

Historic, archived document

Do not assume content reflects current scientific knowledge, policies, or practices.



C. & J. NOVELTY ❖ CANNAS FOR 1918

EXPERIENCE HAS PROVED THAT IT PAYS TO STOCK UP EARLY WITH C. & J. NOVELTIES



C. & J. Cannas in a vase

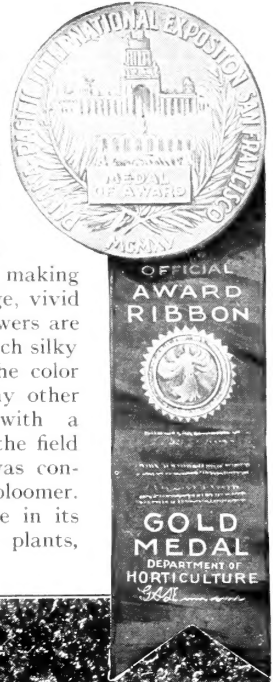
❖ THE PRESIDENT

Height 4 feet. By a sweeping majority of votes, this Canna won the honor of being named "The President," for it is so surpassingly fine that no other red Canna could be a competitor. In color it is a rich, glowing scarlet, and the immense, firm, rounded flowers, 7 inches across when open, are produced on strong erect stalks well above the large, rich green foliage. "The President" is superior to any other red variety in the quantity and also quality of bloom, and the firm flowers are able to resist drought and heat to a remarkable degree. Mr. Wintzer says, "this is one of the most marvelous Cannas ever produced." A grand variety when grown singly and unsurpassed when massed. Strong plants, \$3.50 each.

❖ NOKOMIS

NOTE: We give Indian names to Bronze-leaved Cannas

Height 5 feet. Like "The President," this is a hybrid of the famous Firebird, without any of the bad habits of the parent plant. The foliage is a combination of *emerald-green and bronze*, beautifully veined, making a lovely setting for the large, vivid crimson flowers. These flowers are most attractive, having a rich silky sheen on the petals and the color is darker than that of any other bronze-foliaged Canna with a bloom near this size. In the field last summer this Canna was conspicuous as a consistent bloomer. Nokomis holds front place in its class and color. Strong plants, \$1.50 each.



The White House, where the Nation's gaze is fixed. The flowers must be right, so Conard & Jones' Swastika Cannas were selected

**Florists
Gardeners
Nurserymen**

You cannot afford to waste space or labor or time on *poor varieties*. In these days of short labor and high prices you must bank on the *best stock and no other*. We have introduced more meritorious sorts and taken more prizes for Cannas, we believe, than all other American firms combined. Try these recent novelties:

Wintzer's Colossal	\$1 00	12	100
City of Portland	- 1 50	10	00
Dragon	- -	1 75	12 00
Lafayette	- -	2 00	15 00
Panama	- -	1 00	7 50

6 each of these five for \$3. 12 each for \$5, f.o.b. West Grove

*Terms:
f.o.b.
West Grove*

THE CONARD ❖ WEST GROVE
& JONES CO. PENNA.

ROBERT PYLE, President

A. WINTZER, Vice-President

*Send cash
with order or
satisfactory
reference*

C. & J. SWASTIKA CANNAS FOR 1918

☞ This sign indicates varieties originated and introduced by The Conard & Jones Co.

	PINK SHADES	PRICE			WHITE AND YELLOW	PRICE	
		100	1,000			100	1,000
DWARF	☞ Betsy Ross. 3 ft. Beautiful rose-pink; valuable on account of its dwarf habit.	\$5	\$40	DWARF	☞ Buttercup. 3 ft. True bright buttercup-yellow; large, beautifully formed flowers in fine handsome trusses.	\$7	
	☞ Loveliness. 3 ft. Color, bright ruby-carmine. Flowers very firm in texture. Gladioflora type.	8	60		☞ Cloth of Gold. 3½ ft. <i>Bronze foliage.</i> A golden yellow Canna on a dwarf plant with dark foliage is certainly an acquisition. Beautiful pure orange, tinted with gold and coppery red; flowers are of good size and continue blooming all season. The plants have dark green foliage, striped and edged with brownish bronze.	7.50	\$60
	☞ Martha Washington. 3 ft. Extra-large flowers of bright rose-pink; a great bloomer and splendid for small beds or for bordering beds of tall-growing Cannas.	3	25		☞ Queen of Holland. 3 ft. <i>Bronzy foliage.</i> Foliage very dark green, heavily veined and edged with bronze; bears immense branching trusses of perfectly beautiful flowers. Color, deep rich orange.	10	
	☞ Wawa. 3 ft. A new shade of soft pink. Bears medium-sized flowers in large trusses. A highly improved Maiden's Blush.	12	100		☞ California. 4 ft. A pure rich orange-gold. The flowers are medium size, bloom freely, and the color harmonizes with all others.	4	30
	☞ City of Portland. 3½ ft. Glowing pink, deeper in color than its parent, Mrs. Alfred F. Conard, and the flowers are produced in greatest profusion. It blooms continuously, forming two and three bloom-heads on each stalk, which bud and bloom in succession, so each plant is showing flowers all the time. This is considered the finest salmon-pink Canna in existence. A splendid keeper.	10	90		☞ Compte de Bouchard. 4½ ft. Golden yellow flowers, spotted red.	3	20
MEDIUM	☞ Eastern Beauty. 4 ft. <i>Bronze foliage.</i> Flowers a charming shade of light salmon and orange.	3	25	☞ Elizabeth Hoss. 3½ ft. Pure yellow ground thickly spotted with bright red. A continuous bloomer.	2.50		
	☞ Hungaria. 3½ ft. Rose-pink; possesses a delicate shade not known in any other Canna.	4	35	☞ Golden Gate. 4 ft. The flowers open almost pure gold, but soon become richly rayed with orange-crimson and apricot, centering to the throat of deep carmine-red.	5	40	
	☞ Maid of Orleans. 4½ ft. Flowers rich cream and pink on olive-green foliage. Flowers and truss of largest size. Magnificent foliage.	5	40	☞ Jane Addams. 4½ ft. True, rich buttercup-yellow (richer than Buttercup Canna), with a suggestion of red in the throat. The buds are dark maroon, very pretty, and they blend artistically in color with the bright yellow blooms and soft green foliage.	7	65	
	☞ Morning Glow. 4 ft. Foliage an olive-green, striped and veined with bronze. A greatly improved descendant of Evolution, with well-mounted flowers of exquisite, soft shell-pink and orange-red center. <i>Price, 60 cts. each.</i>	7.50	60	☞ Juanita. 4½ ft. <i>Golden bronze foliage.</i> This flower is a strong orange shade which harmonizes in charming fashion with the <i>golden bronze</i> foliage, a rare and beautiful combination.	8	70	
	☞ Mrs. A. F. Conard. 4 ft. Makes magnificent heads of perfectly formed, firm, lasting flowers of salmon-pink color. A notable variety.	15	120	☞ Mont Blanc (Improved). 3½ ft. Almost pure white, the predecessor of Blanche Wintzer and Snow Queen. For ten years it held the field as the largest near white Canna in existence.	8		
	☞ Mrs. Woodrow Wilson. 4 ft. Rich, soft crimson-pink, particularly clear and pleasing. Flowers are large, with broad, overlapping, rounded petals of great substance and durability. Habit is robust but the leaves do not hide the flowers; foliage is light green, prettily shaded.	20		☞ Princeton. 4 ft. An intense bright yellow flower with a decided dash of red in the throat, extending well up on the petals and showing on the tongue also. Its principal value lies in its ability to resist bleaching better than any other yellow Canna. It flowers early.	15	120	
	☞ Pocahontas (Bronze Olympic). 4½ ft. <i>Bronze foliage.</i> Large, orient-red flowers, borne on firm, upright stems, just enough above the foliage to show the entire head.	10	90	☞ Richard Wallace. 4½ ft. Large-flowered canary-yellow. An especially fine bedder.	5	40	
	☞ Rosea Gigantea. 3½ ft. The giant-sized flowers are wonderful. It is a prodigious bloomer with great flower-heads of soft rose to carmine-pink. A favorite at Washington.	4	35	☞ San Diego. 4 ft. <i>Golden bronze foliage.</i> Described as Chinese orange or Persian yellow in color. The crimped petals are remarkable for substance, which enables them to withstand the hot summer sun without wilting, and another charm is in the buds which are dark bronze, harmonizing with the golden bronze foliage. Grand in every way.	20		
	☞ Venus. 4 ft. The color is a gay, rosy pink, with a well-defined attractive border of creamy yellow. A self-cleaning variety.	5	40	☞ Gladiator. 5 ft. A leader for years. Color is bright yellow, spotted with red. No other bedding Canna in this color can surpass this sturdy robust grower. It seems to stand storms and sun better than any variety we grow, as the individual flowers are exceptionally firm. Other new Cannas of this color keep coming, but up to date Gladiator has not been surpassed.	3	25	
	☞ Wabash. 4 ft. <i>Bronze foliage.</i> Well described as "Bronze-leaved Rosea Gigantea," for this flower has the same great size and carmine-pink color as that famous novelty, adding the advantage of handsome bronze foliage.	4					
	☞ Louise. 5 ft. Soft rose-pink delicately dappled with red.	4					
	☞ Morning Star. 5 ft. Perhaps the fanciest of all our 1917 introductions. An imposing variety with green foliage. Flowers brilliant scarlet, petals broadly edged with pure yellow. <i>Price, 60 cts. each.</i>	4					
	☞ Zenith. 5 ft. Orange-pink or salmon with the tongue pure orange; unlike any other Canna.	4	30				

DWARF: Indicates kinds up to 3 ft. MEDIUM: Over 3 ft. and under 5 ft. TALL: 5 ft. and over

1918 WHOLESALE PRICES

Oak Brand Shrubs

Don't take chances on uncertain importations from abroad. *Play safe* as to both delivery and *quality*, by buying Oak Brand Shrubs "made in America." Strong rooted. Hardy. Strong.

	Per 100	Per 1000		100	1000
ABELIA Grandiflora Rupestris, 9 to 12 in.	\$15.		HYDRANGEA Arborescens Grandiflora Alba, 1½ to 2 ft.	\$10.	
ALTHEA, Banner (Hibiscus), 2 to 3 ft.	12.		2 to 3 ft.	12.	
3 to 4 ft.	15.		3 to 4 ft.	15.	
" Double Red, 1½ to 2 ft.	9.		HYDRANGEA Paniculata Grandiflora, 1 to 1½ ft.	6.	\$50.
2 to 3 ft.	12.		1½ to 2 ft.	8.	75.
" Double Pink, 1½ to 2 ft.	9.		2 to 3 ft.	10.	80.
" Jeanne d'Arc, 1½ to 2 ft.	9.		3 to 4 ft.	12.	90.
BUDDLEIA Magnifica, 1½ to 2 ft.	8.		4 to 5 ft.	15.	125.
2 to 3 ft.	10.		PHILADELPHUS Grandiflora, 2 to 3 ft.	8.	75.
" Veitchiana, 1½ to 2 ft.	8.		4 to 5 ft.	10.	90.
2 to 3 ft.	10.		5 to 6 ft.	12.	100.
DEUTZIA Crenata, 2 to 3 ft.	9.		PRIVET, California, 1½ to 2 ft.	4.	30.
3 to 4 ft.	11.		2 to 2½ ft.	5.	40.
4 to 5 ft.	13.		SPIREA, Anthony Waterer, 1 to 1½ ft.	12.	100.
" Gracilis, 12 to 15 in.	8.		1½ to 2 ft.	15.	125.
1½ to 2 ft.	12.		" Van Houtteii, 2 to 3 ft.	9.	75.
" Gracilis Rosea, 1½ to 2 ft.	10.		3 to 4 ft.	11.	90.
2½ to 3 ft.	15.		4 to 5 ft.	15.	125.
" Lemoinii, 1½ to 2 ft.	15.		VIBURNUM Opulus Sterilis, 2 to 3 ft.	12.	120.
2 to 2½ ft.	15.		" Plicatum, 1½ to 2 ft.	15.	130.
2½ to 3 ft.	18.		*(Note especially the 2 to 3 ft.	25.	150.
" Pride of Rochester, 2 to 3 ft.	10.		1000 rates.) 3 to 4 ft.	30.	200.
4 to 5 ft.	12.		4 to 5 ft.	10.	90.
5 to 6 ft.	15.		WEIGELA Candida, 1½ to 2 ft.	18.	150.
FORSYTHIA Suspensa Fortunei, 2 to 3 ft.	10.		4 to 5 ft.	12.	100.
" Viridissima, 2 to 3 ft.	8.	60.	" Nana variegata, 1½ to 2 ft.	15.	125.
3 to 4 ft.	10.	80.	2 to 3 ft.	18.	150.
4 to 5 ft.	15.	100.	3 to 4 ft.	15.	100.
			4 to 5 ft.	18.	150.

Hardy Climbing Roses

The roots that Roses make in this luxuriously good soil of ours, insure a strong top growth.

	Price per 100				Price per 100		
	1 yr.	2 yr.	3 yr.		1 yr.	2 yr.	3 yr.
AMERICAN PILLAR (M.). The most popular single, hardy climbing Rose in existence. It produces exquisitely lovely, rosy pink flowers in such abundance as to almost cover the plant.	\$12.	\$15.		DOROTHY PERKINS—WHITE (H.W.). A sport from Pink Dorothy that produces snow white flowers and blooms the same time as the parent plant.	\$8.	\$10.	
AMERICA (M.). Delicate pink with white center.	15.			EVANGELINE (W.). Single flowers 2 inches in diameter. Color pure white with a delicate tint of pink on the tips of the petals.			12.
BLUE ROSE—Veichenblau (M.). Same type as Crimson Rambler, but the flowers are rosy-lilac when opening and change to metallic blue.			15.	EXCELSA (Red Dorothy Perkins) (H.W.). Color is intense, clear, crimson maroon with tips of the petals tinged scarlet.			12.
CECILE BRUNNER—CLIMBING (C.I.P.). This is the most free-blooming of the hardy everblooming climbing class. Dainty rosy-pink flowers on a rich, creamy white ground.	15.	18.		HIAWATHA (H.W.). Single flowers. Brilliant scarlet. Very effective.	10.	12.	\$15.
CHRISTINE WRIGHT (H.W.). Bright clear wild-rose-pink flowers, 3 to 4 inches in diameter. Lasts for days when cut.	15.	20.		MINNEHAHA (H.W.). Pink. A vigorous grower.	12.	18.	
CORONATION (W.). New. Crimson flowers with a dash of white on the petals. The clusters have an extremely pleasing fluffy effect when in full bloom.			18.	MISS MESSMAN—(Everblooming Crimson Rambler (M.). Produces crimson flowers the whole growing season.	10.	12.	15.
DAYBREAK (H.W.). Yellowish Pink flowers of the type of Dorothy Perkins.			15.	RUBY QUEEN (H.W.). Large flowers, rich ruby red with a clear white center.	8.	12.	
DR. W. Van FLEET (H.W.). The leader in its class and color. Makes a mass of exquisite buds, often borne singly, on long stems, unsurpassed for cutting. Color is rich flesh color. Foliage is glossy, and this rose is fine in every way.			15.	UNIVERSAL FAVORITE (H.W.). Perfectly double flowers of medium size. Color, clear, bright pink. Unusually fine.	15.		
DOROTHY DENNISON (H.W.). A vigorous growing pink variety.	12.	\$15.		WICHMOSS (CLM.). The Climbing Moss Rose. Very unique. Color, pink with reverse of petals darker pink.	15.	20.	
				WICHURAIANA (W.). Foliage green and white. Flowers white.	10.	15.	
				WICHURAIANA VARIEGATED (W.). Foliage green and white. Flowers White.	15.	20.	
				RUGOSAS			
				SIR THOMAS LIPTON. Pure white, blooms all Summer. Very fragrant.	12.	15.	

Vines and Ivies

Vines and Ivies are continually increasing in popularity. The stock we sell, you can sell to your customers with the *absolute assurance* that it is going to make good for them.

	Per 100			Per 100	Per 1000
	100	1000		\$10.	\$90.
ENGLISH IVY (Hedera Helix), 4 inch pot-grown plants.	5.		HONEYSUCKLE—Lonicera Jap. Aurea Reticulata, 2 year field-grown plants,		
3 inch pot plants.			HONEYSUCKLE—Lonicera Jap. Halliana, 2 year field-grown plants, No. 1.	10.	80.
EUONYMUS RADICANS, 8 to 12 in. field-grown plants.	10.		2 year field-grown plants, No. 1½.	7.	60.
2½ in. pot plants.	5.		HONEYSUCKLE—Lonicera—Chinese Twining, 2 year field-grown plants, No. 1.	10.	90.
EUONYMUS RADICANS VARIEGATA, 12 to 18 in. field-grown plants.	12.		2 year field-grown plants, No. 1½.	7.	60.
2½ in. pot plants.	5.		MATRIMONY VINE (Lycium Barbarum), Field-grown plants, 2 to 3 ft.	8.	70.
HONEYSUCKLE—Lonicera Heckrotti, 2 year field-grown plants, No. 1.	10.	90.	WISTARIA MAGNIFICA, strong plants, 2 to 3 ft.	15.	112.50
2 year field-grown plants, No. 1½.	7.	60.			

Terms:
f. o. b.
West Grove

The CONARD & JONES CO.

ROBERT PYLE, President

WEST GROVE, PA.

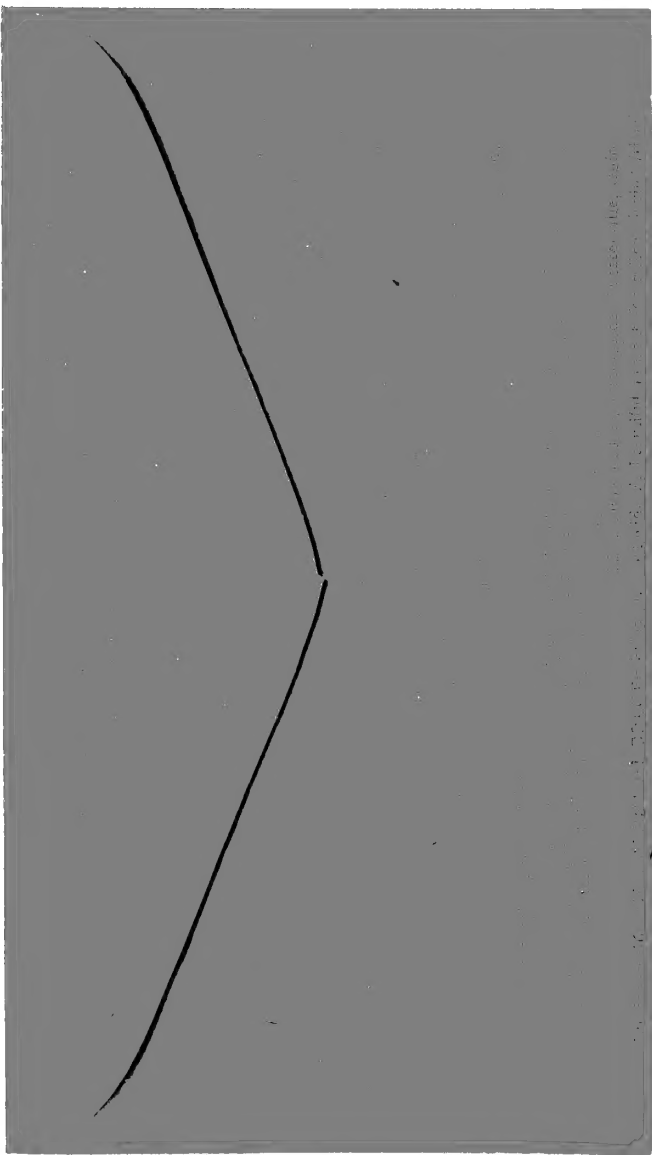
A. WINTZER, Vice-President

Send Cash
with order or
satisfactory
reference

1871

1872

1873



C. & J. SWASTIKA CANNAS FOR 1918

‡ This sign indicates varieties originated and introduced by The Conard & Jones Co.

	PRICE			PRICE			
	100	1,000		100	1,000		
RED SHADES			VARIEGATED KINDS				
DWARF	‡ Dragon. 3 ft. Most vivid and prolific dwarf we know. It blooms incessantly and keeps sending up new bloom-stalks about every week, until cut down by frost. Color is dark ox-blood-red. Very rich. An especially suitable variety for mass planting.....	12	\$100	DWARF	‡ Panama. 3 ft. The color is an attractive rich orange-red, with a well-defined edge of bright golden yellow. The flowers are <i>very large</i> , and the immense spread of the individual blooms, coupled with the early, free-flowering habit, makes this Canna most noteworthy.....	7.50	60
	‡ Express. 2½ ft. Scarlet-crimson, a shade lighter than Philadelphia.....	4	35		‡ Souv. d'A. Crozy. 3 ft. Beautiful red bordered with golden yellow.....	4	30
	‡ Philadelphia. 3 ft. This splendid Canna originated here in 1896, and still holds its place as one of the best dwarf crimson Cannas yet introduced. Philadelphia bears splendid heads of large, finely expanded flowers, and makes handsome plants the whole season....	3	25	MEDIUM	‡ Gladioflora. 3½ ft. Crimson, changing to carmine-rose and edged with gold. An exceptionally free bloomer.....	5	40
	‡ Triumph. 3 ft. A handsome shade of deep, rich crimson, held erect on fine well-built trusses, and strong stems. A constant bloomer with firm flowers that can stand the hot sun without wilting. Fine for small beds or borders.....	4	30		‡ Jennie Walls Fahline. 4½ ft. Pink and primrose, with the lips of the petals flashing carmine-pink and edged with gold.....	5	40
	‡ Beacon. 4 to 4½ ft. Moderate-sized flowers borne in great heads of rich cardinal-red, which for color effect we think is unparalleled.....	5	40		‡ Sam Trelease (Improved). 3½ ft. An intense, bright poppy-red, with a thread of buttercup-yellow around each petal. Exceptionally beautiful.....	15	
	‡ Chautauqua. 4 ft. <i>Bronze foliage.</i> Flowers pure rich scarlet, intensely vivid and striking.....	5	40	TALL	‡ Gaiety. 5 ft. Color is reddish orange, mottled with carmine and edged with yellow. The tongue is yellow and densely spotted with carmine. When planted in solid beds or rows produces a dazzling effect. There is no chance of mixing this Canna with any other, for it is most distinctive and can be picked out from among other varieties because of its lively coloring. For mass planting it is unsurpassed.	10	90
	‡ Compte de Sachs. 4 ft. Foliage deep bronzy green; the flowers open out nearly flat, color clear crimson-scarlet without markings; flower-heads large and full.....	3	20		ORCHID-FLOWERED		
	‡ Firebird. 4 ft. Clear glistening scarlet flowers borne in immense trusses. The individual flowers are unusually fine.....	8	75	MED.	‡ King Humbert. 4 ft. <i>Magnificent bronze foliage.</i> Bright orange-scarlet streaked with crimson. Used in great quantities for bedding, and most satisfactory.....	6	50
	‡ George Washington (Improved). 3½ ft. The color is deep velvety crimson, beautifully shaded. The flowers are large, have broad petals, and are borne in massive trusses.....	3	25		‡ Indiana. 6 ft. Glistening golden orange, daintily marked and striped with red. Single blossoms often 7 inches across.....	4	30
	‡ Lafayette. 4 ft. Resembles the famous "Meteor," but the flowers are a more intense scarlet. The heads of bloom are carried erect above the healthy, green foliage, producing a brilliant effect in mass planting. "Lafayette" is an incessant bloomer and in great favor at Washington on this account.....	15	120	TALL	‡ Louisiana. 7 ft. Flowers are often more than 7 inches across and every inch is vivid scarlet.	3	25
‡ Mount Etna. 4 ft. <i>Bronze foliage.</i> Makes large, bold, erect trusses of intense brilliant crimson flowers, on magnificent <i>dark purple</i> or blackish bronze foliage.....	3	25	‡ Marvel. 5 ft. Rich buff color, edged yellow. No other Canna like it. It blooms all the time and the unusual color gives it value.....		5	40	
‡ Splendor. 4½ ft. The most impressive quality in this Canna is the firm, well-spread-out formation of the flowers, which are an intense scarlet color and very large. It makes 2 or 3 bloom-heads on each stalk, insuring flowers practically all the time.....	5	40	‡ Mrs. Carl Kelsey. 6 to 7 ft. Foliage green with a narrow edge of purple, and with erect, full heads of enormous flowers. Orange-scarlet, flaked and striped with golden yellow; petals wavy edged.....		3	25	
‡ The President. 4 ft. See description on page 1.			‡ Pennsylvania. 6 ft. The flowers are pure, deep scarlet, of immense size. A most excellent sort.....		2	15	
‡ Black Prince. 5 ft. Color an intense dark velvety maroon, almost black; a strong erect grower, with fine dark red stems and deep green leaves edged with purple.....	3	25	‡ Uncle Sam. 6 ft. A very stately variety with enormous heads of brilliant orange-scarlet flowers. This Canna received an award of merit from the Royal Horticultural Society of England and a large bed of it was planted on the grounds of the White House at Washington, D. C.....		3	25	
‡ Conowingo. 5 ft. <i>Bronze foliage.</i> The color of this flower is, like "Splendor," an intense fiery scarlet, but slightly deeper. The foliage is an unusually beautiful plum color at the base, shading to rich olive-green at the tip.....	4	30	‡ Wintzer's Colossal. 5 ft. Colossal indeed are the flowers and bloom-heads of this magnificent Canna. The effect produced by the vivid scarlet flowers is very striking. It is the largest-flowered Canna yet introduced, also the earliest, most persistent, and most prolific bloomer.....		6	50	
‡ Meteor (Wintzer's). 5 ft. Produces an almost solid mass of deep dazzling crimson bloom well above the foliage. Undoubtedly a fine red, and one that will always be in the front rank when a bright, brilliant crimson color is desired.	6	50	‡ Wyoming. 7 ft. <i>Bronze foliage.</i> Blossoms orange-colored; of immense size; foliage is <i>purple</i> . This is about the showiest orange-colored Canna and is very handsome when planted in clumps.....		3	25	
‡ Nokomis. 5 ft. See description on page 1.							
‡ Pillar of Fire. 6 to 7 ft. The giant of its class; flower bright crimson-scarlet.....	3	25					

DWARF: Indicates kinds up to 3 ft. MEDIUM: Over 3 ft. and under 5 ft. TALL: 5 ft. and over

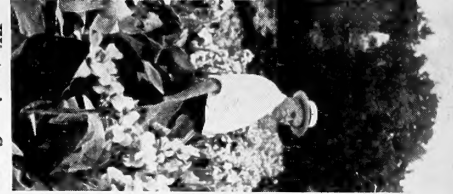
TRADE PRICE-LIST

C. & J. CANNAS 1918

SEE DESCRIPTIONS INSIDE

Unless otherwise noted, the color of the foliage is green

VARIETY	Height	Color	Foliage	Type	PRICE	
					100	1 000
Beacon	4 ft.	Red			\$5 00	\$40 00
Betsy Ross	3 ft.	Pink			5 00	40 00
Black Prince	5 ft.	Maroon			3 00	25 00
Buttercup	3 ft.	Yellow			7 00	
California	4 ft.	Orange			4 00	30 00
Chautauqua	4 ft.	Scarlet	Bronze		5 00	40 00
City of Portland	3 1/2 ft.	Salmon			10 00	90 00
Cloth of Gold	3 1/2 ft.	Orange	Bronze		7 50	60 00
Comte de Bouchard	4 1/2 ft.	Yellow			3 00	20 00
Comte de Sachs	4 ft.	Scarlet			3 00	20 00
Conowingo	5 ft.	Scarlet	Bronze		4 00	30 00
Dragon	3 ft.	Oxblood			12 00	100 00
Eastern Beauty	4 ft.	Salmon	Bronze		3 00	25 00
Elizabeth Hoss	3 1/2 ft.	Yellow			2 50	
Express	2 1/2 ft.	Crimson			4 00	35 00
Firebird	4 ft.	Scarlet			8 00	75 00
Gaiety	5 ft.	Var.			10 00	90 00
George Washington	3 1/2 ft.	Crimson			3 00	25 00
Gladiator	5 ft.	Yellow			3 00	25 00
Gladioflora	3 1/2 ft.	Var.			5 00	40 00
Golden Gate	4 ft.	Yellow			5 00	40 00
Hungaria	3 1/2 ft.	Pink			4 00	35 00
Indiana	6 ft.	Orange		Orchid	4 00	30 00
Jane Addams	4 1/2 ft.	Yellow			7 00	65 00
Jennie W. Fahline	4 1/2 ft.	Var.			5 00	40 00
Juanita	4 1/2 ft.	Orange	Bronze		8 00	70 00
King Humbert	4 ft.	Scarlet	Bronze	Orchid	6 00	50 00
Lafayette	4 ft.	Scarlet			15 00	120 00
Louise	5 ft.	Pink			4 00	
Loveliness	3 ft.	Pink			8 00	60 00
Louisiana	7 ft.	Scarlet		Orchid	3 00	25 00
Maid of Orleans	4 1/2 ft.	Pink			5 00	40 00
Martha Washington	3 ft.	Pink			3 00	25 00
Marvel	5 ft.	Buff		Orchid	5 00	40 00
Meteor (Wintzer's)	5 ft.	Crimson			6 00	50 00
Mont Blanc, Imp.	3 1/2 ft.	White			8 00	
Morning Glow	4 ft.	Pink	Bronze		60 cts.	each
Morning Star	5 ft.	Var.			60 cts.	each
Mount Etna	4 ft.	Crimson	Bronze		3 00	25 00
Mrs. A. F. Conard	4 ft.	Salmon			7 50	60 00
Mrs. Carl Kelsey	6 ft.	Scarlet		Orchid	3 00	25 00
Mrs. Woodrow Wilson	4 ft.	Pink			15 00	120 00
Nokomis	5 ft.	Crimson	Bronze		\$1.50	each
Panama	3 ft.	Var.			7 50	60 00
Pennsylvania	6 ft.	Scarlet		Orchid	2 00	15 00
Philadelphia	3 ft.	Crimson			3 00	25 00
Pillar of Fire	7 ft.	Crimson			3 00	25 00
Pocahontas	4 1/2 ft.	Pink	Bronze		20 00	
Princeton	4 ft.	Yellow			15 00	120 00
Queen of Holland	3 ft.	Orange	Bronze		10 00	
Richard Wallace	4 1/2 ft.	Yellow			5 00	40 00
Rosea Gigantea	3 1/2 ft.	Pink			10 00	90 00
Sam Trelease, Imp.	3 1/2 ft.	Var.			15 00	
San Diego	4 ft.	Orange			20 00	
Souv. d'A. Crozy	3 ft.	Var.			4 00	30 00
Splendor	4 1/2 ft.	Scarlet			5 00	40 00
The President	4 ft.	Scarlet			\$3.50	each
Triumph	3 ft.	Crimson			4 00	30 00
Uncle Sam	7 ft.	Scarlet		Orchid	3 00	25 00
Venus	4 ft.	Pink			4 00	35 00
Wabash	4 ft.	Pink	Bronze		5 00	40 00
Wawa	3 ft.	Pink			12 00	100 00
Wintzer's Colossal	5 ft.	Scarlet		Orchid	6 00	50 00
W.oming	7 ft.	Orange	Bronze	Orchid	3 00	25 00
Zenith	5 ft.	Salmon			4 00	30 00



Wintzer's Canna
Novelties are offered
by the leading flor-
ists in the U. S. A.
**ARE YOU
IN LINE?**

**WINTZER'S
COLOSSAL**

FLOWERS
OVER 8 INCHES
ACROSS

No. 23981.
October 22, 1917.
I feel that I must say a word in regard to the Wintzer's Colossal Canna
Red. I only wish someone from your firm could have seen it. It was beauti-
ful and the flowers bloomed constantly until a few days ago.—Mrs. L. H.
Parkesburg, Pa.

This Magnificent Canna is a Money-Maker

**WE ARE SUBSCRIBERS TO THE FUND FOR
MARKET DEVELOPMENT**
A Co-operative National Campaign to Create New Business for Nurserymen
ASK US ABOUT IT

Department - West Grove, Pa.

THE CONARD & WEST GROVE & JONES CO. PENNA.

ROBERT PYLE, President ANTOINE WINTZER, Vice-President

1c. Paid
West Grove, Pa.
Permit No. 1