

Historic, archived document

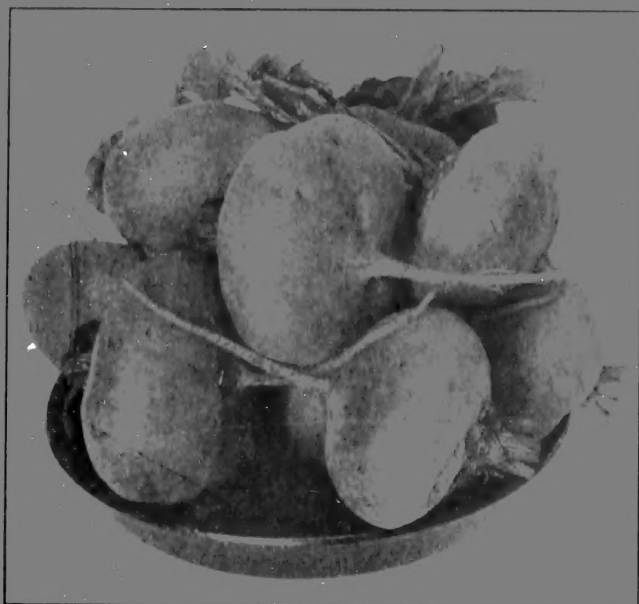
Do not assume content reflects current scientific knowledge, policies, or practices.

FEBRUARY,
1904.

SEP. 11, 1923 ★
FEBRUARY, 1904.
U.S. Department of Agriculture.

LIVINGSTON'S

True Blue Seeds



Trade
Price
List
FOR
1904

IMPROVED CROSBY'S EGYPTIAN BEET.

A very superior beet, carefully selected for years by Mr. Crosby, a noted market gardener, whose aim was to secure a perfect out-door extra early variety.

The Livingston Seed Co.

114 North High St.,

◊ COLUMBUS, O., ◊

FEBRUARY,
1904.

FEBRUARY,
1904.

To Dealers

COLUMBUS, OHIO, February, 1904.

The quotations in this Trade List are intended for **Dealers Only**. We expect to bill at prices given as far as possible, but should any of our stocks run short we reserve the right to decline orders or advance price.

We do not put out our Vegetable Seeds on Commission.

Transportation At the prices quoted customers must pay cost of forwarding. When desired we will send by mail, but when this is done postage will be added to the invoice at the rate of eight cents per pound. Quarter pounds will be supplied at pound rates; quarter bushels at bushel rates.

Cartage, Etc. We make no charge for cartage, boxes, barrels or packing. Bags only are charged for, and at cost, about 15 cents each.

Terms All general bills of Garden Seeds are payable June 1, 1904, without reference to date of purchase; or a discount of one per cent. a month will be allowed on all payments made before June 1. Bills to parties buying **special items only**, are due in 60 days. Onion Sets, Potatoes, etc., are net cash. Unknown correspondents desiring credit must give satisfactory reference.

Seeds in Packets, Etc. Which cannot be billed at the low bulk prices given in this Bulk Wholesale List, will be invoiced at following discounts from prices in our Retail Catalogue:

All Seeds in Packets, except those herein quoted, at 50 per cent. discount. 500 packets or more at 60 per cent. discount.

Seeds by the ounce, pint or quart, 33 $\frac{1}{3}$ per cent. discount.

Potatoes by the pound, or Potato Eyes, 40 per cent. discount.

Plants in collections, 10 per cent. discount.

Books on Garden Topics, 15 per cent. discount.

At these liberal rates of discount the goods must travel at the purchaser's expense, and if by mail, postage will be added to the invoice.

Special Notice.

We do not supply "cheap seeds," and therefore do not try to compete in price with those who handle them. We furnish the Trade exactly the same quality of seeds that we send to our best Market Gardeners. They are grown either by ourselves or subject to our inspection; hence we feel no hesitancy in saying that they are the purest and best to be found. At the same time, however, it must be distinctly understood, since the success of a crop is dependent upon so many contingencies, as condition of soil, mode of planting, climate, etc., that we cannot warrant our Seeds or hold ourselves responsible for any loss or damage arising from any failure thereof.

Address all Orders and Inquiries :

The Livingston Seed Co.

Seed Growers, Merchants and Importers

COLUMBUS, OHIO.

Successors to

A. W. Livingston's Sons.

RETAIL STORES AND OFFICES : 114 North High Street.

WAREHOUSES : 11 to 17 E. Long St. and Lan. Ave. Farm.

LIVINGSTON'S TRUE BLUE SEEDS.

TRADE PRICE LIST.

PLEASE USE OUR "CIPHER" WORDS IN TELEGRAMS.

OUR customers will find a **Telegraphic Code word** printed opposite each article, enabling them to order by wire at comparatively little expense.

For example: "**Five Baneful**" would mean **Five bushels Extra Early Round Pod Valentine Beans**; "**Twenty Target**" would mean **Twenty pounds Livingston's Beauty Tomato**. The additional word, "**Freight,**" "**Express,**" "**Mail,**" would designate the mode of shipment.

ASPARAGUS.

	Tel. Cipher	Per Lb.	10 lbs or over Per Lb.
Donald's Elmira.....	<i>Assassin</i>	\$0 45	\$0 40
Palmetto	<i>Assurge</i>	28	25
Conover's Colossal	<i>Aspen</i>	25	22
Columbian Mammoth	<i>Askak</i>	35	30

ASPARAGUS ROOTS.

CHOICE TWO YEAR OLD STOCK.

			Per 1000
Palmetto	<i>Arson</i>		4 25
Conover's Colossal	<i>Article</i>		3 75
Donald's Elmira.....	<i>Arbest</i>		4 50
Columbian Mammoth	<i>Arlie</i>		4 50

BUSH BEANS, Wax or Yellow Podded.

	Per bu.		10 bus. or over Per bu.
Livingston's New Pencil Pod Wax... <i>Beaten</i>	6 25		
Jones' New Stringless Wax..... <i>Behold</i>	6 25		
Keeney's New Rustless Golden Wax.. <i>Beckon</i>	5 50	5 25	
Wardwell's Kidney Wax..... <i>Bicorn</i>	7 50		
Challenge Black Wax..... <i>Begrime</i>	6 25	6 00	
New Davis Wax..... <i>Bella</i>	7 00		
Extra Early Valentine Wax..... <i>Berth</i>	6 25	6 00	
Currie's Rust Proof Wax..... <i>Believe</i>	6 25		
New Round Pod Kidney Wax..... <i>Bibul</i>	6 75	6 50	
Extra Early Refugee Wax..... <i>Bewitch</i>	6 00	5 75	
Scarlet Flageolet Wax..... <i>Bibac</i>	6 25	6 00	
Perfection Wax	6 25	6 00	
Improved Golden Wax, Grenell's.... <i>Besiege</i>	6 25	6 00	
Detroit Wax	6 25	6 00	
New Prolific Black Wax..... <i>Betroth</i>	6 00	5 75	
Mammoth Yosemite Wax..... <i>Billet</i>	7 50		

BUSH BEANS, Green Podded.

	Tel Cipher	Per bu.	10 bus. or over Per bu.
Extra Early Round Pod Valentine	<i>Baneful</i>	\$4 00	\$3 75
Livingston's Round Six Weeks	<i>Baker</i>	4 00	3 75
Extra Early Mohawk	<i>Badness</i>	3 75	3 50
Early Long Yellow Six Weeks.....	<i>Bade</i>	3 75	3 50
Extra Early Refugee.....	<i>Baleful</i>	4 00	3 75
Longfellow	<i>Bawl</i>	Sold out	
Bountiful	<i>Barton</i>	4 75	
Best of All	<i>Baby</i>	5 00	4 75
Refugee, or 1000 to 1	<i>Barrack</i>	4 25	4 00
Dwarf Horticultural	<i>Bandy</i>	4 00	3 75
New Giant Stringless Green Pod	<i>Bang</i>	4 50	4 25
White Kidney or Royal Dwarf.....	<i>Battes</i>	3 25	3 00
White Marrow	<i>Batting</i>	3 25	3 00
White Navy	<i>Bauble</i>	3 25	3 00
New Stringless Green Pod	<i>Bached</i>	4 50	4 25
Burpee's Bush Lima	<i>Billow</i>	5 75	5 50
Dreer's Bush Lima.....	<i>Binder</i>	6 00	5 75
Henderson's Bush Lima.....	<i>Binmac</i>	6 00	5 75
New Wonder Bush Lima	<i>Becker</i>	6 00	5 75
New Quarter Century Bush Lima....	<i>Beaham</i>	6 00	5 75

BEANS, Pole or Corn.

Siebert's Early Lima	<i>Barbour</i>	5 75	5 50
Early Golden Cluster Wax.....	<i>Bluster</i>	7 00	6 75
Lazy Wife's	<i>Boggle</i>	5 50	5 25
Large White Lima.....	<i>Botarge</i>	5 25	5 00
Dreer's Improved or Challenger Lima.	<i>Boscage</i>	5 50	5 25
White Crease Back, or Fat Horse....	<i>Booth</i>	5 00	4 75
King of the Garden Lima.....	<i>Botanise</i>	5 50	5 25
Early Dutch Case Knife.....	<i>Blighted</i>	5 00	4 75
Speckled Cranberry, or Horticultural.	<i>Boaster</i>	5 00	4 75
Southern Prolific; True Round Pod..	<i>Bony</i>	4 25	4 00
Small Lima, or Sieva.....	<i>Bottle</i>	5 25	5 00
Kentucky Wonder, or Homestead....	<i>Bodkin</i>	6 00	5 75
Red Speckled Cut Short, or Corn Hill.	<i>Bonmot</i>	4 75	4 50
Livingston's Royal Corn Bean	<i>Boyer</i>	6 50
Powell's Prolific Snap.....	<i>Board</i>	6 50

GARDEN BEET.

	P. r. lb.	10 lbs. or over Per lb.
Crosby's Egyptian (Home Grown)	<i>Bracelet</i>	40 35
Improved Extra Early Eclipse	<i>Brail</i>	30 28
Extra Early Egyptian Turnip.....	<i>Brained</i>	30 25
Early Bassano	<i>Bragger</i>	28 24
Dewing's Improved Blood Turnip....	<i>Braet</i>	28 25
Bastian's Early Blood Turnip.....	<i>Brabback</i>	28 25
Half Long Blood, very choice.....	<i>Brabbade</i>	28 25
Long Dark Blood Red.....	<i>Branch</i>	25 22
Edmand's Early Blood Turnip.....	<i>Brain</i>	30 25
Lentz Extra Early Blood Turnip....	<i>Brazen</i>	30 28
Detroit Dark Red Turnip.....	<i>Brackish</i>	35 30

MANGEL WURZEL.

	Tel. Cipher	Per lb.	10 lbs. or over Per lb.
Mammoth Long Red	<i>Brier</i>	\$0 15	\$0 12
Mammoth Red Globe.....	<i>Brisk</i>	15	12
Golden Tankard	<i>Brevier</i>	15	12
Champion Yellow Globe	<i>Breefer</i>	15	12
Yellow Leviathan.....	<i>Brock</i>	15	12

SUGAR BEETS.

Lane's Imperial	<i>Brora</i>	15	12
French White Red Top.....	<i>Broncho</i>	15	12
Vilmorin's Imperial	<i>Browmie</i>	15	12
Klein Wanzleben	<i>Brook</i>	15	12

BROCCOLI.

Purple Cape	<i>Bursche</i>	3 00
-------------------	----------------------	------	-------

BRUSSELS SPROUTS.

Improved Dwarf	<i>Byback</i>	1 10
----------------------	---------------------	------	-------

CABBAGE.

New Extra Early Eureka	<i>Cabman</i>	2 25	2 00
Henderson's Early Spring	<i>Carly</i>	1 75	1 50
Earliest Express, or New Wonderful..	<i>Causer</i>	1 10	1 00
All Head Early.....	<i>Caravas</i>	1 40	1 25
Large Charleston Wakefield	<i>Carbine</i>	1 40	1 25
Select Extra Early Jersey Wakefield	<i>Carun</i>	1 25	1 10
Select Henderson's Early Summer...	<i>Centime</i>	1 25	1 10
Early Flat Dutch.....	<i>Carrom</i>	1 00	90
Early Winnigstadt, <i>select strain</i>	<i>Castel</i>	1 15	1 00
Fottler's Improved Brunswick.....	<i>Cavity</i>	1 25	1 00
Henderson's Succession	<i>Cento</i>	1 40	1 25
All Seasons or Vandergaw.....	<i>Capture</i>	1 25	1 10
Danish Ball Head (Direct from Denmark)	} <i>Carcass</i>	1 60	1 50
The Lupton			
Autumn King, or World Beater.....	<i>Chief</i>	1 25	1 15
Autumn King, or World Beater.....	<i>Choker</i>	1 25	1 10
Chase's Excelsior, choice second early	<i>Carbisk</i>	1 50	1 40
Large Late Flat Dutch....	<i>Chandler</i>	1 00	90
Livingston's New Ideal Winter	<i>Centrip</i>	1 50	1 40
Burpee's Surehead	<i>Chintz</i>	1 25	1 10
Large Late American Drumhead....	<i>Chancel</i>	1 00	90
Early Louisville Drumhead	<i>Chare</i>	1 20	1 10
Marblehead Mammoth.....	<i>Charity</i>	1 25	1 15
Mammoth Rock Red	<i>Chariot</i>	1 50	1 40
Improved American Savoy.....	<i>Cheek</i>	1 25	1 10
Livingston's Select Premium Flat Dutch	} <i>Chink</i>	1 25	1 10
Luxemburg			
Luxemburg	<i>Camping</i>	1 25	1 15

CARROT.

	Tel. Cipher	Per lb.	10 lbs. or over Per lb.
Livingston's Early Market.....	<i>Clarion</i>	\$0 50	\$0 45
Guerande, or Ox Heart.....	<i>Clasper</i>	45	40
Earliest French Forcing, or Gold Ball.....	<i>Clamor</i>	55	50
Intermediate Red	<i>Clear</i>	40	35
Early Scarlet Horn (stump rooted) ..	<i>Clamber</i>	45	40
Improved Long Orange.....	<i>Cleve</i>	40	35
Danver's Half Long.....	<i>Classic</i>	45	40
Nantes Early Half Long Scarlet.....	<i>Clipper</i>	40	35
Chantenay	<i>Clabbisk</i>	45	40
Improved Short White (<i>for stock</i>) ..	<i>Clement</i>	25	22
White Belgian (<i>for stock</i>).....	<i>Clew</i>	25	22

CAULIFLOWER.

		Per oz.	Per lb.
Livingston's Earliest	<i>Cicago</i>	2 00	25 00
Henderson's Early Snow Ball.....	<i>Cicame</i>	1 60	22 00
Extra Early Dwarf Erfurt.....	<i>Cicaffle</i>	1 30	18 00
Half Early Paris, or Nonpareil.....	<i>Cibare</i>	50	6 50
Lenormand's Short Stem	<i>Cidead</i>	50	6 00
Large Late Algiers	<i>Cicamord</i>	50	6 50
Veitch's Autumn Giant.....	<i>Cideone</i>	35	4 00

CELERY.

		Per lb.	10 lbs. or over Per lb.
New Golden Rose, Self Blanching....	<i>Comate</i>	2 10	2 00
Giant Pascal	<i>Cohort</i>	75	70
White Plume, very choice strain	<i>Compound</i>	1 25	1 10
Golden Self Blanching	<i>Coiner</i>	3 25	3 00
Evan's New Triumph	<i>Combine</i>	1 25	1 10
Livingston's New Snowwhite.....	<i>Comer</i>	4 00	
Dwarf Golden Hearted.....	<i>Codger</i>	75	70
Perfection Heartwell	<i>Commerce</i>	90	80
Giant White Solid	<i>Coif</i>	75	70
Boston Market	<i>Cobble</i>	75	70
Giant Golden Heart	<i>Cohere</i>	1 00	90
Perle Le Grand	<i>Comming</i>	1 25	1 10
Pink Plume	<i>Century</i>	1 50	1 25
Flavoring (<i>old seeds</i>).....	<i>Cornate</i>	12	10
Giant Prague Celeriac	<i>Conch</i>	1 00	90

COLLARDS.

True Georgia	<i>Condole</i>	50	45
--------------------	----------------------	----	----

CORN SALAD.

Large Broad Leaved.....	<i>Condome</i>	25	22
-------------------------	----------------------	----	----

CORN, Garden Varieties.

		Per bu.	10 bus. or over Per bu.
New Premo.....	<i>Cormo</i>	5 25	5 00
Kendel's Early Giant	<i>Comflux</i>	4 75	4 50
Burlington Hybrid	<i>Confessor</i>	4 25	4 00
Extra Early Red Cob Cory.....	<i>Conjoin</i>	4 50	4 25
First of All.....	<i>Connate</i>	4 75	4 50

CORN—Continued.

	Tel. Cipher	Per bu.	10 bus. or over. Per bu.
Extra Early White Cob Cory	<i>Copier</i>	\$4 75	\$4 50
New Mammoth White Cory	<i>Converse</i>	5 00	4 75
Adam's Extra Early, choice stock	<i>Confect</i>	3 00	2 75
Early Adams, or Burlington	<i>Confan</i>	3 00	2 75
Early Minnesota	<i>Congruent</i>	4 50	
Crosby's Early	<i>Confutant</i>	5 00	
New Columbus Market	<i>Columbus</i>	6 25	6 00
Country Gentleman	<i>Conflict</i>	Sold out	
Shaker's Early	<i>Convert</i>	5 25	
Livingston's Early Red Cob	<i>Constant</i>	5 25	5 00
Livingston's Early White Cob	<i>Concern</i>	5 25	5 00
Perry's Hybrid	<i>Contrary</i>	4 50	
Old Colony	<i>Continent</i>	6 50	
Livingston's New Silver Coin	<i>Conveyor</i>	8 00	
Egyptian, or Washington Market	<i>Conical</i>	6 25	6 00
Stowell's Evergreen	<i>Cooler</i>	7 50	
Black Mexican	<i>Conference</i>	4 50	
Improved Hickox	<i>Consent</i>	5 50	
Late Mammoth	<i>Constrain</i>	7 00	

CORN, Field Varieties.

Livingston's New Golden Surprise	<i>Curden</i>	1 50	1 40
True Clarage Yellow	<i>Cordate</i>	1 40	1 30
Mammoth White Dent	<i>Coupon</i>	1 40	1 30
True Yellow Leaming	<i>Cowmule</i>	1 40	1 30
White Cap Yellow Dent	<i>Cowmack</i>	1 40	1 30
New White Cob Early Dawn	<i>Cornice</i>	1 50	1 40

CRESS.

		Per lb.	10 lbs. or over Per lb.
Extra Curled (<i>Pepper Grass</i>)	<i>Cunifform</i>	30	25
True Water, 20c per oz.	<i>Curacva</i>	2 25	
Upland, 30c per oz.	<i>Curracy</i>	3 00	

CUCUMBER.

New Cumberland	<i>Coalport</i>	1 75	1 60
Livingston's New Emerald	<i>Cracker</i>	1 90	1 75
Livingston's Evergreen Pickle	<i>Crossroad</i>	1 75	
Hill's Forcing White Spine	<i>Crocket</i>	1 75	
Nichol's Medium Green	<i>Crucial</i>	1 75	
Arlington Improved White Spine	<i>Crosier</i>	2 00	1 90
Extra Long, or Evergreen White Spine	<i>Crisp</i>	1 75	
Livingston's Select Extra Early White Spine	<i>Crinkle</i>	2 00	1 90
Green Prolific, or Boston Pickling	<i>Croaket</i>	2 00	
Jersey Pickle	<i>Crossbol</i>	1 90	
Early Green Cluster	<i>Cretin</i>	1 50	1 40
Early Russian	<i>Crewel</i>	1 50	1 40

CUCUMBER—Continued.

	Tel. Cipher	Per lb.	10 lbs. or over Per lb.
Improved Long Green.....	<i>Croon</i>	\$1 90	\$1 75
Early Frame, or Short Green.....	<i>Cretac</i>	1 50	1 40
Westerfield Chicago Pickle.....	<i>Crushing</i>	2 00	
Giant Pera	<i>Criticism</i>	2 00	
Cool and Crisp.....	<i>Crescent</i>	1 75	1 60
Gherkin, or Burr, True.....	<i>Creeper</i>	1 50	

EGG PLANT.

Livingston's Mammoth Purple.....	<i>Echo</i>	Sold out	
New York Large Purple.....	<i>Easeling</i>	4 00	3 75

ENDIVE.

Fine Green Curled Winter.....	<i>Embogue</i>	80	70
Ever White Curled.....	<i>Electric</i>	80	70
Broad Leaved Batavian (<i>Escarolle</i>)....	<i>Egotist</i>	75	65

KALE.

Siberian, or Dwarf German Greens..	<i>Burgher</i>	25	20
Dwarf Green Curled Scotch.....	<i>Bungling</i>	50	48

KOHL RABI.

Early Purple Vienna.....	<i>Keblap</i>	1 50	1 25
Early White Vienna.....	<i>Kolpie</i>	1 50	1 25

LETTUCE.

New Wonderful, mammoth size; fine	<i>Litany</i>	70	65
Livingston's Crisp as Ice.....	<i>Leaguer</i>	1 25	1 15
Grand Rapids, extra fine for forcing.	<i>Leggin</i>	50	45
Improved Hanson, select stock.....	<i>Legume</i>	45	40
Big Boston	<i>Lanchup</i>	60	55
Denver Market.....	<i>Lattice</i>	50	45
White Seed Tennis Ball, (<i>Boston</i>) Market)	<i>Luthern</i>	50	45
Black Seed Tennis Ball.....	<i>Lodgment</i>	50	45
Defiance Summer	<i>Lessor</i>	55	50
Deacon	<i>Latchet</i>	50	45
Silver Ball	<i>Lobule</i>	60	55
Black Seeded Simpson, select.....	<i>Lanaman</i>	50	45
Prize Head	<i>Linstock</i>	40	35
Early Curled Simpson,	<i>Loburst</i>	45	40
Tilton's White Star.....	<i>Logline</i>	50	45
Mammoth Black Seeded Butter.....	<i>Liner</i>	60	55
Early White Cabbage, or Phil Butter..	<i>Lazar</i>	45	40
Celery Lettuce, Trianon Cos.....	<i>Logman</i>	65	60
New Mammoth Salamander.....	<i>Letting</i>	65	60
Iceberg	<i>Lesson</i>	55	50
California Cream Butter.....	<i>Lapstone</i>	50	45
Marblehead Mammoth	<i>Lighter</i>	65	60

LEEK.

	Tel. Cipher	Per lb.	10 lbs. or over Per lb.
Broad London Flag.....	<i>Labyrinth</i>	\$0 65	\$0 60
Carentan, or Scotch Champion	<i>Lagoon</i>	90	80
Large Rouen	<i>Ladding</i>	90	80

MUSKMELON.

New Paul Rose.....	<i>Madcap</i>	80	75
Livingston's New Tip Top	<i>Melody</i>	Sold out.	
Columbus	<i>Majesty</i>	80	75
Livingston's Market	<i>Marrow</i>	1 50	1 40
The Rose Netted Gem	<i>Megrose</i>	60	55
Osage	<i>Maypole</i>	90	80
Emerald Gem	<i>Mallard</i>	1 50	
Extra Early Green Citron.....	<i>Malleg</i>	70	65
Champion Market	<i>Maihem</i>	1 50	
Extra Early Hackensack.....	<i>Maniple</i>	1 10	1 00
Perfection (<i>The Princess</i>).....	<i>Meantime</i>	80	75
Early Surprise	<i>Melodeon</i>	80	
Early Green Nutmeg.....	<i>Malario</i>	75	70
Skillman's Fine Netted.....	<i>Megal</i>	70	60
Winter Pineapple	<i>Memorize</i>	75	70
Hackensack, or Turk's Cap.....	<i>Manor</i>	90	85
Casaba.....	<i>Magnifier</i>	60	55
Jenny Lind, Extra Early.....	<i>Marker</i>	75	65
Miller's Cream	<i>Massive</i>	90	
Bay View	<i>Magic</i>	90	85
Acme, or Baltimore Nutmeg	<i>Madam</i>	80	75
Burpee's Netted Gem (Rocky Ford) ..	<i>Mattock</i>	60	55
Banana	<i>Madman</i>	80	
Shumway's Giant	<i>Medicine</i>	55	50
Early Grand Rapids.....	<i>Meteoric</i>	55	50
Beck's Triumph	<i>Mechanic</i>	85	80
Improved Anne Arundel	<i>Magnet</i>	80	75
Chicago Market	<i>Maiming</i>	80	75
Christiana	<i>Majestic</i>	60	55
Jersey Belle	<i>Marksman</i>	80	75
Kinsman Queen	<i>Mediate</i>	60	55
Long Island Beauty.....	<i>Marshal</i>	1 50	

WATERMELON.

Livingston's Nabob	<i>Modern</i>	40	35
Duke Jones	<i>Miscreant</i>	35	30
Kleckley Sweets, or Monte Cristo....	<i>Metrop</i>	65	60
Improved Long Dixie	<i>Mirage</i>	35	30
Seminole	<i>Monologue</i>	35	30
Florida Favorite	<i>Middy</i>	50	

WATERMELON—Continued.

	Tel. Cipher.	Per lb.	10 lbs. or over Per lb.
Kolb's Gem, choice stock	<i>Mission</i>	\$0 30	\$0 25
Hoosier King	<i>Minion</i>	40	35
Gray Monarch, or Long Icing	<i>Militant</i>	45	40
Pride of Georgia	<i>Momentous</i>	30	25
Early Jumbo, large, fine quality	<i>Misguide</i>	35	30
Cuban Queen	<i>Meter</i>	35	30
Mammoth Iron Clad	<i>Moat</i>	35	30
Scaly Bark	<i>Monogram</i>	30	25
Improved Mountain Sweet	<i>Mocker</i>	30	25
Phinney's Early	<i>Molar</i>	35	30
Ice Cream, true white seeded	<i>Minstrel</i>	30	25
Gypsy, or Rattlesnake	<i>Millstone</i>	50	45
Round Dark Icing	<i>Methodic</i>	40	35
Round Light Icing	<i>Monastic</i>	40	35
Peerless	<i>Modish</i>	35	30
Sweet Heart	<i>Moodiness</i>	40	35
Cole's Early	<i>Messmate</i>	40	35
Fordhook Early, very fine	<i>Mentor</i>	65	60
Preserving Citron	<i>Mesmerism</i>	28	25
Black Diamond	<i>Merdah</i>	40	35
Blue Gem, or Iceberg	<i>Migrate</i>	45	40
Black Boulder	<i>Misby</i>	65	60
Girardeau's Triumph	<i>Moderate</i>	40	35
Black Spanish	<i>Merchant</i>	30	25
McIver's Sugar	<i>Molten</i>	45	40

ONION.

Livingston's Brown Beauty	<i>Orton</i>	1 50	1 40
Extra Early Red Flat	<i>Oddity</i>	80	75
Extra Large Red Wethersfield	<i>Omous</i>	80	75
Improved Yellow Globe (<i>Under wood Strain</i>)	<i>Obvite</i>	Sold out.	
Southport Red Globe, our own growth	<i>Oracle</i>	95	90
Yellow Danvers	<i>Oching</i>	70	65
Select Yellow Danvers Globe (eastern grown)	<i>Outig</i>	75	70
Ohio Yellow Globe, our own growth	<i>Ophide</i>	90	85
Philadelphia Yellow Strasburg, <i>for sets</i>	<i>Oposs</i>	70	65
Large Yellow Dutch, <i>for large onions</i>	<i>Onset</i>	75	70
Southport Yellow Globe, Conn. grown	<i>Oral</i>	90	85
Mammoth Prizetaker	<i>Opake</i>	90	85
Southport White Globe, <i>Conn. Grown</i>	<i>Ordain</i>	1 50	1 40
White Portugal, <i>for large onions</i>	<i>Ouchab</i>	1 40	1 25
American Extra Early Pearl	<i>Oblige</i>	1 00	90
Mammoth Silver King	<i>Open</i>	1 40	1 25
Philadelphia Silverskin, <i>for sets</i>	<i>Ouchaf</i>	1 40	1 25
Indiana Silver Skin, choice for sets	<i>Ovid</i>	1 10	1 00

ONION, Imported Varieties.

	Tel Cipher.	Per lb.	10 lbs. or over Per lb.
Hard Round Dutch Silverskin.....	<i>Orphon</i>	\$1 40	\$1 30
Giant Red Rocca	<i>Origio</i>	90	85
Earliest White Queen.....	<i>Outop</i>	1 40	1 25
Giant White Italian Tripoli.....	<i>Organ</i>	1 10	1 00
Extra Early Barletta White.....	<i>Ortho</i>	1 50	1 40
Bermuda Island Red, <i>Teneriffe grown</i>	<i>Outoga</i>	Sold out.	
Bermuda Island White, " <i>grown</i>	<i>Outing</i>	Sold out.	
Neapolitan Maggiajola	<i>Orphod</i>	1 00	90
Australian Brown	<i>Orphing</i>	70	65

MUSHROOM SPAWN.

Best English Milltrack.....	<i>Mumbler</i>	10	07
-----------------------------	----------------------	----	----

MUSTARD, For Growing.

White English, or London.....	<i>Mourner</i>	15	10
Southern Giant Curled.....	<i>Motto</i>	35	30
New Chinese	<i>Morion</i>	40	35

ONION SETS.

Prices variable. Write for market price.

			Per bu.
Red Bottom.....	<i>Owabog</i>	32 lbs. to bu.	\$2 25
Yellow "	<i>Owaf</i>	32 lbs. to bu.	1 75
White "	<i>Owack</i>	32 lbs. to bu.	2 00
White Multiplier.....	<i>Owacked</i>	28 lbs. to bu.	3 50
Egyptian, or Perennial.....	<i>Ovup</i>	28 lbs. to bu.	1 00
Yellow Potato, True.....	<i>Owakup</i>	32 lbs. to bu.	3 00
Top or Button.....	<i>Occur</i>	28 lbs. to bu.	2 50

OKRA.

		Per lb.	10 lbs or over Per lb.
White Velvet, extra fine.....	<i>Oblate</i>	25	20
Perkin's Mammoth	<i>Oath</i>	30	25

PARSLEY.

Plain, or Single.....	<i>Paleness</i>	20	18
Fine Double Curled	<i>Pagoda</i>	30	25
Champion Moss, curled	<i>Pacify</i>	30	25
Hamburg Turnip Rooted	<i>Palace</i>	35	30

PUMPKIN.

Livingston's Thanksgiving	<i>Pouridge</i>	Crop Failed.	
Connecticut Yellow Field.....	<i>Polymp</i>	18	16
Mammoth Potiron	<i>Popery</i>	1 10	1 00
Large Cheese	<i>Pondal</i>	40	35
Tennessee Sweet Potato	<i>Poser</i>	65	
Japanese Pie	<i>Pompilo</i>	60	
Large Sweet or Kentucky Field	<i>Pond</i>	20	18
Mammoth Tours	<i>Poplit</i>	45	40
Winter Luxury	<i>Postern</i>	50	45
Nantucket or Negro.....	<i>Porous</i>	60	55

POTATOES, Northern Grown.

Our barrels contain 2½ bushels. We deliver Potatoes to the transportation companies carefully packed; after that our responsibility ceases. Purchasers must take all risk from freezing or heating. We make no charge for barrels or cartage. Prices quoted are F. O. B. Columbus, and subject to market changes.

	Tel. Cipher	Per bbl.
Livingston's Banner	<i>Piety</i>	\$3 50
Seneca Beauty	<i>Plenary</i>	3 50
Extra Early Ohio	<i>Piscary</i>	3 50
The Livingston	<i>Pikestaff</i>	3 50

PARSNIP.

		Per lb.	10 lbs. or over Per lb.
New Zimpfer	<i>Palmy</i>	\$0 60	\$0 50
Selected Hollow Crown	<i>Palliate</i>	20	18

PEPPER.

Improved Thick Long Red	<i>Pholly</i>	2 50	
Red Cherry	<i>Physical</i>	1 50	
Mammoth Ruby King	<i>Philomel</i>	1 20	1 10
Sweet Mountain	<i>Picaroon</i>	1 20	1 10
Bull Nose, or Large Bell	<i>Petrel</i>	1 10	1 00
Long Red Cayenne	<i>Phalynx</i>	1 50	1 40
Red Chili	<i>Picket</i>	1 50	
Golden King, or Queen	<i>Pealing</i>	2 00	
Long Red Cardinal	<i>Pallot</i>	2 00	
Chinese Giant	<i>Pernese</i>	4 50	

PEAS.

		Per bu.	10 bus. or over Per bu.
Livingston's Giant Podded Prolific Sugar	<i>Parley</i>	6 50	
Prosperity, or Gradus	<i>Paymaster</i>	9 00	8 75
Livingston's First in Market	<i>Patten</i>	4 25	4 00
Gregory's Surprise, or Eclipse	<i>Paradox</i>	5 00	4 75
Extra Early Alaska	<i>Pannier</i>	3 00	2 75
First and Best	<i>Pasturage</i>	4 00	3 85
Improved Dan O'Rourke	<i>Pacener</i>	3 75	3 50
American Wonder, true stock	<i>Pantaloon</i>	6 00	5 75
McLean's Little Gem	<i>Pediment</i>	5 25	5 00
Premium Gem	<i>Pencern</i>	5 25	5 00
Philadelphia Extra Early	<i>Penalty</i>	3 75	3 50
Nott's Excelsior	<i>Pellet</i>	6 50	6 25
Juno	<i>Peaceful</i>	4 50	4 25
Shropshire Hero	<i>Penury</i>	4 00	3 75
Carter's Daisy	<i>Parboil</i>	5 75	5 50
Heroine	<i>Paver</i>	4 00	3 75
Horsford's Market Garden	<i>Pavilion</i>	3 50	3 25
McLean's Advancer	<i>Pedestal</i>	3 75	3 50
Pride of the Market	<i>Penchiant</i>	4 25	4 00
Telephone, select stock	<i>Perfidous</i>	4 75	4 50
Long Island Mammoth (Telegraph)	<i>Pedantry</i>	4 25	4 00
Improved Stratagem, very choice	<i>Percolate</i>	4 50	4 25
Abundance	<i>Pantry</i>	3 75	3 50
Bliss' Everbearing	<i>Papa</i>	3 75	3 50
Tom Thumb, extra choice	<i>Pompum</i>	4 50	4 25
Duke of Albany	<i>Palban</i>	4 75	4 50

OFFICE OF
THE LIVINGSTON SEED COMPANY,
SEEDSMEN AND GROWERS,
COLUMBUS, OHIO.

The Livingston Seed Co. give no warranty, express or implied, as to description, purity, productiveness, or any other matter of any seeds they send out, and they will not be in any way responsible for the crop. If the purchaser does not accept the goods on these terms, they are at once to be returned.

SALESROOM :
No. 114 North High Street.
WAREROOMS :
Nos. 15 to 19 East Long Street.

TRIAL GROUNDS :
At the True Blue Seed Farms, two miles out.

COLUMBUS, OHIO, , 1904.

THE LARGEST GROWERS OF TOMATO
SEEDS IN THE WORLD.

Route 100 & Plant Co.,
San Diego, Cal.,

Gentlemen:-

We enclose sample herewith of our lithograph tomato card, which we have is--
are intended to be sent out with correspondence, mail orders, printed matter,
handed to customers, or in any other way which may suggest itself to you. We
advertised this season. The demand is sure to be great. We supply the cards,
free, with orders for seed at following wholesale prices:

Packets, per 100, \$5.00. If 500 packets are ordered during the season, a
rebate of 10 per cent. will be allowed.

Seed, per pound, \$4.00; 5 pounds or more, \$3.75 per pound
Please let us hear from you promptly.

THE LIVINGSTON SEED CO.



PEAS—Continued.

	Tel Cipher	Per bu	10 bus or over Per bu.
Champion of England.....	<i>Parent</i>	\$ 3 25	\$3 00
Yorkshire Hero	<i>Pergolt</i>	3 75	3 50
Melting Sugar	<i>Peristyle</i>	6 00	
Black Eye Marrowfat, hand picked...	<i>Pantomime</i>	2 25	2 00
White Marrowfat, hand picked.....	<i>Porforce</i>	2 25	2 00
Canadian Field, No. 1, white.....	<i>Pathos</i>		Market price.

RADISH.

		Per lb	10 lbs. or more Per lb.
Turnip, Forcing Scarlet.....	<i>Rattle</i>	40	35
“ “ Rosy Gem	<i>Reclaim</i>	35	30
“ “ Non Plus Ultra } (Fireball)	<i>Rayden</i>	35	30
“ “ Snowball	<i>Rebec</i>	35	30
“ “ Crimson Giant	<i>Racer</i>	80	75
“ Early Scarlet	<i>Ransom</i>	25	22
“ Scarlet, white tipped.....	<i>Regara</i>	30	25
“ Deep Scarlet	<i>Ratio</i>	30	25
“ Yellow Summer	<i>Regress</i>	30	25
“ New Golden Dresden.....	<i>Rayman</i>	45	40
“ Large White Summer.....	<i>Reagable</i>	35	30
“ Golden Globe	<i>Raymel</i>	35	30
“ Gray Summer	<i>Razure</i>	30	28
Olive, Forcing Vick's Scarlet Globe.	<i>Recruit</i>	40	35
“ “ New Leafless.....	<i>Ramage</i>	1 75	
“ “ White Rocket	<i>Receptive</i>	45	40
“ French Breakfast	<i>Rayful</i>	35	30
Half Long, Deep Scarlet.....	<i>Reach</i>	35	30
Long, Cincinnati Market	<i>Recharge</i>	30	25
“ Wood's Early Frame.....	<i>Regrate</i>	30	25
“ Scarlet Short Top.....	<i>Rapacious</i>	25	22
“ Brightest Scarlet White Tipped	<i>Really</i>	30	28
“ White Vienna (<i>Lady Finger</i>)	<i>Refrain</i>	30	28
“ New White Icicle	<i>Rascal</i>	45	40
“ Livingston's Pearl	<i>Rebound</i>	40	35
“ White Chartier	<i>Raid</i>	50	40
“ Improved Chartier	<i>Reading</i>	30	28
Summer, White Strasburg.....	<i>Refuple</i>	35	30
“ Giant White Stuttgart.....	<i>Reform</i>	35	32
Winter, California Mammoth.....	<i>Regam</i>	35	30
“ China Rose	<i>Recital</i>	30	25
“ Long Black Spanish.....	<i>Reality</i>	28	25
“ Celestial, or White Chinese.	<i>Ragman</i>	45	40
“ Scarlet Pamir	<i>Recess</i>	75	
“ Long White Spanish.....	<i>Rasping</i>	35	30
“ Round Black Spanish.....	<i>Reclose</i>	25	22

RAPE.

Dwarf Essex	<i>Racing</i>	10	07
-------------------	---------------	----	----

RHUBARB.

Large Victoria	<i>Relegate</i>	80	75
Rhubarb Roots (2 yrs old) per doz 50c	<i>Relater</i>		

SALSIFY.

	Tel. Cipher	Per lb.	10 lbs or over Per lb.
Mammoth Sandwich Island.....	<i>Sacker</i>	\$0 80	\$0 75
Wisconsin Golden	<i>Saphead</i>	1 35	1 25

SAGE.

Broad Leaf	<i>Sage</i>	1 00	90
------------------	-------------	------	----

SPINACH.

Bloomsdale Savoy	<i>Sanscrit</i>	15	12
Best Prickly Seeded Winter.....	<i>Sapphic</i>	15	12
Best Viroflay Thick Leaf	<i>Satole</i>	15	12
Best Long Standing	<i>Sandal</i>	15	12
New Victoria	<i>Satrap</i>	15	12
Round Leaved Summer.....	<i>Salty</i>	15	12

SQUASH.

Mammoth Whale	<i>Scholic</i>	1 00	90
Livingston's New Pie	<i>Scroll</i>	Sold out.	
New White Summer Crookneck	<i>Soldier</i>	50	45
Fordhook.....	<i>Sciatic</i>	90	85
Mammoth White Bush Scallop.....	<i>Scutcheon</i>	55	50
Mammoth Yellow Bush Scallop or Golden Custard	<i>Scaboard</i>	60	55
Giant Golden Summer Crookneck.....		<i>Scioptic</i>	75
Golden Summer Crookneck.....	<i>Scotchman</i>	50	45
Early White Bush Scallop.....	<i>Secular</i>	50	45
Hubbard, choice stock	<i>Scoundrel</i>	90	85
Livingston's Improved Cushaw	<i>Selector</i>	Crop failed.	
Essex Hybrid	<i>Savor</i>	85	80
Boston Marrow	<i>Scarf</i>	60	55
Faxon	<i>Schooner</i>	60	55
Mammoth Chili	<i>Sculler</i>	1 25	1 15
Chicago Warty Hubbard.....	<i>Scaffold</i>	90	85
Golden, or Red Hubbard.....	<i>Seaport</i>	65	60
Winter Crookneck	<i>Sedition</i>	60	55
Golden Bronze	<i>Scoper</i>	85	80

TURNIP.

Extra Early White Milan.....	<i>Thug</i>	60	55
Sweet German	<i>Tidbit</i>	25	22
Extra Early Purple Top Milan.....	<i>Tibieg</i>	40	35
Purple Top Strap Leaf.....	<i>Tiptoe</i>	25	22
Purple Top White Globe.....	<i>Tirode</i>	30	25
Seven Top	<i>Titmouse</i>	20	18
Early White Flat Dutch.....	<i>Thumper</i>	30	25
Early White Egg Shaped.....	<i>Token</i>	40	35
Amber Globe	<i>Thrice</i>	30	25
Large White Globe	<i>Timbrel</i>	25	22
Yellow Stone, very fine.....	<i>Topaz</i>	25	22
Cowhorn	<i>Tepor</i>	35	30
RU TA BAGA, American Purple Top.....	<i>Torpor</i>	25	22
“ “ White Russian	<i>Trance</i>	20	18

LIVINGSTON'S CELEBRATED TOMATO SEEDS

FOR MERCHANTS

IN SEALED PACKAGES ONLY



For the protection of the honest merchant and the grower who desires only true stock of our Tomatoes, we have for several years followed the plan of supplying **Our Celebrated Varieties of Tomato Seeds in Sealed packages only**; and hence every package of the Livingston varieties of Tomatoes grown at headquarters will be sent out under our **TRUE BLUE SEAL**.

In 1870 we originated and introduced our **Paragon**, which was the first perfectly smooth red variety known. Five years later we introduced the **Aeme**, the first perfectly smooth purple sort known. Since the advent of these sorts we have brought out consecutively the **Perfection, Golden Queen, Favorite, Beauty, Potato Leaf, Stone, Royal Red, Aristocrat, Buckeye State, Honor Bright, Yellow Prince, Magnus and New Dwarf Stone**. As originators and introducers of these sorts, we use the most assiduous care in growing the Seeds, and although these same varieties are extensively advertised by other dealers, yet we do not hesitate to claim superiority for our Headquarters' Strains.

SPECIAL NOTICE

We annually supply hundreds of merchants in all parts of the United States with our Tomato Seeds put up in packages for retailing. It is a highly satisfactory and successful method, because it affords a dealer's patrons positive evidence that he is selling the genuine article.

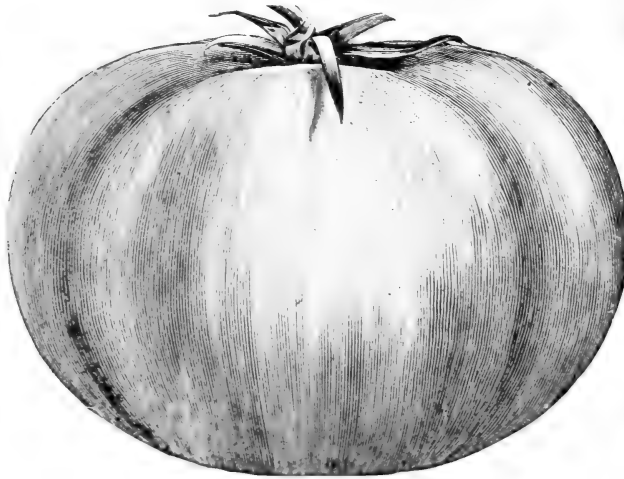
We put up the Seed in **OUNCES, QUARTER-POUNDS and POUNDS**, and each package bears our **TRUE BLUE SEAL**.

Packets for retailing at 5 and 10 cents are supplied to dealers at half price.

To those who have never handled our Seeds we respectfully suggest the propriety of trying this plan.

TOMATO, Livingston's Varieties.

	Tel. Cipher	Per lb.	10 lbs. or over Per lb.
Livingston's New Dwarf Stone.....	<i>Tartar</i>	\$4 00	
Livingston's New Magnus.....	<i>Theorb</i>	2 00	\$1 75
Livingston's Yellow Prince.....	<i>Telic</i>	2 00	1 90
Livingston's Honor Bright.....	<i>Tennis</i>	1 70	1 60
Livingston's Aristocrat.....	<i>Taproot</i>	2 40	2 25
Livingston's Buckeye State.....	<i>Tarnish</i>	2 00	1 90
Livingston's Royal Red.....	<i>Theatric</i>	1 50	1 40
Livingston's Stone.....	<i>Thesis</i>	1 60	1 50
Livingston's Beauty.....	<i>Target</i>	1 60	1 50
Livingston's Paragon.....	<i>Terror</i>	1 60	1 50
Livingston's Acme.....	<i>Tapan</i>	1 50	1 40
Livingston's Favorite.....	<i>Tepidity</i>	1 50	1 40
Livingston's Perfection.....	<i>Testan</i>	1 50	1 40
Livingston's Golden Queen.....	<i>Templar</i>	1 60	1 50

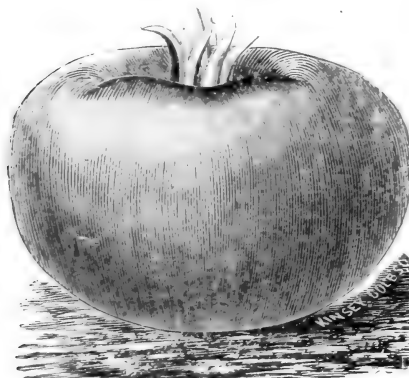


Livingston's Buckeye State Tomato.

This is the largest fruited perfectly smooth PURPLE tomato in cultivation. One of the most satisfactory sorts for the merchants to handle.

TOMATO, Continued.

	Tkl. Clpher	Per lb.	10 lbs. or over Per lb.
Dwarf Champion	<i>Taurus</i>	\$2 40	\$2 25
Yellow Husk	<i>Tenancy</i>	1 75
Purple Husk	<i>Tcxthand</i>	1 75
Atlantic Prize	<i>Tapster</i>	1 40	1 30
Enormous	<i>Textile</i>	1 75	1 65
Plum Shape Yellow	<i>Testimony</i>	1 50
Matchless	<i>Termagan</i>	2 00	1 90
Ponderosa	<i>Toaster</i>	2 75	2 60
Chalk's Early Jewel	<i>Tender</i>	2 00	1 75
Turner's Hybrid, or Mikado	<i>Thinker</i>	2 25	2 00
Improved Trophy	<i>Theocracy</i>	1 60	1 50
Success	<i>Tasting</i>	2 00	1 90
Purple Peach	<i>Tertial</i>	1 75
Yellow Peach	<i>Thoral</i>	1 60
Early Ruby	<i>Tearless</i>	1 40
Yellow Pear	<i>Tegumen</i>	1 75
Red Pear	<i>Terrific</i>	1 75
Sparks' Earliana	<i>Tomboy</i>	4 00	3 50



SPARKS' EARLIANA.

Sparks' Earliana.

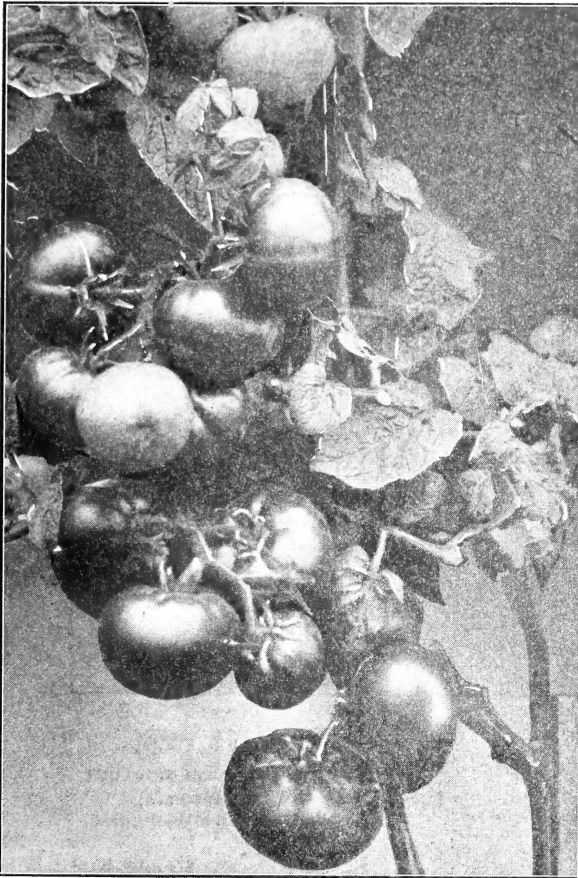
An extremely smooth, bright red tomato of good size and flavor. It was developed by Mr. Geo. C. Sparks, on the warm, sandy soil of Salem county, New Jersey, where the greatest competition exists among growers to be first in the market, and the seed we offer is grown from selected stock of his CHOICEST STRAIN.

Per lb. \$1.00.

Chalk's Early Jewel.

An extremely early deep fruited and solid new tomato, originated by Mr. James Chalk, of Pennsylvania. Color brightest scarlet; foliage rather open, admitting sunshine to hasten ripening. An enormous quantity of fruit ripens at once. We were very favorably impressed with this new sort the past summer, and advise our friends to try it. Per lb \$2.00.

Livingston's New Dwarf Stone Tomato.



The Largest Fruited
Upright Growing Va-
riety in Existence.

Double the Size of
Dwarf Champion.

Retail Prices of Seed.

Packet, 15 Cents;
2 Packets, 25 Cents;
½ Oz., 30 Cents;
Oz., 50 Cents;
¼ Pound, \$1.50.

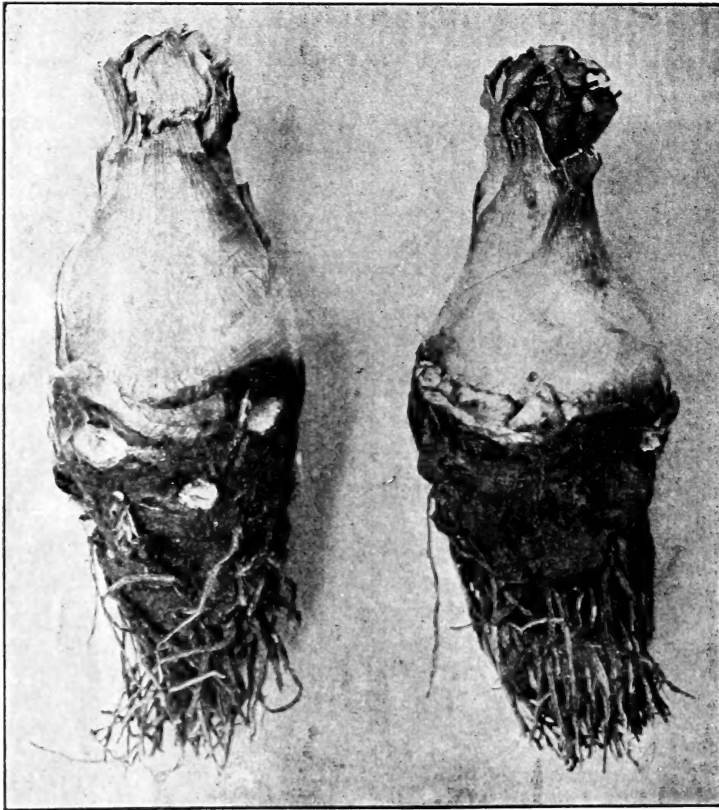
Prices to Trade.

\$4 per Pound;
5 Pounds or Over,
\$3.75 per Pound.

This is another splendid new variety from Livingston, The Tomato Man. In habit of vine it resembles Dwarf Champion, but is of stronger growth and more erect. The fruit resembles Livingston's Stone in color, shape and what is more remarkable, for an erect sort it is practically same size. The strong-upright habit of growth allows very close planting, at least a half closer each way than the distance required for the ordinary vining varieties. In small gardens the plants may be set 18x24 inches apart each way, and yet produce an abundant crop. The shape of the fruit is perfect, with a good skin, which is free from cracks about the stem end. It is very solid, ripens very evenly, and is of most excellent quality.

Ten fruits picked from one vine at same time weighed five pounds, three ounces. Five fruits selected by eye for average size weighed two pounds, nine ounces. This was under field cultivation on farm land with no fertilizer. Specimens weighing one pound each are quite common.

We can supply Electro as above in Half Tone, and also smaller ones of single fruits either in Half Tone or Wood Engraving. Any one of which will be sent free with orders for two pounds or more of Seed.



BULBS.

Excelsior Pearl Tuberose.

We handle immense quantities of these bulbs each season, and owing to the excellence of our strain, the demand is constantly increasing. There is all the difference in the world in the quality of Tuberose Bulbs. We handle stock grown by one man only and he is an expert.

Prices. First Size, 4 to 6 in., 70c. per 100, \$6.50 per 1000

BULBS.

Caladium Esculentum

(Elephant Ears)

Healthy Bulbs Well Cured.

	Doz.	100
1 1/4 to 2 1/4 inches in diam.....	\$0 40	\$2 50
2 1/4 to 3 " " " " " " " " " " " "	60	4 00
3 " to 4 " " " " " " " " " "	1 00	7 00
4 " to 5 " " " " " " " " " "	1 85	12 00

Planet Jr. Implements.

We handle these most excellent Tools in large quantities and will be pleased to send a complete Catalogue of them, postpaid, on request.

	Tel. Cipher	Net Prices
No. 25 Hill and Drill Seeder	Exactio	\$10 00
No. 4 Hill and Drill Seeder and Single Wheel Hoe	Choma	8 00
No. 4 Hill and Drill Seeder, as a Seeder only..	Chunni	6 40
No. 3 Hill and Drill Seeder..	Chalant	8 00
No. 11 Double Wheel Hoe...	Faltasta	6 75
No. 12 Double Wheel Hoe...	Famis	5 25
No. 13 Double Wheel Hoe...	Fana	3 60
No. 16 Single Wheel Hoe....	Faleris	4 40
No. 17 Single Wheel Hoe....	Fallent	3 75
12-Tooth Harrow and Cultivator, Plain.....	Cantabo	4 60

	Tel. Cipher	Net Prices
12-Tooth Harrow and Cultivator, with Wheel.....	Arido	5 50
12 Tooth Harrow and Cultivator, complete....	Bellosa	6 80
No. 8 Horse Hoe complete....	Chalsee	6 80
No. 9 Horse Hoe complete...	Farcino	5 90
Firefly, Garden Plow.....	Ansata	2 00

Paper Seed Bags.

	Per 100	Per 1000
No. 1 Coated, 2 1/4 x 3 in., for Flower Seeds.....	\$0 12	\$1 00
No. 2 2 1/4 x 4 in., for packets of Cabbage, etc.	15	1 10
No. 3 3 1/4 x 4 1/2 in., for packets of Beets, Beans, etc.	18	1 40
No. 4 3 1/4 x 5 in., for ounces, etc.	20	1 65
No. 5 4 1/2 x 6 in., for quarter-pounds, etc.....	25	2 00
No. 6 5 1/4 x 8 in., pint size.....	20	1 85
No. 7 7 1/2 x 9 1/4, quart size.....	25	2 80
No. 8 7 x 10 1/4 in, three pint size	35	3 25

Livingston's Sweet Peas.

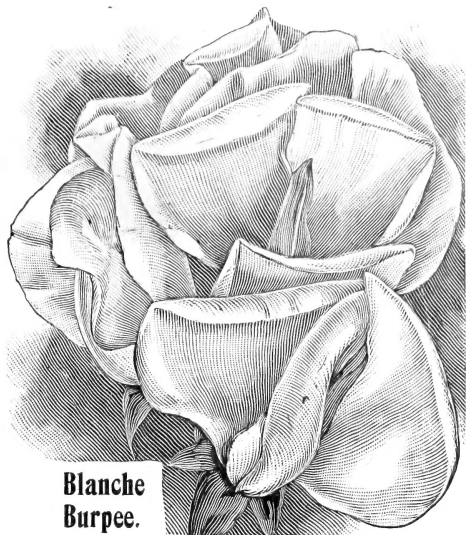
A Superb Collection Including Best
Up-to-Date Kinds.

There is nothing more profitable for
the merchant than Sweet Peas. They
sell readily at 5cts. per ounce.

FIGURE IT OUT FOR YOURSELF.

Named Varieties.

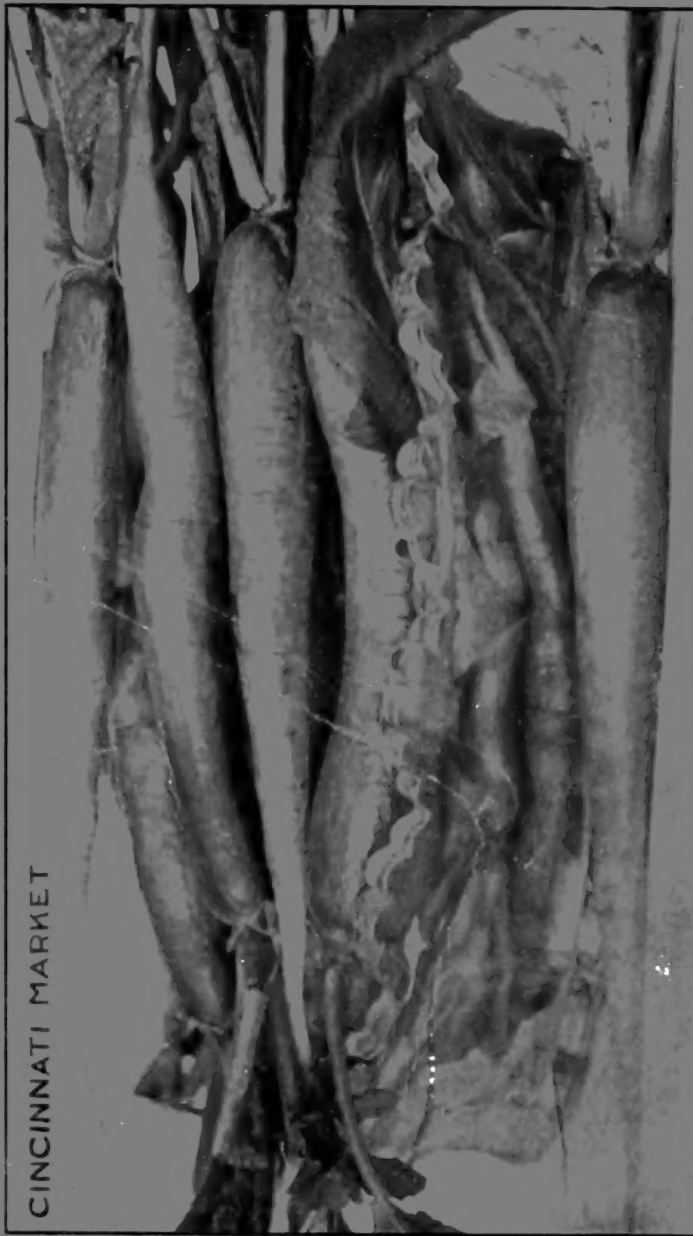
- Admiration**—Pink mauve, lb. 32c.
America—Blood-red, striped white, lb. 20c.
Apple Blossom—Rosy, blush wings, lb. 20c.
Aurora—Orange, flaked and striped, lb. 20c.
Black Knight—Very dark maroon, lb. 25c.
Blanche Burpee—Large, pure white, lb. 25c.
Blanche Ferry—Pink and white, lb. 22c.
Blanche Ferry, Extra Early—lb. 22c.
Blushing Beauty—Medium early; rich deep
blush pink; large hooded form; lb. 30c.
Boreatton—Dark maroon, lb. 20c.
Capt. of the Blues—Purple-blue, lb. 22c.
Captivation—A distinct rosy purple, lb. 20c.
Celestial—Delicate lavender, lb. 25c.
Coccinea—Cherry red, lb. 30c.
Coquette—Tinged blush and lilac, lb. 22c.
Countess of Cadogan—Lilac and blue, lb. 25c.
Countess of Radnor, Improved—(New Coun-
tess); pale lavender, lb. 25c.
Daybreak—Watered crimson scarlet on a white
ground; a free bloomer; lb. 25c.
Eliza Eckford—White shaded and edged light
pink; large and fine, lb. 22c.
Emily Eckford—Bright, heliotrope, lb. 20c.
Emily Henderson—White, good stems, lb. 20c.
Firefly—Intense crimson scarlet, lb. 25c.
Gorgeous—Salmon-orange, lb. 22c.
Gray Friar—Beautiful watered-purple on white;
makes attractive bouquets, lb. 20c.
Golden Rose—Primrose, striped with pink, lb.
80c.
Her Majesty—Beautiful bright rose, with large
full flowers, lb. 20c.
Janet Scott—New, bright pink and buff; ¼ lb.,
40c.; lb., \$1.50.
Jeannie Gordon—New, bright rose, shaded
cream. Pkt., 5c.; 1-4 lb., 25c.; lb., 80c.
Katharine Tracy—A soft, brilliant carmine pink;
vigorous grower; large flowers; lb., 22c.
Lady Penzance—Delicate rose; wings pure pink;
an early and free bloomer, lb. 20c.
Lottie Eckford—White shaded and edged lav-
ender, lb. 22c.
Lord Rosebury—Magenta rose, 1-4 lb., 25c.,
lb., 90c.
Lovely—Soft shell-pink; exquisite, lb. 25c.
Maid of Honor—Light blue, on a white ground;
bold edge of deep lavender, lb. 20c.
Mars—Brilliant deep scarlet, lb. 25c.



**Blanche
Burpee.**

- Modesty**—Delicate soft pink; large and perfect
flowers, lb. 22c.
Mrs. Eckford—Pale primrose yellow, extra fine
flowers and form, lb. 25c.
Mrs. Jos. Chamberlain—Rose pink, finely
striped white, lb. 20c.
"NAVY BLUE"—The only true blue Sweet Pea.
An entirely distinct color. A vigorous grow-
er. Blooms of generous size and remarkable
substance. Stems usually bear three flowers,
occasionally four; lb., 25c.
Othello—Deep glossy maroon, lb. 25c.
Prima Donna—Beautiful light blush pink; grand
flower, lb. 25c.
Pink Friar—Very beautiful; spatter work of
delicate crimson rose on a white ground;
flowers one-third larger than the famous
large Gray Friar, lb. 20c.
Prince of Wales—Rose crimson, lb. 22c.
Queen Victoria—Light Primrose, lb. 22c.
Ramona—Pink splashed on white, lb. 20c.
Royal Rose—Deep rosy pink, wings lighter;
one of the largest, lb. 22c.
Sadie Burpee—Hardest of all whites; flowers
extra large, yet dainty and beautiful in form;
color purest Pearly White, lb. 25c.
Salopian—Deep scarlet or cardinal; the best
red; of fine gradiflora form; stands sun best
of all deep crimson scarlets, lb. 22c.
Senator—Chocolate, striped white, lb. 20c.
Shahzada—Deep maroon; wings indigo; a very
dark variety, lb. 20c.
Stella Morse—Primrose, tinged blush effect, a
rich cream variety, lb. 22c.
Sue Earl—Primrose and very light lavender.
Lb. \$1.00.
Triumph—Rose and Crimson Pink. Lb. 25c.
Venus—Buff pink, lb. 20c.
Livingston's Special Mixture—Finest new large-
flowering sorts and new novelties. No mix-
ture surpasses it in size or richness of flower
and fragrance, lb. 30c.
Eckford's "Gilt Edge" Mixture—Of undoubted
superiority. Mr. Eckford is the famous
Sweet Pea Specialist of England, lb. 20c.
Fine Mixed, All Sorts and Colors—A fine mix-
ture for the low price, lb. 18c.
Livingston's Florist's Mixture—All light colors,
principally a great variety of pink shades,
about twenty-five distinctive varieties, lb. 25c.

CINCINNATI MARKET



LIVINGSTON'S SELECT CINCINNATI MARKET RADISH