

Historic, archived document

Do not assume content reflects current scientific knowledge, policies, or practices.

63,81

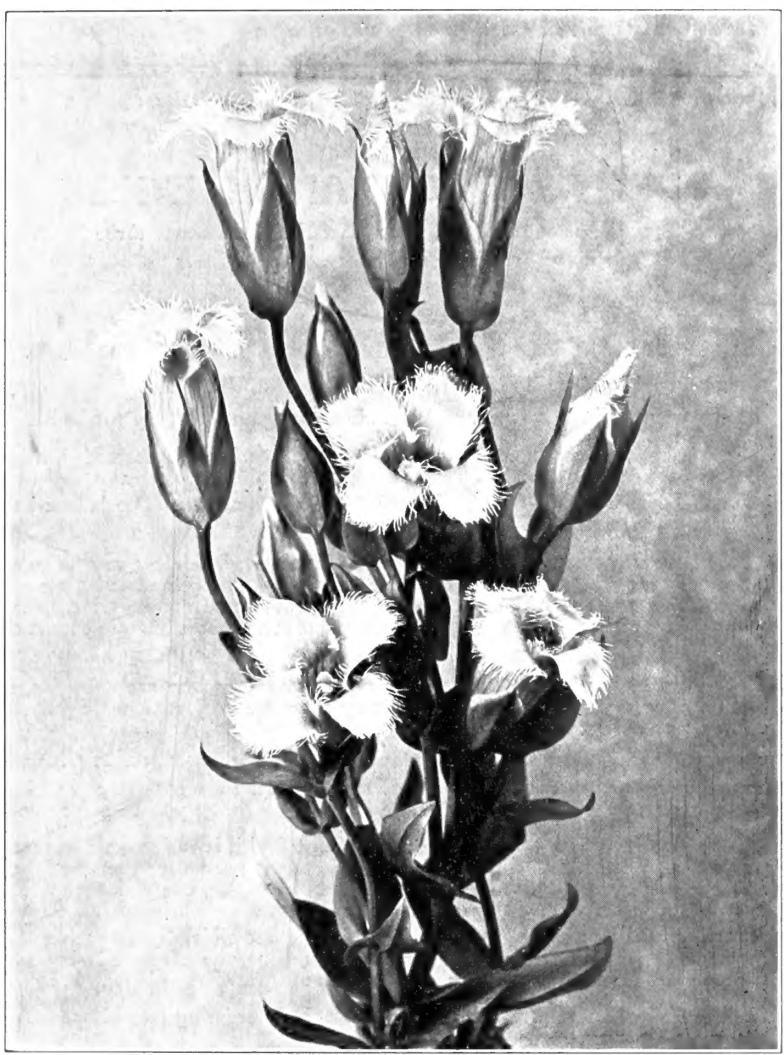
LIBRARY

RECEIVED
★ FEB 23 1933 ★

Vt. Department of Agriculture

Trees and Plants

From Vermont



GENTIANA CRINITA, *Fringed Gentian*. (See page 27)

1933

GEORGE D. AIKEN
Putney - - Vermont

FOREWORD

THIS is our catalog for Spring, 1933. It is not as complete and attractive as we would like to make it, but like everyone else, we have to make drastic economies in order to continue our business successfully, so, instead of putting more expense into a catalog we are reducing prices of nearly all the kinds of trees and plants, trusting that the increased number of orders at these low prices will keep our business up to normal. We are not, however, reducing prices to such an extent that we would have to cut quality also; and we cannot sell heavy, bushy stock at the same price as the spindling not-transplanted stock, so widely advertised, sells for these days.

We have hundreds of varieties of trees and plants not listed in this catalog, and many other sizes of those which we do list here, and we will gladly quote you reasonable prices on your requirements.

WILD FLOWERS AND FERNS

Our special catalog of wild flowers and ferns, issued last Fall, lists about three hundred varieties. If you do not have a copy, we will be glad to send you one.

TERMS AND CONDITIONS OF SALE

READ CAREFULLY BEFORE ORDERING

Prices listed herein are all F.O.B. Putney, and include packing and delivery to the railroad station.

DISCOUNT—All Spring orders, accompanied by full amount in cash, and received during January and February are subject to 10% discount. March orders subject to 5% discount.

All orders should be accompanied by at least 25% of the amount. The balance should be sent before time of shipping or the order will be shipped C.O.D.

TRANSPORTATION—Please state how you wish your order shipped. Unless you do so state, we must use our own judgment in the matter. Small orders are ordinarily sent by mail at least expense, the postage being paid by you to the postman upon delivery. Fruit trees and evergreens, large shrubs and shade trees should be sent by express or freight, but freight shipments are not advisable except on earlots, and shipments going only short distances.

TRUCK DELIVERY—Persons within a hundred miles of our nursery who are using large quantities of stock will find delivery by truck desirable. Our delivery rates are very reasonable and stock will be at your home in a few hours after being dug.

TIME OF SHIPMENT—Orders received during the Winter and early Spring may be shipped on a date specified by the customer but orders received in late Spring during the rush season will be filled in the order in which they are received. For our mutual advantage, we urge you to place your orders early.

CLAIMS—On receipt of stock, examine the shipment carefully, and if it is damaged in transit, notify the agent of the transportation company at once, and enter claim with them for the amount of damage. If stock is unsatisfactory through any fault of ours, notify us at once. Any complaints regarding the quality of the plants must be made within five days after receipt of stock.

When stock is received, plant immediately. Where this is impossible, dig a trench and bury the roots with earth until planting time. Fruit trees and dormant shrubs may be left in ordinary cellar storage for a few days, if the roots are kept moist. Never wet the tops of Strawberry plants. It rots the crowns.

SUBSTITUTION—We do not substitute without permission. If ordering late please mention a second choice or state whether we may substitute similar varieties.

GUARANTEE—All stock is guaranteed true to name and free from disease.

CANADIAN CUSTOMERS—To avoid delay in shipping your order, write to Secretary of the Destructive Insect and Pest Act Advisory Board, Department of Agriculture, Ottawa, for permit to import, and give your permit number on the order you send us.

RATES—Where dozen rates are given, six plants of one size and variety will take this rate. For example: Six Richard Wallace Phlox will sell at the 12 rate, but 2 Richard Wallace, 2 Dawn and 2 B. Comte will take the single rate.

Where 10 rates are given, 5 of one size and variety, such as 5 Baldwin Apple 11-16 in. will take the 10 rate, but 2 Baldwin and 3 Cortland will be sold only at the single rate.

SERVICE DEPARTMENT—Should you desire assistance in the selection of varieties, planning your orchard, shrubbery border, foundation planting or perennial border, we will gladly assist you.

Certificate of Inspection accompanies each shipment.



Blossoms of Bechtel's Flowering Crab (See page 5)

SHADE AND FLOWERING TREES

ACER

Bloodleaf Japanese Maple. *A. palmatum atropurpureum*. The real form of Japanese Maple. Grafted plants: 12 to 18 in. \$2.00 each, \$18.00 per 10; 18 to 24 in. \$2.50 each, \$22.50 per 10.

Manitoba Maple, or Box Elder. *A. negundo*. Rapid growing, round-headed tree for quick effects. 8 to 10 ft. \$1.00 each, \$9.00 per 10; 10 to 12 ft. \$1.50 each, \$13.50 per 10.

Mountain Maple. *A. spicatum*. Native of the mountains of New England, growing in clumps to a height of 12 ft. For background of shrubby border and naturalistic thicket planting. 6 to 8 ft. clumps \$2.00 each, \$17.50 per 10.

Norway Maple. *A. platanoides*. Symmetrical, round headed tree for street or avenue planting. 6 to 8 ft. \$1.50 each, \$14.00 per 10; 8 to 10 ft. \$2.50 each, \$22.50 per 10.

Red Maple. *A. rubrum*. Native tree, covered in early Spring with clusters of tiny, feathery flowers, ranging in color from yellow to bright red. Foliage turns brilliant colors in the Fall. 6 to 8 ft. \$1.50 each, \$13.50 per 10; 8 to 10 ft. \$2.00 each, \$18.00 per 10.

Schwedler Maple. *A. schwedleri*. The purpleleaved Norway Maple. 8 to 10 ft. \$3.50 each.

Silver Maple. *A. dasycarpum*. A rapid growing, wide-spreading tree, whose leaves are deeply cut and silvery beneath. 8 to 10 ft. \$1.00 each, \$9.00 per 10; 10 to 12 ft. \$1.50 each, \$13.50 per 10; 12 to 14 ft. \$2.00 each, \$18.00 per 10.

Skinners Cutleaf Maple. Delicately cut, bright green leaves. Fine for lawns and conspicuous places. 8 to 10 ft. \$2.00 each, \$18.00 per 10; 10 to 12 ft. \$2.50 each, \$22.50 per 10.

Sugar Maple. *A. saccharum*. This is the Maple which grows to such an extent in Vermont, and which supplies the country with Maple syrup. This tree constitutes the best of shade trees, attaining great size, and living to a good old age. 6 to 8 ft. \$1.25 each, \$10.00 per 10, \$90.00 per 100; 8 to 10 ft. \$1.75 each, \$16.00 per 10, \$150.00 per 100; 10 to 12 ft. \$2.50 each, \$22.50 per 10, \$210.00 per 100.

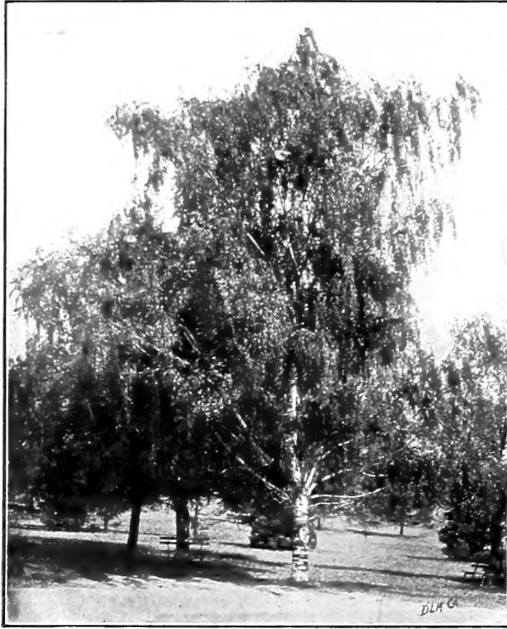
AESCULUS

Horsechestnut. *A. hippocastanum*. A large, handsome tree. Leaves with five or six leaflets. Flowers in upright panicles, white, tinged with red. Pods prickly, enclosing large nuts. 6 to 8 ft. \$2.50 each.

AMELANCHIER

Allegheny Shadblow. *A. laevis*. A small tree, growing to 30 ft. in height, with white flowers in earliest Spring. 3 to 4 ft. \$1.00 each, \$8.00 per 10; 4 to 6 ft. \$1.25 each, \$10.00 per 10.

Norway Maple (*Acer platanoides*)

Cutleaf Weeping Birch (*Betula alba laciniata*)

BETULA

Canoe Birch. *B. papyrifera*. The native white Birch of Vermont which attains such a large size. Looks well planted against dark Hemlocks or other evergreens. Our stock of nursery grown Canoe Birch has been entirely sold out and we can offer only well-shaped, collected trees at the following prices. 6 to 8 ft. \$1.50 each, \$12.50 per 10, \$100.00 per 100; 8 to 10 ft. \$2.00 each, \$18.00 per 10, \$150.00 per 100.

Cutleaf Weeping Birch. *B. alba laciniata*. Graceful, pendant growth and finely cut leaves. Slender, yet vigorous. White bark. 6 to 8 ft. \$2.00 each, \$18.00 per 10; 8 to 10 ft. \$2.75 each, \$26.00 per 10.

CATALPA

Western Catalpa. *C. speciosa*. A large shade tree; big, fragrant blossoms in long, pyramidal clusters of purple and white. 8 to 10 ft. \$1.00 each, \$9.00 per 10.

CERCIS

Judas-tree. *C. canadensis*. In early Spring the leafless branches of this tree are covered with rich, purple blossoms, so that the tree itself looks as if it had turned into a flower. 3 to 4 ft. 75c. each, \$6.00 per 10, 4 to 5 ft. \$1.00 each, \$9.00 per 10; 5 to 6 ft. \$1.25 each, \$10.00 per 10.

CHIONANTHUS

White Fringe. *C. virginica*. Large shrub or small tree of neat, sturdy growth. Glossy, dark green foliage, and in June, feathery racemes of pure white flowers. 2 to 3 ft. \$1.00 each.

CLADRASTIS

Yellowwood. *C. lutea*. A small tree growing to 30 ft. with long, fragrant panicles of white flowers in June. 4 to 6 ft. \$1.50 each.

CORNUS

Flowering Dogwood. *C. florida*. Large, single, pure white flowers in May. Hardy and reliable, and having the reputation of being one of the best for landscape planting. 2 to 3 ft. 75c. each, \$7.00 per 10; 3 to 4 ft. \$1.00 each, \$9.00 per 10; 4 to 5 ft. \$1.25 each, \$10.00 per 10; 5 to 6 ft. \$2.00 each, \$18.00 per 10.

Pinkflowering Dogwood. *C. florida rubra*. Strikingly beautiful, especially when planted with the white variety. Large, rose pink flowers. 2 to 3 ft. \$1.50 each, \$13.50 per 10; 3 to 4 ft. \$2.50 each, \$22.50 per 10

CRATAEGUS

Washington Thorn. *C. cordata*. A tall growing Thorn valued for its Autumn coloring and red fruit. 2 to 3 ft. 75c. each, \$6.50 per 10; 3 to 4 ft. \$1.00 each, \$9.00 per 10; 4 to 5 ft. \$1.50 each, \$13.50 per 10; 5 to 6 ft. \$2.00 each, \$18.00 per 10; 6 to 8 ft. \$3.00 each.

White Hawthorn. *C. coccinea*. Native trees bearing in May clusters of graceful flowers like pure white Appleblossoms, having many conspicuous stamens, followed by scarlet fruit which attracts birds. 2 to 3 ft. 75c. each, \$6.50 per 10; 3 to 4 ft. \$1.00 each, \$9.00 per 10; 4 to 5 ft. \$1.50 each, \$13.50 per 10; 5 to 6 ft. \$2.00 each, \$18.00 per 10; 6 to 8 ft. \$3.00 each.

Paul's Scarlet Thorn. *C. oxyacantha splendens*. A large shrub or small tree, growing as high as 15 ft. The flowers are rich rose red and very double. 3 to 4 ft. \$1.25 each, \$10.00 per 10; 4 to 5 ft. \$1.50 each, \$13.50 per 10.

Pink English Hawthorn. *C. monogyna rosea*. Double pink flowers. Very hardy and long lived. 3 to 4 ft. \$1.25 each, \$10.00 per 10; 4 to 5 ft. \$1.50 each, \$13.50 per 10.

FAGUS

American Beech. *F. americana*. One of the most beautiful and picturesque shade trees. Bark an even rich gray. Tree low-branched and very long-lived. 2 to 3 ft. 75c. each, \$7.00 per 10; 3 to 4 ft. \$1.25 each, \$10.00 per 10.

FRAXINUS

Ash. *F. americana*. Valuable shade tree. Almost immune to insect pests and disease. Rapid growing. 4 to 6 ft. 75c. each, \$7.00 per 10; 6 to 8 ft. \$1.25 each, \$10.00 per 10; 8 to 10 ft. \$1.50 each, \$13.50 per 10.

Western Catalpa (*Catalpa speciosa*)

HALESIA

Great Silverbell. *H. tetraptera.* A small tree, hung with white, bell-shaped flowers in Spring. Very beautiful. 2 to 3 ft. \$1.00 each; 3 to 4 ft. \$1.25 each.

KOELREUTERIA

Goldenrain-tree. *K. paniculata.* A small tree that in Midsummer yields a profusion of golden, Locustlike flowers. 4 to 6 ft. \$1.25 each, \$10.00 per 10.

LARIX

American Larch, or Tamarack. *L. laricina.* The picturesque American Larch or Tamarack. The only native conifer that sheds its needles in the Fall. Attains a height of 80 ft. Prefers moist land. 3 to 4 ft. \$1.00 each, \$9.00 per 10; 4 to 5 ft. \$1.25 each, \$11.00 per 10.

MALUS

Arnold Crab. *M. arnoldiana.* A bushy tree, as wide as it is high. Flowers pink, in clusters on 3 in. stems. Single or semi-double. Attains a height of 20 ft. 2 to 3 ft. 75c. each, \$7.00 per 10; 3 to 4 ft. \$1.00 each, \$9.00 per 10; 4 to 5 ft., bushy, \$1.50 each, \$13.50 per 10.

Red-flowering Crab. *M. atrosanguinea.* Of the same habit of growth as the above. The flowers are a glorious shimmering pink, almost hiding the tree. Good as a hedge plant. Even the smallest tree blooms freely. 2 to 3 ft. 75c. each, \$7.00 per 10; 3 to 4 ft. \$1.00 each, \$9.00 per 10; 4 to 5 ft., bushy, \$1.50 each, \$13.50 per 10.

Bechtel-flowering Crab. *M. ioensis* var. *bechteli.* One of the most beautiful flowering Crab trees. Delicate, shell pink, semi-double blossoms like miniature Roses. 2 to 3 ft. 90c. each, \$8.00 per 10; 3 to 4 ft. \$1.50 each, \$13.50 per 10; 4 to 5 ft. \$2.00 each, \$18.00 per 10.

Redvein Crab. *M. niedzwetzkyana.* Dark pink flowers and edible fruit. Very handsome. 4 to 5 ft. \$1.50 each, \$13.50 per 10; 5 to 6 ft. \$2.00 each, 8 to 9 ft. \$8.00 each.



Great Silverbell (*Halesia tetraptera*)

Sargent Crab. *M. sargentii.* Dwarf, shapely Crab. Pure white flowers, followed by bright red fruit. 2 to 3 ft. \$1.00 each, \$9.00 per 10; 4 ft. specimens \$3.00 each.

Tea Crab. *M. theifera.* Called the most picturesque Crab with its erratic branches nearly concealed by pink and white flowers. 2 to 3 ft. \$1.00 each, \$9.00 per 10.

MORUS

Russian Mulberry. *M. tatarica.* Small tree, bearing reddish black, edible berries, attractive to birds. Often planted in Cherry orchards to keep the birds away from the Cherries. 4 to 6 ft. 75c. each, \$6.00 per 10.

OXYDENDRON

Sourwood. *O. arboreum.* Wide, outflung panicles of drooping, bell-shaped flowers in Midsummer. Glossy green leaves which turn brilliant red in Autumn. 2 to 3 ft. \$1.50 each, \$13.50 per 10; 4 to 5 ft. \$2.50 each.

PLATANUS

Sycamore or Buttonwood. *P. americana.* A widely planted tree. The bark is picturesquely shaded with gray and white. 6 to 8 ft. \$1.25 each, \$10.00 per 10; 8 to 10 ft. \$1.75 each, \$15.00 per 10.

POPULUS

Carolina Poplar. *P. eugeni.* Very rapid growing tree. Planted for quick effects. 8 to 10 ft. 75c. each, \$7.00 per 10; 10 to 12 ft. \$1.00 each, \$9.00 per 10.

Lombardy Poplar. *P. nigra*, var. *italica.* A tree extensively used in landscape planting. Dense, columnar growth. 6 to 8 ft. \$1.00 each, \$9.00 per 10; 8 to 10 ft. \$1.25 each, \$10.00 per 10; 10 to 12 ft. \$1.50 each, \$13.50 per 10; 12 to 14 ft. heavy, \$2.00 each; 14 to 16 ft. heavy, \$3.00 each.



Bechtel Flowering Crab (*Malus ioensis* var. *bechteli*)

PRUNUS

Purpleleaved Plum. *P. pissardi*. Conspicuous for its bronze purple leaves throughout the season. 4 to 5 ft. \$1.00 each, \$9.00 per 10.

P. Newport. A strong, upright growing Plum with reddish foliage, giving it a most striking appearance. 3 to 4 ft. \$1.00 each, \$9.00 per 10; 4 to 5 ft. \$1.25 each, \$11.00 per 10; 6 to 7 ft. \$2.50 each.

JAPANESE FLOWERING CHERRIES

We have been trying the Japanese Flowering Cherries for several years with surprisingly good success. They seem to be perfectly hardy here.

Kwanzan. A late, double, dark pink variety. 3 to 4 ft. trees \$2.00 each, \$18.00 per 10; 4 to 5 ft. \$2.50 each, \$22.50 per 10.

Shirotae. Late double white variety. 3 to 4 ft. \$2.00 each, \$18.00 per 10.

Japanese Weeping Cherry. *P. subhirtella pendula*. Long, pendulous branches covered with light pink, delicate blossoms in cherry blossom time. 5 to 6 ft. \$3.50 each; a few heavy specimens at \$10.00 each.

QUERCUS

Pin Oak. *Q. palustris*. One of the more attractive Oaks, native to Pennsylvania and southward. Leaves are deeply cut and are very highly colored in Autumn. 4 to 6 ft. \$1.00 each, \$9.00 per 10; 6 to 8 ft. \$2.00 each, \$18.00 per 10.

Red Oak. *O. rubra*. The most common Oak in New England, and one which attains a size of 6 ft. or more in diameter, with uniformly good shape. 3 to 4 ft. trees \$1.00 each; 4 to 6 ft. \$1.50 each; 6 to 8 ft. \$3.00 each, \$28.00 per 10.

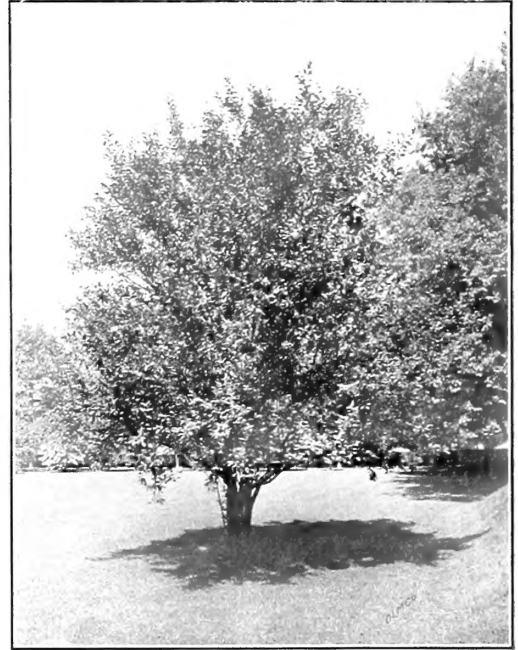
ROBINIA

Black Locust. *R. pseudoacacia*. Drooping panicles of fragrant, creamy white flowers in June. 8 to 10 ft. \$1.50 each, \$10.00 per 10; 10 to 12 ft. \$1.75 each, \$12.50 per 10.

SALIX

Weeping Willow. *S. dolorosa*. For waterside planting. 8 to 10 ft. \$1.25 each, \$10.00 per 10.

Laurel-leaved Willow. *S. pentandra*. Dark, glossy green leaves. Used as a tall hedge or as single specimens. It cannot be recommended too highly. 6 to 8 ft. 75c. each, \$6.00 per 10, \$55.00 per 100; 8 to 10 ft. \$1.25 each, \$10.00 per 10.



Purpleleaved Plum (*Prunus pissardi*)

SORBUS

European Mountain-ash. *S. aucuparia*. A small tree, attractive for its umbels of orange scarlet fruit. Compound leaves. 6 to 8 ft. \$1.25 each, \$10.00 per 10; 8 to 10 ft. \$1.75 each, \$15.00 per 10.

TILIA

Linden, American Basswood. *T. americana*. Large, dense, round-headed tree with fragrant white blossoms in July. 6 to 8 ft. \$2.00 each; 8 to 10 ft. \$3.00 each.

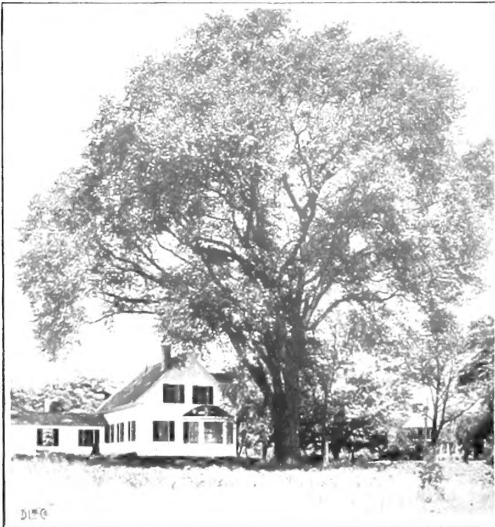
ULMUS

American Elm. *U. americana*. A shade tree of rapid growth, eventually reaching an enormous height and size and living to a good old age. 8 to 10 ft. \$1.50 each, \$12.50 per 10; 10 to 12 ft. \$2.00 each, \$18.00 per 10.

Dwarf Asiatic Elm. *U. pumila*. While this is claimed to be a rapid grower in the West, it is apparently a dwarf with us. Globe shape. 6 to 8 ft. \$1.50 each, \$13.50 per 10; 8 to 10 ft. \$2.00 each, \$18.00 per 10.

Moline Elm. A distinct Elm of slim, columnar growth similar to a Lombardy Poplar. Excellent for street planting. 12 to 14 ft. \$3.50 each, \$32.50 per 10; 14 to 16 ft. \$5.00 each, \$45.00 per 10.

Vase Elm. A vase-shaped grafted form of the American Elm. 12 to 14 ft. \$3.50 each; 14 to 16 ft. \$5.00 each.



American Elm (*Ulmus americana*)

Besides the varieties of Shade and Ornamental Trees offered here, we can supply many other excellent varieties and we will be glad to quote special prices on large quantities of the varieties which we offer.



CONIFEROUS EVERGREENS

THE marvelous beauty of the coniferous evergreens and the wide varieties of uses for them is appreciated more each year. There are, however, certain precautions which must be observed if they are to be grown to perfection.

First, they must never be allowed to dry out, as an evergreen once dried out will seldom recover.

Secondly, if the season is dry or windy, the tops should be kept sprinkled until the roots are re-established.

Most so-called Winter-killing of evergreens is caused by Spring winds from the South causing the moisture to evaporate from the tops while the roots are still frozen so tightly that they cannot draw enough water from the ground to replace it. Frequent sprinkling in early Spring will help prevent the burning or so-called Winter injury.

Thirdly, evergreens and canines should not be allowed to associate, and a low fence should be erected around dwarf evergreens to keep all dogs at a safe distance as they will certainly kill all lower branches if opportunity is given.

ABIES

Balsam Fir. *A. balsamea*. The fragrant Balsam of the Northern woods. It is symmetrical in form and blue green in color.

	Each	Per 10	Per 100
18 to 24 in.	\$1.00	\$9.00	\$75.00
2 to 2½ ft.	1.50	13.50	125.00
2½ to 3 ft.	2.00	18.00	

Prices on larger sizes on request.

Silver Fir. *A. concolor*. Symmetrical, rapid growing trees with long blue gray needles with a frosted appearance. Grows to 80 ft. or more. 2 to 2½ ft. \$3.00 each, \$27.50 per 10; 3 to 4 ft. \$5.00 each.

CHAMAECYPARIS. Retinospora

Green-plumed Cypress. *C. plumosa*. Tall, pyramidal shape, feathery, green-plumed foliage. Stands shearing. For foundations. 18 to 24 in. \$1.50 each, \$13.50 per 10; 2 to 3 ft. \$2.50 each, \$22.50 per 10.

Golden-plumed Cypress. *C. plumosa aurea*. Rich golden green. 18 to 24 in. \$1.50 each, \$13.50 per 10; 2 to 3 ft. \$2.50 each, \$22.50 per 10.

Prices on **Thread Cypress, Golden Thread Cypress, Moss Cypress,** and **Sawara Cypress** submitted on request.

JUNIPERUS

Common Spreading Juniper. *J. canadensis*. Silvery green, low growing, and of spreading growth. For rocky or foreground planting. 12 to 18 in. \$1.00 each, \$8.00 per 10; 18 to 24 in. \$1.50 each, \$12.00 per 10.

J. depressa plumosa. Comparatively new; growing almost prostrate with feathery foliage that turns purple in Winter. 15 to 18 in. \$2.00 each, \$18.00 per 10; 18 to 24 in. \$2.50 each, \$22.50 per 10.

Columnar Chinese Juniper. *J. chinensis columnaris*. Of erect, narrow growth being probably the best of all Junipers of this type as it does not seem to burn. Bluish foliage. 2 to 2½ ft. \$2.50 each, \$22.50 per 10; 2½ to 3 ft. \$3.25 each, \$39.00 per 10.

Chinese Juniper. *J. chinensis*. A conical Juniper with very dense, blue green foliage. Grows to 12 ft. 2 to 2½ ft. \$2.00 each, \$18.00 per 10; 2½ to 3 ft. \$2.75 each, \$25.00 per 10.

Creeping Juniper. *J. horizontalis*. Probably the best known trailing Juniper. Purplish foliage in Winter. 18 to 24 in. \$1.75 each, \$15.00 per 10; 2 to 2½ ft. \$2.00 each, \$18.00 per 10.

Irish Juniper. *J. communis, var. hibernica*. Dense, columnar in form; glaucous green. For formal plantings. 2½ to 3 ft. \$2.00 each, \$17.50 per 10; 3 to 4 ft. \$2.50 each, \$22.50 per 10.



Balsam Fir (*Abies balsamea*)

JUNIPERUS—Continued

Meyer's Juniper. *J. squamata meyeri.* A new introduction. Foliage blue green with iridescent reddish hues. The growth is low, dense, spreading. For rockeries or low evergreen planting. 15 to 18 in. \$2.00 each, \$18.00 per 10; 18 to 24 in. \$2.75 each, \$25.00 per 10; 2 to 2½ ft. \$4.00 each, \$37.50 per 10.

Pfitzer's Juniper. *J. chinensis pfitzeriana.* Low growing with spreading, nodding, plummy growth. Gray green color. Ideal for rockeries, foundation plantings, or the foreground of evergreen plantings. 18 to 24 in. \$2.00 each, \$17.50 per 10; 2 to 2½ ft. \$2.75 each, \$25.00 per 10; 2½ to 3 ft. \$4.00 each, \$38.00 per 10.

Redcedar. *J. virginiana.* Tall, dense columnar in habit. Dark green. Invaluable for landscape planting. 2 to 3 ft. \$1.75 each, \$16.00 per 10; 3 to 4 ft. \$2.75 each, \$25.00 per 10.

Silver Redcedar. *J. virginiana glauca.* The blue foliated form of our Redcedar. 2 to 2½ ft. \$3.00 each, \$27.50 per 10; 2½ to 3 ft. \$4.00 each.

Savin Juniper. *J. sabina.* Dark green, graceful in form. Dwarf. Good for foundation plantings. 18 to 24 in. \$2.00 each, \$17.50 per 10; 2 to 2½ ft. \$3.00 each, \$28.00 per 10.

Spiny Greek Juniper. *J. excelsa stricta.* Silvery, blue green foliage. Compact, pyramidal form. Ideal for low evergreen plantings. 15 to 18 in. \$1.75 each, \$15.00 per 10; 18 to 24 in. \$2.50 each, \$22.50 per 10.

Swedish Juniper. *J. suecica.* Of lighter green color and a little broader than Irish Juniper. Otherwise very similar. 2½ to 3 ft. \$2.00 each, \$17.50 per 10; 3 to 4 ft. \$3.00 each.



Pfitzer's Juniper
(*Juniperus chinensis pfitzeriana*)

PICEA SPRUCE

Colorado Blue Spruce. *P. pungens glauca.* Selected specimens. 18 to 24 in. \$3.00 each, \$27.50 per 10; 2 to 2½ ft. \$4.00 each, \$37.50 per 10; 2½ to 3 ft. \$5.00 each.

Colorado Green Spruce. *P. pungens.* Colorado Spruces not blue enough to sell as Blue Spruce, but good, attractive trees. 18 to 24 in. \$1.50 each, \$13.75 per 10; 2 to 2½ ft. \$2.00 each, \$18.75 per 10; 2½ to 3 ft. \$2.50 each.

Dwarf Alberta Spruce. *P. glauca cornica.* Very dwarf, conical little trees particularly suited to rockeries or formal gardens. 9 to 12 in. \$2.50 each; 12 to 15 in. \$3.50 each; 15 to 18 in. \$4.00 each.

Norway Spruce. *P. excelsa.* Rapid growing tree used for windbreaks. Long, pendulous branches. Deep green.

	Each	Per 10	Per 100
2 to 3 ft.	\$1.25	\$10.00	\$90.00
3 to 4 feet	2.00	17.50	125.00
4 to 5 ft.	2.50	22.50	175.00

Prices for larger sizes on request.

Pygmy Norway Spruce. *P. excelsa pygmaea.* A very dwarf Spruce for rockeries. 8 to 10 in. \$2.00 each.

White Spruce. *P. canadensis.* A shapely, densely growing tree of bluish green, often rivaling the Colorado Blue Spruce in color. 2 to 3 ft. \$2.00 each, \$17.50 per 10; 3 to 4 ft. \$2.50 each, \$22.50 per 10; 4 to 5 ft. \$3.00 each, \$27.50 per 10.

PINUS

Austrian Pine. *P. nigra.* A most picturesque Pine for seaside planting. Long, very dark needles. 2 to 2½ ft. \$2.50 each, \$22.50 per 10.

Jack Pine. *P. banksiana.* A medium sized tree with short, stiff needles. Grows far north to the Arctic Circle. 3 to 4 ft. \$2.00 each.

Japanese Red Pine. *P. densiflora.* One of the finest Pines with heavy, dense, rather light green foliage. 2 to 3 ft. \$2.00 each, \$17.50 per 10; 3 to 4 ft. \$3.00 each, \$27.50 per 10.

Mugho Pine. *P. montana, var. mughus.* Dwarf, slow growing, compact, and neat in appearance. Very hardy. For low evergreen plantings. 15 to 18 in. \$1.25 each, \$10.00 per 10; 18 to 24 in. \$1.75 each, \$16.00 per 10; 2 to 2½ ft. \$2.00 each, \$17.50 per 10.

Norway Pine. *P. resinosa.* A beautiful, dense tree. Long, deep green needles. Very hardy. 2 to 3 ft. \$1.50 each, \$12.50 per 10; 3 to 4 ft. \$2.25 each, \$20.00 per 10.



Redcedar (*Juniperus virginiana*)



White Pine (*Pinus strobus*)

PINUS—Continued

Scotch Pine. *P. sylvestris.* Rapid growing. A very ornamental Pine. Gray green needles. A compact grower. It will grow in very unfavorable soil and climate.

	Each	Per 10	Per 100
3 to 4 ft.....	\$1.50	\$13.50	\$100.00
4 to 5 ft.....	1.75	15.00	125.00
5 to 6 ft.....	2.00	17.50	150.00
6 to 7 feet.....	3.50	30.00	225.00

Note—We shall be glad to submit quotations on large lots of Scotch Pine, 3 ft. to 6 ft. for forest or park planting.

White Pine. *P. strobus.* Native evergreen. Large, bluish green needles. Cannot be shipped out of New England, except to New York. 2 to 3 ft. \$1.50 each, \$13.50 per 10; 3 to 4 ft. \$2.50 each, \$22.50 per 10; 4 to 5 ft. \$3.50 each, \$30.00 per 10.

PSEUDOTSUGA

Douglas-fir. *P. douglasi.* Beautiful, soft, glaucous green needles. 18 to 24 in. \$1.25 each, \$10.00 per 10; 2 to 3 ft. \$2.00 each, \$17.50 per 10; 3 to 4 ft. \$3.00 each, \$28.00 per 10.

TAXUS

Dwarf Japanese Yew. *T. cuspidata nana.* A compact, slow growing Yew. Very useful for planting where low effects are wanted. Rich, dark green. 12 to 15 in. \$3.00 each, \$28.00 per 10; 15 to 18 in. \$4.00 each, \$37.00 per 10.

Japanese Yew. *T. cuspidata.* Hardy, like the above, but of more spreading habit. 15 to 18 in. \$2.75 each, \$25.00 per 10; 18 to 24 in. \$3.50 each, \$32.50 per 10; 2 to 2½ ft. \$4.00 each.

Upright Japanese Yew. *T. cuspidata capitata.* Hardy, upright growth, and dense dark green, handsome foliage. Slow growing, good for low hedges, foundation planting, or for garden use. 18 to 24 in. \$3.50 each, \$32.50 per 10; 2 to 2½ ft. \$4.00 each.

Hicks' Yew. *T. media hicksi.* This Yew is of tall, columnar form with very dark foliage. An especially fine evergreen. 18 to 21 in. \$4.00 each, \$36.00 per 10; 21 to 24 in. \$5.00 each, \$48.00 per 10.

THUJA. Arborvitae

American Arborvitae. *T. occidentalis.* Dense, columnar growth. Good for hedges. Stands severe clipping. We have a large supply of American Arborvitae and offer it at low prices so that you can buy it in quantity for hedges and windbreaks.

	Each	Per 10	Per 100
18 to 24 in., puddled roots.....	\$0.75	\$5.00	\$35.00
2 to 2½ ft., puddled roots.....	.85	6.00	40.00
2½ to 3 ft., B&B.....	1.00	9.00	80.00
3 to 4 ft.....	1.50	12.50	
4 to 5 ft.....	2.50	22.50	

Larger sizes quoted on request.

Globe Arborvitae. *T. occidentalis, var. globosa.* Dwarf, compact and round. Use against foundations or for formal effects. 15 to 18 in. \$1.00 each, \$8.00 per 10; 18 to 24 in. \$1.50 each, \$12.50 per 10; 2 to 2½ ft. \$2.00 each, \$17.50 per 10.

Pyramidal Arborvitae. *T. occidentalis, var. pyramidalis.* Bright rich green. The most useful of all Arborvitae. It grows in a slender, columnar form and holds its color well throughout the Winter. It is used for distinctive hedges, making a tall, narrow hedge of beauty. It is now plentiful enough and the price is low so that it can be used more extensively for that purpose. It is indispensable also to give height to formal plantings. 18 to 24 in. \$1.00 each, \$9.00 per 10; 2 to 3 ft. \$1.75 each, \$16.00 per 10; 4 to 5 ft. \$4.00 each, \$37.50 per 10; 5 to 6 ft. \$6.00 each; 6 to 7 ft. \$8.00 each.

Siberian Arborvitae. *T. wareana.* An attractive, medium height evergreen for low plantings. Delicate light green foliage. 18 to 24 in. \$1.50 each, \$13.50 per 10.

TSUGA. Hemlock

Hemlock. *T. canadensis.* One of the most beautiful of evergreens, as well as being useful and very hardy. Used for tall or low hedges, for windbreaks or screens, or for evergreen plantings of any nature.

	Each	Per 10	Per 100
12 to 18 in. puddled, for hedging		\$4.00	\$25.00
18 to 24 in. puddled, for hedging		7.50	50.00
2 to 2½ ft., B&B.....	\$1.50	13.50	125.00
2½ to 3 ft., B&B.....	2.00	18.00	160.00
3 to 4 ft., B&B.....	3.00	28.00	250.00
4 to 5 ft., B&B.....	5.00	45.00	

Note—B&B means dug with a ball of earth and wrapped in burlap.



Hemlock (*Tsuga canadensis*)

BROAD LEAVED EVERGREENS

TO this great family belongs some of the most beautiful of our plants and shrubs. These, alas, are too little understood as to their requirements, their likes and dislikes. First of all, most of them with the exception of Daphne and Cotoneaster require a sour soil. This is procurable under evergreen trees or in old blueberry pastures. They should have a mulch of leaves around their roots at all times, unless some ground cover such as Pachysandra or Myrtle is used. This keeps the ground always cool and moist around them. They should be given at least partial shade, especially in the late Winter and early Spring, when the sun is apt to dry out their heavily foliaged tops before the roots can draw water from the frozen earth.

Broad leaved evergreens are especially suited to shady foundation plantings for the north side of buildings or in great masses under trees and along streams. Following are some of the hardiest and most easily grown varieties.

CHAMAEDAPHNE

C. calyculata. *Leatherleaf.* Early in May the delightful Heathlike white flower clusters of the Leatherleaf are reflected in the water of the lake shores and streams near which it loves to grow. A splendid shrub for naturalizing. 12 to 18 in. \$2.00 each, \$18.00 per 10.

DAPHNE

Garland Flower. *D. cneorum.* (See Perennials, also.) May to October. A low, shrubby perennial, bearing sweet-scented, pink flowers in clusters, the florets of which are shaped like those of the Lilac.

	Each	Per 10
6 to 9 in., B&B.....	\$0.50	\$4.50
9 to 12 in., B&B.....	.75	7.00
12 to 15 in., B&B.....	1.00	9.00

ILEX

Inkberry. *I. glabra.* Dense, bushy evergreen shrub, with rich green, shiny leaves. In general appearance, much like a magnified Boxwood. Black fruit in Autumn. 12 to 18 in. clumps \$2.00 each, \$18.00 per 10.

KALMIA

Mountain-laurel. *K. latifolia.* The beautiful and much sought Laurel of our native woods. Pink and white flowers in June. Plant in dry shade or partial sun, on the margin of woods or under lawn trees.

Nursery grown plants.	Each	Per 10	Per 100
12 to 18 in., B&B.....	\$2.00	\$18.00	\$175.00
18 to 24 in., B&B.....	2.50	22.50	200.00
2 to 2½ ft., B&B.....	3.50	32.50	
Bushy, collected clumps, B&B			
12 to 18 in.....	1.25	10.00	90.00
18 to 24 in.....	1.50	13.50	125.00
2 to 3 ft.....	2.00	18.00	160.00
3 to 4 ft.....	3.50	32.50	250.00
4 to 5 ft.....	6.00	55.00	



Mountain-laurel (*Kalmia latifolia*)

LEUCOTHOE

Drooping Andromeda. *L. catesbaei.* In early Spring the graceful, drooping branches of this evergreen shrub are hung with beautiful, pendulous racemes of pure white flowers in shape like Lily-of-the-valley. Plant in a shady place. 12 to 18 in. \$1.50 each, \$13.50 per 10; 18 to 24 in. \$2.00 each, \$18.00 per 10; 2 to 3 ft. \$3.00 each.

PIERIS

Mountain Fetterbush. *P. floribunda.* Low, spreading, graceful shrub, good for foundation plantings. White flowers in early Spring. B&B. 12 to 15 in. \$2.00 each, \$18.00 per 10; 15 to 18 in. \$2.50 each, \$22.50 per 10; 18 to 24 in. \$3.50 each, \$32.50 per 10.

RHODODENDRONS

Catawba Rhododendron. *R. catawbiense.* Lilac-rose flowers. All the Rhododendrons offered here are native and should do well under ordinary care. Plant in shade or partial sun and given them a good mulching of straw or leaves. They prefer sour soil.

Nursery Grown	Each	Per 10	Per 100
12 to 15 in., B&B.....	\$2.00	\$19.00	\$180.00
15 to 18 in., B&B.....	2.50	24.00	230.00
18 to 24 in., B&B.....	3.50	32.50	300.00

Early-flowering Rhododendron. *R. carolinianum.* Bright pink flower clusters in early June. Growth more graceful and attractive than the others and flowers of an especially clear bright pink.

Nursery Grown Plants	Each	Per 10	Per 100
12 to 15 in.....	\$2.00	\$18.00	\$160.00
15 to 18 in.....	2.25	20.00	180.00
18 to 24 in.....	3.00	28.00	
2 to 2½ ft.....	4.50	42.50	

Great Laurel. *R. maximum.* For the border of the woods or for evergreen plantings. Immense pink and white blossom heads in July.

Nursery Grown.	Each	Per 10	Per 100
12 to 15 in., B&B.....	\$2.25	\$20.00	\$190.00
15 to 18 in., B&B.....	2.50	22.50	210.00
18 to 24 in., B&B.....	3.00	28.00	275.00
2 to 2½ ft., B&B.....	4.50	42.50	400.00



Catawba Rhododendrons

HARDY SHRUBS

AMELANCHIER

Downy Shadblow. *A. canadensis*. In earliest Spring the white blossoms of the Downy Shadblow are very conspicuous throughout the Northern forests before any deciduous trees are sending out their leaves. Bears edible red fruit. 2 to 3 ft. 60c. each, \$5.50 per 10; 3 to 4 ft. 75c. each, \$7.00 per 10.

ARONIA

Black Chokeberry. *A. melanocarpa*. A small shrub, bearing white flowers in corymbs in early Summer, and black fruit in Autumn. Foliage brilliant crimson in the Autumn. Prefers moist soil, but will grow anywhere. 2 to 3 ft. 50c. each, \$4.50 per 10.

AZALEA

Flame Azalea. *A. calendulacea*. Brilliant flame colored flowers in large clusters. 12 to 18 in. \$1.50 each, \$14.00 per 10; 18 to 24 in. \$2.00 each, \$18.50 per 10; 2 to 2½ ft. \$2.75 each.

Louisa Hunnewell. A variety of Azalea mollis with large yellow flowers. 12 in. plants, \$2.50 each.

Pinkshell Azalea. *A. vaseyi*. Late in May before the leaves appear, the swelling buds of this Azalea open into glorious shell pink flowers completely covering the bush with its burst of bloom. 12 to 18 in. \$2.50 each, \$22.50 per 10; 18 to 24 in. \$3.50 each, \$32.50 per 10.

Swamp Pink. *A. rosea*. The native Azalea. Coral pink with a delightful fragrance. Blooms at Memorial Day just before the leaves appear. 15 to 18 in. \$1.50 each; 18 to 24 in. \$2.50 each, \$22.50 per 10; 2 to 3 ft. \$3.50 each.

Sweet Azalea. *A. arborescens*. Very fragrant, small white flowers in June. 12 to 18 in. \$2.50 each, \$22.50 per 10; 18 to 24 in. \$3.00 each, \$28.00 per 10; 2 to 2½ ft. \$4.00 each.

White Swamp Pink. *A. viscosa*. Deliciously fragrant, white flowers from June till August. 12 to 18 in. \$1.50 each, \$13.50 per 10; 18 to 24 in. \$1.75 each, \$16.00 per 10.

Note—All Azaleas are shipped with ball of earth.

ALMOND

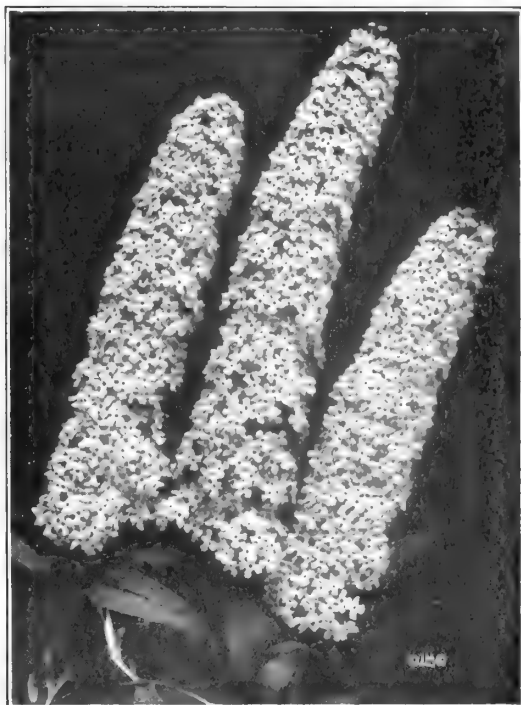
(See PRUNUS)

BERBERIS

Japanese Barberry. *B. thunbergi*. The ever useful and attractive Barberry needs no description. For foundation planting, edging walks or drives, or as single specimens in the shrubbery border it has no equal. Clean cut, green leaves on thorny stems and beautiful red berries in Fall and Winter. 3 yr., 12 to 18 in. 30c. each, \$2.00 per 10, \$12.00 per 100; 3 yr., 18 to 24 in. 40c. each, \$3.00 per 10, \$20.00 per 100; 2 to 2½ ft. 50c. each, \$4.00 per 10, \$30.00 per 100.



Japanese Barberry (Berberis thunbergi)



Oxeye Butterflybush (Buddleia davidi magnifica)

New Redleaved Japanese Barberry. *B. thunbergi atropurpurea*. An attractive bit of foliage color for interspersing among shrubbery or as single specimens. Grows brighter red in Summer and in Fall takes on orange and bronze tints. Berries hang persistently all Winter. Plant in full sun. 12 to 18 in. 40c. each, \$3.50 per 10; 18 to 24 in. 50c. each, \$4.50 per 10.

Box Barberry. A miniature shrub of neat, attractive appearance, suitable for low hedges. 9 to 12 in. plants 35c. each, \$3.00 per 10, \$25.00 per 100; 12 to 15 in. 50c. each, \$4.00 per 10, \$35.00 per 100.

BUDDLEIA

Chinese Butterflybush. *B. alternifolia*. This is a new introduction and is apparently a hardy Buddleia. It grows very rapidly, attaining a height of several feet. The long weeping branches bear a profusion of lilac colored flowers from Midsummer until frost. Our large sized plants should start blooming the first season. 2 to 3 ft. 75c. each; 5 to 6 ft. \$3.00 each.

Oxeye Butterflybush. *B. davidi magnifica*. Fragrant racemes of lavender flowers, from August until frost. Wide branching habit. Dies to the ground each year, sending out new wood every Spring and attaining a height of 4 to 6 ft. in a single season. Heavy plants, 50c. each, \$4.50 per 10. Plant only in the Spring.

CALYCANTHUS

Sweetshrub. *C. floridus*. A dwarf, symmetrical shrub, the leaves of which are fragrant. Choc slate colored, sweet scented flowers. 2 to 3 ft. 75c. each, \$7.00 per 10.

Sweet Pepperbush (*Clethra alnifolia*)

CARAGANA

Siberian Pea Tree. *C. arborescens.* A shrub or small tree attaining a height of 15 to 20 ft., bearing bright yellow, pea-shaped flowers in May and June. Very hardy. 3 to 4 ft. 50c. each, \$4.50 per 10.

CEPHALANTHUS

Buttonbush. *C. occidentalis.* A native of Northern bogs, this shrub grows somewhat like the Hydrangea Peegee. The white flower heads about 1½ in. in diameter are borne in late Summer. 2 to 3 ft. 75c. each, \$6.00 per 10.

CLETHRA. Summersweet

Sweet Pepperbush. *C. alnifolia.* Creamy white, very fragrant flowers in long racemes, from July to September. Attains a height of 3 to 10 ft. 18 to 24 in. 50c. each, \$4.50 per 10; 2 to 3 ft. 60c. each, \$5.50 per 10.

CORNUS

Goldentwig Dogwood. *C. stolonifera flaviramea.* Just like *Stolonifera*, except that the bark is golden yellow. 50c. each, \$4.00 per 10, \$30.00 per 100.

Gray Dogwood. *C. paniculata.* Sometimes grows 10 to 12 ft. high, but ordinarily is considerably shorter. A shapely shrub with white flowers and white berries on red stems. 2 to 3 ft. 50c. each, \$4.50 per 10; 3 to 4 ft. 60c. each, \$5.50 per 10, \$45.00 per 100.

Pagoda Dogwood. *C. alternifolia.* An attractive shrub growing from 6 to 10 ft. high, with exceptionally bright blue berries in the Fall. One of the most attractive berried shrubs. 3 to 4 ft. plants 60c. each, \$5.50 per 10; 4 to 5 ft. \$1.00 each.

Red-osier. *C. stolonifera.* A native red-barked Dogwood resembling *Cornus sibirica*. White blossoms in early Summer and occasionally a few throughout the season. Grayish white berries. 2 to 3 ft. 50c. each, \$4.50 per 10, \$30.00 per 100.

Redtwig Dogwood. *C. sibirica.* A shrub of spreading habit. The bright red bark is attractive, especially when planted with the green-barked *Kerria*. 2 to 3 ft. 50c. each, \$4.50 per 10, \$30.00 per 100.

Silky Dogwood. *C. amomum.* This "Kinnikinnick" of the North is sometimes mistaken for Red-osier, but the bark is not so bright red. The bush grows to 10 ft. and the bright blue berries in Autumn are the most colorful of all Dogwoods. 3 to 4 ft. 50c. each, \$4.00 per 10, \$28.00 per 100.

COTONEASTER

Diel's Cotoneaster. *C. dielsiana.* Grows 5 to 6 ft. with arching branches. Brilliant foliage and scarlet fruit in Autumn. 2 to 3 ft. \$1.50 each.

Peking Cotoneaster. *C. acutifolia.* A hardy shrub, growing to 10 ft. Dark green foliage. Black berries. 2 to 3 ft. 75c. each, \$7.00 per 10.

Rock Cotoneaster. *C. horizontalis.* A dwarf, almost evergreen shrub of great value for the rock garden. Spreading, almost prostrate growth. Leaves small and round, shiny green. Bright scarlet berries. 6 in. pots \$1.00 each, \$8.00 per 10.

CYDONIA

Japanese Quince. *C. japonica.* An old-fashioned shrub. Aflame with scarlet flowers in May. 2 to 3 ft. 50c. each, \$4.50 per 10.

CYTISUS

Scotch Broom. *C. scoparius.* Slim, erect growth. Bright yellow, pea-shaped flowers line the stalks in May and June. 12 to 18 in. 50c. each, \$4.50 per 10.

DAPHNE

Daphne mezereum. Deliciously fragrant, tiny, wine-purple flowers in earliest Spring before the leaves appear. 10 to 15 in., B&B, \$1.00 each.

DEUTZIA

Lemoine's Deutzia. *D. lemoinei.* An invaluable, medium sized shrub of beautiful, symmetrical growth. Densely covered with sprays of white flowers in late May and early June. 2 to 3 ft. 50c. each, \$4.50 per 10.

Pride of Rochester. *Deutzia.* A large growing variety, bearing in June, long, pendulous sprays of pink tinged white flowers. 2 to 3 ft. 50c. each, \$4.50 per 10; 3 to 4 ft. 75c. each, \$7.00 per 10; 5 to 6 ft. \$2.00 each.

Slender Deutzia. *D. gracilis.* A smaller variety with slender growth. White flowers in May and early June. 18 to 24 in. 65c. each, \$6.00 per 10.

ELAEAGNUS

Russian-olive. *E. angustifolia.* Small tree with rounded, bushy head and silvery, dull green foliage. Edible fruit. Very hardy. 3 to 4 ft. 60c. each, \$5.50 per 10.

EUONYMUS

Brook Euonymus. *E. americanus.* A comparatively low growing Euonymus from the Middle West valued for its showy scarlet seeds in Autumn. 2 to 3 ft. 75c. each, \$7.00 per 10.

E. alatus compacta. This is one of the best shrubs of recent introduction, and grows to a height of only 3 to 4 ft. and is as broad as it is tall and is very dense. In the Autumn, the brilliancy of its foliage is almost dazzling. 18 to 24 in. \$1.00 each, \$9.00 per 10; 2 to 2½ ft. \$1.50 each, \$13.50 per 10.

European Burningbush. *Euonymus europaeus.* Tall, erect growing shrub, highly prized for its gorgeous pink fruit in Autumn. 2 to 3 ft. 50c. each, \$4.50 per 10; 3 to 4 ft. 75c. each, \$6.50 per 10; 4 to 5 ft. 90c. each, \$8.00 per 10; 5 to 6 ft. \$1.50 each, \$12.50 per 10.

Wahoo. *E. atropurpureus.* This attains a height of nearly 15 ft. and besides its gorgeous scarlet fruit in Autumn has highly colored foliage. 2 to 3 ft. 75c. each, \$7.00 per 10; 3 to 4 ft. \$1.00 each, \$9.00 per 10.

Winged Euonymus. *E. alatus.* Very beautiful in Autumn for its scarlet foliage and its curious winged bark. 2 to 3 ft. 60c. each, \$5.50 per 10.

EXOCHORDA

Pearlbush. *E. grandiflora*. Snow-white flowers like pearls cover this bush in May. One of the finest shrubs. 2 to 3 ft. 75c. each.

FORSYTHIA

Fortune Goldenbell. *F. fortunei*. Densely covered in early Spring with glorious, bell-shaped, yellow flowers. 2 to 3 ft. 50c. each, \$4.00 per 10; 3 to 4 ft. heavy, 75c. each, \$7.00 per 10; 4 to 5 ft. \$1.00 each.

Showy Forsythia. *F. spectabilis*. Bright golden yellow. The freest flowering and most beautiful Forsythia. 2 to 3 ft. 50c. each, \$4.50 per 10; 3 to 4 ft. 75c. each, \$7.00 per 10.

Weeping Goldenbell. *F. suspensa*. The most graceful Forsythia. The branches are long and pendulous, with an upward sweep at the ends. In May they are densely set with yellow flowers. 2 to 3 ft. 60c. each, \$5.00 per 10; 3 to 4 ft. heavy, 75c. each, \$7.00 per 10; 4 to 5 ft. \$1.00 each.

GENISTA

Dyer's Greenweed. *G. tinctoria*. Round-headed little bush about 3 ft. in height, with green bark and branches, and bright yellow, pea-shaped flowers in July and August. 12 to 18 in. 50c. each, \$4.50 per 10; 2 to 2½ ft. \$1.00 each.

HIBISCUS. Althaea

Rose-of-Sharon. *H. syriacus*. One of the few shrubs to blossom in late Summer. Large, single or double flowers, shaped like Hollyhocks in red, white, pink, or lavender. They form large shrubs, not unlike well-grown white Lilacs. Double: Red, white, blue, or pink. Single: White, red, or pink. 2 to 3 ft. 50c. each, \$4.50 per 10; 3 to 4 ft. 60c. each, \$5.50 per 10.

HAMAMELIS

Vernal Witch-hazel. *Hamamelis vernalis*. An attractive Witch-hazel from the Ozark Mountains and hardy in New England. This is the earliest shrub to blossom, bearing in profusion in late Winter and early Spring, flowers which vary in color from yellow to maroon red. 4 to 5 ft. \$2.50 each, \$22.00 per 10; 5 to 6 ft. \$3.50 each.

Witch-hazel. *H. virginiana*. A very interesting and useful native shrub, valued for its golden yellow, threadlike blossoms, which are borne in profusion in November. Attains a height of 15 ft. 2 to 3 ft. 50c. each, \$4.50 per 10; 3 to 4 ft. 65c. each, \$6.00 per 10; 4 to 6 ft. \$1.00 each.

HYDRANGEA

Common Hydrangea. *H. paniculata grandiflora*. The variety which attains such huge size and which holds its flowers until late in the Fall. White flowers turning rose and bronze with age. The Bush Form: 2 to 3 ft. 50c. each, \$4.50 per 10; 3 to 4 ft. 75c. each, \$6.50 per 10. Tree Form: 3 to 4 ft. \$1.00 each, \$9.00 per 10; 4 to 5 ft. \$1.50 each, \$13.50 per 10.

Hills-of-snow. *H. arborescens sterilis*. A low growing Hydrangea which is covered with huge heads of white flowers in July. Splendid for low, unclipped hedges. 2 to 3 ft. 50c. each, \$4.50 per 10; 3 to 4 ft. 65c. each, \$6.00 per 10.

ILEX

Black Alder, Winterberry. *I. verticillata*. Brilliant, Holly-red berries after the first heavy frosts. Extensively used for Christmas and Thanksgiving decorations. Good for naturalizing in a wet location although it will grow in an ordinary location also. 2 to 3 ft. 75c. each, \$6.50 per 10.

Weeping Goldenbell (*Forsythia suspensa*)**KERRIA**

Globeflower. *K. japonica florepleno*. Bright green stems and bark and double orange flowers throughout the Summer. 2 to 3 ft. 60c. each, \$5.50 per 10.

KOLKWITZIA

Beautybush. *K. amabilis*. A recently introduced shrub which bids fair to become one of the very best. Growth upright in the center, with outer branches arching. Bell-shaped flowers borne in pairs forming a cluster of 25 or so, pink with orange veins. Buds darker pink. Somewhat resembles the Weigela. 18 to 24 in. 50c. each, \$4.50 per 10; 2 to 3 ft. 75c. each, \$6.50 per 10.

LIGUSTRUM

Ibodium Privet. *L. ibodium*. A cross between Ibota and California Privet, combining the hardiness and vigor of the former with the beauty of the latter. 2 to 3 ft. 25c. each, \$2.00 per 10, \$10.00 per 100; 3 to 4 ft. 30c. each, \$2.50 per 10, \$14.00 per 100.

Ibota Privet. *L. ibota*. Used in the North, where California Privet is not hardy. Excellent hedge plant. 2 to 3 ft. 35c. each, \$3.00 per 10, \$20.00 per 100; 3 to 4 ft. 40c. each, \$3.50 per 10, \$27.00 per 100.

Regel's Privet. A very hardy spreading type of Ibota Privet. Much branched. 2 to 3 ft. 50c. each, \$4.00 per 10, \$20.00 per 100; 3 to 4 ft. 60c. each, \$5.00 per 10.

LONICERA

L. morrowi. Cream white flowers, deliciously fragrant. Bright red berries. Spreading form. 3 to 4 ft. 60c. each, \$5.50 per 10.

Tatarian Honeysuckle. *L. tatarica*. This shrub often grows to the height of a small tree. Dainty pink or white flowers in earliest Spring, followed by bright red berries which are attractive to birds. 2 to 3 ft. 50c. each, \$4.00 per 10; 3 to 4 ft. 60c. each, \$5.00 per 10; 4 to 6 ft. \$1.00 each, \$9.00 per 10.

MAHONIA

M. aquifolium. *Oregon Grape.* The beautiful Oregon Grape with Holly-like leaves seems perfectly hardy in Vermont, but drops its leaves in the Spring. In Autumn, it is tinted red and bronze. It has not fruited here yet, but we expect it will when it gets older. 12 to 18 inch plants, B&B, \$1.25 each.

MYRICA

M. caroliniensis. *Bayberry.* The Puritans depended on the berries of the Bayberry to furnish wax for their candles. Now it is a most desirable shrub, almost evergreen, with very fragrant leaves, and the berries are in great demand at Christmas time. It grows to a height of 6 to 7 ft. 18 to 24 in., B&B, \$1.00 each, \$9.00 per 10.

NEMOPANTHUS

Mountain-holly. *N. mucronatus.* Shapely shrub, having attractive, clean cut foliage and red berries in late Summer and early Fall. Very hardy. Prefers a moist soil and partial shade. 2 to 3 ft. 75c. each, 3 to 4 ft. \$1.00 each.

PHILADELPHUS

Golden Syringa. *P. foliis aureus.* Very bushy and having rich yellow leaves. Good for planting with other shrubs where the golden foliage relieves the monotonous green of the planting. 18 to 24 in. 75c. each, \$7.00 per 10; 2 to 2½ ft. \$1.00 each, \$9.00 per 10.

P. grandiflora. Large-flowered, very fast growing. Excellent for use as a screen shrub. Not fragrant. 3 to 4 ft. 60c. each, \$5.00 per 10; 4 to 5 ft. \$1.00 each, \$9.00 per 10; 5 to 7 ft. \$1.50 each, \$13.50 per 10; 7 to 8 ft. \$2.50 each.

P. lemoinei. A dwarf Syringa, growing only a few feet tall. Fragrant flowers. 2 to 3 ft. 50c. each, \$4.00 per 10; 3 to 4 ft. 75c. each, \$6.50 per 10.

P. Manteau d'Hermine. The most dwarf form of Philadelphia we offer. Compact bush and fragrant flowers. 18 to 24 in. 60c. each, \$5.50 per 10; 2 to 3 ft. 80c. each, \$7.50 per 10.

Sweet Syringa. *P. coronarius.* A well-beloved, old-fashioned shrub. Deliciously fragrant, creamy white flowers in June. 2 to 3 ft. 50c. each, \$4.50 per 10; 3 to 4 ft. 75c. each, \$7.00 per 10.

P. virginale. A beautiful new Mockorange. The snowy white flowers are twice as large as the older varieties, are semi-double, and very fragrant. Covered with blossoms in June and blooms occasionally during the Summer and Fall. Of proven vigor. 2 to 3 ft. 50c. each, \$4.50 per 10; 3 to 4 ft. 60c. each, \$5.50 per 10.

PHYSOCARPUS

Golden Ninebark. *P. opulifolius luteus.* A tall shrub having golden yellow leaves and panicles of creamy white flowers in late Spring. 3 to 4 ft. 50c. each, \$4.50 per 10; 4 to 5 ft. \$1.00 each, \$9.00 per 10; 5 to 7 ft. \$1.50 each, \$13.50 per 10.

Ninebark. *P. opulifolius.* A rapid growing shrub. Attains a large size in a short time. Flat racemes of cream colored flowers. Blossoms in early Summer. 2 to 3 ft. 50c. each, \$4.00 per 10; 3 to 4 ft. 60c. each, \$5.00 per 10.

POTENTILLA

Shrubby Cinquefoil. *P. fruticosa.* Single yellow flowers, borne all Summer. A dwarf grower, preferring a moist place. 18 to 24 in. 50c. each, \$1.00 per 10; 2 to 3 ft. 60c. each, \$5.50 per 10.

PRUNUS

Chokecherry. *P. virginiana.* If it were not so common, the Chokecherry with its wealth of snow white, fragrant flowers borne in 2 to 3 in. racemes, would be one of the most popular shrubs. 2 to 3 ft. 50c. each, \$4.50 per 10; 3 to 4 ft. 60c. each, \$5.50 per 10.

Doubleflowering Plum. *P. triloba.* Delicate, pink double flowers, often as much as 1 in. across, thickly set on long, gracefully arching branches in May. Very beautiful and choice. Hardy. 3 to 4 ft. 75c. each, \$6.50 per 10; 4 to 5 ft. \$1.00 each, \$9.00 per 10.

Nanking Cherry. *P. tomentosa.* A beautiful flowering Cherry, which forms a rounded, shrubby bush or small tree, completely covered in late April and early May with soft, rose tinted blossoms. Perfectly hardy, even in Canada, where flowering trees are scarce. 2 to 3 ft. 50c. each, \$4.50 per 10; 3 to 4 ft. 60c. each, \$5.50 per 10.

Flowering Almond. *P. glandulosa sinensis.* In May the branches of this little shrub are wreathed with tiny rosettes. White or pink. 2 to 3 ft. 75c. each, \$6.00 per 10; 3 to 4 ft. \$1.00 each, \$9.00 per 10.

RHODORA

R. canadensis. Bushy shrub growing 1 to 3 ft. high. Lovely lavender flowers cover it in May before the leaves appear. Prefers sour soil. 18 to 24 in. \$2.00 each.

RHUS

Fragrant Sumac. *R. canadensis.* A low spreading shrub with fragrant leaves and conspicuous yellow flowers in early Spring. A good cover for dry banks. 18 to 24 in. 75c. each, \$6.50 per 10, \$55.00 per 100.

Shining Sumac. *R. copallina.* Dwarf Sumac with shining, glaucous green leaves. Bright red berries. 2 to 3 ft. 50c. each, \$4.50 per 10, \$30.00 per 100; 3 to 4 ft. 60c. each, \$5.00 per 10, \$40.00 per 100.

Smoke Bush, Purple Fringe. *R. colinus.* Immense heads of pale purple flowers, so tiny as to give the bush a smoky appearance. Distinctive and beautiful. 2 to 3 ft. \$1.00 each.

Staghorn Sumac. *R. typhina.* A native shrub, popular for naturalistic plantings. Is being planted also more generally in the last few years as a lawn shrub. 3 to 4 ft. 50c. each, \$4.50 per 10, \$35.00 per 100; 4 to 5 ft. 60c. each, \$5.50 per 10, \$40.00 per 100.

ROBINIA

Rose-acacia. *R. hispida.* Low growing, bushy member of the Locust family, bearing clusters of pink flowers in Spring. 2 to 3 ft. 75c. each, \$7.00 per 10; 3 to 4 ft. \$1.00 each.

RUBUS

Purple-flowering Raspberry. *R. odoratus.* A native shrub, particularly adapted to moist shade. From Midsummer till Autumn, the single rosy purple flowers nearly 2 in. across, are borne freely. The large, red berries are edible and usually enjoyed by the younger members of the family. Large leaves, several inches across. Bush grows 4 to 6 ft. tall. 3 to 4 ft. plants 40c. each, \$3.00 per 10.

SORBARIA

Ural False-spirea. *S. sorbifolia.* Plumy white flowers from June until August. Shrub suckers freely, forming large clumps growing from 3 to 6 ft. high. 2 to 3 ft. 50c. each, \$4.50 per 10, \$40.00 per 100; 3 to 4 ft. 60c. each, \$5.50 per 10, \$50.00 per 100.

SAMBUCUS

Snowy Elder. *S. canadensis*. Handsome, compound leaves, and great corymbs of white, fragrant flowers in June. When the beauty of this shrub is more fully appreciated, it will be planted extensively. 2 to 3 ft. 50c. each, \$4.50 per 10; 3 to 4 ft. 75c. each, \$7.00 per 10.

Cutleaf Elder. *S. canadensis acutiloba*. A cutleaf form of the Snowy Elder. 2 to 3 ft. 60c. each, \$5.50 per 10; 4 to 5 ft. \$1.00 each.

Golden Elder. *S. aurea*. Golden leaf form of the Snowy Elder. 2 to 3 ft. 50c. each, \$1.50 per 10.

Early Elder. *S. pubens*. Panicles of cream white flowers in May. A tall growing, shapely shrub. Scarlet berries in Midsummer. 3 to 4 ft. 50c. each, \$1.50 per 10.

SPIRAEA

Bridalwreath. *S. prunifolia*. The true Bridalwreath is distinct from Vanhouttei, although often confused with it. Grows erect. Thickly set with tiny white rosettes before the leaves appear. 2 to 3 ft. 55c. each, \$5.00 per 10; 3 to 4 ft. 75c. each.

Meadowsweet. *S. salicifolia*. Native white Spirea, blossoming in early Summer. 2 to 3 ft. 40c. each, \$3.50 per 10.

Steeplebush. *S. tomentosa*. Native pasture Spirea, used for naturalizing. Tall spikes of soft, rose-colored flowers in Midsummer. 2 to 3 ft. 25c. each, \$2.00 per 10, \$18.00 per 100.

Thunberg Spirea. *S. thunbergi*. A graceful variety, having finely shaped, feathery, fernlike leaves, and double flowers in May. 2 to 3 ft. 50c. each, \$4.00 per 10; 3 to 4 ft. 75c. each, \$6.50 per 10.

Trichocapra. Like Vanhouttei, but blooming two or three weeks later. A strong, hardy grower and a great addition to the list of late blooming shrubs. 2 to 3 ft. \$1.00 each; 3 to 4 ft. \$1.25 each; 5 to 6 ft. \$3.00 each.

Vanhoutte Spirea. *S. vanhouttei*. In May this most beautiful of Spireas is wreathed to the end of each drooping branch with white flowers. Its form and habit make it especially suitable for planting in a conspicuous place. Makes a splendid tall hedge. 2 to 3 ft. 50c. each, \$4.50 per 10, \$35.00 per 100; 3 to 4 ft. 75c. each, \$6.50 per 10, \$45.00 per 100; 4 to 5 ft. heavy clumps, \$1.00 each, \$8.00 per 10, \$65.00 per 100; 5 to 6 ft. \$2.00 each, \$15.00 per 10.

Waterer Spirea. *S. bumalda*, *Anthony waterer*. A dwarf Spirea useful for bordering shrubby plantings. Deep, rose colored flowers in flat corymbs during the entire season. 18 to 24 in. 50c. each, \$4.50 per 10; 2 to 2½ ft. 75c. each, \$6.50 per 10.

STEPHANANDRA

Cutleaf Stephanandra. *S. flexuosa*. Graceful, pendant, fountainlike habit of growth. Leaves delicately cut and fernlike. Masses of creamy white flowers. 2 to 3 ft. 50c. each, \$4.50 per 10.

SYRINGA

Common Purple Lilac. *S. vulgaris*. This most common of shrubs never loses its popularity. Fine for tall flowering hedge. 2 to 3 ft. 50c. each, \$4.50 per 10; 3 to 4 ft. 75c. each, \$7.00 per 10.

Common White Lilac. 2 to 3 ft. 50c. each, \$4.50 per 10; 3 to 4 ft. 75c. each, \$7.00 per 10.

Hungarian Lilac. *S. josikaea*. Valued for its late flowering. Grows to be a small tree. Flowers purple, in late June. Leaves rich, shiny green. 3 to 4 ft. \$1.00 each, \$9.00 per 10.

Japanese Tree Lilac. *S. japonica*. The only lilac to become a real tree in size, eventually attaining 30 ft. in favorable locations. Blooms in June and July. The branched panicles of flowers are often 12 in. long and are creamy white in color. Very desirable. 2 to 3 ft. 75c. each, \$7.00 per 10; 3 to 4 ft. \$1.00 each, \$9.00 per 10; 4 to 5 ft. \$1.50 each.

Persian Lilac. *S. persica*. A slenderly beautiful Lilac with delicate, airy panicles of lavender pink, deliciously fragrant flowers in June. As a background for a perennial border, nothing could be better than this shrub. The growth is hardy, but not rampant, and will not crowd other shrubs or flowers. 2 to 3 ft. 50c. each, \$4.50 per 10; 3 to 4 ft. 75c. each, \$7.00 per 10.

White Persian Lilac. *S. persica alba*. A grayish white form of the Persian Lilac. 2 to 3 ft. 50c. each, \$1.50 per 10.

Syringa villosa. A Lilac species of delicate charm and beauty. Soft, pink flowers in June. 2 to 3 ft. 75c. each, \$7.00 per 10; 3 to 4 ft. \$1.00 each, \$9.00 per 10.

HYBRID LILACS

These are fast supplanting the common Lilac, whose greatest fault has always been that of not blooming for several years after planting. The Lilac hybrids often blossom the same year they are planted, a fact which has brought them instant favor wherever they have been tried. There are nearly a hundred new varieties in many shades of creamy white, lavender, rose, purple and blue, both single and double. We offer below a few of the most desirable.

Belle de Nancy. Double rose pink.

Charles Joly. Double, dark crimson with silvery reflex. Exceptionally beautiful.

Charles the Tenth. Giant trusses of single Lilac purple flowers.

Mme. Casimir Perrier. A beautiful double cream white.

Marie Legraye. Single pure white.

Mme. Lemoine. Very fine, double snowy white.

President Grevy. Immense flowers. Beautiful double blue.

Souvenir de Ludwig Spaeth. Single, grape red.

Price, each, any of the Hybrid Lilacs, 2 to 3 ft., 75c. each, \$7.00 per 10; 3 to 4 ft. \$1.00 each.

10 rates apply only when 5 or more of one variety are ordered



Hybrid Lilac, Marie Legraye



Fruit of European Cranberry Bush

SYMPHORICARPOS

S. chenaulti. An improved type of coral berry with more conspicuous red fruit. 2 to 3 ft. 75c. each, \$6.50 per 10; 3 to 4 ft. \$1.00 each, \$9.00 per 10.

Snowberry. *S. racemosus.* This old-fashioned shrub is found around many an old doorstep in New England. It is well worth growing for the waxy white berries which hang until Winter. Is popular again. 2 to 3 ft. 50c. each, \$4.50 per 10, \$38.00 per 100; 3 to 4 ft. 60c. each, \$5.50 per 10, \$45.00 per 100.

Coralberry. *S. vulgaris.* Sometimes called Coralberry because the long, slender branches are thickly studded with coral red berries in Autumn. Quick growing shrub. 2 to 3 ft. 50c. each, \$4.50 per 10, \$30.00 per 100; 3 to 4 ft. 60c. each, \$5.50 per 10, \$40.00 per 100.

VACCINIUM

Highbush Blueberry. *V. corymbosum.* Well known native Blueberry of New England, valued for its delightful, pink-tinged white flowers and edible fruit. 2 to 3 ft. \$1.00 each, \$9.00 per 10; 3 to 4 ft. \$1.50 each, \$14.00 per 10.

VIBURNUM

Arrowwood. *V. dentatum.* Roughly heart-shaped leaves, assuming rich, dark red shades in Fall. White flowers followed by blue berries. Ornamental as a hedge plant. 2 to 3 ft. 50c. each, \$4.50 per 10; 3 to 4 ft. 75c. each, \$7.00 per 10.

Common Snowball. *V. opulus sterilis.* Guelder Rose. The old-fashioned Snowball bush of earliest memories. Very hardy. Round, white flower clusters in June. 2 to 3 ft. 50c. each, \$4.50 per 10.

Doublefile Viburnum. *V. tomentosum.* Considered the most beautiful flowering Viburnum. Grows 7 to 8 ft. tall. 2 to 3 ft. \$1.00 each, \$9.00 per 10.

Dwarf Cranberry Bush. *V. opulus nanum.* A very dwarf variety of Viburnum opulus. A most useful, very dwarf shrub, growing only 18 to 24 in. tall. 8 to 10 in. 50c. each, \$4.50 per 10.

European Cranberry Bush. *V. opulus.* The European Cranberry Bush is famed for its scarlet fruits in Autumn. 2 to 3 ft. 50c. each, \$4.50 per 10; 3 to 4 ft. 75c. each, \$7.00 per 10; 6 to 7 ft. \$2.50 each.

Highbush Cranberry. *V. americanum.* Very hardy Viburnum, attaining a height of 12 ft. White flowers in June, and during Fall and Winter the bushes are literally loaded with gorgeous red fruit resembling the Cranberry in color, size and flavor. Useful for jelly. 2 to 3 ft. 75c. each, \$7.00 per 10.

Hobblebush. *V. alnifolium.* A Spring flowering Viburnum of our native woods. Broad, flat corymbs of creamy white flowers. Beautiful for a shady place. 2 to 3 ft. 50c. each, \$4.50 per 10.

Japanese Snowball. *V. tomentosum plicatum.* The best of the Snowballs. The white flower heads are thickly set along the stem and are very double. Not very hardy North. 2 to 3 ft. 75c. each, \$6.50 per 10.

Mapleleaf Viburnum. *V. acerifolium.* A very hardy Viburnum attaining a height of 5 ft. Cream white flowers, followed by black fruit. Especially valuable because of its gorgeous pink tinted foliage in Autumn. 18 to 24 in. 50c. each, \$4.00 per 10; 2 to 3 ft. 60c. each, \$5.50 per 10.

Mayflower Viburnum. *V. carlesii.* A slow growing and very scarce variety, the flowers of which have the fragrance and the color of the Trailing Arbutus. 18 to 24 in. \$1.50 each, \$13.50 per 10; 2 to 2½ ft. \$2.00 each, \$17.50 per 10.

Nannyberry. *V. lentago.* Tall, slim growing variety having smooth, shiny leaves and fragrant cream white flowers in early Summer, followed in September by black fruit. 2 to 3 ft. 50c. each, \$4.50 per 10; 3 to 4 ft. 75c. each, \$6.50 per 10.

Wayfaring-tree. *V. lantana.* Tall shrub or small tree. Bears red berries, turning black. White flowers in heavy corymbs. 2 to 3 ft. 50c. each, \$4.50 per 10.

Withe-Rod. *V. cassinoides.* Flat corymbs of cream white flowers in June and July, followed by red berries which turn black. An attractively shaped shrub which will do especially well in a moist place. 2 to 3 ft. 60c. each, \$5.50 per 10; 3 to 4 ft. 90c. each, \$8.50 per 10.

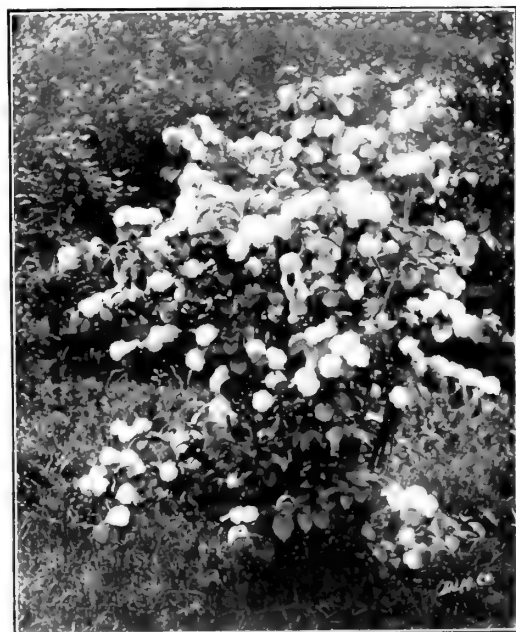
WEIGELA

White Weigela. *W. candida.* A vigorous shrub of tall growth, bearing pure white, bell-shaped flowers in June. 2 to 3 ft. 50c. each, \$4.50 per 10; 3 to 4 ft. 75c. each, \$6.50 per 10.

Red Weigela. *W. Eva Rathke.* A low growing Weigela with outspreading branches and clusters of deep; rose red flowers. 18 to 24 in. 50c. each, \$4.50 per 10, 2 to 3 ft. 75c. each, \$7.00 per 10.

W. floribunda. A little lighter red than Eva Rathke but is a stronger and larger grower. 2 to 3 ft. 50c. each, \$4.50 per 10.

Pink Weigela. *W. rosea.* A tall shrub; beautiful, bell-shaped flowers in large clusters in June. 2 to 3 ft. 50c. each, \$4.50 per 10; 3 to 4 ft. 75c. each, \$6.50 per 10.

Japanese Snowball (*Viburnum plicatum*)



Trumpet Creeper (Bignonia radicans)

HARDY VINES

PLANT vines in deep, carefully enriched soil, and give them a top dressing of manure every Fall just after the ground freezes. Do not place where they will be damaged by snow-slides from the roof, or where there will be a constant dripping off the eaves about their roots, as this packs the ground too hard. Vines should be more generally planted, to soften the strict lines of brick or stucco buildings, to provide shade or privacy on a veranda or pergola, or to hide unsightly objects.

All vines offered below are 2-year No. 1 plants

ACTINIDIA

Silverine. *A. arguta.* Flowers white, with a purple center, entirely covering the vine. Edible fruit. Shining, dark green foliage. \$1.00 each, \$9.00 per 10.

AKEBIA

Fiveleaved Akebia. *A. quinata.* Leaflets dark green, arranged five on a stalk. Flowers violet brown with a cinnamon odor. One of the best of climbers, having a delicate gracefulness and giving dense shade. 60c. each, \$5.00 per 10.

AMPELOPSIS

Boston Ivy. *A. tricuspidata.* Used to cover stone or brick buildings, as it clings to a perfectly smooth surface by means of its tiny aerial rootlets. Handsome foliage, dark blue berries, and harmonizing Autumn tints. 50c. each, \$4.50 per 10.

Engelmann Creeper. *A. engelmannii.* This may be described as the Woodbine that clings to stone. 50c. each, \$4.50 per 10.

Woodbine. *A. quinquefolia.* A native vine, unexcelled for use on wooden buildings. Rapid growing, quickly covering old trees or large surfaces. Bright blue berries and scarlet foliage in Fall. 50c. each, \$4.50 per 10, \$35.00 per 100.

ARISTOLOCHIA

Dutchmans-pipe. *A. siphon.* Large, dark green leaves and curious brownish flowers, shaped like pipes. Very vigorous. A widely planted vine. \$1.00 each, \$9.00 per 10.

BIGNONIA

Trumpet creeper. *B. radicans.* Vigorous, rapid growing vine, bearing large, orange-scarlet, tubular flowers in July and August. 50c. each, \$4.50 per 10.



Boston Ivy (Ampelopsis tricuspidata)

D.L.G.

CELASTRUS

Japanese Bittersweet. *C. orbiculatus*. A strong, hardy variety, by some considered superior to the American Bittersweet. Orange berries and bright red seeds. 50c. each, \$4.50 per 10, \$35.00 per 100.

American Bittersweet. *C. scandens*. A native vine, having a dense growth. Much prized for its orange scarlet berries which are extensively used for decorating. 50c. each, \$4.50 per 10.

CLEMATIS

Clematis Henryi. The large flowering Clematis is easily the most richly colored of Northern vines. Single white flowers 3 to 6 in. across. \$1.00 each, \$9.00 per 10.

Clematis jackmani. Like the above, except in color which is a velvety purple. \$1.00 each, \$9.00 per 10.

Japanese Virgins-bower. *C. paniculata*. One of the most useful and beautiful of vines. Attractive foliage which is hidden in August beneath a shower of snow white, feathery flowers. 50c. each, \$4.50 per 10.

Virgins-bower. *C. virginiana*. A dainty and attractive vine, perfectly hardy and very vigorous. White flowers in August. 50c. each, \$4.00 per 10.

EUONYMUS

Baby Wintercreeper. *E. radicans kewensis*. A tiny Euonymus making dense mounds of evergreen in the rockery, or will climb a couple of feet up a stone wall. 50c. each, \$4.50 per 10.

Bigleaf Wintercreeper. *E. radicans vegetus*. Sometimes called Evergreen Bittersweet, because of its profusion of orange colored berries during the Fall and Winter. Beautiful glossy leaves about an inch in diameter. 50c. each, \$4.50 per 10.

Bronze Wintercreeper. *E. radicans colorata*. More like a vine and much faster growing than the other Wintercreepers. Leaves bronzy and colorful in the Autumn. 50c. each, \$4.50 per 10.

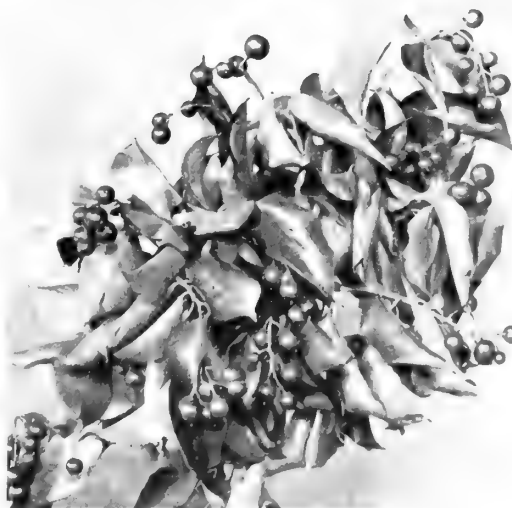
Glossy Wintercreeper. *E. radicans carrieri*. Shiny leaves, midway between radicans and vegetus in size. 50c. each, \$4.50 per 10.

Wintercreeper. *E. radicans*. A low, trailing evergreen vine valuable for covering walls. 50c. each, \$4.50 per 10.

Chinese Wisteria (*Wisteria chinensis*)**LONICERA**

Hall Honeysuckle. *L. halliana*. Rapid growing vine, bearing all Summer; airy sprays of white and yellow blossoms which are very fragrant. 50c. each, \$4.50 per 10.

Scarlet Trumpet Honeysuckle. Glaucous green leaves and long, scarlet flowers. Beautiful and very hardy. 50c. each, \$4.50 per 10.

American Bittersweet (*Celastrus scandens*)**LYCIUM**

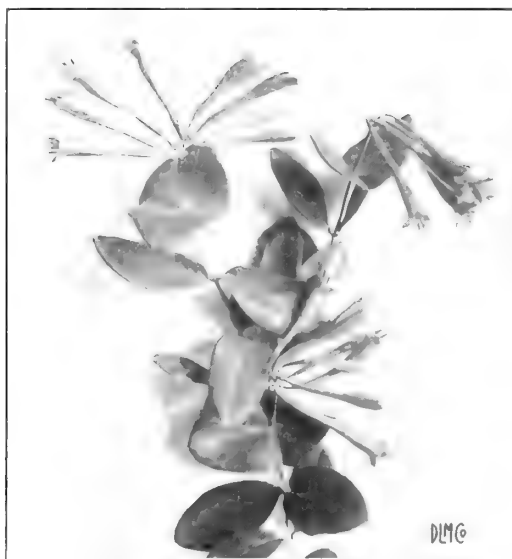
Matrimony-vine. *L. chinensis*. A shrubby climber, bearing small purple flowers followed by scarlet berries. 50c. each, \$4.50 per 10.

POLYGONUM

Silver Lace Vine. *P. auberti*. An invaluable rapid growing vine of dainty though strong and hardy habit. Covers itself throughout the Summer and Fall with long sprays of foamy white flowers. \$1.00 each, \$9.00 per 10.

WISTERIA

Chinese Wisteria. *W. chinensis*. Long racemes of flowers in May. The delightful fragrance of the Wisteria is one of its greatest charms. Lavender or white. Grafted plants, 75c. each, \$6.50 per 10.



Scarlet Trumpet Honeysuckle

ROSES, HYBRID TEAS

IN buying Roses, the best bushes are none too good. The plants we sell are all the best two-year-old field-grown bushes. Many dealers and so-called nurseries sell Hybrid Tea Roses for 30c. to 40c. per plant. These plants are nearly all bench Roses. That is, Roses that have been forced by florists until their usefulness is over and then sold to dealers for a few cents each. Almost invariably, when set in the open, these plants winter-kill the first season. This answers the many questions we receive as to why the actual growers of nursery stock charge more for Rose bushes than do certain dealers who have to buy all their plants.

Any of the following Hybrid Tea Roses, except as noted: Strong, 2 yr. No. 1 plants, 50c. each, \$4.50 per 10

Columbia. A fine American Rose. Flowers long and pointed, borne on unusually long, stiff, almost thornless stems. Color bright pink.

Dame Edith Helen. One of the largest and most highly perfumed of all Hybrid Tea Roses, blooming freely on long stems. Color bright pink.

Duchess of Wellington. Saffron yellow shaded with deep crimson at the base. Very free flowering and delightfully fragrant.

Eldorado, or Land of Gold. Full, cup-shaped flowers. Golden yellow like that of the Climbing Rose Marechal Niel, which is so abundant in the South. Free flowering and fragrant.

Etoile de Hollande. The most outstanding of all dark red Roses. Very free blooming. Flowers large and fine. 75c. each, \$7.00 per 10.

Francis Scott Key. Very large, double Rose of bright crimson. Especially valued for blooming during the dry weather and in late Autumn.

General MacArthur. Authorities claim that this Rose is the most free flowering red garden Rose. Rich crimson scarlet. An old favorite.

Gruss an Teplitz. We especially recommend this as a bedding Rose, continually in bloom until November. Brilliant, deep red in color with a velvety sheen. Wide open flowers.

Hadley. A bright, dark red everbloomer, with long buds opening to full, perfect flowers. Very rich coloring.

John Russell. A very strong grower bearing large, perfectly formed flowers of deep scarlet on tall, strong stems. A fine companion for Frau Karl Druschki and Geo. Arends.

Killarney. Long, pointed buds of silvery pink; one of the finest for cutting.

Lady Ashtown. One of the very best of garden Roses. Color rich satiny pink with a glow of yellow at the base of the petals. Of great value for cutting.

Lolita Armour. A Rose of distinct and delicate coloring and at the same time of strong, vigorous growth. Color is a blending of golden yellow, copper, and coral red. Much harder than Los Angeles which we have discarded as being unsuitable for this climate.

Mme. Butterfly. A sport of Ophelia and one of the most artistically colored Roses. Bright pink, shading into apricot and soft yellow at the base.

Mme. Caroline Testout. The Rose which made Portland, Ore., famous. The streets of that city are lined with beds of this Rose. Large, rounded blooms of a satiny rose pink with darker center, very free blooming.

Mme. Edouard Herriot. *The Daily Mail Rose.* Coral red shaded with yellow and bright rose. Mme. Herriot proves to be one of the best growers and bloomers of all Hybrid Tea Roses in New England.

Mrs. Aaron Ward. Probably bears more blooms than any other yellow Rose; small, dainty flowers of Indian yellow, shading deeper toward the center.

Mrs. Erskine Pembroke Thom. This is a fine new yellow Rose considered by many to be superior to Claudius Pernet for outdoor planting. A continuous bloomer with long, pointed buds, opening rich lemon yellow.

Ophelia. One of the most profuse bloomers. Flowers nearly white, tinged with pink.



Talisman Rose (See page 20)

Radiance. Without doubt one of the finest Roses for American gardens. Usually classed with the best half dozen for garden planting. Strong, upright growth; long stems and full, double flowers of silvery pink. The two Radiance Roses belong to the type which stays in the bud, making them extremely lasting as a cut flower.

Red Radiance. Identical with Radiance except in color, which is a beautiful Rose red.

Rev. F. Page-Roberts. Buds copper red and very long. Flowers unusually double yellow with red reflex. Strong, branching growth.



Rose Frau Karl Druschki. (See page 20)

HYBRID TEA ROSES—Continued

Any of the following Hybrid Tea Roses, except as noted: Strong 2 yr. No. 1 plants, 50c. each, \$4.50 per 10

Rose Marie. Long pointed buds and flowers of rich, glowing rose pink on long, strong stems. Rose Marie is one of the hardiest of Hybrid Tea Roses and seems especially adapted to our Northern climate.

Souvenir de Claudius Pernet. The sensational new yellow Rose named by a French hybridizer for his son Claudius, who was killed in the war. Strong, healthy growth. Color, bright Sunflower yellow. Long, pointed buds opening to full, fragrant flowers. Disease-resistant foliage.

Talisman. Brilliant orange red buds, opening to large, pointed, fragrant flowers of golden yellow stained with copper and gold. It has proved to be very good for garden culture.

Willowmere. A Rose of the Los Angeles type but succeeds where the Los Angeles fails. Erect and free blooming. Flowers pink, suffused with gold.

ROSES. Hybrid Perpetuals

Any of the following Hybrid Perpetuals—2 Year, No. 1, 50c. each, \$4.50 per 10:

Frau Karl Druschki. Perfectly formed, white flowers on long, stiff stems. Bears a heavy crop of flowers in June and from then every month until hard frost. The queen of white Roses.

General Jacqueminot. The Jack Rose; known everywhere. Dark red.

George Arends or Pink Druschki. Clear rose pink and very fragrant. Otherwise identical to Frau Karl Druschki.

Hugh Dickson. A splendid, dark red June Rose, the color of which does not fade into purple as do some in this class. Tall, strong growth.

Magna Charta. Popular bright pink bush Rose. Flowers round and very full. Makes a large, shrublike bush. Blooms to some extent all Summer.

Mrs. John Laing. Quite similar to Magna Charta, but very fragrant. Bright pink flowers globular in form. Blooms frequently all Summer.

Mme. Plantier. Flowers white, unusually hardy. Frequently planted in cemeteries. Makes a large, shrublike bush.

Paul Neyron. Possibly the largest flowering. Rich rosy red.



Austrian Briar Rose, Harison's Yellow



Rosa Hugonis (Golden Rose of China) See page 21

AUSTRIAN BRIARS

Persian Yellow. A lovely yellow bush Rose deservedly one of the most popular in the North, as it is perfectly hardy. Forms a large bush whose branches are thickly set with bright yellow, semi-double flowers in June. 75c. each, \$7.00 per 10.

Austrian Copper. A rare and very striking Rose. Vivid flame and gold single flowers. Fine for a wild or rocky place. \$1.00 each.

Harison's Yellow. In some localities a far better grower than Persian Yellow. Semi-double, yellow flowers. 75c. each, \$7.00 per 10.

POLYANTHA ROSES

Baby Ramblers or Polyantha Roses are fine for bedding purposes, being continually in bloom. They are low growing, seldom attaining a height of more than 18 or 20 inches.

Any of the following Polyantha Roses, 50c. each, \$4.50 per 10

Cecile Brunner. Perfectly formed flowers of pink and gold. Like miniature Tea Roses.

Golden Salmon. Large clusters of orange buds opening flame color. A most striking Polyantha.

Gruss an Aachen. An unusual variety with large flowers like Hybrid Tea Roses. Orange pink buds opening to lighter pink.

Ideal. A darker, finer Rose that has replaced Miss Edith Cavell as the most popular red Polyantha.

Jeanne d'Arc. Pure white flowers in large cluster.

RUGOSA ROSES

Agnes. New yellow Rugosa originated in Canada. Coppery yellow buds opening to fragrant amber yellow flowers which are semi-double. The first yellow Rugosa—a cross between Persian Yellow and Rosa rugosa alba. \$1.00 each, \$9.00 per 10.

Conrad Meyer. A very tall growing Rose of the Rugosa type. Flowers a clear pink. 75c. each, \$7.00 per 10.

F. J. Grootendorst. A hybrid having leaves and growth like a Rugosa and clusters of rich red flowers like a Crimson Rambler. Blooms continuously all Summer and into the Fall. Makes a splendid hedge or border. 75c. each, \$7.00 per 10.

Pink Grootendorst. This variety fills a distinct need, bearing all Summer, clusters of flowers just like Grootendorst, only pink. 75c. each, \$7.00 per 10.

Rugosa Roses. Single. White or red. Used extensively for hedges and shrubby borders. Strong, vigorous growers. Immense, single flowers and thick, dark leaves. 50c. each, \$4.50 per 10, \$40.00 per 100.

ROSES—Continued

RAMBLERS

Any of the following Ramblers, 50c. each, \$4.50 per 10

American Pillar. A climbing Rose having exceptionally large, glossy green foliage. Beautiful flowers in enormous trusses of clear wild rose pink.

Crimson Rambler. Masses of double crimson flowers on long, heavy canes. The most widely planted climber. 50c. each, \$4.50 per 10.

Dr. Van Fleet. Much like Hybrid Teas in form and size. Flesh pink, deepening in the center. Beautiful as a cut flower, as the blooms are borne in sprays on long, strong stems. A basket of these flowers cut in the bud is a remarkably beautiful sight.

Dorothy Perkins. The ever popular Dorothy Perkins is one of the best and hardiest of Ramblers, and lives through our Northern Winters almost without exception. Pink clusters of very double flowers.

Excelsa. A red flowered member of the Perkins family, sharing in their hardiness and vigor. Brilliant red double flowers.

Gardenia. Heavy trusses of lemon yellow flowers, fading to cream. Strong grower.

Mary Wallace. Vigorous, rapid growing Pillar Rose with handsome, glossy green foliage and semi-double, salmon pink flowers. Very beautiful in the bud. Flowers 3 to 4 in. across.

Paul's Scarlet Climber. A wonderful new Rose. Fully tried out in our nursery. Flowers large, in form and size like Dr. Van Fleet, or in other words, much like a Hybrid Tea. Color bright scarlet.

Primrose. Probably the most promising yellow Rambler Rose for the North. Superior to the old Emily Gray.

Silver Moon. Strong, vigorous canes with handsome, dark green, disease-resistant foliage. Very large, single white flowers. A beautiful Rose and classed with the three best Climbers. Requires protection here.

Stachelin. This is attracting the most attention of any climbing Rose of recent introduction, being a very vigorous, hardy grower with large, crimson buds, opening pale pink. Highly perfumed.

Tausendschoen. *Rose of a Thousand Beauties.* Large, double flowers in great clusters varying from deep rose to shell pink.

White Dorothy. Pure white flowers in dense clusters.

Wichuraiana. *Memorial Rose.* A trailing Rose, quickly covering the ground with its glossy, small green leaves. Used extensively in cemeteries. Single, pure white flowers.

ROSE SPECIES

Rosa blanda. *Meadow Rose.* Large, single coral pink flowers on slender stems up to 5 ft. in height. For naturalizing along the borders of woodlands or on dry banks. 50c. each, \$4.50 per 10.

Rosa centifolia. *Cabbage Rose.* An old-time Rose, growing several feet tall with pale pink flowers, the shape of which gives it its name. 4 to 5 ft. bushes. \$1.50 each.

Rosa lucida. *Virginia Rose.* A tall, shapely shrub growing to 6 ft. in height. Foliage glossy green and flowers bright pink. Seed pods brilliant red remaining plump all Winter. For shrubby borders or naturalizing. 60c. each, \$5.00 per 10, \$15.00 per 100.

Rosa hugonis. *Golden Rose of China.* Single yellow flowers in long, arching sprays. Perfectly hardy. Makes a large, shapely shrub to 6 ft. in height and blossoms in late May with *Spiraea vanhouttei*. 2 to 3 ft. \$1.00 each, \$9.00 per 10; 3 to 4 ft. \$1.50 each, \$13.50 per 10.

Rosa setigera. *Prairie Rose.* A Rambler having single pink flowers. For covering walls or low fences. Attractive red fruit. 50c. each.

Rosa nitida. *Bristly Rose.* Dwarf wild Roses about 18 in. to 2 ft. in height. Single pink flowers. 60c. each, \$5.50 per 10.

Provence Rose. The little low growing Rose which was so common around the abandoned farms of New England. Only a foot tall, with large, semi-double red flowers. Not over five plants sold with one order. \$1.00 each.

Rosa spinosissima altaica. *Altai Rose.* Tall, shrubby growth like *Rosa hugonis*. Large, single, pure white flowers. Sometimes called the Northern Cherokee. 2 to 3 ft. \$1.00 each, \$9.00 per 10.

Rosa rubiginosa. *Sweetbriar.* Tall, erect bush, with fragrant leaves. Lovely single pink flowers. Will grow in a wild or rocky place. 50c. each, \$1.50 per 10.

Rosa humilis. *Pasture Rose.* Spiny plant, 3 to 6 ft. high. Clear pink flowers, 2 to 2½ in. across. 50c. each, \$4.50 per 10.

MOSS ROSES

The old-fashioned Moss Rose has never lost its appeal. The buds are covered with a light green moss which gives the flowers an artistic appearance

Henri Martin. Dark red.

Blanche Moreau. Old fashioned white.

Crested Moss. Pink.

Price of Moss Roses, 50c. each, \$4.50 per 10



Hedge of Crimson Rambler Rose



Rambler Rose Stachelin



Artemisia Lactiflora
(See page 23)



Anemone Japonica
(See page 23)



Aquilegia Hybrids (Columbine)
(See page 23)

HARDY PERENNIALS

CARE AND PROTECTION

PREPARE the soil deeply, and enrich with old manure, the older the better. Plants should not be planted below the crown. Too deep planting is the cause of many failures. Be careful, too, to firm the soil about roots. Stamp the ground as hard as you can with your heel, or butt of the trowel. This point cannot be over-emphasized. Air space about the roots is fatal, especially when the planting is done in the Fall. Mulch every year with a thick covering of manure.

As a rule, early Spring blooming perennials should be planted in the Fall; while Fall blooming ones, such as Japanese Anemone, require Spring planting. On the whole, however, Fall is a far better time to plant than is generally realized. Often much time is gained by planting in late September through October, giving plenty of time for root growth before Winter comes. In this way the Spring growth is not disturbed and as a result earlier and better flowers are obtained.

Some plants usually classed as perennials are, in reality, biennials, completing their life cycle in two years. If a biennial fails to blossom the second year, it will live for another season, blossom and die in its third year. All biennials are mentioned as such in the descriptions following.

Note—Not less than 6 of one variety and color at the dozen rate, not less than 25 of one variety and color at the 100 rate where the 100 rate is given

ACHILLEA ptarmica, The Pearl. 2 ft. Pompon-shaped, white flowers throughout the Summer. Easily grown border plant. Good cut flower.

millefolium roseum (Rose Yarrow). Bright rose pink. Blossoms throughout the Summer.

tomentosum. Dwarf, rock garden plant for hot, dry location. Yellow flowers. 6 to 10 in.

ACONITUM (Monkshood) fischeri. 18 to 24 in. A dwarf Monkshood, valuable for its late blooming. Immense, pyramidal clusters of large, bright blue flowers from September until late Fall. Does well in a fertile corner of the rock garden or in the foreground of the border. 30c. each, 3 for 75c., \$2.50 per 12.

napellus. Height 3 to 4 ft. Compact masses of deep blue, helmet-shaped flowers in July and early August. 35c. each, 3 for \$1.00, 12 for \$3.50.

Spark's Variety. 4 to 6 ft. A tall, much-branched Monkshood. Dark navy blue during August. Beautiful as a background for Phlox. 35c. each, 3 for \$1.00, 12 for \$3.50.

uncinatum (Clambering Monkshood). Bright blue flowers from June to September. Tall, slender stems inclined to climb. 25c. each, 3 for 60c., 12 for \$2.00.

AEGOPODIUM podagraria. Green and white leaves. An excellent ground cover for sun or shade, especially for bare spots under shrubbery or near walls or buildings. In quantity, \$10.00 per 100.

ACTAEA (Baneberry). Both the Baneberries are useful for shady spots in the rock or wild garden, and afford attractive color at a time often lacking in interest.

White Baneberry (A. alba). 1 to 1½ ft. White flowers in racemes followed by effective clusters of white berries on bright red stems in late Summer.

Red Baneberry (A. rubra). 2 ft. Large clusters of bright red berries in August.

ALYSSUM (Basket of Gold) saxatile. 10 in. Low, sprawling habit. In May the gray green leaves are buried beneath masses of tiny golden flowers. In bloom in Tulip time. Good for the front of the perennial border or among Spring bulbs, as well as being a rock garden plant of the very highest value.

saxatile citrinum. A beautiful soft lemon yellow, somewhat more agreeable with other colors, but not so brilliant as the above.

ANCHUSA (Alkanet) barrellieri. 2 to 2½ ft. Neither so tall nor so coarse as the others and a true perennial form. Masses of gentian blue flowers on stems well suited for cutting and in bloom by Memorial Day.

italica, var. Dropmore. 4 to 5 ft. June. Tall, branched growth. A large biennial having coarse leaves and Gentian blue flowers. At a little distance the wonderful blue effect of this flower is unequalled

Except as noted, prices of above are 25c. each, 3 of one variety 60c., 6 or more of one variety at \$2.00 per 12, 25 or more of one variety at \$15.00 per 100

ANEMONE (*Windflower*) **cylindrica** (*Lamb's Wool*). 2 ft. Summer blooming variety for full sun. White flowers followed by seed tufts of snowy white wool, lasting on the plant for some time.

hupehensis (*Chinese Anemone*). A beautiful and valuable addition to the list of Fall flowers. Foliage and blossoms similar to japonica, but smaller, more compact and more floriferous. Color bright rose, blooming from late August until after heavy frost. Plant in Spring. 30c. each, 75c. per 3, \$2.50 per doz., \$20.00 per 100.

japonica. 3 to 4 ft. October. Lovely flowers like single Roses, borne on long stems, well above the foliage mass. Soft, luminous colors in old rose, white and crimson. They prefer partial shade and soil mixed with leafmold. Keep their roots well mulched with leaves. Plant only in the Spring. Any of the above colors, 30c. each, 75c. per 3, \$2.50 per doz., \$20.00 per 100.

pulsatilla (*Pasqueflower*). 9 to 12 in. Long, violet blue flowers in May, from a sheath delicately covered with silky, finely curling tendrils of silvery green. Especially fine for the rock garden. 30c. each, 75c. per 3, \$2.50 per doz.

pulsatilla rubra. Grows to 1 ft. in height, with large, very dark red flowers. 30c. each, 3 for 75c., \$2.50 per 12.

quinquefolia (*Native Windflower*). 6 to 9 in. Dainty, nodding, white flowers in early Spring. For the woods or shady rock garden. Excellent for naturalizing under shrubbery. Quantity price, \$10.00 per 100.

sylvestris (*Snowdrop Anemone*). A very hardy Anemone, bearing a profusion of large, snow white blossoms in June. Does well in moist shade or in the rock garden. 12 to 18 in.

ANTHEMIS (*Marguerite*) **tinctoria kelwayi**. 2 to 3 ft. Compact, fernlike foliage, from which rise brilliant masses of single, bright yellow flowers like Daisies from June through August. Succeeds well in a dry soil and among rocks. 15c. each, \$1.50 per doz.

ANTHERICUM, **St. Bernard's Lily** (*A. liliago*). Tufts of grasslike foliage and sprays of loosely borne white flowers in form somewhat similar to an Azalea. Early July. 35c. each, \$3.50 per 12.

AQUILEGIA (*Columbine*). Among the most popular perennials. It blooms in May in Iris time. The flowers have an airy grace, unlike any other plant. Handsome foliage, green throughout the Summer. Plants increase about double their size the second year if given plenty of room. 2 to 2½ ft. May-June.

caerulea (*Rocky Mountain Columbine*). Sky blue and white flowers. Long spurs. 30c. each, 3 for 75c., \$2.50 per 12.

canadensis. Native red and yellow. One of the world's best rock plants.

AQUILEGIA -Continued

chrysantha. Clear yellow. Long spurred. Blossoms continually all Summer.

nivea grandiflora. Best white; short spurred.

Rose Queen. Especially rich shade of deep old rose with a snowy white corolla. 35c. each.

Mrs. Scott Elliott's Hybrids. Among these hybrids are to be found beautiful and delicate shades of coloring and great length of spurs and size of blossoms. Colors range through wine, purple, blue, and white, mauve, lemon yellow, and shades of pink. 30c. each, 75c. per 3, \$2.50 per 12.

Short-spurred Hybrids. Much longer lived than the higher bred strains. Although the dark shades once predominated, bright rose, pink, silvery old rose and light blue are now prominent. Unexcelled for massing in the border.

ARABIS (*Rockcress*) **alpina**. 6 to 8 in. Pure white flowers densely cover this plant in April and May. Blooms at Tulip time and these do well together. One of the earliest flowers to blossom in our nursery.

alpina florepleno (*Double Arabis*). A double, pure white form of the above and more pretentious than the single kind. 35c. each, 90c. per 3, \$3.00 per 12.

rosea. Growth in small rosettes from which rise 3 to 4 in. flower stalks, bearing heads of soft pink flowers. Early Spring.

ARISAEMA (*Jack-in-the-pulpit*) **triphillum**. 1 ft. A native plant, bearing curiously formed, black and green striped flowers in the form of a sheath, part of which droops down to protect the long, brown spathe within, thus giving the plant its name. Late May. Requires shade and moisture.

ARTEMISIA abrotanum (*Southernwood*) (*Old Man*). 2 ft. Deliciously scented foliage of finely cut glaucous green. Old-fashioned garden herb to be found with Sweet Mary, Beebalm, Rosemary and Lavender. 30c. each, 75c. per 3, \$2.50 per doz.

lactiflora. 5 to 6 ft. Numerous long racemes of cream colored, delightfully fragrant flowers in August and early September. Splendid for cutting, in combination with other flowers.

Silver Queen. Grown for its foliage which is delightful cut in combination with almost any flower.

stellata (*Old Woman*). Fragrant herb with soft, gray green leaves. 2 ft.

ASCLEPIAS (*Butterflyweed*) **tuberosa**. 2 ft. Slender growth, branched from the ground. Large flower heads composed of tiny, wing-petaled florets, of brilliant orange. Enjoys a hot, dry location. August. Exceptionally bright and attractive.

ASTER alpinus. 10 to 12 in. Golden yellow centers and long lavender blue or white rays of petals in June. Very lovely in the border or rockeries.

Climax. 4 to 5 ft. tall. Very popular. Bluish lavender.

King of Belgians. Light Lobelia blue. 3 ft. tall.

Maggie Perry. Large-flowered, mauve-colored variety.

novae-angliae or **New England Aster**. 4 ft. Purple. September-October. Tall growth, slightly branched and spreading rapidly from the roots. This Autumn flowering plant is almost essential in the hardy garden. It makes a mass of beautiful color when flowers are scarce.

novae-angliae roseus. Rose colored form, slightly larger and more double than the above. Either one of these is a beautiful companion for the white *Boltonia*.

St. Egwin. Soft pink. 2 to 3 ft. high and compact in growth.

Sam Banham. Very early. Flowers are feathery, pure white. 3 ft. tall.

subcordata caerulea. Like alpinus, it blooms in June. The plants are taller and the flowers larger than alpinus. Lavender blue.



Hardy Asters

Except as noted, prices of above are 25c. each, 3 of one variety 60c., 6 or more of one variety at \$2.00 per 12, 25 or more of one variety at \$15.00 per 100

ASTILBE (*Garden Spirea*) **arendsi Hybrids**. A group of hardy plants we consider invaluable for the hardy border and for cutting. The foliage clumps are persistently green and attractive and in June the plants send up feathery plumes of dainty flowers to a height of 2 ft. or more. They prefer a moist soil but are not overly particular.

Gladstone. Delicate, branched sprays of snowy white.

Kriemhilde. Lovely shade of soft salmon pink.

Rubin. Dense flower spikes of crushed Strawberry color.

Price of any of the above Astilbes, 35c. each, \$3.50 per 12

AUBRIETIA (*Wallress*) **Hybrids**. 6 in. Bright-flowered, creeping perennial, blooming in earliest Spring. Clusters of flowers in purple, rose and blue. First class rock plant.

BAPTISIA (*Wild-indigo*) **australis**. 2 to 3 ft. June. Has shapely clumps of persistently attractive foliage and erect sprays of dark blue flowers shaped like Sweet Peas.

bracteata (*Cream Wild-indigo*). Cream colored blossoms May-June. 1½ to 2 ft. high.

leucantha (*White Wild-indigo*). White, Pea-shaped flowers on drooping branches. July.

BOCCONIA (*Plumepoppy*) **cordata**. 6 to 8 ft. Big, feathery heads of creamy white flowers. Tall, upright habit. Used extensively for the backgrounds of perennial borders.

BOLTONIA (*False-starwort*) **asteroides**. 5 to 6 ft. September-October. The tall stalks are surmounted by immense branched heads of flowers, similar in form to hardy Asters. Pure white.

latisquama. Delightful mauve pink. Neither so tall nor so rampant a grower as the above. Perfectly hardy and of easy culture.

CALLIRHOE (*Poppy Mallow*) **involutrata**. Low, sprawling habit with clear, magenta colored flowers along the prostrate stem. Blooms throughout the Summer and the flowers somewhat resemble small Hollyhocks. Likes a hot, dry location in full sun. A Western prairie flower suitable for dry banks or the less choice positions in the rock garden. Hardy biennial, resowing itself.

CALLA palustris (*Wild Calla*). A miniature ivory white Calla blooming in the bogs during June and July. For water gardens or bogs.

CALTHA (*Marshmarigold*) **palustris**. For planting in swampy places in the sun. Bright golden yellow flowers in May.

CAMPANULA (*Bellflower*) **carpatica** (*Carpathian Harebells*). 8 to 12 in. June-October. A true perennial. This variety grows in a compact form which recommends it for an edging plant or for the rockery. From the foliage tufts rise the slender flower stems, each bearing a pretty, bell-shaped blossom. Blue or white.

Medium or Canterbury-bells. 2 ft. June. One always expects to include this old garden favorite in any hardy garden. Large, bell-shaped flowers, held upright on stiff stalks. Biennials. Pink, white, light and dark blue.

medium calycanthema (*Cup-and-saucer Canterbury-bells*). These are increasingly popular. In form semi-double, giving the flowers the appearance of a cup and saucer. Hardy biennials. Pink, white, blue, or mixed.

persicifolia (*Peachbells*). Blue or white, bell-shaped flowers on tall, graceful stalks. A true perennial and much more graceful than the Canterbury-bells. Establishes itself permanently in any good sunny or half shady position. Fine for cutting.

rotundifolia (*Bluebells of Scotland*). Blue. June-Frost. This is the true Harebell, and grows native to some parts of the country, living in tiny soil pockets of the rocky ledges. The stems are very slender, almost hairlike, and the myriad tiny, bell-shaped flowers which they bear are clear blue. Good border plant. Will grow in sod.



Campanula medium calycanthema
(Cup-and-saucer Canterbury-bells)

CAMPANULA—Continued

rapunculoides (*Coventry-bells*). Dainty spikes of lilac blue, down-drooping, small, bell-shaped flowers during July and August. Will thrive in a neglected place or among shrubbery.

trachelium. Lavender, bell-shaped flowers during July and August. Quite similar to rapunculoides, except in shade of blossom.

CARNATIONS, Dwarf Grenadin. (*Hardy Carnations*). Somewhat smaller than the greenhouse varieties, otherwise identical with them. Very fragrant and one of the best in the list for cut flowers. We offer bright red, white and pink in separate colors at the regular price. Mixed colors, 15c. each, \$1.50 per 12.

CASSIA marylandica (*American Senna*). 3 to 4 ft. Shrubby perennial having yellow, pea-shaped flowers in late Summer and attractive, ferny foliage not unlike a Locust tree.

CENTAUREA (*Bachelor Button*) **montana**. Hardy, continuous blooming plant bearing large, blue flowers on long, strong stems; fine for cutting.

macrocephala (*Caucasian Bachelor Button*). A strong, hardy species having large, compact growth 3 to 4 ft. high. The flowers are borne freely; large, very clear lemon yellow; identical in shape with the large thistle.

dealbata. 18 to 24 in. high. Flowers rosy pink. Blooms in July and August.

CERASTIUM (*Snow-in-summer*) **tomentosum**. Ground cover. This little plant has attractive, gray green foliage and in May and June is covered with miniature, bell-shaped, white flowers.

CHEIRANTHUS (*Siberian Wallflower*) **allioni**. 1½ ft. May and early June. Flower heads bright orange and very fragrant. Lasts for a long time as a cut flower. Hardy biennial, resowing itself every year. Splendid for rock gardens.

CHELONE (*Turtlehead*) **glabra**. Pure white flowers in Midsummer.

lyoni. Bright rose pink flowers. Very large and conspicuous. 2 ft. August and September.

Except as noted, prices of above are 25c. each, 3 of one variety 60c., 6 or more of one variety at \$2.00 per 12, 25 or more of one variety at \$15.00 per 100

HARDY CHRYSANTHEMUMS.

Baby. Yellow, button-flowered, old-fashioned and very popular.

Barbara Cummings. Early, large, bright golden yellow.

Clara Jamieson. Unaffected by frost. An invaluable kind. Autumn coloring in bronze, yellow and red. Pompon.

Glory of Seven Oaks. Early flowering bright yellow.

Little Bob. Bronze red button; very early.

Niza. Early pink.

Red Indian. Large flowers. Red. Very early.

Scotch Mum. Very early. August. White turning pink. Perfectly hardy.

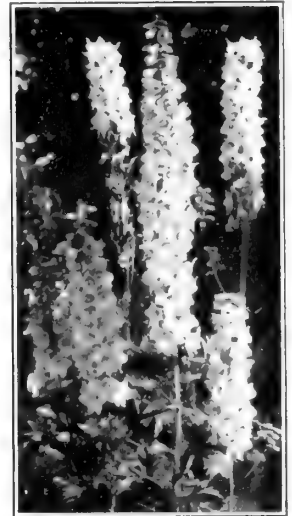
White Midget. Pompon-flowered; pure white.

Costmary (*C. balsamita*). Sweet-scented foliage. Often seen in the herb garden or old-fashioned border. Inconspicuous yellow flowers. 25c. each, 3 for 60c., \$2.00 per doz.

Except as noted, all Chrysanthemums are 30c. each, 75c. for 3, \$2.50 per doz.



Hardy Chrysanthemums



Delphinium (Larkspur)

CIMICIFUGA (*Snakeroot*) **racemosa.** Dense, nodding racemes of cream white flowers. Does best in moist shade, but will thrive in sun.

CLINTONIA (*Bluehead*) **borealis.** Two or 3 large basal leaves from which rises, in May, the flower stem bearing 5 or 6 drooping, bell-shaped, creamy yellow blossoms, which are followed in Summer by bright blue berries. Quantity price, \$10.00 per 100.

CONVALLARIA (*Lily-of-the-valley*) **majalis.** The Valley Lilies succeed in any shady spot and with no care bear the loveliest and most fragrant of flowers. Mulch them with manure, and you will be surprised at the increase in the size of the blossoms. Clumps, 60c. each. Single plants, 10c. each, 25c. per 3, 75c. per 12.

COREOPSIS lanceolata. 2 to 3 ft. Forms large, dense clumps. Well known and very popular perennial, bearing rich yellow flowers most profusely in June, but to some extent all Summer if kept picked.

CORNUS (*Bunchberry, Cornel*) **canadensis.** Invaluable ground cover for shady places. Masses of large, wide open white flowers followed by dense clusters of bright scarlet berries. 6 in. May. Price in quantity, \$12.00 per 100 clumps.

CORONILLA (*Rosevelch*) **varia.** Heavy creeping vine for covering banks, stumps or rocks. Lovely clusters of soft pink, pea-shaped flowers throughout the season.

CORYDALIS glauca (*Pale Corydalis*). 6 in. to 2 ft. high, having attractive divided foliage and many tiny pink flowers each tipped with yellow. Blooms late in May with the German Iris and the two are very beautiful planted together, the habit of Iris being strict and severe and the other airy and graceful. Hardy biennial, resowing itself.

CYPRIPEDIUM (*Lady-slipper*) **acaule** (*Pink Lady-slipper*). 1 ft. Large, rose pink moccasin-shaped flowers on strong, stiff stems, which rise from two to three large, basal leaves. Easily naturalized in dry shade, doing well in the fern garden. Excellent for cutting. Late May and early June.

parviflorum (*The Yellow Lady-slipper*). Several flowers on one stalk. 35c. each, \$3.50 per 12.

spectabile (*Showy Lady-slipper*). Rose pink and white. Many flowered. 40c. each, \$4.00 per 12.

Except as noted, prices of above are 25c. each, 3 of one variety 60c., 6 or more of one variety at \$2.00 per 12, 25 or more of one variety at \$15.00 per 100

DAPHNE (*Garland Flower*) **cnereum.** A low growing, evergreen perennial or shrub, covering itself in May with rose pink flower clusters. Intensely fragrant. Without doubt one of our most popular flowers, attracting attention continually. Blooms at regular intervals of two to three weeks all Summer and Fall. Plants with ball of earth.

6 to 9 in., B&B.....	Each	10
9 to 12 in., B&B.....		\$0.50 \$4.50
12 to 15 in., B&B.....		.75 7.00
		1.00 9.00

DELPHINIUM (*Larkspur*) **Belladonna.** 4 to 5 ft. Long spikes of clear, sky blue. If not allowed to seed, will bloom continuously until frost. Fine cut flower.

Bellamosum. 4 to 5 ft. Color intense dark blue. Habit, exactly like Belladonna of which it is a hybrid.

Blackmore & Langdon. An English strain, by some experts declared to be the finest obtainable. 50c. each, \$1.25 per 3, \$4.00 per 12.

grandiflorum (*Chinese Larkspur*). 2 ft. A dwarf species with fernlike foliage and loosely spreading branches. Most beautiful shade of bright Copenhagen blue or white. Everblooming. Fine bedding plant and excellent for cutting.

grandiflorum minor. A small, compact form about 10 in. high, of great value for bedding purposes or for masses in the rock garden. Blue only.

Pudor's Glory Strain. A strain of Larkspur developed on the Pacific Coast. Inclined toward the lighter shades. 50c. each, \$1.25 per 3, \$4.00 per 12.

Tricorne. A dwarf Prairie Larkspur. Large flowers on short spikes. Bright blue. 6 to 8 in.

Wrexham Strain (*Hollyhock Delphinium*). Immense spikes, closely set with giant Hollyhock-shaped flowers. More dark blue colors in this strain. 50c. each, \$1.25 per 3, \$4.00 per 12.

DICENTRA (*Bleedingheart*) **eximia** (*Fringed Bleeding-heart*). 1 ft. A low growing variety with fernlike foliage. Rose pink, blooms monthly. May-Frost.

spectabilis (*Bleedingheart*). 2 ft. Long racemes of rose colored, heart-shaped flowers in May. A lovely and graceful perennial, fine for cutting. 40c. each, \$4.00 per 12.

DICTAMNUS fraxinella. A hardy plant resembling somewhat the Peony in nature of growth and in foliage, which is a rich, dark green. In May and June racemes of flowers appear whose wing petals and long, upcurling stamens greatly resemble the Azalea. Reddish purple or white.

- DIGITALIS** (*Foxglove*) **gloxiniaeflora**. 4 to 5 ft. An essential member of the hardy garden family. The tall, stately spires give distinction to any garden. June-July. Colors white or rose, at regular price. Biennial, resowing itself. Mixed colors, 50c. per 3, \$1.50 per 12, \$12.00 per 100.
- ambigua** (*Yellow Foxglove*). True perennial. Soft yellow flowers. 2 to 3 ft. Blooms in July.
- DIANTHUS** (*Garden Pinks*) **caesius** (*Cheddar Pink*). Compact tufts of foliage and flowers like Clove Pinks. Of neater habit. One of the best rock plants.
- deltoides** (*Maiden Pink*). Beautiful, dark green foliage and tiny flowers of pink or white.
- neglectus**. Tiny tufts of grassy foliage hidden in June beneath a mass of dazzling pink, single flowers. A very fine Alpine, easily adapted to rock gardens. 50c. each, \$5.00 per 12.
- plumarius**. 18 in. June. These are the old-fashioned Pinks with their silvery gray foliage and Clove-scented blossoms.
- atrococcineus florepleno** (*Everblooming Sweet-william*). Deep rich red. Blooms throughout the season.
- DORONICUM**. 2 ft. Clear, yellow flowers in early May. Very bright and attractive. Somewhat of the appearance of a yellow Shasta Daisy. 50c. each, \$5.00 per 12.
- DODECATHEON** (*Shooting-star*) **media**. A Western prairie flower, having dainty, rose purple flowers during May and June. 1 to 2 ft.

- ECHINACEA purpurea** (*Purple Coneflower*). Rose purple. Daisylike petals and dark chocolate shaped centers. 2 to 3 ft. July and August.
- ECHINOPS** (*Globehistle*) **ritro**. Metallic blue flowers which are useful for dried bouquets. 3 to 4 ft. June to August.
- ELYMUS** (*Lyme Grass*) **glaucus** (*Blue Lyme Grass*). 3 to 4 ft. Blue gray, grassy foliage wonderfully effective in combining colors in the hardy border.
- EPIGAEA** (*Trailing-arbutus*) **repens**. Creeping evergreen plants with deliciously fragrant pink and white flowers in earliest Spring. Clumps, 50c. each, \$5.00 per 12.
- ERYNGIUM amethystinum** (*Seaholly*). Thistlelike heads of glistening Amethyst blue. 2 to 3 ft. July to September.
- EUPATORIUM coelestinum** (*Mistflower*). Beautiful blue flower heads in Autumn. The flowers seem like enlarged portraits of the Blue Ageratum.
- purpureum** (*Joe-pye-weed*). Big brother of the Eupatorium family grows from 1 to 6 ft. tall. Blossoms are reddish purple and take a commanding part in arranging the late August landscape.
- EUPHORBIA corollata**. August. 18 to 24 in. Tiny ivory flowers in sprays. Very fine cut flower to follow the Babysbreath in succession of bloom.

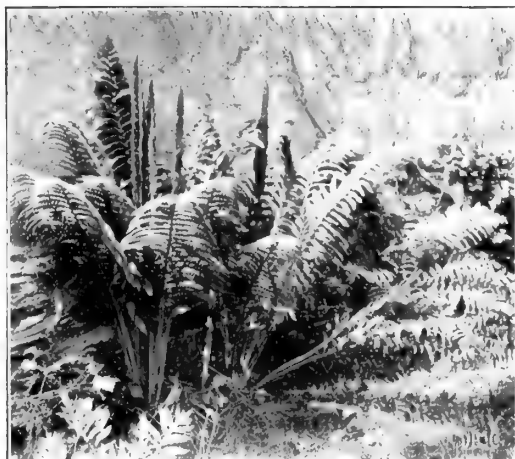
Except as noted, prices of above are 25c. each, 3 of one variety 60c., 6 or more of one variety at \$2.00 per 12, 25 or more of one variety at \$15.00 per 100

HARDY FERNS

	Price for 3	12	100	1000
ADIANTUM pedatum (<i>Maidenhair</i>). Extremely graceful. For shaded rocks and woods. 2 ft.	\$0.60	\$2.00	\$12.00	\$90.00
ASPLENIUM platyneuron (<i>Ebony Spleenwort</i>). Ebony stems. Slender and graceful. 6 to 10 in. Moist, shaded rocks.	1.00	3.00	18.00
trichomanes (<i>Maidenhair Spleenwort</i>). Daintiest of all ferns. 4 to 6 in. tall. An essential rock fern. Shade.	1.00	3.00	18.00
ATHYRIUM filixfemina (<i>Lady Fern</i>). Easily grown fern. 2 to 2½ ft. tall. For rich sun or shade.60	1.50	10.00	80.00
thelyptroides (<i>Silvery Spleenwort</i>). 2 ft. fern for moist, partial shade. Backs of fruiting fronds silvery.90	2.50	16.00
BOTRYCHIUM obliquum (<i>Ternate Grapefern</i>). 1 ft. high. Open woods.	1.00	3.00	18.00
virginianum (<i>Rattlesnake Fern or Grapefern</i>). 1 ft. tall. Attractive and unusual fronds. Open woods.60	2.00	14.00	125.00
CAMPTOSORUS rhizophyllus (<i>Walking Leaf</i>). Unusual fern from the limestone cliffs.60	2.00
CYSTOPTERIS bulbifera (<i>Berry Bladderfern</i>). Rather delicate fern for the rocky woods.60	2.00	15.00
DENNSTEDTIA punctilobula (<i>Hay-scented Fern</i>). Forms dense mats of fragrant fronds 1 ft. tall. One of the best. Open sun or woods.60	1.50	10.00	75.00
Sods of Hay-scented Fern . About 10 in. square.	1.00	3.00	18.00	175.00
DRYOPTERIS clintoniana (<i>Clinton Woodfern</i>). Similar to Crested Woodfern, but much larger.60	2.00	12.00
cristata (<i>Crested Woodfern</i>). 1 to 2 ft. Shady swamps.60	2.00	12.00
Goldiana (<i>Goldie Fern</i>). 2 to 4 ft. Rich woods.	1.50	5.00
intermedia (<i>Fancy Fern</i>). 2 ft. Rich woods. Used extensively by florists.60	2.00	12.00	90.00
linneana (<i>Oakfern</i>). Tiny, attractive 6 in. fern. Shade.70	2.50	16.00	130.00
marginalis (<i>Evergreen Woodfern</i>). About 2 ft. For rich woods.60	2.00	12.00	80.00
novboracensis (<i>New York Fern</i>). Marshy woods and meadows. 1 to 2 ft.60	2.00	12.00	80.00
phegopteris (<i>Beachfern</i>). An 8 in. fern of the drier woods.60	2.00	12.00	80.00
thelypteris (<i>Marshfern</i>). 1 ft. tall. For open, marshy ground.60	1.50	10.00	75.00
LYGODIUM palmatum (<i>Climbing Fern</i>). The only true climbing fern and very rare. Clammers to a height of 3 to 4 ft. Perfectly hardy. Each 50c.	1.35	5.00
ONOCLEA sensibilis (<i>Sensitive Fern</i>). Small in open meadows but grows to 3 ft. in wet shade. Large roots.60	2.00	12.00	80.00
OPHIOGLOSSUM vulgatum (<i>Adderstongue</i>). A quaint fern with single leaf found in cold, open bogs. 4 to 12 in. tall.75	2.50
OSMUNDA cinnamomea (<i>Cinnamon Fern</i>). Immense fronds 4 ft. tall. Open meadows. Roots weigh 1 to 4 lbs. each.60	2.00	15.00	120.00
claytoniana (<i>Interrupted Fern</i>). Perhaps the largest native fern. Up to 6 ft. tall. Open woods and moist fields.60	2.00	15.00	120.00
regalis (<i>Royal Fern</i>). Considered by many the most beautiful of all ferns. Grows to 3 ft. in shady bogs. Smaller in open land.60	2.00	15.00	120.00
regalis gracilis (<i>Slender Royal Fern</i>). Slenderer and apparently at home in drier soil than the Royal.60	2.00	15.00	120.00
POLYPODIUM vulgare (<i>Common Polypody</i>). This 6 in. evergreen fern grows naturally on shaded rocks.60	1.75	12.00	80.00



Osmunda regalis (Royal Fern) (See page 26)



Osmunda cinnamomea (Cinnamon Fern) (See page 26)

HARDY FERNS—Continued

	Price for	3	12	100	1000
POLYSTICHUM acrostichoides (<i>Christmas Fern</i>). A beautiful and well known evergreen fern. Sometimes grown in pots.....	\$0.60	\$2.00	\$12.00	\$90.00	
PTERIS nodulosa (<i>Ostrich Fern</i>). 4 to 6 ft. plumes in moist hollows and by sunny brooks and ponds.....	.60	2.00	13.50	90.00	
PTERIDIUM aquilinum (<i>Bracken</i>). Familiar fern of open sunny hillsides.....	.50	1.50	10.00	60.00	
WOODSIA ilvensis (<i>Rusty Woodsia</i>). Up to a foot tall. For moist, rocky woods. Delicate and attractive.....	.60	2.00	15.00		
obtusata (<i>Blunt-lobed Woodsia</i>). 1 to 1½ ft. tall. For rocky woods.....	.60	2.00	13.50		
WOODWARDIA areolata (<i>Chainfern</i>). 1 to 2 ft. Wet land. The fruit spores resemble chain links.....	.60	2.00	15.00		
virginica (<i>Virginia Chainfern</i>). Larger than the preceding.....	.60	2.00	15.00		

FILIPENDULA (*Garden Spirea*) **hexapetala** (*Dropwort*). Creamy white flower with rosy tint. July. 2 ft.

Ulmaria (*Queen of the Meadow*). A pure white flower similar to *F. rubra* in height and size. June-July.

rubra (*Pink Spirea*). A tall perennial bearing in July, feathery plumes of deep old rose flowers. 4 to 6 ft.

GAILLARDIA (*Blanketflower*) **grandiflora**. 2 ft. June-Frost. Large, single flowers similar in form to giant Daisies. Crimson, with a yellow band around the center. Very gorgeous.

GALAX aphylla (*Galax*). Evergreen ground cover from the Southern mountains.

GALTONIA candicans (*Garden Hyacinth*). A beautiful garden flower growing from a large bulb. Does well in the perennial garden. Pure white, bell-shaped flowers clustered about a tall, erect stalk. 3 to 5 ft. high. Plant only in the Spring. It is best in this latitude to store the bulbs in the Winter. \$1.00 per 12.

GENTIANA (*Gentian*) **andrewsi** (*Blind Gentian*). 1½ ft. A bright blue species, the corolla of which never opens.

linearis (*Narrowleaved Gentian*). Six weeks earlier than *andrewsi* and more of a porcelain blue. Smaller growing.

crinita (*Fringed Gentian*). We won't try to describe the Fringed Gentian as everybody knows it and has hoped to have it some day. Again this year we have about 3,000 plants to offer. Fringed Gentian will not thrive in acid leafmold, but should have a neutral or alkaline soil of muck and sand with plenty of moisture, but not where water stands in the Spring. \$1.50 per 3, \$5.00 per 12, \$10.00 per 100.

GERARDIA (*False Foxglove*) **virginica**. Woodland plant growing to a height of 2 ft. or more and branching freely. Covers itself with bright yellow, tubular flowers in late Summer and early Fall. 40c. each, \$1.10 per 3, \$3.00 per 12.

GYPSOPHILA (*Babysbreath*) **paniculata**. 2 to 3 ft. July-August. Tiny, misty white flowers. Very good for cutting.

paniculata, Bristol Fairy. A famous variety of double Babysbreath. Flowers snow white and fully double. Will bloom almost continually if kept cut. 50c. each, \$5.00 per 12.

repens. A creeping species with flowers like the annual kind. Rock garden plant.

HABENARIA (*Fringed Orchid*) **fimbriata**. A larger and much brighter colored flower than *H. psycodes*. 35c. each, \$3.50 per 12.

psycodes. Tall spikes of lovely lavender tinged flowers in July. 35c. each, \$3.50 per 12.

HELIENIUM autumnale. 5 to 6 ft. Splendid, brilliant yellow flowers in Autumn. Blooms at the same time as the hardy Asters. Valuable late flowering perennial.

autumnale, Riverton Gem. Old gold, overlaid with rich Indian red. Splendid effect of Autumn coloring. A very popular variety, blooming in September-October. 3 to 4 ft. tall.

HELIANTHEMUM (*Rockrose*) **mutabile**. Low growing, wide spreading plants of sturdy growth and evergreen foliage. Densely covered throughout the season with single and semi-double flowers, ranging in color through white, pink, red, yellow and saffron. Flowers resemble small wild Roses. A sun loving plant, quite resistant to drought.

HELIOPSIS (*Hardy Zinnia*) **scabra zinniaeflora**. Zinnialike semi-double flower of orange yellow. 4 to 5 ft. August-September.

Except as noted, prices of above are 25c. each, 3 of one variety 60c., 6 or more of one variety at \$2.00 per 12, 25 or more of one variety at \$15.00 per 100

HELIANTHUS (*Sunflower*) **divaricata**. 4 to 6 ft. in height. Of spreading habit. The flowers are very delicate and attractive shade of lemon yellow. A valuable shade for the Fall garden, although it should be used in the background.

Miss Mellish. 4 ft. Autumn flowering. Lemon yellow, semi-double flowers in greatest profusion. Long stems. Valuable cut flowers.

HEMEROCALLIS flava (*Lemon Daylily*). Among the most popular of the old-fashioned flowers. Lemon-scented, clear yellow flowers in June and July. Lilylike in form. 3 to 4 ft.

fulva (*Tawny Daylily*). Orange, with deeper shadings. Each of these Lilies seems to have been very popular in old-fashioned gardens. The tawny variety is often seen by abandoned houses.

middendorffi. Rich, glowing orange flowers in July and early August.

thunbergi (*Japanese Daylily*). A variety similar to "flava," having the same clear color and delightful fragrance. It blooms a month later.

HEPATICA triloba. 6 to 8 in. May. Shy and dainty early Spring flower. Blue flowers rounded leaves.

acutiflora. Flowers varying through white, blue, and rose. Leaves pointed. Plant both of these varieties in dry shade. Price in quantity, either of above, \$12.00 per 100.

HESPERIS (*Sweet-rocket*) **matronalis**. 3 to 4 ft. May-June. Sweet scented flowers, resembling the hardy Phlox. Lavender, rose or white. Mixed colors only.

HEUCHERA (*Coralbells*) **sanguinea**. 12 in. A very dainty perennial bearing in June and July sprays of tiny, bell-shaped flowers of soft coral red. 35c. each, \$3.50 per 12.

HIBISCUS (*Mallows*) **New Giant-flowering**. 3 to 5 ft. July-August. Huge, single flowers like mammoth Hollyhocks. Pink, white or red by color. 50c. each. Mixed colors, 25c. each, 60c. per 3, \$2.00 per 12.

HOLLYHOCKS. Few gardens ever grew without their row of stately Hollyhocks somewhere in the background. There is unusual charm in the single varieties and often delicate shades of lavender or lemon yellow may be found among them. 6 to 8 ft. July-August.

Double White, Red, and Yellow.

Newport Pink. Very double, bright pink.

Single Mixed.

Double Mixed.

Single White, Red, Yellow and Pink.



Tall Bearded or German Iris

HOSTA (*Plantainlily*) **caerulea**. The old-fashioned, large leaved blue Daylily.

plantaginea grandiflora (*White Daylily*). 1½ to 3 ft. August-September. A formal plant with large, golden green leaves and fragrant flowers, growing like trumpets from the stalk. 40c. each, \$4.00 per 12.

Thomas Hogg. Leaves have a white border. Flowers are blue purple in Midsummer. 35c. each, \$1.00 per 3, \$3.00 per 12.

undulata variegata (Var. *Daylily*). A variegated-leaved variety, having blue flowers.

IBERIS (*Hardy Candytuft*) **sempervirens**. 8 to 10 in. Low, dense habit, beautiful, glossy evergreen leaves and clusters of snow white flowers in late May and June. A border plant of unusual value for edging. Plant with Arabis or Alyssum, as this blooms soon after they are done.

IRIS

A plant of Iris will grow and succeed under the most adverse conditions, but will spread rapidly and blossom profusely if kept thoroughly cultivated and given a light, well drained soil. Although in many species a water-loving plant, most of the common varieties do not like a wet soil. Japanese Iris revels in a rich, heavy soil not too dry.

APRIL AND EARLY MAY FLOWERING

Cristata. Very dwarf, creeping species only 3 in. high. Amethyst blue. A well established clump, looks like a patch of blue sky. Late April and early May. 30c. each, 75c. per 3, \$2.50 per 12.

Pumila. Dwarf Iris blooming in earliest Spring at the same time as the Arabis and the Daffodils. Rich purple. 25c. each, 60c. per 3, \$2.00 per 12.

Pumila alba. Pure white form. 30c. each, 75c. per 3, \$2.50 per 12.

Pumila caerulea. A tiny Iris, 4 in. high. Light purple standards and darker falls. 30c. each, 75c. per 3, \$2.50 per 12.

Pumila, Prairie Gem. Brilliant orange chap. 4 to 6 in. high. 35c. each, \$3.50 per 12.

Verna. A miniature Iris having blue flowers with golden centers. 25c. each, 65c. per 3, \$2.50 per 12.

Cristata alba. An extremely desirable variety of dwarf Iris, and almost impossible to obtain. Just like its sky blue brother only pure white. Single division, \$2.00 each, \$18.00 per 10.

TALL BEARDED IRIS

The plants we send you are not small single divisions but consist of two or more rhizomes and our prices are made on this basis. Where single rates only are given, we will sell 6 plants of the same variety for 5 times the single rate, or 12 plants for 10 times the price for one.

Afterglow. S. and F., misty lavender lighted with soft yellow center. A dainty Iris, beautiful as a foil for the more striking colors. 25c. each.

Alcazar. S., light blue violet; F., deep brilliant purple. Of tall, branching habit, attaining a height of over 40 in. 40c. each.

Amas (Macrantha). S., light blue; F., velvety violet blue. 35c. each.

Ambassadeur. Height 40 in. S., reddish violet; F., deep velvety reddish violet. Large flowers. Tall, strong growth. One of the best. 40c. each.

Ann Page. A many-flowered, much branched Iris. Lavender blue. 50c. each.

Athene. Ivory white. Haft and claw veined maroon on cream, beard yellow. Strong grower of fine form. 60c. each.

Aurea. S. and F., bright golden yellow. The standard yellow Iris, although of dwarf growth. 2 ft. 25c. each.

Autumn Leaves. Smoky amber, the russet color of Autumn leaves. 50c. each.

Except as noted, prices of above are 25c. each, 3 of one variety 60c., 6 or more of one variety at \$2.00 per 12, 25 or more of one variety at \$15.00 per 100

TALL BEARDED IRIS—Continued

- B. Y. Morrison.** S., blue violet; F., velvety raisin purple. A brilliant contrast. 25c. each.
- Caprice.** S., rosy scarlet; F., a deeper shade. Very rich and handsome color in an Iris. 2 ft. 25c. each.
- Celeste.** 30 in. A dainty variety for massing in the garden. Light blue flowers in profusion. 25c. each.
- Cluny.** 40 in. Handsome and tall growing, flowers of largest size. S., bright shade of Lilac blue; F., darker. 40c. each.
- Corrida.** 36 in. Aniline blue. A shade darker than Celeste. Very dainty in effect and one of the best for massing. 50c. each.
- Crusader.** 42 in. A tall Iris and certainly one of the most beautiful; bold clear blue with an orange beard. We consider this the bluest Iris. 40c. each.
- Dream.** 36 in. Called Pink Pallida. Soft clear pink petals of solid substance. 40c. each.
- Early Purple.** The old fashioned, rich purple in bloom on Memorial Day. One of the best of Irises. 26 in. 25c. each.
- E. H. Jenkins.** Possibly the freest blooming Iris. The tall, branching stalks and healthy growth immediately distinguish it. S., pale purple; F., deep purple. 45 in. 40c. each.
- Fairy.** Very attractive white flowers. Dainty pencilings of light blue at the base of the petals. 30 in. 25c. each, \$2.50 per 12.
- Flammenschwert (Flaming Sword).** S., bright gold; F., brilliant chestnut brown with yellow border. Vigorous and free flowering. Very striking variety. 30 in. 40c. each.
- Flavescens.** An old-fashioned variety whose tall, strong growth and soft yellow color render it invaluable for massing with the rose, blue or purple kinds. 30 in. 25c. each, \$2.50 per 12.
- Florentina alba.** S. and F., pearly white with a faint blue cast. Very early flowering, being in bloom with the Darwin Tulips, and the early purple Iris. These are very beautiful when planted together. 2 ft. 20c. each, \$2.00 per 12.
- Georgia.** 24 in. Very early pink with bright orange beard. Free flowering and vigorous. 30c. each.
- Harriet Presby.** S., bright violet blue; F., Petunia violet, white beard. Coloring resembles an Orchid. 4 ft. 35c. each.
- Her Majesty.** Rose-colored flowers veined a deeper shade. 30 in. 25c. each.
- Innocenza.** A small, dainty thing, dear to many Iris lovers. Warm ivory white, with a delightful flare at the falls which gives them a daintiness quite uncommon in an Iris. 26 in. 30c. each.
- Iris King.** S., clear lemon yellow; F., rich mahogany, bordered yellow. A most distinctive and richly colored Iris. Large flowers and tall growth. 25c. each.
- Isolene.** S., lilac pink; F., old rose with bright orange beard. Falls long and drooping. A very beautiful and distinct Iris having large, stout-textured flowers and handsome foliage. 36 in. 35c. each.
- Ivory and Gold.** Warm old ivory shading to gold at center, brilliant orange beard. Color of luminous quality and the texture of waxlike fineness. 50c. each.
- Jeanne d'Arc.** White with Lilac frill. 2½ ft. 25c. each.
- Juniata.** Said to be the tallest bearded Iris. Clear blue self colored. Very fragrant. 35c. each.
- La Neige (Snow).** 24 in. Waxy white, with outstanding petals. We like it. 35c. each.
- Lent A. Williamson.** S., Campanula blue; F., rich royal purple. Yellow beard. Large, fine form and free blooming. 42 in. 35c. each.
- Leonidas.** An exceptionally dainty blue and purple Iris; splendid for cutting. S., deep blue; F., rich purple. 30 in. 25c. each.
- Lohengrin.** S. and F., clear-toned, crisp Lilac rose. Large flowers and tall, strong growth. 30 in. 25c. each.
- Lord of June.** A very handsome Iris of huge proportions. S., luminous, light blue; F., blue. A beautiful Iris and much sought after. 40 in. 25c. each.
- Lorelei.** S., yellow; F., chestnut brown. 25c. each.



Iris Sibirica (See page 30).

- Magnifica.** S., light violet blue; F., deep reddish violet with faint markings of brown; bright yellow beard. Sweetly scented. One of the most notable Iris up to this time. 48 in. 50c. each.
- Marsh Marigold.** 27 in. S., pale golden yellow; F., purple brown with bright yellow border. Unusual. 25c. each.
- Ma Mie (My Friend).** Like Mme. Chereau but much larger. White with feather stitching of clear blue. 25c. each.
- Miranda.** 44 in. Clear deep violet blue. A notable color effect, perhaps the best in its class. 25c. each.
- Mme. Chereau.** A tall, free blooming Iris. Flowers white with a dainty blue frill. 25c. each.
- Mme. Chobaut.** 36 in. Contrasting shades of amber and wine red on a pale yellow ground. Very popular. 40c. each.
- Mildred Presby.** S., creamy white; F., Pansy violet with lavender border. 50c. each.
- Monsignor.** Distinct and rich coloring. S., unveined violet; F., purple, richly overlaid violet. 22 in. 25c. each.
- Mrs. H. Darwin.** 24 in. Warm white with violet and chestnut veining at the base. Flowers densely set on the stalk, making it fine for garden effect. 25c. each.
- Mt. Penn.** S., rosy lavender; F., crimson lilac with brilliant orange beard. Extra rich coloring. 30 in. 40c. each.
- Opera.** 2 ft. Intense velvety reddish lilac with falls darker. Instantly noticed among hundreds of Iris. 40c. ea. h.
- Pallida Dalmatica.** Lavender blue throughout, with silvery sheen. Tall and large. A queen among Iris. 48 in. 25c. each.
- Pallida Princess Beatrice.** A selected form of Dalmatica and frequently confused with it. This Iris has the highest rating of any commonly offered and by many is considered to be the nearest approach to a perfect Iris. S., fine lavender; F., deep lavender. 50 in. 50c. each.
- Parc de Neuilly.** 2 ft. tall. Exceptionally clear, rich purple color. 35c. each.
- Pauline.** 36 in. S. and F., unusually large, velvety Pansy violet; deep orange beard. Fragrant. 25c. each.
- Perfection.** S., light blue; F., dark velvety purple black. 25c. each.
- Princess Victoria Louise.** S., lemon yellow; F., plum color with creamy yellow margin. 25c. each.

Except as noted, prices of above are 25c. each, 3 of one variety 60c., 6 or more of one variety at \$2.00 per 12, 25 or more of one variety at \$15.00 per 100

IRIS—Continued

Prospero. S., pale lavender blended with soft yellow at base; F., rich reddish purple shaded lighter at edge. Heavily marked brown with bright orange beard. 4 ft. 50c. each.

Prosper Laugier. S., coppery bronze; F., bright crimson; very distinct. 25 in. 25c. each.

Queen of the May. A lovely variety which is of such a soft lilac rose that at a little distance the effect is genuinely pink. 30 in. 25c. each, \$2.50 per 12.

Queen Caterina. 30 in. Color iridescent lavender violet with bright yellow beard. Large and striking. 25c. each.

Quaker Lady. S., smoky lavender with soft yellow shading; F., Ageratum blue and old gold. One of the daintiest of Iris and unexcelled for use with other more brilliant colors. 38 in. 25c. each.

Rheintraube. S., clear light blue; F., rich dark purple. Tall, strong growth. Over 3 ft. 75c. each.

Rhein Nixe. 2 ft. Snow white standards and plum-colored falls. 25c. each.

Roseway. 4 ft. A deep rose pink Iris with the growth of Pallida Dalmatica. Bright orange beard. 35c. each.

Seminole. S., velvety rose; F., rich crimson. The best of the red-toned Iris and easily distinguished among hundreds. 2½ ft. 35c. each.

Shekinah. 36 in. Clear pale yellow. Good growth. The first tall yellow. 30c. each.

Sherwin Wright. A deep shade of chrome yellow. 22 in. 30c. each.

Souvenir de Mme. Gaudichau. The ratings of this Iris is 9.3, which shows how high it stands in the estimation of the American Iris Society (10 points being perfection). One of the inner circle of aristocrats. Large and exceedingly rich velvety dark purple, of fine form. 42 in. 50c. each.

Susan Bliss. Giant ruffled flowers of soft lilac rose. 60c. each.

White Knight. 33 in. Snow white, fragrant and of exceptionally fine form. 50c. each.

Note—In the above descriptions, "S." signifies the Standards, or upright petals, and "F." the Falls, or drooping petals of the Iris.

Mixed Iris. 15c. each, \$1.50 per 12, \$10.00 per 100, \$60.00 per 1000.

JAPANESE IRIS

Are among the leading perennials for glorious colors and large, beautiful flowers.

Azure. Double. Light blue, deepening toward the center.

Gold Bound. Possibly the most beautiful. Pure snow white with narrow yellow band. Large, six-petaled flowers greatly waved and ruffled.

Pyramid. Six petals. Light blue.

Mahogany. Rich velvety mahogany red.

Price, any of the above, 35c. each, \$3.50 per 12

Mixed Japanese Iris. 25c. each, 60c. per 3, \$2.00 per 12.

IRIS—VARIOUS SPECIES

Pseudacorus (Yellowflag). Bright yellow Iris, similar to the Siberian and blooming in July. Excellent for waterside planting. 30c. each, 75c. per 3, \$2.50 per 12, \$15.00 per 100.

Sibirica (Siberian Iris). Deep blue flowers and masses of grasslike foliage; very effective. Fine for cutting. 25c. each, 60c. per 3, \$2.00 per 12, \$12.00 per 100, \$70.00 per 1000.

Sibirica, Snow Queen. Both late June and July blooming. 25c. each, 60c. per 3, \$2.00 per 12, \$12.00 per 100, \$70.00 per 1000.

Sibirica, var. Perry Blue. A magnificent flower of clear blue with outstanding horizontal falls. 4 ft. 35c. each, \$3.50 per 12.

Sibirica, Emperor. Large, navy blue. A splendid addition. 4 ft. 35c. each, \$3.50 per 12.

Sibirica, Mme. Butterfly. Light blue to China blue. 4 ft. Somewhat earlier blooming than Perry's Blue. 35c. each, \$3.50 per 12.

Versicolor (The Native Blueflag). Used for planting in wet places. 25c. each, 60c. per 3, \$2.00 per 12, \$12.00 per 100.

Except as noted, prices of above are 25c. each, 3 of one variety 60c., 6 or more of one variety at \$2.00 per 12, 25 or more of one variety at \$15.00 per 100

INCARVILLEA (Hardy Gloxinia) delavayi. A rare and very choice perennial. Vivid rose colored flowers in clusters like the Gloxinia, although the growth is taller and larger. 30c. each, 75c. per 3, \$2.50 per 12.

LATHYRUS (Perennial Peas) latifolius. 3 ft. Similar to the well loved Sweet Peas. Requires a support. No fragrance. Flowers in pink, white or red.

LAVERNER vera (Old English Lavender). Herb having deliciously fragrant leaves and flowers. Should be wintered in the cellar in this latitude. 30c. each, 75c. per 3, \$2.50 per 12.

LEUCOCRINUM monatanum (Colorado Sand Lily). A tiny little plant whose fragrant white flower clusters are borne early in the Spring on stems a few inches high.

LIATRIS (Kansas Gayfeather) pycnostachya. 3 to 5 ft. Tall, dense spikes of purple flowers in August. One of the choicest and most conspicuous species. **scariosa (Bulton Gayfeather).** Buttonlike flowers set along the 2 ft. stalks.

spicata. 3 to 4 ft. August-September. Vivid Lilac rose flowers in dense spikes. Of easy culture in a sunny place.

GARDEN LILIES

It is a fact that Lilies are being planted more extensively each year as their beauty is being more fully appreciated and their needs more fully understood. They are divided roughly into two classes: those which root at the base of the bulb only, and those which root at the base and from the stem above the bulb. Base rooting Lilies may be planted at a shallow depth of 2 to 3 inches. Stem-rooting varieties, however, should be in the ground to a depth of from 6 to 10 inches, so that both sets of roots may be thoroughly covered away from dry surface soil and heat. All Lilies are benefited by a pocket of sharp sand placed around and under the bulb. This conducts the extra moisture away and prevents rotting. They are heavy feeders and like rich soil, but manure should never come in contact with the bulbs as it rots them. Lilies like a mulch above them and often appear to best advantage when coming up through low shrubbery or perennial growth. This affords shade and protection from winds and driving rains. Do not plant in soggy locations.

Auratum (Goldband Lily). Grows 2 to 6 ft. high and bears up to 20 large, very fragrant flowers of the wide open, trumpet form. Color white with a gold band running down the middle of each petal. A clump of these is a sight long to be remembered. Blooms July-September. 35c. each, \$1.00 per 3, \$3.50 per 12.

Batemanniae (Batemann Lily). A late flowering variety of *L. elegans*, growing nearly 4 ft. tall and of a lovely apricot color without spots. 50c. each, \$5.00 per 12.

Canadense (Meadow Lily). A native Lily which requires a moist situation. Tall stalks bearing 8 to 15 dainty yellow or orange blossoms. Blooms in July and August. 25c. each, \$2.50 per 12, \$15.00 per 100.

Candidum (Madonna Lily). For Fall planting only. 35c. each, \$3.50 per 12.

Dauricum (Candlestick Lily). Upright, large, wide open flower; on sturdy stalks, 2 ft. or more in height. Flowers are brilliant deep red. A fine garden variety, succeeding under the most ordinary conditions. June-July flowering. Fall or early Spring planting. 35c. each, \$3.50 per 12, \$22.00 per 100.

Elegans, var. Orange (Orange Cup Lily). A hardy, dwarf Lily which is excellent for garden planting. Erect, cup-shaped flowers of clear orange with darker spots. Short, sturdy growth. 35c. each, \$3.50 per 12.

Elegans, var. atrosanguineum. Similar to the above. Flowers bright crimson. 35c. each, \$3.50 per 12.

Elegans, Mixed. 25c. each, \$2.50 per 12.

Grayi. Dark orange red flowers. Good for garden culture and also for cutting. 25c. each, \$2.50 per 12.



Lilium dauricum (Candlestick Lily) (See page 30)

Henryi. A most satisfactory and hardy Lily of easy culture in good garden soil. Strongly recurved petals of clear orange. Very profuse bloomer. 75c. each, \$7.50 per 12.

Philadelphicum (*Wood Lily*). A brilliant Lily, gaining favor for garden planting; 2 to 3 ft. tall, bearing one or two large, upright red or orange flowers in July and August. 25c. each, \$2.50 per 12, \$18.00 per 100.

Platyphyllum. An improved *Lilium auratum*. Snow white, very large and practically unspotted. A marvelous Lily. 50c. each, \$5.00 per 12.

Regale (*Regal Lily*). Very hardy and one of the earliest Lilies to bloom. Stalks 2 to 4 ft. tall, terminated by one to several trumpet-shaped blossoms, slightly shaded pink on the outside and white, shaded pale yellow within. Blooms in June and July. Plant either in Fall or Spring. 50c. each, \$5.00 per 12.

Speciosum rubrum (*Pink Show Lily*). A magnificent species and is one of the showiest of Lilies. White, suffused with dark old rose and heavily spotted rose red. Plant deeply, either in Fall or Spring. Very hardy. 50c. each, \$5.00 per 12.

Superbum (*Turkscap Lily*). A native Lily. One of the finest and hardest of this family. Often attains a height of 6 ft. and bears a great many flowers of rich orange, having darker spots. 25c. each, \$2.50 per 12.

Tigrinum (*Tiger Lily*). Bright orange red flowers with recurved petals, carried on tall stalks, 2 to 5 ft. in height, 3 to 12 blossoms on one stalk. A perfectly hardy bulb of the easiest culture. 25c. each, \$2.50 per 12, \$18.00 per 100.

Tigrinum floreplo. Double form of the old-fashioned Tiger Lily. 35c. each, \$3.50 per 12.

Tenuifolium (*Siberian Coral Lily*). A brilliant little Lily which is quite easy of culture. Much recurved petals of waxy substance and brilliant scarlet in color. 1 to 2 ft. Early June flowering. Plant in Fall or earliest Spring. 25c. each, 60c. per 3, \$2.00 per 12, \$15.00 per 100.

Testaceum (*Nankeen Lily*). One of the most graceful and attractive of Lilies. Soft nankeen yellow. In everything but color similar to *Candidum*. Absolutely hardy. \$2.50 each.

LIMONIUM (*Statice latifolia* (*Sea-lavender*)). 1 to 1½ ft. July-August. Flat, broad leaves, from which rise flower stalks bearing huge heads of tiny lavender flowers.

LINUM (*Hardy Flax*) **perenne** 2 ft. May and June. Graceful gray green foliage and round, single, porcelain blue flowers of an unusually beautiful shade. Blooms throughout the season. Looks well planted with Iris.

LOBELIA cardinalis (*Cardinalflower*). Tall spikes of rich cardinal red, blooming in August. For naturalizing along streams.

syphilitica (*Great Blue Lobelia*). 1 to 3 ft. Large blue flower spikes in late Summer. Native.

LUPINUS (*Lupine*) **polyphyllus.** June. 2 to 3 ft. Masses of flowers on long, graceful spikes. One of the most important perennials. Blue, white or rose.

LYCHNIS chalconica (*Maltese Cross*). Brilliant scarlet flowers in June.

coronaria (*Mullein Pink*). 3 ft. Upright, branched growth. A tall biennial having soft, gray green foliage and single, amaranth red or white flowers. Blooms in July.

viscaria. One of the most brilliant perennials. Bright, rose colored flowers in upright panicles; during May and June.

LYTHRUM (*Rose Loosetrife*) **salicaria roseum.** Long spikes of rose-colored flowers. Used for naturalizing in moist or wet places, or for the hardy border.

LYSIMACHIA clethroides (*Japanese Loosetrife*). 2 ft. Drooping, pure white flower spikes, blooming throughout the late Summer and Fall. Thrives in shade or sun.

nummularia (*Moneywort*). Rapid growing ground cover with tiny, cup-shaped yellow flowers. For use on banks or under trees when grass will not grow. Price in quantity, \$12.00 per 100.

MATRICARIA (*Feerfew, Golden Ball*) **capensis.** 6 to 12 in. July. Creamy yellow flower heads, sometimes having a row of reflex ivory white petals.

MENTHA (*Mint*) **peperita** (*Peppermint*). An ever-increasing demand for common Peppermint plants prompts us to add this to our catalog.

spicata (*Spearmint*). Any New England boy would consider the trout fishing trip unsatisfactory if he could not nibble the spearmint that grows along the edge of the brook.

MERTENSIA (*Virginia Cowslip*) **virginica.** Beautiful, tubular flowers of clear sky blue, sometimes tinted with pink. Blooms in early May. The roots may be taken up in the Fall and made to blossom in the house.

MITCHELLA (*Partridgeberry*) **repens.** Trailing evergreen vine or ground cover with rich green, rounded leaves, waxy white, fragrant flowers, tinged with pink, in June and July, and bright red berries in the Fall. Valuable for planting in rockeries or under evergreen trees. Sprays of this little vine are often put in bowls where the red berries keep fresh all Winter. Much used by florists. Quantity price, \$12.00 per 100.

MONARDA (*Bergamot*) **didyma.** Brilliant scarlet flowers and fragrant foliage. An old favorite.

didyma roseum. Light red Monarda of thrifty growth and suitable for naturalizing in moist shade.

MYOSOTIS (*Forget-me-not*) **alpestris.** Blooms in early Spring, so profusely that the plant is hidden beneath a cloud of sky blue flowers. Dense, compact growth. Good for the rock garden or border. Good cut flower. Requires full sunshine.

scorpioides (*Everblooming Forget-me-not*). A moisture loving plant. Blooms from late May until frost. Low, prostrate growth. Beautiful cut flower.

NEPETA cataria (*Catnip*). The common, old-fashioned Catnip.

mussini. A rock garden plant having attractive gray green leaves and spikes of violet blue flowers in early Summer.

NYMPHAEA odorata (*Waterlily*). Our native fragrant, white Waterlily.

OENOTHERA (*Primrose*) **speciosa.** 18 in. August-September. Delicate, pure white flowers.

fruticosa. 1 to 2 ft. Sometimes called Sundrops. Bright yellow flowers in June and July.

missouriensis. Low growing with large yellow flowers 4 in. across.

Except as noted, prices of above are 25c. each, 3 of one variety 60c., 6 or more of one variety at \$2.00 per 12, 25 or more of one variety at \$15.00 per 100

ORCHIS (*Showy Orchis*) **spectabilis**. 6 to 8 in. A raceme of delicate lavender, deliciously fragrant flowers in May. Very choice. Should be planted in the shade. 35c. each, \$3.50 per 12.

ORNITHOGALUM (*Star-of-Bethlehem*) **umbellatum**. 12 in. June-July. An old-fashioned, bulbous plant. Clumps of shiny, slender, grasslike foliage amid which the plant sends up slender stems each bearing a cluster of ivory white, star-shaped flowers of Lilylike texture and delicate fragrance. 50c. per 3, \$2.00 per 12.

PACHYSANDRA (*Japanese Spurge*) **terminalis**. An evergreen ground cover used extensively for planting under shrubbery or evergreens, or where the ground is bare and conspicuous. Covered with white flowers in Spring. 25c. each, 60c. per 3, \$2.00 per 12, \$15.00 per 100.

PAPAVER (*Hardy Poppy*) **nudicaule** (*Iceland Poppy*). A dainty race of Poppies, coming into flower in April, and if kept from seeding, will blossom all Summer. Bright orange, yellow, or pure white. 18 in.

orientale (*Oriental Poppy*). 3 to 4 ft. Late May and June. The beauty and brilliance of this flower rank it among the foremost perennials. Very large and seemingly made of satin. Immense scarlet flowers. They have a resting period in Midsummer when the top dies down.

orientale, Mrs. Perry. Satiny old rose. 35c. each, \$3.50 per 12.

PARNASSIA caroliniana (*Grass of Parnassus*). The creamy white blossoms of Parnassia enliven the swamps in August. Flowers are solitary, 1 in. across, borne on 1 to 2 ft. stems.

PENTSTEMON (*Beardtongue*) **barbatus**. Tall, graceful spikes of coral red flowers. Fine for cutting.

digitalis (*Foxglove Pentstemon*). So named from its similarity to the Foxglove. The blossoms are much smaller, however. Pure white. Fine for cutting. 18 in. July.

PEONIES

In spite of its higher price the Peony has the reputation of being one of the best of garden investments. A well selected variety, well planted, will increase in beauty for a lifetime. Dig the soil deeply and enrich with old manure. Plant them not more than 3 inches deep and do not allow them to touch the manure. Do not mound up the soil around them as too deep planting causes the shoots to come blind, or without flower buds.

Note—If you wish dozen rates on Peonies, multiply the single rate by 10. But dozen rates will be allowed only on orders for 6 or more of 1 variety.

Albatre. Very large, compact Rose type. Milk white. Strong, vigorous and tall growing. Free blooming. Heartily endorsed as one of the best Peonies in cultivation. \$1.00 each.

Albert Crousse. A large late Peony. Bomb type, salmon pink. 75c. each.

Asa Gray. Large, well formed flowers of soft lilac pink. Very fragrant. Semi-rose type. \$1.00 each.

Couronne d'Or. (Crown of Gold). Large, beautifully formed flowers with conspicuous golden stamens at the base of the petals. Fragrance and form similar to a Waterlily. 50c. each.

Dorchester. A full, large flower of delightful clear pink. 75c. each.

Eugenie Verdier. Magnificent large flowers of delicate flesh pink with lighter margin, overlaid with silvery sheen. 75c. each.

Edulis Superba. The old-fashioned full, double pink; very bright; early. A good variety. 50c. each.

Felix Crousse. Rich amaranth red. 75c. each.

Festiva Maxima. Still a prize winning variety. Immense white with a tiny scarlet mark near the center. Midseason. 50c. each.

Grover Cleveland. A very fine, dark crimson Peony on upright stems. Late. \$1.50 each.

Except as noted, prices of above are 25c. each, 3 of one variety 60c., 6 or more of one variety at \$2.00 per 12, 25 or more of one variety at \$15.00 per 100



Peony Edulis Superba

James Kelway. Exquisite white with a golden glow at base of petals. Very strong grower and deliciously fragrant. \$1.50 each.

Karl Rosenfield. Very fine, large, red Peony of splendid color and form. One of the very best reds. \$1.50 each.

Lady Alexander Duff. One of the very finest Peonies. Broad petals of French pink tinted flesh. \$2.00 each.

Le Cygne. Considered the nearest perfect of any Peony. Milk white, of immense size and fine texture. Midseason. \$5.00 each.

Longfellow. A fine, high scoring red Peony. Large sized and very satisfactory indeed. \$2.00 each.

Louis Van Houtte. Old-fashioned red. Large and very double. 75c. each.

Milton Hill. A perfect flower of deeper color than Dorchester. A magnificent full, double flower. \$2.50 each.

Mme. Emile Galle. A large, loosely arranged flower. Delicately beautiful. One of our favorites. Late. 75c. each.

Mons. Jules Elie. Bomb type. A royal beauty among Peonies and possibly the largest flowered. Color ideal lilac pink, overlaid with a silvery sheen which fairly glistens in the sunlight. \$1.00 each.

Mme. de Verneville. Very beautiful, compact bloom, with large, outer guard petals and densely double center. Very reliable and free blooming. Early. 50c. each.

Officinalis Rubra. Very early flowering bright red, in bloom usually on Memorial Day. \$1.00 each.

Pasteur. Soft pink with yellow lights at base of petals. \$1.75 each.

Primevere. Soft sulphur yellow. Circle of wide guard petals and very double center of a deeper shade. Distinct and very lovely. Easily attracts attention among hundreds of kinds. \$2.50 each.

Richard Carvel. Enormous globular blooms with broad guard petals and high, dome-shaped center. Color uniform crimson. A "red Jules Elie." \$3.00 each.

Rubra Superba. The best very late red Peony. Large, compact rose type. Color deep crimson. Very fragrant. 75c. each.

Solange. Very large flowers of waxy white suffused with gold. One of the finest midseason Peonies. \$3.00 each.

Therese. One of the world's finest Peonies. Rich, satiny pink of huge size. Reflex of petals glossy and shining. \$3.00 each.

Walter Faxon. Large, globular type. Very strong and vigorous. Color an exceedingly rich and beautiful shade of salmon pink; not found in any other Peony and wherever seen, gives it the effect of being the pinkest. Easily distinguished among hundreds of kinds. \$3.00 each.

Zoe Calot. Rose pink. Rounded center of smaller petals surrounded by a row of larger guard petals. 50c. each.

PHLOX *decussata*

No one thinks of having a garden without its glory of Phlox in Midsummer. There are literally hundreds of varieties from which we have selected the following. Phlox will thrive in any ordinary garden soil. It is important not to let it seed as the seedlings usually revert to the old, original purple type, and come up about the roots where it is impossible to get them all out when weeding.

Prices of Phlox decussata, except as noted,
25c. each, \$2.50 per 12, \$18.00 per 100

- Antonin Mercie.** Blue overlaid white.
Astrild. Brilliant deep carmine. In bloom from July till October.
B. Comte. Brilliant Harvard crimson. Tall and late.
Coquelicot. A tall scarlet Phlox. One of the brightest.
Commander. A very large flowered variety of orange scarlet. A superior new variety.
Dawn. Beautiful blush pink.
Enchantress. Large flowered salmon pink Phlox, similar to Elizabeth Campbell, but of stronger growth.
Ethel Pritchard. Very promising new lavender Phlox.
Frau Anton Buchner. Enormous flowers of perfect form. Pure white.
Hanny Pfeleiderer. White, flushed pink with a crimson eye.
Jules Sandeau. A decided addition to our list of Phlox and one which attracts immediate attention wherever seen. Immense trusses of bright clear rose which does not fade. Not a tall grower.
Matilda. A tall growing early, lavender pink variety. Small florets but floriferous.
Milly Von Hoboken. A new bright rose pink. The individual florets are much larger than those of other varieties.
Miss Lingard. Earliest white; will bloom twice if flowers are picked.
Mme. Paul Dutrie. Appleblossom pink.
Professor Went. Another new variety in crimson. Some folks describe as glorified B. Comte.
Richard Wallace. White with red eye.
R. P. Struthers. Rich flame color. Will not streak or fade.
Rijnstroom. Large-flowered bright rose. Very popular.
Stella's Choice. A fine late white with immense branched trusses.
William Ramsey. Very dark, reddish purple, not magenta; early.

PHLOX SPECIES

- Bifida** (*Cleft Phlox*). Low growing Phlox 3 to 6 in. tall, from the sandy lands of the Central West. Color is usually pale purple.
Divaricata. A Lilac blue Phlox blooming in May. 18 in. When established, forms large colonies. Very beautiful.
Laphami. A larger and bluer variety of the above. 35c. each, \$3.50 per 12.
Glaberrima (*Smooth Phlox, Prairie Phlox*). Growing 1 to 3 ft. high and bearing pink flowers in Midsummer.
Ovata (*Mountain Phlox*). One of the most attractive wild Phlox for sun or shade. It is about 1 ft. tall and covered with beautiful pink flowers in June. A native of the Southern Mountains and a welcome plant in formal border and naturalistic plantings.
Pilosa. 1 ft. A variety native to the West. Dense masses of flowers in May. Foliage similar to subulata, but the plants have upright growth. Rose, blue and white mixed colors.
Reptans. Creeping variety. Prefers dry shade. Flowers rose to rose purple.
Subulata. 6 to 8 in. A ground cover. Low, sprawling habit; glossy green, mossy foliage, beneath a mass of bright flowers. Useful for planting with Spring bulbs. Rose, white, or light blue. April-May.
- — —
- PHYSOSTEGIA** (*False-dragonhead*) **virginiana.** 3 to 4 ft. Tall, slim habit. Flowers closely set on long, graceful, terminal spikes. Pink or white. August.

PHYSALIS francheti (*Chinese Lantern Plant*). Grown for its orange red fruit which makes splendid decorations for Halloween, or for dried bouquets.

PLATYCODON (*Chinese Bellflower*) **grandiflorum.** Wide open, bell shaped flowers, in blue or white, held uprightly from a mass of close, compact foliage. One of the most useful and permanent perennials. No hardy border should be without it.

POGONIA ophioglossoides (*Rose Pogonia*). A dainty pink Orchid of the bogs. June to July. Grassy stems 6 in. high. 30c. each, 75c. per 3, \$2.50 per 12.

POLEMONIUM (*Jacobs-ladder*) **caeruleum.** 18 in. Border plant of easiest culture. Beautiful, clear blue flowers in terminal clusters. Fernlike foliage of decorative value.

reptans. A dwarf species never more than a foot high. Used for rock gardens or foreground of borders. Many panicles of light blue flowers in May and June.

POLYGONATUM (*Solomonseal*) **biflorum.** A curious plant bearing tiny green flowers in pairs along the drooping stalk.

commutatum (*Great Solomonseal*). 4 to 6 ft. A huge Solomonseal from the open, moist fields, cultivated largely in gardens.

PONTIDERIA cordata (*Pickereelweed*). For pools or Lily ponds. Spikes of bright blue flowers in July.

PRIMULA (*Primrose*) **elatior.** An English Primrose. Clear yellow flowers in bunches held erect on stems 6 to 8 in. tall.

polyantha. 8 in. Red and yellow flowers in earliest Spring. One of the most worthy of the Spring flowers, being perfectly hardy and very vigorous.

Hybrids. In varying shades, red orange, and yellow, no two being exactly alike in shade.

PYRETHRUM (*Persian Daisy*) **hybridum.** Single flowering plants, having masses of fernlike foliage and long stems bearing Daisylike flowers; in shades of red, pink and white. Splendid for cutting and used extensively by florists. June. 2 to 3 ft.

RANUNCULUS (*Buttercup*) **acris bulbosa** (*Bulbous Buttercup*). 1 ft. Compact clumps. Single butter yellow flowers in July.

acris florepleno (*Double Buttercup*). Pompons of shining butter yellow. Blooms in late May and June. 12 to 18 in.

RUDBECKIA (*Goldenglow*) **laciniata.** 5 to 6 ft. August. Yellow. Free flowering, bright perennial.

newmanni. Large, branched, bushy form of the Black-eyed-susan. A fine Autumn flowering perennial. Orange petals and black, cone-shaped centers.

SALVIA azurea (*Azure Salvia*). 3 to 6 ft. Tall, branching growth and long, terminal racemes of clear, sky blue flowers in August and September. Light blue is a color rarely seen in the Fall, and clumps of Azure Salvia in the border are wonderfully attractive.

sclarea (*Clary*). A biennial herb, 2 to 3 ft. high, blooming in June. The small flowers are pale blue, surrounded by floral leaves of white and old rose, which give the plant a beautiful and unusual effect. Resows itself. Attractive planted with Madonna Lilies.

Common Sage. The old-fashioned common garden Sage used for seasoning.

SANGUINARIA (*Bloodroot*) **canadensis.** Dainty flowers in earliest Spring. Pure white on erect stems 3 to 4 in. high, each with a leaf carefully wrapped about its stalk. Plant in moist shade or sun.

SAPONARIA ocyroides. A trailing plant covered with myriad pink flowers in May and June. For rock gardens or the front of the border.

SARRACENIA (*Pitcherplant*) **flava** (*Trumpet Pitcherplant*). Tall, yellow trumpets reaching a height of 2 ft.

purpurea. 1 ft. June. Reddish green. A very curious plant found in swamps. It thrives on the insects which it catches in its pitcher-shaped leaves.

Except as noted, prices of above are 25c. each, 3 of one variety 60c., 6 or more of one variety at \$2.00 per 12, 25 or more of one variety at \$15.00 per 100

- SAXIFRAGA pennsylvanicum** (*Swamp Saxifrage*). 3 ft. Tall bog plant with blossoms like Mignonette in May.
- virginensis.** (*Mountain Saxifrage*). A rock plant 4 to 12 in. high, with panicles of white flowers in early Spring.
- SCABIOSA** (*Pincushionflower*) **caucasica.** 2 to 3 ft. Heads of beautiful soft lilac flowers in June and July. A hardy, vigorous plant, the flowers of which are fine for cutting. Perennial.
- japonica.** A late blooming species resembling the annual Scabiosa. Flower heads of soft, clear lavender blue on tall, slim stems. Fine for cutting and blooms after heavy frosts. Biennial.
- SEDUM acre** (*Goldmoss*). A small, mossy plant of rich, golden green color, which quickly carpets the ground in dry or rocky places. Often planted in paths or on rocky ledges. Covers itself from May to July with bright yellow flowers.
- album.** 6 to 8 in. Dark green foliage tufts and flat heads of white flowers in Midsummer.
- anglicum.** A biennial seeding itself freely. Lovely, compact gray foliage, about 6 in. high and masses of pale rose pink flowers in Summer.
- dasyphyllum.** One of the very choicest of the family. Tiny, droplike gray green leaves strung on compact low stems. 50c. each, \$5.00 per 12.
- hispanicum.** Very attractive gray green, compact, low growing Sedum with tiny leaves set somewhat in the form of a star. Rare. 35c. each.
- kamtschaticum** (*Orange Stonecrop*). A comparatively large Sedum, 6 to 9 in. with dark green leaves which are coarsely toothed around the edges. Yellow flowers in loose panicles, blooms July and Aug.
- lydium.** Shapely clumps. Very dwarf. Foliage green, tipped red.
- lydium glaucum.** Minute, rounded clumps of light gray foliage. Especially attractive. Should not be crowded.
- reflexum.** 6 to 8 in. Bushy, upright, rich green foliage. Orange yellow blossoms.
- sarmentosum.** A rapidly spreading Sedum, throwing long, graceful sprays of yellowish green leaves. Yellow flowers.
- sexangulare.** Rock plant of dwarf growth. Foliage rich green.
- sieboldi.** Half erect sprays of gray, wedge-shaped foliage and flat clusters of pale rose flowers in Summer. 6 to 8 in.
- spectabile** (*Showy Sedum*). A taller growing Sedum 12 to 18 in. in height. Immense flat heads of pale pink flowers in late August and September.
- spectabile, Brilliant.** The same as above, but the flowers are dark old rose.
- spurius coccineum.** Prostrate spreading growth. Olive green leaves, tinged with red. Rose colored flowers. Summer.
- SEMPERVIVUM** (*Houseleek*) **arenarium** (*Sand Houseleek*). Tiny little clumps of bright green Hen-and-chickens.
- arachnoideum** (*Spiderweb Houseleek*). A tiny gray green form of the Hen-and-chickens. Excellent for edging paths or flower borders or for the rock garden. Has a webby substance on the leaves giving it its name. Occasionally throws up 3 to 4 in. flower stems bearing several light red flowers.
- calcareum.** Attractive velvety green.
- globiferum.** Bright green. Growth quite rounded. Medium sized.
- tectorum** (*Hen-and-chickens*). A quaint, old-fashioned plant sometimes used for bordering walks or growing in tubs. The leaves form dense rosettes and underneath these, smaller rosettes appear like mother hens with their broods of chickens. Always pleases children.
- SIDALCEA** (*Prairiemallow*) **malvaeflora.** Rosy lavender or white flowers, shaped like small Hollyhocks. 18 to 24 in. Blooms all the early part of the Summer.
- Rose Gem.** 2 ft. Flowers bright satiny rose.
- SILENE** (*Catchfly*) **schafta.** 4 to 8 in. Reliable rock plant. Deep rose pink flowers in loose clusters during the Summer and Fall.
- stellata** (*Starry Campion*). 2 ft. Sun. Prettily fringed white flowers in June.
- virginica** (*Fire Pinks*). Loose, sprawling foliage and star-shaped flowers of brilliant red. 1 to 2 ft. July.
- SPIRANTHES** (*Ladies-tresses*) **cernua.** An Autumn flowering Orchis, useful for planting in moist places in full sun. 8 to 12 in. Flowers creamy white and fragrant.
- STACHYS** (*Woundwort*) **lanata.** Thick, wooly, gray green foliage, supposedly with medicinal properties. Flowers blue in loosely arranged racemes. Height 1½ to 2 ft. June, July.
- STATICE armeria.** Low tufts of grassy foliage and long, straight stems bearing solitary flower heads of lilac pink in early Summer. 18 to 24 in.
- STOKESIA** (*Cornflower Aster*) **cyanea.** Very fine cut flower. Like annual China Asters. Color blue. 18 in. Blooms all Summer.
- Cyanea alba.** The white form.
- SWEET-MARY.** See **Chrysanthemum balsamita.**
- SHASTA DAISIES.** Large flowered, snow white, Daisy-like flowers, blooming continuously all Summer.
- SWEET-WILLIAM** (*Bunch Pinks*). Well known garden flower. Rich masses of color in June and July.
- Crimson.** Deep rich color.
- Newport Pink.** Watermelon pink.
- White.**
- Mixed Colors.** 15c. each, \$1.50 per 12.
- TIARELLA** (*Foamflower*) **cordifolia.** Lacy flower heads of soft, cream white in late May.
- THALICTRUM** (*Meadowrue*) **adiatifolium** (*Maidenhairleaved Rue*). Feathery yellow green flowers. 1 to 2 ft.
- dioicum** (*Early Meadowrue*). 2 ft. Rich woods. Misty purplish flowers in May. Attractive, finely cut foliage.
- diptercarpum** (*Yunnan Meadowrue*). Clouds of soft rose lilac flowers with citron yellow stamens. August-September. One of the most valuable perennials either for the garden or for cutting. 35c. each, \$3.50 per 12.
- glaucum** (*Dusty Meadowrue*). Rich gray green foliage and soft, fluffy, yellow flowers on 4 to 6 ft. stalks in late June and July. Attractive with Delphinium.
- minus** (*Dwarf Rue*). Only a foot high when in bloom in early Summer. Inconspicuous flowers but the foliage is fernlike and very lovely. Especially recommended for rock gardens.
- polygamum** (*Tall Meadowrue*). 4 to 6 ft. A late Summer native, at home near brooks and pools. Feathery flowers of pure white. Fine cut flower. Thrives in the garden border.
- THYMUS citriodorus** (*The Lemon-scented Thyme*). Yellowish leaves having a delightful fragrance.
- lanuginosus.** 2 to 4 in. Woolly, gray green leaves. Compact, prostrate growth.
- serpyllum album** (*White Thyme*). Minute, prostrate foliage and tiny white flowers in early Summer. Very fragrant. For stepping stones or rock garden.
- vulgaris.** An old-fashioned, fragrant herb used for carpeting barren banks or for rockeries. Completely covered by tiny spikes of rose red flowers in June and July.
- TRADESCANTIA** (*Spiderwort*) **rosea.** Leaves are light green and flowers an attractive shade of rose pink. Really a good addition to the hardy perennial plants. It blooms like the other Spiderworts on cloudy days and during the morning. 40c. each, \$1.00 per 3, \$3.00 per 12.
- virginiana.** Clumps of long, grassy foliage. Single, purple flowers with golden stamens. Old-fashioned flowers which are both unique and beautiful. June-July.

Except as noted, prices of above are 25c. each, 3 of one variety 60c., 6 or more of one variety at \$2.00 per 12, 25 or more of one variety at \$15.00 per 100

TRITOMA (*Red Hot Poker Plant*) **pfitzeri**. A gorgeous perennial not entirely hardy here, but reliable a little farther south. Long, grasslike foliage and spikes of orange scarlet flowers in late August, September and October. Spring planting preferred.

TRILLIUM (*Wakerobin*) **erectum**. Dark red. 60c. per 3, \$1.50 per 12.

grandiflorum. White flowers; unusually large. 50c. per 3, \$1.50 per 12, \$8.00 per 100.

recurvatum (*Prairie Trillium*). With brownish blossoms. Plant in shade.

stylosum (*Rose Trillium*). Beautiful rose pink variety from the Southern Mountains.

undulatum (*Painted Trillium*). White splashed with crimson. 60c. per 3, \$1.50 per 12.

The Trilliums are of easy culture if given moist shade and a rich soil. Do not plant under evergreens. Fall planting preferred.

THERMOPSIS caroliniana. A tall growing flower with Cloverlike leaves and handsome spikes of golden yellow, pea-shaped flowers. Greatly resembles Lupine, but the color is clear yellow. 40c. each, \$1.15 per 3, \$4.00 per 12.

TROLLIUS (*Globeflower*) **asiaticus** (*Orange Globe*) Large, orange flowers.

europaeus. Large, lemon yellow flowers like buttercups, 1 to 1½ in. across, on long, strong stems. Fine for cutting.

Either of above, 40c. each, \$4.00 per 12.

TUNICA saxifraga (*Rock Tunica*). A rock garden plant with a heavy growth of narrow, rich green leaves and clouds of tiny white flowers in June and July.

VALERIANA (*Garden Heliotrope*) **officinalis**. 3 to 5 ft. July. Finely cut foliage and long flower stems terminated by round heads of fragrant flowers. Cats are very fond of this plant.

VERBASCUM (*Hardy Mull-in*) **phoeniceum**. Slender spikes 12 to 18 in. tall with flowers in colors from white to purple; splendid rock plant. Biennial resowing itself.

olympicum (*Garden Mullein*). 3 to 5 ft. Tall spires of clear, lemon yellow flowers in June. A fine color effect. Biennial. 25c. each, 60c. per 3, \$2.00 per 12.

VINCA (*Myrtle-periwinkle*) **minor**. A ground cover used in heavy shade where grass will not grow. Bright blue flowers in June.

VERONICA (*Speedwell*) **incana**. 8 to 12 in. Close mats of silver gray foliage and very attractive spikes of Bellflower blue flowers in July. Unexcelled rock plant.

longifolia. 2 to 3 ft. Blue. Long spikes of dusky blue flowers in July and August.

longifolia subsessilis. A handsome Veronica, often called the best. Surely the most conspicuous. Rich blue flowers on heavy, stiffly held spikes. Very striking. 25c. each, \$2.50 per 12.

repens. Miniature plants with tiny, round leaves and delicate spikes of light blue blossoms in late May and early June. An ideal plant for crevices and niches in flagstone walks and terraces, as it grows no higher than grass and requires no more careful treatment.

rupestris, Prostrate. A truly prostrate Veronica. Forms a large, compact mat of dense dark green foliage and covers itself in May with the most beautiful Ageratum blue flower clusters. A dazzling mass of color, and blue is especially valuable in the Spring rock garden.

teucrium. 12 in. Invaluable rock garden or border plant completely hidden by masses of bright gentian blue flower spikes in late May and June.

teucrium, Heavenly Blue. Low growing, splendid for tumbling over rocks and covering itself in May with brilliant masses of clear blue flowers.

VIOLETS, GARDEN.

Confederate Violets. The old-fashioned, large-flowered white with tiny blue lines in the throat.

cucullata. A rapidly spreading garden Violet. Long-stemmed flowers of deep blue. Will thrive in a partially sunny place.

Double Russian. A hardy strain of very double, rich purple Violets. Extremely rare and hard to obtain. 30c. each, \$3.00 per 12.

VIOLA bosniaca (*Bosnian Viola*). A delicately beautiful Viola, well adapted to the rock garden. Will thrive in partial shade. Rounded violet shaped, small flowers of bright rose pink. Continually in bloom. Very choice. 25c. each, 60c. per 3, \$2.00 per 12.

cornuta (*Horned Violet*). 1 ft. Blooms all season. A beautiful species. Color and form like a large Violet. Clear lavender. Always in bloom. 25c. each, 60c. per 3, \$2.00 per 12.

Jersey Gem. Flowers dark violet blue, almost purple. Petals waved. In full bloom from April until November. The flowers are similar to those of a Violet, though much larger and on stems long enough for cutting. Lovely combined with Lily-of-the-valley, Trollius, or many others. We cannot recommend this too highly. 25c. each, 60c. per 3, \$2.00 per 12.

White Jersey Gem. Pure snowy white, otherwise like the above. A new introduction and rare. 25c. each, 60c. per 3, \$2.00 per 12.

Johnny Jump-ups, Ladies Delight. Upper petals, velvety purple, face of yellow with a purple band on the chin. Delightful old-fashioned Viola beloved of our childhood.

VIOLAS, BEDDING, or TUFTED PANSIES. The little Violas are so popular that they need no description. They are always in blossom and the colors are a great addition to the foreground of the border. They are especially adapted for the rock garden and delightful results may be had by planting quantities of these where they will carpet the ground near other perennials of harmonizing colors.

Admiration. Clear reddish purple.

Black Prince. Larger than Bowles Black. Flowers are rich velvety purple black.

Blue Perfection. Bright violet blue flowers, completely cover the plants throughout the entire season. Especially lovely.

Bowles Black. Midget faces of real black with tiny golden yellow eye.

lutea. Dainty, pure golden yellow.

Sutton's Apricot. Charming little fellow with real apricot complexion and sometimes wearing a wine-colored bonnet. 35c. each, \$1.00 per 3, \$3.00 per 12.

White Perfection. Snow white. Drifts of these white Violas are beautiful at the feet of Iris.

Prices, any of the above Violas, except as noted, 15c. each, \$1.50 per 12, \$10.00 per 100

VIOLAS, NATIVE.

blanda. Early sweet white Violet; for a moist place.

canadensis. A Violet rare enough to be desirable and beautiful enough to warrant its use in rock gardens and shady corners. White face with dainty reflex of soft lavender blue. Plant or cut them with Maidenhair ferns as they are natural allies in the woods.

pubescens (*Downy Yellow Violet*). Another Violet worthy of a place in the rock garden. Leafy stems and flowers of soft yellow. Does well in a dry place.

pedata (*Birdsfoot Violet*). Rich purple blue. Revels in acid soil and dry sun.

pedata bicolor. A wonderfully pretty Violet. Upper petals velvety purple; lower ones bright blue. 30c. each, 75c. per 3, \$2.50 per 12.

YUCCA (*Adams Needle*) **filamentosa**. 5 ft. June-July. Immense spikes of creamy white flowers. Very fragrant. Heavy clumps. Evergreen. 50c. each, \$5.00 per 12.

filamentosa variegata (*Variegated Yucca*). Leaves have broad margins of a beautiful creamy yellow. 75c. each.

Except as noted, prices of above are 25c. each, 3 of one variety 60c., 6 or more of one variety at \$2.00 per 12, 25 or more of one variety at \$15.00 per 100

FRUIT TREES

NOW that everyone is trying to figure how to cut the cost of living in every way possible, we expect an increased demand for fruit trees, particularly the home orchard varieties. Prices on all fruit trees are very reasonable, probably as low as they may ever be.

In New England we notice that our early Apple growers are making well on account of the ever increasing tourist trade which comes to us each year.

APPLE TREES

Note—5 or more of 1 variety such as 5 Baldwin or 5 Delicious, at 10 rates, 50 or more of 1 variety at 100 rates

	Each	10	100
2 yr., 5 to 7 ft., 1 1/2 in. diam...	\$0.75	\$5.00	\$30.00
2 yr., 4 to 6 ft., 5/8 in. diam.60	4.00	25.00
2 yr., 3 to 5 ft., 1 1/2 in. diam.50	3.00	20.00

Baldwin. The fine old standby. A good keeper and shipper. Color red. November to April. Not hardy in northern New England.

Cortland. This variety, a cross between McIntosh and Ben Davis, is being more widely planted each year. While it does not seem to be as good quality as McIntosh, the fact that it is considerably later and hangs well on the trees indicates that it may be an excellent variety to supplement but not supplant, the McIntosh.

Delicious. One of the most widely planted of all varieties and succeeding well in all regions where Apples can be grown. Of highest dessert quality, being very nearly sweet. A good yielder and keeper. December to April.

Duchess. A wonderfully good culinary Apple for September use. The trees never get very large and they bear very young. Fruit is large and striped and not seriously bothered by insect pests.

Early McIntosh. One of the McIntosh seedlings originated by the New York Experiment Station. Of excellent quality and ripening in late August. A valuable addition to our list of early Apples.

Fameuse. This variety was introduced into America about 300 years ago and to this date is one of the most desirable of all varieties in northern sections where it grows to perfection. Fruit striped or blotched red and of the very highest quality. Very hardy. October to January.

Gravenstein. One of our highest quality Apples. Fruit large, striped. Not entirely hardy. October to December.

Red Gravenstein. This new variety is a bud sport of the old Gravenstein and practically identical with it except in color which is solid red.

King. A large, striped Apple of very good quality and in good demand on the market. The tree is an annual bearer and of about the same hardness as Baldwin.

Lobo. Apparently a cross between McIntosh and Wolf River, having almost the size of the latter, but of better quality.

McIntosh. The New England McIntosh sells for much the highest price of all Apples on the New York markets and as this variety can be grown to perfection in only a limited range, it is doubtful if it can ever be overplanted. In planting a McIntosh orchard, be sure to interplant a few of some other good pollenizing varieties: Red Astrachan, Northern Spy, Wealthy and Wagener are recommended.

Northern Spy. One of the best varieties for New England and New York. A heavy yielder. Quality excellent. Striped red. November to March.

Pound Sweet. This is one of the fine, old-fashioned Apples which used to be found in every orchard. One of the sweetest of all Apples, very large and of golden yellow color. The tree grows to medium size. Is not hardy far north. November to February.

Red Astrachan. This very early, well known Apple has been in great demand during the last few years and will continue so, owing to the heavy influx of Summer tourists to our Northern states. Very hardy. July and August.

Red Spy. This variety is a bud sport of Northern Spy and is identical with it except for it being a solid red color. One of the most promising new varieties of Apples.

R. I. Greening. One of the very best commercial varieties, as it bears young and heavily. It is an annual bearer and in the long run cannot be surpassed for profit, with the possible exceptions of McIntosh and Northern Spy. November to March.

Roxbury Russet. The old-fashioned late-keeping Russet. Is in much greater demand than it was a few years ago. A variety which will keep into the following Summer in the ordinary cellar storage. January to June.

Stayman Winesap. A fine quality red and yellow Apple. Late keeper. Desirable for central states.

Sweet Bough. Large yellow, sweet Apple, ripening in August. About the most popular tree in the orchard with the children.

Sweet Greening. A splendid old-fashioned sweet Apple. Looks like a R. I. Greening and of delicious quality. Ripens in October.

Twenty Ounce. Big, striped Apple, known as Blessing or Red Streak. A heavy annual bearer of exceptionally good "pie timber." November to December.

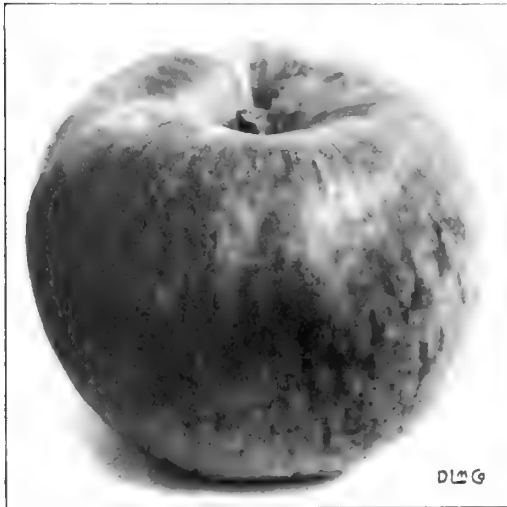
Tolman Sweet. A rather small, very hardy, leading commercial variety of sweet Apple. Very valuable for its keeping and shipping qualities. December to March.

Wagener. Flattish, striped Apple of very good quality. Is planted largely as a filler, for which it is ideally suited. Tree bears young and abundantly and is rather small and short-lived, rarely being profitable after reaching the age of 25 years. Is perhaps the best of all varieties for pollenizing McIntosh. December to March.

Wealthy. A most profitable Fall Apple of high quality. Bears young and heavily. Medium size. Striped. October to November.

Yellow Bellflower. Fine for the home orchard, but not of much commercial value. Tree is hardy in our vicinity, but not in the more Northern sections of New England. Fruit is golden yellow, conical and of a peculiarly delightful flavor. December to February.

Yellow Transparent. The earliest good Apple. Good size, nice quality. Tree very hardy and bears very young, often a year after planting. Yellow Transparent should be one of the most profitable and may well be planted as a filler tree as it attains only a small size. July.



Northern Spy Apple

DLG

APPLE TREES—Continued

Transcendent Crab. This beautiful red and yellow Crab Apple comes into bearing very young. Bears profusely. September.

Hyslop Crab. This is the old-fashioned deep red Crab Apple with beautiful gray bloom. One of the most popular of all. September and October.

DWARF APPLE TREES

The demand for dwarf Apple trees has increased tremendously during the past few years. The trees come into bearing much earlier than standard trees, often the year after planting. The fruit from dwarf trees is usually large and of fine quality. This class of trees may be planted as orchard fillers or where space must be conserved. Plant about 20 feet apart.

We offer the following varieties at these prices:

2 yr. No. 1 trees, 85c. each, \$8.00 per 10

Baldwin, Cortland, Delicious, Duchess, McIntosh, Northern Spy, Pound Sweet, Red Astrachan, R. I. Greening, Stayman Winesap, Sweet Bough, King, Wealthy, and Yellow Transparent.

PLUM TREES

There is just one fault with Plums. They are too easy to grow. And for this reason every farmer or land owner who does not have Plums from July to late September has only himself to blame.

2 yr., 5 to 7 ft., each 75c., \$5.00 per 10, \$40.00 per 100

2 yr., 4 to 6 ft., 65c. each, \$4.00 per 10, \$30.00 per 100

Abundance. A large, light pink Japanese Plum of exceptionally fine quality, being very juicy. One of the earliest of the Plums and is always in good demand. Especially good for home consumption. Early August.

Bradshaw. Very large, reddish purple Plum of exceptional quality and appearance. If placed on the market, Bradshaw would doubtless outsell any other Plum, because of its handsome appearance. This variety is for dessert rather than for canning purposes. Ripens the last of August.

Burbank. Japanese Plum, most widely planted. Produces good crop. Fruit is large and deep red, of good quality. One of the finest for canning. Burbank is inclined to overbear and in some years should be thinned for best results. All Plums do best if two or three varieties are planted. By all means do not plant Burbank alone or it will not bear. September.

Climax. An immense, dark pink Plum, of exceptionally fine quality and with flesh so firm as to make it about the best shipping, high quality variety. Ripens in late August.

Green Gage. Has perhaps the highest quality of any Plum grown. Bears young and heavily, and is about the highest priced Plum on the market. As its name indicates, the color is a greenish yellow. Ripens in September.

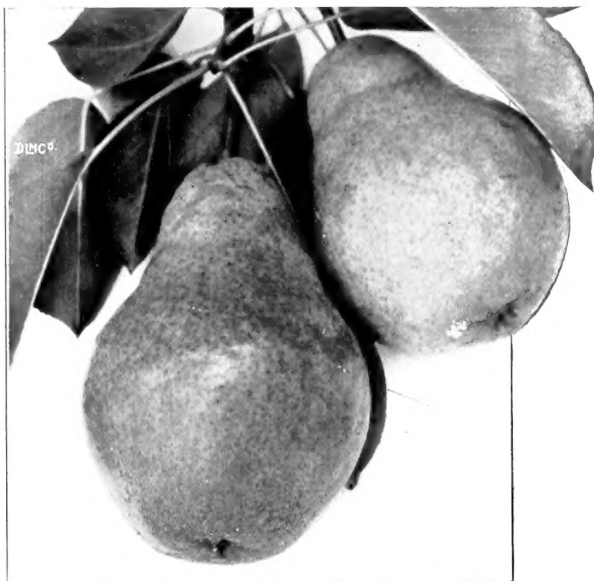
Lombard. An exceptionally heavy yielder. Good size, dark, reddish purple fruit. Equally good for dessert or canning. With the exception of Burbank, Lombard will probably yield more per acre than any other standard variety.

Red June. Medium size dark red fruit. It is the earliest good Plum, and while not of such high quality as some of the other varieties, in some cases it is the most profitable, on account of its extreme earliness. July.

Shropshire Damson. This is the old-fashioned deep blue preserving Plum which has grown in cultivation for over 2000 years. Not a dessert Plum, as the fruit is acid, but it can be grown in regions where the temperature reaches 40 below zero.

Shiro. Clear golden yellow color. Fruit of exceptionally good quality. August.

York State Prune. The largest and best of the Prunes. Exceptionally sweet when fully ripe, and as the tree reaches maturity, bears very heavily. Color, deep blue. Late September.



Bartlett Pears

PEAR TREES

Note—5 or more of 1 variety at 10 rate, 50 or more at 100 rate

Pears can be easily grown in almost any location where the soil is not too light and where the temperature is not likely to drop to more than 30 degrees below zero. It should be borne in mind that with Pears it is usually necessary to plant two or more varieties, as most of them are not self-pollenizing. They respond readily to good cultivation and fertilization, and if well cared for, will come into bearing fairly young, usually within four to six years. The dwarf trees will prove most acceptable, as they generally start yielding within a year or two after planting. We believe it would be well if every home orchard contained Pears which ripened over a season from August to December. Too many restrict their selection of varieties to the August and September sorts, perhaps not realizing that some of the very finest of them all are at their best in November.

	Each	10	100
Standard, 2 yr., 11 16 in.	\$0.75	\$6.00	\$50.00
Standard, 2 yr., 5 8 in.65	5.00	40.00
Dwarf Pears, 2 yr. No. 1.75	7.00

Dwarf Pears obtainable in varieties marked (*).

***Anjou.** This is the very large, dark green Pear which is not at its best till late December, and in good storage, may be kept longer than that. The quality is very good for a variety which can be kept so long, and is perhaps the latest of the really good Pears now on the market.

***Bartlett.** This is the most popular Pear grown, especially for market. The trees bear profitably quite young. The fruit usually brings a high price. When fully ripe, Bartlett is yellow, often with red cheek. Never plant Bartlett alone or it will not bear, as it is self-sterile.

Bosc. The very high quality, long-necked russet Pear seen on the market so much from Thanksgiving to Christmas. The fruit always sells for a very high price. The trees of this variety should be well cared for, as they do not grow as well as the other varieties. Any especial attention given them is paid for by the exceptionally fine quality fruit. November to December.

***Duchess.** A very large yellow Pear with red cheek, which is exceptionally desirable on dwarf stock. Quality is very good. Season, October to November.

PEARS—Continued

- ***Clapp Favorite.** Immense yellow fruit with red cheeks. The quality is very fine. Equally good for canning and dessert. Pick just before ripe and ripen in the dark. Ripens last of August.
 - ***Seckel.** The standard of quality among Pears, bringing very high prices on the market. Seckel runs to quality rather than to size. Season October.
 - Sheldon.** A large, round russet Pear which is very sweet and juicy. On many an old New England farm, the Sheldon Pear tree was likely to be the gathering place for youngsters. Late October.
 - ***Worden-Seckel.** This is a variety which approaches the Seckel in quality. Is considerably larger in size.
- Dwarf Pears** can be furnished in all varieties except **Bosc, Sheldon, and Vermont Beauty.**

NUT TREES

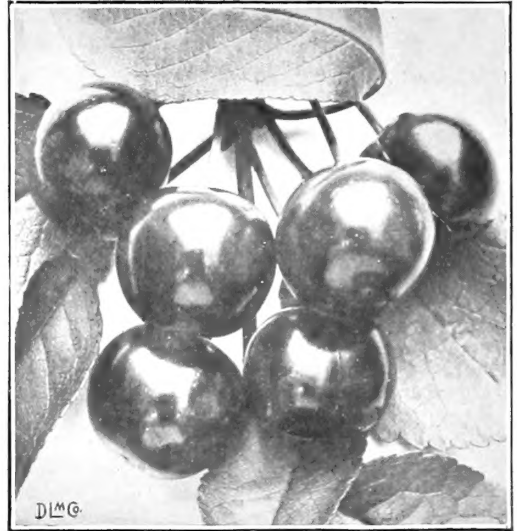
- Note—5 or more of 1 variety at the 10 rate**
- Butternut.** A well known Northern Nut tree from which so many thousands of barrels of rich, oily nuts are gathered each year. We offer a nice lot of 3 to 4 ft. trees, once transplanted at 50c. each, \$4.00 per 10; 4 to 5 ft. at 60c. each, \$5.00 per 10; 5 to 6 ft. at 75c. each, \$7.00 per 10.
 - Black Walnut.** Valuable timber tree of the central states. It is perfectly hardy in Vermont. 4 to 5 ft. at 60c. each, \$5.00 per 10; 5 to 6 ft. 75c. each, \$7.00 per 10.

QUINCES

- Note—5 or more of 1 variety at the 10 rate**
2 yr., 4 to 6 ft., \$1.00 each, \$8.50 per 10
- Quinces, which used to be found in every garden, are now one of the most neglected of the tree fruits. The fact that they make the most delectable jelly of all fruits and are almost equally as good for preserves, in combination with sweet Apples or Pears, should restore them to every home orchard.
- Orange.** Large, round Quince of beautiful, golden yellow color. It is earlier than Champion, and ripens well as far north as Central New England. Middle of October.
 - Champion.** A large and handsome Quince which often bears a year after planting. Excellent quality. Ripens the last of October.

CHERRY TREES

- Note—5 or more of 1 variety at 10 rate, 50 or more at 100 rate**
- | | | | |
|-----------------------------------|-------------|-----------|------------|
| | Each | 10 | 100 |
| 2 yr., 11 16 in., 4 to 6 ft. | \$0.75 | \$6.00 | \$50.00 |
| 2 yr., 5 8 in., 4 to 5 ft. | .65 | 5.00 | 40.00 |
- Note—Sweet Cherry trees are mostly self-sterile and two or more varieties should be planted to secure good results.*
- Black Tartarian.** A large, nearly black sweet Cherry. Quality good. Makes a large tree.
 - Bing.** A dark red, sweet Cherry of very large size. One of the most important commercial varieties. Succeeds well in eastern United States. Quality fine.
 - Early Richmond.** An early red sour variety, bearing heavy crops annually. Ripens in June.
 - English Morello.** Very late, sour Cherry, ripening about the first of August. Fruit is deep red and quite acid. May be grown farther north than other cultivated Cherries. Tree is rather dwarf, rarely attaining a height of more than 8 ft.
 - Gov. Wood.** About the most reliable sweet Cherry. Light yellow color with red cheek and of excellent quality. One of the earliest of the Cherries, ripening in Strawberry time.
 - Montmorency.** The leading commercial variety of sour Cherry, being of large size and of brilliant red color. Bears very heavy crops which ripen middle of July. The trees seem to be more resistant to disease than almost any other kind of Cherry.
 - May Duke.** One of the very earliest Cherries. Large red variety, intermediate between the sweet and the sour varieties. Excellent quality.
 - Napoleon.** This is called the "Royal Ann" in the Western states. It is one of the very largest of Cherries and very sweet. Color is yellow with red cheek.



Black Tartarian Cherries

PEACH TREES

- Note—5 or more of 1 variety at 10 rate, 50 or more at 100 rate**
- | | | | |
|------------------------|-------------|-----------|------------|
| | Each | 10 | 100 |
| 1 yr., 4 to 6 ft. | \$0.60 | \$5.00 | \$30.00 |
| 1 yr., 3 to 5 ft. | .50 | 4.00 | 25.00 |
- Belle of Georgia.** A splendid white Peach, ripening about the middle of September and is hardy as far north as Peaches can be grown successfully. Fruit is very large and of good quality. Practically freestone. One of the best shipping varieties and worthy of commercial planting.
 - Carman.** The most popular white Peach in the North. Large and of good quality. A fairly good keeper, ripening in late August. Freestone.
 - Champion.** A very large, white Peach of delicious flavor. Is not a good shipper, but should be in every home orchard. Ripens August 15-25. Freestone.
 - Early Crawford.** This is possibly the finest quality Peach grown and has been the standard of quality for more than 50 years. Is not a heavy bearer and requires liberal fertilization. Ripens middle of September. Freestone. Very large size when well grown. Yellow with brilliant red cheek.
 - Elberta.** Easily the leading yellow commercial Peach and one of the hardiest. Bears heavily and is one of the best shippers as well as an exceptionally good canning variety. Quality very good, but not equal to Early Crawford. Freestone.
 - Early Elberta.** Very similar to Elberta but a couple of weeks earlier.
 - J. H. Hale.** About the largest of the Peaches. Ripens a few days earlier than Elberta. A yellow variety. Freestone. J. H. Hale is self-sterile and must have another variety planted with it.
 - Rochester.** A fine, large yellow Peach ripening two weeks ahead of Early Crawford.

APRICOTS

- Note—5 or more of 1 variety at the 10 rate**
- | | | | |
|--|---------------|-------------|-----------------|
| Early Golden | Superb | Budd | Moorpark |
| 4 to 5 ft. trees, 75c. each, \$6.00 per 10 | | | |

Too few people know that Apricots are harder than Peaches and may be grown north of the Peach belt. Give care similar to Peaches and plant more than one variety, as Apricots are not self-pollenizing. We offer leading varieties which ripen with us in late July.

SMALL FRUITS

RASPBERRY PLANTS

Raspberries are probably the most profitable of all the small fruits. They are pretty sure to mature a good crop, and the market is never fully supplied. Plant on good, well-drained soil, on a slope, if possible, and cultivate freely. Fertilize with chemicals and wood ashes rather than manure. Of the red varieties about 2,400 to 3,000 plants per acre are required, planted $2\frac{1}{2}$ to 3 feet apart in rows 6 feet apart. The black and purple varieties, planted 3 feet apart in rows 7 feet apart, take about 2,000 plants per acre. Our Raspberry plants this year will be the finest we have ever had to sell. We have spent several years in roguing out every diseased plant we could find in our nurseries.

Cuthbert. The leading variety. Canes tall, vigorous and succeeds well on light soil where other varieties might fail. Berries deep red, conical and finest quality. An abundant cropper. 50c. per 12, \$1.00 per 25, \$3.00 per 100, \$15.00 per 1000.

Golden Queen. A high quality Raspberry, identical with Cuthbert, except in color, which is rich golden yellow. Plants, \$1.00 per 12, \$1.75 per 25, \$5.00 per 100.

Herbert. Fruit is very large and of excellent quality. In addition to these desirable qualities, it is also one of the very hardiest. Herbert does not succeed well if planted on low land near rivers or lakes. 75c. per 12, \$1.50 per 25, \$5.00 per 100.

King. An early Raspberry that will succeed well on light soils. King seems to meet these requirements. Also very hardy. Fruit good size and quality. Price same as Herbert.

Latham. This remarkable hardy Raspberry from Minnesota certainly made good in the fields of Connecticut, where we supplied the plants. They yielded over 5,000 quarts to the acre, according to the records of the Connecticut Extension Department. The plants are of vigorous growth and perfectly hardy. The berries are large, light in color, good flavor and late. Like King, Latham succeeds well on soils too light for other varieties. While not immune to

mosaic, Latham is so resistant, its yielding capacity is scarcely affected by the disease. We recommend Latham for planting in those sections where other varieties have been destroyed by mosaic. \$1.00 per 25, \$3.50 per 100, \$20.00 per 1000.

Plum Farmer. The most popular black Raspberry. Large, early and fine quality. 75c. per 12, \$1.00 per 100, \$30.00 per 1000.

St. Regis. The much advertised everbearer. A commercial variety south of New York, but suitable for home use only in New England. Of good quality but not a heavy cropper. Very early and usually bears a small Fall crop. Berries rather small. Another variety which is practically immune to mosaic. \$1.00 per 25, \$3.50 per 100, \$20.00 per 1000.

Viking. We think it will be one of the leading varieties in a short time. The fruit is of excellent quality, ripening a week to ten days ahead of Latham with us. The canes are erect and almost thornless. The yield is apparently about the same as Latham. We have also had good reports on the Viking from Connecticut and New Hampshire. \$1.00 per 12, \$1.50 per 25, \$4.00 per 100, \$25.00 per 1000.

BLACKBERRY PLANTS

Culture same as for Raspberries. Avoid frosty locations.

Blowers. A giant Blackberry which yields enormous crops of immense berries. Is not entirely hardy in northern New England and not recommended for planting where Peaches cannot be grown. One of our customers in Connecticut reports that his Blowers attained a height of 18 ft. and were loaded with immense berries which found a ready market at 40c. per qt. \$1.00 per 12, \$1.50 per 25, \$5.00 per 100, \$35.00 per 1000.

Eldorado. This variety seems to be the best quality of any cultivated Blackberry and is also hardy. The canes are erect, but not as vigorous growing as Blowers and other kinds. \$1.00 per 12, \$1.75 per 25, \$6.00 per 100.

Snyder. The latest variety to plant in the cold sections, apparently standing 30 degrees below zero without injury. This variety is a good grower, but appreciates good care. If allowed to ripen on the bushes, the berries are sweet and good, but should not be picked until fully ripe. The plant yields immense crops and if you are confined to one variety for commercial planting in northern New England, Snyder is recommended. 75c. per 12, \$1.25 per 25, \$4.00 per 100, \$30.00 per 1000.

CURRENTS and GOOSEBERRIES

Plant Currants and Gooseberries 4 by 7 feet or 5 by 5 feet, and if ground is very rich, they may be set closer. Cultivate thoroughly during Spring and Summer and prune out wood more than two or three years old. Fertilize with manure and acid phosphate.

Notice—Federal quarantines have been modified so that Currants and Gooseberries may be shipped to most Eastern States. A few states, however, have certain areas wherein their planting is prohibited.

CURRENTS

Perfection. A very popular large red Currant. 2 yr. plants, 40c. each, \$2.50 per 10, \$20.00 per 100.

Cherry. Most widely planted Currant. 25c. each, \$1.75 per 10, \$15.00 per 100.

White Grape. Best white variety. Popular for table use. 40c. each, \$2.50 per 10, \$20.00 per 100.

DEWBERRIES

Earlier than Blackberries and the fruit is fully as large. The young canes should be allowed to lie on the ground during the Winter and trained to stakes the following Spring. The leading variety of Dewberries is:

Mayes. A standard variety producing heavy crops of large, fine berries in late July. 75c. per 12, \$1.25 per 25, \$4.00 per 100, \$25.00 per 1000.



Blowers Blackberry

GOOSEBERRY PLANTS

- Downing.** Most popular Gooseberry. Color green, medium size, quality best. 2 yr. plants, 25c. each, \$2.00 per 10, \$18.00 per 100.
- Red Jacket.** Color pale red. Larger than Downing. 40c. each, \$3.50 per 10, \$25.00 per 100.
- Oregon Champion.** Yellowish green, immensely productive. Sweet. 25c. each, \$2.00 per 10, \$18.00 per 100.
- Poorman.** This is a very large red American Gooseberry of excellent quality and considered by many to be the best Gooseberry grown. 35c. each, \$3.50 per 10.

GRAPES

Plant on well drained soil and fertilize well with manure and acid phosphate. Write the U. S. Dept. of Agriculture at Washington for bulletins on Grape culture.

- Brighton.** Very large, dark red variety of fine quality. Midseason. 2 yr. vines, 30c. each, \$2.50 per 10, \$18.00 per 100.
- Caco.** A cross between Concord and Catawba and in great demand because of quality. Light red. 2 yr. vines, 75c. each, \$6.00 per 10.
- Concord.** The standard blue Grape. 2 yr. vines, 25c. each, \$1.75 per 10, \$10.00 per 100.
- Campbell Early.** A giant black Grape of finest quality. Bunches sometimes weigh 2 lbs. 2 yr. vines, 35c. each, \$3.00 per 10, \$20.00 per 100.
- Delaware.** Best quality red Grape. Small but delicious. Early. 30c. each, \$2.50 per 10, \$18.00 per 100.
- Diamond (Moore's Diamond).** A large white Grape of delicious quality. Bunches are often shouldered. 25c. each, \$2.25 per 10, \$15.00 per 100.
- Lucile.** A fine early red Grape of good quality. Bears young and heavily. Earlier and twice as large as Delaware. 25c. each, \$2.00 per 10, \$15.00 per 100.
- Moore Early.** One of the best Grapes for the North. Nearly a month earlier than Concord. Color blue. 30c. each, \$2.50 per 10, \$18.00 per 100.
- Niagara.** The most popular white Grape. 25c. each, \$2.00 per 10, \$15.00 per 100.
- Portland.** A very early white Grape of highest quality. Rapidly coming to lead all early Grapes. 2 yr. vines, 75c. each, \$6.00 per 10.
- Warden.** Similar to Concord but a little earlier. 25c. each, \$2.00 per 10, \$12.50 per 100.
- Wyoming.** Very hardy red Grape. Much earlier than Delaware. Try this in the North where other Grapes fail. 25c. each, \$2.00 per 10, \$15.00 per 100.

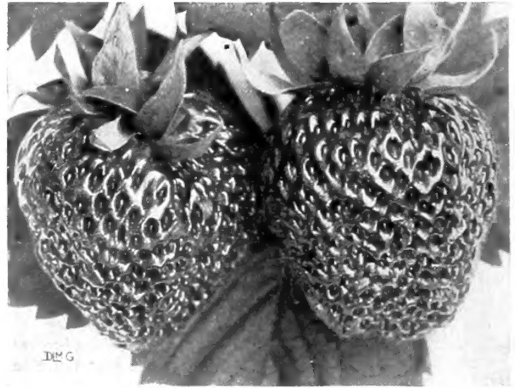
RHUBARB

Rhubarb will grow in almost any soil, but responds readily to heavy fertilization.

- Early Scarlet, or Strawberry Rhubarb.** Scarlet stalks and fine quality. 15c. each, \$1.00 per 10, \$8.00 per 100.



Concord Grape



Mastodon Strawberry

STRAWBERRY PLANTS

For cultural directions of Strawberries we refer you to Farmers Bulletins Nos. 901, 979, and 1028, of the United States Department of Agriculture.

Price of Strawberry plants, except as noted, 50c. per 25, \$1.25 per 100, \$10.00 per 1000

- Crescent.** We have a few thousand plants of what we believe to be the old time Crescent Strawberry. Fruit in midseason, dark red, good sized, intensely aromatic and of high quality. Although originating nearly 70 years ago, it is one of the finest Strawberries grown. 75c. per 25, \$2.00 per 100.
- Howard 17.** The leading commercial variety of New England at the present time. Fruit light red, large and good quality. Early. Ideal for sandy soils and river bottoms but inferior to Sample on clay land. Very resistant to drought.
- Mastodon.** The best everbearing variety of Strawberry that is now commercially available. Larger than Superb and a better plant maker. Quality excellent. Bears on both mother plant and runner. We are obliged to discard both Progressive and Superb in favor of Mastodon. 25 plants \$1.00, \$3.00 per 100.
- Sample.** The great market berry of New England that easily held first place among commercial varieties until the introduction of Howard 17. Our experience has been that Sample does best on the hills and Howard 17 excels along the river valleys. Sample is imperfect flowering and should have one of the perfect flowering varieties planted with it for pollenizing. The berries are very large and uniform, holding up well till the end of the season. Immense cropper. Midseason.
- Senator Dunlap.** An all-round variety. Dark red, pointed berry of excellent quality. Grows almost anywhere. Early to Midseason.
- Note*—We do not sell, or advise planting Strawberry runner plants in the late Summer and Fall.

POT-GROWN STRAWBERRY PLANTS

Many people think that best results are obtained by planting pot-grown Strawberry plants in August and September, as these plants will bear a fairly good crop the following season. We will have available for delivery August and September, 1933, pot-grown plants of leading varieties. Write us for varieties and prices.

ASPARAGUS

No part of the garden will yield more profit with less trouble than the Asparagus bed and as a commercial crop it is near the top. For planting instructions, write your State College or the U. S. Dept. of Agriculture at Washington.

- Martha Washington.** The famous giant rustproof variety, originated by the Dept. of Agriculture. Price of 1 yr. plants, 50c. per 25, \$1.25 per 100, \$8.00 per 1000; 2 yr. plants, 75c. per 25, \$1.50 per 100, \$10.00 per 1000.