



The

T
RINNIAN

1950



Digitized by the Internet Archive
in 2018 with funding from
North Carolina Digital Heritage Center

<https://archive.org/details/trinhian195000trin>

The Trinhian

1950



Published by the Senior Class of 1950
TRINITY HIGH SCHOOL,

The Trin



TRINITY, NORTH CAROLINA

JEAN HILL

ANNE NEWTON

Co-Editors-in-Chief

FORREST MENDENHALL, *Business Manager*

Whian



Asheboro Public Library
Asheboro, North Carolina

FOREWORD

In the 1950 TRINHIAN we have retraced our steps through the past year in order to present a comprehensive view and a composite picture of the succession of events, incidents, and details which have made it an unforgettably happy one. We have endeavored to arrange, within these covers, an outline for reminiscing.

The production of this annual has demanded of us hard work and concentrated effort, as it does for the production of any yearbook. It is only through the energy of the boys and girls in the Senior Class and their sponsor that this memorandum has been compiled.

May this, the mid-century edition of the TRINHIAN be well received, and may it, in the future, become an invaluable souvenir.

ANNE AND JEAN

DEDICATION

In appreciation for her years of service to our school, and for her keen interest in each student whom she has taught, the class of 1950 dedicates this edition of the *Trinhian* to MISS VIRGINIA REDDING.



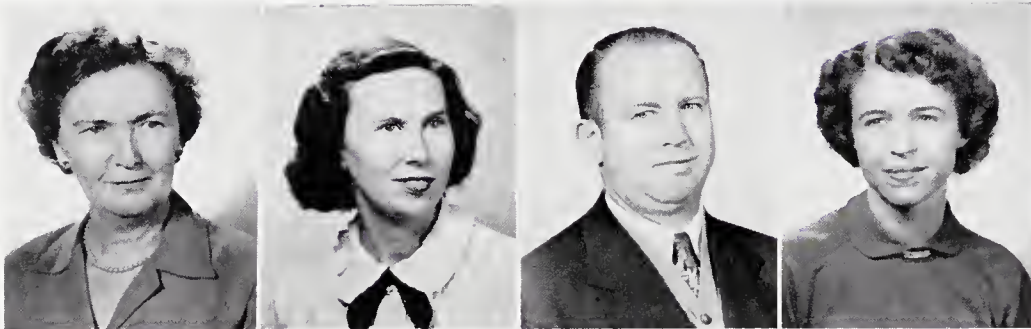
The FACULTY



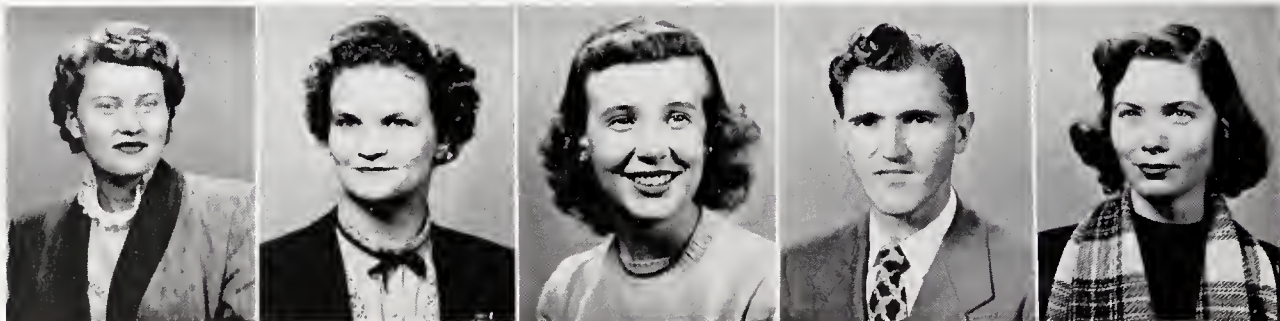
MR. MILLARD COBLE, *Coach*; MISS LAURA E. DAVIS, *Science*;
MR. J. W. DAVIS, *Agriculture*.



MR. L. H. KOON
Principal



MRS. HARVEY FARLOW, *Cafeteria Manager*; MRS. JIMMIE KELLY, *Spanish and English*; MR. J. W. HINES,
English; MISS MARY ELIZABETH MAY, *Mathematics*.



MISS VALERIA MENDENHALL, *Home Economics*; MRS. GURNEY PEACE, *English and Dramatics*; MRS. HARRY ROTHROCK, *Commercial*; MR.
SIDNEY UNDERWOOD, *History*; MRS. EVELYN M. WARD, *History, English*.

Trínhian Staff

Advertising Managers

CHARLES PEACE

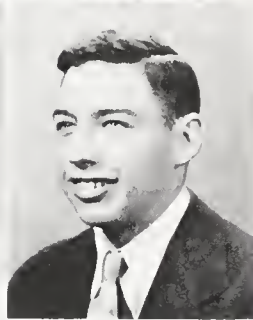
ROGER DAVIS



Subscription Managers

BARBARA WALL

PAUL ALLEN ALBERTSON



WANDA WALKER

Art Editor

NORMA SPENCER

Class Editor



PEARL CASHATT

MATTIE LEE HICKS

High School Picture Manager

Grade Picture Manager

Co-Editors-in-Chief

ANNE NEWTON

JEAN HILL

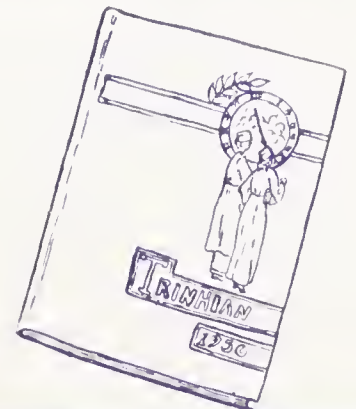


FORREST MENDENHALL

Business Manager

MRS. GURNEY PEACE

Sponsor



Trinhian Staff (con't.)

BETTY JEAN FLYNT
Activity Editor

PATSY LEACH
Alumni & Friends

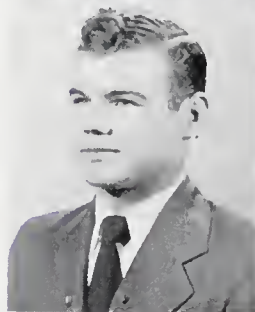
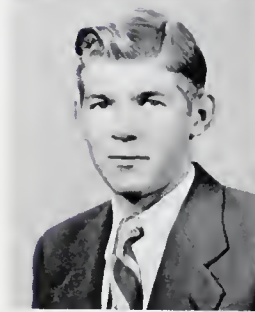
WALTER JONES
Alumni & Friends

J. D. HILL
Alumni & Friends

Sports Editors
BENNIE ROBBINS
JANE WHITE

MARTHA McDOWELL
Class Historian

JOAN HUGHES
Snap Shot Editor



MARCELENE CROTTS

DORIS ELLIOTT

JACK BOLES

BOBBIE SNYDER

BARBARA WADE

Baby Picture Manager

Superlative Picture Manager

Superlative Picture Assistant

Typist

Typist



CLASS OFFICERS

CHARLES PEACE, *President*; ROGER DAVIS, *Vice President*,
PEARL CASHATT, *Secretary*; BETTY JEAN FLYNT, *Treasurer*; ANNE
NEWTON, *Reporter*; BARBARA WALL, *Devotional Chairman*; PATSY
LEACH, *Room Manager*; BENNIE ROBBINS, *Reporter*.



MASCOTS

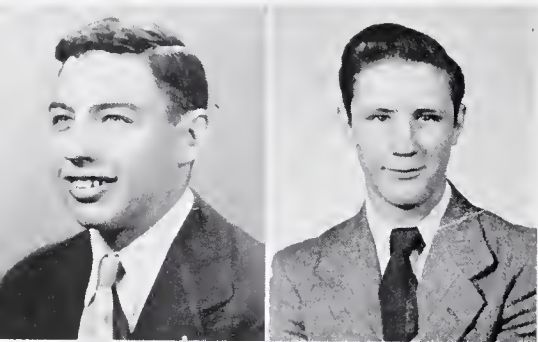
SANDRA ROYALS
RODNEY FARLOW

Class Motto
"We accept the challenge"

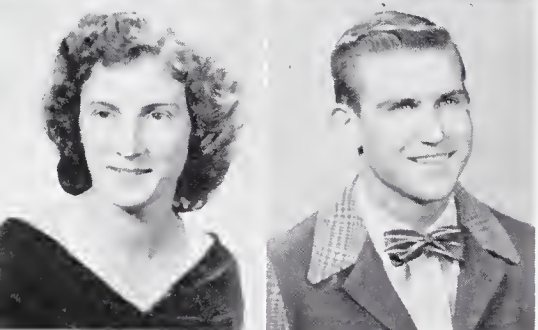
Class Colors
Orchid and White

Class Flower
Sweet Pea

SENIOR CLASS



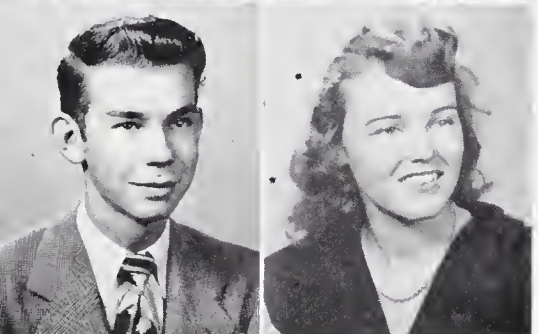
PAUL ALBERTSON
JACK BOLES



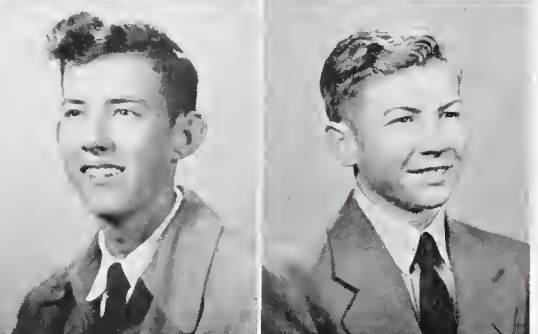
PEARL CASHATT
BOBBY CLODFELTER



J. D. COLTRANE
MARCELENE HURLEY



NELSON CROTTS
VERMELL CROTTS HURLEY

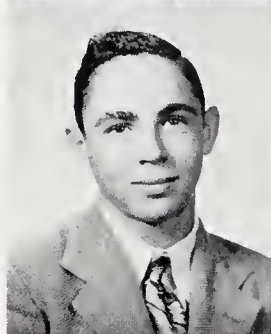
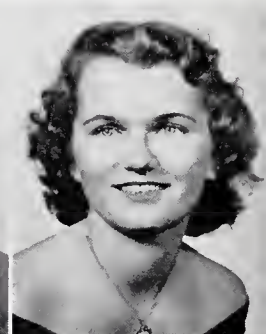
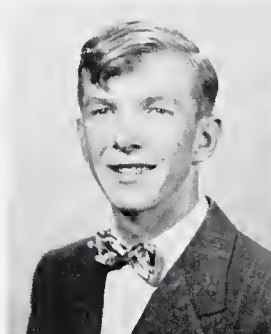


ROGER DAVIS
MACK EDWARDS

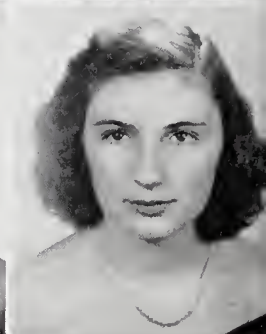
Seniors

ROBERT EDWARDS

DORIS ELLIOTT



J. D. HILL



JEAN HILL

PAUL ALBERTSON: Things happen fast and funny when Paul puts in an appearance. Class reporter 3; F. H. A. Club 1, 2; 4-H Club 1, 2; 3; Glee Club 2, 3; Beta Club 3, 4; Football 3; Athletic Association 1; Paper Staff 4; Junior Play 3; Spanish Play 3. **JACK BOLES:** Jack has a disposition of good nature, and a personality of friendliness, valuable traits of a bus driver. F. F. A. Club 1, 2; Bus Driver 4; Athletic Association 1; Boys Home Economics Club 3; Aeronautics Club 3; Annual Staff 4; Football 3, 4. **PEARL CASHATT:** Everything about Pearl demands sincerity, respect and love from her wide circle of friends. Class Secretary 3, 4; Beta Club 3, 4; Paper Staff 4; Class Editor 3; Book Store 3; Annual Staff 4; Office Staff 4. **BOBBY CLODFELTER:** When things seem to hit you the hardest Bob is the fellow to see. His good cheer and kind understanding are better than any medicine. Football 1, 2, 3, 4; Basketball 3, 4; Glee Club 3; Dramatics 4; Baseball 2, 3, 4; Paper Staff 4; Annual Staff 4; Spanish Play 3; Junior Play 3; Banquet Committee 3; Reporter 2; King 2. **J. D. COLTRANE:** J. D. is a "pal" to girls and boys alike. **MARCELENE CROTTTS:** Good sportsmanship and all-around good fun can always be found with Marcie. Glee Club 2, 3; 4-H Club 1, 2; Dramatics Club 4; Beta Club 3, 4; Spanish Play 3; Annual Staff 4; Junior Play 3; Paper Staff 4; F. H. A. Club 1, 2, 3, 4; Athletic Association 1; Librarian 2, 3, 4; Basketball 1; Dramatics Play 4. **NELSON CROTTTS:** When everything else is disheveled, Nelson's neat appearance in dress, and personality is a relief. Beta Club 3, 4; F. F. A. Club 1, 2; Marshal 3, 4; Vice-President Dramatics 4; Spanish Club 3. **VERMELL CROTTTS:** Gentle speech and character are two of the boldest traits of Vermell's personality. **ROGER DAVIS:** Where personality ends and Roger begins is hard to distinguish, for it is one of his characteristics that stands out to everyone. Class President 1; Cheerleader 1; Class Treasurer 2; F. F. A. Club 2; Athletic Association 1; Glee Club 3; Dramatics Club 4; Class Vice-President 4; Vice-President Beta Club 3, 4; Paper Staff 4. **MACK EDWARDS:** Clear, straight thinking and dependability prove Mack's qualified membership in many organizations. Bus Driver 4; F. F. A. Club 1, 2; 4-H Club 1; Beta Club 3, 4; Spanish Play 3; Junior Play 3; Paper Staff 4. **ROBERT EDWARDS:** No matter what may arise you can depend on Robert to meet it with a good natured grin. F. F. A. Club 1, 2, 3, 4; Vice-President F. F. A. Club 4; Bus Driver 3, 4; Athletic Association 1. **DORIS ELLIOTT:** By always being courteous and friendly to all she meets, Doris in return receives constant companionship. F. H. A. Club 1, 2, 3, 4; Glee Club 2, 3; Beta Club 3, 4; Paper Staff 4; Annual Staff 4; Popularity Queen 3; Junior Play 3; Spanish Club 3, 4; Dramatics Club 4; Librarian 3; Office Staff 4; Dramatics Club Play 4; Spanish Play 3. **BETTY JEAN FLYNT:** Full of pep and humor, Betty is the member of our class most valuable on our "off days". Class Vice-President 1; Class President 2; Class Treasurer 4; Cheerleader 2, 3, 4; F. H. A. Club 2, 3, 4; F. H. A. Club Officer 2, 3, 4; Popularity Queen 1; Homecoming Queen Attendant 3, 4; Glee Club 2, 3; Dramatics Club 4; Marshal 3, 4; Beta Club 3, 4; Secretary Beta Club 4; Paper Staff 4; Athletic Association 1; Annual Staff 4; Junior Play 3; Spanish Play 3; Librarian 2. **BOYD HARRISON:** Boyd is a link in the chain that always pulls with the rest of us. F. F. A. Club 1, 2, 3, 4; 4-H Club 1; Bus Driver 4; Athletic Association 1. **BILL HAWKINS:** Bill is always a firm supporter for what he believes in, regardless of the opposing odds. Jamestown High School 1, 2, 3; Football 4; Dramatics Club 4; Paper Staff 4; King 4. **MATTIE LEE HICKS:** One of Mattie Lee's greatest assets is her sparkling smile, extended each and every day, to each, and everyone. F. F. A. Club 1, 2, 3, 4; Glee Club 2, 3; Athletic Association 1; Annual Staff 4. **BILLY HILL:** As long as Bill keeps his friendly outlook on life, good things are bound to come his way. F. F. A. Club 1, 2, 3; Bus Driver 3, 4; Athletic Association 1; Glee Club 3; Annual Staff 4; J. D. HILL: Where ever support is needed most, J. D. is there pushing with all his power. Football 3. **JEAN HILL:** Well-rounded in all things, Jean has been a leader among her classmates in all her school days. Having the highest academic standing in the class, Jean is valedictorian. Cheerleader 1, 2, 3, 4; F. H. A. Club 1, 2, 3, 4; F. H. A. Club Vice-President 2; Dramatics Club 4; F. H. A. Club President 3, 4; Glee Club 2, 3; French Club President 3; Beta Club 3, 4; Spanish Club 4; Spanish Play 3; Junior Play 3; Dramatics Play 4; Reporter 2, 3; Paper Staff 4; Chief Marshal 3, 4; Co-editor-in-chief of Annual 4; Debating Team 3, 4; Bookstore 3. **LUCY HILL:** Although Lucy is quick-minded and slightly restrained, she is a "jewel" of a pal when you get to know her well. F. H. A. Club 1, 2, 3, 4; 4-H Club 1, 2, 3; Junior Play 3; Glee Club 3; Librarian 2. **JO N HUGHES:** A bubbling personality and a charming disposition make "Jo" one of the '50 seniors most likely to be remembered. Glee Club 2, 3; Athletic Association 1; French Club 3; F. H. A. Club 1, 2, 3; 4-H Club 2, 3; Basketball 2, 4; Homecoming Queen Attendant 3. **LOUISE JOHNSON:** An attitude of sincerity and quietness of manner, make Louise a commendable individual. Spanish Club 4; Spanish Play 3; Paper Staff 4; Bulletin Board Chairman 2, 4; Annual Staff 4. **RAY JONES:** Although Ray may often seem a little shy, the true spirit is always there for the best of all concerned. Basketball 3, 4; Baseball 4; Beta Club 4; Dramatics Club 4; F. F. A. Club 1, 2; Athletic Association 1. **WALTER JONES:** Walter's wit and friendliness make him a favorite in everyone's list. King 1; F. F. A. Club 1, 2, 3, 4; F. F. A. Officer 3; 4-H Club 1, 2, 3; Bus Driver 4.

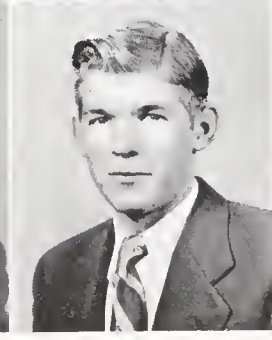
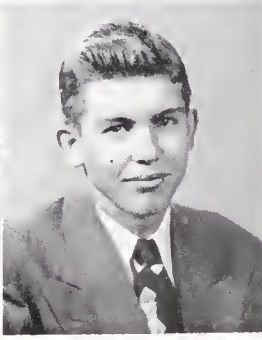
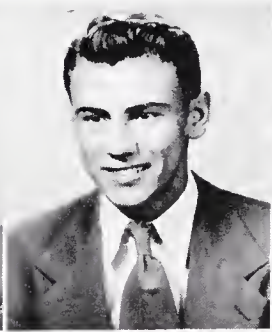
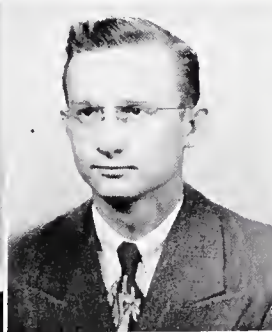
BETTY JEAN FLYNT

BOYD HARRISON

BILL HAWKINS

MATTIE LEE HICKS

BILLY HILL



LUCY HILL

JOAN HUGHES

LOUISE JOHNSON

RAY JONES

WALTER JONES

SHERRILL LAMBETH: Although Sherrill has a quiet manner, he never refuses anyone a favor. **PATSY LEACH:** Having a frank and open mind, and an ability for management, makes Patsy completely capable at any occasion. F. H. A. 1, 2, 3, 4; Beta Club 3, 4; Treasurer of French Club 3; Dramatics Club 4; Librarian 1. **BOBBY LEDBETTER:** Searching for a friend who is genuine and real an all around good guy? Then we suggest you pick Bobby. F. F. A. Club 1, 2, 3, 4; President of F. F. A. Club 4; 4-H Club 1, 2. **CHRISTINE LOVE:** Christine has always been a very cooperative member of our class, with the correct attitude toward all activities. F. H. A. Club 1, 2, 3, 4; 4-H Club 1, 2; French Club 3. **MARTHA McDOWELL:** Dependability and kindness have made Martha a favored person with faculty and students alike. Glee Club 2, 3; 4-H Club 1, 2; Dramatics Club 4; Beta Club 3, 4; Marshal 3, 4; Spanish Play 3; Junior Play 3; Annual Staff 4; Paper Staff 4; F. H. A. 1, 2, 3, 4; Athletic Association 1; Librarian 3, 4; Dramatics Play 4. **ANNIE L. McGEE:** Aggressive in friendship; fun in a crowd, Annie Laura is one who just can't be "typed". **LAWRENCE McNEILL:** When Lawrence quits talking long enough to do some thinking, as a general rule, it is worthwhile. Beta Club 3, 4; Beta Club Treasurer 4; F. H. A. Club 1, 2; Marshal 3, 4; Spanish Play 3; Dramatics Club 4. **FORREST MENDENHALL:** Capable in leading, dependable always easy to get along with, that is Forrest. Athletic Association 1; F. F. A. Treasurer 2; Football 2, 3, 4; Baseball 2; Class Treasurer 3; Business Manager of Annual 4; Co-Captain of Football Team; 4-H Club 1, 2, 3, 4; F. F. A. Club 1, 2; Dramatics Club 4; Spanish Play 3; Bus Driver 3, 4; Junior Class Play 3; Glee Club 2, 3; 4-H Club Vice-President; Dramatics Club Play 4; Paper Staff 4. **DONALD MIKLES:** Donald has the spirit and ability to capture the bright future for which he is headed. 4-H Club 1, 2; Glee Club 2, 3; Basketball 1, 2, 3, 4; Captain of Basketball Team 4; Football 2, 3, 4; Baseball 2, 3, 4; Spanish Club 4; Athletic Association 1; King 1; Spanish Play 3; Dramatics Club 4. **JOHN MIKLES:** John's ability to think with good common sense has often kept the class from making an unwise move. Band 1; 4-H Club 1; Football 4; Baseball Manager 1, 2; Baseball 3, 4; Basketball Manager 2, 3; Basketball 1; Dramatics Club 4; F. F. A. 1, 2; Boys Home Economics 3. **IRENE MITCHELL:** Exceeding in good academic qualities, Irene receives another notch for her determination to work. Class Secretary 1; Basketball 1, 2; Beta Club 4; Athletic Association 1; F. H. A. Club 1, 2, 3, 4; Softball 1, 2; 4-H Club 1, 2, 3. **ANNE NEWTON:** Anne is witty and intelligent. She can adapt herself to any situation. Class Vice-President 1; Popularity Queen 1; F. H. A. Club Treasurer 2, 3, 4; Reporter 2, 3, 4; Basketball 1; Beta Club 3, 4; Beta Club Officer 4; Marshal 3, 4; Devotional Chairman 2; Vice-President French Club 3; Homecoming Queen Attendant 3; Spanish Club 4; Spanish Play 3; Junior Play 3; Debating Team 3, 4; Dramatics Club 4; Cheerleader 4; Glee Club 2, 3; Dramatics Club Play 4; 4-H Club 1; Athletic Association 1; Bookstore 3. **BILLY NEWTON:** Billy's knowledge of radio engineering promises to lead to a wonderful future for him. F. F. A. Club 1, 2, 3; Spanish Play 3; Junior Class Play 3; Substitute Bus Driver 3, 4; Boys Home Economics Club 3. **MAXINE OLIVER:** Maxine is a person who is ever ready and willing to join in and help in all activities. F. H. A. 1, 2, 3; Basketball 1, 3; 4-H Club 2, 3, 4. **HELEN OWEN:** Helen's likable ways and good looks aid in her popularity with everyone. Glee Club 2, 3; French Club 3; 4-H Club 1, 2, 3; F. H. A. Club 1, 2; Athletic Association 1; Homecoming Queen Attendant 3; Popularity Queen 3. **CHARLES PEACE:** Charles has a pleasing personality and character. Although inclined to be mischievous sometimes, he is often serious, but all in all, he is the best-all-around boy in our class. Basketball 1, 2, 3, 4; Beta Club President 4; Class President 4; Spanish Play 3; F. F. A. Club 1, 2; Business Manager of Paper 4; Annual Staff 4; Junior Play 3; Marshal 3, 4; Beta Club 3, 4. **JOYCE PEELE:** Joyce is always ready and willing to turn the tide of conversation into its hilarious best. F. H. A. Club 1, 2, 3, 4; 4-H Club 2, 3; French Club 3. **BENNIE ROBBINS:** With strength in spiritual and moral character, Bennie is a gentleman to everyone and in everything. Having an excellent academic standing, Bennie is Salutatorian. Class President 2, 3; 4-H Club President 4; F. F. A. Club President 2; Beta Club 3, 4; Marshal 3, 4; Basketball 1, 2, 3, 4; Baseball 1, 2, 3, 4; Football; French Club 2, 3; Glee Club 3; Annual Staff 4; Class Editor 1; Class Reporter 1, 4; Paper Staff 4; Dramatics Club 4; 4-H Club 1, 2, 3, 4; F. F. A. Club 1, 2; Athletic Association 1; Bus Driver 3, 4; Patrol Chairman 4; Junior Play 3; Dramatics Club Play 4; President of Dramatics Club 4. **WAYNE RUTH:** Wayne is one of those who never meets a stranger and can readily adapt himself to any situation Wilson High School; Marion High School; French Club 3; Paper Staff 4. **JACK SNIDER:** Jack has the spunk to take anything handed him, and still come out on top. **BOBBIE SNYDER:** Efficient and dependable are words used accurately when describing our Bobbie. F. H. A. Club 1, 2, 3, 4; 4-H Club 1; Annual Staff 4; Office 3, 4. **JANET SNYDER:** She is not often heard voicing her opinion, however, Janet has proven to have a keen one. **RALPH SMALL:** Although Ralph's special attainments are in Baseball, he is cooperative in all things. 4-H Club 1, 2, 3; F. F. A. 1, 2, 3, 4; Baseball 1, 2, 3, 4; Football 2. **BILL SMALL:** Bill is always ready and eager to add his support to any undertaking. High Point High School 1; Latin Club 1; Jr. Varsity Football 1; F. F. A. Club 2; Glee Club 2; Football 2, 3, 4; French Club 3; Boy's Home Economics Club 3.

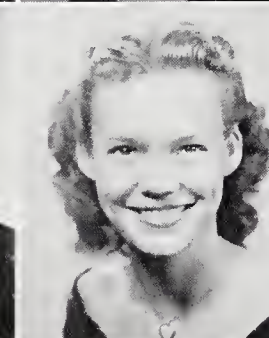
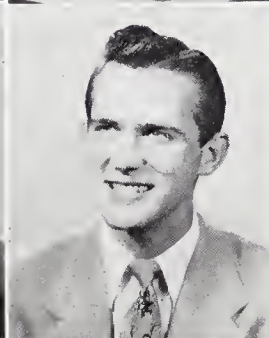
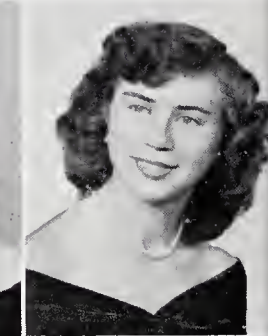
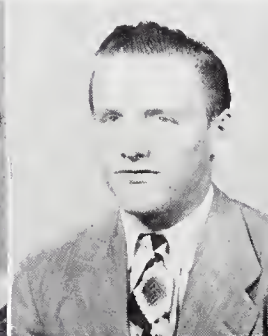
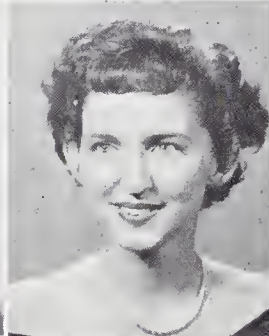
SHERRILL LAMBETH

PATSY LEACH

BOBBY LEDBETTER

CHRISTINE LOVE

MARTHA McDOWELL



FORREST MENDENHALL

DONALD MIKLES

JOHN MIKLES

IRENE MITCHELL

ANNE NEWTON

Seniors

HELEN OWEN



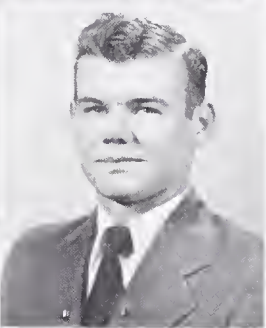
CHARLES PEAC



JOYCE PELLE

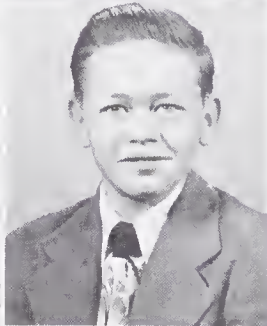
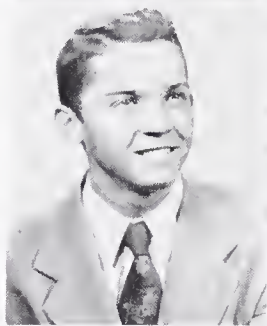


BENNIE ROBBINS

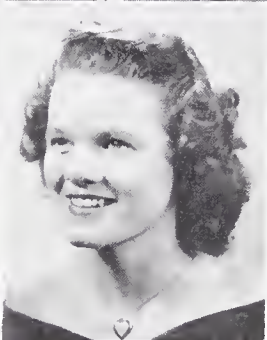
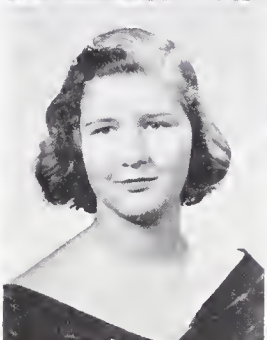
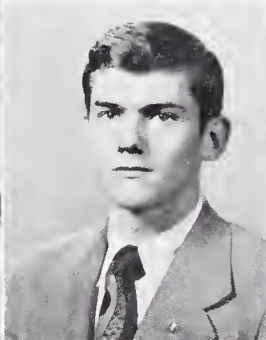


ANNIE L. MCGEE

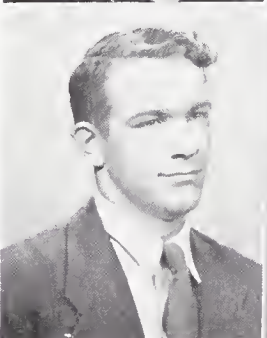
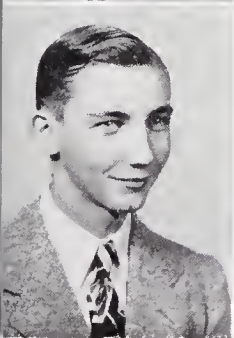
LAWRENCE MCNEIL



WAYNE RUTH
JACK SNIDER



BOBBIE SNYDER
JANFT SNYDER

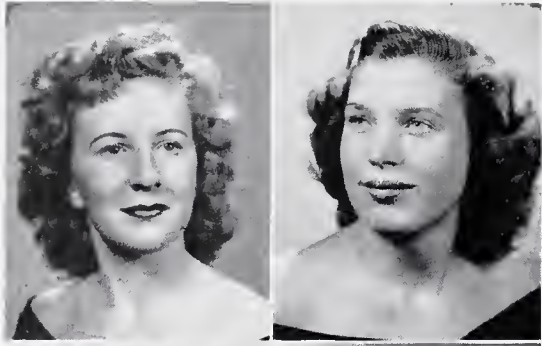


BILLY NEWTON

MAXINE OLIVER

RALPH SMALL

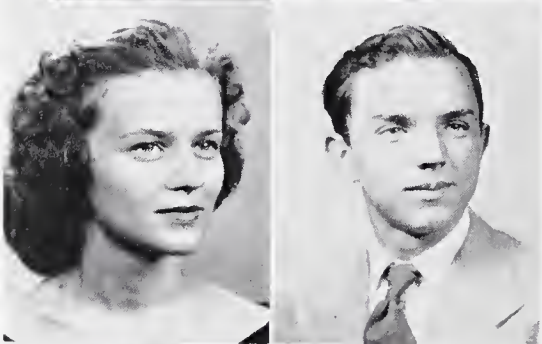
BILL SPELL



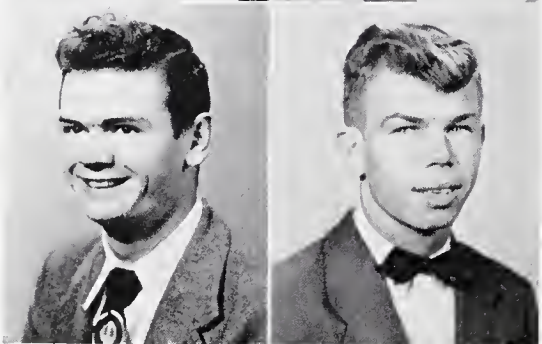
NORMA SPENCER
BARBARA WADE



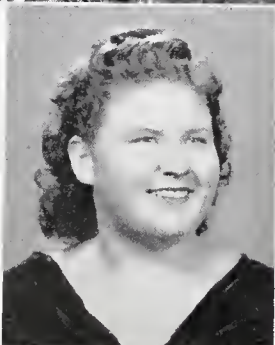
WANDA WALKER
BARBARA WALL



JANE WHITE
JACK VARNER



LLOYD WHITE HERMAN WOOD



CHRISTINE YOW

Seniors

NORMA SPENCER: A dependable, efficient person of firm convictions that's Norma. She is admired and respected by many. Class Secretary and Treasurer 2; Class Reported 1, 2; Glee Club 2, 3; Debating Team 3; 4-II Club 1, 2; F. H. A. Club 1, 2, 3, 4; Popularity Queen 4; Editor of Paper 4; Beta Club 3, 4; Homecoming Queen Attendant 3; Marshal 3, 4; Junior Play 3; Spanish Play 3; Annual Staff 4; Dramatics Club 4; Secretary of Dramatics Club 4; Athletic Association 1; Librarian 1, 2, 3, 4; Dramatics Play. **BARBARA WADE:** Barbara always has the willing attitude to help on all occasions. F. H. A. Club 1, 2, 3, 4; 4-II Club 1; Annual Staff 4; Office 4. **WANDA WALKER:** Sweetness and an even-temper make Wanda the most sought after senior when things aren't exactly peaceful. Glee Club 2, 3; F. H. A. 2, 3, 4; Athletic Association 1; 4-II Club 1, 2, 3; Vice-President 4-II Club 2, 3; Dramatics Club 4; Beta Club 4; Junior Play 3; Annual Staff 4; Paper Staff 4; Class Reporter 1, 2, 3; Librarian 2, 3; Dramatics Play 4; Class Editor 3. **BARBARA WALL:** Barbara possesses deep character and always contrives to have the good sportsmanship attitude. F. H. A. Club 1, 2, 3, 4; Glee Club 1, 2, 3; Athletic Association 1; Beta Club 3, 4; Marshal 3, 4; French Club 3; Junior Play 3; Debating Club 3; Dramatics 4; Club Spanish Play 3; Paper Staff 4; Annual Staff 4; Librarian 2, 3; Dramatics Club Play 4. **JANE WHITE:** One of Jane's many traits is her dazzling store of vitality. Carthage High School 1, 2; Cheerleader 2, 4; Glee Club 3; Paper Staff 4; Marshal 3, 4; Beta Club 4; Spanish Play 3; Paper Staff 4; Annual Staff 4; Junior Play 3. **JACK VARNER:** With Jack's willingness to work and a standard in mind, he will surely prosper. 4-II Club 1, 2, 3; Athletic Association 1; F. H. A. Club 2, 3, 4; Glee Club 2, 3; Bus Driver 4. **LLOYD WHITE:** Good natured and "game" for anything, Lloyd can always be counted on. **HERMAN WOOD:** Herman's attitude toward life parallels with his attitude on the football field; he's in there to win. **CHRISTINE YOW:** Christine is a girl who will do anything to help her fellowmen.

Class History

It was on August 29, 1946 that we began our high school careers in Miss Crouse's and Mr. Welborn's home rooms. As representatives of Miss Crouse's room, Donald Mikles and Anne Newton won the title of Harvest King and Queen. Since this was our first year in high school we took part in few extra-curricular activities.

In our sophomore year, we had Miss Davis and Miss Cranford for our home room teachers and it was by their help that we were determined to accomplish much. Class officers for Miss Davis's room were: *President*, BENNIE ROBBINS; *Vice President*, ANNE NEWTON; *Secretary and Treasurer*, NORMA SPENCER. Miss Cranford's room officers were: *President*, BETTY JEAN FLYNT; *Vice President*, BILLY HURLEY; *Secretary*, LORENE POYNTER; *Treasurer*, ROGER DAVIS. On December 3, 1947, both classes sponsored Bob Jones' Quiz Show. Near the end of our school term, Miss Cranford resigned to be married and she has been greatly missed by all.

When we were Juniors, Mrs. Walter and Mrs. Swiggett were our home room teachers. Our class officers were: *President*, BENNIE ROBBINS; *Vice President*, BETTY JEAN FLYNT; *Secretary*, PEARL CASHATT; and *Treasurer*, FORREST MENDENHALL. October 6 was indeed an exciting day, for we all brought our money and got those long awaited class rings. This month the class sponsored a square dance in the gym, with half the proceeds going to the gym fund. Our profit was \$102.69. In December, the Junior Class presented a show, "*The Lazy Moon Minstrels*" from which we cleared \$162.00. On December 23, eleven marshals were installed in a very impressive program with Rev. Fred Setzer as guest speaker. In January there were 19 members tapped and initiated for membership in the Beta Club. With the proceeds we had made during the year; along with the Junior bookstore money we were ready to have the Junior-Senior Banquet. The theme was Far Away Places, and the Balinese Room of the Robert E. Lee Hotel, in Winston-Salem was the scene of this gala event, on March 25, 1949. Since everyone had such a grand time and enjoyed Bill Kelly's orchestra so much, we gave a semi-formal dance in the gym on May 27. The theme was "Stardust" and this happily ended our Junior year.

On September 1, 1949, Mrs. Peace greeted her 58 Seniors and said she was proud to be our home room teacher. We were ready to begin working to make our year a happy and prosperous one. We elected our class officers who are: *President*, CHARLES PEACE; *Vice President*, ROGER DAVIS; *Secretary*, PEARL CASHATT; *Treasurer*, BETTY JEAN FLYNT. Then we chose our Co-editors and Business Manager of the annual who are: JEAN HILL, ANNE NEWTON and FORREST MENDENHALL respectively. The senior class voted to dedicate the 1950 "TRINIHIAN" to Miss Virginia Redding, a member of Trinity High School faculty for more than 25 years. On November 2nd fifty-two seniors went to Chapel Hill to the Morehead Planetarium and later in the year there were 5 seniors who attended a Social Standards Conference in Asheboro. Even though there was much to do at Christmas time this year, Mrs. Peace still carried out the custom of giving the class a Christmas party in the Home Economics Building. Everyone had a wonderful time. This year we sold stationery, flavoring, story book dolls, pen and pencil sets, pins and pennants to help finance our trip to Washington which is planned for April 20-23. We have won the P. T. A. membership drive and several other contests this year. Norma Spencer and Bill Hawkins were winning high school representatives from the Senior class in the Harvest Festival King and Queen contest.

On April 13th and 15th, the Dramatics Class presented the Senior Play, "*Dear Papa*." This three-act comedy was a commendable production.

Our class colors are orchid and white, our flower is the sweet pea, and our motto is "*We accept the Challenge*". We hope to face the life ahead of us with an even greater faith and vitality than we had four years ago when we entered high school.

MARTHA McDOWELL
Class Historian



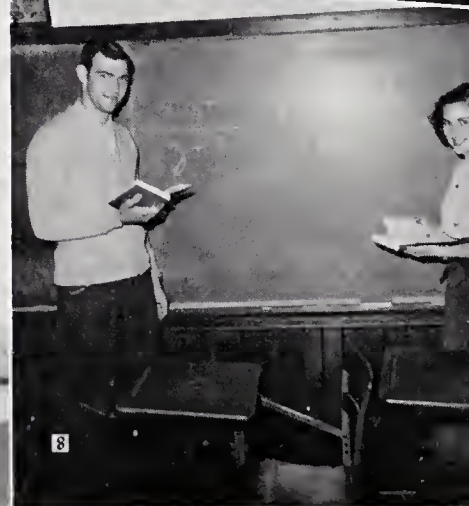
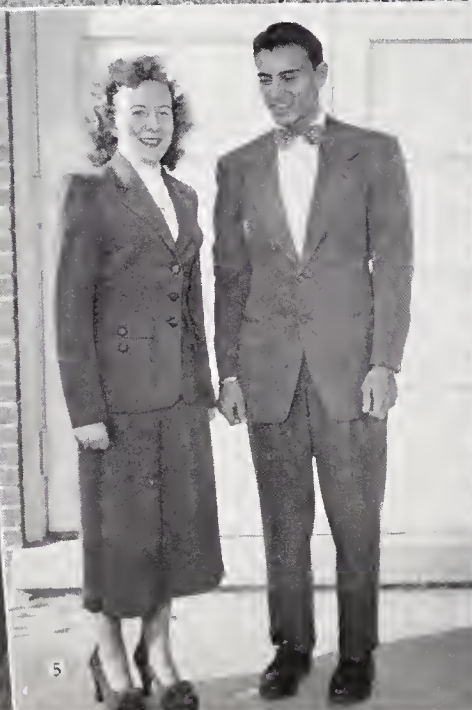
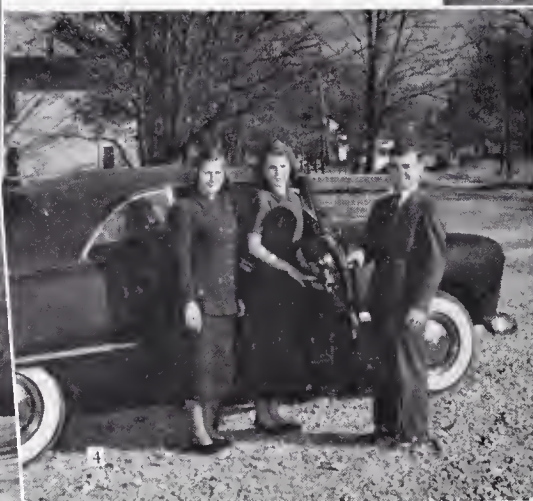
1. BEST LOOKING

J. D. COLTRANE
IRENE MITCHELL
VERMELL CROTTS

2. WITTIEST
WALTER JONES
ANNE NEWTON

3. BEST PERSONALITY
PAUL ALLEN ALBERTSON
MATTIE LEE HICKS
ROGER DAVIS

4. MOST COURTEOUS
BOBBIE SNYDER
DORIS ELLIOTT
BENNIE ROBBINS



SENIOR SUPERLATIVES

- 5. MOST DIGNIFIED
NORMA SPENCER
BILL HAWKINS
- 6. MOST ORIGINAL
PAUL ALLEN ALBERTSON
WANDA WALKER
- 7. NEATEST
NELSON CROTTIS
BETTY JEAN FLYNT



- 8. MOST STUDIOUS
JOHN MIKLES
JEAN HILL
- 9. MOST ATHLETIC
DONALD MIKLES
BARBARA ANN WADE
- 10. BEST SPORT
BARBARA ANN WALL
CHARLES PEACE
- 11. MOST LIKELY
TO SUCCEED
JEAN HILL
BENNIE ROBBINS
- 12. CUTEST
JOAN HUGHES
WAYNE RUTH
- 13. MOST DEPENDABLE
MARTHA McDOWELL
FORREST MENDENHALL
- 14. MOST FRIENDLY
ANNIE LAURA MCGITT
FORREST MENDENHALL
- 15. MOST POPULAR
HELEN OWEN
BOBBY CLODFELTER
- 16. BEST ALL AROUND
CHARLES PEACE
PEARL CASHATT



FIRST ROW: Paul Allen Albertson, Pearl Cashatt, Bobby Clodfelter, Marcelne Crofts, Nelson Crofts, Vermell Crofts. SECOND ROW: Roger Davis, Doris Elliott, Betty Jean Flynt, Boyd Harrison, Billy Hawkins, Mattie Lee Hicks. THIRD ROW: Jean Hill, Lucy Hill, Joan Hughes, Louise Johnson, Ray Jones, Patsy Leach. FOURTH ROW: Bobby Ledbetter, Martha McDowell, Annie Laura McGee, Lawrence McNeil, Forrest Mendenhall, John Mikles. FIFTH ROW: Irene Mitchell, Anne Newton, Billy Newton, Helen Owen, Charles Peace, Joyce Peele. SIXTH ROW: Bennie Robbins, Janet Snyder, Ralph Small, Bill Spell, Norma Spencer, Barbara Wade. SEVENTH ROW: Wanda Walker, Barbara Ann Wall, Jane White, Jack Varner, Herman Wood, Christine Yow. EIGHTH ROW: Bobbie Snyder, Wayne Rnth, Donald Mikles, Walter Jones, Lloyd White, Maxine Oliver.





TRINITY PARENT TEACHER'S ASSOCIATION OFFICERS

MR. E. W. AUMAN, *President*; MR. E. W. WELBORN, JR., *Vice President*; MRS. CHARLIE MORGAN, *Secretary*; MISS VIRGINIA REDDING, *Treasurer*; MR. D. S. UNDERWOOD, *Funds Chairman*; MRS. PELL PAYNE, *Program Chairman*; MRS. T. R. HENDRIX, *Grade Representative Chairman*; MR. L. H. KOON, *School Principal*; MRS. LEROY HANCOCK, *Publicity Chairman*; MISS VALERIA MENDENHALL, *Hospitality Chairman*; MRS. HUGH PHILLIPS, *Membership Chairman*.



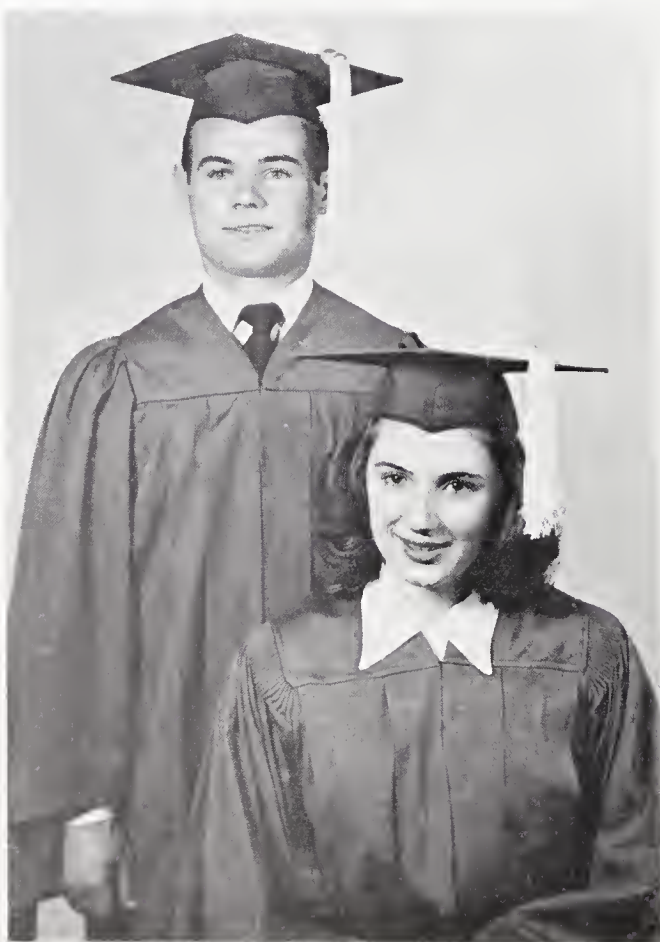
TRINITY SCHOOL BOARD

Left to right: MR. THOMAS J. REDDING, MR. R. GLENN ALBERISON, MR. T. R. ENGLISH, *Chairman*, MR. R. REID MENDENHALL, *Secretary*. Absent when picture was taken, MR. L. H. KOON, *Principal*, and MR. DOAK FINCH.

GOOD CITIZEN

Anne Newton was elected by the Senior class and the high school faculty to represent Trinity High School in the annual "Good Citizen" contest, sponsored by the Alexander Martin Chapter of the Daughters of the American Revolution.

Anne was chosen Good Citizen on the basis of leadership, service, and patriotism and has compiled a scrapbook on her school, community and church activities during her four years in high school. She will attend the D. A. R. Convention in Charlotte on February 2, 3, 4, where she will be awarded a medal and a certificate from the national society. Anne will also attend the Page's Ball.



NANCY JEAN HILL
Valedictorian

BENNIE ROBBINS
Salutatorian

Under Class Officers

JUNIORS

BOBBY FULP
President

HAROLD KINNEY
Vice President

EDNA FARLOW
Secretary

MARGIE WALL
Treasurer



SOPHOMORES

JUNIOR ROBBINS (May)
President

BILLY SCOGGINS (May)
Vice President

BETTY LOFLIN (May)
Secretary & Treasurer

BARBARA MENDENHALL (Davis)
President

BOBBY WHITE (Davis)
Vice President

BOBBIE ENGLISH (Davis)
Secretary

JANICE RICH (Davis)
Treasurer



FRESHMEN

JIMMY HINSON (Underwood)
President

JARRELL SMITH (Underwood)
Vice President

BARBARA SUGGS (Underwood)
Secretary

BETSY ANDREWS (Underwood)
Treasurer

DONALD DAVIS (Hines)
President

CHARLES FLETCHER (Hines)
Vice President

RACHEL SCEARCE (Hines)
Secretary & Treasurer





WELDON BOWMAN
DONALD BOYLES
BILL CAIN

PEGGY JEAN COLLINS
ERNESTINE COOK
JOANNE CROKER

BETTY JO DAVIS
WALTER DAVIS
JUANITA DEATON

EDWARD DURHAM
EDNA FARLOW
BELVA JEAN FRAIZER

JUNIOR

DOROTHY FRAZIER
BOBBY FULP
DONALD HANCOCK

GENEVA HEDRICK
PHYLLIS HILL
QUENTON HILL

RONALD HILL
DORIS HURLOCKER
LENTON KENNEDY

HAROLD KENNEY
HENRY KIVETT



BRUCE LANCE
 DOROTHY LEACH
 JUANITA LING



PATTY LOHR
 SYBLE MANESS
 PEGGY MARSH



CLASS

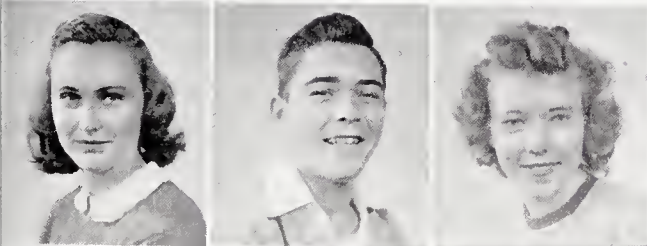
LEON MONROE
 TREVA NESBIT
 BLPEKA PEACE



SARA ELLEN PERRY
 ARNOLD PUGH
 JO VEE SHAKLEFFORD



MARIE SKEEN
 MELVA SKEEN
 JACK STILLEY



SHIRLEY SWIGGETT
 EDGAR TEER
 THURLENE THOMPSON



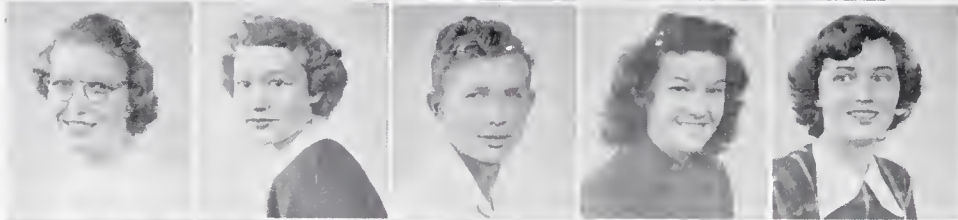
ROBERTA TROGDON
 MARGIE WALL
 GRAYSON WARD



KENNETH WARD
 CARLENE WHITE



KAY ANDREWS
 CARROLL BOWLES
 C. A. BRADY
 SIDNEY CASHATT
 CATHRYN CHANDLER



DORIS COLLETT
 LORENE COLLINS
 DENNIS CRISCO
 DORIS CROTT'S
 BETTY CUMBY



DORIS DAVIS
 BOBBIE ENGLISH
 VALERIA GAFFENEY
 CHARLES GREGORY
 BOBBY GURLEY



JIMMY HANCOCK
 FRANKIE HARRIS
 PEGGY HEDRICK
 DAISY HILL
 DONNA HILL



LOUISE HOWARD
 BOBBY JOHNSON
 BOBBY JONES
 KENNETH JONES
 NANCY KENNEDY



PEGGY KENNEDY
 BETTY LOPLIN
 BARBARA MENDENHALL
 RUBY MILLER
 JACK MITCHELL



FREDDIE MOSELY
 THAD NEWTON
 EMMA JEAN NICKOLS
 LORENE PEACE
 RUTH PEELE

Sophomore Class

VERNA PEELE
PATSY REDDING
JANICE RICH



BOBBY RICHARDSON
ELIZABETH RICHARDSON
JUNIOR ROBBINS



JUNE MARIE ROYALS
LARRY SAUNDERS
ANN SNYDER



LEWIS STROUD
BARBARA TROTTER
JOAN VARNER



FRANCES WAGONER
JOYCE WARD
DORIS JEAN WALL



DONNA WELBORN
ANNIE LOU WHITE
PEGGY YATES





ANN ALBERTSON
 LARRY ALBERTSON
 BETSY ANDREWS
 RANDALL BEAN
 FERN BECK

LEE ROY BECK
 KATHLENE BLACK
 JOE COLTRANE
 DONALD DAVIS
 JIMMIE DAVIS

RICHARD DAVIS
 J. C. DOUGLAS
 CHARLES FRYE
 BILLIE ANN GOODWIN
 JERRY GRAY

PEGGY ANN HARRIS
 BARBARA HEDRICK
 JEANETTE HILL
 JO ANN HILL
 JIMMIE HINSON

ANNA LOU HOWARD
 JOE HUCKS
 GREGG HUGHES
 BOBBY HYDE
 ELSIE INGRAM

ALBERT JESTER
 WILLA MAE KIRKMAN
 JAMES LAMBETH
 GLORIA MARSH
 EDITH MASON

GERALDINE McNEILL
 GAIL MEDLIN
 ANN MEREDITH
 BERT MILLER
 HAROLD DEAN
 MONROE

FRESHMAN CLASS

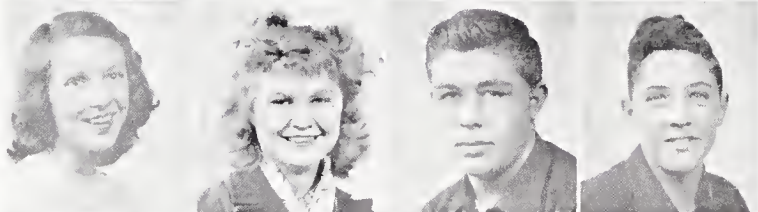
BILLIE JOAN OAKLEY
 PEGGY RUSH
 FRANCES SCFARCE
 RACHEL ANN SCEARCE



RACHEL SCOTT
 GLADYS SEWARD
 BETTY JO SHEFFEY
 JASPER SKEEN



PEGGY SKEEN
 MARY LOU SMALL
 DUANE SMITH
 JARRELL SMITH



JULIA SMITH
 MARGARET SMITH
 NANCY SPENCER
 BARBARA SUGG



RUBY SWAIN
 NANCY TYSINGER
 ANNA LYNN WOODELL
 SHERRIL YOW





SCHOOL

SCHOOL BUILDING



OFFICE STAFF



MR. L. H. KOON
Principal



BUS DRIVERS

First Row: Bennie Robbins, Jack Boles, Walter Jones, Jack Varner, Second Row: Mack Edwards, Forrest Mendenhall, Billy Hill, Edward Durham, Robert Edwards, Boyd Harrison.

SCENES

CAFETERIA WORKERS



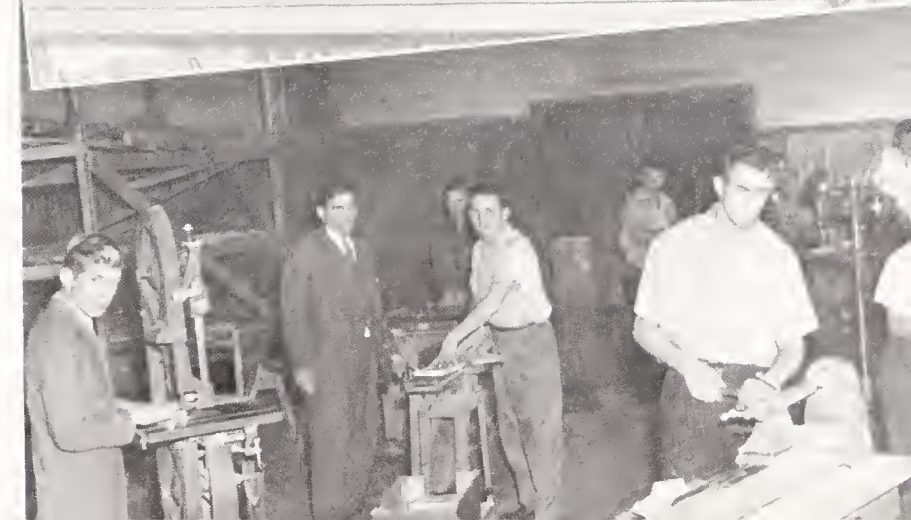
A TYPING CLASS



A HOME ECONOMICS CLASS



AGRICULTURE DEPARTMENT





SCENE FROM THANKSGIVING PLAY
 Presented by the Sixth Grades
 Mrs. Auman, Mrs. Taylor, and Mrs. Coble



SCENE FROM THANKSGIVING PLAY



AN AGRICULTURE CLASS

BUSES

GYM, AGRICULTURE, CAFETERIA, AND HOME ECONOMICS BUILDINGS

DECORATING FOR CHRISTMAS IN THE HOME ECONOMICS BUILDING



HARVEST FESTIVAL



One of the biggest events of the year, the fall festival, took place on November 8. This gala event was preceded by a delicious chicken supper served in the cafeteria to a hungry crowd of 225 people.

The festivities then began in the auditorium with a skit in which the students impersonated the teachers, and other students. This exaggerated imitation was very amusing to the audience.

Then came the crowning of the winners in the King and Queen contest, which brought in more than \$1,500.

Approximately \$2,500 was taken in at the festival.



1. Crowning of primary King and Queen.
2. Winners in the popularity contest: *Primary Department*, Janice Younts and Kenneth Hendrix over 40,000 votes; *Grammar Grades*, Shirley McDowell and James Tysinger, 15,969 votes; *High School Department*, Norma Spencer and Bill Hawkins, 14,000 votes.
3. Master of ceremonies and contestants from primary Department.
4. Scene from program showing Roger Davis as Mr. Hines, Wanda Walker as Mrs. Ward, and Mattie Lee Hicks as Mrs. Peace.
5. Another scene showing Shirley Swiggitt as a curious Student and Barbara Wall as Miss Mendenhall.



**CLUBS
and
ACTIVITIES**

Marshals



MARSHALS 1950-51

Left to right, seated, Shirley Swiggett, Betty Jo Davis, co-chiefs; Juanita Deaton, Dorothy Frazier, Geneva Hedrick; standing, Bobby Fulp, Louise Farlow, Marie Skeen, Louise Huskins, Edna Farlow, and Harold Kinney.



MARSHALS 1949

Left to right, seated, Jane White, Martha McDowell, Nancy Jean Hill, chief, Norma Spencer, Betty Jean Flynt; standing, Bennie Robbins, Lawrence McNeill, Barbara Wall, Ann Newton, Nelson Crotts, and Charles Peace.



The purpose of the National Beta Club is to promote the ideals of honesty, service, and leadership among high school students. To be eligible for membership in the Trinity Chapter, a student must be a Junior or Senior with an academic standing of 85 or above and he must be approved by the high school faculty and the Beta Club.

Under the guidance of Miss May as sponsor, Charles Peace, President; Roger Davis, Vice President; Betty Jean Flynt, Secretary; and Lawrence McNeil, treasurer, the members of the Trinity Chapter have completed and are planning several important projects this year.

Shortly after 20 new members were tapped and initiated for Beta Club membership we started trying to make money to defray

our expenses at the State Beta Club Convention, March 17-19th. Two successful square dances were sponsored in the early fall, and Christmas cards, all purpose cards and plastic book covers have been sold by the Beta Members. The last money making project being sponsored this year will be a chicken pie supper shortly before the state convention.

Our Beta Club members also sponsor the "Bulldog Flash" and assist in the library.

The Trinity Beta Club is now a member of the newly organized United Randolph Beta Club. We had an outstandingly successful mass meeting at Randleman on February 20, 1950 at which time Bobby Fulp was chosen as a nominee for vice president of the state organization. Harold Kinney is treasurer, and Miss May is county sponsor of the United Randolph Beta Club.

JEAN HILL
 ANNE NEWTON
 JANE WHITE
 NELSON CROTTTS
 BENNIE ROBBINS
 BETTY JEAN FLYNT
 PEARL CASHATT
 CHARLES PEACE
 BARBARA WALL
 MARCELENE CROTTTS
 NORMA SPENCER
 ROGER DAVIS

MARTHA McDOWELL
 LAWRENCE McNEILL
 DORIS ELLIOTT
 MACK EDWARDS
 PAUL ALBERTSON
 PATSY LEACH
 LOUISE FARLOW
 LOUISE HUSKINS
 MARIE SREEN
 MINNIE HILL
 EDNA FARLOW
 MARGIE WALL
 SHIRLEY SWIGGITT

BETTY JO DAVIS
 DOROTHY FRAZIER
 PHYLLIS HILL
 WANDA WALKER
 IRENE MITCHELL
 HAROLD KINNEY
 BOBBY FULP
 RAY JONES
 GENEVA HEDRICK
 JAUNITA DEATON
 PAT LOHR
 DOROTHY LEACH
 SARA ELLEN PERRY

BETA CLUB

Beta Events



1. Installation service. 2. Patsy and Dot at the Beta Convention. 3. Another convention shot.
4. The innocents. 5. Beta Pals. 6. Giggling gals and blushing boys. 7. Initiation victims. 8. New
Betas in a corner. 9. Shoe shine boys.



Norma Spencer, *Editor-in-chief*, Charles Peace, *Business Manager*. Forrest Mendenhall, Bennie Robbins, *Circulation Managers*; Martha McDowell, *Exchange and Correspondence Editor*; Jean Hill, Lawrence McNeill, *Subscription Editors*; Ann Newton, Paul Albertson, *Publicity Editors and Humor*; Pearl Cashatt, Marcelene Crotts, *Editors for 7th and 8th Grades*; Roger Davis, Nelson Crotts, *Editors for 8th and 10th Grades*; Louise Johnson, Wanda Walker, *Art Advisors*; Betty Jean Flynt, *Clubs and Extra Curricular Editor*; Jane White, Mack Edwards, Doris Elliott, *Typists*.

**BULL DOG
FLASH
STAFF**



**DEBATING
TEAM**

The N. U. E. A. questions for debate in the national high school debating contest for 1950 is Resolved: "That the President of the United States should be elected by the direct vote of the people." Last year our teams won in their debates with four high schools in this district and we feel sure that with two members of last years teams, two other very interested debaters and Mrs. Ward as coach that they will do well in the debating field this year. **TEAMS:** *Affirmative:* Doris Ann Davis, Frances Wagoner; *Negative:* Ann Newton, Jean Hill, *Coach:* Mrs. Ward.



F. H. A. CLUB

| | |
|----------------------|------------------|
| President | NANCY JEAN HILL |
| Vice President | MARGIE LEE WALL |
| Secretary | BETTY JEAN FLYNT |
| Treasurer | SHIRLEY SWIGGETT |
| Historian | EDNA FARLOW |



| | |
|----------------------|-----------------|
| President | BOBBY LEDBETTER |
| Vice President | ROBERT EDWARDS |
| Secretary | HERMAN WOOD |
| Treasurer | BOYD HARRISON |
| Reporter | WALTER JONES |



F. F. A. CLUB



4-H JUNIORS

WILLIAM DURHAM
President
EUPHON SUMNER
Vice-President
RONNIE WESTON
Secretary
CAROLYN HILL
Song Leader
BETH KINNEY
Pianist



4-H SENIORS

BENNIE ROBBINS
President
FORREST MENDENHALL
Vice-President
MARGARET SMITH
Secretary & Treasurer



SPANISH CLUB

BOBBY FULP
President
KAY ANDREWS
Vice-President
FREDDIE MOSLEY
Secretary & Treasurer



With Mrs. Peace as sponsor, Bennie Robbins, President, Nelson Crofts, Vice President, and Norma Spencer, Secretary & Treasurer, the Dramatics Club has been quite active this year. The purpose of this club is to learn more about the writing, acting, and producing of plays.

By popular demand the club's Christmas play, "The Christmas Rose" was presented four times. We sincerely hope that our Senior play which is to be staged April 14th will be equally successful.

NELSON CROFTS
 DORIS ELLIOTT
 ANNE NEWTON
 ROGER DAVIS
 CHARLES PEACE
 JANE WHITE
 JEAN HILL
 BOBBY CLODFELTER
 BENNIE ROBBINS
 RAY JONES

BETTY JEAN FLYNT
 BARBARA WALL
 BILL HAWKINS
 MARTHA MCDOWELL
 JOHN MIKLES
 NORMA SPENCER
 WANDA WALKER
 MARCELENE CROFTS
 DONALD MILKES
 MRS. PEACE, Sponsor





PIANO STUDENTS



MRS. PELL PAYNE
Teacher



1. The editors laugh it off. 2. Selling peanuts. 3. Sandy at the beach. 4. Nutheads. 5. Bold, heartless women. 6. and, smiling, the girl fell dead. 7. A Washington scene. 8. At Carolina. The Fountain (of youth). 9. Love those columns. 10. Alone, alone, all, all alone. 11. Three of them. 12. Rodney poses. 13. and Santa came to Trinity. 14. Love, oh love, oh lovely love. 15. Half brute, half machine. 16. Lovely ladies of leisure. 17. Is everybody happy? 18. Doris in agony! 19. Ya don't know, do ya? 20. Nature Boy. 21. The wittiest among the witty. 22. High men on the totem pole. 23. Got them treed.



1. Hi Ho Silver! 2. Almost persuaded. 3. The "outdoor type". 4. Somewhat amused. 5. Who let the bars down? 6. Stern chaperone. 7. Sitting pretty. 8. Dancing in the dark. 9. I'll bet she's heavy. 10. The intermission idlers. 11. And Santa comes to T. H. S. 12. While strolling through the mud one day. 13. Ghost Riders on campus. 14. How dramatic! 15. Gorgeous gams. 16. Even better than a mule train. 17. After the ball (game) was over. 18. Back up and push! 19. Old married folks. 20. Three little pigs. 21. "fink nuffin uv it". 22. These summer romances. 23. Fish story.

SPORTS





BETTY JEAN FLYNT
Chief



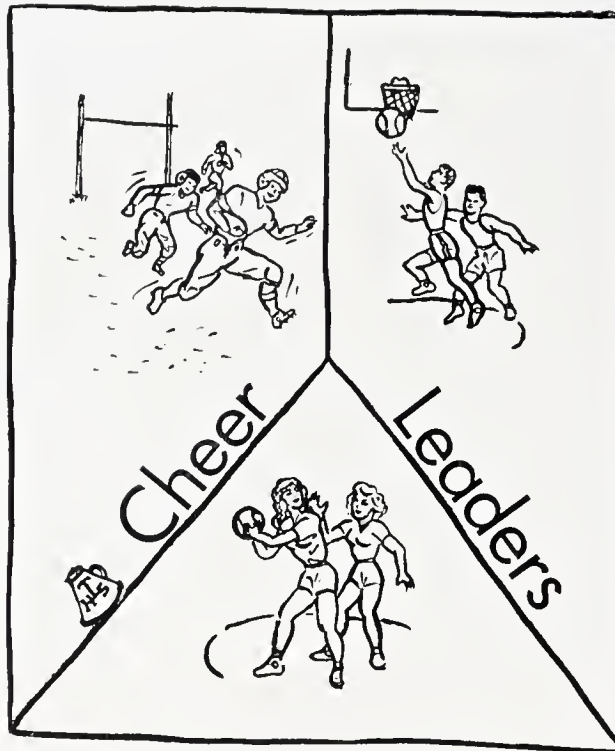
PEGGY MARSH



SHIRLEY SWIGGETT



DORIS COLLINS



DORIS JEAN WALL



ANNE NEWTON



DORIS ANN DAVIS



JANE WHITE



JEAN HILL



When Coach Coble came to Trinity in 1945, he entered a school which had made practically no showing in the sports world. Coach went right to work, and built a record for T. H. S. in football, basketball, and baseball, which compares favorably with the best of them. We are indebted to him for having bettered the minds and bodies of our boys and girls, through athletics.



MILLIARD "RED" COBLE, Coach

FOOTBALL



STARTING LINE UP FOOTBALL

Squatting in front: Coach, "Red" Millard Coble, fullback, Charles Gregory, and assistant coach, Jack Hall. Left to right the other are: Co-captains right halfback, Bobby Clodfelter; right guard, Bobby Fulp; center, Jack Stilley; Co-captain right tackle, Forrest Mendenhall; left guard, "Humphery" Duane Smith; defensive quarterback, Gregg Hughes; left tackle, Herman Wood; offensive quarterback, Donald Hancock; right end, Bill Spell; left end, Donald Mikles; and left halfback, Bill Hawkins.

SCORES

The boys' determination to play and win, and their willingness to really get in shape, paid off this year. After playing the entire season without losing, they climaxed it by tying Graham, a class A high school team, in the annual Hosiery Bowl Game at Graham. The boys are certainly proud of their trophy for the Hosiery Bowl Game. It is the first that has been received at Trinity for football.

| | | | |
|-------------------|----|-----------------------|----|
| Trinity | 39 | Ramseur | 0 |
| Trinity | 25 | Liberty | 15 |
| Trinity | 13 | E. M. Holt | 7 |
| Trinity | 39 | Summerfield | 8 |
| Trinity | 20 | Madison | 0 |
| Trinity | 12 | Jamestown | 7 |
| Trinity | 12 | Bessemer | 7 |
| Trinity | 25 | Allen Jay | 13 |
| Trinity | 18 | Walkertown | 7 |

CLASSIFIED

SENIOR INDIVIDUALS



BOBBY CLODFELTER
Co-Captain

Bobby is that galloping, shifting halfback who often made long runs.



FORREST MENOEHALL
Co-Captain

That tackle who really did his job.



BILL HAWKINS

Bill is that fleet footed half-back.



DONALD MIKLES

The charging, hard hitting left end.



HERMAN WOOD

He is that guy who made tackles and more tackles.

JOHN MIKLES

He put forth every effort to do his part.



BILL SPELL

That end who punts and grabs those passes.



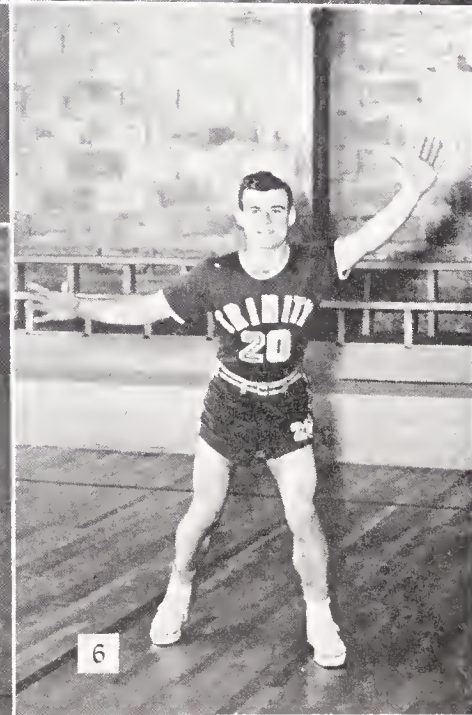
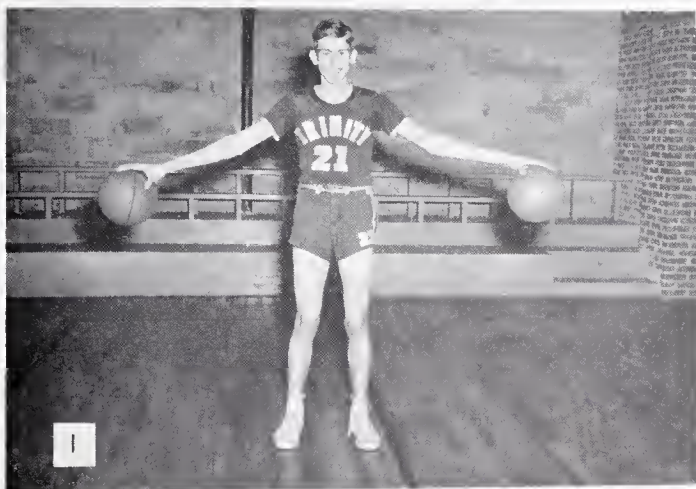


BOYS' BASKETBALL TEAM

Pictured above are: front row left to right: Donald Hancock, Charles Peace, captain Donald Mikles, Ray Jones, and Quinton "Dunk" Hill. Second row: Jimmy Hancock, Kenneth Jones, Joe Hucks, Jack Stilley, and Bobby Clodfelter. Third row: score-keeper Walter Jones, Charlie Fletcher, time keeper Larry Saunders, manager James Crowder, and Coach Millard "Red" Coble.

Not shown are Charles Gregory, Bennie Robbins, and Buddy Parker.

| | | | |
|---------|----|-----------------|----|
| Trinity | 51 | Ramseur | 41 |
| Trinity | 61 | Pleasant Garden | 38 |
| Trinity | 47 | Liberty | 41 |
| Trinity | 48 | Randleman | 30 |
| Trinity | 28 | Guilford | 29 |
| Trinity | 33 | Pleasant Garden | 42 |
| Trinity | 61 | Staley | 41 |
| Trinity | 50 | Allen Jay | 34 |
| Trinity | 74 | Seagrove | 32 |
| Trinity | 67 | Jamestown | 30 |
| Trinity | 63 | Ramseur | 32 |
| Trinity | 40 | Pilot | 31 |
| Trinity | 48 | Jamestown | 36 |
| Trinity | 49 | Allen Jay | 46 |
| Trinity | 48 | Liberty | 45 |
| Trinity | 52 | Grays Chapel | 31 |
| Trinity | 61 | Randleman | 40 |
| Trinity | 53 | Staley | 39 |
| Trinity | 54 | Guilford | 41 |
| Trinity | 63 | Gray's Chapel | 20 |



1. RAY JONES. He is that pivot man who did the double duty of getting rebounds and "hooking for points". 2. CHARLES PEACE. He often scored with that one hand push shot. 3. BOBBY CLODFELTER. Grab the ball from opponents and off the backboard and hang on to it, that's Bobby. DONALD MIKLES. Donald is a good sport, who is always in there fighting with a one hand push shot as his specialty. 5. STARTING LINE-UP, Left to Right, Donald Hancock, Charles Gregory, Donald Mikles (Captain), Ray Jones and Quenton Hill. 6. BENNIE ROBBINS. He won the title of "Blockhouse Benne" at the tournament in Durham.



Shown above: Front Row, left to right; Pattie Lohr, Jaunita "Tootsie" Deaton, Betty Jo Davis, Peggy Jean Collins, Shirley Swiggett, Jo Anne Croker. Second Row, left to right, Ernestine Cook, Betty Sue Loflin, Lorene Collins, Dorothy Frazier, Thurlene Thompson, Gladys Seward, Donna Ree Thompson. Third Row, left to right, Gloria Marsh, Willa Mae Kirkman, June Marie Royals, Betty Aileen Cumby, Betsy Andrews, Peggy Skeen. Fourth Row, left to right, Jeanette Hill, Mary Lou Small, Jo Anne Varner, Julia Smith and Coach Milliard Coble. Insert, Mrs. Coble, assistant coach.

GIRLS' BASKETBALL TEAM



MRS. RUTH COBLE
Sponsor

| | | | |
|-------------------|----|---------------------------|----|
| Trinity | 39 | Ramseur | 29 |
| Trinity | 59 | Pleasant Garden | 51 |
| Trinity | 72 | Liberty | 43 |
| Trinity | 40 | Randleman | 44 |
| Trinity | 38 | Guilford | 49 |
| Trinity | 58 | Pleasant Garden | 35 |
| Trinity | 59 | Staley | 45 |
| Trinity | 59 | Allen Jay | 60 |
| Trinity | 56 | Seagrove | 43 |
| Trinity | 62 | Jamestown | 51 |
| Trinity | 62 | Ramseur | 49 |
| Trinity | 78 | Pilot | 61 |
| Trinity | 60 | Jamestown | 43 |
| Trinity | 66 | Allen Jay | 64 |
| Trinity | 74 | Liberty | 35 |
| Trinity | 54 | Grays Chapel | 31 |
| Trinity | 75 | Randleman | 47 |
| Trinity | 46 | Staley | 59 |
| Trinity | 48 | Guilford | 45 |
| Trinity | 6 | Gray's Chapel | 31 |



GIRLS' BASKETBALL TEAM



BASEBALL TEAM

With several of last year's players and several new boys, we are looking forward to a successful season. Last year's pitching staff, consisting of Ralph Small, Bobby Joe Gurley, Donald Mikles, and Bobby Clodfelter; and second baseman Bennie Robbins; and shortstop Albert King, a transfer from Allen Jay; will probably be key men in the line up this season.

We expect to have a schedule of approximately eighteen games plus a few in the Randolph County Tournament.

With "Red" Coble as coach we can be sure of a hustling team.



1. Ah yes, there's good news tonight! 2. A tickled tackle. 3. Ballet or basketball? 4. Head hunters in a huddle. 5. Chee whizz, she dood it again! 6. The backboard bounce. 7. Donald! Come down from up there! 8. Gregory gallops on. 9. Shirley Swiggett—our Homecoming Queen. 10. The bashful type. 11. Opps! 12. Clodfelter goes in for the kill. 13. The "chief" sits one out. 14. Aw, go on! 15. And another Indian bites the dust! (Gregg Hughes, that is.) 16. Our powerful football team. 17. The Queen and her court. 18. The basketball fellers.

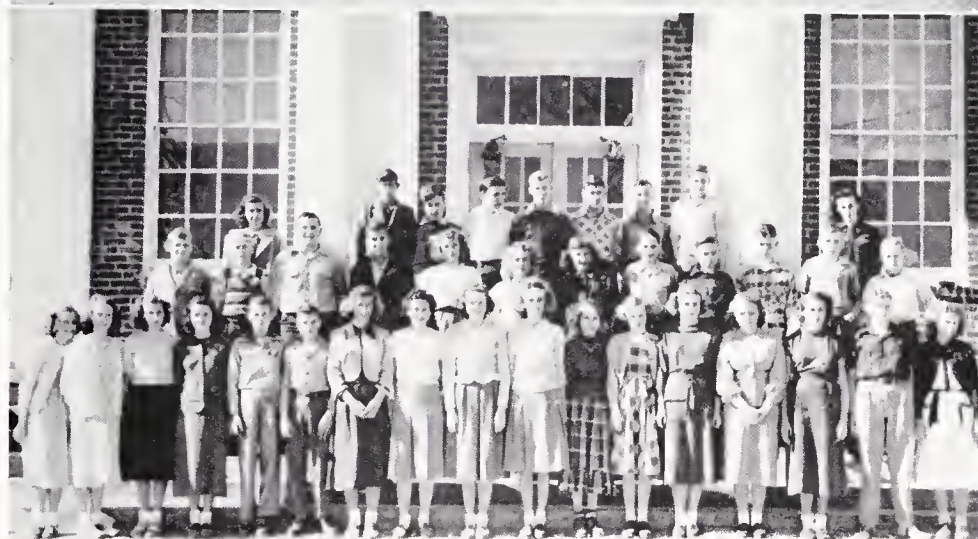
8th GRADE

MR. ROBERT CRESS



8th GRADE

MRS. JANE PRESTON



7th GRADE

MRS. HAROLD LOVE





7th GRADE

MISS RACHEL EARP



6th GRADE

MRS. E. W. AUMAN

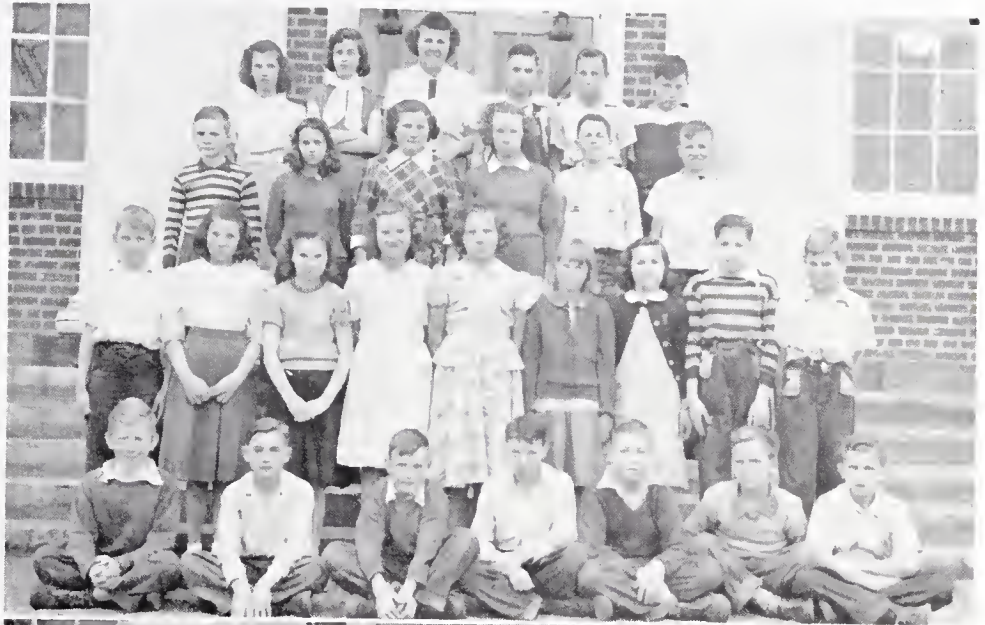


6th GRADE

MRS. MILLARD COBLE

6th GRADE

MISS MARGARET TAYLOR



5th GRADE

MISS VIRGINIA REDDING



5th GRADE

MRS. LEROY HANCOCK





5th GRADE

Mrs. JOHN L. THOMAS



4th GRADE

Mrs. GEORGE STARLING



4th GRADE

Mrs. CATHEREN MARTIN

3rd GRADE

Mrs. LEWIS GRIFFITH



3rd GRADE

Mrs. EDITH B. TRIBBLE



2nd GRADE

Mrs. JOHN PAYNE





2nd GRADE

MISS IDA M. BRANDON



1st GRADE

MRS. J. W. DAVIS



1st GRADE

MRS. S. M. NEWSOM



1st GRADE

MISS ISA CROUSE

ALUMNI

| | | | | | |
|-----------------------|------|-----------------------------|------|--------------------|------|
| Frances Lambeth | 1948 | Verda B. Hughes | 1926 | Glenn Leach | 1947 |
| Fred Lambeth | 1947 | John Hughes | 1928 | Charles Davis | 1949 |
| Miss Nancy Lambeth | 1949 | Mrs. Jonah Leach | 1907 | Robert E. Gray | 1931 |
| Hazel Hill Crotts | 1941 | Joel Walker | 1931 | Velton Snyder | 1928 |
| Maxine Hill Coltrane | 1945 | Lucille Payne White | 1926 | Carl Hill | |
| Austin Brown | 1941 | Cpl. Harold R. Mitchell | 1948 | Dallas Rush | 1941 |
| Lunary Love | 1947 | Pvt. J. T. Mitchell | 1947 | Mrs. Harvey Farlow | 1919 |
| Ruth Elliott Lilly | 1948 | Milton Reddick | 1939 | Harold Farlow | 1949 |
| Odell "Pete" Rush | 1949 | Frank Maness | | Margaret McGee | 1945 |
| Annis Parks | 1936 | Wanda Welborn | 1948 | Dorothy Wood | 1948 |
| Roy Frazier | 1949 | David Sidney Underwood | 1940 | Joseph Peace | 1944 |
| Ruth Hill | 1938 | Mrs. LeRoy Hancock | 1922 | Jack Crouse | 1947 |
| Herman Hill | 1942 | Mr. E. W. Auman | | R. S. Davis | 1949 |
| Opal Hill Helmsteller | 1942 | Mrs. Erline Welborn Hendrix | 1930 | Bobby Williams | 1944 |
| Joseph Hill | 1945 | Miss Betty Jones | 1948 | C. C. Cagle, Jr. | 1939 |
| Charles Snyder | 1948 | Mrs. G. H. Jones | | Earl Howell, Jr. | 1942 |
| Willie D. Welborn | 1937 | Mr. & Mrs. Marvin Cooper | 1947 | David Warren | 1947 |
| Colleen Crotts | 1947 | Mrs. Nell Lackey | 1948 | James Wall | 1947 |
| Irene Biggs | 1947 | Miss Alese Jones | 1948 | Joyce Hill | 1947 |
| Susie White | 1948 | Miss Mary Lee White | 1948 | Cecil Hill | 1945 |
| Mr. Gurney Peace | 1928 | Mrs. R. W. Brown | 1921 | Ray A. Underwood | 1945 |
| Mrs. Juanita Peace | 1928 | Frances Hughes Richardson | | Mrs. Jean Swiggett | 1944 |
| Brown Cumby | 1948 | Ela Bundy Richardson | | James Swiggett | 1948 |
| Nancy Lou Farlow | 1947 | Fred Richardson | | Mrs. Magalene Cook | 1943 |

FRIENDS

| | | |
|----------------------------|----------------------------------|----------------------------|
| Mr. & Mrs. Bob L. Mitchell | Mr. & Mrs. Millard Coble | Mr. & Mrs. Larry Fields |
| Mary Elizabeth May | Mr. & Mrs. John Kennedy | Mr. & Mrs. Watson Millikan |
| Mr. & Mrs. J. W. Davis | Mr. J. W. Hines | Mr. & Mrs. Ralph Brown |
| Miss M. L. Faulk | Arnold Richardson | Charles Fulp |
| Mr. & Mrs. L. H. Koon | Jesse Richardson | A. H. Hill |
| Miss Virginia Redding | Ronald Reed | "Pop" Seward |
| Ida May Brandon | Mrs. Bruce Craven | Mr. & Mrs. W. T. Hill |
| Mrs. S. M. Newsome | Mr. & Mrs. George T. Gunter, Sr. | Homer Hill |
| Mrs. R. K. Tribble | W. S. Crowson | John F. Lilly |
| Mrs. E. W. Auman | Minnie Leach | W. E. Coltrane |
| Mr. G. H. Jones | Mr. & Mrs. E. L. Snyder | Mrs. Lewis Griffith |
| Mr. T. R. Hendrix | F. B. Lindley | Edgar White |
| Jack Spencer | Mr. & Mrs. W. H. Flynt | Eloise McDowell |
| Robert Cress | Mr. & Mrs. James Staton | Louise Patton |
| Mrs. C. L. Thomas | Mr. & Mrs. R. M. Yow | Gracie Dorsett |

Wade H. Cumby

Calvin C. Orrell

Harold C. Davis

*"Heartiest Congratulations To a Swell Group
of Graduates"*

**CUMBY-DAVIS MEMORIAL
MORTUARY, Inc.**

"Funeral Home and Chapel"

Phone 2646

Broad Street at Chestnut

HIGH POINT, N. C.

Compliments of

**LEXINGTON
GROCERY CO.**

Wholesale Grocers

LEXINGTON, N. C.

HIGH POINT, N. C.

Compliments of



PHONE 3344

HIGH POINT, N. C.

CLARK-MENDENHALL AUCTION CO.

"AUCTION IS ACTION"

118 West Washington Street

Phone 4953

HIGH POINT, N. C.

— If It Can Be Sold We Can Sell It —

ALSTON CLARK
Auctioneer

ROBERT MENDENHALL
Auctioneer

HI, GRADUATES... Let's GO!

You lucky guys and gals have places to go in our Piedmont of Opportunity, and I'm going with you. (Fact is, I've been right along since your bottle warming days.)



Lift your chin . . . you're graduating into the freest economy on earth. The only one left where you can pick your own job and work out your own ideas about making it more productive and more profitable. Your diploma is a challenge to understand Our Way . . . to *Keep It Free and Make It Better.* *teriedonL*

DUKE POWER COMPANY

Serving the Piedmont Carolinas

After High School Graduation,
for the best in Business Education

and a good Office Position, attend

JONES BUSINESS COLLEGE

"The School for Better Training"

HIGH POINT, N. C.

Compliments Of

QUALITY SHOE STORE

HIGH POINT, N. C.

C. De Witt Holton Furniture Co.

"Quality Furniture and Carpets"

817 South Main Street

HIGH POINT, N. C.

Best Wishes

GRAY'S JEWELRY

Archadel, North Carolina

Compliments of

ENGLISH MOTOR COMPANY

FORD PASSENGER CARS

FORD TRUCKS

Ford Sales and Service

SERVICE PHONE 2685

OFFICE PHONE 2627

HIGH POINT, N. C.

Compliments

Pat Brown Lumber Company

APPALACHIAN WHITE PINE

N. C. PINE & HARDWOODS

MILL
N. WILKESBORO, N. C.
Phone 3051

MILL
ROXBORO, N. C.
Box 228

Compliments of

W. E. LINTHICUM & SON

Compliments of

BEESON HARDWARE CO.

Electric Appliances
Building Supplies
Sporting Goods

Confidence —

We will continue to justify in fullest measure the confidence and trust inspired by our fifty-three years of noteworthy service.

J. W. SECHREST & SON

Ambulance Service

PHONE 3349 HIGH POINT, N. C.

BROADWAY BARBER SHOP

112 West Broad Street

Bob Jordan W. A. Morton J. R. Lucas

ELWOOD'S GROCERY

SELF SERVICE

Fresh Meats and Groceries

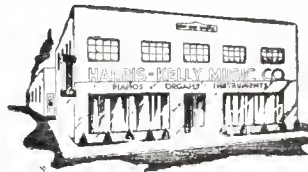
Phone 9823 Archdale, N. C.

Whitlark's Flowers and Gifts

206 West Howell Street

PHONE 3694

Compliments Of



"The House That Quality and Service Built"

HARRIS-KELLY MUSIC CO.

English St. at City Limits
HIGH POINT, N. C.

Compliments of

Scott Book & Stationary Co.

"Gifts and Books of all Kinds"

ASHEBORO, N. C.

SUNSHINE LAUNDRY

210 PINE STREET

Phone 3393

Compliments

MID-STATE MOTORS, Inc.

Your

LINCOLN and MERCURY Dealer

149 W. Kivett St.

Phones 1015 and 1016

ASHEBORO, N. C.

Lambeth-Welborn Supply Co.

*Plumbing, Heating, Electrical Supplies
and Installation*

Youngstown Kitchens

Gibson Electric Stoves and Refrigerators

128 West Commerce Street

Phone 2230

HIGH POINT, N. C.

Bryce Commercial College

Arcade Building

High Point

Accredited and Licensed

Compliments of

SNOW LUMBER CO.

Phones 3396 — 3397

"Everything to Build Anything"

VESTAL MOTOR CO.

FORD CARS

FORD TRUCKS



Sales — Service

Phone 120

Phone 175

ASHEBORO, N. C.

INTERNATIONAL HARVESTER

Form Machines — Tractors

Motor Trucks — Refrigeration

D. W. HOLT & CO.

ASHEBORO, N. C.

Compliments of

The Coca-Cola logo is written in its signature script font. Below the main text, the words "SPRINKLES" and "SODA WATER" are written in a smaller, sans-serif font, separated by a small graphic element.

HIGH POINT, N. C.

**FARLOW
FUNERAL HOME**

AMBULANCE SERVICE

PHONE 85

ASHEBORO, N. C.

Geo. T. Wood & Sons, Inc.

Distributors Carpets and Rugs

Styles for Floors

... Profits for Stores ... Since 1921

HIGH POINT, N. C.

Compliments of

BORDEN'S ICE CREAM

Compliments

of

JESSE WASHBURN

Compliments of



Joel E. Walker

Ambulance Phone 563 — Thomasville, N. C.

HINKLE MILLING CO.

Manufacturers of

SNOWDRIFT FLOUR

Dealers in all kinds of

FEEDS, SEEDS and FERTILIZER

High Point's Finest Ladies' Store



BROWN EQUIPMENT CO.

Allis-Chalmers Dealers

FARM MACHINERY

REPAIR PARTS

Phone 894

THOMASVILLE, N. C.

Home Products by Home Folks

LINDALE DAIRY CORP.

HIGH POINT, N. C.

THOMPSON AUTO CO.

Phone 353

118 West Main Street



Expert Paint and Body Repairs

Factory Trained Mechanics

"Thomasville's Oldest, Most Reliable

Automobile Agency"

Compliments of

HIGH POINT COLLEGE

DAVIDSON Farm Equipment Co., Inc.



Sales and Service

Lexington Road

Telephone 501

P. O. Box 284

THOMASVILLE, N. C.

FOR THE

Finest in Music

Fastest in News

First in Sports

IT'S

WHPE

High Point's Most Powerful AM Station

Southern Motors & Equipment Co.

John Deere Sales and Service

P. O. Box 408

Phone 880

ASHEBORO, N. C.

Compliments of

Clover Brand Dairies, Inc.

MILK — ICE CREAM

HIGH POINT, NORTH CAROLINA

Compliments of

HILLSVILLE GARAGE & REPAIR SHOP

Route 1

Phone 68408

TRINITY, NORTH CAROLINA

Compliments Of

FULP'S GROCERY

Phone 55820

Trinity, N. C.

CITY CLEANERS

300 East Main Street

Phone 369 — Thomasville

FULTON'S GROCERY

Gas — Oil — Hardware

TRINITY, N. C.

Television Sales & Service

Your RCA Dealer

High Point's Pioneer in Television

FELIX MILLER, Jr., Sales Manager

323 North Wrenn St.

Phone 66131

Best Wishes To You

TRINITY SERVICE CENTER

TRINITY, NORTH CAROLINA

Phone 53298

Compliments of a Friend

DR. NAT WALKER

Optometrist

HIGH POINT, N. C.

Drive Carefully

**TEMPLE-CURRY
MOTOR, C., Inc.**

Authorized Sales and Service

LINCOLN — MERCURY

781 N. Main St. :- Ph. 5979 :- High Point, N. C.

PUGH FUNERAL HOME

Ambulance Service

Asseboro Ph. 397 :- Randleman Ph. 2591

SHACKLEFORD'S

Men's Wear

124 N. Main St.

HIGH POINT, N. C.

We Serve Trinity

Harrell Chevrolet Company

THOMASVILLE, N. C.

Compliments of

FIRST NATIONAL BANK

ASHEBORO, N. C.

Member Fed. Reserve System and F. D. I. C.

Guilford Furniture Co., Inc.

309 North Main St. —0— Telephone 2162

ROSE FURNITURE CO.

High Point, N. C.

PHONE 4332

HOLTON FURNITURE CO.

Complete Home Furnishers

THOMASVILLE, N. C.

Phone 488

MOTOR SERVICE COMPANY

Your Hudson Dealer

Complete Service for Your Car

PHONE 275 — ASHEBORO, N. C.

Mann's Cut-Rate Drug Store

LEXINGTON, N. C. GREENSBORO, N. C.
HIGH POINT, N. C. REIDSVILLE, N. C.
KANNAPOLIS, N. C. THOMASVILLE, N. C.
BURLINGTON, N. C.

Compliments of

Utility Appliance Company

205 S. Main Street -:- High Point

BRILEY FURNITURE STORE

Retail Furniture

South Main Ext.

PHONE 6455

Compliments of

PEGGY ANN SHOPPE

117 North Main St.

W. C. BROWN

SHOE SHOP

Phone 4313 — x — 208 E. Washington

JOHN H. BANKS, Textiles

Dealers in all Grade of
Textile Waste and Mill Remnants

P. O. BOX 587

402 Tomlinson Street
HIGH POINT, N. C.

N. H. SILVER

INCORPORATED

Quality Clothes for Men and Boys

WHITEHOUSE BAR-B-QUE

South Main Street Extension

*Dining Room
Private Dining Room
Curb Service*

PHONE 6446

HIGH POINT F. C. X.

GENERAL PAPER CO.

101 Whittier Street, High Point, North Carolina

SOUTHERN MOTOR CO.

Your DeSoto and Plymouth Dealer
2100 South Main Street Phone 3030 or 5800
HIGH POINT, N. C.

HIGH POINT LAUNDRY

INCORPORATED
Launderers — Cleaners
228 N. Wreen St. -- Telephone 3325
High Point, North Carolina

Compliments of
PAT'S BEAUTY SHOP

1007 Fairfield Road
Res. Phone 51557

Paul Kennedy Appliances

Plumbing — Septic Tank Service
Route 1 — Thomasville, N. C.
Phone 9237 or 5-3983 High Point

REDWINE HARDWARE CO.

208 N. Main St.
Phone 3444 --: High Point, N. C.

Compliments of
BECKER TAILORING CO.

New Amos Building
110 W. Washington Street

HORACE G. ILBERTON, Inc.

Dodge and Plymouth Passenger Cars
Dodge Trucks
High Point, North Carolina

Compliments of
DICK CULLER, Inc.

EVERY TYPE OF SPORTING GOODS

Compliments of
Proffitt Wholesale Company

233 W. Russell St.
Telephone 3742

WARD'S GROCERY

Groceries - Notions - Flour and Feed
Meats - Gasoline and Oil
Telephone 9145 --: Rt. 2 --: Trinity, N. C.

Compliments of
ELLINGTON FLORIST

Archdale Road Phone 4032
HIGH POINT, N. C.

BELK-STEVENSON CO.

High Point's Complete Department Store

Compliments
North State Telephone Co.

Compliments of
TRINITY FLORAL COMPANY

Trinity — Phone 62761

Compliments of
LEACHE'S CURB MARKET

THOMASVILLE, N. C.

Samet Salvage Company

Army Surplus
Plumbing Supplies
1807 English Street

Reid's Soda Shop & Grill

SANDWICHES, SHORT ORDERS
SOFT DRINKS, SUNDAES
CURB SERVICE
Archdale, North Carolina

Smith Studio & Camera Shop

Your Class Photographer

**Sheppard
Motor & Supply Co.**

General Auto Parts and Hardware
Indian Motorcycle Sales
Evinrude Outboard Motor Sales
PHONE 48340

Ashmore Business College

5 1/2 E. Main St., Thomasville, N. C.
Charter Member of
National Council of Business Schools
Approved G. I. Training

STAMEY'S

LUGGAGE SHOP

759 N. Main St. High Point, N. C.

Compliments of

ELLINGTON'S GRILL

— Short Orders —

Compliments of

DIP-N-EAT DRIVE IN

801 South Main Street
HIGH POINT, N. C.

Best Wishes from

Richardson's Dept Store

Home Owned Store of
HIGH POINT

Compliments of

Warren's Radio Service

609 S. Main St. High Point, N. C.

Hedrick Sporting Goods Co.

160 S. Main St. Next to Security Bank Bldg.
HIGH POINT, N. C.

**HUNTER
COAL & ICE CO., Inc.**

Always Dependable
Phone 3366 — 1219 Ward Street
High Point, North Carolina

WAGNER TIRE SERVICE

Distributor for U. S. Royal Tires
Box 1931, High Point, N. C.

**LAWING & WELBORN
MOTOR SALES**

Your Dodge and Plymouth Dealer
Phone 811 -- National Highway
THOMASVILLE, N. C.

Compliments of

KEMPLEY'S BAR-B-QUE

HIGH POINT, N. C.

Compliments of

S. H. KRESS & COMPANY

Compliments of

GREEN'S BARBER SHOP

ALLEN JAY COMMUNITY

Swaim Supply Co., Inc.

Plumbing, Heating and Industrial Supplies
HIGH POINT, NORTH CAROLINA

Griffith Office Equipment

Typewriters — Adding Mochines and Office Supplies
515 N. Main Street
High Point, North Carolina

Best Wishes

THE BANK OF RANDOLPH

ASHEBORO, N. C.

PEOPLES SERVICE STATION

Generator and Starter Service
Mobiloil Products

City Limits — S. Main Street
PHONE 9328 — HIGH POINT

ASHEBORO MOTOR CO.

Dealers
CHRYSLER — — — PLYMOUTH
Phone 592 - - - Phone 593

Farlow's Service Station

Phone 9935 -:- Trinity
"Best In The Business"

BOYLES TIRE COMPANY

Wholesale Distributors of Tires
Seat Covers and Accessories
711 N. Main St. — High Point, N. C. — Phone 3705

ARCHDALE MOTOR CO.

ARCHDALE
Route 3 — High Point, N. C.

KENNEDY OIL COMPANY

Gosoline, Motor and Fuel Oils

1203 Tryon Street Phone 3027

HIGH POINT, N. C.

Compliments of

TWILIGHT BEAUTY SHOP

636½ North Main Street
HIGH POINT, NORTH CAROLINA

B & M Tractor Implement Co.

We Serve Randolph and
Davidson Counties
To make it better make ti
F E R G U S O N
LEXINGTON, NORTH CAROLINA



*Within Your Wishes
Within Your Means*

KOONCE
FUNERAL HOME, INC.

Ambulance Service
PHONE 4545

Compliments of
TEXTILE INSURANCE CO.
HIGH POINT, N. C.

LEACHE'S GROCERY
PHONE 53425 TRINITY, N. C.

Compliments of
FRYE
MANUFACTURING CO.

DUTCH LAUNDRY, Inc.
and
SARTIN DRY CLEANING CO.

Compliments of
HIGH POINT
SAVINGS & TRUST CO.

Compliments of
A FRIEND

Printing

preserves the accomplishments of life.
for succeeding generations to emulate.

Printing is

"The Mother of Progress"

PRINTING  **COMPANY**
Letterpress - Complete Printing Service - Lithography
HIGH POINT
NORTH CAROLINA

Autographs

Autographs

Autographs

Asheboro Public Library
Asheboro, North Carolina

RANDOLPH COUNTY PUBLIC LIBRARY



3 9937 01061 9292

