

1

9

5

7



THE TROJAN

THE

TROJAN

Sixth Volume

Charles H. Darden High School

Wilson, North Carolina

Nineteen Hundred Fifty-Seven



As we, the class of 1957, gaze into the crystal ball, we concentrate deeply on the past with the hopes that it will bring reflections of our cherished days at "dear ole Darden High." These concentrations, we hope, will instill within our minds and our hearts the need for bettering our aims for the future—the future which is ours.

Ah-h-h! the mist is gradually disappearing and scenes of those unforgettable moments are as clear as if . . . but wait! Wouldn't you like to take a look with us?

CONTENTS

INTRODUCTION	
OUR SCHOOL	
OUR CLASSES	
OUR ORGANIZATIONS	
OUR ADVERTISERS	

Alma Mater

We sing a song of adoration,
A song full of love and praise
For the school that is our inspiration,
For the place where we spent our high
school days.

We dedicate our thoughts to thee;
Thoughts of true love and good will.
Loyal students we will always be
As we journey o'er the rugged hills.

Although from thee we must part,
This song will linger within.
Yearning and longing in our hearts,
For our Alma Mater we will sing.
We strive to do our best,
While we proudly sing thy name.
May we work, love, and be blessed!
This is our beloved refrain.

Chorus:

Dear ole Darden High!
We laud thee to the sky.
We sing thy name in reverence, praise
Darden High, Darden High, we raise
Our Alma Mater, Darden High!

SPENCER J. SATCHELL



IN APPRECIATION

Mrs. Edith P. James, with her gracious smile and warm, friendly greeting, has inspired us to follow in her footsteps. She, for the past six years, has given, unselfishly, her time and effort in all school activities.

We are especially grateful for her constant work on our yearbook, which will serve as a lasting memory throughout our lives.

To Mrs. James, our adored adviser, we dedicate this, the 1957 edition of THE TROJAN.



A daily check-up on brief forms is a **MUST** in Mrs. James' shorthand class.



Miss Sullivan's science class is determining the content of water in common foods.







Mr. Hams' second-year masonry class is building yellow and solid piers of various sizes

This climactic scene was taken from "Fright," a play given by Mrs. Parks' homeroom class.



Mrs. Barnes' speech-correction group is rehearsing a choral reading.

Versatility is a MUST in Mrs. Hunt's Dramatics club.



Mrs. Leazer's health class begins the day with calisthenics.

Mr. Harris' first-year masonry class is building eight-inch return corners and an eight-inch wall to the line.



Our loyal maintenance staff.

Joseph Edwards and Grace Hall have just completed the bisecting of an equilateral triangle and are explaining it to Mrs. Parks' geometry class.



Where are the students at 12:30? Patronizing our cafeteria, of course!

*We pause as we remember these, our teachers
... our helpers, our guides, our friends ... in
this ...*

OUR
SCHOOL





Mr. S. G. CHAPPELL
City Superintendent of Schools
Secretary of the Board



Dr. R. L. FIKE
Chairman of the Board of Education

THE BOARD OF TRUSTEES

Dr. W. C. HUNTER
Mr. B. J. FORBES

Mrs. J. W. BENSON
Mrs. C. A. KING

Mr. G. H. ADAMS
Mr. CONNOR VICK



PRINCIPAL

Here is our beloved principal, Mr. E. M. Barnes. He is a person for whom we have deep concern and fondest admiration. We regard him as one who enlightens our hearts in times of sorrow and lends a helping hand in times of need. Because of his profound faith in a christian way of life, he is able to cope with situations which arise outside the range of school affairs. May God always serve as his guide in directing the faculty as well as the student body along the right channels of life.



Mr. E. M. BARNES

FACULTY



Mrs. MARGARET B. CHAMBERS
North Carolina College,
M.A.; English; Social
Studies.



Mrs. ZELMA C. DANIELS
Pennsylvania State Uni-
versity, M.Ed.; English;
Social Studies.

Mrs. ADDIE S. HA-
GANS
North Carolina College,
A.B.; English.



Mrs. CLAUDIA W. HUNT
Bennett College, A.B.;
English.



Mrs. MARIAN H. MIL-
LER
New York University,
M.A.; English, French.



Mrs. SADIE W. MIMS
Johnson C. Smith Uni-
versity, A.B.; English,
Social Studies.

SPENCER J. SATCHELL
Columbia University,
M.A.; Music; English.



Mrs. MAMIE E. WHITE-
HEAD
Shaw University, B.S.;
English.



Mrs. MABEL W. PARKS
North Carolina College,
B.S.; Mathematics

CARL W. HINES
Columbia University,
M.A.; Mathematics,
Music.



FACULTY



Miss GLADYS E. MOR-
GAN
North Carolina College,
B.S.; Mathematics.



CHARLES E. BRAN-
FORD
Pennsylvania State
University, M.Ed.;
Mathematics.

Miss MATTIE M.
HINES
Morgan State College,
A.B.; History, Physical
Education.



ELLIS BROWN, Jr.
Johnson C. Smith Uni-
versity, A.B.; Social
Studies.



Miss BESSIE D. SUL-
LIVAN
Livingstone College, B.
S.; Science.

JOHN E. DIXON
Shaw University, B.S.;
Science.



Mrs. LOUISE M. JEN-
KINS
Pennsylvania State
University, M.A.; Home
Economics.



Mrs. JOHNNYE B.
HARRIS
Columbia University,
M.A.; Home Econo-
mics.

Mrs. EDITH P. JAMES
North Carolina College,
B.S.; Business Educa-
tion.

OSWALD W. HARRIS
North Carolina College,
B.S.; Mathematics.



FACULTY



Mrs. MARY G. LEAZER
Livingstone College, A.
B.; Health and Physical
Education.



JAMES M. ELLIOTT
North Carolina College,
B.S.; Physical Educa-
tion.

Mrs. BEATRICE T.
BARNES
Northwestern Univer-
sity, M.A.; Seventh
Grade.



Mrs. ANNIE M. DU-
FREE
Livingstone College,
Diploma; Seventh
Grade.



Mrs. DOROTHY H.
ELLIS
Fayetteville State Col-
lege, B.S.; Seventh
Grade.

Miss JEAN W. BRYANT
Fayetteville State Col-
lege, B.S.; Seventh
Grade.



Mrs HELEN D. WHITT-
ED
Shaw University; Di-
ploma; Seventh Grade.



JAMES C. ELLIS
Fayetteville State Col-
lege, B.S.; Health,
Social Studies.



Mrs. FLORA C. BETHEL
St. Augustine's College,
A.B.; Seventh Grade.

Mrs. ETHEL D. ALEX-
ANDER
Pennsylvania State
College, M.A.; Seventh
Grade.



FACULTY



Mrs. ALICE H. JONES
Bennett College, Di-
ploma; Seventh Grade.

HARRISON SMITH
A. & T. College, B.S.;
Industrial Arts.



Mrs. ODELL W. BAR-
NES
University of Michigan,
M.A.; Speech Therapy.



Mrs. INEZ F. HAW-
KINS
North Carolina College,
B.L.S.; Librarian.



Miss BELLA M. GIL-
CHRIST
Darden High School,
Diploma; Further Study
at New York University;
School Secretary.

SUPERVISOR



Mrs. NELL BALDWIN RICE

Mrs. Nell Baldwin Rice, supervisor of elementary and high schools in our city, has many and varied duties in the capacity of observer, assistant, and counselor. She has served as our supervisor for the past five years. Her work has been outstanding and also beneficial to all of us.

Mrs. Rice received her A.B. and M.A. degrees from North Carolina College at Durham. She has also done further study at Teacher's College, Columbia University.

INFORMAL SHOTS OF FACULTY



We pause as we review our companions:
Seniors, Juniors, Sophomores and Freshmen
and marvel at the opportunities that lie with-
in

OUR CLASSES



HAPPY, YET SAD

The days we feared would never end,
Are now marked off our pad.
It seems, however, without a doubt,
We're sorry rather than glad.

It was hard to believe
When we were told,
That we would shed some tears.
Now that they're o'er, we must admit,
We'll yearn for those four years.

Our high school days were really filled
With work, with fun, and play.
By studying long and laboring hard
We've reached this final day.

Our many thanks to those who helped
Us reach this glorious day;
Our parents, our teachers, our principal too
Encouraged us all the way.

We truly refuse to say good-bye;
We know we'll meet again.
We'll strive to wave our banners high
In sunshine or in rain.

Our hearts are filled with thankfulness
In many, many ways.
God only knows how much we thank' you
For our high school days.

WENDELL HINES

CLASS COLORS
Blue and White

CLASS FLOWER
Carnation

CLASS MOTTO

"Providence furnishes materials, but expects that we should work them up ourselves."

Class of 1957

Officers



PRESIDENT

ALTON RAY KIRK
History Club, FTA, Debating
Society, Basketball Team
(Varsity), Student Council,
Patrol Force, Choral Club,
Boys Glee Club.

LILLIE BEATRICE COOPER
Glee Club, Cheerleader, Stu-
dent Council, Debating Soci-
ety, Trojan Journal, Annual
Staff, FTA, Crown & Sceptre
Club, Athletic Committec.



VICE-PRESIDENT



SECRETARY

LUCILLE ELIZABETH BATTs
Annual Staff, Trojan Journal,
FTA, Crown & Sceptre Club,
NHA, Dramatic Club, Student
Council.

GRACE ALICE HALL
Annual Staff, French Club,
Dramatic Club, Dance Group.



ASSISTANT SECRETARY



TREASURER

GERALDINE YOUNG
NHA, Dramatic Club, English
Club.

FRANK BRUNSON
Basketball Team (Varsity),
Science Club, History Club,
Student Council.



SERGEANT AT ARMS



ROSE MARIE BAILEY
Annual Staff, Dance
Group, French Club, NHA.



DELORES BAINES
NHA, Library Club, Glee
Club.



JESSIE GERTRUDE
BALDWIN
Trojan Journal, Annual
Staff, FTA, Crown &
Sceptre Club, Dramatic
Club.



EDWARD LEE BARNES
Basketball Team, Student
Council, Science Club,
History Club, Dramatic
Club.



REMATHA BARNES
Mixed Chorus, Girls Glee Club
(President), Dramatic Club.



EARLINE BLOUNT
Dramatic Club, Student Coun-
cil, Dance Group.

EMMA LOUISE BOSTIC
Trojan Journal, Crown &
Sceptre Club, French
Club, Science Club, NHA.

CALLIE JOYCE BOWENS
Annual Staff, Patrol Force
(Lt.), Glee Club, French
Club.

CALVIN BOYETTE
Band, Science Club.

CATHERINE BYNUM
NHA, Glee Club.





JOSEPHINE GWENDOLYN
COLLINS
Glee Club, Dance Group,
Dramatics Club, Student
Council, French Club.



BETTY JOYCE COOPER
Patrol Force (Capt.),
Crown & Sceptre Club,
Band (Majorette).



STERLING CORBETT
Science Club.



RALPH CRAWFORD
Band (Assistant Director),
Patrol Force (Lt.), Basket-
ball Team.



HELEN RUTH CURBY
Glee Club, Mixed Chorus,
Student Council.



WILLIAM BAYARD DAVIS
Band, Debating Society, Stu-
dent Council.

WALTER THOMAS
DEANS, JR.

Football Team, Student
Council.

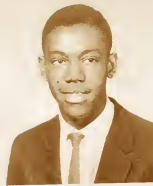
ROBERT EUGENE DEW

Science Club, History
Club, FTA, Basketball
Team (J.V.), Patrol
Force.

EARLINE DICKERSON
Annual Staff, NHA, Dra-
matics Club.

HENRY DILLARD, JR.
Science Club, History
Club, Trojan Journal





EDWARD LEON EVANS
Glee Club, Dramatics
Club, Dance Group.

ANNIE DORIS FARMER
English Club, NHA,
Science Club.

ROOSEVELT ANTHONY
FARMER
Glee Club, Annual Staff,
Dramatics Club, FTA.

JOHN THOMAS
FERGUSON
Science Club, Trojan
Journal, Athletic Com-
mittee.



LEROY FISHER
History Club.



BEVERLY GASKINS
Glee Club, Library Club.

SARAH FRANCES
GREENE

Student Council (Presi-
dent), Crown & Sceptre
Club, Annual Staff, FTA,
Choral Club, Patrol Force,
History Club, Dramatics
Club.

DORA GLASPER
NHA, Dramatics Club,
Library Club.

GRACE GERALD HAGANS
NHA, Science Club.

JEAN HAGANS
Choral Club, NHA, Glee
Club.





LULA MAE HAGANS
Trojan Journal, Crown &
Sceptre, Dance Group
(President), Annual Staff,
Patrol Force (Lt.), Student
Council, Band (Head Ma-
jorette).

NELLIE GRAY HANDY
Glee Club, Student Coun-
cil, NHA, Mixed Chorus.

DOROTHY DARPINE
HAWKINS
Annual Staff, Dance
Group, NHA, Student
Council.

CARL WENDELL HINE
JR.
Annual Staff, Band (Mu-
sical Arranger), Crown &
Sceptre Club, Patrol
Force, Senior Planning
Committee.



JOYCE GAY HOBBS
Glee Club, Mixed Cho-
rus, FTA, Trojan Journal,
Annual Staff, Science
Club.

LUTHER HODGES, JR.
Football Team, History Club,
Science Club.



JEAN ANDERSON
HOLIDAY
Band.

SYLVESTER HOWARD
Science Club.

DOROTHY M. LITTLE
Glee Club, Mixed Chorus,
Dramatics Club.

DORIS MELTON
NHA, English Club, Glee
Club.





IRIS VAN MOORE
Band, Trojan Journal,
FTA, Student Council.



ROBERT MURPHY
Science Club, History
Club.



DOROTHY PATE
Library Club, Dramatics
Club, Science Club.



**WINIFRED GAIL
PEACOCK**
Annual Staff, Trojan
Journal, Crown & Sceptre
Club, FTA, Dance Group
(Assistant Instructor) Dra-
matics Club, Chapel
Committee.



BOBBY JEAN POWELL
Glee Club, Choral Club.



**WILLIAM THOMAS
POWELL**
Science Club.



PATRINELLA REID
Glee Club.

JAMES RICHARDSON
Student Council, Annual
Staff, Dramatics Club,
Glee Club, Football
Team.

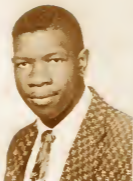
DORIS ROUNTREE
NHA, Glee Club.

PEARL RUFFIN
Glee Club, Dramatics
Club, NHA, Annual Staff.





ERNEST EARL SHERROD
Science Club, Band,
Crown & Sceptre Club,
Debating Society, Student
Council.



THOMAS Q. SIMMONS
Football Team, History
Club.



BETTIE LOU SPEIGHT
Annual Staff, FTA, French
Club, Dramatics Club,
Dance Group.



REMONIA SPEIGHT
NHA, History Club.



MILDRED SPELLS
NHA, Dramatics Club.



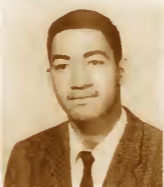
ROBERT EVERETT SPELLS
Band, Debating Society.

JAMES ALBERT
STEWART
History Club.

CARLTON STOKES
History Club, Dramatics
Club, Science Club.

ALTON CROMWELL
THOMPSON
History Club, Library
Club, Debating Society,
Science Club, Dramatics
Club.

AILEEN VICK
Science Club, French
Club.





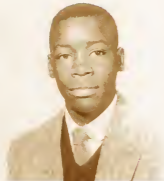
EVA JEAN WEAVER
Science Club, Dramatics
Club.



MARY ELIZABETH WEBB
Dramatics Club.



JEAN WILLIAMS
Science Club, History
Club, Crown & Sceptre
Club.



ROBERT RONNIE WILLIAMS
Science Club, Student Coun-
cil.



BOOKER TALIAFERRO
WOODARD
Dramatics Club, Mixed Cho-
rus.

HATTIE DORIS
WOODARD
Glee Club, Dramatics
Club, NHA, English Club.



JIMMIE D. WOODARD
Glee Club, Dramatic
Club.



RUSSELL JEROME
WRIGHT
Trojan Staff, Athletic
Committee, Annual Staff,
Student Council.



SCHOOL DAYS

A cool, sunny, morning in September, 1954, marked the beginning of our long struggle of climbing the "rugged hills" at dear ole Darden High. Although we were as green as a gourd, it didn't prevent us from carrying out the eagerness we possessed.

Our first year was filled with great joy after we adjusted ourselves to high school life. Our 9th level advisers were Mr. Brown, Mr. Dixon, Mrs. Daniels, Mr. Elliot, and Mr. Bryant. Each 9th level section was very much pleased with the progress that was made. We appreciate the splendid job done by our presidents, namely, Hampton White, Annie Whitehead, Russell Wright, Albert Parker, and Betty Cooper.

Talent was quite predominant in our different classes. We successfully presented two dramatic productions "Congo" and "The Greener Grass." We also participated in the different sports that were provided for us. The boys in Mr. Dixon's class and the girls in Mr. Brown's class were awarded the Intramural Basketball Trophies for their outstanding performances during the Intramural Basketball Tournament.

With the close of the school year approaching, even the Freshmen expected a little merrymaking. Of course it wasn't a Junior-Senior Prom, but to us it was--with only the name changed--"Freshmen's Ball." It was a wonderful way to end our freshman year.

Sophomores: eager beavers, fresh foos or what have you--We really began our second year of high school with new ideas and experiences too. Our advisers were Miss Hines, Mr. Hines, Mrs. Harris, and Mrs. Mims. Our presidents were newly elected but still efficient; they were Jessie Baldwin, Sarah Greene, Hampton White, and Ernest Sherrod.

It seems that our new ideas and experiences really paid off. Wendell Hines received the Excellence in Algebra Award and Ernest Sherrod received the Excellence in Biology Award.

Lillie Cooper, Ernest Sherrod, and Sarah Greene were candidates for the office of Vice-President of the Student Council; Sarah Greene was the students' choice.

Yes, we were well-liked by our principal, our teachers, and above all, the students. Possessing the fine quality, friendliness, we received an invitation to an affair held by the freshmen.

We looked forward to our year as dignified juniors. Alton Kirk's great leadership brought us nearer the light of refined adulthood. We planned for the greatest event of all--the Junior-Senior Prom. All our preparations and cooperation caused this affair to be most successful. We called it "An Evening in Paris." Mr. Harris, Miss Hines, and Mr. Dixon were along to guide us.

We were proud of the scholastic achievements of our classmates: Gail Peacock's skill and accuracy in using the typewriter resulted in her receiving the a-

ward, Excellence in Typing, also the Junior Scholastic Award; mastering geometry, United States history, and being most active in current affairs, automatically won Ernest Sherrod those awards; to help make the Senior Banquet a success was Alton Kirk, who spoke in behalf of the Junior Class.

Always ready to participate in school activities, we entered the float entitled "Rose Bowl," in keeping with the parade theme, "Football on Parade." We were happy to know Miss Betty Cooper took the title "Miss Homecoming."

Several of us were qualified for the Crown and Septre Club; Lucille Batts, Wendell Hines, Betty Cooper, Jessie Baldwin, Lula Mae Hagans, Ernest Sherrod, Sarah Greene were the most fortunate ones.

Finally the level to which we had looked forward with so much anxiety for so long was reached! Here we had the full responsibilities of projecting our maturing qualities into varied events: The first event found us the honored guest of A. & T. College for the occasion, "Senior Day"! We enjoyed the wonderful performance in football between Virginia State and A. & T. Even though our own team was a little green this year, Walter Deans led them as captain. We were happy to know some of our senior boys, (Edward Barnes, Thomas Simmons, Jimmie Barnes, Luther Hodge) played a tremendous role. Russell Wright did a wonderful job in writing up our games. Miss Bettie Speight won the title, "Miss Homecoming." Outstanding among the events of the year was the publication of the annual; Wendell Hines, who was editor and Gail Peacock, who was head typist, along with several others worked exceptionally hard to "meet the deadlines." We were happy that Lula Hagans and Wendell Hines worked so diligently to win the title, "King and Queen Trojan".

Everyone looked forward to the Merriest Christmas Party ever (and it was). Frank Brunson received the most unique gift for 10 cents - (hair pins).

Another event which created much excitement and interest among our classmates, was our presentation "The Jade Ring," a mystery in three acts.

"All work and no play makes Jack a dull boy," but we didn't feel a bit uneasy when we prepared for the Senior Banquet; we felt sure our parents had looked forward to it as much as we. Good food? Um - m-m!

We received royal retaliation for our prom efforts; the juniors took care of that!

Our sincere thanks to our Senior advisers, Mrs. Miller and Mrs. James for making our final year one we will long remember.

Now we face that greatest hurdle thus far along life's way--GRADUATION DAY! Laurels await us there!



MOST INTELLIGENT
Lillie Cooper-Ernest Sherrod



MOST POPULAR
Betty Cooper-Alton Kirk



BEST DRESSED
Alton Kirk-Lucille Batts



FRIENDLIEST
Leroy Fisher-Rematha Barnes



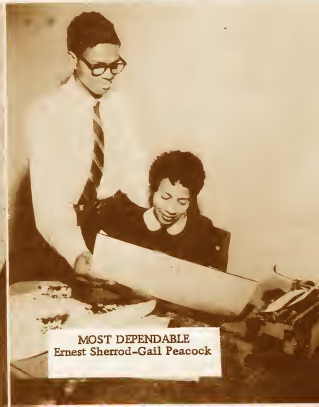
BEST ALL-AROUND
Lula Hagans-Alton Kirk



MOST COURTEOUS
Joyce Bowens-Robert Dew



MOST TALENTED
Wendell Hines-Van Moore



MOST DEPENDABLE
Ernest Sherrod-Gail Peacock

King and Queen



All hail the Trojan King and Queen! Wendell Hines and Lula Hagans won these titles through outstanding solicitation of patrons for our yearbook.



SECOND ROW: Left to right, Fitzgerald Murrain, President; Timothy McIntosh, Vice-President. FIRST ROW: Right to left, Annie Robinson, Secretary; Everlene Giles, Assistant Secretary; Diana Davis, Treasurer.

Class of 1958

TOP ROW: Ella Adams, Ruth Anderson, Beatrice Artis, James Bannerman, Camillus Barnes.
 BOTTOM ROW: Earl Barnes, Emma Barnes, Johnnie Barnes, Cathell Barnes, Nathaniel Barnes.



JUNIOR



Arthur Battle
Alma Best
Gloria Brown
Rudolph Bullock



Doris Bynum
Lavonne Campbell
Madeline Carter
Bernard Cooper



Gene Cox
Thelma Crooms
Verline Currie
Joseph Daniels



David Davis
Diana Davis
Wilter Davis
Ceola Dew



Eva Dew
Floyd Dickerson
Edna Ebron
Grace Edwards

Romaine Edwards
Ada Fox
Bobby Freeman
Everline Giles



Tommy Hagans
Walter Hardy
James Harris
Roberta Harris



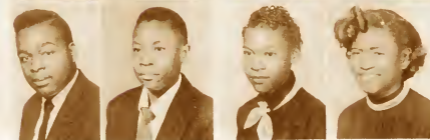
Doris Hicks
Emma Isom
Ray Jenkins
Sellers Jenkins



William Johnson
Esther Jones
Dorothy Kent
Isaac Lassiter



Calvin Merritt
Timothy McIntosh
Doris McNair
Minora McPhail



JUNIOR



Nathaniel McPhail
Eula Moore
Lovelace Murphy
Raymond Murphy



Fitzgerald Murrain
Charles Newsome
James Parker
Susie Penerton



Martha Peppers
Rematha Pettiford
Shirley Powell
Bettie Randolph



Romaine Reid
Annie Robinson
Tommy Robinson
Dillard Rowe



Andrew Rountree
Nellie Rountree
Lila Ruffin
Patricia Ryams

CLASS

Jimmie Sellers
Ruteen Sharpe
Ann Smith
Gilbert Smith



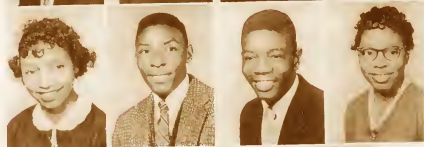
Joyce Spells
Raymond Spells
Carrie Speight
Gwendolyn Speight



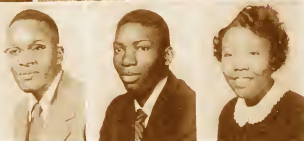
James Thompson
Edna Townsend
Bernice Vines
Mary Ward



Annie L. Williams
Arthur Williams
Joseph Williams
Louise Williams



Nathaniel Williams
James Wilson
Jean Wynn



FIRST ROW: Germaine Wright, Emilie Gaskins, Helena Smith, Delores Short, Georgia Woodard, Mildred Boddie, Lorraine Hagans, Marjorie Dupree. **SECOND ROW:** Mattie Hill, Joyce Rountree, Delores Harris, Annie Flemming, Geraldine Moore, Quetine Dingle, Christine Hinant, Carlise Edwards, Evelyn Pitt. **THIRD ROW:** Jimmie Handy, Charles Best, William Hannah, Thurman Wall, Nathaniel Hannah, Englan Hines, Johnnie Hall. **FOURTH ROW:** Mr. C. W. Hines, Adviser, Willie Knight, Charles Young, Oliver Ricks, Ervin Garrett, Evandelee Crossland, James Artis.





FIRST ROW: Frances Cooper, Ruby Parker, Barbara McClain, Millie Hines, Alberta Hodges, Bettie Powell, Irene Hopkins, Deloris Hobbs, Dorothy Howell. **SECOND ROW:** Rudolph Jenkins, James McCall, Margaret Kenny, Carlillie Morgan, Loretta Johnson, Delores Maye, Carlton Sampson, Ralph Davis, Mrs. M. B. Chambers, Adviser. **THIRD ROW:** William Patterson, Willie Stallings, James Hunt, Joe Holmes, Carl Barnes, Clyde Lucas. **FOURTH ROW:** Willie Richardson, Otha Davis, Robert Jenkins, Gracie Sanders, Paul Reid, Lemi McCall.

FIRST ROW: Betty Newsome,
Anita Joyner, Elizabeth Jordan,
Janice Weaver, Ruth Haskins,
Minnie Little, Christine Wil-
liams, Clementine Williams.
SECOND ROW: Mrs. S. W.
Mims, David Carr, James Davis,
Alton Smith, Bobbie Knight,
Calvin Smith, James Outlaw,
David Speight, Raymond Simms.
THIRD ROW: James F. Barnes,
Roy Bullock, Morris Joyner,
Ralph Murphy, George Jenkins,
Ralph Hargett, Bobbie Becton.
FOURTH ROW: Clarence
Barnes, Bobbie Barnes, Frank
Thompson, William H. Bullock,
Norman Best, Rudolph Bridgers,
Fred Woodard, George Farmer.
FIFTH ROW: Winston Matthews,
Raymond Bryant, Jerry Welling-
ton.





FIRST ROW: Bettie Woodard, La Forest Williams, Shirleen McDonald, Barbara Crawford, Janet Neal, Dorothy Battle, Frances Brunsen, Geraldene Barnes, Ella Wimberley, Mrs. J. B. Harris, Adviser. SECOND ROW: Royce Williams Ruby Brown, Walda Moultrie, Barbara Farmer, Grace Williams, Patricia Reid, Shirley Newkirk, Naomia McIntosh, Loretta McGirt, Marva Hines, Mattie Williams. THIRD ROW: Willie Green, Earnestine Benton, Peggie Autry, Barbara Bobbitt, Carolyn Barnes, Sandra Wallace, Sandra Watts, JoAnn Davis, Bettie Purefoy.

Freshmen

FIRST ROW: Helen Crowder, Mary E. Barnes, Frances Little, Doris Joyner, Mamie Barnes, Jo-Ann Robinson, Marian Carter.
SECOND ROW: Mrs. C. W. Hunt, Adviser, Clem Clemmons, Samuel Anderson, Helen Adams, Delores Nicholson, Margaret Sanders, Oderine Holt, George Daniels, James Chester. THIRD ROW: Claude Barnes, Raymond Best, James Bridgers, Henry Jones, Lazarus Johnson, George Erick Farmer, Robert Locus. FOURTH ROW: Peter Coley, William Joyner, Donald Jones, Willie Daniels, Willie Jones, Harry Hoskins.



FIRST ROW: Louvenia Parker, Thelma Harper, Jean Ballard, Helen Singletary, Margaret Whitley, Emilia Stewart, Bobbie J. Hall, Helen Bynum. SECOND ROW: Miss B. D. Sullivan, Adviser; Mary Walston, Annie P. Bailey, Betty Norfleet, Julia Braswell, Johnese Bryant. THIRD ROW: Howard Arrington, Jimmy Woodard, James Currie, Johnny Edwards, James Bynum, Jerry Williams, Nathaniel Ferguson, Preston Artis.



FIRST ROW: Doris Sherrod,
Mary Cox, Etheleen Tabron, Win-
nie Coley, Ophelia Vines, Mary E.
Wheeler, Earline Newsome, Dora
Cannady. SECOND ROW: Dorothy
Chapman, Trevoynne King, Annie
Rowe, Viola Lucas, Louise Coe,
Doris Simms. THIRD ROW: Mr.
E. Brown, Adviser, Stoney Worsley,
John McCowan, James Murphy,
Arthur Williams, Isaac Russell,
George Sharpe. FOURTH ROW:
Charles Murphy, Essie Smith,
Johnny Smith, Willie Reid.





Freshmen

FIRST ROW: Yvonne Goodman,
Carrie Ebron, Annie Doris Weaver,
Devella Newsome, Ermadine
Spells, Helen Maye, Bessie Gaskins.
SECOND ROW: Mr. J. M. Elliott,
Adviser, Anna Lassiter, Barbara
Evans, Delois Faison, Sedalia
Sellers, Mary Singletary, Delores
Short. THIRD ROW: Otis Brown,
Roy Lee Cooper, Elton Ray Coley,
Charles H. Bullock, Clyde Lucas,
Robert B. Hall. FOURTH ROW:
Rudolph Terry, Albert Adams,
Bennie Carlton, Mortimer Bryant,
Bobbie Batts.



FIRST ROW: Annie Woodard,
Shirley Williams, Annie Sherrod,
Mattie Hinnant, Doris Johnson,
Anna McCall, Peggy Williams.
SECOND ROW: Esther Hill,
Rosetta Rountree, Juanita Lucas,
Eleanor Hargett, Shirley Jenkins,
Carolyn Jones. THIRD ROW:
Elmore Filmore, Norman Lovette,
Jerome Fitch, Jerome Hodges,
Silas Patterson, Marshall Green,
Miss G. E. Morgan, Adviser.
FOURTH ROW: James Holmes,
Carl Parker, James Rountree,
Ulysses Williams, Carlos Speight.



FIRST ROW: JoAnn Johnson, Brenda Hines, Ernestine Hines, Jessie Lee Barnes, Jeanette Moore, Barbara Hall, JoAnn Barnes, Essie Taylor. SECOND ROW: Margaret Robinson, Amie Haskins, Barbara Foster, Barbara Purdie, Charlotte Rhice, Yvonne Purdie. THIRD ROW: Clarence Holley, James E. McCoy, Boisey Barnes, Richard Mitchell, Willie Wilkins, Delmar Darden, Jesse Powell, Mrs. A. S. Hagans, Adviser. FOURTH ROW: Charles Ellis, Charles Darden, Robert Woodard, Walter Greenfield, William Batts, James White, James Williams.

GRAMMAR GRADES



FIRST ROW: Christine Dingle, Shirley White, Edna Sherrod, Mary Ellis, Gloria Ellis, Mary Ward.
SECOND ROW: Mrs. M. E. Whitehead, Adviser, Walter Handy, James B. Locus, Waddell Thompson, Carl Davis, Ernest Carter, Jesse Edwards. THIRD ROW: Henry Batts, James Boyd, Johnnie Mincey, Thomas Barnes, James Faison, William Burch, George Edwards.

FIRST ROW: Fannie Williams,
Mary Rountree, Rosetta Terrell,
Dorothy Lou Hill, Sandra Purdie,
Rosa Lee Sauls, Yvonne Rountree.
SECOND ROW: Mrs. Leazer, Advi-
ser, Howard Edwards, Marcellus
McCray, Ann Mincey, Elizabeth
Bagley, Mayola Newsome, Paul
Lucas, William Earl Farmer.
THIRD ROW: Lewis Neal, Bobby
Neal Jr., Jasper Powell, Berry
Rogers, Haywood Ellis, Gary Lee
Cooper, William Earl Walker.
FOURTH ROW: Bobby Knight,
Donnie Smith, Carnell Holmes,
Luther McNeil, Bobby Lee Hannah,
Lorry Cox.



FIRST ROW: Hattie Newsome, Barbara J. Melton, Betty Lou Martin, Christine Robbins, Geraldine Hinnant, Peggy Dickerson, Dorothy G. Watson, Edna Gray Winstead. SECOND ROW: Raymond Williams, Leroy Gaskins, Roy Lee Ward, Mazie Rogers, Madison B. Mincey, James W. Locus, Sherlock Holmes. THIRD ROW: William T. Parker, Charles Crossland, Robert Lee McNeil, Leland Newsome, Joesph Mercer, Nathaniel Currie, Mr. Branford, Adviser.





GRAMMAR GRADES

FIRST ROW: Goldie Williams, Majorie Reid, Leola Bostic, Katie Isom, Johnnie Fay Barnes, Shirley Braswell, Evelyn Barnes. SECOND ROW: Joyce Barnes, Marion Wright, Flora Williams, Mary Petway, Evangelean Williams, Marjorie Spells. THIRD ROW: Nathaniel Nelson, Billy Pitt, Jesse Holmes, John Brown, Nathaniel Tucker. FOURTH ROW: Mr. J.C. Ellis, Adviser, Carl Bullock, Horace Richardson, Robert Smith, Clifton Williams, Richard Pitt.



FIRST ROW: Mae Carol Brown, Beatrice Hudson, Nebraska Campbell, Delores Farmer, Irene Anderson, Royce Jean Edwards, Trumiller Johnson, Edna Gray Armstrong. SECOND ROW: Brinda Dew, Donna L. Daniels, Delores Cooper, Doris Brooks, Dorothy Coel, Clara L. Barnes, Vivian James, Mrs. L.M. Jenkins, Adviser. THIRD ROW: Betty Artis, Dianne Haskins, Shelia Allen, Doris Isler, Margaret Cotton, Dorothy Hawkins, Fannie How-ell.



FIRST ROW: Roosevelt Hall, Douglass Joyner, Jimmie Bowens, Raymond Dublin, Joseph McNeil, Edgar Hines, Jesse Parker, Ralph Ruffin. **SECOND ROW:** Joseph Locus, Clyde James, Douglass Applewhite, Turner Barnes, Robert Payne, General Bynum, Robert Lee Barnes. **THIRD ROW:** Jake Baines, Robert Hall, Otis Lee Best, Milton Boddie, James Cotton, Melvin Briley, Mr. H. Smith, Adviser.

Grammar

Grades

FIRST ROW: Patsy Speight, Edith Rowe, Betty Harris, Deborah Pittman, Velma Bynum, Barbara Blackstone, Blanche Jenkins, YVonne Handy, Shirley Best, Alice Williams, Daisy Wall. SECOND ROW: Barbara Smith, Dorothy Lofton, Sandra Smith, Thelma Ruffin, Delores Maye, Joyce Faison, Florence Nicholson, Minora Ward. THIRD ROW: David Greenfield, John Best, John Harris, Alvin Towles, Joseph Ward, John Dixon, Henry Moultrie, Mrs. Z. C. Daniels, Adviser. FOURTH ROW: Harold Bynum, James Hobbs, Jesse Forte, William Turner, Lindsey Forte, Charles Weaver.



FIRST ROW: Bobbie Leach, Geraldine Chestnut, Elaine Jordan, Evora Faison, Barbara Dawson, Marjorie Barnes, Barbara J. Artis, Linda D. Chapman, Gladys Johnson, Ella Mae Artis. SECOND ROW: Billy Ray Merrell, Henry T. Baines, Raymond Petway, Jimmie Bailey, Charles Hardy, Lamberg Adams, John King, James E. Hamm, Douglas Dawson. THIRD ROW: Tobe Sherrod, James Owens, Jr., Mrs. A. M. Dupree, Adviser, Stanford L. Richards, Claxton Williams, George Jones, Willie Sharpe, David Williams, Erlest W. Sanders.



FIRST ROW: Annie Ruth Edwards,
Grace Ann Crossland, Jessie Lou-
ise Dawson, Nellie Yvonne Farrior,
Helen Doris James, Ruby Jean
McCoy, Linda Damell Monroe.
SECOND ROW: John Murray,
Annie Elizabeth Barnes, Peggy Ann
Mitchell, Lois Jean Barnes, Rachel
Hill, Alfonso Johnson. THIRD
ROW: Charles Bennett, John D.
Moore, Johnny Johnson, Richard
Fox, Ozia Patterson, James Powell,
Mrs. E. D. Alexander, Adviser.
FOURTH ROW: Charles T. Eat-
mon, John D. Barbour, James E.
Williams, Ralph B. Battle, James
Goodman, Jr., Jerome A. Barnes.



GRADES GRAMMAR



FIRST ROW: Deborah Daniels,
Julia Watson, Sarah Rountree,
Mary Wellington, Margaret Gaddie
SECOND ROW: James Meachem,
Elnora Dew, Helen Jones, Pearlina
Richardson, Herbert Woodard.
THIRD ROW: Lee Arthur McPhail,
John Oliver, William Hines, Ro-
bert Moore, Nathan Haskins, Mrs.
D. H. Ellis.



FIRST ROW: Walter Parker, Mary Spells, Cleveland Parker, Alma Ruth Ward, Ruby Bernice Sharpe, Marjorie Cooper, Peggy Jean Lyles, John Scott Armstrong. **SECOND ROW:** Mrs. A. H. Jones, Emma Parker, Pauline Rasberry, Margie Rasberry, Clarence Rountree, Olivia Rountree, and Bessie Taoron. **THIRD ROW:** Mary Ruffin, De-lores Woodard, Helen Woodard, Earl Henry Merritt, Sarah Lee Herring, Marvin Lee Speight.



FIRST ROW: Mary F. Bynum, Rose Margaret Edwards, Lila Mae Brooks, Ella Mae Rouse, Otisteen Artis, Inez Delois Ruffin, Patricia Wright. SECOND ROW: Jimmie Lee Speight, Jesse Wilson, Annie Doris Simms, Odette Sturdifen, Jennie L. Harris, Charles Farmer, Kenneth Newsome. THIRD ROW: Mrs. B.T. Barnes, Jimmie Lovick, Aaron Rountree, James Patterson, Willie Filmore, Wisdom Blount, Moses Bynum, James Bynum.

FIRST ROW: Vera Isler, Doris Holley, Martha Merritt, Gloria Carter, Mildred Barnes, Eloise Branch, Jennie Burney, Bernice Bullock, Emma Harris, John Jackson. SECOND ROW: Mrs. H. D. Whitted, Reathella Bridgers, Rosa Lee Woodard, Mae Suggs, Lorraine Dew, Gladys Moore, Bernice Barnes, JoAnn Bostic, Mary Harrington, Mary Louise Bullock. THIRD ROW: David Floyd, I. D. Howard, Roscoe Freeman, Mack L. Gaskins, Alexander McCrimmon, Donald Clark, George Hall, John Cannady, Branton McPhail, J. B. Sutton.



FIRST ROW: Betty Anderson,
Yvonne Webb, Eula Webb, Bunnie
Sharpe, Lillie Howard, Annie Win-
stead, Donna Young, Betty Cox,
SECOND ROW: Miss J. W. Bryant,
JoAnn Spell, Sarah Morgan, Annie
Purefoy, Josephine Chestnut, Faye
Thomas. THIRD ROW: Jimmie Lo-
vick, Aaron Rountree, James Pat-
terson, Willie Filmore, Wisdom
Blout, Moses Bynum, James By-
num.



FIRST ROW: JoAnn McNeil, Willie Newsome, Lessie Little, Ruth Williams, Alice Williams, Ettlee Haskins, Geraldine Parker, Bettie Joyner, Ernestine Jordan. SECOND ROW: Bettie Green, Marjorie Cooper, Mimmie Hines, Lula McKeithan, Hilda Winstead, Barbara Williams, Mabel Ellis. THIRD ROW: Izel Jenkins, John Moore, Joseph Hoskins, Robert Dillard, Jesse Pender, Isaac Coley, Walter Ruffin, Albert Williams, Jimmie Ward, Harold Hines, Carl Sherrod, Roosevelt Darden, Mrs. F. C. Bethel.



OUR ORGANIZATIONS.

*As the scene changes, we see all activities
aspiring to make their clubs the finest
among...*





Wendell Hines, Editor-Mrs. A. Hagans and Mrs. E. James, Advisers.



Lillie Cooper
Assistant Editor



Gail Peacock
Business Manager
and
Head Typist



Wendell Hines
Editor

THE 1957 TROJAN STAFF

Beat that deadline--get that book! Beat that deadline--get that book! My, don't these words sound familiar to our staff and our adviser. The only way you can realize the headaches, the long and tedious hours, and the sleepless nights that we encountered is for you to work on a yearbook, not many times, but just once in YOUR life. We sincerely hope that our efforts, great or small, will become a lasting memento for you as they have for us.

LEFT TO RIGHT: Raymond Murphy, Romaine Edwards, Carlillie Morgan, Ruby Parker, Lillie Cooper, Jessie Baldwin, Lucille Batts, Gail Peacock, Grace Hall, Wendell Hines, Pearl Ruffin, Roosevelt Farmer, Joyce Hobbs, Earnest Sherrod, Sarah Greene, Russell Wright, Joyce Bowens, Earline Dickerson, Rose Bailey, John Ferguson, Emma Bostic, Dorothy Hawkins, Lula Hagans. CENTER: Roberta [unclear], [unclear], Betty L. Speight.





STANDING: Sarah Greene, president; Mr. J. E. Dixon, adviser. FIRST ROW: Nathaniel Barnes, Ralph Battle, Calvin Merritt, Margie Spells, James Hunt, Wendell Hines. SECOND ROW: Raymond Dublin, James Cotton, David Speight, Johnnie Barnes, Gilbert Smith, Jesse Pender, Thomas Barnes, Douglas Cooper. THIRD ROW: Sarah Morgan, Preston Artis, Lazuras Johnson, Howard Arrington, Mary Wheeler, Edna Armstrong, Grace Williams, Joyce Faison, Emma Dean Mercer, Geraldine Hinnant. FOURTH ROW: Annie Barnes, Gloria Carter, Carrie Ebron, Margaret Robinson, Francis Little, Ruteen Sharpe, Gwendolyn Speight, Geraldine Moore, Ruby Parker, Helena Smith. FIFTH ROW: Mayola Newsome, Delores Maye, Sandra Hall, Mable Ellis, Donna Daniels, Barbara Purdie, Josephine Collins, James Richardson, Barbara Bobbitt, Helen Jones, Shirley Jenkins.

Student Council

"All members of the Student Council are asked to meet in Mr. Dixon's room immediately after school." These familiar words rang out quite often during the time the representatives were making preparations for attending the Student Council Convention which was held in Raleigh, North Carolina.

The Student Council serves as the spokesman for the student body. It is also instrumental in welcoming new students and, above all, planning for many social events.

Enough cannot be said for the convention which the Student Council representatives attended. They are still buzzing about the informative meetings, the banquet, and the tours they enjoyed.

Officers for the Student Council are elected in the spring. Members are chosen from each home room class in the fall. Mr. John E. Dixon is the adviser of the Student Council.

PATROL FORCE



FIRST ROW: Timothy McIntosh, Joseph Williams, David Carr, James Outlaw, David Speight, James Parker, Calvin Merritt. **SECOND ROW:** Annie Robinson, Loretta McGirt, Walda Moultrie, Dianne Davis, Wilter Davis, Bettie Randolph, Gwendolyn Speight, Minora McPhail, Thelma Crooms, Betty Cooper, Lula Hagans. **THIRD ROW:** Douglas Cooper, Alton Kirk, David Davis, Robert Dew, James Wilson, Nathaniel Barnes, Mr. C. E. Bradford, Adviser; Naomi McIntosh, Joyce Bowems.

ENGLISH CLUB



CENTER: Geraldine Young. **LEFT to RIGHT:** Mattie Hill, Dorothy Townsend, Barbara Crawford, Mary Barnes, Bettie Purefoy, Hattie Woodard, Doris Melton, Annie Farmer, Charlotte Rhice, Barbara Bobbitt, Mildred Boddie, Elsie Hodges, Mrs. M. B. Chambers, Adviser.

CROWN AND SCEPTER CLUB

The new chapter of the Crown and Scepter Club is now in its fourth year at Darden. With the emphasis on scholastic achievement, the society provided recognition and prestige to those outstanding students who have maintained the rigorous statewide standard set up by the organization. Qualifying students must have, in addition to an average of straight B's or above, the attributes of leadership, service, and character. In the first semester of this year, the Society had its annual Induction Ceremony in which fifteen members of the Junior and Senior Classes were initiated. After the ceremony the Society had a wonderful tea, at which time all the faculty was entertained. On December 14, 1956, the Annual Christmas Party was held at the home of the Society's able adviser, Mrs. Harris.

Future education and activities are stressed in regular meetings of the Society. The Society is planning to entertain all the Honor Roll students of the first semester and to attend the Annual State Crown and Scepter Convention, in Raleigh, N.C.

CENTER: Lucille Batts. LEFT to RIGHT: Lula M. Hagans, Beatrice Artis, Jessie Baldwin, Lillie Cooper, Lovelace Murphy, Emma Bostic, Patricia Ryams, Timothy McIntosh, Fitzgerald Murraine, Wendell Hines, Johnnie Barnes, Sarah Greene, Annie Robinson, Louise Williams, Everline Giles, Ernest Sherrod, Gwendolyn Speight, Gail Peacock.



HISTORY CLUB



LEFT to RIGHT: Thomas Simmons, Joseph Williams, Reмония Speight, Nathaniel Williams, Irene Hopkins, Marian Carter, Annie Doris Hicks, Frank Brunson, Robert Dew, Louise Williams, Leroy Fisher, Miss M. M. Hines, Adviser, Alton Kirk.

HOME ECONOMICS CLUB



LEFT to RIGHT: Walda Moultrie, Barbara Farmer, Carolyn Barnes, Jeanette Moore, Barbara Purdie, Dorothy Howell.



SITTING, Left to Right: Everlene Giles, Lucille Batts, Annie Robinson, Roberta Harris, Jessie Baldwin, Romaine Reid, Sarah Greene, Betty Speight, James Parker, Ruteen Sharpe, Wilter Davis, Robert Dew, Rematha Barnes, Leroy Fisher, Roosevelt Farmer. STANDING: Alton Kirk, Mrs. M. H. Müller, Adviser, Gail Peacock, Lillie Cooper, Gwendolyn Speight, Lovelace Murphy, Betty Randolph, Patricia Ryams.

Future Teachers of America

We are proud to call ourselves the Future Teachers of America, because we are looking forward to becoming members of the noble and enriching teaching profession.

The National Education Association states that the movement grew out of the Horace Mann Centennial in 1937, when it was established by the NEA and its affiliated state and local associations. In the spring of 1955, the NEA assigned the responsibility for FTA to its Commission on Teacher Education and Professional Standards.

In the FTA, the high school student may explore his own abilities and interests related to opportunities in teaching.

Here at Darden High School, we seek to determine our major areas of interest and to explore the teaching field through discussion, observation, and assistance as teachers' aides.

Look for us in a few years in any elementary or high school (or even college, perhaps), for WE ARE THE FUTURE TEACHERS!

CHOIR



FRONT ROW: Minnie Little, Sedalia Sellers, Jessie Barnes, Rosa Shaw, Erma Dean Spells, Jean Hagans, Frances Cooper, Christine Hinnant, Rematha Barnes, Sandra Watts, Dorothy Little, Yvonne Purdie, Madeline Carter, Nellie Handy. SECOND ROW: Bettie Woodard, Ruth Anderson, Bettie Cooper, Doris Rountree, Dorothy Kent, Sherlene McDonald, Ada Foxx, Mary Ward, Ann Sanders, Beverly Gaskins, Patricia Ryms, Catherine Bynum, Patrinella Reid, Ernestine Hines. THIRD ROW: Fred Woodard, Jimmie D. Woodard, Edward Evans, Alton Kirk, Andrew Rountree, Roosevelt Farmer.

No organization could mean more to our school than the choir. The members are always co-operative in entertaining our many groups during the school year.

The all girls chorus began the performances by singing for our Thanksgiving program. In rapid procession came the Christmas carols. The choir first entertained the Grammar grades at their Chapel program. With Christmas in their bones, the little ones really enjoyed the carols. For the High School chapel program, the choir and the all girls chorus alternated in singing the many well-known Christmas carols.

The Easter music, the spring concert, the Baccalaureate music and the Commencement anthems are all ahead of us. Since the choir is such a co-operative group, they will continue to raise their voices in harmony - whether in songs of patriotism or hymns of praise.

LIBRARY CLUB



FIRST ROW: Winnie Coley, Julia Braswell, Doris Simms, Mary Townsend, Etheleen Tabourn, Emelia Stewart.
SECOND ROW: Elijah Strayhorn, Joyce Best, Dorothy Diggins, Dora Glasper, Mrs. Hawkins, Adviser, Doris Sherrod.

DEBATING SOCIETY



STANDING LEFT: Mrs. Mims, Adviser; Alton Kirk, vice president. STANDING RIGHT: Lillie Cooper, president. SEATED LEFT to RIGHT: James Richardson, Ernest Sherrod, John Ferguson, Mattie Hill, Ruth Lofton, Mildred Boddie, James Parker, William Davis, David Speight, Robert Spells, Alton Smith.



FIRST ROW: U. Williams, C. Boyette, J. Holmes, A. Battle. SECOND ROW: L. Campbell, W. Davis, J. Hicks, L. Murphy, B. Foster, L. Williams, D. Davis, G. Edwards, B. Evans, P. Williams. THIRD ROW: B. Randolph, A. Smith, W. Greene, J. Holiday, S. Smith, A. Robinson, C. Barnes, A. Haskins, R. Hall, W. Hines. FOURTH ROW: N. Hannah, M. Briley, F. Williams, B. Farmer, W. Moultrie D. Carr, W. Davis, H. Moultrie, J. Hodges. FIFTH ROW: L. McGirt, F. Barnes, E. Taylor, J. Thomas, J. Fitch, L. Coe, R. Simms, J. Dixon. SIXTH ROW: J. Williams, F. Murain, F. Woodard, E. Sherrod, W. Reid, A. Rountree, B. Artis, R. Crawford, J. Outlaw, W. Wilkins, P. Reid, R. Jenkins, C. Weaver, O. Davis, Director, C. W. Hines. LEFT SIDE FRONT TO BACK: Majorettes: B. Bobbitt, D. Flemmings, B. Cooper. RIGHT SIDE: L. Hagans, P. Austry, Drum Major, I. Garrett.

Band

Musically speaking, the band is the backbone of Darden High School. Every year we get off to a booming start. Inasmuch as football games start very soon after school begins, our glorious band also begins its rugged routine practicing.

We furnish all of the music for the home games, and accompany the team on most of their out of town trips. Did we sparkle during our homecoming parade? You bet we did—new suits, new marches, and new formations aroused the interests of all spectators.

The football season ended at "dear ole Darden" but not for us. We were elated over the news that we had been vited to participate in two college homecomings, namely, Shaw University and St. Augustine College. Those memorable days we will always treasure.

Still upholding "dear ole Darden," the band participated in the Community Chest and the Christmas parades. It is TRUE that the band outshone all other bands present.

Our year is never completed until we attend the district band festival which is held in Rocky Mount, North Carolina.

Because we received a top rating there, we were eligible to participate in the State band festival at A. & T. College, Greensboro, North Carolina. We received top honors there also.

Our band continues to grow and with Mr. Hines as our bandmaster, "the sky's the limit."

FOOTBALL TEAM



RUGGED, HUH?

FIRST ROW: Clem Clemmons, Raymond Murphy, Bobby Freeman, Elijah Strayhorn, Walter Deans, Luther Hodges, Edward L. Barnes, Frank Thompson, Joseph Williams. SECOND ROW: Mr. Elliott, Coach, Russell Wright, Thomas Robinson, Ray Jenkins, Edward Joyner, Charles Murphy, Boyd Merritt, Walter Hardy, Jimmie L. Barnes. THIRD ROW: James Bannerman, Andrew Rountree, James Rountree, George Jenkins, Walter Greenfield, Joseph Daniels, Gilbert Smith. FOURTH ROW: William Johnson, Luther Barnes, Oliver Ricks, Gene Cox, Isaac Lassiter, Raymond Bryant, Thomas Simmons.



MISS HOMECOMING

At Darden High School each home room selects a student to run for Miss Homecoming. Each home room is given tickets to sell for the homecoming game. Because the seniors sold the greatest number of tickets, Miss Betty Lou Speight was unanimously declared the winner.

Betty Lou, a rising senior, stated that her reign as Miss Homecoming was simply thrilling.

LEFT to RIGHT: Edna Ebron, Romaine Edwards, Dorothy Diggins, Doris Bynum, James Wilson, James Parker, Carlillie Morgan, Louise Williams, Mattie Williams.



CHEERLEADERS

Hola! Hola! Hola! Hola! This is the familiar chant of the cheerleaders, who stand ever ready to support our teams.

A helping hand is given them by our energetic and lovely majorettes. Although they prance and twirl in many mile long parades, they never tire of supporting our teams, whether they are winning or losing.

MAJORETTES



LEFT to RIGHT: Peggy Autry, Betty Cooper, Doris Flemmings, Barbara Bobbitt, Lula Haggans.

Another glance in our crystal ball very vividly shows the ever dependable persons who have supported our school activities.

OUR PATRONS
AND
ADVERTISERS.



Patrons

Mrs. C. M. Armstrong
Mrs. Rosa Arrington
Mr. and Mrs. S. P. Artis
Mrs. Mamie Autry
Mrs. Boisey O. Barnes
Mr. E. M. Barnes
Eula Belle Barnes
Mr. Raymond Barnes
Mr. Joseph L. Barnes
Mr. Hartford Best
Mr. and Mrs. W. M. Bethel
Miss Emma Bowens
Mrs. Levady Bowens
Mr. Thomas Bowens, Jr.
Mrs. Helen Branford
Mrs. Nellie Braswell
Mrs. Fannie Mae Bridgers
Ida Gray Brown
Mrs. J. R. Brown
Miss Grace G. J. Bryant
Mrs. Maranda Bryant
Mr. Fred Byzum
Mrs. Velma Carroll
Mrs. Lula Collins
Mrs. Alberta Cooper
Mr. and Mrs. Theodora Cooper
Mrs. William Clark
Rev. R. Creech
Mr. M. M. Daniels
Mr. and Mrs. John Dickson
Amelia, Va.
Mrs. Mary Diggs
Mrs. Luvenia Elliot
Mr. John D. Farmer
Mrs. Emmie Farmer
Mr. Judge Flemings
Miss Bella Gilchrist
Mr. John Gill, Jr.
Mr. Levi Godwin
Mr. Alexander Hagans
Mr. Alphonso Hagans
Mr. J. W. Hall
Mr. and Mrs. Louis Hall
Mrs. Daisy Handy
Mrs. J. B. Harrell
Mr. Eddie Harris
Mrs. Beulah Herring
Mrs. Clara Hicks
Mrs. S. E. Hines
Mr. William Hines
Mrs. John Hinnant
Mr. Eddie Lee Horne

Mr. C. D. James
Mrs. Randall James
Rozell Jenkins
Dr. and Mrs. R. J. Johnson
Mrs. Swanee Johnson
Greensboro, N. C.
Mr. Levi Jones
Mrs. Martha Jones
Mr. Walter Joyner
Mr. Charlie Kindell
Mr. F. Carlester Kirk
Mrs. Lela Kirk
Mr. and Mrs. Preston Kirk, Jr.
Mrs. Maggie L. Lee
Mrs. L. H. Lewis
Mrs. Eula Locus
Mr. and Mrs. J. M. Miller, Jr.
Mrs. Lucy Mitchell
Mrs. Jack Mitchell
Mr. Ramon Martinez
Dr. M. H. Matthis
Mr. William Norfleet
Mr. Thomas Parker
Mr. Leotis Reid
Mrs. Nell Baldwin Rice
Mr. Herbert Rhodes
Mrs. Maggie Robinson
Dr. and Mrs. J. B. Rosemond
Mr. James Rountree
Mr. Edward Ruffin
Mrs. L. C. Sherrod
A 1/C Leonard P. Sherrod
Mrs. Susie Smith
Mrs. Phil Spears
Mrs. Doretha Spell
Dr. F. N. Sullivan
Mr. Roderick Taylor
Mr. Louis Thomas
Mr. Lonnie Ward
Mrs. Carrie Weaver
Mr. Joe White
Mrs. Elizabeth Whitfield
Mrs. Louise Wilkins
Mr. E. M. Williams
Mrs. Eva Williams
Mr. Wiley Williams
Mr. and Mrs. Johnnie Woodard
Mrs. Helen R. Worsley
Mrs. Arries Wynn
Mr. Henry Wynn
Mrs. Bessie Young
Mrs. Pearl W. Zachary

COMPLIMENTS

Vann's Electrical Co.
Frigidaire Appliances Co.
C. Woodard Co.
Lou Mau Florist

Rice's Men's Store
Robbins Jewelry Co.
Walter Hines Barber Shop
Eastern Auto
Arlene's
William Hines Barber Shop