

Fig. 16. Ground plan of small structure near south end of Nungere Island.

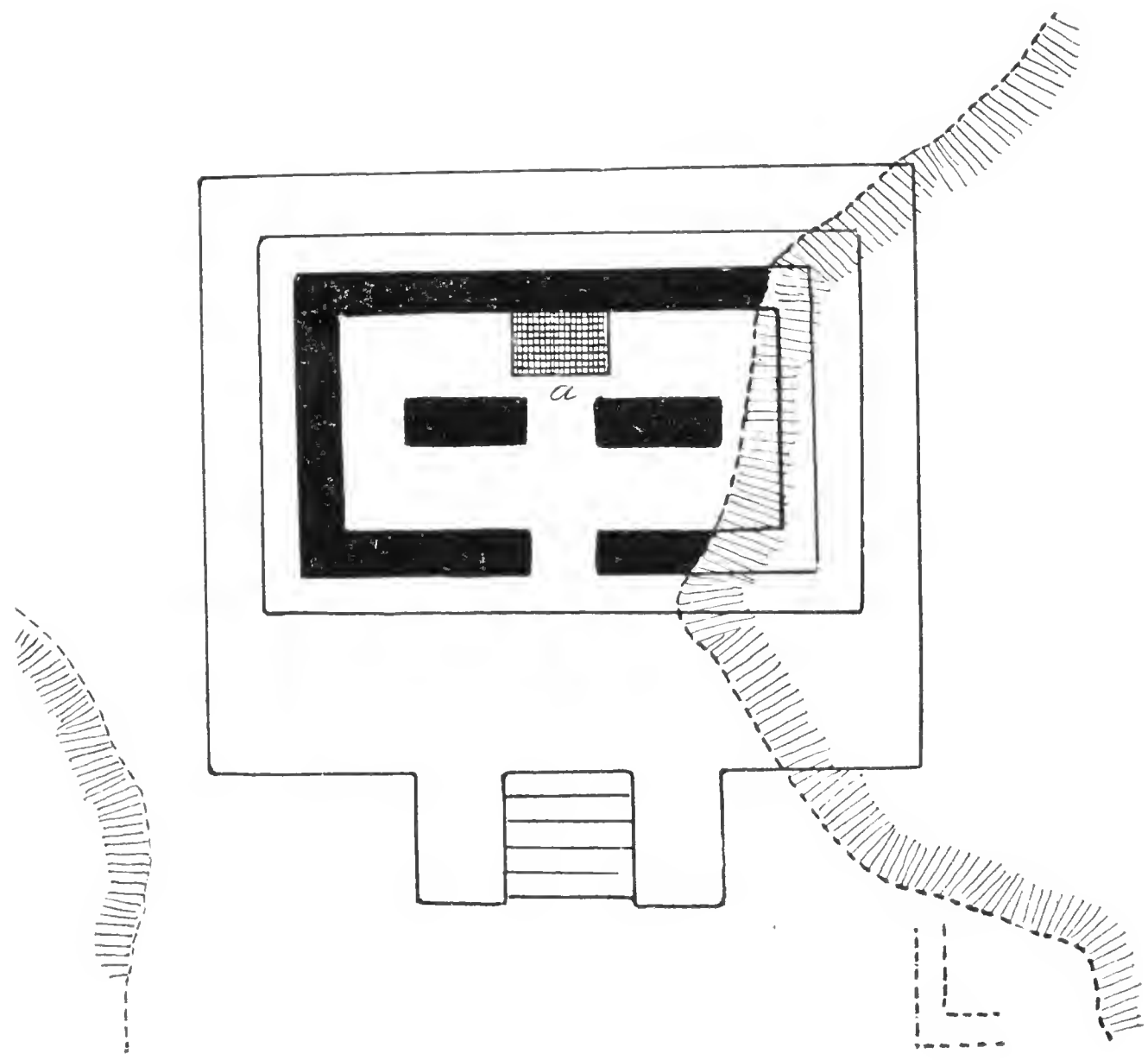


Fig. 17. Ground plan of ruined temple at south end of Nungere Island.

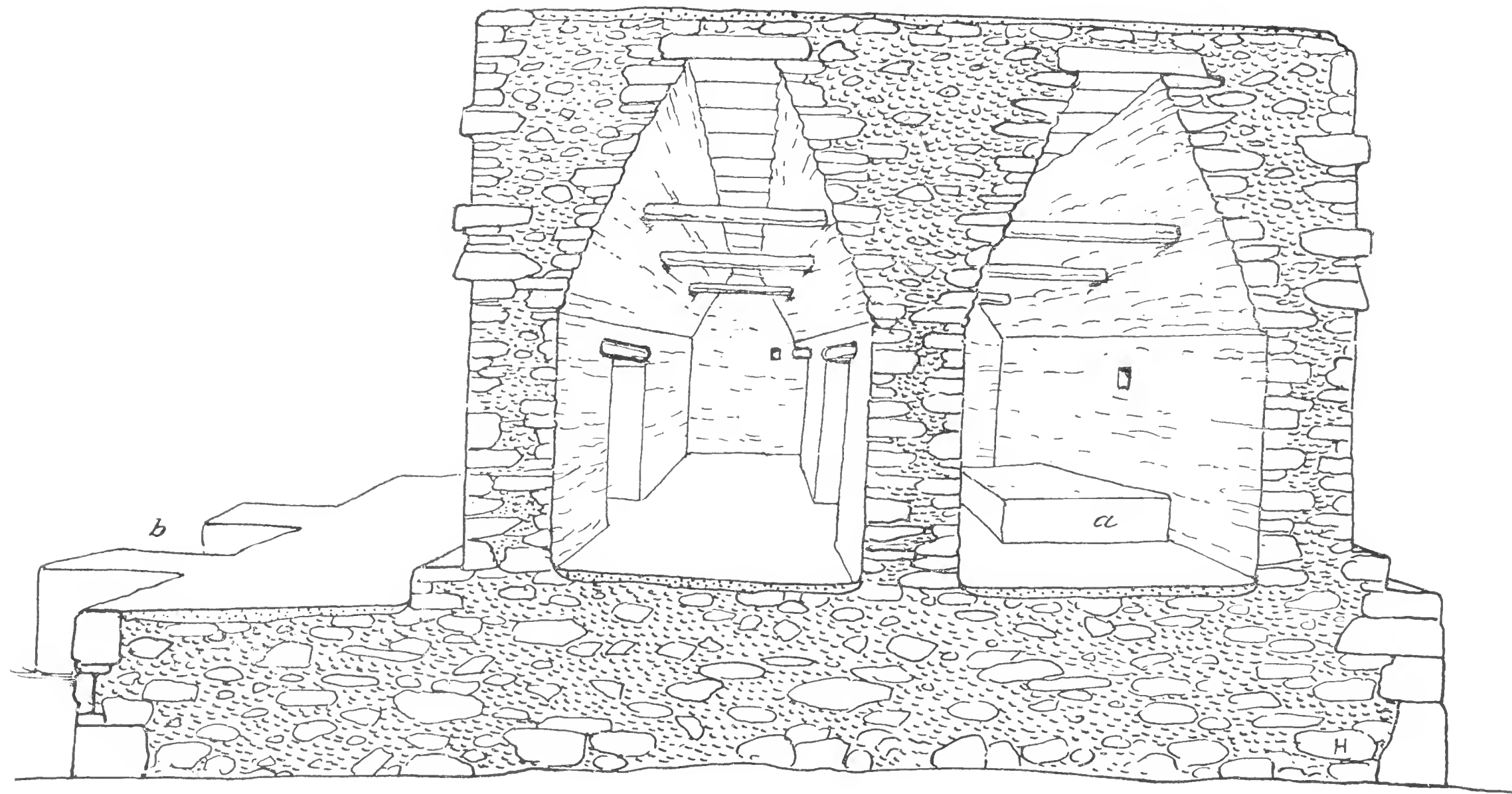


Fig. 19. Graphic section of small temple on south end
of Mugeses Island showing ^{character of} construction and
appearance of chambers. a altar, b stairway.

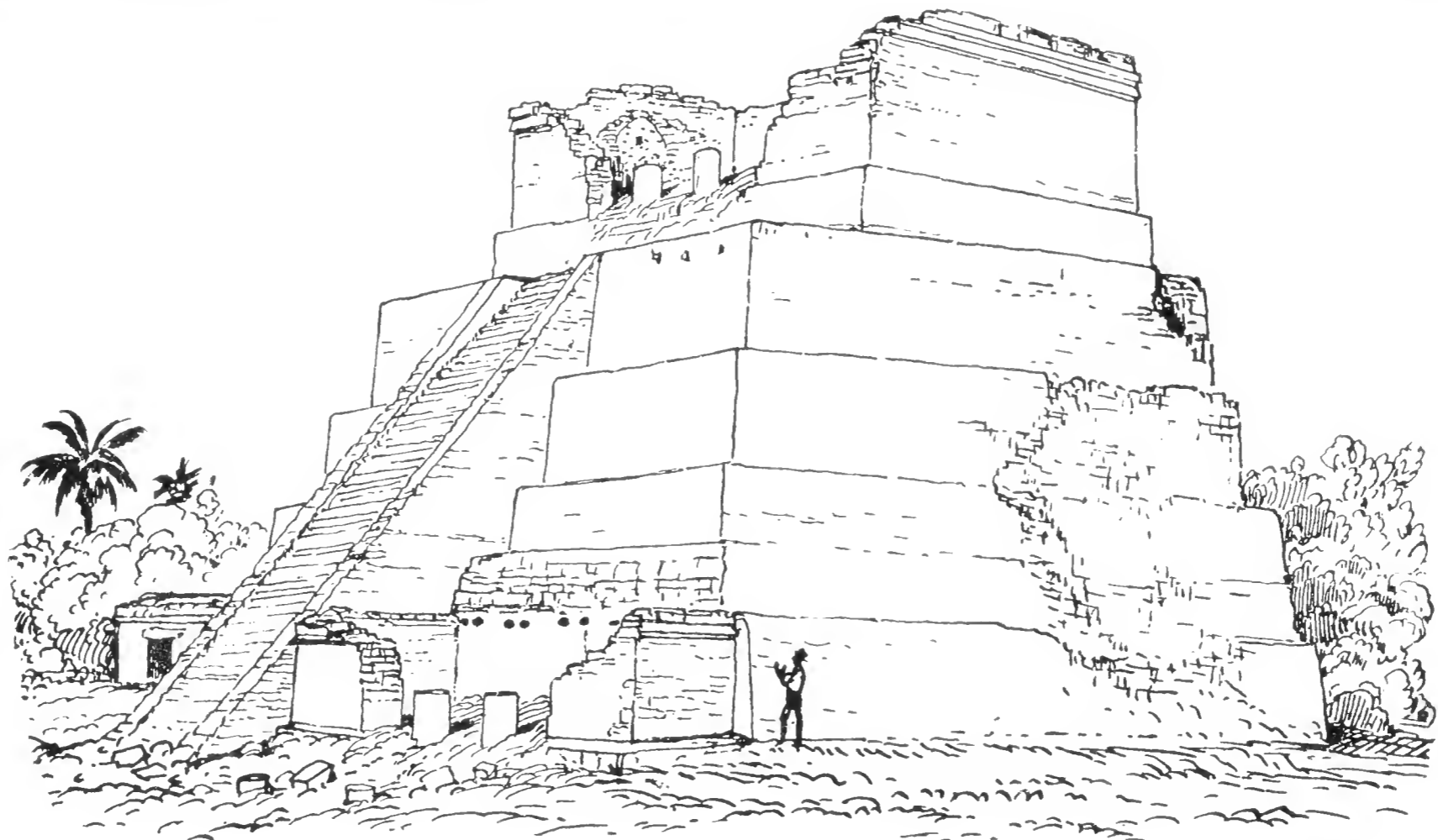


Fig. 24. Pyramid-temple with two inferior structures at base
 El Neco, Yucatan, opposite Mujeres Island.
 mainland of

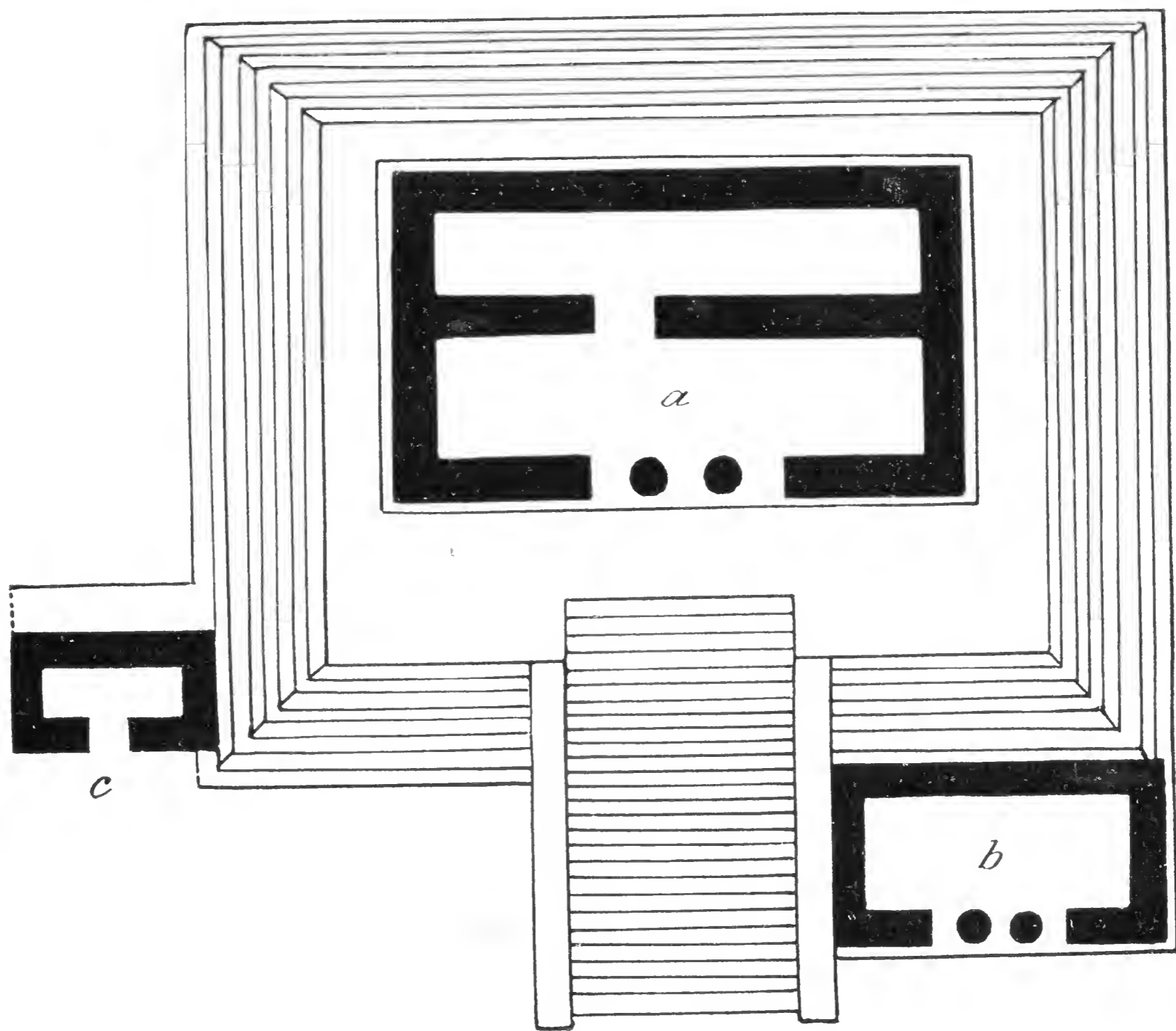


Fig. 25. Plan of pyramid-temple at El Neco, mainland
 of Yucatan, a main summit-temple, b lower
 temple, c minute one-room building.

Mar. 1907

Photo. Engraving, Red. no. L 3/4 p2



View to the sea from the shore of the primary stage, ed.

19701-31. e
41. D

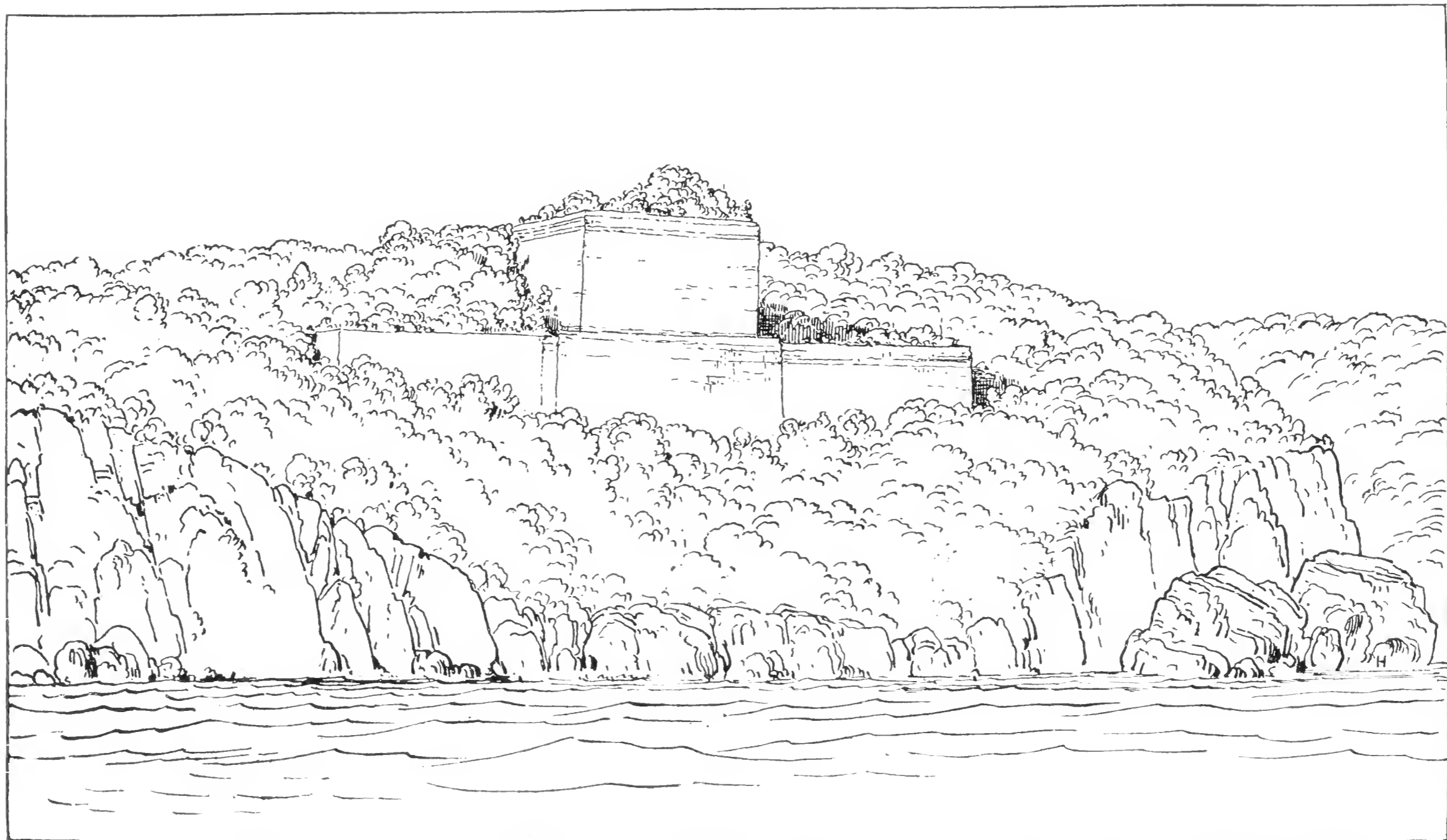
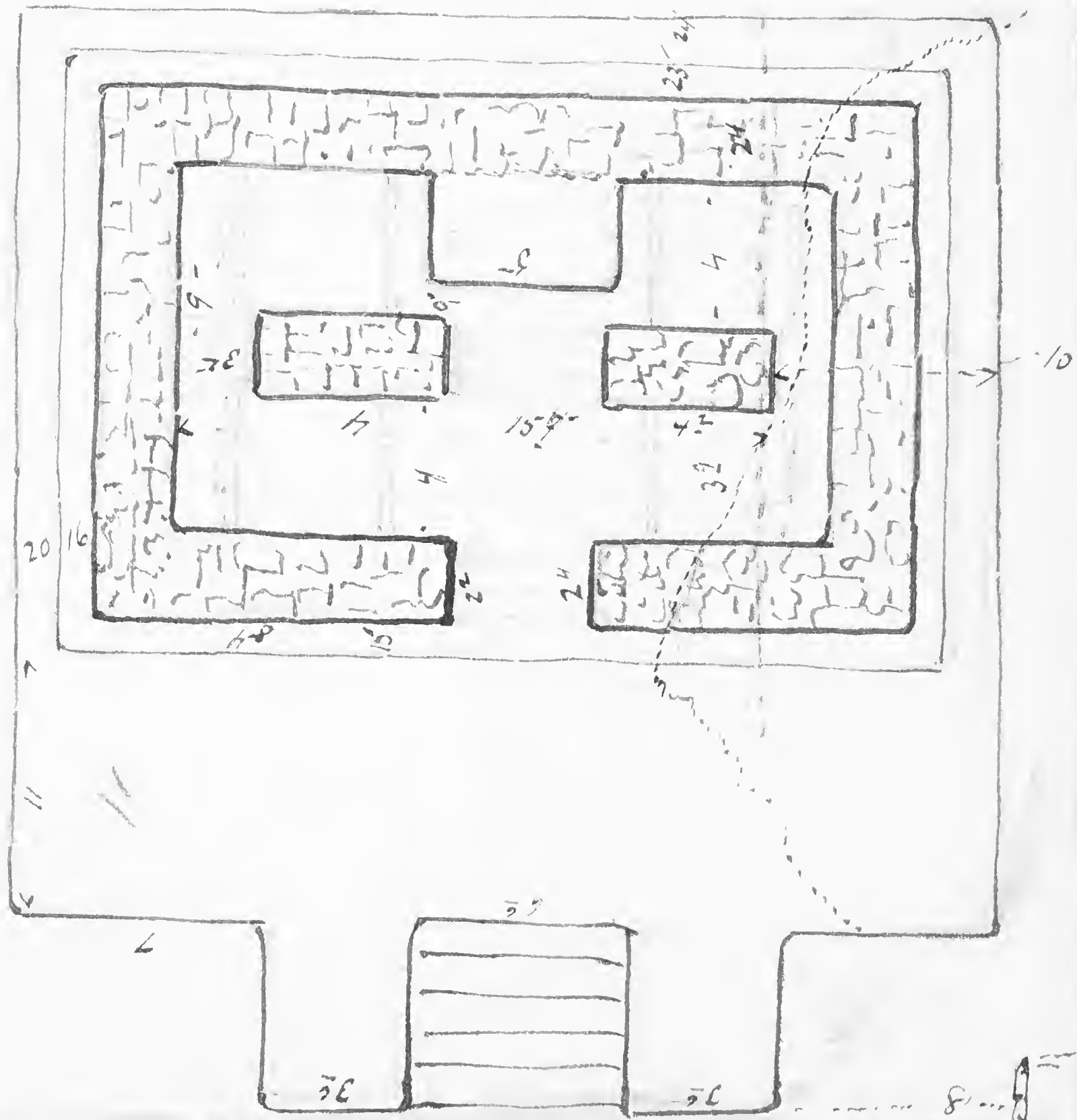


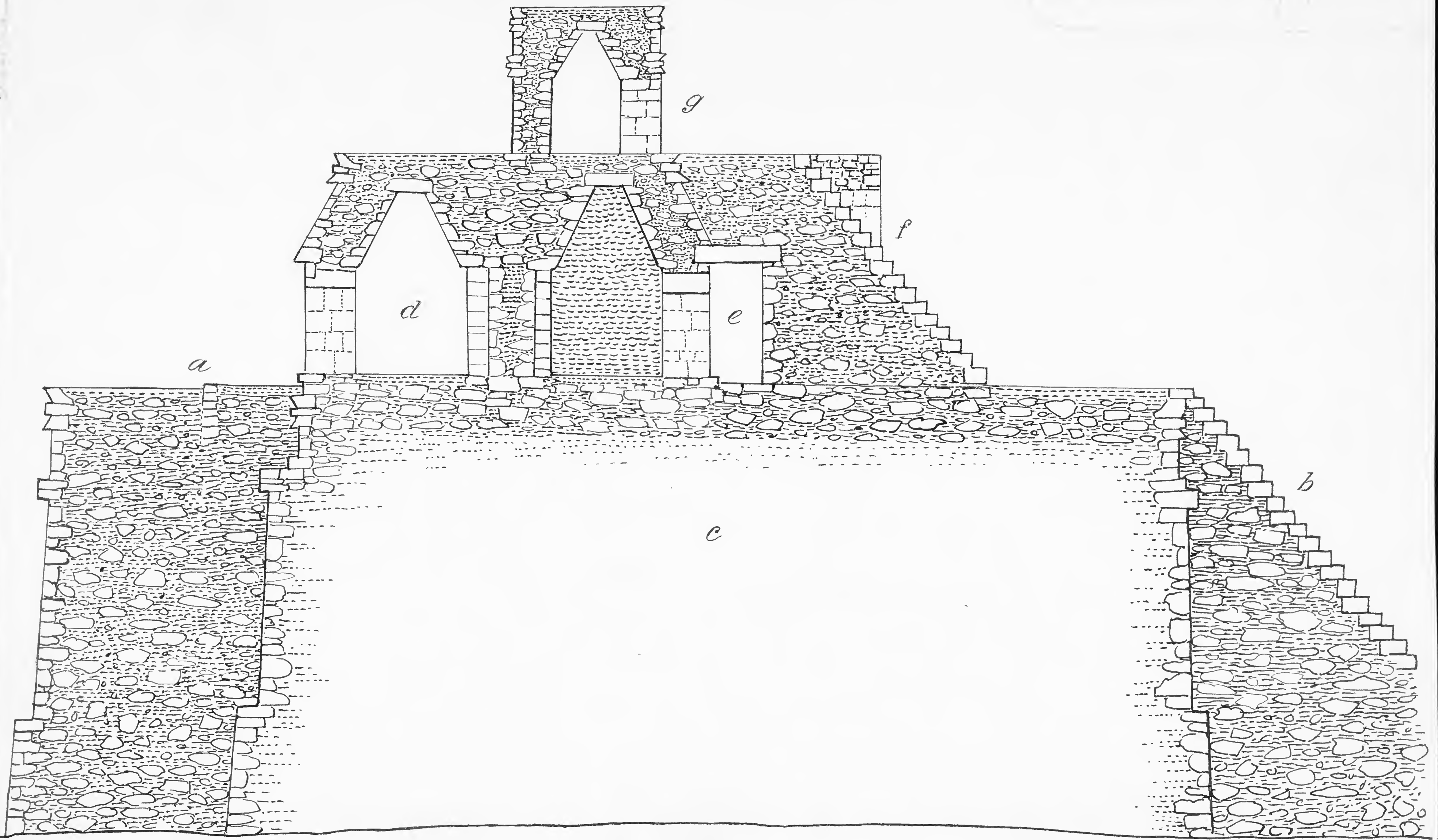
Fig. 27. Ruins of Fullova as seen from the sea. The building fronts inland and the outer walls are without doors or windows.

House on hillside near Nagara 25. June 15th 95

Temple



Handwritten note in the top right corner, possibly reading "Handwritten to 3/4 present".



187 Section of Palace

1910-312
414