



1 9 5 3

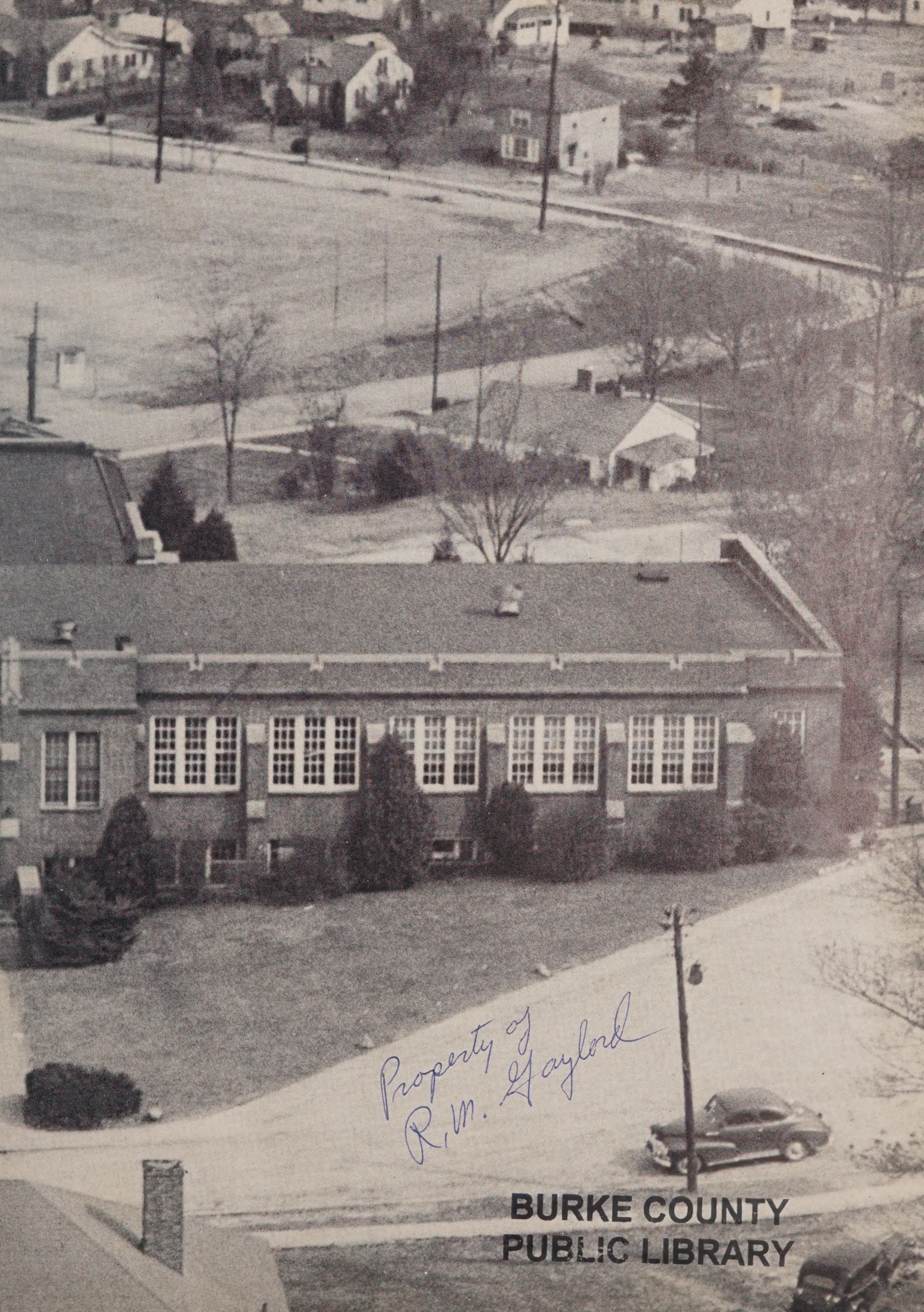
TURKEY TAIL





**Reference**  
**Library Use Only**





*Property of  
R. M. Gaylord*

**BURKE COUNTY  
PUBLIC LIBRARY**





Digitized by the Internet Archive  
in 2021 with funding from  
North Carolina Digital Heritage Center

<https://archive.org/details/turkeytail195300glen>



**JUNIOR AND THE  
AND SENIOR CLASSES  
OF**

GLEN ALPINE HIGH SCHOOL  
Glen Alpine, North Carolina

*Present . . .*





# Foreword

Here, presented in this, the Turkey Tail of '53, is a three act play portraying the true story of life at Glen Alpine High. The curtain rises and to our minds return fond memories of—



*Fall* . . . back to school, football, homecoming, defeat, victory, each contributes to the clamor, fever, and din of school life. The curtain falls, a lull . . . amid ecstatic anticipation it rises on—

*Winter* . . . . . the brisk winds penetrate our dull senses accentuating a buzz of activity, each frosty crystal in the air bears tidings of the Yuletide season, a New Year heralds, exams loom ahead, . . . . . Again the curtain descends to await—

*Spring* . . . the aromatic air creeps upon us, carrying the deadly spring fever and announcing the advent of the "climax season." Warmth, sunshine, idle dreaming. But, as the flowers spring into bloom we snap back to reality. Our graduates must go, just as spring must go, and make their talents bloom.

And now the curtain descends, enclosing those never-to-be forgotten memories as do the covers of this book; except that for you, dear friends, they can open again and again— never to end, willing always to give an encore performance.



Russell Hayford

## Dedication

MR. RALPH WILSON



To Mr. Ralph Wilson we, the junior and senior classes of Glen Alpine High School, dedicate this 1953 Turkey Tail. We bestow on him this recognition for his unerring judgment in dealing with his pupils, his diplomatic way of promoting cooperation, his endless hours of practice, his devotion to the school; but most of all, for that indelible smile which, we are sure, is why "Coach" is ours to praise.

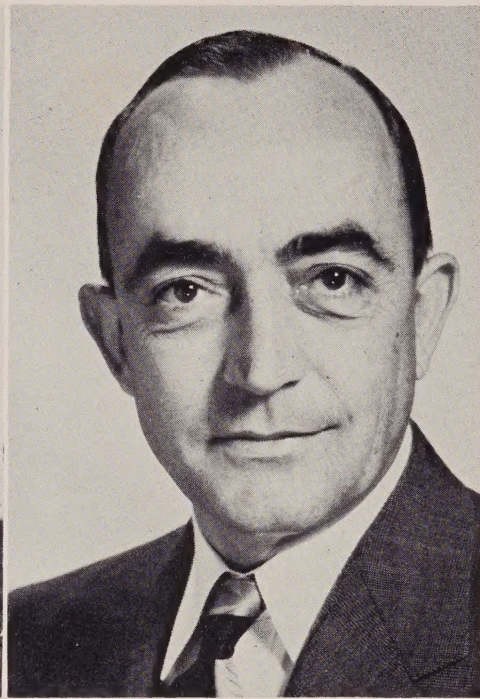
"COACH"



## *Administration*

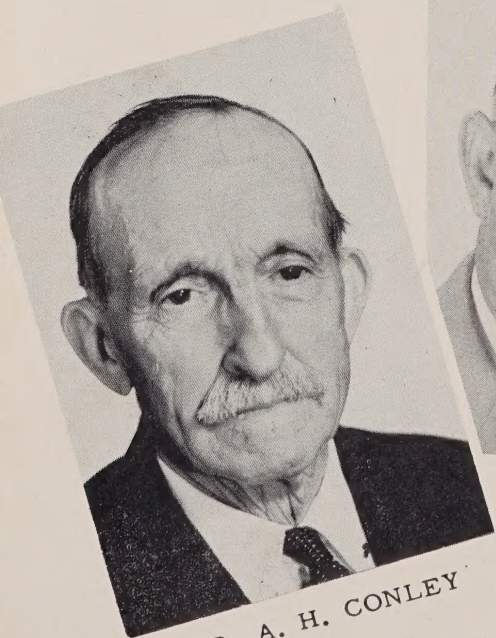


MR. N. O. PITTS  
Chairman

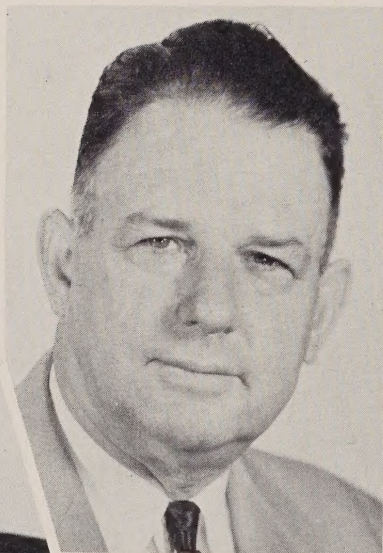


MR. W. A. YOUNG  
Principal

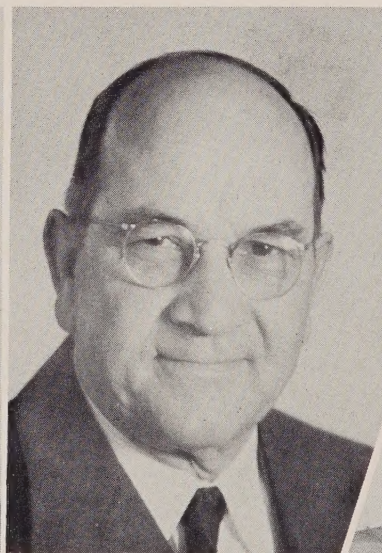
## *School Board*



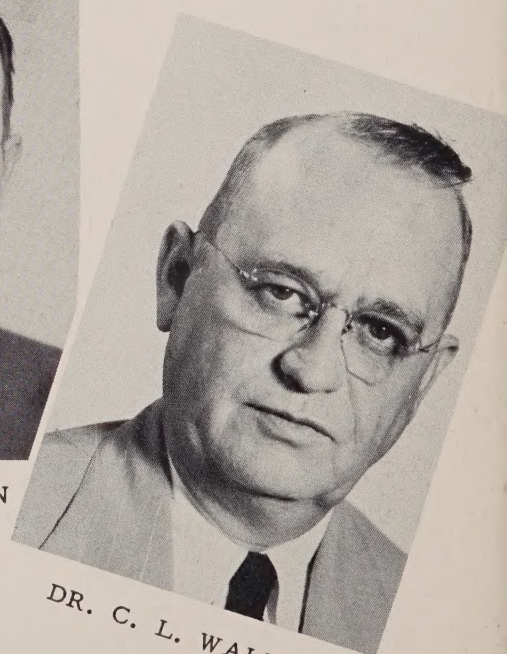
MR. A. H. CONLEY



MR. C. V. LAEL

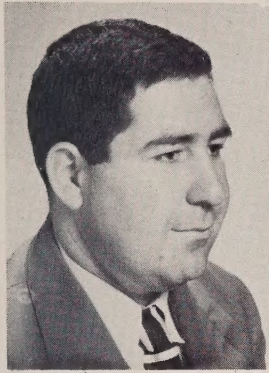


MR. J. B. MELTON



DR. C. L. WALTON





Mr. Ralph Wilson  
Physical Education



Miss Susan Walker  
History



Mrs. W. A. Young  
English, Guidance



Miss Betty Simpson  
English



Miss Rosalba Pascal  
English, French



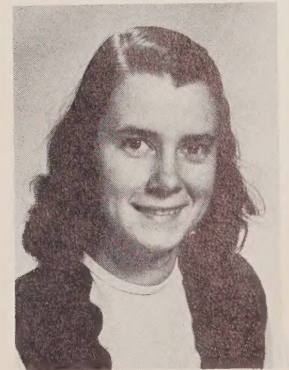
Mrs. D.C. Richard  
Librarian



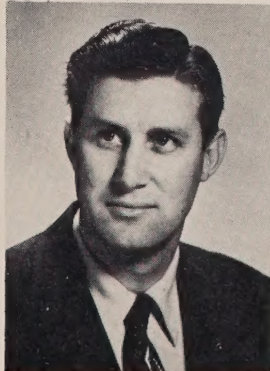
Miss Martha Thomasson  
Music



Miss Dolores  
Martindale  
Mathematics,  
Physical Education



Mrs. LeRoy Scott  
Secretary  
to Principal



Mr. Russell Gaylord  
Vocational  
Agriculture

Mrs. Crawford Melton  
Commercial, English

Mr. Lane Arrington  
Science, Assistant  
Football Coach

Miss Bernice Ribet  
Commercial  
Subjects



Miss Ellen Edwards  
Home Economics





*Yearbook  
Staff*



Seated: Martha Graham, Assistant Editor; Mary Walton, Editor-in-Chief; Betty Henline, Business Manager. Standing: Grace Walker, Picture Editor; Billy Wynne, Frank Queen, Lenada Cuthbertson, Miss Pascal, Advisor. Art Work: Arden Wilson.



# FALL





# *Freshman Class Officers*

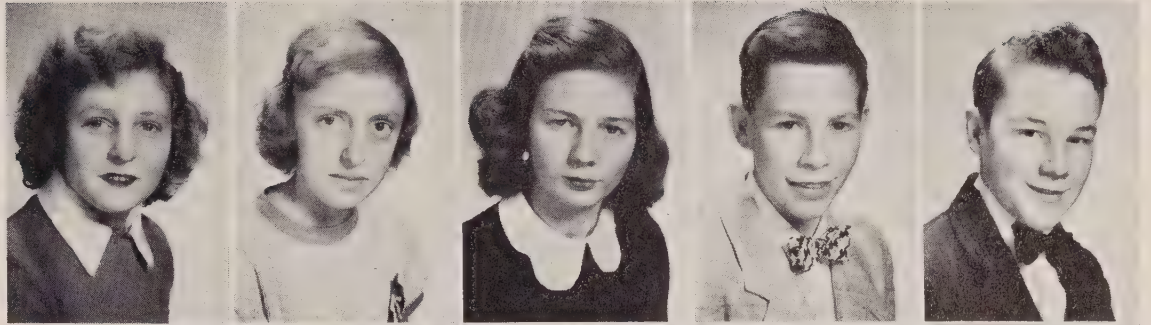


Barbara Lea Taylor ----- Secretary  
Frank Kincaid ----- Vice-President  
Leatha Patton ----- President  
Edith Puett ----- Treasurer

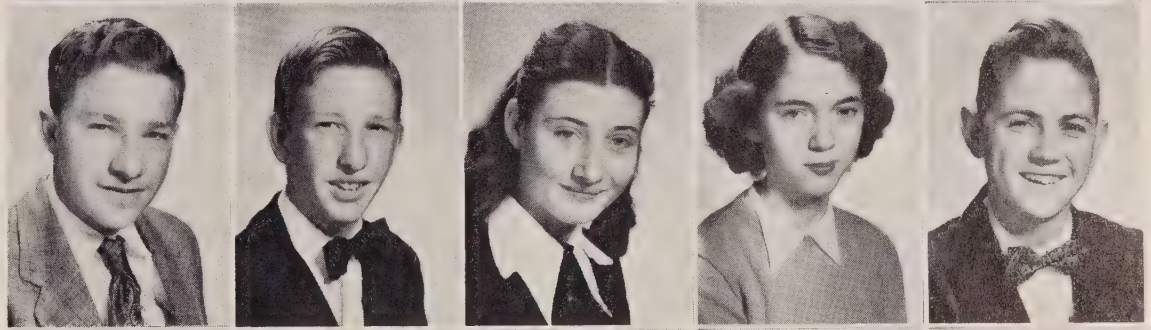


# Freshman Class

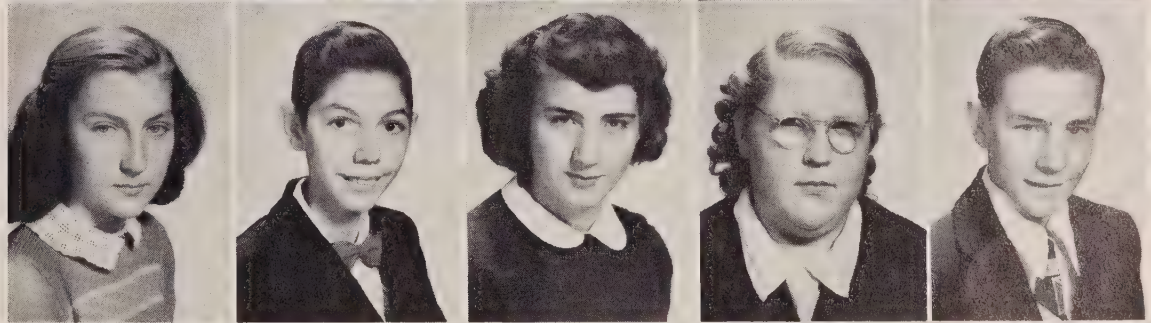
Catherine Arney  
Sarah Arney  
Ethel Bailey  
Edward Benfield  
Bobby Bennett



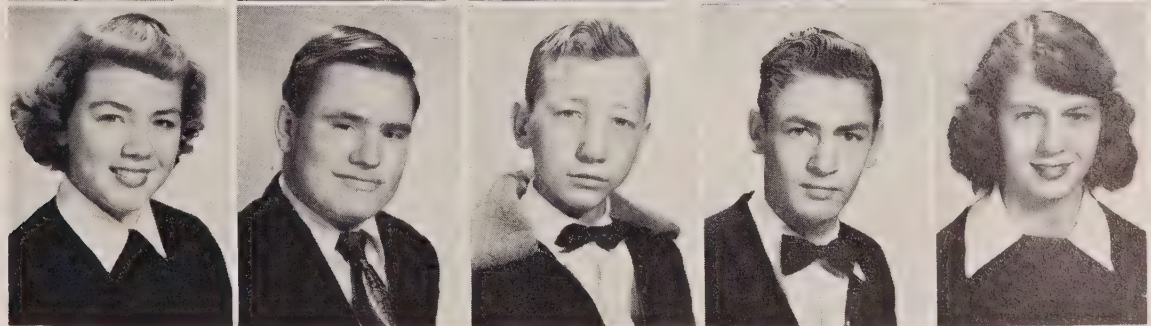
Lee Roy Berry  
Nevelyn Bollinger  
Peggy Brittain  
Judy Caloway  
Thomas Clontz



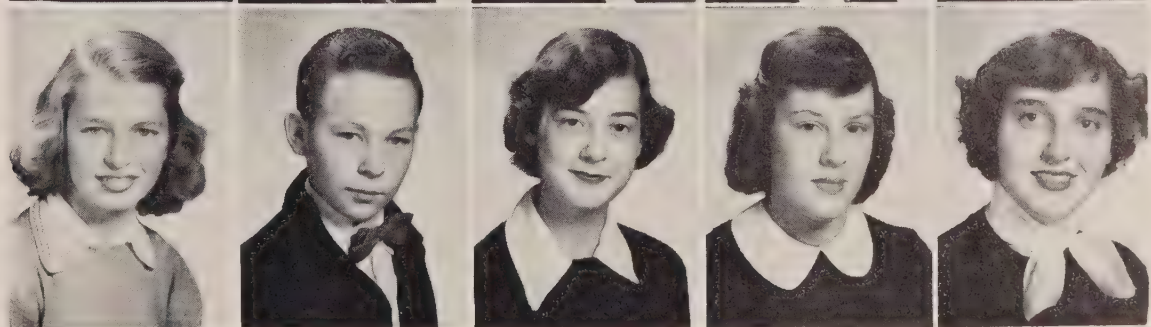
Betty Cooper  
Clifton Davis  
Winnie Daves  
Martha Deaton  
Carl Dellinger



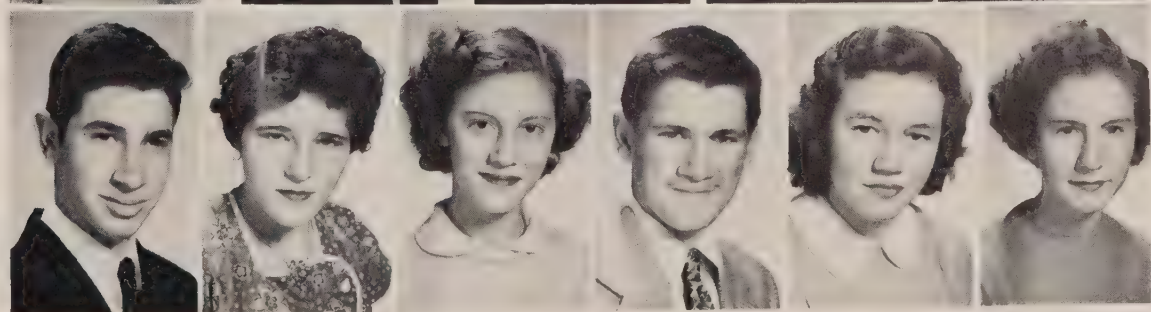
Hazel Denton  
Bennett Epley  
Carroll Epley  
Charles Epley  
Margaret Epley



Nancy Farris  
Forrest Fleming  
Rachel Franklin  
Franda Gibbs  
Joyce Greene

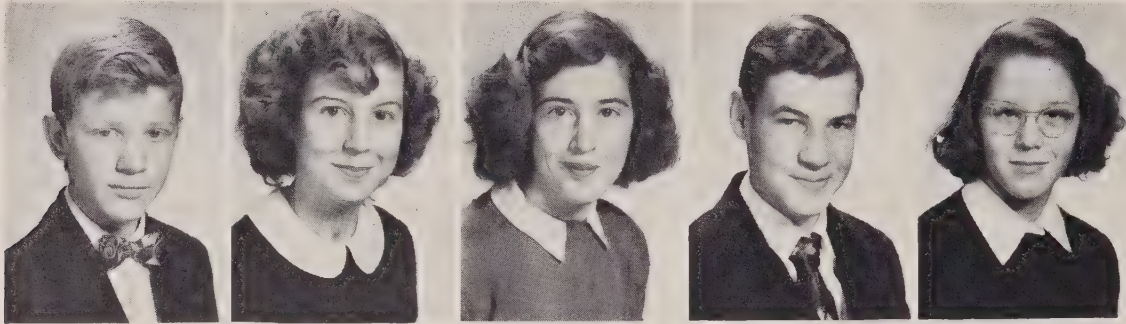


Samuel Henline  
Mattie Jordan  
Nancy Jordan  
Frank Kincaid  
Nell Lail  
Margaret Lambert

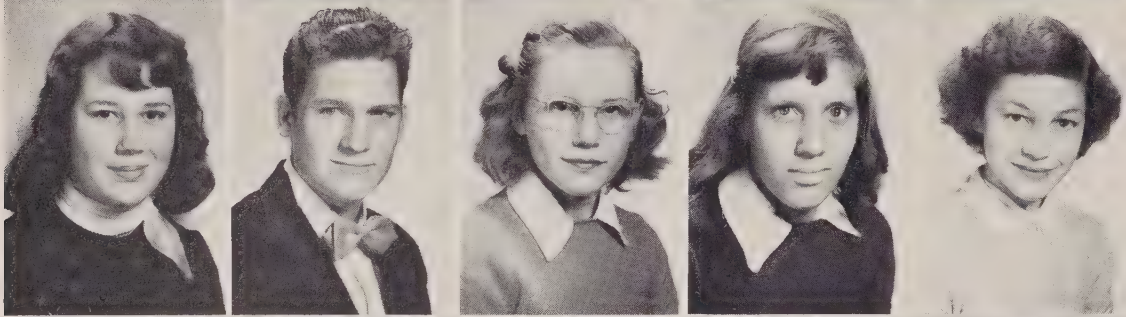




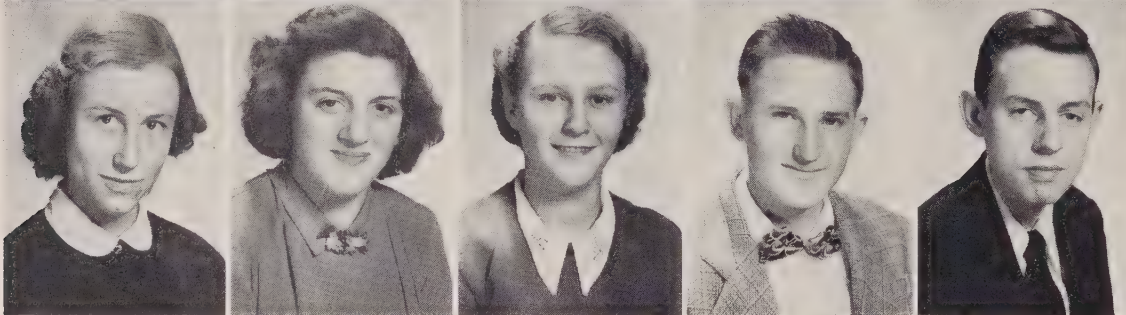
# Freshman Class



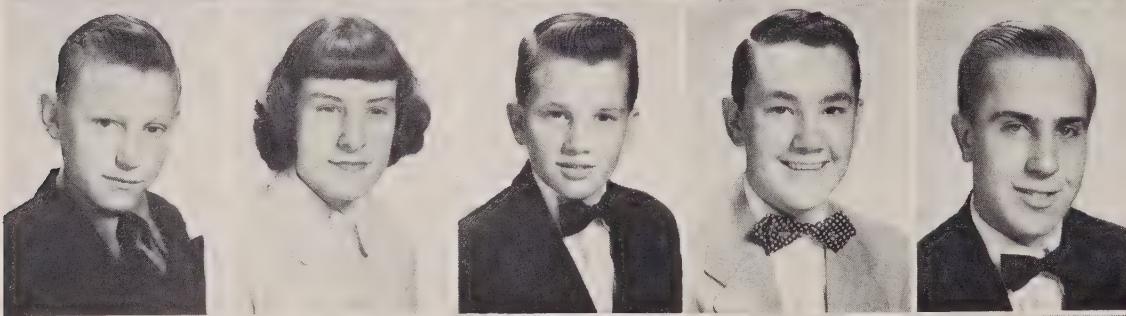
Jack Lowdermilk  
Bettie McCarthy  
Nina McCarthy  
Donald McGalliard  
Faye McGinnis



Donnie Maloney  
William Dean Mims  
Doris Moore  
Thelma Ollis  
Clara Jean Patton



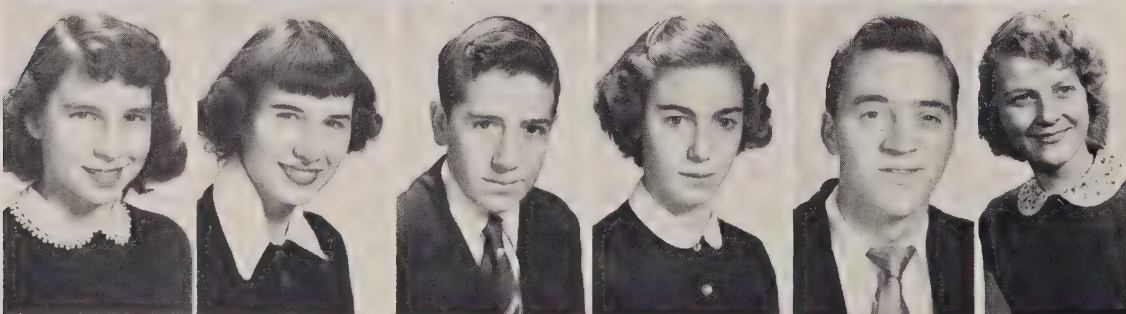
Leatha Patton  
Ruth Pipes  
Doris Pitts  
Everette Pollard  
Gene Prestwood



Ned Pritchard  
Edith Puett  
Rudolph Queen  
Glenn Reep  
Stanley Rodgers



Carolyn Saulman  
Barbara Shook  
Lola Jean Sisk  
Irene Smith  
Barbara Ann Taylor



Barbara Lea Taylor  
Gladys Vines  
James Watson  
Sylvia Williams  
Cline Yancy  
Pansy Owens

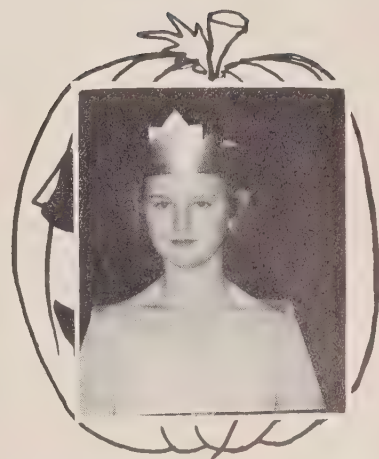


AGNES WARD

*Queen  
Of  
Halloween*



ANITA DAVIS  
"Little Miss Glen Alpine"



DOROTHY WILLIAMSON  
"Junior Miss Glen Alpine"

*FALL*  
**ACTIVITIES**



*FALL*



*Cheerleaders*

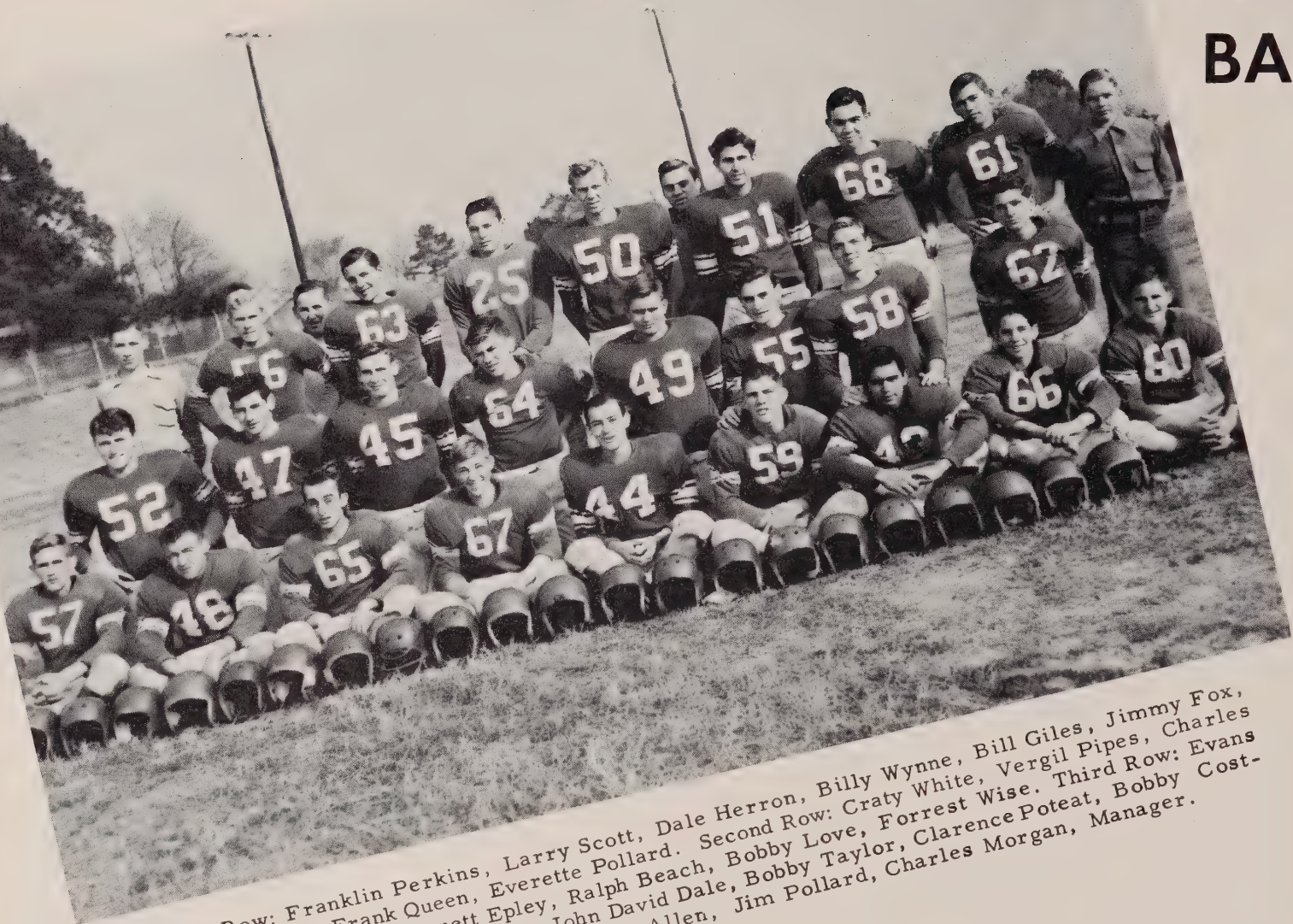


- Margaret Mull
- Doris Fox
- Lenada Cuthbertson
- Bill Pollard
- Frances Benfield

- Agnes Ward
- Mary Walton
- Not Pictured:
- Arden Wilson
- Nancy Duckworth



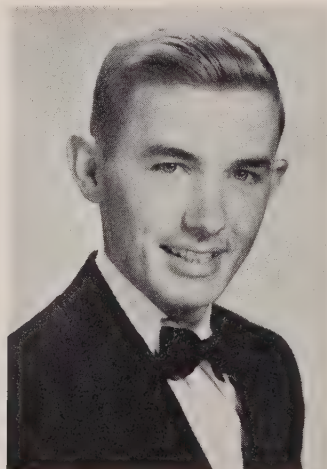
# FOOTBALL



First Row: Franklin Perkins, Larry Scott, Dale Herron, Billy Wynne, Bill Giles, Jimmy Fox, Mickey Moses, Frank Queen, Everette Pollard. Second Row: Craty White, Vergil Pipes, Charles Leonard, Roy Pipes, Bennett Epley, Ralph Beach, Bobby Love, Forrest Wise. Third Row: Evans Swink, Manager; Howard Morgan, John David Dale, Bobby Taylor, Clarence Poteat, Bobby Costner, Cline Yancy, Max Hemphill, Sidney Allen, Jim Pollard, Charles Morgan, Manager.



Coach  
Mr. Wilson



Manager  
Edward Stacy

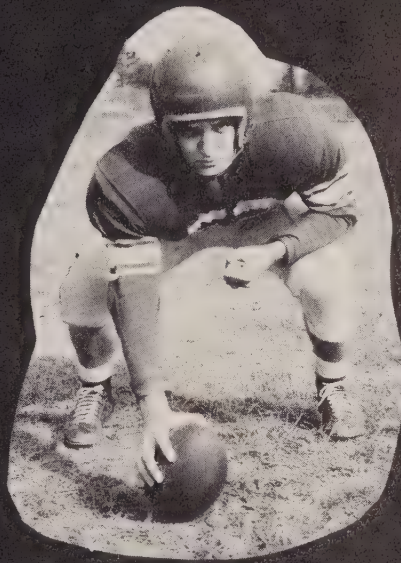


Assist. Coach  
Mr. Arrington





Vergil Pipes  
Captain



Craty White  
C



Dale Herron  
B



Max Hemphill  
C



Bill Giles  
B

1953 SCOREBOARD

Glen Alpine	7	N. C. S. D.	7
Glen Alpine	6	Bessemer City	0
Glen Alpine	7	Granite Falls	13
Glen Alpine	19	Hudson	0
Glen Alpine	20	Taylorville	13
Glen Alpine	19	Cranberry	34
Glen Alpine	13	Spruce Pine	33
Glen Alpine	0	Dallas	22



Charles Leonard-B



Larry Scott-T



Bobby Costner  
E



## *Homecoming Queen*



## *Attendants And Escorts*

Mabel Whisenant, F.H.A.; John Wells, Edith Puett, Student Council; Kirk Bennett, Ophelia Allen, Dramatics Club; Harold White, Joan Graham, Tenth Grade; Louie Hawkins, Lenada Cuthbertson, Twelfth Grade; Sam Henline, Mary Walton, Queen; Betty Rose Huffman, Eleventh Grade; Kenneth Cuthbertson, Barbara Lea Taylor, Ninth Grade; Mozelle Tallent, Glee Club; Agnes Ward, Band; Lawrence Harris, Martha Graham, F.H.A.; Richard Perkins, Ruth Clark, 4-H; Bobby Puett.



# WINTER





*Sophomore Class Officers*

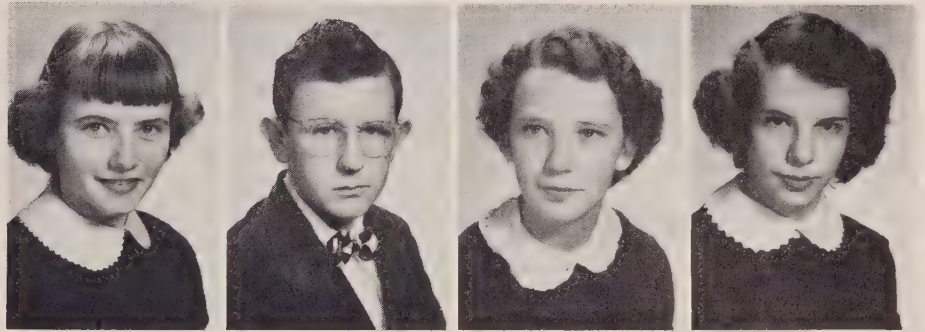


Larry Scott ----- Vice-President  
Ralph Beach ----- President  
Louie Hawkins ----- Treasurer  
Harold Mabe ----- Secretary

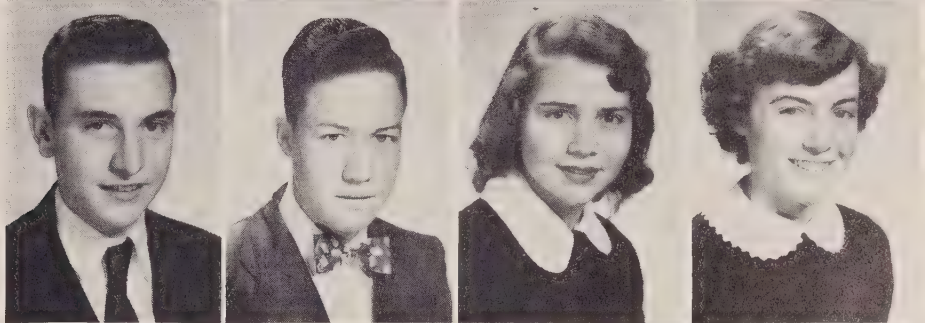


# Sophomore Class

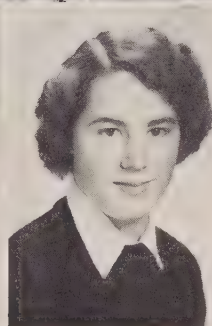
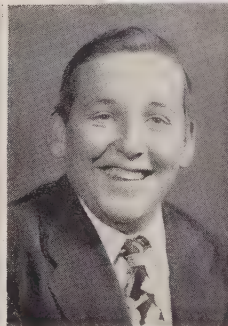
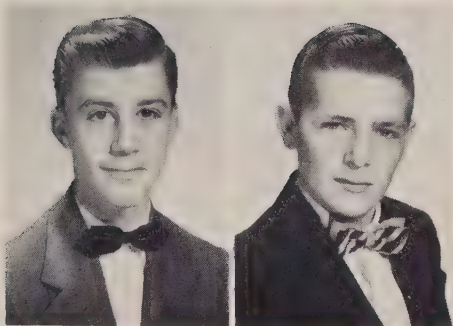
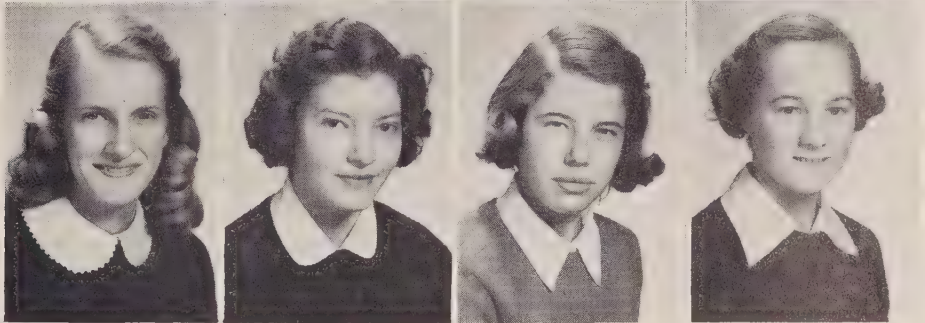
Ophelia Allen  
Ralph Arney  
Faye Bailey  
Nancy Beach



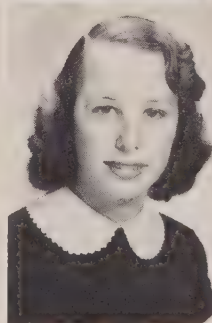
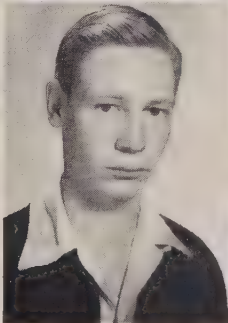
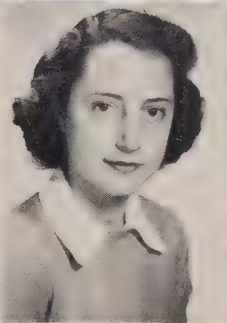
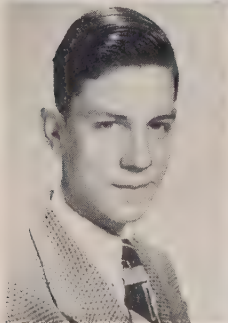
Ralph Beach  
Kirk Bennett  
Barbara Bivens  
Lenora Ann Black



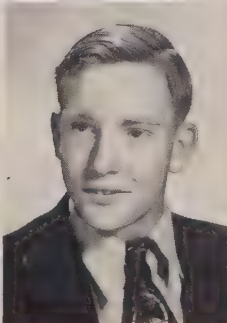
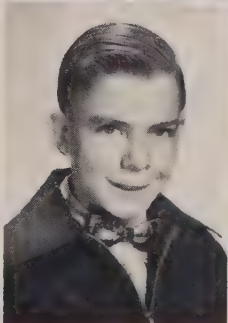
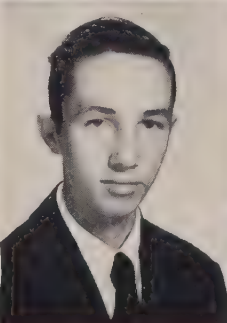
Carol Brown  
Doris Brown  
Edith Browning  
Winnie Browning



Kenneth Cuthbertson  
Glen Dale  
John David Dale  
Nancy Ellen Dale  
Nancy Sue Dale



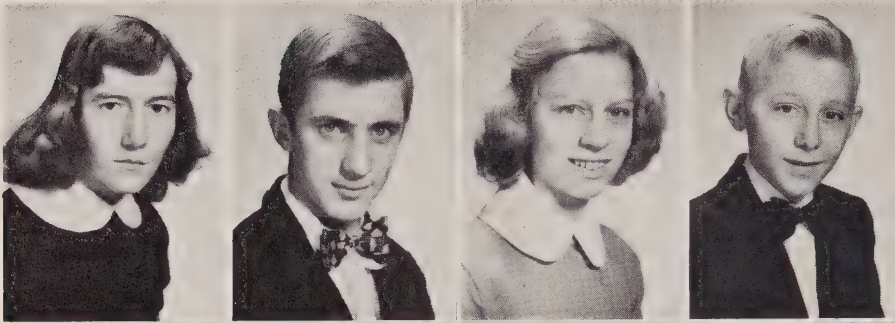
Paul Dellinger  
Shirley Farris  
Benny Fleming  
Doris Fox  
Jane Graham



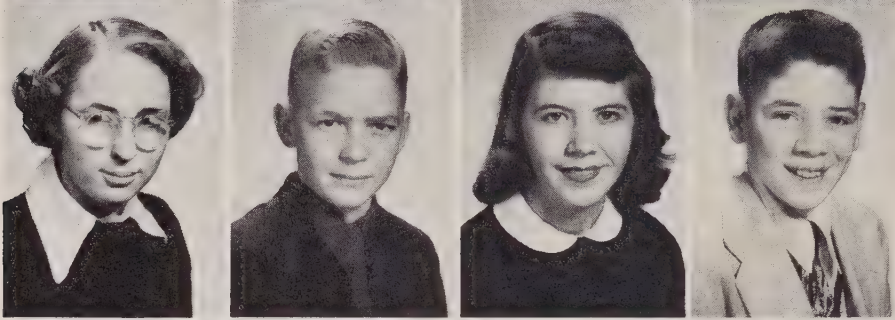
Joan Graham  
Louie Hawkins  
Max Hutchins  
Jerry Jenkins  
Billy Kelly



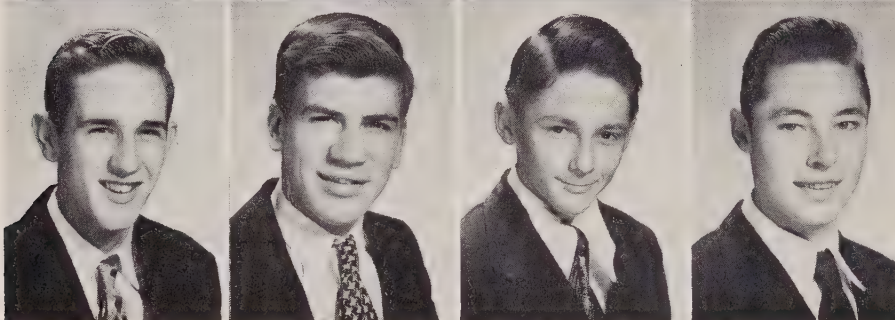
# Sophomore Class



Nancy Kiser  
Bobby Lane  
Ramona Long  
Harold Mabe

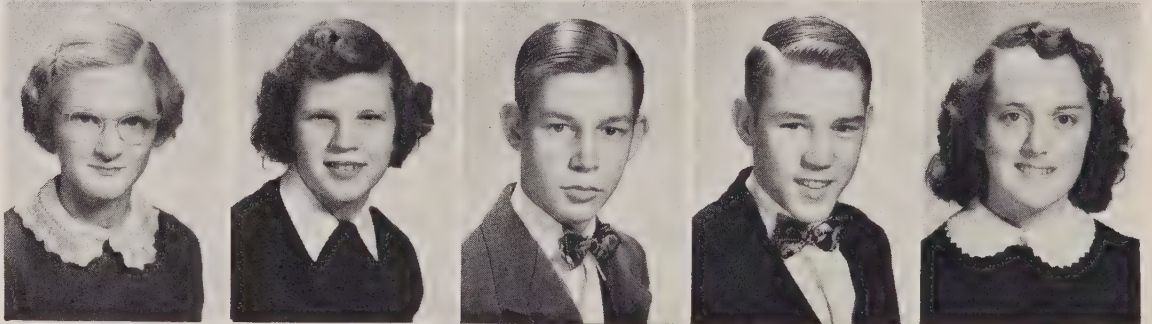


Dorothy Martin  
Charles Morgan  
Shirley Morgan  
Jackie Orders

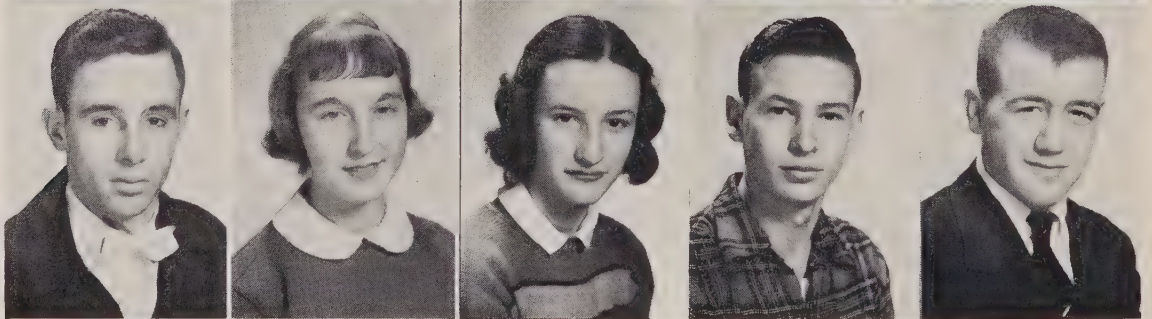


Franklin Perkins  
Roy Pipes  
James Odell Pitts  
Clarence Potat

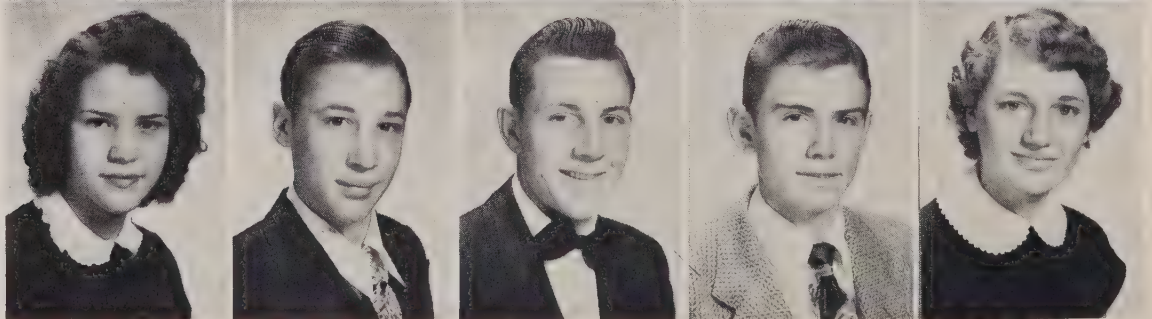
Adeline Powell  
Margaret Powell  
Billy Puett  
Bobby Puett  
Juanita Queen



Bob Reep  
Mary Revis  
Betty Sue Ross  
Homer Rumfeld  
Larry Scott



Lois Stillwell  
Evans Swink  
Bob Taylor  
Harold White  
Geraldine Wise





Junior Class Officers

# Success



John Wells ----- President  
Patsy Hildebrand ---- Sec-Treas.  
Not Pictured:  
Frank Queen ----- Vice-President



# Juniors

Nelson Abernathy

Patsy Hildebrand

Mickey Moses

Donella Arrowood

Fred Houk

Sidney Allen

Betty Rose Huffman

Linda Causby

Noami Jarrett

Jo Chandler

Norman Kincaid

Bobby LaFevers

Edward Denny

Herbert Lail

Nancy Duckworth

Hubert Lail

Ray Farris

Bobby Love

Jimmy Fox

Buddy Mills

Margaret Mull

Martha Graham



# Juniors

Evelyn Ollis

Edward Stacy

Faye Patton

Mozelle Tallent

Carl Patton

Coy Flynn

Effie Tate

Richard Perkins

Joann Turner

Jim Pollard

James Wachob

Grace Walker

Bobby Powell

John Wells

Mary Puett

Mabel Whisenant

Frank Queen

Arden Wilson

Doris Ramsey

Billy Wynne

Clyde McGalliard

Shirley Scott







### SCOREBOARD

Salem	41	G. A.	45
Salem	36	G. A.	52
Morganton	47	G. A.	44
Valdese	58	G. A.	43
Hildebran	54	G. A.	58
Nebo	44	G. A.	59

## *Boys' Basketball*



First Row: Max Hemphill, Franklin Perkins, Larry Scott, Forrest Wise, Bobby Costner. Second Row: Mr. Wilson, Coach; Kenneth Cuthbertson, Jimmy Fox, Mickey Moses, Louie Hawkins, Frank Queen, Everette Pollard, James Wachob, Charles Morgan, Manager. (Not Pictured) Vergil Pipes, Bobby LaFevers.

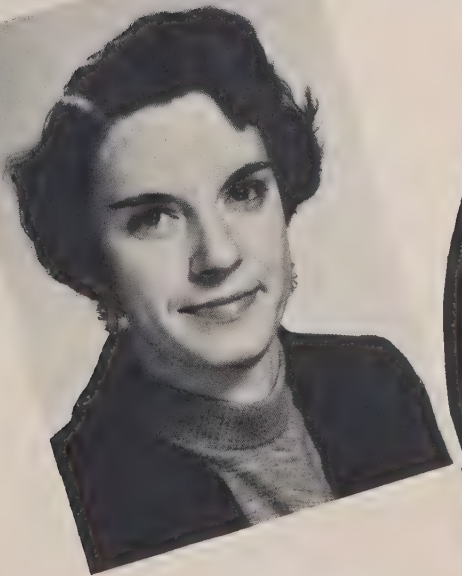




Nancy Duckworth, Gladys Vines, Carolyn Saulman, Doris Fox, Pearl Duckworth, Franda Gibbs, Lois Stillwell, Nancy Sue Dale, Rebecca Hilliard, Manager; Ophelia Allen, Carole Walker, Mildred Pollard, Shirley Farris, Mildred Kincaid, Joann Turner, Kay Clark, Thelma Ollis.

## Girls' Basketball

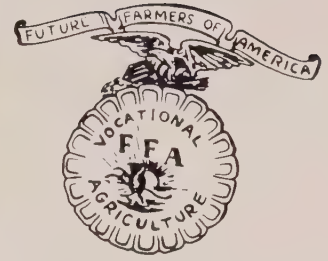
Miss Martindale  
Coach



### SCOREBOARD

Salem	49	G. A.	39
Salem	37	G. A.	48
Morganton	36	G. A.	35
Valdese	50	G. A.	47
Hildebran	34	G. A.	50
Nebo	33	G. A.	27





First Row: Bobby Costner, Max Hemphill, Reporter; Forrest Wise, Vice President; Lawrence Harris, President; John Wells, Secretary; Bobby Powell. Second Row: Dean Mims, Nevelyn Bollinger, Forrest Fleming, Charles Epley, Carl Dellinger, Rudolph Queen, Jimmy Watson, Jack Lowdermilk. Third Row: Ned Causby, Howard Morgan, Carl Patton, Ray Farris, Billy Puett, Stanley Rogers, Kirk Bennett, Evans Swink, Fourth Row: Mr. Gaylord, Advisor; Harold White, Herbert Lail, Everette Pollard, Fred Houk, Paul Dellinger, Frank Browning, Hubert Lail, Bobby LeFevers, Richard Perkins.



First Row: Patsy Hildebrand, Parliamentarian; Martha Graham, Vice President; Rebecca Hilliard, President; Grace Walker, Historian; Jean Brackett, Pianist; Hazel Denton, Song Leader; Doris Fox, Secretary; Shirley Morgan, Barbara Ledford, Reporter. Second Row: Virginia Cooper, Mozelle Tallent, Faye McGinnis, Betty McCarthy, Ethel Bailey, Evelyn Ollis, Mildred Kincaid, Nancy Farris, Margaret Mull, Joyce Reep. Third Row: Arden Wilson, Joann Turner, Ophelia Allen, Treasurer; Agnes Ward, Frances Benfield, Rachel Franklin, Lenada Cuthbertson, Franda Gibbs, Carolyn Saulman, Shirley Farris, Lola Jean Sisk, Donella Arrowood, Sylvia Williams, Betty Rose Huffman, Judy Caloway, Thelma Ollis, Barbara Lea Taylor, Linda Causby, Naomi Jarrett, Miss Edwards, Advisor.



# SPRING





*Senior Class Officers*

Success



Frosh

SOPH

Craty White ----- President  
Lawrence Harris --- Vice-President  
Frances Benfield ----- Sec-Treas.



# Seniors

## FRANCES BENFIELD

Class Officer 4; Paper Staff 4; Glee Club 1,2,4; Softball 1; Cheerleader 4; 4-H Club 1,3; F.H.A. Club 1,2,3,4; Bus Patrol 3; Marshal 3; Halloween Queen 2; Homecoming Attendant 3.

## BOBBY BENFIELD

Softball 3; 4-H Club 1.

## FLETA BENNETT

Dramatics Club 4; Glee Club 1,4; Band 1; Basketball 4; Softball 4; 4-H Club 1,4; F.H.A. Club 1,3.

## KITTY BENNETT

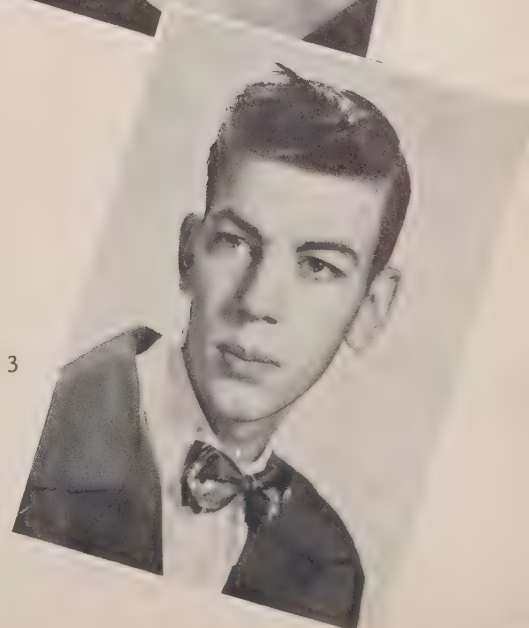
Dramatics Club 1; Glee Club 2,3,4; 4-H Club 4; Bus Patrol 4; Marshal 3; May Court 1; Homecoming Attendant 3.

## ELLEN BRACKETT

Dramatics Club 3,4; Paper Staff 4; Glee Club 4; 4-H Club 4; F.H.A. Club 2,3; Bus Patrol 4; Maid of Honor 4; Senior Superlative.

## HAROLD BOYD

Baseball 1; Bus Patrol 1,2; F.F.A. 2,3





# Seniors

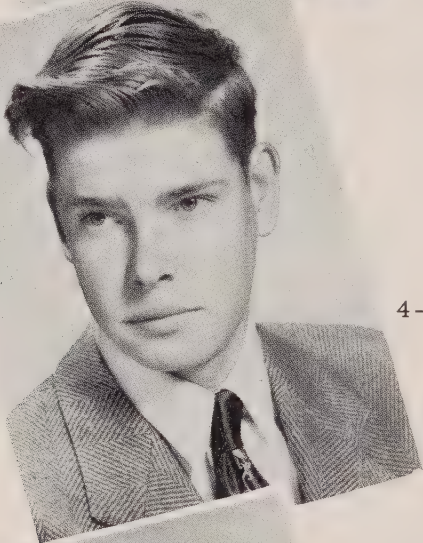
JEAN BRACKETT

Dramatics Club 4; Glee Club 1, 2, 3, 4; Band 1, 2, 3, 4; 4-H Club 1, 2, 3, 4; F. H. A. Club 1, 2, 3, 4; Bus Patrol 3, 4; Senior Superlative.



NED CAUSBY

Dramatics Club 4; Glee Club 1, 2, 3, 4; Band 3, 4; 4-H Club 1, 2, 3, 4; F. F. A. Club 2, 3, 4; Bus Driver 4; Homecoming Escort 3; Senior Superlative.



FRANK BROWNING

4-H Club 1; F. F. A. Club 1, 2, 3.



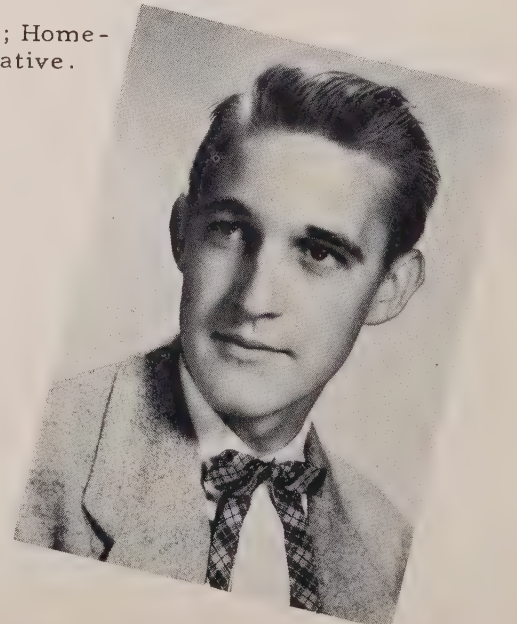
DOROTHY BUFF

Paper Staff 4; Dramatics Club 4; 4-H Club 4; Bus Patrol 3; May Court 4.



RALPH CAUSBY

4-H Club 1, 2, 3, 4; F. F. A. Club 2, 3; Homecoming Escort 3, 4; Senior Superlative.



NAOMI CARSON

Dramatics Club 4; 4-H Club 1, 2, 3, 4.





# Seniors

RUTH CLARK

Debating Club 1; Dramatics Club 4; Paper Staff 4; Glee Club 1,2,3,4; 4-H Club 1,2,3,4; Homecoming Attendant 2,3; Class History.

KAY CLARK

Debating Club 1; Dramatics Club 1,4; Paper Staff 1; Glee Club 1,4; Basketball 1,2,3,4, Captain 4; Softball 1,2,3,4; Monogram Club 1,2; 4-H Club 2,4; May Court 3,4, Queen 4; Homecoming Attendant 2; Senior Superlative.

VIRGINIA COOPER

Oak Hill School 2; Dramatics Club 1,4; Paper Staff 2; Glee Club 3,4; Softball 1; 4-H Club 1,2,3,4; F.H.A. Club 2,3,4 Bus Patrol 2.



BOBBY COSTNER

Dramatics Club 4; Glee Club 3,4; Football 1,2,3,4; Basketball 3,4, Co-Capt. 4; Monogram Club 1,2; 4-H Club 1,2,3; F.F.A. 2,3,4, Officer 4; May Court 4; Superlative.

MAE CURTIS

Dramatics Club 1,4; Paper Staff 2; Glee Club 1,4; Senior Superlative.

RACHEL CRAWLEY

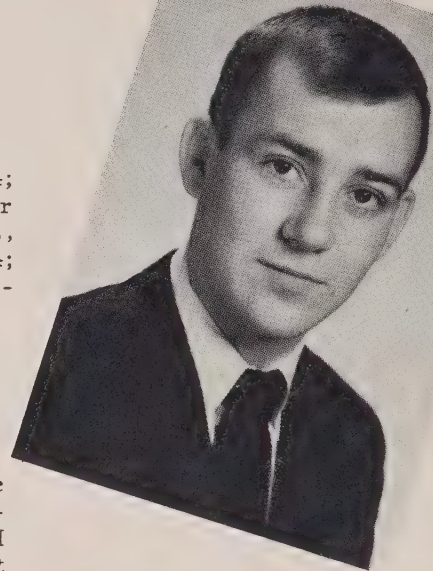
Dramatics Club 4; 4-H Club 1,2; Senior Superlative.



## Seniors

### LENADA CUTHBERTSON

Annual Staff 4; Dramatics Club 4; Officer 4; Paper Staff 2, 4; Glee Club 1, 2, 3, 4, Officer 4; Band 1, 2, 3, 4, Officer 1; Cheerleader 2, 3, 4; Monogram Club 2; 4-H Club 1, 2, 3, 4; F. H. A. Club 1, 2, 3, 4, Officer 2; Homecoming Attendant 4.

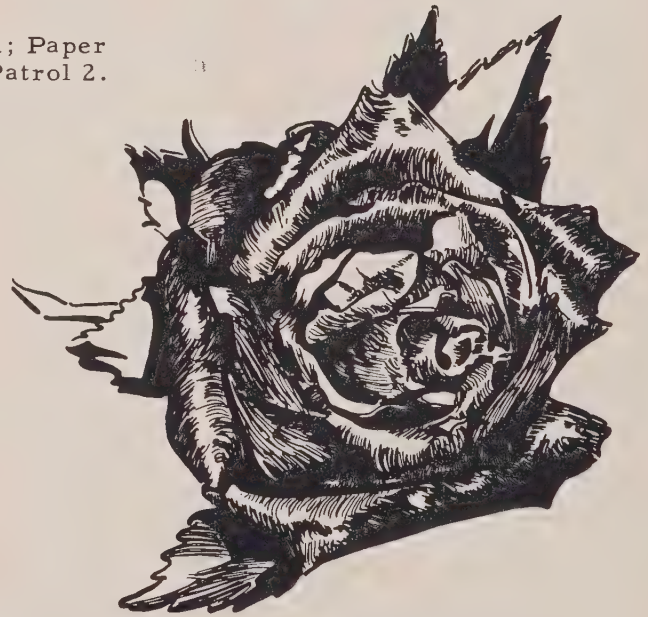


### BILL GILES

Class Officer 1; Dramatics Club 4; Glee Club 1, 4; Band 1, 2; Football 3, 4; Basketball 3; Softball 3; Monogram Club 1, 2; 4-H Club 1, 2, 3, 4; F. F. A. Club 2, 3; May Court 1, 3; Homecoming Escort 2; Superlative.

### DOROTHY DELLINGER

Debating Club 1; Dramatics Club 1; Paper Staff 4; 4-H Club 1, 2, 3, 4; Bus Patrol 2.



### PEARL DUCKWORTH

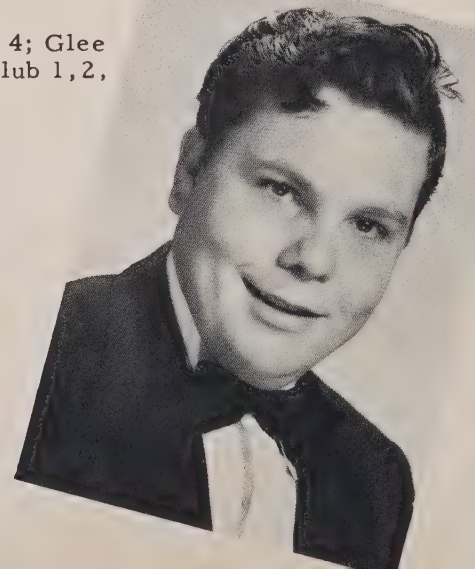
Debating Club 1; Dramatics Club 1, 4; Paper Staff 4; Basketball 1, 2, 3, 4; 4-H Club 1, 2, 3, 4; F. H. A. Club 2; Bus Patrol 4; Senior Superlative.

### J. V. GRAGG

Debating Club 1; Dramatics Club 4; Glee Club 1, 2, 3, 4; Band 1, 2, 3, 4; 4-H Club 1, 2, 3, 4; F. F. A. Club 2.

### DORIS EPLEY

Marshal 3; Senior Superlative.





# Seniors

## MAX HEMPHILL

Football 2, 3, 4; Basketball 2, 3, 4; Softball 3; Monogram 1, 2; F. F. A. 2, 3, 4, Officer 4; May Court 3, 4; Superlative.

## LAWRENCE HARRIS

Class Officer 4; Student Council 4; F. F. A. Club 1, 2, 3, 4, Officer 2, 3, 4; Bus Driver 4; Homecoming Escort 4; Senior Superlative.

## BETTY HENLINE

Class Officer 3; Annual Staff 4, Business Manager 4; Dramatics Club 4; Paper Staff 2, 4, Editor 2; 4-H Club 1, 3, 4, Officer 4; Bus Patrol 3, 4.

## REBECCA HILLIARD

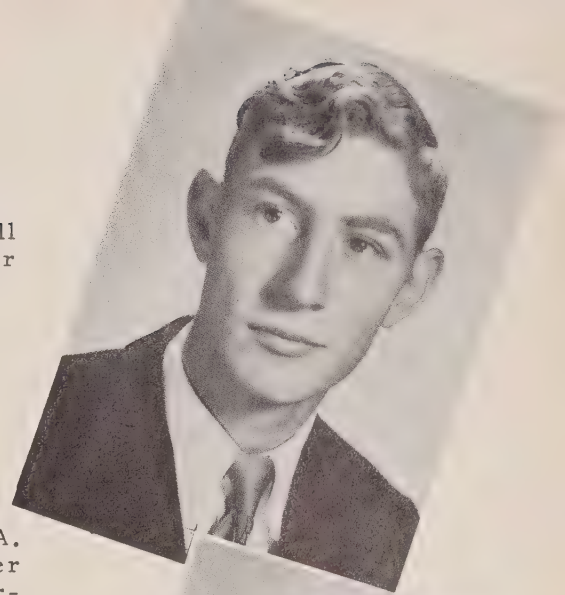
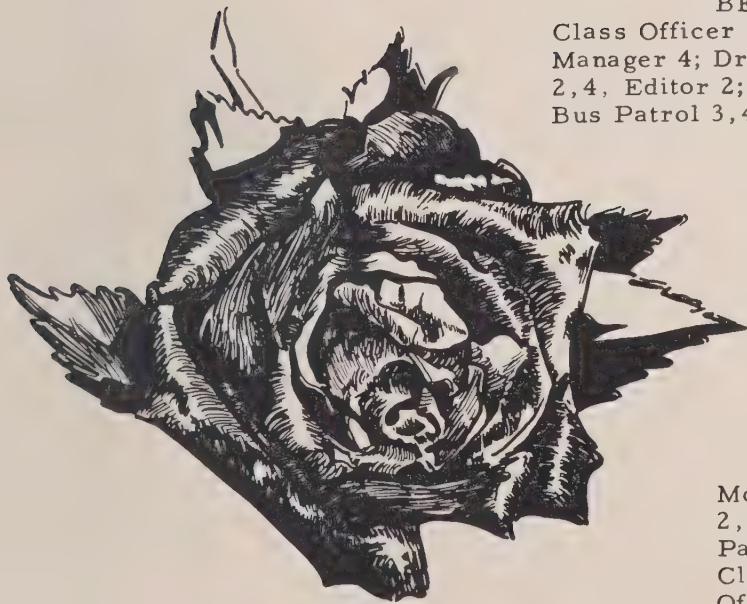
Monogram Club 2; Glee Club 2, 4; Basketball Mgr. 2, 3, 4; Paper Staff 2, 4, Editor 4; 4-H Club 1; F. H. A. Club 1, 2, 3, 4, Officer 3, 4; Bus Patrol 3, 4; Marshal 3; May Court 2.

## MILDRED KINCAID

Dramatics Club 1, 4; Paper Staff 4; Glee Club 2, 3, 4; Basketball 1, 2, 3, 4; F. H. A. Club 2, 3, 4; Bus Patrol 3, 4; Senior Superlative.

## CLAUDE JONES

Student Council 4; F. F. A. Club 1; Bus Driver 3, 4; May King 4; Superlative.





# Seniors

BARBARA LEDFORD

Dramatics Club 4; Glee Club 1, 2, 4; Basketball 1, 2; 4-H Club 1, 2, 3, 4; F. H. A. Club 1, 2, 3, 4; Bus Patrol 3; Marshal 3.



RUTH MILLIGAN

Paper Staff 4; Glee Club 2, 4; 4-H Club 2, 3, 4.



CHARLES LEONARD

Glee Club 1; Football 4; F. F. A. Club 1; May Court 1.



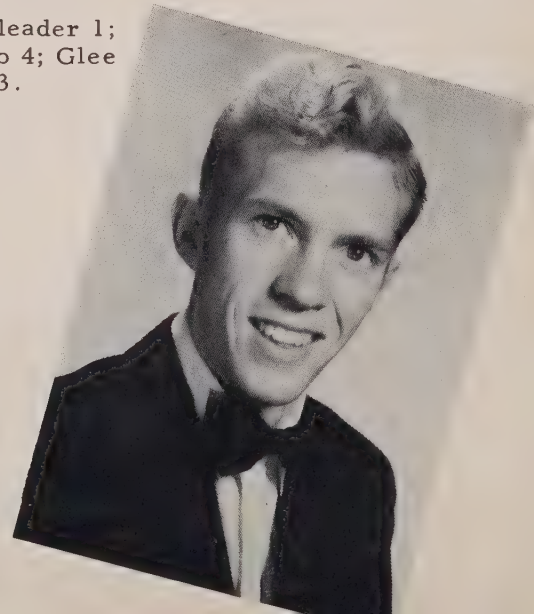
KATIE RUTH McCURRY

Dramatics Club 4; Glee Club 1 2, 3, 4; Basketball 2, 3; Softball 1, 2, 3, 4; 4-H Club 1, 2, 3, 4; Senior Superlative.



HOWARD MORGAN

Nebo Hi School; Baseball 1; Cheerleader 1; Student Council 4; Dramatics Club 4; Glee Club 4; Football 3, 4; Baseball 2, 3.



EFFIE MAE MILLIGAN

Dramatics Club 4; Paper Staff 4; Softball 1; 4-H Club 2; Senior Superlative.

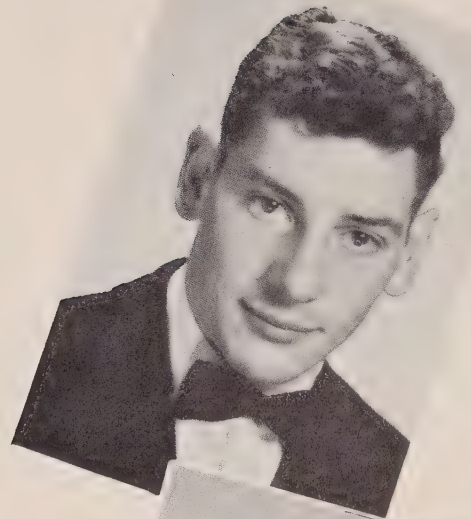




# Seniors



BILL POLLARD  
Football 3; Cheerleader 4.



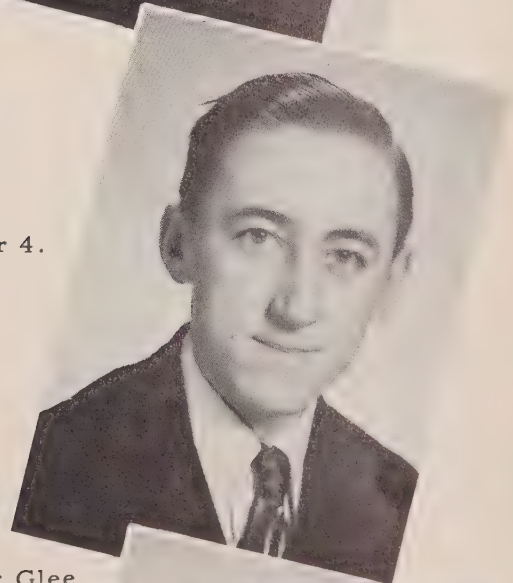
VERGIL PIPES  
Bessemer City High School 1, 3; Class Officer 1; Student Participation 1, 3; Monogram Club 1, 2, 3, 4, Officer 4; Football 1, 2, 3, 4, Captain 4; Basketball 1, 2, 3, 4; F. F. A. Club 2.



MILDRED POLLARD  
Dramatics Club 4; Paper Staff 4; Glee Club 4; Basketball 3, 4; 4-H Club 1, 2, 3, 4.



BILL PORT  
4-H Club 1, 2, 3, 4; Bus Driver 4.



JOYCE REEP  
Dramatics Club 1, 4; Paper Staff 4; Glee Club 1, 2, 3, 4; Majorette 1, 2, 3, 4; Basketball 2; 4-H Club 1, 2, 3, 4; F. H. A. Club 1, 2, 3, 4; Bus Patrol 2, 3, 4; May Court 3; Superlative.



ALICE SUE PRITCHARD  
Dramatics Club 4; Paper Staff 4; Glee Club 4; 4-H Club 1, 2, 3, 4; Bus Patrol 4; May Court 4.





# Seniors

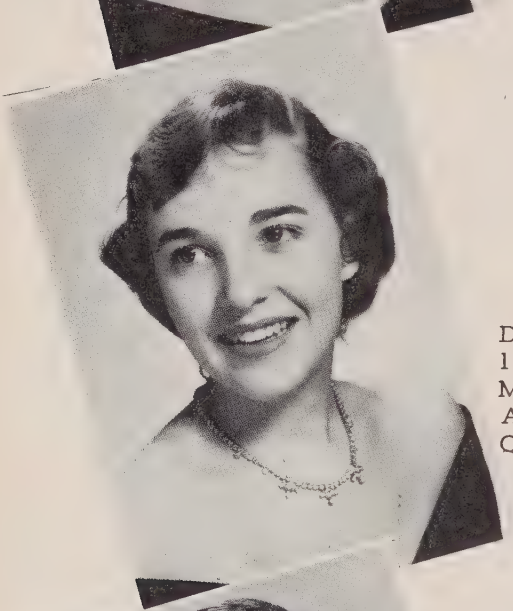
## CAROLE WALKER

Nebo High School 1; Dramatics Club 4; Paper Staff 4; Basketball 4; 4-H Club 2, 3, 4; F. H. A. Club 3; Bus Patrol 4; May Court 2; Halloween Queen 3; Senior Superlative.



## MARY WALTON

Class Officer 1, 3; President Student Council 4; Editor-in-Chief of Annual 4; Dramatics Club 1, 4, Officer 4; Glee Club 1, 2, 3, 4, Pianist 4; Student Director 3; Band 1, 2; Softball Mgr. 3; Cheerleader 3, 4; May Court 1; Homecoming Attendant 3, Queen 4; Chief Marshal 3; Senior Superlative.



## AGNES WARD

Dramatics Club 4; Paper Staff 2; Glee Club 1, 2, 3, 4; Band 1, 2, 3, 4; Cheerleader 2, 3, 4; Monogram Club 2; 4-H Club 1, 2, 3, 4; F. H. A. Homecoming Attendant 4; Halloween Queen 4; Senior Superlative.



## CRATY WHITE

Class Officer 1, 2, 3, 4; Football 1, 2, 3, 4, Captain 3; Monogram Club 1, 2; May Court 2; Senior Superlative.



## BEATRICE WILLIAMS

Glee Club 1, 2, 3, 4; 4-H Club 1, 2, 3, 4.



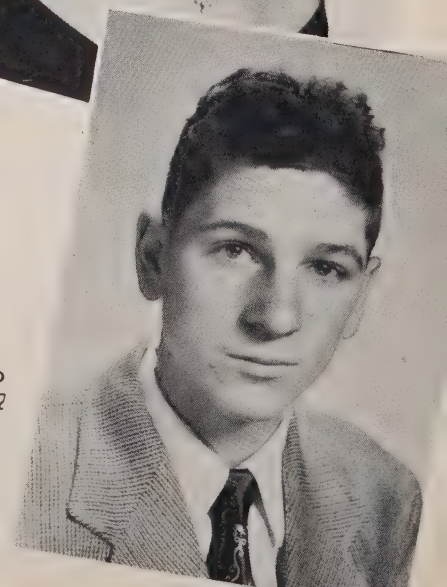
## MYRTLE WISE

Dramatics Club 4; 4-H Club 1, 2, 3, 4; Bus Patrol 4; Senior Superlative.



## FORREST WISE

Glee Club 1; Football 1; Basketball 2; Monogram Club 2; 4-H Club 1; F. F. A. Club 1, 2, 3; Officer 1, 2, 3.





## Class History

It is said that history repeats itself. That may be true in ordinary life, but when it comes to describing some of the events that have enlivened our school years, each one seems to have surpassed the preceding one in strange and wonderful happenings.

We, the class of 1953, entered elementary school in the year of 1940. We were a large class of small boys and girls, very shy, but eager to begin our education. Before long, we had forgotten to be shy, and as the days rolled by, we became very well adapted to our school life. The girls will never forget the little playhouse and how "Ring Around The Roses" thrilled both boys and girls.

Fortunately, no serious sickness befell any of our girls and boys. Of course, there were times when Bill Giles and Agnes Ward would pass their colds around, from walking to school, and leave us all coughing and sneezing.

At the end of our eighth year we were ready to enter high school. That was one of the greatest events in our history. We sang songs suitable for the occasion and had speeches by the honor students who were Grace Setzer and Kitty Bennett. As we received our diplomas, we felt as if we had really grown up. Some of our students proved that by getting married. We had others to join the class, but most of us had come along together.

At last, we had entered High School in the year of 1948. We tried very hard to adapt ourselves to the routine of high school life, and if we made mistakes, we were soon forgiven, if not forgotten. Somewhere along the way, we had acquired the name of being different from any other class, a fact of which we were proud. We won quite a few honors especially when the contest consisted of raising money.

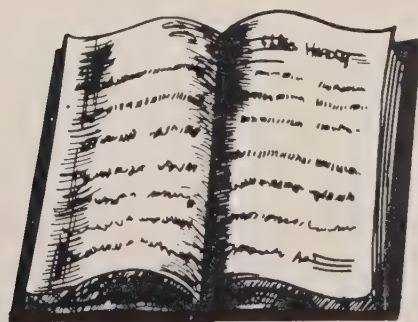
Then when we became Juniors, we knew that our duties had begun. We honored the Seniors with a banquet. We played an important part in all sports events. Carole Walker from our class was elected Halloween Queen as Frances Benfield of our class had been the year before.

Then we were "dignified seniors"! The years had flown by and we were beginning our last year, our best one; so we began by selecting our class officers, who are- President, Craty White; Vice President, Lawrence Harris; Secretary and Treasurer, Frances Benfield. After much thought, we selected our class colors- red and white, our class flower- red and white roses, and our motto- "Good, better, best; never let it rest until the good is better and the better is best."

Of course, no one will consider the enumeration of the foregoing facts a complete history of our class. To present minute statements of everyday occurrences would be beyond my abilities. Something worthy of notice has happened almost daily, and even if we should undertake to make reference to all the doings of the class, the recital would be so long as to overtax the patience of the most lenient.

Whatever you may think of the facts mentioned, you will probably agree with me when I say that we have been making history. Others may lay before you some facts related to our class, but as far as the historian is concerned, she thinks it appropriate to conclude her remarks with this statement: "Thus endeth our first chapter."

Ruth Clark  
Class Historian





## *Last Will and Testament*

After much careful thought and consideration, we, the graduating class of 1953, do hereby leave our most prized possessions in this our Last Will and Testament.

- I, Effie Mae Milligan, leave my ability in shorthand to any studious girl.
- I, Ned Causby, will to just any poor sucker my license tag.
- I, Mary Walton, leave my ability to make the honor roll to Martha Graham.
- I, J. V. Gragg, will my ability to blow the tuba to Bobby Love.
- I, Vergil Pipes, leave my timid ways to Jackie Orders.
- I, Alice Sue Pritchard, leave my freckles to Betty Rose Huffman.
- I, Max Hemphill, leave my flirty ways to Kenneth Cuthbertson.
- I, Betty Henline, leave my position on the annual to Arden Wilson.
- I, Bobby Benfield, leave my cute, but shy ways to Edward Stacy.
- I, Beatrice Williams, leave my beautiful complexion to Jane Graham.
- I, Lawrence Harris, leave to Frank Queen my ability to succeed.
- I, Jean Brittain, bequeath my hobby of collecting diamonds to any girl who has fingers enough.
- I, Bill Pollard, leave my position as cheerleader to Red Morgan.
- I, Mildred Kincaid, leave my job as reporter to Nancy Beach.
- I, Bobby Costner, leave my fascinating wink to any bachelor who wants a date.
- I, Bill Port, leave my speeding tickets to Mickey Moses.
- I, Fleta Bennett, bequeath my pleasing personality to Peggy Brittain.
- I, Carole Walker, leave my many boy friends to Linda Causby.
- I, Myrtle Wise, will my golden curls to Margaret Mull.
- I, Buster Jones, leave my position as bus driver to Buddy Mills.
- I, Rachel Crawley, leave my cuteness to Nancy Kiser.
- I, Katie Ruth McCurry, leave my ability to be witty to Patsy Hildebrand.
- I, Rebecca Hilliard, will my dependability to Hazel Denton.
- I, Lenada Cuthbertson, bequeath my wonderful sense of humor to any old grouch.
- I, Ralph Causby, leave my friendly ways and good times in typing and bookkeeping to Nelson Abernethy.
- I, Kay Clark, leave first-string position in basketball to Doris Fox.
- I, Pearl Duckworth, leave my nickname "Duck" to Nancy Duckworth.
- I, Ruth Milligan, leave my singing ability to Lois Stillwell.
- I, Craty White, will my football ability to Billy Wynne.
- I, Ellen Brackett, leave my alert mind to Fred Houk.
- I, Frances Benfield, leave my peaches and cream smile for all the boys to Barbara Taylor.
- I, Bill Giles, leave that pencil that I never have to anyone in Miss Ribet's class.
- I, Barbara Ledford, leave my speaking ability to Mozelle Tallent.
- I, Howard Morgan, will to Franklin Perkins my skill in getting a wife.
- I, Kitty Bennett, will my dignified manner to Shirley Scott.
- I, Harold Boyd, leave my height to Buddy Pitts.
- I, Dorothy Buff, will my dancing blue eyes to Carole Brown.
- I, Charles Leonard, bequeath my aggravating ways to Jimmy Terry.
- I, Mildred Pollard, will my ability to feed the seniors to Effie Tate.
- I, Agnes Grey Ward, leave my gift of gab to Larry Scott.
- I, Forrest Wise, leave my quick come-backs to John Wells.
- I, Doris Epley, leave my quietness to Mary Puett.
- I, Dorothy Dellinger, leave my speedy ways to Faye Bailey.
- I, Virginia Cooper, will my doctor bills to any rich man who can pay them.
- I, Frank Browning, leave my ability to get by without an excuse to Richard Perkins.
- I, Naomi Carson, will my winning smile to Grace Walker.
- I, Ruth Clark, will my voice to Ophelia Allen.
- I, Mae Curtis, leave my best-all-around ways to Joan Graham.
- I, Harold Carswell, leave to Bobby Taylor my "easy-going-manner."
- I, Joyce Reep, bequeath to any one my bad debts — just charge it.

Joyce Reep  
Class Lawyer



## Class Prophecy

Oh! You ought to see the Seniors of 1953 now. They have really progressed. Remember how we used to discuss things in sociology under Miss Walker, and how Bobby Costner and Max Hemphill kept wanting to go to Alaska? Well, they finally went, but I hear they were chased back by a polar bear. Well, boys, I'll still tell you there's no place like "Old G. A."

Maybe you're wondering what I'm doing digging up all this. Well, I got kinda lonesome for the spark of life of our classmates, and I started to find out what I could about them. I have found most of them, and if there is anyone I have missed, I wish they would let me know.

Let's start off with one of the brightest little girls we had in our class, since most of us know her. Of course, it's Mary Walton. She became a prominent doctor. Joyce Reep is a pretty little elevator girl. Ned Causby is a traveling salesman. His cousin Ralph is engaged as manager of Belk's Department Store. Charles Leonard owns a big "drive-in" diner. Frances Benfield has a permanent job keeping house for Eddie. And as for cousin Bobby, he is operating a drive-in theater. As you know, Howard Morgan was married before he was out of school; now he has a family and works at the new atomic plant in Morganton. Bill Giles is a bartender for J. V. Gragg's Winery.

Just a minute-- I just received a phone call from Craty White, who is home on vacation; he says he is manager of a clothing store in New York. He ought to do well at that. Kitty Bennett married the manager of Belk's. Guess you know who that is without looking. Barbara Ledford became head nurse at the Orthopedic Hospital in Asheville. Mildred

Kincaid became a bride not too long after school was out— married her boss— now look who's boss. Forest Wise and Frank Browning joined forces and now operate a big sawmill. Betty Henline is a secretary at the Atomic Plant, along with a few others by her side: Doris Epley, Virginia Cooper, Pearl Duckworth, Alice Sue Pritchard, and Carole Walker. Agnes Ward is a model for fur coats. Dorothy Dellinger and Rachel Crawley are department store sales clerks.

Pardon me while I read a letter— Well! Guess who— from no one but Kay Clark, still a waitress, but now it's not waiting on the public, just one special customer. Vergil Pipes is playing "pro" football. Bill Port owns a service station. Harold Boyd is manager of a furniture factory. Of course you know that Lawrence Harris is Secretary of Agriculture. I see in the paper where some more of our girls became brides. These were Beatrice Williams, Katie McCurry, and Mildred Pollard. Effie Milligan became a stenographer. I also remember that Jean Britian became a bride before she was out of school. Rebecca Hilliard and some other of our girls went back to G. A. to teach; with her are Ellen Brackett, Mae Curtis, and Dorothy Buff. Naomi Carson is keeping house with a family.

Another phone call— somebody says Lenada Cuthbertson went to California to hunt her fortune; she got married and is still there. Just saw that Bill Pollard is going into the wholesale car dealer business.

Now that I think I have covered everyone, I shall go out to my plane and do some work for Uncle Sammy.

Claude B. Jones  
Class Prophet







Lawrence Harris Ray Clark

"Most Intelligent"



"Most Talented"  
Ellen Brackett Bobby Costner

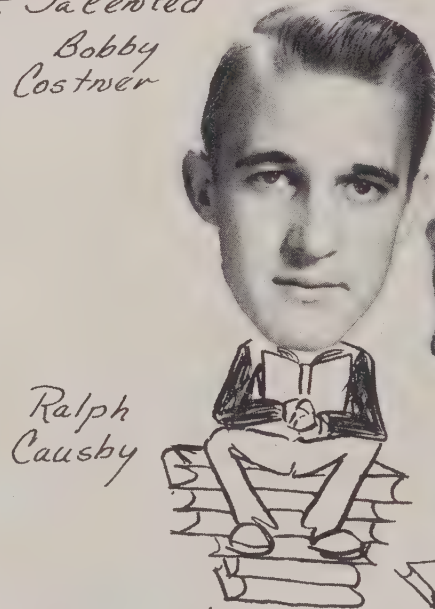


"Most Original"  
Howard Morgan  
Pearl Duckworth



Rachel Crawley Bill Giles

"Cutest"



Ralph Causby



Eppie Mae Milligan

"Most Studious"



Forest Wise

Myrtle Wise

"Most Dependable"



Bill Pollard

Jean Brackett

"Friendliest"



Doris Epley

Frank Brown

"Quietest"



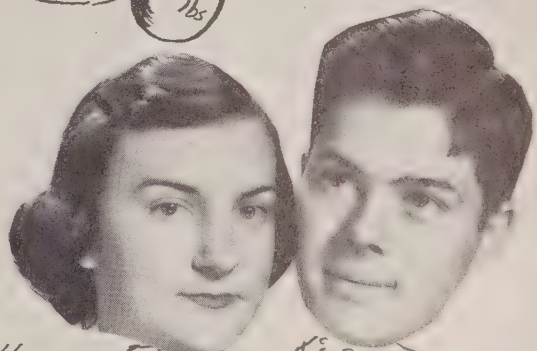


Craty White

"Best Looking"  
Joyce Reep



"Most Athletic"  
Kay Clark - Max Hemphill



Katie Ruth McCune

Buster Jones

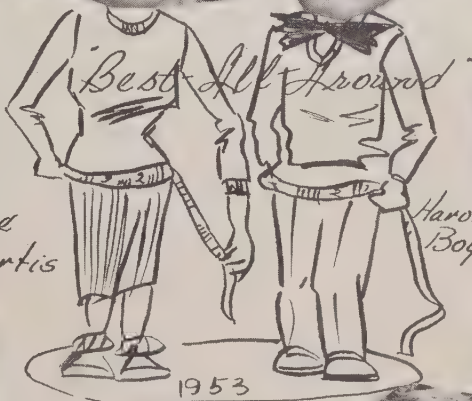
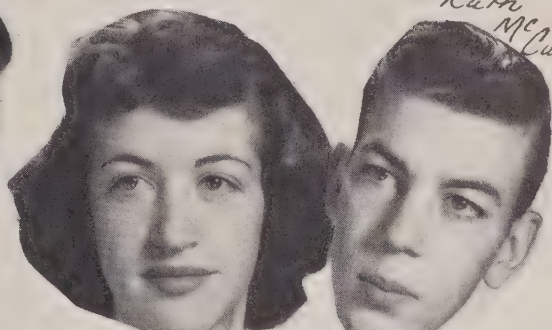
"Wittiest"



Mildred Kincaid

Charles Leonard

"Most Popular"



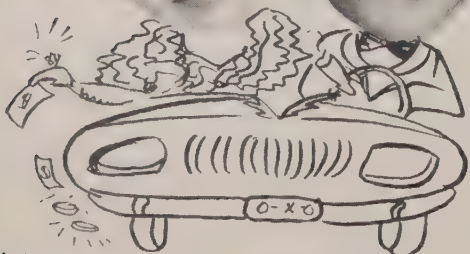
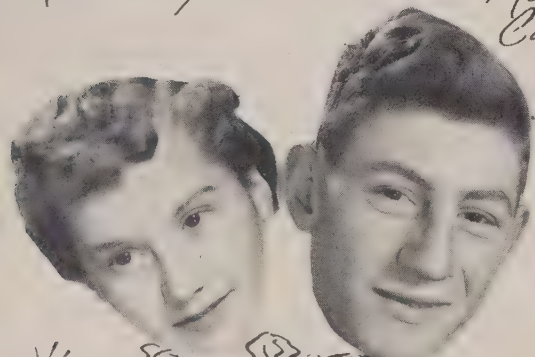
Mae Curtis

Harold Boyd

1953

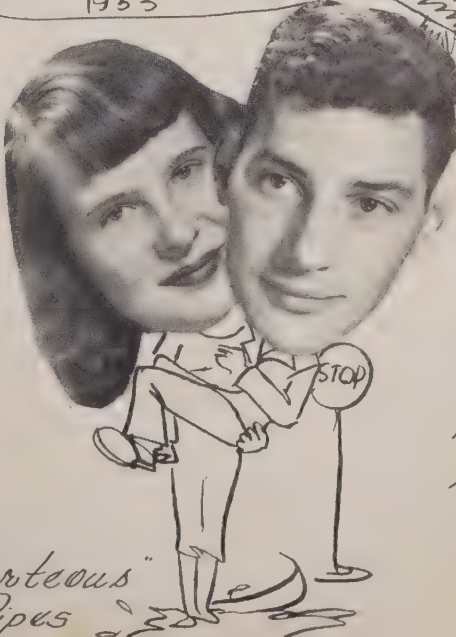


"Best Dressed"  
Agnes Ward  
Ned Causby



"Most Likely To Succeed"

Mary Walton  
Lawrence Harris



"Most Courteous"  
Vergil Pipes





*Queen And King  
Of  
May*

KAY CLARK  
CLAUDE JONES



First Row: Edith Puett, Ophelia Allen, Linda Causby, Alice Sue Pritchard, Ellen Brackett, Maid of Honor; Annelle Young, Flower Girl; Kay Clark, Queen; Claude B. Jones, King; Randall Brackett, Crown Bearer; Brenda Whitner, Flower Girl; Dorothy Buff, Effie Tate, Doris Brown, Judy Caloway. Second Row: Donald McGalliard, Bobby Taylor, Bobby Love, Bobby Costner, Max Hemphill, Clarence Poteat, Edward Benfield.





MAID OF HONOR  
Ellen Brackett



FLOWER GIRLS  
Annelle Young and Brenda Whitner

CROWN BEARER  
Randall Brackett





## Marshals



Seated:  
 Martha Graham  
 Margaret Mull  
 Grace Walker  
 Joann Turner  
 Patsy Hildebrand  
 Chief

Standing:  
 Billy Wynne  
 James Wachob

First Row:  
 Kay Clark  
 Joann Turner

Second Row:  
 Miss Martindale  
 Coach

Doris Fox  
 Joan Graham  
 Ophelia Allen  
 Nancy Duckworth  
 Katie R. McCurry  
 Mary Walton  
 Manager



## Softball



# Activities







## Student Council

Seated:  
 Claude B. Jones, Vice Pres.  
 Mary Walton, President  
 Martha Graham, Secretary

Standing:  
 Roy Pipes  
 Bobby Bennett  
 Grace Walker  
 Carol Brown  
 Edith Puett  
 Franklin Perkins  
 Arden Wilson, Reporter  
 Lawrence Harris  
 Barbara Lea Taylor  
 Billy Wynne  
 Mrs. Young, Advisor

## Gobbler Staff

Seated:  
 Lenada Cuthbertson  
 Ellen Brackett,  
 Associate Bus. Mgr.  
 Effie Mae Milligan  
 Rebecca Hilliard  
 Editor-in-Chief  
 Joyce Reep  
 Standing:  
 Ruth Milligan  
 Mildred Pollard  
 Frances Benfield  
 Alice S. Pritchard  
 Business Mgr.  
 Ruth Clark, Art Ed.  
 Dorothy Dellinger  
 Carole Walker, Asso. Ed.  
 Dorothy Buff  
 Claude Jones  
 Betty Henline,  
 Pearl Duckworth  
 Mildred Kincaid  
 Miss Ribet, Advisor



## Dramatics Club

First Row: Mozelle Tallent, Ruth Clark, Joyce Reep, Effie Mae Milligan, Effie Tate, Agnes Ward, Jean Brackett, Mary Walton, Secretary and Treasurer; Mildred Kincaid, Margaret Mull, Virginia Cooper, Lola Jean Sisk, Rachel Crawley, Nancy Kiser, Lenora Ann Black, Margaret Powell. Second Row: Evelyn Ollis, Jo Chandler, Grace Walker, Betty Rose Huffman, Martha Graham, Patsy Hildebrand, President; Alice Sue Pritchard, Arden Wilson, Joan Turner, Kay Clark, Doris Pitts, Ophelia Allen, Vice President; Katie Ruth McCurry, Romona Long, Winnie Browning, Doris Fox, Nancy Sue Dale, Lois Stillwell. Third Row: Larry Scott, J. V. Gragg, Naomi Jarrett, Faye Patton, Myrtle Wise, Miss Simpson, Advisor; Ellen Brackett, Pearl Duckworth, Lenada Cuthbertson, Program Chairman; Bobby Costner, Bobby Love, Carole Walker, Mildred Pollard, Mrs. Young, Advisor; Linda Causby, Mae Curtis, Dorothy Buff, Geraldine Wise, Kenneth Cuthbertson, Leatha Patton, Bobby Puett, Barbara Ledford. Not Pictured: Bill Giles.



## Glee Club



First Row: Hazel Denton, Student Director; Kati Ruth McCurry, Ruth Milligan, Doris Fox, Agnes Ward, Barbara Bivens, Kay Clark, Sylvia Williams, Mildred Kincaid, Mabel Whisenant, Faye Bailey, Lenora Ann Black, Evelyn Ollis, Nancy Jordan. Second Row: Betty Henline, Alice Sue Pritchard, Patsy Hildebrand, Martha Graham, Secretary and Treasurer; Grace Walker, Doris Moore, Thelma Ollis, Beatrice Williams, Mary Walton, Reporter; Virginia Cooper, Ruth Clark, Ellen Brackett, Jean Brackett, Carolyn Saulman, Faye McGinnis, Nancy Duckworth, Arden Wilson, Joann Turner, Naomi Jarrett, Donella Arrowood, Nell Lail. Third Row: Bobby Love, Mickey Moses, Lois Stillwell, Margaret Powell, Nancy Beach, Mildred Pollard, Betty Rose Huffman, Faye Patton, Mozelle Tal- lent, Rebecca Hiliard, Lenada Cuthbertson, Vice President; Frances Benfield, Barbara Lea Taylor, Joyce Reep, Margaret Mull, Carol Brown, Ophelia Allen, President; Barbara Ledford, Kitty Bennett, Linda Causby, Harold Carswell, J. V. Gragg, Frank Queen, Bill Giles, Bobby Costner, Kenneth Cuthbertson, Billy Wynne, Ned Causby, Miss Thomasson, Director; Lola Jean Sisk, Judy Caloway.



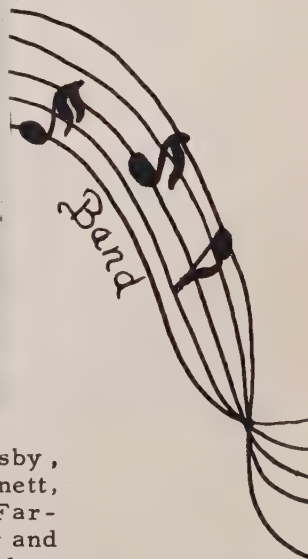
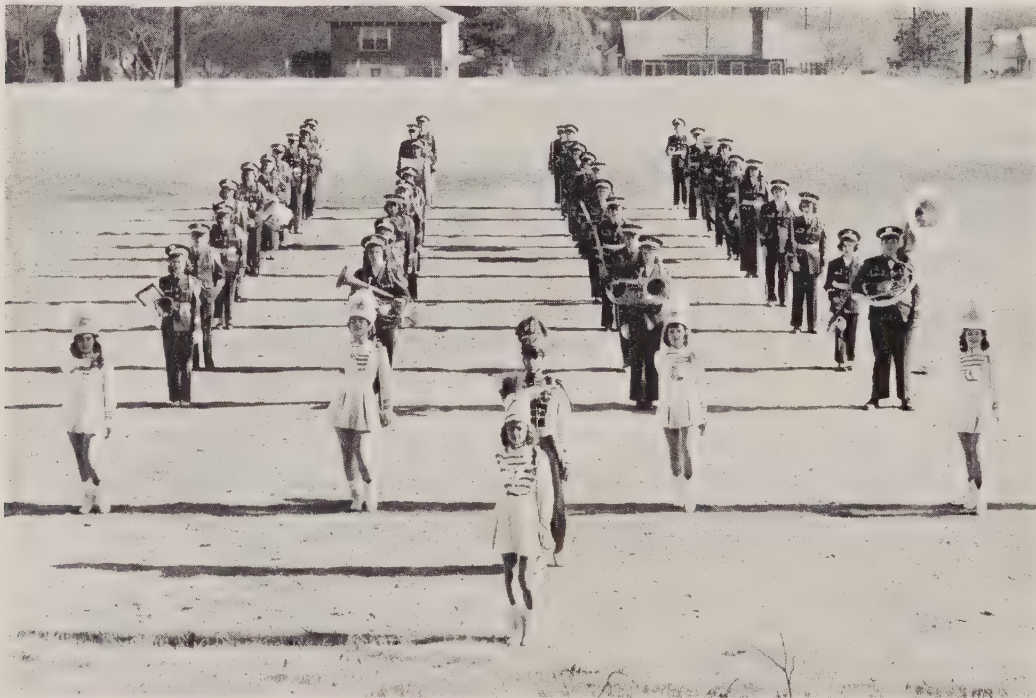
## 4-H Club

First Row: Coy Flynn, Bobby Fox, Charles Yount, Charles Epley, Edward Denny, Dorothy Buff, Jean Brackett, Pianist; Ruth Clark, Secretary and Treas- urer; Betty Henline, President; Frank Queen, Vice President; Beatrice Will- iams, Myrtle Wise, Edith Browning, Ophelia Allen, Kenneth Cuthbertson. Sec- ond Row: Faye Bailey, Ned Causby, Bill Giles, Arden Wilson, Winnie Browning, Dorothy Dellinger, Pearl Duckworth, Carole Walker, Virginia Cooper, Mildred Kincaid, Nancy Kiser, Lenora Ann Black, Doris Fox, Agnes Ward, Margaret Mull, Joyce Reep, Evelyn Ollis, Ruth Milligan. Third Row: Lois Stillwell, Nancy Sue Dale, Jo Ann Turner, Kay Clark, Donald Carson, Frank Kincaid, Margaret Powell, Mildred Pollard, Naomi Carson, Alice Sue Pritchard, Nancy Duckworth, Barbara Ledford, Lenada Cuthbertson, Ellen Brackett, Katie Ruth McCurry, Naomi Jarrett, Linda Causby.





Beth Bobbitt, Margaret Mull, Joyce Reep, Joan Graham, Arden Wilson, Ned Causby, Drum Major.



Majorettes: Beth Bobbitt, Margaret Mull, Arden Wilson, Reporter; Ned Causby, Drum Major; Joan Graham, Joyce Reep, President. First Row: Andrea Bennett, David Brown, Frances Arrowood, Onadine Williams, Barbara Elders, Nancy Fariw, Jerry Butler, Tony Wintzer, Maxine Foreman, Loretta Lane, Secretary and Treasurer. Second Row: Nancy Duckworth, Gladys Morgan, Barbara Lea Taylor, Student Director; Betty Sue Williams, Barbara Shook, Evelyn Ollis, J. E. Mull, Adeline Powell. Third Row: Carol Brown, Paul Gibbs, Libby Giles, Dottie Giles, Jackie Orders, Edith Puett, Naomi Jarrett, Vice President; Larry Causby, Iris Jarrett. Fourth Row: J. V. Gragg, Margaret Beach, Donella Arrowood, Agnes Ward, Linda Causby, Hazel Denton, Lenada Cuthbertson, Nelson Abernathy, Jean Brackett, Kenneth Bivens. Not Pictured: Jackie Danielle.

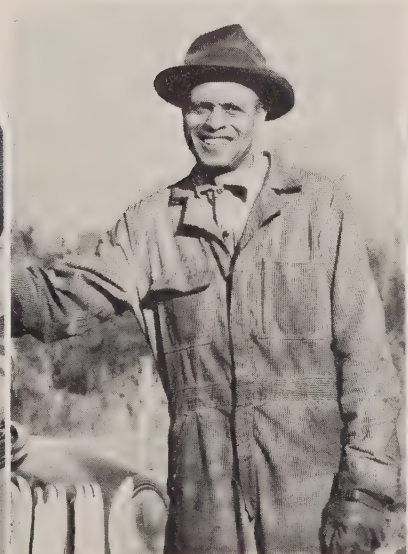


# Safety Patrol



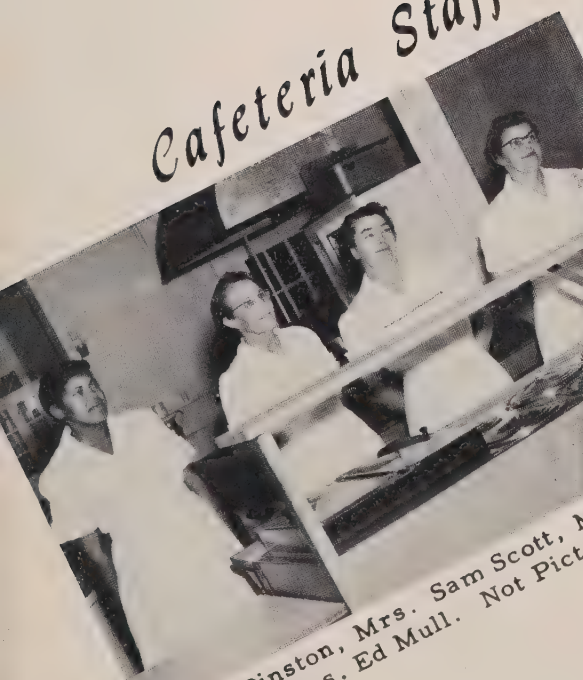
First Row: Alice Sue Pritchard, Grace Walker, Carolyn Saulman, Ophelia Allen, Joyce Reep, Rebecca Hilliard, Sylvia Williams, Kitty Bennett, Jean Brackett, Mildred Kincaid. Second Row: Charles Epley, Rudolph Queen, Glen Reep, Herbert Lail, Bobby Puett, Myrtle Wise, Betty Henline, Carole Walker, Ellen Brackett, Pearl Duckworth. Third Row: John Wells, Harold White, Ralph Beach, Fred Houk, Johnny Henry, Carroll Epley.

# Janitor



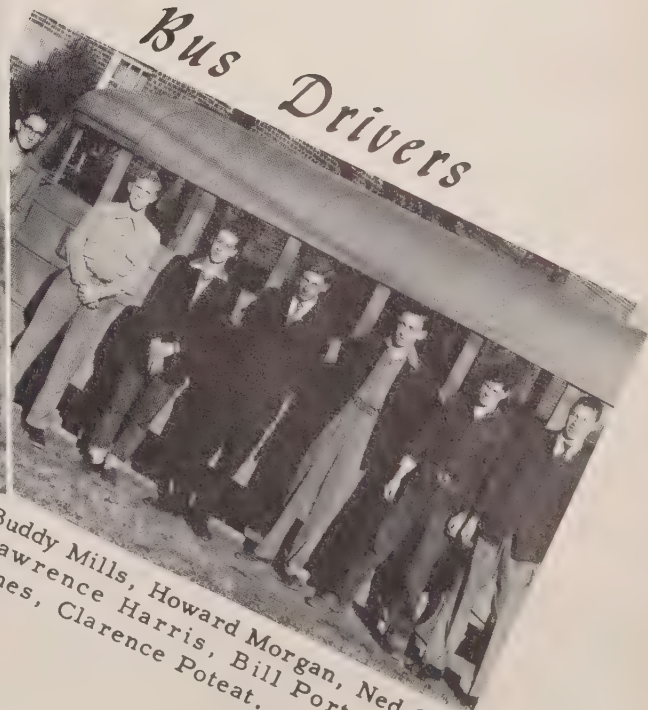
Ed Bowman

# Cafeteria Staff



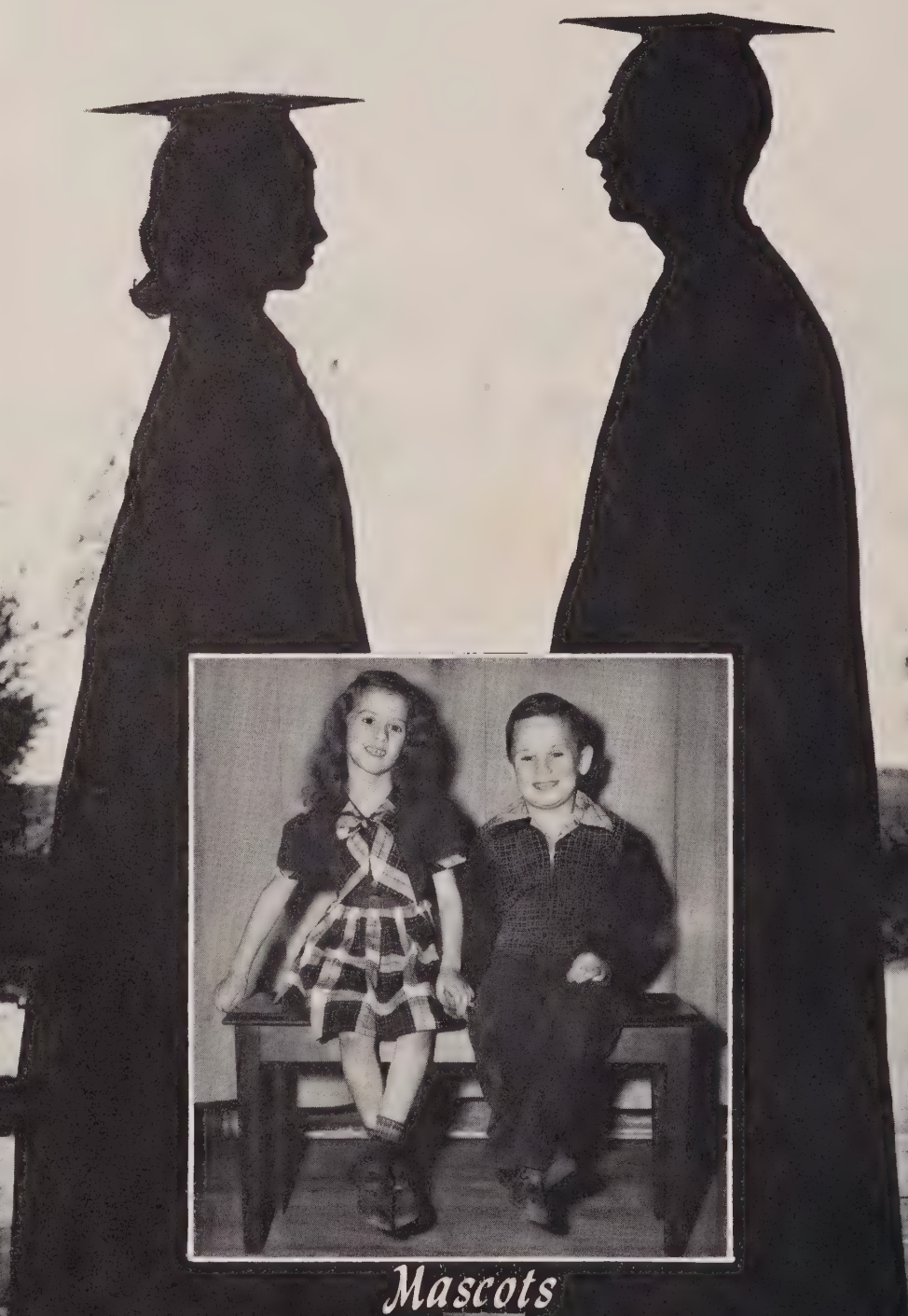
Maggie Pinston, Mrs. Sam Scott, Mrs. Bill Reep, Mrs. Ed Mull. Not Pictured: Willie Rankin.

# Bus Drivers



Buddy Mills, Howard Morgan, Ned Causby, Lawrence Harris, Bill Port, Claude B. Jones, Clarence Poteat.





*Mascots*

MARGARET ANN CUTHBERTSON  
and  
C. L. PRITCHARD







# *Autographs*



# *Autographs*





## GLEN ALPINE BAPTIST CHURCH

CONGRATULATIONS TO THE SENIORS  
WE WELCOME YOU

## WELLS & SEALS MOTORS CO.

Complete Automotive Service  
Front End Alignment  
Paint and Body Work

24-Hour Wrecker Service

Phone 622 - 1089

## MORGANTON HARDWARE CO.

Hardware and Furniture  
General Electric and Frigidaire

Easy Washing Machines

Plumbing and Heating



A Friendly Shopping Center

# WHITE SUPPLY COMPANY

Modern Self-Service Store

Quality Meats

# DEE RICHARD'S MARKET

Free Delivery

Phone 1775-J



# MIMOSA INSURANCE AGENCY

Insure and Save the Mimosa Way

PAUL S. CASH  
Fire - Automobile - Compensation  
and  
General Casualty Insurance

"Cash Savings to Policy Holders Year After Year"

Telephone 586

Morganton

North Carolina

## ASHEVILLE SHOWCASE & FIXTURE COMPANY

Asheville

North Carolina

We have Served Glen Alpine and  
Burke County with Quality  
Photographs Since 1929.

When You Think of Photographs  
of Quality, Think of

## GREENE STUDIO

Walter L. Greene  
Phone 188-W

Morganton

North Carolina

For A Better Tomorrow, Let's Support Our Schools

## SOSSOMAN'S FUNERAL HOME

Phone 810  
Morganton  
North Carolina

Phone 410  
Valdese  
North Carolina



**BREEDEN POULTRY & EGG**

“Pride of the Blue Ridge”  
Fresh Dressed Poultry

Phone 1325

Morganton

North Carolina

*Compliments of*  
**McCALL DISTRIBUTING CO.**

**ESTES**

Heating, Plumbing  
Air Conditioning  
Mill Supplies

100 South Chestnut Street  
Telephone 600

Morganton

North Carolina

**MORGANTON BUILDING  
AND LOAN ASSOCIATION**

Kibler Building  
114 S. Sterling Street  
Telephone 103-W

Morganton

North Carolina

**MORGANTON TRIM SHOP**

Auto Trim and Furniture  
Upholstering

Phone 217

Morganton

North Carolina

**MORGANTON HOME & AUTO  
STORE**

B. F. Goodrich Tires  
Motorola TV

211 N. Sterling Street  
Phone 1311

Morganton

North Carolina

**GOODNIGHT BROS.**

Wholesale  
Fruits, Eggs and Vegetables

Gastonia  
North Carolina

Newton  
North Carolina

**B. B. MULL FUEL AND SUPPLY**

Coal, Fuel, Oil, and Building  
Material

104 Avery Avenue  
Phone 995



*Compliments of*  
**BROWNING BROS. SHOE SHOP**

**REEP'S JUNCTION**  
One Mile From Glen Alpine  
Fresh Meat & Groceries,  
City Service Gas and Oil  
Telephone 1750-R

**THE NEWS-HERALD**  
Burke County's  
Local Newspaper  
For Over 66 Years

**LOG CABIN SERVICE STATION**  
Groceries  
Car Repair Service  
And Parts

**CLINIC DRUG STORE**



**BUMGARNER WOOD YARD**

Pulpwood  
Peeled or Rough

Marion

North Carolina

*Compliments of*  
**JONES' FURNITURE**

Second Door From Post Office

**ART FLOWER SHOP**

"Flowers For All Occasions"

137 West Union Street  
Telephone 558 and 5W

Morganton

North Carolina

*Compliments of*  
**ROSE'S 5-10-25c STORE**

Morganton

North Carolina

**DIXIE FINANCE  
AND INSURANCE CO.**

Ned B. Giles, Manager  
Insurance and Auto Loans

117 1/2 Union Street - 2nd. Floor Burand's  
Phone 1482

Morganton

North Carolina

**PITTS LUMBER CO.**

Glen Alpine

North Carolina



*Compliments of*  
**BURKE FARMERS  
COOPERATIVE**

Buy Burke - None Better

Phone 1126  
Box 304

Morganton North Carolina

*Compliments of*  
**BELK-BROOME  
CO.**

Burke's Newest  
And Most Complete  
Department Store

"The Home of Better Values"

Phone 3723

Morganton North Carolina

**LONG'S ESSO  
SERVICE**

Atlas Tires, Tubes  
And Accessories

Tire Recapping

Phone 531

Morganton North Carolina

**UNION  
HARDWARE  
COMPANY, INC.**

Your Maytag and  
Frigidaire Dealer

Telephone 838

Morganton North Carolina



**TUX BOWERS  
MOTOR COMPANY**

Oldsmobile and GMC Trucks

Morganton North Carolina

1893 - 1953

**LAZARUS**

of Morganton

Serving Burke County  
for 60 Years

*Compliments of*  
**PEOPLE'S DEPT. STORE**

We Clothe The Entire  
Family  
From Head to Toe

Congratulations  
Seniors

**SURASKY'S**

Quality Feed,  
Seed and Fertilizers  
Homelite Chain Saws

**BURKE FARM SUPPLY**

At Depot

Morganton North Carolina

**MORGANTON MILL END SHOP**

Notions and Piece Goods

Quality For Less

312 East Union Street  
Phone 1543

*Compliments of*  
**GRAGG GROCERY**

Phone 1776R4

Congratulations, Seniors

**GLEN ALPINE REST HOME**



*Compliments of*  
**H. E. HENNESSEE BARBER SHOP**

Glen Alpine                      North Carolina

**STANLEY'S JEWELERS**

Honest Values

Convenient Terms

110 N. Sterling Street

Morganton                      North Carolina

**BURKE LUMBER COMPANY**

**LUMBER AND BUILDING MATERIALS**

"QUALITY AND SERVICE"

PHONE 13 - 1214

P. O. Box 337

**MORGANTON, N. C.**

*Compliments of*

**ADLER'S**

Betty Lou and Shoe Center

**MULL FURNITURE COMPANY**

Complete Line  
Home Furnishings & Appliances

N. Green Street  
Phone 1212

Morganton                      North Carolina

**CLONTZ SHOE SHOP**

Fix While U Wait

North Green Street

Morganton                      North Carolina

Protect Your Loved Ones in Our Burial Association

**McCALL'S FUNERAL HOME**

C. R. McCall, Owner

Mrs. C. R. McCall, Assistant - Charles G. McCall, Assistant

For More Than 40 Years We Have Been Trying To Render  
Satisfactory Service

Day Phone 2120 - Night Phone 3671 or 2195

Ambulance Service

Marion

North Carolina



*Compliments of*  
**KIBLER DRUG CO.  
&  
KIBLER BEAUTY SALON**

Phone 93 and 94

*Compliments of*  
**BURKE FURNITURE CO.**

Morganton

North Carolina

*Compliments of*  
**DOCK EPLEY'S GROCERY STORE**

Route 2

Morganton

North Carolina

USED CARS  
**NU-RUN MOTORS**

2 Miles West of Morganton  
Highway 70

Phone 1510-W

**BONCILLA BEAUTY SHOP**

Telephone 406

**FARM SERVICE TRACTOR CO.**

FORD TRACTORS

Dearborn Equipment  
McCulloch Chain Saws  
Simplicity Garden Tractors

111 N. Green Street  
Phone 804

**MULLIS MOTOR COMPANY**

CRYSLER - PLYMOUTH

Morganton

North Carolina



Sales and Service

**SANDERS CHEVROLET CO.**

Morganton

North Carolina



*Compliments of*  
**LESLIE'S SHOE STORE**

**MIMOSA & DAVIS THEATERS**

Morganton

North Carolina

*Compliments of*  
**REGISTRAR OF DEEDS**

W. ALVIN BERRY

*Compliments of*  
**WARLICK GROCERY**

R. W. Pipkin

R. J. Giles

Established in 1913

**BURKE GARAGE COMPANY**

FORD and MERCURY  
Authorized Dealers

Telephone 140

Morganton

North Carolina

**ELOISE**

A Smart Shop for Smart Women

Home of

Nelly Don

Gay Gibson

Minx Mode Dresses

*Compliments of*  
**TWIN POPLAR MOTOR COURT**

Morganton

North Carolina

**CALDWELL HOTEL**

H. P. Pitts, Manager

"Every Meal A Feast"

"Come On"



*Compliments of*

**HENNESSEE'S  
STORE**

Phone 535-J

Glen Alpine

North Carolina



**PIEDMONT DRY CLEANERS**

Phone 239

Morganton

North Carolina

**YOUNG AGES**

“We Major In Minors”

Morganton

North Carolina

**THE ANNUAL STAFF**

Wishes to thank the following for helping  
make possible this edition of the

**TURKEY TAIL**

Richie's Grocery  
Burke Freezer Locker  
W. M. Harris, Grocery  
Sterling Tire & Recapping  
Burke Flower & Feed  
City Feed & Grocery

**AUTOGRAPHS**

































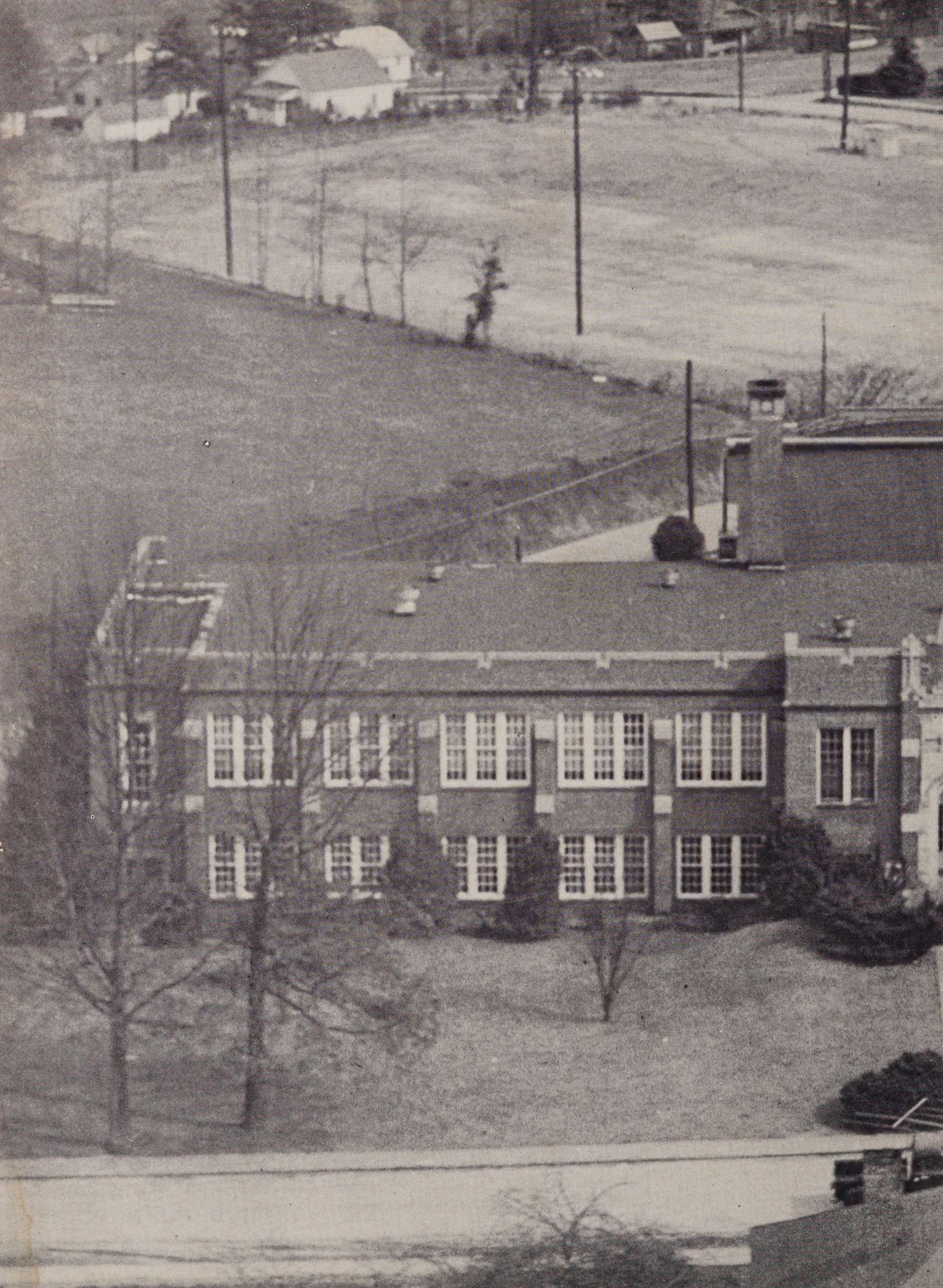




*Delmar*







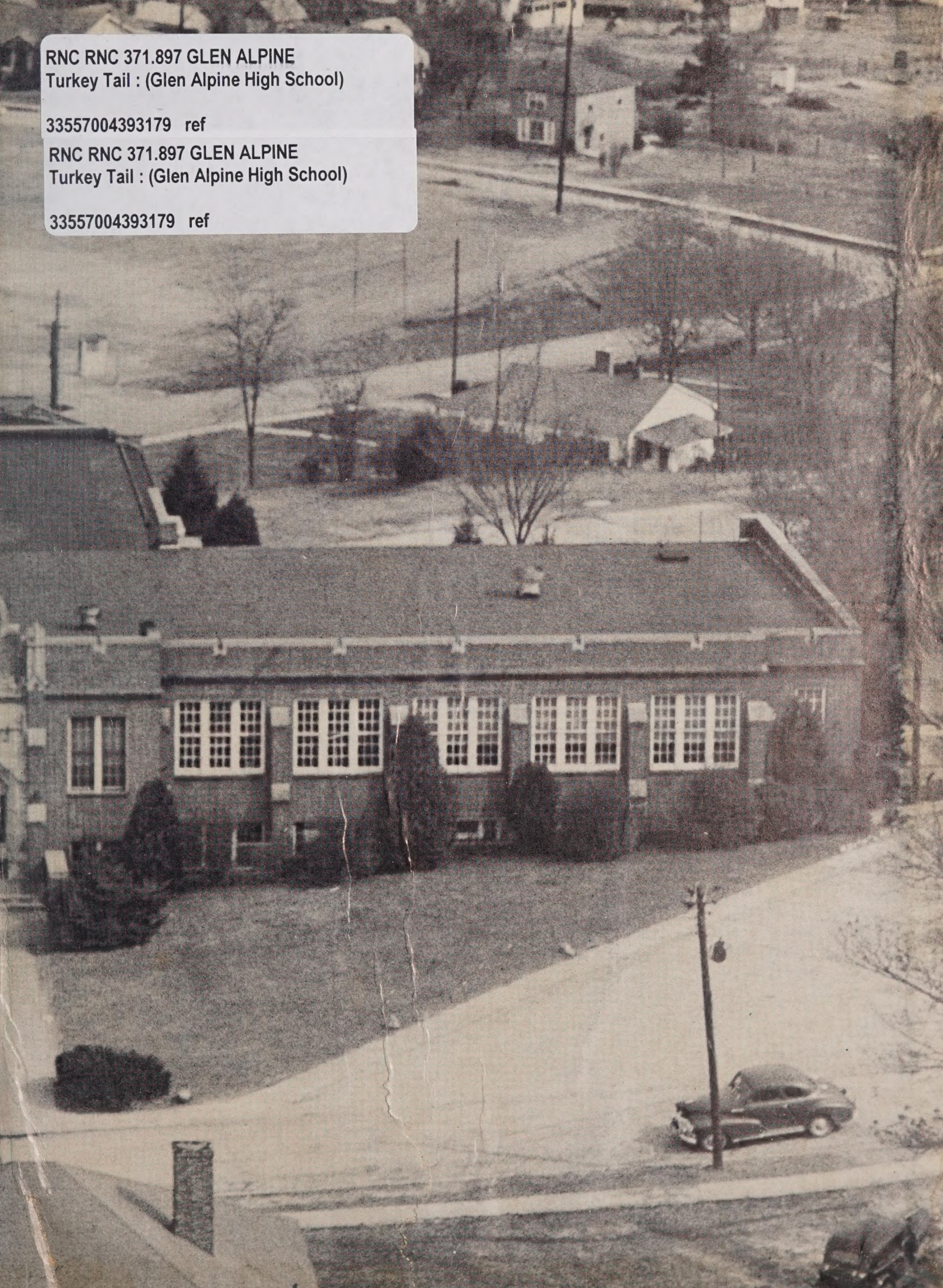


RNC RNC 371.897 GLEN ALPINE  
Turkey Tail : (Glen Alpine High School)

33557004393179 ref

RNC RNC 371.897 GLEN ALPINE  
Turkey Tail : (Glen Alpine High School)

33557004393179 ref





BURKE COUNTY PUBLIC LIBRARY SYSTEM



3 3557 004393179

