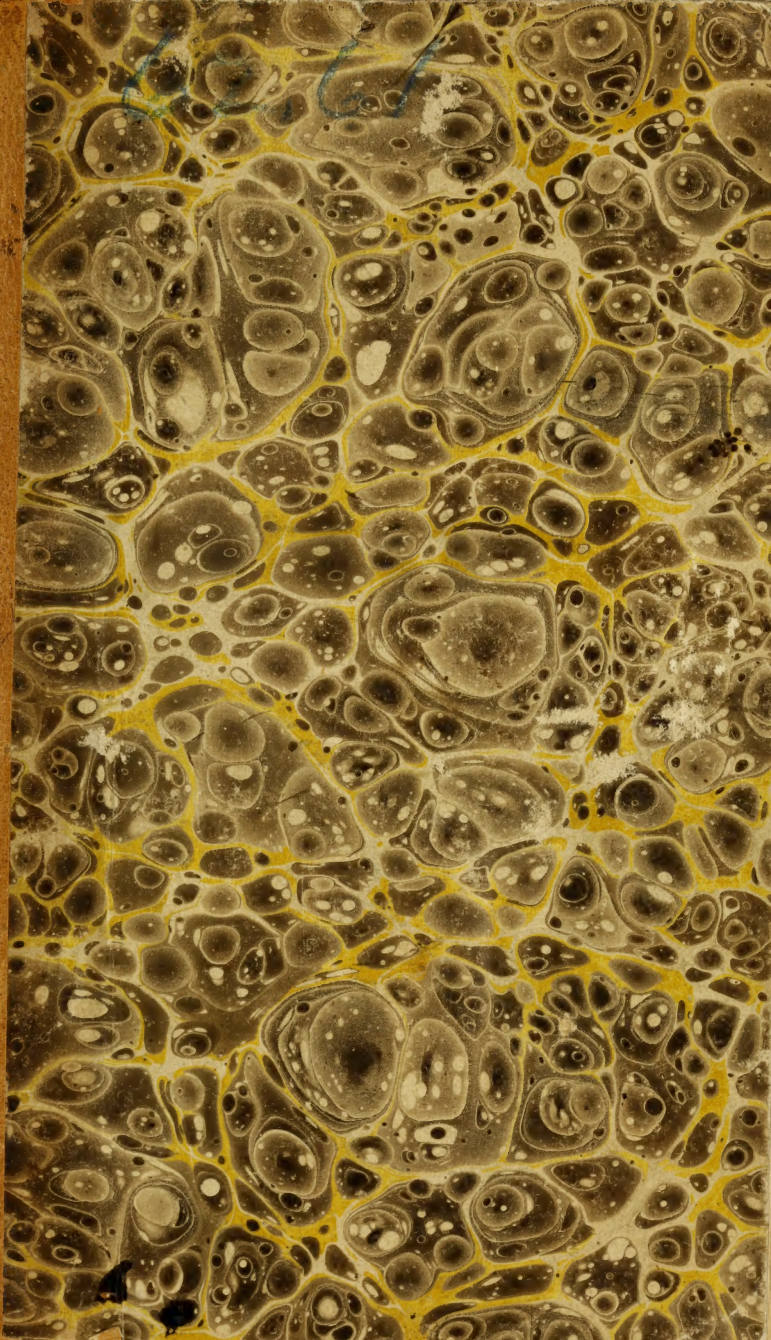
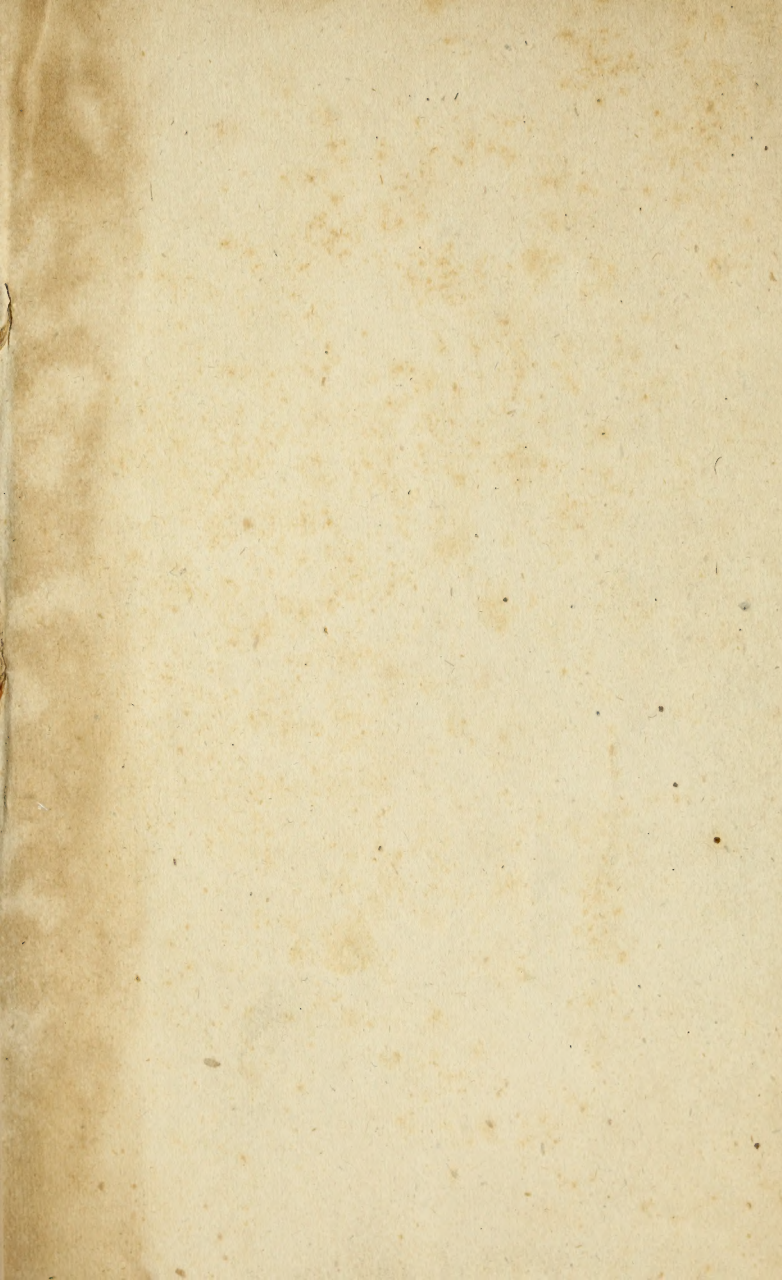


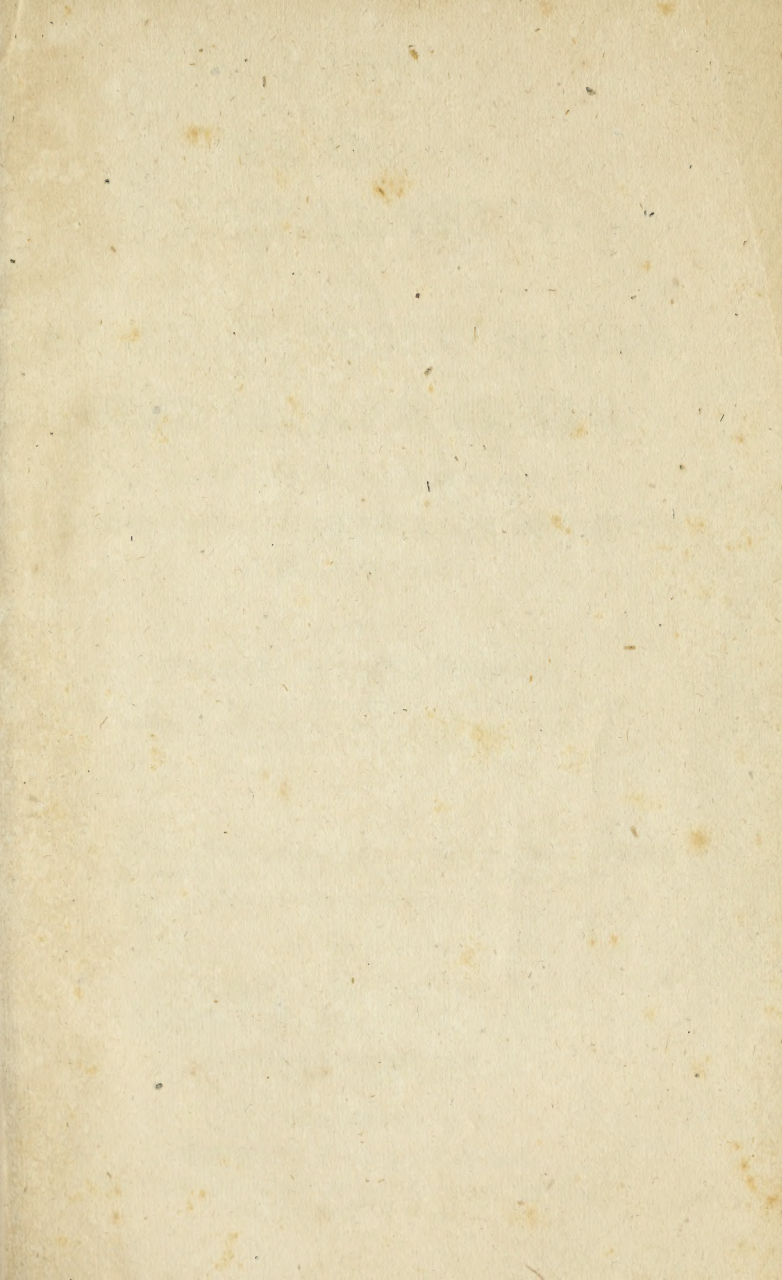
Historic, archived document

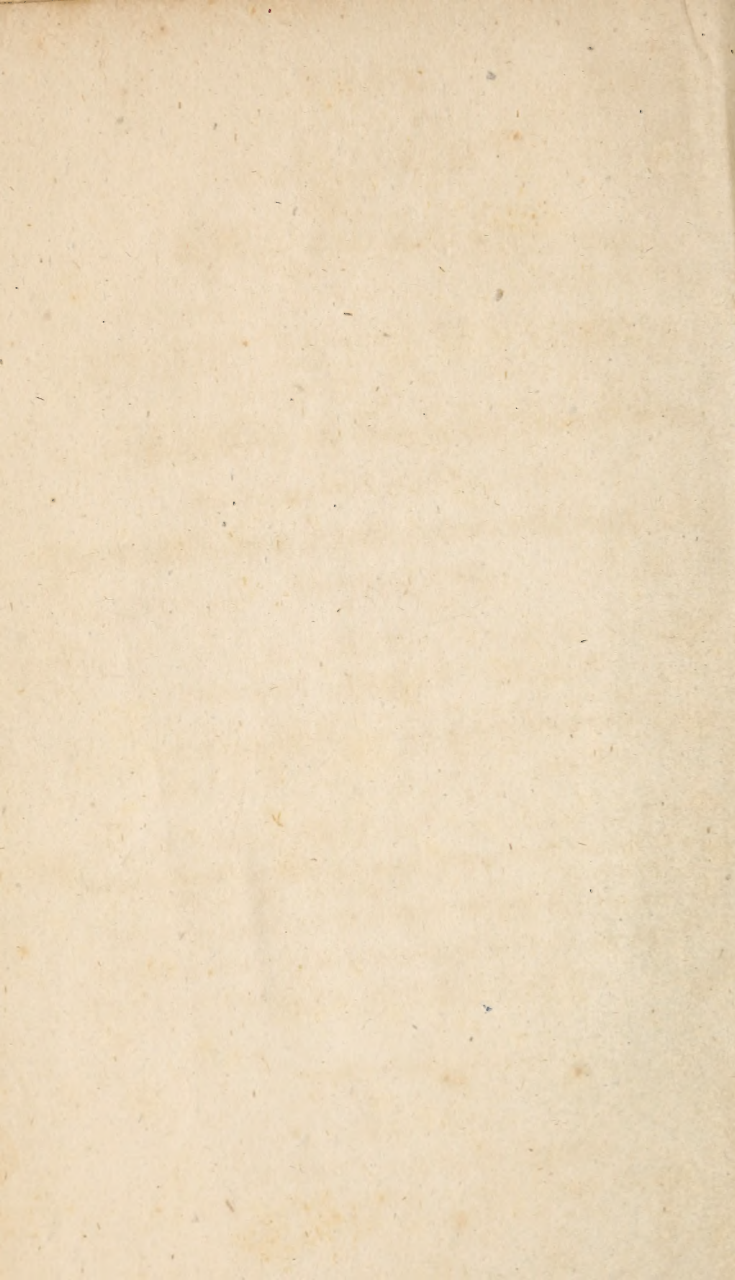
Do not assume content reflects current scientific knowledge, policies, or practices.











1827.

WHOLESALE
CATALOGUE

OF

AMERICAN TREES, SHRUBS,
PLANTS, AND SEEDS,

CULTIVATED AND FOR SALE AT THE

LINNEAN BOTANIC GARDEN AND NURSERIES,
NEAR NEW-YORK.

WILLIAM PRINCE, *Proprietor*,

C. M. of the Linnæan Society of Paris, of the Horticultural
Society of London, and of the Imperial Society of the
Georgofili at Florence, &c. &c.

The Botanic Names generally are according to Pursh's *Flora of
North-America*, and others to Michaux, Nuttall, Torrey,
Elliott, *Hortus Britannicus*, &c.

TWENTY-FOURTH EDITION.

Library, U. S. Department of Agriculture,

Washington, D. C.

NEW-YORK:

PRINTED BY T. AND J. SWORDS,

No. 127 Broadway, corner of Cedar-street, first door
north of the City Hotel.

1827.

N. B. Distinct Catalogues and Publications relative to this Establishment may be obtained of the different Agents, or by application to the Proprietor, as follow.

The four first mentioned being distributed *gratis*.

No. 1. Fruit and Hardy Ornamental Trees, Shrubs, and Plants.

No. 2. Bulbous and Tuberos rooted Plants.

No. 3. Green-House Trees, Shrubs, and Plants.

No. 4. American Indigenous Trees, Shrubs, and Plants.

No. 5. A Short Treatise on the Culture of Trees and Plants generally. *Price 50 cents.*

Nos. 1, 3, and 4, ready for delivery. Nos. 2 and 5 in the press, and will be published speedily.

Mr. Prince expects also to be shortly able to announce the publication of the first part of his work on American Horticulture, which will be issued in four parts.

AGENTS IN EUROPE,

Of whom Catalogues may be obtained, and who will forward orders to the Proprietor.

Thomas Aspinwall, Esq., American Consul, London.	Messrs. William Hesses & Goetze, Hamburg.
James Maury, Esq., American Consul, Liverpool.	John Cuthbert, Esq., American Consul, Hamburg.
David Walker, Esq., American Consul, Glasgow.	John W. Parker, Esq., American Consul, Amsterdam.
Thomas Wilson, Esq., American Consul, Dublin.	Abraham P. Gibson, Esq., American Consul, St. Petersburg.
Isaac Cox Barnet, Esq., American Consul, Paris.	George Moore, Esq., American Consul, Trieste.
Professor Bosc, Jardin du Roi, Paris.	Alexander Burton, Esq., American Consul, Cadiz.
Messrs. Eyries, frères, Havre.	Israel P. Hutchinson, Esq., American Consul, Lisbon.
Joshua Dodge, Esq., American Consul, Marseilles.	

At other places the Consuls of the United States will forward any communications for the Proprietor.

ABBREVIATIONS AND REFERENCES.

- Ph.*—Pursh's Flora Americæ Septentrionalis.
Nut.—Nuttall's Genera of American Plants, &c.
Tor.—Torrey's Flora of the Northern and Middle States.
Big.—Bigelow's Flora Bostoniensis, &c.
Ell.—Elliott's Flora of South-Carolina and Georgia.
Le Conte.—In various publications.
H. B.—Sweet's Hortus Britannicus.
Geo.—Georgia.
Mex.—Mexico.

* denotes Annuals.

§ ——— Dollars.

Cts. — Cents.

Dol. — Dollar.

Dols. — Dollars.



we have ^{new} *Seculus*
formida new *Duff*
beautiful - who from ³,
about 15 fms and 2 of own
Apr 1830 ^{Corner says}
probably from *Peire*

A French citron is
nearly an *Amngt*
at 32 make an
Amngt which
is ^{at} twice as much
as a French bushel
or *peare*

not got

NORTH AMERICAN INDIGENOUS TREES AND SHRUBS.



	Plants. Each.	S E E D S.			
		lb.	Quart.	Bushel.	
	\$ cts.	\$ cts.	\$ cts.	\$ cts.	
1 Acer rubrum, 15 dols. per 100	20	2 00			
2 saccharinum, 15 dols. per 100	20		50	10 00	
3 negundo, 15 dols. per 100	25		50	8 00	
4 <i>v. femina</i>	50				
5 <i>v. crispa</i>	50				
6 nigrum	50	2 50			
7 striatum	25	2 00			
8 coccineum	25	2 25			
9 montanum	25	2 50			
10 dasycarpum	25	1 50			
11 barbatum, <i>vera</i>	1 00			12 00	
12 Esculus flava	25	25			
13 pavia	25	25			
14 macrostachya	25	25			
15 pallida	1 00				
16 discolor	1 00				
17 glabra	1 00				
18 Alnus serrulata	25	1 25			
19 glauca	25	2 00			
20 glutinosa	25	1 75			
21 canadense	25	2 00			
22 autumnale	37				
23 cordata	75				
24 crispa	25	1 75			
25 Amorpha fruticosa	25	2 00			
26 <i>v. angustifolia</i>	50				
27 emarginata	50				
28 canescens	50				
29 microphylla	5 00				
30 pubescens	50				
31 scabra					
32 Amyrsine buxifolia	25				
33 Andromeda acuminata	1 00				
34 angustifolia	50				

	Plants. Each.	S E E D S.		
		lb.	Quart.	Bushel.
	§ cts.	§ cts.	§ cts.	§ cts.
35 <i>Andromeda arborea</i>	1	00		
36 <i>axillaris</i>		50		
37 <i>v. longifolia</i>				
38 <i>calyculata</i>		25		
39 <i>v. ventricosa</i>		50		
40 <i>v. latifolia</i>				
41 <i>v. nana</i>				
42 <i>canescens</i>	1	50		
43 <i>cassinifolia</i>		50		
44 <i>catesbæi</i>		50		
45 <i>ferruginea, vera</i>	2	00		
46 <i>floribunda, vera</i>	5	00		
47 <i>frondosa</i>		50		
48 <i>glaucopterylla</i>		50		
49 <i>hypnoides, white mountains</i>	3	00		
50 <i>ligustrina</i>				
51 <i>mariana</i>		25	4	00
52 <i>nitida, vel coriacea</i>	1	00		
53 <i>paniculata</i>		25	3	75
54 <i>pilulifera</i>	1	50		
55 <i>polifolia</i>		50		
56 <i>v. angustifolia</i>		50		
57 <i>pulverulenta</i>		50		
58 <i>racemosa</i>		25	4	00
59 <i>rigida</i>				
60 <i>speciosa</i>		75		
61 <i>v. glauca</i>				
62 <i>spinulosa</i>	1	00		
63 <i>Anona cherimolia</i>	1	50		
64 <i>guanabaucis</i>	1	50		
65 <i>muricata</i>	1	50		
66 <i>palustris</i>	1	50		
67 <i>sp. ? Rinyon</i>	1	50		
68 <i>squamosa</i>	1	50		
69 <i>Apios frutescens</i>		25		
70 <i>Aralia spinosa</i>		15	50	
71 <i>hispida</i>	1	00		
72 <i>Arbutus uva ursi</i>		50		
73 <i>alpina</i>	1	00		
74 <i>Aristolochia siphon</i>		35		
75 <i>arkansa</i>				
76 <i>tomentosa</i>		50		
77 <i>sp. ? Brazil</i>	1	00		
78 <i>sp. ? Mexico</i>	2	00		
79 <i>Artemesia chinensis</i>		50		
80 <i>Asclepias matelca, Nut.</i>	1	00		
81 <i>curassavica</i>		50		
82 <i>v. alba</i>		75		
83 <i>Ascyrum hypericifolium</i>		25		
84 <i>amplexicaule</i>		50		
85 <i>crux andræe</i>		25		
86 <i>pumilum</i>	2	00		
87 <i>Atragene americana</i>	1	00		
88 <i>Atriplex halimus</i>		50		
89 <i>Azalea arborescens</i>	1	00		

76 vel pubescens

77 proved do

83 hypericoides

Baum says our *Az.*
peryclemenoides is
undiflora rosea of Linn. }

	Plants. Each.	S E E D S. lb.	Quart.	Bushel.
	\$ cts.	\$ cts.	\$ cts.	\$ cts.
90 Azalea aurantia	1 00			
91 v. humilis	1 00			
92 v. major	1 00			
93 bicolor	1 00			
94 calendulacea	1 00			
95 v. crocea	1 00			
96 v. chrysolectra				
97 v. cuprea	2 50			
98 v. cuprina				
99 v. flammea	1 00			
100 v. grandiflora				
101 v. ignescens				
102 v. splendens				
103 v. triumphans				
104 canescens		75		
105 coccinea		75		
106 v. crispa	1 50			
107 v. major	1 50			
108 v. praecox				
109 glauca		50		
110 v. glabra		50		
111 v. pleno	1 00			
112 hirta	1 50			
113 hispida	1 00			
114 lucida	1 00			
115 nitida		50		
116 nudiflora, rubra		35		
117 v. alba				
118 v. alba pleno	2 00			
119 v. alba et rubra	1 00			
120 v. blanda	1 00			
121 v. carnea		50		
122 v. caroliniana				
123 v. colorata				
124 v. crispa	1 00			
125 v. cumulata				
126 v. discolor				
127 v. fastigiata	1 00			
128 v. florida				
129 v. globosa				
130 v. incana	1 00			
131 v. incarnata	1 00			
132 v. mirabilis				
133 v. montana				
134 v. pallida				
135 v. paludosa				
136 v. papilionacea	1 00			
137 v. purpurascens				
138 v. purpurea	1 00			
139 v. purp-pleno				
140 v. rosea				
141 v. ruberrima	2 00			
142 v. rubicunda				
143 v. rubra		75		
144 v. rufa	1 00			

	Plants. Each.	S E E D S			
		S cts.	lb. S cts.	Quart. S cts.	Bushel. S cts.
145 Azalea v. <i>rutilans</i>		75			
146 v. <i>serotina</i>		75			
147 v. <i>staminea</i>	1	00			
148 v. <i>stellata</i>					
149 v. <i>tricolor</i>	5	00			
150 v. <i>variabilis</i>		75			
151 v. <i>variegata</i>		75			
152 proeumbens, <i>white mountains</i>	2	00			
153 scabra		75			
154 v. <i>floribunda</i>		75			
155 v. <i>humilis</i>	1	00			
156 tomentosa					
157 verticillata	1	00			
158 villosa	1	00			
159 viscosa, <i>alba</i>		35			
160 v. <i>crispa</i>		75			
161 v. <i>dealbata</i>		75			
162 v. <i>odora-viole</i>					
163 v. <i>pennicellata</i>					
164 v. <i>præcox</i>		75			
165 v. <i>pubescens</i>	1	50			
166 v. <i>rubrescens</i>	1	00			
167 v. <i>variegata</i>	1	00			
168 v. <i>vittata</i>	1	00			
169 versicolor	1	00			
170 v. <i>ecburghii</i>					
171 v. <i>grandiflora</i>					
172 v. <i>magnifica</i>					
173 v. <i>papilionacea</i>					
174 Baccharis <i>halimifolia</i>		25			
175 v. <i>iræfolia</i>	1	00			
176 v. <i>angustifolia</i>	1	00			
177 v. <i>glomeruliflora</i>	2	00			
178 Befaria <i>hirsuta</i>	2	00			
179 Berberis <i>canadensis</i>		20	40		
180 v. <i>aquifolium, Ph.</i>	20	00			
181 v. <i>caroliniensis, sp. nova, Nut.</i>	1	00			
182 v. <i>pinnata</i>					
183 Betula <i>lenta</i>	15		60		4 50
184 v. <i>populifolia</i>	20		50		4 50
185 v. <i>papyracea</i>	50	1	00		4 50
186 v. <i>excelsa</i>	50		75		4 50
187 v. <i>nigra vel rubra</i>	50	1	75		
188 v. <i>pumila</i>	50				
189 v. <i>nana</i>	50				
190 v. <i>glandulosa</i>					
191 Bignonia <i>crucigera</i>	50				
192 v. <i>capreolata</i>	50				
193 v. <i>radicans coccinea</i>	25	6	00		
194 v. <i>flammea</i>	50				
195 v. <i>jasminifolia, Mexico, H. B.</i>	2	00			
196 Borya <i>ligustrina</i>	1	00			
197 v. <i>acuminata</i>		75			
198 v. <i>porulosa</i>					
199 Bouvardia <i>triphylia</i>		75			

Petula 1854-186 to show
for the hel

New Salignanthus /
Dark leaves

Get Hackberry Nashville
Resembles Honey Locust
Nashville

Get
Caprifolium bracteosum
Hogg

	Plants.	S E E D S.		
	Each.	lb.	Quart.	Bushel.
	\$ cts.	\$ cts.	\$ cts.	\$ cts.
200 <i>Bourvardia v. pubescens</i> , H. B.	1	00		
201 <i>Buddlea globosa</i>		75		
202 <i>Bumelia lycioides</i>		75		
203 <i>chrysophylloides</i>	1	00		
204 <i>lanuginosa</i>				
205 <i>reclinata</i>				
206 <i>Buphthalmuin frutescens</i>		50		
207 <i>angustifolium</i>				
208 <i>Cactus fragile</i>	1	00		
209 <i>Longi</i>	1	50		
210 <i>missouriense</i>	1	00		
211 <i>opuntia</i>		50		
212 <i>pes Corvi</i>	1	00		
213 <i>polyacanthos</i>	1	00		
214 <i>pusillus</i>	1	00		
215 <i>viviparus</i> , Ph.	1	50		
216 <i>sp. ? Arkansa</i>	1	50		
217 <i>sp. ? Georgia</i>	2	00		
218 <i>Callicarpa americana</i>		50		
219 <i>Calycanthus floridus</i>		25		
220 <i>glaucus</i>		50		
221 <i>laevigatus</i>		50		
222 <i>pensylvanicus</i>		75		
223 <i>Caprifolium sempervirens</i>		25		
224 <i>v. minor</i>		50		
225 <i>parviflorum, vel bracteosum</i>		37		
226 <i>v. fulvum</i>		75		
227 <i>Fraseri</i>		50		
228 <i>pubescens</i>	1	00		
229 <i>chamæcerasa</i>		50		
230 <i>gratum</i>		50		
231 <i>sp. ? nova</i>	5	00		
232 <i>Carpinus americana</i>		25		50
233 <i>Cassia occidentalis</i>		75		
234 <i>sp. ? Mexico</i>	1	50		
235 <i>Castanea americana</i> , 15 dols. per 100		20		25
236 <i>pumila</i>		30		50
238 <i>v. Princei, fructo major</i>		50		
239 <i>Catalpa syringifolia</i> , 15 dols. per 100		20	3 00	
240 <i>Ceanothus americanus</i>		25	1 00	
241 <i>microphyllus</i>	1	50		
242 <i>perennis</i>	1	00		
243 <i>sp. ? Carolina</i>	1	00		
244 <i>Celastrus scandens</i>		25		50
245 <i>bullatus</i>				
246 <i>Celtis occidentalis</i>		25		50
247 <i>v. fol. var.</i>		50		1 00
248 <i>crassifolia</i>	1	00		
249 <i>pumila</i>	2	00		
250 <i>Cephalanthus occidentalis</i>		25		50
251 <i>Ceratiola ericoides</i>				
252 <i>Cercis canadensis</i>		25	3 75	
253 <i>Chamærops palmetto</i> 3 dols. to	5	00		
254 <i>hystrix</i>	5	00		
255 <i>serrulata</i>	3	00		

	Plants.		S E E D S.			
	Each.	§ cts.	lb.	Quart.	§ cts.	Bushel.
256 Chamærops? <i>palma regalis, Cuba</i>	0	00				
257 Chimaphila corymbosa, 10 do's. per 100		15				
258 <i>maculata, 10 dols. per 100</i>		15				
259 Cheirostemou platanoides	5	00				
260 Chionanthus montanus		25	1	00		
261 <i>maritimus</i>		50		75		
262 Chrysobalanus oblongifolius	3	00				
263 Cissus hederacea		20		75		
264 <i>ampelopsis</i>		25		75		
265 <i>stans</i>		50				
266 <i>hirsuta</i>		40				
267 Citrus pyramidalis, <i>with pyramidal</i> <i>fruit, from Brazil</i> }	3	00				
268 Clematis virginica		25			2	00
269 <i>crispa</i>		25				
270 <i>cylindrica</i>		50				
271 <i>sericea</i>		30				
272 <i>viorna</i>		50				
273 <i>hybrida</i>		37				
274 <i>triternata</i>		75				
275 <i>reticulata</i>						
276 Clethra alnifolia		25	3			
277 <i>acuminata</i>		50				
278 <i>tomentosa</i>		50				
279 <i>nana</i>						
280 <i>paniculata</i>		50				
281 <i>scabra</i>		50				
282 Cobæa scandens		50				
283 Cocos nucifera	25	00				
284 Comptonia asplenifolia		25				
285 Cornus florida, 15 dols. per 100		20		25		8 00
286 <i>sericea</i>		25		50		
287 <i>alba</i>		25				
288 <i>sanguinea</i>		25				
289 <i>v. fol. var.</i>		50				
290 <i>paniculata</i>		25				
291 <i>cercinata</i>		50				
292 <i>alternifolia</i>		25		50		
293 <i>stricta</i>		25				
294 <i>fol. var.</i>		35				
295 <i>asperifolia</i>		25				
296 <i>fastigiata</i>		50				
297 Corylus americana, 15 dols. per 100		20		25		
298 <i>rostrata</i>		25				
299 Cratægus coeinea		25		25		
300 <i>parvifolia</i>		25		30		
301 <i>crus galli</i>		25		25		
302 <i>v. splendens</i>		37				
303 <i>v. pyracanthifolia</i>		37				
304 <i>apifolia</i>		75				
305 <i>elliptica</i>		30				
306 <i>cordata</i>		50				
307 <i>flava</i>		30				
308 <i>glandulosa</i>		30				
309 <i>punctata</i>		50				

Puff Chionanthus

Go of *Chionanthus* Forman

Dendrobium speciosum
Caracas

Lily of the Oak, fr
Mexico

272 - Seeds vice 1/3

See Ft Catz for
new trees & plants
natives



	Plants.	S E E D S.			
	Each.	lb.	Quart.	Bushel.	
	\$ cts.	\$ cts.	\$ cts.	\$ cts.	
310 <i>Cratægus pyrifolia</i>		25			
311 <i>fissa</i>		60			
312 <i>linearis</i>		60			
313 <i>pannifolia</i>					
314 <i>populifolia</i>		25			
315 <i>salicifolia</i>		35			
316 <i>sanguinea</i>		75			
317 <i>spathulata</i>		50			
318 <i>virginica</i>					
319 <i>viridis</i>					
320 <i>Crescentia cucurbitana, Mexico</i>	5	00			
321 <i>Croton maritimum</i>	3	00			
322 <i>Cupressus disticha, 15 dols. per 100</i>		25	50	14 00	
323 <i>v. nutans</i>		50			
324 <i>v. nigra</i>		50			
325 <i>thyoides</i>		50	50		
326 <i>Cyrilla caroliniana</i>		75			
327 <i>Decumaria sarmentosa</i>		50			
328 <i>barbara</i>		50			
329 <i>Diervilla lutea</i>		25			
330 <i>Diospyros virginiana, 20 dols. per 100</i>		25	50	1 00	
331 <i>v. dulce</i>	1	00			
332 <i>pubescens</i>	1	00			
333 <i>sp. ? Texas</i>	5	00			
334 <i>Dirca palustris, 20 dols. per 100</i>		25	1 75		
335 <i>Echites difformis</i>	1	00			
336 <i>Eleagnus argentea</i>	3	00			
337 <i>Empetrum nigrum</i>		50			
338 <i>Epigæa repens</i>		25			
339 <i>Euonymus americanus, 12 dols. per 100</i>		15		1 00	
340 <i>v. sarmentosus</i>	2	00			
341 <i>atropurpureus</i>		25	1 00		
342 <i>v. fructo pallido</i>		50			
343 <i>angustifolius</i>	1	00			
344 <i>obovatus, Torrey</i>	3	00			
345 <i>Eupatorium melliflora</i>	1	00			
346 <i>sp. ? Mexico</i>	1	00			
347 <i>Euphorbia sp. ? Mexico</i>	2	00			
348 <i>Fagus ferruginea, vera</i>		50	75	16 00	
349 <i>sylvatica</i>		25	75	16 00	
350 <i>Fothergilla alnifolia</i>		50			
351 <i>latifolia</i>		75			
352 <i>major</i>					
353 <i>gardeni</i>					
354 <i>serotina</i>					
355 <i>Fraxinus acuminata</i>		25		35	
356 <i>v. latifolia</i>					
357 <i>carolina</i>		50			
358 <i>v. latifolia</i>		50			
359 <i>cinerea</i>		60			
360 <i>elliptica</i>					
361 <i>epiptera</i>		25		50	
362 <i>juglandifolia</i>		50	1 00		
363 <i>lancea</i>					
364 <i>ovata</i>					

	Plants. Each.	S E E D - S.		
		lb.	Quart.	Bushel.
	\$ cts.	\$ cts.	\$ cts.	\$ cts.
365 Fraxinus pallida	60			
366 pannosa	60			
367 pubescens	25		75	
368 platicarpa	75			
369 quadrangulata	75			
370 Richardi				
371 sambucifolia	25		35	
372 v. <i>crispa</i>				
373 yiridis	50			
374 sp. ? <i>Brazil</i>	5 00			
375 Fuchsia arborescens, <i>Mexico</i>	2 00			
376 Gardenia mexicana	3 00			
377 Gaultheria procumbens	15			
378 serphyllifolia	50			
379 Gelsemium nitidum	50			
380 Gleditschia triacanthos, 15 dols. per 100	25	75		
381 v. <i>inermis</i>	50	1 00		
382 monosperma	50			
383 Gordonia pubescens, or <i>Franklinia</i>	50	5 00		
384 lasianthus	1 00			
385 Gymnocladus canadensis	25	1 50		
386 Halesia tetraptera	25	1 50		
387 v. <i>parviflora</i>	1 00		1 00	
388 diptera	1 00			
389 Hamamelis virginica	25	2 75		
390 Hibiscus syriacus, plur. var.	25	1 00		
391 albo pleno	37			
392 striato pleno	37			
393 rubro pleno	50			
394 purpureo pleno	37			
395 ceruleo pleno	50			
396 arborescens, roseo, from <i>Mexico</i>	3 00			
397 v. <i>alba</i> , do. do.	3 00			
398 Hippophæa argentea	3 00			
399 canadensis	50			
400 Hopea tinctoria	1 50			
401 Hudsonia ericoides	50			
402 tomentosa	75			
403 Hydrangea vulgaris	15			
404 nivea	25			
405 quercifolia	40			
406 cordata				
407 Hypericum Kalmianum	25	4 00		
408 prolificum	50			
409 fasciculatum	3 00			
410 galioides	3 00			
411 densiflorum	3 00			
412 aspalathoides	3 00			
413 frondosum				
414 glaucum (<i>elegans</i>)	5 00			
415 nudiflorum				
416 rosmarinifolium	3 00			
417 sp. ? <i>Georgia</i>	3 00			
418 sp. ? <i>Carolina</i>	3 00			
419 Illicium parviflorum	1 00			

Handwritten text, possibly a signature or date, oriented vertically.

~~15~~ 7 vel depresso

	Plants.	S E E D S.		
	Each.	lb.	Quart.	Bushel.
	\$ cts.	\$ cts.	\$ cts.	\$ cts.
420 Illicium floridanum	1 00			
421 Ilex opaca	30	75		
422 prinoides	1 00			
423 cassine vera	1 00	2 00		
424 vomitoria vera	1 00	2 00		
425 angustifolia				
426 canadensis	1 00			
427 dahoon vera	1 50			
428 laxiflora	1 00	2 00		
429 Indigofera, sp. ? Florida	1 50			
430 Itea virginica	50			
431 Iva frutescens	25	1 00		
432 Juglans nigra, 15 per dols. 100	16		15	1 50
433 cinerea, 15 dols. per 100	16		15	1 75
434 tomentosa	25		15	2 00
435 aquatica vera	1 00		50	4 00
436 amara, 20 dols. per 100	25		15	2 25
437 alba	25		15	2 50
438 porcina obcordata	25		15	2 25
439 v. ficiformis	40		50	
440 olivæformis	40		50	15 00
441 hybrida, nova	5 00			
442 sulcata, vera	1 00			
443 myristicæformis.	5 00			
444 Juniperus virginica	15	20	20	4 00
445 v. humilis				
446 v. fol. var.	50			
447 sabina	40			
448 barbadensis	75			
449 bermudiana	75			
450 excelsa				
451 prostrata	50			
452 Jussieuia grandiflora	2 00			
453 Kalmia latifolia	25	3 00		
454 angustifolia	25	6 00		
455 fol. var.	1 00			
456 v ovata	50			
457 hirsuta	1 00			
458 glauca	50			
459 Lagerstræmia indica, purpurea exotic	1 00			
460 var. carnea	1 00			
461 var. atrorubra	1 50			
462 v. alba	1 00			
463 Laurus sassafras	25		1 00	
464 benzoin	25	50	1 00	
465 geniculata	1 00			
466 carolinensis	50	2 00	2 00	
467 diospyros	50			
468 cateshyana				
469 mexicana?	5 00			
470 persea	2 00			
471 Ledum latifolium	50			
472 palustre	35			
473 v. decumbens	75			
474 Linnæa borealis	25			

	Plants. Each.	S E E D S.			
		lb.	Quart.	Bushel.	
	§ cts.	§ cts.	§ cts.	§ cts.	
475 Ligustrum vulgare <i>W</i>	15	50	50		
476 v. fructu albo	35				
477 v. sempervirens	25				
478 v. fol. var.	25				
479 Liquidambar styraciflua, 15 dols. per 100	25		2 00		in cones
480 Liriodendron tulipifera	20	1 00			4 50
481 v. integrifolia	1 00				
482 Lycium carolinianum	1 00				
483 boerhavianum	1 50				
484 Lythrum alatum	50				
485 Maclura aurantiaca, <i>famina</i>	1 00				
486 v. mascula	1 90				
487 Magnolia tripetala, 12 dols. per 100	20		4 50		
488 glauca, <i>latifolia</i> , 10 dols. per 100	14	2 00			
489 semipleno	2 00				
490 longifolia	1 00				
491 acuminata, <i>vera</i> , 20 dols. per 100	30		8 00		
492 auriculata	1 00	7 00			
493 grandiflora, 50 dols. per 100	75	5 00			
494 v. elliptica	2 00				
495 v. lanceolata	2 00				
496 v. obovata	2 00				
497 v. <i>præcox</i>					
498 v. <i>crispa</i>	2 00				
499 v. <i>exoniensis</i>	1 50				
500 v. <i>semipleno</i>	2 00				
501 v. <i>Thompsoniana</i>	5 00				
502 cordata	1 00	10 00			
503 macrophylla	1 00				
504 pyramidata	3 00				
505 Malva arborea, <i>rosea</i> ? <i>Mexico</i>	3 00				
506 v. <i>alba</i> , <i>Mexico</i>	3 00				
507 Mammea americana	4 00				
508 Mangifera indica, <i>exotic</i>	3 00				
509 Melia azedarach, <i>exotic</i> , 15 dols. per 100	25	1 00	1 00		
510 Menispermum canadense	25				
511 Menziesia globularis	1 00				
512 cærulea	1 00				
513 ferruginea	1 00				
514 Mimosa julibrissin, <i>exotic</i> , 25 dols. per 100	50				
515 Mitchellia repens	25				
516 Montanoa? arborescens, <i>Mexico</i>	5 00				
517 Morus rubra, 15 dols per 100	20				
518 pennsylvanica?					
519 missouriensis, <i>sp. nova</i>	3 00				
520 Mylocarium ligustrinum, 100 dols. per 100	2 00				
521 Myrica cerifera	25		50		
522 caroliniensis	50				
523 gale	25				
524 v. <i>femina</i>	30				
525 pennsylvanica	25				
526 Myristica mexicana					
527 Nyssa villosa, 20 dols. per 100	25		50		
528 biflora, 25 dols. per 100	40		1 00		
529 candicans	1 00		3 00		

Raise price
of Pines ngra

	Plants.	S	E	E	D	S.
	Each.	lb.	Quart.	Bushel.		
	\$ cts.	\$ cts.	cts.	\$ cts.		
530 <i>Nyssa tomentosa</i>	75		3 00			
531 <i>denticulata</i>			1 00			
532 <i>Olea americana</i>	1 00		3 00			
533 <i>Ornus americana</i>	75					
534 <i>Ostrya virginica</i>	25			50		
535 <i>Oxycoecus macrocarpus</i>	15			25		
536 <i>v. fol. var.</i>	1 00					
537 <i>vulgaris</i>	15					
538 <i>erectus</i>						
539 <i>Passiflora peltata, Ph.</i>	1 00					
540 <i>Petiveria alliacia, Florida</i>	1 50					
541 <i>Philadelphus grandiflorus</i>	25					
542 <i>inodorus</i>	50					
543 <i>hirsutus (sp. nova) Nut.</i>	3 00					
544 <i>Physalis somnifera</i>	75					
545 <i>Pinckneya pubescens</i>	1 00					
546 <i>Pinus strobus</i>	25	3 00				
547 <i>palustris</i>			3 00		in cones	
548 <i>rigida</i>	30	4 75		15	4 00	
549 <i>serotina</i>	50			35	8 00	
550 <i>ineps</i>	35	5 00		15	4 00	
551 <i>balsamea</i>	30	4 00				
552 <i>fraseri</i>	50	8 00			in cones	
553 <i>canadensis</i>	25			50	8 00	
554 <i>nigra</i>	35			35	4 50	
555 <i>alba</i>	50			50	in cones	
556 <i>rubra</i>	35			50	8 00	
557 <i>variabilis</i>	35	5 00		15	4 50	
558 <i>taeda</i>	50			25	6 00	
559 <i>pendula</i>	25	6 00		50	in cones	
560 <i>resinosa</i>	50			25	5 00	
561 <i>banksiana</i>	2 00					
562 <i>microcarpa</i>	50	6 00		50		
563 <i>pungens</i>	5 00					
564 <i>taxifolia</i>						
565 <i>Planera aquatica</i>	1 00					
566 <i>Platanus occidentalis</i>	15		15	15	3 00	
567 <i>Populus balsamifera</i>	20					
568 <i>trepida</i>	25					
569 <i>grandidentata</i>	50					
570 <i>angulata</i>	25					
571 <i>candicans</i>	30					
572 <i>laevigata</i>	30					
573 <i>heterophylla</i>	25					
574 <i>monilifera</i>	25					
575 <i>betulifolia</i>	25					
576 <i>hudsoniana</i>	35					
577 <i>nana</i>	50					
578 <i>ontariensis</i>	50					
579 <i>Porcellia triloba</i>	40		50	1 00		
580 <i>glabra</i>	40		50	1 00		
581 <i>parviflora, vera</i>	2 00					
582 <i>pygmaea</i>	2 00					
583 <i>grandiflora</i>						
584 <i>Potentilla fruticosa</i>	25					

	Plants. Each.	S E E D S.		
		lb.	Quart.	Bushel.
	5 cts.	5 cts.	5 cts.	5 cts.
585 <i>Potentilla floribunda</i>	50			
586 <i>Prinos verticillatus</i>	25	50	50	
587 glaber	40	1 00	1 00	
588 lævigatus	50	50	50	
589 ambiguus	25	75	75	
590 canadense	75			
591 lanceolatus	75			
592 prunifolius	60			
593 <i>Prunus chicasa, rubra</i>	50			
594 v. <i>fructo flava</i>	50			
595 depressa	50			
596 pubescens	50			
597 cerasifera	50			
598 serotina	50			
599 borealis	75			
600 pensylvanica	50		1 00	
601 maritima	50		1 00	
602 virginiana, 15 dols. per 100	25	50	75	10 00
603 caroliniana, 20 dols. per 100	40	75	75	16 00
604 hiemalis	50			
605 americana, <i>rubra</i> , 25 dols. per 100	50		1 00	
606 v. <i>fructo flava</i> , 25 dols. per 100	50			
607 floridana	50			
608 nigra, 25 dols. per 100	50		1 00	
609 depressa	50			
610 persicifolia	50			
611 pumila	50			
612 pygmæa	25			
613 rubra	75			
614 semperflorens	1 00			
615 sphærica	25			
616 spinosa	50			
617 v. <i>pleno</i>	75			
618 susquehanna	1 00			
619 sp. ? <i>Georgia</i>	5 00			
620 sp. ? <i>nana, Texas</i>	5 00			
621 <i>Psychotria floridana, sp. nova</i>	4 00			
622 sp. ? <i>S. America</i>	75			
623 <i>Psidium pyriferum</i>	25		1 00	
624 <i>Ptelea trifoliata</i>	2 00			
625 <i>Punica granatum, albo pl. nova var. exotic</i>	15			
626 <i>Pyrola rotundifolia</i> , 10 dols. per 100	15			
627 asarifolia	15			
628 elliptica, <i>Nut.</i>	15			
629 secunda	25		1 00	
630 <i>Pyrus melanocarpa</i>	25		1 00	
631 arbutifolia	30			
632 ovalis	25			
633 botryapium	30	2 50		
634 coronaria	37			
635 americana	50			
636 angustifolia	50			
637 sanguinea	50			
638 caroliniana	50			
639 pensylvanica	50			

Prunus mollis } J. Porter
— *penula* }

The tall growing *Mespilus*
from Lancaster is very
diff from the Canada see
the one in Azulebio
Fort Mager ^{red} Crab

Rhamnus
lanceolata
(Carrsott)

just Michx names
also to L. S.

L. sinuosa Lod

	Plants.	S E E D S.			
	Each.	lb.	Quart.	Bushel.	
	\$ cts.	\$ cts.	\$ cts.	\$ cts.	
640 Quercus alba, 10 dols. per 100	15		15	3 50	
641 rubra, 8 dols. per 100	15		15	4 00	
642 coccinea, 10 dols. per 100	20		15	4 50	
643 tinctoria, 10 dols. per 100	25		15	4 50	
644 prinus, 8 dols. per 100	15		12	3 50	
645 montana, 15 dols. per 100	25		15	4 50	
646 bicolor, 15 dols. per 100	25		20	5 00	
647 chinquapin	30		50	10 00	
648 banisteri, 15 dols. per 100	25		50	6 00	
649 ambigua, <i>vel borealis</i> , 15 dols. } per 100	30		25	5 50	
650 palustris, 15 dols. per 100	20		20	4 50	
651 obtusiloba, 10 dols. per 100	25		50		
652 falcata, 15 per dols. 100	25		50		
653 virens, 25 dols. per 100	30		1	00	
654 phellos, 15 dols. per 100	30		1	00	
655 aquatica, 20 dols. per 100	50		1	16 00	
656 <i>v. heterophylla</i>	50				
657 sericea, <i>vera</i>	2 00				
658 laurifolia, <i>vera</i>	2 00				
659 cinerea, 30 dols. per 100	50		1	00	
660 catesbaei, 25 dols. per 100	50		5	15 00	
661 nigra, 15 dols. per 100	25		50	10 00	
662 lyrata, 20 dols. per 100	50		1	00	
663 macrocarpa, 25 dols. per 100	50		1	00 20 00	
664 castanea, <i>vera</i>	1 00				
665 triloba	50		1	00	
666 maritima	50				
667 nana	50				
668 discolor, 10 dols. per 100	25		15	4 00	
669 imbricaria					
670 Rhamnus alnifolius	50				
671 franguloides	50				
672 carolinianus					
673 Rhododendron maximum	50	4	00		
674 <i>v. album</i>	1 50				
675 catawbiense	2 00				
676 punctatum	50	4	00		
677 Rhodora canadensis	50				
678 Rhus glabrum	15		1	00	
679 <i>v. coccineum</i>					
680 typhinum	25		1	00	
681 vernix	40		2	00	
682 toxicocendron	25				
683 copallinum	35		1	00	
684 aromaticum, <i>mas.</i>	35				
685 <i>v. femina</i>	1 00				
686 pumilum					
687 radicans	25	1	00	1 00	
688 viridiflorum					
689 Ribes floridum	20				
690 aureum, <i>fructo nigra</i>	30				
691 <i>v. fructo flava</i>	50				
692 triflorum	50				
693 oxycanthoides	30				

Our Ribes oxycanthoides
must be lacustris

704 vel rosea

Ribes albinervis

— rigens

— gracile

— lacustre

Dr
Porter

I have been told of a Wh.
{ flg Rubus odoratus

Rubus frondosus Dr Porter

R. occidentalis

White Bramble

Small Salix Lod 71 - was
{ alive in garden

	Plants. Each.	S E E D S.		
		lb.	Quart.	Bushel.
	\$ cts.	\$ cts.	\$ cts.	\$ cts.
749 Rosa <i>v. simplicifolia</i>	1	00		
750 <i>v. Noisetii</i>		50		
751 <i>v. Herbemonti</i>	2	00		
752 <i>v. Bradleyi</i>	2	00		
753 <i>indica, odorata simplicifolia</i>	1	50		
754 Rubus <i>trivialis</i>		20		
755 <i>odoratus</i>		20		
756 <i>villosus</i>		25		
757 <i>idaeus</i>		15		
758 <i>strigosus</i>		25		
759 <i>cuneifolius</i>		50		
760 <i>occidentalis</i>		25		
761 <i>arcticus</i>		50		
762 <i>canadense</i>		50		
763 <i>chamæmoros</i>		50		
764 <i>flagellaris</i>		25		
765 <i>inermis</i>		25		
766 <i>novæboracensis</i>		25		
767 <i>pennsylvanicus</i>		35		
768 <i>pistillatus</i>		50		
769 <i>saxatilis</i>		35		
770 <i>sp. ? Georgia</i>	1	00		
771 <i>sp. ? Maine.</i>		35		
772 Sabal <i>adansonii</i>	2	50		
773 Salix <i>ambigua</i>		40		
774 <i>candida</i>		50		
775 <i>conifera</i>		50		
776 <i>cordata</i>		40		
777 <i>cordifolia</i>		50		
778 <i>decipiens, fem.</i>		50		
779 <i>v. mas.</i>		50		
780 <i>discolor, fem.</i>		50		
781 <i>v. mas.</i>		75		
782 <i>falcata</i>		50		
783 <i>fuscata, fem.</i>		25		
784 <i>v. mas.</i>		50		
785 <i>glabra, sp. nova</i>	1	00		
786 <i>grisea</i>		75		
787 <i>herbacea</i>		50		
788 <i>lambertiana, fem.</i>		50		
789 <i>v. mas.</i>		50		
790 <i>longifolia</i>		50		
791 <i>lucida</i>		25		
792 <i>muhlenbergiana</i>		25		
793 <i>myricoides</i>		50		
794 <i>myrsinites</i>		75		
795 <i>nigra</i>		25		
796 <i>pedicellaris</i>		50		
797 <i>pennsylvanica</i>		50		
798 <i>petiolaris</i>		40		
799 <i>recurvata</i>		50		
800 <i>repens</i>		50		
801 <i>reticulata</i>		50		
802 <i>rigida</i>		50		
803 <i>rosmarinifolia</i>		50		

	Plants.	S E E D S.			
	Each.	lb.	Quart.	Bushel.	
	\$ cts.	\$ cts.	\$ cts.	\$ cts.	
804 <i>Salix rostrata</i>		75			
805 <i>sericea</i>		50			
806 <i>tetrapla</i>		50			
807 <i>triandra, Maine</i>		50			
808 <i>tristis</i>		30			
809 <i>sp. ? nova minima, white mountains</i>	3	00			
810 <i>sp. ? Maine</i>		75			
811 <i>sp. ? Canada</i>		75			
812 <i>Salvia mexicana, nova</i>		50			
813 <i>coccinea</i>		30			
814 <i>splendens</i>		50			
815 <i>Sambucus canadensis</i>		15			
816 <i>pubescens</i>		35			
817 <i>Sapindus saponaria, exotic</i>	1	00	2 00	2 00	
818 <i>Schinus tererebinthus</i>	1	00			
819 <i>sp. Mexico</i>	1	50			
820 <i>Schisandra coccinea</i>		50			
821 <i>Shephardia eleagnoides, Genus nova, } Missouri, Nut.</i>					
822 <i>Smilax rotundifolia</i>		20	50	50 10 00	
823 <i>herbacea</i>		25			
824 <i>laurifolia</i>	1	00			
825 <i>lanceolata</i>		50			
826 <i>pseudochina</i>		50			
827 <i>aspera</i>		50			
828 <i>bona nox</i>					
829 <i>caduca</i>		25			
830 <i>glauca</i>					
831 <i>hastata</i>					
832 <i>peduncularis</i>		25			
833 <i>quadrangularis</i>					
834 <i>sassaparilla</i>		25			
835 <i>tamnoides</i>					
836 <i>sp. Georgia</i>		75			
837 <i>Solanum dulcamara</i>		15			
838 <i>v. fol. var.</i>		30			
839 <i>Sorbus americana</i>		35	75	75	
840 <i>microcarpa</i>		35			
841 <i>Spiræa opulifolia</i>		20			
842 <i>tomentosa</i>		25			
843 <i>salicifolia</i>		25			
844 <i>paniculata</i>		25			
845 <i>sorbifolia</i>		30			
846 <i>chamædrifolia</i>		50			
847 <i>hypericifolia</i>		25			
848 <i>v. fol. lutea</i>		50			
849 <i>v. rosea</i>		50			
850 <i>betulifolia</i>		50			
851 <i>corymbosa</i>	1	50			
852 <i>Staphylea trifolia</i>		25			
853 <i>Sterculea platanifolia, exotic</i>		50	2 00	2 00	
854 <i>Stuartia virginica</i>		50			
855 <i>pentagynia</i>	2	00			
856 <i>Stillingia sebifera, exotic</i>		50	2 00	2 00	
857 <i>Styrax grandifolium</i>		50			
85 <i>pulverulentum</i>		50			

The Salix (Lawrence P^d)
Carr. I^o was canescens
Sp^d Griseb of Pursh
a specimen Sp^d from
Thore Torrey m^k
S. eriocarpa — both
the kind at L^o & the
rostrata bear cones at
end of ~~the~~ shoots which
hand on in Dec^r —

new
Shining *Verbena*
Florida

898 *Azalea*

	Plants. Each.	S E E D S.			
		§ cts.	lb.	Quart.	Bushel.
859 <i>Styrax glabrum</i>		50			
860 <i>Symphoria racemosa</i> , 20 dols. per 100		30		50	
861 <i>glomerata</i> , 15 dols. per 100		25		50	
862 <i>glauca</i> , <i>sp. nova</i>	5	00			
863 <i>Taxus canadensis</i>		50			
864 <i>Thuja occidentalis</i>		25		50	
865 <i>orientalis</i> , <i>exotic</i>		25	4 00		
866 <i>Tilia glabra</i>		50		1 00	
867 <i>pubescens</i>		50			
868 <i>laxiflora</i>					
869 <i>heterophylla</i>					
870 <i>Ulmus americana</i>		40			
871 <i>fulva</i>		50			
872 <i>alata</i>		50			
873 <i>nemoralis</i>		50			
874 <i>Vaccinium album</i>		25			
875 <i>amœnum</i>		25			
876 <i>angustifolium</i>	1	50			
877 <i>arboresum</i>	1	00			
878 <i>buxifolium</i>	1	00			
879 <i>carolinianum</i>					
880 <i>corymbosum</i>		25	80		
881 <i>crassifolium</i>	1	00			
882 <i>diffusum</i>	1	50			
883 <i>dumosum</i>		25			
884 <i>elevatum</i>	1	00			
885 <i>erythrocarpum</i>	2	00			
886 <i>formosum</i>	1	50			
887 <i>frondosum</i>		25	1 00		
888 <i>fuscatum</i>		50			
889 <i>halleriæfolium</i>	1	50			
890 <i>latifolium</i>		75			
891 <i>ligustrinum</i>	1	00			
892 <i>myrsinitis</i>	1	00			
893 <i>nitidum</i>	1	00			
894 <i>pensylvanicum</i>					
895 <i>prunifolium</i>					
896 <i>pumilum</i>					
897 <i>resinosum</i>		25	1 00		
898 <i>speciosum</i>	1	50			
899 <i>stamineum</i>		25	1 00		
900 <i>tenellum</i>		25			
901 <i>venustum</i>					
902 <i>virgatum</i>		50			
903 <i>uliginosum</i>		50			
904 <i>vitisidæa</i> , <i>white mountains</i>	3	00			
905 <i>Viburnum prunifolium</i>		20		50	
906 <i>pyrifolium</i>		50		1 00	
907 <i>oxycoccus</i>		25		50	
908 <i>acerifolium</i>		35		50	
909 <i>pubescens</i>		50			
910 <i>nudum</i>		30		50	
911 <i>v. latifolium</i>		50			
912 <i>dentatum</i>		30		50	
913 <i>v. fol. var.</i>		50			

	Plants. Each.	S E E D S.			
		lb.	Quart.	Bushe.	
	\$ cts.	\$ cts.	\$ cts.	\$ cts.	
914 Viburnum prinoides	1	00			
916 lento		30			
917 lævigatum		75			
918 lantanoïdes		50			
919 alnifolium		50			
920 cassinoïdes		50			
921 edule	1	00			
922 molle		75			
923 nitidum		75			
924 obovatum					
925 Virgilia lutea		75			
926 Viscum flavescens		50			
927 Vitis riparia, mas.		25			
928 cordifolia		37			
929 Isabellæ		37			
930 Scuppernon, albo		37			
931 v. rosea		50			
932 labrusca		37			
933 Elsingburghii		37			
934 Orwigsburghii		37			
935 Catawba		37			
936 Alexanderi		25			
937 Worthingtoni		37			
938 Elktoni		37			
939 Nortoni		37			
940 Columbiæ		37			
941 Lufborough		37			
942 Muncy		37			
943 rotundifolia, vera	1	00			
944 æstivalis, nigra		25			
945 v. rubra, vera		50			
946 v. alba		35			
947 v. sinuata		50			
948 v. virginica		35			
949 blandii		35			
950 Longii, sp. nova	1	50			
951 missouriensis, sp. nova	2	00			
952 sp. ? Texas	5	00			
953 sp. ? Tennessee	2	00			
954 sp. ?	2	00			
955 Verdilho		75			
956 Nigrinho		75			
957 Tinto		75			
958 Wendlandia populifolia		50			
959 Xylosteum ciliatum, vera	5	00			
960 v. album, Ph.	5	00			
961 solonis, sp. nova	5	00			
962 villosum, vera, Ph.	1	00			
963 sp. nova, white mountains	5	00			
964 Yucca gloriosa		50			
965 filamentosa, 4 dols. 50 cts. per doz.		50			
966 v. fol. var.	2	00			
967 recurvifolia	1	00			
968 angustifolia	1	50			

wine
 These are celebrated
 Madeira grapes.

923 *Sp. Carrs*
Shining leaves

917 & 920 *Evergreen*

A D D E N D E.

- 1 *Aspidium dilatatum*, (*Cryptogamia*)
- 2 *Carex sylvatica*, (*Graminae*)
- 3 * *Cassia tora*
- 4 *Elephantopus tomentosus*
- 5 *Gerardia setacea*
- 6 Graminae, 3 species? from *Illinois*
- 7 *Osmunda interrupta*, (*Cryptogamia*)
- 8 *Poa elongata*, *Tr.*
- 9 * *Rhexia purpurea*
- 10 *Viola crenata*
- 11 *Zizadenus glaberrimus*

	Plants. Each. \$ cts.	S E E D S. lb. Quart. Bushel. \$ cts. \$ cts. \$ cts.
969 <i>Yucca aloifolia</i> , 5 dols. per dozen	50	
970 <i>v. fol. var.</i>		
971 <i>glauca</i>	1 00	
972 <i>crenulata</i>	1 50	
973 <i>tenuifolia</i>	2 00	
974 <i>Zanthorhiza apiifolia</i>	15	
975 <i>Zanthoxylum fraxineum</i>	25	
976 <i>tricarpon, vera</i>		
977 <i>Zizyphusvolubilis</i>	75	

NORTH AMERICAN HERBACEOUS PLANTS.

	Each. \$ cts.		Each. \$ cts.
1 <i>Acacia brachyloba</i>	25	30 <i>Allium striatum</i>	30
2 <i>glandulosa</i>	25	31 <i>tricoecon</i>	40
3 <i>sp. ? Arkansa</i>	1 00	32 <i>triflorum</i>	50
4 * <i>Acalypha virginica</i>		33 <i>vineale</i>	10
5 <i>Achillea asplenifolia</i>	30	34 <i>Alstræmeria ligtu</i>	75
6 <i>millefolium</i>	12	35 <i>pelegrina</i>	75
7 <i>ptarmica</i>	12	36 <i>salsilla</i>	1 00
8 <i>v. pleno</i>	20	37 * <i>Amaranthus hypocon-</i>	
9 <i>tomentosa</i>	30	<i>driacus</i>	
10 <i>Aconitum napellus americanum</i>	40	38 * <i>spinusus, &c.</i>	
11 <i>v. albo</i>	40	39 * <i>Amaryllis atamasco,</i>	15
12 <i>uncinatum</i>	50	13 dols. per 100	
13 <i>Acorus calamus</i>	12	40 <i>Amsonia angustifolia</i>	50
14 <i>Actæa alba</i>	25	41 <i>latifolia, 15 dols. }</i>	25
15 <i>rubra</i>	25	per 100	
16 <i>Agave americana</i>	40	42 <i>salicifolia, 25 dols. }</i>	40
17 <i>v. fol. var.</i>	50	per 100	
18 <i>virginica</i>	50	43 <i>Anemone dichotoma</i>	15
19 <i>Agrimonia eupatoria</i>	12	44 <i>narcissiflora</i>	30
20 <i>parviflora</i>	15	45 <i>pensylvanica</i>	12
21 <i>Alchemilla alpina</i>	30	46 <i>quinquefolia</i>	15
22 <i>Ajeteis alba</i>	15	47 <i>v. purpurea</i>	20
23 <i>aurea</i>	25	48 <i>v. purp. pleno</i>	25
24 <i>Alisma parviflora</i>	15	49 <i>thalioides</i>	15
25 <i>trivialis, &c.</i>	15	50 <i>v. pleno</i>	50
26 <i>Allium angulosum</i>	30	51 <i>virginica</i>	25
27 <i>canadense</i>	15	52 <i>Angelica atropurpurea</i>	
28 <i>cernuum</i>	8	53 <i>lucida</i>	25
29 <i>mutabile</i>	50	54 <i>triquinata</i>	25

	Each. \$ cts.		Each. \$ cts.
55 Antirrhinum linaria	12	104 Asclepias nivea	35
56 Apios tuberosa, 15 dols. } per 100 }	25	105 -obovata, <i>Ell.</i>	2 00
57 Apocynum androsæmifolium	25	106 obtusifolia	25
58 cannabinum	25	107 parviflora	
59 hypericifolium	25	108 paupercula	2 00
60 Aquilegia canadensis, 15 dols. } per 100 }	25	109 pulchra, 15 dols. } per 100 }	20
61 v. lutea	40	110 phytolaccoides	25
62 Arabis alpina	30	111 purpurascens	25
63 falcata	25	112 quadrifolia	25
64 *lyrata		113 suaveolens	2 00
65 rhomboidea	25	114 syriaca, 15 dols. } per 100 }	20
66 Aralia nudicaulis	15	115 v. nova	50
67 racemosa	15	116 tomentosa, <i>Ell.</i>	2 00
68 Arenaria loricifolia	30	117 tuberosa, 15 dols. } per 100 }	20
69 peploides	30	118 v. decumbens	25
70 squarrosa	25	119 variegata, <i>veru</i> } <i>hybrida, Mi-</i> } <i>chaux</i> }	1 00
71 Arethusa bulbosa	25	120 verticillata, 15 } dols. per 100 }	25
72 divaricata	25	121 viridiflora, <i>Ph.</i>	2 00
73 medeoloides	25	122 sp. ? <i>Florida</i>	2 00
74 ophioglossoides	25	123 sp. ? <i>Louisiana</i>	2 00
75 pendula	25	124 sp. ? <i>Georgia</i>	2 00
76 verticillata	25	125 sp. ? <i>Carolina</i>	2 00
77 *Argemone mexicana		126 sp. ? <i>Mexico</i>	
78 * albiflora		127 Aster acuminatus	35
79 Aristolochia serpentaria	15	128 æstivus	25
80 Artemesia canadensis	35	129 amplexicaulis	25
81 dracunculoides	15	130 amygdalinus	25
82 santonica	25	131 blandus	25
83 Arum atrorubens		132 carolinianus	40
84 dracontium	40	133 concolor	25
85 sagittifolium	50	134 conyzoides	25
86 triphyllum, 12 dols. } per 100 }	15	135 cordifolius	25
87 v. viridiflorum	25	136 corymbosus	15
88 virginicum	25	137 cyaneus	25
89 Arundo phragmites	50	138 diffusus	15
90 Asarum arifolium	50	139 dumosus	15
91 canadense	25	140 ericoides	25
92 virginicum	25	141 floribundus	25
93 Asclepias acuminata	25	142 foliosus	25
94 amœna, 20 dols. } per 100 }	25	143 fragile	25
95 amplexicaulis	2 00	144 gracilis	40
96 angustifolia, <i>Ell.</i>	2 00	145 grandiflorus	25
97 cinerea, <i>Ell.</i>	2 00	146 graveolens, <i>sp. nova</i>	50
98 connivens, <i>Ell.</i>	2 00	147 hyssopifolius	15
99 debilis, <i>Ph.</i>	2 00	148 inuloides, <i>Georgia</i>	1 00
100 furcata		149 junceus	25
101 incarnata, 15 dols. } per 100 }	20	150 lævis	25
102 laurifolia	1 00	151 ledifolius	25
103 longifolia, <i>vel.</i> } <i>Acerates lon-</i> } <i>gifolia</i> }	2 00	152 linariifolius	25
		153 linifolius	25

we have
Asclepias amara
we had — *pulchra alba*

Several Southern Sp. pa
Genus nearly allied to
Aster Carr's son told
me name of it

178 from Brookline

187 - P. H. A. p. 10

1980 of Geampensyl =
-varicium Nat

	Each. \$ cts.		Each. \$ cts.
154 Aster macrophyllus	15	205 Caladium v. auriculatum	1 00
155 miser	25	206 Calla palustris	50
156 multiflorus	15	207 Caltha ficaroides	35
157 mutabilis	25	208 flabellifolia	50
158 novæ anglæ	20	209 palustris	25
159 nova belgica	25	210 v. pleno	50
160 paludosus, elegans	1	50 211 Calypso borealis	1 00
161 paniculatus	25	212 Calystegia catesbyana	
162 patens	25	213 sepium	25
163 patula	35	214 spithamea	25
164 phlegifolius	25	215 Campanula acuminata	25
165 puniceus	25	216 americana	15
166 radule	25	217 *perfoliata	
167 rigidus	25	218 rotundifolia	25
168 salicifolius	25	219 v. alba	40
169 solidagonoides	25	220 sp. nova	50
170 spectabilis	25	221 sp. nova, } white mountains }	1 00
171 squarrosus		222 Canna angustifolia	50
172 suaveolens	35	223 flaccida	50
173 tardiflorus	25	224 glauca	50
174 tenuifolius	15	225 sp. nova, gigan- } tea, Georgia }	1 50
175 tradescantiæ	25	226 Cantus coronopifolia	
176 undulatus	25	227 Cardamine virginica	15
177 versicolor	15	228 *Cardiospermum halica- } cabum, seed \$3 per lb. }	
178 sp. nova, Boston, Nut.	50	229 *Cassia chamæerista	
179 sp. ? Niagara	50	230 marylandica, 12 } dols. per 100 }	15
180 sp. ? Georgia	1 00	231 *nictitans	
181 sp. ? Georgia	1 00	232 sp. Florida	1 00
182 sp. ? S. Carolina	1 00	233 Caulophyllum thalictroides	25
183 sp. ? N. Carolina	1 00	234 *Centauria americana	
184 Astragalus canadensis	25	235 Chærophyllum claytoni	20
185 missouriensis	50	236 *procumbens	
186 Baptisia alba-vera, vel. } Podalyria } alba }	50	237 Chaptalia tomentosa	75
187 cerulea, 15 dols. } per 100 }	25	238 Chelidonium majus	15
188 v. alba	35	239 v. pleno	30
189 v. rosea	50	240 Chelone barbata	35
190 v. purpurea	50	241 campanulata	30
191 perfoliata		242 glabra	25
192 tinctoria, 20 dols. } per 100 }	25	243 lyoni	75
193 uniflora	1 00	244 obliqua	20
194 Bartsia coccinea	15	245 speciosa	50
195 Betonica sp. ? Mexico	1 00	246 *Chenopodium anthelminticum	
196 *Blitum capitatum		247* ambrosoides	
197 Boltonia asteroides	50	248 Chrysosplenium oppositifolium	25
198 Bootia, Genus nova, Big.	1 00	249 Cichorium intybus	15
199 Brasenia peltata	60	250 Cicuta bulbifera	25
200 Buchnera americana	30	251 maculata	25
201 Cacalia atriplicifolia	25	252 Cimicifuga cordifolia	50
202 reniformis	25	253 fetida	50
203 suaveolens	25	254 palmata	50
204 Caladium esculentum, 5 } dols. per dozen }	75	255 serpentaria, 15 } dols. per 100 }	25

	Each. \$ cts		Each. \$ cts.
256 <i>Circea lutetiana</i>	25	307 <i>Coreopsis verticillata</i>	25
257 <i>canadensis</i>	25	308 <i>sp. ? Carolina</i>	50
258 <i>Claytonia alsinoides</i>	35	309 <i>sp. ? Mexico</i>	
259 <i>lanceolata</i>	75	310 <i>Cornus canadensis</i>	25
260 <i>v. rubra</i>	75	311 <i>Corydalis cucullaria</i>	25
261 <i>spathulæfolia</i>	50	312 <i>formosa</i>	25
262 <i>virginica, 14 } dols. per 100</i>	15	313 <i>v. alba</i>	1 00
263 * <i>Cleome dodecandra</i>	15	314 <i>fungosa</i>	15
264 <i>Clinopodium vulgare</i>	15	315 <i>glauca</i>	25
265 <i>Clitoria mariana</i>	25	316 <i>Crinum americanum</i>	1 00
266 <i>virginica</i>	25	317 <i>v. antheræ alba</i>	1 50
267 <i>Cnicus plur. sp.</i>	15	318 <i>v. antheræ rubra</i>	2 60
268 <i>Collinsonia anisata</i>	50	319 * <i>Crotalaria parviflora</i>	
269 <i>canadensis, 15 } dols. per 100</i>	25	320 <i>Cucubalus behen</i>	15
270 <i>tuberosa</i>	1 00	321 <i>stellatus</i>	25
271 <i>sp. ? Mexico</i>	1 00	322 <i>Cunila glabella</i>	50
272 <i>Coniarum palustre</i>	25	323 <i>glabra</i>	50
273 <i>v. fol. var.</i>	40	324 <i>mariana</i>	15
274 <i>Commelina communis</i>	25	325 * <i>Cuscuta americana</i>	
275 <i>erecta</i>	25	326 <i>Cyamus flacicomus, vel. } Nelumbium luteum</i>	1 00
276 <i>virginica</i>	25	327 <i>Cymbidium hyemale</i>	25
277 <i>sp. nova, Geo.</i>	1 50	328 <i>odontorhizon</i>	25
278 <i>Conium arachcha</i>	3 00	329 <i>pulchellum</i>	25
279 <i>Conostylis americana</i>	50	330 <i>Cynoglossum amplexicaule</i>	15
280 <i>Convallaria majalis, 10 dols. } per 100</i>	12	331 <i>officinale</i>	15
281 <i>v. pleno</i>	25	332 <i>sylvaticum</i>	25
282 <i>v. rubra</i>	25	333 <i>Cypripedium arietinum</i>	1 00
283 <i>verticillata</i>	50	334 <i>candidum</i>	1 00
284 <i>Convolvulus arvensis ame- } ricani</i>	25	335 <i>humile</i>	25
285 <i>batatas, alba</i>	25	336 <i>parviflorum</i>	50
286 <i>v. rubra</i>	25	337 <i>pubescens</i>	50
287 <i>v. flava</i>	25	338 <i>spectabile</i>	50
288 <i>panduratus</i>	50	339 <i>Dahlia superflua, 20 varieties</i>	
289 <i>v. pleno</i>	1 00	340 <i>Dalea sp. ?</i>	
290 <i>spithameus</i>	25	341 <i>Dalibarda fragaroides</i>	35
291 <i>sp. ? Florida</i>	1 00	342 <i>repens</i>	25
292 <i>Conyza bifrons</i>	30	343 * <i>Datura stramonium</i>	
293 * <i>marylandica</i>	30	344 <i>tatula</i>	
294 <i>pycnostachya</i>	50	345 <i>Delphinium azureum</i>	25
295 <i>Coptis trifolia</i>	25	346 <i>exaltatum</i>	50
296 <i>Coreopsis aurea</i>	25	347 <i>tricorne</i>	30
297 <i>auriculata</i>	25	348 <i>urceolatum</i>	50
298 <i>erassifolia</i>	30	349 <i>Dentaria diphylla</i>	35
299 <i>grandiflora</i>	50	350 <i>lasciniata</i>	25
300 <i>lanceolata</i>	35	351 <i>Diapensia cuneifolia, white } mountains</i>	2 00
301 <i>pinnata</i>	35	352 <i>obtusifolia, idem</i>	2 00
302 <i>procera</i>	35	353 <i>Dionæa muscipula</i>	50
303 <i>tenuifolia</i>	35	354 <i>Dioscorea sativa</i>	55
304 <i>tinctoria</i>	25	355 <i>villosa</i>	25
305 <i>trichosperma</i>	25	356 <i>Diphylleja cymosa</i>	50
306 <i>tripteris</i>	25	357 <i>Dodecastheon meadia</i>	35
		358 <i>v. alba, vera</i>	1 00
		359 <i>Donia ciliata</i>	2 00

Cypripedium pubescens
we have 2 to one
with pale straw
col bracts the
other with brown
ish or russet col bracts

Cyp^m pubescens straw
pale col bracts
brownish or russet

284 Maine Sp. Hill

We had ~~Salvia~~ from
Mexico

302 - 20th

359 Shrubby on my notes

364 our old tall sort

303 Drop Sp from Nuttall

300 biennial

435 *rotundifolia*
(on the notes)

457 biennial grows
at Hoboken Hills

432 is the fine blue
pea blossom plant
in one of frames in
our garden near
Gonolobium or

	Each.	Each.		Each.
	§	cts.		§
				cts.
360		50	414	50
361		35	415	25
362	1	00	416	35
363		25	417	50
364	1	00	418	25
365		25	419	
366		25	420	25
367		25	421	
368		40	422	1
369		20	423	25
370	2	00	424	1
371	2	00	425	15
372		15	426	15
373	1	00	427	15
374		25	428	50
375		40	429	1
376		25	430	1
377		35	431	
378		25	432	50
379		50	433	25
380			434	
381			435	50
382		15	436	50
383	1	00	437	15
384		15	438	15
385		25	439	25
386		30	440	15
387		35	441	15
388		35	442	50
389	1	50	443	50
390		50	444	50
391		25	445	50
392	1	50	446	40
393		25	447	25
394	1	50	448	50
395		50	449	15
396	1	00	450	1
397		15	451	15
398		50	452	15
399		25	453	15
400		30	454	25
401		30	455	15
402		25	456	
403		40	457	25
404		15	458	
405		25	459	25
406		40	460	20
407		35	461	25
408		15	462	
409		15		1
410		50		00
411		30		
412		50		1
413		25		00
				15
				35

	Each. \$ cts.		Each. \$ cts.
466 <i>Geum strictum</i>	25	518 <i>Helianthus scaber</i>	30
467 <i>virginianum</i>		519 <i>strumosus</i>	25
468 <i>Glaucium luteum</i>	15	520 <i>trachelifolius</i>	35
469 <i>Glechoma hederacea</i>	12	521 <i>tuberosus</i>	25
470 <i>Glycine comosa</i>	25	522 <i>sp. ? Florida</i>	1 00
471 <i>*monoica</i>		523 <i>sp. ? Georgia</i>	1 00
472 <i>tomentosa</i>	25	524 <i>Heliopsis laevis</i>	25
473 <i>v. erecta</i>	50	525 <i>Helonias angustifolia</i>	50
474 <i>Gnaphalium americanum</i>	25	526 <i>asphodeloides</i>	25
475 <i>decurrens</i>	50	527 <i>dioica, mas.</i>	25
476 <i>margaritaceum</i>	25	528 <i>v. femina</i>	25
477 <i>platagineum</i>	25	529 <i>erythrosperma</i>	50
478 <i>polycephalum</i>	40	530 <i>latifolia</i>	25
479 <i>purpureum</i>	25	531 <i>Hemerocallis fulva</i>	20
480 <i>uliginosum</i>	20	532 <i>v. fol. var.</i>	50
481 <i>sp. ? Florida</i>		533 <i>v. pleno</i>	50
482 <i>Gonolobium hirsutum</i>	30	534 <i>Hepatica americana</i>	15
483 <i>laeve</i>	30	535 <i>v. alba</i>	25
484 <i>macrophyllum</i>	50	536 <i>v. cerulea pl.</i>	50
485 <i>niger ? Mex.</i>	1 00	537 <i>v. rubra pl.</i>	50
		538 <i>Heracleum lanatum</i>	25
486 <i>*Gossypium herbaceum</i>		539 <i>Herpestris sp. nova, Geo.</i>	1 00
487 <i>barbadense</i>		540 <i>Heteranthera acuta</i>	25
488 <i>Gratiola aurea</i>	25	541 <i>graminea</i>	25
489 <i>virginica</i>	25	542 <i>Heuchera caulescens</i>	40
490 <i>Gyrotheca tinctoria, H.</i>		543 <i>hispidā</i>	30
<i>B., Dilatris tinctoria, Ph.</i>	1 00	544 <i>lucida</i>	30
491 <i>*Hedeoma pulegioides</i>		545 <i>macrophylla</i>	30
492 <i>Hedysarum canadense</i>	15	546 <i>pubescens</i>	25
493 <i>marylandicum</i>	15	547 <i>villosa</i>	40
494 <i>nudiflorum</i>	15	548 <i>viscida</i>	25
495 <i>paniculatum</i>	25	549 <i>*Hibiscus esculentus</i>	
496 <i>strictum</i>	15	550 <i>grandiflorus, 3 } dols per doz. }</i>	40
497 <i>viridiflorum</i>	15	551 <i>manihot</i>	50
498 <i>sp. ? Florida</i>	1 00	552 <i>militaris</i>	25
499 <i>Helenium autumnale</i>	15	553 <i>moscheutos</i>	25
500 <i>mexicanum, &c.</i>	1 00	554 <i>v. rubra</i>	50
501 <i>Helianthemum canadense</i>	15	555 <i>v. alba</i>	50
502 <i>carolinianum</i>	1 00	556 <i>palustris</i>	25
503 <i>ramuliflorum</i>	15	557 <i>v. rosea pallida</i>	50
504 <i>Helianthus altissimus</i>	20	558 <i>scaber, vera</i>	1 00
505 <i>angustifolius</i>	50	559 <i>speciosus, 3 dols. } per dozen }</i>	40
506 <i>atrorubens</i>	50	560 <i>virginicus, vera</i>	75
507 <i>decapetalus</i>	35	561 <i>Hieraceum gronovii</i>	35
508 <i>diffusus</i>	30	562 <i>kalmii</i>	25
509 <i>divaricatus</i>	25	563 <i>paniculatum</i>	40
510 <i>frondosus</i>	50	564 <i>venosum</i>	15
511 <i>giganteus</i>	25	565 <i>Houstonia alba, sp. no- } va, Nut. }</i>	1 00
512 <i>macrophyllus</i>	30	566 <i>cerulea</i>	15
513 <i>missouriensis</i>	35	567 <i>ciliolata, Tor.</i>	1 00
514 <i>mollis</i>	30	568 <i>purpurea</i>	35
515 <i>multiflorus</i>	20	569 <i>rotundifolia</i>	1 00
516 <i>v. pleno</i>	30		
517 <i>pubescens</i>	50		

551 is *Arum* - *Phaeoglossum*
not

Arizone celosoides is }
our sort of pelation }
so says *Lyngby* *Fauntleroy*

500 & 508 same on *A. B. S.*
Wells *canescens* *P. syn*

to 4058 & we chgd
#1, 1830 fall 1830

Miscobolus Carr
afterwards called
Macrostachya
found former to be
Virga

609 I thought once I
had 2 var pale &
dark - how is it

By both Orange &
Red Bedford. Near
Cheston City

	Each. \$ cts.		Each. \$ cts.
570 Humulus americanus	15	616 Iris v. rubro	1 00
571 Hydrastis canadensis	25	617 v. pleno	1 00
572 Hydrocotyle americana	15	618 prismatica	25
573 umbellata	15	619 tridentata, vera	50
574 vulgaris	25	620 verna	50
575 Hydrolea corymbosa	1 00	621 versicolor	15
576 quadrivalvis	1 00	622 virginica	25
577 Hydrophyllum canadense	25	623 sp. nova, Big.	1 00
578 virginicum	25	624 Ixia caelestina	2 00
579 Hypericum angulosum	50	625 Jatropha stimulosa	3 00
580 ascyroides	25	626 Jeffersonia diphylla	50
581 corymbosum		627 Justicia humilis	2 00
582 marylandicum	50	628 Kuhnia eupatoroides	25
583 mutilum	15	629 Lactuca elongata	15
584 parviflorum	15	630 Lathyrus maritimus, Big.	1 00
585 pyramidatum	50	631 myrtifolius	15
586 Hypoxis erecta	15	632 venosus	15
587 graminea		633 Lechea major	15
588 juncea	1 00	634 minor	15
589 Hyssopus nepetoides	15	635 Leontodon taraxacum	12
590 serophularoides	15	636 Leonurus cardiaca	12
591 *Impatiens biflora		637 Lepidium virginicum	15
592 Indigofera caroliniana	2 00	638 Leptandra virginica	50
593 Inula falcata	50	639 Lespedeza angustifolia	50
594 graminea		640 capitata	15
595 helenium	15	641 polystachya	50
596 mariana	15	642 procumbens	50
597 *Ipomæa coccinea, seed 2 } dols. per lb. }		643 prostrata	75
598 dissecta		644 repens	15
599 jalapa	75	645 reticulata	75
600 *lacunosa, seed 4 } dols. per lb. }		646 sessiliflora	15
601 macrorrhiza, vel } Michauxii, 9 } 1 00		647 violacea	15
602 *nil, seed 3 dols. } per lb. }		648 sp. ? New-Jersey	75
603 *purpurea, seed 2 } dols. per lb. }		649 Liatris elegans	50
604 *v. striata su- } perba, seed 4 } dols. per lb. }		650 gracilis	75
605 *quamoclit, seed } 1 dol. per oz }		651 intermedia	1 00
606 sagittifolia, vel speciosa 3	00	652 macrostachya	35
607 sp. ? Florida		653 odoratissima	50
608 Iresine elatior	50	654 paniculata	1 00
609 Iris caelestina	25	655 pilosa	25
610 cristata	25	656 pumila	50
611 cupræa	25	657 pyenostachya	75
612 hexagona, vera	50	658 secunda	1 00
613 lacustris, sp. nova, Tor. 2	00	659 scariosa, 15 dols. } per 100 }	25
614 missouriensis	50	660 sphaeroidea, 25 } dols. per 100 }	35
615 v. albo	50	661 squarrosa	25
		662 tenuifolia	1 00
		663 sp. ? Tennessee	75
		664 sp. ? Carolina	1 00
		665 sp. ? Georgia	1 00
		666 Ligusticum scoticum, Maine	25
		667 Lilium canadense	15
		668 carolinianum	50

	Each. \$ cts.		Each. \$ cts.
669 <i>Lilium catesbaei</i> , 8 dols. per dozen	75	723 <i>Melananthera hastata</i>	50
670 <i>pensylvanicum</i>	50	724 <i>Melanthium virginicum</i>	40
671 <i>philadelphicum</i>	20	725 <i>Menispermum canadense</i>	15
672 <i>superbum</i>	15	726 <i>Mentha borealis</i>	15
673 <i>umbellatum</i>	2 00	727 <i>tenuis</i>	15
674 * <i>Lindernia pyxidaria</i>		728 <i>viridis</i>	15
675 <i>Linum lewisii</i>	25	729 <i>Menyanthes americana</i>	25
676 <i>perenne</i>	25	730 <i>Micranthemum orbiculatum</i>	50
677 <i>Lithospermum officinale</i>	35	731 <i>Miegia macrosperma, vera</i>	1 00
678 <i>latifolium</i>	15	732 <i>tecta</i>	50
679 <i>virginianum</i>	25	733 <i>Mikania scandens</i>	25
680 <i>Lobelia amœna</i>	1 00	734 <i>Milleria sp. ? Mexico</i>	1 50
681 <i>cardinalis</i>	15	735 <i>Mimosa pudica</i> , seed 16 } dols. per lb. }	
682 <i>claytoniana</i>	15	736 <i>sp. ? Florida</i>	
683 <i>dortmanna</i>		737 <i>Mimulus alatus</i>	15
684 <i>fulgens</i>	30	738 <i>glutinosus</i>	40
685 <i>glandulosa</i>	1 00	739 <i>luteus vel guttatus</i>	25
686 <i>inflata</i>	15	740 <i>ringens</i>	15
687 <i>kalmii</i>	15	741 <i>Mitella ciliaris</i>	50
688 <i>pallida</i>	25	742 <i>cordifolia</i>	25
689 <i>siphilitica</i>	15	743 <i>diphylla</i>	25
690 <i>Lotus gracilis</i>	50	744 <i>Monarda altissima</i>	50
691 <i>Ludwigia hirsuta</i>	15	745 <i>clinopodia</i>	25
692 <i>macrocarpa</i>	15	746 <i>didyma</i>	15
693 <i>nitida</i>	15	747 <i>fistulosa</i>	25
694 <i>Lupinus nootkatensis</i>	50	748 <i>v. alba</i>	50
695 <i>perennis</i>	25	749 <i>gracilis</i>	50
696 <i>villosus</i>		750 <i>hirsuta</i>	50
697 <i>Lycopus exaltatus</i>	15	751 <i>kalmiana, vera</i>	50
698 <i>virginicus</i>	15	752 <i>mollis</i>	50
699 <i>Lychnis alpina</i>	20	753 <i>oblongata</i>	50
700 <i>Lysimachia angustifolia</i>	50	754 <i>punctata</i>	25
701 <i>capitata</i>	25	755 <i>purpurascens</i>	35
702 <i>ciliata</i>	15	756 <i>rugosa</i>	35
703 <i>heterophylla</i>	25	757 <i>Russeliana</i>	50
704 <i>hybrida</i>	15	758 <i>Monotropa uniflora, &c.</i>	15
705 <i>quadrifolia</i>	15	759 <i>Myosotis arvensis</i>	20
706 <i>racemosa</i>	15	760 <i>palustris</i>	25
707 <i>thyrsiflora</i>	35	761 <i>scorpioides</i>	25
708 <i>Lythrum salicaria</i>	25	762 <i>Narthecium americanum</i>	50
709 <i>verticillatum</i>	25	763 <i>Neottia cernua</i>	25
710 <i>virgatum</i>	30	764 <i>pubescens</i>	25
711 <i>Malaxis liliifolia</i>	30	765 <i>repens</i>	25
712 <i>longifolia</i>	30	766 <i>tortilis</i>	25
513 <i>ophioglossoides</i>	30	767 * <i>Nicandra physaloides</i>	
714 * <i>Malva caroliniana</i>		768 * <i>Nicotiana paniculata</i>	
715 <i>rotundifolia</i>	15	769 * <i>tabacum</i>	
716 <i>Marrubium vulgare</i>	15	770 * <i>sp. nova</i>	
717 * <i>Martynia diandra</i>		771 <i>Nuphar advena</i>	25
718 * <i>proboscidea</i>		772 <i>kalmiana</i>	50
719 <i>Maurandia semperflorens</i>	50	773 <i>lutea</i>	25
720 <i>Medeola virginica</i>	15	774 <i>Nuttalia digitata</i>	50
721 <i>Medicago lupulina</i>	12	775 <i>pedata</i>	1 00
722 <i>Melampyrum americanum</i>		776 <i>Nymphæa odorata</i>	50

Maranta arundinacea
in Florida

Got *Helianthus*
tomentosus
Nuttall

Got *Hesperis*
punctatum

Got
Orchis, tall green is }
O. Dilata says seeds }
Leeds says
Orchis Spect. Habernaria
fimbriata proved tall green

Phlox divaricata striata

— *excelsa*

— *Colonyana*

— *Corymbosa*

Roos says *Holonifera* 885 is like
879

886 to 885 same *Trepens* same

866 is *Baris aepurus*

867 & 891 same

	Each. \$ cts.		Each. \$ cts.
777 <i>Nymphæa v. rosea</i>	50	832 <i>Panax trifolium</i>	25
778 <i>Obolaria virginica</i>	25	833 <i>Pancratiun angustum</i>	
779 <i>Oenothera biennis</i>	12	834 <i>caribæum</i>	1 00
780 <i>cæspitosa</i>	50	835 <i>carolinianum</i>	1 00
781 <i>cruciata</i>	35	836 <i>fluitans</i>	1 00
782 <i>fraseri</i>	25	837 <i>littorale</i>	1 50
783 <i>fruticosa</i>	20	838 <i>maritimum</i>	50
784 <i>v. fol. var.</i>	40	839 <i>mexicanum</i>	50
785 <i>glauca</i>	20	840 <i>v. altissimum</i>	1 50
786 <i>grandiflora</i>	20	841 <i>rotatum</i>	1 00
787 <i>macrocarpa</i>		842 <i>v. altissimum</i>	1 50
788 <i>pumila</i>	25	843 <i>speciosum</i>	
789 <i>rosea</i>		844 <i>sp. nova, Florida</i>	2 00
790 <i>serrulata</i>	35	845 <i>sp. fragrans, Brazil</i>	3 00
791 <i>speciosa</i>	50	846 <i>sp. nova, Georgia</i>	2 00
792 <i>*triloba</i>		847 <i>Parnassia caroliniana</i>	25
793 <i>sp. ? Florida</i>		848 <i>palustris</i>	35
794 <i>Onosmodium hispidum</i>	40	849 <i>Parthenium integrifolium</i>	1 00
795 <i>Ophlotheca floridana</i>	1 00	850 <i>Passiflora incarnata</i>	35
796 <i>Orehis bephariglottis</i>	40	851 <i>lutea</i>	35
797 <i>bifolia</i>	50	852 <i>Pedicularis canadensis</i>	40
798 <i>bracteata</i>	30	853 <i>gladiata</i>	25
799 <i>ciliaris</i>	30	854 <i>pallida</i>	50
800 <i>eristata</i>	40	855 <i>Penstemon digitalis</i>	35
801 <i>dilatata</i>	75	856 <i>lævigata</i>	50
802 <i>discolor</i>	40	857 <i>pubescens</i>	25
803 <i>fimbriata</i>	40	858 <i>Penthorum sedoides</i>	25
804 <i>flava</i>	1 00	859 <i>Phalangium quamash</i>	3 00
805 <i>fuscescens</i>	50	860 <i>Phaseolus helvolus</i>	25
806 <i>herbiola</i>	75	861 <i>perennis</i>	25
807 <i>hyperborea</i>	75	862 <i>*trilobus</i>	
808 <i>incisa</i>	50	863 <i>Phlox acuminata, vel decussata</i>	25
809 <i>lacera</i>	75	864 <i>amoena</i>	50
810 <i>macrophylla</i>	1 00	865 <i>aristata</i>	50
811 <i>obsoleta</i>	50	866 <i>canadense</i>	50
812 <i>orbiculata</i>	1 00	867 <i>carnea</i>	40
813 <i>psycodes</i>	50	868 <i>carolina</i>	40
814 <i>spectabilis</i>	30	869 <i>divaricata</i>	25
815 <i>tridentata</i>	30	870 <i>v. atrorubra</i>	1 00
816 <i>unifolia</i>	50	871 <i>v. alba</i>	1 00
817 <i>virescens</i>	40	872 <i>floridana</i>	1 00
818 <i>viridis</i>	50	873 <i>glaberrima</i>	35
819 <i>2 sp. Georgia</i>	75	874 <i>intermedia</i>	40
820 <i>Origanum vulgare</i>	15	875 <i>latifolia</i>	
821 <i>Orobanche americana</i>	50	876 <i>maculata</i>	25
822 <i>uniflora</i>	50	877 <i>missa, vel suffruticosa</i>	35
823 <i>Orontium aquaticum</i>	30	878 <i>nivalis</i>	40
824 <i>Oxalis acetosella</i>	35	879 <i>ovata, vel floridana</i>	25
825 <i>corniculata</i>	15	880 <i>paniculata</i>	25
826 <i>dillenii</i>	25	881 <i>v. alba</i>	50
827 <i>stricta</i>	15	882 <i>pilosa</i>	50
828 <i>tetraphylla</i>	35	883 <i>pyramidalis</i>	25
829 <i>violacea</i>	15	884 <i>setacea</i>	25
830 <i>Pachysandra procumbens</i>	50	885 <i>stolonifera</i>	25
831 <i>Panax quinquefolium</i>	35	886 <i>suaveolens</i>	25

	Each.		Each.
	§ cts.		§ cts.
887 Phlox <i>v. tardiflora</i>	50	933 Potentilla norwegica	15
888 <i>v. fol. var.</i>	35	934 opaca	30
889 subulata	25	935 palustris	30
890 <i>v. alba</i>		936 pensylvanica	30
891 triflora	35	937 simplex	15
892 undulata	25	938 tridentata, &c.	25
893 virginica	50	939 Pothos fœtida	25
894 <i>sp. nova</i>	1 00	940 Prenanthes alba	25
895 Phryma leptostachya	25	941 altissima	25
896 Physalis obscura	25	942 cordata	25
897 pensylvanica	25	943 rubicunda	50
898 viscosa, &c.	25	944 serpentaria, &c.	35
899 Phytolacca decandra	20	945 Primula mistassinica	
900 Pisum maritimum, &c.	35	946 pusilla	
901 Plantago cucullata	25	947 Prunella pensylvanica	15
902 lanceolata	15	948 vulgaris	12
903 maritima	20	949 Psoralea lupinellus	5 00
904 <i>v. fol. var.</i>	50	950 mellilotoides	5 00
905 virginica, &c.	15	951 <i>sp. ? Georgia, &c.</i>	5 00
906 Podophyllum peltatum	25	952 Pulmonaria virginica, &c.	40
907 Podostigma pubescens,		953 Pycnanthemum incanum	25
<i>Ell., Asclepias pedicellata, Ph.</i>	2 00	954 linifolium	23
908 viridis, <i>Ell.,</i>		955 verticillatum, &c.	50
<i>Asclepias viridis,</i>	2 00	956 Pyrola media	25
<i>Pursh.</i>		957 minor	25
909 Polemonium reptans	25	958 uniflora, &c.	25
910 <i>v. album, &c.</i>	75	959 Ranunculus abortivus	20
911 Polyanthes tuberosa, <i>pl.</i>		960 acris	15
<i>exotic, 6</i>		961 <i>v. pleno</i>	20
dols. per		962 auricomus	30
100 roots		963 bulbosus	20
912 <i>v. fol. var.</i>		964 <i>v. pleno</i>	30
3 dols. per	40	965 filiformis	25
dozen		966 fluvialis	25
913 Polygala lutea	25	967 hirsutus	25
914 rubella	25	968 lingua	25
915 *sanguinea	25	969 pensylvanicus	15
916 senega, &c.	25	970 repens	15
917 Polygonatum angustifolium	15	971 <i>v. pleno</i>	30
918 latifolium	50	972 sceleratus	15
919 multiflorum	15	973 <i>sp. nova</i>	50
920 vulgare, &c.	25	974 Rhexia glabella	1 00
921 Polygonum coccineum	25	975 lutea	1 00
922 <i>indens</i>	15	976 mariana	25
923 virginianum	15	977 virginica	25
924 <i>parum, &c.</i>	25	978 <i>3 sp. ? Georgia</i>	1 00
925 Pontederia angustifolia	50	979 *Ricinus communis	
926 cordata	30	980 Rubia Brownei	2 00
927 lanceolata, &c.	1 00	981 Rubus arcticus	35
928 Potamogeton, <i>plur. sp.</i>	25	982 chamæmoris	40
929 Potentilla argentea	30	983 saxatilis	30
930 canadensis	15	984 Rudbeckia amplexifolia	40
931 confertiflora, <i>Tor.</i>	50	985 columnaris	35
932 nivea	40	986 digitata	30
		987 fulgida	35

Prenanthis new Pitcher }
fr Sault St Marie

Pycnanthemum
concoloratum our
narrow Sp

got *Prunella* Ohio

we had from Pitcher *Primula*
fr Lake Superior

Silene regia

1051 - is *Sto galericulata*
Mull

		Each.			Each.	
		§	cts.	§ cts.		
988	Rudbeckia hirta	25	1041	Saxifraga sibirica	25	
989	lasiantha	35	1042	virginensis	15	
990	laciniata	25	1043	Scheuchzeria palustris	25	
991	moschata	50	1044	Schrankia uncinata	30	
992	pinната	50	1045	Scelopendrum officinalis	30	
993	purpurea	25	1046	Scrophularia marylandica	15	
994	triloba	25	1047	Scutellaria integrifolia	15	
995	sp. nova, alba	1	00	1048	galericulata	15
996	Ruellia ciliosa	1	00	1049	hyssopifolia	15
997	hybrida	1	00	1050	lateriflora	15
998	oblongifolia	1	00	1051	ovalifolia, &c.	30
999	strepsis	35	1052	Sedum pusillum	25	
1000	Rumex acetosella	15	1053	telephioides	35	
1001	obtusifolius	25	1054	ternatum, &c.	25	
1002	sanguineus	20	1055	Senecio aureus	15	
1003	verticillatus, &c.	15	1056	hieracifolius	15	
1004	Sabbatia angularis	15	1057	obovatus, &c.	15	
1005	paniculata	50	1058	Sibbaldia procumbens	40	
1006	stellaris	15	1059	*Sida abutilon		
1007	*Sagina procumbens		1060	dioica	25	
1008	Sagittaria acutifolia	25	1061	mexicana	1 00	
1009	heterophylla	50	1062	napæa, &c.	25	
1010	latifolia	25	1063	Silene pennsylvanica	25	
1011	sagittifolia	25	1064	virginica, &c.		
1012	v. pleno	1 00	1065	Silphium asteriscus	40	
1013	2 sp. ? Geo.	1 50	1066	connatum	40	
1014	*Salicornia herbacea		1067	conjugatum	35	
1015	*Salsola salsa		1068	laciniatum	25	
1016	Salvia angustifolia	75	1069	perfoliatum	25	
1017	azurea	30	1070	squarrosum	40	
1018	coccinea	30	1071	ternatum	25	
1019	lyrata	25	1072	teribinthinaceum	40	
1020	maculata, Florida	1 00	1073	trifoliatum	25	
1021	sp. ? Florida	1 00	1074	verticillatum	40	
1022	Sanguinaria canadensis	15	1075	2 sp. ? Geo., &c.	1 00	
1023	Sanguisorba canadensis	25	1076	Sison aureus	35	
1024	Santecula marylandica	15	1077	Sisymbrium amphibium	25	
1025	Saponaria officinalis	15	1078	nasturtium	25	
1026	v. albo pleno	25	1079	sophia, &c.	25	
1027	v. rubro pleno	35	1080	Sisyrinchium anceps	25	
1028	Sarracenia flava	50	1081	bermudianum	40	
1029	purpurea, 25 } dols. per 100 }	30	1082	iridifolium	40	
1030	v. lutea	1 00	1083	mucronatum	25	
1031	psittacina, vel } rubra }	50	1084	Nuttallii	50	
1032	variolaris	75	1085	striatum, &c.	50	
1033	Saururus cernuus	25	1086	Sium lineare	25	
1034	Saxifraga aizoides	25	1087	rigidius	25	
1035	aizoon	25	1088	Smilacina borealis	35	
1036	androsacea	25	1089	canadensis	25	
1037	cæspitosa	25	1090	racemosa	25	
1038	geum	35	1091	stellata	25	
1039	oppositifolia	25	1092	trifolia	50	
1040	pennsylvanica	15	1093	umbellata	50	
			1094	Smyrniun atropurpureum	50	
			1095	cordatum	25	

	Each.		Each.
	§ cts.		§ cts.
1096 <i>Smyrniurn integerrimum</i>	25	1149 <i>Streptopus distortus</i>	
1097 <i>Solanum carolinense</i>	40	1150 <i>lanuginosus</i>	
1098 <i>sp. ? tubero-</i>	2	1151 <i>roseus</i>	2 00
<i>sa, Brazil</i>		1152 <i>Strophostylis angulosa</i>	75
1099 <i>sp. ? tubero-</i>	3	1153 <i>Stylosanthes elatior</i>	25
<i>sa, Texas</i>		1154 <i>hispida</i>	25
1100 <i>Solidago altissima</i>	20	1155 <i>verticillata</i>	25
1101 <i>angustifolia</i>	50	1156 <i>Talinum teretifolium</i>	1 00
1102 <i>arguta</i>	25	1157 <i>Tephrosia virginica</i>	35
1103 <i>aspera</i>	25	1158 <i>Teucrium canadense</i>	15
1104 <i>axillaris</i>	25	1159 <i>virginicum</i>	15
1105 <i>bicolor</i>	25	1160 <i>Thalia dealbata</i>	75
1106 <i>cæsia</i>	25	1161 <i>Thalictrum cornutum</i>	30
1107 <i>canadensis</i>	25	1162 <i>dioicum</i>	25
1108 <i>discolor</i>	40	1163 <i>pubescens</i>	30
1109 <i>elliptica</i>	25	1164 <i>purpurascens</i>	37
1110 <i>erecta</i>	55	1165 <i>rugosum</i>	25
1112 <i>flexicaulis</i>	25	1166 <i>sibiricum</i>	50
1113 <i>gigantea</i>	25	1167 <i>Thesium umbellatum</i>	25
1114 <i>hispida</i>	25	1168 <i>Tiarella cordifolia</i>	25
1115 <i>lævigata</i>	25	1169 <i>Tigridia pavonia, 5</i>	} 15
1116 <i>lanceolata</i>	25	<i>dols. per 100</i>	
1117 <i>lateriflora</i>	25	1170 <i>Tillandsia Bartramii</i>	1 00
1118 <i>latifolia</i>	25	1171 <i>usneoides</i>	1 00
1119 <i>mexicana</i>	25	1172 <i>sp. ?</i>	2 00
1120 <i>novaboracensis</i>	25	1173 <i>Tofieldia glaberrima</i>	1 00
1121 <i>odorata</i>	25	1174 <i>pubescens</i>	50
1122 <i>petula</i>	25	1175 <i>Tradescantia ciliata</i>	50
1123 <i>petiolaris</i>	25	1176 <i>rosea</i>	35
1124 <i>procera</i>	25	1177 <i>subaspera</i>	50
1125 <i>puberula, Nut.</i>	50	1178 <i>virginica</i>	25
1126 <i>reflexa</i>	25	1179 <i>pallida</i>	50
1127 <i>rugosa</i>	50	1180 <i>alba</i>	35
1128 <i>scabra</i>	25	1181 <i>rubra</i>	35
1129 <i>sempervirens</i>	25	1182 <i>rubra plena</i>	35
1130 <i>stricta</i>	25	1183 * <i>Trichostema dichotoma</i>	
1131 <i>virga-aurea</i>	25	1184 <i>Trientalis americana</i>	25
1132 <i>virgata</i>	25	1185 <i>Trifolium pensylvanicum</i>	20
1133 <i>ulmifolia</i>	25	1186 <i>reflexum</i>	20
1134 <i>sp. nana, white</i>	} 1	1187 <i>repens, &c.</i>	15
<i>mountains</i>		1188 <i>Trillium cernuum</i>	25
1135 <i>sp. Florida</i>	1	1189 <i>erectum</i>	25
1136 <i>Sonchus, plur. sp.</i>	20	1190 <i>album</i>	50
1137 <i>Sparganophorus verticillatus</i>	50	1191 <i>grandiflorum</i>	50
1138 <i>Spartina glabra</i>	40	1192 <i>obovatum</i>	50
1139 <i>Spigelia marylandica</i>	30	1193 <i>pendulum</i>	50
1140 <i>Spiræa aruncus</i>	15	1194 <i>pictum</i>	50
1141 <i>lobata</i>	25	1195 <i>sessile</i>	25
1142 <i>stipulacea</i>	1	1196 <i>Triosteum angustifolium</i>	1 00
1143 <i>trifoliata</i>	25	1197 <i>perfoliatum</i>	25
1144 <i>Stachys aspera</i>	25	1198 <i>Trollius laxus</i>	50
1145 <i>hispida</i>	25	1199 <i>Troximum glaucum</i>	35
1146 <i>Statice armeria</i>	25	1200 <i>virginicum</i>	25
1147 <i>caroliniana</i>	15	1201 <i>Tussilago palmata</i>	75
1148 <i>Stevia alba, Mexico</i>	1	1202 <i>Typha angustifolia</i>	25

We have
Follis americana
laxus

(*Friosteum angustifolium* from
Cleghorn he says if not
angustifolium must be a
non-descript as it
cannot be perfoliatum
as it does not grow there

1157 *virginiana*
plenty on road from
South Kingston to Newport

1204ettle by Andromeda
calyculata

We have
Cecilia flaudax
— striata

1220 pink (colored)
of 1895

omit 1271 of pink }
among trees - }

	Each. \$ cts.		Each. \$ cts.
1203 <i>Typha latifolia</i>	25	1244 <i>Viola striata superba, nova</i>	75
1204 <i>Urtica canadensis</i>	25	1245 <i>debilis</i>	20
1205 <i>dioica</i>	25	1246 <i>dentata</i>	25
1206 <i>pumila</i>	25	1247 <i>digitata</i>	50
1207 <i>Utricularia, plur. sp.</i>	25	1248 <i>hastata</i>	20
1208 <i>Uvularia flava</i>	50	1249 <i>heterophylla, Le Conte</i>	1 00
1209 <i>grandiflora</i>	30	1250 <i>lanceolata</i>	15
1210 <i>perfoliata</i>	15	1251 <i>ovata</i>	25
1211 <i>puberula</i>	50	1252 <i>palmata</i>	15
1212 <i>sessilifolia</i>	15	1253 <i>palustris, white mount.</i>	50
1213 <i>Valeriana pauciflora</i>	25	1254 <i>papilionacea</i>	25
1214 <i>Valisneria americana</i>	50	1255 <i>pedata</i>	15
1215 <i>Veratrum viride</i>	25	1256 <i>primulifolia</i>	20
1216 <i>Verbascum blattaria</i>	15	1257 <i>pubescens</i>	20
1217 <i>lychnitis, &c.</i>	25	1258 <i>rostrata</i>	50
1218 <i>Verbena aubletia</i>	20	1259 <i>rotundifolia</i>	40
1219 <i>bipinnatifida</i>	75	1260 <i>sagittata</i>	25
1220 <i>hastata</i>	15	1261 <i>selkirki</i>	75
1221 <i>v. alba</i>	25	1262 <i>septemloba, Le Conte</i>	1 00
1222 <i>urticifolia</i>	15	1263 <i>striata</i>	20
1223 <i>Verbesina coreopsis</i>	25	1264 <i>villosa, Walter</i>	1 00
1224 <i>siegesbeckia</i>	25	1265 <i>sp. ? Georgia</i>	1 00
1225 <i>virginica</i>	25	1266 <i>sp. ? Carolina</i>	1 00
1226 <i>Vernonia noveboracensis</i>	25	1267 <i>sp. ? Nova-Scotia, &c.</i>	50
1227 <i>præalta</i>	25	1268 <i>Xyris brevifolia</i>	25
1228 <i>Veronica officinalis</i>	15	1269 <i>caroliniana</i>	25
1229 <i>*peregrina</i>		1270 <i>fimbriata</i>	40
1230 <i>virginica</i>	25	1271 <i>Zamia integrifolia, vel pumila</i>	8 00
1231 <i>Vicia americana</i>	25	1272 <i>*Zea mays, pluribus varietas, 2 dols. per 100 ears</i>	
1232 <i>cracca</i>	25	1273 <i>Zephyranthes carinata</i>	2 00
1233 <i>sativa</i>	25	1274 <i>*Zinnia multiflora</i>	
1234 <i>3 sp. ? Florida</i>		1275 <i>* pauciflora</i>	
1235 <i>Villarsia lacunosa</i>	25	1276 <i>* violacea</i>	
1236 <i>Viola asarifolia</i>	50	1277 <i>Genus ? volubilis tuberosus, new nondescript vine, tuberos root</i>	1 00
1237 <i>*bicolor</i>			
1238 <i>blanda</i>	20		
1239 <i>canadensis</i>	20		
1240 <i>canina</i>	25		
1241 <i>clandestina</i>	25		
1242 <i>concolor</i>	20		
1243 <i>cucullata, 12 dols. per 100</i>	75		

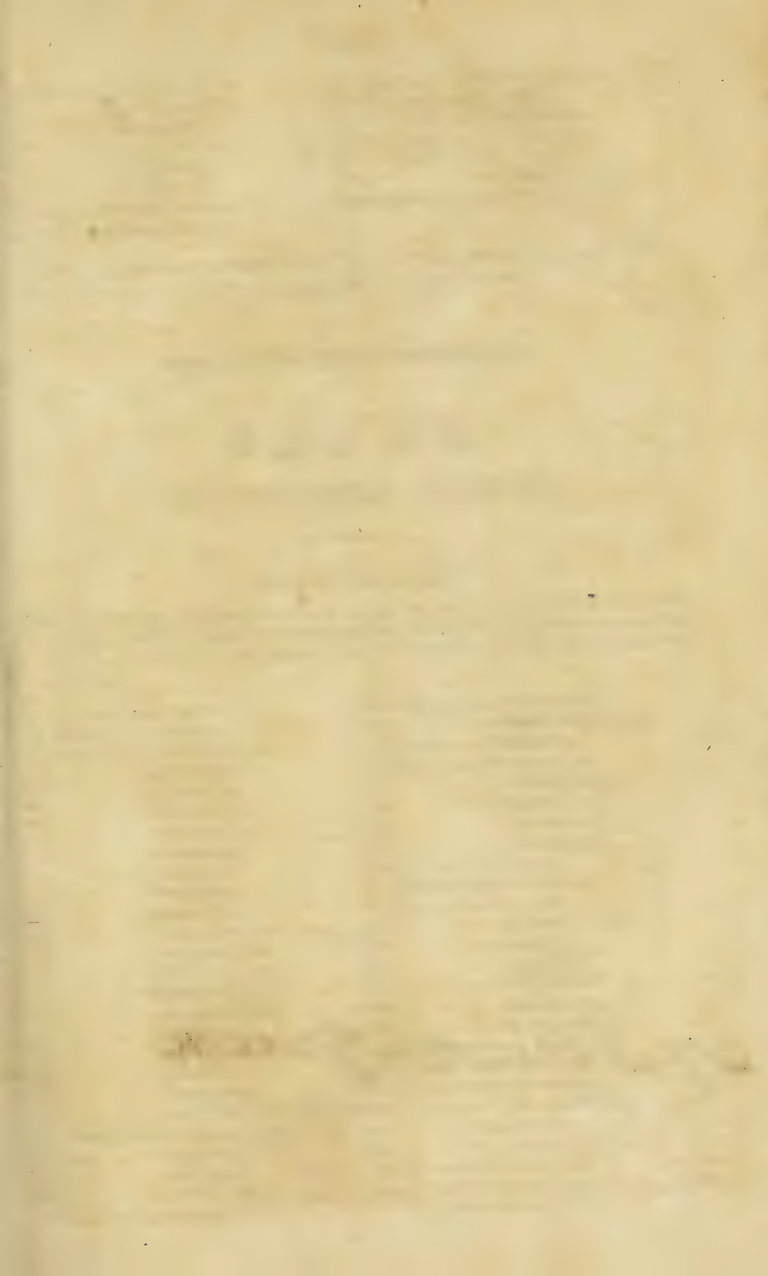
N. B. Those species to which the word *vera* is attached, have been hitherto almost invariably sent to Europe with inaccuracy, for the *Juglans sulcata*, they have been sent a variety of *J. alba* vel *squamosa*; for *Fagus ferruginea*, the *sylvatica*; for *Asclepias variegata*, a variety of *syriaca*; for *Juglans aquatica*, a variety of *Juglans amara*; for *Quercus laurifolia*, a variety of *virens*; for *Vitis rotundifolia*, *Xylosteum solonis* and *ciliatum*, and some species of *Ilex*, other species and varieties; for *Hibiscus virginicus* a variety of *palustris*; for *Baptisia alba*, the *cerulea v. alba*; for *Miegia macrosperma*, the *Arundo donax*; and, in the same manner, with many other species; and some species which are now enumerated in the European catalogues, will be found on examination not to have yet found their way to Europe.

GRASSES.

GRAMINÆ.

15 to 25 Cents each.

- | | | | |
|----|-----------------------|----|--|
| 1 | Agrostis alba | 47 | Carex virescens |
| 2 | compressa | 48 | xanthophysa |
| 3 | stricta | 49 | sp? <i>white mountains</i> , 50 cis. |
| 4 | vulgaris, &c. | 50 | Cyperus odoratus |
| 5 | Andropogon avenaceus | 51 | parviflorus |
| 6 | nutans | 52 | repens |
| 7 | scoparium, &c. | 53 | strigosus |
| 8 | Anthoxanthum odoratum | 54 | tuberosus, &c. |
| 9 | Aira melicoides | 55 | Dactylis glomerata |
| 10 | truncata, &c. | 56 | Digitaria sanguinalis |
| 11 | Bromus ciliatus | 57 | Dulichium spathaceum |
| 12 | purgans | 58 | Elymus glaucifolius |
| 13 | sp? | 59 | hystrix |
| 14 | Carex acuta | 60 | virginicus, &c. |
| 15 | ampullacea | 61 | Eriophorum angustifolium |
| 16 | anceps | 62 | polystachyon |
| 17 | bullata | 63 | virginicum, &c. |
| 18 | cespitosa | 64 | Holcus fragrans |
| 19 | curta | 65 | lanatus |
| 20 | Deweyana | 66 | Juncus acuminatus |
| 21 | disperma | 67 | bicornis |
| 22 | flava | 68 | effusus |
| 23 | flexuosa | 69 | nodosus |
| 24 | folliculata | 70 | polycephalus |
| 25 | fraseri. 50 cents | 71 | spicatus, <i>white mountains</i> ,
50 cents |
| 26 | lacustris | 72 | tenuis, &c. |
| 27 | latifolia | 73 | Leersia virginica |
| 28 | limosa | 74 | oryzoides, &c. |
| 29 | marginata | 75 | Milium amphicarpon, 1 dollar |
| 30 | mihacea | 76 | Muhlenburghia diffusa |
| 31 | multiflora | 77 | erecta, &c. |
| 32 | oligocarpa | 78 | Panicum crus galli |
| 33 | pallescens | 79 | glaucum |
| 34 | pseudocyperus | 80 | hispidum |
| 35 | retrorsa, 50 cents | 81 | latifolium |
| 36 | rosea | 82 | nitidum, &c. |
| 37 | scabrata | 83 | Paspalum ciliatifolium, &c. |
| 38 | scoparia | 84 | Phalaris arundinacea, &c. |
| 39 | stellulata | 85 | Poa canadensis |
| 40 | stipata | 86 | compressa |
| 41 | straminea | 87 | dentata |
| 42 | sylvatica | 88 | elongata, 50 cents |
| 43 | tentaculata | 89 | Rhynchospora alba, &c. |
| 44 | teretiusecula | 90 | Saccharum giganteum, &c. |
| 45 | varia | 91 | Scirpus acicularis |
| 46 | vestita | | |



4th is Winter Green

92	Scirpus americanus	100	Sparganium ramosum, &c.
93	atrovirens	101	Stipa bicolor, &c.
94	capitatus	102	Trichodium laxiflorum
95	debilis	103	Tripsacum dactaloides, &c.
96	eriphorum	104	Uniola gracilis
97	lineatus, &c.	105	spicata, &c.
98	Sorghum saccharatum	106	Zizania aquatica, &c.
99	Sparganium americanum		

N. B. A collection of *Grasses*, of more than double the number of species above enumerated, can be supplied by timely notice.

F E R N S.

CRYPTOGAMIA FILICES.

25 to 50 Cents each.

The Proprietor is determined to extend the collection of Ferns so as to comprise every American species, as no person has yet paid much attention to forming an extensive living collection of this highly interesting class.

1	Agrostichum aureum	27	Asplenium ruta muraria
2	Adiantum pedatum	28	trichomanes, &c.
3	Aspidium acrostichoides	29	Blechnum boreale
4	aculeatum	30	Botrychium dissectum
5	angustum	31	fumarioides
6	asplenoides	32	gracile
7	auriculatum	33	simplex
8	bulbiferum	34	virginicum
9	cristatum	35	Cheilanthes vestita
10	dentatum	36	Dicksonia pitosiuscula
11	exaltatum	37	Equisetum arvense
12	filix, <i>femina</i>	38	hyemale.
13	filix, <i>mascula</i>	39	palustre
14	intermedium	40	scirpoides
15	marginale	41	uliginosum
16	novaboracense	42	variegatum, <i>Tor.</i>
17	obtusum	43	Torreyanum, &c.
18	spinulosum	44	Hydroglossum palmatum
19	tenue	45	Isoetes lacustris
20	thelypteris	46	Lycopodium clavatum
21	<i>sp. ? North-Carolina</i>	47	complanatum
22	Asplenium angustifolium	48	dendroideum
23	ebeneum	49	lucidum, &c.
24	elatam	50	Onoclea obtusilobata
25	montanum	51	sensibilis
26	rhizophyllum	52	Ophioglossum bulbosum

53	<i>Ophioglossum vulgatum</i>	66	<i>Pteris atropurpurea</i>
54	<i>Osmunda cinamomea</i>	67	caudata
55	interrupta	68	elegans
56	regalis	69	gracilis
57	spectabilis	70	hastata
58	<i>Polypodium aureum</i>	71	pedata
59	calcareum	72	plumieri, &c.
60	connectile	73	<i>Schizæa pusilla</i>
61	hexagonopterum	74	<i>Scolopendrium officinarum</i>
62	hyperboreum	75	<i>Woodsia hyperborea</i>
63	vulgare, &c.	76	ilvensis
64	<i>sp.? West Indies</i>	77	<i>Woodwardia onocleoides</i>
65	<i>Pteris aquilina</i>	78	virginica, &c.

Musci, Algæ, and Fungi, of many species.

SOUTH AMERICAN AND WEST INDIA TREES, SHRUBS, AND PLANTS.

	Each. \$ cts.		Each. \$ cts.
1		22	<i>Amaryllis psittacina</i>
2		23	reginæ
3		24	reticulata
4		25	rutila
5		26	solandrifolia
6		27	striatifolia
7		28	tubispatha
8		29	vitata, 6 dols. } per dozen } 50
9		30	<i>Anacardium occidentale</i>
10		31	<i>Aristolelia macqui</i>
11		32	<i>Artocarpus nucifera</i> , &c.
12		33	<i>Angræcum maculatum</i>
13		34	<i>Begonia argyrostigma</i>
14		35	hirsuta
15		36	odorata, &c.
16		37	<i>Bignonia æquinoctialis</i>
17		38	purpurea
18		39	stans, &c.
19		40	<i>Bixa orellana</i>
20		41	<i>Bletia florida</i>
21		42	verecunda, &c.
		43	<i>Bromelia ananas</i>
		44	karatas,
		45	pinguin, &c.





	Each. \$ cts.		Each. \$ cts.
154 <i>Myrtus dumosa</i>	2 00	193 <i>Passiflora picta</i>	1 00
155 <i>pimenta</i>	5 00	194 <i>picturata</i>	1 00
156 <i>Oncidium uncinatum</i>	1 00	195 <i>punctata</i>	75
157 <i>Oxalis fruticosa</i> ?	1 00	196 <i>quadrangularis</i>	50
158 <i>rosea, &c.</i>	50	197 <i>racemosa</i>	60
159 <i>Pancreatium caribæum</i>	1 00	198 <i>rubra</i>	75
160 <i>fragrans</i>	2 00	199 <i>serrata</i>	75
161 <i>littorale</i>	1 00	200 <i>serratifolia</i>	50
162 <i>speciosum, &c.</i>	2 00	201 <i>tuberosa</i>	50
163 <i>Parkinsonia aculeata</i>	75	202 <i>tuberosa</i>	75
164 <i>Passiflora adiantifolia</i>	75	203 <i>vespertilio</i>	1 00
165 <i>alata</i>	75	204 <i>Physalis edulis</i>	75
166 <i>alba</i>	1 00	205 <i>Pitcairnia, sp. ? Brazil</i>	2 00
167 <i>albida</i>	75	206 <i>Plumeria alba</i>	2 00
168 <i>angulata</i>	1 00	207 <i>rubra</i>	3 00
169 <i>angustifolia</i>	75	208 <i>Poinciana pulcherrima</i>	75
170 <i>cærulea</i>	40	209 <i>v. lutea</i>	75
171 <i>ciliata</i>	75	210 <i>Portlandia grandiflora</i>	
172 <i>cupræa</i>	75	211 <i>Prunus barbadensis</i> ?	2 00
173 <i>discolor</i>	75	212 <i>Panicum nana</i>	75
174 <i>edulis</i>	60	213 <i>Rhexia, sp. ? Brazil</i>	75
175 <i>fetida</i>	75	214 <i>Richardsonia laurifolia</i>	5 00
176 <i>filamentosa</i>	75	215 <i>Rivina lævis</i>	50
177 <i>glauca</i>	75	216 <i>Rontodeletia americana</i>	1 00
178 <i>heterophylla</i>	75	217 <i>Ruellia formosa</i>	40
179 <i>hirsuta</i>	75	218 <i>Sapindus saponaria</i>	1 00
180 <i>holosericea</i>	75	219 <i>Schinus terebinthinus</i>	1 00
181 <i>laurifolia</i>	60	220 <i>Solanum, sp. ? S. America</i>	2 00
182 <i>ligularis</i>	1 00	221 <i>Swietenia mahagoni</i>	5 00
183 <i>lunata</i>	60	222 <i>Tamarindus occidenta-</i>	
184 <i>maculata</i>	1 00	<i>lis, H. B.</i>	} 75
185 <i>maliformis</i>	75	223 <i>Tillandsia, sp. ? Brazil</i>	2 00
186 <i>mucronata</i>	75	224 <i>Tradescantia discolor</i>	75
187 <i>multiflora</i>	75	225 <i>Trevirania coccinea</i>	50
188 <i>murucuya</i>	60	226 <i>Triumphetta grandiflora</i>	1 00
189 <i>normalis</i>	75	227 <i>Xylophylla latifolia</i>	1 00
190 <i>pallida</i>	75		
191 <i>pedata</i>	75	228 <i>Genus? air plant, Ca-</i>	
192 <i>peltata</i>	75	<i>raccas</i>	} 2 00



AMERICAN FRUIT TREES.

APPLES. *Pommiers. Pyrus malus. 37 Cents each.*

TABLE FRUIT.

C denotes those which have proved good for Cider also.

P ——— those which are also proper for preserving or cooking.

1 Yellow harvest	<i>ripe in July.</i>	70 Red winter sweeting	r. Nov. to Mar.
2 Sine qua non, <i>very fine</i>	do	71 Yellow bellflower	do
4 Red Juneating	do	73 Vandervere, P	do
7 American summer queen	Aug.	74 Dickskill	do
11 Marygold	do	75 Swaar	do
12 Red and green sweeting, <i>weighs a lb.</i>	Aug. & Sept.	76 Craam	do
20 Maiden's blush P	Sept.	77 Pomme gris, <i>grey apple of Canada</i>	do
22 Rambo, or <i>Romanite</i> , P	Sept. & Oct.	78 Wood's greening	do
27 Fall pippin, <i>weighs a lb.</i>	Nov.	81 Winter queening, <i>of Ohio</i>	do
28 Corlies' sweeting, C	Sept. to Dec.	82 Lady's finger	Nov. to April.
29 Large white sweeting	do	84 Rhode-Island greening, <i>weighs a lb.</i>	do
33 American nonpareil, <i>doctor apple</i>	Oct. & Nov.	85 Jersey greening	Nov. to June.
34 Monstrous bellflower	do	87 Priestley, P	Dec. to April.
36 Catline, <i>of Maryland</i> , C	Oct. to Jan.	88 Moore's sweeting	Dec. to June.
37 Michael Henry pippin	D. to Feb.	89 Green everlasting	do
38 Newtown Spitzenburgh	O. to Jan.	90 Red everlasting	do
40 Monstrous pippin, <i>or apple, or New-York gloria mundi, has weighed 27 to 35 oz.</i>	P do	91 Boston russeting, <i>Roxbury russeting</i>	do
41 Newark king	do	N. B. <i>These four last apples have been preserved sound above a year</i>	
42 Morgan	Oct. to Feb.	92 Green Newtown pippin, C	do
43 American wine, C P	do	93 Yellow Newtown pippin, C P	do
44 Cumberland spice	Nov. to Feb.	94 Carthouse, or <i>Gilpin</i> , C	Jan. to May
45 Bullock's pippin, or <i>sheep nose</i> , C P	do	95 Redling	do
46 Pennock's winter	do	96 Tewksbury blush	Jan. to July.
49 Long-Island russet	Nov. to Mar.	97 Newark yellow, or <i>French pippin</i>	Nov. to Jan.
51 Federal pearmain	do	98 Shippen's russeting	do
54 Winter sweet pearmain	do	99 Roman stem	Dec. to Feb.
56 Belden, or <i>red cheek</i>	do	100 Buck's county, or <i>Salisbury cider</i> , C	do
57 Fameuse, or <i>de niege</i>	do	101 American pippin, C	Jan. to Ap.
58 Red Baldwin pippin	do	102 Chandler	do
59 Red jellyflower	do	147 Canada reinette	do
61 Bourassa	do	152 American violet	do
62 Surprise, <i>yellow outside, and red to the core within</i>	do	157 Grand sachem	do
64 Seek-no-farther	do	175 Early sweet redstreak	Aug.
67 Æsopus Spitzenburgh, <i>thought by many inferior to none</i>	do		
68 Flushing Spitzenburgh	do		

176 Scales large summer redstreak	} <i>r.</i> in Aug	195 American black	<i>r.</i> Dec. to Feb.
178 Trenton early redstreak		Sept.	196 Coate's red winter
179 Large spiced crab, P		197 Aunt's large red	do
180 Cathead	Oct. & Nov	198 Orange	do
181 Pumpkin sweeting		199 Mansfield large red	Jan. to Ap.
182 Taylor's, or Freehold red- streak		200 Long green pippin	do
183 Carroll's striped		201 Warren	do
184 Barnes' fancy		202 Lob	do
185 Sweet and sour		203 Vout	do
186 New-England seek- no-farther	} Nov. to Jan.	204 Ninepartner's little russet, <i>will</i> <i>keep above a year</i>	
187 Brownite		do	205 Poughkeepsie russeting
188 White doctor		206 Porter's favourite	
189 Red sweet pippin		209 East-Jersey redstreak	
190 American quince	<i>r.</i> Nov. to Jan.	210 Maryland grey redstreak	
191 Golden lady	Dec. to Feb	211 Dutchess county redstreak	
192 Woolman's long pippin		212 Virginia redstreak	
193 Dumpling		213 Belt's Berton crab	
194 Monmouth large green		214 Williams' favourite	
		215 Fall sopswine	

CIDER APPLES.

T denotes those that are good table fruit also.

P ——— those that are best for preserving.

107 Hughes' Virgi- nia crab	} <i>r.</i> Oct. & Nov.	114 Campfield, or Newark sweeting, <i>ripe from Oct. to Jan.</i>	
108 Gloucester white, of Virgi- nia, T		do	116 Cooper's russet- ing, T P
111 Roane's white crab	Oct. to Jan.	117 Harrison's Newark	do

APPLES for Preserves or Ornament.

169 Prince's new double flowering, <i>with small green fruit, 1 dol.</i>		167 Prince's new double flowering, <i>with yellow fruit, 1 dol.</i>	
163 American green crab		168 Prince's new double flowering, <i>with large green fruit, 1 dol.</i>	
164 Fort Mage	do. 1 dol.		

PEARS. *Poiriers. Pyrus communis. 37 Cents each.*

7 Sugartop, or harvest	<i>r.</i> July	59 Prince's late virgalieu	<i>r.</i> Oct.
27 Peach pear	Sept.	61 Rushmore's bon chretien	do
40 Prince's sugar		63 Boston epargne	do
41 ——— early virgalieu		68 Newtown virgalieu	Nov. to Jan.
46 Rockland	Oct. to Dec.	72 Prince's St. Germain	Nov. to Feb.
47 Buffum's		88 Flushing grey russet	Dec. to Jan.
48 Washington	Sept. & Oct	194 Bartlet	
50 Pope's scarlet major		204 Somerindyke	
51 Pope's Quaker			

193 is noted by me
was not Amⁿ in another
Catge

185—Oct

206—Sep



CHERRIES. *Cerices. Prunus cerasus.* 50 Cents each.

3 Richmond, or } early Kentish } r. in May & June.	32 Yellow honey ripe in May & June.
9 American heart, or large white heart	38 Elkhorn do
12 China heart	39 Remington white heart July & Aug.
23 American amber	40 Forman's late July
23 Prince's duke	44 Plumstone morello do
	54 Norton's encysted, curious do
	77 Downer's favourite do

PLUMS. *Pruniers. Prunus domestica.* 50 Cents each.

† denotes those of large size.
‡ ——— those of superior flavour.
P ——— those for preserves.

[2 †† American cherry, <i>myrobalan, or cerise</i>	ripe in July.	29 ‡ White gage	ripe in Aug.
3 Red chicasaw	do	31 †† Smith's Orleans	do
4 Yellow do.	do	32 †† Huling's superb, weighs near 4 oz. 1 dol.	Sept.
5 Early purple	Aug.	34 ‡ American yellow gage	do
6 American red, P	do	56 Peter's large yellow	Aug. & Sept.
7 Ditto yellow, P	do	58 Lewistown egg	Sept.
9 Wetherill's sweet	do	39 ‡ Huling's fine blue	Aug.
12 ‡ Burlington red	do	40 Elfrey	do
16 †† Cooper's large	do	41 Tomlinson's Charlotte	do
23 †† Washington, or Bolmer, weighs near 4 oz. 1 dol.	do	45 Miller's Spanish	Sept.
24 †† Prince's gage, new, very large, 1 dol.	do	52 ‡ Yellow honey, new, 1 dol.	Aug.
27 ‡ Red gage	do	53 Prince's blue primordian, earliest of all, 1 dol.	July.

PEACHES. *Pêchers. Amygdalus persica.* 57 Cents each.

‡ denotes those of superior flavour.
† ——— those of remarkable size.
M ——— those which are melting.
C ——— clingstones or paves.

2 ‡ Yellow nutmeg	ripe in July.	12 Early white, C	ripe in Aug.
3 ‡ Red nutmeg	do	13 Jacques' new yellow rare-ripe, M	do
4 ‡ White nutmeg	do	14 New white rare-ripe, M	do
6 ‡ Sweet water, or large American nutmeg, M	Aug.	15 Lemon freestone	do
7 ‡ Red rare-ripe	do	17 Freestone heath, M	do
8 ‡ White rare-ripe	do	18 Gold and purple, C	do
9 Yellow rare-ripe, M	do	25 Morris red rare-ripe	Sept.
11 Early red, C	do	26 Ditto white ditto	do

27 Oldmixon freestone	ripe in Sept.	71 Freestone winter	r. Sept. & Oct.
28 Oldmixon, C		do 85 Haine's' early red	
33 Cut-leaved, or serrated		do 86 Coate's early yellow	
34 †† Columbia		do 87 Diana, C	
35 Washington, C		do 88 Taylor's large yellow freestone	
36 †† Red pine apple, C		do 89 Late freestone heath	
37 †† Kennedy's Carolina, early lemon, C		90 Large yellow freestone	
39 †† Red cheek mélécoton, M		do 91 Latest yellow freestone	
42 † Orange peach, M		do 92 Nagle's favourite	
44 † President		do 93 Elizabethtown fine	
45 † Congress, C		do 94 Mammoth	
48 White blossom		do 95 Yellow pine apple	
52 Western Newington, C		do 96 New natural	
53 White pine apple		do 97 Nonpareil, very large	
54 Hyslops, C		do 98 Late red freestone	
59 † Large red October, C	Oct.	do 99 Rodman's late yellow	
60 Long red, C		100 Rodman's red, C	
66 Sargent's rareripe, M	Aug	do 101 Favourite red freestone	
67 Late red ditto, M	Sept.	102 Binney's red, C	
68 Kenrick's heath		do 103 Cole's red	
70 Heath, C very su- perior,	Oct. & Nov.	do 104 Red Catharine	

In enumerating the foregoing fruits I have only included those of acknowledged merit, and in addition thereto there are various American varieties of Apricots, Nectarines, Raspberries, Strawberries, Persimmons, Papaws, Blackberries, Cranberries, Whortleberries, Walnuts, Chesnuts, Hazlenuts, Grapes, &c. &c. &c.



A D D E N D E.

- | | |
|--|--|
| 1 Aspidium dilatatum, (<i>Cryptogamia</i>) | 7 Osmunda interrupta, (<i>Cryptogamia</i>) |
| 2 Carex sylvatica, (<i>Graminæ</i>) | 8 Poa elongata, <i>Tor.</i> |
| 3 *Cassia tora | 9 *Rhexia purpurea |
| 4 Elephantopus tomentosus | 10 Viola erenata |
| 5 Gerardia setacea | 11 Zizadenus glaberrimus |
| 6 Graminæ, 3 species ? from Illinois | |

Exotic seed
Peonies of about
a dozen

Timothy seed

Red Clover

Onion

Kidney Beans



