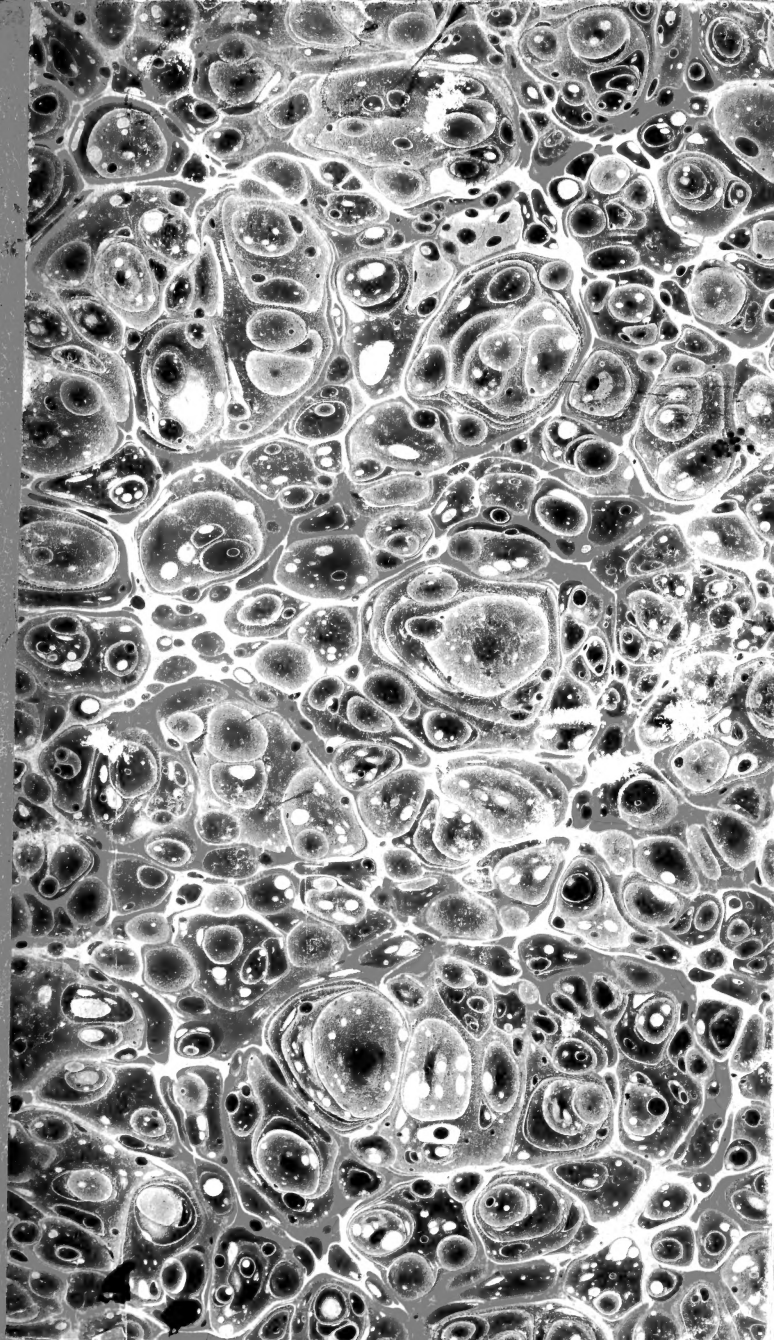


Historic, archived document

Do not assume content reflects current scientific knowledge, policies, or practices.

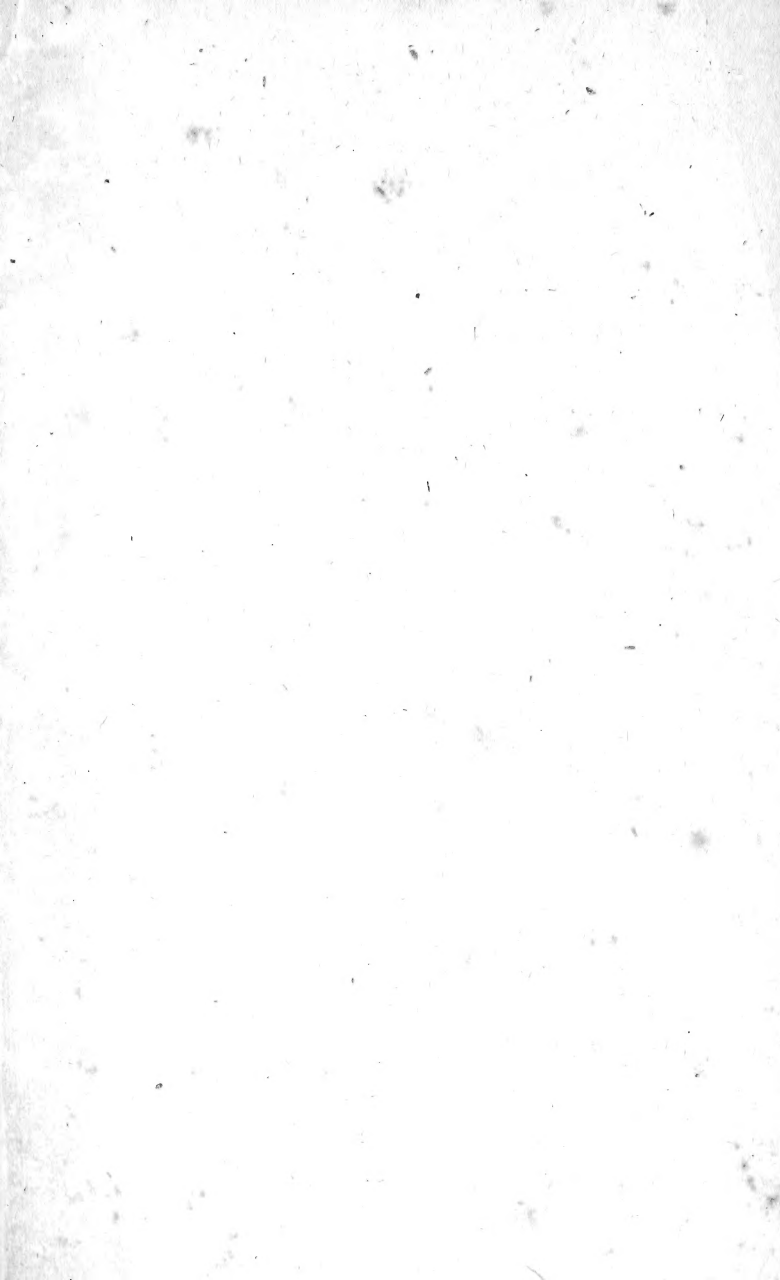














1827.

WHOLESALE
CATALOGUE

OF


AMERICAN TREES, SHRUBS,
PLANTS, AND SEEDS,

CULTIVATED AND FOR SALE AT THE

LINNEAN BOTANIC GARDEN AND NURSERIES,
NEAR NEW-YORK.

WILLIAM PRINCE, *Proprietor*,

C. M. of the Linnæan Society of Paris, of the Horticultural
Society of London, and of the Imperial Society of the
Georgofili at Florence, &c. &c.

 *The Botanic Names generally are according to Pursh's Flora of
North-America, and others to Michaux, Nuttall, Torrey,
Elliott, Hortus Britannicus, &c.*

TWENTY-FOURTH EDITION.

Library, U. S. Department of Agriculture,

Washington, D. C.

NEW-YORK:

PRINTED BY T. AND J. SWORDS,

No. 127 Broadway, corner of Cedar-street, first door
north of the City Hotel.

1827.

N. B. Distinct Catalogues and Publications relative to this Establishment may be obtained of the different Agents, or by application to the Proprietor, as follow.

The four first mentioned being distributed *gratis*.

No. 1. Fruit and Hardy Ornamental Trees, Shrubs, and Plants.

No. 2. Bulbous and Tuberos rooted Plants.

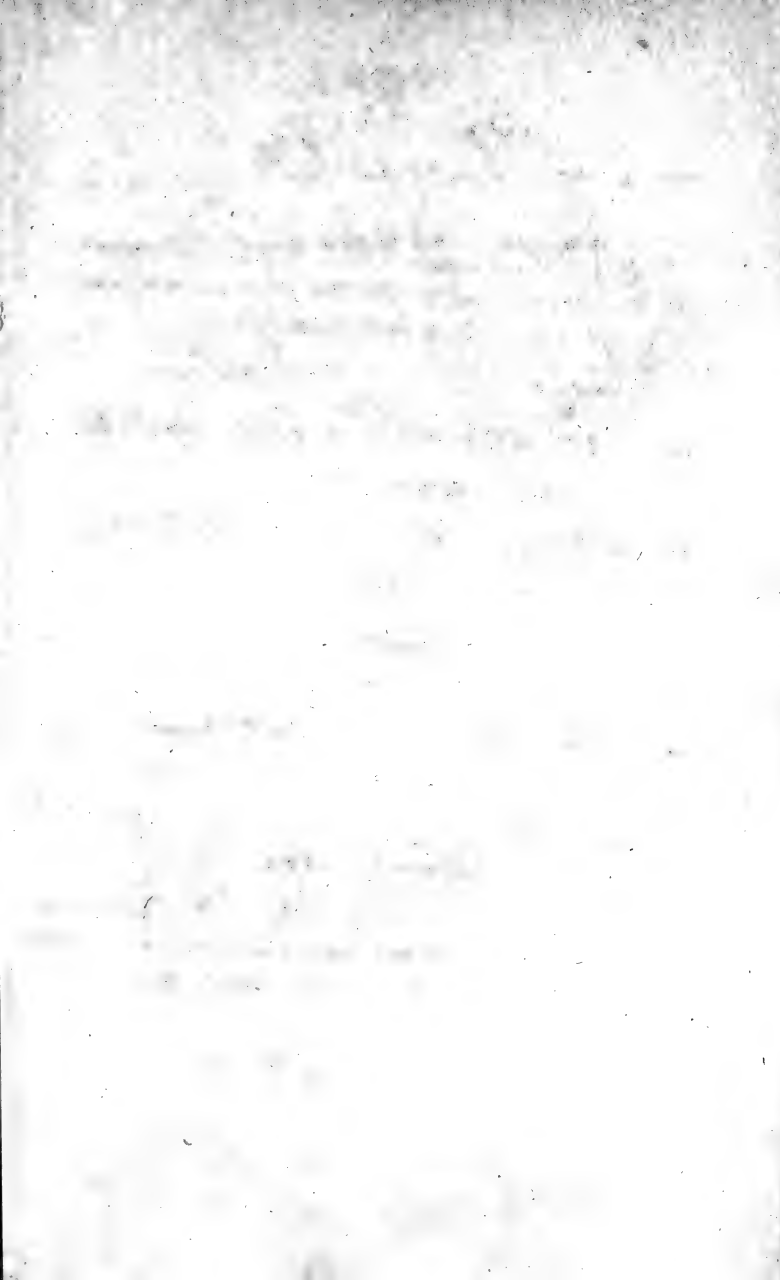
No. 3. Green-House Trees, Shrubs, and Plants.

No. 4. American Indigenous Trees, Shrubs, and Plants.

No. 5. A Short Treatise on the Culture of Trees and Plants generally. *Price 50 cents.*

Nos. 1, 3, and 4, ready for delivery. Nos. 2 and 5 in the press, and will be published speedily.

Mr. Prince expects also to be shortly able to announce the publication of the first part of his work on American Horticulture, which will be issued in four parts.





AGENTS IN EUROPE,

Of whom Catalogues may be obtained, and who will forward orders to the Proprietor.

Thomas Aspinwall, Esq., American Consul, London. James Maury, Esq., American Consul, Liverpool. David Walker, Esq., American Consul, Glasgow. Thomas Wilson, Esq., American Consul, Dublin. Isaac Cox Barnet, Esq., American Consul, Paris. Professor Bosc, Jardin du Roi, Paris. Messrs. Eyries, frères, Havre. Joshua Dodge, Esq., American Consul, Marseilles.		Messrs. William Hesses & Goetze, Hamburg. John Cuthbert, Esq., American Consul, Hamburg. John W. Parker, Esq., American Consul, Amsterdam. Abraham P. Gibson, Esq., American Consul, St. Petersburg. George Moore, Esq., American Consul, Trieste. Alexander Burton, Esq., American Consul, Cadiz. Israel P. Hutchinson, Esq., American Consul, Lisbon.
--	--	---

At other places the Consuls of the United States will forward any communications for the Proprietor.



ABBREVIATIONS AND REFERENCES.

- Ph.*—Pursh's Flora Americæ Septentrionalis.
- Nut.*—Nuttall's Genera of American Plants, &c.
- Tor.*—Torrey's Flora of the Northern and Middle States.
- Big.*—Bigelow's Flora Bostoniensis, &c.
- Ell.*—Elliott's Flora of South-Carolina and Georgia.
- Le Conte.*—In various publications.
- H. B.*—Sweet's Hortus Britannicus.
- Geo.*—Georgia.
- Mex.*—Mexico.

- * denotes Annuals.
- § ——— Dollars.
- Cts. — Cents.
- Dol. — Dollar.
- Dols. — Dollars.





we have ^{new} *Seculus*
purpura new *Swif*
beautiful - who from ³,
about 15 fms and 2 of own
Apr 1830 ^{Comer says}
probably from *Peru*

A French citron is
nearly an *Amngt*
at 32 make an
Amngt which
is ^{at} twice as much
as a French bushel
or *Amngt* -

1629 not got

NORTH AMERICAN INDIGENOUS TREES AND SHRUBS.

	Plants. Each.	S E E D S.			
		\$ cts.	lb. \$ cts.	Quart. \$ cts.	Bushef. \$ cts.
1 Acer rubrum, 15 dols. per 100		20	2 00		
2 saccharinum, 15 dols. per 100		20		50	10 00
3 negundo, 15 dols. per 100		25		50	8 00
4 <i>v. femina</i>		50			
5 <i>v. crispa</i>		50			
6 nigrum		50	2 50		
7 striatum		25	2 00		
8 coccineum		25	2 25		
9 montanum		25	2 50		
10 dasycarpum		25	1 50		
11 barbatum, <i>vera</i>	1	00			12 00
12 Esculus flava		25	25		
13 pavia		25	25		
14 macrostachya		25	25		
15 pallida	1	00			
16 discolor	1	00			
17 glabra	1	00			
18 Alnus serrulata		25	1 25		
19 glauca		25	2 00		
20 glutinosa		25	1 75		
21 canadense		25	2 00		
22 autumnale		37			
23 cordata		75			
24 crispa		25	1 75		
25 Amorpha fruticosa		25	2 00		
26 <i>v. angustifolia</i>		50			
27 emarginata		50			
28 canescens		50			
29 microphylla	5	00			
30 pubescens		50			
31 scabra					
32 Amyrsine buxifolia		25			
33 Andromeda acuminata	1	00			
34 angustifolia		50			

	Plants. Each.	S E E D S.		
		lb.	Quart.	Bushel.
	\$ cts.	\$ cts.	\$ cts.	\$ cts.
35 <i>Andromeda arborea</i>	1	00		
36 <i>axillaris</i>		50		
37 <i>v. longifolia</i>				
38 <i>calyculata</i>		25		
39 <i>v. ventricosa</i>		50		
40 <i>v. latifolia</i>				
41 <i>v. nana</i>				
42 <i>canescens</i>	1	50		
43 <i>cassinifolia</i>		50		
44 <i>catesbæi</i>		50		
45 <i>ferruginea, vera</i>	2	00		
46 <i>floribunda, vera</i>	5	00		
47 <i>frondosa</i>		50		
48 <i>glaucophylla</i>		50		
49 <i>hypnoides, white mountains</i>	3	00		
50 <i>ligustrina</i>				
51 <i>mariana</i>		25	4	00
52 <i>nitida, vel coriacea</i>	1	00		
53 <i>paniculata</i>		25	3	75
54 <i>pilulifera</i>	1	50		
55 <i>polifolia</i>		50		
56 <i>v. angustifolia</i>		50		
57 <i>pulverulenta</i>		50		
58 <i>racemosa</i>		25	4	00
59 <i>rigida</i>				
60 <i>speciosa</i>		75		
61 <i>v. glauca</i>				
62 <i>spinulosa</i>	1	00		
63 <i>Anona cherimolia</i>	1	50		
64 <i>guanabaucis</i>	1	50		
65 <i>muricata</i>	1	50		
66 <i>palustris</i>	1	50		
67 <i>sp. ? Rinyon</i>	1	50		
68 <i>squamosa</i>	1	50		
69 <i>Apios frutescens</i>		25		
70 <i>Aralia spinosa</i>		15	50	
71 <i>hispida</i>	1	00		
72 <i>Arbutus uva ursi</i>		50		
73 <i>alpina</i>	1	00		
74 <i>Aristolochia siphon</i>		35		
75 <i>arkansa</i>				
76 <i>tomentosa</i>		50		
77 <i>sp. ? Brazil</i>	1	00		
78 <i>sp. ? Mexico</i>	2	00		
79 <i>Artemesia chinensis</i>		50		
80 <i>Asclepias matelca, Nut.</i>	1	00		
81 <i>curassavica</i>		50		
82 <i>v. alba</i>		75		
83 <i>Aseyrum hypericifolium</i>		25		
84 <i>amplexicaule</i>		50		
85 <i>crux andræe</i>		25		
86 <i>pumilum</i>	2	00		
87 <i>Atragene americana</i>	1	00		
88 <i>Atriplex halimus</i>		50		
89 <i>Azalea arborescens</i>	1	00		

76 vel pubescens

77 proved do

82 hypericoides

Baum says our *Az.*
peryclemenoides is
undiflora rosea of Linn.

	Plants. Each.	S E E D lb. Quart.	S. Bushel.
	\$ cts.	\$ cts.	\$ cts.
90 Azalea aurantia	1 00		
91 v. humilis	1 00		
92 v. major	1 00		
93 bicolor	1 00		
94 calendulacea	1 00		
95 v. crocea	1 00		
96 v. chrysoletra			
97 v. cuprea	2 50		
98 v. cuprina			
99 v. flammea	1 00		
100 v. grandiflora			
101 v. ignescens			
102 v. splendens			
103 v. triumphans			
104 canescens		75	
105 coccinea		75	
106 v. crispa	1 50		
107 v. major	1 50		
108 v. praecox			
109 glauca		50	
110 v. glabra		50	
111 v. pleno	1 00		
112 hirta	1 50		
113 hispida	1 00		
114 lucida	1 00		
115 nitida		50	
116 nudiflora, rubra		35	
117 v. alba			
118 v. alba pleno	2 00		
119 v. alba et rubra	1 00		
120 v. blanda	1 00		
121 v. carnea		50	
122 v. caroliniana			
123 v. colorata			
124 v. crispa	1 00		
125 v. cumulata			
126 v. discolor			
127 v. fastigiata	1 00		
128 v. florida			
129 v. globosa			
130 v. incana	1 00		
131 v. incarnata	1 00		
132 v. mirabilis			
133 v. montana			
134 v. pallida			
135 v. paludosa			
136 v. papilionacea	1 00		
137 v. purpurascens			
138 v. purpurea	1 00		
139 v. purp-pleno			
140 v. rosea			
141 v. ruberrima	2 00		
142 v. rubicunda			
143 v. rubra		75	
144 v. rufa	1 00		

	Plants. Each.	S E E D S		
		lb. S cts.	Quart. S cts.	Bushel. S cts.
145 <i>Azalea v. rutilans</i>		75		
146 <i>v. serotina</i>		75		
147 <i>v. staminea</i>	1	00		
148 <i>v. stellata</i>				
149 <i>v. tricolor</i>	5	00		
150 <i>v. variabilis</i>		75		
151 <i>v. variegata</i>		75		
152 <i>procumbens, white mountains</i>	2	00		
153 <i>scabra</i>		75		
154 <i>v. floribunda</i>		75		
155 <i>v. humilis</i>	1	00		
156 <i>tomentosa</i>				
157 <i>verticillata</i>	1	00		
158 <i>villosa</i>	1	00		
159 <i>viscosa, alba</i>		35		
160 <i>v. crispata</i>		75		
161 <i>v. dealbata</i>		75		
162 <i>v. odora-viole</i>				
163 <i>v. pennicellata</i>				
164 <i>v. praeox</i>		75		
165 <i>v. pubescens</i>	1	50		
166 <i>v. rubrescens</i>	1	00		
167 <i>v. variegata</i>	1	00		
168 <i>v. vittata</i>	1	00		
169 <i>versicolor</i>	1	00		
170 <i>v. cecurghii</i>				
171 <i>v. grandiflora</i>				
172 <i>v. magnifica</i>				
173 <i>v. papilionacea</i>				
174 <i>Baccharis halimifolia</i>		25		
175 <i>ivaeifolia</i>	1	00		
176 <i>angustifolia</i>	1	00		
177 <i>glomeruliflora</i>	2	00		
178 <i>Befaria hirsuta</i>	2	00		
179 <i>Berberis canadensis</i>		20	40	
180 <i>aquifolium, Ph.</i>	20	00		
181 <i>caroliniensis, sp. nova, Nut.</i>	1	00		
182 <i>pinnata</i>				
183 <i>Betula lenta</i>	15		60	4 50
184 <i>populifolia</i>	20		50	4 50
185 <i>papyracea</i>	50	1	00	4 50
186 <i>excelsa</i>	50		75	4 50
187 <i>nigra vel rubra</i>	50	1	75	
188 <i>pumila</i>	50			
189 <i>nana</i>	50			
190 <i>glandulosa</i>				
191 <i>Bignonia crucigera</i>	50			
192 <i>capreolata</i>	50			
193 <i>radicans coccinea</i>	25	6	00	
194 <i>flammea</i>	50			
195 <i>jasminifolia, Mexico, H. B.</i>	2	00		
196 <i>Borya ligustrina</i>	1	00		
197 <i>acuminata</i>		75		
198 <i>porulosa</i>				
199 <i>Bouvardia triphylla</i>		75		

Betula 1854-186 to slow
pp. Bushel

near *Salicanthus* /
Dark leaves

Get Hackberry Nashville
— Resembles Honey Locust
Nashville

Get
Caprifolium bracteosum
Hogg

	Plants.	S E E D S.		
	Each.	lb.	Quart.	Bushel.
	\$ cts.	\$ cts.	\$ cts.	\$ cts.
200 <i>Bourvardia v. pubescens, H. B.</i>	1	00		
201 <i>Buddlea globosa</i>		75		
202 <i>Bumelia lycioides</i>		75		
203 <i>chrysophylloides</i>	1	00		
204 <i>lanuginosa</i>				
205 <i>reclinata</i>				
206 <i>Buphthalmuin frutescens</i>		50		
207 <i>angustifolium</i>				
208 <i>Cactus fragile</i>	1	00		
209 <i>Longi</i>	1	50		
210 <i>missouriense</i>	1	00		
211 <i>opuntia</i>		50		
212 <i>pes Corvi</i>	1	00		
213 <i>polyacanthos</i>	1	00		
214 <i>pusillus</i>	1	00		
215 <i>viviparus, Ph.</i>	1	50		
216 <i>sp. ? Arkansa</i>	1	50		
217 <i>sp. ? Georgia</i>	2	00		
218 <i>Callicarpa americana</i>		50		
219 <i>Calycanthus floridus</i>		25		
220 <i>glaucus</i>		50		
221 <i>laevigatus</i>		50		
222 <i>pensylvanicus</i>		75		
223 <i>Caprifolium sempervirens</i>		25		
224 <i>v. minor</i>		50		
225 <i>parviflorum, vel bracteosum</i>		37		
226 <i>v. fulvum</i>		75		
227 <i>Fraseri</i>		50		
228 <i>pubescens</i>	1	00		
229 <i>chamæcerasa</i>		50		
230 <i>gratum</i>		50		
231 <i>sp. ? nova</i>	5	00		
232 <i>Carpinus americana</i>		25		50
233 <i>Cassia occidentalis</i>		75		
234 <i>sp. ? Mexico</i>	1	50		
235 <i>Castanea americana, 15 dols. per 100</i>		20		25
236 <i>pumila</i>		30		50
238 <i>v. Princei, fructo major</i>		50		
239 <i>Catalpa syringifolia, 15 dols. per 100</i>		20	3 00	
240 <i>Ceanothus americanus</i>		25	1 00	
241 <i>microphyllus</i>	1	50		
242 <i>perennis</i>	1	00		
243 <i>sp. ? Carolina</i>	1	00		
244 <i>Celastrus scandens</i>		25		50
245 <i>bullatus</i>				
246 <i>Celtis occidentalis</i>		25		50 1 00
247 <i>v. fol. var.</i>		50		
248 <i>crassifolia</i>	1	00		
249 <i>pumila</i>	2	00		
250 <i>Cephalanthus occidentalis</i>		25		50
251 <i>Ceratiola ericoides</i>				
252 <i>Cercis canadensis</i>		25	3 75	
253 <i>Chamærops palmetto</i>	3 dols. to	5 00		
254 <i>hystrix</i>		5 00		
255 <i>serrulata</i>		3 00		

	Plants. Each.	S	E	E	D	S.
	cts.	lb.	Quart.	cts.	cts.	Bushel.
	cts.	cts.	cts.	cts.	cts.	cts.
256 Chamærops? <i>palma regalis, Cuba</i>	0	00				
257 Chimaphila corymbosa, 10 do's. per 100		15				
258 <i>maculata, 10 dols. per 100</i>		15				
259 Cheirostemon platanoides	5	00				
260 Chionanthus montanus		25	1	00		
261 <i>maritimus</i>		50		75		
262 Chrysobalanus oblongifolius	3	00				
263 Cissus hederacea		20		75		
264 <i>ampelopsis</i>		25		75		
265 <i>stans</i>		50				
266 <i>hirsuta</i>		40				
267 Citrus pyramidalis, <i>with pyramidal</i> <i>fruit, from Brazil</i> }	3	00				
268 Clematis virginica		25			2	00
269 <i>crispa</i>		25				
270 <i>cylindrica</i>		50				
271 <i>sericea</i>		30				
272 <i>viorna</i>		50				
273 <i>hybrida</i>		37				
274 <i>triternata</i>		75				
275 <i>reticulata</i>						
276 Clethra alnifolia		25	3			
277 <i>acuminata</i>		50				
278 <i>tomentosa</i>		50				
279 <i>nana</i>						
280 <i>paniculata</i>		50				
281 <i>scabra</i>		50				
282 Cobæa scandens		50				
283 Cocos nucifera	25	00				
284 Comptonia asplenifolia		25				
285 Cornus florida, 15 dols. per 100		20		25		8 00
286 <i>sericea</i>		25		50		
287 <i>alba</i>		25				
288 <i>sanguinea</i>		25				
289 <i>v. fol. var.</i>		50				
290 <i>paniculata</i>		25				
291 <i>cercinata</i>		50				
292 <i>alternifolia</i>		25		50		
293 <i>stricta</i>		25				
294 <i>fol. var.</i>		35				
295 <i>asperifolia</i>		25				
296 <i>fastigiata</i>		50				
297 Corylus americana, 15 dols. per 100		20		25		
298 <i>rostrata</i>		25				
299 Cratægus coeinea		25		25		
300 <i>parvifolia</i>		25		30		
301 <i>crus galli</i>		25		25		
302 <i>v. splendens</i>		37				
303 <i>v. pyracanthifolia</i>		37				
304 <i>apifolia</i>		75				
305 <i>elliptica</i>		30				
306 <i>cordata</i>		50				
307 <i>flava</i>		30				
308 <i>glandulosa</i>		30				
309 <i>punctata</i>		50				

Cuff Chionanthus

Go. G. of Chionanthus Forman

Dendrobium Speciosum
Caracas

Lily of the Oak, fr
Mexico

272 - Seeds price 1/3

(See G. & Catz for
new trees & plants
- natives



	Plants.	S E E D S.			
	Each.	lb.	Quart.	Bushe.	
	\$ cts.	\$ cts.	\$ cts.	\$ cts.	
310 <i>Cratægus pyrifolia</i>	25	25			
311 <i>fissa</i>	60				
312 <i>linearis</i>	60				
313 <i>pannifolia</i>					
314 <i>populifolia</i>	25				
315 <i>salicifolia</i>	35				
316 <i>sanguinea</i>	75				
317 <i>spathulata</i>	50				
318 <i>virginica</i>					
319 <i>viridis</i>					
320 <i>Crescentia cucurbitana, Mexico</i>	5 00				
321 <i>Croton maritimum</i>	3 00				
322 <i>Cupressus disticha, 15 dols. per 100</i>	25	50	50	14 00	
323 <i>v. nutans</i>	50				
324 <i>v. nigra</i>	50				
325 <i>thyoides</i>	50		50		
326 <i>Cyrilla caroliniana</i>	75				
327 <i>Decumaria sarmentosa</i>	50				
328 <i>barbara</i>	50				
329 <i>Diervilla lutea</i>	25				
330 <i>Diospyros virginiana, 20 dols. per 100</i>	25	50	1 00		
331 <i>v. dulce</i>	1 00				
332 <i>pubescens</i>	1 00				
333 <i>sp. ? Texas</i>	5 00				
334 <i>Dirca palustris, 20 dols. per 100</i>	25	1 75			
335 <i>Echites difformis</i>	1 00				
336 <i>Eleagnus argentea</i>	3 00				
337 <i>Empetrum nigrum</i>	50				
338 <i>Epigæa repens</i>	25				
339 <i>Euonymus americanus, 12 dols. per 100</i>	15		1 00		
340 <i>v. sarmentosus</i>	2 00				
341 <i>atropurpureus</i>	25		1 00		
342 <i>v. fructo pallido</i>	50				
343 <i>angustifolus</i>	1 00				
344 <i>obovatus, Torrey</i>	3 00				
345 <i>Eupatorium melliflora</i>	1 00				
346 <i>sp. ? Mexico</i>	1 00				
347 <i>Euphorbia sp. ? Mexico</i>	2 00				
348 <i>Fagus ferruginea, vera</i>	50	75		16 00	
349 <i>sylvatica</i>	25	75		16 00	
350 <i>Fothergilla alnifolia</i>	30				
351 <i>latifolia</i>	75				
352 <i>major</i>					
353 <i>gardeni</i>					
354 <i>serotina</i>					
355 <i>Fraxinus acuminata</i>	25		35		
356 <i>v. latifolia</i>					
357 <i>carolina</i>	50				
358 <i>v. latifolia</i>	50				
359 <i>cinerea</i>	60				
360 <i>elliptica</i>					
361 <i>epiptera</i>	25		50		
362 <i>juglandifolia</i>	50		1 00		
363 <i>lancea</i>					
364 <i>ovata</i>					

		Plants.	S E E D . S.		
		Each.	lb.	Quart.	Bushel.
		\$ cts.	\$ cts.	\$ cts.	\$ cts.
365	Fraxinus pallida	60			
366	pannosa	60			
367	pubescens	25		75	
368	platicarpa	75			
369	quadrangulata	75			
370	Richardi				
371	sambucifolia	25		35	
372	v. <i>crispa</i>				
373	viridis	50			
374	sp. ? <i>Brazil</i>	5 00			
375	Fuchsia arborescens, <i>Mexico</i>	2 00			
376	Gardenia mexicana	3 00			
377	Gaultheria procumbens	15			
378	serphyllifolia	50			
379	Gelsemium nitidum	50			
380	Gleditschia triacanthos, 15 dols. per 100	25	75		
381	v. <i>inermis</i>	50	1 00		
382	monosperma	50			
383	Gordonia pubescens, or <i>Franklinia</i>	50	5 00		
384	lasianthus	1 00			
385	Gymnocladus canadensis	25	1 50		
386	Halesia tetraptera	25	1 50		
387	v. <i>parviflora</i>	1 00		1 00	
388	diptera	1 00			
389	Hamamelis virginica	25	2 75		
390	Hibiscus syriacus, plur. var.	25	1 00		
391	albo pleno	37			
392	striato pleno	37			
393	rubro pleno	50			
394	purpureo pleno	37			
395	ceruleo pleno	50			
396	arborescens, roseo, from <i>Mexico</i>	3 00			
397	v. <i>alba</i> , do. do.	3 00			
398	Hippophæa argentea	3 00			
399	canadensis	50			
400	Hopea tinctoria	1 50			
401	Hudsonia ericoides	50			
402	tomentosa	75			
403	Hydrangea vulgaris	15			
404	nivea	25			
405	quercifolia	40			
405	cordata				
407	Hypericum Kalmianum	25	4 00		
408	prolificum	50			
409	fasciculatum	3 00			
410	galioides	3 00			
411	densiflorum	3 00			
412	aspalathoides	3 00			
413	frondosum				
414	glaucum (<i>elegans</i>)	5 00			
415	nudiflorum				
416	rosmarinifolium	3 00			
417	sp. ? <i>Georgia</i>	3 00			
418	sp. ? <i>Carolina</i>	3 00			
419	Illicium parviflorum	1 00			



~~157~~ vel depressa

	Plants.	S E E D S.		
	Each.	lb.	Quart.	bushe ^{ts} .
	\$ cts.	\$ cts.	\$ cts.	\$ cts.
420 Illicium floridanum	1 00			
421 Hex opaca	30	75		
422 prinoides	1 00			
423 cassine vera	1 00	2 00		
424 vomitoria vera	1 00	2 00		
425 angustifolia				
426 canadensis	1 00			
427 dahoon vera	1 50			
428 laxiflora	1 00	2 00		
429 Indigofera, sp. ? Florida	1 50			
430 Itea virginica	50			
431 Iva frutescens	25	1 00		
432 Juglans nigra, 15 per dols. 100	16		15	1 50
433 cinerea, 15 dols. per 100	16		15	1 75
434 tomentosa	25		15	2 00
435 aquatica vera	1 00		50	4 00
436 amara, 20 dols. per 100	25		15	2 25
437 alba	25		15	2 50
438 porcina obcordata	25		15	2 25
439 v. ficiformis	40		50	
440 olivæformis	40		50	15 00
441 hybrida, nova	5 00			
442 sulcata, vera	1 00			
443 myristicæformis	5 00			
444 Juniperus virginica	15	20	20	4 00
445 v. humilis				
446 v. fol. var.	50			
447 sabina	40			
448 barbadensis	75			
449 bermudiana	75			
450 excelsa				
451 prostrata	50			
452 Jussieua grandiflora	2 00			
453 Kalmia latifolia	25	3 00		
454 angustifolia	25	6 00		
455 fol. var.	1 00			
456 v ovata	50			
457 hirsuta	1 00			
458 glauca	50			
459 Lagerstræmia indica, purpurea exotic	1 00			
460 var. carnea	1 00			
461 var. atrorubra	1 50			
462 v. alba	1 00			
463 Laurus sassafras	25		1 00	
464 benzoin	25	50	1 00	
465 geniculata	1 00			
466 carolinensis	50	2 00	2 00	
467 diospyros	50			
468 catesbyana				
469 mexicana?	5 00			
470 persea	2 00			
471 Ledum latifolium	50			
472 palustre	35			
473 v. decumbens	75			
474 Linnæa borealis	25			

	Plants. Each.	S E E D S.			
		lb.	Quart.	Bushel.	
	§ cts.	§ cts.	§ cts.	§ cts.	
475 <i>Ligustrum vulgare</i> <i>W</i>	15	50	50		
476 <i>v. fruct. albo</i>	35				
477 <i>v. sempervirens</i>	25				
478 <i>v. fol. var.</i>	25				
479 <i>Liquidambar styraciflua</i> , 15 dols. per 100	25		2 00		in cones 3 00
480 <i>Liriodendron tulipifera</i>	20				4 50
481 <i>v. integrifolia</i>	1 00				
482 <i>Lycium carolinianum</i>	1 00				
483 <i>boerhavianum</i>	1 50				
484 <i>Lythrum alatum</i>	50				
485 <i>Maclura aurantiaca, femina</i>	1 00				
486 <i>v. mascula</i>	1 90				
487 <i>Magnolia tripetala</i> , 12 dols. per 100	20		4 50		
488 <i>glauca, latifolia</i> , 10 dols. per 100	14	2 00			
489 <i>semipleno</i>	2 00				
490 <i>longifolia</i>	1 00				
491 <i>acuminata, vera</i> , 20 dols. per 100	30		8 00		
492 <i>auriculata</i>	1 00	7 00			
493 <i>grandiflora</i> , 50 dols. per 100	75	5 00			
494 <i>v. elliptica</i>	2 00				
495 <i>v. lanceolata</i>	2 00				
496 <i>v. obovata</i>	2 00				
497 <i>v. praeox</i>					
498 <i>v. crispa</i>	2 00				
499 <i>v. exoniensis</i>	1 50				
500 <i>v. semipleno</i>	2 00				
501 <i>v. Thompsoniana</i>	5 00				
502 <i>cordata</i>	1 00	10 00			
503 <i>macrophylla</i>	1 00				
504 <i>pyramidata</i>	3 00				
505 <i>Malva arborea, rosea?</i> <i>Mexico</i>	3 00				
506 <i>v. alba, Mexico</i>	3 00				
507 <i>Mammea americana</i>	4 00				
508 <i>Mangifera indica, exotica</i>	3 00				
509 <i>Melia azedarach, exotica</i> , 15 dols. per 100	25	1 00	1 00		
510 <i>Menispermum canadense</i>	25				
511 <i>Menziesia globularis</i>	1 00				
512 <i>caerulea</i>	1 00				
513 <i>ferruginea</i>	1 00				
514 <i>Mimosa julibrissis, exotica</i> , 25 dols. per 100	50				
515 <i>Mitchella repens</i>	25				
516 <i>Montanoa? arborescens, Mexico</i>	5 00				
517 <i>Morus rubra</i> , 15 dols per 100	20				
518 <i>pennsylvanica?</i>					
519 <i>missouriensis, sp. nova</i>	3 00				
520 <i>Mylocarium ligustrinum</i> , 100 dols. per 100	2 00				
521 <i>Myrica cerifera</i>	25				50
522 <i>caroliniensis</i>	50				
523 <i>gale</i>	25				
524 <i>v. femina</i>	30				
525 <i>pennsylvanica</i>	25				
526 <i>Myristica mexicana</i>					
527 <i>Nyssa villosa</i> , 20 dols. per 100	25				50
528 <i>biflora</i> , 25 dols. per 100	40				1 00
529 <i>candicans</i>	1 00				3 00

480 - ~~1000~~

518 ^{Real} ~~integrata~~

Raise price
of *Pinus nigra*

	Plants.	S	E	E	D	S.
	Each.	lb.	Quart.	Bushel.		
	\$ cts.	\$ cts.	¢ cts.	\$ cts.		
530 <i>Nyssa tomentosa</i>	75		3 00			
531 <i>denticulata</i>			1 00			
532 <i>Olea americana</i>	1 00		3 00			
533 <i>Ornus americana</i>	75				50	
534 <i>Ostrya virginica</i>	25				25	
535 <i>Oxycoccus macrocarpus</i>	15					
536 <i>v. fol. var.</i>	1 00					
537 <i>vulgaris</i>	15					
538 <i>erectus</i>						
539 <i>Passiflora peltata, Ph.</i>	1 00					
540 <i>Petiveria alliacia, Florida</i>	1 50					
541 <i>Philadelphus grandiflorus</i>	25					
542 <i>inodorus</i>	50					
543 <i>hirsutus (sp. nova) Nut.</i>	3 00					
544 <i>Physalis somnifera</i>	75					
545 <i>Pinckneya pubescens</i>	1 00					
546 <i>Pinus strobus</i>	25	3 00				
547 <i>palustris</i>			3 00			in cones
548 <i>rigida</i>	30	4 75		15	4 00	
549 <i>serotina</i>	50			35	8 00	
550 <i>ineps</i>	35	5 00		15	4 00	
551 <i>balsamea</i>	30	4 00				
552 <i>fraseri</i>	50	8 00				in cones
553 <i>canadensis</i>	25			50	8 00	
554 <i>nigra</i>	35			35	4 50	
555 <i>alba</i>	50			50	in cones	
556 <i>rubra</i>	35			50	8 00	
557 <i>variabilis</i>	35	5 00		15	4 50	
558 <i>tæda</i>	50			25	6 00	
559 <i>pendula</i>	25	6 00		50	in cones	
560 <i>resinosa</i>	50			25	5 00	
561 <i>banksiana</i>	2 00					
562 <i>microcarpa</i>	50	6 00		50		
563 <i>pungens</i>	5 00					
564 <i>taxifolia</i>						
565 <i>Planera aquatica</i>	1 00					
566 <i>Platanus occidentalis</i>	15		15		15	3 00
567 <i>Populus balsamifera</i>	20					
568 <i>trepida</i>	25					
569 <i>grandidentata</i>	50					
570 <i>angulata</i>	25					
571 <i>candicans</i>	30					
572 <i>lævigata</i>	30					
573 <i>heterophylla</i>	25					
574 <i>monilifera</i>	25					
575 <i>betulifolia</i>	25					
576 <i>hudsoniana</i>	35					
577 <i>nana</i>	50					
578 <i>ontariensis</i>	50					
579 <i>Porcelia triloba</i>	40		50	1 00		
580 <i>glabra</i>	40		50	1 00		
581 <i>parviflora, vera</i>	2 00					
582 <i>pygmæa</i>	2 00					
583 <i>grandiflora</i>						
584 <i>Potentilla fruticosa</i>	25					

	Plants. Each.	S E E D S.		
		lb.	Quart.	Bushel.
	\$ cts.	\$ cts.	\$ cts.	\$ cts.
585 <i>Potentilla floribunda</i>	50			
586 <i>Prinos verticillatus</i>	25	50	50	
587 glaber	40	1 00	1 00	
588 lævigatus	50	50	50	
589 ambiguus	25	75	75	
590 canadense	75			
591 lanceolatus	75			
592 prunifolius	60			
593 <i>Prunus chicasa, rubra</i>	50			
594 v. <i>fructo flava</i>	50			
595 depressa	50			
596 pubescens	50			
597 cerasifera	50			
598 serotina	50			
599 borealis	75			
600 pensylvanica	50		1 00	
601 maritima	50		1 00	
602 virginiana, 15 dols. per 100	25	50	75	10 00
603 caroliniana, 20 dols. per 100	40	75	75	16 00
604 hiemalis	50			
605 americana, <i>rubra</i> , 25 dols. per 100	50		1 00	
606 v. <i>fructo flava</i> , 25 dols. per 100	50			
607 floridana	50			
608 nigra, 25 dols. per 100	50		1 00	
609 depressa	50			
610 persicifolia	50			
611 pumila	50			
612 pygmæa	25			
613 rubra	75			
614 semperflorens	1 00			
615 sphærica	25			
616 spinosa	50			
617 v. <i>pleno</i>	75			
618 susquehanna	1 00			
619 sp. ? <i>Georgia</i>	5 00			
620 sp. ? <i>nana, Texas</i>	5 00			
621 <i>Psychotria floridana, sp. nova</i>	4 00			
622 sp. ? <i>S. America</i>	75			
623 <i>Psidium pyriferum</i>	25		1 00	
624 <i>Ptelea trifoliata</i>	2 00			
625 <i>Punica granatum, albo pl. nova var. exotic</i>	15			
626 <i>Pyrola rotundifolia</i> , 10 dols. per 100	15			
627 asarifolia	15			
628 elliptica, <i>Nut.</i>	15			
629 secunda	25		1 00	
630 <i>Pyrus melanocarpa</i>	25		1 00	
631 arbutifolia	30			
632 ovalis	25			
633 botryapium	30	2 50		
634 coronaria	37			
635 americana	50			
636 angustifolia	50			
637 sanguinea	50			
638 caroliniana	50			
639 pensylvanica	50			

Prunus mollis } J. Porter
— *penula* }

The tall growing *Mespilus*
from Lawrencepoint is very
diff from the Canada see
the one in Azalea
Fort Nagel, ^{and} Crab

Rhamnus
lanceolata
(Carrasot)

just thick names
also to 2d Sp

2d sinuosa Led

	Plants.	S E E D S.		
	Each.	lb.	Quart.	Bushel.
	\$ cts.	\$ cts.	\$ cts.	\$ cts.
640 Quercus alba, 10 dols. per 100	15		15	3 50
641 rubra, 8 dols. per 100	15		15	4 00
642 coccinea, 10 dols. per 100	20		15	4 50
643 tinctoria, 10 dols. per 100	25		15	4 50
644 prinus, 8 dols. per 100	15		12	3 50
645 montana, 15 dols. per 100	25		15	4 50
646 bicolor, 15 dols. per 100	25		20	5 00
647 chinquapin	30		50	10 00
648 banisteri, 15 dols. per 100	25		25	6 00
649 ambigua, vel borealis, 15 dols. } per 100	30		25	5 50
650 palustris, 15 dols. per 100	20		20	4 50
651 obtusiloba, 10 dols. per 100	25		50	
652 falcata, 15 per dols. 100	25		50	
653 virens, 25 dols. per 100	30		1	00
654 phellos, 15 dols. per 100	30		1	00
655 aquatica, 20 dols. per 100	50		1	16 00
656 v. heterophylla	50			
657 sericea, vera	2 00			
658 laurifolia, vera	2 00			
659 cinerea, 30 dols. per 100	50		1	00
660 catesbaei, 25 dols. per 100	50		1	15 00
661 nigra, 15 dols. per 100	25		50	10 00
662 lyrata, 20 dols. per 100	50		1	00
663 macrocarpa, 25 dols. per 100	50		1	00 20 00
664 castanea, vera	1 00			
665 triloba	50		1	00
666 maritima	50			
667 nana	50			
668 discolor, 10 dols. per 100	25		15	4 00
669 imbricaria				
670 Rhamnus alnifolius	50			
671 franguloides	50			
672 carolinianus				
673 Rhododendron maximum	50	4	00	
674 v. album	1 50			
675 catawbiense	2 00			
676 punctatum	50	4	00	
677 Rhodora canadensis	50			
678 Rhus glabrum	15		1	00
679 v. coccineum				
680 typhinum	25		1	00
681 vernix	40		2	00
682 toxicocendron	25			
683 copallinum	35		1	00
684 aromaticum, mas.	35			
685 v. femina	1 00			
686 pumilum				
687 radicans	25	1	00	1 00
688 viridiflorum				
689 Ribes floridum	20			
690 aureum, fructo nigra	30			
691 v. fructo flava	50			
692 triflorum	50			
693 oxycanthoides	30			

	Plants	S E E D S		
	Each.	lb.	Quart.	Bushel.
	\$ cts.	\$ cts.	\$ cts.	\$ cts.
694 <i>Ribes cynosbati</i>		50		
695 <i>resinosum</i>		50		
696 <i>canadense</i>		50		
697 <i>coccineum</i>				
698 <i>glandulosum</i>		50		
699 <i>lacustris</i>		40		
700 <i>prostratum</i>	1	00		
701 <i>Robinia pseudacacia</i> , 12 dols. per 100		15	2	00
702 <i>viscosa</i>		25		
703 <i>hispida</i>		25		
704 <i>arborea</i>		75		
705 <i>Rosa blanda</i>		50		
706 <i>v. semipleno</i>	1	00		
707 <i>v. pleno</i>	1	00		
708 <i>carolina</i>		25	1	00
709 <i>v. pleno</i>		75		
710 <i>orymbosa</i>		50	1	00
711 <i>fenestrata</i>		50		
712 <i>florida</i>				
713 <i>fraxinifolia</i>		50		
714 <i>v. pleno</i>	1	00		
715 <i>gambella</i>		50		
716 <i>laevigata</i>		50	2	00
717 <i>Lindleyi</i>		50		
718 <i>Longii</i>	3	00		
719 <i>lucida</i>		30		
720 <i>v. pleno</i>	1	00		
721 <i>lutescens</i>		50		
722 <i>Lyonii?</i>		50		
723 <i>missouriensis</i>	1	00		
724 <i>montezumæ</i>	4	00		
725 <i>nitida</i>		50		
726 <i>parviflora</i>		25	2	00
727 <i>v. pleno</i>		40		
728 <i>pendulina</i>		25	1	00
729 <i>v. pallida</i>		50	2	00
730 <i>v. pallida plena</i>		75		
731 <i>v. rubra plena</i>		75		
732 <i>rapa</i>		75		
733 <i>rubifolia</i>		50		
734 <i>setigera</i>		50		
735 <i>stricta</i>		50		
736 <i>suaveolens</i>		25		
737 <i>v. semiplena</i>		50		
738 <i>v. rubra plena</i>	1	00		
739 <i>v. incurvata</i>	1	00		
740 <i>v. alba plena</i>	1	50		
741 <i>v. maxima plena</i>	1	00		
742 <i>v. pumila plena</i>	1	00		
743 <i>Woodsii</i>		50		
744 <i>sp. nova, Michigan</i>	5	00		
745 <i>sp. nova, Albany</i>	3	00		
746 <i>sp. ? Virginia</i>	1	00		
<i>HYBRIDÆ</i>				
748 <i>Champneyana, pleno</i>		50		

Our Ribes oxycanthoides
must be lacustre

704 vel rosea

Ribes albinervis

— rigens

— gracile

— lacustre

Dr
Porter

I have been told of a Wh.
{ flg. *Rubus odoratus*

Rubus frondosus Dr. Porter

R. occidentalis

White Bramble

Small *Salix* Sod 71 - was
{ alive in garden

	Plants.	S E E D S.			
		Each.	lb.	Quart.	Bushel.
	\$ cts.	\$ cts.	\$ cts.	\$ cts.	
749 Rosa v. <i>simplici</i>	1	00			
750 v. <i>Noisetii</i>		50			
751 v. <i>Herbemonti</i>	2	00			
752 v. <i>Bradleyi</i>	2	00			
753 <i>indica, odorata simplici</i>	1	50			
754 Rubus <i>trivialis</i>		20			
755 <i>odoratus</i>		20			
756 <i>villosus</i>		25			
757 <i>idæus</i>		15			
758 <i>strigosus</i>		25			
759 <i>eucifolius</i>		50			
760 <i>occidentalis</i>		25			
761 <i>arcticus</i>		50			
762 <i>canadense</i>		50			
763 <i>chamæmorus</i>		50			
764 <i>flagellaris</i>		25			
765 <i>inermis</i>		25			
766 <i>novæboracensis</i>		25			
767 <i>pensylvanicus</i>		35			
768 <i>pistillatus</i>		50			
769 <i>saxatilis</i>		35			
770 <i>sp.? Georgia</i>	1	00			
771 <i>sp.? Maine.</i>		35			
772 Sabal <i>adansoni</i>	2	50			
773 Salix <i>ambigua</i>		40			
774 <i>candida</i>		50			
775 <i>conifera</i>		50			
776 <i>cordata</i>		40			
777 <i>cordifolia</i>		50			
778 <i>decipiens, fem.</i>		50			
779 <i>v. mas.</i>		50			
780 <i>discolor, fem.</i>		50			
781 <i>v. mas.</i>		75			
782 <i>falcata</i>		50			
783 <i>fuscata, fem.</i>		25			
784 <i>v. mas.</i>		50			
785 <i>glabra, sp. nova</i>	1	00			
786 <i>grisea</i>		75			
787 <i>herbacea</i>		50			
788 <i>lambertiana, fem.</i>		50			
789 <i>v. mas.</i>		50			
790 <i>longifolia</i>		50			
791 <i>lucida</i>		25			
792 <i>muhlenbergiana</i>		25			
793 <i>myricoides</i>		50			
794 <i>myrsinites</i>		75			
795 <i>nigra</i>		25			
796 <i>pedicellaris</i>		50			
797 <i>pensylvanica</i>		50			
798 <i>petiolaris</i>		40			
799 <i>recurvata</i>		50			
800 <i>repens</i>		50			
801 <i>reticulata</i>		50			
802 <i>rigida</i>		50			
803 <i>rosmarinifolia</i>		50			

	Plants. Each.	S E E D S.		
	\$ cts.	lb.	Quart.	Bushel.
	\$ cts.	\$ cts.	\$ cts.	\$ cts.
804 <i>Salix rostrata</i>	75			
805 <i>sericea</i>	50			
806 <i>tetrapla</i>	50			
807 <i>triandra, Maine</i>	50			
808 <i>tristis</i>	50			
809 <i>sp. ? nova minima, whitemountains</i>	3 00			
810 <i>sp. ? Maine</i>	75			
811 <i>sp. ? Canada</i>	75			
812 <i>Salvia mexicana, nova</i>	50			
813 <i>coccinea</i>	30			
814 <i>splendens</i>	50			
815 <i>Sambucus canadensis</i>	15			
816 <i>pubescens</i>	55			
817 <i>Sapindus saponaria, exotic</i>	1 00	2 00	2 00	
818 <i>Schinus tererebinthus</i>	1 00			
819 <i>sp. Mexico</i>	1 50			
820 <i>Schisandra coccinea</i>	50			
821 <i>Shephardia eleagnoides, Genus nova, } Missouri, Nut.</i>				
822 <i>Smilax rotundifolia</i>	20	50	50	10 00
823 <i>herbacea</i>	25			
824 <i>laurifolia</i>	1 00			
825 <i>lanceolata</i>	50			
826 <i>pseudochina</i>	50			
827 <i>aspera</i>	50			
828 <i>bona nox</i>				
829 <i>caduca</i>	25			
830 <i>glauca</i>				
831 <i>hastata</i>				
832 <i>peduncularis</i>	25			
833 <i>quadrangularis</i>				
834 <i>sassaparilla</i>	25			
835 <i>tamnoides</i>				
836 <i>sp. Georgia</i>	75			
837 <i>Solanum dulcamara</i>	15			
838 <i>v. fol. var.</i>	30			
839 <i>Sorbus americana</i>	35	75	75	
840 <i>microcarpa</i>	55			
841 <i>Spiræa opulifolia</i>	20			
842 <i>tomentosa</i>	25			
843 <i>salicifolia</i>	25			
844 <i>paniculata</i>	25			
845 <i>sorbifolia</i>	30			
846 <i>chamædrifolia</i>	50			
847 <i>hypericifolia</i>	25			
848 <i>v. fol. lutea</i>	50			
849 <i>v. rosea</i>	50			
850 <i>betulifolia</i>	50			
851 <i>corymbosa</i>	1 50			
852 <i>Staphylea trifolia</i>	25			
853 <i>Sterculea platanifolia, exotic</i>	50	2 00	2 00	
854 <i>Stuartia virginica</i>	50			
855 <i>pentagynia</i>	2 00			
856 <i>Stillingia sebifera, exotic</i>	50	2 00	2 00	
857 <i>Styrax grandifolium</i>	50			
85 <i>pulverulentum</i>	50			

The Salix (Lawrence P^d)
Carr 2^d was canescens
P^d Griseb of Pursh
a specimen P^d from
there Torrey m^k
S. eriocarpa — both
the kind at Lost & the
rostrata bear cones at
end of ~~stems~~ ~~stems~~ which
hand on in Dec^r

new
Shining *Verbena*
Florida

898 *Sp. Azalea*

	Plants. Each. \$ cts.	S E E D S. lb. \$ cts.	Quart. \$ cts.	Bushel. \$ cts.
859 <i>Styrax glabrum</i>	50			
860 <i>Symphoria racemosa</i> , 20 dols. per 100	30		50	
861 <i>glomerata</i> , 15 dols. per 100	25		50	
862 <i>glauca</i> , <i>sp. nova</i>	5 00			
863 <i>Taxus canadensis</i>	50			
864 <i>Thuja occidentalis</i>	25		50	
865 <i>orientalis</i> , <i>exotic</i>	25	4 00		
866 <i>Tilia glabra</i>	50		1 00	
867 <i>pubescens</i>	50			
868 <i>laxiflora</i>				
869 <i>heterophylla</i>				
870 <i>Ulmus americana</i>	40			
871 <i>fulva</i>	50			
872 <i>alata</i>	50			
873 <i>nemoralis</i>	50			
874 <i>Vaccinium album</i>	25			
875 <i>amœnum</i>	25			
876 <i>angustifolium</i>	1 50			
877 <i>arboresum</i>	1 00			
878 <i>buxifolium</i>	1 00			
879 <i>carolinianum</i>				
880 <i>corymbosum</i>	25	80		
881 <i>crassifolium</i>	1 00			
882 <i>diffusum</i>	1 50			
883 <i>dumosum</i>	25			
884 <i>elevatum</i>	1 00			
885 <i>erythrocarpum</i>	2 00			
886 <i>formosum</i>	1 50			
887 <i>frondosum</i>	25	1 00		
888 <i>fuscatum</i>	50			
889 <i>halleriæfolium</i>	1 50			
890 <i>latifolium</i>	75			
891 <i>ligustrinum</i>	1 00			
892 <i>myrsinitis</i>	1 00			
893 <i>nitidum</i>	1 00			
894 <i>pensylvanicum</i>				
895 <i>prunifolium</i>				
896 <i>pumilum</i>				
897 <i>resinosum</i>	25	1 00		
898 <i>speciosum</i>	1 50			
899 <i>stamineum</i>	25	1 00		
900 <i>tenellum</i>	25			
901 <i>venustum</i>				
902 <i>virgatum</i>	50			
903 <i>uliginosum</i>	50			
904 <i>vitisidæa</i> , <i>white mountains</i>	3 00			
905 <i>Viburnum prunifolium</i>	20		50	
906 <i>pyrifolium</i>	50		1 00	
907 <i>oxycoecus</i>	25		50	
908 <i>acerifolium</i>	35		50	
909 <i>pubescens</i>	50			
910 <i>nudum</i>	30		50	
911 <i>v. latifolium</i>	50			
912 <i>dentatum</i>	30		50	
913 <i>v. fol. var.</i>	50			

	Plants.	S E E D S.		
	Each.	lb.	Quart.	Bushel.
	\$ cts.	\$ cts.	\$ cts.	\$ cts.
914 Viburnum prinoides	1	00		
916 lento		30		
917 lævigatum		75		
918 lantanooides		50		
919 alnifolium		50		
920 cassinoides		50		
921 edule	1	00		
922 molle		75		
923 nitidum		75		
924 obovatum				
925 Virgilia lutea		75		
926 Viscum flavescens		50		
927 Vitis riparia, mas.		25		
928 cordifolia		37		
929 Isabellæ		37		
930 Scuppernon, albo		37		
931 v. rosea		50		
932 labrusca		37		
933 Elsingburghii		37		
934 Orwigsburghii		37		
935 Catawba		37		
936 Alexanderi		25		
937 Worthingtoni		37		
938 Elktoni		37		
939 Nortonii		37		
940 Columbia		37		
941 Lufborough		37		
942 Muncy		37		
943 rotundifolia, vera	1	00		
944 æstivalis, nigra		25		
945 v. rubra, vera		50		
946 v. alba		35		
947 v. sinuata		50		
948 v. virginica		35		
949 blandii		35		
950 Longii, sp. nova	1	50		
951 missouriensis, sp. nova	2	00		
952 sp. ? Texas	5	00		
953 sp. ? Tennessee	2	00		
954 sp. ?	2	00		
955 Verdilho		75		
956 Nigrinho		75		
957 Tinto		75		
958 Wendlandia populifolia		50		
959 Xylosteum ciliatum, vera	5	00		
960 v. album, Ph.	5	00		
961 solonis, sp. nova	5	00		
962 villosum, vera, Ph.	1	00		
963 sp. nova, white mountains	5	00		
964 Yucca gloriosa		50		
965 filamentosa, 4 dols. 50 cts. per doz.		50		
966 v. fol. var.	2	00		
967 recurvifolia	1	00		
968 angustifolia	1	50		

wine

These are celebrated
Madeira grapes.

923 *Sp. Carrs*
Shining leaves

917 x 920 *Evergreen*

A D D E N D E.

- 1 *Aspidium dilatatum*, (*Cryptogramma*)
- 2 *Carex sylvatica*, (*Gramin.*)
- 3 * *Cassia tora*
- 4 *Elephantopus tomentosus*
- 5 *Gerardia setacea*
- 6 **Gramine, 3 species?** from *Illinois*
- 7 *Osmunda interrupta*, (*Cryptogramma*)
- 8 *Poa elongata*, *Tr.*
- 9 * *Rhexia purpurea*
- 10 *Viola corymbosa*
- 11 *Zizadenus glaberrimus*

	Plants. Each. \$ cts.	S lb. cts.	E Quart. cts.	E D cts.	S Bushel. cts.
969 <i>Yucca aloifolia</i> , 5 dols. per dozen	50				
970 <i>v fol var.</i>					
971 <i>glauca</i>	1 00				
972 <i>crenulata</i>	1 50				
973 <i>tenuifolia</i>	2 00				
974 <i>Zanthorhiza apiifolia</i>	15				
975 <i>Zanthoxylum fraxineum</i>	25				
976 <i>tricarpon, vera</i>					
977 <i>Zizyphusvolubilis</i>	75				

NORTH AMERICAN

HERBACEOUS PLANTS.

	Each. \$ cts.		Each. \$ cts.
1 <i>Acacia brachyloba</i>	25	30 <i>Allium striatum</i>	30
2 <i>glandulosa</i>	25	31 <i>tricoecon</i>	40
3 <i>sp. ? Arkansa</i>	1 00	32 <i>triflorum</i>	50
4 * <i>Acalypha virginica</i>		33 <i>vineale</i>	10
5 <i>Achillea asplenifolia</i>	30	34 <i>Alstræmeria ligtu</i>	75
6 <i>millefolium</i>	12	35 <i>pelegrina</i>	75
7 <i>ptarmica</i>	12	36 <i>salsilla</i>	1 00
8 <i>v. pleno</i>	20	37 * <i>Amaranthus hypocon-</i>	
9 <i>tomentosa</i>	30	<i>driacus</i> }	
10 <i>Aconitum napellus americanum</i>	40	38 * <i>spinousus, &c.</i>	
11 <i>v. albo</i>	40	39 * <i>Amaryllis atamasco,</i>	15
12 <i>uncinatum</i>	50	13 dols. per 100 }	
13 <i>Acorus calamus</i>	12	40 <i>Amsonia angustifolia</i>	50
14 <i>Actæa alba</i>	25	41 <i>latifolia, 15 dols. }</i>	25
15 <i>rubra</i>	25	per 100 }	
16 <i>Agave americana</i>	40	42 <i>salicifolia, 25 dols. }</i>	40
17 <i>v. fol. var.</i>	50	per 100 }	
18 <i>virginica</i>	50	43 <i>Anemone dichotoma</i>	15
19 <i>Agrimonia eupatoria</i>	12	44 <i>narcissiflora</i>	30
20 <i>parviflora</i>	15	45 <i>pensylvanica</i>	12
21 <i>Alchemilla alpina</i>	30	46 <i>quinquefolia</i>	15
22 <i>Ajctris alba</i>	15	47 <i>v. purpurea</i>	20
23 <i>aurea</i>	25	48 <i>v. purp. pleno</i>	25
24 <i>Alisma parviflora</i>	15	49 <i>thaliectroides</i>	15
25 <i>trivialis, &c.</i>	15	50 <i>v pleno</i>	50
26 <i>Allium angulosum</i>	30	51 <i>virginica</i>	25
27 <i>canadense</i>	15	52 <i>Angelica atropurpurea</i>	
28 <i>cernuum</i>	8	53 <i>lucida</i>	25
29 <i>mutabile</i>	50	54 <i>triquinata</i>	25

	Each. \$ cts.		Each. \$ cts.
55 Antirrhinum linaria	12	104 Asclepias nivea	35
56 Apios tuberosa, 15 dols. } per 100 }	25	105 -obovata, <i>Ell.</i>	2 00
57 Apocynum androsæmifolium	25	106 obtusifolia	25
58 cannabinum	25	107 parviflora	
59 hypericifolium	25	108 paupercula	2 00
60 Aquilegia canadensis, 15 dols. } per 100 }	25	109 pulchra, 15 dols. } per 100 }	20
61 v. lutea	40	110 phytolaccoides	25
62 Arabis alpina	30	111 purpurascens	25
63 falcata	25	112 quadrifolia	25
64 *lyrata		113 suaveolens	2 00
65 rhomboidea	25	114 syriaca, 15 dols. } per 100 }	20
66 Aralia nudicaulis	15	115 v. nova	50
67 racemosa	15	116 tomentosa, <i>Ell.</i>	2 00
68 Arenaria laricifolia	30	117 tuberosa, 15 dols. } per 100 }	20
69 peploides	30	118 v. decumbens	25
70 squarrosa	25	119 variegata, <i>veru</i> } <i>hybrida, Mi-</i> } <i>chaux</i> }	1 00
71 Arethusa bulbosa	25	120 verticillata, 15 } dols. per 100 }	25
72 divaricata	25	121 viridiflora, <i>Ph.</i>	2 00
73 medeoloides	25	122 sp. ? <i>Florida</i>	2 00
74 ophioglossoides	25	123 sp. ? <i>Louisiana</i>	2 00
75 pendula	25	124 sp. ? <i>Georgia</i>	2 00
76 verticillata	25	125 sp. ? <i>Carolina</i>	2 00
77 *Argemone mexicana		126 sp. ? <i>Mexico</i>	
78 * albiflora		127 Aster acuminatus	35
79 Aristolochia serpentaria	15	128 æstivus	25
80 Artemesia canadensis	35	129 amplexicaulis	25
81 dracunculoides	15	130 amygdalinus	25
82 santonica	25	131 blandus	25
83 Arum atrorubens		132 carolinianus	40
84 dracontium	40	133 concolor	25
85 sagittifolium	50	134 conyzoides	25
86 triphyllum, 12 dols. } per 100 }	15	135 cordifolius	25
87 v. viridiflorum	25	136 corymbosus	15
88 virginicum	25	137 cyaneus	25
89 Arundo phragmites	50	138 diffusus	15
90 Asarum arifolium	50	139 dumosus	15
91 canadense	25	140 ericoides	25
92 virginicum	25	141 floribundus	25
93 Asclepias acuminata	25	142 foliosus	25
94 amœna, 20 dols. } per 100 }	25	143 fragile	25
95 amplexicaulis	2 00	144 gracilis	40
96 angustifolia, <i>Ell.</i>	2 00	145 grandiflorus	25
97 cinerea, <i>Ell.</i>	2 00	146 graveolens, <i>sp. nova</i>	50
98 connivens, <i>Ell.</i>	2 00	147 hyssopifolius	15
99 debilis, <i>Ph.</i>	2 00	148 inuloides, <i>Georgia</i>	1 00
100 furcata		149 junceus	25
101 incarnata, 15 dols. } per 100 }	20	150 lævis	25
102 laurifolia	1 00	151 ledifolius	25
103 longifolia, <i>vel.</i> } <i>Acerates lon-</i> } <i>gifolia</i> }	2 00	152 linariifolius	25
		153 linifolius	25

we have
Asclepias amara
we had — *pulchra alba*

Several Southern Sp. pa
Genus nearly allied to
Aster Carr's son told
me name of it

178 from Brookline

187 - P. H. A. p. 10

198 of Geampenseyl =
-varicium Nat

	Each. \$ cts.		Each. \$ cts.
154 Aster macrophyllus	15	205 Caladium v. auriculatum	1 00
155 miser	25	206 Calla palustris	50
156 multiflorus	15	207 Caltha ficaroides	35
157 mutabilis	25	208 flabellifolia	50
158 novæ angliæ	20	209 palustris	25
159 nova belgica	25	210 v. pleno	50
160 paniculosus, elegans	1 50	211 Calypso borealis	1 00
161 paniculatus	25	212 Calystegia catesbyana	
162 patens	25	213 sepium	25
163 patula	35	214 spithamea	25
164 phlegifolius	25	215 Campanula acuminata	25
165 puniceus	25	216 americana	15
166 radule	25	217 *perfoliata	
167 rigidus	25	218 rotundifolia	25
168 salicifolius	25	219 v. alba	40
169 solidagonoides	25	220 sp. nova	50
170 spectabilis	25	221 sp. nova, } white mountains }	1 00
171 squarrosus		222 Canna angustifolia	50
172 suaveolens	35	223 flaccida	50
173 tardiflorus	25	224 glauca	50
174 tenuifolius	15	225 sp. nova, gigan- } tea, Georgia }	1 50
175 tradescantiæ	25	226 Cantus coronopifolia	
176 undulatus	25	227 Cardamine virginica	15
177 versicolor	15	228 *Cardiospermum halica- } cabum, seed \$3 per lb. }	
178 sp. nova, Boston, Nut.	50	229 *Cassia chamæcrista	
179 sp. ? Niagara	50	230 marylandica, 12 } dols. per 100 }	15
180 sp. ? Georgia	1 00	231 *nictitans	
181 sp. ? Georgia	1 00	232 sp. Florida	1 00
182 sp. ? S. Carolina	1 00	233 Caulophyllum thalictroides	25
183 sp. ? N. Carolina	1 00	234 *Centauria americana	
184 Astragalus canadensis	25	235 Chærophyllum claytoni	20
185 missouriensis	50	236 *procumbens	
186 Baptisia alba-vera, vel. } Podalyria } alba }	50	237 Chaptalia tomentosa	75
187 cerulea, 15 dols. } per 100 }	25	238 Chelidonium majus	15
188 v. alba	35	239 v. pleno	30
189 v. rosea	50	240 Chelone barbata	35
190 v. purpurea	50	241 campanulata	30
191 perfoliata		242 glabra	25
192 tinctoria, 20 dols. } per 100 }	25	243 lyoni	75
193 uniflora	1 00	244 obliqua	20
194 Bartsia coccinea	15	245 speciosa	50
195 Betonica sp. ? Mexico	1 00	246 *Chenopodium anthelminticum	
196 *Blitum patatum		247* ambrosoides	
197 Boltonia asteroides	50	248 Chrysoplemium oppositifolium	25
198 Bootia, Genus nova, Big.	1 00	249 Cichorium intybus	15
199 Brasenia peltata	60	250 Cicuta bulbifera	25
200 Buchnera americana	30	251 maculata	25
201 Cacalia atriplicifolia	25	252 Cimicifuga cordifolia	50
202 reniformis	25	253 fetida	50
203 suaveolens	25	254 palmata	50
204 Caladium esculentum, 5 } dols. per dozen }	75	255 serpentaria, 15 } dols. per 100 }	25

	Each. \$ cts		Each. \$ cts.
256 <i>Circaea lutetiana</i>	25	307 <i>Coreopsis verticillata</i>	25
257 <i>canadensis</i>	25	308 <i>sp. ? Carolina</i>	50
258 <i>Claytonia alsinoides</i>	35	309 <i>sp. ? Mexico</i>	
259 <i>lanceolata</i>	75	310 <i>Cornus canadensis</i>	25
260 <i>v. rubra</i>	75	311 <i>Corydalis cucullaria</i>	25
261 <i>spathulæfolia</i>	56	12 <i>formosa</i>	25
262 <i>virginica, 14 } dols. per 100</i>	15	13 <i>v. alba</i>	1 00
263 * <i>Cleome dodecandra</i>	14	14 <i>fungosa</i>	15
264 <i>Clinopodium vulgare</i>	15	15 <i>glauca</i>	25
265 <i>Clitoria mariana</i>	25	16 <i>Crinum americanum</i>	1 00
266 <i>virginica</i>	25	17 <i>v. antheræ alba</i>	1 50
267 <i>Cnicus plur. sp.</i>	15	18 <i>v. antheræ rubra</i>	2 60
268 <i>Collinsonia anisata</i>	50	19 * <i>Cucularia parviflora</i>	
269 <i>canadensis, 15 } dols. per 100</i>	25	20 <i>Cucubalus behen</i>	15
270 <i>tuberosa</i>	1 00	21 <i>stellatus</i>	25
271 <i>sp. ? Mexico</i>	1 00	22 <i>Cunila glabella</i>	50
272 <i>Conium palustre</i>	25	23 <i>glabra</i>	50
273 <i>v. fol. var.</i>	40	24 <i>mariana</i>	15
274 <i>Commelina communis</i>	25	25 * <i>Cuscuta americana</i>	
275 <i>erecta</i>	25	26 <i>Cyamus flacicomus, vel. } Nelumbium luteum</i>	1 00
276 <i>virginica</i>	25	27 <i>Cymbidium hyemale</i>	25
277 <i>sp. nova, Geo.</i>	1 50	28 <i>odontorhizon</i>	25
278 <i>Conium aracacha</i>	3 00	29 <i>pulchellum</i>	25
279 <i>Conostylis americana</i>	50	30 <i>Cynoglossum amplexicaule</i>	15
280 <i>Convallaria majalis, 10 dols. } per 100</i>	12	31 <i>officinale</i>	15
281 <i>v. pleno</i>	25	32 <i>sylvaticum</i>	25
282 <i>v. rubra</i>	25	33 <i>Cypripedium arietinum</i>	1 00
283 <i>verticillata</i>	50	34 <i>candidum</i>	1 00
284 <i>Convolvulus arvensis ame- } ricani</i>	25	35 <i>humile</i>	25
285 <i>batatas, alba</i>	25	36 <i>parviflorum</i>	50
286 <i>v. rubra</i>	25	37 <i>pubescens</i>	50
287 <i>v. flava</i>	25	38 <i>spectabile</i>	50
288 <i>panduratus</i>	50	39 <i>Dahlia superflua, 30 varieties</i>	
289 <i>v. pleno</i>	1 00	40 <i>Dalea sp. ?</i>	
290 <i>spithameus</i>	25	41 <i>Dalibarda fragaroides</i>	35
291 <i>sp. ? Florida</i>	1 00	42 <i>repens</i>	25
292 <i>Conyza bifrons</i>	30	43 * <i>Datura stramonium</i>	
293 <i>marylandica</i>	34	44 <i>atata</i>	
294 <i>pycnostachya</i>	50	45 <i>Delphinium azureum</i>	25
295 <i>Coptis trifolia</i>	25	46 <i>exaltatum</i>	50
296 <i>Coreopsis aurea</i>	25	47 <i>tricorne</i>	30
297 <i>auriculata</i>	25	48 <i>urceolatum</i>	50
298 <i>crassifolia</i>	30	49 <i>Dentaria diphylla</i>	35
299 <i>grandiflora</i>	50	50 <i>lasciniata</i>	25
300 <i>lanceolata</i>	35	51 <i>Diapensia cuneifolia, white } mountains</i>	2 00
301 <i>pinnata</i>	35	52 <i>obtusifolia, idem</i>	2 00
302 <i>procera</i>	35	53 <i>Dionæa muscipula</i>	50
303 <i>tenuifolia</i>	35	54 <i>Dioscorea sativa</i>	55
304 <i>tinctoria</i>	25	55 <i>villosa</i>	25
305 <i>trichosperma</i>	25	56 <i>Diphylleja exmosa</i>	50
306 <i>tripteris</i>	25	57 <i>Dodecatheon meadia</i>	35
		58 <i>v. alba, vera</i>	1 00
		59 <i>Donia ciliata</i>	2 00

Cypripedium pubescens
we have 2 to one
with pale straw
col bracts the
other with brown
-ish or russet col bracts

Cyp m pubescens straw
pale col bracts
brownish or russet

284 Maine Sp. Hill

We had ~~sales~~ from
Mexico

302-20th

359 Shrubby on my notes

36 four to tall for

303 Drop off from Nuttall

350 biennial

435 *rotundifolia*
(on the notes)

457 biennial grows
at Hoboken Hills

432 is the fine blue
pea blossom plant
in one of frames in
our garden near
Gonolobium or

	Each.	Each.		Each.
	§	§		§
	cts.	cts.		cts.
360 <i>Donia squarrosa</i>	50	414	<i>Eupatorium tucurifolium</i>	50
361 <i>Dracocephalum denticulatum</i>	35	415	trifoliatum	25
362 <i>variegatum</i> 1	00	416	verticillatum	35
363 <i>virginicum</i>	25	417	<i>sp. ? Louisiana</i>	50
364 <i>sp. nova</i> 1	00	418	<i>Euphorbia corollata</i>	25
365 <i>Drosera filiformis</i>	25	419	<i>*cyathophora</i>	
366 <i>longifolia</i>	25	420	<i>ipecaeanha</i>	25
367 <i>rotundifolia</i>	25	421	<i>*variegata</i>	
368 <i>Drvas octopetala</i>	40	422	<i>Ferula angustifolia, Mexico</i> 1	50
369 <i>Echium vulgare</i>	20	423	<i>villosa</i>	25
370 <i>Elephantopus carolinianus</i> 2	00	424	<i>sp. ? Mexico</i>	1 50
371 <i>Elliottia racemosa, Gen. nov.</i> 2	00	425	<i>Fragaria canadensis</i>	15
372 <i>Elodea campanulata</i>	15	426	<i>hudsonica</i>	15
373 <i>Elytraria virgata</i> — 1	00	427	<i>virginica</i>	15
374 <i>Epilobium angustifolium</i>	25	428	<i>v. maxima, Peru</i>	50
375 <i>v. album</i>	40	429	<i>Frasera walteri</i>	1 00
376 <i>coloratum</i>	25	430	<i>Fritillaria lanceolata</i>	1 00
377 <i>latifolium</i>	35	431	<i>*Fumaria officinalis</i>	
378 <i>rosmarinifolium</i>	25	432	<i>Galactia glabella</i>	50
379 <i>spicatum</i>	50	433	<i>mollis</i>	25
380 <i>Epipactis convallaroides</i>		434	<i>*Galardia bicolor</i>	
381 <i>Erigeron canadense</i>		435	<i>Galax cordifolia</i>	50
382 <i>bellidifolium</i>	15	436	<i>Galium boreale</i>	50
383 <i>graminifolium</i> 1	00	437	<i>circæsans</i>	15
384 <i>philadelphicum</i>	15	538	<i>pilosum</i>	15
385 <i>platagineum</i>	25	439	<i>tinctorium</i>	25
386 <i>purpureum</i>	30	440	<i>trifidum</i>	15
387 <i>strigosum</i>	35	441	<i>Gaura biennis</i>	15
388 <i>Eriocaulon plur. sp.</i>	35	442	<i>Gentiana alba</i>	50
389 <i>Eriogonum longifolium,</i> } <i>Arkansa</i> } 1	50	443	<i>amarelloides</i>	50
390 <i>Eryngium aquaticum</i>	50	444	<i>angustifolia</i>	50
391 <i>fœtidum</i>	25	445	<i>atesbæi</i>	50
392 <i>gracile</i> 1	50	446	<i>erinita</i>	40
393 <i>virginianum</i>	25	447	<i>ochroleuca</i>	25
394 <i>sp. nova, Geo.</i> 1	50	448	<i>pneumonanthæ</i>	50
395 <i>Erythrina herbacea</i>	50	449	<i>saponaria</i>	15
396 <i>Erythronium albidum</i> 1	00	450	<i>sp. ? Mexico</i>	1 50
397 <i>lanceolatum</i>	15	451	<i>Geranium carolinianum</i>	15
398 <i>Eupatorium ageratoides</i>	50	452	<i>maculatum</i>	15
399 <i>album</i>	25	453	<i>robertianum</i>	15
400 <i>altissimum</i>	30	454	<i>Gerardia flava</i>	25
401 <i>americanum</i>	30	455	<i>pedicularia</i>	15
402 <i>amenum</i>	25	456	<i>*purpurea</i>	
403 <i>aromaticum</i>	40	457	<i>quercifolia</i>	25
404 <i>cælestinum</i>	15	458	<i>*tenuifolia</i>	
405 <i>hyssopifolium</i>	25	459	<i>Geum agrimonoides</i>	25
406 <i>lanceolatum</i>	40	460	<i>album</i>	20
407 <i>maculatum</i>	35	461	<i>canadense</i>	25
408 <i>melissoides</i>	15	462	<i>latifolium, sp. } nova, Nut. } white moun- } tains }</i>	1 00
409 <i>perfoliatum</i>	15			
410 <i>purpureum</i>	50			
411 <i>rotundifolium</i>	30	463	<i>Peckii, white mount.</i> 1	00
412 <i>senifolium</i>	50	464	<i>rivale</i>	15
413 <i>sessilifolium</i>	25	465	<i>v. fol. var.</i>	35

	Each. \$ cts.		Each. \$ cts.
466 <i>Geum strictum</i>	25	518 <i>Helianthus scaber</i>	30
467 <i>virginianum</i>		519 <i>strumosus</i>	25
468 <i>Glaucium luteum</i>	15	520 <i>trachelifolius</i>	35
469 <i>Glechoma hederacea</i>	12	521 <i>tuberosus</i>	25
470 <i>Glycine comosa</i>	25	522 <i>sp. ? Florida</i>	1 00
471 * <i>monoica</i>		523 <i>sp. ? Georgia</i>	1 00
472 <i>tomentosa</i>	25	524 <i>Heliopsis laevis</i>	25
473 <i>v. erecta</i>	50	525 <i>Helonias angustifolia</i>	50
474 <i>Gnaphalium americanum</i>	25	526 <i>asphodeloides</i>	25
475 <i>decurrens</i>	50	527 <i>dioica, mas.</i>	25
476 <i>margaritaceum</i>	25	528 <i>v. femina</i>	25
477 <i>platagineum</i>	25	529 <i>erythrosperma</i>	50
478 <i>polycephalum</i>	40	530 <i>latifolia</i>	25
479 <i>purpureum</i>	25	531 <i>Hemerocallis fulva</i>	20
480 <i>uliginosum</i>	20	532 <i>v. fol. var.</i>	50
481 <i>sp. ? Florida</i>		533 <i>v. pleno</i>	50
482 <i>Gonolobium hirsutum</i>	30	534 <i>Hepatica americana</i>	15
483 <i>laeve</i>	30	535 <i>v. alba</i>	25
484 <i>macrophyllum</i>	50	536 <i>v. cerulea pl.</i>	50
485 <i>niger ? Mex.</i>	1 00	537 <i>v. rubra pl.</i>	50
		538 <i>Heracleum lanatum</i>	25
486 * <i>Gossypium herbaceum</i>		539 <i>Herpestris sp. nova, Geo.</i>	1 00
487 * <i>barbadense</i>		540 <i>Heteranthera acuta</i>	25
488 <i>Gratiola aurea</i>	25	541 <i>graminea</i>	25
489 <i>virginica</i>	25	542 <i>Heuchera caulescens</i>	40
490 <i>Gyrotheca tinctoria, H.</i>		543 <i>hispida</i>	30
<i>B., Dilatris tinctoria, Ph.</i>	1 00	544 <i>lucida</i>	30
491 * <i>Hedeoma pulegioides</i>		545 <i>macrophylla</i>	30
492 <i>Hedysarum canadense</i>	15	546 <i>pubescens</i>	25
493 <i>marylandicum</i>	15	547 <i>villosa</i>	40
494 <i>nudiflorum</i>	15	548 <i>viscida</i>	25
495 <i>paniculatum</i>	25	549 * <i>Hibiscus esculentus</i>	
496 <i>strictum</i>	15	550 <i>grandiflorus, 3 } dols per doz. }</i>	40
497 <i>viridiflorum</i>	15	551 <i>manihot</i>	50
498 <i>sp. ? Florida</i>	1 00	552 <i>militaris</i>	25
499 <i>Helenium autumnale</i>	15	553 <i>moscheutos</i>	25
500 <i>mexicanum, &c.</i>	1 00	554 <i>v. rubra</i>	50
501 <i>Helianthemum canadense</i>	15	555 <i>v. alba</i>	50
502 <i>carolinianum</i>	1 00	556 <i>palustris</i>	25
503 <i>ramuliflorum</i>	15	557 <i>v. rosea pallida</i>	50
504 <i>Helianthus altissimus</i>	20	558 <i>scaber, vera</i>	1 00
505 <i>angustifolius</i>	50	559 <i>speciosus, 3 dols. } per dozen }</i>	40
506 <i>atrorubens</i>	50	560 <i>virginicus, vera</i>	75
507 <i>decapetalus</i>	35	561 <i>Hieraceum gronovii</i>	35
508 <i>diffusus</i>	30	562 <i>kalmii</i>	25
509 <i>divaricatus</i>	25	563 <i>paniculatum</i>	40
510 <i>frondosus</i>	50	564 <i>venosum</i>	15
511 <i>giganteus</i>	25	565 <i>Houstonia alba, sp. no- } va, Nut. }</i>	1 00
512 <i>macrophyllus</i>	30	566 <i>cerulea</i>	15
513 <i>missouriensis</i>	35	567 <i>citriolata, Tor.</i>	1 00
514 <i>mollis</i>	30	568 <i>purpurea</i>	35
515 <i>multiflorus</i>	20	569 <i>rotundifolia</i>	1 00
516 <i>v. pleno</i>	30		
517 <i>pubescens</i>	50		

551 is *Thru* - *Phaeo*
not

Trisene celosoides is }
our sort of relation }
so says *Lloyd* & *Fauntleroy*

500 & 508 same on *A/B*
Hell *carescens* *P* *syn*

to 1058 & we chyd
#1, very fall 1830,

Miscobolina Carr
afterwards called
macrostachya &
found former to be
virga

609 I thought once I
had 2 var pale &
dark - how is it -

By both Orange &
Red Bedford, Mass
Chester City

	Each. \$ cts.		Each. \$ cts.
570 Humulus americanus	15	616 Iris v. rubro	1 00
571 Hydrastis canadensis	25	617 v. pleno	1 00
572 Hydrocotyle americana	15	618 prismatica	25
573 umbellata	15	619 tridentata, vera	50
574 vulgaris	25	620 verna	50
575 Hydrolea corymbosa	1 00	621 versicolor	15
576 quadrivalvis	1 00	622 virginica	25
577 Hydrophyllum canadense	25	623 sp. nova, Big.	1 00
578 virginicum	25	624 Ixia caelestina	2 00
579 Hypericum angulosum	50	625 Jatropha stimulosa	3 00
580 ascyroides	25	626 Jeffersonia diphylla	50
581 corymbosum		627 Justicia humilis	2 00
582 marylandicum	50	628 Kuhnia eupatoroides	25
583 mutilum	15	629 Lactuca elongata	15
584 parviflorum	15	630 Lathyrus maritimus, Big.	1 00
585 pyramidatum	50	631 myrtifolius	15
586 Hypoxis erecta	15	632 venosus	15
587 graminea		633 Lechea major	15
588 juncea	1 00	634 minor	15
589 Hyssopus nepetoides	15	635 Leontodon taraxacum	12
590 scrophularoides	15	636 Leonurus cardiaca	12
591 *Impatiens biflora		637 Lepidium virginicum	15
592 Indigofera caroliniana	2 00	638 Leptandra virginica	50
593 Inula falcata	50	639 Lespedeza angustifolia	50
594 graminea		640 capitata	15
595 helenium	15	641 polystachya	50
596 mariana	15	642 procumbens	50
597 *Ipomæa coccinea, seed 2 } dols. per lb. }		643 prostrata	75
598 dissecta		644 repens	15
599 jalapa	75	645 reticulata	75
600 *lacunosa, seed 4 } dols. per lb. }		646 sessiliflora	15
601 macrorrhiza, vel } Michauxii, 9 } 1 00		647 violacea	15
602 *nil, seed 3 dols. } per lb. }		648 sp. ? New-Jersey	75
603 *purpurea, seed 2 } dols. per lb. }		649 Liatris elegans	50
604 *v. striata su- } perba, seed 4 } dols. per lb. }		650 gracilis	75
605 *quamoclit, seed } 1 dol. per oz }		651 intermedia	1 00
606 sagittifolia, vel speciosa 3	00	652 macrostachya	35
607 sp. ? Florida		653 odoratissima	50
608 Iresine elatior	50	654 paniculata	1 00
609 Iris caelestina	25	655 pilosa	25
610 cristata	25	656 pumila	50
611 cupræa	25	657 pyenostachya	75
612 hexagona, vera	50	658 secunda	1 00
613 lacustris, sp. nova, Tor.	00	659 scariosa, 15 dols. } per 100 }	25
614 missouriensis	50	660 sphaeroidea, 25 } dols. per 100 }	35
615 v. albo	50	661 squarrosa	25
		662 tenuifolia	1 00
		663 sp. ? Tennessee	75
		664 sp. ? Carolina	1 00
		665 sp. ? Georgia	1 00
		666 Ligusticum scoticum, Maine	25
		667 Lilium canadense	15
		668 carolinianum	50

		Each. \$ cts.		Each. \$ cts.
669	<i>Lilium catesbæi</i> , 8 dols. per dozen	75	723	<i>Melananthera hastata</i> 50
670	<i>pennsylvanicum</i>	50	724	<i>Melanthium virginicum</i> 40
671	<i>philadelphicum</i>	20	725	<i>Menispermum canadense</i> 15
672	<i>superbum</i>	15	726	<i>Mentha borealis</i> 15
673	<i>umbellatum</i>	2 00	727	<i>tenuis</i> 15
674	* <i>Lindernia pyxidaria</i>		728	<i>viridis</i> 15
675	<i>Linum lewisii</i>	25	729	<i>Menyanthes americana</i> 25
676	<i>perenne</i>	25	730	<i>Micranthemum orbiculatum</i> 50
677	<i>Lithospermum officinale</i>	35	731	<i>Miegia macrosperma, vera</i> 1 00
678	<i>latifolium</i>	15	732	<i>tecta</i> 50
679	<i>virginianum</i>	25	733	<i>Mikania scandens</i> 25
680	<i>Lobelia amœna</i>	1 00	734	<i>Milleria sp. ? Mexico</i> 1 50
681	<i>cardinalis</i>	15	735	<i>Mimosa pudica</i> , seed 16 } dols. per lb. }
682	<i>claytoniana</i>	15	736	<i>sp. ? Florida</i>
683	<i>dortmanna</i>		737	<i>Mimulus alatus</i> 15
684	<i>fulgens</i>	30	738	<i>glutinosus</i> 40
685	<i>glandulosa</i>	1 00	739	<i>luteus vel guttatus</i> 25
686	<i>inflata</i>	15	740	<i>ringens</i> 15
687	<i>kalmii</i>	15	741	<i>Mitella ciliaris</i> 50
688	<i>pallida</i>	25	742	<i>cordifolia</i> 25
689	<i>siphilitica</i>	15	743	<i>diphylla</i> 25
690	<i>Lotus gracilis</i>	50	744	<i>Monarda altissima</i> 50
691	<i>Ludwigia hirsuta</i>	15	745	<i>clinopodia</i> 25
692	<i>macrocarpa</i>	15	746	<i>didyma</i> 15
693	<i>nitida</i>	15	747	<i>fistulosa</i> 25
694	<i>Lupinus nootkatensis</i>	50	748	<i>v. alba</i> 50
695	<i>perennis</i>	25	749	<i>gracilis</i> 50
696	<i>villosus</i>		750	<i>hirsuta</i> 50
697	<i>Lycopus exaltatus</i>	15	751	<i>kalmiana, vera</i> 50
698	<i>virginicus</i>	15	752	<i>mollis</i> 50
699	<i>Lychnis alpina</i>	20	753	<i>oblongata</i> 50
700	<i>Lysimachia angustifolia</i>	50	754	<i>punctata</i> 25
701	<i>capitata</i>	25	755	<i>purpurascens</i> 35
702	<i>ciliata</i>	15	756	<i>rugosa</i> 35
703	<i>heterophylla</i>	25	757	<i>Russeliana</i> 50
704	<i>hybrida</i>	15	758	<i>Monotropa uniflora, &c.</i> 15
705	<i>quadrifolia</i>	15	759	<i>Myosotis arvensis</i> 20
706	<i>racemosa</i>	15	760	<i>palustris</i> 25
707	<i>thyrsiflora</i>	35	761	<i>scorpioides</i> 25
708	<i>Lythrum salicaria</i>	25	762	<i>Narthecium americanum</i> 50
709	<i>verticillatum</i>	25	763	<i>Neottia cernua</i> 25
710	<i>virgatum</i>	30	764	<i>pubescens</i> 25
711	<i>Malaxis liliifolia</i>	30	765	<i>repens</i> 25
712	<i>longifolia</i>	30	766	<i>tortilis</i> 25
513	<i>ophioglossoides</i>	30	767	* <i>Nicandra physaloides</i>
714	* <i>Malva caroliniana</i>		768	* <i>Nicotiana paniculata</i>
715	<i>rotundifolia</i>	15	769	<i>tabacum</i>
716	<i>Marrubium vulgare</i>	15	770	<i>sp. nova</i>
717	* <i>Martynia diandra</i>		771	<i>Nuphar advena</i> 25
718	* <i>proboseidea</i>		772	<i>kalmiana</i> 50
719	<i>Maurandia semperflorens</i>	50	773	<i>lutea</i> 25
720	<i>Medeola virginica</i>	15	774	<i>Nuttalia digitata</i> 50
721	<i>Medicago lupulina</i>	12	775	<i>pedata</i> 1 00
722	<i>Melampyrum americanum</i>		776	<i>Nymphæa odorata</i> 50

Maranta arundinacea
in Florida

got *Helianthus*
tomentosus
Nuttall

got *Hypericum*
punctatum

got
Orchis, tall green is }
O. Dilata says seeds }
Leeds says
Orchis spect. & Habenaria
fimbriata proved tall green

Phlox divaricata striata

— *excelsa*

— *Corymbosa*

— *Corymbosa*

Hoops says *Solonifera* 885 is like
886 & 885 same & *repens* same
879

866 is *barrae repens*

867 & 891 same

	Each. \$ cts.		Each. \$ cts.
777 <i>Nymphæa v. rosea</i>	50	832 <i>Panax trifolium</i>	25
778 <i>Obolaria virginica</i>	25	833 <i>Pançratium angustum</i>	
779 <i>Oenothera biennis</i>	12	834 <i>caribæum</i>	1 00
780 <i>cæspitosa</i>	50	835 <i>carolinianum</i>	1 00
781 <i>cruciata</i>	35	836 <i>fluitans</i>	1 00
782 <i>fraseri</i>	25	837 <i>littorale</i>	1 50
783 <i>fruticosa</i>	20	838 <i>maritimum</i>	50
784 <i>v. fol. var.</i>	40	839 <i>mexicanum</i>	50
785 <i>glauca</i>	20	840 <i>v. altissimum</i>	1 50
786 <i>grandiflora</i>	20	841 <i>rotatum</i>	1 00
787 <i>macrocarpa</i>		842 <i>v. altissimum</i>	1 50
788 <i>pumila</i>	25	843 <i>speciosum</i>	
789 <i>rosea</i>		844 <i>sp. nova, Florida</i>	2 00
790 <i>serrulata</i>	35	845 <i>sp. fragrans, Brazil</i>	3 00
791 <i>speciosa</i>	50	846 <i>sp. nova, Georgia</i>	2 00
792 <i>*triloba</i>		847 <i>Parnassia caroliniana</i>	25
793 <i>sp. ? Florida</i>		848 <i>palustris</i>	35
794 <i>Onosmodium hispidum</i>	40	849 <i>Parthenium integrifolium</i>	1 00
795 <i>Ophiotheca floridana</i>	1 00	850 <i>Passiflora incarnata</i>	35
796 <i>Orchis bephariglottis</i>	40	851 <i>lutea</i>	35
797 <i>bifolia</i>	50	852 <i>Pedicularis canadensis</i>	40
798 <i>bracteata</i>	30	853 <i>gladiata</i>	25
799 <i>ciliaris</i>	30	854 <i>pallida</i>	50
800 <i>eristata</i>	40	855 <i>Penstemon digitalis</i>	35
801 <i>dilatata</i>	75	856 <i>lævigata</i>	50
802 <i>discolor</i>	40	857 <i>pubescens</i>	25
803 <i>fimbriata</i>	40	858 <i>Penthorum sedoides</i>	25
804 <i>flava</i>	1 00	859 <i>Phalangium quamash</i>	3 00
805 <i>fuscescens</i>	50	860 <i>Phaseolus helvolus</i>	25
806 <i>herbiola</i>	75	861 <i>perennis</i>	25
807 <i>hyperborea</i>	75	862 <i>*trilobus</i>	
808 <i>incisa</i>	50	863 <i>Phlox acuminata, vel decussata</i>	25
809 <i>lacera</i>	75	864 <i>amœna</i>	50
810 <i>macrophylla</i>	1 00	865 <i>aristata</i>	50
811 <i>obsoleta</i>	50	866 <i>canadense</i>	50
812 <i>orbiculata</i>	1 00	867 <i>carnea</i>	40
813 <i>pscodes</i>	50	868 <i>carolina</i>	40
814 <i>spectabilis</i>	30	869 <i>divaricata</i>	25
815 <i>tridentata</i>	30	870 <i>v. atrorubra</i>	1 00
816 <i>unifolia</i>	50	871 <i>v. alba</i>	1 00
817 <i>virescens</i>	40	872 <i>floridana</i>	1 00
818 <i>viridis</i>	50	873 <i>glaberrima</i>	35
819 <i>2 sp. Georgia</i>	75	874 <i>intermedia</i>	40
820 <i>Origanum vulgare</i>	15	875 <i>latifolia</i>	
821 <i>Orobanche americana</i>	50	876 <i>mutata</i>	25
822 <i>uniflora</i>	50	877 <i>mutata, fruticosa</i>	35
823 <i>Orontium aquaticum</i>	30	878 <i>nivalis</i>	40
824 <i>Oxalis acetosella</i>	35	879 <i>ovata, vel floridana</i>	25
825 <i>corniculata</i>	15	880 <i>paniculata</i>	25
826 <i>dillenii</i>	25	881 <i>v. alba</i>	50
827 <i>stricta</i>	15	882 <i>pilosa</i>	50
828 <i>tetraphylla</i>	35	883 <i>pyramidalis</i>	25
829 <i>violacea</i>	15	884 <i>setacea</i>	25
830 <i>Pachysandra procumbens</i>	50	885 <i>stolonifera</i>	25
831 <i>Panax quinquefolium</i>	35	886 <i>suaveolens</i>	25

	Each. \$ cts.		Each. \$ cts.
887 Phlox <i>v. tardiflora</i>	50	933 Potentilla norwegica	15
888 <i>v. fol. var.</i>	35	934 opaca	30
889 subulata	25	935 palustris	30
890 <i>v. alba</i>		936 pensylvanica	30
891 triflora	35	937 simplex	15
892 undulata	25	938 tridentata, &c.	25
893 virginica	50	939 Pothos fœtida	25
894 <i>sp. nova</i>	1 00	940 Prenanthes alba	25
895 Phryma leptostachya	25	941 altissima	25
896 Physalis obscura	25	942 cordata	25
897 pensylvanica	25	943 rubicunda	50
898 viscosa, &c.	25	944 serpentaria, &c.	35
899 Phytolacca decandra	20	945 Primula mistassinica	
900 Pisum maritimum, &c.	35	946 pusilla	
901 Plantago cucullata	25	947 Prunella pensylvanica	15
902 lanceolata	15	948 vulgaris	12
903 maritima	20	949 Psoralea lupinellus	5 00
904 <i>v. fol. var.</i>	50	950 melilotoides	5 00
905 virginica, &c.	15	951 <i>sp. ? Georgia, &c.</i>	5 00
906 Podophyllum peltatum	25	952 Pulmonaria virginica, &c.	40
907 Podostigma pubescens, } <i>Ell., Asclepias pedicellata, Ph.</i> } 908 viridis, <i>Ell.,</i> } <i>Asclepias viridis,</i> } <i>Pursh.</i> }	2 00	953 Pycnanthemum incanum	25
909 Polemonium reptans	25	954 linifolium	23
910 <i>v. album, &c.</i>	75	955 verticillatum, &c.	50
911 Polyanthes tuberosa, <i>pl. exotica,</i> 6 dols. per } 100 roots } 912 <i>v. fol. var.</i> } 3 dols. per } dozen }	40	956 Pyrola media	25
913 Polygala lutea	25	957 minor	25
914 rubella	25	958 uniflora, &c.	25
915 sanguinea	25	959 Ranunculus abortivus	20
916 senega, &c.	25	960 acris	15
917 Polygonatum angustifolium	15	961 <i>v. pleno</i>	20
918 latifolium	50	962 auricomus	30
919 multiflorum	15	963 bulbosus	20
920 vulgare, &c.	25	964 <i>v. pleno</i>	50
921 Polygonum coccineum	25	965 filiformis	25
922 <i>pendul.</i>	15	966 fluvialis	25
923 <i>peruvianum</i>	15	967 hirsutus	25
924 <i>parvum, &c.</i>	25	968 lingua	25
925 Pontederia angustifolia	50	969 pensylvanicus	15
926 cordata	30	970 repens	15
927 lanceolata, &c.	1 00	971 <i>v. pleno</i>	30
928 Potamogeton, <i>plur. sp.</i>	25	972 sceleratus	15
929 Potentilla argentea	30	973 <i>sp. nova</i>	50
930 canadensis	15	974 Rhexia glabella	1 00
931 confertiflora, <i>Tor.</i>	50	975 lutea	1 00
932 nivea	40	976 mariana	25
		977 virginica	25
		978 <i>3 sp. ? Georgia</i>	1 00
		979 *Ricinus communis	
		980 Rubia Brownei	2 00
		981 Rubus arcticus	35
		982 chamæmoris	40
		983 saxatilis	50
		984 Rudbeckia amplexifolia	40
		985 columnaris	35
		986 digitata	30
		987 fulgida	35

Prenanthis new Pitcher }
fr Sault St Marie }

Prenanthis *murina*
lanceolatum our
narrow Sp

Got *Prunella* Ohio

we had from Pitcher *Primula*
fr Lake Superior

Silene regia

1051- is *S. galericulata*
Muhl

	Each.		Each.
	§ cts.		§ cts.
988 <i>Rudbeckia hirta</i>	25	1041 <i>Saxifraga sibirica</i>	25
989 lasiantha	35	1042 vi giniensis	15
990 laciniata	25	1043 <i>Scheuchzeria palustris</i>	25
991 moschata	50	1044 <i>Schrankia uncinata</i>	30
992 piinnata	50	1045 <i>Scelopendrum officinalis</i>	30
993 purpurea	25	1046 <i>Scrophularia marylandica</i>	15
994 triloba	25	1047 <i>Scutellaria integrifolia</i>	15
995 <i>sp. nova, alba</i>	1	00 1048 galericulata	15
996 <i>Ruellia ciliosa</i>	1	00 1049 hyssopifolia	15
997 hybrida	1	00 1050 lateriflora	15
998 oblongifolia	1	00 1051 ovalifolia, &c.	30
999 strepens	35	1052 <i>Sedum pusillum</i>	25
1000 <i>Rumex acetosella</i>	15	1053 telephioides	35
1001 obtusifolius	25	1054 ternatum, &c.	25
1002 sanguineus	20	1055 <i>Senecio aureus</i>	15
1003 verticillatus, &c.	15	1056 hieracifolius	15
1004 <i>Sabbatia angularis</i>	15	1057 obovatus, &c.	15
1005 paniculata	50	1058 <i>Sibbaldia procumbens</i>	40
1006 stellaris	15	1059 * <i>Sida abutilon</i>	
1007 * <i>Sagina procumbens</i>		1060 dioica	25
1008 <i>Sagittaria acutifolia</i>	25	1061 mexicana	1 00
1009 heterophylla	50	1062 napæa, &c.	25
1010 latifolia	25	1063 <i>Silene pennsylvanica</i>	25
1011 sagittifolia	25	1064 virginica, &c.	
1012 <i>v. pleno</i>	1	00 1065 <i>Silphium asteriscus</i>	40
1013 <i>2 sp. ? Geo.</i>	1	50 1066 connatum	40
1014 * <i>Salicornia herbacea</i>		1067 conjugatum	35
1015 * <i>Salsola salsa</i>		1068 laciniatum	25
1016 <i>Salvia angustifolia</i>	75	1069 perfoliatum	25
1017 azurea	30	1070 squarrosum	40
1018 coccinea	30	1071 ternatum	25
1019 lyrata	25	1072 teribinthinaceum	40
1020 maculata, <i>Florida</i>	1	00 1073 trifoliatum	25
1021 <i>sp. ? Florida</i>	1	00 1074 verticillatum	40
1022 <i>Sanguinaria canadensis</i>	15	1075 <i>2 sp. ? Geo., &c.</i>	1 00
1023 <i>Sanguisorba canadensis</i>	25	1076 <i>Sison aureus</i>	35
1024 <i>Santcula marylandica</i>	15	1077 <i>Sisymbrium amphibium</i>	25
1025 <i>Saponaria officinalis</i>	15	1078 nasturtium	25
1026 <i>v. albo pleno</i>	25	1079 sophia, &c.	25
1027 <i>v. rubro pleno</i>	35	1080 <i>Sisyrinchium anceps</i>	25
1028 <i>Sarracenia flava</i>	50	1081 bermudianum	40
1029 purpurea, 25 } dols. per 100 }	30	1082 iridifolium	40
1030 <i>v. lutea</i>	1	00 1083 mucronatum	25
1031 psittacina, vel } rubra }	50	1084 Nuttallii	50
1032 variolaris	75	1085 striatum, &c.	50
1033 <i>Saururus cernuus</i>	25	1086 <i>Sium lineare</i>	25
1034 <i>Saxifraga aizoides</i>	25	1087 rigidius	25
1035 aizoon	25	1088 <i>Smilacina borealis</i>	35
1036 androsacea	25	1089 canadensis	25
1037 cæspitosa	25	1090 racemosa	25
1038 geum	35	1091 stellata	25
1039 oppositifolia	25	1092 trifolia	50
1040 pennsylvanica	15	1093 umbellata	50
		1094 <i>Smyrniun atropurpureum</i>	50
		1095 cordatum	25

	Each.		Each.
	\$ cts.		\$ cts.
1096 <i>Smyrniurn integerrimum</i>	25	1149 <i>Streptopus distortus</i>	
1097 <i>Solanum carolinense</i>	40	1150 <i>lanuginosus</i>	
1098 <i>sp. ? tubero-</i>	2	1151 <i>roseus</i>	2 00
<i>sa, Brazil</i>		1152 <i>Strophostylis angulosa</i>	75
1099 <i>sp. ? tubero-</i>	3	1153 <i>Stylosanthes elatior</i>	25
<i>sa, Texas</i>		1154 <i>hispida</i>	25
1100 <i>Solidago altissima</i>	20	1155 <i>verticillata</i>	25
1101 <i>angustifolia</i>	50	1156 <i>Talinum teretifolium</i>	1 00
1102 <i>arguta</i>	25	1157 <i>Tephrosia virginica</i>	35
1103 <i>aspera</i>	25	1158 <i>Teucrium canadense</i>	15
1104 <i>axillaris</i>	25	1159 <i>virginicum</i>	15
1105 <i>bicolor</i>	25	1160 <i>Thalia dealbata</i>	75
1106 <i>cæsia</i>	25	1161 <i>Thalictrum cornutum</i>	30
1107 <i>canadensis</i>	25	1162 <i>dioicum</i>	25
1108 <i>discolor</i>	40	1163 <i>pubescens</i>	30
1109 <i>elliptica</i>	25	1164 <i>purpurascens</i>	37
1110 <i>erecta</i>	55	1165 <i>rugosum</i>	25
1112 <i>flexicaulis</i>	25	1166 <i>sibiricum</i>	50
1113 <i>gigantea</i>	25	1167 <i>Thesium umbellatum</i>	25
1114 <i>hispida</i>	25	1168 <i>Tiarella cordifolia</i>	25
1115 <i>lævigata</i>	25	1169 <i>Tigridia pavonia, 5</i>	} 15
1116 <i>lanceolata</i>	25	<i>dols. per 100</i>	
1117 <i>lateriflora</i>	25	1170 <i>Tillandsia Bartramii</i>	1 00
1118 <i>latifolia</i>	25	1171 <i>usneoides</i>	1 00
1119 <i>mexicana</i>	25	1172 <i>sp. ?</i>	2 00
1120 <i>novaboracensis</i>	25	1173 <i>Tofieldia glaberrima</i>	1 00
1121 <i>odorata</i>	25	1174 <i>pubescens</i>	50
1122 <i>petula</i>	25	1175 <i>Tradescantia ciliata</i>	50
1123 <i>petiolaris</i>	25	1176 <i>rosea</i>	35
1124 <i>procera</i>	25	1177 <i>subaspera</i>	50
1125 <i>puberula, Nut.</i>	50	1178 <i>virginica</i>	25
1126 <i>reflexa</i>	25	1179 <i>pallida</i>	50
1127 <i>rugosa</i>	50	1180 <i>alba</i>	35
1128 <i>scabra</i>	25	1181 <i>rubra</i>	35
1129 <i>sempervirens</i>	25	1182 <i>rubra plena</i>	35
1130 <i>stricta</i>	25	1183 * <i>Trichostema dichotoma</i>	
1131 <i>virga-aurea</i>	25	1184 <i>Trientalis americana</i>	25
1132 <i>virgata</i>	25	1185 <i>Trifolium pensylvanicum</i>	20
1133 <i>ulmifolia</i>	25	1186 <i>reflexum</i>	20
1134 <i>sp. nana, white</i>	} 1	1187 <i>repens, &c.</i>	15
<i>mountains</i>		1188 <i>Trillium cernuum</i>	25
1135 <i>sp. Florida</i>	1	1189 <i>erectum</i>	25
1136 <i>Sonchus, plur. sp.</i>	20	1190 <i>album</i>	50
1137 <i>Sparganophorus verticillatus</i>	50	1191 <i>grandiflorum</i>	50
1138 <i>Spartina glabra</i>	40	1192 <i>obovatum</i>	50
1139 <i>Spigelia marylandica</i>	30	1193 <i>pendulum</i>	50
1140 <i>Spiræa aruncus</i>	15	1194 <i>pictum</i>	50
1141 <i>lobata</i>	25	1195 <i>sessile</i>	25
1142 <i>stipulacea</i>	1	1196 <i>Triosteum angustifolium</i>	1 00
1143 <i>trifoliata</i>	25	1197 <i>perfoliatum</i>	25
1144 <i>Stachys aspera</i>	25	1198 <i>Trollius laxus</i>	50
1145 <i>hispida</i>	25	1199 <i>Troximum glaucum</i>	35
1146 <i>Statice americana</i>	25	1200 <i>virginicum</i>	25
1147 <i>caroliniana</i>	15	1201 <i>Tussilago palmata</i>	75
1148 <i>Stevia alba, Mexico</i>	1	1202 <i>Typha angustifolia</i>	25

We have
Follis amer. ul.
taxus

(*Friosteum angustifolium* from
Cleghorn he says if not
angustifolium must be a
non-descript as it
cannot be *perfoliatum*
as it does not grow there

1157 *virginiana*
plenty on road from
South Kingston to Newport

1204 nettle by *Andromeda*
calyculata

We have
Crota blanda &
— *striata*

1230 pink *colpa*
glabra

omit 1271 & pink }
among trees — }

	Each. \$ cts.		Each. \$ cts.
1203 <i>Typha latifolia</i>	25	1244 <i>Viola striata superba, nova</i>	75
1204 <i>Urtica canadensis</i>	25	1245 <i>debilis</i>	20
1205 <i>dioica</i>	25	1246 <i>dentata</i>	25
1206 <i>pumila</i>	25	1247 <i>digitata</i>	50
1207 <i>Utricularia, plur. sp.</i>	25	1248 <i>hastata</i>	20
1208 <i>Uvularia flava</i>	50	1249 <i>heterophylla, Le Conte</i>	1 00
1209 <i>grandiflora</i>	30	1250 <i>lanceolata</i>	15
1210 <i>perfoliata</i>	15	1251 <i>ovata</i>	25
1211 <i>puberula</i>	50	1252 <i>palmata</i>	15
1212 <i>sessilifolia</i>	15	1253 <i>palustris, white mount.</i>	50
1213 <i>Valeriana pauciflora</i>	25	1254 <i>papilionacea</i>	25
1214 <i>Valisneria americana</i>	50	1255 <i>pedata</i>	15
1215 <i>Veratrum viride</i>	25	1256 <i>primulifolia</i>	20
1216 <i>Verbascum blattaria</i>	15	1257 <i>pubescens</i>	20
1217 <i>lychnitis, &c.</i>	25	1258 <i>rostrata</i>	50
1218 <i>Verbena aubletia</i>	20	1259 <i>rotundifolia</i>	40
1219 <i>bipinnatifida</i>	75	1260 <i>sagittata</i>	25
1220 <i>hastata</i>	15	1261 <i>selkirki</i>	75
1221 <i>v. alba</i>	25	1262 <i>septemloba, Le Conte</i>	1 00
1222 <i>urticifolia</i>	15	1263 <i>striata</i>	20
1223 <i>Verbesina coreopsis</i>	25	1264 <i>villosa, Walter</i>	1 00
1224 <i>siegesbeckia</i>	25	1265 <i>sp. ? Georgia</i>	1 00
1225 <i>virginica</i>	25	1266 <i>sp. ? Carolina</i>	1 00
1226 <i>Vernonia noveboracensis</i>	25	1267 <i>sp. ? Nova-Scotia, &c.</i>	50
1227 <i>præalta</i>	25	1268 <i>Xyris brevifolia</i>	25
1228 <i>Veronica officinalis</i>	15	1269 <i>caroliniana</i>	25
1229 <i>*peregrina</i>	25	1270 <i>fimbriata</i>	40
1230 <i>virginica</i>	25	1271 <i>Zamia integrifolia, vel pumila</i>	8 00
1231 <i>Vicia americana</i>	25	1272 <i>*Zea mays, pluribus varietus, 2 dols. per 100 ears</i>	2 00
1232 <i>cracca</i>	25	1273 <i>Zephyranthes carinata</i>	2 00
1233 <i>sativa</i>	25	1274 <i>*Zinnia multiflora</i>	
1234 <i>3 sp. ? Florida</i>	25	1275 <i>* pauciflora</i>	
1235 <i>Villarsia lacunosa</i>	25	1276 <i>* violacea</i>	
1236 <i>Viola asarifolia</i>	50	1277 <i>Genus ? volubilis tuberosus, new nondescript vine, tuberous root</i>	1 00
1237 <i>*bicolor</i>	20		
1238 <i>blanda</i>	20		
1239 <i>canadensis</i>	20		
1240 <i>canina</i>	25		
1241 <i>clandestina</i>	25		
1242 <i>concolor</i>	20		
1243 <i>cucullata, 12 dols. per 100</i>	75		

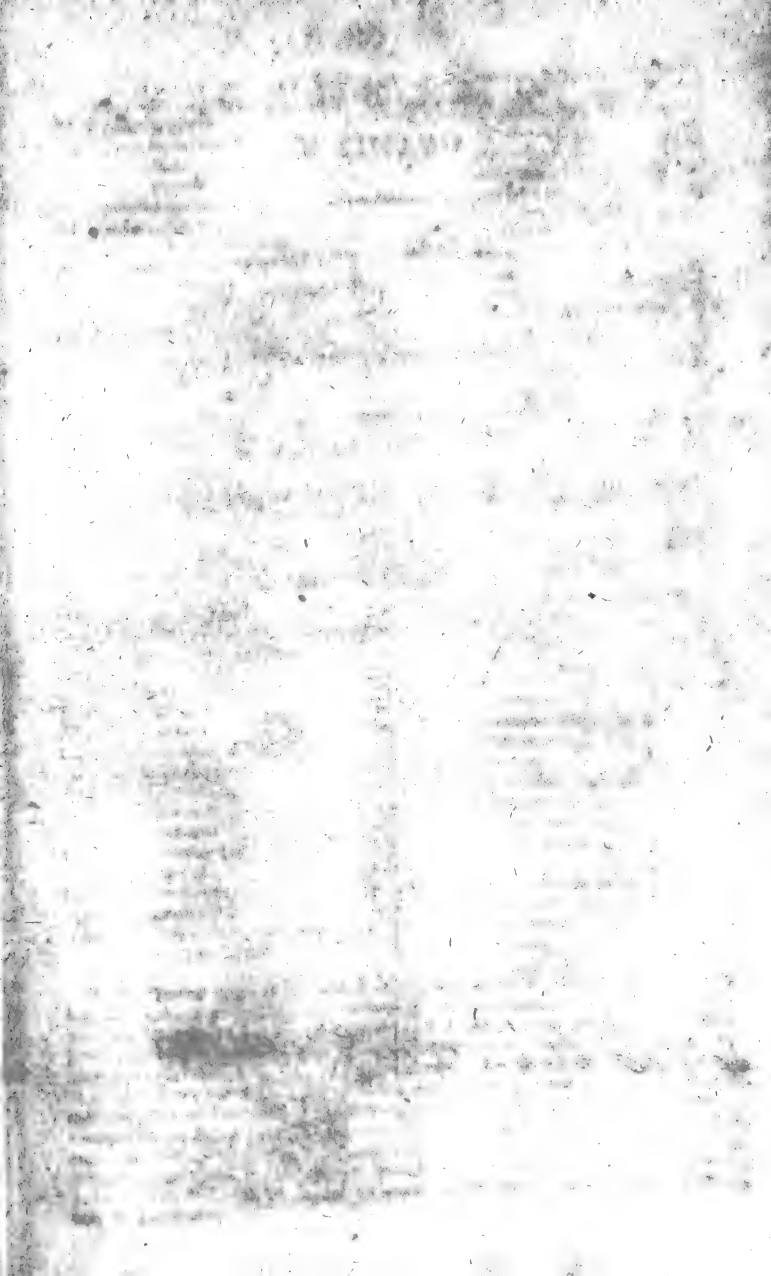
N. B. Those species to which the word *vera* is attached, have been hitherto almost invariably sent to Europe with inaccuracy, for the *Juglans sulcata*, they have been sent a variety of *J. alba* vel *squamosa*; for *Fagus ferruginea*, the *sylvatica*; for *Asclepias variegata*, a variety of *syriaca*; for *Juglans aquatica*, a variety of *Juglans amara*; for *Quercus laurifolia*, a variety of *virens*; for *Vitis rotundifolia*, *Xylosteum solonis* and *ciliatum*, and some species of *Ilex*, other species and varieties; for *Hibiscus virginicus* a variety of *palustris*; for *Baptisia alba*, the *cerulea v. alba*; for *Miegia macrosperma*, the *Arundo donax*; and, in the same manner, with many other species; and some species which are now enumerated in the European catalogues, will be found on examination not to have yet found their way to Europe.

GRASSES.

GRAMINÆ.

15 to 25 Cents each.

- | | | | |
|----|-----------------------|----|--------------------------------------|
| 1 | Agrostis alba | 47 | Carex virescens |
| 2 | compressa | 48 | xanthophysa |
| 3 | stricta | 49 | sp? <i>white mountains</i> , 50 cis. |
| 4 | vulgaris, &c. | 50 | Cyperus odoratus |
| 5 | Andropogon avenaceus | 51 | parviflorus |
| 6 | nutans | 52 | repens |
| 7 | scoparium, &c. | 53 | strigosus |
| 8 | Anthoxanthum odoratum | 54 | tuberosus, &c. |
| 9 | Aira melicoides | 55 | Dactylis glomerata |
| 10 | truncata, &c. | 56 | Digitaria sanguinalis |
| 11 | Bromus ciliatus | 57 | Dulichium spathaceum |
| 12 | purgans | 58 | Elymus glaucifolius |
| 13 | sp? | 59 | hystrix |
| 14 | Carex acuta | 60 | virginicus, &c. |
| 15 | ampullacea | 61 | Eriophorum angustifolium |
| 16 | anceps | 62 | polystachyon |
| 17 | bullata | 63 | virginicum, &c. |
| 18 | cespitosa | 64 | Holcus fragrans |
| 19 | curta | 65 | lanatus |
| 20 | Deweyana | 66 | Juncus acuminatus |
| 21 | disperma | 67 | bicornis |
| 22 | flava | 68 | effusus |
| 23 | flexuosa | 69 | nodosus |
| 24 | folliculata | 70 | polycephalus |
| 25 | fraseri 50 cents | 71 | spicatus, <i>white mountains</i> , |
| 26 | lacustris | | 50 cents |
| 27 | latifolia | 72 | tenuis, &c. |
| 28 | limosa | 73 | Leersia virginica |
| 29 | marginata | 74 | oryzoides, &c. |
| 30 | mihacea | 75 | Milium amphicarpon, 1 dollar |
| 31 | multiflora | 76 | Muhlenburghia diffusa |
| 32 | oligocarpa | 77 | erecta, &c. |
| 33 | pallescens | 78 | Panicum crus galli |
| 34 | pseudocyperus | 79 | glaucum |
| 35 | retrorsa, 50 cents | 80 | hispidum |
| 36 | rosea | 81 | latifolium |
| 37 | scabrata | 82 | nitidum, &c. |
| 38 | scoparia | 83 | Paspalum ciliatifolium, &c. |
| 39 | stellulata | 84 | Phalaris arundinacea, &c. |
| 40 | stipata | 85 | Poa canadensis |
| 41 | straminea | 86 | compressa |
| 42 | sylvatica | 87 | dentata |
| 43 | tentaculata | 88 | elongata, 50 cents |
| 44 | teretiuscula | 89 | Rhynchospora alba, &c. |
| 45 | varia | 90 | Saccharum giganteum, &c. |
| 46 | vesita | 91 | Scirpus acicularis |



47 is Winter Green

92	Scirpus americanus	100	Sparganium ramosum, &c.
93	atrovirens	101	Stipa bicolor, &c.
94	capitatus	102	Trichodium laxiflorum
95	debilis	103	Tripsacum dactaloides, &c.
96	erriophorum	104	Uniola gracilis
97	lineatus, &c.	105	spicata, &c.
98	Sorghum saccharatum	106	Zizania aquatica, &c.
99	Sparganium americanum		

N. B. A collection of *Grasses*, of more than double the number of species above enumerated, can be supplied by timely notice.

F E R N S.

CRYPTOGAMIA FILICES.

25 to 50 Cents each.

The Proprietor is determined to extend the collection of Ferns so as to comprise every American species, as no person has yet paid much attention to forming an extensive living collection of this highly interesting class.

1	Agrostichum aureum	27	Asplenium ruta muraria
2	Adiantum pedatum	28	trichomanes, &c.
3	Aspidium acrostichoides	29	Blechnum boreale
4	aculeatum	30	Botrychium dissectum
5	angustum	31	fumarioides
6	asplenoides	32	gracile
7	auriculatum	33	simplex
8	bulbiferum	34	virginicum
9	cristatum	35	Cheilanthes vestita
10	dentatum	36	Diksonia pitosiuscula
11	exaltatum	37	Equisetum arvense
12	filix, <i>femina</i>	38	hyemale
13	filix, <i>mascula</i>	39	palustre
14	intermedium	40	scirpoides
15	marginale	41	uliginosum
16	novaboracense	42	variegatum, <i>Tor.</i>
17	obtusum	43	Torreyanum, &c.
18	spinulosum	44	Hydroglossum palmatum
19	tenue	45	Isoetes lacustris
20	thelypteris	46	Lycopodium clavatum
21	<i>sp. ? North-Carolina</i>	47	complanatum
22	Asplenium angustifolium	48	dendroideum
23	ebeneum	49	inciduum, &c.
24	elatam	50	Oncoclea obtusilobata
25	montanum	51	sensibilis
26	rhizophyllum	52	Ophioglossum bulbosum

53	<i>Ophioglossum vulgatum</i>	66	<i>Pteris atropurpurea</i>
54	<i>Osmunda cinamomea</i>	67	caudata
55	interrupta	68	elegans
56	regalis	69	gracilis
57	spectabilis	70	hastata
58	<i>Polypodium aureum</i>	71	pedata
59	calcareum	72	plumieri, &c.
60	connectile	73	<i>Schizæa pusilla</i>
61	hexagonopterum	74	<i>Scolopendrium officinarum</i>
62	hyperboreum	75	<i>Woodsia hyperborea</i>
63	vulgare, &c.	76	ilvensis
64	sp.? <i>West Indies</i>	77	<i>Woodwardia onocleoides</i>
65	<i>Pteris aquilina</i>	78	virginica, &c.

Musci, Algæ, and Fungi, of many species.

SOUTH AMERICAN AND WEST INDIA TREES, SHRUBS, AND PLANTS.

	Each. \$ cts.		Each. \$ cts.
1		22	<i>Amaryllis psittacina</i>
2		23	reginæ
3		24	reticulata
4		25	rutila
5		26	solandrifolia
6		27	striatifolia
7		28	tubispatha
8		29	vitata, 6 dols. } per dozen } 50
9		30	<i>Anacardium occidentale</i>
10		31	<i>Aristolelia macqui</i>
11		32	<i>Artocarpus nucifera</i> , &c.
12	5	33	<i>Angræcum maculatum</i>
13		34	<i>Begonia argyrostigma</i>
14		35	hirsuta
15	1 00	36	odorata, &c.
16	1 75	37	<i>Bignonia æquinoctialis</i>
17	15	38	purpurea
18	40	39	stans, &c.
19		40	<i>Bixa orellana</i>
20	1 00	41	<i>Bletia florida</i>
21	50	42	verecunda, &c.
		43	<i>Bromelia ananas</i>
		44	karatas,
		45	pinguin, &c.

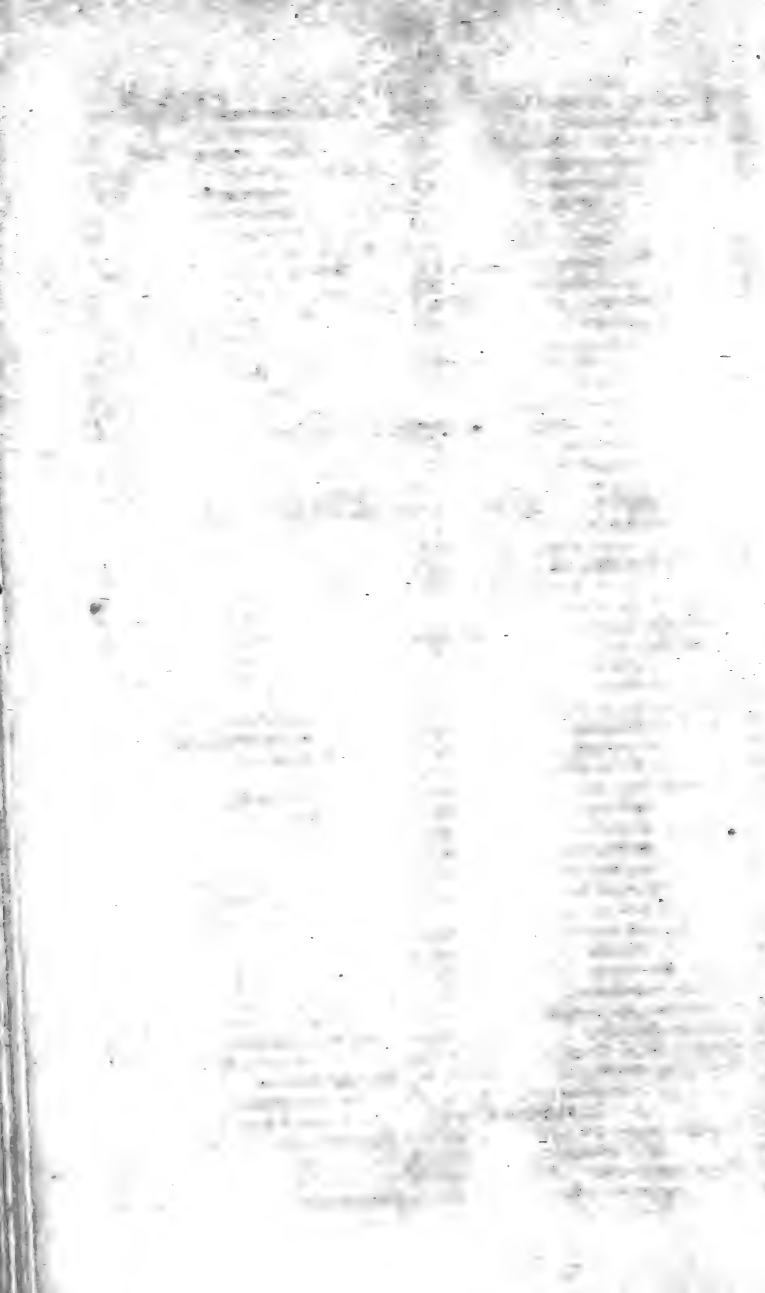
1870
1871
1872
1873
1874
1875
1876
1877
1878
1879
1880
1881
1882
1883
1884
1885
1886
1887
1888
1889
1890
1891
1892
1893
1894
1895
1896
1897
1898
1899
1900

1901
1902
1903
1904
1905
1906
1907
1908
1909
1910
1911
1912
1913
1914
1915
1916
1917
1918
1919
1920
1921
1922
1923
1924
1925
1926
1927
1928
1929
1930

1931
1932
1933
1934
1935
1936
1937
1938
1939
1940
1941
1942
1943
1944
1945
1946
1947
1948
1949
1950
1951
1952
1953
1954
1955
1956
1957
1958
1959
1960

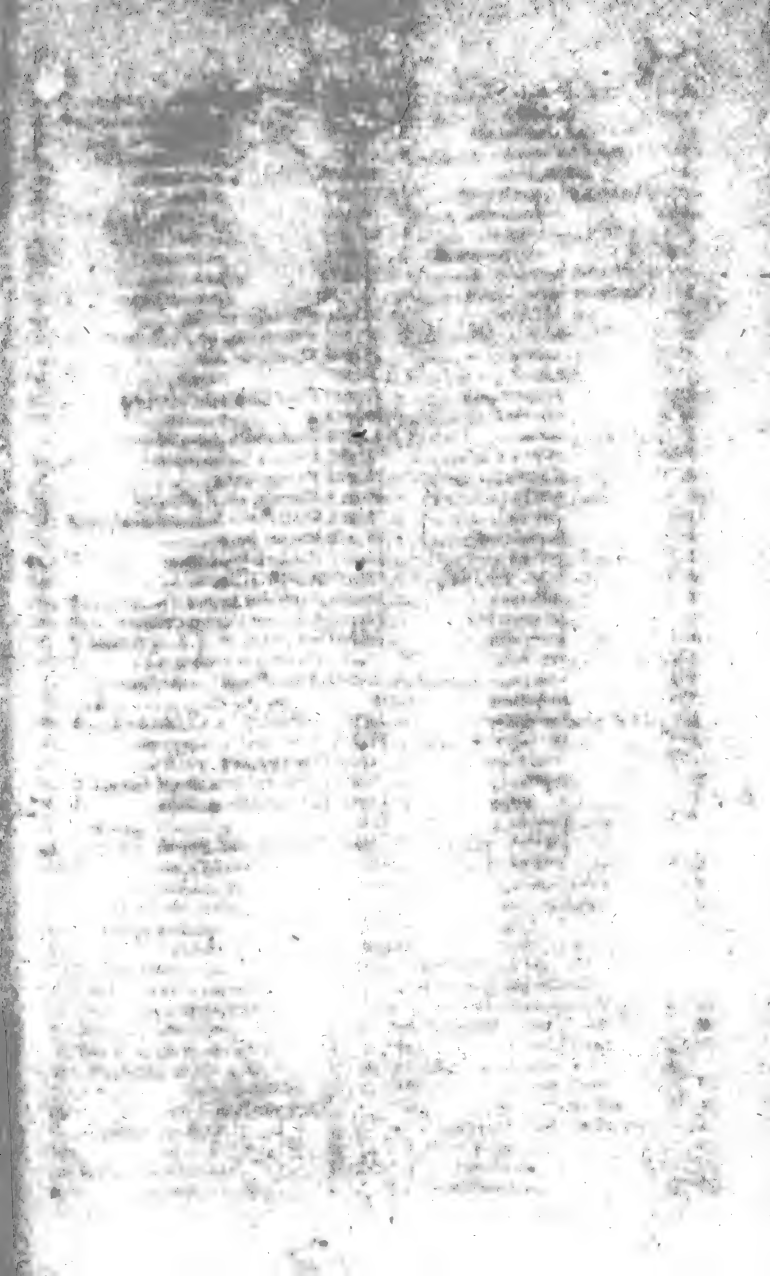
1961
1962
1963
1964
1965
1966
1967
1968
1969
1970
1971
1972
1973
1974
1975
1976
1977
1978
1979
1980
1981
1982
1983
1984
1985
1986
1987
1988
1989
1990

1991
1992
1993
1994
1995
1996
1997
1998
1999
2000
2001
2002
2003
2004
2005
2006
2007
2008
2009
2010
2011
2012
2013
2014
2015
2016
2017
2018
2019
2020



	Each.		Each.
	§ cts.		§ cts.
46 <i>Brunsfelsia americana</i>	1 00	101 <i>Fuchsia coccinea</i>	25
47 <i>Bubroma gauzuma</i>	75	102 <i>gracilis</i>	50
48 <i>Cactus braziliensis</i>	50	103 <i>macrostema</i>	75
49 <i>cochenillifer</i>	50	104 <i>Gardenia randia</i>	3 00
50 <i>cylindricus</i>	50	105 <i>rotundifolia</i>	3 00
51 <i>ficus indica</i>	50	106 <i>tetracantha, &c.</i>	3 00
52 <i>flagellaris</i>	50	107 <i>Genipa americana</i>	3 00
53 <i>grandiflorus</i>	60	108 Genus? <i>poma aurea, of</i>	} 2 00
54 <i>hexagonus</i>	75	<i>Barbadoes</i>	
55 <i>mammillaris</i>	50	109 <i>Gesneria bulbosa</i>	75
56 <i>melocactus</i>	3 00	110 <i>Gloxinia maculata</i>	50
57 <i>pereskia</i>	50	111 <i>speciosa, &c.</i>	50
58 <i>phyllanthus</i>	75	112 <i>Gonolobus suberosus?</i>	1 50
59 <i>repandus</i>	60	113 <i>Gossypium hirsutum?</i>	1 50
60 <i>speciosus</i>	50	114 <i>Gouania tomentosa</i>	1 00
61 <i>speciosissimus</i>	75	115 <i>Guatteria virgata</i>	1 00
62 <i>spinossissimus</i>	75	116 <i>Guaiacum officinale</i>	2 00
63 <i>tetragonus</i>	75	117 <i>Hæmatoxylon campechi-</i>	} 3 00
64 <i>triangularis</i>	50	<i>anum</i>	
65 <i>truncatus</i>	60	118 <i>Hippomane mancinella</i>	3 00
66 <i>tuna, &c.</i>	60	119 <i>Homalium racemosum</i>	2 00
67 <i>Caladium bicolor</i>	60	120 <i>Hura crepitans</i>	1 00
68 <i>maculatum</i>	60	121 <i>Hymenæa courbaril</i>	1 50
69 <i>violaceum</i>	75	122 <i>Indigofera, sp.? S. America</i>	1 50
70 <i>sp.? Brazil</i>	1 50	123 <i>Ipomæa digitata</i>	1 00
71 <i>Calophyllum calaba</i>	4 00	124 <i>multiflora</i>	1 00
72 <i>Cameraria latifolia</i>	1 00	125 <i>sanguinea</i>	2 00
73 <i>Canna coccinea</i>	40	126 <i>tuberosa</i>	50
74 <i>esculenta</i>	50	127 <i>umbellata</i>	1 00
75 <i>iridiflora, &c.</i>	2 00	128 <i>Jatropha curcas</i>	75
76 <i>Caryophyllus aromaticus</i>		129 <i>multifida</i>	75
77 <i>Cassia bicapsularis</i>	75	130 <i>panduræfolia, &c.</i>	1 00
78 <i>corymbosa</i>	50	131 <i>Justicia coccinea</i>	40
79 <i>sp.? St. Vincent's</i>	1 00	132 <i>lucida</i>	1 50
80 <i>Catesbæi latifolia</i>	1 00	133 <i>peruviana</i>	75
81 <i>spinosa</i>	1 00	134 <i>pieta</i>	75
82 <i>Cestrum diurnum</i>	40	135 <i>v. viridifolia</i>	75
83 <i>fœtidissimum</i>	40	136 <i>Lantana aculeata</i>	30
84 <i>laurifolium</i>	75	137 <i>camara</i>	30
85 <i>parqui, &c.</i>	50	138 <i>involutata</i>	30
86 <i>Cinchona peruviana</i>		139 <i>melissæfolia</i>	30
87 <i>Cocoloba pubescens</i>	3 00	140 <i>nivea</i>	40
88 <i>uvifera</i>	1 00	141 <i>trifolia, &c.</i>	30
89 <i>Cordia sebestena</i>	1 50	142 <i>Lettsonia, sp.? S. Amer.</i>	1 50
90 <i>Crinum erubescens</i>	1 50	143 <i>Littæa geminiflora</i>	
91 <i>Dorstenia contrayerva</i>	50	144 <i>Mammea americana</i>	4 00
92 <i>Duranta plumieri</i>	1 00	145 <i>Maranta arundinacea</i>	50
93 <i>Echites, sp.? Brazil</i>	1 50	146 <i>zebrina, &c.</i>	1 00
94 <i>Erythrina crista galli</i>	2 00	147 <i>Marica cærulea</i>	1 50
95 <i>coraliodendron</i>	1 50	148 <i>martinicensis</i>	75
96 <i>sp.? S. America</i>	2 00	149 <i>northiana, &c.</i>	1 00
97 <i>Eugenia uniflora</i>	1 50	150 <i>Maurandia semperflorens</i>	40
98 <i>sp.? Brazil</i>	2 00	151 <i>Mimosa pigra</i>	75
99 <i>Ficus braziliensis</i>	1 00	152 <i>Morus tinctoria</i>	2 00
100 <i>crassinervis, &c.</i>	1 00	153 <i>Musa sapientum</i>	2 00

	Each. \$ cts.		Each. \$ cts.
154 <i>Myrtus dumosa</i>	2 00	193 <i>Passiflora picta</i>	1 00
155 <i>pimenta</i>	5 00	194 <i>picturata</i>	1 00
156 <i>Oncidium uncinatum</i>	1 00	195 <i>punctata</i>	75
157 <i>Oxalis fruticosa</i> ?	1 00	196 <i>quadrangularis</i>	50
158 <i>rosea, &c.</i>	50	197 <i>racemosa</i>	60
159 <i>Pancreatium caribæum</i>	1 00	198 <i>rubra</i>	75
160 <i>fragrans</i>	2 00	199 <i>serrata</i>	75
161 <i>littorale</i>	1 00	200 <i>serratifolia</i>	50
162 <i>speciosum, &c.</i>	2 00	201 <i>tuberosa</i>	50
163 <i>Parkinsonia aculeata</i>	75	202 <i>suberosa</i>	75
164 <i>Passiflora adiantifolia</i>	75	203 <i>vespertilio</i>	1 00
165 <i>alata</i>	75	204 <i>Physalis edulis</i>	75
166 <i>alba</i>	1 00	205 <i>Pitcairnia, sp. ? Brazil</i>	2 00
167 <i>albida</i>	75	206 <i>Plumeria alba</i>	2 00
168 <i>angulata</i>	1 00	207 <i>rubra</i>	3 00
169 <i>angustifolia</i>	75	208 <i>Poinciana pulcherrima</i>	75
170 <i>cærulea</i>	40	209 <i>v. lutea</i>	75
171 <i>ciliata</i>	75	210 <i>Portlandia grandiflora</i>	
172 <i>cupræa</i>	75	211 <i>Prunus barbadensis</i> ?	2 00
173 <i>discolor</i>	75	212 <i>Panicum nana</i>	75
174 <i>edulis</i>	60	213 <i>Rhexia, sp. ? Brazil</i>	75
175 <i>fetida</i>	75	214 <i>Richardsonia laurifolia</i>	5 00
176 <i>filamentosa</i>	75	215 <i>Rivina lævis</i>	50
177 <i>glauca</i>	75	216 <i>Rontodeletia americana</i>	1 00
178 <i>heterophylla</i>	75	217 <i>Ruellia formosa</i>	40
179 <i>hirsuta</i>	75	218 <i>Sapindus saponaria</i>	1 00
180 <i>holosericea</i>	75	219 <i>Schinus terebinthinus</i>	1 00
181 <i>laurifolia</i>	60	220 <i>Solanum, sp. ? S. America</i>	2 00
182 <i>ligularis</i>	1 00	221 <i>Swietenia mahagoni</i>	5 00
183 <i>lunata</i>	60	222 <i>Tamarindus occidenta-</i>	
184 <i>maculata</i>	1 00	<i>lis, H. B.</i>	} 75
185 <i>maliformis</i>	75	223 <i>Tillandsia, sp. ? Brazil</i>	2 00
186 <i>mucronata</i>	75	224 <i>Tradescantia discolor</i>	75
187 <i>multiflora</i>	75	225 <i>Trevirania coccinea</i>	50
188 <i>murucuya</i>	60	226 <i>Triumphetta grandiflora</i>	1 00
189 <i>normalis</i>	75	227 <i>Xylophylla latifolia</i>	1 00
190 <i>pallida</i>	75		
191 <i>pedata</i>	75	228 <i>Genus? air plant, Ca-</i>	
192 <i>peltata</i>	75	<i>raccas</i>	} 2 00





AMERICAN FRUIT TREES.

APPLES. *Pommiers. Pyrus malus. 37 Cents each.*

TABLE FRUIT.

C denotes those which have proved good for Cider also.

P ——— those which are also proper for preserving or cooking.

1 Yellow harvest	<i>ripe in July.</i>	70 Red winter sweeting	r. Nov. to Mar.
2 Sine qua non, <i>very fine</i>	do	71 Yellow bellflower	do
4 Red Juneating	do	73 Vandervere, P	do
7 American summer queen	Aug.	74 Dickskill	do
11 Marygold	do	75 Swaar	do
12 Red and green sweeting, <i>weighs a lb.</i>	Aug. & Sept.	76 Craam	do
20 Maiden's blush P	Sept.	77 Pomme gris, <i>grey apple of Canada</i>	do
22 Rambo, or <i>Romanite</i> , P	Sept. & Oct.	78 Wood's greening	do
27 Fall pippin, <i>weighs a lb.</i>	Nov.	81 Winter queening, <i>of Ohio</i>	do
28 Corlies' sweeting, C	Sept. to Dec.	82 Lady's finger	Nov. to April.
29 Large white sweeting	do	84 Rhode-Island greening, <i>weighs a lb.</i>	do
33 American nonpareil, <i>doctor apple</i>	Oct. & Nov.	85 Jersey greening	Nov. to June.
34 Monstrous bellflower	do	87 Priestley, P	Dec. to April.
36 Catline, <i>of Maryland</i> , C	Oct. to Jan.	88 Moore's sweeting	Dec. to June.
37 Michael Henry pippin	D. to Feb.	89 Green everlasting	do
38 Newtown Spitzenburgh	O. to Jan.	90 Red everlasting	do
40 Monstrous pippin, <i>or apple, or New-York gloria mundi, has weighed 27 to 35 oz.</i>	P do	91 Boston russeting, <i>Roxbury russeting</i>	do
41 Newark king	do	N. B. <i>These four last apples have been preserved sound above a year</i>	
42 Morgan	Oct. to Feb.	92 Green Newtown pippin, C	do
43 American wine, C P	do	93 Yellow Newtown pippin, C P	do
44 Cumberland spice	Nov. to Feb.	94 Carthouse, or <i>Gilpin</i> , C	Jan. to May
45 Bullock's pippin, or <i>sheep nose</i> , C P	do	95 Redling	do
46 Pennoek's winter	do	96 Tewksbury blush	Jan. to July.
49 Long-Island russet	Nov. to Mar.	97 Newark yellow, or <i>French pippin</i>	Nov. to Jan.
51 Federal pearmain	do	98 Shippen's russeting	do
54 Winter sweet pearmain	do	99 Roman stem	Dec. to Feb.
56 Belden, or <i>red cheek</i>	do	100 Buck's county, or <i>Salisbury cider</i> , C	do
57 Fameuse, or <i>de niege</i>	do	101 American pippin, C	Jan. to Ap.
58 Red Baldwin pippin	do	102 Chandler	do
59 Red jellyflower	do	147 Canada reinette	do
61 Bourassa	do	152 American violet	do
62 Surprise, <i>yellow outside, and red to the core within</i>	do	157 Grand sachem	do
64 Seek-no-farther	do	175 Early sweet redstreak	Aug.
67 Æsopus Spitzenburgh, <i>thought by many inferior to none</i>	do		
68 Flushing Spi zenburgh	do		

176 Scales large summer redstreak	} <i>r.</i> in Aug	195 American black	<i>r.</i> Dec. to Feb.
178 Trenton early redstreak		Sept.	196 Coate's red winter
179 Large spiced crab, P		197 Aunt's large red	do
180 Cathead	Oct. & Nov	198 Orange	do
181 Pumpkin sweeting		199 Mansfield large red	Jan. to Ap.
182 Taylor's, or Freehold red-streak		200 Long green pippin	do
183 Carroll's striped		201 Warren	do
184 Barnes' fancy		202 Lob	do
185 Sweet and sour		203 Vout	do
186 New-England seek-no-farther	} Nov. to Jan.	204 Ninepartner's little russet,	<i>will keep above a year</i>
187 Brownite		do	205 Poughkeepsie russeting
188 White doctor		206 Porter's favourite	
189 Red sweet pippin		209 East-Jersey redstreak	
190 American quince	<i>r.</i> Nov. to Jan.	210 Maryland grey redstreak	
191 Golden lady	Dec. to Feb	211 Dutchess county redstreak	
192 Woolman's long pippin		212 Virginia redstreak	
193 Dumpling		213 Belt's Berton crab	
194 Monmouth large green	do	214 Williams' favourite	
		215 Fall sopswine	

CIDER APPLES.

T denotes those that are good table fruit also.

P ——— those that are best for preserving.

107 Hughes' Virginia crab	} <i>r.</i> Oct. & Nov.	114 Campfield, or Newark sweeting,	<i>ripe from Oct. to Jan.</i>
108 Gloucester white, of Virginia, T		do	116 Cooper's russeting, T P
111 Roane's white crab	Oct. to Jan.	117 Harrison's Newark	do

APPLES for Preserves or Ornament.

169 Prince's new double flowering, with small green fruit, 1 dol.	167 Prince's new double flowering, with yellow fruit, 1 dol.
163 American green crab	168 Prince's new double flowering, with large green fruit, 1 dol.
164 Fort Magee do. 1 dol.	

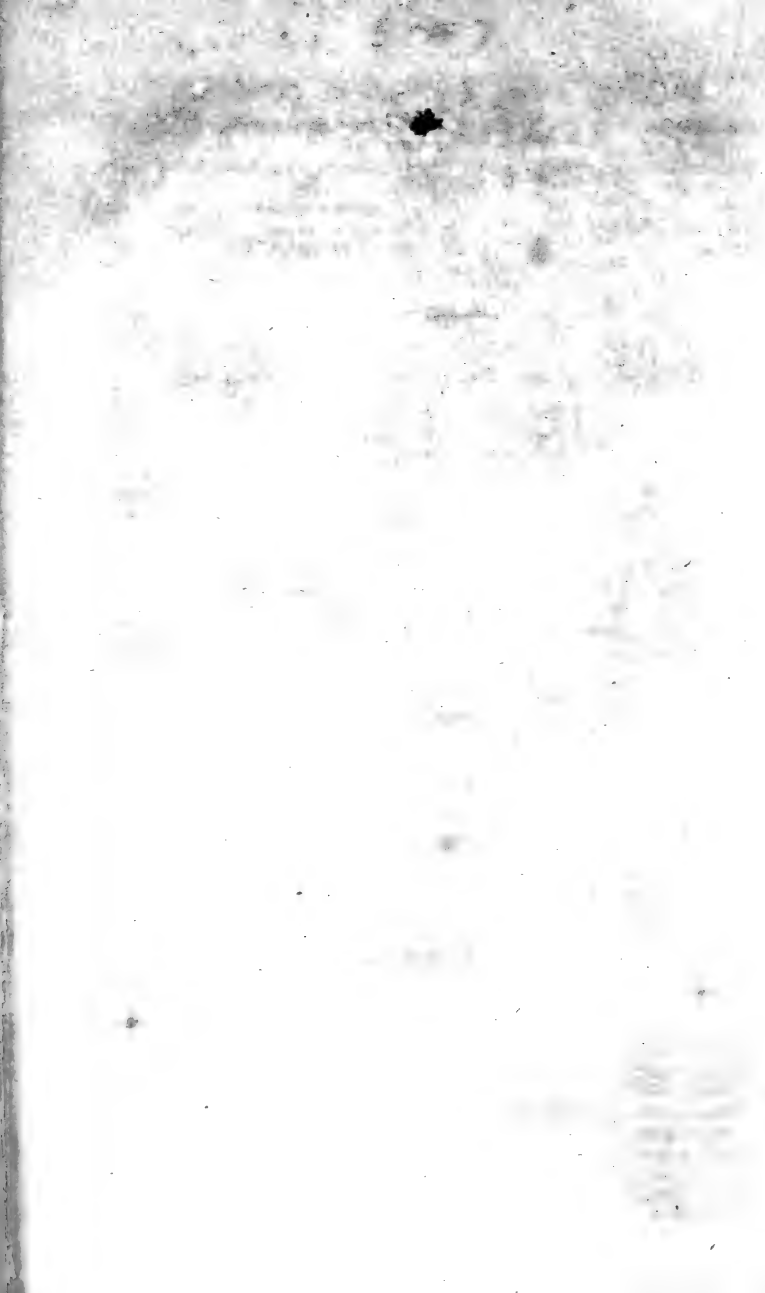
PEARS. *Poiriers. Pyrus communis. 37 Cents each.*

7 Sugartop, or harvest	<i>r.</i> July	59 Prince's late virgalieu	<i>r.</i> Oct.
27 Peach pear	Sept.	61 Rushmore's bon chretien	do
40 Prince's sugar		63 Boston epargne	do
41 ——— early virgalieu		68 Newtown virgalieu	Nov. to Jan.
46 Rockland	Oct. to Dec.	72 Prince's St. Germain	Nov. to Feb.
47 Buffum's		88 Flushing grey russet	Dec. to Jan.
48 Washington	Sept. & Oct	194 Bartlet	
50 Pope's scarlet major		204 Somerindyke	
51 Pope's Quaker	do		

193 is noted by me
was not Amⁿ in another
Catey

185—Oct

206—Sep



CHERRIES. *Cerices. Prunus cerasus.* 50 Cents each.

3 Richmond, or } early Kentish } r. in May & June.	32 Yellow honey ripe in May & June.
9 American heart, or large white heart	38 Elkhorn do
12 China heart	39 Remington white heart July & Aug.
23 American amber	40 Forman's late July
23 Prince's duke	44 Plumstone morello do
	54 Norton's encysted, curious do
	77 Downer's favourite do

PLUMS. *Pruniers. Prunus domestica.* 50 Cents each.

† denotes those of large size.
‡ ——— those of superior flavour.
P ——— those for preserves.

[2 †† American cherry, <i>myrobalan, or cerise</i>	ripe in July.	29 † White gage	ripe in Aug.
3 Red chicasaw	do	31 †† Smith's Orleans	do
4 Yellow do.	do	32 †† Huling's superb, weighs near 4 oz. 1 dol.	Sept.
5 Early purple	Aug.	34 † American yellow gage	do
6 American red, P	do	36 Peter's large yellow	Aug. & Sept.
7 Ditto yellow, P	do	38 Lewistown egg	Sept.
9 Wetherill's sweet	do	39 † Huling's fine blue	Aug.
12 † Burlington red	do	40 Elfrey	do
16 †† Cooper's large	do	41 Tomlinson's Charlotte	do
23 †† Washington, or Bolmer, weighs near 4 oz. 1 dol.	do	45 Miller's Spanish	Sept.
24 †† Prince's gage, new, very large, 1 dol.	do	52 † Yellow honey, new, 1 dol.	Aug.
27 † Red gage	do	53 Prince's blue primordian, earliest of all, 1 dol.	July.

PEACHES. *Pêchers. Amygdalus persica.* 37 Cents each.

‡ denotes those of superior flavour.
† ——— those of remarkable size.
M ——— those which are melting.
C ——— clingstones or paves.

2 † Yellow nutmeg	ripe in July.	12 Early white, C	ripe in Aug.
3 † Red nutmeg	do	13 Jacques' new yellow rare-ripe, M	do
4 † White nutmeg	do	14 New white rareripe, M	do
6 † Sweet water, or large American nutmeg, M	Aug.	15 Lemon freestone	do
7 † Red rareripe	do	17 Freestone heath, M	do
8 † White rareripe	do	18 Gold and purple, C	do
9 Yellow rareripe, M	do	25 Morris red rareripe	Sept.
11 Early red, C	do	26 Ditto white ditto	do

27 Oldmixon freestone	ripe in Sept.	71 Freestone winter	r. Sept. & Oct.
28 Oldmixon, C		do 85 Haine's' early red	
33 Out-leaved, or serrated		do 86 Coate's early yellow	
34 †† Columbia		do 87 Diana, C	
35 Washington, C		do 88 Taylor's large yellow freestone	
36 †† Red pine apple, C		do 89 Late freestone heath	
37 †† Kennedy's Carolina, early lemon, C		90 Large yellow freestone	
39 †† Red cheek mélécoton, M		do 91 Latest yellow freestone	
42 † Orange peach, M		do 92 Nagle's favourite	
44 † President		do 93 Elizabethtown fine	
45 † Congress, C		do 94 Mammoth	
48 White blossom		do 95 Yellow pine apple	
52 Western Newington, C		do 96 New natural	
53 White pine apple		do 97 Nonpareil, very large	
54 Hystops, C		do 98 Late red freestone	
59 † Large red October, C		do 99 Rodman's late yellow	
60 Long red, C		Oct. 100 Rodman's red, C	
66 Sargent's rareripe, M		do 101 Favourite red freestone	
67 Late red ditto, M		Aug 102 Binney's red, C	
68 Kenrick's heath		Sept. 103 Cole's red	
70 Heath, C very su- perior,		do 104 Red Catharine	
			Oct. & Nov.

In enumerating the foregoing fruits I have only included those of acknowledged merit, and in addition thereto there are various American varieties of Apricots, Nectarines, Raspberries, Strawberries, Persimmons, Papaws, Blackberries, Cranberries, Whortleberries, Walnuts, Chesnuts, Hazlenuts, Grapes, &c. &c. &c.



A D D E N D E.

- | | |
|--|--|
| 1 Aspidium dilatatum, (<i>Cryptogamia</i>) | 7 Osmunda interrupta, (<i>Cryptogamia</i>) |
| 2 Carex sylvatica, (<i>Graminæ</i>) | 8 Poa elongata, <i>Tor.</i> |
| 3 *Cassia tora | 9 *Rhexia purpurea |
| 4 Elephantopus tomentosus | 10 Viola erenata |
| 5 Gerardia setacea | 11 Zizadenus glaberrimus |
| 6 Graminæ, 3 species? from Illinois | |

Exotic seed
Peonies of about
a dozen & 1/2

Timothy seed

Red Clover

Onion

Kidney Beans



