

United States Department of Agriculture

FIELD DIARY

Kansas, Utah.

May 8 - Aug. 14 1916

(Official title)

NOTICE.— This book is Government property. The finder is requested to mail it to the
DISBURSING CLERK, DEPARTMENT OF AGRICULTURE, WASHINGTON, D. C., or deliver it to the
official whose name appears above. A detachable addressed frank will be found on the last
page; by tying this on the cover the book may be mailed without postage or wrapping
fastened shut.

INSTRUCTIONS.

Every officer or other employee of the Department of Agriculture conducting work while traveling will, so far as practicable, keep a diary in which will be recorded, under an appropriate date entry, a concise statement of all important matters pertaining to such work and also of any general matters that may be of interest to the Department.

This diary will be retained by the official preparing same, but will be subject to call by the administrative officers of the Department, including the disbursing officer, at any time.

When this book is filled another may be secured by application to the chief of your Bureau or to the disbursing officer of the Department.

James Wilson
Secretary of Agriculture.

- Kingbird
- 200
- Thrush
- Great Blue Heron
- Least Sandpiper
- 200
- Blackbird
- White-throated Sparrow
- Baltimore Oriole
- Red-winged Blackbird
- Green Heron
- Green Heron
- Yellow Warbler
- **Jessie** Warbler
- Wood Thrush
- Catbird
- Flicker
- Downy Woodpecker
- Mourning Dove
- House Wren
- Chimney Swift
- House Finch
- Titmouse
- Red-eyed Vireo
- Brimstone
- Redwing
- Woodcock
- Cowbird
- Starling
- Indigo Bunting
- Song Sparrow
- Cardinal

Lawrence May T
 called in Dr. N.P.
 Sherwood.

- E.W. Seward
- Charles Herrman
- Jack Mitchell
- E.M. Yeo
- Paul Reeme
- C.D. Spangh.
- Will Jounslly.
- S.M. Killam
- Ed. L. Chapman

- R.C. [unclear] city
- Clyde Moore

photographers
C.D. Spangh 1203 Main St. Grover
species affected [unclear] [unclear] [unclear]

Shallow
Birds found in shallow water
of bottom. some birds on deep water just
birds when shallow water is located.

Birds not [unclear] until November.
Some attribute [unclear] birds to system that
except this [unclear] first [unclear] in Nov. 1913.

Can't find food but [unclear]. think this hardly
probable

attribute trouble to crowding in shallow
water & [unclear] of water supply. Few birds
seen by him were unable to fly but he
had little real knowledge of them. Birds were
more noticeably after the freeze.

(Weak birds killed by the freeze
would die with head under [unclear])

Bottoms dry for [unclear] or first years
until this fall. 9 B. S. A. buildings,
etc. 40 [unclear] [unclear].

Los Herrman

no disease. Dead birds all [unclear].
Believe any killed by [unclear] of
Nov. 10, 1913. Some [unclear] [unclear] [unclear]

across Bottom between [unclear] & [unclear].
None [unclear] [unclear] & [unclear] that
were [unclear] in.

with [unclear] [unclear] [unclear]. [unclear] [unclear]
shortly [unclear] [unclear]. [unclear] [unclear] [unclear]

try no ducks in [unclear] [unclear] [unclear]
[unclear].
[unclear] - [unclear] [unclear] [unclear]

May 13

- Yellow Warbler
- Red shafted Flicker
- Mountain Bluebird
- Spotted Sandpiper
- Olive backed Thrush
- Crows
- Nuthatch
- Blue Jay
- White winged Blackbird

W. J. Bennett

1/2 mile out of
park
fence
near
road
1000
500 yds

May 14
Algodon Canyon

- Yellow Warbler
- Red shafted Flicker
- Mountain Bluebird
- Spotted Sandpiper
- Olive backed Thrush
- Crows
- Macgillivray's Warbler
- Long crested Jay
- Impatiens Jay
- Flicker
- Blue Jay
- Crows
- Nuthatch
- Blue Jay
- Virginia Warbler
- Chickadee

~~101.1~~

6 103.2

May 17
 Therm 52°

- English Sparrow 18
- Redwing
- Meadowlark
- Bullock Oriole
- Stilt
- Great Blue Heron
- Wren Grebe
- Coot
- Forster Tern
- Willet
- Raven
- yellow Warbler
- Pileolated "
- Audubon's "
- Marsh Wren
- Savanna Sparrow
- Cowbird.
- Spotted Sandpiper
- Killdeer.
- Heron
- Great Blue Heron
- Mourning Dove
- Cormorant
- Night Heron
- Barn Swallow
- Yellowhead
- Plegatus calender

- Mallard 1
- American snail 10
- Jacksnipe 1
- Speckbill 2

- Bobolink
- Cuckoo
- Snowy Plover
- Brewer Blackbird
- Lark Sparrow
- Sage Sparrow
- Goldfinch
- Kingbird
- Robin
- Song Sparrow
- ~~Tree Swallow~~

- ~~English Sparrow~~
- ~~Redwing~~
- ~~Meadowlark~~
- ~~Bullock Oriole~~
- ~~Stilt~~
- ~~Great Blue Heron~~
- ~~Wren Grebe~~
- ~~Coot~~
- ~~Forster Tern~~
- ~~Willet~~
- ~~Raven~~
- ~~yellow Warbler~~
- ~~Pileolated "~~
- ~~Audubon's "~~
- ~~Marsh Wren~~
- ~~Savanna Sparrow~~
- ~~Cowbird.~~
- ~~Spotted Sandpiper~~
- ~~Killdeer.~~
- ~~Heron~~
- ~~Great Blue Heron~~
- ~~Mourning Dove~~
- ~~Cormorant~~
- ~~Night Heron~~
- ~~Barn Swallow~~
- ~~Yellowhead~~
- ~~Plegatus calender~~
- ~~Mallard 1~~
- ~~American snail 10~~
- ~~Jacksnipe 1~~
- ~~Speckbill 2~~
- ~~English Sparrow~~
- ~~Redwing~~
- ~~Meadowlark~~
- ~~Bullock Oriole~~
- ~~Stilt~~
- ~~Great Blue Heron~~
- ~~Wren Grebe~~
- ~~Coot~~
- ~~Forster Tern~~
- ~~Willet~~
- ~~Raven~~
- ~~yellow Warbler~~
- ~~Pileolated "~~
- ~~Audubon's "~~
- ~~Marsh Wren~~
- ~~Savanna Sparrow~~
- ~~Cowbird.~~
- ~~Spotted Sandpiper~~
- ~~Killdeer.~~
- ~~Heron~~
- ~~Great Blue Heron~~
- ~~Mourning Dove~~
- ~~Cormorant~~
- ~~Night Heron~~
- ~~Barn Swallow~~
- ~~Yellowhead~~
- ~~Plegatus calender~~
- ~~Mallard 1~~
- ~~American snail 10~~
- ~~Jacksnipe 1~~
- ~~Speckbill 2~~

May 17
 Therm 52°
 Brown Sparrow

~~9:15~~
~~9:10 10:00~~

- Redpoll
 - Murre
 - Murrelet
 - Gull
 - Puffin
 - Guillemot
 - Jaeger
 - Osprey
 - Raven
 - Crow
 - Starling
 - Chipping sparrow
 - Song sparrow
 - Meadow sparrow
 - Field sparrow
 - Junco
 - Towhee
 - Goldfinch
 - Starling
 - Chipping sparrow
 - Song sparrow
 - Meadow sparrow
 - Field sparrow
 - Junco
 - Towhee
 - Goldfinch

May 20
~~July 1911~~
 - Redpoll
 - Murre
 - Murrelet
 - Gull
 - Puffin
 - Guillemot
 - Jaeger
 - Osprey
 - Raven
 - Crow
 - Starling
 - Chipping sparrow
 - Song sparrow
 - Meadow sparrow
 - Field sparrow
 - Junco
 - Towhee
 - Goldfinch
 - Franklin gull
 - Black sea
 - Murre
 - Caspian Tern
 - Sandpiper 106.3, 106.3, 106.3
 - Dowitcher
 - Red back 106.8
 - Redhead 105.8

- 15
 - 36
 - 8
 - 7
 - 8
 - 8
 - 1
 - 4

May 21
 - 15
 - 36
 - 8
 - 7
 - 8
 - 8
 - 1
 - 4
 (30 pr.)
 Scarps
 106.8

- [Faint handwritten notes and bleed-through from the reverse side of the page]

Bobolink
 Tree Swallow
 Chiff " "
 Barn " "
 Bullock Oriole
 Cowbird
 Redwing
 Yellowhead
 Night Heron
 Goldfinch
 Dark Sparrow
 Magpie
 Towhee sp
 Brewer " "
 Audubon's Warbler
 Kingbird

46° May 22 1 ft 6"

Pileolated Warbler

May 24

Audubon "

Black-throated Gray "

Foster's Junco

Violet Green Swallow. ~~103.8~~ 106.8

Barn Swallow.

Sheep ~~117.7~~

Snowy Heron ~~105.2~~

May 25

- ~~Empidonax~~ ~~Warbler~~ ~~1092~~
- ~~Pallid~~ ~~Warbler~~
- ~~Blue Jay~~
- ~~White-eyed Vireo~~
- ~~Goldfinch~~
- ~~Downy Woodpecker~~
- ~~Blue Jay~~
- ~~Magpie~~
- ~~Violet Green Swallow~~
- ~~Redstart~~
- ~~Chickadee~~
- ~~Redstart~~
- ~~Great Blue Heron~~
- ~~Common Nighthawk~~
- ~~Yellowthroat~~
- ~~Chipping Sparrow~~
- ~~Wren~~
- ~~Avocet~~
- ~~Song Sparrow~~
- ~~Robin~~
- ~~Spurwing Plover~~
- ~~Catbird~~
- ~~Mallard~~
- ~~Redhead~~

- ~~European Warbler~~
- ~~Yellow Warbler~~
- ~~Godwit~~
- ~~Redstart~~
- ~~Downy Woodpecker~~
- ~~Pheasant~~
- ~~Spotted Sparrow~~
- ~~Chipping Sparrow~~
- ~~Hummer~~
- ~~Quail~~
- ~~Ring-billed Gull~~
- ~~Wolf~~
- ~~Common Nighthawk~~

- Mallard IIII
- ~~Common Nighthawk~~ ^{7 fresh} IIII
- Redhead IIII
- Godwit IIII
- Pintail IIII
- Green-wing IIII
- Oriole IIII
- Sparrow IIII

- Avocet 30-9
- Wolf 27

Kouf Kouf Ka - Ka-ah out
Ka-ah out
Ka-ah out

with young birds 2-8

May 26

- Yellow Warbler
- Song Sparrow
- Field Sparrow
- Kingbird
- Blue Jay
- Violet Green Swallow
- Junco
- Wren
- Common Towhee
- Goldfinch
- House Wren
- Red-winged Blackbird
- Crows
- Grackles
- Rufous Humbird
- Nighthawk
- White-eyed Vireo
- Chipping Sparrow
- Starling
- Pelican ~~1000~~
- Towhee
- Song Sparrow
- Field Sparrow
- Kingbird
- Blue Jay
- Red-winged Blackbird
- Cowbird
- Kingbird
- Crow
- Parula III
- Common Towhee III III
- Goldfinch III II
- Mallard I
- Redwing III
- Blue Jay I

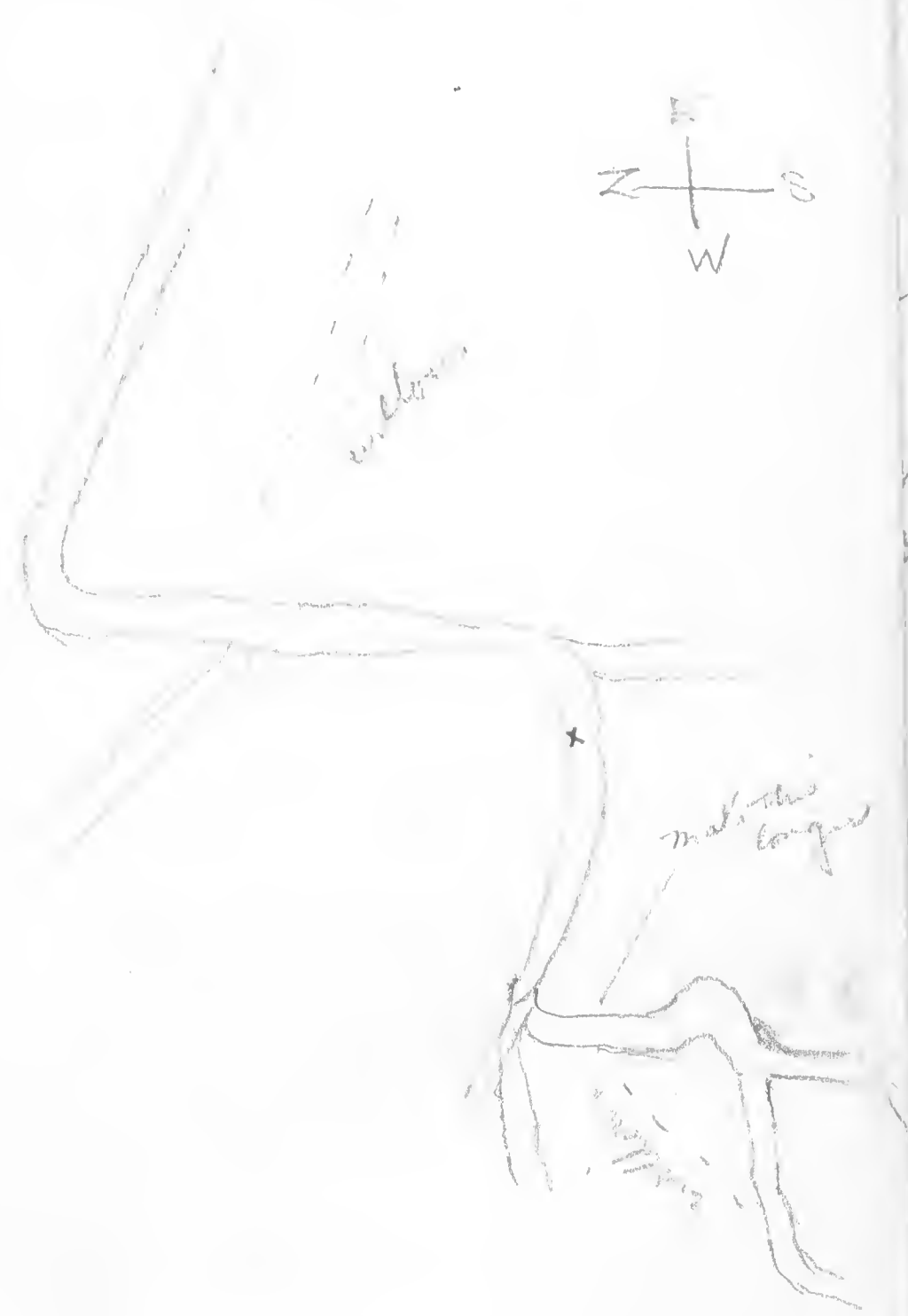
- 1000 - Starling
- Redwing
- Cowbird
- Field Sparrow
- Song Sparrow
- Kingbird
- Goldfinch
- Black Jay
- Crow
- Red-winged Blackbird

- Junco II
- Starling I

about 1000
 1/2 egg III III
 3 egg
 1 egg II
 1 egg III II
 90 about
 + \$ 1/4

egg
 egg
 egg

May 29



- Mourning Dove
- Trutt Hylodid
- Audubon Warbler
- Yellow "
- Pileolated "
- Black headed grosbeak

May 30
 42 +
 117 2 in

- Bobolink
- Bullock Goose
- Cowbird pair
- Caspian Tern
- Willet
- Curlew
- Avocet
- Stilt
- Spotted Sandpiper
- Night Heron
- Great Blue Heron
- Redwing
- Yellowhead
- Meadowlark
- Swanna Sparrow
- Forster Tern
- Caspian "
- Red billed Grebe
- Barn Swallow
- Cliff "
- Ird "
- Gadwall
- Kingbird
- Magpie
- Violet Green Swallow

May 31
1 ft. 8 in.
temp 46°

- June:
- ~~Whistling Warbler~~
 - Bobolink
 - Violet Green Swallow
 - Barn "
 - Cliff "
 - Ird "
 - Chickadee
 - Pileolated Warbler
 - Yellow Warbler
 - Redwing
 - Yellowhead
 - Brewer's Blackbird
 - Meadowlark
 - Bullock's Goose
 - Avocet
 - Stilt
 - Magpie
 - Willet
 - Curlew
 - Marsh Wren
 - Coot
 - Night Heron
 - Kingbird
 - Towhee ? yellow throat
 - Forster's Tern
 - M. gullways Warbler
 - Brewer's Sparrow
 - Lark Sparrows ³
 - Lark Bunting ^{10.2}
 - House Wren
 - Robin
 - Veery Sparrows
 - Artisan in Kingbird
 - Shrike
 - Sage Thrasher
 - Leucosteth
 - Caspian Tern
 - ~~Ha~~
 - Caspian Tern
 - Mourning Dove
 - Raven

- Barn Swallow
- Cliff
- Kingbird
- Raven
- Night Heron
- Snowy "
- Kingbird
- Ark "
- ~~Cliff~~
- ~~Swallow~~

Y 10 11

V. ...
 ...
 ... 1
 ... 6

... 17:30 15, 7-7
 ... 10+1. 13+10, 10
 ... 9+2 ...
 ... 1-10-11

- 2nd ...
- Spornbill 14-15-
- Meadow 11111 111-10-11
- Parakeet 1111
- Redhead 111111111111111111111111-25-111111
- Curlew 111111
- Goshawk 1111
- Ruddy 111 111111

- Wigeon
- Curlew on Seal
- Goshawk
- Redhead
- Yellowthroat
- Redwing
- Bullock's Oriole
- Cowbird
- Meadowlark
- Coot
- Night Heron
- Snowy Plover
- Great Blue Heron
- W. Grebe
- Killdeer
- Avocet
- Tattler
- Barn Swallow
- Cliff
- Swallow
- Kingbird
- Wood Kingbird
- Wood Pewee
- Traill Flycatcher
- Magpie
- Pileolated Wren
- Caspian Tern
- Forster's "
- Song Sparrow
- Sparrow
- Black-headed Grosbeak
- Pileolated Warbler
- ...

June 2
 52°

- Yellow Warbler
- Catbird
- Marsh Wren
- Chipmunk
- Wren
- Least Bittern
- Marsh Hawk
- Oriole
- Redwing
- Spornbill
- Parakeet
- W. Kingbird
- Catbird
- Kingbird
- Song Sparrow
- Oriole
- W. Wood Pewee

- Killdeer
- Spotted Sandpiper
- ~~Red-winged Blackbird~~
- Long-billed Curlew
- Redwing
- Yellowthroat (10/18)
- ~~Green-winged Teal~~ ~~10/18~~
- ~~Meadowlark~~
- ~~Corvid~~
- Kingbird
- Marsh Wren
- Willet
- Crows
- Wagtails
- ~~Great Blue Heron~~
- Snowy Heron ~~10/18~~
- Night Heron
- Coot
- Black Duck
- Loon
- Yellowthroat
- Ring-billed Gull ~~10/18~~
- ~~Fresh Water Duck~~
- Night Hawk
- ~~Belted Kingfisher~~
- ~~Common Teal~~ |||||||
- ~~Spoonbill~~ ||||
- ~~Godwit~~ ||
- ~~Willet~~ ||
- ~~Mallard~~ ||||
- ~~Redhead~~ ||||| ||| ||| ||| ||| ||| ||| ||| ||| |||
- ~~Ruddy~~ ||

Arrived 35
 Left 12
 Snowy Heron 50

June 7
 1st-8

- Magpie
- Yellowthroat
- Kingbird
- Redwing
- Barn Swallow
- Tern
- Wagtails
- Crows
- Coot
- Loon
- Merganser
- Fresh Water Duck
- Ring-billed Gull
- ~~Loon~~
- ~~Loon~~ ~~10/18~~
- Killdeer
- Yellowthroat
- Pintail 12
- Spoonbill 12
- Mallard 20

- Frigate
- Great Blue Heron
- Snowy Heron
- Long-billed Curlew

Common Teal 	46	()4
- Godwit 	6	
- Spoonbill 	7	
- Mallard 	8	
- Redhead 	19	
- Pintail 	1	
- Ruddy 	1	

June 8

Pelican	103.0	
Common Golden Gull	46.0	
Great Blue Heron		
Worm Eater		
Franklin Gull	106.6	106.0
Ring-billed Gull		
Forster's Tern		
Black	11	
Marsh Wren		Tree Swallow
Yellowthroat		Barn Swallow
Redwing		Belted Kingfisher
Boat		Kingbird
Willet		Trill Flycatcher
Franklin Gull		Greater Yellowlegs
Pintail		Canada Goose
Redhead		Cowbird
Shoveler		Meadowlark
Common Noddy		Crow
Mallard		Spotted Sandpiper
Ruddy Duck		Semipalm. Spar.
Marsh Hawk		Yellow Warbler
No. 8 Bulwer's	109.9	
Wile	106.6	106.8 107.0

Pintail 762 - (26)
 Redhead 241
 Ruddy 3
 Gadwall 4
 Common Noddy 5
 7-23 Mallard 23
 Forster's Tern 5
 Blackhead 200
 Wile 1

Wile 1500 - 2-5
 Snow 200 2-4
 Ring-billed 200

June 9
 1 ft 6 1/2 in
 temp 66

Wren Warbling Vireo
 Black-headed Grosbeak

- Crows
- Tit
- Towhee
- Cowbird
- Wild
- Barn Swallow
- Tree
- Bullock
- Thrush
- Meadow Sparrow
- Bullock
- Brewer
- Coot
- Blue
- Nighthawk
- Gopher
- Kingbird
- Yellowthroat
- Redwing
- White Plover
- Plover
- Franklin gull

June 10
 6 3/4 in

- Redhead
- Yellowthroat
- Great Blue Heron
- Kingbird

Butterfly 12-31-2

- Redhead 10
- Cinnamon Teal
- Mallard
- Pintail
- Gadwall
- Ruddy

Redhead 13+3, 7, 13, 15, 8, 7 eggs 10 eggs
 12+7, 10

June 11
 11 6 1/2
 50°

June 12
1916
6020

- Yellow-billed Cuckoo
- Red-headed Woodpecker
- Blue Jay
- Green Heron
- Great Egret
- Yellow-crowned Night Heron
- American Osprey
- Bald Eagle
- Great Blue Heron
- Green Heron
- W. Kingbird
- Cowbird
- Oriole
- Yellow-billed Cuckoo
- Red-headed Woodpecker
- Blue Jay
- Green Heron
- Great Egret
- Yellow-crowned Night Heron
- American Osprey
- Bald Eagle
- Great Blue Heron
- Green Heron
- W. Kingbird
- Cowbird
- Oriole
- Yellow-billed Cuckoo
- Red-headed Woodpecker
- Blue Jay
- Green Heron
- Great Egret
- Yellow-crowned Night Heron
- American Osprey
- Bald Eagle
- Great Blue Heron
- Green Heron
- W. Kingbird
- Cowbird
- Oriole

- White-bellied Nighthawk
- Mourning Dove
- Common Nighthawk
- Broad-winged Hawk
- Red-shouldered Hawk
- Cooper's Hawk
- Sharp-shinned Hawk
- Blue-winged Teal
- Raven
- Buzzard

- 10 - Green-winged Teal #1
- Yellow-billed Cuckoo #1
- Red-headed Woodpecker #1
- Blue Jay #1
- Green Heron #1
- Great Egret #1
- Yellow-crowned Night Heron #1
- American Osprey #1
- Bald Eagle #1
- Great Blue Heron #1
- Green Heron #1
- W. Kingbird #1
- Cowbird #1
- Oriole #1

Partial 100-60
This 75

End - end 9, 11, 2, 11, 11, 10

Marbled 10 9 1/2
10 - 3
Blue Jay 5

~~Yellow-billed Cuckoo 2, 4, 2, 2, 4, 3, 2, 4, 4~~
~~Marsh Wren 4-5~~

Red-headed woodpecker

June 13
 1916

Redwing
 Kingbird
 Franklin's Gull
 Yellow-headed Vireo
 Great Blue Heron
 Common Sparrow
 Barn Swallow
 Town Swallow
 Crows
 Kingbird
 Red-tailed Hawk
 Sharp-shinned Hawk
 Red-shouldered Hawk
 Screech Owl
 Nighthawk
 Great Horned Owl
 Whip-poorwill
 Mockingbird
 Starling
 Blue Jay
 Crow
 Grackle
 Starling
 House Sparrow
 English Sparrow
 Cowbird
 Chipping Sparrow
 Song Sparrow
 Field Sparrow
 Junco
 Towhee
 C. Wren
 Nuthatch
 Titmouse
 Blue Jay
 Crow
 Grackle
 Starling
 House Sparrow
 English Sparrow
 Cowbird
 Chipping Sparrow
 Song Sparrow
 Field Sparrow
 Junco
 Towhee
 C. Wren
 Nuthatch
 Titmouse

Common Seagull IIII
 Mallard III
 Gadwall I
 Sprosbill II
 Redhead III
 Mallard 200
 Pintail 50

June 14

Willet 400-600 ♂ ♂ ♂
 Marsh Wren 106.6, 105.8, 106.2, 106.3
 Crow 106.1
 Killdeer
 Wilson Phalarope
 No "
 Mourning Dove
 Song Sparrow
 Redwing
 Kingbird
 Red-tailed Hawk
 Sharp-shinned Hawk
 Red-shouldered Hawk
 Screech Owl
 Nighthawk
 Great Horned Owl
 Whip-poorwill
 Mockingbird
 Starling
 Blue Jay
 Crow
 Grackle
 Starling
 House Sparrow
 English Sparrow
 Cowbird
 Chipping Sparrow
 Song Sparrow
 Field Sparrow
 Junco
 Towhee
 C. Wren
 Nuthatch
 Titmouse

Pintail 2600
 Sprosbill 50
 Mallard 100
 Gadwall 100
 Redhead 50
 Widgeon 3
 Mallard II
 Common Seagull IIII
 Redhead III
 Gadwall II
 Sprosbill I

About June 16
 Yellowhead
 Common
 Birds Philarope ~~♂ 105.6 ♀ 106.6, 107.0~~
 Savannah Sparrow ~~107.1, 107.1~~
 Foster Tern
 Still ~~106.6, 107.1, 105.0, 105.9, 106.1~~
 Killdeer ~~107.1, 106.6, 106.6~~
 Common Tern
 Albs
 Common Seal
 Redhead
 Pintail
 Coot
 Night Heron ♂ want want
 ♀ want want

June 17
 11 ft 7
 85°

June 18
 Alca baccinator ♀ juv.
 Mottled center of bill
 Sand gull ♂ breeding plumage.
 Hooded Merganser
 Red breasted " pair
 Branta nigricans pair
 American Merganser pair
 Cackling goose? ♀
 Virginia Rail pair
 Tern - pair outer web pale.
 Gallinago delicata pair
 Claytonia islandica ♀
 Heterosygna fusca ♀

June 1		12.22
" 5		5.05
" 9		46
" 10		1.77
" 16		6.10
" 19	Board	<u>36.50</u>
		63.10

running expense.		
Bosby salary		50.00 ✓
launch hire		12.00 ✓
Boat hire		2.50 ✓
Subsistence Bosby		60.00 ✓
& Chramm Johnson Form 5		<u>6.05 ✓</u>
		130.55 ✓

Estimated subsistence available from 19	30.00
	<u>43.06</u>

ammunition	6.59
"	7.37
canteen	.75
coordinate paper	25
S. Chramm Johnson	<u>7.51</u>
	22.47
More Smith Supply Co	5.15

48.60
 22.47

 20.59

50.81

due quisa June 20	2.35
Paid out for board for June 4	<u>29.50</u>
due me	27.15

- Cowbird
- Redwing
- Purple Martin
- Least Swallow
- White-eyed Swallow
- Royal Wren
- Indigo Bunting
- Cuckoo
- Yellow Warbler
- Small Flycatcher
- Marsh Wren
- Song Sparrow
- Yellowthroat
- Meadowlark
- Great Blue Heron
- Gallinule
- Song Sparrow
- White-crowned
- Crow
- Savannah Sparrow
- Merganser
- Cormorant
- Kingbird
- Yellowthroat
- Plover
- Phoebe
- Hairy Woodpecker
- Red-eyed Vireo
- Black-throated Blue
- Yellowthroat
- Plover

- American Coot / N N N N N N N N N N N N N N N N N N
- Redhead / N N N N N N N N N N N N N N N N N N -10-
- Gull / N N N
- Spoonbill / N N N N N
- Pintail / N N
- Mallard / N N N
- Ruddy / N N N

Redhead 14 drake 2
 Spoonbill 30-15
 Mallard 10
 Pintail 1
 American Coot 1 - 4, - 15-14
 Grebe 20

- Kingbird
- Cuckoo
- Gull
- Redhead III
- Spoonbill III
- Ruddy 5
- Pintail III
- Gull I

Mallard 17

- Puffin
- Chickweed
- *Chelidonium*
- *Oxystechia*
- *Hordeum jubatum*
- *Urtica*
- *Suaeda*
- *Salsola vermiculata*
- *Panicum capillare*

• *Cratogeomys*

• *Dryas* - 2 species
 small *scirpus*

- *Sage Thrasher*
- *Empidonax* *trichas* 150 males
- *Redstart*
- *Sage Thrasher*
- *Wm. Creeper*
- *Redstart*
- *Saw-whet* *parula* *flocks*
- *Godwit*
- *Sharp-shinned* *Wren* ~~107.2~~
- *Common Nighthawk*
- *Tree Toad*
- *Spotted Owl*
- *Parula*
- *Cowbird*
- *Song Sparrow*
- *Yellowthroat*
- *Acorn* *egg* *building* *nest*
- *Pelican*
- *Tit*
- *Mallard*
- *Coot* *10*
- *Common* *rd* *swan*
- *Redhead* *juv* *16* *eye*
- *Wedge-tailed* *Scaup* *flocks*
- *Willet*
- *Osprey*
- *Golden* *eye*
- *Snowy* *Plover*
- *Ring-billed* *Gull*
- *Lesser* *Gull* *106.2*
- *Spotted* *Turnstone*

June 24
 1915
 52

1/1 4 3/4 in.

- Woodcock
- Great Egret
- Kingbird
- Yellowthroat
- Redwing
- Yellowthroat
- Indigo Bunting
- Chickadee
- Mourning Dove
- House Sparrow
- Field Sparrow
- Foxglove
- Song Sparrow
- Meadowlark
- Yellow Warbler
- Cowbird
- Field Sparrow
- Coot 6, 9, 3, 12
- Dove
- Snowy Plover
- Spotted Sandpiper
- Snowy Plover dead
- Brown Blackbird
- Wren
- Virginia Rail

Cinnamon Teal |||||
 Gadwall |||||
 Greenbill |||
 Ruddy Duck |||||
 Redhead |||||
 Mallard |||||
 Pintail |||||

49
 Cinnamon |||||
 Mallard |||||
 Greenbill ||

Counted yesterday 1 area papered Oct. 15
 note
 Gadwall 9, 7
 Cinnamon 9, 3, 8
 Mallard 9, 8
 Ruddy 2

20

June 20

Chrysopsis
 - grass abundant
 - rounded knot in lawn 10-15 feet high
Sarcobatus
Atriplex confertifolia scattered
Atriplex low form
Allenrolia grass
 mat of
Distichlis spicata short blades
 mats of grass
Syntherisma abundant
 scattered
 - straw bordered with *Scirpus americanus*
Pigeon grass
 mat
Chrysopsis

Round *Scirpus* growing in clumps
Potamogeton
Ceratophyllum?
 coniferous

Allenrolia 15 in high
Sarcobatus
Leptochloa integrata
Borrichia aspera
Salsola rubra
 small *Scirpus*
Cortaderia
Panicum
Radiata few
Onoclea
Muhlenbergia yellow

Chrysopsis not seen
 1910,
 1911 a few

Mull alba

Calif gold with cool
 Cool 5, 8, 9, 9
~~7~~ in 3cm ~~1058~~
 Pelican
 Marsh Wren
 Lesser Yellowlegs
 Avocet
 Sitt ~~1064~~
 Redwing
 yellowthroat ~~1108~~ & ~~1064~~
 Bullock's Oriole
 English Sparrow
 Redpoll
 Night Heron
 ddb
 Wils Phalarope
 great Blue Heron
 Estancia ~~1070~~ ~~1069~~

June 28
 1915
 70

Redhead
 Cinnamon Teal 30 Eggs
 Phalarope " 1
 Pombell
 Gadwall

June 29

Redwing
 Marsh Wren
 Crows
 Crows
 Kingbird
 Marsh Wren
 Killdeer
 Greater yellowlegs ~~105.5~~ ^{♀ ad} ~~106.1~~ ~~106.5~~
 Crows
 Yellowhead
 P. Lincan
 Calif gull
 Forked wing ^{♀ ad}
 Godwit 105.3, ~~106.0~~, ~~106.6~~, ~~106.6~~, 106.6
 Lesser yellowlegs 107.3
 Wild. Phalarope
 Willet ~~106.5~~ ^{♂ ad} ~~106.1~~
 Franklin gull
 Mallard and Wony ~~109.1~~

Common teal 35 | 2
 Gadwall 2 | 1
 Redhead 1 | 7-15-8-4-10
 Ruddy 1 | 1

Dredges

Pintail 17-1-20-8-4-11-10
 Common teal 15-2-25-40
 Mallard 20-6-7-11-10
 Spar. bill 2
 Redhead 5-60-100-60-10
 Gadwall 2-4-4
 Green-winged teal 15

Wild Phal. ♂♂ ~~104.3~~ ~~104.7~~ ~~107.3~~ ~~105.7~~
~~104.1~~ ~~104.0~~ ~~104.7~~

Sackett time as carpenter
 May 22 1 day
 " 23 1/2 "
 " 30 1/2 "
 " 31 3/4 "

July 1
p 524
1912

- Yellow Warbler
- Blue Jay
- Red Wing
- White-throat
- Blue Jay
- Red Wing
- Yellow Warbler
- Blue Jay
- 1912
- Rough winged
- Song Sparrow
- Common Nighthawk
- Robin
- Shrike
- Cat
- Willet
- Crow
- House Sparrow
- Wren
- English Sparrow
- Catbird
- Shrike
- Sparrow
- Plumbeous Ibis
- Robin
- Greater Yellowlegs

~~1085, 1095, 1105~~

May 19 normal day. Nothing note. Sleep
 with clothes, working on the floor with
 bill, exercise, stand
 May 22. Still expanded. can't stand. May.
 Too long for me.
 May 23. In long hair. exercise about.
 better in at night. Exercise
 feet. wings starting.
 May 25. Growth all night. well feathered.
 can't stand a little bit
 May 27. From now at night. walk's unsteady
 wings growing
 May 30. Can't stand & walk feet at
 being shut in. mossy green bed.
 June 3. Able to fly up to do wings
 now (still). Bill shows great
 growth. Growing better.
 June 6. I spend time under house
 in front of steps. Kill the fly.
 June 10. Wings wings. stands
 upright. walks about. Then
 begins to peck. feet for self in basin
 June 15. Still down step. still as birds
 June 16. began to drink.
 June 21. Begins to get in water front & back
 down. rather starting. absent.
 June 23. pecks feathers. does not like to
 be handled much.
 June 30. can peck. comes with
 blue-green. walks & runs. trouble in
 pecking - sleeps on board still.
 holds head in back neck.

bill large & strong. Feather fine
 & smooth. legs still short.
 nervous. Fondly pecking. Run
 out when water is thrown.
 June 27. Travels about gate. normal house.
 June 28. Runs up & jumps on wire
 above. Shows disgust for movement.
 June 30. drinks readily. gives
 small amounts.
 June 27. angry at Helen & Cook.

July 1. Raging at Helen & Cook.

July 3
 148.6
 50

- Redwing
- Whimbrel
- Jaeger
- Albino
- Great Blue Heron
- Wedge-tailed
- Booby
- Wm. Grebe
- Calif. Gull
- Coast Gy. Gull
- Pelican
- Compass

Godwit	106.2	105.0	♀	♂	♂
Wilson Phalarope	106.5	107.7	♀	♂	♂
	106.2				

- Common Duck 30 pairs - 150 ducks
- Pintail 20
- Spoonbill 28
- Mallard 44
- Redhead 47

- 3532 Albino yg.
- 3533 "
- 3534 "
- 35 Snowy
- 36 "
- 37 "
- 38 Albino
- 39 "
- 40 "
- 41 "
- 42 "
- 43 Snowy
- 44 "
- 45 "
- 46 "
- 47 Albino
- 48 Snowy
- 49 Albino
- 50 "
- 51 "
- 52 "
- 53 "
- 54 "
- 55 "
- 56 "
- 57 "
- 58 "
- 59 "
- 60 "
- 61 "
- 62 "
- 63 "
- 64 "
- 65 "

- deaf
- Mallard IIII
- Redhead IIII
- Coast I
- Goswami
- Pintail II

3566

67
68
69
70
71
72
73
74
75
76
77
78
79
80
81
82
83
84
85
86
87
88
89
90
91
92
93
94
95
96
97
98
99

dbis
"
"
"
"
"
"
"
"
"
"
"
"
"
Snowy
"
"
dbis
Snowy
dbis
Snowy
"
"
"
"
"
dbis
"
"
"

992
993
994
995
996
997
998
999
1000

3600

dbis
1 night train
2 dbis
3
4 night train
5 dbis
6
7 Snowy
8
9 dbis
10 Snowy
11
12 dbis
13 Snowy
14 dbis
15 Snowy
16 night train
17
18 dbis
19
20

July 5

Yellow Warbler
Blue Jay
Crows

Vireo - bellied gnatcatcher
Pied-billed Grebe
Seymour's Warbler

- Yellow Warbler
- Blue Jay
- Crows
- Robin
- Black-bird
- Wilson Phoebe
- Red-bellied Gnatcatcher
- Tree Toad
- Wren
- Mocker
- Junco
- Blue Jay
- Starling
- Chipping Sparrow
- Spotted Sandpiper
- Black-bird
- Pheasant
- Blurred Owl ~~1077 & 1073~~
- Chipping Sparrow
- Mocker
- Bull Terrier
- Flycatcher
- Black-bellied Gnatcatcher
- Robin
- Franklin Gull

← →
Down Stork
A few water. Potomac

Judge Stork
Small of water

- ✓ Horseweed
- ✓ Round Scirpus clump
- ✓ alfalfa & grain fields
- ✓ Broad leaved Potamogeton abundant
- ✓ Distichlis
- ✓ Melilotus abundant
- ✓ Potamogeton green color
- ✓ Melilotus alba
- ✓ Picea
- ✓ Melilotus officinalis none
- ✓ Small Scirpus
- ✓ Utricularia between common banks
- ✓ Potamogeton abundant
- ✓ Picea abundant
- ✓ Echinochloa integrata
- ✓ Carex abundant
- ✓ Phragmites
- ✓ Najas
- ✓ Chara abundant
- ✓ Sarcocolla abundant
- ✓ Picea abundant

Erigeron annuus
Opuntia
Salsola rubra

Long Pond, shallow Pond
Potamogeton nodosus
Myriophyllum

Dead River
Potamogeton nodosus
Myriophyllum
leaf
Eragrostis setacea
Rosa
Potamogeton perfoliatus
Sarcocolla, fern
dandelion
yarrow
Dead grass
eye grass
thistle
milkweed
moss
Radiola hirsuta fern
Zizania aquatica local

Blue Jay
 Barn Swallow
 Junco
 Bank Swallow
 Cliff Swallow

July 7
Temp 72°

- Downy Woodpecker
 - Song Sparrow

- Bull Terrier
- American Sparrow
- Marsh Wren
- Redwing
- Coot
- Spotted Sandpiper
- Night Heron
- Dove
- Great Blue Heron
- Yellowthroat
- Phoebe
- Oriole
- Tit
- Towhee
- Wilson Phalarope ~~105.6~~
- Least Sandpiper
- Greater Yellowlegs
- Wren
- Cowbird
- Godwit ~~101.3~~
- Cinnamon Teal
- Redhead 1 pt
- Mallard 100 (49) 10,
- Gadwall 1
- Pintail 75

W. Sandpiper ~~107.6, 107.6, 107.5, 107.6, 107.3, 105.1, 107.6~~
 July 8

- Redwing
- English Sparrow
- Phoebe
- Barn Swallow
- Junco
- Cliff Swallow
- Bank Swallow
- Kingbird
- Night Heron
- Dove
- Song Sparrow
- Coot
- Yellowthroat
- Mocker
- Tit
- Yellowthroat
- Yellowthroat
- Black Tern ~~106.7, 106.0, 107.6~~
- Freshwater Gull
- Phoebe
- Cinnamon Teal ~~105.0~~

Mallard 30
 Gadwall 10
 Junco 40-40-50
 Gadwall 10

P. ...
... ..
... ..
Scirpus ...
... ..
Puccinellia
Castal
Belis amygdaloides abundant
" exigua few
cockleweed
Pumy
Pigeon grass
... ..
plantain

Kendall Canal.

Lactuca integrata and above
... ..
Mull. officinalis
Mullus
Radiola
... yellow flower pink leaves
Puccinellia abundant
wire grass

Pelecanus ... wings held up. head
pushed out of subventral bill
brought out open

dog & cat
pouder domo.
visi. of mono-jar
abye at men

July 11
1 ft. 8 3/4 in

Black Tern 100

Wickiup Warbler

Avocet ♀ 104.8, ♂ 104.6, ♀ 105.4, ♀ 105.5, ♀ 104.7, 105.6,

~~Stilt 104.8, 104.6, 105.4, 105.5, 104.7, 105.6,~~

Godwit 22 31,

♂ 105

Night Heron

Cost

Redwing

Savannah Sparrow

Yellowhead

Marsh Wren

Winter Wren

Calif Gull ♂ ad

Powder Mill 103

Godwit 105.0, 102.9, 102.7, 105.3, 105.1, 106.5

~~Great Yellowlegs 105.6~~

Cinnamon Teal 200

Spoonbill 2-14

Godswall 10,

Ballad,

Pintail 10

June 12 9 3/4
1 ft. ~~1 1/2~~

Redhead 11

Poorwill

Western Savannah Sparrow

Robin

Lazuli Bunting

Sharp-shinned Hawk

Credit 3 25

7.5 lbs
 3.2 lbs
 1.5 lbs
 1.0 lbs
 0.5 lbs

11
 11 1/2

Mottled Swallow
 Yellowthroat
 Indigo Bunting
 Peewee
 Gannet
 Dove
 Great Blue Heron
 Great Heron
 No Phalarope
 Wile

107.6, 108, 101, 6, 107
 104.8

Redhead
 Pintail
 Bluebill
 Mallard
 Loon
 Ruddy

Common Loon
 Mallard
 Goldeneye
 Redhead

Day	Notes	Weight	Day	Notes	Weight
2	"		6	"	
3	"		7	"	
4	night	3689 lbs	8	"	
5	Snowy	90 "	9	"	
6	lbs	1 "	60	"	
7	"	2 "	1	"	
8	"	3 "	2	Great Blue	
9	"	4 "	3	Snowy	
30	"	5 "	4	"	
1	"	6 "	5	"	
2	"	7 "	6	"	
3	"	8 "	7	"	
4	"	9 "	8	Great Blue	
5	Snowy	3700 "	9	Snowy	
6	"	1 "	70	"	
7	"	2 "	1	"	
8	"	3 "	2	"	
9	"	4 "	3	"	
40	"	5 "	4	lbs	
1	"	6 "	5	Snowy	
2	"	7 "	6	lbs	
3	"	8 "	7	Night Heron	
4	"	9 "	8	lbs	
5	"	10 "	1	Snowy	
6	"	1 "	80	"	
7	"	2 "	1	"	
8	"	3 "	2	"	
9	"	4 "	3	"	
50	"	5 "	4	"	
1	"	6 "	5	"	
2	"	7 "	6	"	
3	"	8 "	7	"	
4	"	9 "	8	"	
		20			

Great Vulture

Rostral highly vascularized, large vein, comes up on either side from neck just below base of skull. Right one extends clear to tip of bill between ramus given off numerous branches below + a few below, left one anastomoses with it by slender branch below in both of tongue. Each large vein gives off branch below two. A great net work of veins another large vein extends out each ramus of jaw, to tip given off branched below, lower line comes from jugular

1911
Hypobates pe. h. 101.5
B. swallow 706.2
January 8106.0 9 107.5

Night Hawk
 Barn Swallow
 Solitary Tanager
 Spotted Sandpiper
 Wilson Phalarope
 Black Tern
 Frigate Tern
 Calif Gull
 Great Blue Heron
 Barn Swallow
 ibis
 Marsh Wren
 Yellowthroat
 Redwing Blackbird
 Cowbird
 Savannah Sparrow
 Marsh Wren
 Barn Swallow
 Cliff
 Franklin Gull
 Spadewit
 Raven
 Least Sandpiper
 Wren
 Dove
 M. Phalarope 103.6, 100.6, 103.8, 105.4, 103.2
 American Osprey 20.3.2
 Pintail
 Green-winged Teal
 Redhead

July 1st 53

Willet
Calif Gull

Great Blue Heron 1
 Redhead 1
 Ruddy 1
 Coot 1
 Avocet 1
 Spoonbill 1
 Head West
 Coot 1
 Redhead 1
 Avocet ~~1~~
 Pintail ~~1~~
 Redhead 1
 Ruddy 1
 Frigate Tern 100 per
 2 eggs 9
 3 eggs 0

all but 2 shown
skipped in

Shore 107.3

7:00 P.M.
 180 W. /
 14 pairs abundant & rather lower
 changed with green in that
 they appeared dull olive green
 #13 O.K.
 #3 O.K. laid egg
 7/2 2 7.00 AM

~~180 W.
 14 pairs. lower abundant green
 hard to see distinctly green
 bird pulling.
 #13 O.K.
 #3 O.K.
 #5 8/27 - Holland 9 3/4 yrs.~~

~~180 W.
 1450~~

- Great Blue Heron
- Night Heron
- Snowy Heron
- Forster Tern
- Pilchard Tern
- California Gull
- Common Noddy
- Pelican
- Greater Yellowlegs
- Stilt
- Avocet
- Willet
- Wading
- Marsh Wren
- Kingbird
- Wren Gnatcatcher
- Coot
- Dowitcher 1053 1054 1055
- W. Sandpiper 1019
- No. Phalarope
- Wilson "
- Lesser Yellowlegs
- Least Sandpiper
- Common Noddy

- 1 Slaughter old South Shore
- 2 N. Noddy old
- 3 Noddy old
- 4 "
- X wading

Printed
 Blanket

6:00 P.M.
#8 O.K.
#5 up by
#4 quiet when given ¹⁰⁰⁰ bird O.K.
#3 O.K.
#3 O.K.

Mallard Redhead not present

7/23

7:00 P.M.
#8 O.K.
#5 quiet when given ¹⁰⁰⁰ bird, a little
bit nervous. ¹⁰⁰⁰ bird
#4 quiet when given ¹⁰⁰⁰ bird
#3 O.K.
#3 O.K.

7:00 P.M.

#8 O.K.
#5 quiet when given ¹⁰⁰⁰ bird
#4 no change
#3 O.K.

7/24

#7 O.K.
#5 quiet when given ¹⁰⁰⁰ bird, no
change
#4 quiet when given ¹⁰⁰⁰ bird, a little
nervous when ¹⁰⁰⁰ bird
given in color, rather loose but
of much substance. Bird a way
little ¹⁰⁰⁰ bird
#3 O.K.
#3 O.K.

Red-breasted Merganser
Yellow Warbler

7:00 P.M.
#8 O.K.
#4 O.K.
#5 no change
#4 (a) quiet when given ¹⁰⁰⁰ bird, a little
nervous when given ¹⁰⁰⁰ bird
(b) O.K.
#12 O.K.
#3 O.K.

2 1/2 hrs
 2 hrs waiting for the 20 gals
 from the
 4. from 7 000
 - 10000 in 1000
 1 1/2 O.K.
 1 3 0 R.

March
 6:30 P.M.
 1 1/2 O.K.
 1 1/2 O.K.
 1 1/2 @ for water change
 - 10000 in 1000
 1 1/2 O.K.
 1 1/2 O.K.

Night Heron egg
 Female Tern
 Kingbird
 Song Sparrow
 House Sparrow
 Red-winged Blackbird
 Indigo Bunting
 Field Sparrow
 Flicker
 Great Blue Heron
 Cowbird
 Crow
 Starling
 Kingbird
 Mockingbird ~~1000~~

6:00 AM
 1-10 from late night - brought with
 blue jays
 @ from late night brought with
 blue jays
 #13 OK
 #30 OK

6:20 bird has had soft shelled
 egg. probably of another

- Night Hawk
- 7:30 AM
- Carpenter
- Kingbird
- House Wren
- Robin
- Magpie
- Redwing
- Yellowthroat
- Chimney Swift
- Wren
- Spotted Sandpiper

11:00 AM 7/27
 #14 O.K.
 #5 no change
 #4 as per check game string

@ from loose brought game from
 #1 in small amount of water
 #13 OK
 #30 OK

5:00 AM
 Jan 10. a little water
 not other change
 #4 D. face light olive green
 #113 D. face change
 #13 D. face light green
 #1 D. face light green

7/28

5:00 AM
 #5 m. hang
 #4 871 band - bright eye
 face water clear olive green
 other band bright
 face water light bright green
 #12 D.K.
 #13

Duck Hawk 1072
~~Merganser 1078, 1078, 1076, 1070~~
 Kingfisher
 Great Blue Heron
 Horned Grebe
 Black Duck
 Calf Gull
 Ring-billed Gull
 Spotted Sandpiper
 Avocet
 English Sparrow
 Field Sparrow
 Starling
 Yellowthroat
 Prothonotary
 Blue Jay
 Red-shouldered
 Titmouse 1070 ^{nest} 1072
 Grackle 1060
 White-throated 1059

6:30 AM
 #14 D.K.
 #5 m. d. water added
 no change. face clear black.
 #4 a. face bluish olive green
 #71 face bright pale yellow
 the water very hot but pleasant
 water clear small amount
 no change in temperature
 #13 D.K.
 #3 D.K.

2:00
 2:11
 2:15
 2:20
 2:25

7/29

Decline of sexual activity in birds

7:00 P.M.
 1st round feeding for Dick
 Mellard
 2nd round feeding done no change
 given last time by Doug & K.
 A 4th round feeding done
 7:11 P.M. given last time given
 provided for
 3 O.K. given
 3 V.K. given

Kingbird
 Flicker
 Yellowthroat
 Tit
 Crow
 Spotted Sandpiper
 Oriole
 Snowy Plover
 Great Blue Heron
 Night Heron
 Marsh Wren
 Solitary Sandpiper
 Killdeer
 Black Tern
 Forster Tern
 Coot
 Cormorant
 Double-crested
 Godwit
 Dun Sandpiper
 Wading
 W. Grebe
 Goose
 Wilson Snipe 1095

dead
 Curlew 11
 Common Jack
 Island
 2 mallard

Phalarope

primary
 Green
 Phalarope
 Red-tailed
 Coot
 Mallard

7:00 P.M. no change.
#11 low feces in water and with
large green
#12 no change
#13 O.K.
#14 O.K.

7:00 P.M.
#14 O.K.
#15 no change
#17 no change. Birds able to
clutter top of pen.
#13 O.K.
#15 Egg laid O.K. 7/31

7:00 P.M. O.K.
#14 O.K.
#15 no change
#17, #11 feces both water clean green
#12 O.K.
#13 O.K.

6:30 2/1 3 1/2 in.
#14 O.K. laid egg today.
#15 no change
#14 no change. Feces thin as
water & with only slight
substance in water.
#13 O.K.
#13 O.K. 8/1

6:30 A.M.
#14 O.K.
#15 no change
#14 #11 feces clean from sticks
#12 no change
#13 O.K.
#13 O.K.
#14 O.K.
#15 bird O.K. feces a little brown

July 2nd - most pleasant breeze
Redwinged blackbird 1000

8/2

7:00

8:11 O.K.

75 both show the same
with small water started

40 O.K.

H 3 O.K.

7:50 P.M.

24 pieces of untreated

24 pieces both abundant about

normal

H 3 O.K.

H 3 O.K.

8/3

24 pieces show some eggs slightly

at 2000 feet water level

H 3 O.K.

H 3 O.K.

8/4

7:00 - 7:50 pieces loose dark then

H 3 O.K.

H 3 O.K. egg laid.

Blanchard Island

8 pieces shown. Foot tracks
filled with sating water. Hill top
water deep, cold sating water at
9 meters and abundant as seen
at the lake. Water off slope 15 to 15
meters above water at all
level of rocks etc. in water
reflections abundant

No corals in water around
Blanchard

Lagoon salt
in lagoon water, about 1000
meters from shore
along inner edge of lagoon
long narrow board strips

~~Amount 107.8, 103.6, 103.7, 104.1, 104.8~~

~~Shina forest 7 days 105.6,
2 " 101.5
8 " 104.5~~

#12 872 Redhead 1/2 year
 #13 873 Cost 3/4 year
 874 Redhead 3/4 " "
 875 Hen just

7:00 P.M.
 #12 O.K.
 #11 bird seems normal
 #4 @ no change
 #11 several smaller birds
 Birds under quarter & back
 #3 birds O.K.

8/5
 #12 O.K.
 #14 no change
 #4 no change
 #12 O.K.
 #3 O.K.

#5 876 Redhead mostly young
 #7 877 Redhead mostly young
 #8 878 Gadwall " "

7:00 a.m. 8/6
 #12 O.K.
 #14 " solution normal
 #5 O.K.
 #4 no change
 #13 O.K.
 #3 O.K.
 #17 O.K.
 6:00 P.M. 8/6
 #12 O.K.
 #14 " "
 #5 " feet a little loose.
 #4 feet in both normal in
 color loose
 #13 feet loose, birds O.K.
 #3 O.K.
 #17 feet O.K.

#11 879 Redhead 3/4 year
 880 Gadwall "
 #16 881 Gadwall
 882 Cost

7.00
 10.00 O.K.
 14.00 new solution
 15.00 O.K.
 16.00 O.K.
 17.00
 18.00 O.K.
 19.00 O.K.

883 Redhead "signum"
 884 " "
 885 " "

17.00 P.M.
 12 O.K.
 5 " in pan
 4 terminated
 13 Redhead seems a little
 small
 11 O.K. in pan signum
 3 O.K.
 17 O.K.
 16 O.K.

Bittern 1040
 Still
 Avocet
 W. bit
 Yellowhead Manx
 Solitary Sandpiper
 Greater yellowlegs
 Marsh Wren
 Yellowthroat
 Lawrence Sparrow
 Fork Tern
 Noddy Tern
 Cormorant
 Snowy Plover
 Great Blue Heron
 Gull
 Black Tern
 Common Noddy 20-60
 Gadwall 2
 Green-winged Teal 1000-2000
 Pintail 300-200
 Mallard 15-20
 Redhead 20
 Kingbird
 Gull 400
 White Phalarope
 Lesser yellowlegs
 ibis

22 all O.K.
 23 O.K.
 7:14 " " " " " " " "
 25 solution of gum " " " " " " " "
 bird, alone
 25 solution " " " " " " " "
 26 O.K.
 27 O.K.
 28 O.K.
 29 O.K.

11 "886 " " " " " " " "
 887 " " " " " " " "

6:00 P.M. bird " " " " " " " "
 2884 " " " " " " " "
 walk but prefers to lie down, does
 not eat. I can barely bring membrane
 nictitans across eye. I walk with
 difficulty, supported in hand head
 droop a little, wings hang
 loose, fall on side & cannot wing.
 285 strange wing position
 eye reflex O.K. Don't eat
 883 eye reflex a little slow,
 bird can walk but does not eat
 212 O.K.
 214 O.K. escaped
 215 fine wing which is damaged
 214 fine in both this morning
 in color

25 solution of gum " " " " " " " "
 211 O.K.
 23 O.K.
 217 solution " " " " " " " "
 216 O.K.

7:30 A.M.
 22 "885 head and neck body
 head turned back, a watery
 exudate in eye.
 #885, very weak, can barely
 hold up head, marked dyspnoea
 cannot stand. membrane
 nictitans can cover part of eye
 alone or with an effort to close
 eye. obvious contraction of
 eye muscles turning eyeball.
 wings hang loosely
 #12 O.K.
 #5 fine thin white solution
 2/3 gone, but strong action
 #4. 1cc strong clear juice in both
 212 solution " " " " " " " "
 birds O.K.
 #11 O.K.
 #2 " " " " " " " "
 #11 solution " " " " " " " "
 #11 birds O.K.

7.00 P.M.

L12 O.K.

L5 solution 3/4 gone no change.

L4 ♀ feces dark green

♂ feces normal mottled dark green

#13 solution 1/4 gone birds O.K.

#11 solution 1/2 gone O.K.

#3 O.K.

#17 water practically birds O.K.

#16 O.K.

7/11

7.00 A.M.

L22 spermatozoa scale seen mostly

L12 O.K.

L5 O.K. solution renewed

L4 ♀ feces fully gone green

♂ feces some mottled green

#13 feces & shells seen birds O.K.

solution 3/4 gone

L11 feces loose birds O.K. water

renewed.

L3 O.K.

#7 solution gone renewed, feces loose

birds O.K.

#16 O.K.

solution 5, 11, 17.

6.00 P.M.

L18 same O.K. given salt solution

#12 O.K.

#5 no change

#4 ♀ feces from dark green O.K.

♂ feces liquid light green

#13 solution mostly gone

no change.

#11 solution 1/2 gone. one change.

#2 O.K.

#10 O.K. feces loose.

#16 O.K.

7/12

7.00 A.M.

~~L12 O.K.~~

~~L5 feces gone dark, no change~~

~~L4 ♀ feces water thin fresh green~~

~~♂ no change~~

~~#13 no change solution renewed~~

~~#11 O.K.~~

~~#16 O.K.~~

~~#10 O.K.~~

~~#2 O.K.~~

~~L5 feces dark green solution renewed~~

#4 ♂ feces watery green

♀ feces mottled darker green

apparently fine tomorrow O.K.

~~#11 O.K.~~

#11 change very wild

#2 O.K.

#17 O.K.

#16 O.K.

~~7:00 AM~~
 7:00 AM
 7:15 AM
 7:30 AM
 7:45 AM
 8:00 AM

8/14

7:00 AM
 7:15 AM
 7:30 AM
 7:45 AM
 8:00 AM
 8:15 AM
 8:30 AM
 8:45 AM
 9:00 AM
 9:15 AM
 9:30 AM
 9:45 AM
 10:00 AM
 10:15 AM
 10:30 AM
 10:45 AM
 11:00 AM
 11:15 AM
 11:30 AM
 11:45 AM
 12:00 PM
 12:15 PM
 12:30 PM
 12:45 PM
 1:00 PM
 1:15 PM
 1:30 PM
 1:45 PM
 2:00 PM
 2:15 PM
 2:30 PM
 2:45 PM
 3:00 PM
 3:15 PM
 3:30 PM
 3:45 PM
 4:00 PM
 4:15 PM
 4:30 PM
 4:45 PM
 5:00 PM
 5:15 PM
 5:30 PM
 5:45 PM
 6:00 PM
 6:15 PM
 6:30 PM
 6:45 PM
 7:00 PM
 7:15 PM
 7:30 PM
 7:45 PM
 8:00 PM
 8:15 PM
 8:30 PM
 8:45 PM
 9:00 PM
 9:15 PM
 9:30 PM
 9:45 PM
 10:00 PM
 10:15 PM
 10:30 PM
 10:45 PM
 11:00 PM
 11:15 PM
 11:30 PM
 11:45 PM
 12:00 AM

7:00 AM
 7:15 AM
 7:30 AM
 7:45 AM
 8:00 AM
 8:15 AM
 8:30 AM
 8:45 AM
 9:00 AM
 9:15 AM
 9:30 AM
 9:45 AM
 10:00 AM
 10:15 AM
 10:30 AM
 10:45 AM
 11:00 AM
 11:15 AM
 11:30 AM
 11:45 AM
 12:00 PM
 12:15 PM
 12:30 PM
 12:45 PM
 1:00 PM
 1:15 PM
 1:30 PM
 1:45 PM
 2:00 PM
 2:15 PM
 2:30 PM
 2:45 PM
 3:00 PM
 3:15 PM
 3:30 PM
 3:45 PM
 4:00 PM
 4:15 PM
 4:30 PM
 4:45 PM
 5:00 PM
 5:15 PM
 5:30 PM
 5:45 PM
 6:00 PM
 6:15 PM
 6:30 PM
 6:45 PM
 7:00 PM
 7:15 PM
 7:30 PM
 7:45 PM
 8:00 PM
 8:15 PM
 8:30 PM
 8:45 PM
 9:00 PM
 9:15 PM
 9:30 PM
 9:45 PM
 10:00 PM
 10:15 PM
 10:30 PM
 10:45 PM
 11:00 PM
 11:15 PM
 11:30 PM
 11:45 PM
 12:00 AM

8/16

7:00 AM
 7:15 AM
 7:30 AM
 7:45 AM
 8:00 AM
 8:15 AM
 8:30 AM
 8:45 AM
 9:00 AM
 9:15 AM
 9:30 AM
 9:45 AM
 10:00 AM
 10:15 AM
 10:30 AM
 10:45 AM
 11:00 AM
 11:15 AM
 11:30 AM
 11:45 AM
 12:00 PM
 12:15 PM
 12:30 PM
 12:45 PM
 1:00 PM
 1:15 PM
 1:30 PM
 1:45 PM
 2:00 PM
 2:15 PM
 2:30 PM
 2:45 PM
 3:00 PM
 3:15 PM
 3:30 PM
 3:45 PM
 4:00 PM
 4:15 PM
 4:30 PM
 4:45 PM
 5:00 PM
 5:15 PM
 5:30 PM
 5:45 PM
 6:00 PM
 6:15 PM
 6:30 PM
 6:45 PM
 7:00 PM
 7:15 PM
 7:30 PM
 7:45 PM
 8:00 PM
 8:15 PM
 8:30 PM
 8:45 PM
 9:00 PM
 9:15 PM
 9:30 PM
 9:45 PM
 10:00 PM
 10:15 PM
 10:30 PM
 10:45 PM
 11:00 PM
 11:15 PM
 11:30 PM
 11:45 PM
 12:00 AM

6:00 PM
 #13 O.K.
 #12 O.K.
 #14 O.K.
 #5 O.K.
 #7 male dead yellow. due
 to a road set out on a low
 water table & a dead
 ♀ swimming in water
 #13 solution nearly gone. birds
 seem O.K.
 #12 O.K.
 #17 solution nearly gone O.K.
 #16 O.K.

8/16

7:00 AM
 #13 O.K.
 #12 O.K.
 #14 O.K.
 #5 O.K.
 #7 ♀ quite abt. tail droops
 # is a little unsteady with
 #13 solution gone
 #2 O.K.
 #17 O.K. water about gone
 #16 O.K.

8:30 AM
 #13 terminated birds - turn
 head back has m.c. slow. ~~do~~
 Abnormal eyes & held there
 #17 terminated birds gone.

#2 O.K.
 #12 O.K.
 #14 O.K. water gone
 #3 solution 2/3 gone no change
 #4 no change
 #3 O.K.
 #16 water 3/4 gone O.K.

not in tan mud as yellow mud
 feeding status unaffected
 trouble due to vegetation
 lowering water
 Not necessary in mammals &
 signs are those affected
 Abnormal eyes & held there affected
 trouble not in sleep water
 as solution unaffected
 trouble perhaps attributable
 in vireonidae as smaller water
 birds most affected

6:00 PM

#17 O.K.
 #12 O.K.
 #14 tail droops
 #7 tail droops. right shoulder
 green along a few
 #5 head and feet
 m.m. affected slow
 #3 O.K.
 #16 O.K.

577 O.K.
578 "
579 "
580 O.K. mostly in jet
581 O.K.

582 Redhead
583 "
584 "

11 ⁵⁷⁵ shaded soil *Polyommatus* etc
found at foot larger than
from usual shallow surface water
for drainage.

12 ⁵⁷⁶ shaded
shallow water connected
with *Polyommatus* etc
of water for drainage & *Polyommatus*
etc

13 ⁵⁷⁷ unshaded
large unshaded shallow
pool water surface to water

7:00 P.M.
12 O.K.
14 O.K. terminated
4 ♀ resting on *Polyommatus* - small
in feet fell down in *Polyommatus*
apparently eating nothing! decidedly
dumpy. Water stained green
with *Polyommatus* etc. *Polyommatus*
returned to water immediately
3 O.K. eggland
16 O.K.

8/19

7:00 a.m.
12 O.K.
4 dead *Polyommatus* *Polyommatus*
3 O.K.
16 O.K.

Night heron
 Wooded swamp
 Red wing
 Green heron
 Grebe

Black Sparrow
 Yellowthroat
 Great Blue Heron
 Finch

Count ~~100 105.0, 107.3, 108.3~~
~~103.5, 106.9~~

Common
 Green heron
 Pelican
 Calif gull
 Godwit
 Dowitcher
 Forster Tern
 Black "
 Blue jays

~~Pintail~~ ~~|||||~~
~~Sparrow~~ ~~||~~
~~California~~ ~~|||~~
~~Green heron~~ ~~|||~~
 Count 1

#5 891
 #11 692

morning work. Some filament in
 shallow 3 1/2
 small spotted Mallard, 4 Green heron
 on channel (do they go into fish ponds?)
 North wind was laid flat bare.

Shingler Island depot
 Pintail 7, 1 dead gull, 1 Pelican
 Green heron 1
 Calif gull 1
 Ring bill 1

Shingler Island has been flooded
 water spilled in shallow
 stagnant water in water among
 Scaevola

6:00 P.M.
 #11 O.K. water gone from
 ground from still (partly insects)

#13 O.K. abundant water
 fed

#14 water gone from ground
 from rain on ground plants, water
 fed

#12 O.K.
 #15 water gone from water
 Shingler Island

#16 O.K.

894 ♂ 35 5/12 right shot 330mg
 893 ♀ right leg 5 1/2 right shot

3722 Capt m. Cinnamon
 end of hit under 3rd
 toe on right foot
 3 " " (873)
 4 " "
 5 " "
 6 " "
 7 " "
 8 " "
 9 " "
 373 0 " "
 1 " "
 2 " "
 3 missing
 4 " "
 5 " "
 6 Cinnamon ♀ not sick
 7 " "
 8 " "
 9 " "
 374 0 " "
 1 " "
 2 Pintail ♂ ad fluff
 3 " "
 4 " "
 5 " "

6 " ♀
 7 " ♂
 8 " wings
 9 " not milled
 375 0 ♀
 1002 Redhead 3/4 ♀ (874)
 2 " full ♂ (875)
 4 " 3/4 (876)
 5 " "
 6 missing
 7 Redhead 2/3
 8 " 3/4 (879)
 9 "

101 0
 1
 2
 3
 4
 5
 6
 7
 8
 9

5 shot in gizzard
 a darkened reddish patch
 between proctodae above pylorus
 proventriculus. enlarged stomach

6:00 P.M.
 7:00 K.K.
 # 8 Am. given water. Sling blood.
 # 5 E.K.
 # 4 feces in both other also brown
 # 3 10. K bird
 # 16 10 K water given esp. + incubated
 # 17 without water all day
 given normal eat.

12 1000 bird same part
 #1 & 2 juvs rather less blue brown
 #3 O.K.
 #4 O.K.
 #15 dead, Redhead
 #16 nest entirely gone (water level 20 ft inside)
 #17 seen 21
 #18 20 juvs dry, 20th day
 30 Jul water brought in

6 00 P.M.
 #12 O.K.
 #13 "
 #14 "
 #4 ♀ juvs fine bright green
 ♂ faced thru W. side of nest
 dry alone
 #13 O.K.
 #14 O.K. hungry

3751	Spring	
29370	Passer	in
1	"	"
2	"	"
3	"	"
Command		106.2
Kingfisher		105.3

Bobolink Savon
 7:00 AM
 #12 O.K.
 #17 "
 #18 juvs fine seen O.K.
 #19 ♂ juvs thru tangled with grass
 #20 O.K.
 #21 O.K.

Some Songow water high good
 stream into bay - water just
 clearing ducks & Koots into bay
 Not all scattered. The great banks
 of shrubs. Fair about 200th of
 Wharf low. No wind. I
 The birds of the High End
 Puntal & Waller.

2:30 P.M.
 #11 O.K. water in again
 #12 O.K.
 #13 O.K. water in again
 7:00 P.M.
 #12 O.K.
 #18 seen O.K.
 #15 juvs seen early go to nest just
 out of nest
 #14 ♂ juvs thru blue grass
 #15 juvs thru blue grass
 #14 O.K. seen in nest

8/23

1. still some small birds with
15 still in full out and
- 1 of pair - 1000-1200
- 1 of pair - 1000-1200
- 1 of pair - 1000-1200

1000 K.
1100 1 pair
Old River channel
Greenway 1000-1200
Pintail 500-300
Mallard

Small pond scattered Fall valley
Some visible low to south

7:45 am. change change
7:50 PM.
#12 O.K.
#15 dead in corner
#4 3 pair live green both strong
#4 1 dark green
#13 O.K.
#11 bird O.K. solution - only green

8/24

7:00 am.
#12 O.K.
#15 little sluggish
#4 6 pair thin live green
#4 1 pair thin dark green
#12 O.K.
#17 O.K.
9:00 am
#13 O.K.
#15 O.K.
7:00 PM.
#17 solution mostly green bird O.K.
#13 O.K.
#4 pair both thin about
olive green
#19 1 pair green no change
#12 O.K.

7:00 am.
#12 O.K.
#15 little sluggish
#4 pair thin live green
#4 1 pair thin dark green
#12 O.K.
#17 O.K.
#13 O.K.
#15 O.K.
#19 1 pair green no change
#12 O.K.
#11 pair from bird O.K.

#10 O.K.
 #11 O.K.
 #12 O.K.
 #13 O.K.
 #14 O.K.
 #15 O.K.
 #16 O.K.
 #17 O.K.

Grouse 9
 Sparrowbill 1
 8/27 9 00 a.m.
 #12 O.K.
 #13 O.K.
 #17 O.K.

Grouse 9
 Sparrowbill 1
 Pintail 1

- Sparrowhawk
- Black-billed Plover
- Yellow Warbler
- Red-tailed "
- Kingbird
- Rock Wren
- Barn Swallow
- Compass
- Yellowthroat
- Chickadee
- Night Heron
- Great Blue Heron
- Black Wren
- Pied-billed Grebe
- Raven
- Magpie
- Stitch
- Pileup
- Snowy Heron
- Elbow
- Coat
- Great
- Pied-billed Grebe

- Calif Gull
- Killdeer
- Spotted Sandpiper
- Least "
- Canada Goose
- Thryothorus swainsonii* 1079

- Redhead
- Pintail
- Sparrowbill
- Willow
- Grouse

375	Mallard	♂			
1	"	♀			
2	"	♂			
3	"	♀			
4	"	♂			
5	"	♀			
6	"	♂			
7	"	♀			
8	"	♂			
9	"	♀			
10	"	♂			
11	"	♀			
12	"	♂			
13	"	♀			
14	"	♂			
15	"	♀			
16	"	♂			
17	"	♀			
18	"	♂			
19	"	♀			
20	"	♂			
21	"	♀			
22	"	♂			
23	"	♀			
24	"	♂			
25	"	♀			
26	"	♂			
27	"	♀			
28	"	♂			
29	"	♀			
30	"	♂			
31	"	♀			
32	"	♂			
33	"	♀			
34	"	♂			
35	"	♀			
36	"	♂			
37	"	♀			
38	"	♂			
39	"	♀			
40	"	♂			
41	"	♀			
42	"	♂			
43	"	♀			
44	"	♂			
45	"	♀			
46	"	♂			
47	"	♀			
48	"	♂			
49	"	♀			
50	"	♂			
51	"	♀			
52	"	♂			
53	"	♀			
54	"	♂			
55	"	♀			
56	"	♂			
57	"	♀			
58	"	♂			
59	"	♀			
60	"	♂			
61	"	♀			
62	"	♂			
63	"	♀			
64	"	♂			
65	"	♀			
66	"	♂			
67	"	♀			
68	"	♂			
69	"	♀			
70	"	♂			
71	"	♀			
72	"	♂			
73	"	♀			
74	"	♂			
75	"	♀			
76	"	♂			
77	"	♀			
78	"	♂			
79	"	♀			
80	"	♂			
81	"	♀			
82	"	♂			
83	"	♀			
84	"	♂			
85	"	♀			
86	"	♂			
87	"	♀			
88	"	♂			
89	"	♀			
90	"	♂			
91	"	♀			
92	"	♂			
93	"	♀			
94	"	♂			
95	"	♀			
96	"	♂			
97	"	♀			
98	"	♂			
99	"	♀			
100	"	♂			
101	"	♀			
102	"	♂			
103	"	♀			
104	"	♂			
105	"	♀			
106	"	♂			
107	"	♀			
108	"	♂			
109	"	♀			
110	"	♂			
111	"	♀			
112	"	♂			
113	"	♀			
114	"	♂			
115	"	♀			
116	"	♂			
117	"	♀			
118	"	♂			
119	"	♀			
120	"	♂			
121	"	♀			
122	"	♂			
123	"	♀			
124	"	♂			
125	"	♀			
126	"	♂			
127	"	♀			
128	"	♂			
129	"	♀			
130	"	♂			
131	"	♀			
132	"	♂			
133	"	♀			
134	"	♂			
135	"	♀			
136	"	♂			
137	"	♀			
138	"	♂			
139	"	♀			
140	"	♂			
141	"	♀			
142	"	♂			
143	"	♀			
144	"	♂			
145	"	♀			
146	"	♂			
147	"	♀			
148	"	♂			
149	"	♀			
150	"	♂			
151	"	♀			
152	"	♂			
153	"	♀			
154	"	♂			
155	"	♀			
156	"	♂			
157	"	♀			
158	"	♂			
159	"	♀			
160	"	♂			
161	"	♀			
162	"	♂			
163	"	♀			
164	"	♂			
165	"	♀			
166	"	♂			
167	"	♀			
168	"	♂			
169	"	♀			
170	"	♂			
171	"	♀			
172	"	♂			
173	"	♀			
174	"	♂			
175	"	♀			
176	"	♂			
177	"	♀			
178	"	♂			
179	"	♀			
180	"	♂			
181	"	♀			
182	"	♂			
183	"	♀			
184	"	♂			
185	"	♀			
186	"	♂			
187	"	♀			
188	"	♂			
189	"	♀			
190	"	♂			
191	"	♀			
192	"	♂			
193	"	♀			
194	"	♂			
195	"	♀			
196	"	♂			
197	"	♀			
198	"	♂			
199	"	♀			
200	"	♂			

3774
 3727

 47
 16

 63

Salpinctes

Avocet Brown B. P.
 Olive Woodcock
 Sage Thrasher Least Sparrow
 Cedar on little mtn. low east on
 below Cedar Butte
 quantities of grasshoppers
 swarms of flies both house
 abundant mosquitoes created by
 water. Some water also
 white & encrusted with salt
 Beyond with extensive fields
 level & alkali flat from which
 stand numerous islands
 round oval or irregular in
 shape.
 Salt well - some older than
 by water tank.
 Lampo house, few
 houses. flies at beginning of
 ground to some extent.
 Sage brush & several grasses
 most plentiful - growing numbers
 view across Salt River Delta
 little ground
 F.C. Hoag, Mrs. Sten etc.
 on this house. A small valley
 in water - some signs gathering
 Cedar on hills above valley
 Nest Bole, Bar M, Middle of Spis

126
W
B

|||||

350

a	w	13		5
120	120	120	21	17
146	107	107		20
128	91	143		48
113	171	128		11
135	110	117		26
108	164	90		52
90	148	126		104
48	96	230		52
88	76	210		20
50	38	286		38
		47		
729		333		
Barn Swallow		nest		
Shrike		nest		
Yellow head		English Sparrow		
Marsh Wren		Redwing		
Orange Sparrow		Cormorant in dead		
Hooded Merganser		Yellowthroat		
Night hawk		Great Blue Heron		
Brewer Blackbird		Titmouse		
Killdeer				
Least Sandpiper				
Swamp Sparrow				
Green Heron		flapper		
Mallard				
Virginia Rail				
Canada Goose				
Marsh Wren				

Bar M. Slope
Salsola vermiculata ab. flats
Distichlis spicata
Typha angustifolia common flats
Salsola vermiculata flats
Distichlis spicata common
Scirpus americanus ab.
Phragmites communis common
 Plantage
Phragmites communis flats
Cyperus sp. ab.
Phragmites communis common
 Chara common with
Lactuca pulchella few
 wove grass
Scirpus americanus common
 salt grass, *Scirpus americanus*
 common

Phragmites communis
Phragmites communis
 Phragmites few
 Allonnia
 in water plants

Surface of ... 1 foot below
 lat. ... 3.5 miles
 Springs ...
 that running ...
 7200 feet ... cedars ...
 trails visible ...
 to ... 10,000 feet
 a little snow ... cedars
 Black Pine 9800 feet ...
 very few ... cedars runs up
 Monument isolated ...
 To south ...
 but ...
 cloudy, shady South breeze
 from ...

Kellin 130

Shrike
 Horned Lark
 Killdeer
 Least Sandpiper
 Brown Sparrow ~~1005~~
 Barn Swallow
 Song Sparrow
 Chipmunk ~~♂ 1005 ♀ 1007~~

Sarcobatus
 Callisitta
 Salicoma utahensis
 " rubra ...
 Atriplex

8/21

2120K
 24. ...
 birds eat well
 2310K

1100	Redhead	#16
1101	Green-winged ♂	#5
1103	Redhead	#5
1102	Redhead	#17
1105	Green-winged ♂	

3775 Pintail ♂ ad ramp eaten
6 Mallard ♂ ad.

Dead

~~Green-wing 4~~
~~Mallard 1~~
~~Spoonbill 1~~
~~Coot 1~~

Added

~~Mallard 1~~
~~Pintail 2~~
~~Coot 1~~
~~Green-wing 1~~

7:00 A.M.

Sept 1

#12 O.K.
#4 both ♂ ad experiment terminated
#3 O.K.
#17 O.K. water full of logs
#15 dead
~~Coot 1~~
~~Mallard 2~~
~~Coot 1~~
~~Pintail 1~~

Brought in
~~Mallard 11~~
~~Pintail 11~~
~~Coot 11~~
~~Green-wing 1~~
~~Spoonbill 1~~

#4
11036 Mallard ♀ 6 shot
1107 " ♂ 4 "

3777 Aigial clam
8 Mallard ♂ ad ramp eaten

9 Pintail ♀
3780 " ♀
1 Cinnamon ♀
2 Spoonbill ♂
3 " ♂
4 " ♂
5 " ♂
6 " ♂
7 Coot im
8 " ad
9 " im (12)

3793 Cinnamon ♀
1 " ♀
2 " ♀

6:00 P.M.

#12 O.K.
#5 exp begun
#4 O.K.
#17 O.K.

7/2

#12 O.K.
#5 O.K.
#4 gun in both traps with gun
#17 water frozen dead

3793	greening	1	1
4	"	1	1
5	"	1	1
6	"	1	1
7	"	1	1
8	"	1	1
9	"	1	1
3800	"	1	1
1	"	1	1
2	"	1	1
3	"	1	1
4	"	1	1
5	"	1	1
6	"	1	1
7	"	1	1
8	"	1	1
9	"	1	1
381	Comm	1	1
1	"	1	1
2	"	1	1
3	"	1	1
4	"	1	1
5	"	1	1
6	"	1	1
1021	Redhead	2/3	♀
2	"	2/3	
3	"	3/4	
4	"	3/4	
5	"	2/3	
6	"	2/3	
7	"	2/3	
8	"	2/3	
9	"	2/3	

8/3

#2 O.K.
 #5 O.K.
 #4 green in both thin, dark green
 #11 water reduced to 1/2 and O.K.
 added 1/2 part

100 yds
212 O.K.
115 O.K.
#7 pins in work were wavy due
grad & had stringing

118 O.K.
110 O.K.
dead
Nuthatch 1
Redhead 1
Sparrow 4
W. Swallow 2

8/3

Barn Swallow
Bank Swallow

Acorn	
Protein	
grain	3.75
gas	
Heart tone	25
Lath	30
Soaps	
dimers	70
laundry	75

- ✓ Robin
- ✓ Bobolink
- Yellow Warbler
- Quail
- Parula
- Redhead
- Protonotary
- ~~C. v. d. d.~~
- Snowy Hum
- Nighthawk
- Great Horned Owl
- Barn Swallow
- Sparrowhawk
- Horned Grebe 10.0
- Godwit 10.0
- Plover 10.0

Brought in
~~Nuthatch~~
~~Wren~~
~~Redhead~~
~~Sparrow~~
~~Protonotary~~
~~Protonotary~~



1029	Redhead	♂	3/4	1049	Redhead	♀	3/4
1030	"		2/3	1050	"	♂	3/4
1	"	♀	3/4	1	"		3/4
2	"	♂	3/4	2	"		1/2
3	"	♀	3/4				
4	"	♂	full				
5	"	♂	5/4				
6	"	♂	3/4				
7	"	♀	3/4				
8	"	♀	3/4				
9	"		2/3				
1040	"		2/3				
1	"		2/3				
2	"	♀	3/4				
3	"	♂	3/4				
4	"	♂	3/4				
5	"	♂	2/3				
6	"	♀	1/2				
7	"		2/3				
8	"		3/4				
9	"						

3814	Pintail	♂	3826	Greenwing	♂
5	"	♂	7	"	♀
6	"	♂	8	"	♂
7	"	♂	9	"	♂
8	"	♂	3830	Common	♂
9	"	♂	1	"	♂
3820	"	♂	2	"	♂
1	"	♂	3	"	♂
2	"	♂	4	"	♂
3	"	♂	5	"	♂
4	Mallard	♂	6	Spoonbill	♂
5	"	♀			

Lincoln Sparrows 1085

7:00 P.M.
 #12 Redhead dead
 #5 One dead, the sulphur
 #1 ♀ dead in pan.
 ♂ tail drooping breast low
 mustards.
 #11 water nearly gone - O.K.
 #16 pan dry & fresh water
 gone
 8/6
 #12 O.K.
 #4 no change from last year
 #11 water very low birds O.K.
 #14 O.K.

3837 still in

Brought in
~~Greening~~ #####
~~Redhead~~ +
~~Mallard~~ |
~~Spoonbill~~ |

2000
 1500
 400 from the blue room and kitchen
 ex. little bird caught
 # 100 R
 # 160 R
 # 180 R
 Mallard |
 Greening ||

Brought
 Greening 9/
 Greening 1/

# 1108	Redhead	2/3	# 12
# 1109	Redhead	2/3	# 5
# 1110	Greening	3	

- Barn Swallow
- Pileolated Warbler
- Oriole
- Chimney Swift
- Starling
- Flicker
- Red Winged Blackbird
- Snowbird
- Spotted Sandpiper
- Duck Hawk
- Greater Yellowlegs
- Green G. sp.
- Avocet
- Skutt
- Green Jay
- Greening
- Mallard
- Pintail
- Redhead
- Snowbird

1053	Redhead	♂	3/4	315	gunning	♂
4	"		7/8	81	"	♂
5	"		2/3	9	"	♂
6	"	♀	3/4			
7	"	"	7/8			
8	"	♂	7/8			
9	"		2/3			
1060	"	♂	2/3			
1	"	♀	2/3			
2	"		7/8			
3	"	♂	1/4			
4	"	♀	3/4			
5	"	♀	7/8			
6	"	♂	7/8			
7	"		2/3			
8	"		3/4			
9	"		3/4			
1070	"	♀	3/4			
1	"		3/4			
2	"	♂	7/8			
3	"		2/3			
4	"		3/4			
5	"	♀	7/8		sick	
6	"		7/8			
3839	Pintail	♂		3848	Pintail	♀
3840	"	♂		9	Mallard	♂
1	"	♂		3850	Common	♀
2	"	♂			"	♂
3	"	♂			"	♀
4	"	♂			"	♂
5	"	♀			"	♂
6	"	♀			"	♂
7	"	♂			gunning	♂

6:00 P.M. #1111 Redhead #14
 6:20 P.M. #110 Gunning #11
 7:50 water began
 #4 sick
 #11 O.K.
 #16 O.K. water very low
 7:00 A.M.
 #12 O.K.
 #5 O.K.
 #7 feed like usual no change
 #17 O.K. water low
 #18 water very low
 dead
 Gunning 2
 Redhead 3
 Gadwall 1

1077	Redhead	7/8	3860	gunning	♂	water
8	"	7/8	1	"	♀	"
9	"	7/8	2	Spotted	bill	♀
1080	"	7/8	3	"	"	♀
1	"	7/8				
2	"	7/8				
3	"	7/8				
4	"	7/8				
5	"	3/4				
6	"	full				
7	"	"				
8	"	7/8				
9	"	"				
1090	"	full				

6:00 P.M.
 #10 OK fresh abandoned in grass
 - water very low. bird seems
 worn on feet but not on
 about normal.
 #11 5 feet the brown country
 I hope to go
 #12 OK
 #13 water about 1/2 quarts
 from river added birds O.K.
 At water from 2 feet from river added
 birds O.K.
 7:00 a.m. 8/4
 8:00 a.m.
 #14 OK
 2-3 runs possible to start. Mountain
 field in grass water mostly gone
 to small in mud holes.
 #15 feet then the brown
 #16 OK
 #17 OK water low
 #18 OK

gumwing ~~detected~~
 Pintail

- Junco
- Brewer's Sparrow ~~1884~~
- Cassin's Sparrow ~~1881, 2~~
- Red wing Blackbird
- English Sparrow
- Red winged Blackbird
- Barn Swallow
- House Wren
- Indigo Bunting ~~1884~~
- Common Nighthawk
- Pintail
- Chipping Sparrow
- Brewer's Sparrow
- Yellow Warbler
- Marsh Wren

~~Brewer's Sparrow 4
 Red wing 1
 Indigo 3
 Pintail 2
 Junco 1~~

- Kingfisher
- P. 24
- White-throated Sparrow
- Blue Swallow
- Song Sparrow
- Night Heron
- Snowy "
- Great Blue
- Cowbird
- Marsh Wren
- Magpie
- Robin
- Night

#1113 growing ♀ 16

Brought in
 growing ♀ |||||
 Mallard |||
 Pintail |||
 Quail |

3864 widgeon ♂
 5 Mallard ♀
 6 growing ♂
 7 " ♂
 8 " ♂
 9 " ♂
 3870 " ♂
 1 " ♂
 2 " ♂
 3 " ♂
 4 " ♂
 5 " ♂
 6 " ♂
 7 " ♂
 8 " ♂
 9 " ♂
 3880 " ♂
 1 " ♂
 2 " ♂
 3 " ♂
 4 " ♂
 5 " ♂
 6 " ♂
 7 " ♂
 8 " ♂
 9 " ♂
 3890 " ♂
 1 " ♂
 2 " ♂
 3 " ♂
 4 " ♂
 5 " ♂
 6 " ♂
 7 " ♂
 8 " ♂
 9 " ♂
 2 Cinnamon ♀
 6 Coyt ♂

3899 Redhead ^{wink} ♂
 3900 " "

6:00 PM
 #14 OK
 Bird unable to stand
 sits with head down. When lifted
 throws over on back. Given fresh
 water. Walk on. OK
 #11 still slightly more active
 + brighter
 #14 is just thin water consist
 ground
 #11 still about 1/2 active
 9/12

7:00 AM
 #12 OK
 #14 3 changes of activity
 #11 OK
 #14 2 changes now. stand - walk
 with some difficulty
 Pintail ~~NI~~
 Mottled ~~NI~~
 Greening ~~NI~~
 3901 Common ♀
 3902 Greening ~~NI~~ badly eaten

- Lutescent Warbler
- Red breasted Nuthatch
- Chickadee
- Chipping Sparrow
- Pileolated Warbler
- Ruby-crowned Kinglet
- Yellow Warbler
- Redwing

6:00 PM
 #14 OK
 #14 Redbreast change. Feet close folded
 #11 ♀ resting on ground rather weak
 on feet. Given water. Stagger
 stagger in walking
 #11 no change
 #14 active. Feet same as before walk
 9/12

7:00 AM
 #14 Redbreast same about same
 feet close folded
 #11 + barely able to walk
 #11 no change
 #14 still about 1/2 active
 9/12

May 1924

- Field Sparrow
- Robin
- Night Heron
- Marsh Wren
- Chipping sparrow
- Barn Swallow
- Kingfisher ~~102.6~~
- Pipit
- Field Sparrow
- Wren
- Woodcock
- Dove
- Crow
- Blue Jay
- Sharpshin
- Bank Swallow
- Chipping Sparrow
- Bl. Bellied Plover
- Ring-billed Gull
- Catbird
- Thrasher
- Snowy Heron
- Night "

Yellowthroat 11

Brought in	
Green-wing	14 - 13
Mallard	2 - 5 5
Goosander	1
Stilt	1
Pintail	7
Spoonbill	2
Osprey	1

6:00 P.M.

2 B.K.

14 swans, almost full of annual strength also some with milk

7:11 A no change

10:00 A no change down west of lake with difficulty some sleep

11:00 A no change

12:00 P no change sleep in the change

dead green-wing 111
Mallard 11

8/14
 7:00 AM
 #14 normal
 #15 tail drooping, face very
 pale -
 #16 normal, a little unsteady
 #17 weather cannot climb to top
 off canyon wings droop
 #18 slow

~~Dead~~
~~Point #11~~
~~Stall #11~~

6:00 AM
 #12 O.K.
 #14 normal
 #15 slow wing
 #16 normal
 #17 no change, face very pale water
 #18 no change

8/15
 7:00 AM
 #12 O.K.
 #14 normal
 #15 no change
 #16 drooping, breast depressed
 #17 no change, face thin
 #18 feet wet, ground covered
 by white but not wet
 things drop, membrane under
 cover position, posture
 not at all with any great
 difficulty.

- | | |
|-------------------|-----|
| #1116 Redhead 2/3 | #14 |
| #1118 Green 3 | " |
| #1115 Redhead 3/4 | #5 |
| #1117 " 3/4 | #16 |

6:00 PM
 #12 O.K.
 #14 tail no, get suff. hot
 Redhead face watery otherwise
 O.K.
 #15 no change
 #16 face watery, legs pale
 #13 now tail reddish & wings
 can walk
 #14 no change
 #16 O.K.

#12 O.K.
 #13 seal O.K.
 Redhead O.K.
 #14 ♀ same as before
 ♂ no change
 #13 small bird seen standing, talk
 women & had group, no change in
 others. few in water, minimal
 #11 no change
 #16 O.K.

Brought in	
Quail	2
Partridge	22
Pintail	17
Spoonbill	2
Widgeon	1
	<hr/> 44

#12 O.K.
 #14 Seal O.K.
 Redhead O.K.
 #15 same O.K.
 #14 ♀ same as before
 ♂ no change
 #13 ♂ put in yesterday dead
 others O.K.
 #11 O.K.
 #16 O.K.

7:00 a.m.
 #12 O.K.
 #14 Seal O.K.
 Redhead O.K.
 #15 O.K.
 #14 no change. Walk about seal
 groups in that same. least
 depressed.
 ♀ dived water, no land seen
 #13 no grass with grass
 #14 no change
 #16 no change

~~Dead~~
~~Mallard 1~~
~~Pintail 1~~
~~Quail 11~~

Added
 Quail 1
 Mallard 1
 Pintail 11

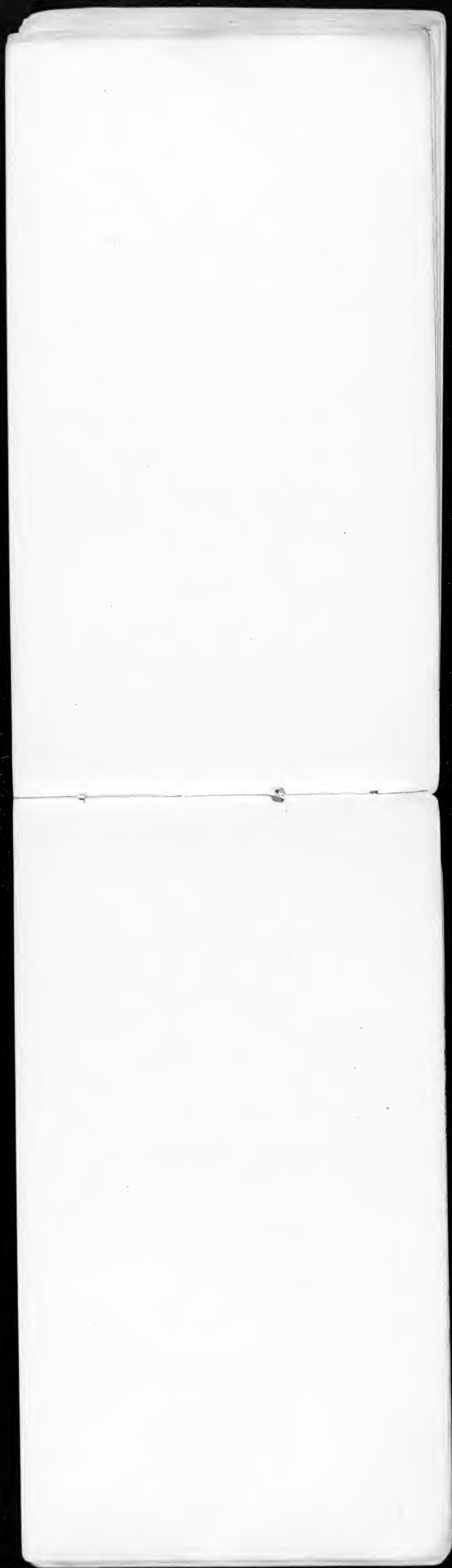
3934	Suntail	F	3937	Junco	
5	"	♂	8	"	
6	"	♂	9	"	
7	"	♂	3940	"	
8	"	♂	1	"	
9	"	♀	2	"	
3910	Mallard	♂ (866)	3	"	
1	"	♂	4	"	
2	"	♂ (871)	5	"	
3	"	♂	6	"	
4	Junco	♂ (1104)	7	"	
5	"	♂	8	"	
6	"	♂	9	"	
7	"	♀	3950	"	
8	"	♂	1	"	
9	"	♂	2	"	
3920	"	♂	3	"	
1	"	♂	4	"	
2	"	♂	5	"	
3	"	♂	6	"	
4	"	♂	7	"	
5	"	♂	8	"	
6	"	♂	9	"	
7	"	♂	1092	Redhead	3/3 (895)
8	"	♂	3	"	(1102)
9	"	♀	4	"	7/8
3930	"	♂	5	"	7/8
1	"	♂	6	"	7/8
2	"	♂	7	"	
3	"	♂	8	"	
4	"	♂	9	"	
5	"	♀	1100		
6	"	♂			

6:00 a.m.
 #12 O.K.
 #14 Seal O.K.
 #15 Redhead 11/6 O.K.
 #16 Bird quarter water low
 #17 2 gals from brown colored
 #18 1 gal from very dark green
 #19 no change
 #20 13 gals from foot from dark green
 #21 no change
 #22 no change
 #23 16 gals from water
 low 7/10

7:00 a.m.
 #12 O.K.
 #14 Redhead O.K.
 Seal O.K.
 #25 no change water added
 Bird ch. drank out
 #26 no change
 #27 13 gals from water
 #28 16 gals from water no change

dead
 1 galing



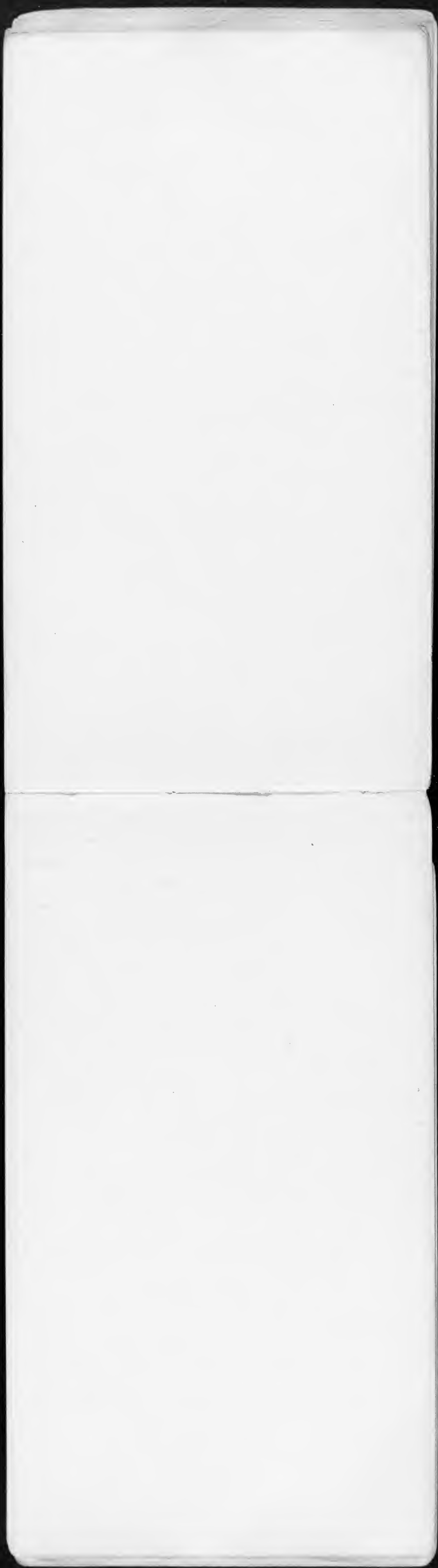


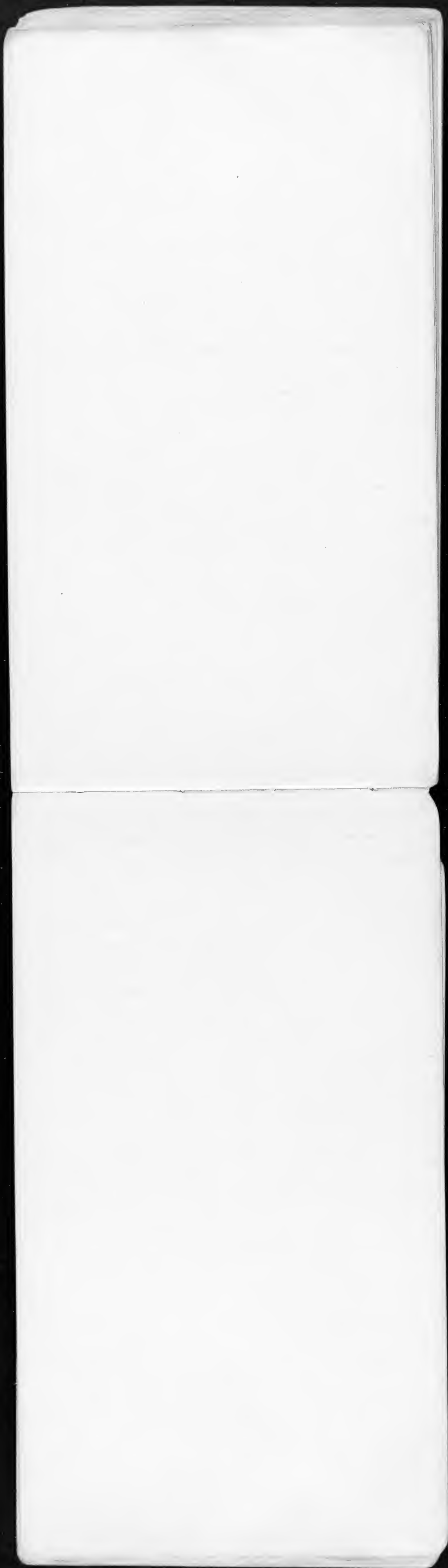
for books & into camps on each of
a table in which the stream, occasionally
abundant in bushes, various things & a dinner
plate cooking.
The first night I spent in a tent
can sleep about 1000 now without
trouble. I & some others in my party
found some of the best of the material
at present to be made in the tent
which I found very nice. Stove of iron
found in tent with some food found
& I found several things. Does not
eat like most when drinking. With
Does not eat to the middle of the
tent. Nothing particular to be seen

July 2. Not at all afraid of pain
 these words in my mouth. It really
 attracts to wisdom.
 July 5. Still meditation with some
 spiritual work going on.

July 6. After taking both ahead out
 the bath. Would did not appear
 but now up a stick of mine.
 Give a low "adul" but bright
 when he came of regard to whom in
 Seridun in some north part.
 Church no longer to stand up.
 The point is not in any change or
 make object. Bright was under
 credit over almost all hanging
 great. Certain + certain "liberco"
 over some. Bible old "just"
 placing evidence of truth at morning
 then with good, but good. In
 returned in down state of mine
 July 7. The morning saw the
 nothing need of that of the
 something mental. Truly what
 a mental part. Still good
 friends about in "liberco"
 from no other in "liberco"
 I think some more freedom?
 As has many that through
 in looking just good of that
 no freedom of that in "liberco"
 great something cutting edges
 all my spiritualness. Cut out
 from "liberco". On 14 & 15
 give or have power.
 8 months in some more of the
 or just.

July 2. Not at all afraid of pain
 these words in my mouth. It really
 attracts to wisdom.
 July 5. Still meditation with some
 spiritual work going on.





1
2
3
4
5
6

Overd

7th 23

Mallard
Even-earled
Mallard
Gadwall
9/14
9/15
9/15
9/14
9/14
9/15

9/11

7th 22

1
2
3
4
5
6
7
8
9
10
11
12
13
14
15
16
17
18
19
20
21
22
23
24
25
26
27
28
29
30
31
32
33
34
35
36
37
38
39
40
41
42
43
44
45
46
47
48
49
50

1
2
3
4
5
6
7
8
9
10
11
12
13
14
15
16
17
18
19
20
21
22
23
24
25
26
27
28
29
30
31
32
33
34
35
36
37
38
39
40
41
42
43
44
45
46
47
48
49
50

Dr. Cassy A. Wood
7 W. Madison
Chicago

1
2
3
4
5
6
7
8
9
10
11
12
13
14
15
16
17
18
19
20
21
22
23
24
25
26
27
28
29
30
31
32
33
34
35
36
37
38
39
40
41
42
43
44
45
46
47
48
49
50

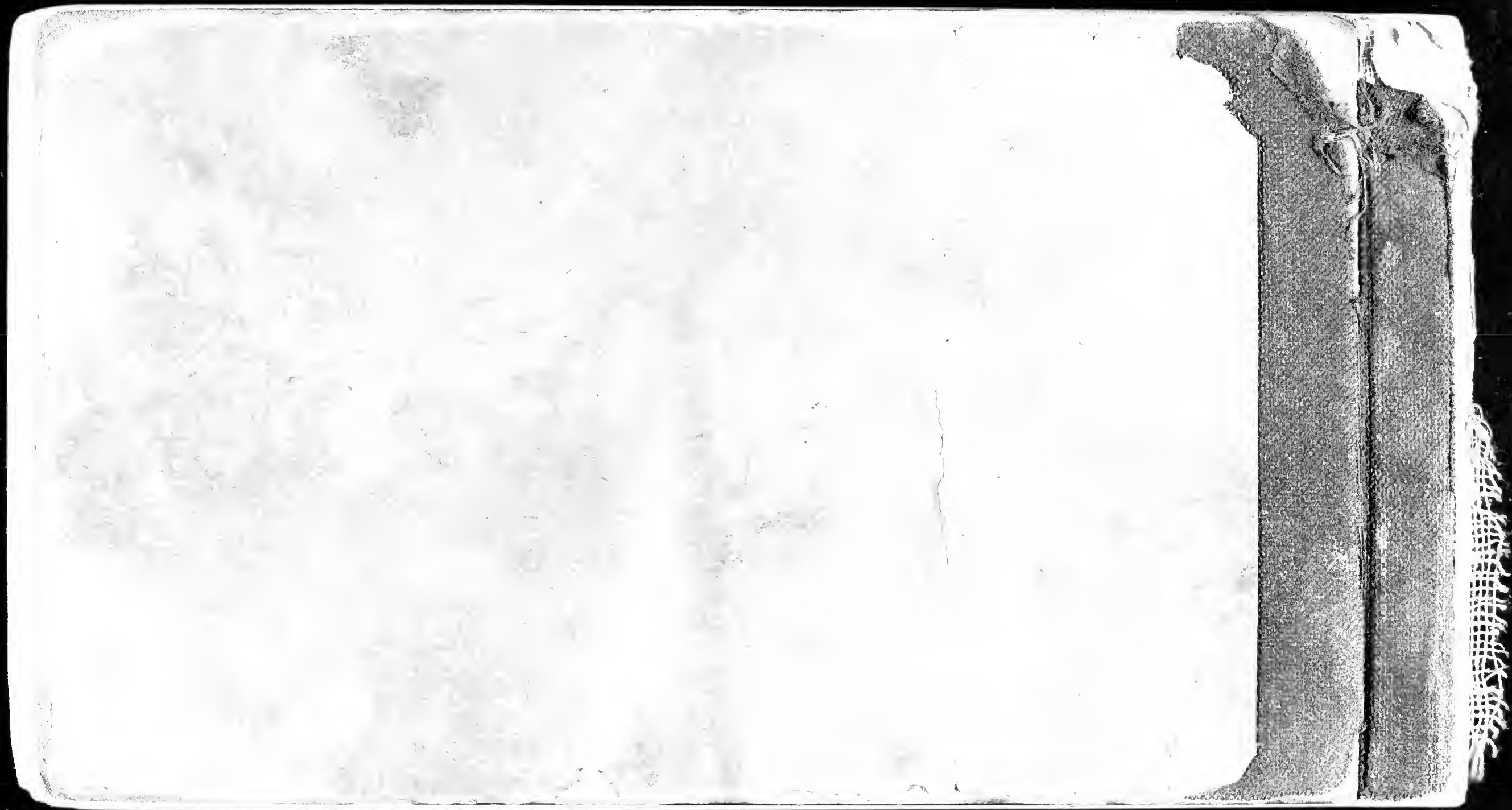
1
2
3
4
5
6
7
8
9
10
11
12
13
14
15
16
17
18
19
20
21
22
23
24
25
26
27
28
29
30
31
32
33
34
35
36
37
38
39
40
41
42
43
44
45
46
47
48
49
50

1
2
3
4
5
6
7
8
9
10
11
12
13
14
15
16
17
18
19
20
21
22
23
24
25
26
27
28
29
30
31
32
33
34
35
36
37
38
39
40
41
42
43
44
45
46
47
48
49
50

1
2
3
4
5
6
7
8
9
10
11
12
13
14
15
16
17
18
19
20
21
22
23
24
25
26
27
28
29
30
31
32
33
34
35
36
37
38
39
40
41
42
43
44
45
46
47
48
49
50

1
2
3
4
5
6
7
8
9
10
11
12
13
14
15
16
17
18
19
20
21
22
23
24
25
26
27
28
29
30
31
32
33
34
35
36
37
38
39
40
41
42
43
44
45
46
47
48
49
50

1
2
3
4
5
6
7
8
9
10
11
12
13
14
15
16
17
18
19
20
21
22
23
24
25
26
27
28
29
30
31
32
33
34
35
36
37
38
39
40
41
42
43
44
45
46
47
48
49
50



Tassoides - four rows of spines on hind
leg.

Utah

Aug. 19 - Oct. 26, 1916

#1119 Redhead 2 years
 10-c. faces pink Pintail
 for you with Duck Sack #14

#1120 Pintail ♀ healthy #12
 10-c blood feed sick bird

~~3960 goodly
 3961 arrived~~

#14 Seal O.K.
 #15 Seal O.K.
 #16 Seal O.K.
 #17 Seal O.K.
 #18 Seal O.K.
 #19 Seal O.K.
 #20 Seal O.K.
 #21 Seal O.K.
 #22 Seal O.K.
 #23 Seal O.K.
 #24 Seal O.K.
 #25 Seal O.K.
 #26 Seal O.K.
 #27 Seal O.K.
 #28 Seal O.K.
 #29 Seal O.K.
 #30 Seal O.K.
 #31 Seal O.K.
 #32 Seal O.K.
 #33 Seal O.K.
 #34 Seal O.K.
 #35 Seal O.K.
 #36 Seal O.K.
 #37 Seal O.K.
 #38 Seal O.K.
 #39 Seal O.K.
 #40 Seal O.K.
 #41 Seal O.K.
 #42 Seal O.K.
 #43 Seal O.K.
 #44 Seal O.K.
 #45 Seal O.K.
 #46 Seal O.K.
 #47 Seal O.K.
 #48 Seal O.K.
 #49 Seal O.K.
 #50 Seal O.K.
 #51 Seal O.K.
 #52 Seal O.K.
 #53 Seal O.K.
 #54 Seal O.K.
 #55 Seal O.K.
 #56 Seal O.K.
 #57 Seal O.K.
 #58 Seal O.K.
 #59 Seal O.K.
 #60 Seal O.K.
 #61 Seal O.K.
 #62 Seal O.K.
 #63 Seal O.K.
 #64 Seal O.K.
 #65 Seal O.K.
 #66 Seal O.K.
 #67 Seal O.K.
 #68 Seal O.K.
 #69 Seal O.K.
 #70 Seal O.K.
 #71 Seal O.K.
 #72 Seal O.K.
 #73 Seal O.K.
 #74 Seal O.K.
 #75 Seal O.K.
 #76 Seal O.K.
 #77 Seal O.K.
 #78 Seal O.K.
 #79 Seal O.K.
 #80 Seal O.K.
 #81 Seal O.K.
 #82 Seal O.K.
 #83 Seal O.K.
 #84 Seal O.K.
 #85 Seal O.K.
 #86 Seal O.K.
 #87 Seal O.K.
 #88 Seal O.K.
 #89 Seal O.K.
 #90 Seal O.K.
 #91 Seal O.K.
 #92 Seal O.K.
 #93 Seal O.K.
 #94 Seal O.K.
 #95 Seal O.K.
 #96 Seal O.K.
 #97 Seal O.K.
 #98 Seal O.K.
 #99 Seal O.K.
 #100 Seal O.K.

Bronze in

Quail 1
 Duck 2
 Widgeon 1
 Spotted 1
 Golden 7

#100 Seal O.K.
 #101 Seal O.K.
 #102 Seal O.K.
 #103 Seal O.K.
 #104 Seal O.K.
 #105 Seal O.K.
 #106 Seal O.K.
 #107 Seal O.K.
 #108 Seal O.K.
 #109 Seal O.K.
 #110 Seal O.K.
 #111 Seal O.K.
 #112 Seal O.K.
 #113 Seal O.K.
 #114 Seal O.K.
 #115 Seal O.K.
 #116 Seal O.K.
 #117 Seal O.K.
 #118 Seal O.K.
 #119 Seal O.K.
 #120 Seal O.K.
 #121 Seal O.K.
 #122 Seal O.K.
 #123 Seal O.K.
 #124 Seal O.K.
 #125 Seal O.K.
 #126 Seal O.K.
 #127 Seal O.K.
 #128 Seal O.K.
 #129 Seal O.K.
 #130 Seal O.K.
 #131 Seal O.K.
 #132 Seal O.K.
 #133 Seal O.K.
 #134 Seal O.K.
 #135 Seal O.K.
 #136 Seal O.K.
 #137 Seal O.K.
 #138 Seal O.K.
 #139 Seal O.K.
 #140 Seal O.K.
 #141 Seal O.K.
 #142 Seal O.K.
 #143 Seal O.K.
 #144 Seal O.K.
 #145 Seal O.K.
 #146 Seal O.K.
 #147 Seal O.K.
 #148 Seal O.K.
 #149 Seal O.K.
 #150 Seal O.K.
 #151 Seal O.K.
 #152 Seal O.K.
 #153 Seal O.K.
 #154 Seal O.K.
 #155 Seal O.K.
 #156 Seal O.K.
 #157 Seal O.K.
 #158 Seal O.K.
 #159 Seal O.K.
 #160 Seal O.K.
 #161 Seal O.K.
 #162 Seal O.K.
 #163 Seal O.K.
 #164 Seal O.K.
 #165 Seal O.K.
 #166 Seal O.K.
 #167 Seal O.K.
 #168 Seal O.K.
 #169 Seal O.K.
 #170 Seal O.K.
 #171 Seal O.K.
 #172 Seal O.K.
 #173 Seal O.K.
 #174 Seal O.K.
 #175 Seal O.K.
 #176 Seal O.K.
 #177 Seal O.K.
 #178 Seal O.K.
 #179 Seal O.K.
 #180 Seal O.K.
 #181 Seal O.K.
 #182 Seal O.K.
 #183 Seal O.K.
 #184 Seal O.K.
 #185 Seal O.K.
 #186 Seal O.K.
 #187 Seal O.K.
 #188 Seal O.K.
 #189 Seal O.K.
 #190 Seal O.K.
 #191 Seal O.K.
 #192 Seal O.K.
 #193 Seal O.K.
 #194 Seal O.K.
 #195 Seal O.K.
 #196 Seal O.K.
 #197 Seal O.K.
 #198 Seal O.K.
 #199 Seal O.K.
 #200 Seal O.K.

6:50 PM
 6:50 PM
 2:19 large Redhead V.K.
 small
 small
 #15 O.K. eye ball
 #14 (2) dead
 (2) dead
 a bird with yellow neck looking
 down at water slightly agitated
 #13 both O.K. feet small
 #11 O.K. feet small
 #3 O.K.
 1 no change
 1:00 PM
 1:00 PM
 1:00 PM
 #14 large Redhead V.K.
 small
 small
 #5 O.K.
 #4 5 dead
 7 birds on island
 #13 water in pan island down
 birds flying vigorously in
 drooping tail. feet at least
 normal. when changed to fresh
 water
 #3 O.K. water nearly gone wings droop.
 #16 bird seems O.K.

9/21

Died.
 Spoonbill 1
 Pintail 2
 6:00 AM
 #12 O.K.
 Pintail O.K.
 #14 small Redhead V.K.
 #5 water gone. now supplied
 #13 cripple foot feet tinged with
 green
 other bird normal.
 #3 O.K. water gone now supplied
 #16 no change
 7:00 AM
 #12 O.K.
 Pintail O.K.
 #5 O.K.
 #13 cripple foot shows yellow
 feet other O.K.
 fresh water continued
 #3 O.K.
 #16 no change
 Brought in
 Greenwing (2)
 Pintail (2)
 Mallard (1) } dead

9/22

1871

1871
1872

7/25
 7:40 A.M.
 #1122 another down
 #1123 " "
 9:55
 #1122 " " *defecated main*
 #1123 " " *referred to pen*
 10:00 A.M.
 #1126 another down
 #1125 " "
 10:15 A.M.
 #1126 another down *not to pen*
 #1125 " "

5:30 P.M. #1125 ^{feces loose} 2 c.c. m.m. O.K.
 #1126 ^{feces loose} 2 c.c. m.m. " "
 #1122 feces loose brownish greenish
 2 c.c. m.m. O.K.
 #1123 feces loose
 2 c.c. m.m. O.K.

6:00 P.M.
 #12 O.K.
 #1122 unable to fly to top of pen
 #1123 O.K.
 #11 O.K.
 #13 feces in main W.C. - very
 little yellow
 #11 O.K.
 #3 O.K.

8/25

#12 O.K.
 #13 O.K.
 #14 O.K.
 #15 O.K. *unable to fly to top of pen*
 #16 O.K. *unable to fly to top of pen*
 #17 feces long greenish solid
 #18 O.K. *unable to fly to top of pen*
 #19 O.K. *unable to fly to top of pen*
 #20 O.K. *unable to fly to top of pen*
 #21 O.K. *unable to fly to top of pen*
 #22 O.K. *unable to fly to top of pen*
 #23 O.K. *unable to fly to top of pen*
 #24 O.K. *unable to fly to top of pen*
 #25 O.K. *unable to fly to top of pen*

Caught in	
Green-winged Teal	86
Coot	1
Common Loon	2
Redhead	2
Goldeneye	2
Loon	2
Mallard	2
Spoonbill	16
Pintail	21
<hr/>	
	84 - by Carter and

3775	Spoonbill	♀	
6	"	♀	
7	"	♂	
8	Goldeneye	♂	imp. color
9	"	♀	wake
3990	"	♂	imp. color
1	"	♀	
2	"	♀	
3	"	♂	
4	Mallard	♀	imp. from back of neck
5	"	♂	" " "

- Robin
- Pine Siskin
- Hummer
- Redstart
- Junco
- Chimney Swift

10:00 PM
 #200
 Subal 12.5
 #8 Merganser nestling seen along in
 both birds 11 to fly to top of pine
 #14 bold swim 0.10.
 #5 0.11 - water gone. terminated
 #13 another Mallard which is released
 (the 5.00) goes in pond from water
 nearby gone
 #11 which could swim further to top of
 cage. swim cannot reach cover by
 then #12 swim only 1/3 distance back
 #200.

#13 soon again from a pair. Mallard
 just a pair. seems changed. birds
 frequent
 #11 bird barely able to stand.
 cannot fly. water
 #3 water nearly gone. bird O.K.
 6:00 P.M.

#8 both O.K.
 #14 both O.K.
 #5 all seem improved
 #3 water gone. Bird O.K.

Duck

Pintail	6
Greenwing	3
Widgeon	1
Spoonbill	1

7:00 A.M.
 #8 both O.K.
 #14 both O.K.
 #5 water gone. Mallard
 able to stand. birds
 frequent

Died

Redhead	11
Greenwing	11
Mallard	1
Bronze	1
Pintail	2
Greenwing	8
Redhead	2
Widgeon	1
Mallard	2
Spoonbill	10
	29

3116 Mallard 3

7
8
9
4000
1 Pintail
2 "
3 "
4 "
5 "
6 "
7 "
8 missing
9 Pintail

401 0 "
1 "
2 "
3 "
4 "
5 "
6 "
7 "
8 Quail
9 Oregon

4020 1 released
2 Redhead
3 "
4 Greenwing
5 "
6 "
7 "
8 "
9 "

4030
1
2
3
4
5
6
7
8
9
4040
1
2
3
4
5
6
7
8
9

♀ rump water released
Brentford
not banded
Sintail " "

♂ IIII
♀ IIII

1098 Redhead
1099 "
1100 "
1201 "
1202 "
1203 "
1204 "
1205 "
1206 "

1218 Redhead
1220 "
1 "

(116)

(884)
(111)
(117)
(692)

(115)
(119)
(121)

1210
1
2
3
4
5
6
7
8
9

1/2 grown

4015 Podilymbus in
 6 Grebe (1123)
 7 " (1124)
 8 " (1126)
 9 " (1128)

4060 Wigeon ♂
 1 " ♂
 2 " ♂
 3 " ♂
 4 Mallard ♂ (1129)
 5 " ♂ (869)
 6 " ♀ (893)
 7 " ♀
 8 Spontill ♂
 9 Redwall ♀

4050 Spontill ♀
 1 " ♀
 2 " ♂
 3 " ♀
 4 " ♀
 5 Wigeon ♂
 6 Spontill ♂
 7 " ♀
 8 " ♀
 9 " ♀

4070 " ♀
 1 " ♂
 2 " ♂
 3 " ♂
 4 " ♀
 5 " ♀
 6 " ♀
 7 " ♀
 8 " ♀

8/29

~~Dead
 Grebe 5
 Pintail 2
 Redhead 1~~

~~Brought in
 Grebe
 Redhead
 Cinnamon
 Pintail
 Wigeon~~

4077	Mallard	♀	4111	Spoonbill	♀
8	"	♀	2	"	♂
9	Pintail	♂	3	"	♂
4080	"	♂	4	Redhead	
1	"	♂			
2	"	♂			
3	"	♂			
4	Mallard	♂			
5	"	♂			
6	gimmewing	♂			
7	"	♀			
8	"	♀			
9	"	♀			
4090	"	♀			
1	"	♀			
2	"	♀			
3	"	♀			
4	"	♂			
5	"	♂			
6	"	♀			
7	"	♀			
8	"	♂			
9	"	♂			
4100	"	♀			
1	"	♀			
2	"	♀			
3	"	♀			
4	"	♀			
5	"	♀			
6	"	♂			
7	"	♀			
8	"	♀			
9	"	♂			
4110	Spoonbill	♀			

#1127 Mallard ♀ im. 2nd shot 1:30 P.M.
 #1128 " ♂ im 3rd shot "
 #1129 " ♀ im 8th 6 " "
 #1130 left leg " ♀ 10th 6 " "

7:00 AM 8/20
 #5 Mallard male without mouth
 wings still long. One female 10th
 other 3 males 10th
 #4 female with 10th female
 #3 female 10th female
 Dead

1 Redhead 1
 1 Spoonbill 1
 1 Pintail 1
 2 Gimmewing 2

4115	Pintail	♀	4145	Sparrow	♀
6	"	♀	9	"	♂
7	"	♂			
8	"	♂			
9	"	♂			
4120	"	♂			
1	gunning	♂			
2	"	♀			
3	"	♂			
4	"	♀			
5	"	♀			
6	"	♂			
7	"	♂			
8	"	♂			
9	"	♀			
4130	"	♂			
1	"	♀			
2	"	♀			
3	"	♂			
4	"	♀			
5	gunning	♂			
6	gunning	♂			
7	"	♂			
8	"	♂			
9	"	♂			
4140	"	♂			
1	"	♂			
2	"	♂			
3	"	♂			
4	"	♂			
5	"	♂			
6	"	♂			
7	"	♂			

6.50 P.M.
4120 O.K.

#5 Mallard walks well wings still droop. Use Pintail O.K. other small to stand. feeds all around #4 feeds in both wading slat gun #3 feeds wading fish ground. solution 4/3 gun

10/1

7.00 A.M.
4120 O.K.

#4 feeds thin slat gun in both #5 Mallard strong wings back Pintail weak use slat gun #3 feeds wading gun

10/2

3.50 P.M.
4120 O.K.

#5 weak pintail dead. Mallard walks well but wings drag ground. Spans filled with rain water. solution renewed. #4 feeds thin wings about gun birds O.K. #3 feeds wading gun. Spans filled with rain water. birds ground solution renewed

~~dead
Snowy Plover
Gull
Mallard~~

19/5

4150	greening	
1	"	
2	"	
3	"	
4	"	
5	"	
6	"	
7	"	
8	"	
9	"	
4160	"	
1	"	
2	"	
3	"	
4	"	
5	"	
6	"	
7	"	
8	"	
9	Cinnamon	
4170	greening	
1	"	
2	Wiggen	
3	"	
4	Cinnamon	
5	"	
6	Wiggen	
7	Pintal	

923 alt Dec. 24, 1915 Narrows of
 Jordan River 20 mi S. Salt Lake
 City. J. Nelson
 from Mr. Chamber
 1.0 Tugan
 614 E 6th South 6:30

2/28/10 10/10

— Mallard wings clipped at
not dragging — that
#4 feet loose eyes old & flutter
#11 feet loose
#13 feet

I saw
#5 Mallard wings clipped wings
higher than #4 — feet loose

#5 Pinned 10/10 Mallard wings
feet loose
#11 feet loose eyes old & flutter
#13 feet

- #1121 Mallard ♀ 10/10 10/11
- #1132 do do do 10/11
- #1133 Pinned ♂ left leg 6 = 6 shot #3
- #1134 do do right leg 4 = 6 shot #3
- #1135 Mallard grown in 10 = 6 shot #13
- #1136 do do 7/7 grown 11 do do

7/10/10 14/10

— Mallard wings mostly in
place. Pinned 10/10 — feet loose

#1141 bird strong feet strong
olive green

#1133 feet water tinged with
green. #1136 has eyes cramped

to feet it cannot walk. Alter 10/10

#11 feet thin slightly tinged with
green 10/10

#1133 feet thin almost normal
10/10

#1135 Mallard feet on legs slightly
tinged with blue. Pinned 10/10

feet strong slightly greenish in
feet

#11 no change

#13 no change — action. feet
strongly tinged with green

#11 feet strongly tinged with green

#13 feet strong tinged green

6:00 am 10/11
 #5 no change. Tail nearly to
 release
 #4 a little unsteady on feet. breast
 less feces walking bright green
 #13 no change
 #11 feet loose dark green
 #3 feet green no change

10/12
 6:00 am
 #5 no change feet on feet feet
 no green
 #4 unsteady feet nearly on ground
 stumbles in walking
 #13 no change. feces abundant
 bright green
 #11 left foot tail droops
 both birds more quiet. feces loose
 dark green
 #3 no change feet loose dark green

7:00 am 10/13
 #5 distal has wings in place
 #4 unable to stand
 #13 small bird no change
 large one unable to stand
 #11 no change
 #3 both birds unsteady

Baybars diet

30 yds	3 worms	0
50 "	1-4 inches	0
	4-8 "	0
	8-12 "	0
70 "	7	0
	8	0
	9	1
10 #6	shot were found	no 9 - all
measured without	count	
90 yds	10	0
	11	3
	12	1
110 yds	13	0
	14	1
	15	5
130	16	3
	17	1
	18	3
	1 to 4" 19	0
	4 to 8" 20	12
	8 to 12" 21	3
150 yds	22	4 4-8"
	23	0 "
	24	2 w/Jan
170	25	1 "
	26	1
	27	2
190	28	0
	29	1
	30	1
210	31	0
	32	0
	33	1

2009 11

10/14

2009 11
 #4 dead lying on breast feet
 straight - normal
 #13 ... dead lying on breast
 head ...
 #11 both ...
 ...
 ...

4178 Ringbill

4179 "

4180 Pintail ♂ lead person

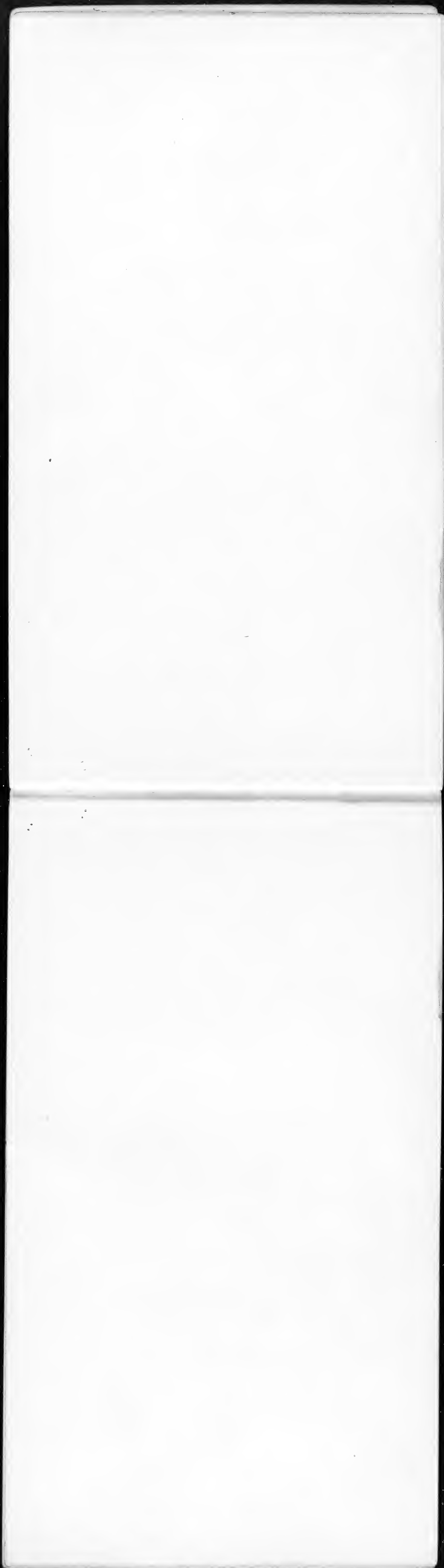
8 000 m

12/15

#2 no change
 ...
 #13 mother ...
 #11 ...
 #3 no change

- Parula-crown at night
- Chipping Sparrow
- Meadowlark
- Robin Thrush
- Junco
- Spur
- Redstart
- Merganser
-
-
- Marsh Wren
- Flipping

Buffhead Oct. 17



4181	Pointed ♂	
2	Redhead ♀	
3	Pointed ♂	
4	" ♂	
5	" ♂	
6	Mulland ♀	
7	Pointed ♂	
8	Redhead ♂	
9	Spoonbill ♂	
4190	Johnson ♀	
1	" ♂	
2	" ♂	
3	" ♂	

Perodipus
upper incisors

Perodipus
5 toes on hind foot

~~Dipodo~~

Dipodomys 4 toes on hind foot.

4181 Yindful ♂
2 Redquad ♀
3 Rindal ♀

Microtus edax

Skull differs from M. Californicus ♂
in larger size, heavier dentition. M2 usually
with open 5th loop. jugal more
expanded. ridges heavier.

7/11
 ... natural position
 ... Plumage
 ... One last seen ...

- Pipit
- Meadowlark
- House Finch
- Crow
- English Sparrow
- Starling
- Wren

	Bigelow's	Point	
1	30 yds	0	surface
2	"	2	12 inches
3	"	4	"
4	"	4	"
5	50	0	
6	"	2	
7	"	2	
8	40	1	
9	"	2	
10	"	0	surface
11	90	0	
12	"	2	
13	"	1	
14	110	0	
15	"	1	
16	"	2	
17	130	2	
18	"	2	
19	"	5	
20	150	4	
21	"	8	
22	"	10	
23	170	13	10 in. deep hole
24	"	7	"
25	"	1	
26	190	5	10 in. deep hole
27	"	9	"
28	"	5	"
29	210	6	
30	"	5	
31	"	10	
32	230	4	
33	"	11	
34	"		

7/18
 5. spec. skinned slightly, 26
 to fly
 #12 no change
 #13 birds very weakly in the
 change
 #3 birds, almost dead, not
 up at all

#1128 Mollard (head portion)
 Much unutilized
 1 shot much worms still ingested
 (preserved) grass and fill of
 with variety of shells etc

#1135 Redhead (head portion)
 ingested material small amount
 mostly shells etc. much gravel
 5 shot preserved - ingested
 contents about green.
 lining of caeca (head portion)

7/18
 5 spec. show considerable
 #12 spec. show slight
 to end of spec.
 #13 spec. still large spec. message
 20 birds
 #3 birds dead, other weak
 spec. message daily target bird
 7/19

7/19
 #11 one dead last night other
 #3 one dead other 4 live
 8/20

#50. R. spec. olive brown
 #13 no change, spec. from material
 #11 spec. weak but is barely
 able to stand. tail droops breast depressed
 #3 one dead. other barely able to stand

11/21

Blackbill #1059 ♀ 109 ♂ 1053 ♂ 1070 ♂
♀ 1070 ♀ 1076 ♂ 1070

Green-winged Teal

#1 Blackbill ♂
2 ♀

8/22

#5 juv. slightly above green bird.
parallel to. Banded's released ^{on night} ~~on night~~
#12 juv. normal bird B.R. ~~on night~~
#11 band stronger face & tail
#3 very small & unable to ~~stand~~
head & wings in wings droop

11:00 a.m.

#8) #1138 ♂ full plumage
2 c.c. solution 5 gr MgCl₂ in
20 c.c. dist. water

#9) #1137 ♂ in plum.
2 c.c. solution 2 1/2 gr MgCl₂ in
20 c.c. dist. water.

11:15 a.m.

#7) #1140 ♂ in half full plum.
2 c.c. solution 1 1/4 gr MgCl₂ in
20 c.c. dist. water

11:30 a.m.

#7) #1137 ♀
2 c.c. solution 10 gr scale from
feet at lab. in 20 c.c. dist. water

11:35 a.m.

#14) #1142 ♂ juv.
2 c.c. solution 7 1/2 gr scale from
feet at lab. in 20 c.c. dist. water

#14) #1141 ♂ juv.
2 c.c. solution 5 gr scale from
feet at lab. in 20 c.c. dist. water

2:05 P.M.

1138 2nd dose 2cc

1137 " " "

1140 " " "

1139 " " "

1142 " " "

1141 " " "

6:00 P.M.

1138 unable to stand can barely
push along on breast. Bird sits
quietly, feet under body. Wings hanging
loose of head in position.

Membrana nictitans absolutely
paralyzed. slight watery pulse
irregular. marked dyspnoea, normal

1137 seems O.K. T.C.C. given

1140 " "

1139 unable to fly to top of cage
otherwise O.K.

1142 O.K.

1141 O.K.

3 Pintail Pecker lying on right
foot extended.

8:00 P.M.

1138 lies with head on one
side protrude on floor. marked
dyspnoea. Membrana nictitans
absolutely paralyzed. some
discharge from eye. A
large quantity exuding from
mouth coming through the
laryngeal canal and
the glottis. Bird wholly
unable to move.

9:00 P.M.

#1139 Barely able to stand, very weak, wings broken, legs loose, bill points down touching table.

Thryothorus nigrilans comes in half of eye only, green & c.c. from water by path.

Drank considerable amount of green water.

9:30 P.M.

#1138 discharge continues from Harderian glands. Has thickened to a mass in eye. This tends to clog ~~the~~ glottis. Breathing slow & labored at times restricted to gasping. ~~Abdominal~~ At these periods the abdominal sacs apparently are not filled. Pulse 170 to 180, strong & regular. Feet thin waxy.



11/22

7:00 A.M.

#1138 dead feet under body, head lying on side in front.

#1139 much improved, can stand & can fly a little bit.

#1138 cannot fly to top of cage, but m.m. O.K. last night last night.

#1140, #1141, #1142, #1143, #1144, #1145, #1146, #1147, #1148, #1149, #1150, #1151, #1152, #1153, #1154, #1155, #1156, #1157, #1158, #1159, #1160, #1161, #1162, #1163, #1164, #1165, #1166, #1167, #1168, #1169, #1170, #1171, #1172, #1173, #1174, #1175, #1176, #1177, #1178, #1179, #1180, #1181, #1182, #1183, #1184, #1185, #1186, #1187, #1188, #1189, #1190, #1191, #1192, #1193, #1194, #1195, #1196, #1197, #1198, #1199, #1200.

9:00 A.M.

#1138 Post mortem. Considerable watery fluid in eye, a thickened mass coming from choroid.

Lungs better look to some look of pulmonary congestion.

Ventracles in eye etc. Blood not coagulated very dark.

Spleen & liver normal. Intestine somewhat hardened.

Chrolochrom in eye, ventricles. Spleen also filled with gas.

Excrement almost certainly absent. Kidneys normal.

Gizzard normal. crop very full. Feet almost very slightly better.

#1132 Mallard ♀ head portion
 (part mounted)
 Bird in general flesh & fat
 almost completely gone.
 Single shot recovered in
 gizzard
 Bird of mounted all characteristic
 appearance of head portion.

#1134 Pintail ♀ head portion
 (part mounted)
 Skin to emaciated
 feathers largely removed
 feathers with green, green
 gizzard good (some but
 not all)
 Shot recovered
 characteristic lesions.

#1133 Pintail ♂ head portion
 (part mounted)
 This is very similar to
 #1134 but gizzard
 gizzard stained green
 all characteristic appearance
 of head portion present.

#1194	Mallard	♀	(863)
4195	Pied-billed Grebe		(1137)
4196	Pied-billed Grebe	♂	(1136)
4197	Mallard	♀	(1131)

10:15 A.M.

- 7) #1143 Green-winged Teal ♂ full
 2 c.c. solution 5 gm $CaCl_2$ in 20 c.c. dist water
- 11) #1144 " ♂ im
 2 c.c. solution 5 gm $CaCl_2$ in 20 c.c. dist water
- 14) #1145 " ♂ full
 2 c.c. solution 2 gm Soda bicarb in 20 c.c. dist water
- 14) #1146 " ♂ im
 2 c.c. solution 1 1/4 gm Soda bicarb in 20 c.c. dist water
- 12) #1147 " ♂ im
 2 c.c. solution 5 gm NaCl in 20 c.c. dist water
- 12) #1148 " ♀ im
 2 c.c. sol. 1/2 gm NaCl in 20 c.c. dist water
- 13) #1149 Green-winged Teal ♀
 2 c.c. sol. 2 1/2 gm $CaCl_2$ in 20 c.c. dist water
- 13) #1150 Green-winged Teal ♀
 2 c.c. solution 5 gm $CaCl_2$ in 20 c.c. dist water

4198. ~~granivorous~~ ♀
 9 " " ♀
 #200 missing
 1 " " ♀
 2 " " ♂
 3 " " ♀
 4 " " ♂
 5 " " ♂
 6 " " ♀
 7 " " ♀
 8 " " ♂
 9 " " ♀
 #210 " " ♀
 1 " " ♀
 2 Redhead ♂ (July 2)
 3 Pintail ♀
 4 Granivorous ♀
 5 " " ♂
 6 " " ♂
 7 " " ♂
 8 " " ♂
 9 " " ♀

(1146) " "
 (1139) " "
 (1137) " "

#1130 10 shot recovered

2:15 P.M.

#1148 second dose. seems O.K.
 #1147 " " " "
 #1143 " " " "
 #1144 " " " "
 #1145 " " " "
 #1146 " " " "

#1150 dead lying on breast
 wings slightly drooped, one foot
 under body. One extended behind
 head. Mouth a slight waxy exudate
 from eye. membranes whitens
 & drawn.

6:00 P.M.

#1141 dead lying on breast
 wings fully drooped, feet behind
 head. Mouth a slight waxy exudate
 from eye.
 #1142 unable to fly to top of
 a tree trunk O.K.
 #1143 can stand but cannot
 fly. membranes and whitens
 & slightly in corner of eye.
 #1144 same condition as 1143
 a slight waxy exudate from eye.
 #1145 same O.K.
 #1146 same O.K.
 #1147 unable to fly to top of
 a tree trunk O.K.

8:20 P.M.

#1149. able to hold up head but cannot stand. Membrana nictitans affected. When brought halfway across eye of 1st hump closed back. After returning bird to box it suddenly spread wings & bat them rapidly for 20 seconds & they were dead. feet under body head lying in front. paralyzed deluded Membrana nictitans 1/8 drawn.

#1144 was given water at 6 P.M. when picked up at two different intervals had filled esophagus so that a considerable amount ran out of mouth. unable to stand. wings hang loosely has some trouble in supporting head. Membrana nictitans paralyzed. can be brought back up slowly across eyeball but does not respond to slight stimuli. a watery discharge from eye that is beginning to glaze giving eye a glazed appearance. pulse strong rapid. marked dyspnea 27 respirations per minute, diarrhoea evident.

#1143 can barely support head wings hang loosely from

sides head finally drops to one side. Membrana nictitans completely paralyzed. eye with some exudate. a glazed appearance to eyeball. pulse strong regular. marked dyspnea, respirations 18 to minute. a watery discharge from esophagus with strong taste of mag. Cl₂. diarrhoea evident.

7:00 a.m.
#1143 dead. body in front feet under body head to one side, Membrana nictitans in normal position. a slight watery exudate from eye. wings spread.
#1144 is resting in water pan. feet behind. a watery exudate from eye giving it glazed appearance.
#1145 somewhat affected but able to fly. Membrana nictitans O.K.
#1146 not affected.

#1147

7:30 AM
#1144 Post mortem

fat
ventricles in systole
con. dark normal
spleen normal
stomach intensely
injected with dark blood
intestines in part, wall injected by blood
caeca distended
Duct sickness

#1143 Post mortem

ventricles in systole blood
not coagulated. Dry dark
liver with normal
spleen normal. intestinal
distention intense especially
in duodenum caeca greatly
distended
seems to be closure of
intestine
intestine contents
partly coagulated filling
intestine
Duct sickness

#1149

ventricles in systole
liver very dark normal
spleen normal
intestine in duodenum
intense wall thickening
caeca partly filled with
extravasated blood

intestine firm & white
sloughing of
gravid lining injuried
immediately below promentum
Duct sickness in part

#1150 Post mortem

Ventricles in systole
blood dark not coagulated
rectal muscles evident but
fat
liver contains spots of congestion
duodenum distended with
blood fat
intestine below firm &
hard
caeca normal
kidneys normal
stomach O.K.
some soft portions of
duct sickness

#1147 Post mortem

Ventricles in systole
con. dark normal
spleen with spots of
congestion same O.K.
kidney dry & whitened
intestine firm hardened
wall injected
duodenum with intense
distention
sloughing of lining below
promentum
duct sickness in part

1148 grunting 7 D.K.
 1145 " " " "
 1146 " " " "

- Inventory*
- 1 bx skulls - # 8 shot 20 gauge
 - 2 " " " # 6 " " "
 - 9 pt mouse jaws flat top
 - 2 " " " " "
 - 10, 2 qt " " "
 - 10 Schuyler mouse traps
 - 12 Out of sight " "
 - 1 meat grinder
 - 1 ax
 - 1 saw
 - 1 hammer
 - 1 dipper
 - 1 10 gal water can
 - 1 5 gal gas can
 - 3/4 sack bran
 - 3 lb ft 3 ft gal. serum
 - 9 12 qt galvanized dishpan (worn)
 - 7 12 qt gal pails (1 in 9)
 - 1 gal chamber
 - 1 gal alcohol
 - 3 gal pans small
 - 1 W absolute alcohol
 - 1 lb formaldehyde
 - 1 can chloroform
 - 1 lb CaCl₂
 - 11 8 oz glass stoppers bottles
 - 2 16 oz flasks
 - 6 8 oz " "
 - 1 1000 c-c graduated
 - 1 125 " "
 - 6 feathers east side
 - 1 pebble & mortar
 - 1 stand of 2 rings

- 1 glass jar
- 1 8oz table lamp
- 1 bill jar
- 4 small glass jars
- 15 bowls 1/2 badly worn
- 1 dipper
- 1 wash basin
- 1 stove (personal)
- 1 wash kitchen
- 1 dust pan
- 1 basin
- 1 soap
- 1 brush
- 2 qt. white paint
- 2 qt. red paint
- 12 platform 11 1/2 ft.
- 3 6x4x12 pine 1" mesh
- 1 " " " 2" " mig
- 7 3x3x4 " 1" mesh
- 2 3x3x5 " 1" "
- 3 2x2x5 " 2" "
- 1 2x2x4 " 2" "

Post office
 cash money order
 change address

Hotel
 Laundry receipt

Deposit
 ticket
 2 per baggage
 1 box ex press
 1 can
 see about rep. for to Guiana

J. F. Spindler

10 boxes
 1 can
 1 box newspapers

J. F. Nibby

Antenna for *pyralis*

Anterior pair of setae attached
to dorsal margin of anterior
body of stem. Just outside
margin of associated
groove. Attachment
just within the attachment
of the stem associated
membrane. Diameter
~~the spiracle somewhat flattened~~

The second pair of setae
3 more widely flattened
They attach to the inner
surface of the
previous setae. Anterior set
to extreme point of setal
insertion, as seen from

The two setae of the
spiracles merge into anteriorly
for process
There are two setae both
enter the spiracle
when the organ at the
anterior end of its ascending
dorsal arm enters just the
single pancreatic duct.

The hepatic enteric duct
comes down makes a
slight bend toward the
pancreas and then turns

back to the duodenum
adjacent to & immediately above
the pancreatic duct. The
cylindrical enteric duct lies
immediately above the
gall bladder with developed
right side of its lumen
than left. The its inner edge
a slight constriction
of a kind as in *O. diglana*
Septum triangular

Subangular
Spine fused to septum
22 x 32 mm

Prothoracic lobe 3.5 mm long
Gizzard 3.5 x 2 mm
Length of intestine 15 mm
caeca to pancreas

Length of caeca
Caecal displacement
retrograde distally

896 } W Salt Lake City '42 L.W. Ploger
 1043 } near same
 1269 } H W. Brown 11/2/10 Danhalter
 3869 } Mrs West 7/28 Sloughs W.
 } Salt Lake
 1027 Sloughs Point

Lewis Medical Case Co,
 2048 Woodward ave
 Detroit
 Mich

- ✓ Anatomy of *Colinus*
- ✓ Birds of New Archipelago
- ✓ Powder Downs
- ✓ Birds Mexico Oklahoma
- " *Ardea herodias* Kansas
- " *Ardea herodias* River
- ✓ *Ardea herodias* sequence of molt in Potlatch Plateau
- The downy of *Ardea*
- Feather molt in captivity
- Molt of *Ardea*
- Habit of white faced glossy ibis in captivity
- ✓ Characteristics of some wild duck in captivity
- ✓ Diet foods of the Virginia duck
- ✓ Head position in wild fowl
- color in *Ardea herodias*
- Position of legs in *Ardea herodias*
- ✓ Birds Dissected
- " of *Ardea*
- ✓ Peculiar egg laid by 7-10
- ✓ Duck Dissection

1
123

2
456

3
789

Film 24

- 1
- 2
- 3
- 4
- 5
- 6
- 1
- 2
- 3
- 4
- 5
- 6
- 1
- 2
- 3
- 4
- 5
- 6

Mallard pond

9/20

74' creek ducks

9/25

Film 25

Phragmites " 2

9/5

Head of stream " 2

10/5

Bridge Bushy

10/8

River above lab

10/8

Film 26

Jypsha Bear River

10/8

Black willow

Boat land

10/21

Howe

~~Kejola~~

~~points~~

Beaker 350, 200, 200

rubber balls 2 doz

1 piece cork

~~1 doz 1/2 size straws~~

~~1 doz 1/2 size straws~~

~~1 doz 1/2 size straws~~

2 doz 1/2 size straws

Cranium

show

~~Shaving brush~~

Carbon down wheel

Camp

~~flush tank~~