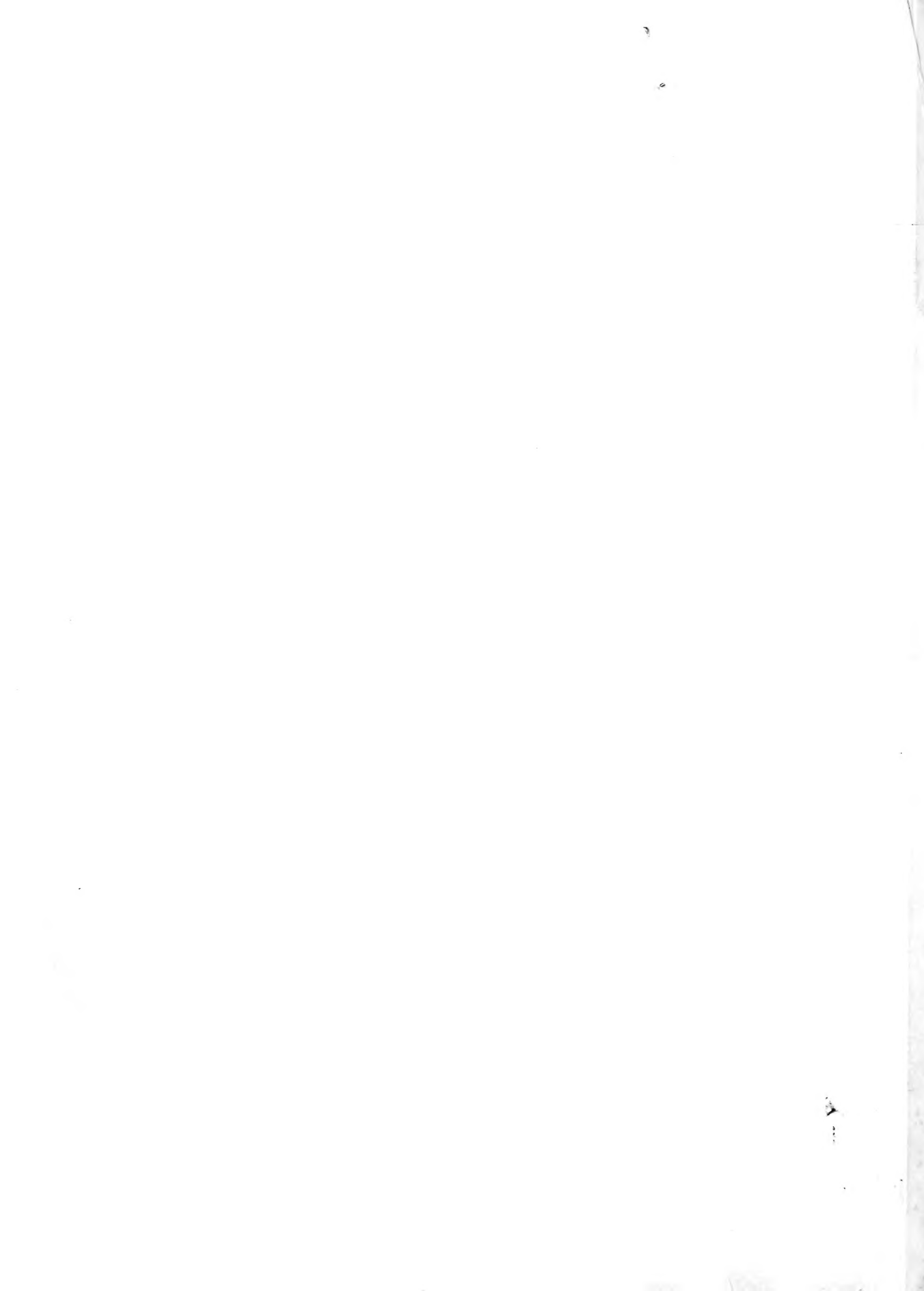
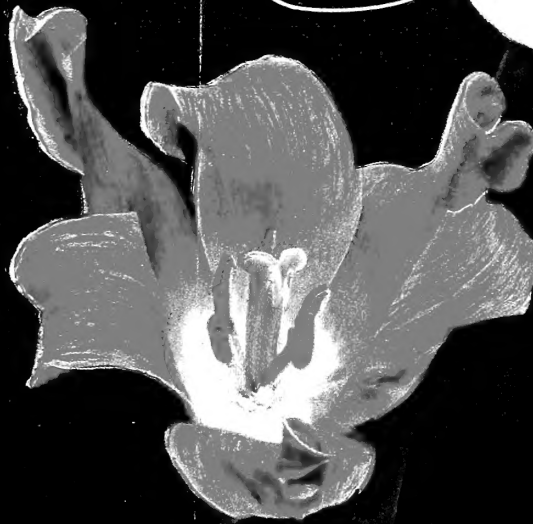
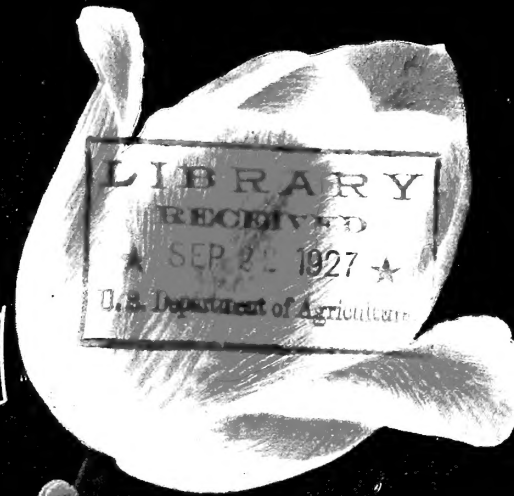


Historic, archived document

Do not assume content reflects current scientific knowledge, policies, or practices.



Vaughan's Spring Flowering Bulbs



1927

Cover Collection No. 1

The varieties illustrated are, in the position they appear:

- Pink Pearl**
- Sirene**
- Argo** **Chestnut**
- King George**
- Gryphus**

We will mail, postpaid,
2 each of these varieties
(12 bulbs) \$2.75
4 " (24 ") 5.00
6 " (36 ") 7.00
12 " (72 ") 12.50



Scarlet Emperor

Scarlet Emperor—Cottage.
 Doz., \$1.20; 100, \$7.50; 1000, \$69.00.

Bacchus—Breeder.
 Doz., \$1.80; 100, \$14.00; 1000, \$135.00.

Prince of Orange—Breeder.
 Doz., \$1.75; 100, \$13.00; 1000, \$120.00.

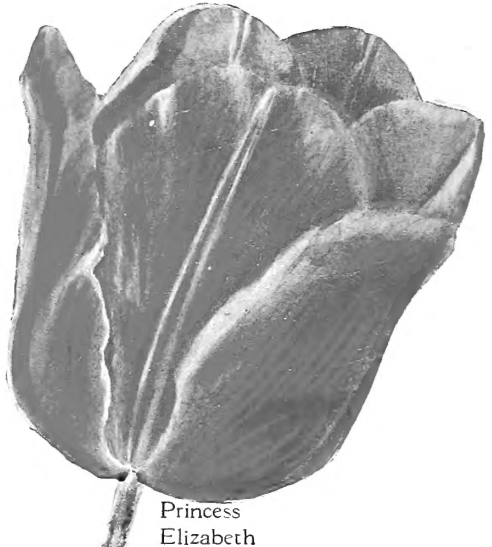
Mrs. Moon—Cottage.
 Doz., \$1.30; 100, \$8.50; 1000, \$79.00.

Isis—Darwin.
 Doz., 75c; 100, \$5.00; 1000, \$47.00.

Princess Elizabeth—Darwin.
 Doz., 65c; 100, \$4.50; 1000, \$42.00.

Don Pedro—Breeder.
 Doz., \$1.50; 100, \$11.00; 1000, \$100.00.

Gen. De Wet—Early.
 Doz., \$1.75; 100, \$13.00; 1000, \$125.00.



Princess Elizabeth



Mrs. Moon



Bacchus



Don Pedro



Prince of Orange



Isis



Gen. De Wet

Cover Collection No. 2

Of the varieties illustrated on this page we will mail post-paid:

1 each (8 bulbs) for	- \$1.25	6 each (48 bulbs) for	- \$ 5.50
2 each (16 bulbs) for	- 2.25	12 each (96 bulbs) for	- 10.00



Tulip Prices are Down to Pre-war Figures

MAY-FLOWERING tulips of first quality sell this fall for the lowest prices since the world war. Two big crops in Holland are responsible for this condition, which is likely to be very short-lived. Indeed, as this is written,

advice is that prices are stiffening abroad and may begin to rise. But our bulbs have been bought and they are offered to you at the substantial reductions listed in this catalogue, giving you an opportunity which may never come again, to enhance your garden's spring display at low cost.

Not only are this year's low prices due wholly to overproduction, as proved by the fact that early tulips and hyacinths in which there is no surplus, are as high as ever; but we in America must always face the possibility of being denied the privilege of importing tulips, as we have been denied narcissi. Whenever the Federal Horticultural Board so wills, a quarantine may be imposed on tulips, and we will face the higher prices and the sadly limited choice of varieties, which now prevail with narcissi.

Tulips May Soon Be Priceless

WE STRONGLY advise our customers, therefore, to buy of tulips in this fortunate year as freely as they can; for with care, the bulbs will last a lifetime, and no one knows how soon a good collection of the better tulip varieties may be, for the private garden, impossible to duplicate, and therefore priceless.

Of all the rewards won by the gardener, that found in the beauty of spring-flowering bulbs is the most dependable and satisfying. A gardener may love the winter, his season of rest, when he plans by the fireside the

A Rare Opportunity to Invest in Bulbs Which Last a Lifetime

months of enjoyment to come. But is there ever a one who fails to grow impatient and long for the day when the first flower of spring shall open?

Without the bulbs, this day would be late, indeed. The crocuses, scillas, and daffodils begin their heads above a desolate soil, and bring a welcome message to those who watch.

There are in the garden season a dozen flowers that dominate, one after the other herbaceous borders. Each in its season is the headliner of the show. The complete border must contain them all, let it have what else it will. They are, in order of appearance: Daffodils, tulips, iris, peonies, larkspur and lilies, hollyhocks, phlox, dahlias (where they can be grown), zinnias, cosmos, hardy asters and chrysanthemums. From March to Thanksgiving day their pageant continues. All these may be planted in the fall, except the dahlias, zinnias, and chrysanthemums and the hardy bulbs must be planted then.

The purchase of spring-flowering bulbs should not be considered an expense, to be charged to one garden season. It is an investment. A stock of bulbs has been known to produce flowers in the same garden for a century.

Even the labor of lifting bulbs after flowering may be dispensed with. All do excellently when left undisturbed year after year. This practice, indeed, is recommended for the daffodils. And tulips will suffer small loss if allowed to remain in a bed where they have done well, with annual doses of bone meal, and occasional liming.

They are happy in the same beds with perennials.

Beginners' Bulb Offers

\$1.00 To introduce to you the variety and beauty of spring flowering bulbs we will send the following, all of first quality: 6 Scillas, 6 Crocuses, 6 early Tulips, 6 May-flowering bulbs and 6 Narcissi—30 bulbs in all—for \$1.00, postpaid.

\$5.00 We will send bulbs of the finest quality of our selection, all named varieties, or single colors, no mixtures, bagged separately with names on bags; the following assortment: 25 crocuses, 25 scillas, 25 early tulips, 50 May-flowering tulips, 25 mixed daffodils, 18 Paper White narcissi for indoor growing—168 bulbs for \$5.00, prepaid.

\$10.00 We will send bulbs of the finest quality and of the better named varieties, bagged separately, with names on bags, the following assortment: 50 crocuses, 50 scillas, 25 early tulips, 50 Darwin tulips, 25 Cottage tulips, 25 Breeder tulips, 45 mixed daffodils, 30 Paper White narcissi for indoor growing, 25 bedding hyacinths—325 bulbs for \$10.00, not prepaid.

\$25.00 We will send bulbs of the finest quality and of the better named varieties, bagged separately with names on bags, in the following assortment: 150 crocuses, 150 scillas, 100 early tulips, 150 Darwin tulips, 150 cottage tulips, 100 Breeder tulips, 100 mixed daffodils, 25 Paper White narcissi for indoor growing, 25 bedding hyacinths—950 bulbs, not prepaid, for \$25.00.

Tulips New and Old— Novelties and Native Species

Tulips of Native Species are
Esteemed for Rock Gardens

For Gardeners Who Want the
Latest and Quaintest of
This Floral Family

NEW varieties of tulips are constantly being introduced by Dutch breeders. In most cases they add new colors or color combinations to the already superb range which the tulips afford. In some cases novel forms are featured. On this page we have listed recent introductions of interest. The tulip species, or wild forms of this flower, which are also listed, are in growing demand for rock gardens, and wild gardens, for which they have especial charm.

Darwins

Bleu Aimable Bright violet-purple, with distinct steel-blue shading; inside dark violet-purple, with blue base starred white; a very distinct and handsome Tulip of large size and shapely form. Height, 26 inches. Doz., \$0.75; 100, \$5.00; 1000, \$45.00.

City of Haarlem Intense dark scarlet with darker bloom; large steel-blue base and white halo; wonderful cup-shaped flower, with petals incurving slightly at the tips. One of the finest brilliant red Darwins. Height, 27 inches. Doz., \$2.50; 100, \$18.00.

Duke of Portland Clear claret color changing with age to bright garnet, and blue base; a long, very large flower of rich color and fine form. Height, 30 inches. A very fine variety. Doz., \$1.60; 100, \$12.00; 1000, \$110.00.

Eclipse A deep rich glowing blood-red. Large flower of fine form; the best of its color. Height, 26 inches. Doz., \$2.00; 100, \$15.00; 1000, \$125.00.

Gryphus Illustrated on front cover. Dark violet-purple, with a white base; a flower of splendid shape. A good border variety. Even more beautiful in color when forced. Height, 26 inches. Doz., \$1.35; 100, \$9.00; 1000, \$85.00.

King George V Illustrated on front cover. Glowing salmon-scarlet, shaded bright rose; inside brilliant orange-scarlet with blue base. A flower of intense color for outdoors. Height, 25 inches. Doz., \$3.50; 100, \$25.00.

La Fiancee Deep rose, shading to old-rose and delicate pink at the edges, with blue base. A splendid variety of large size, and very effective when planted with mauve and dark lavender sorts. Height, 30 inches. Doz., \$2.00; 100, \$15.00; 1000, \$125.00.

Matchless (Roi d'Islande). Soft old-rose, with a narrow white border; inside soft violet-rose with a blue base. A very beautiful soft color and one that forces splendidly. Height, 26 inches. Doz., \$1.25; 100, \$8.00; 1000, \$75.00.

Orion Dark scarlet with blue base; enormous flower of brilliant coloring. Height, 24 inches, extra for forcing. Doz., \$1.10; 100, \$7.00; per 1000 \$65.00.

Prince of Wales Glowing salmon-scarlet shaded rose, extra large flower on strong stem with white center. Each \$0.50; doz., \$5.50; 100, \$40.00.

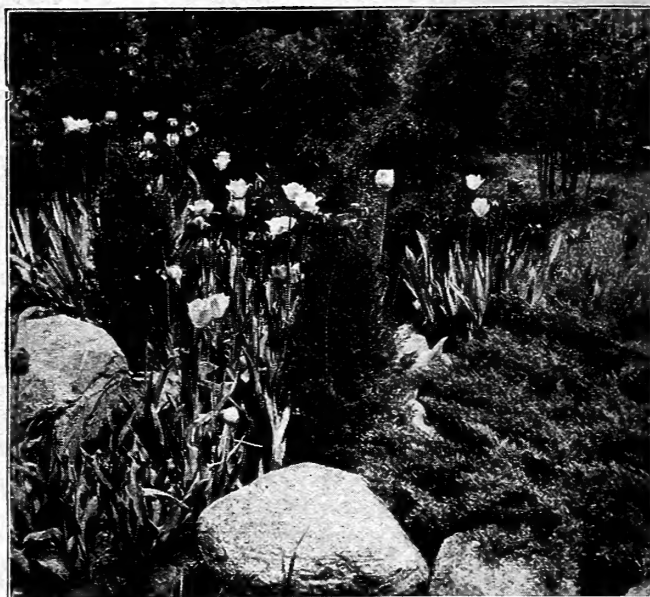
Queen Mary Lovely shade of cerise-scarlet, edged deep pink, with bright blue base. A large flower of a very clear color. Height, 28 inches. Doz., \$1.35; 100, \$9.00; 1000, \$85.00.

The Bishop Soft bluish violet, with ashy bloom; inside paler, with white base; a long flower of very artistic color. Height, 28 inches. Doz., \$2.75; 100, \$20.00.

Valentin A magnificent large, shapely Darwin Tulip. A light violet with a blue base. Height, 22 inches. Doz., \$0.70; 100, \$4.50; 1000, \$40.00.

Venus A splendid exhibition variety—the finest of its color. Pure, even tone of silvery rose, white base, marked with a pale blue ring. Height, 28 inches. Doz., \$8.50; 100, \$60.00.

Victoire D'Oliviera Carmine-red. Doz., \$0.90; 100, \$6.00; 1000, \$55.00.



Cottage

Ambrosia This beautiful new variety of Cottage Tulip contains a combination of shades—bronze with rosy lilac glow; inside of the large, well-shaped flower is a salmon-orange tone. Height, 22 inches. Doz., \$3.50; 100, \$25.00.

Argo This extraordinary variety is well taken by all who have seen it. While the flower is not large, it stands out amongst all others for its rich color. It is deep golden yellow, slightly penciled toward the top edges with orange, which deepens as the flower ages. Doz., \$1.60; 100, \$12.00; 1000, \$110.00.

Dido A large, well-formed flower of rich orange-rose tone, with margin of bright orange-yellow, inside bright orange with yellow base. Height, 24 inches. Each, \$0.60; doz., \$6.60; 100, \$50.00.

George Mendal Carmine rose, inside salmon. Height, 24 inches. Doz., \$1.35; 100, \$9.00; 1000, \$85.00.

Hobbema Old-rose, flushed buff; a very large, globular flower with rounded petals and carried on a strong stem. A tulip of remarkable coloring, and very beautiful when grown out-of-doors. Fine for late forcing; if forced early the color is not so clear. Height, 13 inches. Doz., \$1.30; 100, \$8.50; 1000, \$80.00.

Lord Carnarvon Has a well defined band of clear bright pink on its magnificent pointed petals which makes it amazing. The Tulip has an uncommon form, and the band or striping of pink makes it a wonderful flower. Height, 26 inches. Each, \$0.50; doz., \$5.50; 100, \$40.00.

Marvel Amber-yellow, with rosy lilac flush at center of petals; inside bright yellow shaded brown toward base with green star. Medium sized flower, becoming quite yellow with age. Height, 25 inches. Each, \$0.35; doz., \$3.50; 100, \$25.00.

Mount Lowe A marvelous tulip in size and of rich and glowing pink, striped white; a magnificent flower. Ends of petals reflex slightly. The whole flower is uncommonly arresting and fine. Height, 28 inches. Each, \$0.35; doz., \$3.50; 100, \$25.00.

Quaintness Golden brown, overlaid with rose, the interior mahogany-brown, with yellow base. A remarkable color scheme to be found among the Cottage Tulips. A fine pointed flower, very charming among purple horned Pansies. Height, 20 inches. Each, \$0.35; doz., \$3.50; 100, \$25.00.

Breeders

Chestnut Illustrated on front cover. Very dark brown, almost black. Height, 24 inches. Doz., \$1.00; 100, \$6.50; 1000, \$60.00.

Old Times Dull garnet, edged primrose-yellow, with greenish base; rather long flower of somewhat pointed form. A showy Breeder of English origin. Height, 24 inches. Doz., \$1.40; 100, \$9.50; 1000, \$90.00.

Pink Pearl Illustrated on front cover. A new Breeder and quite the finest of its color. The outside of the flower is a lilac-pink, inside rose, beautiful white base. A magnificent, large, egg-shaped flower. Height, 26 inches. Doz., \$4.50; 100, \$30.00.

Roi Soleil This new Breeder Tulip is a combination of shades—rich dark violet, flamed with bronze. A magnificent, large flower borne on strong stems. Height, 28 inches. Doz., \$3.00; 100, \$22.00.

Lily-Flowering Tulips

As the result of crossing the dainty pointed-petaled *Tulipa retroflexa* with a pink Darwin, we have here a new, very beautiful, and distinct race of Tulips having graceful, slightly reflexing flowers on tall, sturdy stems.

- Adonis** Long, fine shaped flower of a vivid rosy red. Doz., \$1.35; 100, \$9.00; 1000, \$85.00.
- Artemis** Bright carmine-rose, pure white base. Doz., \$1.30; 100, \$8.50; 1000, \$80.00.
- Sirene** Illustrated on front cover. A very beautiful flower. Rich rose-pink with pale pink at the margins of segments, white base. Fine forcer. Great exhibition flower of exquisite beauty. Doz., \$1.15; 100, \$7.50; 1000, \$70.00.

Botanical Tulips and Wild Species

For the Rock Garden and Hardy Plant Border

The general characteristics of the various species, all of which are natives of Asia Minor and Central Asia, are bright colors and recurved petals. These Tulips do not always feel happy in their new surroundings and after two, or possibly three, seasons they will disappear. With care and the provision of suitable quarters they will flower quite satisfactorily. They feel best contented in rock gardens and borders

- Australis** (Celsiana.) Yellow, shaded brown. Doz., \$1.60; 100, \$12.00; 1000, \$110.00.
- Clusiana** "Lady" or "Candystick" Tulip. Outer petals bright cherry-red, inner petals creamy white, with violet base; small flower, but very distinct. It should be planted in light soil 6 or 9 inches deep, in the rock garden or among stones in the front of the herbaceous border. A warm and sheltered situation should be chosen, where it will prove to be a gem among early-flowers. Flowering season late April, Height, 8 inches. Doz., \$1.10; 100, \$7.00; 1000, \$65.00.
- Cornuta Stenopetala** Beautifully formed flower, lacinated like a Parrot Tulip, but held upright on tall, stiff stem. Very interesting and curious in a collection. Color combination scarlet and gold. Doz., \$1.10; 100, \$7.00; 1000, \$65.00.
- Eichleri** A grand Tulip from Turkestan; immense crimson-scarlet flowers with glistening black center marked with gold. Height, 11 inches. Doz., \$2.75; 100, \$20.00.
- Florentina Odoratu (Sylvestus)** Deliciously fragrant butter-yellow blossoms often two to a stem, with bronze exteriors, carried on slender, arching stem. Increases rapidly when once established. Interplant with Grape Hyacinths. Height, 18 inches. Doz., \$1.30; 100, \$8.50; 1000, \$80.00.
- Greigi Aurea** Brilliant orange-scarlet, with deep yellow goblet-shaped flower, pointed, slightly reflexing petals and broad, thick leaves flushed with purple. Flowers in late April and May, and is a gorgeous Tulip. Wants a hot, dry situation. Height, 9 inches. Doz., \$4.50; 100, \$30.00.
- Kaufmanniana** Large, creamy flower, brilliantly marked with carmine, yellow center. Flower opens flat and is carried on a stem usually less than a foot in height. Blooms early in April. The bulbs should be planted six inches deep. Splendid for naturalizing in shady places; self-sows freely. Height, 5 to 7 inches. Doz., \$4.50; 100, \$30.00.
- Persica** Orange-yellow, black base. Doz., \$1.10; 100, \$7.00; 1000, \$65.00.

The Grandest of Tulips is Louis XIV

You Can Buy 12 This Year for \$1.50

FEW will dispute the claim of Louis XIV to first rank among the tulips. It may have a rival in height, though it would be difficult to find one. There may be other varieties as large, and some which compare with it in rich and beautiful coloring. But to match it in all three respects, in dignified height, impressive size, and color all combined, there is no variety that we know. By general consent, Louis XIV has reigned king of all tulips, since it was introduced as a new variety some 12 years ago.

The first mention of Louis XIV in Vaughan's Seed Store's catalogue was in 1917. The following year it was priced at \$13.00 a dozen. The price of a tulip is not governed entirely by merit. The fact that there are relatively few bulbs in existence during the first years of its propagation, forces a high price. As the number of bulbs increases this price naturally falls, without any corresponding decline in the merit of the flower. It has been so with Louis XIV, but the drop has not been rapid. Last fall it was catalogued at \$3.00 a dozen, which was less than some of the newer sorts of far less merit.

This year the large Dutch production gave us a chance to buy a quantity of Louis XIV at a price which would permit us to make a special offer to our customers; and we resolved to do what we could to place Louis XIV bulbs in as many gardens as possible. We offer first quality bulbs of Louis XIV for \$1.50 a dozen; and we urge everyone who has a favorable place to grow them, to invest in at least a dozen of these finest of all tulips. It is improbable that they will be obtainable at this price again for many years. And it may be a century before any better tulip is developed than this truly royal flower.

The rich coloring of this variety is at its best when planted with flowers of a lighter color, and in a position which enjoys the full sunlight. Louis XIV makes a wonderful cut flower; and is often used with petals turned back, to show its beautiful center.

Success With Rock Gardens

ROCK GARDENING is in fashion, but it is far from being a fad. A real interest in rock gardening is the mark of an initiate in horticulture.

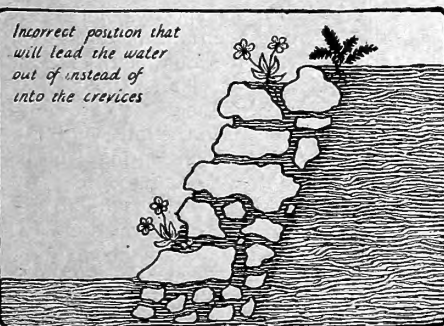
The construction of a rock garden is dealt with in a practical manner by a writer in a recent issue of the magazine *Own Your Own Home*, from which the diagrams accompanying this article were taken. "Commence by digging out to a depth of six inches and filling in the excavated space with small rocks," says the writer. "The foundation is completed by covering these small rocks to a depth of two or three inches with moss or leaf mould.

"A vital factor in achieving a successful rockery is to have all rocks solidly placed. The only loose rocks permitted are the very

small ones holding the earth in crevices as shown in illustrations. Place all rocks with the surfaces slanting to the inside as much as possible so the water will lead into instead of away from the crevices."

A rock garden is necessarily naturalistic in design. There should be no formality about the arrangement of plants. A natural appearance should be sought in the stones, and the rougher and older looking they are, the better. Where rock gardens are used in close relation to gardens of formal design, care must be taken to avoid an incongruous appearance.

There may be a screen to separate the rock garden, or its setting may be handled so that a feeling of harmony is created.



From "Own Your Own Home Magazine."

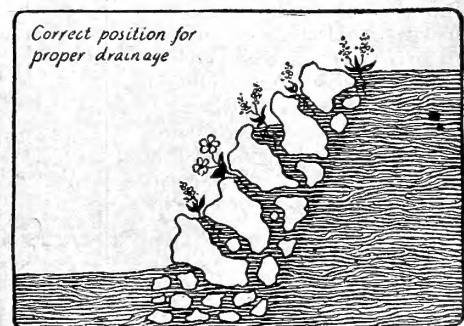
Rock Garden Bulb Collection

The bulbs especially suited to the rock garden are *Chionodoxas* (Glory of the Snow); *Eranthis* (Winter Aconite); *Fritillaria Meleagris*; *Muscari* (Grape Hyacinth); *Scilla Sibirica*; *Scilla Campanulata*; *Leucojum Vernum* (Spring Snowflake); *Tulip Clusiana* (Candy-Stick Tulip). Complete descriptions and prices are found on Pages 3, 20 and 21.

We offer a collection of these bulbs for rock gardeners. 6 each of 8 kinds, 48 bulbs, \$2.25; 12 each of 8 kinds, 96 bulbs, \$4.00. All postpaid.

PLANTS FOR ROCK GARDENS

Our list of perennial plants for fall planting contains many subjects suitable for rock gardens, each of which is indicated by the symbol + placed before it to assist in your selection.



From "Own Your Own Home Magazine."



Peonies That Match Pearls Are Possible in Your Garden

DO YOU realize that the love of flowers may amount to a passion; and that from the beauty of his favored blossoms, a devotee may obtain pleasure as definite and keen as through any other experience in life?

For proof of this, we refer inquirers to thousands of peony fans. There are also iris fans; and dahlia fans, to say nothing of rose and delphinium devotees. But in no case does enthusiasm rise to such heights, and nowhere are the evidences of rapture so unmistakable, as at a peony show, or in a peony garden. And when you examine the modern peonies, you do not wonder.

How changed this flower has come to be, since the days when the early officinalis rubra with its bright red blossoms was its common representative in gardens. Its chief claim to eminence in the floral world used to be its size; and we would say it made up by its impressive proportions, what it may have lacked in coloring and delicacy of petals. But now, with size greatly increased, we have blossoms of a coloring unsurpassed for subtle shading. We have Solange, which Mrs. Edward Harding compared to an oriental pearl; Therese and Walter Faxon, the exquisite pinks; LeCynge, milk-white with petals curving like the feather's on a swan's wing and others in number of a quality which not the finest roses can surpass.

The landscape value of the peony can not be questioned. Its huge flowers, on bushes that match shrubs in size, produce an effect in the garden which no other flower can duplicate. And now these flowers have been brought to a perfection which makes a selected specimen a thing to treasure, to cover with a paper bag to prevent fading in the bright sun; to cut when it is opening and carry into the house, where from the beginning to the end of its brief life, its exquisite beauty may be enjoyed to the full.

If you have no peonies of this quality in your garden; then there is a pleasure in store for you, which need not be put off another year. Buy the best you

Exquisite Coloring of the Newer Kinds is Coupled With Free-Flowering Qualities

can afford this fall, and enter next June into the blessed society of the peony fans.

The World's best 4 Peonies

OUR collection 7D, including Le Cygne, Solange, Therese and Walter Faxon, gives the varieties

which Mrs. Edward Harding in her book, "Peonies in the Little Garden," declares to be the four best in the world. Prices of peonies will not decline rapidly, because propagation is relatively slow. If \$20 seems too much, the other collections contain varieties more moderate in price and of quality very little less. All the varieties in these collections are of the first rank, as the ratings given them by the American Peony Society prove.

Do not form your opinion of the modern peonies, by plants of unnamed varieties which you may have or know about. Of no flower are there more out-of-date specimens surviving in gardens. The peony is a long-lived plant. The purchase of a good variety is an investment for life. But the flowering qualities of the different varieties differ greatly; and only in recent years have systematic

breeding efforts and careful attention to ancestry given us so many beautiful free flowering kinds at moderate prices.

A variety need not be new to be good; but unless you know its name there is no certainty of its quality. While the purchase of a named variety, of known character, assures you of good flowers and plenty of them.

Is it not worse than foolish to take a chance on failure with an unknown and perhaps barren plant, when good ones cost so little?

Whenever a peony plant under proper treatment refuses to blossom, it should be discarded. A fair trial will not take long. Most peony plants, of 3 eyes and up, planted in the fall, will blossom the following spring. This is true of free-flowering varieties of all colors. If blossoms fail to appear by the third year, unless a cause is apparent in the environment of the plant, which can be corrected, the plant may be discarded.

Ask for complete Peony list.

Bargain Peony Collections

By Express, F. O. B. Chicago. If wanted by mail, add 15c for divided root collections, 25c for medium root collections.

Divided roots have 2 to 3 eyes; medium roots, 4 to 6 eyes; large roots, 7 eyes or more.

The number preceding each variety is the rating assigned by the American Peony Society, 10 being perfection

Collection 7D

The four best peonies for \$20.00.

Mrs. Edward Harding, in "Peonies in the Little Garden," says the varieties in this collection are, in her opinion, the best in the world

- | | |
|--------------------|-----------------------|
| 99 Le Cygne, white | 98 Therese, pink |
| 97 Solange, cream | 93 Walter Faxon, pink |

One each of the above, divided roots, \$20.00.

Collection 7A

- | | |
|-------------------------------|-------------------------|
| 8.1 Duchess de Nemours, white | 8.4 Felix Crousse, red. |
|-------------------------------|-------------------------|

- | | |
|---------------------------------|--------------------------------|
| 7.7 Dorchester, late pink. | 7.9 Mad. de Verneville, white. |
| 7.6 Eduhis Superba, early pink. | 8.4 Marguerite Gerard, pink. |
- One each of the above, divided roots, \$3.00; medium roots, \$5.00; large roots, \$7.00.

Collection 7B

- | | |
|----------------------------|-----------------------------|
| 8.4 Felix Crousse, red. | 9.2 Mons. Jules Elie, pink. |
| 9.3 Festiva Maxima, white. | 8.7 President Taft, pink. |

One each of the above, divided roots, \$3.50; medium roots, \$5.50.

Collection 7C

- | | |
|-----------------------------|-------------------------------|
| 7.8 E. G. Hill, tyrian-red. | 9.1 Lady Alexandra Duff, pink |
| 9.1 Francis Willard, white. | 8.8 Richard Carvel, red. |

One each of the above, divided roots, \$10.00.

Collection 6-E—Surplus Varieties \$4.00

Twelve different Peonies—4 white and light; 5 pink and rose; 3 red—all labeled to color; \$4.00; by mail, postpaid, \$4.50.

New Irises Paint the Most Brilliant Garden Picture

IF THERE were any doubt as to which of the perennials is supreme as a landscape flower, the past season has dispelled it. The improved varieties which make the modern iris seem a different race, were seen in their full effect in thousands of the more advanced gardens in June; and the verdict was unanimous that of all the pictures possible in the flower garden, that painted by the irises is most brilliant.

What flower can match their wonderful range of color, and at the same time equal their variety of size and form? The only color lacking in the iris, red, is the one least essential in the garden. Of pinks, purples, both red and blue; yellows from pale cream to the deepest gold, it is now possible to obtain varieties of almost any height wanted from 18 inches to 4 feet. There are pure whites low and tall, and the beautifully delicate plicatas—white edged with purple—to highlight groups of the duller colors. There are bronzes and browns, and luminous ruby colors, to glow in the sunshine.

Too long have the newer irises been collectors' flowers. The time has come when they must leave the prosaic surroundings of the collector's rows, and take their rightful places in the garden, where their beauty may be displayed at its best, set off by beautiful surroundings. Give them a background of cool green; group them with studied care for color-harmony and contrast; light up the duller ones with plentiful white; balance the blue-purples with good yellows, and let the pink varieties, from the palest to the deep ruby of Seminole, supply the warmth which completes an entrancing picture.

Best Varieties at a Bargain

THERE is no longer any reason for delay in acquiring some of the better irises. Prices are down and merit has been established so that investment may be made without risk of error. There will always be the very latest introductions, which will interest chiefly those who take pride in the completeness of their list. Even these, at the higher prices, will usually be found a good investment; since the increase should keep pace with reduction in prices. And certainly that garden will soon be out of date

They Have Proved Their Title to Supremacy as a Landscape Flower

which does not begin now to add to its attractions those varieties which established the modern standard of beauty in this race, and have now become plentiful and moderate in price. Six such varieties that have made iris history, all being rated by the American Iris Society at 9 points or over (10 being perfection) are those listed in our collection 7E, displayed in the box at bottom of this page. The garden which acquires these may be satisfied that for years to come, it will possess irises of the first rank. Collection 7F lists varieties of a wide color choice and outstanding merit. Collection 7G offers standard varieties, some still unsurpassed in their color class, all of which add to the garden picture a variety of color and height which will be found invaluable in arranging pleasing groups.

Irises dominate the border in the period that follows the May-flowering tulips and precedes the peonies. Their season continues about one month.

Those few perennials which blossom with them cannot compare with the irises in grandeur; so that no garden can afford to do without them.

If there is any flower more easily grown, more gratefully responsive to the gardener's care, we do not know it. And our American climate seems to have been made for the hardy varieties; they enjoy our cold winters and our hot summers, and ask only a place in the sun, which is well drained. They may be planted in the midsummer, the autumn or the spring; and they do well in each case.

The Culture of Irises

THE main cultural detail for the tall bearded or dry irises is drainage and all the sun possible. They require a summer bake to do their best. They also demand a well limed soil. They need no fertilizing but benefit from an occasional dressing of bone meal worked into the soil or a coating of wood ashes in alternating years with lime; or, better still, a coating of gypsum in the spring shortly after growth starts. Gypsum provides the lime element in the form which best suits irises. Gypsum is also the best known preventive and cure of iris rot. It is almost entirely free from insects and disease pests, the rot and borer both being rare and easy to cope with.

Ask for complete Iris list.



QUEEN CATERINA

Vaughan's Iris Bargains

Shipped at buyer's expense F. O. B. Chicago.

Collection 7E

Six of the world's finest irises, varieties that have made history, for \$4.00. A year ago they sold for \$7.50.

- 9.4 **Ambassadeur**, bronze and maroon, 40 inches.
- 9.1 **Lord of June**, lavender-blue, 40 inches.
- 9.1 **Queen Caterina**, lavender-violet, 40 inches.
- 9.0 **Lent A. Williamson**, purple, 42 inches.
- 9.5 **Princess Beatrice**, the true "Pallida Dalmatica," pale lavender, 36 inches.
- 9.3 **Souvenir de Mme. Gaudichau**, finest of deep purples, 36 inches.

One each of the above six irises for \$4.00.
Three each (18 plants) for \$10.00.

Collection 7F

Eight choice varieties of outstanding charm and unique coloring for \$2.50.

- 8.6 **Cluny**, pale lilac blue, 38 inches.
- 8.3 **La Neige**, ivory white of satin texture, 24 in.
- Prospero**, lavender-purple, 48 inches.
- The Inca**, yellow and plum, 24 inches.
- 8.3 **Dejazet**, rose and violet, 24 inches.
- 8.7 **Opera**, red-purple, 28 inches.
- 8.1 **Raffet**, lavender-violet, 26 inches.
- Trianon**, pale buff, 28 inches.

One each of the above eight irises for \$2.50.
Three each (24 plants) for \$5.00.

Collection 7G

Twelve splendid standard sorts, each of distinctive merit and special value in the border, for \$2.00.

- Alcazar**, purple.
- Archevique**, violet.
- Celeste**, lavender.
- Florentina Alba**, earliest white.
- Gertrude**, violet.
- Lohengrin**, mauve.
- Monsignor**, violet.
- Prosper Laugier**, bronze.
- Queen of May**, pink.
- Rhein Nixe**, white and plum.
- Sherwin Wright**, yellow.
- Storm Cloud**, slate blue.

One each of the above twelve irises, \$2.00.
Three each (36 plants) for \$4.00.

50 Plants for \$3.00—Collection 7H. Ten each of 5 varieties (50 plants) our selection, for \$3.00.

Shipped express collect—If wanted by Parcel Post, add 15c per collection.

Bulbs for Indoor Gardening

Hyacinths in glasses blossom in 6 weeks. Amaryllis is largest of easily forced flowers.

Hyacinths

Amaryllis

Hyacinths in Pots

IT IS important in the pot culture of Hyacinths to have rich, light soil. Cover the hole in the pot with a piece of broken pot, and over this place a layer of moss, which will keep the soil from clogging the drainage thus provided. Break off any offsets which appear at the base of the bulbs, and, in potting, place each bulb so that its top shall be half an inch below the surface of the soil, and an inch below the rim of the pot. Use a 5-inch pot for single bulb or four in a 6-inch pot. Give a good watering and set away in a dark, cool place. An excellent place is in an outdoor pit, well drained, where you can cover them with about 3 to 5 inches of coal ashes or sand. Let them remain here for eight or ten weeks, bringing them to the light as required.



OF all bulbs which the amateur can grow successfully indoors, the Amaryllis is at once the largest, most beautiful, surest to flower and most easily handled. Our new hybrids, especially, are so gorgeous in size and coloring as to amaze those not familiar with them. From a single stem, spring from one to three lily-like flowers, six to eight inches in diameter. So vigorous are the bulbs that they will blossom if stood on a table in a warm room, but it is better to grow them in pots.

They thrive best in a compost of two-thirds good garden loam with one-third leaf mold, to which should be added a little sand. They require temperature of 50 to 55 degrees, and if to be forced it should be raised ten degrees.

The size of the pot depends on the variety and size of bulb. A six-inch or seven-inch pot will accommodate one bulb of most varieties, though some of the "monster" bulbs require as large as a 10-inch or 12-inch pot. Place only one bulb in each pot, covering it as far as the neck or upper narrow part. Water sparingly at first until the flower shoots begin to appear. Some growers keep them in the dark until the flower stems are four or five inches long, and then bring them to the light.

After flowering they should be placed in a warm window, or set outside in sand or cinders and watered every day (sometimes twice a day), until the end of August when water should be gradually withheld and the bulbs allowed to go to rest.

BELLADONNA MAJOR. Fall bloomer, very free and fragrant. Flowers which are a lovely shell-pink color, are borne on stems 2 to 2½ feet high.

Large Bulbs. Each, 30c; per doz., \$3.00; 100, \$22.00.

Equestre. Orange-scarlet. Each, 30c; doz., \$3.00; 100, \$22.00.

JOHNSONI. Has immense trumpet-shaped flowers, which measure 6 to 8 inches across, are borne on strong fleshy spikes, and are rich, deep velvety crimson, each petal having a broad white stripe contrasting beautifully with the deep red color. Each, 55c; doz., \$5.50; 100, \$40.00.

VAUGHAN'S NEW HYBRIDS. One of the finest strains of Amaryllis we have yet seen, raised by an eminent grower whose entire stock we have purchased. Flowers are immense, borne mostly two and three to a stem, in an amazing and beautiful range of colors, blended, splashed and striped in a manner not seen in other strains. **California-Grown:** Each, 60c; doz., \$6.50; 100, \$50.00. **Florida-Grown:** Each 50c; doz., \$5.75; 100, \$45.00.

Dutch Roman or Miniature Hyacinths

(Also called Cynthellas)

These are fine for growing in pots, pans or window boxes. Although naturally small in size, they give very large spikes of bloom, considering the size of bulb. Follow directions given for "Hyacinths in Pots." Mailing weight per doz., 2 lbs.

SINGLE RED AND ROSE—LADY DERBY, bright rose-pink; **GERTRUDE,** clear rose; **LA VICTORIA,** brilliant dark pink.

Prices: Per doz., \$1.35; per 100, \$9.00; 1000, \$85.00.

SINGLE WHITE—LA GRANDESSE, snow-white; **L'INNOCENCE,** purest white.

Prices: Per doz., \$1.35; per 100, \$9.00; 1000, \$85.00.

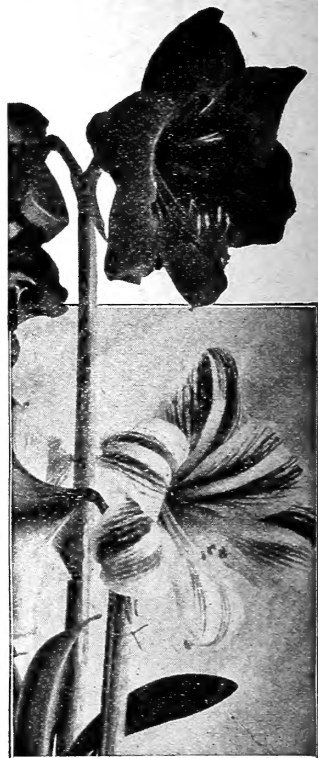
SINGLE BLUE—GRAND MAITRE, deep porcelain; **QUEEN OF THE BLUES,** light blue.

Prices: Per doz., \$1.35; per 100, \$9.00; 1000, \$85.00.

VAUGHAN'S PREPARED FIBRE

For growing Bulbs in Bowls without drainage.

Per lb., 15c; 3 lbs., 40c; 10 lbs., \$1.00.



Belgian Hyacinth Glasses		Tye Shape	
	PRICES	Each.	Doz.
Belgian. Tall.....	\$0.40		\$3.75
Tye Shape.....	.40		4.00

Not responsible for breakage in transit.

Hyacinths in Glasses

The single varieties are, with a few exceptions, best adapted to this mode of culture. They produce finer flower spikes than the double. Fill the glass with clear soft water, so as to nearly touch the base of the bulb, putting a small piece of charcoal in each glass to keep the water pure and afford some nourishment. The filled glasses should be placed in a dry, cool, dark place, and kept there until the roots almost touch the bottom of the glass, when they may be exposed gradually to the light. Water must never be changed, but should be replenished.

Exhibition Hyacinths—Monster Bulbs

THESE should be planted in pots, ornamental bowls, or pans; or grown in water in Hyacinth glasses. They are not suitable for outdoor cultivation. We have arranged with one of our Dutch growers to select the very finest and largest bulbs he has of special kinds of superior quality, that will give huge spikes in some of the choicest colors obtainable. They are all single-flowered:

Red, Pink, White, Blush-White, Light and Dark Blue, and Yellow.

Each variety will be carefully packed and named.

Price, each, 40c; per doz., \$4.00; per 100, \$30.00.

Vaughan's Rainbow Collections

Single Named Hyacinths for Window Garden

QUEEN OF PINKS, Pink. **GRAND MAITRE,** Light Blue. **LA VICTORIA,** Red. **L'INNOCENCE,** White. **KING OF THE BLUES,** Dark Blue. **CITY OF HAARLEM,** Yellow

PREPAID PRICES—

	Postpaid
A—6 Bulbs, one of each variety.....	\$1.50
B—12 Bulbs, two of each variety.....	2.75
C—24 Bulbs, four of each variety.....	5.00
D—36 Bulbs, six of each variety.....	7.50

For other named varieties of Hyacinths for indoor growing, see page 17.

Grow Your Christmas Flowers

In Bowls, Without Drainage, With Gravel and Water, or Fibre and Water

Paper White Narcissi



AN EMBARGO by the Federal Horticultural Board against the importation of narcissus bulbs, limits us this year to American grown narcissi of all types, including the tender Paper Whites, used so extensively for forcing in gravel and water.

The stock of American grown Paper Whites is very limited, and the greatest care is necessary to insure good quality. The increase in prices is due to the small supply. After inspecting fields of growing narcissi in every section of the United States where their propagation has been attempted—from the Pacific Coast, to Texas, Florida and South Carolina—we have purchased for our customers the cream of those obtainable.

All Paper Whites offered by us are from fields free from insects and so have not been subjected to the hot water treatment, which is required

for fly-infested bulbs, and which is said to injure their forcing qualities. All our bulbs have been grown in sections favorable in soil and climate by thoroughly experienced propagators whose previous crops of Paper Whites have been tested for forcing and found to be equal in flower production to imported bulbs, though somewhat later in flowering. Our customers should allow a somewhat longer time for bringing these bulbs to flower than they were accustomed to allow the French bulbs.

If by Parcel Post, 12 bulbs weigh 3 lbs.; 50, 10 lbs. Add postage at zone rates.

Medium Bulbs, 12-13 ctms., per doz., 75c; per 100, \$5.00; per 1000, \$45.00.

Fancy Selected Bulbs, 13 ctms., per doz., \$1.00; per 100, \$7.00; per 1000, \$65.00.

Mammoth Bulbs, 14 ctms., per doz., \$1.25; per 100, \$8.00; per 1000, \$75.00.

French Roman Hyacinths

The white variety, if planted early in September and slowly forced, will bloom in November. The others require from two to three weeks longer. They will flower in three months.

White, select size, per doz., \$2.00; per 100, \$13.00.

Blue, per doz., \$1.50; per 100, \$11.00.

Light Pink, per doz., \$1.50; per 100, \$11.00.

Dark Pink, per doz., \$1.50; per 100, \$11.00.

Lilies of the Valley



THESE beautiful, fragrant flowers may be brought to flower in 18 to 21 days, if pips from cold storage are used. They are easily forced in a bowl, if planted in sphagnum moss and kept well watered. Their dainty fragrance is preferred by many to the large Paper White narcissi, and they are much quicker to flower. Do not order more than you intend to use at once as the cold storage pips will

not keep. Plant about 25 pips in a 7-inch bowl, place in a warm temperature, 65 degrees Fahrenheit and shade from light until leaves and spikes are well developed, then admit light gradually. Increase temperature to 75 degrees or 80 degrees if possible. An inverted pot over each bowl answers admirably to shade them. They may be forced in soil the same way, in a 7-inch pot or pan. This is the treatment for cold storage pips only.

COLD STORAGE PIPS, ready November 1. Per doz., \$1.25; 25 for \$2.00; 100 for \$6.50, postpaid.

SPHAGNUM MOSS, sufficient for 25 pips, 10c, postpaid.

Chinese or Sacred Lily

The Chinese Sacred Lily is a narcissus, imported from China until January, 1926, when it was barred from the United States together with other narcissi. The bulbs we offer are grown in the United States. The bulbs require a warm and humid room in which to grow. They are large and throw up 5 to 10 flower spikes with clusters of fragrant white blossoms. Plant in water with gravel to hold them upright. It is advisable to cut two or three slits half an inch deep, up and down the sides of the bulb near the top, to enable the flowering shoots to burst through the tough outer skin.

Try growing a few in Prepared Fibre. Our tests proved very successful.

Mammoth. Each, 25c; doz., \$2.50.

BULB PLANTER



Bulb Planter

Specially designed for planting Daffodils and other bulbs in grass. This tool cuts and lifts a clean circular piece of turf.

Each (in Chicago), \$8.75; (in N. Y.), \$8.50.

BULB DIBBER



Bulb Dibber

Specially designed for dibbling bulbs into borders, etc., steel shod, with strong iron thread and cross wooden handle; a good strong heavy tool, weight, about 6 3/4 lbs., length 36 inches overall. This tool will save its cost.

Each (in Chicago), \$6.75; (in N. Y.), \$6.50.


Gravel and Pearl Chips

Gravel for bulb bowls, 5c per lb.; 5 lbs., 20c; 10 lbs., 35c. Pearl chips, 15c per lb.; 10 lbs., \$1.25.

Pearl Chips, Colored. Per lb., 20c; 10 lbs., for \$1.50.

For Parcel Post delivery add postage at zone rates.

Not responsible for breakage if bowls are sent by Parcel Post.



Dibber. For planting bulbs and plants; steel point. Ea., 85c (wt., 10 oz.).

F. L. Style Bowls

A POTTERY bowl with a matt green, blue and jet black glaze finish. Prices: 5-inch (wt. 2 lbs.), 40c; 6-inch (wt. 3 lbs.), 50c; 8-inch (wt. 4 lbs.), 85c. For Parcel Post delivery add postage at zone rates. See last page.

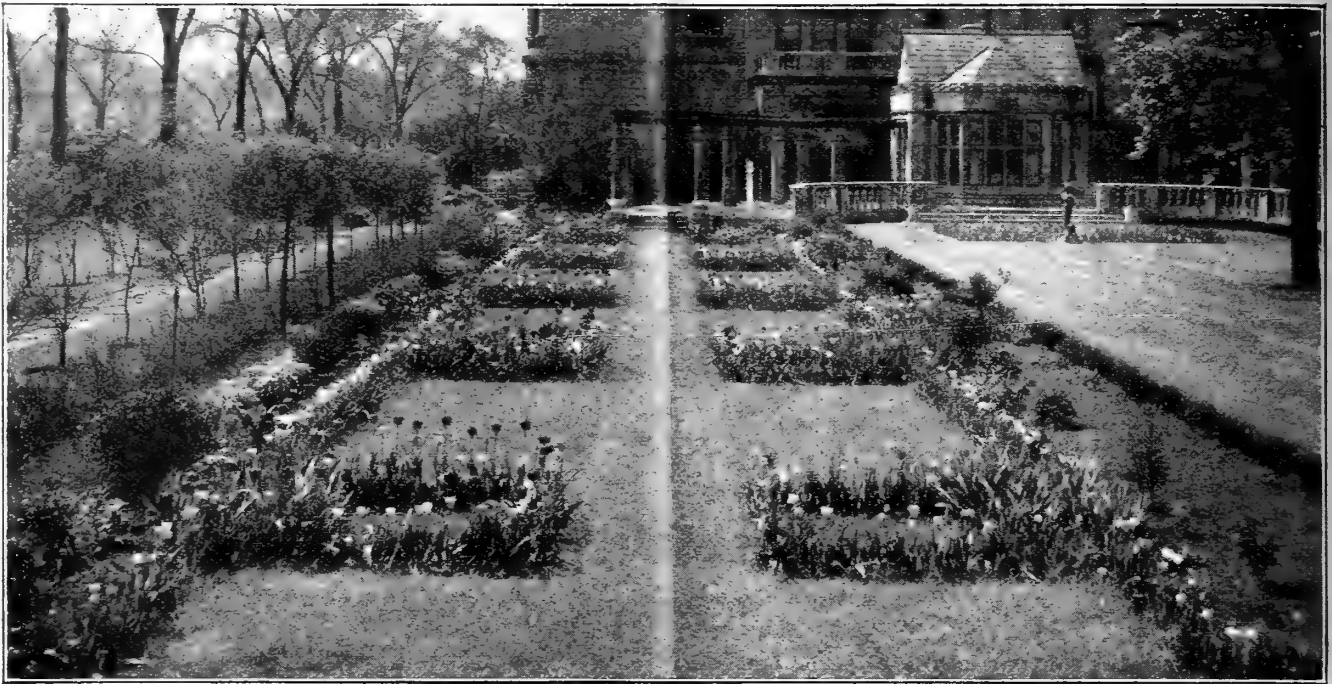


Colored Satin Finish Glass Bowls

THESE bowls are specially shaped for bulbs and equally attractive for flowers, made of the best grade of flint glass, in a rich beautiful satin finish, in the following colors: Nile Green, Light Blue, Rich Deep Amber, and Black.

5 1/2 inch, weight 2 lbs., each, 60c. 6 1/2 inch, weight 3 lbs., each, 70c. 9 inch, weight 4 lbs., each, 90c.





Tulips for Color-Scheme Plantings

TULIPS are, above all, color. They have beauty of form; there is nothing more graceful in the floral kingdom than their cup-shaped blossoms poised on slender stems, sometimes three feet high; but one can have small appreciation of their charm without a knowledge of their extraordinary range of colors.

It follows that color is of prime importance in tulip plantings; and color harmonies and contrasts must be studied in planning them.

As concrete examples we have planned 12 combinations for which we offer bulbs, of our selection, at a special price. We are able to make a special price, because we can select the colors demanded from varieties of which we are not short. There is never any way to tell what named varieties are to be in most

demand each year. We order on the basis of last year's demand, the only basis we have; but usually sales go differently, and we soon find ourselves with a shortage of some varieties and a surplus of others; and the latter are apt to be the finer and higher priced.

To encourage originality of arrangement in these plantings, we offer no planting plans, but suggest that the colors be grouped in pleasing contrast in whatever setting your garden may provide. In the formal bed the perennial border, at the foot of the shrubbery border, along the garden fence wherever their colors are desired, so they have good drainage and sunlight, these tulips will be happy.

For the early varieties 6 inches between bulbs in all directions should be allowed, and for the Darwin and Breeder varieties, 8 inches are needed.

Single Early Tulips

Red and White

25 of each (50 bulbs)	\$ 2.50
50 of each (100 bulbs)	4.50
100 of each (200 bulbs)	8.00
250 of each (500 bulbs)	19.00

Pink and White

25 of each (50 bulbs)	\$ 2.50
50 of each (100 bulbs)	4.50
100 of each (200 bulbs)	8.00
250 of each (500 bulbs)	19.00

Red, White, Yellow

25 of each (75 bulbs)	\$ 3.75
50 of each (150 bulbs)	6.50
100 of each (300 bulbs)	12.00
250 of each (750 bulbs)	30.00

Double Early Tulips

Red and White

25 of each (50 bulbs)	\$ 3.00
50 of each (100 bulbs)	5.50
100 of each (200 bulbs)	10.00
250 of each (500 bulbs)	22.50

Pink and White

25 of each (50 bulbs)	\$ 3.00
50 of each (100 bulbs)	5.50
100 of each (200 bulbs)	10.00
250 of each (500 bulbs)	22.50

Red, White Yellow

25 of each (75 bulbs)	\$ 5.00
50 of each (150 bulbs)	9.00
100 of each (300 bulbs)	17.00
250 of each (750 bulbs)	40.00

Darwin Tulips

Black (Dark Purple) and White

25 of each (50 bulbs)	\$ 2.00
50 of each (100 bulbs)	3.50
100 of each (200 bulbs)	6.00
250 of each (500 bulbs)	14.00

Rose and Blue-Purple

25 of each (50 bulbs)	\$ 2.00
50 of each (100 bulbs)	3.50
100 of each (200 bulbs)	6.00
250 of each (500 bulbs)	14.00

Red and White

25 of each (50 bulbs)	\$ 2.00
50 of each (100 bulbs)	3.50
100 of each (200 bulbs)	6.00
250 of each (500 bulbs)	14.00

Darwin and Breeder Tulips

Rose, Lavender, Pink, Reddish Mahogany, Yellow

25 of each (125 bulbs)	\$ 6.00
50 of each (250 bulbs)	11.00
100 of each (500 bulbs)	20.00

Yellow and Lilac

25 of each (50 bulbs)	\$ 2.50
50 of each (100 bulbs)	4.00
100 of each (200 bulbs)	7.00
250 of each (500 bulbs)	15.00

Scarlet, Purple, Brown, Lavender, Orange-Bronze, Rose-Pink

25 of each (150 bulbs)	\$ 8.00
50 of each (300 bulbs)	15.00
100 of each (600 bulbs)	27.50

This Collection also contains Cottage Tulips



Autumn Is the Time to Make a Lawn

IN THE autumn there is no seeding, no drouth, no excessive heat. Seed sown in September germinates in time for a long stretch of favorable weather in which to become established before winter sets in. The winter ordeal is not so severe as the summer; and after it comes a long, cool spring, for further growth before midsummer and seeding time arrives. Fall, therefore, is the best time to sow.

The Value of Tested Seed

OUR lawn mixtures are cleaned and re-cleaned. Then our seeds are tested for germination to insure that they have in them the power to grow. Our blends for various purposes are composed of several grasses, each of which has a purpose; some to make a quick show, some to make a quick turf the first

summer, a little clover to help enrich the soil and fill in bare spots and always Kentucky Blue Grass of the finest quality to take hold in its own way,

to spread and finally to dominate in the permanent turf.

See that the seed is well covered. Rake it into a new seed bed and roll so that the soil is firmed over the seed. Where seed is sown on an old lawn always cover it with a top-dressing of sand or soil and fertilizer. Seed thrown on the top of hard ground has no chance to grow and will merely wash off.

In selecting a mixture you may feel assured that the more expensive blends are well worth their added cost.

Quantity to Use—On new lawns use 1 lb. of seed for 300 square feet. To replenish lawns where turf is thin use half quantity.

Vaughan's "Chicago Parks" Lawn Seed—The Standard Lawn Mixture

This mixture is composed of heavy, re-cleaned seed, blended according to the formula proved in our 50 years' experience to be the best for permanent lawns under American conditions. Recent scientific experiments by the Department of Agriculture confirmed what experience had taught us as to our formula. Kentucky blue grass and red top form the bulk of this mixture, to which are added white clover in the correct proportion and other grasses to thicken the turf, and assist in establishing the permanent stand of blue grass upon which good lawns depend. Our mixture produces a lawn that will endure. Price, ½ lb., 25c; 1 lb., 50c; 2 lbs., \$1.00; 3 lbs., \$1.45; 5 lbs., \$2.40; 10 lbs., \$4.75; 15 lbs., \$7.00; 20 lbs., \$9.25; 25 lbs., \$11.50; 50 lbs., \$22.50; 100 lbs., \$40.00.

Vaughan's "Columbian"

For Shady Lawns or Sandy Soil

On sandy soil or in light shade, conditions are met with when making a lawn which require the use of a special grass seed mixture. Vaughan's "Columbian" is the correct mixture for such locations.

½ lb., 25c; 1 lb., 50c; 2 lbs., \$1.00; 3 lbs., \$1.45; 5 lbs., \$2.40; 10 lbs., \$4.75; 15 lbs., \$7.00; 20 lbs., \$9.25; 25 lbs., \$11.50; 50 lbs., \$22.50; 100 lbs., \$40.00.

Write for special prices on larger quantities.

Vaughan's Dense Shade Mixture

Composed of grasses most suited for growing in heavily shaded situations.

Price, lb., 75c; 2 lbs., \$1.50; 3 lbs., \$2.20; 5 lbs., \$3.65; 10 lbs., \$7.20; 15 lbs., \$10.65; 20 lbs., \$14.00.

Vaughan's "Quick Show" Grass Mixture

Has not the permanency of color of our "Chicago Parks," but makes a respectable showing the first season. Sow 100 lbs. to acre.

Price, lb., 40c; 2 lbs., 80c; 3 lbs., \$1.15; 5 lbs., \$1.90; 10 lbs., \$3.75; 100 lbs., \$32.50.

On orders under \$2.00 or beyond prepaid zone, add 5c per lb. for postage. Lawn Seed orders of \$2.00 or more prepaid to within 300 miles of Chicago or New York. On Parcel Post C. O. D. Orders there is an extra charge of 12c for C. O. D. Delivery.

Vaughan's Homegrounds Mixture

There is a wide demand for a grass seed mixture at 25c a pound. This is the best we can prepare to sell at this price, and much better than most mixtures which sell at this price. It contains some Kentucky Blue Grass, and a proportion of timothy, but much less timothy than most other 25c-mixtures. It will germinate thickly and produce a show of green in a few days. It is especially recommended for hard usage, such as around apartment buildings, in parkways and elsewhere where reseeding is necessary every year.

Price, lb., 25c; 2 lbs., 50c; 3 lbs., 70c; 5 lbs., \$1.15; 10 lbs., \$2.20; 25 lbs., \$5.25; 100 lbs., \$20.00.

Creeping Bent Stolons

We are able to supply this splendid golf grass for private use. It produces a fine lawn in one season but must have extra care, several top-dressings a year and frequent mowing. But for those willing and able to provide the needed care it will repay as no other grass known. For \$20.00 we will send you enough runners and roots of the grass to plant 1,000 square feet. 500 sq. ft. for \$12.50; 250 sq. ft. for \$7.50; 100 sq. ft. for \$4.00. If larger quantities are desired ask for a special quotation. We furnish complete directions and deliver to you in the best growing condition. A leaflet giving further information about Creeping Bent Stolons will be sent upon request. It is best to plant Stolons in May and June for spring planting, and from the middle of August to the middle of September for fall planting.

Vaughan's Special Lawn Seed Mixtures

Terrace Mixture

A mixture of grasses that root quickly and form a good turf under conditions as met with on terraces. Lb. 60c; 2 lbs., \$1.20; 3 lbs., \$1.75; 5 lbs., \$2.85; 10 lbs., \$5.50; 100 lbs., \$50.00.

Vaughan's Tennis Court Mixture

Undoubtedly the best there is, not only for Tennis Courts, but for Cricket Grounds, and Bowling Greens, made up of deep-rooting hard-wearing grasses.

Price, lb., 60c; 2 lbs., \$1.20; 3 lbs., \$1.75; 5 lbs., \$2.85; 10 lbs., \$5.50; 100 lbs., \$50.00.

Vaughan's Special Grass Mixture "Private Estate"

This contains a large proportion of the more expensive grasses, like the Bent Grasses, Cheving's Fescue, etc., also extra heavy Kentucky Blue Grass. Produces turf of closest, finest texture.

Price, lb., 70c; 2 lbs., \$1.40; 3 lbs., \$2.05; 5 lbs., \$3.35; 10 lbs., \$6.50; 20 lbs., \$12.90; 100 lbs., \$60.00.

Fairway Mixture

For Fairways we recommend a simple but very well proportioned mixture of Kentucky Blue Grass and Red Top, which gives excellent results and if properly cared for improves with age.

Price, lb., 50c; 2 lbs., \$1.00; 3 lbs., \$1.45; 5 lbs., \$2.40; 10 lbs., \$4.75; 100 lbs., \$37.00. Sow 100 to 150 lbs. to the acre. Special prices quoted on large quantities.

Putting Green Mixture

We offer a mixture of fancy grasses that make a very good turf but recommend that only one kind of grass be used on putting greens, e.g., European Mixed Bent, or Cheving's Fescue, etc.

Price, lb., 75c; 2 lbs., \$1.50; 3 lbs., \$2.20; 5 lbs., \$3.65; 10 lbs., \$7.20; 20 lbs., \$14.00.

Seed of the Bent Grasses

EUROPEAN MIXED BENT (so-called "Creeping Bent") is a mixture of Bents including true Creeping Bent, Velvet Bent, and a large percentage of Rhode Island Bent. It has been in high favor as a putting green grass.

The important advantage of the Bent Grasses on lawns is that they like acid soils and can be fed with acid reacting fertilizers, such as Ammonium sulphate, the constant use of which discourages weeds.

These seeds are somewhat to be preferred to the Creeping Bent Stolons for lawn purposes (but not for putting greens) because they do not grow so rapidly and the average home-owner can keep up with the mowing. Seed at the rate of 3 to 4 lbs. per 1000 sq. ft.

European Mixed Bent ("Creeping Bent Grass"), 1 lb., \$1.50; 5 lbs., \$7.25; 10 lbs., \$14.00.

RHODE ISLAND BENT GRASS has been neglected as a lawn grass. It makes a fine close turf of excellent color and adapts itself readily to any soils particularly acid soils. This grass also makes good putting green turf.

Rhode Island or Colonial Bent, 1 lb., \$1.70; 5 lbs., \$8.25; 10 lbs., \$16.00.

White Clover

Extra fancy seed. Price, ½ lb., 40c; 1 lb., 75c; 2 lbs., \$1.50; 3 lbs., \$2.20; 5 lbs., \$3.60; 10 lbs., \$7.00.

Fancy Grass Seeds Unblended

Our analyst is a university graduate with a thorough training in the seed laboratories of the United States Department of Agriculture.

We label all our lots of seed, 10 lbs. or over, with a purity and germination test. Weekly price card sent on request. **Samples free.**

Fancy Kentucky Blue Grass (*Poa pratensis*)

The greatest of all lawn and pasture grasses for this country. It requires time to establish itself and should be grazed on lightly for the first two years. The seed may be sown in very early Spring or in September. Sow 40 to 60 lbs. per acre for pasture and 100 to 135 lbs. to the acre for lawns.

EXTRA FANCY SUN CURED SEED—Specially re-cleaned and of high germination: 23 lbs. per bushel. 1 lb., 45c; 2 lbs., 85c; 3 lbs., \$1.20; 5 lbs., \$1.80; 10 lbs., \$3.45; 50 lbs., \$16.00; 100 lbs., \$30.50, prepaid to 300 miles.

Fancy Seed, actual weight, 21 lbs. per bu. (The standard grade of re-cleaned blue grass.) 1 lb., 40c; 2 lbs., 75; 3 lbs., \$1.05; 5 lbs., \$1.50; 10 lbs., \$2.85; 50 lbs., \$13.25; 100 lbs., \$24.50, prepaid to 300 miles.

Red Top Grass (*Agrostis alba*)

This grass is well adapted to moist and acid soils but will grow and succeed on any and all kinds of soils. It is one of the most valuable grasses for pastures and meadows but not quite as nutritious as Timothy for hay. Sow in Fall or Spring with or without a nurse crop. To sow an acre of pasture use 8 to 10 lbs. of fancy or 20 lbs. of virgin Red Top. It is invaluable in a lawn grass mixture as it comes quickly and protects the slower-growing grasses until they can establish themselves.

Extra Fancy re-cleaned solid seed (32 lbs. per bu.): 1 lb., 40c; 2 lbs., 75c; 3 lbs., \$1.05; 5 lbs., \$1.45; 10 lbs., \$2.75; 50 lbs., \$12.65; 100 lbs., \$23.25, prepaid to 300 miles.

Fertilizers for the Lawn

VAUGHAN'S "ROSE GROWER" BONE MEAL

This is a special brand we have put up for our trade. It is ground fine, hence acts quickly. Free from acid, and a superb article. It is made from bone accumulated in large slaughter houses, and should not be compared with the Bone Meal made from cattle heads and feet gathered upon the Western prairies. Our "Rose Grower" Bone has been slightly steamed to soften it and is thus quicker in its action. Analysis: Ammonia, 4½ per cent; total phosphoric acid, 48 per cent; bone phosphate, 48 to 54 per cent.

Price 5 lbs., 50c; 10 lbs., 95c; 25 lbs., \$1.80; 50 lbs., \$2.75; 100 lbs., \$4.10; 500 lbs., \$16.25; 1000 lbs., \$31.00; 2000 lbs., \$60.00.

Quantity Required.—For permanent pasture and mowing lands ½ to 1 ton per acre; for trees and vines, 2 to 4 quarts each; for top-dressing, 1000 to 1500 lbs. per acre; rose beds and plants, 1 part to about 50 of soil; for starting a new lawn, as a base, 3 to 5 lbs. per 100 square feet.

REGULAR BONE MEAL.—Price, 25 lbs., \$1.60; 50 lbs., \$2.35; 100 lbs., \$3.70; 500 lbs., \$15.00; 1000 lbs., \$26.50; 2000 lbs., \$52.00.

VAUGHAN'S SHEEP MANURE

This is a pure, natural Manure, and its effect is immediate; it is excellent for mixing with the soil for greenhouse plants—one part manure and six parts soil. Strewn over and dug into the vegetable garden or placed directly in drills or hills, it promotes a rapid, steady growth until maturity. It makes the richest, safest and quickest Liquid Manure. For use in liquid form, one pound to five gallons of water will make a liquid which can be used with safety daily if necessary.

Price, 5 lbs., 35c; 10 lbs., 65c; 25 lbs., \$1.35; 50 lbs., \$1.95; 100 lbs., \$3.00; 500 lbs., \$10.90; 1000 lbs., \$18.40; 2000 lbs., \$35.75.

LAWN AND GARDEN FERTILIZER (6-8-6)

Six per cent ammonia (nitrogen); 8 per cent phosphates; 6 per cent potash. This is a mineral fertilizer, odorless and readily soluble. For a new lawn broadcast evenly 30 to 40 pounds per 1,000 square feet; to stimulate an old lawn, apply 20 to 30 pounds per 1,000 square feet, and during the growing season wash it down immediately with the hose to prevent burning. For flowers and vegetables use 4 to 6 pounds per 100 square feet. 5 lbs., 50c; 10 lbs., 90c; 25 lbs., \$1.95; 50 lbs., \$3.00; 100 lbs., \$5.00; 500 lbs., \$21.75.

How to Plant Bulbs

PLANT all fall bulbs except tulips as soon as they can be secured. Plant tulips when the leaves fall.

Drainage is essential. Dig the soil deeply—eighteen inches if possible, pulverize fine and, if heavy, place a cushion of sand under the larger bulbs, especially lilies.

Use no barnyard manure unless it can be spaded into the ground the spring previous to planting. Bone meal is the only safe fertilizer and should be used freely.

If planting with a dibber, take care that the bulb rests on the soil and is not "hung"—that is, left with a hole beneath it caused by the point of the dibber.

Plant bulbs as a rule one and a half times the depth of the bulb, early tulips 4 to 5 inches deep, the larger late tulips 5 to 6 inches deep, narcissus and hyacinths 5 to 6 inches deep, lilies 6 inches deep, crocuses and small bulbs 2 inches deep.



Darwin Tulips



Pink and Rose Shades

Afterglow (26 in.) Deep orange suffused with salmon and salmon edge. Large flower of good substance and unusual coloring. Carried on a tall stately stem. Per doz., \$1.60; 100 \$12.00; 1,000, \$100.00.

Baronne De La Tonnaye (26 in.) Bright rose, margined blush-rose; long, large flower, beautifully shaped. Per doz., 55c; 100, \$3.50; 1,000, \$30.00.

Centenaire (30 in.) Rich violet-rose with large blue center, immense flower of perfect shape; splendid forcer. Per doz., 60c; 100, \$4.00; 1,000, \$35.00.

Clara Butt (20 in.) Bright shrimp pink, paler edges. Perfect bloom of medium height, white base, midseason, lasts well. The best pink Darwin. Per doz., 55c; 100, \$3.50; 1,000, \$30.00.

Le Notre (27 in.) Beautiful rose shaded blush, extra early variety, very fine for indoor growing. Per doz., 70c; 100, \$4.50; 1,000, \$40.00.

Massenet (25 in.) Soft appleblossom flushed white, large flower. Per doz., \$1.25; 100, \$8.00; 1,000, \$75.00.

Massachusetts (25 in.) Deep rose-banded petals with very distinct pale rose edges. Long oval blooms on strong, erect stems. Blossoms early and cut blossoms last well. Per doz., 60c; 100, \$4.00; 1,000, \$35.00.

Mme. Krelage (27 in.) Very similar to Massachusetts, but the central pink band is a shade lighter and blends into the pale border. Earlier than Massachusetts and tones off into lighter shades all over. Per doz., 55c; 100, \$3.50; 1,000, \$30.00.

Nauticus (25 in.) Glowing dark cerise, center, violet and bronze. Per doz., 60c; 100, \$4.00; 1,000, \$35.00.

Petrus Hondius (28 in.) Bright carmine-rose, the most brilliant color in Darwins. Per doz., \$1.00; 100, \$6.50; 1,000, \$60.00.

Princess Elizabeth (Syn. Julie Vinot.) (26 in.) Large flower; soft rich rose toning to silvery-rose at edges. Inside deep rose, white base. Highly recommended. Per doz., 65c; 100, \$4.50; 1,000, \$42.00.

Prof. Rawenhoff (28 in.) Cherry-rose with ivory-white and blue base. Enormous, attractive flower. Per doz., 60c; 100, \$4.00; 1,000, \$35.00.

Psyche Soft salmon-rose, very lovely; borne on long, stiff stems. Per doz., 60c; 100, \$4.00; 1,000, \$35.00.

Sieraad Van Flora (24 in.) Bright rosy pink flower, shaded with lilac; blue base. Very effective. Per doz., 60c; 100, \$4.00; 1,000, \$35.00.

Suzon (22 in.) Pale blush pink outside, rosy pink inside. Blue and white base. A distinct and desirable tulip as a companion to some of the dark shades. Per doz., 70c; 100, \$4.50; 1,000, \$40.00.

White and Blush

Gretchen (23 in.) Pale flesh-pink, changing to light peach-pink. Large egg-shaped bloom. Per doz., 55c; 100, \$3.50; 1,000, \$30.00.

Painted Lady (27 in.) Creamy white, faint tinge of heliotrope. Per doz., 60c; 100, \$4.00; 1,000, \$35.00.

White Queen (24 in.) White, passing to pink. Per doz. 70c; 100, \$4.50; 1,000, \$40.00.

DARWIN TULIPS are beautifully outlined, cup-shaped and carried on tall, stiff stems. They vary in color from almost jet black, crimson and scarlet, purple to lilac, mauve, pink and indescribable intermediate blending and pastel shades. Yellow is the one color missing, but this can be supplied from the Cottage varieties listed on following pages and from the richly blended Breeders, varieties may be chosen which will increase the effectiveness of a planting of the pastel tints so prevalent among the Darwins.

Planting. Plant four or five inches deep and six inches apart in raised beds or borders so that the bulbs are slightly above the level of adjacent lawn or walks. In preparing the ground, use Vaughan's Rosegrower Bone Meal (three handfuls to a square yard), thoroughly mixed through the soil.

Parcel Post. If you wish bulbs sent by parcel post, add to our prices, postage at zone rates from Chicago or New York (see last page) counting twelve bulbs as one pound, fifty as four pounds.

Shades of Red

Ariadne (28 in.) Brilliant rosy crimson, shaded scarlet with blue base, large flower of great substance. One of the finest. Good forcer. Per doz., \$1.00; 100, \$6.50; 1,000, \$60.00.

Bartigon (22 in.) Large flowers of fiery crimson with bright scarlet margin. One of the best of its color. Per doz., 55c; 100, \$3.50; 1,000, \$30.00.

Europe (22 in.) Glowing salmon-scarlet, shaded rose; well formed globular flower, erect grower and lasts well. Per doz., 60c; 100, \$4.00; 1,000, \$35.00.

Farncombe Sanders (25 in.) Fiery rose, scarlet, inside vivid cerise-scarlet with white center marked blue; flowers perfect shape. Per doz., 55c; 100, \$3.50; 1,000, \$30.00.

Feu Brilliant (25 in.) Glowing vermilion, blue and white base. Per doz., 75c; 100, \$5.00; 1,000, \$45.00.

Glow (23 in.) Brilliant glowing vermilion, white and blue base. Per doz., 65c; 100, \$4.50; 1,000, \$40.00.

Harry Veitch (24 in.) Brilliant blood-red with slightly lighter margin; blue base. Immense blooms on stout stems. An extremely brilliant color that lasts well. Per doz. 70c; 100, \$4.50; 1,000, \$40.00.

Isis Fiery crimson-scarlet with blue base. Per doz., 75c; 100, \$5.00; 1,000, \$47.00.

King Harold (24 in.) Deep purple-red with white base, a beautiful variety for the garden, standing the weather well, good forcer. Per doz., 50c; 100, \$4.00; 1,000, \$35.00.

Pride of Haarlem (28 in.) Bright rose suffused with purple; an enormous flower unsurpassed for groups because of its fine color and stately habit. Per doz., 55c; 100, \$3.50; 1,000, \$30.00.

William Pitt (22 in.) Very dark scarlet with purple shade on the outer petals; large flower. Per doz., 70c; 100, \$4.50; 1,000, \$40.00.

Violet, Black and Shades of Purple

Dream (25 in.) Pale violet changing to lavender, with lighter edge, clear blue base. Early and keeps its color. Per doz., 70c; 100, \$4.50; 1,000, \$40.00.

Faust (30 in.) Dark satiny purple with blue base, very large and well formed, good forcer. Per doz., \$1.20; 100, \$7.50; 1,000, \$69.00.

Frans Hals (28 in.) Large blue-violet flowers, extra, very good forcer. Per doz., \$1.25; 100, \$8.00; 1,000, \$75.00.

La Tulipe Noire (25 in.) Nearest of all to the black color. Per doz., \$1.00; 100, \$6.50; 1,000, \$60.00.

La Tristesse (Dolores) (25 in.) Slaty-mauve with silvery margin and a violet and bronze reverse. A splendid contrast with the yellow Cottage Tulips. Per doz., 70c; 100, \$4.50; 1,000, \$40.00.

Mrs. Potter Palmer (26 in.) Deep reddish-purple, with dark blue base. A striking and distinct tulip. Per doz., 60c; 100, \$4.00; 1,000, \$35.00.

Philippe de Commines (25 in.) Velvety dark violet. Per doz., 70c; 100, \$4.50; 1,000, \$40.00.

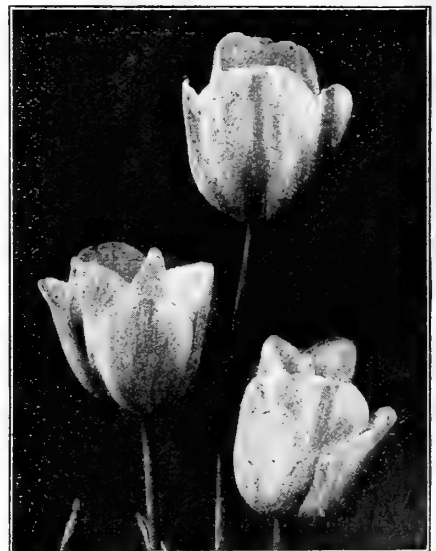
Rev. H. Ewbank (20 in.) Deep lilac, toning at the edges to pale lavender. Lighter in color and not so tall as Dream, white base. Distinct flat open flower. Lasts well. Most popular of this shade. Per doz., 60c; 100, \$4.00; 1,000, \$35.00.

The Sultan (24 in.) Deep maroon-black, brownish margin. Per doz., 55c; 100, \$3.50; 1,000, \$30.00.

William Copeland (Syn. Sweet Lavender.) The best Darwin Tulip for forcing. It may be grown in the house as easily as the early Tulips. Also fine for the border. When grown outside, color is rosy lilac. When forced, color is beautiful lavender. Per doz., 70c; 100, \$4.50; 1,000, \$40.00.

Zulu (27 in.) Rich, velvety, purple-black; large cup-shaped flower. Per doz., 70c; 100, \$4.50; 1,000, \$40.00.

LOUISVILLE, KY.
Vaughan's Seed Store, Chicago.
Gentlemen: The Parrot Tulips that I bought from you last year were just beautiful.
MRS. L. G. WOERTZ.



THE DARWIN TYPE

Mixture of Darwin Tulips

Special Mixture, made up by ourselves from best distinct kinds. Per doz., 60c; 100, \$4.00; 1000, \$35.00.

Regular Mixture, splendid value for mixed beds and cutting. Per doz., 50c; 100, \$3.00; 1000, \$25.00.



Cottage Tulips



AS WITH the Darwin and Breeder types, the classification of Cottage tulips is by race and history, rather than any striking difference in appearance. This type is inclined to have pointed petals, sometimes turned back, and the blossom to be smaller and more slender. But they harmonize perfectly with the Darwins and Breeders and supply a quality of clear, bright color which these lack; while they have pure yellows not found in the others.

Every known shade is to be found among these, from deepest crimson, to bright red, orange, glorious yellows, pink and a host of delicate tints of yellow, pink cream and heliotrope. They blossom a few days later than the Darwins, often carrying the flowering period of Spring bulbs into the early days of June, especially if planted in a shady position. Many sweet-scented varieties are included, such as Ges. Lutea, G. Lutea Pallida and Mrs. Moon.

***For Pots.** When grown in pots, these, like the Darwin tulips, can be had in flower indoors during March and April, in a temperature not exceeding 55 degrees. Those best suited for growing in this way are marked*.

Parcel Post. Count twelve bulbs to one pound, fifty to four pounds; one hundred as seven pounds. Larger numbers are sent by express.



Cottage Tulips Blossom Last and Carry the Season Often Into June.

Pink and Rose Shades

Carnation The old English Picotee. Snow-white, changing to carmine-rose, exquisitely beautiful. Per doz., 65c; 100, \$4.50; 1,000, \$40.00.

***Inglescombe Pink** (24 in.) Beautiful clear pink with amber tinge inside, later becoming pure pink. Per doz., 60c; 100, \$4.00; 1,000, \$35.00.

Maiden's Blush (Picotee) (20 in.) A long-shaped flower, pure white recurved petals, margined rose. Per doz., 60c; 100, \$4.00; 1,000, \$35.00.


Bronze, Fawn, Lilac and White

***Fairy Queen** (20 in.) Oblong blooms of rosy heliotrope blending into a golden yellow at the edges of petals. Very distinct. One of the most beautiful of all. Per doz., 60c; 100, \$4.00; 1,000, \$35.00.

***Parisian White** (14 in.) Pure white, edged silvery pink, beautiful globe-shaped flowers. Per doz., 70c; 100, \$4.50; 1,000, \$40.00.

The Fawn (20 in.) Egg-shaped bloom of yellowish fawn color, blended with pale rosy lavender and blush-pink margin. One of the prettiest of all late tulips. Per doz., 60c; 100, \$4.00; 1,000, \$35.00.


Union Jack Light violet feathered purple with white markings. Very odd. Per doz., \$1.10; 100, \$7.00; 1,000, \$65.00.



Vaughan's Special Mixture
Cottage Tulips

AN excellent collection of named varieties, giving a dazzling display in mass. Splendid for cutting. Per doz., 60c; 100, \$4.00; 1,000, \$35.00.

Regular mixed. Per doz., 50c; 100 \$3.00; 1,000, \$25.00.



Yellow and Striped Shades

***Bouton d' Or** (16 in.) Round shapely blooms of the purest gold. Good for massing in beds or borders and very fine for vases when cut. Per doz., 60c; 100, \$4.00; 1,000, \$35.00.

***Columbus** (Gala Beauty.) (18 in.) Medium pointed blooms of rich golden yellow, feathered and splashed with intense glowing scarlet. Sweet-scented. A delightful combination of color, distinct from all others. Per doz., \$1.15; 100, \$7.50; 1,000, \$70.00.

Ellen Willmott (20 in.) Long-pointed bloom of pale primrose-yellow, edged golden yellow. Sweet-scented. Per doz., 70c; 100, \$4.50; 1,000, \$40.00.

***Gesneriana Lutea** (20 in.) A very shapely bloom of the purest yellow; distinctly sweet-scented. One of the best yellow tulips in existence for color and perfume. Per doz., 60c; 100, \$4.00; 1,000, \$35.00.

Inglescombe Yellow (18 in.) A fine large, globe-shaped flower, color full rich yellow; sometimes called the Yellow Darwin. Per doz., 60c; 100, \$4.00; 1,000, \$35.00.

***Ixioides** (18 in.) Pure lemon-yellow, very distinct, pointed bloom similar to Ges. Lutea Pallida, but has a jet black base. When fully open, resembles a giant Ixia, from which it derives its name. Late and lasts. Per doz., 90c; 100, \$6.00; 1,000, \$55.00.

Mrs. Moon (30 in.) This is beyond doubt the finest late yellow tulip in existence. The blooms are long and pointed, the outer petals reflexed. Distinctly perfumed. Highly recommended for large beds and borders. Per doz. \$1.30; 100, \$8.50; 1,000, \$79.00.

Moonlight (20 in.) Oblong blossoms of delicate pale yellow. Very distinct. Plant in semi-shade. Per doz., 80c; 100, \$5.50; 1,000, \$50.00.

Scarlet and Red Shades

Grenadier (24 in.) Brilliant orange-red. A new Tulip of great beauty. Flowers long, borne on very graceful stems. Per doz., \$1.10; 100, \$7.10; 1,000, \$68.00.

Gesneriana Major (Spathulata Maj.) (24 in.) Rich crimson-scarlet, with blue basal blotch. One of the best of its color for large plantings especially in combination with yellow or white. Per doz., 60c; 100, \$4.00; 1,000, \$35.00.

Gesneriana "Orange Globe" (22 in.) Rich crimson-scarlet, shading to orange. A grand contrast with Gesneriana Lutea Pallida. Per doz., 80c; 100, \$5.10; 1,000, \$48.00.

Glare of the Garden (18 in.) Large egg-shaped blooms of rich velvety crimson, with black and gold base. Pronounced the finest of all late crimson tulips. Per doz., \$1.00; 100, \$6.50; 1,000, \$60.00.

Inglescombe Scarlet (16 in.) Brilliant vermilion with a black base. One of the best reds. Per doz., 60c; 100, \$4.00; 1,000, \$35.00.

John Ruskin Large egg-shaped bloom of graceful form and habit. Flowers salmon-rose with pale yellow margin; inside heliotrope with golden border and base. One of the choicest in this list. Per doz., \$1.00; 100, \$6.00; 1,000, \$52.00.

***La Merveille** (20 in.) Extra large fragrant flower, suffused with apricot-orange. Per doz., 60c; 100, \$4.00; 1,000, \$35.00.

***Scarlet Emperor** (24 in.) Brilliant glowing scarlet. Flowers of gigantic size, cup-shaped, with clear yellow base. (Awarded 1st-class certificate R. H. S. England.) Per doz., \$1.20; 100, \$7.50; 1,000, \$69.00.

Peoria, Ill.

Vaughan's Seed Store:
The Hybrid Amaryllis bulbs I purchased last Spring produced the most gorgeous as well as largest blooms I ever saw. Sure were proud of them.
C. E. LAUMEYER,

Breeder Tulips




- Apricot** (24 in.) Bronze shaded Apricot, olive base, large flower. Per doz., \$1.55; 100, \$11.00; 1,000, \$100.00.
- Attraction** Light bluish violet, inside glowing purple, white base. Per doz., \$1.40; 100, \$10.00; 1,000, \$95.00.
- Bacchus** (28 in.) Dark violet-blue, very large flower, very handsome. Per doz., \$1.80; 100, \$14.00; 1,000, \$135.00.
- Bronze Queen** (28 in.) Soft buff, inside tinged golden bronze, good forcer. Per doz., 80c; 100, \$5.50; 1,000, \$50.00.
- Cardinal Manning** (28 in.) Wine-red, flushed rosy brown. Per doz., \$1.00; 100, \$6.50; 1,000, \$60.00.
- Coridion** (24 in.) Clear yellow, very distinct. Per doz., \$2.50; 100, \$16.00; 1,000, \$150.00.
- Don Pedro** A beautiful shade coffee-brown, shaded maroon, inside rich mahogany. Per doz., \$1.50; 100, \$11.00; 1,000, \$100.00.
- Feu Ardent** (24 in.) Brilliant fiery red, good forcer. Per doz., \$1.60; 100, \$12.00; 1,000, \$110.00.
- Garibaldi** Light brown, suffused with lilac with broad edge of soft yellow inside, light bronze pointed petal. Per doz., \$5.50; 100, \$40.00.
- General Ney** (25 in.) Old gold with olive. Large flower. Per doz., \$1.20; 100, \$7.50; 1,000, \$67.00.
- Godet Parfait** (30 in.) Bright violet, with white base, very large flower. Per doz., \$1.50; 100, \$11.00; 1,000, \$100.00.
- Golden Bronze** (24 in.) Beautiful bronzy yellow, good forcer. Per doz., 90c; 100, \$6.00; 1,000, \$55.00.
- James Watt** (25 in.) Brownish black, edged bronze. Very large and beautiful. Doz., \$3.00; 100, \$22.00; 1,000, \$200.00.
- Jaune d'Oeuf** (26 in.) Outside orange-red, inside orange, good forcer. Per doz., \$1.00; 100, \$6.50; 1,000, \$60.00.
- Le Mogol** (26 in.) Clear lilac, flushed white. Per doz., \$1.15; 100, \$7.50; 1,000, \$70.00.
- Louis XIV** (16 in.) An immense flower, rich purple, with golden bronze margin; inside bronzy purple. A gigantic and very handsome tulip. Per doz., \$1.50; 100, \$12.00; 1,000, \$110.00.

BREEDER tulips are closer to the parent type of this ancient flower than others. The origin of the tulip is hidden in the dim past. But we know that the Dutch fanciers who in 1634 to 1637 speculated in new varieties during the reign of tulipomania grew the "mother bulbs," or Breeder tulips, to produce new striped varieties by "breaking." The Darwin race is supposed to have developed from the Breeders. For a long time the dark, rich colors of the latter were neglected in favor of the brighter and clearer tones of the other types. But recently taste has changed, and the richly hued Breeders have come into favor.


They blossom in May, and though not so tall, perhaps, produce as a rule, even larger blossoms than the Darwins. The colors include many rare among flowers—browns, bronzes purples, blue-blacks, deep mauves, dull gold and dark lilac all exquisitely blended.

Planting. Plant the same as Darwins. Parcel post weights are also the same.



Vaughan's Special Mixture of Breeder Tulips

An excellent collection of this popular class of Tulips, including many rare colors. Per doz., 70c; 100, \$4.50; 1,000, \$40.00.



- Lucifer** (18 in.) Bright terra-cotta-orange Very large. Per doz., \$2.75; 100, \$20.00; 1,000, \$180.00.
- Madame Lethierry** (26 in.) Salmon very handsome. Per doz., \$1.40; 100, \$9.50; 1,000, \$90.00.

- Marie Louise** Rose flushed with yellow. A pleasing combination of colors. Per doz., \$1.15; 100, \$7.50; 1,000, \$70.00.
- Panorama (Fairy)** (26 in.) Reddish, mahogany, good forcer. Per doz., \$1.00; 100, \$6.50; 1,000, \$60.00.
- Plutarchus** (26 in.) Bronze, shaded at base with terra-cotta, a very handsome tulip. Per doz., \$1.10; 100, \$7.00; 1,000, \$65.00.
- Prince of Orange** Orange-scarlet, edged light yellow, flower of striking beauty. Per doz., \$1.75; 100, \$13.00; 1,000, \$120.00.
- Queen Alexandria** (23 in.) A beautiful new late tulip with a very elegant shaped flower, soft sulphur-yellow with black anthers. Per doz., 90c; 100, \$6.00; 1,000, \$55.00.
- St. James** (28 in.) Dark rosy li'ac, edged bronzy tan, with coppery rose flush at tips of petals; inside ruddy mahogany, edged golden brown with yellow and green base. A large flower on tall stem. Doz., \$1.40; 100, \$9.50; 1,000, \$90.00.
- Samson** (25 in.) Violet, bronze bordered, good forcer. Per doz., 90c; 100, \$6.00; 1,000, \$55.00.
- Superba** (27 in.) Shining velvet-black, brown tinted. Per doz., \$1.15; 100, \$7.50; 1,000, \$70.00.
- Turenne** (25 in.) A remarkably fine tulip of rich purple, broadly margined amber. Inside brownish yellow. Per doz., \$1.60; 100, \$12.00; 1,000, \$110.00.
- Velvet King** (21 in.) Crimson-maroon, reflecting a purplish "bloom," deep crimson inside. Creamery white base. Rounded petals. Distinct in color and shape from Zulu. Very fine. Per doz., \$1.40; 100, \$9.50; 1,000, \$90.00.
- Violet Queen** Large ruby-violet of stately habit. Per doz., \$1.00; 100, \$6.50; 1,000, \$60.00.
- Yellow Perfection** (24 in.) Light bronze-yellow. Per doz., \$1.10; 100, \$7.00; 1,000, \$65.00.
- Vulcain** (25 in.) Reddish apricot, with broad margin of bright buff-yellow, inside dark apricot, edged yellow, with dark green base, starred yellow. A flower of splendid form and in color unlike any other tulip. Per doz., \$2.50; 100, \$16.00; 1,000, \$150.00.



Striped and Parrot Tulips



Striped Tulips

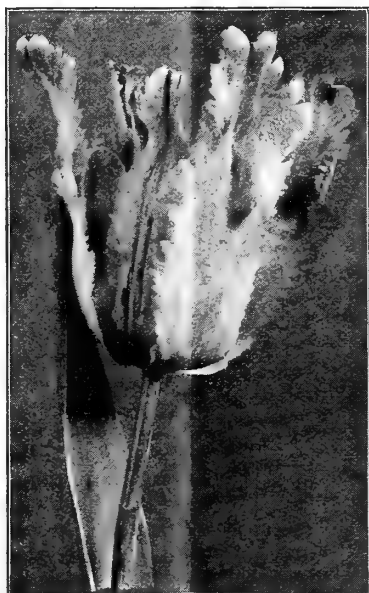
THOUGH too gay for modern taste to serve in large plantations, the old-fashioned striped tulips are beautiful. They prove that the Dutch tulipomania was not without excuse, and no gardener who wishes his collection to be representative will be without some specimens.

For indoor decoration a few of these truly beautiful and unquestionably striking flowers will be found most welcome. Particularly in May, when they blossom, will their contrasted shades be welcome both indoors and out. Culture, same as for Darwin's.

Parcel Post. Count 12 bulbs as one pound, and add postage at zone rates. (See last page.)

Bizarres Mixed. Flowers beautifully blotched, striped and feathered with crimson, pink, scarlet, rose, lilac and purple on yellow ground. Per doz., 75c; 100, \$5.00; 1,000, \$45.00.

Bybloemens Mixed. White ground, blotched, striped or feathered with lilac, purple, violet, blue. Per doz., 90c; 100, \$6.00; 1,000, \$55.00.



The Parrot Type is Beautiful

Parrot Tulips

THEIR fringed and corrugated petals with their wonderful variation make these old-fashioned flowers the most curious of all tulips. Flowering at the same time as other late sorts; they are entirely distinct from any other; the flowers are thick-petaled with extra long stems, and keep extremely well after being cut. The average height is 15 inches.

- Admiral de Constantinople** Red tipped orange. Per doz., 75c; 100, \$5.00; 1,000, \$45.00.
- Lutea Major** Bright yellow; large. Per doz., 75c; 100, \$5.00, 1,000, \$45.00.
- Markgrave** Yellow, striped scarlet and green. Per doz., 75c; 100, \$5.00; 1,000, \$45.00.
- Perfecta** Yellow, striped red. Per doz., 75c; 100, \$5.00; 1,000, \$45.00.
- Couleur Cafe** Brown and yellow. Per doz., 75c; 100, \$5.00; 1,000, \$45.00.
- Cramoisie Brilliant** Deep crimson with large black center. Per doz., 75c; 100, \$5.00; 1,000, \$45.00.
- Gloriosa** Red and yellow. Per doz., 75c; 100, \$5.00; 1,000, \$45.00.
- Mixed Superfine** Per doz., 70c; 100, \$4.50; 1,000, \$40.00.



Rembrandt Tulips



- Apollo** Lilac rose and white striped dark carmine. Doz., \$1.25; 100, \$8.00; 1,000, \$75.00.
- Julienne** Rose, striped and feathered carmine-purple and white. Edges of petals broadly blotched white. Doz., \$1.25; 100, \$8.00; 1,000, \$75.00.
- Red Prince** Rose-flamed fiery red. Doz., \$1.25; 100, \$8.00; 1,000, \$75.00.
- Semele** White, heavily striped and feathered vivid rosy pink. Large, of exquisite coloring. Doz., \$1.25; 100, \$8.00; 1,000, \$75.00.
- Vesta** Lilac, striped and flamed dark carmine. Doz., \$1.25; 100, \$8.00; 1,000, \$75.00.
- Zenobia** Amaranth and white, feathered brilliant brown. Doz., \$1.25; 100, \$8.00; 1,000, \$75.00.

REMBRANDT Tulips are in reality "broken" forms of Darwin Tulips. Broken Tulips, on account of their odd colorings and variegations, were very popular at one time, and while the modern tendency to favor self-colors is recognized generally throughout all countries, these broken forms possess splendid decorative value. The stems average from 18 to 22 inches in height.

Extra Fine Mixed
Doz., 80c; 100, \$5.50; 1,000 \$50.00.

A Splendid Late Double Tulip

Bleu Celeste (Blue Flag) Blooming in May with the Cottage Tulips, this magnificent variety makes a wonderful showing in the herbaceous border, or in the partial shade of low shrubs. The blooms are large and very double (resembling a good double peony), a delightful shade of pale bluish purple and are borne on long stems, making them splendid decorative flowers. Per doz., 90c; 100, \$6.00; 1,000, \$55.00.



Double Early Tulips



Double Yellow

- Brimstone Beauty** 12b, yellow and apricot. Per doz., 75c; 100, \$5.00; 1,000, \$45.00.
- Couronne d'Or (Crown of Gold)** 10a, beautiful rich, golden yellow. Per doz., 90c; 100, \$6.00; 1,000, \$55.00.
- Mr. Van der Hoef** A yellow sport of Murillo with all its superb qualities. One of the very finest of the primrose-yellow Double Tulips. A very lovely flower. Per doz., \$1.15; 100, \$7.50; 1,000, \$72.50.

Double Red

- Imperator Rubrorum** 9a, bright scarlet. Per doz., \$1.10; 100, \$7.00; 1,000, \$65.00.
- Rubra Maxima** 8b, dazzling scarlet. Per doz., 80c; 100, \$5.25; 1,000, \$52.50.
- Toreador** Reddish-orange and yellow. Per doz., \$1.30; 100, \$8.50; 1,000, \$80.00.
- Vuurbaak** 9b, bright scarlet, suffused orange. Per doz., 90c; 100, \$6.00; 1,000, \$57.50.

THERE is a distinct revival of the popularity of double tulips. Coming a little later than the singles, they last much longer, and where the single and double are planted together the season of flowering is prolonged from two to three weeks. The double tulips require a soil more fertile than the singles for perfection of blossoms; and where well grown their mammoth peony-like flowers of delicate or brilliant coloring are most effective either in groups in the border, or in formal beds. The double tulips do very well when grown in pots for winter blooming, but they must be forced more slowly than the single tulips.

Explanatory. The number following the name of the variety denotes the height in inches, while the (a) and (b) indicate their earliness of bloom—the (a's) flower together and are earliest; the (b's) flower together, but are somewhat late.

Parcel Post. 12 bulbs weigh 1 lb.; 50, 4 lbs.; 100, 7 lbs. Add postage at zone rates on last page.

Double Pink

- Electra** Magnificent, enormous flower; beautiful rose, feathered violet; a handsome novelty, unexcelled for exhibition purposes. Per doz., \$1.35; 100, \$9.00; 1,000, \$85.00.
- Lord Roseberry** 10b, light pink. Per doz., 80c; 100, \$5.50; 1,000, \$50.00.
- Lucretia** 14b, deep rose. Per doz., 75c; 100, \$5.00; 1,000, \$45.00.
- Murillo** 7a (fancy), large pink, suffused white. Per doz., 65c; 100, \$4.50; 1,000, \$40.00.
- Peach Blossom** 8a, deep rosy pink, deepening with age to a deep rose. A very fine flower with a wonderful color. A new variety of superb quality. Per doz., \$1.15; 100, \$7.50; 1,000, \$70.00.
- Salvator Rosa** 8a, beautiful rose, fine forcer. Per doz., 80c; 100, \$5.50; 1,000, \$52.50.

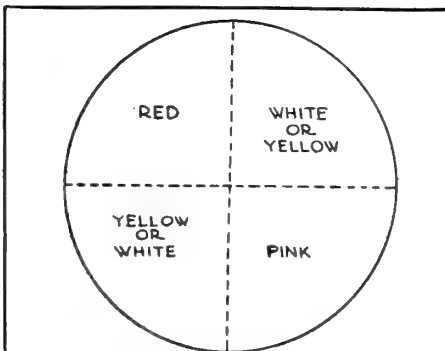
Double Striped or Otherwise Colored

- Mystery of India** Terra Cotta with bronze and rose combination; large flowers on strong stem, for bedding only. Per doz., \$1.25; 100, \$8.00; 1,000, \$75.00.
- Titian** 82, scarlet, edged yellow. Per doz., \$1.10; 100, \$7.00; 1,000, \$65.00.
- Tournesol** 8a, Red and yellow; very showy. Per doz., \$1.00; 100, \$6.50; 1,000, \$60.00.

Double White

- Boule de Nieve** 10b, pure white. Per doz., 90c; 100, \$6.00; 1,000, \$55.00.
- Schoonoord (White Murillo)** 12b, pure white. Extra fine. Per doz., 80c; 100, \$5.50; 1,000, \$52.50.

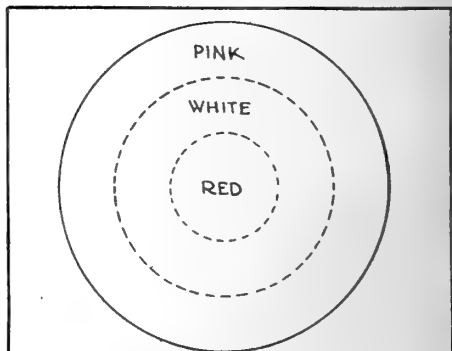
Tuscola, Ill., May 16, 1927.
Gentlemen:—Your Tulip Bulbs received last fall are just beautiful—began blooming in April—some still in bloom. Last order, Lavenders, Pinks, Red, Darwin, beautiful. I thank you for your selection. Respectfully,
MRS. F. E. COY KENDALL.



SPECIAL OFFER SINGLE TULIP BEDS—Early Flowering

We can furnish at a special price, bulbs for circular beds in four colors, varieties to be our selection. Shallow-rooted plants can be grown in these beds without removing the tulips, except once in three years. For planting in parkways these beds are ideal. Plant the bulbs either 4 or 6 inches apart.

- For 3-ft. bed planted 4 in. apart, 96 tulips, 24 each, red, white, yellow and pink \$4.50, postpaid.
- For 3-ft. bed planted 6 in. apart, 36 tulips, 9 each, red, white, yellow and pink, \$1.50, postpaid.
- For 4-ft. bed planted 4 in. apart, 128 tulips, 32 each, red, white, yellow and pink, \$5.50, postpaid.
- For 4-ft. bed, planted 6 in. apart, 60 tulips, 15 each, red, white, yellow and pink, \$2.50, postpaid.



SPECIAL OFFER DOUBLE TULIP BEDS—Early Flowering

We can furnish at a special price bulbs for circular beds in three colors, varieties to be our selection. Shallow-rooted plants can be grown in these beds without removing the tulips, except once in three years. For planting in parkways these beds are ideal. Plant the bulbs either 4 or 6 inches apart.

- For 3-ft. bed, planted 4 in. apart, 96 tulips, 32 each, pink, white and red, \$5.50, postpaid.
- For 3-ft. bed, planted 6 in. apart, 36 tulips, 12 each, pink, white and red, \$2.00, postpaid.
- For 4-ft. bed, planted 4 in. apart, 128 tulips, 42 each, pink, white and red, \$7.00, postpaid.
- For 4-ft. bed, planted 6 in. apart, 60 tulips, 20 each, pink, white and red, \$3.50, postpaid.



Vaughan's Special

Mixture Made from the best named varieties that will bloom about the same time, and of about the same height. Do not compare this mixture with regular mixtures which are made up by the Holland growers. Per doz., 80c; 100, \$5.50; 1,000, \$50.00.



Extra Fine Double Mixed Per doz., 60c; 100, \$4.00; 1,000, \$35.00.

Single Early Tulips



FRED MOORE

EARLY TULIPS have suffered undeserved neglect by gardeners who think of them chiefly as material for beds of the carpet type. The fact that these tulips, with their brilliant colors, their short stems and uniform height, formed ideal subjects for the geometrical patterns worked out in flowers which were the fashion a few years back, should not blind us to their usefulness in the modern garden.

Two or three weeks of brilliant color in April, following the daffodils and preceding the Darwin tulips, are worth much to any garden. The early tulips alone can supply it; and among them can be found varieties to play almost any part your garden scheme demands. It is a mistake to think of the early tulips as all short-stemmed, and too bright in color. It is true their brilliancy cannot be excelled by any other class of their own family or any other flower family that we know. But there are also varieties of delicate tints and shades, as beautiful and with flowers as large as anything the May-flowering classes can produce. In height, 12 inches is not uncommon, and a graceful carriage fits these taller kinds to serve in any role a Darwin would grace.

One of the Best of All

IF LOUIS XIV has a rival, for supremacy in the tulip kingdom, it is the single early tulip Gen. DeWet. This grand variety is a late early; it is 10 inches tall, larger than most Darwins, and blossoms as a brilliant orange, shot with rose. It is one of the most fragrant of tulips, and its blossoms have remarkable endurance. A group of DeWets in the April garden will draw every eye, and provide a glowing spot of color from the time the last narcissi have flowered until the earliest Darwins begin. As the flowers grow older the rose coloring spreads and sometimes dominates the blossom.

The illustration of DeWet on the second cover of this catalogue does not do justice to its relative size; it is the largest of the early tulips.

Fred Moore, 10 inches tall, a deep orange edged with yellow, is a splendid variety. Pink Beauty, 12 inches tall, bright rose pink shading to white, is one of the most delicate and charming of pink tulips. Diana and White Swan are whites, tall and beautiful. And others in the list can be chosen to complete a planting which will make life in the garden brighter and happier during two or three April weeks. Do not avoid the brilliant colors at this season. Warmth is much needed in the April landscape. Balance them properly with whites and blues, and even the reds and yellows will delight you next spring.

Explanatory. The number following the name of the variety denotes the height in inches, while the (a) and (b) indicate their earliness of bloom—the (a's) flower together and are earliest; the (b's) flower together, but are somewhat late. The Duc Van Thol Tulips should be used for pots only.

Parcel Post. 12 bulbs weigh 1 lb.; 50, 4 lbs.; 100, 7 lbs. Add postage at zone rates.

Single Scarlet and Crimson

- Artus** 7b, a splendid deep scarlet. Per doz., 60c; 100, \$4.00; 1,000, \$35.00.
- Belle Alliance** 3b, brilliant scarlet. Per dozen, 80c; 100, \$5.50; 1,000, \$50.00.
- Brilliant Star** 8a, bright glowing scarlet; very early. Per doz., \$1.10; 100, \$7.00; 1,000, \$65.00.
- Couleur Cardinal** 8a, crimson. Per doz., 90c; 100, \$6.00; 1,000, \$55.00.
- Cramoisi Brilliant** 7b, bright scarlet. Per doz., 60c; 100, \$4.00; 1,000, \$35.00.
- Vermilion Brilliant** 7b, dazzling vermilion-scarlet, fine for pots. Per doz., 90c; 100, \$6.00; 1,000, \$56.00.

Single Yellow

- Chrysolora** 8b, golden yellow; fine bedder. Per doz., 80c; 100, \$5.50; 1,000, \$52.50.
- Fred Moore** 10b, deep orange, edged yellow. Per doz., 75c; 100, \$5.00; 1,000, \$45.00.
- King of Yellows** 9a, deep golden yellow. Per doz., 60c; 100, \$4.00; 1,000, \$35.00.
- Mon Tresor** 7a, pure yellow; large cup. Per doz., \$1.00; 100, \$6.50; 1,000, \$60.00.
- Rising Sun** Per doz., \$1.15; 100, \$7.50; 1,000, \$70.00.
- Yellow Prince** 8a, golden yellow, fine forcer. Per doz., 75c; 100, \$5.00; 1,000, \$45.00.

Single White

- Diana** 14b, pure glistening white, with a yellow base; long flower of handsome shape. A fine new Tulip which grows more beautiful as it ages. Per doz., 60c; 100, \$4.00; 1,000, \$35.00.
- La Reine** 8b, white, shaded rose. Per doz., 60c; 100, \$4.00; 1,000, \$35.00.
- La Reine Maxima.** A lightly flushed white Tulip of large size. Makes charming beds with lavender Violas. Splendid for forcing. Height 13 inches. Per doz., 75c; 100, \$5.00; 1,000, \$45.00.
- Lady Boreel** 8b, pure white, splendid. Per doz., 90c; 100, \$6.00; 1,000, \$55.00.
- White Swan** 15b, pure white. Per doz., 75c; 100, \$5.00; 1,000, \$45.00.
- White Hawk** 7a, white; very fine. Per doz., 80c; 100, \$5.25; 1,000, \$47.50.

Striped Margined or Otherwise

- Duc de Berlin** 6a, clear scarlet, edged yellow. Per doz., 80c; 100, \$5.50; 1,000, \$50.00.
- De Wet** 10a, beautiful deep orange, shaded golden yellow at the base of the petals. A very fragrant flower and one of the finest new sorts in cultivation. There is no other orange variety which equals it in brilliancy. It is therefore one of the showiest bedders, and as it forces splendidly we can recommend it for all purposes. Per doz., \$1.75; 100, \$13.00; 1,000, \$125.00.
- Grand Duke (Keizerskroon)** 10b, red distinct wide golden border, one of the finest. Per doz., \$1.15; 100, \$7.50; 1,000, \$70.00.
- Prince of Austria** 8a, orange-vermilion. Per doz., 80c; 100, \$5.25; 1,000, \$47.50.
- Wouverman** 7b, dark violet. Per doz., \$1.00; 100, \$6.50; 1,000, \$60.00.

Single Pink and Rose

- Flamingo** 8a, carmine-rose and white. Per doz., 80c; 100, \$5.25; 1,000, \$47.50.
- Ibis** 14b, quite the finest novelty offered by us this year. A brilliant dark pink color when grown indoors. A grand exhibition variety. Per doz., \$1.25; 100, \$8.00; 1,000, \$75.00.
- Pink Beauty** 12b, bright rose-pink shading to blush-white. Per doz., \$1.60; 100, \$11.00; 1,000, \$100.00.
- Proserpine** 9a, glossy pink, early. Per doz., \$1.15; 100, \$7.50; 1,000, \$70.00.
- Prosperity** Fine pink. Per doz., 80c; 100, \$5.25; 1,000, \$47.50.
- Rose Gris de Lin** 7b, delicate rose, flushed white. Per doz., 60c; 100, \$4.00; 1,000, \$35.00.
- Rose Luisante** 7b, brilliant deep pink. Per doz., 90c; 100, \$6.00; 1,000, \$55.00.
- Rose Precose** Light pink, grand flower. Very early and good for forcing indoors. Per doz., \$1.40; 100, \$9.50; 1,000, \$90.00.



Single Early Mixed

Per doz., 50c; 100, \$3.00; 1,000, \$27.00

Vaughan's Special Single Mixed

Per doz., 75c; 100, \$5.00; 1,000, \$45.00



PINK BEAUTY



Daffodils and Narcissi



DAFFODILS and other Narcissi were barred from import to the United States Jan. 1, 1926, by quarantine order of the Federal Horticultural Board. We are therefore limited to the sale of American grown bulbs, and have been compelled to reduce our list of varieties materially.

We can assure our customers that the bulbs which we can supply are of excellent quality. Prices are higher than those formerly asked for imported bulbs, but the increase is not as great as had been feared. In the case of hardy narcissi, there is no question about the high quality of bulbs which have been grown, as have those we offer, from the best grade of imported stock. Experience will tell whether this quality can be maintained, and a sufficient increase reaped to keep prices within reach. We believe it can, and are growing our own bulbs of hardy varieties, though offering this year none of our own production except the mixture for naturalizing, which we strongly recommend.

Large Trumpet All Yellow

Emperor A magnificent sort. The entire flower is a rich yellow; trumpet of immense size and petals so broad that they overlap. Three of these bulbs planted in a 6-inch pot will make a splendid show. Large bulbs, each, 20c; per doz., \$2.00; 100, \$15.00.

Golden Spur A tall, vigorous, golden yellow flower, with healthy green foliage. Fine for beds or pots. Very early. Large bulbs. Each, 20c; doz., \$2.00; 100, \$15.00.

King Alfred "The King of Yellow Daffodils." Tall, vigorous, golden yellow flower, of elegant form. The expanded trumpet measures 2½ inches in diameter, the perianth proportionately large and segments gracefully twisted. Height, 24 inches. Mammoth bulbs. Each, 40c; doz., \$4.00; 100, \$30.00.

Minister Talma Flowers are bright yellow with a large open trumpet, deeply filled at brim and are thrown well above the erect foliage. Early forcer. Each, 25c; doz., \$2.50; 100, \$18.00.

Olympia A giant flower rivaling Van Waveren's giant in size; sulphur-yellow perianth, handsome yellow frilled trumpet. Each, 50c; doz., \$5.50; 100, \$40.00.

Van Waveren's Giant The largest of all trumpets, perianth primrose, trumpet bright orange-yellow. Each, 50c; per doz., \$5.50; 100, \$40.00.

Large Trumpet Bicolor

Duke of Bedford (New) A bicolor of massive proportions; perianth pure white, 4½ inches across, with large expanding clear yellow trumpet. Each, 50c; doz., \$5.50; 100, \$40.00.

Glory of Noordwijk A grand bicolor, large yellow trumpet, petals sulphur-yellow. Each, 35c; doz., \$3.50; 100, \$25.00.

Empress This makes a fitting companion to the Emperor. We think it one of the finest of bicolors. The trumpet is of a rich yellow, with perianth of snow-white petals; flowers bold and erect. Large bulbs. Each, 20c; doz., \$2.00; 100, \$15.00.

Miss Ellen Terry Fine white perianth, yellow trumpet, early forcer. Each, 20c; doz., \$2.00; 100, \$15.00.

Princeps Maximus A popular variety, being used extensively for naturalizing in woodlands or along streams; one of the best forcing sorts, being very early; perianth sulphur-yellow, trumpet rich yellow. Large bulbs. Each, 10c; doz., \$1.00; 100, \$6.00.

Victoria Flowers large and erect, with creamy white perianth of remarkable breadth and good quality; the trumpet is a clear rich yellow and frilled at mouth. Large bulbs. Each, 25c; doz., \$2.50; 100, \$18.00.

Weardale Perfection Perianth white, trumpet soft sulphur-white, exceedingly handsome. Each, 40c; doz., \$4.00; 100, \$30.00.

Incomparabilis

This class includes many of the most beautiful and useful Daffodils for bedding, naturalizing and border planting. Strong growers, hardy and free bloomers. Forcing for winter flowers, they are splendid.

Gloria Mundi A lovely flower, with fine bold, clear, rich yellow perianth; large cup, much expanded, and very heavily stained orange-scarlet; handsome and striking. Each, 25c; doz., \$2.50; 100, \$18.00.

Mixtures For Naturalizing

Our Special mixed contains all the high price Trumpet Leedsii, Star and Poeticus types which we imported before Quarantine 37 went into effect and should not be compared with cheap mixed offered by many.

Vaughan's Special Mixed. Doz., \$1.00; 100, \$6.50; 1000, \$60. Regular Mixed. Doz., 80c; 100, \$5.50; 1000, \$50.00.

Homespun (Primrose Sir Watkin)

One of the finest of all yellow Incomparabilis. Color clear uniform yellow, perfect form, substance and quality. Has received more awards than almost any other Daffodil. Each, 50c; doz., \$5.00; 100, \$35.00.

Sir Watkin A well-known daffodil, excellent for large plantings, or growing in pots. Full perianth of pure yellow with large rich golden trumpet. Large size. Each, 20c; doz., \$2.00; 100, \$15.00.

Leedsii

All have white perianths with white or sulphur trumpets. Most beautiful classes for cutting of all daffodils.

Evangeline Pure white perianth, lemon-yellow cup. Each, 25c; doz., \$2.50; 100, \$18.00.

Lord Kitchener Large, snow-white perianth; big crown of palest primrose, elegantly fluted at the brim. A perfect flower. Each, 75c; doz., \$7.50.

Mrs. Langtry A remarkably free-flowering variety, broad white perianth, and white cup opening pale primrose. Valuable for naturalizing. Each, 15c; doz., \$1.50; 100, \$10.00.

White Lady A giant-flowering variety resembling a White Sir Watkin. Large, broad, pure white perianth and a bold frilled cup of pale citron passing to white. Each, 18c; doz., \$1.75; 100, \$12.00.

Star

To this class belong the most interesting of all Narcissi, including the Barri, Burbridge and Engleheart (Flat Trumpet) sorts. Their pedigree is similar to the Incomparabilis type, but they inherit more of the Poeticus character in having the cups less than one-third of the length of the perianth segments (petals) and more of the red parent blood suffused through the cup.

Conspicuous A flower of exquisite beauty, unexcelled for cutting; large, broad-spreading perianth; broad, short cup, conspicuously edged bright orange-scarlet. Lasts long in water. Each, 15c; doz., \$1.50; 100, \$10.00.

Incognita A beautiful flower with large white perianth, large, flat cup of a glowing orange-apricot color, margined cinnamon-buff. One of the finest of recent introductions. Each, 40c; doz., \$4.00; 100, \$30.00.



Narcissi Naturalized in a Woodland

Red Beacon Perianth is ivory-white, broad and of great substance, slightly shaded sulphur at base, cup prettily fluted and of the most intense fiery orange-red. Each, 60c; doz., \$6.00; 100, \$45.00.

Poetaz

By crossing Poeticus and Polyanthus varieties, growers have succeeded in obtaining this perfectly hardy strain of bunch-flowering Narcissus. They do well planted in pots for winter flowers.

Elvira Pure white with yellow eye, large flower of remarkably good substance; very long stemmed, 3 to 4 flowers on a stem. Each, 20c; doz., \$2.00; 100, \$15.00.

Laurens Koster Perianth white, cup light orange-yellow. Each, 20c; doz., \$2.00; 100, \$15.00.

Poeticus

The pure white perianth and all red or piceoted cup and delicious perfume, peculiar to itself, makes this one of the most popular of all Narcissi.

Horace Snow-white perianth, dark red cup. Each, 30c; doz., \$3.00; 100, \$20.00.

King Edward VII (Almira) Magnificent large flowers with broad, round petals, a glistening white; the yellow cup is edged deep red; very early-flowering variety. Each, 20c; doz., \$2.00; 100, \$15.00.

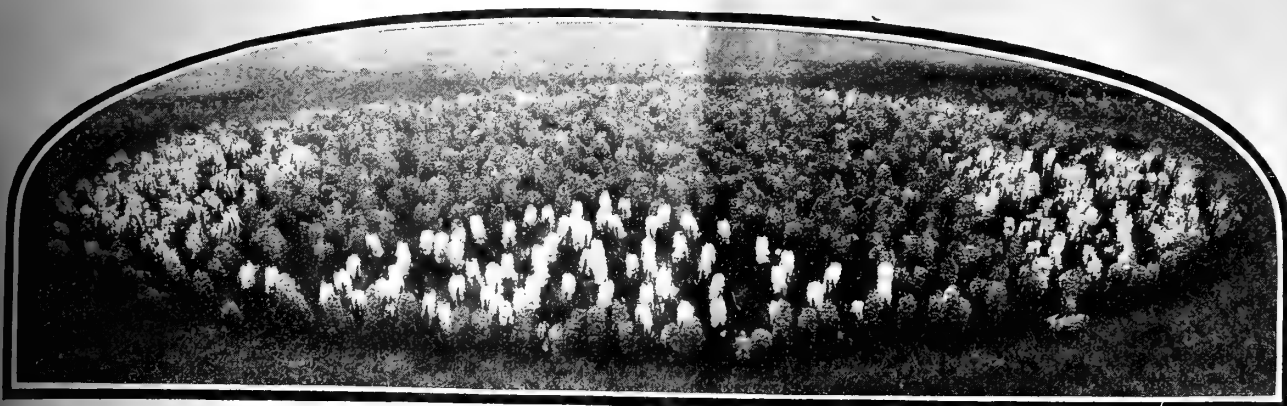
Poeticus (Common Pheasant's Eye) The Narcissus for garden planting; pure white with scarlet-edged cup or eye. Fine for naturalizing, being hardy and increases readily in numbers; late. Each, 12c; doz., \$1.25; 100, \$8.00.

Ornatus A much improved form of the ordinary Poeticus, producing larger flowers and appearing two weeks earlier; for this reason they are especially adapted for forcing and make a splendid cut-flower. Large bulbs. Each, 15c; doz., \$1.50; 100, \$10.00.

Double

Alba Plena Ordorata The well-known double white, scented form of Poeticus; sometimes called the gardenia-flowered Narcissus. Late-flowering, and will not force. Best suited for beds or naturalizing. Each, 18c; doz., \$1.75; 100, \$12.00.

Von Sion The common Double Yellow Daffodil. The bulbs are large in size, the finest roots that we can select. Each bulb will bring three or more flowers. Each, 20c; doz., \$2.00; 100, \$15.00.



Hyacinths



HYACINTHS are returning to popularity for both formal beds and border plantings. Their uniform, exact form and habit of growth fit them exceptionally for formal plantings, where they provide much needed blues, for contrast with pink and yellow tulips. In the border, planted in groups, they are welcome companions with the dwarf iris pumila hybrids. And what could be finer than King of the Blues, and the flaming orange early tulip De Wet? Hyacinths are fragrant as well as beautiful.

Hyacinth bulbs may be planted from September to December, in any good, well-drained garden soil, which has previously been well

enriched (but never with fresh manure) and dug from 12 to 18 inches. The beds should be raised several inches above the surrounding ground to prevent lodgments of water which causes bulbs to rot. Bulbs should be set 6 inches apart and 6 inches deep. Before the ground freezes, cover the bed with material, such as leaves, straw, pine branches, etc., to a depth of 4 inches. Do not uncover too early in Spring.

PARCEL POST—Add postage for these at rate of 2 lbs. weight per dozen bulbs. Price each includes postage.

Single White

- Arentine Arendsen, snow-white.
- General Vetter, bluish-white.
- Hein Roozen, snow-white.
- La Grandesse, pure white, large bells, splendid spike.
- L'Innocence, pure white, compact truss on short stem, fine for pots.
- Prices of above, per doz., \$2.50; 100, \$18.00.

Single Blue

- Bismarck, bright blue.
- Dr. Lieber, dark blue.
- Grand Maitre, dark porcelain, medium early.
- King of the Blues, dark, medium early.
- Queen of the Blues, light fine spike.
- Schotel, light blue, large spike.
- Prices of above, per doz., \$2.50; 100, \$18.00.

"Fancy" Hyacinths

THIS is a grade of Mixed Hyacinths which we annually import, paying the highest prices known for mixed varieties. The bulbs measure from 16 to 17 centimeters in size, are plump and sound, selected from the best named varieties.

Blue, all shades; **Light Blue**; **Red and Rose**; **Rose**; **Pure White**; **White**, all shades; **Yellow**; **Mixed, All Colors**. Mailing weight per dozen, 2 lbs.; price of above, per doz., \$2.25; 100, \$16.00, 1,000, \$150.00. We offer these in singles only.

Good Hyacinths

Blue, all shades; **Light Blue**; **Red and Rose**; **Rose**; **Pure White**; **White and Blush**; **Yellow**; **Mixed, All Colors**. **PARCEL POST**—Add postage for these at rate of 2 lbs. per dozen bulbs. Price of above, per doz., \$1.75; 100, \$13.00; 1,000, \$125.00.

Single Red and Rose

- Garibaldi, brilliant red, early.
- General de Wet, light pink.
- Gertrude, rose-pink, medium early; one of the best pot varieties.
- La Victoria, brilliant dark pink.
- Lady Derby, delicate pink, early forcer.
- Marconi, bright pink.
- Queen of Pinks, choice pink.
- Roi des Belges, bright scarlet, early.
- Price of above, per doz., \$2.50; 100, \$18.00.

Single Yellow

- City of Haarlem, golden-yellow.
- King of the Yellows, extra medium early.
- Yellow Hammer.
- Prices of above, per doz., \$2.50; 100, \$18.00.

First-Sized Hyacinths for Glasses, Pots

Numbers following names indicate time of flowering. No. 1's flowering together earliest, while 4's are latest. For cultural directions see Page 6. Your selection of varieties as listed below. Each, 30c; doz., \$3.00; 100, \$22.00.

Single Red and Rose

- General de Wet, 2, light pink.
- Gertrude, 3, rose-pink, medium early; one of the best pot varieties.
- La Victoria, 3, brilliant dark pink.
- Lady Derby, 1, delicate pink, early forcer.
- Marconi, 2, bright pink.
- Queen of Pinks, 2, choice, pink.
- Roi des Belges, 3, bright scarlet, early.

Single Blue and Purple

- Bismarck, 2, bright blue.
- Dr. Lieber, dark blue.
- Grand Maitre, 2, dark porcelain, medium early.
- King of the Blues, 4, dark, medium only.
- King of the Blues, 4, dark, medium only, pale blue.

Vaughan's Rainbow Collections

Single Named Hyacinths for Window Garden

Queen of Pinks, Pink Grand Maitre, Lt. Blue
 La Victoire, Red L'Innocence, White
 King of the Blues, Dark Blue
 City of Haarlem, Yellow

PREPAID PRICES— Postpaid

- A—6 Bulbs, one of each variety.....\$1.50
- B—12 Bulbs, two of each variety..... 2.75
- C—24 Bulbs, four of each variety..... 5.00
- D—36 Bulbs, six of each variety..... 7.50

Messrs. Vaughan Seed Store. Marion, Ill.
 The bulbs I got from you, Narcissus and Tulips, sure had beautiful flowers; also, the Dahlias and Zinnias from seed.
 Sincerely yours,
 MRS. F. A. MARTIN.

Single Blue and Purple—Continued

- Queen of the Blues, 4, light fine spike.
- Schotel, 2, light blue, large spike.

Single Yellow and Orange

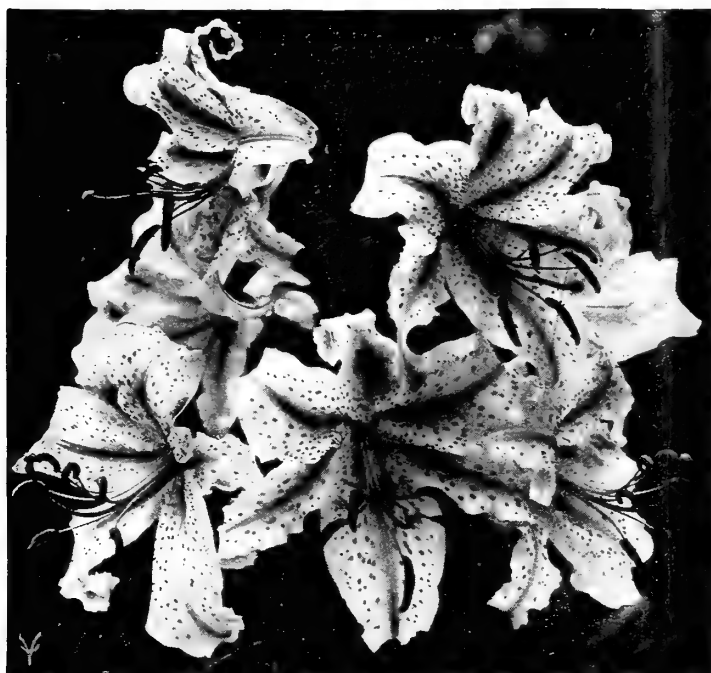
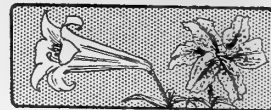
- City of Haarlem, 3, golden yellow.
- King of the Yellows, 4, extra medium early.
- Yellow Hammer, 3.

Single White and Blush

- Arentine Arendsen, snow-white.
- General Vetter, bluish-white.
- Hein Roozen, 2, snow-white.
- La Grandesse, 3, pure white, large bells, splendid spike.
- L'Innocence, 2, pure white, compact truss on short stem; fine for pots.



The Hardy Lilies



LILIUM AURATUM

LILIES are so beautiful, so fragrant, we are likely to think them too fine for the amateur to grow. But many are hardy, thrifty flowers, capable of surviving conditions which would overcome flowers much less beautiful. Grow them in the border in small groups, with background, where their beauty has a suitable setting for its display. They blossom, as a rule, in midsummer, when fine flowers are at a premium. One of the finest effects in the border is produced by lilies in combination with hardy larkspur. The Madonna and Umbellatum lilies are especially suited for this use.

Lilies Arrive from Japan in November

Most Lily Bulbs, being of late maturity, are not ready before October and late November (the best time to plant them). Where the ground is liable to freeze up before the late lilies arrive, it should be mulched with six or eight inches of leaves or straw so the bulbs may be planted on arrival.

Lilium Harrisii, Candidum and Formosum are ready now, all others in November.

Outdoor Culture—When planting lilies out-of-doors, see that they have a well drained position, and where they will be shaded from very hot sun. Such places can usually be found around the shrub borders, and in the hardy plant border. Many varieties are termed "stemrooters," that is, they develop roots on the stem up to two or three inches from the ground. These roots are voracious feeders, and on them depend greatly the number and size of flowers. When they appear, the plant should receive a top-dressing of good rich soil on which they can feed freely. Spade over the ground thoroughly to a depth of 18 inches before planting lilies and enrich it with bone meal. Plant the bulbs 4 to 6 inches deep, depending on their size and the soil, deeper in light soil. Put some sand under and around the bulbs, and after covering protect with six or eight inches of leaves or other litter, which must be removed in late spring.

April planting is permissible if planting the previous fall was prevented.

Indoor Culture—Lilies should be potted immediately upon receipt, if intended for growing in pots or for forcing. In potting use a compost of fibrous loam and sweet decomposed leaf soil, with plenty of coarse sand or a mixture of good peat, loam, and sand, adding to the compost a few pieces of charcoal. See that the pot is well drained. The bulb should be set about half-way down in the pot and barely covered with soil, thus leaving room to top-dress and fill the pot with more soil when stem-roots appear above the bulb. After potting,

give a thorough watering and set outside in a cold frame or shady situation, then cover with ashes or long straw. After they have stood from three weeks to a month and thoroughly rooted, bring inside, in a temperature of about 66°; let the plants grow slowly under a bench or some other suitable place until about 6 inches high; then place on top of the bench in full light. An occasional application of liquid cow manure, starting about six weeks before flowering time, will stimulate the plant wonderfully. **Thorough rooting is essential.**

Lily Bulbs by Parcel Post. For postage Zone Rates see last page.

Size, 8-9 in., 3 bulbs, 1/2 lb.; doz., 4-5 lbs.; 9-11 in., 3 bulbs, 1 1/2-2 lbs., doz., 6-7 lbs.; 11-13 in., 3 bulbs, 2-3 lbs.; doz., 9-10 lbs.

Lilium Auratum Ready December

The Gold-Banded Lily of Japan—The most beautiful variety of all the lily family; should be in every garden. Flowers white, dotted crimson, with a clear golden band running through the center of each petal; very fragrant. A splendid lily for pots, or for planting out in the shrub or plant borders. In either way it is very handsome, its large flowers and delicious perfume make it one of the most valuable of all. It is perfectly hardy with ordinary protection and suitable soil.

First Size (8 to 9 in.), each, 35c; doz., \$3.50; 100, \$25.00.
Mammoth (9 to 11 in.), each, 50c; doz., \$5.00; 100, \$35.00.
Jumbo (11 to 12 in.), each, 75c; doz., \$7.50; 100, \$50.00.

Auratum Platyphyllum Ready December

This is without a question one of the most wonderful lilies in cultivation. The leaves are very long and broad and the stems attain a height varying from 7 to 10 feet. The flowers are similar in color to Auratum, heavily spotted, but much larger, the petals more overlapping, and of greater substance.

First Size (8 to 9 inch), each, 50c; doz., \$5.00.
Mammoth, (9 to 11 inch), each, 75c; doz., \$7.50.

Easter Lilies

We offer three types of the Longiflorum Lily usually grown by the florist. Bulbs planted when received can be readily brought into bloom by Easter if kept in a warm room or conservatory. Flowers are large, trumpet-shape, pure white in color and of a delicious fragrance.

Lilium Harrisii

Now ready. 7 to 9 in., each, 40c; doz., \$4.00; 100, \$25.00; 8 to 10 in., each, 50c; doz., \$5.00; 100, \$35.00; 9 to 11 in., each, 75c; doz., \$7.50; 100, \$55.00.

Lilium Formosum

Ready in September. 6 to 8 in., each, 15c; doz., \$1.50; 100, \$10.00; 7 to 9 in., each, 20c; doz., \$2.00; 100, \$15.00; 9 to 10 in., each, 35c; doz., \$3.50; 100, \$25.00.

Lilium Giganteum

Ready in November. 6 to 8 in., each, 20c; doz., \$1.75; 100, \$12.00; 7 to 9 in., each, 30c; doz., \$2.50; 100, \$18.00; 9 to 10 in., each, 45c; doz., \$4.50; 100, \$30.00.

Lily of the Valley

Cold Storage—For forcing. Very fragrant and producing in abundance. Plant about 25 pips in a 7-in. pot or pan, place in a warm temperature, 65° F. and shade from light until leaves and spikes are well developed, then admit light gradually. Increase temperature to 75° or 80° if possible. An inverted pot over each potful answers admirably. This is the treatment for cold storage pips only. They bloom in from 18 to 21 days.

VAUGHAN'S PERFECTION PIPS.

Cold Storage—Per 100, \$6.50. **Fresh Pips**—Ready in December. Doz., \$1.00; 100, \$4.50.

Large Clumps—For outdoor planting, clumps are best to plant. They do best in a shady, moist place. We especially recommend the clumps for outdoors, as they give a quicker and better effect at less cost. Each, 65c, postpaid.

Lilium Tenuifolium Ready October

The lovely Coral Lily of Siberia. A great beauty. The brightest of all lilies. Grows 20 inches high, with finely cut foliage, slender stems and beautifully shaded coral-red flowers. One ought to grow them by the dozen, they are so fine for cutting and making clumps for the lawn. Blooms very early.

Each, 40c; doz., \$4.00.



MADONNA LILIES

Madonna Lilies (*Lilium Candidum*)

Now Ready

This is one of the oldest, loveliest and best known lilies. Can only be planted in fall. Ours is the thick-petaled type, imported by us from Northern France. The flowers, of which there are three to twenty on each stem, are snow-white, with heavy yellow stamens and of the most delightful fragrance. It is hardy and will thrive in any ordinary soil, preferring plenty of light and air. Blooms in the open ground about June 20th. Orders should, therefore, be mailed on receipt of this Catalogue.

18 to 20 ctms., each, 25c; doz., \$2.50; 100, \$18.00. 20 to 22 ctms., each, 30c; doz., \$3.00; 100, \$22.00. 22 to 24 ctms., each, 40c; doz., \$4.00; 100, \$30.00. 24 to 26 ctms., each, 50c; doz., \$5.50; 100, \$40.00. 26 ctms. and over, each, 75c; doz., \$7.50.

Various Hardy Lilies

"Each" and "Dozen" Prices Include Postage

***Canadense (Meadow Lily)**—Gracefully drooping, bell-shaped, red and yellow flowers typical of our Northern meadows. Each, 20c; doz., \$2.00.

Henryi—A new, rare, and very beautiful lily from China. The flower stalks, 3 to 5 feet high, carry 5 to 8 large flowers each; apricot spotted brown. Each, 60c; doz., \$6.00.

***Elegans Mixed**—A splendid assortment of this type. Each, 25c; doz., \$2.50.

Martagon—The Purple Martagon, strong-growing, producing twenty to thirty light-spotted purple flowers, very graceful, vigorous and floriferous. (June-July, 3 ft.) Each, 30c; doz., \$3.00.

***Pardalinum (Leopard Lily)**—Rich scarlet and yellow, spotted rich brown. Each, 30c; doz., \$3.00.

***Superbum**—The finest of the native lilies. Flowers bright orange, spotted purple. Each, 20c; doz., \$2.00.

Tigrinum Splendens—Very hardy native lily; orange, spotted purple. Each, 20c; doz., \$2.00.

Tigrinum Flore Pleno (Double Tiger Lily)—The well known double Tiger Lily. Rich orange blossoms, 4-foot. Each, 20c; doz., \$2.00.

Umbellatum—Colors range from deepest red through all shades of crimson, rose, yellow, buff and apricot. Each, 25c; doz., \$2.50.

*These are ready in October; balance in November.

We supply 6 Bulbs of a kind at dozen rate, 25 at 100 rate, and 250 at 1000 rate.

ONTONAGON, MICH.

Vaughan's Seed Store, Chicago.

Gentlemen: Your cover assortment and also the 50 bulbs of seven varieties for two dollars (\$2.00) which I ordered from you last fall were a perfect picture this spring and attracted much attention and comment.

Yours truly,

JOHN GRANVILLE HEARD.

Lilium Myriophyllum (Regale)

Ready in October

A new and very rare lily from China. The flowers are white, shading to yellow in the center, with a pink tinge on the outer edges. A strong grower, some 3 or 4 feet high. It is deliciously scented, and its extreme hardiness makes it a valuable lily for outdoor planting.

First Size, each, 40c; doz., \$4.00.

Mammoth Size, each, 75c; doz., \$7.50.

Calla (Richardia)

Ready Now

White Calla Lily (Aethiopica)—A well-known plant of easy culture for winter bloom, and makes a handsome house or window plant. To aid profuse blooming keep dormant from the middle of June until the last of September; pot on receipt in good, rich soil, using 6 to 8-inch pot, give light and heat in abundance. Both foliage and flowers are attractive in this desirable winter bloomer. **If by PARCEL POST, add postage at Zone Rates.**

First Size (1¼ to 1½ in.), weight, doz., 1 lb. Each, 15c; doz., \$1.50; 100, \$10.00.

Select Size (1½ to 2 in.), weight, doz., 2 lbs. Each, 30c; doz., \$3.00; 100, \$20.00.

Mammoth (2 to 2½ in.), weight, doz., 3 lbs. Each, 45c; doz., \$4.50; 100, \$35.00.

Yellow Calla (Elliottiana)

Ready in November

New and beautiful variety; same habit of growth as ordinary white Calla; flowers same size and shape, rich, clear, lustrous golden yellow; foliage dark green, with translucent creamy spots, strong bulbs.

First Size (1½ to 2 in.). Each, 15c; doz., \$2.00; 100, \$15.00.

Mammoth (2 to 2½ in.). Each, 25c; doz., \$2.50; 100, \$18.00.

Jumbo (2½ in. and up). Each, 30c; doz., \$3.00; 100, \$22.00.

Lilium Speciosum (Lance-Leaved Lily)

Ready in December

These lilies are probably the most popular of all, succeeding equally well in open border or in pots. When fully open, the petals curve gracefully on the flower stem, exposing the beautiful rose and crimson markings, which characterize the **Rubrum** and **Melpomene** types.

Album—Pure white.

First Size (8 to 9 in.), each, 50c; doz., \$5.50; 100, \$40.00.

Mammoth (9 to 11 in.), each, 80c; doz., \$8.00; 100, \$60.00.

Rubrum—White, spotted and rayed rosy red. We consider this the most satisfactory of the **Speciosum** class.

First Size (8 to 9 in.), each, 35c; doz., \$3.50; 100, \$25.00.

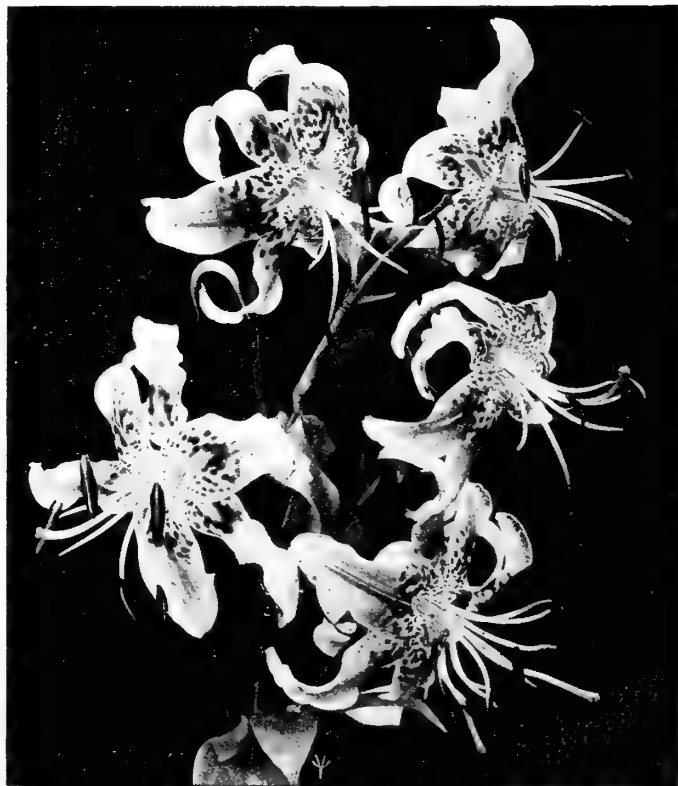
Mammoth—(9 to 11 in.), each 50c; per doz. \$5.00; 100, \$35.00.

(11 to 13 in.), each, 75c; doz., \$7.50; 100, \$50.00.

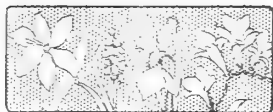
Melpomene—White, spotted and splashed deep crimson.

First Size (8 to 9 in.), each, 35c; doz., \$3.50; 100, \$25.00.

Mammoth (9 to 11 in.), each, 50c; doz., \$5.00; 100, \$35.00.



LILIUM SPECIOSUM RUBRUM



Miscellaneous Bulbs

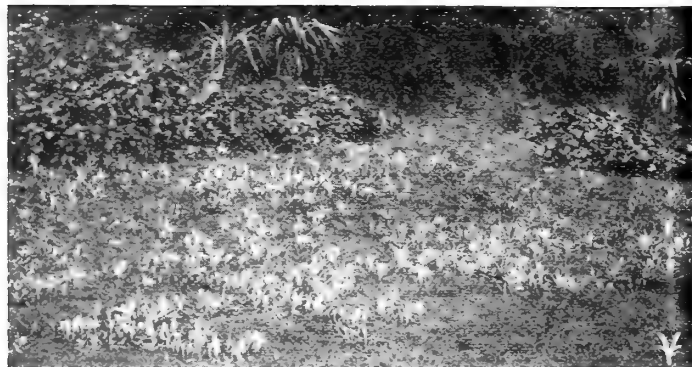


Anemone (Windflower)

The variety offered below are charming hardy flowers. They are suitable for pot or border culture, and when planted in masses are most effective. They succeed best in a light, rich, well-drained loam. Plant in November, or as soon as the ground can be worked in the spring. If planted in the autumn they should be covered with leaves, straw or long manure on the approach of winter.

Special Mixed. Doz., \$1.00; 100, \$6.00.

St. Brigid, a grand strain of Poppy Anemones whose flowers range in color from the deepest crimson to the purest white, embracing such delicate shades as cobalt, scarlet, rose, salmon-pink, and heliotrope. Most are semi-double. Doz., \$1.35; 100, \$9.00.



Crocuses in The Spring Border

Spring-Flowering Crocus

One of the earliest flowers to open in Spring, the Crocus makes an effective show when planted in masses or arranged in groups in a border. They are perfectly hardy and can be left in the ground for several years without being disturbed. The large-flowering named varieties are ornamental when flowered in pots, six or eight bulbs in 5-inch size. They will not flower if exposed to heat, nor must severe forcing be attempted. It is a mistake to plant Crocuses too deeply, an inch of covering being quite sufficient, anything deeper may cause them to fail to bloom.

Dozen price includes postage. 100 bulbs weigh 3 lbs.

Albion, blue, striped white.	Mont Blanc, pure white.
Baron von Bruno, dark blue.	La Majesteuse, white, violet stripe.
David Rizzio, deep purple.	Madam Mina, white striped.
Dandy, blue.	Sir Walter Scott, white, blue stripe.
Non Plus Ultra, blue, bordered white.	Mammoth White.
Othello, dark purple.	Select Yellow.

Price of above, per doz., 55c; 100, \$3.50; 1000, \$30.00.

Mammoth Yellow, Doz., 70c; 100, \$4.50; 1000, \$40.00.

SPECIAL OFFER 21 "W": 10 each of 10 varieties of above. (100 bulbs.) Our Selection, postpaid, for \$3.00.

Vaughan's "Pride of Holland" Strain of Named Crocus

Are larger bulbs and give better blooms than ordinary named kinds and are of special value for pot culture. We offer five colors. Please mention "Pride of Holland" strain when ordering.

Sir Walter Scott, white, blue striped.	David Rizzio.
Queen Victoria, pure white.	King of Blues, fine blue.

Mammoth Yellow.

Price, per doz., 75c; 100, \$5.00; 1000, \$40.00.

Crocus—Vaughan's Special Mixture Giant-Flowered

We make this mixture from named sorts only. For planting outdoors along borders or amongst shrubbery this mixture cannot be excelled.

Doz., 40c; 100, \$2.50; 1000, \$20.00

Calochortus or Mariposa Tulip

These famous California flowers possess much delicacy and brilliancy of coloring. They resemble a tulip in shape, and are of many colors, shades and markings.

Mixed, doz., 70c; 100, \$4.50, postpaid; 1000, \$40.00, postpaid.

Camassia Leichtlinii

Fine perfectly hardy late spring flowers of much merit. At the base they have large grass-like leaves and an erect, many flowering spike rises from 18 in. to 3 ft. in height. The very handsome flowers are star-shaped and open in long succession. In the garden they continue good from year to year and are most excellent to naturalize in moist places in grass. Two colors, fine blue and creamy white. Cover the bulbs 1½ to 2 in. over their tops.

Blue, } doz., \$1.75; 100, \$12.00.
White, }

Chionodoxa (Glory of the Snow)

One of our loveliest Spring flowers, when established its sheets of blue in very early Spring are a great attraction in borders, dotted over bulb beds, or massed on rockwork. Once planted it comes up year after year, the flower spikes increasing in size and beauty. Excellent in pots. Prices include postage.

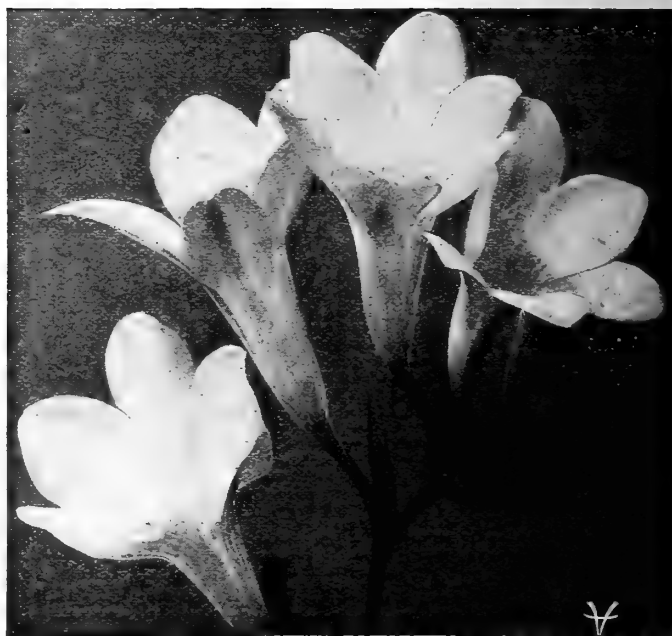
Lucillae. Bright blue with large clear white center. Doz., 55c; 100, \$3.50; 1000, \$30.00.

Sardensis. Intense deep blue. Doz., 60c; 100, \$4.00; 1000, \$35.00.

Eranthis Hyemalis (Winter Aconite)

Early in Spring the golden blossoms of Winter Aconite look charming, resting on an emerald-green of cushion leaves, forming a striking contrast to the Snowdrop, Scilla and Chionodoxa. The foliage remains long after the flowers, making the plant especially valuable in moist situations, such as under trees. Eight inches high. Price per dozen and 100 includes postage.

Doz., 55c; 100, \$3.50; 1000, \$30.00.



Vaughan's Purity Freesias

Vaughan's Giant Freesias

These are well known for their delightful fragrance, the new colored ones which we offer adding a new charm to the class. They should be potted in September and stood outside until the approach of frost, then taken inside to the conservatory or a sunny, airy window, where they will flower freely from January onwards. Plant early to secure good results. Dozen and 100 prices include postage.

VAUGHAN'S PURITY. Flowers are a magnificent snowy white, of very large size and great fragrance. One bulb will throw three to five flower-heads, each of which will have from eight to nine buds of the finest type.

½ to ⅔ in. doz., 35c; 100, \$2.25; 1000, \$18.00; ⅔ to 1 in. doz., 55c; 100, \$3.50; 1000, \$30.00; 1 in. and up. doz., 60c; 100, \$4.00; 1000, \$35.00.

New Named Colored Freesias

After many years devoted to crossing and hybridizing by an eminent grower we are now able to offer these popular bulbs in the following distinct colors:

California. A large flower of a bright golden yellow, strong grower, long stems. Doz., \$1.15; 100, \$7.50; 1000, \$70.00.

Carmencita. Light orange-salmon. Doz., \$1.15; 100, \$7.50; 1000, \$70.00.

General Pershing. Lavender-pink, yellow lip somewhat of a bronze cast. Doz., 70c; 100, \$4.50; 1000, \$40.00.

June Michelsen. Large-flowering deep rose-pink with blush throat, one of the best. Doz., \$1.30; 100, \$8.50; 1000, \$80.00.

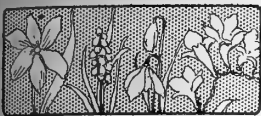
Yellow Prince. Doz., \$1.15; 100, \$7.50; 1000, \$70.00.

Rainbow Mixed. (Our own mixture.) Doz., 60c; 100, \$4.00; 1000, \$35.00.

Mrs. Mark Peter (1925 Introduction)

A very attractive Freesia. Deep rosy salmon with lower petals blotched orange and yellow. Doz., \$1.25; 100, \$8.00; 1000, \$75.00.

Miscellaneous Bulbs



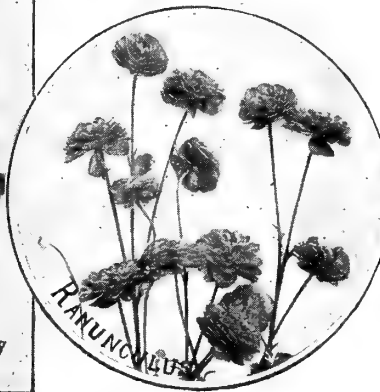
We are glad to report that the Federal Horticultural Board withdrew from its embargo against the seven minor bulbs which were to have been excluded Jan. 1, 1926, along with the Narcissi. For the present unrestricted imports continue of these bulbs, which are: Chionodoxas, Eranthis, Hyemalis, Fritillaria Meleagris and Imperialis, Muscari, Scillas and Snowdrops.



Fritillaria Meleagris

Singular dwarf spring-flowering plants, bearing large pendant, bell-shaped flowers of various colors: yellow, white, black, purple, striped and splashed and checkered in the most curious way. Invaluable for pot culture and exceedingly pretty when grown in large groups in the garden border or wild dry situation.

Doz., \$1.10; 100, \$7.00 (postpaid). Per 1000, \$65.00.



Fritillaria Imperialis (Crown Imperial)

The Crown Imperial is a stately hardy border-plant, very effective in Spring when grouped in woodlands, wild gardens, orchards. For forming bold groups in the permanent border or on lawns it is of great value, and should be allowed to remain undisturbed. To obtain the best results, plant the bulbs in September, in a good, deep loam.

Each, 30c; doz., \$3.00; 100, \$20.00.

Ixias

The ixia is a beautiful little winter-flowering bulb, with long, slender, graceful spikes of bloom. The colors are rich, varied and beautiful, the center always differing in color from the other parts of the flower, so that the blossoms, expanding in the sun's rays, present a picture of gorgeous beauty. Very desirable for pots. If planted outside be sure to cover with straw or leaves.

Named Varieties. Doz., 70c; 100, \$4.50; 1000, \$40.00

Mixed. Doz., 55c; 100, \$3.50; 1000, \$30.00.

Leucojum Vernum

(Spring Snowflake)

Pretty bulbous plants allied to the Snowdrop, but of much stronger and bolder habit, growing in rich soil from 1 to 2 ft. high, and producing freely beautiful large white flowers, distinctly tipped with green; excellent for cutting. When once planted, they take care of themselves. The first year, however, a good mulch should be given so as to protect from freezing, bulbs being California-grown. Should have a place in all hardy collections, particularly shady nooks; can be grown in pots.

Per doz., \$1.00; per 100, \$6.50; per 1000, \$60.00.

Muscari (Grape Hyacinth)

Beautiful little flowers for planting in masses either in shade or sun. Once planted, they multiply rapidly and send up flower stems by the score each year. Also adapted for growing indoors. Plant six bulbs in a five-inch pot. Perfectly hardy.

Blue. Pretty little spikes of dark blue flowers; an old garden favorite, used largely for small beds, edging, etc. Doz., 50c; 100, \$3.25; 1000, \$27.00.

Pure White. This is a beautiful companion to the above, and they make a striking show when planted together. Price, per doz., 90c; 100, \$6.00; 1000, \$55.00.

Heavenly Blue. The best blue. Doz., 55c; 100, \$3.50; 1000, \$30.00.

Mourning Iris (Iris Susiana)

Immense flowers, bluish-tinted brown and covered with a network of fine lines. Flowers to the end of May and grows about a foot high. Plant in a location where there is plenty of drainage. Keep them from getting too wet by placing boards on them after planting.

Each, \$1.00; doz., \$10.00. Mailing weight, doz., ¾ lb.

Oxalis

Most of these Oxalis flower from October until Christmas, and later. Easily grown, requiring only a good, somewhat peaty soil, with considerable light, for their successful growth. Dozen and 100 prices include postage.

Grand Duchess. Lavender, pink and white, doz., 55c; 100, \$3.50; 1000, \$30.00, Bermuda Buttercup. Per doz., 55c; 100, \$3.50; 1000, \$30.00.

Ranunculus (Buttercup)

Nothing produces a brighter or more gorgeous effect in June and July than beds of Ranunculus; the flowers are all good for cutting, and the culture is very simple. They thrive in any ordinary garden soil, but should have protection in spring from the late frosts and sharp winds. Plant outside latter end of March or early April, as soon as frost is out of the ground, or earlier in the hot bed if desired for early cutting. Plant in November for early spring bloom in frames. Set the tubers 3 or 4 inches apart, pressing them firmly into the soil, claws downwards, and cover them with sand, then with soil; keep the crown of the tubers two inches under the surface. During dry weather the plants should be given abundance of water.

French Mixed. Per doz., 80c; 100, \$5.50; 1000, \$50.00.

Special H. & S. Strain. Doz., \$1.75; 100, \$12.00; 1000, \$100.00.

Scillas (Squills or Wood Hyacinths)

As edgings and masses in beds and borders, Scillas are most valuable. They succeed in shady flower borders and bare shady places and odd corners which often have a desert-like appearance in the flower garden can by their use be rendered bright and cheerful. Prices per dozen and 100 include postage.

SIBIRICA (The Blue Squill). Bright blue, nothing more beautiful for edgings or pots in early Spring, flowering with the Snowdrop. Height, 4 inches.

Mammoth Bulbs. Doz., 80c; 100, \$5.50; 1000, \$50.00.

CAMPANULATA. Clear Blue, very erect in habit (15 inches). Doz., 75c; 100, \$5.00; 1000, \$45.00.

Alba. Pure white (12 in.) Doz., 75c; 100, \$5.00; 1000, \$45.00.

Rosea. Fine rose (15 in.) Doz., 80c; 100, \$5.50; 1000, \$50.00.

Snowdrops (Galanthus)

In early Spring there is nothing more beautiful than graceful blossoms of the Snowdrop. In beds of Tulips and Hyacinths, Snowdrops flower while these bulbs are just moving to the surface, and when the flowers are over, there remains a groundwork of green foliage.

Prices per dozen and 100 include postage.

Single. (Largest Bulbs.) Doz., 70c; 100, \$4.50; 1000, \$40.00.

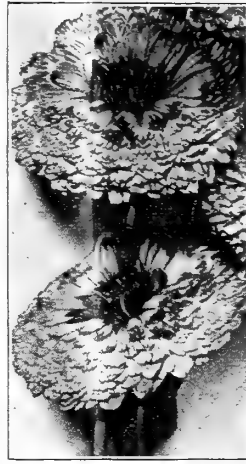
Double. (Largest Bulbs.) Doz., 80c; 100, \$5.50; 1000, \$50.00.



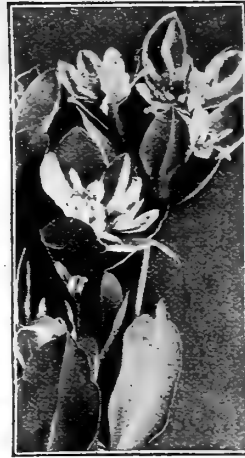
ANTIRRHINUM



CALLIOPSIS



CALENDULA



EUPHORBIA



ESCHOLTZIA

Flower Seeds for Fall Sowing

FEW know many of our prettiest and best known annuals may be sown in the fall, in fact some varieties, like the annual Larkspur, are much better, treated in this way. The principle is the one nature uses. Seed dropped from parent plant will lay dormant in the soil until early in the spring when it germinates and begins a root system long before one can get in the ground to sow seed. Consequently the flowering season is prolonged by the earlier blooming. Ground should

be prepared and seed sown just previous to the late heavy frosts.

The fall-sown plants as a rule are much sturdier and better established on the blossoming date than those started indoors.

Another advantage of fall sowing is that it relieves pressure in the springtime. Care should be taken not to sow too early, as the seed will germinate and die in the fall.

Sweet peas should be heavily mulched with leaves or straw.

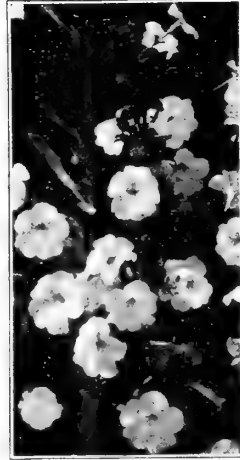
- 195 *Ageratum*. Blue Perfection. Pkt., 10c.
 230 *Agrostemma*. Coeli Rosa (Rose of Heaven). A good cutflower. Pkt., 10c.
 250 *Alyssum*. Sweet. Dainty white flowers. $\frac{1}{2}$ oz., 15c; pkt., 10c.
 255 *Alyssum*. Vaughan's Little Gem. Snow-white carpet plant. $\frac{1}{4}$ oz., 25c; pkt., 10c.
 310 *Anchusa*. Capensis (Summer Forget-me-not). Flowers beautiful blue. Pkt., 10c.
 425 *Antirrhinum*. Vaughan's special mixture. $\frac{1}{2}$ oz., 25c; pkt., 15c.
 1070 *Bartonia*. Aurea. Showy golden yellow flowers. Pkt., 10c.
 1170 *Cacalia*. Mixed. Pkt., 10c.
 1190 *Calendula*. Orange King. Orange flowers. Pkt., 10c.
 1245 *Calliopsis*. Vaughan's special mixture. $\frac{1}{2}$ oz., 30c; pkt., 10c.
 1260 *Candytuft*. Giant Hyacinth-Flowered White. $\frac{1}{4}$ oz., 25c; pkt., 10c.
 1535 *Centaurea* Cyanus. Vaughan's special mixture. 1 oz., 60c; pkt., 10c.
 1570 *Centaurea* Imperialis mixed. Pkt., 10c.
 1790 *Clarkia*. Vaughan's special mixture. Pkt., 10c.
 1950 *Cosmos*. Early Flowering Mammoth mixed. $\frac{1}{4}$ oz., 20c; pkt., 10c.
 2305 *Dianthus*. Vaughan's special double and single mixture. $\frac{1}{4}$ oz., 30c; pkt., 10c.
 2415 *Escholtzia*. Vaughan's special mixture. $\frac{1}{2}$ oz., 40c; pkt., 10c.
 2435 *Euphorbia*. Variegata (Snow on the Mountain). Pkt., 10c.
 2590 *Godetia*. Gladiolus Flowered Rose. Pkt., 15c.
 2680 *Gypsophila*. Elegans Grandiflora Alba. $\frac{1}{2}$ oz., 20c; pkt., 10c.
 2860 *Hunemannia*. Fumariaefolia. (Bush Escholtzia.) Pkt., 10c.
 2170 *Larkspur*. Vaughan's special mixture. $\frac{1}{4}$ oz., 30c; pkt., 10c.
 2310 *Lavender* Lace Flower. (Didiscus Coeruleus.) Pkt., 10c.
 3010 *Leptosyne* Stillmani. Golden yellow flowers. Pkt., 10c.
 3020 *Linum*. Grandiflorum Rubrum. Pkt., 10c.
 3105 *Lupinus*. Tall annual mixed. Pkt., 10c.
 3212 *Matthiola* Bicornis. Evening scented stock. Pkt., 10c.
 3380 *Nemophila*. Mixed. Pkt., 10c.
 3390 *Nicotiana* Affinis (Sweet-scented Tobacco plant). Pkt., 10c.
 3420 *Nigella*. Miss Jekyll. Pkt., 10c.
 3875 *Pansy*. Vaughan's Giant mixture. Pkt., 15c.
 4018 *Petunia*. Rose of Heaven. Color rich brilliant rose with inconspicuous white throat, darker than Rosy Morn; a compact grower; very free-blooming. Pkt., 25c.
 4220 *Phlox* Drummondii. Vaughan's special mixture. $\frac{1}{2}$ oz., 30c; pkt., 15c.
 4310 *Poppy*. Vaughan's special double and single mixed. $\frac{1}{2}$ oz., 25c; pkt., 10c.
 4690 *Sanvitalia* Procumbens fl. pl. Small double yellow flowers. Pkt., 10c.
 4691 *Saponaria* Vaccaria Rose. The light graceful sprays of glistening pink flowers are produced in greatest profusion. Pkt., 10c.
 4755 *Schizanthus*. Garaways Hybrids. Pkt., 25c.
 5320 *Sweet Peas*. Vaughan's special mixture. Spencer varieties. Oz., 25c; pkt., 10c.
 5815 *Virginia Stocks*. Mixed. $\frac{1}{2}$ oz., 15c; pkt., 10c.
 5805 *Viscaria*. Mixed. Pkt., 10c.



LINUM



PANSY



PETUNIA



MIGNONETTE



SCHIZANTHUS

Vaughan's Garden Tools and Requisites

PRICES GIVEN BELOW DO NOT INCLUDE PREPAYING OF CHARGES EXCEPT WHERE NOTED

FERTILIZERS (F. O. B. New York)

ADCO ARTIFICIAL STABLE MANURE. Make it yourself, in your own garden. To each ton of straw, hay, cornstalks or dried leaves add 150 lbs. Adco to make four tons of fresh or three tons of rotted manure. Adco contains nothing injurious to health or harmful to animal or plant life. Shipments accompanied by full directions. Price, 25 lb. bag, \$2.50; 150 lbs., \$11.50. Write for booklet.

BONE MEAL, Vaughan's "Rose Grower" Brand. Has been slightly steamed so that it can be ground fine, and is thus quicker in its action. 5 lbs., 50c; 10 lbs., 95c; 25 lbs., \$1.80; 50 lbs., \$2.75; 100 lbs., \$4.10.

BONE MEAL, "Regular Grade." 25 lbs., \$1.60; 50 lbs., \$2.35; 100 lbs., \$3.70.

CATTLE MANURE (Shredded). A natural fertilizer for all general purposes. If applied to the lawn in the fall it protects grass roots through the winter. As easy and clean to handle as grain. Price: 100 lbs., \$3.00; 500 lbs., \$10.90; 1,000 lbs., \$18.40; 2,000 lbs., \$35.75.

NITRATE OF SODA or Chili Saltpeter. Nitrate of Soda is not a substitute for other Manures, but we recommend it as the cheapest and best form in which to apply Nitrogen to plants. Gardeners who are using farm manure should continue to use it, but use Nitrate of Soda in addition to other fertilizers. If your object is to grow maximum crops you must furnish the plant with Nitrogen. Cannot go by mail.

Price (subject to market changes), 5 lbs., 60c; 10 lbs., \$1.00; 25 lbs., \$2.00; 100 lbs., \$5.85. Write for prices on larger quantities.

SHEEP MANURE (Pulverized). Excellent for mixing with soil for greenhouse plants; one part manure and six parts soil. 5 lbs., 35c; 10 lbs., 65c; 25 lbs., \$1.35; 50 lbs., \$1.95; 100 lbs., \$3.00; 500 lbs., \$10.90; 1,000 lbs., \$18.40; ton, \$35.75.

VAUGHAN'S CONCENTRATED PLANT FOOD. This is the most useful fertilizer for all kinds of plants raised in pots. Small pkg., 20c each. Large pkg., 30c each. Mailing weight, small, 10 oz.; large, 17 oz. Each package contains full directions.

Fertilizer prices include delivery within 25 miles of Chicago on 25, 50, 100, 125 and 250 lb. lots. Smaller quantities delivered with orders of seeds, bulbs and supplies of \$2.00 or more. On larger quantities than 250 pounds the customer pays all freight or express charges.

INSECTICIDES AND FUNGICIDES

Insecticides containing Poison cannot be sent by mail.

Weights—By mail, ½ pt., 1 lb.; pt., 2 lbs.; qt., 3 lbs.

APHINE. A new insecticide discovery that kills plant lice of every species. Effective indoors and outdoors. Per ½ pint, 40c; per pint, 65c; per quart, \$1.00; gallon, \$3.00.

BLACK LEAF 40. Highly recommended as a spray for soft-bodied sucking insects. Follow directions carefully. 1 oz., 35c; ½ lb., \$1.25; 2 lbs., \$3.50. (1 oz. makes from 5 to 10 gals. of spray.)

FISH OIL SOAP. An excellent wash for trees and plants where insects and eggs affect the bark; also used for smearing upon trees to prevent worms crawling up. Per lb., 30c; 5 lbs., \$1.25.

FLOWERS OF SULPHUR. For mildew on roses, etc. Lb., 12c; 10 lbs., 85c; 25 lbs., \$2.00.

LEMON OIL. Destroys mealy bug, scale, thrip, red spider, etc. ½ pint, 35c; pint, 60c; quart, \$1.00; ½ gal., \$1.75; gal., \$3.00; 5 gals., \$12.00.

LIME-SULPHUR. The best remedy for San Jose scale. One gallon makes ten; one of the best Autumn sprays. Qt. can, 45c; 1 gal., \$1.00; 5 gal. can, \$4.00.

NICO-FUME. Strips of paper strongly saturated with Nicotine. These when suspended and lighted make one of the best and simplest methods of fumigating greenhouses. Use 4 to 6 sheets for ordinary house 100 feet by 20 feet wide. Price, 24 sheets, \$1.25; 144 sheets, \$5.25; 288 sheets, \$9.50.

NICO-FUME LIQUID. For fumigating or spraying; contains 40 per cent Nicotine. ¼ lb., 75c; 1 lb., \$2.25; 4 lbs., \$7.00; 8 lbs., \$13.00.

NIKOTEN. Fumigating or spraying compound for killing insects on plants in greenhouses and frames. ½ pint, \$1.10; pint, \$2.00; 4-lb. bottle, \$8.00; 8-lb. bottle, \$15.00.

SCALICIDE. An oil preparation for San Jose scale. Qt., 75c; gal., \$1.75; 5 gallons, \$6.25.

SULPHO TOBACCO SOAP. For greenfly on roses. 8-oz. box, 25c; by mail, 30c; 3 ozs., 15c; by mail, 20c.

TOBACCO STEMS. For fumigating. 5 lbs., 25c; 100 lbs., \$2.50.

TOBACCO DUST. One of the best remedies for green and black aphid, fleas, beetles, etc., also for insects in the ground. Lb., 15c; 5 lbs., 35c; 10 lbs., 60c; 100 lbs., \$4.00.

VOLCK. Controls scale insects, mealy bug, white flies, red spiders, rust, mites, aphid and thrips. Pint, 75c; quart, \$1.00; gallon, \$3.00; 5 gallons, \$12.00.

KNIVES, Budding. Ivory handle. Each, \$2.75; by mail, \$2.80.

Propagating, "The Vaughan," best of all. Each, \$1.25; by mail, \$1.30.

Budding and Propagating. Two blades, white handle. Each, \$1.50; by mail, \$1.55.

Pruning, Henckel No. 3 C. Each, \$2.50; by mail, \$2.60.

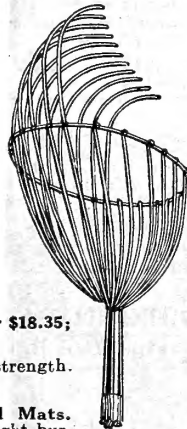
Imported Pruning. \$2.00; by mail, \$2.05.

LABELS, Wooden, for Pots. Per 100 1000
4-in., painted, \$0.35 \$1.85
5-in., painted, .40 2.45

Tree (copper wired) 3½ in., .45 2.65
Cypress.—For use outside, will last for years, 16x1½ in. Doz., 60c; 100 for \$4.00; 18x2 in. Doz., 75c; 100, \$5.00.

WIRE FRUIT PICKER

A mechanical apple and fruit picker, so simple children can pick fruit with no danger. Without pole, price, 60c each.



HOTBED SASH. Unglazed, for 3 rows, 10-inch glass. Each, \$2.95; 3 for \$8.55; doz., \$33.00.

Glazed, each, \$6.00; 3 for \$17.50; doz., \$68.80.

For 8-inch glass, 4 rows, each, \$3.20; 3 for \$9.25; doz., \$35.60.

Glazed, each, \$6.25; 3 for \$18.35; doz., \$71.00.

Add 95c per sash for double strength.

HOTBED MATS.

Milo Waterproof Hotbed Mats. A combination of heavyweight burlap felt and absorbent pulp, cemented together with a specially prepared water-proof compound absolutely impervious to rain, sleet and snow proof against frost; repellent to rats and mice. Easy to handle, wears for years.

Size, 40x78 inches, Each, \$2.85; doz., \$28.80.
Size, 76x76 inches, Each, \$5.00; doz., \$51.00.

GLASS CUTTER, DIAMOND. Each, \$5.00.

GLASS CUTTER, RED DEVIL. Each, 25c.

GLAZING POINTS, Vaughan's Perfection. No rights or lefts. No. 2, small, single thick glass; No. 2½, double thick, for greenhouse and skylights. Price, per lb. (approximately 900), 70c, postage extra.

Siebert's Improved, ¾ and ½, price per lb. 70c.

PUTTY (Twemlow's Old English). Semi-liquid. To be used in same manner as Mastic. Price, per gal., \$2.90.

PUTTY BULB (Scollay's). A useful tool with a tube for applying liquid putty in glazing greenhouses. Each, \$1.75. Mailing weight, 1 lb.

SPRINKLERS. The Lenox. A splendid sprayer for in or outdoor plants, rose bushes, etc. Each, 70c; by mail, 75c; extra bulbs, 25c each. Scollay's Rubber. Indispensable for floral work. Large, \$1.50; by mail, \$1.55.

WATERING POTS.—American. Heavy galvanized round can, two copper-faced roses, long spout; 4 quart, \$4.65; 6 quart, \$5.10; 8 quart, \$5.75; 10 quart, \$6.10; 12 quart, \$6.45.

French Style. Oval, otherwise same make as above; 6 quart, \$5.85; 8 quart, \$6.20; 10 quart, \$6.60; 12 quart, \$7.20.

THERMOMETERS. Tin Case, 8-inch, Each, 50c. Cabinet Wood Case, 8-inch, Each, 75c. Tin Case, standard grade tested, 8-inch, Each, \$1.50; Hotbed, Brass Point, Wooden Frame, Each, \$2.50; Self-Registering with magnet to set it, 8-inch, registers highest and lowest temperature, Each, \$6.00.

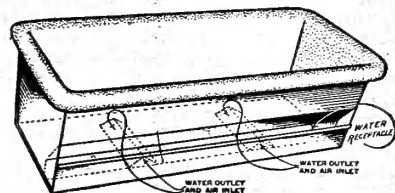
SELF-WATERING FLOWER BOXES "SAVO"



Savo Self-Watering Flower Boxes—one of the best of this type of flower boxes. Made of the best grade of galvanized steel with neat round corners and a full roll rim—beautifully finished in aluminum or green.

Model	Height	Width	Length	Price
Model A	8 inches	8 inches	23 inches	\$3.00
Model B	8 inches	9½ inches	29 inches	4.00
Model C	8 inches	9½ inches	35 inches	4.50
Model D	8 inches	9½ inches	41 inches	5.00
Model E	8 inches	12 inches	12 inches	3.00
Model F	12 inches	12 inches	12 inches	3.50

"SUCCESS"



The "Success" Window Boxes are substantially constructed of galvanized sheet steel, lock sealed and soldered watertight. A water pocket extends the full length of boxes, from which tubes lead into the box itself. This pocket with the tubes serve the following purposes, i. e.: Provides for watering the roots from below, allowing them to take up moisture as required; provides air circulation and ventilation, keeping the soil sweet and healthy; provides a perfect drainage should the plants be excessively watered by heavy rains or other causes. In fact, it serves as an accurate gauge as to the condition of the soil at all times. The boxes are finished in an attractive shade of green enamel and will prove an addition to any home, hotel or office building. Since they are watertight, they are especially adapted for inside use.

Outside dimensions of Window Boxes:

Length	Width	Depth	Price
24-in.	8½-in.	6¼-in.	\$1.95
30-in.	8½-in.	6¼-in.	2.40
36-in.	8½-in.	6¼-in.	3.25
42-in.	8½-in.	6¼-in.	4.00

PEAT MOSS—Granulated. A moisture retaining humus, an important aid in saving soil fertility. Better than manure. Bale, about 190 lbs., \$5.00.

PEAT. (Fern roots) Per sack, about 3 bushels, \$3.25.

PEAT. For potting Azaleas. Per sack, about 3 bushels, \$3.00.

LEAF MOLD. Peck 40c; Bushel Sack \$1.25.

POTTING SOIL. This mixture is prepared by us. Suitable for all ordinary plants and bulbs; by express or freight at buyer's expense, ready for use. Pk., 40c; bu., \$1.25; bbl., \$3.00.

POTS, PANS AND SAUCERS

RED CLAY POTS.—We pack these carefully, but will not be responsible for breakages.

Doz.	100	1000	Doz.	100
2 in.	\$0.30	\$1.50	6 in.	\$1.20
2½ in.	.35	1.65	7 in.	1.65
3 in.	.50	2.67	8 in.	2.25
4 in.	.65	3.40	10 in.	each, 50c
5 in.	.85	6.00	12 in.	each, 80c

BULB PANS (RED)

Each	Doz.	Each	Doz.	
6 in.	\$0.15	\$1.20	8 in.	\$0.25
7 in.	.20	1.65	10 in.	.50

TUBS—(Flower) Richmond.

These are made of best seasoned White Virginia Cedar, securely bound with welded wire hoops. They are nicely painted green, paint of best oils. Prices F. O. B. Chicago or New York.

No.	Each	Four	No.	Each	Four		
1	6x 6	\$0.90	\$3.40	9	14x13	\$2.35	\$9.00
3	8x 8	1.10	4.20	11	16x15	3.00	11.40
5	10x 9	1.30	5.00	13	18x17	3.75	14.60
7	12x11	1.80	6.80	14	19x18	4.65	17.20

If handles are required add 35c per tub. First figure following number of tub gives diameter in inches at top of tub; second figure depth in inches.

Helpful Details Making Mail Orders Convenient and Safe

Send to the City Nearest Your Address

Vaughan's Seed Store

10-12 W. Randolph Street, CHICAGO
47-49 Barclay Street, NEW YORK

Order at Once Send in your order as soon as possible after receiving catalog. Bulbs for immediate planting will be sent at once, others at proper time, with due notification.

How to Order Use the order sheet accompanying this catalog. One section is for seeds, bulbs and sundries (i. e. Insecticides, Manures, Poultry Supplies, etc.); the other for plants, shrubs and trees only. **Don't** put plants and trees on the same section with bulbs and seeds.

Important Write your name, postoffice, state and express office plainly with black ink, on every order, and every time you write to us. Give plain express, mail or freight directions; where none are given, we route the same at buyers' risk.

Quantity, Size, Price Always give the quantity required of bulbs, plants or trees, mentioning size where different sizes are offered, and carry out the price of each item.

Mistakes These will happen in spite of all care. Write us at once with copy of original order if possible, and mistakes will be promptly rectified. Please do not return goods until you hear from us.

Parcel Post Fourth Class Mail Matter, which includes seeds, plants, bulbs, roots, books, tools, insecticides (in dry and paste form), odorless fertilizers and requisites, may be forwarded by domestic parcel post within the United States. See table opposite showing postage you should add to insure free delivery. All poisonous insecticides, are unmailable.

Express Service For most orders exceeding 20 pounds in weight and for plants requiring special packing, we urge they be expressed. **Mark order plainly if wanted by Express or Parcel Post.**

Time of Sending Not all fall bulbs are ready at the same time, but nearly all the Dutch and French importations are in the store by September 15. The following table gives approximate dates of arrival: **September 1**—Lilium Candidum, Roman Hyacinths, Lilium Harrisii, Freesias, Peonies. **September 15**—Hyacinths, Daffodils and Narcissi, Tulips and other Dutch bulbs, Callas. **October 20**—Full supply of Lilies, Chinese Narcissus, Dahlias and Gladiolus. **November 10**—Lily of the Valley, new crop Tuberoses. **Perennial Plants, September 15** until frost; **Trees and Shrubs** and all nursery stock, **October 1st** until frost.

Our Terms with customers not having an account are strictly cash with order. We make no C. O. D. shipments unless one-third of amount is paid in cash with order. **No trees, plants or other perishable stock, are sent C. O. D.**

How to Send Money Send by New York or Chicago draft, registered letters, or postoffice or express money order; both are cheap and absolutely safe. Small postage stamps are taken as cash, but we prefer larger denominations, such as fives, tens or fifteens. Registered letters can be sent from any postoffice, and your receipt sent you by return mail if demanded. If personal checks are used have them certified and add 15 cents for exchange cost. Put no currency in letter unless you register the same. Make money order payable to "Vaughan's Seed Store."

PARCEL POST Vaughan's Seed Store at Chicago and New York, covers the United States in a remarkable way to secure cheap postal rates for its many mail order customers.

The weights of all bulbs and roots offered are given and customers are requested to add sufficient to their remittance to cover postage on total estimated weight of order at rates given in the following table.

DOMESTIC PARCEL POST RATES		First pound or fraction	Each additional pound or fraction
On Seeds, Plants, Bulbs, Roots, Books, Tools, etc., within the U. S. and Possessions.			
First Zone	Chicago or New York City or 50 miles thereof	7c.	1c.
Second Zone	within 50 to 150 miles of either	7c.	1c.
Third Zone	within 150 to 300 miles	8c.	2c.
Fourth Zone	within 300 to 600 miles	9c.	4c.
Fifth Zone	within 600 to 1000 miles	10c.	6c.
Sixth Zone	within 1000 to 1400 miles	11c.	8c.
Seventh Zone	within 1400 to 1800 miles	13c.	10c.
Eighth Zone	all over 1800 miles and Canada	14c.	12c.

NOTE.—Limit of weight for delivery within the first, second and third zones, 70 pounds; to Canada 11 lbs., to all other zones 50 pounds. If weight exceeds this, we will pack in 2 or 3 parcels (not more) provided money is remitted to cover postage. **Mark your Zone Number on order.**

Our Responsibility It is so manifestly impossible for a seller of any perishable article to be responsible for what may happen to it after it leaves his hands, especially one like seeds, which are planted in the ground under varying conditions of soil and climate, that we, in common with all American seed houses, disclaim responsibility as to the crop which may be raised from seeds which we sell.

At the same time, in case of any failure to secure proper results caused from some inherent fault in the seeds themselves, Vaughan's Seed Store accepts responsibility, not for crop, but to the extent of the amount of money paid for the seeds, if immediately advised. Or seeds may be returned.

We Do Not Warrant in any way, expressed or implied, the contents or the description, quality, productiveness or any other matter of any seeds, bulbs, plants, shrubs or trees sold by us, and we will not be in any way responsible for the crop. If the purchaser does not accept these goods on above terms, no sale is made thereof, and he must return them at once and money will be refunded. Subject to the above conditions, we make this sale at the moderate prices at which we sell our goods. **VAUGHAN'S SEED STORE, Incorporated.**

Contents of Gardening Illustrated, Autumn, 1927

Explanation of Table Below: Numbers prefixed B, represent Bulbs; P, Plants and Trees; R, Roots; S, Seeds.

Page	Page	Page	Page
Alyssum.....S. 22	Daffodils (see Narcissus)	Insecticides.....23	Peat.....23
Amaryllis.....B. 6	Darwin Tulip.....B. 11	Iris.....P. 5	Pearl Chips.....7
Anemone.....B. 20	Dianthus.....S. 22	Ixias.....B. 21	Peonies.....P. 4
Annuals.....22	Eranthis.....20	Joss Flower (see Chinese Lily)	Petunia.....S. 22
Anomatheca (see Freesia)	Escholtzia.....S. 22		Phlox.....S. 22
Antirrhinum.....S. 22	Fertilizers.....10, 23	Knives.....23	Plant Tubs.....23
Breeder Tulips.....B. 13	Fiber for Bulbs.....6	Labels.....23	Poppy.....S. 22
Bulb Bowls.....7	Flower Baskets.....23	Lawn Fertilizers.....10	Pots, Pans, Saucers.....23
Bulb Collections.....1-3, 4, 5	Flower Boxes, Tubs.....23	Lawn Making in Autumn.....9	Porch Boxes.....23
Bulbs for Indoor Gardening.....B. 6	Flower Pots, Pans.....23	Lawn Seed.....9, 10	Potting Soil.....23
Bulb Planters.....7	Flower Seeds.....22	Leaf Mold.....23	Putty.....23
Calendula.....S. 22	Flower Tubs.....23	Leucojum.....21	Ranunculus.....B. 21
Calla Lily.....B. 19	Freesia.....B. 20	Lily of the Valley.....B. 7, 18	Richardia (see Calla Lily)
Calliopsis.....S. 22	Fritillaria.....21	Lilies.....B. 18, 19	
Calochortus.....B. 20	Fruit Picker.....23	Muscari.....21	Sacred Lily.....7
Camassia Leichtlinii.....B. 20	Fungicides.....23	Narcissus.....B. 7, 16	Scilla.....B. 21
Centaurea.....S. 22	Glass Cutter.....23	Narcissus (Chinese).....B. 7	Snowdrop.....21
Chinese Lily.....B. 7	Glazing Material.....23	Nicotiana Affinis.....S. 22	Sprinklers.....23
Chionodoxa.....20	Grass Seed.....S. 9, 10	Oxalis.....B. 21	Sweet Peas.....22
Christmas Flowers.....7	Gravel.....7	Pansy.....S. 22	Thermometers.....23
Chrysanthemum.....S. 22	Gypsophila.....S. 22	Paper Whites.....7	Tulips.....B. 1, 2, 3, 8, 11-15
Color Scheme.....8	Hotbed Sash.....23	Parcel Post Rates.....24	Tulip Borders.....B. 8
Columbine (see Aquilegia)	Hotbed Mats.....23		Watering Cans.....23
Cosmos.....S. 22	Hyacinth Glasses.....6		Window Boxes.....23
Cottage Tulips.....B. 12	Hyacinths.....B. 6, 7, 17		
Crocus.....B. 20			



Vesta

Vesta—Rembrandt.
 Doz., \$1.25; 100, \$8.00; 1000, \$75.00.
Clara Butt—Darwin.
 Doz., 55c; 100, \$3.50; 1000, \$30.00.
Garibaldi—Breeder.
 Doz., \$5.50; 100, \$40.00; 1000, \$350.00.
Attraction—Breeder.
 Doz., \$1.40; 100, \$10.00; 1000, \$95.00.
Glow—Darwin.
 Doz., 65c; 100, \$4.50; 1000, \$40.00.



Attraction



Clara Butt



Garibaldi



Glow

Cover Collection No. 3
 Of the varieties illustrated on this page we will mail postpaid:
 2 each (10 bulbs) \$1.60 6 each (30 bulbs) \$4.50
 12 each (60 bulbs) \$8.50



Golden Anniversary Tulip Collection
 of May flowering (Darwin, Cottage or Breeder) type, each variety separately bagged and labeled.
 60 bulbs, 6 each of 10 named varieties, \$3.00 postpaid.
 120 bulbs, 12 each of 10 named varieties, \$5.50 postpaid.
 600 bulbs, 60 each of 10 named varieties, \$25.00 by express.
 1000 bulbs, 100 each of 10 named varieties, \$40.00 by express.



Vaughan's GIANT Flowering TULIPS

Planting Suggestions

THE eight varieties illustrated in colors on this page are typical of the wonderful May-flowering tulips. On the left, from top to bottom, they are, in order:

Faust—Darwin.

Doz., \$1.20; 100, \$7.50; 1000, \$69.00.

Carnation—Cottage.

Doz., 65c; 100, \$4.50; 1000, \$40.00.

Ariadne—Darwin.

Doz., \$1.00; 100, \$6.50; 1000, \$60.00.

The Fawn—Cottage

Doz., 60c; 100, \$4.00; 1000, \$35.00.

On right, top to bottom:

Louis XIV—Breeder.

Doz., \$1.50; 100, \$12.00; 1000, \$110.00.

Violet Queen—Breeder.

Doz., \$1.00; 100, \$6.50; 1000, \$60.00.

General Ney—Breeder.

Doz., \$1.20; 100, \$7.50; 1000, \$67.00.

John Ruskin—Cottage.

Doz., \$1.00; 100, \$6.00; 1000, \$52.00.

Cover Collection No. 4

Of the varieties listed on this page we will mail postpaid:

One each (8 bulbs) 75c.

Three each (24 bulbs) \$2.00.

Six each (48 bulbs) \$3.75.

Twelve each (96 bulbs) \$7.00.

Breeder Tulips

To interest our customers to the richly-colored Breeder Tulips we offer two special collections, postpaid, as follows:

Fifteen bulbs, one each fifteen varieties, our selection, \$1.50.

Forty-five bulbs, three each fifteen varieties, our selection, \$4.00.

Vaughan's Seed Store
CHICAGO - NEW YORK