

Historic, archived document

Do not assume content reflects current scientific knowledge, policies, or practices.

LIBRARY
 RECEIVED
 ★ SEP 30 1948 ★
 U. S. Department of Agriculture

62-23

Vaughan's Spring Flowering Bulbs

1948
**RAINBOW
 Tulip Sextette**

Top left, Golden Age (Darwin)
 Middle left, Faust (Darwin)
 Lower left, Dillenberg (Breeder)
 Top right, Venus (Darwin)
 Middle right, Scotch Lassie (Darwin)
 Lower right, President Taft (Darwin)

Outstanding representatives of the tulip's wide color range, these giant varieties will produce a vivid display in your spring garden.

PRICES PREPAID

Six Bulbs, one each of above.....	\$1.10
Twelve Bulbs, two each of above....	1.75
Thirty-six Bulbs, six each of above...	4.25
Seventy-two Bulbs, 12 each of above	7.50
Doz.	100
Golden Age	\$1.55 \$11.00
Faust	1.60 11.75
Dillenberg	1.55 11.00
Venus	1.60 11.75
Scotch Lassie	1.60 11.75
Pres. Taft	1.60 11.75



Vaughan's Seed Store
 Chicago New York

Outstanding varieties of the most attractive tulip colors are illustrated on this page. Keizerskroon is most popular of early tulips, and one of the first to flower. Its bright red and yellow bloom is a welcome sight for eyes weary of winter. Gen. De Wet is a late early, with flowers lasting until

9 Giant Tulips \$1.50

No. 1 Bulb of each variety illustrated hereon (9 Bulbs) prepaid.

Two each (18 bulbs).....	\$ 2.60
Three each (27 bulbs).....	3.50
Six each (54 bulbs).....	6.50
Twelve each (108 bulbs).....	12.00

the tall, late, giant tulips come. All other varieties are of this class, flowering in May, and presenting the most brilliant display of the spring garden.

Golden Harvest is the largest yellow tulip; Glacier the largest white. Louis XIV is best loved of all the Breeders; Yellow Giant the largest yellow Darwin. City of Haarlem is the reddest Darwin, Princess Elizabeth the largest pink, Marjorie Bowen an opalescent Cottage type.



GOLDEN HARVEST (Cottage)

Doz., \$1.40
100, \$9.50



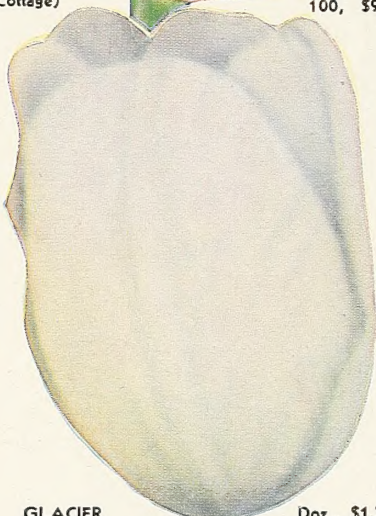
KAISERSKROON (Early)

Doz., \$1.70
100, \$12.00



GEN. DE WET (Single)

Doz., \$1.50
100, \$10.50



GLACIER (Darwin)

Doz., \$1.70
100, \$12.00



LOUIS XIV (Breeder)

Doz., \$1.60
100, \$11.50



YELLOW GIANT (Darwin)

Doz., \$1.40
100, \$9.50



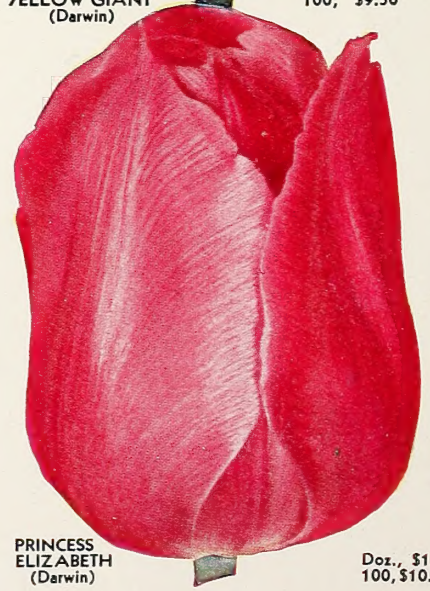
CITY OF HAARLEM (Darwin)

Doz., \$1.60
100, \$11.50



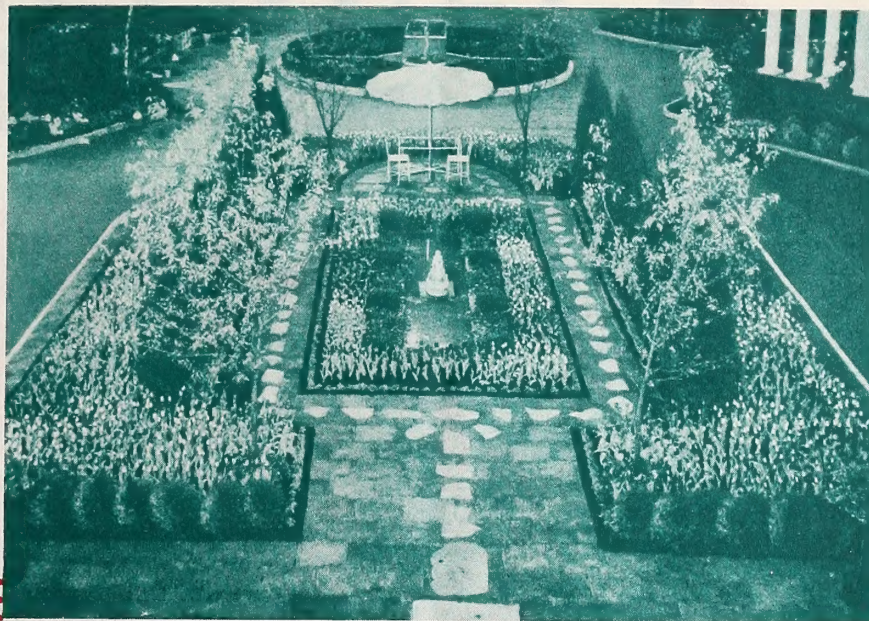
MARJORIE BOWEN (Cottage)

Doz., \$1.60
100, \$11.50



PRINCESS ELIZABETH (Darwin)

Doz., \$1.45
100, \$10.00



Vaughan's Rainbow Tulip Garden Which Won Gold Medal at National Flower and Garden Show, Chicago, 1948.

Vaughan's Famous

RAINBOW GARDEN OF GIANT TULIPS

48 Flowering Size Bulbs, eight each of six named varieties, \$3 separately bagged and labeled. Prepaid for - - - - -

Spring garden beauty reaches a climax when the tulips bloom. There is no other flower which so outshines all rivals during its season.

It brings to the May landscape, slowly recovering from winter's drabness, a dazzling display of every color of the rainbow. The tulip's color-range is one of its chief merits and in most gardens will not be equaled later.

Every garden should take advantage of the tulip's full range of color. To make this possible is the purpose of

our Rainbow Garden of Tulips offer, which for years we have made the best fall bulb value available to home gardens.

In it the tulip is represented by an outstanding variety of each color group. The low price does not mean small bulbs—they measure 11-12 ctms., and bear flowers of the largest size. Each variety is separately bagged and labeled, so you can arrange them in the color-pattern you prefer.

Our 1948 Rainbow Garden of Tulips . . . Eight Each of These Six varieties.

Violet

Telescopium, Darwin Hybrid, violet rose. As large as a Darwin, and similarly cup-shaped, this lovely variety belongs to the Triumph class, which was bred by crossing early tulips with Darwins. It brings a giant tulip to your garden a week to 10 days earlier than other giants.

Yellow

Mother's Day, Cottage, lemon yellow. The soft pure yellow coloring of this variety is of exactly the tone which harmonizes delightfully with pink and red as well as lavender; and contributes sunny highlights without which a border would be dull.

Orange

Dillenburg, Breeder. The best examples of orange coloring are found among the Breeder tulips, where rich blends rather than primary hues are the rule. In this huge flower, 27 inches tall, it is blended with salmon and rose, in a glowing-bronze effect.

Red

Utopia, Darwin, brilliant cherry red. This is one of the newer varieties, distinguished by its deep, glowing color, which is rapidly gaining favor over older reds. Its large flowers, held up on strong stems, will provide an indispensable accent to your garden arrangement.

Pink

Prunus, Darwin, rose pink. A sport or mutant from the red Darwin tulip Bartigon, it has the size and vigor of its parent. Its giant, cup-shaped flower is a delightful soft pink, beautiful both in the garden and in cut flower arrangements.

White

Zwanenberg, Darwin, white. A group of white flowers is needed in every border planting. This variety is one of the newer white Darwins, fully equal in size and height to other colors, and of a pure white, with contrasting black anthers, which make petals seem whiter.

4 Great

PEONIES \$4.50

Catalogue Value \$6.00 (Postage 15c Additional)

Of all the new varieties introduced, relatively few survive the test of garden culture and take their place among the acknowledged leaders. The peonies you plant may outlive you, so it is important to choose varieties for permanent planting which have demonstrated lasting merit. The four offered on this page are among the world's best, for display in the garden, or in the flower show. The flowers of each will last for days if cut in the bud stage and allowed to open in the house.

BARONESS SCHROEDER (9.0) One of the finest Peonies in existence. Immense flowers of great substance with high chalice-shaped center. Opens a delicate flesh-white, sometimes a soft baby pink, changing to creamy-white. One of our best cut-flower varieties and an excellent keeper. June rose fragrance, late. \$1.50.

LONGFELLOW (9.0) Perhaps the most brilliant of all red peonies, as striking in the garden as in the show-room. It blooms in early midseason, has excellent foliage and strong, stiff stems. Very popular on account of its dependability and its vivid fadeless color. \$1.75.

REINE HORTENSE (PRESIDENT TAFT) (8.7) One of the finest Peonies in our Nursery. A vigorous, strong grower, a profuse bloomer, and an excellent cut-flower variety, cut blooms lasting a week or more. Its flowers are among the largest of any variety that we grow and the color is a beautiful uniform light pink, center flecked crimson. Midseason. This variety is a consistent prize winner at the large peony shows. \$1.25.

SARAH BERNHARDT (9.0) One of the largest and most beautiful of all pink Peonies. It is a vigorous grower and a prolific bloomer, carrying its perfectly formed flowers gracefully on tall stems. The color is a deep rose-pink, with lighter edging; center flecked crimson. An extra good cut-flower variety. Late mid-season; fragrant. \$1.50.



PEONY LONGFELLOW

10 IRIS

Aristocrats

\$3.00

Catalogue Value \$4.70 (Postage 10c Additional)

These are among the finest Irises in cultivation. Each is rated close to perfection and not long ago not one could have been purchased for the price of the collection. Your Iris display is lacking if you have not these varieties; and our low prices make it possible to own them for less than the cost of ordinary plants.



GUDRUN

BLACK WINGS. 38 in. Velvety black buds opening to large flowers of intense midnight blue overlaid with a frosty black luster. Very fragrant. 40c; 3 for \$1.00.

CALIFORNIA GOLD. 36 in. A super novelty with magnificent, large flowers of dazzling, deep golden yellow which does not fade. 40c; 3 for \$1.00.

CITY OF LINCOLN. 40 in. A magnificent bi-color that is a "standout" in the garden. The dome-shaped standards of clear vivid yellow make a striking contrast with the golden edged, rich velvety red of its flaring falls. 60c; 3 for \$1.50.

INDIAN HILLS. 37 in. A stunning Iris of clear rich wine purple. Its large blooms of good substance and fine form, have great carrying power and make a glorious mass of color in the garden. 40c; 3 for \$1.00.

GUDRUN. 36 in. Enormous, well shaped flowers of lovely pure white, dusted with soft gold at the throat. 40c; 3 for \$1.00.

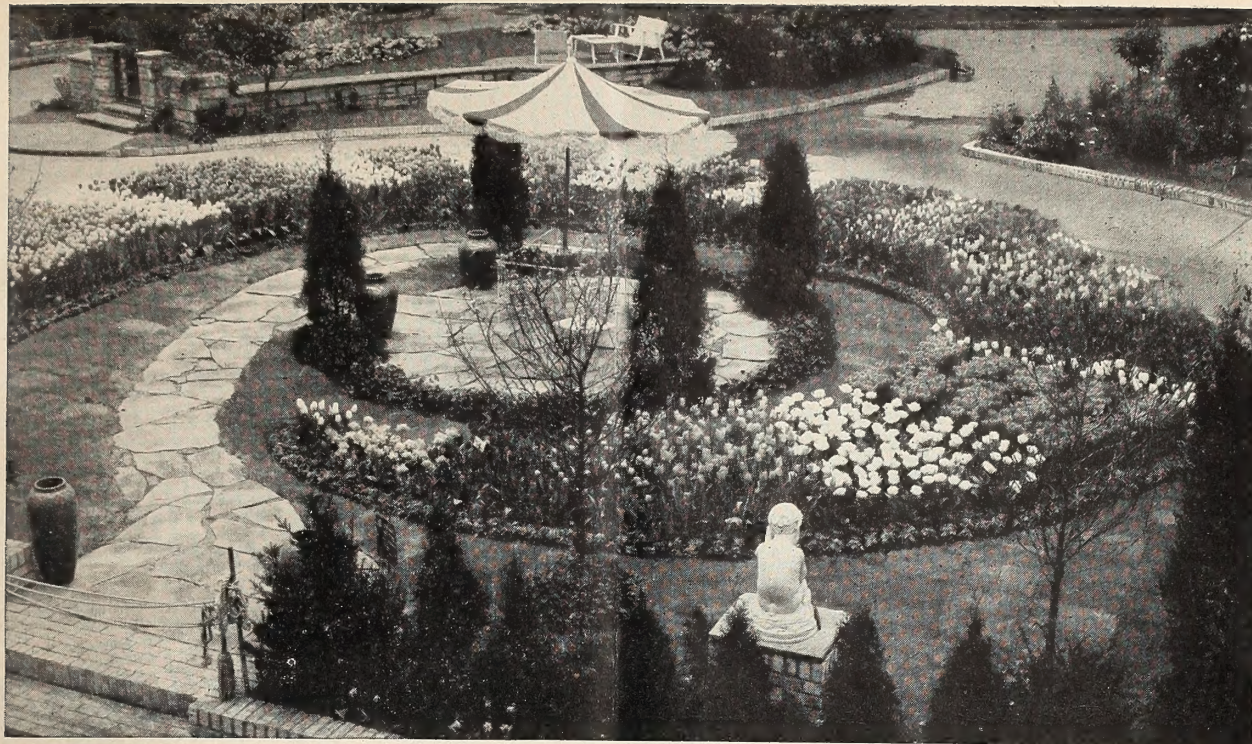
JUNALUSKA. 40 in. One of the most beautiful Iris in existence. S. rosy copper threaded with gold; F. brilliant copper-red. Huge flowers of perfect form and heavy substance. 40c; 3 for \$1.00.

MIDWEST GEM. 36 in. Very fragrant, unusual and beautiful with its large ruffled flowers of luminous apricot, flushed pink, on strong branching stalks. 60c; 3 for \$1.50.

ORMOHR. 40 in. The flowers are of gigantic size, the standards beautifully domed, the falls semi-flaring; substance excellent. The color is a soft gray-lavender veined violet with a rosy glow over all. 60c; 3 for \$1.50.

RED DOMINION. 40 in. S. clear lustrous deep red, slightly frilled, F. broad, horizontal, velvety red; nearly black. One of the most popular Iris grown. 40c; 3 for \$1.00.

TIFFANY. 36 in. A sensational plicata creation in creamy yellow gaily stitched in a burnished rosy bronze. Hardy, free blooming plants that will create a refreshing atmosphere in your garden. 50c; 3 for \$1.25.



VAUGHAN'S TULIP GARDEN AT NATIONAL FLOWER SHOW, 1947.

Vaughan's Tall, Late, Giant Tulips

ALL varieties of the tall, late-flowering giant tulips are likely to be grouped in popular language as "Darwin tulips". They are often sold that way, though among them there are several clans, each having definite family resemblances, of which the Darwin, Darwin hybrids, Cottage and Breeder are most numerous.

All these bloom about the same time, and harmonize perfectly in garden plantings. They can be selected by color, height, and form for use in the garden border without regard to their ancestry. The distinction between these various clans tends to become less definite, as they are interbred by growers seeking improved varieties. We continue to list each tulip clan separately, however, to aid you in identifying favorite varieties, and also to give additional descriptive information. For an interesting planting varieties of all types should be used.

Planning a tulip garden is made easy by the fact that you may count so surely upon each flower blooming as planned. The height, color and flowering season are all so dependable, it is a pleasure to plan a color effect and see it develop in the spring, just as planned.

Imports from Holland will constitute most of the bulbs available to Americans this fall. Of these we are one of the largest importers, and have purchased the cream of the crop.

Red Darwins

Darwin tulips are characterized by a soft overtone which gives their colors a pastel effect. The flowers are cup-shaped and carried on tall, stiff stems. In color range they include all the rainbow hues, in amazing variety. Yellow, which long was missing from the Darwins, is now represented by several fine varieties; and new varieties include splendid giant whites.

Included in the variety lists on this and the following pages are many newly introduced varieties which show improvement in color, height, size or in some other important respect. But we retain the best of the old varieties, many of which may never be surpassed.

Bartigon. (22 in.) Large flowers of fiery crimson with bright scarlet margin. One of the best of its color. Doz., \$1.35; 100, \$9.00.

Charles Needham. (28 in.) Large, glowing vermilion-red, extra novelty. Doz. \$1.60; 100, \$11.50.

City of Haarlem. (27 in.) Considered by many to be the finest red Darwin. It can always be depended upon to make an excellent show, with its immense cups of cardinal red, shading to scarlet at edges. Doz., \$1.60; 100, \$11.50.

(Illustrated in Color on Inside Front Cover)

All America
Collection

100 GIANT \$ 1.00
TULIPS

Ten each of the following outstanding varieties. (100 bulbs) will be sent postpaid for \$11.00.

Don Pedro. Coffee-brown, fragrant.

Eclipse. Rich dark red.

Gloria Swanson. Crimson red.

King George V. Brilliant rose.

La Tulip Noire. Black-purple.

Mrs. John T. Scheepers. Clear chrome yellow.

Niphetos. Light lemon yellow.

Princess Elizabeth, largest pink.

Mount Erebus. White.

The Bishop. Deep violet.

This collection of 100 bulbs of wonderfully blended colors will provide your garden with a display of which you may well be proud.

DARWIN, Red—Continued

Eclipse. (27 in.) Rich, glowing dark red, with a blue base circled by white. A giant tulip of good form on a tall, strong stem, which does not easily snap in stormy weather. Doz., \$1.60; 100, \$11.50.

Farncombe Sanders. (25 in.) Fiery rose scarlet with white center marked blue; flowers perfectly shaped. Doz., \$1.45; 100, \$10.00.

Gloria Swanson. (32 in.) An enormous crimson-red, with bluish base. Very strong stem, flower has great lasting qualities. This is really a giant in the garden, also an excellent early forcing variety. Doz., \$1.45; 100, \$10.00.

Margaux. (30 in.) Tremendous flower, deep shade blue base, carried on a strong stiff stem. Rich and intriguing. Doz., \$1.55; 100, \$11.00.

President Taft. (27 in.) (Sealing Wax.) Deep crimson-maroon, superb for border and one of the most beautiful varieties for late forcing. Doz., \$1.60; 100, \$11.75.

(Illustrated in Color on Front Cover)

Pride of Haarlem. (28 in.) Vivid rose. An old standby that is deserving of a place in the best gardens. Unsurpassable for fine coloring, reliable performance and enormous flower. Doz., \$1.50; 100, \$10.00.

Red Pitt. (24 in.) Bright scarlet form of Wm. Pitt. Excellent for forcing as well as for bedding. Doz., \$1.55; 100, \$11.00.

Scarlet Beauty. (28 in.) Beautiful fiery scarlet, one of the best Darwin Tulips for outside planting, possessing a straight, strong stem and a flower that lasts long. Doz., \$1.60; 100, \$11.50.

Utopia. (26 in.) Brilliant cherry-red. One of loveliest new Darwin Tulips for forcing. Far better than Wm. Pitt. A good garden variety. Doz., \$1.55; 100, \$11.00.

Pink and Rose Darwins

Afterglow. (26 in.) All the splendor of a glorious sunset is suggested by this wonderful tulip with its deep orange tints suffused with salmon, and edged apricot orange. Tall, stately grower. Doz., \$1.60; 100, \$11.50.

Aristocrat. (30 in.) This is a magnificent garden tulip of recent introduction, very tall with very large carmine Rose lighter edge flowers, truly an aristocrat among tulips. Doz., \$1.80; 100, \$13.00.

Clara Butt. (20 in.) Newer and larger pinks may be found, but Clara Butt remains a favorite. It is a true pink, wholly free from lavender, a rare color and a charming flower. Doz., \$1.55; 100, \$11.00.

Darwin Tulips



White Darwin Tulips Interp'anted with Forget-Me-Not, in a Glencoe, Ill., Garden



DARWIN TULIPS IN THE FORMAL GARDEN
PINK AND ROSE—Continued

King George V. (28 in.) An immense flower of brilliant rose with a light blue base. The color is dazzling in its brilliance, and this is without doubt one of the finest and most beautifully formed Darwins. Doz., \$1.60; 100, \$11.50.

Mr. Van Zyl. (30 in.) Glorious dark rosy pink with a border somewhat paler. A new Darwin Tulip very much admired in our Trials on account of its striking color, large size, and excellent texture. Doz., \$1.60; 100, \$11.50.

Philip Snowden. (25 in.) Delicate rose, very large flower. Doz., \$1.35; 100, \$9.00.

Princess Elizabeth. (26 in.) (Syn. Julie Vinot.) Large flower; soft rich rose toning to silvery rose at edges. Inside deep rose, white base. One of the largest and finest pinks. Doz., \$1.45; 100, \$10.00. (Illustrated in Color on Inside Front Cover)

Princess Mary. (28 in.) Bright carmine-rose with margin of rose-pink; inside clear carmine-rose with blue base and white halo. One of the largest flowers in this color. Doz., \$1.60; 100, \$11.50.

Pride of Zwanenburg. (29 in.) Rose-pink, flushed salmon, inside light red, very large flower of strong texture on strong stem. Doz., \$1.60; 100, \$11.50.

Prunus. (25 in.) A delightful rose-pink with salmon glow well formed flower on a strong stiff stem. Very fine for bedding or late forcing. Doz., \$1.40; 100, \$9.50.

Queen of Hearts. (28 in.) (Formerly Apple Blossom) A beautiful soft rose sport of the old standby Farncombe Sanders, with steel blue anthers and pure white base. The flower is enormous with a rich texture, the stem is tall and straight, yet graceful. Doz., \$1.60; 100, \$11.50.

Rose Copeland. (27 in.) A very fine lilac-rose can also be forced. Doz., \$1.35; 100, \$9.00.

Venus. (32 in.) One of the most wonderful tulips of recent introduction. The large flower is of exquisite rose, with a white center slightly edged light blue. The entire flower bares a beautiful silvery sheen. The stem is always long and strong, making it a grand exhibition variety. Doz., \$1.60; 100, \$11.75.

(Illustrated in Color on Front Cover)

Lacinated Darwin

Sundew. (25 in.) This flower is something entirely new in tulips. The curved petals are provided with barbs, giving the edges of the flower a fringed effect. It is said to be a natural sport of the popular variety Bartigon, retaining the brilliant crimson coloring and magnificent size of its parent. Doz., \$1.60; 100, \$11.50.



Mixture of Darwin Tulips

Vaughan's Special, made up by ourselves from best varieties, First size, 25 for \$2.75; 50 for \$5.00; 100 for \$10.00.



Violet, Black and Purple

Bleu Aimable. (26 in.) Bright violet-purple, with distinct steel blue shading, inside dark violet-purple, with blue base starred white; a very distinct and handsome tulip of large size and shapely form. Doz., \$1.60; 100, \$11.50.

Blue Eagle. (29 in.) (Black Eagle.) Extra large cup-shaped flowers of the richest and most intense deep but brilliant purple. Doz., \$1.70; 100, \$12.00.

Demeter. (28 in.) Of a warm, reddish purple, which glows like a ruby in the sun, the medium sized flowers of this variety provide a unique color-note for the border planting. Doz., \$1.80; 100, \$13.00.

Faust. (30 in.) Dark satiny purple with blue base, very large and well formed, good forcer. Doz., \$1.60; 100, \$11.75. (Illustrated in Color on Front Cover)

Greuze. (26 in.) Large cup shaped flower of bluish-violet. Very showy in the garden. Doz., \$1.45; 100, \$10.00.

Insurpassable. (27 in.) A mammoth lilac of great substance carried on a tall, strong stem. One of the best of this color for the garden or for early February forcing. Doz., \$1.70; 100, \$12.00.

Jubilee. (28 in.) A magnificent blue-purple tulip. The flower is beautifully formed, deep rich bluish-violet. A flower of great beauty and long keeping qualities. Doz., \$1.60; 100, \$11.75.

La Tulipe Noire. (25 in.) Nearest of all to the black color. Doz., \$1.60; 100, \$11.75.

Rev. H. Ewbank. (25 in.) An exquisite shade of soft lavender-violet, slightly shaded silver-gray. A variety of great merit on account of its lovely color. Doz., \$1.55; 100, \$11.00.

Scotch Lassie. (29 in.) Of purest deep lavender with darker shade inside and dark blue base. Among the best lavenders in our collection. Doz., \$1.60; 100, \$11.75. (Illustrated in Color on Front Cover)

The Bishop. (29 in.) A magnificent flower of clear, deep violet, with a blue base circled by a white halo. A beautiful garden variety. Doz., \$1.60; 100, \$11.75.

William Copeland. (25 in.) (Sweet Lavender.) Outside this variety produces flowers of fine rosy lilac, but is at its best when grown indoors during the winter. When forced indoors the flowers are the purest lavender of all tulips. Doz., \$1.35; 100, \$9.00.

White and Blush

Glacier. (28 in.) A giant white with white base and anthers, oval shaped with substantial petals. Does not open as wide as most Tulips do when placed in warm room. We do not know of another tulip of its size and with same lasting qualities. Doz., \$1.70; 100, \$12.00. (Illustrated in Color on Inside Front Cover.)

White City. (28 in.) Pure white with black anthers. Large and strong flower, carried on a stiff, straight stem. Recommended for bedding purposes. Doz., \$1.60; 100, \$11.50.

Zwanenburg. (28 in.) Pure white with black anthers. Large flower, highly recommended for both bedding and forcing. Doz., \$1.45; 100, \$10.00.

Yellow Darwins

Golden Age. (29 in.) Among the many new yellow Darwins of recent introduction, this giant variety is quite the finest. It is a bright golden orange—distinctly a new shade in yellow Tulips—and a fine, strong grower with exquisitely shaped flowers. Doz., \$1.55; 100, \$11.00. (Illustrated in Color on Front Cover)

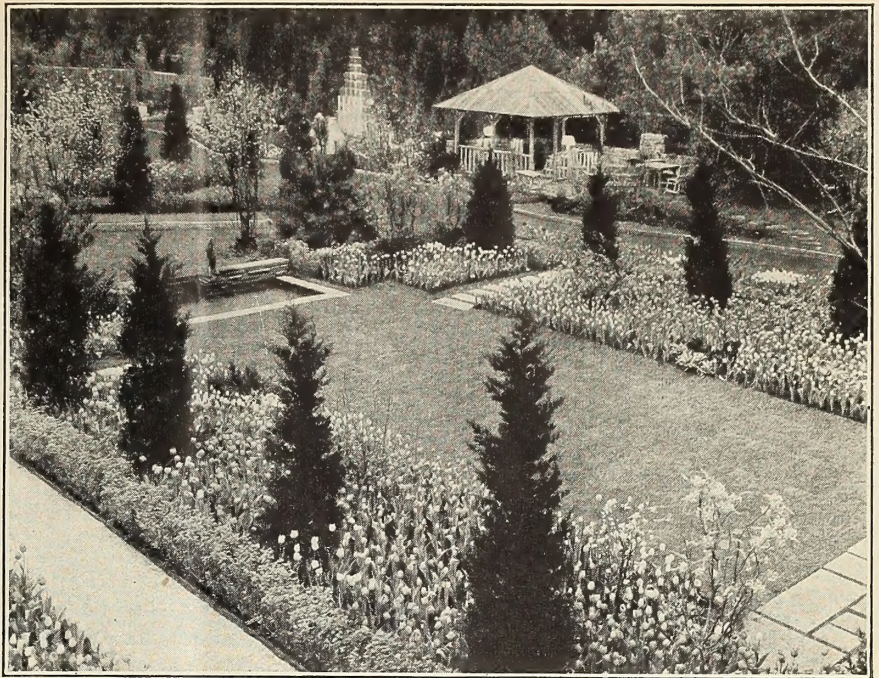
Niphotos. (30 in.) Light lemon yellow turning to creamy-white as flower ages; perfect form, well lasting. Doz., \$1.45; 100, \$10.00.

Yellow Giant. (29 in.) This was the first yellow of the Darwin clan to be introduced; and the flower has the true Darwin cup-shape. It is large, produced on tall, strong stems, and completes the color balance in Darwin plantings. Doz., \$1.40; 100, \$9.50. (Illustrated in Color on Inside Front Cover)

All shipments of flowering bulbs ordered from this catalogue at dozen or less than dozen rates will be prepaid. Orders at 100 rate will be shipped by express, charges collect, except that special offers will be prepaid where it is so specified in the offer.



TULIP CLUSIANA (CANDY-STICK)



Tulips are Ideal for Formal Gardens Because of the Uniformity of Height and Season of Bloom

Species Tulips

For the Rock Garden and Hardy Plant Border.

The general characteristics of the various species, all of which are natives of Asia Minor and Central Asia, are bright colors and recurved petals.

Clusiana "Lady" or "Candystick" Tulip, Outer petals bright cherry red, inner petals creamy white, with violet base; small flower, but very distinct. It should be planted in light soil 6 or 9 inches deep, in the rock garden or among stones in the front of the herbaceous border. A warm and sheltered situation should be chosen, where it will prove to be a gem among early flowers. Flowering season late April, Height, 8 inches. Doz., \$1.35; 100, \$9.00.

Red Emperor. (Fosteriana) Fosteriana is a majestic tulip of great size; the dazzling scarlet flowers are borne upon stout stems, 18 inches and even as much as 24 inches high. Vermilion will perhaps best describe their intense and lovely color. Drainage must be perfect, and the sunniest place possible should be apportioned to it. It flowers in late April. Each, 20c; Doz., \$1.70; 100, \$12.00.

Darwin Hybrids

TRIUMPH STRAIN

NOT since the Darwin race was introduced, has so great an improvement been made in the tulip family, as in the new Triumph class. Here are early tulips—coming at a time when every bit of color in the garden is more precious because there is so little of it—with stems as tall flowers as large and colors even more brilliant than the Darwins. A hybrid of the Darwin and early singles, the Triumph tulips have a distinctive beauty of their own, and a clear luminous color quality which will make you treasure them. Two full weeks are added to the tall tulip season by planting these.

Alberio. (26 in.) Glossy cherry-red with very small yellow rim around petals. Large flower, good bedder. Doz., \$1.35; 100, \$9.00.

Corniforus. Brilliant red, base white, early forcer, one of the most outstanding triumphs, very large flower. Doz. \$1.35; 100, \$9.00.

Crater. Dark vermilion-red, edging lighter, good forcer. Doz., \$1.35; 100, \$9.00.

Elisabeth Evers. Rose with pure white base. Doz., \$1.45; 100, \$10.00.

Kansas. Pure white. Doz., \$1.45; 100, \$10.00.

Telescopium. (23 in.) Violet rose, strong flower on stiff stem. Doz., \$1.45; 100, \$10.00.

Ursa Minor. (17 in.) Deep golden yellow. Doz., \$1.45; 100, \$10.00.

Cottage Tulips

COTTAGE tulips are rapidly losing their uniformity in shape, characterized by egg-shaped blooms, with pointed, even reflexed petals; since they have been used extensively in hybridizing with other types. As a result of these crosses, this class now includes the largest of all tulips, the variety Advance; and many other newer varieties which have the typical cup-shaped form of the Darwin and Breeder types, combined with the brilliant

clear coloring, in which the Cottage type has always excelled. In general Cottage tulips blossom a few days later than the Darwins, and carry their flowering period into the early days of June, especially if planted in a shady position. But they harmonize perfectly with the Darwin and Breeder varieties, and supply a quality of clear, bright color which the others lack.

White and Red Hybrid

Ossi Oswald. (28 in.) One of the new hybrids uniting the brilliant color of the Cottage clan with the size and shape of the Darwin, this is a variety of extraordinary size and beauty. It is pure white, with a picotee edging of bright cherry red, and attracts instant attention and admiration. The flowers are of true Darwin shape, and have lasting quality when cut. Doz., \$1.70; 100 \$12.00.

Yellow Cottage

Belle Jaune. (30 in.) Fine deep yellow, a very large and long flower of excellent form. Doz., \$1.45; 100, \$10.00.

Golden Harvest. (28 in.) This is the largest yellow tulip that we offer and perhaps the largest of all yet developed. It blooms early and its flowers last through a long season, growing in size and beauty. Its color is a deep yellow with petals of great substance, borne on tall, stiff stems. We know of no yellow that equals it. Doz., \$1.40; 100, \$9.50.

(Illustrated in Color on Inside Front Cover).

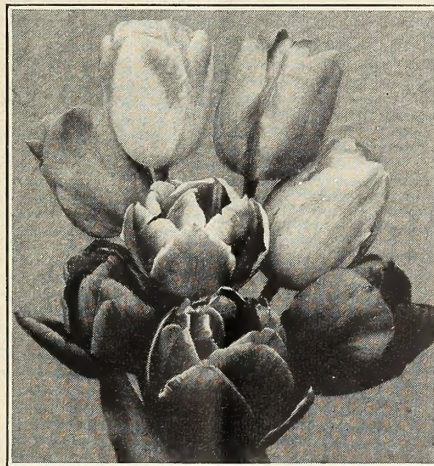
Inglescombe Yellow. (18 in.) A fine large, cup-shaped flower, color full rich yellow. Doz., \$1.45; 100, \$10.00.

Moonlight. (20 in.) Long, narrow flower of beautiful pale yellow. Opens two or three days sooner than most yellow Cottage tulips. Doz., \$1.60; 100, \$11.50.

Mrs. Moon. (26 in.) This is one of the finest late yellow tulips in existence. The blooms are long and pointed, outer petals reflexed. Distinctly perfumed. Doz., \$1.60; 100, \$11.50.

Mother's Day (Lemon Queen) (25 in.) The yellow coloring of this variety is of exactly the tone which harmonizes delightfully with pink and red as well as lavender. Doz., \$1.35; 100, \$9.00.

Mrs. John T. Scheepers. (30 in.) Clear chrome-yellow erect, tall stem. Enormous oblong flower. One of the largest of yellow tulips. Doz., \$1.45; 100, \$10.00.



EARLY DARWIN HYBRIDS

MIXTURE
Cottage Tulips
Vaughan's Special

AN excellent collection of named varieties, giving a dazzling display in mass. Splendid for cutting. Doz., \$1.40; per 100, \$10.00.



TULIP ADVANCE, LARGEST OF ALL



A TULIP BORDER WITH PANSIES IN THE FOREGROUND

COTTAGE TULIPS—Continued

Red and Orange, Cottage

Advance. (28 in.) This is the largest of all tulips, equal in size to Mayflower and of the same color, but with a strong stem which holds the huge flower upright. It is an orange scarlet, with black center, which grow more vivid in color and larger in size as the flower develops. As an exhibition flower it is not surpassed, and it is outstanding in any garden. Doz., \$1.45; 100, \$10.00.

Grenadier. (20 in.) Magnificent light orange. When the sun shines on a fully expanded flower of this variety the color is dazzling. Flower long, on graceful stem. Doz., \$1.55; 100, \$11.00.

Marshall Haig. (30 in.) Among the new Tulips this ranks supreme as being one of the finest brilliant self-red colors. A flower of magnificent size and texture and much admired on account of its brilliant tone. Doz., \$1.60; 100, \$11.50.

Mazeppa. (23 in.) Bright cocheneal-red, large white center. Novelty. Doz., \$1.70; 100, \$12.00.

Pink and Rose

Barbara Pratt. (32 in.) Rich light cochineal carmine, edges lilac-rose. A very beautiful tulip with slightly reflexed petals. Highly recommended. Doz., \$1.60; 100, \$11.50.

Dido. (26 in.) Superb in form, poised erect on a straight stem, and fragrant. It is a deep, rich pink with salmon lights, suffused and slightly edged orange. Doz., \$1.45; 100, \$10.00.

Marjorie Bowen. (24 in.) A very unusual combination of buff and salmon which passes to deep rose-pink with salmon shading. A charming blend. Doz., \$1.60; 100, \$11.50. (Illustrated in color on Inside Front Cover.)

Rosabella. (18 in.) This graceful tulip can be compared to the loveliness of a rosebud. Pure pink in color, it possesses great charm both as a cut flower and in the garden. Doz., \$1.60; 100, \$11.50.

White

Albino. (22 in.) A fine pure white, with large flower, which has rounded petals. It blooms early and last long in good condition, and is most effective in border grouping. It is a favorite with florists for early forcing. Doz., \$1.70; 100, \$12.00.

Carrara. (22 in.) Having rounded rather than pointed petals, this pure white variety is exceptionally large and resembles the Darwin type. It is not as early as Albino, and combines well with all types of tall, late tulips in border plantings. Doz., \$1.45; 100, \$10.00.

Mount Erebus. (30 in.) Creamy-white flower, clear base, sulphur anthers. Turning pure white with age. Doz., \$1.60; 100, \$11.50.

Breeder Tulips

FROM Breeder tulips, most of the tall, large flowered types have been developed. These were the "mother bulbs" of ancient Dutch breeders, grown not for their own rich beauty, but because among them would appear flowers of the striped and blotched coloring then esteemed so highly.

These stripes and blotches are now known to have been caused by a virus disease; and the Breeder tulips are valued for their own beauty. Among them are some of the tallest and largest varieties of all, and many colors rare among flowers—browns, bronzes, purples, dull gold and dark lilac, exquisitely blended. One of the most fragrant of all tulips is Don Pedro, a coffee-brown.

Alice Keith. (27 in.) Very bright orange-yellow edged golden with small olive green base. Large flower on strong stem. One of the finest Breeder Tulip for bedding. The flower becomes more beautiful as it ages. Doz., \$1.60; 100, \$11.50.

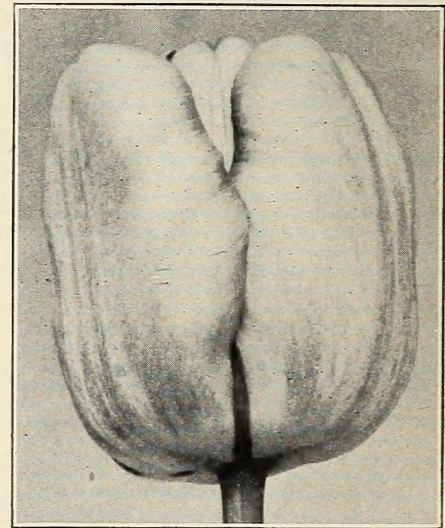
Bacchus. (28 in.) Though introduced over 300 years ago, it has no superior in clear, richness of color and beauty of form. The color is very similar to the purple of Concord grapes. Doz., \$1.60; 100, \$11.50.

Cherbourg. (30 in.) Undoubtedly one of the finest Breeder Tulips. A deep tone of golden yellow, with a suffusion of terra cotta, the deeper tone of yellow growing stronger toward the edges of the petals. Doz., \$1.60; 100, \$11.50.

Dillenburg. (27 in.) A glorious salmon orange, shaded rose. The flowers are large and borne on strong, stiff stems. Highly recommended for exhibition purposes but should not be used for early forcing. Doz., \$1.55; 100, \$11.00. (Illustrated in Color on Front Cover)

Don Pedro. (27 in.) A beautiful shade of coffee-brown, shaded maroon, inside rich mahogany. It is one of the few fragrant tulips, with a strong but delightful odor that perfumes the garden. Doz., \$1.70; 100, \$12.00.

Louis XIV. (36 in.) Considered by many good judges to be the finest of all tulips. Others may match it in height, in size, or in rich coloring; but a rival which equals it in all these qualities is yet to appear. In the garden it is always magnificent, and as a cut flower its rich blend of purple and gold is truly royal. Doz., \$1.60; 100, \$11.50. (Illustrated in Color on Inside Front Cover)



TULIP DON PEDRO, MOST FRAGRANT

Indian Chief. (38 in.) The flower is enormous, very widely opened and squarely built. The flower is mahogany red in color, the petals are of very heavy texture, the stem extremely heavy and straight as a ramrod. A magnificent flower of richest coloring. Doz., \$1.60; 100, \$11.50.

Lucifer. (28 in.) Most beautiful of the orange-red tulips. Very late flowering, tall stem, and very brilliant color. Good form and excellent substance. Doz., \$1.70; 100, \$12.00.

Panorama. (24 in.) (Fairy) Rich deep red of beautiful form, strong stem and good substance. Excellent cut flower. Doz., \$1.60; 100, \$11.50.

Prince of Orange. (25 in.) Orange-scarlet, edged light yellow flower of striking beauty. Doz., \$1.60; 100, \$11.50.

All shipments of flowering bulbs ordered from this catalogue at dozen or less than dozen rates will be prepaid.

Orders at 100 rate will be shipped by express, charges collect, except that special offers will be prepaid where it is so specified in the offer.

Vaughan's Special Mixture of Breeder Tulips

An excellent collection of this popular class of Tulips, including many rare colors. Doz., \$1.60; per 100, \$11.75.

New Late Double

MANY new varieties have been developed in the late flowering double tulips. Blossoming at the same time with the Darwin, Cottage and Breeder types, they have much longer stems and larger flowers than the early doubles, and give stunning effects in beds, or as border accents

Coxa. (21 in.) Carmine-red. Vermilion edged very small white border. Large flower. Very fine for border planting. Doz., \$1.45; 100, \$10.00.

Eros. (20 in.) The large double flowers are of a deep true pink with silvery high-lights. Its double flowers, borne on tall, strong stems, are compared to peonies by all who see them, but we do not know any peony which has its lovely coloring. A group planted in any garden will be arouse admiration. Doz., \$1.45; 100, \$10.00.

(Illustrated in Color on Inside Back Cover)

Livingstone. (20 in.) Large flower of bright cherry-pink, good strong stem, very fine for bedding and lovely when forced in February. Doz., \$1.70; 100, \$12.00.

Mount Tacoma. (24 in.) A magnificent giant double white Tulip which reminds one of a peony in full bloom; superb for beds. Doz., \$1.60; 100, \$11.50.

(Illustrated in Color on Inside Back Cover)

Uncle Tom. (21 in.) A very beautiful Tulip with large full-double flowers of a uniform deep glossy maroon-red color, really a distinct shade in Tulips. Doz., \$1.70; 100, \$12.00.

Parrot Tulips

THEIR fringed and corrugated petals make these the most curious of all tulips. Flowering at the same time as other late sorts, the flowers are thick-petaled with extra long stems, and keep extremely well after being cut. The average height is 15 inches.

FANTASY

A remarkable Parrot Tulip with a straight, strong stem, a quality which has always been lacking in Parrot tulips. This variety is a sport of the well-known Darwin tulip, Clara Butt, and has the same clear pink color as its parent, combined with artistic form of a Parrot tulip. Each petal is over three inches long, and two inches across. The center of the petals on the outside are marked emerald green. Each, 20c; Doz., \$1.60; 100, \$11.50. (Illustrated on Inside Back Cover).

New Named Varieties

Blue Parrot. Petals bright purple blue, Parrot of Darwin Blue Aimable, strong stem. Each 20c; Doz., \$1.55; 100, \$11.00.

Orange Favorite. Glistening deep orange shaded rose inside deep orange-scarlet with yellow base, sweet scented flower of great size and brilliant coloring. Each, 20c; Doz., \$2.00; 100, \$15.00.

Red Champion. Parrot of Darwin Bartigon borne on strong stem, deep red color. Each 25c; Doz., \$2.50; 100, \$18.00.

(Illustrated in Color on Inside Back Cover).

Sunshine. Pure butter yellow. Parrot of Cottage Bouton d'Or. Each, 30c; Doz., \$2.75; 100, \$20.00.

There. A sport of Darwin Tulip Farncombe Sanders, it has retained the many good qualities of this so-popular variety. The very large flower is of subdued scarlet color with the inside of the petals a lighter but brilliant rosy red. Each, 25c; Doz., \$2.20; 100, \$16.00.

Violet Queen. Sport from Opal Queen, violet. Each 20c; Doz., \$1.70; 100, \$12.00.

(Illustrated in Color on Inside Back Cover)

Standard Types

Lutea Major. Bright yellow; large. Doz., \$1.45; 100, \$10.00.

Markgrave. Yellow, striped scarlet and green. Doz., \$1.45; 100, \$10.00.

Couleur Cafe. Brown and yellow. Doz., \$1.45; 100, \$10.00.

Cramoisie Brilliant. Deep crimson with large dark center. Doz., \$1.45; 100, \$10.00.



TYPICAL BED OF SINGLE EARLY TULIPS

Early Bedding Tulips

BRED for use in formal beds, early tulips of each variety grow to the same height, and blossom at the same time. Once most popular of all types, they promise to return to favor, for planting in front of broad, low houses of modern design. A circular or oblong bed of early tulips, of one color, or two harmonizing colors, will present an enchanting view from your picture window next April.

Explanatory. The number following the name of the variety denotes the height in inches, while the (a) and (b) indicate their earliness of bloom—the (a's) flower together and are earliest; the (b's) flower together, but somewhat later.

Early Single

Couleur Cardinal. 8a. As its name denotes this variety possesses the brilliant red coloring called Cardinal. Immense blooms of good cup form open later. Doz., \$1.50; 100, \$10.50.

Fred Moore. 10b. Beautiful, large orange scarlet flowers with lighter. Doz., \$1.40; 100 \$9.50.

General DeWet. 10a. Beautiful deep orange, shaded golden yellow at the base of the petals. A very fragrant flower and one of the finest varieties in cultivation. There is no other orange variety which equals it in brilliancy. It is therefore one of the showiest bedders, and as it forces splendidly we can recommend it for all purposes. Doz., \$1.50; 100, \$10.50.

(Illustrated in Color on Inside Front Cover)

Keizerskroon. 10b. This is one of the oldest, as it is, assuredly, one of the best early varieties. The huge flower is bright red, nearly scarlet, edged with yellow; the margin is broad and clearly defined, the flower is seen and recognized from afar. It is a strong, healthy grower, and a bed of it will bring into the early spring garden some of the color and joy for which we will have longed for many months. Doz., \$1.70; 100, \$12.00.

(Illustrated in Color on Inside Front Cover)

Pink Beauty. 12b. Bright rose-pink shading to blush-white. Doz., \$1.60; 100, \$11.50.

Rose Luisante. 7b Brilliant deep pink Doz., \$1.50; 100, \$10.50.

Rising Sun. 8a. The brilliance of its namesake is seen in the golden beauty of this magnificent tulip. Large, of good form, and sturdy growth, it is an ideal tulip for bedding and border. Doz., \$1.50; 100, \$10.50.

Sunburst. 12a. Yellow, flushed with red. A beautiful tulip for bedding or forcing. Doz., \$1.45; 100, \$10.00.

White Hawk. 8a. Pure white. Doz., \$1.45; 100, \$10.00.

Early Double

Couronne d'Or (Crown of Gold) 10a. Beautiful rich, golden yellow, flushed orange. Doz., \$1.60; 100, \$11.50.

Electra. 8b. Magnificent, enormous flower; beautiful rose, feathered violet; a handsome novelty, unexcelled for exhibition purposes. Doz., \$1.45; 100, \$10.00.

Mr. Van der Hoef. 12a. Yellow sport of superb qualities. One of the very finest of the primrose-yellow double tulips. Doz., \$1.45; 100, \$10.00.

Orange Nassau. 10b. Bright orange-scarlet with a margin of orange. Outer petals shaded cherry-red. Doz., \$1.50; 100, \$10.50.

Peach Blossom. 8a. Deep rosy pink, deepening with age to a deep rose. A very fine flower with a wonderful color. A new variety of superb quality. Doz., \$1.45; 100, \$10.00.

Rubra Maxima. 8b Dazzling scarlet. Doz., \$1.45; 100, \$10.00.

Schoonoord (White Murillo). 12b. Pure white. Doz., \$1.45; 100, \$10.00.

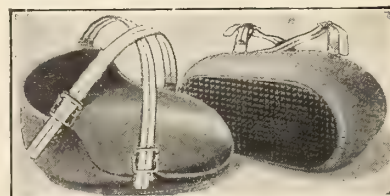
Toreador. 8a. Reddish orange and yellow. Doz., \$1.60; 100, \$11.50.

Triumphator. 9b. Magnificent bright pink, the best of the several sports of the popular "Murillo." It is an improvement upon the variety "Peach Blossom" which has long been recognized as one of the best double pink tulips. It is more double, the color is much softer, and the form better. Doz., \$1.50; 100, \$10.50.

Vuurbaak. 9b. Bright scarlet, suffused orange. Doz., \$1.50; 100, \$10.50.

For Knee Comfort

Knee Pads, \$2.10, prepaid \$2.25



All rubber cushion pads constructed of solid and sponge rubber with adjustable straps; fit any knee, will not slip down. A gift any dirt gardner will welcome

2,4D FOR FALL SPRAYING

Tests have shown good results in preventing the germination of weed seed in spring lawns have followed spraying with 2,4D in the fall. Weedone, a liquid which is diluted with water and sprayed on the lawn is excellent for this purpose. It does not irritate the skin, or corrode spraying equipment. Leaves no residue on plants which is harmful to live stock and does not make the soil sterile.

	WEEDONE	Prepaid Price
6 ft. oz.	1,000 sq. ft.	\$0 75
1 qt.	5,000 sq. ft.	2 50
1 gal.	20,000 sq. ft.	7 50
5 gals.	100,000 sq. ft.	\$30 by express collect.

Hyacinths



HYACINTH
GRAND
MAITRE

HYACINTHS contribute to the spring garden fragrance as well as colors which at that time no other flowers can give so well. Indeed, it is doubtful whether at any time of the garden year lovelier true pinks and blues can be found than those which hyacinths provide.

They serve to border paths, near all garden architecture, including ornaments such as bird baths, pools and fountains, and groups of hyacinths may well be worked into the border planting, where they will provide a needed color foil or accent.

For garden planting, it is not necessary to use the largest forcing sizes. Bulbs of third and bedding sizes will do well. Take especial care to plant them in well drained soil, and if there is any doubt, elevate the bed a few inches to keep them above water. Plant bulbs six inches deep, and after the ground has frozen a light mulch to keep the frost in, will benefit.

Due to a short crop in Holland please allow us to substitute varieties. They will all be good varieties.

RED AND ROSE

- Gertrude.**—Rose-Pink, one of the best pot varieties
Jan Bos.—Scarlet early forcer.
La Victoire.—Brilliant red.
Pink Pearl.—Rosy pink.
Queen of Pinks.—Rose, pink, choice.

WHITE

Arentine Arendsen.—Pure white, large bells, splendid spike, best for outdoor planting.

L'Innocence.—Pure white, best for growing in pots indoors

YELLOW

City of Haarlem.—Golden Yellow.

BLUE

Bismarck.—Lavender.

Grand Maitre.—Dark porcelain blue.

King of Blues.—Very dark blue.

Queen of Blues.—Very light blue.

	Each	Doz.	100
Mammoth Bulbs. (19 Ctm.)	\$0.50	\$4.75	\$35.00
First Size (18-19 Ctm.)	.40	4.00	29.00
Second Size (17-18 Ctm.)	.35	3.50	24.00
Third Size (16-17 Ctm.)	.30	3.00	20.00
Bedding Size (15-16 Ctm.)	.25	2.50	17.00

Above prices are for your selection of named varieties.



DUTCH ROMAN HYACINTHS

Hyacinths in Pots

For Winter Blooming

LIGHT, rich soil produces the best flowers. Place each bulb one inch deep, an inch and one-half from each other bulb or edge of pot. Water well, and set away in a dark, cool cellar, or an outdoor pit which is well drained. If outside, cover with three or four inches of sand or ashes. Let them remain there for eight or ten weeks to root, then bring them into a warm room, but keep them in the dark (cover the pot with a paper bag, cloth, etc.). Then when the flower spike is three or four inches out of the bulb, they may be exposed to the light, and will open beautifully.

Exhibition Hyacinths (Mammoth Bulbs)

These are the bulbs 19 centimeters and over listed in the center column on this page. They are not recommended for outdoor planting but should be used for forcing in glasses, or in pots or pans. We have arranged with one of our Dutch growers to select these bulbs for their ability to give huge spikes of flowers, suitable for flower shows, or for striking decorative effects.

Dutch Roman or Miniature Hyacinths

These are small bulbs of the varieties listed in the first column on this page, and they are excellent for growing by amateurs in pots, pans, bowls or window boxes. They give flower spikes much larger than would be expected from their size, which is from 14 to 15 centimeters in circumference. Your selection of named varieties, chosen from the list in first column. Each, 20c; doz., \$2.00; 100, \$15.00.



ENGLISH IRIS

Hardy Bulbous Garden Iris

ADMIRERS of the iris will find this group to be valuable additions to their collections. Flowering in late June and early July, they follow the bearded and Siberian irises, prolonging the display and producing flowers of a distinct type and quality of coloring. The colors are clear and brilliant, and the petals are delicate, but of excellent substance. They make quality cut flowers, lasting fully a week in water.

Bulbs should be dug each year after foliage has turned brown. They should be cured quickly in a dry location, and only the largest bulbs should be replanted for flowering.

Iris Tingitana Wedgewood

For indoor use and protected plantings. The amateur should plant his bulbs, six or eight according to size, in a seven- or eight-inch pot. They must be kept cool, 45 degrees or so, until the buds are out of the neck. A great cut flower. Light blue in color. 8-9 ctm. for outdoor planting. Doz., 90c; 100, \$6.00; 1000, \$55.00. 10 ctm. up for indoor growing, doz., \$2.00; 100, \$15.00; 1,000, \$140.00.

English Iris

These thrive in any ordinary garden soil but prefer a good loam. The earlier the planting, after beginning of September, the greater the success; the bulbs should be planted 4 inches deep. They flower from end of June to beginning of July.

KING OF THE BLUES. Dark blue
LAMARTINE. White, carmine rosy flakes.
LUCINDA. Porcelain blue, flaked darker.
IDEAL. Pale mauve.
PRINCE ALBERT. Delicate silvery blue.
MONT BLANC. Pure white.
PURPLE KING. Deep purple.
QUEEN OF THE BLUES. Light blue.
 Each, 20c; doz., \$2.00; 100, \$15.00.

Iris Reticulata

Fragrant Iris—Hardy with Protection
RETICULATA. This may be forced into bloom in the house with ease. Six or eight bulbs put into a 4- or 5-inch pot when received will bloom about Christmas time. The fragrant blossoms remind one of a bunch of fresh violets. Perfectly hardy with reasonable protection. It is one of the loveliest early flowering bulbs for the rockery. To show it off well, plant a number of bulbs under the white Arabis Alpina. Each, 15c; doz., \$1.10; 100, \$7.50.

Dutch Iris (Bulbous)

For Outdoor Planting Only
 (Require some protection in northern states.)
IMPERATOR. Rich dark blue. Very large. Doz., 65c; 100, \$4.50.
D. HARING. Rich snow-white. Doz., 95c; 100, \$6.50.
YELLOW QUEEN. Soft clear yellow. Doz., 75c; 100, \$5.00.
DUTCH IRIS MIXED. Doz., 60c; 100, \$4.00.

Bulbs You Can Flower Indoors

Lilies of the Valley

Ready to Ship November and December.

We can again offer imported lily of the valley pips prepared for forcing into flower in bowls. These beautiful, fragrant flowers may be brought to flower in 18 to 21 days, if pips from cold storage are used. They are easily forced in a bowl, if planted in sphagnum moss and kept well watered. Their dainty fragrance is preferred by many to the large Paper White Narcissi, and they are much quicker to flower. Do not order more than you intend to use at once as the cold storage pips will not keep. Plant about 25 pips in a 7-inch bowl, place in a warm temperature, 65 degrees Fahrenheit and shade from light until leaves and spikes are well developed, then admit light gradually. Increase temperature to 75 degrees or 80 degrees if possible. An inverted pot over each bowl answers admirably to shade them. They may be forced in soil the same way, in a 7-inch pot or pan. This is the treatment for cold storage pips only.

COLD STORAGE PIPS. 12 for \$2.50; 25 for \$5.00, postpaid.

SPHAGNUM MOSS, sufficient for 25 pips, 15c, postpaid



Lily of the Valley Grown in Sphagnum Moss



PAPER WHITE NARCISSI GROWING IN GRAVEL AND WATER

Calla Lilies

REHMANNII, Superba. Ready in November. The rare Pink Calla Lily. Rather dwarfier and smaller flowered than the White Calla, but of alluring coloring, palest blush to pure rose. Each, 45c; doz., \$4.50.

WHITE, Ready Now. A well-known plant of easy culture for winter bloom, and makes a handsome house or window plant. To aid profuse blooming keep dormant from the middle of June until the last of September; pot on receipt in good, rich soil, using 6 to 8-inch pot, give light and heat in abundance. Both foliage and flowers are attractive in this desirable winter bloomer.

First Size (1 1/4 to 1 1/2 in.)... Each, 25c; doz., \$2.50; 100, \$18.00.

Select Size (1 1/2 to 1 3/4 in.)... Each, 45c; doz., \$4.50; 100, \$30.00.

Mammoth (1 3/4 to 2 in.)... Each, 55c; doz., \$5.50; 100, \$40.00.

Jumbo (2 in. and over).... Each, 75c; doz., \$7.50; 100, \$50.00.

Calla Golden Yellow Elliottiana

Ready in November

New and beautiful variety; same habit of growth as ordinary white Calla; flowers same size and shape, rich, clear, lustrous golden yellow; foliage dark green, with translucent creamy spots, strong bulbs.

First Size (2 to 2 1/2 in.).... Each, 35c; doz., \$3.50; 100, \$25.00.

Mammoth (2 1/2 to 3 in.).... Each, 60c; doz., \$6.00; 100, \$45.00.

Jumbo (3 in. and up).... Each, 90c; doz., \$9.00; 100, \$65.00.

Oxalis

For Indoor Planting Only

Most of these Oxalis flower from October until Christmas, and later. Easily grown, requiring only a good, somewhat peaty soil.

BERMUDA BUTTERCUP. Doz., 60c; 100, \$4.00; 1,000, \$35.00.

GRAND DUCHESS. Lavender and pink. Doz., 60c; 100, \$4.00; 1,000, \$35.00.

HIRTA. Deep pink, very fine for hanging baskets. Doz., 60c; 100, \$4.00; 1,000, \$35.00.

Ixias

The Ixia colors are rich, the center always differing in color from the petals. Very desirable for pots. If planted outside be sure to cover with straw or leaves.

Mixed. Doz., 80c; 100, \$5.50; 1,000, \$50.00.

Amaryllis

(Illustrated in Color on Inside Back Cover)

OUR strain of giant flowered amaryllis rich in brilliant red, and lovely white flowers, with many in which the white ground is vividly marked with contrasting tones of red, pink and salmon. In size, this strain has never been surpassed.

Of all bulbs which the amateur can grow successfully indoors, the Amaryllis is the largest, most beautiful, surest to flower and most easily handled. Our new hybrids, especially are so gorgeous in size and coloring as to amaze those not familiar with them.

Place only one bulb in each pot, covering it as far as the neck or upper narrow part. Water sparingly at first until the flower shoots begin to appear. Some growers keep them in the dark until the flower stems are four or five inches long, and then bring to light.

After flowering they should be placed in a warm window, or set outside in sand or cinders and watered every day (sometimes twice a day), until the end of August when water should be gradually withheld and the bulbs allowed to go to rest. In the fall they can be forced again as with new bulbs.

MIXED. Flowers are immense, in an amazing range of color blends, splashed and striped in a manner not seen in other strains.

	Each	Doz.	100
2 1/4 - 2 1/2 in. Dia.....	\$0.45	\$4.50	\$30.00
2 1/2 - 2 3/4 in. Dia.....	.60	6.00	45.00
2 3/4 - 3 in. Dia.....	.75	7.50	55.00
3 - 3 1/4 in. and up Dia.....	.90	9.00	65.00

Lachenalias

For Indoor Growing

Lachenalias are useful as pot plants because of their bright flowers and interesting foliage.

Culture. Plant six or seven bulbs in a five or six inch pot with cool culture similar to freesias produce blossoms during late February and March. They do not need support.

AUREA. The flowers are pendulous long bells forming a loose spike up to one foot high. The young flower spike is usually red toned and the deep golden blossoms often have red margined petals. Blooms in late January and February. As a cut flower it normally lasts two weeks in the house. Three Bulbs for 50c; Doz., \$1.75; 100, \$12.00.

Paper White Narcissi

THESE have been favorites for ages as a decoration for the living room during the coldest winter months when flowers are scarce. Their culture is simple, and with good strong bulbs such as we supply, flowering is sure. Plant bulbs in shallow bowls filled with pebbles, or fibre, and water. Keep in the dark until roots form (about 2 weeks) then bring into light. A day temperature of not over 70° is best.

Fancy selected bulbs (13 ctm.). Three bulbs for 30c; Dozen, \$1.10; 100, \$7.50; 1,000, \$70.00.

Mammoth bulbs (14 ctm.). Three bulbs for 40c; Dozen, \$1.35; 100, \$9.00; 1,000, \$80.00.

Jumbo bulbs (15 ctm.). Three bulbs for 45c; Dozen, \$1.55; 100, \$11.00; 1,000, \$100.00.

The Yellow Paper White (Grand Soleil D'or)

A larger, stronger scented form of the Paper White Narcissus colored a beautiful golden yellow with a darker cup.

Mammoth bulbs. Per three, 40c; dozen, \$1.50; 100, \$10.00.

Chinese Sacred Lily (Narcissus)

THIS narcissus is called by the Chinese the "Joss Flower." The flowers are white, with yellow cup, and very fragrant. Each bulb produces several flower-spikes. Plant like Paper White Narcissi in bowl of bulb fibre, or pebbles and water. Avoid dry, hot rooms. A kitchen window may be best until flowers come. Recommended for Christmas flowering.

Large bulbs. Three for 40c; per dozen, \$1.35; 100, \$9.00.

Leucocoryne (Glory of the Sun)

Flowers exquisite light blue on tall, wiry stems and of very long-lasting quality with faint heliotrope fragrance. For indoor culture except in warm states. Three bulbs for 50c; doz., \$1.60; 100, \$11.00.



Daffodils or Narcissi



GIANT
TRUMPET
ALL-WHITE
BEERSHEBA

Aerolite. A golden giant with flowers beautifully proportioned, perianth deep primrose, with a pure medium yellow trumpet left in bold relief by outer petals, an inch and a half wide; medium early, but one the longest lasting of all. Each, 30c; doz \$2.55; 100, \$18.00.

Beersheba. Finest all white. Large, perfectly flat perianth, trumpet long and beautifully flanged at mouth. A flower of great size, measuring nearly five inches across; a vigorous grower and a grand exhibition variety. Each, 40c; Doz., \$4.00; 100, \$30.00.

Dawson City. Broad overlapping perianth with long-formed deep golden yellow trumpet. Each, 25c; Doz., \$2.30; 100, \$16.00.

Emperor. A magnificent sort. The entire flower is a rich yellow trumpet of immense size and petals so broad that they overlap. Each, 20c; doz., \$2.00; 100, \$15.00.



JOHN EVELYN (Incomparabilis)

Incomparabilis

This class includes many of the most beautiful and useful Daffodils for bedding, naturalizing and border planting. Strong growers, hardy and free bloomers. Forced for winter flowers, they are splendid.

Carlton. A fine clear yellow self-color of great size. Flat overlapping perianth and large expanded crown frilled at brim, a magnificent plant of great vigor. Each, 25c; doz., \$2.25; 100, \$15.00.

Croesus. Universally popular both for the garden and for exhibition; light canary-yellow perianth of perfect form, with outer petals nearly touching, the inner ones overlapping, opening flat; broad fluted cup of rich orange to base; substantial, free-flowering. Each, 20c; doz., \$2.00; 100, \$14.00.

Fortune. Broad creamy yellow perianth of very solid texture, crown of great size and elegant form, opening at mouth and beautifully frilled, of a glowing soft orange. A Giant Incomparabilis of perfect form, early a strong grower. Each, 35c; doz., \$3.50; 100, \$25.00.

John Evelyn. D deservedly an international favorite; outstanding among the new. Incomparabilis hybrids; flatly opening perianth, 4 to 5 inches across, with a flat cup nearly 2 inches in diameter, densely frilled, the perianth being pure white, without trace of shading, and the cup lemon yellow and fluted or shirred to the base. Each, 25c; doz., \$2.25; 100, \$15.00.

Francisca Drake. It is impossible to describe adequately the beauty of this unusual flower of a distinct new type; the pure white perianth petals are of unusual substance, an inch and a half wide, and tinted gold at the base, which shows through on the outside; the cup, wide and deep, is golden yellow at the base, changing gradually to flame-orange at the densely frilled edge. Each, 25c; doz., \$2.25; 100, \$15.00.

(Illustrated in Color on Back Cover)

Dick Wellband. One of the finest of recent introductions. Very strong grower and exceptionally free flowering. The perianth is pure white and the cup a brilliant flame-orange. One of its most remarkable qualities is that the color does not fade but rather intensifies with age. The flower has unusual lasting qualities. Each, 25c; doz., \$2.40; 100, \$16.00.

(Illustrated in Color on Back Cover)



DAISY SCHAFFER, LEEDSII

Attractive Leedsii

Have white perianths with white or sulphur trumpets. Most beautiful class for cutting

Daisy Schaffer. One of the best of the remarkable new Giant Leedsii type; the flower 4½ inches across, with cup nearly 2 inches resembles a Giant Trumpet, but much more graceful in form; perianth pure white, with cup opening primrose and turning to light canary-yellow; deeper at the base. Each, 25c; doz., \$2.50; 100, \$18.00.

Hera. Broad-petalled creamy white perianth, star-shaped and deeply frilled cup of creamy white with a dainty edged of light primrose. Each, 20c; doz., \$1.75; 100, \$12.00.

(Illustrated in Color on Back Cover)

Mrs. Nette O'Melveny. A dancing daffodil with pure white perianth and cup of clear lemon-yellow, with orange picotee; splendid foliage, tall, graceful stem, and good neck; in every way a delightful flower. Each, 20c; doz., \$2.00; 100, \$14.00.

Tunis. A large, tall, robust-growing Leedsii of most Poeticus distinct character and great lasting substance, broad waved white perianth and large bold ivory crown with handsome flanged and serrated brim, retaining a remarkable flush of pale copper gold at the edge. Each, 25c; doz., \$2.50; 100, \$18.00.

Poeticus Narcissi

The pure white perianth and all-red or picotee cup, and delicious perfume, peculiar to itself, makes this one of the most popular of all Narcissi.

Of all the hardy types this is probably the one most likely to thrive and multiply in the garden. Bulbs should not be lifted for several years until they appear to be crowding, then they may be lifted, divided and replanted over a much larger area. Avoid poorly drained places

Actea. Large Poeticus pure white perianth with scarlet edged eye. Each, 20c; doz., \$1.75; 100, \$12.00. (Illustrated in Color on Back Cover)

Horace. Large star-shaped perianth, gleaming white, with flat eye, yellow edged red; medium height, very broad perianth petals. Each, 20c; doz., \$1.60; 100, \$11.00.

Ornatus Maximus. A much improved form of the ordinary Poeticus, producing larger flowers and appearing two weeks earlier. Each, 20c; doz., \$1.60; 100, \$11.00.

Poeticus (Common Pheasant's Eye). The Narcissus for garden planting; pure white with scarlet-edged cup or eye. Fine for naturalizing, being hardy and increases readily in numbers; late. Each, 20c; doz., \$1.60; 100, \$11.00.

D AFFODILS are the first of the major garden flowers to blossom in the spring. This makes them doubly precious, as heralds of a season of joy, after the long winter.

Great advancement has been made in breeding new varieties, which are indicated by stars.

Culture of the Daffodil

The daffodil tribe likes a cool root run and its flowers are at their best in the cooler days of spring. Therefore it is essential to dig the soil deeply and provide humus. Like the tulip, the daffodil will not thrive if there is fresh manure in the soil and commercial plant food should be used when the bulb is planted. It likes a moist soil but it must have excellent drainage. The plant food should be mixed in the soil below the bulb and if the soil is heavy, a cushion of sand is advisable.

Giant Trumpets

King Alfred. "The King of Yellow Daffodils." Tall, vigorous, golden yellow flower, of elegant form. The expanded trumpet measures 2½ inches in diameter, the perianth proportionally large and segments gracefully twisted. Height, 24 inches. Double Nose Bulbs. Each, 30c; doz., \$2.75; 100, \$20.00. First size Bulbs, Each, 20c; doz., \$2.00; 100, \$14.00.

Winter Gold. Very early, of great garden merit, producing flowers of very elegant form in February. Perianth bright yellow, trumpet long and straight of a deep golden yellow, prettily frilled at mouth. Very showy, height 18 inches. Forces as early as Golden Spur, but has much better form and color. Each, 30c; doz., \$2.75; 100, \$19.00.

(Illustrated in Color on Back Cover)

Mount Hood. Broad, flat, overlapping perianth and large, at mouth widely expanded trumpet. The color is almost pure white throughout a variety you should have in your collection. Each, 45c; doz., \$4.50; 100, \$30.00.

Mrs. E. H. Krelage. Known as the White King Alfred. Charming and exquisite new variety. Perianth of purest white. Trumpet creamy yellow changing to white. Each, 30c; doz., \$2.55; 100, \$18.00.

Spring Glory. A very early showy bicolor daffodil with large white perianth, trumpet bright yellow with open frilled mouth. Each, 30c; doz., \$2.55; 100, \$18.00.

Golden Harvest. Undoubtedly one of the largest trumpet varieties in existence. The perianth is well formed and overlapping; the trumpet is of good shape and proportion, rolled back at the brim. The color is deep golden-yellow. Each, 35c; Doz., \$3.50; 100, \$25.00.



MINIATURE DAFFODIL THALIA

Miniature Daffodils

The following are charming little subjects for rock work, where their dainty flowers are seen to perfection. They should be left undisturbed for years, and if happy will soon establish themselves and afford a lovely picture in early spring. All the Bulbocodium like moisture, and should therefore be planted at the foot of the rockery. When in bud water freely.

Moonshine. A beautiful Triandrus hybrid, star-shaped creamy white flower, often 3 to a stem, drooping gracefully, very beautiful and a great favorite, especially for the rock garden or for naturalizing in the shade. Each, 25c; doz., \$2.50; 100, \$18.00.

Thalia. Two or three lovely pure white flowers per stem, 2 inches or more across, making a beautiful cluster. Very suitable for the rock-garden or for forcing. Each, 30c; doz., \$2.75; 100, \$20.00.

Vividly Colored Barrii

Thanks to the brilliant contrast effects due to color in the cup, the Barrii type is contributing many improved varieties to the daffodil list and it is here that further progress may be expected. The flowers have a character and grace which make them charming either for cutting or garden display.

Diana Kasner. A pure white perianth and a large fluted yellow cup with blood-red frill, very free-flowering and an excellent forcer. We consider this variety as one of the most valuable introductions and cannot recommend it too highly for show purposes. Each, 20c; doz., \$1.75; 100, \$12.00.

Firetail. Derservedly popular the world over; broad petalled creamy-white perianth and large orange cup with scarlet-orange frill. Each, 20c; doz., \$1.75; 100, \$12.00.

Graceful Jonquils

Jonquils are graceful, sweet-scented flowers which thrive well in a moist, shady position in borders. Flowers are arranged on the stem in a cluster.

Jonquilla Simplex. The true single sweet jonquil, of light elegant growth, bearing out of doors in May clusters of numerous small rich yellow flowers of delicious scent. Each, 15c; doz., \$1.25; 100, \$8.00.

Jonquilla Flore-Pleno. The old double sweet jonquil, produces in May little heads of rich yellow double flowers, very fragrant and attractive for cutting. Each, 15c; doz., \$1.25; 100, \$8.00.

Golden Sceptre. A medium-sized perfectly built flower of deep Jonquil yellow, 3 inches or more in diameter. The whole flower, as with the others in this class, is of the greatest substance, keeping in perfect condition exceptionally long both in the garden and when cut. Each, 15c; doz., \$1.50; 100, \$10.00.

Cluster Flowered Poetaz

Crossing of Poeticus and Polyanthus varieties produced this perfectly hardy strain of bunch-flowering Narcissus. Do well planted in pots for winter flowers.

Cheerfulness. The double Elvira, a very pleasing double white Poetaz, good stems, a fine garden and show flower. Each, 20c; doz., \$1.75; 100, \$12.00.

Early Perfection. Very early Poetaz. Perianth white cup yellow. Good for growing indoors. Each, 20c; doz., \$1.75; 100, \$12.00.

Geranium. Pure white perianth with deep red cup. One of the best of all Poetaz and highly recommended. Each 20c; Doz., \$2.00; 100, \$14.00. (Illustrated in color on back cover.)

Laurens Koster. Perianth white, cup light orange-yellow. Each, 20c; doz., \$1.60; 100, \$11.00.

12 Daffodils for \$1.00 Naturalizing

25 Daffodils for \$2.00. Smaller bulbs but of flowering size, packed in a special decorated bag with cultural instructions. Prepaid.

DAFFODILS are the first major flowers to bloom in the spring. By nature they are informal flowers, and look best when grown in drifts, in the shrubbery or under trees. They like to nestle among the roots of shrubs, and as they bloom before the leaves develop, they thrive in places which later in the season are well shaded. Our naturalizing mixture is an exceptional value, containing many of the best named Trumpet, Leedsii, Star and Poeticus varieties. Plant them and do not disturb until they crowd; the bulbs may then be lifted and replanted over a much larger area. A purchase of bulbs is an investment which will pay in bloom for a lifetime.

FIRST SIZE MIXED

12 Bulbs, \$1.50; 100 Bulbs, \$9.50; 1,000 Bulbs, \$85.00, Prepaid.

NARCISSI NATURALIZED IN THE WOODLAND



The "Pink Daffodil"

Mrs. R. O. Backhouse. Perianth of ivory white, and long trumpet of apricot pink, changing to shell pink at the deeply fringed edge; exceptional substance; long lasting. Grow in greenhouse or plant in partial shade to bring out the pink color. Each, 60c; doz., \$6.00; 100, \$45.00.

Cyclamineus Hybrids

These have perianths reflexed as in a cyclamen.

February Gold. Perianth golden yellow, trumpet fringed orange; very early. Each, 25c; doz., \$2.25; 100, \$15.00.

Where to Plant Daffodils

Daffodils are particularly fine subjects to plant under the edge of bushes or among perennials in the hardy border as they seem to like to nestle among the roots of their neighbors. A clump of golden trumpets peeping from beneath the overhanging branches of Spiraea Van Houttei or nestling in a sheltered angle of a building are one of the gladsome sights of early spring.

A few bulbs can be tucked into odd corners all about the garden and they will repay mightily when the first sunny days of spring bring their sturdy shoots breaking through the earth.

Daffodils and narcissus need not be moved for several years if they are flourishing, in fact not until the clump becomes so large that it is evident it needs to be divided and they should be replanted at once.



ALBA PLENA ADORATA (Double)

Double Varieties

Alba Plena Odorata. The well-known double Poeticus; sometimes called the gardenia-flowered Narcissus. Late-flowering, and will not force. Each, 20c; doz., \$1.75; 100, \$12.00.

Indian Chief. Very large and very double, bright yellow interspersed with orange; the petals curled and twisted. Each, 25c; doz., \$2.25; 100, \$15.00.

Mary Copeland. One of the famous varieties of the new semi-double type, cream-white with a golden ray down the center, giving a three-color effect. Each, 30c; doz., \$2.75; 100, \$20.00.

Royal Sovereign. Valuable addition to the Twink group of semi-doubles, creamy white interspersed with crinkled and frilled trumpet petals of primrose-yellow. Each, 35c; doz., \$3.25; 100, \$22.00.

Texas. Large yellow and scarlet-orange interwoven petals. Very choice variety. Each, 35c; doz., \$3.50; 100, \$25.00.

Twink. It is double, of the semi-full type, the petals alternating a soft primrose and clear orange, free-flowering and hardy. Each, 30c; doz., \$2.55; 100, \$18.00.



Miscellaneous Bulbs



First Flowers to Bloom in Spring



SNOWDROPS

Snowdrops (*Galanthus*)

Snowdrops flower while Tulips are just sprouting, and when the flowers are over, there remains a ground-work of green foliage.

Single. (Largest Bulbs.) Doz., 95c; 100, \$6.50; 1,000, \$60.00.
Double. (Largest Bulbs.) Doz., \$1.00; 100, \$7.00; 1,000, \$65.00.



SPRING FLOWERING CROCUS

Crocus

Flowering soon after snowdrops and before the daffodils, crocuses in groups or masses present a delightful picture. We offer four colors: **White, Blue, Yellow and Striped.** Order by color, or in a balanced mixture, which will include an equal quantity of each color.

Doz 100 1000
 9-10 ctns., single color or mixed. . \$0.60 \$4.00 \$35.00
 8-9 ctns., single color or mixed. . .50 3.00 25.00

Chionodoxa

(Glory of the Snow)

One of our loveliest Spring flowers, when established its sheets of blue in very early Spring are a great attraction in borders or massed on rock-work. It flowers with the early Scillas.

LUCILLEA. Bright blue with large clear white center. Doz., 55c; 100, \$3.50; 1,000, \$30.00.
SARDENSIS. Deep blue. Doz., 55c; 100, \$3.50; 1,000, \$30.00.

All shipments of flowering bulbs ordered from this catalogue at dozen or less than dozen rates will be prepaid.

Orders at 100 rate will be shipped by express, charges collect, except that special offers will be prepaid where it is so specified in the offer.



SCILLAS SELF-SEED AND MULTIPLY

Scillas (*Squills*)

For Late Flowering, See Next Page.

As edgings and masses in beds and borders, Scillas are most valuable. They succeed in shady flower borders and bare shady places and odd corners.

SCILLA SPRING BEAUTY. Spring Beauty is a giant by comparison with the ordinary Siberica, very free blooming and ideal for growing in pans or pots. Brought into a 50 to 55 deg. house after being well rooted, it flowers within two weeks, the glorious blue spikes having stems 6 to 8 in. long. Perhaps there is nothing so truly blue that will bloom at that time. Outdoors it is a trifle later than the ordinary but decidedly superior. Large bulbs, doz., 90c; 100, \$6.00; 1,000, \$55.00.

SIBERICA (The Blue Squill). Bright blue, nothing more beautiful for edgings or pots in early Spring, flowering with the Snowdrop. Height, 4 inches. Mammoth Bulbs. Doz., 80c; 100, \$5.50; 1,000, \$50.00.



ERYTHRONIUM HENDERSONII

Anemone (Windflower)

They succeed best in light, rich, well-drained loam. Plant in early October. Mulch after freezing.

DE CAEN. A real selected strain. This mixture contains many fine shades of blue, white and reds. Mixed. Doz., \$1.00; 100, \$7.00; 1,000, \$65.00.

ST. BRIGID. Flowers range from the deepest crimson to the purest white, embracing cobalt, scarlet, rose, salmon-pink, and heliotrope. Most are semi-double. Doz., \$1.25; 100, \$8.00; 1,000, \$75.00.

Brodiaeas

CAPITATA. California Hyacinths. The stem is slender, capped with a head of violet-blue flowers. They revel in hot, dry places, and flower early. Doz., \$1.00; 100, \$7.00; 1,000, \$65.00.

BRIDGESIL. A very fine reddish violet color. Doz., \$1.25; 100, \$8.00; 1,000, \$75.00.

Calochortus

True Mariposa, or Butterfly Tulips

Cup-shaped flowers, one to many on a stem, marked with eyes and dots and pencilings in rich colors.

MIXED. From 1 to 2 feet high, flowers vary through white, yellow, lilac to purple and pink to deep claret-red. They thrive best in porous soil, sandy or gritty, either in sun or light shade. Flowers are 2 to 4 in. Doz., \$1.00; 100, \$7.00; 1,000, \$65.00.

Camassia

Camassias go four inches underground, about five inches apart. The flowers are starlike.

ESCULENTA. Light blue flowers borne gracefully erect. Height, 18 inches to 2 feet. Each, 10c; doz., 60c; 100, \$4.00; 1,000, \$35.00.

Dog Tooth Violet (*Erythroniums*)

If they had no other beauty than that of their richly mottled leaves, they would be well worth a place in the shady corner. Their flowers are 3 inches across, with stems 6 to 18 inches high. The colors run in delicate tints of white, pink, cream, bright yellow and rose. They are hardy in the coldest States, and while they are at their best in a loose, gritty soil, rich in leaf mold, they also thrive in woodlands, in shaded corners, or in the crevices of rockwork in shade.

CALIFORNICUM has large cream-colored flowers. Doz., \$1.00; 100, \$7.00; 1,000, \$65.00.

CALIFORNICUM BI-COLOR. Creamy, yellow centre, tall stems. Doz., \$1.00; 100, \$7.00; 1,000, \$65.00.

CITRINUM is rather more erect in habit, with flowers almost pure white with strongly contrasting deep citron. Doz., \$1.00; 100, \$7.00; 1,000, \$65.00.

HARTWEGGII is as pretty as Californicum, with more yellow in the flower, and each flower on a separate stalk. Very early and stands much heat. Good for pots. Doz., \$1.25; 100, \$8.00; 1,000, \$75.00.

HENDERSONII. Like Californicum, but the flowers are a lovely light purple, with centers a deep maroon. Doz., \$1.10; 100, \$7.50; 1,000, \$70.00.

TUOLUMNENSIS is quite new to both the garden and science. Large leaves, not mottled, and golden yellow flowers. The bulbs are very large and by offsetting form large clumps. Not too free flowering, but very distinct. Doz., \$1.75; 100, \$12.00.

Mixed. Doz., 95c; 100, \$6.50; 1,000, \$60.00.

Eranthis Hyemalis (Winter Aconite)

Early in Spring the golden blossoms of Winter Aconite look charming, resting on an emerald-green cushion of leaves, forming a striking contrast to the Snowdrop, Scilla, and Chionodoxa. The foliage remains long after the flowers, making the plant especially valuable in moist situations, such as under trees. Height 8 inches.

Doz., 50c; 100, \$3.50; 1,000, \$30.00.



Miscellaneous Bulbs



Weeks before the daffodils appear, snowdrops, chionodoxas, scillas and crocuses blossom in the garden, often peeping through late snow. These and other early bulbs are the first of all flowers to bloom, and precious for that reason. Every garden should have at least a small group, visible from a window, where their beauty can be enjoyed in cool weather.



Fritillaria

MELEAGRIS. Singular dwarf spring-flowering plants bearing large pendant, bell-shaped flowers of various colors; yellow, white, black, purple, striped and splashed and checkered in the most curious way. Invaluable and exceedingly pretty when grown in large groups in the garden border or wild dry situation. Doz., 50c; 100, \$3.50; 1,000, \$30.00.

IMPERIALIS (The Crown Imperial) is a stately hardy border-plant, very effective in Spring when grouped in woodlands wild gardens, orchards. Bell-shaped flowers, orange, red and checkered. Plant 12 inches deep, in well drained, location. Each, 75c; doz., \$7.50; 100, \$55.00.

RECURVA (Mission Bells). A beautiful woodland plant from Southern California. 1½ to 2 feet, and producing dainty orange scarlet flowers. They prefer partial shade and a loose soil. Each, 20c; doz., \$1.80; 100, \$13.00.

Ranunculus (Buttercup)

Plant in November for early spring bloom in frames Set 3 or 4 inches apart, pressing firmly into the soil, claws downward and cover them with sand, then with soil; keep the crown of the tubers four inches under the surface. Water them well.

VICTORIA HYBRID MIXED. Far superior to any Ranunculus that we know. Flowers are double and large. Doz., \$1.00; 100, \$7.00; 1,000, \$65.00.

Leucojum (Snowflake)

AESTIVUM (Summer Snowflake). A very handsome, hardy, robust growing plant, producing spikes elegant drooping white flowers in May. Greatly prized for cutting, on stems about 14 to 18 inches high. Same culture as the Narcissi. Each, 15c; Doz., \$1.35; 100, \$9.00; 1,000 \$85.00.

VERNUM (Spring Snowflake). A favorite little early spring flower having drooping, bell-shaped flowers, white with small brown tips. Once planted in a favorable environment they come up every spring, bearing more flowers each time. Excellent for rock gardens and naturalizing. Each, 15c; Doz., \$1.35; 100, \$9.00; 1,000, \$85.00.

Ornithogalum

ARABICUM. Throws up a tall stem with a cluster of star-shaped flowers; pure white with dark centers. Excellent for cutting, lasting a long time in water. Hardy in the South and other mild climates, but they should be given protection when planted outdoors in the North. Culture in the house is about the same as for Hyacinths. Each, 15c; doz., \$1.50; 100, \$10.00; 1,000, \$90.00.

UMBELLATUM. This is the small white hardy variety that is seen in great profusion and around many of the old gardens. It propagates readily and adapts itself splendidly to naturalizing. It does well over a wide temperature range and blooms profusely each season with little or no care. Each, 10c; doz., \$1.00; 100, \$7.00; 1,000, \$65.00.

Grape Hyacinths (Muscari)

Muscari, or Grape Hyacinths, are a race of spring-flowering bulbous plants which thrive in American gardens. They are notshowy when only a few are seen together, but a drift of them presents a picture of beauty, especially if planted with late tulips, for which purpose they are well adapted. The species also look charming in clumps in the rock garden or border, and the Feather Hyacinth (*M. plumosum*), in particular, may be employed, with great gain, in pots in the cold greenhouse. In fact, pot culture gives this Grape Hyacinth such delicate and uncommon coloring, that it might well be grown anywhere under glass. All are very accommodating in their requirements, but prefer a good loam with a little old manure dug into it, and, in the case of the Feather Hyacinth alluded to, a rather warmer position. The bulbs should be planted during autumn at a depth of about three inches and about two inches apart.

ARMENIACUM. Deep blue, large flowers. 8-9 Ctns. Doz., 60c; 100, \$4.00; 1,000, \$35.00. 9-10 Ctns. Doz., 65c; 100, \$4.50; 1,000, \$40.00.

EARLY GIANT. Improved Armeniacum. Larger bells and a little lighter in color. Blooms about 10 days earlier. 8-9 Ctns. Doz., 65c; 100, \$4.50; 1,000, \$40.00. 9-10 Ctns. Doz., 75c; 100, \$5.00; 1,000, \$45.00.

ALBA (Pure White). This is a beautiful companion to the above, and they make a striking show when planted together. Doz., 80c; 100, \$5.50; 1,000, \$50.00.

PLUMOSUM. Bearing in May handsome feathery plumes of violet colored flowers, very attractive. Doz., 65c; 100, \$4.50; 1,000, \$40.00.



SPRING SNOWFLAKES (*Leucojum Vernum*)

Late Flowering Scillas

Scilla Campanulata flowers with the Darwin tulips and is often interplanted with them.

CAMPANULATA (Clear Blue). Very erect in habit (15 inches). Doz., 60c; 100, \$4.00; 1,000, \$35.00.

Alba. Pure white (12 in.). Doz., 60c; 100, \$4.00; 1,000, \$35.00.

Rosea. Fine rose (15 in.). Doz., 60c; 100, \$4.00; 1,000, \$35.00.

NUTANS Blue. The true English blue-bell. In its native habitat it abounds in woodlands literally carpeting the ground. Gracefully arching stem carrying many violet blue flowers, opening after most other Scillas are gone. Very hardy. Doz., 60c; 100, \$4.00; 1,000, \$35.00.

NUTANS Alba. Pure white companion to the above, with long arching stem. Beautiful when naturalized in copses, shady walks, etc. Also prized for cutting. Doz., 65c; 100, \$4.50; 1,000, \$40.00.

Sparaxis, Mixed

Graceful spikes 6 to 8 inches high; flowers of the brightest colors, tigered, streaked and flushed—a riot of color. Excellent for indoor winter flowering—about 12 bulbs to a 6-inch pot. Do not plant outdoors in cold sections. In cool localities, give winter protection. For southern gardens, especially in rockeries, Sparaxis are indispensable.

Doz., 80c; 100, \$5.50; 1,000, \$50.00.

Iritelia

UNIFLORA VIOLACEA. A rootlike bulb which produces in early spring a pale violet-blue flower with white center, delightfully fragrant. They spread rapidly in the rockery or in masses under shrubs, perfectly hardy. About 3 inches high. Doz., 65c; 100, \$4.50; 1,000, \$40.00.

Easter Lilies—Semi-hardy

CROFT LILY. Widely used by florists for Easter flowering, this Oregon hybrid bears large pure white trumpets on sturdy stems 12 to 14 inches tall. It is suited for outdoor planting on the Pacific Coast, in southern states, and elsewhere if given good winter protection. Blooms July-August. 7-8 inch bulbs. Each 35c; dozen, \$3.00; 100, \$25.00.

To grow indoors or in the greenhouse for Eastern blooming we offer special treated bulbs for November shipment. 8-9 inches

Each, 50c; dozen, \$5.00; 100, \$35.00.

ESTATE LILY. Similar to the Croft lily, but with taller stems, this variety is also some what harder and more likely to survive in cold winters, if well protected. Its large, white trumpet flowers have heavy petals, and are long lasting when cut. Bloom July-August.

Each, 50c; dozen, \$5.00.

Hardy Lilies

Collection of Five Hardy Garden Lilies \$1.35

One each of the following varieties: Canadense, Regale, Superbum, Tenuifolium, Umbellatum \$1.35
Two each variety as above. \$2.40 Six each variety as above. 6.75
Twelve ea. var. as above. \$12.50 All prepaid 600 miles.

LILIES are hardy, thrifty flowers, capable of surviving conditions which would overcome flowers much less beautiful. Grow them in the border in small groups, with background, where their beauty has a suitable setting for its display. They blossom, as a rule, in midsummer, when fine flowers are at a premium. With each order a leaflet giving instructions for growing them in the garden will be sent. All our lily bulbs are American grown. They should be planted on receipt to enable the bulbs to begin root growth this fall.

Outdoor Culture—When planting lilies out-of-doors, see that they have a well drained position, and where they will be shaded from very hot sun. Such places can usually be found around the shrub borders, and in the hardy plant border. Never mix manure in the soil around lilies, but enrich with a standard commercial plant food or with bone meal. Many varieties are termed "stemrooters," that is, they develop roots on the stem up to two or three inches from the ground. These roots are voracious feeders, and on them depend greatly the number and size of flowers. When they appear, the plant should receive a top-dressing of good rich soil on which they can feed freely. Spade over the ground thoroughly to a depth of 18 inches before planting lilies. Plant the bulbs 4 to 8 inches deep, depending on their size and the soil, deeper in light soil.

Late planting—Some varieties of lilies do not become fully dormant, so they can be dug, until so late that delivery of the bulbs may be delayed until Nov. 1. To keep the soil from freezing, so that late planting may be done, select the location where bulbs are to go and cover the surface with a mulch of leaves, straw, glass wool, or other effective material. Applied before freezing sets in, this will be sufficient to protect the soil below it from late autumn temperatures.

Bellingham Hybrids

A strain of lilies developed by crossing named varieties produced by Dr. David C. Griffiths at the Bellingham, Wash., U.S. experiment station. Up to 20 flowers are borne in pyramidal flower heads on tall stems. Colors range from clear yellow to bright orange red with scarlet tipped petals, many flowers spotted with brown. Easy to grow with some protection in cold winters; should be left to multiply undisturbed. Flowers long lasting when cut.

Each, 50c; dozen, \$5.00; 100, \$35.00.

Oregon Collection of Garden Lilies

Two bulbs each of the following five strains: Liliun Centifolium Hybrids, Bellingham Hybrids, Sunset Lily, Umbellatum New Hybrids and one other variety of our selection. The ten bulbs will be packed wrapped in vegetable parchment squares on which will be printed variety, description and cultural instructions.

Collection of 10 bulbs, \$3.50.

Lilium Canadense

Ready in September

The whole plant has a downward, graceful movement and looks like a slender, tiered green belfry ringing golden bells. The flowers are nodding, bell-shaped, with petals flaring out and turning back slightly. They are heavily dotted on the inside with purplish brown dots. Blooms the end of June to July. Should be planted five inches deep. It is an excellent lily for naturalizing. Height, 3 to 5 ft.

Canadense Mixed—Each, 25c; dozen, \$2.50; 100, \$18.00.

Lilium Centifolium.

Ready in October

A giant among lilies, with long, trumpet-shaped white flowers, streaked outside with brown and flushed inside with yellow at the base. Bulbs—6-7 inches, each, 45c; doz., \$4.50; 7-8 inches, each, 55c; doz., \$5.50.

Lilium Phillipinense Formosanum

Ready in October

A refined and graceful Lily with long grassy foliage, and long wide-mouthed trumpet flowers of the purest white, slightly marked externally with reddish brown. The plants grow to a height of 2-3 feet, are very robust and offer great resistance to wind and weather. It is hardy, very fragrant and one of the loveliest of the new varieties. Each, 45c; doz., \$4.50; 100, \$30.00.

Lily of the Valley

Ready in October

Lily of the Valley is one of the best ground covers for shady places in the home grounds. It spreads rapidly, crowding out weeds, and the fragrant blossoms come early in the spring in great abundance.

Clumps. Each, 60c., three for \$1.50; doz., \$5.50.



LILIUM Canadense



LILIUM Regale



LILIUM Tenuifolium



LILIUM Rubrum

Lilium Regale—Ready in October

The large, trumpet-shaped flowers are snowy white, with a pure yellow center, while the exterior of the petals is slightly tinged pink. It is a strong grower, attaining the height of three or four feet. The flowers are beautiful, possessing a delightful fragrance. The bulb usually presents a dried, shriveled appearance.

First Size, 6-7 in. in circumference. Each, 20c; doz., \$2.00; 100, \$15.00.
Select Size, 7-8 in. in circumference. Each, 35c; doz., \$3.50; 100, \$25.00.
Mammoth Size, 8-9 in. in circumference. Each, 45c; doz., \$4.50; 100, \$32.00.
Jumbo Size, 9-10 in. in circumference. Each, 60c; doz., \$6.00; 100, \$45.00.
Extra Jumbo, 10-11 in. Each, 80c; dozen, \$8.00; 100, \$60.00.

Lilium Speciosum Rubrum (Magnificum)—Ready in November

The typical form is white, flushed pink, and heavily spotted with carmine. The stem is about four feet high and has fresh, green, lance-shaped leaves, and the frilly flowers face downward and carelessly roll back their petals, while the stamens and pistil curl way out. A very beautiful lily, perfectly hardy, very seldom diseased, and a late Aug. and early Sept. bloomer. Plant the bulbs eight to ten inches deep.

Each, 75c; dozen, \$7.50.

Lilium Superbum—Ready in September

(American Turk's Cap, Swamp Lily)—The most magnificent and showy of the native North American species, well worthy of extensive culture. This splendid lily produces from ten to forty flowers of brilliant orange-scarlet, shaded yellow and spotted purplish brown at the base, with red anthers, in late July and August. This lily requires an acid condition and should be planted at least 8 inches deep. Height, 3-8 feet. Each, 30c; dozen, \$3.00; 100, \$20.00.

Lilium Tenuifolium—Ready in October

The lovely Coral Lily of Siberia. A great beauty. The brightest of all lilies. Grows 20 inches high, with finely cut foliage, slender stems and beautifully shaded coral-red flowers. One ought to grow them by the dozen, they are so fine for cutting and making clumps for the lawn. Blooms very early. Each, 25c; dozen, \$2.50; 100, \$18.00.

Lilium Umbellatum—Ready in October

This group of lilies is of hybrid origin, and thrives in American garden borders, multiplying and enduring. They are early flowering, blooming during the first part of June. Usually attaining the height of two to three feet, they carry four to six flowers of cup-shape.

Mixed. Each, 45c; doz., \$4.50; 100, \$30.00.

Sunset Lily—Ready in October

Because of its ease of culture, rapidity of increase and its extreme hardiness, the new Sunset Lily is certain to achieve widespread favor. Height 5-6 ft., with 10 or more flowers to the stalk. This lily is bright red, it's throat, bright yellow with dark spots. Stems are straight and strong with no tendency to droop. Not particular as to soil, it will thrive in full sun or partial shade. July flowering.

5-6 inch. Each, 40c; doz., \$3.75; 100, \$27.00.
6-7 inch. Each, 50c; doz., \$4.75; 100, \$35.00.

For **NEW lawns** or **OLD**,
AUTUMN is the
 best time to sow



		15 Lbs.. \$12.65
1/2 Lb....\$0.50	3 Lbs...\$2.65	20 Lbs.. 16.75
1 Lb......90	5 Lbs... 4.35	25 Lbs.. 20.75
2 Lbs... 1.80	10 Lbs... 8.50	100 Lbs.. 79.00
	Prepaid in U. S. A.	

FOR lawn grasses, autumn weather is just what the doctor ordered. Shorter days, cooler nights and more abundant moisture, give infant plants an ideal start. The longer they have to grow before the freeze-up, the better they will be prepared to survive winter.

In the fall it is more important than ever to sow only permanent grasses, free from short-lived, coarse growing types. For a lawn of permanence and beauty, our famous Chicago Parks mixture is recommended, containing fancy, re-cleaned seed of fine leaved, hardy, lasting grasses of high purity and germination. It contains no timothy, or other coarse adulterants. We are adding to our mixture a liberal amount of the new Creeping Red Fescue, a strain developed by scientific breeding methods. This fine leaved grass spreads from the roots and so helps thicken the turf as to help crowd out weeds. See prices above.

We offer Chicago Parks mixture without Clover as "Fairway Mixture" at Chicago Parks prices, as quoted above.

Vaughan's "Private Estate" Bent Formula

For those interested in a deluxe mixture we highly recommend our Private Estate formula. This formula contains over 98% pure seed and is free of all noxious weeds.

In addition to Kentucky Blue Grass of the highest quality, to insure a durable and resistant foundation for your lawn, Private Estate formula includes an important proportion of bent. It produces a heavy turf of very fine texture. This mixture is equal or better in purity to the highest priced mixtures and is the best value on the market.

Price, 1 lb., \$1.00; 2 lbs., \$2.00; 3 lbs., \$2.95; 5 lbs., \$4.85; 10 lbs., \$9.50; 15 lbs., \$14.15; 20 lbs., \$18.75; 25 lbs., \$23.25; 100 lbs., \$89.00.

Vaughan's "Columbian"

When making a lawn on sandy soil or in moderate shade, Vaughan's "Columbian" is the correct blend.

Price, 1/2 lb., 50c; 1 lb., 90c; 2 lbs., \$1.80; 3 lbs., \$2.65; 5 lbs., \$4.35; 10 lbs., \$8.50; 15 lbs., \$12.65; 20 lbs., \$16.75; 25 lbs., \$20.75; 100 lbs., \$79.00.

Vaughan's Dense Shade Formula

Composed of grasses most suited for growing in heavily shaded situations. A splendid mixture. It is also satisfactory in light shade.

Price, 1/2 lb., 55c; 1 lb., 95c; 2 lbs., \$1.90; 3 lbs., \$2.80; 5 lbs., \$4.60; 10 lbs., \$9.00; 15 lbs., \$13.40; 20 lbs., \$17.75; 25 lbs., \$22.00; 100 lbs., \$84.00.

Vaughan's No. 25 Lawn Formula

An economy blend for new seedings and quick results which should be followed by reseeding with a more permanent blend like our "Chicago Parks." In spite of its low price, this blend does not contain timothy. Sow at the rate of 1 lb. to every 200 sq. ft. Begin cutting when grass is 3 to 4 inches high and continue to cut regularly to keep turf fine.

Price, 1 lb., 65c; 2 lbs., \$1.30; 3 lbs., \$1.90; 5 lbs., \$3.10; 10 lbs., \$6.00; 15 lbs., \$8.90; 20 lbs., \$11.75; 25 lbs., \$14.50; 100 lbs., \$54.00.

White Clover For Lawns

Extra fancy seed. Price, 1/4 lb., 35c; 1/2 lb., 65c; 1 lb., \$1.15; 2 lbs., \$2.30; 3 lbs., \$3.40; 5 lbs., \$5.55; 10 lbs., \$10.90; 15 lbs., \$16.00; 20 lbs., \$21.00; 25 lbs., \$25.75.

All Grass Seed is Prepaid to Any Part of the U. S. A.—There is an Extra Charge by Post Office for Collection on C. O. D. Packages.

Kentucky Blue Grass (Poa pratensis)

EXTRA HEAVY SUN-CURED SEED—Specially re-cleaned. 1/2 lb., 60c; 1 lb., \$1.10; 2 lbs., \$2.20; 3 lbs., \$3.25; 5 lbs., \$5.35; 10 lbs., \$10.50; 15 lbs., \$15.65; 20 lbs., \$20.75; 25 lbs., \$25.75; 50 lbs., \$52.00.

Fancy Seed—(Standard grade of re-cleaned blue grass.) Price, 1/2 lb., 55c; 1 lb., 95c; 2 lbs., \$1.90; 3 lbs., \$2.80; 5 lbs., \$4.60; 10 lbs., \$9.00; 15 lbs., \$13.40; 20 lbs., \$17.75; 25 lbs., \$22.00; 50 lbs., \$42.00.

Creeping Red Fescue

Developed by scientific methods, this spreads from the roots making a dense turf which tends to crowd out weeds. Does well in shade and is good on sandy soil. Price, 1 lb., \$1.05; 2 lbs., \$2.10; 3 lbs., \$3.20; 5 lbs., \$5.10; 10 lbs., \$10.00; 15 lbs., \$14.90; 20 lbs., \$19.75; 25 lbs., \$24.50; 50 lbs., \$48.50.

Chewing's Fescue

This is valuable on sandy soils and in shade, perennial with afine blade and a spreading root system. 5 lbs. to 1,000 sq. ft.—1 lb., \$1.00; 2 lbs., \$2.00; 3 lbs., \$2.95; 5 lbs., \$4.85; 10 lbs., \$9.50; 15 lbs., \$14.15; 20 lbs., \$18.75; 25 lbs., \$23.25; 50 lbs., \$46.00.

Alta Fescue

This recent development has a deep root system and is drought resistant. It stands up under traffic and though coarse is excellent for athletic fields, airports, roadsides, etc. 1 lb., \$1.00; 2 lbs., \$2.00; 3 lbs., \$2.95; 5 lbs., \$4.85; 10 lbs., \$9.50.

Poa trivialis (Rough Blue Grass)

A grass for moist, shady spots. 1/2 lb., 85c; 1 lb., \$1.50; 2 lbs., \$3.00; 3 lbs., \$4.40; 5 lbs., \$7.25; 10 lbs., \$14.25; 15 lbs., \$21.00; 20 lbs., \$27.60; 25 lbs., \$33.75; 50 lbs., \$65.00.

Red Top Grass (Argrostis alba)

Extra fancy re-cleaned solid seed—Price, 1/2 lb., 45c; 1 lb., 80c; 2 lbs., \$1.60; 3 lbs., \$2.35; 5 lbs., \$3.85; 10 lbs., \$7.50; 15 lbs., \$11.15; 20 lbs., \$14.65; 25 lbs., \$18.00; 50 lbs., \$34.50.

Seed of the Bent Grasses

For lawns Bent grass from seed is preferred to creeping Bent stolons because it does not grow so rapidly or require so much cutting and top dressing. Seed 3 to 4 lbs. per 1000 square feet.

ASTORIA BENT GRASS. This grass has creeping roots which throw up new shoots and make a very thick turf. It makes a splendid lawn and golf grass. Requires less care than the aggressive surface creepers. Price, 1/4 lb., 60c; 1/2 lb., \$1.00; 1 lb., \$1.75; 2 lbs., \$3.50; 3 lbs., \$5.20; 5 lbs., \$8.50; 10 lbs., \$16.75; 15 lbs., \$24.75; 20 lbs., \$32.60; 25 lbs., \$40.00.

SEASIDE CREEPING BENT GRASS. This is a true creeping Bent grass seed. One or two top dressings a year will keep it in good condition. Does not require as much cutting as the varieties of bent grown from plugs and stolons. 1/4 lb., 55c; 1/2 lb., 95c; 1 lb., \$1.70; 2 lbs., \$3.40; 3 lbs., \$5.05; 5 lbs., \$8.25; 10 lbs., \$16.25; 15 lbs., \$24.00; 20 lbs., \$31.60; 25 lbs., \$38.75.

Perennial Rye Grass

A rather broad bladed grass, good where a quick, heavy turf is wanted. Price, 1 lb., 40c; 2 lbs., 80c; 3 lbs., \$1.15; 5 lbs., \$1.85; 10 lbs., \$3.50; 15 lbs., \$5.15; 20 lbs., \$6.70; 25 lbs., \$8.25; 50 lbs., \$16.00; 100 lbs., \$30.00.

COMMON RYE GRASS. (Italian Type.) 1 lb., 30c; 2 lbs., 60c; 3 lbs., 85c; 5 lbs., \$1.35; 10 lbs., \$2.50; 15 lbs., \$3.65; 25 lbs., \$5.75; 50 lbs., \$10.00.

Hardy Perennial Plants for Fall Planting

HARDY perennials may be set out this fall in time to become well established before winter sets in; and next year will see them better developed, and bearing finer flowers than can be obtained from plants set in your border next spring.

This advantage is accompanied with very little extra risk. We

do not list the kinds which need special protection through the winter. It is always well to apply a light mulch of straw or excelsior over newly planted perennials after the ground has frozen. This will tend to prevent winter thaws and frost heaving. Plants should never be planted where water stands or where there is poor drainage.

ALYSSUM (Rock Madwort). Saxatile Compactum (Basket of Gold). Excellent plant for the rockery or borders. One of the showiest spring flowers with its large clustered blooms of bright yellow. Grows from 10 to 12 inches high. Very hardy. Blooms April and May. 60c each; 3 for \$1.50; Doz. \$4.75.

AQUILEGIA (Columbine) Crimson Star. Bright red outer petals with white center. Long spurred 3-inch flowers on 2 foot stems. A must in any perennial garden. 60c each; 3 for \$1.50; Doz. \$4.75.

Mrs. Scott Elliott's Hybrids. The finest color mixture grown. Flowers are large, have long spurs, and the colors cover all shades of lavender, purple, red, white, yellow, blue and pink. 50c each; 3 for \$1.25; Doz. \$4.25.

ARABIS (White Rock Cress). Alpina. A splendid creeping plant which seldom grows over 12 inches high. Bears masses of white blossoms in early spring. Foliage is very ornamental balance of the year. 50c each; 3 for \$1.25; Doz. \$4.25.

ARTEMISIA Silver King. A striking contrast plant with light silver gray foliage. May be cut and dried for winter use. 60c each; 3 for \$1.50; Doz. \$4.75.

ASTERS (Michaelmas Daisy)

Beechwood Challenger. Darkest red of all.

Harrington's Pink. Finest true pink. Large flowers of luminous pink on bushy plant.

Royal Blue. A deep blue. Produces myriads of large, showy flowers.

White Lady. Large, graceful white flowers in profusion.

All above 60c each; 3 for \$1.50; Doz. \$4.75.

COLLECTION. One of each of the above four varieties, \$2.00.

CARNATIONS Hardy Grenadin Mixed. Old time favorite. Blooms always an available table bouquet. 50c each; 3 for \$1.25; Doz. \$4.25.

CARNATION Crimson King. 2 ft. Closely resembling a greenhouse Carnation in size and habit of growth. Large, fragrant, bright crimson blooms of velvety appearance borne in profusion in June and continuing until frost. Each, 75c; 3 for \$1.95; doz., \$5.75.

COREOPSIS. Double Sunburst. Brilliant double yellow flowers 1½ inch to 2 inch in diameter. 50c each; 3 for \$1.25; Doz. \$4.25.

CAMPANULA Persicifolia. White. True perennial variety, growing about two feet high. Large blue bell-shaped blooms, attractive for contrast either in beds or in bouquets. Long blooming period. 60c each; 3 for \$1.50; Doz. \$4.75.

DICENTRA Spectabilis. (Bleeding Heart). Its long racemes of graceful, heart-shaped pink flowers are always attractive. A fine plant for that shady spot. \$1.00 each; 3 for \$2.75; Doz. \$7.25.

DELPHINIUM

Vetterle and Reinelt Pacific Hybrids. This elegant strain of Delphinium is almost beyond description. Flower spikes 3 to 5 feet long, closely packed with individual flowers from 2 to 3 inches across; many are double, semi-double, some single. Plants resistant to mildew. Stems wiry and strong enough to resist high winds. Strong, well-rooted plants.

Black Knight. Darkest royal violet.

Blue Bird. Clear medium blue, with white bee.

Guinevere. Light pink-lavender, with white bee.

King Arthur. Royal violet, large white bee.

Summer Skies. Clearest light blue with white bee.

All of the above, Each, 75c; 3 for \$1.95; doz., \$5.75.

Collection. One of each of the above five varieties, \$3.25

Other Hybrids

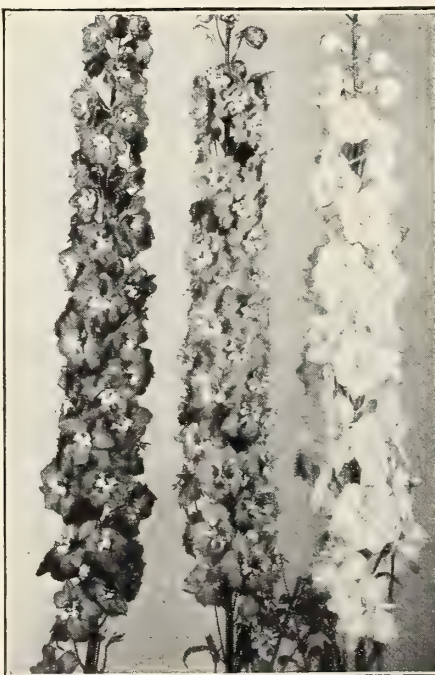
Belladonna Improved Cliveden Beauty. 2 ft. June-July. Exquisite turquoise blue. These are charming when combined in bouquets. Each, 50c; 3 for \$1.25; doz., \$4.25

Add Postage for Plant Orders

Prices on this page do not include postage. For 12 plants or less include in your remittance postage in the following amounts: Single plants, 12c; 3 plants 16c; 6 plants, 20c; 12 plants, 25c. Shipments larger than 12 plants will be made by express collect, unless otherwise instructed.



AQUILEGIA Mrs. Scott Elliott's Strain



DELPHINIUM Pacific Giants

DIANTHUS BARBATUS

Single Sweet William 18-24 in.

Vaughan's Special Mixture of Sweet William Mixed only. Plants, each, 45c; 3 for \$1.15; Doz., \$4.00.

EVERBLOOMING SWEET WILLIAM

Latifolius Atrococcineus Flora Plena. A beautiful summer blooming variety as it bears brilliant fiery crimson blooms all through the season. Very hardy and a sturdy grower. Plants, each, 60c; 3 for \$1.50; Doz., \$4.75.

GAILLARDIA (Blanket Flower). Dazzler.

One of the most brilliant of the family. Large flowering type with blooms of bright golden yellow centered by a disc of satiny maroon. 2 ft. 50c each; 3 for \$1.25; Doz. \$4.25.

Goblin, Dwarf. A true dwarf Gaillardia which deserves a place in every garden. Grows 12 to 15 inches high in very compact shape. Foliage practically disappears under the mass of large deep red and gold blooms. 50c each; 3 for \$1.25; Doz. \$4.25.

Portola Hybrids. Extremely large flowering strain and noted for the wide range of deep colors which vary from reddish brown to deep gold. Makes colorful bouquets. 2 ft. 50c each; 3 for \$1.25; Doz. \$4.25.

GYPSOPHILA Paniculata Bristol Fairy (Double Baby's Breath). Early double pure white large flowering perennial Baby's Breath. Produces a second crop of spikes. 75c each; 3 for \$2.00; Doz. \$6.25.

"Pacifica". Beautiful pearly pink blooms in branching panicles. Grows 18 inches tall and blooms in September and October. Excellent for use in fall bouquets. 65c each; 3 for \$1.75; Doz. \$5.50.

NEW HEMEROCALLIS (Day Lilies)

Bagdad. Rich mahogany red. 42 in. Blooming June and July. Each, 75c; 3 for \$1.95; doz., \$5.75.

Calypso. Large light cadmium yellow. 40 in. Blooming July and August. Each, 60c; 3 for \$1.50; doz., \$4.75.

Hyperion. The finest Citron yellow available. Delightfully fragrant. 40 in. Blooming July. Each, \$1.00; 3 for \$2.65; doz., \$7.25.

Imperator. Star Shaped blooms of orange red lined with sulphur. 40 in. Blooming July and August. Each, 60c; 3 for \$1.50; doz., \$4.75.

Margaret Perry. Brilliant orange scarlet, lined with yellow. 48 in. Blooming July and August. Each, 60c; 3 for \$1.50; doz., \$4.75.

Modesty. Large flowering pale yellow. 30 in. Blooming June and July. Each, 75c; 3 for \$1.95; doz., \$5.75.

Collection: One of each of the above 6 varieties, \$3.85.

HIBISCUS (Rose Mallow) Avalon Hybrid.

A new hybrid strain. Different in form, foliage, season, habit and color. Flowers mostly of bell shape, and vary from bluish through pink, rose and vivid reds. Blooming season lasts until middle of October. 60c each; 3 for \$1.50; Doz. \$4.75.

Jumbo Red. A special selection made to improve color and size of the flower of the Mallow Marvels Red. Plants, each, 55c; 3 for \$1.35; Doz., \$4.50.

UNCONDITIONAL GUARANTEE

We guarantee that all perennial plants are properly matured for use of the home gardener and that they will reach the customer in good condition.

Any complaint as to quality or condition of plants must be made at once upon receipt of shipment, and letter accompanied by packing sheet.

CHECK YOUR ORDER

Check your order carefully before mailing. It is almost impossible to make changes on orders after they have been placed in process of filling

PERENNIAL PLANTS—Continued.

HEUCHERA (Coral Bell). Plants have rosette-like clumps of attractive foliage from which dainty stems arise to a height of 18 inches. Small bell-like flowers from panicles at the upper part of the stem. Very dainty and attractive in beds or when cut. We offer the ROSEA variety which has a beautiful deep pink color. 60c each; 3 for \$1.50; Doz. \$4.75.

HOLLYHOCKS. Newport Pink. Rich, shimmering pink blooms on tall stems.

Scarlet Beauty. Brilliant scarlet color for bold backgrounds.

Price of above. Each, 45c; 3 for \$1.15; doz., \$3.75

PHLOX SUBULATA (Dwarf Creeping Phlox).

One of the best rock garden plants. Strong grower with a creeping habit. Multiplies very rapidly. Blooms in May. Very prolific.

LILACINA—Pale lilac lavender.

ATRO-PURPUREA—Dark purple.

Price of above varieties, 60c each; 3 for \$1.50; Doz. \$4.75.

SPECIAL VARIETIES OF PHLOX

Charles Curtis. Brilliant cherry red. Very showy. Flash. Rich carmine-rose with orange-scarlet center.

July Lights. A brilliant carmine red with blood red eye.

Miss Lingard. Long accepted as one of the best cutting varieties, pure white. Splendid for bouquets and mixed floral arrangements.

Salmon Beauty. Rich salmon pink with white eye.

Your choice of the above varieties, .75 each; 3 for \$2.00; doz., \$6.25; or one each of the above 5 for \$3.35.

STANDARD VARIETIES

Africa. The favorite deep red. Good grower and sure, heavy bloomer.

Annie Laurie. One of the best new salmon-reds. Sturdy grower.

Count Zeppelin. Very strong grower and free flowering. Large white blooms with vivid bright red eye.

Daily Sketch. One of the best introductions of recent years. Immense flowers of light salmon pink with carmine eye.

E. I. Farrington. A Phlox of distinctive beauty. Flower trusses are extremely large and color is a delightful salmon shade with slightly darker eye.

Ethel Pritchard. Rich bluish-violet which blends well with other colors.

Leo Schlageter. One of the brightest and flashiest of all red Phlox. Sturdy grower and very free bloomer.

Prime Minister. Clear pure white, brilliant red center.

On all of above. Each, 60c; 3 for \$1.50; doz., \$4.75.

Collection. One each of the above varieties, \$4.00.

LIATRIS (Kansas Gay Feather)—September Glory.

A giant 6-foot spike solidly covered with purple flowers from top to bottom. The flowers, unlike the common variety, come into bloom all at the same time, creating a marvelous effect. Each, 75c; 3 for \$1.95; Doz. \$5.75.

LINUM (Flax) Perenne Blue. 2 ft. May-Aug.

Has dainty sky-blue flowers on graceful arching stems. Blooms produced continuously in profusion. Each, 50c; 3 for \$1.25; Doz. \$4.25.

PYRETHRUM (Painted Daisies) Robinson's Hybrids Mixed.

Foliage is fernlike and ornamental. No other perennial flower possesses such color, hardness, and general usefulness as these gorgeous blooms. The mixed colors blend and contrast with one another in a most pleasing profusion of gay bloom. This is a really great new strain. 60c each; 3 for \$1.50; Doz. \$4.75.

RUDBECKIA Purpurea. Reddish purple flowers, large brown cone-shaped center. 2 to 3 foot stems. Blooms July to October. 60c each; 3 for \$1.50; Doz. \$4.75.

SCABIOSA (Pincushion Flower) Caucasica Perfecta.

Do well in any ordinary garden soil. Stems 18 to 24 inches long topped by charming flowers in a soft lilac lavender shade. In bloom from June to September. Each, 60c; 3 for \$1.50; doz., \$4.75.

VINCA Minor (Grave Myrtle) Bowles Variety.

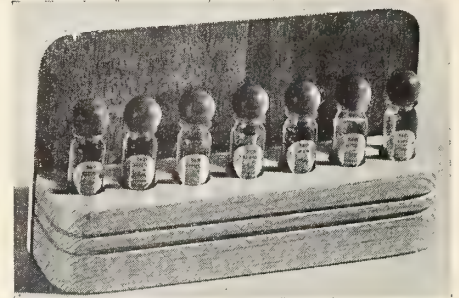
A fine ground cover for shady places. Flowers of an intense blue. 45c each; 3 for \$1.15; Doz. \$3.75.

VIOLET Royal Robe. Lustrous violet blue, huge, very fragrant flowers, opening like a pansy. 60c each; 3 for \$1.50; Doz. \$4.75.

Vaughan's NATURAL FLORAL Perfumes

THE QUALITY of Vaughan's Natural Floral Perfumes is attested by the many women of prominence in society, on the stage, and radio, who regularly purchase our perfumes and colognes for their own use and for gifts to their friends. They have found in these perfumes a recreation of the fragrances they prefer, truer than was provided by the best imported perfumes.

We invite women of taste and discrimination to compare them directly with their favorite imports regardless of brand, price or name. Examine them critically. Then apply this final test—compare them with the freshly opened flower for which they are named—there can be no more difficult test than this.



VAUGHAN'S PERFUME BAR
7 Odors, Half-dram each, \$3.60, tax paid
Add 15 cents for postage

The attractive container of polished wood, which is illustrated holds 7 half-dram bottles, each containing one of the following floral odors:

- Narcissus Carnation Apple Blossom
- Gardenia Lily of the Valley
- Lilac Honeysuckle

Measuring 6½ by 3½ inches, the bar makes a decorative fixture for the dressing table, and enables the owner to select with ease whatever odor may be desired, a gift which is sure to be welcomed.



COLOGNE SAMPLER
½ oz. each of six most popular odors \$1.25
Postpaid, Tax Included

Attractive as a gift. Particularly suitable for 'teen agers as well as for the mature woman of taste. Prepared, our selection of odors.

Size	Perfume	Size	Cologne
1 dram	... \$0.78	1 oz	... \$0.60
2 drams	... 1.50	4 oz	... 1.50
½ oz	... 2.70	½ pint	... 2.82
1 oz	... 4.80	1 pint	... 5.40

These prices are prepaid. Do not add Federal Excise tax: Above prices include the tax.

Available in Either Cologne or Perfume

Cologne is about one-eighth the strength of perfumes (about double the strength of ordinary toilet water).

Appleblossom: Soft, yet fresh and clean.

Bouquet S: A delicately feminine blend of rich floral oils.

Bouquet X: Another blend, slightly "drier" and less sweet. An exotic fragrance.

Carnation: Many acknowledge it as the best recreation of this beloved old favorite.

Wild Rose: Like the breeze through a Sweet Briar hedge in June.

Clove Pink: Similar to carnation.

Wild Spice: Like a clipper ship laden with spices.

Forest Breeze: A smoky, piney fragrance.

Freesia: the most accurate reproduction available of this elusive fragrance.

Gardenia: Not sweet like so many "Gardenia" perfumes—a rich, intense odor.

Geranium: Like a crushed geranium leaf.

Hawaiian Lei: A lovely blend of exotic tropical flowers.

Heather: A rich "smoky" or "peaty" fragrance that goes well with sport clothes.

Honeysuckle: An old favorite.

Lilac: This outstanding fragrance is again available. Like lilacs wet with morning dew.

Lily of the Valley: At last, a satisfactory reproduction of this elusive scent.

Parma Violet: The full richness of this famous old time luxury perfume.

Red Rose: The Damask Rose type.

Sweet Pea: The true fragrance of the original Spencer sweet pea.

Violet: The English violet.

White Rose: Once more available.

Annual Flower Seed for Fall Sowing

WHEN you sow seeds of annuals in Fall, you imitate Nature's method. Practically all hardy annuals will produce stronger, sturdier plants with earlier bloom by this method. Even when spring sowing is desirable experienced gardeners also sow in fall because they then have a continuous season of bloom. Also, they can sow at their leisure instead of trying to plant everything in a few short weeks. Do not be in too much of a hurry to sow.

The ideal time is just before the ground freezes for the winter. November 15th is early enough in normal seasons in the vicinity of Chicago and New York. If the ground has

been prepared in advance, sowings can also be made during winter thaws.

A fine seed bed is desirable, if the sides are protected with boards it will save the seed from washing away. A light covering of may be used if birds are troublesome. Plant at half the depth used when sowing seed in spring. Broadcast all small seed.

★Varieties preceded by star are especially recommended for sowing in the fall above your bulbs. They will grow in the spring and blossom after the bulbs. Their shallow roots will not interfere with the bulbs maturing properly; their growth will conceal the bulb foliage after it grows yellow and unsightly.

Larkspur Prefers Fall Sowing

★Larkspur Giant Imperial (Base Branching). These Larkspurs are ideal for cut flowers as the flower stems, three to four feet long, branch from the base of the plants.

- 2151 **Blue Bell.** A fine medium blue
2172 **Dazzler.** A rich scarlet base.
2155 **Exquisite Pink Improved.** Soft pink.
2163 **Sweet Lavender.** Light lavender blue.
2175 **White King.** Pure glistening white.
Any of the above, pkts., 15c; 3 pkts., for 35c.
2159 **Giant Imperial Mixed.** The above and others. Pkt., 15c; ¼ oz., 50c; oz., \$1.60.
3390 **Nicotiana. Affinis.** (Sweet-scented Tobacco plant). White. Pkt., 10c.
3393 **Nicotiana. Crimson Bedder.** The flowers are of rich deep crimson. Pkt., 15c.
3420 **Nigella. Miss Jekyll Dark Blue.** Bearing on long stems, large semi-double flowers of a charming intense dark blue nestling in fine feathery foliage. Pkt., 10c.
4018 **Petunia Rose of Heaven Select.** Rich brilliant rose, with inconspicuous white throat, darker than Rosy Morn. Pkt., 25c; ¼ oz., 75c
4025 **Petunia. Vaughan's Special Mixture of Dwarf Small Flowering Varieties.** Will be a revelation to those who plant a packet, in furnishing an unending supply of flowers in a most bewildering combination of colors. Pkt., 25c; ½ oz., 75c; ¼ oz., \$1.25.
4370 ★**Poppy. Vaughan's Special Shirley Mixed.** Pkt., 15c; ¼ oz., 30c.



ANNUAL LARKSPUR (Giant Imperial Mixed)

- 255 ★**Alyssum. Vaughan's Little Gem.** Snow-white carpet plant. Pkt., 10c; ¼ oz., 40c.
259 **Alyssum Violet Queen.** A beautiful, fragrant sweet Alyssum, of bright clear violet hue. Pkt., 15c; ¼ oz., 60c; 1 oz., \$2.00.
332 **Antirrhinum.** (Snapdragon). Rust-resistant Super Majestic Mixed Pkt., 20c; 3 pkts., 50c
1287 ★**Candytuft.** Mixed all colors. Pkt., 10c; ¼ oz., 30c.
★**CENTAUREA CYANUS SUPER-DOUBLE** (Bachelor's Button)
1506 **Blue Boy.** Corn-flower blue.
1507 **Pinkie.** Lovely true pink.
1508 **Red Boy.** Deep glowing red.
1509 **Snowman.** Pure white.
Each of above, pkt., 15c; any 2 pkts., for 25c; ¼ oz., 30c.
1522 **Vaughan's Special Super Double Mixed.** Pkt., 15c; ¼ oz., 25c; ½ oz., 40c.

- 1966 **Cosmos. Sensation Special Mixed.** Giant early strain. Pkt., 25c.
2015 **Cynoglossum Blue Bird.** (Chinese Forget-Me-Not) 18 to 24 in. Large sprays of brilliant blue Forget-Me-Not like flowers. Pkt., 10c; ¼ oz., 25c.
2259 **Dianthus Heddewigii Gayety.** Very large, showy fringed flowers; wide range of lovely colors; pure white to crimson. Pkt., 25c.
2861 **Hunnemannia Sunlite.** Gorgeous, semi-double, clear canary-yellow blooms. Light gray-green foliage. Pkt., 15c; ½ oz., 50c.



PANSY, SWISS RASPBERRY ROSE

Pansies, Giant Swiss

- 3892 **Alpenglow.** Rich wine-red shades. Pkt., 25c
3896 **Berna.** Dark violet blue. Pkt., 25c.
3891 **Blue (Ullswater) (Thuner Sea).** Deep blue flower with blue-black blotches. Pkt., 25c.
3820 **Coronation Gold.** The largest pure gold self. Pkt., 50c.
3900 **Pure White.** Pkt., 50c.
3894 **Vaughan's Super Swiss Giant Mixture.** ¼ oz., \$1.25; pkt., 35c.
3901 **Pansy Swiss Raspberry Rose.** A lovely tint of pink best described as Raspberry Rose. It has a suggestion of a lighter tone on the edges of the petals and is marked with a velvety blotch in a deeper tone. Pkt., 75c.

SPECIAL MIXTURES

- 3794 **Vaughan's Super Maple Leaf Giant Mixture (Canadian Giants).** The leaves are of giant size and flowers up to 4 inches across, of wonderful substance and fine form. Many charming colors. ¼ oz., \$1.50; ½ oz., \$2.50; Pkt., 50c.
3875 **Vaughan's Giant Mixture.** This mixture contains all the self-colors, such as white, yellow, blue, purple, red, bronze, etc. All the flowers are of the Giant type and of good shape and texture. ¼ oz., \$1.50; Pkt., 25c.

Viola Cornuta

- 5790 **Blue Perfection.** Light blue. Pkt., 15c.
5789A **Blue Beauty.** Bright blue. Pkt., 15c.
5804 **Chantreyland.** Apricot. Pkt., 25c.
5802A **King Henry (Purple King).** Deep purple violet with lighter center and yellow eye. Pkt., 25c.
5796 **Jersey Gem.** Flowers of rich pure violet, large, fragrant. Pkt., 25c.
5806 **White Perfection.** Finest white. Pkt., 15c.
5795 **Nosegay.** A blend of bright gay colors, red, yellow, blue and apricot, combined with many blotched combinations. Pkt., 25c.
8582 **Super Large Flowering Scotch.** The flowers are large, all two toned without blotches and have a complete color range. Pkt., 25c.

CORNUTA HYBRIDA (Large Flowers)

- 5787 **Arkwright Ruby.** Bright ruby crimson shaded terra-cotta; fragrant. Pkt., 25c.
5789 **Blue Butterfly.** Vivid mid-blue shading to white in the upper petals. Pkt., 25c.
5790A **Chinese Blue.** A round-faced type. According to the Royal Horticultural Chart, is French Blue. Pkt., 25c.
5798 **Lutea Splendens.** 8 in. Bright yellow. 10c.

5813 **VIOLA** Vaughan's Special Mixture. A charming and delightful mixture of these bright and everblooming Violas in a complete color range, shading from pale lavender to rich purple-black, yellow, white, terra-cotta, apricot and rose. Pkt. 25c

Perennial Delphinium PACIFIC GIANT HYBRIDS

The new strain produces plants that are 60 to 65 percent mildew resistant. The flowers are of immense size, tightly set on straight stems that are strong and whippy. The flowers do not shatter.

- 7559B **Blue Bird.** A clear medium blue with white bee with high tall spikes.
7563 **Black Knight.** Large flowers of varying dark violet shade.
7559A **Blue Jay.** From medium to dark blue with dark bee.
7563A **Cameliard Series.** This is a pure lavender self with white bee.
7560 **Galahad.** Clear white, highly mildew resistant.
Each of the 5 above, large pkt., \$1.00; small pkt., 50c.
7561 **King Arthur.** Royal violet, large white bee.
7561A **Guinevere.** Light pink lavender with white bee.
7562 **Summer Skies.** Light blue with white bee.
7562A **Clear White.** Of glistening texture
7559 **Round Table Series.** As the name implies this represents all of the color combinations of the above Knights and their Ladies.
Each of the 5 above, large pkt., 75c; small pkt., 40c.

Vaughan's Irises

PLANTS BY PARCEL POST—If to be sent by parcel post, add postage as follows: Single plants, 5c; 3 plants, 10c; 6 plants, 15c; 12 plants, 25c. We accept no responsibility for delays or conditions that may prove injurious to the contents.

PLANTS BY EXPRESS—We recommend this mode of transit where quantities are over 18 to 24 plants. We pack carefully, but accept no responsibility for delays over which we have no control that may cause injury to the contents.

"S" refers to the three standard or upright curling petals; "F" to falls or drooping petals.

Irises are most effective if planted 3 of a kind in a clump.

DYKES MEMORIAL MEDAL. This is an award made annually in America, France and England for the best Iris of the year.

As soon as iris plants are received, plant them in a sunny, well drained place. Each plant should have at least eighteen inches clear space from other irises, as it will grow in a circle and many varieties spread rapidly. The rhizome, or fleshy root stock from which the leaves and roots grow, should be barely covered with soil, with the roots properly spread below, and the soil well firmed about them. Until the plant is established, give it frequent attention, watering in dry spells. In the first winter, after the ground has frozen, a light mulch to prevent thawing and heaving will be beneficial.

Outstanding Varieties

See our Iris Aristocrat collection on page 2.

Amigo. 34 in. Flowers of heavy texture are very richly colored, like a velvety blue purple pansy. S. clear light lavender violet; F. deep hacinthe violet, edged white. \$1.00; 3 for \$2.50.

Berkeley Gold. 38 in. This top ranking yellow self which does not fade. The flowers are large and of thick substance, have beautifully rounded domes and flaring falls. 75c; 3 for \$2.00.

Black Wings. 38 in. Intense midnight blue. 40c; 3 for \$1.00.

Buechly Giant. 40 in. This variety has the largest flowers of any Iris we grow. It is a clear lavender blue bicolor that has perfect form and will create a sensation in any garden. 40c; 3 for \$1.00.

California Gold. 40c; 3 for \$1.00.

Caroline Burr. 40 in. Very large flowers of a fascinating new color and perfection of form. A cool ivory self overlaid with a soft elusive green and a frosty iridescent sheen. \$2.00.

China Maid. 48 in. Words are inadequate to describe this new, intriguing blend of pink, golden copper and soft lilac. Besides having a beautiful color, it has large size, fine form and a smooth even texture that is outstanding. 75c.

City of Lincoln. 40 in. Red and yellow, bicolor. 60c; 3 for \$1.50.

Copper Lustre. 36 in. Dykes Medal, 1938. Considered "the Iris of the Century." Its flowers are of huge size and its color a blend of glowing copper and gold with iridescent sheen. Nothing quite like it. 50c; 3 for \$1.25.

Daybreak. 40 in. A huge golden pink with slight undertones of copper. The flowers are well shaped, with closed standards and falls that are semi-flaring, but there is a suggestion of ruffling about the entire flower. It has excellent branching stems. \$3.00.

Depute Nomblot. 50 in. Dykes Medal 1930. A magnificent Iris of great size. S. coppery-red, flushed golden bronze; F. rich claret crimson. The entire flower seems lightly dusted with gold which sparkles in the sun. 40c; 3 for \$1.00.

E. B. Williamson. 36 in. An excellent Iris of rich, glowing coppery-red, almost a self, with a silky, lustrous finish. Unusual in color, perfect in form, and strong in growth, it is one of the finest of all Irises. 50c.

ELMOHR

The Colossal New Iris.

36 in. A super Iris. Iris seedling of Wm. Mohr that has magnificent, richly colored, rounded blooms of heavy texture. Their color is reddish mulberry with a pinkish glow that gives it great brilliance. A sensational Iris that is hardy and thrives everywhere. When you see Elmohr in bloom, it will thrill you as no other Iris has to date. Dykes medal 1945. \$1.25; 3 for \$3.00.

Elsa Sass. 38 in. Exquisite, ruffled flowers that are the color of lemon-ice, a most unusual shade that has a startling effect. Blooms of good size and good form. 60c; 3 for \$1.50.

Exclusive. 40 in. Exclusive, yes—for no other blue color is quite like it. The pure light blue color is overlaid with a silvery mist which produces a "powder blue" effect that is very beautiful. 50c; 3 for \$1.25.

Garden Magic. 44 in. Deep, smooth, very dark velvety red self. Its color is almost a maroon, warm and glowing, with a lustrous finish. Flowers are very large and bloom late. Always in demand. \$1.00; 3 for \$2.50.

De Luxe Iris Collection. One each of Garden Magic, Golden Majesty, China Maid, Grand Canyon and Sable. (value \$4.50) for \$3.50. (Postage 10c additional). (After Oct. 1st it may be necessary to change this collection).

Golden Majesty. 42 in. A truly superb Iris which is "tops" in its color class. It is a gleaming, deep rich, pure yellow self which does not fade. The flowers are large and of thick substance, have beautifully rounded domes and flaring falls. 75c; 3 for \$2.00.

Golden Treasure. 38 in. An exquisite creamy golden heart and rich yellow beard. Huge flowers; perfectly branched stems. 50c; 3 for \$1.25.

Grand Canyon. 38 in. Delicately ruffled flowers of a rich and colorful blend of plum, copper and gold, like the colors in the Grand Canyon. \$1.00; 3 for \$2.50.

Great Lakes. 48 in. An exquisite pure blue, the shade of an unclouded sky reflected in crystal waters. It is almost perfection, having crisp petal texture, widely branched, strong stems, and ideally formed blooms with widely flaring falls. Winner of the Dykes Medal 1942. \$1.00.

Gudrun. 36 in. Enormous, flowers pure white, Early. 40c; 3 for \$1.00.

Happy Days. 40 in. An immense clear yellow with flowers over 7 inches from top to bottom. 40c; 3 for \$1.00.

Indian Hills. 37 in. A stunning Iris of clear rich wine purple. 40c; 3 for \$1.00.

Jean Cayeux. 38 in. Dykes Medal 1931. This Iris is a masterpiece. A beautiful blending of coffee or Havana brown with a golden glint that is enchanting. The flowers are of perfect shape. 40c; 3 for \$1.00.

Junaluska. 40 in. S. rosy copper. F. brilliant copper-red. 40c; 3 for \$1.00.

Los Angeles. 40 in. Giant, snowy-white flowers of satin texture; the standards faintly edged lavender blue. One of the finest of all white Irises. 40c; 3 for \$1.00.

Marquita. 38 in. Enormous, beautifully formed flowers of luminous ivory yellow; falls heavily veined maroon. 50c; 3 for \$1.25.

Midwest Gem. 36 in. Flowers of luminous apricot. 60c; 3 for \$1.50.

Ming Yellow. 50 in. The perfect yellow Iris. The gigantic blooms remind one of a smooth, rich flawless carpeting of deep, yellow velvet. Vigorous in growth, it has strong foliage and stout, well branched stems. 75c; 3 for \$2.00.

Missouri. 36 in. Dykes Medal, 1937. Of sensational size and unquestionably one of the best of all blue Irises. S. clear vivid blue; F. slightly darker; semi-flaring. 50c; 3 for \$1.25.

Morocco Rose. 38 in. S. lustrous pale pink, flushed deeper; F. deep rose-lilac pink, long and flaring. A beautiful creation of amazing size. 75c; 3 for \$2.00.

Mulberry Rose. 40 in. Huge flowers of radiant, lovely, mulberry rose with a bronze beard. A new and unusual shade in the deep pink class that stands out from afar in the garden. \$2.50.

Naranja. 40 in. One of the most talked of Iris originations. A large flowered yellow with a distinct orangy overcast on the falls. Decidedly different. 40c; 3 for \$1.00.

Oromohr. 40 in. The flowers are of gigantic size, the standards beautifully domed, the falls broad and semi-flaring; substance excellent. The color is a soft gray lavender-veined violet with a rosy glow over all. 60c; 3 for \$1.50.

Pink Satin. 42 in. Large, finely shaped flowers of a very delicate and smooth, yet glistening Pink. 40c; 3 for \$1.00.

Prairie Sunset. 37 in. Dykes Medal 1943. A gorgeous new blend of peach apricot, rose, copper and gold that captures and holds within itself all the warm, glowing colors of the western sunset. \$1.50.



RED DOMINION

Rebellion. 38 in. S. coppery-rose; F. glowing deep blood-red. A vividly colored Iris of faultless form and rainproof substance. 40c.

Red Dominion. 40 in. Deep red. 40c; 3 for \$1.00.

Royal Coach. 36 in. S. chamois yellow with faint cinnamon dotting; F. bright yellow, bordered and dotted brown. 50c.

Sable. 40 in. Excellent form, hardness, and good bloom every year are some of the qualities which make this variety a prize-winner. An almost perfectly black Iris with a lustrous, silky sheen and an intense depth of color never before seen. \$1.00; 3 for \$2.50.

Sensation. 38 in. Corn-flower blue flowers of perfect form and heavy substance. A perfect flower, the standards beautifully arched, the falls flaring; tall and sturdy. 40c; 3 for \$1.00.

Sierra Blue. 48 in. Dykes Medal 1935. Enormous flowers of soft clear enamel-like blue, reminding one of the blue of the Sierra mountains. It has widely flaring falls, good substance, and a refined finish and graceful form that is really exceptional. 40c; 3 for \$1.00.

Spun Gold. 38 in. Dykes Medal 1944. A gorgeous yellow that is eagerly sought after because of its fine record. It is a deep, pure golden yellow self with a velvety lustre that adds to its beauty and depth of color. \$2.50.

Snow Flurry. 40 in. Enormous, beautifully ruffled flowers of pure icy white, very faintly flushed with blue. The flowers come early, last over a long period and literally cover the strong stems. \$1.50; 3 for \$4.00.

Snowking. 40 in. A great beauty and The King of the white Irises. Giant snow-white flowers of fine form and heavy substance; very hardy. 40c; 3 for \$1.00.

Spring Cloud. 42 in. A striking plicata. S. white heavily dotted and edged blue; F. clear white faintly marked blue. 40c; 3 for \$1.00.

Stardom. 34 in. Unusual in its blending of coppery-pink and apricot-buff. Bright orange beard. Very free flowering. 75c; 3 for \$2.00.

The Red Douglas. 40 in. Dykes Medal 1941. Sensational new vibrant red-purple of colossal size, gorgeously rich in color, like a piece of fine plush. Grows and blooms well everywhere, and the experts agree that it is one of the finest Irises ever raised. \$1.00.

Tiffany. 36 in. A plicata creamy yellow stitched in a burnished bronze. 50c; 3 for \$1.25.

Tobacco Road. 34 in. A very distinctive Iris of rich golden tobacco brown. The large flowers are compact and firm with very heavy substance and trim flaring form. An Iris that has exceptionally rich glowing tones and is the very best of the deep browns. \$6.00.

Wabash. 39 in. Dykes Medal 1940. S. snowy white, delightfully ruffled at the edges; F. wide and flaring, deep hyacinth violet with a definite white edge. Has wonderful substance and orchid-like beauty. Voted by the Iris experts in 1940, 1941 and again in 1942 as the best Iris in commerce. 75c; 3 for \$2.00.

Champion Iris Collection. One each of Elmohr, Great Lakes, Ming Yellow, Prairie Sunset, The Red Douglas and Wabash. (Value \$6.25 for \$4.75.) (Postage 10c additional.) (After October 1st it may be necessary to change this collection).

Ten Fine Irises

Price of the following, except where noted. Each 40c. 3 of one kind for \$1.00. (Note, we cannot supply 3 different kinds for \$1.00).

- Alta California.** 48 in. Flowers of deep golden yellow, faintly bronzed.
- Blue Triumph.** 42 in. A magnificent Iris of fine light blue. Huge stalks.
- Cheerio.** 40 in. S. golden tan flushed rose; F. rich glowing velvety red.
- Crystal Beauty.** 40 in. Perfectly shaped flowers of pure snow white.
- Destiny.** 18 in. A great. Iris. S. deep purple. F. blackish red-purple.
- Frieda Mohr.** 42 in. A gigantic lilac-pink bicolor 6½ inches in size.
- Indian Chief.** 40 in. S. pinkish red. F. glowing velvety red. A prolific bloomer.
- No-We-Ta.** 35 in. A beautiful ruffled pink with yellow flushes at the center.
- Rameses.** 36 in. Dykes Medal 1932. A large blend of russet rose, pink and buff.
- Wm. Mohr.** 26 in. Pale lilac flower, beautifully veined violet. Very unusual.
- Surprise Iris Collection.** 24 Irises. 3 each of 8 named varieties, our selection, in a rainbow of colors for \$3.00. Use these for borders or mass color effects. They are worth many times the price. (If wanted by parcel post, send 25c. additional).

Fall Blooming Irises

These varieties bloom in the Spring and have a habit of blooming again in the Autumn.

- Autumn King.** 30 in. A blue-purple bicolor of fine size. 40c; 3 for \$1.00.
- Autumn Queen.** 18 in. Pure white flowers of good size and quality. 50c.
- Eleanor Roosevelt.** 28 in. An outstanding variety of very fine deep velvety purple. Profuse bloomer twice a year. 40c.
- Southland.** 28 in. Clear deep chrome yellow of large size and heavy substance. 40c.

Special Offer No. 20-A. 6 Fall Irises, 2 Autumn King, 1 Autumn Queen, 2 Eleanor Roosevelt, and 1 Southland (value \$2.50) for \$1.90. (Postage 10c additional.)

Dwarf Irises (Pumila Hybrida)

Dwarf varieties, that bloom two weeks in advance of the tall bearded Irises.

- Atroviolacea.** 5 in. Red-purple with white tipped beard. Very early. 35c; 3 for 90c; 12 for \$3.00.
- Keepsake.** 8 in. Bright golden yellow on slender stalks. Narrow foliage. 50c; 3 for \$1.25.
- Rose Mist.** 8 in. Dusty rose-pink. Very pretty, unusual and rare. 45c; 3 for \$1.15.
- Spring Skies.** 6 in. Lovely light blue, the shade of the Belladonna Larkspur. 35c; 3 for 90c; 12 for \$3.00.
- Tampa.** 8 in. Clear wine red on slender stalks. Narrow foliage. 50c; 3 for \$1.25.

Special Offer No. 20C. 10 Dwarf Irises, 2 each Atroviolacea, Keepsake, Rose Mist, Spring Skies and Tampa, (value \$4.30 for \$3.25. Postage 10c additional.)

Siberian Irises

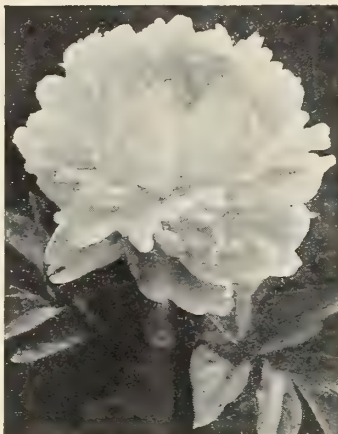
The most delicate and elegant of all small flowered Irises. They grow on tall stems, have graceful, grass-like foliage, and are excellent for cutting.

Price, except where noted, 40c each; 3 of one kind for \$1.00.

- Caesar.** 30 in. Brilliant red-purple of large size and fine form.
- Emperor.** 48 in. Large flowers of a deep rich, dark violet-blue. Very fine.
- Perry's Blue.** 48 in. Large, well formed flower of a beautiful shade of sky-blue. One of the most popular and finest of Siberian Iris.
- Snow Queen.** 30 in. Large ivory white with rich yellow blotch at the throat.

Special Offer No. 20-B. 8 Siberian Irises, Emperor, Perry's Blue and Snow Queen (value \$3.20 for \$2.00. (Postage 20c additional)

Vaughan's Peonies



PEONY THERESE

PEOONIES, especially the modern introductions, are probably the most valuable, and most beloved of all perennial plants. Planted in sun or semi-shade in single clumps or long beds; or bordering lawns, shrub rows, and drives, they give a grand display of large fragrant blossoms of brilliant colors during June, followed by their exquisite foliage which is very ornamental during summer months. They are also most effective for home and table decorations, and last longer in water than many other perennials. Avoid buying cheap Peonies; they require just as much care as the better kinds, and are disappointing in the end.

Peonies may be planted from September first until May. We offer **Divided roots**, natural divisions, having 3 to 5 eyes of blooming size.

The figures following the varieties are the latest ratings given to them by the American Peony Society, based on a scale giving 10 points for perfection.

Roots by Parcel Post.—If to be sent by parcel post, add postage as follows: Single roots, 8c; two roots, 12c; 3 roots, 16c.

Light and Dark Pink and Rose

Claire Dubois. (8.7) Very large double, globular flowers; color rich clear satiny pink, with glossy reflex. Late midseason. \$1.00.

Edulis Superba. (7.6) Usually blooms for Decoration Day. The large flowers are a beautiful deep, vivid pink, and are borne profusely on tall, strong stems. One of the most fragrant of all Peonies and one of the best for cut flowers in its color and season. \$1.00.

Georgiana Shaylor. (8.9) Large, flat, pale rose-pink with a few flecks of crimson. Strong grower and midseason bloomer. \$1.00.

Hansina Brand. (9.1) A flower of beautiful form and really giant size. Color deep flesh pink, shading darker at the base of the petals with a salmon reflex. Resembles Solange but has a better stem and flowers that always open. Late. \$5.00.

Martha Bullock (9.1) A real peony aristocrat, gigantic in size and exquisitely beautiful. Its immense cupped shaped flowers of bright old-rose pink are often 9 to 12 inches in diameter and are held well above the foliage on tall, stout stems. Rose-like fragrance; late. As a garden, cut-flower or show variety, this one is hard to beat. \$1.75.

Mons. Jules Elie. (9.2) By many considered the most beautiful of all Peonies. The flowers are an immense ball of imbricated petals incurved like a chrysanthemum; the color a glistening lilac-pink shading to deeper rose at the base all overlaid with a sheen of silver. Comes into bloom early and is one of our finest varieties for cutting. Very fragrant. \$1.50.

Mrs. F. D. Roosevelt. (9.3) Like the person it is named for, this Peony is going places. It is a strong grower and a dependable, free bloomer. Flowers double with extra long loose petals of soft rose-pink. A wonderful variety that competes with Tourangelle for the honor of being called "The world's most beautiful Peony." \$5.00.

Mrs. John M. Kleitsch. (9.0) Very large cupped flowers of exceptional substance on tall heavy stems very late in the season. Color old-rose-pink. \$2.50.

Myrtle Gentry. (9.1) Immense flowers of perfect substance on stiff stems. Color beautiful light pink, changing to rosy white, with tints of flesh and salmon. Tea rose fragrance. Late midseason. Often called "the perfect peony" for it has no faults and has all you could wish for in a flower. \$2.50.

Nick Shaylor. We think this is one of the very finest most beautiful of the new Peonies. Has very large globular blooms of perfect form and color is bluish pink with deeper pink and salmon lights at the base of the petals. \$5.00.

President Wilson. (9.7) A beautiful peony that resembles an enormous rose, its many petals cupped in a huge shell-pink ball. Large and very fragrant. \$1.50.

Reine Hortense (President Taft) (8.7) A beautiful uniform light pink, center flecked crimson. Described on page 2. \$1.25.

Sarah Bernhardt (9.0) This fine variety is a dark rose-pink, edged lighter pink; center flecked crimson. Described on page 2. \$1.50.

Therese (9.8) A wonderful Peony of perfect habits with immense blooms that are truly splendid in form, texture and color. Enormous petals of pale, translucent, old-rose-pink, paling toward the base and illumined by a golden yellow glow in the depths. Early midseason. \$2.00.

Walter Faxon (9.3) Ranked by Mrs. Harding as the three finest peonies. "Here is the most delectable hue of pink displayed by any of the peonies outside of the tree peonies," she writes. It is a free-blooming variety and grows strongly. Should be cut and allowed to open in the house where it will last for days in increasing beauty. Midseason. \$1.50.

White and Light Varieties

Alsace Lorraine (8.8) One of the most charming and beautiful in our collection. Its large flowers borne in clusters, have petals long and slightly cupped, which radiate symmetrically from the center like a water-lily. The color is a rich, creamy white, center delicately tinted amber. \$1.00.

Avalanche. (8.7) A magnificent flower which opens like a rose. Pure white with a few penciling of carmine. A chaste and beautiful variety of perfect form, delightfully fragrant; late midseason. An excellent cut-flower and landscape variety. \$1.00.

Baroness Schroeder (9.0) One of the finest Peonies in existence. Described on page 1. \$1.50.

Festiva Maxima (9.3) An old variety which Mrs. Edward Harding says, "should be in every garden, large or small, lavishly arrayed or economically furnished." Flowers white, dotted carmine, are often 7 to 8 inches in diameter. Very fragrant. Early. \$1.00.

Frances Willard (9.1) A perfectly-formed flower that is found among the winning classes in every show-room. Very large blooms, often having a raised, cup-shaped center inclosing golden stamens. Opens an exquisite bluish-white, with an occasional carmine touch, changing to pure white. Of good substance and a fine cut-flower variety. Late midseason. \$1.50.

Kelway's Glorious (9.5) An extremely large flower, full of glistening white petals, the outer edges of which are slightly crinkled and curved inward. Very fragrant. Late midseason. \$2.75.

LeCygne (9.4) (The Swan). "One of the three finest peonies," says Mrs. Harding. The curving petals of this magnificent flower are arranged like the feathers on a swan's wing. "Symmetrical, globular, of great size, fragrant, free-blooming, and milk-white," continues Mrs. Harding, "Le Cygne stands by itself." Early midseason \$3.00.

DeLuxe Peony Collection

Six of the world's finest varieties

- 9.4 Le Cygne, white 9.4 Tourangelle, white.
9.2 Philippe Rivoire, red 9.5 Therese, pink
9.2 Solange, cream 9.3 Walter Faxon, pink
One each of above (value \$12.00) for \$9.50.

Vaughan's Peonies

WHITE AND VARIETIES—Continued

Mme. de Verneville (7.9) Very full and double, pure white, center tinted blush. Exquisite rose fragrance. Very beautiful reliable bloomer; early. \$1.00.

Mme. Jules Dessert. (9.4) A strong-growing, free-blooming plant, of delicate coloring. When the flower is cut just as the bud unfolds, and is allowed to open in a shaded room, wonderful tints of flesh, straw and white can be seen to perfection. Midseason. \$1.50.

Mrs. J. V. Edlund (9.5) Unquestionably one of the finest of all Peonies with large, pure white blooms of perfect form. Excellent for exhibition, having won first prize for the 3 best white blooms for about six consecutive years at the Minnesota Peony Show. Tall; vigorous; floriferous; sweet fragrance. \$7.50.

Primevere (8.6) "Finest of the yellow herbaceous peonies and one of the most fragrant," says Mrs. Harding. "Striking and ornamental in the garden, it is still more satisfying as a cut flower. Then its color is safely guarded, and its perfume fully enjoyed. Midseason. \$1.50.

Solange (9.2) Of this variety Mrs. Harding writes: "Until the lover of peonies knows Solange, his life is wasted, bare, uninteresting, improvised, and lonely beyond all words to tell. Its flower is high built, compact, and composed of large, thick petals which closely overlap. The color is deep cream, tinged with amber throughout, with a touch of soft, salmon-pink glowing from its heart." Late. \$1.50.

Tourangelle (9.4) Most of the experts agree that this is the most beautifully colored of all Peonies. Pearl-white, overlaid with delicate shades of salmon; flowers flat, borne on long stems. Exquisite in its color tints if shaded from the sun when opening. Late. \$1.50.

3 Extra Fine Peonies \$2.50

One each *Edulis Superba* (pink), *Felix Crousse* (red) and *Mad. de Verneville* (white) (value \$3.00) for \$2.50, postage 15c additional.

Red and Crimson Sorts

Auguste Desert. (8.7) Cup-shaped flowers of velvety crimson-carmine, very brilliant, with silvery reflex. Mids. \$1.00.

Cherry Hill. (8.6) Deep garnet with a glistening sheen, brightened by golden stamens. The flowers come very early, are unaffected by weather and last a long time, holding their rich bright color until the last petals fall. Excellent garden variety. \$1.50.

Felix Crousse (8.4) Its large, globular flowers, solid and compactly built from edge to center, are a rich, even, brilliant, dazzling ruby-red. Late midseason. \$1.00.

Grover Cleveland (8.2) Large, compact flowers of rich bright crimson on stiff stems. It has excellent foliage and is one of our most desirable, late midseason reds. \$1.00.

Karl Rosefield. (8.8) Very tall, compact grower of stately habit and an excellent bloomer, every stem carrying a huge ball-like flower of rich velvety-crimson. Very brilliant and striking. We consider it the best all-round red Peony. Early midseason. \$1.25.

Longfellow. (9.0) Perhaps the most brilliant of all the red peonies, as striking in the garden as in the showroom. It blooms in early midseason, has excellent foliage and strong, stiff stems. Very popular on account of its dependability and its vivid fadeless color. \$1.75.

Mary Brand. (8.7) Vivid crimson of immense size; full double. \$1.50.

Mons. Martin Cahuzac (8.8) Medium sized, globular blooms. Dark purple-garnet with black reflex. The darkest peony known. Strong, vigorous grower; free-bloomer; midseason. \$1.75.

Officinalis Rubra Plena (8.6) This is the old-fashioned red, the most brilliant of all red peonies; early and splendid cut flower. \$1.50.

Philippe Rivoire. (9.2) Very dark crimson with velvety sheen. Perfectly formed, cup-shaped flowers with incurved center; delightfully fragrant; late. It is distinctly different and is the most beautiful and highest rated of all red Peonies. \$2.50.

Richard Carvel (8.8) Large globular flowers, all one shade of bright crimson. Tall, very stout stems, annual and profuse bloomer. Delicate fragrance. Early, usually in bloom for Decoration Day. \$1.50.

Tenuifolia Flore Pleno. A very early species, in bloom two weeks ahead of any other Peony. Flowers are a full-double brilliant crimson and the foliage is finely cut like that of the *Cosmos*. Very rare and always scarce. Should be mulched the first winter after planting. \$2.50.

Tree Peonies

Rare shrub-like plants. They are hardy, free-blooming, have rich coloring and thrive in an average soil in part or full sun. They should be mulched the first winter. Plants offered are in 5 inch pots.

Lactea Pure white, blotched carmine. \$5.00.

Reine Elizabeth One of the best of the double-flowered varieties. Very large. bright salmon-pink; free flowering. \$5.00.

Souv. De Ducher Large, globular bloom; bright reddish violet with silvery reflex. \$5.00.

Souv. De Maxime Cornu. Enormous flowers 8 inches or more across, with wrinkled petals of deep yellow, heavily shaded orange; fragrant. \$10.00.

Hybrid Tea Roses

EVERBLOOMING HYBRID TEAS

The Hybrid Tea Roses bear their glorious blooms profusely from June until late fall. In severe winter climates they need proper winter protection.

2 Year No. 1, \$1.25; 3 of one kind for \$3.45

Christopher Stone. Produces quantities of brilliant, velvety scarlet blooms all season. Delicious fragrance.

Condesa de Sasgtao. Spectacular cupped flowers of orange-scarlet on the inside, yellow on the reverse. Strong grower; alluring fragrance.

Etoile de Hollande. A brilliant dark red Rose of magnificent size and perfect form; flowers deliciously fragrant.

McGredy's Yellow. Beautifully formed buds and flowers of pure, light butter-cup yellow.

Mme. Jules Bouche. Long, pointed, shapely buds, excellent for cutting, opening into superb white flowers, slightly shaded at times with blush pink; fragrant.

Mrs. Chas. Bell (Shell-Pink Radiance). An exquisite shade of salmon-shell-pink that is not found in any other rose. Delicious fragrance.

Mrs. Erskine Pembroke Thom. An unfading yellow with dark, healthy foliage. Slender buds open to perfectly shaped flowers of canary yellow.

Picture. Each lovely flower is a picture. The nicely formed buds open into flowers of velvety rose-pink with a warm salmon undertone.

Poinsettia. Its long pointed buds open into beautiful poinsettia-scarlet blooms. One of the most dazzling red roses we have ever seen.

Radiance. Large, full, deliciously fragrant blooms of brilliant rosy carmine, shaded pink. One of the most popular roses in America.

Red Radiance. Flowers clear cerise-red. Size, foliage, growth and habit same as in the parent Radiance. Hardy; strong grower.

Talisman. A remarkable blending of gold, apricot, yellow, deep pink, and old rose. The rose of many Gold Medals and one of the most popular of all roses for cutting.

Special Offer No. 21-A. 6 named varieties of Everblooming Hybrid Tea Roses, our selection, all different, for \$6.50.

EVERBLOOMING FLORIBUNDAS

These Roses are among the hardiest and most continuous blooming hybrids offered giving a spectacular display from June until frost. Their flowers are borne in clusters.

Dormant Roses, \$1.25; 3 of one kind for \$3.45

Dagmar Spath. Large trusses of pure white semi-double flowers, produced freely all summer.

Improved LaFayette. An unusually prolific large flowering variety; very showy and fine for mass plantings. Flowers deep brilliant red, richly suffused crimson.

Rosenelfe. Unusually beautiful, silvery rose-pink flowers of *Gardenia*-like form. They are very double, about 2 1/2 inches across, and are produced freely all summer.

Special Offer No. 21-B. One each the above 3 Floribunda Roses (value \$3.75) for \$3.25.

CLIMBING ROSES

Paul's Scarlet Climber. A most important addition to the Climbing Roses; none can compare with it for brilliancy of color, which is a vivid scarlet. \$1.25; 3 for \$3.45.

Oriental Flowered Peonies

These are entirely without pollen. The inner petals are a mass of filaments surrounded by a guard of petals

Ama-No-Sode (9.2) Considered by many the handsomest pink Oriental peony. The flowers are large, of bright rose, shading lighter toward the edge of the petals. \$2.50.

Fuyajo (9.2) Outer petals dark, rich, mahogany-dark red striped and tipped buff. \$1.25.

Gold Mine (8.2) Cup-shaped flowers of dark rose-pink with deep golden center. A strong grower and profuse bloomer. Midseason. \$1.00; 3 for \$2.00.

Mikado. (8.6) Guards velvety crimson, forming a cup enclosing a filigree cushion of crimson petaloids, edged and tipped gold. \$1.25.

Toro-No-Maki. (9.0) Very large lilac-white with amber yellow center. Spectacular and very beautiful. \$3.50.



ROSE, V FOR VICTORY

Roses ready for Fall planting about November first. If wanted by Parcel Post, remit postage, allowing 1 lb. per plant.

For complete list of Roses, including the best of the "New Varieties", ask for our "Spring Gardening Illustrated Catalogue" ready in January.

SUB-ZERO HYBRID TEAS

A new race of Roses that have beautiful flower and that bloom freely and constantly all summer. They are easy to grow, the plants increasing in vigor and the flowers in quality each year. They are hard even in sub-zero winters, but should be given winter protection the same as other roses.

2 yr. No. 1, \$1.75; 3 of one kind for \$5.00.

Pink Princess. (Pat. No. 459). The red buds open to full petaled, deep rose-pink, high centered blooms that have an enchanting fragrance. They make a splendid show in the garden and are lovely for cut-flower arrangements when cut. Its beautiful foliage is famous for being free from premature defoliation.

Red Duchess. (Pat. Pending). You will always enjoy and remember this rose for its captivating fragrance, colorful persistent foliage and flowers of a wonderful shade of red.

Shades of Autumn. (Pat. No. 542). Beautiful fragrant flowers of a brilliant orange, copper and carmine red.

V For Victory. (Pat. No. 543). One of the finest roses in existence. The color is a real yellow, with fragrant, un fading flowers, sometimes 5 inches in diameter, on long stiff stems.

Special Offer No. 21C. One each of the above 4 Sub-Zero Roses for \$6.75.

Flowering Trees and Shrubs



CRIMSON KING MAPLE

All Prices Are F. O. B. Our Nurseries,
Western Springs, Ill.

The figures in italics following each variety indicate in feet the average height of the plant at maturity. B. & B. indicates "Balled and Burlapped."

BARBERRY (Berberis)

Green-leaved Barberry (Berberis Thunbergi). 4 ft. Popular hedge plant. Scarlet berries in fall and winter. 18 to 24 in., 75c; 3, \$2.10; 10, \$6.50; 100, \$55.00.

Red-leaved Barberry (Berberis Thunbergi Atropurpurea). 4 ft. The foliage is a rich, bronzy red, if planted in full sun. 18 to 24 in., \$1.00; 3, \$2.75; 10, \$8.50; 2 to 2½ ft., \$1.25; 3, \$3.45.

BEAUTY BUSH (Kolkwitzia Amabilis)

6 to 8 ft. A graceful shrub that is well named, for it is one of the most beautiful in our Nursery. It makes a wonderful showing in June when its long arching branches are usually completely covered with masses of pink snapdragon-like flowers. A hardy and reliable shrub for better home and landscape plantings. 2 to 3 ft., \$1.50; 3, \$4.20.

BRIDALWREATH (Spiraea Van Houttei)

5 to 6 ft. One of the most beautiful and useful shrubs. White flowers in June. 2 to 3 ft., 75c; 3, \$2.10; 10, \$6.50. 3 to 4 ft., \$1.00; 3, \$2.70; 10, \$8.50.

BURNING BUSH (Euonymus)

Winged Burning Bush (Euonymus Alatus). 6 to 8 ft. Bark cork-like and curiously winged; leaves small; fruit red; in autumn, foliage bright red. One of our best shrubs for specimen plantings and for growing in shady locations. 2 to 3 ft., \$2.00; 3, \$5.25; 3 to 4 ft., \$2.50; 3, \$7.00; 4 to 5 ft., \$4.00.

Dwarf Burning Bush (Euonymus Alatus Compacta). 4 to 6 ft. A compact shrub that is especially attractive in the fall when the foliage turns crimson, and the whole bush resembles a ball of fire. Fine for formal effects as it may be kept trimmed to the size and height desired. 18 to 24 in., \$2.00; 3, \$5.50; 2 to 2½ ft., \$2.50; 3, \$6.75; 2½ to 3 ft., \$3.50; 3, \$9.75; 3 to 3½ ft., specimens. B. & B. \$5.00.

COTONEASTER

Peking Cotoneaster (Acutifolia). 5 to 10 ft. Small leathery leaves of rich glossy green on willow brown branches closely set with small pink flowers in May; jet black berries in fall. It is a beautiful shrub and makes one of our finest hedges, due to its upright growth and adaptability to dry situations. Can be trimmed like Privet. Recommended in the North where hedge plants must be extremely hardy. 2 to 3 ft., \$1.00; 3, \$2.70; 10, \$8.50; 3 to 4 ft., \$1.25; 3, \$3.50.

CRANBERRYBUSH (Viburnum)

European Cranberrybush (Viburnum Opulus). 10 ft. A handsome shrub with dense green foliage. The single white flowers, borne in flat imperfect clusters in May are succeeded with showy cranberry-like berries that cling to the leafless branches all winter. 3 to 4 ft., \$1.25; 3, \$3.60; 10, \$10.00.

DOGWOOD (Cornus)

Coral Dogwood (Cornus Alba Sibirica). 6 to 10 ft. Bright coral-red branches. 2 to 3 ft., 80c; 3, \$2.25; 3 to 4 ft., \$1.00; 3, \$2.85.

Goldentwig Dogwood (Cornus Stol. Flaviramea). 6 to 10 ft. Attractive golden yellow bark. 3 to 4 ft., \$1.00; 3, \$2.85.

ELM (Ulmus)

3 Quick Growing Varieties

American Elm, Moline Type (Ulmus Americana Molini). 80 to 100 ft. Exceedingly large foliage. Of upright habit, taking up little room. Splendid tree for the street or for small yards.

American Elm, Vase Type (Ulmus Americana Urni). 80 to 100 ft. A beautiful tree for landscape or boulevard planting where grace, dignity and uniformity are desired. A true vase-shaped tree.

Chinese or Siberian Elm (Ulmus Pumila). 75 ft. On account of its rapid growth, resistance to disease and ability to thrive in almost any situation, this new variety is already one of the most popular shade and street trees in America. A tree of rare beauty with small, dark green foliage.

Height	Caliper	Each	3 for
8 to 10 ft.	1 to 1¼ inch.	\$3.75	\$10.50
8 to 10 ft.	1¼ to 1½ inch.	4.50	12.75
8 to 10 ft.	1½ to 1¾ inch.	5.00	14.25
10 to 12 ft.	1¾ to 2 inch.	5.50	15.45

Larger sizes, prices on application.

FIREBUSH OR FLOWERING QUINCE

Cydonia Japonica. 4 to 5 ft. Very showy in April when its branches are covered with brilliant orange scarlet flowers, followed by yellowish green, quince-shaped, fragrant fruits. 18 to 24 in., \$1.10; 3 for \$2.95.

GOLDEN BELL (Forsythia)

Showy Border Golden Bell (F. Intermedia Spectabilis). 6 to 8 ft. Considered the best of the Forsythias on account of its larger and richer yellow blossoms, which completely cover the wide spreading branches in early spring. 2 to 3 ft., 90c; 3, \$2.50; 3 to 4 ft., \$1.25; 3, \$3.60; 10, \$11.00.

Korean Golden Bell (F. Ovata). 5 to 8 ft. Extremely hardy and very early. The flowers are pale primrose-yellow, 2 to 3 ft., \$1.00; 3 for \$2.85.

HANSEN BUSH CHERRY

Prunus Besseyi. 4 to 5 ft. Hardy, quick-bearing cherry. Fruit resembles a small plum, massed in clusters from the ground up; good to eat fresh and makes delicious preserves. Have striking ornamental value, dwarf, bush nature, fragrant white flowers in spring and beautiful silvery green foliage which turns rich red and gold color in fall. 2 to 3 ft., 90c; 3 for \$2.50; per 10, \$8.00.

HONEYLOCUST (Gleditsia)

Thornless Honeylocust (G. Triacanthos Inermis). 50 to 70 ft. A large, vigorous tree with spreading branches, thornless or nearly so, and handsome feathery fern-like leaves. Good for yard or street planting and will withstand the dust and smoke of the city well. Thrives in any soil and will endure drought. 8 to 10 ft., 1 to 1¼ in. caliper, \$3.50; 3, \$9.75; 8 to 10 ft., 1¼ to 1½ in. caliper, \$4.00; 3, \$11.25; 8 to 10 ft., 1½ to 1¾ in., \$4.75; 3, \$13.50; 10 to 12 ft., 1¾ to 2 in., \$6.50.



WINTER CREEPER (Euonymus Vegetus)

HONEYSUCKLE (Lonicera)

Pink Tatarian Honeysuckle (Lonicera Tatarica Rosea). 9 to 10 ft. One of our best shrubs for screen and border planting. 2 to 3 ft., 80c; 3 for \$2.25.

Zabel Red Honeysuckle (L. Korolkowi Zabeli). 10 ft. A dense upright shrub. This variety produces a grand display of red flowers in spring followed by red fruits in summer. It is probably the darkest colored bush honeysuckle. We consider Zabeli one of the really worthwhile recent introductions. 2 to 3 ft., \$1.00; 3 for \$2.70; 3 to 4 ft., \$1.25; 3 for \$3.45.

HYDRANGEA

Peegee Hydrangea (H. Paniculata Grandiflora). 8 to 10 ft. Immense panicles of bloom a foot long, white turning to rose, commencing to bloom in August. 18 to 24 in., \$1.10; 3, \$2.95; 10, \$9.00.

Snowball Hydrangea (H. Arborescens Grandiflora). 4 ft. Large, flat heads of snow-white flowers in June and July. Thrives in shade. 18 to 24 in., \$1.35; 3 for \$3.75.

LILAC SPECIES

Common Purple Lilac (Syringa Vulg. Purpurea). 12 to 15 ft. The old-fashioned Lilac. It is hardy and vigorous, endures neglect and blooms abundantly. Purple flowers early in May. 2 to 3 ft., \$1.00; 3, \$2.75; 10, \$8.50.

Persian Purple (Syringa Persica). 8 to 10 ft. The most graceful and freely flowering of the Lilacs and one of the most beautiful hedge and screen plants in existence. The leaves are long and narrow; the branches drooping and willowy; and the purple-lavender flowers, in loose panicles, come in such profusion that they completely cover the plants. 2 to 3 ft., \$1.00; 3, \$2.75; 10, \$8.00; 3 to 4 ft., \$1.35; 3, \$3.75; 10, \$12.00.

FRENCH HYBRID LILACS (Syringa)

Belle de Nancy. Double. Large satiny rose showing some white towards the center. Free blooming; extra fragrant. 3 to 4 ft., \$2.75; 3 for \$7.50.

Charles Joly. Double flowers of dark wine-red with silvery reverse. 2 to 3 ft., \$2.50; 3, \$6.75; 3 to 4 ft., \$3.50; 3 for \$9.75.

Charles X. Magnificent trusses of single, reddish-purple flowers. Fragrant; free flowering; strong grower. 2 to 3 ft., \$1.75; 3, \$4.50; 3 to 4 ft., \$2.50; 3, \$6.75; 4 to 5 ft., \$4.00.

Ludwig Spaeth. Immense clusters of single, deep purplish red flowers. 2 to 3 ft., \$2.50.

Marechal Lannes. Extra large trusses of double or semi-double flowers of beautiful bluish violet. Very showy; fragrant. 4 to 5 ft., \$5.00.

Marie Legraye. Its large, single, pure white flowers are borne in very large panicles and are very beautiful. Blooms profusely and is a fine cut-flower variety. 2 to 3 ft., \$1.75; 3, \$4.50; 3 to 4 ft., \$2.75; 3, \$7.50; 4 to 5 ft., \$4.00.

Mme. Lemoine. Double pure white in large clusters. Strong grower. 2 to 3 ft., \$2.00; 3, \$5.25.

Pres. Grevy. Large compact clusters of double flowers of very fine blue. 2 to 3 ft., \$2.00; 3, \$5.25; 3 to 4 ft., \$2.75; 3, \$7.50.

Vestale. Perfectly shaped, single white. 2 to 3 ft., \$2.00; 3, \$5.25; 3 to 4 ft., \$2.75; 3, \$7.50.

MAPLE (Acer)

Crimson King Maple (Acer Plat. Schwedleri Nigra). (Patent No. 735). The new purple leaved Maple which holds its rich dark color throughout the summer. 8 to 9 ft., \$6.00.

Columnar Norway Maple (Acer Platanoides Columnare). 50 to 60 ft. Compact columnar form of the Norway Maple. 8 to 10 ft., 1 to 1¼ in. caliper, \$6.50; 8 to 10 ft., 1¼ to 1½ in., \$9.00.

Norway Maple (Acer Platanoides). 50 to 75 ft. A large and handsome tree with spreading branches, and compact, round head. Broad, dark green foliage, fading with tones of yellow and gold in autumn. 8 to 10 ft., 1 to 1¼ in. caliper, \$5.00; 3, \$14.25; 8 to 10 ft., 1¼ to 1½ in. caliper, \$6.50; 3, \$18.45.

Larger sizes, prices on application.

DWARF NINEBARK

Physocarpus Monogynus. 5 ft. One of our finest low-growing hedge plants. Of dense, upright growth, it requires little shearing. The leaves are small, three to five lobed, and in color are a dark, glossy green. Ideal for growing in shady places or in full sun. 3 to 4 ft., \$1.00; 3, \$2.85; 10, \$9.00.

MOCK ORANGE (Philadelphus)

Common Mock Orange. The free flowering single white found in the old-fashioned gardens. Of rapid growth, forming a large bush. 4 to 5 ft., \$1.25; 3 \$3.45; 10, \$11.00.

Virginalis. 7 to 8 ft. One of the most beautiful shrubs grown. In June the plants appear as a huge bouquet, being completely covered with extra large, single and semi-double flowers that are pure white and sweet-scented. It has a long blooming season, the new wood producing large individual flowers often 3 inches across, throughout the summer. 2 to 3 ft., \$1.50; 3, \$4.20; 3 to 4 ft., \$1.75; 3, \$4.80.

PRIVET HEDGES

Amur Privet (Ligustrum Amurense). 12 ft. One of the best hardy hedge plants. 2 to 3 ft., 50c; 10, \$4.00; 100, \$35.00; 3 to 4 ft., 60c; 10, \$5.00; 100, \$40.00.

Regal Privet (Ligustrum Iboata Regelianum). 8 to 10 ft. Dark, glossy green leaves; spreading graceful habit. Grows well in sun or shade. 18 to 24 in., 80c; 3 for \$2.25.

PRUNUS (Almond or Plum)

Newport Purple-leaf Plum (P. Cerasifera Newport). 12 to 15 ft. A small tree shrub. The young branches are a dark purple; the leaves, when young, are lustrous crimson, changing to a dark purple, and retain this beautiful tint until they drop, late in autumn. 3 to 4 ft., \$2.25; 3, \$6.00; 6 to 8 ft., \$6.50.

Pink Flowering Almond (P. Glandulosa Sinesis). 4 to 6 ft. These bushy shrubs never fail to produce in early spring, before leaves appear, a profusion of small, very double pink roselike flowers that are closely set along the branches. 2 to 3 ft. \$1.50; 3 for \$4.00.

Siberian Flowering Almond (P. Nana). 3 ft. Bright rosepink flowers on dwarf bushes in early spring. Small almond fruits add interest in summer to this hardy shrub. The slender, dark green leaves change to bright orange and red in Fall. 2 to 3 ft., \$1.25; 3 for \$3.45.

EVERBLOOMING SPIRAEA

Spiraea Froebeli. 3 ft. Round, flat clusters of rosy-pink flowers from June to October. Beautiful foliage all season. One of our best low growing shrubs for general use and for flowering hedges. 18 to 24 in., 90c; 3 for \$2.55; 10, \$8.00; 24 to 30 in., \$1.00; 3 for \$2.75; 10, \$8.50.

SNOWGARLAND (Spiraea Arguta)

4 to 5 ft. A remarkable floriferous and showy shrub. Leaves narrow, bright green fading with tones of yellow and orange in fall. The flowers are small, pure white, and borne in early spring in such great profusion that the whole shrub appears laden with snow. 3 to 4 ft., \$1.00; 3, \$2.85; 10, \$8.50.

SNOWBALL

Old-Fashioned Snowball (V. Opulus Sterile). 8 to 10 ft. Large balls of white flowers in May. 3 to 4 ft., \$1.35; 3, \$3.75; 4 to 5 ft., \$1.75; 3, \$4.80.

WINTERCREEPER (Euonymus)

Bigleaf Wintercreeper (Euonymus Radicans Vegetus). This hardy evergreen trailer has round leaves and is sometimes called "Evergreen Bittersweet" on account of its gorgeous red berries, which are resplendent all winter against a rich deep evergreen foliage. Makes a useful ground cover or will climb on brick or stone. 4 in. pots, \$2.00; 3 for \$5.40.

Grapes

Concord (Black). The most popular grape in America. Large, handsome bunches of large, luscious berries; juicy, sweet and tender. Very productive. 2-yr. No. 1, 75c; 3, \$1.75; 10, 5.00.

Prices of the following three varieties, 2-yr. No. 1, each, 75c; 3 of one kind for \$1.75; 10 for \$5.00; 3 yr., 90c; 3 of one kind for \$2.50.

Caco (Red). The most beautiful of the hardy grapes. Bunches large and compact, fruit sweet and palatable weeks before fully ripe.

Portland (White). This is the earliest of all grapes. Large bunch and berry; flesh sweet, juicy and of fine color. Vine hardy, vigorous and productive over a wide area.

Sheridan (Black). Valuable new grape that is expected to replace Concord, which it surpasses in many regions. Large in bunch and berry; keeps and ships well. Good quality.

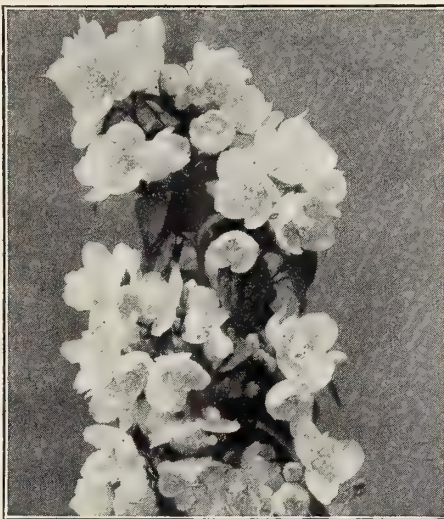
SPECIAL OFFER No. 23. One each of grapes Caco, Concord, Portland and Sheridan 2 yr., (value \$3.00) for \$1.95. (Postage and packing, 15c additional).

VIBURNUM

Noted for their Beautiful Autumn Fruits

Arrow Wood (Viburnum Dentatum). 10 to 12 ft. Of upright habit; dark green foliage which changes to purple and red in autumn. White flowers in flat clusters in June; dark blue fruits in autumn. Succeeds in shade. 2 to 3 ft., 80c; 3, \$2.25; 3 to 4 ft., 90c; 3, \$2.55.

Wayfaring Tree (Viburnum Lantana). 15 ft. Large robust shrub with soft, heavy leaves, silvery beneath. Clusters of white flowers in May succeeded by red fruit, turning black in autumn, retains its foliage very late. 2 to 3 ft., 80c; 3, \$2.25; 3 to 4 ft., 1.00; 3, \$2.75.



PHILADELPHUS Virginalis

VINES FOR FALL PLANTING

BITTERSWEET (Celastrus Scandens)

A native climbing or twining plant with handsome large leaves; yellow flowers in May and June and clusters of ornamental orange-capsuled fruit in autumn. Succeeds well in shade. We recommend planting 2 or more in a group. 2 yr., \$1.00; 3 for \$2.50; 3 yr., \$1.25; 3 for \$3.45.

CREEPER (Ampelopsis)

Boston Ivy (Ampelopsis Tricuspidata or Veitchii). The grandest hardy climbing vine in existence for covering houses, churches, schools, etc. Its glossy, ivy leaves overlap each other, and its long delicate young shoots stretch up the walls with free and rapid growth. The tendrils at nearly every point cling firmly to the smoothest surface of rock or brick. 2-year, 85c; 3 for \$2.25; doz., \$8.50.

LARGE-FLOWERING CLEMATIS

Henryi. Pure white flowers, usually eight-petaled, 4 to 6 inches in diameter and pure white. Very hardy 2 yr. \$1.35.

Jackmani. This variety, with its strong, healthy growth, hardy nature and rich, deep velvety purple flowers, is the most satisfactory of its class. 2 yr. \$1.35.

Mme. Edward Andre. Beautiful bright velvety red, free-flowering and continuous bloomer. 2 yr., \$1.35.

Gold Medal Collection. One 2-yr. old, root each, Jackmani, Henryi and Mad. Edward Andre, \$3.50.

HONEYSUCKLE (Lonicera)

Everblooming Honeysuckle (Lonicera Heckrotti). Remarkable for large size and distinct appearance of its flowers, crimson-carmine without and golden apricot inside. They are very beautiful and fragrant and are in bloom from the middle of June until frost. 3 yr., \$1.50.

We have a large assortment of the most popular and meritorious ornamental shrubs, shade trees, evergreens, vines and fruit trees. If you wish stock not listed in this catalogue or stock in large sizes, send us your list for quotation or ask for "Nursery Price List," ready about Oct. 1st.

Vaughan's Evergreens

All Prices Are F. O. B. Our Nurseries, Western Springs, Ill.

When Personal of Selection of Stock is made, We charge for According to Its Value.

ARBORVITAE (Thuja)

American Arborvitae (T. Occidentalis). A broad pyramidal tree. 3 1/2 to 4 ft., \$5.50; 4 to 4 1/2 ft., \$6.00; 4 1/2 to 5 ft., \$6.50; 5 to 5 1/2 ft., \$7.50; 5 1/2 to 6 ft., \$8.50.

Globe Arborvitae (T. Occidentalis Globosa). A round, compact form with deep green foliage. 15 in., \$3.00; 18 in., \$3.50; 24 in., \$4.00.

Pyramidal Arborvitae (T. Occidentalis Pyramidalis). A compact, narrow pyramidal tree. 3 to 3 1/2 ft., \$5.00; 3 1/2 to 4 ft., \$5.75; 4 to 4 1/2 ft., \$6.50; 4 1/2 to 5 ft., \$7.50; 5 to 5 1/2 ft., \$8.50; 5 1/2 to 6 ft., \$9.50.

JUNIPER (Juniperus)

Andorra Juniper (J. Horizontalis Plumosa). Of prostrate habit; foliage bright green in summer, rich reddish purple in winter. 2 to 2 1/2 ft., \$6.00; 2 1/2 to 3 ft., \$7.50.

Burk Redcedar (J. Virg. Burki). An improved form of Silver Redcedar. 5 1/2 to 6 ft., \$16.50; 6 to 6 1/2 ft., \$18.00.

Canaert Redcedar (J. Virg. Canaerti). Fine Pyramidal form with heavily tufted deep green foliage. 4 to 4 1/2 ft., \$11.50; 4 1/2 to 5 ft., \$12.50; 5 to 5 1/2 ft., \$15.00; 5 1/2 to 6 ft., \$17.50.

Pfitzer Juniper (J. Chin. Pfitzeriana). One of the best Junipers. Of broad, bushy growth, with thick, rich green foliage. 18 to 24 in., \$6.50; 3 for \$18.50; 2 to 2 1/2 ft., \$8.00; 2 1/2 to 3 ft., \$10.00. 3 to 3 1/2 ft., \$12.00.

Redcedar (J. Virginiana). Tall growing, one of the best known evergreens. 6 to 6 1/2 ft., \$11.50.

Savin Juniper (J. Sabina). A dwarf evergreen with semi-erect spreading branches. 2 to 2 1/2 ft., \$6.00; 2 1/2 to 3 ft., \$6.75.

Silver Redcedar (J. Virg. Glauca). One of our choicest evergreens with attractive blue tinged foliage. 4 to 4 1/2 ft., \$11.50; 4 1/2 to 5 ft., \$12.50; 5 to 5 1/2 ft., \$15.00; 5 1/2 to 6 ft., \$16.50; 6 to 6 1/2 ft., \$18.00; 6 1/2 to 7 ft., \$20.00.

Von Ehron Savin Juniper (J. Sabina Von Ehron). Semi-spreading; very dark green foliage. 2 to 2 1/2 ft., \$6.00; 2 1/2 to 3 ft., \$6.75; 3 to 3 1/2 ft., \$9.00.

Dundee Juniper (J. Virg. Hillii). Dense conical form; bluish gray-green foliage, plum colored in winter. 4 1/2 to 5 ft., \$12.50; 5 to 5 1/2 ft., \$15.00; 5 1/2 to 6 ft., \$16.50.

JUNIPER—Continued

Keteleer Juniper (J. Chin. Keteleeri). Similar to Canaert Redcedar, but of more open growth and pyramidal habit. 5 1/2 to 6 ft., \$15.00.

PINE (Pinus)

Austrian Pine (P. Nigra). A good tree for city planting. A distinctive variety with stout spreading branches and long rich green needles. 4 1/2 to 5 ft., \$15.00; 5 to 5 1/2 ft., \$17.50.

Mugho Pine (P. Mont. Mughus). Good low growing evergreen. 15 in., \$3.50; 3 for \$9.75; 18 in., \$4.25; 3 for \$12.00; 2 ft., \$5.00; 2 1/2 ft., \$6.50; 3 ft., \$9.50.

SPRUCE (Picea)

Black Hill Spruce (P. Canadensis Albertiana). A very dense, compact growing spruce with green or bluish foliage. 2 1/2 to 3 ft., \$6.00; 3 for \$17.25; 3 to 3 1/2 ft., \$7.00; 3 for \$20.25.

Norway Spruce (P. Excelsa). A pyramidal tree of rapid growth and dark green foliage. 2 to 2 1/2 ft., \$3.75; 2 1/2 to 3 ft., \$4.50; 3 to 3 1/2 ft., \$5.50; 3 1/2 to 4 ft., \$6.50.

Colorado Blue Spruce (P. Pungens Glauca). Very showy, rich silvery blue foliage. 2 to 2 1/2 ft., \$8.50; 2 1/2 to 3 ft., \$10.00. 3 to 3 1/2 ft., \$12.00.

Colorado Green Spruce (Picea Pungens). The abundance of heavy rich green foliage makes this variety a most impressive and popular evergreen. Splendid for specimen planting. 2 to 2 1/2 ft., \$7.00; 2 1/2 to 3 ft., \$7.75; 3 to 3 1/2 ft., \$8.50; 3 1/2 to 4 ft., \$10.00.

YEW (Taxus)

Spreading Yew (T. Cuspidata). Of dense, spreading growth, with heavy, dark green foliage. 15 to 18 in., \$7.00; 3 for \$19.95; 18 to 24 in., \$8.50; 3 for \$24.45; 2 ft., \$10.00; 2 1/2 ft., \$12.50; 3 ft., \$17.50.

Upright Yew (T. Cusp. Capitata). An upright or pyramidal form with glossy, deep green foliage. 2 ft., \$12.00; 2 1/2 ft., \$15.00; 3 ft., \$22.50; 3 1/2 ft., \$27.50.

Hick's Yew (T. Media Hicksi). A distinct columnar form with rich, deep green foliage. 2 1/2 ft., \$12.00; 3 ft., \$14.00; 3 1/2 ft., \$18.50.

Supplies for Fall and Winter Gardens

Special Chemical Aids

ROOTONE

A hormone powder easy to use, anyone can apply safely, no skill is needed to apply Rootone, no measurements, no vials, no elaborate charts to follow, just dip and plant. Price, ¼ oz. pkg., 25c; 2 oz. jar, enough to treat 3,000 cuttings, \$1.00; 1lb. jar will treat up to 30,000 cuttings, \$5.00.

Rootone No. 10. For rooting of Azaleas, and other woody cuttings. 2 oz. jar, \$2.00; 1 lb. can, \$10.00. Write for leaflet; all postpaid.

FRUITONE

The hormone spray for stopping pre-harvest drop 2/5 oz. pkt., 25c; 2 oz., \$1.00; 8 oz., \$2.00.

TRANSPLANTONE

For treatment of transplants of all kinds it contains the root forming hormones and Vitamin B-1. ½ oz., 25c; 3 oz., \$1.00; lb., \$4.00.

Floralife Keeps Cut Flowers Longer

Just stir patented Floralife into vase of water. More than doubles life of florist or home grown bouquets. Maintains color and fragrance. Acts like magic Floralife also stimulates; makes buds open wide and expands size of blossoms. No need to change water or re-clip stems. Fully guaranteed. 3 packets (each packet treats two quarts water) 25c.

An excellent gift to all flower lovers and hospital patients, contains 15 colorful packets, \$1.00 . . . 30 qt. economy Handy-Home box, \$1.00; 100 qt. size big drum, \$3.00; postpaid, \$3.25.

Magic Soil Substitute for Starting Plants.

MIKAMAGIC is a prepared form of vermiculite, cleansed of all impurities which might injure plants, and of the correct sizes for horticultural use. Completely sterile, and free of all organisms which might cause damping off, it is one-tenth the weight of soil and has remarkable ability to retain both water and air; both of which are vital to plant growth.

In addition to being an unsurpassed medium for starting seeds and rooting cuttings, it is effective as a soil conditioner.

Material is made in three grades, coarse for base or foundation; medium, for the center layers, and fine for using on the surface of seed starters.

Prices, ½ peck bag, 50c; ½ bushel bag, \$1.75; 1 bushel bag, \$2.95. All shipped by express, charges collect.



Lawn and Leaf Rake. Durably made of 20 genuine spring steel tines, 18 in. spread. Handle measure 48 in. Each, \$1.25.

Springfield Lawn Sweeper

This machine will clean the lawn more thoroughly than three or four men with hand rakes, and greatly benefit the turf. Put together in the most durable and thorough manner. With Semi-pneumatic wheels, 20" width price \$34.50; 28" width \$44.50. Specify whether rakes or brushes are desired.

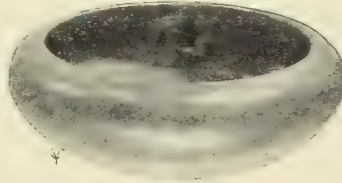


RODENT ROCKETS

Novel, effective destroyers; light like a roman candle and blitz out whole families of gophers, moles, rats, field mice, ants etc., at one "shot." Safe sure, efficient aids to hunters in "un-treeing" hole-up woodchucks, raccoons, etc. 3 for 25c; dozen, 95c.

Bowls for Growing Bulbs

BULBS which are easily forced in bowls are described and illustrated on Pages 11 and 13. Attractive and inexpensive floral decorations for the living room and sunparlor can be produced by anyone who will follow the simple directions supplied.



F. L. STYLE BOWLS

(Not illustrated). A pottery with slightly rolled top in matt green, blue or jet black glaze finish. Prices: 6-inch (wt. 2 lbs.), 65c; 7-inch (wt. 3 lbs.), 80c; 8½-inch (wt. 4 lbs.), \$1.00.

For parcel post delivery add 10c per bowl postage.

PEARL CHIPS AND BULB FIBRE

Pearl Chips, white, per lb., 10c; 10 lbs., 75c. Colored, per lb., 15c; 10 lbs., 85c; add 10c per lb. for postage.

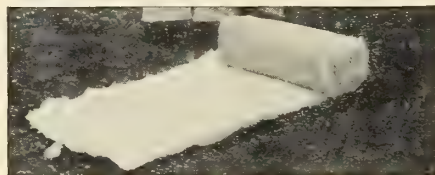
Vaughan's Prepared Fibre

For Growing Bulbs in Bowls, without Drainage. Per lb., 25c; 3 lbs., 60c; 10 lbs., \$1.25; add 10c per lb. for postage.

HOT-BED MATS

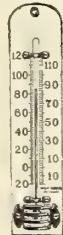
For protecting hotbeds Made of poplin materials, vat dyed and Sanforized to make them damp proof. 76x76 inch—\$9.00 each; dozen \$99.00.

PUTTROPE. A great improvement for glazing, and caulking. Easy to apply, won't deteriorate, run or get brittle. 100 ft. \$1.35; 1000 ft., \$6.75.



Glass Wool. Protection and perfect mulch for your prized Plants and Shrubs, has been proved superior to all other mulches for the winter protection of plants. A snowy white blanket composed of extremely fine glass fibres, put up in bats, 24" x 96" in size and are an approximate 1½ inches thick at 2½ lbs. per cubic ft. density. Price, per bat, \$1.25; three for \$3.30; carton of 12, \$12.00.

GLAZING POINTS, Vaughan's Perfection. No rights or lefts. No. 2, small, single thick glass; No. 2½, double thick, for greenhouse and skylights. Per lb. (approximately 900), 75c; postage extra.



Siebert's Improved, ⅝ and ¾, price per lb., 75c.

THERMOMETERS. White Porcelain, 8-inch. Each, \$1.50.

Tim Case, standard grade tested, 12-inch, Each, \$3.25.

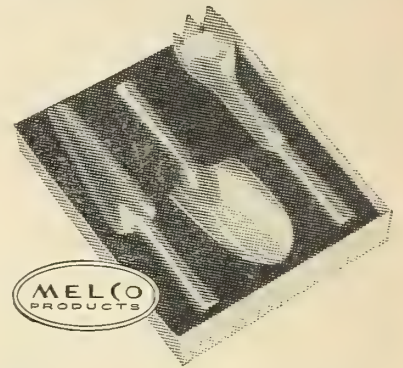
Hotbed, all glass heavy point, \$1.35.

Self-Registering with magnet to set it, 8-inch, registers highest and lowest temperature, Each, \$10.50.

LABELS, Wooden, for Pots.	Per 100	1000
4 in., painted.	\$.065	\$3.10
6 in., painted.	.80	4.65
Tree (copper wired) 3½ in.	.80	4.65

We prepay all light items listed on this page, and where price does not include delivery, the additional amount required for postage is specifically noted. If this amount is not forwarded delivery of such items will be by express, charged collect.

Gift Suggestions



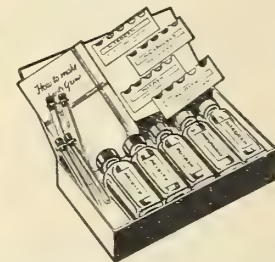
Melco Polished Feather-Light Garden Set

Set of 3 for \$3.95, postpaid \$4.25

Made of cast aluminum as strong as steel, these tools are light as a feather, and moulded to fit your hand. They are absolutely rust-proof, and easily cleansed and polished, so they will be beautiful as well as useful as long as they last, which will be for many years. A large trowel, small transplanting trowel, and hand-fork for cultivating are included in the set of three.

Soil Testers Easy to Use

Home Gardeners's Kit, \$2.50, pstp'd \$2.60



This simple, practical, easy-to-use kit is your best insurance of gardening success. Made by the maker of professional field test kits used by nurserymen, growers and greenkeepers throughout the country. Tests for nitrogen, phosphorus, potash and acidity. It will make at least three separate tests for each element. No technical skill required. Results of tests are apparent immediately. The Sudbury Home Gardener's Soil Test Kit, complete with instructions and data on plant needs. \$2.50, postpaid, \$2.60.

Testing Fluid for Refill—Specify whether for nitrogen, phosphorus, potash, or acidity. When ordering the above, it requires No. 2 and No. 3 to make Nitrogen Tests, No. 4 and No. 5 for Phosphorus Tests and No. 6 and No. 7 to make Potash Tests, therefore when ordering, please order two numbers. 2 oz., \$1.00; 6 oz., \$2.00, both postpaid.

Advanced Amateur Kit

\$4.75, postpaid \$5.00

An advanced amateur, or a garden club, 4-H, club or neighborhood group, will find this larger kit invaluable. It is housed in an attractive case of imitation leather and contains sufficient material for many accurate tests.

Handiest of All Sprayers

\$4.50, prepaid \$4.75

This is a special mixing and spraying nozzle which attaches to the garden hose. Insert insecticide cartridge and spray—as easy as watering your lawn. Brass finish, each, \$4.00. Chrome finish, each, \$4.50.

36 inch extension, straight chrome finish, \$1.75.

We can supply a complete line of cartridges, Rotenone, Nicotine, Pyrethrum, D. D. T., Sulphur, Bordo or Arsenate of Lead. Price, each, 35c; three for \$1.00; doz., \$3.85.

Fertilizers are delivered within 25 miles of New York by Freight or Express at our Option.
 Errata—Prices on fertilizer in our catalogue are F. O. B. Chicago. Following are New York prices.

Vaughan's High Grade Fertilizers

These Prices Are Subject to Change Without Notice.

VAUGHAN'S "ROSE GROWER" BONE MEAL

This is a special brand we have put up for our trade. It is ground fine, hence acts quickly. Free from acid and a superb article. It is made from bone accumulated in large slaughter houses, and should not be compared with the Bone Meal made from cattle heads and feet gathered upon the western prairies. Analysis: Nitrogen 3.7 percent; total phosphoric acid, 20 percent. Prices, 5 lbs., 75c; 10 lbs., \$1.25; 25 lbs., \$2.00; 50 lbs., \$3.90; 100 lbs., \$7.50.

Regular Bone Meal. 2.47% nitrogen; 20% phosphoric acid. 25 lbs., \$1.90; 50 lbs., \$3.75; 100 lbs., \$7.00.

Activo. (Formerly called Bacto) Make your own fertilizer easy, quick—often in as little as three weeks. Just sprinkle on kitchen waste, leaves, garden rubbish, sewage sludge, etc. 5-pound bag makes up to a ton of rich, soil-building organic humus, better than manure. Sprinkle in outdoor toilets; reduces odors, makes easily-handled ash of waste. Prices, 4 oz., 30c; No. 7 size, about 7 lbs., \$2.00; No. 25 size, about 25 lbs., \$5.79.

Adco Artificial Stable Manure. Make it yourself, in your own garden. To each ton of straw, hay, cornstalks or dried leaves add 150 lbs. Adco to make four tons of fresh or three tons of rotted manure. Adco contains nothing injurious to health or harmful to animal or plant life. Shipments accompanied by full directions. Prices, 7½ lbs., \$1.35; 25 lbs., \$3.00; 150 lbs., \$12.00.

Agrico. Specially formulated for lawns, trees and shrubs. Provides ALL the needed plant foods—stimulating quick growth in early spring—providing slowly available plant food all season long. 6-10-4. Prices, 5 lbs., 45c; 10 lbs., 80c; 25 lbs., \$1.50; 50 lbs., \$2.50; 100 lbs., \$4.50.

Agrico Garden Fertilizer. 5-10-5. 5 lbs., 45c; 10 lbs., 80c; 25 lbs., \$1.50; 50 lbs., \$2.50; 100 lbs., \$4.00.

Agrico for Broadleaf Evergreens. Agrico for Broadleaf Evergreens not only supplies the right balance of all the needed plant foods, but one that also builds up soil acidity, which is essential for best growth. It is specially formulated to do both jobs properly. Apply Agrico for Broadleaf Evergreens in early Spring, at the rate of 3 lbs. per 100 sq. ft. For flowering plants, make a second application of 1 to 2 lbs. per 100 sq. ft., as soon as buds begin to appear. 10 lbs., \$1.00; 25 lbs., \$2.00; 50 lbs., \$3.25; 100 lbs., \$5.25.

Agrinite. 8¼% Nitrogen, all organic fertilizer; can be easily used in place of dried blood or tankage. Prices, 25 lbs., \$2.00; 50 lbs., \$3.50; 100 lbs., \$5.00.

Aluminum Sulphate. For creating acid condition in the soil. Prices, 1 lb., 25c; 5 lbs., 50c; 10 lbs., 80c; 25 lbs., \$1.50; 50 lbs., \$2.60; 100 lbs., \$4.75.

Ammonium Sulphate. 20.6% nitrogen. Prices, 5 lbs., 60c; 10 lbs., \$1.00; 25 lbs., \$1.75; 50 lbs., \$3.25; 100 lbs., \$6.25.

Armours Special Ornamental Fertilizer. 10-6-4. Especially prepared for lawns, trees, shrubs and flowers. 100-lb. bags only, \$6.50 each.

Armours Velvet Green 5-10-5. Contains nitrogen, phosphorus and potash, the three major plant foods. The formula is recognized by leading nurserymen as best for all types of plants. 10 lbs., 85c; 25 lbs., \$1.50; 100 lbs., \$4.00.

BONE, Raw Ground. Excellent material for vine borders or greenhouse benching. Also all bulbs, indoors and outside. Fine for roses. High analysis. Prices, 25 lbs., \$2.00; 50 lbs., \$3.90; 100 lbs., \$7.50.

Shredded Cattle Manure. Manufactured by special process from selected fresh cleanings from cattle pens. There is no offensive odor, and when spread on lawn and garden it works down into the soil so that there is no refuse to blow about or be raked off when the growing season begins. 25 lbs., \$1.75; 50 lbs., \$2.50; 100 lbs., \$4.25; 500 \$19.00.

MIKAMAGIC

Is a prepared form of vermiculite, cleaned of all impurities which might injure plants, and of the correct size for horticultural use. This remarkable material has proved to give almost magical results as a substitute for soil in starting seeds and rooting cuttings. Material is made in three grades, coarse for base or foundation; medium, for the center layers, and fine for using on the surface of seed starters. Price, 2 cubic ft. bag, \$1.75.

Blood, Dried. For top-dressing, for mixing with the soil, and for applying in liquid form, it is one of the best and safest nitrogenous fertilizers. It is splendid for roses, carnations, chrysanthemums and all kinds of pot plants. Prices, 5 lbs., \$1.00; 10 lbs., \$1.75; 25 lbs., \$3.25.

Compo. Compo is a correct mixture of chemicals and other materials for the quick decomposition of waste plant materials and all vegetation, such as leaves, straw, vines, grass clippings, etc. Turns all the above, into valuable organic fertilizer. 7½ lbs., enough to make 375 lbs. of manure, \$1.00; 25 lbs., enough to make 1250 lbs. of manure, \$2.00; 100 lbs., enough to make 2½ tons of manure, \$7.50.

Crystal Urea. A highly concentrated inorganic fertilizer containing 46 percent available nitrogen, clean, odorless, stainless, for flowers, vegetables, berries, shrubs, lawns, ornamental and fruit trees; 92 times stronger than manure. Prices, 1 lb. can, 25c; 5 lbs., \$1.00; 10 lbs., \$1.75; 25 lbs., \$3.75; 50 lbs., \$5.50.

Driconure. Nature's own fertilizer, is an ideal plant food combining poultry and cow manure with peat moss. Clean, soft and easy to use. 50 lb. bag will top dress 1000 square feet of lawn, or feed up to 500 square feet of garden area. Prices, 7½ lb. bag, 55c; 50 lb. bag, \$2.00 each; 5 to 19 bags of 50 lbs., \$1.90 each; 20 to 39 bags, \$1.80 each; ton or more, \$1.60 each.

Hy-Gro. 13-26-13. The soluble plant food. The ideal plant food for starter solution and most economical way of feeding plants. 1 tablespoon to a gallon of water will feed 20 plants for six weeks. 3 oz., 25c; 20 oz., \$1.00; 10 lbs., \$4.00.

Hyponex Plant Food. For growing plants in sand soil or water. One teaspoonful will make a gallon of complete plant food. 1 lb. will make 100 gallons. Prices, 3 ozs., 25c; 7 ozs., 50c; 1 lb., \$1.00; 10 lbs., \$8.00.

Humus. Recommended for top-dressing or use on heavy clay soils. Prices, 100-lb. bags, \$2.50; 500 lbs., \$12.00.

Leaf Mold. For correcting of clayey and sandy soil conditions. Prices, 100 lbs., \$4.00; 500 lbs., \$18.00.

Lime, Hydrated. Prices, 5 lbs., 40c; 10 lbs., 60c; 25 lbs., \$1.00; 50 lbs., \$1.50; 100 lbs., \$2.00.

SHEEP MANURE

This is a pure, natural Manure, and its effect is immediate; it is excellent for mixing with the soil for greenhouse plants—one part manure and six parts soil. Strewn over and dug into the vegetable garden or placed directly in drills or hills, it promotes a rapid, steady growth until maturity. It makes the richest, safest and quickest Liquid Manure. For use in liquid form, one pound to five gallons of water will make a liquid which can be used with safety daily if necessary. 5 lbs., 50c; 10 lbs., 75c; 25 lbs., \$1.50; 50 lbs., \$2.50; 100 lbs., \$4.00; 500 lbs., \$18.00.

Limestone, Pulverized. Is a neutralizer for soil acidity, also improves the texture of the soil and liberates nitrogen and other plant food, and stimulates bacterial action. Apply after the land is plowed or dug for a crop, scattering with a lime distributor, 2 tons or more per acre, or by hand in small gardens—about a large handful to a square yard. Prices, 80-lb. bags, \$1.60; 100 lbs., \$2.00.

New Plant Life is that scientifically discovered liquid life restorer which has for a quarter of a century demonstrated in homes everywhere, growth and bloom far beyond the housewife's fondest expectation. 3 oz., 25c.

Peat Moss, Granulated. A moisture-retaining humus, an important aid in saving soil fertility, better than manure. Prices, bale of about 20 bushels, \$6.00; ½ bale, \$4.00.

Plantabbs. The high analysis plant food tablet containing the proper amount of Vitamin B 1. Prices, box of 30 tablets, 25c; box of 75 tablets, 50c; box of 200 tablets, \$1.00; can of 1000 tablets, \$3.50.

Plant Prod. Plant Prod 15-30-15 a water soluble fertilizer supplies, in a water soluble form, the most essential plant foods necessary for vigorous growth and hardiness. It is beneficial to all types of plants, ornamental and vegetable. In a water solution Plant Prod is easily absorbed into the soil where it remains for a long period of time. At no time does it lose any of its effectiveness while in the soil. Plant Prod is really the economical and safe way to feed plants. 3 oz., 25c; 24 oz., \$1.00; 10 lbs., \$4.00; 25 lbs., \$8.00; 50 lbs., \$15.00; 100 lbs., \$25.00.

Poultek Fertilizer. Made from pure poultry droppings of caged poultry only. Dehydrated daily to conserve its full natural strength, 100% pure, no straw, peat moss or floor litter mixed in. 25-lb. bag, \$1.50; 50-lb. bag, \$2.50.

Rose Food. An organic, no filler, 100% plant food of dried blood, fish scrap, bone meal, potash, cottonseed meal and phosphate. This is a special mixture for growing roses and is a balanced, all-purpose fertilizer which can be used on all flowers, shrubbery, etc. 5 lbs., 65c; 10 lbs., \$1.25; 25 lbs., \$2.65; 100 lbs., \$9.60.

Stimulant Tablets. For potted plants. Prices, 30 tablets 25c; 100 tablets, 75c; 500 tablets, \$2.50; 1,000 tablets, \$3.50.

Super Phosphate. Twenty percent available. Bone phosphate the most available form. Used on grain crops and others requiring an excessive amount of phosphoric acid. Prices, 5 lbs., 45c; 25 lbs., \$1.25; 50 lbs., \$2.00; 100 lbs., \$3.00; 500 lbs., \$13.00.

Tree Food. Tree Food 10-6-4 especially formulated for trees, shrubs and lawns. A real help for fruit or ornamental trees. A swell sod grower. 25 lbs., \$2.25; 50 lbs., \$3.75; 100 lbs., \$6.90.

Vigoro. Is a specially prepared plant food. It contains all the elements necessary to grow flowers, lawns, vegetables, shrubbery and trees. Complete directions in every bag. Prices, 5 lbs., 50c; 10 lbs., 90c; 25 lbs., \$1.60; 50 lbs., \$2.75; 100 lbs., \$4.25.

ers and Insecticides

O. B. Chicago)

elivery within 25 miles of
lb. lots. On larger quan-
to close quantity prices,
or express charges.

ABLE MANURE. Make
garden. To each ton of
dried leaves add 150 lbs.
s of fresh or three tons of
ents accompanied by full
25; 25 lb. bag, \$2.95; 150

own fertilizer from waste
No. 2 size treats 450 lbs.
No. 7 size treats 1800 lbs.
ze treats up to three tons

GREEN
tgreen is
and bal-
r lawns,
d garden
lb bag,
; 100 lb.

Regular
5; 50 lbs.,

(Shredded).
urposes. If ap-
e fall it protects
the winter. As
andle as grain.
; 100 lbs., \$3.50;
000 lbs., \$26.00

or lawns, flowers,
ery and potted
rates, phosphate
ns no filler. Price,
35c; 25 lbs., \$1.75;
lbs., \$4.50.

A plant food free of weeds pro-
ver a long period. 25 lbs., \$1.35;
0 lbs., \$3.50; 500 lbs., \$15.00.

E (Pulverized). Excellent for
for greenhouse plants; one part
arts soil. 5 lbs., 40c; 10 lbs., 70c;
0 lbs., \$2.10; 100 lbs., \$3.50; 500
0 lbs., \$25.00; ton, \$49.00.

lete Plant Food. Supplies in bal-
eleven vital plant food elements
utiful plants. Clean, odorless, sani-
zo use. Vigoro has brought gardening
ions of home owners everywhere.
50c; 10 lbs., 90c; 25 lbs., \$1.60;

SPECIAL LAWN, TREE AND
OD. 10% nitrogen, 8% available
id, 6% potash. Excellent for all types
s and evergreens. For shade trees
s drilled 16 inches deep and 2 feet a-
rip of outside branches at rate of 3/4
ch foot in height of tree up to 50 lbs.
or evergreens use 1/2 pound per foot in
e, and work into surface soil. 25 lbs.,
s., \$4.95.

AL BALANCED ROSE FOOD

GANIC). 5-7-4.
no filler, 100%
of Dried Blood,
Bone Meal, Pot-
seed Meal and
This is a special
growing roses and
ed, all purpose
rich can also be
lowers, shrubby,
type mixture has
by commercial
1 florists for many
as given excellent
ice, per 5 lb. bag,
aid, \$1.00; 10 lbs.,
paid, \$1.70; 25 lbs.,
lbs., \$9.45.



LOSS—Granulated. A moisture retaining
an important aid in saving soil fertility.
han manure. Garden size bale about 25
95; bale about 100 lbs., \$5.75.

PEAT. (Fern roots). For Orchids and
s, sack, about 2 bushels, \$5.25.

Duplex Crinkled Waterproof Tree Wrap

covering the trunks of transplanted and newly
and shade trees. Helps your stock to get off
lthy start. Rolls, 4 inches wide, about 155 ft.
Weight, about 2 1/2 lbs. Each, 85c; postpaid,
z., \$8.40.

INSECTICIDES AND FUNGICIDES

**Weights—By mail 1/4 pt., 1 lb.; pt., 2 lbs.; qt., 3
lbs.; add 10 cents per lb. for postage; otherwise
shipment will be by express charges collect.**

DRY LIME SULPHUR. For dormant spraying
use 12 to 15 lbs., to 50 gals., water, 1b., 36c; 5 lbs.,
\$1.60; 25 lbs., \$4.50; 100 lbs., \$12.50.

DOGZOFF. Breaks dogs of bad habits, spray under-
neath evergreen or shrubs. Price, bottle, 60c.

FLOWERS OF SULPHUR. For mildew on roses, etc.
Lb., 15c; 10 lbs., \$1.00; 25 lbs., \$2.00.

KALITE. Rotenone impregnated dust. 1 lb. pkg., 35c;
4 lb. bag, \$1.00; 25 lb. bag, \$4.50.

LEMON OIL. Destroys mealy bug, scale, thrip, red
spider, etc. 1/2 pint, 40c; pint, 65c; quart, \$1.15;
gal., \$3.25; 5 gals., \$12.00.

ROTOTEC with 5% D.D.T. For controlling chew-
ing and sucking insects. 4 oz. bottle, \$1.00; pint,
\$2.75.

SCALECIDE. An oil preparation for San Jose scale.
Qt., 85c; gal., \$2.00; 5 gallons, \$7.25.

TOBACCO STEMS. For fumigating. 5 lbs., 35c;
100 lbs., \$2.75.

TOBACCO DUST. One of the best remedies for
green and black aphids, fleas, beetles, etc., also for
insects in the ground. Lb., 15c; 5 lbs., 60c; 10 lbs.,
\$1.25; 100 lbs., \$5.35.

DOG-CHECK. The ideal repellent. Safe and harm-
less to use. New formula will permit spraying on
new growth. Unaffected by rain, one spraying lasts
from two to three week. 3 oz., 60c; 8-oz., \$1.00;
32-oz., \$3.00; gallon, \$11.50.

RAT-NOTS. Safe way to exterminate rats. Prepared
Bait, contains Squill. Can be used without fear of
harming humans, dogs, live stock, etc. Trial size
of 9 Nots, 25c; Estate size, 50 Nots, \$1.00.

D. D. T. DUST 5%

1 lb., 35c; prepaid, 45c.
5 lbs., \$1.25; prepaid, \$1.50.
10 lbs., \$2.25; by express, charges collect.

For Home and Summer Camp

D.D.T. Household Spray

An oil spray for spraying or brush-
ing on screens and porch walls and
for general household use. Quart,
65c; prepaid for 75c. Gallon,
\$1.85. Shipped by express charges
collect.

D.D.T. Aerosol Bomb

When released from the bomb in
5 to 7 seconds, non-poisonous
Freon gas impregnated with 3%
D.D.T. and 2% pyrethrum com-
pletely fills a room, killing insect
life and leaving a deadly deposit
which will protect from pests for
weeks. Aerosol bomb, contents
16 oz., \$3; postpaid, \$3.25.



MASTERS HANDI-CART



Replaces the old
fashioned wheel-
barrow for every
purpose. Garden
work really be-
comes a pleasure.
Just dip it down and
rake grass cuttings,
leaves, earth or gravel
into the cart. Can also
mix cement right in the
cart. No. 18-S, size of wheels 10 in. diameter. Extreme
overall width of cart 20 in. Size of hopper body
26 1/2 x 16 x 12 1/2 in. Price each, \$7.50.

No. 20-D, size of wheels 10 in. diameter. Extreme
overall width of Cart 25 in. Size of hopper body
27 1/2 x 21 x 13 1/2 in. Price each, \$9.95.

FOLDAWAY INCINERATOR

All welded construction, painted green enamel.
Ideal for burning leaves, paper, etc. Folds away flat.
Height 24 1/2 inches, depth 17 1/2 inches, width 18 1/2
inches. Price each \$2.45.

No. FS 21. Garden Craft Feeding Station

This is one of the
most successful and
appreciated bird feed-
ers. It is equipped with
a spindle for mounting,
and the double weather
vane keeps the shel-
tered end headed into
the wind, thus keeping
the food dry in rainy or
snowy weather.



Size 24x12x12. Shipping weight 16 lbs.
Price stained brown \$ 7.75
Price stained with glass back 10.25
Erection Post bored for mounting rod 2.00
Shipped by express, charges collect.

AUTOMATIC BIRD FEEDERS

(Patented)

An economical feeder
for all kinds of seeds,
cracked corn or other
small food.

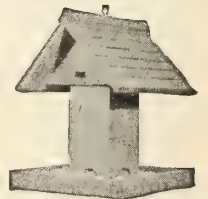
If filled with sun-
flower seeds, it un-
failingly attracts Car-
dinals, rose-breasted Gros-
beaks, Finches and
many other large as
well as small pretty
birds all year round.

Birds enjoy swinging
with the feeder. Each,
\$2.75; postpaid, \$2.85;
3 for \$8.00.



No. FS. 10. Garden Craft Bird Feeder

This cleverly constructed
feeder will provide endless
pleasure and satisfaction
for bird lovers. You will
be more than repaid for
your generosity in provid-
ing food for your feathered
friends during the early
spring, late fall and winter,
by their appreciation. Size
8x3x10 in. Shipping weight,
3 lbs. Price, \$2.25; post-
paid, \$2.35.



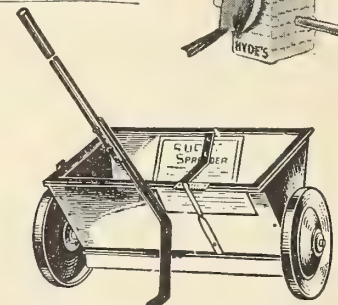
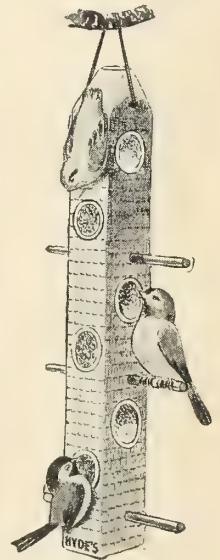
Erection pole with arm \$1.35; postpaid, \$1.45.

COMMUNITY DINER No. CDD

Aerial picnic grounds
for Clinging and Perch-
ing Birds, i.e., Chicka-
dees, Nuthatches,
Woodpeckers, etc. and
Juncos, Song Sparrows,
Rose-Breasted Gros-
beaks, Catbirds, Mock-
ingbirds, Purple
Finches, etc. No. CDD,
price each filled \$1.60;
postpaid \$1.85; No
CDE filled and 24 ex-
tra Tidbits \$2.60 each,
postpaid \$2.90. Both
Gift boxed

Extra package of
24 tidbits \$1.20 per
pkg.; three for \$3.50.

Except where speci-
fied otherwise items
listed on this page
will be shipped by
exp. charges collect.



FERTILIZER SPREADERS

Will spread any kind of commercial fertilizer, grass
seed or top dressing. Has new disc wheels, foot rest
and selective feed control. 16 inch, hopper capacity
about 20 lbs., price each, \$5.95; 20 inch, hopper cap-
acity about 40 lbs. each \$9.95; 30 inch, hopper capacity,
about 80 lbs., each, \$16.75. Super Heavy 36 inch,
with rubber tires hopper capacity over 100 lbs.,
each, \$35.50.

Pointers on Planting Fall Bulbs

The first two months of spring, when garden beauty is most welcome, yet most rare, hardy bulbs supply the dominant flowers. And of all flowers, they offer the easiest, surest success. Provided he plants quality bulbs, with attention to a few simple rules, even a beginner can hardly fail to produce blossoms of the first rank.

Spring flowering bulbs prolong the garden season for a month at least; and in most sections they bloom at a time when all their surroundings are fresh and beautiful; when moisture is ample, weeds have not yet grown, and few if any insects bother them.

The greatest enemy of fall bulbs is poor drainage; they must be planted in locations where water drains away quickly, and if there is any doubt about this, beds should be raised above the surrounding surface sufficiently to insure it.

Bulbs will grow well in any reasonably good garden soil, but it should be well prepared to a depth of at least twelve inches. The depth of planting varies with the kind of bulb, but the depths shown on the accompanying planting chart are minimums, with deeper planting advisable in many cases.

When tulips are to be left for several years without lifting, bulbs should be placed 10 to 12 inches deep, where they will be cooler, will produce fewer "splits" and continue to maintain blooming size for long periods. Use no manure on bulbs unless it has been thoroughly rotted and can be spaded into the ground several weeks previous to planting. A balanced plant food applied to the soil at the rate of 5 lbs. to 100 square feet and spaded into the soil will benefit the bulbs.

The earlier bulbs blossom in the spring, the more important it is to plant them early in the fall, so they will have time to make root growth in their new location. Daffodils and hyacinths especially benefit from early planting.

After the soil has been prepared, bulbs may be planted with a trowel, or by the use of a blunt-end dibber. Avoid using a pointed dibber, or any device which will permit the bulb to be caught by the sides of the hole with air beneath it. The bulb should rest on the bottom with soil packed firmly around it.

What is known as the Dutch method is sometimes followed in planting beds. Soil is thrown out to the proper planting depth, bulbs are then placed where they are wanted and the soil filled in above them. This is a convenient method where a formal pattern is followed in placing the bulbs.

In case of necessity, however, fall bulbs can be planted as late as the ground can be worked. It is a good rule to plant all bulbs as soon as you receive them and you are willing to disturb established beds. Tulips should go in when the leaves fall. Bulbs planted early enough to make root growth will anchor themselves in the new location, and resist frost heaving, which is likely to be severe in the newly turned soil. When late planting is necessary, cover the bed with a mulch of leaves after the ground has frozen. This will prevent winter thaws, and consequent frost heaving.

A Winter Window Garden

15 Bulbs Including Six Different Subjects With \$2.50
Vaughan's Prepared Bulb Fibre. Prepaid 300 Miles

INCLUDED IN THIS OFFER

- | | |
|--|--|
| 2 Amaryllis Hybrids. | 3 Chinese Sacred Lilies, mammoth bulbs. |
| 3 Narcissus King Alfred. | 1 Calla Lily White bulb, first size. |
| 3 Mammoth Paper White Narcissus bulbs, 14 ctms. | 2 Pounds of Vaughan's Prepared Bulb Fibre. |
| 3 Yellow Paper Whites (Grand Soleil D'Or) mammoth bulbs. | |

Most of you know how easy it is to force into flower the beautiful, fragrant, Paper White Narcissus, in bowls of water. By using Vaughan's prepared bulb fibre in place of pebbles, the variety of bulbs that can be forced is widely increased.

METHOD OF FORCING BULBS IN FIBRE. Moisten Vaughan's Prepared Bulb Fibre to saturation, fill the bowl with wet fibre, and plant the bulbs allowing their necks to emerge from the fibre, but without pressing the fibre too firmly around them. Place the bowl in a cool, airy place where the light is dim or dark, and preferably the temperature does not rise above 55 degrees. Keep the fibre moist, since if it dries out the flower buds may go blind. But water sparingly until good roots have formed. When strong top growth has been made in the dark, take the bowl to a sunny window, where it will have fresh air, all the sunlight possible especially in the morning, and preferably a temperature not less than 55 nor more than 70 degrees.

Complete Directions for Planting and Forcing. All These Subjects Are Included.

Figures given in this table are minimums, and in some cases should be greater. See discussion in column to left, headed "Pointers on Planting Bulbs."

VAUGHAN'S BULB PLANTING CHART	
1 in.	
2 in.	
3 in.	CROCUS 3 in. APART SNOWDROPS 3 in. APART
4 in.	SCILLAS 3 in. APART GRAPE HYACINTHS 3 in. APART
5 in.	LILIUM CANDIDUM 12 in. APART
6 in.	HYACINTHS 8 in. APART NARCISSUS 6 to 8 in. APART GIANT TULIPS 5 to 8 in. APART
7 in.	
8 in.	HARDY LILIES 12 to 15 in. APART
9 in.	

After bulbous plants have flowered, their leaves should not be cut or disturbed until they turn yellow, which indicates that the bulbs have ripened, and the leaves may then be removed. Premature removal will prevent the maturing of the bulbs and may destroy them. For example, crocuses planted in the lawn, which is mowed before the crocus leaves turn yellow, seldom last a second year.



HOLE-IN-ONE PLANTING TOOL

Make a hole in one operation. Simply cut the tool into the soil, remove it with a twisting motion, and with the tool comes a plug of soil, leaving a perfectly flat bottomed hole. Small hand tool for cultivated soil. Each, 75c; postpaid, 85c.

Longhandle, each, \$6.00.

DIBBER

For transplanting vegetable plants, steel point (weight 10 oz.), Each, \$1.25; postpaid, \$1.35.

Do not use pointed dibber for planting bulbs.

Bulbs for Beginners

24 Bulbs, 4 Each of 6 Different Varieties, prepaid \$1.60

4 Scilla Siberica, 4 Grape Hyacinths, 4 Giant Tulips, 4 Hardy Daffodils, 4 Crocus, 4 Erythroniums—18 Bulbs.

36 Bulbs, 6 Each of 6 Different Varieties, prepaid \$2.50

6 Scilla Siberica, 6 Grape Hyacinths, 6 Giant Tulips, 6 Hardy Daffodils, 6 Crocus, 6 Spring Snowflakes—36 bulbs.

BIRD SEED

RAPE. Large—sweet (not bitter like the small black). 1 lb., 45c; 5 lbs., \$1.95; 10 lbs., \$3.65; 25 lbs., \$7.75.

SUNFLOWER. 1 lb., 50c; 5 lbs., \$2.20; 10 lbs., \$4.15; 25 lbs., \$8.95.

CANARY SEED. 1 lb., 40c; 5 lbs., \$1.70; 10 lbs., \$3.15; 25 lbs., \$6.95.

VAUGHAN'S CANARY MIXTURE. 1 lb., 40c; 5 lbs., \$1.70; 10 lbs., \$3.15; 25 lbs., \$6.95.

FINCH SEED. 1 lb., 35c; 5 lbs., \$1.40; 10 lbs., \$2.60.

PARRAKEET SEED. 1 lb., 40c; 5 lbs., \$1.70; 10 lbs., \$3.15; 25 lbs., \$6.95.

VAUGHAN'S WILD BIRD FEEDING MIXTURE. (as recommended by the Illinois Audubon Society). 1 lb., 25c; 2 lbs., 45c; 5 lbs., 95c; 10 lbs., \$1.65; 25 lbs., \$3.85; postpaid. By freight collect, 100 lbs., \$11.50.

All prices prepaid, except where noted.



PEONY FLOWERED TULIP MOUNT TACOMA. Blossoming at the same time as the Darwin tulips, held upright on 23-inch stems, these huge white flowers are easily mistaken for peonies, which they resemble in size and form. They are an entirely distinct type from the early double tulips, excelling not only in size and height, but also in beauty. This is pure white, with occasional markings of emerald green on the outer petals. Doz., \$1.60; 100, \$11.50.



PARROT TULIP FANTASY



PEONY FLOWERED TULIP EROS. In any planting of tall, late giant tulips, a group of Eros will be the focal point. Though its companions present the most brilliant color of the garden season, the large, fully double flowers of Eros, held aloft on strong 20-inch stems, will dominate the show. Its color is a deep true pink with silvery highlights; and it blossoms with the Darwin tulips. Doz., \$1.45; 100, \$10.00.

AMARYLLIS



Our strain of giant flowered amaryllis is rich in brilliant red, and lovely white flowers, with many in which the white ground is vividly marked with contrasting tones of red, pink and salmon. In size, this strain has never been surpassed. Of all bulbs which the amateur can grow successfully indoors, the Amaryllis is the largest, most beautiful, surest to flower and most easily handled. See Page 9 for cultural instructions.

MIXED. Flowers are immense, in an amazing range of color blends, splashed and striped in a manner not seen in other strains.

	Each	Doz.	100
2 1/4-2 1/2 inch	\$0.45	\$4.50	\$30.00
2 1/2-2 3/4 inch60	6.00	45.00
2 3/4-3 inch75	7.50	55.00
3-3 1/4 inch90	9.00	65.00

Parrot Tulips have the largest blossoms, with long, deeply fringed petals and more of them. Prior to the world war, named varieties were few, and the new ones listed below are outstanding post-war novelties.

FANTASY. Not new, but still unrivaled in its color class. A mutant of the Darwin Clara Butt, it has the same rare salmon pink, in enormous flowers, on sturdy 27 inch stems. Doz., \$1.60; 100, \$11.50.

RED CHAMPION. Exactly the color of the fiery crimson Darwin tulip Bartigon, which many consider the brightest red of all, but bearing a flower of the characteristic Parrot type. Its long petals are waved, with edges deeply cut and fringed. Doz., \$2.35; 100, \$17.00.

VIOLET QUEEN. (Opal Queen.) All the beauty of form which is found in Fantasy, is here reproduced in a pearly violet blend with truly opalescent quality. The flower is huge, all petals deeply fringed. 26 inches high. Doz., \$1.60; 100, \$11.50.



8 Modern Daffodils \$1⁸⁵

One Each of the Eight Varieties Illustrated on This Page, Prepaid



VARIETIES illustrated on this page are outstanding representatives of their types, recently introduced. In favorable locations they will continue to bloom for years, and multiply if lifted and replanted, when they become too crowded.

Back Cover Collection H

Two each of the varieties illustrated on this page (16 bulbs) \$ 3.40
 Three each (24 Bulbs) 4.50
 Six each (48 Bulbs) 8.50
 Twelve each (96 Bulbs) 16.00

Prices of Separate Varieties

	Doz.	100
Top left, Actaea	\$1.75	\$12.00
Middle left, Francisca Drake	2.25	15.00
Bottom left, Winter Gold	2.75	19.00
Top center, Royal Sovereign	3.25	22.00
Bottom center, Fortune	3.50	25.00
Top right, Dick Wellband	2.40	16.00
Middle right, Hera	1.75	12.00
Bottom right, Geranium	2.00	14.00

ALL ABOVE PRICES PREPAID

