

## Historic, archived document

Do not assume content reflects current scientific knowledge, policies, or practices.



62.23

1950

# Darwin Tulip Quintette

Prices Prepaid, each variety separately bagged and labeled.

5 bulbs, one of each.....	\$ 0.75
15 bulbs, 3 of each.....	1.75
60 bulbs, 12 of each.....	5.50
120 bulbs, 24 of each.....	10.50

Starting at lower left and proceeding clockwise, varieties illustrated are:

<b>Gloria Swanson,</b> Doz. 100 250		
Darwin.....	\$1.30	\$ 9.00 \$20.00
<b>Queen of the Night,</b> Darwin.....	1.40	10.00 22.50
<b>Ossi Oswald,</b> Darwin hybrid.....	1.40	10.00 22.50
<b>Advance,</b> giant Cottage.....	1.45	10.50 23.75
<b>Golden Harvest,</b> Cottage.....	1.20	8.50 18.75



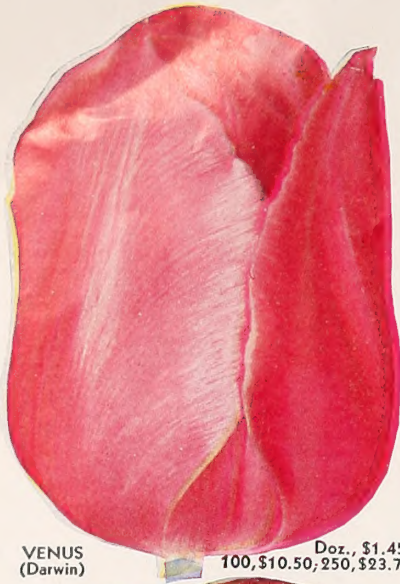
**Vaughan's** SPRING FLOWERING BULBS—1950  
 10 W. RANDOLPH ST., CHICAGO—47 BARCLAY ST., NEW YORK

# Color Scheme Group of Ten Giant Tulips

One 1st size bulb of each variety illustrated on this page, **\$1.35** each separately bagged and labeled

Three each 30 Bulbs for ..... \$ 3.25  
 Twelve each 120 Bulbs for ..... 11.50  
 Twenty-Four each 240 Bulbs for 22.00

No other flower has so wide a color range as the tulip. Full advantage of this fact should be taken in the spring garden. Varieties on this page are outstanding representatives of their respective color classes. Bulbs of each variety come separately bagged and labeled, to permit of accurate placing in the garden picture. Kaiserskroon, is the most popular of single early flowering tulips and will bloom first, the others will follow quickly, flowering together. Don Pedro, one of the few brown flowers in existence, is the most fragrant of tulips. A planting of this collection will bring to the May garden a variety and brilliance of color which cannot be surpassed by any later month.



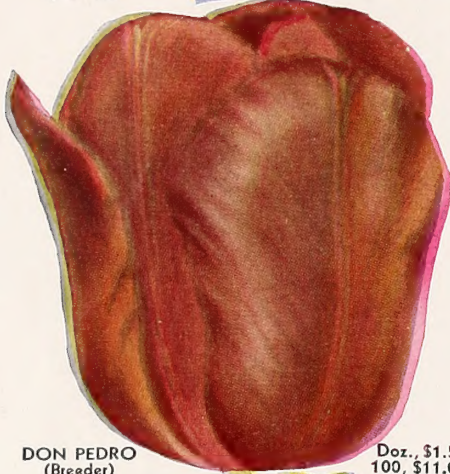
VENUS  
(Darwin)

Doz., \$1.45;  
100, \$10.50; 250, \$23.75



CHAS. NEEDHAM  
(Darwin)

Doz., \$1.45;  
100, \$10.50; 250, \$23.75



DON PEDRO  
(Breeder)

Doz., \$1.50;  
100, \$11.00;  
250, \$25.00



ZWANENBURG  
(Darwin)

Doz., \$1.45;  
100, \$10.50; 250, \$23.75



KAISERSKROON  
(Early)

Doz., \$1.40; 100  
\$10.00; 250, \$22.50



RED PITT  
(Darwin)

Doz., \$1.40;  
100, \$10.00; 250, \$22.50



PRINCESS  
ELIZABETH  
(Darwin)

Doz., \$1.20;  
100, \$8.50; 250, \$18.75



BLUE EAGLE  
(Darwin)

Doz., \$1.50;  
100, \$11.00; 250, \$25.00



MRS. J. T. SCHEEPERS  
(Cottage)

Doz., \$1.45;  
100, \$10.50; 250, \$23.75



LOUIS XIV  
(Breeder)

Doz., \$1.50;  
100, \$11.00; 250, \$25.00



# Vaughan's Famous

## RAINBOW GARDEN OF GIANT TULIPS

48 Flowering Size Bulbs, eight each of six named varieties, **\$3**  
separately bagged and labeled. Prepaid for - - - - -

96 bulbs, 16 each of these six named varieties, prepaid.....	\$ 6.00
192 bulbs, 32 each of these six named varieties, prepaid.....	12.00
600 bulbs, 100 each of these six named varieties, in original bags, prepaid.....	37.50

Here is the outstanding tulip value for amateurs. At a price less than a mixture, you get a collection, of finest named tulip varieties in a full range of colors.

Each variety is outstanding in its color-class. Nor does the low price mean small bulbs—they measure 11-12 centimeters in circumference and bear flowers of the largest size.

This is not a mixture. Each of the six named varieties comes in a separate bag, labeled with its name. You can plant each bulb with full knowledge of its color—and arrange them for a planned effect.

Tulips are especially adapted to color-scheme planting. Each of the rainbow colors enhances the beauty of its neighbors, while in turn it acquires new charm because of its companions. Only with labeled bulbs is such careful planting possible, since in a mixture, bulbs cannot be identified, and their arrangement is a matter of chance.

Tulips are the first flowers to bloom in the spring that include all rainbow colors. So varied is their color range, it is possible to produce a show in the May garden, which cannot be surpassed by later blooms. To enable every garden to take advantage of this opportunity, we have for many years made our rainbow collection the best fall bulb value available to home gardeners.

### Yellow

**Golden Harvest, Cottage.** 28 in. This is the largest yellow tulip, of clear deep color, with petals of great substance, and a strong stem. It blooms early and its flowers last for a long time, growing in size and beauty.

### Pink

**Prunus, Darwin, rose pink.** A sport or mutant from the red Darwin tulip **Bartigon**, it has the size and vigor of its parent. Its giant, cup-shaped flower is a delightful soft pink, beautiful both in the garden and in cut flower arrangements.

### Red

**Red William Pitt, Darwin.** 26 in. One of the earliest Darwin tulips, this is a brilliant scarlet, much brighter than the popular William Pitt, of which it is a mutant. It bears a huge flower. Color illustration on opposite page.

**Gloria Swanson, Darwin.** Borne on a 32 inch stem of exceptional strength, this giant flower is crimson with a bluish base. Yet no description can convey an idea of its unique beauty, of form and color, and its difference from other reds. Color illustration on front cover.

### Orange

**Dillenburg, Breeder.** The best examples of orange coloring are found among the Breeder tulips, where rich blends rather than primary hues are the rule. In this huge flower, 27 inches tall, it is blended with salmon and rose, in a glowing-bronze effect.

### White

**Themis, Cottage.** 27 in. One of the largest white tulips, with the shape of a Darwin, and the clear coloring of the Cottage type. It has yellow anthers and is one of the last late tulips to remain in flower in the spring.

# 4 Great PEONIES \$4<sup>50</sup>

Catalogue Value \$6.25 (Postage Additional for 5 lbs.)

Of all the new varieties introduced, relatively few survive the test of garden culture and take their place among the acknowledged leaders. The peonies you plant may outlive you, so it is important to choose varieties for permanent planting which have demonstrated lasting merit. The four offered on this page are among the world's best, for display in the garden, or in the flower show. The flowers of each will last for days if cut in the bud stage and allowed to open in the house. Plant as soon as received in full sun, giving three feet in direction from other plants. Do not set the crown, from which the eyes grow, more than two inches below the soil surface.

**BARONESS SCHROEDER** (9.0) One of the finest Peonies in existence. Immense flowers of great substance with high chalice-shaped center. Opens a delicate flesh-white, sometimes a soft baby pink, changing to creamy-white. One of our best cut-flower varieties and an excellent keeper. June rose fragrance, late. \$1.50.

**LONGFELLOW** (9.0) Perhaps the most brilliant of all red peonies, as striking in the garden as in the show-room. It blooms in early midseason, has excellent foliage and strong, stiff stems. Very popular on account of its dependability and its vivid fadeless color. \$2.00.

**MONS. JULES ELIE** (9.2) By many considered most beautiful of all Peonies. The flowers are an immense ball of imbricated petals incurved like a chrysanthemum; the color a glistening lilac-pink shading to deeper rose at the base, all overlaid with a sheen of silver. Comes into bloom early and is one of our finest varieties for cutting. Very fragrant. \$1.50.

**SARAH BERNHARDT** (9.0) One of the largest and most beautiful of all pink Peonies. It is a vigorous grower and a prolific bloomer, carrying its perfectly formed flowers gracefully on tall stems. The color is a deep rose-pink, with lighter edging; center flecked crimson. An extra good cut-flower variety. Late mid-season; fragrant. \$1.25.



PEONY LONGFELLOW

# 10 IRIS Aristocrats \$3<sup>00</sup>

Catalogue Value \$4.80 (Postage Additional for 3 lbs.)

These are among the finest Irises in cultivation. Each is rated close to perfection and not long ago not one could have been purchased for the price of the collection. Your Iris display is lacking if you have not these varieties; and our low prices make it possible to own them for less than the cost of ordinary plants. As soon as Iris plants are received, plant them in a sunny, well drained place.

**GOLDEN MAJESTY**, 42 in. Truly superb, "tops" in its color-class. The large flowers of thick substance with flaring falls are a gleaming, deep, pure yellow self which does not fade. 50c; 3 for \$1.25.

**GOLDEN MAJESTY**

**GUDRUN**, 36 in. Enormous, well shaped flowers of lovely pure white, dusted with soft gold at the throat. 40c; 3 for \$1.00.

**INDIAN CHIEF**, 40 in. S. pinkish red. F. glowing velvety red. A prolific bloomer. Early. 40c; 3 for \$1.00.

**INDIAN HILLS**, 37 in. A stunning Iris of clear rich wine purple. Its large blooms of good substance and fine form, have great carrying power and make a glorious mass of color in the garden. 40c; 3 for \$1.00.

**JUNALUSKA**, 40 in. One of the most beautiful Iris in existence. S. rosy copper threaded with gold; F. brilliant copper-red. Huge flowers of perfect form and heavy substance. 40c; 3 for \$1.00.



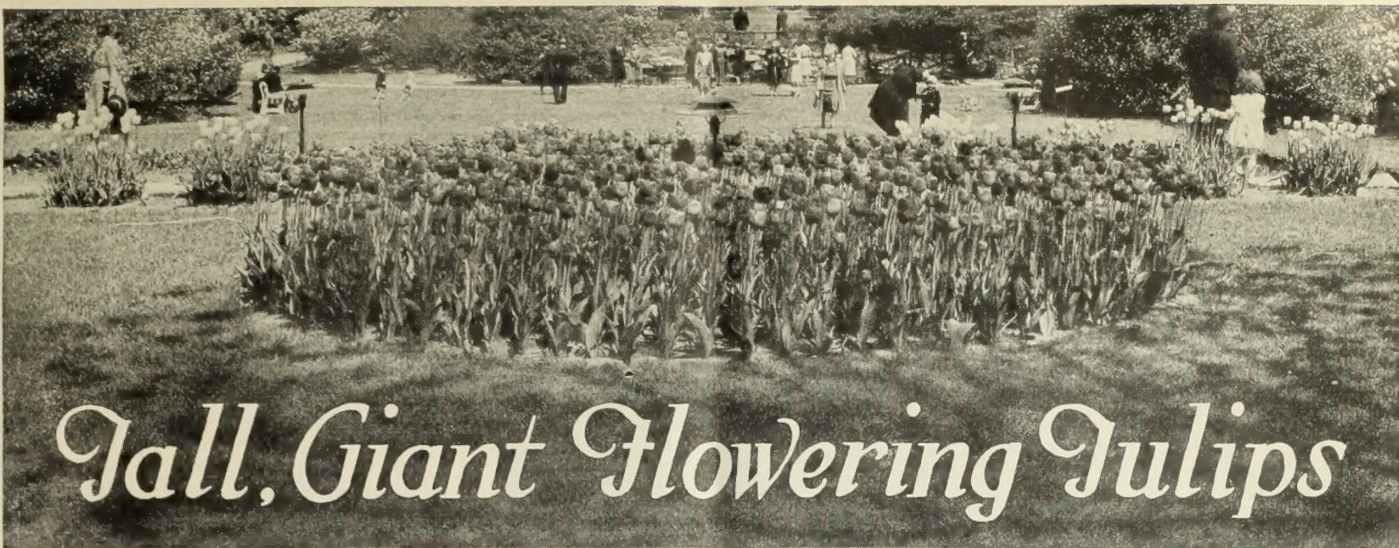
**MOROCCO ROSE**, 38 in. S. lustrous pale pink, flushed deeper; F. deep rosalyne pink, long and flaring. A beautiful creation of amazing size. 60c; 3 for \$1.50.

**RADIANT**, 34 in. S. brilliant burnished orange. F. glowing coppery red. Color so vivid and intense it attracts immediate attention in the garden. 50c; 3 for \$1.25.

**STARDOM**, 34 in. Unusual in its blending of coppery-pink and apricot-buff. Bright orange beard. Its vigorous growth, free blooming habits and luscious color is sure to please you. 60c; 3 for \$1.50.

**VAGABOND PRINCE**, 36 in. Glossy deep black purple self on well branched stalk. 50c; 3 for \$1.25.

**WABASH**, 39 in. S. snowy white; F. deep hyacinth violet with a definite white edge. Has wonderful substance and orchid-like beauty. Voted by the Iris experts in 1940, 1941 and again in 1942 as the best Iris in commerce at that time. 50c; 3 for \$1.50.



# Tall, Giant Flowering Tulips

ALL varieties of the tall, late-flowering giant tulips are likely to be grouped in popular language as "Darwin tulips". They are often sold that way, though among them there are several clans, each having definite family resemblances, of which the Darwin, Darwin hybrids, Cottage and Breeder are most numerous.

All these bloom about the same time, and harmonize perfectly in garden plantings. They can be selected by color, height, and form for use in the garden border without regard to their ancestry. The distinction between these various clans tends to become less definite, as they are interbred by growers seeking improved varieties. We continue to list each tulip clan separately, however, to aid you in identifying favorite varieties, and also to give additional descriptive information. For an interesting planting varieties of all types should be used.

Planning a tulip garden is made easy by the fact that you may count so surely upon each flower blooming as planned. The height, color and flowering season are all so dependable, it is a pleasure to plan a color effect and see it develop in the spring, just as planned.

## Darwin Tulips

Darwin tulips are characterized by a soft overtone which gives their colors a pastel effect. The flowers are cup-shaped and carried on tall, stiff stems. In color range they include all the rainbow hues, in amazing variety. Yellow, which long was missing from the Darwins, is now represented by several fine varieties; and new varieties include splendid giant whites.

Included in the variety lists on this and the following pages are many newly introduced varieties which show improvement in color, height, size or in some other important respect. But we retain the best of the old varieties, many of which may never be surpassed.

### Red Darwins

- Bartigon.** (22 in.) Large flowers of fiery crimson with bright scarlet margin. One of the best of its color. Doz., \$1.15; 100, \$8.00; 250, \$17.50.
- Charles Needham.** (28 in.) Large, glowing vermilion-red, extra novelty. Doz., \$1.45; 100, \$10.50; 250, \$23.75. (Illustrated in Color on Inside Front Cover)
- City of Haarlem.** (27 in.) Considered by many the finest red Darwin. It can always be depended upon to make an excellent show, with its immense cups of cardinal red, shading to scarlet at edges. Doz., \$1.45; 100, \$10.50; 250, \$23.75.
- Eclipse.** (27 in.) Rich, glowing dark red, with a blue base circled by white. A giant tulip of good form on a tall, strong stem, which does not easily snap in stormy weather. Doz., \$1.45; 100, \$10.50; 250, \$23.75.
- Farncombe Sanders.** (25 in.) Fiery rose scarlet with white center marked blue; flowers perfectly shaped. Doz., \$1.15; 100, \$8.00; 250, \$17.50.
- Flag of War.** (28 in.) Outstanding dark crimson variety, dark base. Large and substantial strong flower, stiff stem. Recommended for bedding. Good substance. Doz., \$1.60; 100, \$12.00; 250, \$27.50.
- Gloria Swanson.** (32 in.) An enormous crimson-red, with bluish base. Very strong stem, flower has great lasting qualities. This is really a giant in the garden, also an excellent early forcing variety. Doz., \$1.30; 100, \$9.00; 250, \$20.00. (Illustration in Color on Front Cover)

### DARWIN, Red—Continued

- J. K. Lilly.** (28 in.) An extremely handsome, cup-shaped vermilion-red bloom, form and coloring superb, there is no color variation in the flower. Clear yellow center and anthers, stem wiry and graceful. One of the top red novelties of the garden and extremely fine when forced in mid-February. Doz., \$1.90; 100, \$14.00; 250, \$31.25.
- Margaux.** (30 in.) Tremendous flower, deep wine red, broadly edged with lighter shade blue base, carried on a strong stiff stem. Rich and intriguing. Doz., \$1.45; 100, \$10.50; 250, \$23.75.
- Notre Dame.** (27 in.) Clear American Beauty red with a blue sheen, brilliant blue base. Pointed flower petals which are slightly recurved. Exceptionally strong flower and plant. Doz., \$1.90; 100, \$14.00; 250, \$31.25.
- Pride of Haarlem.** (28 in.) Vivid rose. An old standby that is deserving of a place in the best gardens. Unsurpassable for fine coloring, reliable performance and enormous flower. Doz., \$1.15; 100, \$8.00; 250, \$17.50.



DARWIN TULIPS IN FORMAL GARDEN

## All America Collection

### 100 GIANT TULIPS \$10

Ten each of the following outstanding varieties. (100 bulbs) will be sent postpaid for \$10.00.

- The Bishop.** Deep violet.  
**City of Haarlem.** Cardinal Red.  
**Golden Age.** Bright golden orange.  
**Insurpassable.** Lilac.  
**La Tulip Noire.** Black-purple.  
**Kansas.** White.  
**Mother's Day.** Soft yellow.  
**Philip Snowden.** Delicate rose.  
**Princess Elizabeth,** largest pink.  
**Utopia.** Cherry-red.

This collection of 100 bulbs of wonderfully blended colors will provide your garden with a display of which you may well be proud.

**Red Pitt.** (24 in.) Bright scarlet form of Wm. Pitt. Excellent for forcing as well as for bedding. Doz., \$1.40; 100, \$10.00; 250, \$22.50. (Illustration in Color on Inside Front Cover)

**Scarlet Beauty.** (28 in.) Beautiful fiery scarlet for outside planting, possessing a straight, strong stem and a flower that lasts long. Doz., \$1.45; 100, \$10.50; 250, \$23.75.

**Utopia.** (26 in.) Brilliant cherry-red. One of loveliest new Darwin Tulips for forcing. Far better than Wm. Pitt. A good garden variety. Doz., \$1.30; 100, \$9.00; 250, \$20.00.

### Pink and Rose Darwins

- Afterglow.** (26 in.) All the splendor of a glorious sunset is suggested by this wonderful tulip with its deep orange tints suffused with salmon, and edged apricot orange. Tall, stately grower. Doz., \$1.45; 100, \$10.50; 250, \$23.75.
- Aristocrat.** (30 in.) This is a magnificent garden Tulip of recent introduction, very tall with very large carmine Rose lighter edge flowers, truly an aristocrat among tulips. Doz., \$1.50; 100, \$11.00; 250, \$25.00.
- Clara Butt.** (20 in.) Newer and larger pinks may be found, but Clara Butt remains a favorite. It is a true pink, wholly free from lavender, rare color and a charming flower. Doz., \$1.15; 100, \$8.00; 250, \$17.50.
- King George V.** (28 in.) An immense flower of brilliant rose with a light blue base. The color is dazzling in its brilliance, and this is without doubt one of the finest and most beautifully formed Darwins. Doz., \$1.40; 100, \$10.00; 250, \$22.50.



# Darwin Tulips



A BORDER OF LATE GIANT TULIPS AND PANSIES



TALL LATE TULIPS INTERPLANTED WITH FORGET-ME-NOTS

PINK AND ROSE —Continued

- Mr. Van Zyl.** (30 in.) Glorious dark rosy pink with a border somewhat paler. A new Darwin Tulip very much admired in our Trials on account of its striking color, large size, and excellent texture. Doz., \$1.45; 100, \$10.50; 250, \$23.75.
- Philip Snowden.** (25 in.) Delicate rose, very large flower. Doz., \$1.20; 100, \$8.50; 250, \$18.75.
- Princess Elizabeth.** (26 in.) (Syn. Julie Vinot.) Large flower; soft rich rose toning to silvery rose at edges. Inside deep rose, white base. One of the largest and finest pinks. Doz., \$1.20; 100, \$8.50; 250, \$18.75.
- Princess Mary.** (28 in.) Bright carmine-rose with margin of rose-pink; inside clear carmine-rose with blue base and white halo. One of the largest flowers in this color. Doz., \$1.65; 100, \$11.50; 250, \$26.25.

**Pride of Zwaneburg.** (29 in.) Rose-pink, flushed salmon, inside light red, very large flower of strong texture on strong stem. Doz., \$1.65; 100, \$11.50; 250, \$26.25.

**Prunus.** (25 in.) A delightful rose-pink with salmon glow well formed flower on a strong stiff stem. Very fine for bedding or late forcing. Doz., \$1.20; 100, \$8.50; 250, \$18.75.

**Rose Copeland.** (27 in.) A very fine lilac-rose can also be forced. Doz., \$1.20; 100, \$8.50; 250, \$18.75.

**Venus.** (32 in.) One of the most wonderful tulips of recent introduction. The large flower is of exquisite rose, with a white center slightly edged light blue. The entire flower bares a beautiful silvery sheen. The stem is always long and strong, making it a grand exhibition variety. Doz., \$1.45; 100, \$10.50; 250, \$23.75.

(Illustrated in Color on Inside Front Cover)

## Yellow Darwins

**Golden Age.** (29 in.) Among the many new yellow Darwins of recent introduction, this giant variety is quite the finest. It is a bright golden orange—distinctly a new shade in yellow Tulips—and a fine, strong grower with exquisitely shaped flowers. Doz., \$1.45; 100, \$10.50; 250, \$23.75.

**Niphetos.** (30 in.) Light lemon yellow turning to cream, well lasting. Doz., \$1.30; 100, \$9.00; 250, \$20.00.

**Yellow Giant.** (29 in.) This was the first yellow of the Darwin clan to be introduced; and the flower has the true Darwin cup-shape. It is large, produced on tall, strong stems, and completes the color balance in Darwin plantings. Doz., \$1.20; 100, \$8.50; 250, \$18.75.

## White Darwins

**Glacier.** (28 in.) A giant white with white base petals, and anthers, oval shaped with substantial petals. Does not open as wide as most Tulips do when placed in warm room. We do not know of another tulip of its size and with same lasting qualities. Doz., \$1.70; 100, \$13.00; 250, \$30.00.

**Royal Guest.** (29 in.) A superb creamy-white, shading to almost white as it ages, no base, yellow anthers. The large oval flower has exceptionally lasting qualities. Doz., \$1.90; 100, \$14.00; 250, \$31.25.

**Zwaneburg.** (28 in.) Pure white with black anthers. Large flower, highly recommended for both bedding and forcing. Doz., \$1.45; 100, \$10.50; 250, \$23.75.

(Illustrated in Color on Inside Front Cover.)



## Mixture of Darwin Tulips

Vaughan's Special, made up by ourselves from best varieties, First size, 25 for \$2.50; 50 for \$4.50; 100 for \$9.00; 250 for \$20.00.



## Violet, Black and Purple

**Bleu Aimable.** (26 in.) Bright violet-purple, with distinct steel blue shading, inside dark violet-purple, with blue base starred white; a very distinct and handsome tulip of large size and shapely form. Doz., \$1.40; 100, \$10.00; 250, \$22.50.

**Blue Eagle.** (29 in.) (Black Eagle.) Extra large and most intense deep but brilliant purple. Doz., \$1.50; 100, \$11.00; 250, \$25.00. (Illustrated in Color on Inside Front Cover)

**Demeter.** (28 in.) Of a warm, reddish purple which glows like a ruby in the sun. The medium sized flowers of this variety provide a unique color-note for the border planting. Doz., \$1.50; 100, \$11.00; 250, \$25.00.

**Elise Landi.** (29 in.) Outside petals are Bishop's purple, slightly lighter at edges; inside of bloom is rich purple with pure white center and blue halo. A beautiful oval-shaped flower of large size. One of the new ones, and without doubt one of the finest purple. Doz., \$3.00; 100, \$20.00; 250, \$47.50.

**Faust.** (30 in.) Dark satiny purple with blue base, very large and well formed, good forcer. Doz., \$1.45; 100, \$10.50; 250, \$23.75.

**Greuze.** (26 in.) Large cup shaped flower of bluish-violet. Very showy in the garden. Doz., \$1.35; 100, \$9.50; 250, \$21.25.

**Insurpassable.** (27 in.) A mammoth lilac of great substance carried on a tall, strong stem. One of the best of this color for the garden or for early February forcing. Doz., \$1.65; 100, \$11.50; 250, \$26.25.

**La Tulipe Noire.** (25 in.) Nearest of all to the black color. Doz., \$1.35; 100, \$9.50; 250, \$21.25.

**Queen of the Night.** (28 in.) One of the darkest Tulips ever introduced. A real Black Tulip or rare beauty. Large flower on tall stiff stem. Doz., \$1.40; 100, \$10.00; 250, \$22.50.

(Illustrated in Color on Front Cover)

**Rev. H. Ewbank.** (25 in.) An exquisite shade of soft lavender-violet, slightly shaded silver-gray. A variety of great merit on account of its lovely color. Doz., \$1.40; 100, \$10.00; 250, \$22.50.

**Scotch Lassie.** (29 in.) Of purest deep lavender with darker shade inside and dark blue base. Among the best lavenders in our collection. Doz., \$1.50; 100, \$11.00; 250, \$25.00.

**The Bishop.** (29 in.) A magnificent flower of clear, deep violet, with a blue base circled by a white halo. A beautiful garden variety. Doz., \$1.60; 100, \$12.00; 250, \$27.50.

**William Copeland.** (25 in.) (Sweet Lavender.) Outside this variety produces flowers of fine rosy lilac, but is at its best when grown indoors during the winter. When forced indoors the flowers are the purest lavender of all tulips. Doz., \$1.20; 100, \$8.50; 250, \$18.75.

## White and Red Hybrid

**Ossi Oswald.** (28 in.) One of the new hybrids uniting the brilliant color of the Cottage clan with the size and shape of the Darwin, this is a variety of extraordinary size and beauty. It is pure white, with a picotee edging of bright cherry red, and attracts instant attention and admiration. The flowers are of true Darwin shape, and have lasting quality when cut. Doz., \$1.40; 100, \$10.00; 250, \$22.50.

(Illustrated in Color on Front Cover)

## Lacinated Darwin

**Sundew.** (25 in.) This flower is something entirely new in tulips. The curved petals are provided with barbs, giving the edges of the flower a fringed effect. It is said to be a natural sport of the popular variety Bartigon, retaining the brilliant crimson coloring and magnificent size of its parent. Doz., \$1.40; 100, \$10.00; 250, \$22.50.



**MIXTURE**

Cottage Tulips

Vaughan's Special

AN excellent collection of named varieties, giving a dazzling display in mass. Splendid for cutting. Doz., \$2.50; 50, \$4.50; 100, \$9.00; 250, \$20.00.



*Yellow Cottage*

**Belle Jaune.** (30 in.) Fine deep yellow, a very large and long flower of excellent form. Doz., \$1.35; 100, \$9.50; 250, \$21.25.

**Golden Harvest.** (28 in.) This is the largest yellow tulip that we offer and perhaps the largest of all yet developed. It blooms early and its flowers last through a long season, growing in size and beauty. Its color is a deep yellow with petals of great substance, borne on tall, stiff stems. We know of no yellow that equals it. Doz., \$1.20; 100, \$8.50; 250, \$18.75.

(Illustrated in color on Front Cover.)

**Inglescombe Yellow.** (18 in.) A fine large, cup-shaped flower, color full rich yellow. Doz., \$1.15; 100, \$8.00; 250, \$17.50.

**Moonlight.** (20 in.) Long, narrow flower of beautiful pale yellow. Opens two or three days sooner than most yellow Cottage tulips. Doz., \$1.45; 100, \$10.50; 250, \$23.75.

**Mrs. Moon.** (26 in.) This is one of the finest late yellow tulips in existence. The blooms are long and pointed, outer petals reflexed. Distinctly perfumed. Doz., \$1.50; 100, \$11.00; 250, \$25.00.

**Mother's Day (Lemon Queen)** (25 in.) The yellow coloring of this variety is of exactly the tone which harmonizes delightfully with pink and red as well as lavender. Doz., \$1.20; 100, \$8.50; 250, \$18.75.

**Mrs. John T. Scheepers.** (30 in.) Clear chrome-yellow erect, tall stem. Enormous oblong flower. One of the largest of yellow tulips. Doz., \$1.45; 100, \$10.50; 250, \$23.75.

(Illustrated in Color on Inside Front Cover.)

*White Cottage*

**Albino.** (22 in.) A fine pure white, with large flower, which has rounded petals. It blooms early and last long in good condition, and is most effective in border grouping. It is a favorite with florists for early forcing. Doz., \$1.45; 100, \$10.50; 250, \$23.75.

**Carrara.** (22 in.) Having rounded rather than pointed petals, this pure white variety is exceptionally large and resembles the Darwin type. It is not as early as Albino, and combines well with all types of tall, late tulips in border plantings. Doz., \$1.35; 100, \$9.50; 250, \$21.25.

**Mount Erebus.** (30 in.) Creamy-white flower, clear base, sulphur anthers. Turning pure white with age. Doz., \$1.50; 100, \$11.00; 250, \$25.00.

**Themis.** (27 in.) Pure white, yellow anthers. Very fine for bedding, can also be used for indoor growing. Doz., \$1.35; 100, \$9.50; 250, \$21.25.

*Red and Orange Cottage*

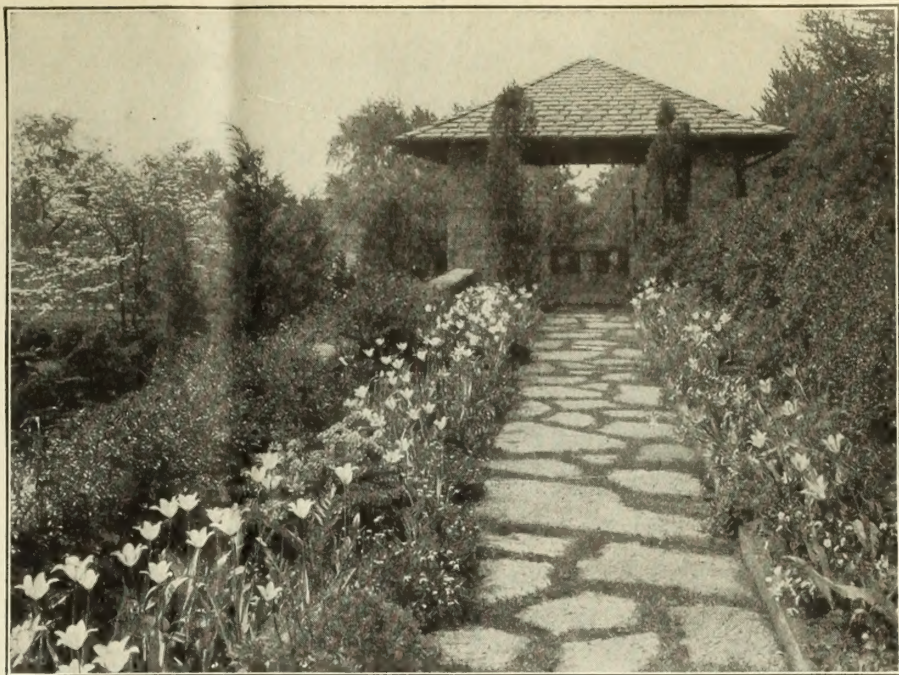
**Advance.** (28 in.) This is the largest of all tulips, with a strong stem which holds the huge flower upright. It is an orange scarlet, with black center, which grow more vivid in color and larger in size as the flower develops. As an exhibition flower it is not surpassed, and it is outstanding in any garden. Doz., \$1.45; 100, \$10.50; 250, \$23.75.

(Illustrated in Color on Front Cover)

**Grenadier.** (20 in.) Magnificent light orange. When the sun shines on a fully expanded flower of this variety the color is dazzling. Flower long, on graceful stem. Doz., \$1.45; 100, \$10.50; 250, \$23.75.

**Marshall Haig.** (30 in.) Among the new Tulips this ranks supreme as being one of the finest brilliant self-red colors. A flower of magnificent size and texture and much admired on account of its brilliant tone. Doz., \$1.50; 100, \$11.00; 250, \$25.00.

**Mazeppa.** (23 in.) Bright cocheneal-red, large white center. Novelty. Doz., \$1.45; 100, \$10.50; 250, \$23.75.

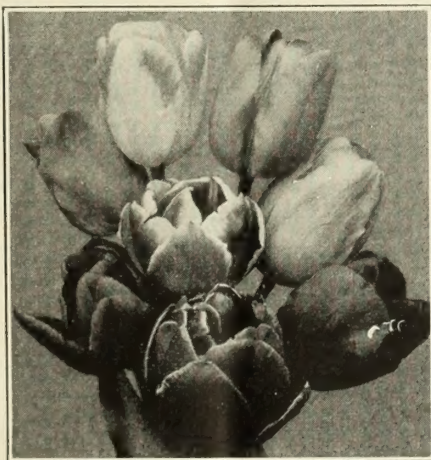


COTTAGE TULIPS IN PERENNIAL BORDER

*New Giant Cottage Tulips*

MOST NEW tulips introduced since the war have been of the Cottage clan. By crossing with other types, their clear, bright colors have been united with giant size, so that the largest of all tulips are found among new Cottage hybrids. We list these new varieties, and older ones which are still unsurpassed, in their color classes.

Cottage tulips should be included in every tulip planting. They harmonize perfectly with Darwin and Breeder varieties, and supply a quality of brilliant color which the others need, to set off their softer tones. Some blossom a little later than the Darwins, carrying the tulip season well into the early days of June.



EARLY DARWIN HYBRIDS

*Pink and Rose Cottage*

**Barbara Pratt.** (32 in.) Rich light cochineal carmine, edges lilac-rose. A very beautiful tulip with slightly reflexed petals. Highly recommended. Doz., \$1.45; 100, \$10.50; 250, \$23.75.

**Dido.** (26 in.) Superb in form, poised erect on a straight stem, and fragrant. It is a deep, rich pink with salmon lights, suffused and slightly edged orange. Doz., \$1.35; 100, \$9.50; 250, \$21.25.

**Marjorie Bowen.** (24 in.) A very unusual combination of buff and salmon which passes to deep rose-pink with salmon shading. A charming blend. Doz., \$1.40; 100, \$10.00; 250, \$22.50.

**Rosabella.** (18 in.) This graceful tulip can be compared to the loveliness of a rosebud. Pure pink in color, it possesses great charm both as a cut flower and in the garden. Doz., \$1.45; 100, \$10.50; 250, \$23.75.

*Early Darwin Hybrids*

NOT since the Darwin race was introduced, has so great an improvement been made in the tulip family, as in the new Triumph class. Here are early tulips—coming at a time when every bit of color in the garden is more precious because there is so little of it—with stems as tall flowers as large and colors even more brilliant than the Darwins. A hybrid of the Darwin and early singles, the Triumph tulips have a distinctive beauty of their own, and a clear luminous color quality which will make you treasure them. Two full weeks are added to the tall tulip season by planting these.

**Alberio.** (26 in.) Glossy cherry-red with very small yellow rim around petals. Large flower, good bedder. Doz., \$1.15; 100, \$8.00; 250, \$17.50.

**Corniforus.** Brilliant red, base white, early forcer, one of the most outstanding triumphs, very large flower. Doz. \$1.15; 100, \$8.00; 250, \$17.50.

**Crater.** Dark vermilion-red, edging lighter, good forcer. Doz., \$1.15; 100, \$8.00; 250, \$17.50.

**Elisabeth Evers.** Rose with pure white base. Doz., \$1.20; 100, \$8.50; 250, \$18.75.

**Kansas.** Pure white. Doz., \$1.20; 100, \$8.50; 250, \$18.75.

**Telescopium.** (23 in.) Violet rose, strong flower on stiff stem. Doz., \$1.20; 100, \$8.50; 250, \$18.75.

**Ursa Minor.** (17 in.) Deep golden yellow. Doz., \$1.20; 100, \$8.50; 250, \$18.75.

All shipments of flowering bulbs ordered from this catalogue at dozen or less than dozen rates will be prepaid.

Orders at 100 rate will be shipped by express, charges collect, except that special offers will be prepaid where it is so specified in the offer.



Breeder Tulips Combine Perfectly with Darwin and Cottage in Border Plantings

## Breeder Tulips

TULIP  
INDIAN  
CHIEF

FROM Breeder tulips, most of the tall, large flowered types have been developed. These were the "mother bulbs" of ancient Dutch breeders, grown not for their own rich beauty, but because among them would appear flowers of the striped and blotched coloring then esteemed so highly.

These stripes and blotches are now known to have been caused by a virus disease; and the Breeder tulips are valued for their own beauty. Among them are some of the tallest and largest varieties of all, and many colors rare among flowers—browns, bronzes, purples, dull gold and dark lilac, exquisitely blended. One of the most fragrant of all tulips is Don Pedro, a coffee-brown.

**Indian Chief.** (38 in.) The flower is enormous, very widely opened and squarely built. The flower is mahogany red in color, the petals are of very heavy texture, the stem extremely heavy and straight as a ramrod. A magnificent flower of richest coloring. Doz., \$1.50; 100, \$11.00; 250, \$25.00.

**Lucifer.** (28 in.) Most beautiful of the orange-red tulips. Very late flowering, tall stem, and very brilliant color. Good form and excellent substance. Doz., \$1.50; 100, \$11.00; 250, \$25.00.

**Alice Keith.** (27 in.) Very bright orange-yellow edged golden with small olive green base. Large flower on strong stem. One of the finest Breeder Tulip for bedding. The flower becomes more beautiful as it ages. Doz., \$1.30; 100, \$9.00; 250, \$20.00.

**Bacchus.** (28 in.) Though introduced over 300 years ago, it has no superior in clear, richness of color and beauty of form. The color is very similar to the purple of Concord grapes. Doz., \$1.50; 100, \$11.00; 250, \$25.00.

**Cherbourg.** (30 in.) Undoubtedly one of the finest Breeder Tulips. A deep tone of golden yellow, with a suffusion of terra cotta, the deeper tone of yellow growing stronger toward the edges of the petals. Doz., \$1.50; 100, \$11.00; 250, \$25.00.

**Dillenburg.** (27 in.) A glorious salmon orange shaded rose. The flowers are large and borne on strong, stiff stems. Highly recommended for exhibition purposes but should not be used for early forcing. Doz., \$1.30; 100, \$9.00; 250, \$20.00.

**Don Pedro.** (27 in.) A beautiful shade of coffee-brown, shaded maroon, inside rich mahogany. It is one of the few fragrant tulips, with a strong but delightful odor that perfumes the garden. Doz., \$1.50; 100, \$11.00; 250, \$25.00.

(Illustrated in Color on Inside Front Cover)

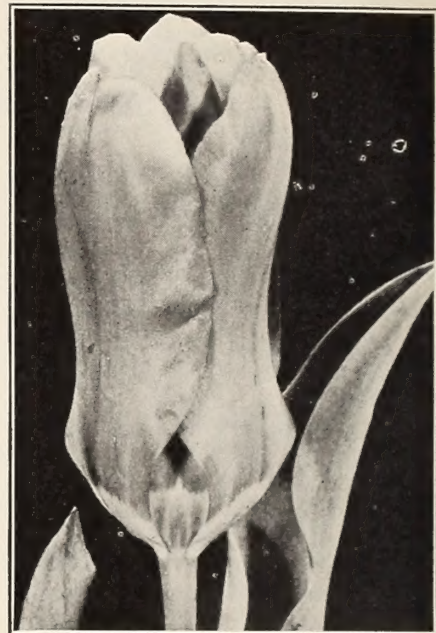
**Louis XIV.** (36 in.) Considered by many good judges to be the finest of all tulips. Others may match it in height, in size, or in rich coloring; but a rival which equals it in all these qualities is yet to appear. In the garden it is always magnificent, and as a cut flower its rich blend of purple and gold is truly royal. Doz., \$1.50; 100, \$11.00; 250, \$25.00. (Illustrated in Color on Inside Front Cover).

### Vaughan's Special Mixture of Breeder Tulips

An excellent collection of this popular class of Tulips, including many rare colors. Doz., \$1.40; per 100, \$10.00; 250, \$22.50.

**Panorama.** (24 in.) (Fairy) Rich deep red of beautiful form, strong stem and good substance. Excellent cut flower. Doz., \$1.30; 100, \$9.00; 250, \$20.00.

**Prince of Orange.** (25 in.) Orange-scarlet, edged light yellow flower of striking beauty. Doz., \$1.30; 100, \$9.00; 250, \$20.00.



TULIP RED EMPEROR

## Species Tulips

The general characteristics of the various species, all of which are natives of Asia Minor and Central Asia, are bright colors recurved petals and early flowering.

**Red Emperor. (Fosteriana)** Fosteriana is a majestic tulip of great size; the dazzling scarlet flowers are borne upon stout stems, 18 inches and even as much as 24 inches high. Vermilion will perhaps best describe their intense and lovely color. Drainage must be perfect, and the sunniest place possible should be apportioned to it. It flowers in late April. Doz., \$1.70; 100, \$12.00; 250, \$27.50.

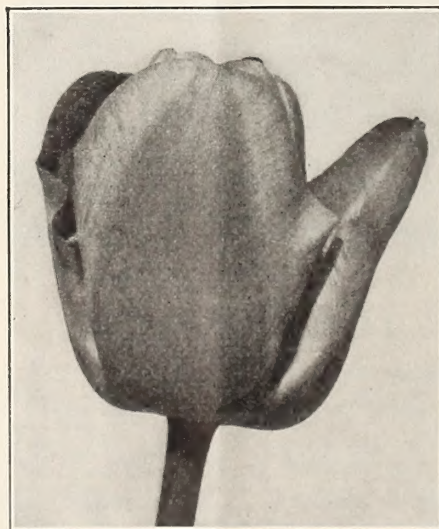
**Clusiana** "Lady" or "Candystick" Tulip, Outer petals bright cherry red, inner petals creamy white, with violet base; small flower, but very distinct. It should be planted in light soil 6 or 9 inches deep, in the rock garden or among stones in the front of the herbaceous border. A warm and sheltered situation should be chosen, where it will prove to be a gem among early flowers. Flowering season late April. Height, 8 inches. Doz., \$1.15; 100, \$8.00; 250, \$17.50.

## Rembrandt Tulips

**American Flag.** Dark red with broad white lines and blue base. So named because the three colors resemble the American Flag. A real novelty. Doz., \$1.70; 100, \$13.00; 250, \$30.00.

All shipments of flowering bulbs ordered from this catalogue at dozen or less than dozen rates will be prepaid.

Orders at 100 rate will be shipped by express, charges collect, except that special offers will be prepaid where it is so specified in the offer.



TULIP MOROCCO BEAUTY

**Morocco Beauty.** (26 in.) A much improved red, interior dark reddish mahogany, yellowish base, straight stem. Outstanding novelty. Doz., \$2.50; 100, \$17.00; 250, \$40.00.

## New Late Double

**M**ANY new varieties have been developed in the late flowering double tulips. Blossoming at the same time with the Darwin, Cottage and Breeder types, they have much longer stems and larger flowers than the early doubles, and give stunning effects in beds, or as border accents.

**Coxa.** (21 in.) Carmine-red. Vermilion edged very small white border. Large flower. Very fine for border planting. Doz., \$1.50; 100, \$11.00; 250, \$25.00.

**Eros.** (20 in.) The large double flowers are of a deep true pink with silvery high-lights. Its double flowers, borne on tall, strong stems, are compared to peonies by all who see them, but we do not know any peony which has its lovely coloring. A group planted in any garden will be arouse admiration. Doz., \$1.65; 100, \$11.50; 250, \$26.25.

(Illustrated in Color on Inside Back Cover)

**Livingstone.** (20 in.) Large flower of bright cherry-pink, good strong stem, very fine for bedding and lovely when forced in February. Doz., \$1.70; 100, \$12.00; 250, \$27.50.

**Mount Tacoma.** (24 in.) A magnificent giant double white Tulip which reminds one of a peony in full bloom; superb for beds. Doz., \$1.65; 100, \$11.50; \$26.25.

**Uncle Tom.** (21 in.) A very beautiful Tulip with large full-double flowers of a uniform deep glossy maroon-red color, really a distinct shade in Tulips. Doz., \$2.00; 100, \$15.00; 250, \$35.00.

**Mixture of Late Double Tulips.** Made by us from named varieties, insuring well balanced selection. Doz., \$1.65; 100, \$11.50; 250, \$26.25.

## New Parrot Tulips

**O**UTSTANDING among the new tulips introduced since war ended, are new varieties of the Parrot type. Their petals are huge, thick fleshed, fringed and the flowers keep well when cut. A group will focus attention of garden visitors. Average height 15 inches.

### FANTASY

A remarkable Parrot Tulip with a straight, strong stem, a quality which has always been lacking in Parrot tulips. This variety is a sport of the well-known Darwin tulip, Clara Butt, and has the same clear pink color as its parent, combined with artistic form of a Parrot tulip. Each petal is over three inches long, and two inches across. The center of the petals on the outside are marked emerald green. Doz., \$1.40; 100, \$10.00; 250, \$22.50. (Illustrated on Inside Back Cover).

## New Named Varieties

**Blue Parrot.** Petals bright purple blue, Parrot of Darwin Blue Aimable, strong stem. Doz., \$1.30; 100, \$9.00; 250, \$20.00.

**Orange Favorite.** Glistening deep orange shaded rose inside deep orange-scarlet with yellow base, sweet scented flower of great size and brilliant coloring. Each, 20c; Doz., \$1.70; 100, \$12.00; 250, \$27.50.

**Red Champion.** Parrot of Darwin Bartigon, borne on strong stem, deep red color. Doz., \$1.75; 100, \$13.00; 250, \$30.00.

**Sunshine.** Pure butter yellow. Parrot of Cottage Bouton d'Or. Doz., \$2.00; 100, \$15.00; 250, \$35.00.

**Therese.** A sport of Darwin Tulip Farncombe Sanders, it has retained the many good qualities of this so-popular variety. The very large flower is of subdued scarlet color with the inside of the petals a lighter but brilliant rosy red. Doz., \$1.90; 100, \$14.00; 250, \$31.25.

**The Black Parrot.** This rare black-flowered Parrot Tulip is offered only in a limited quantity. This purple Black Parrot flower is so unique and strange that the demand is tremendous so order immediately to insure delivery. Each, \$1.00; Doz., \$11.00.

**Violet Queen.** Sport from Opal Queen, violet. Doz., \$1.60; 100, \$12.00; 250, \$27.50.

**Mixture of Parrot Tulips.** Prepared by us to insure well balanced display of colors. Doz., \$2.00; 100, \$14.00; 250, \$33.75.



A BED OF TULIP KAIZERKROON EDGED WITH PINK BEAUTY

## Early Bedding Tulips

**B**RED for use in formal beds, early tulips of each variety grow to the same height, and blossom at the same time. Once most popular of all types, they promise to return to favor, for planting in front of broad, low houses of modern design. A circular or oblong bed of early tulips, of one color, or two harmonizing colors, will present an enchanting view from your picture window next April.

**Explanatory.** The number following the name of the variety denotes the height in inches, while the (a) and (b) indicate their earliness of bloom—the (a's) flower together and are earliest; the (b's) flower together, but somewhat later.

## Early Single

**Couleur Cardinal.** 8a. As its name denotes this variety possesses the brilliant red coloring called Cardinal. Immense blooms of good cup form open later. Doz., \$1.40; 100, \$10.00; 250, \$22.50.

**Fred Moore.** 10b. Beautiful, large orange scarlet flowers with lighter. Doz., \$1.15; \$8.00; 250, \$17.50.

**General DeWet.** 10a. Beautiful deep orange, shaded golden yellow at the base of the petals. A very fragrant flower and one of the finest varieties in cultivation. There is no other orange variety which equals it in brilliancy. It is therefore one of the showiest bedders, and as it forces splendidly we can recommend it for all purposes. Doz., \$1.15; 100, \$8.00; 250, \$17.50.

**Keizerskroon.** 10b. This is one of the oldest, as it is, assuredly, one of the best early varieties. The huge flower is bright red, nearly scarlet, edged with yellow; the margin is broad and clearly defined, the flower is seen and recognized from afar. It is a strong grower. Doz., \$1.40; 100, \$10.00; 250, \$22.50.

(Illustrated in Color on Inside Front Cover)

**Pink Beauty.** 12b. Bright rose-pink shading to blush-white. Doz., \$1.50; 100, \$11.00; 250, \$25.00.

**Rose Luisante.** 7b. Brilliant deep pink. Doz., \$1.40; 100, \$10.00; 250, \$22.50.

**Rising Sun.** 8a. The brilliance of its namesake is seen in the golden beauty of this magnificent tulip. Large, of good form, and sturdy growth, it is an ideal tulip for bedding and border. Doz., \$1.15; 100, \$8.00; 250, \$17.50.

**Sunburst.** 12a. Yellow, flushed with red. A beautiful tulip for bedding or forcing. Doz., \$1.15; 100, \$8.00; \$17.50.

**White Hawk.** 8a. Pure white. Doz., \$1.15; 100, \$8.00; 250, \$17.50.

**Mixture of Early Single Tulips.** Including well balanced selection of named varieties which will bloom together, at the same height. Doz., \$1.30; 100, \$9.00; 250, \$20.00.

## Early Double

**Couronne d'Or (Crown of Gold)** 10a. Beautiful rich, golden yellow, flushed orange. Doz., \$1.35; 100, \$9.50; 250, \$21.25.

**Electra.** 8b. Magnificent, enormous flower; beautiful rose, feathered violet; a handsome novelty, unexcelled for exhibition purposes. Doz., \$1.40; 100, \$10.00; 250, \$22.50.



COURONNE D'OR

EARLY DOUBLE—Continued

**Mr. Van der Hoef.** 12a. Yellow sport of Murillo with all its superb qualities. One of the very finest of the primrose-yellow. Doz., \$1.40; 100, \$10.00; 250, \$22.50.

**Orange Nassau.** 10b. Bright orange-scarlet with a margin of orange. Outer petals shaded cherry-red. Doz., \$1.40; 100, \$10.00; 250, \$22.50.

**Peach Blossom.** 8a. Deep rosy pink, deepening with age to a deep rose. A very fine flower with a wonderful color. A new variety of superb quality. Doz., \$1.40; 100, \$10.00; 250, \$22.50.

**Schoonoord (White Murillo).** 12b. Pure fine. Doz., \$1.40; 100, \$10.00; 250, \$22.50.

**Toreador.** 8a. Reddish orange and yellow. Doz., \$1.40; 100, \$10.00; 250, \$22.50.

**Triumphator.** 9b. Magnificent bright pink, an improvement upon "Peach Blossom." It is more double, the color is much softer, and the form better. Doz., \$1.40; 100, \$10.00; 250, \$22.50.

**Vuurbaak.** 9b. Bright scarlet, suffused orange. Doz., \$1.70; 100, \$12.00; 250, \$27.50.

**Mixture of Early Double Tulips.** Prepared by us from named varieties of all colors, which will bloom at the same time, and grow to the same height. Doz., \$1.40; 100, \$10.00; 250, \$22.50.



HYACINTH  
GRAND  
MAITRE

HYACINTHS contribute to the spring garden fragrance as well as colors which at that time no other flowers can give so well. Indeed, it is doubtful whether at any time of the garden year lovelier true pinks and blues can be found than those which hyacinths provide.

They serve to border paths, near all garden architecture, including ornaments such as bird baths, pools and fountains, and groups of hyacinths may well be worked into the border planting, where they will provide a needed color foil or accent.

For garden planting, it is not necessary to use the largest forcing sizes. Bulbs of third and bedding sizes will do well. Take especial care to plant them in well drained soil, and if there is any doubt, elevate the bed a few inches to keep them above water. Plant bulbs six inches deep, and after the ground has frozen a light mulch to keep the frost in, will benefit.

#### For Winter Blooming

LIGHT, rich soil produces the best flowers. Place each bulb one inch deep, an inch and one-half from each other bulb or edge of pot. Water well, and set away in a dark, cool cellar, or an outdoor pit which is well drained. If outside, cover with three or four inches of sand or ashes. Let them remain there for eight or ten weeks to root, then bring them into a warm room, but keep them in the dark (cover the pot with a paper bag, cloth, etc.). Then when the flower spike is three or four inches out of the bulb, they may be exposed to the light, and will open beautifully.

# Hyacinths

## RED AND ROSE

**Gertrude.**—Rose-Pink, one of the best pot varieties

**Jan Bos.**—Scarlet early forcer

**La Victoire.**—Brilliant red

**Pink Pearl.**—Rosy pink.

**Queen of Pinks.**—Rose, pink, choice

## WHITE

**Arentine Arendsen.**—Pure white, large bells splendid spike, best for outdoor planting

**L'Innocence.**—Pure white, best for growing in pots indoors

## YELLOW

**City of Haarlem.**—Golden Yellow.

## BLUE

**Bismarck.**—Lavender.

**Grand Maitre.**—Dark porcelain blue.

**King of Blues.**—Very dark blue.

**Queen of Blues.**—Very light blue

### Bulbs of above Varieties for Garden Planting.

	Each	Doz.	100
First Size (18-19 Ctm.) . . . .	\$0.30	\$3.00	\$22.00
Second Size (17-18 Ctm.) . . . .	.25	2.50	18.00
Third Size (16-17 Ctm.) . . . .	.20	2.00	15.00
Bedding Size (15-16 Ctm.) . . . .	.18	1.80	14.00

Above prices are for your selection of named varieties.

## Hyacinths for Pots

Mammoth Bulbs of any above varieties to Grow In Glasses and Pots.

19 ctms. and over, Each 35c; doz., \$3.50; 100, \$25.00.



FRENCH ROMAN HYACINTHS

### French Roman Hyacinths

These beautiful Hyacinths are among the most easily cultivated and most satisfactory of flowering bulbs. The white variety, if planted early in September and slowly forced, will bloom in November. The others require from two to three weeks longer.

	Each	Doz	100
White . . . . .	\$0.25	\$2.50	\$18.00
Blue . . . . .	.15	1.50	11.00
Pink . . . . .	.18	1.80	14.00



ENGLISH IRIS

## Hardy Bulbous Garden Iris

ADMIRERS of the iris will find this group to be valuable additions to their collections. Flowering in late June and early July, they follow the bearded and Siberian irises, prolonging the display and producing flowers of a distinct type and quality of coloring. The colors are clear and brilliant, and the petals are delicate, but of excellent substance. They make quality cut flowers, lasting fully a week in water.

Bulbs should be dug each year after foliage has turned brown. They should be cured quickly in a dry location, and only the largest bulbs should be replanted for flowering

### Iris Tingitana Wedgewood

For indoor use and protected plantings. The amateur should plant his bulbs, six or eight according to size, in a seven- or eight-inch pot. They must be kept cool, 45 degrees or so, until the buds are out of the neck. A great cut flower. Light blue in color. 8-10 ctms. for outdoor planting. Doz. 90c; 100, \$6.00; 1000, \$55.00. 10 ctms. up for indoor growing, doz. \$2.00; 100, \$15.00; 1,000, \$140.00.

### English Iris

These thrive in any ordinary garden soil but prefer a good loam. The earlier the planting, after beginning of September, the greater the success; the bulbs should be planted 4 inches deep. They flower from end of June to beginning of July.

**KING OF THE BLUES.** Dark blue  
**LAMARTINE.** White, carmine rosy flakes  
**LUCINDA.** Porcelain blue, flaked darker  
**IDEAL.** Pale mauve  
**PRINCE ALBERT.** Delicate silvery blue.  
**MONT BLANC.** Pure white  
**PURPLE KING.** Deep purple  
**QUEEN OF THE BLUES.** Light blue  
Each, 20c; doz., \$2.00; 100, \$15.00.

### Iris Reticulata

**Fragrant Iris—Hardy with Protection**  
**RETICULATA.** This may be forced into bloom in the house with ease. Six or eight bulbs put into a 4 or 5-inch pot when received will bloom about Christmas time. The fragrant blossoms remind one of a bunch of fresh violets. Perfectly hardy with reasonable protection. It is one of the loveliest early flowering bulbs for the rockery. To show it off well, plant a number of bulbs under the white Arabis Alpina. Each, 15c; doz., \$1.10; 100, \$7.50.

### Dutch Iris (Bulbous)

For Outdoor Planting Only

(Require some protection in Northern States.)  
**IMPERATOR.** Rich dark blue. Very large. 6-7 ctms. Doz. 60c; 100, \$4.00. 7-8 ctms. Doz., 90c; 100, \$6.00.  
**GOLDEN HARVEST.** Golden yellow. 6-7 ctms. Doz. 65c; 100, \$4.50. 7-8 ctms. Doz. 90c; 100, \$6.00.  
**WHITE EXCELSIOR.** Pure white. 6-7 ctms. Doz. 65c; 100, \$4.50. 7-8 ctms. Doz., 90c; 100, \$6.00.  
**YELLOW QUEEN.** Soft clear yellow. 5-6 ctms. Doz. 65c; 100, \$4.50; 7-8 ctms. Doz., \$1.25; 100, \$8.00.  
**DUTCH IRIS MIXED.** Doz., 60c; 100, \$4.00.

# First Flowers to Bloom in Spring



SNOWDROPS

## Snowdrops (*Galanthus*)

Snowdrops flower after the first spring thaws and when the flowers are over, there remains a ground-work of green foliage

**Single.** (Largest Bulbs.) Doz., 80c; 100, \$5.50; 1,000, \$45.00.

**Double.** (Largest Bulbs.) Doz., 80c; 100, \$5.50; 1,000, \$45.00.



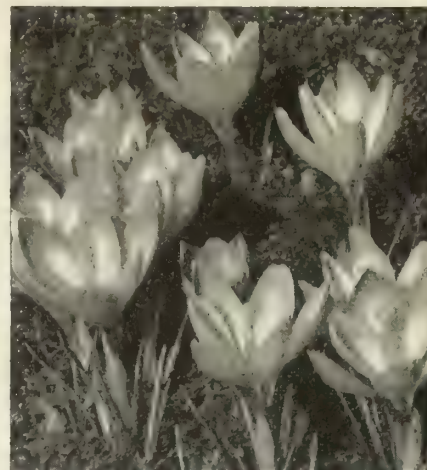
SCILLAS SELF-SEED AND MULTIPLY

## Scillas (*Squills*)

**For Late Flowering, See Page 13.**  
As edgings and masses in beds and borders, Scillas are most valuable. They succeed in shady flower borders and bare shady places and odd corners.

**SCILLA SPRING BEAUTY.** Spring Beauty is a giant by comparison with the ordinary Siberica, very free blooming and ideal for growing in pans or pots. Brought into a 50 to 55 deg. house after being well rooted, it flowers within two weeks, the glorious blue spikes having stems 6 to 8 in. long. Perhaps there is nothing so truly blue that will bloom at that time. Outdoors it is a trifle later than the ordinary but decidedly superior. Large bulbs, doz., 80c; 100, \$5.50; 1,000, \$45.00.

**SIBERICA (The Blue Squill).** Bright blue, nothing more beautiful for edgings or pots in early Spring, flowering with the Snowdrop. Height, 4 inches. Mammoth Bulbs. Doz., 75c; 100, \$5.00; 1,000, \$40.00.



CROCUSES

## Crocus

Flowering soon after snowdrops and before the daffodils, crocuses in groups or masses present a delightful picture. We offer four colors: **White, Blue, Yellow and Striped.** Order by color, or in a balanced mixture, which will include an equal quantity of each color

	Doz.	100	1000
<b>BLUE and PURPLE</b>			
8-9 Ctms. ....	\$0.50	\$3.00	\$20.00
9-10 Ctms. ....	.55	3.50	25.00
10 Ctms. and up. ....	.60	4.20	32.00
<b>WHITE, 8-9 Ctms.</b> ....	.60	4.00	30.00
9-10 Ctms. ....	.65	4.50	35.00
10 Ctms. and up. ....	.75	5.00	40.00
<b>STRIPED, 8-9 Ctms.</b> ....	.60	4.00	30.00
9-10 Ctms. ....	.65	4.50	35.00
10 Ctms. and up. ....	.75	5.00	40.00
<b>YELLOW, 8-9 Ctms.</b> ....	.65	4.50	35.00
9-10 Ctms. ....	.75	5.00	40.00
10 Ctms. and up. ....	.80	5.50	45.00



GRAPE HYACINTHS

## Grape Hyacinths (*Muscari*)

Grape Hyacinths, thrive in American gardens, planted with late tulips, for clumps in the rock garden or border. All are very accommodating in their requirements, but prefer a good loam with a little old manure dug into it, and, in the case of the Feather Hyacinth, a rather warmer position. The bulbs should be planted during autumn at a depth of about three inches and about two inches apart.

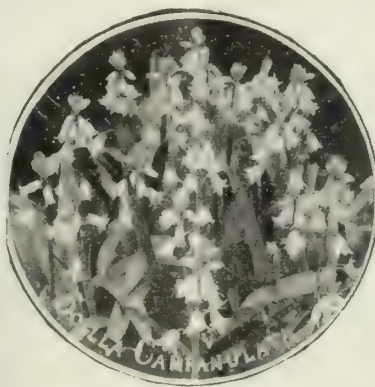
**ARMENIACUM.** Deep blue, large flowers. 8-9 Ctms. Doz., 45c; 100, \$3.00; 1,000, \$20.00. 9-10 Ctms. Doz., 60c; 100, \$4.00; 1,000, \$30.00.

**EARLY GIANT.** Impressed Armeniacum. Larger bells and a little lighter color.

Blooms about 10 days earlier. 8-9 Ctms. Doz., 55c; 100, \$3.50; 1,000, \$25.00. 9-10 Ctms. Doz., 65c; 100, \$4.50; 1,000, \$35.00.

**ALBA (Pure White).** These make a striking show when planted with the above. Doz., 95c; 100, \$6.00; 1,000, \$50.00.

**PLUMOSUM.** Bearing in May handsome feathery plumes of violet colored flowers, very attractive. Doz., 60c; 100, \$4.00; 1,000, \$30.00.



## Late Flowering Scillas

Scilla Campanulara flowers with the Darwin tulips and is often interplanted with them

**CAMPANULATA (Clear Blue).** Very erect in habit (15 inches). Doz., 75c; 100, \$5.00; 1,000, \$40.00.

Alba. Pure white (12 in.). Doz., 75c; 100, \$5.00; 1,000, \$40.00.

Rosea. Fine rose (15 in.). Doz., 75c; 100, \$5.00; 1,000, \$40.00.

**NUTANS Blue.** The true English blue-bell. In its native habitat it abounds in woodlands literally carpeting the ground. Gracefully arching stem carrying many violet blue flowers, opening after most other Scillas are gone. Very hardy. Doz., 65c; 100, \$4.50; 1,000, \$35.00.

**NUTANS Alba.** Pure white companion to the above, with long arching stem. Beautiful when naturalized in copses, shady walks, etc. Also prized for cutting. Doz., 65c; 100, \$4.50; 1,000, \$35.00.



SPRING SNOWFLAKES (*Leucojum Vernum*)

## Leucojum (Snowflake)

**VERNUM (Spring Snowflake).** A favorite little early spring flower having drooping, bell-shaped flowers, white with small brown tips. Once planted in a favorable environment they come up every spring, bearing more flowers each time. Excellent for rock gardens and naturalizing. Each, 15c; Doz., \$1.30; 100, \$9.00; 1,000, \$85.00.

### PLANT THESE BULBS TO WELCOME SPRING

Grouped in the border, where you can see them from a window, the bulbs in the following collections will begin to flower when the last snows melt, and all will have bloomed before the first daffodils. They will insure a joyful uplift of your spirit, as they tell of winter's end, and spring's coming.

No. 121—36 bulbs, 12 single snowdrops, 12 scilla siberica, 12 mixed crocus, 8-9 ctms. prepaid for \$2.00.

No. 122—75 bulbs, 25 single snowdrops, 25 scilla siberica, 25 mixed crocus, 8-9 ctms. prepaid for \$3.50.



# Daffodils or Narcissi



**D**AFFODILS are the first of the major garden flowers to blossom in the spring. This makes them doubly precious, as heralds of a season of joy, after the long winter.

The daffodil tribe likes a cool root run and its flowers are at their best in the cooler days of spring. Therefore it is essential to dig the soil deeply and provide humus. Like the tulip, the daffodil will not thrive if there is fresh manure in the soil and commercial plant food should be used when the bulb is planted. It likes a moist soil but it must have excellent drainage. The plant food should be mixed in the soil below the bulb and if the soil is heavy, a cushion of sand is advisable.

Daffodils are particularly fine subjects to plant under the edge of bushes or among perennials in the hardy border as they seem to like to nestle among the roots of their neighbors.



NARCISSUS POETICUS

## Poeticus Narcissi

The pure white perianth and all-red or picoteed cup, and delicious perfume, peculiar to itself, makes this one of the most popular of all Narcissi.

Of all the hardy types this is probably the one most likely to thrive and multiply in the garden. Bulbs should not be lifted for several years until they appear to be crowding, then they may be lifted, divided and replanted over a much larger area. Avoid poorly drained places.

**Actea.** Large Poeticus pure white perianth with scarlet edged eye. Each, 20c; doz., \$1.75; 100, \$12.00. (Illustrated in Color on Back Cover)

**Horace.** Large star-shaped perianth, gleaming white, with flat eye, yellow edged red; medium height, very broad perianth petals. Each, 20c; doz., \$1.60; 100, \$11.00.

**Poeticus (Common Pheasant's Eye).** The Narcissus for garden planting; pure white with scarlet-edged cup or eye. Fine for naturalizing, being hardy and increases readily in numbers; late. Each, 20c; doz., \$1.60; 100, \$11.00.

## Cluster Flowered Poetaz

Crossing of Poeticus and Polyanthus varieties produced this perfectly hardy strain of bunch-flowering Narcissus. Do well planted in pots for winter flowers.

**Cheerfulness.** The double Elvira, a very pleasing double white Poetaz, good stems, a fine garden and show flower. Each, 15c; doz., \$1.50; 100, \$10.00.

**Early Perfection.** Very early Poetaz. Perianth white cup yellow. Good for growing indoors. Each, 15c; doz., \$1.50; 100, \$10.00.

**Geranium.** Pure white perianth with deep red cup. One of the best of all Poetaz and highly recommended. Each 20c; Doz., \$1.75; 100, \$12.00. (Illustrated in color on back cover.)

**Laurens Koster.** Perianth white, cup light orange-yellow. Each, 15c; doz., \$1.50; 100, \$10.00.

## Giant Trumpets

**King Alfred.** "The King of Yellow Daffodils." Tall, vigorous, golden yellow flower, of elegant form. The expanded trumpet measures 2½ inches in diameter, the perianth proportionally large and segments gracefully twisted. Height, 24 inches. Double Nose Bulbs, Each, 25c; doz., \$2.30; 100, \$16.00. First size Bulbs, Each, 20c; doz., \$1.75; 100, \$12.00.

**Aerolite.** A golden giant with flowers beautifully proportioned, perianth deep primrose, with a pure medium yellow trumpet left in bold relief by outer petals, an inch and a half wide; medium early, but one the longest lasting of all. Each, 25c; doz., \$2.25; 100, \$15.00.

**Beersheba.** Finest all white. Large, perfectly flat perianth, trumpet long and beautifully flanged at mouth. A flower of great size, measuring nearly five inches across; a vigorous grower and a grand exhibition variety. Each, 45c; Doz., \$4.50; 100, \$32.00.

**Dawson City.** Broad overlapping perianth with long-formed deep golden yellow trumpet. Each, 25c; Doz., \$2.30; 100, \$16.00.

**Golden Harvest.** Undoubtedly one of the largest trumpet varieties in existence. The perianth is well formed and overlapping; the trumpet is of good shape and proportion, rolled back at the brim. The color is deep golden-yellow. Each, 25c; doz., \$2.30; 100, \$16.00.

**Mount Hood.** Broad, flat, overlapping perianth and large, at mouth widely expanded trumpet. The color is almost pure white throughout a variety you should have in your collection. Each, 60c; doz., \$6.00; 100, \$40.00.

**Mrs. E. H. Krelage.** Known as the White King Alfred. Charming and exquisite new variety. Perianth of purest white. Trumpet creamy yellow changing to white. Each, 25c; doz., \$2.30; 100, \$16.00.

**Queen of the Bicolor.** The very best bicolor daffodil with large white perianth, trumpet bright yellow with open frilled mouth. Each, 25c; doz., \$2.30; 100, \$16.00.

**Winter Gold.** Very early, of great garden merit, producing flowers of very elegant form in February. Perianth bright yellow, trumpet long and straight of a deep golden yellow, prettily frilled at mouth. Very showy, height 18 inches. Forces as early as Golden Spur, but has much better form and color. Each, 25c; doz., \$2.25; 100, \$15.00. (Illustrated in Color on Back Cover)



GIANT KING ALFRED  
"KING OF  
DAFFODILS"

## Vividly Colored Barrii

Thanks to the brilliant contrast effects due to color in the cup, the Barrii type is contributing many improved varieties to the daffodil list and it is here that further progress may be expected. The flowers have a character and grace which make them charming either for cutting or garden display.

**Diana Kasner.** A pure white perianth and a large fluted yellow cup with blood-red frill, very free-flowering and an excellent forcer.

We consider this variety as one of the most valuable introductions and cannot recommend it too highly for show purposes. Each, 20c; doz., \$1.85; 100, \$13.00.

**Mrs. Barclay.** Large flower with flat, reflexed, broad-petaled overlapping perianth of pale primrose, changing to pure white; deeply frilled flat cup of primrose-yellow, with dainty orange picotee; extremely showy, and a great favorite in the garden. Each, 20c; doz., \$1.90; 100, \$14.00.

## Incomparabilis

This class includes many of the most beautiful and useful Daffodils for bedding, naturalizing and border planting. Strong growers, hardy and free bloomers. Forced for winter flowers, they are splendid.

A fine clear yellow self-color of great size. **Carlton.** Flat overlapping perianth and large expanded crown frilled at brim, a magnificent plant of great vigor. Each, 20c; doz., \$2.00; 100, \$14.00.

**Fortune.** Broad creamy yellow perianth of very solid texture, crown of great size and elegant form, opening at mouth and beautifully frilled, of a glowing soft orange. A Giant Incomparabilis of perfect form, early, a strong grower. Each, 25c; doz., \$2.35; 100, \$17.00. (Illustrated in Color on Back Cover)

**John Evelyn.** D deservedly an international favorite; outstanding among the new Incomparabilis hybrids; flatly opening perianth, 4 to 5 inches across, with a flat cup nearly 2 inches in diameter, densely frilled, the perianth being pure white, without trace of shading, and the cup lemon yellow and fluted or shirred to the base. Each, 20c; doz., \$1.75; 100, \$12.00. (Illustrated in Color on Back Cover)

**Francisca Drake.** It is impossible to describe adequately the beauty of this unusual flower of a distinct new type; the pure white perianth petals are of unusual substance, an inch and a half wide, and tinted gold at the base, which shows through on the outside; the cup, wide and deep, is golden yellow at the base, changing gradually to flame-orange at the densely frilled edge. Each, 20c; doz., \$1.85; 100, \$13.00.

**Dick Wellband.** One of the finest of recent introductions. Very strong grower and exceptionally free flowering. The perianth is pure white and the cup a brilliant flame-orange. One of its most remarkable qualities is that the color does not fade but rather intensifies with age. The flower has unusual lasting qualities. Each, 25c; doz., \$2.25; 100, \$15.00. (Illustrated in Color on Back Cover)



JOHN EVELYN (Incomparabilis)

## Oregon Collection of Daffodils

Favorite varieties of an Oregon Daffodil expert which will assure your garden of a representative display of top varieties includes: Aerolite, Giant Trumpet, having large yellow trumpet and primrose petals; Mrs. R. O. Backhouse, the famous "pink" daffodil; Francisca Drake, white petals and golden cup; Mrs. Nette O'Melveny, clear lemon yellow with orange picotee; and Golden Perfection, a cluster-flowered jonquil

One, each variety, 5 Bulbs for...	\$ 1.00
Five, each variety, 25 Bulbs for..	4.50
Ten, each variety, 50 Bulbs for..	8.00
Twenty, ea. variety, 100 Bulbs for	15.00

Prepaid



LEEDSII, DAISY SCHAFFER

*Attractive Leedsii*

Have white perianths with white or sulphur trumpets. Most beautiful class for cutting.

**Daisy Schaffer.** One of the best of the remarkable new Giant Leedsii type; the flower 4 1/2 inches across, with cup nearly 2 inches resembles a Giant Trumpet, but much more graceful in form; perianth pure white, with cup opening primrose and turning to light canary-yellow, deeper at the base. Each, 25c; doz., \$2.30; 100, \$16.00.

**Hera.** Broad-petalled creamy white perianth, star-shaped and deeply frilled cup of creamy white with a dainty edging of light primrose. Each, 20c; doz., \$1.75; 100, \$12.00.

**Mrs. Nette O'Melveny.** A dancing daffodil with pure white perianth and cup of clear lemon-yellow, with orange picotee; splendid foliage, tall, graceful stem, and good neck; in every way a delightful flower. Each, 20c; doz., \$1.75; 100, \$12.00.

**Tunis.** A large, tall, robust-growing Leedsii of most distinct character and great lasting substance, broad waved perianth and large bold ivory crown with handsome flanged and serrated brim, retaining a remarkable flush of pale coppery gold at the edge. Each, 25c; doz., \$2.50; 100, \$18.00. (Illustrated in Color on Back Cover)

*Graceful Jonquils*

Jonquils are graceful, sweet-scented flowers which thrive well in a moist, shady position in borders. Flowers are arranged on the stem in a cluster.

**Jonquilla Simplex.** The true single sweet jonquil, of light elegant growth, bearing out of doors in May clusters of numerous small rich yellow flowers of delicious scent. Each, 15c; doz., \$1.20; 100, \$7.50.

**Jonquilla Flore-Pleno.** The old double sweet May little heads of rich yellow double flowers, very fragrant and attractive for cutting. Each, 15c; doz., \$1.40; 100, \$9.50.

**Golden Perfection.** A perfect perianth with wide overlapping segments, deep citron-yellow with mica sheen and cup of pure gold perfectly proportioned to balanced of flower; calyx grey-green flecked with gold; unique in its class. Each, 20c; doz., \$2.00; 100, \$14.00.

**Golden Sceptre.** A medium-sized perfectly built flower of deep Jonquil yellow, 3 inches or more in diameter. The whole flower, as with the others in this class, is of the greatest substance, keeping in perfect condition exceptionally long both in the garden and when cut. Each, 15c; doz., \$1.40; 100, \$9.50.

*Cyclamineus Hybrids*

These have perianths reflexed as in a cyclamen.

**February Gold.** Perianth golden yellow, trumpet fringed orange, very early. Each, 25c; doz., \$2.25; 100, \$15.00.

**12 Daffodils for \$1.00 Naturalizing**

25 Bulbs, \$2.00; 100 Bulbs, \$7.50; 1,000 Bulbs, \$65.00, Prepaid.

DAFFODILS are the first major flowers to bloom in the spring. By nature they are informal flowers, and look best when grown in drifts, in the shrubbery or under trees. They like to nestle among the roots of shrubs, and as they bloom before the leaves develop, they thrive in places which later in the season are well shaded. Our naturalizing mixture is an exceptional value, containing many of the best named Trumpet, Leedsii, Star and Poeticus varieties. Plant them and do not disturb until they crowd; the bulbs may then be lifted and replanted over a much larger area. A purchase of bulbs is an investment which will pay in bloom for a lifetime.

FIRST SIZE MIXED

12 Bulbs, \$1.50; 100 Bulbs, \$9.50; 1,000 Bulbs, \$85.00, Prepaid.

NARCISSI NATURALIZED IN THE WOODLAND



*The "Pink Daffodil"*

**Mrs. R. O. Backhouse.** Perianth of ivory white, and long trumpet of apricot pink, changing to shell pink at the deeply fringed edge; exceptional substance; long lasting. Grow in greenhouse or plant in partial shade to bring out the pink color. Each, 45c; doz., \$4.25; 100, \$30.00.

*Miniature Daffodils*

The following are charming little subjects for rock work, where their dainty flowers are seen to perfection. They should be left undisturbed for years, and if happy will soon establish themselves and afford a lovely picture in early spring. All the Bulbocodium like moisture, and should therefore be planted at the foot of the rockery. When in bud water freely

**Moonshine.** A beautiful Triandrus hybrid, star-shaped creamy white flower, often 3 to a stem, drooping gracefully, very beautiful and a great favorite, especially for the rock garden or for naturalizing in the shade. Each, 30c; doz., \$3.00; 100, \$20.00.

**Thalia.** Two or three lovely pure white flowers per stem, 2 inches or more across, making a beautiful cluster. Very suitable for the rock-garden or for forcing. Each, 30c; doz., \$3.00; 100, \$20.00.

*Double Varieties*

**Indian Chief.** Very large and very double, bright yellow interspersed with orange; the petals curled and twisted. Each, 25c; doz., \$2.30; 100, \$16.00.

**Mary Copeland.** One of the famous varieties of the new semi-double type, cream-white with a golden ray down the center. Each, 30c; doz., \$3.00; 100, \$20.00.

**Royal Sovereign.** Valuable addition to the Twink group of semi-doubles, creamy white interspersed with crinkled and frilled trumpet petals of primrose-yellow. Each, 35c; doz., \$3.35; 100, \$23.00.

(Illustrated in Color on Back Cover)

**Texas.** Large yellow and scarlet-orange interwoven petals. Very choice variety. Each, 25c; doz., \$2.30; 100, \$16.00.

**Twink.** It is double, of the semi-full type, the petals alternating a soft primrose and clear orange, free-flowering. Each, 20c; doz., \$2.00; 100, \$14.00.



DOUBLE DAFFODIL INDIAN CHIEF

# Bulbs You Can Flower Indoors



Lily of the Valley Grown in Sphagnum Moss

## Lilies of the Valley

Ready to Ship November and December.

We can again offer imported lily of the valley pips prepared for forcing into flower in bowls. These beautiful, fragrant flowers may be brought to flower in 18 to 21 days, if pips from cold storage are used. They are easily forced in a bowl, if planted in sphagnum moss and kept well watered. Do not order more than you intend to use at once as the cold storage pips will not keep. Plant about 25 pips in a 7-inch bowl, place in 65 degrees Fahrenheit and shade from light until leaves and spikes are well developed, then admit light gradually. Increase temperature to 75 degrees or 80 degrees if possible.

**COLD STORAGE PIPS.** 12 for \$2.50; 25 for \$4.75, postpaid.  
**SPHAGNUM MOSS,** sufficient for 25 pips, 15c, postpaid

## Amaryllis

(Illustrated in Color on Inside Back Cover)

OUR strain of giant flowered amaryllis is rich in brilliant red, and lovely white flowers, with many in which the white ground is vividly marked with contrasting tones of red, pink and salmon.

Place only one bulb in each pot, covering it as far as the neck or upper narrow part. Water sparingly at first until the flower shoots begin to appear. Some growers keep them in the dark until the flower stems are four or five inches long, and then bring to light.

After flowering they should be placed in a warm window, or set outside in sand or cinders and watered every day, until the end of August when water should be gradually withheld and the bulbs allowed to go to rest. In the fall they can be forced again.

**MIXED.** Including many color blends.

	Each	Doz.	100
2 1/4 - 2 1/2 in. Dia.....	\$0.35	\$3.50	\$25.00
2 1/2 - 2 3/4 in. Dia.....	.50	5.00	35.00
2 3/4 - 3 in. Dia.....	.70	7.00	45.00
3 - 3 1/4 in. and up Dia.....	.85	8.50	65.00

All shipments of flowering bulbs ordered from this catalogue at dozen or less than dozen rates will be prepaid.

Orders at 100 rate will be shipped by express, charges collect, except that special offers will be prepaid where it is so specified in the offer.



PAPER WHITE NARCISSI GROWING IN GRAVEL AND WATER

## Paper White Narcissi

Imparted French Bulbs Grown

THESE have been favorites for ages as a decoration for the living room during the coldest winter months when flowers are scarce. Their culture is simple, and with good strong bulbs such as we supply, flowering is sure. Plant bulbs in shallow bowls filled with pebbles, or fibre, and water. Keep in the dark until roots form (about 2 weeks) then bring into light. A day temperature of not over 70° is best

**Fancy selected bulbs** (13 ctm.). Three bulbs for 35c; Dozen, \$1.35; 100, \$9.00; 1,000, \$85.00.

**Mammoth bulbs** (14 ctm.). Three bulbs for 45c; Dozen, \$1.60; 100, \$11.00; 1,000, \$100.00.

**Jumbo bulbs** (15 ctm.). Three bulbs for 55c; Dozen, \$1.85; 100, \$13.00; 1,000, \$120.00.

## The Yellow Paper White (Grand Soleil D'or)

A larger, stronger scented form of the Paper White Narcissus colored a beautiful golden yellow with a darker cup

**Mammoth bulbs.** Per three, 45c; dozen, \$1.60; 100, \$11.00.

## Chinese Sacred Lily (Narcissus)

THIS narcissus is called by the Chinese the "Joss Flower." The flowers are white, with yellow cup and very fragrant. Each bulb produces several flower-spikes. Plant like Paper White Narcissi in bowl of bulb fibre, or pebbles and water. Avoid dry, hot rooms. A kitchen window may be best until flowers come. Recommended for Christmas flowering

**Large bulbs.** Three for 40c; per dozen, \$1.50; 100, \$10.00.

## Leucocoryne (Glory of the Sun)

Flowers exquisite light blue on tall, wiry stems and of very long-lasting quality with faint heliotrope fragrance. For indoor culture except in warm states. Three bulbs for 50c; doz., \$1.75; 100, \$12.00.



WHITE CALLA LILIES

## Calla Lilies

PINK REHMANNII, Superba Ready in November.

The rare Pink Calla Lily. Rather dwarfer and smaller flowered than the White Calla, but of alluring coloring, palest blush to pure rose. 1 1/4-1 1/2 in. h. Each, 25c; doz., \$2.50. 1 1/2-2 in. h. Each, 35c; doz., \$3.50.

**WHITE, Ready Now.** A well-known plant of easy culture for winter bloom, and makes a handsome house or window plant. To aid profuse blooming keep dormant from the middle of June until the last of September; pot on receipt in good, rich soil, using 6 to 8-inch pot, give light and heat in abundance. Both foliage and flowers are attractive in this desirable winter bloomer

**First Size** (1 1/4 to 1 1/2 in.)... Each, 20c; doz., \$2.00; 100, \$15.00.

**Select Size** (1 1/2 to 1 3/4 in.)... Each, 40c; doz., \$4.00; 100, \$27.00.

**Mammoth** (1 3/4 to 2 in.)... Each, 50c; doz., \$5.00; 100, \$37.00.

**Jumbo** (2 in. and over)... Each, 75c; doz., \$7.50; 100, \$50.00.

## Calla Golden Yellow Elliottiana

Ready in November

New and beautiful variety; same habit of growth as ordinary white Calla; flowers same size and shape, rich, clear, lustrous golden yellow; foliage dark green, with translucent creamy spots; strong bulbs.

**First Size** (2 to 2 1/2 in.)... Each, 35c; doz., \$3.50; 100, \$25.00.

**Mammoth** (2 1/2 to 3 in.)... Each, 65c; doz., \$6.50; 100, \$48.00.

**Jumbo** (3 in. and up)... Each, \$1.00; doz., \$10.00; 100, \$75.00.

## Ixias

The Ixia colors are rich, the center always differing in color from the petals. Very desirable for pots. If planted outside be sure to cover with straw or leaves

**Mixed.** Doz., 50c; 100, \$3.50; 1,000, \$25.00.

## Lachenalias

For Indoor Growing

Lachenalias are useful as pot plants because of their bright flowers and interesting foliage

**Culture.** Plant six or seven bulbs in a five or six inch pot with cool culture similar to freesias produce blossoms during late February and March. They do not need support.

**AUREA.** The flowers are pendulous long bells forming a loose spike up to one foot high. The young flower spike is usually red toned and the deep golden blossoms often have red margined petals. Blooms in late January and February. As a cut flower it normally lasts two weeks in the house. Three Bulbs for 50c; Doz., \$1.60; 100, \$11.00.

## Sparaxis, Mixed

Graceful spikes 6 to 8 inches high; flowers of the brightest colors, tigered, streaked and flushed—a riot of color. Excellent for indoor winter flowering—about 12 bulbs to a 6-inch pot. Do not plant outdoors in cold sections. In cool localities, give winter protection. For southern gardens, especially in rockeries. Sparaxis are indispensable

Doz 80c; 100 \$5.50; 1 000 \$45.00.





# Miscellaneous Bulbs



ST. BRIGID ANIMONE

## Anemone (Windflower)

They succeed best in light, rich, well-drained loam. Plant in early October. Mulch after freezing.

**DE CAEN.** A real selected strain. This mixture contains many fine shades of blue, white and reds. Mixed. Doz., 90c; 100, \$6.00; 1,000, \$50.00.

**ST. BRIGID.** Flowers range from the deepest crimson to the purest white, embracing cobalt, scarlet, rose, salmon-pink, and heliotrope. Most are semi-double. Doz., 95; 100, \$6.50; 1,000, \$55.00.

## Brodiaeas

**CAPITATA.** California Hvacinths. The stem is slender, capped with a head of violet-blue flowers. They revel in hot, dry places, and flower early. Doz., 95c; 100, \$6.50; 1,000, \$55.00.

**BRIDGESII.** A very fine reddish violet color. Doz., \$1.10; 100, \$7.50; 1,000, \$65.00.

## Calochortus

**True Mariposa, or Butterfly Tulips**

Cup-shaped flowers, one to many on a stem, marked with eyes and dots and penciling in rich colors.

**MIXED.** From 1 to 2 feet high, flowers vary through white, yellow, lilac to purple and pink to deep claret-red. They thrive best in porous soil, sandy or gritty, either in sun or light shade. Flowers are 2 to 4 in. Doz., \$1.20; 100, \$8.00; 1,000, \$75.00.

## Camassia

Camassias go four inches underground, about five inches apart. The flowers are starlike.

**ESCULENTA.** Light blue flowers borne gracefully erect. Height, 18 inches to 2 feet. Each, 10c; doz., 65c; 100, \$4.50; 1,000, \$35.00.

## Eranthis Hyemalis (Winter Aconite)

Early in Spring the golden blossoms of Winter Aconite look charming, resting on an emerald-green cushion of leaves, forming a striking contrast to the Snowdrop, Scilla and Chionodoxa. The foliage remains long after the flowers, making the plant especially valuable in moist situations, such as under trees. Height 8 inches.

Doz., 65c; 100, \$4.50; 1,000, \$35.00



Made of imported leather processed to make it pliable as kid and washable. An ideal glove for men and women gardeners. Will outwear six cotton gloves. Sizes for men: "Small," "Medium," "Large"—for women: "Medium" and "Large." Price, \$1.50 a pair, postpaid



## Fritillaria

**MELEAGRIS.** Singular dwarf spring-flowering plants bearing, large pendant, bell-shaped flowers of various colors: yellow, white, black, purple, striped and splashed and checkered in the most curious way. Invaluable and exceedingly pretty when grown in large groups in the garden border or wild dry situation. Doz., 65c; 100, \$4.50; 1,000, \$35.00.

**IMPERIALIS (The Crown Imperial)** is a stately hardy border-plant, very effective in Spring when grouped in woodlands wild gardens, orchards. Bell-shaped flowers, orange, red and checkered. Plant 12 inches deep, in well drained, location. Each, 70c; doz., \$7.00; 100, \$50.00.

**PUDICA.** From 4 to 6 in. high, with rather large basal leaves and erect stems, bearing to 3 to 6 nodding bells 1 1/4 to 1 1/2 in. long and pure gold in color. Absolutely hardy and a gem for the rock garden. Each, 20c; doz., \$1.80; 100, \$13.00.

**RECURVA (Mission Bells).** A beautiful woodland plant from Southern California. 1 1/2 to 2 feet, and producing dainty orange scarlet flowers. They prefer partial shade and a loose soil. Each, 20c; doz., \$1.75; 100, \$12.00.



ERYTHRONIUM HENDERSONII

## Saxolin Duplex Crinkled Waterproof Tree Wrap

For covering the trunks of transplanted and newly set fruit and shade trees. Helps your stock to get off to a healthy start. Rolls, 4 inches wide, about 155 ft to a roll. Weight, about 2 1/2 lbs. Each, 85c; postpaid, 85c; doz., \$7.80.



RANUNCULUS VICTORIA HYBRID

## Ranunculus (Buttercup)

Plant in November for early spring bloom in frames Set 3 or 4 inches apart, pressing firmly into the soil, claws downward and cover them with sand, then with soil; keep the crown of the tubers four inches under the surface. Water them well.

**VICTORIA HYBRID MIXED.** Far superior to any Ranunculus that we know. Flowers are double and large. Doz., 90c; 100, \$6.00; 1,000, \$50.00.

## Ornithogalum

**ARABICUM.** Throws up a tall stem with a cluster of star-shaped flowers; pure white with dark centers. Excellent for cutting, lasting a long time in water. Hardy in the South and other mild climates, but they should be given protection when planted outdoors in the North. Culture in the house is about the same as for Hvacinths. Each, 15c; doz., \$1.30; 100, \$9.50; 1,000, \$85.00.

**UMBELLATUM.** This is the small white hardy variety that is seen in great profusion and around many of the old gardens. It propagates readily and adapts itself splendidly to naturalizing. It does well over a wide temperature range and blooms profusely each season with little or no care. Each, 15c; doz., \$1.20; 100, \$8.00; 1,000, \$70.00.

## Dog Tooth Violet (Erythroniums)

If they had no other beauty than that of their richly mottled leaves, they would be well worth a place in the shady corner. Their flowers are 3 inches across, with stems 6 to 18 inches high. The colors run in delicate tints of white, pink, cream, bright yellow and rose. They are hardy in the coldest States, and while they are at their best in a loose, gritty soil, rich in leaf mold, they also thrive in woodlands, in shaded corners, or in the crevices of rockwork in shade.

**CALIFORNICUM** has large cream-colored flowers. Doz., \$1.15; 100, \$8.00; 1,000, \$70.00.

**CALIFORNICUM BI-COLOR.** Creamy, yellow centre, tall stems. Doz., \$1.15; 100, \$8.00; 1,000, \$70.00.

**CITRINUM** is rather more erect in habit, with flowers almost pure white with strongly contrasting deep citron. Doz., \$1.15; 100, \$8.00; 1,000, \$70.00.

**HARTWEGGII** is as pretty as Californicum, with more yellow in the flower, and each flower on a separate stalk. Very early and stands much heat. Good for pots. Doz., \$1.20; 100, \$8.50; 1,000, \$75.00.

**HENDERSONII.** Like Californicum, but the flower are a lovely light purple, with centers a deep maroon. Doz., \$1.15; 100, \$8.00; 1,000, \$70.00.

**TUOLUMNENSIS** is quite new to both the garden and science. Large leaves, not mottled, and rather yellow flowers. The bulbs are very large and set setting form large clumps. Not too free flowering, but very distinct. Doz., \$1.75; 100, \$12.00.

Mixed. Doz., \$1.05; 100, \$7.50; 1,000, \$65.00.

# Hardy Lilies

## For Fall Planting

**L**ILIES are hardy, thrifty flowers, capable of surviving conditions which would overcome flowers much less beautiful. Grow them in the border in small groups, with background, where their beauty has a suitable setting for its display. They blossom, as a rule, in midsummer, when fine flowers are at a premium. With each order a leaflet giving instructions for growing them in the garden will be sent. They should be planted on receipt to enable the bulbs to begin root growth this fall.

**Outdoor Culture**—When planting lilies out-of-doors, see that they have a well drained position, and where they will be shaded from very hot sun. Such places can usually be found around the shrub borders, and in the hardy plant border. Never mix manure in the soil around lilies, but enrich with a standard commercial plant food or with bone meal. Many varieties are termed "stemrooters," that is, they develop roots on the stem up to two or three inches from the ground. These roots are voracious feeders, and on them depend greatly the number and size of flowers. When they appear, the plant should receive a top-dressing of good rich soil on which they can feed freely. Spade over the ground thoroughly to a depth of 18 inches before planting lilies. Plant the bulbs 4 to 8 inches deep, depending on their size and the soil, deeper in light soil.

**Late planting**—Some varieties of lilies do not become fully dormant, so they can be dug, until so late also **Japanese Lilies arrive late**, so that delivery of the bulbs may be delayed until December. To keep the soil from freezing, so that late planting may be done, select the location where bulbs are to go and cover the surface with a mulch of leaves, straw, glass, wool, or other effective material. Applied before freezing sets in, this will be sufficient to protect the soil below it from late autumn temperatures.

### Lilium Auratum—Ready in December

#### BE SURE TO READ LATE PLANTING INSTRUCTIONS

The Gold-Banded Lily of Japan. Imported bulbs of this magnificent lily are again available. Its huge flowers are white, dotted crimson, with a clear gold band down the middle of each petal. Stems grow seven feet tall, flowers ten inches across. Plant deeply in porous soil, rich in humus

8-9 inch. Each, 45c; doz., \$4.50.  
9-11 inch. Each, 70c; doz., \$7.00.

### Lilium Auratum Latyphyllum—Ready in December

#### BE SURE TO READ LATE PLANTING INSTRUCTIONS

(Improved Auratum). Similar but superior to Auratum in larger flowers, profuse blooming, and glossy foliage.

8-9 inch. Each, 65c; doz., \$6.50. 9-11 inch. Each, 85c; doz., \$8.50.

### Lilium Canadense—Ready in September

The whole plant has a downward, graceful movement and looks like a slender green belfry ringing golden bells. The flowers are nodding, bell-shaped, with petals flaring and curving back slightly. They are heavily dotted inside with purplish brown dots. Blooms the end of June to July. It is excellent for naturalizing. Height, 3 to 5 ft.

Canadense Mixed—Each, 25c; dozen, \$2.50; 100, \$18.00.

### Lilium Centifolium—Olympia Hybrids

Ready in October

A giant among lilies, with long, trumpet-shaped white flowers, streaked outside with brown and flushed inside with yellow at the base.

Bulbs—6-7 inches, each, 40c; doz., \$4.00; 7-8 inches, each, 50c; doz., \$5.00

### Easter Lilies—Semi-hardy

**CROFT LILY.** Widely used by florists for Easter flowering, this Oregon hybrid bears large pure white trumpets on sturdy stems 12 to 14 inches tall. It is suited for outdoor planting on the Pacific Coast, in southern states and elsewhere if given good winter protection. Blooms July-August. 7-8 inch bulbs. Each, 50c; dozen, \$5.00; 100, \$37.00.

To grow indoors or in the greenhouse for Eastern blooming we offer special treated bulbs for November shipment. 8-9 inches.

Each, 80c; dozen, \$8.00; 100, \$60.00.

**ESTATE LILY.** Similar to the croft lily, but with taller stems, this variety is also somewhat hardier and more likely to survive in cold winters, if well protected. Its large, white trumpet flowers have heavy petals, and are long lasting when cut. Bloom July-August. Each, 60c; dozen, \$6.00; 100, \$40.00.

### Lilium Phillipinense Formosanum

Ready in October

A graceful Lily with grassy foliage, and long wide-mouthed trumpet flowers of pure white, marked externally with reddish brown. The plants grow to 3 feet, or more, are very robust, and fragrant.

Late flowering. 3-4 inch. Each, 30c; doz., \$3.00; 100, \$20.00.

4 inch and up, Each, 50c; doz., \$5.00; 100, \$35.00.

### Lily of the Valley—Ready in October

Lily of the Valley is one of the best ground covers for shady places in the home grounds. It spreads rapidly, crowding out weeds, and the fragrant blossoms come early in the spring in great abundance

Clumps. Each, 60c; three for \$1.50; doz., \$5.50.

### Bellingham Hybrids—Semi-hardy

A strain of lilies developed by crossing named varieties produced by Dr. David C. Griffiths at the Bellingham, Wash., U. S. experiment station. Up to 20 flowers are borne in pyramidal flower heads on tall stems. Colors range from clear yellow to bright orange red with scarlet tipped petals, many flowers spotted with brown. Easy to grow with some protection in cold winters; should be left to multiply undisturbed. Flowers long lasting when cut. Each, 50c; dozen, \$5.00; 100, \$35.00.



LILIAM, Auratum



LILIAM Rubrum



ESTATE LILY



LILIAM Regale

## Collection of Five Hardy Garden Lilies \$1.25

One each of the following varieties: Canadense, Regale, Superbum, Tenuifolium, Lilium Phillipinense . . . . . \$1.25  
Two each variety as above. \$2.20 Six each variety as above. 6.00  
Twelve ea. var. as above. \$11.50 All prepaid 600 miles.

### Lilium Regale—Ready in October

The large, trumpet-shaped flowers are snowy white, with a pure yellow center, while the exterior of the petals is slightly tinged pink. It is a strong grower, attaining the height of three or four feet. The flowers are beautiful, possessing a delightful fragrance. The bulb usually presents a dried, shriveled appearance.

First Size, 6-7 in. in circumference. Each, 20c; doz., \$1.75; 100, \$12.00.

Select Size, 7-8 in. in circumference. Each, 25c; doz., \$2.50; 100, \$18.00.

Mammoth Size, 8-9 in. in circumference. Each, 35c; doz., \$3.50; 100, \$25.00.

Jumbo Size, 9-10 in. in circumference. Each, 50c; doz., \$5.00; 100, \$35.00.

Extra Jumbo, 10-11 in. Each, 60c; dozen, \$6.00; 100, \$45.00.

### Lilium Speciosum Rubrum (Magnificum)—Ready in December

The typical form is white, flushed pink, and heavily spotted with carmine. The stem is 3 to 4 feet high and has lance-shaped leaves. The flowers face downward and roll back their petals, while the stamens and pistil project. A very beautiful lily, perfectly hardy, very seldom diseased, and a late Aug. and early Sept. bloomer. Plant eight to ten inches deep.

8-9 inch. Each, 45c; doz., \$4.50. 9-11 inch. Each, 65c; doz., \$6.50.

### Lilium Superbum—Ready in September

(American Turk's Cap, Swamp Lily)—The most showy of native North American species, this splendid lily produces from ten to forty flowers of brilliant orange-scarlet, shaded yellow and spotted purplish brown at the base, in late July and August. This lily requires an acid condition and should be planted at least 8 inches deep. Height, 3-8 feet. Each, 30c; dozen, \$3.00; 100, \$20.00.

### Sunset Lily—Ready in October

Because of its ease of culture, rapidity of increase and its extreme hardiness, the new Sunset Lily is certain to achieve widespread favor. Height 5-6 ft. with 10 or more flowers to the stalk. This lily is bright red, its throat, bright yellow with dark spots. Stems are straight and strong with no tendency to droop. July flowering.

5-6 inch. Each, 35c; doz., \$3.50; 100, \$25.00.

6-7 inch. Each, 45c; doz., \$4.50; 100, \$32.00.

### Lilium Tenuifolium—Ready in October

The lovely Coral Lily of Siberia. A great beauty. The brightest of all lilies. Grows 20 inches high, with finely cut foliage, slender stems and beautifully shaded coral-red flowers. One ought to grow them by the dozen, they are so fine for cutting and making clumps for the lawn. Blooms very early.

2½-3 inch. Each, 20c; doz., \$1.75; 100, \$12.00.

3 inch and up. Each, 25c; doz., \$2.25; 100, \$15.00.

### Lilium Umbellatum—Ready in October

This group of lilies is of hybrid origin, and thrives in American garden borders, multiplying and enduring. They are early flowering, blooming during the first part of June. Usually attaining the height of two to three feet, they carry four to six flowers of cup-shape.

Mixed. Each, 50c; doz., \$5.00; 100, \$35.00.

# For NEW lawns or OLD, AUTUMN is the best time to sow the Finest Lawn Seed Grown Vaughan's Chicago Parks



$\frac{1}{2}$  Lb...\$ 0.60; 1 Lb...\$ 1.15; 2 Lbs.. \$ 2.30  
 3 Lbs... 3.40; 5 Lbs... 5.60; 10 Lbs... 11.00  
 15 Lbs... 16.40; 20 Lbs... 21.75; 25 Lbs... 27.00  
 100 Lbs..104.00. Prepaid in U. S. A.

FOR lawn grasses, autumn weather is just what the doctor ordered. Shorter days, cooler nights and more abundant moisture, give infant plants an ideal start. The longer they have to grow before the freeze-up, the better they will be prepared to survive winter.

In the fall it is more important than ever to sow only permanent grasses, free from short-lived, coarse growing types. For a lawn of permanence and beauty, our famous Chicago Parks mixture is recommended, containing fancy, re-cleaned seed of fine leaved, hardy, lasting grasses of high purity and germination. It contains no timothy, or other coarse adulterants. We are adding to our mixture a liberal amount of the new Creeping Red Fescue, a strain developed by scientific breeding methods. This fine leaved grass spreads from the roots and so helps thicken the turf and to help crowd out weeds. See prices above.

We offer Chicago Parks mixture without Clover as "Fairway Mixture" at Chicago Parks prices, as quoted above.

## Vaughan's "Private Estate" Bent Formula

For those interested in a deluxe mixture we highly recommend our Private Estate formula. This formula contains the highest purity seeds obtainable; and is free of all noxious weeds.

In addition to Kentucky Blue Grass of the highest quality, to insure a durable and resistant foundation for your lawn, Private Estate formula includes an important proportion of bent. It produces a heavy turf of very fine texture. This mixture is equal or better in purity to the highest priced mixtures and is the best value on the market.

Price, 1 lb., \$1.35; 2 lbs., \$2.70; 3 lbs., \$4.00; 5 lbs., \$5.60; 10 lbs., \$13.00; 15 lbs., \$19.40; 20 lbs., \$25.75; 25 lbs., \$32.00; 100 lbs., \$124.00.

## Vaughan's "Columbian"

When making a lawn on sandy soil or in moderate shade, Vaughan's "Columbian" is the correct blend.

Price,  $\frac{1}{2}$  lb., 60c; 1 lb., \$1.15; 2 lbs., \$2.30; 3 lbs., \$3.40; 5 lbs., \$5.60; 10 lbs., \$11.00; 15 lbs., \$16.40; 20 lbs., \$21.75; 25 lbs., \$27.00; 100 lbs., \$104.00.

## Vaughan's Dense Shade Formula

Composed of grasses most suited for growing in heavily shaded situations. A splendid mixture. It is also satisfactory in light shade.

Price,  $\frac{1}{2}$  lb., 60c; 1 lb., \$1.15; 2 lbs., \$2.30; 3 lbs., \$3.40; 5 lbs., \$5.60; 10 lbs., \$11.00; 15 lbs., \$16.40; 20 lbs., \$21.75; 25 lbs., \$27.00; 100 lbs., \$104.00.

## Vaughan's Excel Formula

An economy blend for new seedings and quick results which should be followed by reseeding with a more permanent blend like our "Chicago Parks." In spite of its low price, this blend does not contain timothy. Sow at the rate of 1 lb. to every 200 sq. ft. Begin cutting when grass is 3 to 4 inches high and continue to cut regularly to keep turf fine.

Price, 1 lb., 90c; 2 lbs., \$1.80; 3 lbs., \$2.65; 5 lbs., \$4.35; 10 lbs., \$8.50; 15 lbs., \$12.65; 20 lbs., \$16.75; 25 lbs., \$20.75; 100 lbs., \$79.00.

## White Clover For Lawns

Extra fancy seed. Price,  $\frac{1}{4}$  lb., 45c;  $\frac{1}{2}$  lb., 85c; 1 lb., \$1.60; 2 lbs., \$3.20; 3 lbs., \$4.75; 5 lbs., \$7.75; 10 lbs., \$15.25; 15 lbs., \$22.50; 20 lbs., \$28.40; 25 lbs., \$34.50.

## Ladino Clover

Price,  $\frac{1}{2}$  lb., \$1.50; 1 lb., \$2.75; 3 lbs., \$8.10; 5 lbs., \$13.00; 10 lbs., \$25.00; 25 lbs., \$56.25.

All Grass Seed is Prepaid to Any Part of the U. S. A.—There is an Extra Charge by Post Office for Collection on C. O. D. Packages.

## Kentucky Blue Grass (*Poa pratensis*)

**EXTRA HEAVY SUN-CURED SEED**—Specially re-cleaned.  $\frac{1}{2}$  lb., 70c; 1 lb., \$1.30; 2 lbs., \$2.60; 3 lbs., \$3.85; 5 lbs., \$6.35; 10 lbs., \$12.50; 15 lbs., \$18.65; 20 lbs., \$24.75; 25 lbs., \$30.75; 50 lbs., \$60.00.

**Fancy Seed**—(Standard grade of re-cleaned blue grass.) Price,  $\frac{1}{2}$  lb., 60c; 1 lb., 1.10; 2 lbs., \$2.20; 3 lbs., \$3.25; 5 lbs., \$5.35; 10 lbs., \$10.50; 15 lbs., \$15.65; 20 lbs., \$20.75; 25 lbs., \$25.75; 50 lbs., \$50.00.

## Creeping Red Fescue

Developed by scientific methods, this spreads from the roots making a dense turf which tends to crowd out weeds. Does well in shade and is good on sandy soil. Price, 1 lb., \$1.15; 2 lbs., \$2.30; 3 lbs., \$3.40; 5 lbs., \$5.60; 10 lbs., \$11.00; 15 lbs., \$16.40; 20 lbs., \$21.75; 25 lbs., \$27.00; 50 lbs., \$53.50.

## Chewing's Fescue

This is valuable on sandy soils and in shade, perennial with a fine blade and a spreading root system. 5 lbs. to 1,000 sq. ft.—1 lb., \$1.10; 2 lbs., \$2.20; 3 lbs., \$3.25; 5 lbs., \$5.35; 10 lbs., \$10.50; 15 lbs., \$15.65; 20 lbs., \$20.75; 25 lbs., \$25.75; 50 lbs., \$52.00.

## Alta Fescue

This recent development has a deep root system and is drought resistant. It stands up under traffic and though coarse is excellent for athletic fields, airports, roadsides, etc. 1 lb., \$1.00; 2 lbs., \$2.00; 3 lbs., \$2.95; 5 lbs., \$4.85; 10 lbs., \$9.50; 15 lbs., \$14.15; 25 lbs., \$23.25.

## Poa trivialis (Rough Blue Grass)

A grass for moist, shady spots.  $\frac{1}{2}$  lb., 60c; 1 lb., \$1.15; 2 lbs., \$2.30; 3 lbs., \$3.40; 5 lbs., \$5.60; 10 lbs., \$11.00; 15 lbs., \$16.40; 25 lbs., \$27.00; 50 lbs., \$52.50.

## Red Top Grass (*Argrostis alba*)

Extra fancy re-cleaned solid seed—Price,  $\frac{1}{2}$  lb., 55c; 1 lb., \$1.00; 2 lbs., \$2.00; 3 lbs., \$2.95; 5 lbs., \$4.85; 10 lbs., \$9.50; 15 lbs., \$14.15; 25 lbs., \$23.25; 50 lbs., \$45.00.

## Seed of the Bent Grasses

For lawns Bent grass from seed is preferred to creeping Bent stolons because it does not grow so rapidly or require so much cutting and top dressing. Seed 3 to 4 lbs. per 1000 square feet.

**ASTORIA BENT GRASS.** This grass has creeping roots which throw up new shoots and make a very thick turf. It makes a splendid lawn and golf grass. Requires less care than the aggressive surface creepers. Price,  $\frac{1}{4}$  lb., 60c;  $\frac{1}{2}$  lb., \$1.00; 1 lb., \$1.75; 2 lbs., \$3.50; 3 lbs., \$5.20; 5 lbs., \$8.50; 10 lbs., \$16.75; 15 lbs., \$24.75; 20 lbs., \$32.60; 25 lbs., \$40.00.

**SEASIDE CREEPING BENT GRASS.** This is a true creeping Bent grass seed. One or two top dressings a year will keep it in good condition. Does not require as much cutting as the varieties of bent grown from plugs and stolons.  $\frac{1}{4}$  lb., 55c;  $\frac{1}{2}$  lb., 95c; 1 lb., \$1.70; 2 lbs., \$3.40; 3 lbs., \$5.05; 5 lbs., \$8.25; 10 lbs., \$16.25; 15 lbs., \$24.00; 20 lbs., \$31.60; 25 lbs., \$38.75.

## Perennial Rye Grass

A rather broad bladed grass, good where a quick, heavy turf is wanted. Price, 1 lb., 40c; 2 lbs., 80c; 3 lbs., \$1.15; 5 lbs., \$1.85; 10 lbs., \$3.50; 15 lbs., \$5.15; 20 lbs., \$6.70; 25 lbs., \$8.25; 50 lbs., \$16.00; 100 lbs., \$30.00.

**COMMON RYE GRASS.** (Italian Type.) 1 lb., 30c; 2 lbs., 60c; 3 lbs., 85c; 5 lbs., \$1.35; 10 lbs., \$2.50; 15 lbs., \$3.65; 25 lbs., \$5.75; 50 lbs., \$10.00.

See Page 26 for Latest Items Available for Weed Free Lawns.

# Hardy Perennial Plants for Fall Planting

**HARDY**perennials may be set out this fall in time to become well established before winter sets in; and next year will see them better developed, and bearing finer flowers than can be obtained from plants set in your border next spring.

We do not list the kinds which need special protection through the winter. It is always well to apply a light mulch of straw or excelsior over newly planted perennials after the ground has frozen. This will tend to prevent winter thaws and frost heaving.

No orders for Perennial Plants accepted for Fall delivery after October 10th.

## DELIVERY GUARANTEE

We guarantee that all perennial plants are properly matured for use of the home gardener and that they will reach the customer in good condition.

Any complaint as to quality or condition of plants must be made at once upon receipt of shipment, and letter accompanied by packing sheet.

Check your order carefully before mailing. It is almost impossible to make changes on orders after they have been placed in process of filing.

**Please remember** that a plant is a living organism, it feeds, drinks and breathes and must be cared for accordingly.

**ANCHUSA Italica, Dropmore Variety.** 5 ft. June-July. Gentian flowers. Each, 60c; 3 for \$1.50; doz., \$4.75.

**AQUILEGIA (Columbine) Crimson Star.** Bright red outer petals with white center. Long spurred 3-inch flowers on 2 foot stems. A must in any perennial garden. 60c each; 3 for \$1.50; doz., \$4.75.

**Mrs. Scott Elliott's Hybrids.** The finest color mixture grown. Flowers are large, have long spurs, and the colors cover all shades of lavender, purple, red, white, yellow, blue and pink. 50c each; 3 for \$1.25; doz., \$4.25.

**ARTEMISIA Silver King.** A striking contrast plant with light silver gray foliage. May be cut and dried for winter use. 60c each; 3 for \$1.50; doz., \$4.75.

## ASTERS (Michaelmas Daisy)

**Beechwood Challenger.** Darkest red of all.

**Harrington's Pink.** Finest true pink. Large flowers of luminous pink on bushy plant.

**Royal Blue.** A deep blue. Produces myriads of large, showy flowers.

**White Lady.** Large, graceful white flowers in profusion.

All above 60c each; 3 for \$1.50; Doz. \$4.75.

**AUBRIETIA Royal Hybrids.** A fine color range. Trailing habit. Each, 50c; 3 for \$1.25; doz., \$4.25.

**CARNATIONS Hardy Grenadin Mixed.** Old time favorite. Blooms always an available table bouquet. 50c each; 3 for \$1.25; doz., \$4.25.

**CARNATION Crimson King.** 2 ft. Closely resembling a greenhouse Carnation in size and habit of growth. Large, fragrant, bright crimson blooms of velvety appearance borne in profusion in June and continuing until frost. Each, 75c; 3 for \$1.95; doz., \$5.75.

**COREOPSIS. Double Sunburst.** Brilliant double yellow flowers 1½ inch to 2 inch in diameter. 50c each; 3 for \$1.25; doz., \$4.25.

## DELPHINIUM

**Vetterle and Reinelt Pacific Hybrids.** This elegant strain of Delphinium is almost beyond description. Flower spikes 3 to 5 feet long, closely packed with individual flowers from 2 to 3 inches across; many are double, semi-double, some single. Plants resistant to mildew. Stems wiry and strong enough to resist high winds. Strong, well-rooted plants.

**Black Knight.** Darkest royal violet.

**Blue Bird.** Clear medium blue, with white bee.

**Blue Jay.** Dark blue with dark bee.

**Galahad.** Clear white. Mildew resistant.

**Guinevere.** Light pink-lavender, with white bee.

**King Arthur.** Royal violet, large white bee.

**Summer Skies.** Clearest light blue with white bee.

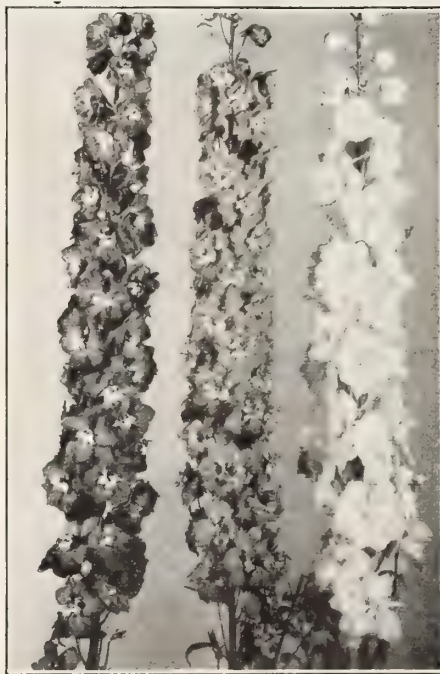
All of the above, Each, 75c; 3 for \$1.95; doz., \$5.75.

**Belladonna Improved Cliveden Beauty.** 2 ft. June-July. Exquisite turquoise blue. Each 50c; 3 for \$1.25; doz., \$4.25.

**Bellamosum Improved.** Large deep blue flowers, uniform in color, with a white bee. Blooms 2½ inches across. Each, 50c; 3 for \$1.25; doz., \$4.25.

## Add Postage for Plant Orders

Prices on this page do not include postage. For 12 plants or less include in your remittance postage in the following amounts: Single plants, 12c; 3 plants 16c; 6 plants, 20c; 12 plants, 25c. Shipments larger than 12 plants will be made by express collect, unless otherwise instructed.



DELPHINIUM Pacific Giants

## DIANTHUS BARBATUS

Single Sweet William 18-24 in.

**Vaughan's Special Mixture of Sweet William** Mixed only. Each, 45c; 3 for \$1.15; doz., \$4.00.

## EVERBLOOMING SWEET WILLIAM

**Latifolius Atrococcineus Flora Plena.** A beautiful summer blooming variety as it bears brilliant fiery crimson blooms all through the season. Very hardy and a sturdy grower. Each, 60c; 3 for \$1.50; doz., \$4.75.

**GAILLARDIA (Blanket Flower). Dazzler.**

One of the most brilliant of the family. Large flowering type with blooms of bright golden yellow centered by a disc of satiny maroon. 2 ft. 50c each; 3 for \$1.25; doz., \$4.25.

**Goblin, Dwarf.** A true dwarf Gaillardia which deserves a place in every garden. Grows 12 to 15 inches high in very compact shape. Foliage practically disappears under the mass of large deep red and gold blooms. Each, 50c; 3 for \$1.25; doz., \$4.25.

**Portola Hybrids.** Extremely large flowering strain and noted for the wide range of deep colors which vary from reddish brown to deep gold. Makes colorful bouquets. 2 ft. Each, 50c; 3 for \$1.25; doz., \$4.25.

**DICENTRA Spectabilis. (Bleeding Heart).** Its long racemes of graceful heart-shaped pink flowers are always attractive. A fine plant for that shady spot. \$1.00 each; 3 for \$2.75; doz., \$7.25.

**GYPSOPHILA "Pacifica".** Beautiful pearly pink blooms in branching panicles. Grows 18 inches tall and blooms in September and October. Excellent for use in fall bouquets. Each, 65c; 3 for \$1.75; doz., \$5.50.

## HELIANTHEMUM Mutabile (Rock Rose).

8-12 in. Low-growing evergreen plants forming large clumps, completely covered with bloom during July and August. Pale rose changing to lilac, then to white. Excellent for rockeries. Mixed colors. Each, 60c; 3 for \$1.50; doz., \$4.75.

## IMPROVED HEMEROCALLIS

(Day Lilies)

**Calypso.** Large light cadmium yellow. 40 in. July and August. Each, 60c; 3 for \$1.50; doz., \$4.75.

**Imperator.** Star Shaped blooms of orange red lined with sulphur. 40 in. Blooming July and August. Each, 60c; 3 for \$1.50; doz., \$4.75.

**Linda.** Pastel bi-color of pale yellow and cinnamon with crinkled petals, 38 in. stems. July. Each, \$1.00; 3 for \$2.65; doz., \$7.25.

**Margaret Perry.** Brilliant orange scarlet, lined with yellow. 48 in. Blooming July and August. Each, 60c; 3 for \$1.50; doz., \$4.75.

**Modesty.** Large flowering pale yellow. 30 in. June and July. Each, 75c; 3 for \$1.95; doz., \$5.75.

**Mikado.** Orange with spot of mahogany red on each petal June to August. 36 in. stems. Each, 75c; 3 for \$1.95; doz., \$5.75.

**Ophir.** 50 in. Deep golden yellow trumpet shaped flowers 5 inches across, borne 25 to 30 to a stem. Each, 75c; 3 for \$1.95; doz., \$5.75.

**Sir Michael Foster.** 4 ft. Large ruffled, fragrant flowers of clear yellow without a mark of any kind. June, July. Each 75c; 3 for \$1.95; doz., \$5.75.

## HIBISCUS (Rose Mallow) Avalon Hybrid.

A new hybrid strain. Different in form, foliage, season, habit and color. Flowers mostly of bell shape, and vary from blush through pink, rose and vivid reds. Blooming season lasts until middle of October. 60c each; 3 for \$1.50; doz., \$4.75.

**Jumbo Red.** A special selection made to improve color and size of the flower of the Mallow Marvels. Each, 55c; 3 for \$1.35; doz., \$4.50.

## HEUCHERA (Coral Bell) Rosea.

Outstandingly beautiful deep pink color; very lovely contrasted with attractive foliage. Blooms over a long period and makes delightful bouquets. Each, 60c; 3 for \$1.50; doz., \$4.75.

**Rosamundi.** One of the best coral-pink sorts. The plants are vigorous growers and produce an abundance of richly colored blossoms on tall stems which last over two months. Each, 75c; 3 for \$1.95; doz., \$5.75.

**Sanguinea.** Extremely bright crimson flowers are borne on tall, graceful spikes 18 inches tall. Very free-flowering; bloom from June to September. Each, 75c; 3 for \$1.95; doz., \$5.75.

**HOLLYHOCKS Newport Pink.** Rich, shimmering pink blooms on tall stems.

**Scarlet Beauty.** Brilliant scarlet color for bold backgrounds. Price of above. Each, 45c; 3 for \$1.15; doz., \$3.75.

**Vaughan's Special Mixture.** Mixture of all the best double varieties with new French strains. Mixed Colors. Each, 45c; 3 for \$1.15; doz., \$3.75.

**IBERIS (Perennial Candytuft) Gibraltarica.** Pinkish white. Each, 60c; 3 for \$1.50; doz., \$4.75.

**LAVENDER (Lavendula) Munstead Strain.** 1 ft. A most valuable variety. A month earlier than the common Lavender. Seeds germinate in 12 days. Each, 60c; 3 for \$1.50; doz., \$4.75.

**LOBELIA Cardinalis (Cardinal Flower).** 2 ft. July-Oct. Tufts of bronzy green foliage from which arise spikes of fiery scarlet flowers. Each, 60c; 3 for \$1.50; doz., \$4.75.

## LIATRIS (Kansas Gay Feather)—September

**Glory.** A giant 6-foot spike solidly covered with purple flowers from top to bottom. The flowers, unlike the common variety, come into bloom all at the same time, creating a marvelous effect. Each, 75c; 3 for \$1.95; doz., \$5.75.

PERENNIAL PLANTS—Continued.

**LINUM (Flax) Perenne Blue.** 2 ft. May-Aug. Has dainty sky-blue flowers on graceful arching stems. Blooms produced continuously in profusion. Each, 50c; 3 for \$1.25; Doz. \$4.25.

**LYCHNIS Chalcedonica (Maltese Cross).** 3 feet. June-Aug. Burning Star. Flowers fiery red in clusters, each blossom forming a Maltese cross. Each, 50c; 3 for \$1.25; doz., \$4.25.

**PHYSALIS FRANCHETTI Chinese Lantern**  
**Plant.** 1½ ft. Produces balloon-like husks the second year from seed, which turn bright red when ripe and resemble Chinese Lanterns, useful in winter bouquets. Seeds germinate in 15 days. Each, 50c; 3 for \$1.25; doz., \$4.25.

**PLATYCODON (Chinese Bell Flower).** They resemble Campanulas, with dainty bell flowers on graceful stems. They flower from June to September.

**Grandiflorum.** 2-3 ft. Large handsome deep blue flowers. Each, 50c; 3 for \$1.25; doz., \$4.25.

**PYRETHRUM (Painted Daisies) Robinson's**

**Hybrids Mixed.** Foliage is fernlike and ornamental. No other perennial flower possesses such color, hardness, and general usefulness as these gorgeous blooms. The mixed colors blend and contrast with one another in a most pleasing profusion of gay bloom. This is a really great new strain. 60c each; 3 for \$1.50; Doz. \$4.75.

**SPECIAL VARIETIES OF PHLOX**

**Charles Curtis.** Brilliant cherry red. Very showy.

**Flash.** Rich carmine-rose with orange-scarlet center.

**July Lights.** A brilliant carmine red with blood red eye.

**Lillian.** Unusually large trusses of charming soft pink.

**Salmon Beauty.** Rich salmon pink with white eye.

**Your choice of the above varieties, 75c each; 3 for \$2.00; doz., \$6.25; or one each of the above 5 for \$3.35.**

**STANDARD VARIETIES**

**Africa.** The favorite deep red. Good grower and sure, heavy bloomer.

**Blue Boy.** Near blue color with violet cast.

**Count Zeppelin.** Very strong grower and free flowering. Large white blooms with vivid bright red eye.

**Daily Sketch.** One of the best introductions of recent years. Immense flowers of light salmon pink with carmine eye.

**E. I. Farrington.** A Phlox of distinctive beauty. Flower trusses are extremely large and color is a delightful salmon shade with slightly darker eye.

**Leo Schlageter.** One of the brightest and flashiest of all red Phlox. Sturdy grower and very free bloomer.

**Prime Minister.** Clear pure white, brilliant red center.

**Rosea Superba.** Magnificent flower heads of a glowing rosy pink.

**Thor.** Deep salmon-pink with scarlet over-tone. On all of above. Each, 60c; 3 for \$1.50; doz., \$4.75.

**RUDBECKIA Purpurea.** Reddish purple flowers, large brown cone-shaped center, 2 to 3 foot stems. Blooms July to October. Each, 60c; 3 for \$1.50; doz., \$4.75.

**SCABIOSA (Pincushion Flower) Caucasica Perfecta.** Do well in any ordinary garden soil. Stems 18 to 24 inches long topped by charming flowers in a soft lilac lavender shade. In bloom from June to September. Each, 60c; 3 for \$1.50; doz., \$4.75.

**SHASTA DAISY Alaska.** 2-2½ feet. Splendid for cutting. Each, 50c; 3 for \$1.25; doz., \$4.25.

**STATICE LATIFOLIA Great Sea Lavender.** 18 in. Grows in fine lace-like bush form with a profusion of misty purplish-blue blossoms. May be cut and dried for winter bouquets. Unexcelled for filler in floral arrangements. Each, 50c; 3 for \$1.25; doz., \$4.25.

**STOKESIA (Stokes' Aster) Cyanea.** 18 in. July-Oct. Flowers rich blue. Each, 60c; 3 for \$1.50; doz., \$4.75.

**TRITOMA (Red Hot Poker).** Very handsome and showy border plants. Flowers borne in compact form on stout 3 and 4 ft. stems.

**Pfizer's Hybrids.** Orange scarlet. Each, 60c; 3 for \$1.50; doz., \$4.75.

**VINCA Minor (Grave Myrtle) Bowles Variety.** A fine ground cover for shady places. Flowers of an intense blue. Each, 45c; 3 for \$1.15; doz., \$3.75.

**VIOLET Royal Robe.** Lustrous violet blue, huge very fragrant flowers, opening like a pansy. Each, 60c; 3 for \$1.50; doz., \$4.75.

# Vaughan's NATURAL FLORAL Perfumes

**Vaughan's Perfume Sampler  
 Five Odors, 1 dram each, \$2.40.**

To enable you and your friends to try our natural floral perfumes, we have packed these attractive sampler gift boxes, containing five odors of our selection, one full dram of each. This price covers both postage and excise tax. Do not add anything for either.



**THE QUALITY** of Vaughan's Natural Floral Perfumes is attested by the many women of prominence in society, on the stage, and radio, who regularly purchase our perfumes and colognes for their own use and for gifts to their friends. They have found in these perfumes a recreation of the fragrances they prefer, truer than was provided by the best imported perfumes.

Size Perfume	Price	Size Cologne	Price
1 dram . . .	\$0.78	1 oz . . . . .	\$0.60
2 drams . . .	1.50	4 oz . . . . .	1.50
½ oz . . . . .	2.70	½ pint . . . . .	2.82
1 oz . . . . .	4.80	1 pint . . . . .	5.40

These prices are prepaid. Do not add Federal Excise tax: Above prices include the tax.

**COLOGNE SAMPLER**

½ oz. each of six most popular odors **\$1.25**  
 Postpaid, Tax Included

Attractive as a gift. Particularly suitable for 'teen agers as well as for the mature woman of taste. Prepacked, our selection of odors.

**Available in Either Cologne or Perfume**

Cologne is about one-eighth the strength of perfumes (about double the strength of ordinary toilet water).

**Appleblossom:** Soft, yet fresh and clean.  
**Bouquet S:** A delicately feminine blend of rich floral oils.

**Bouquet X:** Another blend, slightly "drier" and less sweet. An exotic fragrance.

**Carnation:** Many acknowledge it as the best recreation of this beloved old favorite.

**Forest Breeze:** A smoky, piney fragrance.

**Gardenia:** Not sweet like so many "Gardenia" perfumes—a rich, intense odor.

**Hawaiian Lei:** A lovely blend of exotic tropical flowers.

**Heather:** A rich "smoky" or "peaty" fragrance that goes well with sport clothes.

**Honeysuckle:** An old favorite.

**Lavender:** The clean fresh scent of true English Lavender.

**Lilac:** This outstanding fragrance is again available. Like lilacs wet with morning dew.

**Lily of the Valley:** At last, a satisfactory reproduction of this elusive scent.

**Parma Violet:** The full richness of this famous old time luxury perfume.

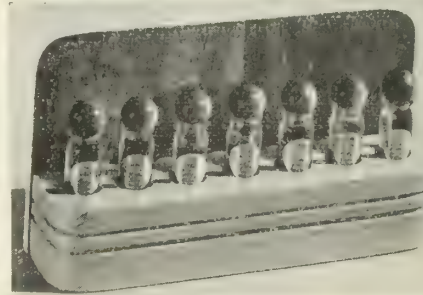
**Sweet Clover:** Like a clover field in mid-July.

**Sweet Pea:** The true fragrance of the original Spencer sweet pea.

**Ten Weeks Stocks:** The rich spicy clove fragrance of Stocks.

**Wild Rose:** Like the breeze through a Sweet Briar hedge in June.

**Wisteria:** Like Sweet Pea, but lighter and with a touch of "leaf green" in the fragrance.



**VAUGHAN'S PERFUME BAR**

**7 Odors, Half-dram each, \$3.60, tax paid  
 Add 15 cents for postage**

The attractive 6½ x 3½ inch container of polished wood, illustrated holds 7 half-dram bottles, each containing one of the following floral odors:

- Narcissus                      Carnation                      Apple Blossom
  - Gardenia    Lily of the Valley    Lilac    Honeysuckle
- It makes a decorative fixture for the dressing table, a gift which is sure to be welcomed.

**AVAILABLE IN PERFUMES ONLY**

**Bouquet No. 5:** A sophisticated French type fragrance, rich, yet not heavy.

**Spring in England:** Like the breath of an English Spring.

**AVAILABLE IN COLOGNE ONLY**

**Original Formula:** The true traditional cologne as made in the city of Cologne centuries.

**Royal Fern:** A mossy, woody fragrance that appeals to men.

**Peony:** Like a rich rose with a touch of "green" in the odor.

# Flower Seeds for Fall Sowing

WHEN you sow seeds of annuals in Fall, you imitate Nature's method. Practically all hardy annuals will produce stronger, sturdier plants with earlier bloom by this method. Even when spring sowing is desirable experienced gardeners also sow in fall because they then have a continuous season of bloom. Also, they can sow at their leisure instead of trying to plant everything in a few short weeks. Do not be in too much of a hurry to sow.

The ideal time is just before the ground freezes for the winter. November 15th is early enough in normal seasons in the vicinity of Chicago and New York. If the ground has

been prepared in advance, sowings can also be made during winter thaws.

A fine seed bed is desirable, if the sides are protected with boards it will save the seed from washing away. A light covering may be used if birds are troublesome. Plant at half the depth used when sowing seed in spring. Broadcast all small seed.

★Varieties preceded by star are especially recommended for sowing in the fall above your bulbs. They will grow in the spring and blossom after the bulbs. Their shallow roots will not interfere with the bulbs maturing properly; their growth will conceal the bulb foliage after it grows yellow and unsightly.

## Larkspur Prefers Fall Sowing

### ★LARKSPUR SUPREME

This is an entirely new strain of the popular base branching type, which produces sturdy plants sending up from the base many flowering spikes, each a tall, strong, spire of beauty; the perfect cutting strain. The colors are not just slight variations from old varieties, but are new, distinct, with a brilliance equaled by no others. Fully double florets closely placed on the stem.

- 2128 **Rose Supreme.** Deeper rose than any other.  
 2127 **Lilac Supreme.** Clear, pale lilac, free from pink.  
 2129 **Salmon Supreme.** True salmon, stronger in tone than others.  
 2130 **White Supreme.** Pure white without suggestion of pink.  
 2132 **Pink Supreme.** Deep rose pink, lovely under lights.  
 2131 **Dark Blue Supreme.** Deep violet purple. Each of the above, pkt., 15c; any 4 pkt., 50c.  
 2133 **Supreme Mixed.** A blend of all the above with additional colors not yet introduced. ¼ oz., 65c; Large Pkt., 25c.

- 3420 **Nigella Miss Jekyll Dark Blue.** Bearing on long stems, large semi-double flowers of a charming intense dark blue nestling in fine feathery foliage. Pkt., 10c.  
 4018 **Petunia Rose of Heaven Select.** Rich brilliant rose, with inconspicuous white throat, darker than Rosy Morn. Pkt., 25c; ¼ oz., 75c.  
 4025 **Petunia, Vaughan's Special Mixture of Dwarf Small Flowering Varieties.** Will be a revelation to those who plant a packet, in furnishing an unending supply of flowers in a most bewildering combination of colors. Pkt., 25c; ½ oz., 75c; ¼ oz., \$1.25.

- 4370 **★Poppy, Vaughan's Special Shirley Mixed.** Pkt., 15c; ¼ oz., 30c.

### VIOLA CORNUTA

- 5790 **Blue Perfection.** Light blue. Pkt., 15c.  
 5789A **Blue Beauty.** Bright blue. Pkt., 15c.  
 5804 **Chanteyland.** Apricot. Pkt., 25c.  
 5802A **King Henry.** Deep purple violet with lighter center and yellow eye. Pkt., 25c.  
 5796 **Jersey Gem.** Flowers of rich pure violet, large, fragrant. Pkt., 25c.  
 5806 **White Perfection.** Finest white. Pkt., 15c.  
 5795 **Nosegay.** A blend of bright gay colors, red, yellow, blue and apricot, combined with many blotched combinations. Pkt., 25c.  
 8582 **Super Large Flowering Scotch.** The flowers are large, all two toned without blotches and have a complete color range. Pkt., 25c.

### CORNUTA HYBRIDA (Large Flowers)

- 5787 **Arkwright Ruby.** Bright ruby crimson shaded terra-cotta; fragrant. Pkt., 25c.  
 5790A **Chinese Blue.** A round-faced type. According to the Royal Horticultural Chart, is French Blue. Pkt., 25c.  
 5798 **Lutea Splendens.** 8 in. Bright yellow. 10c

5813 **VIOLA** Vaughan's Special Mixture. A charming and delightful mixture of these bright and everblooming Violas in a complete color range, shading from pale lavender to rich purple-black, yellow, white, terra-cotta, apricot and rose. Pkt..... 25c



PANSY, SWISS RASPBERRY ROSE

## Pansies, Giant Swiss

- 3892 **Alpenglow.** Rich wine-red shades. Pkt., 25c.  
 3896 **Berna.** Dark violet blue Pkt., 25c.  
 3891 **Blue.** Deep blue flower with blue-black blotches. Pkt., 25c.  
 3820 **Coronation Gold.** The largest pure gold self. Pkt., 50c.  
 3900 **Pure White.** Pkt., 50c.  
 3901 **Raspberry Rose.** A lovely tint of pink best described as Raspberry Rose. It has a suggestion of a lighter tone on the edges of the petals and is marked with a velvety blotch in a deeper tone. Pkt., 75c.  
 3894 **Vaughan's Super Swiss Giant Mixture.** ¼ oz., \$1.25; pkt., 35c.

### SPECIAL MIXTURES

- 3794 **Vaughan's Super Maple Leaf Giant Mixture (Canadian Giants).** The leaves are of giant size and flowers up to 4 inches across, of wonderful substance and fine form. Many charming colors. ¼ oz., \$1.50; Pkt., 50c.  
 3875 **Vaughan's Giant Mixture.** This mixture contains all the self-colors, such as white, yellow, blue, purple, red, bronze, etc. All the flowers are of the Giant type and of good shape and texture. ½ oz., \$1.50; Pkt., 25c.

## Perennial Delphinium PACIFIC GIANT HYBRIDS

The new strain produces plants that are 60 to 65 percent mildew resistant. The flowers are of immense size, tightly set on straight stems that are strong and whippy. The flowers do not shatter.

- 7559B **Blue Bird.** A clear medium blue with white bee with high tall spikes.  
 7563 **Black Knight.** Large flowers of varying dark violet shade.  
 7559A **Blue Jay.** From medium to dark blue with dark bee.  
 7563A **Cameliard Series.** This is a pure lavender self with white bee.  
 7560 **Galahad.** Clear white, highly mildew resistant. Each of the above, large pkt., \$1.00; small pkt., 50c.  
 7561 **King Arthur.** Royal violet, large white bee. Large pkt., 75c; small pkt., 40c.  
 7561A **Guinevere.** Light pink lavender with white bee. Large pkt., 75c; small pkt., 40c.  
 7562 **Summer Skies.** Light blue with white bee. Large pkt., 75c; small pkt., 40c.  
 7562A **Clear White.** Of glistening texture. Large pkt., 75c; small pkt., 40c.  
 7559 **Round Table Series.** As the name implies this represents all of the color combinations of the above Knights and their Ladies. Large pkt., 75c; small pkt., 40c.



ANNUAL LARKSPUR (Supreme Mixed)

- 255 **★Alyssum Vaughan's Little Gem.** Snow-white carpet plant. Pkt., 10c; ¼ oz., 40c.  
 259 **Alyssum Violet Queen.** A beautiful, fragrant sweet Alyssum, of bright clear violet hue. Pkt., 15c; ¼ oz., 60c; 1 oz., \$2.00.  
 332 **Antirrhinum.** (Snapdragon). Rust-resistant Super Majestic Mixed. Pkt., 20c; 3 pkts., 50c.  
 1287 **★Candytuft.** Mixed all colors. Pkt., 10c; ¼ oz., 30c.  
**★CENTAUREA CYANUS SUPER-DOUBLE (Bachelor's Button)**  
 1506 **Blue Boy.** Corn-flower blue.  
 1507 **Pinkie.** Lovely true pink.  
 1508 **Red Boy.** Deep glowing red.  
 1509 **Snowman.** Pure white.  
 Each of above, pkt., 15c; any 2 pkts., for 25c; ¼ oz., 30c.  
 1522 **Vaughan's Special Super Double Mixed.** Pkt., 15c; ¼ oz., 25c; ½ oz., 40c.  
 1966 **Cosmos Sensation Special Mixed.** Giant early strain. Pkt., 25c.  
 2015 **Cynoglossum Blue Bird.** (Chinese Forget-Me-Not). 18 to 24 in. Large sprays of brilliant blue Forget-Me-Not like flowers. Pkt., 10c; ½ oz., 25c.  
 2259 **Dianthus Laciniatus Gaiety.** Very large, showy fringed flowers; wide range of lovely colors; pure white to crimson. Pkt., 25c.  
 2861 **Hunneemannia Sunlite.** Gorgeous, semi-double, clear canary-yellow blooms. Light gray-green foliage. Pkt., 15c.  
 3390 **Nicotiana Affinis.** (Sweet-scented Tobacco plant). White. Pkt., 10c.  
 3393 **Nicotiana Crimson Bedder.** The flowers are of rich deep crimson. Pkt., 15c.

# Vaughan's Irises

**PLANTS BY PARCEL POST**—If to be sent by parcel post, add postage as follows: Single plants, 8 oz. 3 to 6 plants, 1 lb., 10 to 12 plants, 3 lb., 15 to 18 plants, 4 lb. We accept no responsibility for delays or conditions that may prove injurious to the contents.

**PLANTS BY EXPRESS**—We recommend this mode of transit where quantities are over 18 to 24 plants. We pack carefully, but accept no responsibility for delays over which we have no control that may cause injury to the contents.

"S" refers to the three standard or upright curling petals; "F" to falls or drooping petals. Irises are most effective if planted 3 of a kind in a clump.

**DYKES MEMORIAL MEDAL.** This is an award made annually in America, France and England for the best Iris of the year.

As soon as iris plants are received, plant them in a sunny, well drained place. Each plant should have at least eighteen inches clear space from other irises, as it will grow in a circle and many varieties spread rapidly. The rhizome, or fleshy root stock from which the leaves and roots grow, should be barely covered with soil, with the roots properly spread below, and the soil well firmed about them. Until the plant is established, give it frequent attention, watering in dry spells. In the first winter, after the ground has frozen, a light mulch to prevent thawing and heaving will be beneficial.

## Outstanding Varieties

See our Iris Aristocrat collection on page 2.

**Amigo.** 34 in. Flowers of heavy texture are very richly colored, like a velvety blue purple pansy. S. clear light lavender violet; F. deep hyacinth violet, edged white. 50c; 3 for \$1.25.

**Azure Skies.** 36 in. A perfectly formed, ruffled azure blue self with flaring falls. A serenely trim iris with firm crisp petals. One of the loveliest of all blue irises. \$1.25; 3 for \$3.00.

**Berkeley Gold.** 38 in. This top ranking yellow Iris should sell for more. It is large deep clear yellow self of fine form, heavy substance and smooth texture. Stands rain, hot weather, does not fade. \$1.00; 3 for \$2.50.

**Black Wings.** 38 in. Velvety black buds opening to intense midnight blue overlaid with a frosty black luster. Fragrant. 40c; 3 for \$1.00.

**Blue Shimmer.** 38 in. The extremely large and a beautiful clear sparkling white, dotted and pepper all-over with clear blue. Really outstanding. \$1.50.

**Bryce Canyon.** 38 in. A fascinating and distinct warm shade of glowing henna-copper. Well branched stems, highly domed standards and broad round falls. A good grower everywhere. \$3.50.

**California Gold.** 36 in. Good garden variety with non-fading flowers of dazzling, deep golden yellow. 40c; 3 for \$1.00.

**Caroline Burr.** 40 in. Very large flowers of a fascinating new color and perfection of form. A cool ivory self overlaid with a soft elusive green and a frosty iridescent sheen. \$1.00.

**China Maid.** 48 in. Words are inadequate to describe this new, intriguing blend of pink, golden copper and soft lilac. Besides having a beautiful color, it has large size, fine form and a smooth even texture that is outstanding. 75c.

**City of Lincoln.** 40 in. A magnificent bicolor garden. S. dome-shaped, clear vivid yellow; F. flaring, rich velvety red. 50c; 3 for \$1.25.

**Copper Lustre.** 36 in. Dykes Medal, 1938. Considered "the Iris of the Century." Its flowers are of huge size and its color a blend of glowing copper and gold with iridescent sheen. Nothing quite like it. 50c; 3 for \$1.25.

**Daybreak.** 40 in. A huge golden pink with slight undertones of copper. The flowers are well shaped, with closed standards and falls that are semi-flaring, but there is a suggestion of ruffling about the entire flower. It has excellent branching stems. \$1.25; 3 for \$3.00.

**E. B. Williamson.** 36 in. An excellent Iris of rich, glowing copper-red, almost a self, with a silky, lustrous finish. Unusual in color, perfect in form, and strong in growth, it is one of the best. 40c; 3 for \$1.00.

## ELMOHR

### The Colossal New Iris.

**36 in. A super Iris.** Iris seedling of Wm. Mohr that has magnificent, richly colored, rounded blooms of heavy texture. Their color is reddish mulberry with a pinkish glow that gives it great brilliance. A sensational Iris that is hardy and thrives everywhere. When you see Elmohr in bloom, it will thrill you as no other Iris has to date. Dykes medal 1945. \$1.00; 3 for \$2.50.

**Elsa Sass.** 38 in. Exquisite, ruffled flowers that are the color of lemon-ice, a most unusual shade that has a startling effect. Blooms of good size and good form. 50c; 3 for \$1.25.

**Exclusive.** 40 in. Exclusive, yes—for no other blue is quite like it. The pure light blue color is overlaid with a silvery mist which produces a "powder blue" effect that is very beautiful. 50c; 3 for \$1.25.

One each of  
**De Luxe Iris Collection.** Azure Skies, Berkeley Gold; Mulberry Rose, Sable and Snow Flurry. (value \$5.50) for \$4.00. (Add postage for 1 lb.) (After Oct. 1st it may be necessary to change this collection.)

**Ethelwyn Dubuar.** 38 in. Fine large flowers of deep pink. 40c.

**Garden Flame.** 34 in. A large, richly colored Iris of deep rose-mahogany with very broad petals. Ranks with the top among the red Irises. Late. \$1.00; 3 for \$2.50.

**Garden Magic.** 44 in. Deep, smooth, very dark velvety red self. Its color is almost a maroon, warm and glowing, with a lustrous finish. Flowers are very large and bloom late. Always in demand. 75c; 3 for \$2.00.

**Golden Majesty.** 42 in. A truly superb Iris of gleaming, deep rich, pure yellow which does not fade. 50c; 3 for \$1.25.

**Golden Treasure.** 38 in. An exquisite creamy yellow Iris with a glowing golden heart and rich yellow beard. Huge flowers; perfectly branched stems. 50c; 3 for \$1.25.

**Grand Canyon.** 38 in. Delicately ruffled flowers of a rich and colorful blend of plum, copper and gold, like the colors in the Grand Canyon. 75c; 3 for \$2.00.

**Great Lakes.** 48 in. An exquisite pure blue, the shade of an unclouded sky reflected in crystal waters. It is almost perfection, having crisp petal texture, widely branched, strong stems, and ideally formed blooms with widely flaring falls. Winner of the Dykes Medal 1942. 75c; 3 for \$2.00.

**Gudrun.** 36 in. Enormous, flowers pure white, Early. 40c; 3 for \$1.00.

**Indian Hills.** 37 in. A stunning Iris of clear rich wine purple. 40c; 3 for \$1.00.

**Junaluska.** 40 in. S. rosy copper. F. brilliant copper-red. 40c; 3 for \$1.00.

**Los Angeles.** 40 in. Giant, snowy-white flowers of satin texture; the standards faintly edged lavender blue. One of the finest of all white Irises. 40c; 3 for \$1.00.

**Master Charles.** 38 in. A gorgeous flaring flower of rich, glowing mulberry purple with a wonderful sheen and finish that is hard to equal. S. true purple; F. rich purple, both overlaid velvety black, blending to Madder Brown at the base. \$2.50.

**Midwest Gem.** 36 in. Very fragrant, unusual and beautiful with it ruffled flowers of luminous apricot, flushed pink. 50c; 3 for \$1.25.

**Ming Yellow.** 50 in. The perfect yellow Iris. The gigantic blooms remind one of a smooth, rich flawless carpeting of deep, yellow velvet. Vigorous in growth, it has strong foliage and stout, well branched stems. 75c; 3 for \$2.00.

**Missouri.** 36 in. Dykes Medal, 1937. Of sensational size and unquestionably one of the best of all blue Irises. S. clear vivid blue; F. slightly darker; semi-flaring. 50c; 3 for \$1.25.

**Morocco Rose.** 38 in. S. lustrous pale pink, flushed deeper; F. deep rose-lene pink, long and flaring. 60c; 3 for \$1.50.

**Mulberry Rose.** 40 in. Huge flowers of radiant, lovely, mulberry rose with a bronze beard. A new and unusual shade in the deep pink class that stands out from afar in the garden. \$1.00; 3 for \$2.50.

**Naranja.** 40 in. One of the most talked of Iris originations. A large flowered yellow with a distinct orangy overcast on the falls. Decidedly different. 40c; 3 for \$1.00.

**Ola-Kala.** 36 in. Beautiful rich, deep yellow flowers of fine form and brilliant with flaring falls. So intensely yellow and brilliant it is almost on the orange side. Withstands weather excellently. Dykes Medal Winner for 1948. \$1.50; 3 for \$4.00.

**Ormohr.** 40 in. The flowers are of gigantic size, the standards beautifully domed, the falls broad and semi-flaring; substance excellent. The color is a soft gray lavender-veined violet with a rosy glow over all. 50c; 3 for \$1.25.



One each of  
**Novelty Iris Collection.** Blue Shimmer, Bryce Canyon, Master Charles, Ola-Kala and Ranger. (value \$11.00) for \$7.90. (Add postage for 1 lb.) (After October 1st it may be necessary to change this collection)

**Prairie Sunset.** 37 in. Dykes Medal 1943. A gorgeous new blend of peach apricot, rose, copper and gold that captures and holds within itself all the warm, glowing colors of the western sunset. \$1.00; 3 for \$2.50.

**Radiant.** 34 in. S. Brilliant burnished orange. F. glowing coppery red. Color so vivid and intense it attracts immediate attention in the garden. 50c; 3 for \$1.25.

**Ranger.** 36 in. Very dark, true crimson red Long large blooms of firm texture. A sure producer of flowers and lots of them. \$2.00; 3 for \$5.00.

**Sable.** 40 in. Excellent form, hardiness, and good bloom every year are some of the qualities which make this variety a prize-winner. An almost perfectly black Iris with a lustrous, silky sheen and an intense depth of color never before seen. \$1.00; 3 for \$2.50.

**Sensation.** 38 in. Corn-flower blue flowers of perfect form and heavy substance. A perfect flower, the standards beautifully arched, the falls flaring; tall and sturdy. 40c; 3 for \$1.00.

**Snow Flurry.** 40 in. Enormous, beautifully ruffled flowers of pure icy white, very faintly flushed with blue. The flowers come early, last over a long period and literally cover the strong stems. \$1.25; 3 for \$3.00.

**Spun Gold.** 38 in. Dykes Medal 1944. A gorgeous yellow that is eagerly sought after because of its fine record. It is a deep, pure golden yellow self with a velvety lustre that adds to its beauty and depth of color. \$1.00; 3 for \$2.50.

**Stardom.** 34 in. Unusual in its blending of coppery-pink and apricot-buff. Bright orange beard. Very free flowering. 60c; 3 for \$1.50.

**The Red Douglas.** 40 in. Dykes Medal 1941. Vibrant red-purple of colossal size, gorgeously rich in color, like a piece of fine push. Grows and blooms well everywhere, and the experts agree that it is one of the finest Irises ever raised. 75c; 3 for \$2.00.

**Tiffany.** 36 in. A sensational plicata creation in creamy yellow gaily stitched and dotted burnished rosy bronze. Hardy, free blooming plants that will create a refreshing atmosphere in your garden. 50c; 3 for \$1.25.

**Vagabond Prince.** 63 in. Glossy deep black purple self on well branched stalk. 50c; 3 for \$1.25.

**Wabash.** 39 in. Dykes Medal 1940. S. snowy white, delightfully ruffled at the edges; F. wide and flaring, deep hyacinth violet with a definite white edge. Has wonderful substance and orchid-like beauty. Voted by the Iris experts in 1940, 1941 and again in 1942 as the best Iris in commerce. 50c; 3 for \$1.25.

One each of  
**Champion Iris Collection.** Elmohr, Garden Flame, Great Lakes, Prairie Sunset and Spun Gold. (Value \$4.75) for \$3.50. (Add Postage for 1 lb.) (After October 1st it may be necessary to change this collection)

## Ten Fine Irises

Price of the following. Each, 40c. 3 of one kind for \$1.00. (Note, we cannot supply 3 different kinds for \$1.00).

- Blue Triumph.** 42 in. A magnificent Iris of fine light blue. Huge stalks.
- Buechly Giant.** 40 in. Giant clear lavender blue bicolor
- Cheerio.** 40 in. S. golden tan flushed rose; F. rich glowing velvety red.
- Crystal Beauty.** 40 in. Perfectly shaped flowers of pure snow white.
- Depute Nomblot.** 50 in S coppery-red; F. rich claret crimson
- Indian Chief.** 40 in. S. pinkish red. F. glowing velvety red. A prolific bloomer.
- Jean Cayeux.** 38 in. Dykes Medal 1931. A beautiful blending of coffee or Havana brown. 40c.
- Naranja.** 40 in. A large flowered yellow with a distinct orange overcast on the falls. Decidedly different. 40c.
- Pink Satin.** 42 in. Fine flowers of delicate and smooth, yet glistening pink.
- Wm. Mohr.** 26 in. Pale lilac flower, beautifully veined violet. Very unusual.

**Surprise Iris Collection.** 18 Irises. 3 ca. of 6 named varieties, our selection, in a rainbow of colors for \$3.00. Use these for borders or mass color effects. They are worth many times the price. (If wanted by parcel post, add postage for 5 lbs.)

## Fall Blooming Irises

These varieties bloom in the Spring and have a habit of blooming again in the Autumn.

- Autumn King.** 30 in. A blue-purple bicolor of fine size 40c; 3 for \$1.00.
- Autumn Queen.** 18 in. Pure white flowers of good size and quality. 50c.
- Eleanor Roosevelt.** 28 in. An outstanding variety of very fine deep velvety purple. Profuse bloomer twice a year 40c.
- October Blaze.** 34 in. Big, glowing red-purple, somewhat on the order of Indian Chief. 40c; 3 for \$1.00.
- Southland.** 28 in. Clear deep chrome yellow of large size and heavy substance. 40c.

**Special Offer No. 200-A.** 8 Fall Irises, 2 Autumn King, 2 Autumn Queen, 2 October Blaze and 2 Southland, (value \$3.20) for \$2.25. (Add postage for 1 lb.)

## Dwarf Irises (Pumila Hybrida)

Dwarf varieties, that bloom two weeks in advance of the tall bearded Iris

- Atroviolacea.** 5 in. Red-purple with white tipped beard. Very early. 35c; 3 for 90c; 12 for \$3.00.
- Keepsake.** 8 in. Bright golden yellow on slender stalks. Narrow foliage. 50c; 3 for \$1.25.
- Rose Mist.** 8 in. Dusty rose-pink. Very pretty unusual and rare. 50c; 3 for \$1.25.
- Tampa.** 8 in. Clear wine red on slender stalks. Narrow foliage. 50c; 3 for \$1.25.

**Special Offer No. 200B.** 12 Dwarf Irises, 3 each of above 4 varieties (value \$4.65) for \$3.75. (Add postage for 1 lb.)

## Siberian Irises

The most delicate and elegant of all small flowered Irises. They grow on tall stems, have graceful, grass-like foliage, and are excellent for cuttings.

Price, except where noted, 40c each; 3 of one kind for \$1.00.

- Emperor.** 48 in. Large flowers of a deep rich, dark violet-blue. Very fine
- Perry's Blue.** 48 in. Large, well formed flower of a beautiful shade of sky-blue. One of the most popular and finest of Siberian Iris
- Snow Queen.** 30 in. Large ivory white with rich yellow blotch at the throat.

**Special Offer No. 200-C.** 8 Siberian Irises, 3 each Emperor, and Perry's Blue and 2 Snow Queen, (value \$2.80) for \$2.00. (Add postage for 4 lbs.)

# Vaughan's Peonies



PEONY THERESE

PEONIES, especially the modern introductions, are probably the most valuable, and most beloved of all perennial plants. Planted in sun or semi-shade in single clumps or long beds; or bordering lawns, shrub rows, and drives, they give a grand display of large fragrant blossoms of brilliant colors during June, followed by their exquisite foliage which is very ornamental during summer months. They are also most effective for home and table decorations, and last longer in water than many other perennials. Avoid buying cheap Peonies; they require just as much care as the better kinds, and are disappointing in the end.

Peonies may be planted from September first until May. We offer **Divided roots**, natural divisions, having 3 to 5 eyes of blooming size.

The figures following the varieties are the latest ratings given to them by the American Peony Society, based on a scale giving 10 points for perfection.

**Roots by Parcel Post.**—If to be sent by parcel post, add postage as follows: Single roots, 2 lbs.; two roots, 3 lbs.; 3 roots, 4 lbs.; 4 roots, 5 lbs

## Light and Dark Pink and Rose

**Claire Dubois.** (8.7) Very large double, globular flowers; color rich clear satiny pink, with glossy reflex. Late midseason. \$1.00.

**Edulis Superba.** (7.6) Usually blooms for Decoration Day. The large flowers are a beautiful deep, vivid pink, and are borne profusely on tall, strong stems. One of the most fragrant of all Peonies and one of the best for cut flowers in its color and season. \$1.00.

**Hansina Brand.** (9.1) A flower of beautiful form and really giant size. Color deep flesh pink, shading darker at the base of the petals with a salmon reflex. Resembles Solange but has a better stem and flowers that always open late. \$4.00.

**Martha Bullock** (9.1) A real peony aristocrat, gigantic in size and exquisitely beautiful. Its immense cupped shaped flowers of bright old-rose pink are often 9 to 12 inches in diameter and are held well above the foliage on tall, stout stems. Rose-like fragrance; late. As a garden variety, or as a cut-flower or show variety, this one is hard to beat. \$1.50.

**Mons. Jules Elie.** (9.2) An immense ball like flower of glistening lilac-pink, early. Very fragrant. Described on page 2 \$1.50.

**Mrs. F. D. Roosevelt.** (9.3) Like the person it is named for, this Peony is going places. It is a strong grower and a dependable, free bloomer. Flowers double with extra long loose petals of soft rose-pink. A wonderful variety that competes with Tourangelle for the honor of being called "The world's most beautiful Peony" \$5.00.

**Myrtle Gentry.** (9.1) Immense flowers of perfect rose form and wonderful substance on stiff stems. Color beautiful light pink, changing to rosy white, with tints of flesh and salmon. Tea rose fragrance. Late midseason. Often called "the perfect peony" for it has no faults and has all you could wish for in a flower. \$2.50.

**Nick Shaylor.** We think this is one of the very finest most beautiful of the new Peonies. Has very large globular blooms of perfect form and color is blush pink with deeper pink and salmon lights at the base of the petals. \$4.50.

**Reine Hortense (President Taft).** (8.7) One of the finest Peonies in our Nursery. A vigorous, strong grower, a profuse bloomer, and an excellent cut-flower variety, cut blooms lasting a week or more. Its flowers are among the largest of any variety that we grow and the color is a beautiful uniform light pink, center flecked crimson. Mid-season. A consistent prize winner at shows. \$1.00.

**Sarah Bernhardt.** (9.0) This fine variety is one of the largest and best pink Peonies in the world. It is a vigorous grower and a prolific bloomer, carrying its perfectly formed flowers gracefully on tall stems. The color is a dark rose-pink, edged lighter pink, center flecked crimson. An extra good cut-flower variety, it is always found in the winning classes of every show room. Late midseason. Fragrant. \$1.25.

**Therese** (9.5) A wonderful Peony of perfect habits with immense blooms that are truly splendid in form, texture and color. Enormous petals of pale, translucent, old-rose-pink, paling toward the base and illumined by a golden yellow glow in the depths. Early midseason. \$2.00.

**Walter Faxon** (9.3) Ranked by Mrs. Harding as the three finest peonies. "Here is the most delectable hue of pink displayed by any of the peonies outside of the tree peonies," she writes. It is a free-blooming variety and grows strongly. Should be cut and allowed to open in the house where it will last for days in increasing beauty. Midseason. \$1.50.

## White and Light Varieties

**Alsace Lorraine** (8.8) One of the most charming and beautiful in our collection. Its large flowers borne in clusters, have petals long and slightly cupped, which radiate symmetrically from the center like a water-lily. The color is a rich, creamy white, center delicately tinted amber. \$1.00.

**Baroness Schroeder** (9.0) One of the finest Peonies in existence. Described on page 1. \$1.50.

**Festiva Maxima** (9.3) An old variety which Mrs. Edward Harding says, "should be in every garden, large or small, lavishly arrayed or economically furnished." Flowers white dotted carmine, are often 7 to 8 inches in diameter. Very fragrant. Early. \$1.00.

**Frances Willard** (9.1) A perfectly-formed flower that is found among the winning classes in every show-room. Very large blooms, often having a raised, cup-shaped center inclosing golden stamens. Opens an exquisite blush-white, with an occasional carmine touch, changing to pure white. Of good substance and a fine cut-flower variety. Late midseason \$1.00.

**Kelway's Glorious** (9.5) An extremely large flower, full of glistening white petals, the outer edges of which are slightly crinkled and curved inward. Very fragrant. Late midseason. \$2.75.

**LeCygne** (9.4) (The Swan). "One of the three finest peonies," says Mrs. Harding. The curving petals of this magnificent flower are arranged like the feathers on a swan's wing. "Symmetrical, globular, of great size, fragrant, free-blooming, and milk-white," continues Mrs. Harding, "Le Cygne stands by itself." Early midseason. \$3.00.

## DeLuxe Peony Collection

Six of the world's finest varieties  
 9.4 Le Cygne, white 9.4 Tourangelle, white  
 9.2 Philippe Rivoire, red 9.5 Therese, pink  
 9.2 Solange, cream 9.3 Walter Faxon, pink  
 One each of above (value \$11.75) for \$9.50.

**Mme. de Verneville** (7.9) Very full and double, pure white center tinted blush. Exquisite rose fragrance. Very beautiful reliable bloomer; early. \$1.00.

**Mrs. A. M. Brand.** (9.0) The very large white have remarkable substance and perfect rose form, and they come very late in the season. The plants are medium tall, vigorous, with strong stems and beautiful dark green foliage. \$3.00.

**Mme. Jules Dessert.** (9.4) A strong-growing, free-blooming plant, of delicate coloring. When the flower is cut just as the bud unfolds, and is allowed to open in a shaded room, wonderful tints of flesh, straw and white can be seen to perfection. Midseason \$1.25.



WHITE AND LIGHT PEONIES—Continued

**Mrs. J. V. Edlund** (9.5) Unquestionably one of the finest of all Peonies with large, pure white blooms of perfect form. Excellent for exhibition, at one time having won first prize for the 3 best white blooms for about six consecutive years at the Minnesota Peony Show. Tall; vigorous; floriferous; sweet fragrance. \$6.00.

**Primevere** (8.6) "Finest of the yellow herbaceous peonies and one of the most fragrant," says Mrs. Harding. "Striking and ornamental in the garden, it is still more satisfying as a cut flower. Then its color is safely guarded, and its perfume fully enjoyed. Midseason. \$1.75.

**Solange** (9.2) Of this variety Mrs. Harding writes: "Until the lover of peonies knows Solange, his life is wasted, bare, uninteresting, improvised, and lonely beyond all words to tell. Its flower is high built, compact, and composed of large, thick petals which closely overlap. The color is deep cream, tinged with amber throughout, with a touch of soft, salmon-pink glowing from its heart." Late. \$1.50.

**Tourangelle** (9.4) Most of the experts agree that this is the most beautifully colored of all Peonies. Pearl-white, overlaid with delicate shades of salmon; flowers flat, borne on long stems. Exquisite in its color tints if shaded from the sun when opening. Late. \$1.25.

**3 Extra Fine Peonies \$2.50**

One each *Edulis Superba* (pink), *Felix Crousse* (red) and *Mad. de Verneville* (white) (value \$3.00) for \$2.50; (add postage for 4 lbs.)

**Red and Crimson Sorts**

**Cherry Hill** (8.6) Deep garnet with a glistering sheen, brightened by golden stamens. The flowers come very early, are unaffected by weather and last a long time, holding their rich bright color until the last petals fall \$1.50.

**Felix Crousse** (8.4) Its large, globular flowers, solid and compactly built from edge to center, are a rich, even, brilliant, dazzling ruby-red. Late midseason. \$1.00.

**Grover Cleveland** (8.2) Large, compact flowers of rich bright crimson on stiff stems. It has excellent foliage and is one of our most desirable, late midseason reds \$1.00.

**Karl Rosefield** (8.8) Huge ball-like flower of rich velvety-crimson. Very brilliant and striking. We consider it the best all-round red Peony. Early midseason. \$1.00.

**Longfellow** (9.0) Perhaps the most brilliant of all the red peonies. \$2.00.

**Mary Brand** (8.7) A vivid crimson of huge size always found among the winning reds in flower shows. It comes into bloom in mid-season and the flowers last a long time and hold their color perfectly in the sun. An excellent variety for the garden or for cut-flowers. \$1.50.

**Mons. Martin Cahuzac** (8.8) Medium sized, globular blooms. Dark purple-garnet with black reflex. The darkest peony known. Midseason. \$2.00.

**Officialis Rubra Plena** (8.6) This is the old-fashioned red, the most brilliant of all red peonies; early and splendid cut flower \$1.50.

**Pfeiffer's Red Triumph** (9.2) Blooms as early as Richard Carvel but is a shade darker in color. Buds large, very dark, like Philippe Rivoire before opening. Tall stiff stems; flowers deep crimson; fragrant \$1.75.

**Philippe Rivoire** (9.2) Very dark crimson with velvety sheen. Perfectly formed, cup-shaped flowers with incurved center; delightfully fragrant; late. It is distinctly different and is the most beautiful and highest rated of all red Peonies. \$2.50.

**Richard Carvel** (8.8) Large globular flowers, all one shade of bright crimson. Tall, very stout stems annual and profuse bloomer. Delicate fragrance. Early, usually in bloom for Decoration Day. \$1.50.

**Tenuifolia Flore Pleno** (9.2) A very early species, in bloom two weeks ahead of any other Peony. Flowers are a full-double brilliant crimson and the foliage is finely cut like that of the Cosmos. Very rare. Should be mulched the first winter after planting. \$2.50.

**Oriental Flowered Peonies**

These are entirely without pollen. The inner petals are a mass of filaments surrounded by a guard of petals.

**Ama - No - Sode** (9.2) Considered by many the handsomest pink Oriental peony. The flowers are large, of bright rose, shading lighter toward the edge of the petals. \$3.00.

**Fuyajo** (9.2) Outer petals dark, rich, mahogany-red with velvety shading. Petaloids dark red striped and tipped buff. \$1.50.

**Gold Mine** (8.2) Cup-shaped flowers of dark rose-pink with deep golden center. A profuse bloomer. Midseason. \$1.00.

**Mikado** (8.6) Guards velvety crimson, forming a cup enclosing a filigree cushion of crimson petaloids, edged and tipped gold \$1.50.

**Toro-No-Maki** (9.0) Very large lilac-white with amber yellow center spectacular and very beautiful \$3.50.

**Vaughan's Everblooming Roses**

**EVERBLOOMING HYBRID TEAS**

The Hybrid Tea Roses bear their glorious blooms profusely from June until late fall. In severe winter climates they need proper winter protection

**2 Year No. 1, \$1.25; 3 of one kind for \$3.45**

**Christopher Stone**. Produces quantities of brilliant, velvety scarlet blooms all season; fragrant

**Dainty Bess**. Exquisite single, delicate rose-pink flowers with contrasting center of wine-red stamens

**Duquesa de Penedera**. A beautiful rose with splendid blooms of orange-apricot with deeper coppery tones. Strong grower; bright green foliage

**Etoile de Hollande**. A brilliant dark red Rose of magnificent size and perfect form; fragrant

**McGredy's Ivory**. Its long, pointed buds open into magnificent creamy white blooms.

**McGredy's Scarlet**. A top-notch rose with perfectly formed flowers of vivid rose-red; long stems

**McGredy's Yellow**. Beautifully formed buds and flowers of pure, light butter-cup yellow

**Mme. Jules Bouche**. Long, pointed, shapely buds; excellent for cutting, opening into superb white flowers, slightly shaded at times with bluish pink.

**Mrs. Erskine Pembroke Thom**. An unfading yellow with dark, healthy foliage. Slender buds open to perfectly shaped flowers of canary yellow

**Picture**. Each lovely flower is a picture. The nicely formed buds open into flowers of velvety rose-pink with a warm salmon undertone.

**Poinsettia**. Its long pointed buds open into beautiful poinsettia-scarlet blooms. One of the most dazzling red roses we have ever seen.

**Pres. Herbert Hoover**. Its deep copper-red buds open to a wonderful blend of cream, pink and scarlet. Huge flowers on vigorous tall plants

**Radiance**. Large, full, deliciously fragrant blooms of brilliant rosy carmine, shaded pink. One of the most popular roses in America.

**Red Radiance**. Flowers clear cerise-red. Size, foliage, growth and habit same as in the parent Radiance. Hardy; strong grower.

**Talisman**. A remarkable blending of gold, apricot, yellow, deep pink, and old rose. The rose of many Gold Medals and one of the most popular of all roses for cutting.

**Special Offer No. 210-A**. One each *Etoile de Hollande*, *McGredy's Scarlet*, *Mme. Jules Bouche*, *E. P. Thom*, *Picture* and *Pres. H. Hoover* for \$5.95.

**PATENTED HYBRID TEA ROSES**

**Capistrano**. (Pat. App. For). Big, long, beautifully formed buds open to extremely large, full blooms of glowing rose-pink. \$2.00; 3 for \$5.50.

**Eclipse**. (Pat. No. 172). Famous for its elegant, long, streamlined buds, often more than 2 inches long, of clear bright yellow; freely produced; excellent for cutting \$1.35; 3 for \$3.75.

**Forty-Niner**. (Pat. 792). An unbelievable brilliant bicolor of rich yellow and dazzling red. Mildly fragrant. \$1.75; 3 for \$5.00.

**Nocturne**. (Pat. 713). Beautiful streamlined buds and fine, long lasting, open flowers of intriguing dark red. \$1.50; 3 for \$4.25.

**Peace**. (Pat. No. 591). Huge yellow buds, edged cerise, open to great peony-like blooms, often 5 inches in diameter, which change to creamy yellow with a delicate flush of pink, deepening as the flower slowly opens. Beautiful holly-like foliage. \$2.00; 3 for \$5.50.

**Rubaiyat**. (Pat. 758). Long pointed, shapely buds slowly open to very large, brilliant rose-red blooms. Delicious fragrance \$1.50; 3 for \$4.25.

**Will Rogers**. (Pat. 256). Dark velvety crimson maroon with really intense old rose fragrance. Does best in semishade. \$1.35; 3 for \$3.75.

**CLIMBING ROSES**

**Blaze**. Cup-shaped, vivid scarlet flowers like the Paul's Scarlet Climber, but with recurrent bloom \$1.50; 3 for \$4.25.

**Paul's Scarlet Climber**. Large clusters of semi-double, beautifully formed, vivid scarlet flowers almost completely cover the plants in June. One of the most brilliant climbers grown. \$1.25; 3 for \$3.45.

**TREE PEONIES**

5-in pot plants, \$5.00 each, except where noted

**Lactea**. Pure white, blotched carmine

**Reine Elizabeth**. Very large bright salmon pink

**Souv. de Ducher**. Bright reddish violet.

**Souv. de Maxime Cornu**. Enormous flowers of deep yellow heavily shaded orange \$10.00.



ROSE, V FOR VICTORY

Roses ready for Fall planting about November 1st. If wanted by Parcel Post, remit postage, allowing 1 lb. per plant.

For complete list of Roses, including the best of the "New Varieties", ask for our "Spring Gardening Illustrated Catalogue" ready in January.

**SUB-ZERO HYBRID TEAS**

A new race of Roses that have beautiful flowers and that bloom freely and constantly all summer. They are easy to grow, the plants increasing in vigor and the flowers in quality each year. They are hardy, even in sub-zero winters, but should be given winter protection the same as other roses

2 yr. No. 1, \$1.75; 3 of one kind for \$5.00.

**Pink Princess**. (Pat. No. 459). The red buds open to full petaled, deep rose-pink, high centered blooms that have an enchanting fragrance. They make a splendid show in the garden and are lovely for cut-flower arrangements when cut. Its beautiful foliage is famous for being free from premature defoliation

**Red Duchess**. (Pat. Pending). You will always enjoy and remember this rose for its captivating fragrance, colorful persistent foliage and flowers of a wonderful shade of red.

**Shades of Autumn**. (Pat. No. 542). Beautiful fragrant flowers of a brilliant orange, copper and carmine red

**V For Victory**. (Pat. No. 543). One of the finest roses in existence. The color is a real yellow, with fragrant, unfading flowers, sometimes 5 inches in diameter, on long stiff stems

**Special Offer No. 210C**. One each of Sub-Zero Roses for \$6.75.

**Sub-Zero Floribunda Roses.**

2-yr. No. 1, \$1.75; 3 of one kind for \$5.00.

**Anne Vanderbilt**. (Pat. 504) An easy to grow rose that often produces 100 or more fragrant blooms in one season. Flowers exquisite coppery-orange, informal, semi-double and very brilliant

**Curly Pink**. (Pat. 842) Matchless in the combination of size and form of bloom, beauty of cluster, constancy, vigor and foliage, hardiness and performance. When established, many large, two-toned pink blossoms, in several stages form a gorgeous bouquet on a single stem

**King Boreas**. (Pat. Pending). The very double fragrant lemon-yellow flowers, borne singly or in candelabra clusters, are abundant from June to November. Beautiful glossy foliage.

**FASHION FLORIBUNDA ROSE**

The top winner rose in the 1950 All-American Rose Trials. The pointed buds come singly or in clusters and open gradually into lovely miniature Hybrid teas, up to 3 1/2 inches across, of sparkling salmon-orange. Enchanting old rose fragrance. \$2.00; 3 for \$5.50.

# Flowering Trees and Shrubs



MOCK ORANGE *Virginalis*

## All Prices Are F. O. B. Our Nurseries, Western Springs, Ill.

The figures in italics following each variety indicate in feet the average height of the plant at maturity. B. & B. indicates "Balled and Burlapped."

### BARBERRY (*Berberis*)

**Green-leaved Barberry (*Berberis Thunbergi*).** 4 ft. Popular hedge plant. Scarlet berries in fall and winter. 18 to 24 in., 75c; 3, \$2.10; 10, \$6.50; 100, \$55.00.

**Red-leaved Barberry (*Berberis Thunbergi Atropurpurea*).** 4 ft. The foliage is a rich, bronzy red, if planted in full sun. 18 to 24 in., \$1.00; 3, \$2.75; 10, \$8.50; 2 to 2½ ft., \$1.25; 3, \$3.45.

### BEAUTYBUSH (*Kolkwitzia Amabilis*).

6 to 8 ft. A graceful shrub that is well named, for it is one of the most beautiful in our Nursery. It makes a wonderful showing in June when its long arching branches are usually completely covered with masses of pink snapdragon-like flowers. A hardy and reliable shrub for better home and landscape plantings. 2 to 3 ft., \$1.50; 3 for \$4.20.

### BRIDAL WREATH (*Spiraea Van Houttei*)

5 to 6 ft. One of the most beautiful and useful shrubs. White flowers in June. 2 to 3 ft., 90c; 3, \$2.40; 10, \$7.50; 3 to 4 ft., \$1.15; 3, \$3.00; 10, \$9.00.

### BURNING BUSH (*Euonymus*)

**Winged Burning Bush (*Euonymus Alatus*).** 6 to 8 ft. Bark cork-like and curiously winged; leaves small; fruit red; in autumn, foliage bright red. One of our best shrubs for specimen plantings and for growing in shady locations. 2 to 3 ft., \$2.50; 3, \$7.00.

**Dwarf Burning Bush (*Euonymus Alatus Compacta*).** 4 to 6 ft. A compact shrub that is especially attractive in the fall when the foliage turns crimson, and the whole bush resembles a ball of fire. Fine for formal effects as it may be kept trimmed to the size and height desired. 18 to 24 in., \$2.25; 3 for \$6.15; 3½ to 4 ft., specimens, B. & B. \$7.50. 4 to 4½ ft., B. & B. \$8.50.

### COTONEASTER

**Peking Cotoneaster (*Acutifolia*).** 5 to 10 ft. Small leathery leaves of rich glossy green on willow brown branches closely set with small pink flowers in May; jet black berries in fall. It is a beautiful shrub and makes one of our finest hedges, due to its upright growth and adaptability to dry situations. Can be trimmed like Privet. Recommended in the North where hedge plants must be extremely hardy. 2 to 3 ft., \$1.00; 3, \$2.70; 10, \$8.50.

### CRANBERRYBUSH (*Viburnum*)

**European Cranberrybush (*Viburnum Opulus*).** 10 ft. A handsome shrub with dense green foliage. The single white flowers, borne in flat imperfect clusters in May are succeeded with showy cranberry-like berries that cling to the leafless branches all winter. 3 to 4 ft., \$1.25; 3, \$3.45; 10, \$11.00; 4 to 5 ft., \$1.50; 3 for \$4.20.

### DOUBLE FLOWERING CRAB

**Malus Ioensis Bechteli.** 10 to 15 ft. Trees of medium size are covered in early spring with large, beautiful, double fragrant flowers resembling small roses of a delicate pink. 3 to 4 ft., \$2.75; 4 to 5 ft., \$3.75; 5 to 6 ft., \$5.50.

### DOGWOOD (*Cornus*)

**Coral Dogwood (*Cornus Alba Sibirica*).** 6 to 10 ft. Bright coral-red branches. 3 to 4 ft., \$1.00; 3, \$2.85.

**Goldentwig Dogwood (*Cornus Stol. Flaviramea*).** 6 to 10 ft. Attractive golden yellow bark. 3 to 4 ft., \$1.00; 3 for \$2.85.

### ELM (*Ulmus*)

**American Elm, Moline Type (*Ulmus Americana Molini*).** 80 to 100 ft. Exceedingly large foliage. Of upright habit, taking up little room. Splendid tree for the street or for small yards. Rapid grower.

**Chinese or Siberian Elm (*Ulmus Pumila*).** 75 ft. On account of its rapid growth, resistance to disease and ability to thrive in almost any situation, this variety is already one of the most popular shade and street trees in America. A tree of rare beauty with small, dark green foliage.

Height	Caliper	Each	3 for
8 to 10 ft.	1 to 1¼ inch	\$4.75	\$13.50
8 to 10 ft.	1¼ to 1½ inch	5.50	15.45
8 to 10 ft.	1½ to 1¾ inch	6.50	18.50
10 to 12 ft.	1¾ to 2 inch	7.50	21.00

Larger sizes, prices on application.

### FIREBUSH OR FLOWERING QUINCE

**Cydonia Japonica.** 4 to 5 ft. Very showy in April when its branches are covered with brilliant orange scarlet flowers, followed by yellowish green, quince-shaped, fragrant fruits. 18 to 24 in., \$1.10; 3 for \$2.95; 10 for \$9.00.

### GOLDEN BELL (*Forsythia*)

**Showy Border Golden Bell (*F. Intermedia Spectabilis*).** 6 to 8 ft. Considered the best of the Forsythias on account of its larger and richer yellow blossoms, which completely cover the wide spreading branches in early spring. 3 to 4 ft., \$1.25; 3, \$3.60; 10, \$11.00.

**Spring Glory.** 5 to 8 ft. The loveliest of all Golden Bells and the most prolific, its attractive large pale yellow flowers completely covering the bushes in early spring. 2 to 3 ft., \$1.50; 3, \$4.00.

### HYDRANGEA

**Peegee Hydrangea (*H. Paniculata Grandiflora*).** 8 to 10 ft. Immense panicles of bloom a foot long, white turning to rose, commencing to bloom in August. 18 to 24 in., \$1.10; 3, \$2.95; 10, \$9.00.

**Snowball Hydrangea (*H. Arborescens Grandiflora*).** 4 ft. Large, flat heads of snow-white flowers in June and July. Thrives in shade. 18 to 24 in., \$1.25; 3 for \$3.30; 10, \$10.00.

### HONEYLOCUST (*Gleditsia*)

**Thornless Honeylocust (*G. Triacanthos Inermis*).** 50 to 70 ft. A large, vigorous tree with spreading branches, thornless or nearly so, and handsome feathery fern-like leaves. Good for yard or street planting and will withstand the dust and smoke of the city well. Thrives in any soil and will endure drought. 8 to 10 ft., 1 to 1¼ in. caliper, \$4.75; 3, \$13.50; 8 to 10 ft., 1¼ to 1½ in. caliper, \$5.50; 3, \$15.45; 8 to 10 ft., 1½ to 1¾ in. caliper, \$6.50.

**Moraine Locust. (Patent No. 836).** 80 to 100 ft. New. A near-perfect shade or street tree. It is a selected form of the Honeylocust that is thornless and seedless and grows more rapidly, as fast as the soft maple or Chinese elm, but is definitely hard wooded. We highly recommend it. 5 to 6 ft., \$6.00.

### HONEYSUCKLE (*Lonicera*)

**Bush Honeysuckle, 9 to 10 ft.** One of our best shrubs for screen and border planting. Pink or White. 2 to 3 ft., 90c; 3 for \$2.40; 10, \$7.50; 3 to 4 ft., \$1.15; 3, \$3.30; 10, \$9.00.

**Zabel Red Honeysuckle (*L. Korolkowi Zabeli*).** 10 ft. A dense upright shrub. This variety produces a grand display of red flowers in spring followed by red fruits in summer. It is probably the darkest colored bush honeysuckle. We consider Zabeli one of the really worthwhile recent introductions. 2 to 3 ft., \$1.00; 3 for \$2.85; 3 to 4 ft., \$1.25; 3 for \$3.45; 10 for \$11.00.

### MAPLE (*Acer*)

**Columnar Norway Maple (*Acer Platanoides Columnare*).** 50 to 60 ft. Compact columnar form of the Norway Maple. 8 to 10 ft., 1¼ to 1½ in., \$9.50; 8 to 10 ft., 1½ to 1¾ in., \$12.00.

**Norway Maple (*Acer Platanoides*).** 50 to 75 ft. A large and handsome tree with spreading branches and compact, round head. Broad, dark green foliage, fading with tones of yellow and gold in autumn. 8 to 10 ft., 1 to 1¼ in. caliper, \$6.50; 3, \$18.45; 8 to 10 ft., 1¼ to 1½ in., \$7.50; 3 for \$21.45.

**Schwedler Maple (*Acer Platanoides Schwedleri*).** 40 to 60 ft. Gleaming red and purple leaves in spring, changing to dark green during summer. 8 to 9 ft., non-branched, \$5.00; 3 for \$14.25.

### LILAC SPECIES

**Common Purple Lilac (*Syringa Vulg. Purpurea*).** 12 to 15 ft. The old-fashioned Lilac. It is hardy and vigorous, endures neglect and blooms abundantly. Purple flowers early in May. 2 to 3 ft., \$1.00; 3, \$2.75; 10, \$8.50; 3 to 4 ft., \$1.25; 3 for \$3.60.

**Persian Purple (*Syringa Persica*).** 8 to 10 ft. The most graceful and freely flowering of the Lilacs and one of the most beautiful hedge and screen plants in existence. The leaves are long and narrow; the branches drooping and willowy; and the purple-lavender flowers, in loose panicles, come in such profusion that they completely cover the plants. 2 to 3 ft., \$1.00; 3, \$2.75; 3 to 4 ft., \$1.35; 3, \$3.75; 10, \$12.00.

**Tree Lilac (*Syringa Japonica*).** 15 to 20 ft. The last of the Lilacs to bloom, bearing its small creamy-white flowers in misty upright clusters from 12 to 18 inches long in June and July. 2 to 3 ft., \$1.50; 3 for \$4.20; 3 to 4 ft., \$1.75; 3 for \$4.80.

### FRENCH HYBRID LILACS (*Syringa*)

**Belle de Nancy.** Double. Large satiny rose showing some white towards the center. Free blooming; extra fragrant. 3 to 4 ft., \$2.75; 3 for \$7.50.

**Charles Joly.** Double flowers of dark wine-red with silvery reverse. 3 to 4 ft., \$3.00; 3 for \$8.25.

**Charles X.** Magnificent trusses of single, reddish-purple flowers. Fragrant; free flowering; strong grower. 3 to 4 ft., \$2.75; 3, \$7.50; 4 to 5 ft., \$4.00; 3, \$11.25.

**Ludwig Spaeth.** Immense clusters of single, deep purplish red flowers. 2 to 3 ft., \$2.50; 3 for \$6.75; 3 to 4 ft., \$4.00.

**Marie Legraye.** Its large, single, pure white flowers are borne in very large panicles and are very beautiful. Blooms profusely and is a fine cut-flower variety. 2 to 3 ft., \$2.25; 3, \$6.00; 3 to 4 ft., \$2.75; 3, \$7.50.

**Mme. Lemoine.** Double pure white in large clusters. Strong grower. 2 to 3 ft., \$2.25; 3, \$6.00; 3 to 4 ft., \$2.75; 3, \$7.50.

**Pres. Grevy.** Large compact clusters of double flowers of very fine blue. 3 to 4 ft., \$2.75; 3, \$7.50.

**Vestale.** Perfectly shaped, single white. 2 to 3 ft., \$2.25; 3, \$6.00; 3 to 4 ft., \$2.75; 3, \$7.50.

### MAIDENHAIR TREE

**Ginkgo Biloba.** 50 to 60 ft. Highly ornamental tree of upright growth but with peculiar spreading branches. The leaves are fan-shaped, of deep green color, turning golden yellow in fall. Especially valuable in that it is immune to ordinary attacks of insects and withstands so well the unnatural conditions of our cities. 6 to 8 ft., 1¼ to 1 in. caliper, \$5.00; 8 to 10 ft., 1 to 1¼ in. caliper, \$6.00.

### DWARF NINEBARK

**Physocarpus Monogynus.** 5 ft. One of our finest low-growing hedge plants. Dense, upright growth, it requires little shearing. The leaves are small, three to five lobed, and in color are a dark, glossy green. Ideal for growing in shady places or in full sun. 2 to 3 ft., \$1.00; 3, \$2.85; 10, \$9.00.



WINTER CREEPER (*Euonymus Vegetus*)

**MOCK ORANGE (Philadelphus)**

**Common Mock Orange.** The free flowering single white found in the old-fashioned gardens. Of rapid growth, forming a large bush. 3 to 4 ft., \$1.10; 3, \$2.95; 10, \$9.00; 4 to 5 ft., \$1.25; 3, \$3.45. **Virginalis.** 7 to 8 ft. One of the most beautiful shrubs grown. In June the plants appear as a huge bouquet, being completely covered with extra large, single and semi-double flowers that are pure white and sweet-scented. It has a long blooming season, the new wood producing large individual flowers often 3 inches across, throughout the summer. 3 to 4 ft., \$1.75; 3, \$4.80; 4 to 5 ft., \$2.00; 3, \$5.55.

**PRIVET HEDGES**

**Amur Privet (Ligustrum Amurense).** 12 ft. One of the best hardy hedge plants. 2 to 3 ft., 50c; 10, \$4.00; 100, \$35.00; 3 to 4 ft., 60c; 10, \$5.00; 100, \$40.00.

**PRUNUS (Almond or Plum)**

**Pink Flowering Almond (P. Glandulosa Sinensis).** 4 to 6 ft. These bushy shrubs never fail to produce in early spring, before leaves appear, a profusion of small very double pink roselike flowers that are closely set along the branches. 2 to 3 ft. \$1.50; 3 for \$4.00.

**Siberian Flowering Almond (P. Nana).** 3 ft. Bright rosepink flowers on dwarf bushes in early spring. Small almond fruits add interest in summer to this hardy shrub. The slender, dark green leaves change to bright orange and red in Fall. 18 to 24 in., \$1.00; 3 for \$2.85.

**ROSA MULTIFLORA-FENCE ROSE**

6 to 8 ft. The white or light pink, flowers mature into bright red berries which attract game and song birds. The shrub is armed with sharp thorns and makes a stock tight hedge as wide as tall. Seedlings. 12 to 15 in., ¼ in. caliper at crown, 50 for \$7.00; 100 for \$12.00; 500 for \$50.00

**EVERBLOOMING SPIRAEA**

**Spiraea Froebeli.** 3 ft. Round, flat clusters of rosy-pink flowers from June to October. Beautiful foliage all season. One of our best low growing shrubs for general use and for flowering hedges. 18 to 24 in., 90c; 3 for \$2.55; 10, \$8.00; 24 to 30 in., \$1.00; 3 for \$2.75; 10, \$8.50.

**SNOWGARLAND (Spiraea Arguta)**

4 to 5 ft. A remarkable floriferous and showy shrub. Leaves narrow, bright green fading with tones of yellow and orange in fall. The flowers are small, pure white, and borne in early spring in such great profusion that the whole shrub appears laden with snow. 3 to 4 ft., \$1.00; 3, \$2.85; 10, \$8.50.

**SNOWBALL**

**Gardenia-scented Snowball (Viburnum Burkwoodi).** 5 ft. This garden aristocrat is fast growing, semi-evergreen and bears its very fragrant, waxy, pinkish-white flowers in round, domed clusters in early spring. Foliage is rich, glossy green, brilliantly tinted in autumn. Pot grown plants, \$3.50.

**Old-Fashioned Snowball (V. Opulus Sterile).** 8 to 10 ft. Large balls of white flowers in May. 2 to 3 ft., \$1.35; 3, \$3.75; 4 to 5 ft., \$1.90; 3, \$5.25.

**WINTERCREEPER (Euonymus)**

**Bigleaf Wintercreeper (Euonymus Radicans Vegetus).** This hardy evergreen trailer has round leaves and is sometimes called "Evergreen Bittersweet" on account of its gorgeous red berries, which are resplendent all winter against a rich deep evergreen foliage. Makes a useful ground cover or will climb on brick or stone. 15 to 18 in. \$2.50; 3 for \$6.75.

**Purpleleaf Wintercreeper (E. Radicans Colorata).** Named for its winter foliage. Plant an excellent ground cover; glossy green in summer. 3 inch pots, 90c; 3 for \$2.50.

**Grapes**

Prices, 2-yr. No. 1, each, 75c; 3 of one kind for \$1.75; 10 for \$5.00.

**Concord (Black).** The most popular grape in America. Large, handsome bunches of large, luscious berries; juicy, sweet and tender. Very productive.

**Caco (Red).** The most beautiful of the hardy grapes. Bunches large and compact, fruit sweet and palatable weeks before fully ripe.

**Fredonia (Black).** The earliest good black grape, ripening about three weeks before most varieties. Clusters medium; berries large, of every good quality.

**Portland (White).** This is the earliest of all grapes. Large bunch and berry; flesh sweet, juicy and of fine color. Vine hardy, vigorous and productive over a wide area.

**SPECIAL OFFER No. 230.** One each of grapes—Caco, Concord, Portland and Sheridan 2 yr. (value \$3.00) for \$1.95. (Add Postage for 3 lbs.)

**VIBURNUM**

Noted for their Beautiful Autumn Fruits

**Arrow Wood (Viburnum Dentatum).** 10 to 12 ft. Of upright habit; dark green foliage which changes to purple and red in autumn. White flowers in flat clusters in June; dark blue fruits in autumn. Succeeds in shade. 2 to 3 ft., \$1.00; 3, \$2.70; 3 to 4 ft., \$1.25; 3, \$3.30.

**Wayfaring Tree (Viburnum Lantana).** 15 ft. Large robust shrub with soft, heavy leaves, silvery beneath. Clusters of white flowers in May succeeded by red fruit, turning black in autumn, retains its foliage very late. 2 to 3 ft., \$1.00; 3, \$2.70; 3 to 4 ft., \$1.25; 3, \$3.30.



GARDENIA-SCENTED SNOWBALL

*Vaughan's Evergreens*

All Prices Are F. O. B. Our Nurseries, Western Springs, Ill.

When Personal of Selection of Stock is made, We charge for According to Its Value.

**ARBORVITAE (Thuja)**

**Douglas Pyramidal Arborvitae (T. Occidentalis Douglasi Pyramidalis).** Glossy green pyramid with fronds somewhat curled. 3 to 3½ ft., \$5.75; 3½ to 4 ft., \$6.50; 4 to 4½ ft., \$7.50.

**Globe Arborvitae (T. Occidentalis Globosa).** A round, compact form with deep green foliage. 24 in., \$4.50; 30 in., \$5.50.

**Pyramidal Arborvitae (T. Occidentalis Pyramidalis).** A compact, narrow pyramidal tree. 4 to 4½ ft., \$7.50; 4½ to 5 ft., \$8.50; 5 to 5½ ft., \$9.50; 5½ to 6 ft., \$10.50.

**JUNIPER (Juniperus)**

**Andorra Juniper (J. Horizontalis Plumosa).** Of prostrate habit; foliage bright green in summer, rich reddish purple in winter. 18 in., \$6.00; 3½ to 4 ft., \$10.50; 4 to 4½ ft., \$12.50.

**Burk Redcedar (J. Virg. Burki).** An improved form of Silver Redcedar. 6 to 6½ ft., \$18.00; 6½ to 7 ft., \$20.00; 7 to 7½ ft., \$22.50.

**Canaert Redcedar (J. Virg. Canaerti).** Fine Pyramidal form with heavily tufted deep green foliage. 4 to 4½ ft., \$12.00; 4½ to 5 ft., \$14.00; 5 to 5½ ft., \$16.00; 5½ to 6 ft., \$17.50.

**Keteleer Juniper (J. Chin. Keteleeri).** Similar to Canaert Redcedar, but of more open growth and pyramidal habit. 6 to 6½ ft., \$20.00; 6½ to 7 ft., \$22.00; 7 to 7½ ft., \$25.00.

**Pfitzer Juniper (J. Chin. Pfitzeriana).** One of the best Junipers. Of broad, bushy growth, with thick, rich green foliage. 18 to 24 in., \$6.50; 2 to 2½ ft., \$8.00; 2½ to 3 ft., \$10.00; 3 to 3½ ft., \$12.50.

**Redcedar (J. Virginiana).** Tall growing, one of the best known evergreens, 5½ to 6 ft., \$10.50; 6 to 6½ ft., \$11.50.

**Savin Juniper (J. Sabina).** A dwarf evergreen with semi-erect spreading branches. 2 to 2½ ft., \$6.50.

**Silver Redcedar (J. Virg. Glauca).** One of our choicest evergreens with attractive blue tinged foliage. 4 to 4½ ft., \$12.00; 4½ to 5 ft., \$14.00; 5 to 5½ ft., \$15.00; 5½ to 6 ft., \$16.50; 6 to 6½ ft., \$18.00; 6½ to 7 ft., \$20.00.

**Von Ehron Savin Juniper (J. Sabina Von Ehron).** Semi-spreading; very dark green foliage. 3 to 3½ ft., \$8.50; 3½ to 4 ft., \$10.50.

**Schott Redcedar (J. Virginiana Schotti).** A dense, conical form with fresh green foliage that does not change in winter. 4½ to 5 ft., \$12.50; 5 to 5½ ft., \$15.00; 5½ to 6 ft., \$17.50.

**VINES FOR FALL PLANTING**

**BITTERSWEET (Celastrus Scandens)**

A native climbing or twining plant with handsome large leaves; yellow flowers in May and June and clusters of ornamental orange-capsuled fruit in autumn. Succeeds well in shade. We recommend planting 2 or more in a group. 2 yr. 85c; 3 for \$1.95; doz., \$7.00; 3 yr., \$1.25; 3 for \$3.45.

**CREEPER (Ampelopsis)**

**Boston Ivy (Ampelopsis Tricuspidata or Veitchei).** The grandest hardy climbing vine in existence for covering houses, churches, schools, etc. Its glossy, ivy leaves overlap each other, and its long delicate young shoots stretch up the walls with free and rapid growth. The tendrils at nearly every point cling firmly to the smoothest surface of rock or brick. 2-year, 85c; 3 for \$2.25; doz., \$8.50.

**LARGE-FLOWERING CLEMATIS**

**Henryi.** Pure white flowers, usually eight-petaled, 4 to 6 inches in diameter and pure white. Very hardy. 2 yr. \$1.35.

**Jackmani.** This variety, with its strong, healthy growth, hardy nature and rich, deep velvety purple flowers, is the most satisfactory of its class. 2 yr. \$1.35.

**Mme. Edward Andre.** Beautiful bright velvety red, free-flowering and continuous bloomer. 2 yr., \$1.35.

**Gold Medal Collection.** One 2-yr. old, root each, Jackmani, Henryi and Mad. Edward Andre, \$3.50. (Add postage for 1 lb.)

**DUTCHMAN'S PIPE**

**Aristolochia Siphon.** A vigorous and rapid-growing climber, bearing striking brownish colored flowers, resembling a miniature pipe in shape. Its large, dark green heart-shaped leaves give a tropical foliage effect and produce a splendid shade. It thrives in sun or shade. 2 yr., grafted, \$2.00.

**HONEYSUCKLE (Lonicera)**

**Everblooming Honeysuckle (Lonicera Heckrodti).** Remarkable for large size and distinct appearance of its flowers, crimson-carmine without and golden apricot inside. They are very beautiful and fragrant and are in bloom from the middle of June until frost. 2 yr., \$1.10; 3, \$3.00.

**PINE (Pinus)**

**Austrian Pine (P. Nigra).** A good tree for city planting. A distinctive variety with stout spreading branches and long rich green needles. 5 to 5½ ft., \$18.00; 5½ to 6 ft., \$25.00.

**Mughu Pine (P. Mont. Mughus).** Good low growing evergreen. 18 in., \$5.50; 3 for \$15.45; 2 ft., \$6.50; 2½ ft., \$8.50.

**SPRUCE (Picea)**

**Norway Spruce (P. Excelsa).** A pyramidal tree of rapid growth and dark green foliage. 2 to 2½ ft., \$3.75; 2½ to 3 ft., \$4.50; 3 to 3½ ft., \$5.50; 3½ to 4 ft., \$6.50.

**Colorado Blue Spruce (P. Pungens Glauca).** Very showy, rich silvery blue foliage. 2½ ft., \$12.00; 3 ft., \$13.50; 3½ ft., \$16.00.

**Colorado Green Spruce (Picea Pungens).** The abundance of heavy rich green foliage makes this variety a most impressive and popular evergreen. Splendid for specimen planting. 2 to 2½ ft., \$7.00; 2½ to 3 ft., \$7.75; 3 to 3½ ft., \$9.00; 3½ to 4 ft., \$10.50; 4 to 4½ ft., \$12.00.

**YEW (Taxus)**

**Spreading Yew (T. Cuspidata).** Of dense, spreading growth, with heavy, dark green foliage. 18 in. \$7.50; 2 ft., \$10.00; 2½ ft., \$12.50; 3 ft., \$17.50.

**Upright Yew (T. Cusp. Capitata).** An upright or pyramidal form with glossy, deep green foliage. 2 ft., \$9.50; 2½ ft., \$14.00; 3 ft., \$18.50; 3½ ft., \$22.50; 4 ft., \$30.00.

**Hick's Yew (T. Media Hicksi).** A distinct columnar form with rich, deep green foliage. 2½ ft., \$10.00; 3 ft., \$14.00; 3½ ft., \$18.50; 4 ft., \$22.50; 4½ ft., \$25.00; 5 ft., \$30.00.

We have a large assortment of the most popular and meritorious ornamental shrubs, shade trees, evergreens, vines and fruit trees. If you wish stock not listed in this catalogue or stock in large sizes, send us your list for quotation or ask for "Nursery Price List," ready about Oct. 1st.

# Supplies for Fall and Winter Garden

## Special Chemical Aids

### ROOTONE

A hormone powder easy to use, which stimulates root development. No skill is needed to apply, just dip and plant. Price, ¼ oz. pkg., 25c; 2 oz. jar, enough to treat 3,000 cuttings, \$1.00; 1 lb. jar will treat up to 30,000 cuttings, \$5.00.

Rootone No. 10. For rooting of Azaleas, and other woody cuttings. 2 oz. jar, \$2.00; 1 lb. can, \$10.00.

Write for leaflet; all postpaid.

### FRUITONE

The hormone spray for stopping pre-harvest drop. 2/5 oz. pkt., 25c; 2 oz., \$1.00; 8 oz., \$2.00.

### ROSETONE

Vitamin and Hormone combination for Roses. ½ oz., 25c; 3 oz., \$1.00.

### TRANSPLANTONE

For treatment of transplants of all kinds it contains the root forming hormones and Vitamin B-1. ½ oz., 25c; 3 oz., \$1.00; 1 lb., \$4.00.

## Floralife Keeps Cut Flowers Longer

Just stir patented Floralife into vase of water. More than doubles life of florist or home grown bouquets. Maintains color and fragrance. Acts like magic Floralife also stimulates; makes buds open wide and expands size of blossoms. No need to change water or re-clip stems. Fully guaranteed. 3 packets (each packet treats two quarts water) 25c.

An excellent gift to all flower lovers and hospital patients, contains 15 colorful packets, \$1.00... 30 qt. economy Handy-Home box, \$1.00; 100 qt. size big drum, \$3.00; postpaid \$3.25.

## Magic Soil Substitute for Starting Plants

TERRALITE is a prepared form of vermiculite, cleansed of all impurities which might injure plants, and of the correct sizes for horticultural use. Completely sterile, and free of all organisms which might cause damping off, it is one-tenth the weight of soil and has remarkable ability to retain both water and air; both of which are vital to plant growth.

In addition to being an unsurpassed medium for starting seeds and rooting cuttings, it is effective as a soil conditioner.

Material is made in three grades, coarse for base or foundation; medium, for the center layers, and fine for using on the surface of seed starters.

Prices, ½ peck bag, 40c; ½ bushel bag, 90c; 1 bushel bag, \$1.95. All shipped by express, charges collect.



**Glass Wool.** Protection and perfect mulch for your prized Plants and Shrubs, has been proved superior to all other mulches for the winter protection of plants. A snowy white blanket composed of extremely fine glass fibres, put up in bates, 24" x 96" in size and are an approximate 1½ inches thick at 2½ lbs. per cubic ft. density. Price, per bat \$1.25; three for \$3.30; carton of 12, \$12.00.

**GLAZING POINTS, Vaughan's Perfection.** No rights or lefts. No. 2, small, single thick glass; No. 2½, double thick, for greenhouse and skylights. Per lb. (approximately 900), 75c; postage extra.

**Siebert's Improved,** ½ and ¼, price per lb., 75c.

**THERMOMETERS.** White Porcelain, 8-inch. Each, \$1.50.

**Tin Case,** standard grade tested, 12-inch. Each, \$3.25.

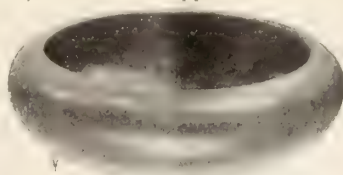
**Hotbed,** all glass heavy point, \$1.35.

**Self-Registering** with magnet to set it, 8-inch, registers highest and lowest temperature. Each, \$10.00.

LABELS, Wooden, for Pots.	Per 100	1000
4 in., painted.....	\$0.65	\$3.25
6 in., painted.....	.80	4.65
Tree (copper wired) 3½ in.....	.80	4.65

## Bowls for Growing Bulbs

BULBS which are easily forced in bowls are described and illustrated on Pages 11 and 13. Attractive and inexpensive floral decorations for the living room and sunparlor can be produced by anyone who will follow the simple directions supplied.



### F. L. STYLE BOWLS

(Not illustrated) A pottery with slightly rolled top in matt green, blue or jet black glaze finish. Prices: 6-inch (wt. 2 lbs.), 75c; 7-inch (wt. 3 lbs.), 95c; 8½-inch (wt. 4 lbs.), \$1.10.

For parcel post delivery add 10c per bowl postage.

### PEARL CHIPS AND EULB FIBRE

Pearl Chips, white, per lb., 10c; 10 lbs., 70c. Colored, per lb., 15c; 10 lbs., 85c; add 10c per lb. for postage.

### Vaughan's Prepared Fibre

For Growing Bulbs in Bowls, without Drainage. Per lb. 25c; 3 lbs., 65c; 10 lbs., \$1.35; add 10c per lb. for postage.



**Lawn and Leaf Rake.** Durably made of 20 genuine spring steel tines, 18 in. spread. Handle measure 48 in. Each, \$1.35.

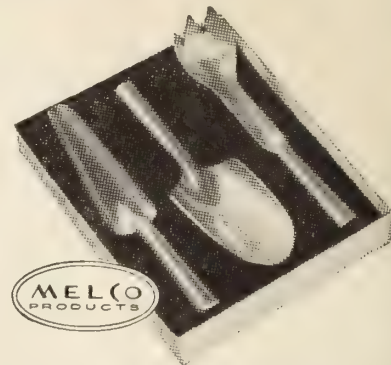


## CLEAN SWEEP LAWN SWEEPER

Save time and energy, eliminate tedious raking, let the quiet sweeper gently sweep leaves, grass, clip-pings, small twigs and paper from your lawn and driveway into a canvas basket with easy action. All castings of special aluminum alloy. Strong, durable and rust-proof. Semi-pneumatic tires. Brush mounted on self adjusting chrome steel bearing. Aluminum alloy caster wheels provide ease of operation. 20 inch. Each, \$27.50. Weight, 30 lbs. 28 inch. Each, \$37.50. Weight 40 lbs.

We prepay all light items listed on this page, and where price does not include delivery, the additional amount required for postage is specially noted. If this amount is not forwarded delivery of such items will be by express, charged collect.

## Gift Suggestion



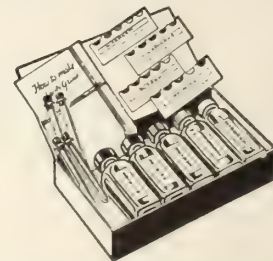
## Melco Polished Feather Light Garden Set

Set of 3 for \$3.95, postpaid \$4.25

Made of cast aluminum as strong as steel, the tools are light as a feather, and moulded to fit your hand. They are absolutely rust-proof, and easily cleaned and polished, so they will be beautiful as well as useful as long as they last, which will be many years. A large trowel, small transplanting trowel, and hand-fork for cultivating are included in the set of three.

## Soil Testers Easy to Use

Home Gardeners' Kit, \$2.50, postpaid \$2.60



This simple, practical, easy-to-use kit is your best insurance of gardening success. Made by the maker of professional field test kits used by nurserymen, grower and greenkeeper throughout the country. Tests for nitrogen, phosphorus, potash and acidity. It will make at least three separate tests for each element. No technical skill required. Results of tests are apparent immediately. The Sudbury Home Gardener's Soil Test Kit, complete with instructions. \$2.50; postpaid, \$2.60.

Testing Fluid for Refill—Specify whether for nitrogen, phosphorus, potash, or acidity. When ordering the above, it requires No. 2 and No. 3 to make Nitrogen Tests, No. 4 and No. 5 for Phosphorus Tests and No. 6 and No. 7 to make Potash Tests, therefore when ordering, please order two numbers. 2 oz., \$1.00; 6 oz., \$2.00, both postpaid.

## Advanced Amateur Kit

\$4.75, postpaid \$5.00

An advanced amateur, or a garden club, 4-H, club or neighborhood group, will find this larger kit invaluable. It is housed in an attractive case of imitation leather and contains sufficient material for many accurate tests, \$4.75; Postpaid \$5.00.

## To Feed Established Trees and Shrubs



**Ross Root Feeder.** Irrigates and feeds at the same time with 12 nutrient cartridges complete, \$3.50. Extra cartridges, carton of 12, \$1.00.



We prepay fertilizer orders within 25 miles of N.Y. City where orders amount to \$5.00 or over.  
 Errata—Prices on fertilizers in our catalogue are F.O.B. Chicago.  
 Following are New York prices.

# Vaughan's High Grade Fertilizers

These Prices Are Subject to Change Without Notice.

## VAUGHAN'S "ROSE GROWER" BONE MEAL

This is a special brand we have put up for our trade. It is ground fine, hence acts quickly. Free from acid and a superb article. It is made from bone accumulated in large slaughter houses, and should not be compared with the Bone Meal made from cattle heads and feet gathered upon the western prairies. Analysis: Nitrogen 3.7 percent; total phosphoric acid, 20 percent. Prices, 5 lbs., 75c; 10 lbs., \$1.25; 25 lbs., \$2.00; 50 lbs., \$3.90; 100 lbs., \$7.50.

**Regular Bone Meal.** 2.47% nitrogen; 20% phosphoric acid. 25 lbs., \$1.90; 50 lbs., \$3.75; 100 lbs., \$7.00.

## Activo. (Formerly called Bacto)

Make your own fertilizer easy, quick—often in as little as three weeks. Just sprinkle on kitchen waste, leaves, garden rubbish, sewage sludge, etc. 5-pound bag makes up to a ton of rich, soil-building organic humus, better than manure. Sprinkle in outdoor toilets; reduces odors, makes easily-handled ash of waste. Prices, 4 oz., 30c; No. 2 size, about 2 lbs., \$1.00; No. 7 size, about 7 lbs., \$2.00; No. 25 size, about 25 lbs., \$6.99. No. 50 size, about 50 lbs., \$11.95.

## Adco Artificial Stable Manure.

Make it yourself, in your own garden. To each ton of straw, hay, corn-stalks or dried leaves add 150 lbs. Adco to make four tons of fresh or three tons of rotted manure. Adco contains nothing injurious to health or harmful to animal or plant life. Shipments accompanied by full directions. Prices, 5 lbs., \$1.25; 20 lbs., \$3.00; 150 lbs., \$12.00.

**Agrico.** Specially formulated for lawns, trees and shrubs. Provides ALL the needed plant foods—stimulating quick growth in early spring—providing slowly available plant food all season long. 6-10-4. Prices, 5 lbs., 45c; 10 lbs., 80c; 25 lbs., \$1.60; 50 lbs., \$2.65; 100 lbs., \$4.75.

**Agrico Garden Fertilizer. 5-10-5.** 5 lbs., 45c; 10 lbs., 80c; 25 lbs., \$1.60; 50 lbs., \$2.40; 100 lbs., \$4.25.

## Agrico for Broadleaf Evergreens.

Agrico for Broadleaf Evergreens not only supplies the right balance of all the needed plant foods, but one that also builds up soil acidity, which is essential for best growth. It is specially formulated to do both jobs properly. Apply Agrico for Broadleaf Evergreens in early Spring, at the rate of 3 lbs. per 100 sq. ft. For flowering plants, make a second application of 1 to 2 lbs. per 100 sq. ft., as soon as buds begin to appear. 10 lbs., \$1.10; 25 lbs., \$2.10; 50 lbs., \$3.40; 100 lbs., \$5.50.

**Aluminum Sulphate.** For creating acid condition in the soil. Prices, 5 lbs., 50c; 10 lbs., 80c; 25 lbs., \$1.50; 50 lbs., \$2.60; 100 lbs., \$4.75.

**Ammonium Sulphate.** 20.6% nitrogen. Prices, 5 lbs., 60c; 10 lbs., \$1.00; 25 lbs., \$1.75; 50 lbs., \$3.25; 100 lbs., \$6.25.

**BONE, Raw Ground.** Excellent material for vine borders or greenhouse benching. Also all bulbs, indoors and outside. Fine for roses. High analysis. Prices, 25 lbs., \$2.00; 50 lbs., \$3.90; 100 lbs., \$7.50.

## Cow Manure Dehydrated

**(Bovung).** Manufactured by special process from selected fresh cleanings from cattle pens. There is no offensive odor, and when spread on lawn and garden it works down into the soil so that there is no refuse to blow about or be raked off when the growing season begins. 25 lbs., \$1.75; 50 lbs., \$2.50; 100 lbs., \$4.25; 500 lbs., \$19.00.

## TERRA LITE

Is a prepared form of vermiculite, cleaned of all impurities which might injure plants, and of the correct size for horticultural use. This remarkable material has proved to give almost magical results as a substitute for soil in starting seeds and rooting cuttings. Price, 2 bu. bag, \$2.15; 1/2 bu. bag, 90c; 4 qt. bag, 50c.

**Armours Special Ornamental Fertilizer. 10-6-4.** Especially prepared for lawns, trees, shrubs and flowers. 100-lb. bags only, \$6.50 each.

**Blood, Dried.** For top-dressing, for mixing with the soil, and for applying in liquid form, it is one of the best and safest nitrogenous fertilizers. It is splendid for roses, carnations, chrysanthemums and all kinds of pot plants. Prices, 5 lbs., \$1.00; 10 lbs., \$1.75; 25 lbs., \$3.25.

**Bulb Food.** Potash where potash is needed (5-6-15). For Dahlias, Lily, Gladiola, etc. 5 lbs., 75c; 10 lbs., \$1.25; 25 lbs., \$2.75; 100 lbs., \$9.00.

**Crystal Urea.** A highly concentrated inorganic fertilizer containing 46 percent available nitrogen, clean, odorless, stainless, for flowers, vegetables, berries, shrubs, lawns, ornamental and fruit trees; 92 times stronger than manure. Prices, 5 lbs., \$1.00; 10 lbs., \$1.75; 25 lbs., \$3.75; 50 lbs., \$5.50.

**Premier-nure.** Nature's own fertilizer, is an ideal plant food combining poultry and cow manure with peat moss. Clean, soft and easy to use. 50 lb. bag will top dress 1000 square feet of lawn, or feed up to 500 square feet of garden area. Prices, 7 1/2 lb. bag, 60c; 50 lb. bag, \$2.25 each; 5 to 19 bags of 50 lbs., \$2.00 each.

**Hy-Gro. 13-26-13.** The soluble plant food. The ideal plant food for starter solution and most economical way of feeding plants. 1 tablespoon to a gallon of water will feed 20 plants for six weeks. 3 oz., 30c; 20 oz., \$1.00; 2 lbs., \$1.25; 10 lbs., \$4.50.

**Hyponex Plant Food.** For growing plants in sand, soil or water. One teaspoonful will make a gallon of complete plant food. 1 lb. will make 100 gallons. Prices, 3 ozs., 30c; 7 ozs. 50c; 1 lb., \$1.00; 10 lbs., \$8.00.

## SHEEP MANURE

This is a pure, natural Manure, and its effect is immediate; it is excellent for mixing with the soil for greenhouse plants—one part manure and six parts soil. Strawn over and dug into the vegetable garden or placed directly in drills or hills, it promotes a rapid, steady growth until maturity. It makes the richest, safest and quickest Liquid Manure. For use in liquid form, one pound to five gallons of water will make a liquid which can be used with safety daily if necessary. 25 lbs., \$1.50; 50 lbs., \$2.50; 100 lbs., \$4.00; 500 lbs., \$18.00.

**New Plant Life** is that scientifically discovered liquid life restorer which has for a quarter of a century demonstrated in homes everywhere, growth and bloom far beyond the housewife's fondest expectation. 3 oz., 25c.

**Peat Moss, Granulated.** (Irish when available). A moisture-retaining humus, an important aid in saving soil fertility, better than manure. Large bale each, \$6.00, 5 for \$28.75.

**Plantabbs.** The high analysis plant food tablet containing the proper amount of Vitamin B1. Prices, box of 30 tablets, 25c; box of 75 tablets, 50c; box of 200 tablets, \$1.00; can of 1000 tablets, \$3.50.

**Rose Food.** An organic, no filler, 100% plant food of dried blood, fish scrap, bone meal, potash, cottonseed meal and phosphate. This is a special mixture for growing roses and is a balanced, all-purpose fertilizer which can be used on all flowers, shrubbery, etc. 5 lbs., 75c; 10 lbs., \$1.25; 25 lbs., \$2.75; 100 lbs., \$9.00.

**Sacco Plant Food 4-12-4** The complete all purpose plant food for lawns, flowers, trees, shrubs and gardens. 5 lbs., 50c; 10 lbs., 90c; 25 lbs., \$1.50; 50 lbs., \$2.75; 100 lbs., \$3.95.

**Super Phosphate.** 18%-20% available. Used on grain crops and others requiring an excessive amount of phosphoric acid. Prices, 5 lbs., 45c; 25 lbs., \$1.25; 50 lbs., \$2.00; 100 lbs., \$3.00; 500 lbs., \$13.00.

**"Trace L"** a complete plant food (8-16-7) containing 15 essential elements in guaranteed amounts. (Nitrogen, phosphorus, potassium, calcium, magnesium, iron, sodium, sulphur, manganese, zinc, boron, iodine, copper, molybdenum, cobalt). The new complete, balanced, soluble plant food, one teaspoonful in a gallon of water, treats 100 square feet. Use for house plants, gardens, lawns, shrubs, etc. 1/2 lb., 65c; 1 lb., \$1.00; 15 lbs., \$9.00.

**Wedo (6-10-4 with 2, 4-D).** The double acting lawn food, kills weeds feeds grass. 25 lbs., \$2.75; 50 lbs., \$4.95; 100 lbs., \$7.95.

**Vigoro.** Is a specially prepared plant food. It contains all the elements necessary to grow flowers, lawns, vegetables, shrubbery and trees. Complete directions in every bag. Prices, 5 lbs., 50c; 10 lbs., 90c; 25 lbs., \$1.60; 50 lbs., \$2.65; 100 lbs., \$4.25.

We prepay fertilizer orders within 25 miles of New York City where orders amount to \$5.00 or over.

# Fertilizers and Insecticides

## FERTILIZERS (F. O. B. Chicago)

Fertilizer prices include delivery within 25 miles of Chicago on 25, 50, and 100 lb. lots. On larger quantities than 100 lbs., owing to close quantity prices, the customer pays all freight or express charges.

**ADCO ARTIFICIAL STABLE MANURE.** Make it yourself, in your own garden. To each ton of straw, hay, cornstalks or dried leaves add 150 lbs. Adco to make four tons of fresh or three tons of rotted manure. Shipments accompanied by full directions. 5 lbs., \$1.25; 20 lb. bag, \$2.90; 150 lbs., \$14.50.

**ACTIVO.** Make your own fertilizer from waste materials with Activo. No. 2 size treats 450 lbs. compact price, \$1.00. No. 7 size treats 1800 lbs. price, \$2.00. No. 25 size treats up to three tons price, \$6.79; 50 lbs., \$9.95.

**ARMOUR VERTAGREEN PLANT FOOD.** Verta-green is a high quality blended and balanced plant food for lawns, flowers shrubs, trees and garden vegetables. Price, 10 lb. bag, 90c; 25 lb. bag, \$1.60; 100 lb. bag, \$4.25.

**BONE MEAL, "Regular Grade."** 5 lbs., 75c; 10 lbs., \$1.25; 25 lbs., \$2.85; 50 lbs., \$3.45; 100 lbs., \$6.35

**CATTLE MANURE (Shredded).** Utilizer for all general purposes. If applied to the lawn in the fall it protects grass roots through the winter. As easy and clean to handle as grain. Price: 50 lbs., \$2.25; 100 lbs., \$3.50; 500 lbs., \$13.75; 1,000 lbs., \$26.00



**LOMA.** A plant food for lawns, flowers, vegetables, shrubbery and potted plants. Rich in nitrates, phosphate and potash; contains no filler. Price, 5 lbs., 45c; 10 lbs., 85c; 25 lbs., \$1.75; 50 lbs., \$2.75; 100 lbs., \$4.50.

**HY-GRO.** High analysis Soluble Plant Food contains 13% Nitrogen, 26% Phosphorus and 13% Potash, plus all the minor chemical elements. Price, 3 oz., 30c. Postpaid, 40c; 20 oz., \$1.00; postpaid, \$1.10.

**MILORGANITE.** A plant food free of weeds provides plant food over a long period. 25 lbs., \$1.35; 50 lbs., \$2.15; 100 lbs., \$3.50; 500 lbs., \$15.00.

**SHEEP MANURE (Pulverized).** Excellent for mixing with soil for greenhouse plants; one part manure and six parts soil. 5 lbs., 40c; 10 lbs., 70c; 25 lbs., \$1.45; 50 lbs., \$2.10; 100 lbs., \$3.50; 500 lbs., \$13.00; 1000 lbs., \$25.00; ton, \$49.00.

**VIGORO.** Complete Plant Food. Supplies in balanced form the eleven vital plant food elements for hardy, beautiful plants. Clean, odorless, sanitary, and easy to use. Vigoro has brought gardening success to millions of home owners everywhere. Price, 5 lbs., 50c; 10 lbs., 90c; 25 lbs., \$1.60; 50 lbs., \$4.25.

**VAUGHAN'S SPECIAL LAWN, TREE AND SHRUB FOOD.** 10% nitrogen 8% available phosphoric acid, 6% potash. Excellent for all types of shade trees and evergreens. For shade trees apply in holes drilled 16 inches deep and 2 feet apart under drip of outside branches at rate of 3/4 pound for each foot in height of tree up to 50 lbs. per tree. For evergreens use 1/2 pound per foot in height of tree, and work into surface soil. 25 lbs., \$2.25; 100 lbs., \$4.95.

## SPECIAL BALANCED ROSE FOOD

(ALL ORGANIC). 5-7-4. An organic, no filler, 100% Plant Food of Dried Blood, Fish Scraps, Bone Meal, Potash, Cottonseed Meal and Phosphate. This is a special mixture for growing roses and is a balanced, all purpose fertilizer which can also be used on all flowers, shrubbery, etc. This type mixture has been used by commercial growers and florists for many years and has given excellent results. Price, per 5 lb. bag, 85c postpaid \$1.00; 10 lbs., \$1.45, postpaid, \$1.70; 25 lbs., \$3.00; 100 lbs., \$9.45.



**PEAT MOSS—Granulated.** A moisture retaining humus, an important aid in saving soil fertility. Better than manure. Garden size bale about 25 lbs., \$2.95; bale about 100 lbs., \$5.75

**ORCHID PEAT.** (Fern roots). For Orchids and Azaleas, sack, about 2 bushels, \$5.25.

**Saxolin Duplex Crinkled Waterproof Tree Wrap** For covering the trunks of transplanted and newly set fruit and shade trees. Helps your stock to get off to a healthy start. Rolls, 4 inches wide, about 155 ft to a roll. Weight, about 2 1/2 lbs. Each, 85c; postpaid, 95c; doz., \$8.40.

## FOLDAWAY INCINERATOR

All welded construction, painted green enamel. Ideal for burning leaves, paper, etc. Folds away flat. Height 24 1/2 inches, depth 17 1/2 inches, width 18 1/2 inches. Price each \$2.75.

## INSECTICIDES AND FUNGICIDES

**Weights—**By mail 1/2 pt., 1 lb.; pt., 2 lbs.; qt., 3 lbs.; add 10 cents per lb. for postage; other wise shipment will be by express charges collect.

**AZOFUME 10.** Kills red spiders and mites on evergreens. Price, lb., 80c; postpaid, 90c; 4 lbs., \$2.40

**DRY LIME SULPHUR.** For dormant spraying use 12 to 15 lbs., to 50 gals. water. 1 lb., 30c; 5 lbs., \$1.65; 25 lbs., \$4.50; 100 lbs., \$12.50

**DOGZOFF.** Breaks dogs of bad habits, spray underneath evergreen or shrubs. Price, bottle, 60c

**FLOWERS OF SULPHUR.** For mildew on roses, etc. 1 lb., 15c; 10 lbs., \$1.00; 25 lbs., \$2.00

**KALITE.** Rotenone impregnated dust. 1 lb. pkg., 35c; 4 lb. bag, \$1.00; 25 lb. bag, \$4.50.

**LEMON OIL.** Destroys mealy bug, scale, thrip, red spider, etc. 1/2 pint, 45c; pint, 75c; quart, \$1.25; gal., \$3.50; 5 gals., \$13.00.

**ROTOTEC with 5% D.D.T.** For controlling chewing and sucking insects 4 oz. bottle, \$1.00; pint, \$2.75.

**SCALECIDE.** An oil preparation for San Jose scale. Qt., \$1.05; gal., \$2.50; 5 gallons, \$8.45.

**DOG-CHECK.** The ideal repellent. Safe and harmless to use. New formula will permit spraying on new growth. Unaffected by rain, one spraying lasts from two to three weeks. 3 oz., 60c; 8-oz., \$1.00; 32-oz., \$3.00; gallon, \$11.50.

**RAT-NOTS.** Safe way to exterminate rats. Prepared Bait, contains quill. Can be used without fear of harming humans, dogs, live stock, etc. Trial size of 9 Nots, 25c; Estate size, 50 Nots, \$1.00.

## D. D. T. DUST 5%

1 lb., 35c; prepaid, 45c; 5 lbs., \$1.25; prepaid, \$1.50.

## For Home and Summer Camp

### D.D.T. Household Spray

An oil spray for spraying or brushing on screens and porch walls and for general household use. Quart, 65c; prepaid for 75c. Gallon, \$1.85. Shipped by express charges collect

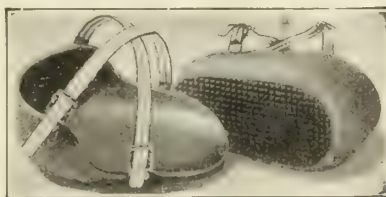


### D.D.T. Aerosol Bomb

When released from the bomb in 5 to 7 seconds, non-poisonous Freon gas impregnated with 3% D.D.T. and 2% pyrethrum completely fills a room, killing insect life and leaving a deadly deposit which will protect from pests for weeks. Aerosol bomb, contents 12 oz., \$1.75; postpaid, \$1.90.

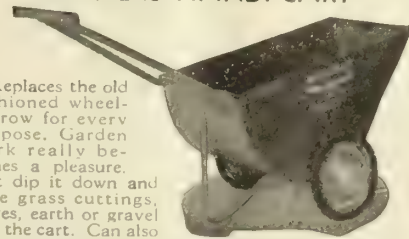
## For Knee Comfort

Knee Pads, \$2.10, prepaid \$2.25



All rubber cushion pads constructed of solid and sponge rubber with adjustable straps; fit any knee, will not slip down. A gift any dirt gardner will welcome

## MASTERS HANDI-CART



Replaces the old fashioned wheelbarrow for every purpose. Garden work really becomes a pleasure. Just dip it down and rake grass cuttings, leaves, earth or gravel into the cart. Can also mix cement right in the cart. No. 18-S, size of wheels 10 in. diameter. Extreme overall width of cart 20 in. Size hopper of body 26 1/2 x 16 x 12 1/2 in. Price each, \$9.45. No. 20-D, size of wheels 10 in. diameter. Extreme overall width of Cart 25 in. Size of hopper body 27 1/2 x 21 x 13 1/2 in. Price each, \$13.45

## No. FS 21. Garden Craft Feeding Station

This is one of the most successful and appreciated bird feeders. It is equipped with a spindle for mounting, and the double weather vane keeps the sheltered end headed into the wind, thus keeping the food dry in rainy or snowy weather.



Size 24x12x12. Shipping weight 16 lbs. Price stained brown, \$ 8.50. Price stained with glass back, \$ 11.25. Erection Post bored for mounting rod, 2.25

## AUTOMATIC BIRD FEEDERS

(Patented)

An economical feeder for all kinds of seeds cracked corn or other small food

If filled with sun flower seeds, it invariably attracts Cardinals, rose-breasted Grosbeaks, Finches and many other large as well as small pretty birds all year around

Birds enjoy swinging with the feeder. Each \$3.00; 3 for \$8.55.



## No. FS. 10. Garden Craft Bird Feeder

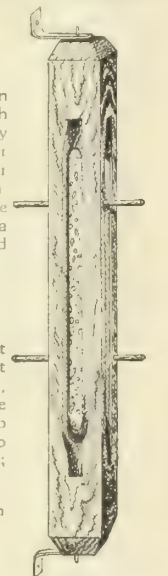
This cleverly constructed feeder will provide endless pleasure and satisfaction for bird lovers. You will be more than repaid for your generosity in providing food for your feathered friends during the early spring, late fall and winter by their appreciation. Size 8x3x10 in. Shipping weight 3 lbs. Price, \$2.50; postpaid, \$2.60.



Erection pole with arm, \$1.35. (Not mailable)

## New Improved Longfellow Feeder

17 1/2 x 3 x 3 in. Newest and best in this type feeder. Provided with "Easy Up" Brackets to quickly attach anywhere to window side or sill, storm sash or tree, or post, or hang with wire from a branch. Including Suet Cylinder. Price each \$1.50, postpaid \$1.75. Extra Refills 50c per cylinder; postpaid 60c; doz. cylinders for \$5.40.



## RODENT ROCKETS

Novel, effective destroyers; light like a roman candle and blitz out whole families of gophers, moles, rats, field mice, ants, etc., at one "shot." Safe sure, efficient aids to hunters in "un-treering" holed-up woodchucks, raccoons, etc. 2 for 25c; dozen, \$1.20.

Write for Price and Leaflet on Power Lawn Mowers.

## MASTERS FERTILIZER and SEED DISTRIBUTORS



New microscopic control, "finger tip" action. No. 25S, 20 lb capacity, steel wheels. A good low priced, sturdy spreader. Price each, \$7.50; rubber tires, \$8.50. No. 30, 50 lb. capacity, with rubber tires and rubber grip handles, price each, \$11.35.

Masters Perfect Spreader, heavy duty, No. M241, 24 inch, with steel wheels, price, \$29.25; No. M361, 36 inch, with steel wheels, price, \$39.95; No. 361D, 36 inch with rubber tire wheels, price, \$44.50

## Pointers on Planting Fall Bulbs

The first two months of spring, when garden beauty is most welcome, yet most rare, hardy bulbs supply the dominant flowers. And of all flowers, they offer the easiest, surest success.

Spring flowering bulbs prolong the garden season for a month at least; and in most sections they bloom at a time when all their surroundings are fresh and beautiful; when moisture is ample, weeds have not yet grown, and few if any insects bother them.

The greatest enemy of fall bulbs is poor drainage; they must be planted in locations where water drains away quickly, and if there is any doubt about this, beds should be raised above the surrounding surface sufficiently to insure it.

Bulbs will grow well in any reasonably good garden soil, but it should be well prepared to a depth of at least twelve inches. The depth of planting varies with the kind of bulb, but the depths shown on the accompanying planting chart are minimums, with deeper planting advisable in many cases.

When tulips are to be left for several years without lifting, bulbs should be placed 10 to 12 inches deep, where they will be cooler, will produce fewer "splits" and continue to maintain blooming size for long periods. Use no manure on bulbs unless it has been thoroughly rotted and can be spaded into the ground several weeks previous to planting. A balanced plant food applied to the soil at the rate of 5 lbs. to 100 square feet and spaded into the soil will benefit the bulbs.

The earlier bulbs blossom in the spring, the more important it is to plant them early in the fall, so they will have time to make root growth in their new location. Daffodils and hyacinths especially benefit from early planting.

After the soil has been prepared, bulbs may be planted with a trowel, or by the use of a blunt-end dibber. Avoid using a pointed dibber, or any device which will permit the bulb to be caught by the sides of the hole with air beneath it. The bulb should rest on the bottom with soil packed firmly around it.

What is known as the Dutch method is sometimes followed in planting beds. Soil is thrown out to the proper planting depth, bulbs are then placed where they are wanted and the soil filled in above them. This is a convenient method where a formal pattern is followed in placing the bulbs.

In case of necessity, however, fall bulbs can be planted as late as the ground can be worked. It is a good rule to plant all bulbs as soon as you receive them and you are willing to disturb established beds. Tulips should go in when the leaves fall. When late planting is necessary, cover the bed with a mulch of leaves after the ground has frozen. This will prevent winter thaws, and consequent frost heaving.

After bulbous plants have flowered, their leaves should not be cut or disturbed until they turn yellow, which indicates that the bulbs have ripened.

## Grow a Winter Window Garden

15 Bulbs Including Six Different Subjects With **\$2.50**  
Vaughan's Prepared Bulb Fibre. Prepaid 300 Miles

Most of you know how easy it is to force into flower the beautiful, fragrant, Paper White Narcissi, in bowls of water. By using Vaughan's prepared bulb fibre in place of pebbles, the variety of bulbs that can be forced is widely increased.

### INCLUDED IN THIS OFFER

- 2 **Amaryllis Hybrids**, 2 1/4-2 1/2.
- 3 **Narcissus King Alfred**, Large Rounds.
- 3 **Mammoth Paper White Narcissus** bulbs, 14 ctm.
- 3 **Yellow Paper Whites (Grand Soleil D'Or)** mammoth bulbs.
- 3 **Chinese Sacred Lilies**, 16-18 ctm. mammoth bulbs.
- 1 **Calla Lily White** bulb, first size.
- 2 **Pounds of Vaughan's Prepared Bulb Fibre**.

**METHOD OF FORCING BULBS IN FIBRE.** Moisten Vaughan's Prepared Bulb Fibre to saturation, fill the bowl with wet fibre, and plant the bulbs allowing their necks to emerge from the fibre, but without pressing the fibre too firmly around them. Place the bowl in a cool, airy place where the light is dim or dark, and preferably the temperature does not rise above 55 degrees. Keep the fibre moist, since if it dries out the flower buds may go blind. But water sparingly until good roots have formed. When strong top growth has been made in the dark, take the bowl to a sunny window, where it will have fresh air, all the sunlight possible especially in the morning, and preferably a temperature not less than 55 nor more than 70 degrees.

Complete Directions for Planting and Forcing All These Subjects Are Included.

VAUGHAN'S BULB PLANTING CHART	
1 in.	
2 in.	
3 in.	CROCUS 3 in. APART
4 in.	SCILLAS 3 in. APART
5 in.	LILIUM CANDIDUM 12 in. APART
6 in.	HYACINTHS 8 in. APART
7 in.	NARCISSUS 6 to 8 in. APART
8 in.	EARLY TULIPS 5 to 6 in. APART
9 in.	LATE TULIPS 5 to 8 in. APART
	HARDY LILIES 12 to 15 in. APART
	SNOWDROPS 3 in. APART
	GRAPE HYACINTHS 3 in. APART

Figures given in this table are minimums, and in some cases should be greater. See discussion in column to left, headed "Pointers on Planting Bulbs."

## Bulbs for Beginners

24 Bulbs, 4 Each of 6 Different Varieties, prepaid **\$1.50**

4 Scilla Siberica, 4 Grape Hyacinths, 4 Giant Tulips, 4 Hardy Daffodils, 4 Crocus, 4 Erythroniums—24 Bulbs.

36 Bulbs, 6 Each of 6 Different Varieties, prepaid **\$2.45**

6 Scilla Siberica, 6 Grape Hyacinths, 6 Giant Tulips, 6 Hardy Daffodils, 6 Crocus, 6 Spring Snowflakes—36 bulbs.

### BIRD SEED

**RAPE.** Large—sweet (not bitter like the small black). 1 lb., 40c; 5 lbs., \$1.70; 10 lbs., \$3.15; 25 lbs., \$6.50

**SUNFLOWER.** 1 lb., 45c; 5 lbs., \$1.95; 10 lbs., \$3.65; 25 lbs., \$7.70.

**CANARY SEED.** 1 lb., 40c; 5 lbs., \$1.70; 10 lbs., \$3.15; 25 lbs., \$6.95.

**VAUGHAN'S CANARY MIXTURE.** 1 lb., 40c; 5 lbs., \$1.70; 10 lbs., \$3.15; 25 lbs., \$6.95.

**FINCH SEED.** 1 lb., 35c; 5 lbs., \$1.40; 10 lbs., \$2.60.

**PARRAKEET SEED.** 1 lb., 40c; 5 lbs., \$1.70; 10 lbs., \$3.15; 25 lbs., \$6.95.

**VAUGHAN'S WILD BIRD FEEDING MIXTURE.** (as recommended by the Illinois Audubon Society). 1 lb., 30c; 2 lbs., 50c; 5 lbs., \$1.00; 10 lbs., \$1.80; 25 lbs., \$4.10; 100 lbs., \$12.00. All prices prepaid.



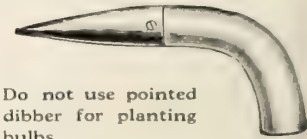
### HOLE-IN-ONE PLANTING TOOL

Make a hole in one operation. Simply cut the tool into the soil, remove it with a twisting motion, and with the tool comes a plug of soil, leaving a perfectly flat bottomed hole. Small, hand tool for cultivated soil. Each 75c; postpaid, 85c.  
Longhandle, each, \$6.25.



### DIBBER

For transplanting vegetable plants, steel point (weight 10 oz.) Each, \$1.25; postpaid, \$1.35.



Do not use pointed dibber for planting bulbs.

### 2,4D Weed Killer for Fall Spraying.

Improved Weedone will not only kill lawn weeds but also willow, locust, sumac, poison oak, poison ivy in shade; elm and many other woody weeds which resist other forms of 2,4D. It is safer to use because no vapor can be carried to injure wanted plants. 8 oz., covers 1,500 square feet, \$1.00; postpaid, \$1.10; 1 qt., covers 5,000 sq. ft., \$2.75, postpaid \$2.90; 1 gal. covers 20,000 sq. ft., \$6.95; 5 gals. covers 100,000 sq. ft., \$25.00. One gallon and over shipped by express, charges collect.

**Bar-Weed**, powerful liquid form of 2,4D, 8 oz., bottle, enough to treat 1,500 square feet, postpaid for 49c.







## HYACINTHS FOR THE GARDEN

For bordering garden paths, and planting around bird-baths, pools and fountains, hyacinth bulbs of third and bedding sizes will serve well. They contribute to the spring garden fragrance and colors which no other flowers supply in that season.

- Gertrude.**—Rose-Pink.  
**Jan Bos.**—Scarlet.  
**La Victoire.**—Red.  
**Pink Pearl.**—Rosy pink.  
**Queen of Pinks.**—Rose.  
**Arentine Andersen.**— Pure white, large bells, splendid spike, best for outdoor planting.  
**City of Haarlem.**— Golden Yellow.  
**Bismarck.**—Lavender.  
**Grand Maitre.**— Dark porcelain blue.  
**King of Blues.**— Very dark blue.  
**Queen of Blues.**— Very light blue.  
**First Size (18-19 Ctm.)** Each, 30c; Doz., \$3.00; 100, \$22.00.  
**Second Size (17-18 Ctm.)** Each, 25c; Doz., \$2.50; 100, \$18.00.  
**Third Size (16-17 Ctm.)** Each, 20c; Doz., \$2.00; 100, \$15.00.  
**Bedding Size (15-16 Ctm.)** Each, 18c; Doz., \$1.80; 100, \$14.00.

Above prices are for your selection of named varieties.



PINK AND BLUE HYACINTHS



## GIANT LATE DOUBLE TULIPS

### PEONY FLOWERED TULIP EROS. Illustrated above.

In any planting of tall, late giant tulips, a group of Eros will be the focal point. Though its companions present the most brilliant color of the garden season, the large, fully double flowers of Eros, held aloft on strong 20-inch stems, will dominate the show. Its color is a deep true pink with silvery high-lights; and it blossoms with the Darwin tulips. Doz., \$1.65; 100, \$11.50; 250 for \$26.25.

### PEONY FLOWERED TULIP MOUNT TACOMA.

Blossoming at the same time as the Darwin tulips, held upright on 23-inch stems, these huge white flowers are easily mistaken for peonies: This is pure white, with occasional markings of emerald green on the outer petals. Doz., \$1.65; 100, \$11.50; 250 for \$26.25.



## VAUGHAN'S AMARYLLIS—MIXED

Our strain of giant flowered amaryllis is rich in brilliant red, and lovely white flowers, with many in which the white ground is vividly marked with contrasting tones of red, pink and salmon. In size, this strain has never been surpassed. Of all bulbs which the amateur can grow successfully indoors, the Amaryllis is the largest, most beautiful, surest to flower and most easily handled. See Page 9 for cultural instructions. Flowers are immense, in an amazing range of color blends, splashed and striped in a manner not seen in other strains.

	Each	Doz.	100
2 1/4-2 1/2 inch	\$0.35	\$3.50	\$25.00
2 1/2-2 3/4 inch	.50	5.00	35.00
2 3/4-3 inch	.70	7.00	45.00
3-3 1/4 inch	.85	8.50	65.00



PARROT TULIP FANTASY

Parrot Tulips have the largest blossoms, with long, deeply fringed petals and more of them. For a complete list of new and old varieties, See Page 7

**FANTASY.** Not new, but still unrivaled in its color class. A mutant of the Darwin Clara Butt, it has the same rare salmon pink, in enormous flowers, on sturdy 27 inch stems. Doz., \$1.40; 100, \$10.00; 250 for \$22.50.

# 8 Loveliest \$1.60 8 Daffodils

One each of the eight varieties illustrated on this page, each separately bagged and labeled, prepaid.



Daffodils are the heralds of spring, lifting their golden trumpets to proclaim that the garden season has formally opened. They are the first major flowers to bloom, preceded only by the minor bulbs. Every garden should grow them. In well drained locations, they may be left undisturbed and will bloom for years until they crowd. Bulbs can then be lifted and replanted over a larger area. Varieties on this page are outstanding, and will prove an investment in garden beauty from which dividends may be expected for many years.

**Back Cover Collections**

Two each of the varieties illustrated on this page .....	16 Bulbs	\$ 3.00
Three each .....	24 Bulbs	4.25
Six each .....	48 Bulbs	7.50
Twelve each .....	96 Bulbs	14.00

**Prices of Separate Varieties**

	Doz.	100
Top left, Actaea .....	\$1.75	\$12.00
Middle left, John Evelyn .....	1.75	12.00
Bottom left, Winter Gold .....	2.25	15.00
Top center, Royal Sovereign .....	3.35	23.00
Bottom center, Golden Sceptre .....	1.40	9.00
Top right, Dick Wellband .....	2.25	15.00
Middle right, Geranium .....	1.75	12.00
Bottom right, Fortune .....	2.30	16.00

ALL ABOVE PRICES PREPAID

