

Historic, archived document

Do not assume content reflects current scientific knowledge, policies, or practices.

Vermont's Hardiest Varieties

Fruit Trees * Shade Trees

Berry Plants * Shrubs

Vines * Evergreens

* Perennials *

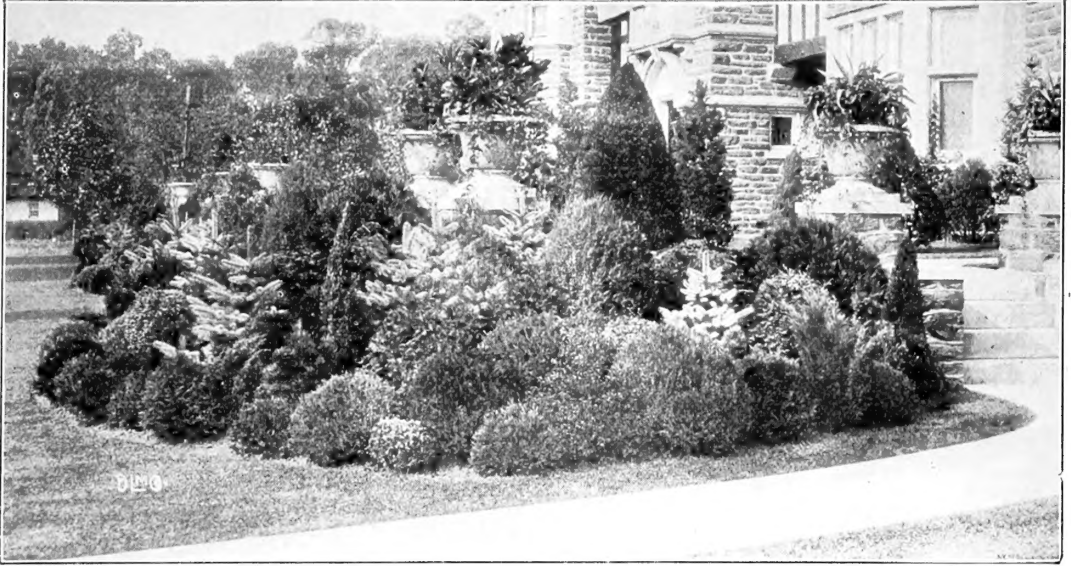


1925

from the Nurseries of

GEO. D. AIKEN

PUTNEY, VT.



Vermont's Hardest Varieties

Fruit Trees, Shade Trees
Berry Plants, Shrubs
Vines, Evergreens
Perennials

GEO. D. AIKEN
PUTNEY, VERMONT



Terms and Conditions of Sale

Read carefully before ordering

All orders should be accompanied by at least 25 per cent of the amount. The balance should be sent before time of shipping or the order will be shipped C. O. D.

All spring orders received before March 1st are subject to a 10 per cent discount if accompanied by cash. All orders received during March are subject to 5 per cent discount if accompanied by cash. Prices net after April 1st.

Please state whether you wish your order to go forward by mail or express. Unless you do so state we must use our own judgment in the matter. We strongly advise against shipping live plants by freight.

Orders weighing over 20 pounds go best by express. Smaller orders by mail. No large fruit trees or shade trees can be shipped by mail.

Please enclose postage. 10c. will cover 100 strawberries, or 25 raspberries or blackberries. Unless postage is included, order will be sent C. O. D. charges.

Guarantee. All stock is guaranteed true to name and free from disease.

In ordering, please distinguish carefully between mail and express addresses and be sure to give both if they are not the same.

Time of shipment. It is the customer's prerogative to specify when shipment is to be made. All orders where time of shipment is not specified we ship as nearly as possible in the order in which they are received.

Regarding fall orders. Orders received during the summer for fall shipment, will be sent in the following order, unless customer specifies time of shipment: Evergreens after August 15th, perennials after September 15th, trees, shrubs and roses after October 15th. We so specify as this is the best time for fall moving of above items.

Claims. Upon receipt of stock examine *carefully* and if damaged in transit notify express company and enter claim for amount of damage. If unsatisfactory through fault of ours notify us at once. Any complaints regarding quality of plants must be made within five days after receiving stock.

Substitution. We do not substitute without permission. If ordering late please mention a second choice or state whether we may substitute for similar varieties.

Packing. Do not expect an order which calls for several different classes of plants to be packed in one container. Strawberries and perennials, for instance, require different packing from trees and shrubs and we usually pack them separately. Your order may not reach you at one time on this account. Fruit trees may be planted earlier and in some cases we send them out in advance of strawberries.

What to do on receipt of stock. Plant immediately. Where this is impossible dig a trench and bury the roots with earth until planting time. This is the best possible way to keep plants prior to planting. Do not leave in containers. Never wet the tops of strawberry plants. It rots the crowns.

FRUIT TREES

In submitting our list of varieties of fruit trees, we wish to say that we offer only kinds that we believe to be of real value under suitable conditions. Most varieties have faults as well as virtues. We cannot afford space here to give more than brief descriptions, but will gladly assist you in choosing varieties adapted to your locality if you wish. Our trees this year are of very good quality, and you will find our prices attractive.

APPLE TREES

	Each	10	100
2 yr., 5-7 ft. trees, 11-16 in. diameter.....	\$0.75	\$6.50	\$55.00
2 yr., 4-6 ft. trees, 5-8 in. diameter.....	.65	5.50	45.00
2 yr., 3-5 ft. trees, 1/2 in. diameter.....	.55	4.50	35.00
1 yr. No. 1 whips.....	.60	5.00	40.00

Note—5 of 1 variety at 10 rates, 50 or more of 1 variety at 100 rates.

Baldwin. The fine old standby, a good keeper and shipper. Color red. Nov. to April. Not hardy in northern New England.

Cortland. A very promising variety similar to McIntosh, but a month later and has the advantage of hanging on the trees well. 1 yr. size only, at 75c. each.

Delicious. Does well in any section where apples grow well. Bears young and heavily. High quality and good keeper. For dessert only. Dec. to April.

Duchess of Oldenburg. An early fall apple that comes into bearing very young. Often planted for a filler. Fruit striped, acid and for culinary use only. Sept. Very hardy.

Fameuse. A small dessert apple of highest quality. Fruit striped red. Oct. to Jan. Hardy.

Gravenstein. One of our highest quality apples. Fruit large, striped. Not entirely hardy. Oct. to Dec.

Hubbardston Nonesuch. A dessert apple that does well in central and southern New England. Fruit sub-acid, striped. Nov. to Feb.

Jonathan. Very high quality apple grown extensively in the northwest. Grows well in parts of New England. Medium size, red. Nov. to Mar.

Maiden Blush. Flat yellow apple with red cheek. Not hardy north. Oct.

McIntosh. The great red apple of New England. Very highest quality. Oct.-Jan.

Northern Spy. One of the best varieties for New England and New York. A heavy yielder. Quality excellent. Striped red. Nov. to Mar.

Northwestern Greening. Larger than the Rhode Island but not so good quality. Very hardy. Nov. to Mar.

Pound Sweet. Yellow. Very large and sweet. Not very hardy. Nov. to Feb.

Red Astrachan. The well known early red apple. Very hardy. July-Aug.

R. I. Greening. One of the most profitable varieties grown. Bears young and heavily. Nov. to Mar.

Roxbury Russet. The old-fashioned, late keeping russet. Jan. to May.

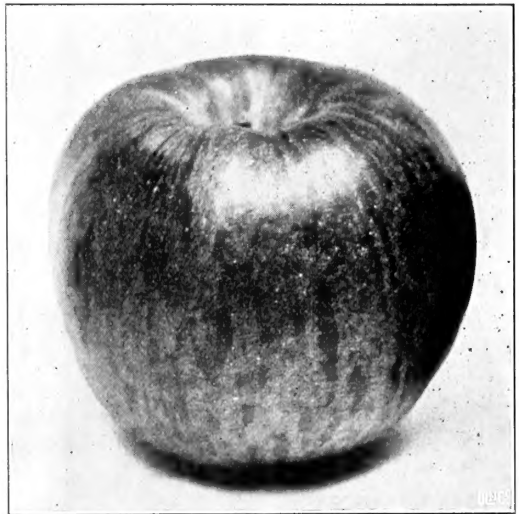
Stayman Winesap. A fine quality red and yellow apple. Late keeper. Most desirable for central states.

Sutton Beauty. Of high quality. Supposed to be a cross between Baldwin and Hubbardston. Nov. to Feb.

Sweet Bough. Large yellow. Sweet and juicy. Aug.

Twenty Ounce. The big striped fall apple locally known as "Blessing." Nov.-Dec.

Tolman Sweet. A small, very hardy sweet apple. Valuable for its keeping quality. Dec. to Mar.



Northern Spy Apple

Wagener. Planted largely as a filler as the tree is short lived. Flat, striped, good quality. Dec. to Mar.

Wealthy. A most profitable fall apple of high quality. Bears young and heavily. Medium size. Striped. Oct. to Nov.

Winter Banana. Bright yellow with brilliant cheek. Poor quality. Nov. to Feb.

Wolf River. The big red and yellow apple that attracts so much attention at fruit shows. Bears young and heavily. Quality poor. Very hardy. Dec. to Jan.

Yellow Bellflower. A beautiful golden apple, sometimes with red cheek. Conical shape. Good quality. Not very hardy. Dec. to Feb.

Yellow Transparent. The earliest good apple. Good size and nice quality. Hardy. Tree bears very young, often the year after planting. July.

Transcendent Crab. Yellow, striped with red. Comes into bearing young. Sept.

Hyslop Crab. Deep red with beautiful bloom. Sept.-Oct.

DWARF APPLE TREES

2 yr., No. 1 trees, 85c. each, \$8.00 per 10.

Baldwin, Duchess, Delicious, McIntosh, Red Astrachan, Wealthy and Yellow Transparent.

FRUIT TREES—Continued

PLUM TREES

Note—5 or more of 1 variety at 10 rate;
50 or more at 100 rate.

2 yr., 11-16 in., 5-7 ft. trees, \$1.00 each,
\$9.00 per 10, \$85.00 per 100.

2 yr., 5-8 in., 4-6 ft. trees, 90c. each,
\$8.00 per 10, \$75.00 per 100.

Abundance. Large, light pink color. Sweet and juicy. Early Aug.

Burbank. Large, deep red, good quality. Very productive. Sept. 1st.

Bradshaw. Very large, violet-red plum. Fine quality. Aug.

Green Gage. Standard of quality. Sept.

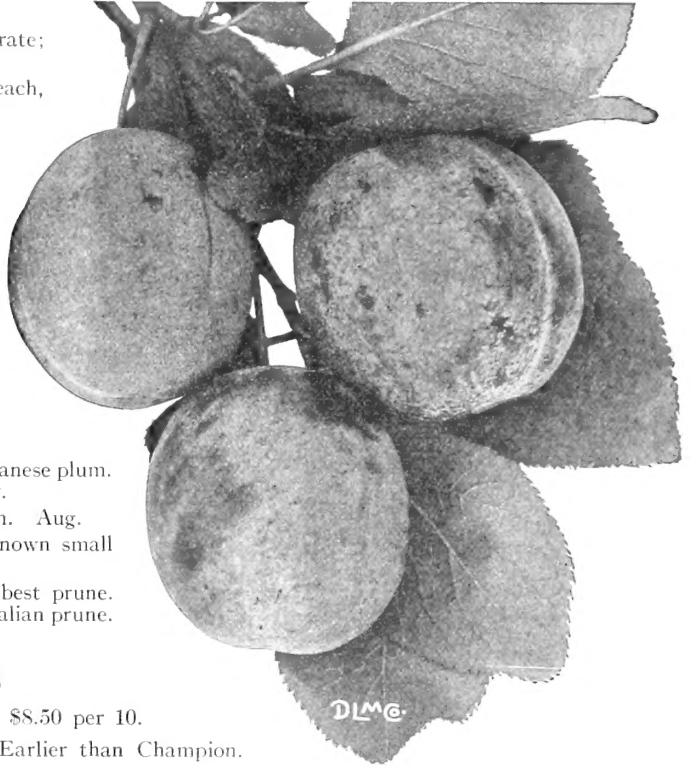
Lombard. Most popular European variety. Dark reddish purple. Good quality. Very productive. Aug.-Sept.

Red June. A medium size early Japanese plum. Productive and fair quality. July.

Shiro. Very early sweet yellow plum. Aug.

Shropshire Damson. The well known small blue preserving plum. Sept.

York State Prune. Largest and best prune. Probably same as Felleberg or Italian prune. Blue. Sept.



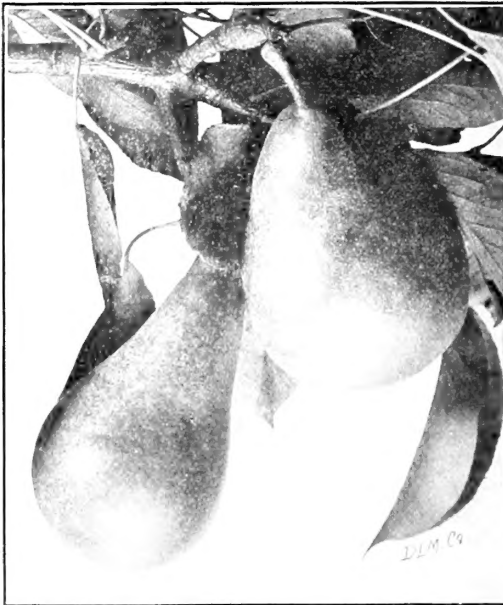
Plums

QUINCES

2 yr., 4-6 ft., \$1.00 each, \$8.50 per 10.

Orange. Round, bright yellow. Earlier than Champion.

Champion. Large and handsome. Bears very young.



Pears, Clapp Favorite

PEAR TREES

Note—5 or more of 1 variety at 10 rate; 50 or more at 100 rate.

Standard, 2 yr., 11-16 in., 5-7 ft. trees, \$1.00 each,
\$9.00 per 10, \$85.00 per 100.

Standard, 2 yr., 5-8 in., 4-6 ft. trees, 90c. each,
\$8.00 per 10, \$75.00 per 100.

Dwarf Pears, 2 yr. No. 1, 85c. each, \$7.50 per 10.

Anjou. Large winter pear. Good quality. Dec.

Bartlett. The most popular pear grown. Yellow when ripe. Sept.

Bosc. Very high quality russet pear. Tree a slow grower. Nov. to Dec.

Clapp Favorite. Large early pear. Yellow with red cheek. Late August.

Duchess. Very large yellow pear with red cheek. Bears young. Oct. to Nov.

Lawrence. A delicious, medium-sized pear. Nov.

Seckel. The standard of quality among pears. Small but delicious. Oct.

Sheldon. A round, russet pear, sweet and juicy. Oct.

Vermont Beauty. A small yellow pear with red cheek. Very hardy and finest quality when fully ripe.

FRUIT TREES—Continued

PEACH TREES

Note—5 or more of 1 variety at 10 rate, 50 or more at 100 rate.

1 yr., 4-6 ft. trees, 50c. each, \$4.00 per 10, \$30.00 per 100.

Belle of Georgia. A splendid white peach ripening middle of September. Large and good quality. A fine shipper.

Carman. Most popular white peach. Late August. Freestone.

Champion. Very high quality white peach with red cheek. Aug. Freestone.

Early Crawford. Yellow with red cheek. Finest quality. Sept. Freestone.

Elberta. Best commercial yellow variety. Late Sept. Freestone.

Greensboro. Early white variety. Early Aug. Clingstone.

J. H. Hale. Larger than Elberta, and a few days earlier. Yellow flesh. Freestone.

Rochester. A fine, large yellow peach ripening two weeks ahead of Early Crawford. Claimed to be the most desirable yellow peach, but we have not fruited it yet.

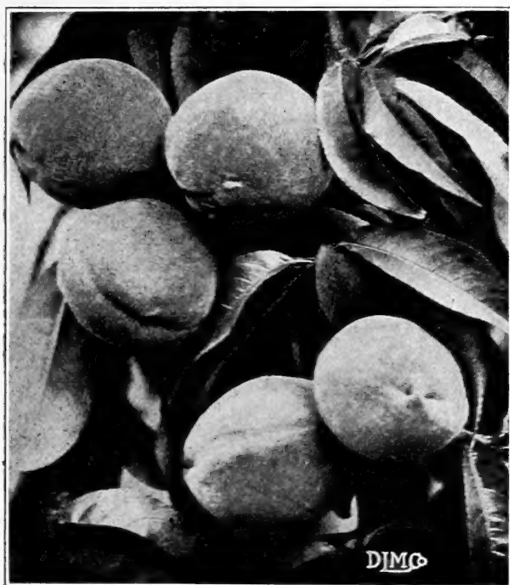
APRICOT TREES

Apricots are much hardier than peaches and are fine for eating fresh, making sauce or drying. Be sure to plant at least two varieties or they will not pollinize. 4-5 ft. trees, 60c. ea., \$5.00 per 10.

Budd. One of the smaller, hardier sorts. Orange color, very sweet.

Harris. A good sized, very early variety. Color orange; quality good.

Moorpark. A large orange and red sort. Later than the others.



Peach, Belle of Georgia

CHERRY TREES

Note—5 or more of 1 variety at 10 rate, 50 or more at 100 rate.

2 yr., 11-16 in., 4-6 ft., \$1.00 each, \$9.00 per 10.

2 yr., 5-8 in., 4-5 ft., 90c. each, \$8.00 per 10.

1 yr., No. 1, 75c. each, \$7.00 per 10, \$60.00 per 100.

Black Tartarian. A large, nearly black, sweet cherry. Makes a large tree.

Early Richmond. An early, red sour variety. Ripens in June.

English Morello. Dark red, acid. Aug.

Gov. Wood. Light yellow, with red cheek. Very sweet. June.

Montmorency. Large red, sour variety. Most popular. July.

May Duke. A large red cherry, intermediate between the sweet and sour varieties. One of the very earliest.

Napoleon. Called Royal Ann in the Northwest. Yellow with red cheek. Large and sweet.

SMALL FRUITS

BLACKBERRIES

Culture same as for raspberries. Avoid frosty locations.

Blowers. A giant blackberry that yields enormous crops of immense berries. Not entirely hardy in northern New England. \$1.00 per 12, 25 for \$1.50, 100 for \$5.00, \$35.00 per 1000.

Snyder. The safest variety to plant in cold sections. Perfectly hardy and a good grower but quality only fair. 75c. per 12, \$1.25 per 25, \$4.00 per 100, \$30.00 per 1000.

Eldorado. Very fine quality, large size and hardy. \$1.00 per 12, \$1.75 for 25, \$6.00 per 100.

Dewberries. Earlier than blackberries and the fruit is fully as large. The young canes should be allowed to lie on the ground during the winter and trained to stakes the following spring. We offer Lucretia and Mayes at \$1.00 per 25, \$3.00 per 100, \$20.00 per 1000.

CURRANTS

Currants and gooseberries will grow in any good, rich soil, and yield amazingly well. Fertilize them heavily with manure supplemented with acid phosphate. Do not plant them on steep hillsides as they will be likely to tip over after a year or two. Because of restrictions we cannot ship currants outside New England. In states that permit the planting of currants they should prove very profitable indeed, as the supply is becoming shorter and the price higher each year.

Perfection. A very popular large red currant. 2 yr. plants, 40c. each, \$3.50 per 10, \$25.00 per 100.

Red Cross. Early and sweet. 2 yr. plants, 25c. each, \$1.75 per 10, \$12.00 per 100.

Cherry. Most widely planted currant. Price same as Red Cross.

Wilder. Strong, upright grower. Popular. Price same as Red Cross.

White Grape. Best white variety. Popular for table use. Price same as Perfection.



SMALL FRUITS—Continued

RASPBERRY PLANTS

Raspberries are probably the most profitable of all small fruits. They are pretty sure to mature a good crop and the market is never fully supplied. Plant on good, well-drained soil and cultivate freely. It usually pays best to fertilize with chemicals and wood ashes, rather than manure. Avoid planting Cuthbert and Herbert near rivers or frosty hollows. June and Marlboro are best for these locations.

Special Notice—Fully 75 per cent of all our raspberry plants are sold in the fall and we cannot offer Marlboro, Idaho or Golden Queen for spring. What we have of these varieties will be used for our own planting. Should you contemplate planting raspberries extensively, we would advise placing your order at once for fall 1925.

Latham. A variety originated by the Minnesota Experiment Station and distributed as Minnesota No. 4. We have grown this variety for several years and consider it worthy of more general planting. Plants are vigorous and perfectly hardy. Berries large, light color, good flavor, and late. A valuable late variety for cold climates and does well on lighter soil than most varieties. \$1.00 per doz., \$6.00 per 100.

Cuthbert. The leading variety. Canes tall, vigorous, and succeeds well on light soil where other varieties might fail. Berries deep red, conical and finest quality. An abundant cropper. 75c. per 12, \$1.25 per 25, \$4.00 per 100, \$30.00 per 1000.

St. Regis. The much advertised everbearer. A commercial variety south of New York, but suitable for home use only in New England. Of good quality but not a heavy cropper. Very early and usually bears a small fall crop. Berries rather small. Price same as Cuthbert.

Herbert. Fine quality, large size and very hardy. Midseason. Of exceptional value for northern New England and New York. 75c. per 12, \$1.50 per 25, \$5.00 per 100, \$37.50 per 1000.

June. One of the most profitable varieties grown. Canes erect and very vigorous, attractive color and spineless. Ripens last of June and is a heavy yielder. Fruit good quality, very large and firm. Color light red. Price same as Herbert.

Plum Farmer. The most popular black raspberry. Large, early and fine quality. 75c. per 12, \$3.00 per 100, \$20.00 per 1000.

Columbian. The most popular purple raspberry grown. Immensely productive. Fruit large, good quality and fine for canning. \$1.00 per 12, \$6.00 per 100.

Royal Purple. Grows more erect than Columbian and is later. Bears over a long season. Quality good. Plant very hardy. \$1.00 per 12.

GOOSEBERRY PLANTS

Downing. Most popular gooseberry. Color green, medium size, quality best. 2-yr. plants. 25c. each, \$2.00 per 10, \$18.00 per 100.

Red Jacket. Color pale red. Larger than Downing. Price same.

Oregon Champion. Yellowish green, immensely productive. Sweet. Price same as Downing.

RHUBARB

Rhubarb will grow in almost any soil, but responds readily to heavy fertilization. As Giant Linnaeus seems to be the leading variety we offer only that variety this season.

Giant Linnaeus. Divided roots, 15c. each, \$1.00 per 10, \$8.00 per 100.

ASPARAGUS

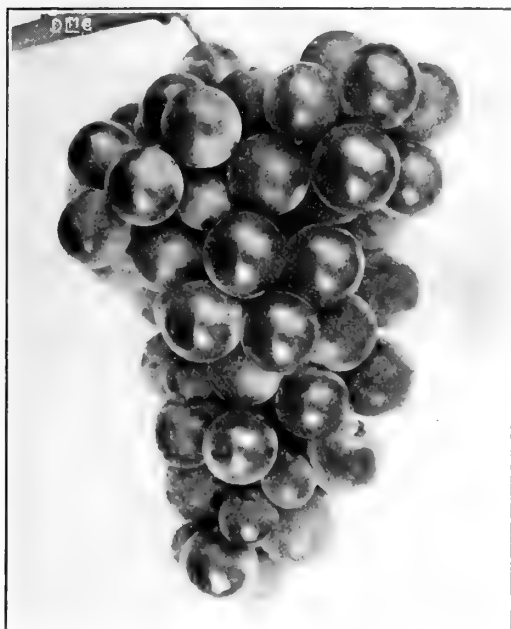
Martha Washington. The famous giant, rust-proof variety originated by the Dept. of Agriculture. 2 yr. plants. 75c. per 25, \$2.00 per 100, \$16.00 per 1000.

Giant Argenteuil. The best of the older varieties, and one from which the Martha Washington descended. 2 yr. plants, 60c. per 25, \$1.50 per 100, \$12.00 per 1000.

Palmetto. One of the older varieties. Price same as Argenteuil.

10% Discount
for cash on spring orders
received before March 1st.

SMALL FRUITS—Continued



Grapes, Moore Early

GRAPES

Plant on well drained soil and fertilize well with manure and acid phosphate. Write the U. S. Dept. of Agriculture at Washington for bulletins on grape culture.

Brighton. Very large, dark red variety of fine quality. Midseason. 2 yr. vines, 30c. each, \$2.50 per 10, \$22.50 per 100.

Champion. A very early large black grape for the north. 25c. each, \$2.00 per 10, \$15.00 per 100.

Concord. The standard blue grape. 2 yr. vines. 25c. each, \$1.75 per 10, \$12.00 per 100.

Campbell Early. A giant black grape of finest quality. Bunches sometimes weigh 2 lbs. 2 yr. vines. 35c. each, \$3.00 per 10, \$27.50 per 100.

Delaware. Best quality red grape. Small but delicious. Early. Price same as Brighton.

Diamond (Moore's Diamond). A large white grape of delicious quality. Bunches are often shouldered. 25c. each, \$2.25 per 10, \$18.00 per 100.

Lucile. A fine early red grape of good quality. Bears young and heavily. Earlier and twice as large as Delaware. Price same as Champion.

Moore Early. One of the best grapes for the North. Nearly a month earlier than Concord. Price same as Brighton.

Niagara. The most popular white grape. 25c. each, \$2.00 per 10, \$18.00 per 100.

Warden. Similar to Concord but a little earlier. Price same as Niagara.

Wyoming. Very hardy red grape. Much earlier than Delaware. Try this in the North where other grapes fail. Price same as Niagara.

Grapes, 1 yr. No. 1, at two-thirds the price of 2 yr. vines.

STRAWBERRY PLANTS

For cultural directions of strawberries we refer you to Farmers Bulletins Nos. 901, 979 and 1028 of the U. S. Dept. of Agriculture.

Abington. A very large light red strawberry of very good quality. (Midseason.) A good pollinizer for Sample. 50c. per 25, \$1.25 per 100, \$8.00 per 1000.

Howard 17. The leading commercial variety of New England at the present time. Fruit light red, large and good quality. Early. Ideal for sandy soils and river bottoms, but inferior to Sample on clay land. Very resistant to drought. Price same as Abington.

Sample. The great market berry of New England that easily held first place among commercial varieties until the introduction of Howard 17. Our experience has been that Sample does best on the hills and Howard 17 excels along the river valleys. Sample is imperfect flowering and should have one of the perfect flowering varieties planted with it for pollinizing. The berries are very large and uniform, holding up well till the end of the season. Immense cropper. Midseason. Price same as Abington.

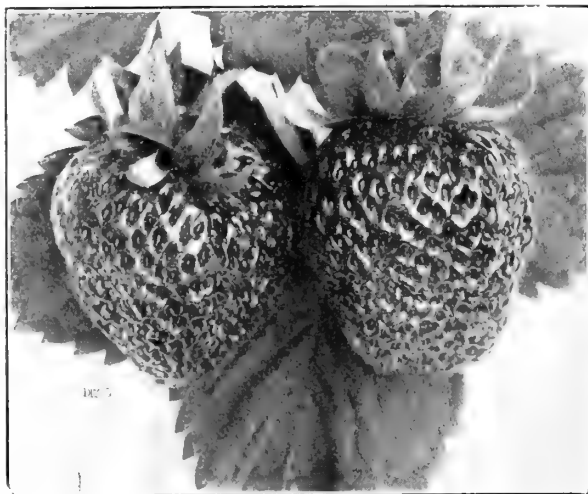
Senator Dunlap. An all-around variety. Grows anywhere. Quality good. Early to midseason. Price same as Abington.

Progressive Everbearing. The most widely planted everbearing variety. Berries same size and shape as Dunlap. Quality fine. Bears earliest of all in spring and again in the fall. Plants very hardy. 75c. per 25, \$2.00 per 100, \$12.50 per 1000.

Superb Everbearing. This everbearer is much larger than Progressive but not so good quality. Superb bears an immense crop in June. 75c. per 25, \$2.00 per 100.

POT GROWN STRAWBERRY PLANTS

Set during August and September will produce a crop the following summer. Write for prices.



Strawberries, Senator Dunlap

DECIDUOUS TREES

ACER

Red Maple. *A. rubrum*. An ideal shade tree. Leaves bright red in fall. Flowers brilliant crimson in early spring. 8 to 10 ft., \$2.00 each, \$17.50 per 10.

Striped Maple. *A. pennsylvanicum*. A very ornamental small tree, the bark of which is striped in green and yellow. 4 to 6 ft., 50c. each, \$4.00 per 10.

Sugar Maple. *A. saccharum*. This is the maple which grows to such an extent in Vermont, and which supplies the country with maple syrup. Aside from its utility, it is this tree, also which constitutes the best of shade trees, attaining great size, and living to a good old age. The foliage turns, in fall, to brilliant shades of orange and yellow. 8 to 10 ft., \$1.50 each, \$13.50 per 10.

Norway Maple. *A. platanoides*. A rapid growing tree, symmetrical in form. Its leaves change in the autumn to a beautiful rich yellow. Useful for a street tree or for avenues or lawns. 8 to 10 ft., \$2.50 each, \$22.50 per 10.

Ash-Leaved Maple, Manitoba Maple. *A. negundo*. Rapid growing tree. Light green bark and foliage. Good for screen or windbreak. 4 to 6 ft., 50c. each, \$4.00 per 10.

AESCULUS

Horse Chestnut. *A. hippocastanum*. A large, handsome tree, native of Europe. Leaves with five or six leaflets. Flowers in upright panicles, white, tinged with red. Pods prickly, enclosing large nuts. 8-10 ft., \$2.75 each.



White Hawthorn, *Crataegus coccinea*. See page 9.



Sugar Maple, *Acer saccharum*

BETULA

Canoe Birch. *B. papyrifera*. The native white birch of Vermont, which attains such a large size. Should be planted extensively. Looks well planted against dark hemlocks or other evergreens. 6 to 8 ft., \$1.00 each, \$9.00 per 10.

Cutleaf Weeping Birch. *B. alba laciniata*. Graceful, pendant growth and finely cut leaves. Slender, yet vigorous. White bark. 4 to 6 ft., \$3.00 each.

CATALPA

Western Catalpa. *C. speciosa*. A large, very hardy tree; big, fragrant blossoms in long, pyramidal clusters of purple and white. 8 to 10 ft., \$1.50 each, \$13.50 per 10.

CERCIS

Judas Tree. *C. canadensis*. In early spring the leafless branches of this tree are covered with rich, purple flowers, so that the tree itself looks as if it had turned into a flower. 4 to 5 ft., \$1.50 each, \$12.50 per 10.

CORNUS

Flowering Dogwood. *C. florida*. One of the loveliest of the flowering trees. Bears large, single, pure white flowers in May. Hardy and reliable, and having the reputation of being one of the best for landscape planting. Classed as a small tree, or large shrub. 3 to 4 ft., \$1.00 each, \$9.00 per 10.

Pink Flowering Dogwood. *C. florida rubra*. Strikingly beautiful, especially when planted with the white variety. Beautiful against dark evergreens. Large, rose-pink flowers. 2 to 3 ft., \$2.00 each, \$18.00 per 10.

DECIDUOUS TREES—Continued

CRATAEGUS

White Hawthorn. *C. coccinea*. Native tree bearing in May dense clusters of graceful flowers like pure white apple blossoms, having many conspicuous stamens, followed by scarlet fruit. Fruit attracts the birds. 2 to 3 ft., 60c. each, \$5.00 per 10.

ELM. See *Ulmus*.

LIRIODENDRON

Tulip Tree. *L. tulipifera*. Large, outspreading branches, and fragrant, yellow flowers. The tree is named from the form of the leaves which is that of conventional tulips. 4 to 5 ft., \$1.00 each, \$9.00 per 10.

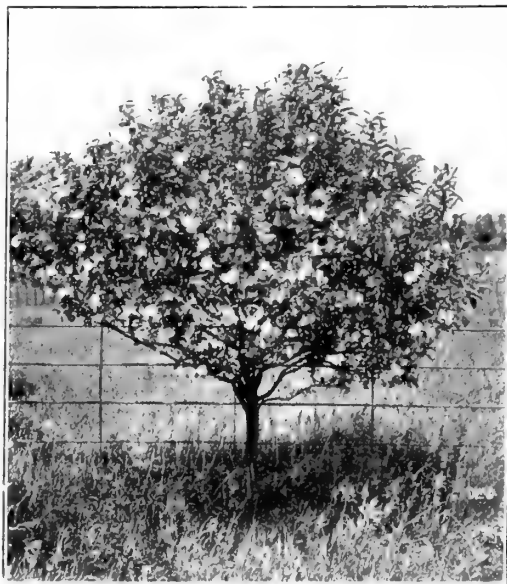
MORUS

Russian Mulberry. *M. tatarica*. Small tree, bearing reddish-black, edible berries, attractive to birds. Often planted in cherry orchards to keep the birds away from the cherries. 4 to 6 ft., 50c. each, \$4.00 per 10.

POPULUS

Carolina Poplar. *P. carolinensis*. Very rapid growing tree. Planted when quick effects are wanted. 8 to 10 ft., 75c. each, \$7.00 per 10.

Lombardy Poplar. *P. nigra, var. italica*. A tree extensively used in landscape planting. Dense, columnar growth. 8 to 10 ft., 75c. each, \$7.00 per 10.



Bechtel's Flowering Crab, *Pyrus ionensis*

PRUNUS

Nanking Cherry. *P. tomentosa*. A beautiful flowering cherry tree which forms a rounded, shrubby bush or small tree completely covered in late April and early May, with soft, rose-tinted, cherry blossoms. Perfectly hardy, even in Canada, where flowering trees are very scarce. 4 to 5 ft., \$1.00 each.

PYRUS

Bechtel's Flowering Crab. *P. ionensis, var. bechteli*. One of the most beautiful of the beautiful flowering crab trees. Delicate, shell-pink, semi-double blossoms. Late flowering. 3 to 4 ft., \$1.50 each, \$13.50 per 10.

ROBINIA

Black Locust. *R. pseudoacacia*. Rapid growing tree, the wood of which is very resistant to decay. Drooping panicles of very fragrant, creamy-white flowers in June. 6 to 8 ft., \$1.50 each, \$13.50 per 10.

SALIX

Weeping Willow. *S. babylonica*. For waterside planting. 8 to 10 ft., \$1.25 each, \$10.00 per 10.

SORBUS

Mountain Ash. *S. americana*. Small tree, attractive for its umbels of scarlet fruit. Compound leaves of good color. 6 to 8 ft., \$1.50 each, \$13.50 per 10.



Weeping Willow, *Salix babylonica*

DECIDUOUS TREES—Continued

STEPHANANDRA

Cutleaf Stephanandra. *S. flexuosa.* Graceful, pendant, fountain-like habit of growth. Leaves delicately cut and fernlike. Masses of creamy white flowers. 2 to 3 ft., 75c. each, \$6.00 per 10.

TILIA

Linden, American Basswood. *T. americana.* Large, dense, round-headed tree. When in blossom in June the fragrance may be detected many rods away. 8 to 10 ft., \$2.00 each.

ULMUS

American Elm. *U. americana.* Shade tree of rapid growth, eventually reaching an enormous height and size. Some of the most beautiful streets in America are lined with these venerable trees, their arched branches meeting overhead. Unequaled for street or driveway planting. 8 to 10 ft., \$1.75 each, \$16.50 per 10.

American Elm, *Ulmus americana*

EVERGREENS—Broad-Leaved

DAPHNE

Garland Flower. *D. cneorum.* See also perennials. 2 ft. May and June. A low, shrubby perennial, bearing sweet-scented, pink flowers in clusters, the florets of which are shaped like those of the lilac. \$1.00 each, \$9.00 per 10.

KALMIA

Mountain Laurel. *K. latifolia.* The beautiful and much sought laurel of our native woods. Much prized in Europe. Pink and white flowers in June. Plant in dry shade or partial sun, on the margin of woods or under lawn trees. 15 to 18 in., \$1.25 each, \$10.00 per 10; 2 to 3 ft., \$2.00 each, \$20.00 per 10.



Rhododendron

LEUCOTHOE

Drooping Andromeda. *L. catesbaei.* In early spring the graceful, drooping branches of this evergreen shrub are hung with beautiful, pendulous racemes of pure white flowers, in shape like Lily of the Valley. Plant in a shady place. 1 ft. 75c. each; 2 to 3 ft., \$1.50 each.

PACHYSANDRA

Japanese Spurge. *P. terminalis.* An evergreen ground cover of great value for planting under shrubs or in any place where the ground is bare and conspicuous. In spring the dark green foliage is set with sprays of white flowers. 25c. each, \$2.00 per 10.

RHODODENDRON

Great Laurel. *R. maximum.* A native of the Alleghenies. For the border of the woods or for evergreen plantings. Immense pink and white blossom heads in July. 2 ft. \$3.00 each, \$25.00 per 10; 3 to 4 ft., \$5.00 each.

Early Flowering Rhododendron. *R. carolinianum.* Bright pink flower clusters in early June. Growth more graceful and attractive than the others and flowers of an especially clear bright pink. 2 ft., \$3.00 each; 3 to 4 ft., \$5.00 each.

Catawba Rhododendron. *R. catawbiense.* Lilac-rose flowers. All the rhododendrons offered here are native and should do well under ordinary care. Plant them in shade or partial sun and give them a good mulching of straw or leaves. They prefer a very sour soil. 2 ft., \$2.50 each; 3 to 4 ft., \$4.50 each.

CONIFEROUS EVERGREENS

ABIES

Silver Fir. *A. concolor*. Rapid growing, hardy, long, stiff needles and dense growth. Blue-gray, 2 to 2½ ft., \$4.50 each, \$40.00 per 10.

Balsam Fir. *A. balsamea*. The fragrant balsam of the northern woods. Symmetrical in form. Blue-green. 1 to 2 ft., 75c. each, \$6.00 per 10; 2 to 3 ft., \$1.50 each, \$13.50 per 10.

JUNIPERUS

Common Spreading Juniper. *J. canadensis*. Silvery-green, low growing and of spreading growth. For rockery or foreground planting. 12 to 18 in., \$1.00 each, \$8.00 per 10; 18 to 24 in., \$1.50 each, \$12.00 per 10; 2 to 3 ft., \$2.50 each, \$22.50 per 10.

Sabine Juniper. *J. sabina*. Dark green, graceful in form. Dwarf. Good for foundation plantings. 18 to 24 in., \$3.50 each, \$30.00 per 10.

Red Cedar. *J. virginiana*. Tall, dense, columnar in habit. Dark green. Invaluable for landscape planting. Requires great care in planting. 2 to 3 ft., \$1.75 each, \$15.00 per 10; 3 to 4 ft., \$3.00 each.

Irish Juniper. *J. communis, var. hibernica*. Dense, columnar in form; glaucous-green. For formal plantings, or as foundation evergreen. 1½ to 2 ft., \$1.50 each, \$13.50 per 10.

PICEA

Colorado Blue Spruce. *P. pungens glauca*. Hardy and beautiful. Use as a specimen. Blue-green. 2 to 3 ft., \$8.00 each; 6 to 10 ft., \$15.00 to \$25.00 each.

White Spruce. *P. alba*. Very shapely, bluish-green. 2 to 3 ft., \$1.75 each, \$15.00 per 10.

Norway Spruce. *P. excelsa*. Rapid growing tree, used for windbreaks. Long, pendulous branches. Deep green. 2 to 3 ft., \$1.50 each, \$14.00 per 10; 4 to 5 ft., \$3.00 each.

Note.—Prices on larger specimens on application.



Silver Fir, *Abies concolor*

Red Spruce. *P. rubra*. Native tree. Exceptionally hardy. Dark rich green; graceful and symmetrical. 18 to 24 in., \$1.25 each, \$10.00 per 10; 2 to 3 ft., \$2.00 each, \$17.50 per 10.

PINUS

White Pine. *P. strobus*. Native evergreen. Large, dark green needles. 18 to 24 in., 75c. each, \$7.00 per 10; 2 to 3 ft., \$1.00 each, \$9.00 per 10; 3 to 4 ft., \$1.50 each, \$12.00 per 10.

Mugho Pine. *P. montana, var. mughus*. Dwarf, slow growing, compact and neat in appearance. Very hardy. For low evergreen plantings. 15 to 18 in., \$3.00 each, \$27.50 per 10; 18 to 24 in., \$3.50 each.

Norway Pine. *P. resinosa*. Beautiful, dense tree. Long, deep green needles. Very hardy. 2 to 3 ft., \$1.75 each, \$15.00 per 10.

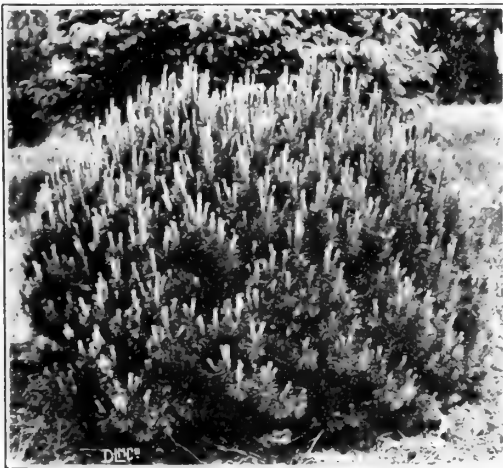
PSEUDOTSUGA

Douglas-Fir. *P. taxifolia*. Beautiful, soft, dark green needles. 18 to 24 in., \$1.50 each, \$12.50 per 10.

RETINOSPORA

Green Plumed Cypress. *R. plumosa*. Tall, pyramidal shape; feathery green-plumed foliage. Stands shearing. For foundations. 18 to 24 in., \$2.00 each; 2 to 3 ft., \$3.50 each.

Golden Plumed Cypress. *R. plumosa aurea*. Rich golden green. 2 to 3 ft., \$3.50 each.



Mugho Pine, *Pinus montana, var. mughus*

CONIFEROUS EVERGREENS—Continued

TAXUS

Japanese Yew. *T. cuspidata capitata.* Hardy, upright growth and dense, dark green, handsome foliage. Slow growing, good for low hedges, foundation planting or for garden use. 15 to 18 in., \$2.00 each, \$17.50 per 10.

Japanese Yew. *T. cuspidata.* Hardy, like the above, but of more spreading habit. 15 to 18 in., \$2.00 each, \$17.50 per 10.

American Yew. *T. canadensis.* Spreading habit, increasing rapidly. Dark green foliage. Plant under evergreens or on shady hillsides. Prefers moisture. 1½ to 2 ft., \$2.50 each, \$22.50 per 10.

THUJA

American Arborvitae. *T. occidentalis.* Dense, columnar growth. Good for hedges. Will stand severe clipping. 1½ to 2 ft., \$1.00 each, \$9.00 per 10; 2 to 3 ft., \$1.50 each, \$12.50 per 10.

Pyramidal Arborvitae. *T. occidentalis, var. pyramidalis.* Bright rich green. 2 to 3 ft., \$2.25 each, \$20.00 per 10.

Golden Arborvitae. *T. occidentalis var. aurea.* Yellow-green in color. 2 to 3 ft., \$3.00 each.

Globe Arborvitae. *T. occidentalis, var. globosa.* Dwarf, compact and round in form. Use against foundations or for formal effects. 12 to 18 in., \$1.50 each.

Japanese Yew, *Taxus cuspidata*

TSUGA

Hemlock. *T. canadensis.* One of the most beautiful of evergreens, as well as being useful and very hardy. Used for tall or low hedges. For windbreaks or screens, or for evergreen plantings of any nature, 12 to 18 in., \$1.00 each, \$9.00 per 10; 18 to 24 in., \$1.50 each, \$13.50 per 10; 2 to 3 ft., \$2.00 each, \$17.50 per 10.

HEDGES

We are often asked to suggest some shrubs which will make attractive hedges. Below we mention several with their especial use and the respective value of each. Prices and sizes on these shrubs will be found under heading "Hardy Shrubs."

Japanese Barberry. Is covered with small thorns and helps to keep troublesome dogs or cats or small boys at a safe distance. It may be clipped to any size not over 4 ft. Hung with brilliant berries in fall and winter. Plant 12 to 18 in. apart for a hedge.

Spiraea vanhouttei. May be clipped or allowed to grow in its own graceful manner. It makes an exceptionally good flowering hedge, 4 to 6 ft. high, and is good for immediate effect. Plant 18 in. to 2 ft. apart for a close hedge.

Hydrangea, Hills of Snow. Many prefer this low growing hydrangea, which is massed with white bloom in early summer. Grows 3 to 4 ft. tall, and makes a good, low, unclipped hedge. Plant 2 to 3 ft. apart.

Privet. There are three kinds of privet suitable to our climate, all of which are ideal in their own way. **California Privet** has oval, glossy green foliage, when in good condition is as handsome as the boxwood of the South. Will make a good low hedge, but is not hardy enough to attain a height of more than 3 or 4 ft. in New England. **Ibota Privet** is absolutely hardy and very vigorous. It will quickly grow into a tall, thick hedge, and can be counted on to attain from 6 to 12 ft. in height. **Ibodium Privet** is a cross between the California and the Ibota privet, and is similar in

appearance to California, while it has the hardiness and vigor of Ibota. It is a comparatively new introduction and will probably fill a long felt need: All privet should be planted from 10 to 15 in. apart.

Laurel-Leaved Willow. Makes a handsome, rapid growing wall of green and will attain a height of 15 to 20 ft. Glossy, dark green leaves which are very fragrant in the spring. Widely used as a screen for objectionable views. Plant from 4 to 6 ft. apart.

Hemlock Hedge. For an evergreen hedge in a cold climate, nothing is more suitable or beautiful than our native hemlock. May be clipped down to 3 or 4 ft. or allowed to attain a much greater height.

Arborvitae, or White Cedar. Is very hardy also, and especially long-lived. For a tall hedge of lasting value, you will do well to plant this evergreen. Often used for cemetery planting.

Box Barberry. As a last consideration you may have a place for which Box Barberry is eminently suitable. Used everywhere that the Boxwood of the South is not hardy enough. For bordering walks, or for the edge of the perennial border. Plant from 4 to 6 in. apart.

HARDY SHRUBS

See special page on hedge plants.

ALTHAEA

Rose of Sharon. *Althaea.* One of the few shrubs to blossom in midsummer; large, single or double flowers, shaped like hollyhocks in red, white, pink, or lavender. They form large shrubs, not unlike well grown white lilacs. 2 to 3 ft., 50c. each, \$4.50 per 10.

AZALEA

White Swamp Pink. *A. viscosa.* Deliciously fragrant white flowers. 12 to 15 in., \$1.00 each, 15 to 24 in., \$1.50 each.

Flame Azalea. *A. lutea.* Brilliant, flame-colored flowers in large clusters. 2 to 3 ft., \$2.00 each.

Swamp Pink. *A. nudiflora.* The native azalea. Coral-pink, with a delightful fragrance. Blooms at Memorial Day just before the leaves appear. 15 to 18 in., \$1.50 each; 2 to 3 ft., \$2.00 each.

ALMOND. See **Prunus.**

BERBERIS

Japanese Barberry. *B. thunbergi.* The ever useful and attractive barberry needs no description. For foundation planting, edging walks or drives, or as single specimens in the shrubbery border it has no equal. Clean cut, green leaves on thorny stems, and beautiful red berries in fall and winter. 3 yr., 18 to 24 in., 40c. each, \$3.00 per 10, \$25.00 per 100; 3 yr., 12 to 18 in., 25c. each, \$2.00 per 10, \$15.00 per 100; 2 to 3 ft., bushy, 75c. each.

Box Barberry. A miniature shrub of neat, attractive appearance. 3 yr., 35c. each, \$2.50 per 10, \$20.00 per 100.



Azalea, Swamp Pink, *Azalea nudiflora*

BUDDLEIA

Butterflybush. *B. magnifica.* Fragrant racemes of lavender flowers from August until frost. Wide, branching habit. Dies to the ground each year, sending out new wood every spring, and attaining a height of 4 to 6 ft. in a single season. Heavy plants, 50c. each, \$4.50 per 10.

Plant only in the spring.

CALYCANTHUS

Sweetshrub. *C. floridus.* A dwarf, symmetrical shrub, the leaves of which are very fragrant. Chocolate-colored, sweet-scented flowers. 1½ to 2 ft., 50c. each, \$4.50 per 10.

CORNUS

Red-Osier Dogwood. *C. stolonifera.* A native shrub of spreading habit. The bright red bark makes it very attractive, especially when planted with the green-barked kerria. 2 to 3 ft., 40c. each, \$3.50 per 10.

CYDONIA

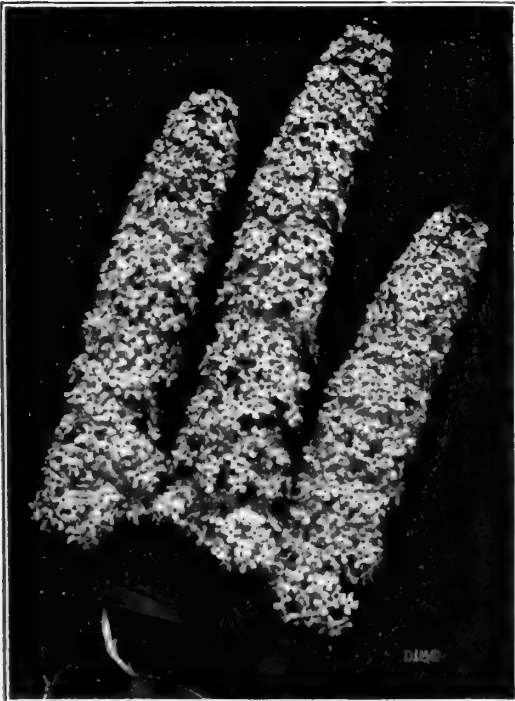
Japanese Quince. *C. japonica.* An old-fashioned shrub. The bush is aflame with scarlet flowers in May. 2 to 3 ft., 50c. each.

DEUTZIA

Lemoine's Deutzia. *D. lemoinei.* An invaluable medium-sized shrub of beautiful symmetrical growth. Densely covered with sprays of white flowers in late May and early June. 2 to 3 ft., 60c. each, \$5.50 per 10.

Slender Deutzia. *D. gracilis.* A smaller variety with slender growth. White flowers in May and early June. 18 to 24 in., 65c. each, \$6.00 per 10.

Pride of Rochester. *Deutzia.* A larger growing variety, bearing in June, long, pendulous sprays of pink-tinged white flowers. 2 to 3 ft., 50c. each, \$4.50 per 10.



Butterflybush, *Buddleia magnifica*

HARDY SHRUBS—Continued

EUONYMUS

Wing Barked Euonymus. *E. alatus*. Very beautiful in autumn for its scarlet foliage and masses of fruit which are much like the Bittersweet in form and color. Curious winged bark. 2 to 3 ft., \$1.00 each, \$9.00 per 10.

FORSYTHIA

Fortune's Golden Bell. *F. fortunei*. Densely covered in early spring with glorious, bell-shaped, yellow flowers. 2 to 3 ft., 50c. each, \$4.00 per 10.

Weeping Golden Bell. *F. suspensa*. The most graceful forsythia. The branches are long and pendulous, with an upward sweep at the ends. In May they are densely set with yellow flowers. 2 to 3 ft., 60c. each, \$5.00 per 10.

Showy Forsythia. *F. spectabilis*. The most brilliant forsythia, having larger blossoms of a brighter color than the others. Vigorous, healthy grower. A fine introduction. 2 to 3 ft., 75c. each, \$7.00 per 10.

Golden Bell. *F. viridissima*. A sturdy, green-barked forsythia, the foliage of which is practically evergreen. 2 to 3 ft., 50c. each, \$4.50 per 10.

HYDRANGEA

Hills of Snow. *H. arborescens sterilis*. A low-growing hydrangea which is covered with huge heads of white flowers in July. Splendid for low, unclipped hedges. 2 to 3 ft., 75c. each, \$7.00 per 10.

Common Hydrangea. *H. paniculata grandiflora*. The variety which attains such huge size and which holds its flowers until late in the fall. White flowers turning rose and bronze with age. 18 to 24 in., 50c. each, \$4.50 per 10; 2 to 3 ft., 75c. each, \$7.00 per 10; 3 to 4 ft., \$1.00 each, \$9.00 per 10.

Tree Hydrangea. The common hydrangea is often trained to grow in a treelike form. After planting cut off any side shoots which may start on the main stem the first year. 3 to 4 ft., \$1.25 each, \$10.00 per 10.



Hydrangea



Weeping Golden Bell—Forsythia suspensa

ILEX

Mountain Holly. *I. verticillata*. Sometimes called winterberry. Bright red berries thickly set along the stem in the fall and early winter. 18 to 24 in., 50c. each, \$4.50 per 10.

KERRIA

Japanese Kerria. *K. japonica*. A very graceful and beautiful small shrub. Its slender branches are bright green. Effective planted with the bright red-stemmed Dogwood. Flowers orange, semi-double. 2 to 3 ft., 75c. each, \$7.00 per 10.

LIGUSTRUM

Ibolium Privet. *L. ibolium*. A cross between Ibota and California privet, combining the hardiness and vigor of the former with the beauty of the latter. 2 to 3 ft., 40c. each, \$3.50 per 10, \$25.00 per 100.

Ibota Privet. *L. ibota*. Used in the North, where California is not hardy. Excellent hedge plant. 2 to 3 ft. 35c. each, \$3.00 per 10, \$22.00 per 100.

California Privet. *L. ovalifolium*. Handsome, glossy green foliage, not hardy enough in the North to attain a height above the snow line. 2 to 3 ft., 25c. each, \$1.50 per 10, \$10.00 per 100.

LONICERA

Tatarian Honeysuckle. *L. tatarica*. This shrub often grows to the height of a small tree. Dainty pink or white flowers in earliest spring, followed by bright red berries which are attractive to birds. 2 to 3 ft., 60c. each, \$4.50 per 10.

HARDY SHRUBS—Continued

PHILADELPHUS

Sweet Syringa. *P. coronarius*. A well-beloved, old-fashioned shrub. Deliciously fragrant, creamy white flowers in June. 2 to 3 ft., 50c. each, \$4.50 per 10.

Golden Syringa. *P. foliis aureus*. Very bushy, and having rich yellow leaves. Good for planting with other shrubs where the golden green foliage relieves the monotonous green of the planting. 18 to 24 in., 75c. each, \$7.00 per 10.

POTENTILLA

Shrubby Cinquefoil. *P. fruticosa*. Single yellow flowers, borne all summer. A dwarf grower, preferring a moist place. 18 to 24 in., 40c. each, \$3.00 per 10.

PRUNUS

Flowering Almond. *P. japonica*. In May the branches of this little shrub are wreathed with tiny pink and white rosettes. 3 to 4 ft., \$1.00 each.

RIBES

Flowering Currant. *R. aureum*. The spicy fragrance of the flowering currant in May is all pervading. Bright yellow, tubular flowers. 2 to 3 ft., 50c. each, \$4.50 per 10.

RHUS

Smoke Bush, Purple Fringe. *R. cotinus*. Immense heads of pale purple flowers, so tiny as to give the bush a smoky appearance. Distinctive and beautiful. 3 to 4 ft., \$1.00 each.

Staghorn Sumac. *R. typhina*. A native shrub, popular for naturalistic plantings. Is being planted also more generally in the last few years as a lawn shrub. 3 to 4 ft., 50c. each, \$4.50 per 10.

RUBUS

Purple Flowering Raspberry. *R. odoratus*. Slender, graceful branches and single flowers of rosy purple. Plant in the shade. 3 to 4 ft., 40c. each, \$3.00 per 10.

SAMBUCUS

Snowy Elder. *S. canadensis*. Handsome, compound leaves, and great corymbs of white, fragrant flowers in June. When the beauty of this shrub is more fully known it will be planted extensively. 2 to 3 ft., 40c. each, \$3.50 per 10.

SPIRAEA

Waterer's Spiraea. *S. bumalda*, *Anthony Waterer*. A dwarf spiraea useful for bordering shrubby plantings. Deep rose colored flowers in flat corymbs during the entire season. 15 to 18 in., 50c. each, \$4.50 per 10; 18 to 24 in., 60c. each, \$5.50 per 10.

Steeple Bush. *S. tomentosa*. Native pasture spiraea, used for naturalizing. Tall spikes of soft, rose-colored flowers in midsummer. 2 to 3 ft., 25c. each, \$2.00 per 10.

Meadow Sweet. *S. latifolia*. Native white spiraea, blossoming in early summer. 2 to 3 ft., 40c. each, \$3.50 per 10.

Bridalwreath. *S. prunifolia*. The true bridalwreath is distinct from *vanhouttei* although often confused with it. Grows erect. Thickly set with tiny white rosettes before the leaves appear. 2 to 3 ft., 50c. each, \$4.50 per 10.

Van Houtte's Spiraea. *S. vanhouttei*. In May this most beautiful of spiraeas is wreathed to the end of each drooping branch with white flowers. Its form and habit make it especially suitable for planting in a conspicuous place. Makes a splendid tall hedge. 2 to 3 ft., 40c. each, \$3.50 per 10.

Thunberg's Spiraea. *S. thunbergi*. A very graceful variety, having finely shaped, feathery leaves and double flowers in May. 2 to 3 ft., 50c. each, \$4.50 per 10.



Planting of Spiraea

HARDY SHRUBS—Continued

Hybrid Lilac, *Syringa*

SYMPHORICARPOS

Snowberry. *S. racemosus.* This old-fashioned shrub is found around many an old doorstep in New England. It is well worth growing for the waxy white berries which hang until winter. Becoming popular again. 2 to 3 ft., 50c. each, \$4.50 per 10.

Indian Currant. *S. vulgaris.* Sometimes called coralberry because the long, slender branches are thickly studded with coral-red berries in autumn. Very quick growing shrub. 2 to 3 ft., 50c. each, \$4.50 per 10.

SYRINGA. See *Philadelphus.*

SYRINGA

Common Purple Lilac. *S. vulgaris.* This most common of shrubs never loses its popularity. Fine for tall flowering hedge. 2 to 3 ft., 50c. each, \$4.50 per 10; 3 to 4 ft., 75c. each, \$7.00 per 10.

Common White Lilac. 2 to 3 ft., 50c. each, \$4.50 per 10; 3 to 4 ft., 75c. each, \$7.00 per 10.

Hybrid Lilacs. These are fast supplanting the common lilac, whose greatest fault has always been that of not blooming for several years after planting. The lilac hybrids often blossom the same year they are planted, a fact which has brought them instant favor wherever they have been tried. There are nearly a hundred new varieties in many shades of creamy white, lavender, rose, purple and blue, both single and double. We offer below a few of the most popular. 2 to 3 ft.:

Belle de Nancy. A bright, satiny rose-pink. Immense panicles of double flowers.

Marie Legraye. Single pure white.

President Grevy. Single clear blue.

Mme. Casimir Perier. Creamy white, double flowers.

Charles 10th. A giant dark reddish-purple.

Any of the hybrid lilacs, \$1.00 each, \$9.00 per 10

VIBURNUM

Japanese Snowball. *V. tomentosum plicatum.* The best of the snowballs. The white flower heads are thickly set along the stem and are very double. 2 to 3 ft., \$1.00 each, \$9.00 per 10.

Wayfaring Tree. *V. lantana.* Tall shrub or small tree. Bears large, red, berries. White flowers in heavy corymbs. 3 to 4 ft., 60c. each.

Arrowwood. *V. dentatum.* Roughly heart-shaped leaves, assuming rich, dark red shades in fall. White flowers followed by dark blue berries. Very ornamental as a hedge plant. 3 to 4 ft., 50c. each, \$4.50 per 10.

Hobblebush. *V. alnifolium.* A spring flowering Viburnum of our native woods. Broad, flat corymbs of creamy white flowers. Very beautiful for a shady place. 2 to 3 ft., 50c. each, \$4.50 per 10.

Withe-Rod. *V. cassinoides.* Flat corymbs of cream-white flowers in June and July, followed by bright blue berries. An attractively shaped shrub, which will do especially well in a moist place. 2 to 3 ft., 50c. each, \$4.50 per 10; 3 to 4 ft., 75c. each, \$7.00 per 10.

WEIGELA

Pink Weigela. *W. rosea.* A tall shrub; beautiful, bell-shaped flowers in large clusters in June. 2 to 3 ft., 60c. each, \$5.50 per 10.

White Weigela. *W. candida.* A vigorous shrub of tall growth, bearing pure white, bell-shaped flowers in June. 2 to 3 ft., 60c. each, \$5.50 per 10.

Red Weigela. *W. Eva Rathke.* A low-growing Weigela with outspreading branches and clusters of deep, rose-red flowers. 18 to 24 in., 60c. each, \$5.50 per 10.

Withe-Rod, *Viburnum cassinoides*

Boston Ivy—*Ampelopsis veitchi*

HARDY VINES

Plant vines in deep, carefully enriched soil, and give them a top dressing of manure every fall just after the ground freezes. Do not place where they will be damaged by snowslides from the roof, or where there will be a constant dripping off the eaves about their roots, as this packs the ground too hard. Vines should be more generally planted, to soften the strict lines of brick or stucco buildings, to provide shade or privacy on a veranda or pergola, or to hide unsightly objects.

All vines offered below are 2 yr. No. 1 plants.

ACTINIDIA

Silver Vine. *A. arguta*. Flowers white, with a purple center, entirely covering the vine. Edible fruit. Shining, dark green foliage. 75c. each, \$7.00 per 10.

AKEBIA

Fiveleaved Akebia. *A. quinata*. Leaflets dark green, arranged five on a stalk. Flowers violet-brown with a cinnamon odor. One of the best of climbers, having a delicate gracefulness, and giving a dense shade. 60c. each, \$5.00 per 10.

AMPELOPSIS

Boston Ivy. *A. veitchi*. Used to cover stone or brick buildings, as it clings to a perfectly smooth surface by means of its tiny aerial rootlets. Handsome foliage, dark blue berries, and charming autumn tints. 75c. each, \$7.00 per 10.

Woodbine. *A. quinquefolia*. A native vine, unexcelled for use on wooden buildings. Rapid growing, quickly covering old trees or large surfaces. Bright blue berries and scarlet foliage in fall. 40c. each, \$3.50 per 10.

ARISTOLOCHIA

Dutchman's-Pipe. *A. siphocampylus*. Large, dark green leaves, and curious brownish flowers, shaped like pipes. Very vigorous. A widely planted vine. \$1.00 each, \$9.00 per 10.

BIGNONIA

Trumpet Vine. *B. radicans*. Vigorous, rapid growing vine, bearing large, orange-scarlet, tubular flowers in July and August. 50c. each, \$4.50 per 10.



Clematis jackmani. See page 18

HARDY VINES—Continued

CELASTRUS

Japanese Bittersweet. *C. orbiculatus*. A strong, hardy variety, by some considered superior to the American Bittersweet. Orange berries and bright red seeds. 50c. each, \$4.50 per 10.

American Bittersweet. *C. scandens*. A native vine, having a dense growth. Much prized for its orange-scarlet berries which are extensively used for decorating. 50c. each, \$4.50 per 10.

CLEMATIS

Japanese Virgins-Bower. *C. paniculata*. One of the most useful and beautiful of vines. Attractive foliage which is hidden in August beneath a shower of snow white, feathery flowers. 50c. each, \$4.50 per 10.

Clematis henryi. The large flowering clematis easily the most richly colored of northern vines. Single flowers 3 to 6 in. across. Delicate creamy white. \$1.00 each.

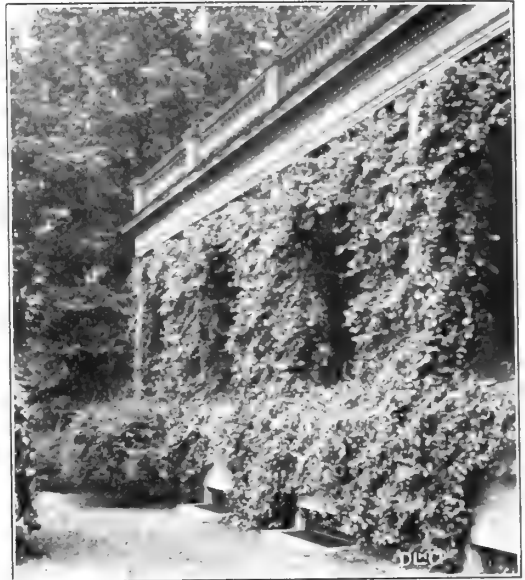
Clematis jackmani. Like the above except in color which is a velvety purple. \$1.00 each.

Virgins-Bower. *C. virginiana*. A dainty and attractive vine, perfectly hardy and very vigorous. White flowers in August. 40c. each, \$3.00 per 10.

EUONYMUS

Evergreen Bittersweet. *E. radicans*. Very hardy, dense growing evergreen vine, with thick, dark green leaves. Bears orange fruit similar to the native bittersweet. Self clinging. 50c. each, \$4.50 per 10.

Euonymus radicans vegetus. Low, trailing vine similar to the above. Good for low stone walls. Sometimes clipped for formal effects. 50c. each, \$4.50 per 10.



Hall's Honeysuckle

LONICERA

Hall's Honeysuckle. *L. halliana*. Rapid growing vine, bearing all summer, airy sprays of white and yellow blossoms which are very fragrant. 50c. each, \$4.50 per 10.

LYCIUM

Matrimony-Vine. *L. barbarum*. A shrubby climber, bearing small purple flowers followed by scarlet berries. 50c. each, \$4.50 per 10.

POLYGONUM

Silver Lace Vine. *P. auberti*. An invaluable rapid growing vine of dainty though strong and hardy habit. Covers itself throughout the summer and fall with long sprays of foamy white flowers. 75c. each.

WISTERIA

Chinese Wisteria. *W. chinensis*. Long racemes of lavender-purple flowers in May. The delightful fragrance of the Wisteria is one of its greatest charms. 60c. each, \$6.00 per 10.

White Wisteria. *W. chinensis alba*. White form of above. 60c. each, \$5.00 per 10.



Wisteria



ROSES, Hybrid Teas

Columbia. A fine American rose. Flowers long and pointed, borne on unusually long, stiff, almost thornless stems. Color bright pink. Blooms continually until late fall.

Hadley. A bright, dark red everbloomer, with long buds opening to full, perfect flowers. Very rich coloring.

Gruss an Teplitz. We especially recommend this as a bedding rose. Continually in bloom until November. Brilliant deep red in color with a velvety sheen. Wide open flowers. 75c. each, \$7.00 per 10.

Killarney. Long pointed buds of silvery pink; one of the finest for cutting.

Lolita Armour. A rose of distinct and delicate coloring and at the same time of strong, vigorous growth. Color is a blending of golden yellow, copper, and coral red. Much hardier than Los Angeles which we have discarded as being unsuitable for this climate. 90c. each, \$8.50 per 10.

Lady Ursula. A delicately scented, flesh pink rose; large, full flowers with high center and outer petals gracefully reflexed. Remarkable for its freedom of bloom and strong, upright growth.

Mme. Edouard Herriot. *The Daily Mail Rose.* Coral-red shaded with yellow and bright rose.

Mme. Caroline Testout. The rose which made Portland, Ore., famous. The streets of that city are lined with beds of this rose. Large, rounded blooms of a satiny-rose pink with darker center. Very free blooming.

Mrs. Aaron Ward. Probably bears more blooms than any other yellow rose; small, dainty flowers of Indian yellow, shading deeper toward the center. Color varies greatly with the conditions of the weather.

Ophelia. A rose which in 10 years has made its name a byword among florists and the flower buying public. Every lover of beautiful cut flowers should plant Ophelia. Color, soft flesh pink, changing in some seasons to an amber pink.

Radiance. Without doubt one of the finest roses for American gardens. Usually classed with the best half dozen for garden planting. Strong, upright growth; long stems and full, double flowers of silvery pink. The two Radiance roses belong to the type which stays in the bud, making them extremely lasting as a cut flower.

Red Radiance. A sport of Radiance and like it except in color which is a beautiful rose-red.



Rose Gruss an Teplitz

Any of the above, except as noted, strong, 2 yr. No. 1 plants 85c. each, \$8.00 per 10.

HYBRID TEA ROSES—Continued

Rose Marie. Of the greatest garden value. Color bright rose-pink; long, beautiful flowers borne with great freedom all summer. Likely to displace many of the older pinks for bedding.

Sunburst. Orange-yellow paling toward the edge of the petals.

Souvenir de Claudius Pernet. The sensational new yellow rose named by a French hybridizer for his son Claudius, who was killed in the war. For a yellow rose this is most remarkable. Strong, healthy growth. Color, bright sunflower yellow. Long pointed buds opening to full, fragrant flowers. Disease resistant foliage. \$2.00 each for 2 yr. No. 1 plants.

Any of the above, except as noted, strong, 2 yr. No. 1 plants, 85c. each, \$8.00 per 10.

HYBRID PERPETUALS

Frau Karl Druschki. Perfectly formed, white flowers on long, stiff stems. Bears a heavy crop of flowers in June and from then every month until hard frost. The queen of white roses.

General Jacqueminot. The Jack Rose; known everywhere.

George Arends, or Pink Druschki. By many considered the best pink bush rose. Clear rose-pink and very fragrant. Otherwise identical to Frau Karl Druschki.

Magna Charta. Popular bright pink bush rose. Flowers round and very full. Makes a large, shrublike bush. Blooms to some extent all summer.

Mrs. John Laing. Quite similar to Magna Charta but very fragrant. Bright pink flowers globular in form. Blooms frequently all summer.



Rose Ophelia. See page 19

Mme. Plantier. Flowers pure white, unusually hardy. Frequently planted in cemeteries. Makes a large, shrublike bush.

Each 75c., \$7.00 per 10.

AUSTRIAN BRIARS

Persian Yellow. A lovely yellow bush rose deservedly one of the most popular in the north, as it is perfectly hardy. Forms a large bush whose gracefully arching branches are thickly set with bright yellow, semi-double flowers in June. 75c. each, \$7.00 per 10.

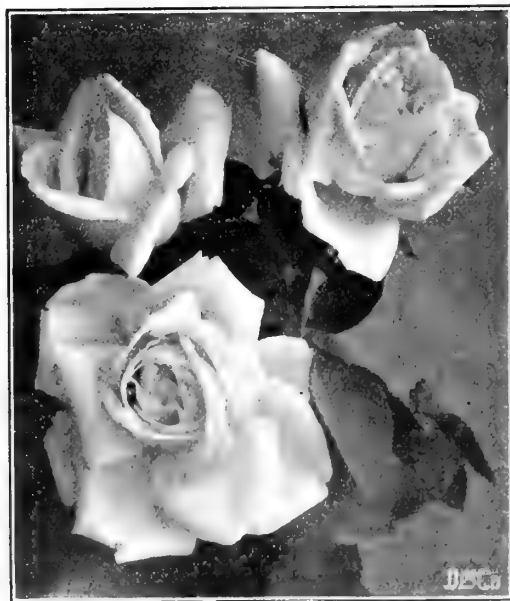
Austrian Copper. A rare and very striking rose. Vivid flame-colored single flowers. Fine for a wild or rocky place. \$1.00 each.

SWEET BRIAR

Rosa rubiginosa. *The Native Sweet Briar.* Forms a tall bush, the leaves of which are very fragrant. Lovely, single pink flowers. Plant in a wild or rocky place or if in the garden give plenty of room. 50c. each, \$4.50 per 10.

ROSA RUGOSA

Rugosa Roses. White or red. Used extensively for hedges and shrubbery borders. Strong, vigorous growers. Immense, single flowers and thick, dark leaves. 50c. each, \$4.50 per 10.



Rose Frau Karl Druschki



Rose Hugonis

ROSES—Continued

ROSA HUGONIS

Golden Rose of China. A new and very beautiful rose. Single yellow flowers in long, arching sprays. It has proved to be perfectly hardy in the north. Blooms in late May or early June several weeks before any other rose is in blossom. \$1.50 each.

POLYANTHA ROSES

Baby Ramblers, or Polyantha roses are fine for bedding purposes being continually in bloom. They are low growing, seldom attaining a height of more than 18 or 20 in. We offer strong, 2 yr. old plants of pink, white or red for 75c. each, \$7.00 per 10.

RAMBLERS

Dorothy Perkins. The ever popular Dorothy Perkins is one of the best and hardiest of ramblers, and lives through our northern winters almost without exception. Pink clusters of very double flowers. 50c. each, \$4.50 per 10.

Excelsa. A red flowered member of the Perkins family, sharing in their hardiness and vigor. Brilliant red double flowers. 50c. each, \$4.50 per 10.

White Dorothy. The white completes the trio. Pure white flowers in dense clusters. 50c. each, \$4.50 per 10.

American Pillar. A climbing rose having exceptionally large, glossy green foliage. Beautiful flowers in enormous trusses of clear wild rose-pink. 75c. each, \$7.00 per 10.

Hiawatha. A strikingly beautiful, single, climbing rose. Bright red flowers with conspicuous, lemon-yellow stamens. Early flowering. 50c. each.

Wichuraiana. *Memorial Rose.* A trailing rose, quickly covering the ground with its glossy, small green leaves. Used extensively in cemeteries. Single pure white flowers. 50c. each.

Crimson Rambler. Masses of double crimson flowers on long, heavy canes. The most widely planted climber. 50c. each, \$4.50 per 10.

Paul's Scarlet Climber. A wonderful new rose. Fully tried out in our nursery. Flowers large, in form and size like Dr. Van Fleet, or in other words, much like a hybrid tea. Color bright scarlet. 75c. each.

Dr. Van Fleet. A complete departure from the usual rambler rose. Flowers are much like the hybrid teas in form and size. Color flesh pink, deepening in the center. Beautiful as a cut flower, as the blooms are borne in sprays on long, strong stems. A basket of these flowers cut in the bud is a remarkably beautiful sight. 75c. each, \$7.00 per 10.

Tausendschön. *Rose of a Thousand Beauties.* Large, double flowers in great clusters varying from deep rose to shell pink. 50c. ea., \$4.50 per 10.

Climbing American Beauty. Bears blossoms fully as large as the June roses. Color rose-red. Not a strong grower in many places. 75c. each, \$7.00 per 10.

Yellow Rambler. Heavy trusses of lemon yellow flowers. Strong grower. 50c. each, \$4.50 per 10.

Mary Wallace. A new rose originated by Dr. Van Fleet. A pillar rose making a strong, self supporting bush 6-8 ft. high. Foliage practically disease-proof. Blooms freely in June and to some extent throughout the summer and fall. Flowers semi-double, bright rose-pink, salmon-pink at base. The largest of the new climbing roses, often measuring over 4 in. across. Each \$2.00.

Silver Moon. Strong, vigorous canes with handsome, dark green, disease-resistant foliage. Very large, single white flowers. A beautiful rose and classed with the three best climbers. Requires protection here. 75c. each, \$7.00 per 10.

MOSS ROSES

The old-fashioned moss rose has never lost its appeal. The buds are covered with a light green moss which gives the flowers an indescribably artistic appearance. Price of dark red, or mixed colors. 50c. each, \$4.50 per 10.



Polyantha Rose, Baby Rambler



HARDY PERENNIALS

Among the hardy perennials are to be found all the old-fashioned plants which grew in our mother's gardens, as well as newer and improved varieties, the results of many years of selection and crossing, or hybridizing, as it is called. New iris, new peonies and phlox appear every year, as well as new perennial poppies and delphinium, in short, every plant in the catalogue, until their number is legion. Some become permanent additions to the list of garden flowers, and others are discarded.

CARE AND PROTECTION

Prepare the soil deeply, and enrich with old manure, the older the better. Plants should not be planted below the crown. Too deep planting is the cause of many failures. Be careful, too, to firm the soil about the roots. Stamp the ground as hard as you can with your heel, or butt of the trowel. This point cannot be overemphasized. Air space about the roots is fatal, especially when the planting is done in the fall. Mulch every year with a thick covering of manure.

As a rule, early spring blooming perennials should be planted in the fall; while fall blooming ones, such as Japanese anemone, require spring planting. On the whole, however, fall is a far better time to plant than is generally realized. Often much time is gained by planting in late September through October, giving plenty of time for root growth before winter comes. In this way the spring growth is not disturbed and as a result earlier and better flowers are obtained.

Some plants usually classed as perennials are, in reality, biennials, completing their life cycle in two years. If a biennial fails to blossom the second year, it will live for another season, blossom and die in its third year. All biennials are mentioned as such, in the descriptions following.

Note—Not less than 6 of 1 variety or color at the rate per 12.

AEGOPODIUM

A. podagraria. A variegated plant much used for edging purposes. Green and white leaves.

ACHILLEA. The Pearl

A. ptarmica. 2 ft. Pompon-shaped, white flowers throughout the summer. Easily grown border plant. Good cut flower.

ACONITUM. Monkshood

A. uncinatum. *Wild Monkshood.* 3-5 ft. June-Sept. Deep purple, helmet-shaped flowers on tall, slender stalks, inclined to climb.

A. napellus. One of the best known aconitums. Rich blue flowers from June until September, growing from 3 to 3½ ft. tall. Splendid for massing effects in the garden. 35c. each, \$3.50 per 12.

A. fischeri. A very choice aconitum. Blue flowers during September and October. 35c. each, \$3.50 per 12.

ADONIS. Pheasant's Eye

A. vernalis. 1 ft. April-May. A lovely spring flower having large, single, yellow flowers and feathery, fernlike foliage. Fine for the front of the perennial border where if undisturbed, it will increase rapidly. 30c. each, \$3.00 per 12.

ALYSSUM. Basket of Gold

A. saxatile. 10 in. May. Low, sprawling habit. In May the gray-green leaves are buried beneath masses of tiny golden flowers. In bloom in tulip time. Good for the front of the perennial border or for planting among spring bulbs.

ANCHUSA. Alkanet

A. italica, var. Dropmore. 4-5 ft. June. Tall, branched growth. A large biennial having coarse leaves, and gentian-blue flowers. At a little distance the wonderful blue effect of this flower is unequalled.

Price, any of the above, except as noted, 20c. each, \$2.00 per 12.

HARDY PERENNIALS—Continued

ANEMONE. Windflower

A. japonica. 3-4 ft. Oct. Lovely flowers like single roses, borne on long stems, well above the foliage mass. Soft, luminous colors in old rose, white and crimson. They prefer partial shade and soil mixed with leafmold. Keep their roots well mulched with leaves. Any of the above colors, each 25c., \$2.50 per 12.

ANTHEMIS. Marguerite

A. tinctoria kelwayi. 2-3 ft. Compact, fernlike foliage, from which rise brilliant masses of single, bright yellow flowers like daisies from June through August. Succeeds well in a dry soil and among rocks.

AQUILEGIA. Columbine

Among the most popular perennials. It blooms in May in iris time. The flowers have an airy grace, unlike any other plant. Handsome foliage, green throughout the summer. Plants increase about double their size the second year if given plenty of room. 2-2½ ft. May-June.

A. chrysantha. Clear yellow. Long-spurred. Blossoms continually all summer.

A. nivea grandiflora. Best white. Short-spurred.

A. canadensis. Native red and yellow. Long-spurred.

A. Shades of Pink. Long-spurred hybrids of varying shades of rose and pink.

A. caerulea. Rocky Mountain Columbine. Sky-blue and white flowers. Well deserving its universal popularity.

A. Mrs. Scott Elliott's Hybrids. Among these new hybrids are to be found beautiful and delicate shades of coloring and great length of spurs and size of blossoms. Colors range through wine, purple, blue, blue and white, mauve, lemon-yellow, and shades of pink. 25c. each, \$2.50 per 12.

A. Dreer's Long-Spurred Hybrids. A beautiful and reliable strain comprising a large percentage of pink and rose shades. Long spurs.

A. Short-Spurred. Some people prefer the old-fashioned short-spurred columbine. Hardy and very long-lived.

ARABIS. White Rockcress

A. alpina. 6-8 in. Pure white flowers, densely cover this plant in April and May. Blooms at tulip time and these do well together. The earliest flower to blossom in our nursery.

A. alpina florepleno. Double Arabis. A double, pure white form of the above and more pretentious than the single kind. 25c. each, \$2.50 per 12.

ARISAEMA. Jack-in-the-Pulpit

A. triphyllum. 1 ft. A native plant bearing curiously formed, black and green striped flowers in the form of a sheath, part of which droops down to protect the long, brown spathe within, thus giving the plant its name. Late May. Requires shade and moisture.

ARTEMISIA. Southernwood

A. abrotanum. 2 ft. Deliciously scented foliage of finely cut glaucous green. Old-fashioned garden herb to be found with Sweet Mary, Bee Balm, Rosemary and Lavender. 25c. each.

ASCLEPIAS. Butterflyweed

A. tuberosa. 2 ft. Slender growth, branched from the ground. Large flower heads composed of tiny, wing-petaled florets, of brilliant orange. Enjoys a hot, dry location. Aug. Exceptionally bright and attractive.

A. incarnata. Swamp Milkweed. Dark rose-colored flowers in early summer. Requires a moist situation in the sun.

ASTER

A. novae-angliae, or New England Aster. 4 ft. Purple. Sept.-Oct. Tall growth, slightly branched, and spreading rapidly from the roots. This autumn flowering plant is almost essential in the hardy garden. It makes a mass of beautiful color when flowers are scarce.

A. novae-angliae roseus. Rose-colored form, slightly larger and more double than the above. Either one of these is a beautiful companion for the white Boltonia. 25c. each, \$2.50 per 12.

ASTILBE. Garden Spiraea

A. arendsi Hybrids. A group of plants invaluable for cut flowers; much used for florist's baskets. Attractive, deeply cut foliage which is green throughout the summer; and in June and July feathery plumes of rose or white flowers. 50c. each.

AUBRIETIA. Walleress

A. Hybrids. 6 in. Bright flowered, creeping perennial, blooming in earliest spring. Clusters of flowers in purple, rose or blue. 25c. each, \$2.50 per 12.



Aquilegia and Foxglove

Price, any of the above, except as noted, 20c. each, \$2.00 per 10.

HARDY PERENNIALS—Continued



Calochortus venustus

BAPTISIA. False Indigo

- B. australis.** 2-3 ft. June. Has shapely clumps of persistently attractive foliage and erect sprays of dark blue flowers shaped like sweet peas.
- B. leucantha.** Delicate white false indigo. White, pea-shaped flowers on drooping branches. July.
- B. bracteata.** Bracted False Indigo. Cream colored blossoms entirely covering the plant. May-June. 1½-2 ft. high.

BELLIS. English Daisy

- B. perennis.** 9 in. An old-fashioned favorite which has been much improved. The modern English daisy has large pink and white double flowers on stems which are long enough for cutting. Try planting them with forgetmenots. Good for edging. Blooms all season. 15c. each, \$1.50 per 12.

BLEEDINGHEART. See *Dielytra***BOLTONIA.** False Starwort

- B. asteroides.** 5-6 ft. Sept.-Oct. The tall stalks are surmounted by immense branched heads of flowers, similar in form to hardy asters. Pure white. 15c. each, \$1.50 per 12.

BOCCONIA. Plume Poppy

- B. cordata.** 6-8 ft. Big, feathery heads of creamy white flowers. Tall, upright habit. Used extensively for the backgrounds of perennial borders.

BUTTERFLYBUSH. See *Shrubs***BUTTERFLYWEED.** See *Asclepias***CAMASSIA**

- C. leichtlini.** A bulbous plant from the West. Cream colored flowers on slender stems rising from grassy foliage. Plant only in the fall.

CARNATIONS

- C. Dwarf Vienna.** *Hardy Carnations.* A race of hardy carnations which we have tried out for several years in the nursery with pleasing results. Somewhat smaller than the greenhouse varieties, otherwise identical with them. Colors red, crimson, pink, white, yellow and an occasional bicolor. Very fragrant and one of the best in the list for cut flowers. We offer bright red, white and pink in separate colors, at the regular price. Mixed colors, 15c. each, \$1.50 per 12.

CALOCHORTI. California Tulips

Bulbous plants, hardy when protected with leaves or sod. Were wintered safely here in 1924. In the East they bloom in June and July. They are also fine house bulbs as they will blossom well if potted up in the fall and cared for in a warm room. The flower tints are exquisite.

GLOBE TULIPS

- C. albus.** *Fairy Lantern.* Rather dwarf in nature, growing about 8 in. tall. Pure white with dainty fringe. 10c. each, 75c. per 12.
- C. amabilis.** Rich butter yellow. 10c. each, 75c. per 12.

MARIPOSA TULIPS

- C. venustus.** These lovely flowers are named for the Spanish word for butterfly. The markings on their petals are similar in beauty and delicacy to those on a butterfly's wings. Slender stems, 12-18 in. tall, each bearing a cup-shaped flower of ivory-white marked with rose-purple or crimson at the center. Splendid for cutting. 15c. each, \$1.00 per 12.

CALLIRHOE. Poppy-Mallow

- C. involucrata.** Single flowers in a setting of prostrate, trailing foliage. Clear, true magenta, in form like miniature hollyhocks. Of easy culture in a sunny place.



Astilbe, Garden Spiraea. See page 23

Price, any of the above, except as noted, 20c. each, \$2.00 per 12.

HARDY PERENNIALS—Continued

CAMPANULA. Bellflower

- C. medium**, or **Canterbury-Bells**. 2 ft. June. One always expects to include this old garden favorite in any hardy garden. Large, bell-shaped flowers, held upright on stiff stalks. Biennials. Pink, white, light and dark blue. 15c. each, \$1.50 per 12.
- C. medium calycanthema**. *Cup-and-Saucer*. *Canterbury-Bells*. These are increasingly popular. In form semi-double, giving the flowers the appearance of a cup and saucer. Hardy biennials. Mixed colors.
- C. carpatica**. *Carpathian Harebells*. 8-12 in. June-Oct. A true perennial. This variety grows in a compact form which recommends it for an edging plant or for the rockery. From the foliage tufts rise the slender flower stems, each bearing a pretty, bell-shaped blossom.
- C. carpatica alba**. White flowered form of above.
- C. rotundifolia**. *Blue Bells of Scotland*. Blue. June-frost. This is the true harebell, and grows native to some parts of the country, living in tiny soil pockets of the rocky ledges. The stems are very slender, almost hairlike, and the myriad, tiny, bell-shaped flowers which they bear are clear blue. Good border plant. Will grow in sod.
- C. persicifolia**. *Peach-Bells*. Blue or white, bell-shaped flowers on tall, graceful stalks. A true perennial, and much more graceful than the canterbury-bells. Establishes itself permanently in any good sunny or half shady position. Fine for cutting.
- C. latifolia macrantha**. *Coventry-Bells*. Dainty spikes of lilac blue, down-drooping, small, bell-shaped flowers during July and August. Will thrive in a neglected place or among shrubbery. Spreads from the roots.

CENTAUREA. Bachelor Button

- C. montana**. Hardy, continuous blooming plant bearing large, blue flowers on long, strong stems; fine for cutting.
- C. macrocephala**. *Caucasian Bachelor Button*. A strong, hardy species having large, compact growth 3 to 4 feet high. The flowers are borne freely; large, very clear lemon-yellow; identical in shape with the large thistle.

CERASTIUM. Snow-in-Summer

- C. tomentosum**. *Ground Cover*. This little plant has attractive, gray-green foliage and in May and June is covered with miniature bell-shaped, white flowers.

Peach-Bells, *Campanula persicifolia*

CHEIRANTHUS. Siberian Wallflower

- A. allioni**. 1½ ft. May and early June. Flower heads bright orange and very fragrant. Lasts for a long time as a cut flower. Very brilliant. Hardy biennial, resowing itself every year. 15c. each, \$1.50 per 12.

CHRYSANTHEMUMS

The last flowers to bloom in the garden and when the first killing frosts have come, their colors are a welcome sight. It is well to store them in a cool cellar for the winter.

The pompons and button types are the earliest flowering, and should be in flower by the last of October and last with care except in northern New England until Thanksgiving Day. If heavy frosts threaten, a light lath frame placed on stakes above the bed will prevent frost settling on the plants and spoiling the colors, and will, if put on during all cold nights, keep them blooming indefinitely.

Indian. Bright Indian red. Early and reliable. Aster type.

Clara Jameson. One of the showiest varieties. Autumn coloring in bronze and scarlet. Will bloom after heavy frost.

Niza. The earliest pink to blossom. Delicate pink. Dwarf grower.

Baby. The old-fashioned button flowered yellow. Great favorite.

Snowclad. Pure white.

Lucifer. Ox-blood red. Large flowered.

Mrs. Roberts. Deep rose-pink.

Oconto. A very reliable pure white; large flowering.

Glory of Seven Oaks. Bright golden yellow. Large.

Any of the above, 25c. each, \$2.50 per 12.



Pompon Chrysanthemums

Price, any of the above, except as noted, 20c. each, \$2.00 per 12.

HARDY PERENNIALS—Continued

CIMICIFUGA. Snakeroot

C. racemosa. 4-8 ft. Dense drooping racemes of cream white flowers. Does best in moist shade, but will thrive in sun.

CLINTONIA. Bluebead

C. borealis. Two or three large basal leaves from which rises, in May, the flower stem bearing five or six drooping, bell-shaped, cream yellow blossoms, which are followed in summer by bright blue berries.

CONVALLARIA. Lily-of-the-Valley

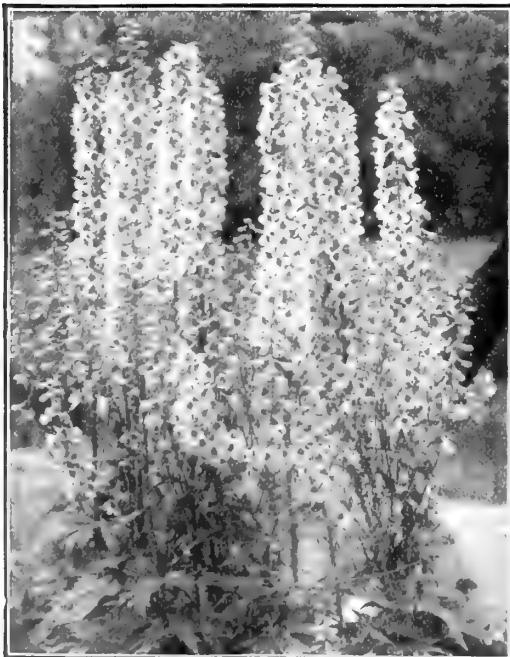
C. majalis. The valley lilies succeed in any shady spot and with no care bear the loveliest and most fragrant of flowers. Mulch them with manure, and you will be surprised at the increase in the size of the blossoms. Clumps, 60c. each, pips, 25c. per 10, \$3.00 per 100.

CORYDALIS

C. glauca. *Pale Corydalis*. 6 in. to 2 ft. high, having attractive divided foliage and many tiny pink flowers each tipped with yellow. Blooms late in May with the German iris and the two are very beautiful planted together, the habit of iris being strict and severe and the other, airy and graceful. Hardy biennial resowing itself.

COREOPSIS

C. lanceolata. 2-3 ft. Forms large, dense clumps. Well known and very popular perennial, bearing rich yellow flowers, most profusely in June, but to some extent all summer if kept picked.



Larkspur

Bleedingheart, *Dielytra spectabilis*

CYPRIPIEDUM. Ladyslipper

C. acaule. *Pink Ladyslipper*. 1 ft. Large, rose-pink moccasin-shaped flowers, on strong, stiff stems, which rise from two to three large, basal leaves. Easily naturalized in dry shade, doing well in the fern garden. Excellent for cutting. Late May and early June. 25c. each, \$2.50 per 12.

DAHLIA. See Plants and Bulbs

DAPHNE. Garland Flower

D. cneorum. A low growing, evergreen perennial or shrub, covering itself in May with rose-pink flower clusters. Intensely fragrant. Without doubt one of our most popular flowers, attracting attention continually. Blooms at regular intervals of two to three weeks all summer and fall. 8-12 in. plants, with ball of earth, \$1.00 each, \$10.80 per 12.

DAYLILY. See *Hemerocallis*

DELPHINIUM. Larkspur

D. Gold Medal Hybrids. Extra heavy plants, raised from an excellent strain of seed saved from the best varieties of giant hybrids. 25c. each, \$2.50 per 12.

D. belladonna. 4-5 ft. Long spikes of clear sky-blue. If not allowed to seed will bloom continuously until frost. Fine cut flower.

D. bellamosum. 4-5 ft. Color intense dark blue. Habit, exactly like *belladonna* of which it is a hybrid.

D. grandiflorum. *Chinese Larkspur*. 2 ft. A dwarf species with fernlike foliage and loosely spreading branches. Most beautiful shade of bright Copenhagen blue. Everblooming. Fine bedding plant and excellent for cutting.

D. grandiflorum album. White form of above. Very fine.

Price, any of the above, except as noted, 20c. each, \$2.00 per 12.

HARDY PERENNIALS—Continued

DICTAMNUS. Fraxinella

D. fraxinella. A hardy plant resembling somewhat the peony in nature of growth and in foliage, which is a rich dark green. In May and June racemes of reddish purple flowers appear, whose wing petals and long, upcurling stamens greatly resemble the azalea.

D. fraxinella alba. Pure white form of the above. A more valuable color. Dictamnus is a plant of permanent value increasing in beauty each year. Either of the above, 35c. each, \$3.50 per 12.

DIELYTRA

D. spectabilis. *Bleedingheart.* 2 ft. Long racemes of rose-colored heart-shaped flowers in May. A lovely and graceful perennial, fine for cutting. 50c. each, \$5.00 per 12.

D. formosa. 1 ft. A low growing variety, with fernlike foliage. Rose-pink, blooms every month. May-frost. 25c. each, \$2.50 per 12.

D. canadensis. *Squirrelcorn.* 8-10 in. Pale pink, heart-shaped flowers in earliest spring. Requires shade. 10c. each, \$1.00 per 12.

D. cucullaria. *Dutchman's-Breeches.* Cream colored blossoms in long racemes. Fernlike foliage. A native variety blooming in early spring. Requires shade. 1 ft.

DIANTHUS. Garden Pinks

D. plumarius. 18 in. June. These are the old-fashioned pinks with their silver-gray foliage and clove-scented blossoms. Many colors.

D. latifolius atrococcineus florepleno. *Ever-blooming Hybrid Sweet William.* A brilliant, crimson-flowered pink, which blossoms continually. Often taken up to bloom in the house in the winter. Good for the rock garden. 15c. each, \$1.50 per 12.

D. caesius. *Cheddar Pinks.* Compact tufts of foliage and flowers like clove pinks. Of neater habit.

D. deltoides. *Maiden Pinks.* Beautiful, dark green foliage and tiny flowers of pink or white.

D. Dwarf Vienna. See **Hardy Carnations.**

D. barbatus. See **Sweet William.**

DIGITALIS. Foxglove

D. gloxiniaeflora. 4-5 ft. An essential member of the hardy garden family. The tall, stately spires give distinction to any garden. June-July. Colors white or rose. Biennial resowing itself.

D. lanata. *Gnome Flower.* Curious and distinct. Buff and white flowers smaller than the above. Not offered until fall, 1925. Hardy biennial.

D. grandiflora. *Yellow Foxglove.* True perennial. Soft yellow flowers. 1-2 ft. Blooms in July.

DODECATHEON. Shooting Star

D. media. A western prairie flower having dainty, rose-purple flowers during May and June. 1-2 ft.

ERYTHRONIUM. Dogtooth Violet

E. americanum. 10 in. Yellow, bell-like flowers in May. Increasing in popularity as a cultivated flower. Plant in dry shade or in sun.



Dianthus, Garden Pinks

EUPATORIUM. Hardy Ageratum

E. ageratoides. *Wild Ageratum.* 3½ ft. Aug.-Sept. White flowers in dense heads.

E. coelestinum. 18-24 in. Aug.-frost. Similar to the annual ageratum. Soft flower heads of dusky blue. 25c. each, \$2.50 per 12.

FILIPENDULA. Garden Spiraea

F. rubra. *Pink Spiraea.* A tall perennial bearing in July, feathery plumes of deep old rose flowers. 4-6 ft.

F. purpurea alba. *Queen of the Meadow.* A pure white flower similar to the above in height and size. June-July.

F. hexapetala. *Dropwort.* A dwarfier species similar in color and leaf to the pink spiraea, although only a foot or so in height.

FOXGLOVE. See Digitalis

FORGET-ME-NOT. See Myosotis

FEVERFEW

Old-fashioned herb valued for its scented leaves, and small, cream colored, chrysanthemum-shaped flowers. 25c. each.

Price, any of the above, except as noted, 20c. each, \$2.00 per 12.

HARDY PERENNIALS—Continued

FUNKIA. Plantainlily

F. subcordata. 1½-3 ft. Aug.-Sept. A formal plant, with large, golden green leaves, and fragrant flowers growing like trumpets from the stalk. 35c. each.

F. undulata variegata. A variegated leaved variety having blue flowers.

GAILLARDIA. Blanket Flower

G. grandiflora. 2 ft. June-frost. Large, single flowers similar in form to giant daisies. Crimson, with a yellow band around the center. Very gorgeous.

GARDEN HYACINTHS. See **Plants and Bulbs****GEUM.** Red Avens

G. Mrs. Bradshaw. A semi-double, scarlet-flowered plant growing about 18 in. high. Long stems making the flowers valuable for cutting.

GENTIANA. Gentian

G. andrewsi. *Blind Gentian.* 1½ ft. A bright blue species, the corolla of which never opens.

GOLDENGLow. See **Rudbeckia****GYPSOPHILA.** Babysbreath

G. paniculata. 2-3 ft. July-Aug. Tiny, misty-white flowers. Very good for cutting.

G. repens. A creeping species with flowers like the annual kind.

HELENIUM

H. autumnale. 5-6 ft. Splendid, brilliant yellow flowers in autumn. Blooms at the same time as the hardy asters. Valuable late flowering perennial.

H. autumnale. *Riverton Gem.* Old gold overlaid with rich Indian red. Splendid effect of autumn coloring. A very popular variety, blooming in Sept.-Oct.

HELIANTHEMUM. Rockrose

H. mutabile. Low growing, wide spreading plants of sturdy growth and evergreen foliage. Densely covered throughout the season with single and semi-double flowers, ranging in color through white, pink, red, yellow and saffron. Flowers resemble small wild roses. A sun loving plant, quite resistant to drought.

HELIOPSIS. Hardy Zinnia

H. pitcheriana. Semi-double, yellow flowers in late summer and fall. 4 ft.

H. scabra zinniaeflora. Zinnia-like flowers of rich orange-yellow. Aug.-Sept.

HELIANTHUS. Sunflower

H. Miss Mellish. 4 ft. Autumn flowering. Lemon yellow, semi-double flowers in greatest profusion. Long stems. Valuable cut flowers.

HEMEROCALLIS. Daylily

H. fulva. *Tawny Daylily.* Orange, with deeper shadings. Each of these lilies seems to have been very popular in old-fashioned gardens. The tawny variety is often seen by the roadside.

H. flava. *Lemon Daylily.* Lemon lilies are among the most popular of the old-fashioned flowers. Lemon-scented, clear yellow flowers in June and July, lilylike in form. 3-4 ft.

H. thunbergi. *Japanese Daylily.* A variety similar to "flava," having the same clear color and delightful fragrance. It blooms a month later.

HEPATICA

H. triloba. 6-8 in. May. A very shy and dainty early spring flower. The windflowerlike blossoms are white, blue or rose. Plant in shade.

HESPERIS. Sweet Rocket

H. matronalis. 3-4 ft. May-June. Sweet-scented flowers, somewhat resembling the hardy phlox. Lavender, rose or white. Mixed colors.

HEUCHERA. Coralbells

H. sanguinea. A very dainty perennial bearing in June and July sprays of tiny, bell-shaped flowers of soft coral-red. 25c. each, \$2.50 per 12.

HIBISCUS. Mallows

H. New Giant Flowering. 3-5 ft. July-Aug. Huge, single flowers, like mammoth hollyhocks, of crimson, pink or white. Mixed colors.

H. moscheutos. *Swamp Mallow.* Beautiful silvery-pink flowers borne several at a time on stalks 3-4 ft. in height. Unusually attractive, easily grown perennial.

HOLLYHOCKS

Few gardens ever grew without their row of stately hollyhocks somewhere in the background. There is unusual charm in the single varieties and often delicate shades of lavender or lemon yellow may be found among them. 6-8 feet. July-Aug.

Double White, Red, Single White, Red or Pink.

Newport Pink. Very double, bright pink.

Single Mixed.

IBERIS. Hardy Candytuft

I. sempervirens. 8-10 in. Low, sprawling habit; beautiful, glossy, evergreen leaves and heavy clusters of snow-white flowers in late May and June. A border plant of unusual value for edging. Plant with arabis or alyssum, as this blooms soon after they are done. 25c. each, \$2.50 per 12.

INCARVILLEA. Hardy Gloxinia

I. delavayi. A rare and very choice perennial, perfectly hardy here. Vivid rose-colored flowers in clusters like the gloxinia, although the growth is taller and larger. 50c. each, \$5.00 per 12.

Price, any of the above, except as noted, 20c. each, \$2.00 per 12.

HARDY PERENNIALS—Continued

IRIS

Few people realize that there are iris which bloom in April and May, and also in late June and July when the better known kinds are gone. A plant of iris will grow and succeed under the most adverse conditions, but will spread rapidly and blossom profusely, if kept thoroughly cultivated and given a light, well drained soil. Although in many species a water loving plant, most of the common varieties do not like a wet soil. Among these are the tall bearded iris offered below.

Japanese Iris revels in a rich heavy soil not too dry.

APRIL AND EARLY MAY FLOWERING

- I. pumila.** Dwarf iris blooming in earliest spring at the same time as the arabis and the daffodils. Blue, white or yellow flowers.
- I. cristata.** Very dwarf, creeping species only 3 in. high. Amethyst-blue. A well established clump, looks a patch of blue sky. Late April and early May.
- I. verna.** A miniature iris having blue flowers with golden centers.
- Any of the above, 25c. each, \$2.50 per 12.

TALL BEARDED IRIS

Enthusiastic hybridists have done much to improve the old-fashioned iris, and today there stands with the few old kinds of merit such as *pallida dalmatica* and *flavescens* many regal beauties which, because of price, the average gardener cannot afford to buy.

To be admitted at all to the ranks of the newer and better iris, each kind is subjected to severe tests as to foliage, growth, stalk, flower and color. Of these, some have been offered to the public long enough for the supply to have become sufficient, and the price has naturally dropped to that of the average peony. Nothing is of more general interest to flower lovers than a number of these, to which more kinds may be added each year.

Alcazar. Standards light blue-violet; falls, deep brilliant purple. Of tall, branching habit, attaining a height of over 40 in. 25c. each.

Aurea. S. and F., bright golden yellow. The standard yellow iris, although of dwarf growth. 2 ft. 25c. each.

Caprice. S., rosy claret; F., a deeper shade. Very rich and handsome color in an iris. 2 ft. 25c. each.

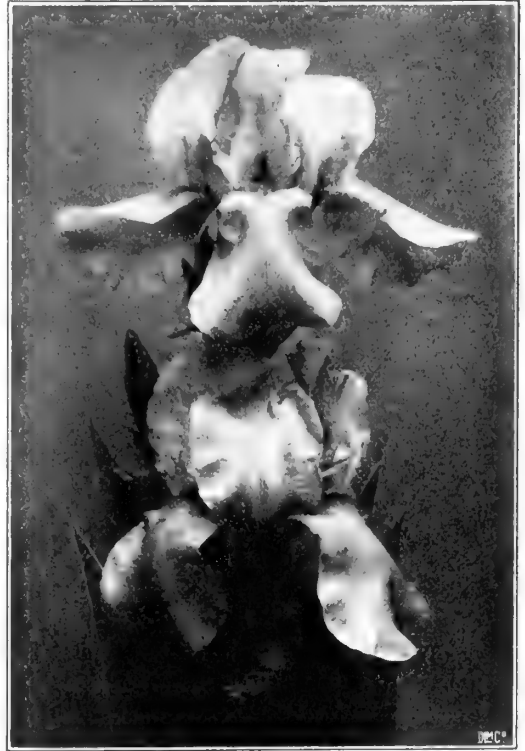
Crusader. A tall iris and certainly one of the most beautiful; bold, clear blue with an orange beard. 42 in. \$2.50 each.

E. H. Jenkins. Possibly the freest blooming iris. The tall, branching stalks and healthy growth immediately distinguish it. Usually from six to eight blossoms open at once on each stalk. S., pale purple; F., deep purple. 45 in. \$5.00 each.

Flavescens. An old-fashioned variety whose tall, strong growth and soft yellow color render it invaluable for massing with the rose, blue or purple kinds. 30 in. 25c. each, \$2.50 per 12.

Her Majesty. Rose-colored flowers veined a deeper shade. 30 in. 25c. each.

Isolene. S., lilac-pink; F., old rose with bright orange beard. Falls long and drooping. A very beautiful and distinct iris having large, stout-textured flowers, and handsome foliage. 36 in. 35c. each, \$3.50 per 12.



Iris pallida dalmatica

Florentina alba. S. and F., pearly white with a faint blue cast. Very early flowering, being in bloom with the Darwin tulips and the purple King iris. These are very beautiful when planted together. 2 ft. 20c. each, \$2.00 per 12.

Innocenza. A small, dainty thing, dear to many iris lovers. Warm ivory-white, with a delightful flare at the falls which gives them a daintiness quite uncommon in an iris. 26 in. 50c. each.

Iris King. S., clear lemon-yellow; F., rich mahogany, bordered yellow. A most distinctive and richly colored iris. Large flowers and tall growth. 50c. each.

Lent A. Williamson. S., campanula-blue; F., rich royal purple. Yellow beard. Large, fine form and free blooming. Considered one of the finest American introductions. 42 in. \$2.50 each.

Lord of June. A very handsome iris of huge proportions. S., lavender-blue; F., rich violet-blue. A beautiful iris and much sought after. 40 in. \$2.50 each.

Price, any of the above, except as noted, 20c. each, \$2.00 per 12.

HARDY PERENNIALS—Continued



Japanese Iris

TALL BEARDED IRIS—Continued

- Mme. Chereau.** A tall, free blooming iris. Flowers white with a dainty blue frill. 20c. each, \$2.00 per 12.
- Pallida dalmatica.** Lavender-blue throughout, with a silvery sheen. Tall and large. A queen among iris. 25c. each, \$2.50 per 12.
- Pallida speciosa.** An exact counterpart of dalmatica, but several shades darker in color. Looks very well planted a little distance back of it, giving the effect of light and shadow. 25c. each, \$2.50 per 12.
- Pallida Princess Beatrice.** A selected form of dalmatica and frequently confused with it. This iris has the highest rating of any commonly offered, and by many is considered to be the nearest approach to a perfect iris. S., fine lavender; F., deep lavender. \$1.00 each, \$10.00 per 12. Rating 9.5.
- Purple King.** An early deep rich purple iris in bloom at the same time as florentina alba. A fine iris of perfect habit of growth and form. 2 ft. 20c. each, \$2.00 per 12.
- Queen of the May.** A lovely variety, which although there are no real pink irises, still is of such a soft lilac rose that at a little distance the effect is genuinely pink. 30 in. 20c. each, \$2.00 per 12.
- Rhein Nixe.** Snow-white standards and plum-colored falls. 20c. each, \$2.00 per 12.
- Souvenir de Mme. Gaudichau.** The rating of this iris is 9.3, which shows how high it stands in the estimation of the American Iris Society (10 points being perfection). One of the inner circle of aristocrats. Large and exceedingly rich velvety dark purple of fine form. 42 in. \$4.50 each.

Price, any of the above, except as noted, 20c. each, \$2.00 per 12.

JAPANESE IRIS

Are among the leading perennials for glorious colors and large, beautiful flowers. The Japanese names are unpronounceable for the average person, and so we have numbered them as follows:

- No. 1.** Deep, rich velvety-blue, turning purple; six-petaled; large, down-drooping, graceful habit. Conspicuous yellow throat.
- No. 2, or Gold Bound.** Possibly the most beautiful. Pure snow-white with narrow yellow band. Large, six-petaled flowers greatly waved and ruffled.
- No. 4.** Beautiful, waved flower; petals held freshly stiff: Bright, clear rose-lavender, conspicuously marked snow-white. Gives the effect of freshly laundered organdie.
- No. 5.** Large, six-petaled; slightly down drooping. Dark rose-lavender, entering into blue at base. Bright yellow throat.
- No. 8.** Tall, single pure white. Three-petaled.
- No. 10.** Large, six-petaled; reddish-purple. No markings.
- No. 12.** A rich, velvety navy-blue. Very late. Six-petaled.
Price each, any of the above, 25c., \$2.50 per 12.

VARIOUS SPECIES

- I. versicolor.** *The Native Blue Flag.* Used for planting in wet places.
- I. sibirica.** *Siberian Iris.* Deep blue flowers and masses of grasslike foliage; very effective. Fine for cutting.
- I. sibirica alba.** White form. Both late June and July blooming.
- I. pseudacorus.** *Yellowflag.* Bright yellow iris, similar to the Siberian and blooming in July.
- I. ochroleuca gigantea.** *Yellowband Iris.* A late July blooming kind; very tall and slender. Flowers slim-petaled, snow-white, with a narrow, golden band down the center. Exceptionally fine for cutting.

LATHYRUS. Perennial Peas

- L. latifolius.** 3 ft. Similar to the well-loved sweet peas. Requires a support. No fragrance. Flowers in red, pink or white. Mixed colors.

LAVENDER

- L. vera.** *Old English Lavender.* An herb having deliciously fragrant leaves and flowers. Should be wintered in the cellar in this latitude. 25c. each, \$2.50 per 12.

LEWISIA

- L. rediviva.** Among the most beautiful of rock plants. They will, however, thrive in any soil not too heavy. Tiny plants with fleshy leaves and satiny-pink flowers similar in form to the waterlily. 25c. each, \$2.50 per 12. Plant only in early fall.

HARDY PERENNIALS--Continued

LINONIUM. *Statice*

- L. latifolia.** *Sea-Lavender.* 1-1½ ft. July-Aug. Flat, broad leaves, from which rise flower stalks bearing huge heads of tiny lavender flowers. 25c. each, \$2.50 per 12.

LIATRIS. *Kansas Gayfeather*

- L. spicata.** 3-4 ft. Aug.-Sept. Vivid lilac flowers in dense spikes. Of easy culture in a sunny place.

LILIES. See **Plants and Bulbs**LINUM. *Hardy Flax*

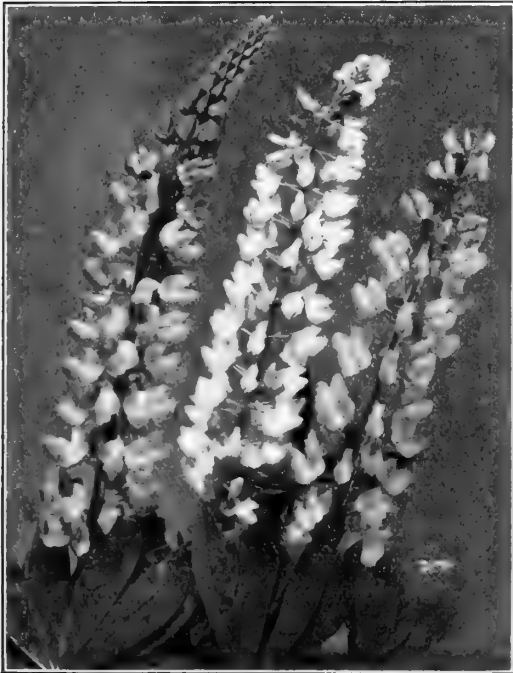
- L. perenne.** 2 ft. May and June. Graceful, gray-green foliage and round, single, porcelain-blue flowers, of an unusually beautiful shade. Blooms throughout the season. Looks well planted with iris.
- L. perenne alba.** Milk-white flowers.

LUPINUS. *Lupine*

- L. polyphyllus.** June. 2-3 ft. Masses of deep blue flowers on long, graceful spikes. One of the most important perennials.
- L. polyphyllus roseus.** Rose-colored form of above.
- L. polyphyllus albus.** White form, very beautiful.

LYTHRUM. *Rose Loosestrife*

- L. salicaria roseum.** Long spikes of rose-colored flowers. Used for naturalizing in moist or wet places.



Lupine

LYCHNIS. *Maltese Cross*

- L. roseus.** *Mountain Pinks.* An old-fashioned garden flower still to be found about old door-stones and in abandoned gardens. Rose, white, or blue flowers from June to midsummer.
- L. chalcedonica.** Brilliant scarlet flowers in June.
- L. viscaria.** Said to be one of the most brilliant perennials. Bright, rose-colored flowers in upright panicles; during May and June.
- L. haageana.** 1 ft. June-Aug. Bright shades of salmon and rose, orange or white. Florets large and distinct.
- L. coronaria.** *Mullein Pink.* 3 ft. Upright, branched growth. A tall biennial having soft, gray-green foliage and single, amaranth-red flowers. Blooms in July.
- L. flosjovis.** *Flower-of-Jove.* 1 ft. Like the above although of dwarf growth and the flowers are bright pink.

MERTENSIA. *Virginia Cowslip*

- M. virginica.** Beautiful, tubular flowers of clear sky-blue, sometimes tinted with pink. Blooms in early May. The roots may be taken up in the fall and made to blossom in the house.

MONARDA. *Bergamot*

- M. didyma.** Brilliant scarlet flowers and fragrant foliage. An old favorite.

MYOSOTIS. *Forget-me-not*

- M. alpestris.** Blooms in early spring, so profusely that the plant is hidden beneath a cloud of sky-blue flowers. Dense, compact growth. Good for the rock garden or border. Good cut flower. Requires full sunshine.
- M. palustris.** *Everblooming Forget-me-not.* A moisture loving plant. Blooms from late May until frost. Low, prostrate, growth. Beautiful cut flower.

MYRTLE. See **Vinca**OENOTHERA. *Primrose*

- O. speciosa.** 18 in. Aug.-Sept. Delicate, pure white flowers.
- O. fruticosa.** 1-2 ft. Sometimes called Sundrops. Bright yellow flowers in June and July.

ORNITHOGALUM. *Star-of-Bethlehem*

- O. umbellatum.** 12 in. June-July. An old-fashioned, bulbous plant, now very rare and choice. Clumps of shiny, slender, grasslike foliage amid which the plant sends up slender stems each bearing a cluster of ivory white, star-shaped flowers of lilylike texture and delicate fragrance. 50c. for 3, \$2.00 per 12.

PACHYSANDRA

- P. terminalis.** An evergreen ground cover used extensively for planting under shrubbery or evergreens, or where the ground is bare and conspicuous. Covered with white flowers in spring. 25c. each, \$2.40 per 12.

Price, any of the above, except as noted, 20c. each, \$2.00 per 12.

HARDY PERENNIALS—Continued

PAPAVER. Hardy Poppies

- P. orientale.** *Oriental Poppies.* 3-4 ft. Late May and June. The beauty and brilliance of this flower rank it among the foremost perennials. Very large and seemingly made of satin. Immense scarlet flowers. They have a resting period in midsummer when the plant disappears. 20c. each, \$2.00 per 12.
- P. orientale.** *Perry's White.* A snow-white form having a blood-red blotch at the base of each petal. Strikingly beautiful.
- P. orientale.** *Mrs. Perry.* Satiny old-rose. Each of the above 25c. each, \$2.50 per 12.
- P. nudicaule.** *Iceland Poppies.* A dainty race of poppies, coming into flower in April, and if kept from seeding, will blossom all summer. Bright orange, yellow, or pure white. 18 in.

PENTSTEMON. Beard Tongue

- P. pubescens.** Lilac flowers like small foxgloves, on very leafy stems. 1 ft. Sept.-Oct. 25c. each, \$2.50 per 12.
- P. barbatus torreyi.** Tall, graceful spikes of coral-red flowers; fine for cutting.
- P. digitalis.** *Foxglove Pentstemon.* So named from its similarity to the foxglove. The blossoms are much smaller, however, and are set closely along the stem. Fine for cutting. Pure white. 18 in. July.

PHALARIS. Ribbon Grass

- P. arundinacea picta.** A striped grass formerly used in old-fashioned borders and which has been brought back to popularity. Used in arranging baskets or vases. Light green with creamy white stripes.

PEONIES

In spite of its higher price the peony has the reputation of being one of the best of garden investments. A well selected variety, well planted, will increase in beauty for a lifetime. Dig the soil deeply and enrich with old manure. Plant them not more than 3 inches deep and do not allow them to touch the manure. Do not mound up the soil around them as too deep planting causes the shoots to come blind, or without flower buds.

PINK

- Asa Gray.** Large, well formed flower of soft lilac pink. Very fragrant. Semi-rose type. \$1.50 each.
- Dorchester.** A full, large flower of delightful clear pink. 75c. each.
- Milton Hill.** A perfect flower of deeper color than Dorchester. A magnificent full, double flower. \$3.00 each.
- Edulis Superba.** The old-fashioned full, double pink; very bright; early. A good variety. 50c. each.
- Mme. Emile Galle.** A large, loosely arranged flower. Delicately beautiful. One of our favorites. Late. 75c. each.

- Mons. Jules Elie.** Bomb type. A royal beauty among peonies and possibly the largest flowered. Color ideal lilac-pink, overlaid with a silvery sheen which fairly glistens in the sunlight. \$1.00 each.
- Walter Faxon.** Large, globular type. Very strong and vigorous. Color an exceedingly rich and beautiful shade of salmon pink; a shade not found in any other peony, and wherever seen, gives it the effect of being the pinkest. Easily distinguished among hundreds of kinds. \$8.00 each.

WHITE

- Mme. de Verneville.** Very beautiful, compact bloom, with large outer guard petals and densely double center. Very reliable and free blooming. Early. 50c. each.
- Festiva Maxima.** Still a prize winning variety. Immense white, with a tiny scarlet mark near the center. Mid-season. 50c. each.
- Baroness Schroeder.** A newer variety of beautiful glistening white. Very large and fragrant. Midseason. \$1.50 each.
- Couronne d'Or.** *Crown of Gold.* Large, beautifully formed flowers with conspicuous golden stamens at the base of the petals. Fragrance and form similar to a waterlily. 50c. each.
- Albatre.** Very large; compact rose type. Milk-white. Strong, vigorous and tall growing. Free blooming. Heartily endorsed as one of the best peonies in cultivation. \$1.00 each.

PEONIES BY COLOR

For those who do not care for the named varieties, we offer good roots in red, white or pink at 35c. each, \$3.50 per 12.



Peonies

Price, any of the above, except as noted, 20c. each, \$2.00 per 12.

PEONIES—Continued

RED

- Louis Van Houtte.** Old-fashioned red. Large and very double. 50c. each.
- officialis rubra.** Very early flowering bright red. \$1.00 each.
- Felix Crousse.** For a red variety, this is unsurpassed. Rich amaranth-red. \$1.00 each.
- Rubra Superba.** The best very late red peony. Large, compact rose type. Color deep crimson. Very fragrant. 75c. each.
- Edward Andre.** Very reliable mid-season red variety. 50c. each.

YELLOW

- Primevere.** The nearest approach to a yellow peony. Color a soft sulphur yellow. Circle of wide guard petals and very double center of a deeper shade. Distinct and very lovely. Easily attracts attention among hundreds of kinds. \$4.50 each.

PHLOX

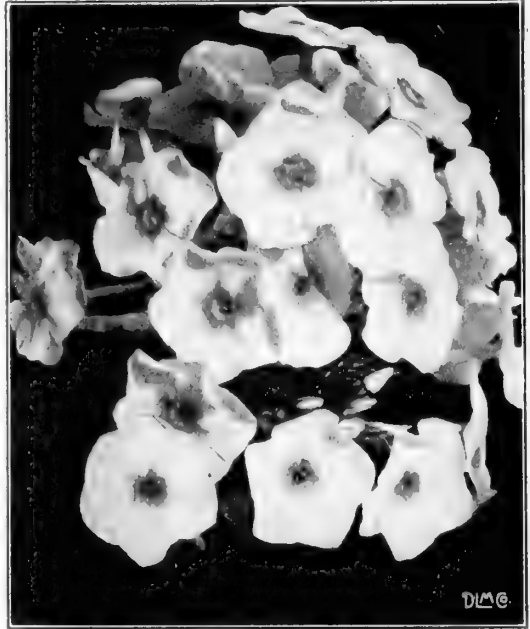
No one thinks of having a garden without its glory of phlox in midsummer. There are literally hundreds of varieties, from which we have selected the following. Phlox will thrive in any ordinary garden soil. It is important not to let it seed as the seedlings usually revert to the old, original purple type, and come up about the roots where it is impossible to get them all out when weeding.

- Antonin Mercié.** Blue overlaid white.
- Astrild.** Brilliant deep carmine.
- B. Comte.** Brilliant amaranth crimson.
- Coquelicot.** A tall scarlet phlox. One of the brightest.
- Dawn.** Beautiful blush pink.
- Elizabeth Campbell.** Most popular salmon-pink. 35c. each, \$3.50 per 12.
- Eugene Danzanvilliers.** Clear lilac, entering into white at center.
- Frau Anton Buchner.** The finest white phlox. Enormous flowers of perfect form.
- Hanny Pfeiderer.** White, flushed pink with a crimson eye.
- Miss Lingard.** Earliest white; will bloom twice if flowers are picked.
- Mme. Paul Dutrie.** Apple-blossom pink.
- Mme. Meuret.** Bright scarlet; very tall.
- Mme. Carpentier.** A fine large white.
- Riverton Jewel.** Deep rose-pink, deepening into rose-red at the center.
- Richard Wallace.** White with red eye.
- R. P. Struthers.** Rich flame color. Will not streak or fade.
- Rijnstroom.** Large flowered bright rose. Very popular.
- William Ramsey.** A very rich shade of dark, deep crimson. A beauty.
- Any of the phlox, except as noted, 25c. each, \$2.50 per 12.

VARIOUS SPECIES

- P. subulata.** 6 to 8 in. A ground cover. Low, sprawling habit; glossy green, mossy foliage, beneath a mass of bright flowers. Useful for planting with spring bulbs. Rose, white or blue. April-May.

Price, any of the above, except as noted, 20c. each, \$2.00 per 12.



Phlox

- P. divaricata.** A lilac-blue phlox blooming in May. 18 in. When established forms large colonies. Very beautiful.
- P. pilosa.** 1 ft. A variety native to the west. Dense masses of lilac-blue flowers in May. Foliage similar to subulata, but the plants have upright growth.

PHYSOSTEGIA. False-Dragonhead

- P. virginiana.** 3 to 4 ft. Tall, slim habit. Flowers closely set on long, graceful, terminal spikes. Flesh pink to lavender-pink. Aug.
- P. virginiana alba.** White form.
- P. speciosa.** A dainty flower of clear flesh pink.

PITCHERPLANT. See *Sarracenia*

PLATYCODON. Chinese Bellflower

- P. grandiflorum.** Wide open, bell-shaped flowers, in blue or white, held uprightly from a mass of close, compact foliage. One of the most useful and permanent perennials. No hardy border should be without it.
- P. mariesi.** A lovely lower growing sort, in bloom from July until Sept. Violet-blue flowers. Not offered until fall.

POLEMONIUM. Jacob's Ladder

- P. caeruleum.** 18 in. Border plant of easiest culture. Beautiful, clear blue flowers in terminal clusters. Fernlike foliage of decorative value.

POLYGONATUM. Solomonseal

- P. biflorum.** A curious plant bearing tiny green flowers in pairs along the drooping stalk.

HARDY PERENNIALS—Continued

PRIMULA. Primrose

P. polyantha. 8 in. Red and yellow flowers in earliest spring. One of the most worthy of the spring flowers, being perfectly hardy and very vigorous.

P. elatior. An English primrose. Clear yellow flowers in bunches held erect on stems 6 to 8 in. tall.

PYRETHRUM. Persian Daisy

P. hybridum. Single flowering plants, having masses of fernlike foliage and long stems bearing daisylike flowers; in shades of red, pink, and white. Splendid for cutting and used extensively by florists.

P. florepleno. The double forms of this flower are quite like small chrysanthemums. Not all these plants will come double, as they are seedlings, but a large percentage is expected to be so.

RUDBECKIA. Goldenglow

R. laciniata. 5 to 6 ft. Aug. Yellow. Free flowering, bright perennial.

R. triloba. *Black-Eyed-Susan.* A garden variety. The flowers are sometimes identical with the wild form and sometimes having broad bands of golden brown about the base of the petals.



Pyrethrum, Persian Daisy

SHASTA DAISIES

Large flowered, snow-white, daisylike flowers, blooming continuously all summer.

SAXIFRAGA

S. virginiensis. *Early Saxafrage.* A snow-white flower appearing in the clefts of the rocks as soon as the snow has melted in the spring. Very dainty, and of value in rockery planting.

SANGUINARIA. Bloodroot

S. canadensis. Dainty flowers in earliest spring. Pure white, on erect stems 3 or 4 in. high, each with a leaf carefully wrapped about its stalk. Plant in moist shade or sun.

SAPONARIA

S. ocymoides. A trailing plant covered with myriad pink flowers in May and June. For rock gardens or the front of the border.

SARRACENIA. Pitcherplant

S. purpurea. 1 ft. June. Reddish-green. A very curious plant found in swamps. It thrives on the insects which it catches in its pitcher-shaped leaves.

SCABIOSA. Pincushion Flower

S. caucasica. 2 to 3 ft. Heads of beautiful soft lilac flowers in June and July. A hardy, vigorous plant, the flowers of which are fine for cutting.

S. japonica. *Japanese Scabiosa.* 2 to 3 ft. Clear blue flowers in profusion from Sept. to Nov. Excellent for cutting.

SEMPERVIVUM. Houseleek

S. soboliferum. *Hen-and-Chickens.* A quaint, old-fashioned plant sometimes used for bordering walks or growing in tubs. The leaves form dense rosettes and underneath these smaller rosettes appear like mother hens with their broods of chickens. Always pleases children.

SEDUM. Stonecrop

S. acre. *Goldmoss.* A small, mossy plant of rich golden green color, which quickly carpets the ground in dry or rocky places. Sometimes planted in paths or on rocky ledges. Covers itself from May to July with bright, yellow flowers.

S. spectabile. *Showy Sedum.* 12 to 15 in. Aug.-Sept. Close, compact growth and heavy rounded, corymbs of old rose flowers.

SIDALCEA. Prairiemallow

S. malvaeflora. Rosy lavender flowers shaped like small hollyhocks on branched stems. 18 in. high. Blooms freely throughout the summer.

S. candida. Pure white; unusually attractive.

Price, any of the above, except as noted, 20c. each, \$2.00 per 12.

HARDY PERENNIALS—Continued

SILENE

S. virginica. *Firepink.* Loose, sprawling foliage and star-shaped flowers of brilliant red.

SMILACINA. False Solomonseal

S. racemosa. 1 to 3 ft. A beautiful flower, often cultivated. Filmy heads of white flowers, on gracefully bending stalks. Late May and June.

SPIDERWORT. See *Tradescantia*

STOKESIA. Cornflower Aster

S. cyanea. Very fine cut flowers. Large flowers like annual asters in blue or white. July-Oct.

SWEET MARY

Sweet-scented, long green leaves. Deliciously fragrant plant used in the herb garden or border.

SWEET-WILLIAM. Bunch Pinks

Well known garden flowers. Rich masses of color in June and July. The newer shades of pure crimson and pink are much admired. 2 ft. June.

We offer two distinct colors and also an assortment which we can sell at a lower price.

Newport Pink. Clear watermelon pink.

Crimson. Deep, rich crimson.

Mixed Colors. 10c. each, \$1.00 per 12.

TIARELLA. Foamflower

T. cordifolia. Beautiful flower heads of soft, cream white in late May.

TIGERLILY. See *Plants and Bulbs*

THALICTRUM

T. polygamum. *Meadowrue.* 4 to 6 ft. A late summer native, at home near brooks and pools. Feathery flowers of pure white. Fine cut flower. Thrives in the garden border.

T. dipterocarpum. Clouds of soft rose lilac or pure white flowers with citron-yellow stamens. Aug.-Sept. One of the most valuable perennials either for the garden, or for cutting. 35c. each, \$3.50 per 12.

THERMOPSIS

T. caroliniana. A tall growing flower with clover-like leaves and handsome spikes of golden yellow, pea-shaped flowers. Greatly resembles Lupine, but the color is clear yellow. 25c. each, \$2.50 per 12.

TRADESCANTIA. Spiderwort

T. virginiana. Clumps of long, grassy foliage. Single, purple flowers with golden stamens. Old-fashioned flowers which are both unique and beautiful. June-July.

TRITOMA. Red-hot Poker Plant

T. pfitzeri. A magnificent perennial, increasingly popular. In August, September and October it is aflame with immense heads of tubular flowers, bright scarlet in color. 2 to 3 ft. 25c. each, \$2.50 per 12.



Tritoma

TRILLIUM. Wakerobin

T. grandiflorum. White flowers; unusually large.

T. erythrocarpum. *Painted Trillium.* White splashed with crimson.

T. erectum. Dark red.

The Trilliums are of easy culture if given moist shade and a rich soil. Do not plant under evergreens.

TROLLIUS. Globeflower

T. europaeus. We have had many calls for this flower and are offering it for the first time this year. Large, lemon-yellow flowers like buttercups, 1 to 1½ in. across, on long, strong stems. Fine for cutting. Useful in arranging baskets at commencement time.

There are several varieties of Trollius in bright orange and orange-scarlet which we hope to offer soon. 50c. each, \$5.00 per 12.

VALERIANA. Garden Heliotrope

V. officinalis. 3 to 5 ft. July. Finely cut foliage, and long flower stems terminated by round heads of fragrant flowers. Cats are very fond of this plant.

VERBASCUM. Hardy Mullein

V. olympicum. 8 ft. A tall biennial with immense branched spikes of soft yellow flowers; very picturesque.

Price, any of the above, except as noted, 20c. each, \$2.00 per 12.

HARDY PERENNIALS—Continued

*Veronica longifolia subsessilis***VERONICA.** Speedwell

- V. longifolia.** 2 to 3 ft. Blue. Long spikes of dusky blue flowers in July and August.
- V. longifolia subsessilis.** A handsome Veronica, often called the best. Surely the most conspicuous. Rich blue flowers on heavy, stiffly held spikes. Very striking. 25c. each, \$2.50 per 12.

Price, any of the above, except as noted, 20c. each, \$2.00 per 12.

HARDY FERNS

There are still many corners and out-of-the-way spots which are bare and ugly by reason of dense shade. These are ideal places for a collection of hardy ferns. Plant with them a few violets, forget-me-nots and ladyslippers and perhaps a collection of wild flowers.

In the background should be the tall, luxuriant ostrich ferns and in front of them may be planted Interrupted, Cinnamon or Royal ferns. In the foreground should be the Christmas or sword fern and the maidenhair, with a conspicuous clump of evergreen wood fern, for these are always green and attractive.

Among rocks plant clumps of ebony spleenwort. You will be surprised by the erect beauty of its graceful fronds. The tiny oak fern should have a place, especially if you are making a collection, because it is rare in most sections of the country.

Maidenhair. *Adiantum pedatum.*

Christmas Fern or Rock Fern. *Aspidium acrostichoides.*

Evergreen Woodfern. *Aspidium marginale.*

Maidenhair Spleenwort. *Asplenium trichomanes.* 25c. each, \$2.50 per 12.

Ebony Spleenwort. *Asplenium ebeneum.* 25c. each, \$2.50 per 12.

VIOLA

- V. cornuta.** *Horned Violet.* 1 ft. Blooms all season. A beautiful species. Color and form like a large violet. Clear lavender. Always in bloom.
- V. cornuta alba.** A much-prized form. Exactly like the above, but a pure, snow-white. Never out of bloom.
- V. Jersey Gem.** This year we are offering a beautiful new Viola originating in New Jersey. Flowers soft violet-blue; petals waved; growth very sturdy and handsome. Continually in blossom. Much admired in our nursery last summer.

25c. each, \$2.50 per 12.

Violas in many colors for bedding. 15c. each, \$1.50 per 12. For fall 1925.

V. canadensis. A violet rare enough to be desirable, and beautiful enough to warrant its use in rock gardens and shady corners. White face with dainty reflex of soft lavender-blue. Plant or cut them with Maidenhair ferns as they are natural allies in the woods.

V. pubescens. *Downy Yellow Violet.* Another violet worthy of a place in the rock garden. Leafy stems and flowers of soft yellow. Will do well in a dry place.

GARDEN VIOLET

V. cucullata. A rapidly spreading garden violet. Long-stemmed flowers of deep blue. Will thrive in a partially sunny place.

VINCA. Myrtle

V. minor. A ground cover used in heavy shade where grass will not grow.

YUCCA. Adams Needle

Y. filamentosa. 5 ft. June-July. Immense spikes of creamy white flowers. Very fragrant. Heavy clumps of tapering evergreen leaves. 25c. each.

Hay-Scented Fern. *Dicksonia punctilobula.* 10c. each, 50c. per 12.

Royal Fern. *Osmunda regalis.*

Interrupted Fern. *Osmunda claytoniana.*

Ostrich Fern. *Osmunda struthiopteris.*

Common Polypody. *Polypodium vulgare.*

Oakfern. *Phegopteris dryopteris.* 25c. each, \$2.50 per 12.

Except where noted, 20c. each, \$2.00 per 12.

PLANTS AND BULBS

GLADIOLUS

STANDARD VARIETIES

Le Marechal Foch. Our own experience with this gladiolus has led us to believe it to be one of the finest ever introduced. Under the same conditions as our other bulbs the flowers were nearly twice as large and of the softest clearest shade of apple blossom pink throughout. 10c. each, \$1.00 per 12.

War. Is among the few whose size will compare favorably with Le Marechal Foch. Rich blood-red of enormous size. Late blooming. 10c. each, \$1.00 per 10.

America. Soft lavender pink. The most popular variety.

Mrs. Francis King. An ever popular bright flame color.

Peace. Very late white. Large flowers of pure white with throat delicately feathered lilac.

Schwaben. A clear yellow. Throat slightly marked bronze.

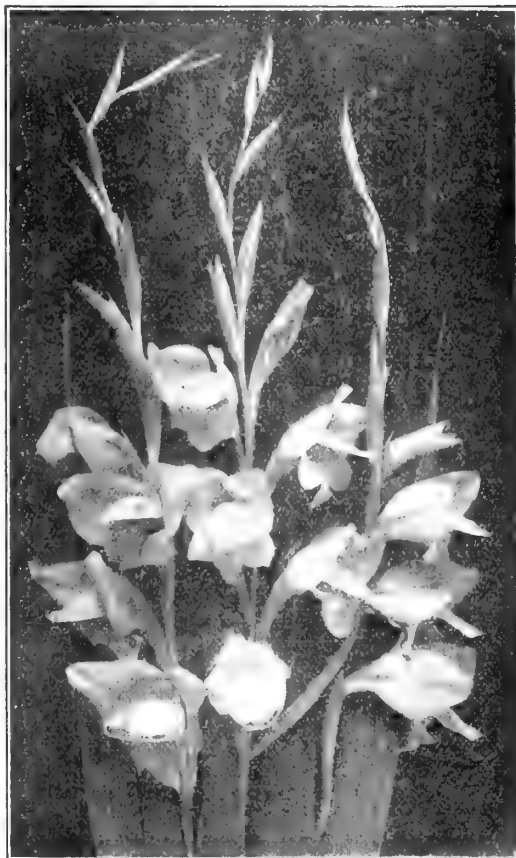
Baron J. Hulot. Deep, rich purple. 15c. each, \$1.50 per 12.

George Paul. Velvety Harvard crimson. Immense flowers, many being open at one time.

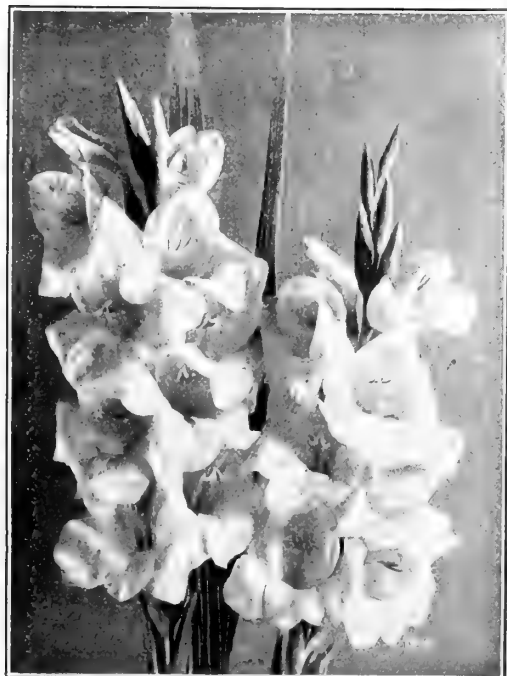
Mrs. Frank Pendleton. Judged by specialists to be the most richly colored of gladiolus. Bright pink with carmine throat.

Mrs. Watt. Rich wine color. Exceptionally fine and distinct.

Lily Lehman. Ivory-white, lily-shaped flowers. Delicately beautiful. 10c. each, \$1.00 per 12.



Primulinus Hybrids



Gladiolus America

Prince of Wales. A standard orange variety. Large flowers.

Willy Wigman. A conspicuous flower of dainty size. White with brilliant crimson throat. A splendid contrast.

Alice Tiplady. The largest and best of the primulinus hybrids, all of which are widely known for their slender, graceful flowers. Orange-saffron in color. Most beautiful for cutting. 10c. each, \$1.00 per 12.

Primulinus Hybrids. Shades of orange, lemon-yellow, rose and cream. 5c. each, 50c. per 12.

Maiden's Blush. A delightful primulinus hybrid, of soft, clear pink. A famous kind for cutting. 10c. each, \$1.00 per 12.

Anna Eberius. A well known, dark kind. Deep rhodamine-purple. 15c. each, \$1.50 per 12.

Byron L. Smith. A pure lavender, unmarked or spotted. A very lovely thing. 15c. each, \$1.50 per 12.

Louise. Another lavender of huge size. Lavender, with deep rose or camine throat. Coloring greatly resembles expensive orchids. 15c. each, \$1.50 per 12.

Any of the above, except as noted, 7c. each, 75c. per 12.

Mixed Gladiolus. 50c. per 12.

PLANTS AND BULBS—Continued

HYACINTHUS. Garden Hyacinth

H. candicans. A beautiful garden flower, growing from a large bulb. Of easiest culture in any good soil. Does well in the perennial garden. Pure white, drooping, bell-shaped flowers clustered about a tall, erect stalk, 3 to 4 ft. high. Adds distinction to any garden. 75c. per doz. Plant in spring only.

PANSY PLANTS

We offer plants raised from the best seed obtainable and our plants will bloom from May for as long a time as the flowers are kept picked. Wide variety of colors. 35c. per 12.

WELL KNOWN DAHLIAS

Delice. Has never been surpassed in its color class. Silvery pink overlaid faint lavender. For a long time the most popular florists dahlia. 25c. each.

Jack Rose. Much resembles the rose of this name. Dark crimson of velvety texture. 25c. each.

Mina Burgle. Is the best known bright red dahlia, and for its color has few equals. Excellent growth and full, well shaped flowers. 25c. each.

Yellow Show. An immense lemon-yellow dahlia of the show type. 35c. each.

Dreer's White. An immense globular dahlia, of pure snow-white. 50c. each.

Pompon Dahlias. Are always fine for cutting and no collection is complete without a few of these small but dainty flowers. White, yellow or red, 25c. each.

Mixed Dahlias. We offer for the benefit of those who have never tried to raise these flowers a few of the best colors in mixture at 15c. each, \$1.50 per 12.



Dahlia Delice

GARDEN LILIES

It is evident that garden lilies are increasing in popularity among the average garden makers. Judging from the tremendous sale of Madonna and Regal lily bulbs last fall, we have concluded that our customers have set their seal of approval on these varieties. Native lilies are also much in demand. We have therefore secured a more complete stock of lilies whose merits for garden culture have long been known.

Garden lilies have an appeal wholly justified by their rare beauty and charm. Some require great care in raising, but some are as easy to grow as a peony or a rose. There is a certain satisfaction in having success with them, and we are adding cultural suggestions which may be helpful. Lilies should be planted deeply, usually with the top of the bulb 6 inches below the surface of the ground. A little sharp sand put in below the base of the bulb is almost essential to perfect drainage. They should never be planted in wet, soggy locations. Enrich carefully, but never allow the manure to touch the bulbs.

LILIUM TIGRINUM. Tiger Lily

Bright orange-red flowers with recurved petals, carried on tall stalks 2 to 5 ft. in height, three to twelve blossoms on one stalk. A perfectly hardy bulb of the easiest culture. Often found about old places. 25c. each, \$2.00 per 10.

LILIUM GRAYI. Grays Lily

Dark, orange red flowers. Good for garden culture and also for cutting. 20c. each, \$2.00 per 12.

LILIUM SUPERBUM. Turkecap Lily

A native lily. One of the finest and hardiest of this family. Often attains a height of 6 feet and bears a great many flowers of rich orange, having darker spots. 20c. each, \$2.00 per 12.

LILIUM CANADENSE. Meadow Lily

Another native lily which requires a moist situation. Tall stalks bearing eight to fifteen dainty yellow or orange blossoms. Blooms in July and August. 25c. each, \$2.50 per 12.

LILIUM ELEGANS, var. ORANGE

A hardy, dwarf lily which is excellent for garden planting. Erect, cup-shaped flowers of clear orange. Short, sturdy structure. 25c. each, \$2.50 per 12.

LILIUM HENRYI

A most satisfactory and hardy lily of easy culture in good garden soil. Strongly recurved petals of clear orange. Very profuse bloomer. 50c. each, \$5.00 per 12.

GARDEN LILIES—Continued

LILIUM PARRYI

A rare and exquisitely beautiful lily from the Pacific coast. The blossoms are shaped like those of the Easter lily and are deliciously fragrant. The color is a very delicate lemon-yellow. Under favorable conditions this lily will grow from 3 to 5 feet tall. It enjoys light shade. Plant in fall or spring, but fall planting is best. \$1.00 each.

LILIUM PARDALINUM. Leopard Lily

Another western species. The tiger lily of the canyons. Varying forms of much spotted red or orange flowers, having strongly recurved petals. Easily grown. 50c. each, \$5.00 per 12.

LILIUM CONCOLOR

A charming little lily bearing several stalks to one bulb. Wide open starry flowers of waxy texture and clear scarlet in color. June to July flowering. Fall or spring planting. One of the best for garden planting. \$1.00 each.

LILIUM CANDIDUM. Madonna Lily

Handsome, large, very fragrant flowers of pure spotless white. Quite similar in form to the Easter lily of the florists. Perfectly hardy. Beautiful in the hardy garden. Blooms in late June and early July. Plant in the fall, barely covering the bulb. 35c. each, \$3.00 per 12.

LILIUM REGALE. Regal Lily

A recent introduction. Very hardy and one of the earliest lilies to bloom. Stalks 2 to 4 feet tall terminated by one to several trumpet-shaped blossoms, slightly shaded pink on the outside and white shaded pale yellow within. The flowers are among the largest and finest of the lily family. Blooms in June and July. Plant either in fall or spring. 50c. each, \$5.00 per 12.



Lilium elegans. See page 38

LILIUM DAURICUM. Candlestick Lily

Erect, large, open, trumpet-shaped flowers on sturdy stalks 2 feet or more in height. Flowers are brilliant deep red. A fine garden variety succeeding under the most ordinary conditions. June-July flowering. Fall or early spring planting. 35c. each, \$3.50 per 12.

LILIUM AURATUM. Gold Banded Lily

Said by many to be the most popular lily grown. Grows 2 to 6 feet high and bears up to twenty large, very fragrant flowers of the wide open trumpet form. Color white with a gold band running down the middle of each petal. A clump of these is a sight long to be remembered. Blooms July-Sept. They arrive from Japan very late in the fall, usually when the ground is frozen. It is well to pot them up in large pots and keep in coldframe over winter. They may also be planted in the spring. Plant from 8 to 10 inches deep. 50c. each, \$5.00 per 12.

LILIUM TESTACEUM. Nankeen Lily

One of the most graceful and attractive of lilies. Color a soft nankeen yellow. The flowers are borne on stalks often 6 or 7 feet tall. Absolutely hardy. Stock withdrawn for propagation.

LILIUM SPECIOSUM RUBRUM

A magnificent species and is one of the showiest of lilies. White suffused with dark old rose and heavily spotted rose-red. Plant deeply, either in Fall or spring. Very hardy. 50c. each, \$5.00 per 12.

LILIUM PHILADELPHICUM. Wood Lily

A brilliant lily, gaining favor for garden planting, 2 to 3 feet tall, bearing one or two large, upright red or scarlet flowers in July and August. 25c. each, \$2.50 per 12. (Not offered until fall, 1925).

LILIUM TENUIFOLIUM. Siberian Coral Lily

A brilliant little lily which is quite easy of culture. Much recurved petals of waxy substance and brilliant scarlet in color. 1 to 2 feet. Early June flowering. Plant in fall or earliest spring. 25c. each, \$2.50 per 12.



Lilium auratum

CERTIFICATE OF NURSERY INSPECTION WITH PERMIT TO SHIP
Vermont State Department of Agriculture

E. S. BRIGHAM,
 Commissioner of Agriculture,
 MONTPELIER, VT.

M. B. CUMMINGS,
 Inspector of Nurseries,
 BURLINGTON, VT.
 August 4, 1923.

To Whom It May Concern:

This is to certify that I have this day carefully examined the nurseries and grounds or accompanied consignment of Geo. D. Aiken of Putney, Vermont, and find no evidence of San José Scale, Gypsy or Brown Tail Moth, or other noxious insect or disease likely to be transmitted on nursery stock.

(Signed) M. B. CUMMINGS,
 State Nursery Inspector.

Valid for One Year, or until revoked.

WHO USES OUR PLANTS?

While we receive, and like to get testimonials, yet they are so easily faked by unscrupulous persons that their value is largely lost to legitimate concerns, Instead we are giving a list of public institutions who use **our plants**:

- University of Wisconsin, Madison, Wis.
- Central Quebec Experiment Station, Cap Rouge, Quebec.
- Vermont State Agricultural College.
- Massachusetts Agricultural College.
- West Virginia Experiment Station.
- Connecticut Extension Service.
- Vermont State School of Agriculture, Randolph, Vt.

- Essex County Agricul. School, Hathorne, Mass.
 - New Hampshire State College.
 - New Jersey Experiment Station.
 - Smith's Agricultural School, Northampton, Mass.
 - New York Agricultural School, Canton, N. Y.
 - University of Kentucky, Lexington, Ky.
- and others. Our plants are used in nearly every state in the Union.

NEPONSET PAPER POTS

These waterproof paper pots are considered the best on the market. They are used extensively by florists, nurserymen and gardeners. They are all set up ready to use. Prices as follows:

	100	1000
2 1/4-in. pots.....	\$0.75	\$3.40
2 1/2-in. pots.....	.85	3.90
3 -in. pots.....	1.00	5.30
3 1/2-in. pots.....	1.25	6.90
4 -in. pots.....	1.50	8.60
5 -in. pots.....	2.00	13.40
6 -in. pots.....	2.50	17.90

The 5- and 6-in. pots can be furnished in 500 lots at 1000 rates.

STIM-U-PLANT

A high grade fertilizer in tablet form for use on house plants, window boxes, gladiolus, and, in fact, any sorts of plants. These tablets analyze 11% nitrogen, 12% phosphoric acid and 15% potash. All three elements are water soluble, making them immediately available for the use of the plants. We recommend them to you. 10 tablets, 15c.; 30 tablets, 25c.; 100 tablets, 75c.; 1000 tablets, \$3.50.

SERVICE DEPARTMENT

Should you desire assistance in the selection of varieties, planning your orchard, shrubby border, foundation planting or perennial border we will gladly assist you. We can also send a reliable person to supervise the planting if you wish.

INDEX

	Page		Page
Dahlias.....	38	Peonies.....	32, 33
Evergreens, Broad-leaved.....	10	Perennials, Hardy.....	22-36
Evergreens, Coniferous.....	11, 12	Plants and Bulbs.....	37, 38
Ferns, Hardy.....	36	Roots and Plants.....	6
Fruits, Small.....	5, 6, 7	Roses.....	19, 20, 21
Fruits, Trees.....	3, 4, 5	Shrubs, Hardy.....	13, 14, 15, 16
Gladiolus.....	37	Sundries.....	40
Hedges.....	12	Trees, Deciduous.....	8, 9, 10
Hyacinths.....	38	Trees, Fruit.....	3, 4, 5
Iris.....	29, 30	Vines, Hardy.....	17, 18
Lilies, Garden.....	38, 39		



Annuals & Bedding Plants

FOR SPRING, 1925

FROM THE NURSERIES OF

GEO. D. AIKEN, PUTNEY, VERMONT



There is a satisfaction in growing flowers which are raised especially for picking: with annuals, the more you pick, the more you have.

One always hesitates to pick perennials: they are so soon gone.

In buying annual plants, remember that they should bloom three or four weeks earlier than when the seed is sown in the open ground. Many of the best annuals, such as snapdragon, sown out-of-doors, bloom late, if at all. Then, too, there is always some favorite kind which fails to come up, leaving a blank in the garden, and spoiling the scheme of color or design.

Our annuals will be ready for delivery about May 1st, and by then will be thoroughly hardened off for outdoor planting. Geraniums and heliotrope are better planted around Memorial day.

WINDOW BOXES.—We will be glad to furnish the right number of plants for a good effect. Send us the dimensions and we will send you the plants.

NOTE.—Inquire next Fall for our special line of evergreens for window boxes.

	Per 12	Per 100
AGERATUM, blue	\$0.35	\$2.50
ASTERS, Heart of France, dark ruby red40	3.00
ASTERS, new fancy yellow; large, clear yellow; very fine	1.00	8.00
ASTERS, Early Branching or Royal—Lavender35	2.00
Purple35	2.00
La France, pink35	2.00
Snow white35	2.00
Shell pink35	2.00
ANTIRRHINUM, Snapdragons, large flowering half dwarfs—		
Empress, rich crimson50	3.50
Golden Queen, bright yellow50	3.50
Silver Pink, soft pearly pink50	3.50
Purity, snow white50	3.50
BALSAM, Double Camellia-Flowered mixed40	3.00
CALENDULA, Pot Marigolds—Orange King35	2.00
Lemon Queen35	2.00
CENTAUREA, Bachelor's Buttons—Double blue35	2.00
Double rose35	2.00
CLARKIA, Double Flowering—Double white35	2.00
Double salmon35	2.00
CLEOME, Spider Flower; tall, flowers rose pink35	2.00
COSMOS, Extra Early Flowering Colossal—Crimson35	2.00
Pink35	2.00
White35	2.00
DIDISCUS COERULEUS, Blue Lace Flower35	2.00
DIMORPHOTHECA, African Golden Daisy35	2.00
MARVEL OF PERU, Four-O'clocks35	2.00
LARKSPURS, Annual—Ageratum, blue35	2.00
Exquisite, rose pink45	3.00
Dark blue35	2.00
Carmine35	2.00
LOBELIA, Crystal Palace Compacta, blue75	5.00
White Gem75	5.00
LAVATERA, Annual Mallow; wonderful bright rose pink35	2.00

(OVER)

	Per 12	Per 100
LUPINE, Annual, bright blue.....	.35	2.00
MARIGOLD, African—Lemon Queen25	1.50
Orange King.....	.25	1.50
MIGNONETTE, Golden Machet; intensely fragrant35	1.50
NIGELLA, Love-in-a-Mist35	2.00
PETUNIA, Purple Prince, the popular purple Petunia75	5.00
Rosy Morn, pink75	5.00
Snowball, pure white75	5.00
PHLOX, Annual—Shell pink35	2.00
Crimson.....	.35	2.00
White35	2.00
Bright pink.....	.35	2.00
SALPIGLOSSIS, Purple and gold50	3.50
Rose and gold.....	.50	3.50
Scarlet and gold.....	.50	3.50
SALVIA, America; earliest, freest and longest blooming salvia,50	3.50
SCABIOSA, Azure Fairy35	2.00
Crimson.....	.35	2.00
King of Blacks.....	.35	2.00
Rose35	2.00
White35	2.00
SCHIZANTHUS, Fringe Flower.....	.75	5.00
SUMMER CYPRESS, Annual Hedge Plant; indispensable for edging and dividing flower beds35	2.00
LARGE FLOWERING BEDDING STOCKS, Bright pink50	3.50
Light blue.....	.50	3.50
Pure white50	3.50
VERBENAS, Dreer's Mammoth.....	.50	3.50
Pink50	3.50
Blue50	3.50
White50	3.50
Scarlet.....	.50	3.50
Mayflower Verbena, Mayflower scented75	5.00
VIOLAS, Tufted Pansies—Papilio, blue.....	.35	2.00
Lutea splendens, yellow35	2.00
White Perfection35	2.00
ZINNIAS, Improved Dwarf Double—Flesh pink40	3.50
Orange40	3.50
Scarlet.....	.40	3.50
Salmon rose.....	.40	3.50
PANSIES, Dreer's Giant Masterpiece. Remarkable type, the petals being conspicuously curled or waved. The range of color is very extensive. The rich dark velvety colors predominate35	2.50
GERANIUMS, Bedding-out sizes. Leading varieties	2.00	15.00
HELIOTROPE, dark blue, very fragrant.....	1.50	12.00

CANNAS

The plants which we offer are started into growth, ready for immediate bedding. The varieties are standard sorts, and the best obtainable.

PRESIDENT, dark green leaves, brilliant red flowers, most striking and beautiful	\$.15 each, \$1.50 dozen	
RICHARD WALLACE, clear yellow, very fine, green leaved variety15	1.50
KING HUMBERT, beautiful orange flowers, bronze leaved,15	1.50
MRS. ALFRED CONARD, the best pink canna, dark green leaves15	1.50
EUREKA, the best white canna, green leaves.....	.15	1.50

VEGETABLE PLANTS

	Per 12	Per 100
TOMATOES, Chalk's Early Jewel, standard early tomato	\$1.00	\$8.00
CABBAGE, Jersey Wakefield, standard kind, early.....	.35	2.00
Copenhagen Market, standard late variety35	2.00
CAULIFLOWER, Early Snowball, best early pure white cauliflower35	2.00

(OVER)

GEO. D. AIKEN
PUTNEY
VERMONT

