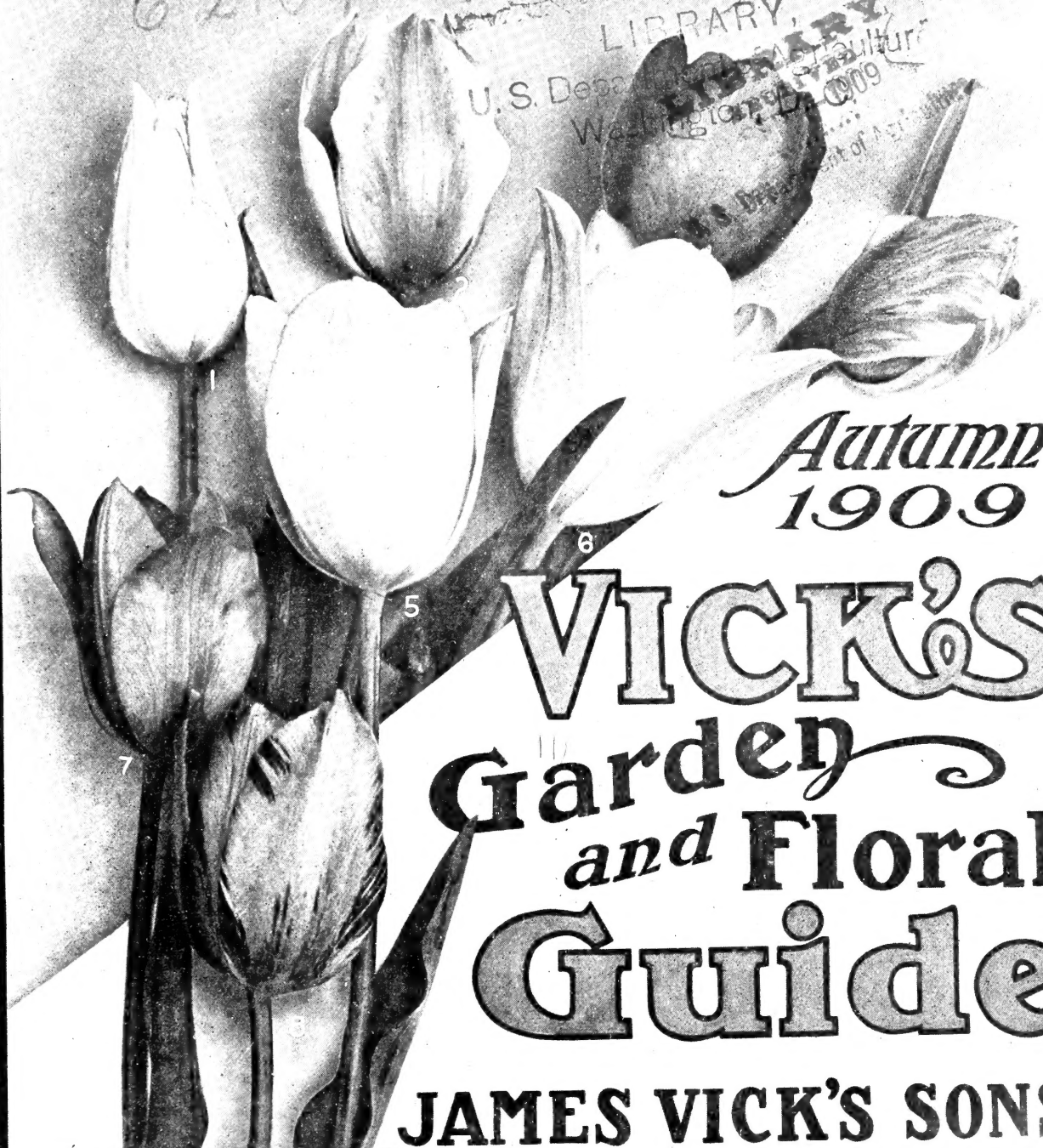


Historic, archived document

Do not assume content reflects current scientific knowledge, policies, or practices.

6261

LIBRARY
U.S. Department of Agriculture
Washington, D.C. 20009
U.S. Department of Agriculture



*Autumn
1909*

VICK'S Gardener and Floral Guide

JAMES VICK'S SONS

GROWERS AND IMPORTERS OF SEEDS, BULBS, PLANTS

ROCHESTER, N.Y.

May Flowering Tulips

- 1—Picotee
- 2—Primrose
- 3—Gesneriana
- 4—Clusiana
- 5—Snowdon
- 6—Vittellina
- 7—Persica
- 8—Violet Bybloemen

Three Bulbs of each Variety for
\$1.25, postpaid

See page 11



THE name of JAMES VICK'S SONS has come to be synonymous with "HIGH QUALITY" in Bulbs, Seeds, Plants, and kindred articles. Over sixty years of concentrated effort, an enthusiastic business organization, a close study of the value of every new article introduced to the trade; and above all, an ambition to make new friends and keep the old, has been the method by which this high position has been reached.

Mere words do not begin to give an idea of the time, labor and expense necessary to select stocks which will give the greatest satisfaction to the planter. Hundreds of varieties which at first promise to be of value are finally discarded as unworthy of a place in our Catalogs—for every item must stand the test of quality, and assist in upholding our reputation for reliability. Notwithstanding this outlay, our customers are assured the lowest possible prices consistent with absolutely dependable stocks.

No house is more careful in filling orders; we use every reasonable means to learn the customer's wishes without delaying the shipment, and as far as possible every order is shipped the day it is received. Your interests are our interests, and we present you with this 1909 Bulb Catalog confident that we merit your trade, and assure you of the best treatment, whether the order is small or large.

Most of the illustrations in this Catalog are reproduced direct from photographs of the flowers and plants. We have endeavored to make the descriptions as accurate as the pictures—direct, concise, simple—and we believe they may be relied upon in every respect.

Quality, Reliability and Economy are the inducements we offer.



SUGGESTIONS TO ALL WHO BUY

We will send Seeds, Bulbs and Plants, by mail to any part of the United States, at prices named in this Catalogue, postage paid, unless otherwise noted

THE only exceptions to this rule are *in cases especially noted*. Persons living at the most distant parts of the country will no longer be compelled to buy poor goods or none, but can send their order with the money, and in a few days the articles will arrive in good order at their post office, or express office, where they can be obtained without further cost, as every package, except where noted, will be *paid through to destination*. Our customers will oblige us very much by giving their nearest Express office and name of the company delivering goods, as it is often better to ship heavy goods by express. We guarantee the safe arrival of packages of Seeds, Bulbs and Plants in good condition. Whenever writing in reference to previous order, be sure to mention the post office to which goods were to be shipped, and sign the same name as in first order. When customers fail to receive their Seeds, Bulbs or Plants in a reasonable time, they should inform us, and also send a copy of their order, stating the amount of money, and in what manner it was sent. **No goods sent C. O. D.**

CHECKS—When individual checks are sent please add 15 cents to cover cost of collection at the Bank.

We will send VICK'S GARDEN AND FLORAL GUIDE for 1910 free to all customers of 1909; to others it will be mailed free upon application. If any customer fails to receive a GUIDE before February, 1910, please send us a postal stating the fact, with name and post office.

DON'T FORGET TO WRITE YOUR NAME, POST OFFICE AND STATE

HOW TO SEND MONEY.

ALL MONEY MAY BE SENT AT OUR RISK AND EXPENSE if forwarded according to directions in either manner here stated. Please send money with the order.

When remittances are not made according to the following directions we disclaim all responsibility.

1—Post Office Money Order. If your Post Office is a Money Order office, send a money order, which will cost as follows: Sums not exceeding \$2.50, 3 cents; over \$2.50 and not exceeding \$5.00, 5 cents; over \$5.00 and not exceeding \$10.00, 8 cents. This is the best way, and we advise our friends, when possible, to send a P. O. Money Order.

2—Express Money Order. Express Money Orders, to be obtained at all offices of the American, United States, Adams, Pacific, National, Wells, Fargo & Co., and other Express companies.

3—Draft on New York. A Draft on New York can be obtained at any Bank, and this is sure to come correctly.

4—Registered Letter. When money cannot be sent by either of the first three methods, it may be sent in a Registered Letter. The cost of registering is eight cents.

The expense of forwarding money in either of the above ways we will pay, and the cost may be deducted from the amount forwarded.



Established by James Vick in 1849

VICK'S

Oldest Mail Order Seed House

GARDEN AND FLORAL GUIDE

FOR THE AUTUMN OF NINETEEN HUNDRED AND NINE



C

THE window culture of Hyacinths, Tulips, and Narcissus is very popular, and presents a most attractive way of raising these plants, which by their beauty and fragrance grace our living rooms in winter. The general treatment of these different kinds of bulbs is the same. A light, porous soil just suits them—some garden loam, leaf mould and sand mixed together. Use five-inch pots for Hyacinths and Narcissus. Place some pieces of broken pot in the bottom so as to secure free drainage, and then fill up to about two inches of the top, set a bulb on the soil in the center of the pot, then fill in with soil until the bulb is about two-thirds covered. Set the pot down once or twice on the bench with a sharp rap so as to settle the soil and bulb down well. Tulips should be potted the same way, only there may be as many as four or five bulbs in a five-inch pot, and six in a six-inch pot, and they can be buried somewhat deeper in the soil, so that only the points show above the surface. At least three-fourths of an inch of space should remain between the top of the soil and the rim of the pot in order to hold water whenever watering is necessary. When the potting is finished as above described, give water sufficient to wet the soil all through.

ROOTING THE BULBS. The pots should now be placed in a dark room, or in the cellar, to remain several weeks while the bulbs are making roots, for it is necessary that these should form before the growth of the leaves or flowers. Not much heat is needed for root-growth, and a temperature of 50° is best. It will be a good precaution to take, to set the pots in a box and fill in soil or moss between the pots to keep them from drying out, and then cover the box over closely so that mice cannot get in. Here they can remain from six to ten weeks, or until they have quite filled the pots with roots. Some will root faster than others and will show signs of leaf-growth, and these can be taken up first to the light, while the others are left to bring out later, thus causing them to bloom at different times, successively over a number of weeks. They should be placed in a good light in a temperature of 50° to 60°, and freely ventilated on fine days. If one has not pots to use, bulbs can be planted in boxes in the same way as here described.

BULBS IN THE GARDEN. All hardy bulbs do well in ordinary garden soil if it is dry, that is if water does not lie on it in winter. A compact clayey soil may be improved for bulbs by mixing with it a quantity of sand. A sandy loam is all that is desirable. The ground should be spaded deep immediately before planting. When planting a large number in a border or bed it is well to remove entirely the upper layer of soil to a depth of four inches and then spade the lower soil a good depth. Rake it smooth and level, and, if possible, spread over the surface a layer of sand an inch in depth; this provides a bed for the roots to run in freely, and enables them to make a vigorous growth from the start. Providing a bed of sand is not absolutely necessary, but if it is convenient to do so it is an advantage. The largest bulbs are now set on the bed, from four to six inches apart, and Crocus, Snowdrop, etc., about two inches apart, and when all are in place the surface soil that was removed is gently spread over them without disturbing them, and they thus get covered some three or four inches in depth. At the north bulbs should by preference be planted from the last of September up to November, while at the south November will be early enough.

AFTER THE BULBS ARE PLANTED. When the bulbs are set and covered, before hard freezing weather comes they will need to be covered with leaves or litter, enough to prevent the ground from freezing much, for the bulbs are injured by the movement of the soil about them that takes place when the ground thaws, tearing or straining the roots, and enfeebling the plants. Early in spring the most of the covering can be removed, leaving a little to remain over the the bed until the leaves begin to push, and then clearing it all off.

AFTER THE BULBS HAVE BLOOMED. Bulbs in a shrubbery border may be left after blooming without disturbance, and each spring they will renew their growth and bloom. At the last of May or early in June summer-blooming plants can be set in between the bulbous plants whose ripening foliage will soon after wither and disappear; or the bulbs can be carefully lifted with soil attached, taken away, and placed in a trench previously prepared for them in a half shady place, where they can remain until the foliage has decayed, when the bulbs can be removed from the soil and be placed away in a dry, airy, cool place, to remain until time for planting in early autumn.

At Prices Quoted in this Catalogue we prepay Postage or Express Charges, unless otherwise stated.

LEUCOJUM
VERNUM
Spring Snowflake
See page 11

HYACINTHS FOR HOUSE AND GARDEN

FOR very early blooming in the house, the White Roman Hyacinth is a great favorite. Its flower spikes are looser and shorter than those of the Holland Hyacinth; but, instead of one, each bulb has usually two or three flower stems. Three or four bulbs of Roman Hyacinths potted early in the season, in a six-inch pot, will make fine blooming specimens at the winter holidays. Under the same conditions the Holland Hyacinths bloom later, and a single bulb is sufficient for a five-inch pot. In a six-inch pot three bulbs may be placed, and if the flowers are in three shades—red, white, and blue—a very pretty effect is secured. The time of blooming may be regulated to some extent by holding the potted bulbs in the dark and keeping in a cool place, thus retarding the bloom and allowing the plants to be brought along successively for a number of weeks. For planting in quantities in the garden it is more economical to use the unnamed varieties, the bulbs costing less; these can be planted to form a mass by themselves, mixed if so desired, or in varied designs.

Vick's First and Best Collections of Bulbs

Collection "A," Hyacinths for House Culture

Baron Van Thuyll, pink	Marie, dark blue
Grande Maitre, porcelain blue	Mr. Plimsoll, white
Grande Blanche, blush white	Robert Steiger, deep red

Price 65 cents, postage prepaid

Collection "B," Hyacinths for Garden Culture

Isabella, rosy white	Princess Louise, rose
Non plus ultra, pure white	Princess Royal, red
Othello, dark blue	Van Speyk, light blue

Price 65 cents, postage prepaid

Collections A and B postpaid for \$1.20

A Bed of Red, White and Blue Hyacinths Six Feet in Diameter 127 Large, Sound Bulbs

We have made the following Collection so low in price that all can afford to have a beautiful bed in bloom early in spring, at a time when there is a scarcity of flowers.

1st row, 6 bulbs, blue	{ Center One Bulb }	4th row, 24 bulbs, white
2d row, 12 bulbs, blue		5th row, 30 bulbs, red
3d row, 18 bulbs, white		6th row, 36 bulbs, red

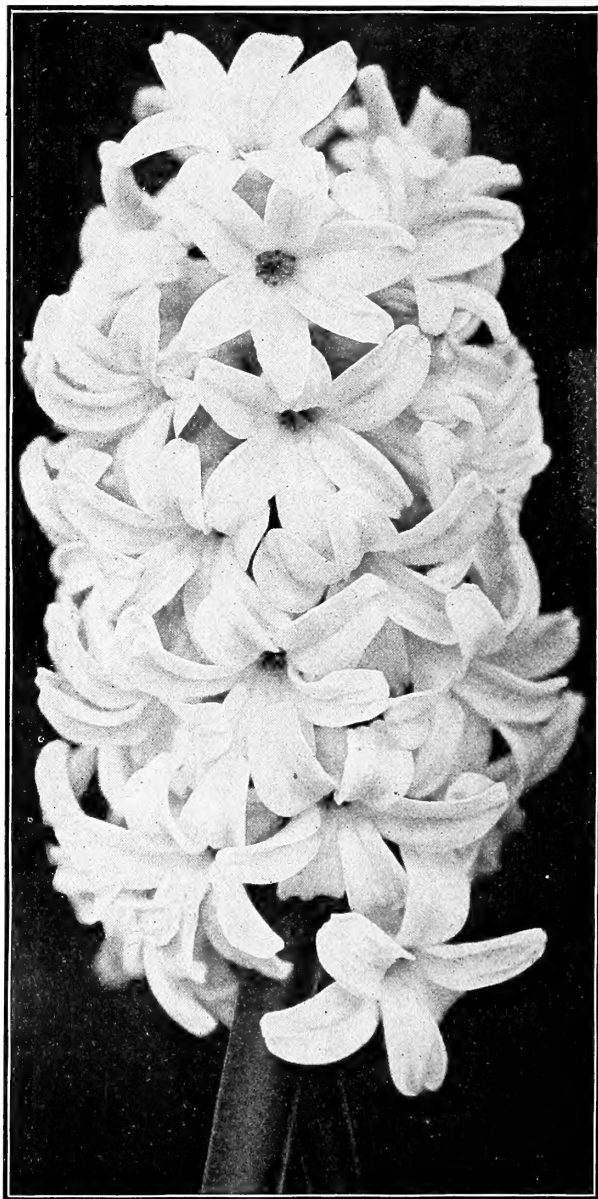
Delivered Anywhere in the United States for \$5.00

Sixty-cent Collection of 40 Assorted Bulbs For House or Out-of-Door Culture

A most desirable and favorite collection; will give universal satisfaction in both quality and quantity.

- 6 Hyacinths—2 Red, 2 White, 2 Blue.
- 10 Tulips—Single Early, choice mixed.
- 3 Narcissus, Mixed.
- 21 Crocus—All colors mixed.

40 Choice Bulbs for 60 cents, Postage paid



SINGLE HYACINTH, CHARLES DICKENS

VICK'S EXHIBITION HYACINTHS

FOR the benefit of customers who wish for the very finest bulbs of the choicest varieties for pots and glasses, we have imported from one of the best growers in Holland, a limited number of the largest and most perfect bulbs to be obtained. These especially fine bulbs we offer at the comparatively low price of

15 cents each, \$1.50 per dozen, postage prepaid.

In ordering, please be careful to designate these as Vick's Exhibition Varieties.

SINGLE RED AND ROSE

- Garibaldi.** Dark red; fine truss.
Fabiola. Pink, carmine striped; large spike.
Gen. Pelissier. Brilliant carmine; splendid spike; early.
Gertrude. Rosy pink; large, upright spike; extra fine.
Lady Derby. Waxy pink; new.
Lord Macaulay. Bright rosy carmine; very large bells.
Moreno. Waxy pink; large bells, extra good truss.
Rose a Merveille. Blush rose; fine truss.

SINGLE WHITE

- Baroness Van Thuyt.** Pure white; fine large truss.
Grande Blanche. Blush white; large bells and spike.
Grandeur a Merveille. Fine large truss of large bells.
La Grandesse. Extra fine pure white; large bells and grand spike.
L'Innocence. Extra fine spike of snow-white bells.
Paix de l'Europe. Extra large spike of snow-white drooping bells.

SINGLE BLUE AND PURPLE

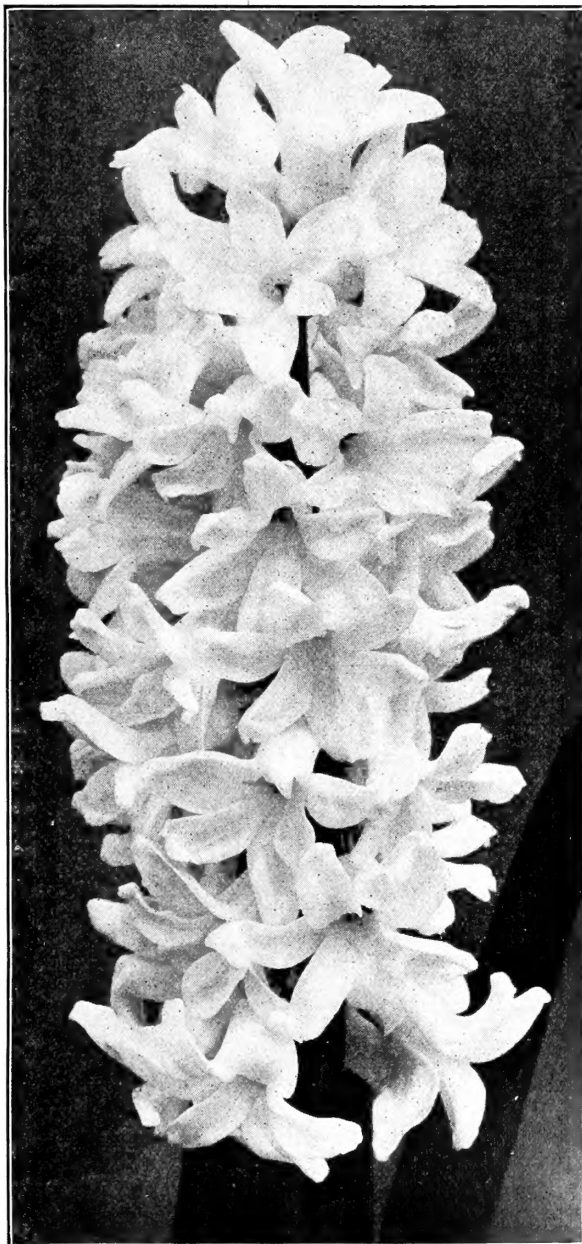
- Charles Dickens.** Blue, shading to porcelain; handsome tall spike; excellent.
Gen. Havelock. Blackish purple, extra fine.
Grand Lilas. Light porcelain; extra fine large truss and bells.
Grand Maitre. Dark porcelain blue; grand spike of large bells.
King of the Blues. Rich dark blue; large compact spike.
Queen of the Blues. Clear light blue; fine spike of very large bells.
Haydn. Lilac-mauve; fine large truss.

SINGLE YELLOW

- Ida.** Rich pure yellow; fine large spikes

DOUBLE RED AND ROSE

- Kastanjebloem.** Extra fine blue.
Le Grand Concurrent. Pale rose, shaded with pink; fine spike of large bells.
Lord Wellington. Extra fine blush pink; large spike and bells.
Marie de Medicis. Rose; fine large bells and spike.
Prince of Orange. Deep rose; fine spike.



SINGLE HYACINTH L'INNOCENCE

DOUBLE WHITE

- Bouquet Royal.** Pure white, yellow center; fine spike.
Isabella. Fine blush white; grand spike and large bells. Excellent.
La Tour d'Auvergne. Pure white; large bells; extra fine spike; very early.
Prince of Waterloo. Pure white; large bells and truss.

DOUBLE BLUE

- Bloksberg.** Clear porcelain; fine large spike.
Charles Dickens. Dark blue, shaded lilac; handsome compact truss.
Garrick. Extra fine dark blue.
Mignon de Dryfhout. Pale blue; fine truss.

DOUBLE YELLOW

- Jaune Supreme.** Deep yellow; fine spike.

GRAPE HYACINTHS

Also called "Blue Lily of the Valley." About six inches high and very much resembles a bunch of grapes. Planted in groups of a dozen or so, the bulbs produce a mass of blossoms. Plant very hardy. For winter blooming in the house they excel.

- Blue.** Two for 5 cts.; dozen 20 cts.; hundred \$1.00.
White. Three for 10 cts.; dozen 30 cts.; hundred \$1.70.

FEATHERED HYACINTHS

A peculiar species, improving daily in beauty after once commencing to bloom, and developing finally into an immense blue feathery plume about twelve inches high. It is very desirable for winter blooming, and cultivated as other Hyacinths it will give perfect satisfaction. Three for 5 cts.; dozen 30 cts.; hundred \$1.70.

At the Single and dozen price we pay postage to destination.

Never had them so nice.

I wish to tell you that the Hyacinths I had of you last fall were the finest I have ever grown. I had a hundred bulbs of those cited in catalogue at 75 cts. per dozen and have had them in the house and they are fine. I have paid much more other years, but never had them so nice. Thanking you for same, I remain,

Yours respectfully,
 SYRACUSE. MRS. A. FEATHERBY.

NAMED HYACINTHS EXTRA LARGE BULBS

The finest varieties and best bulbs, purchased and imported specially for customers who want extra choice bulbs for the conservatory or window, or to plant in beds of design in the garden. The single-flowered varieties are more desirable for house culture than the doubles.

12 cents each, or \$1.20 per dozen, Postage or Express Charges prepaid

Not less than Six Bulbs will be sold at the dozen rate.

Ask for Special Prices if large quantities are desired.

SINGLE RED AND ROSE

Amy. Bright scarlet.
Charles Dickens. Delicate pink.
Fabiola. Rose; handsome bells and large spike.
Garibaldi. Brilliant carmine.
General Pelissier. Bright carmine.
Gertrude. Rosy pink; large, upright spike.
Gigantea. Blush pink, large flowers and very large truss.
Lord Macaulay. Bright rosy carmine; extra fine.
Moreno. Fine pink.
Norma. Light pink, large bells and fine truss.
Roi des Belges. Dark red; early, fine spike.
Romeo. Bright scarlet.

SINGLE WHITE

Alba Superbissima. Pure white.
Albertine. Pure white.
Baroness Van Thuyt. Flowers snow white; fine large truss; one of the best for any purpose.
Grandeur a Merveille. Blush white.
La Grandesse. Fine snow white.
L'Innocence. Snow white; extra fine spike.
La Franchise. Waxy white.
Madame Van der Hoop. Pure white, large bells.
Paix de l'Europe. Pure white.
Pavilion Blanc. Pure white.
Queen Victoria. Pure white.
Voltaire. Creamy white.

SINGLE BLUE

Baron Van Thuyt. Dark blue.
Bleu Mourant. Purple blue.
Charles Dickens. Bright blue shading to porcelain blue; excellent.
Grand Lilas. Light porcelain.
King of the Blues. Rich, dark blue.
LaPeyrouse. Light lavender
Leonidas. Light blue, large spike.
Pieneman. Dark porcelain blue.
Queen of the Blues. Light blue.
Regulus. Porcelain blue, large bells.
Schotel. Light lavender; extra fine.

SINGLE PURPLE

Haydn. Lilac-mauve, large truss.

SINGLE YELLOW

Ida. Rich golden yellow.
King of the Yellows. Deep yellow.
Obelisque. Fine pure yellow.

DOUBLE RED and ROSE

Bouquet Royal. Salmon pink.
Bouquet Tendre. Carmine rose, early.
Czar Nicholas. Blush pink.
Grootvoorst. Blush pink; large, early.
Le grand Concurrent. Pale rose.
Lord Wellington. Extra fine pink.
Noble par Merite. Deep rose, early.
Prince of Orange. Dark rose, fine.

DOUBLE WHITE

Bouquet Royal. Pure white, yellow center.
Grootvoorstin. Creamy white, large bells.
La Tour d'Auvergne. Pure white, large bells; very early.
La Virginite. Blush white; early.
Prince of Waterloo. Waxy white, large bells.
Non Plus Ultra. Pure white.

DOUBLE BLUE

Bloksberg. Clear porcelain blue.
Charles Dickens. Dark blue, handsome truss.
Crown Prince of Sweden. Violet blue.
Garrick. Lilac blue; fine spike.
General Antinck. Light blue, large bells and truss.
Lord Raglan. Dark blue, large bells.

DOUBLE YELLOW

Gœthe. Light yellow, fine truss.
Jaune Supreme. Deep yellow, fine.

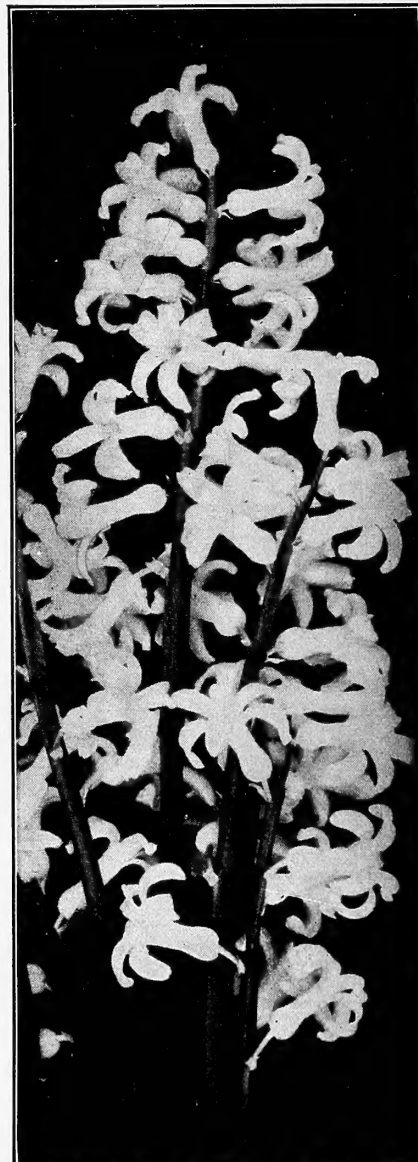
☞ THE full page engraving on page 7 shows how Vick Quality Bulbs may be used for bedding purposes. The results are always worth more than the expense when you use **VICK QUALITY BULBS.**



This Trade Mark Stands for the Highest Quality SEEDS PLANTS BULBS



Sixty Years have passed since this business was born, and thro all these years Quality has been the guiding Star.



Unnamed Hyacinths Separate Colors

Bulbs of Unnamed Hyacinths are comparatively cheap, and can be used in large numbers at no great expense. They are also used largely for winter forcing for cut flowers, and for window plants. When, however, the finest specimen pot plants are desired the named bulbs should be used.

Single Varieties

Dark Red	Dark Blue
Rose and Pink	Light Blue
Red, all shades	Blue, all shades
Pure White	Yellow, all shades
Blush White	Mixed White
Vick's Special Single Mixed	

Double Varieties

Dark Red	Dark Blue
Rose and Pink	Light Blue
Red, all shades	Blue, all shades
Pure White	Yellow
Blush White	Mixed White
Vick's Special Double Mixed	

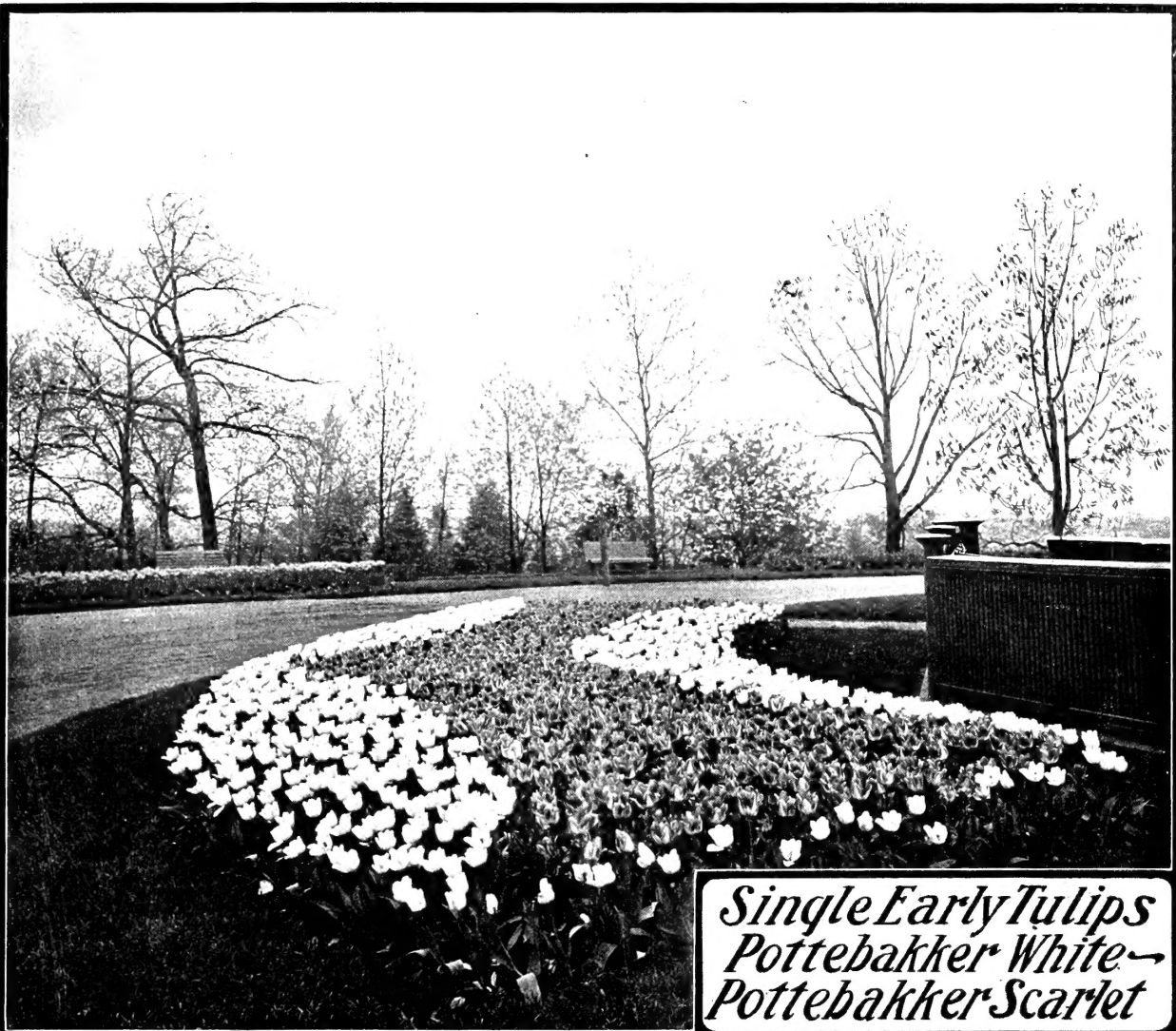
Each, 7 cents; dozen, 75 cents; hundred, \$4.50 delivered free to any postoffice in the United States

Dozen, 60 cents; hundred, \$4.00; delivered at Express Office Rochester, N. Y., charges not prepaid

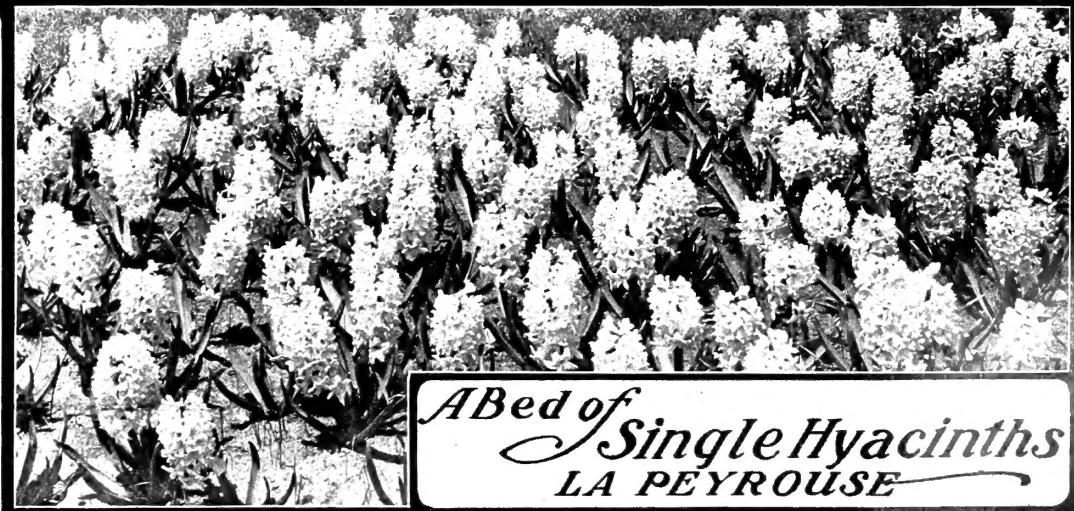
ROMAN HYACINTHS

These Hyacinth Bulbs are extra selected, and will give the greatest satisfaction, each bulb producing several graceful spikes. We advise early planting, so as to have the bulbs well rooted before commencing to force them. Early delivery can best be secured by sending your orders at once.

Early Roman White. Each 6 cts.; dozen, 50 cts.; hundred, \$3.75. Postage or Express charges prepaid.



Single Early Tulips
Pottebakker White
Pottebakker Scarlet



A Bed of
Single Hyacinths
LA PEYROUSE

VICK'S TULIPS



THE single early varieties in mixture set along a border produce a brilliant show. Plant the bulbs in beds or borders about six inches apart, with each color in a mass by itself to produce the strongest effect.

DUC VAN THOL TULIPS—The earliest and lowest growing kinds. Good for pot and garden culture.

TOURNESOLS—The next earliest, coming in two colors, orange-red and yellow; flowers double.

THE SINGLE EARLY TULIPS—Form a very charming class and of a great variety of colors.

THE DOUBLE TULIPS—The same range of colors, and the flowers of long duration.

THE LATE TULIPS—Have the tallest flower stems, are of an indefinite number of colors, and the flowers are of the most perfect shape. The choicest varieties are found in this class, which is divided into sections called *Bizarres*, *Violets*, and *Roses*. The *Bizarres* have yellow ground marked with some other color. *Violets* have white ground with purple and violet marks. *Roses* have white ground marked or variegated with rose, scarlet, crimson or cherry. The bulbs are used both in garden and pot culture, but cannot be forced.

PARROT TULIPS—A very distinct race and the most picturesque of this genus of beautiful and showy flowers. The flowers are large, marked with a combination of the brightest colors, various shades of yellow, red and green, and instead of being regular in form, the divisions are spread, twisted and wavy

as if in wanton grotesqueness to display their grace and beauty.

May Flowering Single Tulips

Under the most adverse circumstances and unpleasant environments this class of Tulips always give satisfaction. All are gorgeously colored (except Maiden's Blush) and long stemmed, making them extra well adapted for cutting, in which condition they retain their form and color for over two weeks.

50 *Bizarres*, mixed colors. 50 *Gesneriana*, scarlet, blue base.
50 *Darwins*, mixed colors. 50 *Maiden's Blush*.

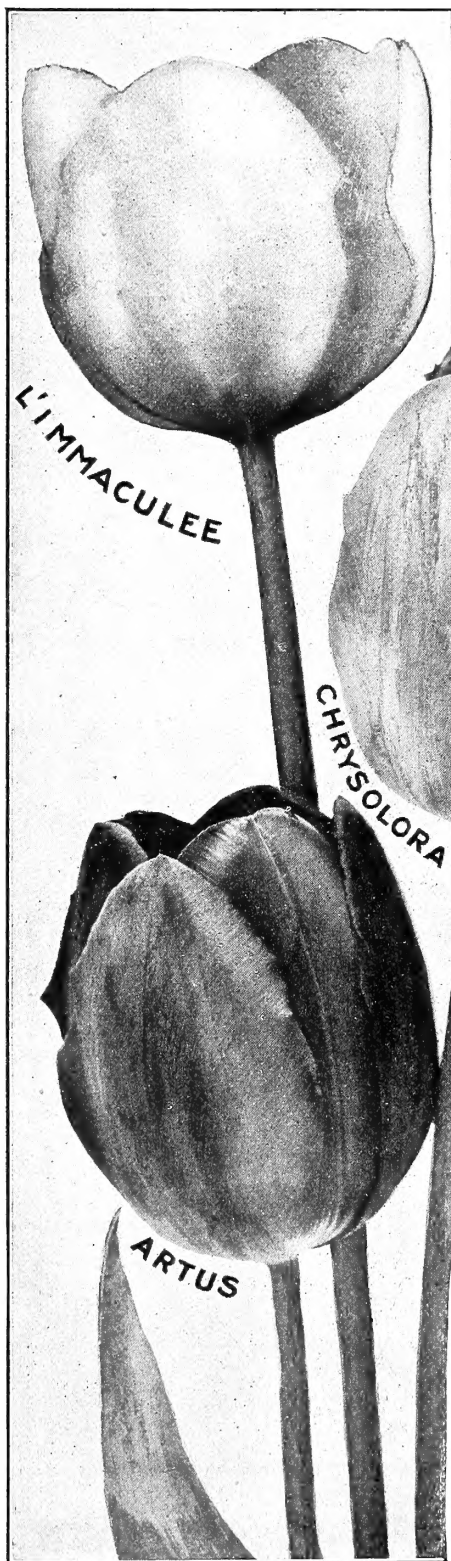
200 Bulbs for \$3.25 express prepaid; or half the number for \$1.75 express prepaid

For descriptions see page 11

Highland Park Collection of Single Early Tulips

This beautiful bed is circular, six feet across, or 18 feet in circumference, requiring a total of 271 bulbs planted four inches apart. The center and first three rows require 37 scarlet "Artus;" the next three rows 90 "Chrysolora," pure yellow, and the last three rows 144 "L'Immaculee," pure white.

We will furnish the 271 bulbs delivered to any express office in the U. S. for \$4.00



Varieties contained in the Highland Park collection of Single Early Tulips

Early-Flowering Single Tulips

Comprising the Finest Selections for both Forcing and Bedding

Varieties marked E are the earliest to bloom; E1, following; E2, the latest.

	DOZ.	100	1000
Artus. (E1) bright scarlet	3 for 15	35	2 00 16 00
Belle Alliance. (E1) scarlet	3 for 15	50	3 00 28 00
Brutus. (E1) orange-crimson, gold-margined	3 for 15	35	2 00 18 00
Canary Bird. (E) yellow	3 for 10	35	1 75 15 00
Chrysolora. (E) yellow	2 for 05	25	1 25 10 75
Crimson King. (E1) scarlet	3 for 15	40	2 25 20 00
Couleur Cardinal. (E1) bronze scarlet; a flower of great substance; stems long	07	65	4 00 35 00
Couleur Ponceau. (E1) crimson and white	3 for 10	30	1 50 13 00
Cottage Maid. (E1) rose and white	3 for 10	30	1 60 14 00
Duchesse de Parma. (E1) orange-red, yellow-bordered	3 for 10	35	1 75 15 00
Dusart. (E1) fine large scarlet	05	50	3 60
Fire Flame. Scarlet	3 for 10	30	1 60 14 00
Flamingo. Light and dark rose Very fine	15	1 50	
Grace Darling. Scarlet; very large flower, with broad petals	15	1 50	8 00
Joost Van Vondel. (E1) red and white. Splendid	3 for 15	35	2 00 18 00
Joost van Vondel. (E1) splen- did white	08	75	5 00 40 00
Keizerskroon. (E1) scarlet, yellow-edged	3 for 15	40	2 25 20 00
L'Immaculee. (E) white	3 for 15	25	1 25 9 00
La Reine. (E1) (Queen Victoria) beautiful rosy white	3 for 10	30	1 35 12 00
Mon Tresor. Large, deep yellow	3 for 15	45	2 60 23 00
Pink Beauty. (E1) splendid carmine, white bottom. One of the most elegant varieties in cultivation	15	1 50	
Pottebakker White. (E)	3 for 10	35	1 75 15 00
Pottebakker Scarlet. (E)	3 for 15	40	2 50 24 00
Pottebakker Yellow. (E) occasionally striped red	3 for 15	35	2 00 16 00
President Lincoln. (E2) handsome violet	3 for 15	50	3 00 26 00
Prince of Austria. (E1) beautiful orange	3 for 15	50	3 00 25 00
Princess Mariana. (E) white, tinged pink	3 for 10	30	1 60 14 00
Proserpine. (E) carmine-rose, large and splendid	07	65	4 00 35 00
Purple Crown. (E) purplish crimson	3 for 10	30	1 60 14 00
Rembrandt. (E1) scarlet crimson	3 for 15	50	3 00 25 00
Rose Luisante. (E2) Pink	3 for 15	65	4 00 35 00
Rose Grisdelin. (E) soft rose	3 for 10	35	1 75 15 50
Rosamundi. (E1) white and pink	3 for 10	30	1 35 12 00
Standard Royal. (E1) white and red	3 for 15	35	2 00 18 00
Standard Gold. (E1) yellow and red	07	70	5 00
Thomas Moore. (E1) orange	3 for 10	35	1 75 15 00
Vermillion Brilliant. (E) red	07	65	4 00 35 00
White Swan. (E2) pure white	3 for 10	30	1 35 12 00
Yellow Prince. (E) yellow	2 for 05	25	1 30 11 50

Vick's Superfine Mixture of nearly equal blooming varieties, dozen, 25 cents; one hundred, \$1.25; one thousand, \$10.00.

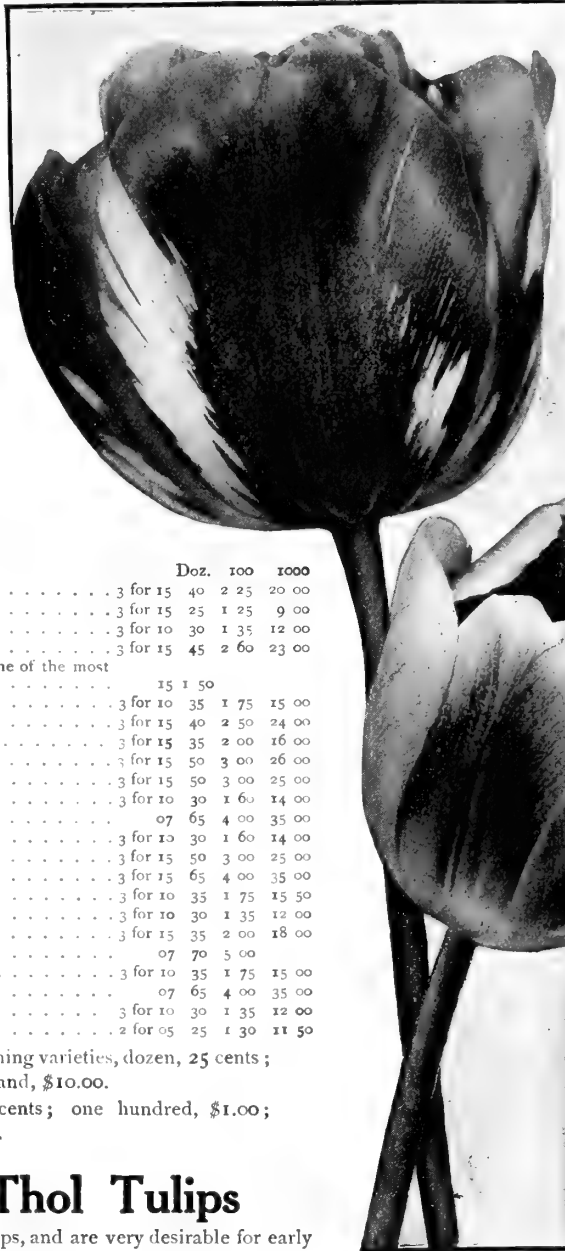
First Quality Single Mixture. Dozen, 20 cents; one hundred, \$1.00; one thousand, \$7.50.

Single Duc Van Thol Tulips

The Duc Van Thols are the earliest of the Tulips, and are very desirable for early forcing, coming into bloom throughout December, and especially at Christmas.

	DOZ.	100	1000
Red and Yellow	2 for 05	25	1 25 10 00
Rose	3 for 15	50	3 00 26 00
Scarlet	3 for 15	35	2 00 18 00
Cochineal	10	90	6 00
Crimson	3 for 10	30	1 35 12 00
Gold Striped	3 for 10	30	1 50 13 00
White Maximus	3 for 15	35	2 00 18 00
Yellow	05	40	2 60
Orange	3 for 10	30	1 75

Not less than 50 Bulbs supplied at the hundred rate, or less than 500 at the 1000 rate



Remember these bulbs are grown by expert Holland growers, and are unexcelled by any stocks imported

(SINGLE TULIP COTTAGE MAID)

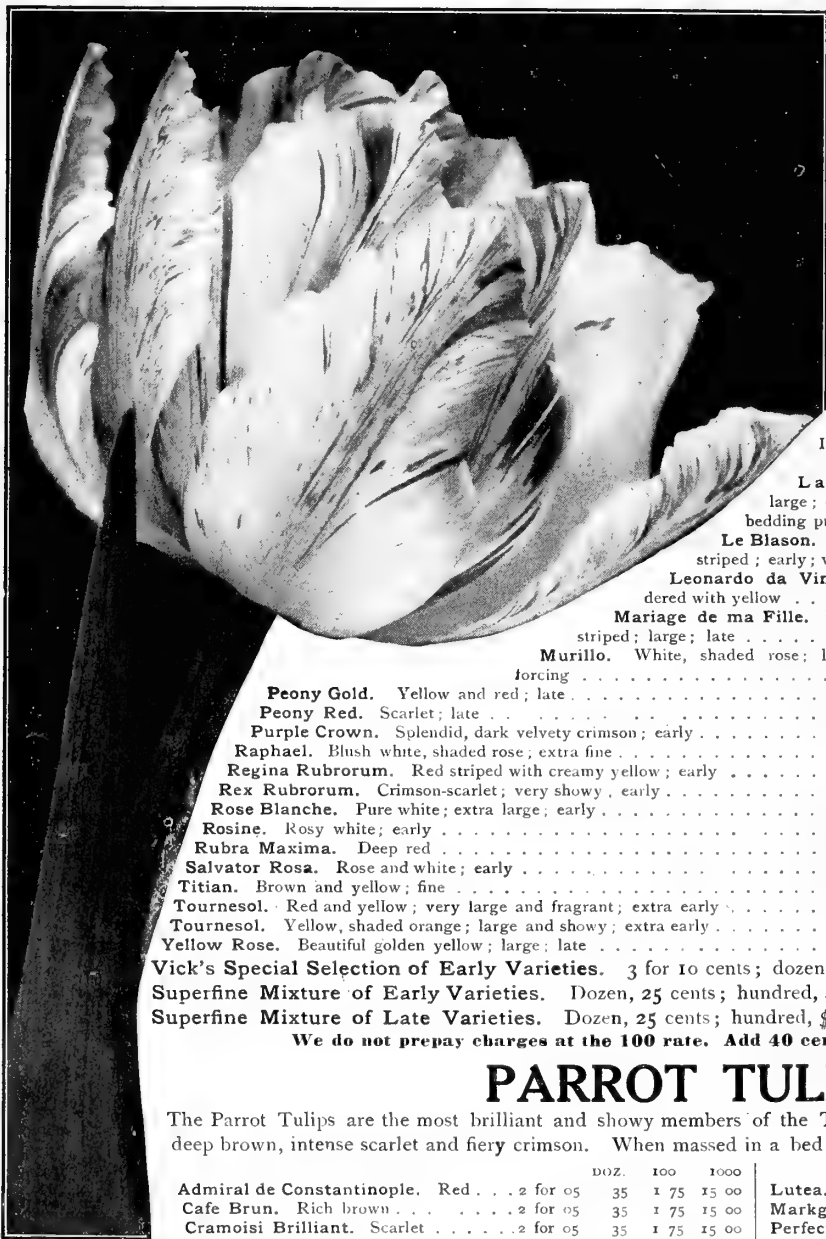
SINGLE TULIP REMBRANDT



At Single and Dozen rates we prepay the postage.

Hundred and thousand lots by express at the purchaser's expense.

Vick's Double Tulips for Bedding and Potting



DOUBLE TULIP
MARIAGE DE MA
FILLE

Alba maxima. Pure white 2 for 05	DOZ	100	1000
	\$0 25	\$1 25	\$10 00
Arabella. Carmine-pink; extra large flowers 3 for 15	45	2 85	25 00
Blue Flag. Blue; late 3 for 15	45	2 85	25 00
Crown of Gold. Yellow, orange shaded 3 for 15	50	3 25	28 00
Crown of Roses. Rose; large; early 08	85	5 00	
Duc van Thol. Red, yellow-edged; early 2 for 05	25	1 25	10 00
Duke of York. Red and white; fine; large; early 3 for 10	30	1 50	12 50
Gloria Solis. Bronze, orange and crimson; early 3 for 15	40	2 00	16 25
Imperator Rubrorum. Red; early 06	65	4 00	
La Candeur. White; large; early; largely used for bedding purposes 3 for 10	35	2 00	16 00
Le Blason. Delicate rose and white striped; early; very fine 3 for 10	35	2 00	17 00
Leonardo da Vinci. Orange-red, bordered with yellow 07	65	4 00	
Mariage de ma Fille. White and carmine striped; large; late 3 for 15	50	3 00	
Murillo. White, shaded rose; large; early; fine for forcing 05	50	3 00	25 00
Peony Gold. Yellow and red; late 3 for 10	30	1 50	13 00
Peony Red. Scarlet; late 3 for 10	30	1 50	13 00
Purple Crown. Splendid, dark velvety crimson; early 3 for 10	30	1 60	14 00
Raphael. Blush white, shaded rose; extra fine 15	25	8 00	
Regina Rubrorum. Red striped with creamy yellow; early 07	65	4 60	
Rex Rubrorum. Crimson-scarlet; very showy; early 05	40	2 25	20 00
Rose Blanche. Pure white; extra large; early 3 for 10	30	1 35	12 00
Rosine. Rosy white; early 3 for 15	50	3 00	25 00
Rubra Maxima. Deep red 05	45	2 60	23 00
Salvator Rosa. Rose and white; early 09	80	5 00	
Titian. Brown and yellow; fine 3 for 15	40	2 25	20 00
Tournesol. Red and yellow; very large and fragrant; extra early 3 for 15	40	2 25	20 00
Tournesol. Yellow, shaded orange; large and showy; extra early 05	50	2 65	24 00
Yellow Rose. Beautiful golden yellow; large; late 2 for 05	25	1 25	10 50

Vick's Special Selection of Early Varieties. 3 for 10 cents; dozen, 40 cents; hundred, \$2.00; thousand, \$15.00.
 Superfine Mixture of Early Varieties. Dozen, 25 cents; hundred, \$1.25; thousand, \$10.00.
 Superfine Mixture of Late Varieties. Dozen, 25 cents; hundred, \$1.25; thousand, \$10.00.

We do not prepay charges at the 100 rate. Add 40 cents per 100 if wanted by mail.

PARROT TULIPS

The Parrot Tulips are the most brilliant and showy members of the Tulip family, the colors ranging from yellow to deep brown, intense scarlet and fiery crimson. When massed in a bed they make a dazzling show.

Admiral de Constantinople. Red 2 for 05	DOZ.	100	1000
Cafe Brun. Rich brown 2 for 05	35	1 75	15 00
Cramoisi Brilliant. Scarlet 2 for 05	35	1 75	15 00
Gloriosa. Yellow and red 2 for 05	35	1 75	15 20
Lutea. Yellow 2 for 05	35	1 75	15 00
Markgraaf. Red and yellow 2 for 05	35	1 75	15 00
Perfecta. Red striped 2 for 05	35	1 75	15 00
Superfine Mixed 2 for 05	25	1 25	10 00

At the Single and Dozen rates we prepay the postage or express charges to destination.
 Hundred and Thousand lots by express at the expense of the purchaser.



If you are planning to set **Fruit or Ornamental Trees** this fall or next spring, you will surely be interested in our latest illustrated publication **Vick's Tree Catalogue**, which contains a selected list of the best sorts for the large orchard, the suburban place, or the city lot. The stock is grown specially for our trade. The Catalogue will be mailed free on request.



May-Flowering Single Tulips for Bedding



MAY-FLOWERING TULIP, ISABELLA

CALLA *Richardia Africana*

The well known Egyptian Lily, or Lily of the Nile, with large white flowers and broad foliage. Excellent for aquarium purposes. In the spring they may be planted in the garden and left until September, when they may be taken up, potted, and removed to the house or conservatory, and will bloom during the winter and spring. Our Calla roots are grown specially for our trade, by Californian bulb growers, and in a section of the State where the Calla is perfectly at home and grows magnificently.

First Size, large flowering rhizomes, each 20 cents; per dozen, \$2.00.

Second Size, each 15 cents; per dozen, \$1 50.

ALLIUM NEAPOLITANUM

This species is largely raised in Southern France for its handsome white flowers produced in clusters; and is extensively grown by florists. Six or eight bulbs may be planted in a five-inch pot; they will develop in a low or moderate temperature. Two for 5 cents; dozen 20 cents; \$1.00 per 100, postpaid. 85 cents per hundred, postage or express charges not prepaid.

LEUCOJUM, Spring Snowflake

Leucorum vernum or Spring Snowflake resembles a monster snowdrop; very useful for cutting; also makes a beautiful border or cluster around the edges of shrubbery. Well suited for pot culture. Flowers white, with bright green spots. Three for 10 cents; per dozen, 30 cents; per hundred, \$2.00; postpaid.

The Late-flowering Tulips are very attractive and they bloom after the early varieties, thus prolonging the garden's display.

	DOZ.	100	1000
Bizarres. Yellow grounds, striped with crimson, purple, etc. 2 for 05	25	1 25	
Roses. White ground, marked with crimson, scarlet or pink 3 for 10	30	1 35	
Violets. White ground, striped or blotched with blue, violet, etc. 3 for 10	30	1 50	
Bizarres, Roses, and Violets, mixed. 3 for 10	30	1 25	
Bouton d'Or. (Golden Beauty) 3 for 10	25	1 25	
Breeders, or "Mother Tulips." Fine mixed 3 for 10	30	1 60	
Clusiana. White and red striped 3 for 20	60	4 50	
Darwin. These splendid Tulips are borne on strong stems about two feet high, and embrace many colors which appear in no other class. Mixed colors 3 for 10	30	1 60	
Florentine odorata. Yellow 3 for 10	30	1 60	
Gesneriana. The most superb of all Tulips. The very large and symmetrically-formed flowers are borne on tall, strong stems, and keep in good condition much longer than any other variety. Brilliant crimson-scarlet, with deep blue-black base. Magnificent when massed 3 for 10	30	1 75	15 00
Golden Crown. Yellow and rose 3 for 10	25	1 25	
Isabella. Cream, turning to rosy carmine 3 for 10	35	1 75	
Macropila. Sweet-scented, scarlet 3 for 10	25	1 25	
Persica. Yellow and brown 3 for 30	1 00	6 00	
Picotee. (Maiden's Blush) 3 for 10	35	2 00	
Primrose. Primrose, turning to delicate pink 3 for 15	50	4 00	
Snowdon (Shandon Bells). Pure white 3 for 15	50	4 00	
Vittellina. Large; pale canary yellow 3 for 30	1 00	6 00	
All colors and classes mixed. 3 for 10	30	1 50	

"Cover Collection" of May-Flowering Tulips

The eight varieties shown on the front cover of this catalogue are among the most attractive of the late flowering class. The illustration does not do them justice, as the flowers are only about half natural size, and of course the beautiful colorings and markings cannot be shown there.

One Bulb of each variety for 50 cents, postpaid
Three Bulbs of each variety for \$1.25, postpaid



SINGLE ANEMONES DOUBLE

The Garden Anemones are very beautiful flowers. Some are double, some are single, the single varieties being the most brilliant. These Anemones have not been grown generally at the north because somewhat tender, and are not advised except for those gardens which have some shelter, either from buildings or evergreen trees or closely planted shrubs, where on a well-drained border the bulbs may be planted in autumn and given the protection of a thick coating of stable litter or leaves or evergreen boughs. The flowers are so beautiful that they will give the highest satisfaction when they come into bloom in the spring. Plant them five inches apart and cover three inches deep. The bulbs can also be potted in the fall and kept cool and be brought into bloom in the window or the greenhouse.

	DOZ.	100
Anemone, single.		
Mixed brightest colors 2 for 5	20	\$1 00
Double. Best mixed colors 3 for 10	30	1 50
Single scarlet. 2 for 5	25	1 25
Double scarlet. 04	35	2 00
Single pure white (The Bride) 2 for 5	25	1 25

At prices quoted we prepay postage

*Double
Narcissus*

ORANGE
PHOENIX

*Trumpet
Narcissus*

GLORY
of
LEIDEN



NARCISSUS, OR DAFFODILS



THE peculiar and graceful forms which the Narcissus assumes in its numerous varieties are particularly agreeable and fascinating. The well-known Daffodil and the Jonquil belong to this family of plants. With the exception of the Polyanthus varieties the bulbs are hardy in all parts of the country, and should be planted in Autumn in the garden border at the same time and in the same manner as Hyacinths and Tulips. All species of Narcissus love plenty of moisture. In pot culture they should be freely supplied with water, and when grown among pebbles in bowls of water they are secured from drought. The double varieties make a great show in the garden in early spring, while the Polyanthus varieties are particularly desirable for window and greenhouse culture, planting three or four in a five or six-inch pot. The Single Narcissus named in this list are the most beautiful and highly prized.

SINGLE AND TRUMPET NARCISSUS

	DOZ	100	1000
Horsfieldii. Perianth white, yellow trumpet; magnificent	06	50	\$2 50 \$23 00
Empress. A great splendid flower of rare beauty. One of the best of the two colored trumpets. Perianth white and of good substance, trumpet rich yellow. An excellent forcer	06	60	3 00 25 00
Bicolor Grandis maximus. Flowers extra large; broad, pure white petals; late; fine for cutting	3 for 15	50	2 00 16 00
Bicolor Princeps maximus. Primrose perianth, yellow trumpet; one of the best and earliest for forcing	3 for 15	40	1 25 10 00
Bicolor Victoria. Perianth creamy white; trumpet rich yellow. Richly perfumed	07	65	4 00 35 00
Emperor. Deep yellow, large trumpet	06	60	3 00 25 00
Golden Spur. Rich golden yellow, both trumpet and perianth; early, large, and free blooming	06	60	3 00 25 00
Henry Irving. Rich yellow, frilled trumpet; a magnificent flower	06	50	2 50 23 00
Mrs. Langtry. One of the best of the Leedsii type. Perianth broad white; cup white, edged apricot. Very fine	05	35	1 50 12 50
Poeticus (Pheasant's Eye). White, scarlet eye; cannot be forced but fine for garden culture	3 for 10	25	80 6 00
Poeticus ornatus. Pure white, sweet scented, fine for forcing; about a month earlier than the Pheasant's Eye	2 for 5	25	1 25 10 00
Poeticus Burbidgei. Large white flowers, cup margined red; bloom a month earlier than the old popular Poeticus. Fine for house or out-of-door culture	04	25	1 50 8 00
Biflorus. White and yellow, two flowers	05	35	1 50 12 00
Spurius Coronatus. A beautiful yellow self. Best of the early varieties	05	40	1 80 15 00
Trumpet Major. True golden yellow petals and trumpet, fine for forcing and cutting; standard single yellow Daffodil	3 for 10	35	1 50 13 00
Large Trumpet Varieties Mixed	04	25	1 25 10 00
Medium Trumpet Varieties Mixed	04	30	1 00 8 00

Glory of Leiden. Immense golden yellow flowers which are borne on strong upright stems; trumpet is extremely large, very long, and fluted; the rich yellow perianth is broad and over-lapping (as shown in the engraving). Grows 12 to 15 inches high. Every garden should have this variety; it can also be easily grown in pots for winter blooming. Each 25 cents; dozen \$2.25; hundred, \$15.00.



SINGLE TRUMPET NARCISSUS, EMPRESS — Half natural size

At the Single and Dozen rate we prepay the Postage or Express Charges. Charges on Hundred and Thousand lots to be paid by the purchaser.

DOUBLE NARCISSUS

	DOZ.	100	1000
Albo pleno odorato. White, sweet-scented; recommended highly for outdoors for cutting; cannot be forced 2 for 5	25	\$1 25	\$ 9 00
Incomparable (Butter and Eggs). Yellow and orange; sweet-scented 2 for 5	25	1 25	10 00
Orange Phoenix. Is often called Eggs and Bacon. Double, white flowers with orange nectary. Easily grown indoors 3 for 10	35	1 75	15 00
Sulphur Phoenix or Silver Crown 6	60	3 00	25 00
Double Von Sion. The true "Double Yellow Daffodil," 1st size 3 for 10	35	1 75	14 00
Double Von Sion. Extra selected 3 for 10	35	2 00	17 00
Double Von Sion, Double Nose. Extra large bulbs, producing two or three flowers 05	50	3 00	25 00
Double Mixed. 3 for 10	30	1 25	10 50

POLYANTHUS NARCISSUS

	DOZ.	100	1000
Double Roman. White and yellow 04	40	\$1 50	\$12 00
Gloriosum superbum. White, with deep orange cup; fine. 05	40	2 25	20 00
Grand Monarque. White, yellow cup, the finest of all white Polyanthus; excellent for growing in water 05	40	2 50	22 00
Grand Soliel d'Or. Bright yellow, deep orange cup. 05	40	2 50	22 00
Her Majesty. Fine white 05	40	2 50	22 00
Newton. Yellow, orange cup; very fine 05	40	2 50	22 00
Polyanthus Narcissus, Superfine Mixed. 05	40	1 60	14 00

Paper White Narcissus
THE BEST NARCISSUS FOR GROWING IN WATER

This variety is far superior to the Chinese Sacred Lily for growing in water; the flowers are larger, more attractive in color, and intensely fragrant, and are produced very freely. It blooms very quickly after being set among the pebbles, and makes a handsome ornamental plant. Set the bulbs in a shallow dish, with gravel or small stones to hold them in place, and fill with water, leaving the top of the bulb about half an inch above the water.

Each, 4 cents; dozen, 40 cents; hundred \$1.75; thousand \$15.00.

JONQUILS

All the following are particularly desirable for forcing and window culture.

	DOZ.	100	1000
Largest Double. Sweet-scented 3 for 10	35	2 00	18 50
Single. Sweet-scented 2 for 5	20	1 00	8 00
Campernel (Great Jonquil). Yellow, fragrant 2 for 5	20	1 00	7 00
Rugulosus. Large golden yellow, much finer than Campernel 2 for 5	25	1 55	9 00
True Silver Jonquil. (Tenuior). Flower pale silvery-sulphur colored, 1 to 2 inches broad; 1 to 2 flowers on stem; fine 06	60	3 75	32 00

PEBBLES

For growing Chinese Lilies and Paper White Narcissus in water. 10 cents per quart, by express not paid.



At the Single and Dozen rate we prepay the Postage or Express Charges. Charges on Hundred and Thousand lots to be paid by the purchaser.

CHINESE SACRED LILY

A variety of Polyanthus Narcissus introduced by the Chinese. The flowers are pure silvery white, with golden yellow cups, chaste and graceful in appearance and of exquisite fragrance. A dozen bulbs started at intervals in shallow bowls of water, three or four bulbs in each dish, with just enough small pebbles or stones to prevent them from toppling over, will give a succession of flowers throughout the winter.

Extra large size bulbs, by mail postpaid, each 12 cents; per dozen, \$1.25. Original basket 30 bulbs \$2.00; Express or Freight not paid.



TEN DAYS OLD

NARCISSUS, PAPER WHITE GRANDIFLORUS

TWENTY-SIX DAYS OLD

IXIA, The Rainbow Flower

Few flowers attract more attention by their curious forms and strange colorings, nearly all showing three or more colors. Several may be planted in a small pot. There is a greater difference in the form and color of Ixias than in almost any other class of plants. They are easily raised in pots in a cold-frame, window, or greenhouse. Half a dozen bulbs may be put in a four-inch or five-inch pot. Choice bulbs, three for 5 cents; per dozen, 20 cents; per 100, \$1.00, postpaid.

OXALIS For Pots or Hanging Baskets

An interesting class of small bulbs, desirable for winter-flowering in pots, producing an abundance of bloom. Plant from three to five bulbs in a pot. After flowering, knock them out of the pots, separate and plant in fresh soil, keeping them in a dry place. About August or September they will commence growing again. Then bring them to the light and air, and commence watering. In this way the bulbs will keep sound all summer, and will increase rapidly. The leaves resemble in form the clover leaf. As the leaves are on long slender stalks, and consequently droop, the Oxalis can be readily adapted to hanging baskets and other similar purposes. The following are the best of the winter-flowering varieties, and may be grown either in pots or hanging baskets.

Oxalis, Bermuda Buttercup.	This improved variety produces bright yellow flowers in greater profusion and size than any other of the species.	EACH	DOZ.	100
Grand Duchesse. Pink		05	45	2 50
Grand Duchesse. Lavender		05	45	2 50
Grand Duchesse. White		05	45	2 50
Bowiei. Bright rose		3 for 10	30	2 00
Versicolor. Variegated		3 for 10	25	1 50
Mixed varieties		3 for 10	30	1 50

At prices quoted we prepay postage or express charges.

WE shall be pleased to send a copy of this Catalog to any of your friends. Send name and address on postal

CROCUS The First of the Early Spring Flowers

The Crocus and the Snowdrop are the first flowers to appear in our gardens; they come as soon as the frost is out of the ground and while frosty nights still occur, but they are brave and hardy little heralds of the spring. The bulbs should be planted so as to cover quite a space on a flower border, or they may be set about two inches apart in a row as an edging. After flowering, the bulbs may be taken from the ground and kept in a dry place until planting time in the autumn, or may be allowed to remain in the ground; it will make no difference, except that those remaining undisturbed will be likely to flower a week or ten days earlier than those which have been replanted.

A very pretty effect is secured by planting the bulbs in large numbers on the lawn or front grass plat. They can be set in by thrusting down a narrow spade or a trowel and spreading the opening a little, sufficient to place in the bulb, and then crowding together. In this way they are quickly planted and the sod is not disturbed. In early spring the flowers appear above the grass, and in our northern country it is a surprise to see the faces of these bright bloomers as soon as winter has gone. By the time it is necessary to run the lawn mower over the grass the flowers will have disappeared and no harm will come to them from the mower, but the bulbs will remain to bloom again each succeeding spring.

NAMED CROCUS—EXTRA LARGE BULBS

	DOZ.	100
Albion. Striped	2 for 5	18 1 00
Baron von Brunow. Dark blue	2 for 5	18 1 00
King of the Blues. Purple	2 for 5	18 1 00
King William. Dark	2 for 5	18 1 00
Lord Palmerston. Blue	2 for 5	18 1 00
Margot. Light blue; extra	2 for 5	18 1 00
Mammoth. White	2 for 5	18 1 00
Mont Blanc. Pure white	2 for 5	18 1 00
Non Plus Ultra. Variegated	2 for 5	18 1 00
President Grant. Striped	2 for 5	18 1 00
Queen Victoria. White	2 for 5	18 1 00
Sir Walter Scott. Variegated	2 for 5	18 1 00

CROCUS IN COLORS

	DOZ.	100	1000
Blue and Purple	15	60	\$4 00
White	15	60	4 00
Striped and Variegated	15	60	4 00
All colors mixed	15	60	4 00
Large Yellow	20	90	7 50
Mammoth Yellow	2 for 5	20	1 20 10 00
Cloth of Gold	2 for 5	15	75
Cloth of Silver	2 for 5	15	75

We do not pay postage on 100 lots. If wanted by mail add 20 cents per 100, otherwise we will send by express, not paid.

CHIONODOXA

Spring flowering plant, producing Scilla-like flowers; hardy and early. Excellent for winter blooming in the house, and also for cut flowers.

Chionodoxa Lucillæ. Azure blue. Three for 10 cents; per dozen, 20 cents; per hundred, \$1.25, postpaid.

Sardensis. Fine dark blue. Three for 10 cents; per dozen, 20 cents; per hundred, \$1.25, postpaid.

COLCHICUM

The Autumn Flowering Crocus

The Colchicum, Autumn Crocus, is a curious and interesting flower. The leaves appear in the spring, and the flowers in the autumn. The bulbs are perfectly hardy. Each bulb gives quite a cluster of flowers, generally six or eight, and so persistent is it in its determination to flower that if taken up early in the autumn before the time for flowering, and placed in a pot or basket, it will bloom just as well as if left in the ground.

Colchicum autumnale. Pink. Each, 10 cts.; dozen 80 cents.

Colchicum autumnale. Double. Each 15 cts.; dozen \$1.25.



VICK'S MAMMOTH EARLY FLOWERING WHITE CROCUS

The Iris, or Fleur-de-lis

THE IRIS or Flower-de-Luce, the *Fleur-de-lis* of the French, is one of the most beautiful of hardy garden plants. There are several distinct species of these plants, natives of different regions, each presenting many garden varieties, the flowers of which are of peculiar and handsome formation, beautifully colored and marked, and equal in beauty the most showy orchids. The plants are hardy in the garden. Some kinds are desirable for the greenhouse.

English. (Anglica). Large, handsome flowers. Each, 5 cents; per dozen 35 cents; per hundred, \$2.00.

Spanish. (Hispanica). Well adapted for pot culture and forcing in the winter. Three for 5 cents; per dozen, 15 cents; per hundred, 50 cents.

Pavonia (Peacock). Small, beautifully marked flower; desirable for window culture. Three for 10 cents; per dozen, 35 cents; per hundred, \$2.00.

German Iris

A good old flower, handsome and as many-hued as some of our finest orchids, and perfectly hardy. They bloom in May and June, when there is a scarcity of flowers. Plant three inches deep.

Each 20 cents; six for \$1.00; nine for \$1.50.

Bacchus. White, edged with lavender.

Celeste. Light blue.

Harlequin. Lavender, lower petals striped purple.

Madcap. Lavender and purple.

Madame Chareau. White.

Phidias. Bright yellow, lower petals mahogany.

Sappho. Lavender blue, lower petals rosy purple.

Souvenir. Old gold and purple.

Teresita. Pure white, lower petals purple.

Velveteen. Bronze yellow and rich purple

Japanese Iris

The flowers of the Japan Iris are of the richest colors, ranging from white to purple, with delicate markings and veinings and quite different in form from those of the German Iris, being much flatter and larger. Some of the flowers are eight inches in diameter. They bloom in profusion during June and July, and are perfectly hardy and of easy culture, but do best where they can have abundant moisture at the roots, and for this reason are admirably adapted to culture by the side of streams and on the edges of ponds and lakes, or in any similar place where the soil retains moisture.

Each 25 cents; dozen, \$2.50.

Blue Danube. Deep indigo blue, violet shadings.

Gold Bound. Pure white.

Hyde Park. Reddish purple, striped white.

Mahogany. Dark red, shaded maroon.

Paragon. Rich velvety purple.

Spotted Beauty. White spotted with violet crimson.

FRITILLARIA

Very early flowering bulbs, producing large, bell-shaped flowers of various colors. Suitable both for the open garden and for pot culture.

Meleagris (Guinea Hen Flower). Mixed varieties, per dozen, 15 cents; per hundred, \$1.50, postpaid.

Imperialis. See Crown Imperial.

CROWN IMPERIAL

Fritillaria Imperialis. A well-known, stately, hardy plant, which throws up a tall, vigorous stem, and in early spring produces a cluster of large, drooping, bell-shaped flowers, surmounted by a tuft of glossy green leaves. The Bulbs should be planted four or five inches deep, and about a foot apart.

Mixed varieties. Each 15 cts.; per dozen \$1.50; postpaid



*Flowers of the beautiful GERMAN IRIS
MADAME CHAREAU*

We prepay the Postage or Express charges (unless otherwise noted) on all Bulbs, Plants, Shrubs and Supplies listed in this Catalogue. Most dealers expect you to pay such charges.

Bulbs for Holiday Gifts A novel way of remembering your friends is to order Bulbs sent to them NOW, with instructions for planting, and at the Holiday season the fragrance and beauty of the flowers will be a daily reminder of the donor, and add much to the brightness and pleasure of this joyous time.

FREESIAS Winter Blooming Plants for Window or Conservatory

The bulbs are small, and six or eight can be planted in a five-inch pot. The earlier the bulbs are potted, the better, setting them down so that the soil will cover the tips. They will start both root and top growth without much delay, and can easily be had in bloom by Christmas. Be careful to keep them moist and in a moderate temperature. The flowers, which are white with a blotch of yellow at the throat, and about an inch in length, are produced in a raceme of five to eight, each standing erect. They are deliciously fragrant. The stems cut and placed in water keep well. After the plants have bloomed they can be given less and less water until the leaves have died, when the bulbs can be dried off and laid away until the following autumn. *Postage or Express prepaid.*

Freesia refracta alba, selected	DOZ.	100
Mammoth or monster bulbs	04 40	\$2 25
Extra Large Size (sold by some dealers as "Mammoth") 3 for 10	30	1 50

SPARAXIS

These are small bulbs with flowers of many colors, like those of the Ixia, and they require the same treatment. They make beautiful winter-blooming plants. Several bulbs can be planted in a small pot; or a box in the window planted with Ixias and Sparaxis will give a great display of bright-colored, beautiful flowers. Mixed varieties, 2 for 5 cents; dozen 20 cents; hundred \$1.00; postage or express charges prepaid.



PUSCHKINIA LIBANOTICA



FREESIA REFRACTA ALBA

ORNITHOGALUM

A beautiful and showy plant. The flower spikes are from eighteen to twenty-four inches high, bearing numerous pearly white flowers with jet-black center, and with a perfume distinctly aromatic. The bloom remains perfect for many weeks. When grown in the garden they make an interesting and pretty sight. The plants are desirable for greenhouse or window decoration, and florists are now growing them largely for their value as cut flowers. Each 5 cents; per dozen, 50 cents; per hundred, \$2.50, by express not prepaid.

PUSCHKINIA

This plant is a native of Asia Minor and Afghanistan, and only one species is in cultivation at present. The Puschkinia is one of the earliest of the spring flowering plants, opening its handsome white and blue flowers with the Snowdrop and Crocus. The flower spikes resemble those of the Hyacinth. For planting in masses the Puschkinia is unexcelled by any other bulb, the large white flowers with blue stripe being particularly effective. It will thrive in any garden border, and is also desirable for potting for house blooming. The bulbs increase rapidly and should be divided every two or three years.

3 for 10 cents; per dozen, 30 cents; per hundred, \$1.75, postpaid.

It isn't what you pay, but *but what you get for what you pay*, that makes a good bargain. You get your money's worth here.

LILY OF THE VALLEY

One of the most charming and greatly admired plants grown. The bulbs or pips can be planted in a bed out doors, or they can be potted four to six in a four-inch pot, which can be left in a cool place for a time, and even if exposed to a sharp frost are not injured, but apparently benefited thereby, and then with plenty of warmth, light and water, they will soon produce beautiful green leaves, and sprays of lovely white and exquisitely fragrant blossoms. One or more pots may be sunk in the garden and left until wanted. It requires from three to five weeks for them to perfect their flowers if kept very warm and given plenty of water. Like those of other bulbs the flowers are larger and very much finer when raised in the house than in the garden.

Vick's Extra Selected. Each, 5 cents; per dozen, 50 cents; bundle of 25 pips, 75 cents; hundred, \$2.75, prepaid. Per thousand, \$20.00, express not prepaid.

Second Quality. Dozen, 40 cents; bundle of 25 pips, 50 cents; hundred, \$1.75; prepaid. Per thousand, \$16.00, express not prepaid.

SCILLAS

The Scillas bloom before the leaves appear, and the flowers, about an inch across, are borne in clusters on stems about four inches in height. *Scilla Siberica* produces flowers of an intense blue, while those of *S. præcox alba* are pure white. After the flowers are gone the leaves appear and a new growth of bulbs takes place. The bulbs are hardy, quite small, and should be planted in a group in the garden where they may be left. The plants can also be grown in pots, six or eight bulbs in a 4-inch or 5-inch pot, and will do well in a window or cool greenhouse. Do not give them a warm place. After growing in pots the bulbs can be turned out into the border.

	EACH	DOZ.	100	
<i>Scilla Siberica.</i> Bright intense blue	\$0 04	\$0 25	\$1 50	Postpaid
<i>præcox alba.</i> Pure white	04	30	2 00	Postpaid

SNOWDROPS

It is almost an even race between the Snowdrop and the Crocus to appear in the spring, the Snowdrop coming a few days first. As the name indicates the flowers are white, and instead of standing upright, like the Crocus, they are nodding on stems about six inches in height. The bulbs should be planted close like those of the Crocus, and they, too, like the latter, can be planted on the lawn where they will maintain themselves for a number of years. They make very pretty pot plants for the window, starting several bulbs in a pot.

	DOZ.	100
Single Snowdrop . . . 2 for 05	15	\$1 00
Double Snowdrop . . . 3 for 10	25	1 75
Elwesii Giant 2 for 05	15	1 00

At prices quoted we prepay postage.

RANUNCULUS

The bulbs of the so-called Garden Ranunculus are somewhat tender in northern climates, where they can be recommended only for pot culture.

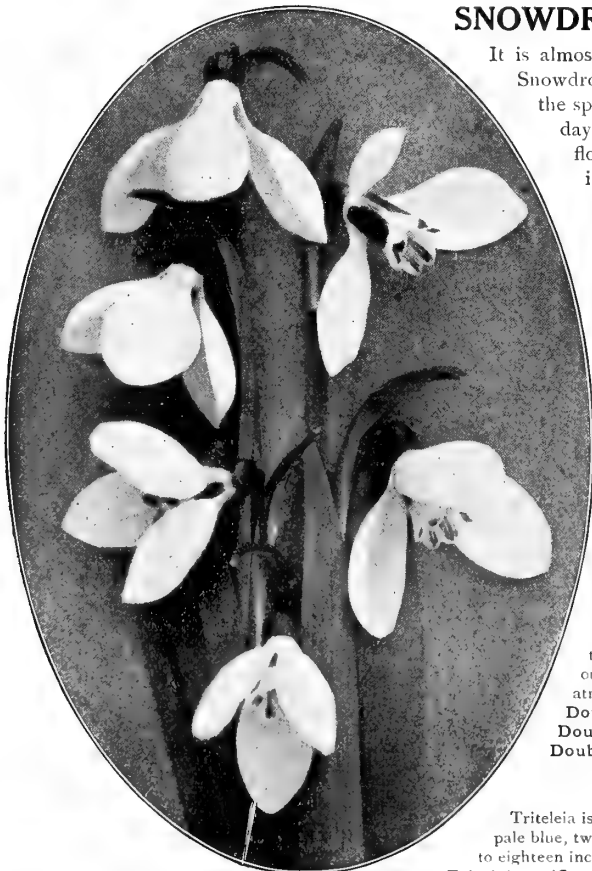
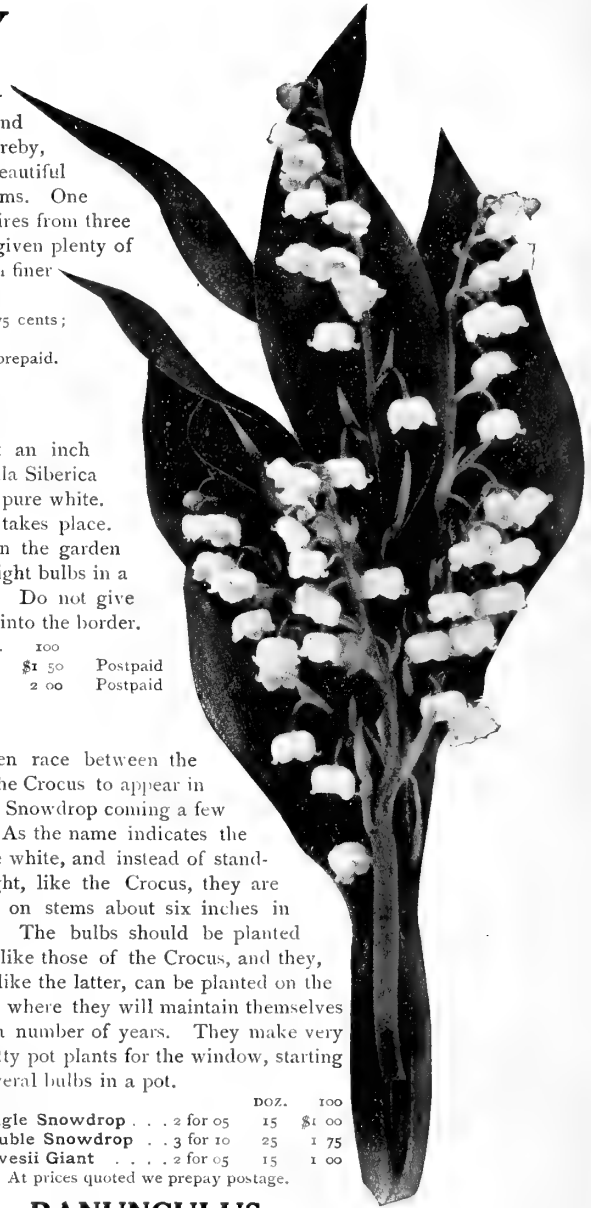
The flowers are both single and double and of a great variety of colors. The bulbs have tooth-like prongs or claws and should be set with the claws downwards. The bulbs can be kept in sand in a low, even temperature through the winter, and then be planted in the garden early in the spring. At the south they can be planted out in late autumn. In growing the plants in pots they should have a cool, moist atmosphere, such as afforded by a cool greenhouse.

	DOZ.	100
Double French, mixed	2 for 05	\$0 20 \$1 00
Double Persian, mixed	2 for 05	20 1 00
Double Turban, mixed	3 for 10	25 1 25

TRITELEIA

Triteleia is a South American species. The common name for it is Spring Starflower. Flowers pale blue, two to two and a half inches across, borne singly, very rarely two, on stems from nine to eighteen inches high. A good pot plant, and the bulb, increase rapidly.

Triteleia uniflora. 2 for 5 cents; dozen, 15 cents; hundred, 75 cents; postage paid.



GIANT SNOWDROPS

THE MAGIC FLOWER Our Most Popular Novelty

In early spring the Magic Flower (*Lycoris squamigera*) sends up its attractive strap-leaf foliage, which grows until late in July, when it ripens off and disappears, and one unfamiliar with the plant would naturally think it had died. About a month later the flower stalks spring like magic out of the bare ground, and rising to a height of two to four feet, develop an umbel of large lily-shaped flowers from six to fifteen in number, of a delicate lilac pink shaded with clear blue. It is perfectly hardy and succeeds well in ordinary garden soil, and is a novel and attractive addition to any collection of bulbous plants. Each, 50 cents; dozen, \$7.00; postage or express prepaid.



A Specimen Plant and Flower, and a field where the Magic Flower is grown for our customers



VICK'S FAVORITE HARDY LILIES

THE Lily is a favorite flower everywhere. *Lilium candidum* does best when planted in August or September. This variety is valuable for forcing, and is used extensively for this purpose. The method is to plant the bulbs in six-inch pots, barely covering them with soil, then plunge them in the garden in a warm, sheltered place, and let them remain there until the pots are well filled with roots, after which they may be removed to the house or conservatory, where they will flower in eight or ten weeks. In forcing *L. Harrisii* or *L. Japonicum longiflorum*, plant them in six-inch pots half-filled with a rich soil, sink the bulbs, leaving just the tips exposed. After the bulb has thrown its stem above the top of the pot, fill the pot with rich soil composed mostly of well-rotted cow manure, as these bulbs throw out rootlets from the stem.

- Lilium Philippense.** This new and beautiful Lily was recently brought to this country from the Philippine Islands. The plant grows about two feet high, with a delicate grass-like foliage, and is exceedingly graceful in appearance. The flowers are pure white, resembling *Lilium Harrisii*, but longer and more slender, the average length being about nine inches and measuring from six to seven inches in diameter. 20 \$2 00
- Auratum.** The magnificent gold banded Lily of Japan; freely spotted with crimson red; sweet scented. Blooms about July 15th. Extra large bulbs. 20 2 00
- Canadense.** Our native Lily; flowers drooping, delicate scarlet-yellow throat, spotted black. Blooms July 10th. 20 2 00
- Candidum.** Common white lily; hardy, free bloomer, fragrant. 15 1 50
- Elegans, Best Red.** Light red. 20 2 00
- Elegans sanguineum.** Blood-red. 20 2 00
- Elegans Incomparable.** Deep crimson, slightly spotted with black
The above three varieties bloom about July 1st.

- Elegans Batemanniae.** A beautiful Japanese variety; flowers upright, of clear apricot-yellow; strong and hardy; should have a place in every garden. Blooms about July 13th. 25 2 50
- Elegans Wallacei.** Flowers rich vermilion-orange, spotted with maroon. Blooms in the autumn. Fine. 20 2 00
- Hansoni.** A rare early-flowering species of beautiful yellow color, petals very thick, dotted with purple. One of the handsomest varieties. Blooms second week in June. 30 3 00

LILIUM LONGIFLORUM IN A GREENHOUSE

- Harrisii.** (Easter Lily.) The flowers are pure white, trumpet-shaped, and are unexcelled in beauty by those of any other species, while the fragrance is simply exquisite. By starting the bulbs at intervals of a few weeks, a succession of bloom may be had for a long time. Many dealers offer small-sized bulbs, but we send out only the extra large size. 25 2 50
- Humboldtii.** Orange, spotted claret. Extra fine. Blooms about July 15th. 30 3 00
- Japonicum longiflorum.** White, trumpet-shaped. Blooms about July 20th. 20 2 00
- Leichtlini.** Canary-yellow, spotted red. Very rare. Blooms about August 15th. 30 3 00
- Pardalinum.** The best of the Canadense class. Yellow and red spotted. Blooms about July 10th. 20 2 00
- Parryi.** Pure lemon-yellow. Long trumpet-shaped. Very fine. 30 3 00
- Speciosum Rubrum.** White and rose, dark crimson spots. 20 2 00
- Speciosum Melpomene.** Crimson, spotted with deep blood-red; each petal distinctly bordered with white. Same habit of growth as *rubrum*; stems dark and color of flower much deeper. 20 2 00
- Speciosum Album.** White. 25 2 50
- The above three bloom about August 15th.*

- Superbum.** Yellow and orange-red; drooping. Three to six feet high, bearing from five to twenty flowers. Blooms about July 15th. 15 1 50
- Tenuifolium.** One of the most beautiful and delicate of the early-flowering varieties. Flowers dazzling vermilion-scarlet, suspended from slender, graceful stems; they are so bright as to attract attention from a great distance. The first to bloom. 20 2 00
- Tigrinum splendens.** Tiger Lily. Blooms about August 1st. 15 1 50
- Tigrinum fl. pl.** Double Tiger Lily. Blooms about August 15th. 20 2 00
- For \$1.00 at Single Rates purchasers may select to amount of \$1.25.*

A Collection of Six \$1.00 Delivered at Extra Choice Lilies \$1.00 your door.

The following six varieties of Lilies we offer in a collection for \$1.00, or two collections for \$1.75, express or postage prepaid. *Lilium Auratum*, Golden Day Lily, *Lilium Tenuifolium*, *Lilium Longiflorum*, *Lilium Elegans Incomparable*, *Lilium Speciosum Rubrum*.

We prepay the Postage or Express Charges on Lilies, whether you buy one bulb or a dozen

The New Hardy Lily "Golden Gleam"

For Illustration See Last Cover

This brilliant Lily derives its name from its remarkable clear and brilliant golden yellow color. It is

The Hardest Lily in Cultivation

and when planted four or five inches deep in sandy or moderately light soil, it winters without protection. It closely resembles its mother parent, *L. tenuifolium*, but

The color is a clear, brilliant Golden Yellow

and the blooms are produced more freely; it attains a height of about three feet, and blooms in June. The bulbs reserved for this fall's trade are particularly fine and healthy, and everyone who fancies the superb and stately lilies should add this magnificent variety to the collection. Each 35 cents; per dozen, \$3.75.

Wouldn't you like to give a corner of your garden to Lilies? Can you imagine anything more beautiful than sweet-scented *Auratum*, the brilliant *Tenuifolium*, or the purity of *Longiflorum*? These three varieties, and *L. Speciosum Rubrum*, *Elegans*

Incomparable, Golden Day Lily — six varieties — will be sent to any address for **\$1.00**, postpaid. The fall is the best time for planting, too, and we can send them in ample time if you order soon.



THE DAY LILIES

The Day Lilies are hardy garden border plants, bearing large Lily-like flowers. The plants can be set in autumn, and may be protected by a light covering of leaves the first winter after setting out. *Funkia alba* or *White Day Lily*. Each 20 cents.

Japonica. Light blue, with narrow foliage. Each 20 cents.

Undulata media picta. Flowers lavender; foliage light green, beautifully variegated with white; one of the most beautiful hardy plants in cultivation, and without an equal for cemetery planting. Each 25 cents.

Hemerocallis flava. Yellow or Lemon Lily. One of the best hardy border plants; flowers clear canary-yellow, very fragrant. Each 20 cents.

One bulb each of the preceding four sorts 70 cents.

Golden Day Lily (*Hemerocallis aurantiaca major*). One of the very finest hardy herbaceous plants.

The plant is extremely vigorous in its habit. The large and attractive foliage rises to a height of two feet, and is of a deep green. The flower spikes are strong, bearing as many as twelve flowers in succession, which are seven to eight inches across; of a rich orange-yellow, quite distinct. Each 30 cents; two for 50 cents.

Hardy Plants, Old and New

are yearly growing in popularity — they require little care and bloom freely. A third edition of *Vick's Catalogue of Hardy Plants* lists all the favorite Plants, Roses and Shrubs. Ask for a copy, if interested



LILIUM PHILIPPENSE (See opposite page)



Desirable House-Plant Department

Varieties Specially Valuable for Cut Flowers and Decorations



As it is much more difficult to pack a single plant so that it will carry safely, than a larger number, we trust our customers will order accordingly. For both economy and safety in packing and shipping it is best to order at least a dollar's worth of plants. **We prepay postage unless otherwise stated.**

ABUTILON—Flowering Maple

Hard-wooded greenhouse shrubs, blooming almost the entire year; well adapted for house culture. Flowers bell-shaped and drooping. Each 15 cents.

Eclipse. A trailing variety, beautifully marked deep green and yellow; the flowers are bright yellow, with crimson throat.

Golden Fleece. Yellow.

Snow-Storm. White.

ACHANIA MALVAVISCUS

One of the most satisfactory house plants grown, blooming summer and winter, and not subject to insects of any kind. Flowers scarlet. Each 15 cents.

ANTHERICUM

Anthericum vittatum variegatum. An elegant house-plant, with dark green leaves bordered with broad stripes of pure white. It throws up long spikes of small, star-shaped flowers. Fine for hanging baskets. Each 20 cents.

ARAUCARIA EXCELSA

Norfolk Island Pine. One of the best tender evergreens for house culture. Very handsome and decorative. Each \$1.50.

ASPARAGUS SPRENGERI

One of the most rapid growing plants, making in a very short time great masses of fine, feathery, drooping foliage, exceedingly graceful and beautiful. The stems grow several feet in length, and are valuable for use in cut-flower work. As a house plant it has no superior, as it withstands the indoor temperature well. Each 20 cents; two for 30 cents.

AUCUBA JAPONICA VARIEGATA

A most useful plant for decorative purposes for the house in winter. Foliage dark green, freely spotted with bright yellow. Each 20 cents. Extra strong plants 50 cents.

FLOWERING BEGONIAS

This class of beautiful plants is deservedly popular. The beauty of foliage combined with graceful flowers and free-blooming qualities, makes the plants highly desirable. As pot plants for winter decoration they have few equals. Each, 15 cents; per dozen, \$1.50.

Alba picta. Leaves narrow, green, and nicely spotted with white; flowers white, in clusters.

Argentea Guttata. Leaf bronze with silver markings. Flowers white.

Bertha de Chateaurocher. Flowers soft scarlet.

Foliosa. A handsome plant; the foliage is small and delicate, and contrasts well with its white blossoms.

Hybrida Multiflora. Flowers pink, very free.

McBethii. Flowers pure white; foliage finely cut.

Metallica. The surface of the leaf has a metallic or bronze color. Flowers white.

Marguerite. Leaves bronzy green, large trusses of rose colored flowers.

Sandersoni. Scarlet; fine winter bloomer.

Zebrina. Leaf oblong, green ribbed with silver.

THE REX BEGONIAS

The Rex varieties of Begonia are very effective as pot plants. Care should be taken to keep the foliage free from dust. Occasionally the plants may be showered, but should not be exposed to the sun until the leaves are perfectly dry. Each 20 cents; dozen, \$2.00.

Countess Louise Erdody. The wonderful Cork-screw Begonia.

Grandis. Bronze.

Pres. Carnot. Silvery white.

Surprise. Leaf deep bronze and silvery rose.

Van-der Hyde. Mottled green and white.

AZALEAS

The diversity of color and free-blooming qualities of the different varieties of Azalea make them exceedingly popular. After blooming in the house, place the plants in a shady spot out of doors during summer, and remove to the house in fall for winter blooming. Color from pure white to dark crimson. Price, 10-inch heads, each \$1.00; 12-inch heads, each \$1.25; 14-inch heads, each \$1.50; 16-inch heads, each \$2.00.

LITTLE GEM CALLA

A dwarf variety of the old Calla, eight inches high, free bloomer. Each, 15 cents; two for 25 cents.



REX BEGONIA

CAREX JAPONICA VARIEGATA

A Japanese grass, very useful and ornamental for the house. Seems to enjoy the atmosphere of living-rooms. Each 15 cents; two for 25 cents.

CYPERUS ALTERNIFOLIUS—Umbrella Plant

A beautiful plant, easily grown. It makes a very showy plant for pot culture, is one of the best for ferneries, while for the aquarium it is without an equal. May be grown in soil kept constantly wet, or in a dish or vase of water. Each 15 cents.



CARNATIONS
GENEVEIVE LORD ENCHANTRESS G. H. CRANE

CARNATIONS

The Carnation is both beautiful and fragrant, and gives plenty of flowers for a long time. The ever-blooming varieties are admirable for winter flowers in the house, and are the main dependence of the florist for the preparation of floral ornaments. Strong field-grown plants, 30 cents each; two for 50 cents; this size furnished from September 15th to November 1st. Young plants, just right for winter blooming, 20 cents each; six for \$1.00.

American Flag. The flowers are regularly striped with scarlet and pure white, with foliage of metallic blue

Boston Market. Pure white.
Enchantress. Delicate shell pink
G. H. Crane. Scarlet.
Geneveive Lord. Bright pink
Lady Bountiful. Pure white.
Mrs. Francis Joost. Light pink.
Red Jacket. Brilliant scarlet
The Queen. Creamy white.
Winsor. Silvery pink.



FERNS

Ferns cannot be dispensed with in elaborate decorations for the house. A single plant of the Boston Fern is as useful in producing a graceful effect as any plant we know of. In planting a fernery do not crowd them, but give room for the development of the fronds; their growth is rapid, and many varieties soon double their original size. Be your own florist and fill your fern dishes, at home. Five of the best and hardiest varieties are sufficient to fill a fern dish eight inches in diameter. Each, 15 cts.; dozen, \$1.50.

Lastrea chrysoloba. Young leaves orange, turning to deep green.

Pteris Wi soni. Crested leaves.

Pteris tremula. A tall strong grower.

Pteris adiantoides. Broad glossy deep green foliage.

Polypodium aureum. Foliage bluish color.

Adiantum cuneatum. The popular Maiden-Hair Fern.

Aspidium Tsussimense. A pretty species, with dark green foliage

Cyrtomium Falcatum. Large green glossy leaves.

Polystichum setosum. Foliage dark green.

Pteris Cretica albo-lineata. A pretty and useful variegated variety; leaves green and white.

Pteris serrulata. Glossy deep green foliage.

Pteris Wimsetti. Fine for fern pans and house culture; finely crested

Boston Drooping Fern

One of the most satisfactory of all decorative plants for house-culture. The handsome green fronds attain a length of four to five feet, and droop gracefully over on every side. Each, 20 cents; large plants, 75 cents.

Dwarf Boston Fern, Nephrolepis Scotti

A very dwarf and compact form of the Boston Fern. The fronds are short and narrow, of a graceful recurving form. Plants of small size make nice specimens in a short time. For house culture we recommend it as a plant that will please all. Strong young plants, each 20 cents. Large plants, each 75 cents.

Nephrolepis Amerpohli

This is the latest addition to the Ostrich Plume type, and is the most delicate and graceful. The fronds are broad, and of a depth that gives them a cushion-like appearance. Each, 20 cents. Large plants, 75 cents.

Nephrolepis Whitmani

The plume appearance of the foliage makes the variety unquestionably the most striking among all the Nephrolepis. The plant is quite dwarf, and the leaves very wide; a grand fern. Strong young plants, each, 20 cents; large plants, each, 75 cents.

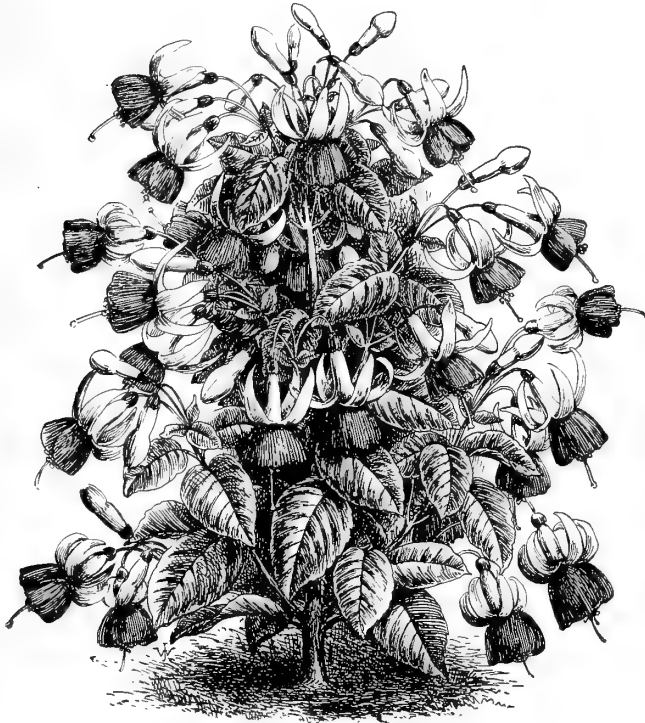
LACE FERN

Asparagus plumosus nanus. Beautiful on account of its light feathery growth, which very much resembles lace. The graceful dark green foliage surpasses the Maiden-Hair Fern in delicacy of texture. Splendid as a pot plant and for decorative purposes. Each 20 cents; two for 30 cents.

We prepay the Postage or Express Charges on all goods listed in this Catalogue, unless otherwise stated.



NEPHROLEPIS WHITMANI



FUCHSIA, LITTLE BEAUTY

FUCHSIAS

No plants are more graceful and elegant than the Fuchsias. Their contrasting colors,—white, carmine, rose, purple,—make them very attractive. They should be kept in a partially shaded window, as bright sun injures the flowers. Each, 15 cents; dozen, \$1.50.

SINGLE VARIETIES

Little Beauty. Bright red and purple. Corolla reddish rose, sepals carmine. **Bouquet.** Bushy plant, producing a prodigious number of good-sized flowers of beautiful form.

Rosains Patrie. Tube and sepals carmine. Corolla white.

DOUBLE VARIETIES

Avalanche. Corolla violet, sepals crimson.

Jeanne Summary. Tube and sepals carmine; corolla white.

Jupiter. Corolla purple, sepals scarlet.



CYCLAMEN PERSICUM GIGANTEUM

The Cyclamen is particularly adapted for window culture, as it blooms abundantly and for a long time in the winter and spring. The flowers are borne on long stems above the foliage, and are very showy. Strong bulbs, each 30 cents.

GREVILLEA ROBUSTA — Silk Oak

A beautiful plant for decorative purposes; quick of growth and of easy culture. The leaves are a light bronze color, the tips being covered with a soft down resembling raw silk. For the house it is unsurpassed, as it needs little attention. Each, 20 cents; two for 30 cents.

Satisfaction and Pleasure in Vick's Seeds

I want at this time to express my entire satisfaction with the seeds and bulbs sent me by your firm. I have received a great deal of pleasure from the flowers raised from your seeds and bulbs, and especially the Asters. I think you have the best collection of Asters sold by any seed firm, and I have informed many of my friends of that fact. With best wishes for your success, I remain,
Toledo, Ohio. Very truly yours, SHERMAN W. LOTT

GERANIUMS

The Geranium is too well known to need an extended description. All we offer are strong, healthy plants, and the best of their class. Each 15 cents; three for 40 cents; per dozen, \$1.50.

SINGLE VARIETIES

Albert Carre. Intense scarlet.
Gen. Galliene. Intense crimson.
Jules Lematrie. Pink and white.
Margurite de Layre. White.
Mrs. E. G. Hill. A fine salmon.
Queen of the Whites Improved. Pure white.
Telegraph. Pleasing shade of deep orange.

DOUBLE VARIETIES

Alphonse Ricard. Bright orange red.
Beaute Poitevine. Salmon pink.
Countess de Harcourt. Pure snow-white.
Double General Grant. Bright scarlet.
Heteranthe. Scarlet, large flower.
Jean Viaud. Brilliant rose.
La Favorite. Pure white.
Le Pilot. Dark scarlet.
Madame Buchner. Snowy-white.
Madame Jaulin. Delicate pink, bordered white.
Madame la Comtesse de Baume. A charming bright pink.
S. A. Nutt. Brilliant deep blood-red, with maroon shading.
Toronto. Bright salmon.

SWEET-SCENTED

Rose. The most desirable of the scented varieties.
Dr. Livingston. Leaves green, finely divided.

IVY-LEAF

Thick, glossy, Ivy-shaped leaves; plants drooping in habit.
Jeanne d'Arc. White, suffused with lavender.
Leopard. Lilac pink, blotched with crimson.
Souvenir de Charles Turner. Deep pink, feathered maroon in upper petals.

OLEANDER

Splendens variegata. Large, double, pink flowers, produced early in the season; glossy green leaves with a broad margin of creamy white. Each, 20 cents; two for 30 cents.



Many thanks for the seeds sent, and I should have sent the acknowledgement ere this, but it seemed impossible.

May the Father deal by you as generously as you do by others is the earnest wish of

Angola, N. Y.

Yours truly,
L. S. HIGGINS.



THIRD SIZE

Strong plants from 3-inch pots

SECOND SIZE

12 inches high

FIRST SIZE

18 to 20 inches high

PALMS

Palms will do well at a window where there is little or no direct sunshine. A regular, but not excessive, supply of water and a fair light are all the plants demand during the cool season. The soil should be a substantial fibery loam. A daily syringing of the leaves is an advantage, but in winter once a week is sufficient. If kept in a living-room with dry furnace heat, daily syringing or spraying the leaves is advisable. We here offer plants of the handsomest and most reliable species. First size, eighteen to twenty inches high. Second size, twelve inches high. Third size, strong plants from 3-inch pots.

Sent by Mail or Express, charges prepaid, at these Prices

Kentia Belmoreana. Graceful arching leaves, with long, terete, shining, yellowish-brown petioles; divisions of the leaves twenty to thirty in number, strap-shaped, and deep green in color. This Palm will stand a great deal of ill usage and maintain a good appearance. First size \$1.25; second size 85 cents; third size 35 cents.

Kentia Forsteriana. The beautiful "Thatch Palm." Similar to *K. Belmoreana*, but the petioles are a darker green and the leaf divisions broader. A handsome Palm for table decoration. First size \$1.25; second size 85 cents; third size 25 cents.

Latania Borbonica. Fan-shaped leaves, split into divisions at the apex. A strong, vigorous plant, and makes a fine appearance in the window or in contrast with other plants. First size \$1.25; second size 50 cents; third size 25 cents.

OTAHEITE ORANGE

A dwarf orange, which grows, blooms, and fruits freely in pots, when only a foot or two high. Fruit about one-half the size of ordinary oranges. The blossoms are produced in great abundance, delicate and beautiful in color, and of a delicious perfume. Strong plants, each 20 cents; extra strong plants, each 35 cents.

SMILAX

A very graceful climbing plant, with dense green foliage. Very fine for house culture. Each, 15 cents; two for 25 cents.

PRIMULA

Obconica grandiflora

Perpetual blooming, — bearing large trusses of flowers on long stems, well above the foliage; color a pale lilac and pink. Each, 20 cents; dozen, \$2.00.

CHINESE PRIMROSE

Few house plants afford greater satisfaction. They require a cool north window, and care should be taken that no water falls on the buds as it causes them to rot. In summer they can be turned out into a shady border.

Single White or Single Pink. Each, 20 cents.

BABY PRIMROSE

Primula Forbesii

Needs but little care. It forms a dense rosette of fleshy leaves, from which spring the flower stems about twelve inches tall; delicate rosy-lilac flowers produced in great abundance. Each 20 cents; two for 30 cents.

Ponderosa Lemon

This wonderful Lemon is a true Ever-bearing Variety

On a plant six feet high no less than eighty-nine Ponderosa Lemons were growing at one time; the tree was in bloom, and at the same time had fruit in all stages of development from the size of a pea up to the ripe fruit. Fruit weighing over four pounds has been taken from this tree. The lemons have very thin rind for such large fruit. It is the juiciest of all lemons, makes delicious lemonade, and for culinary purposes cannot be excelled. It fruits when quite small, and makes a lovely house plant. Thrifty young plants, each 25 cents; two for 40 cents.

OXALIS

Ortgiesi or Golden Star. A very satisfactory plant for pot culture, and has attractive foliage. Always in bloom and does not require any special care or treatment to be grown to its greatest perfection. The plant grows from twelve to fifteen inches in height, branching freely, like a small tree in form, with dark olive foliage, underside of which is a beautiful crimson; flowers in clusters, star-shaped, of a bright golden yellow. Each, 15 cents.

PASSIFLORA — Passion Vine

A class of rapid growing climbing plants well adapted for house culture in winter or for training over porches, etc., in summer. The flowers are about four inches in diameter, petals pear-shaped and very symmetrically arranged.

Constance Elliott. The flowers are pure white. Each 15 cents.

RUBBER PLANT

Ficus elastica. One of the best plants grown for table or house decoration. It succeeds well with ordinary treatment. The glossy green leaves seem especially formed to resist the dust and gas to which plants in dwelling-houses are exposed. Strong plants, 50 cents, 75 cents, and \$1.00 each.

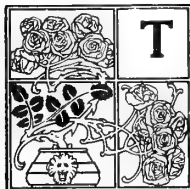
SWAINSONIA

Galegifolia alba. A popular house plant blooming in sprays of ten to twenty flowers, in shape much like the Sweet Peas. An exceptionally attractive ever-blooming plant, and the pure white flowers are used extensively in cut flower work. Each 15 cents.

JASMINE. Jasminum grandiflorum. A favorite greenhouse climber or house plant everywhere; one of the sweetest of flowers. Foliage fine; flowers white, star-shaped and very fragrant, blooming from November till May. Easy of culture. Each, 20 cents.

Why not ask us to mail a copy of this Catalogue to some of your friends? We enclose a post-card for the name and address. We'll gladly send the Catalogue, free.

Some of the most Desirable Hardy Roses



THE autumn season, after the first of October, is especially favorable for transplanting the hardy roses. The plants should be dormant; that is, the growth should be finished and the plants have dropped their leaves, or at least the leaves should have been removed from the hard and ripened wood. In this condition there can be no drooping of the plants, and all wounds tend to callous and heal over quickly, and possibly even to make some new roots before cold weather sets in, and the plants are ready to start off into new growth at the earliest opportunity in the spring. In setting the plants remove with a sharp knife any portions of injured roots, leaving a smooth cut surface. Be sure and plant in deep-spaded, mellow, and well-enriched soil, where no water will lie. Early in the spring the tops should be cut back sharply, leaving only some six or eight inches of stem. After planting draw some soil up into a mound around each plant and then cover the ground with a good thickness of stable litter, leaves or evergreen boughs.

HYBRID PERPETUALS

The Hybrid Perpetual class is entirely hardy. The flowers are of large size, and of the most beautiful colors. Through their blooming season they give us a show of brilliant colors unequalled by any other plants. The following are only a few of the Hybrid Perpetual Roses we cultivate, but they form a good collection. Those who leave the selection to us shall have our best efforts to serve them.

One-year plants, each 20 cents; \$2.00 per dozen.

Two-year plants, each 40 cents; \$4.00 per dozen.

Anne de Diesbach. Beautiful shade of carmine; an extra fine variety.

Caroline Marniesse. Pure (or slightly creamy) white; double; sweetly tea-scented. A perpetual bloomer.

Coquette des Alpes. White, slightly shaded with carmine; a perpetual bloomer.

Francois Levet. Large flower of fine form, on straight stiff stems; bright clear rose color; a splendid variety.

General Jacqueminot. Rich, crimson-scarlet, very bright and velvety.

John Keynes. Dark velvety crimson; large, fine form.

La Reine. A beautiful, clear, bright rose; full form; very fragrant.

Madame Planter. Summer bloomer; pure white.

Magna Charta. Color a beautiful bright pink suffused with carmine.

Paul Neyron. Bright pink.

Pæonia. Bright clear red; very sweet; one of the finest.

Prince Camille de Rohan. Rich, dark, velvety crimson, shading to maroon; very double and sweet.

These Three Hardy Roses will give hundreds of lovely flowers in June

Kaiserin Augusta Victoria. Pearly white, softly tinted with lemon in center; fragrant. A strong, healthy grower, with bold beautiful foliage. Particularly hardy, and one of the most beautiful Roses in cultivation. Young pot plants, 15 cents each; per dozen, \$1.50. One-year plants, 20 cents each; per dozen, \$2.00.

Killarney. A grand new Hybrid Tea Rose, perfectly hardy and a perpetual bloomer. The color is a bright sparkling pink; flowers very large, and the buds long and pointed. Young pot plants, 15 cents each; per dozen \$1.50. One-year plants, 20 cents each; per dozen, \$2.00.

Persian Yellow. The Rose of our mothers' gardens, and one that should be in every garden to-day. In the craze for new varieties many of the fine old sorts are neglected for those of more recent introduction, and in many instances they are inferior to the old standard varieties. Flowers nearly double, borne in immense clusters. Color a deep golden yellow. The plants are a perfect mass of flowers in June. Strong, 2-year plants, each, 50 cents.

THE MOSS ROSES

Moss Roses are very popular and much admired for their buds, which are covered with a moss-like texture. One-year plants, each, 25 cents; per dozen \$2.00. Two-year plants, each 40 cents; per dozen, \$4.00.

Comtesse de Murinais. Pale flesh, changing to white.

Henry Martin. Dark red.

Madame de Rochelambert. Bright pink.

Princess Adelaide. Pink.

White Bath. Pure White.

The Baby Rambler Roses

Exceptionally Free Bloomers for the Garden and are Unexcelled for House Roses

Madame Norbert Levavasseur. This beautiful novelty produces clusters of flowers as large as the old Crimson Rambler. The color is a charming brilliant red, and it bloom with great profusion. This rose blooms all summer, and is undoubtedly the most popular bedding rose ever sent out. As a pot Rose it has no equal, as it is a continuous bloomer. Strong young pot plants, 15 cents each; per dozen \$1.50. Strong one-year old field-grown plants, 20 cents each; per dozen, \$2.00. Two-year plants, 40 cents each; per dozen, \$4.00.

Amy Muller, or Pink Baby Rambler. This grand novelty is a fitting companion to the well known crimson Baby Rambler. The plants branch freely and attain a height of about eighteen inches. The showy brilliant rose-colored flowers are produced in the greatest profusion from June until fall. Each individual flower measures about two inches in diameter. The petals are sometimes twisted which gives the flower a very unique appearance. Young pot plants, 15 cents each; per dozen \$1.50. Strong, 1-year field-grown plants, 20 cents each; per dozen, \$2.00.



PERSIAN YELLOW ROSE

No garden is complete without a collection of Perennials, and Vick's **Hardy Plant Catalogue** lists some of the best in cultivation. Ask for a copy today—free

THE RAMBLER ROSES

The Ramblers are so well known that it is unnecessary to devote space to a long description of these wonderfully beautiful and useful hardy climbers. They are suitable for training on walls, verandas, trellises, arbors, and pillars, and as specimen pot plants for winter forcing. Flowers are well-formed and though small are produced in so great profusion as to present an immense mass of bloom. The Crimson is the best color and most satisfactory. When in bloom the plants are literally covered with flowers.

Crimson Rambler. White Rambler. Yellow Rambler. Pink Rambler.

Strong one-year plants, each 20 cents; set of four 60 cents.

Two-year plants, 40 cents each; set of four for \$1.50.

TAUSENDSCHON, A Grand Climber

This beautiful climbing rose surpasses all other climbing roses, in growth, foliage and beauty of flower. The flowers are borne in large clusters from June to August. Each flower measures about one and a half inches in diameter, and is of a beautiful soft rose color, changing to rosy-carmine. The plant is of strong, vigorous growth, perfectly hardy, and a good variety to plant where a strong climber is desired. This rose is nearly thornless. The shining, dark green foliage is never attacked by disease or insects.

Strong, one-year field grown plants, 20 cents each; per dozen, \$2.00. Two-year plants, 40 cents each; per dozen, \$4.00.

THE PHILADELPHIA RAMBLER

This Rose is a cross between the popular Crimson Rambler and the fiery crimson Hybrid Perpetual Victor Hugo, and is identical with the Crimson Rambler except that the color is brighter crimson, and never fades; is a valuable acquisition to the climbing roses. One-year plants, each 20 cents; per dozen, \$2.00. Two-year plants, 40 cents each; per dozen, \$4.00.

DOROTHY PERKINS

A hybrid of Rosa Wichuraiana and Mme. Gabriel Lutz. In its foliage, growth, and habit of blooming, it is remarkably like Crimson Rambler, but the flowers are more double and of a beautiful shell-pink color, and hold a long time without fading. The flowers are also very sweetly scented, a characteristic not possessed by most other Roses of the Rambler family. One-year plants, 20 cents each; per dozen, \$2.00. Two-year plants, 40 cents each; per dozen, \$4.00.

LADY GAY, Rose of the Highest Merit

A seedling from the popular Crimson Rambler, which it resembles in habit and general effect. The flowers are of a delicate cherry pink color, which fades to soft white. The foliage is very profuse and of a glossy deep green shade. As will be seen from the accompanying illustration, the flowers are very numerous and of good size; they are also delicately perfumed. The plant is a vigorous grower and perfectly hardy. One-year plants, 20 cents each; per dozen, \$2.00. Two-year plants, 40 cents each; per dozen, \$4.00.

FAVORITE CLIMBING ROSES

Are perfectly hardy; bloom early in summer, and when in a rich soil soon cover any arbor or porch. One-year plants, 20 cents each; two for 35 cents. Two-year plants, 35 cents each; two for 60 cents.

Baltimore Belle. Pale blush, nearly white. **Queen of the Prairie.** Rosy red; fine.

It may be well to give the caution that Climbing Roses do not require the close annual pruning that the Hybrid Perpetuals need, nor will they submit to it and produce flowers. The long shoots or canes of the climbers bear short side branches on which the flowers are borne, and the plants are capable of bearing great numbers of flowers annually; these side growths are therefore to be encouraged. Cut out all old canes and cut back the side shoots for renewal.

EVERBLOOMING MONTHLY ROSES

The ever-blooming class comprises the Teas, Chinas, Noisettes, and Bourbons. These have free-blooming qualities, exquisite fragrance, and delicate colors. They are well adapted to house-culture. The varieties offered are among the best in cultivation; they have been carefully grown in pots during the summer, and are in excellent condition for winter flowering. Shower the plants frequently, or sponge the leaves to keep them clear of the red spider, their worst enemy in the house. Fine strong plants, 15 cents each; \$1.50 per dozen. *Italic letters indicate classes: T, Tea; C, China*

Bon Silene. Carmine, tinted with salmon. *T.*
Bridesmaid. Clear delicate pink. *T.*
Gen. de Tartas. Carmine, shaded purple. *T.*
Jules Finger. Fine shade of rose.
La Princesse Vera. Ivory white, shaded coppery yellow.
La Pactole. Lemon yellow.
Louis Richard. Pink.
Marion Dingen. Deep crimson.
Marie Van Houtte. Creamy white. *T.*
Madame Joseph Schwartz. White, flushed with pink. *T.*
Marie Guillot. White, tinged with pale yellow. *T.*



Marechal Niel. Yellow, tea-scented. *T.*
Papa Gontier. Brilliant carmine.
Princess Bonnie. Crimson.
Princess de Sagan. The richest crimson of any Rose in our collection.
Perle des Jardins. Rich shade of yellow; perfect form. *T.*
Queen's Scarlet. Crimson-scarlet; beautiful buds. *C.*
Rainbow. Carmine, striped white.
Suzanne Blanchet. Light pink.
The Bride. White.
Sylph. Delicate pink.
White Maman Cochet. Pure white, ruffled and full.



LADY GAY CLIMBING ROSE

The Most Desirable Hardy Flowering Shrubs



BERBERIS THUNBERGII

A handsome low-growing form of the Barberry of Japanese origin. Foliage abundant, leaves small, obovate; flowers reddish; berries bright crimson. In autumn the leaves turn a bright red and make a great display. A beautiful plant for the lawn or the front of the shrubbery, or for a low-growing ornamental hedge. Each, 25 cents.

DEUTZIA

We can highly recommend the Deutzias for their hardiness, good habit, great profusion of bloom,—and in every respect as being among the most desirable hardy shrubs.

Gracilis. Flowers white; single, and entirely covering the branches.

Double White. Pure white.

Crenata flore-pleno. Flowers double; white, with back of petals pinkish.

Pride of Rochester. Flowers double; pure white, reverse of petals delicate rose; large and handsome.

Strong plants, each 25 cents. The collection of four, 80 cents; express paid.

KERRIA JAPONICA

Japan Globe Flower. A graceful dwarf shrub, bearing yellow flowers the entire season.

Argentea variegata. A dwarf variety, with small green foliage edged with white. Flowers, single, yellow.

Each, 25 cents; the two for 40 cents.

SNOWBALL — Viburnum

Japanese Snowball — Viburnum plicatum. Of lower and more compact growth than the old Snowball. The flowers are somewhat larger and of purer white; remain longer in good condition. Each 30 cents.

Viburnum Opulus sterilis. The well-known Snowball; produces large clusters of snow-white flowers in May. Each 25 cents.

SPIRAEA

The Spiræas are in the front rank among flowering shrubs for the lawn or garden. Beginning to bloom in May, they produce flowers abundantly through the summer. Each 25 cents; any two for 40 cents.

Arguta. Dwarf. Flowers clear white, and freely produced. The best very early-flowering white Spiræa.

Anthony Waterer. Dwarf; constant bloomer.

Billardi. Flowers rose-colored, in terminal spike-like panicles, produced nearly all summer.

Billardi alba. Similar to Billardi; flowers white.

Bumalda. Half-Dwarf. Flowers deep rose.

Douglasi. Four to five feet high. Flowers rose-colored.

Van Houttei. A vigorous plant that sends up numerous tall, slender shoots, which curve gracefully, and the last of May or in June are literally covered with pure white flowers, making the bush a mass of bloom.

TAMARIX

Hardy shrub, with very graceful and handsome feathery foliage. The plant flowers so freely that in the early summer it is one mass of pink bloom, completely hiding the foliage. Invaluable for planting by the seaside, where very few plants will grow. Each, 25 cents; dozen, \$2.50.

WEIGELA

Handsome summer flowering shrubs, with an abundance of trumpet shaped flowers, borne in clusters. Each, 25 cents; three for 60 cents.

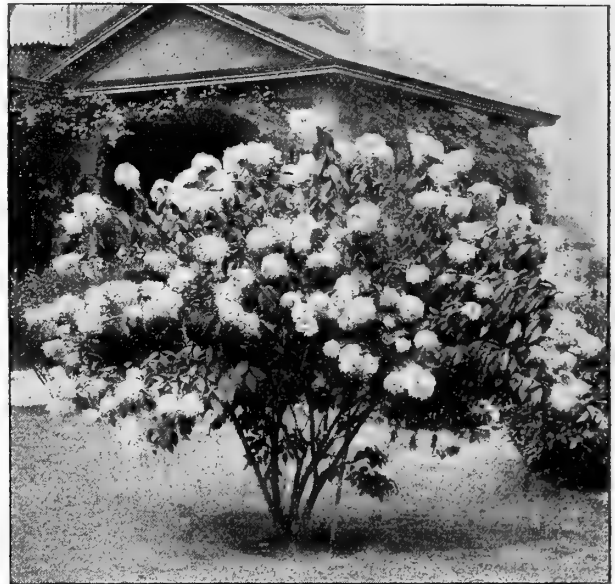
Candida. Pure white.

Eva Rathke. Large purplish red flowers.

Rosea. Rose colored flowers, borne in the greatest profusion.

XANTHOCERAS SORBIFOLIA

Hyacinth Tree. A valuable hardy shrub. If better known would be in every garden. From five to eight feet in height. Blooms early in spring; the flowers are bell-shaped, one inch broad, in clusters about eight inches long, resembling those of the Horse Chestnut as well as those of the Hyacinth, completely covering the plant. Petals crumpled, white, marked with yellow, changing to purple at the base. Foliage light green. Each 50 cents.



HYDRANGEA PANICULATA GRANDIFLORA

HYDRANGEA

Arborescens (Grandiflora Alba.) This magnificent American Hydrangea is the most beautiful hardy flowering shrub introduced in many years. It attains a height of five to six feet, and about the same breadth. It is of far more graceful habit than Hydrangea paniculata grandiflora. The form of the panicle is much like that of Hydrangea Hortensis. Trusses large and beautifully formed; the blooms are of the very largest size, pure snow-white; the foliage is finely finished. Strong, one-year plants, each, 25 cents; dozen, \$2.50.

Paniculata Grandiflora. One of the finest hardy shrubs in cultivation. The flower trusses are immense heads from nine to twelve inches in length and nearly as broad. Color purest white, afterward changing to deep pink as the season advances. It blooms in July, at a time when no other shrub is in flower, and remains beautiful until destroyed by frost. Hardy as a lilac bush. The plants we offer will all bloom the first season. Prices according to size. First size, each, 50 cents; two for 80 cents. Second size, each, 20 cents; three for 50 cents.

ALTHEA. Rose of Sharon. Beautiful erect-growing shrubs, of the easiest culture, bearing large, showy flowers early in the fall. Very desirable because of flowering when few other shrubs are in bloom. Double Red, Double White, and Double Violet. Each 25 cents; dozen, \$2.50.

FORSYTHIA SUSPENS (Fortunei.) Golden Bells. One of the earliest spring-flowering shrubs, producing large, bright yellow flowers. Each 25 cents.

SYRINGA Grandiflora. Flowers pure white, fragrant. A very popular shrub. Each, 25 cents.



Perennial Plants

solve the perplexing problem of making your garden beautiful all summer. Our Catalogue tells why, how, and what to use. Ask for it

Vick's Catalogue of Hardy Plants, Roses and Shrubs



Some of the Favorite Hardy Climbing Plants



HALL'S JAPAN HONEYSUCKLE

AMPELOPSIS

These are hardy plants, will grow in any location, and very rapidly. Each 25 cents; dozen \$2.00.

Veitchii. Clings very firmly to the side of a house or wall, and will soon form a perfect mass of foliage. Also known as Japan or Boston Ivy.

Quinquefolia, or Virginia Creeper. Sometimes called American Ivy and Woodbine; a very rapid grower; the leaves turning crimson in autumn. This is a native plant, and the hardest and most rapid climber we have.

AKEBIA QUINATA

A Japanese hardy climbing plant; handsome compound leaves with five leaflets; purplish flowers and purplish mottled berries. An interesting plant. Each 25 cents.

BIGNONIA (Tecoma)

Bignonia radicans or Trumpet Vine. A hardy, strong-growing climber, with large trumpet-shaped, orange-scarlet flowers; very handsome and desirable. Each 20 cents.

CLEMATIS

The Clematis makes a rapid growth, and produces its beautiful showy flowers in the greatest profusion. For pillars, trellises, bedding in masses, or planting about rock-work, it cannot be excelled. In the fall give the plants a good top-dressing of well-rotted manure.

Clematis paniculata. A hardy and remarkably handsome climbing plant. The freedom of bloom is quite unparalleled, for when the plant is in full flower the greater part of the foliage is entirely hidden from view. Flowers pure white, star-shaped, about one inch in diameter, and borne in large clusters on stiff stems from four to six inches long, that rise from the axils of the leaves; they will last several days as cut flowers, retaining their freshness, and their fragrance is very agreeable. The plant is a strong, quick grower, with broad, healthy foliage, which is seldom attacked by insects. Each 25 cents; two for 40 cents.

LARGE-FLOWERING VARIETIES

Henryi. Fine large cream-white flowers. The best white variety. A strong grower, and very hardy; a perpetual bloomer. Each, 40 cents.

Jackmanni. Large, intense violet-purple flowers, from four to six inches in diameter. Each 40 cents.

Madame Edouard Andre. Fine bright crimson; free from any purplish shading. Each 40 cents.

The Set of four Clematis for \$1.30.

HONEYSUCKLE

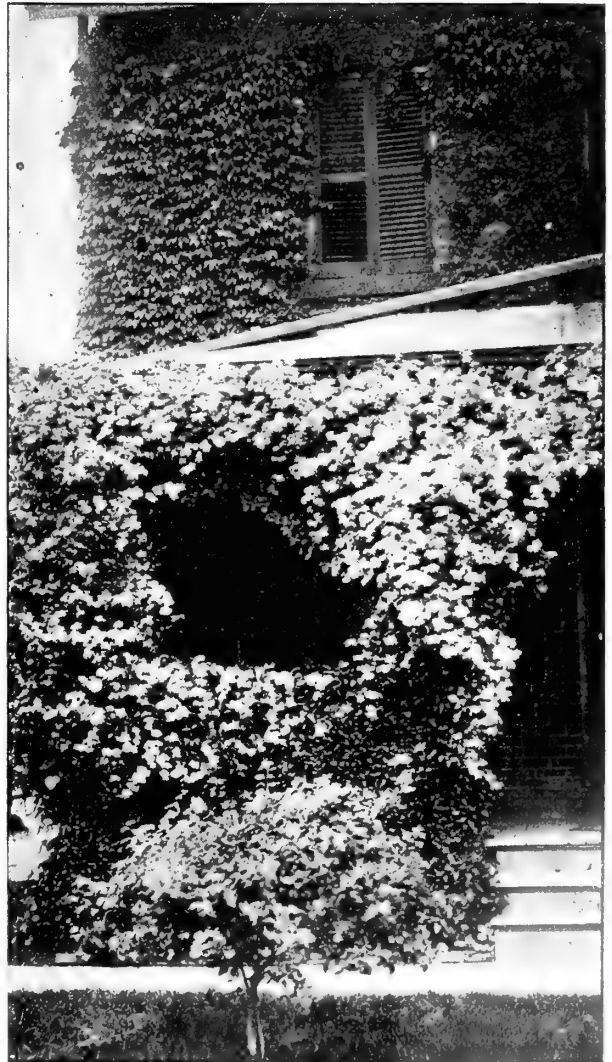
One of the most desirable hardy climbers. The plants grow with great freedom in any good soil, and commence blooming the second year from planting. **Hall's Japan.** Flowers are pure white, changing to yellow. Each 20 cents; dozen, \$2.00.

CHINESE MATRIMONY VINE

A vigorous hardy climber. Flowers bright purple, succeeded by scarlet berries nearly an inch long. Each 20 cents; two for 35 cents.

WISTARIA MAGNIFICA

A strong and rapid grower, desirable for trellises, porches, etc. Flowers light purple, showy, and produced in long racemes. Each 25 cents.



CLEMATIS PANICULATA



HARDY PERENNIAL PLANTS



Vick's Double Anemone "Whirlwind"

Planted outdoors this fall it will bloom the following season.

The double variety "Whirlwind" has all the free-blooming and other good qualities of the single white, and the additional ones of greater hardiness of plants and more lasting blooms. Each 20 cents; dozen, \$2.00.

Japonica Alba. Flowers pure white with yellow center, single. Each 20 cents; dozen, \$2.00.

Queen Charlotte. An early-flowering pink Anemone. Of vigorous growth. It begins to flower in August, continues to bloom until November, and becomes more attractive each day. Flowers semi-double, broad, perfectly formed, and of a pleasing shade of silvery pink. Each 20 cts.; dozen, \$2.00.

ACHILLEA

The Pearl. The blooms are of purest white, and so large that they resemble a Pompon Chrysanthemum. Hardy, and will thrive in almost any situation. Very desirable for the garden or cemetery; blooms nearly the whole season. Each 20 cents; three for 50 cents.

Millifolium roseum. Foliage very finely cut; flowers pink. A continuous bloomer. Each 20 cents; two for 30 cents.

Tomentosum. Bright yellow flowers. Very fine for rockeries. Each 20 cents; two for 30 cents.

HARDY ASTERS—Michaelmas Daises

Lady Trevylan. White, early.

Pyramidalis. Lavender blue.

White Queen. White, late.

Each 20 cents; dozen, \$2.00.

Ask for Vick's Catalogue of Hardy Plants. It's a beautifully illustrated book of Perennials. Free.

AQUILEGIA

Chrysantha. The beautiful golden yellow Columbine. Each 20 cents

Cœrulea. This is the true form of the Rocky Mountain Columbine. Flowers blue. Each 20 cents.

Skinneri. Scarlet and yellow. Each 20 cents; dozen, \$2.00.

ARMERIA

(Sea Pink or Thrift) a very pretty and interesting hardy alpine plant, fine for border or rockery. Flowers rose pink. Each 15 cents; dozen \$1.50.

HARDY POMPON CHRYSANTHEMUMS

These are the very best of all Chrysanthemums for planting out of doors, and also very desirable for growing as pot plants, being dwarf, compact growers, and free bloomers. They are perfectly hardy, blooming before severe frosts will hurt the flowers. Each 15 cents; dozen, \$1.50.

Anna Mary. Creamy white, tipped pink. **Druid Hill.** Crimson.

Crimson Ball. Beautiful deep crimson. **Kent.** Yellow. **St. Illoria.** Silvery-pink.

DELPHINIUMS—Larkspur

Delphiniums are valuable plants for the herbaceous garden. The flowers are produced from June until frost.

Formosum. A most brilliant deep blue, the finest blue flower known among our hardy plants. Each 20 cents.

Bee Larkspur. Interesting for the manner in which the petals are folded up in the center of each flower, so as to resemble a bee. Flowers of lighter shade than Delphinium formosum. Each 20 cents.

Chinese. A pretty variety, in varying colors from blue to white. Each 20 cts.

SHASTA DAISY

The Shasta Daisy is one of the most marvelous productions introduced in years. It is extremely hardy; it can be multiplied rapidly by simple division, and it is not particular as to soil. It blooms better and more abundantly each season, and continues in bloom for several months. The flowers are extremely large and graceful, averaging about four inches in diameter, with petals of the purest glistening whiteness, and are borne on single, long, stiff, wiry stems; when cut the blooms remain perfectly fresh and in good condition for two weeks or more. No other flower can compare with it in usefulness. Each 20 cents.



CLEMATIS DAVIDIANA

Vigorous, hardy plant, two to four feet high, flowers bell shaped, deep lavender or violet in color, very fragrant, and are produced in clusters in great profusion. Strong plants, each 20 cents; two for 35 cents.

EULALIA

Japonica variegata. This variety, except that the variegation of the leaf is lengthwise, is very similar in style and habit of growth to E. Japonica zebrina, and it forms so beautiful and striking a contrast to that variety as to make them desirable companion plants.

Japonica zebrina. This plant is unlike most variegated plants, as its stripe or marking is across the leaf instead of lengthwise. In fall it bears large tassel-like plumes.

Gracillima univittata. The most beautiful of all the Eulalias. Foliage narrow, dark green, with a silvery white midrib.

Each 20 cents; one plant of each of above three for 50 cents.

DOUBLE HOLLYHOCKS

We have excellent healthy plants, grown from seed, that will flower the first summer, and usually for three or four summers after. Give the plants a light covering of coarse litter for winter protection. The colors are nicely assorted, so that almost every color from white to purple may be expected. Each 20 cents; the set of six colors for \$1.00.

"Allegheny." New Fringed Perpetual-Blooming. A great improvement in Hollyhocks. The flowers come single, semi-double and double. They are seldom less than five inches across, and are beautifully fringed, of fine form and delicate texture. Two to four buds form at the base of every leaf, where the old style Hollyhocks have but one or two. These buds open in succession, prolonging the flowering season until autumn. Fine plants that will bloom the first season. Each 20 cents; six for \$1.00.

HELIANTHUS — Hardy Sunflowers

These varieties of Helianthus are perfectly hardy in this locality, but in colder regions a protection of coarse litter will be required. The plants attain a height of about four feet, and in their blooming season, in August and September, they are nearly covered with bright golden-yellow double flowers, about the size of a Dahlia; they are very desirable for cutting. Each 15 cents; dozen, \$1.50.

Helianthus lataeferns. Plant of distinct habit, forming a pyramid of lovely flowers and foliage. Flowers golden-yellow, single.

Multiflorus plenus. Yellow flowers, perfectly formed.

HIBISCUS—Rose Mallow

Tall, hardy, free blooming plants, with very showy flowers. Each 20 cents; two for 35 cents.

Large-Flowering. Perfectly hardy in any place, and is one of the most beautiful hardy flowering plants we have. The color is a deep pink.

Militaris. Delicate flesh pink flowers, tinged with a deeper color toward the center.

HARDY PINKS

Perfectly hardy, and very desirable in the garden on account of their beauty and fragrance. Each 20 cents; per dozen, \$2.00.

Comet. A fine shade of red, flowers double, clove-scented.

Her Majesty. Flowers very large, fringed, very double, and pure white.

Fragrance delicious, clove-scented. Long stiff stems support the flowers. A rival of the Carnation.

Souvenir de Saie. Flowers a delicate soft rosy pink, being fully as large as a Carnation; beautifully formed, very double, exceedingly useful for cutting.

White Reserve. A nicely fringed white. Ever-blooming.

PRIMROSE — Primula veris superba

This beautiful Primula originated in a bed of seedling Polyanthus, and is undoubtedly a hybrid Primrose, having somewhat the habit of a Polyanthus and the pale yellow color and the fragrance of the English Primrose. The plant is six to eight inches in height, is perfectly hardy, and flowers earlier and continues in bloom longer than any other Primula. Each 20 cents; \$2.00 per dozen.

CHINESE PEONIES

The Chinese Peonies are desirable on account of their large size, fine colors, and profuse blooming. They are perfectly hardy, and will succeed on any ground unless so wet that the water will lie on the surface in the winter and spring. May be planted either in the autumn or spring. Extra fine roots, each 30 cents; dozen, \$3.00, except as noted.

Active. Rose, flowers large, very compact.

Beaute Francaise. Pink, center fringed.

Buyckii. Rose, center salmon marked with red.

Double White. Each 35 cents.

Dr. Bretonneau. Rose.

Duchess de Orleans. Violet-rose, center salmon.

Festiva alba. Pure white. Each 35 cents.

Festiva maxima. Pure white, inner petals tipped carmine. Each 75 cents.

Fragrans. One of the best double pink varieties.

Humea alba. Single. White, center yellow. Each 30 cents.

Limbata. Rose, large, fine.

Lamartine. Dark crimson. Each 35 cents.

Madame Calot. One of the finest double whites. Each 50 cents.

Madame Morren. Outer petals bluish, center salmon

Magnifica. Delicate pink, changing to white. Each 50 cents.

Nivalet. Rose, large and full.

Officinalis rubra. Rich deep crimson, very early, and one of the brightest of the dark-colored varieties.

Perfection. Rose, center salmon marked purple.

Pomponia. Purplish-pink, center salmon-rose.

Pulcherrima alba. Blush on opening, changing to a pure white. Each 35 cts.

Purple Crown. Purple. Each 35 cents.

Roi Guillaume. Light rose.

Rosa mutabilis. Rose and pink shaded.

Smitzii. Crimson, flowers single. Foliage finely divided.

Striata speciosa. Pale rose, center nearly white.

Tenuifolia flore-pleno. Foliage graceful and slender, making a fine contrast when arranged with the double dark crimson flowers, that nearly rival the rose in delicate perfume, perfection of bloom, and brilliancy of color. Blooms earlier than other varieties. Each 50 cents; two for 90 cents.

Triomphe du Nord. Violet and rose, large and fine.

PAPAVER — Poppy

Oriente. The well-known Oriental Poppy. Flowers brilliant scarlet, often six inches or more in diameter. Each 20 cents.

Nudicaule. The Iceland Poppy. Always in bloom; flowers white, orange, and yellow. Each 20 cents.

ACONITUM UNCINATUM. Flowers purple, hood shaped. Especially valuable for planting under trees or in shady positions. Each 20 cents; dozen, \$2.00.

ALYSSUM Saxatile Compactum. One of the best plants for the rockery or border. Flowers bright yellow. Each 20 cents; dozen, \$2.00.

ARABIS Alpina. A very early spring-flowering plant. Flowers pure white. Each 20 cents.

COREOPSIS Lanceolata. Flowers large, bright golden yellow, and produced in the greatest profusion the entire summer; invaluable for cutting. Each 20 cents.



CHINESE PEONIES

A Superbly Illustrated Catalogue describing all the best

Hardy Plants Old and New

will be mailed to our friends who are interested, and ask for it. Send us your name and address on a postal card, or write a letter telling about your success with Vick's Seeds



PERENNIAL PHLOX

One of the best of the hardy flowering plants. A show of brilliant flowers can be had from June until November. The varieties listed are all large-flowering. If you want something extra fine, plant generously of Perennial Phlox. Strong field-grown plants, each 20 cents; dozen, \$2.00.

- Bridesmaid.** White, large crimson-carmine center.
Coquelicot. Bright scarlet.
Eclairer. Carmine, salmon center, with rosy-white star.
Eiffel Tower. Clear salmon, purple eye.
Esclamonde. Rosy lilac, shaded white; large purple center surrounded with white halo.
Fabrihant Wiese. Carmine shaded violet.
Ferdinand Cortez. Bright deep crimson.
Isabey. Orange-salmon, center purplish crimson.
King of the Purples. A fine shade of purple.
Lumineux. Light red, crimson eye.
Lustre. Rose pink, carmine center.
Mlle. Cuppenheim. Pure white; late.
M. Bezanson. Fiery crimson, velvety purple eye.
Nettie Stewart. Pure white, faintly tinged pink at base of petals.
Pantheon. Salmon-rose.
Premier Ministre. Rosy white, center deep rose.
Richard Wallace. Pure white with distinct violet eye.
Sir Edwin Landseer. Brilliant crimson.
Teddy. Rosy white; carmine eye; tips of petals sometimes striped crimson.
The Pearl. Pure white.

RUDBECKIA—Golden Glow

- Laciniata flore-pleno (Golden Glow).** A showy hardy perennial, attaining a height of eight feet, blooming from July to September. Flowers double, deep golden yellow, and borne on long stems, making it suitable for cutting. Each 20 cents; two for 30 cents; per dozen, \$1.50.
Newmani. Single, golden yellow, with black center; grows about eighteen inches high. Each 20 cents.
Purpurea, or Giant Purple Cone Flower. Flowers reddish purple. Two to three feet high. Each, 20 cents.

HERBACEOUS SPIRAEAS

- Spiræa palmata elegans.** A beautiful, hardy, free-flowering plant, with sweet-scented white flowers and red anthers; a very pleasing and useful plant for cut flowers, and excellent for hardy herbaceous borders. Each 20 cents.

STOKESIA CYANEA—Cornflower Aster

One of the most valuable of the native hardy plants, growing from eighteen to twenty-four inches high, and of the easiest culture, succeeding in any open sunny situation. The flowers are borne profusely from July until frost, are of a handsome lavender-blue color, and measure from four to five inches in diameter. Each, 20 cents; dozen, \$2.00.

TRITOMA—Flame Flower

- McOweni.** A charming variety, coming into bloom very early; stems long, truss rather loose; color orange scarlet and yellow. Each, 25 cents; dozen, \$2.50.
Pfitzeri. A grand improvement on the old Tritoma uvaria grandiflora, or Red Hot Poker. The flower spikes, which are produced with considerably more freedom than in the old variety, are of gigantic size; frequently four and a half feet high, with heads of bloom over twelve inches long, of a rich orange-scarlet, shading to salmon-rose at edge. Each, 25 cents; dozen, \$2.50.

YUCCA—Spanish Bayonet

Yucca filamentosa. Erect plants with sharp-pointed leaves; will endure the winter in most parts of the country; sends up a strong stem bearing large, white, bell-shaped flowers. Strong one-year-old roots, 25 cents; strong two-year-old roots, 50 cents.

DICENTRA spectabilis, or Bleeding Heart. Bears heart-shaped, deep pink flowers in a graceful drooping raceme a foot or more in length. Each 30 cents.

DIGITALIS. (Foxglove). A highly ornamental plant of stately growth. Each 20 cents.

FORGET-ME-NOT (Myosotis palustris). A variety that is always in flower. Each, 15 cents; dozen \$1.50.

GAILLARDIA Grandiflora. Among the most attractive and effective of our hardy perennial plants; one mass of gorgeous bloom from June till autumn. Each 20 cents.

GYPSOPHILA Paniculata. Gypsophilas are valuable for bouquet making, either green or dried. They are very graceful and easily cultivated. Should be in every garden. Flowers white. Each 15 cents.

HELIOPSIS Pitcheriana. A hardy perennial, three feet high, broad and bushy, and a perpetual bloomer. Flowers deep golden yellow, two inches. Very fine for cutting. Each 15 cents.

HYPERICUM MOSERIANUM. Forms a handsome bushy plant, with branches literally covered with golden yellow flowers all summer. Each 25 cents; dozen \$2.50.

IBERIS Sempervirens, Evergreen Candytuft. Produces innumerable flat heads of pure white flowers during April and May. Each 15 cents, per dozen, \$1.50.

LOBELIA Cardinalis. Cardinal flower. Flowers rich fiery cardinal color. Each, 15 cents; dozen, \$1.50.

LYCHNIS Chalcedonica. Produces large heads of brilliant scarlet flowers. A gem for cut flowers. Each 15 cents; per dozen, \$1.50.

LYSIMACHIA Clethroides. A fine hardy plant, growing about two feet high, with long, dense, recurved spikes of pure white flowers. Each 15 cents; dozen, \$1.50.

LYTHRUM Roseum Superbum. A strong-growing, shrub-like plant, producing large spikes of rose-colored flowers from July to September. Each 20 cents; per dozen, \$2.00.

LATHYRUS Grandiflorus. Perennial Pea. Clusters of red flowers from June to September. Each, 20 cents; dozen, \$2.00.

MONARDA DIDYMA. Bright red, showy flowers. Fine for planting among bulbs or in a mixed border. Each 15 cents; two for 25 cents.

PENTSTEMON Barbatus Torreyi. Most useful hardy perennial, is in bloom from June until autumn, with panicles of brilliant scarlet flowers. Very fine. Each, 15 cents; dozen, \$1.50.

Coerulea. Dwarf. Flowers blue. Each 20 cents; dozen, \$2.00.

PHLOX SUBULATA, The Bride. Pure white, with pink eye. Each 15 cents; per dozen, \$1.50.

PHYSOSTEGIA Virginica. Delicate pink. Flowers resemble a gigantic heather. Each, 20 cents; dozen, \$2.00.

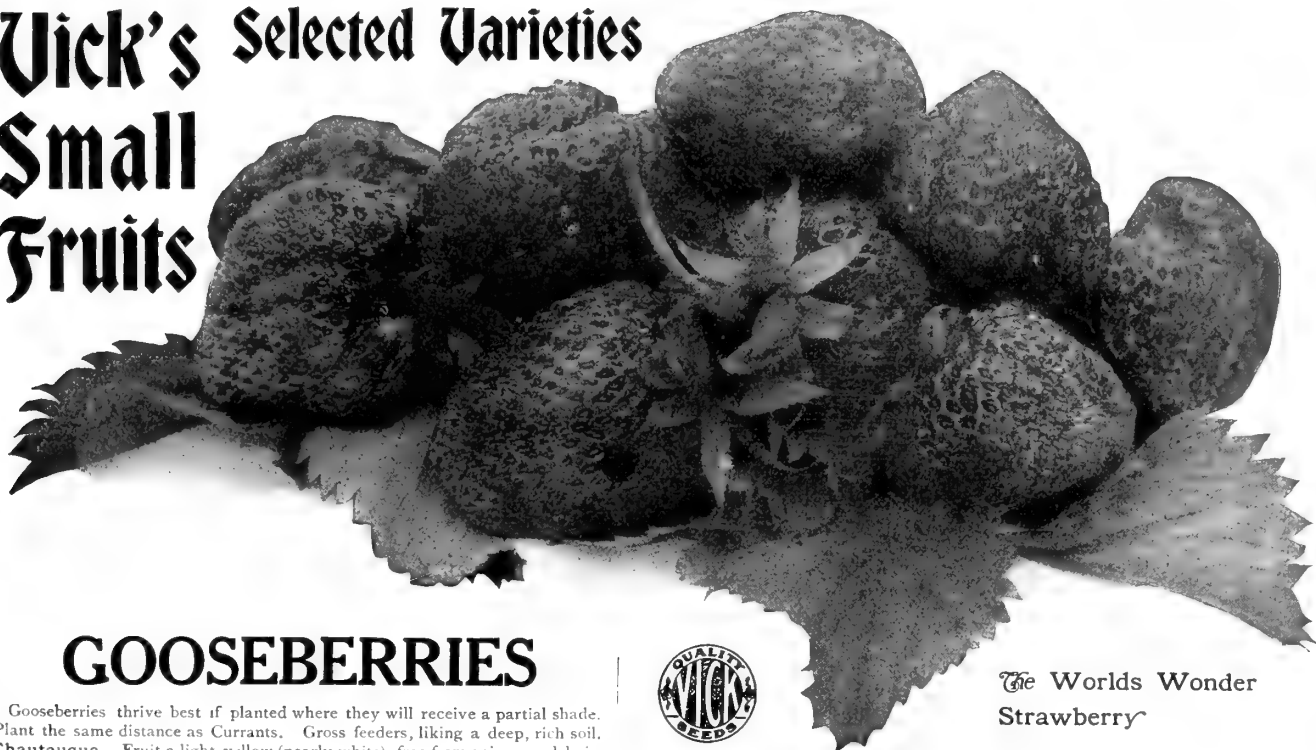
PLATYCODON Grandiflorum, The Chinese Bell Flower. In bloom the entire season. The flower resembles the Clematis in size and color. Two varieties, blue and white. Each 15 cents.

POLEMONIUM, (Jacob's Ladder). Nice plants for border. Two varieties, blue and white. Each 20 cents; dozen, \$2.00.

SALVIA PRATENSIS. A strong hardy plant, with flower spikes of deep blue. In bloom from June to September. Each 20 cents; \$2.00 per dozen.

VERONICA SPICATA. An elegant border plant. Long spikes of deep blue flowers. Each 20 cents; dozen, \$2.00.

Vick's Selected Varieties Small Fruits



GOOSEBERRIES

Gooseberries thrive best if planted where they will receive a partial shade. Plant the same distance as Currants. Gross feeders, liking a deep, rich soil.

Chautauqua. Fruit a light yellow (nearly white), free from spines and hair. Thick-skinned, sweet, and of exquisite flavor. Each 40 cents; dozen \$3.50.

Downing's. A native seedling, greenish white, vigorous, hardy and prolific. large fruit. Free from mildew. Each 20 cents; dozen \$1.50.

Golden Prolific. Fruit large, deep golden yellow, excellent in quality and very attractive in appearance. Perfectly hardy, prolific, a good grower, and unusually free from mildew. Each 40 cents; dozen \$3.50.

Industry. A new foreign variety. Fruit dark red, very large, and of a rich agreeable flavor; an immense yielder. Each 30 cents; dozen, \$2.00.

Pearl. Grown from seed of Houghton, crossed with Ashton Seedling. Worth of special notice because of its good quality, productiveness, and freedom from mildew. Each 20 cents; dozen \$1.50.

STRAWBERRIES

For field-culture plant in rows four feet apart, with the plants one foot apart in the row. For garden-culture plant three feet by one foot. Should the ground not be prepared for planting on receipt of the plants, they should be heeled in, in a cool, moist, shady place. Do not sprinkle the foliage, as it causes a moisture to collect which is very injurious to the crowns, causing them to rot. In setting the plants, be careful to have the crowns even with or a little above the surface of the ground, and to have the trench or hole in which the plant is set deep enough to allow the roots their full length. Some varieties of Strawberries have pistillate or imperfect flowers. These must have perfect-flowered varieties planted every 15 or 20 feet among them, or they will produce imperfect fruit. The pistillate varieties are marked (P).

Dozen, 25 cents; hundred, \$1.50; thousand, \$6.00; except where noted.

Vick's Uncle Joe. Its fruit is perfect in form, of a dark, rich color, firm flesh, monstrous in size and uniform in shape and among other attractive features, its early and continuous yield during the season is attributable to its strong, healthy and robust growth. Dozen, 50 cents; twenty-five, 75 cents; hundred, \$2.00; thousand, \$12.00.

Climax, New. This strawberry originated with Henry W. Graham, of Maryland, and is a cross between Bubach and Hoffman. The Climax ripens a little later than Michaels Early. Dozen, 35 cents; hundred, \$1.50; thousand, \$8.00.

Echo. We consider this variety superior both in flavor and sweetness, and while it is not a good shipping berry, for the home garden it is unsurpassed. Fruit brilliant red, of medium size, second early. Plants very productive, and continue to bear late in the season.



The Worlds Wonder Strawberry

Gandy. One of the best late Strawberries in market, and a general favorite with fruit growers. The berries are large and of uniform size, of a rich crimson color, and quite firm. Plant a vigorous grower and good cropper.

Nick Ohmer. Exceedingly large, beautiful color; conical in form, uniform and regular; quality unsurpassed. Very productive; strong grower.

Seaford. (P). Fully equal to Bubach in size; far more productive, firm enough to meet all requirements; color deep, glossy red, and quality fit for a king. The plant is as large as Bubach and a much more vigorous grower, while it ripens its crop much faster and several days earlier, and, therefore, commands a higher price.

Stevens' Late Champion. Originated in New Jersey. Plants of more than ordinary vigor; a good runner; perfectly healthy; color bright. A fine looking berry. Ripens after most other varieties have gone. Dozen, 35 cents; hundred, \$1.50; thousand, \$8.00.

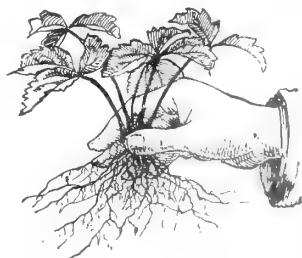
World's Wonder. As productive as the Haverland, but twice as large. Fruit is a bright red in color and does not turn dark after being picked. Uniform in shape, large size, good keeper and shipping berry. Ripens early and brings extra fancy price on market. Vines are strong, thrifty and rapid in growth. Will produce a large crop on either high or low land. The fruit is so firm and its keeping qualities are so excellent that it does not need to be picked oftener than once in three days. Dozen, 50 cents; hundred, \$2.00; thousand, \$10.00.

OTHER STANDARD VARIETIES

Brandywine,	Eureka,	Jessie,	Crescent (P).	Glen Mary
Bubach,	McKinley,	Wilson,	William Belt	Sample

At dozen and hundred prices we Prepay the Postage or Express charges. At thousand rate the purchaser will pay the Express or Freight charges.

THIS ILLUSTRATION SHOWS THE PROPER MANNER OF SETTING STRAWBERRY PLANTS. Roots trimmed and straightened, plant erect and even with the surface of the ground.



CURRANTS

Choose a moist, rich soil for Currants, and keep it well manured. Plant five feet apart each way. Keep free from weeds and grass, and give liberal cultivation. To destroy the currant-worm that feeds on the leaves, dust them with powdered white hellebore.

Each, postage paid, 15 cents; dozen, \$1.50; hundred, \$7.00, except where noted.

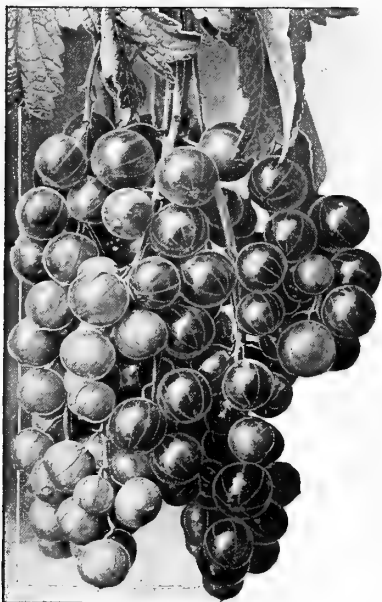
At the single and dozen prices we prepay mail or express charges. Hundred lots by express or freight; charges not prepaid.

All strong two-year-old plants and true to name.

Cherry. Large, productive.

Black Champion. An English sort; fruit large, handsome, highly-flavored; extra good for jams, etc.

Fay's Prolific. One of the best; very productive, large size, good flavor, bears early adapted to light soils. Standard for market.



PERFECTION CURRANT

Red Cross. New variety, fully tested and found worthy of introduction; plants strong, vigorous and very productive; clusters large, often four inches long; berries large; fruit grows in masses, giving additional facilities in gathering; fruit of superior quality; a trial will both please and satisfy you.

White Grape. Valuable for the table; quality excellent, mild and sweet.

Perfection Color, bright red; size, as large as the Fay's or larger, the clusters averaging larger, the size of berry being well maintained to end of cluster. Rich, mild sub-acid, plenty of pulp, with few seeds. Less acid and of better quality than any other large currant in cultivation. The Perfection is a great bearer, superior to Fay or any other large sort. Strong 2-year plants, each 30 cents; \$2.50 per dozen.

GRAPES

At the single and dozen prices we prepay mail or express charges. Hundred lots by express or freight, charges not prepaid.

Agawam (Rogers 15.) Large red, borne in clusters of good size. Excellent quality. Aromatic flavor, peculiar to this variety. Strong growing, productive. Each 25 cents; dozen \$2.50; hundred \$8.00.

Brighton. Dark red; very early, quality best, should be planted near the Worden or Concord, or some other self-fertilizing variety, to promote fruit setting. Each 25 cents; dozen \$2.50; hundred \$8.00.

Catawba. Large, compact; berries deep red, sweet and juicy. Each 25 cents; dozen \$2.50; hundred \$8.00.

Concord. Black. Most popular and reliable variety cultivated. Each 20 cents; dozen \$2.00; hundred \$6.00.

Campbell's Early. Several years of observation and tests prove it a strong, vigorous, hardy vine; thick, healthy, mildew-resisting foliage; always sets its fruit well and bears abundantly; clusters large, usually shouldered, compact and handsome; berries large, nearly round, often an inch or more in diameter; black, with light purple bloom; skin thin, but tenacious, bearing handling and shipping admirably; flavor rich, sweet, slightly vinous; flesh rather firm but tender, parting easily from its few and small seeds; very early; remarkable keeping qualities. Each 30 cents; dozen, \$3.00

Delaware. Light red, early, of best quality. Each 25 cents; dozen \$2.50; hundred, \$8.00.

Moore's Diamond. Bunches large, compact; berries large, white, with a whitish bloom; skin thin; flesh melting, juicy, and sweet to center; vine strong and healthy and an abundant bearer. Each 25 cents; dozen \$2.50; hundred, \$8.00.

Niagara. Strong, vigorous grower; bunch and berries large and of good quality; color light green; very productive. One of the best light colored grapes. Each 25 cents; dozen \$2.50; hundred \$8.00.

Nectar. A cross between Concord and Delaware. Vine hardy and a good grower; clusters of fruit of medium size, compact; berries medium size, color jet black, with a fine bloom; quality excellent, with a pure, rich, vinous flavor. Ripens at the same time as the Delaware. Each 30 cents; dozen \$3.00.

Worden. The best Black Grape, and the most productive and satisfactory of all varieties. Very strong and hardy. Each 25 cents; dozen \$2.50; hundred \$8.00.

YANGHOW, CHINA, May 30, 1909.

I feel that I ought to write to you of the wonderful results that we have secured from the small lot of Strawberries we ordered from you last year. After the long voyage of more than a month, nineteen strawberry plants arrived, and thirteen finally grew. This year I have some 130 plants from this start, and we have had all the berries that we could eat. One plant at one time had over 200 blossoms and formed berries upon it.

Such attention as you have always given our small orders, goes a long ways to make life pleasanter for us Americans in exile out here.

Yours truly, A. S. TAYLOR, M. D.

BLACKBERRIES

For field culture, plant in rows six feet apart and plants three feet apart in the row. For garden culture, five by four feet.

Each 15 cents; dozen 75 cents; 100, \$2.00; except where noted. At the dozen price we prepay mail or express charges; 100 lots by freight or express, charges not prepaid. Not less than 50 at 100 rate.

INTRODUCED BY VICK The Rathbun GROWN EVERYWHERE

This is by far the largest Blackberry in cultivation. In quality it surpasses the luscious Dewberry, being without the hard core common to Blackberries; in fact it melts in the mouth. It is the most desirable variety either for table use or for canning. The plant is hardy, vigorous, and a great bearer. Another strong point in its favor is its habit of rooting from the tips, like Blackcaps. It brings more in the market; fruit holds to large size throughout the season; and as a shipper it is unsurpassed. Each 15 cents; dozen 80 cents; hundred \$2.50.

Agawam. Hardy and very prolific; fruit sweet and soft to the center. Early and reliable sort.

Erie. Fruit roundish, uniform in size, excellent quality, handsome. A valuable variety for home use or market.

Eldorado. Very vigorous and hardy; fruit large, of finest quality, and without a hard core. Each, 15 cents; dozen, 80 cents; hundred, \$3.00.

Minnewaski. Vigorous, quite hardy in this region, very productive; large, jet black, shining fruit, uniform size, sweet and soft to center; ripens early, continuing to middle of September. Dozen, 80 cents; hundred, \$2.50.

Snyder. Very hardy. Berries medium size, produced abundantly; sweet, juicy, and without a hard core when fully ripe. Adapted to the northwest, where other varieties are injured in severe winters.



THE RATHBUN BLACKBERRY

RASPBERRIES: Red, Black, and Yellow Varieties

There are two general types of Raspberries, and they require different treatment. Blackcaps, and others that increase from the ends of the canes, should be planted $3\frac{1}{2} \times 7$ feet. Prepare the land same as for Strawberries. Cultivate often enough to keep the soil loose and free from weeds. When the canes attain the height of one foot pinch off the ends; this causes the canes to branch, grow stocky and self-supporting. In the spring of the bearing year cut these branches back to within six inches of the main stalk. After fruiting, cut out all the dead wood. Red Raspberries, and others that sucker, should be set $5 \times 3\frac{1}{2}$ feet apart when they must be cultivated both ways. Allow only three or four canes in each hill to grow,—treat all others that spring up as weeds. When three or four feet high, pinch back cane same as with Blackcaps. The secret of raising fine crops of Raspberries is in rigorous pruning and keeping suckers down. If not checked, the tendency is to mat the surface with canes, when very little fruit is secured. For garden culture the red varieties may be set three feet apart each way, and Caps 4×3 feet.

THE COLUMBIAN RASPBERRY

This variety is so well advertised and so popular as a berry for the home garden that it is known from Maine to California. One-half dozen strong plants will supply a family with fruit, as it grows from eight to twelve feet high, and in fruiting season its branches are covered with fine, large, crimson berries. Plants perfectly hardy, have endured 28° below zero without freezing. It is the best in the world for canning, and grown largely for evaporating, retaining its color, form and flavor remarkably. Each 15 cents; dozen 80 cents, hundred \$3.50.

RED RASPBERRIES

Loudon. This Raspberry has been tested in many localities, and practical fruit growers agree that it is an advance beyond the best of the standard varieties. Hardier, better, and far more productive than Cuthbert, and the berries are larger and the drupes longer. Berries firm, bright red; cling to the stem and do not crumble in picking; splendid shipper. Plant vigorous, heavy yielding, and practically thornless. Each 15 cents; dozen 75 cents; hundred \$3.00.

Cuthbert. A valuable late variety; large, firm, and of superior quality; very productive. Each 15 cts.; dozen 60 cts.; hundred \$2.50; thousand, \$9.00

Miller's Red. One of the best early varieties. As large as Cuthbert. Bright red. Flavor fruity and rich. Each 15 cts.; dozen 75 cts.; hundred, \$3.00.

BLACK RASPBERRIES

Cumberland. A most remarkable Raspberry on account of its wonderful size and good qualities. Very hardy, having withstood a temperature of 16° below zero; very productive, making large crops of enormous berries about one inch in diameter. Fruit very firm and may be shipped long distances; may be called a mid-season variety, coming in shortly ahead of the Gregg. Each 15 cents; dozen 75 cents; hundred \$3.00.

Mills. This variety is extremely large, perfectly hardy, free from blight or rust, large as the Cumberland, very firm, and with the bloom somewhat like the Gregg. It has been the most productive of all the Black Raspberries we have tried, and brings the highest price of any in the market. Each 15 cents; dozen 75 cents; hundred \$3.00.

Ohio. Fruit large, fine quality, and best of Cap sorts for drying. Strong, hardy, productive, late. Dozen 75 cents; hundred \$3.00.

Palmer. Resembles Standard Early Tyler, but larger and better; recommended for early bearing. Each 15 cents; dozen 75 cents; hundred \$3.00.

YELLOW RASPBERRIES

Golden Queen. Very productive; fruit large, light amber color; equally as hardy as any other sort. Each 15 cents; dozen 85 cents; hundred \$3.50.



THE COLUMBIAN RASPBERRY

Collections of Small Fruits

No changing or substituting permitted. Postage or Express prepaid.

Collection No. 1—Strawberries

Five varieties, early, medium, and late, which in our judgment are best adapted for general garden culture.

12 Echo . . . \$0 25	12 Glen Mary . . . \$0 25	12 Seaford . . . \$0 25
12 Gandy . . . 25	12 Sample . . . 25	

Five Varieties — 60 Plants — for \$1.25, delivered

Collection No. 2 Raspberries

RED—6 Loudon \$0 40	BLACK—6 Cumberland . . . \$0 40
6 Columbian 40	6 Palmer 40

Four Varieties — 24 Plants — for \$1.25, delivered

Collection No. 4—Currants and Gooseberries

6 Red Cross (red) \$0 75	2 White Grape \$0 75
2 Black Champion 75	2 Gooseberries, Downing . . . 75

Four Varieties — 12 Plants — for \$1.50, delivered

Collection No. 5—Grape Vines

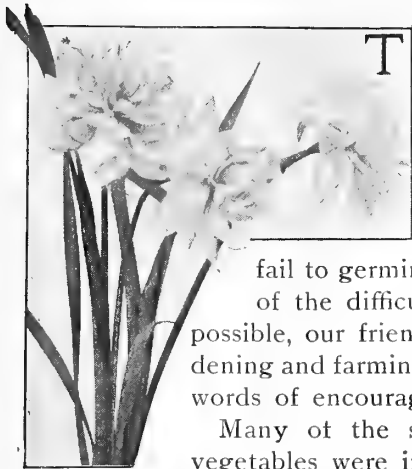
1 Agawam, (red) \$0 25	1 Niagara (white) \$0 25
1 Catawba (red) 25	1 Campell's Early (black) . . . 25
1 Diamond (white) 25	1 Worden (black) 25


Six Varieties — Six Plants — for \$1.25, delivered

Grand Collection of Small Fruits

No. 1, Strawberries
No. 2, Raspberries
No. 4, Currants and Gooseberries
No. 5, Grapes

All for \$4.50



TO CUSTOMERS who have favored us with words of encouragement, and with testimonials as to the quality of Vick's Seeds, we extend our hearty appreciation. There are, however, many who remain silent so long as the seeds grow and produce good flowers or vegetables, and who say nothing about results from high quality seeds, skillful cultivation and good soil; but on the other hand, if on account of inclement weather, or inexperience in planting, seeds fail to germinate, we are almost sure to hear from them. While we wish to learn of the difficulties under which our patrons labor, and also wish to assist, so far as possible, our friends in successful gardening and farming, we enjoy receiving words of encouragement like this: 

Many of the standard varieties of vegetables were introduced by James

Vick, or by his sons, and Vick's Asters are famous among florists and amateurs wherever these popular flowers are grown. The late introductions of flowers and vegetables listed in Vick's Garden and Floral Guide (issued January 1st) are worthy of your attention; they have been tested by many customers and market gardeners in various parts of the country, and been found of the highest grade for home garden and market. Among them are:

Volga Cabbage, heads large, round and solid.

Golden Nugget Corn, tender and sweet, 2d early.

Lemon Cucumber, a distinct novelty. Delicious flavor, crisp, tender. Fruits profusely.

Ailsa Craig Onion. Snow-white flesh, flavor mild as a Spanish onion, and the size is immense.

The Three Best Peas for the Home Garden

Thomas Laxton, early **Vick's Daisy**, medium
Improved Stratagem, late

Vicktor Potato, extra early; smooth, roundish and slightly flattened. Cooks dry and mealy.

Scarlet Globe Radish, skin rich red, flesh white, shape oval; handsome in form and color.

Earliana Tomato. Our own growing. A week earlier than any other. Large size, smooth.

Branching Asters, Early and Late.

Mikado Pink Asters.

Vick's Violet King Aster

New Ruffled Petunias, many glorious colors.

Golden Gleam Lily, the only golden yellow lily.

The Magic Flower (see page 19).

Some who have never grown Vick Quality Vegetable and Flower Seeds, and who do not know the superiority of our leading varieties, will be interested to learn of the experience of those who have tried them, and we therefore wish you would write us just how they have succeeded with you and your opinion of them. Please don't neglect this, as your judgment is valuable.

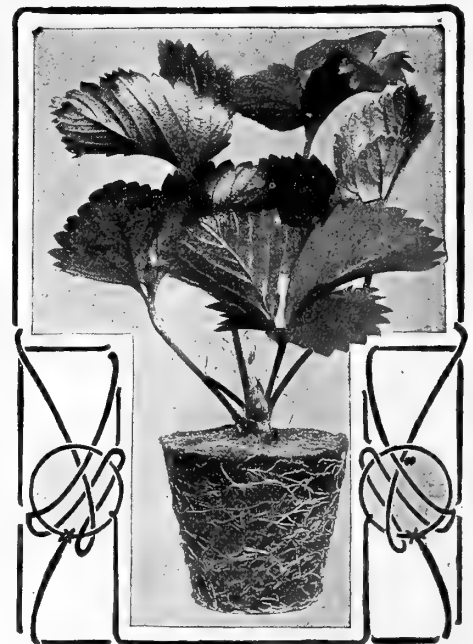
Your New Ruffled Petunias have done well with me. The seed germinated splendidly and the plants have been in bloom a week now. Not bad for North-west Canada.

Wm. B. Crawther
Edmonton, N.W.T.

**Pot
Grown
Plants
Save a
Year's
Time.**

**Why
Not
Save It
?**

**"Time
is
Money"**



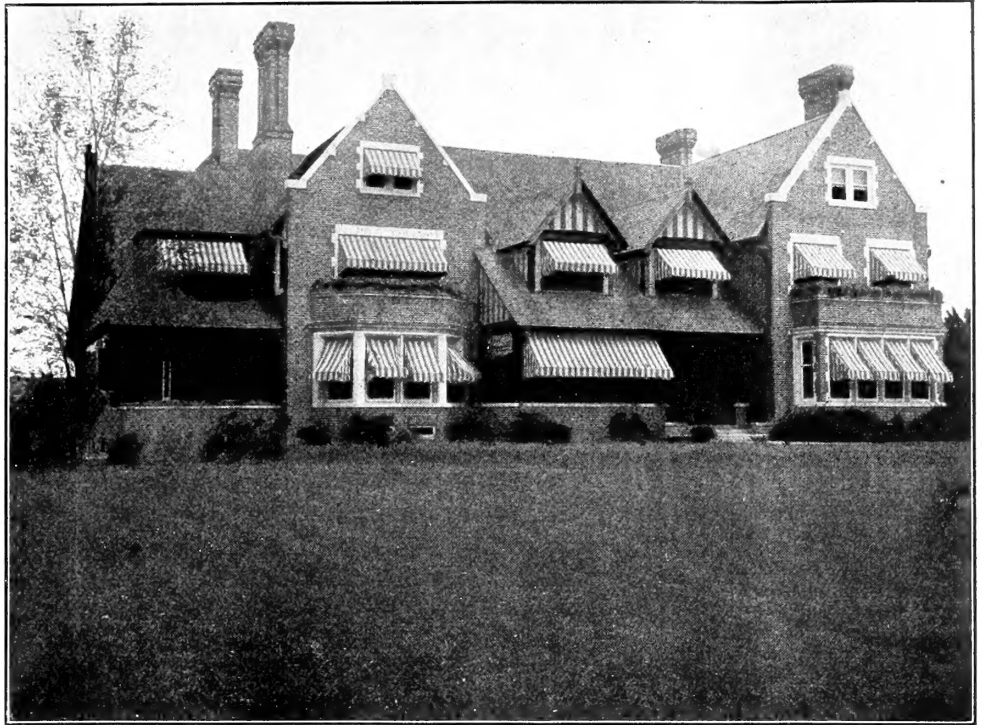
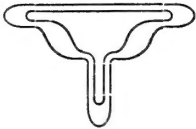
If strong pot grown Strawberry plants are put out early in the autumn an abundant crop will be the result the following spring. We have an exceptionally fine lot of these, embracing the leading varieties, and have great confidence in offering this stock, which has been grown especially for our most critical trade.

Brandywine	Glen Mary	McKinley	Sharpless
Bubach No. 5	Gandy	Nick Ohmer	Senator Dunlap
Climax	Marshal	President	Wm. Belt
		Steven's Late Champion	

Per dozen 50 cents; per hundred \$3.50.
To be sent by Express, charges not prepaid.

Vick's Velvet Lawn Grass Mixture

Makes a rich
Glossy Green
Smooth Turf



The Velvet Mixture contains all of the very best varieties of grasses suited for the purpose of making a Lawn beautiful in appearance, durable and lasting, and which will stand the frosts of winter and the hot sun of summer, showing a deep rich green at all seasons. The seed used is pure and heavy and especially cleaned. There is a great difference in the quality of Lawn Grass Seed. The mixtures that are sold in the stores and by some seedsmen at a very low price is composed mostly of Blue Grass Chaff, and will not grow. Our mixture is composed of the purest Kentucky Blue Grass Seed obtainable in Kentucky, including White Clover, Sweet Vernal and other desirable grasses for Lawns. Per quart, 30 cents; lb., 45 cents; postpaid. Peck, (5 lbs.) \$1.50; bushel (20 lbs.) \$5.00; express or freight not prepaid.

Vick's Shady Spot Lawn Grass

For shaded corners or under trees, where ordinary grasses will not thrive. Quart, 30 cents; pound, 45 cents; peck, (5 lbs.) \$1.50; bushel (20 lbs.) \$5.00. Express or freight not prepaid.

Special Grass Mixtures

These Mixtures contain over a dozen of the best permanent grasses, both American-grown and imported. All are permanent, and when once established will last indefinitely, if the fertility of the soil is kept up by occasional top-dressing.

Standard Hay Mixture. For general hay lands; containing six varieties of grasses and clover. Pound, 25 cents; 100 lbs., \$18.00.

Standard Pasture Mixture. For ordinary pastures, where the land is neither very wet nor very dry. Pound, 25 cents; 100 lbs., \$18.00.

Dry Pasture Mixture. For very high and dry pastures; containing grasses that withstand exposure and severe weather. Pound, 25 cents; 100 lbs., \$18.00.

Wet Pasture Mixture. Made up of grasses especially adapted to damp places. Pound, 25 cents; hundred lbs., \$18.00.

All the above mixtures are made up to sow 35 pounds to the acre. At the prices given we do not prepay carrying charges. Not less than 25 pounds at 100 pound rate. No charge for bags or packages.

Pulverized Sheep Manure, a Clean and Effective Fertilizer

A pure, natural, odorless fertilizer and the most nutritious food for all vegetable growth. The best for lawn and garden. Its effect is immediate, lasting, and it can be applied without risk. On lawns its effect is readily apparent and should be applied either in spring or fall to achieve the best results. One ton is sufficient for an acre, and 12 pounds for a plot 15 by 20 feet. 6 lbs., 35 cents; 25 lbs., 75 cents; 50 lbs. \$1.25; 100 lbs., \$2.00; charges not prepaid.

Estate of W. H. Wadsworth, Geneseo, N. Y.

JAMES VICK'S SONS

July 1, 1909

Gentlemen — The Lawn Grass Seed which we received from you the past season has proved a success, despite dry weather, making a thick sward, and entirely free from weeds.

JOHN LIVINGSTONE.

The Eastman Estate, Rochester

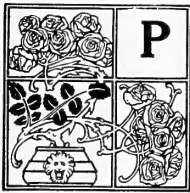
JAMES VICK'S SONS

June 18, 1909

Gentlemen — I have used your Lawn Grass seed Mixture for the past three years and find it a mixture of superior quality, producing a beautiful lawn. The lawn in the Eastman gardens is admired by everyone who sees it. I recommend your seed to anyone who desires a satisfactory lawn.

WILLIAM PIRIE.

Seeds of Hardy Plants for Fall Sowing



PERENNIALS and Biennials are not given the space which they deserve in our gardens. The original outlay for a good assortment is practically nothing; to a large extent they take care of themselves, furnish an abundance of flowers which are extremely useful for cutting, and many of them will bloom the first year if the seed is sown early in the fall. A slight protection of leaves or straw is an advantage, but not absolutely necessary. A garden of perennials is a garden of pleasure from early spring until late in autumn. Our catalogue of *Hardy Plants, Old and New*, gives much valuable information about these garden favorites. Ask for a free copy.

PERENNIALS

Adlumia cirrhosa. Sometimes called Wood Fringe, Mountain Fringe or Climbing Fumitory	10
Adonis vernalis. Flowers yellow	5
Alyssum saxatile compactum. Golden yellow flowers. The popular name is Gold Dust	5
Aquilegia. Carnation or Striped. White, with red stripes; double	10
Chrysanth. A beautiful, large-flowered, canary-yellow variety. Three feet	5
Skinneri. Colors scarlet and yellow. Two feet	10
Cœrulea. Flowers large; sky-blue and white	10
Glandulosa vera. Dark blue flowers; pure white corolla	10
New Large-Flowering Hybrids. Large yellow, with orange spurs	10
Sulphur yellow, with blue spurs	10
Mixed Varieties, single or double, each	5
Asperula odorata. The flowers are pure white. Six inches	5
Campanula Carpatica. Six inches high. White and blue mixed	5
Pyramidalis. Plants three feet high. Blue and white, mixed	10
Grandiflora. (Platycodon). Large bell-shaped, deep blue flowers	10
Candytuft, Iberis sempervirens. White, one foot	10
Gibraltarica. Lilac, shading to white. One to two feet in height	10
Coreopsis grandiflora. Golden yellow flowers	10
Lanceolata. Similar to the above. Used extensively for cut flowers	10
Digitalis. Mixed varieties	5
Gaillardia grandiflora. Crimson, scarlet, orange and yellow. Mixed colors	10
Gypsophila paniculata. (Baby's Breath). White	5
Hollyhock, Double. From the best named collection in Europe	10
New Fringed Mammoth Allegheny. All colors mixed	10
Lychnis chalcedonica. Two feet high, brilliant scarlet flowers	5
Larkspur—Delphinium Formosum. Brilliant blue, white eye. Three feet	5
Formosum cœlestinum. (Pillar of Beauty). Celestial blue; flowers large; spikes long. Plants three feet in height	10
Zallii (Hardy Yellow Larkspur). Sulphur yellow; bearing spikes of forty to fifty blossoms each, an inch in diameter. Plants one to two feet	10
Large-flowering Hybrids. Three to six feet high. Flowers of various shades. Finest varieties mixed	5
Extra choice double, mixed	5
Perennial Peas. Grow five feet high. White, Red, Rose or Pink, or mixed varieties; each	5
Pinks, Dianthus plumarius, (Pheasant's Eye, or June Pink, sometimes called Grass Pink). Closely related to the Carnation. Single varieties mixed	5
Plumarius, Pheasant's Eye or June Pink. Double	10
Cyclops Pink. New variety of Scotch Pink, producing an entirely new series of colors of exquisite beauty, enlivened by a large eye of velvety blood red. Has a sweet clove-like perfume. Single	10
Semperflorens. Florist's Perpetual Pink. Very sweet-scented, double and single flowers. Great diversity of colors	25
Myosotis palustris (True Forget-me-not). Blue with yellow eye	10
Poppy—Papaver bracteatum. Scarlet. Three feet high	5
Involucratum maximum. Fine large flowers	5
Orientalis. Very large; red. Three feet	5
Primula auricula. Fine mixed	25
Auricula. From named flowers	50
Eliator (Polyanthus). Fine mixed	10
Vulgaris. Wild English Primrose	10
Rocket (Hesperis matronalis). Sweet Purple, Sweet White, or mixed, each	5
Pyrethrum roseum hybridum. Double varieties mixed	25
Roseum hybridum. Single varieties mixed	10
Shasta Daisy. The pure white flowers are from two and one-half to four inches in diameter	10
Viola odorata (semperflorens). Deep violet-blue, and deliciously fragrant	10
The Czar. Blue and White, sweet-scented, each	10

PERENNIALS that bloom the First Year from Seed

Antirrhinum. New Giant-Flowered. Fine flowers, double the size of ordinary sorts, of a rich velvety texture. Bright Crimson; Brilliant; Chamois; Deep Scarlet; Firefly; Galathea; Yellow; Rose; Striped; White; each	10
One packet each of the above ten varieties for 75 cents.	
Extra Fine Giant-flowered Mixed. Per ounce, 60 cents	5
Tom Thumb. Very pretty dwarf plants, about six inches high, and of the usual colors described above. Mixed colors	5
Daisy, Best German Seed. Mixed colors	10
White. Constant	10
Longfellow. Large, rose-colored flowers	10
Snowball. Perfectly double and pure white	15
Larkspur nudicaule. Bright scarlet; native of California. One foot	10
Chinese. Two to three feet. Blue, white, and pink, mixed	5
Lobelia cardinalis. Blooms first year if well started with heat	10
Lychnis Haageana hybrida. One foot in height. Mixed colors	5
Viscaria splendens. Flowers bright crimson	5
Pansies, Vick's Giant Superb. Packet, 40 cents; two packets, for 70 cents; ½ ounce, \$1.00; ounce, \$7.50.	
Vick's Peerless. Packet, 25 cents; ½ ounce, 90 cents; ounce, \$5.00.	
Masterpiece. Packet	25
Giant-Flowering Varieties, Mixed	10
Standard Varieties. Mixed Seeds, packet, 5 cents; ½ oz. 25 cents; ounce, \$1.50.	
Iceland Poppy—Papaver nudicaule. Pure White, Yellow, and Orange. Separate or mixed, each	10
Collection of the three Iceland Poppies for 25 cents.	
Primula Forbesii. (Baby Primrose)	20
Obconica grandiflora alba. Profuse bloomer, bearing on long stems, heads with 10 to 15 white flowers, occasionally shading to lilac	15
Obconica grandiflora. Mixed varieties	15
Pyrethrum Golden Feather. Prized for its yellow foliage	10
Cornflower Aster, Stokesia cyanea	15
Viola cornuta. Tufted Pansies. All the finest colors mixed	10
Viola lutea grandiflora (splendens). Large yellow	10

BIENNIALS (Bloom the Second Year from Seed).

Campanula Medium (Canterbury Bell). Flowers large. Plants two feet high.	
Single varieties mixed	5
Double varieties mixed	5
Calycanthemum (Cup and Saucer). Flowers, three inches long, saucer three inches across	5
Myosotis alpestris. Blue. Six inches	5
Alpestris alba. White. Six inches	5
Alpestris rosea. Rose. Six inches	5
Alpestris Indigo blue. New, very fine	10
Alpestris robusta grandiflora (Eliza Fonrobert). Blue, with clearly defined yellow eye	10
Alpestris Victoria. Sky blue, dwarf	10
Sweet William, Holborn Glory. Magnificent large flowers	10
Perfection (Auricula-flowered). Single varieties mixed	5
Extra choice, mixed	10
Double varieties mixed	5
Dunetti. Single. Blood-red, velvety texture	5
White. Single. Constant	5

JAMES VICK'S SONS:

Plants received in due time, in fine condition, much larger than I expected, especially the Pæonias. Many thanks for the same.
Indiana. LOTTIE E. TITUS.

MISCELLANEOUS SUPPLIES

Grafting Wax. ¼ lb., 15 cents; ½ lb., 25 cents; lb., 35 cents, postpaid.

Budding Knives. Postage paid.

No. 718—1 blade, open, cocoa handle	\$0 35
No. 850—2 blade, folding, ivory handle	1 00
No. 419—2 blade, folding, ivory handle, superior steel	1 50
No. 690—2 blade, folding, buffalo handle, ivory tip	1 00
No. 919—1 blade folding, ivory handle	1 00
No. 917—1 blade, folding, ivory handle, sheep's foot blade	1 25

Pruning Knives. Postage paid.

No. 1002—1 hook blade, open, wood handle	60
No. 117—1 hook blade, folding, cocoa handle, round end	80
No. 801—1 blade, folding, cocoa handle, 4-inch blade	65
No. 923—1 blade, folding, stag handle, 4-inch blade	1 00
No. 928—1 straight 3¼-in blade, folding, stag handle	1 50

Labels. Wooden. Painted. Charges not prepaid.

3½ inch, pot, per 1000	75
4 inch, pot, per 1000	90
4½ inch, pot, per 1000	1 00
5 inch, pot, per 1000	1 25
6 inch, pot, per 1000	1 50
8 inch, pot, per 100	2 50
3½ inch, tree, notched, per 1000	1 25
3½ inch, tree, pierced, per 1000	1 25
1 x 5 inch, tree, notched, per 100	60

Plant Tubs. Fibrotta ware, practically indestructible, impervious to moisture, light, easy to handle. 12½ inch, each \$1.25; 13½ inch, each \$1.50; charges not prepaid.

Plant Stands. Fibrotta ware. 16-inch, \$1.25; 18-inch, \$1.35; 20-inch, \$1.50; charges not prepaid.

Potting Soil. Especially prepared and sifted, per bu., 60 cents; bbl., \$1.50; charges not prepaid.

Pruning Shears. Charges not prepaid.

No. 1537—8-inch	} Nickel {	\$0 65	
No. 1537—8½-inch		85	
No. 1538—8½-inch		} Plated {	1 00
No. 512—6-inch			85
10-inch, Wiss, genuine			2 50	
9-inch, Wiss, genuine			2 25	

Raffia. For tying, per lb., 20 cents; 5 lbs., 90 cents; 10 lbs., \$1.50; charges not prepaid.

Raffia. For Basket making. Our present list embraces the following colors: No. 3, Indian Red; No. 12, Light Orange; No. 5, Yellow; No. 16, Bright Yellow; No. 14, Sage Green; No. 17, Emerald Green; No. 6, Dark Navy; No. 20, Purple; No. 8, Pink; No. 10, Brown; No. 9, Black. Per ounce, 6 cents; ¼ lb. 20 cents; ½ lb., 40 cents; lb., 75 cents. Natural, per ounce 5 cents; ¼ lb., 8 cents; ½ lb., 15 cents; lb., 25 cents. Charges not prepaid.

Reeds—	OZ.	¼ LB.	LB.
No. 1	\$0 08	\$0 30	\$1 00
No. 2	07	25	75
No. 3	06	20	65
No. 4	05	20	60
No. 5	04	15	50
No. 6	04	15	50

Sweet Grass. Per ounce, 15 cents; ¼ lb., 40 cents; lb., \$1.50; charges not prepaid.

If Raffia, Reeds, or Sweet Grass are wanted by mail, add postage as follows: ounce, 3 cents; ¼ lb., 6 cents; pound, 18 cents. Samples of Raffia and Reeds on application.

Syringes. Brass. Charges not prepaid.

No. A—12-inch barrel, 1-spray rose and jet	\$2.50
No. 12—14-inch barrel, 2-spray rose and jet	3 75
No. 11—16-inch barrel, 2-spray rose and jet	5 50
No. 5—18-inch barrel, 2-spray rose, jet, and elbow joint	6 50

Sprinklers. Tyrian. Rubber, made with a perforated detachable top; valuable for window gardening, bouquet sprinkling, dampening clothes, etc.; postage paid.

6-ounce size, straight neck	\$0 75
6-ounce size, bent neck	85
8-ounce size, straight neck	1 00
8-ounce size, bent neck	1 10

Weeders. Claw, 25 cents; Brown's Easy, 60 cents; Hazeltine's, 30 cents; Lang's, 30 cents; postage paid.

INSECTICIDES

Note. Liquids and Poisonous Powders cannot be sent by mail.

Dalmatian Insect Powder. The true "Persian" insect powder. ¼ lb., 20 cents; ½ lb., 35 cents; lb., 55 cents; postage paid.

Fir Tree Oil. For all kinds of sucking insects, whether on root, stem or foliage, such as Green and Black Fly, Mealy Bug, Scale, Aphis, etc. Valuable also for animal parasites and insects. ½ pint, 40 cents; pint, 75 cents; qt., \$1.35; gal., \$4.50; charges not prepaid.

Sulpho-Tobacco Soap. Used as a wash for roses, trees, and house plants. Very desirable for insects on animals. 3-oz. cakes 15 cents; 8-oz. cake 30 cents; postage paid.

Tobacco Dust (The Black Stuff). Lb., 25 cts.; postage paid. Special price on large quantities.

Nicotide. (Liquid.) Can be used for either fumigating or spraying. The strongest extract of tobacco on the market. ¼ lb. 70 cents; ½ lb. \$1.25; 1 lb. \$2.50; 8 lbs. \$15.00; charges not prepaid.

Nicofume. A tobacco-paper insecticide for fumigating only. Small size, 24 sheets, 75 cents; medium size, 144 sheets, \$3.50; large size, 288 sheets, \$6.50; charges not prepaid.

Nikoteen. Per pint bottle 1 50

Kerosene Emulsion. 65 per cent. oil. For scale insects, aphids, etc. Quart, 50 cents; gal., \$1.00; charges not prepaid.

Whale Oil Soap. Used as a wash for roses, trees, and plants affected with insects. 1-lb. box, 35 cents, postage paid. Special price on large quantities.

FERTILIZERS

Floral Fertilizer. A chemically correct flower food for house plants. Has no odor, and can be used dry or dissolved in water for sprinkling. Small size (feeds 25 plants six months), 25 cents; large size (feeds 25 plants for one year), 50 cents; postage paid.

Pure Raw Bone Meal. Per sack of 100 lbs., \$3.00; charges not prepaid.

Pulverized Sheep Manure. 6 lbs. 25 cents; 25 lbs. 60 cents; 50 lbs. \$1.25; 100 lbs. \$2.00; charges not prepaid.

The new
Golden Gleam
Lily



JAMES VICK'S SONS
ROCHESTER, N.Y.

This Lily inherits the brilliant luster of the mother plant (*L. tenuifolium*), but instead of being red, is a PURE GOLDEN YELLOW. It is the only PURE golden colored lily known, and is one of the HARDIEST lilies in cultivation. As with all lilies, the fall is the best time to plant "Golden Gleam."