

## Historic, archived document

Do not assume content reflects current scientific knowledge, policies, or practices.



62.61

1327

Loc. 1011  
Rec'd OCT 4 1936

U. S. Department of Agriculture

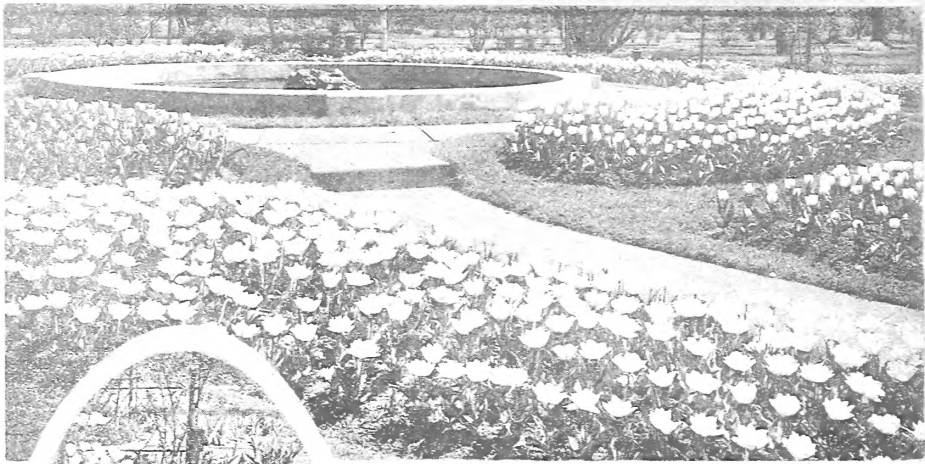


# VICK'S GARDEN AND FLORAL GUIDE

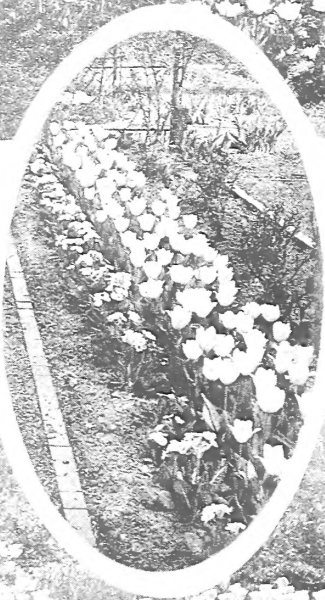
AUTUMN EDITION

JAMES VICK'S SONS  
ROCHESTER, N. Y.  
THE FLOWER CITY.

VICK'S SINGLE  
EARLY TULIPS



FORMAL BEDS  
SINGLE AND  
DOUBLE TULIPS

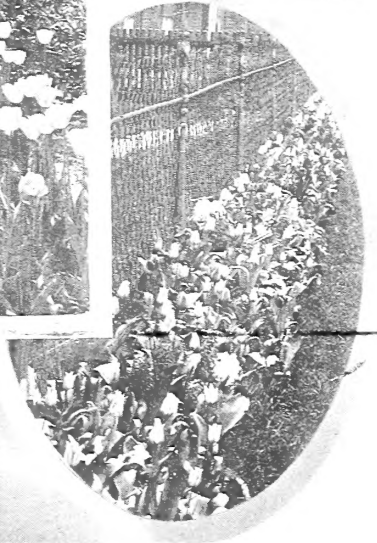


SINGLE EARLY TULIPS USED IN  
BORDER WITH PRIMROSE EDGING



AN ATTRACTIVE  
BORDER OF MIXED  
TULIPS AND  
HYACINTHS

INFORMAL TREATMENT OF  
DARWIN LATE-FLOWERING TULIPS



*A few suggestions how to use  
Fall Bulbs effectively for out-of-  
door planting both in formal  
and informal beds.*

# PLEASE WRITE YOUR ORDER ON THIS SHEET

# JAMES VICK'S SONS, Inc.

ROCHESTER, N. Y. "THE FLOWER CITY"

Gentlemen: Please send me the articles listed below subject to conditions in your Catalogue, for which I enclose: .....

## PRINT OR WRITE YOUR NAME PLAINLY TO AVOID DELAY

Name .....

Street or  
Box No. .... R. D. No. ....

Post Office ..... State .....

(Check in square which way you want order sent)

Parcel Post  Express  Freight

If Express or Freight station is different from Post Office address, ship to this address :  
.....



No matter how many times you have written to us before, always give your name and address in full. For conditions and instructions about ordering, see opening pages of Catalogue. Please use this sheet for orders only. More order blanks will gladly be sent upon request.

**F-30**

	Quantities Seed				PLANTS BULBS ROOTS	Names of Varieties Wanted <small>(Write plainly. See that your correct address is given.)</small>	Total Price	
CHECK COL.	Bu.	Lbs.	Oz.	PCKT.			\$	cts.
Please do not write in this column								
	Amount Brought Forward							

**BE SURE YOUR FULL NAME AND CORRECT ADDRESS ARE GIVEN BEFORE YOU FINISH THIS ORDER**

MORE ORDER BLANKS AND ADDRESSED ENVELOPES WILL BE GLADLY SENT UPON REQUEST

CHECK COL.	Quantities				PL'TS BULBS ROOTS	NAMES OF VARIETIES WANTED	Total Price
	Bu.	Lbs.	Oz.	Pkt.			

THIS LETTER FROM

Name .....

P. O. ....

Street and No. ....

State ..... County.....

Please write your name and address very plainly on the above lines.

STAMP  
HERE

James Vick's Sons, Inc.

Rochester,

New York

"The Flower City"

Please do not write in this column.

Form No. 6001

**POST OFFICE DEPARTMENT**  
THIRD ASSISTANT POSTMASTER GENERAL  
DIVISION OF MONEY ORDERS

No. \_\_\_\_\_  
Stamp of Issuing Office



The Postmaster will insert

here \_\_\_\_\_ the office drawn on, when the office named by the remitter in the body of this application is not a Money Order Office. Spaces above this line are for the Postmaster's record, to be filled in by him

**Application for Domestic Money Order**

Spaces below to be filled in by purchaser, or, if necessary, by another person for him

Amount

Dollars \_\_\_\_\_ Cents \_\_\_\_\_

Pay to Order of **JAMES VICK'S SONS**

(Name of person or firm for whom order is intended)

**SEEDSMEN, FLORISTS, NURSERYMEN**

Whose Address Is \_\_\_\_\_ No. \_\_\_\_\_ Street \_\_\_\_\_

Post Office) **ROCHESTER,**

State **NEW YORK.**

Sent by \_\_\_\_\_ (Name of sender)

No. \_\_\_\_\_ Street \_\_\_\_\_  
City \_\_\_\_\_ and \_\_\_\_\_  
State \_\_\_\_\_

**PURCHASER MUST SEND ORDER AND COUPON TO PAYEE**

65-7165

IF NOT SUFFICIENT ROOM ON THIS SHEET USE OTHER PAPER

OLDEST MAIL ORDER CONCERN IN AMERICA

# JAMES VICK'S SONS, INC.

*Seedsman, Nurserymen, Florists*

ROCHESTER, N. Y.

*"The Flower City"*

September, 1930.

Dear Friend:

Here's the finest opportunity to make a small investment bring in the largest dividends you can find anywhere.

We convinced our growers that we can win much more business for them by their reducing their prices to us. And then we stopped the printing presses long enough to reduce our prices still further to you. As a result many varieties are now at the lowest prices ever catalogued. We go so far as to say that if, when you receive your order, you find lower prices anywhere else from a reliable concern, tell us and we will refund the difference.

And that isn't all!

If you will send us your order promptly, if it exceeds \$2.00 we will send you, on request, absolutely free, two bulbs of beautiful Bearded Iris, carefully labeled, our selection. Or, if you prefer, we will send you a Hyacinth bulb, your selection of color, with every order of bulbs amounting to \$2.00 or more.

Frankly, our reason for making this extra special offer in addition to all the other money saving offers in our book is to induce you to send us your order early.

Where else can you purchase so much beauty, pleasure and satisfaction for so little? When your flowers bloom next spring your enjoyment and happiness will be multiplied by the knowledge that all your friends and every passerby will also enjoy the beauty, grace and fragrance in your garden.

You have nothing to lose, and everything to gain by mailing your order promptly. See our Money Back Guarantee on page 1. Then fill out and mail the attached money-saving order form at once.

Faithfully yours,

JAMES VICK'S SONS, INC.

WHD:LB





## More Beautiful Gardens

Dame Garden has a way of appealing to us all to make our surroundings more and more beautiful. "Something new, something better in your garden next spring," she pleads. "Provide now for the future" she advises, "Plant bulbs and shrubs this fall for flowers next spring."

## Satisfying Desires

Beautiful tulips, hyacinths, daffodils or Narcissus, crocus and lilies, and perennial plants and shrubs are the best means of responding to your instinctive appeals for the beautiful.

## We Help You

To satisfy your desires for the best of everything. We are importing immense quantities of Holland's choicest bulbs packed by experts who have represented us for many years and know our trade requires the "Cream of the Crop."

## Three Reasons Why

this House has successfully served garden lovers everywhere for over 80 years.

### CONVENIENCE

You can select from a larger assortment in our catalogue than in a local seed store. It is as easy to order by mail as by telephone or personal call—as convenient as if our store were on your nearest business street.

### SAVINGS

Bulbs are by no means luxuries—when you buy from Vick's. Our wide experience enables us to buy the choicest quality stock in large quantities, at remarkably low prices. By selling direct to you, we save salaries of salesmen, traveling expenses and high rents and thereby reduce costs to a minimum.

These savings we are glad to pass along to you. We quote what we believe to be the lowest prices in the country for the choicest quality. Furthermore we help you make additional savings because we pay the postage.

Compare our prices. We are willing to let you be the judge. We know that quality for quality, our prices are lowest.

### QUALITY

No matter how swift the service, nor how low the price, if the quality is not there you are not getting your money's worth. Our supply comes from the best and most reliable growers in Holland. Thousands of satisfied customers re-purchase annually over a million bulbs as proof of their satisfaction. And we GUARANTEE our bulbs to grow—or we will refund every penny you have paid.

## We Sell Quality and Service

In the stores where you like to shop you expect to find the best goods and prompt, efficient, careful service. Our long experience and wide-spread trade is proof that you can buy from us as conveniently and as satisfactorily as if our stores were on your street.

## Our Prices are Lower

Look at our prices on Hyacinths! Lowest in 10 years. Look at our offers of plants. No such special low quantities ever offered before. Now is time to fill your garden with plants and bulbs at lowest possible investment. Many kinds are being sold below cost of production.

## Highest Quality Grown

Not only are these the most popular kinds but they will be large size, first class bulbs,—the fact is we never buy

any other kind, for quality is the most important consideration with us. Furthermore, we have not been "shopping around" for cheap offers. These bulbs come from the best and most reliable growers in Holland who have been shipping bulbs to us for years and who know that we must have well ripened, healthy bulbs which will be sure to give abundant satisfaction.

We are confident that no where else can you get better quality at such low prices. If you can, tell us about it and we will refund the difference.

## Many New Varieties

On the advice of our growers and after thorough consideration we have added to our regular stock a number of extra fine varieties, many new, in nearly all classes of tulips. All through our plant pages you will find new and improved varieties. We are sure these newer, better kinds will find a welcome place in many fine gardens this fall.

## How to Order

No intricate system or elaborate orders. Just make your own selection from this book. Fill out our easy order form, enclose the correct amount and we will do the rest. No packing, carting or extras.

We pay the postage unless otherwise mentioned.

**James Vick's Sons, Inc.**

**Rochester, N. Y.**

**"The Flower City"**

## Prompt Shipment

With our warehouse centrally located, near Post Office, express and freight stations, we fill orders quickly.

**ON THEIR WAY  
IN A DAY**

## Our Money Back Guarantee

We guarantee, to the full extent of the purchase price, our plants and bulbs to be sound and healthy and to reach you in good condition. If for any reason you are not satisfied with any purchase, notify us promptly specifying carefully and we will refill or refund your money whichever you prefer, but in no case will James Vick's Sons be responsible for more than the amount actually paid for the goods. This is the guarantee that protects every purchaser from this catalogue.

Remember you are purchasing from a house with experience whose business absolutely depends upon the good will of its satisfied customers. Many of them have purchased here for over 50 years. Their continued trade is proof of our ability to please, and is our best recommendation.

When buying from us—America's First Direct Mail Seed Concern—you receive superior quality, save money, and are protected by our liberal MONEY-BACK GUARANTEE.



### BREEDER TULIPS

- BLACK DIAMOND.** Black, edged mahogany.  
3 for 37 cents; doz., \$1.10; 100, \$6.50.
- COPERNICUS.** Bronze copper-colored brown, yellow base; tall stem.  
3 for 40 cents; doz., \$1.25; 100, \$7.50.
- FEU ARDENT.** Glossy cocheneal-red, shaded mahogany, yellow base; very large flower of fine round shape.  
3 for 50 cents; doz., \$1.50; 100, \$9.00.
- GODET PARFAIT.** Bright violet, clear and refined. A very long lasting flower on tall strong stem.  
3 for 38 cents; doz., \$1.15; 100, \$7.00.
- GOLDEN BRONZE.** Glossy golden bronze with deep gold base. A striking variety.  
3 for 38 cents; doz., \$1.15; 100, \$7.00.
- GREAT SAMSON.** Heliotrope, brownish shaded.  
3 for 37 cents; doz., \$1.10; 100, \$6.50.
- LORD BRYON.** Claret-red, on the outside overlaid with a deeper bloom; long conical flower; lemon-yellow base.  
3 for 50 cents; doz., \$1.50; 100, \$9.00.
- LUCIFER.** Soft orange-red, very bold flower.  
3 for 50 cents; doz., \$1.50; 100, \$9.00.
- MADRAS.** Dark-bronze, long shaped flower, tall stem.  
3 for 30 cents; doz., 90 cents; 100, \$5.50
- PLUTARCHUS.** Bronzy-yellow and terra-cotta.  
3 for 38 cents; doz., \$1.15; 100, \$7.00.
- PRINCE ALBERT.** Bright mahogany-bronze.  
3 for 50 cents; doz., \$1.50; 100, \$9.00.
- ST. JAMES.** Brownish violet; edges turning to bronze; inside bronze.  
3 for 30 cents; doz., 90 cents; 100, \$5.50
- VELVET KING (Dreadnought).** Velvety purple-blue, very strong stem. Extra.  
3 for 50 cents; doz., \$1.50; 100, \$9.00

**See Vick's Artistic  
Breeder Tulip Collection  
on page 7.**

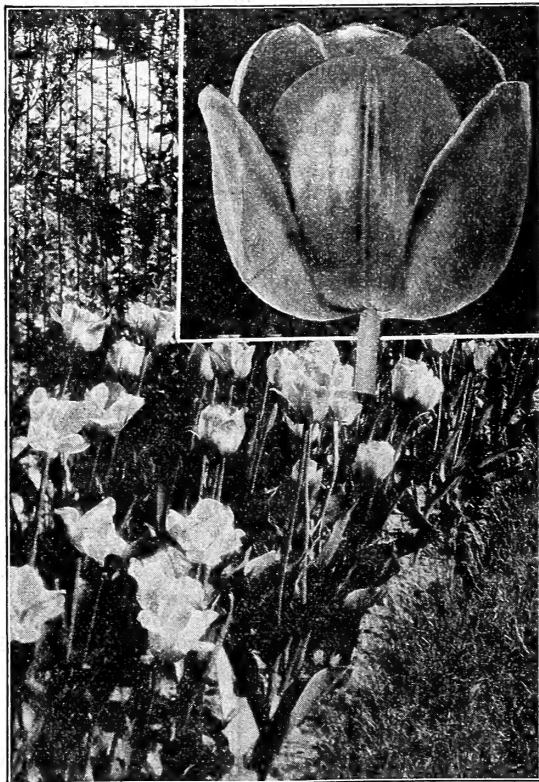
# Choice Selection of

Here for the first time, we offer these from groups of new varieties in several classes at prices for those prevailing heretofore. These magnificent and highly rec-

### DOUBLE TULIPS

- L'AURORA.** Brilliant carmine; the most beautiful round shaped Tulip. A novelty of great merits. New.  
3 for 65 cents; doz., \$2.00; 100, \$12.00.
- MR. VAN DER HOEF.** Pure golden yellow, large flower, good forcer. Sport of Murillo. Extra.  
3 for 38 cents; doz., \$1.15; 100, \$7.00.
- MR. VAN TUBERGEN.** Deep golden yellow, very large bold flower on strong stem. Extra for forcing.  
3 for 40 cents; doz., \$1.25; 100, \$7.50.
- QUEEN OF THE PINKS.** Delicate deep rose; large fine shaped flower on strong stem. Excellent for outdoor or indoor growing.  
3 for 38 cents; doz., \$1.15; 100, \$7.00.
- TOREADOR.** Beautiful orange red with terra-cotta edge. Very large double flower. One of the best for Christmas forcing.  
3 for 60 cents; doz., \$1.75; 100, \$11.00.
- VUURBAAK.** Dazzling scarlet. Very large double flower on strong stem. Splendid for bedding or forcing.  
3 for 40 cents; doz., \$1.25; 100, \$7.50.

## We Pay the Postage



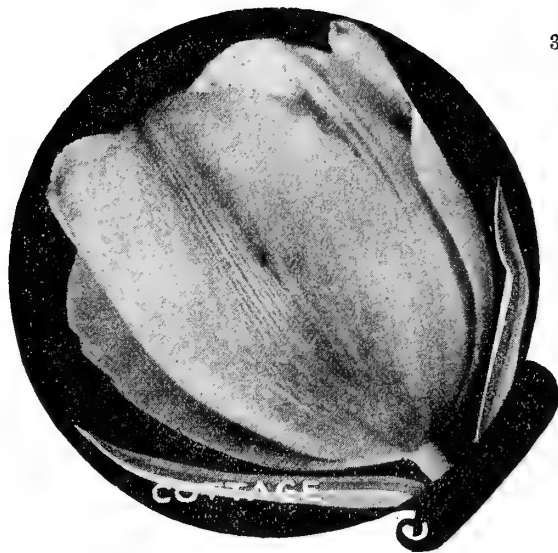
BREEDER

# Newer Varieties

Recommended tulips add amazingly to the range of flower colors and shades and supplement to perfection the varieties offered in following pages.

## DARWIN TULIPS

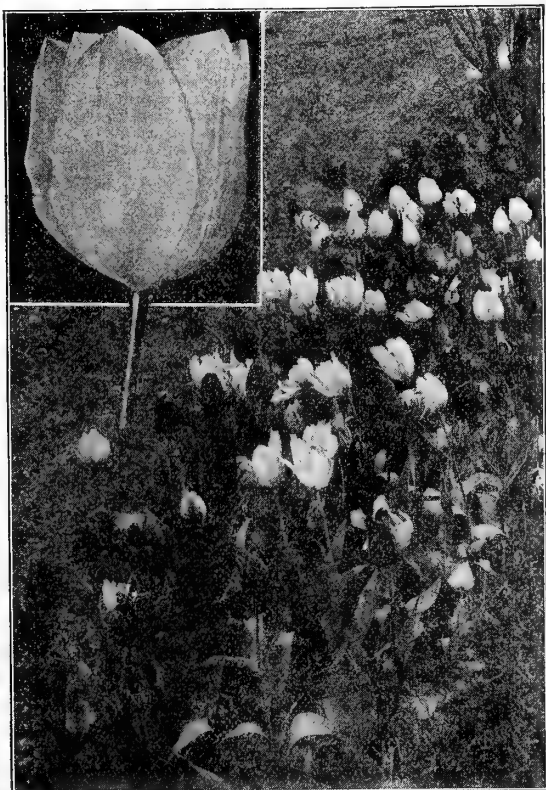
- AFTERGLOW.** Bright rose, edged and shaded orange.  
3 for 50 cents; doz., \$1.50; 100, \$9.00.
- BARON VAN GOLDSTEIN.** Pale salmon-pink, blue filaments; large beautiful flower.  
3 for 65 cents; doz., \$2.00; 100, \$12.00.
- CITRONELLA.** Lemon-yellow; tall flower on strong stem; New.  
3 for 75 cents; doz., \$2.50; 100, \$15.00.
- ETHEL ROOSEVELT.** Pale rose with a bright blue base.  
3 for 50 cents; doz., \$1.50; 100, \$9.00.
- FEU BRILLIANT.** Brilliant scarlet, early.  
3 for 40 cents; doz., \$1.25; 100, \$7.50.
- GLORY OF WALWORTH (Opal Queen).** Heliotrope, edged pale lilac.  
3 for 40 cents; doz., \$1.25; 100, \$7.50.
- LA FIANCEE.** Beautiful old rose with a soft satiny sheen; very tall stem.  
3 for 45 cents; doz., \$1.35; 100, \$8.25.
- LE NOTRE.** Clear rose, large flower, extra for forcing.  
3 for 30 cents; doz., \$90; 100, \$5.50.
- MASNET (The Dove).** Pale lilac rose, creamy white bordered; very large; the latest.  
3 for 45 cents; doz., \$1.35; 100, \$8.25.
- MATCHLESS (Roi d'Islande).** Bright rose; inside soft violet-rose, large flower.  
3 for 40 cents; doz., \$1.25; 100, \$7.50.
- PRESIDENT TAFT.** Deep blood-red, paler edged, very fine.  
3 for 50 cents; doz., \$1.50; 100, \$9.00.



- PRINCE OF THE NETHERLANDS.** Fine rose carmine; immense flower.  
3 for 38 cents; doz., \$1.15; 100, \$6.75.
- PRINCESS JULIANA.** Dazzling orange scarlet.  
3 for 38 cents; doz., \$1.15; 100, \$7.00.
- SCARLET BEAUTY.** Beautiful bright scarlet, strong stem. The best scarlet Darwin tulip for planting outside. Keeps very long.  
3 for 33 cents; doz., \$1.00; 100, \$6.00.
- SIR TREVOR LAWRENCE.** Reddish violet, shaded lilac; enormous flower on very tall strong stem.  
3 for 45 cents; doz., \$1.35; 100, \$8.25.
- U. S. A.** Orange red, with lighter borders; strong stem.  
3 for 45 cents; doz., \$1.35; 100, \$8.25.
- VIKING.** Intense violet, with pale lavender edges; fine color.  
3 for 50 cents; doz., \$1.50; 100, \$9.00.
- ZULU.** Very dark violet black, fine shape.  
3 for 38 cents; doz., \$1.15; 100, \$6.75.

## SINGLE EARLY TULIPS

- AUGUSTA.** Bright deep rose, large gobular shape. A splendid novelty of great merit. Highly recommended for bedding or forcing.  
3 for 30 cents; doz., 90 cents; 100, \$5.50.
- BRILLIANT STAR.** Brilliant scarlet, black centre, large flower, tall erect stem. A grand variety for forcing and for bedding.  
3 for 30 cents; doz., 90 cents; 100, \$5.50.
- COULEUR CARDINAL.** Brilliant scarlet crimson. Beautiful shaped flower, long stem. Splendid for forcing or bedding.  
3 for 37 cents; doz., \$1.10; 100, \$6.50.
- HOBBEEMA.** Rosy lilac, a unique color, large globular flower on strong stem. A splendid exhibition variety.  
3 for 38 cents; doz., \$1.15; 100, \$7.00.
- IBIS.** Dark rose with pink edge; large flower of great substance; extra fine for forcing.  
3 for 38 cents; doz., \$1.15; 100, \$7.00.
- MADAME FRYLINK.** Lively pink; the best early pink Tulip.  
3 for 33 cents; doz., \$1.00; 100, \$6.00.
- QUEEN MARY.** Bright pink, large egg shaped flower, early forcer. New.  
3 for 50 cents; doz., \$1.50; 100, \$9.00.
- RISING SUN.** Golden yellow, very large flower of great substance.  
3 for 50 cents; doz., \$1.50; 100, \$9.00.
- SIR THOMAS LIPTON.** Brilliant scarlet, large flower of great substance on strong erect stem.  
3 for 50 cents; doz., \$1.50; 100, \$9.00.



SINGLE EARLY

PRINCESS ELIZABETH

BARTIGON

# GIANT-DARWIN Best Quality

Beautiful, showy, abundant flowering, these immense brilliantly colored flowers, on tall graceful stems, bloom soon after the Single and Double Earlies and before summer flowers appear.

Out of hundreds of varieties, the following were selected because of their striking beauty and shapely flowers. These are the most popular varieties at exhibits and flower shows. No other Darwins are sold in such large quantities. No other

## Now! A Gloriously

**BARON DE LA TONNAYE.** Flowers very large, of a dainty carmine-rose, shading to soft pink. A grand bedding or forcing variety. Height 26 inches. 6 for 45 cents; 12 for 75 cents; 100 for \$5.00.

**CARL BECKER.** Pale rosy violet with center salmon rose. Large handsome flower; good forcer. Height 32 inches. 6 for 50 cents; 12 for 85 cents; 100 for \$6.00.

**CLARA BUTT.** Clear pink flushed salmon rose; large flowers of handsome shape. Exquisitely beautiful out-of-doors and fine for forcing in the house. Height 21 inches. 6 for 40 cents; 12 for 65 cents; 100 for \$4.50.

PRIDE OF HAARLEM

**DREAM.** Beautiful soft, uniform lilac; large flower. 6 for 45 cents; 12 for 80 cents; 100 for \$5.50.

**EUROPE.** (Salmon King.) Glowing salmon-scarlet; medium size flower on strong stem. Fine for border and splendid variety for pot culture. Height 22 inches. 6 for 45 cents; 12 for 75 cents; 100 for \$5.00.

**GLORY.** Brilliant scarlet, good size flower on long stem. A splendid bedding plant. 6 for 45 cents; 12 for 80 cents; 100 for \$5.50.

**GLOW** (Claude Gillot). Dazzling vermilion-scarlet, base dark blue, margined white. Very showy bedder. 6 for 45 cents; 12 for 80 cents; 100 for \$5.50.

**GRETCHEN** (Margaret). Delicate flesh color, interior soft pink. On account of its dainty color it is very popular as a cut flower. 6 for 45 cents; 12 for 75 cents; 100 for \$5.00.

**HARRY VEITCH.** Color, rich blood red with blue base. Flowers large, borne on stems 28 inches long. An exceptionally fine variety for either the garden or forcing in the house. 6 for 45 cents; 12 for 80 cents; 100 for \$5.50.

**INGLESCOMBE YELLOW.** A large flower, pure glossy canary yellow, cup shaped; very fine for borders and cutting. 6 for 45 cents; 12 for 75 cents; 100 for \$5.00.

**ISIS.** A fiery crimson scarlet with blue base, margined white large and beautiful. Height 27 inches. 6 for 45 cents; 12 for 80 cents; 100 for \$5.50.

**KING HAROLD.** Maroon scarlet with white base. A beautiful variety for the garden standing the weather well. Height 24 inches. 6 for 45 cents; 12 for 80 cents; 100 for \$5.50.

**LA CANDEUR** (White Queen). Almost pure white when mature. At first tinged pale rose. The black anthers add to the showy effect when the flower is open. Medium size. Fine for bedding or pot. Height 24 inches. 6 for 50 cents; 12 for 85 cents; 100 for \$6.00.

**LA TULIP NOIRE** (The Black Tulip). The most famous and finest black tulip, as nearly black as any flower grown. A bloom of rich velvety texture and perfect form. Height 25 inches. 6 for 50 cents; 12 for 90 cents; 100 for \$6.50.

### Newer Varieties

**BARTIGON.** Fiery crimson red, pure white base. One of the best varieties for forcing. Height 24 inches. 6 for 45 cents; 12 for 80 cents; 100 for \$5.50.

**CENTENAIRE.** Rich violet-rose with white base and blue center. Immense flower of perfect shape. Height 32 inches. 6 for 45 cents; 12 for 80 cents; 100 for \$5.50.

**PRINCESS ELIZABETH.** A vivid rosy pink with light border. One of the most beautiful pink Darwins. Height 23 inches. 6 for 45 cents; 12 for 75 cents; 100 for \$5.00.

**PROFESSOR RAUWENHOFF.** Bright cherry red, suffused with scarlet. Height 24 inches. 6 for 45 cents; 12 for 80 cents; 100 for \$5.50.

**SOPHROSINA.** A new light pink shaded rose. A flower of very delicate beauty. 6 for 50 cents; 12 for 90 cents; 100 for \$6.50.

**WHISTLER.** Vivid crimson scarlet with blue base; extra large flower. The finest red Darwin yet produced. 6 for 45 cents; 12 for 80 cents; 100 for \$5.50.

**Darwins planted this fall will make your garden bright and beautiful next spring.**

# FLOWERING TULIPS

## Lowest Prices

Darwins will make your beds and borders so gloriously beautiful next spring.

Best of all, you can make your selection from this list at less expense than you have expected. Less than other good concerns are offering. The description of each of these varieties has been carefully checked with our test records. We GUARANTEE them true to name or we will refund your money. No one can offer better quality at any price.



5

## Brilliant Tulip Bed Within the Reach of Every Purse

**LOVELINESS.** Soft carmine-rose, paler at margin, of good size and fine form. A beautiful Tulip for massing or border. Height 21 inches. 6 for 45 cents; 12 for 75 cents; 100 for \$5.00.

**MADAME KRELAGE.** Bright lilac-rose, margined with pale silvery-rose; inside a soft rose pink. A very long blossom of remarkably handsome form. 28 inches high. 6 for 45 cents; 12 for 75 cents; 100 for \$5.00.

**MASSACHUSETTS.** The height of this fine variety is about 26 inches. The large flowers are a vivid pink, with white center. It is considered one of the very best for the border or massing. 6 for 45 cents; 12 for 80 cents; 100 for \$5.50.

**MR. FARNCOMBES SANDERS.** A large, broad-petaled, perfectly shaped Tulip. Outside surface of petals are scarlet with a rosy bloom. Inside face a vivid cerise scarlet with white center, marked with blue. One of the best. Height 25 inches. 6 for 45 cents; 12 for 75 cents; 100 for \$5.00.

**MRS. POTTER PALMER (Fashion).** A deep purple Tulip of fine form. A great favorite for border planting. 28 inches high. 6 for 55 cents; 12 for \$1.00; 100 for \$7.00.

**NAUTICUS.** A very handsome Tulip for outdoors or forcing in the house. The flowers are borne on strong stems 30 inches high, and are of a pleasing purplish rose, the center a dark violet. 6 for 45 cents; 12 for 80 cents; 100 for \$5.50.

**PAINTED LADY.** A creamy white flower faintly tinged with soft heliotrope. Large and very beautiful; somewhat resembles a Water Lily. 24 inches high. 6 for 45 cents; 12 for 80 cents; 100 for \$5.50.

**PHILPE DE COMMINET.** Large, dark velvety purple flowers almost black on stiff, upright stems. An early forcer and fine for the border. 24 inches high. 6 for 50 cents; 12 for 85 cents; 100 for \$6.00.

**PRIDE OF HAARLEM.** A wonderful Tulip, both for its glorious color and stately habit. A brilliant rosy-carmine flower, sweet scented, very large and of superb form. Unsurpassed for borders and a sure and early forcer. 25 inches high. 6 for 45 cents; 12 for 75 cents; 100 for \$5.00.

**PSYCHE.** A beautiful rich soft rose, inside shading to silvery rose with base tinted blue. Large flower, long stem. Height 28 inches. 6 for 45 cents; 12 for 80 cents; 100 for \$5.50.

**REVEREND EWBANK.** A vivid heliotrope-lilac with lighter tint at the margin. A magnificent flower in the border and fine for forcing. 22 inches high. 6 for 45 cents; 12 for 80 cents; 100 for \$5.50.

**THE SULTAN.** Rich maroon-black with a blue base. A medium size flower of perfect form and velvety texture. 25 inches high. 6 for 45 cents; 12 for 75 cents; 100 for \$5.00.

**WILLIAM COPELAND (Sweet Lavender).** Very beautiful, the best early forcing Darwin Tulip. Its color, when forced, is a delicate rare-lavender. Not so good for outdoor growing. 6 for 45 cents; 12 for 80 cents; 100 for \$5.50.

**VICK'S DARWIN TULIPS.** Separate Colors Unnamed. White, pink, red, rose, yellow. 6 for 40 cents; 12 for 65 cents; 100 for \$4.50.

**VICK'S DARWIN TULIPS.** All colors mixed. 12 for 60 cents; 100 for \$3.90.

## Our Special Darwin Offers

Here are twelve of the most popular Darwins ever introduced. They cover the entire range of colors, and guaranteed to bloom or we will refund your money.

### The Twelve Most Beautiful Darwins

Baron de la Tonnaye, rose pink.  
Bartigon crimson.  
Clara Butt, pink.  
Gretchen, light pink.  
Inglescombe Yellow.  
Isis, fiery scarlet.  
King Harold, deep scarlet.  
Mr. Farncombes Sanders, scarlet.  
Nauticus, deep rose.  
Pride of Haarlem, rosy carmine  
The Sultan, maroon black.  
William Copeland, lavender.

### WE PAY POSTAGE

Each variety labeled separately so that next spring you will know the names of each beautiful flower.

### Offer "A"

3 bulbs each all 12 kinds

### Special Price

Regular Value \$2.68 **\$2.35**

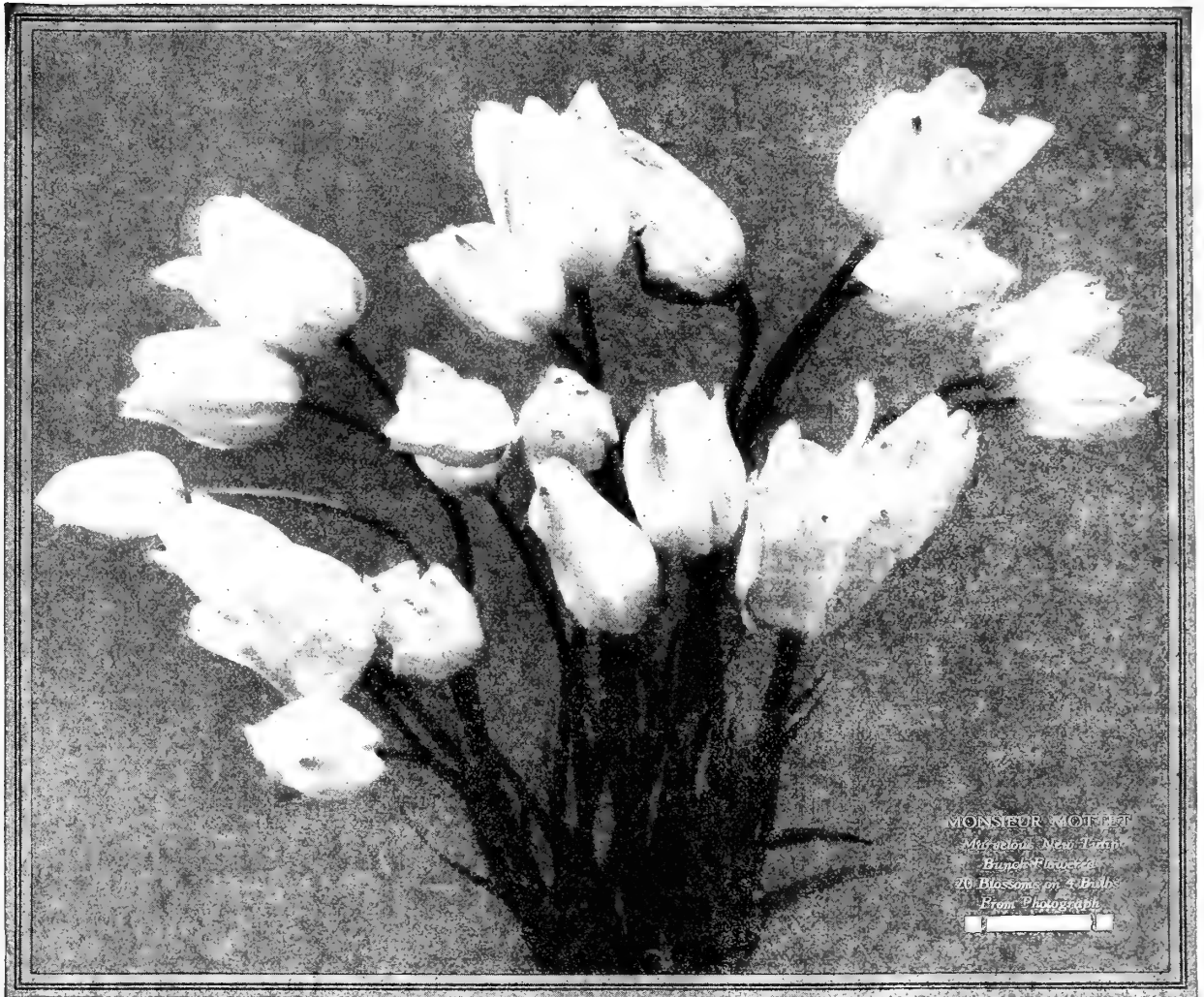
You Save 33c

### Offer "B"

6 bulbs each for **\$4.40**

You Save 95c

**We Guarantee Safe Delivery Of All Our Shipments**



## MONSIEUR MOTTET—the new sensation!

**MONSIEUR MOTTET, New Multi-Flowering Tulip.** One of the outstanding new things in tulips in many years. Produces several flowers, sometimes as many as 6 or 7, from one bulb, all blooming at the same time—an actual bouquet for the price of one bulb. The flowers open almost as white as a morning cloud, and gradually deepen to a beautiful rose pink. Grow on long slender graceful stems two feet or more in height. Very easy to grow in any good outdoor location. Blooms at the same time as the Darwins and Mayflowering varieties.

You will find it unusual, interesting, and valuable. No other bulb has received more favorable comment than this innovation. Purchasers are profuse in their praises. All speak highly of the color and flower. All mention the interest and pleasure shown by those who see the blooms. We recommend it highly.

For your own pleasure—for the wonder and delight of your friends next spring, plant a dozen or more in a small spot in your garden this fall. When they bloom next May your friends will think you planted 4 or 5 times as many. And if you are not fully satisfied we will refund your money.

**6 for 75c; 12 for \$1.35; 100 for \$9.00**

**--produces as many  
as six flowers on  
each bulb**

**--averaging only**

**2½c**

**a flower**

# BREEDER TULIPS

**--the flower with a  
startling history**

The names of these beautiful, large flowered, late tulips suggest their 16th century ancestry. At that time fortunes were spent in frenzied speculation in the "Tulip Craze" for rare varieties bred from this class. For four years the excitement continued. As high as 13,000 florins was paid for a single bulb. The mania continued until governmental interference was necessary to end the ruinous speculation.

The following names give no conception of the rich blending of colors in a single flower which alone distinguishes these flowers from Darwins. Words and pictures are far too inadequate to portray the exquisite beauty of the artistic Breeder Tulips. No other flower in existence gives the color blending for which these newer varieties are famous. For house decorations, either potted or as cut flowers, the colors blend with the most beautiful tapestries, rugs, and furnishings.

Prices of Breeder Tulips have always been high. Because we purchase them in such large quantities, we can now offer them to you at unusually low prices. These varieties, once enjoyed only by wealthy folk who could afford them, are now within the reach of every purse. You will be delighted with any selection you make from this page.

## SOME RARE VARIETIES

- LOUIS XIV.** Rich dark purple flushed bronze with broad margin of golden brown. Considered the most beautiful Breeder Tulip. 6 for 60 cents; 12 for \$1.10; 100 for \$7.50.
- APRICOT.** A beautiful bronze shaded ruddy apricot with orange base flushed orange and red; height 25 inches. 6 for 60 cents; 12 for \$1.10; 100 for \$7.50.
- DON PEDRO.** A unique shade of coffee brown shaded at edge with bronze; inside rich mahogany; large flower. 6 for 65 cents; 12 for \$1.15; 100 for \$7.75.
- PRINCE OF ORANGE.** Terracotta with orange scarlet edge, shading to light yellow; a large flower of striking beauty. 6 for 60 cents; 12 for \$1.10; 100 for \$7.50.
- TURENNE.** Purplish brown with broad margin of soft yellow; very large flower. Height 30 inches. 6 for 60 cents; 12 for \$1.10; 100 for \$7.00.

## MOST POPULAR LIST

- ASPASIA.** Clear red shaded with purple; large blue base; center white, shaded blue; extra large flowers; very fine. 6 for 50 cents; 12 for 85 cents; 100 for \$6.00.
- BLACK CHIEF** (Noire Veritable). Dark rich velvety purple almost black. 6 for 55 cents; 12 for \$1.00; 100 for \$7.00.
- BRONZE QUEEN.** (Clio.) Soft bronze or buff tinged apricot; inside golden bronze; very good for pot culture and also fine for out-of-doors; has large flowers of sturdy habit; height 26 in. 6 for 45 cents; 12 for 80 cents; 100 for \$5.50.
- CARDINAL MANNING.** A unique blend of mauve and rose, making a general effect of dull wine red, changing to almost pure orange at extreme edge of petals. 6 for 45 cents; 12 for 80 cents; 100 for \$5.50.

## Artistic Breeder Tulip Collection

A fine opportunity to try out some of the best Breeders at special low prices. Descriptions above:

Aspasia, Jaune D'Oeuf, Bronze Queen, LeMogul, Medea, Fairy

**OFFER M—3 each all six kinds—18 bulbs \$1.59**  
Regular value \$1.80

**OFFER N—6 each all six kinds—36 bulbs \$2.99**  
Regular value \$3.60

Panorama



**Here's VALUE Indeed!**

- GENERAL NEY.** Dull old gold with deep apricot base shaded to orange; height 25 inches. 6 for 50 cents; 12 for 85 cents; 100 for \$6.00.
- JAUNE D'OEUUF.** (Sunrise). Golden, outside petals shaded apricot to orange red; inside orange; very good for forcing. 6 for 50 cents; 12 for 85 cents; 100 for \$6.00.
- LORD CURZON.** (La Singuliere). A wonderfully handsome silvery white heavily flushed at margin with dark maroon crimson. With age color tinges the whole flower; very large; height 25 in. 6 for 70 cents; 12 for \$1.25; 100 for \$8.50.
- LE MOGUL.** A pale silvery lilac passing through white with silver veins; inside a dark lilac; white base; medium size flower; height 18 inches. 6 for 60 cents; 12 for \$1.10; 100 for \$7.50.
- MEDEA.** Lovely salmon carmine, a color that keeps well; one of the largest tulips grown. 6 for 45 cents; 12 for 80 cents; 100 for \$5.50.
- MON TRESOR.** Bright carmine red; large flower of striking color. 6 for 45 cents; 12 for 80 cents; 100 for \$5.50.
- PANORAMA.** (Fairy.) Reddish brown or mahogany shaded and edged with deep bronze; beautifully shaped flower; one of the very best for early forcing. 6 for 45 cents; 12 for 80 cents; 100 for \$5.50.
- PRINCE OF ORANGE.** (Sunset). Rich terracotta red with orange-red margin. Very brilliant and beautiful. 6 for 60 cents; 12 for \$1.10; 100 for \$7.50.
- QUEEN ALEXANDRA.** Soft sulphur yellow or primrose shaded with deep orange, black anthers, wonderfully beautiful. 6 for 45 cents; 12 for 80 cents; 100 for \$5.50.
- TURENNE.** Beautiful purple brown, with yellow margin. 6 for 60 cents; 12 for \$1.10; 100 for \$7.00.
- YELLOW PERFECTION.** Light bronze-yellow, edged yellow; large flower of wonderful beauty. Height 25 inches. 6 for 50 cents; 12 for 85 cents; 100 for \$6.00.
- BREEDER TULIPS OF ALL VARIETIES MIXED.** 6 for 45 cents; 12 for 75 cents; 100 for \$5.00.

**WE PAY THE POSTAGE**

**Breeder's will give your garden the joyous touch of springtime!**

Gesneriana  
Rosea

# May Flowering

## --splendid for house

You can prolong the beauty of your tulip bed for two weeks or more by planting Cottage Tulips. They blossom a few days later than the Darwins and carry the flowering period of Spring bulbs into the early days of June.

Only Cottage Tulips can give you glorious yellow and white shades. Every known color is to be found among them from deepest crimson to bright red orange, intensive yellow and pink cream. Their immense size and brilliant colors make a striking showing either alone or with Darwins and Breeders.

## Picturesque Mayflowering Tulips

The following collection shows a good range of colors and several types of flowers at a lower price than if purchased separately:

**ISABELLA; INGLEScombe PINK,  
PICOTEE, GESNERIANA RED**

**OFFER "K"**

**OFFER "L"**

**4 each of all 4 kinds. Regular price \$1.30.**

**8 each of all 4 kinds. Regular Price \$2.50.**

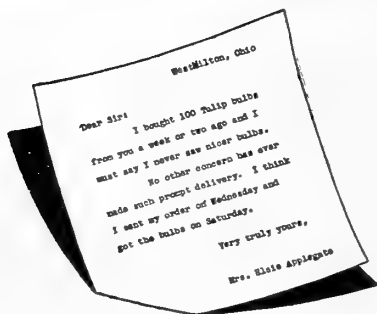
**You save 31c**

**You save 85c**

**Special Price 95c**

**Special Price \$1.70**

**--no other  
store can beat  
these values!**



**BOUTON D'OR (Golden Beauty).** A graceful Tulip with cup shaped golden-yellow flowers that keep a long time in good condition. Unsurpassed as cut flowers and for late forcing. 20 inches high. 6 for 45 cents; 12 for 75 cents; 100 for \$5.00.

**ELLEN WILMOT.** Soft creamy yellow reflexed petals, beautiful elongated flower. 6 for 50 cents; 12 for 85 cents; 100 for \$6.00.

**INGLEScombe PINK (Salmon Queen).** A very attractive Tulip of soft rose color with a salmon flush. Very prominent among the late Tulips. 20 inches high. 6 for 45 cents; 12 for 75 cents; 100 for \$5.00.

**INGLEScombe YELLOW.** A large flower of pure glossy canary yellow; cup shaped. Very fine. 6 for 45 cents; 12 for 75 cents; 100 for \$5.00.

**LA CANDEUR.** A silvery white Tulip that turns to a soft rose as the flower ages. Very beautiful. Height 16 inches. 6 for 45 cents; 12 for 80 cents; 100 for \$5.50.

**LA MERVEILLE.** Orange-scarlet flushed with rose; yellow center. A long, large flower of exquisite form, deliciously fragrant. 20 inches high. 6 for 45 cents; 12 for 80 cents; 100 for \$5.50.

**GESNERIANA LUTEA.** A very fine late yellow for bedding and growing among shrubbery. Flowers are very large and beautifully formed. Color a rich, pure golden yellow. Has a strong stem that will stand the roughest weather. 25 inches high. 6 for 45 cents; 12 for 75 cents; 100 for \$5.00.

**GESNERIANA SPATHULATA MAJOR.** A superb Tulip with very large, intensely brilliant crimson-scarlet flowers, borne on strong yet graceful stems which keep in condition a long time. We strongly recommend this Tulip for all kinds of outdoor planting. Its beauty attracts attention everywhere. 24 inches high. 6 for 45 cents; 12 for 80 cents; 100 for \$5.50.

**ISABELLA (Blushing Bride—Shandon Bells).** Deep goblet-shaped flowers on stems 18 inches high. Creamy white petals tinted with blush, turning as the flower ages to carmine pink. One of the best for forcing and border planting. 6 for 45 cents; 12 for 80 cents; 100 for \$5.50.

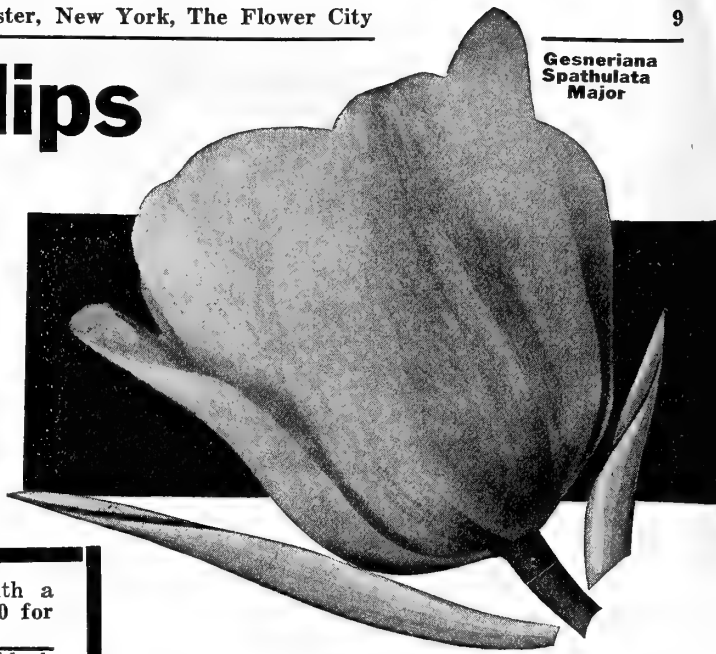


# or Cottage Tulips

## and table decoration

Plant them at random among the shrubbery or perennial beds and you will be delighted at the effect when they blossom. You will be especially pleased because just at that season other flowers are usually lacking. And you will find them exceptionally good for cut flowers.

The list of varieties below is much more complete than usually found elsewhere. And the prices are real bargains. You will find them easy to grow. Plant them preferably in light, well-drained soil and at least 4 inches deep so that if desired the surface soil may be used for other flowers after their blooming season is over.



**Gesneriana  
Spathulata  
Major**

**GESNERIANA ROSEA.** A rosy carmine Tulip with a black center. 6 for 45 cents; 12 for 80 cents; 100 for \$5.50.

**MACROSPILLA.** A crimson-scarlet Tulip with a black and yellow center. Attractive in borders and among shrubbery. 6 for 45 cents; 12 for 80 cents; 100 for \$5.50.

**MOONLIGHT.** A new soft yellow, extra large elongated flower. 6 for 45 cents; 12 for 80 cents; 100 for \$5.50.

**MRS. MOON.** Deep pure yellow, large flowers with reflexed pointed petals. 6 for 60 cents; 12 for \$1.10; 100 for \$7.50.

**PICOTEE (Maiden's Blush).** A very beautiful Tulip as a cut flower and in borders and beds. The petals are recurving, pure white, acquiring in a few days a pink edging which suffuses the entire flower as it grows older. Very beautiful. 22 inches high. 6 for 45 cents; 12 for 80 cents; 100 for \$5.50.

**THE FAWN.** Rosy soft fawn, or dove color, shading to blue. A very graceful tulip of unique, charming color. 6 for 45 cents; 12 for 80 cents; 100 for \$5.50.

**VICK'S MAY-FLOWERING or COTTAGE TULIPS.** All colors mixed. 12 for 65 cents; 100 for \$4.50.

## PARROT OR DRAGON TULIPS

The Parrot Tulips are the most brilliant and showy members of the Tulip family. The colors range from yellow to deep brown, intense scarlet and fiery crimson. They get their name from the characteristic beak or horn formed by the petals giving them a unique, ragged appearance. When massed in a bed they make a dazzling show.

**6 for 45c 12 for 75c 100 for \$5.00**

**ADMIRAL de CONSTANTINOPLE.** Red.

**CAFE BRUN.** Rich brown.

**CRAMOISI BRILLIANT.** Scarlet.

**LUTEA.** Yellow

**MARKGRAAF.** Red and yellow.

**PERFECTA.** Red striped.

**SUPERFINE MIXED.** 12 for 70 cents; 100 for \$4.75.

## --Cottage Tulips are easy to grow!

The Prices in this book have been reduced again and again, as we have succeeded in getting better offers by cable from our growers. You get the benefit of these substantial savings. On the other hand nowhere else can you get better quality at any price.

## --it's easy to order from JAMES VICK'S because we make it convenient by paying the postage.

# EARLY-FLOWERING SINGLE TULIPS

Two or three weeks of brilliant color in April following Daffodils and preceding Darwin Tulips are worth much to any garden. And the early tulips alone can supply it. These gay and dashing varieties, with their brilliant hues, come so soon after dull, cold winter months that they make friends everywhere. Their brilliancy cannot be surpassed by any other class of their own family or any other flower family.

You will find it far more effective to have each color planted in borders or in beds by itself. The bulbs may be left in the ground after blooming and bedding plants set in the same bed without disturbing the tulip bulbs.

For indoor growing or "forcing" single early varieties are the most popular and easiest to grow of any of the tulips. Nothing will furnish you greater satisfaction than one or two pots of all varieties of these brilliantly hued flowers, each pot containing from six to twelve flowers,—especially when their cost is so low!

In the following list those varieties which are best suited for indoor culture are indicated by the term "forcer" or "forcing." The list contains the very choicest, finest, most popular of several hundred known named kinds.

## ARTUS

### A small investment here will yield big dividends of beauty next spring

Varieties marked A are the earliest to bloom; B, following; C, the latest. D, stands for dwarf; T, tall; M, medium height.

**ARTUS.** Flowers large beautiful bright red, making a splendid show when planted alone or with other colors. Outdoors only. B. D. 6 for 40 cents; 12 for 65 cents; 100 for \$4.50.

**BELLE ALLIANCE.** A finely formed flower, bright scarlet in color. One of the best for bedding as it lasts a long time; also one of the best for pot culture. B. D. 6 for 45 cents; 12 for 85 cents; 100 for \$6.00.

**CHRYSOLORA.** Flowers a fine rich golden-yellow of large size. Excellent for bedding on account of its long keeping qualities. A. M. 6 for 60 cents; 12 for \$1.10; 100 for \$7.50.

**COTTAGE MAID.** Rose and white; one of the most charming variegated varieties. Especially for bedding. B. D. 6 for 45 cents; 12 for 85 cents; 100 for \$6.00.

**CRAMOISI BRILLIANT.** Large flowers of brilliant, dazzling red; very effective for bedding. Lasts well. B. T. 6 for 40 cents; 12 for 65 cents; 100 for \$4.50.

**CRIMSON KING.** Fine bright scarlet, yellow at base. Excellent bedder. B. M. 6 for 40 cents; 12 for 70 cents; 100 for \$5.00.

**DUC DE BERLIN.** Light red with broad golden yellow border; very early. One of the best for forcing. A. D. 6 for 50 cents; 12 for 90 cents; 100 for \$6.50.

**DUSART.** Dark scarlet, recommended especially for bedding as it lasts a long time. B. D. 6 for 45 cents; 12 for 80 cents; 100 for \$5.50.

**FLAMINGO.** Beautiful pink and white. The large round flowers open light and deepen with age to a brilliant rose. One of the best new varieties; good for either forcing or bedding. C. M. 6 for 45 cents; 12 for 85 cents; 100 for \$6.00.

**FRED MOORE.** Bright orange, scarlet shaded; very handsome. B. M. 6 for 45 cents; 12 for 85 cents; 100 for \$6.00.

**GOLD FINCH.** Pure golden yellow, sweet scented, excellent for forcing. Superior to the old favorite Yellow Prince. A. D. 6 for 60 cents; 12 for \$1.10; 100 for \$7.50.

**KEIZERSKROON.** Bright scarlet, broad yellow margin. A popular variety for bedding and potting. A. T. 6 for 75 cents; 12 for \$1.35; 100 for \$9.00.

**Lady Boreel.** (Joost Van Vondel, white). New snow-white, enormous show flower for exhibition purposes. Splendid for pots. A. D. 6 for 50 cents; 12 for 90 cents; 100 for \$6.50.

**L'IMMACULEE.** Pure white, good, does well inside. A. M. 6 for 45 cents; 12 for 80 cents; 100 for \$5.50.

**La Reine.** (Queen Victoria.) A splendid variety for either bedding or house-culture. Beautiful rosy white. B. M. 6 for 40 cents; 12 for 70 cents; 100 for \$5.00.

**PINK BEAUTY.** Bright rosy pink, shading to blush white. Very large beautifully shaped flower, becoming very popular. C. T. 6 for 80 cents; 12 for \$1.45; 100 for \$10.00.

**PRINCE OF AUSTRIA.** Bright orange vermillion, one of the finest of forcing, also an attractive bedder. B. T. 6 for 50 cents; 12 for 85 cents; 100 for \$6.00.

**PROSPERINE.** Flowers carmine-rose, large and beautifully formed. Fine forcer. A. M. 6 for 75 cents; 12 for \$1.40; 100 for \$9.50.

**ROSE GRISDELIN.** Soft rose, somewhat shaded with blush white. Fine forcer. B. D. 6 for 40 cents; 12 for 70 cents; 100 for \$5.00.

**ROSE HAWK.** (La Riene Maxima.) Extra large white flower, slightly edged pink. B. M. 6 for 50 cents; 12 for 85 cents; 100 for \$6.00.

**ROSE LUISANTE.** Beautiful deep silky rose. The finest rose Tulip yet produced. C. D. 6 for 60 cents; 12 for \$1.10; 100 for \$7.50.

**THOMAS MOORE.** An old favorite, bright orange, sweet scented. B. T. 6 for 50 cents; 12 for 85 cents; 100 for \$6.00.

**VERMILLION BRILLIANT.** Bright glittering scarlet, yellow base, large flower. Extra fine forcer or bedder. C. D. 6 for 55 cents; 12 for \$1.00; 100 for \$7.00.

**WHITE HAWK.** One of the best pure whites. C. M. 6 for 50 cents; 12 for 85 cents; 100 for \$6.00.

**WHITE SWAN.** Another popular pure white for out-of-doors. C. T. 6 for 45 cents; 12 for 80 cents; 100 for \$5.25.

**YELLOW PRINCE.** Another good old sort. One of the best yellows. A. D. 6 for 50 cents; 12 for 90 cents; 100 for \$6.50.

**VICK'S SUPERFINE MIXTURE OF TULIPS.** Bloom at the same time. 12 for 65 cents; 100 for \$4.25.

**SEPARATE COLORS—UNNAMED.** Bloom at the same time. White, pink, yellow, red, rose, variegated. 6 for 40 cents; 12 for 65 cents; 100 for \$4.50.

Offer "O"

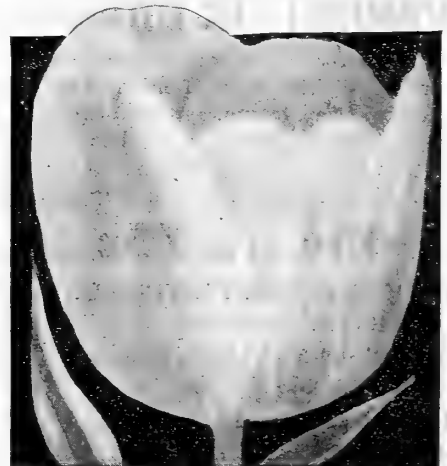
4 each of  
Artus  
Cottage  
Maid  
Gold Finch  
Prince of  
Austria

for  
**\$1.35**

Offer "P"

9 each  
for  
**\$3.50**

You save  
money  
here



YELLOW PRINCE

# VICK'S DOUBLE TULIPS AT BARGAIN PRICES

## *-ideal for bedding and potting*

Because of their giant, peony-like flowers of delicate and brilliant coloring, double tulips are exceedingly popular. They bloom a little later than the single early kind and thus prolong the blooming period until the May-flowering varieties blossom. Quality—unsurpassed! Prices—lowest!

Varieties marked A are earliest to bloom; B, following; C, the latest.

D, stands for dwarf; T, tall; M, medium height.

**BOULE DE NEIGE.** Pure white, very large full peony-like flowers; good forcer. B. D. 6 for 50 cents; 12 for 85 cents; 100 for \$6.00.

**COCHENEAL.** Brilliant carmine red, extra good forcer. 6 for 55 cents; 12 for \$1.00; 100 for \$7.00.

**CROWN OF GOLD.** (Couronne d'Or.) One of the best of the double Tulips; deep yellow, large flowers. Does well for either the garden or forcing. B. M. 6 for 55 cents; 12 for \$1.00; 100 for \$7.00.

**CROWN OF ROSES.** Rich deep rose, large flowers, perfectly double. A. T. 6 for 50 cents; 12 for 85 cents; 100 for \$6.00.

**GLORIA SOLIS.** Red, striped yellow. A showy flower in every respect. Very popular. B. M. 6 for 60 cents; 12 for \$1.10; 100 for \$7.50.

**LA CANDEUR.** A fine double white. One of the best bedding varieties. B. D. 6 for 50 cents; 12 for 85 cents; 100 for \$6.00.

**LORD BEACONFIELD.** A deep cherry rose. B. M. 6 for 50 cents; 12 for 85 cents; 100 for \$6.00.

**LUCRETIA.** A splendid bright pink, large well-formed flowers; forces well. C. M. 6 for 45 cents; 12 for 80 cents; 100 for \$5.50.

**MURILLO.** Extra good for forcing in the house, and equally good for bedding. The finest double light pink. B. M. 6 for 40 cents; 12 for 70 cents; 100 for \$5.00.

**SALVATOR ROSA.** Fine deep rose; large flower; excellent forcer. B. M. 6 for 50 cents; 12 for 90 cents; 100 for \$6.50.

**SCHOONOORD** (Murillo White.) Similar to Light Pink Murillo except in color. The best pure white double Tulip. A. M. 6 for 50 cents; 12 for 85 cents; 100 for \$6.00.

**RUBRA MAXIMA.** Flowers large and double. The color a deep dark scarlet, when massed attracts attention a long distance. One of the best scarlets. A. M. 6 for 55 cents; 12 for \$1.00; 100 for \$7.00.

**TEA ROSE.** Soft sulphur yellow or primrose slightly orange shaded. A unique and attractive color. A. D. 6 for 45 cents; 12 for 80 cents; 100 for \$5.50.

**TOURNESOL RED.** Rich scarlet, yellow edged. Very early A. D. 6 for 55 cents; 12 for \$1.00; 100 for \$7.00.

**YELLOW ROSE.** Best late double Tulip. Pure gold yellow. C. T. 6 for 50 cents; 12 for 85 cents; 100 for \$5.75.

**FINE QUALITY MIXED, EARLY VARIETIES.** 12 for 65 cents; 100 for \$4.50.

**DOUBLE TULIPS SEPARATE COLORS—UNNAMED.**

White, pink, yellow, red, or variegated. 12 for 75 cents; 100 for \$5.25.





12

# VICK'S EXHIBITION HYACINTHS

**--brilliant hued, fragrant, garden favorites**

If you delight in growing the largest and most beautiful flowers you have ever seen—if you enjoy having your friends and neighbors admire and express astonishment at the glorious beauty of your display—then plant Exhibition Hyacinths! These will grow flowers equaling in size and beauty, the best you will see on exhibition in

florists displays. That is why we call them EXHIBITION bulbs! So easily and quickly can they be grown either in soil or water—so fragrant and stately are the blossoms that they are one of the most loved winter blooming flowers ever grown.

**25c each, 4 for 75c; 12 for \$2.00**

## SINGLE RED AND ROSE

- GENERAL DE WET (Pink Grand Maitre). Light pink, large truss; new.  
 GERTRUDE. Rosy pink; large, upright spike; extra fine.  
 LADY DERBY. Waxy pink. A great favorite with particular people.  
 LA VICTOIRE. Brilliant carmine red; extra fine.  
 MORENO. Waxy pink; large bells, extra good truss.  
 QUEEN OF THE PINKS. Lovely bright rosy pink; enormous well-shaped spike.  
 ROSE A MERVEILLE. Blush rose; fine truss.

## SINGLE WHITE

- ARENTEINE ARENDSE. Pure white; large truss; small bells, very early.  
 GRAND BLANCHE. Pure white; fine large truss.  
 LA GRANDESSE. Extra fine pure white; large bells and grand spike.  
 L'INNOCENCE. Extra fine spike of snow-white bells; most popular white.

## SINGLE YELLOW

- CITY OF HAARLEM. Large, pure bright yellow; large spike; extra fine.  
 YELLOW HAMMER. New pure golden yellow; large well-shaped spike; the best yellow hyacinth yet produced.

## SINGLE BLUE AND PURPLE

- ELECTRA. Light silvery blue. Best light blue.  
 ENCHANTRESS. Beautiful porcelain blue.  
 GRAND MAITRE. Dark porcelain blue; grand spike of large bells.  
 KING OF THE BLUES. Rich dark blue; large compact spike.  
 PERLE BRILLIANT. One of the best of the newer kinds; light blue.  
 QUEEN OF THE BLUES. Clear light blue; fine spike of very large bells.

## SPECIAL WONDER VALUE HYACINTH OFFER

Here is a real bargain! If you want a wide range of varieties at the lowest cost take advantage of this money-saving offer. Only because these collections are made up in large numbers at one time, thus reducing expenses, are we able to make this amazing offer. The bulbs are of the most popular varieties, well-developed, medium size and at these prices are rare bargains.

### Collection "Q" and "R" SINGLE Hyacinths

- |                                 |                                |
|---------------------------------|--------------------------------|
| L'INNOCENCE, white.             | GRANDE BLANCHE, blush white.   |
| CITY OF HAARLEM, bright yellow. | KING OF THE BLUES, dark blue.  |
| GENERAL DE WET, light pink.     | LA VICTOIRE, carmine red.      |
| GERTRUDE, rosy pink,            | LADY DERBY, pale pink.         |
| GRANDE MAITRE, porcelain blue.  | QUEEN OF THE PINKS, rosy pink. |

**Collection "Q" 1 each all 10 kinds \$1.50**

**Collection "R" 2 each all 10 kinds \$2.85**

**IT PAYS TO BUY THE BEST  
WHEN PRICES ARE SO LOW**

**WE PAY THE POSTAGE**

**You get the finest quality-or your money back - you save and get prompt service!**

# VICK'S SINGLE HYACINTHS

## -rich in beauty - low in price

# 22c

**A**LTHOUGH not quite so extra large and popular as the Exhibition varieties, the Hyacinths on this page are of the regular large size used by leading florists. We are proud of them because they were carefully selected by our Holland Growers. We are proud of the varieties listed below because they were chosen only after careful study from hundreds of others. They give excellent satisfaction for indoor growing in soil or water and equally good results in the lawn or garden. Because these bulbs grow uniform in shape and size you will be delighted with the effect when they are used as borders in front of shrubbery.

Here you will find a much larger list of varieties and colors than in other seed stores. They are carefully labeled. A small investment now will yield astonishingly large dividends in pleasure this winter.

### 22c each; 4 for 70c; 12 for \$1.75

follow  
the arrow  
and save money

#### SINGLE YELLOW

- City of Haarlem. Large bright, golden yellow; large spike.
- King of the Yellows. Deep yellow.
- Yellow Hammer. Pure golden yellow; new.

#### SINGLE PURPLE

- Haydn. Lilac-mauve, large truss.
- Lord Balfour. Beautiful violet.
- Sir. Wm. Mansfield. Purplish mauve; large truss.

Your  
Money's  
Worth

and  
We Pay  
the Postage

Grandeur a Merveille. Blush white.

Grand Blanche. White, fine.

Hein Roozen. New pure white; best yet.

La Grandesse. Fine snow white.

L'Innocence. Snow white; extra fine spike.

Madame Van Der Hoop. Pure white, large bells.

Queen of Whites. Flowers snow white; fine large truss.

#### SINGLE BLUE

Bismarck. Large truss, fine blue.

Czar Peter. Silvery blue.

Electra. Light silvery blue. Finest light blue.

Enchantress. Porcelain. Extra.

Grand Maitre. Dark porcelain blue. Most popular blue.

King of the Blues. Rich. dark blue.

Perle Brilliant. New light blue; superior to Chas. Dickens.

Queen of the Blues. Light blue.

Schotel. Light lavender; extra fine.

#### SINGLE RED AND ROSE

Baron Van Thuyt. Rose, early.

General De Wet. Light pink; large truss, new.

Gertrude. Rosy pink; large, handsome flower.

Gigantea. Blush pink, large flowers and very large truss.

Lady Derby. Pale pink; very large.

La Victoire. Brilliant carmine red.

Moreno. Fine pink; large bell.

Norma. Light pink, large bells and fine truss.

Queen of the Pinks. Bright rosy pink.

Roi Des Belges. Bright red; early, fine spike.

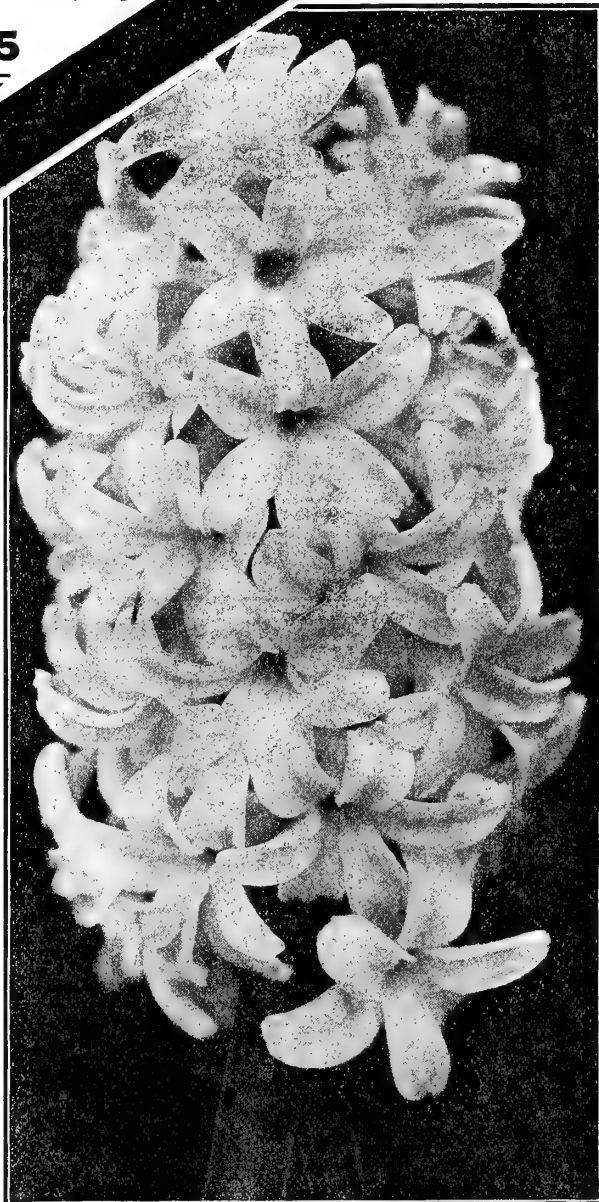
Rose a Merveille. Rose.

#### SINGLE WHITE

Albertine. Pure white. Early.

Arentine Arendse. Pure white. Very fine, new.

General Vetter. White, tinged bluish; large well shaped flowers.



L'INNOCENCE—Single White Hyacinth

# THIS HYACINTH OFFER WILL SAVE YOU MONEY

*if you are interested  
in Colors not in names*

Here is a real money-saving bargain. You will find these Single Hyacinths in separate colors excellent values. Each color consists of varieties of which our growers have a surplus. That's why they are priced so low. The cost is so little, the quality so high that our customers purchase them in large quantities to use for outdoor planting and indoor potting.



A BED OF VICK'S HYACINTHS

**16c each, 4 of a kind for 50c, 12 for \$1.25, 100 for \$7.50**

## VICK'S SINGLE HYACINTHS

Pure White	Red, all shades
Blush White	Light Blue
White, all shades	Dark Blue
Rose and Pink	Blue, all shades
Dark Red	Yellow, all shades

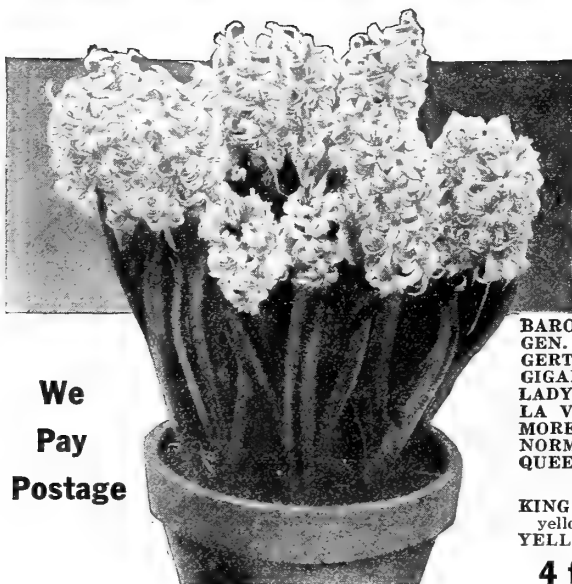
**We Pay Shipping Charges**

*Alvador, Ore.*

*"My Tulips and Hyacinths were the talk of the country for miles around. People came out here from Eugene to see them and I was told people drove miles out of their way just to come by. They sure were a pretty sight. And so large. Some of them, when open, were as large as saucers.*

*Mrs. Leonie Mansfield.*

**COMPLETE COLLECTION, TWO EACH, ONLY \$2.25**



**We  
Pay  
Postage**

## MINIATURE HYACINTHS BLOOM EARLY and FREELY

These are small bulbs, single flowering, and excellent for growing in pots, pans, and boxes in the house or in beds in the open ground. Plant them closely and you will be greatly pleased with the charming effect. Splendid value for the price. **4 for 30c**

### SINGLE RED AND ROSE

BARON VAN THUYL. Light rose.  
GEN. PELISSIER. Deep red; early.  
GERTRUDE. Rosy pink.  
GIGANTEA. Pale rose.  
LADY DERBY. Light pink, very large.  
LA VICTOIRE. Carmine red.  
MORENA. Beautiful pink.  
NORMA. Pale waxy pink.  
QUEEN OF THE PINKS. Rosy pink.

### SINGLE YELLOW

KING OF THE YELLOWS. Pure yellow.  
YELLOW HAMMER. Golden yellow.

### SINGLE WHITE

ARENTINE ARENDSE. Pure white.  
GRANDE BLANCHE. Blush white.  
LA GRANDESSE. Pure white.  
L'INNOCENCE. Pure white.

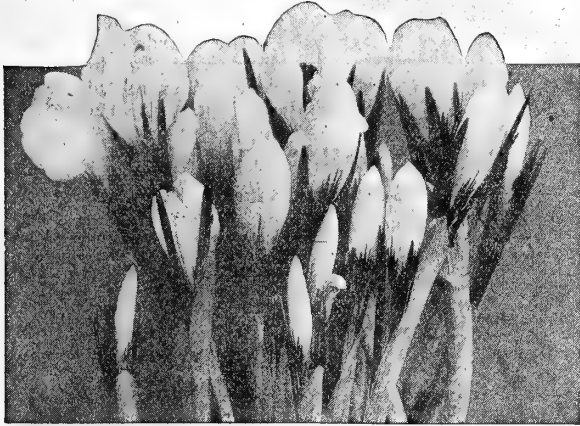
### SINGLE BLUE

GRANDE MAITRE. Dark porcelain blue.  
KING OF THE BLUES. Dark blue.  
LA PEYROUSE. Porcelain  
PERLE BRILLIANT. New light blue.  
QUEEN OF THE BLUES. Porcelain blue.

**4 for 30 cents; 12 for 75 cents; 100 for \$4.50**

# VICK'S CROCUS - herald the coming of spring

Long before Tulips and Daffodils appear, these brave and hardy flowers push their way through the soil to assure you that Spring is near. It is not unusual to see the ground covered with snow and crocus in bloom at the same time. They are hardy, do not deteriorate and may be left in the ground, undisturbed, for years. Because they bloom and are out of the way before the other bulb flowers, it is a good plan to plant Tulip and Hyacinth beds full of them. Large flowering, low prices.



## NAMED VARIETIES, Extra Large Bulbs

	6 for	12 for	100 for
ALBION. Striped .....	\$.35	\$.60	\$4.25
BARON VON BRUNOW. Dark blue .....	.35	.60	4.25
KING OF THE BLUES. Purple .....	.35	.60	4.25
MONT BLANC. White .....	.40	.70	4.50
PALLAS. (New) Striped .....	.40	.70	4.50
PURPUREA GRANDIFLORA. Finest and largest dark purple .....	.45	.80	5.25
SIR WALTER SCOTT. Variegated .....	.40	.70	4.50

## You Pay Less for Unnamed Crocus

	6 for	12 for	100 for
BLUE AND PURPLE .....	\$.30	\$.50	\$3.50
WHITE .....	.30	.50	3.50
STRIPED AND VARIEGATED .....	.30	.50	3.50
ALL COLORS MIXED .....	.30	.50	3.25
LARGE YELLOW. First Size .....	.45	.80	5.25
YELLOW. Second Size .....	.35	.65	4.00

## We Pay Postage

## CASH SAVING BARGAIN BULB COLLECTIONS

Real money-saving bargains at defy-competition prices. Not only are these prices ridiculously low, but they are made up of such a pleasing and adaptable assortment of varieties that if you are at all interested in bulbs for any purpose, you can make good use of them. Equally suitable for either outdoor planting or indoor use. Selected from our regular high-grade choice stock and carefully labeled.

**38 BULBS  
ONLY \$2.00**

6 HYACINTHS—Two each, Red,  
White and Blue.  
12 DARWIN TULIPS—Assorted colors.  
20 CROCUS—Assorted colors.

**SAVE 45c**

**76 BULBS  
ONLY \$3.84**

12 HYACINTHS—4 each, Red  
White and Blue.  
24 DARWIN TULIPS—Assorted colors.  
40 CROCUS—Assorted colors.

**SAVE \$1.06**

## PHENOMENAL! STARTLING!

### Amazing California Redwood Burl 98c

The picture cannot do it justice. Must be seen to be appreciated. Place the Burl in a bowl containing a small amount of water. Soon a wonderful transformation takes place. Sprouts appear. Quickly—within two or three weeks—the entire surface is covered with an intriguing miniature forest of tiny evergreen trees.

Your friends will marvel and wonder at the beauty of this rare handy-work of nature. Extremely hardy, the Burl will grow in any climate and actually grow for years where many other plants will fail.

No special treatment, no care is necessary. Simply keep the base in water and a tiny forest will grow as high as 12 to 18 inches.

And the cost is so slight, the beauty so rare that you should have at least one California Redwood Burl.

**98c each - SPECIAL 6 for \$4.88**

**WE PAY POSTAGE**





# HARDY LILIES

Every garden should have only are they valuable to the garden, but they are flowers for the house. By will secure a succession of blooms from September. Prices are the lowest. An savi

## AURATUM

The Gold-Band Lily of Japan

A favorite variety for outside purposes. No garden, however small should be without it. Its ease of culture and magnificent flowers of a delicate ivory color thickly dotted with chocolate-crimson spots with a gold band running through the center of each petal, make it one of the most desirable varieties of garden lilies. Blooms about July 20th. Although quite hardy, for best results an extra covering should be given the bulbs in the winter. Home grown stock ready in October. Extra strong bulbs, imported from Japan, November. Each, 54 cents; doz., \$5.50. **54c**

Auratum

## Vick's Calla Lilies for House

**RICHARDIA AFRICANA.** The well known Egyptian Lily, or Lily of the Nile, with large white flowers and broad foliage. Excellent for aquarium purposes. In the spring they may be planted in the garden and left until September, when they may be taken up, potted, and removed to the house or conservatory, to bloom during the winter and spring. First Size, large flowering bulbs, each, 34 cents; doz., \$3.50. **34c**

**GODFREY.** An improved everblooming White Calla superior in every way to the common variety except that it is somewhat smaller in size; white, more abundant flowering and delicately fragrant. Each, 34 cents; doz., \$3.50. **34c**

**ELLIOTTIANA.** The popular yellow Calla. Each, 34 cents; doz., \$3.50. **34c**

**SPECIAL - All three - Only 84 cents.**

**BEAUTY  
AT LOW  
PRICE**

## DAY LILIES

44 cents each, \$4.48 per dozen.

The Day Lilies are superb autumn flowers, desirable for planting on the side of a lawn or at the edge of shrubbery. They do well in shade and are much prized on that account. The plants can be set in autumn, and may be protected by a light covering of leaves the first winter after setting out. **44c**

**WHITE DAY LILY—FUNKIA ALBA.** Broad light green leaves. Flowers large pure white, fragrant.

**BLUE DAY LILY—FUNKIA JAPONICA.** Light blue; narrow foliage.

**VARIEGATED LEAVED LILY—FUNKIA UNDULATA MEDIA PICTA.** Lavender flowers. Foliage light green, beautifully variegated with white.

**HEMEROCALLIS AURANTIACA MAJOR.** Golden Day Lily. One of the very finest hardy herbaceous plants. The plant is extremely vigorous in its habit. The large and attractive foliage rises to a height of two feet, and is of a deep green. The flower spikes are strong, bearing in succession as many as twelve flowers which are seven to eight inches across; of a rich orange-yellow. A very remarkable variety.

**REAL  
VALUES**

### SPECIAL DAY LILY COLLECTION

Two each of the 4 varieties described above only \$2.98  
One each of the 4 varieties described above only \$1.64

### POPULAR BARGAIN LILY COLLECTION

	Ea.
Candidum	.34
Auratum, the Gold-Band Lily of Japan	.54
Elegans, Best Red	.39
Japonicum	
Longiflorum	.49
Speciosum Album	.49
Speciosum Rubrum	.49
Tigrinum Splendens	.49
Tigrinum Fl. Pl.	.49
Regular Value	\$3.72

**SPECIAL  
SALE PRICE  
\$2.98**

**SAVE  
ON THIS  
SPECIAL  
OFFER**

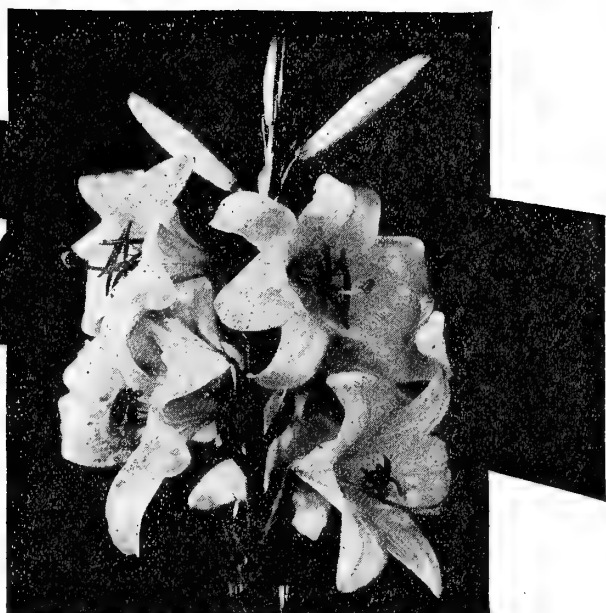


# EASY TO GROW

at least a few lilies. Not  
utiful flowering plants in  
kingly handsome as cut  
ing different varieties, you  
first of June until the latter part of  
pay postage which means additional  
r you.

## CANDIDUM Known as Madonna Lily

Best known white lily; hardy, free bloomer, fragrant; known  
as Annunciation Lily or Madonna Lily. Candidums can be **38c**  
planted any time in the fall. They have been successfully planted as  
late as the last of November out of doors. Blooms in June. Can be  
grown inside. Large Bulbs, both home grown and imported, ready now.  
Each, 38 cents; 3 for \$1.00; doz., \$3.50.



Candidum

## Other Popular Varieties

**ELEGANS.** Best Red. Light red. Each, 39 cents; doz., \$4.00.

**ELEGANS SANGUINEUM.** Blood-red. Each, 39 cents; doz., \$4.00.

**ELEGANS INCOMPARABLE.** Deep crimson, slightly spotted with black. Each, 39 cents; doz., \$4.00.

The above three varieties of Elegans bloom about July 1st.

### WE PAY POSTAGE



lla Lily

**ELEGANS BATEMANNI.** A beautiful **39c**  
Japanese variety; flowers upright, of clear  
apricot-yellow; strong and hardy; should have a  
place in every garden. Blooms about July 15th.  
Each, 39 cents; doz., \$4.00.

**HARRISII.** (Easter Lily.) The flowers are **49c**  
pure white, trumpet-shaped, and are un-  
excelled in beauty by those of any other species  
while the fragrance is simply exquisite. Especially  
used for indoor growing. By starting the bulbs at  
intervals of a few weeks, a succession of bloom  
may be had for a long time. Each, 49 cents; doz.,  
\$5.00.

**JAPONICUM LONGIFLORUM.** The hardy **49c**  
Easter Lily. Very fragrant. White, trum-  
pet-shaped. Blooms about July 20th. Each, 49  
cents; doz., \$5.00.

**LONGIFLORUM MULTIFLORUM.** Pure **49c**  
white trumpet-shaped flowers. Splendid for  
growing in pots for Easter flowering, and very  
desirable for outdoor planting, being quite hardy;  
two to three feet high; blooms in June outdoors.  
Easily grown indoors. Each, 49 cents; doz., \$5.00.

**SPECIOSUM ALBUM.** The speciosum or **49c**  
Lancifolium are the most important of  
all the Japanese Lilies. Always satisfactory. The  
Album has large white flowers of great substance,  
with a greenish band running through the center  
of each petal. Each, 49 cents; doz., \$5.00.

**SPECIOSUM RUBRUM** White and rose; **49c**  
rich crimson spots. Extra fine. Each, 49  
cents; doz., \$5.00.

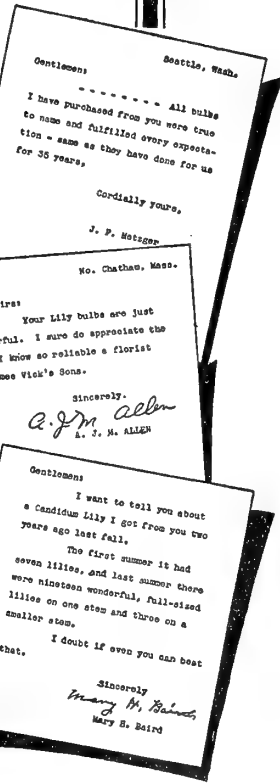
**SPECIOSUM MELPOMENE.** Crimson, **49c**  
spotted with deep blood-red; each petal  
distinctly bordered with white. Same habit of  
growth as Rubrum; stem dark and color of flower  
much deeper. Each, 49 cents; doz., \$5.00.

The above three bloom about August 15th

**HENRYI** (The Yellow Speciosum.) Rich **58c**  
apricot yellow, spotted with brown. Same  
type of flower and habit of growth as other Speci-  
osum lilies. Very hardy and vigorous grower.  
Each, 58 cents; doz., \$6.00.

**TIGRINUM SPLENDENS.** Improved Tiger **49c**  
Lily. Perfectly hardy, and most desirable  
for planting in the border with other hardy plants.  
Blooms about August 1st. Each, 49 cents; doz.,  
\$5.00.

**TIGRINUM FL. PL.** Double Tiger Lily. **49c**  
Blooms about August 15th. Each, 49 cents;  
doz., \$5.00.



Gentlemen: Boston, Wash.  
----- All bulbs  
I have purchased from you were true  
to name and fulfilled every expecta-  
tion - same as they have done for us  
for 35 years.  
Cordially yours,  
J. P. Notager  
No. Chatham, Mass.

Dear Sirs:  
Your Lily bulbs are just  
wonderful. I sure do appreciate the  
fact I know so reliable a florist  
as James Vick's Sons.  
Sincerely,  
A. J. M. Allen  
A. T. M. ALLEN

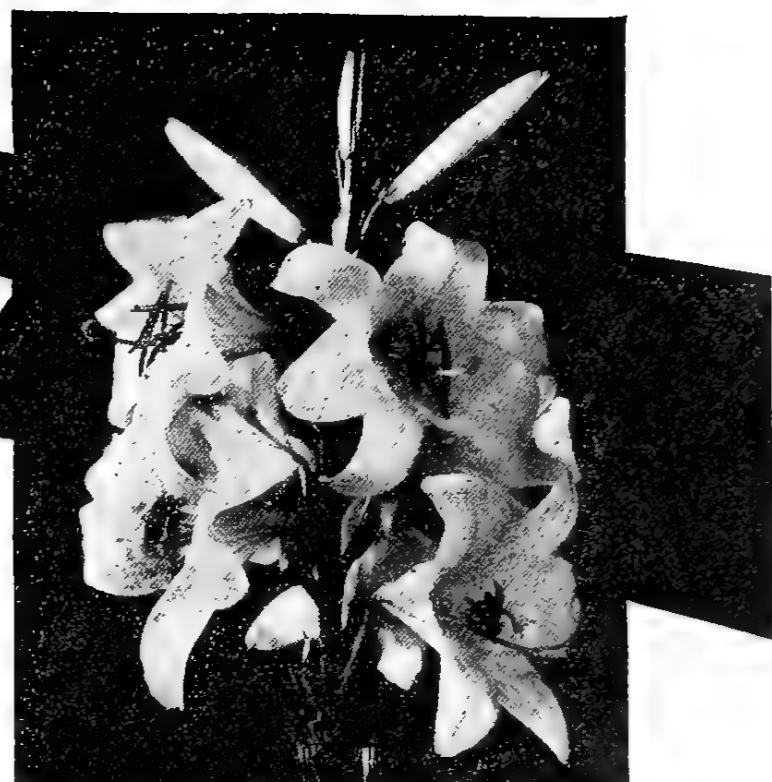
Gentlemen:  
I want to tell you about  
a Candidum Lily I got from you two  
years ago last fall.  
The first summer it had  
seven lilies, and last summer there  
were nineteen wonderful, full-sized  
lilies on one stem and three on a  
smaller stem.  
I doubt if even you can beat  
that.  
Sincerely  
Mary M. Baird  
Mary S. Baird



# HARDY LILIES EASY TO GROW



Auratum



Candidum

Every garden should harbor at least a few lilies. Not only are they valuable as beautiful flowering plants in the garden, but they are strikingly handsome as cut flowers for the house. By planting different varieties, you will secure a succession of blooms from the first of June until the latter part of September. Prices are the lowest. And we pay postage which means additional savings for you.

## AURATUM

### The Gold-Band Lily of Japan

A favorite variety for outside purposes. No garden, however small should be without it. Its ease of culture and magnificent flowers of a delicate ivory color thickly dotted with chocolate-crimson spots with a gold band running through the center of each petal, make it one of the most desirable varieties of garden lilies. Blooms about July 20th. Although quite hardy, for best results an extra covering should be given the bulbs in the winter. Home grown stock ready in October. Extra strong bulbs, imported from Japan, November. Each, 54 cents; doz., \$5.50.

54c

## CANDIDUM

### Known as Madonna Lily

Best known white lily; hardy, free bloomer, fragrant; known as Annunciation Lily or Madonna Lily. Candidums can be planted any time in the fall. They have been successfully planted as late as the last of November out of doors. Blooms in June. Can be grown inside. Large Bulbs, both home grown and imported, ready now. Each, 38 cents; 3 for \$1.00; doz., \$3.50.

38c

## Vick's Calla Lilies for House

**RICHARDIA AFRICANA.** The well known Egyptian Lily, or Lily of the Nile, with large white flowers and broad foliage. Excellent for aquarium purposes. In the spring they may be planted in the garden and left until September, when they may be taken up, potted, and removed to the house or conservatory, to bloom during the winter and spring. First Size, large flowering bulbs, each, 34 cents; doz., \$3.50.

34c

**GODFREY.** An improved everblooming White Calla superior in every way to the common variety except that it is somewhat smaller in size; white, more abundant flowering and delicately fragrant. Each, 34 cents; doz., \$3.50.

34c

**ELLIOTTIANA.** The popular yellow Calla. Each, 34 cents; doz., \$3.50.

34c

**SPECIAL - All three - Only 84 cents.**

## Other Popular Varieties

**ELEGANS.** Best Red. Light red. Each, 39 cents; doz., \$4.00.

**ELEGANS SANGUINEUM.** Blood-red. Each, 39 cents; doz., \$4.00.

**ELEGANS INCOMPARABLE.** Deep crimson, slightly spotted with black. Each, 39 cents; doz., \$4.00.

The above three varieties of Elegans bloom about July 1st.

**ELEGANS BATEMANNI.** A beautiful Japanese variety; flowers upright, of clear apricot-yellow; strong and hardy; should have a place in every garden. Blooms about July 15th. Each, 39 cents; doz., \$4.00.

39c

**HARRISII.** (Easter Lily.) The flowers are pure white, trumpet-shaped, and are unexcelled in beauty by those of any other species while the fragrance is simply exquisite. Especially used for indoor growing. By starting the bulbs at intervals of a few weeks, a succession of bloom may be had for a long time. Each, 49 cents; doz., \$5.00.

49c

**JAPONICUM LONGIFLORUM.** The hardy Easter Lily. Very fragrant. White, trumpet-shaped. Blooms about July 20th. Each, 49 cents; doz., \$5.00.

49c

**LONGIFLORUM MULTIFLORUM.** Pure white trumpet-shaped flowers. Splendid for growing in pots for Easter flowering, and very desirable for outdoor planting, being quite hardy; two to three feet high; blooms in June outdoors. Easily grown indoors. Each, 49 cents; doz., \$5.00.

49c

**SPECIOSUM ALBUM.** The speciosum or Lancifolium are the most important of all the Japanese Lilies. Always satisfactory. The Album has large white flowers of great substance, with a greenish band running through the center of each petal. Each, 49 cents; doz., \$5.00.

49c

**SPECIOSUM RUBRUM.** White and rose; rich crimson spots. Extra fine. Each, 49 cents; doz., \$5.00.

49c

**SPECIOSUM MELPOMENE.** Crimson, spotted with deep blood-red; each petal distinctly bordered with white. Same habit of growth as Rubrum; stem dark and color of flower much deeper. Each, 49 cents; doz., \$5.00.

49c

The above three bloom about August 15th  
**HENRYI** (The Yellow Speciosum.) Rich apricot yellow, spotted with brown. Same type of flower and habit of growth as other Speciosum lilies. Very hardy and vigorous grower. Each, 58 cents; doz., \$6.00.

58c

**TIGRINUM SPLENDENS.** Improved Tiger Lily. Perfectly hardy, and most desirable for planting in the border with other hardy plants. Blooms about August 1st. Each, 49 cents; doz., \$5.00.

49c

**TIGRINUM FL. PL.** Double Tiger Lily. Blooms about August 15th. Each, 49 cents; doz., \$5.00.

49c

**BEAUTY AT LOW PRICE**

**SAVE ON THIS SPECIAL OFFER**

## DAY LILIES

44 cents each, \$4.48 per dozen.

The Day Lilies are superb autumn flowers, desirable for planting on the side of a lawn or at the edge of shrubbery. They do well in shade and are much prized on that account. The plants can be set in autumn, and may be protected by a light covering of leaves the first winter after setting out.

44c

**WHITE DAY LILY—FUNKIA ALBA.** Broad light green leaves. Flowers large pure white, fragrant.

**BLUE DAY LILY—FUNKIA JAPONICA.** Light blue; narrow foliage.

**VARIEGATED LEAVED LILY—FUNKIA UNDULATA MEDIA PICTA.** Lavender flowers. Foliage light green, beautifully variegated with white.

**HEMEROCALLIS AURANTIACA MAJOR.** Golden Day Lily. One of the very finest hardy herbaceous plants. The plant is extremely vigorous in its habit. The large and attractive foliage rises to a height of two feet, and is of a deep green. The flower spikes are strong, bearing in succession as many as twelve flowers which are seven to eight inches across; of a rich orange-yellow. A very remarkable variety.

### SPECIAL DAY LILY COLLECTION

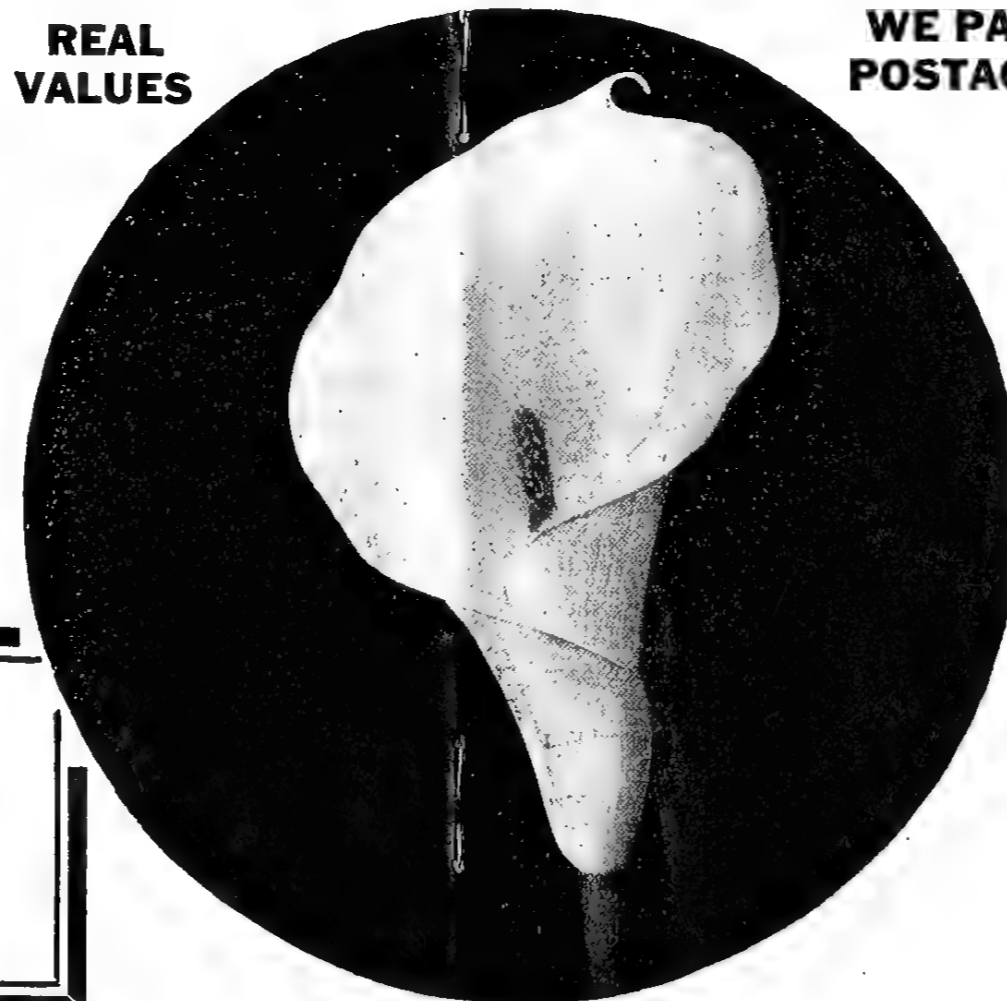
Two each of the 4 varieties described above only \$2.98  
One each of the 4 varieties described above only \$1.64

### POPULAR BARGAIN LILY COLLECTION

	Ea.
Candidum	.34
Auratum, the Gold-Band Lily of Japan	.54
Elegans, Best Red	.39
Japonicum	
Longiflorum	.49
Speciosum Album	.49
Speciosum Rubrum	.49
Tigrinum Splendens	.49
Tigrinum Fl. Pl.	.49
Regular Value	\$3.72

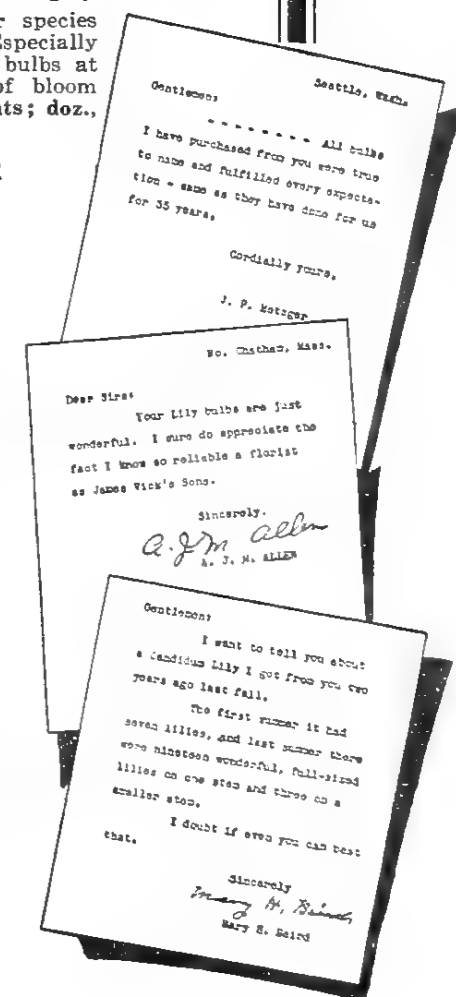
**SPECIAL SALE PRICE \$2.98**

**REAL VALUES**



Calla Lily

**WE PAY POSTAGE**



# Narcissus (DAFFODILS) -

## --exceptional

Here are giant gold and white flowers with enormous flaring trumpets. Their bewildering beauty will delight you. Flower of legend and poetry, everyone knows them and loves them.

With the exception of Polyanthus varieties all are hardy and can be grown out of doors. They should be planted in the autumn at the same time and in the same manner as Tulips and Hyacinths. As they bloom very early, they make a wonderful showing in the garden even before the leaves are fully out on the trees. When thru blooming, the bulbs may be lifted to make room for other plants. Or if you prefer, they may be left in the ground permanently and will come up each spring for years to gladden the heart of gardeners.

### Giant Trumpet (Ajax)

This class of single large-flowered Narcissus is distinguished for long petals or perianth and very large trumpets. They are either white, yellow or bicolor, the latter term being applied to those having petals or perianth of one color and trumpets of another.

**EMPRESS (Bicolor).** A splendid flower of rare beauty. One of the best of the two-colored trumpets. Perianth white and of good substance; trumpet rich yellow. An excellent forcer. First size, round bulbs.

Each, 20 cents; doz., \$1.85; 100, \$11.00

Mammoth, double nose bulbs, usually have two full size blossoms.

Each, 25 cents; doz., \$2.25; 100, \$15.00

**EMPEROR.** Perianth and trumpet deep yellow, large trumpet. First size round bulbs.

Each, 20 cents; doz., \$2.00; 100, \$12.00

Mammoth, double nose bulbs.

Each, 23 cents; doz., \$2.25; 100, \$15.00

**GOLDEN SPUR.** Rich golden yellow, both trumpet and perianth; early, large, and free blooming. First size, round bulbs.

Each, 20 cents; doz., \$2.00; 100, \$12.00

Large double nose bulbs.

Each, 23 cents; doz., \$2.25; 100, \$15.00

**KING ALFRED.** Largest and best clear yellow.

Each, 35 cents; doz., \$3.50

**MADAM DE GRAAFF.** One of the largest and finest of all White Trumpet Narcissus, perianth pure white, trumpet soft primrose passing off white. First size, round bulbs.

Each, 25 cents; doz., \$2.25; 100, \$15.00

**PRINCEPS MAXIMUS.** Primrose perianth, yellow trumpet; one of the best and earliest for forcing. First size round bulbs.

Each, 20 cents; doz., \$2.10; 100, \$13.00

Mammoth double nose bulbs.

Each, 25 cents; doz., \$2.25; 100, \$15.00.

**SPRING GLORY (Bicolor)** pure white perianth, golden yellow trumpet. Very early, large, free flowering variety.

Each, 25 cents; doz., \$2.25; 100, \$15.00

**VICTORIA (Bicolor)** Perianth creamy white; trumpet rich yellow. Richly perfumed. First size, round bulbs.

Each, 20 cents; doz., \$2.00; 100, \$12.00

Mammoth double nose bulbs.

Each, 25 cents; doz., \$2.25; 100, \$15.00

### Medium Trumpet or Cup

In this class we have grouped the varieties which have medium-sized crowns or trumpets and most of them have quite large, broad petals or perianth, the trumpet being reduced in size in many cases to almost a cup. This is a very beautiful, distinctive class.

**INCOMPARABILIS SIR WATKIN.** Sulphur yellow; cup bright yellow tinged orange; bold, handsome flower. First size, round bulbs.

Each, 16 cents; doz., \$1.60; 100, \$9.50

**BARRI CONSPICUOUS.** Broad perianth, soft yellow color; short cup, edged orange scarlet.

Each, 15 cents; doz., \$1.50; 100, \$9.00

**BARRI SEAGULL.** Very large white perianth, expanded canary yellow cup, edged apricot.

Each, 20 cents; doz., \$2.15; 100, \$14.00

**LEEDSII MRS. LANGTRY.** Broad, white perianth; cup white; primrose edge. A remarkably free flowering variety.

Each, 15 cents; doz., \$1.65; 100, \$9.00

**LEEDSII WHITE LADY.** One of the best of this class. Broad white perianth, dainty cup shaded soft lemon yellow, beautifully crinkled.

Each, 20 cents; doz., \$1.85; 100, \$11.00

**LEEDSII QUEEN OF THE NORTH.** Broad white perianth lemon cup. Largest and best Leedsii.

Each, 20 cents; doz., \$2.00; 100, \$12.00



## Grand Narcissus Bargain Collection

Here is an excellent mixture of several classes and colors of perfectly hardy varieties. This mixture will grow both single and double flowers. Some will yield two flowers to a bulb. Especially valuable for outdoor planting informally between hardy shrubs and plants.

### SPECIAL MONEY- SAVING PRICES

**6 for 75c**

**12 for \$1.40**

**25 for \$2.60**

**100 for \$8.00**

**FREE - "Simple Rules For Successful Bulb Growing" ASK FOR IT**

# Loved By Everyone

## *blooming qualities*

### Small Cup Narcissus

This group contains varieties with very small cups sometimes called eyes. They are very dainty and popular. They include two main sorts, the popular Poeticus or Poet's Narcissus and the Poetaz. The Poetaz is a new group obtained by crossing the Poeticus with Polyanthus varieties producing a flower similar to that of the Poeticus but bearing several flowers on a stem like the Polyanthus. They are perfectly hardy and can be grown successfully out of doors or in the house.

**POETICUS PHEASANTS EYE.** Pure white perianth; scarlet or orange-red eye or cup. Excellent for naturalizing.

Each, 15 cents; doz., \$1.35; 100, \$7.50

**POETAZ ELVIRA.** Pure white, yellow cup edged orange; three to four flowers on a stem; very free flowering; delicately fragrant.

Each, 15 cents; doz., \$1.50; 100, \$9.00

**POETAZ LAURENS KOSTER.** Yellow, with golden cup. Very large flowers.

Each, 20 cents; doz., \$2.00; 100, \$12.00

### Double Narcissus

**ALBA PLENA ODORATA.** White, sweet-scented; recommended highly for outdoors for cutting; cannot be forced.

Each, 15 cents; doz., \$1.25; 100, \$7.50

**VON SION.** The popular "Double Yellow Daffodil." Very early. Great favorite for garden planting.

Each, 20 cents; doz., \$2.00; 100, \$12.00

### Jonquils

This is a small-flowering type of Narcissus prized for its graceful golden, fragrant blossoms and the ease with which it may be grown. **RUGULOSUS.** Large golden yellow, fragrant. (Improved Campnerel).

Each, 20 cents; doz., \$1.75; 100; \$10.00

## Paper White Narcissus

### Large Flowering

**A variety of Polyanthus Narcissus usually grown in water**

They bloom very quickly after being set among the pebbles, and make handsome ornamental plants. Set the bulbs in a dish with gravel or small stones to hold them in place, and fill with water, leaving the top of the bulb about half an inch above the water. While Paper White Narcissus are most easily grown in water as described above, they may also be grown very successfully in boxes or pots like other bulbs. We offer American grown bulbs as the government now forbids their importation for sale. We believe we have the choicest bulbs obtainable and believe they will give good satisfaction.

Each, 12 cents; doz., 1.15; per hundred, \$8.00.

### SOLEIL d'OR (Sun of Gold)

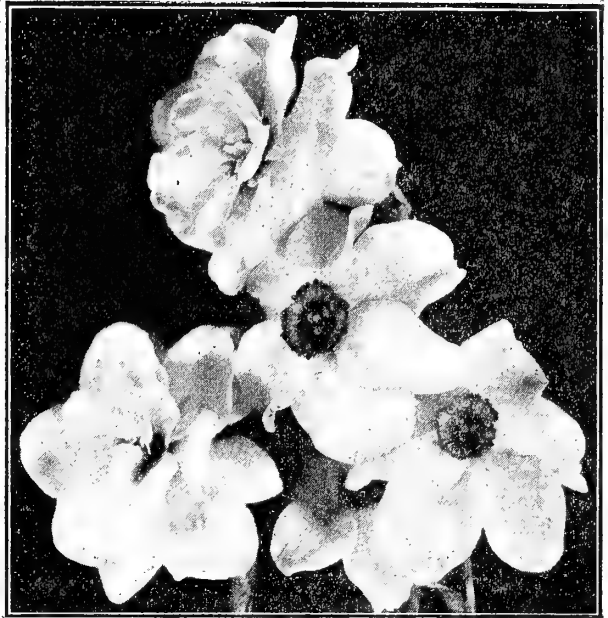
#### Yellow Paper Whites

This variety is used exclusively for growing in the house. It is usually grown like Paper Whites among pebbles in the water. Very free blooming. Bright golden yellow flowers with deep orange red cup.

Each, 20 cents; doz., \$2.25; per hundred, \$14.00.

## WE PAY POSTAGE

Save on Grand Narcissus Bargain Collection



ALBA PLENA ODORATA and POETICUS NARCISSUS



PAPER WHITE NARCISSUS—8 blooms from 4 bulbs

# VICK'S CHRYSANTHEMUMS

## NEW POMPON CHRYSANTHEMUM

### Dorothy Turner

Latest and finest new Pompon Chrysanthemum. Attaining perfection just in time for the Thanksgiving season, it is an ideal Thanksgiving color, a lively combination of bronze and old gold. The broad, overlapping petals are evenly shaded with rich old-gold, deepening to a chestnut bronze at the center. Habit is just about perfect, branching strongly from the base and producing freely, rigid wiry stems of 30 inches or higher. The foliage is a rich glossy green amply sufficient but not too dense. Ideal color and type for pot-culture or cutting. Very free flowering. Recently captured the Silver Cup of the Chrysanthemum Society of America for the best seedling Pompon not disseminated.

We consider ourselves lucky to be able to offer this very fine new variety this year.

Large plants ready for potting for bloom this fall, 90 cents each; 3 for \$2.50; 6 for \$4.50.

### Other Popular Chrysanthemums

These are large, field grown plants, well branched and will flower this fall. Each plant will fill a six or seven inch pot. Some are hardy, and if planted out this fall will give a fine show of bloom every autumn. Not injured by early frosts.

Be sure to give plenty of water when resetting.

**Eden.** Beautiful rose pink, well formed. Pompon, hardy.

**Golden Climax.** Orange yellow, one of the finest in cultivation. Pompon, fine for potting.

**Golden Nugget.** Rich golden yellow. Pompon.

**Miramar.** A fine early bronze. Very large flower, incurved petals.

**Pink Patty.** Large flowering Pompon. Extra.

**White Doty.** Strong erect plant, beautifully formed flower, with incurved petals. Tall. Hardy.

**Whittier.** Very large, beautiful incurved petal, yellow variety. Very popular. Tall. Early.

Each, 35 cents; 4 of any one kind, \$1.20.

## HOUSE PLANTS

### CARNATIONS

The delicately rich and pleasant fragrance combined with the beautiful colors and perfect outline of the Carnation, secures for it a prominent place in all collections of plants, either for the house or garden. The plants may be potted in September and October, watered and shaded a few days, and they will bloom all winter in a cool sunny window. We give an entire new list this year.

Each, 25 cents; five for \$1.00. 100 any one kind for \$12.00 not prepaid.

**Betty Lou.** Generous blooming deep pink.

**Hilda.** Faintly striped, with general effect light pink.

**Eldora.** More noticeably striped, a lighter pink.

**Morning Glow.** Pure shell pink. Very early.

**Jewel.** Pure shell pink; early.

**White Ivory.** Glistening white.

**White Matchless.** Very abundantly flowering.

### GERANIUMS

Each, 30 cents; 4 for \$1.00

**Abbie Schaffer.** Brilliant deep blood red, very bushy, one of the finest bloomers. Double.

**Mrs. Pollock.** Leaves variegated, flowers scarlet.

**Holden.** Scarlet. Very fine.

### OTHER POPULAR GERANIUMS

Large plants from field at once. Later, from pots.

**Alphonse Ricard.** Bright orange-red. Trusses very large.

**S. A. Nutt.** Brilliant deep blood-red, with maroon shadings. Rather tall; vigorous grower. Truss large. One of the finest bloomers.

**Beaute Poiteveine.** Bright salmon-pink, delicately shading to white.



LARGE-FLOWERING—WHITTIER

## Hardy Perennial Plants

### PLANT THEM THIS FALL

We strongly advise our friends to plant all kinds of hardy perennials in the Fall. If the work is done carefully, you will gain nearly a year's growth and will get the full benefit next season.

In planting, spread the roots carefully and pack fine dirt solidly around them so as to exclude all air space. A protection of leaves or straw litter is a wise precaution for the winter months. Remove this covering early in the spring and the plants are ready to start growing at the first breath of warm weather. Many varieties are very effective when planted in borders or beds with spring flowering bulbs of Hyacinths, Tulips and Narcissus.

We pay the postage on all plants as far as the third zone except as specially noted.

### ALYSSUM

**Saxatile Compactum**—"Basket of Gold." An indispensable plant for the rocky or border, growing one foot high and producing masses of broad flat heads of bright yellow flowers during the month of May.

Each, 25 cents; 4 for 90 cents

### HARDY ASTERS—Michaelmas Daisies

**Lady Trevelyan.** White, early.

**Pyramidalis.** Lavender Blue.

**White Queen.** White, late. Each, 25 cents; 4 for 90 cents.

### NEW ANCHUSA ITALICA Dropmore Variety

One of the most valuable of the recent introductions. The plants are vigorous and branching, growing from three to five feet in height. The flowers are borne on long pyramidal, graceful spikes; color beautiful, clear, bright blue, a shade peculiar to this variety. Its blooming season is June and July.

Each, 30 cents; 4 for \$1.00.

### ACHILLEA

Each, 30 cents; 4 for \$1.00.

**The Pearl.** The blossoms are of purest white, and so large that they resemble a Pompon Chrysanthemum. Hardy, and will thrive in almost any situation. Very desirable for the garden or cemetery; blooms nearly the whole season.

**Millifolium roseum.** Foliage very finely cut; flowers pink. A continuous bloomer.



**ANEMONE—"WHIRLWIND"**  
**VICK'S DOUBLE ANEMONE**  
 "Whirlwind"

Will bloom next season if you plant it outdoors this fall.

The double variety of "Whirlwind" has all the free-blooming and other good qualities of the single white, with additional greater hardiness of plant and more lasting blooms.

Each, 35 cents; doz., \$3.50

**Japonica Alba.** Flowers pure white with yellow center, single.

Each, 35 cents; doz., \$3.50

**Queen Charlotte.** An early-flowering pink Anemone, of vigorous growth. It begins to flower in August, and continues to bloom until November, becoming more attractive each day. Flowers semi-double, broad, perfectly formed, and of a pleasing shade of silvery pink.

Each, 35 cents; doz., \$3.50

**AGEPODIUM**

A low growing foliage plant with leaves of white and green produced in great abundance. Suitable for permanent border or edging foundation planting or ground cover. Requires no attention and will grow in any soil.

Each, 25 cents; 4 for 90 cents.

**AQUILEGIA or COLUMBINE**

**Chrysantha.** The beautiful golden-yellow Columbine.

**Coerulea.** The true Rocky Mountain Columbine. Flowers azure blue

Each, 25 cents; 4 for 90 cents

**BOLTONIA**

Among the showiest of our native hardy perennials. Attains a height of four to five feet, with single aster-like flowers in large clusters. When in full flower (and it remains in bloom a long time) it is a wonderfully handsome shrub-like plant.

**Asteroides.** Pure white. Each, 25 cents; 4 for 90 cents.

**BOCCONIA (Plume Poppy)**

A splendid hardy perennial with beautiful flowers and foliage suitable for planting either alone or in groupings with other tall perennials. Thrives in any soil or location, growing as high as 6 or 7 feet. Creamy white flowers on long strong stems make this plant a thing of beauty in July and August.

Each, 25 cents; 4 for 90 cents

**CAMPANULA or BELL FLOWER**

Each, 25 cents; 4 for 90 cents.

**Carpatica.** (Carpathan Hare-Bell.) A pretty, compact species, not exceeding eight inches high; flowers clear blue, one inch in diameter.

**Carpatica Alba.** White flowers.

**Medium.** Old fashioned Canterbury Bell. In three colors, pink, blue and white. Our stock is all grown from the finest strain of seed.

**Persifolia.** Grows one and one-half feet high, and produces a great number of blue flowers in loose clusters, from June to October.

**Persifolia alba.** A white form of the above.

**Pyramidalis.** A most attractive plant for the border, forming a perfect pyramid, covered with large blue and white flowers.

**Pyramidalis alba.** Same habit as *Pyramidalis*, but flowers are white.

**CERASTIUM or "SNOW IN SUMMER"**

**Tomentosum.** A very pretty dwarf, white-leaved edging, plant, bearing small white flowers. Fine for rockery.

Each, 25 cents; 4 for 90 cents

**CHINESE LANTERN PLANT**

**Physalis Franchetti.** An ornamental variety of Winter Cherry grown principally for its very attractive balloon-like husks or pods, which turn bright red and resemble Chinese paper lanterns. These may be dried and last forever, making splendid winter decorations.

Each, 35 cents; 3 for \$1.00

**DELPHINIUM or HARDY LARKSPUR**

Easily among the finest of all our perennial plants. The prevailing colors are rich, clear shades of blue. The taller kinds produce long spikes of bloom that are strikingly decorative, and last a long time as cut flowers. The plants have a long season of bloom, which can be greatly prolonged by keeping the seed stalks cut out and supplying plenty of water. The dark, handsome foliage is neat and attractive throughout the whole season. The plants are perfectly hardy.

Each, 25 cents; 4 for 90 cents

**Gold Medal Hybrids.** The most beautiful and most highly developed Larkspurs we have ever seen in a perfectly fascinating array of colors and forms, single, double, semi-double in all shades, some with dark center, some light center, no two exactly alike.

**Belladonna.** The finest light blue yet produced; clear, turquoise-blue flowers, very free blooming. 2 feet high.

**HARDY CANDYTUFT**

**Iberis sempervirens.** A very useful low-growing practically evergreen plant excellent for rockery and border. The pure white flowers are borne in great profusion on umbrella like spikes. 8 to 10 inches high. Fine for cemetery planting. One of the best perennials. Perfectly hardy in any climate. Each, 25 cents; 4 for 90 cents.

**COREOPSIS**

**Lanceolata Grandiflora**

A most popular hardy plant. Flowers are a rich golden yellow graceful and invaluable for cutting. Blooms very abundantly during June and continues in flower during the entire summer and autumn.

Each, 25c.; 4 for 90c.

**DIGITALIS or FOXGLOVE**

Very stately and highly ornamental plants, with flower stems at least three feet in height. Fine for border, or planted singly in half-shady places near a walk or drive. The racemes of flowers are often two feet in length, containing scores of prettily-spotted thimble-shaped flowers.

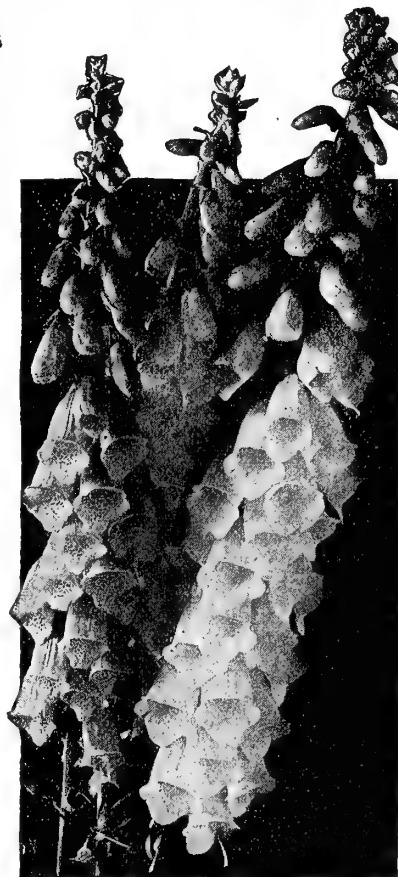
Each, 25c.; 4 for 90c.

**Fine Mixture,** 6 for \$1.00. **New Yellow,** 1 yr., ea., 25c.; 4 for 90c.

**DICENTRA or Bleeding Heart**

**Spectabilis.** We are glad to be able to again offer this old time favorite. They are still very scarce owing to the restriction in importing them, but we are now accumulating a stock of our own. They bear long racemes of graceful heart shaped pink flowers.

Each, 40c; 3 for \$1.10.



DIGITALIS or FOXGLOVE



GAILLARDIA  
GRANDIFLORA  
OR  
BLANKET  
FLOWER

## HOLLYHOCKS

**Double Hollyhock.** This flower is justly becoming more popular every day. We have excellent healthy plants, grown from seed, that will flower the first summer. Give the plants a light covering of coarse litter for winter protection. In six separate colors—White, red, pink, purple, yellow, maroon. Each, 25 cents; 4 for 90 cents.

**"Allegany."** New Fringed Perpetual-Blooming. The flowers come single, semi-double, and double. They are seldom less than five inches across, and are beautifully fringed, of fine form and delicate texture. Two to four buds form at the base of each leaf, where the old style Hollyhocks have but one or two. These buds open in succession, prolonging the flowering season until autumn. Fine plants that will bloom the first season. Mixed colors. Each, 25 cents; 4 for 90 cents.

## HIBISCUS—Rose Mallow

Tall, hardy, free blooming, with showy flowers. Height from three to five feet. July to Sept. Each, 30 cents; 4 for \$1.00.

**Crimson Eye.** The flowers are immense in size. The coloring is of the purest white, with a large deep spot of velvety crimson in the center of each flower. A well developed plant will produce several hundred of these flowers during the season.

**Militaris.** Delicate flesh pink flowers, tinged with a deeper color toward the center.

## LYCHNIS

**Chalcedonica—Maltese Cross—Jerusalem Cross.** A most beautiful hardy perennial, growing three feet high, and producing brilliant scarlet flowers all summer long. Very desirable for mass planting and for a combination of colors in the border. Each, 30 cents; 4 for \$1.00.

## LYTHRUM Roseum Superbum

A strong-growing, shrub-like plant, producing large spikes of rose-colored flowers from July to September. Grows three to four feet high. Each, 25 cents; 4 for 90 cents.

## GAILLARDIA or Blanket Flower

**Grandiflora.** Among the most attractive and effective of our hardy perennial plants. Will thrive in almost any position or in any soil. One mass of bloom from June till autumn. The gorgeous flowers, two to three inches in diameter, dark red-brown in center, with bands of crimson-orange and vermilion, are borne on stems, eighteen to twenty-four inches long. When used for filling in front of shrubbery Gaillardia adds a dash of color which is very effective. Each, 25 cents; 4 for 90 cents.

## FORGET-ME-NOT

**Myosotis palustris.** The true perennial Forget-me-not. A variety that is always in flower. Each, 25 cents; 4 for 90 cents. 1 yr. plants, 6 for \$1.00.

## GYPSOPHILA—Baby's Breath

**Paniculata.** Gypsophilas are valuable for bouquet making, either green or dried. They are very graceful and easily cultivated. Should be in every garden. Flowers white. Plants two feet high. Blooms, July and Aug. Each, 30 cents; 4 for \$1.00. 1 yr. plants, 6 for \$1.00.

## HELIANTHUS—Hardy Sunflower

These varieties of Helianthus are perfectly hardy in this locality, but in colder regions a protection of coarse litter will be required. The plants attain a height of about four feet, and in their blooming season, August and September, they are nearly covered with bright golden-yellow double flowers, about the size of a Dahlia; they are very satisfactory for cutting.

Each, 25 cents; 4 of a kind, 90 cents

**Helianthus latæfrons.** Plant of distinct habit, forming a pyramid of lovely flowers and foliage. Flowers, golden-yellow, single.

**Maximiliana.** Golden-yellow, with reddish brown center. Single.

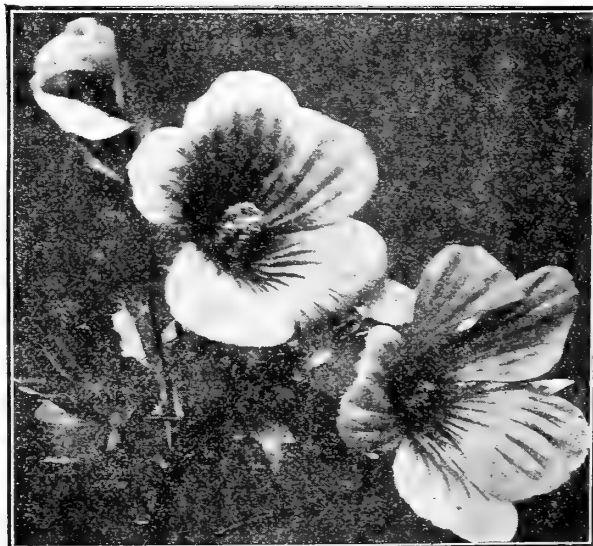
**Multiflorus. (Double hardy Sunflower).** Large, double Dahlia-like, golden-yellow flowers in great profusion during July and August. Grows about four feet high. Very beautiful.

## HYACINTHUS

**Candicans.** Summer Hyacinth. A beautiful stately plant, with stems three to four feet high. It has large, pure white pendant, funnel-shaped flowers, in long racemes. Very fragrant. In the North the bulbs should be dug in the fall, and stored in a cool dry place. Each, 25 cents; 4 for 90 cents.

## LATHYRUS—Perennial Peas

One of the best of the perennial climbers. It is very hardy and will succeed in almost any location. It produces clusters of large flowers which remain in bloom for a long while. Rose or Crimson. Each, 25 cents; 4 for 90 cents.



HIBISCUS—Rose Mallow

Parcel post or express is prepaid on all plants at single and dozen prices to the 5th zone, larger quantities not prepaid



**PENTSTEMON**

Most useful hardy perennial, blooming from June until fall. Very fine for border or rocky. Flowers borne on tall spikes, about 3 feet high. Beautiful blue flowers.

Each 25 cents; 4 for 90c

**PHYSOSTEGIA****False Dragon-Head**

One of the most beautiful of our summer flowering perennials, bearing long spikes of globular shaped flowers resembling a giant feather.

Each 25 cents; 4 for 90c

Virginica. A bright pink. Four feet.

Virginica alba. White. Two feet.

Speciosa. A very delicate light pink. Grows four to five feet high.

**HARDY PINKS**

These pinks are perfectly hardy, and will remain in the open ground all winter without protection.

Field grown plants, each, 35 cents; dozen, \$3.50.

Comet. A fine shape of red; flowers double, clove scented.

Her Majesty. Flowers very large, fringed, very double, and pure white. Fragrance delicious, clove scented. Long stiff stems support the flowers.

Souvenir de Salle. Soft rosy pink; large as a carnation; beautifully formed and very double.

White Reserve. A nicely fringed white. Always in bloom.

**HARDY POPPY**

Iceland Poppies. The plants are perfectly hardy, and bloom the entire season. The flowers are about the size and shape of those of the well-known Shirley Poppy, and are borne on long wiry stems. The delicate silken texture of the flowers nodding on slender stems, produces an exquisitely dainty effect. Charming as cut flowers, lasting well if cut when the buds are opening. White, yellow, and orange. Each, 25 cents; 4 for 90 cents.

Oriental Poppies. The single large Oriental Poppy is one of the most striking and showy of all the hardy garden plants. The tall stems, three feet in height, bear great flowers of brilliant scarlet six or eight inches across. The plants thrive well either in the full sun or in partial shade. They are a great addition to the hardy border, and are of especial value among shrubbery, lighting up the usually dark and somber clumps of shrubs. The flowers are splendid for cutting, lasting well if cut as they are opening.

The plants bloom in June, and they disappear during July and August, to reappear again in the fall. 1 year old plants. Each, 30 cents; dozen, \$3.00. Seedlings, 4 for 50 cents.

**HERBS**

English Lavender. Each, 25 cents; 4 for 90 cents.

**ORNAMENTAL GRASSES**

Ornamental Grasses are very effective in borders and in clumps among shrubbery. They grow easily and when once started, practically take care of themselves. Each, 25 cents; 4 for 90 cents.

Erianthus Ravennae. Handsome ornamental either alone in clumps or with shrubbery. Each, 25 cents; 4 for 90 cents.

Eulalia. Handsome, tall, ornamental grasses for the open lawn, or for clumps in the borders of shrubbery. Leaves beautifully variegated.

Eulalia Japonica zebrina. Stripe across the leaf instead of lengthwise.

**MONARDA DIDYMA**

An exceptionally fine, hardy perennial for planting in the garden or in a mixed border. The plant grows about 2½ feet high, branching freely, and bears multitudes of bright red, showy flowers all summer, which are surpassed in intensity of color only by the Cardinal Flower. For a mass of color it is very striking. Thrives well in the shade. Each, 30 cents; 4 for \$1.00.

**PYRETHENUM**

Sometimes called Spring Flowering Chrysanthemum. Hardy perennial plant of easy culture, with beautiful, large, daisy like flowers in a variety of brilliant colors, ranging from intense scarlet to pure white. The flowers are borne on long stems and are splendid for cutting, lasting in water longer than almost any other flower. The plants have a long season of bloom.

Each, 30 cents; 4 for \$1.00.

**PLATYCODON Grandiflorum**

The Chinese Bell Flower. In bloom the entire season. The flower resembles Clematis in size and color. Two varieties, blue and white, two feet high. 1 yr. plants, Each, 30 cents; 4 for \$1.00; 6 for \$1.25.

**Cives or Chives**

In great demand for seasoning. Tops are more tender and delicately flavored than the best young onions. Clumps, can be divided. Each 25 cents; 4 for 90 cents.

**IRIS, or Fleur-de-Lis**

Iris the "Fleur-de-Lis, is one of the most delicately beautiful hardy garden plants. There are several classes, natives of different regions, but far and away the most popular are German Iris, true Flag Iris or Fleur-de-Lis and Japanese Iris or Iris Kaempferi, in which classes there are hundreds of varieties of handsome form, beautifully colored and marked, and rivaling in beauty the most showy orchids.

Iris thrive in almost any soil or situation. They require plenty of moisture, but cannot endure standing water. They require very little care and will remain in the ground from year to year, gradually spreading and increasing the size and beauty of the floral display.

**GERMAN IRIS - FLAG IRIS**

Perfectly hardy. Blooms in May and June. Should be planted only an inch or so under ground.

"S" refers to the "Standards" or upright petals; "F" refers to the "falls" or lower petals.

A. E. KUNDRED. S. yellow bronze. F. red with orange beard, fragrant. 20 cents each.

ALCAZAR. Very large handsome variety, rated high by Iris Society. S. light violet bronze. F. deep purple, bronze veins in throat. Usually sold for about 50 cents. 20 cents each.

AMAS. Very large; two shades of violet. 20 cents each.

A. W. BLAKELY. A fine, vigorous, pink and yellow Iris. 20 cents each.

AZURE. A rich purple bi-color. Very tall, free flowering. Rated high. 30 cents each.

BLUE KING. Fine deep blue. 20 cents each.

CANARY. Light yellow; early, free flowering. Showy, attractive. 20 cents each.

C. A. PFEIFFER. S. pale blue violet. F. pansy violet, with lighter edge. Orange beard. Tall. 20 cents each.

CAPRICE. S. purple or rosy red with F. still deeper, yellow beard. One of the best reds. Very beautiful. 20 cents each.

CLARENCE WEDGE. S. heliotrope with lighter edge; Falls a purple red. Orange beard. 20 cents each.

DR. MANTOR. Orchid colored. Excellent. 20 cents each.

FLAVESCENS. Large, sweet scented, pale lemon yellow. Very popular. 20 cents each.

GOLDEN FLEECE. Attractive pale yellow. Early, vigorous, free flowering. 20 cents each.

GOLDEN PLUME. Upper petals rich golden yellow, lower chestnut brown edged yellow. 20 cents each.

HONORABILIS. Upright petals vivid yellow, lower petals rich mahogany. 20 cents each.

IGNACITE. A very showy and free flowering lavender, with deeper shadings. 20 cents each.

IRIS KING. Standards old gold, very broad, falls deep brown. Rich color combination. Medium height. 20 cents each.

KATHARINE FRYER. S. clear sulphur yellow; F. velvety violet-carmine. Beard orange. Very tall; very beautiful. 20 cents each.

LENT A. WILLIAMSON. Upper petals lavender-violet; lower velvety violet purple. Flowers large. Highly rated. An outstanding variety. 20 cents each.

LOHENGRIN. Large ruffled flowers. Upper petals light mauve, lower violet tall. Very beautiful, very popular. 20 cents each.

LORELEY. S. yellow, splashed purple. F. Purple bordered yellow. Very profuse bloomer. 20 cents each.

MARY GARDEN. A curiously speckled flower. S. yellow flushed lavender. F. creamy white, dotted and veined maroon. 20 cents each.

MONSIGNOR. Rich coloring, good substance. Bluish violet overlaid with brownish purple. Highly rated. 20 cents each.

MRS. COWLEY. Russet, flushed carmine; lower velvety violet carmine. 20 cents each.

MRS. H. DARWIN. Pure white, with falls slightly reticulated, violet at base. No better white. 20 cents each.

PROSPER LAUGIER. Showy, free flowering, popular, light bronze with velvety ruby purple. 20 cents each.

PURPLE KING. Splendid, early, free flowering deep violet purple. 20 cents each.

QUEEN OF MAY. Soft Lilac pink. Delightfully fragrant. 20 cents each.

SHERWIN WRIGHT. Bright golden yellow. Vigorous and free flowering. 20 cents each.

WALHALLA. Lavender blue with violet purple falls. Early, large flowering. 20 cents each.

**SPECIAL PRICES--Your Choice**

Any 4--20 cent varieties, only 75c.

Any 10--20 cent varieties \$1.75

**JAPANESE IRIS**

Fine Mixture 3 for 90c; 12 for \$3.25

## Perennial Phlox

Perennial Phlox is one of the most popular and satisfactory of all hardy plants. It is extremely effective where planted as a border; massed in beds it makes a gorgeous spectacle; while if scattered among other early flowering plants it is delightfully attractive. It grows from 2 to 4 feet and produces large spikes of showy lasting flowers. Blooms from June to September. Cutting away each flower stem after it blooms causes the plant to bloom more freely, increases the size of the flowers and lengthens the blooming season.

### Descriptions of Perennial Phlox

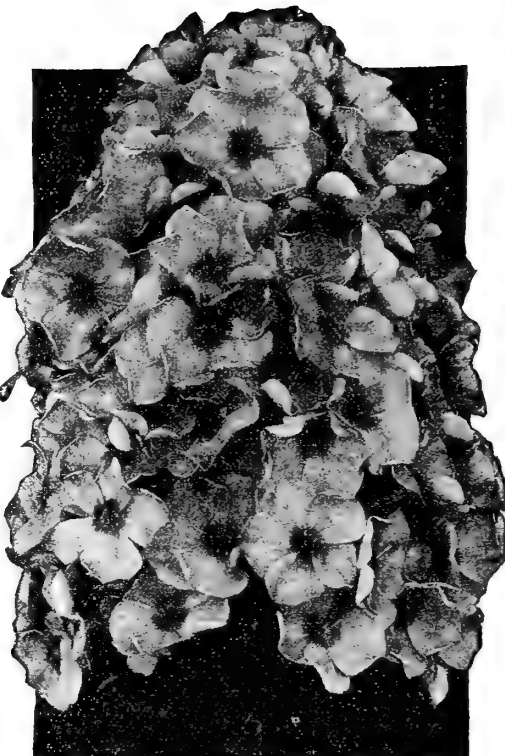
- B. Compte.** A tall variety with large blooms of rich satiny amaranth. Very brilliant. The color blends well with yellow.
- Ferdinand Cortez.** Beautiful orange scarlet.
- Commander (Von Hindenburg).** A brilliant deep crimson with slightly darker eye. Produces a large number of spikes making a gorgeous display. Comparatively new but rapidly becoming a great favorite.
- Miss Ethel Pritchard.** A beautiful mauve. Almost a pale blue. Very vigorous and floriferous. Medium height.
- Miss Lingard.** Flowers from early summer till October. Mammoth white flowers shaded pink. Abundant handsome foliage.
- Mrs. Jenkins (Independence).** Late pure white of medium height. Wonderfully free flowering variety. Very popular.
- Rhineland.** Handsome salmon pink with large truss and individual florets. Medium dwarf.
- R. P. Struthers.** Bright rosy red, crimson eye.
- Rijnstrom.** A beautiful clear pink. Large flower and truss.
- Widar.** Beautiful violet blue with clear white eye.
- Any of the above, 35 cents each; 3 of any one kind for 90 cents; 12 for \$3.50.

## VICK'S PEONIES

THIS queen of herbaceous Perennial Plants deserves its increasing popularity because of its beauty, range of color and form, extreme hardiness, ease of culture and freedom from plant pests and diseases. You will find below a very choice assortment of different colors and types including the early, mid-season and late kinds. Our Peonies are grown under the direction of an expert and are of high quality and true to name. At prices below we prepay postage or express as far as the 5th zone. Special prices on large quantities.

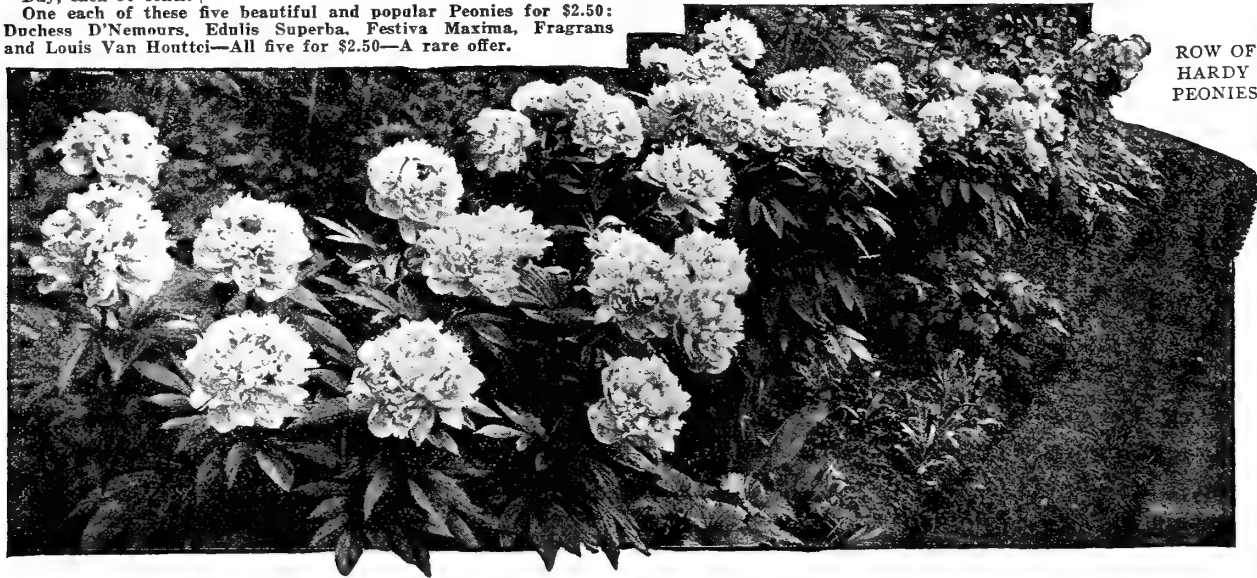
- Achille.** Large rose-type flower; pale pink shading to lilac white; fragrant; each, 50 cents.
- Alexander Dumas.** Medium size; light violet rose; crown type; creamy white collar of narrow petals mingled with white center petals; fragrant; each, 60 cents.
- Augustin D'Hour.** Large bomb type flower; dark brilliant Solferino red slightly silvery reflex; each 75 cents.
- Avalanche.** Large compact crown type; milk white center; flecked crimson red; very choice; each \$1.00.
- Couronne D'Or.** Large semi-rose type; pure white with ring of yellow stamens around a tuft of center petals; tips carmine; each 65 cents.
- Duchess D'Nemours.** Pure white; crown type; sulphur white collar; no flecks; fragrant; very early; each 60 cents.
- Edulis Superba.** Large; bright mauve pink; flat crown type; very fragrant; the earliest deep pink, usually blooms by Decoration Day, each 50 cents.

One each of these five beautiful and popular Peonies for \$2.50; Duchess D'Nemours, Edulis Superba, Festiva Maxima, Fragrans and Louis Van Houttei—All five for \$2.50—A rare offer.



VICK'S HARDY PERENNIAL PHLOX

- Festiva Maxima.** Probably the most popular pure white rose type Peony; center slightly flecked crimson; early; each 50 cents.
- Fragrans.** Dark pink; compact bomb type; medium size; fragrant; late; each 50 cents.
- Livingston.** Delicate lilac-rose tipped silver, central petals flecked carmine. Of immense size. Perfect rose type. Each, \$1.00.
- Louis Van Houttei.** Medium size semi-rose type; deep carmine rose; tipped silver; late; each 75 cents.
- Madame Calot.** Large rose-type; pale shell-pink, center shaded darker; collar tinted silver; fragrant; early; each 75 cents.
- Madame De Vernville.** One of the best pure white Peonies; bomb type, slightly flecked carmine; fragrant; early; each 65 cents.
- Madame Ducl.** Extra fine large globular bomb type. Light mauve rose color, silvery reflex. Free blooming. Each, 75 cents.
- Rubra Superba.** Large compact rose-type; crimson; the best very late red; each 75 cents.



ROW OF HARDY PEONIES

TRITOMA  
FLAME FLOWER**TRITOMA—Flame Flower**

**Pützeri.** A great improvement on the old Tritoma uvaria grandiflora, or Red Hot Poker. The flower spikes which are produced with considerably more freedom than in the old variety, are of gigantic size; frequently  $4\frac{1}{2}$  feet high, with heads of bloom over twelve inches long, of a rich orange-scarlet, shading to salmon-rose at edge. Flowers from July until frost.

Each, 35 cents; 4 for \$1.30.

**YUCCA—Spanish Bayonet**

**Filamentosa.** One of the most decorative and striking of the hardy plants. It is erect and stately, perfectly hardy, and has sharp pointed leaves and large spikes of creamy white, bell-shaped flowers. It grows about four feet high and blooms in August.

Each, 30 cents; 4 for \$1.00.

**HARDY SHRUBS**

Do not wait until spring to plant your shrubbery, perennials, roses, trees, etc. Make your plans now and set them out this Fall. You will gain nearly a year's growth by having the plants well established in the soil and ready to start active growing at the first breath of spring. It is wise to protect the roots of the stock set out in the Fall with a covering of straw manure or leaves for the first winter.

At prices indicated here we prepay postage or express charges on all shrubs, vines and roots as far as the fifth zone from Rochester except as otherwise expressly stated.

**BERBERIS—BARBERRY**

**Japanese.** A handsome low-growing form of the Barberry, of Japanese origin. Foliage abundant, leaves small, obovate; flowers reddish; berries bright crimson. In autumn the leaves turn a bright red, making a fine display. A beautiful plant for the lawn or the front of the shrubbery, or for a low growing ornamental hedge. Each, 75 cents; dozen, \$7.00, postpaid.

Smaller plants just right size for hedges, dozen, \$4.00; 100, \$30.00; by express collect.

**RUDBECKIA or Cone Flower**

Each, 30 cents; 4 for \$1.00.

**LACINIATA flora plena—Golden Glow.** The best known and most popular ever-blooming hardy plant grown. It is covered during the season with masses of rich golden-yellow double flowers on long stems that make it suitable for cutting. Attains a height of 6 to 8 feet.

**Newmanii—Perennial "Black-eyed Susan."** The flowers are single, golden-yellow, with black center; grows 3 feet high and blooms from July to October.

**Purpurea, or Giant Purple Cone Flower.** Flowers reddish wine-purple. Grows about two to three feet high and blooms from July to October.

**ALTHEA**

**Rose of Sharon.** Beautiful, erect-growing shrubs, of the easiest culture, bearing large showy flowers in early fall. Very desirable because it flowers when few other shrubs are in bloom. Grows 6 to 8 ft. high. **Double Red, Double White and Double Pink.** Each, 75 cents.

**SALVIA PRATENSIS or Hardy Sage**

A very strong, hardy plant, twelve to eighteen inches high which bears showy spikes of deep blue flowers from June to September. Very beautiful.

Each, 25 cents; 4 for 90 cents. 1 Year Plants, 6 for \$1.00.

**SEDUM, Stonecrop**

**Sporan Alba.** Low growing plant. Flat green leaves, white flowers. Blooms in July.

**Lydam Evergreen species.** Brown foliage with pinkish flowers, growing from 1 to 3 inches high. Blooms in June.

Each, 25 cents; dozen, \$2.50.

**SCABIOSA or Pin Cushion Flower**

**Caucasica.** One of the best hardy plants, producing beautiful lilac colored flowers from June until fall. 18 to 25 inches high.

Each, 25 cents; 4 for 90 cents.

**SHASTA DAISY—New Improved Alaska**

A fine hardy perennial, 12 to 18 inches high. The flowers are pure white, with a bright yellow center, average about four inches in diameter, and are borne on long, stiff, wiry stems. Valuable for cutting, remaining fresh for two weeks or more.

Each, 30 cents; dozen, \$3.00.

**SWEET WILLIAM or Dianthus Barbatus**

The best varieties of Sweet William have exceedingly beautiful colors, and are very large and almost perfect in form, with trusses of great size. They are fine as cut flowers. The plants are perfectly hardy. **Holborn Glory.** Beautiful shades, center and margin of white. **Dunnett's Crimson.** Dark Crimson. **Pink Beauty.** Beautiful salmon pink. **Scarlet Beauty.**

Any variety. Each, 25 cents; 4 for 90 cents.

**VALERIANA RUBRA**

An old-fashioned plant, about two feet high, which blooms from June to October. The flower heads are large and beautiful, bright red in color and of spicy fragrance. Its long spike of fragrant flowers make it an excellent border plant and suitable for cutting.

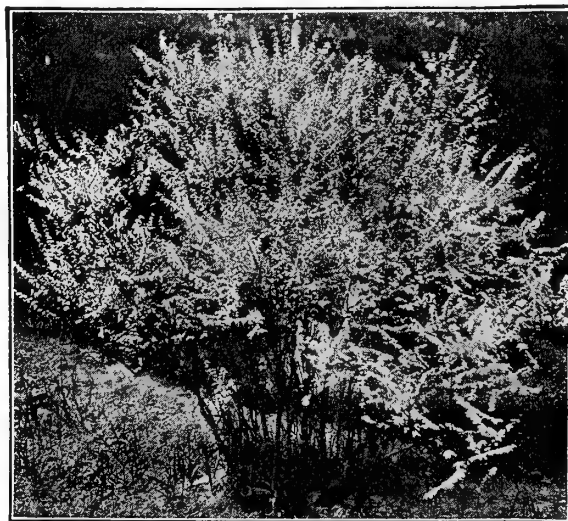
Each, 25 cents; 4 for 90 cents.

**VERONICA—Speedwell**

Each, 25 cents; 4 for 90 cents.

**Spicata.** One of the prettiest of the spring flowering herbaceous plants, bearing pretty blue flowers in long spikes. Valuable both for the garden and for cut flowers. They should be in every garden.

**SPIREA ARGUTA** The earliest of the Spireas



SPIREA ARGUTA The earliest of the Spireas

Our greenhouse farms at Barnards, N. Y., this year were filled full of the finest stock of Perennials we have ever grown.

## CALIFORNIA PRIVET

The best known plant for hedges. It is very hardy, grows rapidly, and produces very abundant foliage. Can be trimmed frequently to conform to the individual idea of beauty and symmetry.

Plants, 12 to 18 inches, 65 cents for 10; \$4.50 per hundred.

Plants, 18 to 24 inches, 80 cents for 10; \$6.00 per hundred.

Plants, 24 inches to 3 feet, \$1.00 for 10; \$7.50 per hundred.

By Express or Freight, collect. Specials prices by 1000.

## CORNUS or Dogwood

*Cornus Elegantisima*. One of the finest variegated shrubs; of rapid growth; the leaves are broadly margined with white, while some are entirely white. 10 to 12 ft. Each, 75 cents; 3 for \$2.00.

## DEUTZIA

Each, 65 cents; 3 for \$1.75.

The Deutzia is a native of Japan. It is a hardy shrub of fine habit, luxuriant foliage, and a profusion of attractive flowers which bloom from June to September. Our plants of this beautiful and popular flowering shrub are strong and well rooted.

*Crenata latifolia*. New. Large panicles of eighteen to twenty single blossoms. The flowers are pure white with a center of golden yellow. Very attractive. Strong plants.

*Crenata Magnifica*. New. A great acquisition. The pure white double flowers are over an inch in diameter. The plant is vigorous and the flowers are borne in large trusses. Strong plants.

*Lemoinei*. Flowers single, pure white, and entirely covering the branches. Strong plants.

*Pride of Rochester*. One of the finest varieties, producing large, double white flowers; the backs of the petals being slightly tinted with rose. Blooms early in June. Strong plants.

*Candida*. Profuse-flowering; generally hardy, and well adapted to ordinary soils. Double pure white flowers; borne in panicles. Strong plants.

## HYDRANGEAS

*Aborescens*. This magnificent American Hydrangea is the most beautiful hardy flowering shrub introduced in many years. It attains a height of five to six feet, and about the same breadth. It is of more graceful habit than *Hydrangea paniculata grandiflora*. The form of the panicle is much like that of *Hydrangea Hortensis*. Trusses large and beautifully formed; the blooms are of the very largest size, pure snow white; the foliage is finely finished. Fine, strong, well-grown plants. Each, 75 cents; 3 for \$2.00.

*Paniculata Grandiflora*. One of the finest hardy shrubs in cultivation. The flower trusses are immense heads from nine to twelve inches in length and nearly as broad. Color purest white, changing to deep pink as the season advances. It blooms in July, at a time when no other shrub is in flower and remains beautiful until destroyed by frost. As hardy as a lilac bush. The plants we offer will bloom the first year. Each, \$1.00; 3 for \$2.75.



DEUTZIA *Pride of Rochester*

## EVERBLOOMING BUTTERFLY BUSH

### BUDDLEIA

The Buddleia is a magnificent new shrub that has given unbounded satisfaction wherever grown. It is perfectly hardy, thrives in all sorts of soils, grows vigorously from two to three feet high, and blooms the first season from spring planting. Add to this the extreme beauty of its flowers, which are borne in great profusion throughout the summer and continue until cut down by severe frost, and the fact that it also makes a splendid pot plant, and you have the explanation of its rapid growth in popularity since its recent introduction.

The flowers of the Buddleia are extremely beautiful. They are of a soft shade of lilac in color and are borne in dense cylindrical spikes, which, under liberal cultivation, are from twelve to fifteen inches in length and three inches in diameter. They have a very pleasing fragrance.

In the spring the old plants should be cut back to the ground and they will throw up a fresh, strong growth.

Extra large field grown plants, each, 60 cents; 4 for \$1.75.



EVERBLOOMING BUTTERFLY BUSH

## FORSYTHIA (Golden Bell)

Each, 65 cents; 3 for \$1.75.

*Forsythia Fortunei*. These splendid old shrubs, growing eight to ten feet in height, light up the garden with glistening masses of yellow before the leaves appear in the early spring. Their bright golden flowers, often appearing before the snow is gone, vie with the Crocus as harbingers of spring.

## LILACS

Lilacs have always been popular on account of their hardiness, vigorous growth, abundant foliage and graceful and luxuriant sweet-scented flower panicles. The large flowered Red, White and Purple, are among the most desirable tall growing shrubs, attaining a height of eight to ten feet. The named varieties grow somewhat smaller.

At Highland Park in Rochester, which has one of the most complete collections of lilacs anywhere in the country, the varieties we list here stand out preeminently as the most desirable, because of their hardiness, vigor, free-blooming qualities and beautiful shades. Large flowered, red. Purple-red flowers, standard variety. \$1.00 ea. Large flowered, purple. Bluish-purple flowers, standard variety; always good. \$1.00 each.

Large flowered, white. Cream white flowers; very fine. \$1.00 each. Pres. Grevy. The most popular blue variety. A profuse bloomer; flowers double, blue and very fragrant. \$1.00 each.

Charles X. Large shining leaves; trusses large, rather loose, flowers single, reddish-purple. \$1.00 each.

Ludwig Spaeth. Planted very extensively in all parts of the country. Trusses large, flowers single purplish red. Very desirable. \$1.00 each.

Frau Dammann. One of the most popular and a leading variety. Large panicles of single white flowers, in great profusion. \$1.00 each.

Josikaea (Josika's or Hungarian Lilac). Dark, shining leaves, and purple flowers in June, after the other Lilacs have done flowering. \$1.00 each.

The Butterfly Bush with its charmingly graceful spikes of bloom should have a prominent place in the border or on the lawn.

## SPIREA, Meadow Sweet

Any of the varieties below, each, 50 cents; 4 for \$1.50.

**Arguta.** Flowers clear white and freely produced. The very best early-flowering white Spirea grown.

**Anthony Waterer.** Very low growing, and bearing flat heads of deep rose blossoms all through the late summer.

**Bumaldi.** The ever blooming Spirea. Dwarf and compact in habit; leaves are bright green, with variegations of yellow; flowers deep pink. Blooms throughout the Summer and Autumn. Very desirable shrub.

**Callosa alba.** Dwarf White Spirea. A valuable, white flowering, dwarf shrub, one to three and one-half feet high, of bushy, symmetrical form, which flowers all summer.

**Aurea.** (Golden Spirea.) One of the best of our yellow leaved shrubs.

**Thunbergii.** (Thunberg's Spirea.) April and May. Low-growing, rounded form, delicate, drooping, yellowish green, lanceolate leaves, which take on and retain the most beautiful tints in Autumn. Small abundant white flowers in May. For planting in front of porches it has no rival.

**Prunifolia or Bridal Wreath.** One of the best and most admired of the early flowering varieties. This beautiful shrub, which comes from Japan, is very hardy and of medium size, attaining a height of from four to five feet.

**Van Houttei.** This is one of the finest and most satisfactory of all Spireas, either single or among other shrubs. It forms a round, graceful bush with arching branches, which in June are set from tip to tip with beautiful white blossoms. A shrub which cannot be over praised.

## SYRINGA (Mock Orange)

**Syringa, Grandiflora.** Large white flowers. Very hardy. Each, 65 cents; 4 for \$2.25.

**Syringa, Golden.** Large, deep yellow leaves; white flowers; bush hardy.

Each, \$1.00; 3 for \$2.50.

## TAMARIX

Hardy shrub, with very graceful and handsome feathery foliage. The plant flowers so freely that in the early summer it is one mass of pink bloom, completely hiding the foliage. Grows 12 to 15 ft. Each, 65 cents; 3 for \$2.50.

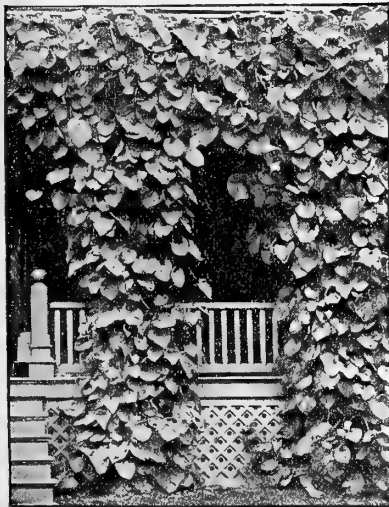
## WEIGELA, Diervilla

**Candida.** This is the very best of all the white flowering Weigelas. A strong, upright, erect grower; flowers pure white, and produced in great profusion. Commences to bloom in June, 3 ft. Each, 75 cents; doz., \$7.00.

**Eva Rathke.** A charming new variety; flowers a beautiful, distinct, clear shade of crimson. Blooms twice each season. 3 ft. Each, \$1.00; doz., \$10.00.

**Rosea.** A hardy and beautiful shrub, bearing in May a profusion of rose-colored flowers. Will grow in shade. Each, 75 cents; dozen, \$7.00.

**Variegated.** Leaves variegated, green, yellow and pink. Flowers delicate rose and pink. A charming shrub. Each, 75 cents; dozen, \$7.00.



DUTCHMAN'S PIPE

The Spireas are the best known and most popular of all flowering shrubs. The best varieties are listed above.

## VICK'S HARDY VINES

### AMPELOPSIS

**Veitchii.** Japanese or Boston Ivy. This hardy variety clings firmly to the side of a house or wall, and will soon form a perfect mass of foliage. The leaves overlap with wonderful regularity. In autumn this handsome climber manifests its greatest beauty, becoming a glowing mass of the brightest shades of crimson, scarlet and orange.

Strong vines, each, 75 cents; dozen, \$7.00.

**Quinquefolia.** American Ivy or Virginia Creeper. A native climber of vigorous growth; a fine green in summer changing to rich crimson in fall. It affords shade quickly; desirable for covering walls; verandas or trunks of trees.

Strong vines, each, 65 cents; 3 for \$1.75.

### CLEMATIS

Clematis is a favorite climbing plant for trellises, porches, and fences. It makes a rapid growth, producing its showy flowers in great profusion. Its abundant foliage and wealth of bloom combine usefulness with beauty.

**Henryii.** Single; the finest white Clematis; very large, fine flowers; grows rapidly; blooms freely during summer and autumn. Each, \$1.00; 3 for \$2.50.

**Jackmani.** Flowers large, intense violet-purple; produced in great profusion, blossoms from four to six inches in diameter. The most beautiful hardy climber in cultivation. Each, \$1.00; 3 for \$2.50.

**Madame Edouard Andre.** A valuable variety; distinct color; of fine bright crimson, with no purplish shade about it. Large flowers, borne so profusely that it is called Crimson Jackmani. Each, \$1.00; 3 for \$2.75.

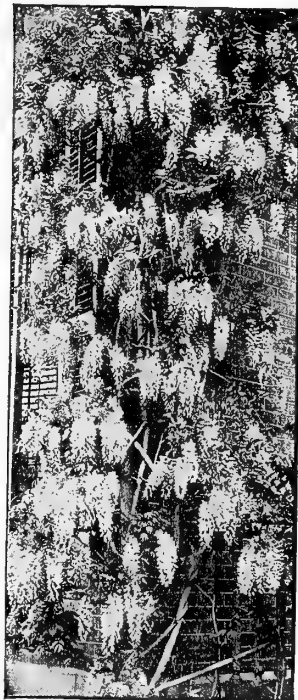
**Paniculata.** A remarkably beautiful climbing plant. Flowers pure white, star-shaped, about one inch in diameter, borne very freely in large clusters; will last several days as cut flowers, retaining their freshness and fragrance. The plant is a strong, quick grower. One of the most desirable and useful of climbing plants. Each, 50 cents; 3 for \$1.25.

### ENGLISH IVY

Extensively used for window boxes and vases in the summer. For outdoor display in window boxes at hotels and private residences its value is widely recognized. A good climbing plant for the house. Each, 35 cents; 4 for \$1.20.

### TRUMPET VINE

**Tecoma radicans.** A fine, hardy, climbing plant, producing clusters of large, trumpet-shaped, orange-scarlet flowers about three inches long. The foliage also is very beautiful. If the tops are kept cut back, it makes a beautiful bush for the lawn. Each, 65 cents; 3 for \$1.75.



WISTARIA

### CINNAMON VINE

A very rapid climber of incomparable beauty, with flowers of exquisite perfume. The growth is very rapid and the vines cover a large space in a short time. It is grown from a tuber, is perfectly hardy and will live out of doors without protection. The vine dies to the ground each fall, and starts growth early in the spring.

Tubers, Each, 25 cents; 4 for 90 cents.

### DUTCHMAN'S PIPE

**Aristolochia Siph.** A very handsome rapid-growing hardy climber attaining a height of 30 feet or more. The picture to the left clearly shows the large attractive overlapping foliage.

Each, 90 cents.

### HONEYSUCKLE

**Hall's Japan.** A vigorous rapid growing nearly evergreen climber, native of Japan. Leaves are dark green and produce a dense covering. Flowers are white changing to yellow, deliciously fragrant, borne in great profusion in summer and sometimes in autumn. Each, 90 cents.

### WISTARIA Chinese Purple

Wistaria is a strong, rapid grower, desirable for trellises, porches, etc. When well established it blooms profusely. The light purple flowers are very showy, and are produced in long racemes. A large plant in bloom is a beautiful sight. Perfectly hardy. Strong Roots, each, 90 cents.

# Vick's Hardy Rose Collection

2 yr. plants each 70 cts.; all 6 for \$3.80

This collection of six choice Hardy Roses has been so popular that we repeat it this season. These varieties have been carefully selected and include some of both of the Hybrid Teas and Hardy Perpetuals. All are varieties of proved merit.

**Killarney Pink.** A Rose that has won fame both as a hardy garden variety and as a winter cut flower. It has large long pointed buds of a sparkling brilliant pink opening to large loose blooms of a beautiful flesh color, borne on long strong stems. Hybrid Tea.

**Anna De Diesbach.** A lovely shade of light carmine pink. Very large, double flowers. Very vigorous grower and hardy. Hardy Perpetual.

**Frau Karl Druschki.** (Snow Queen). An immense pure white perfectly double Rose, sometimes almost six inches in diameter, abundantly produced in June and if kept growing, continuous blooming all summer. Hardy Perpetual, **Ophelia.** Words can give only a faint idea of the superb beauty of this rose. The beautifully formed fragrant flowers are a delicate shade of salmon pink shaded with rose. The buds are unusually attractive and open full and double. Blossoms profusely all summer until frost. Highly desirable both for outdoors as well as greenhouse culture. Hybrid Tea.

**Gruss an Teplitz.** Color a rich scarlet, shading to velvety crimson; very fragrant, a free strong grower, and the most profuse bloomer known, being covered with flowers the whole season. Hybrid Tea.

**Radiance.** A glorious new Rose of American production. Vigorous, upright bushy plants, bearing a continuous supply of very large, beautiful, brilliant carmine pink blooms with yellow or salmon pink shadings at the base of petals.

## Choice Hybrid Tea Roses

The Best We Have Ever Offered

The Same High Quality at Lower Prices.

We recommend the following varieties, with those above, as being pre-eminently the best and most satisfactory list obtainable in their range of color and form. As we shall have a large stock we have reduced our prices to the lowest point consistent with quality.

2 yr. each 70 cts.; 3 for \$1.95

**American Legion.** Buds produced on long stiff stems of immense size, long and pointed, opening a pleasing shade of cerise which keeps until all petals fall. An ideal rose for cutting. Absolutely hardy in all sections.

**Cheerful.** Pure orange flame. Of fine form. Flowers freely and continuously.

**Constance.** Buds long, orange yellow streaked with red, flowers golden yellow, full and globular. Free bloomer.

**Columbia.** Peach-blow pink, deepening to a glowing rose pink. Flowers of good size and form on long stiff stems nearly thornless. Exquisitely fragrant

**Double White Killarney.** An improvement over White Killarney.

**Duchess of Wellington.** Intense saffron yellow changing to deep coppery yellow. Buds long, flowers large, well formed. A good bloomer.

**Dorothy Page Roberts.** Large, open, coppery pink blooms, suffused apricot - yellow. A most attractive and unique variety; very vigorous and free-flowering.

**Etoile Luisante or Baby Herriot (Poly).** Color shrimp pink with intense coppery scarlet suffusion. Most beautiful rose in its class. Sure to please.

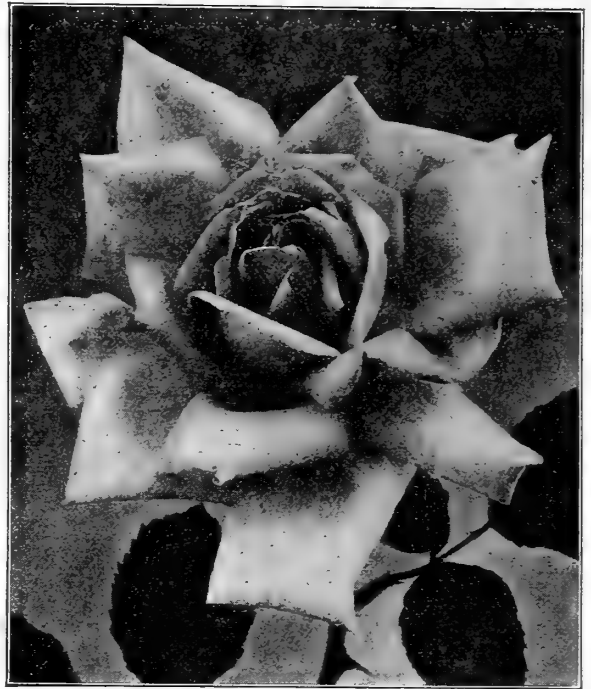
**Etoile de France.** Brilliant shade of clear crimson velvet. Center velvety cerise. Large flowers, long stems. Vigorous, free blooming and hardy. Especially valuable as an outdoor variety.

**Francis Scott Key.** A rose of even glowing red color; flowers unusually large, full and double; buds long and pointed.

**Golden Emblem.** One of the most beautiful yellow roses ever grown. Flowers so freely that as a garden and bedding rose it is without a rival.

**Golden Ophelia.** An Ophelia seedling. Sturdy, stiff stems with beautiful glossy foliage. Flowers medium size, excellent texture of bright golden yellow. As an indoor rose it makes several crops throughout the year. Blossoms profusely.

**Gorgeous.** Flowers full, large and exquisitely formed of deep orange flushed copper yellow, heavily veined with reddish copper. Beautiful, strong, vigorous.



LOS ANGELES (One of the best Hybrid Teas)

**George Ahrends.** Bright red to delicate rose. Extremely large, full and deliciously fragrant. Very floriferous. Long, stiff stems.

**Hoosier Beauty.** A glowing crimson scarlet with delicate shadings; rich velvety texture; deliciously fragrant; plant is of strong vigorous growth; one of the best roses of its color.

**Lady Ursula.** Delicate flesh pink, petals gracefully reflexed. Vigorous upright growth. Large blooms on long stems. Does well in dry places.

**Laurent Carle.** Very large, full, fragrant carmine crimson borne on long strong stems. Blossoms continuously until fall.

**Los Angeles.** Without question one of the finest roses ever introduced: the color is luminous flame pink toned with coral and shaded with translucent gold at base of petals; the buds are handsome, long and pointed; richly fragrant.

**Lady Hillingdon.** Deep apricot yellow, unique in having solid color without any shading. The color never fades even after the flowers are cut but invariably deepens.

**Mrs. Arthur Robert Waddell.** Long pointed deep apricot buds, are unusually attractive. Exquisitely graceful rose petaled orange salmon flowers. Soft bronzy foliage.

**Mrs. Calvin Coolidge.** Clear buff, yellow flowers, suffused with orange in the center. Medium size, well formed, double, fragrant.

**Magna Charta.** Extra large, full bright rosy pink flower of unusual depth, form and fragrance. One of the hardiest and best bloomers.

**Madame Edouard Herriot;** Coral red shaded yellow and bright rosy scarlet. Famous "Daily Mail" Rose.

**Madame Butterfly.** Similar to Ophelia but a stronger grower, producing more and larger flowers. Color a blending of bright pink apricot and rose. Intensified Ophelia.

**Miss Lolita Armour.** Very large, full fragrant blooms chrome yellow at base changing to burnt orange and copper, reflex of petals changing to bright salmon.

**Prince Camille de Rohan.** Deep velvety crimson, passing to intense maroon shaded black. Large, handsome, fragrant blooms. Sometimes called the black rose.

**Persian Yellow.** From Persia. Bright yellow, small double, foliage, faintly scented.

**Red Radiance.** A fitting companion of the famous Rose Radiance of which it is a sport. It has all the good qualities of the parent and differs only in the beautiful deep cerise red color of the large globular blooms.

**Souvenir de Claudius Pernet.** One of the finest new introductions. A striking sunflower - yellow, deeper in center. Very large full flowers with elongated petals, and long pointed buds of exquisite shape.

**Sunburst.** Bright glowing orange blooms, paling slightly at edges of petals. The beautiful bronzy foliage is disease resistant.

**Wm. F. Dreer.** Soft silvery shell pink with rich golden yellow at base. Blossoms shaped like Los Angeles. Very beautiful.

**White Killarney.** A beautiful white rose of the same type and shape as the famous Pink Killarney; the long full buds are handsome and the open flower is most refined and beautiful in form and texture.

# VICK'S HARDY CLIMBING ROSES

**60c each, 3 for \$1.60**

**DOROTHY PERKINS.** In foliage, growth, and habit of blooming it is remarkably like the Crimson Rambler, but the flowers are more double and of a beautiful shell-pink color, and hold a long time without fading. The flowers are also sweetly scented, a characteristic not possessed by most Roses of the Rambler family.

**WHITE DOROTHY PERKINS.** This addition to this famous family will be welcomed by all flower lovers. Similar in habit to the others of its class but with pure white flowers.

**RED DOROTHY PERKINS.** This is a recent introduction and the acclaim with which it has been received assures it a foremost place among the Hardy Climbing Roses. The flowers are large and double and are produced very freely. The color, which is an intense, clear crimson-maroon with tips of petals tinged with scarlet, remains bright and unfaded throughout the blooming period.

**SILVER MOON.** Beautiful pure white semi-double flowers four inches and over in diameter, beautifully cupped. The yellow stamens in the center add to its attractiveness.

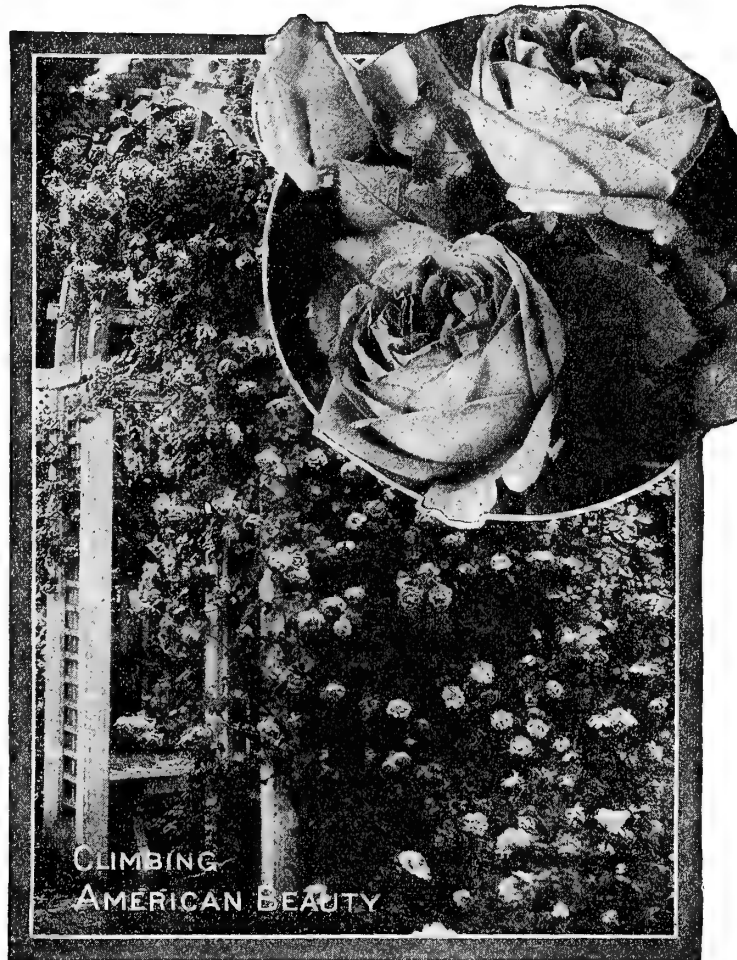
**CHRISTINE WRIGHT.** A climbing Hybrid Tea. Flowers large, double, perfect. Bright, wild rose pink. Blooms singly and in clusters, profusely in June and more or less throughout the season. Immune to disease. Strong, climbing habit.

**THE PHILADELPHIA RAMBLER.** A cross between the popular Crimson Rambler and the fiery crimson Hybrid Perpetual Victor Hugo, and identical with the Crimson Rambler except that the color is brighter crimson, and never fades; a valuable acquisition to the climbing roses.

**LADY GAY, ROSE OF THE HIGHEST MERIT.** Resembles Crimson Rambler in habit and general effect. The flowers are of a delicate cherry pink color, fading to soft white, of good size and delicately perfumed.

**CLIMBING AMERICAN BEAUTY.** This is known as the best hardy climbing rose in the large-flowering class. The flower is as large, as beautiful, and as double as the American Beauty, which is so well known as one of the most attractive roses, that it does not need a description.

**TAUSENSCHON—THOUSAND BEAUTIES.** Tausendschon well deserves its name, "The Rose of a Thousand Beauties." Its free flowering qualities and beautiful white and delicate pink blossoms make it a favorite. It is grown in large quantities for winter forcing. The flowers are borne in large clusters from June to August. Each flower measures about one and a half inches in diameter, and is of a beautiful soft rose color, changing to rosy-carmine; the strong, vigorous hardy plants and attractive foliage are highly resistant to disease and insects.



Climbing American Beauty 60c

## Rambler Roses 60c

Strong, two year plants, each 60c; 3 for \$1.60.

1 each all 4 for \$2.00.

**CRIMSON.** A great favorite.

**PINK.** Flowers in clusters in great profusion.

**WHITE RAMBLER.** Another favorite growing like Crimson Rambler, with white flowers in great cluster.

**YELLOW RAMBLER.** Deep golden-yellow flowers in large cluster, covering the entire bush.

## Moss Roses 89c

The peculiarities of the Moss Roses are the delicate prickles which crowd their stems, and the beautiful mossy covering of their opening buds. They are strong, vigorous growers, and are perfectly hardy. Each, 89 cents; 3 for \$2.45.

**HENRI MARTIN.** A magnificent Moss Rose. Extra large and perfectly double. Color a deep rosy carmine, shaded a bright crimson.

## POT PLANTS FOR INDOORS HARDY

EVERBLOOMING

ROSES 35c

One year green plants, with foliage ready to bud. Hardy enough to do well in the garden if set out after cold weather. Each, 35 cents; 3 for 90 cents.

**MAMAN COCHET.** Rich pink, changing to silvery rose.

**SUNBURST.** Orange copper or golden yellow, strong grower.

**WHITE COCHET.** Beautiful snowy white.

**WHITE KILLARNEY.** Soft, pure white, very popular.

## TENDER EVERBLOOMING TEA ROSES

One year green plants ready to bud. These roses are tender and must be grown indoors except in warm climates. Each, 35 cents; 3 for 90 cents.

**LADY HILLINGDON.** Golden yellow; long, pointed bud.

**MADISON.** Creamy white, large flowers.

**MRS. BEN. R. CANT.** Clear, bright rose-red; all season.

**SUNRISE.** Orange and copper, scarlet and yellow; very beautiful.

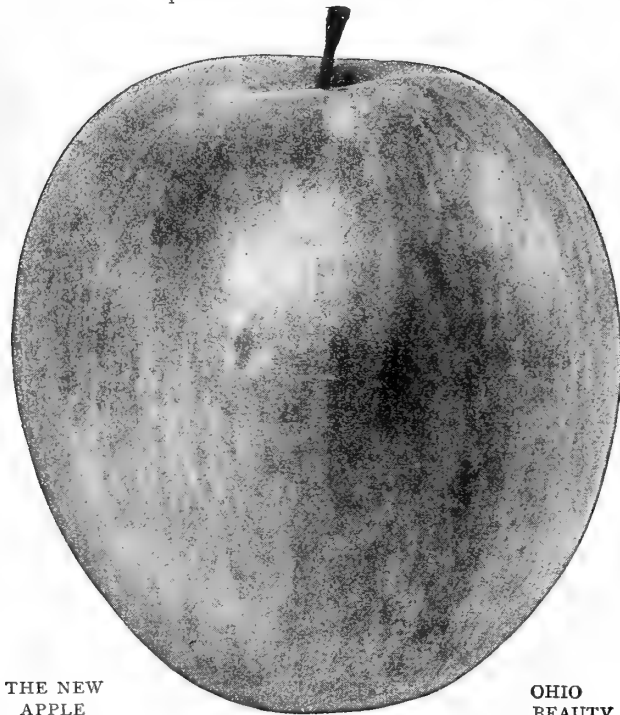
# FRUIT TREES FROM ROCHESTER

(Nursery Center of the World)

### Northern Crown are Best

By Express or Freight not Prepaid. Fruit trees are too heavy for parcel post.

The satisfaction of eating handsome, sparkling fruit fresh from one's own garden cannot be measured. Only those who have had this pleasurable experience know their appetizing lusciousness. Many otherwise waste spaces in corners, along fences and terraces can be utilized to provide abundant table delicacies.



THE NEW APPLE

OHIO BEAUTY

## THE THREE BEST NEW APPLES

**New Cortland.** New. Highly praised by New Ag. Station, where it originated. Fruit large, bright red, surpassing famous McIntosh; flesh firm, juicy, delicious; ideal winter apple. Each, \$ .85, 10 for \$8.00.

**New Red Spy.** Similar to Northern Spy except in color which is a bright red without stripe. 2 year trees, each, \$ .85.

**Ohio Beauty.** An excellent new winter apple, large, handsome, color yellow or greenish blush striped red. Flesh slightly tinged yellow, crisp, tender, aromatic, juicy. Best grade 5 to 7 ft., each, \$ .85.

## BEST SUMMER APPLES

**Red Astrachan.** Well-known red summer apple, in great demand. Sweet Bough. A favorite everywhere. Everyone should own a tree of this variety.

**Yellow Transparent.** Earliest of all. Large, tender, juicy; big crop every year.

## BEST FALL APPLES

**Duchess of Oldenburg.** A fine apple; yellow skin striped with red. Crisp, tender and juicy.

**Fall Pippin.** Large, yellow; tender, juicy and rich.

**Fameuse.** (Snow Apple.) Red skin, white flesh; very tender.

**Wealthy.** Medium size apple, beautifully striped and splashed with red. Fine flavor. Very hardy.

WE GUARANTEE our nursery stock to be TRUE TO NAME, QUALITY AS REPRESENTED and in FIRST CLASS CONDITION WHEN SHIPPED, with the express understanding and agreement that should any stock arrive in unsatisfactory condition, if purchaser will notify us immediately giving us report of the express or freight agent, or should any stock prove not true to name, we will refund the price paid or refill the order whichever the purchaser prefers. We assume no liability, however, in any event for an amount in excess of the money received for the stock. By reason of these conditions, we are able to make the above low prices for our trees and plants.

## BEST WINTER APPLES

- Baldwin.** Best grade, each 85 cents; 10 for \$8.00. Most popular variety planted. Delicious. The great national dessert Apple. Flesh tender; very juicy. Apple large, striped red.
- Golden Russet.** Very hardy Russet apple.
- Rhode Island Greening.** Best green apple. Fine for cooking.
- Jonathan.** Large, brilliant red. Good keeper. A great apple for the home garden.
- McIntosh Red.** Best red winter apple; tender, juicy, crisp.
- King.** Large red; fine bearer. Hardy.
- Northern Spy.** A great eating apple. Known the world over.
- Rome Beauty.** A very handsome red striped apple of good quality. A good keeper.
- Talman Sweet.** Best sweet. Light yellow with blush of red.
- Winter Banana.** An apple with a banana flavor. Fine looking.

## BEST DWARF APPLES

Fine for the Town or City Lot where there is limited space in which to grow fruit.

Extra Large Trees, \$0.85 each; ten for \$8.00.

Dwarf Trees in These Varieties: Baldwin, Crimson Beauty, Northern Spy, McIntosh Red, Snow Apple, R. I. Greening, Duchess, Wealthy, Winter Banana.

## BEST CRAB APPLES

	Each	Ten
<b>XXX Grade, Largest Size</b>	\$0.85	\$8.00
<b>Hyslop.</b> Dark red.	Transcendent.	Yellow, red cheek

## BEST SOUR CHERRIES

	Each	Ten
<b>XXX Extra Size</b>	\$1.00	\$9.00
<b>Early Richmond.</b> Dark red cherry, juicy, acid, great cooker, very productive.		
<b>Montmorency.</b> Most popular of all cherries. Large, bright shining red, acid flavor.		
<b>English Morello.</b> Best red sour cherry. Two weeks later than Montmorency. Fruit medium size, very dark red.		

## BEST SWEET CHERRIES

	Each	Ten
<b>XXX Extra Size</b>	\$1.50	\$12.50
<b>Black Tartarian.</b> Large, sweet, heart-shaped. Very fine cherry. Bears immense crops. Most popular sweet variety grown.		
<b>Napoleon.</b> Best of yellow sweets. Heart-shaped fruit. Very large. Meat tender, juicy, fine flavor. A great canning cherry.		
<b>Windsor.</b> Hardest sweet Cherry. Fruit large, very dark red.		

## BEST PEARS

	Each	Ten
<b>XXX Extra, 5 to 7 ft.</b>	\$1.90	\$12.50
<b>Anjou (Autumn).</b> Large, handsome, fine flavor, good keeper.		
<b>Bartlett.</b> Popular everywhere. Large, yellow pear. September.		
<b>Clapp's Favorite.</b> (Summer) Large, early pear. Hardy and productive. August.		
<b>Duchess (Autumn).</b> Large light green and russet. Good flavor.		
<b>Flemish Beauty (Autumn).</b> Beautiful, sweet pear, hardy.		
<b>Seckel (Autumn).</b> A great home garden variety. Small fruit, juicy, melting tender. Fine for preserving and pickling.		

## BEST DWARF PEARS

Dwarf Pears are popular where space is limited. Fruit is same size as on standard trees.

Prices on Dwarf Pear Trees	Each	Ten
<b>XXX 3 to 4 ft.</b>	\$ .85	\$ 8.00

We recommend the following varieties:

- Duchess
- Bartlett
- Clapp's Favorite
- Seckel



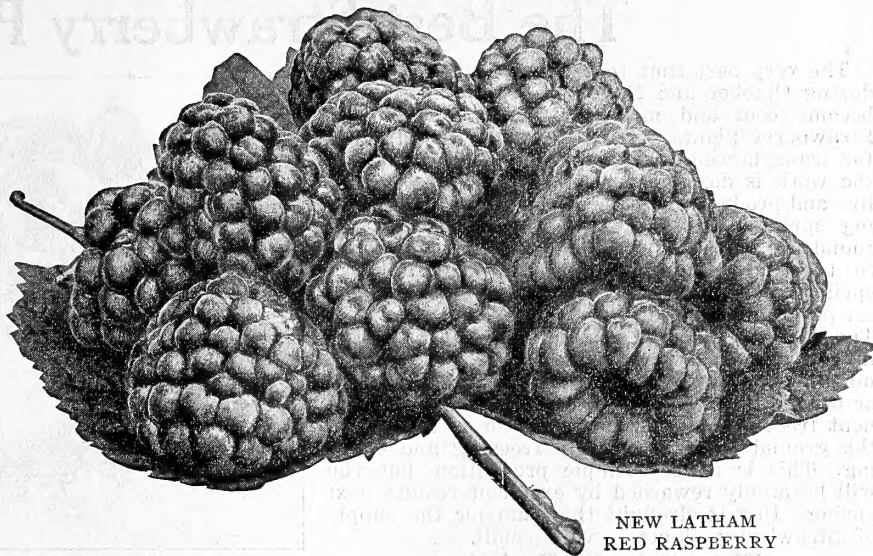
## Best Rhubarb

### PIE PLANT

Makes delicious sauce and pies. Easy to grow, very hardy.

Make your cellar a garden. Grow your own Rhubarb for fresh sauce and pies this winter. Set ten plants almost submerged in a tub of water in semi-darkness in your cellar preferably under a cellar window where there is not much light and only moderate cellar heat. As soon as plants are growing rapidly, add gradually rich loam to the water or easier still, add an occasional tablet of Stimulant or Fertilis for plant food. In a few weeks you can cut a plentiful supply of tender, luscious stalks for making delicious sauce or pies, all the average family can use.

Each 20 cents; 10 for \$1.50



NEW LATHAM  
RED RASPBERRY

## Vick's Small Fruits

### RED RASPBERRIES

PRICES—2 for 30 cents; 10 for \$1.00

100 for \$5.00 except as noted.

**Latham.** The big new, disease free Red Raspberry out-yields all other varieties and brings highest market prices because of its splendid appearance and large size. See illustration, natural size. 2 for 40 cts.; 10 for \$1.50.

**St. Regis Everbearing.** Begins to ripen in June and continues to bear fruit until frost. Truly an everbearing Red Raspberry. Berries large, bright crimson, highest quality. Rich and sugary, with a true raspberry flavor. A fine shipper. In size, productiveness and quality St. Regis leads all other reds.

**Columbian.** A cross between the Cuthbert and Gregg. Hardy even in Wisconsin. A most vigorous grower; cane is 10 to 16 feet in length and often over an inch in diameter. Fruit very large; color dark reddish-purple; adheres firmly to the stem; seeds small; has a distinct flavor of its own making it a most delicious table berry. For canning it is much superior to any other. Bears enormous crops.

**Cuthbert.** The best of all Red Raspberries for market on account of its fine shipping qualities, size, color, and richness of flavor. Very strong grower, vigorous, healthy foliage and very hardy. One of the reliable varieties; can always be depended upon to bear a good crop.

## Vick's Black Raspberries

Price—2 for 30 cents; 10 for \$1.00; 100 for \$5.00

**Plum Farmer.** This wonderful new Black Raspberry has been thoroughly tested and is a great favorite for home use, and one of the best commercial sorts for all sections. A vigorous grower, hardy and very productive; one of the best to withstand drought. Fruit enormously large, covered with a grayish bloom like the bloom on a grape; matures early, easily picked, ships well, sells at the highest prices.

**Kansas.** A splendid variety of proved merit. Productive, hardy and of excellent quality.

## Plums

Extra Size each, 85 cents; 10 for \$8.00

**Abundance.** (Japan). Large, red, flesh light yellow. Early.

**Bradshaw.** Dark violet red, oblong, flesh yellow, juicy.

**Burbank.** (Japan). Large, round, red, good bearer, fine quality.

**German Prune.** Long oval, purple, thick bloom. Sweet.

**Lombard.** Tree will grow anywhere. A red, oblong, large plum. Juicy, sweet and pleasant. Should be in every garden.

## Quinces

Best Extra Size each, \$1.00; 10 for \$9.50

**Orange.** Most popular variety. Large, golden-yellow. Cooks very tender. Fine flavor.

## Blackberries

Price—2 for 40 cts.; 10 for \$1.25; 100 for \$6.00

**Blowers.** The giant of all Blackberries. An upright, mammoth grower; is very hardy and productive. Fruit jet black, of fine quality; a good shipper. Commences to ripen in July and bears fruit about two months.

**Eldorado.** A berry you can depend upon every time. The vines are very vigorous and extra hardy. Berries are large, black, and borne in big clusters.

Our prices on Small Fruits, and Fruit and Ornamental Trees are based on the actual value of the plants and do not include the cost of transportation. Most shipments of Small Fruits can be forwarded cheapest by Parcel Post. If you prefer that route add an amount sufficient to pay for postage. Otherwise shipment will be made by Express collect.

*Manchester, N. H.,  
I received the plants in good condition, a real surprise package. I cannot tell you how pleased I am with all especially the cherries.  
M. N. E.*

# The Best Strawberry Plants

The very best time to set Strawberry plants is during October and November when the soil has become cool and moistened by fall rains and Strawberry plants are mature and well hardened for transplanting. This is nature's ideal time. If the work is done properly, plants set in Autumn live and produce a good crop of berries the following spring. The winter weather firms the soil round the roots and the plants are in place ready to take advantage of the first warm days of spring and are growing vigorously before spring set plants get rooted.

**The Secret of Success** with fall set plants consists in covering each plant just out of sight with a mulching of barnyard manure, leaves, excelsior or other litter. This should be done when permanent freezing weather has come so as to prevent the ground from alternately freezing and thawing. This is a very simple precaution, but you will be amply rewarded by excellent results next spring. Due to drought this summer the supply of Strawberry plants is very small.

## Three Splendid Varieties

The following three varieties originated and developed by the New York Fruit Testing Association have demonstrated their unusual merit to such an extent that we unhesitatingly recommend them as distinctly the finest June bearing varieties that have ever been produced.

As one is an early, one a midseason and the third a late variety, plants of each will give you berries all during the June Strawberry season.

25 for \$1.50; 50 for \$2.75; 100 for \$4.50; postpaid, 25 each of the three varieties, 75 plants, \$4.00; 50 each of the three varieties, 150 plants, \$7.00.

**Beacon.** Very early, berries are dark, glossy red, flesh red to center, juicy but firm, sub-acid, delicious, the best early variety we know of. Perfect.

**Boquet.** Mid-season, extra large berries, glossy red, richly juicy, very firm, prodigiously productive. Perfect.

**Bliss.** Late, claimed to be the finest berry in existence. Very large, medium red, very glossy, juicy but firm, sprightly sweet, highly flavored. Perfect.

## STANDARD JUNE BEARING VARIETIES

Any of the following, 25 for \$1.00; 100 for \$3.00; postpaid. By express collect, 250 for \$6.00; 500 for \$10.50; 1000 for \$18.00.

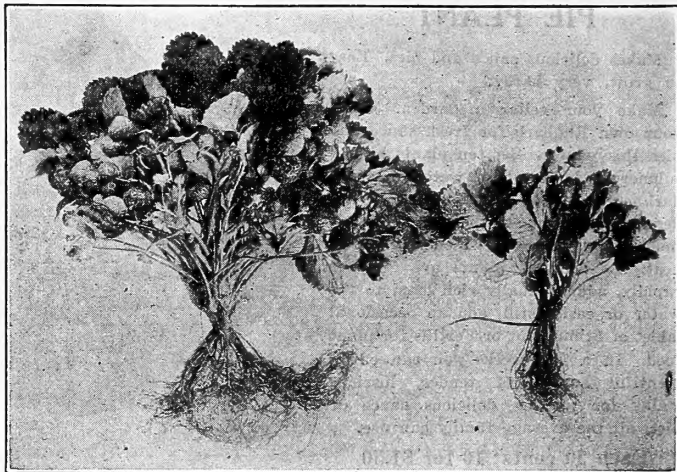
**Bubach.** Among the leaders of old standard varieties. Fruit large and handsome, conical, bright scarlet moderately firm, rich in flavor. Desirable for home use and market. Season early to medium. A great berry, bringing fine prices on the market. Imperfect.

**Gandy.** A large, late berry, heavy yielder, strong grower. Fruit very firm, and of good quality. On the market brings fine price. Late. Perfect.

**Glen Mary.** A fancy market variety. Meat is rich, firm, juicy and of high flavor. Big dark red berry. Midseason. Perfect.

**Premier.** A new early variety of exceptional merit, vigorous, enormously productive, commencing early and continuing to bear through a long season. Fruit is attractive rich red of delicious quality, firm enough to ship well. Perfect.

**Senator Dunlap.** Very hardy and productive. Berries good size, bright glossy red, good quality. Ripens early and bears fruit for a long period. Early Midseason. Perfect.



GOLD COIN, THE NEW EVERBEARING STRAWBERRY

## A NEW EVERBEARING STRAWBERRY

**Gold Coin.** The most remarkable everbearing strawberry we have ever seen. It begins to bear very young and keeps at it continuously from May until November. Its wonderful bearing qualities are clearly shown in the picture above made from a photo taken in September. The large plant, which you see is simply laden with fruit in all stages of development was set out the previous October, less than a year before. The small plant is a spring runner barely two months old and already commencing to yield fruit. Not only will this remarkable variety out-yield nearly all others but in quality, handsome appearance and flavor, it has no superior. Perfect.

25 plants for \$2.00; 50 plants, \$4.00; 100 plants, \$6.00; postpaid.

## STANDARD EVERBEARING VARIETIES

25 for \$1.50; 100 for \$4.50 postpaid.

By express collect, 250, \$9.00; 500, \$14.50; 1000, \$25.00.

**Mastodon.** Without exception the best known and most popular everbearing variety ever offered. Numerous large growers can testify to its enormous productivity and superior quality. Perfect.

**Progressive.** This is one of the leading everbearing varieties, producing good sized berries from May until November. The fruit is of fine quality, highly colored, deliciously flavored, and red to the core. Perfect.

## The Best Grape Vines

**Concord.** Bears large clusters of large black grapes overlaid with rich bloom. While flesh is juicy sweet and tender, it is sufficiently firm to keep well and stand packing and shipping long distances; a strong grower, very hardy, very productive. By far the most popular variety. Each 20 cents; 10 for \$1.75.

**Lucile.** A beautiful bright red variety of medium size, but very hardy and very productive.

Each 25 cents; 10 for \$2.00

**Worden.** Bears large compact handsome black clusters; larger, earlier and superior in flavor to the Concord.

**Niagara.** Produces very large clusters of white grapes, larger than Concord; skin is thin but strong; flesh melting sweet; keeps and ships well; highly recommended. Each, 20 cents; 10 for \$1.75.

# Fertilizers and Soil Builders

F. O. B. Rochester

**PULVERIZED SHEEP MANURE.** The best general fertilizer for lawn, garden and greenhouse. It is a dry, pure animal product, finely ground and has an oily quality not found in the ordinary sheep manure, and contains less dirt and foreign matter than the ordinary brands offered. As a top dressing for lawns or gardens it is very effective without unsightly appearance or offensive odor. It may be safely used for any fertilizing purpose as it contains no acid or chemicals to burn tender roots or sprouting seeds. It furnishes plant food in available natural form and its effect lasts a long time. 5 lbs., 40c.; 25 lbs., \$1.25; 50 lbs., \$2.00; 100 lbs., \$3.00.

**PURE RAW BONE MEAL.** An excellent fertilizer for lawns, shrubbery and plants of all kinds. Finely ground, it decomposes rapidly and becomes quickly available as plant food yet does not evaporate or waste as rapidly as commercial fertilizers. Can be used safely without danger of burning the tenderest plants. Very efficient, very economical. 5 lbs., 40c.; 10 lbs., 70c.; 25 lbs., \$1.50; 50 lbs., \$2.50; 100 lbs., \$4.00.

**FLORANID.** The most highly concentrated nitrogen fertilizer. 92 times stronger than manure and containing 46% available nitrogen, which is an essential element in all plant foods. Floranid produces quick and vigorous growth in pot plants, bulbs, perennials, shrubs, etc. On lawns the beneficial effect is almost immediate. A level teaspoonful to a gallon of water is sufficient. 1 lb. carton, 50c; 5 lb. bag, \$1.50; 10 lbs., \$2.50.

**NITRATE OF SODA (Chili Salt Petre).** The best known and cheapest form of nitrogen for plants. Highly concentrated and immediately available. 1 lb., 25c; 5 lbs., 65c; 10 lbs., \$1.00; 25 lbs., \$2.00; 50 lbs., \$3.50; 100 lbs., \$6.00.

**STIMUPLANT** makes a Wonder Garden. Stim-U-Plant is a highly concentrated, immediately available plant food in convenient tablet form. It is odorless, clean and wonderfully effective for stimulating plant growth either out-of-doors or in pots. Simply insert tablets in soil or dissolve in water to use instead of liquid manure. 10 tablets, 15 cents; 30 tablets, 25 cents; 100 tablets, 75 cts., postage paid.

**PEAT MOSS.** Imported decomposed vegetable matter, dry, odorless, free from weeds, furnishing humus to the soil, without fungus and disease. Splendid for mixing with heavy soil to make it mellow and tillable. Fine for compost, for potting soil and greenhouse benches. Large, closely compressed bales, \$4.75 each.

**VIGORO.** Supplies the right kind and amount of food to give plant a good start and keep it growing and in vigorous condition during the growing season. Produces velvety lawns, more and better flowers and delicious vegetables. Economical. A booklet "The Home Beautiful", in every bag. Only one to four pounds, according to season, required per 100 square feet of surface, 5 lbs., 50 cents; 25 lb. bag, \$1.75; 50 lb. bag, \$3.00; 100 lb. bag, \$5.00.

# Insecticides and Fungicides

F. O. B. Rochester

Insects and worms which eat leaf or stalk are usually controlled by poisons, applied to plants in liquid or dust form. Sucking insects like aphids, plant lice, plant flies or beetles can only be destroyed by contact sprays which suffocate or paralyze. Fungus diseases such as mildew, blight, rust, etc., which cause leaves to turn brown or black and wither and the stem to rot, can usually be prevented by fungicides.

**AGRI-PAX.** A powerful but safe contact spray guaranteed by the makers to kill aster beetles, rose bugs, leaf hoppers, which most sprays would not effect, and all other insects of every known kind. A big boon to aster growers. Will not harm tender plants. Non-poisonous to humans and animals. Therefore, can be used on all kinds of vegetables and fruits. No annoying fumes. No stains to hands or clothing. 8 oz., 40c.; 16 oz., 60c.; 32 oz., \$1.00.

**BLACK LEAF-40.** The standard liquid nicotine solution to destroy sucking insects, such as aphids, plant lice, etc. It is very highly concentrated, only small quantities being needed to make solution. Spraying directions on each package. 1 oz., 35c.; ½ lb., \$1.25; 2 lbs., \$3.75; 10 lbs., \$15.50.

**DERRISOL.** Kills by paralysis. Non-poisonous, odorless, pleasant and safe to use. Efficient for the control of aphids, black flies, leaf hoppers, thrip and many other soft bodied sucking insects as well as many small leaf eating larvae such as cabbage worms. Can be used on plants soon to be eaten. 1 oz. bottle makes six gallons, 35c; ½ lb. bottle, \$1.25; 1 lb. can, \$2.25.

**FISH OIL SOAP.** A wash for roses, plants and trees infested with insects. 1 lb., 35c; 5 lbs., \$1.50.

**FUNGTROGEN.** Ideal spray for mildew and black spot on roses and other plants. Contains important nitrogenous hortogen readily absorbed by the plant through the foliage and results in increasing vigor, luxuriant foliage and wonderful blooms. An invisible spray highly endorsed by professionals. Highly concentrated, making sixty times its volume when diluted with water. ½ pint, 75c.; Pint, \$1.25; Quart, \$2.00.

**LIME SULPHUR POWDER.** Applied as a dormant spray in the fall after the leaves drop or in the spring before the buds open to destroy San Jose scale and fungus scores of apple scab, peach rot, leaf spot, etc. One-half pound will make five gallons of solution. 1 lb., 40c.; 5 lbs., \$1.80.

**SULPHO TOBACCO SOAP.** An excellent spray for aphids on plants and a wash for fleas on cats and dogs. 3 oz. cake, 15c; 1 doz. cakes, \$1.25; 8 oz. cake, 25c; 1 doz. cakes, \$2.50.

**TOBACCO DUST.** Effective against lice. 1 lb., 15c.; 5 lbs., 50c.; 25 lbs., \$2.00; 100 lb. bag, \$6.00.

**VOLCK.** An effective spray to kill red spider, mealy bug, scale, mildew, aphids, flies, thrip, caterpillar. Used safely on tender greenhouse and garden plants. Will not burn hands, stain clothing or leave disagreeable odor. Actually brightens the plants and gives them a healthy, handsome appearance. ½ pint, 50c.; Pint, 75c.; 1 quart, \$1.00.

Prices on this page are f. o. b. Rochester, i. e., the express or freight charges to be paid by customers and are subject to market changes. Reduced prices on larger quantities, on request.



PEONIES AT HIGHLAND PARK—SEE OUR SPLENDID NEW LIST OF PEONIES ON PAGE 23.

Rec'd OCT 4 1930 ☆

VICK'S POPULAR DARWIN TULIPS  
JAMES VICK'S SONS, ROCHESTER, N.Y.