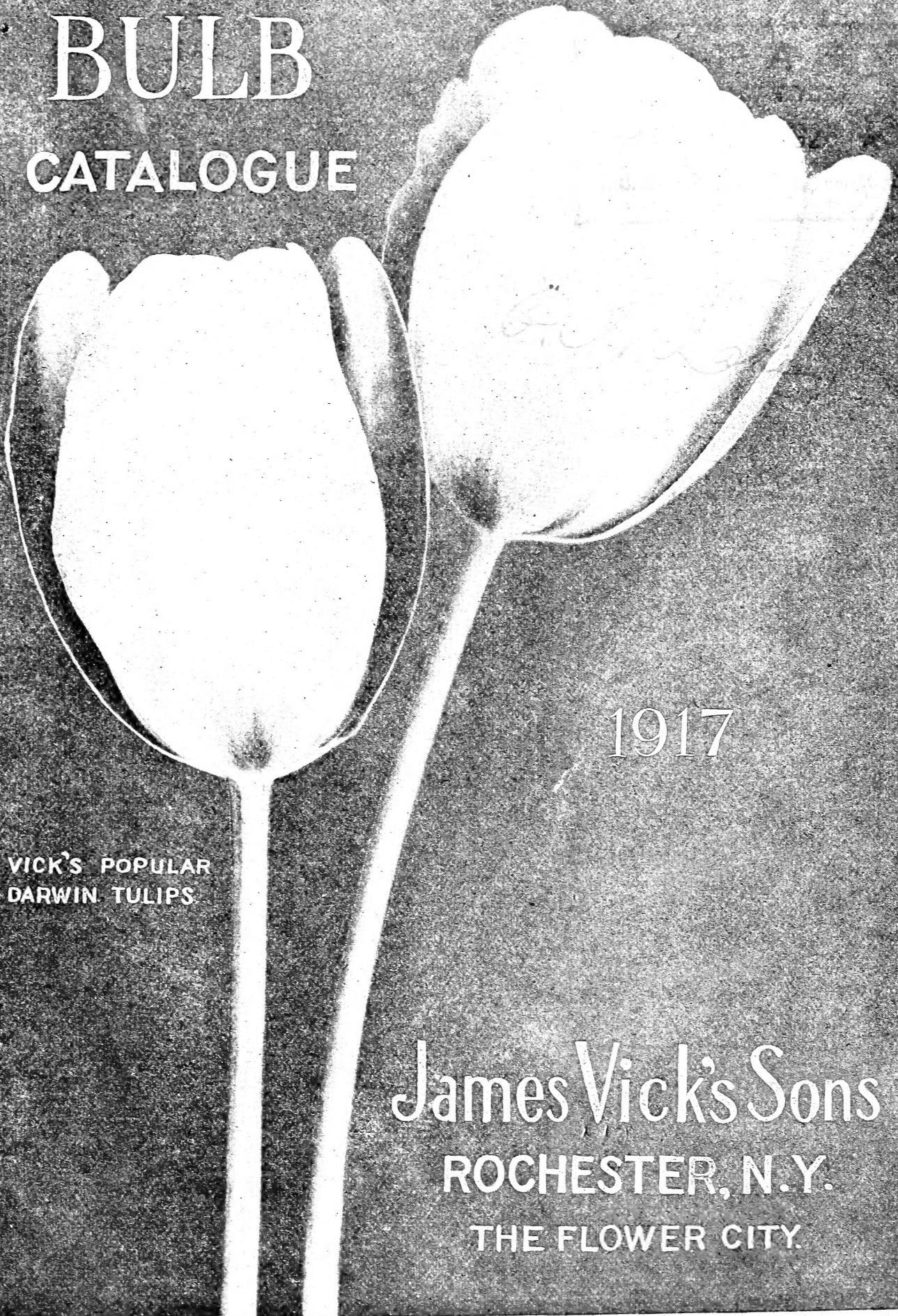


# Historic, archived document

Do not assume content reflects current scientific knowledge, policies, or practices.



# VICK'S WHOLESALE BULB CATALOGUE



1917

VICK'S POPULAR  
DARWIN TULIPS.

James Vick's Sons  
ROCHESTER, N.Y.  
THE FLOWER CITY.

# New Early-Flowering Long-Season Spencer Sweet Peas

Direct From the Introducer

## For Forcing

The New Early Long-Season Spencer Sweet Pea Novelties offered last year for the first time were grown and introduced by one of the largest growers of Sweet Peas in the world. Many of the Standard and Spencer varieties were introduced by this concern. Following is the introducer's description:

"The Novelties we are offering herewith are exclusively our own productions and were developed from our own crosses. These varieties are absolutely fixed, both as to type and color. Every one of our crosses were made from the old Early-Flowering or Christmas Grandiflora types on the late or standard Spencers as parents.

"Our plants began to bloom exactly 106 days after planting the seed in the open ground; six weeks earlier than the late-flowering varieties planted at the same time. One of their chief characteristics is their long season of blooming, as they commonly stay in bloom for four full months.

"We have a number of other selections coming along, and it will not be long before all of the colors in the late fall varieties will be found in the Early-Flowering Long-Season type. These we are now offering are among the best."

**Early Morning Star.** Deep orange-scarlet or flame color in standard with rich orange-pink wings. It does not burn in the open, and under glass will be magnificent. The flowers are large and of best Spencer form, and are borne in threes and fours in wonderful profusion.

Packet of 15 seeds, 15 cents.

**Early Song Bird.** We are sure this will be the leading pale pink for florists. The flower is the same color as "Florence Morse Spencer," and has the same excellent form and features of "Mrs. Hugh Dickson," but is on white ground. The placement of the flowers is splendid for packing, and the flowers are borne on long stems in threes and fours.

Packet of 25 seeds, 15 cents.

**Early Melody.** Deeper shade of pink than "Early Song Bird," on white ground, closely resembling "Countess Spencer" and near "Hercules." Can be described as rose pink on white ground. Four large well waved flowers are borne on nearly every stem.

Packet of 25 seeds, 15 cents.

**Early Spring Maid.** The color is light pink on cream ground, and blossoms have the same splendid characteristics as "Mrs. Hugh Dickson." There is no Early Spencer cream pink as attractive as "Early Spring Maid." Packet of 25 seeds, 15 cents.

**Early Snow Flake.** This is the best Early-Flowering Spencer we have seen. The blossoms are very large and of the best waved Spencer form. The flowers are borne in wonderful profusion on long stems. This will be in great demand by all who grow for market.

Packet of 15 seeds, 15 cents.

**Early Heather Bell.** This will be one of the most popular shades with all florists, as it will be so useful for making up for any occasion. Flowers are very large, borne in fours and threes on stout stems. Color is a rich, pleasing mauve. After standing in water becomes mauve lavender. Packet of 25 seeds, 15 cents.

---

## Extra Early Forcing Varieties

**Blanche Ferry Spencer.** (Christmas Pink). Pink and white. Ounce, 35 cts.

**Christmas White.** Ounce, 35 cents.

**Earliest of All.** Pink and white.

Ounce, 15 cents.

**Mont Blanc.** White. Ounce, 15 cents.

**Yarrowa.** Bright rose pink, with light wings. Ounce, 75 cents.

**Mrs. C. H. Totty.** Lavender. Ounce, 15 cents.

**Mrs. F. J. Dolansky.** Pure pink. Ounce, 15 cents.

**Mrs. Skach.** The best forcing pink. Ounce, 40 cents.

The above varieties were grown and the seed stock selected especially for forcing



# GOOD NEWS

Paper Whites have arrived. Balance of French stock unloading. Cable reports our Holland bulbs have sailed, therefore will arrive earlier than usual. Rush orders will receive prompt attention.

**James Vick's Sons,**

August 29, 1917.

THIS LETTER IS FROM

**Wholesale Department**

Name.....

P. O. ....

County.....

State.....

Please write your name and address very plainly on the above lines.

PLACE  
STAMP  
HERE

**James Vick's Sons,**  
**Rochester,**  
**New York.**

*THE FLOWER CITY.*

Customers will please not write in this space

*How Shipped*.....; *Date Shipped*.....19.....

*In*.....*Pkgs.:*.....*Boxes;*.....*Baskets;*.....*Bbls.;*.....*Bags*

*To be sent later :*.....

*Filled by*.....; *Checked by*.....

# VICK'S

## Wholesale Bulb, Seed and Plant Catalogue

For Fall of Nineteen Hundred Seventeen

The Prices in This Book are for Florists and Dealers Only

**A**FTER considerable cable correspondence with our Holland growers, we are able to assure our customers most emphatically that the quality of our bulbs will be up to our usual high standard, and that we have very positive assurances that the Holland American Line will be permitted to carry bulbs.

**Buyers should use** great care this year, because, as a result of the demoralized conditions abroad, a great many bulbs, which have changed hands frequently, will probably be shipped to America. In such bulbs there can be no assurance of good quality. All of our stock is coming from growers from whom we have secured our bulbs for many years because of their uniform high quality. They cable that their stock is fully up to the high standard which our trade demands, and is all of their own growing, so that they have not been obliged to purchase of farmers or use stock picked up on the bulb market. In our judgment, these are important facts.

**Our Prices** are very low again this year, much below the five year average, and probably much lower than bulbs will be again for a long time.

**The Fact** that we are getting our stock from sources which we have found for years to be perfectly reliable, and the other fact that our prices are very reasonable, ought to bring us not only the orders of our regular trade but of many other careful florists who consider prices very important, but quality more important than price.

**Our Terms** are liberal. To parties of approved credit we allow 60 days time, or 2 per cent. discount if paid in 10 days from date of invoice, or 3 per cent. if cash is sent with order. Orders from new or unknown customers should be accompanied by cash; or, if credit is desired by new customers, satisfactory references, preferably banks and business concerns who have extended credit, will be required. No goods will be sent C. O. D. unless a partial remittance is made as a guarantee that goods will be accepted. *These prices are subject to change without notice.*

**Our Facilities** are unsurpassed. With splendid freight and express accommodations we can handle orders rapidly. Nine railroads enter Rochester, whose numerous fast freight and express trains enable customers to secure their shipments promptly.

**At prices here quoted** we deliver all goods to the freight or express companies in Rochester, with no charges for boxes, packing or carting. With our excellent equipment for shipping we can be depended upon to send out bulbs in apparent good condition; after that our responsibility ceases. While we exercise great care to have all Seeds, Plants and Bulbs true and reliable, we give no warranty, express or implied, as to description, quality, productiveness or any other matter, and we will not be responsible in any way for the crop. If the customer does not accept these terms, it is not a sale, and the goods are at once to be returned, and the money paid for same will be refunded. Subject only to the above conditions, and by reason thereof, we make the moderate prices at which we sell our goods.

**Special Notice.** Customers should give on every order, full name, postoffice, freight or express station, county and State; and also advise whether goods are wanted by express or freight. In the absence of such instructions we will ship according to our best judgment, but will not be responsible for the consequences. **WE USUALLY SHIP BY EXPRESS**, believing that course to be safer and more satisfactory. But sometimes, in the absence of instructions, we ship by freight, especially in cases of heavy shipments, to points easily reached. We have no fixed rule, however, and advise that customers give their preference.

**A Final Request.** Customers should advise whether they desire the varieties shipped when ready, or the entire order held until it can be shipped together. If not advised, we will ship when each kind of bulb is ready. The early Bulbs—Roman Hyacinths, Paper White Narcissus, Freesias, Candidum, Harrisii and Calla Lilies—can be furnished at once: nearly all of these have already arrived. Hyacinths, Tulips, Crocus, etc., in September; Lilies of our own growing can be furnished in October while most imported hardy lilies, do not, as a rule, arrive until late in October or November.

# VICK'S BULBS FOR FORCING

Not less than six Bulbs of a kind at the dozen price, 25 at the 100, or 250 at the 1000

## Early Roman Hyacinths

One of the most popular varieties for florists and gardeners. Can be brought into bloom in November if planted in August, and a succession of blooms can be had the entire winter. Crop very short this year. Pure White, 12 to 15 centimetres. Per dozen, 60 cents; per 100, \$4.50; per 1000, \$40.00. Vick's Special White per dozen, 75 cents; per 100, \$5.00; per 1000, \$45.00. Blue, per dozen, 45 cents; per 100, \$3.25. Pink, per dozen, 50 cents; per 100, \$3.50.

## Narcissus, Paper White Grandiflorus

Superior in every way to the ordinary Paper White. Very popular for forcing. Can be brought into flower in about 30 to 40 days. Will do well in ordinary house temperature and with no special care. For growing in shallow dishes in pebbles and water they are superior to Chinese Lilies. Flowers are larger, more attractive in color and possess a more pleasing fragrance. Pure White, 13 centimetres or over, per dozen, 30 cents; per 100, \$1.60; per 1000, \$14.50.

## Double Roman Narcissus

One of the best varieties for forcing. Flowers white, with yellow centers. Deliciously fragrant. Per dozen 30 cents; per 100, \$1.60; per 1000, \$15.00.

## Freesia Refracta Alba

A very valuable and desirable bulbous plant for forcing, rapidly gaining in favor. Each spike bears from five to eight flowers which last a long time after being cut. The flowers are pure white, with a touch of yellow at the inner base, and delightfully fragrant. Mammoth size bulbs, ( $\frac{3}{4}$  inch and up). Per dozen, 25 cents; per 100, \$1.35; per 1000, \$12.00. Extra large bulbs ( $\frac{1}{2}$  to  $\frac{5}{8}$  inch). Per dozen, 20 cents; per 100, \$1.15; per 1000, \$10.00.

## Freesia Purity

A very superior strain. First size; per dozen, 35 cents; per 100, \$1.25. Per 1000, \$10.00. Extra choice; per dozen, 40 cents; per 100, \$1.50; per 1000, \$12.50.

## Freesia Excelsior

A splendid new variety. Two or three times as large as ordinary kinds and pure white. Per dozen, 50 cents; per 100, \$3.50.

## Lilium Longiflorum or Japanese Easter Lily

This magnificent lily is a great favorite both for forcing and outdoor planting. It resembles *L. Harrisii* in color and shape. While it cannot be brought into flower quite as early, it is a great favorite to follow *Harrisii*. Flowers are pure white, trumpet shaped and exquisitely fragrant. We offer only the best imported stock. Price, 7 to 9 inches, extra selected, per dozen, \$0.90; per 100, \$5.75; per 1000, \$52.50. Per case of 300 bulbs as originally packed, \$15 75.

## Lilium Longiflorum Formosum

Strong healthy bulbs, peculiarly unsusceptible to disease. Forces readily. Free bloomer. Especially recommended for florists. A growing favorite. 7 to 9 inches, per dozen, \$1.10; per 100, \$6.25; per 1000, \$57.50.

## Lilium Longiflorum Multiflorum

7 to 9 inches; per dozen, \$1 00; per 100, \$6.00; per 1000, \$55.00. Per case of 300 bulbs as originally packed, \$16.25.

## Lilium Giganteum

Extra fine. Very popular. 7 to 9 inches; per dozen, 85 cents; per 100, \$5.25. Per case, 300 bulbs, \$14.25.

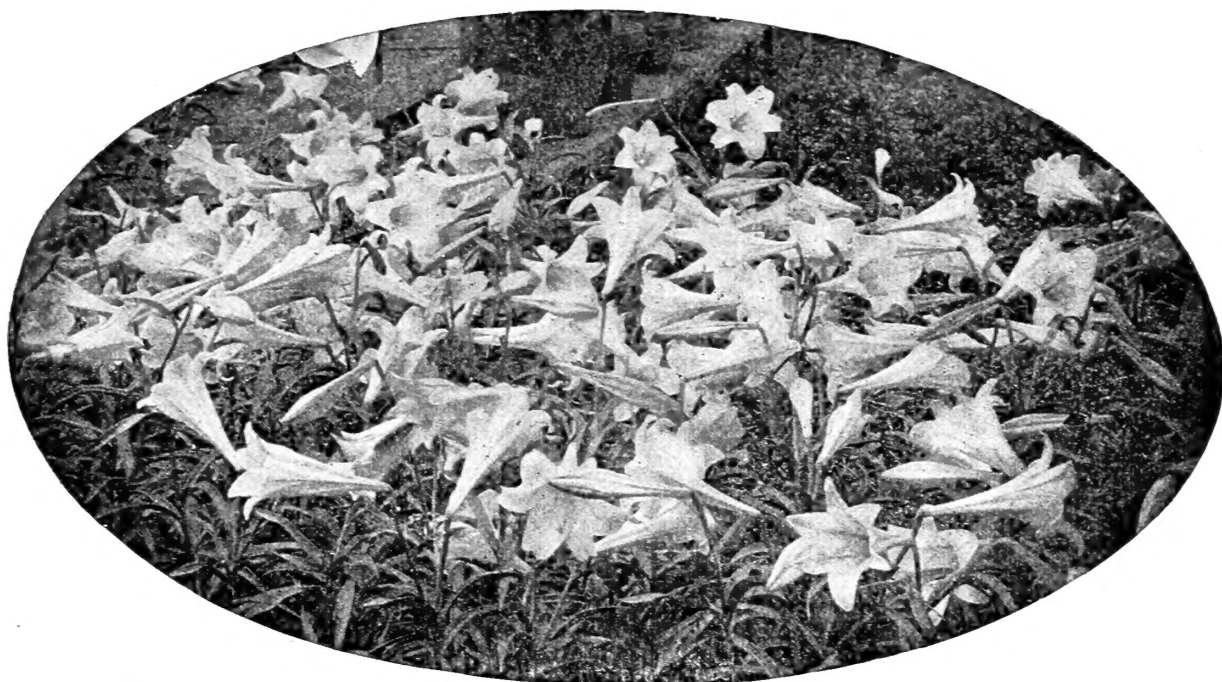
## Lilium Candidum

This variety is sometimes called the Annunciation Lily, or Madonna Lily. Good for forcing, also used for outdoor planting. Its snowy white flowers are borne aloft by long, slender stems. Unsurpassed in stateliness and beauty. Choice selected bulbs, per dozen, 75 cents; per hundred, \$5.00; per thousand, \$48.00.



# LILIUM HARRISII

## TRUE BERMUDA EASTER LILY



Invaluable for florists. Can be forced into bloom by Christmas. Our stock comes direct from one of the best growers in Bermuda, to whom we pay special prices to secure extra good bulbs, well grown, thoroughly ripened, carefully packed. We believe this stock will give perfect satisfaction.

7-9 inches, per dozen, \$1.50; per 100, \$10.00; Original case of 200, \$19.00

---

## MINIATURE HYACINTHS

These are small bulbs, single flowering and excellent for growing in pans, pots or boxes in the house, or in beds in the open ground. They bloom early and very freely. May be planted close together with charming effect. Very valuable and popular with florists everywhere.

Per dozen, 25 cents; per 100, \$1.60; per 1000, \$14.00

---

### SINGLE RED AND ROSE

**Baron van Thuyt.** Light rose  
**Gen. Pelissier.** Deep red; early  
**Gertrude.** Rosy pink

**Gigantia.** Pale rose  
**Morena.** Beautiful pink  
**Norma.** Pale waxy pink

### SINGLE WHITE

**Baroness van Thuyt.** Pure white  
**Grande Blanche.** Blush white

**La Franchise.** Blush white  
**La Grandesse.** Pure white

**L'Innocence.** Pure white

### SINGLE BLUE

**Charles Dickens.** Blue tinged lilac  
**Grand Maitre.** Dark porcelain blue  
**King of the Blues.** Dark blue

**La Payrouse.** Porcelain  
**Queen of the Blues.** Porcelain blue  
**Schotel.** Light blue

### SINGLE YELLOW

**King of the Yellows.** Pure yellow

# VICK'S HYACINTHS

First Size Bulbs, Especially Selected for Our Trade

*An Unusual Opportunity to Buy Superfine Quality Bulbs at Low Prices*

**T**HE growers from whom we import our Hyacinths are famous as specialists all over the world. Because their markets to countries at war are closed, it affords us an opportunity to offer Hyacinths from well-known and reliable sources — a stock that we are acquainted with and can highly recommend,—at prices lower than ever before. In fact, we offer our customers the same high-grade stock we are accustomed to furnish, at prices lower than other houses quoted for advance import orders. We import more bulbs into Rochester than all the other Seedsmen, Nurserymen and Florists combined. Order early. We anticipate a heavy demand from florists and dealers who, because of the submarine scare, are unable to secure stocks from the usual sources. When we get the new trade we expect to keep it by furnishing "Vick Quality Stock, the Best the Earth Produces."

**Not less than 6 of one variety at dozen rate, 25 at hundred rate.**

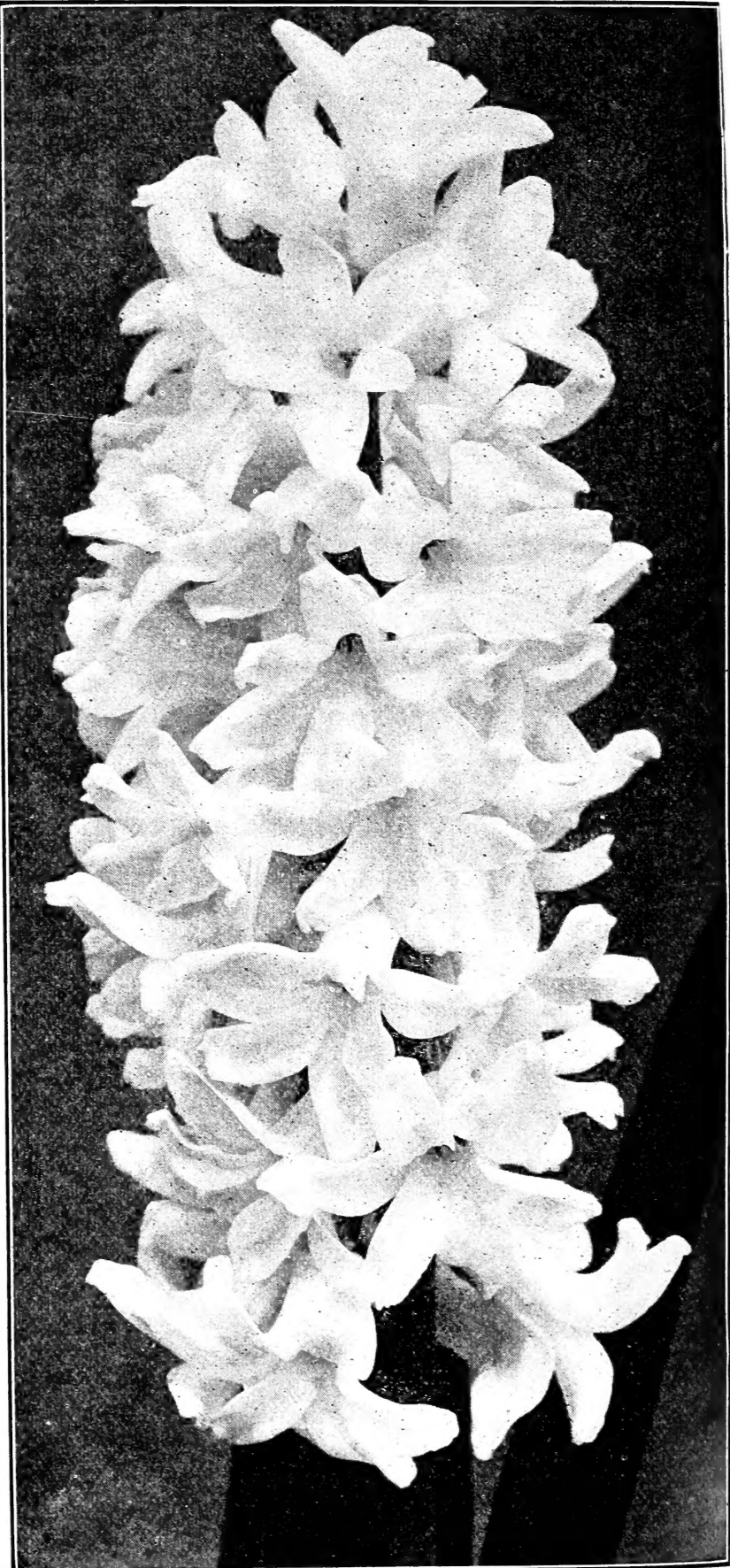
Where less than 6 are ordered, 8 cents each  
Special Prices on Larger Quantities

## SINGLE RED AND ROSE.

	Per Doz.	Per. 100
Amy, carmine . . . . .	\$0 75	\$5 50
Baron van Tuyll, fine pink . .	75	5 50
Charles Dickens, delicate pink .	75	5 50
Garibaldi, brilliant carmine . .	75	5 50
General Pelissier, brilliant carmine, very early . . . .	75	5 50
Gertrude, rosy pink . . . . .	75	5 25
Gigantea, blush pink . . . . .	75	5 50
Lady Derby, waxy pink, very large . . . . .	75	5 50
Lord Macaulay, rosy carmine .	75	5 50
Moreno, fine pink . . . . .	75	5 50
Norma, blush pink . . . . .	75	5 50
Robert Steiger, deep red . . .	75	5 50
Roi des Belges, bright red, . .	75	5 50
Rose à Merveille, rose, extra fine	75	5 50

## SINGLE WHITE.

Alba Superbissima, pure white .	75	5 50
Albertina, extra fine, pure white	75	5 50
Baroness van Tuyll, pure white	75	5 50
Grand Blanche, blush white, large bells and spike . .	75	5 50
Grandeur à Merveille, blush white	75	5 50
La Franchise, waxy white . . .	75	5 50
La Grandesse, pure white . . .	75	5 50
L'Innocence, pure white . . .	75	5 50
Madame Van der Hoop, pure white . . . . .	75	5 50



**VICK'S HYACINTHS—Continued**

**SINGLE WHITE.**

	Per Doz.	Per 100
Queen Victoria, pure white . . .	75	5 50
Voltaire, creamy white . . . . .	75	5 50

**SINGLE BLUE.**

Baron van Tuyll, dark blue . . .	75	5 50
Charles Dickens, light blue . . .	75	5 50
Czar Peter, light porcelain blue, large spike . . . . .	75	5 50
Enchantress, beautiful porcelain	75	5 50
Grand Lilas, porcelain-lilac . . .	75	5 50
Grand Maitre, dark porcelain blue . . . . .	75	5 50
King of the Blues, deep blue . . .	75	5 50
La Peyrouse, light porcelain . . .	75	5 50
Queen of the Blues, light blue . .	75	5 50
Schotel, light porcelain, extra fine . . . . .	75	5 50

**SINGLE YELLOW.**

City of Haarlem, very large, best pure yellow . . . . .	75	5 50
Ida, golden yellow, early . . . . .	75	5 50
King of the Yellows, deep yellow	75	5 50
Obelisque, pure yellow . . . . .	75	5 50
Tamerlan, orange-yellow . . . . .	75	5 50

**SINGLE PURPLE.**

Haydn, distinct mauve . . . . .	75	5 50
Sir William Mansfield, purple mauve, large truss . . . . .	75	5 50

**DOUBLE RED AND ROSE.**

	Per Doz.	Per 100
Bouquet Royal, salmon pink . . \$0	80	\$5 75
Bouquet Tendre, carmine rose . .	80	5 75
Chestnut Blossom, new blush pink . . . . .	80	5 75
Grootvorst, blush pink . . . . .	80	5 75
Le Grand Concurrent, pale rose . .	80	5 75
Lord Wellington, delicate pink . .	80	5 75
Noble Per Merite, deep rose . . . .	80	5 75
Prince of Orange, dark rose . . . .	80	5 75

**DOUBLE WHITE.**

Bouquet Royal, pure white . . . . .	80	5 75
Grootvorstin, creamy white . . . . .	80	5 75
Isabelle, rosy white . . . . .	80	5 75
La Tour d' Auvergne, pure white . .	80	5 75
La Virginite, blush white . . . . .	80	5 75
Non plus ultra, pure white . . . . .	80	5 75
Prince of Waterloo, pure white . . .	80	5 75

**DOUBLE BLUE.**

Bloksberg, light porcelain blue . . .	80	5 75
Charles Dickens, lilac blue . . . . .	80	5 75
Crown Prince of Sweden, violet blue . . . . .	80	5 75
Garrick, bright blue . . . . .	80	5 75
General Antinck, Porcelain, dark center . . . . .	80	5 75
General Kohler, bright blue, large	80	5 75

**DOUBLE YELLOW.**

Jaune Supreme, bright yellow . . . .	80	5 75
Sir Rowland Hill, pure yellow . . . .	80	5 75

**UNNAMED HYACINTHS.**

Our unnamed Hyacinths are made up of mixtures of named varieties and are used by many successful Florists for forcing, in place of the more expensive named kinds. For outdoor growing, this stock will give abundant satisfaction. The saving in price here is greater than on any other class.

Not less than 6 bulbs at the dozen rate, 25 at 100 rate, 250 at 1000 rate.

Single Mixed Rose	Doz	100	1000	Double Mixed Rose	Doz	100	1000
and Red . . . . .	35	2 40	21 00	and Red . . . . .	40	2 50	23 00
“ “ Dark Red . . . . .	35	2 40	21 00	“ “ Dark Red . . . . .	40	2 50	23 00
“ “ Rose and Pink . . . . .	35	2 40	21 00	“ “ Rose and Pink . . . . .	40	2 50	23 00
“ “ White, all shades . . . . .	35	2 40	21 00	“ “ White, all shades . . . . .	40	2 50	23 00
“ “ Pure White . . . . .	35	2 40	21 00	“ “ Pure White . . . . .	40	2 50	23 00
“ “ Rosy and Cream White . . . . .	35	2 40	21 00	“ “ Rosy and Cream White . . . . .	40	2 50	23 00
“ “ Blue, all shades . . . . .	35	2 40	21 00	“ “ Blue, all shades . . . . .	40	2 50	23 00
“ “ Dark Blue . . . . .	35	2 40	21 00	“ “ Dark Blue . . . . .	40	2 50	23 00
“ “ Light Blue . . . . .	35	2 40	21 00	“ “ Light Blue . . . . .	40	2 50	23 00
“ “ Yellow . . . . .	35	2 40	21 00	“ “ Yellow . . . . .	40	2 50	23 00
“ “ all colors . . . . .	35	2 40	21 00	“ “ all colors . . . . .	40	2 50	23 00

# Vick's Single Early Tulips

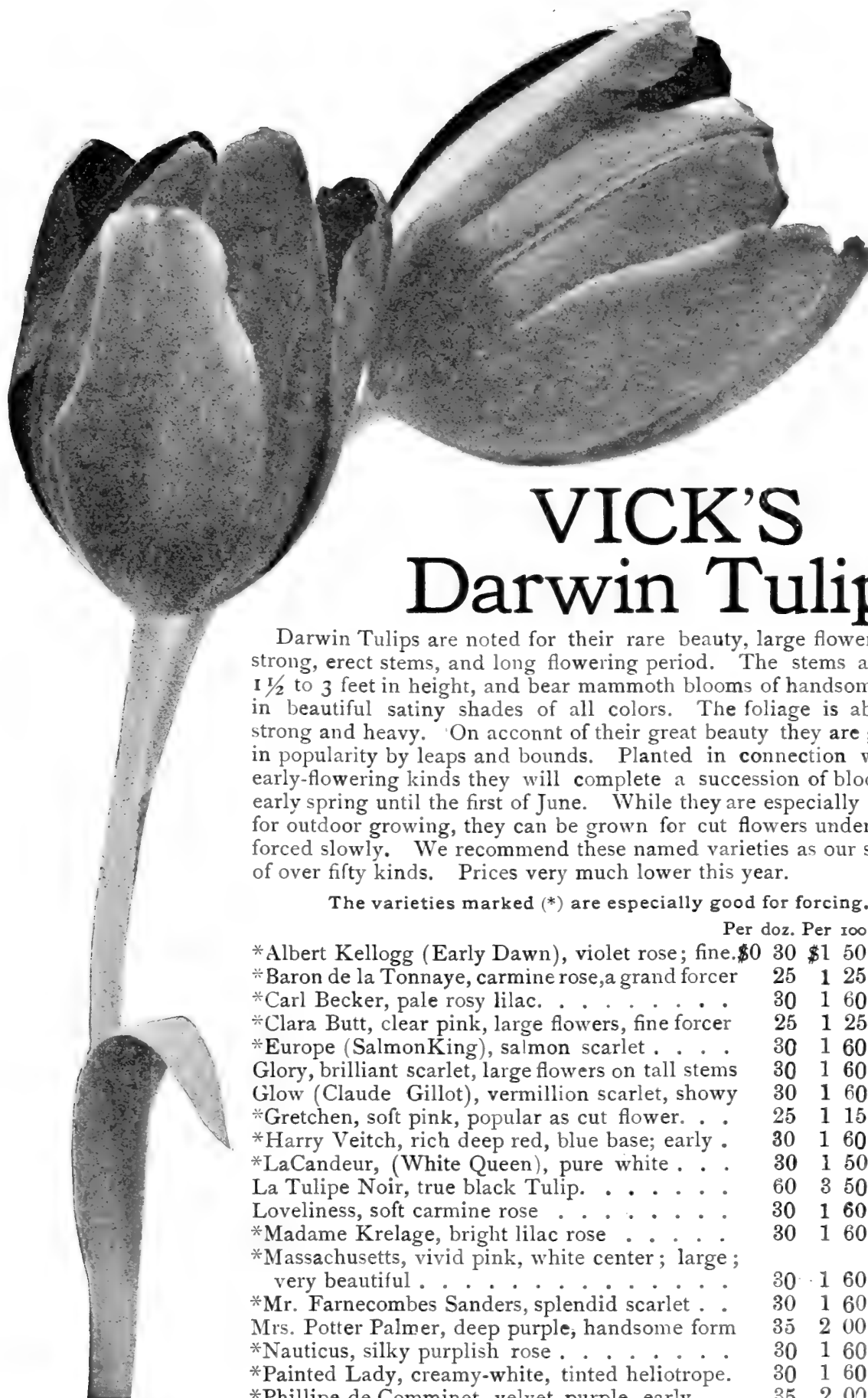
## CHOICEST NAMED VARIETIES

The varieties below are considered the best and most popular by all leading Florists and Bedding Experts. Our prices are as low as many other houses have offered for advance import orders. Regular Vick Quality—the best the earth produces.

Not less than six bulbs of one variety at the dozen rate, nor less than twenty-five at the 100 rate, nor less than 250 at the 1000 rate

The Varieties marked (\*) are superior for forcing.

	Per doz.	Per 100	Per 1000
Artus, bright scarlet, good bedder . . . . .	\$0 20	\$1 00	\$9 00
*Belle Alliance, (Waterloo) scarlet, large flower, fragrant . . . . .	25	1 35	12 00
Brutus, crimson . . . . .	25	1 35	12 00
Brutus Gold Striped, deep red; petals edged with orange; very fine	30	1 60	15 00
*Canary Bird, yellow, early . . . . .	25	1 35	12 00
*Chrysolora, golden yellow . . . . .	25	1 35	12 00
*Cottage Maid, rose and white, pointed petals forces slowly . . . . .	25	1 15	10 00
*Couleur Cardinal, scarlet, one of the very best, forces slowly . . . . .	35	2 00	18 00
Couleur ponceau, crimson and white . . . . .	20	1 00	9 00
Crimson King, fine crimson, large flower . . . . .	25	1 10	9 50
Duchesse de Parma, red, with ruffled yellow edge . . . . .	25	1 15	10 00
*Duc van Thol, Scarlet . . . . .	25	1 15	10 00
* " " Red and yellow . . . . .	25	1 15	10 00
" " Crimson . . . . .	20	1 10	9 50
* " " Cochineal extra fine . . . . .	35	2 00	18 00
* " " White, maximus . . . . .	25	1 15	10 00
*Dusart, fine large dark scarlet, pointed petals . . . . .	25	1 15	10 00
Fire Flame . . . . .	25	1 35	12 00
*Flamingo, light and dark rose shading, extra large, fine . . . . .	50	3 00	28 00
*Joost vanVondel, red and white . . . . .	25	1 35	12 00
*Joost vanVondel, a splendid white . . . . .	40	2 25	20 00
*Keizerskroon, (Grand Duc) red, golden edge . . . . .	25	1 35	12 50
*L'Immaculee, pure white . . . . .	20	1 00	9 00
*La Reine (Queen Victoria) beautiful rosy white . . . . .	25	1 15	10 00
*Mon Tresor, large, deep yellow . . . . .	30	1 60	15 00
Pink Beauty, carmine and white, extra fine . . . . .	40	2 25	20 00
*Pottebakker, white . . . . .	25	1 50	14 00
* " scarlet . . . . .	25	1 25	11 00
* " yellow, occasionally striped red . . . . .	25	1 25	11 00
*President Lincoln, violet . . . . .	30	1 60	15 00
*Prinœ of Austria, beautiful orange, fragrant . . . . .	25	1 35	12 50
*Princess Helena, snow white, large flowers . . . . .	25	1 25	11 50
Princess Marianne, rose shaded . . . . .	25	1 15	10 00
*Proserpine, beautiful rose crimson . . . . .	40	2 25	20 00
*Purple Crown, dark purple, excellent . . . . .	25	1 25	11 00
Queen of Scarlets, extra fine . . . . .	25	1 25	11 00
Rembrandt, bright scarlet . . . . .	30	1 60	15 00
Rosamundi (Huikman), pink and white . . . . .	20	1 00	9 00
*Rose Grisdelin, pink and white . . . . .	20	1 00	9 00
*Rose Luisante, pink . . . . .	35	2 00	17 50
*Thomas Moore, orange, a beautiful color . . . . .	20	1 00	9 00
*Vermilion Brilliant, bright red . . . . .	40	2 25	20 00
*White Hawk, (Albion) pure white, splendid for forcing . . . . .	30	1 60	15 00
White Swan . . . . .	25	1 15	10 00
*Yellow Prince, fine yellow, sweet scented . . . . .	25	1 15	10 00
Extra Superfine, mixed . . . . .	20	90	7 50
First Quality, mixed . . . . .	20	75	6 50
Unnamed in Separate Colors, white . . . . .	25	1 00	8 00
" " " " pink . . . . .	25	1 00	8 00
" " " " yellow . . . . .	25	1 00	8 00
" " " " red . . . . .	25	1 00	8 00
" " " " variegated . . . . .	25	1 00	8 00
(6) " " " " rose . . . . .	25	1 00	8 00



# VICK'S Darwin Tulips

Darwin Tulips are noted for their rare beauty, large flowers, long, strong, erect stems, and long flowering period. The stems are from 1½ to 3 feet in height, and bear mammoth blooms of handsome shape in beautiful satiny shades of all colors. The foliage is abundant, strong and heavy. On account of their great beauty they are growing in popularity by leaps and bounds. Planted in connection with the early-flowering kinds they will complete a succession of bloom from early spring until the first of June. While they are especially adapted for outdoor growing, they can be grown for cut flowers under glass if forced slowly. We recommend these named varieties as our selection of over fifty kinds. Prices very much lower this year.

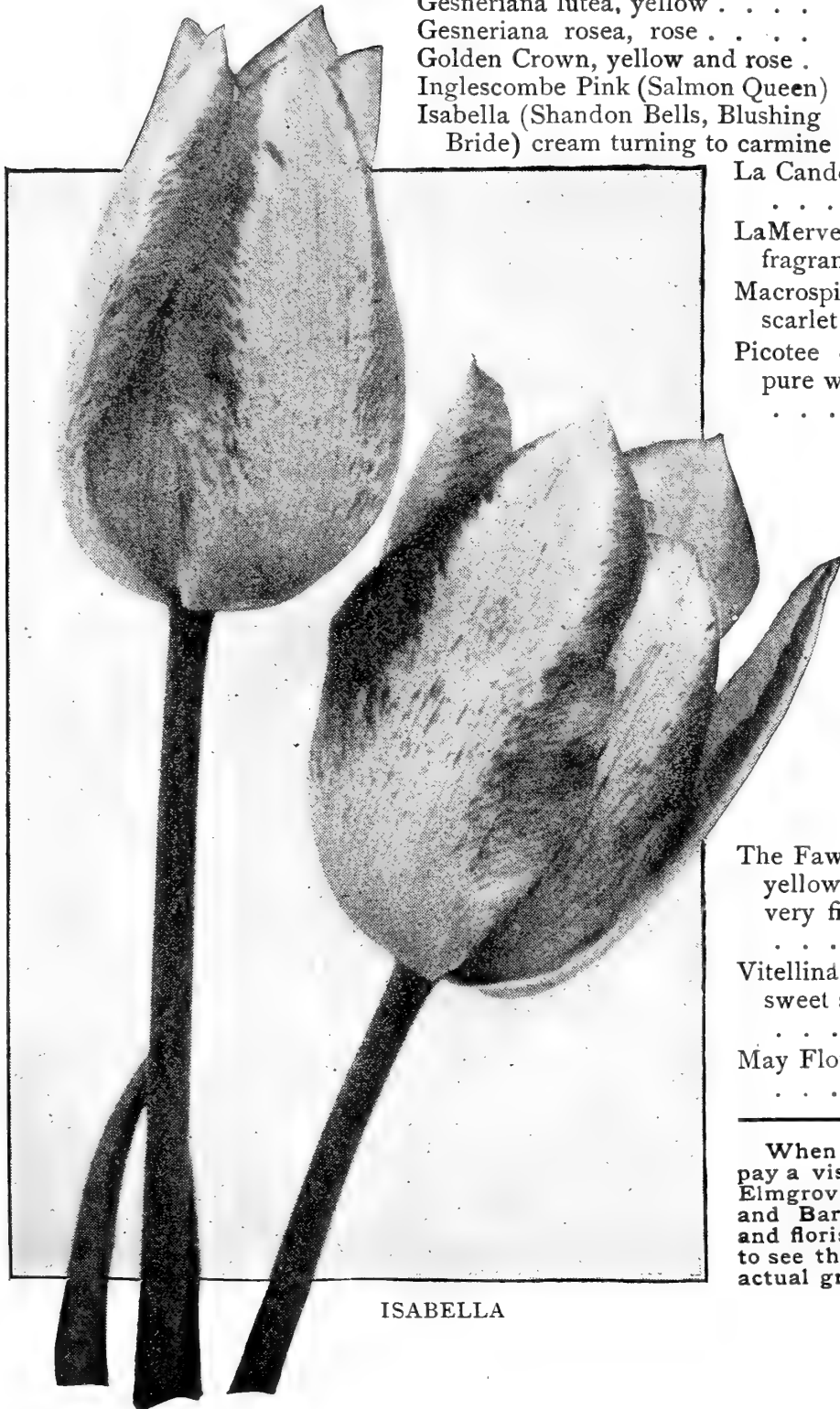
The varieties marked (\*) are especially good for forcing.

	Per doz.	Per 100	Per 1000
*Albert Kellogg (Early Dawn), violet rose; fine.	\$0 30	\$1 50	\$13 50
*Baron de la Tonnaye, carmine rose, a grand forcer	25	1 25	11 00
*Carl Becker, pale rosy lilac. . . . .	30	1 60	15 00
*Clara Butt, clear pink, large flowers, fine forcer	25	1 25	11 00
*Europe (Salmon King), salmon scarlet . . . .	30	1 60	15 00
Glory, brilliant scarlet, large flowers on tall stems	30	1 60	15 00
Glow (Claude Gillot), vermillion scarlet, showy	30	1 60	15 00
*Gretchen, soft pink, popular as cut flower. . .	25	1 15	10 00
*Harry Veitch, rich deep red, blue base; early .	30	1 60	15 00
*LaCandeur, (White Queen), pure white . . .	30	1 50	13 50
La Tulipe Noir, true black Tulip. . . . .	60	3 50	32 00
Loveliness, soft carmine rose . . . . .	30	1 60	15 00
*Madame Krelage, bright lilac rose . . . . .	30	1 60	15 00
*Massachusetts, vivid pink, white center; large; very beautiful . . . . .	30	1 60	15 00
*Mr. Farnecombe Sanders, splendid scarlet . .	30	1 60	15 00
Mrs. Potter Palmer, deep purple, handsome form	35	2 00	18 00
*Nauticus, silky purplish rose . . . . .	30	1 60	15 00
*Painted Lady, creamy-white, tinted heliotrope.	30	1 60	15 00
*Phillipe de Comminet, velvet purple, early . .	35	2 00	18 00
*Pride of Haarlem, brilliant rosy-carmine, sweet scented; early forcer.	30	1 60	15 00
*Rev. Eubank, heliotrope-lilac, fine for forcing. . . . .	30	1 75	16 50
*Scylla, dazzling fiery scarlet with blue base . . . . .	30	1 60	15 00
*The Sultan, rich maroon black, blue base, perfect form . . . . .	25	1 25	11 00
Extra fine Darwin Mixture. . . . .	20	1 15	9 50

# Vick's May Flowering Tulips

During the last few years there has been an immense sale on many of these varieties. They surpass the earlier kinds for out-door growing because of the length of their stems. Many of them have large, open flowers, while others, especially the so-called "Botanical Tulips" though unusual in shape, are exquisitely beautiful. Prices on many varieties are lowest ever known.

	Per doz.	Per 100	Per 1000
Bizarres, yellow ground, mixed varieties . . . . .	\$0 25	\$1 25	\$10 50
Byblooms—Roses, white ground, mixed varieties . . . . .	25	1 25	10 50
Violets, white ground, mixed varieties . . . . .	25	1 25	10 50
Roses, and Violets, mixed . . . . .	25	1 25	10 50
Breeders, fine mixed . . . . .	25	1 35	12 00
Bouton d'or (Ida, Golden Beauty) . . . . .	25	1 25	11 00
Clusiana, white and red striped . . . . .	40	2 50	23 00
Elegans, white, splendid . . . . .	35	2 25	20 00
Elegans, carmine . . . . .	25	1 50	12 00
Florentine odorato, yellow . . . . .	30	1 50	13 50
Gesneriana spathulata, brilliant scarlet . . . . .	25	1 25	11 00
Gesneriana aurantiaca, orange . . . . .	25	1 25	11 00
Gesneriana lutea, yellow . . . . .	25	1 25	11 00
Gesneriana rosea, rose . . . . .	20	1 10	9 00
Golden Crown, yellow and rose . . . . .	20	1 10	9 00
Inglescombe Pink (Salmon Queen) . . . . .	25	1 35	11 50
Isabella (Shandon Bells, Blushing Bride) cream turning to carmine . . . . .	20	1 20	10 00
La Candeur, white . . . . .	30	1 50	13 50
LaMerveille, orange - scarlet fragrant . . . . .	20	1 20	10 00
Macropsila, sweet-scented scarlet . . . . .	20	1 10	9 00
Picotee (Maiden's Blush) pure white, edged rose . . . . .	25	1 25	10 50
Persica, yellow and brown . . . . .	30	1 60	15 00
Primrose Beauty, sweet scented; a pale primrose . . . . .	30	1 60	15 00
Retroflexa, yellow . . . . .	30	1 60	15 00
Striped Beauty, rose flecked crimson and white, extra fine . . . . .	40	2 25	20 00
The Fawn, changes to light yellow and blush rose; very fine . . . . .	35	2 00	18 00
Vitellina, soft primrose, sweet scented . . . . .	40	2 25	20 00
May Flowering, mixed. . . . .	20	1 00	8 75



ISABELLA

When you come to Rochester pay a visit to our seed farms at Elmgrove, Spencerport, Ogden and Barnard. Many seedsmen and florists take this opportunity to see the flowers in bloom under actual growing conditions.

# Vick's Selected Double Tulips

## EARLY VARIETIES

The following list covers the best and most popular varieties of Double Tulips. Those kinds marked with an asterisk (\*) are especially recommended for forcing. All varieties can be grown to advantage in out-door bedding.

	Per doz	Per 100	Per 1000
Alba Maxima, fine double, pure white . . . . .	\$0 25	\$1 35	\$12 00
*Anna Roozen, deep pink, very fine, full double . . . . .	35	1 75	
Arabella, carmine-pink, extra large flowers . . . . .	30	1 60	15 00
*Crown of Gold, finest yellow shaded orange, fine forcer . . . . .	40	2 25	20 00
*Crown of Roses, best deep pink, splendid pot plant. . . . .	40	2 25	20 00
Duc van Thol, red and yellow edge . . . . .	20	1 10	9 00
Duke of York, cherry and white, early . . . . .	25	1 35	12 00
Gloria Solis, bronze, orange and crimson; early . . . . .	25	1 35	12 00
*Imperator rubrorum, scarlet, finest of its kind for forcing. . . . .	30	1 75	16 00
La Candeur, white; early . . . . .	25	1 25	10 50
LeBlason, rose and white, early . . . . .	25	1 25	10 50
*Lord Beaconsfield, deep cherry rose, very beautiful. . . . .	30	1 60	15 00
*Lord Roseberry, rose; beautiful . . . . .	35	2 00	17 50
*Murillo, pink and white; early . . . . .	25	1 25	11 50
Purple Crown, splendid dark velvety-crimson; early . . . . .	25	1 25	11 50
Regina Rubrorum, red striped with creamy yellow; early . . . . .	40	2 25	
*Rex Rubrorum, a beautiful bright scarlet; early . . . . .	30	1 60	15 00
Rose Blanche, pure white, early . . . . .	25	1 25	11 00
*Rosine, beautiful bright rose on white ground . . . . .	30	1 75	16 00
*Rubra maxima, best dark scarlet; one of the best . . . . .	25	1 35	12 00
*Salvator Rosa, deep rose; fine for the house. . . . .	30	1 50	13 00
*Schoonoord (White Murillo) best pure white; splendid for forcing. . . . .	30	1 75	16 00
*Tea Rose, beautiful saffron yellow; splendid for forcing. . . . .	40	2 25	20 00
Titian, deep red, yellow edge; very attractive. . . . .	35	2 00	18 00
*Tournesol, red and yellow; fragrant . . . . .	35	2 00	18 00
* " yellow, true; extra large and showy. . . . .	35	2 00	18 00
Fine Quality Mixed. . . . .	20	90	7 50
Superfine Double Mixture, early sorts . . . . .	25	1 00	8 50

## LATE VARIETIES

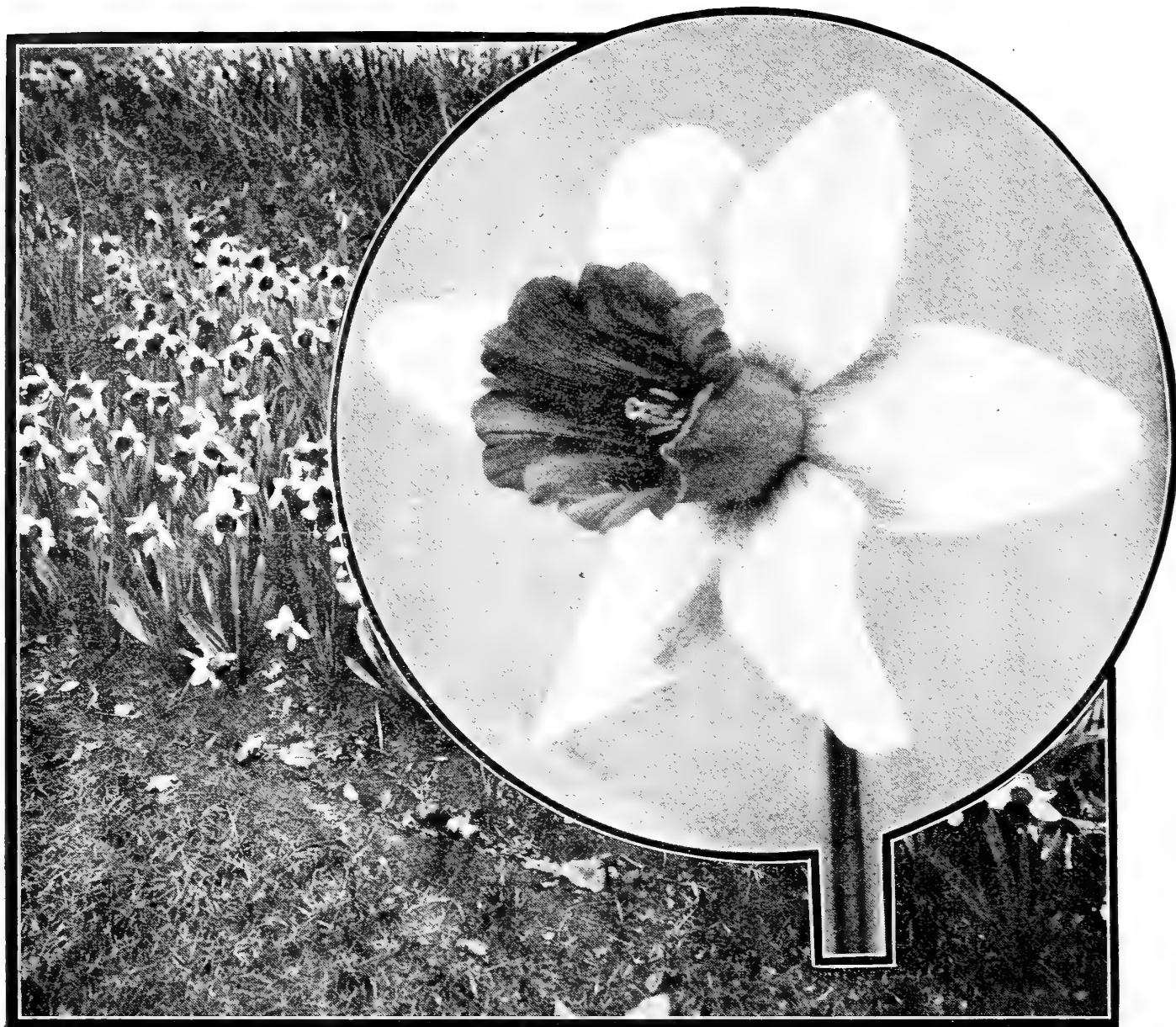
While there has been a rapid increase in the popularity of all kinds of bulbs during the last few years, among no other classes has there been such an increase in demand as for the Late Flowering kinds. We are devoting considerable attention to these various classes and recommend them to the careful consideration of gardeners, florists and dealers.

	Per doz	Per 100	Per 1000
Blue Flag, soft violet blue . . . . .	\$0 50	3 25	
Marriage de ma Fille, crimson and white . . . . .	45	3 00	27 50
Paeony, gold, yellow and red . . . . .	30	1 60	15 00
Paeony, red . . . . .	30	1 60	15 00
Yellow Rose, pure yellow, sweet scented, fine . . . . .	25	1 25	11 00
Double Late Superfine, mixed . . . . .	25	1 00	8 50

# Parrot or Dragon Tulips

Very popular on account of their brilliant colorings and peculiar form of flower.

	Per doz.	Per 100	Per 1000
Admiral de Constantinople, red . . . . .	\$0 25	\$1 25	\$10 00
Café Brun, rich brown . . . . .	20	1 00	8 50
Cramosi Brilliant, scarlet . . . . .	20	1 00	8 50
Gloriosa, yellow and red . . . . .	20	1 00	8 50
Lutea, yellow . . . . .	20	1 00	8 50
Markgraaf, red and yellow . . . . .	20	1 00	8 50
Perfecta, red striped . . . . .	20	1 00	8 50
Extra Superfine Mixture . . . . .	20	1 00	8 50



## Vick's Selected Single Narcissus

Extremely popular for forcing and out door growing. Perfectly hardy. Will grow anywhere.

	Per doz.	Per 100	Per 1000
Bicolor Empress. One of the very best, yellow and white, first size	\$0 30	\$1 50	\$13 50
“ “ Double nose bulbs. Will produce 2 or 3 blooms	35	2 00	18 00
“ Grandis maximus, white perianth, broad petals . . . . .	30	1 50	13 50
“ Horsfieldii, yellow trumpet, white perianth . . . . .	30	1 50	13 50
“ Princeps maximus, primrose perianth, yellow trumpet . . .	25	1 10	9 00
“ “ Double nose bulbs . . . . .	25	1 25	11 50
“ Victoria, creamy white perianth, yellow trumpet, fine . .	30	1 60	15 00
“ “ double nose bulbs. Will produce 2 or 3 blooms	40	2 25	20 00
Biflorus, white, yellow cup, twin flowers . . . . .	25	1 00	8 50
Emperor, deep yellow, large, fine, first size . . . . .	30	1 50	13 50
“ double nose bulbs, extra fine . . . . .	35	2 00	18 00
Golden Spur, fine yellow, large flower, early, first size . . . . .	30	1 60	15 00
“ “ double nose bulbs . . . . .	40	2 25	20 00
Henry Irving, yellow, fine, early . . . . .	30	1 60	15 00
Incomparable Sir Watkin, rich golden yellow, dark cup, first size	30	1 50	13 50
“ “ “ double nose bulbs . . . . .	30	1 75	16 00
Ledsii, Mrs. Langtry, white, very beautiful . . . . .	20	1 00	8 50
Poeticus, “Pheasant's Eye,” pure white perianth, yellow cup, edged with crimson. Not for forcing . . . . .	20	75	6 50
Poeticus Burbidgei. Early; white, cup edged orange . . . . .	15	65	5 50



**VICK'S SELECTED SINGLE NARCISSUS—Continued**

	Per doz	Per 100	Per 1000
Poeticus Ornatus, pure white, sweet-scented, good forcer . . . . .	\$0 20	\$0 75	\$ 6 50
Spurius coronatus, pure yellow . . . . .	25	1 25	11 50
Trumpet Major, golden yellow, standard single Daffodil . . . . .	25	1 25	11 50
Large Trumpet varieties mixed . . . . .	20	1 10	9 50
Medium " " " . . . . .	20	90	8 00

**POLYANTHUS NARCISSUS**

The flowers are produced in clusters or trusses. Not hardy in this climate, but for flowering in pots in the house they are unsurpassed.

	Per doz	Per 100	Per 1000
Double Roman, white with yellow center . . . . .	\$0 30	\$1 60	\$15 00
Gloriosa, white, orange cup . . . . .	40	2 25	20 00
Grand Monarque, white and yellow . . . . .	40	2 25	20 00
Grand Soliel d'Or, bright yellow . . . . .	40	2 25	20 00
Her Majesty, beautiful white . . . . .	40	2 25	20 00
Newton, fine yellow . . . . .	40	2 25	20 00
Paper White, grandiflorus (see description, page 2) . . . . .	30	1 60	14 50
All colors mixed . . . . .	30	1 60	15 00

**DOUBLE NARCISSUS**

	Per doz	Per 100	Per 1000
Albo pleno odorato, white, fragrant . . . . .	\$0 20	\$1 10	\$9 00
Incomparable, light yellow . . . . .	25	1 35	12 00
Orange Phoenix, white and orange . . . . .	25	1 35	12 00
Silver Phoenix or Sulphur Crown . . . . .	25	1 35	12 00
VonSion, well known as "Double Yellow Daffodil," first size . . . . .	25	1 35	12 00
VonSion, extra selected . . . . .	30	1 60	15 00
VonSion, double Nose, extra large bulbs producing 2 to 3 flowers . . . . .	40	2 25	19 00
Extra fine mixed . . . . .	25	1 25	10 50

**Jonquils**

Valued for their lovely golden and deliciously sweet-scented flowers. They are perfectly hardy and flower very early in the spring. Excellent for house blooming.

	Per doz	Per 100	Per 1000
Largest Double, sweet-scented, golden yellow . . . . .	\$0 25	\$1 35	\$11 00
Single, sweet-scented, golden yellow . . . . .	15	75	6 00
Tenuior, Silver Jonquil . . . . .	30	1 75	16 00
Campnel, (Great Jonquil), yellow, fragrant . . . . .	15	75	6 00
Odorous rugulosus (Improved Campnel) . . . . .	15	75	6 50

**Chinese Sacred Lily**

. JOSS FLOWER.

Special Chinese grown Bulbs.

A variety of the Polyanthus Narcissus, growing best in a wet soil. Excellent for retail trade; in growing demand through the season. When grown in pebbles and water it presents a beautiful appearance.

Per dozen . . . . .	\$0 85
Original basket containing 30 bulbs . . . . .	1 75
Four baskets in a hamper . . . . .	6 50

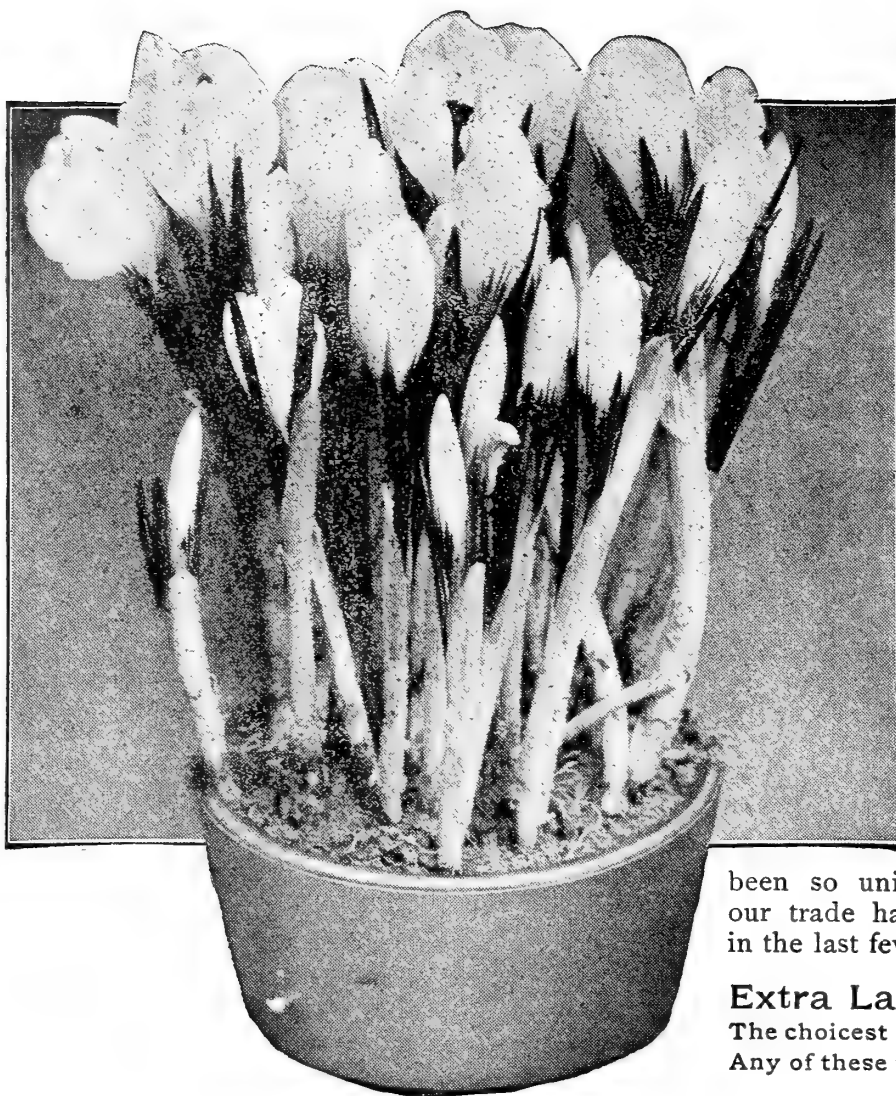
**Oxalis**

An interesting class of small bulbs, desirable for winter flowering in pots and hanging baskets, producing an abundance of bloom.

	Per Doz	Per 100	Per 1000
Bermuda Buttercup, mammoth size . . . . .	\$0 20	\$1 25	\$10 00
Bowei, bright rose . . . . .	20	1 00	8 50
Grand Duchess, pink . . . . .	20	1 00	8 50
" " lavender . . . . .	20	1 00	8 50
" " white . . . . .	.20	1 00	8 50
Versicolor, variegated . . . . .	.20	1 00	8 50
Finest mixed . . . . .	15	90	7 50

**DON'T BE DISAPPOINTED—ORDER YOUR BULBS EARLY**

A careful investigation since this catalogue was started shows that the demand for bulbs this fall will greatly exceed the limited importations which have been ordered.



# Vick's Crocus

## Named and Mixed Varieties

There is a rapidly growing demand for Crocus both for forcing and outdoor growing. Our stock has been so uniformly satisfactory that our trade has increased enormously in the last few years.

**Extra Large Named Bulbs**  
The choicest of all the named varieties,  
Any of these varieties at 15 cts. per doz.

Per 100      per 1000

Not less than 50 sold at the 100 price.		Per 100	Per 1000		Per 100	per 1000
Blue and Purple . . . . .		\$0 50	\$1 25	Albion, striped . . . . .	\$0 75	\$6 00
White . . . . .		50	4 25	Baron Von Brunow, dark blue.	75	6 00
Striped and Variegated . . .		50	4 25	Grand Concurrent, white. . .	75	6 00
All colors mixed . . . . .		45	4 00	King of the Blues, purple. . .	75	6 00
Large Yellow, mammoth size				King William, dark blue . . .	75	6 00
Per doz. 20 cts.		80	7 00	Lord Palmerston, blue . . . .	75	6 00
"    "    First size . . . .				Mammoth, white. . . . .	75	6 00
"    "    Per doz. 15 cts.		75	6 50	Margot, light blue . . . . .	75	6 00
"    "    Second size . . .				Mont Blanc, pure white. . . .	75	6 00
"    "    Per doz. 15 cts.		60	6 50	Non Plus Ultra, variegated. . .	75	6 00
Cloth of Gold "    15 cts.		65	5 50	President Grant, striped. . . .	75	6 00
Cloth of Silver "    15 cts.		65	5 50	Purpurea grandiflora . . . . .	75	6 00
				Queen Victoria, white . . . . .	75	6 00
				Sir Walter Scott, striped. . . .	75	6 00

### Allium Neapolitanum

An excellent variety for winter flowering, pure white, with green stamens; extensively used by florists for forcing for cut flowers. Per dozen, 15 cents; per 100, 75 cents; per 1000, \$6.50.

### Anemone

The Anemone in bloom is a most beautiful flower. Both double and single are desirable.

	Per doz.	Per 100	Per 1000
Single, best mixed colors . . . . .	\$0 15	\$0 70	\$5 50
Single pure white, The Bride . . . . .	15	75	6 50
Single Scarlet . . . . .	20	90	8 00
Double, best mixed colors . . . . .	20	1 10	9 00

### Chionodoxa (Glory of the Snow)

This family increases in popularity as it becomes better known. For pot culture in the house or for early spring outdoor use they are very gratifying.

	Per doz	Per 100	Per 1000
Lucilæ, blue and white . . . . .	\$0 15	\$0 80	\$ 7 00
Sardensis, deep blue . . . . .	15	80	7 00

### Puschkinia

One of the earliest of the spring flowering plants, opening its handsome flowers with Snowdrops and Crocus. The flower spikes resemble those of the Hyacinth. For planting in masses the Puschkinia is unexcelled by any other bulb, the large white flowers with blue stripes being particularly effective. It will thrive in any garden border, and is also desirable for potting for house blooming.

	Per doz.	Per 100	Per 1000
Libanotica . .	\$0 15	\$0 85	\$7 00

### Snowdrop

(GALANTHUS NIVALIS.)

	Per doz.	Per 100	Per 1000
Single . .	\$0 15	\$0 75	\$ 6 00
Double . . .	20	1 00	9 00
Elwesii, (Giant Snowdrop) finest of all for cutting . . . . .	15	75	6 50

### Triteleia

Star-shaped flowers, an inch in diameter, pure white, beautifully lined with celestial blue. Fine for potting. They are also quite hardy and can be planted in open ground making fine bloom for early spring.

Triteleia uniflora

	Per doz.	Per 100	Per 1000
	\$0 15	\$0 60	\$5 00



PUSCHKINIA

### Fritillaria (Guinea Hen Flower)

Very early flowering bulbs suitable for either garden or pot culture, bearing large drooping bell-shaped flowers of various colors, checkered and variegated.

	Per doz.	Per 100	Per 1000
Meleagris, mixed . . . . .	\$0 15	\$0 80	\$ 7 00

### Muscari (Grape and Feathered Hyacinths)

Blue Grape Hyacinth, small grape-like flowers . . . . .	\$0 15	\$0 60	\$ 4 75
White Grape Hyacinth, like the above in form, but clear white . .	15	75	6 00
Feathered Hyacinth, a pretty feathery flower, curious and interesting	15	80	7 00

### Leucojum

Like monster Snowdrops. These are among the earliest of our spring flowers, and can also be forced in pots for winter bloom.

	Per doz.	Per 100	Per 1000
Vernum (Spring Snow-flake) . . . . .	\$0 35	\$1 75	\$15 00

### Ixiolirion Montanum

Ixiolirion Montanum ( Azure Amaryllis). Color, clear deep blue; stems long and graceful, flowers large. Per dozen, 25 cents; per 100, \$1.25; per 1000, \$11.00.

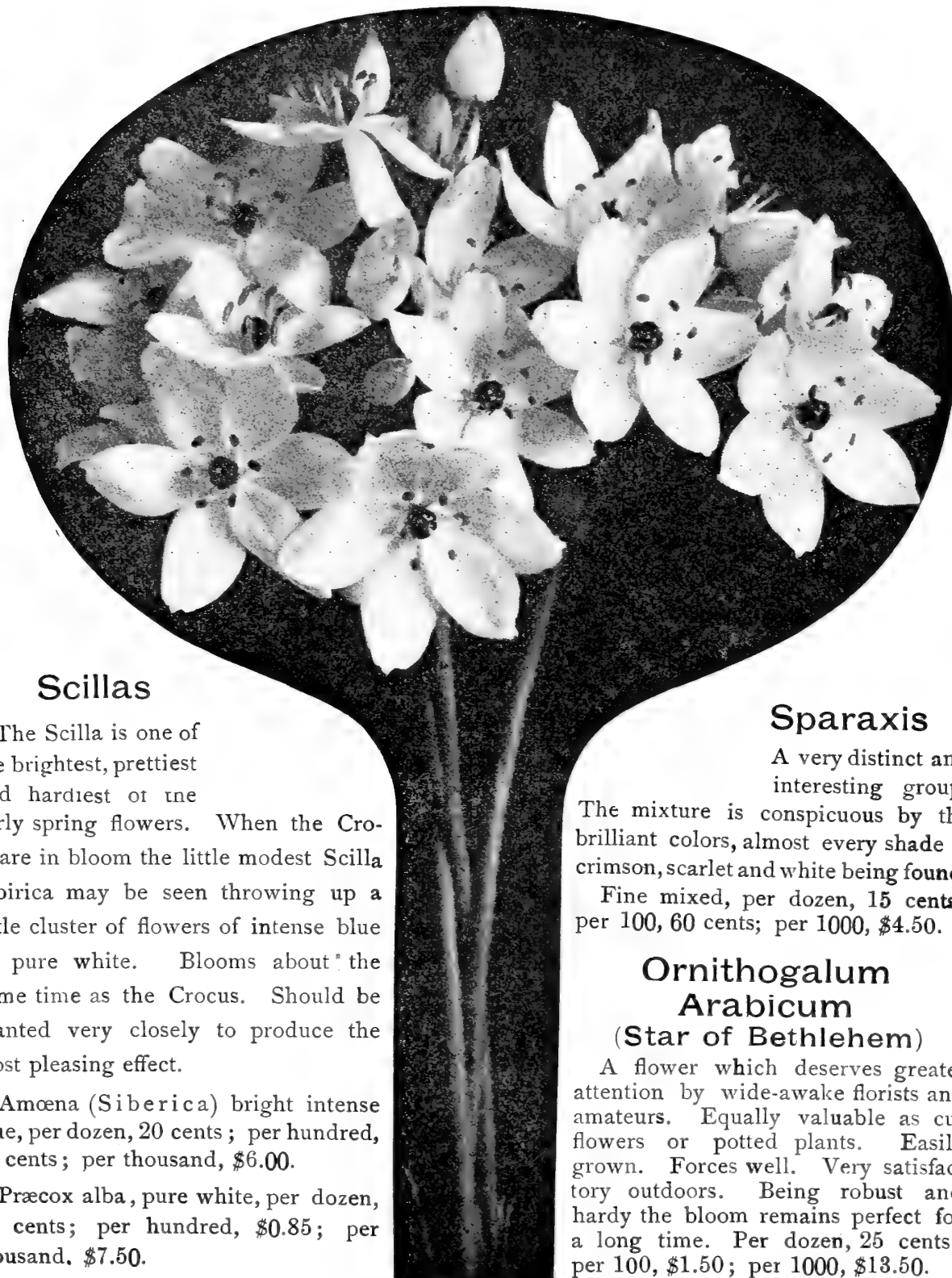
### Crown Imperial (*Fritillaria Imperialis*)

A very distinct and wonderfully interesting variety. Will attract attention in any group of outdoor spring flowers. Once put in the ground, and having obtained a fair start, it will continue to grow and increase from year to year.

	Each	Per doz	Per 100
Mixed varieties . . . . .	\$0 10	\$1 10	\$8 00

### Colchicum (Autumn Crocus)

Autumnale, white . . . . .	\$0 60	\$4 00
Autumnale, lilac . . . . .	55	3 75



### Scillas

The Scilla is one of the brightest, prettiest and hardiest of the early spring flowers. When the Croci are in bloom the little modest Scilla Sibirica may be seen throwing up a little cluster of flowers of intense blue or pure white. Blooms about the same time as the Crocus. Should be planted very closely to produce the most pleasing effect.

Amoena (Siberica) bright intense blue, per dozen, 20 cents; per hundred, 75 cents; per thousand, \$6.00.

Præcox alba, pure white, per dozen, 20 cents; per hundred, \$0.85; per thousand, \$7.50.

### Sparaxis

A very distinct and interesting group.

The mixture is conspicuous by the brilliant colors, almost every shade of crimson, scarlet and white being found.

Fine mixed, per dozen, 15 cents; per 100, 60 cents; per 1000, \$4.50.

### Ornithogalum Arabicum

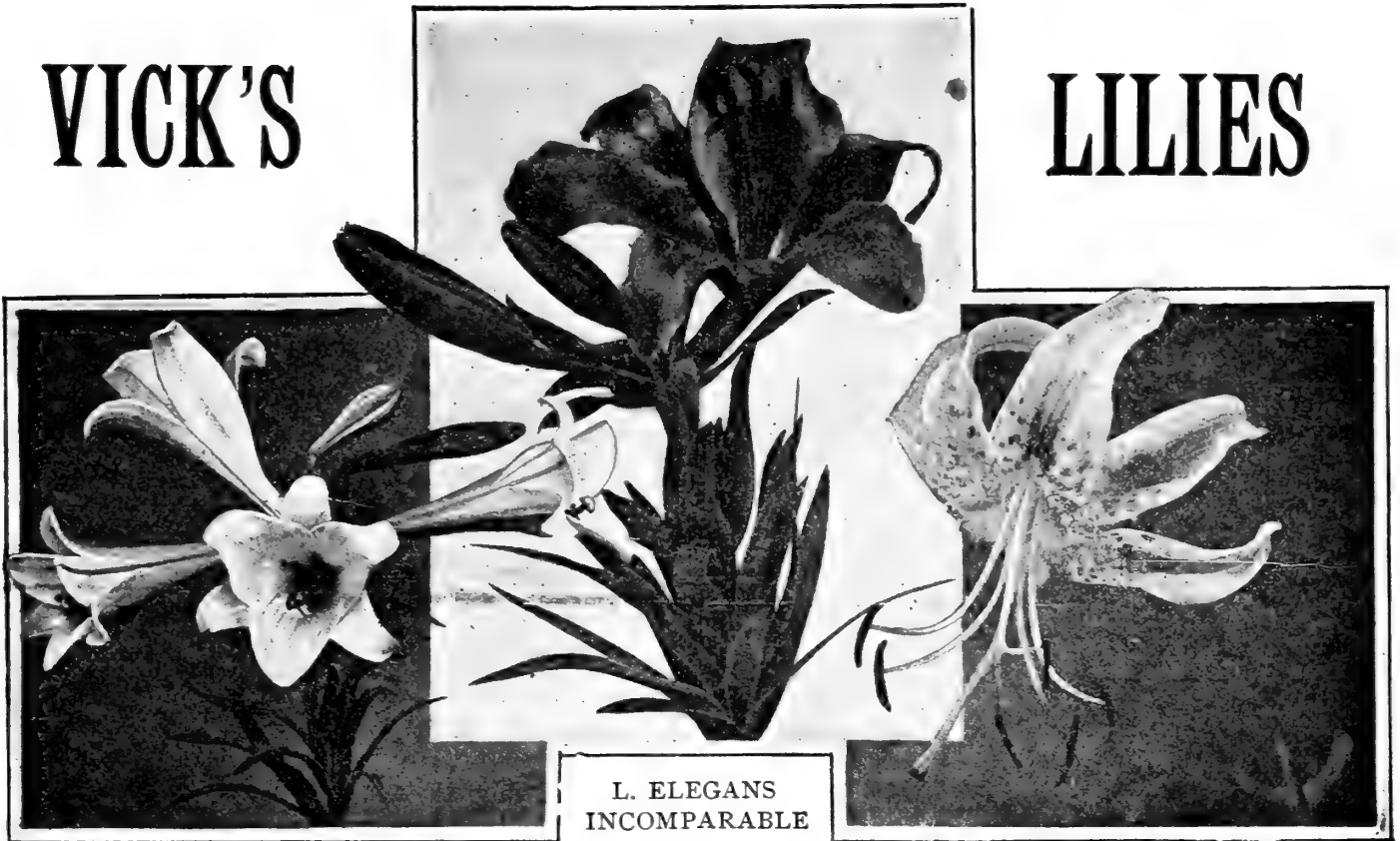
(Star of Bethlehem)

A flower which deserves greater attention by wide-awake florists and amateurs. Equally valuable as cut flowers or potted plants. Easily grown. Forces well. Very satisfactory outdoors. Being robust and hardy the bloom remains perfect for a long time. Per dozen, 25 cents; per 100, \$1.50; per 1000, \$13.50.

ORNITHOGALUM ARABICUM

# VICK'S

# LILIES



L. ELEGANS  
INCOMPARABLE

## LILIUM LONGIFLORUM

	Per Doz	Per 100
<b>Lilium auratum</b> , . . . . .	\$1 50	\$8 00
Canadense . . . . .	1 00	6 00
Candidum . . . . .	(See page 2)	
Elegans atrosanguineum . . . . .	1 50	10 00
Elegans Batemani . . . . .	1 50	9 00
Elegans, best red . . . . .	1 50	9 00
Elegans Incomparable . . . . .	1 50	9 00
Elegans Wallacei . . . . .	1 50	9 00
Elegans, fine mixed . . . . .	1 25	8 00
Giganteum . . . . .	(See page 2)	
Harrisii (Bermuda Easter) (See page 3)	(See page 3)	
Longiflorum Japonicum . . . . .	(See page 2)	
Longiflorum Formosum . . . . .	(See page 2)	

## SPECIOSUM RUBRUM

Longiflorum Multiflorum . . . . .	(See page 2)	
Lancifolium or Speciosum:	Per Doz	Per 100
Album Monstrosum . . . . .	1 50	9 50
Rubrum . . . . .	1 50	8 00
Melpomene . . . . .	1 50	8 00
Magnificum . . . . .	1 50	8 00
Leichtlini Orange . . . . .	1 25	8 00
Leichtlini Maximowiczii . . . . .	1 35	9 00
Pardalinum . . . . .	1 25	8 00
Phillipense . . . . .	1 25	8 00
Superbum (Turk's Cap) . . . . .	1 20	7 00
Tenuifolium . . . . .	1 25	7 00
Tigrinum Splendens (Single Tiger) . . . . .	75	5 00
Tigrinum fl.pl.(Double Tiger)	90	6 00

## Calla Lilies Dry Bulbs

Superior for forcing. Our bulbs are thoroughly ripened and come direct from one of the largest growers in the world.

	Per doz.	Per 100
Selected bulbs, 2 in. and up	1 75	12 00

## Ranunculus

	Per doz.	Per 100	Per 1000
Best mixed French . . . . .	\$0 10	\$0 50	\$4 00
Best mixed Persian . . . . .	10	60	4 50
Best mixed Turban . . . . .	10	60	4 50

## Iris

The Iris, or Flowering Flag, or *Fleur de lis* of the French, is a well known family of hardy border flowers. Bloom from May to July. (For Japan and German Iris see page 20.)

	Per doz	Per 100	Per 1000
Anglica, mixed sorts	\$0 15	\$1 10	\$9 50
Hispanica, mixed var.	15	60	4 50
Pavonia . . . . .	20	1 25	11 50

## Ixia

Best mixed . . . . .	10	50	4 00
----------------------	----	----	------

# Standard Trees, Berry Plants, Grapevines, Strawberries

## APPLE TREES

	Each	Per 10	Per 100
XXX 5-7ft. . . . .	\$0 25	\$2 25	\$17 50
XX 4-5ft. . . . .	20	1 75	15 00

### VARIETIES

Baldwin	Northern Spy
Delicious	Maiden Blush
Duchess	McIntosh Red
Early Harvest	King
Fall Pippin	Red Astrachan
Fameuse	Rome Beauty
Golden Russett	Sweet Bough
Gravenstein	Talman Sweet
R. I. Greening	Winter Banana
Jonathan	Yellow Transparent

## CRAB APPLES

Hyslop	Transcendant
--------	--------------

## PEACH TREES

	Each	Per 10	Per 100
XXX 4-6ft. . . . .	\$0 15	\$1 25	\$12 00
XX 3-4ft. . . . .	12	1 10	9 00

### VARIETIES

Belle of Georgia	Elberta
Carman	Fitzgerald
Champion	Foster
Chairs' Choice	Niagara
Crawford Early	Yellow St. John
Crawford Late	

### Early Elberta

	Each	Per 10	Per 100
XXX 4-6ft. . . . .	\$0 20	\$1 75	\$15 00
XX 3-4ft. . . . .	12	1 10	9 00

### The Hale

	Each	Per 10	Per 100
XXX 4-6ft. . . . .	\$0 30	\$2 75	\$22 00
XX 3-4ft. . . . .	25	2 25	18 00

### Rochester

	Each	Per 10	Per 100
XXX 4-6ft. . . . .	\$0 25	\$2 25	\$18 00
XX 3-4ft. . . . .	20	1 75	15 00

## PEARS

	Each	Per 10	Per 100
XXX 5-7ft. . . . .	\$0 25	\$2 25	\$20 00
XX 4-5ft. . . . .	20	1 75	16 00

### VARIETIES

Anjou	Flemish Beauty		
Bartlett	Seckel		
Clapp's Favorite	Wildor		
Duchess			
Dwarf Pears . . . . .	\$0 20	\$1 75	\$16 00

## SOUR CHERRIES

	Each	Per 10	Per 100
XXX . . . . .	\$0 25	\$2 25	\$18 00
XX . . . . .	20	1 75	15 00

Early Richmond	Montmorency
English Morello	

## SWEET CHERRIES

	Each	Per 10	Per 100
XXX . . . . .	\$0 30	\$2 75	\$25 00
XX . . . . .	25	2 25	18 00

Black Tartarian	Napoleon
Lambert	

## PLUMS

	Each	Per 10	Per 100
XXX 5-7ft. . . . .	\$0 25	\$2 25	\$20 00
XX 4-5ft. . . . .	20	1 75	16 00

### VARIETIES

Abundance	Lombard
Bradshaw	Reine Claude
Burbank	Shropshire Damson
German Prune	

## QUINCES

### Orange

	Each	Per 10	Per 100
XXX . . . . .	\$0 30	\$2 75	\$25 00

## BLACKBERRIES.

	Doz.	100	1000
Blowers New . . . . .	\$0 75	\$3 50	\$25 00
Eldorado . . . . .	75	3 50	25 00
Rathbun . . . . .	75	3 50	25 00

## CURRENTS.

	Each	Doz.	100
Black Champion . . . . .	\$0 15	\$0 85	\$6 00
Cherry, red . . . . .	15	85	6 00
Perfection . . . . .	18	1 65	15 00
Red Cross . . . . .	15	85	6 00
White Grape . . . . .	15	85	6 00

## GOOSEBERRIES.

	Each	Doz.	100
Downing . . . . .	\$0 15	\$1 25	\$9 50
Pearl . . . . .	15	1 25	9 50
Red Jacket . . . . .	20	1 75	12 00

## RASPBERRIES—RED.

	Doz.	100	1000
Columbian . . . . .	\$0 50	\$2 50	\$20 00
Cuthbert . . . . .	50	2 50	20 00
Golden Queen . . . . .	80	3 00	25 00
St. Regis . . . . .	80	3 00	25 00

## RASPBERRIES—BLACK.

	Doz.	100	1000
Cumberland . . . . .	\$0 50	\$2 25	\$17 50
Gregg . . . . .	50	2 25	17 50
Kansas . . . . .	50	2 25	17 50
Plum Farmer . . . . .	50	2 25	17 50
Black Diamond . . . . .	50	2 25	17 50

## GRAPES.

	Each	Doz.	100
Brighton . . . . .	\$0 15	\$1 00	6 50
Campbell's Early . . . . .	25	2 00	20 00
Concord . . . . .	10	75	5 00
Delaware . . . . .	15	1 00	6 50
Diamond . . . . .	15	1 00	6 50
Moore's Early . . . . .	20	1 25	7 25
Niagara . . . . .	15	1 00	6 50
Worden . . . . .	15	1 00	6 50

## Pot-grown STRAWBERRY Plants

	Doz.	100	1000
Brandywine . . . . .	\$0 50	\$4 00	\$22 00
Bubach . . . . .	50	4 00	22 00
Chesapeake . . . . .	50	4 00	22 00
Early Ozark . . . . .	50	4 00	22 00
Glen Mary . . . . .	50	4 00	22 00
Marshall . . . . .	50	4 00	22 00
Sample . . . . .	50	4 00	22 00
Senator Dunlap . . . . .	50	4 00	22 00
Stevens Late Champion . . . . .	50	4 00	22 00
William Belt . . . . .	50	4 00	22 00
Vick's Uncle Joe . . . . .	75	4 00	30 00
Progressive (Fall bearing)	75	4 00	30 00

# PLANTS AND BULBS

LIMITED SPACE does not permit us to enumerate our entire list of Plants and Bulbs. Prices on other varieties will be furnished upon request. It is our aim to offer the best stocks obtainable—strong, true to name, and free from disease and insects. We prefer to furnish the Best, not the Cheapest. No charge for packing. Unless so requested, we never ship plants by freight. To insure safe packing, greenhouse plants are removed from the pots.

## Tender Plants and Bulbs.

	Per doz	Per 100
Abutilons, in variety . . . . .	\$0 60	\$ 4 00
Amaryllis Johnsoni. Large bulbs, each 25c . . . . .	2 50	20 00
Amaryllis Vittata Hybrids, Giant flowering; each 50c . . . . .	5 50	
Amaryllis Chlidanthus fragram . . . . .	60	4 00
Araucaria excelsa, 10 to 12 in. high, extra fine, each 50c . . . . .		
Achania Malvaviscus . . . . .	75	5 00
Asparagus plumosus nanus 2½-inch pots . . . . .	60	4 00
3-inch pots . . . . .	75	5 00
Sprengeri, 2½-inch pots . . . . .	60	4 00
Begonias, flowering varieties, Rex varieties, 2¼-inch pots . . . . .	75	5 00
3-inch pots . . . . .	60	4 00
85	6 00	
Carnations, general collection, from open ground, Beacon . . . . .	1 00	7 00
Harlowardin . . . . .	1 00	7 00
Pink Enchantress, Rose Pink Enchantress, White Enchantress, White Perfection, Winsor and Mrs. Lawson . . . . .	85	6 00
Calla, Little Gem (green plants) . . . . .	75	5 00
Cannas, general collection . . . . .	50	3 50
Carex Japonica variegata . . . . .	60	4 00
Cyperus alternifolius . . . . .	60	4 00
Dahlias . . . . .	85	6 00
Dracaena Indivisa, field grown, ready for 5-inch pots . . . . .	2 25	15 00
Ficus elastica (Rubber Tree) 4-inch pots, 25 cts. each . . . . .		
5-inch pots, 35 cts. each . . . . .		
Fuchsia, general collection . . . . .	60	4 00
Ferns, for fern dishes, Adiantum, Cuneatum, Aspidium, Tsussimense, Cyrtomium Falcatum, Pteris, Cretica Albo lineata, Hastata, Serrulata, Wilsoni, Wimsetti, . . . . .	60	4 00
Nephrolepis Bostoniensis, (Boston Fern) 2½-inch pots . . . . .	60	4 00
Large plants from bench, each 15c., 25c. and 35c., according to size.		

	Per doz.	Per 100
Ferns—		
Nephrolepis Whitmani . . . . .		
2½ inch pots . . . . .	\$0 60	\$4 00
Large plants from bench, 25c. and 35c. . . . .		
Nephrolepis Scotti. The new dwarf Boston Fern. 2½-inch pots . . . . .	60	4 00
Large plants from bench, 25c. and 35c. . . . .		
Roosevelt fern. 2½ inch pots . . . . .	60	4 00
Large plants from bench, two sizes each 25c and 35c. . . . .		
Teddy, Jr. Plants from bench, two sizes each, 25c and 35c. . . . .		
Gladiolus, mixed . . . . .	20	1 25
Hydrangea Otaksa, 3 in pots . . . . .	1 00	7 00
Field-grown, each 10 cts. . . . .		
Jasminum grandiflorum . . . . .	75	5 00
Lemon Verbena . . . . .	60	4 00
Madeira Vine . . . . .	30	1 50
Oleafragrans . . . . .	60	4 00
Oleander, double pink, 3-in. pots . . . . .	85	6 00
Variegated, 3-inch pots . . . . .	1 00	7 00
Otaheite Orange, 2½ in. pots . . . . .	1 00	7 00
3½ in. pots . . . . .	1 25	8 00
Extra strong plants 4-in. pots . . . . .	1 75	12 00
Passiflora . . . . .	60	4 00
Primroses, single white or pink . . . . .	75	5 00
Baby Primrose (P. Forbesii) . . . . .	75	5 00
Roses, monthly, 3 in. pots. . . . .	1 00	7 00
Smilax . . . . .	50	3 50
Vinca major var., field grown . . . . .	85	6 00

## Hardy Shrubs and Vines

	Per Doz	Per 100
Akebia quinata, 2 year . . . . .	\$0 85	\$8 00
Ampelopsis quinquefolia . . . . .	85	6 00
Veitchii, field grown . . . . .	1 25	8 00
Aristolochia Siphon . . . . .	3 00	20 00
Bignonia radicans . . . . .	85	6 00
Buddleia Variabilis . . . . .	1 25	8 00
Clematis paniculata, 2 year, per 1000, \$60 . . . . .	1 00	7 00
Jackmanii, Madam Edouard Andre and Henryi . . . . .	2 25	15 00
Cornus, . . . . .		
Elegantissima . . . . .	1 25	8 00
Mascula . . . . .	1 25	8 00
Honeysuckle, Hall's Japan. . . . .	1 25	8 00
Hydrangea paniculata grand. 2 year . . . . .	1 50	10 00

	Per Doz	Per 100
Hydrangea arbor grand. alba, strong, 1 year, field grown	\$1 00	\$7 00
2 year . . . . .	1 50	10 00
Ivy, English, 2½ inch pots . . . . .	50	3 50
3 " " . . . . .	60	4 00
" " 3½ " " . . . . .	1 00	7 00
Kerria Japonica . . . . .	1 25	8 00
Lilac, Purple . . . . .	1 50	10 00
White . . . . .	1 50	10 00
Roses, Hybrid Perpetuals 2 year . . . . .	2 50	18 00
Caroline Mariesse. . . . .	2 50	18 00
Ramblers, Crimson, Pink, White, Yellow, 2 yr. . . . .	1 75	12 00
Philadelphia Rambler, 2 year . . . . .	2 00	12 00
Dorothy Perkins, 2 year . . . . .	1 75	12 00
Lady Gay, 2 year . . . . .	1 50	10 00
Tausendschoen, 2 year . . . . .	1 75	12 00
Spiræa Arguta, Billardi, Bil- lardi alba, B u m a l d a, D o u g l a s s i, Anthony Waterer, Van Houtteii, Calosa alba, Forsythia, 2 to 3 feet high . . . . .	1 25	8 00
Syringa Grandiflora . . . . .	1 25	8 00
Tamarix Africana, 2 to 3 feet Each, 8 cents. . . . .		

### Hardy Bulbs and Roots

	Per Doz	Per 100
Achillea The Pearl, Millefo- lium roseum, tomentosum	\$0 85	\$6 00
Aegopodium. . . . .	85	6 00
Alyssum Saxatile, compactum . . . . .	85	6 00
Anchusa Italica ( Dropmore variety ) . . . . .	85	6 00
Anthemis Tinctoria . . . . .	85	6 00
Anemone, Queen Charlotte, Whirlwind, Japonica Alba. . . . .	1 00	7 00
Aquilegia chrysantha and cœ- rulea, Skinneri, Erskine Park Hybrids, double mixed and single mixed. . . . .	85	6 00
Armeria (Thrift or Sea Pink) . . . . .	85	6 00
Arabis alpina . . . . .	85	6 00
Artemesia Latifolia . . . . .	85	6 00
Asters, (Michaelmas Daisies) in variety . . . . .	85	6 00
Boltonia Asteroides . . . . .	85	6 00
Cerastium Tomentosum . . . . .	85	6 00
Chives . . . . .	85	6 00
Cinnamon Vine . . . . .	85	6 00
Clematis Davidiana . . . . .	85	6 00
Campanulas, Media or Canter- bury Bell, Carpatica Blue and White, Persicifolia Blue and White, Pyramid- alis, Blue and White . . . . .	85	6 00
Centaurea Mont. alba. . . . .	85	6 00
Coreopsis lanceolata grandifl. Daisy, Shasta . . . . .	85	6 00

	Per Doz	Per 100
Delphinium, Elatum, For- mosum, Formosum Coe- lestinum, Sinensis . . . . .	85	\$6 00
Dicentra . . . . .	1 50	10 00
Digitalis, in variety . . . . .	85	6 00
Erianthus Ravennae . . . . .	85	6 00
Eulalia Japonica variegata . . . . .	85	6 00
gracillima univitata . . . . .	85	6 00
zebrina . . . . .	1 00	7 00
Euphorbia Corollati . . . . .	85	6 00
Funkia Japonica, light blue . . . . .	85	6 00
undulata media picta, var'd Alba, white . . . . .	1 50	10 00
Gaillardia grandiflora . . . . .	85	6 00
Genista Tinctoria . . . . .	85	6 00
Geranium sang. . . . .	85	6 00
Gypsophila paniculata . . . . .	85	6 00
Helenium. . . . .	85	6 00
Hibiscus, Hardy Large-flow'g Crimson Eye, Militaris . . . . .	85	6 00
Hemerocallis flava, Yellow Day Lily . . . . .	85	6 00
Hemerocallis Aurantiaca Ma- jor, or Golden Day Lily, each 20 cents . . . . .	1 75	
Helianthus latæfrons, Maxi- miliania, Multi. Plenus . . . . .	85	6 00
Helianthemum Vulgare . . . . .	85	6 00
Hollyhocks, in colors, field grown roots, double . . . . .	85	6 00
New Mam. Fr'd Allegheny Hyacinthus . . . . .	60	4 00
Iris Kæmpferi, named . . . . .	1 00	7 00
" mixed . . . . .	85	6 00
Germanica, mixed . . . . .	60	4 00
" named . . . . .	75	5 00
Lamium Purpureum . . . . .	85	6 00
Lavender, sweet scented . . . . .	85	6 00
Lobelia cardinalis . . . . .	85	6 00
Lupinus . . . . .	85	6 00
Lychnis Chalcedonica, Visca- ria-Viscaria fl-pl . . . . .	85	6 00
Lycoris, squamigera . . . . .	1 00	7 00
Lysimachia clethroides . . . . .	85	6 00
Lythrum roseum superbum . . . . .	85	6 00
Monarda didyma . . . . .	85	6 00
Myosotis Palustris . . . . .	85	6 00
Pardanthus Sinensis . . . . .	85	6 00
Pentstemon Coerulea . . . . .	85	6 00
" Barbatus Torreyii . . . . .	85	6 00
Perennial Pea, pink, crimson, red. . . . .	85	6 00
Peonies, fine collection . . . . .	1 75	12 00
White . . . . .	2 25	15 00
Perennial Phlox, named va- rieties, field grown . . . . .	85	6 00
Phlox Subulata, The Bride Physostegia, Virginica, alba, cœrulea . . . . .	85	6 00
Pinks, fine collection (clumps) Platycodon grandiflorum . . . . .	85	6 00
Poppy, Oriental . . . . .	85	6 00
Poppy, Iceland, white, yellow and orange . . . . .	85	6 00



	Per doz	Per 100		Per Doz	Per 100
Primula, Veris Superba . . .	85	\$6 00	Stokesia cyanea . . . . .	85	\$6 00
Pyrethrum roseum . . . . .	85	6 00	Sweet William, Crimson, White,		
Rudbeckia Golden Glow . . .	85	6 00	Holborn Glory and mixed .	85	6 00
Newmani, purpurea . . . .	85	6 00	Thermopsis Caroliniana . . .	85	6 00
Salvia Pratensis . . . . .	85	6 00	Tritoma McOweni . . . . .	85	6 00
Sedum, in variety . . . . .	85	6 00	" Pfitzeri . . . . .	1 00	7 50
Spiræa, aruncus, palmata,			Veronica spicata . . . . .	85	6 00
elegans . . . . .	85	6 00	Viscaria Splendens. . . . .	85	6 00
			Yucca filamentosa, 1 year . .	85	6 00

**Sage (Pot Plants) Per doz., 75 cents; per 100, \$5.00**

## Vick's Famous Flower Seeds

NOTE—Where flower seeds are quoted at 10 cents per ounce, if smaller quantities are wanted we will send our regular packets at 50 per cent. discount from retail prices.

	Per ¼ oz.	Per oz.		Per ¼ oz.	Per oz.
<b>Antirrhinum Majus—</b> (Snapdragon)			<b>Canterbury Bell</b> (Campanula Medium), Single varieties		
Silver Pink (Special florists' strain) . . . ¼ oz., 20 cts.	30	\$1 0	mixed . . . . Lb., \$2.00		\$0 25
Scarlet and Gold . . . . .	20	50	Double varieties mixed . .	25	75
Scarlet, white throat. . . .	20	50	Calycanthemum (Cup and Sau- cer), mixed . . . . .	35	1 25
Ruby King, deep blood red.	20	50	Pyramidalis, white, blue and mixed. . . . .	35	1 25
Queen Victoria, white . . .	25	60	<b>Carnation—Dwarf, Early-flower-</b> ing Vienna, extra fine		
Yellow and Orange Striped.		50	double mixed. . . . .	35	1 25
New Giant-flowered, choicest mixed . . . . .		50	Dwarf, Early-flowering Vien- na, double, pure white . .		
Tall varieties, fine mixed.	10	25	¼ oz., 25 cts.	45	1 50
Lb., \$3.00			Extra fine double mixed . .		
<b>Alyssum—</b>			1/16 oz., 25 cts.; 1-8 oz., 45 cts.	60	2 00
Benthami (Sweet Alyssum) .		15	Marguerite, mixed. . . . .	25	75
Lb., \$1.75			" Giant, or Malmaison, mixed, extra large-flowered		
" compactum erectum			strain. . . . 1-8 oz., 25c.	45	1 50
"Little Gem" Lb., \$3.50		30	<b>Cineraria hybrida</b> , choice		
" compactum procum- bens, "Carpet of Snow" Lb., \$4.00		35	mixed, Per packet 25 c.; 1-64 oz. 75 cts.		
(Perennial) saxatile compac- tum, "Gold Dust," splen- did for edging . . . . .		35	Extra choice, prize strain .		
<b>Ampelopsis Veitchii.</b> . . . .		25	1-128 oz., 75 cts.;		
<b>Anchusa Italica</b> , Dropmore .		1 00	1-64 oz., \$1.25.		
<b>Asparagus</b> (Greenhouse grown) Sprengeri . . . . .			<b>Coreopsis</b>		
250 seeds, 35 cts.;			lanceolata grandiflora. . .		20
1000 seeds, 75 cts.			<b>Cyclamen—Persicum gigan-</b> teum, choice mixed. . .		
Plumosus nanus . . . . .			100 seeds, 60c.; 1-16 oz., \$1.25; ¼ oz., \$2.00.		
100 seeds, 50 cts.;			Persicum, fine mixed . . .		
1000 seeds, \$3.50.			100 seeds, 50 cts.;		
<b>Aquilegia—</b>			1-8 oz., \$1.50.		
Cœrulea . . . ¼ oz. 25 cts.	35	1 25	<b>Daisy</b> (Bellis perennis).		
Large-flowered Hybrids . .			Longfellow, flowers very large, dark rose,		
1-8oz., 20 cts.	35	1 00	1-8 oz. 30 cents . . . .	50	1 75
<b>Calceolaria hybrida grandi-</b> flora, large flowered, splen- did strain, 1-128 oz. 50 cts.			Snowball, large flower, double white, extra fine quality		
<b>Candytuft—White Rocket .</b>			1-8 oz. 30 cents . . . .		1 75
Lb., 75 cts.		10	Choicest double, mixed,		
Empress, large, white . . .			1-8 oz. 20 cents		1 00
Lb., \$3.00		25	Shasta—Seed from our own stock plants. . 1-8 oz. 15c.		1 00
Mixed colors . . Lb., 75 cts.		10			

	Per ¼ oz.	Per oz.
<b>Delphinium</b> —Formosum (blue)	40	\$1 25
Chinese Mixed . . . . .		35
<b>Dianthus Plumarius</b> —(Pheasant's Eye) Single fine mixed		40
Double mixed . . . . .	35	1 00
Semperflorens (Florists' Perpetual Pinks) 1-16 oz., 20c.		2 00
<b>Digitalis</b> (Foxglove)		
Extra choice, mixed . . . . .		30
<b>Fuchsia</b> —(Crop failure)		
<b>Geranium zonale</b> , best mixed.	50	1 50
<b>Gloxinia hybrida</b> , choice collection. Packet, 20 cents.		
<b>Grevillea robusta</b> . . . . .		50
<b>Gypsophila paniculata</b> . . . . .		20
Double, 100 seeds, 40 cts.		
<b>Hollyhock</b> —Mam. Fringed Allegheny choice mixed . . . . .		50
lb., \$6 00		
Fine double mixed . . . . .		1 00
<b>Jerusalem Cherry</b> (Solanum Capsicastrum Nanum) . . . . .		25
<b>Lobelia</b> —Barnard's Perpetual, ⅛ oz. 20 cents		1 25
Cardinalis, brilliant scarlet, 1-32 oz., 30c.; ⅛ oz., 50c.; ⅛ oz., 85 cents.		
<b>Mignonette</b> —Sweet (Reseda odorata) . . . lb., 60 cts.		10
Allen's Defiance . . . . .		40
Bismarck—Imp'd Matchet		75
Machet, true dwarf, fine for pot culture and borders		25
Golden Queen . . . . .		35
White Pearl, best white . . . . .	35	1 25
<b>Myosotis</b> —(Forget-me-not)		
Alpestris, blue, rose and white each . . . . .	15	50
" Indigo blue, very fine	20	65
" Robusta grandiflora, (Eliza Fonrobert) . . . . .	25	75
" Victoria, sky blue, for pots . . . . .	25	75
" Mixed . . lb., \$3.00		30
Palustris semperflorens, true perennial. . ⅛ oz., 35 cts. lb., \$2.00		
Perfection, extra large . . . . .		
⅛ oz., 60 cts.; lb., \$4.00		
<b>Pansy</b> —		
<b>Vick's Superb Mixture</b> of choicest strains, 1-16 oz., 85 cts.; 1-8 oz., \$1.50;	2 50	8 00
Vick's Peerless Mixture . . . . .		
⅛ oz. 85 cts.		5 00
Trimardeau or Giant, . . . . .		
" Adonis, light blue . . . . .	50	1 75
" King of the Blacks. 1-8 oz., 45 cts.	75	2 50

**Pansy**—(Continued).

	Per ¼ oz.	Per oz.
Trimordeau or Giant . . . . .		
" Lord Beaconsfield.	60	\$2 00
" Prince Henry . . . . .		
1-8 oz., 45 cts.	75	2 50
" Pure Yellow . . . . .	60	2 00
" Snowflake . . . . .		
1-8 oz., 45 cts.	75	2 00
" White, with dark eye	75	2 50
" Yellow, with dark eye	75	2 50
Giant flowering choice mixed	35	1 25
<b>Poppy, Iceland, Orange, White, Yellow, and Mixed, each . . . . .</b>	25	75
<b>Poppy Oriental</b> —		
Darkest red . . . . .		50
<b>Primula Sinensis</b> —		
Choicest fringed, mixed, . . . . .		
1-64 oz., 60c.; 1-32 oz., \$1.00		
<b>Primula</b> —		
Obconica grandiflora, hybrids mixed, 1-64 oz. 25 cts.		
vulgaris (English Primrose) ⅛ oz. 25 cents		1 50
<b>Rudbeckia</b> —Purpurea (Cone Flower). . . . .	40	1 50
<b>Smilax</b> (Myrsiphyllum asparagoides) . . . . .		30
<b>Stock</b> —Dwarf Forcing, Ten-Weeks "Snow-Flake" 1-16 oz. 75 cts.		
Dresden Perpetual White, "Cut and come again" 65		
Large-Flowering Dwarf, Ten-Weeks, mixed colors 1-8 oz., 35c.	60	1 50
Giant White Nice, ⅛ oz. 40c.		
Giant Yellow Nice, ⅛ oz. 40c.		
Beauty of Nice, delicate fleshy pink, ⅛ oz. 75 cts.		
Queen Alexandra, rosy lilac, 1-8 oz., 40 cts.		
<b>Sweet William</b> —		
Holborn Glory, extra large flowers, finest shades . . . . .		30
Dunnett's Dark Crimson . . . . .		30
Double White . . . . .		60
Single White . . . . .		30
Double, finest mixed . . . . .		60
Single, finest mixed . . . . .		20
<b>Vinca</b> —mixed . . . . .		50
Delicata, a new color, beautiful soft delicate pink . . . . .		
⅛ oz., 20 cts.	35	1 00
Rosea, Rosea alba and Alba	20	60
<b>Wallflower</b> —Finest double, mixed, 1-16 oz. 20 cts. . . . .		2 00
Single, finest mixed . . . . .		20

# FERTILIZERS, INSECTICIDES AND FLORISTS' SUPPLIES

PRICES QUOTED HERE ARE NET CASH, AND SUBJECT TO MARKET CHANGES

- Clay's Fertilizer.** A well known English fertilizer for forcing greenhouse plants. Exportation of fertilizers not allowed at present by British government.
- Pulverized Sheep Manure.** Practically odorless. Highly recommended for lawn, garden and greenhouse use. 100 lb. bag, \$2.25; per ton, f.o.b. Chicago, \$27.00; f.o.b. Rochester, \$33.00.
- Nitrate of Soda.** (Chili Saltpeter.) The best and cheapest form of Nitrogen for plants. Highly concentrated and immediately available. Nothing like it to make plants grow. 10 lbs., \$1.00; 25 lbs., \$2.25; 50 lbs., \$4.00; 100 lbs., \$7.00; original bag (about 200 lbs., \$12.50.
- Scotch Soot.** Per Bag (circ. 112 pounds) \$3 25.
- Wood Ashes.** High Potash Analysis. Per barrel, \$2.75; ton, \$20.00.
- Pure Raw Bone Meal.** 50 lbs., \$1.75; 100 lbs. \$3.00; 200 lbs. \$5.50.
- Aphis Punk.** Excellent for aphis, red spider, white, green and black fly and thrip. (For greenhouse only.) Per box of 12 rolls, 60 cents; per dozen boxes, \$6.50.
- Arsenate of Lead.** (Dry Powdered.) Per lb., 50 cents; 2 lbs., 95 cents; 5 lbs., \$2.25; 25 lbs., \$9.50; 100 lbs., \$35.00.
- Arsenate of Lead.** (Paste.) Per lb., 30 cents; 5 lbs., \$1.25; 10 lbs., \$2.25; 25 lbs., \$5.00; 100 lbs., \$18.00.
- Black Leaf 40.** A concentrated solution of Nicotine sulphate which does not evaporate like "free" nicotine, in ordinary temperatures. Therefore especially valuable for spraying in the gardens, nursery or orchard. 1 oz. bottle, 25 cts.; ½ pound can, 75 cts; 2 pound can, \$2.50; 10 pound can, \$10.75.
- Bug-Death.** For potato bugs and blight; contains no arsenic and does not easily wash off.
- |                           |        |                             |        |
|---------------------------|--------|-----------------------------|--------|
| 1 pound package . . . . . | \$0 20 | 12½ pound package . . . . . | \$1 25 |
| 3 " " . . . . .           | 50     | 100 " keg . . . . .         | 8 50   |
| 5 " " . . . . .           | 75     |                             |        |
- Bordeaux Mixture.** For mildew and fungus. Pint, 30 cents; Qt. 50 cents; 1 gal., \$1.25.
- Improved Kil-Tone.** A combined insecticide and fungicide. To control leaf-eating insects and plant diseases. Recommended for Potatoes, Beans, Melons, Tomatoes, Cucumbers, Egg Plant, Roses and shrubbery. 1 lb. package, 24 cts.; 10 lbs., \$1.90; 150 lbs., \$22.50. f.o.b. factory. Prices f.o.b. Rochester, 2 cents per pound higher.
- Nicoticide.** (Liquid.) For fumigating and spraying. The active principle of tobacco. 4 oz., 60c.; ½ pt., \$1.15; 1 pt., \$2.25; 1 qt., \$4.25; ½ gal., \$8.00; 1 gal., \$14.50.
- Nicofume.** Tobacco paper in sealed tin cans. Most effective and best method of fumigation. Tin cans (24 sheets) \$0.85; 1 gross can (144 sheets,) \$4.00; 2 gross can (288 sheets) \$7.50.
- Nicofume Liquid.** ¼ lb., 50c.; 1 lb., \$1.50; 4 lbs., \$5.50; 8 lbs., \$10.50.
- Nikoteen** A powerful nicotine extract. 1¼ oz. bottle, 40 cts.; ½ lb., 85 cts.; 1 lb., \$1.50.
- Sulpho-Tobacco Soap.** As a wash for roses, trees, and house plants. Also for insects on animals. 3 oz. cakes, each, 10 cts.; doz., \$1.00; 8 oz. cakes, each, 15 cts.; doz., \$2.00.
- Scalecide.** One of the best known insecticides and fungicides. For orchards, small fruits, shrubbery, and hardy plants. It is said to kill San Jose scale without injury to tree or fruit buds. Qt., 40 cts.; gal., \$1.00; 5 gals., \$4 25; 50 gals., \$29.50.
- Tobacco Dust** (fine) For dusting. 1 lb., 10 cents; 5 lbs., 30 cents; 10 lbs. or over 5 cents per lb.; 100 lbs., \$4.00.
- Fish Oil Soap.** Used as a wash for roses, trees, and plants affected with insects. 1 lb. box, 25 cents; per dozen, \$2.50. ½ lb. box, 15 cents, per dozen, \$1.50.
- Mastica.** For glazing work. It is a putty-like preparation made especially for the purpose. Sets quickly, can be used in cold weather, does not crack. Use in a putty bulb or machine. Gallon pails, \$1.80; 5 gallons or over, \$1.25 per gallon. Machine for applying, \$1.50. Putty Bulbs, \$1.00.
- Pot Labels.** Painted, per 1000—4 inch, 85 cts.; 4½ inch, 95 cts.; 5 inch, \$1.10; 6 inch, \$1.25; 8 inch, \$3.25; 10 inch, \$4.00; 12 inch, \$5.50.
- Raffia.**—Natural, per pound, 25 cts.; 5 lbs or over, 20 cts. per lb. Colored, per lb., 75 cts.
- Sprinklers.** "Tyrian." Rubber, made with a perforated detachable top; valuable for window gardening, bouquet sprinkling, dampening clothes, and florists' general use.
- |                                       |         |                                       |        |
|---------------------------------------|---------|---------------------------------------|--------|
| 6-ounce size, straight neck . . . . . | \$0 60. | 8-ounce size, straight neck . . . . . | \$0 80 |
| 6-ounce size, bent neck . . . . .     | 70.     | 8-ounce size, bent neck . . . . .     | 90     |

TRUMPET  
NARCISSUS  
EMPRESS

James Vick's Sons  
ROCHESTER, N. Y.  
THE FLOWER CITY

