

Historic, archived document

Do not assume content reflects current scientific knowledge, policies, or practices.

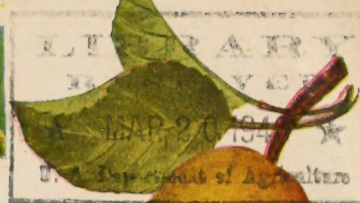
62.37



TRIPLE RED DELICIOUS APPLE
Page 20



CONCORD GRAPE
Page 33



BARTLETT PEAR
Page 25

**VICTORY
PLANTERS GUIDE
FOR 1943**

Harrison's
NURSERIES, INC.

Berlin, Maryland

ESTABLISHED 1884

GROWERS of QUALITY

- Fruit Trees
- Berry Plants
- Ornamentals



MARY WASHINGTON ASPARAGUS
Page 32



**BURBANK
PLUM**
Page 26



MONTMORENCY SOUR CHERRY
Page 27



**THE NEW
RED HAVEN
PEACH**
Page 5

Harrisons'

BETTER FRUITS
Bud-Selected Strains
Productive • Dependable



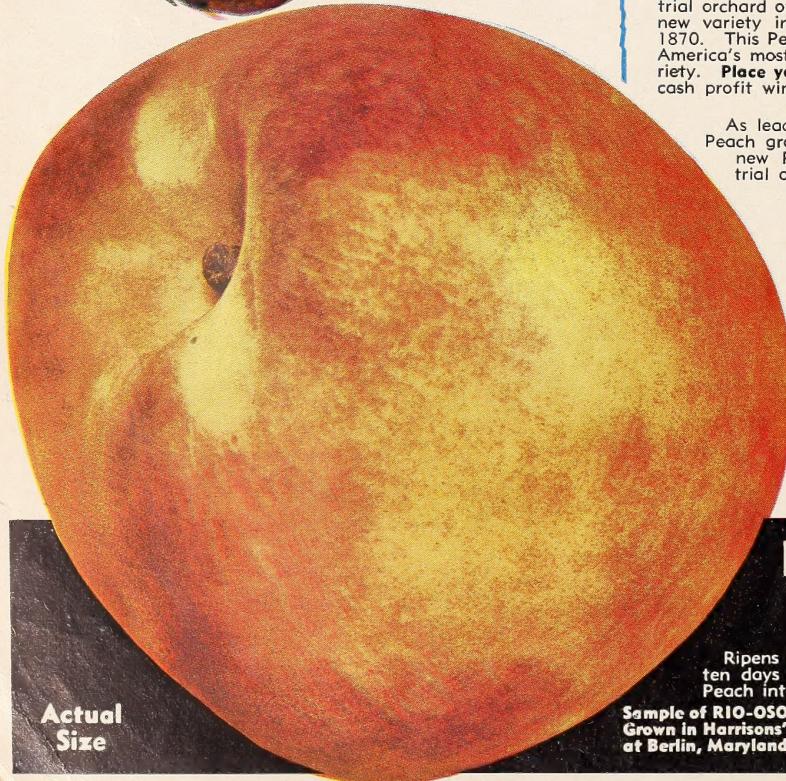
SUPER RED McINTOSH APPLE Page 18



HALE-HAVEN PEACH Page 10



PREMIER STRAWBERRY
Page 30



Actual Size

30 Rio-Oso Gem
for only \$16.50
Special Introductory Offer

Each peach grower owes it to himself to plant a trial orchard of this sensational Peach. It is the best new variety introduced since the famous Elberta in 1870. This Peach is "going places" and will soon be America's most extensively planted, late ripening variety. **Place your money** on Rio-Oso-Gem—it's a sure cash profit winner.

ENJOY LARGE PROFITS

As leading nurserymen, and large commercial Peach growers we have the utmost faith in the new Rio-Oso-Gem Peach. We offer you a trial orchard planting as below:

SPECIAL OFFER

30 Rio-Oso-Gem Peach Trees \$16.50

As a special 1943 inducement we will supply you with 30 Rio-Oso-Gem Peach trees, U. S. Plant Patent No. 84, one-year, 3 to 4 ft., for \$16.50. You save on the original cost. We further guarantee complete satisfaction. If for any reason you are not satisfied with this special offer of Rio-Oso-Gem Peach trees, we will gladly return your money.

SEE OPPOSITE PAGE FOR COMPLETE DESCRIPTION

RIO-OSO GEM

U. S. PLANT PATENT NO. 84

The World's Largest Peach

Ripens two weeks later than J. H. Hale. Colors ten days before ripening. The best commercial Peach introduced since the famous Elberta.

Sample of RIO-OSO GEM
Grown in Harrisons' Orchards
at Berlin, Maryland

Sold only by Harrisons'
in numerous states.

I'LL TELL THE WORLD

IT PAYS TO PLANT

HARRISONS'
HI-QUALITY
TREES



The New Discovery **RIO-OSO-GEM**

An amazing feature of the Rio-Oso-Gem is, it will take on a good bright red color and yellow background two weeks before ripening, and even ten days before actual ripening time the percentage of bright red color is decidedly more than most other varieties. When Rio-Oso-Gem is ready to pick and ship it has practically a solid red color. There is no other Peach known that carries such a high percentage of red color on the fruit as this marvelous Rio-Oso-Gem.

EXPERT FRUIT GROWERS SAY O. K.

Rio-Oso-Gem has now fruited in practically every Peach district of the Union. Veteran Peach growers of the nation are loud in their praise of this startling variety. Rio-Oso-Gem has passed the experimental stage and proven an outstanding commercial variety superseding the famous Elberta of the Victorian era.

BIGGEST PEACH ON EARTH

The Rio-Oso-Gem is a perfect freestone, form is globular, slightly elongated, of extremely large size, averaging in diameter from 2 $\frac{3}{4}$ to 3 $\frac{3}{4}$ inches, deep yellow flesh, very fine grain, firm texture, with very excellent flavor, being rich, juicy, sweet and slightly spicy. The coloring is unique, being a beautiful dark crimson-red, running out to lighter crimson and into a rich mottle of crimson over the orange-yellow ground color. It is a good transcontinental shipper.

BEARS HEAVIER THAN ELBERTA

Rio-Oso-Gem is an extremely heavy bearer and on account of its prolific set of fruit, it is necessary to practice extremely heavy thinning. It has hardy, vigorous fruit buds, which insure it being a heavy annual bearer. Tree bears young.

PRICES OF RIO-OSO-GEM (U. S. Plant Patent No. 84)

One-year budded trees	trees		
	1-9	10-49	50-300
5-6 ft., 11/16-7/8 in. cal...	\$0.95	\$0.80	\$0.75
4-5 ft., 9/16-11/16 in. cal...	.85	.70	.65
3-4 ft., 7/16-9/16 in. cal...	.75	.60	.55
2-3 ft., 5/16-7/16 in. cal...	.70	.55	.50
2-3 ft., 1/4-5/16 in. cal...	.65	.50	.45
18-24 in.55	.40	.35

There is a brilliant future in store for the progressive orchardist who plants Rio-Oso-Gem Peach trees.

Commercially TESTED
America's Highest Price PEACH
Plant Now!

Extra
GOOD
for
HOME
Orchards

PROTECTED BY U. S. PLANT PATENT NO. 84

The Rio-Oso-Gem has been protected by the Government against infringement by U. S. Plant Patent laws for a period of 17 years from the date patent was granted, being November 23, 1923. It is unlawful for anyone to propagate and sell the Rio-Oso-Gem, U. S. Plant Patent No. 84, Peach trees without obtaining written permission from the owner.

Exclusive Propagation and Sales Rights of the Rio-Oso-Gem in the Following States Granted to Harrisons:

Alabama, Arkansas, Connecticut, Delaware, District of Columbia, Florida, Georgia, Kansas, Kentucky, Louisiana, Maryland, Maine, Massachusetts, Mississippi, New Hampshire, New Jersey, New York, North Carolina, Oklahoma, Pennsylvania, Rhode Island, South Carolina, Tennessee, Texas, Vermont, Virginia and West Virginia. Also sales rights in Ohio, Indiana, Illinois, Missouri, Michigan, Iowa, Minnesota, and Wisconsin.

BRING HIGHEST MARKET PRICES

Fruit men were amazed at the high prices Rio-Oso-Gem brought on the markets this season. They outsold Elbertas and J. H. Hale from \$1.00 to \$1.50 per bushel, and sold for as high as \$5.00 per bushel.

a New
LATE PEACH
the perfect
Running Mate for
Elberta

TWO WEEKS LATER THAN ELBERTA

The Rio-Oso-Gem would be a Peach of commercial importance when ripening at any time during the Peach season, but it is very fortunate that it ripens two weeks later than Elberta, which puts it at a time when there is no other variety of commercial importance as a competitor, and fills a long looked-for gap in commercial production, ripening when the markets are clamoring for Peaches—this variety has sold at very much higher prices than Elberta and J. H. Hale. To prolong your Peach shipping season, we highly recommend to you planting the Rio-Oso-Gem. Harrisons' have planted several thousand Rio-Oso-Gem in their own famous orchards. We have the utmost faith in the Rio-Oso-Gem, and we will also make future plantings of this remarkable Peach.



RIO-OSO-GEM PEACH. U. S. Plant Patent No. 84

Harrisons'—The Nation's Fruit Tree Nurseries



Message From HARRISONS



Dear Friends:

Our message this year will be short and brief. Our most important goal to attain is VICTORY FOR 1943. If we all put our head and shoulders back of this, victory will be ours.

Fruit is Food. Grow your own — make preparations to can as much food as possible. Food will win the war and write the peace.

As a relaxation from strenuous work, why not plant your home grounds? It will afford you a lot of pleasure.

As large commercial fruit growers and nurserymen, we are endeavoring to do our part. Our nursery is chock full of worth-while fruit trees, berry plants and ornamentals that are capable of producing a lot of food and pleasure to those on the home front. Let us be of service to you.

Yours for Victory,
HARRISONS' NURSERIES, Inc.

Buying Fruit Trees Is An Act of Confidence

Your future success and profit from your investment depends on factors you cannot see, the skill and experience of the nurserymen, the type of parent tree that is used in propagation, the willingness of the nurserymen to stand back of every one of his claims.

For 59 years the Harrison organization has been supplying fruit trees to an ever-widening circle of customers, until today Harrissons' Nurseries are the largest growers of fruit trees in the World. This demand we believe is due to the profit producing proven heavy yielding, bud selected strain fruit trees we are producing plus absolute dependability and square dealings. Thousands of reports from enthusiastic customers, hundreds of year in and year out customers, are proof that you can depend on **Harrissons' Fruit Trees**. You buy them without risk and with assurance they will yield you the greatest possible profit.

This is Your PROTECTION

Every customer is assured of Harrissons' Hi-Quality Trees and Plants at all times. Expert growing on proper soils, careful digging and packing is Harrissons' policy on every order. Every tree and plant we ship is guaranteed to be strictly first class, free from injurious diseases and insects and to reach you in good condition.

Any time trees or plants are received that do not meet these standards they will be replaced free of charge or your money refunded.

Continued growth depends on soil, weather conditions, planting and after care. After ten days it is mutually understood that the nursery stock is satisfactory; however, we will replace nursery stock that dies from unavoidable causes at half price, if notified within six months after its arrival.

HARRISONS' NURSERIES, INC.

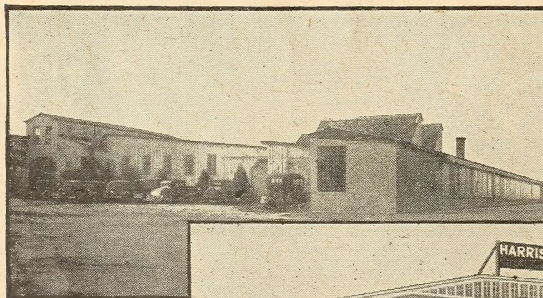


OVER FIFTY YEARS' DEPENDABLE DEALINGS.

Fruit Is Food — Grow Your Own

HARRISONS' SPECIALTIES

Fruit Trees — Strawberry Plants — Grape Vines
Asparagus Roots — Small Fruits — Roses — Shade
Trees — Evergreens — Shrubs — Vines — Hedge
Plants — Azaleas — Boxwood — Peonies.



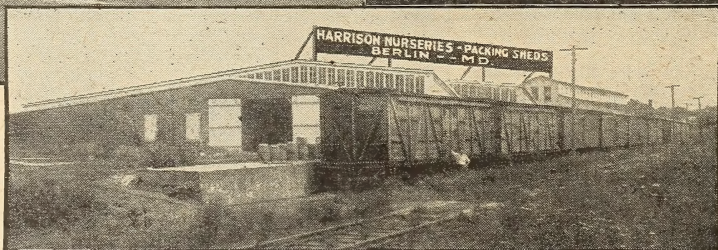
Front Entrance to
Mammoth Packing
Houses

59 YEARS OF
LEADERSHIP



Another View of
Packing Houses

OVER 5000
ACRES



Side View of Packing Houses with Private Railway Siding Holding 35 Freight Cars

PLANT HARRISON'S SUPER-STRAIN SELECTED TREES

TRIPLE CERTIFICATION

By U. S. Government, State of Maryland, in addition to other horticultural inspectors. Your order insures Harrison Grown, healthy, clean nursery stock. Free from diseases and insect pests. Certificate of Inspection accompanies each shipment.





3 Brand New
High Quality

Peaches



Red Haven

Earlyberta

Sullivan's EARLYBERTA

An Early Ripening Bud Sport of Elberta

Here is the early ripening strain of genuine Elberta growers have been wanting. Discovered by Mr. Sullivan in a Georgia orchard. Identical to Genuine Elberta in every characteristic except it ripens about 7 days earlier. Yellow freestone, firm, juicy, rich, good flavored. Equally attractive as Elberta and is a good keeper. Good for either home or commercial planting.

PRICES OF RED HAVEN, SULLIVAN'S EARLYBERTA, and EARLY HALE-HAVEN

	True-to-Name—Certified 100% Healthy		
	1 to 9 Trees	10 to 49 Trees	50 to 300 Trees
5 to 6 ft., 11/16 to 7/8 in. cal.	\$0.85	\$0.75	\$0.65
4 to 5 ft., 9/16 to 11/16 in. cal.	.75	.65	.60
3 to 4 ft., 7/16 to 9/16 in. cal.	.65	.55	.50
2 to 3 ft., 5/16 to 7/16 in. cal.	.55	.45	.40
2 to 3 ft., 1/4 to 5/16 in. cal.	.45	.40	.35
18 to 24 inches	.35	.30	.25

Prices apply on total quantity of each variety ordered.

The Sensational RED HAVEN

Tops All Extra Early Peaches Earliest Yellow Freestone Peach

The new early ripening Yellow Peach that ripens about 10 days before Golden Jubilee.

The most promising early ripening yellow freestone Peach ever introduced. A cross between Hale-Haven and Kalhaven made at the South Haven, Michigan, Experimental Station. Brilliant red color with creamy yellow background, smooth skin, almost fuzzless. Reddens before it ripens. Bears heavy crops and should be thinned for best results. Every grower should try RED HAVEN. Supply of trees is limited—order early.

EARLY HALE-HAVEN

A bud sport of the well-known Hale-Haven, retaining all its characteristics, such as large size, high red color before ripening, extra fine flavor and yet ripening a week earlier. Tests show it will keep as good as Hale-Haven.

A very promising new commercial variety. We recommend every grower to plant a few trees so as to compare its merits with other varieties ripening at the same time. We are confident that you will like Early Hale-Haven and that it will be a profitable Peach for you to grow. Plant Patent No. 325.

Harrisons'—The Nation's Fruit Tree Nurseries

Peaches

A bright and PROFITABLE CASH FUTURE
Plant a PEACH ORCHARD
this Spring



HARRISON'S' BUD-SELECTED TREES PAY GREATER PROFITS FINEST STRAINS.

Harrison's "bud selection" of propagating direct from bearing trees of known sturdy ancestry, superior strains, bearing the highest coloring of fruit, with extra heavy bearing habits, has made the greatest contribution in directing and fixing the characteristics of the yield; of perfecting color; increasing the size of the fruit and the volume, as well as regularity of the crop.

FRUIT GROWERS—look at fruit trees in other nurseries, then come to Berlin and see the superior quality of Harrison's' true-to-name varieties at attractive prices. See the fruit trees growing in the nurseries—know what you buy. For best results, plant dependable Harrison-grown trees.

The Reasons Back of Harrison's' Superior Stock

- A—Our organization has over 59 years' experience.
- B—Every step in growing under the personal supervision of the Harrison brothers.
- C—One hundred thousand trees in our own orchards from which our propagating plants are selected.
- D—Use of modern methods for planting, cultivating and digging.
- E—Over 5000 acres of various types of soil.
- F—Ideal soil and climatic conditions.
- G—Co-operation of leading horticulturists and experimental stations all over the world.

HARRISON'S' Super-Selected Strain Varieties Bear Bigger and Better Crops of Peaches.

INCREASES YOUR PROFITS AT NO EXTRA COST

YOUNGER BEARING

Do you want your trees to come into bearing at an early age? It is a recognized fact that trees propagated direct from bearing trees will commence to fruit at an earlier age than trees that are propagated from non-bearing scions. Harrison Grown Fruit Trees, due to the fact they are propagated from bearing trees, will produce profit-paying crops in the earliest possible time.



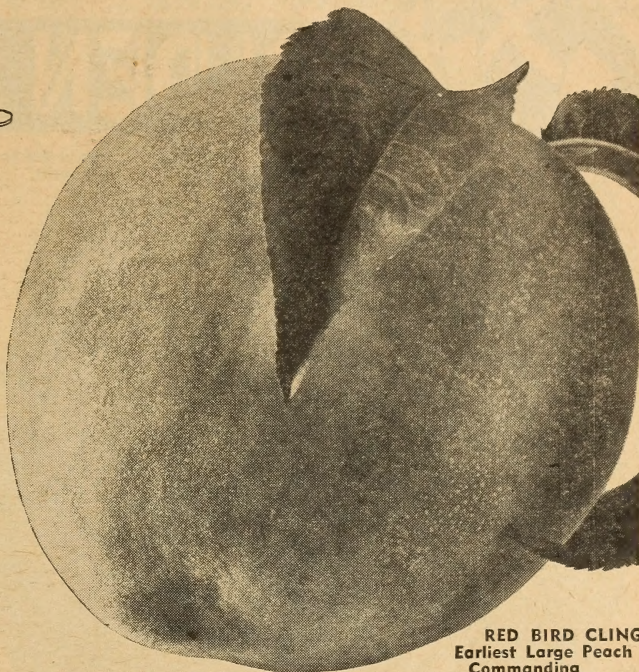
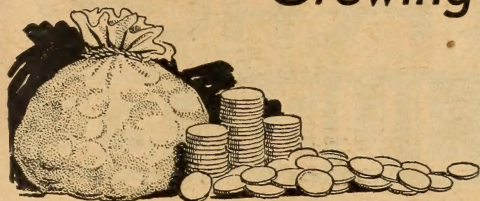
A Sectional View of Harrison's' Peach Trees Growing at Berlin, Maryland



BIGGEST PEACH TREE VALUES IN AMERICA



Make Money Growing **Red Bird Peach** — a Real Profitable Variety



RED BIRD CLING
Earliest Large Peach
Commanding
High Prices

Also known as "Early Wheeler." The first Peach of large size to ripen. White, cling, with a crimson cheek and yellowish white undertone; very hardy, will thrive in any peach-growing district.

Plant Red Birds—The First of the Early Profits

SALES \$1150

From 1000 Red Bird Cling Peach trees which bore a crop when trees had been planted in orchard only 2 years—averaging 1/2 bushel per tree. Large, 1-year peach trees were planted.

June Elberta

a new variety

A big, handsome red and gold Peach, highly colored, excellent quality and a dandy shipper. Being one of the earliest of the good yellow-fleshed Peaches, this semi-freestone variety quickly returns cash dividends before later varieties reach the market. An extra good Peach for home orchards.

OTHER VERY EARLY VARIETIES

Early Rose Very early. Another favorite commercial Peach. White, cling, medium large size for an early Peach, high bright red skin, sweet, delicious flavor. Good shipper, making it a new favorite among commercial varieties.

Greensboro White, freestone, extra large for such an early Peach. One of the handsomest, being a large, yellowish white with crimson cheek; flesh is white and of average quality. Exceedingly hardy, being an extra heavy, prolific bearer and adapted for wide variations in Peach regions. Good home Peach.

MAYFLOWER. White, cling, small size with red all over. Earliest Peach grown.

MONEY IN FRUIT GROWING
Leading Orchardists Prefer Harrison Grown Fruit Trees

YOU TAKE NO CHANCE IN PLANTING HARRISON'S TREES

If fruit trees are continuously propagated from the nursery rows, because it is cheaper, fruit trees begin to degenerate, and when the original was a poor type, the nurseryman, without knowing it, continues to reproduce poor, undesirable, small type fruit. Incidentally, in case there was a mixture in the nursery rows, how could a nurseryman propagate true-to-name trees successfully? We are orchardists and nurserymen, and nothing can compare with our own scientific method of "bud selections"—it always gives complete satisfaction and spells profit for the fruit farm.

HARRISON'S HARDY PEACH TREES

We absolutely guarantee Harrison-grown Peach trees, variety for variety, to be as hardy or hardier than trees grown in any locality north of us.

Grown On the "Brink" of the Atlantic

Our favorable climatic conditions, being located only 8 miles from the Atlantic Ocean, with our rich soils of various types, coupled with the latest scientific and practical methods, as well as an unusually large number of experienced nurserymen, with ample facilities, enables Harrison's to grow America's foremost, finest and best quality, true-to-name fruit trees, with superior merits and extra heavy annual bearing habits, which we guarantee, with proper care, will produce bumper crops in any fruit-growing section of the United States.

PRICES OF HARRISON'S HIGH QUALITY PEACH TREES

(Except as noted)

Propagated Direct from "VERIFIED" Varieties of Super-Selected Strains

CERTIFIED 100% HEALTHY

	1 to 9 trees	10 to 49 trees	50 to 300 trees
One year budded trees			
5 to 6 ft., 1 1/16 to 7/8 in. cal.	\$0.80	\$0.65	\$0.45
4 to 5 ft., 9/16 to 11/16 in. cal.	.70	.60	.40
3 to 4 ft., 7/16 to 9/16 in. cal.	.60	.50	.35
2 to 3 ft., 5/16 to 7/16 in. cal.	.50	.40	.30
2 to 3 ft., 1/4 to 5/16 in. cal.	.40	.35	.25
18 to 24 inches	.30	.25	.20

Write for prices on larger quantities.

May be assorted varieties of Peach Trees.

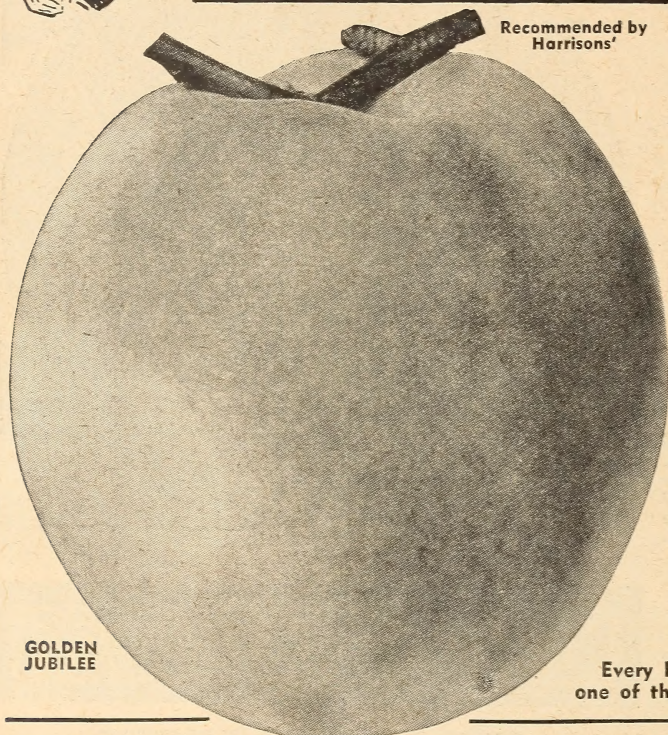
Plant "Bud-Selected" Super-Strain Trees





A LEADER and What a PEACH!

GOLDEN JUBILEE



Recommended by
Harrisons'

GOLDEN
JUBILEE

Harrisons' were the first nurserymen to give wide publicity to Golden Jubilee. They recommend it to every grower north and west of Georgia. Our own orchards have several thousand trees that are bearing fruit for the commercial market, and they have proved beyond doubt an ever popular variety with a brilliant future ahead.

Our strain of Golden Jubilee is the original strain introduced by the New Jersey Experimental Station.

Commercial Peach Orchardists for a half century have been looking for an early Peach of high quality, yellow, freestone, with attractive coloring and good shipper. The Golden Jubilee is far better than any other yellow variety of commercial importance for the early ripening season. A pretty looking Peach with plenty of appetite appeal.

It ripens fully four or five days ahead of Carman.

Fruit Is of Good Size

In most localities the fruit of the Golden Jubilee will attain extra good size for an early Peach. One of its most remarkable features is that it is hardy in fruit bud and withstood the bitter cold weather of last winter better than the average variety of Peach. It is a cross between the famous Elberta, and the hardy Greensboro, which is a very early variety. Golden Jubilee, fortunately, through the cross inherited the finest qualities of both the Elberta and Greensboro.

Every home orchard should have Golden Jubilee—
one of the finest flavored Peaches grown.

OTHER EARLY VARIETIES

CARMAN. Semi-freestone, medium size, attractive and luscious, oval-shaped, yellowish white and bright red cheek; flesh creamy white, spicy and good flavor. Hardy, strong grower; heaviest producer of the earliest varieties. A sure cropper.

CUMBERLAND. An outstanding favorite early white Peach. A comparatively new, white, nearly freestone variety that was developed by the New Jersey Experimental Station. The fruit resembles Belle of Georgia, both in appearance and quality, although it ripens about the same time or a little before Carman. It has proven a heavy cropper, vigorous grower and hardy as Carman. Flesh white, firm and much better quality than Carman and Mamie Ross. We recommend Cumberland for a white, semi-freestone variety that ripens during the Carman season.

FOR PRICES
SEE PAGE 7

It's Easy
to Grow
Delicious
Healthful
Peaches

EARLY MIDSEASON PEACHES

ROCHESTER. Popular midseason variety. Excels in western New York and Michigan. Yellow, freestone, large, covered with mottled red blush; flesh yellow, stained with red at pit; very good quality, prolific bearer. One of the best early midseason yellow freestone Peaches for nearby markets, and highly desirable for canning. Our buds came direct from the original tree from Mr. A. H. Heberle, of Rochester, New York, the originator. Popular in western New York and Michigan.

HILEY. Early midseason. Bears huge crops of fancy Peaches. White, freestone, medium size, highly red colored and is a very handsome Peach of exceptionally good flavor. Tree is strong grower, very healthy and an extra heavy bearer. You can depend on Hiley to bear heavy crops year after year. The marvelous color and wonderful flavor have made it popular on the markets.

FAIRS BEAUTY. Early midseason. Yellow, freestone, medium to large size.

TRIOGEM. (N. J. 70). Early, oval, red all over, medium large, yellow, freestone.



Plant "Bud-Selected" Super-Strain Trees. It Pays



For Real Profit Plant Harrison's Selected Strain Trees
 Scientifically Propagated by America's Best Fruit Tree Growers

Goldeneast — *Very Large, Firm, Attractive*

(N. J. 87)

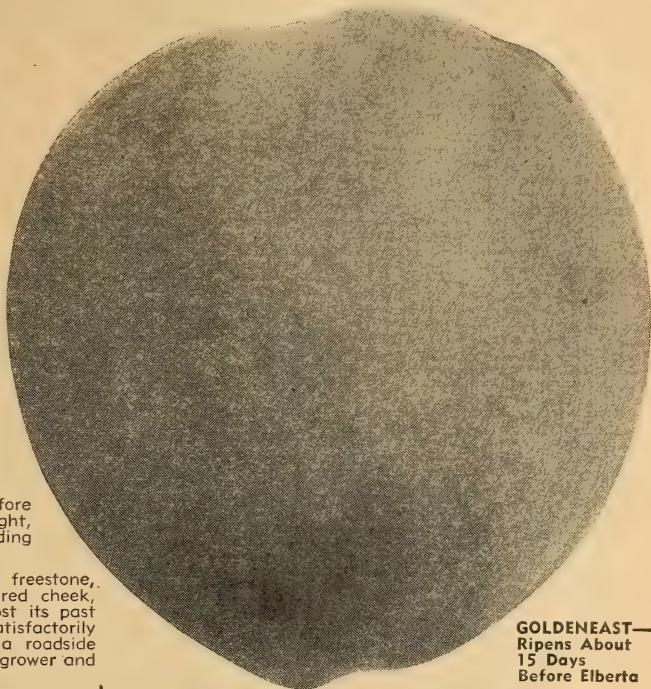
Ripens early midseason, very large oval, firm, high color, yellow flesh, freestone, smooth, nearly fuzzless like J. H. Hale, one of its parents. Colors several days in advance of its ripening. This, combined with its very slow rate of softening, makes it an ideal Peach for commercial growers. Hangs well to the tree after the Peaches become firm ripe. This is a distinct advantage to the grower who sells locally and ships short distances. Goldeneast, as grown in New Jersey, is distinctly superior to the older varieties that ripen at its same season. Quality of its fruit is very good.

A REAL PROFIT MAKER

GOLDENEAST has been fruited commercially in New Jersey and Maryland for several years. During this time it has topped all varieties in price on the New York and Philadelphia markets for several days at a time. Growers with vision should plant Goldeneast. Our trees were propagated direct from bearing trees in New Jersey.

Sunhigh (N. J. 82). Ripens a few days before Goldeneast. Large, red all over, bright, smooth, firm, yellow, semi-freestone. Spreading grower.

Champion A Good Home Peach. White, freestone, very large, creamy white with red cheek, sweet, juicy; very high flavor. Champion has lost its past commercial importance because it will not carry satisfactorily under refrigeration, but as a home garden or a roadside Peach, it is one of the best. Tree is hardy, large grower and productive.



GOLDENEAST—
Ripens About
15 Days
Before Elberta



A
4Yr. Old
Beauty

*Fruit Is Food...
Grow Your Own*
It's easy with
**Harrisons' Superior
EARLY-TO-BEAR
Fruit Trees and Plants**

TRUE-TO-NAME

In addition to carefully selecting the propagating wood from bearing trees of superior strains we have also employed the services of Dr. W. H. Upshall, of Vineland, Ontario, Canada Experimental Station, to inspect our Peach trees in the nursery rows and he has pronounced our trees true-to-name. This is just another precaution in order to check up on any possible errors so that we can be absolutely sure that our varieties will reproduce true when planted in your orchards.

Once planted, Harrison trees readily take root and develop very rapidly—they are quality bred, ready for early fruiting. A young Goldeneast Peach tree.

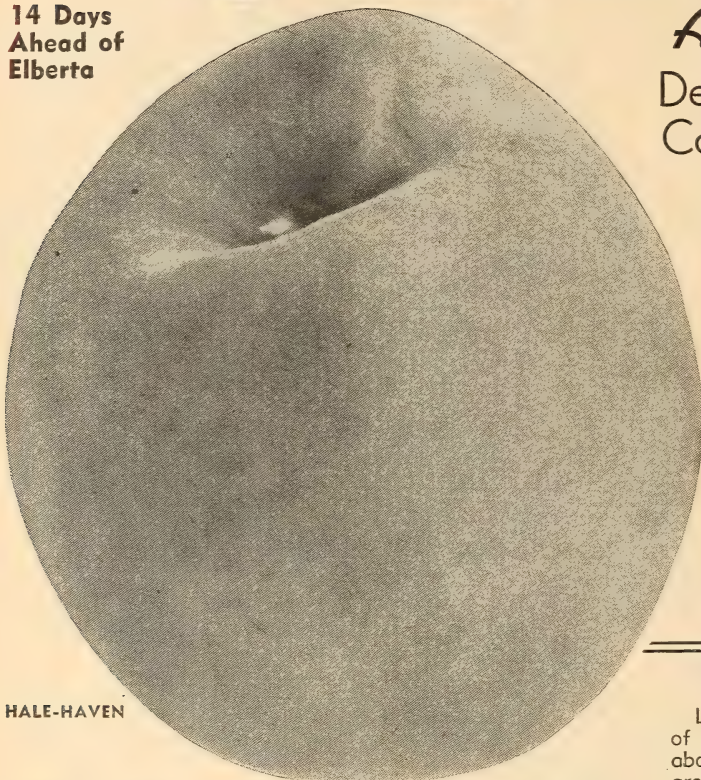
Harrisons' Fruit Trees Are Hardy in Any Climate



Two Famous Peaches Join hands



14 Days
Ahead of
Elberta



HALE-HAVEN

Harrisons' volume production has enabled us to supply you with high quality nursery products at low prices. All varieties are within reach of any home planter and fruit grower and priced to save you money. We ship everywhere. State and Federal inspected.

**Little
Peach
Orchards**
make more
profit than
Big Farms

PLANT PEACHES FOR BIG CASH PROFITS

Your fruit fortune is in your hands. Don't gamble—buy Harrisons' true-to-name super selected "budded" trees, backed by three generations of practical experience.

The photograph below shows a typical peach orchard, with a specimen tree, showing habit of growth.



A Marvellous Peach
Definitely a Red
Color before Ripening

A Real Quality Variety

Yellow, freestone, large, high red color, firm, good flavor. It takes on red color early and the Peaches show good red color several days before ripening, which gives it a distinct advantage for marketing. Very hardy in fruit bud and a heavy bearer. Ripens about two weeks before Elberta. Hale-Haven is a new variety, being a cross between the famous J. H. Hale and the well known new variety, South Haven, being originated by the Michigan Experimental Station.

**Early Midseason, Yellow
Freestone, Heavy Bearer,
Hale-Haven Should Be
Planted in Every Orchard**

SOUTH HAVEN

Large, handsome yellow, freestone Peaches of uniform size, delicate in flavor. Ripens about 15 to 18 days ahead of Elberta. Trees are very hardy and productive. Adapted to cold climates and produce bumper crops in mild climates. A proven variety.

SEE PAGE 7 FOR PEACH TREE PRICES



NATIONAL *Reputation* J.H. HALE *Originated by the Late PEACH KING*

MIDSEASON—Ripens 2 to 3 days before Elberta

Original Strain J. H. HALE

Our "Hales" are propagated direct from the original strain, the variety originated by the late J. H. Hale of South Glastonbury, Connecticut, and Fort Valley, Georgia, known as the Peach King of

America. There are many types and strains of J. H. Hale grown, but the only one worthy of commercial importance is the original strain, which is the extra large, round, highly colored Peach. The original strain necessitates cross-pollenization and it is necessary, for proper results, to plant a few Belle of Georgia or Hiley along with Hale for cross-pollenization.

Extra Large Size Yellow, freestone, extra large, beautiful red coloring, firm and of the highest quality and enticing flavor. J. H. Hale ripens about 2 or 3 days prior to Elberta.



Belle of Georgia



(Belle)

- Fruit Large
- Delicious Flavor
- Attractive
- Big Crops
- Easy to Grow
- Very Hardy



The Queen of Flavor

The Best White

Midseason Variety

Ripens midseason. Color creamy white with red cheek. Flesh white, red near pit. Size large, freestone. Belle of Georgia, for some time, has been recognized as the best all-around white Peach on the market. It is easily the best shipping white Peach of its season, ranking almost with Elberta in this respect. Because of its many desirable qualities, it has become standard in the large commercial orchards, and you can find few orchardists of any importance who do not have a block of Belle in their orchards. These men know from experience just what varieties pay best and endorse it highly.

BELLE OF
GEORGIA
PEACH

EARLY ELBERTA. Early midseason. Yellow, freestone, large, lemon-yellow with a dark cast, bluish with vivid red. Beautiful appearance, high quality, being somewhat similar to Elberta, although a trifle better flavor, rich golden tender flesh, yet firm and has a delightful flavor; excellent for canning.

VALIANT. Early midseason. Seeding of Elberta. Yellow freestone, productive.

Harrisons' Fruit Trees are Hardy in Any Climate



Elberta TOPS PEACH SALES

**Sensational
Standard Peach
of the World**

It's the Greatest Money-Maker

**Greater
Profits**

from

Harrisons'

Original

"BUD"

Strain

Plant

Harrisons'

Superior

Strain

and Reap

the Cash

Benefits

**It's a Yellow
Freestone—
Midseason**

Fruit is large to extra large; golden yellow with brilliant shades of red; firm juicy, rich, sweet and good flavor. Elberta has the greatest international reputation of any Peach. It has been the standard for all other Peaches almost since the date of its introduction. The coloring of Elberta is practically perfect. The rich, yellow skin is almost entirely covered with dark red blush upon the sunny side. This attractive appearance and the uniform large size serve to sell it almost on sight.



**Harrisons'
ELBERTA
"Original Strain"**

**Stamina — Uniformity — Best Canning — Premium Prices
Public Demand**

The large fruit, being uniform in size and shape, along with its high, attractive color and firmness, withstands shipments of three thousand or more miles under refrigeration in cars taking two or three weeks before being consumed, arriving with stamina enough to still look its best. Elberta has the reputation of being a Peach without a peer and the variety which is always in favor and strong demand with the buying public, demanding the highest possible market prices. Elberta is by far the best canning Peach.

Save Disappointment — Plant Only Original Strain Elberta

Today, there are more than seven distinct types and strains of Elberta, bearing fruit in the orchards of this country. To compare the various sizes, shapes, texture and red coloring of these Elberta with those grown "on original strain trees" gives sufficient reason why they sold this year at a premium of 50c to 75c per bushel on the New York and other leading fruit markets.

They Cost No More — See page 7

Why plant degenerated strains of Elberta when you can plant Harrisons' heavy yielding original strain trees. They can be purchased at the lowest price that high quality trees can be produced for. It is true trees, size by size, can be produced cheaper by budding them from non-fruited trees in the nursery row, but this method causes degeneration. Trees grown in this manner will be lighter croppers and require a longer time in coming into bearing.

**Thousands Acclaim the Superiority of
Harrison-Grown Trees**

Harrisons' pride themselves in propagating from the original Elberta strain, buds of which were personally cut by the late Senator Orlando Harrison from the original Elberta mother tree in the Rumph orchard in 1889.

We have two commercial orchards, now 44 years old, of these wonderful original strain Elberta. Besides yielding bumper crops annually, they are the source of our present supply of original strain buds for the new young trees.

For years our Elberta Peaches have been the background of handsome Peach profits. You can do the same if you plant Harrisons' original strain Elberta—it's your best bet.

America's No. 1 Peach—Elberta. There are more Elberta Peach trees in bearing than any other variety on earth.

*The Best
Commercial
Variety - Elberta*

Tree is vigorous, very hardy, sturdy, thrives in widely different localities. Elberta is hardier in bud than most varieties, and is a uniform prolific bearer. You can always depend on Elberta as a sure cropper.

HERE'S THE PEACH GROWERS ARE TALKING ABOUT



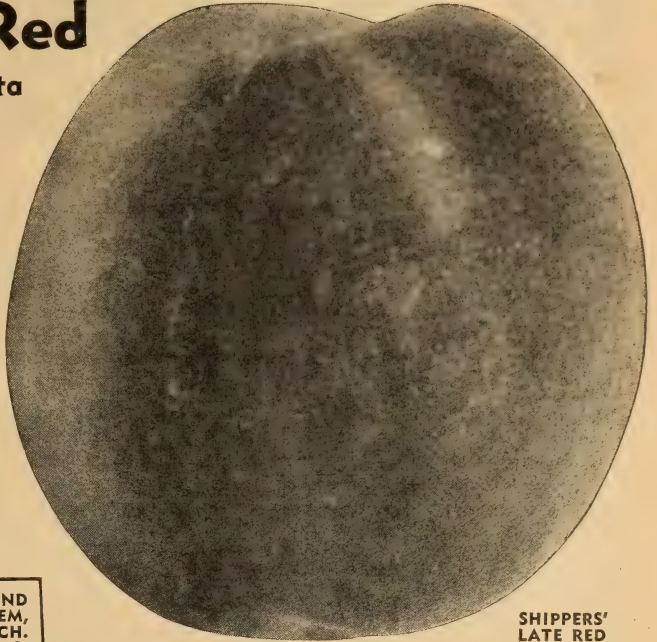
Shippers' Late Red

Ripens a Few Days After Elberta

Yellow, freestone, large, round, bulkier than Elberta, with an attractive red coloring which is catchy to the eye. Flesh is yellow, juicy, sweet and of pleasing flavor. Trees are very hardy, good growers, bear young, sure croppers, and prolific bearers. Promising new late commercial variety and excellent home sort.

QUALITY THE BEST

Shippers' Late Red is one of the highest quality Peaches grown. Tree ripened fruits command highest prices and buyers come back for more. Good for canning and preserving. Growers are planting large quantities of this variety to prolong their Peach season. Commence to ripen just before the Elberta harvest is finished and is out of the way before Rio-Oso-Gem starts to ripen.



SHIPPERS' LATE RED

TO FOLLOW UP YOUR SHIPPERS' LATE RED AND SALBERTA DON'T FAIL TO PLANT RIO-OSO-GEM, THE MOST OUTSTANDING LATE RIPENING PEACH. FOR COMPLETE DESCRIPTION SEE PAGES 2 AND 3.



HARRISON'S SUPER STRONG GRADED One-Year Peach Trees, True-to-Name

SALBERTA

A Late Commercial Peach. Yellow, freestone, large, being a satisfactory cross between Elberta and Salwey. Salberta inherited the size, quality and productivity of Elberta, and inherited the lateness in season of Salwey. This new variety is being planted commercially in many peach-growing sections. Ripens about 10 days after Elberta.

KRUMMEL'S (Krummel's Late October). Yellow, freestone; extra large, round, deep yellow with a blush of carmine on the sunny side—fine flavor. Good shipper, and ripens late in the season.

SALWEY. Very late. Yellow, freestone.

HARRISON-GROWN FRUIT TREES

Are Definitely Superior Because

They Are:

- Absolutely True to Name
- Healthy—vigorous
- Disease free
- Hardy
- Properly hardened off before digging
- Propagated from bearing trees of selected strains
- Come into bearing earlier
- Yield bigger crops of better fruits
- Have larger roots
- Take hold quickly in new locations
- The best trees for less money



Harrison's Reputation Was Built on the Superiority of Our Fruit Trees

JUMBO Fruit Trees

Big Roots—Bear Early

*Fruit is Food—
Grow Your Own*

**SAVE TWO TO THREE YEARS BY PLANTING
NOW SUPER-SIZE FRUIT TREES HAVING
JUMBO GROWTH**

**Best Trees Obtainable—Carefully
Selected—Specimen Trees**

Time is money, therefore, for the additional expense of a few cents per tree you can plant Jumbo size fruit trees and eat the fruit from them surprisingly soon after planting. The Super-Size fruit trees, being especially grown as Jumbo Trees, are the strongest growers. They are exceedingly vigorous, very hardy, and produce tremendous crops of fruit. These are ideal trees for the home garden.

YOUR SELECTION—Can be assorted varieties—Apples, Peaches, Pears, Plums—consisting of only the varieties as listed on this page.

Jumbo Size—6 to 8 ft., heavily branched—\$1.50 each; 3 for \$4.05; 5 for \$6.00; 10 for \$11.00; 25 for \$22.50; 50 for \$37.50.

**THIS SPECIAL OFFER ONLY ON FOLLOWING VARIETIES,
SUPER-SELECTED, JUMBO-SIZE TREES:**

Varieties are listed in their order of ripening:

All kinds are suitable for home planting.

APPLES—Yellow Transparent, Williams Early Red, Early McIntosh, Triple Red Delicious, Super-Red McIntosh, Bright Red Jonathan, Grimes Golden, Yellow Delicious, Red Rome Beauty, Scarlet Red Stayman, New Red Spy, Red Yorking, Double Red Baldwin, Solid Red Winesap.

CRAB APPLES—Transcendent.

PEACHES—Red Bird Cling, Golden Jubilee, Hale-Haven, Elberta, Rio-Oso-Gem (patented).

PEARS—Clapp's Favorite, Bartlett, Duchess, Kieffer, Seckel.

PLUMS—Red June, Abundance, Burbank, Santa Rosa, Superior, Underwood.

**Jumbo Fruit Trees Are Too Large for Parcel Post
Shipment — We Recommend Express.**



**A
GUARANTEE
ON
JUMBO TREES**

You take no chances when you buy Jumbo trees from Harrison's'.

If they are not satisfactory your money will be cheerfully refunded in full, providing they are properly packed and returned within 24 hours after receipt.



**Jumbo
Trees
are
Ideal
for
Home
Orchard
Plantings**



**A Jumbo Tree Takes Shape After the First Season.
Once Established, They Bear Fruit in from 12 to 18
Months' Time.**

A Jumbo Size Apple Tree

Harrisons' APPLE TREES

for the **FRUIT INDUSTRY**

Apple Growing—Pays Profits

BUT in order to get these profits, it is necessary to start with the best trees and the most desirable varieties. Harrisons' Nurseries have been, and are still growing, at Berlin, Maryland, the finest and best Apple trees of superior merits it is possible to produce. Harrison-grown Apple trees are propagated on whole root stock, insuring an unusually large root system which is the basis of plant growth. Our Apple trees are scientifically budded and grafted from selected heavy bearing strain trees of the variety desired, using the bud selection system. Today we believe that we have more of the improved and best strains of Apples in our nursery than any nursery concern in America. Do not allow a few cents per tree to keep you from buying Harrison-grown Apple trees, the finest and by far the best quality produced on the North American Continent.



Bud-Selection
THE KEY TO
BETTER FRUITS

Cutting Buds

TRUE TO NAME

The World's Foremost Fruit Variety Identification Specialists Have Examined Harrison-Grown Trees and Pronounced Them True to Name

In addition to carefully selecting the propagating wood from bearing trees of superior strains, we have also employed the services of Dr. J. K. Shaw, Research Professor of Pomology of Massachusetts State College, Amherst, Mass., and of Dr. W. H. Upshall of the Vineland, Ontario, Canada, Experimental Station. These two men are the world's foremost fruit identification specialists and they have pronounced our trees true to name.

HARRISONS' "BUD SELECTION" FROM SUPERIOR STRAIN TREES

Young fruit trees, budded from selected trees in full fruit, are definitely superior to any other method of propagation. Careful examination and selection of healthy, heavily branched, heavy-yielding trees are without question the best parent trees to supply the buds for young tree inheritance.

RESULTS COME SEVERAL YEARS HENCE

No one can measure in advance the future results of a newly planted orchard. Several years must come and go before the trees bear fruit. A good inheritance immediately qualifies it as a money-maker, fruit is large and true-to-name. Poor trees at any price never give satisfaction.

Fifty-nine years of dependability and square business dealings—finds Harrisons' today the best place in America to buy truly dependable trees.

Millions of Harrisons' "bud selected" fruit trees planted throughout the years are today the very backbone of a profitable and dependable fruit business in all sections of the country.

HARRISONS' TREES HAVE A GOOD RESERVE OF PLANT FOOD

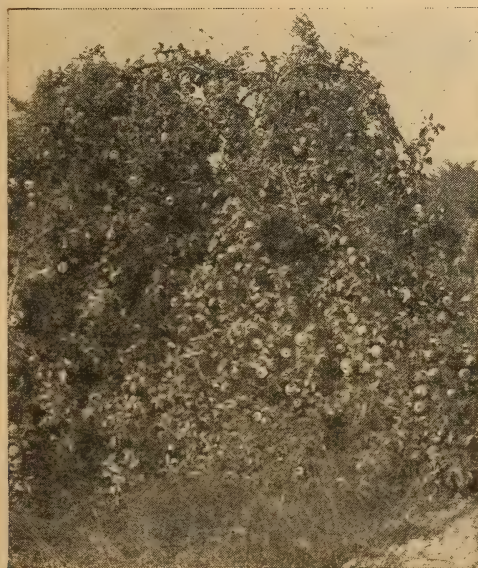
Harrisons' trees are scientifically nurtured so that the trees will absorb the different latent plant growth elements so vitally necessary in the successful growth of trees after transplanting. This stored up energy is one of the many reasons why Harrisons' trees prove successful wherever planted.

HARRISONS' HIGH QUALITY APPLE TREES

PRICES, ALL VARIETIES:
TRUE TO NAME—CERTIFIED 100% HEALTHY

	1 to 9 trees	10 to 49 trees	50 to 300 trees
Two-year, budded trees:			
5-6 ft., 11/16 to 7/8 in. cal. . .	\$0.90	\$0.75	\$0.55
4-5 ft., 9/16 to 11/16 in. cal. . .	.80	.70	.50
3-4 ft., 7/16 to 9/16 in. cal. . .	.70	.60	.45

Write for prices on larger quantities.
May be assorted varieties of Apple trees.



TODAY FRUIT GROWING is gaining on the big farms — little orchards lead the way to a profitable and worth-while fruit market.



Buy "Bud-Selected" Super-Strain Fruit Trees

PLANT BIG TREES FOR QUICK RESULTS

Yellow Transparent

It's a Summer Apple — First of the Year

**Ripens Early, Skin Clear Yellow, Flesh White,
Flavor Slightly Acid, Size Medium**

This is the most popular early green Apple grown and has proven a profit maker in a large number of Apple districts. The Yellow Transparent tree is very hardy and somewhat of a dwarf grower, bears when very young and makes an excellent filler. We believe there is a big future for the grower who plants this variety; we ourselves anticipate planting several hundred trees of Yellow Transparent this year.

Yellow Transparent First on the Market

as it ripens early in July, making excellent eating Apples and selling without difficulty. There is almost no competition at this time; Yellow Transparent leads the field, and is eagerly sought for by those people who find their "Apple appetites" impatient.

Yellow Transparent Trees Bear Early

and produce nearly every season. They are rather dwarf growing, and may be planted a little closer than most other varieties. A fine soil is not necessary, or even desirable, as the trees seem to grow best on rather poor ground, such as hillsides and uplands.

Thrives in the South and North

It thrives just as well in the South as it does in the North. Most varieties are particularly well adapted to a certain region, and, while they may be grown elsewhere, are only at their best when grown in the prescribed region. Yellow Transparent is extremely successful in Georgia, and does equally well in Canada.

MAKE YOUR OWN APPLE SAUCE WITH FRUIT GROWN IN YOUR OWN BACK YARD

EARLY McINTOSH. Resembles its McIntosh parent in appearance, but is less aromatic. An attractive uniform red color, good size, flesh white, tender, and juicy. The trees are vigorous, hardy, healthy, productive, and bear annually if thinned early and severely. The shape and frame work of the tree, especially the heavy-butted branches, are like those of McIntosh. The crop ripens ten days later than that of Yellow Transparent. The fine flavor is similar to that of famous McIntosh Red.

EARLY RED DUCHESS. Highly colored early Apples bring premium prices, this bud sport colors red all over early in the season.

PLANT BIG TREES FOR QUICK RESULTS

EXPERT NURSING!

These world famous super-selected trees are definitely superior.

Literally 59 years of experimentation, acclimating and "expert nursing" are behind the fruit trees developed and grown at the

**HARRISONS' BIG NURSERIES
PLANT A HOME ORCHARD NOW**



TWO-YEAR APPLE TREES
Superior Strains, Straight
Stems, Well Branched
Heads, Fibrous Roots



A sample branch showing the results of Harrison's inborn inheritance



THE FUTURE LOOKS BRIGHT FOR EARLY APPLES

Superior Strain - Sturdy Ancestry - Maximum Yields



Large Transparent (LODI)

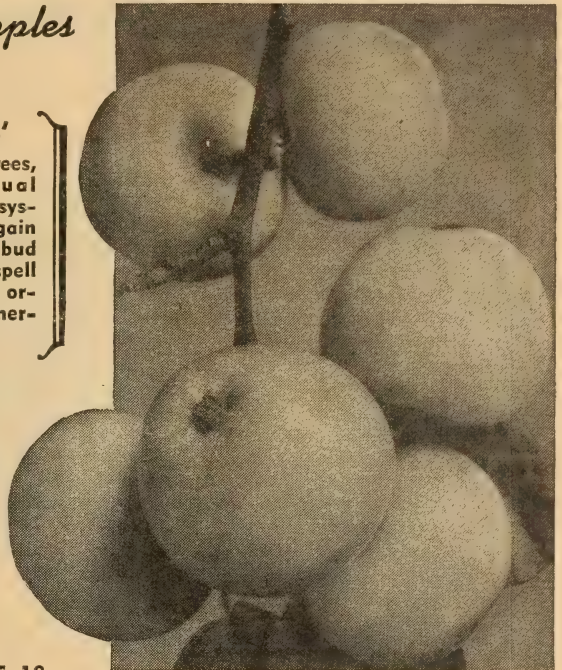
A New Summer Variety *First of Apples*

Ripens Very Early—Destined to Replace the Ever Popular Yellow Transparent

We believe there is a big future for this new summer Apple. Our commercial friends should lose no time in anticipating the future demand for an Apple of this type.

Somewhat of a dwarf grower, bearing very young, it makes an excellent filler. The skin is a clear yellow, white flesh, of medium size.

HARRISON'S'
Super Selected Trees, with their unusual substantial root system, are proving again and again that "bud selected" strains spell yearly profits to orchardists and commercial planters.



EARLY APPLE GROWERS MAKE MORE MONEY WITH LARGE TRANSPARENT

Yes, actual profits, that's what we mean. It can be done—here's why: Yellow Transparent Apples are always the first on the market and generally they bring good profits when they attain the proper size. Size on Yellow Transparent is hard to get, but easily on its Big Brother, "Large Transparent," which ripens at the same time.

Large Transparent Apples Average up to 1/2 Inch Larger Than Yellow Transparent. This Means 35c to 50c per Bushel Extra

FOR ADDITIONAL EARLY VARIETIES SEE PAGE 18



WILLIAMS EARLY RED—Ready for Market when folks just get hungry for Apples

LARGE TRANSPARENT (Lodi)
You can depend on bumper crops. Plant Harrison's "Bud Selected" Strain

Williams EARLY RED

The Big Red Home or Market Apple

Just at the time when people are hungry for a fresh, new red Apple, this superb sort comes into market. In New York, Boston, Philadelphia and other eastern cities the fruit sells about as quick as it hits the market-house or dealer's store. It holds its own anywhere and has proven to be—

The most profitable Summer Apple

The rich bright red fruit catches the buyer's eye and is ordered at a price that yields the grower a good profit. The Apple is large, with tender, crisp, white flesh, juicy and slightly tart. The trees come to bearing when quite young, producing freely and steadily. Fine for a filler or permanent tree, and being hardy, can be successfully grown in New England states and Canada. All commercial orchards should include Williams Early Red.

FOR PRICES, SEE PAGE 15

Grow Your Own Williams Early Red for Eating and Cooking



HARRISONS
HI-QUALITY
TREES

Growers Who Want More Color — Plant Super-Red McIntosh



Make Money with Harrisons' Super-Red McIntosh

Earlier Coloring — Solid Red Strain

A new strain of McIntosh Red that starts coloring earlier and produces a larger percentage of extra fancy fruits. Super-Red McIntosh, when allowed to mature on the trees, is slightly darker in color than our regular improved McIntosh Red. Has all the best qualities of ordinary McIntosh and will mean larger profits for growers who have been unable to get sufficient color. McIntosh has been the favorite in the North; this new strain extends the planting area farther South. The most highly colored solid red strain available, regardless of price. We have some exceptionally good two-year trees to offer this season. Plant McIntosh strain of Apples for big profits, equally as good in home orchards as it is commercially.



**SUPER-RED
McINTOSH
Apple**

McIntosh Red

Improved Type—Heavy Yielding train Preferred by Many Growers in the North

Until the discovery of our New Super Red McIntosh our improved McIntosh Red was the best strain of McIntosh available. It colors solid red when climatic and soil conditions allow it to remain on the trees until it is mature. This heavy yielding strain is much superior to many strains of McIntosh, especially the dull striped kinds. If you do not have trouble getting sufficient color then we recommend you planting this time proven, heavy yielding strain. McIntosh Red is very hardy and produces bumper crops each year. Generally considered as the best flavored Apple grown. Recommended for home or commercial orchard plantings.

Leading Orchardists Prefer Harrison-Grown Fruit Trees

Harrisons' Super-Selected Trees

with their unusual substantial root system, are proving again and again that "bud selected" strains spell yearly profits to orchardists and commercial planters.

Fall Ripening McIntosh Apples Are Ideal for Home Planting

ALL APPLE TREES ARE PRICED ON PAGE 15

OTHER EARLY APPLES

- ANOKA.** Striped red. Bears when extra young.
 - CLOSE.** New tested U.S.D.A. No. 57 variety. Ripens with or slightly ahead of Yellow Transparent. Early red Apple, good cropper.
 - EARLY HARVEST.** Medium size, yellow.
 - MELBA.** A seedling of McIntosh. Good size, early.
 - MILTON.** A very handsome new apple of the McIntosh type. Fruit a beautiful pinkish red with tender, crisp, white flesh of excellent flavor. Trees hardy and vigorous. Ripens a month ahead of McIntosh Red.
 - RED SUMMER RAMBO.** Harrisons' new early coloring bud sport. This new strain is much superior to the ordinary Summer Rambo.
 - RED JUNE (Carolina).** Medium size, red.
 - SUMMER RAMBO.** Large, splashed with red.
 - SWEET BOUGH.** Pale yellow, large, tender, sweet.
 - WILSON RED JUNE.** Fairly large, red.
- SEE PAGES 16 AND 17 FOR OTHER VARIETIES OF EARLY APPLES**

HARRISONS
HI-QUALITY
TREES

Fall Ripening McIntosh Apples Are Ideal for Home Planting

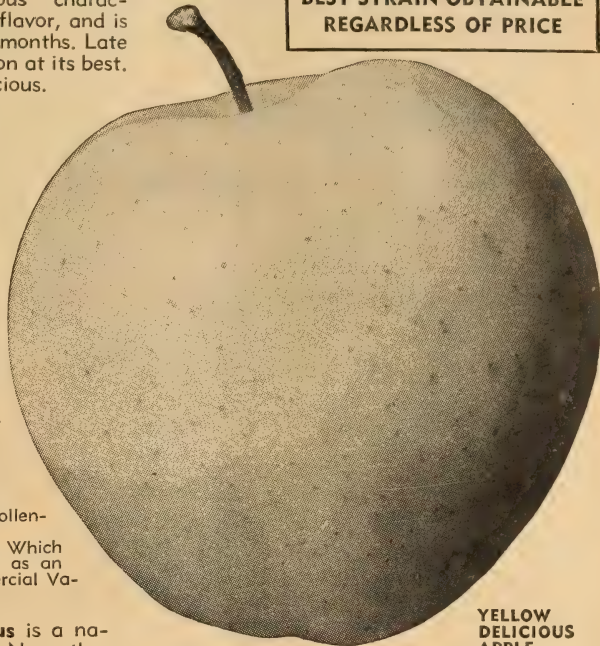
Not Magic **YELLOW DELICIOUS** as Nature made it—a GOLDEN YELLOW



**BEST STRAIN OBTAINABLE
REGARDLESS OF PRICE**

A golden yellow Apple with decided "Delicious" characteristics. Yellow Delicious has a remarkably good flavor, and is most popular for eating during the fall and winter months. Late September and January finds the flavor and condition at its best. Many people think it superior to the famous Delicious.

**A Gleaming Golden Yellow with
Alluring Beauty
Invest in Harrisons'
Super-Selected**



**YELLOW
DELICIOUS
APPLE**

YELLOW DELICIOUS

BECAUSE:

- 1—A Practical Money-Maker
 - 2—Appetite Appeal
 - 3—Highest Prices
 - 4—Grows in 33 States
 - 5—Disease-Resistant; Vigorous
 - 6—Bears Young; Grows Fast
 - 7—Big Crops Every Year
 - 8—An Excellent Pollenizer
- A Golden Apple Which Has Won Its Fame as an Outstanding Commercial Variety.

Yellow Delicious is a national favorite. No other Apple has such an appeal to the appetite. Folks cannot resist buying them when displayed for sale.

**[PRICES OF ALL APPLE
TREES ON PAGE 15]**

A Prolific Cropper at an Early Age

The Yellow Delicious tree is very thrifty, hardy, and a vigorous grower. It is renowned for its heavy bearing of fruit at a very early age. You can depend on a good yield of ripened fruit each year.

GRIMES GOLDEN

Harrisons' Selected "Big Yield" Strain

BEST HOME ORCHARD APPLE

Autumn, medium sized, golden yellow, tender, rich, aromatic, sub-acid, delicious, possibly the best-flavored Apple known, and a good keeper. No better variety exists for eating raw or for cooking. Tree is very hardy and one of the heaviest bearers known, producing extra large crops annually. Excellent variety for a filler, as it comes into bearing very early. Grimes Golden is the best pollenizer known, especially for Stayman Winesap, Turley, Baldwin, Cortland, Rome, Winesap, McIntosh and others. Be sure to include Grimes Golden in your orchard. IT IS EASY TO GROW.

CROSS-COUNTRY PACKING

Our method of packing enables us to ship our products thousands of miles with the stock arriving in field-fresh condition. We guarantee safe arrival no matter where you live.

**PLANT
NOW!**

**TREES SHRUBS
FRUITS and ROSES**



BE PATRIOTIC

PLANT FRUITS

Fruit is Food!

Hon. Claude R. Wickard, Secretary of Agriculture, says: "Food will win the War and write the Peace."

Every person should raise some food, therefore, in your planting this season, be sure to include fruit trees, berry plants and asparagus.

It is evident that a food shortage is facing the United States with her vast undertaking to feed the Allies.

From present indication this food shortage will last several years. America expects you to do your part.

Big Golden Apples a Treat to Eat



HARRISON'S Triple Red Delicious

KING OF ALL RED APPLES

**A MILLION DOLLARS WORTH OF
EYE APPEAL — SELLS ON SIGHT**

SOLID BRIGHT RED COLOR

**Starts Coloring During Early August—One
Month Before Ripening**

GLORIFIED RED APPLE OF THE WORLD

Ideal for Home Orchards

Harrisons' Triple-Red Delicious is not only a commercial Apple, but it is every bit as well adapted to the home grounds. Whether you wish to plant a thousand or if you have room for only one tree, Harrisons' Triple-Red Delicious will give full value.

Why pay premium prices for other improved strains of Delicious when trees of Harrison's Triple-Red Delicious, the earliest coloring, heavy producing type, being superior to all others, can be bought from Harrisons' at a lower cost.

GET YOUR ORCHARD STARTED THIS YEAR

REASONS FOR PLANTING THIS REMARKABLE APPLE:

- | | | |
|---------------------------------|----------------------|-----------------------------|
| 1. Most Profitable Apple Grown. | 4. Rich Flavor. | 9. Big Crops. |
| 2. Succeeds Nearly Everywhere. | 5. Large Size. | 10. Good Keeper. |
| 3. Bears Young. | 6. Earlier Coloring. | 11. Easily Grown. |
| | 7. Triple Red Color | 12. More Extra Fancy Fruit. |
| | 8. Attractive Shape. | |

Same price as other varieties. See page 15

This Apple was introduced by us several seasons ago and since its introduction has been bought and fruited by the tens of thousands by leading fruit growers throughout the country. It is a "bud sport" of unusually superior merits, being triple-red colored and the earliest red coloring strain known.

LEADING FRUIT GROWERS PROCLAIM HARRISON'S TRIPLE-RED DELICIOUS IS SUPERIOR TO ALL OTHER STRAINS

Leading orchardists and fruit men of the country who have seen the Harrisons' Triple-Red Delicious in fruiting claim it is superior to any of the other several new double red earlier coloring strains of Red Delicious such as Starking, Richard Delicious, Shotwell Red Delicious, and others.

This past season our Harrisons' Triple-Red Delicious colored weeks earlier than the ordinary Red Delicious. Growers expressed amazement at the difference in color of these two distinct strains. Trees looked like they were loaded with balls of fire, each apple solid bright red in color.

**Blue Blooded
Aristocrats
of the
Dining Table
Brilliant
Crimson-Red
Large Size
Extra Fancy**



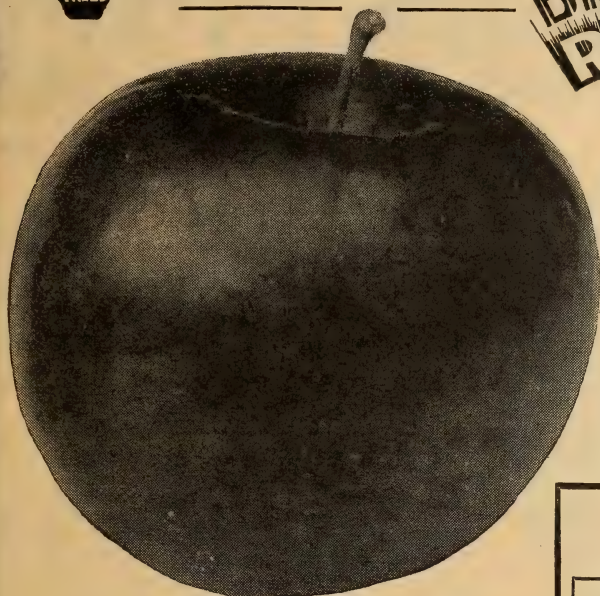
Harrisons' Triple Red Delicious Apples Fruiting in Our Orchards at Berlin, Maryland.
Pictured in true colors on front cover page.



IT PAYS TO PLANT THE BEST

BRIGHT RED Jonathan

SOLID RED COLOR ALL OVER



BRIGHT RED JONATHAN APPLE

A Great Improvement Over the Ordinary Jonathan

We searched the country over to find a strain of Jonathan that had more color than our selected Big Yield Strain Jonathan. After thousands of miles of travel inspecting all of the new strains of this famous variety we found the one we had been looking for. It colors solid red several days earlier, otherwise it is identical with ordinary Jonathan. Growers who want more, deeper colored Apples will find our Bright Red Jonathan the best colored strain obtainable.

Little Orchards Make More Profit Than Big Farms

HARRISON'S HARDY APPLE TREES

We absolutely guarantee Harrison-grown Apple trees, variety for variety, to be as hardy or hardier than trees grown in any locality north of us.

Other Autumn Apples

Delicious **SOMETIMES CALLED STARK DELICIOUS**

This is the Original Strain of Delicious

Of peculiar and distinctive shape; brilliant dark red, flesh fine grained, juicy, crisp and melting, flavor sweet, with a slight acid taste, with a delightful aroma, very highest quality.

NORTHWESTERN GREENING. Large, round, greenish yellow; juicy, firm, good quality; splendid keeper, ships well. Attractive Apple when packed in bushels, demands good prices, excellent baking Apple. Should not be planted extensively, because crops are not so certain, due to blossoming early. Trees are extremely hardy, vigorous, and bear very young.

RED GRAVENSTEIN. This red sport is more attractive than Gravenstein. It differs from Gravenstein only in the solid dark red fruit.

WEALTHY. Medium to large size; round; almost solid red; flesh white or a little stained; tender, crisp, juicy, fine grained, aromatic and very good flavor. Relatively good keeper. Old variety most extensively planted in North. Tree is very hardy, withstanding unusually cold climates, vigorous, fruits at early age, bears regular and abundant crops. Tree somewhat dwarf, making a fine filler.

FAMEUSE (Snow). Pure white flesh, very good.

GRAVENSTEIN. Large, streaked and splashed with red.

JEFFERIES. Tender, excellent quality.

KENDALL. McIntosh seedling. Same season as McIntosh, but keeps longer.

LOBO. Similar to McIntosh but colors earlier.

MAIDEN'S BLUSH. Large, red blush.

NORTHWESTERN GREENING. Very large, greenish yellow, good shipper. Popular for baking.

JONATHAN. Medium to large, red, juicy. Good keeper, and an excellent shipper.

CRAB APPLES

Double Purpose—An Ornamental and Fruit Tree Combined
HYSLOP. Deep crimson, large size, sub-acid and of good quality. Fine for all kinds of preserving, canning, etc., and good to eat fresh. Tree handsome.

TRANSCENDENT. Yellow striped with red; good for eating fresh and fine for preserving. Best of all Crab Apples. Tree large; quick grower.

YOUNGAMERICAN. Attractive red fruit of excellent size and quality. Good as ornamental.

For Prices see page 15

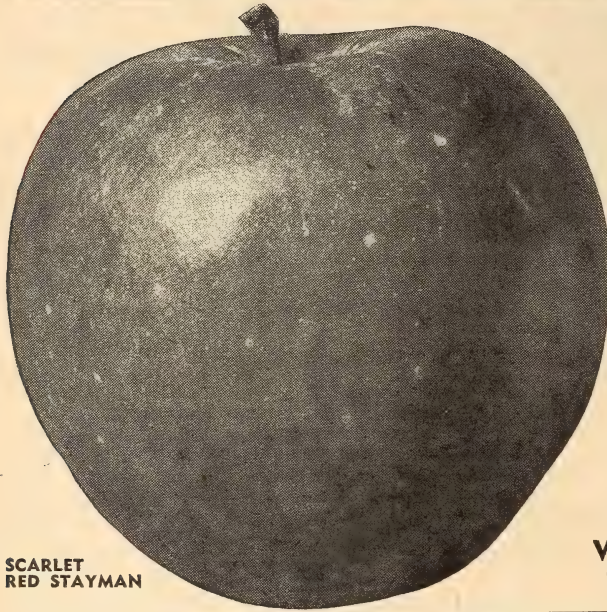
HYSLOP CRAB APPLES



Harrisons' Take All the "Risk" Out of Buying Fruit Trees



When we say **RED** we mean **HARRISONS -**
SCARLET RED STAYMAN



**SCARLET
RED STAYMAN**

Scarlet Red Stayman
BRILLIANT COLOR

We offer to the public the greatest strain of Stayman Winesap ever discovered. It is a true bud sport found in a Stayman Winesap orchard. Scarlet Red Stayman takes on bright red color weeks earlier than ordinary Stayman. Its ripening date is the same but can be picked earlier if desired.

A READY MARKET AT TOP PRICES

Scarlet Red Stayman is the best general purpose apple for planting in the East. Its solid scarlet-red color and its bright attractive finish causes it to command highest market prices. The fruit is large and it produces bumper crops each year.

KEEP CRISP AND JUICY UNTIL LATE SPRING

Because this new strain takes on solid red color weeks earlier, allows it to be picked when it is hard ripe, thereby making it keep much better during the winter and spring.

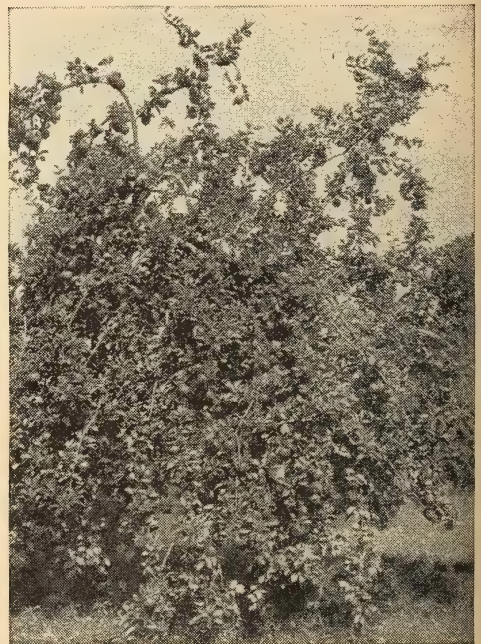
NO INCREASE IN PRICE OVER OTHER VARIETIES

We grow Scarlet Red Stayman Apple trees by the tens of thousands and improved methods of production and low selling costs enable us to sell you the very best strain of Stayman at no increase in price over ordinary varieties. Most nurseries ask more for their so-called improved varieties, but you can plant the improved Scarlet Red Stayman with our assurance that it is the best strain of Stayman available regardless of price.

Will Be a Great Money-Maker for Growers

SOLID RED WINESAP

Old Winesap generally has plenty of color when planted in most sections, but for those growers who want a more solid red-colored Winesap, we recommend our new strain.



**"Bud Selected" Apple Trees Bear Larger
Crops of Quality Fruit**

OTHER TYPES OF STAYMAN

CHERRY RED STAYMAN

Many growers, especially in certain districts, have some trouble getting enough color on their Stayman Winesap. We offer Cherry Red Stayman to those growers who want more and darker color. This strain is lighter in color than Dark Red Stayman, but darker in color than Scarlet Red Stayman, otherwise its characteristics are the same as ordinary Stayman in fruiting, etc.

DARK RED STAYMAN

The darkest of all our Stayman Winesap strains. It is especially recommended for growers who want the dark or almost black-colored Apples. It is a heavy yielder, but we prefer any of the other strains that we offer to this one.

STAYMAN WINESAP

Big Yield Strain

Without a doubt the heaviest yielding strain of Stayman Winesap obtainable. This strain yields bumper crops year after year. It colors to a good bright red and gets nearly solid red colored when allowed to stay on trees until fully ripe. This is an improved strain and is preferred by many growers in the East. Tested and time-proven by thousands of growers.

WINESAP. An Apple Favorite in Virginia. Sometimes called Old Winesap and Virginia Winesap. Medium size, oblong, smooth, and a fine dark red—one of the best red-colored apples grown; flesh yellow, crisp, tender, very juicy, aromatic, firm and of excellent flavor. Very long keeper and considered the best cold storage variety, keeping until July. Strong grower; comes into bearing early. Our strain produces bumper crops of the larger sized apples with plenty of color.

TURLEY—A Type of Stayman

This variety is an offspring of Winesap, which it resembles. Fruit rounded, conical in shape, as large as Stayman Winesap, smoother skinned, deeper and richer in color; juicy and rich flavor. Tree very hardy and comes into bearing early. Planted extensively in Indiana and Ohio along with Stayman Winesap to prolong shipping season.



SCARLET RED STAYMAN IS THE BEST STRAIN OBTAINABLE

Red Rome Beauty

A FAVORITE WITH THE GROWERS

This Is a Flaming Triple Solid Scarlet-Red "Bud Sport"

Renowned for Bearing at an Early Age

An improved Rome Beauty, identical in vigor and production. Color of fruit much brighter and solid red. Produces much higher percentage of fancy Apples and also superior in quality to the ordinary strain of Rome Beauty. Red Rome Beauty is renowned for bearing at a very early age, producing bumper crops of large size Apples. The tree is a vigorous, strong grower, exceedingly hardy.

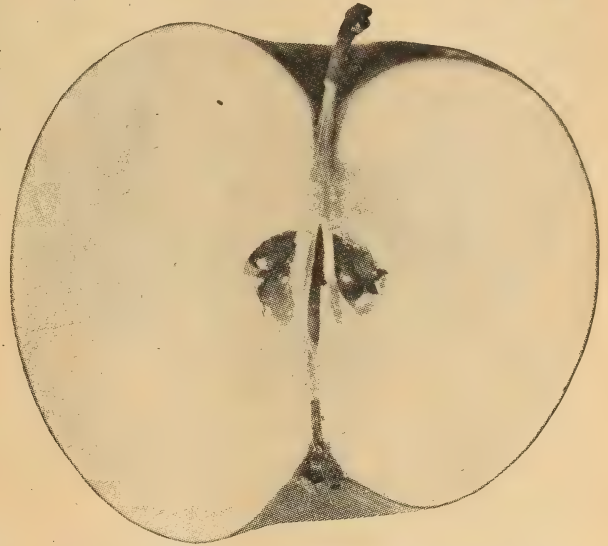
Superior to All Other Tested Strains of Rome

Harrisons' strain of Red Rome Beauty is the best of all Rome Beauty types and because of its improved and early high red color characteristics, will eventually replace the Rome Beauty. Already the Red Rome Beauty is a star among leading commercial varieties of winter apples. It pays to grow them.

Red Rome Beauty is easy to pack U. S. Fancy grade while most strains of Rome Beauty have just enough color to pass the requirements of U. S. No. 1 grade.

ROME BEAUTY. Large, round, red, flavor and quality above average.

Yes!—It's HARRISONS' Superior Strain, Being the Famous Solid Bright Scarlet-Red Super-Strain from the Pacific Northwest.



RED ROME BEAUTY—Colors Red a Month Earlier than Rome
A 100 per cent Red—
Flesh exceptionally white and fine grained

The Appalachian Winner

RED YORKING

An Exalted York Imperial

A Winner—because it comes into the market 3 to 5 weeks ahead of its parent.

The Red Yorking is a "bud sport", being a mutation of the famous York Imperial. This "bud sport" originated on a tree, grown with other York Imperial trees, in Harrisons' Nurseries and later sold to Mr. W. H. Allison, near Shipensburg, Penna., for use in planting a large orchard about twenty-nine years ago.

Early Coloring Means 100% Perfect Extra Fancy Grade

The Red Yorking is similar in size and shape to York Imperial, but is characterized by the abundant red coloring that completely covers the fruit. A vigorous grower and an abundant producer.

BALDWIN. Large, red, yields big crops, good keeper.

DOUBLE RED BALDWIN. A new dress for this old reliable variety. Solid deep red color, much earlier than ordinary Baldwin. The color makes it sell better. This new strain will bring new profits to the grower of Baldwins.

YORK IMPERIAL. Medium to large size, round, irregular, greenish yellow overlaid with bright red; flesh tender, firm, crisp, and of high flavor; wonderful keeper. Can be kept in cold storage until June. Tree is a vigorous grower, strong and healthy; an unusually heavy bearer.



"RED YORKING"

United States Plant Patent No. 125
(FOR PRICES OF ALL APPLES, SEE PAGE 15)

More fruit prizes are won on fruit grown in orchards planted with Harrisons' fruit trees than any other.

HARRISONS'
HI-QUALITY
TREES

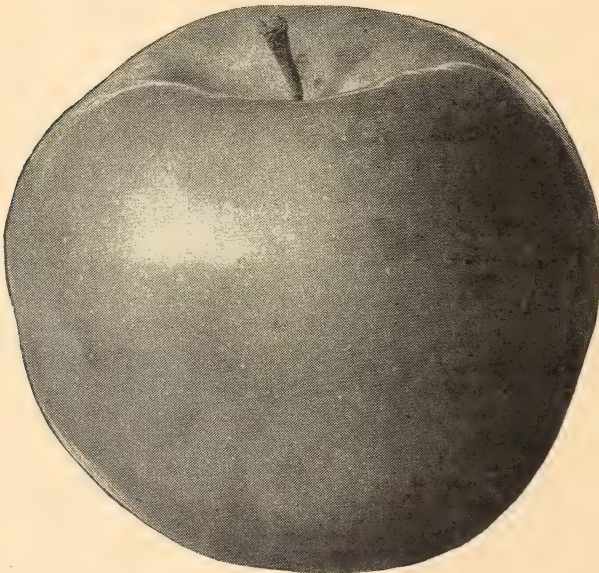


NEW
RED SPY

NORTHERN SPY. Large, bright scarlet-red, with yellow markings. Flesh juicy, rich, crisp, tender, aromatic and highly flavored. Tree a strong, erect grower, very healthy, extremely hardy and a free producer. We offer an exceptionally heavy bearing strain that comes into bearing at an early age.

RHODE ISLAND GREENING THE POPULAR NORTHERN APPLE

Large, greenish yellow; flesh crisp, juicy, quite acid, firm, fine grained, tender, and of very fine flavor and quality. An excellent keeper, a popular barrel Apple; brings good prices. Generally planted in New England, New York, Michigan and Canada, but not advisable to plant south of the Mason-Dixon line.



RHODE ISLAND GREENING



ANOTHER SPORT *the New* **RED SPY**

A new "bud sport" from New England. Identical with the ordinary Northern Spy in fruiting habits. Extra large size fruit, strong vigorous, hardy trees. Comes into bearing earlier than the ordinary strain. Colors early, nearly every Apple being solid red in color. We recommend it for commercial and home plantings in northern states.

OTHER GOOD WINTER APPLES

CORTLAND. A new variety resulting from cross pollenization of McIntosh Red and Ben Davis, and inheriting the good qualities of each parent. Beautiful red Apple, approximately the same size and fine flavor of the McIntosh, but ripens three weeks or a month later. Good keeper.

GALLIA BEAUTY. A Rome Beauty type of Apple identical in every respect, except its earlier coloring qualities; recommended for commercial planting. For general plantings we consider our Red Rome Beauty better. However, if you desire Gallia Beauty we have the true strain.

LOWRY. Beautiful mahogany-red, good, medium size, round oval shape, nearly sweet, mild sub-acid; excellent flavor, good shipper, long keeper, and sells at fancy prices in export as well as domestic markets. New popular commercial variety in Virginia.

MAMMOTH BLACK TWIG (Paragon). Extra large in size and round; skin smooth, yellowish covered with deep red, the general effect being dark red; flesh tender, tinged with yellow, crisp sub-acid, aromatic, fine flavor, of excellent quality, long keeper of great value. An important commercial variety in the East. Tree is vigorous and healthy, yields big crops. Plant Delicious or Jonathan as a pollinizer.

MACOUN. Similar quality and texture to McIntosh Red, although it ripens 2 to 3 weeks later than Cortland.

NEWFANE. Delicious type, large size; attractive red color.

STARK. Long keeper and a reliable commercial sort. Fruit large, round, greenish yellow with red stripes; flesh yellow, crisp and mildly acid. Excellent baking Apple, preferred by the larger baking concerns and hotels. A good variety for the commercial orchard because the tree is hardy, thrifty, healthy and very productive. Good trees to top work other sorts on.

SWEET DELICIOUS. Seedling of Delicious. Very sweet in flavor.

TWENTY OUNCE. Very large, yellow striped with red; fine quality, good keeper.

WOLF RIVER. Very large, handsome, bright yellow, skin mottled and blushed with deep red and broad stripes of bright carmine, fair quality, long keeper and excellent for cooking.

WINTER RAMBO. Medium size, greenish yellow color; thick skin.

WAGENER. A large Apple of beautiful bright red; fine texture, high flavor and excellent quality. Tree bears early; a reliable cropper.

WINTER BANANA. Extra large, golden yellow, and beautifully shaded with bright crimson-red; firm, fine grained, rich, sub-acid. The name suggests the high flavor. Tree thrives nearly everywhere. Should be packed in bushels or boxes and sold soon after picking.

YATES. Yellow splashed with red. Popular in the South.

HARRISONS'
HI-QUALITY
TREES

HARRISONS' APPLE TREES ARE ABSOLUTELY HARDY AND HAVE PROVEN TO BE THE BEST IN NORTHERN STATES AND CANADA

Fancy BARTLETT PEARS

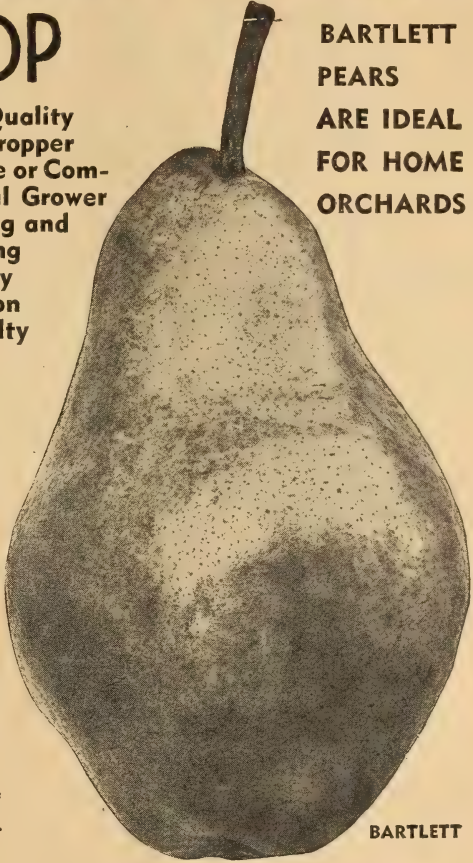
ALWAYS TOP

BARTLETT PEARS ARE IDEAL FOR HOME ORCHARDS

BARTLETT PEAR

For home, for canning, for market, the best. Ripens during summer. A golden colored pear, with a red cheek on most specimens. Bartlett mellow and is excellent for eating very early in the fall, yet when picked a week before it is ripe, and properly stored, will keep till late. Flavor delicious and musky; flesh buttery, rich and juicy. One of the finest pears that grows, to eat raw. A mingling of the flavor of Bartlett Pear and quince gives about the finest taste of any food this world's folks have. Bartlett trees bear early, produce enormous crops, and are not nearly so subject to damage by insects and disease as some other sorts. The trees do especially well with high culture.

- 1—Superb Quality
- 2—Heavy Cropper
- 3—For Home or Commercial Grower
- 4—For Eating and Canning
- 5—Bear Early
- 6—A Harrison Specialty



BARTLETT

FANCY BARTLETTS BRING HIGHEST PRICES

Bartlett Pears always sell on the markets even when other sorts are not in great demand. The fruit is so handsome and appealing that it pays to pack it in fancy containers. Bushels or bushel boxes are best adapted. The fruit ought to be sorted and graded, wrapped in tissue paper, and arranged in the container practically the same way that you pack apples. Pears are sometimes packed in peach carriers, and sell to good advantage. Plain fruit can be sold without wrapping, in small baskets or boxes.

One or two Bartlett Pear trees in the city yard will furnish a considerable amount of fruit; a half dozen will supply the family with fresh fruit and a surplus for preserving.

KIEFFER—EASY TO GROW

Of all the pears, Kieffer is the most easily grown. Trees are vigorous, exceptionally hardy and thrive on varied soils in any climate. Kieffer is the only pear that can be successfully grown in such southern states as Alabama, Mississippi, Louisiana, etc., and yet it is the leading commercial pear in Canada. Kieffer is blight-resistant, and can be successfully planted in large orchards.

This fruit is large to very large size; skin yellow, with light vermilion cheek; flesh yellowish white, very juicy. Noted for being a long time keeper.—Most popular canning pear.

A leading commercial variety. New method of storing enables Kieffer pears to have as good flavor as other varieties.

OTHER DESIRABLE VARIETIES

- BEURRE BOSCH.** Large size, fine quality, brings highest market price. Late.
- BEURRE D'ANJOU.** Large, green in color, somewhat yellow when ripe, buttery, melting, rich vinous, good flavor. Tree vigorous, hardy, prolific bearer. Very late.
- CAYUGA.** Flesh is firm and fine texture quite to the center and possesses a delectable flavor. New.
- CLAPP'S FAVORITE.** Large size, hardy and very productive. Thrives where other varieties fail. Very early.
- DOUGLAS.** Very resistant to blight. A winter pear of wonderful quality, golden yellow with a faint blush on the cheek. Bears early.
- DUCHESSE.** Very large, dull greenish yellow. Tree somewhat dwarf but a dependable bearer. Late.
- EWART.** Large size and good quality. Greenish yellow netted with russet, and has a fine, melting, tender, juicy flesh. New.
- GARBER.** Large, clear yellow, heavy bearer. Fine market variety; unsurpassed for preserves.
- GORHAM.** Flavor is sweet and vinous with a very marked and pleasing aroma. Flesh is white, tender, buttery and juicy. Valuable for dessert and canning. New.
- KOONCE.** One of the earliest pears, free from blight, does not rot at the core like many early pears. Fruit is yellow, medium to large, delightful flavor. Very productive.
- PHELPS.** Flesh is tender and juicy with a pleasant vinous flavor. New.
- PULTENEY.** New variety originated by the New York Experimental Station. Fruit is of the Bartlett type, a little more regular in outline, skin smoother.
- SECKEL.** A beautiful and delicious little pear. One of the richest and highest flavored pears grown. Tree dwarf, bears prolific crops. Late.
- SHELDON.** Medium size, flesh slightly coarse, melting, juicy, late.
- WAITE.** New, outstanding, high quality. Very resistant to blight. Late.
- WILLARD.** Yellowish, juicy. Late.
- WINTER NELIS.** A sweet rich pear for winter use. The trees are not very vigorous but are adapted to most soils and are productive. For home and market.
- WORDEN SECKEL.** A seedling of Seckel. Superior in size and color. Midseason.

HARRISON GROWN PEAR TREES
 BUDDED ON BLIGHT-RESISTANT ROOTS
 TRUE-TO-NAME—CERTIFIED 100% HEALTHY

	1 to 9	10 to 49	50 to 300
2-Yr. Budded Trees	Trees	Trees	Trees
5 to 6 ft., 11/16 to 7/8 in. cal.	\$1.00	\$0.80	\$0.65
4 to 5 ft., 9/16 to 11/16 in. cal.	.85	.70	.55
3 to 4 ft., 7/16 to 9/16 in. cal.	.70	.55	.45

May be assorted varieties of Pears.

HARRISON-GROWN PEAR TREES ARE BUDDED ON STRONG, BLIGHT-RESISTANT ROOTS

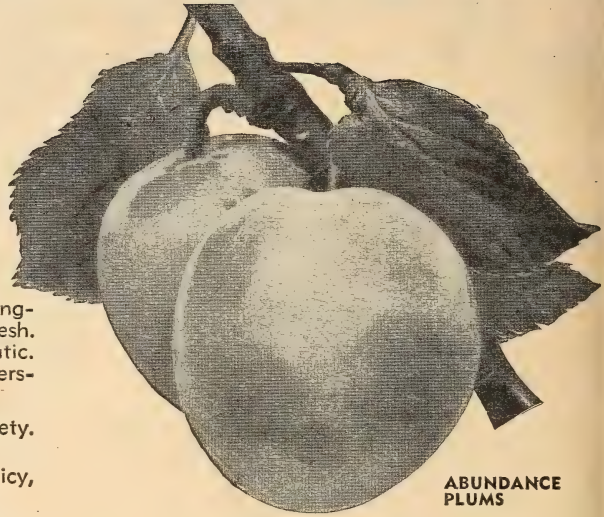




Grow Delicious Plums in Your Own Back Yard

HARRISON'S PRIZE WINNING PLUMS

They Never Miss



ABUNDANCE. Early, large, color pinkish red changing to darker red, with thin bloom. Yellow flesh. Very juicy, sweet and tender, pleasantly aromatic. Hardy, very productive. Adaptable to a wide diversity of soils and climates.

AMERICAN MIRABELLE. Midseason. New variety. Medium size fruit, sweet Yellow Damson.

BRADSHAW. Midseason, large, dark violet-red, juicy, excellent flavor. Desirable for canning.

BURBANK. Early, about one week after Abundance. Large, cherry-red with thin lilac bloom. Flesh amber-yellow with rich, sugary flavor; high quality and very productive. A product of Burbank, the master plant breeder. Should be in every orchard.

FELLENBERG PRUNE (Italian). Late, medium size, freestone, dark purple, delicious. Fine for drying.

FORMOSA. Early. One of the best early Plums, with fair shipping qualities. Fruit is large and oval, becoming cherry-red and attractive in ripening, flesh firm, sweet, and flavor resembles the apricot.

GRAND DUKE. Late. Commercial variety, purplish black, juicy, sweet, excellent for cooking.

GERMAN PRUNE. Late, large, dark purple, sweet. Good for canning and drying.

LOMBARD. Midseason. Medium size, showy, purplish red fruit, excellent quality for canning, cooking, preserving or spicing. Prolific cropper.

RED JUNE. Early, medium size, garnet-red color, thin bloom, flesh light yellow, somewhat meaty, sweet, aromatic. Trees are healthy, hardy and productive. An early market Plum.

BURBANK PLUM



SANTA ROSA. Early. Fruit very large size, round, purplish red, flesh reddish near skin, firm, juicy, and has a pleasant tart flavor, of exceptionally high quality.

SHIRO (Early Gold). Early. Fruit is very large, golden yellow, semi-transparent, covered with bright scarlet-red blush.

SHROPSHIRE DAMSON. Late, medium size, dark purple. Very productive. The best for preserving. The popular old-fashioned Damson variety.

STANLEY PRUNE. Midseason. Freestone, large, new Prune variety, outstanding characteristics. Considered best for cooking and fresh fruits.

SUPERIOR. Large size, red, firm flesh, delicious quality.

UNDERWOOD. Very large, beautiful red color. Delicious quality.

WICKSON. Midseason, extra large size, color dark red, thin bloom, flesh amber-yellow, firm, sweet.

HARRISON GROWN PLUM TREE PRICES

TRUE TO NAME. Propagated direct from "VERIFIED" varieties of super-selected strains.

TRUE TO NAME	CERTIFIED 100% HEALTHY		
	1 to 9 trees	10 to 49 trees	50 to 300 trees
Two-year, budded trees:			
5 to 6 ft., 11/16 to 7/8 in. cal.	\$1.00	\$0.80	\$0.65
4 to 5 ft., 9/16 to 11/16 in. cal.85	.70	.55
3 to 4 ft., 7/16 to 9/16 in. cal.70	.55	.45

May be assorted varieties of Plums

PROFITABLE ROADSIDE FRUIT MARKET

Plant several different varieties of fruit that ripens continuously throughout the season. Construct an attractive roadside stand and sell your own fruit. You can sell for less money than other retailers, and at the same time make a bigger profit. A fine money-making opportunity, especially for those located on well travelled highways.



Buy "Bud-Selected" Super-Strain Fruit Trees - It Pays

Sour

HARRISONS' Profitable Cherries

Montmorency

The most popular Sour Cherry grown in America. It ripens midseason, is large, red, slightly acid, flesh very tender, good quality. The best shipper of all Sour Cherries; always commands the highest market prices in city markets or commercial canneries. When preserved at home or commercially, it is always attractive in appearance and of extra good quality.

DYEHOUSE. Ripens a week ahead of Early Richmond. The earliest good sour cherry.

EARLY RICHMOND. Exceedingly hardy and productive.

ENGLISH MORELLO. Large, blackish red cherry. Hardy and productive. Very late.

MAY DUKE. Very early, productive, an old time favorite.



LARGE MONTMORENCY—Sour

	PRICES ON SOUR CHERRY TREES		
	TRUE-TO-NAME—CERTIFIED	100% HEALTHY	
	1 to 9	10 to 49	50 to 300
2-Yr. Budded Trees	Trees	Trees	Trees
4 to 6 ft., 11/16 to 7/8 in. cal.	\$1.00	\$0.80	\$0.65
3 to 4 ft., 9/16 to 11/16 in. cal.85	.70	.55
2 to 3 ft., 7/16 to 9/16 in. cal.70	.60	.45
1 1/2 to 2 ft., 5/16 to 7/16 in. cal.60	.50	.40

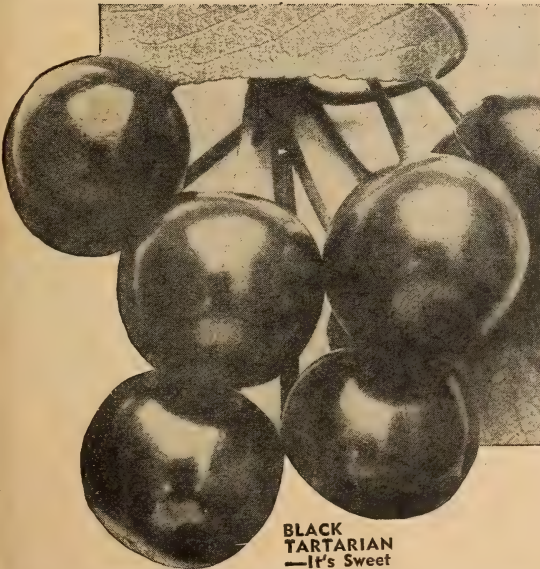
Write for prices on larger quantities.
May be assorted varieties of Sour Cherry Trees.

SPECIALS FOR VICTORY FRUIT GARDENS

VICTORY OFFER No. 1

- 1 Belle of Georgia Peach. 3 to 4 ft.
- 1 Elberta Peach. 3 to 4 ft.
- 1 Triple Red Delicious Apple. 3 to 4 ft.
- 1 Bartlett Pear. 3 to 4 ft.
- 1 Black Tartarian Sweet Cherry. 3 to 4 ft.
- 1 Burbank Plum. 3 to 4 ft.
- 1 Montmorency Sour Cherry. 3 to 4 ft.
- 1 Gold Mine Nectarine. 3 to 4 ft.

All 8 Healthy Trees for Only \$3.95



BLACK TARTARIAN
—It's Sweet

HARRISON GROWN SWEET CHERRY TREES

What fruit is more pleasing than the Sweet Cherry? The ideal fruit to plant in the back yard. We have a good supply of first-class trees in the following varieties:

BING. Very large, dark brown, flesh firm, sweet. Midseason.

BLACK TARTARIAN. Very large, sweet, purplish black color, juicy, rich flavor, heavy bearer and most profitable sweet variety grown. Early.

GOLDEN WAX. Large, yellow, fine flavor. Bears bumper crops. Easily grown. Midseason.

GOVERNOR WOOD. Large, light yellow, marked with red, sweet flavor.

LAMBERT. Extra large, sweet, jet black, very popular. Midseason.

NAPOLEON (Royal Ann). Large, pale yellow, bright red cheek, sweet, excellent flavor, prolific bearer. Midseason.

SENECA. Resembles Black Tartarian, but ripens two weeks earlier, rich sweet flavor.

SCHMIDT (Schmidt's Bigarreau). Large, sweet, deep black, tender, fine flavor. Midseason.

WINDSOR. Large, sweet, almost black, fine quality. Valuable late variety.

YELLOW SPANISH. Large, sweet, yellow with red tinge. One of the most beautiful and popular of the light colored cherries. Heavy bearer. Midseason.

	PRICES ON SWEET CHERRY TREES	
	TRUE-TO-NAME—CERTIFIED	100% HEALTHY
	1 to 9	10 to 50
	Trees	Trees
4 to 5 ft.	\$1.05	\$0.90
3 to 4 ft.90	.75
2 to 3 ft.80	.65

May be assorted varieties of Sweet Cherry Trees.

Harrison-Grown Cherry Trees

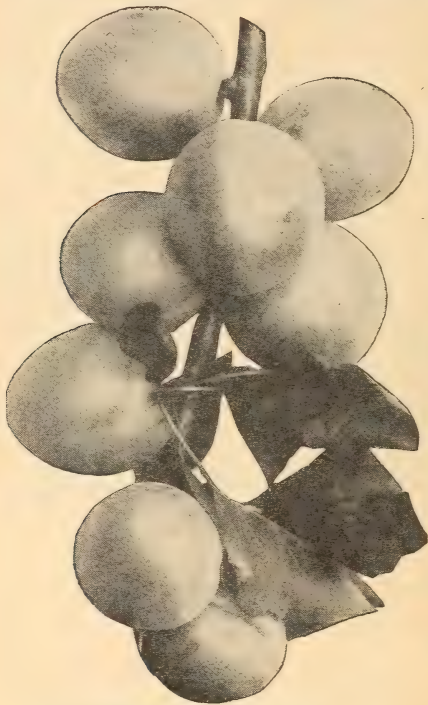
Budded from bearing commercial orchards of superior strains. All cherries are budded on hardy grown, whole root seedlings, which, in our most favorable soil, form a large, fibrous, well-proportioned root system, which is exceedingly important for the proper growth of cherries. Highest quality at most attractive prices.

THE BEST QUALITY, TRUE-TO-NAME STOCK



Apricots — Nectarines — Quinces

Extra Good Fruits for the Home Orchard



ALEXANDER APRICOTS—A Real Treat

APRICOTS

The apricot is one of the most delightfully luscious fruits grown, when eaten fully ripe and fresh from the tree. It is remarkable that such a rich and beautiful, golden, sweet fruit is not planted more, especially since it ripens just after the early cherries and before the best early peaches.

ALEXANDER. Early, prolific, freestone, orange, with red blush; very juicy and sweet flavor. A large prolific sort that will withstand adverse weather conditions. This variety deserves greater popularity. The best.

EARLY GOLDEN. Small, pale orange, juicy and sweet. It is a hardy, prolific bearer; ripens first of July.

GROW YOUR OWN FRUIT *It's Easy with Harrison's' Hi-Quality*

NECTARINES *Delicious for Eating*

There is a mistaken idea that the nectarine is a cross between the peach and something else, while it is really nothing more or less than a smooth-skinned peach. The melting, juicy texture of the nectarine and its delicious flavor furnishes one of the most delightful fruits for eating during the summer. Plant a few trees in your home orchard this year.

GOLD MINE. White flesh, large, attractive, freestone.

HUNTER. Large, round, yellow, freestone.

QUETTA. Large, greenish white, splashed with red, white flesh, cling. Prominent new variety.

SURE CROP. Very vigorous and productive. The fruits are large, roundish, white and overlaid with very attractive red. Very pleasing flavor.



NECTARINES ARE DELICIOUS

PRICES ON NECTARINES AND APRICOT TREES
TRUE-TO-NAME—CERTIFIED 100% HEALTHY

	1 to 9	10 to 49
	Trees	Trees
4 to 5 ft., 9/16 to 11/16 in. cal.	\$1.00	\$0.80
3 to 4 ft., 7/16 to 9/16 in. cal.85	.70

May be assorted varieties of Nectarine or Apricot Trees.

FRUIT IS FOOD — GROW YOUR OWN

NUT TREES

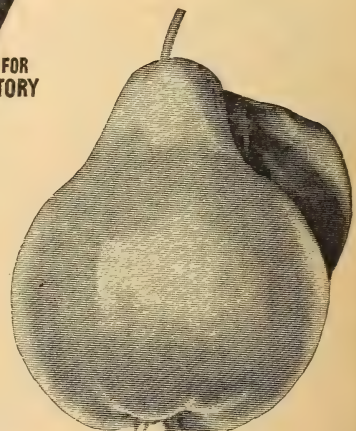
Are Ornamental and Profitable



PAPER SHELL PECAN. Medium to large nuts; oblong thin shell, rich flavor. Good grower. The best type Pecan grown. 2 to 3 ft., \$1.50 each; 2 for \$2.50.

BLACK WALNUT (*Juglans nigra*). Rapid grower, spreading branches, large, delicious nuts, prolific bearer. 1½ to 2 ft., 75c each; 2 for \$1.25; 10 for \$5.00.

ENGLISH WALNUT (*Juglans regia*). Thin shelled, large, delicious nuts, producing heavy crops and demanding good prices. Most popular Walnut grown. 2 to 3 ft., \$1.75 each; 2 for \$3.00.



ORANGE QUINCE

QUINCE

ORANGE. Late, large, bright yellow, excellent flavor, productive and rarely fails to produce a crop. Best canning variety. We offer the Wayne County (New York) strain. 4 to 5 feet, \$1.25 each; 10 for \$10.00.

FIG

BROWN TURKEY. Medium to large size; copper-brown skin, flesh white. Not hardy North. 2 to 3 ft., \$1.00 each; 10 for \$7.50.



It's Twice the Fun when You Grow Your Own Fruits

New Giant Cultivated BLUEBERRIES

- Profitable to Grow
- Delicious Berries
- Very Ornamental

Once Planted Lasts a Lifetime

Blueberries are not only the largest money makers of all time commercially, but are also one of the easiest fruits to grow. The berries bring up to 75c per quart—\$400.00 per acre the third year. They are exquisitely mild, sweet and delicious and bring highest prices on the market. The demand for Blueberries is practically unlimited. A planting lasts a lifetime with proper care and the plants will pay for themselves their first crop. A few bushes planted in the shrub border and in the garden will be sufficient to supply you with berries for years.

5 LEADING BLUEBERRIES

Listed in Order of Ripening

CABOT. Plants seldom exceed three feet in height and make a broad, low bush. The color of the new growth in winter is a light red over olive. The large berries have a delicious sub-acid flavor.

RANCOCAS. The bush of slender, vigorous, upright habit rarely surpasses five feet in height. The winter twigs are a dark red. The berries are somewhat larger than those of Rubel and begin to ripen several days earlier.

CONCORD. The bush is of upright habit and at maturity exceeds six feet in height. The young growth is bright red in winter. The berries are large, frequently reaching three-quarters of an inch in diameter. They usually ripen a few days earlier than Rubel and are fine in flavor and appearance.

RUBEL. A vigorous, productive variety. Well developed bushes stand six feet high and the winter color of the young wood is a rich red. The large berries of fine color are usually ready to pick the first week in July. Best commercial variety.

JERSEY. The bush is of vigorous habit and grows very large. The winter color of the young growth is a light red over golden brown. The berries are the largest of any here listed, light blue and ripen about the same time as Rubel.

PRICES OF ABOVE VARIETIES

	Each	3 to 9	10 to 29	30 to 99	100 or more
	plants	plants	plants	plants	plants
2-yr., 4 to 12 in. . .	\$0.75	\$0.65	\$0.50	\$0.45	\$0.40
2-yr., 12 to 18 in. . .	1.00	.85	.70	.65	.60
3-yr., 18 to 24 in. . .	1.50	1.30	1.15	1.00	.85

EASY TO GROW

Set the bushes 5 by 7 feet apart in moist, acid soil. If your soil is sweet, it may be made acid by mixing with it a little quantity of acid peat, rotted leaves and pine needles, or similar material. Fruit ripens over a period of several weeks. Plant two or more varieties so as to insure proper pollinization.



Blueberries—Ornamental as Well as Fruitful

Very Ornamental

As an ornamental shrub the Blueberry cannot be surpassed. Full of lovely pink blooms, which open to bell-shaped, white flowers in June. Plants are compact, low growing, having waxy green leaves which turn red during the fall. Twigs are reddish brown and very showy during the winter.

Victory Offer No. 2

- 1 Rubel Blueberry. 12 to 18 inch.
 - 25 Asparagus Roots. 2-year size.
 - 6 Latham Red Raspberries. 1 year.
 - 6 Boysenberries. 1 year.
 - 6 Cumberland Black Raspberries.
- All 44 Plants for Only \$2.98



BLUEBERRIES—Delicious to Eat—Profitable to Grow



PLANT BLUEBERRIES FOR HEALTH—PROFIT—BEAUTY

HARRISONS' BIG YIELD STRAWBERRY PLANTS

PICK WORLD'S FINEST BERRIES FROM YOUR OWN PLANTS

A Big Profit From Your Own Back Yard

Everybody prefers the flavor of vine-ripened Strawberries. They are more delicious and usually sell for 5c to 10c more per quart. Customers pay premium prices for garden fresh Strawberries and small growers make real money, up to \$500.00 per acre.

Whether you have a small garden or several acres, you can make a big extra cash income by planting Harrisons' "Big Yield" Strawberries. Others are doing it, why not you. It costs only a few dollars to get started.

Premier King of the Early Berries

Too well known to need much description. The standard early berry by which all other varieties are judged. Holds all records for big crops and big profits. Premier has filled more crates, made more dollars, and brought joy to more Strawberry growers than any other variety ever grown.

Adapted to All Soils—Heavy Yielder. It thrives on most any type of soil and is a rampant plant maker. Premier fruits extra early when berries are selling at a high price. It is a big yielder of big, bright red berries of fine flavor. For home garden, local market, or for shipping moderate distances it has outclassed all the older varieties.



GROW YOUR OWN STRAWBERRIES



Field Fresh Strawberry Plants

Victory Offer No. 3

- 50 Premier
- 50 Big Joe
- 50 Chesapeake
- 50 Mastodon

All for \$3.95

DORSETT, Early

Large Fruit — Vigorous Grower — Heavy Crops

Dorsett berries average large size, considerably larger than the Premier; in fact, their size is comparative with Chesapeake, which is the outstanding late berry. Plant growth is exceedingly vigorous, being far more vigorous than most other varieties. Dorsett yields large crops of fancy, light red berries.

FAIRFAX, Early

The Sugar-Saving Berry

Color is a deep, full red; its rich, sweet flavor brings buyers back for more. Fairfax berries are exceptionally firm, making it an ideal shipper. Superior to all for home use, equal to any for commercial planting.

Prices of "Big Yield" Plants:

	25	50	100	250	500	1000
Early						
Dorsett	\$0.60	\$1.05	\$1.55	\$3.50	\$5.25	\$8.75
Fairfax..	.65	1.10	1.60	3.60	5.40	9.00
Premier..	.60	1.05	1.55	3.50	5.25	8.75
Midseason						
Big Joe..	.60	1.05	1.55	3.50	5.25	8.75
Catskill..	.65	1.10	1.60	3.60	5.40	9.00
Late						
Chesap'ke	.70	1.20	1.70	3.90	5.85	9.75
Gandy..	.60	1.05	1.55	3.50	5.25	8.75
Lupton..	.65	1.10	1.60	3.60	5.40	9.00
Everbearing						
Gem... ..	1.00	1.75	2.60	5.90	8.85	14.75
Mastodon	1.05	1.80	2.65	6.00	9.00	15.00



HARRISONS' PLANTS ARE PREFERRED BY LEADING GROWERS

Fresh Berries from July till Frost

with *Harrisons' Everbearing*

MASTODON

A Triple Yield

1. Plant this spring, 1943.
2. Pick 1st crop, July to frost, 1943.
3. Pick 2nd crop, June, 1944.
4. Pick 3rd crop, August to frost, 1944.

3 REAL CROPS—3 BIG PROFITS

Bears in 90 days, and, too, it's the best
Family Garden Strawberry
Loads of Big Berries in 90 Days

Unlike the other varieties, Mastodon begins to bear luscious berries three months after planting and bears three big crops in eighteen months. Customers have reported yields as high as three quarts per plant the first fall.

Why Wait a Whole Year?

Plant Harrisons' "Big Yield" Mastodon this spring and grow your own berries this summer and fall, instead of buying them. If you have more than you can use, they are easily disposed of in the nearby community, where they will always bring top prices.

Gem Everbearing

New Companion for Mastodon
Get Your Berry Patch Started
This Season

Bears 100 Days After Planting
Gem will start to bear the first season planted and will bear large crops until frost. These berries bring the highest prices in the markets or on a roadside stand. There is a great opportunity for making money by planting Gem. Get your patch started this season; they will give you enough berries for your own family and some to sell to your neighbors or ship to the city markets.

Chesapeake The Favorite Late Berry

It is a good producer of very large berries that hold their shape well until the end of the season. It does not yield as many berries per acre as some of the early varieties, but the size and quality of its fruit enables it to sell for a much better price which offsets this disadvantage. The berries are firm enough to ship to distant markets and to arrive in first-class condition. An exceedingly valuable commercial berry but equally adapted for home planting. We offer a selected "Big Yield" strain.



LUSCIOUS STRAWBERRIES ARE EASY TO GROW

BIG JOE The Old Reliable Midseason Variety

LARGE YIELD—FANCY FRUIT—FINE FLAVOR

Big Joe is a heavy producer of large, brilliant red berries of extra fine flavor and is firm enough to withstand long shipments. The plants are good growers and heavy yielders. This variety succeeds on all types of soil but does extra well when given good care and fertility. Be sure to include some Big Joe in your planting this spring. Our big yield strain insures big crops.

CATSKILL

A midseason berry that will produce the largest crop of bigger berries of any midseason variety we know. Catskill is entirely satisfactory as to firmness, quality, color and attractiveness, season of ripening and climatic adaption. The highest record of marketable berries was made with this variety. In shipping respects it ranks with Chesapeake and Lupton. It is rated equally as attractive as Fairfax or Dorsett. The berries are borne on rather long fruiting stems which makes it easier to get at in picking.

TWO GOOD LATE VARIETIES

GANDY. The favorite late berry in many localities. Large size and handsome appearance make it command highest prices on the market. Not quite as productive as some of the other berries, but its appearance and quality offset this. Good for either home use or commercial planting.

LUPTON—A Table Delight. The heaviest sales are made in Pennsylvania, New York, Michigan, West Virginia and Ohio. A favorite for years, because of its large size and attractive "double red" color. They demand top prices because of their appetizing appeal.



A Typical Bed From Which Our Big Yield Plants Are Dug

Harrison Strawberry Plants Are Bred Up for Bigger Yields and Tell the Story at Harvest Time.

ASPARAGUS

**BIG
YIELD
STRAIN**

A Nutritious Food Crop



MARY WASHINGTON

COMMERCIAL GROWERS
Asparagus Roots are a special-
ty with us and if you are inter-
ested in large quantities, please
write us for special prices.

**Harrisons' Pedigreed Mary
Washington Crowns Yield
Bigger Crops and Greater
Profits**

**Highly Profitable and Easily
Grown**

Being the first vegetable to come in the spring it always brings a high price on the markets. Stocks being delicious and very healthful, every garden should have a generous supply and when properly set and cared for will last a lifetime.

**The Famous Mary Washington—True-
to-Name—Plant This Pedigreed Strain**

There is no variety of Asparagus as good as Mary Washington and whether you are growing for home use only or for market you cannot afford to grow any other. This wonderful new Asparagus was developed and introduced by the U. S. Department of Agriculture and although it is just a recent introduction it has become famous the country over.



**IT'S EASY TO CUT YOUR FAMILY'S
FOOD COST—PLANT ASPARAGUS**

**JUMBO ROOTS
3 Years' Growth
BEST FOR HOME
GARDENS**

PRICES
25 for ... \$1.00
50 for ... 1.50
100 for ... 2.50
250 for ... 5.00

Rust Resistant—Profitable

Growers everywhere are discarding all other varieties in favor of the famous Mary Washington, because it is earlier, the stalks are larger, more tender and more productive than any other variety and more highly immune to rust, which means that one planting will produce profitable crops for many years.

Large—Early—Tender—Juicy

Asparagus buyers now demand Mary Washington and are willing to pay fancy prices to get it. The demand for Mary Washington is tremendous because when it is once eaten, no other variety will give satisfaction. The stalks are purplish green color, large, tender and juicy. A very rapid grower, which means many cuttings.

We Recommend Two-Year Roots

Experience has taught us that 2-year roots give better results than 1-year roots. The 2-year roots are much larger and have more food stored up, which causes them to make more growth and yield larger crops of Asparagus sooner than the 1-year roots. For home gardens use 3-year jumbo roots for quickest results.

Plant Harrisons' Pedigreed Roots

We have made a specialty of growing Asparagus roots for over forty years and have supplied plants for some of the finest Asparagus beds in the country. The growing, handling, and shipping of millions of Asparagus roots has taught us many things and today we are in position to supply you with quality roots at low cost. All our crowns were grown direct from the original strain of seed.

PRICES OF GENUINE PEDIGREED

MARY WASHINGTON ASPARAGUS ROOTS

	25	50	100	250	500	1000	3000
1 yr. No. 1	\$.065	\$.090	\$1.40	\$2.70	\$4.40	\$8.00	\$23.25
2 yr. No. 1	.85	1.15	1.90	3.45	5.35	10.00	29.25

Write for prices on larger quantities. We maintain a separate department for handling Asparagus roots and are in a position to give prompt service on larger orders.

Victory Gardens

Asparagus is the ideal vegetable crop to grow, once planted it yields a large crop of delicious Asparagus year after year. Plant JUMBO size roots for quickest results.



Mary Washington Asparagus in the Nursery Rows

What a Strain! ^{THAT SUPER} CONCORD GRAPE

For Bigger and Better Crops Plant

CONCORD

HARRISONS' SUPER STRAIN

Black, midseason. The most popular and extensively planted grape in America. It adapts itself to varying conditions and is grown in most every state in the union. Large, compact bunches of dark purplish black colored berries. The berries are covered with a rich bloom, skin is tender, but is sufficiently firm to carry to distant markets; flesh is juicy, sweet and tender.

Exceptionally Heavy Yields

Concord is a very vigorous grower, hardy and very productive. It ripens during midseason, and is rated as the best money-making commercial variety.



CONCORD

OTHER BLACK GRAPES

CLINTON. Black. Late. A rank grower, hardy; bunch and berry small to medium size, slightly juicy and spicy. Ripens two to three weeks after Concord.

FREDONIA. Black. Very early. Originated by New York Experimental Station. The bunch and berry are large, with excellent, juicy, delicious flavor. Vigorous and productive. Ripens fully ten days before Moore's Early.

IVES. Black. Midseason. Quality good when fully ripe. Produces a successful market grape.

MOORE'S EARLY. Black. Early. Bunch and berry very large. Equal to Concord in quality, health and hardiness, but ripens about ten days earlier. It is a fair grower, valuable for garden and vineyard.

WORDEN. Black. This excellent grape is as hardy, healthy, vigorous and productive as Concord, of which it is a seedling, but better in quality. It is sweeter, larger in bunch and berry. Several days earlier. Valuable for garden and vineyard.

RED GRAPES

AGAWAM. Red. Midseason. Large, thick skin, aromatic flavor. Vines strong, rank grower. Hardy and productive. Ripens with Concord.

BRIGHTON. Dark red. Early, bunch large, berry medium size. Skin thin. Flesh tender. Sweet and best quality. Vine vigorous and fairly productive.

CACO. Red. Midseason. Fruit is very large and handsome. A rich wine-red color. Not a very rank grower and a shy bearer.

CATAWBA. Red. Very late. Large. Flesh pulpy with rich vinous flavor. Quality good. A very desirable variety.

DELAWARE. Red. Early midseason. Bunch and berry good size, compact, flesh juicy, very sweet and refreshing. Vine very hardy and productive. A slow grower. Requires rich soil, good culture, close pruning.

SALEM. Dark red. Midseason. Bunch and berry large. Flesh sweet, tender, with rich vinous flavor. Good keeper, vigorous and productive.

WHITE GRAPES

ELVIRA. White. Late. Bunch and berry medium size. A good wine grape in the South.

NIAGARA. White. Midseason. Best of the standard light-colored Grapes. Bunches of large greenish white berries change to pale yellow when fully ripe. A rank grower and very productive. Popular with vineyardists and home gardeners in the North, as well as the South.

VICTORY OFFER No. 4

2 Concord ALL FOR \$1.00
2 Agawam FOR
2 Niagara

PRICES

HARRISONS' BIG YIELD GRAPE VINES
Dependable — True-to-name
All varieties except as noted:

	Each	3	10	25	50
2 yr. No. 1	\$.35	\$0.95	\$1.65	\$3.50	\$6.00
Concord 2 yr. No. 1	.30	.80	1.50	3.00	5.00
Caco 2 yr. No. 1	.50	1.30	3.00	6.00	10.00

FOR QUICK CROPS PLANT JUMBO GRAPE VINES

Have already fruited in the nursery row. Should fruit the first year set. Ideal for home plantings. We can furnish the following varieties only in Jumbo size:

CONCORD — CATAWBA — AGAWAM
MOORE'S EARLY — WORDEN

Prices: 50c each, 3 for \$1.25, 6 for \$2.25, 10 for \$3.80, 25 for \$7.00, 50 for \$12.00.

GRAPES — A Lifetime Investment



WORTH-WHILE RASPBERRIES FOR YOUR VICTORY FRUIT GARDEN

CUMBERLAND

The Most Popular Black Raspberry

CUMBERLAND RASPBERRIES



START A ROADSIDE MARKET

Grow your own fruit and sell it locally. A little investment yields a big profit.

Midseason to late. This is the most popular Black-cap of the present time, because of its great size, firmness, and productiveness. The fruit is the largest of the Raspberry family, and is of such handsome appearance that it is sure to bring the top prices on the market.

NEW LOGAN. A new Black Raspberry variety; probably its two most noteworthy characteristics are that it ripens about a week earlier and is more resistant to the virus diseases. A very productive variety and fruit of good size and quality. If an early berry is desired, it is one of the best. It does not crumble.

SHUTTLEWORTH. An outstanding new black variety which is a decided improvement over the well-known commercial variety, Plum Farmer. Earliness in season and heavy bearing were the characteristics which made Plum Farmer very popular with the commercial growers, and its offspring, the Shuttleworth, inherited these same desired characteristics. Shuttleworth is being planted extensively in Western New York and is taking the place of Plum Farmer.

PRICES BLACK RASPBERRIES—Selected Plants

	1 Year, No. 1 Tips				
	12	25	50	100	250
	Plants	Plants	Plants	Plants	Plants
Cumberland	\$.90	\$1.40	\$2.30	\$4.00	\$9.75
New Logan	.95	1.45	2.40	4.15	10.15
Shuttleworth	.95	1.45	2.40	4.15	10.15

NEW the Sensational Boysenberry

The New Mammoth Berry that Will Revolutionize the Berry-Growing Industry

Two Inches In Length

The new Boysenberry is truly a glorified Young-berry. We offer it again this year because of the tremendous large size of the berries; because of its very prolific fruiting; and lastly, because we think that it has the highest qualities of all bramble fruits.

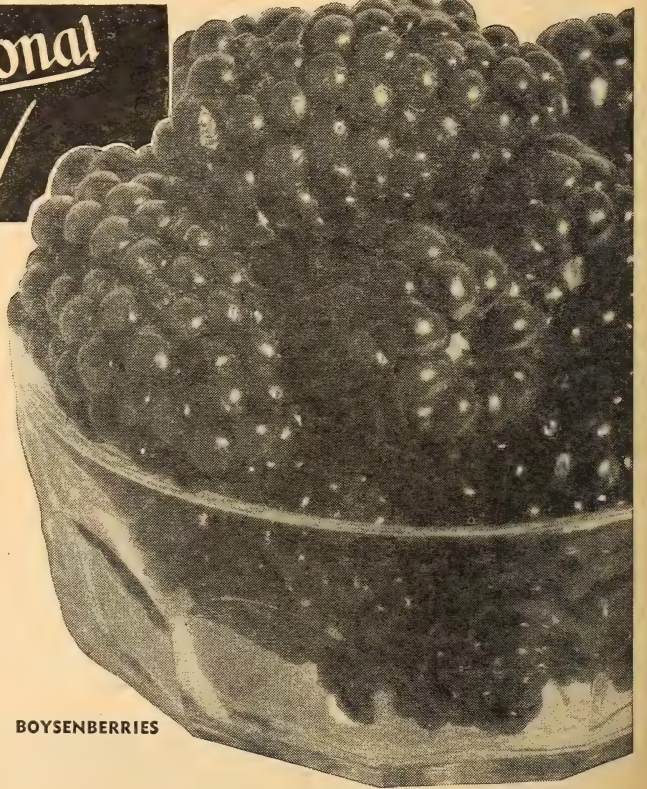
They are just as easy to grow as blackberries. They produce a larger crop, not because there are more berries, but because each berry is so much larger. Has a rich, tangy flavor all its own.

LUCRETIA DEWBERRY

Long, mammoth black berries, recognized as the leading variety. Incomparably better in every way than any blackberry you have ever seen or tasted. Lucretia is a very early bearer, ripening from a week to ten days before even the earliest blackberries. Big, uniform size makes them top-notchers in price on any market. For real profits and for home and commercial growing, Lucretia is the only variety of importance.

BOYSENBERRIES, DEWBERRIES—No. 1 Plants

	6	12	25	100	250
	Plants	Plants	Plants	Plants	Plants
Boysenberry	\$0.90	\$1.50	\$2.50	\$6.50	\$15.00
Lucretia	.50	.75	1.25	3.50	8.50



BOYSENBERRIES

Grow Finer Flavored Berries

With Harrison's' ^{SELECT} _{CERTIFIED} Raspberry Plants

LATHAM

WORLD'S LEADING RASPBERRY

The sensational yields of this variety have attracted the attention of growers everywhere, and all those who have given it a trial are praising the many unusual features they have found in Latham. After thoroughly testing Latham we find it a remarkable variety in every respect; you will be both delighted and surprised after giving it a trial.

Tremendously Productive; Large Berries. Latham is a tall, vigorous grower, the canes are extra heavy, well able to support the load of fruit. The foliage is healthy, dark green, tough and leathery, highly resistant to insects. Latham ripens with Cuthbert. Covers a longer fruiting season. The berries are beauties and will cause a sensation wherever they are shown. Many are over an inch in diameter and they hold this size to the end of the season. Color dark rich red.

A Blue Ribbon Winner for the Home and Commercial Grower. It simply cannot be equalled.

12 Selected Latham Raspberry plants for only 95c



LATHAM—The Big Red

Biggest Money-Making Raspberry in America

PRICES OF RED RASPBERRIES AND BLACKBERRIES

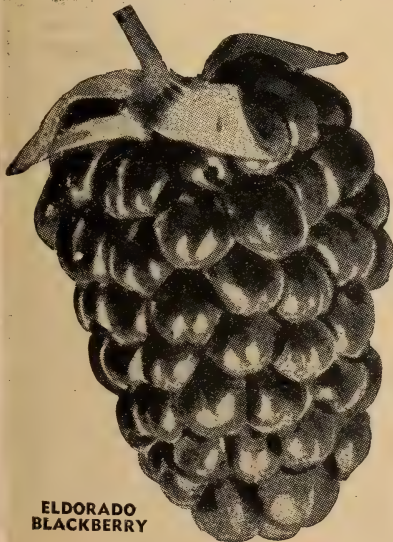
Selected Plants, One Year, No. 1, True-to-Name

RED RASPBERRIES

	12	25	50	100	250
Chief	\$0.95	\$1.50	\$2.60	\$4.45	\$11.00
Latham95	1.50	2.60	4.45	11.00
Newburgh	1.00	1.55	2.65	4.60	11.45
St. Regis95	1.50	2.60	4.45	11.10

BLACKBERRIES

Alfred	1.05	1.55	2.60	4.60	11.55
Eldorado95	1.50	2.50	4.35	10.80



ELDORADO BLACKBERRY

A Heavy Yielding Blackberry that Spells Success Everywhere

ways commands the highest price. This variety is making big money for other growers and it will do the same for you.

ALFRED. A comparatively new Blackberry that has given good results wherever planted. Immense sized berries, practically coreless, heavy producers and very hardy. Worthy new commercial variety, ripens over a long period of time.

Other Red Raspberries

CHIEF. A new Red Raspberry that is destined to challenge the supremacy of Latham, originated by the Minnesota State Breeding Farm and has been given rigid tests over a wide area. It has proven hardy, resistant to disease, a heavy cropper of large, excellent quality berries that will withstand shipments to market.

ST. REGIS. There is a demand for this fine fruit in the late summer and fall. Growers make exceptionally large profits when grown for markets. However, if you do not grow them for market, by all means plant a few bushes for home use. St. Regis produces a big crop of fruit during the regular season and then continues bearing all summer and fall on the new canes.

NEWBURGH. The new Red Raspberry which is gaining popularity rapidly. Bright red, excellent shipper, high quality. Earlier than Cuthbert. A new commercial leader.

ELDORADO

The Heavy Yielding Variety. The heavy producing quality of Eldorado has placed it first among Blackberries. Every good quality possessed by other Blackberries is emphasized in Eldorado. Its berries are of enormous size, shiny jet-black; sweet pleasing flavor.

For Home or Commercial Planting. It is valuable for all purposes, both home and commercial, being so firm that it will remain in good condition for three and four days, and can be sent to distant markets where it always commands the highest price.

Harrison's' Berry Plants Have a National Reputation



Ornamentals

Improve the Appearance
of YOUR HOME GROUNDS

**HARRISON'S
GROWN**



EVERGREENS SPACED WIDE APART

HARRISON'S HI-QUALITY EVERGREENS

7 REASONS FOR THEIR SUPERIORITY

1. Scientifically propagated from selected plants.
2. Transplanted frequently and root pruned.
3. Field-grown, spaced wide apart.
4. Cultivated, sprayed and sheared.
5. Dug with large balls of rich earth and burlapped for shipment.
6. Each plant is individually selected to fill your order.
7. Give immediate landscape results.



BERCKMANN'S GOLDEN ARBOR-VITAE

COMPACT GLOBULAR ARBOR-VITAE
(*Thuja occidentalis compacta*). Natural compact, globe-shape, dark green foliage. The ideal low-growing plant for massing against the taller evergreens in foundation plantings.

	Each	2 for	10 for
12 to 15 inch	...\$1.75	\$3.30	\$14.00

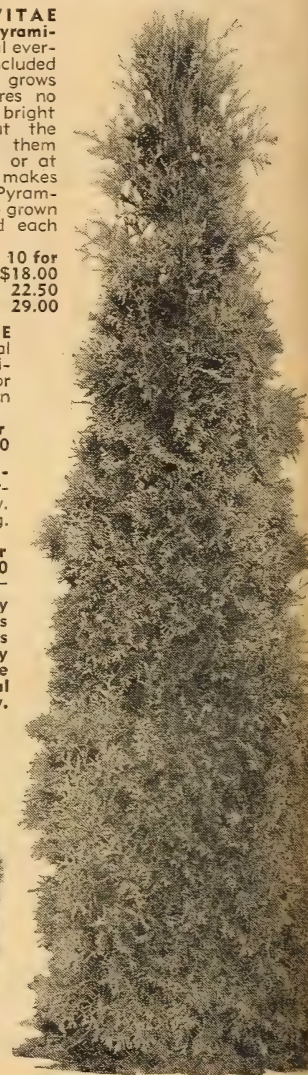
BERCKMANN'S GOLDEN ARBOR-VITAE (*Biota aurea nana*). Dwarf, compact evergreens. Foliage a bright lustrous yellow. Fine for adding color in the planting. Highly admired by all who see it.

	Each	2 for	10 for
12 to 15 inch	...\$2.40	\$4.40	\$21.00

Do not Confuse Harrison's Hi-Quality Evergreens with Bed Grown Stock. This Type of Stock May be as Tall as the Plants We Offer, They Do Not Have the Body and are Useless for Immediate Landscape Effect and Oftentimes Require Several Years Growth Before they are Satisfactory.



COMPACT GLOBULAR ARBOR-VITAE



PYRAMIDAL ARBOR-VITAE

REMEMBER! Houses are Cold and Uninviting Until the Marvel of Growing Things Transforms Them Into Real Homes

Nursery Stock a Good Investment

Is there any other thing about your home that grows in value, interest and beauty each succeeding year like trees and plants? Most other things are wearing out with use and age and constantly depreciating in value. That is why we say our nursery stock is a permanent and accumulative investment.

HI-QUALITY EVERGREENS

PYRAMIDAL ARBOR-VITAE
(*Thuja occidentalis pyramidalis*). A really beautiful evergreen that should be included in every planting. It grows tall and narrow, requires no trimming, and retains its bright green color throughout the whole year. A pair of them placed at the entrance or at the corner of a home makes a superb showing. Our Pyramidal Arbor-vitae are grown with extreme care and each one is a specimen.

	Each	2 for	10 for
1 1/2-2 ft.	...\$2.25	\$4.00	\$18.00
2-3 ft.	... 2.75	5.00	22.50
3-4 ft.	... 3.50	6.20	29.00



Evergreens Will Give You Everlasting Beauty at a Small Expense

HARRISON'S' DECORATIVE EVERGREENS

Our Splendid Trees Embellish the Grounds of Beautiful Homes the Country Over

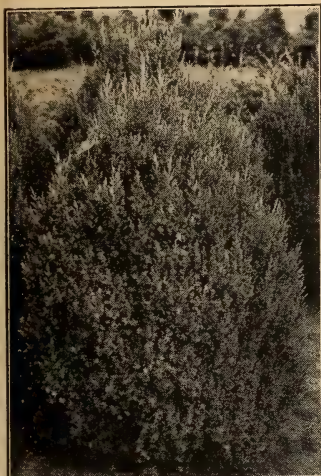
BEAUTIFUL RETINOSPORAS

Dainty and Feathery — So Picturesque in the Foundation or Rockery

GOLDEN PLUME-LIKE RETINOSPORA

—Our Most Popular Golden Tinted Evergreen

A handsome golden colored evergreen that is admired by all. Its pleasing shade provides the right amount of contrast when it is planted along with other evergreens along its side or back of it. Feathery, fern-like foliage can be kept trimmed to any size. No home foundation plantings are complete without this remarkable healthy evergreen.



SPINY GREEK JUNIPER



GOLDEN PLUME-LIKE and SILVER RETINOSPORA

PLUME-LIKE RETINOSPORA (*Retinospora plumosa*). A handsome evergreen with feathery, light green foliage, more beautiful than a fern. Excellent for foundation plantings; can be kept pruned to any desired height.

VEITCH'S SILVER RETINOSPORA (*Retinospora squarrosa veitchii*). Foliage silvery blue, feathery and dense, giving a soft, woolly appearance. Broad, pyramidal outline, can be kept to any height by trimming. One of the best Retinosporas.

PRICES FOR THREE ABOVE			
RETINOSPORAS	Each	2 for	10 for
12- to 15-inch . . .	\$1.75	\$3.30	\$14.00
15- to 18-inch . . .	2.00	3.80	17.00
18- to 24-inch . . .	2.75	5.00	22.50
2 to 3 feet	3.25	6.00	27.50
3 to 4 feet	3.75	7.00	32.50

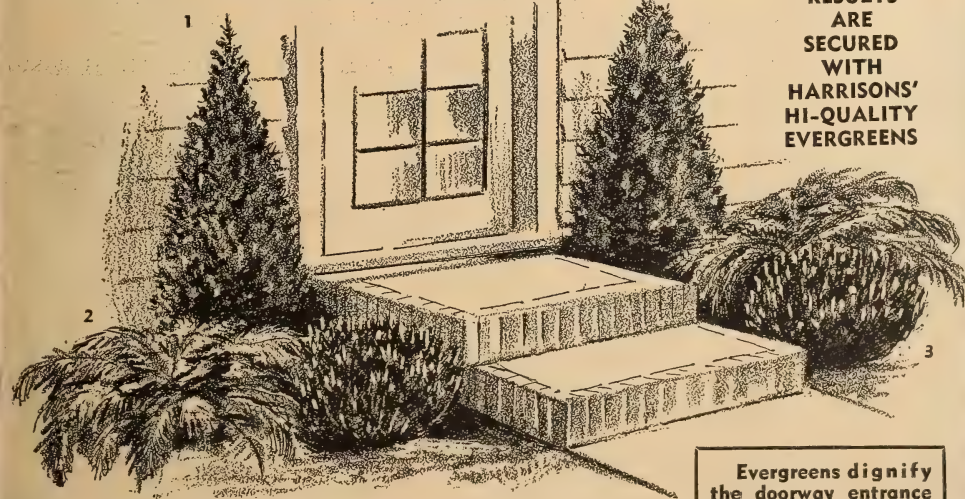
SPINY GREEK JUNIPER. Upright columnar habit and bluish green foliage. The growth is so slow that the tree is well adapted for foundation plantings and other situations requiring dwarf trees.

	Each	2 for	10 for
12- to 15-inch . . .	\$2.00	\$3.80	\$17.00
15- to 18-inch . . .	2.50	4.70	21.00

THE CHARMING IRISH JUNIPER (*Juniperus communis hibernica*). Forms a narrow and dense column, compact, bluish green foliage. Most attractive when planted around foundation of a home, at corners and entrances. Widely used in formal gardens.

	Each	2 for	10 for
1½ to 2 ft.	\$2.00	\$3.80	\$17.00
2 to 3 ft.	2.50	4.70	21.00
3 to 4 ft.	3.25	5.80	25.00

Door-step Planting



IMMEDIATE RESULTS ARE SECURED WITH HARRISON'S HI-QUALITY EVERGREENS



IRISH JUNIPER

FOR THE CORRECT WAY TO PLANT EVERGREENS SELECT ACCORDING TO NUMBERS INDICATED

- No. 1. Pyramidal Arbor-Vitae, Retinosporas, Irish Juniper, Hicks' Yews, Irish Yew.
- No. 2. Spreading Yew, Repandens Spreading Yew.
- No. 3. Compact Globular Arbor-Vitae, Berckmann's Golden Arbor-Vitae, Spiny Greek Juniper.

Evergreens dignify the doorway entrance and at the same time establish a feeling of warmth and welcome so desirable at the entrance.

Evergreens Famous for Quality, Vigor and Beauty



Yews or Taxus

Beautiful Rich Green - All Year
Hardy, Disease - Resistant, Long - Lived



IRISH·YEW *taxus baccata Hibernica*

Fine Soft Lustrous Foliage

An ARISTOCRAT from OLD IRELAND

This Evergreen is the aristocratic member of the Yew family. It grows tall and narrow with stout, crowded branches and spirally arranged leaves which are dark green in color. This Yew is very scarce, but everyone who sees it is enthusiastic about it. Formerly it was imported from Europe, but after all importations were discontinued by the Federal Government, American nurserymen were unable to supply their customers. Fortunately, we had some specimen plants in our nurseries from which we were able to propagate.

	Each	2 for	10 for
12 to 15 inches	\$2.00	\$3.80	\$17.00
15 to 18 inches	2.40	4.40	20.00
18 to 24 inches	3.15	5.25	23.00
2 to 2½ feet	3.75	6.75	30.00
2½ to 3 feet	5.00	9.00	40.00
3 to 4 feet	6.50	12.00	55.00

HICKS' YEW (*Taxus Cuspidata Hicksii*). Another columnar form of Yew that is very similar to the Irish Yew, but is a much faster grower. The branches ascend almost vertically generally growing with many stems. Its rich dark glossy green makes it much more attractive than Arbor-vitae or Junipers. We can unhesitatingly recommend it for planting in all sections. It has proven to be perfectly hardy. If extremely narrow effect is desired it can be obtained by trimming the sides of the plant when it is small. This variety is extensively used for making high class evergreen hedges.

	Each	2 for	10 for
12 to 15 inches	\$1.75	\$3.30	\$14.00
15 to 18 inches	2.00	3.80	17.00
18 to 24 inches	2.50	4.70	21.00
2 to 3 feet	3.50	6.20	29.00



IRISH YEW

SPREADING YEW (*Taxus cuspidata*). The beautiful Yew of moderate bushy growth, usually grows wider than it does tall, starts branching from the bottom developing into a bush form. The spreading branches are densely clothed with short leaves of dull green. It is the most attractive spreading evergreen, will grow in semi-shady locations. Hardest of all Yews. By trimming the side branches the plant can be made to grow semi-upright and likewise by trimming the top branches the plant can be made to develop lower to the ground. Can also be trimmed into globe shape.

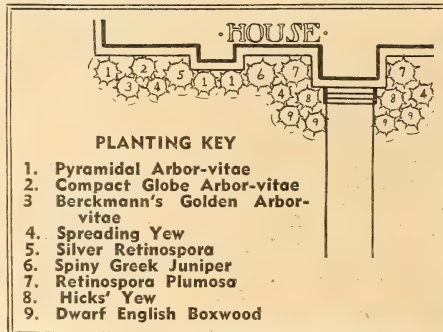
	Each	2 for	10 for
12 to 15 inches	\$2.00	\$3.80	\$17.00
15 to 18 inches	2.40	4.40	20.00
18 to 24 inches	3.30	6.00	27.00

REPENDENS SPREADING YEW (*Taxus baccata repandens*). A low spreading dwarf type of Yew, having a slightly weeping effect after it reaches some age. Has dark green needles and will grow particularly well in shady locations. Very slow growth.

	Each	2 for	10 for
12 to 15 inches	\$2.50	\$4.40	\$20.00
15 to 18 inches	3.30	6.00	27.00



HICKS' YEW



A TYPICAL FOUNDATION PLANTING



SPREADING YEW
Exceptionally Hardy

PLANT YEWs—
They Are Distinctive and Long-Lived



SKILLFULLY GROWN—EACH EVERGREEN A SPECIMEN

HARRISONS' GENUINE HEALTHY BOXWOOD AT AMAZINGLY LOW PRICES

Dwarf English Boxwood

The Famous Colonial Boxwood of the South

(*Buxus Sempervirens Suffruticosa*.) A widely known and popular form of dwarf Boxwood. It has small deep green dense leaves which hold their bright color throughout the winter months. Suitable for very low hedges and edgings; can be trimmed in various forms.

Easy to Grow. Dwarf English Boxwood is easy to grow and will thrive in most every type of soil. After this plant once becomes established, it does not require any particular attention. It is practically immune from all diseases and insects. Can be planted in the full sunlight and semi-shady locations.

Large Specimen Plants Sell at High Prices. Dwarf English Boxwood has been called the "Century" plant, due to its ability to live over a hundred years. A few years ago, large plants sold for fabulous prices, many selling for hundreds of dollars.

Ideal for Dwarf Hedges. Make your home grounds the show place of your community. Dwarf English Boxwood is the ideal low growing plant to add the finishing touches to your home grounds. It stays green all winter and provides your planting with year around beauty. Can be trimmed if desired, but not necessary, unless you want the strictly formal effect.



DWARF ENGLISH BOXWOOD

PRICES OF DWARF ENGLISH BOXWOOD

	Each	2 for	10 for
3 to 4 inches	\$.35	\$0.60	\$2.50
4 to 6 inches	.50	.90	4.50
6 to 8 inches	.75	1.40	6.50

SPECIAL ENGLISH BOXWOOD OFFER

10 Dwarf English Boxwood
3 to 4 in. for \$2.50

AMERICAN

BOXWOOD *steps out ahead*

—the real Aristocrat of the Evergreen family

YOU CAN SECURE THE FINEST SPECIMENS IN AMERICA FROM HARRISONS'

Possibly no evergreen shrub has been so much used for marking the boundaries of formal gardens, to outline flower beds, for low hedges, and for other ornamental purposes. The plants will adapt themselves to almost any situation and climate, and by judicious pruning can be trained to many forms.

Compact—Deep Glossy Leaves

Our Boxwood has deep glossy green leaves. They are dense, compact specimens, having been sheared many times. The leaves on this variety are small and resemble the dwarf English Boxwood. This variety is a dwarf grower, but it makes much faster growth than the English Boxwood. For those who want large Boxwood plants in a few years, this is the best variety to plant.

Let's Plant More

American BOXWOOD

(*Buxus Sempervirens*)

A BROTHER OF "YE OLDE ENGLISH" BOXWOOD

—It Grows Much Faster

PRICES OF AMERICAN BOXWOOD

	Each	2 for	10 for
3 to 4 inches	\$.35	\$0.60	\$2.50
4 to 6 inches	.45	.80	3.50
6 to 8 inches	.60	1.10	5.00
8 to 10 inches, B&B	.80	1.50	7.00
10 to 12 inches, B&B	1.10	2.10	10.00
12 to 15 inches, B&B	1.50	2.90	14.00
15 to 18 inches, B&B	2.00	3.80	18.00

THEY LIVE FOR CENTURIES

AMERICAN BOXWOOD

SPECIAL AMERICAN BOXWOOD OFFER

10 American Boxwood
3 to 4 inch for only \$2.50

YOU CAN PLACE YOUR ORDER WITH US WITH COMPLETE CONFIDENCE. It is our earnest desire that each and every one of our customers be fully satisfied in their dealings with us. If you are not and feel that it is our fault in any way, please write to us. No transaction is complete unless you are completely satisfied.

BOXWOOD IS A SPECIALTY WITH US—
WRITE FOR PRICES ON LARGER QUANTITIES





LOVELY BROADLEAF EVERGREENS

BUSH ARBUTUS

(Abelia grandiflora)

One of our beautiful, popular and satisfactory Broad-Leaved Evergreens. The graceful, drooping stems and branches are covered with dark, glossy leaves, which in winter assume a metallic sheen. From the middle of June until frost, this plant produces an immense quantity of tubular-shaped white flowers tinged with pink, about an inch long, which are borne in clusters. Good for shady locations.

	Each	2 for	10 for
1 to 1½ ft.	\$1.50	\$2.70	\$11.50
1½ to 2 ft.	2.00	3.80	17.00
2 to 3 ft.	2.50	4.70	21.00

BERBERIS JULIANAE. A beautiful and rare evergreen variety. It stays perfectly green during the winter and blends well with other evergreens and broad-leaved evergreens. Each 2 for 10 for

1½ to 2 ft.	\$1.75	\$3.00	\$13.50
-------------	-------	--------	--------	---------

SOUTHERN MAGNOLIA (Magnolia grandiflora). The finest large growing broad-leaved evergreen tree. Large glossy leaves, handsome white flowers during summer. Trees grow pyramidal in form and often attain 50 feet or more in height. Its flowers are followed by large pods covered with brilliant red seeds. Each 2 for 10 for

1½ to 2 ft.	\$2.75	\$5.00	\$22.50
2 to 3 ft.	3.50	6.30	29.00
3 to 4 ft.	4.50	8.00	37.50



BUSH ARBUTUS — Abelia Grandiflora

Real Holly Trees

AMERICAN HOLLY (Ilex opaca). The Christmas Holly. Its bright green, spiny leaves and brilliant red berries make it one of our handsomest plants.

	Each	2 for	10 for
1½ to 2 ft.	\$3.00	\$5.30 \$24.00

AZALEA—A Miracle of Loveliness

Every Woman's Heart Has a Place for this "Prince of the Orient"



AZALEA HINODEGIRI—A profusion of all-over deep coral-pink at blooming time

AZALEA HINODEGIRI

Deep Coral-Pink Flowers

Azalea hinodegiri is a dwarf grower with evergreen foliage. In the spring it produces a profusion of deep coral colored blossoms, completely hiding the foliage. Ideally suited for planting around the foundation of homes or adding color in front of evergreens.

PRICES OF AZALEA HINODEGIRI

	Each	2 for	10 for
4- to 6-inch spread, B&B	\$0.60	\$1.10 \$4.50
6- to 8-inch spread, B&B	1.00	1.90 8.00

AZALEA AMOENA

Rosy Purple Flowers — Evergreen Foliage

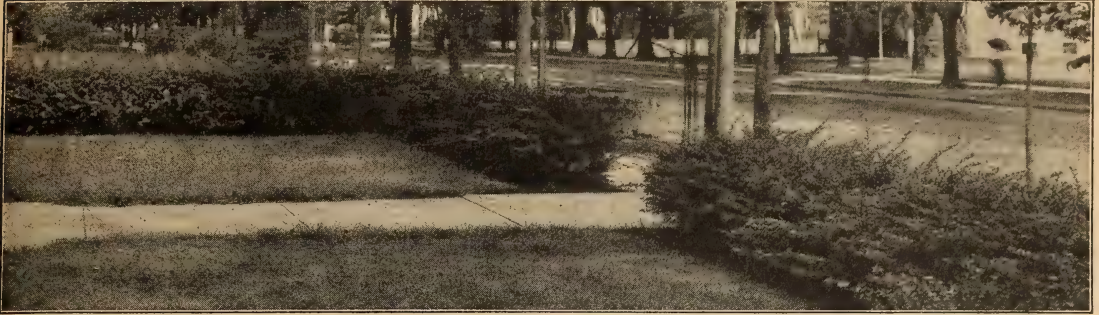
A dense dwarf growing shrub with slender branches and semi-double flowers of a bright rosy purple color. Evergreen foliage that makes it very attractive when out of bloom. Grows satisfactorily in shade as well as in full sunlight. More hardy than the other kinds and its wealth of bloom in the early spring is a delight to everyone who sees it.

PRICES FOR AZALEA AMOENA ONLY

	Each	2 for	10 for
12 to 15 inches, B&B	\$2.00	\$3.40 \$15.00
15 to 18 inches, B&B	2.50	4.30 20.00
18 to 24 inches, B&B	3.00	5.20 24.00

HEDGES *Beautiful living fences*

HARRISON'S
HI-QUALITY
ORNAMENTALS



GREEN BARBERRY — Green in the summer, turning to a brilliant coppery red in late fall, a protection against small animals, because of the sharp thorns. This type of hedge is practical and inexpensive.

GREEN BARBERRY (*Berberis thunbergii*). The best low dense hedge plant grown. Its abundant, small light green leaves, which turn to rich colors in autumn, and its wealth of scarlet berries make it very attractive. Extremely hardy and requires but little pruning. Ornamental and graceful the whole year.

	1 to 9 Plants	10 to 49 Plants	50 to 300 Plants
9 to 12 inches	\$.05	\$.12	\$.09
12 to 15 inches	.20	.16	.12
15 to 18 inches	.30	.25	.20
18 to 24 inches	.45	.35	.25

IBOLIUM PRIVET (*Ligustrum ibolium*). A cross between California and Iboeta Privet with beauty of the former and hardness of the latter.

	1 to 9 Plants	10 to 49 Plants	50 to 300 Plants
1 1/2 to 2 feet	\$.18	\$.15	\$.10
2 to 3 feet	.25	.20	.15

UPRIGHT BARBERRY

(*Berberis thunbergii hibernica*)
THE IDEAL HEDGE PLANT

Very similar to Green Barberry, except it grows upright instead of spreading; glossy green foliage, pyramidal habit, bears a profusion of scarlet berries which stay on the bush well into the winter months. May be trimmed any desired shape. Hardy, can be used for hedges or individual specimens without pruning.

	1 to 9 Plants	10 to 49 Plants	50 to 300 Plants
12 to 15 inches	\$.30	\$.25	\$.20
15 to 18 inches	.40	.35	.25
18 to 24 inches	.50	.45	.30
2 to 3 feet	.60	.50	.35

RED-LEAVED BARBERRY (*Berberis thunbergii atropurpurea*). A highly important introduction among shrubs, giving us for the first time a practical, easily grown shrub of medium height, with good, distinctly red foliage. This must prove a boon to all types of landscaping, where studied contrasts are to be worked out with the shrub foliage depended on for colors.

	1 to 9 Plants	10 to 49 Plants	50 to 300 Plants
9 to 12 inches	\$.20	\$.16	\$.12
12 to 15 inches	.30	.25	.20
15 to 18 inches	.40	.35	.25
18 to 24 inches	.50	.45	.30



UPRIGHT BARBERRY



SPIRAEA VAN HOUTTEI

Always makes an attractive hedge

This grand shrub has done more to beautify the homes of America than any other variety. It is valuable as a specimen in groups in border planting and for hedges. The branches are slender, drooping, covered with white flowers in April or early May. It grows in any place either in full sunlight or partial shade. Disease resistant, hardy, thrives under adverse conditions. Ultimate height 6 to 8 feet but can be kept lower by trimming.

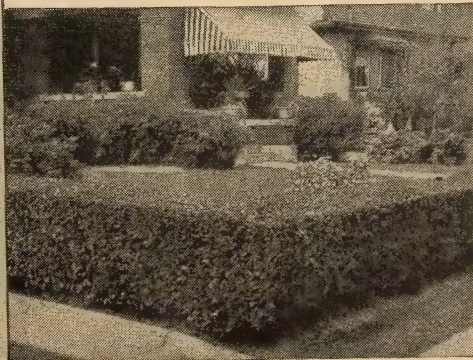
	1 to 9 Plants	10 to 49 Plants	50 to 300 Plants
18 to 24 inch	\$.30	\$.25	\$.20
2 to 3 feet	.35	.30	.25

CALIFORNIA PRIVET

THE LEADING LOW COST HEDGE PLANT

CALIFORNIA PRIVET (*Ligustrum ovalifolium*). We grow California Privet by the mile. Most popular hedge plant; can be trimmed to any desired shape. For planting long hedges, this is the most economical variety. Quick grower.

	1 to 9 Plants	10 to 49 Plants	50 to 300 Plants
8 to 12 in.	\$.12	\$.09	\$.05
1 to 1 1/2 ft.	.15	.12	.07
1 1/2 to 2 ft.	.18	.15	.10
2 to 3 ft.	.25	.20	.15
3 to 4 ft.	.35	.26	.20



Strong, Hardy, Well-Rooted Plants for Quick and Permanent Hedges

When You Think of Your Shade Trees, Buy Direct

NORTHERN STRAIN

CHINESE ELM

Grows 20 Feet in Four Years

Because of its beauty and extremely rapid growth, Chinese Elm has become a leading shade tree of America. It is planted in every state, and like its native country of Korea, withstands intense cold and extreme heat. It makes excellent shade in five short years, averaging about 5 feet growth annually. It is by far the fastest growing hard-wooded shade tree. It resembles the American Elm except the leaves are smaller, with the gracefulness of a cut-leaf Birch.

SILVER MAPLE

(*Acer dasycarpum*). The name comes from the color of leaves. Underneath, these are the same shade as new, bright silver; on top they are light green. Many of them are carried on their edges, and when wind blows the trees are alive with silver and green flashes. In the fall the leaves fade to pale yellow. Growth is faster than that of any other Maple.

AMERICAN ELM

(*Ulmus americana*). A noble native tree of great size, wide spreading, gracefully curving branches, growing up in a form like the outline of long-stemmed flowers in a tall vase.



CHINESE ELM. Quickest Growing Tree in the World

ORIENTAL PLANE

(*Platanus orientalis*). A rapid, upright, clean growing shade tree, long lived, beautiful dense foliage. A superb tree of gigantic proportions, which is very hardy.

AMERICAN PLANE

(*Platanus occidentalis*). A very rapid growing tree for yard and street planting. The bark is grayish green and peels off during the winter.



ORIENTAL PLANE

ALL HARRISONS' SHADE TREES HAVE BIG ROOTS, SHAPELY TOPS, AND GIVE IMMEDIATE EFFECT AFTER PLANTING

For Quicker Service We Recommend Express Shipment

CROSS COUNTRY PACKING

Our method of packing enables us to ship our shade trees thousands of miles with the trees arriving in field-fresh condition. We guarantee safe arrival no matter where you live.



SILVER MAPLE

PRICES OF SHADE TREES ON THIS PAGE ONLY			
	Each	2 for	10 for
4 to 5 feet	\$0.95	\$1.50	\$ 6.50
5 to 6 feet	1.35	2.20	9.00
6 to 8 ft., 1 to 1 1/4 in. cal.	1.75	3.25	12.50
8 to 10 ft., 1 1/4 to 1 1/2 in. cal. ...	2.50	4.50	17.50
10 to 12 ft., 1 1/2 to 1 3/4 in. cal. ...	3.25	5.50	25.00
12 to 14 ft., 1 3/4 to 2 in. cal.	4.00	7.00	32.50

Write for prices on larger quantities.
Shade trees cannot be shipped by Parcel Post.



BETTER SHADE TREES FOR LESS MONEY

STATELY PIN OAKS

(*Quercus palustris*)

America's Favorite Oak Tree

The tree of trees—no other tree is more beautiful—once planted the Pin Oak continues to grow for a lifetime. Some of the finest, most attractive plantings depend almost entirely on the stately Pin Oak for their landscape appeal.

Beautiful Bronze Color During Autumn

Deeply cut, bright, fresh green foliage during the summer, turning to a bright bronze color during autumn. The most graceful tree for the lawn, equally as desirable for street or roadside planting.

YOU'LL NEVER REGRET PLANTING PIN OAKS.

RED OAK (*Quercus rubra*). Growth is slow, eventually grows large. Has extra large leaves. A good shade and street tree.

NORWAY MAPLE

(*Acer platanoides*)

Typical Maple leaves, large and bright green, fading to gold in the fall. Trunk and branches are sturdy and strong, lending an effect of ruggedness. Growth is slow. Branches and foliage are thick and compact, and the head, which is round-topped, begins to branch out not far above the ground.

SWEET GUM

(*Liquidambar styraciflua*). A shapely tree with slender, corky-ridged branches. Leaves are bright green and lustrous; in autumn they change to a pleasing tone of crimson color.

Prices for above varieties:

	Each	2 for	10 for
6 to 8 ft., 1 in. cal.	to 1 1/4	\$2.25	\$4.00 \$17.50
8 to 10 ft., 1 1/4 in. cal.	to 1 1/2	3.25	5.50 22.50
10 to 12 ft., 1 1/2 in. cal.	to 1 3/4	4.25	7.50 30.00
12 to 14 ft., 1 3/4 in. cal.	to 2	5.25	9.00 40.00

Write for prices on larger quantities. Shade trees cannot be shipped by Parcel Post.

LOMBARDY POPLAR

(*Populus nigra italica*)

A tall, spirelike tree used for screens and formal plantings. It is fast growing, distinctly ornamental and beautiful.

	Each	2 for	10 for	100 for
4 to 5 ft.	\$0.75	\$1.10	\$ 4.50	\$40.00
5 to 6 ft.	1.00	1.60	6.00	50.00
6 to 8 ft.	1.50	2.50	10.00	90.00

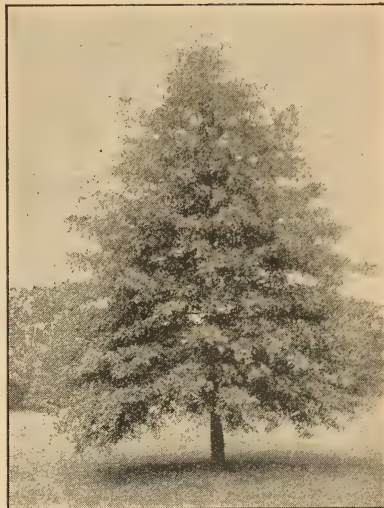
The above prices are for Lombardy Poplars only.

HARRISONS' CAN SUPPLY SHADE TREES IN CAR LOADS

We invite the City Forester of your Department of Parks; the District Engineer of your State Highway Commission and Landscape Architect to visit us at Berlin, Maryland, to see the Shade Trees growing in our nurseries.

Our tremendous production enables us to supply high quality Shade Trees at very low prices.

Picture these lovely shade trees in your own garden. They are modern and really so inexpensive.



PIN OAK



NORWAY MAPLE



LOMBARDY POPLAR



TREES FOR BEAUTY AND SHADE



Harrisons' Ornamental

SHADE TREES



SUGAR MAPLES—Ideal for Street Planting

**RAPID
GROWING**

VIGOROUS

**STRAIGHT
TRUNKS**

HARDY

SUGAR MAPLE

(*Acer saccharum*)

A tall and symmetrical tree, hard wooded, long lived and extremely hardy, widely used for street and ornamental planting. The leaves color richly in the fall, turning to brilliant hues of scarlet and yellow. Growth is medium fast.

	Each	2 for	10 for
4 to 5 ft.	\$1.35	\$2.20	\$ 9.00
5 to 6 ft.	1.50	2.50	10.00
6 to 8 ft.	2.25	4.00	17.50

**Harrisons' Hardy Trees are Not Affected by
Change of Climate**

FOR QUICKER SERVICE—WE RECOMMEND
EXPRESS SHIPMENT



BABYLON WEeping WILLOW

GENUINE DOUBLE WHITE FLOWERING CHERRY TREES

One of the most lovely spring flowering trees. Large double pure white blossoms that envelop the entire tree. The best and easiest flowering Cherry tree to grow. No planting is complete without one or more of this remarkable variety. Widely used for planting along streets and avenues.

Pictured in color on inside back cover page

	Each	2 for
2 to 3 ft.	\$0.70	\$1.20
3 to 4 ft.90	1.60
4 to 5 ft.	1.25	2.20
5 to 6 ft.	1.75	3.00

WEEPING WILLOWS

BABYLON WEeping WILLOW. (*Salix babylonica*). A rapid growing, hardy tree, thriving in any moist soil. The Willows are valuable and interesting subjects on account of their graceful aspect.

	Each	2 for	10 for
5 to 6 ft.	\$1.50	\$2.50	\$10.00
6 to 8 ft.	2.25	4.00	17.50

DWARF BLOOD-LEAF MAPLE

(*Acer palmatum atropurpureum*)

Picturesque Maple for use in landscape schemes, as an individual specimen or to add color to your planting. Very conspicuous, medium size bush with blood-red foliage. Best color in sunny locations. We offer an improved strain.

10 to 15 in., \$1.75 each; 2 for \$3.20.

Pictured in color on back outside cover page.



DWARF BLOOD-LEAF MAPLE

AMERICA'S *Finest* Flowering

Trees

FOR
YOUR GARDEN



DOGWOOD BLOSSOMS

WHITE FLOWERING DOGWOOD (*Cornus florida*). One of the native spring flowering small trees, with white flowers and bright red berries in fall.

	Each	2 for
2 to 3 feet	\$1.00	\$1.80
3 to 4 feet	1.50	2.70
4 to 5 feet	2.00	3.50
5 to 6 feet	2.75	5.00

RED FLOWERING DOGWOOD (*Cornus florida rubra*). One of the most popular small ornamental trees. Handsome red flowers in early spring. Makes an attractive lawn specimen.

	Each	2 for
1½ to 2 ft.	\$1.40	\$2.50
2 to 3 ft.	1.80	3.30

FLOWERING PEACHES. During early spring the Flowering Peaches are covered with a mass of beautifully formed and highly colored double flowers. These trees cannot be too highly recommended. Perfectly hardy, thriving in any soil in which other peaches grow. We make a specialty of growing Flowering Peach trees and have several thousand to offer this season. We offer **Double Red.**

Prices of Flowering Peach Trees

	Each	2 for
2 to 3 ft.	\$0.50	\$0.90
3 to 4 ft.70	1.20
4 to 5 ft.90	1.60

DOUBLE PINK FLOWERING PLUM (*Prunus triloba plena*). This small growing tree is covered with double pink blooms early in the spring, before the leaves appear. Seldom attains a height of more than 8 feet.

	Each	2 for
1 to 1½ ft.	\$0.50	\$0.90
1½ to 2 ft.60	1.10

PINK FLOWERING ALMOND. A lovely dwarf flowering shrub. Profusion of double pink blooms during early spring.

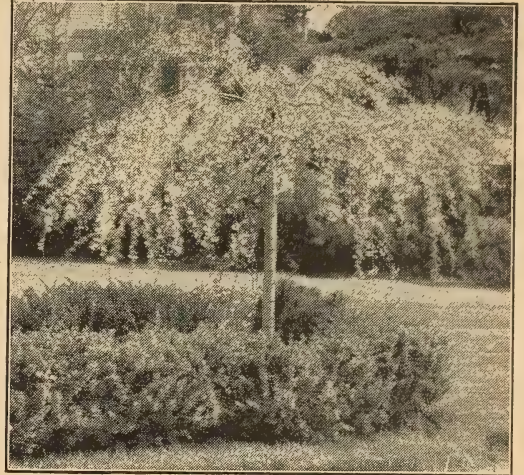
	Each	2 for
1½ to 2 ft.	\$0.60	\$1.10
2 to 3 ft.80	1.40
3 to 4 ft.	1.10	2.00

PURPLE-LEAVED OTHELLO PLUM. Upright grower, foliage brilliant reddish purple, holding its color throughout season. Prolific bearer, with crimson fruit producing ornamental effect.

	Each	2 for
3 to 4 ft.	\$0.90	\$1.60
4 to 5 ft.	1.25	2.20

BECHTEL'S FLOWERING CRAB APPLE. Only genuine double-flowered Crab. When in bloom, appears to be covered with delicate pink, perfectly double, small roses of delicious fragrance. Best Flowering Crab Apple.

	Each	2 for
1½ to 2 ft.	\$0.60	\$1.10
2 to 3 ft.80	1.40
3 to 4 ft.	1.10	2.00



WEeping CHERRY. One of the most beautiful of flowering trees. Drooping branches growing from the top of a slender main stem in a way that vaguely resembles the frame of an umbrella. In early spring the tree is covered with delicate clusters of dainty pink flowers.

Prices, grafted heads on 4 to 6 ft. stems, \$3.75 each; 2 for \$6.50.



DOUBLE WHITE FLOWERING CHERRY
Pictured in color on inside back cover page



BECHTEL'S FLOWERING CRAB APPLE
Very hardy and colorful



RED FLOWERING PEACH
Pictured in color on inside back cover page

MAKE YOUR HOME GROUNDS MORE BEAUTIFUL





Harrisons' Lifetime Shrubs To Beautify Your Home

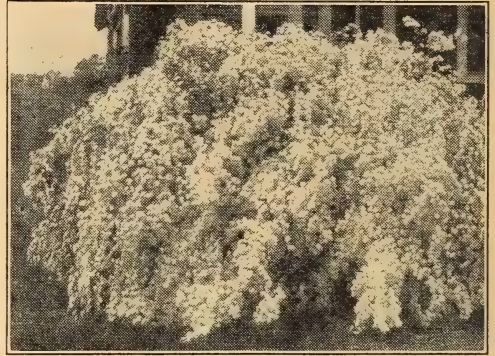
Everywhere people are making their homes more livable, more attractive. A little planning, a little planting. And what joy and satisfaction in having a home framed with beautiful trees and a well-kept lawn planted to shrubs and flowers.

This colorful shrub planting adds that "bit" of beauty so necessary to the home. Each variety should be carefully selected and planted to get the proper place and correct balance.

These shrubs blossom intermittently from April until frost.

The Glorious Spirea Van Houttei

This grand shrub has done more to beautify the homes of America than any other variety. It is valuable as a specimen in groups in border planting and for hedges. The branches are slender, drooping, covered with white flowers in April or early May. It grows in any place either in full sunlight or partial shade. Disease resistant, hardy, thrives under adverse conditions. Ultimate height 6 to 8 feet but can be kept lower by trimming. The most popular shrub. We have an extra fine supply of first class plants this year and are pricing them especially low.



SPIREA VAN HOUTTEI

	Each	2 for	10 for	100 for
1½ to 2 ft.	\$0.30	\$0.55	\$2.50	\$20.00
2 to 3 ft.35	.65	3.00	25.00

BLUE HYDRANGEA (*Hydrangea otaksa*). Old favorite southern hydrangea. When winters are severe we suggest heeling in. Large balls of blue flowers; very attractive large leaves. Color depends on acidity of soil. **Field grown plants, 80c each; 2 for \$1.50.**

CREPE MYRTLE. (*Lagerstroemia indica*). Small green, glossy leaves; very beautiful showy flowers during midsummer to fall; noticeable object in any landscape. Not hardy north of Mason-Dixon line, but most popular southern shrub. Pink and red varieties. **1½ to 2 ft., each \$1.20; 2 for \$2.10; 10 for \$9.00.**

FIRETHORN. A beautiful shrub covered with a profusion of white flowers in early spring, followed by bright orange berries which hang on all winter.

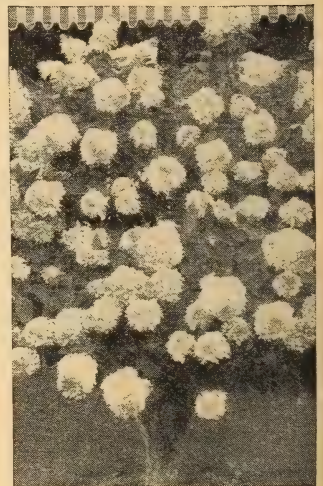
	Each	2 for
12 to 15 in.	\$1.10	\$2.00
15 to 18 in.	1.40	2.50

HYDRANGEA PEE GEE (*Hydrangea paniculata grandiflora*). Large flowers; first snowy white, then pink changing to reddish bronze in the fall. Blooms midsummer to fall. **18 to 24 in., 50c each; 2 for 90c; 10 for \$4.00.**

QUINCE, FLOWERING (*Cydonia japonica*). Scarlet flowers in April and May. No doubt one of the most attractive spring blooming shrubs. **1 to 1½ ft., 35c each; 2 for 60c; 10 for \$2.50.**

SPIREA ANTHONY WATERER. Crimson flowers in large, flat clusters. Blooms early and continues till fall. **12 to 15 in., 45c each; 2 for 80c.**

WEIGELA EVA RATHKE. Very attractive deep carmine-red flowers, making a very showy shrub. **1½ to 2 ft., 60c each; 2 for \$1.00. 2 to 3 ft., 80c each; 2 for \$1.40.**



HYDRANGEA P. G.



FLOWERING QUINCE



FIRETHORN



BLUE HYDRANGEA



WEIGELA, EVA RATHKE



These Plants Add Color and Variety to Your Planting

**Beautify
Your
Home
Grounds
This
Year**



WITH DISTINCTIVE SHRUBS
They Make a Colorful Planting

	Each	3 for	10 for
Medium—1 to 1½ feet	\$0.35	\$0.90	\$2.50
Big—1½ to 2 feet40	1.05	3.00
Largest—2 to 3 feet50	1.35	4.00

ALTHEA or ROSE OF SHARON (*Hibiscus syriacus*). The double and single flowers are formed in varying colors. We can supply single red, double red, white with crimson center, single white, and double white.

BUDDLEIA MAGNIFICA. New and undoubtedly the finest of all the summer-flowering Butterfly Bushes. Large bright lavender panicles. Flowers do not sunburn as do other varieties. Foliage heavy rich dark green. Very hardy.

DEUTZIA, PRIDE OF ROCHESTER. Double white flowers, slightly tinged with rose, appear in mid-June.

DOGWOOD, REDBRANCHED (*Cornus alba sibirica*). Bright red bark, white flowers, blue fruit; rapid grower, beautiful winter effect.

GOLDEN BELL (*Forsythia*). Vigorous, upright grower; profusion of yellow flowers in April. One of the best early blooming shrubs.

HONEYSUCKLE BUSH (*Lonicera morrowi*). Early white flowers in June, followed by red berries.

SPIRAEA BILLIARDI. A hardy type of Spiraea that grows exceedingly well in dry places. Long, fluffy flower spikes. We offer two colors: white and pink.

SYRINGA, SWEET MOCK ORANGE or GARLAND (*Philadelphus coronarius*). Of upright habit, and produces in June a wealth of white, fragrant flowers.

SWEET-SCENTED SHRUB (*Calycanthus floridus*). Hardy native with many double, chocolate-colored flowers in May. Flowers, leaves and even the wood have a spicy fragrance.

TAMARIX GALLICA. Light pink blossoms in May and June. Bluish green foliage.

TAMARIX AMURENSE. Slender branches covered with pink flowers. Grey-green foliage.

TAMARIX, AFRICAN (*Tamarix africana*). Feathery grey-green foliage, very showy.

TARTARIAN HONEYSUCKLE (*Lonicera tatarica*). Very attractive in blossom, producing an abundance of flowers followed by red fruit. We offer pink and white varieties.

WEIGELA, PINK (*Weigela rosea*). The most popular Weigela sold today. Its delicate pink, bell-shaped flowers are borne in great profusion along arching branches.



ALTHEA (Rose of Sharon)



DEUTZIA,
PRIDE OF ROCHESTER



SYRINGA (Mock Orange)



GOLDEN BELL (*Forsythia*)



TAMARIX—Feathery Foliage



TARTARIAN HONEYSUCKLE

Outstanding in Fragrance and Beauty

Aristocrats Among Roses

New Beauty for Your Garden
Everblooming Hybrid Teas—bloom all summer

EVERBLOOMING HYBRID TEAS

Ami Quinard Very dark crimson-maroon, semi-double flowers. One of the darkest Roses grown and under certain conditions appears to be black. Very free bloomer, healthy grower. The most spectacular dark Rose.

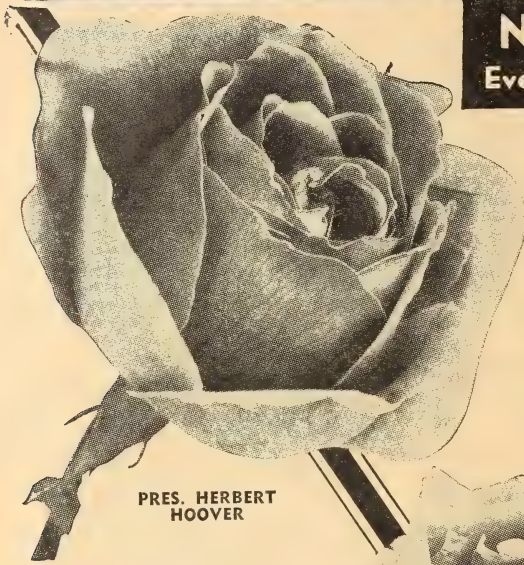
Condesa de Sastago Marvelously colored Rose with large cupped flowers of coppery red inside and rich yellow outside. A profuse bloomer at all times, keeps well when cut, and is spicily fragrant. Compares with the Radiance Rose in vigor and hardiness.

Etoile de Hollande At present considered most popular of crimson Hybrid Teas. Velvety scarlet-crimson with delicious fragrance, and enormous petals. It charms continuously with its delightful color, vigorous growth, and well-formed flowers on long stems. Truly a faultless Rose.

Golden Dawn Generally considered the finest yellow Rose. Blooms of soft lemon-yellow tinted with old rose markings, long-lasting fragrance of real Tea scent. Hardy, bushy, medium height, and very vigorous.

Kaiserin Auguste Viktoria Perfect creamy white bloom, slightly tinged with lemon, large and full. Long shapely buds open to full-petaled, deliciously scented bloom. An old favorite that even today has not been surpassed.

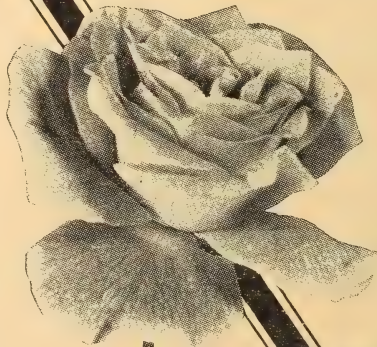
Mrs. Chas. Bell A delicate, refined shell-pink shade, intensely fragrant. Very vigorous, tall and bushy. A sport of the ever-popular Pink Radiance, and sometimes called "Shell-Pink Radiance." An exquisite Rose that should be in every garden.



PRES. HERBERT
 HOOVER



ROSLYN



TALISMAN



RED RADIANCE

Harrisons
Bud-Selected
Roses
ARE BETTER
because

- Grown under ideal soil and climatic conditions.
- Two-year, field-grown, budded low on de-eyed multiflora japonica rose stock.
- Years of experience in growing, packing and handling of Rose bushes.
- Scientifically budded from selected mother plants.
- All varieties are fully tested.
- Larger root systems take hold quicker in new locations.
- Packed in moisture retaining material, they arrive in field-fresh condition.
- Graded to higher standards.
- Free from diseases and insects.

PRICES

All Varieties—Pages 48-49

EVERBLOOMING HYBRID TEAS—NURSERY GROWN
 BUDDED ON MULTIFLORA JAPONICA UNDERSTOCKS

	Each	3 for	10 for	50 for
Super Select Grade	\$0.75	\$2.10	\$6.00	\$25.00

Plant Your
Rose Garden
THIS
SEASON

For Better Blooms
Buy Bud-Selected Plants
Harrisons' Budded Roses are the Best



Harrisons' Field Grown Hardy ROSES

**GORGEOUS ROSES THAT MAKE ANY
PLANTING MORE COLORFUL**

Mrs. E. P. Thom Deep yellow buds, with carmine markings, opening to semi-double, clear lemon-yellow, never fading blooms. Similar to Souv. de Claudius Pernet, being among the best yellows grown successfully throughout the United States.

Mrs. Pierre S. du Pont Medium sized reddish gold buds open to a semi-double golden yellow that is a glorious sight from early summer until freezing weather. Moderately fragrant. Vigorous, compact, glossy foliage. The "ace" of the golden yellow Roses.

Pink Radiance A brilliant carmine-pink with yellow shading at base of petals, having a light silvery tone on the inside, and deeper on the outside. Vigorous, free bloomer, parent of Red Radiance. Among the oldest Roses, planted everywhere because it has made good everywhere.

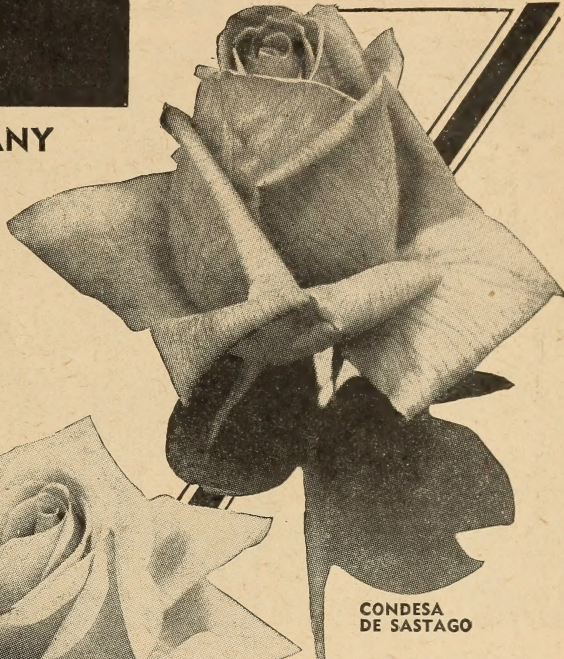
Pres. Herbert Hoover One of the outstanding Roses. A glorious new Rose of vivid cerise-red toned with yellow, orange and scarlet, richly perfumed and free flowering.

Red Radiance A sport of the famous Radiance and identical in all characteristics except color. A brilliant cerise-red color, and intensely fragrant. Tall and bushy, healthy foliage and excellent blooming qualities. The favorite red Rose of America's millions.

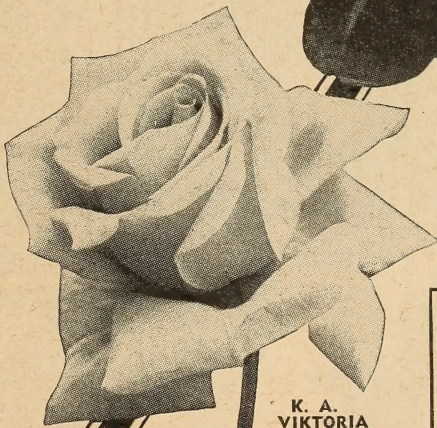
Talisman
A multi-colored glorious combination of orange, yellow and rose-red. They simply eclipse other Roses in autumn. Fine for both decoration and cutting. The tri-tone flowers are produced all season.

**ORDER
EARLY**

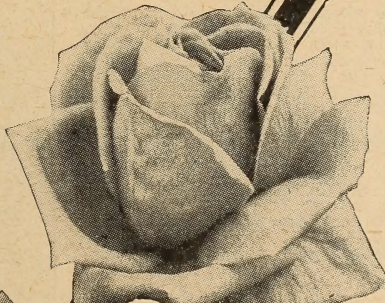
**MRS. PIERRE
S. DU PONT**



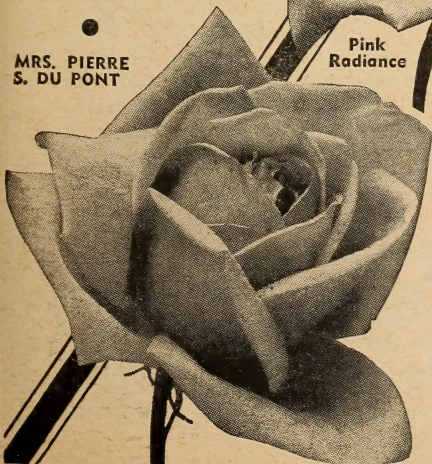
**CONDESA
DE SASTAGO**



**K. A.
VIKTORIA**

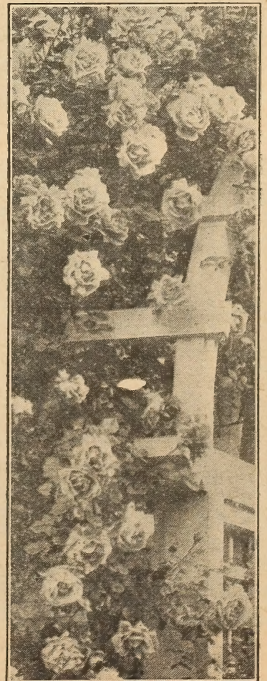


**Pink
Radiance**



Paul's Scarlet Climber

Large, intense scarlet blooms; freely produced. It is strong and perfectly hardy. The most popular climbing Rose. 70c each; 3 for \$2.00; 10 for \$5.50.



GORGEOUS PEONIES

Flowers that rival the Rose. Once planted they last for years. There should be several planted in every yard. Their large bright colored flowers during May and June furnish an abundance of flowers for the home.

Can supply following colors: White, Pink, Red. State color desired.

Strong 3- to 5-eye divisions, 55c each; 3 for \$1.50; 10 for \$4.50.

MAKE YOUR GARDEN A SHOW PLACE

In making the selections offered here, the trees, shrubs and roses will give you a distinctive garden such as your neighbors cannot duplicate with ordinary material. This is your opportunity to enjoy the finest creations of the horticultural world—trees and flowers that are unusual in form and color. Make up your order now from the super-quality offerings contained in this planting guide.



Harrisons' Dazzling Colored AZALEA-TYPE 'MUMS



AZALEA-TYPE 'MUMS

Pictured in true color on back outside cover page

The most sensational hardy plant creation in years. Makes a rounded, compact bush the size of a tub, covered with hundreds of brilliant blooms from August to Thanksgiving. Gives your garden the most complete variety of colors imaginable at a time when most every other kind of plant has finished blooming.

HUNDREDS OF BLOOMS FIRST SEASON

Planted this spring they will be literally covered with blooms during the fall. They grow about 12 to 15 inches tall and thrive in most any kind of soil. A few plants planted here and there will brighten up your whole yard. Very easy to grow and requires little attention.

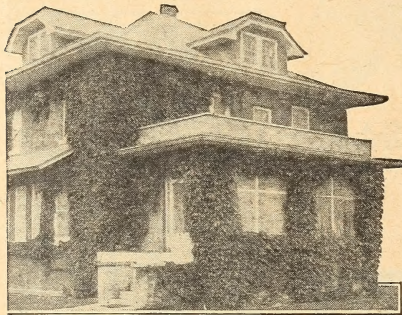
MOST GORGEOUS COLORS

The plants we offer are the finest that can be produced and come in the following dazzling colors: Pink, Red, Yellow, and White. State color desired. **Prices of all colors: Strong plants, 40c each; 3 for \$1.00; 10 for \$2.90.**

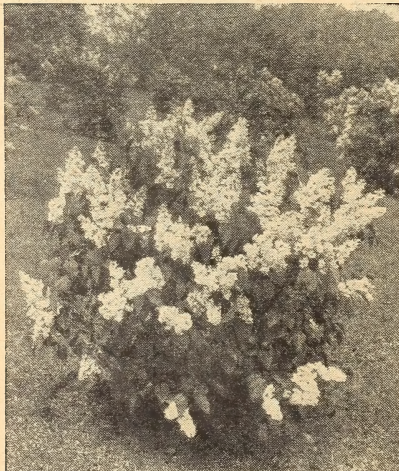
GORGEOUS LILACS

Lilacs are marvels of beauty and elegance. They are one of the first plants to bloom in the spring. Perfectly hardy in any locality. We can supply the following colors: White, Purple, Pink and Blue. State color desired. **Prices: Field-grown plants, 75c each; 2 for \$1.30; 10 for \$6.00.**

If small shipments are desired by parcel post, add 10 per cent to your remittance. Each shipment is accompanied by an official inspection certificate.



ENGLISH IVY



GORGEOUS LILACS

HARDY VINES NATURE'S DRAPERIES

SPURGE (*Pachysandra terminalis*). An evergreen ground cover. Will grow in dense shade; suitable for planting beneath trees where grass will not grow.

Each 2 for 10 for

Strong plants ... \$0.30 \$0.45 \$2.00

CHINESE WISTERIA. A rampant growing, clinging vine. Blue flowers in large drooping clusters during May and June.

60c each; 2 for \$1.10; 10 for \$5.00.
ENGLISH IVY (*Hedera Helix*). The most popular evergreen vine; large, deep green, glossy foliage. Excellent for covering walls. Useful for shady locations. **50c each; 2 for 90c; 10 for \$4.00.**

HALL'S HONEYSUCKLE. Dark, glossy green foliage; fragrant flowers from July to fall. **50c each; 2 for 90c; 10 for \$4.00.**

YELLOW JASMINE (*Jasminum nudiflorum*). A shrub-type vine, deep golden yellow flowers in early spring. **2-yr. plants, 60c each; 2 for \$1.10.**

Money Back

In the event that any nursery stock sold by us should prove untrue to name under which it is sold, we hereby agree, on proper proof of such untruthfulness to name, to replace the original order or to refund the purchase price. Except for such liability, and in respect to all nursery stock sold by us, we give no warranty, express or implied, as to description, quality, productiveness or any other matter. **HARRISON'S NURSERIES, INC.**

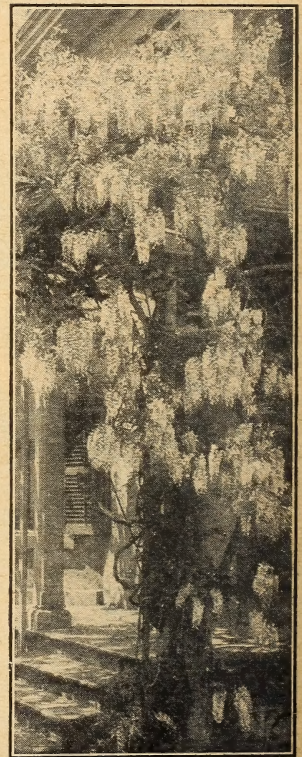
Note: Any money overpaid by customer will be promptly refunded.

Terms—Net Cash

Remittance with order, by check, money order or draft.

We will ship C. O. D. provided a deposit of one-fourth amount of purchase is sent with order.

All stock priced f.o.b. Berlin, Maryland.



CHINESE WISTERIA



BLUEBERRIES

Very Ornamental—Fruitful—Delicious—Profitable to Grow
See Page 29

PIN OAK (Page 43)



A few of
Harrisons'
Specialties
of excep-
tional merit



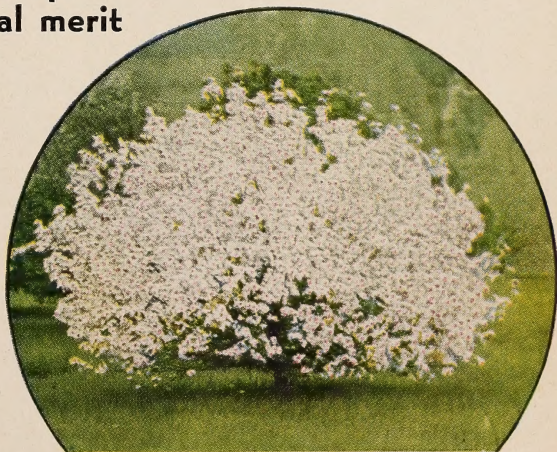
DWARF ENGLISH BOXWOOD
Page 39



BLUE HYDRANGEA (Page 46)



RED FLOWERING PEACH
Page 45



DOUBLE WHITE FLOWERING CHERRY
Page 44



SPREADING YEW
Page 38



AZALEA-TYPE 'MUMS Page 50



DWARF BLOOD-LEAF MAPLE
Page 44

Harrison's

NURSERIES, INC.

PLANTS AND TREES THAT SUCCEED
BERLIN, MARYLAND

Use These
Colorful
Plants
for modernizing
your home
grounds



AMERICAN BOXWOOD
Page 39



AZALEA HINODEGIRI
Page 40



**COMPACT GLOBULAR
ARBOR-VITAE**

Page 36

**PYRAMIDAL
ARBOR-VITAE**