

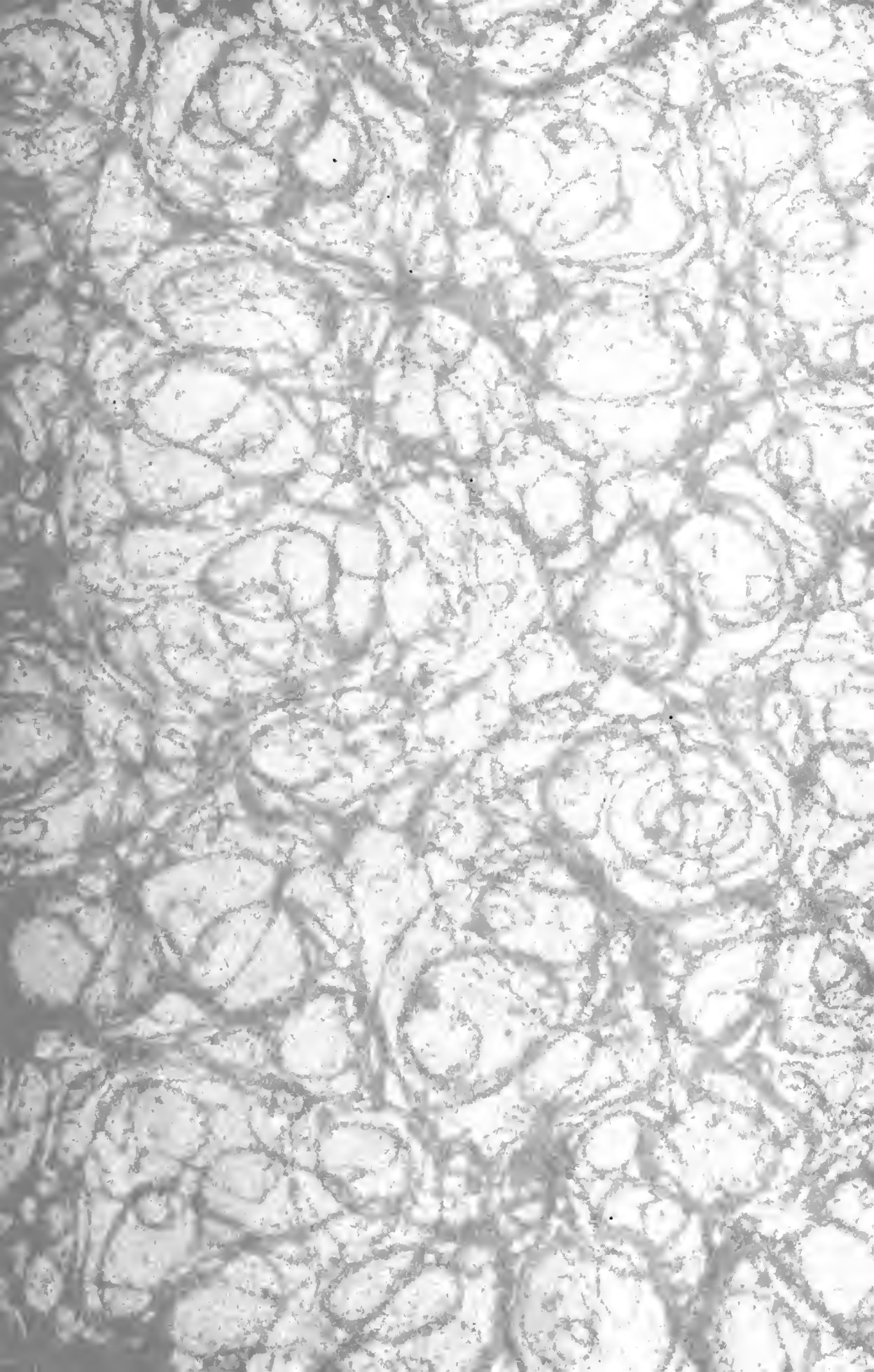
UC-NRLF



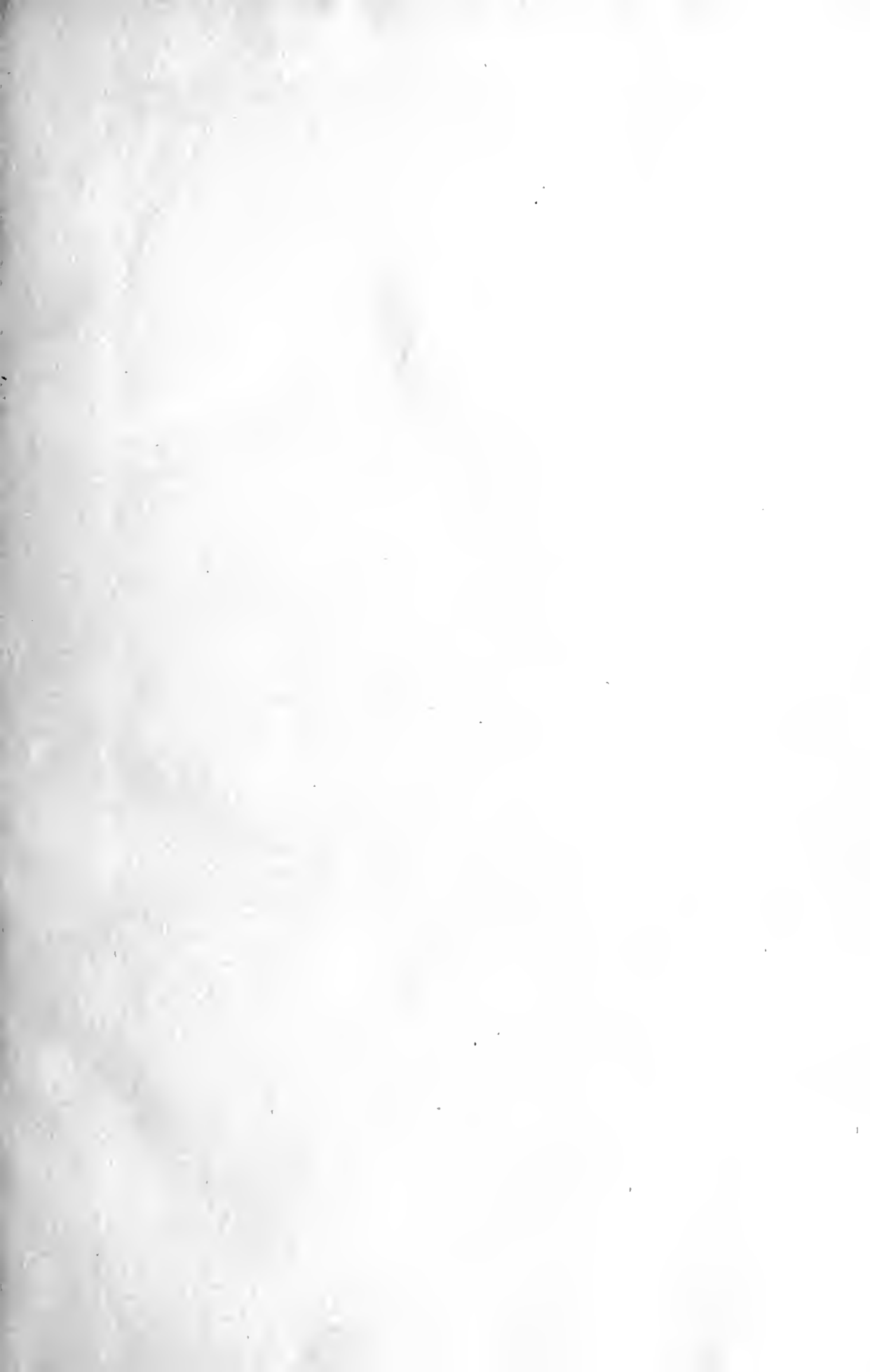
\$C 147 211

Scanned with a scanner from the University of California, San Diego

BERKELEY
LIBRARY
UNIVERSITY OF
CALIFORNIA



488
10-



Digitized by the Internet Archive
in 2008 with funding from
Microsoft Corporation

The Visitation
OF
Buckinghamshire,

In 1566,

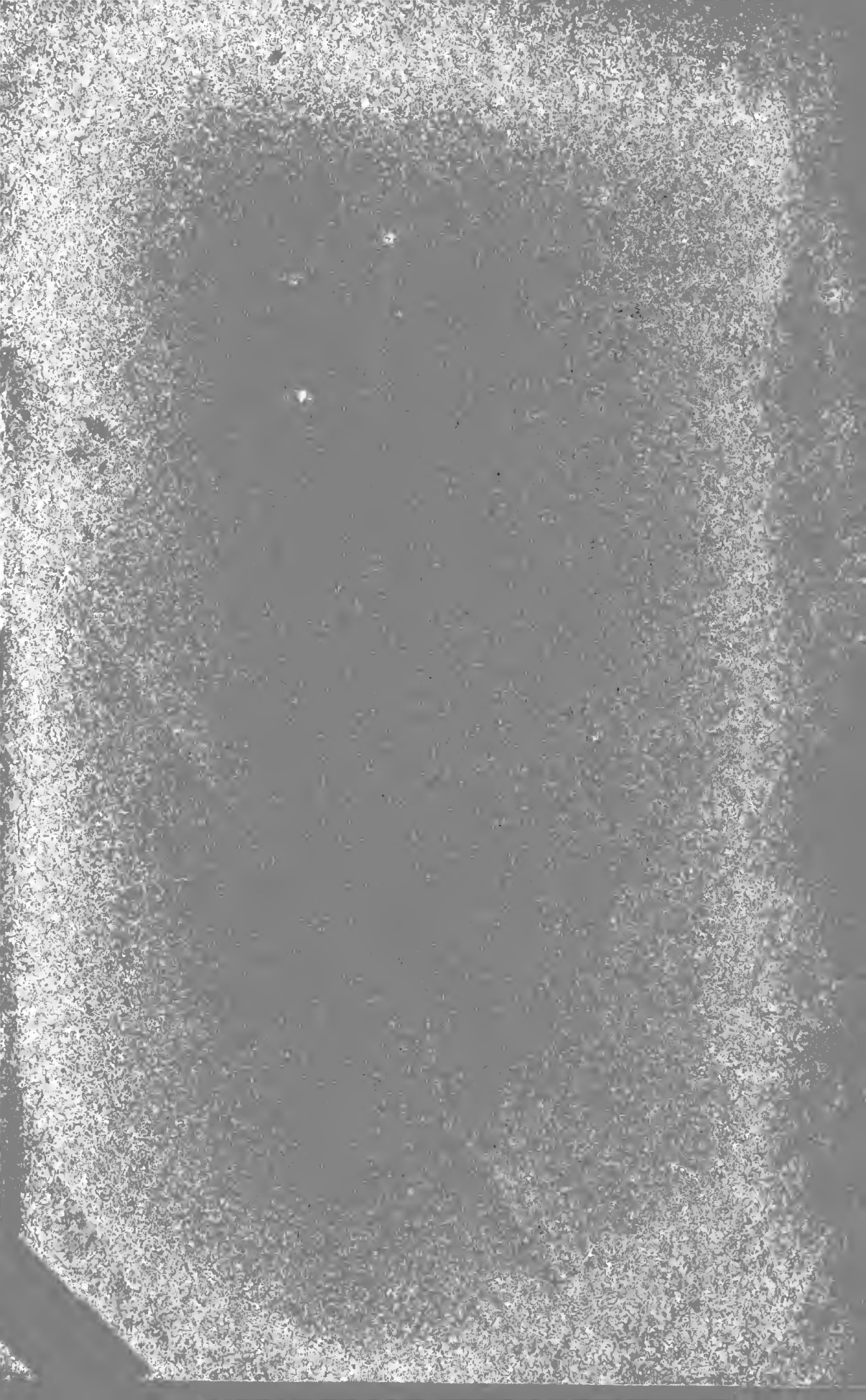
BY
William Harbey,
Clarenceux Rex Armorum.

(HARLEIAN MS. 5867.)

EDITED BY
WALTER C. METCALFE, F.S.A.

EXETER :
WILLIAM POLLARD, PRINTER, NORTH STREET.
1883.

414







1



2



3



4

1. The Bohun Swan, from the monumental brass of Eleanor, Duchess of Gloucester and Countess of Buckingham, at Westminster, 1399.
2. Arms of the Borough of Buckingham.
3. Arms of the Borough of Chepping Wycombe; these are given in Harl. MS. 5867, in mistake for those of Buckingham, and the latter are omitted.
4. Seal (now disused) of the Borough of Buckingham.

The above cuts, which have been kindly lent for this publication by Henry Gough, Esq., Barrister-at-Law, are from an article by him on "The Swan of Buckingham," in *Records of Buckingham*, vol. iii, pp. 249—270. The blazon of the arms will there be found, with authorities.

The Visitation

HTC
a

OF

Buckinghamshire,

In 1566,

BY

William Harbey,

Clarenceulx Rex Armorum.

(HARLEIAN MS. 5867.)

EDITED BY

WALTER C. METCALFE, F.S.A.

EXETER :

VILLIAM POLLARD, PRINTER, NORTH STREET.

1883.

LOAN STACK

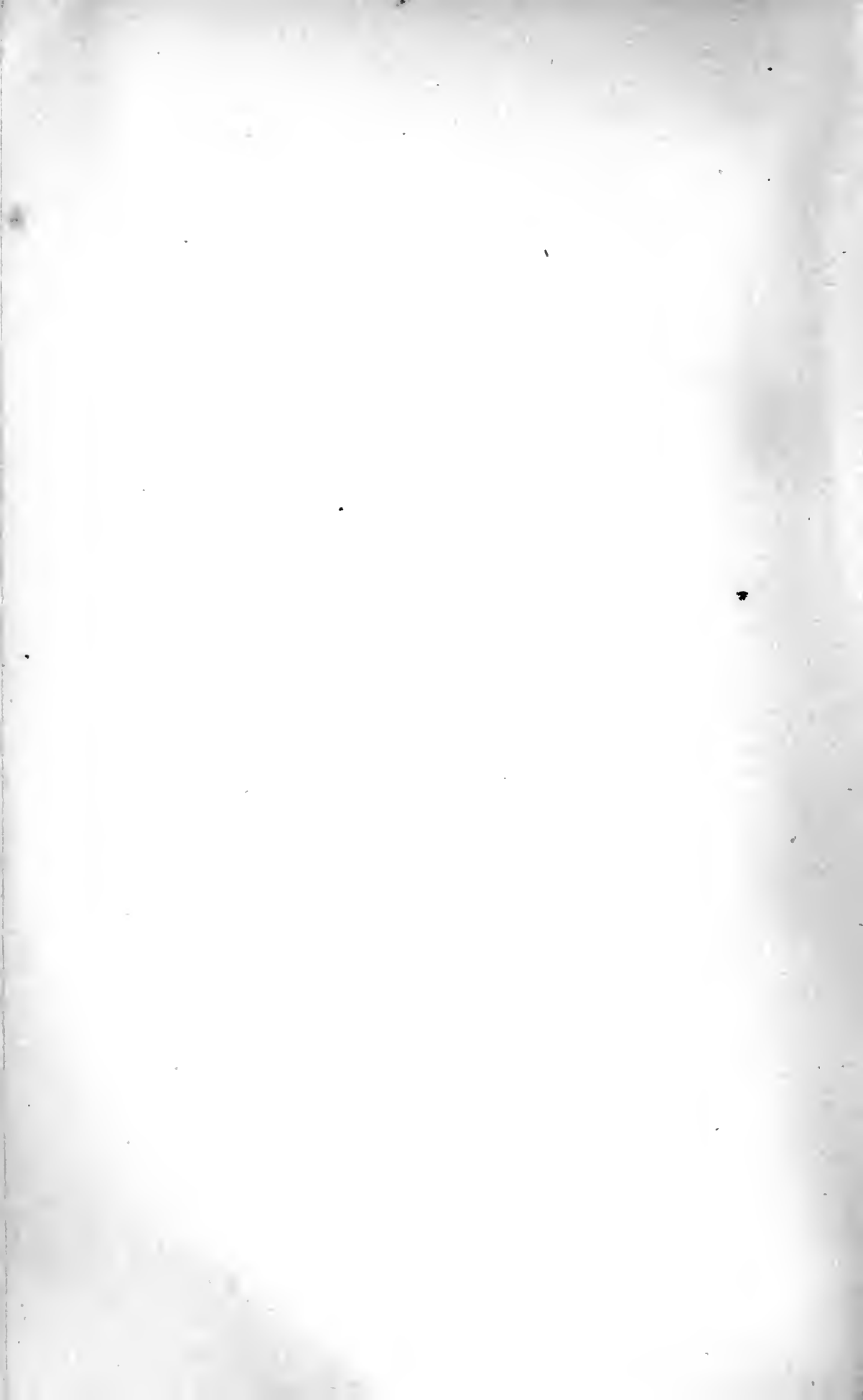
CS437

B8H3

1883

LIST OF PEDIGREES.

	PAGE		PAGE
Annesley	- 1	Lechingham	- 21
Apryce	- 2	Longevill	- 21
Ardes	- 2	Lovett	- 22
Belson	- 4	Meredith	- 23
Berenger	- 4	Mordaunt	- 24
Brightridge	- 5	Moore	- 26
Brightwell	- 5	Norwood	- 26
Brudenell	- 6	Pakington	- 27
Buckingham	- 7	Pigott	- 28-30
Bullock	- 7	Porter	- 30
Chetwood	- 8	Purefoy	- 31
Cheyne	- 9	Puttnam	- 32
Clarke	- 10	Reade	- 33
Clavor	- 10	Redman	- 33
Collys	- 11	Risley (<i>bis</i>)	- 34
Dormer	- 11	Rookes	- 37
Duncombe	12, 13	Rufforde	- 37
East	- 13	Ruthall	- 38
Eyre	- 14	Sankey	- 39
Fitzhugh	- 14	Temple	- 40
Foster	- 15	Tirrell	- 42
Fowler	- 15	Vacheil	- 43
Hampden	- 16	Wallinger	- 44
Hawtrie	17-19	Walwyn	- 44
Jones	- 19	West	- 46
Kingstone	- 20	Woodforde	- 46
		Woodward	- 48
		Wycombe	- 49



THE
VISITATION OF THE COUNTY OF BUCKINGHAM

BY
WILLIAM HARVEY, *Clarenceux Rex Armorum*,

A^o 8 ELIZ., 1566.

(Harl. MS., 5867.)

Edited by WALTER C. METCALFE, F.S.A.

For facility in reference, the Pedigrees are arranged alphabetically, matches are printed in *italics*, and notes are given in parentheses.

ANNESLEY of *Newport*.

ARMS : *Paly of six Argent and Azure, a bend Gules.*

... ANNESLEY of Ruddington, co. Nott., Esq., mar. ... da. of ... *Inglyshe* of ... co. ..., Gent., and by her had issue,—Hughe, his eldest son ; Bryan, second son ; Raufe, third son ; John, fourth son ; and ROBERT, fifth son ; Ciscellie, mar. to *John Hall* of London ; Katherin, mar. to ... *Langham* of London ; Johan, died sans issue ; Elizabeth, mar. to ...

ROBERT ANNESLEY of Newporte, co. Buck., Esq., fifth son to ... Annesley, mar. .. da. to *Thomas Clovyll* of Cowldhall (Coptfold Hall in Margaretting) co. Essex, Esq., and by her hath issue,—GEORGE, his eldest son and heir ; Frances, mar. to *Thomas Flyssher* ; Katherin, mar. to *John Lamborne* of Wodisdon (Waddesdon), co. Buck., Gent. ; Anne, mar. to *Leonarde Mounte* of Newporte.

GEORGE ANNESLEY of Newporte, Gent., eldest son and heir to Robert, mar. *Elizabeth*, late wife of *William Stokes* and da. of ... *Dove* of Mulshoe, co. Buck., and by her hath issue,—James, his eldest son and heir apparent ; Mathew, second son ; Thomas, third son ; Robert, fourth son ; James, fifth son ; Raulfe, sixth son ; and George, seventh son ; Judythe, eldest da. ; Ciscellie, second da. ; and Mary, third da., all unmar.

APRYCE of North Crowley.

ARMS : Quarterly of 8,—1 and 8, *Sable, three spear heads Argent* ; 2, *Argent, three boars' heads coupéd close Sable* ; 3, *Argent, three conies Sable* ; 4, *Gules, a garb Or* (Otter, but ?) ; 5, *Ermine, a lion passant Gules* (Drewe) ; 6, *Argent, on a chief Gules three fleurs-de-lis Or* (Washinge) ; 7, *Gules, a cross patonce Or, a crescent for difference* (Latymer), *Argent, a chevron between three leopards' heads Or* (Wyllford.)

CREST : *An otter proper collared and lined Or.*

ISAKE APRYCE of Wales, co. Breknock, Gent., mar. ... da. of ... *Braye*, and sister to *Sir Reignold Braye*, and by her had issue,—ROBERT, his eldest son.

ROBERT APRYCE of Washinge, co. Hunt., Gent., eldest son and heir to Isake, mar. *Johan*, da. to *John Otter* of London, Gent., and of *Elizabeth* his wife, da. and heir of *John Drewe* of Sadlebowe (in Wiggenhall St. Mary), co. Norf., Gent., and of ... his wife, da. and heir of *Robert Washinge*, Gent., and by her hath issue,—WILLIAM, his eldest son ; Edward, second son ; and Thomas, third son.

WILLIAM APRYCE of North Crowley, co. Buck., Gent., eldest son and heir to Robert, mar. *Elizabeth*, da. and heir of *Robert Latymer* of North Crowley, Gent., and by her hath issue,—ROBERT, his eldest son and heir apparent ; Edmond, second son ; Lewys, third son ; and John, fourth son ; Elizabeth, mar. to *Roger Tellove* of Turvey, co. Bed. ; Cassandra, first mar. to *John Roberts* of Wollaston, co. Northamp., after to *Peter Boston* (*Ashton*, see 'Vis. of Hunts., 1613,' p. 31), in co. Linc., Gent., and thirdly she mar. to *Adlard Welbye* of Gedney, co. Linc., Gent.

ROBERT APRYCE of North Crowley, Esq., eldest son and heir to William, mar. *Johan*, da. and co-heir of *Robert Wyllforde* of London, Gent., and by her hath issue,—Robert, his eldest son and heir apparent ; John, second son ; Isake, third son ; Adlard, fourth son ; Mary ; and Elizabeth ; all living.

ARDES of Sherington.

ARMS : *Argent, a bend between six mullets Sable.*

CREST : *Within a catherine wheel Sable crowned Or a sun in splendour.*

THOMAS DE ARDES of Hardmeade, co. Buck., Esq., mar. *Apyce*, da. and heir of *William Butteler* of Hardmeade, Esq., and of *Elleanor* his wife, da. and heir of ... *Gerves*, which William Butteler was son and heir to

William Butteller, son and heir of William Butteller and of *Elleanor his wife*, da. and heir of ... *Wynton*, which William Butteller was son and heir to Robert Butteller and of *Maude* his wife, da. and one of the heirs of *John Hardmeade* of Hardneade, Esq. ; and the said Thomas Ardes and Avice his wife had issue,—HEWGHE, their eldest son and heir.

HEWGHE ARDES of Hardmeade, Esq., eldest son and heir to Thomas, mar. *Johan*, da. and heir to *John Bucknell* of Chichley, co. Buck., Gent., and by her hath issue,—JOHN, his eldest son and heir.

JOHN ARDES of Hardmeade, Esq., eldest son and heir to Hewghe, mar. *Isabell*, da. and heir to *John Lynforde* of Sherington, co. Buck., Esq., and of *Katherin* his wife, da. of *Robert Nevyll* of Gayhurst, co. Buck., Esq., which John Lynforde was son and heir to John Lynforde and of *Katherine* his wife, da. and heir to *John Luffwyke* of Manton, co. Rutl., Esq., which John Lynforde was son and heir to Richard Lynforde and of *Sybbell* his wife, da. and heir of *Roger Caron* of Sherington, Esq., and of *Thomazin* his wife, da. and heir of *William Sherington* of Sherington, Esq., and of *Mary* his wife, da. of ... *Cockfeilde* of Sherington, Esq., which John Ardes and Isabell his wife had issue,—MYGHELL, his eldest son.

MYGHELL ARDES of Sherington, Esq., eldest son and heir to John, mar. *Marye*, da. of ... *Wake* of Blyseworthe, co. Northamp., Esq., and by her hath issue,—ANTHONY, his eldest son ; after, the said Myghell mar. to his second wife *Katherin*, da. and heir of ... *Hammell* of Tansworthe, co. Northamp., Gent., and by her had issue,—Humfrey ; Susan, mar. to ... *Moreton* of Owndell, co. Northamp., and divers others.

ANTHONY ARDES of Sherington, Esq., eldest son and heir to Myghell, mar. *Margarett*, da. of *Edmonde Vavasor* of, co. York., Esq., and by her hath issue,—EDWARD, his eldest son and heir ; William, second son ; after, the said Anthony mar. to his second wife, *Christian*, da. of ... *Hutton* in co. ..., and by her hath issue,—Thomas ; and John ; Elizabeth ; Dorothe ; and Katherine.

EDWARD ARDES of Sherington, Esq., eldest son and heir to Anthony, mar. *Katherin*, da. of *Thomas Lowe* of Clyfton Reynes, co. Buck., Esq., and by her hath issue,—Richard, his eldest son and heir apparent ; Thomas, second son ; Edward, third son ; Francis, fourth son ; Israel fifth son ; Andrew, sixth son ; Sherington, seventh son ; Phellippe eighth son ; and Humfrey, ninth son ; Anne, mar. to *Thomas Nurse* of London.

BELSON of Brill.

ARMS: *Per pale Gules and Azure, on a chevron engrailed Argent between three greyhounds' heads erased of the third collared Purpure as many hurts, Impaling, Sable, a chevron between three bulls' heads cabossed Or* (Buckley.)

THOMAS BELSON of Aston, co. Oxon. Gent., mar. ... da. to ... and by her had issue,—Robert, his eldest son and heir, died *sans issue*; WILLIAM, second son; John, third son; Edmond, fourth son; and Richard, fifth son; Johan, mar. to ... *East of Radnydge, co. Buck.*

WILLIAM BELSON of Brylle, co. Buck, Esq., second son to Thomas and brother and heir to Robert, mar. *Anne*, da. to *Walter Curson* of Waterpury, co. Oxon, Esq., and by her had issue,—Augustyne, his eldest son and heir; EDWARD, second son; Ambros, third son; JEROM, fourth son; Elnnory, mar. to *John Adesse* of Lurgesall, co. Buck.; Margaret, mar. to *William Truste* of Medford (Trist of Maidford), co. Northamp., and after to *Thomas Baylye* of the same place; Bridgett, mar. to *Leonard Grateley* of Oxford; Johan, mar. to *Edmonde Kynge* of Shabington, co. Buck.

EDWARD BELSON of Brill, Gent., second son to William, mar. *Agnes*, da. to *Thomas Harte* of Bryll, and by her hath issue,—William, his eldest son and heir apparent.

JEROM BELSON of Brill, co. Oxon (Buck.), Gent., fourth son to William, mar. *Elizabeth*, da. to *George Buckley* of Bostoke Grene, co. Cheshire, Gent., and widow of *Richard Wrighte* of London, Sergeant Paynter to Kinge Henry the Eighte, and by her as yet hath no issue.

BERENGER of Woburn.

ARMS: *Or, a cross Azure, over all a bendlet Gules, Impaling, Quarterly: 1, Gules, three martlets Or, on a chief of the second as many mullets Azure* (Lusher); 2, *Gules, on a cross Or five roses of the field within a bordure of the second*; 3, *Or, three bars Sable, a bordure Ermine*; 4, *Per pale Gules and Sable, three falcons' heads erased Argent.*

JOHN BEDENGER of Alvedeston, co. (Wilts), temp. H. 3, Esq., mar. *Crystyan*, da. of ... and had issue,—INGERAM, his eldest son.

INGERAM BEDENGER of Alvedeston, Kt., temp. H. 3, mar. and had issue,—John, his eldest son; and NICHOLAS, second son.

NICHOLAS BEDENGER of Alvedeston, Esq., second son to Ingeram, mar. and had issue,—Nicholas, his eldest son ; and JOHN, second son.

JOHN BERENGER of Pewsey, co. South. (Wilts), Esq., second son to Nicholas, mar. and had issue,—John, his eldest son ; and THOMAS, second son.

THOMAS BERENGER of Mannynforde, co. Wilts, Esq., second son and heir to John, mar. and had issue,—JOHN Benneger, his eldest son ; Ingebrand, died *sans issue*,

JOHN BENNEGER of Mannynforde, Esq., eldest son and heir to Thomas mar. *Beatrice*, sister to *John Mychell* of Marlingboroughe (Marlborough) co. Wilts, Gent., and by her had issue,—Thomas, his eldest son ; ROBERT, second son ; John, third son ; John, fourth son ; and Richard, fifth son.

Robert Benneger of Marlinboroughe, Esq., second son to John, mar. *Agnes*, da. of *William Varasor* of Spaldington, co. York, Esq., and by her hath issue,—WILLIAM, his eldest son ; Sir Thomas, Kt., second son ; and Andreas, third son, died *sans issue*.

WILLIAM BENNEGER of Owborne, co. Buck., Gent, eldest son and heir to Robert, mar. *Katherin*, da. to *William Lusher*, of Showlan (near Puttenham), co. Surrey, Esq., and by her hath issue,—Margarett ; and Susan ; both unmar.

BRIGHTRIDGE of *Iver*.

ARMS: *Sable, on a bend Or between two cinquefoils Argent three bears heads erased of the first, muzzled of the third.*

WILLIAM BRIGHTRIDGE of Iver, co. Buck., Gent., son and heir to John, mar. *Elizabeth*, widow of *William Wattes*, and da. of *William Rouse* of Heyse, co. Midd., and by her hath issue,—George, his eldest son ; and Leonard, second son ; Thomas and Francis dyed both *sans issue* ; Josyan, mar. to *William Bavin* of Langley Marrys, co. Bucks. ; Sara, promised to *Roger Garrett* of Uxbridge, co. Midd.

BRIGHTWELL of *Chearsley*.

WALTER BRIGHTWELL of Chersley, co. Buck., Gent., mar. and had issue,—JOHN, his eldest son and heir.

JOHN BRIGHTWELL of the said place and co., Gent., eldest son and heir to Walter, mar. *Margerye*, da. to *Henry Burte* of Chilton, co. Buck., and by her had issue,—THOMAS, his eldest son.

· THOMAS BRIGHTWELL of the said place and co., Gent., eldest son and heir to John, mar. to his first wife, *Maryan*, da. of *John Mann* of Aston, co. Oxon, and by her hath issue,—Mary; after, the said Thomas, mar. to his second wife, *Isabell*, da. to *John Randal* of Shellingforde, co. Oxon. (? Berks) and by her as yet hath no issue.

BRUDENELL of *Stoke Mandeville*.

ARMS: Quarterly of 6: 1 and 6, *Argent, a chevron Gules between three chapeaux Azure turned up Ermine*; 2, *Ermine, on a chevron Gules three escallops Or* (Atgrove); 3, *Gyronny of eight Or and Sable* (Rana); 4, *Azure, two bezellets between six cross crosslets fitchèe Or* (Blackett); 5, *Gules, eight lozenges in fess five and three Argent* (Preston).

WILLIAM BRUDENELL of Aynowe, co. Oxon, Esq., son and heir to Richard Brudenell of Deddington, in the same co., Esq., mar. *Agnes*, da. and heir to *Thomas at Grove* and of *Alys* his wife, da. and heir of *Walter Rana* of Ranes, co. Buck., Esq., and of *Margarett*, his wife, da. and heir of *Philip Blackett*, Gent.; and the said William had issue,—William, his eldest son and heir; Edmond, second son; and HENRY, third son; and Margarett.

HENRY BRUDENELL of Agmondesham, co. Buck., Gent., third son to William, mar. *Alice*, da. and heir of *Hewghe Preston* of Preston, co. Northamp., Esq., and by her had issue,—ROBERT, his eldest son; and Edmond, second son.

ROBERT BRUDENELL of Stoke Mandevyle, co. Buck, Esq., eldest son and heir to Henry, mar. *Mawde*, da. of ... and by her had issue,—JOHN, his eldest son.

JOHN BRUDENELL of Stoke Mandevyle, Esq., eldest son and heir to Robert, mar. *Mary*, da. of ... *Gerrye* of ... and by her had issue,—JOHN, his eldest son.

JOHN BRUDENELL of Stoke Mandevyle, Esq., eldest son and heir to John, mar. *Anne*, da. of *Sir William Hartwell* of Preston, co. Northamp., and by her had issue,—Edmond, his eldest son and heir; Margarett, mar. to *John Ryce* of Amersham, co. Buck, Esq.; Anne, mar. first to *John Clarke* of Stoke Mandevyle, after to *Laurence Rodes* of Wickomb, Yeoman; Letice, mar. to *John Duncombe* of Brickhill, co. Buck.

EDMONDE BRUDENELL of Stoke Mandevyle, Esq., son and heir to John, mar. *Mary*, da. of *Thomas Hawtrey* of Chekers, co. Buck, Esq., and by

her had issue,—FRANCIS, his eldest son and heir; Henry, second son; Brockas, third son; Richard, fourth son; Margaret, mar. to *Roger Hensloe* of Wingrave, co. Buck., Gent.; Agnes, mar. to *Thomas Spring* of Chilton, co. Buck., Yeoman; Sibil; and Dorothy.

FRANCIS BRUDENELL of Stoke Mandevyle, Esq., son and heir to Edmonde, mar. *Jane*, da. to *Roger Taverner* of Uppminster, co. Essex, and as yet hath no issue.

TOWN AND BOROUGH OF BUCKINGHAM.

The MS. gives in trick, Sable, on a mount Vert a swan Argent gorged and chained Or. But these are the Arms of High Wycombe.

These are the auncient Armes apperetynynge and belonginge to the Towne and Borough of Buckingham and paryshe of the same; and at this my p'sent Visitation was Thomas Moore, *Bayliff*; Paul Darrell, Esq., *Stewarde*; John Lambert, John Cates, John Apowell, Hugh Broughton, William Illinge, and Richard Myllinge, *Burgesses* and late Bayliffs of the saide Towne and Boroughe; John Hokeley, *Town Clarke*; and John White, *Under Bayliff* of the saide Boroughe; which auncient Arms I, Clarenceul alias Harvy, Kinge of Armes, have ratified and confirmed and recorded in the Recordes of myne office according to the auncient and laudable custom herein provided. In wittnes whereof I have subscribed thereunto with my hande.

BULLOCK of Thornborough.

ARMS: Quarterly of 6: 1 and 6, *Gules, a chevron Argent between three bulls' heads cabossed of the second armed Or*; 2, *Argent, on a chief Gules three cinquefoils of the field* (Byllett); 3, *Argent, three lions' heads erased Sable* (Moreton); 4, *Chequy Argent and Sable* (Vernon); 5, *Argent, a bull passant Gules armed Or* (Rydley).

THOMAS BULLOCKE Aburforde (Aborfield), co. Berk., Esq., mar. *Alyce*, da. of *John Kyngsmyll*, one of the King's Justices of the Com'on Place and by her hath issue,—Richard, his eldest son and heir; Thomas, second son; George, third son; John, fourth son; WILLIAM, fifth son; and Gregory, sixth son; Margaret; Dorothe; Elianor; Magrerye; Alyce; and Jane.

WILLIAM BULLOCK of Aburford, Gent., fifth son to Thomas, mar. *Elizabeth*, da. of ... *Byllet* of Moreton, co. Staff, Esq., and of his wife, da. and heir of ... *Moreton*, co. Staff, Esq.; and the said William and Elizabeth his wife had issue,—John, his eldest son and heir; Robert, second son; William, third son; ANDREWE, fourth son; and Thomas, fifth son; Alyce and Elianor, both unmar.

ANDREWE BULLOCK, Citizen and Marchant Taylor of London, fourth son to William, mar. *Johan*, third da. to *Raufe Vernon* of Peke, co. Darby, Esq., and of ... his wife, da. and heir of *John Ridley* of Brode Ashe, co. Chesh., Esq.; and the said Andrewe and Johan his wife hath issue,—Walter, his eldest son and heir; THOMAS, second son, of London, Mercer; and Thomas the younger, third son; Johan; Mary; and Agnes.

THOMAS BULLOCK of Thornborough, co. Buck., Gent., second son to Andrewe, mar. *Agnes*, da. of *Edmond Symeon* of Pirton, co. Oxon, and by her hath issue,—Edmond, his eldest son and heir apparant; Maude and Anne, unmar.

CHETWOOD of *Chetwood*.

ARMS: Quarterly of 6: 1, *Quarterly Argent and Gules, four crosses patèe counterchanged*; 2, *Chequy Argent and Sable, a fess Ermine, on a chief Gules, three leopards' faces Or*; 3, *Or, on a fess between three mascles Gules as many plates*; 4, *Argent, a lion rampant Gules crowned Or*; 5, *Argent, three covered cups Sable*; 6, *Chequy Or and Gules, a chief Ermine, impaling, Or, three crescents Gules* (Woodhull).

CREST: *Out of a coronet Or a demi-lion Gules.*

THOMAS CHETWOODE of Reyse, co. Chesh., Gent., mar. da. of ... *Bearesforde* of Bearesforde, co. Darby, Esq., and by her hath issue,—ROGER, his eldest son; after, the said Thomas mar. to his second wife, ... da. of ... *Wylbram* of Woodaye, co. Chesh., Esq., and by her hath issue,—Elianor, mar. to *William Clayton* of Thelwall, in the said co., Gent.; thirdly, the said Thomas mar. *Elianor*, da. of ... *Sprustoe* of *Sprustoe* (*Spurstow* of *Spurstow*), co. Chesh., Esq., and by her hath issue,—John and Randolph, died both sans issue.

ROGER CHETWOODE of Reyse, Gent., eldest son and heir to Thomas, mar. to his first wife, *Elianor*, da. of *Thomas Masterson* of the Wyche, co. Chesh., Gent., and by her hath issue,—James, now of Staffordshire,

his eldest son ; John, second son ; RICHARD, third son ; Roger, fourth son ; Elianor, mar. to *John Hankye*, one of the p'vye chamber of Kinge Edwarde the sixth and Capiteine of a band of horsemen at the Seige of Harington ; Margaret, unmar.

John Chetwood of Chetwood, co. Buck., Gent., second son to Roger, not mar.

RICHARD CHETWOODE of Warkworth, co. North'ton, Gent., third son to Roger, mar. *Agnes*, da. and heir to *Anthony, Baron Wollull*, in co. Bed., and by her hath issue,—Richard, his eldest son and heir.

CHEYNE of Drayton Beauchamp.

ARMS: Quarterly 1 and 4, *Chequy Or and Azure, a fess Gules fretty Ermine* ; 2 and 3, *Or, a lion rampant Sable*.

JOHN CHEYNE of Drayton Bewchampe, co. Buck., Esq., mar. *Margaret*, da. of *Robert Ingleton* of Thornton, co. Buck., Esq., and by her had issue,—ROBERT, his eldest son and heir ; and John, second son ; and seven daughters, one mar. to *Restwolde* of the Vache, co. Buck., Esq., another to *Sir Edmoude Peckham* of Denham, co. Buck., kt., another to *Poete Darrell* of Lilingstone, co. Buck., Esq., another to *Roger Lee* of Flete Marston, co. Buck., Esq., another to *Richard Fawconer* of Ashenden, co. Buck., Esq., another to *John Babham* of Cokeham, co. Bark., Esq., the seventh mar. to *Judge Molineux* of Thorpe, near Newark, co. Nott., Knight of the Bathe.

ROBERT CHEYNE of Chesham Boys, co. Buck., Esq., eldest son and heir to John, mar. *Elizabeth*, da. to *John Webbe* of ... co. ... Gent., Usher to Kinge Edward the sixth, and by her had issue,—JOHN, his eldest son ; Margaret, mar. to *Richard Duncombe* of Moreton, co. Buck., Gent. ; Katherin, mar. to *Christopher Lydcotte* of Salofelde, co. York, Gent.-Pencioner ; Elizabeth, mar. to *Bennett Lee* of Holcott, co. Buck., Gent. ; after, the said Robert mar. to his second wife, *Marye*, da. to *John Sylam* of Bramhanger (? Bromham), co. Bed., and by her had issue,—Thomas, second son ; Marye, mar. to *John Newdygate* of Harvyll (Harefield), co. Midd., Esq.

JOHN CHEYNE of Drayton Bewchampe, co. Buck., Esq., eldest son and heir to Robert, mar. to his first wife, *Wynnefryde*, da. to *John, Lord Mordaunte* of Turvey, co. Bed., and by her had issue,—John, his eldest son and heir apparant ; Francis, second son ; and Thomas, third son ; Margaret ; Elizabeth ; Mary ; and Jane, all unmar. ;—after, the said John

Cheyne mar. to his second wife, *Joyce*, da. of *Sir Anthony Lee* of Brigstone (Burstun), co. Buck., Kt., and by her hath issue,—Henry; and Katherin.

CLARKE of *Dundon Court*.

ARMS: *Per chevron Azure and Argent three eagles displayed counter-changed, in chief a leopard's face Or.*

JAMES CLARKE of Swethlande, co. Leic., Gent., mar. *Agnes*, da. and heir of ... *Tede* and of his wife, da. of ... *Kyngeston* of Grobye co. Leic., Esq., and by her had issue,—THOMAS; his eldest son; Richard, second son; Henry, third son; and Robert, fourth son.

THOMAS CLARKE of Swethlande, Gent., eldest son and heir to Jeames, mar. *Marye*, da. of *Thomas Tede* of Pynchbeck, co. Linc., and by her had issue,—WILLIAM, his eldest son and heir; Robert, second son; Dorothe, mar. to *Humphrey Damporte* of Tamworth, co. Staff., Gent.

WILLIAM CLARKE of *Dundon Courte*, co. Buck., Esq., eldest son and heir to Thomas, mar. *Dame Elizabeth Catesbye*, late wife to *Sir Richard Catesby* of Legers Ashby, co. Northam., Kt., and sister and one of the heirs of *John, Lord Bray*, son and heir of *Edmond, Lord Bray* of Eton, co. Bed.; which William Clarke and Dame Elizabeth his wife had issue,—Edmond, which died yonge; which Dame Elizabeth Catesbye was first mar. to *Sir Raufe Verney* of Penley, co. Heref., Kt., and had issue by him,—Edmond Verney, eldest son; Raufe Verney, second son; and John Verney, third; died all three *sans issue*; Edmond, fourth son and heir now living; Francis, fifth son; Raufe, sixth son; Uryan, seventh son; Richard, eighth son; Jane, first da. mar. to *Francis Hynde* of Madingley, co. Cambr., son and heir to Justice Hinde of the same place and co., kt.; Anne, second da. mar. to *Sir Nicholas Pointz* of Iron Acton, co. Gloc., Kt. of the Bathe; secondly, the said Dame Elizabeth mar. to *Sir Richard Catesbye* aforsaid, and by him had issue,—Jane, which died yonge.

CLAVOR of *Foxcott*.

ARMS: *Sable, a fess voided Or between three castles triple-towered Argent.*

CREST: *A lion's paw erased and erect proper holding a key Argent.*

MARMADUKE CLAVOR of Fostocke al's Foxcott, co. Buck., Gent., mar. *Elizabeth*, da. to *Henry Wattes* of Whaddon, co. Buck., Esq., and by her

had issue,—Mathew, his eldest son ; Clement, second son ; Arthur, third son ; Eleanor ; Anne ; Isabell ; Elizabeth ; and Ciscellie.

COLLYS of *Bradwell*.

WILLIAM COLLYS of Lye (Leigh), co. Wore., Gent., mar. *Alice*, da. to ... *Acton* of ..., co. Wore., Esq., and had issue,—WILLIAM, his eldest son and heir.

WILLIAM COLLYS of the said place and co., Esq., eldest son and heir to William, mar. *Margarett*, da. to ... *Hitch* of ..., co. Gloc., and by her had issue,—Edmond, his eldest son and heir ; MYCHELL, second son ; William, third son ; John, fourth son ; Alys, mar. to *Foull* *Orell* of Thenforde, co. Northamp., Esq. ; Jane, mar. to *Edmond Rulinge*, of ..., co. Wore., Gent. ; Mary, mar. to *Raufe Undrell* (*Underhill*) of Stonley, co. Warw., Gent. ; Anne, mar. to *Richard Pytcher* of Crydley, co. Heref. ; Ursula, mar. to *William Hawes* of ..., co. Warw. ; Elizabeth, not yet mar.

MYCHELL Collys of Bradwell, co. Buck., Gent., second son to William, mar. *Marye*, da. of *Edward Graente*, of Snyttesfelde, co. Warw., Gent., and hath issue,—Anne and Katherin, and no more.

DORMER of *Ascot in Wing*.

ARMS: Quarterly, 1 and 4, *Azure, ten billets four three two one Or, on a chief of the second a demi-lion issuant Sable* ; 2, *Gules, a chevron Argent between three fishes naiant Or, a chief indented of the second* ; 3, *Argent, three fleurs-de-lis Azure*.

GEFFREY DORMER of Thame, co. Oxon, Esq., mar. to his first wife, *Margery*, and heir of ... *Cowtriche* of Twyforde, co. Buck., Gent., and by her had issue,—WILLIAM, his eldest son ; Thomas, second son ;—After, the said Geffrey mar. to his second wife, *Alys*, da. of ... *Launce-lyn*, and had issue,—Geffrey ; Mychaell ; Peter ; and Mychaell ; Parnell first mar. to ... *Nashe*, and after to *John Goodwin* of Over Wichington co. Bucks., Esq. ; Maude, mar. to ... *Brightman*, half-brother to *Sir John Dauntesey*, Kt.

WILLIAM DORMER of Wyckombe, co. Buck., Esq., eldest son and heir to Geffrey, mar. *Agnes*, da. of *Sir Richard Woodeyle*, *Erle Ryvers*, and by her had issue,—ROBERT, his eldest son ; and three da.'s, the one mar. to *Sir John Baldwin*, Kt., Lord Cheife Justice of Englande ; another

mar. to ... *Bromwell* of London, marchante; the other to one *Bryeteyn* of London, marchante.

SIR ROBERT DORMER of the parish of Winge, co. Buck., Kt., Treasurer of the Campe at Mutterell under Thomas, Duke of Norf., Leife Tennante to Kinge Henrye the Eighth, eldest son and heir to William, mar. *Jane*, da. to *John Newdegate* of Harfelde, co. Midd., Esq., and by her had issue,—WILLIAM, his eldest son and heir.

SIR WILLIAM DORMER of Ascott in the parische of Winge, co. Buck., Kt., eldest son and heir to Sir Robert, mar. to his first wife, *Marye*, da. to *Sir Willien Sydney* of Penshurst, co. Kent., Kt. and Kt. Banneret and Governor to Kinge Edwarde the Sixth, and by her had issue,—Thomas and Robert, dyed both yonge; Jane, mar. to *Don Rogonus, Counte de Feria*; Anne, mar. to *Sir Walter Hungerford* of Farley Castell co. Wilts., Kt., son and heir to the Lorde Hungerford;—after, the said Sir William Dormer, mar. to his second wife, *Dorothe*, da. to ... *Catesbye* of Hushton (Whiston), co. Northamp., Esq., and by her hath issue,—Robert, his eldest son and heir apparant; Mary; Katherin; and Margaret, all unmar.

DUNCOMBE of Moreton.

ARMS: *Per chevron floy counterfloy Gules and Argent three talbots' heads erased counterchanged.*

CREST:—*A talbot's head erased Gules collared Or.*

RICHARD DUNCOMBE of Wyngrave, co. ..., married *Anne*, da. and heir of *Copcott* in co. ..., Gent., and by her had issue,—RICHARD, his eldest son and heir.

RICHARD DUNCOMBE of Moreton, co. Buck., mar. *Margarett*, da. of *Robert Cheyne* of Chesham Boys, co. Buck., Esq., and by her had issue,—JOHN, his eldest son and heir; Margarett, unmar.; Jane, mar. to *William Nayler* of London, Gent.

JOHN DUNCOMBE of Moreton, Gent., eldest son and heir to Richard, mar. *Marye*, da. of *William Russell* of ..., co. ..., and by her hath issue,—Edward, his eldest son and heir apparant; Katherin; Russell; and Mary, all unmar.

DUNCOMBE of *Much Brickhill*.

WILLIAM DUNCOMBE of Ivingoe Aston, co. Buck., Gent., mar. to his first wife, *Mary*, da. and one of the heirs of *Richard Reynes* of Clifton Reynes, co. Buck., Esq., third son to Sir John Reynes of Clifton Reynes, Kt., which William and Mary had issue,—THOMAS, his eldest son living; ROGER, second son; Mary; and Elizabeth who mar. *William Draymer* of Cranbroke, co. Kent, Gent.; after, the said William mar. to his second wife, *Alyce*, da. of ... *Whytton* in co. Oxon, Gent., and by her hath issue,—WILLIAM; Edwarde; Edmonde; John; Gyles; and Clement; Anne, mar. to *Richard Saunders* of Potesgrave; Susan, mar. to *George Selyoke* of co. Darby, Esq.

THOMAS DUNCOMBE of Mutche Bryekhill, co. Buck., Gent., eldest son and heir to William, mar. *Isabell*, da. to *Thomas Saunders* of Agmondisham, co. aforesaide, Gent., and by her hath issue,—John, his eldest son and heir apparant; Frances, second son; William, third son; Susan; Agnes; and Alice, all three unmar.

ROGER DUNCOMBE of Lydelington Park, co. Bed., Gent., second son to William, by Mary his wife, mar. *Cescellye*, da. to *Edmonde Conqueste* of Houghton Conqueste, co. Bed., Esq., and by her had issue,—Edmonde; and Robert; died both yonge.

WILLIAM DUNCOMBE of Mutche Bryekhill, Gent., eldest son to William by his last wife, mar. *Ellyn*, da. to *William Saunders* of Potesgrave, co. Bed., Gent., and hath as yet no issue.

EAST of *Radnyge*.

ARMS: *Argent, a chevron Ermines between three horses' heads erased Sable; impaling Gules two chevrons Argent.*

CREST: *A horse rampant Sable.*

WILLIAM EASTE of Radnyge, co. Buck., Gent., mar. *Sybell* da. of *Thomas Belson* of Aston, co. Oxon, Gent., and by her had issue,—THOMAS, his eldest son; and William, second son; Margaret, mar. to ... *Clarke* of Wyckombe, co. Buck, yeoman.

THOMAS EAST of Radnyge, Gent., eldest son and heir to William, mar. *Dorothe*, da. to *John Penn* in co. Bucks, Esq., and by her had issue,—EDWARD, his eldest son and heir; David, second son; Henry, third son; Sybell, first mar. to *Thomas Waters* of Aston, co. Buck., Gent., and after to *Andrew Mansfelle* of Amerden, co. Buck., Esq.

EDWARD EAST of Radnyge, Gent., eldest son and heir to Thomas, mar.

Cyscell, da. and sole heir to *Francis Fetiplace* of Stanlake, co. Oxon., Gent., and by her hath issue,—*Dorothy*, a da., unmar.

EYRE of *Burnham*.

ARMS : *Azure, a chevron between three ears of corn slipped Or.*

CREST : *A pewit proper tufted Or beaked and legged Gules.*

THOMAS EYRE of Burnham, co. Buck., Gent., mar. and had issue,—EDMONDE, his eldest son and heir ; Thomas, second son ; Elizabeth, mar. to *John Durlante* of Cluworthe (Clewer), co. Bark., Gent. ; Elizabeth, mar. to *Robert Sylvester* of London, citizen.

EDMONDE EYRE of Burnham, Gent., eldest son and heir to Thomas, mar. *Christian* da. to *John Blackmore* of Binfolde, co. Bark., Gent., and by her had issue,—THOMAS, his eldest son and heir ; Gyles, second son ; Elizabeth, mar. to *Nycholas Browne* of London, marchante ; Margaret, mar. to *John Byllington* of London.

THOMAS EYRE of Burnham, Gent., eldest son and heir to Edmonde, mar. to his first wife, *Alyce*, da. to *William Pastrell* of Langley, co. Buck., and by her had no issue ;—after, the said Thomas mar. to his second wife, *Beatryce*, da. to *Rycharde Husbanle* of Cowley, co. Midd., and by her had issue,—Thomas, his eldest son and heir ; Abraham, second son ; Margaret, mar. to *Roger Burnes* of Harnesworthe, co. Midd. ; Elizabeth mar. to ... *Edwards* of Horton, co. Buck. ;—thirdly, the said Thomas mar. to his third wife, *Elizabeth*, da. to *John Edwards* of Horton, and by her as yet hath no issue.

FITZ HEWGHE of *Wuendon*.

ARMS : Quarterly, 1 and 4, *Ermine, on a chief Gules three martlets Or* ;
 2, *Argent, three chevrons Sable each charged with a bezant* ;
 3, *Sable, a chevron engrailed Or between three bezants each charged with a cross patée Gules.*

ROBERT FITZ HEWGHE of Wandon, co. Buck., Gent., fifth son to William Fitzhewghe of Wylden, co. Bed., Gent., mar. *Elizabeth*, da. of *Rycharde Burye* of Tuddington, co. Bed., Gent., and by her hath issue,—Mary and Frances now living.

FOSTER of *Hanslope*.

ARMS: Quarterly of 6, 1 and 6, *Argent*, a chevron *Vert* between three bugle horns *Or*; 2, *Gules*, two bars *Argent* in chief three eagles' heads crused of the second; 3, *Gules*, on a fess between six cross-crosslets *Or* a fleur-de-lis; 4, *Argent*, a lion rampant *Sable*; 5, *Azure*, three bars *Argent*, on a canton *Or* a dove of the field; impaling *Argent*, two bars *Gules*, in chief three mullets of the second (Washington.)

NYCHOLAS FOSTER of ..., co. Northamp., Gent., mar. and had issue,—WILLIAM, his eldest son.

WILLIAM FOSTER of Hansloppe, co. Buck., Gent., eldest son and heir to Nycholas, mar. *Emme*, da. and heir of *John Knighte* of Hanslope, Gent., and by her had issue,—William, his eldest son, died *sans issue*; THOMAS, second son.

THOMAS FOSTER of Hansloppe, Gent., second son to William Foster and brother and heir to William aforesaide, mar. ..., da. of *John Fitz Geoffrey* of Thurley, co. Bed., Esq., and by her had issue,—GEORGE, his eldest son and heir.

GEORGE FOSTER of Hanslope, Gent., eldest son and heir to Thomas, mar. *Joan*, da. of *Thomas Church* of Rewwell (? Runwell) Hall, co. Essex, and by her hath issue,—EDMONDE, his eldest son and heir apparant; Elizabeth, mar. to *Christopher Danyell* of Lynforde, co. Buck.; Anne, mar. to *Griffin Beychmore* of Hansloppe; Elizabeth; Alyce; and Ciscellie, unmar.

EDMONDE FOSTER of Hansloppe, Gent., eldest son and heir to George, mar. *Anne*, third da. to *Laurence Washington* of Sowthe Grave (Sulgrave), co. Northamp., Gent., and by her hath issue,—George, his eldest son.

 FOWLER of *Ludgershall*.

ARMS: Quarterly of 6, 1 and 6, *Azure*, on a chevron *Argent* between three lions passant guardant *Or* as many crosses moline *sable*; 2, *Argent*, three bars *Gules* in chief a lion passant *Sable*; 3, *Or*, three wolves' heads crused *Gules* within a bordure *Azure* charged with ten castles *Argent*; 4, *Ermine*, on a canton *Gules* an owl *Argent*; 5, *Vair Argent and Gules*.

SIR RYCHARDE FOWLER of Rycott, co. Oxon, Kt., mar. to his first wife *Elizabeth*, da. to *Andrece*, Lord *Wyndesore*, and had issue by her,—

George, his eldest son, died sans issue; Edward, second son; Anthonye, third son; Bridgett, mar. to ... *Ogan* of Est Bradenham, co. Norf.;—after, the said Sir Rycharde mar. to his second wife, *Julian*, da. to *Sir John Shave*, Kt. and Alderman of London, and by her had issue,—John, fourth son; Christopher, fifth son; and WILLIAM, sixth son; Margaret, mar. to *Christopher Westcott* of Lurgeshall, co. Buck., Esq.

WILLIAM FOWLER of Lurgeshall, Gent., sixth son to Sir Rycharde Fowler, mar. ...

HAMPDEN of *Hartwell*.

ARMS: Quarterly of 6, 1, *Argent, a saltire Gules between four eagles displayed Azure*; 2, *Argent, three bars wavy Azure, over all a bend Sable charged with as many bezants* (*Shingleton*); 3, *Argent, three cross-crosslets fitchée, Sable on a chief of the second lion rampant Or issuant* (*Stokes*); 4, *Argent, a bend between six billets Sable* (*Luton*); 5, *Sable, a buck's head cabossed Argent attired Or, between the attires a cross patée fitchée of the third* (*Hartwell*); 6, *Gules, on a bend Ermines cotised Sable three boars' heads couped Argent* (*Edgecombe*).

CREST: *A peacock's head erased Azure.*

RICHARDE HAMPDEN of *Hartwell*, co. Bucks, Esq., mar., *Elizabeth*, da. and heire of *Thomas Shingleton*, of *Hartwell*, Esq., and of *Agnes* his wife, da. and heire to *Thomas Stokes*, and of *Elyanor* his wife, da. and heir to *Sir Robert Luton*, son and heir to *Thomas Luton*, son and heir to *Luton* and of *Alice* his wife, da. and heir to *William Hartwell*, of *Hartwell*, Esq.; which *Richard Hampden* and *Elizabeth* his wife had issue—*JOHN*, his eldest son and heir.

JOHN HAMPDEN, of *Kymbell*, co. Buck, Esq., eldest son and heir to *Richarde*, mar. ... the da. of ... and by her had issue,—*RICHARDE*, his eldest son; and *Thomas*, second son.

RICHARDE HAMPDEN, of *Hartwell*, Esq., eldest son and heir to *John*, mar. ... the da. of ... and by her had issue—*RICHARDE*, his eldest son.

RICHARDE HAMPDEN, of *Hartwell*, Esq., eldest son and heir to *Richarde*, mar. ... the da. of ... and by her had issue, *WILLIAM*, his eldest son.

WILLIAM HAMPDEN, of *Hartwell*, Esq., eldest son and heir to *Richarde*, mar. *Elizabeth*, da. of ... *Bysshoppe*, and by her had issue—*THOMAS*, his eldest son; and had two da's., one mar. to ... *Davers*; the other to ... *Hubott*.

THOMAS HAMPDEN, of *Hartwell*, Esq. eldest son and heir to *William*,

mar. *Alyce*, da. and heir of *John Edgcombe* of Oxford, co. Oxon., Esq., and by her hath issue—**JEROM**, his eldest son and heir; *Edwarde*, second son; and *Richard*, third son; *Awdrye*, first mar. to *William Watson*, and after to *John Gamlyn* in co. Linc.; *Elizabeth*, mar. to *John Vyvyan*.

JEROM HAMPDEN, of Hartwell, Esq., eldest son and heir to *Thomas*, mar. *Johan*, da. of *William Elmes*, in co. Northamp., Esq., and by her had issue—**MYGHELL**, his eldest son and heir; *Francis*, second son, and *Walter*, third son, dyed, bothe sans issue; and *Thomas*, fourth son, now living.

MYGHELL HAMPDEN, of Hartwell, Esq., eldest son and heir to *Jerom*, mar. *Marye*, da. of *Christopher Ashfelle*, of Chesham, co. Buck, Esq., and by her hath issue,—*Alexander*, his eldest son and heir apparent; *John*, second son; *William*, third son; *Edward*, fourth son; *Christopher*, fifth son; and *Richard*, sixth son; *Jane*; *Anne*; *Elionar*; and *Elizabeth*, all as yet unmar.

HAWTREY of Checkers.

ARMS: Quarterly of 13. 1, *Argent, on a bend cotised Sable four lions passant of the field*; 2, *Azure, five fusils in fess Argent a label of as many points Or* (*Alteripa*); 3, *Gules, two chevrons within a bordure engrailed Argent* (*Paynell*); 4, *Per bend Or and Azure an eagle displayed counter changed* (*Blakenhall*); 5, *Gules, two lions passant Or* (*Pype*); 6, *Or, two bars Gules* (*Harcourt*); 7, *Hampden*; 8, *Singleton*; 9, *Stokes*; 10, *Luton*; 11, *Hartwell*; 12, *Azure, a chevron Argent between three bucks' heads cabossed Or*; 13, *Sable, a lion rampant Argent within a bordure gobony of the last and of the second, impaling Quarterly 1 and 4, Or, on a fess between two chevrons Sable three crosslets of the field* (*Walpole*); 2 and 3, *Ermings, three lozenges Ermine within a bordure Argent* (*Haultoft*.)

CREST: *A lion's head erased Or fretty Sable.*

WILLIAM DE ALTERIPA, of Algerkirke, co. Linc., Kt., mar. *Katherin*, da. and one of the heirs of *Sir Raufe Checkers*, in co. Buck, Kt., and by her had issue,—**WILLIAM**, his eldest son.

SIR WILLIAM DE ALTERIPA, of Algerkirke, Kt., eldest son and heir to *Sir William*, mar. . . . the da. of . . . and by her had issue,—**THOMAS**, his eldest son.

THOMAS DE ALTERIPA of the said place and co., Esq., eldest son and heir to *Sir William*, mar. *Johan*, da. of . . . and by her had issue—*William*

Hawtrey, his eldest son, and sans issue ; and NICHOLAS HAWTREY, second son.

NICHOLAS HAWTREY, of Checkers, co. Buck, Esq., second son and heir to Thomas, mar. *Aljee*, da. of ... and by her had issue,—RICHARDE, his eldest son.

RICHARDE HAWTREY, of Checkers, Esq., eldest son and heir to Nicholas, mar. ... da. of ... and by her had issue,—THOMAS, his eldest son.

THOMAS HAWTREY, of Checkers, Esq., eldest son and heir to *Richarde*, mar. *Margaret*, da. and one of the heirs of *Sir Thomas Paynell*, of co. Oxon, Kt., and by her had issue—THOMAS, his eldest son.

THOMAS HAWTREY, of Checkers, Esq., eldest son and heir to Thomas, mar. *Katherin*, da. and heir to *Thomas Blakenhall*, son and heir of Thomas Blakenhall, son and heir of Roger Blakenhall, and of *Agnes* his wife, da. and one of the heirs of *John Pype*, and of *Margaret* his wife, da. and heir of *Henry Harcourte*, son and heir to Sir Henry Harcourte, Kt., which Thomas Hawtrey and Katherin his wife had issue,—THOMAS, his eldest son ; Henry, second son ; Edward, third son ; and John, fourth son.

THOMAS HAWTREY, of Checkers, Esq., eldest son and heir to Thomas, mar. *Agnes*, da. of ... and by her had issue—THOMAS, his eldest son ; John second son ; Edward, third son ; and Raufe, fourth son ; Katherin, mar. to ... *Hill* ; Mary mar. to *William Temple*, of Elsboroughe, co. Buck.

THOMAS HAWTREY, of Checkers, Esq., eldest son and heir to Thomas, mar. *Sybell*, da. and one of the heirs of *Richarde Hampden*, of Kymbell, co. Buck, Esq., and by her had issue,—WILLIAM, his eldest son ; Henry, second son ; John, third son ; Myghell, fourth son ; John, fifth son ; Robert, sixth son ; and Thomas, seventh son ; Marye mar. to *Edmonde Brudenell* of Stoke Mandevyle, co. Buck, Esq. ; Johan, first mar. to *Robert Russell* of Welford, co. Northamp., Gent., and after to *Nycholas Weste*, Esq., one of the six Clarkes of the Chauncerye ; Agnes, first mar. to *Jasper Fearne*, and after to *Rycharde Potter* of Kent, Esq. ; Margaret, fourth da., mar. to *John Smylthe*, Sergeant at Arms.

WILLIAM HAWTREY, of Checkers, Esq., eldest son and heir to Thomas, mar. *Marye*, da. of *John Brockas* of Horton, co. Buck, Esq., and by her had no issue ;—after the said William mar. to his second wife, *Agnes*, widow of *Hewghe Losse*, Esq., and da. of *Thomas Walpole*, in co. Norf., Esq., and by her hath issue—Thomas, his eldest son and heir apparent ; William, second son ; and Dorothe.

HAWTREY *of Hedsor.*

ARMS: Hawtry *as before* impaling Dormer.

RAUFFE HAWTRYE of Ryslippe, co. Midd., Gent., mar. *Wynnyfryde*, da. to ... *Walliston* of Ryslippe, Esq., and by her had issue, John, his eldest son; and EDUARDE, second son; Fryswyde, mar. to *Robert Mattes* of Ryslippe; Wynnyfryde, mar. to ... *Warle* of Bedford, co. Midd.; Alys, third da., mar. to (Thomas) *Sankey* of Edlesbrough, co. Buck, Gent.; and Margaret, unmarried.

EDWARD HAWTRYE, of Hedsore, co. Buck, Gent., second son to Raufe, mar. *Elizabeth*, daughter to *Gabriell Dormer* of Lee, co. Buck, Gent., and by her had issue.—Wynnyfride and Elizabeth, children.

JONES *of Taplow.*

ARMS: Quarterly, 1, *Argent, three cocks Gules Or* (Howell or Seys); 2, *Sable, a chevron Argent between three spear heads of the second imbrued proper* (Jones); 3, *Gules, on a chevron Or three lapwings Sable*; 4, *Argent, a lion rampant Sable crowned Or*, impaling Quarterly, 1 and 4, *Argent, a saltire between twelve cross crosslets Or* (Dennye); 2, *Or, a fess dancettée Gules, in chief three martlets Sable, a bordure engrailed of the third*; 3, *Azure, three trout fretted in triangle Argent*.

CREST: *A buck's head cabossed proper, between the attires two boughs vert.*

EYNON SEIS in com. Brecknock in Wales, mar. and had issue,—HOWELL, his eldest son.

HOWELL of Brecknockshire, Esq., eldest son and heir to Eynon Seyes, mar. and had issue.—HOWELL VAUGHAN, his eldest son.

HOWELL VAUGHAN, son and heir to Howell ap Eynon Seyes, mar. *Mawde*, da. of *Llewellyn ap Howell*, and by her had issue, LLEWELLIN, his eldest son.

LLEWELLIN AP HOWELL VAUGHAN, eldest son and heir to Howell Vaughan mar. *Mawde*, da. to *Yeron ap Ryce ap Ivor*, and had issue, THOMAS, his eldest son; Morgan, second son; Gwyllyam, third son; Davye Gam, fourth son; Jenkyn, fifth son; Richarde, sixth son; Howell, seventh son; and Griffythe, eighth son.

THOMAS LLEWELLIN AP HOWELL, eldest son and heir to Llewellyn, mar. *Elizabeth*, da. and heir to *Adam ap Phellippe* of Llanveyr Culendin (Kilgidin) co. Monmouth, Esq., and by her had issue,—Gwyllyam, his eldest son; and JOHN, second son,

JOHN AP THOMAS, of Langatoke, besyde Uske, co. Monmouthe, Esq., second son to Thomas Llewelin, mar. *Wentyan*, da. to *William Morgan*, of the Chappell by Aburgavenye, in the said countie of Monmouthe, Esq., and by her had issue,—THOMAS, his eldest son and heir.

THOMAS AP JOHN, of the place and countie aforsaide, eldest son and heir to John ap Thomas, mar. *Anne*, da. to *John Roger*, of Wernethet in the saide countie of Monmouthe, and had issue,—JOHN THOMAS, his eldest son and heir.

JOHN THOMAS of Llangatoke, Esq., eldest son and heir to Thomas ap John, mar. *Jane*, the da., and one of the heirs of *Jenkin Thomas* of Redegwerne, co. Glamorgan, Esq., and by her had issue,—THOMAS, his eldest son; Mathewe, second son; and William, third son; Jane, mar. to *James ap Watkin*, and after to...*Herbarte* of Colbroke, co. Monmouth; Jane the younger mar. to *Ryce ap Jenkin*; and Dennys not yet mar.

THOMAS JONES of Taplowe, co. Buck, Esq., eldest son and heir to John, mar. *Ursula*, da. of *Thomas Denny*, of Chesthunte, co. Hertf., Esq., and hath as yet no issue.

KINGSTON of Wendover.

ARMS: Quarterly, 1 and 4, *Sable, a lion rampant Or tail forked*; 2 and 3, *Argent, on a chevron Azure between three lozenges Sable as many harts' heads cabossed Or* (Staveley).

WILLIAM KYNGESTON of Wendover, co. Buck., Esq., mar. *Katherin*, da. to *John Wendover* of Wendover, Gent., and by her had issue,—HENRY, his eldest son.

HENRY KYNGESTON of Wendover, Esq., eldest son and heir to William, mar. *Maude*, da. to *John Garne* of Halton, co. Buck., Esq., and by her had issue,—JOHN, his eldest son and heir.

JOHN KYNGESTON of Wendover, Gent., eldest son and heir of Henry, mar. *Alyce*, da. and heir of ... *Kyppinge* of Smaleden (Small Dean), co. Buck., yeoman, and of *Crystian* his wife, da. of *William Hampden* of West Hampden, co. Buck., Esq., and the said John Kyngeston and Alyce had issue,—RAUFE, his eldest son; *Agnes*, mar. to *Henry Tracher* of Wendover, yeoman.

RAUFE KYNGESTON of Wendover, eldest son and heir to John, mar. *Elizabeth*, da. and sole heir to *Alexander Staveley* of Bignell, co. Buck., Esq., Grome Porter to King Henry the Eight, and of *Jane* his wife, da. and sole heir to *John Jenkyns* of Alton, co. South., Gent., and the said Raufe and Elizabeth have issue,—GEORGE, their eldest son and heir;

Robert; Edward; and Johan; died all three *sans issue*;—after, the said Raufe mar. to his second wife, *Margarett*, da. of *Sir Edwarde Chamberleyne* of Sherborne, co. Oxon., Kt., and by her hath issue,—Gabryell; Edward; and William; all three living.

GEORGE KYNOESTON of Wendover, Gent., eldest son and heir to Raufe, mar. *Johan*, da. of ... *Barton* of ..., co. Hertf., and by her hath issue,—Raufe, his eldest son and heir apparent.

LECHINGHAM *of Wendover.*

ARMS: Quarterly, 1 and 4, *Sable*, three boars' heads coupéd within a bordure engrailed *Argent*; 2 and 3, *Argent*, a Cornish chough proper.

ROBERT LECHINGHAM of Wendover, co. Buck., Esq., mar. *Maude*, da. of ... *More* in co. South., and by her had issue,—Henry, his eldest son, died *sans issue*; WILLIAM, second son and heir; and Nycholas, third son.

WILLIAM LECHINGHAM of Wendover, Gent., son and heir to Robert, mar. *Elizabeth*, da. of *Symonde Wytell* of Cawsam, co. Berks., and by her had issue,—Robert, his eldest son; TOWCHER, second son and heir; and Rycharde, third son; Elizabeth, mar. to *Thomas Nashe* of Weston Turvyll, co. Buck., yeoman.

TOWCHER LECHINGHAM of Wendover, Gent., second son and heir to William, mar. *Alyce*, da. to ... *Bysshopp* of Welborne, co. Warw., yeoman, and by her hath issue,—Myghell, his eldest son; William, second son; and Edmonde, third son.

LONGEVILL *of Wolverton.*

ARMS: Quarterly of 8, 1 and 8, *Gules*, a fess dancettée *Ermine* between six cross-crosslets *Argent*; 2, *Gules*, an eagle displayed *Argent*, over all a bendlet *Gules*; 3, *Or*, on a chief *Gules* two dexter hands appaumée *Argent*; 4, *Gules*, three lucres naiant in pale *Argent*; 5, Quarterly, *Gules* and *Or*, in the first quarter a cross patée of the second (Middleton); 6, *Vert*, three lions passant in pale *Argent*; 7, *Azure*, three covered cups within an orle of cross-crosslets fitchée *Argent*.

CREST: A talbot's head erased *Gules* collared dancettée *Argent*.

Sir JOHN LONGEVILL of Wolverton, co. Buck., Kt., mar. to his first

wife ..., da. of ... *Hastings* of ..., and by her had issue,—after, the said Sir John Longevill mar. to his second wife ..., da. of ... *Tresham*, and had issue.

The said Sir John Longevill had issue,—Sir Thomas Longevill, Kt., his son natural, who died sans issue; ARTHURE, second son natural; John, third son; and Rycharde, fourth son.

ARTHURE LONGEVILL of Wolverton, Esq., second son to Sir John Longevill and brother and heir to Sir Thomas, mar. *Anne*, widow of *John Elmes* and da. and heir of *Thomas Mydleton* of Sylkesworth, co. Durham, Esq., and had issue,—Henry, his eldest son and heir; Arthure, second son; Frances, mar. to *Francis Heydon* of the Grove, co. Hertf.

Which Anne aforseide, wife to the said Arthure, and da. and heir to Thomas Mydleton, was first mar. to *Henry Ruthall* of Mowleshoe, co. Buck., Gent., and had issue by him, Richard, her eldest son and heir, which Richard mar. *Elizabeth*, da. to *Robert Burgen* of Watton-at-Stone, co. Hertf., Esq., and hath issue,—Henry, his eldest son and heir apparent; secondly, the said Anne mar. to John Elmes, by whom she had no issue; thirdly, she mar. to Arthure Longevill, and hath issue as aforseide.

LOVETT of *Liscombe*.

ARMS: Quarterly, 1 and 4, *Argent, three wolves passant in pale Sable*; 2 and 3, *Ermine, a bordure Sable charged with eight bezants*, (*Turvyle*), impaling, Quarterly, 1 and 4, *Azure, two organ pipes in saltire between four crosses patée Or* (*Williams*); 2 and 3, *Argent, a moor cock Sable* (*Moore*).

ROBERT LOVETT of Lyscombe, co. Buck., Esq., mar. *Sara*, da. and heir of *Sir Roger Turvyle* of Helmedon, co. Northampt., Kt., and by her had issue,—JOHN, his eldest son and heir.

JOHN LOVETT of Lyscombe, Esq., eldest son and heir to Robert, mar. *Margarett*, da. of ..., and by her had issue,—WILLIAM, his eldest son and heir; and Thomas, second son.

WILLIAM LOVETT of Lyscombe, Esq., eldest son and heir to John, mar. ..., da. of ..., and had issue,—ROGER, his eldest son.

ROGER LOVETT of Lyscombe, Esq., eldest son and heir to William, mar. ..., da. of ..., and had issue,—JOHN, his eldest son.

JOHN LOVETT of Lyscombe, Esq., eldest son and heir to Roger, mar. ..., da. of ..., and had issue,—SYMONDE, his eldest son.

SYMONDE LOVETT of Lyscombe, Esq., eldest son and heir to John, mar. ..., da. of ..., and by her had issue,—John, his eldest son, died sans issue; RYCHARDE, second son; William, third son; and Robert, fourth son.

RYCHARDE LOVETT of Lyscombe, Esq., second son to Symond, and brother and heir to John, mar. ..., da. of ..., and by her had issue — RYCHARDE, his eldest son.

RYCHARDE LOVETT of Lyscombe, Esq., eldest son and heir to Rycharde mar. *Alyce*, da. of *Thomas Martyn* of London, Gent., and by her hath issue,—LAURENCE, his eldest son and heir; Robert, second son; and Rycharde, third son; Alyce, mar. to *John Taylor* of London, citizen.

LAURENCE LOVETT of Lyscombe, Esq., eldest son and heir to Richard, mar. *Elizabeth*, da. to *Reynolde Williams* of Burvyld, co. Buck, Esq., elder brother to the Lord Williams of Tame, and by her had issue,—William, his eldest son, died sans issue; Francis, second son and heir apparent; Jane; Anne; Marye; and Elizabeth, all four unmar.

MEREDITH of *Upper Wel* near *Shenley*.

ARMS: *Per pale Or and Argent a lion rampant Sable, impaling Gules, two bars Argent, a crescent for difference* (Foxley).

CREST: *A demi-lion rampant Sable collared and lined Or.*

JOHN (MOORE alias) MERYDETH of Upper Welde, co. Buck., Gent., mar. ..., da. of ... *Wodmansye* in co. ..., and by her hath issue,—JOHN, his eldest son.

JOHN MERYDETH of Upper Welde, Gent., eldest son and heir to John, mar. *Alyce*, da. of (*Thomas*) *Redman* of Wovinge (*Oving*), co. Buck., Gent., and by her hath issue,—JOHN, his eldest son and heir; Robert, second son; and Thomas, third son; Jane, mar. to *Robert Wylllyatt* of Horwolde (*Harwood*), co. Buck., yeoman; Margerye, mar. to *Alexander Guest* of Tewkesburye, co. Gloc.; Anne, mar. to *Henry Brytnell* of Abbots Aston, co. Buck., yeoman; Elizabeth; and Katherin, unmar.

JOHN MERYDETH of Upper Welde, Gent., eldest son and heir to John, mar. *Awdryan*, da. to *John Foxley* of Blakesley, co. Northamp., Esq., and by her hath issue,—John, his eldest son and heir; William, second son; and Frances, a da., living.

MORDAUNT of *Westbury*.

ARMS: Quarterly of 12, 1 and 12, *Argent*, a chevron between three estoiles *Sable*; 2, Quarterly, *per pale indented Or and Gules*, in the first quarter five lozenges in cross of the second (*Danno*); 3, *Argent*, on a bend *Sable* a luce lined and ringed of the first (*Broke*); 4, Quarterly, *per fess indented Or and Azure*, a crescent for difference (*Pyrott*); 5, *Gules*, a cross lozengy *Or*, on an inescucheon in the first quarter an eagle displayed *Argent* (*Argentyne*); 6, *Gules*, an eagle displayed *Argent* within a bordure engrailed *Or* (*Strange*); 7, *Argent*, fretty *Sable*, on a chief *Gules* three mullets *Or* (*Huntingdon*); 8, *Argent*, on bend *Gules* fretty of the field (—); 9, *Sable*, three cinquefoils between six cross crosslets *Argent*; 11, *Gules*, two lions passant *Argent*, over all a benullet *Or* (*Strange*); 12, *Gules*, two lions passant *Argent* crowned *Or* (*Strange*); impaling Quarterly, 1, *Gules*, a chevron *Ermine* between three pine apples *Or* (*Pyne*); 2, *Sable*, three chevronels *Ermine*, a mullet for difference (*Wise*); 3, *Argent*, a chevron between three fleurs-de-lis *Gules* (*Chamonde*); 4, Quarterly, 1 and 4, a chevron between three escallops, 2 and 3, a lion rampant within a bordure engrailed.

CREST: *The bust of a Moorish prince habited Or wreathed about the temples Argent and Sable.*

OSBERT MORDAUNTE, of Turvey, co. Bed., Esq., eldest son and heir to Osmund Mordaunte, mar. and had issue; EUSTACE, his eldest son.

EUSTACE MORDAUNTE, of Turvey, Esq., eldest son and heir to Osbert, mar. *Alyce*, da. and heir to *William Danno*, Esq., and by her had issue,—WILLIAM, his eldest son.

WILLIAM MORDAUNTE, of Turvey, Esq., eldest son and heir to Eustace, mar. *Ayce*, da. of *Sir William de Olney*, Kt., and by her hath issue,—WILLIAM, his eldest son.

WILLIAM MORDAUNTE, of Turvey, Esq., eldest son and heir to William, mar. *Rose*, da. of *Sir Raufe Wake*, Kt., and by her hath issue,—ROBERT, his eldest son and heir.

ROBERT MORDAUNT, of Turvey, Esq., eldest son and heir to William, mar. *Johan*, da. of ... *Frowyke*, Esq., and by her hath issue,—EDMONDE, his eldest son and heir.

EDMONDE MORDAUNTE, of Turvey, Esq., eldest son and heir to Robert,

mar. *Ellyn*, da. and one of the heirs of *Raufe Broke*, in co. Essex, Esq., son and heir to Sir Lawrence Broke, Kt., and of *Elizabeth*, his wife, da. and heir of *Raufe Pyrott*, and of *Cassandra*, his wife, da. and heir of *Gyles Argentyne*, of ..., co. Suff., Esq., which Edmonde and Ellyn had issue,—ROBERT, their eldest son and heir.

ROBERT MORDAUNTE of Turvey, Esq., eldest son and heir to Edmonde, mar. *Agnes*, da. and heir of *John Strange*, Lord of Ampton, Tynworthe, and Brokeley, co. Suff., and of *Elizabeth* his wife, sister to *William Betteller* of Walton, co. Essex, Esq., and the said Robert and Agnes had issue,—ROBERT, their eldest son and heir.

ROBERT MORDAUNTE of Turvey, eldest son and heir to Robert, mar. *Margarett*, da. of *John Peecke* of Cowple, co. Bed., Esq., and by her hath issue,—Sir John Mordaunte, Kt., his eldest son ; WILLIAM, second son ; *Elizabeth*, mar. to *Sir Weston Browne* of Rodinge, co. Essex, Kt.

WILLIAM MORDAUNTE of ..., co. ..., Esq., second son to William, mar. *Anne*, da. and one of the heirs of *Thomas Huntington* of Hempsted, co. Essex, Esq., and by her had issue,—ROBERT, his eldest son and heir ; Edmonde, second son, mar. *Anne*, da. of *Ryehard*, Lord *Ryche* ; Anne, eldest da., mar. to ... *Torrell* of Sussex, Esq. ; Jane, mar. to *John Slade* of ..., co. ..., Gent. ; Margaret, mar. to *Sir Lawrence Taylard* of Dodington, co. Hunt., Kt. ; Elizabeth, mar. to *William Hygham* of Gyffords, co. Suff., Esq. ; another da., mar. to *Robert Lockton* of Sawson.

ROBERT MORDAUNTE of Hempsted, co. Essex, Esq., eldest son and heir to William, mar. *Barbara*, da. and heir to *John Le Strange* of Lyttell Massingham, co. Norf., Esq., and by her hath issue,—William, his eldest son, died sans issue ; Phellippe, second son and heir ; ROBERT, third son ; Henry, fourth son ; Edmonde, fifth son ; and Edwarde, sixth son : *Margarett*, mar. to *Edmoude Channe* of Hempsted, yeoman ; Jane, mar. to *Robert Wylkins* of London, grocer ; Barbara, mar. to ... *Suel'oye*, yeoman ; Anne, mar. to *Thomas Crocherode* of Toppesfelde, co. Essex, Gent. ; Alyce, mar. to *Gyles Chyssyell* of Lyttle Barfeld, co. Essex, Esq. ; Elizabeth, mar. to *Thomas Heathe* of Shelswell, co. Oxon, Esq.

ROBERT MORDAUNTE of Westburye, co. Buck., Esq., second son to Robert, mar. *Jane*, da. and heir of *Henry Pyne* of Lyanmie, co. Cornwall, Esq., and of *Dorothy* his wife, da. and one of the heirs of *Sir John Chamonde* in co. Corn., Kt., and of ... his wife, da. and one of the heirs of ... *Tregarthin* of Cornwall, Esq. ; which Henry Pyne was son and heir to Thomas Pyne and of *Margarett* his wife, da. and one of the heirs of *Olyver Wyse* in co. Cornwall, Esq. ;—and the said Robert and Jane had issue.

MOORE of Grove.

ARMS: *Argent, three hounds courant in pale Sable, impaling Rufford, quartering Butler.*

RAUFE MOORE, of Whitchurehe, co. Bucks, Gent., mar. *Elizabeth*, da. of ... *Mason*, of Dothersell (Doddershall), co. Buck, and by her had issue,—ROBERT, his eldest son; Nicholas, died sans issue; Anne, mar. to *Rycharde Blacknall*, of Drayton, co. Buck, Gent.; Katherine, mar. to *Henrye Watts*, of Whaddon Chase, co. Buck, Esq.

ROBERT MOORE, of Grove, co. Bucks, Gent., eldest son and heir to Raufe, mar. *Elizabeth*, da. to *John Rufforde*, of Edlesboroughe, co. Bucks, Esq., and by her had issue,—Robert, William, and Roger, died all three yonge; Dorothe, mar. to *Roger Stephens*, of Leighton Bussarde, co. Bed., Yeoman; Clemence, Jane, Margerye, and Johan, all unmar.

 MOORE of Upper Weat, see MEREDITH.

NORWOOD of Astwood.

ARMS: *Ermine, a cross Gules, a crescent for difference.*

ROBERT NORWOODE of ..., co. Midd., Esq., mar. .. da. of ..., and by her had issue,—THOMAS, his eldest son.

THOMAS NORWOODE of Harrowe-on-the-Hill, co. Midd., Esq., eldest son and heir to Robert, mar. to his first wife, ..., da. of ..., and by her had issue,—Robert, a clerk, her eldest son; ROGER, second son; after, the said Thomas mar. to his second wife, *Ellyu*, da. of *Thomas Warner*, of ..., co. Midd., and by her hath issue,—Thomas, third son; William, fourth son; Nycholas, fifth son; and John, sixth son; Elizabeth, mar. to *Robert Knowlinge*, in co. Oxon; Alyce, mar. to *Robert Cole*, of Heston, co. Midd.; and Agnes, unmarried; thirdly, the said Thomas, mar. *Johan*, da. of *John Warner*, of Langley, co. Hertf., and widow of ... *Taylor*, of Harrowe, co. Midd., and by her hath no issue.

ROGER NORWOODE of Astwoode, co. Buck., Gent., second son and heir apparant to Thomas, mar. *Elizabeth*, da. of *Rycharde Monox* of London Salter, and by her hath issue,—John, his eldest son; Thomas, second son; and Benmedecke, third son.

PAKINGTON of Aylesbury.

ARMS: Quarterly, 1, *Per chevron Argent and Sable, in chief three mullets pierced Gules, and in base as many garbs Or*; 2, *Argent, on a fess between six martlets Gules three cinquefoils of the field* (Washburne); 3, *Argent, three pairs of oak-leaves Vert stalked Sable* (Baldwin); 4, *Ermine, a fess chequy Or and Azure* (Arlerne), impaling, Quarterly, 1 and 4, *Sable, three lucies hauriant Argent, on a chief Or a lion rampant of the field between two pellets each charged with a martlet Azure* (Kytson); 2 and 3, *Quarterly, 1 and 4, Paly of six Argent and Azure on a chief Gules three bezants* (Donington), 2 and 3, *Argent, a chevron between three mullets Gules* (Pye).

CREST: *A demi-hare Azure.*

JOHN PAKINGTON of Stamforle, co. ... , Esq., mar. ... , da. and heir of ... *Washburne* in co. Wore., Esq., and by her had issue,—JOHN, his eldest son; HUMFREY, second son; ROBERT, third son; Augustin, fourth son; and dyvers da's, 1, ... , first mar. to ... *Blounte*, and after to ... *Corbett*; ... mar. to ... *Gravenor* in co. Salop, Esq.; ... mar. to ... *Neve* in co. Essex.

SIR JOHN PAKINGTON of Hampton Lovett in co. Wore., Kt., eldest son and heir to John, mar. ... da. of ... , and by her had issue,—Bridgett, mar. to *John Lyttleton* of Frankelin in co. Wore., Esq.; another da., mar. to ... *Sculamore* of co. Heref., Esq.

HUMFREY PAKINGTON of London, marchante, second son to John, mar. ... da. of ... , and by her had issue,—John, his eldest son and heir; William, second son; and dyvers da's, one, mar. to *Roger Martin*, Alderman of London; Jane, first mar. to *Hunfrey Baskerville*, Alderman of London, and after to *Lyonell Duckett*, Alderman of London; another, mar. to *Rycharl Lambert*, Alderman of London; another, mar. to *John Lambert* of London, merchant; Anne, first mar. to *Hunfrey Style*, Gent. and Merchant of London, and after to ... *Jackman*, Alderman of London; another, mar. to ... *Coles* of London, merchant; another, mar. to ... *Burbage* of ... , co. Midd., Gent.

ROBERT PAKINGTON of London, Esq., third son to John, mar. to his first wife, *Anne*, one of the da's and heirs of *Sir John Baldwin* of Aylesboroughe, co. Buck., Kt., Lord Cheife Justice of the comon place, and by her had issue,—THOMAS, his eldest son; John, his second son; Elizabeth, first mar. to *John Lane* of Walgrave, co. Northamp., Esq., and

after to *Sir Rycharde Malorye*, Kt. and Alderman of London; Anne, mar. to *Rycharde Cupper* of Glympton, co. Oxon., Esq.; and Margaret, mar. to *Bennett Lee* of Burstow, co. Buck., Esq. and after, she mar. to *Thomas Scotte* of ..., co. York., Gent.

Sir THOMAS PAKINGTON of Aylesburye, co. Buck., Kt., eldest son and heir to Robert, mar. *Dorothe*, da. of *Sir Thomas Kytson* of Hengrave, co. Suff., Kt., and by her hath issue,—John, his eldest son and heir apparent; Henry, second son; Robert, third son; and Thomas, fourth son; Margaret; Katherin; and Margaret, all unmar.

The said *Sir John Baldwin*, Kt., mar. ..., da. to *William Dormer* of Wyecombe, co. Buck., Esq., and had issue,—William, who died sans issue; Anne, mar. to *Robert Pakington* of London, mercer; Parnell, first mar. to ... *Romsey* of Hitcham, co. Buck., Esq., and after to ... *Burlace* of Lyttle Marlowe in the said co., Esq.; Alyce, a nunne at Burnham, died sans issue.

PIGOTT of Beachampton.

ARMS: Quarterly, 1, *Sable, three picks Argent, a crescent for difference*; 2, *Barry of six Sable and Argent, six cinquefoils of the second three two and one* (Dayrell); 3, *Azure, a fess Or between three maidens' heads couped at the shoulders Argent erined of the second* (Marrow); 4, *Per chevron Argent, and Sable, three elephants' heads erased counterchanged* (Saunders); impaling Quarterly of 8, 1 and 8, *Per saltire Argent and Sable, in chief three trefoils slipped Vert two and one in base as many of the last one and two* (Tresham); 2, *Argent, a chevron engrailed between three martlets Sable* (Pevensey); 3, *Ermine, on a bend Sable three goats' heads erased Argent* (Mulsho); 4, *Gules, a chevron between three fleurs-de-lis Argent*; 5, *Argent, a fess Sable between three crescents Gules*; 6, *Per pale Sable and Argent three estoiles counterchanged*; 7, *Argent, a cross voided between four cross crosslets fitchée Gules* (Billing).

CREST: *A greyhound couchant collared Argent, charged on the breast with three picks Sable.*

RYCHARDE PIGGOTT of Rypon, co. York, Esq., a younger brother of the said house, mar. to his first wife, ..., da. and heir to ... *Gyfford* of Whaddon, co. Bucks, Esq., and by her had issue,—ROBERT, his eldest

son and heir ; after, the said Rycharde, mar. to his second wife, *Isabelle*, da. to *Paule Darrell* of Lyllingstone, co. Bucks, Esq., and by her had issue,—*JOHN*, second son.

ROBERT PYGGOTT of the same place and co., Esq., eldest son and heir to Rycharde, by his first wife, mar. ..., da. of ..., and by her had issue,—*THOMAS*, his eldest son and heir ; Rycharde, second son.

THOMAS PYGGOTT of Whaddon, co. Buck., Esq., eldest son and heir of Robert, Serjeant at the Lawe, mar. to his first wife, ..., the da. and heir of ... *Langston*, in co. Essex, Esq., and had issue,—*William*, his eldest son ; *Francis*, second son ; after, the said Thomas mar. to his second wife, *Elizabeth*, the da. of ... *Everisbie* of Quynnton, co. Buck., and had issue,—*Thomas*, third son, of whome *Thomas Pygott* of Dothersell is descended ; *Robert*, fourth son ; *Roger*, fifth son ; and divers das., whereof one mar. to *Sir Humfrey Ferrys* (Ferrers) of Tamworthe, co. Staff., Kt. ; another mar. to ... *Boulstered* of Hegeley, co. Buck., Esq. ; another mar. to *Sir Walter Henley* of Kent, Kt. ; and another mar. to ... *Vauz*, of the Courte.

JOHN PYGGOTT of Bechampton, Esq., second son to Rycharde by his second wife, mar. *Isabell*, da. and one of the heirs of *John Edge* of Stonye Stratforde, co. aforesaide, Esq., and by her had issue,—*ROBERT*, his eldest son and heir ; *John*, second son ; *Jane*, mar. to *George Rotherham* of Luton, co. Bed., Esq.

ROBERT PYGGOTT of Bechampton, Esq., eldest son and heir to John, mar. *Luce*, da. and heir of *Thomas Saunders* of Stowe, co. Buck., Gent., and by her had issue,—*THOMAS*, his eldest son and heir ; *Humfrey*, second son ; *William*, third son ; *Bridgett*, mar. to *Sir Olyver Walloppe*, Kt. ; *Isabell*, mar. to *William Aestrye* of Bed., Esq. ; *Alyce*, mar. to ... *Howard* of Callyce ; *Elizabeth*, mar. to *George Lyngar* ; *Jane*, mar. to *Rychard Yate* of Longworth, co. Berks, Gent.

THOMAS PYGGOTT of Bechampton, Esq., eldest son and heir to Robert, mar. *Isabell*, da. to *Rycharde Tresham* of Newton, co. Northamp., Esq., and by her hath issue,—*Valentyn*, his eldest son and heir ; *George*, second son ; *Edmonde*, third son ; *Robert*, fourth son ; *William*, fifth son ; *Matthewe*, sixth son ; *Arthure*, seventh son ; *Francis*, eighth son ; and *Clement*, ninth son ; *Isabelle*, mar. to *George Salesburge* of Haver-sham, co. Buck., Gent. ; *Luce*, mar. to *Robert Ley* of (?) Yetley, in the said co., Gent. ; and *Judythe*, unmar.

PIGOTT of *Little Horwood*.

ARMS: Quarterly, 1 and 4, *Pigott without the crescent*; 2 and 3, *Argent, three bugle horns stringed* (Gyfford); impaling Quarterly, 1, *Argent, a trefoil slipped between three mullets Gules* (Ashfield); 2, *Azure, an eagle displayed Argent* (Wilcotes); 3, *Barry wavy of six Argent and Azure, on a chief Sable two lions rampant addorsed of the first*; 4, *Or, three leopards passant Sable*.

ROBERT PYGOTT of Lyttle Horwoode, co. Buck., Esq., mar. ..., da. and heir of ... *Gyfforde* of Whaddon, co. Buck., Esq., and by her had issue,—THOMAS Pygott, Sergeant at the Lawe, and others.

THOMAS PYGOTT of Whaddon, Sergeant at the Lawe, eldest son and heir to Robert, mar. to his first wife, *Anne*, da. and heir of ..., co. Essex, Gent., and by her had issue,—WILLIAM, his eldest son and heir; Francis, second son; and three da's.

WILLIAM PYGOTT of Lyttle Horwoode, co. Buck., Esq., eldest son and heir to Thomas, mar. to his first wife, *Mary*, da. of *Sir John Lougryle* of Wolverton, in the said co., Kt., and by her hath issue,—LEONARDE, his eldest son and heir; John and Thomas, dyed both sans issue.

LEONARDE PYGOTT of Lyttle Horwoode, co. Buck., Esq., eldest son and heir to William, mar. *Katherine*, da. to *Humphrey Ashefelde* of Hetheroppe, co. Oxon, Esq., and by her had issue,—Humphrey and Thomas, dyed both sans issue; Anne and Margaret living unmar.

PORTER of *Barton Hartshorne*.

ARMS: Quarterly, 1 and 4, *Gules, three bells Argent*; 2 and 3, *Ermine, on a canton Gules an owl Argent* (Porter).

JOHN PORTER of Barton, co. Buck., Esq., mar. *Johan*, da. and heir of *Thomas Mawdelyne* of Potterspurye, co. Northamp. and of *Johan* his wife, da. and heir of *Thomas Barton*, son and heir of Thomas Barton, son and heir of Henry Barton, son and heir of Henry Barton of Barton Hartshorne, co. Buck., Esq., which John Barton and Johan had issue,—JOHN PORTER, who had issue —THOMAS PORTER, who had issue,—JOHN PORTER and William Porter, which John Porter had issue,—JOHN PORTER, who had issue,—THOMAS PORTER, which Thomas had issue,—JOHN PORTER.

JOHN PORTER of Barton Hartishorne, Gent., eldest son and heir to John, mar. *Anne*, da. to ..., and by her had issue, JOHN, his eldest son and heir; Edward, second son; and a da. mar. to ... *Wynghatt* of Bed.

JOHN PORTER of Barton Hartishorne, Gent., eldest son and heir to John, mar. *Alyce*, da. to *Rycharde Willis* of Pryers Marssam (Prior's Marston), co. Warw., Gent., and had issue,—EDUARDE, his eldest son and heir; John, second son; William, third son; Henry, fourth son; Robert, fifth son; Alyce, mar. to *Roger Ducke* of Newnton Purcell, co., Oxon., Gent.; Elianor, mar. to *William Whellus* of Tosseter, co. Northamp.; Elizabeth, mar. to *William Smythe* of Padburye, co. Buck., Marchant of the Staple.

EDUARDE PORTER of the same place and co., Gent., eldest son and heir to John, not yet mar.

PUREFOY of *Shalstone*.

ARMS: Quarterly, 1, *Gules, three pairs of gauntlets conjoined*; 2, *Quarterly, Or and Gules, a crescent for difference* (Ayott alias Allenaytt); 3, *Azure, three stirrups Or* (Shereford); 4, *Gules, a chevron Ermine between three leopards' faces Or* (Wylforde).

PHÉLLIPPE PUREFOYE of Shereforde, co. Warw., Esq., eldest son and heir to William, mar. *Margarett*, da. and heir to *Symonde Shyreforde* of Shirforde, co. Warw., Esq., and by her had issue,—WILLIAM, his eldest son and heir, which William had issue,—WILLIAM; Thomas, second son, Recorder of Coventrye, of this Thomas descended the houses of Leicester and Warw.

WILLIAM PUREFOY of Shyreforde, Esq., eldest son and heir to William, mar. *Maryan*, the da. and heir of *Alleyn Ayott* of Shalston, co. Buck., Esq., and by her had issue,—WILLIAM, his eldest son and heir, who was Shirife of Leicester and Warwickshires in the 25th yeare of K. Henrye the sixth, and had issue,—WILLIAM.

WILLIAM PUREFOY of Shalston, Esq., eldest son and heir to William, mar. *Margerye*, da. of *Sir Robert Knightley*, and by her had issue,—Phéllippe, his eldest son, mar. and died sans issue; JOHN, second son.

JOHN PUREFOYE of Shireforde, Esq., second son to William and brother and heir to Phéllippe, mar. ..., da. of ..., and by her had issue,—NYCHOLAS, his eldest son and heir; Alys, mar. to *John Ashwell* of Turweston, co. Buck., Gent.

NICHOLAS PUREFOYE of Shalston, co. Buck., Esq., eldest son and heir to John, mar. to his first wife *Alys*, da. to *Thomas Denton* of Bassyles Lye, co. Buck., Esq., and by her had issue,—EDWARD, his eldest son and heir ;—after, the said Nycholas mar. to his second wife, *Clemence*, da. of ... *Lydygule* in co. Warw., Gent., and by her had issue,—Symonde ; Suzan, mar. to *Edmond Jenney*, Gent. ;—thirdly, the said Nycholas mar. *Katherine*, da. to *Rycharde Broadfelde*, in co. Bark., Yeoman, and by her hath issue,—Martyn, Luke, and Francis ; Isabell, mar. to *Thomas Gorbwyn* of Oxford, Gent. [and Deane of Canterburye and Byshoppe of Bathe].

EDWARDE PUREFOYE of Shalston, co. Buck., Esq., eldest son and heir to Nycholas, mar. *Anne*, da. to *Thomas* (? *Richard*) *Phetiplace* of Besylles Lee, co. Buck., Esq., and by her had issue ; and Francis, and Henry, and Thomas died all three sans issue.

JOHN PUREFOYE of Shaldeston, co. Buck., Esq., eldest son and heir to Edward, mar. *Elizabeth*, da. to *Sir John Browne* of Walton, co. Oxon, Kt., and by her hath, as yet, no issue. [Marye, mar. to *Thomas Thorne* of Yardley Hastings, co. North'ton, Gent.]

PUTTNAM of Penne.

ARMS: Quarterly, 1 and 4, *Sable, crusily fitchée Argent a stork of the last* ; 2 and 3, *Lozengy Or and Azure*.

CREST: *A wolf's head Gules a mullet for difference.*

NICHOLAS PUTTNAM of Penne, co. Buck., Gent., mar. and had issue,—JOHN, his eldest son.

JOHN PUTTNAM of Penne, Gent., eldest son and heir to Nicholas, mar. *Margarett*, da. of ... *Pygott* of ..., co. Buck., Gent., and by her had issue,—JOHN, his eldest son ; GEORGE, second son ; and Robert, third son ; Ellyn dyed sans issue.

JOHN PUTTNAM of Penne, Gent., eldest son and heir to John, mar. *Marye*, da. of *Rycharde Verney* of Myddle Claydon, co. Buck., Gent., and died sans issue.

GEORGE PUTTNAM of Penne, Gent., second son to John, and brother and heir to John, mar. *Isabell*, da. to *John Shrimpton* of Chippinge Wyckam, co. Buck., yeoman, and by her hath issue,—John, his eldest son and heir apparrant ; William, second son ; Rycharde, third son ; Marye ; Suzan ; Ellyn ; Jane ; and Isabell, all living ; Elizabeth died young.

READE of *Ludgershall*.

ARMS: Quarterly of 6, 1 and 6, *Azure, three pheasants Or*; 2, *Per chevron Gules and Argent three unicorns' heads coupéd counter-changed*; 3, *Azure, a fess between three leopards' faces Or an annulet for difference*; 4, *Argent, a lion rampant Azure gutté Or*; 5, *Argent, a fess Gules between two crescents of the second in chief and a bugle horn stringed vert in the base*.

THOMAS READE of the name *Newe Forreste*, in co. South., Gent., mar. *Elizabeth*, da. and heir of ... *Dollinge* in co. Dorsett, Gent., and by her had issue,—John, his eldest son, died sans issue; WILLIAM, second son and heir; THOMAS and John, twins, which John was drowned in the *Mary Rose* at *Porchemouth*, in the ... year of Henry the Eighth; William, died sans issue; *Elizabeth*, mar. to *Lewyes Guildeforde* of ..., co. Essex, and by her had issue,—Arthur; Jane, mar. to *Thomas Blysse* of *Strowdwater*, co. Gloc.; Anne, mar. to *Humfrey Twynam* of *Subberten*, co. South., and had issue,—Nicholas Twynam, Humfrey, and Lewys, and Elizabeth.

WILLIAM READE of *Crandon*, co. Buck., Gent., second son and heir to Thomas, mar. ..., da. of ..., and by her had issue,—THOMAS, his eldest son and heir apparent; Johan and Cescellie unmar.

THOMAS READE of *Lurgishall*, co. Buck., Gent., third son to Thomas, mar. *Anne*, widow of *Leonarde Reade*, and da. to *Sir ... Wylforde*, Kt. and Alderman of London, and by her hath no issue.

REDMAN of *Oving*.

ARMS: Quarterly, 1 and 4, *Gules, three cushions Ermine tusselé Or*; 2 and 3, *Gules, a lion rampant Argent on the shoulder a fleur-de-lis Azure, over all a fleur-de-lis for difference*.

THOMAS REDMAN of *Wovinge*, co. Buck., Gent., mar. *Jane*, da. of ... *Lamburne* of *Wodesdon*, co. Buck., Gent., and by her had issue,—Thomas, his eldest son; John, second son; RAUFE, third son; and Edwarde, fourth son; Alyce, mar. to *John Moore* alias *Love* of *Lenborough*, co. Buck., yeoman; Anne, mar. to *Thomas Foster* of ..., co. Cambr., Gent.; Agnes, mar. to *Rycharde Kettell* of *Bysshoppes Langley*, co. Hertf., Gent.

RAUFE REDMAN of *Wovinge*, Gent., third son to Thomas, mar. *Brylgett*, widow of *Rycharde Popper* of *Lyllingstone Lovell*, co. Oxon., Gent., and da. of *Thomas Cole* of *Northley*, co. Gloc., Gent., and by her hath issue,—Elizabeth, and Jane.

RISLEY of *Chetwood*.

ARMS : Quarterly of 12, 1, *Argent, a fess Azure between three crescents Gules* ; 2, *Ermine, on a chief Sable a talbot passant Argent* (Morden) ; 3, *Chequy Argent and Gules, on a bend Sable three mullets of the first* (Bekering) ; 4, *Argent, a lion rampant tail forked Gules* ; 5, *Azure two bars and a chief Argent* (Newbold) ; 6, *Argent, three pellets* (De la Lune) ; 7, *Argent, on a bend cotised Sable three mullets Or* (Hawten) ; 8, Quarterly, *Ermine and Azure, over all a cross engrailed Or* (Osborne) ; 9, *Argent, a bend cotised Sable three mullets Or* (Derehrst) ; 10, *Argent, three eagles displayed Gules a label Azure* (Newnham) ; 11, *Argent, three torteaux* (Halysberk) ; 12, *Azure, ten billets four three two one and a canton Or charged with a raven proper* (Blondell).

CREST ; *A talbot statant Ermine collared Azure charged with bezants supporting with the dexter paw an escucheon.*

ROBERT RYSELEY of Hillesdon, co. Buck., Esq., mar. ..., eldest da. and one of the heirs of *John Harten* of Pytsford, co. Northamp., Gent., and by her hath issue, ... William, his eldest son and heir ; and JOHN, second son.

JOHN RYSELEY of Wytteberye, co. Northamp., Esq., second son to Robert, mar. *Johan*, da. of *Richard Osborne* of Kelmarsch, co. Northamp., Esq., late wife of *Thomas Clavell* of Lyttlestone (Lillingstone) Lovell, co. Oxon., Esq., and by her hath issue, — WILLIAM, his eldest son ; Marye ; Margaret ; and Jane.

WILLIAM RYSELEY of Chetwoode, co. Buck, Esq., son and heir to John, mar. *Alyce*, da. and heir of *John Newman* of Staunton, co. Northamp., Esq., and by her hath issue, — WILLIAM, his eldest son and heir apparant ; Margaret, mar. to *Christopher Catelijn* of Harrowlde, co. Bed., Esq.

WILLIAM RYSELEY of Chetwoode, Esq., eldest son and heir to William, mar. *Johan*, da. of *Foulke Battery* of Lawrence Marston, co. Northamp., Gent., and by her hath issue, — Powle, his eldest son and heir apparant ; George, second son ; Elizabeth ; Mabell ; and Anne ; all three unmar.

RISLEY of *Chetwood*.

(Apparently an addition to the M.S.)

SIR RAULFE RISLEY, Kt., lived in the 32 years of the Reigne of king Henry the thirde, and had issue, — HENRY,

HENRY RISLEY, son and heir to Sir Raulfe, mar. and had issue,—SIR HENRY.

SIR HENRY RISLÈY, Kt., lived in Edward the second's tyme, and some part of Edward the thirde's time, and had issue,—RAULFE.

RAULFE RISLEY, son and heir to Sir Henry, mar. the da. of ... *Meryfelde* (*Argent, a chevron Sable between three Cornish choughs*), and had issue,—THOMAS.

THOMAS RISLEY, son and heir to Raulfe, mar. the da. of ... *Langley* (*paly of six Argent and Vert*), and had issue,—JOHN.

JOHN RISLEY, son and heir to Thomas, mar. *Julyan*, da. and heir of *Richard Morden*.

ROBERT RISLEY, son and heir to John, mar. *Margaret*, da. and heir to *Thomas Bekeringe*, and of *Marye* his wife, da. of *Richard Langforde* (*paly of six Or and Gules a bend Argent*), who was son and heir of RAULFE BEKERINGE and of his wife, da. of *John Cawton* (*Gules two bars and in chief as many mullets Argent*), which Raulfe Bekeringe was son and heir to John Bekeringe and of *Morde* his wife, da. and one of the heirs of RAULFE HAVERINGE and of *Julyan* his wife, da. and heir of *Henry Newbottle*; which Raulfe was son and heir to John Haveringe, who was the son and heir unto Robert Haveringe, son and heir to Sir John Haveringe, Kt.; which John Bekeringe aforesaid was son and heir to Sir Thomas Bekeringe, Kt., and of his wife the da. of ... *Erneford*; which Sir Thomas was son and heir of Sir John Bekeringe of Norton, co. Nott., Kt., who was son and heir of Sir Thomas Bekeringe, Kt., that lived in Edward the First tyme; Bekeringe, *chequy Argent and Gules a bend Sable*, for the younger howse *upon the bend three mullets Argent*; Erneford beareth *Or three bars Sable a border Ermines*; NOTE, that Raulfe Bekeringe aforesaid had an elder brother whose name was Sir Thomas Bekeringe, who mar. the da. and heir of *Sir John Lowdham*, Kt., *Argent a bend Azure crasily Or*, which Sir Thomas Bekeringe had issue,—*Alys* his da. and heir mar. to *Sir Thomas Rempston*, Kt., of whom *Sir Richard Stapleton* is descended; Rempston, *Argent a chevron and cinquefoil Sable*; Haveringe, *Argent a lion rampant the tail forked Gules armed and langued Azure*.

JOHN RISLEY, son and heir of Robert Risley aforesaid, mar. *Jane*, da. and heir of ... *De la Lune*, and had issue,—JOHN, his eldest son; and Robert, second son.

SIR JOHN RISLEY, Kt., died without issue male.

ROBERT RISLEY, second son to John, and brother and heir male to Sir

John Risley, mar. *Elimor*, da. and one of the heirs of ... *Hauten*, lord of Pisforde, co. North'ton, and had issue,—WILLIAM, his eldest son ; JOHN, second son.

WILLIAM RISLEY, son and heir to Robert, mar. *Agnes*, da. to *Thomas Brulshaw* (*Argent, two bars Sable*), and had issue,—Margaret, mar. to *John Chauncye* of Edgecott, co. North'ton., Esq., Jane, second da., mar. to *John Gatton*.

NOTE that Chauncye quartereth hereby Risley, Mordon, Bekering, Haveringe, Newbolde, Delaborne, and Hawten, besides other.

JOHN RISLEY, second son to Robert, and brother and heir male to the said William Risley, mar. *Johan*, da. of *Richard Osborne*, and one of the heirs of her mother, and had issue,—WILLIAM, his eldest son ; which Richard Osborne was of Kelmlesley, co. North'ton, Esq., who mar. *Jane*, the da. and heir of *Thomas Derehurst*, who mar. *Jane*, da. of ... *Covyle* (*Azure, a lion rampant Argent over all a bend Gules*), who was the son and heir of John Derehurst of Foylecourt, co. Glouc. Esq.

WILLIAM RISLEY of Chetwood, co. Buck., Esq., son and heir to John, mar. *Alys*, da. and one of the heirs of *John Newnham* of (?) Stanton, co. North'ton, Esq., and of *Isabel* his wife, da. and heir of ROBERT HALLESBERKE and of *Alys* his wife, da. of *Martyn Ellys* (*Or, on a cross Sable five crescents Argent*), which Robert was son and heir to Thomas Hallesberke and of his wife, the da. and heir of ... *Odingselles* (*Argent, a fess and in chief two mullets Gules*), son and heir to Richard Halesberke and of *Katherin* his wife, the da. and heir to *Heughe Blondell*, son and heir to Henry Hallesberke and of ... his wife, the da. of ... *Sherdelowe*, son and heir to Thomas Hallesberke and of ... his wife, the da. of ... *Daycorthe*, son and heir of William Hallesberke, who mar. and had issue,—William, his eldest son, died sans issue ; Henry, second son, was a man of religion ; Thomas, was a knight of the Rodes ; John, Dean of Wells, and brother to the said Richard ; which William Hallesberke was the son and heir of William Hallesberke that lived in the reign of King Edward the Third.

NOTE also that *Anne*, the second da. and one of the heirs of *John Newnham*, mar. to *Thomas Malorye*, and had issue,—Robert Malorye.

WILLIAM RISLEY of Chetwood, co. Buck., Esq., son and heir to William aforesaid ; mar. *Johan*, da. of *Foulke Buttery* alias *Matanye* of co. North'ton, Gent., and had issue,—Pawle, his eldest son ; George, second son ; Thomas, third son ; Elizabeth, mar. to *Thoby Chauncye* of Edgecott, co. North'ton, Esq. ; Isabell, mar. to *Thomas Heath* of Shellesworth, co. Oxford, Esq. ; Anne ; Frances ; and Jane, unmar.

ROOKES of *Fawley*.

ARMS: Quarterly, 1 and 4, *Argent, a fess flory counterflory Gules between three rooks Sable*; 2 and 3, *Ermine, three chevrons Gules* (Sacquevyle).

THOMAS ROOKES of Fawley, co. Buck., Esq., mar. *Margery*, da. and heir to *Thomas Sacqueryle* of Fawley, Esq., and by her had issue,—THOMAS, his eldest son.

THOMAS ROOKES of Fawley, Esq., eldest son and heir to Thomas, mar. ..., da. of ... *Fowler* of Rycott, co. Oxon., Gent., and by her hath issue, THOMAS, his eldest son and heir.

THOMAS ROOKES of Fawley, Esq., eldest son and heir to Thomas, mar. ..., da. of *Sir William Stoner* of Stoner, co. Oxon., Kt., and by her had issue,—THOMAS, his eldest son and heir,

THOMAS ROOKES of Fawley, Esq., eldest son and heir to Thomas, mar. *Elizabeth*, da. of (*John*) *Mynterchamber*, in co. Suff., Gent., and by her had issue,—ROBERT, his eldest son and heir; George, second son; and William, third son; Anne, mar. to *Alexander Whytley*, costomer of Hull, co. Line.

ROBERT ROOKES, of Fawley, Esq., eldest son and heir to Thomas, mar. *Marye*, da. to *Thomas Golsdve* of Norwich, co. Norf., Gent., and by her hath issue,—Felyce, a da.; after, the said Robert mar. to his second wife, *Elizabeth*, da. of *John Oglethorpe* of Newington, co. Oxon., Gent., and by her hath issue,—Oglethorpe Rookes, his eldest son and heir apparant.

RUFFORDE of *Buttlers*.

ARMS: Quarterly, 1 and 4, *Argent a chevron between three trefoils slipped Sable*; 2 and 3, *Argent a fess between three escallops Sable* (Butler); impaling, Quarterly, 1, *Argent on a chevron between three stags' heads erased Sable as many bugle horns stringed of the field* (Huntley); 2, *Quarterly, per fess indented Or and Azure*; 3, *Argent, a fess Sable in chief three escallops of the last*; 4, *Argent, a fess sable in chief three pellets*.

WILLIAM RUFFORDE of Buttlers co. Buck., Esq., mar. ... da. and heir of *Thomas Buttler* of Edlesboronghe, co. Buck., Gent., and by her had issue,—THOMAS, his eldest son.

THOMAS RUFFORDE of Buttlers, Esq., eldest son and heir to William, mar., and had issue,—THOMAS, his eldest son.

THOMAS RUFFORDE of Buttlers, Esq., eldest son and heir to Thomas, mar. *Elizabeth*, da. and one of the heirs of *Edward Cheldrye* of Cheldrye, co. Buck., Esq., and by her had issue,—ROBERT his eldest son ; and JOHN, second son.

ROBERT RUFFORDE of Buttlers, Esq., eldest son and heir to Thomas, mar. *Margurett*, da. of ..., and by her had issue,—THOMAS, his eldest son and heir.

THOMAS RUFFORDE of Buttlers, Esq., eldest son and heir to Robert, mar. *Phellippe*, da. of *Phellippe Power*, of ..., co. ..., Gent., and by her had issue,—JOHN, his eldest son ; and Robert, second son.

JOHN RUFFORDE of Buttlers, Esq., eldest son and heir to Thomas, mar. ..., da. of ..., and by her had issue,—JOHN, his eldest son.

JOHN RUFFORD of Buttlers, Esq., eldest son and heir to John, mar. *Elyanor*, da. of *Godfrey Toppes*, of co. Norf., Esq., and by her had issue,—GYLES, his eldest son and heir ; and THOMAS, second son.

GYLES RUFFORDE of Buttlers, Esq., eldest son and heir to John, mar. *Margerye*, da. of .. *Chatterton*, and was slayne by the hands of Conyers and Spencer at the procurement of one Bennett Smythe, and died sans issue.

THOMAS RUFFORDE of Buttlers, Esq., second son to John, and brother and heir to Gyles, mar. *Anne*, da. of *George Huntley* of Froster, co. Gloc., Esq., and by her hath issue,—Henry, his eldest son and heir apparent ; and George, second son.

RUTHALL of Wolcerton.

RYCHARDE RUTHALL of Mowlshoe, co. Buck., Esq., second brother to THOMAS Ruthall, Lord Busshoppe of Durham, mar. *Agnes*, da. and heir to *William Hobbes* of ..., and by her had issue,—THOMAS, his eldest son ; HENRY, second son : Rose, mar. first to *John Turpin* of Knaptoft, co. Leic., Esq., and after to *Edmond Astell* of the same place and co., Gent. ; Marye, mar. to *Thomas Charnocke*, of Charnocke Hall, co., Lanc. Esq. ; Dorothy, mar. to *Robert Brockas* of Horton Hall, co. Buck., Esq. ; Jane, mar. to ... *Broune* of ..., co. Kent, Esq. ; Elizabeth, mar. to *Thomas Duckett* of Waltham, co. Essex, Gent. ; Margaret, mar. to *John Mylleton* of ..., co. Essex, Gent.

HENRY RUTHALL of Gunton, co. North., Gent., second son to Rycharde, mar. *Anne*, da. and sole heir to *Thomas Mylleton* of Sylkesworthe, co.

Durham, Esq., and by her hath issue,—RYCHARDE, his eldest son and heir apparant.

RYCHARDE RUTHALL of Wolverton, co. Buck., Esq., eldest son and heir to Henry and Anne, mar. *Elizabeth*, da. to *Robert Burgoyne* of Watton-at-Stone, co. Hertf., Esq., and by her hath issue,—Henrye, his eldest son and heir apparant.

SANKEY of Edlesborough.

ARMS: Quarterly 1 and 4, 1, *Argent, on a bend three roaches of the field*; 2, *Argent, on a chevron Sable five plates within a bordure engrailed of the second* (Barker ? Whitton); 3, *Gules, two lions passant gardant Or* (Delamare); 4, *Or, five lozenges in fess* (Sparsholte).

Note that the other four cotes in pale are to be quartered with these arms of Sankey.

In pale, quarterly, 1, *per bend Argent and Azure, a cross moline Gules*; 2, *Argent, on a cross Sable five lozenges Or* (Brightwell); 3, *Or, on a bend cotised Sable three lions passant of the field*; 4, *Argent, a mullet pierced Gules* (Harpeden).

THOMAS SANKEY of Edlesboroughe, co. Buck., Esq., mar. *Margarett*, da. and one of the heirs of *John Barker* and *Alyce* his wife, da. and heir of *Barnard Delamare* and of *Alyce* his wife, da. and heir of *Edmonde Sparsholtr*, in co. Bark., Esq., which Thomas Sankey and Margarett his wife had issue,—EDWARDE, his eldest son; John, second son, died sans issue; Anne, mar. to ... *Wodeson*, in co. Warw.; Margarett, died sans issue.

EDWARDE SANKEY of Edlesboroughe, Esq., eldest son and heir to Thomas, mar. *Marye*, da. of ... *Clement* of ..., co. Line., Gent., and by her had issue,—THOMAS, his eldest son and heir; John, second son; Frances, mar. to *William Hill* of Wendover, co. Buck., Yeoman; Jane, second da., mar. to *William Sergeant* of Kymble, co. Buck., Yeoman; Dorothe, third da., mar. to *William Reynolds* of Kymble, Yeoman.

THOMAS SANKEY of Edlesboroughe, Esq., eldest son and heir to Edwarde, mar. *Alyce*, da. of *Roufe Huctrey* of Ryslyppe in co. Midd., Esq., and by her hath issue,—Wynyfred, a da.

TEMPLE of *Stow*.

(Apparently an addition to the M.S.)

1. ROBERT TEMPLE of Temple Hall in the parish of Sybsden near Wellesborough, co. Leic., lived in the reign of Henry 3, and had issue,—WILLIAM.
2. WILLIAM TEMPLE, son and heir to Robert, lived anno 4 H. 3, who mar. and issue,—HENRY.
3. HENRY TEMPLE, son and heir to William, lived anno 3 Ed. 1, who mar. *Mawde*, the da. of *John Rybbesforde*, Esq., son and heir to Sir William Rybbesforde, Kt. (*Ermyns a chief Gules fretty Or*), who had issue :
4. RICHARD TEMPLE, lived anno 3 Ed. 1, who mar. *Katherine*, da. of *Thomas Langley*, Esq. (*Argent a fess and in chief three escallops Sable*), and had issue,—NICHOLAS.
5. NICHOLAS TEMPLE, lived anno 24 Ed. 1, who mar. *Isabell*, da. of *William Barwell*, Esq. (*Or two bars Gules three martlets Sable in fess*), and had issue,—NICHOLAS.
6. NICHOLAS TEMPLE, lived anno 4 R. 2, who mar. *Mary*, da. of *Robert Daberon*, Esq. (*Azure a chevron*), and had issue,—THOMAS.
7. THOMAS TEMPLE, son and heir of Nicholas, lived anno 1 H. 6, who mar. *Jane*, da. of *John Braulbridge*, Esq. (*Vair, Or and Sable a bend Gules*), and had issue,—ROBERT.
8. ROBERT TEMPLE, of Temple Hall, in the parish of Sybsden, lived anno 8 H. 6, who mar. *Mary*, the da. of *William Kynscott*, Esq. (*Argent eight escallops Sable 2, 3, 2, 1, on a canton Gules a mullet Or*), and had issue,—Nicholas, his eldest son, died sans issue; ROBERT, second son; THOMAS, third son (*see 9 post*); Henry, fourth son, died sans issue.
9. ROBERT TEMPLE, of Temple Hall, near Wellesborough, co. Line., Esq., second son to Robert, and brother and heir to Nicholas, mar. *Grace*, da. to *William Turyle*, Esq. (*Or three chevrons Vair*), and had issue.
10. RICHARD TEMPLE of Temple Hall, Esq., son and heir to Robert, mar. *Elizabeth*, da. to *Richard Vincent*, Gent. (*Azure, three leaves or trefoils slipped*), and had issue.
11. ROGER TEMPLE of Temple Hall, Esq., lived in the reign of H. 8, who mar. *Agnes* the da. of *John Bewfoure*, Esq. (*Argent, on a chevron Sable three crosses patée Or*), and had issue.
12. RICHARD TEMPLE of Temple Hall, Esq., son and heir to Roger, mar. *Joyce*, da. and one of the heirs of ... *Lovett* of Welford, ec. Northton, Esq. (*Argent three wolves passant in pale Sable armed Gules*), and had issue,—RICHARD.

13. RICHARD TEMPLE of Temple Hall, Esq., son and heir of Richard, mar. *Elizabeth*, da. of *George George*, of Baudington, co. (? Baunton) Glouc., Esq., and hath issue,—Richard, his eldest son; Edward, second son now living anno 1594; and Mary.

9. THOMAS TEMPLE of Whitney, co. Oxford, Esq., second son to Robert Temple, that lived (see No. 8) mar. *Mary*, da. and one of the heirs of *Thomas Gedney*, her brother Hughe dying without issue and leaving Katherine his other sister and co-heir, mar. to *John Ramsey*, Gent., which Thomas Gedney the father mar. *Catherine*, a da. of *Raufe Twyforde*, Esq., being son and heir to Hugh Gedney and of *Elizabeth*, his wife, da. and one of the heirs of ROBERT WALKINGHAM, Esq., and of *Anne* his wife, the da. of *Richard Darnant*, who was the son and heir of John Walkingham and of *Alys* his wife, the da. of *Henry Buckland*, Esq., who was the son and heir of Richard Walkingham and of *Elizabeth* his wife, the da. of *Robert Moigne*, Esq., who was the son and heir of Richard Walkingham and of *Isabell* his wife, the da. of *Matthew Lowdham*, Esq., son of Richard Lowdham, who was the son of Henry Walkingham, that was son and heir to Henry; which HUGH GEDNEY aforesaid was the son and heir to William Gedney and of *Elizabeth* his wife, da. of *John Dorrante*, Esq., son and heir of Hugh Gedney and of *Mary* his wife, da. of *Thomas Hansard*, Esq., son and heir of Hugh Gedney, Esq., and of *Jane* his wife, da. of *Sir Henry Erdington*, Kt., son and heir of Henry Gedney and of *Margaret* his wife, da. of *Thomas Moulton*, Esq., who was the son and heir of John Gedney, son and heir of Hugh Gedney, Esq.; son and heir of Sir William Gedney, Kt.; and the said Thomas Temple and Mary his wife had issue—WILLIAM.

10. William Temple of Whitney, Esq., son and heir to Thomas, mar. *Isabell*, da. to *Henry Overton*, Esq., *Argent, three hoars' heads couped Sable*, and had issue,—THOMAS.

11. THOMAS TEMPLE of Whitney, Esq., son and heir to William, mar. *Alys*, da. of *John Herytage*, of Byrton Dassett, co. Warw., Esq., *Bendy of six Argent and Sable on a chief Gules three cross crosslets Or*, and had issue,—ROBERT, his eldest son; PETER, second son.

12. ROBERT TEMPLE of Whitney, Esq., son and heir to Thomas, mar. and had issue,—Cuthbert Temple, of Stanlake, who mar. and had issue,—Peter Temple, of Coton, co. Warw., Esq.

13. PETER TEMPLE of Byrton Bassett, co. Warw., Esq., second son to Thomas, mar. *Mylycent*, da. of *John Jeckett* of Newington, co. Midd.,

Gent., and by her had issue, —JOHN, his eldest son; Anthony, second son.

14. John Temple of Stowe, co. Buck., Esq., son and heir to Peter, mar. *Suzan*, da. and one of the heirs of *Thomas Spencer* of Everton, co. North'ton, Esq., and by her had issue, —THOMAS, his eldest son; George, second son, died young; John, third son; Alexander, fourth son; William, fifth son; Peter, sixth son; Mylycent, mar. to *Edward Saunders* of Brycksworth, co. North'ton, Esq.; Dorothey, mar. to *Paule Rysley* of Chetwood, co. Buck., Esq.; Catherine, mar. to *Sir Nicholas Parker* of Ratton, co. Sussex, Kt.; Suzan, mar. to *Thomas Denton* of Hillesdon, co. Buck., Esq.; Mary, mar. to *John Farmer* of Marlow, co. Buck., Esq.

15. THOMAS TEMPLE of Stowe, Gent., son and heir apparant to John, mar. ..., the da. of ... *Saunders* of ..., co. Buck., Esq., and hath issue.

NOTE also that Robert Walkingham, who mar. Anne, the da. of Richard Davenante, had one other da. and coheir named Anne, mar. to *William Morfyn* (*Argent, on a chevron Sable three sheaves Or*), son of Thomas, who had issue, —Thomas Morfyn, that mar. *Grace*, da. of *Robert Rookwood* (*Argent, on a chief Sable three chess rooks Or*), of whom there is issue remaining.

TIRRELL, of Thornton.

ARMS: Quarterly of 9 : 1, Tirrell; 2, Borgatt; 3, Flambert; 4, Coggeshall, 5, Bruyn; 6, Rockley; 7, Ingleton; 8, Swynford; 9, Fitz Ellis, as under Tirrell in 'The Visitations of Essex,' *Harl. Soc.*, p. 299; and CREST as there given.

SIR EDUARDE TERRYLL, of Heron, co. Essex, Kt., and eldest son and heir to Sir Lyonell Terryll, Kt., mar. *Anne*, da. and heir of ... *Burgatt* (Borgatt) of ..., co. Suff., Esq., and by her hath issue, —HEWGHE, his eldest son and heir, tempore Edward 3.

SIR HEWGHE TERRYLL of the said place and co., Kt., son and heir to Sir Edward, mar. *Jane*, da. and one of the heirs of ... *Flambert*, Esq., and by her hath issue, —JEAMES, his eldest son.

SIR JEAMES TERRYLL of Heron, Kt., eldest son and heir to Sir Hewghe, mar. *Margaret*, da. of *Sir William Heron*, of ..., co. Essex, Kt., and by her hath issue, —WALTER his eldest son.

SIR WALTER TERRYLL of Heron, Kt., eldest son and heir to Sir James,

mar. *Jane*, one of the das. and heirs of *Sir William Sweyneforde*, in co. Essex, Kt., and by her hath issue,—THOMAS, his eldest son.

SIR THOMAS TERRYLL of Heron, Kt., eldest son and heir to Sir Walter, mar. *Eleanor*, da. of ... *Flambert*, and by her had issue, JOHN, his eldest son.

SIR JOHN TERRYLL of Heron, Kt., eldest son and heir to Sir Thomas, Treasurer of the kinge's howse, mar. ..., one of the das. and heirs of *Sir William Cogeshall*, co. Essex, Kt., and by her hath issue,—THOMAS, his eldest son ; William of Gyppinge, second son ; and William of Beaches, third son.

SIR THOMAS TYRRELL of Heron, Kt., eldest son and heir to Sir John, mar. *Anne*, da. of *Sir John Marney*, of Essex, Kt., and by her hath issue, —William, his eldest son ; THOMAS, second son ; Humfrey of Warley, third son ; Robert of Thornton-on-the-Hill, fourth son.

SIR THOMAS TYRRELL of Wokingdon (Ockendon), co. Essex, Esq., second son to Sir Thomas, mar. *Elizabeth*, da. and one of the heirs of *Sir Henry Bruyn*, Kt., which Elizabeth was after married to *Sir William Brandon*, Kt., father to Charles, Duke of Suff., which Thomas had issue,—WILLIAM, his eldest son.

WILLIAM TERRYLL of Wokingdon, Esq., eldest son and heir to Thomas, mar. *Elizabeth*, da. to *Thomas Bodeley* of... Esq., and by her hath issue,—HUMFREY, his eldest son and heir ; and divers da's.

HUMFREY TERRYLL of Thornton, co. Bucks, Esq., eldest son and heir to William, mar. *Jane*, da. and heir to *Robert Ingleton* and *Sybbell* his wife, da. and heir of ... *Fitzelles* in co. Oxon, Esq., and by her had issue,—GEORGE, his eldest son and heir.

GEORGE TYRRELL of Thornton, Esq., eldest son and heir to Humfrey, mar. to his first wife *Ellyn*, da. to *Sir Educarde Mountaigne* of Boughton, co. Northamp., Kt., late Lord Chiefe Justice of Englande, and by her hath issue,—Edwarde his eldest son and heir apparente ; Thomas, second son ; and Margery :—After the said George mar. to his second wife *Margarye*, da. of ... *Cooke* of ... co. Chesh., and by her hath issue commynge.

VACHELL of North Marston.

ARMS : Quarterly, 1 and 4, *Bendy of six Azure and Ermine* ; 2 and 3, *Argent, a chevron Sable between three cocks Gules* (Cockworthie).

CHEST : *A bull's gamb in pale couped Argent.*

THOMAS VACHELL of Coley, co. Buck., Esq., mar. to his first wife, ...

da. to ... and by her had issue,—THOMAS, his eldest son and heir; after the said Thomas mar. to his second wife ... da. to...and by her had issue,—John his second son.

THOMAS VACHELL of the said place and co., Esq., eldest son and heir to Thomas, mar. ... da. to ... and by her had issue,—OLYVER, his eldest son and heir; ... a da. mar. to ... *Brakenburge* of the Northe.

OLYVER VACHELL of Bereton, (?Borden near Petersfield) co. Sowth. Esq., eldest son and heir to Thomas, mar. *Margarett*, da. to *Rycharde Norton*, East Tisted, co. Sowth., Esq., and of *Elizabeth* his wife, da. and heir to *William Rotherfelde* of Rotherfelde, (in East Tisted) co. Sowth., Esq., which Olyver and Margarett had issue,—STEPHEN, his eldest son and heir; Thomas, second son; Elizabeth, mar. to *Robert Jogy*, of Farnam, co. Surr., Gent.; Margerye, Marye, and Anne, not yet mar.

STEPHEN VACHELL of North Marston, co. Buck, Esq., eldest son and heir to Olyver, not mar.

WALLINGER of *Whitchurch*.

ARMS: *Gules, a fess Vair between three falcons Or; impaling Meredith alias Moore.*

RYCHARDE WALLYNGER of Waltam Hollycrosse, co. Essex, Gent., mar. *Elizabeth*, da. of ..., in co. Essex, and by her had issue,—JEAMES, his eldest son and heir; and divers others that died sans issue.

JEAMES WALLINGER of Whitechurrehe, co. Buck., Gent., eldest son and heir to Rycharde, mar. *Johan*, da. of ... *Moore* alias *Meredith*, in co. Buck., Gent., and by her hath issue,—Jeames, his eldest son and heir apparant; and Anne, now living.

WALWYN of *Aylesbury*.

ARMS: *Gules a bend Ermine in chief a talbot passant Or within a bordure of the second.*

CREST: *Out of a mural crown Or a demi-griffin Vert wings displayed ruined in the mouth with a spear proper.*

THOMAS WALWEYNE of Markyll, co. Heref., Esq., mar. ..., da. of *Sir Thomas Basherfelde* (*Bashervill*) of ..., co. Heref., Kt., and by her had issue,—THOMAS, his eldest son and heir; and divers others.

THOMAS WALWEYNE of Markyll, Esq., eldest son and heir to Thomas,

mar. *Elianor*, one of the da's. and heirs of ... *Mylborne* of ..., co. Heref., Esq., and by her hath issue,—Thomas, his eldest son and heir; Nycholas, second son, dwelled at Langforde; EDMONDE, third son, at Thornboroughe; Macklin, fourth son, at Markyll; Foulke, fifth son, at Cleve; John, sixth son, at Brecknoeke; William, seventh son, Auditor of the Duchie of Lanc.; Andrew, eighth son, died; Thomas, ninth, at Allen's Moore; Nycholas, tenth son, Cannon at Hereford; Marke, eleventh son, abod at home; Stephen, twelfth son, in Kente; Kennarde, thirteenth son, in Hampshire; and Robert, fourteenth son, in Oxfordshire; Emme, mar. to *William Cheyne* of ..., co. Buck., Esq., and had issue by the said William,—*Jane*, who was mar. to *Thomas Wryghtlesley*, Erle of *Southampton*, she mar. to her second husband ... *Person*, of Claydon, co. Buck., Gent., and had issue,—John, Thomas, and Henry; Margaret, mar. to *Edmonde Clarke* of Mycheldever, co. South., Gent.; Anne, mar. to ... *Weldon* of ..., co. Berk., Gent.; thirdly the said Emme mar. to ... *Moone* of co. Linc., Gent., and by him had issue,—Lettyce, that dyed; Marye, mar. to ... *Lynyarde* of ..., co. Heref., Kt.; Edythe, mar. to ... *Scudamore* in co. Heref., Esq.; Johan, mar. to ... *Bodman* of ..., co. Heref., Esq.

EDMONDE WALWEYNE of Thornboroughe, co. Buck., Gent., third son to Thomas, mar. to his first wife, *Anne*, da. of *Thomas Grene* of Grenes Norton, co. Northamp., Esq., and by her had issue,—JOHN, his eldest son:—after the said Edmonde mar. to his second wife, *Anne*, da. to ... *Ashley* of ... co. Warw., Esq., and by her had issue,—John, William, and Thomas, died all three sans issue; thirdly, the said Edmonde mar. to his third wife, *Anne*, da. of *Andrew Hooper* in co. Warw., and by her had issue,—John; and Anne, mar. to *Humphreye Broke* in co. Northamp.

JOHN WALWEYNE of Aylesburye, co. Buck., Gent., eldest son and heir to Edmonde, mar. to his first wife, *Alyce*, da. to *William Farconer* of Quarendon, Yeoman, and by her hath issue,—Edmonde, John, William, Avice, and Lettyce, dyed all sans issue; after, the said John mar. to his second wife, *Johan*, da. of *John Hokeley* of Bromwyche, co. Staff., and by her had issue,—John his eldest son and heir apparant; William, second son; Robert, third son; Thomas, fourth son; Henry, fifth son; and Anne; thirdly, the said John mar. *Johan*, da. of *Robert Cooke* of Tandrige in co. Sutheri (Surrey) and by her hath no issue.

WEST of *Mearsworth*.

ARMS : Quarterly, 1 and 4, *Argent a fess dancettée Sable* ; 2 and 3, *Azure three leopards' heads jessant-de-lis Or*.

CREST : *Out of a ducal coronet Or a griffin's head Azure charged with a fleur-de-lis of the first.*

THOMAS WESTE of Edlesboroughe, co. Buck., Gent., mar. *Elizabeth*, da. of ... *Sankey* of Edlesborough, Esq., and by her hath issue,—*Anthonye*, his eldest son and heir ; *Thomas*, second son ; and *NICHOLAS*, third son ; *Robert*, fourth son ; and *Mathewe*, fifth son ; *Elizabeth*, mar. to *Edward Shoreter* of Maulden, co. Essex ; *Elianor*, died sans issue.

NICHOLAS WESTE of Masseworthe, co. Buck., Esq., one of the six Clarkes of the Chauncerye, third son to *Thomas*, mar. *Johan*, da. of *Thomas Hartrey* of Edlesboroughe, co. Buck., Esq., and widow of *Robert Russell* of Welford, co. Northamp., Gent., and by her hath issue,—*William*, his eldest son ; *Elizeus*, second son ; *Edwarde*, third son ; *Ester*, eldest da. ; and *Sybbell*, second da.

WOODFORDE of *Brightwell*.

ARMS : *Sable three leopards' heads reversed jessant-de-lis Argent* impaling *Reade*.

CREST : *Two lions' gambes Argent*.

WILLIAM WODFORDE of Wyfordbye and Brantingbye, co. Leic., Esq., mar. ..., da. and heir of *Walter Preste* of Melton Mowbraye, co. Leic., Esq., and by her had issue,—*JOHN*, his eldest son.

JOHN WODFORDE of the said place and co., Esq., eldest son and heir to *William*, mar. ..., da. and heir of *Stacye Folleylle* of Ashebye Follvyll, co. Leic., Esq., and by her had issue,—*ROBERT*, his eldest son.

SIR ROBERT WODFORDE of the same place and co., Kt., eldest son and heir to *John*, mar. ..., da. and heir of *Sir Roger Brabason* of Sproxton, co. Leic., Kt., and by her had issue,—*ROBERT*, his eldest son.

SIR ROBERT WODFORDE of the said place and co., Kt., eldest son and heir to *Sir Robert*, mar. ..., da. of *Sir William Trussell*, Kt., and by her had issue,—*JOHN*, his eldest son.

SIR JOHN WODFORDE of the said place and co., Kt., eldest son and heir to *Sir Robert*, mar. ..., da. of *Sir John Watton*, Kt., and by her had issue,—*ROBERT*, his eldest son.

SIR ROBERT WODFORDE of the said place and co., Kt., eldest son and heir to Sir John, mar. ..., da. of *Sir John Neryll* of Rowlston, co. Nott., Kt., and by her had issue, — ROBERT, his eldest son.

SIR ROBERT WODFORDE of the said place and co., Kt., eldest son and heir to Sir Robert, mar. ..., da. of *Sir Laurence Barkley*, Kt., and by her had issue, — THOMAS, his eldest son ; ..., mar. to the son and heir of *Geffrre Sherrarde* of co. Leic., Esq.

THOMAS WODFORDE of the said place and co., Esq., eldest son and heir to Sir Robert, mar. ..., da. of ..., and by her had issue, — RAUFFE, his eldest son.

RAUFFE WODFORDE of the said place and co., Esq., eldest son and heir to Thomas, mar. da. of *William Vyllers* of co. Leic., Esq., and by her had issue, — WILLIAM, his eldest son ; MATHEWE, second son ; JOHN, third son ; ROBERT, fourth son ; Thomas, fifth son ; Johan, mar. to ... *Neryll* of Rowlstone, co. Leic.

WILLIAM WODFORDE, eldest son and heir to Rauffe, mar. *Anne*, da. to *Symonde Norwiche* of Brampton, co. Northamp., Esq., and by her hath issue, — Margaret, his onlie da., first mar. to *John Turvyll*, son and heir to John Turvyll, son and heir to John Turvyll of New Hall, co. Licc., Esq., and after to *Thomas Moreton*, nephew to Bysshoppe Moreton, Archebysshoppe of Cantorburye.

MATHEW WODFORDE, second son to Rauffe, mar. *Luce*, da. to *William Brokesbye* of ..., co. Leic., Esq.

JOHN WODFORDE, third son to Rauffe, mar. to his first wife, *Myllgeant*, da. to *Thomas Markham*, Esq., and after to *Marye*, da. of *John Jernygham* of ..., co. Suff., Esq., and by her had issue, — John ; Stephen ; William ; and two da's.

ROBERT WODFORDE of Brightwell, in the p'yshe of Burnham, co. Buck., Esq., fourth son to Rauffe, mar. *Alys*, da. and heir of *Thomas Gate* of Brightwell, Esq., and by her had issue, — THOMAS, his eldest son ; Edward, second son ; Christopher, third son ; Ewstace, fourth son ; Margaret, mar. to *Edward Grauntam* of Hedsore, co. Buck., Gent. ; Marye, mar. to *John Ede* of ..., co. Sussex, Gent. ; and Elizabeth, a nonne.

THOMAS WODFORDE of Brightwell, Esq., eldest son and heir to Robert, mar. *Elizabeth*, da. of *Richard Blounte* of Iver, co. Buck., Esq., and by her had issue, — JAMES, his eldest son ; George, second son, and Alexander, third son, died both sans issue ; Sylvester ; Gamaliel ; Robert ; Thomas ; Anne, first mar. to *William Juckman* of Wyunge, co. Buck., and after to *Frauncis Darrell* of Lamporte, co. Buck., Gent. : Elizabeth, first

mar. to *George Weldon*, base son to Thomas Weldon of Cockham, co. Bark., Esq., and after to *George Hynde*, Sargeant Plu'mer to King Henry the Eighth, thirdlie to *John Fisher* of Buntingford, co. Hertf., Esq., and fourthly she mar. to *Robert Moulten*, Gent.; Ursula, mar. to *Walter Light* of Radwaye, co. Warw., Esq.; Sybbell, mar. to *John Ayluffe* of ..., co. South., Yeoman; Dorothe, mar. to *John Bysshoppe* of St. Davyes, and hath issue,—Suzan, and Alyce, unmar.; Avelline, mar. to ... *Weston* of Bunburye, co. Oxon., Gent.

JEAMES WODFORDE of Brightwell, Esq., eldest son and heir to Thomas, mar. Katherin, da. of *Thomas Reade* of Borstall, co. Oxon., Gent., second brother to Sir William Reade, Kt., and by her hath issue,—Anthouye, his eldest son, died yonge; Robert, second and heir apparant; Jane; Anne; Mabell; Ursula; Elizabeth; Elizabeth, died yonge.

WOODWARD of Upton.

ARMS: *Barry of six Azure and Argent three harts' hearts cabossed Or on a chief of the second a wolf passant Gules between two annulets Sable.*

JOHN WOODWARDE of Upton, co. Buck., Esq., mar. ..., da. of ... *Cotlingridge* of ..., co. Buck., Esq., and by her had issue,—GEORGE, his eldest son.

GEORGE WOODWARDE of Upton, Esq., eldest son and heir to John, and Clarke of the Castell of Wyndsore, mar. *Agnes*, da. of *John Mychell* of Cawne, co. Wilts, Esq., and by her had issue,—JOHN, his eldest son; Rycharde, second son, and Clarke of the Honnor and Castell of Windesore; Henry, third son; and William, fourth son; Katherin, eldest da., first mar. to *Thomas Manfetele* of Amerden, co. Buck., Esq., and after to *William Druings* of Hull Lavington, co. Sussex, Gent.; Elizabeth, mar. to *Anthony Hampshire* of London; Emme, mar. to ... *Cotes* of London; Anne, mar. to *Lawrence Ugnall* of Penn, co. Buck., Esq.; Alyce, mar. to *Francis Fetipluce* of ..., co. Buck., Esq.; and Jackamyn, mar. to *Robert Dennys* of Lodesworth, co. Sussex, Gent.

JOHN WOODWARDE of Upton, Esq., eldest son and heir to George, mar. *Margarett*, da. to *George Boulstered* of Hedgerley Boulstred, co. Buck., Esq., and by her had issue,—George, his eldest son and heir apparant Robert, second son; and Ambrose, third son.

TOWN AND BOROUGH OF WYCOMBE.

ARMS: *Not given in the MS.*

Whereas the Mayor Baylyffes and Burgesses of the Towne and Boronghe of Wycombe otherwise named Cheppinge Wycombe have used for there auncient Armes and Comon Seal these Armes here above depicted; Whereuppon I, Clarencieux Kinge of Armes, have ratefied registred and recorded the same in my bokes of vysytacon now made within the countie of Buckingham, at which tyme of this my present Vysytacon, Frauncis Parke was *Mayor*; Thomas Pynnne Esquire, now Baron of the Exchequer, George Littleboy, Robert Gravett, Thomas Keyle, John Starlinge, Rowland Eeles, and William Thwaytes, *Aldermen and late Mayors* of the said Towne and Borough of Wycombe; George Welles and Barthilmewe Pewsyc, *Baylyffs*; Rowlande Chalfont, *Stewarde and Towne Clarke*; Robert Oxlade, *under Baylyffe*; which Armes I have ratefied and confirmed unto the said Mayor Baylyffes and Burgesses and to their successors the same to use at their libertie and pleasure without contradiction of any person or persons whatsoever. In wyttnes whereof I have hereunto Subscriybed my name the xxviith of June 1566.

ERRATA.

Page 4, for Elrnory *read* Elynnor.

Page 5, for Ingebrand *read* Ingelram.

INDEX.

The CAPITALS refer to Pedigrees, the *italics* to Arms.

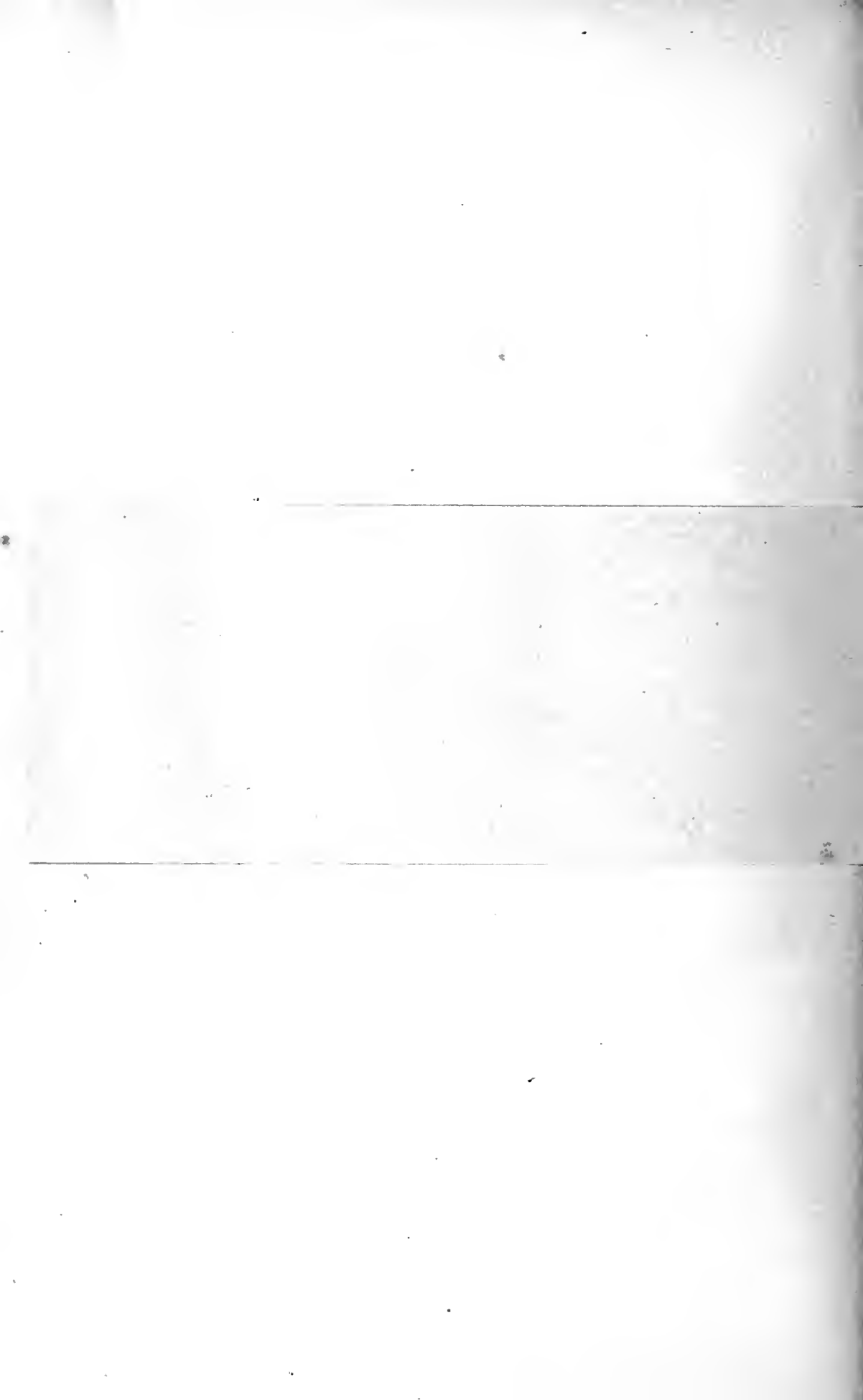
ANNESLEY, I	Baylye, Tho., 4	Brightman, —, 11
<i>Annesley</i> , I	Beachmore, Griffin, 15	BRIGHTRIDGE, 5
Ap Howell, Fl., 19; Mawde,	Bearesforde, —, 8	<i>Brightridge</i> , 5
19	BEKERING, 35	BRIGHTWELL, 5
Arnwell, Jo., 7	<i>Bekerina</i> , 21, 25	<i>Briantwell</i> , 20

ERRATA.

The following names have been omitted from the Index :

Acton, —, 11 ; Alice, 11.
 Adesse, Jo., 4.
Alteripa, 17.

Awstrye, Wm., 29	36	Buckland, Alys, 41 ; Hen.,
Aylyffe, Jo., 48	Blounte, —, 27 ; Eliz., 47 ;	41
<i>Ayott</i> , alias <i>Allenaytt</i> , 31	Rich, 47	Buckley, Eliz., 4 ; Geo., 4
Ayott, Alleyn, 31 ; Marian,	Bodeley, Eliz., 43 ; Tho., 43	Buckwell, Joan, 3 ; Jo. 3
31	Bodman, —, 45	BULLOCK, 7
Babham, Jo., 9	Borgatt, —, 42 ; Anne, 42	<i>Bullock</i> , 7
<i>Baldwin</i> , 27	Botteller, Eliz., 25 ; Wm.,	Burbage, —, 27
Baldwin, Anne, 27 ; <i>Sir Jo.</i> ,	25	Burgen, Eliz., 22 ; Hen.
11, 27, 28	Bowlstered, —, 29 ; Geo.,	22 ; Rob., 22
<i>Barker</i> , ? <i>Whitton</i> , 39	48 ; Marg., 48	Burgoyne, Eliz., 39 ; Rob
Barker, Jo., 39 ; Mary, 39	Brabason, —, 46 ; <i>Sir Roger</i> ,	39
Barkley, —, 47 ; <i>Sir Lawr.</i> ,	46	Burlace, —, 28
47	<i>Bradbridge</i> , 40	Burte, Henry, 5 ; Marg.
Barnes, Roger, 14	Bradbridge, Jane, 40 ; Jo.,	Bury, Eliz., 14 ; Rich., 14
BARTON, 30	40	<i>Butler</i> , 37
Barton, —, 21 ; Joane, 21	<i>Bradshaw</i> , 36	Butler, —, 37 ; Tho., 37
<i>Barwell</i> , 40	Bradshaw, Agnes, 36 ; Tho.,	Butteller, Avyce, 2 ; Wm
Barwell, Isab., 40 ; Wm.,	36	2
40	Brakenburye, —, 44	Buttery, Foulke, 34, 36
Baskervill, —, 44 ; Humfr.,	Brandon, <i>Sir Wm.</i> , 43	Joan, 31, 36
27 ; <i>Sir Tho.</i> , 44	Bray, —, <i>Sir Reig.</i> , 1 ;	<i>Byllett</i> , 7
Bavin, Wm., 5	Edm., <i>Lo.</i> , 10 ; Jo., <i>Lo.</i> ,	Byllett, —, 8 ; Eliz., 8
	10	



INDEX.

The CAPITALS refer to Pedigrees, the *italics* to Arms.

- ANNESLEY, 1
Annesley, 1
 Ap Howell, Fl., 19; Mawde, 19
 Apowell, Jo., 7
 Ap Jenkin, Ryce, 20
 Ap Phillippe, Adam, 19; Eliz., 19
 APRYCE, 2
Apryce, 2
 Ap Ryce Ap Ivor, Mawde, 19; Yevon, 19
 Ap Watkin, Jas., 20
Arderne, 27
 ARDES, 2
Ardes, 2
Argentyne, 24
 Argentyne, Cass., 25; Gyles, 25
Ashfield, 30
 Ashfield, Chr., 17; Kath., 30; Humfr., 30; Mary, 17
 Ashley, —, 45; Anne, 45
 Ashton, Peter, 2
 Ashwell, Jo., 31
 Astell, Edm., 38
Atgrove, 6
 Atgrove, Tho., 6
 Awstrye, Wm., 29
 Ayliffe, Jo., 48
Ayott, alias *Allenaytt*, 31
 Ayott, Alleyn, 31; Marian, 31
- Babham, Jo., 9
Baldwin, 27
 Baldwin, Anne, 27; *Sir Jo.*, 11, 27, 28
Barker, ? *Whitton*, 39
 Barker, Jo., 39; Mary, 39
 Barkley, —, 47; *Sir Lawr.*, 47
 Barnes, Roger, 14
 BARTON, 30
 Barton, —, 21; Joane, 21
Barwell, 40
 Barwell, Isab., 40; Wm., 40
 Baskervill, —, 44; Humfr., 27; *Sir Tho.*, 44
 Bavin, Wm., 5
- Baylye, Tho., 4
 Beachmore, Griffin, 15
 Bearesforde, —, 8
 BEKERING, 35
Bekering, 34, 35
 BELSON, 4
Belson, 4
 Belson, Sib., 13; Tho., 13
 BERENGER, 4
Berenger, 4
Bewfowc, 40
 Bewfowe, Agnes, 40; Jo., 40
Billing, 28
 Billington, Jo., 14
 Bishop, —, 16, 21; Alice, 21; Eliz., 16; Jo., 48
Blackett, 6
 Blackett, Marg., 6; Ph. 6
Blakenhall, 17
 Blakenhall, Kath., 18; Tho., 18
 Blackmore, Chr., 14; Jo., 14
 Blacknall, Rich., 26
 Blisse, Tho., 33
Blondell, 34
 Blondell, Hugh, 36; Cath., 36
 Blounte, —, 27; Eliz., 47; Rich., 47
 Bodeley, Eliz., 43; Tho., 43
 Bodman, —, 45
 Borgatt, —, 42; Anne, 42
 Botteller, Eliz., 25; Wm., 25
 Bowlstered, —, 29; Geo., 48; Marg., 48
 Brabason, —, 46; *Sir Roger*, 46
Bradbridge, 40
 Bradbridge, Jane, 40; Jo., 40
Bradshaw, 36
 Bradshaw, Agnes, 36; Tho., 36
 Brakenburye, —, 44
 Brandon, *Sir Wm.*, 43
 Bray, —, *Sir Reig.*, 1; Edm., *Lo.*, 10; Jo., *Lo.*, 10
- Brightman, —, 11
 BRIGHTRIDGE, 5
Brightridge, 5
 BRIGHTWELL, 5
Brightwell, 39
 Britnell, Hen., 23
 Broadfield, Kath., 32; Rich., 32
 Brocas, Jo., 18; Mary, 18; Rob., 38
Broke, 24
 Broke, Ellen, 25; Humph., 45; *Sir Lawr.*, 25; Raufe, 25
 Brokesbye, Lucy, 47; Wm., 47
 Bromwell, —, 12
 Broughton, Hugh, 7
 Browne, —, 38; Eliz., 25, 32; *Sir Jo.*, 32; Nich., 14; *Sir Weston*, 25
- BRUDENELL, 6
Brudenell, 6
 Brudenell, Edm., 18
 Bruyn, Eliz., 43; *Sir Hen.*, 43
 Bryeteyn, —, 12
Buckingham, 7
 Buckland, Alys, 41; Hen., 41
 Buckley, Eliz., 4; Geo., 4
 Buckwell, Joan, 3; Jo., 3
 BULLOCK, 7
Bullock, 7
 Burbage, —, 27
 Burgen, Eliz., 22; Hen., 22; Rob., 22
 Burgoyne, Eliz., 39; Rob., 39
 Burlace, —, 28
 Burte, Henry, 5; Marg., 5
 Bury, Eliz., 14; Rich., 14
Butler, 37
 Butler, —, 37; Tho., 37
 Butteller, Avyce, 2; Wm., 2
 Battery, Foulke, 34, 36
 Joan, 31, 36
Byllett, 7
 Byllett, —, 8; Eliz., 8

- Caron, Rog., 3; Sybell, 3
 Catelyn, Chr., 34
 Cates, Jo., 7
 Catesbye, De, —, 12; Dor.,
 12; *Dane* Eliz., 10; *Sir*
 Rich., 10
Cawton, 35
 Cawton, —, 35; Jo., 35
 Chalfont, Rowland, 49
 Chamberleyne, *Sir* Edw.,
 21; Marg., 21
Chamonde, 24
 Chamonde, Dor., 25; *Sir*
 Jo., 25
 Charnock, Tho., 38
 Chatterton, —, 38; Marg.,
 38
 Chamneye, Jo., 36; Thoby,
 36
 Checkers, Kath., 17; *Sir*
 Raufe, 17
 CHETWOOD, 8
Chetwood, 8
 CHEYNE, 9
Cheyne, 9
 Cheyne, Jane, 45; Marg.,
 12; Rob., 12; Wm., 45
 Childrey, Edw., 38; Eliz., 38
 Chumne, Edm., 25
 Chureh, Joan, 15; Tho., 15
 Chyssel, Gyles, 25
 Clarelle, Tho., 34
 CLARKE, 10
Clarke, 10
 Clarke, —, 13; Edm., 45;
 Jo., 6
 CLAYOR, 10
Clavor, 10
 Clayton, Wm., 8
 Clement, —, 39; Marg., 39
 Cockfield, —, 3; Mary, 3
Cockworthie, 43
 Cogeshall, —, 43; *Sir* Wm.,
 43
 Coles, —, 27
 Cole, Br., 33; Rob., 26;
 Tho., 33
 Collingridge, —, 48
 COLLYS, 11
 Conquest, Cec., 13; Edm.,
 13
 Cooke, —, 43; Marg., 43
 Copcott, —, 12; Anne, 12
 Corbett, —, 27
 Coles, —, 48
 Cowliche, —, 11; Marg.,
 11
 Crochrode, Tho., 25
 Cupper, Rich., 28
 Curson, Anne, 4; Walter, 4
Daberon, 40
 Daberon, Mary, 40; Rob.,
 40
 Dagworth, —, 36
 Damporte, Humfr., 10
 Daniell, Chr., 15
Danno, 24
 Danno, Alice, 24; Wm., 24
 Darrell, Fr., 47; Isab., 29;
 Paul, 7, 9, 29
Dayrell, 28
 Davenant, Anne, 41; Rich.,
 41
 Davers, —, 16
 Dawntesey, *Sir* Jo., 11
De la Lune, 34
 De la Lune, —, 35; Jane,
 35
Delamare, 39
 Delamare, Alice, 39; Bar-
 nard, 39
Denny, 19
 Denny, Tho., 20; Urs., 20
 Dennys, Rob., 48; Wm., 48
 Denton, Alys, 31; Tho., 31,
 42
Derehurst, 34
 Derehurst, Jane, 36; Jo.,
 36; Tho., 36
 Dollinge, —, 33; Eliz., 33
Donington, 27
 DORMER, 11
Dormer, 11
 Dormer, —, 28; Eliz., 19;
 Gabr., 19; Wm., 28
 Dorrante, Eliz., 41; Jo., 41
 Dove, —, 1
 Drayner, Wm., 13
Drewe, 2
 Drewe, Eliz., 2; Jo., 2
 Ducke, Roger, 31
 Duckett, Lionel, 27; Tho.,
 38
 DUNCOMBE, 12
Duncombe, 12
 Duncombe, Jo., 6; Rich., 9
 Durdante, Jo., 14
 EAST, 13
East, 13
 East, 4
 Edle, Jo., 47
Edycombe, 16
 Edgecombe, Alice, 17; Jo.,
 17
 Edwards, —, 14; Eliz., 14;
 Jo., 14
 Edye, Isab., 29; Jo., 29
 Eeles, Rowland, 49
Ellis, 36
 Ellis, Alice, 36; Martin, 36
 Elmes, Joan, 7; Jo., 22;
 Wm., 17
 Erdington, *Sir* Hen., 41;
 Jane, 41
Erneford, 35
 Erneford, —, 35
 Everisbie, —, 29; Eliz., 29
 EYRE, 14
Eyre, 14
 Farmer, Jo., 42
 Fawconer, Alice, 45; Rich.,
 9; Wm., 45
 Fearn, Jasper, 18
 Ferrers, *Sir* Humfr., 29
 Fettiplace, Cec., 14; Fr.,
 14; 48; Tho., 32
 Fisher, Jo., 47
 Fitz Ellis, —, 43; Sybel,
 43
 Fitz Geoffrey, —, 15; Jo.,
 15
 FITZ HUGH, 14
Fitz Hugh, 14
 Flamberg, —, 42, 43; Elea-
 nor, 43; Jane, 42
 Folville, —, 46; Stacy, 46
 FOSTER, 15
Foster, 15
 Foster, Tho., 38
 FOWLER, 15
 Fowler, —, 37
 FOXLEY, 23
 Foxley, Awdr., 23; Jo., 23
 Frowyke, —, 42; Joan, 24
 Gamlyn, Jo., 17
 Garrett, Roger, 5
 Gate, Alys, 47; Tho., 47
 Gaton, Jo., 36
 GEDSEY, 41
 George, Eliz., 41; Geo., 41
 Gerrye, —, 6; Mary, 6
 Gerves, —, 2; Eleanor, 2
 Gest, Alex., 23
Gifford, 30
 Gifford, —, 28, 30
 Godsalue, Mary, 37; Tho.,
 37
 Godwyn, Tho., 32
 Goodwin, Jo., 11
 Grantham, Edw., 47
 Grateley, Leonard, 4
 Gravenor, —, 27
 Gravett, Rob., 49
 Grawnte, Edw., 11; Mary,
 11
 Grene, Anne, 45; Tho., 45
 Guildford, Lewis, 33
 Gurne, Jo., 20; Maude, 20
 HALISBERK, 36
Halisberk, 34
 Hall, Jo., 1
 Hannell, —, Kath., 3
 HAMPDEN, 16
Hampden, 16
 Hampden, Chr., 20; Rich.,
 18; Syb., 18; Wm., 20
 Hampshire, Anth., 48

- Hankye, Jo., 9
Hansard, Mary, 41 ; Tho., 41
Harcourt, 17
Harcourt, Marg., 18 ; Hen., 18
Hardmeade, Jo., 3 ; Maude, 3
Harpeden, 39
Harte, Agnes, 4 ; Tho., 4
Hartwell, 16
Hartwell, Alice, 6 ; Anne, 6 ; Wm., 16 ; *Sir Wm.*, 6
Hastings, —, 22
Haultoft, 17
HAVERING, 35
Havering, 35
Hawes, Wm., 11
Hawten, 34
Hawten, —, 34, 36 ; *Eliador*, 36 ; Jo., 34
HAWTREY, 17, 19
Hawtreys, 17
Hawtreys, Alice, 39 ; Joan, 46 ; Mary, 6 ; Raufe, 39 ; Tho., 6, 46
Heath, Tho., 25, 36
Henley, *Sir Walter*, 29
Hensloe, Roger, 7
Herbarte, —, 20
Heritage, 41
Heritage, Alys, 41 ; Jo., 41
Heron, Marg., 42 ; *Sir Wm.*, 42
Heydon, Fr., 22
Higham, Wm., 25
Hill, —, 18 ; Wm., 39
Hinde, *see* Hynde
Hitcher, —, 11 ; Marg., 11
Hobbes, Agnes, 38 ; Wm., 38
Hokeley, Joan, 45 ; Jo., 7, 45
Hooper, Andr., 45 ; Anne, 45
Howard, —, 29
Howell or Seys, 19
Hubott, —, 16
Hungerford, *Sir Walter*, 12
Huntingdon, 24
Huntington, Anne, 25 ; Tho., 25
Huntley, 37
Huntley, Anne, 38 ; Geo., 38
Husband, Beatr., 14 ; Rich., 14
Hutton, —, 3 ; Christian, 3
Hynde, Fr., 10 ; Geo., 47 ; *Justice*, 10
Illinge, Wm., 7
Ingleton, Jane, 43 ; Marg., 9 ; Rob., 9, 43
Inglyshe, —, 1
Jackman, —, 27 ; Wm., 47
Jeckett, Jo., 41 ; Mil., 41
Jenkins, Jane, 20 ; Jo., 20
Jenney, Edm., 32
Jerningham, Jo., 47 ; Mary, 47
JONES, 19
Jones, 19
Joye, Wm., 41
Kettell, Rich., 33
Keyle, Tho., 49
King, Edm., 4
Kingscott, 40
Kingscott, Mary, 40 ; Wm., 40
Kingsmill, Alice, 7, Jo., 7
KINGSTON, 20
Kingston, 20
Kingston, —, 10
Kipping, —, 20 ; Alice, 20
Kitson, 27
Kitson, Dor., 28 ; *Sir Tho.*, 28
Knight, Emme, 15 ; Jo., 15
Knightley, Marg., 31 ; *Sir Rob.*, 31
Knowlinge, Rob., 26
Lambert, Jo., 7, 27 ; Rich., 27
Lamburne, —, 33 ; Jane, 33
Lane, Jo., 27
Langford, 35
Langford, Mary, 35 ; Rich., 35
Langham, Jo., 1
Langley, 35, 40
Langley, —, 35 ; Kath., 40 ; Tho., 40
Langston, —, 29
Latymer, 2
Latymer, Eliz., 2 ; Rob., 2
Launcelyn, —, 11 ; Alice, 11
LECHINGHAM, 21
Lee, *Sir Anth.*, 10 ; Bennett, 9, 28 ; Joyce, 10 ; Roger, 9
Ley, Robert, 29
Lidcott, Chr., 9
Lillard, —, 32 ; Clement, 32
Light, Walter, 47
Linford, Rob., 3 ; Jo., 3 ; Rich., 3
Lingar, Geo., 29
Lingard, —, 45
Littleboy, Geo., 49
Lockton, Rob., 25
LONGEVILL, 21
Longevill, 21
Longvyle, *Sir Jo.*, 30 ; Mary, 30
Losse, Hugh, 18
LOVETT, 22
Lovett, 22, 40
Lovett, —, 40 ; Joyce, 40
Lowdham, 35
Lowdham, —, 35 ; Isab., 41 ; *Sir Jo.*, 35 ; Math., 41
Lowe, Kath., 3 ; Tho., 3
Luffwyke, Jo., 3 ; Kath., 3
Lusher, 5
Lusher, Kath., 5 ; Wm., 5
Luton, 16
Luton, El., 16 ; *Sir Rob.*, 16 ; Tho., 16
Lyttleton, Jo., 27
Malorye, *Sir Rich.*, 28 ; Rob., 36 ; Tho., 36
Manfield, Tho., 48
Mann, Jo., 6 ; Maryan, 6
Mansfield, Andrew, 13
Markham, Mil., 47 ; Tho., 47
Marney, Anne, 43 ; *Sir Jo.*, 43
Marrow, 28
Martyn, Alice, 23 ; Roger, 27 ; Tho., 23
Mason, —, 26 ; Eliz., 26
Mastersson, Eliador, 8 ; Tho., 8
Matanye, *see* Buttery
Mattes, Rob., 19
Mawdelyne, Joan, 30 ; Tho., 30
MEREDITH, 23
Meredith, 23
Meryfelde, 35
Meryfelde, —, 35
Michell, Agnes, 48 ; Beatr., 5 ; Jo., 5, 48
Middleton, 21
Middleton, Anne, 22, 38 ; Jo., 38 ; Tho., 22, 38
Milborne, —, 45 ; Eliador, 45
Millinge, Rich., 7
Minsterehamber, Eliz., 37 ; Jo., 37
Moigne, Eliz., 41 ; Rob., 41
Molmeux, *Judge*, 9
Monox, Eliz., 26 ; Rich., 26
Moone, —, 45
MOORE, 25
Moore, 22, 25
Moore, Tho., 7
Moore, *alias* Love ; Jo., 33
Moore, *alias* Meradeth, —, 44 ; Joan, 44
MORDAUNT, 24

- Mordaunt*, 24
Mordaunt, Jo., *Lo.*, 9 ;
 Winif., 9
Morden, 34
Morden, Julyan, 35 ; Rich.,
 35
More, —, 21 ; Mawde, 21
Moreton, 7
Moreton, —, 3, 8 ; Tho., 47
Morfyn, 42
Morfyn, Tho., 42 ; Wm., 42
Morgan, Wenlyan, 20 ; Wm.,
 20
Moulton, Marg., 41 ; Rob.,
 47 ; Tho., 41
Mount, Leon., 1
Mountague, Sir Edw., 43 ;
 Elyn, 43
Mulsho, 28

Nashe, —, 11 ; Tho., 21
Naylor, Wm., 12
Neve, —, 27
Nevill, —, 47 *bis* ; Sir Jo.,
 47 ; Kath., 3 ; Rob. 3
Newbold, 34
Newbold, Henry, 35 ; Jul.,
 35
Newdegate, Jo., 9, 12
Newham, 34
Newham, Alice, 34 ; Anne,
 36 ; Jo., 34, 36
Norton, Marg., 44 ; Rich.,
 44
Norwich, Anne, 47 ; Sym.,
 47
NORWOOD, 26
Norwood, 26
Nurse, Tho., 3

Odell, Fonlk, 11 ; *and see*
 Wodhull
Odingselles, 36
Odingselles, —, 36
Ogan, —, 16
Oglethorpe, Eliz., 37 ; Jo.,
 37
Olney de, Alice, 21 ; Sir
 Wm., 24
Osborne, 34
Osborne, Joan, 34, 36 ;
 Rich., 34, 36
Otter, 2
Otter, Joan, 2 ; Jo., 2
Oxlade, Rob., 49
Overton, 41
Overton, Hen., 41 ; Isab.,
 41

PAKINGTON, 27
Pakington, 27
Pakington, Rob., 28
Parke, Fr., 49
Parker, Sir Nich., 42

Pastrell, Alice, 14 ; Wm.,
 14
Paynell, 17
Paynell, Marg., 18 ; Sir
 Tho., 18
Peck, Jo., 25 ; Marg., 25
Peckham, Sir Edm., 9
Penn, Dor., 13 ; Jo., 13
Person, —, 45
Pevensey, 28
Pewsye, Barth., 49
PIGOTT, 28, 30
Pigott, 28
Pigott, Marg., 32
Pipe, 17
Pipe, Agnes, 18 ; Jo., 18
Pitcher, Rich., 11
Pointz, Sir Rich., 10
PORTER, 30
Porter, 30
Potter, Rich., 18
Power, Ph., 38
Poyner, Rich., 33
Prest, —, 46 ; Walter, 46
Preston, 6
Preston, Alice, 6 ; Hewghe, 6
PUREFOY, 31
Purefoy, 31
PUTTNAM, 32
Puttnam, 32
Pye, 27
Pyne, 24
Pyne, Henry, 25 ; Jane, 25 ;
 Tho., 25
Pymme, Tho., 49
Pyrott, 24
Pyrott, Eliz., 25 ; Raufe, 25

Rana, 6
Rana, Alice, 6 ; Walter, 6
Ramsey, —, 28 ; Jo., 41
Randall, Rob., 6 ; Jo., 6
READE, 33
Reade, 33
REDMAN, 33
Redman, 33
Redman, Alice, 23 ; Tho.,
 23
Rempston, 35
Rempston, Sir Tho., 35
Restwolde, —, 9
Reynes, Mary, 13 ; Rich.,
 13 ; Rob., 18
Reynolds, Wm., 39
Ribbesford, 40
Ribbesford, Jo., 40 ; Mawde,
 40 ; Sir Wm., 40
Rich, Anne, 25 ; Rich., 25
Ridley, 7
Ridley, —, 8 ; Jo., 8
RISLEY, 34, *bis*
Risley, 34
Risley, Paul, 42
Roberts, Jo., 2

Roger, Anne, 20 ; Jo., 20
Rogonus, *Dox*, Count de
 Peria, 12
ROOKES, 37
Rookes, 37
Rookwood, Grace, 42 ; Rob.,
 42
Rotherfelde, Eliz., 44 ; Wm.,
 44
Rotherham, Geo., 29
Rowse, Eliz., 5 ; Wm., 5
Rudinge, Edm., 11
RUFFORD, 37
Rufford, 37
Rufford, Eliz., 26 ; Jo., 26
Russell, Marg., 12 ; Rob.,
 46 ; Wm., 12
RUTHALL, 38
Ruthall, Hen., 22 ; Rich.,
 22
Ryce, Jo., 6

Sacquevyle, 37
Sacquevyle, Marg., 37 ;
 Tho., 37
Salesburye, Geo., 29
Sanders, —, 42
SANKEY, 39
Sankey, 39
Sankey, —, 46 ; Eliz., 46 ;
 Tho., 19
Saunders, 28
Saunders, Edw., 42 ; Ellen,
 13 ; Isab., 13 ; Lucy, 29 ;
 Rich., 13 ; Tho., 13, 29 ;
 Wm., 13
Scott, Tho., 28
Seudamore, —, 27, 45
Selyoke, Geo., 13
Sergeant, Wm., 39
Shaw, Sir Jo., 16 ; Julian,
 16
Sherdelowe, —, 36
Shereford, 31
Shereford, Marg., 31 ; Sy-
 mond, 31
Sherington, Thomaz., 3 ;
 Wm., 3
Sherrard, Geff., 47
Shingleton, 16
Shingleton, Eliz., 16 ; Tho.,
 16
Showeler, Edw., 46
Shrimpton, Isab., 32 ; Jo.,
 32
Sidney, Mary, 12 ; Sir
 Wm., 12
Silvester, Rob., 14
Singleton, *see* Shingleton
Slade, Jo., 25
Smythe, John, 18 ; Wm.,
 31
Snelloge, —, 25
Sparsholte, 39

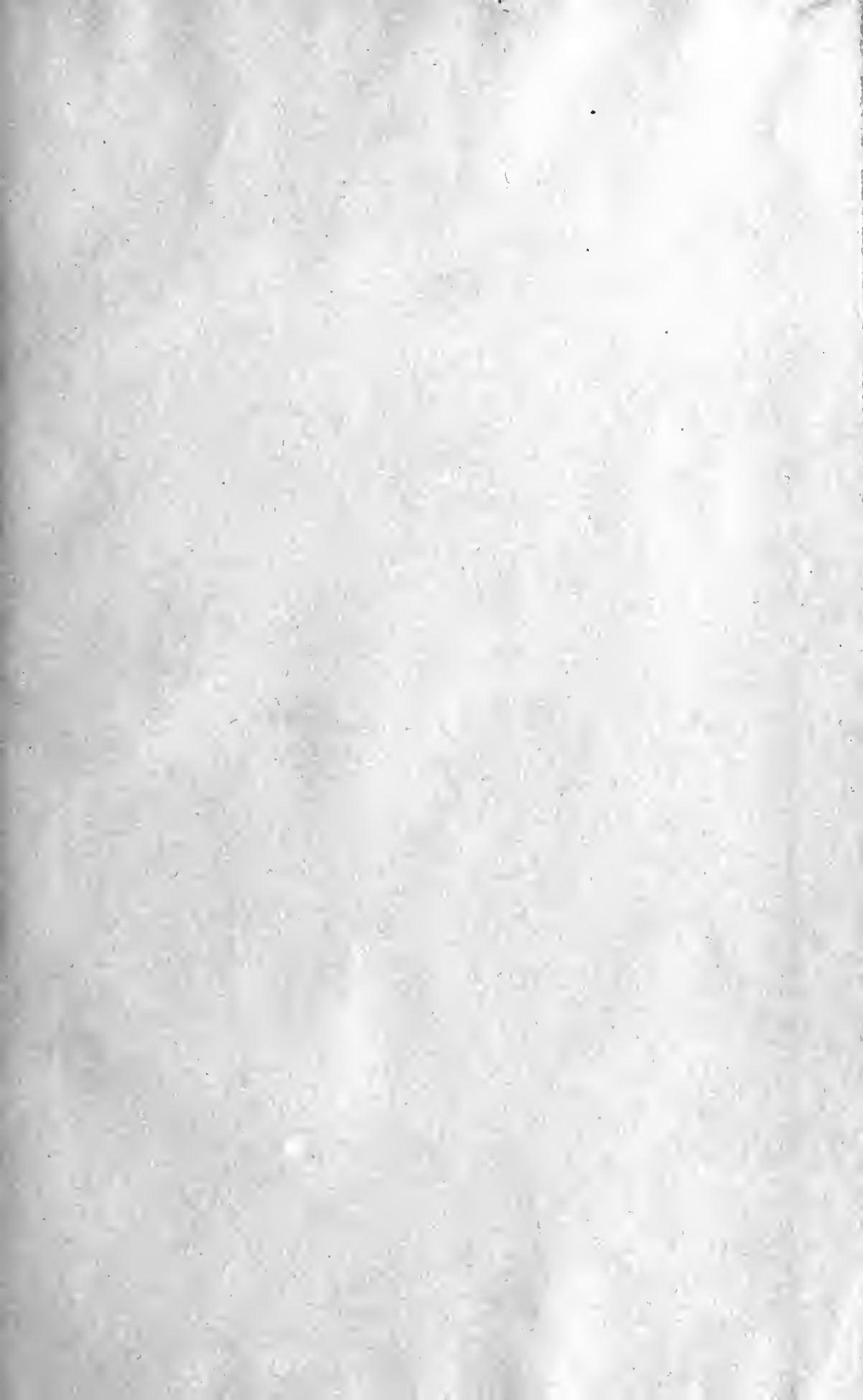
- Sparsho Alice, 39; Edm., 39
 Spencer, Sus., 42; Tho., 42
 Spurstow, —, 8; Elianor, 8
 Stapleton, *Sir* Rich., 36
 Starling, Jo., 49
Staveley, 20
 Staveley, Alex., 20; Eliz., 20
 Stephens, Roger, 26
Stokes, 16
 Stokes, Agnes, 16; Eliz., 1; Tho., 16; Wm., 1
 Stoner, —, 37; *Sir* Wm., 37
Strange, (ter) 24
 Strange, Agnes, 25; Jo., 25
 Strange Le, Barb., 25; Jo., 25
 Swynforde, Jane, 43; *Sir* Wm., 43
 Sylam, Jo., 9; Mary, 9
 Symeon, Agnes, 8; Edm., 8
 Taverner, Jane, 7; Roger, 7
 Taylard, *Sir* Lawr., 25
 Taylor, —, 26; Jo., 23
 Tede, —, 10; Agnes, 10; Mary, 10; Tho., 10
Temple, 40
 Temple, Wm., 18
 Tetlowe, Roger, 2
 Thomas, Jane, 20; Jenkin, 20
 Thorne, Tho., 32
 Thwaytes, Wm., 49
 TIRRELL, 42
 Toppes, El., 38; Godfrey, 38
 Torrell, —, 25
 Tracher, Agnes, 20; Hen., 20
 Tregarthin, —, 25
Tresham, 28
 Tresham, —, 22; Isab., 29; Rich., 29
 Trist, Wm., 4
 Trussell, —, 46; *Sir* Wm., 46
 Turpin, Jo., 38
Turveyle, 22, 40
 Turvyle, Grace, 40; Jo., 47; *Sir* Roger, 22; Sara, 22; Wm., 40
 Twyforde, Cath., 41; Raufe, 41
 Twynam, Humf., 33
 Ugnall, Lawr., 48
 Underhill, Raufe, 11
 VACHELL, 43
Vachell, 43
 Vauz, 29
 Vavasor, Agnes, 4; Edm., 3; Marg., 3; Wm., 5
 Verney, Edm., *bis* 10; Fr., 10; Jo., 10; Mary, 32; Raufe, *bis* 10; *Sir* Raufe, 10; Rich., 10, 32; Uryan, 10
Vernon, 7
 Vernon, Joan, 8; Raufe, 8
 Villers, —, 47; Wm., 47
Vincent, 40
 Vincent, Eliz., 40; Rich., 40
 Vivian, Jo., 17
 Wake, —, 3; Marye, 3; *Sir* Raufe, 24; Rose, 24
 WALKINGHAM, 41
 WALLINGER, 44
Wallinger, 44
 Walloppe, *Sir* Oliver, 29
Walpole, 17
 Walpole, Agnes, 18; Tho., 18
 WALWYN, 44
Walwyn, 44
 Warde, —, 44
 Warner, Ellyn, 26; Joau, 26; Jo., 26; Tho., 26
Washburne, 27
 Washburne, —, 27
Washingte, 2
 Washingte, —, 2; Rob., 2
Washington, 15
 Washington, Alice, 15; Laur., 15
 Waters, Tho., 13
 Watson, Wm., 17
 Watton, 46; *Sir* Jo., 46
 Watts, Eliz., 10; Hen., 10, 26; Wm., 5
 Webbe, Eliz., 9; Jo., 9
 Welbye, Adlard, 2
 Weldon, —, 45; Geo., 47
 Welles, Geo., 49
 Wendover, Jo., 20; Kath., 20
 West, 46
West, 46
 West, Nich., 18
 Westcott, Chr., 11
 Weston, —, 48
 Whellus, Wm., 31
 White, Jo., 7
 Whitley, Alex., 37
 Whitton, —, 13; Alice, 13
Willcotes, 30
Wilford, 1
 Wilford, *Sir* —, 33
 Joan, 2; Rob., 2
 Wilkins, Rob., 25
Williams, 22
 Williams, Eliz., 23; Reign., 23
 Willatt, Rob., 23
 Willis, Alys, 31; Rich., 31
 Windsor, Andr., 15; Eliz., 15
 Winton, —3; Elianor, 3
Wisc, 24
 Wise, Marg., 25; Oliver, 25
 Witell, Eliz., 21; Simon, 21
 Wodeson, —, 39
 Wodhull, Agnes, 9; Anth., *Baron*, 9; and see Odell
 Wodmansye, —, 23
 WOODFORDE, 46
Woodforde, 46
Woodkull, 8
 Woodvyle, Agnes, 11; *Sir* Rich., *Earl Rivers*, 11
 WOODWARD, 48
Woodward, 48
 Wright, Rich., 4
 Wrythesley, Tho., E. of South'ton, 45
 WYCOMBE, Town of, 49
 Wylbram, —, 8
 Wyngatt, —, 31
 Yate, Rich., 29

EXETER :
WILLIAM POLLARD, PRINTER, NORTH STREET.









14 DAY USE
RETURN TO DESK FROM WHICH BORROWED

LOAN DEPT.

RENEWALS ONLY—TEL. NO. 642-3405

This book is due on the last date stamped below, or
on the date to which renewed.

Renewed books are subject to immediate recall.

Due end of SUMMER Period
subject to recall after —

SEP 17 '70 5 8

REC'D LD SEP 10 70 -9AM 58

SENT ON ILL

OCT 09 1996

U. C. BERKELEY

LD21A-60m-3,'70
(N5382s10)476-A-32

General Library
University of California
Berkeley

