




# THE WAG

1950







Digitized by the Internet Archive  
in 2022 with funding from  
North Carolina Digital Heritage Center

<https://archive.org/details/wag195000grah>

1950

THE WAG



# THE WAG

*Published by the Senior Class of*

**GRAHAM HIGH SCHOOL**



*To one who has served faithfully in our high school  
for twenty-five years, with sincere admiration and respect,  
we proudly dedicate this yearbook to*

**MR. J. M. COOK**  
*Custodian*

## HIGH SCHOOL FACULTY



MR. NEEDHAM G. BRYAN  
A.B., Atlantic Christian College  
M.A., University of North Carolina

MISS ESTHER BAGWELL  
B.S., Woman's College, University of N. C.

MR. CRAYTON ROBERT BENSON, Jr.  
A.B., Catawba College  
M.A., University of North Carolina

MISS GENA CHURCH  
A.B., Salem College  
M.A., George Peabody College for Teachers

MR. GEORGE HECKMAN  
A.B., Catawba College

MR. R. L. HILL  
A.B., High Point College

MRS. HAROLD JETER, Jr.  
Saint Mary's  
A.B., University of North Carolina

MISS VIRGINIA JORDAN  
A.B., Guilford College

MRS. VANCE LATTA  
A.B., Woman's College, University of N. C.  
M.A., Cornell University

MR. MALCOLM C. NELSON  
Pfeiffer Junior College  
A.B., University of North Carolina

MRS. LOWELL SHIVE  
A.B., Meredith College

MRS. M. D. SMITH  
M.A., Duke University

MRS. PAUL D. SMITH  
A.B., Elon College

MISS CLARE THOMAS  
A.B., Elon College

MISS LORENA WAGONER  
B.S., Appalachian State Teachers College  
B.L.S., University of North Carolina



## SCHOOL BOARD



Mr. Morris Burke  
Dr. W. C. Goley

Mr. Hal Farrell, *Chairman*

Rev. Eugene Hancock  
Mr. George Neal

## P. T. A.



Mr. T. M. Johnson, Jr., *President*  
Mr. Thurman Allred, *Vice-President*  
Mrs. Myrtle Wilson, *Secretary*  
Mr. Ben Lee, *Treasurer*

# THE WAG

EDITOR-IN-CHIEF ..... HADLEY IVEY

BUSINESS MANAGER ..... MARY ELLA MARTIN

ADVERTISING MANAGER ..... BOYD ANDREWS



Mary Ella Martin, Hadley Ivey, Boyd Andrews

# STAFF OF 1950

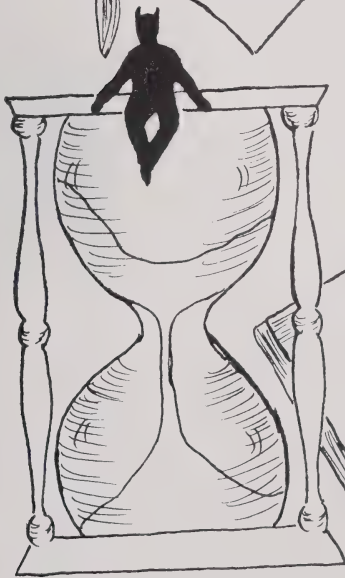
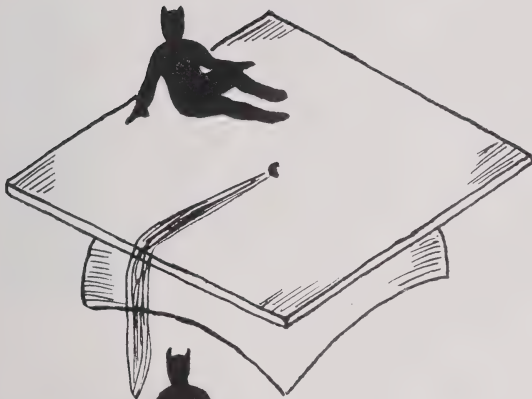


<i>Associate Editor</i> .....	Patricia Brittain
<i>Associate Business Manager</i> .....	Lee Ivey
<i>Associate Advertising Manager</i> .....	Tommae Brittain
<i>Circulation Manager</i> .....	Bill Sizemore
<i>Associate Circulation Manager</i> .....	Franz Holt
<i>Activities Editor</i> .....	Pat Durham
<i>Sports Editor</i> .....	Joe Kimrey
<i>Photography Editor</i> .....	Billy Mercer
<i>Art Editor</i> .....	Betty Bradshaw
<i>Typists</i> .....	Dot Qualls, Peggy Mercer, Peggy Willard
<i>Advisers</i> .....	Mrs. Vance Latta, Mr. N. G. Bryan

# Foreword...

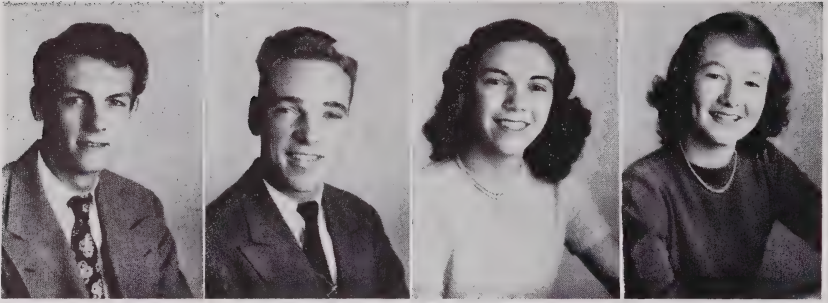


*In this WAG we have attempted to catch in part the spirit of our school life during the 1949-50 school year. The good times and the bad, the pleasures of tasks well done, the fellowship in studies and play, the competition on athletic fields—all of these have found a place in our Annual. We hope that each of you, in future years, will find this WAG a joyful part of the memories of by-gone days.*



# Seniors

## SENIOR CLASS OFFICERS



*President, Joe Linens; Vice-President, Don Brummitt; Secretary, Betty Lou Holt; Treasurer, Ann Woods*

### MOTTO

"The past forever gone,  
The future still our own."



### FLOWER

Rose



### COLORS

Red and White



### MASCOTS

Millicent Basden  
Don Longest



# SENIORS

CONNIE M. ADAMS

"MACK"  
"Beat Carolina."

Baseball 1; Football 1, 2, 3, 4; Most Improved Football Player 3; Glee Club 4; Monogram 3, 4; Associate Editor *The Cracker* 4.



TED BARHAM

"BAR-HAM"  
"I ain't going back."

Radio 4; Dramatics 4; Audio-Visual Aids 4.

ALTVISTA ALBRIGHT

"OWL"  
"Herman (Dear)."

Homemakers Club 4; Cafeteria Worker 4; Photography 4. Transferred from Glade Valley, Senior Year.



WILLIAM HUGHES BLACKWELDER

"BILL"  
"Let's go take one."

Cafeteria Worker 1, 2; Glee Club 4; Audio-Visual Aids 4.

PEGGY MOLENE ALLISON

"PEG"  
"Just don't worry about it."

Assistant Librarian 1, 2; Art Club 3; Audio-Visual Aids 4; Crafts 4; Photography 4; Girls' Athletic Club 4.



BETTIE B. BRADSHAW

"BIG B"  
"I ain't nothing but business—  
just class."

Majorette 1, 2, 3, 4; Student Council 1; President Freshman Class 1; Glee Club 1; Homemakers Club 2; Art Club 3, 4, President 3; Assistant Art Editor *The Cracker* 3; Make-Up Editor 4; Art Editor THE WAG 4; Girls' Athletic Club 4; Most Talented 4; Class Poet 4.

CURTIS BOYD ANDREWS

"TONI"  
"All the Way Choo-Choo."

Cafeteria Worker 1, 2, 3; Monogram Club 3, 4; Key Club 3, 4; Football Manager 3; Basketball Manager 3, 4; Advertising Manager THE WAG 4; Archery 4; Dramatics 4; *The Cracker* 1; Boys' Athletic Club 4; Best Dressed 4.



MILDRED ANN BRADSHAW

"MILLIE"  
"Hello there!"

Glee Club 1, 3, 4; *The Cracker* Circulation Manager, Business Manager 3; Homemakers Club 1, 2; Library Assistant 1, 2, 3, 4; President Library Club 3, Secretary 4; Vice-President Student Council 3, President 4; Assistant Business Manager THE WAG 3; Manager of Girls' Basketball 2, 3; Monogram Club 3, 4; National Honor Society 3, 4; Marshal 3; Cheerleader 4; Dramatics 4; Monitor 4; Most Valuable to School 4.

MONNIE LOY ANDREWS

"MONK"  
"Let it be—it matters not."

Typist *The Cracker* 4; Girls' Athletic Club 4.



JOSEPH DONALD BRUMMITT

"HEDY"  
"All the way Choo-Choo"

Monogram 3, 4; Band 1, 2; Vice-President Seniors 4; Basketball 1, 2, 3, 4, Co-captain 4; Football 2, 3, 4; Sports Editor *The Cracker* 4; Photography 4; Best All Around 4.

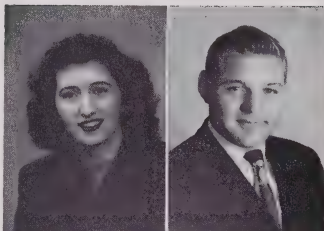
# SENIORS

GRACE MARIE BURKE

"MOONIE"

"Life is made for love and cheer."

Head Majorette 1, 2, 3, 4; Typist  
The Cracker 4; Girls' Athletic Club 4;  
Prettiest 4.



HARRY CORNELL

"BEAST"

"The world would be mine  
if I had time for it."

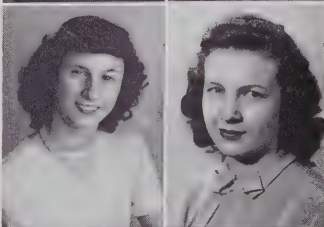
Football 1, 2, 3, 4, Co-captain 4; Base-  
ball 2, 3, 4; Glee Club 4, Vice-President  
4; Sports Editor The Cracker 4; Mono-  
gram 3, 4, Vice-President 4; Boys' Ath-  
letic Club 4; Wittiest 4.

FAYE GUTHRIE CAMPBELL

"FAYEDENE"

"You don't say, bub!"

Glee Club 1; Homemakers Club 2; Art  
Club 3, 4.



WILLIE RUTH CROW

"RUFUS"

"Gosh, Petel!"

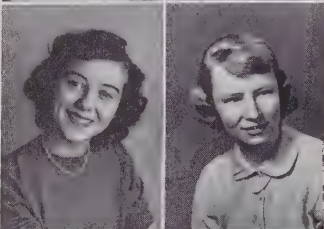
Homemakers Club 1, 2; Art Club 3, 4;  
Crafts 4.

MARY ANN CHANDLER

"SOUTHERN YANKEE"

"How y'all?"

Treasurer Junior Class 3; Assistant Art  
Editor The Cracker 3; Art Club 3, 4,  
President 4; National Honor Society 4;  
Receptionist 4; Cheerleader 4; Mono-  
gram Club 4; Dramatics 4; Monitor 4;  
Girls' Athletic Club 4; Cutest 4, Trans-  
ferred from Greenville, South Carolina,  
Junior Year.



SARA KATE DAVIS

"CRAZY KATE"

"Hello, peopies!"

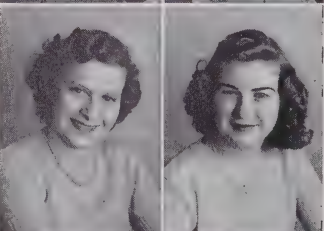
Homemakers Club 1, 2, 3, Secretary 2;  
Glee Club 1, 2, 3, 4; Editorial Editor  
The Cracker 3, 4; Chief Marshal 3;  
National Honor Society 3, 4, President  
4; Dramatics Club 4; Cafeteria Worker  
4; Archery 4; Most Likely To Succeed  
4; Historian 4.

PEGGY GIBSON COOPER

"PEG"

"I'll declare."

Homemakers Club 2, 3; Manager Girls'  
Basketball 3, 4; Art Club 3; Monogram  
Club 4. Transferred from Burlington  
High Sophomore Year.



JO ANN DRUMMOND

"JO ANN"

"You're so right!"

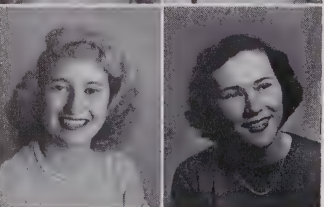
Library 1; Glee Club 2, 3; National  
Honor Society 3, 4; Dramatics 4; Art  
Club 4; Archery 4; Receptionist 3, 4;  
Associate Editor The Cracker 4; Moni-  
tor 4.

POLLY MADGE CORE

"PEACHES"

"May I have the car, Mother?"

Glee Club 1; Basketball 1, 2, 3, 4, Co-  
captain 4; Vice-President Sophomore  
Class 2; Art Club 3; Monogram Club  
3, 4; Girls' Athletic Club 4.



PATRICIA ANN DURHAM

"PAT"

"I mean, really!"

Glee Club 1, 2, 3, 4; Homemakers Club  
2; Student Council Representative 3;  
The Cracker Staff 3; National Honor  
Society 4, Vice-President 4; THE WAG  
4; Receptionist 4; Dramatics, Secretary  
and Treasurer 4; Friendliest 4; Testa-  
trix 4.



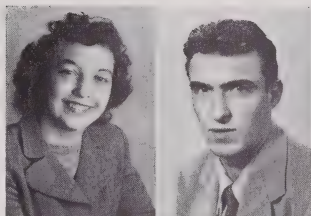
# SENIORS

**BETTIE ANN EURY**

"DOODLE"

*"This couldn't happen AGAIN."*

Homemakers Club 2; Art Club 4; President 3; Dramatics 4. Transferred from Alexander Wilson Sophomore Year.



**BILLY HANFORD**

"BILL"

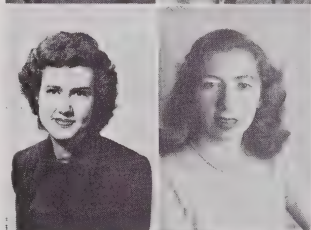
Radio 4; Audio-Visual Aids 4; Cutest 4. Transferred from Alexander Wilson.

**BETTE LOU FINCHER**

"LOU"

*"It's immaterial to me."*

Dramatics 4; Glee Club 2, 3. Transferred from E. M. Holt Junior Year.



**BETTY HELM COLLINS**

"BET"

*"Is that right?"*

Homemakers Club 2, 3; Art Club 3.

**SHIRLEY MAE FOWLER**

"SHIRL"

*"Well, shut your mouth."*

Glee Club 3.



**BETTY LOU HOLT**

"DILLY"

*"Don'tcha know?"*

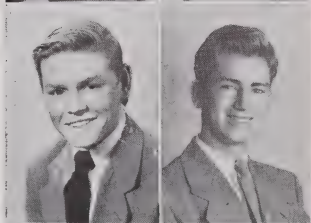
Basketball 1, 2, 3, 4; Glee Club 1, 2, 3, 4; Treasurer Freshman Class 1; Student Council Representative 2; Monogram Club 3, 4; Secretary 4; Senior Class Secretary 4; Typist *The Cracker* 4; Girls' Athletic Club 4.

**HARLIN CECIL GILLESPIE**

"PECKER"

*"Get 'em off one time."*

Baseball 2; Cafeteria Worker 1, 2, 4; Archery 4; Boys' Athletic Club 4; Friendliest 4.



**HADLEY H. IVEY**

"BURHEAD"

*"Go allybooga."*

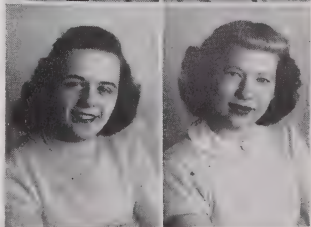
Editor-in-Chief *THE WAG* 4; Key Club 4; Dramatics 4; Most Valuable to the School 4.

**BETTY JEAN GUTHRIE**

"GUS"

*"Hey there!"*

Basketball 1, 2, 3, 4; Glee Club 1, 2, 3, 4; Treasurer 4; Homemakers Club 1, 2; Monogram Club 3, 4; Treasurer 4; Sports Editor *The Cracker* 3, Typist 4; Crafts 4; Girls' Athletic Club 4.



**JUNE CAROL JOBE**

"ACE"

*"Where's Toby?"*

Glee Club 1; Library Assistant 2; Cafeteria Worker 3; Art Club 4; Dramatics 4; Girls' Athletic Club 4.

# SENIORS

**BILLIE JOYCE JOHNSON**

"BILL"  
"Some kind of crazy, huh?"

Glee Club 1, 3; Library Assistant 1;  
Dramatics 4; Cafeteria Worker 3; Girls'  
Athletic Club 4.



**GERALD LEWIS**

"Lew"  
"Yeh, you will."

Student Council 2, 3; Key Club 3; Dra-  
matics 4; Radio 4; Audio-Visual Aids  
4; *The Cracker* 4; Most Original 4;  
Prophet 4.

**MARY EDNA JONES**

"COTTON"  
"Well don't let it worry you."

Glee Club 1, 3, 4; Library Assistant 2;  
Basketball 1; Vice-President Dramatics  
4; Girls' Athletic Club 4; Most Popu-  
lar 4.



**VERA MAE LINDLEY**

"VEP"  
"For garden seed."

Homemakers Club 1, 2, President 2;  
Glee Club 2, 3; Marshal 3; National  
Honor Society 4; Good Citizen 4; Re-  
ceptionist 4; Business Manager *The  
Cracker* 4; Dramatics 4; Monitor 4;  
Girls' Athletic Club 4; Most Depend-  
able 4.

**JOSEPH K. KIMREY**

"POKE"  
"Let's go to Burlington."

Football 1, 2, 3, 4; Baseball 1, 2, 4;  
Basketball 1; Monogram Club 3, 4;  
President 4; Glee Club 4; Sports Editor  
*THE WAG* 4; Boys' Athletic Club 4;  
Best Looking 4.



**JOE LINENS**

"GAYLORD"  
"Yeab, man."

Class Treasurer 1; Band 1, 2; Football  
2, 3, 4, Co-captain 4; Baseball 2, 3, 4;  
Monogram Club 3, 4; *THE WAG* Staff  
3; Vice-President Key Club 3; President  
4; President Senior Class 4; Dramatics  
4; Boys' Athletic Club 4; Most Popu-  
lar 4.

**JACQUELINE KING**

"JACKIE"  
"Goodness gracious!"

Cafeteria Worker 3.



**MARGARET ALLENE LONG**

"MAGGIE"  
"Do tell."

Receptionist 3; Glee Club 3, 4; Mar-  
shal 3; National Honor Society 4; Li-  
brary Assistant 4; Monitor 4; Crafts 4.

**LORRAINE LAYTON**

"LOBY"  
"I'll get even with ya!"

Glee Club 2, 3, 4; Reporter *The Crack-  
er* 2, 4; Cafeteria Worker 2; Dramatics  
4; Girls' Athletic Club 4; Wittiest 4.



**JAMES ALLEN MCPHERSON**

"FERKIE"  
"Atta boy!"

Archery 4; Baseball 1, 2, 3, 4; Foot-  
ball Manager 1; Football 2, 3, 4; Bas-  
ketball 2, 3, 4, Co-captain 4; Cafeteria  
Worker 1, 4; Student Council 4; Mon-  
ogram Club 3, 4; Dramatics 4; Boys'  
Athletic Club 4; Most Athletic 4.

# SENIORS

CHRISTINE MADDEN

"CHICK"

"How in the world are you?"

Cafeteria Worker 2; Co-Editor-in-Chief *The Cracker* 4; Dramatics 4; Homemakers Club 1, 2, 3, President 1; Girls' Athletic Club 4.



HILDA GREY MOONEYHAM

"MOONEY"

"My goodness!"

Photography 4; Crafts 4; Audio-Visual Aids 4; Girls' Athletic Club 4.

MARVIN MANN

"Bob"

"Let's go to Chapel Hill."

Latin Club 1; Glee Club 1, 2, 3; Radio 4; Audio-Visual Aids 4. Transferred from Chapel Hill Senior Year.



NANCY CAROLYN MOSER

"MOE"

"You know it too, bub?"

Receptionist 3; Glee Club 1, 3, 4; Archery 4; Dramatics 4.

MARY ELLA MARTIN

"IKE"

"Well for goodness sakes."

Glee Club 1, 3, 4; Monogram Club 3, 4; Vice-President Junior Class 3; Basketball 1, 2, 3, 4, Co-captain 4; Assistant Advertising Manager THE WAG 3, Business Manager THE WAG 4; Dramatics 4; Receptionist 3, 4; Girls' Athletic Club 4; Best All Around 4.



JAMES RUDOLPH MULLINS

"BUD"

"How you doing, pooche?"

Cafeteria Worker 1, 3; Glee Club 4; Boys' Athletic Club 4.

PEGGY ANN MERCER

"PEG"

"You know it, Ace."

Glee Club 1, 2, 3, 4, Accompanist 3, 4; Typist THE WAG 4; Best Dressed 4.



HATTIE LOU PRATER

"BUMPS"

"My cow."

Basketball 3, 4; Monogram Club 4; Dramatics 4; Audio-Visual Aids 4; Photography 4; Girls' Athletic Club 4; Most Athletic 4. Transferred from Sylvan, Junior Year.

WILLIAM CHARLES MERCER

"LIGHTNING"

"Onward, State College!"

Student Council 1; Band 1, 2, 3, 4, Vice-President 3; President Sophomore Class 2; Key Club 3, 4; Photography Editor THE WAG 4; Class Secretary 1; Most Talented 4.



CLARA FAYE PUGH

"CAR"

"My cow."

National Honor Society 4; Receptionist 4; Glee Club 2, 3; Marshal 3; Homemakers Club 1, 2; Typist *The Cracker* 4; Dramatics 4; Girls' Athletic Club 4; Most Studious 4.

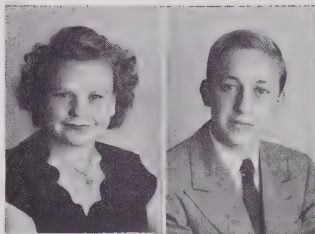
# SENIORS

DORIS FAYE PUGH

"RED"

"For goodness sakes."

Photography 4; Audio-Visual Aids 4;  
Crafts 4; Girls' Athletic Club 4.



WILLIAM RICHARD SIZEMORE

"SIZE"

"What you talking about?"

Football Manager 2; Baseball Manager  
1; Monogram Club 3, 4; Circulation  
Manager THE WAG 4; Basketball 3, 4;  
Key Club 4; Dramatics 4; Monitor 4;  
Boys' Athletic Club 4; Most Likely To  
Succeed 4.



LUCY DOTT QUALLS

"DOTT"

"You know it too, Ace."

Glee Club 1, 4; Typist THE WAG 4;  
Editorial Editor *The Cracker* 4; Crafts 4.



JERRY L. SHARPE

"SHOT"

"Time's a-wasting."

Key Club 3, 4; Cafeteria Worker 2;  
Radio 4; Audio-Visual Aids 4.

RAE QUALLS

"QUALLS"

"Grow a little more."

Cafeteria Worker 1; Glee Club 4;  
Audio-Visual Aids 4; Most Talkative 4.



GERALDINE LEAH SHEPHERD

"GERRY"

"Let's go to E. C. T. C.!"

Basketball Manager 2, 4; Monogram  
Club 3, 4; Dramatics 4; Audio-Visual  
Aids 4; Typist *The Cracker* 4; Basket-  
ball 1; Girls' Athletic Club 4.

UNA FAY ROBERTSON

"UNIE"

"You don't know, do you?"

Student Council 1, 4; Class Secretary  
and Treasurer 2; Receptionist 2; Junior  
Class President 3; Glee Club 3, 4; Mar-  
shal 3; Co-Editor-in-Chief *The Cracker*  
4; Dramatics 4; Monitor 4; Girls' Ath-  
letic Club 4.



SARA JANE SHOUSE

"SHOUSE-HOUSE"

"Ain't nothing 'bout us but class!"

Glee Club 1, 4; Receptionist 2, 4; Dra-  
matics 4; Basketball 1; Girls' Athletic  
Club 4.

BARBARA ANNE RUSSELL

"PEE-DAB"

"You better know so!"

Glee Club 1, 3, 4; Library Assistant 1;  
Archery 4; Dramatics 4; Most Orig-  
inal 4.



CHERRY THOMAS

"SHERRY"

"I'll be seeing you."

Glee Club 1, 2, 3; Crafts 4; Music  
Club 3.

# SENIORS

ESTHER ADAMS THOMPSON

"ESTERITA"

"You know it, Ace."

Dramatics 4; Glee Club 1, 4; Girls' Athletic Club 4.



PEGGY M. WILLARD

"PEG"

"Lexington, here I come!"

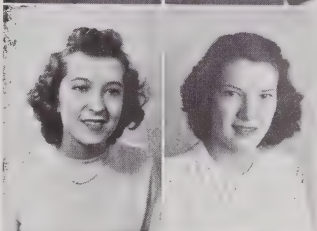
Glee Club 1; Typist THE WAG 4.

PATRICIA ANN TYSOR

"PAT"

"So help you to goodness."

Glee Club 2; Honor Society 3, 4, Secretary 4; Art Club 4; Photography 4; Crafts 4.



MARGARET JANE WILSON

"MAGGIE"

"You make me so mad."

G. A. A. 3; Softball 3; Basketball 4; Girls' Athletic Club 4. Transferred from Fayetteville Senior Year.

MARVIN WALLACE

"SHORTY"

"If at first you don't succeed, try, try, again."

Junior Basketball 1; Softball 2; Baseball 2; Beta Club 3; Marshal 3; Audio-Visual Aids 4; Most Studious 4. Transferred from Alexander-Wilson Senior Year.



JENEVERETTE WILSON

"DUBY"

"Merci beaucoup."

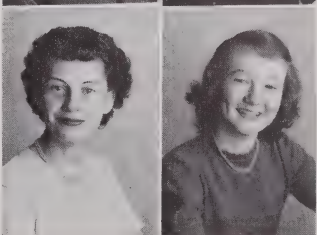
Glee Club 2, 3, 4; Student Council, Secretary 2; Reporter *The Cracker* 2; Associate Editor THE WAG 3; Crafts 4; Girls' Athletic Club 4; Biggest Flirt 4.

FAYNE WELCH

"FINNANNIE"

"Wish I could take a trip to Guam."

Library Assistant 1; Art Club 4; Dramatics 4; Typist *The Cracker* 4; Girls' Athletic Club 4.



ELIZABETH ANN WOODS

"ANN"

"Hub?"

Glee Club 3, 4; Secretary Library Club 2; Reporter *The Cracker* 3, Make-Up Editor 4; Marshal 3; Honor Society 4; Monitor 4; Receptionist 4; Senior Class Treasurer 4; Archery 4; Crafts 4; Student Council Representative 2; Most Talkative 4.

# “The Past, Forever Gone . . .”

SO WE BEGAN — a hundred thirty-two of us, almost the largest group ever to start in our school. Mothers had prepared us for the big day with our best clothes and shiny faces, but our first look at the huge monster, school, reduced many of us to tears.

By the time we reached the second and third grades we were old-timers, with a slightly superior attitude. Most of the boys and some of the girls boasted scratches and bruises from fights and tree-climbing. Oh, we were a tough bunch then!

Studies weighed heavily upon us in the fourth grade, and we spent some time over the three R's, especially 'rithmetic. The boys tried their hardest to look and act like little monsters; and the girls, in their bobbed hair, curls, or pig-tails, simply ignored the silly things.

Powdered wigs and hoop skirts, knee-pants and lipstick were the sissy accompaniments to the Minuet which we so daintily danced for a chapel program in the fifth grade. We painted great “master-pieces,” named the forty-eight states, recited jingles about Columbus sailing the ocean blue, and played softball.

We were terribly mean in the sixth grade and often went for weeks at a time without a recess because of our talkative habits. We made a rule about hair-combing in class and held a mock trial if anyone was reported for this serious offense.

The seventh and eighth grades were “Junior High,” and we felt we were grown up. We danced the Highland Fling until our legs ached for one May Day, and did acrobatics, crowned with a most wonderful pyramid, for the next May Day program. We showed off. We were marvelous!

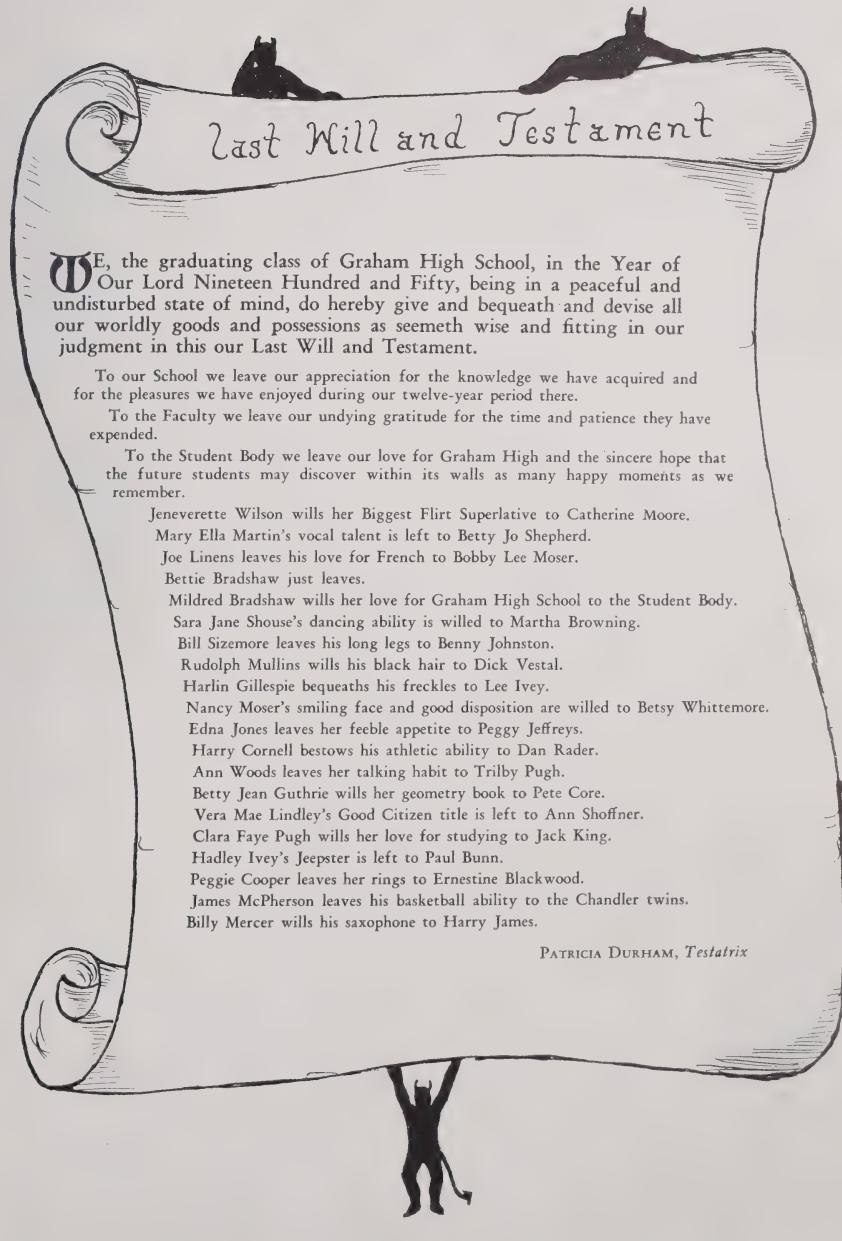
Freshmen!! At the sight of all those people still above us, our class of eighty-nine—including three newcomers, June Carol Jobe, Ann Woods, and Patricia Tysor—felt a little less brave and very much more confused. Slowly we began to feel at home and to enter with enthusiasm the classes and sports, the fun and frolics of these “High Schoolers.”

Sophomores!! We settled down in earnest to the routine of changing classes, writing themes, reciting Latin, and in general having the time of our lives. We welcomed Peggy Gibson and Betty Ann Eury into the class, began the hero worship of those handsome football players, and looked a bit enviously at the wonderful Seniors.

Juniors!! Threading our way slowly through the maze of magazine-selling, “Three Days of Gracie,” winning football, and the miraculous Junior-Senior banquet, we seemed to live in a daze, with a year passing in just no time at all. New arrivals were Mary Ann Chandler, Betty Lou Fincher, and Hattie Prater.

Seniors!! Bow low when you say that wonderful word. We are on top of the world. We have class rings, plans for a Washington trip, and annual pictures; and everyone stands when we enter Assembly. Now the twenty-five of us who have spent all our school days at Graham High and the forty-two who have joined us along the way, including Senior arrivals Marvin Wallace, Marvin Mann, and Billy Hanford, are beginning a new chapter in our life just as the world begins a new half-century. May the dreams in our hearts come true as we remember, “The future, still our own!”

SARA KATE DAVIS  
*Historian*



## Last Will and Testament

**WE**, the graduating class of Graham High School, in the Year of Our Lord Nineteen Hundred and Fifty, being in a peaceful and undisturbed state of mind, do hereby give and bequeath and devise all our worldly goods and possessions as seemeth wise and fitting in our judgment in this our Last Will and Testament.

To our School we leave our appreciation for the knowledge we have acquired and for the pleasures we have enjoyed during our twelve-year period there.

To the Faculty we leave our undying gratitude for the time and patience they have expended.

To the Student Body we leave our love for Graham High and the sincere hope that the future students may discover within its walls as many happy moments as we remember.

Jeneverette Wilson wills her Biggest Flirt Superlative to Catherine Moore.

Mary Ella Martin's vocal talent is left to Betty Jo Shepherd.

Joe Linens leaves his love for French to Bobby Lee Moser.

Bettie Bradshaw just leaves.

Mildred Bradshaw wills her love for Graham High School to the Student Body.

Sara Jane Shouse's dancing ability is willed to Martha Browning.

Bill Sizemore leaves his long legs to Benny Johnston.

Rudolph Mullins wills his black hair to Dick Vestal.

Harlin Gillespie bequeaths his freckles to Lee Ivey.

Nancy Moser's smiling face and good disposition are willed to Betsy Whittemore.

Edna Jones leaves her feeble appetite to Peggy Jeffreys.

Harry Cornell bestows his athletic ability to Dan Rader.

Ann Woods leaves her talking habit to Trilby Pugh.

Betty Jean Guthrie wills her geometry book to Pete Core.

Vera Mae Lindley's Good Citizen title is left to Ann Shoffner.

Clara Faye Pugh wills her love for studying to Jack King.

Hadley Ivey's Jeepster is left to Paul Bunn.

Peggie Cooper leaves her rings to Ernestine Blackwood.

James McPherson leaves his basketball ability to the Chandler twins.

Billy Mercer wills his saxophone to Harry James.

PATRICIA DURHAM, *Testatrix*



# Prophecy

IN THIS YEAR of atomic inventions a great physicist has invented a new time machine which will push up the time until the year 1960. In this way we will be able to take a look at what our class of 1950 is doing.

Hadley Holt Ivey, the Burlington Mills tycoon, is being hen-pecked by his wife, Mrs. Edna Ivey. William Mercer still hasn't decided which it will be, Marie Burke or Okey. Mrs. Monnie Loy Kimrey is on her way out to Hollywood to visit her husband, Joe Kimrey, the handsome movie idol of millions. Mary Ella Martin is already out there singing with the Joe Linens band, with Peggy Mercer as his star pianist. Marvin Mann has retired since he won a million dollars on a quiz program.

Harry Cornell is now head football coach at Cornell University, with Connie Adams as assistant coach. Doris Pugh, Cherry Thomas, Esther Thompson, Hilda Mooneyham, Hattie Prater, and Jenerette Wilson have become beautiful nurses. Bill Sizemore and Gerald Lewis have gone into the lumber business together and now operate the biggest lumber company in the state. Clara Faye Pugh and Vera Mae Lindley are helping Una Faye Robertson to compete with the Stork Club in the night club business.

Back at G. H. S. it seems as if Dott Qualls has got Mrs. Reeves' job as school secretary. Marvin Wallace runs one of the biggest newspapers in the South, with Jerry Sharpe as his ace reporter. Now we see Mrs. Peggy Cooper, Mrs. Betty Mae Collins, Mrs. Annie Faye Campbell, and Mrs. June Carol McIntyre leaving Jackie King's beauty shop and heading for Barham's French Dress Shop. To keep law and order, Burleigh Wilson is our chief of police with Bill Blackwelder his desk sergeant. Bill Hanford owns the largest farm in the country.

Boyd Andrews is vice-president of Rae Qualls' hosiery mill. Every Sunday morning you can see cartoons in the funny papers which are drawn by Bettie Bradshaw. Mary Ann Chandler is a fashion

designer with Sara Jane Shouse as her model. There is a new Buick company in Graham owned by Nancy Moser. Ann Russell has become a psychiatrist with Rudolph Mullins as a regular client. Don Brummitt now runs A. & P., with Peggy Allison doing the brain work. Margaret Long has become a famous authority on cooking. Leading the state's girl scouts is Sara Kate Davis.

Pat Durham has become a great voice teacher and is giving lessons to the daughter of the President of the U. S. A. At the head of the County Welfare Department is Mildred Bradshaw. High scorer for the Philadelphia Eagles basketball team this year is James McPherson. Ann Woods' talking ability has gotten her elected state senator. Harlin Gillespie has moved out West and is "punching" cows. Loby Layton, co-starring with Christine Madden, just finished her new production, "Stars in Her Hair." Geraldine Shepherd married Donald Denny and they seem to be very happy. Mrs. Ruth (Crow) Andrews has taken up the profession of her husband — teaching. Betty Lou Holt and Billie J. Johnson have opened a soda shop which is called "Killjoy."

Longest Shoe Shop is now partly owned by Betty Guthrie. Fayne Welch always liked children, so now she runs a nursery. Margaret Wilson and Peggy Willard joined the Wacs, and both are now generals. Polly Core finally married Jack Cathey and they are now living happily off her pay. The former Betty Fincher works in a bank — a fact which makes it easy to support her husband. Betty Ann Eury has become America's greatest woman auto racer. The former Pat Tysor isn't doing much of anything because she married a multi-millionaire. And now, last but not least, Altavista Albright and Shirley Fowler have become teachers, a fact which is mighty hard to believe.

Just as fast as we left 1950 we return, and I sincerely hope that these or better things will happen to the wonderful class of 1950.

GERALD LEWIS  
*Propbet*



# Class Poem

Henceforth our hearts shall sigh no more,  
For toilsome days of school are o'er;  
Comes soon the time that we must part,  
With school day memories in each heart.

Reverent Seniors now we stand,  
Eager to succeed; we know we can,  
For Senior hopes we've now attained;  
Our strongest efforts weren't in vain.

But fondly our thoughts will return,  
For old friendships we'll sadly yearn;  
With faith and love our hearts have grown,  
Through the happiest years we've ever known.

We'll wish the wheels of time could turn,  
That once more we may live and learn,  
As hair grows grey and steps grow slow,  
As later on through life we go.

And so farewell to classmates dear,  
We'll remember each and every year;  
Our school days past, forever gone,  
We face the future, now our own.

BETTIE BRADSHAW  
Senior '50



**Best All-Around**

MARY ELLA MARTIN — DON BRUMMITT

**Most Likely To Succeed**

BILL SIZEMORE — SARA KATE DAVIS

**Most Dependable**

JERRY SHARPE — VERA MAE LINDLEY

**Most Valuable to School**

MILDRED BRADSHAW — HADLEY HOLT IVEY

# SUPERLATIVES

**Best Dressed**

PEGGY MERCER — BOYD ANDREWS

**Prettiest — Best Looking**

MARIE BURKE — JOE KIMREY

**Most Talented**

BETTIE BRADSHAW — WILLIAM MERCER

**Most Studious**

CLARA FAYE PUGH — MARVIN WALLACE





**Most Popular**  
 JOE LINENS — EDNA JONES

**Cutest**  
 MARY ANN CHANDLER — BILLY HANFORD

**Friendliest**  
 PAT DURHAM — HARLIN GILLESPIE

**Most Athletic**  
 JAMES MCPHERSON — HATTIE PRATER

## OF 1950

**Most Talkative**  
 ANN WOODS — RAE QUALLS

**Biggest Flirt**  
 BURLEIGH WILSON — JENEVERETTE WILSON

**Most Original**  
 ANNE RUSSELL — GERALD LEWIS

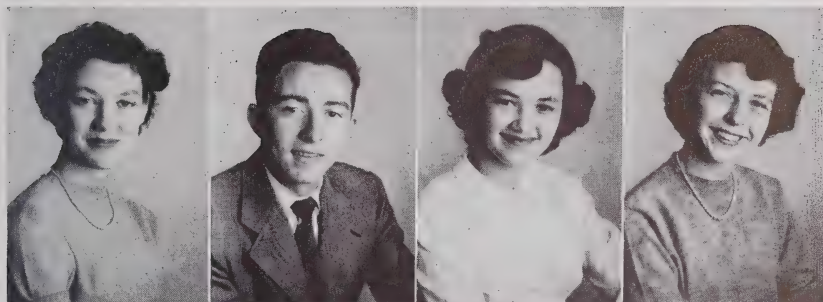
**Wittiest**  
 LORRAINE LAYTON — HARRY CORNELL





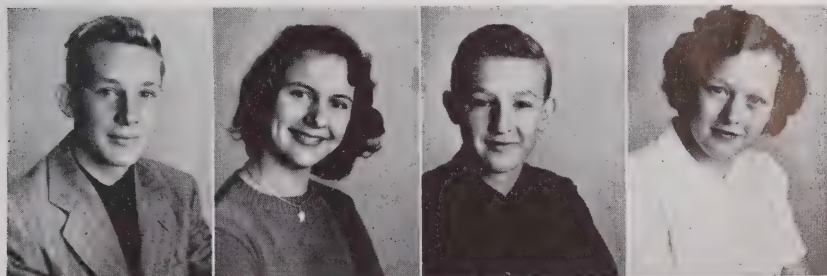
# CLASS OFFICERS

## JUNIOR CLASS



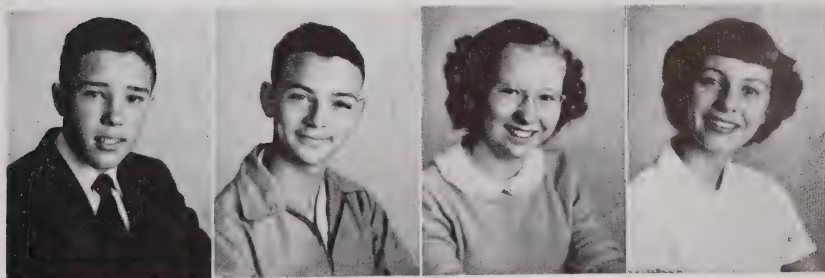
*President, Patricia Brittain; Vice-President, Franz Holt; Secretary, Martha Browning; Treasurer, Tommae Brittain*

## SOPHOMORE CLASS



*President, Henry Flythe; Vice-President, Carol Ann Ritchie; Secretary, Billy Harden; Treasurer, Alice Crow*

## FRESHMAN CLASS



*President, John Wooten; Vice-President, Phillip Davis; Secretary, Virginia Moore; Treasurer, Jane Wrike*

# JUNIORS



Polly Allen  
 Betty Allison  
 William Black  
 Ernestine Blackwood  
 Patricia Brittain  
 Tommae Brittain  
 Jimmy Brown  
 Martha Browning  
 Paul Bunn  
 Georgia Mae Bunting

Richard Cole  
 Evelyn Elmore  
 Hal Farrell  
 Billy Garrison  
 Pat Griffith  
 Ivey Gilliam  
 Bobby Harrelson  
 Dot Helm  
 Franz Holt  
 Rose Horne

Lee Ivey  
 Betty Lou Ivey  
 Harry James  
 Louis Jarmon  
 Peggy Jeffreys  
 Bennie Johnston  
 Robert Jones  
 Jack King  
 Lamar Dixon (not pictured)  
 Billy Gillespie (not pictured)

# JUNIORS

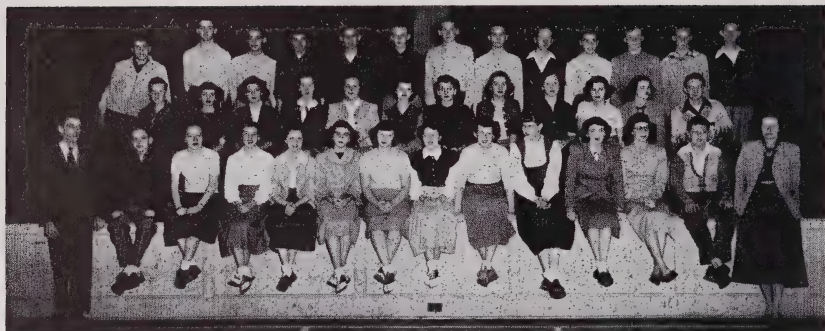


Ned Lewis  
 Joan Linens  
 Lota Mae Logan  
 Doris Massey  
 Sylvia McAdams  
 Bobby Lee Moser  
 Josephine Okey  
 Dan Rader  
 Douglas Ratliff  
 Peggy Ann Robinson

Billy Self  
 Peggy Shanklin  
 Ralph Shaw  
 Betty Jo Shepherd  
 Ann Shoffner  
 Carol Ann Slaughter  
 Nira Sledge  
 Zane Sledge  
 Charles Storey

Dorothy Teague  
 Barbara Thompson  
 Billy Turner  
 Richard Vestal  
 Jimmy Walker  
 Jeanette Wallace  
 Dan Webster  
 Burleigh Wilson  
 Lavica Wright  
 Tommy Zachary

# SOPHOMORES



Lettie Allison  
C. A. O'Baugh, Jr.  
Harold Black  
Nina Boswell  
James Bradshaw  
Ronald Brafford  
Jack Brewer  
Bettie Burgess  
William Carter  
Billy Chandler  
Bobby Chandler  
Martha Clapp  
Pete Core  
Alice Crow  
Freddie Cummings

Josephine Davis  
Bill Drummond  
Mauline Duke  
Bill Fincher  
Patsy Flanigan  
Henry Flythe  
Jack Fuller  
Margaret Gates  
Shirley Gillespie  
Jimmy Glenn  
Carol Gowens  
Peggy Griffith  
Walter Gurkin  
George Guthrie

Marjorie Hamby  
Glenda Hancock  
Billy Harden  
Elizabeth Helm  
Melba Hinshaw  
Howard Hodgkin  
Carolyn Holt  
Don Holt  
Jackie Hunter  
Coanne Isley  
Jean Carol Ivey  
Glenda Faye James  
Jerry Jeffreys  
Pat Jones  
Bobby Jones



# SOPHOMORES



Gena King  
John Lassiter  
John Allen Layton  
Eleanor Lineberry  
Judy Longest  
Mary McClure  
June Carol McPherson  
Bobby McQueen  
Lloyd Michels  
Georgia Lee Miller  
Bascom Moore  
Barbara Moore

Barbara Ann Moser  
Raymond Perdue  
George Phillips  
Donald Pickard  
Annie Lou Pugh  
Ruth Ratliff  
Bettie Jane Ray  
Frances Ray  
Carol Ann Ritchie  
Margaret Russell  
Carlyne Sams  
David Self  
Mary Ellen Self

Geralda Shepherd  
Douglas Smith  
Berkley Stutts  
Charles Stutts  
Jo Nell Thacker  
Teddy Thompson  
Jimmy Tutterow  
Annie Webster  
Ray Welch  
June West  
Billie Jo Wilson  
Betsy Whittemore

*Teachers, Mrs. M. D. Smith, Mrs. V. H. Latta, Mr. Malcolm Nelson*

# FRESHMEN



Betty Adams  
Frances Albright  
John Andrews  
James Austin  
Dorothy Bayliff  
Charles Belcher  
Frances Blackwelder  
Betty Burch  
Harold Dean Campbell  
A. Leo Chandler  
Sloan Cain  
Patricia Clapp

Peggy Clark  
Joyce Creef  
Phillip Davis  
Winston Drummond  
Barbara Eason  
Betty Ray Fleishel  
Tommy Fogleman  
Martha Sue Guthrie  
Bonnie Herring  
Joe Holt  
Patsy Isley

Richard James  
Thomas James  
C. Allen Jarmon  
Joe Jeffreys  
Greta Jones  
Polly Kidd  
Belva Kimrey  
Betty Kimrey  
Faye Kimrey  
Patsy King  
Betsy Kirkman  
Jerry Kivett

# FRESHMEN



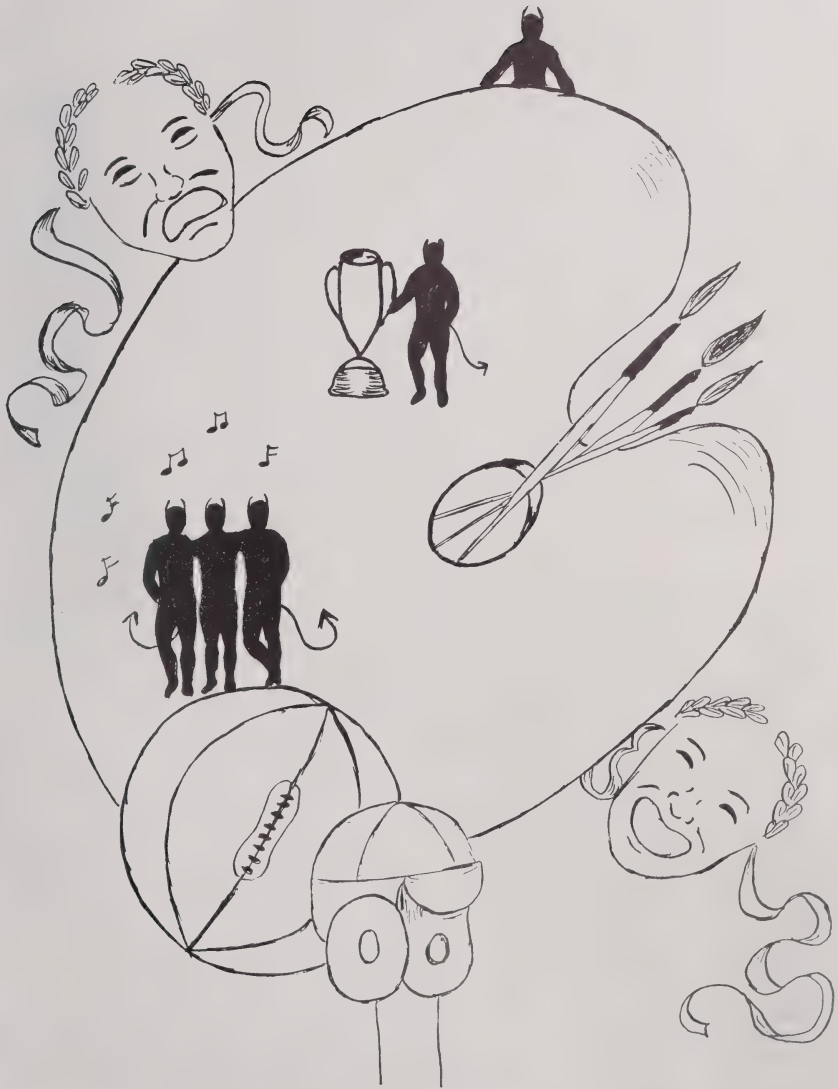
Billy Wayne Lashley  
Alton Lineberry  
Jean Long  
Clifford McCauley  
Winford McGuire  
Betsy McVey  
David Michael  
James Michels  
Bobby Moore  
Catherine Moore  
Virginia Moore

Mary Lou Okey  
Shirley Patton  
Glenn Pierce  
Catherine Pugh  
Billy Ray  
Thomas Ray  
Joan Robertson  
Betty Rudd  
Agatha Russell  
Jimmy Schronce  
Betty Jean Sharpe

Jerry D. Shouse  
Marie Sides  
Clement Smith  
Douglas Stewart  
Becky Stuckey  
Glen Melton Thomas  
Coy Thompson  
Roger Webster  
Billie Faye Welch  
John Wooten  
Jane Wrike

*Teachers, Mrs. Harold Jeter Jr., Miss Virginia Jordan, Miss Clare Thomas*





ACTIVITIES- SPORTS

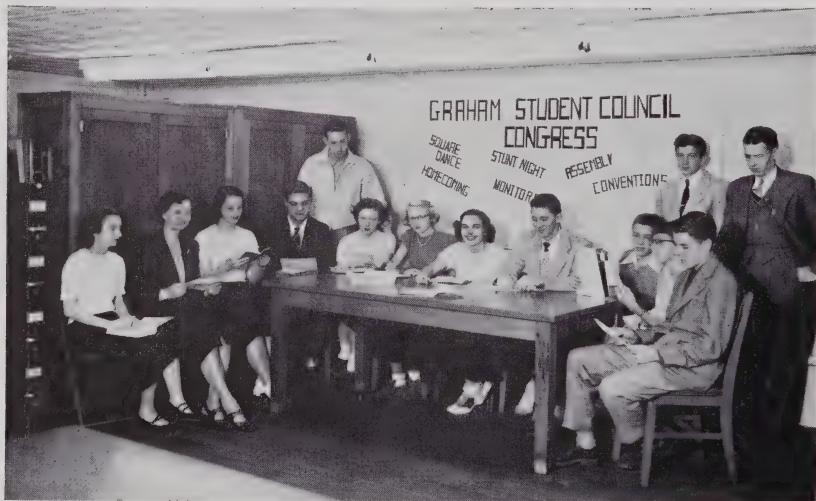


## NATIONAL HONOR SOCIETY

Mildred Bradshaw  
 Martha Browning, *Treasurer*  
 Mary Ann Chandler  
 Sara Kate Davis, *President*  
 Jo Ann Drummond  
 Pat Durham, *Vice-President*  
 Rose Horne  
 Benny Johnston  
 Vera Mae Lindley  
 Margaret Long  
 Clara Faye Pugh  
 Pat Tvsor, *Secretary*  
 Ann Woods  
 Tommy Zachary

*Adviser, Miss Gena Church*

## STUDENT COUNCIL



Mildred Bradshaw, *President*; Tommy Zachary, *Vice-President*; Barbara Moore, *Secretary*; John Wooten, *Treasurer*; Sloan Cain, Hal Farrell, Greta Jones, Mary E. McClure, James McPherson, Una Faye Robertson, Berkley Stutts, Lavica Wright.

*Advisers, Miss Gena Church, Mr. N. G. Bryan*

## RECEPTIONISTS



Martha Browning, Mary Ann Chandler, Jo Ann Drummond, Pat Durham, Rose Horne, Vera Mae Lindley, Mary Ella Martin, Sylvia McAdams, Clara Faye Pugh, Sara Jane Shouse, Ann Woods.

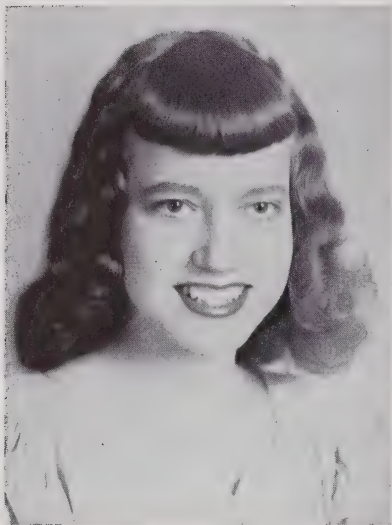
*Adviser, Miss Gena Church*

## LIBRARY ASSISTANTS



Frances Albright, Ronald Brafford, Mildred Bradshaw, Georgia Bunting, Betty Burch, Joyce Creef, Margaret Gates, Shirley Gillespie, Marjorie Hamby, Glenda Hancock, Don Holt, Lota Mae Logan, Margaret Long, June McPherson, Connie Martin, Glenda Norris, Dan Rader, Peggy Robinson, Jean Wood, Lavica Wright.

*Adviser, Miss Wagoner*



## GOOD CITIZEN

VERA MAE LINDLEY

*chosen by  
the Senior Class  
and High School Faculty  
and  
sponsored by  
the Alamance County Chapter  
Daughters of the American Revolution*

## MARSHALS



Tommae Brittain, *Chief*; Ivey Gilliam, Tommy Zachary, Benny Johnston, Patricia Brittain, Rose Horne, Martha Browning.



## CRACKER STAFF



*Editors-in-Chief*, Christine Madden, Una Faye Robertson; *Associate Editors*, Connie Adams, Jo Ann Drummond; *Editorial Editors*, Sara Kate Davis, Dett Qualls, Vera Mae Lindley, Gerald Lewis; *Make-Up Editors*, Bettie Bradshaw, Ann Woods; *Sports Editors*, Don Brummitt, Harry Cornell; *Typists*, Fayne Welch, Monnie Andrews, Marie Burke, Betty Guthrie, Betty Lou Holt, Lorraine Layton, Clara Faye Pugh, Geraldine Shepherd. *Advisers*, Mr. Robert Benson and Mrs. Lowell Shive.

## DIVERSIFIED OCCUPATIONS



Peggy Allison, Bettie Bradshaw, Annie Faye Campbell, Peggy Gibson Cooper, Betty Ann Eury, Betty Lou Fincher, Shirley Fowler, Betty Collins, Marvin Mann, Peggy Mercer, Dott Qualls, Rae Qualls, Douglass Ratliff, Jerry Sharpe, Esther Thompson, Pat Tysor, Marvin Wallace, Dan Webster, Peggy Willard, Lavica Wright. *Coordinator*, Miss Gena Church.

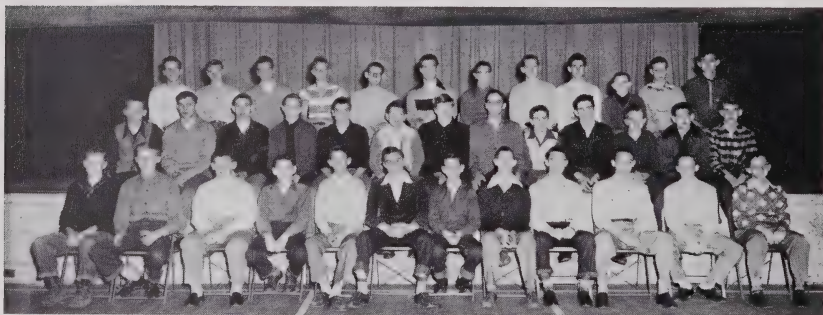
## GIRLS' ATHLETIC CLUB



Peggy Allison, Monnie Loy Andrews, Bettie Bradshaw, Martha Browning, Georgia Bunting, Marie Burke, Mary Ann Chandler, Polly Core, Betty Jean Guthrie, Betty Lou Holt, Rose Horne, Betty Lou Ivey, Peggy Jeffreys, June Carol Jobe, Billie Joyce Johnson, Edna Jones, Lorraine Layton, Vera Mae Lindley, Christine Madden, Mary Ella Martin, Hilda Mooneyham, Sylvia McAdams, Josephine Okey, Clara Faye Pugh, Doris Pugh, Hattie Prater, Peggy Robinson, Una Faye Robinson, Peggy Shanklin, Geraldine Shepherd, Betty Jo Shepherd, Ann Shoffner, Sara Jane Shouse, Carol Slaughter, Nira Sledge, Zane Sledge, Esther Thompson, Fayne Welch, Jeneverette Wilson, Margaret Wilson, Tommae Brittain.

*Adviser, Mr. George Heckman*

## BOYS' ATHLETIC CLUB



John Andrews, J. E. Austin, Charles Belcher, Ronald Brafford, Jackie Brewer, William Carter, Billy Chandler, Bobby Chandler, John Core, William Drummond, Billy Fincher, Henry Flythe, Tommy Fogleman, Walter Gurkin, Don Holt, Joe Holt, Richard James, Joe Jeffreys, Bob Jones, Jerry Kivett, Billy Lashley, John Layton, Bud Lineberry, David Michael, Bascom Moore, Clifford McCauley, Winford McGuire, Bobby McQueen, C. A. O'Baugh, Raymond Perdue, Donald Pickard, Glenn Pierce, Billy Ray, Jimmy Schronce, David Self, Jerry Shouse, Douglas Stewart, Charles Stutts, Teddy Thompson, Jimmy Tutterow, Dan Webster.

*Adviser, Mr. George Heckman*

## ARCHERY



Boyd Andrews, Paul Bunn, Billy Chandler, Pete Core, Sara Kate Davis, Jo Ann Drummond, Harlin Gillespie, Walter Gurkin, Don Holt, Lee Ivey, Thomas James, James McPherson, Jimmy Michels, Lloyd Michels, Bobby Moore, Nancy Moser, Raymond Perdue, Anne Russell, Douglas Smith, Ann Woods, John Wooten. *Adviser*, Mr. N. G. Bryan.



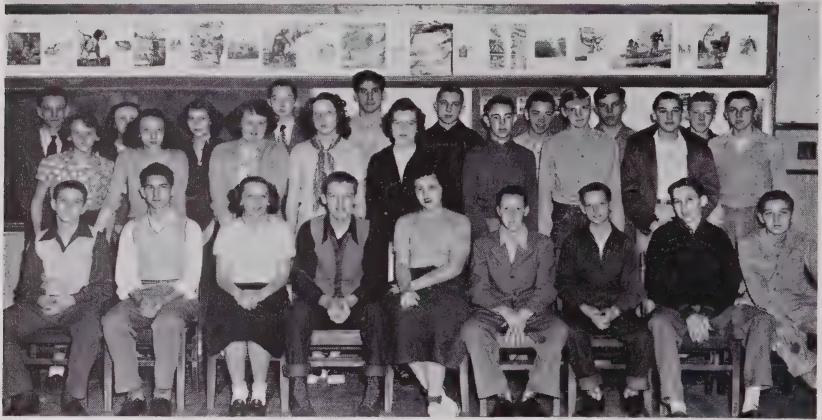
## MONITORS

Mildred Bradshaw  
Mary Ann Chandler  
Jo Ann Drummond  
Hal Farrell  
Ned Lewis  
Vera Mae Lindley  
Margaret Long  
Bobby McQueen  
George Phillips  
Una Fay Robertson  
Ann Woods

*Advisers*

Miss Gena Church, Mr. N. G. Bryan

## PHOTOGRAPHY CLUB



Frances Albright, James Bradshaw, Harold Campbell, Freddie Cummings, Walter Gurkin, Jerry Jeffreys, Gena King, Jerry Kivett, Kenneth Lassiter, Eleanor Lineberry, Bobby McQueen, James Michels, Lloyd Michels, Georgia Miller, Catherine Moore, Donald Pickard, Glenn Pierce, Betty Jane Ray, Billy Ray, Tommy Ray, Carlyne Sams, David Self, Marie Sides, Douglas Smith, Charles Stutts, Jo Nell Thacker, Teddy Thompson, June West, Betsy Whittemore. *Adviser*, Mr. Malcolm Nelson.

## ART CLUB



Lettie Allison, Frances Blackwelder, Bettie Bradshaw, Annie Faye Campbell, Mary Ann Chandler, Martha Clapp, Patricia Clapp, Ruth Crow, Josephine Davis, Jo Ann Drummond, Betty Ann Eury, Betty Ray Fleishel, Margaret Gates, Martha Guthrie, Patsy Isley, June Carol Jobe, Greta Jones, Betsy Kirkman, Catherine Moore, Betty Jean Sharpe, Marie Sides, Patricia Tysor, Fayne Welch, Harold Dean Campbell, Bobby Lee Moore, Dorothy Bayliff. *Adviser*, Mrs. Paul Smith.

## AUDIO-VISUAL AIDS



Ted Barham, Harold Dean Black, Billy Blackwelder, Ernestine Blackwood, James Bradshaw, Freddie Cummings, Phillip Davis, Jimmy Glenn, George Guthrie, Billy Hanford, Howard Hodges, Thomas James, Kenneth Lassiter, Gerald Lewis, Ned Lewis, Marvin Mann, James Michels, Hattie Prater, Rae Qualls, Tommy Ray, Jerry Sharpe, Billy Self, C. L. Smith, Dorothy Teague, Glen Thomas, Marvin Wallace, John Wooten. *Adviser*, Mr. R. L. Hill.

## CRAFTS



John Andrews, Charles Belcher, William Black, Phillip Davis, Evelyn Elmore, Jim Fogleman, Bobby Harrelson, Rose Horne, Thomas James, Joe Jeffreys, Bill Lashley, Bud Lineberry, Clifford McCauley, James Michels, Bobby Lee Moser, Bill Ray, Thomas Ray, Betty Jean Sharpe, Nira Sledge, C. H. Smith, Douglas Stewart, Dorothy Teague, Glen Thomas, John Wooten. *Adviser*, Mrs. Harold Jeter, Jr.

## HOMEMAKERS OF AMERICA



Altavista Albright, Polly Allen, Lettie Allison, Tommae Brittain, Martha Browning, Georgia Bunting, Martha Clapp, Louise Copple, Margaret Gates, Shirley Gillespie, Marjorie Hamby, Rose Horne, Greta Jones, Gena King, Eleanor Lineberry, Joan Linens, Judy Longest, Mary E. McClure, Betsy McVey, Georgia Lee Miller, Catherine Moore, Virginia Moore, Catherine Pugh, Bettie Jane Ray, Carol Ann Ritchie, Joan Robertson, Peggy Robinson, Margaret Russell, Carlyne Sams, Nira Sledge, Zane Sledge, Marie Sides, Rebecca Stuckey, Jo Nell Thacker, Billie Faye Welch, Betsy Whittemore, Jane Wrike.  
*Adviser, Mrs. Paul Smith.*

## DRAMATICS



Ernestine Blackwood, Mildred Bradshaw, Patricia Brittain, Mary Ann Chandler, Sara Kate Davis, Jo Ann Drummond, Pat Durham, Bettie Ann Eury, Betty Lou Holt, Peggy Jeffreys, June Carol Jobe, Billie Joyce Johnson, Edna Jones, Lorraine Layton, Vera Mae Lindley, Sylvia McAdams, Christine Maden, Mary Ella Martin, Nancy Moser, Josephine Okey, Hattie Prater, Una Faye Robertson, Anne Russell, Betty Jo Shepherd, Geraldine Shepherd, Sara Jane Shouse, Carol Slaughter, Esther Thompson, Jeanette Wallace, Fayne Welch, Boyd Andrews, Ted Barham, Hal Farrell, Billy Garrison, Hadley Ivey, Gerald Lewis, Joe Linens, James McPherson, Glen Pierce, Jerry Shouse, Bill Sizemore, Tommy Zachary, Clara Faye Pugh. *Adviser, Mr. Robert Benson.*

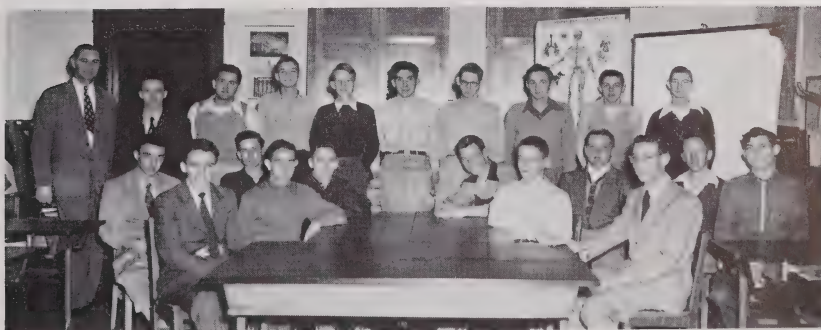
## KEY CLUB

Boyd Andrews  
 Hal Farrell  
 Pat Griffith  
 Bill Harden  
 Franz Holt  
 Hadley Ivey  
 Lee Ivey  
 Benny Johnston  
 Ned Lewis  
 Joe Linens  
 Billy Mercer  
 Bobby McQueen  
 Bascom Moore  
 George Phillips  
 Dan Rader  
 Jerry Sharpe  
 Bill Sizemore  
 Dick Vestal  
 Tommy Zachary

*Sponsor, KIWANIS CLUB*



## RADIO CLUB



John Andrews  
 Ted Barham  
 Charles Belcher  
 Harold Dean Black  
 James Bradshaw  
 Phillip Davis  
 George Guthrie

Billy Hanford  
 Harry James  
 Kenneth Lassiter  
 Gerald Lewis  
 Marvin Mann  
 Clifford McCauley

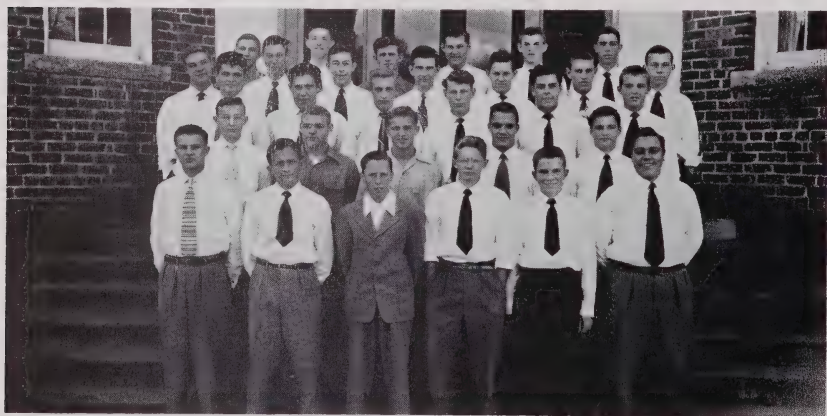
C. A. O'Baugh  
 Glenn Pierce  
 Douglas Ratliff  
 Tommy Ray  
 Jerry Sharpe  
 C. L. Smith  
 Glen Thomas

*Adviser, MR. R. L. HILL*

## GLEE CLUBS



Betty Adams, Mildred Bradshaw, Pat Brittain, Martha Browning, Georgia Bunting, Betty Burgess, Peggy Clark, Louise Copple, Alice Crow, Sara Kate Davis, Pat Durham, Mauline Duke, Betty Lou Holt, Coanne Isley, Peggy Jeffreys, Edna Jones, Lorraine Layton, Margaret Long, Judy Longest, Mary Ella Martin, Sylvia McAdams, Mary McClure, Betsy McVey, Peggy Mercer, Barbara Moore, Virginia Moore, Nancy Moser, Josephine Okey, Ann Pugh, Dott Qualls, Agatha Russell, Anne Russell, Margaret Russell, Fay Robertson, Joan Robertson, Gerelda Shepherd, Sara Jane Shouse, Carol Slaughter, Rebecca Stuckey, Cherry Thomas, Esther Thompson, Jeneverette Wilson, Ann Woods, Lavica Wright, Jane Wrike. *Adviser*, Miss Esther Bagwell.



Connie Adams, Jimmy Brown, Billy Blackwelder, Sloan Cain, Harold Campbell, Harry Cornell, Lamar Dixon, Bill Drummond, Bill Frick, Pat Griffith, Billy Harden, Howard Hodgins, Joe Holt, Jerry Jeffreys, Robert Jones, Joe Kimrey, Jack King, Bobby McQueen, David Michael, Bascom Moore, Rudolph Mullins, George Phillips, Rae Qualls, Dan Rader, Charles Storey, Berkley Stutts, Charles Stutts, Richard Vestal, Dan Webster, Ray Welch, Burleigh Wilson. *Adviser*, Miss Esther Bagwell.



## BAND



Douglas Bayliff  
Bill Boswell  
Joe Browning  
Jerry Baumgarner  
Bill Copeland  
Ronny Donnelly  
Bill Drummond

Larry Dunn  
Jimmy Glenn  
Jean Goley  
Bill Horne  
Holmes Harden  
Ann Harden  
David Johnson

Tyson Johnson  
Kirk Moser  
Billy Mercer  
Mary Lou Okey  
Melvin Parish  
Jerry Taylor  
Mary Curtis Wrike

*Director, Mr. Worth Stephens*

## MAJORETTES

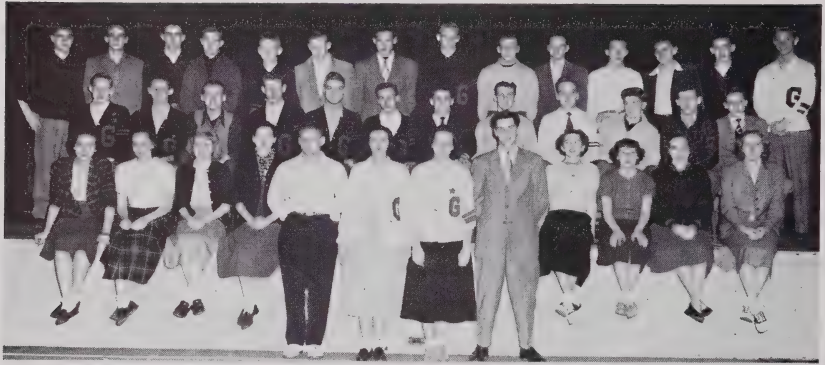


Bettie Bradshaw  
Peggy Clark

Patsy Flannigan  
Marie Burke  
Boosie Gowens

Mary E. McClure  
Ann Shoffner

## MONOGRAM CLUB



Joe Kimrey, *President*; Harry Cornell, *Vice-President*; Betty Lou Holt, *Secretary*; Betty Jean Guthrie, *Treasurer*; Connie Adams, Boyd Andrews, Mildred Bradshaw, Patricia Brittain, Jimmy Brown, Don Brummitt, Peggy Cooper, Pete Core, Polly Core, Lamar Dixon, Bill Frick, Jack Fuller, Pat Griffith, Don Holt, Franz Holt, Joe Holt, Peggy Jeffries, Bennie Johnston, Bobby Jones, Jack King, Bud Lineberry, Joe Linens, Mary Ella Martin, James McPherson, Bobby McQueen, Bobby Moser, Josephine Okey, Hattie Prater, Geraldine Shepherd, Bill Sizemore, Carol Slaughter, Berkley Stutts, Billy Turner, Jimmy Tutterow, Dick Vestal, Burleigh Wilson, Tommy Zachary. *Adviser*, Mr. George Heckman.

## CHEERLEADERS



Mildred Bradshaw  
Lo Ann Burch

David Michael

Mary Ann Chandler  
Peggy Jeffreys



## FOOTBALL — 1949



Coach Heckman, Co-captains Harry Cornell and Joe Linens, Coach Benson



Managers: John Layton, Huey Moser, and George Phillips  
Billy Harden (not pictured)

## FOOTBALL SQUAD OF 1949



Connie Adams  
 John Andrews  
 Charlie Belcher  
 Ronald Brafford  
 Don Brummitt  
 Pete Core  
 Harry Cornell  
 Lamar Dixon  
 Bill Frick  
 Pat Griffith  
 Ivey Gilliam  
 Walter Gurkin

Don Holt  
 Franz Holt  
 Joe Holt  
 Jerry Jeffreys  
 Bobby Jones  
 Bobby A. Jones  
 Joe Kimrey  
 Jack King  
 Bill Lashley  
 Joe Linens  
 Bud Lineberry

James McPherson  
 Bob McQueen  
 Bob Moser  
 Glenn Pierce  
 Raymond Perdue  
 Bill Ray  
 Berkley Stutts  
 Jimmy Tutterow  
 Dick Vestal  
 Ray Welch  
 Burleigh Wilson  
 Tommy Zachary

*Coaches, Benson and Heckman*

### *Football Scores — 1949*

Graham	0	Roxboro	31
Graham	25	Siler City	0
Graham	0	Chapel Hill	7
Graham	0	Bessemer	0
Graham	6	Draper	0
Graham	6	Oxford	40
Graham	12	Mebane	0
Graham	20	Hartsel	0
Graham	18	Durham County	6
Graham	44	E. M. Holt	0

### HOSIERY BOWL

Graham	7	Trinity	7
--------	---	---------	---

## GIRLS' BASKETBALL



*Coach, Miss Clare Thomas*

FIRST ROW:

Jane Wrike  
Betty Jean Guthrie  
Nira Sledge  
Mary Ella Martin, *Co-captain*  
Margaret Wilson  
Betty Lou Holt  
Polly Core, *Co-captain*  
Carol Ann Slaughter  
Josephine Okey  
Patricia Brittain

SECOND ROW:

Geraldine Shepherd, *Manager*  
Zane Sledge  
June Carol McPherson  
Glenda Faye James  
Betty Jo Shepherd  
Carolyn Holt  
Billie Faye Welch  
Peggy Jeffreys  
Peggy Cooper, *Manager*  
Hattie Prater (not pictured)

## BOYS' BASKETBALL



FIRST ROW, *left to right*

Franz Holt  
Bill Sizemore  
Bob Moser  
Tommy Zachary  
James McPherson, *Co-captain*  
Don Brummitt, *Co-captain*  
Rudolph Mullins  
Dick Vestal  
Benny Johnson

SECOND ROW, *left to right*

John Layton  
Jerry Jeffreys  
Billy Garrison  
David Michael  
Hal Farrell  
Winford McGuire  
Bascom Moore

*Managers, Boyd Andrews and Charles Belcher*

*Coach, Robert Benson*

## BASEBALL TEAM



Harry Cornell  
 James McPherson  
 Tommy Zachary  
 Bobby Moser  
 Richard Vestal (not pictured)

Lamar Dixon  
 Joe Linens  
 Franz Holt  
 Bobby Jones  
 Winford McGuire (not pictured)

Charles Stutts  
 John Layton  
 Jimmy Tutterow  
 Jimmy Glenn  
 Jerry Jeffreys

*Coach, George Heckman*

### *Baseball Scores — 1949*

Graham	12	Elon	4
Graham	8	Haw River	4
Graham	8	Graham Tigers	6
Graham	1	Eli Whitney	8
Graham	3	Burlington	1
Graham	8	Altamahaw-Ossipee	6
Graham	6	Alexander-Wilson	2
Graham	9	Mebane	7
Graham	18	Sylvan	6





# ADVERTISEMENTS

# Bur-Mil's Greatest Investment Is Here In Alamance County

**T**WENTY-FIVE YEARS AGO Burlington Mills began here in Burlington as a small bedspread mill. Since that humble beginning, this Company has grown during the past quarter-century until it is now one of the world's largest producers of rayon fabrics. Its operations have spread to five states and four foreign countries. The list of Bur-Mil textile products now includes women's woven and knit outerwear and underwear fabrics, men's wear fabrics, decorative fabrics, cotton piece goods, yarns, women's and men's hosiery, industrial and transportation fabrics, and ribbons.

Despite this growth and expansion, Burlington Mills is proud to point out that the Burlington area—the birthplace of the Company—still embraces its largest concentration of plants, people and investment. There are 15 Bur-Mil manufacturing plants or service units in Burlington and Alamance County employing over 4,000 people with an annual payroll of over \$11,000,000.

Burlington Mills is proud to be a part of the great community of Burlington. It appreciates the fine cooperation and loyal support it has received. It is equally proud of its many employees who join with other good citizens in the civic, educational and religious activities of city and county.

Burlington Mills   
*"Woven into the Life of America"*

EXECUTIVE OFFICE - GREENSBORO, N. C.

ELGIN  
HAMILTON  
BULOVA watches

**Hadley's**

*Established 1898*

*The Jewelers*

GRAHAM, N. C.

---

*Compliments of*

**Graham Hosiery Mills**

*Incorporated*

GRAHAM, N. C.

# Leath Hosiery Mill

INCORPORATED

*Manufacturers of*

Ladies' 51-Gauge Full Fashioned Hosiery

GRAHAM, N. C.

*Compliments*

**National Bank of  
Alamance**

GRAHAM, N. C.



*"Serving This Community  
Since 1899"*



Member Federal Deposit  
Insurance Corporation

*Compliments of*

**The New  
McClure Funeral Home**



AMBULANCE SERVICE



Dial 2711

*Compliments of*

# Western Auto Associate Store

GRAHAM, N. C.

*Compliments of*

## GRAHAM UNDERWRITERS

★

Dial 6-1522

★

GRAHAM, N. C.

*Compliments of*

## GRAHAM GROCERY CO.

MEATS *and* GROCERIES

Dial 6-3057

### Graham Dry Goods Store

*"The Store That Appreciates  
Your Trade"*

### HAL'S MEN'S SHOP

"CLOTHES TO WEAR  
*for*  
MEN WHO CARE"

*Compliments of*

**GRAHAM  
BARBER  
SHOP**

---

AM — 920 K.C.



— OF COURSE

FM — 101.1 M.C.

---

*Compliments*

**ISLEY'S GROCERY**

---

**SANITARY BARBER SHOP**

New Location—Corner Main and Harden  
Beneath Blossom Shop  
GRAHAM, N. C.

*Compliments of*

**Virginia Mills, Inc.**

SWEPSONVILLE, N. C.

---

**Self Electrical Contractor**

J. T. SELF

West Harden Street

*Installations of All Kinds*

Day Phone 6-1992

Night Phone 6-0629

GRAHAM, N. C.

---

**City Laundry and Cleaners**

*"One Call Cleans All"*

Phone 6-4439

BURLINGTON, N. C.

# MY HAT SHOP

122 East Front Street

*"For Better Styles and Quality"*

Beautiful Dresses, Millinery, Bags

MODERATELY PRICED

*Compliments of*

## Longest Shoe Store

*Finest in Shoes  
For All the Family*

Phone 6-1138

Graham, N. C.

## Graham Soda Shop

*"Where Friends Meet"*

Drinks  
Sandwiches  
Sundaes

ZEB and HALLIE HEARN  
*Proprietors*

Dial 6-5311

*Compliments of*

### Ben Franklin Store

FRANCIS M. JESNAK

Graham, N. C.

*Compliments of*

### NU-VOGUE HOSIERY

Graham, N. C.

## BUCK'S CLEANERS

*"for those who care"*

DIAL 6-1516

*Compliments of*

**KIVETT MOTOR SALES**

**NASH**

Corner Front and Church Streets  
**BURLINGTON**

---

**Warren Hosiery Shop**

304 S. Main St. Phone 6-5550  
Burlington, N. C.

---

*Compliments*

**Wilson's Men's Shop**

124 East Front Street

---

**Modern Venetian Blind  
Company**

*Manufacturers of Modern  
Venetian Blinds*

144 South Main Street  
Graham, N. C.

---

---

**Moon's Fashion Shop**

SMART  
LADIES  
APPAREL

Dial 6-8219

---

**BLALOCK'S TAILORY**

*"A Tailor-Made Man  
Is a Good-Looking Man"*

BURLINGTON, N. C.

---

**GRAHAM CAFE**

*Home-Cooked Food*  
Short Orders a Specialty

---



*Compliments of*

**Graham 5 & 10**

AND

**Erwin Hosiery Mills**

GRAHAM, N. C.

---

*Congratulations*

**JACK'S SODA SHOP**

Dial 6-5118

---

*Compliments of*

**C. C. BAYLIFF**

*Notary Public and Justice of the Peace*

GRAHAM, N. C.

Home Phone 6-1886

Office Phone 6-5454

**INCOME TAX SERVICE**

**Public Typing and Mimeographing**

---

**Uptown ESSO Service**

Opposite Post Office

*"Service First"*

*Compliments of*

**The Jewel Box**

CONGRATULATIONS  
*from*  
**FLOYD'S**  
*Men's Furnishings*



FLOYD L. PHILLIPS, *Proprietor*



Dial 6-7114

Graham

---

**WRIKE DRUG COMPANY**

*Sodas — Cokes — Medicine*  
*Cosmetics — Stationery*

Dial 6-4316

Graham

---

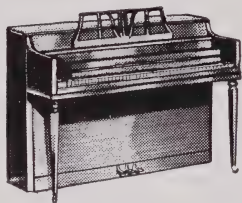
**GRAHAM HARDWARE CO., Inc.**

General Hardware  
Builders Supplies

SERVICE THAT SATISFIES  
SINCE 1903

Phone 6-4409

Graham, N. C.



59 Years  
in  
Burlington  
Selling

PIANOS — SEWING MACHINES  
BAND INSTRUMENTS

**C. B. Ellis Music Store**  
BURLINGTON, N. C.

---

*Compliments of*

**GREEN'S FUEL GAS CO.**

West Elm Street  
Graham, N. C.

---

*Compliments of*

**Sears, Roebuck & Co.**

J. C. HIGGINS  
*Sporting Goods*  
*for*  
*All Occasions*

Burlington, N. C.

200 East Front Street

Dial 6-6336

*Compliments of*

**Firestone**

Phone 6-6977

Graham, N. C.

---

*Compliments*

**DIXON HARDWARE**

Dial 6-4959

---

**RAYLASS**

**Department Store**

*Where Your Dollar Buys Most*  
BURLINGTON, N. C.

---

*Compliments of*

**BURLINGTON SPORTING  
GOODS**

Burlington, N. C.

---

*"The Best Place To Buy a Suit  
... Slacks Too"*

**T. N. BOONE - Tailors**

Burlington, N. C.

*Compliments*

**KERN'S**

"The Best in Bread"

---

*Compliments of*

**Clapp Furniture  
Company**

Dial 6-2113

Burlington, N. C.

---

*Congratulations and Best Wishes*

**Moorefield Florist**

Burlington, N. C.

**McAdams Cash Grocery**

*Fresh Meats and Staple Groceries*

Dial 6-3292

Graham

*Compliments*

**TROLLINGER'S FLORIST**

Main Street

Burlington

*Compliments of*

**Sellars**

*Burlington's Finest*

*Department Store*

**Bayliff's**

**SERVICE CENTER**

Graham, N. C.

411 W. Harden St.

Dial 6-4106

**COBLE FURNITURE COMPANY**

COMPLETE HOME FURNISHERS

207 West Davis Street

BURLINGTON, N. C.

DIAL 6-9452

*Congratulations, Seniors*

**Rich & Thompson**

Furniture  
and  
Electrical  
Appliances

Dial 6-4202

Graham

*Compliments of*

**Graham and Alco  
THEATRES**

Graham - North Carolina

**Carolina Cafeteria  
and Pastry Shop**

*A Quality Food Service*

207 E. Front St. Burlington

---

*Best Wishes - Seniors*

**Graham Motor Sales**

*Your CHEVROLET Dealer*

West Harden Street Phone 6-3692

---

**GOOD HEALTH**

*helps you to earn*

**GOOD SCHOLARSHIP**

**MELVILLE DAIRY**

**Milk and  
Dairy Products**

BURLINGTON, N. C.

---

**HUGHES  
MOTOR  
COMPANY**

*Authorized Sales  
and Service*

GRAHAM, N. C.

West Harden Street Dial 6-3003

---

*Compliments of*

**HARDIE'S  
ESSO STATION**

Phone 9130

---

**TIRE SALES  
COMPANY**

*Your GE Dealer*

Dial 6-6331 Burlington

---

## **Graham Dry Cleaners**

HAPPY - SNAPPY - SERVICE

*If it's service you want*

**CALL US**

Phone 6-3606

Graham, N. C.

*Southern Dairies*



*Compliments of*

## **JAROSZ HOSIERY MILL**

GRAHAM . . . . . NORTH CAROLINA

## **Graham Drug Co.**

PRESCRIPTIONS  
COSMETICS

*Fountain Service*

Graham, N. C.

*Compliments of*

## **FRANK'S Jewelry**

Main Street

Graham, N. C.

*Compliments of*

# Graham Lumber Company

E. A. BRAXTON and SONS

West Harden Street

Dial 6-7611

---

## THE BLOSSOM SHOP

*Graham's Newest Florist*

Boys, see us for the next favorite corsage for that girl friend.

GRAHAM, N. C.

Day Dial 6-3745; Night 6-2908

---

## CRAWFORD'S DEPARTMENT STORE

Graham, North Carolina

*Where There's Coke  
There's Hospitality*



6 bottle  
carton  
25¢  
plus deposit



BOTTLED UNDER AUTHORITY OF THE COCA-COLA COMPANY BY

Burlington Coca-Cola Bottling Co.

## ALAMANCE LAUNDRY

AND  
DRY CLEANERS

*"We Do It Better"*

A Complete Laundry and  
Dry Cleaning Service

Call 6-6381

BURLINGTON, N. C.

**TOPS  
FOR  
QUALITY!**



TELEPHONE 6-3220

*"Where the Sportsmen Meet"*

## MASSEY'S SPORT SHOP

*All Kinds of Sporting Goods*

BICYCLES  
GUNS  
AMMUNITION  
FISHING  
GOLF

FOOTBALL  
BASKETBALL  
BASEBALL  
SOFTBALL  
TENNIS

## OUR ADVERTISERS

- ¶ Without the loyal support and coöperation of our advertisers, the publication of THE WAG would not be possible.
- ¶ We take this means of conveying to them our sincere thanks for their generous assistance.
- ¶ With pride we p̄sent them to our readers as unsurpassed in the merchandising and industrial fields they represent, and bespeak for them in full measure the patronage of the citizens of our community.

THE STAFF









