

1924

1924  
Tuesday  
July 15  
6 a.m.  
put off for  
Fringes

Fish was uneventful passed, many of  
Woman Key; Rebecca Shoals lighthouse;  
Jat Jefferson now deserted and coal  
sheds, with twisted, crane, and unroofed  
buildings blown down in big hurricane  
that probably is just as it was in Civil  
War days.

70 feet  
100 h.p.  
16 gal.  
gas per  
min.

by Fish is about 60 <sup>nautical</sup> miles, launch  
goes about 9 1/2 to 10 knots 6.30 - 2.30 to  
island. Cost 39,000 to build, and 50-60,000 to  
duplicate today.

Allison  
has one  
that burns  
1 gal per  
min. =

Laboratory two large building for Lab purposes  
southernmost, has southern section forming  
one long sleeping porch.

Dr. Grove and I are in northern build.

30 knot  
boat used to  
collect  
fish for  
Sta. We

Bird Key. formerly Hospital Key, ded of  
and during yellow fever patients from  
Jat.

had been  
lead to  
expect that  
lot of "Gudger"  
Science would  
be carried on there [at Fringes]

Ports were all broken and at time of yellow  
fever epidemic, by Prisoner Doctor who was  
given charge.



Wednesday  
July 16

Trih to Fort Jefferson in the a.m.  
returned about 10:30. The grave got  
a little chromid under an ascidian  
and I found a few small spider  
crabs, *Mithras species*



Wednesday  
~~Thursday~~  
July 16  
afternoon

July 16 - 1924 Bird Key Reef <sup>49</sup>

Bird key reef over end near Fort  
Jefferson except last bit or islet across  
five foot channel, and nearest the Fort.

Dr. Single secured one Portunus (Achelous)  
and one Petrolisthes sebae

Color notes made  
Crangon formosus  
Crangon armillatus  
" near armillatus  
Petrolisthes armatus  
Mithrax sculptus  
Mithrax pilosus  
Portunus sebae

Large female  
hatched eggs  
round in made  
when fingers close  
saved in picric  
like some of young  
which were observed  
morning of July 18  
(water had been changed  
night of 17th)



50

Thursday July 17, 1924

(1a)

Dredged with the Dohrn.

White Shoal #16

3 *Caprellids*

6 *Amphipods* 2 species

1 *Stenorhynchus*

1 Almus-like

1 red speckled, but practically  
white appearing as head

1 *Synalpheus* diff species from other later  
this day

Few worms.

Bird ~~Sand~~ Key 7 = 2nd haul of  
day



Thursday  
July 17.

All ~~coral~~ coral sand and  
Lithothamnium bottom  
except last haul which had  
mostly algae and finesand

At. 2.30

first haul most mucky all except last  
White shoal #15

Made  
several  
dredge  
hauls.

① slimy  
White shoal #16 <sup>7-8 fms.</sup> largest squilla  
scorlet <sup>margin</sup> day after collecting had  
died in bucket over night after  
squillas natural looking grayish white

② White shoal haul #17.

Synalpheus sp.

Bind key 7. Boat dredge 10 1/2 fms.

③ White Shoal 18

- 1 Gelia
- 4 Amphipods
- 4 Milneux 2 sp.
- 1 Aemus like
- 1 Cymothoa

④

White Shoal #19 1 Ebalia + 1 addomen of shrimp.



*[Faint, illegible handwriting at the top of the page]*

*[Faint, illegible handwriting in the upper middle section]*

*[Faint, illegible handwriting in the middle section]*

*[Faint, illegible handwriting in the lower middle section]*

*[Faint, illegible handwriting in the lower section]*

*[Faint, illegible handwriting in the lower section]*

*[Faint, illegible handwriting in the lower section]*

*[Faint, illegible handwriting at the bottom of the page]*



order of work thus ① ② ③ etc.

July 18 - 1924  
Friday

Bender caught out by mags  
mummified - Geocarimus lateralis

and a hermit on rocks below  
lighthouse

Went dredging  
with Taylor, made a haul before 12 o'clock and

several # after

① East Key #10 ~~expode~~ and set grass on beach  
for amphipods

⑤ Sand Key #1 July 18, 1924 middle ground  
50 yds west of Key in 25 feet water

1 Podochela riisei 2

Color the faintest kind of olive  
buff.

⑥ Sand Key on rocks just below water at high tide

9 Clibanarius tricolor

3. small Mithras from filamentous  
marked with dirty white, + green alga  
+ live green



July 18.-24  
Friday  
Hexter speared half dozen lobsters  
near Bird Key this a.m.  
Had set traps last night west of  
Soggerhead key + caught nothing.

---

- (2) Middle Key shore collecting in  
3 ft of water. from algae
- 1 Palaeomon tenuicornis
  - 1 Pitho, dirty white with least  
touches of pea green on  
central anterior portion  
<sup>color noted</sup>
  - 1 tiny Mytilus with similar  
markings, like green however.
  - 1 Clit. tricolor
  - 1 little gray squilla.
- 

- (3) Middle Key #1  
debris saved, bottom coral  
one bottle only. / sponge alcyonaria  
coral saved



July 18-1924 (4) Middle Key Sta #2

Silt  
Hammer coral

1 Pithr

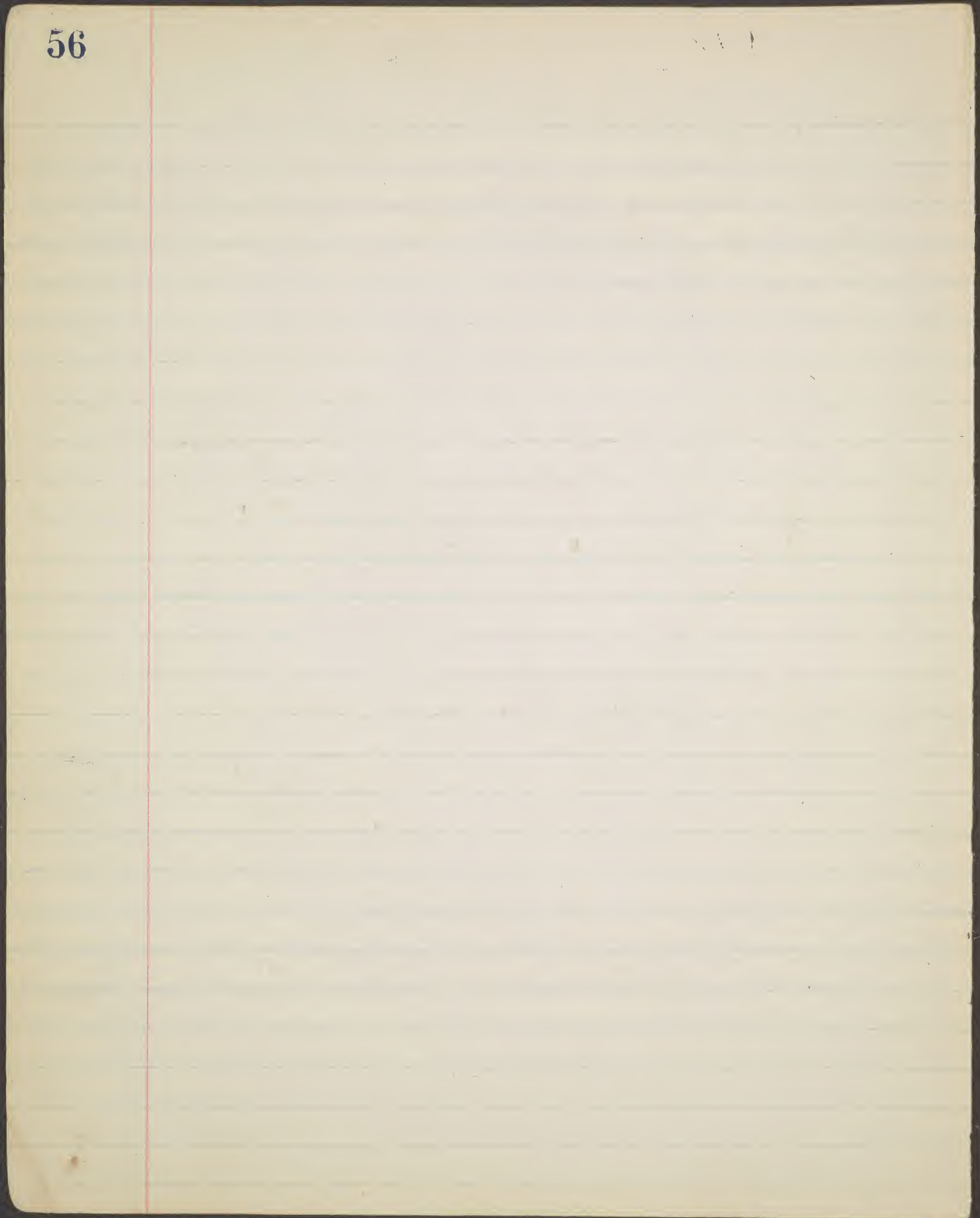
1 ~~Hammer~~ Siliqua-like with speckled bands

1 tiny mitrax

(Carpus + spots almost  
maroon, fingers +  
bands otherwise white  
as is carpus below

(7) Sand Key #2 changed to white  
Shoals #20 Bryozoa only saved  
mainly encrusting coral stalks







1924

all hauls made between 9+12 57 a.m.  
of about 15 mins duration

Saturday July 19. Hedged with John;  
made eight dredge hauls with "John"  
off Sugarhead Key. Using boat  
dredge.

White Shoal # 21.

Sets of sponges

some gorgonians  
Halimeda in

abundance

1 Stenorhynchus	} small	} clay color + dirty white
1 small octopus		
2 species <del>P</del> mithras	} small	} coral color.
4 xanthids		

~~1 Pith~~

1 Pith

2 squilla

3 Petrolisphaera as in haul 21

1 Venus like, Crimsun

1 tiny isopod mottled hazel + white

1 ochre yellow ostracod

1 large hermit.

1 little alpheid mottled with  
flesh color, eggs Panot green.



July 19. 1924

White Shoal # 22

2 Hemus like, large one <sup>vermillion</sup> orange  
small <sup>vermillion</sup> rufous

1 synalpheus

1 Portunid, sand color + ~~to~~

1 Ebalia

1 Portunid, legs cross ~~to~~ banded  
with ferruginous1 } Bigornites Chelipedes salmon  
} type with chestnut fingers  
( otherwise coral sand color  
corneae transparent with black1 <sup>super</sup> hole in center  
hermit like preceding only  
carapace in white

2 Petrolisthes n. sp?

Sta. 23. 1 Pilth with, like green  
markings9 1/2 fms. 1 Xanthid + 1 milner with  
faint vinaceous-rufous markings  
fingers dark brown umber  
joints whitish apices  
hands <sup>pink</sup> flesh on inside and between  
articles of fingers on outside



Rain out of cloud out of a clear sky at  
 very heavy + driving 5 pm.

---

Sta. #24 <sup>fair</sup> 1/2 calman tinged Piller  
 2 straw yellow squillas; + 1 buff.  
 Squilla largest as transparent vermilion  
 1 Hemus Potty red x Carmine  
 1 much broken Synalpheus.  
 1 synalpheus + palaeomon pinkish  
 slightly pinkish only  
 color



Called White Shoals station  
by Taylor, but one  
station above

July 20 Out with H. Shorn.  
Sunday White Shoals Sta 29-37  
depth 7-10 fms

5 miles south of  
Loggerhead Key

Station 29-32 combined

1 coral sand, grey white chromia  
with touch of vinaceous red  
on proximal upper half of ~~fingers~~  
movable fingers and few dots of same  
color all across base of fixed fingers

1 baby callappa, white

1 white Myzozelia Alimentary tract  
in abdomen looks salmon color  
from above; eggs cadmium orange  
with black ocelli

Hands above + movable fingers faint

Waxel

Eye black

Two equal pincers, large one white alimentary  
tract in carapace of ant. third of abdomen  
lemon yellow Segs, chelipeds 1+2nd antennae  
with small widely spaced, ~~seen~~ <sup>not</sup> seen by naked  
eye, crimson spots, about 2mm apart on  
legs, more on palm, denser <sup>on</sup> at base of  
movable fingers



Sta. 33 had large logger head sponge  
Amphipods raised with manna + wine purple  
and 1 Pisonia + some whitish chelipeds  
+ pale rose red sponges

July 20  
Sunday  
Sta.

Out with H. Chapman made  
white shovels Sta's 29 - 37

Sta. 34 got lot of Synalpheus  
from diver head sponge 6 x 6 in dia.

2 small spider crabs, large

vinaceous buff and 1

small squilla coffee green.

1 inch malacostrac madder brown

1 amphipod.

Two juxtaposed horns spider

median raised areas pea greenish  
white, mostly white; lateral areas  
light rufous; all dorsal spines except  
for extreme white tip, pale rose red.

Legs faint vinaceous cinnamon, legs  
spindled pinkish vinaceous; basal 2/3  
of movable finger bet peach blossom pink +  
rose red, distal 1/3 hazel with extreme  
tips white and narrow ~~for~~ band of white  
bet, red + haze

fixed finger basally  
like palm distal 1/3  
hazel extreme tip white (over)



Saw a water spout in afternoon

11:51

Stn. 1 brownish cross banded alpheid  
like other day.

Sta. 35 + 36 1 banded alpheid  
as above

Stns 35-36-37 combined

Sta. 37 hasty shrimp haul.

1 Podochela

1 Petrolisthes or sp. always done

up as result of dredge haul  
Same of Gammaridians

Porcelain sand color

1 Stenorhynchus

4 long nosed spiders

1 lice green  
markings  
one ~~small~~ white  
the with

lateral touches of light ochraceous infuse



1924

- Sta 35-37 6 Gonodactylus all diff.
- 1 Plain
  - 1 almost plain
  - 1 sand grey with white spots
  - 1 Orange ochraceous with white spots
  - 1 Mottled green laterally
  - 1 Vinaceous cinnamon " " " "
  - with coral red alimentary tract
  - 1 blue eyed hermit
  - 1 white hermit
  - 1 soft Hermit like orange vermillia.

What I have been ~~calling~~ calling  
 with after have been *Cymatobia*  
 with Chinese orange, flesh color or  
 ochraceous ~~refined~~ markings  
 but always very light, usually  
 they are sand colored, always  
 come up as 'halimed' bottoms.

- 1 dished out two hermit spiders  
 = vermillion below, and legs  
 upper disk = burnt carmine  
 or wine purple



1924

V 11

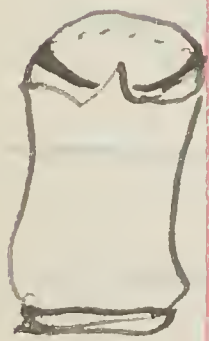
July 20-24

35-37

Crypta Heterocrypta dirty, china  
 white, like old coffee stained  
 cut. touched with pea green  
 on distal half of rostrum and a  
 little on either side and tips  
 of hands. Garpus on right side  
 touched with Bay on left with  
 fainter touch.

1 White Hermit

pearly, slightly opalescent white  
 cornea snowy white with tiny  
 red/orange vermillion flecks all  
 over



Ring of madder brown  
 just above base of  
 cornea, touching points of horn  
 and just about base of  
~~leg~~ legs most faintly striped  
 with broken bands of madder brown  
 + central blue with white chromato-  
 phores against glass transparent  
 translucent ground. This is  
 what makes it look opalescent.  
 Carapace with few very faint  
 touches of the brown on anterior

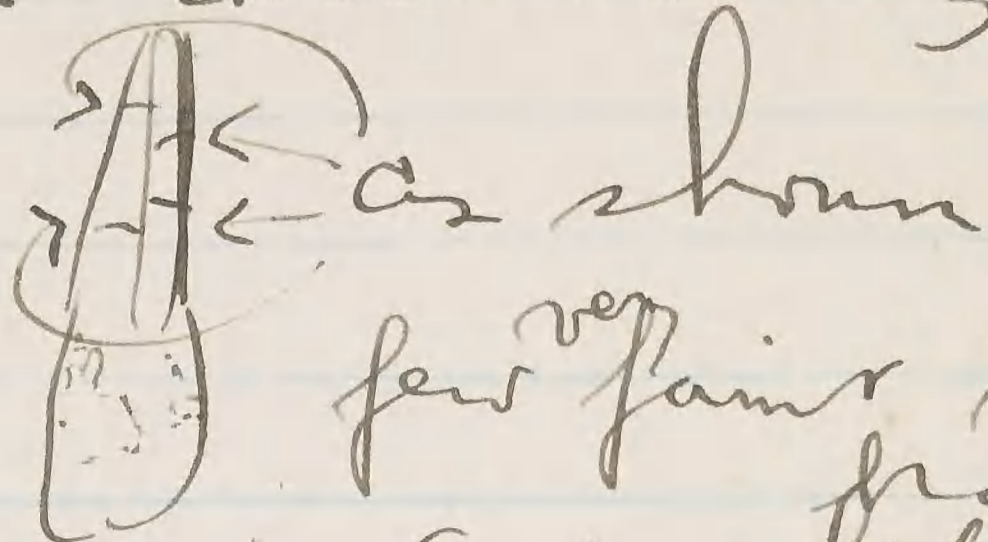


1924

111

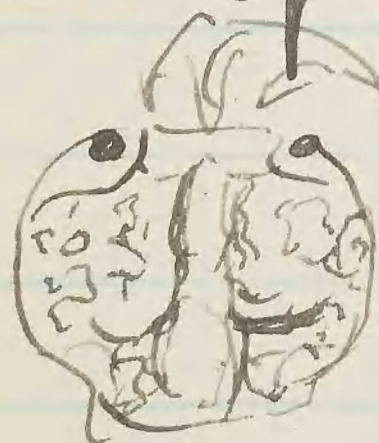
65

parting rest clear with opaque  
white chamois threads  
only one cheliped to hand has  
fingers with thread like transverse  
bands



few <sup>very</sup> faint touches of the  
<sup>brown</sup>  
Hermit came out of white Bulla  
like shell in 8 or 10.

Pisidium ~~right~~ right arm cream color  
left hand palmer brown  
carpus with few touches of olive



cream touched with vinaceous buff  
darker mottlings of olive and  
dull color

legs and under parts orange red  
eggs wine purple.



14-11



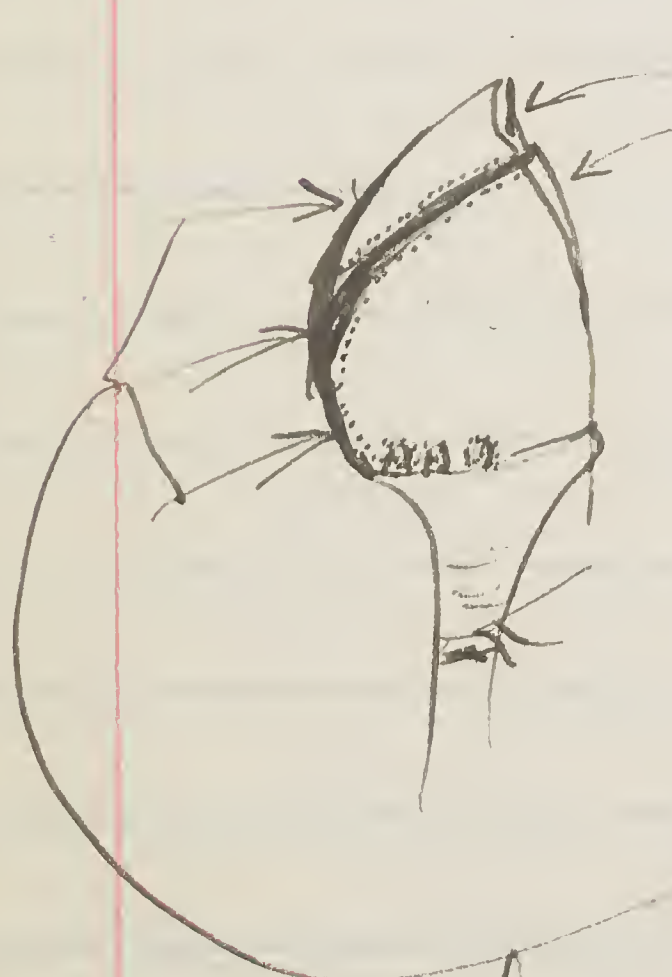
1924

July 21 Monday collected on reef, rather  
rocks, west of Sight House, between  
8.30 and 10.30. am.

Saw a Mithrax about 2½-3 inches  
across carapace,

Got several Chibanarius tricolor  
and one small Paguristes grayi <sup>minor</sup>  
white speckled like one color noted a  
few days ago

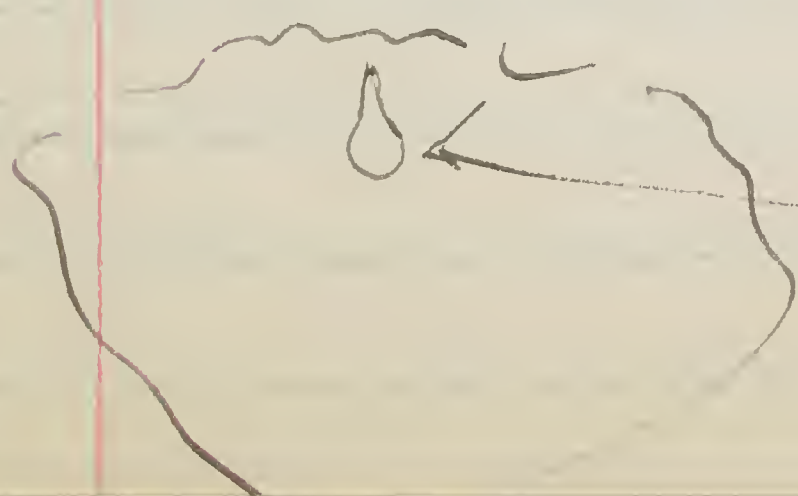
1 Xanthid,  
several small Pachygrapsus



Cadmium orange  
Dotted lines and spots tawny  
ochraceous

Black line and peduncle  
Claws brown x Vandyke brown.

Xanthid sand white with few scattered  
black markings, rather irregular spots  
with anterior median  
chestnut area.





= Microphrys bicornutus.

July 21

Decorata spiders greenish above  
and below. 2 age green, lighter below  
Hands mottled ~~only~~ mottled with  
~~chocolate~~ chocolate and fingers and tending  
to olive on palm.

Mr. Gave + Bender brought in from Fort  
one large grapsus and two  
decorata spiders = largest + one  
with ascidian ~~from~~ above bottle.  
latter has purplish cast, dark ~~maroon~~  
purple to capace + mottlings on hands.

high of 21 Clear starlight at about ~~9~~ <sup>nine</sup> o'clock  
with lightning flashing in distance. noticed 2 or 3  
~~the~~ intermittent spots of greenish phosphorescence  
floating 10 or 20 yds off shore, one <sup>glowed</sup> flashed  
again some minutes later close to beach. I ran  
down at some minutes afterward, maybe 1/2 way, saw  
it glow in sand; very brightly a bluish light  
intensely strong from a little ostracod, size of half  
a grain of wheat. Sorted long enough to show  
evadne, carry to <sup>in bottle</sup> but half way back, it lit again  
in bottle; in alcohol for few minutes.



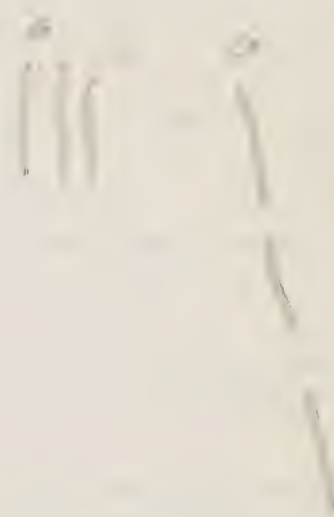
Notes

Mithrax everywhere rocks + reef.  
 Cymatopoda + small Xanthids in dredge hauls  
 Pachygrapsus in rock crevices, on piles  
 ? on reefs covered at high water  
 Grapsus grapsus runs over brick walls of  
 fort, as does ~~Sidgia~~ Sidgia.

July 22, Tuesday, At six Hr. Sargely woke  
 me up. Rowed out and saw Pabolo  
 swarming, sometimes as many as  
 6 worms to a sq. foot, more often  
 worms were a foot or two apart.  
 Large grey ones with distended after  
 bodies females, coral <sup>or salmon?</sup> red ones in  
 many cases as large as females = males  
 Performed spiral wriggling, body was  
 smoke grey in case of females; eggs  
 shed in water of appreciable size  
 looked on though one had head cast  
 coral sand in water. The part of  
~~the~~ body burnt amber, or as light as  
 drab



Dayhade combs water  
& sand off eye cloth  
with palhet maxillated





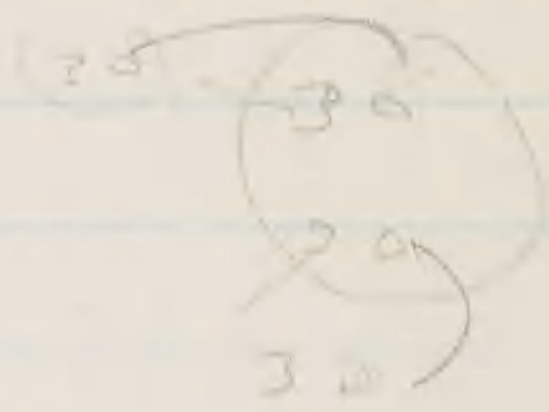
July 22 Sunday dredged with Johan  
Dr. Smiley went along, had  
very good luck with net superimposed  
on boat dredge.

Made Stns. 38 - 44 in channel  
*some mistake about time* *check*  
*depths 50 ft.*

Sta 38 Steamed due south from southern  
channel buoy 25 mins dredge in 40 fms.?  
No. 2. *= 4-5 miles*

Bottom goes  
about 9 miles  
per hr.

Udotea, and sand bottom 15 min. tow.



Sta. 39 same bottom. 15 min. haul. ~~10.20 am.~~ 18  
2 1/2

Sta. 40 20 fms.? at 10.20 am. 15 min haul 15 minutes

7 miles  
with



1924

2

20 min  
2 miles

Sta. 41 Steamed from last haul. 10.25 am. to 10.45  
 rounded = 40 fms. 11. am. = 40 fms. 11.18 a.m. = 60  
 fms. 11.36 = 75 fms. at 12.30 were  
 washing through gray ooze,  
 Headed north at 12.30 p.m.  
41 had at least 5 sp. Pteropods.

15 miles  
south  
of bay

Sta 42 @ 12.55 p.m. had same ooze lot as 41.  
 rounded at end of haul. 50 fms.

10 miles  
south

Sta. 43 @ 1.30 p.m. soft white sand. 45 fms  
 considerable sponges + bryozoa, few algae

Sta. 44 @ 2. p.m. 15 min tow, net on deck at 2.27  
18 fms Spongy belt, coarse sand. p.m.

Passed bay homeward bound @ 3.15 p.m.

Off end of island @ 3.40.

Figure that S. 44 was about 7 miles due south  
 of bay.

6 miles  
south



1924

73

July 23 Wednesday dredged with Hohmann again  
made Stu's 415 - 51 inclusive

Logger head Bouy #10  
Sta. 45; 8.40 a.m. passed western bouy  
net over at 8.45 opposite bouy, lost gear  
heading west sounded at 9.25, 19 fms.

3 1/2 mile haul at 9.30 fine grey sand.  
west of No. 10 bouy net hady low. Cauleppora + sand  
turned south. few starfish.  
fine broken shells.  
10.8 sounded in 20 fms

Sta 46, coarse sand, few algae under way after  
3 miles 1 alcyonarian, 1 Portunid haul @ 10.30  
S.W. of No. 10 bouy.

Sta 47 10.45 = 30 fms. 11.00 dredge on deck  
dark black + grey coarse coral sand.  
about 11 miles S.W. of "Loggerhead" No. 10  
bouy.

Sta. 48 40 fms. @ 11.20.  
about 10 fine grey, soft muddy sand  
South of No. 10 Bouy = grey ooze some sand.  
12.20 head East.

Sounded at 1.00 p.m. 30 fms.  
Loggerhead light due north. about 9 miles  
Sta 49 net in at 1.25. south of No. 2  
one coral head 18 x 12 x 6 inches bouy.  
some algae.



Last Sta. Pohn, Monday July 23.

Sta. 50 net up at 159

Dictyonys + Zonaria. clean haul  
except for algae.

about 10 miles S. of No. 2 buoy.

about 45 fms.

Gondakofu

---

Squilla digs by rapid motion of ambulatoria  
ducks head, and puts eyes together



1924

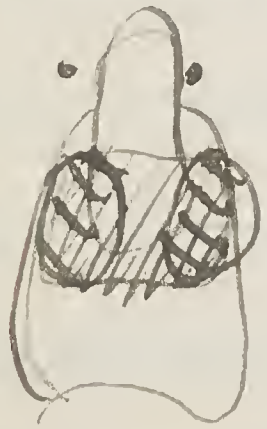
July 24, Thursday dredged with Vellela  
along banks and shoals west side  
of island. = Soggerhead Key 30+<sup>feet</sup>/<sub>fms</sub>

Loggerhead Sta. 15, 16, 17 combined as about 30 feet  
water.

Living in  
shaded holes  
in coral

Two gobies tail fan and integument  
white (pearl or china); hairs fringing  
tail fan and across abdomen  
straw yellow. Abdominal contents  
of larger specimen flame scarlet, smaller  
thinner one colorless.

Bands touched with salmon color,  
Stomach forms block of purple =



slate grey x India purple  
spotch in thinner smaller  
specimen big really only noticeable  
at sides

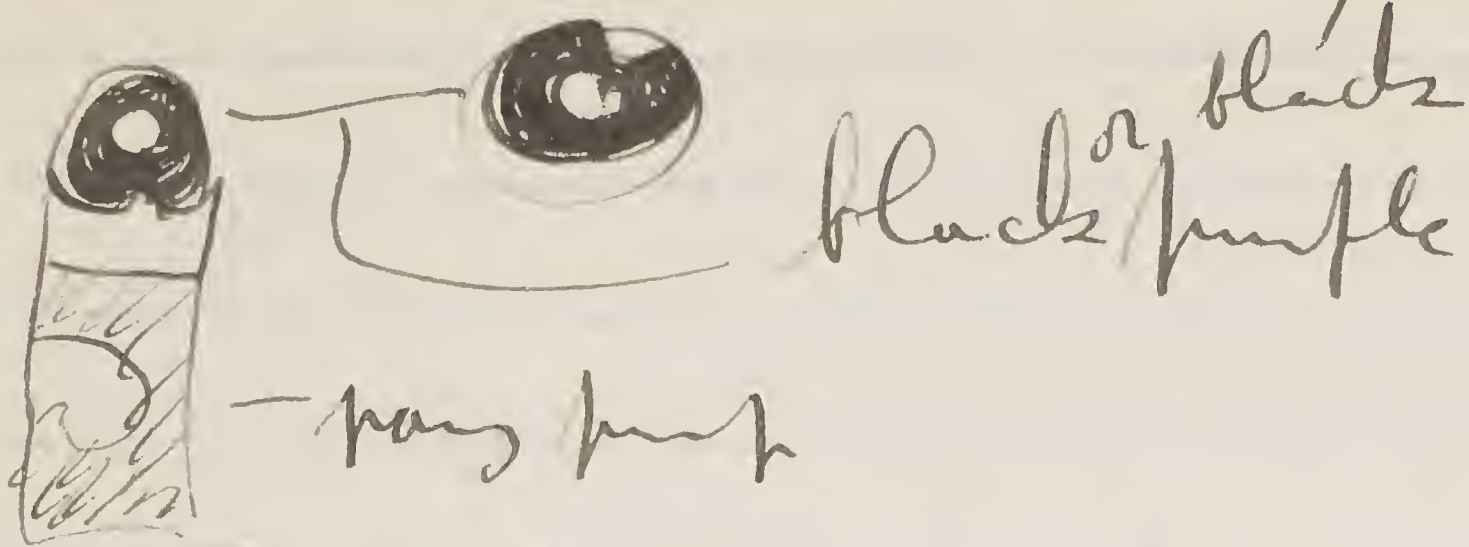
Small Portunid, legs Paris blue speckled on a pale  
blue ground, tips and margins of  
dactyls Pomegranate purple, hinder or upper  
margin of ambulator brown (= brick red)  
Just two joints of paddles transparent with  
very few of the dark blue flecks. Middle 1/3 of carpal spine  
crimson, inside of fixed fingers bright pomegranate purple  
Meral spines on inner base ferruginous & madder brown

Back mottled  
Vinous cinnamon  
cream buff  
Vinous buff

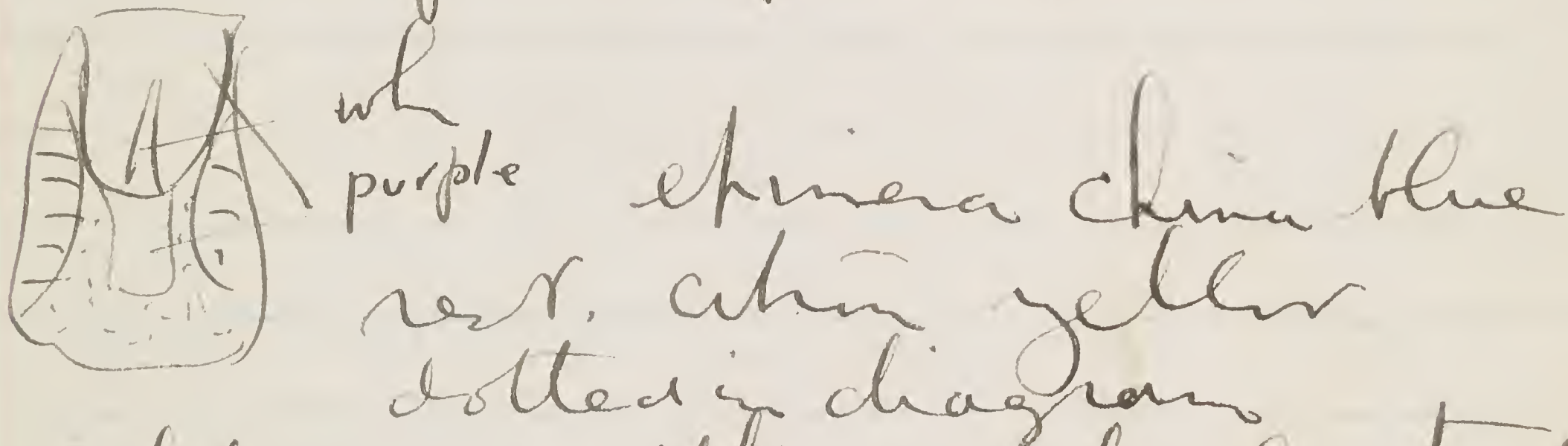
Anterior  
Meral



# Smashed hermit Pansy purple



Legs purple, proximal ends white  
 + distal end of dactyl to anterior  
 portion of carapace purple + white

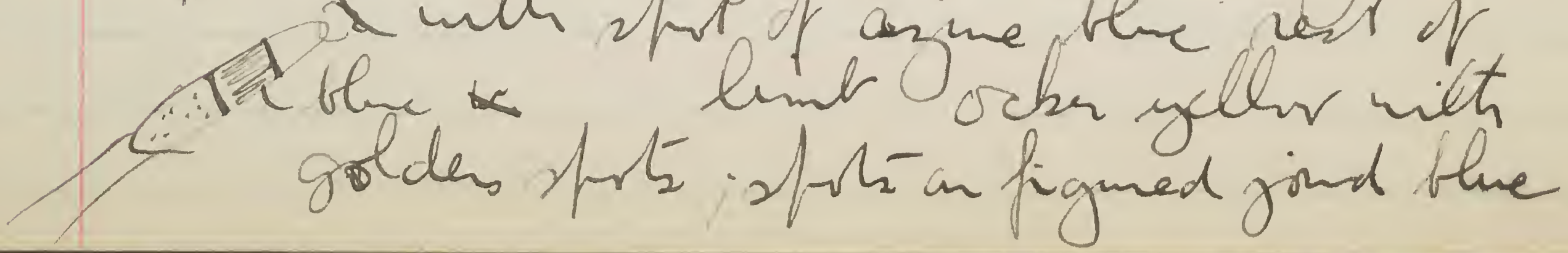


Abdomen with medial stripe  
 of ~~brown~~ walnut brown and  
 lateral stripe  $R|B|R$  of  
 granium red

Eggs scarlet.

Gnathodactylus burnt amber with  
 wood brown + near white markings

# <sup>near</sup> middle of length of ~~pedip~~ <sup>leg</sup> basal joint  
 with spot of azure blue rest of





1924 Thursday  
 July 24 could. t

Soggy head #15 @ 10. am.

Dictyota 1 small blue legged Portunid  
 Bottom around 40-50 feet.

#16 Bot @ 35 feet?

headed due south toward Soggyhead  
 Sight.

#17 Bet. Sight house and end of id.  
 end head. section.

Soggy Head

Haul #18 near old wreck at 130  
 on outer edge of Banks west of wreck  
 algae Dictyota.

#19 =  $\frac{1}{2}$  way bet wreck & buoy  
 got Dictyota with mid rift  
 looks like kelp.



1551  
24



1924

79

July 25, Friday bet 9 + 11.30 collected  
at Fort Jefferson  
from Halimeda pulled up inside <sup>moat</sup>  
got amphipods, few colletes shrimp  
and a few tiny crabs. two isopods

from Hydrina one amphipod  
and two Palaemon species

<sup>s beneath</sup>  
for Fort Jefferson landing pier

Cook's boy brought me a number of fortynids  
and a few Palaemon tenuicornis ~~Red~~  
had shrimps for floating gulf weed.



July 26 Saturday. went on Bird Key Reef in afternoon tide coming in 2 feet over reef, not so good. Bender got 2 Xanthid I hadn't seen. I have an recalled middle section of Bird Key Reef and Bender on southern section, or Bird Key reef proper.

July 27 Sunday, Schaeffer + the two Taylors left this a.m. bag and luggage and few clothes.



East side

July 27,

Sunday. I have collected off rocks before light from pier, got number of things Alpheus makey sound on drying saw definitely know this.

Saw tide just after lunch

last time pair of legs in Petrolisthes with brush goes over other legs, brushing them off or feeling them over, saw one of little whitish ones go over last 4th leg of left side + next to last, 3d leg of ~~left~~ right side

Found

best collecting by carry rocks as large as I could manage ashore + splitting them

immense numbers  
with eggs  
eggs where in  
weeds on  
rocks + in holes

open found I believe all three, of speckled saw Alpheids in one larger <sup>inch</sup> in <sup>hole</sup> at bottom. Others crawled out on sand when I dropped rock on beach.

Mr. Grave and Bender brought me a lot of weed from moat, <sup>I washed the</sup> ~~that~~ got a large

Pentastemella quillu ciliata + good size

Septodius floridanus, lots of Thaer paschalis



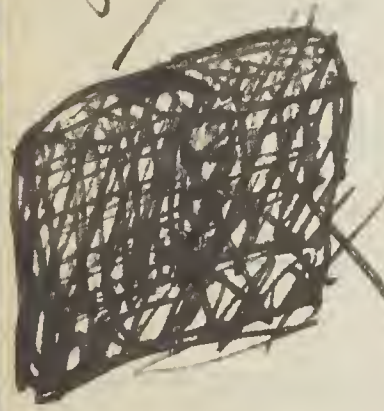
Picked up as large pieces of coral rock & several large pieces of compacted sand heads as I could carry them up on beach

July 28 Monday, Went collecting among the rocks today, east side of island and point north of light house pier.

Of course the small miller is as small as small miller in quantity, come in second day on the same rock

Got several *Glyptothorax gonagra* by prying open <sup>deserted</sup> sea urchin holes, would hide way back in small holes so that you would wonder how they ever got in and out.

Got many Crangons out of holes in rocks and several (3) fishes a gain. <sup>several species</sup> ~~the C. armillatus~~ are all times ~~with~~ <sup>with</sup> ~~not as high~~ <sup>times</sup>



*Leptodius floridanus* were all quite small and only a few on this day + the preceding *Squilla* ~~was~~ as usual the most common crustaceans living in the holes.

On rocks + on reef get grey, and various shades of green, and brown.

The <sup>one</sup> red and bright yellow are belong to the "dredge hauls."

Crangons are several to a large *Phole* hole 1 1/2 dia at bottom almost.



Bender had few Mithrax + the (1 of the) one Xanthid that was with the myxomas

them from

H. Singler + Bender collected on Bird Key Reef; Got at least a dozen Leptodius floridanus all sizes and as many Microthys bicornutus decaratus which Bender is trying experiments on. and several smaller Mithrax spinosissimus small red + fuzzy + spiny.

These animals on the reef though I got crabs from places large both

Reef crabs seem much like, rocky ledge crabs on Soggerhead but run larger in size; live in interstices between rocks rather than dependant on pholad + worm holes, or occasionally deserted sea urchin holes.

The little isopods are the hardiest creatures, come very alive in a dish of debris in which everything else had died + water had ~~been~~ by 10 o'clock the next morning <sup>odor</sup>

Got another Epiplatys + two somewhat Epiplatys-like with lipid carapace; more a hard por chocolate than Epiplatys. One of <sup>Epiplatys</sup> Wdays collecting had red cream centymarkings on carapace. Also got another Portunid



1924

July 29

Tuesday

If my ident are right

---

*Portunus (Achelous) adnyi* is predominantly reddish
 

---



---

*Portunus ventralis* predominantly live green.  
 = depressions
 

---

Changed alcohol in morning, didn't do much work as this is mail day, Holm put in an early appearance, about 1 two o'clock. with mail

---

Cynoptera with sponges & also on coarse sandy bottom without any growth, except few fragments of algae.

---



1924

85

July 30<sup>①</sup>, Wednesday. Went Seining in cove on South side of Song Key, made 3 hauls 50 foot seine!

got a 25 ft. 6 feet deep

② { Guttered a few bunches of sea weed in about 4ft of water out near mouth of light. Generally clean sandy bottom with scattered tufts of weed.

③ { Occasional bunches of *Halimeda* one bunch pulled up put in bucket. (about double hand full.

④ { picked up 1/2 doz fair sized rocks in four feet of water on outskirts of Bush Key reef just where it runs into eel grass patch, on west side near Song Key.

⑤ Bener picked up two *Mithras pilosus* and 2 *Bacteria setigera*, and 2 *Septodius floridanus* from rock about Fort Jefferson docks.



1991

July 31 Thursday, morning cleaned up  
 previous days mess of collecting.

The Xanthids are very hardy. In a tub  
 collected before yesterday morning in which the  
 water had become so stagnant that it  
 had a decidedly bad odor, everything, numerous  
 sea anemones were dead in the bottom &  
 all the mitraxes and squillas too. The  
 two little Xanthids (Bush Key) and the one  
 lone isopod, the only one I found, were the  
 only living things.

Out of Benders ~~Box~~. Jar Jeffers dock  
 collection, the Aidea + Septodius were the  
 only things alive in the stagnant bucket this  
 morning. They seemed dead too, but revived  
 on being transferred to a dish of fresh water.

The green hairless (on careface) mitraxes  
 are very hardy but the Xanthids, last longer  
 than is revive where the others won't.



1924

87

July 31  
~~Aug 1~~

Thursday ~~Friday~~ in late afternoon bet. 3 and 5 p.m. collected on southern end of Bush Key Reef, just north of Channel.

got a number of snails but nothing new. and a carapace of a Calappa

---

Brought back four pieces of seaweed overgrown, dead coral, largest 1 x 2 feet, 3 smaller ones about 1 ft x 6 in. some holes in them, cracked them in tub, scraped off algae. From washing got quite a number of crustacea, including another Epialtes, Synameta + a Gnathophyllum.

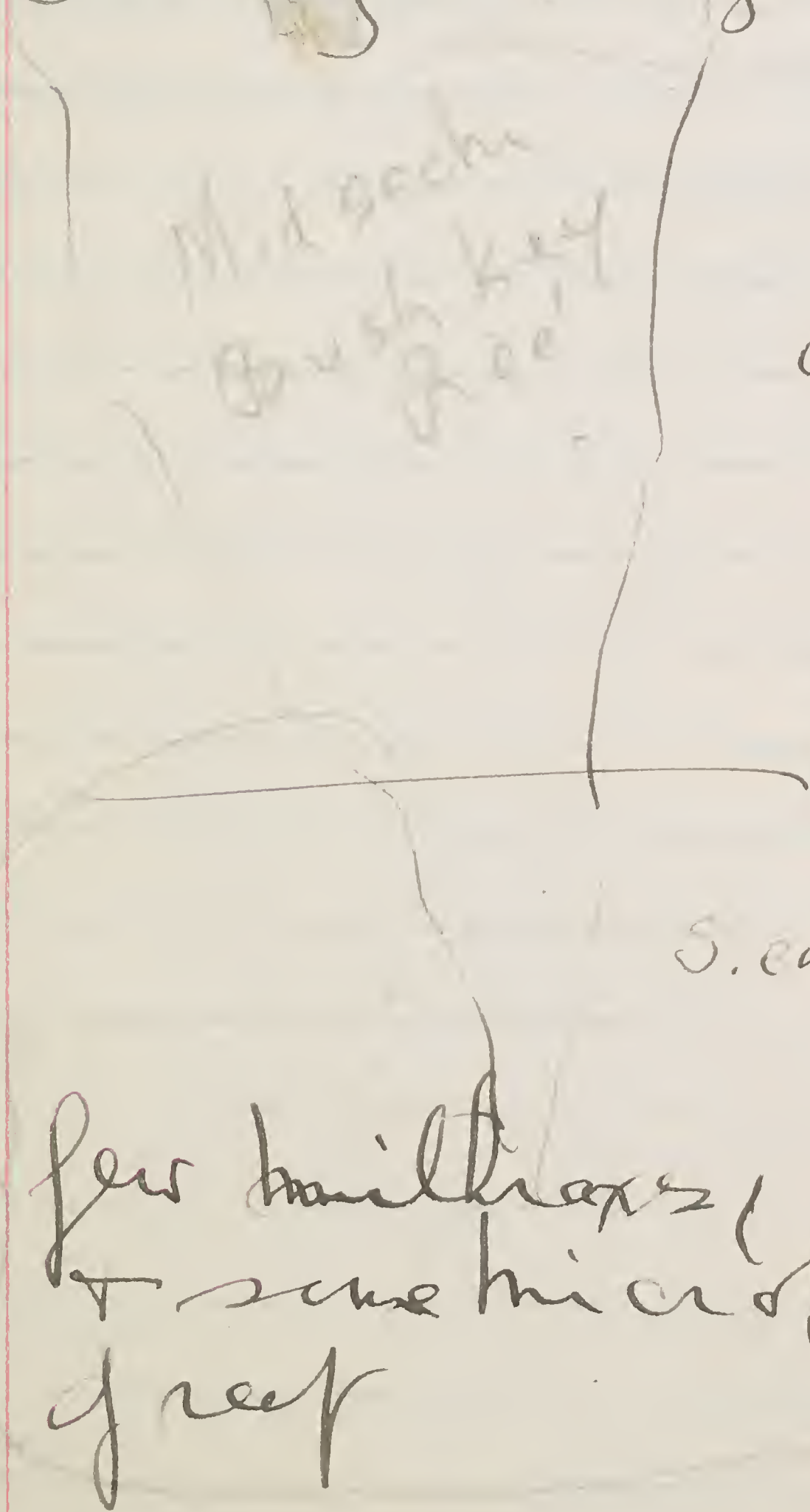


1951

Angled Bush Key Reef mid section

Friday afternoon collected on mid-section of Bush Key reef, outside edge spiders, all over Xanthids especially L. floridana, where apparently spray washes over, literally thousands of them all sizes, and Euphia magna in quantity.

Mid section Bush Key Reef



of about stagnant pools. In the deeper stagnant pools got large blue Xanthids

outside  
+ on rock some Grapsus grapsus  
One large ♀ that with them had come down to spawn?

S. end

few millipeds, all small + tiny + some microphytes on outer side of reef

Washed lot of seaweeds for about 3 ft water for inside of reef bet. it & reef grass bottom



1924

Aug. 2, Saturday, cleared up stuff collected yesterday.

In afternoon 2.30 - 4.20 collected  
on northern end of Bush Key reef  
south of channel dividing it from  
the reef S.E. of Smug Key which  
reef seems to have much the same  
character.

<sup>Seemed</sup>  
Seemed more dead than northern  
& middle portions

Some dry

near  
dry

Spray  
wet

have looked  
microscope

Georgina

Clit.

+ Calcium

Trich

Euphrasia (2)

Leptodermis 3 or 4 didn't get but 1

Pink xanth

Stagnant  
puddle blue xanth

Got one of ear  
two Euphrasia

Heard snapping  
of sticks & Squid



Aug 3,

Sunday a.m.

10-11.30 ~~a.m.~~ a.m.

2511

Shed at west side of Loggerhead Key bet light house pier + off N.W. of island.

8 hauls combined

Haul 6 ~~4~~ just west of island in 8-50 feet. 1 big A. erosa

2 hauls N.W. of island on rich bottom mostly sponges + cake making 1 large muthox

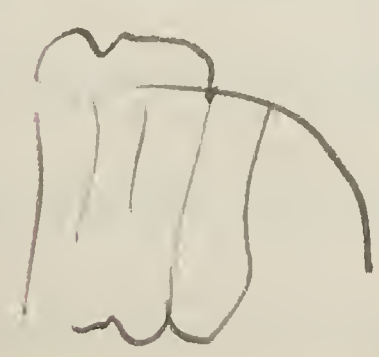
Dr. Grove gave me some crust found with his ascidians, two of them amphipods which ran in oral siphon for protection; 1 amphipod + a shrimp.

looks

palest apple greenish, <sup>really</sup> transparent colorless.

last three but one of epimeral bearing

segments, five x five green, epimeral



of same segments lighter

6

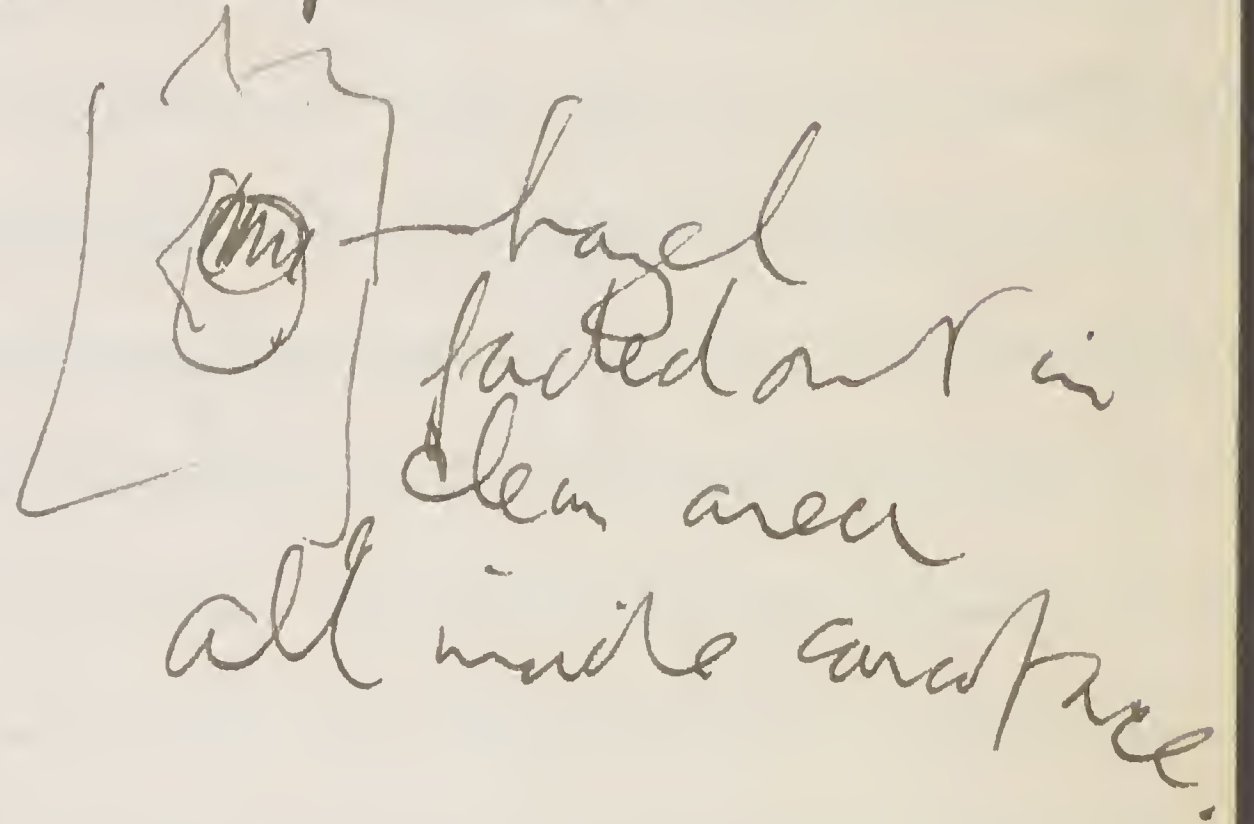
eye hazel under white net work



1924

transparent legs all black, flesh, <sup>cornea</sup> ~~eyes~~ with coal black spot in center

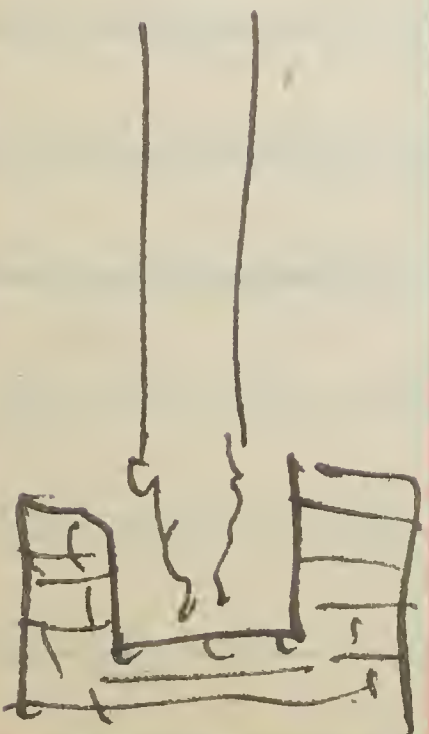
Antennae, antennules legs + tail fan with few opaque with white specks  
stomach hazel



Aug 4 Monday This night + took mail. Tried crab nets, over last night in Fort Jefferson moat, from entrance gang way.

Got no crabs though, but from some bunches of sea weed from near intake pipe on S.E. side got several crabs

Soft grassy mud from around base of pile where it had rotted away from concrete footing



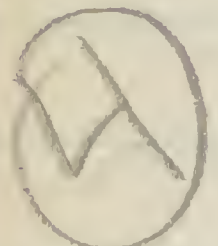


Monday 1924

1511

August 4.

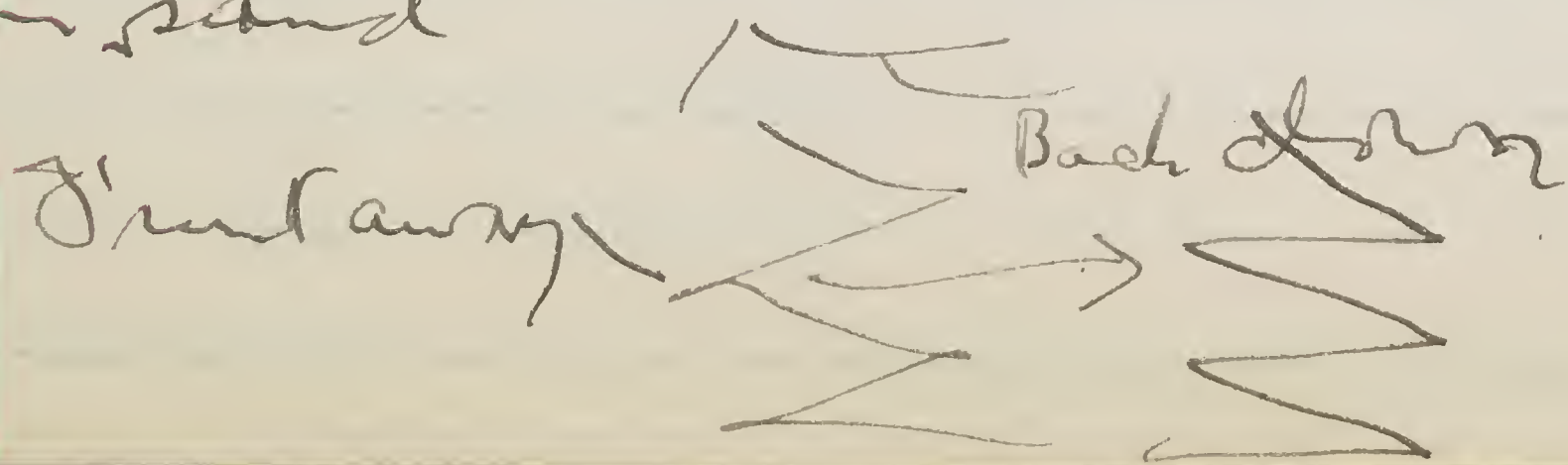
Went dredging with mill net off  
 N.W. end (N.W. light house) of  
 Soyuzhead Key about 3/4 to 1 mile  
 off in av. <sup>over</sup> 10 feet water, mostly  
 all grass bottom, some sand also,  
 and, judging from hauls (made for  
 a five hauls) broken coral frags  
 6-8 inches many 1-2 all dead  
 and much overgrown with lots of  
 brown sea grass + many roots  
 Some hauls were made in as little  
~~as~~ as 5 feet much same char.  
 bottom.



~~See~~

Charley got a Calappa in the most  
 live buried in sand.

with delphes a little away from  
 body, pushes out with hind legs  
 back and, pushes delphes away from  
 body, repeat and so works way down  
 in sand





1924  
 Aug. 5, 1924 Tuesday.

Used boat dredge looking for small green ascidian in the Grave.

Occurs  $\frac{2}{3}$  distance from wreck to bay off S. end of Sorage head in 18-20 feet water, rocky coral beech bottom, much of

it attached. Kind of sargassum & the large broad leaved alga

Jaylor says much interested in a little pink *peruensis* discarded in an *crab* amphipod *reared*.

Charles secured an *Arca* with much more reticulating lines, lines finer & more numerous & reticulations more numerous too, antennae bright red (geranium red) with narrow white bands at joints



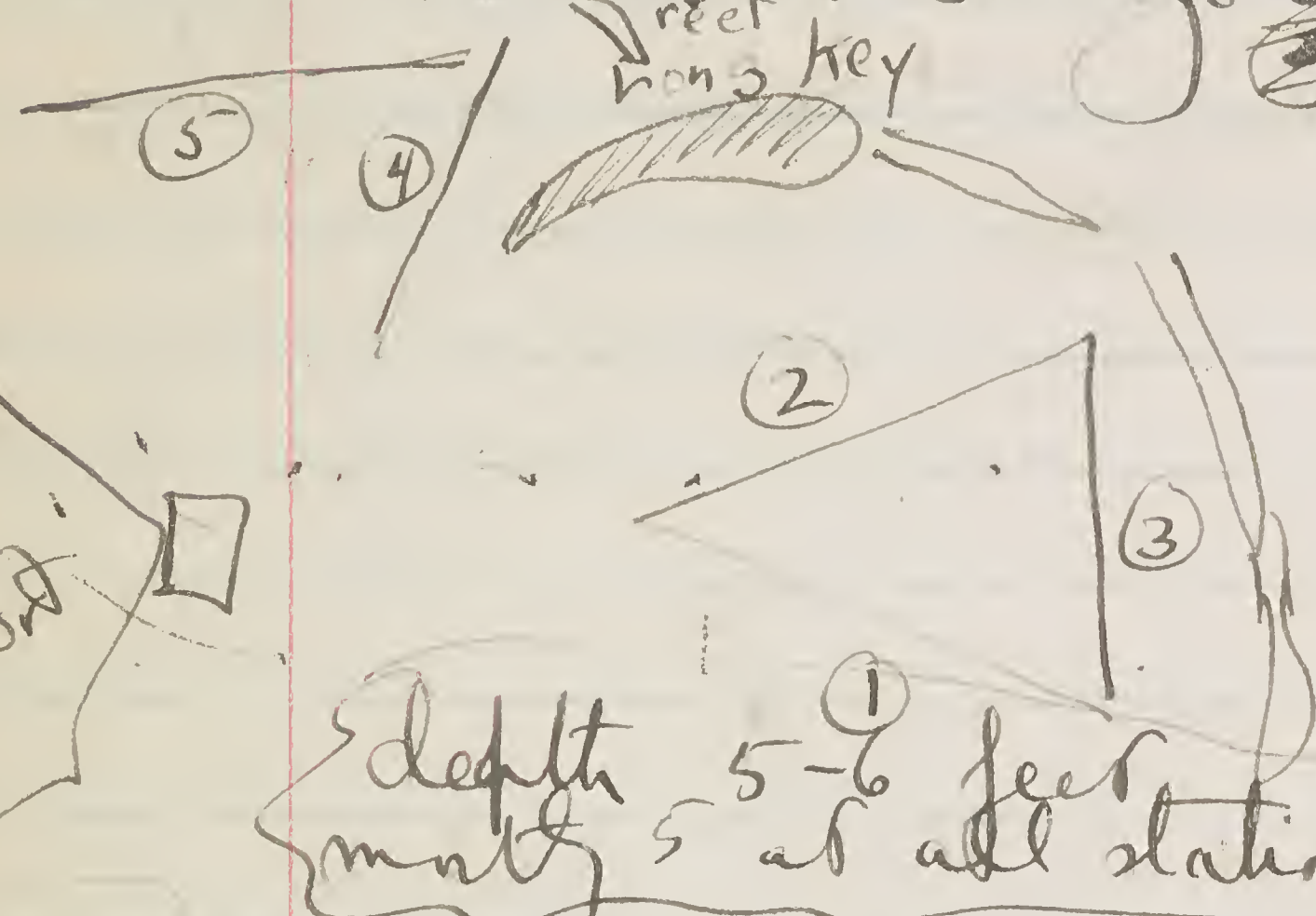
Small Calappa  
Aves. S. Bird Key  
Reef & Beach

Small Calappa ate pieces

Aug 5 Tuesday contd.

of enough  
in over night  
a 1/10  
it = more

went dredging in area bet. Somy  
Key + Bush. Key reef, all grass  
bottoms + Sclerolites.



4+5 the Roub Slick  
& green filament  
felt.

In first three  
got Ozachila and  
Porzuma. Portunids

on 4+5, puerulus of Spiny lobster and  
humbler of Portunids.

found a second puerulus but it  
was all mashed. (Dexter says he  
has found tiny lobsters on dock piles  
at station, I have a small one but  
Dexter has a much smaller one.)

3 ends  
tells me  
he never  
seen  
lobster here

\* Calappa has in current opening bet  
chelpeds + body, shows at opening by dorsal  
of current when they become clogged.

examined when very low, full shows at  
top of 6 or 8 inches of water. A 1/2 inch  
high 2 inch in prod of body when half out  
of water, but that may be more to Dexter

but they  
might have been  
subleed  
most crabs  
Dexter  
Dexter  
Dexter



1924

95

Aug. 6

Wednesday. Went dredging hills  
dredge in 20-25-30 feet, made  
about 4 hauls, eel grass, and  
loose rock, and coral frag. Bottom  
got Chromis here. 1 hermit, 2 shrimp  
besides some other common things.  
Had to quit because of engine trouble.  
shortly after noon; started at 10, 30

Sight house about 5. Fort S.E. x E.  
20 feet deep. N.E. nearly path of light. Aug. 6, 1924  
eel grass, rock + broken coral.  
25-30 feet light. be S + S.W. Fort. E + N.E.  
eel grass rocks, bottom  
picked up one rock 18" x 1 1/2" x 6 inches.



Aug. 7

Thursday 1924  
Between 10 a.m. and 2 p.m.

Got a few good specimens for Dr. Gravel  
of both mid East Key  
in 10 feet water  
dredged

around all on eel grass

(1) East Key in middle ground between  
East & Middle Key (got nothing)

1-5 foot  
net in 5

To the south on East Key, headed  
south on eel grass 10-15 feet.

Made ~~four~~ four hauls in this vicinity  
and lost Mills dredge in the fifth

(2) made 3 hauls with boat dredge  
one on east side of East Key

#6 + 7

second from N end toward middle key  
stopped at channel. All hauls  
unlined due to very similar bottom

little  
grass

eel grass was patchy only with stands  
and coral heads between

(3) #8


Along east side of Middle Key <sup>headed</sup>  
10 feet water <sub>south</sub>

#9  
10 feet

Hauled across bottom end of middle key headed  
toward Sand Key, lots of Siphon  
and eel grass, got a clear

colorless puerulus except for Angel  
eyes + few inconspicuous opaque white spots



Aug. 7. Thursday cont'd  
 also, of a fine white strand between eyes  
 nerve strand?

(4) made several attempts to haul  
 around Sand Key, could barely  
 get started but what dredged hooked  
 gave up after several attempts.

5 #  
 10 Hauled on Song Key Shoal, headed  
 south toward Key about half  
 way between the black can buoy on  
 Starva rock and the Song Key.  
 Eel grass + *Stidjorja*, 3-4 feet deep.

Large calappa called "queen crabs"  
 Thunzy, dark red mithra (pilous?) "devil crabs"



Aug. 8, Friday.

Saw the bunch off after breakfast.  
Dr. Jenner & Dr. Gove  
Spent forenoon in laboratory getting caught  
up solutions changed etc. The once  
fed up to date and not washed. It has  
been the dickens up till now getting  
specimens cured for and what brief notes  
I have written up. Now everything is  
ship shape for last two weeks.

Went dredging in afternoon.

#1 #2  
10 feet  
Made two hauls off S.W. of Bird  
Key on broken coral, and broken coral  
rock bottom, lots of weeds and Scleractinia  
of water weeds mostly <sup>Dictyota</sup> Hypnea, some Halimeda  
and green tufted ~~plant~~ (flowers) <sup>short</sup> in stalks +  
the matted filamentous kind, some (little)  
eel grass.

#3  
10 feet  
Then made one haul in what appeared  
pretty good eel grass bottom of  
S.W. corner of house south of piles  
of old ~~floor~~ foundation, got several

~~ascidians~~ on bottom similar to first two (1+2) on far  
then made two hauls on last side of Bird Key Harbor about in 8-10 feet  
of water great many Dictya, some sponges.



1924

99

Aug 9,

Saturday.

Took me 3/4 of day sorting through several tubs of weeds obtained yesterday. Of course noticeable things were picked out on launch at time of dredging, but in the sea used found very little as compared to other times; undoubtedly due to fact that it must have begun to mature. It certainly did not keep well over night. Should be washed out same day. Don't pay to get too much.

Squillas make most of noise on reef. Have never yet seen them unless spinning dactyls which when you come to think of it are quite weak always knock you with bulbous nose on the snail. as sharp + sudden as when you snap pencil against leg or ~~or~~ ~~me~~ against your finger

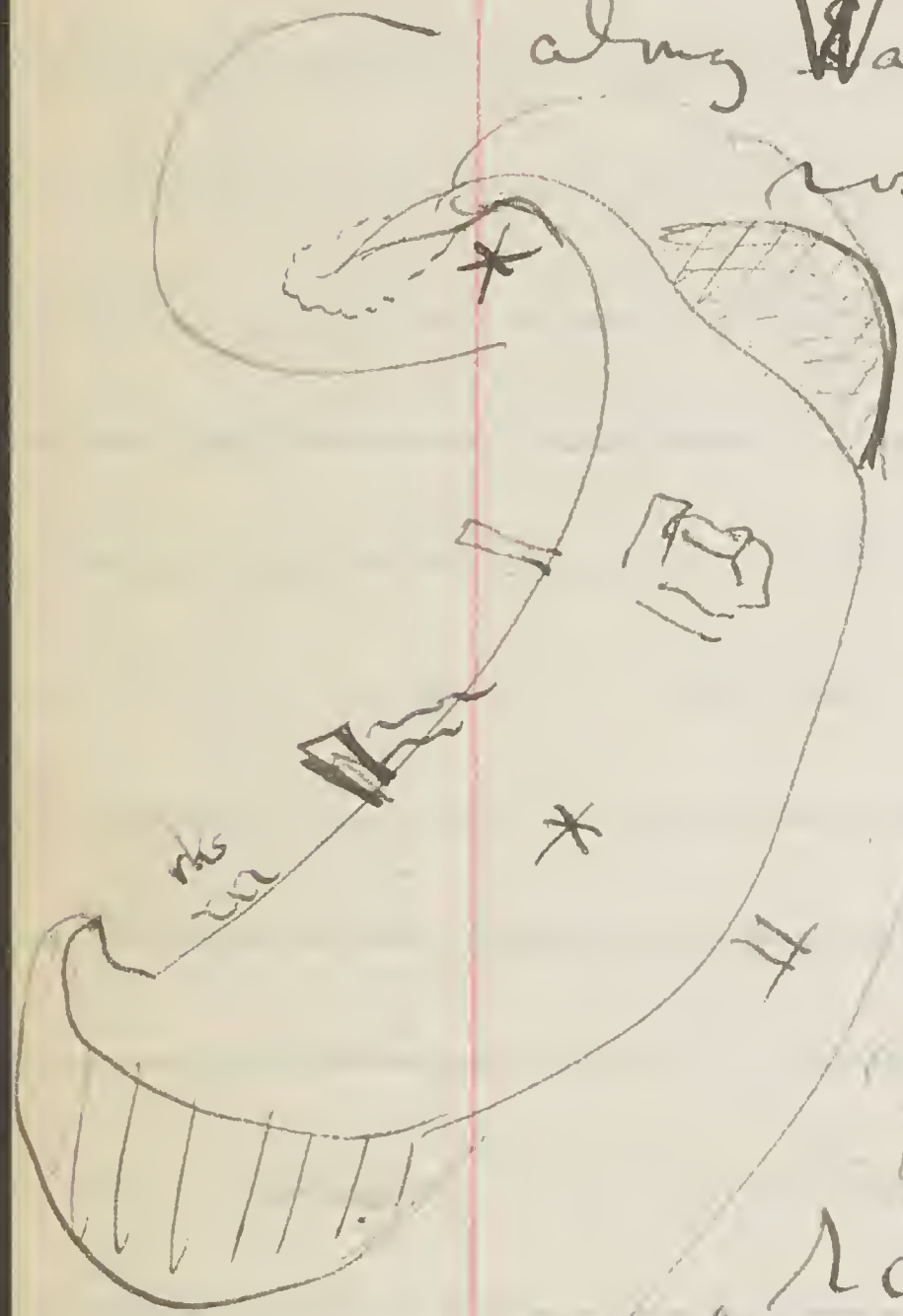


Aug 10

Sunday ... Soyger Head Key

In the forenoon went up the beach looking for Hippas but saw no traces even attempted to dig in what appeared to be likely places

along West side sandy bottom, few weeds + no rock for shore collect in to 4 1/2 feet. only eastern half of northern flat had some rocks on it, these cracked up yielded a number of things including an brownish Portunid. A Couch shell yielded two Portunids the larger more bluish soft, the smaller hard but it went to pieces over night. Picked up rocks in shaded area, from which I obtained specimens collected at north end of island on this date.



\* seine  
here Aug. 12, '24  
50 foot seine



1924

Aug. 10

Sunday afternoon collected along beach and in shallow water along west side of Sogger head key practically no rocks in situ, but those noted north of westside light-house pier didn't have much on them.

Got few things from weeds

water inside of S. point and to north of it up to rocks runs of quite steep to 6 or 8 feet, weedy bottom but few rocks that can be cracked open. Beyond to east of S. point is a large shallow area which tide rip by runs, I got just a few larger rocks here about 1" x 6" x 8" about all there were very little in them, ~~scylla~~ fish and few small crabs.

From rocks just to north of westside light-house pier got a few tiny young stages of *Pachygrapsus*, and on beach near by two tiny *Oryzodes*.

Then well off Southern point of the single brought out large rock 2' x 18" x 18" which yielded ~~specimen~~ of rock stuff some gray *Schroeteria* + orange *formosus*.



Aug 11. Monday, spent forenoon getting  
 yesterday's stuff in shape // in afternoon stayed in  
 boat till dinner time // bet 1.30 and 4.30 actually  
 stood that Casiopea rarely swims <sup>in water</sup>  
 is usually upside down in sand <sup>in shell</sup>  
 looks all the world like bushy hydroid  
 or alga, got several *Thomomys*  
*Syngaster* and *Desarma*  
 found no traces of Calappa though  
 looked hard.  
 Charly said he only noticed large  
 ones because it was but half  
 buried

rather pin under  
 large chrysalis in  
 five foot channel  
 N. of Bird Key  
 reef.  
 be got  
 some  
 days  
 ago

Aug. 12 Tuesday seined just inside  
 N.W. point (N. end) of Doggerhead Key  
 see sketch of Aug 10 p. 100) got Pompano  
 + jacks and several fishes th. Smiley  
 had not yet seen.  
 and a few blue legged Portunids  
 and two Podochelais // On afternoon worked  
 north section of Bird Key Reef (Benders channel  
 reef) got a *Sarments* *versiformis* was  
 yellow, floating around in low tide foot  
 among weeds. And more of general  
 run of common stuff. 3 long-armed Xanthids  
 1 medium + 2 small = dark middle over  
 top of Bird Key.

10:30  
 A.M.  
 got several large  
 lobsters  
 largest exclusively  
 horns to tip  
 telson 14 1/2 in  
 4 1/8 in ch. with  
 across widest part  
 of end of telson  
 from tip of longest  
 feeler  
 P.M.  
 2-4 P.M.  
 actually on  
 reef.



1924

103

Aug. 13. Wednesday, cleaned up yester days  
collections this a.m.

In afternoon worked south end of  
Bird Key Reef.

Is very sandy and that  
seems to kept down size and  
variety, fewer large mitras  
than on northern end, and the  
Septodius is <sup>much</sup> smaller. Crangons  
seem to be all the greenish kind  
and the small squillas however  
fewer. sand to greater amount of  
shoal water and lack of a channel.



Aug. 14 Thursday. Cleaned up yesterday stuff and went through a large Boyce head for "shrimps" two halves of sponge that is contents of bottled separately. Sponge was about 18 inches in dia. across the top and 12 inches across bottom & 12 inches high.

In afternoon owing to fact that I had to finish up the second half of the sponge after lunch.

Went out near there looking for to see if part of Smyke Shoal would be out of water at low tide. Lowest place was  $2\frac{1}{2}$  - 3 feet under water (where we bumped the other day) here I picked up some perforated and weedy rock; and an old worn empty shell which had 3 reddish brown millipedes in it; and these color phases of the green on with two spines on carpus.

Got about 6 *Epialta litorea* ~~with~~ from Hyman saw on <sup>large to</sup> medium *C. formosus*



1924

105

Aug 15 Friday, Cleaned up yesterday's rocks + weeds  
this am. //

In the afternoon got about an hour mid section  
of Bird Key reef. saw many ~~one~~ squilla  
{ saw few Eriphia gonagra } only caught a few.  
{ gave Bender one sample }

some of specimens put in sugar solution.

Shrimp with apple green eggs + some similar  
marking walked about with abdomen tilted  
high in air.

The *Mithras fulvipes*? (hair one) was  
on outside of reef where surf comes in.



Aug. 16 Saturday, the dredge with the John,  
made 9 hauls on about a S course  
from channel buoy.

Ran 30 mins due south of buoy.  
#1 the dredge at 9.20, 15 min. tow.

20 fms.?

net on deck at 10.45

little grey ooze, + grey sand, milk net  
carried away, boat dredge hanging  
by one side aft; one tiny frag. of algae

#2

20 fms.

Same course, net over at 9.50 wh at  
10 o'clock. course, (sh) shelly, sand.

#3

25 fms

net over again same course at 10.05  
on deck at 10.30, coarse sand, + shell frags

→ about 10 miles S of S.W. Channel buoy

#4

37 fms

At. 11.10 a.m. 37 fms, net wh at 11.35  
= soft grey ooze like wet cement with  
practically no, or no sand.

1 Siphonid from the mud  
1 one small star fish



1924  
Aug. 16. cont'd

107

# 5 Headed back at 11.45, N.  
35 fms. Net over @ 12 noon; muddy-grey  
bottom and frag of alga wanted.

# 6. Net up @ 1.15 p.m. coarse sand  
30 fms. little more of desired alga. <sup>added to</sup> ~~combined with~~  
preceding under 5.

# 7. Net in @ 2.30 (20 fms.) coarse  
20 fms. sand shelly  
about 9 meters

# 8 Running S.E from # 7. Net up at  
25 fms. 2.45 (25 fms). Sand mixed with  
some mud as before.

# 9 Turned back toward light @ 2.40  
20 fms. (about 1/2 hr run) (headed <sup>away</sup> ~~to~~ N.W. + N.)  
Dounded @ 3.15 20 fms.  
more than a bucket of sand dollars  
Net up at 3.40  
Passed buoy at 4.25 p.m. } Mills says this  
of Buoy. } haul is 45 mins S.E.

Dr. Huxley got a large Pteropus he saw swimming as they  
were going over to the jetty in the Darwin as they were to get  
it took refuge in some floating gulf weed. Scooped up with dip  
net. Earl got a small to medium Callinectes on weeds in first  
near cover pipe where he went to dip up a jelly fish



Aug. 17. Sunday fore + afternoon cleaned up yesterday's stuff

10 feet water N. end logger head reef

Longely coll.

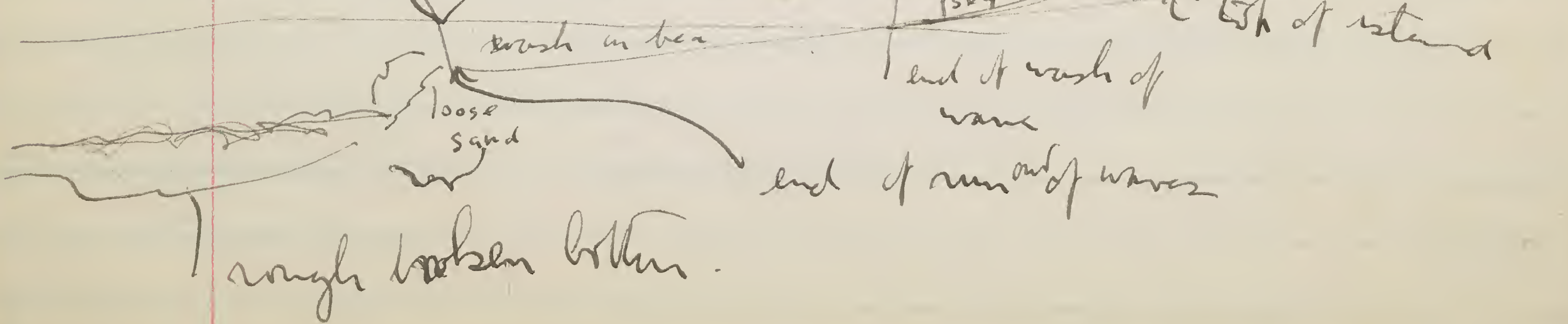
Mr. Souley brought in a beautiful large Stenopus hispidus Sides in holes in coral heads with long antennae caught by disturbing <sup>giving it away</sup> when it comes out to see what the trouble is.

(Just like spinning lobsters and tickles) Mr. Souley says almost every large coral head harbors some (or a pair) and is uncommon.

Portunus ventralis A.M. - Edw

Just before supper put in half hour on rocks and did not get few common things

Bender cleaned out a few sea urchins and threw remains on beach noticed that they disappeared and saw bits of them sticking out of sand; and taking up a piece of grass of sand found Portunid marked with date. in sand slope bet beach & lagoon





1924

Aug. 18

East  
side

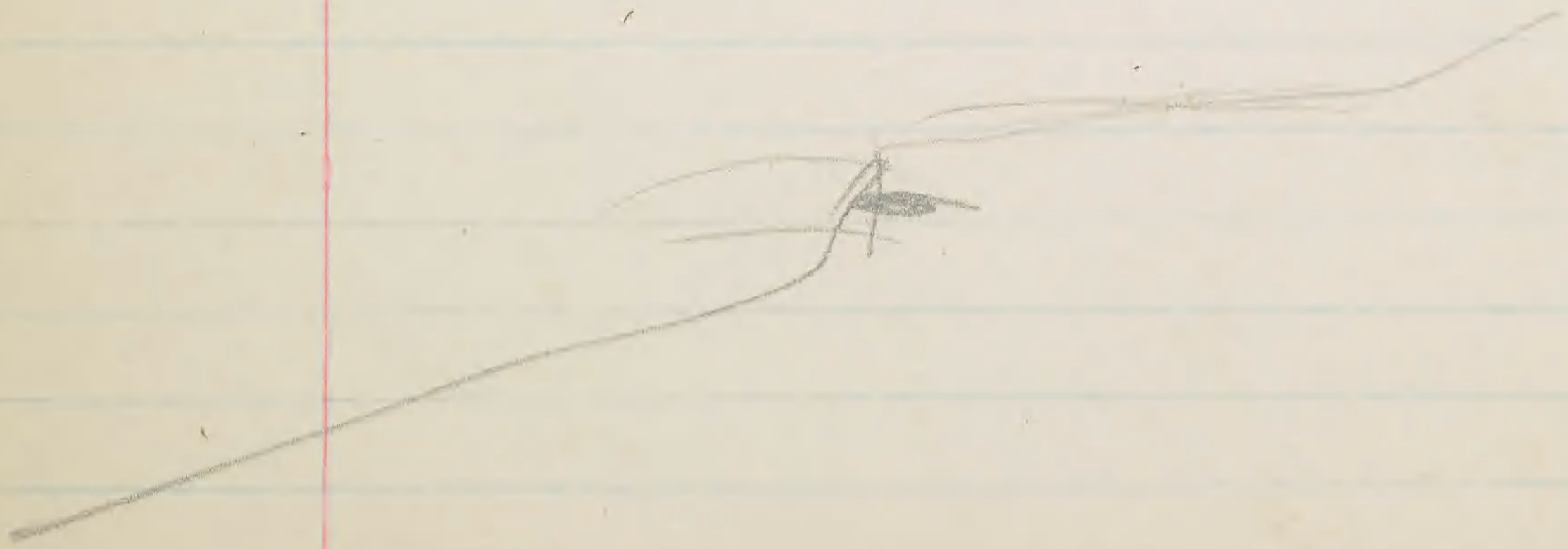
~~Monday~~ cleaned up yesterday's stuff and in afternoon, 2 o'clock, went down on rocks below light house pier. got a few bunches of weed + couple of shrimps from gulf weed

Bender walking along shore ~~saw~~ saw a *Plaginia* sliding over rocks just below surface he called me, I was wading out in deeper water with the water glass and coming up behind I slipped the little dip net over him.

This was the second Bender had seen; the first one got in a crevice <sup>among</sup> the rocks and got away.

Also found <sup>piece of</sup> a *Hippa* shell on beach + pieces of eggs.

Got a *Crangon* + an *Epialtus litorbuculatus* from the weeds





110  
 Tuesday  
 Aug 19, ~~Wednesday~~

(1) Went over after breakfast to collect on beach water at No or n.e. end of fort north. E. corner of N. coal dock just got a bucket of weeds from two docks too rough + windy to do more.

(2) Then went around to lee side of moat wall, bet. beach + south of entrance to moat.  
 Bender got several swimming crabs with my dip net; I missed about 6 chances with hand small dip net  
 This is maybe best place for swimming crabs sandy areas + eel grass patches, in about 4 feet of water. Two largest were up.



1924

111

Wed. Aug. 20 tide was lowest about 8.30 or 40  
though scheduled

*Callinassa* burrows, laying antennae  
back along back; antennules are extended  
between chelipeds, deep digging with side  
legs, abdomen folded up upon itself  
as soon as carapace is buried in  
sand.

① Bird Key reef not out at this "low" tide  
② then tried Bush Key reef in two places throwing  
shovels of sand in the edge table; first  
place sand and coral fragments  
got one *Crangon* (heterochelid?) and in a  
more sandy place out of little beach got  
nothing.

③ Went over into seining inlet and dug  
around the humps in sand with holes  
in them in about 3d shovel full got  
a *Callinassa*, but it was the only one  
I could dig up, in a very considerable  
number of attempts apparently was in the  
top of its burrow when I happened to strike



Aug 21, Thursday

In walking along higher parts of beach the boys got 13/2 inch <sup>wide</sup> Callappa shells one 2 1/2 long Chama, a Portunid + an Euphia

wanted to seine on sand Key + collect on rocks but Sh. Sangle thought it would be too rough (an also too much like Doggerhead Key.

1.

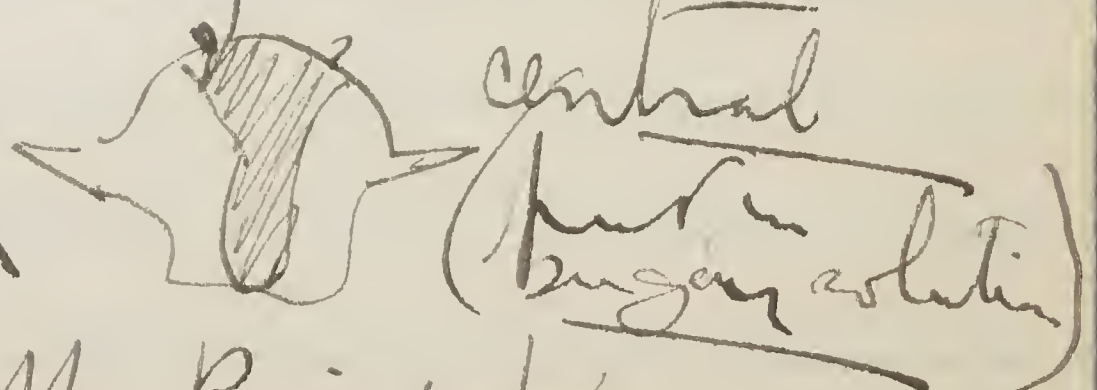
As result went around South end of Island looking for Hippa. Offered birds 50¢ for first live one, but have yet to get it

No signs on beach; dug in several places that looked likely, and looked along wash of waves with water glass. but found nothing.

Looking around on rocks not a very large spiny lobster; and secured a large Milnebray vermiculus from a hole in rock <sup>which had to openings</sup>. chased him <sup>by means</sup> out of one, and through other I picked him up with dip net

2.

Hester and Earl went seining in cove at north end of island; got a few more Portunids as on previous occasion as well as fish; and one like true Bender tailed out of sand and with reverse coloration on carapace area slate, lateral grayish



3.

Sh. Sangle; while studying fish off Bird Key reef brought in 3 Hippodactylus later for 3 or 4 inch brought in 3 inch of which I saved one + two which I planned to sell



~~Friday~~

1924

Aug 22.

Friday,

went down on rocks below  
Sight House pier got a few crabs were  
put in bottle but not labeled as it  
had to be packed too soon.

Got a *P. grayi* in small  
Condshell had to  
break part to get it in bottle.

in a long rather deep crevice saw  
several 4 or 5 *Peronopsis* I am quite  
sure, pulling weeds off rocks with  
cheliped, had bright (brilliant  
lemon or bright) yellow markings + edgings  
antennules ditto, the pipe a rich brown  
tawny ochraceous with darker <sup>perant</sup> back brown  
and spines and markings; but  
couldn't catch any.

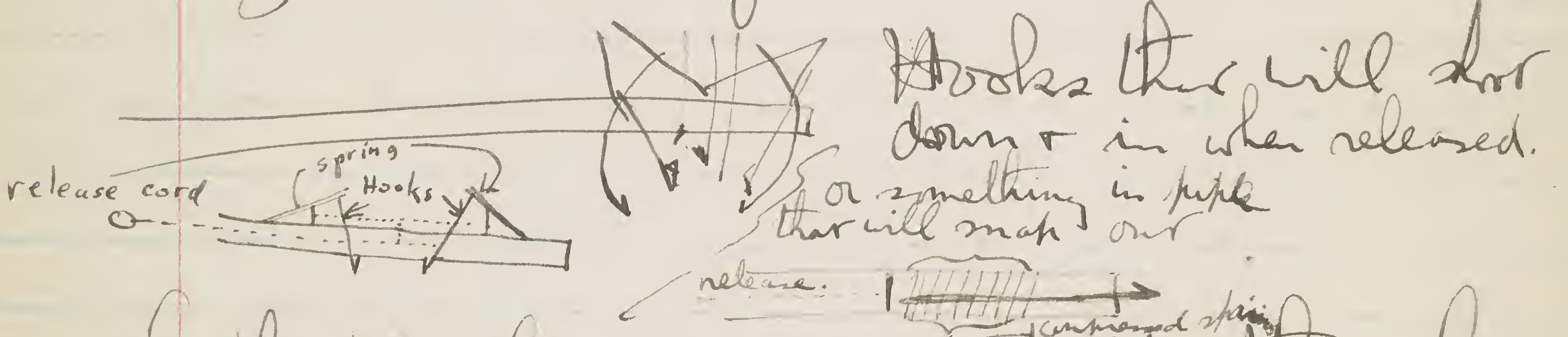
Termin brought in three *Pachygrapsus*  
and a *Thromia* from around dock piles.  
are put in bottle with above but unlabeled.

if any *Pinnotherids* might be in alimantar tract.  
Got nothing



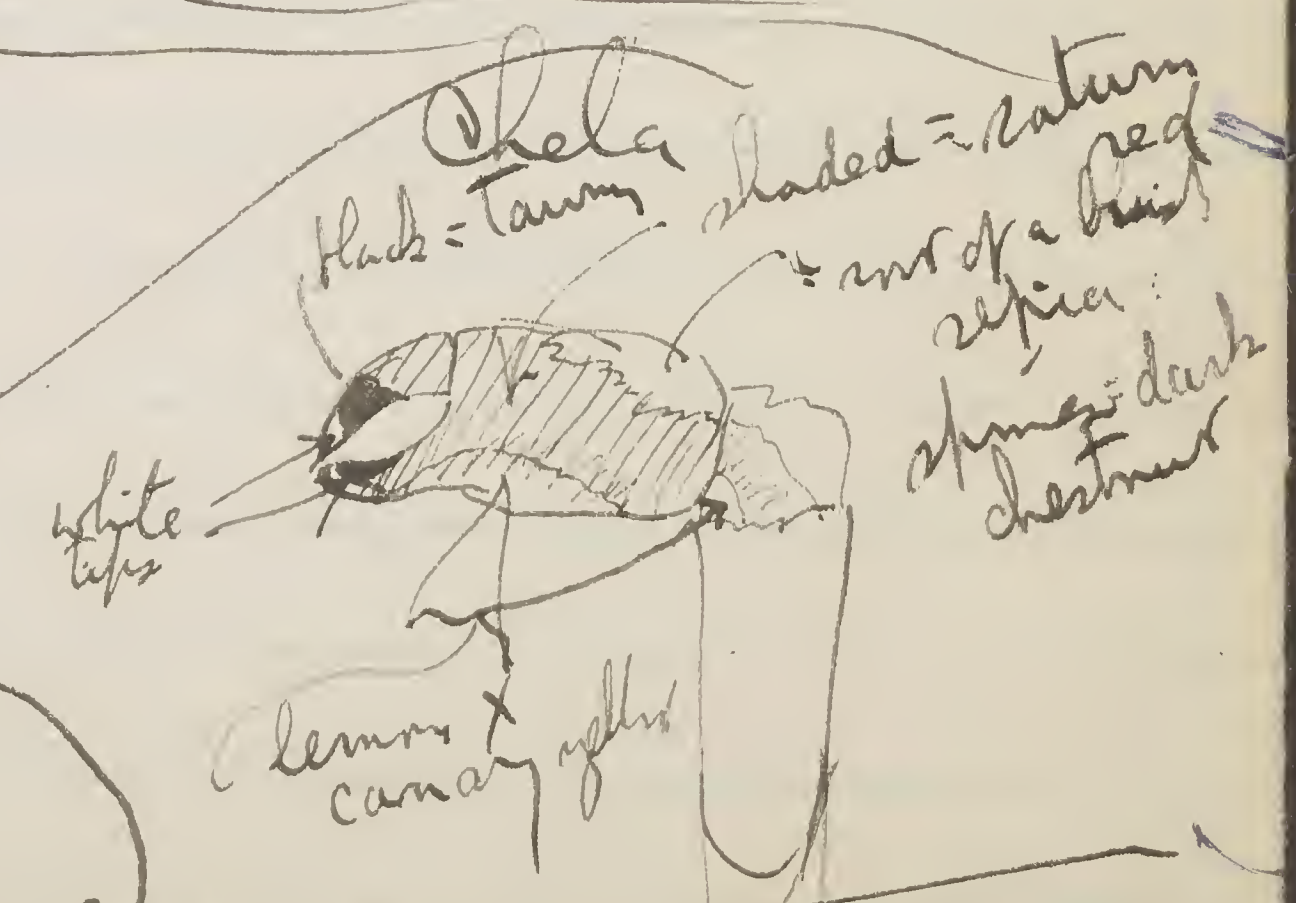
Aug. 23 Saturday

I went down on rocks again for ~~half an hour~~ an hour and half actual time on rocks below light house pier to get a Percn if I could, but they still eluded me. One needs a sort of a spring contrivance which shoots out bolts to catch crabs like these in light, or dove quadrants like rock crabs



The jungle gave me a Hippa that had been taken earlier in season. I suppose a beach near docks where Bender said he found one too earlier in season. too

Aug. 24 Sunday



Beneath red in some place on under side of manus under side of propodus & carpus claws above but less of it as dactyl above

Abdomen scraped off

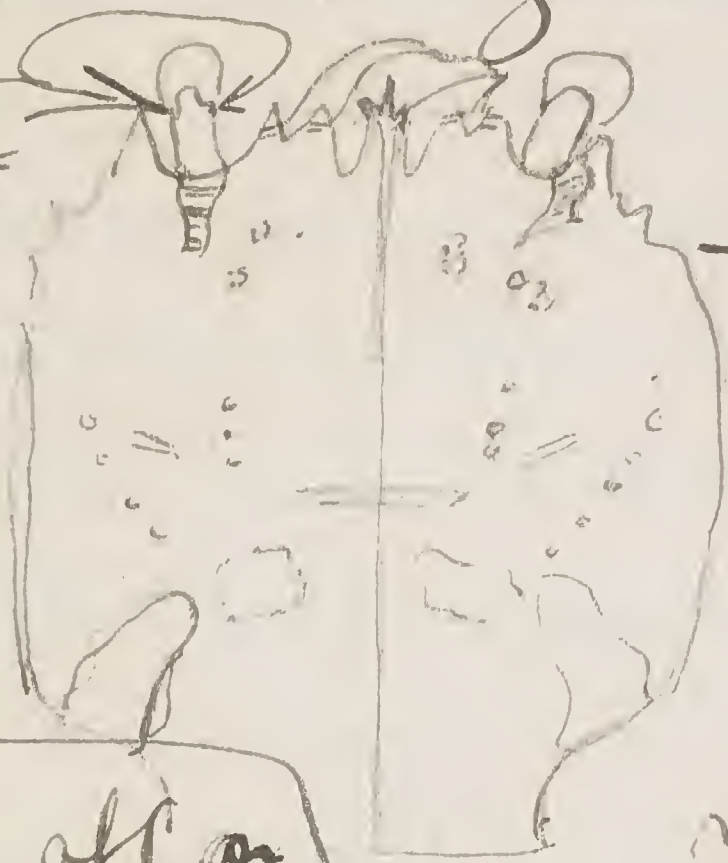


1924

Aug. 24 Sunday

Got my Perony this morning  
for that is what it proved to be  
that is I got most of it + antennular flagella

this line  
green like below\*  
citrus yellow



lateral rostral spines citr\*  
& has an lateral spines yellow\*

~~Ant~~ Areas on carapace  
behind eye dark golden  
greenish  
apple green with a  
golden iridescence cast

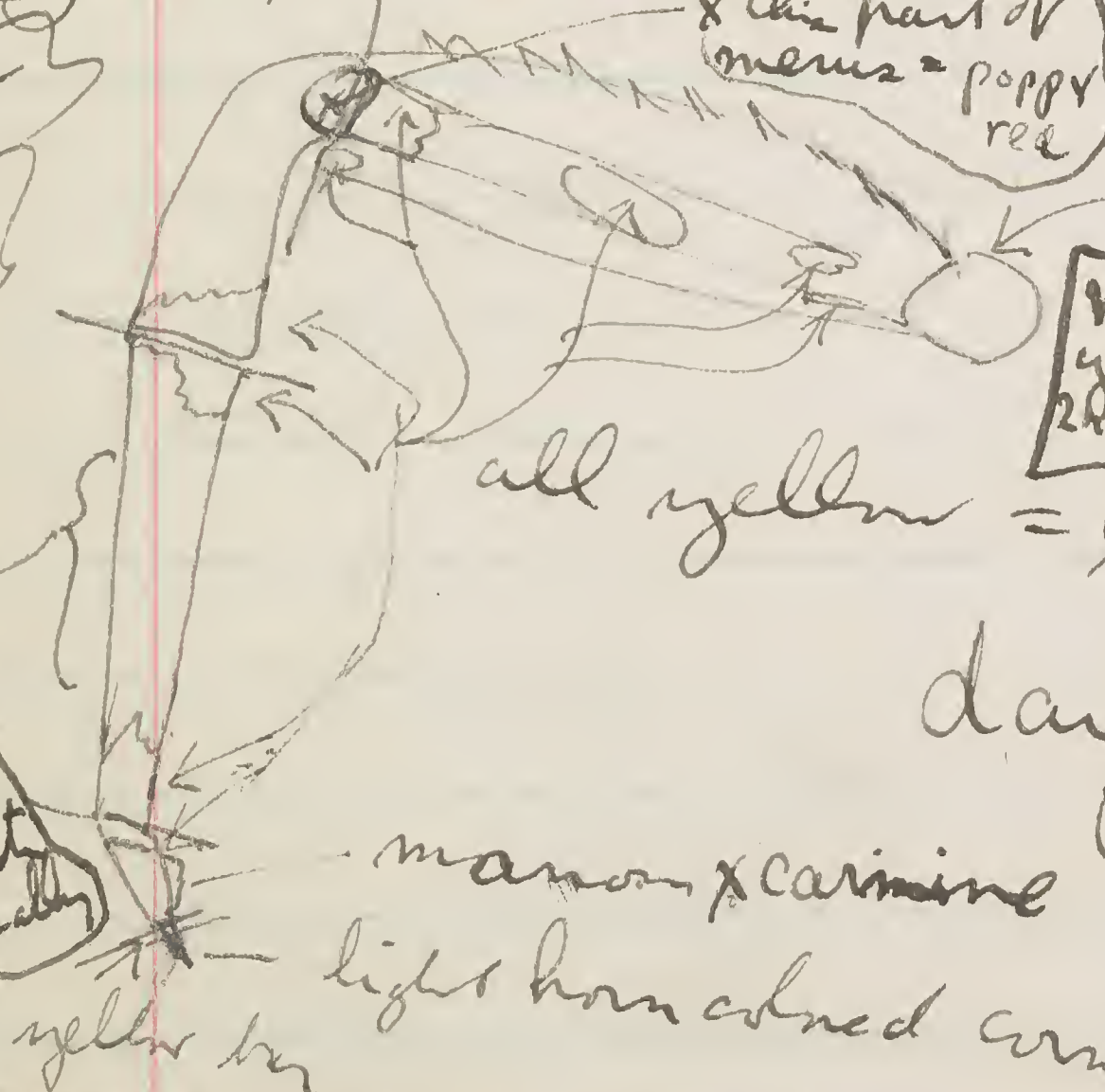
rest of spots & median  
transverse lines dull apple  
green (bet apple x malachite  
green)

Thinge hairs pre + aft on  
meral joints, almost spic

& this part of  
merus = poppy  
red

cornae  
hairs

pubes  
mostly a  
darker  
brown with  
chestnut  
yellow hair



all yellow = lemon x canary yellow

meral spine  
yellow maroon like  
2nd row of small spines  
all maroon

under here on anterior  
side is low  
line fading at  
both ends of citrus  
yellow\*

dark part burnt sienna  
Bay + chestnut shades

maroon x carmine

light horn colored corneal claw

Citrus yellow line running around front begins just  
beneath margin of carapace, on epimera, in front of pectin  
of ~~the~~ ~~leg~~, touches ventral border of orbit and is half  
on either side of row of five spines above maxillifeds

Under side of legs plain anterior half merus = dark  
Basis + ischium = straw yellow posterior half = light  
Sienna



116 1924

Aug. 24. Sunday (Cont'd) <sup>1035</sup>  
also got a large red miltray this morning.

(2) After lunch hauled the 50 foot seine  
once into the. Single for minnow  
got some large, but mostly small  
and 6 species, of which I preserved  
2, one Portunus, all today's  
junk bottled in a 1 qt mason jar  
unlabeled + shipped in sep small  
acid box.

Finished packing + shaved -  
already to go !!!

1035

1035

1035

1035



David H. Ogden  
 Groton, New York.  
 R.F.D. 14 Route.

Fermin Rebello  
 617 - Virginia; Key West.

1 qt. milk  
 4 eggs  
 2 tablespoons sugar  
 1 small table spoon salt.  
 3 tablespoons shortening and butte  
 flour to smooth batter  
 2 heaping teaspoons baking powder  
 be sure heaping "Rumford"

*(real butter not margarine)  
 used butter himself*

Woodland 4941 - W  
 Charles R. Burrows  
 Eaton R. Burrows  
 5915 Chester Ave Phila. Pa.  
 "you can't find"  
 Buffalo.



1924

Aug. 25, Monday.

Low uneventful trip in left at 7<sup>20</sup>,  
got in Key West about 5<sup>20</sup>,  
I got my order + went R.R. office to  
tickets.

Met Van there he took me  
home to meet his wife Mary Wells.

Rushed back to ship to get luggage  
made hasty goodbyes, missed milk  
and after some little drinking around  
town; they took me to the train  
Sup. Train 16<sup>5</sup> <sup>incl</sup> <sup>tick</sup>

Aug. 26. Tuesday enroute

Break. 65 + 20 // Lunch 1.25 + 25 //

mailed request to station (express  
a gun at Key West to send  
safely to Daphne Park.