



#26 Stating fish board off Ris

150 + 50

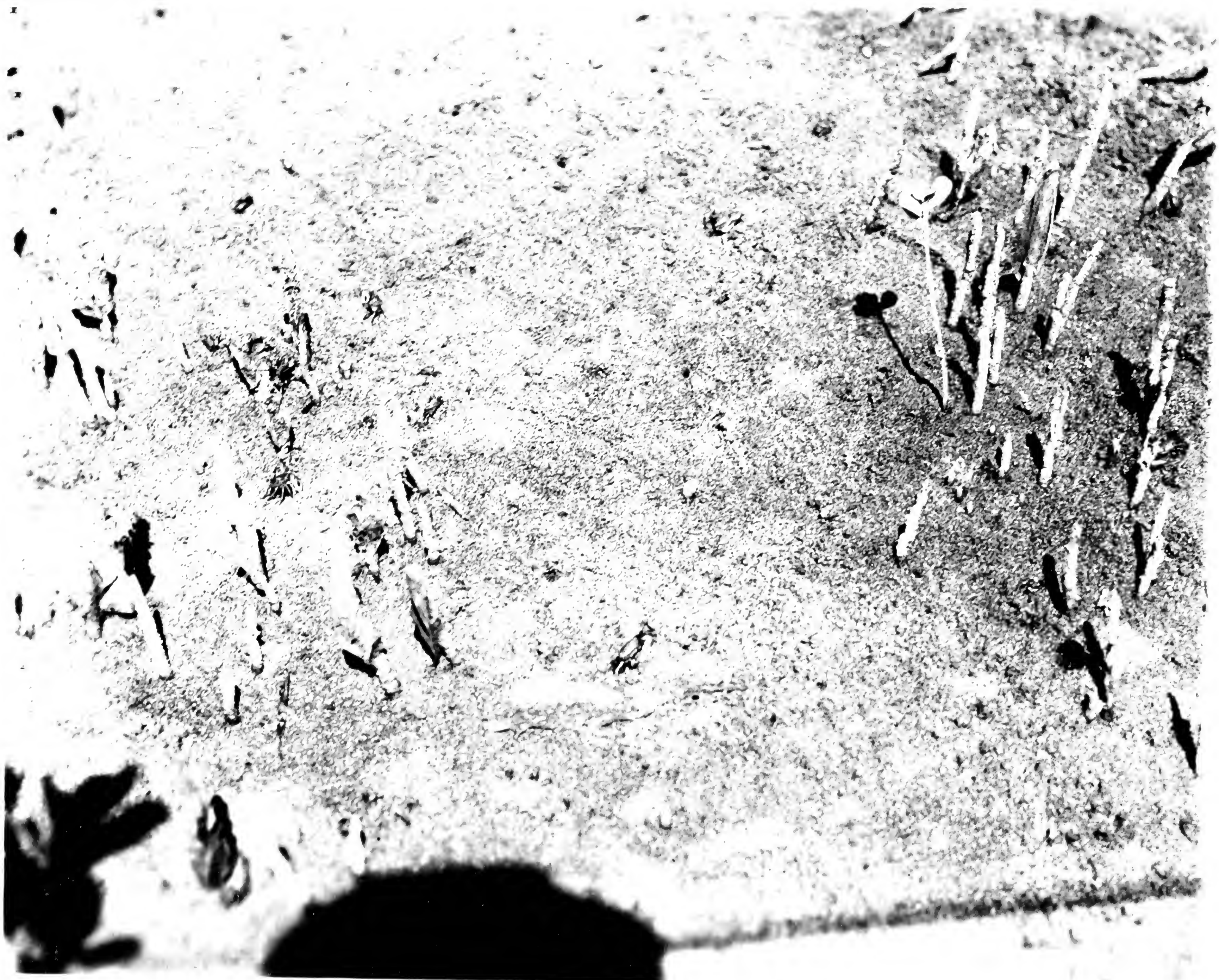
about 1/2

cell bet.

2/2

oo

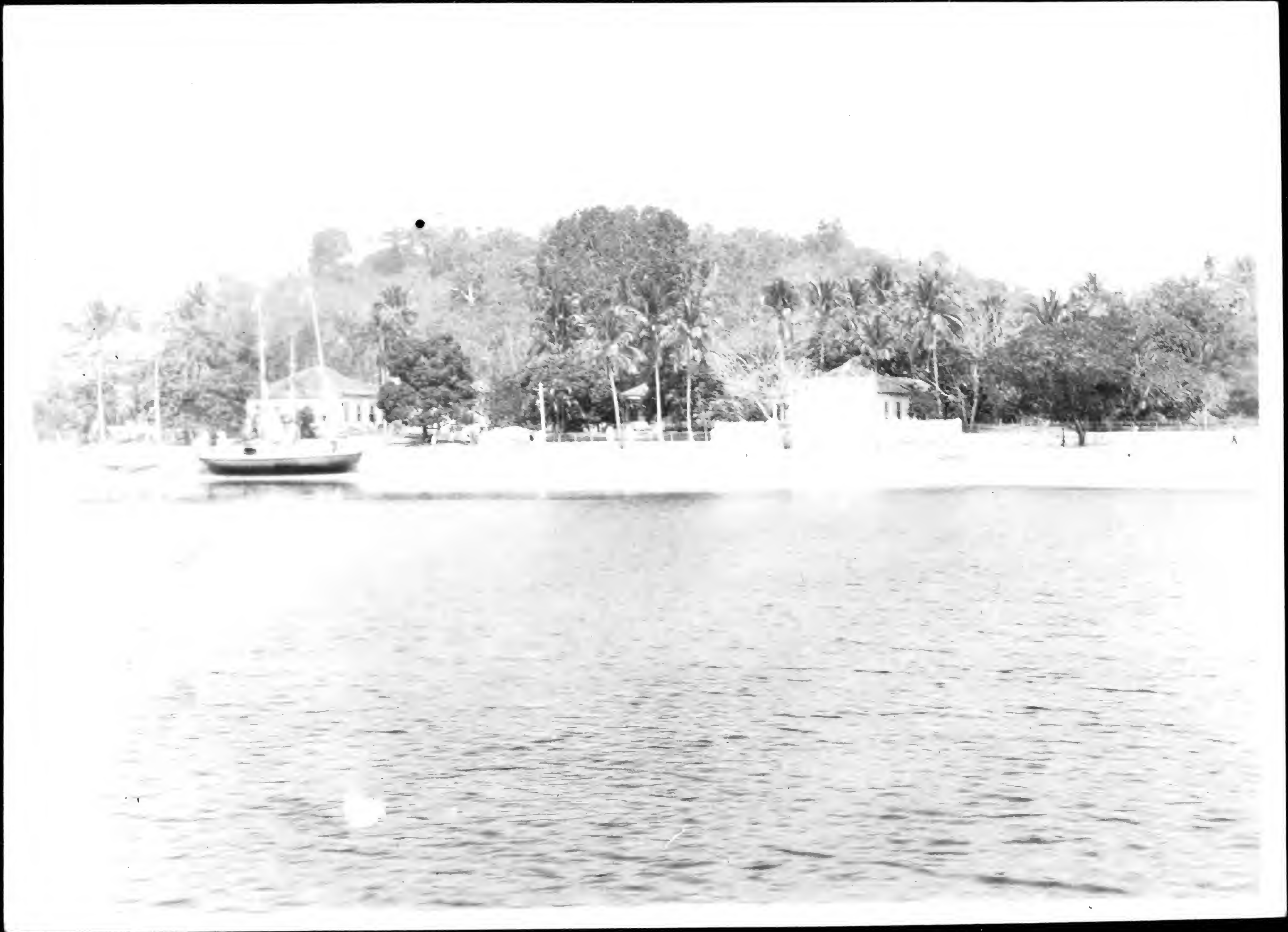
||



Wp mine Alha
Governador Aug 27/
/25

169

#45



27 Paquas
Cms. 23, 25

infinitly
25
25

111



28.

Pagueli

Aug: 23 / 1925.

F 16

~~F 11~~

1

25

~~F 25~~

28



29 Pasquella.

29

$\frac{1}{25}$

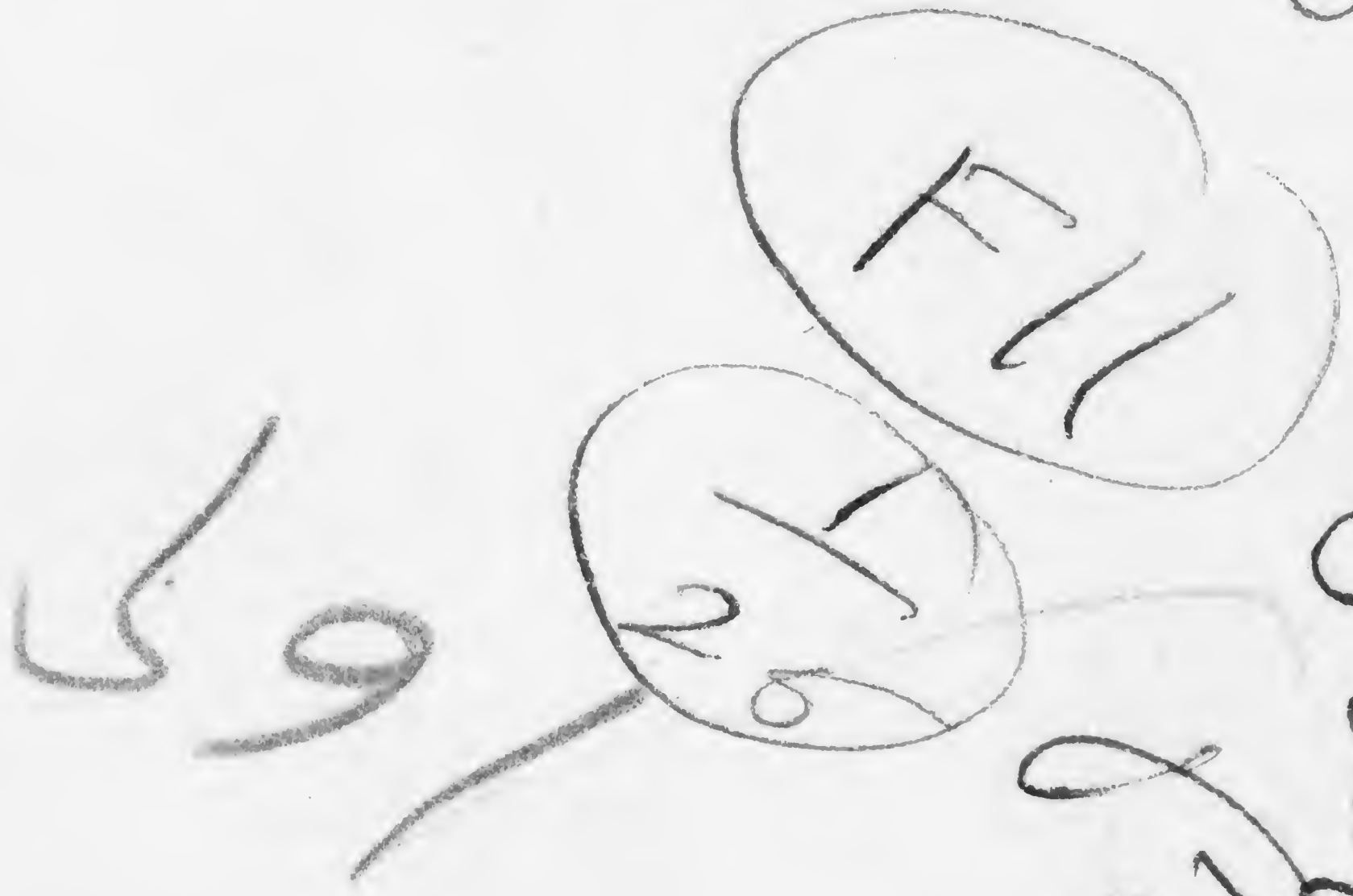
F. 11





30

Parquetta
Paquetta





31.

F 11

1
25

✓
✓
✓

Paquette



32.

1516

1

10

16

1

Paqueira

"Nesta casa

Hospedou-se

o Príncipe Regente

Depois rei d. João VI.

1808 - 1821.



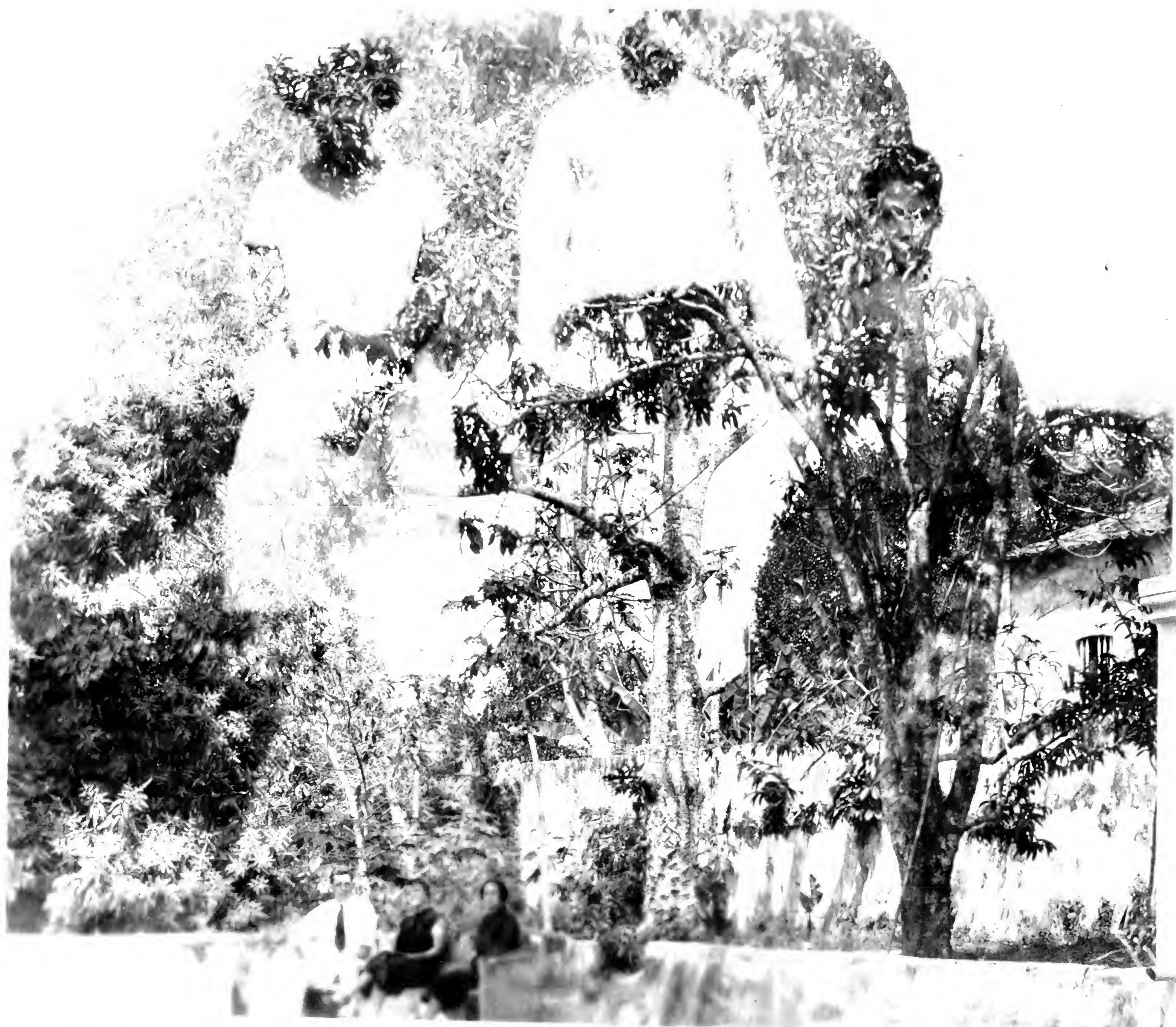
#33

Paquedai

16

F16

1
10
M



34/

Paquella.

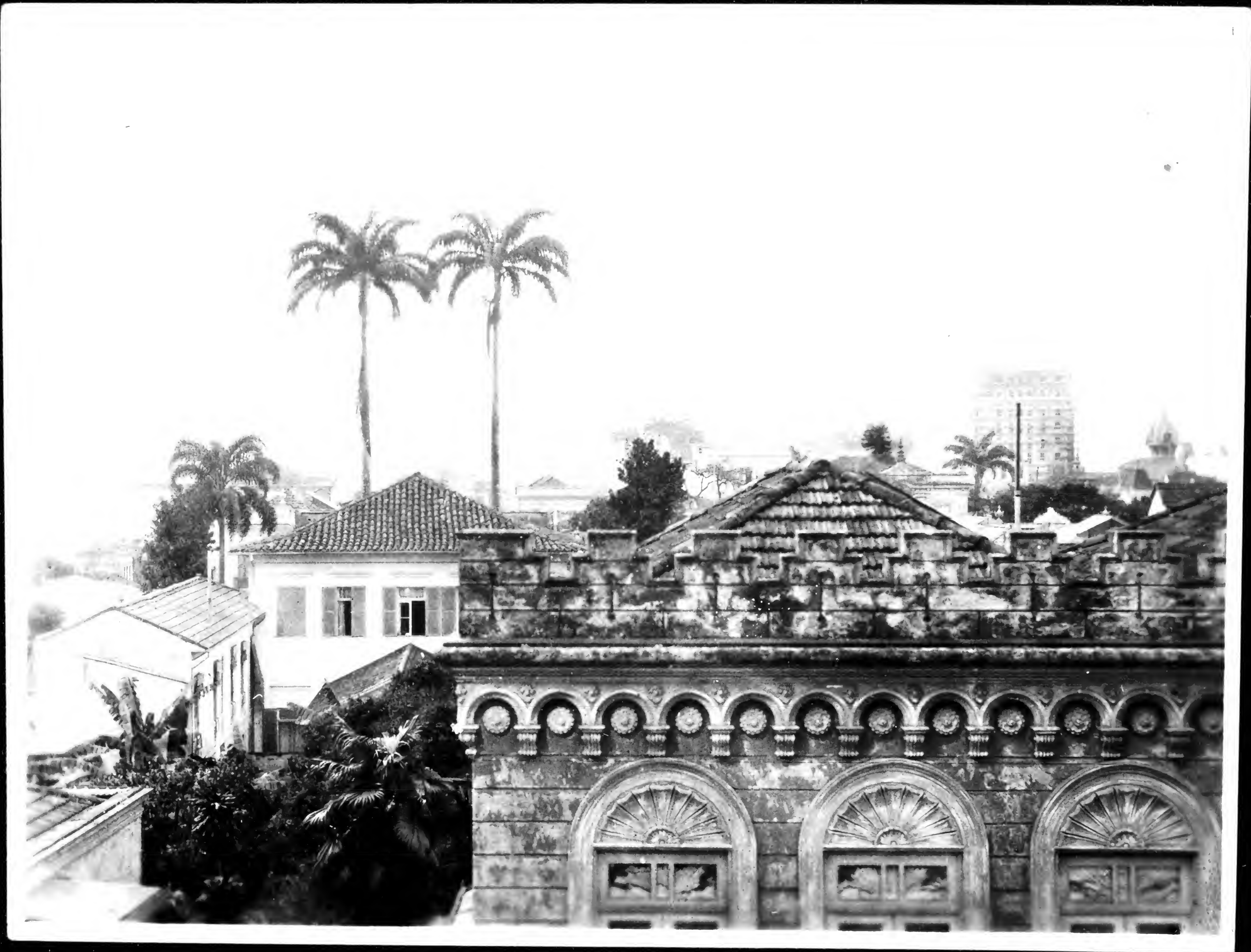
Amuse

16

1

10

✓
6
9



35
35

Winkler Pits

$\frac{5}{1}$

8

Screen

Sept



36. *hirsutus* *Pis*

Screen F 11
1
15
J.C.



#37.

No screen

Noon or
2 p.m.

F 11

208

$\frac{1}{25}$



#38

2

at Micheneroy?

to }
5/10 }

of

?



#40

In shade of bridge
Conto do Rio highway
Aug 26/25.

Upper layer of sand rather
heavily impregnated with mud,
lower white sand brought
up in pellets which show up
in considerable contrast
Dead Fiddler sawed



#411

F 111

9 6 1

1

1

2

franklin
of bridge
4 p.m.

Conte do

Paris.

Nishereoy

Aug. 26/25



Up river Olhu
Governor, Aug. 27/
1/25

169

#42



Uph river, Alha
Governor Aug. 27/28

16

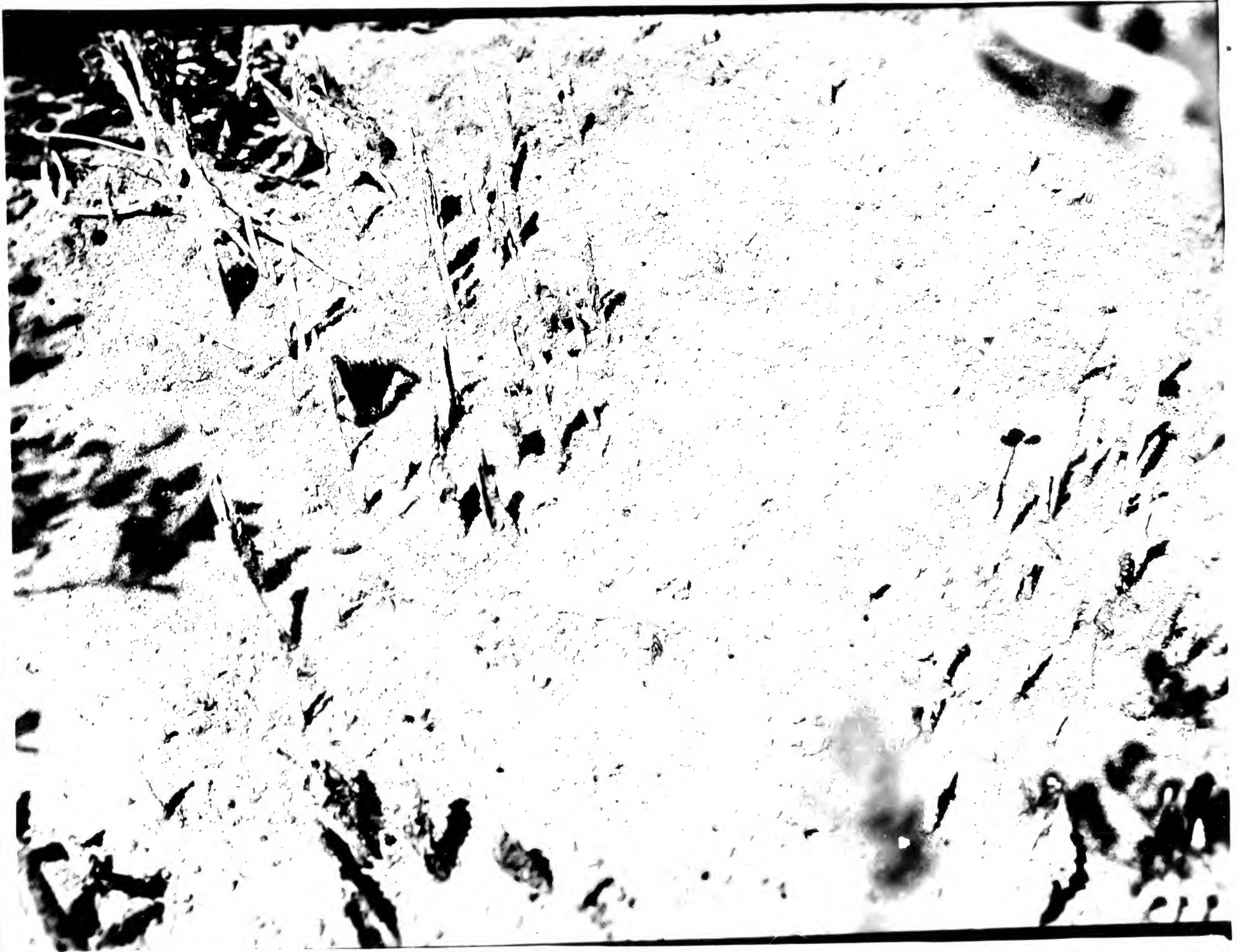
#43.



Wh river Ilha
Governador Aug. 27/
/25

#44.

167



#46

W
T
T
T



#177

177-177

3



#48

25



#52 Paqueta

1777

11





20 Pasquetta.

F 111

1
50

28



21. *Paspalum*.

F: 8

$\frac{1}{50}$

gr



22 Piqueli sheet

F. 8

1/50

9/20



23 Paquette.

F 8

650

1/50



#25 Pyralis.

F. 8

gn 1/50



#2.

F 8 medium
1/5' screen

very heavy

2, p.m.

#4 fine good but no fine
subtle with 8 x 1/2" → fine lines
no seam = same as 207H
discarded.



3. } distance for Cuda This

at least count along

that section }

yellow screen

F. 0 1/2



4 Cabs Thier

Aug. 13, 1925.

F. 0 1/50

no screen



#5 Caber Tris

Trislow

which moved

it as it

was mail.

F 8/1/5
screen

9
should be

screen

~~F 8/1/2~~



#6. Shrimp vendor Riv.

Aug. 1925

bet
F 6.3 +

F 8

$\frac{1}{5'0}$

Sunny day
shady side

Peneus setiferus



8.

Rich. Harrison

Aug. 14/25.

F 8

1/25-



9.

Russ, Iowa.

Aug. 14/25.

F 8

$\frac{1}{10}$

Beak



#10 Aug 14/25

View to East from
Riv. Mus. Terrace.



11

Salsbe in Brit.
hms. garden.

4 p.m.

1
25

83
h



13 *Sunphire* *Pargueli*
Aug. 19, 1925

F
11

GREEN

1/
2

h₂o



Saqueta Aug. 19, 1925

14

12 noon

Bright sun.

F. 16

5 sec.

836



#15 Saquela
Aug. 19, 1925.

65
19

F16
2 1/2 mins



#17

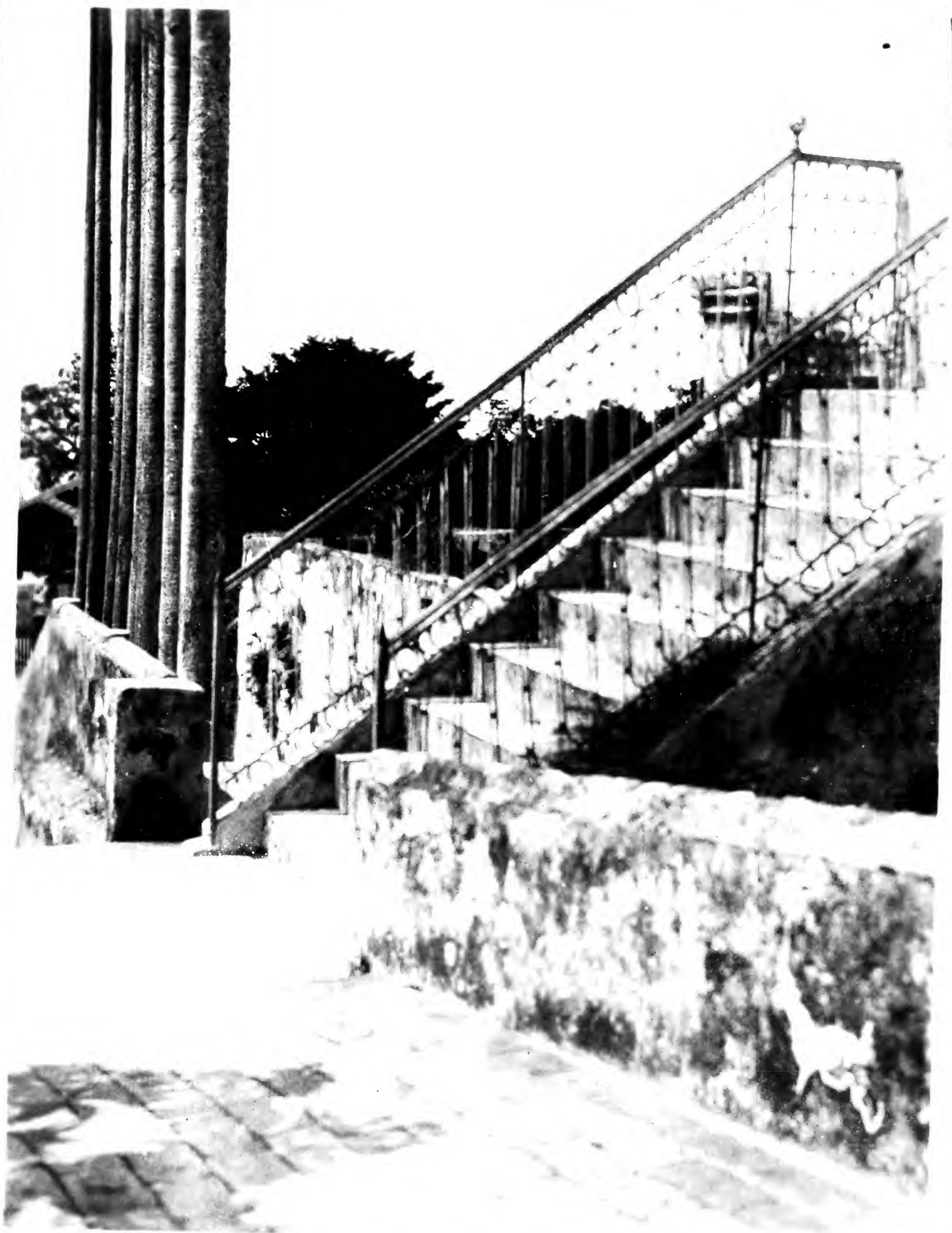
F 11

Bright
sun

1/
50

moon

1/26



#18 Paqueta

Aug. 19 / F

25

11

5
50

2026



#19 Paqueta.

F 11

836 $\frac{1}{50}$

now good
sun.