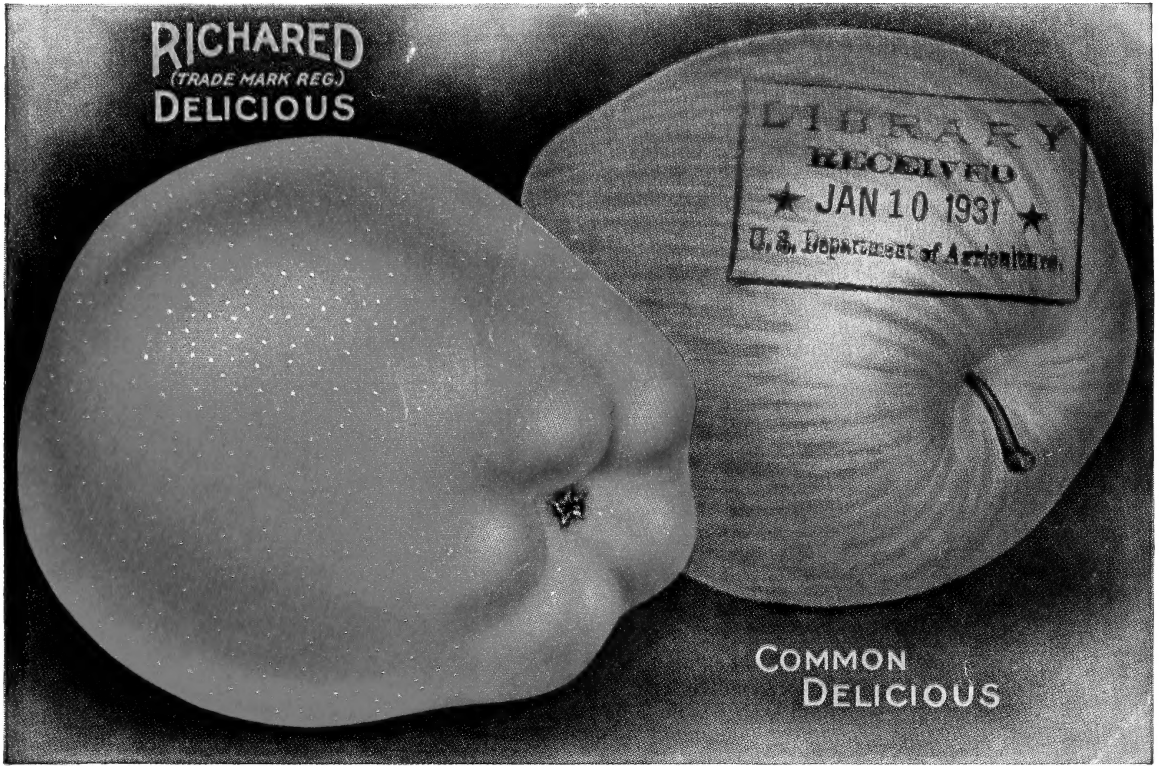


Historic, archived document

Do not assume content reflects current scientific knowledge, policies, or practices.

THE NEW THE OLD



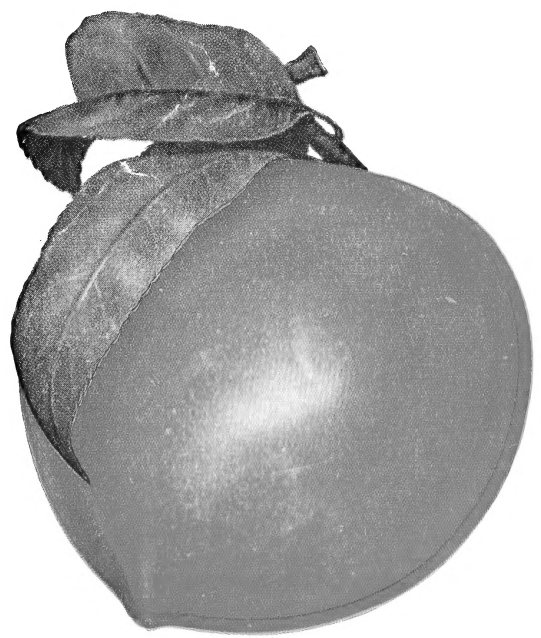
All Red 🍑 "August Color" 🍑 Still Green

The Way To MORE BEAUTIFUL HOMES
and MORE PROFITABLE FARMS

Through
Our Complete Catalogue
For Year 1931

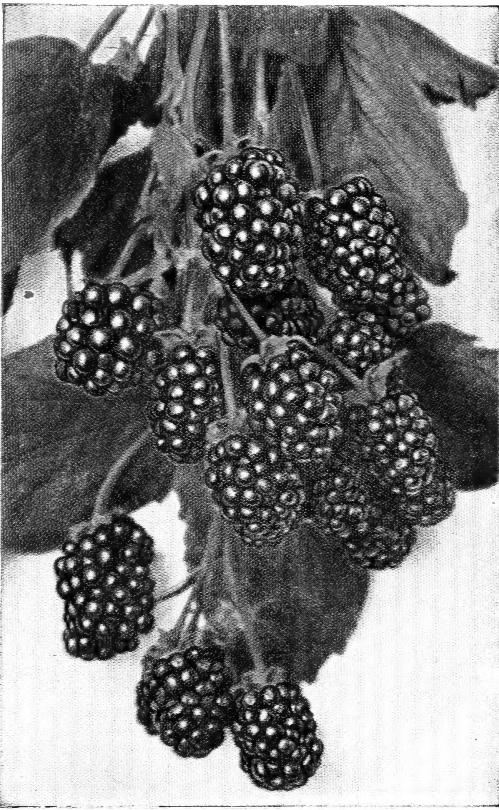
Bountiful
Ridge
Nurseries

Princess Anne
Maryland

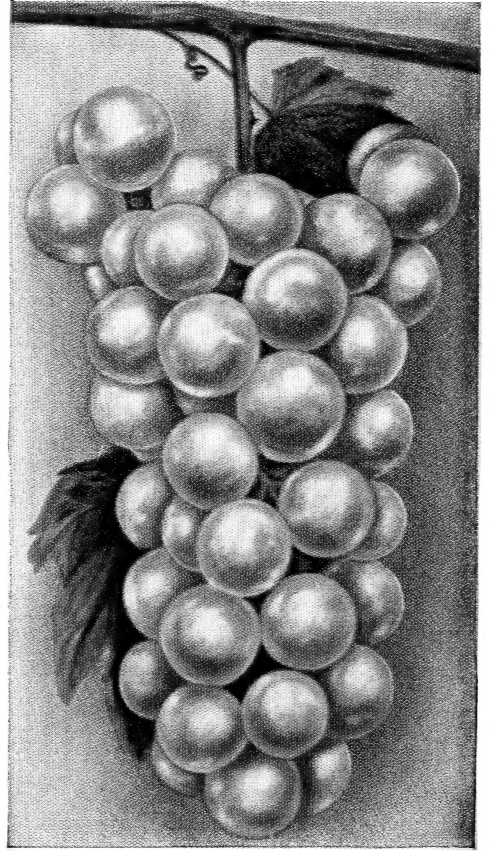


Elberta Peach.
The leader among market Peaches.

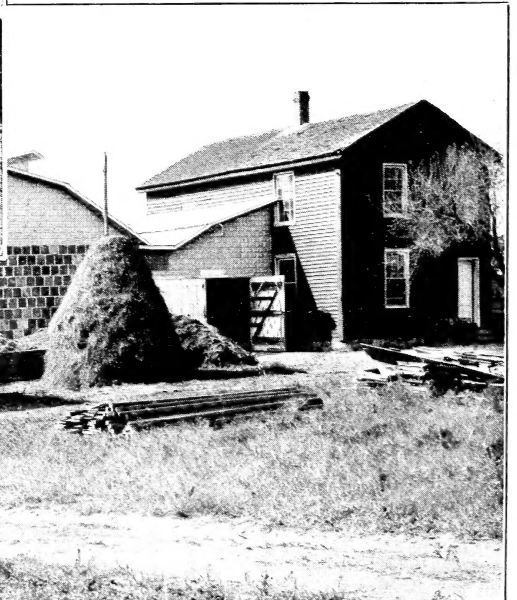
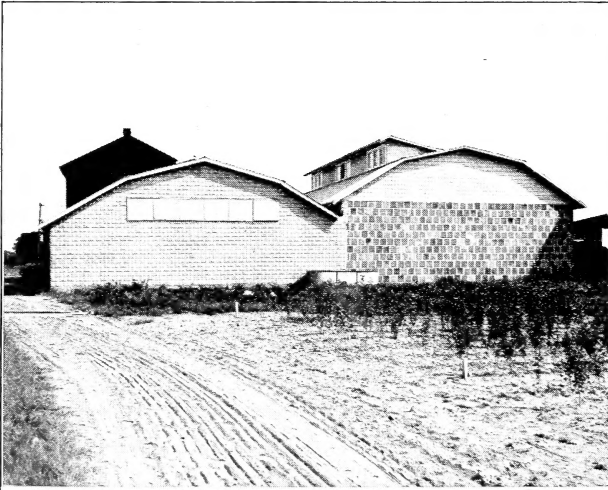
Well Rooted - Productive
Trees and Plants go in every
order shipped



Eldorado Blackberries.



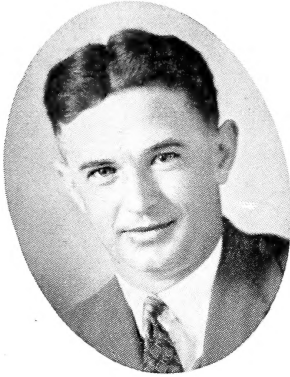
Niagara Grapes.



Front and rear view of our modern storage and packing houses with office attached. No Winter storage here. Built with six and eight inch walls and ventilated so as to retain the vitality of our plants in the spring months till you want them shipped.

The Men That Wish to
Serve You.

Their Long Experience In
The Nursery Means Quality
Stock to You.



HOMER S. KEMP
Assistant Manager



GEO. W. KEMP
General Manager



EDGAR H. KEMP
Assistant Manager

1931

ANOTHER tablet has been written in the pages of time and we are now looking forward to another planting season and harvest time for 1931. We trust the past season has dealt kindly with you so that you may face the coming year with a smile and a desire to push on to success. We are pleased to say that our sales, during the past year, showed a very great increase over the year previous and we want to express our sincere thanks to all of our patrons, during the past years, for it is their orders, which is an expression of confidence in our Nursery and its Managers, that have enabled us to build our Nursery to what it is today. The many fine letters we receive, some of which you will find listed in this catalogue, makes us all feel that our untiring efforts, in producing the best stock possible to grow and delivering it to our customers at the lowest price consistent with cost of production and quality, are indeed appreciated. We want the quality of our stock to justify the continued patronage of every customer of ours and we want the service we render to our patrons to be second to none and it is to this end that the management of the Bountiful Ridge Nurseries pledges themselves and ask your loyal support in the future.

We leave nothing undone that will tend to produce better and hardier Nursery Stock for our Customers. Our experience has taught us to know when we are producing the right kind of stock for you. Our Scion Wood is selected by our Managers with utmost care, our root stocks are selected for hardiness and freedom from diseases. Our new and large packing and storage houses are so constructed that when the stock is assembled there in the spring for shipment it is never exposed.

We have reduced our cost of production in every department where it was possible to do so and we have given you the advantage of every surplus we have in the Nursery by reducing the prices to the lowest level Nursery stock has been for years. We are making your dollar reach further this year than ever before when you buy from us. Our stock is better than ever before (note the new photographs of our nursery) many of our one-year Apple, Peach and Pear have grown to more than six feet in height this year, denoting thriftiness and hardiness. The comparative dry season has produced the best root system possible.

This catalogue presents to you the opportunity to see, to compare, to buy, to plant and to harvest the best of nature's gift to man. To enjoy the beauty and restfulness that only beautiful ornamentals properly planted can give you. To make your orchard and home surroundings typify PROGRESS and SUCCESS. It presents the opportunity for you to save, to vision into the future what these fruits and ornamentals, listed within this catalogue, can mean to you and your children five, ten or twenty years from now. Opportunity now challenges your good judgment—the Gong of Progress has been sounded, through this our new 1931 Catalogue. Heed the Call—Plant for the Future! Note the Specialities, note every item listed and note the low prices for the best stock that can be grown, sold on our direct to planter plan. Make our stock the standard for price and quality comparison, take advantage of our liberal discounts and write for special prices where large quantities of any item are wanted. The Management of the Bountiful Ridge Nurseries stands ready to co-operate with you in every way possible to help you to success by planting our stock. Send your orders to us, whether they be large or small, we have the stock and the organization to handle them.

Make your Farms more profitable and your Homes more beautiful with Bountiful Ridge Nurseries' products. We pledge ourselves to give you service and satisfaction.



Golden Jubilee

Developed and introduced by the New Jersey Experimental Station—A high quality, Early, Yellow, Freestone Peach beyond every expectation.

The above is an exact reproduction of the **GOLDEN JUBILEE PEACH** in size, color, texture and general appearances. The peaches from which this reproduction was made were picked from second generation trees at Westville, N. J., July 31, 1929. Without a doubt this is the most valuable peach of its season that has ever been brought to the attention of the planting public, and as has been stated, it will mean millions of dollars to the peach industry. It has been our privilege to see the original Golden Jubilee tree and the second generation trees in fruiting, and needless to say, there is no peach of its season that can compare with it.

The **GOLDEN JUBILEE PEACH** is a second generation seedling of the Elberta crossed with Greensboro, coming into bloom a few days later than Elberta.

First we have a strong, hardy tree that apparently will do equally as well on different types of soil. It has a hardy bud, more so than Elberta. You have a very high colored, fine textured, yellow fleshed, juicy, freestone peach, ripening from 3 to 5 days ahead of Carman or about 3 weeks ahead of Elberta, and lastly, the peach gets large with a good crop on the trees and carries to market almost on a par with Elberta. You have a peach that will compare favorably with Elberta on any market regardless of season. The **GOLDEN JUBILEE** does not have any bitter flavor that so often accompanies the Elberta. Do you realize what these points of merit can mean to you, as a grower, on any market you might be seeking? Our buds of this peach came direct and we know they are true **GOLDEN JUBILEE**. We sold out of the trees early last year. We have a larger stock now and can supply your needs if you place your order promptly. Do not miss your chance to plant an orchard of this peach—NOW.

Prices Golden Jubilee Peach Trees—All 1-Year Buds

	1 to 10 Each.	10 to 50 Each.	50 to 100 Each.	100 to 300 Each.	300 or more Each.
5 to 6 feet, 11/16 up.....	60 cts.	45 cts.	35 cts.	30 cts.	27 cts.
4 to 5 feet, 9 to 11/16 in. caliber.....	50 cts.	40 cts.	30 cts.	27 cts.	25 cts.
3 to 4 1/2 feet, 1/2 to 9/16 in. caliber.....	42 cts.	37 cts.	27 cts.	25 cts.	23 cts.
3 to 4 feet, 7 to 7/16 to 1/2 in. caliber.....	37 cts.	30 cts.	25 cts.	23 cts.	20 cts.
2 to 3 feet, 5 to 7/16 in. caliber.....	30 cts.	25 cts.	22 cts.	20 cts.	17 cts.
2 feet up, light, nice rooted.....	25 cts.	20 cts.	18 cts.	15 cts.	13 cts.

The following varieties were also developed and introduced by the N. J. Experimental Station. They are marked improvements over other varieties of their season, and we can recommend them to our patrons. These varieties are the same price as other standard peach trees listed on pages 10 to 11.

CUMBERLAND (25 BG). A seedling crossed with Greensboro. The tree is a vigorous grower and as hardy as the Carman. The fruit is larger than Bell Ga. attractively colored with red, oval in shape. The flesh is white, almost free, firmer and better quality than Carman or Alton. Ripens 5 days before Carman. Color photo page 11.

ECLIPSE (1 B). A self-pollinated seedling of Belle. A dark red, yellow fleshed freestone peach of firm texture and good flavor, ripening with Hiley. Size equal to Hiley, tree more vigorous. Fruit oval, flesh fine grained; excellent shipper; hangs to tree well. Recommended as a variety to replace Hiley.

RADIANCE (47 BG). A seedling of Belle crossed with Greensboro. A large, oval, white-fleshed freestone similar in form to Belle; good color and quality. Ripens with Carmen. Adapted both to the home and to commercial orchards.

PRIMROSE (28 BE). A seedling of Belle crossed with Elberta. A large, yellow-fleshed freestone of good quality, ripening with Belle of Georgia. Recommended as a yellow-fleshed variety to replace Belle and precede Elberta in home orchards.

WELL PLEASD

Greenwood, Del., Nov. 19, 1929.

Bountiful Ridge Nurseries,
Princess Anne, Maryland.

Dear Sirs:

Trees arrived in fine shape and am well pleased with them. The trees we got last fall made a fine growth this year.

Respectfully,
E. L. KRATZ.

BLAXTAYMAN
TRADE MARK REG.

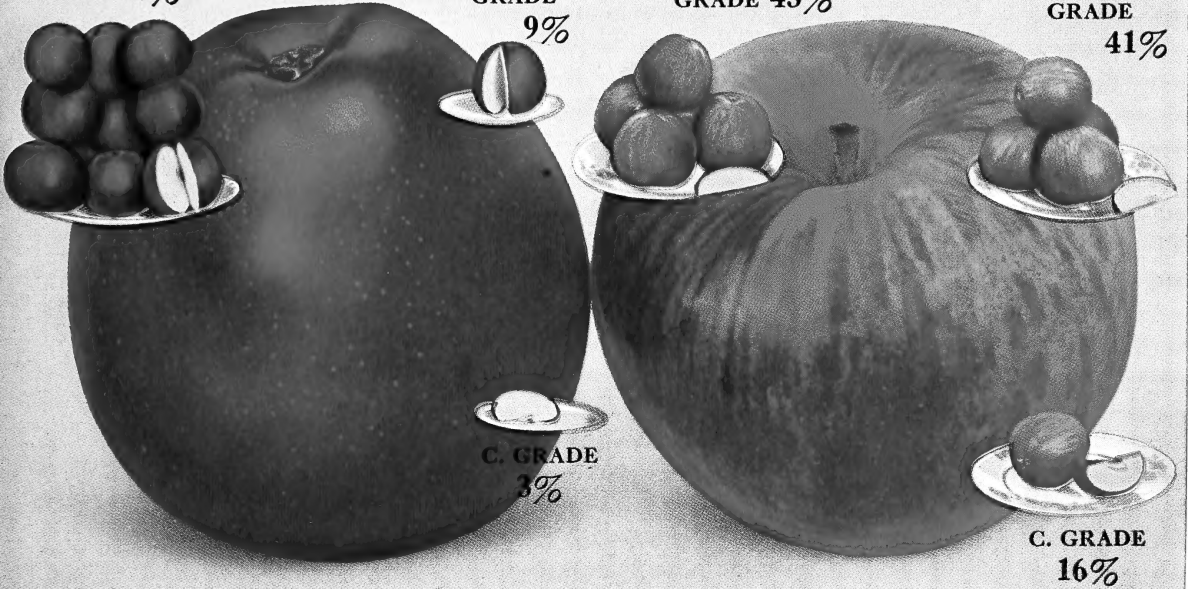
STAYMAN WINESAP

**EXTRA FANCY
GRADE 88%**

**FANCY
GRADE 9%**

**EXTRA FANCY
GRADE 43%**

**FANCY
GRADE 41%**



AVERAGE COLOR and GRADES

The Picture That Tells the Story Between Profit and Loss

An ALL RED STAYMAN WINESAP apple with every merit of this great favorite among apples.

An apple that is as large an improvement over the Staymans Winesap as the RICHARED is over the Delicious.

The management of the Bountiful Ridge Nurseries are proud of the privilege to offer their patrons another Blood Red apple as a companion to the Blood Red Delicious. This apple was found among a planting of 75 Stayman Winesap trees planted in 1906. From the start it has produced apples which were in sharp contrast with apples from the other Staymans Winesap trees. The tree was a typical STAYMAN'S WINESAP tree in every way, having the same type of foliage and habits of growth but the fruit was a SOLID BLOOD RED, without a trace of stripe, over the entire tree. It was also noticed that it got this very attractive color at least ten days before the other Stayman Winesaps in the same orchard began to color any noticeable amount, even though the fruit came to maturity at apparently the same time.

Realizing the advantages of this Blood Red color of the apple and still retaining the full quality of the old Staymans, tests were made to be sure the tree would reproduce true to type. We top worked some trees in the orchard and set buds in the nursery for three years, taking buds

from grafts set the first year from the original tree and the following year we took buds and grafts from these and worked them on other trees bringing them to fruiting as soon as possible. Our every hope was fulfilled when these top worked trees came into fruiting and proved that the full red color of the fruit would carry through to coming generations of trees and give to the fruit growing world a BLOOD RED STAYMAN'S WINESAP APPLE. This will mean millions of dollars in time to come to the fruit grower for with its BLOOD RED COLOR the apple brought with it a thicker and tougher skin.

Continued tests have proven that the Blaxtayman colors a beautiful solid RED all over without a trace of a stripe. That it does not crack at the stem as the old Staymans. That it is crisp and juicy and that it has the same excellent flavor as the Staymans Winesap. That the Blaxtayman has a firmer texture and a thicker skin than the regular Staymans and will not scald in storage, which enables the grower to pick it earlier and keep it longer. It has everything to recommend it, a few of its advantages over the Staymans are: **Earlier Coloring** * * * **A Full Red Color** * * * **More Extra Fancy Apples** * * * **Earlier Picking—No Wind-falls** * * * **Does Not Crack** * * * **No Scald In Storage** * * * **Advantage of Earlier Marketing** * * * **Better Keeper for Late Market** * * * **More Profits.**

IT PAYS TO PLANT THE BEST REGARDLESS OF PRICE and PRICES * * WELL—HERE IT IS * * THE REDUCTION IN PRICES ON THIS BLOOD RED STAYMAN WINESAP APPLE THAT CHALLENGES YOU TO PLANT THAT ORCHARD OF THEM AND RICHARED DELICIOUS. There is now no reason to hesitate; the prices are right; we have one of the finest lots of the trees we have ever grown. SEND YOUR ORDER NOW WITHOUT FURTHER DELAY.

10 Per Cent. Discount on All Blaxtayman and Richared where cash accompanies the order.

**NEW PRICES ON BLAXTAYMAN AND RICHARED APPLE TREES
FALL 1930—SPRING 1931**

Grade	1 to 11	12 to 24	25 to 49	50 to 99	100 to 499
4 to 6 feet, 1 year.....	\$1.15	\$.90	\$.75	\$.65	\$.60
3 to 4 feet, 1 year.....	1.00	.80	.65	.55	.50
2 to 3 feet, 1 year.....	—	—	.55	.45	.40
5 to 7 feet, 2 year.....	1.25	1.00	.80	.70	.65
4 to 5 feet, 2 year, 9/16.....	1.15	.90	.75	.65	.60
3 to 4½ feet, 2 year.....	.95	.75	.60	.50	.45

Prices are for trees delivered. Further discounts allowed where you buy 200 trees or more. Write for information.

RICHARED

TRADEMARK REG. U. S. PAT. OFF.

The DELICIOUS *Supreme*

A BLAZING EXAMPLE OF ONE OF NATURE'S CONTRIBUTIONS TO PROGRESS

A Blood Red Bud Mutation of the Famous Delicious Apple That Promises to Revolutionize the Growing of Delicious Apples

See Cover for Color Illustration.

You need no longer marvel in doubt. It is here. That Real Delicious Apple that colors a full bright red, without a stripe on every part of the tree weeks before time

to pick the fruit. The apple that every man who grows Delicious apples has dreamed of and hoped for. The significance of this Phenomenal freak of nature is hard to realize. It will mean millions of dollars to the fruit growers of this great country. No orchardists can overlook these facts about this new apple, the **RICHARED DELICIOUS**. A tree of the same hardy characteristics as the old Delicious, producing an apple with that same appetizing, delicious flavor, producing an apple that colors a full bright red without a trace of stripe on every part of the tree, the apple attaining this color weeks before we usually pick the old Delicious, thus enabling every one who grows it to eliminate the usual loss from drop apples, to pick earlier, to market earlier if he desires to do so, to seek a foreign market with a high quality apple that has superior carrying qualities when picked early and to keep longer in storage for our late markets if desired. These advantages combined with the fact that better than 80 per cent of the apples will grade extra fancy grade should make it one of the most profitable apples for the fruit grower. **WE HAVE THOUSANDS OF THE FINEST ONE AND TWO YEAR TREES OF THIS GREAT APPLE GROWN ON THE SUNNY EASTERN SHORE THAT AWAIT YOUR CALL. DO NOT HESITATE, PLANT THEM.**

We are giving you a brief history of the apple and our own personal opinion and description of it along with the opinions of some of the leading orchardists and fruit buyers of the North West Apple District.

In the Spring of 1910 Mr. G. T. Richardson planted near Monitor, Washington, an orchard consisting of 425 Delicious apple trees. When the orchard came into bearing Mr. Lewis Richardson, the present owner, noticed that the apples on one tree were much deeper red in color than any of those on the adjoining trees. He did not at once pay much attention to this seemingly freak tree but when the tree continued to bear these large highly colored apples he was amazed and concluded that here was a definite variation from the other delicious and one that would prove valuable. Accordingly he showed the fruit to the management of the Columbia & Okanogan Nursery Company of Wenatchee, Washington. After an investigation which revealed that the apples from this tree were a true Delicious in every way except for the increased color. The Nursery Company saw that here was an apple that was worth millions of dollars to the fruit industry of the world providing the tree could be propagated and grown that would produce fruit identical with the parent tree. They accordingly entered into negotiations with Mr. Lewis Richardson, the son of the original owner, and who is now owner of the orchard, and secured the exclusive propagating rights from this tree. They then grafted several surrounding trees and budded a number of young nursery trees from the original tree, to see if this color would carry through to the next generation. The following year buds were taken from these grafts and again the following year buds were taken from buds set the year before giving us three generations of trees.

In the fall 1925 the first grafts set bore fruit identical with the parent tree. **SOLID RED—NO STRIPE WHATSOEVER**, even in the shaded portions of the tree, getting this brilliant color about two to three weeks before the fruit on the old delicious trees near by began to color any noticeable amount. In 1926 and 1927 two other generations of this remarkable fruit bore and the fruit was identical with the parent tree. It was then released to the planters for orchard planting being called and trademarked "RICHARED" DELICIOUS. We the Bountiful Ridge Nurseries secured propagating rights to the apple in July 1928, and at once set 25,000 buds in the best seedlings we had and have at this time a fine stock of the trees for our patrons. Every tree has a well developed root and seems to be unusually rugged; many of the trees are now over 6 feet tall at one year old.

We have exhibited the fruit of the Richared at many fairs and Horticultural meetings in the east, some of the fruit being 2 years old, from storage, and have given it every test possible in comparison with the old delicious and must say that it stands out as a definite and permanent improved delicious. It has every thing to recommend it where high colored Delicious fruit is desired. The fruit colors several weeks ahead of the old delicious and colors equally as well on every part of the tree regardless of foliage. This means you can pick earlier—before the fruit is dead ripe which enables you to handle it more readily either for immediate marketing or for storage and gives you almost all extra fancy grade apple. Any grower can realize what this means to him in dollars and cents, and while the trees may seem a little high we want to say to all our patrons that if you wish Delicious type of apple and are not now getting enough color on your old Delicious to make it profitable you cannot equal this apple and should plant it. The extra cost of a tree will be more than realized in the increased price you get for the first bushel of apples picked from a RICHARED Delicious tree and then you are able to realize these increased profits throughout the entire life of the tree. So again we say to you if you wish the DELICIOUS TYPE of apple do not let the increased price on the RICHARED DELICIOUS stop you from ordering these trees. Sign the special order agreement when ordering RICHARED.

The following letters will be of interest to you. **READ THEM. PRICES ON PAGE THREE.**

AMERICAN FRUIT GROWERS ORCHARD MANAGER MAKES LARGE PLANT OF "RICHARED"

Wenatchee, Wash., October 24, 1927.

Last spring I decided to set out an orchard of my own, and my observations over a period of years led me to believe that I wanted a large portion of my own orchard planted to Delicious, as it has been a consistent money getter for the grower in this district. After a good deal of deliberation, I decided that your "RICHARED" Delicious was the apple I wanted on account of solid, blood red, early coloring, early picking, less liability of loss from drop, large percentage of Extra Fancy, as this colors so much more than the common Delicious, coloring even in the shade and dense foliage, together with better keeping qualities. All these qualities convinced me that this was the profitable apple for me to plant, and I did plant about one thousand of them last spring. They were good trees and have made very satisfactory growth.

Yours very truly,

FRANK. H. AYERS.

Mr. Ayers is orchard manager of the 276-acre Birchmont Orchards, belonging to the American Fruit Growers, and has been in charge of this immense orchard for the last seven years. In addition to Mr. Ayers' personal plant the American Fruit Growers also planted many "RICHARED" Delicious trees this past year.

WILL ENTIRELY REPLACE PLANTING OF COMMON DELICIOUS

R. EDWARD TRIMBLE
Consulting Horticulturist

Wenatchee, Washington

I have seen and observed your new strain of Delicious the "RICHARED," both on the original parent tree and

also the apples on the young trees, and in my opinion you have the most beautiful apple in the world. It is certainly marvelous to see these, full blood red color in August, while Delicious on adjoining trees are still green. This added color with advantages of earlier picking, earlier marketing, firmer apples, more extra fancies, no loss from "Windfalls," and better keeping qualities, convinces me that in the "Richared" Delicious you have an apple worth millions of dollars to the apple industry of the world.

I have seen and tasted your "Richared" Delicious which the records at the cold storage plant showed were kept in cold storage for three (3) seasons—apples picked in 1925 and still firm, crisp and juicy in September, 1927, two years later.

I have no hesitancy in stating that in my opinion the "Richared" Delicious will entirely replace plantings of common Delicious and that it is a better apple from every standpoint.

R. EDWARD TRIMBLE,
Consulting Horticulturist.

"RICHARED" REPRODUCES TRUE TO TYPE

Wenatchee Produce Co., Inc.

Wenatchee, Wash., Oct. 22, 1927.

I was indeed surprised when I first saw the original "RICHARED" Delicious tree at the Richardson Orchard during the early fall of 1926, which at that time was loaded down with deep red apples, while the apples on the other Delicious trees in the same orchard were still green.

I also saw the young trees propagated from the parent tree and they also were bearing apples of identical type.

Yours truly,

Wenatchee Produce Co.,
By CONRAD RAN, President.



The Monmouth Beauty Apple

BLUE RIBBON

Trenton, N. J.

INTERSTATE FAIR

1925 - 1926 - 1927 - 1928 - 1930

BLUE RIBBON

Hagerstown, Md.

INTERSTATE FAIR

1927 - 1928

It is with a sense of pride that we can bring this new introduction of ours to the attention of the people who are interested in Apple culture.

Its superior size, combined with its good quality and handsome appearance, makes it a leader on any market at its season of ripening, and to this we must add the carrying and keeping qualities of the apple, which leaves it in prime condition when it arrives on the market after being in transit for a number of days or weeks.

DESCRIPTION

The origin of this apple as near as we can possibly tell is put forth in the following statement from Mr. C. R. Applegate in whose orchard the apple made its first appearance. Mr. Applegate says: "Referring to the history of the new apple that I have discovered in my orchard, would say that this tree was set in as a filler in a Duchess of Oldenburg block where a tree had died. After this tree was set it died back and a new shoot appeared from the ground. When I pruned the following year I discovered this shoot and my intention at that time was to bud or graft this shoot over later but forgot all about it. The following spring when I pruned I found that this shoot showed characteristics that I was not familiar with, showing thrift and looking promising otherwise, so I decided to let it stand and see what it would amount to. The result was that it has grown to be a fine tree, and it has now fruited for several years in succession, and I think it is far superior to any other apple of this season that is now in cultivation."

Note: Mr. Applegate is a practical orchardist, cultivating successfully several hundred acres of orchards in Monmouth County, N. J.

Our attention was attracted by this apple in August, 1924, while in Mr. Applegate's packing house near Freehold, N. J., and we were very favorably impressed with the general appearance of the apple and we asked to see the tree from which the fruit was picked. The tree has semi-dwarf characteristics such as the Wealthy, only more spreading, producing a very rugged growth, wood very hard and tough, the tree growing thin and spreading, giving the fruit the necessary light and air that is so essential to coloring of the fruit early in the season.

The fruit spurs are evenly distributed from the

base of the limbs to the terminal growth similar to the McIntosh Red. The blossoms are hardy and stand the cold snaps well. The blossoms opening about the same time as the Duchess.

The market is demanding a large red apple at this time of the year and this apple is beautifully colored with a bright red running off on the calyx end of the apple to a slight yellow streaked with red, giving it a very attractive appearance, one that at once catches the eyes of the public.

The season of this apple is just after the Duchess of Oldenburg or ripening in Monmouth County, N. J., about August 5th to 25th, depending on the season. The apple colors early and hangs well on the tree, giving the grower a long season over which to pick the apple. The apple sizes up well, there being no seconds on the tree hardy, most of the apples grading from two and one-half to four inches.

BOUNTIFUL RIDGE NURSERIES.

New Prices Monmouth Beauty

	Each.	Ten.
5 to 6 foot, 2 year, well branched Trees	\$1.00	\$6.00
4 to 5 foot, 1 year whips	.75	5.00
3 to 4 foot, 1 year whips	.50	3.50

SPECIAL TRIAL ORCHARD OFFER No. 1 50 Trees

(Nothing less than 50 Trees of Monmouth Beauty)	
50 1-year Trees, 4 to 5 foot, whips	\$20.00
or	
50 1-year Trees, 3 to 4 foot, whips	15.00

SPECIAL TRIAL ORCHARD OFFER No. 2 100 Trees

(Nothing less than 250 Trees of Monmouth Beauty)	
100 1-year Trees, 4 to 5 foot, whips	\$35.00
or	
100 1-year Trees, 3 to 4 foot, whips	30.00

SPECIAL TRIAL ORCHARD OFFER No. 3 250 Trees

(Nothing less than 250 Trees of Monmouth Beauty)	
250 1-year 4 to 5 foot Trees, whips	\$83.00
or	
250 1-year Trees, 3 to 4 foot, whips	70.00

APPLE TREES

GENERAL PRICES APPLE TREES

ONE YEAR OLD

All varieties except Monmouth Beauty, Gallia Beauty, price rate as follows: 1 to 6 trees at the each rate, 6 to 50 trees at the 10 rate, 50 to 250 trees at the 100 rate, and 250 to 1,000 and more at the 1,000 rate.

	Each.	10.	100.	1,000.
Largest Size , 1 yr. 4 to 5 ft. high, extra fine...	\$.045	\$3.50	\$25.00	\$220.00
Medium Size , 1 yr. 3 to 4 ft. high.....	.40	3.25	20.00	180.00
Smaller Size , 1 yr. 2 to 3 ft. high.....	.35	3.00	15.00	140.00
Parcel Post Size —2 to 3 ft., 40c each, postpaid;				
3 to 4 ft., 50c each, postpaid.				

TWO YEAR OLD APPLE TREES

All varieties except Monmouth Beauty, Gallia Beauty, figure price rate as above.

	Each.	10.	100.	1,000.
Smaller Size , 3½ to 4 ft., 7 to 9-16 in. caliber...	\$.040	\$3.25	\$25.00	\$200.00
Medium Size , 4 to 5 ft., 9 to 11-16 in.....	.50	3.75	30.00	250.00
Largest Size , 5 to 6 ft., 11-16 in.—Our best....	.55	4.75	35.00	320.00

Staymans Winesap.

We are in a position to supply your wants in Apple trees—whether you wish large or small trees—whether you want ten trees or ten thousand—whether you live North or South—our stock is **HARDY**. Read our testimonials.

Varieties listed in order of ripening near as possible on Eastern Shore Maryland.

SUMMER VARIETIES

CRIMSON BEAUTY. Originated in Maine. Very hardy, strong grower and very productive; extremely early bearer, earliest ripening apple known. A handsome red apple. Flesh sub-acid, pleasant to eat out-of-hand. Ripens July 1st.

YELLOW TRANSPARENT. Tree upright, and a very early and abundant bearer. Fruit of good size; skin clear white, turning to a pale yellow; flavor acid and very good. Ripens from ten days to two weeks earlier than Early Harvest. Ripens July 1st to 10th.

WILLIAMS' EARLY RED. Among the earliest to ripen and the largest of all early apples, a better name for it is "Big Red Apple." Flesh is white, juicy and slightly tart, tender and crisp. A very good one, like Transparent, bears heavily on young trees. July 10th to 15th.

STARR. One of the finest early apples grown in New Jersey. Can be picked over a long period of time large and of a fine yellowish color; a great bearer and valuable market variety; comes into fruiting very young. July 15th to 30th.

EARLY HARVEST (Yellow Harvest). Medium to large; pale yellow; beautiful; fine flavor. Tree moderate, erect grower, good bearer. Ripens July 15th to 30th.

EARLY MCINTOSH. A McIntosh Hybrid being almost solid red in color, very crisp and juicy with the same high quality as the well known McIntosh. A thrifty grower and a regular bearer. Your opportunity to have the McIntosh type as a very early apple. Cash in on the popularity of the McIntosh by growing Early McIntosh for your markets. Ripens July 15th to 20th.

DUCHESS OF OLDENBURG. Vigorous growth; Russian; large; striped; tender, juicy, sub-acid; good; regular and abundant bearer. One of the hardiest kinds known. Ripens July 20th.

GRAVENSTEIN. Ripens continuously during a period of several weeks and should have two or three pickings, beginning July 25th.

ENGLISH CODLING. This apple ranks among the most profitable apples for New Jersey. A good bearer, color green, large in size, a splendid baking apple and sought after very much by city buyers. Ripens August 10th to 15th.

TWENTY-OUNCE. Fruit exceptionally large, yellow and red. Juicy and crisp, sub-acid. Tree is vigorous and productive. August 15th to 25th.

AUTUMN VARIETIES

WEALTHY. This beautiful, moderate sized, brilliant red apple is of fine quality, one of the best of its season; it is a relatively good keeper, and owing to the hardness of the tree, its adaptability to cold climates, and early bearing habits, it can be profitably planted as a filler. Season, August 15th to 25th.

SUMMER RAMBO. Large, flat, streaked red and yellow; very tender, juicy and fine flavored. Tree an upright grower, hardy and productive. Ripens August 20th to 25th.

MAIDEN'S BLUSH. Of uniformly large size, smooth, round, beautifully flushed with red on creamy yellow ground; flesh tender, of pleasant but not high flavor. A good market sort because of its attractiveness and the tree's heavy crops. Ripens August 25th.

JONATHAN. Very red apple, smooth, of good size, and fine quality. Ripens September 1st. Can be kept in common storage late in winter.

GRIMES GOLDEN. An apple of the highest quality. It is one of the fancy dessert apples and ranks with Delicious and Jonathan on the market. Medium to large; bright yellow with pink cheek; flesh fine grained, juicy, with a very pleasing spicy flavor. The tree is hardy, grows upright and is quite disease and insect-resistant. Ripens September 5th to 15th.

WINTER VARIETIES

DELICIOUS. A remarkable variety introduced in the West several years ago where it is being largely planted and rapidly taking first rank both for commercial and home orchards. Fruit large, nearly covered with brilliant dark red; flesh fine grained, crisp and melting, juicy with a delightful aroma; of very highest quality. A splendid keeper and shipper. Tree one of the hardiest, a vigorous grower. Ripens September 5th to 25th.

MCINTOSH RED. A choice variety of the Fameuse type. Tree vigorous with spreading head; a good annual bearer. Fruit above medium to large, highly perfumed; almost covered with brilliant crimson, a beautiful fruit; flesh snow white, crisp, very tender, slightly aromatic, sub-acid, very good quality. Ripens September 5th to 20th.

KING OF TOMPKINS COUNTY. A standard variety. Hard to beat for either table use or cooking; vigorous and a good cropper. Fruit is bright red, large and uniform, and brings a fancy price over other varieties. Keeps well in cold storage. Ripens September 8th to 15th.

SMOKE HOUSE. Comes into bearing moderately young. It has a thin skin of yellow striped with rather a dull red, and is very attractive. Ripens September 10th to 20th.

NORTHWESTERN GREENING. Tree a splendid vigorous grower, quite hardy. Fruit large to very large; green, becoming yellowish-green when ripe; flesh yellow, fine grained and firm; flavor a good sub-acid; very smooth and attractive; should be given plenty of room in the orchard to secure large, even fruit. Ripens September 15 to 20th. A good winter apple in North.

WINTER BANANA. Fine, vigorous grower, large healthy foliage; early bearer. Fruit medium to large, smooth and handsome, golden-yellow usually shaded with red blush; flesh fine grained, rich, sub-acid, aromatic; highest quality. Ripens Sept. 20th.

OPALESCENT. Very large, brilliant dark red all over. Tree bears young and very prolific. Average quality. Ripens September 20th to 25th.

TOLMAN SWEET. Medium, pale yellow, slightly tinged with red; firm, rich and very sweet; the most valuable baking apple, vigorous, hardy and productive. Ripens September 25th to 30th.

RHODE ISLAND GREENING. Fruit large and handsome, smooth, dark green overspread with yellow. Flesh tender, rich, rather acid, but highly flavored and excellent; tree vigorous, spreading. Ripens September 25th to 30th.

STAYMAN'S WINESAP. Tree vigorous, hardy, spreading. An early bearer and very productive. Fruit medium size, round, approaching conic; skin smooth, greenish purple; flesh yellow, firm, tender, juicy, rich, sub-acid, aromatic, quality the best. A splendid late keeper. October 10th to 15th.

YORK IMPERIAL. This is a fine, hardy, large red, winter apple. It succeeds over a wide range of country. Comes into bearing at four years from planting, bears regularly and heavily. The foliage and fruit are remarkably free from scab. The fruit is of medium size, skin yellow and almost wholly covered with two shades of red. Oct. 10th.

CORTLAND. (New variety developed by New York State Experimental Station.) A fine apple resulting from the cross pollination of McIntosh and Ben Davis. Inheriting only the good qualities of each. The Cortland is a beautiful red apple, larger than the McIntosh, and matures a month later. Keeps late in Winter and can be handled and shipped like the hardiest of other market varieties. October 15th to 20th.

BALDWIN. No variety yields larger crops or bears shipment better, or is more attractive in color, size and shape than the Baldwin. It is esteemed as an eating apple, and for cooking. For a commercial orchard it can be relied upon. Large, bright red, crisp, juicy and rich; tree vigorous, upright and productive. Keeps until April. Ripens Oct. 10th.

NORTHERN SPY. Large, roundish-conical, often flattened, slightly ribbed; handsomely striped with red; flavor rich, aromatic, mild sub-acid, fine. Keeps through winter and late into spring. Oct. 25th.

RED SPY. Red Spy is a typical Spy except in color. The color is a solid bright red without either stripes or splashes. The new variety has great beauty in the fruits, and in the tree, hardiness, healthfulness, productiveness, and reliability in bearing. 2-year trees only. Oct. 25th.

ROME BEAUTY. Keeps in good condition till May and June. Large, round, mottled, and striped in different shades of red; flavor and quality away above the average; appearance and size are its valuable points; always sells and always brings good prices.

DARK RED ROME. This is another Rome Beauty sport originating on the farm of U. T. Cox, Proctorville, O., and is considered very desirable by many growers. It is a typical Rome Beauty in size, shape, and texture, with the same keeping qualities, except that it is a Dark Red, and on some soils almost black. We recommend this where one wants dark red color. Oct. 25th to 30th.

GALLIA BEAUTY, Red Rome. This apple is considered by all of the leading authorities on apples the best of the Red Rome sports for the Eastern fruit grower. It is a typical Rome Beauty, having the same shape, and general texture, with equal or better quality with the advantage of a clear bright red on all of the fruit. Our scion wood of



Delicious.

the Gallia Beauty came direct from the original trees, and their progenies that are fruiting with Mr. E. J. Riggs, Gallipolis, O. 5c extra per tree. Oct. 25th to 30th.

PARAGON. One of the best of the long keeping winter varieties. Does well on almost any soil; is a very thrifty grower and fruits young; bears regular. Is of the Winesap type, being very good quality; coloring a deep dull red almost all over; flesh slightly yellow; should be in every list as it is one of the most profitable commercial apples of the winter varieties. November 1st.

MAMMOTH BLACK TWIG. Excels Winesap in nearly every important point, better grower, harder and the fruit much larger; color even a darker red; flesh firmer; flavor milder, but fully equal. A long keeper. November 1st.

WINESAP. Medium size, dark red, juicy, mild. A favorite late winter apple and a leading commercial variety on all markets, as well as a very popular home apple in the West. Is a high-class dessert apple; also very good for sauce, pies, jelly and marmalade. Nov. 1st to 10th.

Crab Apples

Prices Same as All Standard Apple Trees.

HYSLOP. Season September to October; tree vigorous where hardy. Fruit medium; yellow ground-
ed with heavy shadings of deep crimson and splashes of maroon with heavy blue bloom. Flesh fine, firm, yellow, astringent; bears abundantly in clusters, which make tree exceedingly ornamental.

TRANSCENDENT. Season September; fruit medium to large; color brownish-yellow with blush of carmine; flesh firm and crisp, yellowish, fine-grained, very juicy, acid. Tree is a vigorous grower. Hardy. Subject to blight and should not be planted near other orchard trees.

Dwarf Apple Trees

The Dwarf Apple Trees come into bearing much earlier than the Standard trees. Their low, broad heads are within reach, so that the fruit can be easily picked. These trees take up so little room that they can be planted in the garden, or even on the lawn, and with care will bear good crops within three or four years. The fruit is of extra high quality. Trees bear very early. We have the following list of best varieties of Dwarf Apples to offer:

Baldwin	Delicious	Stayman's Winesap
Rome Beauty	Yellow Transparent	McIntosh
	Wealthy	Cortland

2 Year Trees, 4 ft. up.....60c each
\$4.50 for 10 trees.

SPECIAL: One each of above varieties.....\$4.00

Plum Trees

The Plum, like the Pear, and other finer fruits, succeeds best in heavy soil with some clay and being almost entirely free from disease, they can be grown very profitably. The finer kinds are excellent dessert fruits, of rich and luscious flavor; for cooking and canning they are unsurpassed.

Plums should be planted 18 feet apart in rich soil, which should be kept well cultivated.

PRICES OF PLUM TREES

	Each.	10.	100.
Largest Size, 2 year, 5 to 6 ft....	\$.70	\$6.00	\$45.00
Medium Size, 2 year., 4 to 5 ft....	.60	5.00	35.00
Very fine 1 yr. Buds, 4 to 6 ft....	.60	5.00	35.00

European Plums

BRADSHAW. Very large, dark violet-red, flesh yellowish green; juicy and pleasant; tree vigorous, erect and productive. August.

FELLENBURG or ITALIAN PRUNE. Dark purple with a dark blue bloom; size medium; oval, pointed and tapering. Flesh juicy and delicious; fine for drying.

GERMAN PRUNE. A valuable Plum of fair quality for dessert, but most esteemed for drying and preserving. Large, long-oval, purple, with a thick blue bloom; flesh firm, sweet and pleasant, separating from the stone. Moderate to vigorous in growth. September.

IMPERIAL GAGE. Large, oval, yellowish-green with marbled green stripes, heavy white bloom, flesh greenish, juicy, melting, rich and best quality; tree upright and vigorous. September.

LOMBARD. Medium, roundish-oval, violet-red, juicy and pleasant; adheres to stone, valuable market sort, hardy and adapted to light soils; a reasonably sure cropper.

YORK STATE PRUNE. Is one of the largest, best in quality and most productive of all prunes or plums. Large, dark blue, covered with purple bluish; flesh yellow and delicious; freestone, ripening the last week in September.

SHROPSHIRE DAMSON. Fruit oval; tree a good grower and enormously productive; fruit of medium size produced in thick clusters or groups, dark purple color, esteemed for preserving.

DAMSON. The old-fashioned blue Damson known to every housewife for the fine jelly and preserves they make. Tree very hardy and prolific bearer.

JAPANESE PLUMS

ABUNDANCE. One of the best Japan Plums. Tree is very rapid grower, healthy, and comes into bearing quite young and yields abundantly; medium size, rich, bright cherry red with distinct bloom and highly perfumed; flesh light yellow, juicy and tender, and excellent quality. Tree vigorous and hardy.



5 to 6 feet. 4 to 5 feet. 3 to 4 feet.
Showing Size of Trees and Roots.


**Buy Trees With Roots
That Make Them Grow**

BURBANK. Medium to large, orange-yellow, dotted and marbled with red; flesh meaty yellow, sweet and good; valuable for canning and a good market plum. Mid-June. Hardy and most prolific of the Japan varieties.

UNIVERSITY OF MARYLAND

COLLEGE PARK, MARYLAND.

Date: Sept. 3, 1930.



STATE HORTICULTURAL DEPARTMENT
Certificate of Inspection

Duplicate of Number 73

This is to Certify, That on the 3rd day of Sept., 1930 we examined the Nursery Stock of The Bountiful Ridge Nurseries growing in their nurseries, at Princess Anne County of Somerset State of Maryland, in accordance with the laws of Maryland, 1898, Chapter 289, Section 58, and that said nurseries and premises are apparently free, so far as can be determined by inspection, from the San Jose Scale, Peach Yellow, Pear Blight and other dangerously injurious insect pests and plant diseases.

This Certificate is valid until Sept. 1st, 1931 unless sooner revoked, and does not include nursery stock not grown within this State, unless such stock is previously covered by Certificate and accepted by the State Entomologist and State Pathologist.

Wm. H. Goff
State Entomologist

C. Temple
State Pathologist

**EVERY
SHIPMENT
CERTIFIED
FREE
FROM
DISEASE**

**WELL
GROWN
HEALTHY
STOCK
GROWS**

**ONE ORDER
OF OUR
PRODUCTS
WILL
BE CON-
VINCING**

The New Hope Farm Peach

This Peach originated as a chance seedling at Hope Farm, in Bergen County, New Jersey. It has long been our ambition at Hope Farm to give the world some new fruit, good enough to be worthy of carrying the name, and give comfort and pleasure to the world long after we have passed out of it. At the same time we have recognized the fact that there are already too many fruit varieties in cultivation, and that only the very best of those which possess superior qualities should ever be added to the list. We should not think of presenting this new candidate for favor unless we felt absolutely sure it has superior merit.

Six years ago (1919) when cleaning up the barnyard in the Fall, we found a small peach tree growing, as it seemed, out of a loose stone foundation of a small building. Apparently some one had carelessly thrown the pit away. It had sprouted and established itself by the side of this building. By the merest accident it was not destroyed. It grew in the most undesirable place that could well be selected for a peach tree.

The situation is cold and sunless, being densely shaded by thick and tall shrubbery. The soil is hard and unpromising, but the little tree grew abundantly under these hard conditions. The next year after discovery the tree showed a remarkable vigor with strong, heavy foliage and quick growth. This great vigor of growth is one of the strong characteristics of the tree. In the nursery row it appears to outstrip other varieties easily. The parent tree stands in a place where cultivation is impossible, yet it has developed into large size. At three years it bore a few peaches, enough to show the character of the fruit, and it has produced large crops since then.

In any remarks or pictures of this peach we desire to be fully conservative and not make any statement or appearance which is in any way exaggerated. In color Hope Farm is a light yellow with a dark red cheek. The flesh is white with a yellow tinge. It is

a clean, freestone with a flavor which we consider superior to Belle of Georgia. It is one of the best shipping peaches, being firm and solid. We have mailed specimens for long distances and given it a fair trial. It has always stood the journey perfectly. Its season of ripening is a week to ten days later than Elberta, so that with its fine quality and attractive appearance, it will fill a distinct place in the peach season. In any section where the tree will thrive Hope Farm may be recommended for its great vigor and hardiness, its high quality and beauty, and its late season of ripening. It will prove, as I firmly believe, the most popular late peach of its color and class, and it can be confidently recommended to all those who are interested in new varieties, or in profitable peach culture.

H. W. COLLINGWOOD.

	Each.	Ten.
4 to 6 ft., 1 year, very fine trees.....	\$.80	\$4.00
3 to 4 ft., 1 year.....	.70	3.50

SPECIAL TRIAL ORCHARD OFFER
No. 4—50 Trees

50 1-year trees, 4 to 6 ft., best grade.....\$17.50

SPECIAL TRIAL ORCHARD OFFER
No. 5—100 Trees

100 1-year trees, 4 to 6 ft., best grade.....\$30.00
or
100 1-year trees, 3 to 4 feet..... 20.00

SPECIAL TRIAL ORCHARD OFFER
No. 6—250 Trees

250 1-year trees, 4 to 6 ft., best grade.....\$60.00
or
250 1-year trees, 3 to 4 feet..... 50.00



Mr. Geo. W. Kemp, General Manager, looking over one of our apple seedling blocks. Seedlings planted spring 1930, budded during August, 1930, photo taken October 8, 1930. Strong, healthy seedling are the starting of vigorous, healthy trees for your orchard. 70,000 seedling in this block. To the left is another block of apple containing about 75,000 trees. Just beyond that where the dark foliage is it shows a part of our field of peach trees with over 200,000 trees ready for sale. In the distance are our packing houses.

Peach Trees

We have the finest stock of hardy trees, with well ripened wood and an abundance of fibrous roots, that we have ever grown. We handle them with care so they will grow when you receive them.

Peach growing has long been a specialty in our nursery, both from the viewpoint of producing better, healthier and stronger trees, and eliminating all varieties but the best. While eliminating the undesirable and worthless varieties the matter of new and better varieties has not been overlooked. The nurseryman who does not endeavor to better his assortment to strengthen the movement towards better fruits is not doing justice to his patrons. With pride we can say the Bountiful Ridge Nurseries is keeping pace with the times. We consider the true Early Elbert, the Genuine J. H. Hale, and Brackett marked improvements over old varieties, and recommend them as the best of their season. Read of the new varieties we list that have been brought out by the N. J. Experiment Station. We can especially recommend the Eclipse and Jubilee.

PRICES OF PEACH TREES

All varieties except Hope Farm and New Jersey varieties, 1 to 6 trees at the each rate; 6 to 50 at the ten rate; 50 to 250 at the 100 rate, and 250 to 1,000 at the 1,000 rate.

The finest straight bodied, well rooted stock we have ever offered our customers.

	Each	10.	100.	1,000.
2 to 3 ft. high, sturdy trees, 5 to 5/16-7/16 inch.....	\$.25	\$2.00	\$12.00	\$100.00
3 to 4 ft. high, 7/16 to 1/2 inch cal. (spcial planters' grade)....	.30	2.50	15.00	135.00
3 to 4 1/2 ft. high, 1/4 to 9/16 inch.....	.35	3.00	17.00	150.00
4 to 5 ft. high, 9 to 11/16 inch.....	.40	3.50	18.00	170.00
5 to 6 ft. high, 11/16 inch up.....	.50	4.00	22.00	200.00

Write for special prices on quantities of 1,000 or more.

Varieties listed according to season of ripening as near as possible.

EARLY VARIETIES

MAYFLOWER. Earliest peach known. Dark red all over; beautiful appearance. Carries well to market. Blooms very late, crop never entirely cut off by late frosts. Size medium, quality good. Semi-cling.

RED BIRD (Early Wheeler). Cling, earliness, high color and good quality make it very valuable. Very large. Creamy white overspread with a bright glowing red. Good shipper.

GREENSBORO (Semi-Cling). Large yellow with splashes of bright red; highly colored; flesh white, very juicy and of good quality. Hardy, early.

CARMEN. Large, creamy-white with deep blush; skin tough, making it a good market variety; flesh tender, juicy, fine flavor. Early. Semi-cling.

SOUTH HAVEN. An early yellow Freestone peach of recent introduction which shows promise of being an excellent peach. We recommend it where an early, high quality peach is desired.

ROCHESTER (Free). Large yellow and red Peach. Flesh yellow, of fine quality and exquisite flavor. Stone very small and will ship as well as Elberta.

The tree comes into bearing when very young, is a strong upright grower, and is hardy as an oak. Early.

CHAMPION (Free). Large, round, quite regular; yellowish-white mottled with red on sunny side; flesh white with red at the pit. One of the best in quality and a general favorite of great hardiness.

MEDIUM EARLY VARIETIES

HILEY. Freestone, white. A large white peach with beautiful red cheek; the flesh is juicy, tender and white. Midseason.

SLAPPEY. A comparatively new yellow freestone, which ripens at about the same time as the Rochester and the Early Crawford, both of which it excels in every way. It bears early and heavily.

CRAWFORD'S EARLY (Free). Large, roundish, bright yellow with red cheek; flesh yellow, juicy and sweet; quality good.

FITZGERALD (Free). Improved early Crawford, a bright yellow splashed with red; flesh deep yellow and of best quality; early. Freestone.



Mr. Geo. W. and Homer S. Kemp in our block of one-year peach. These are Elberta here, 28 other varieties in the entire block of over 200,000 peach trees. Photo taken October 8th. Note the height and dark green thirt foliage they have, budded from bearing trees they are now ready for you to plant and what an orchard they will make for you. Block of apple to the left of about 75,000.

MIDSEASON VARIETIES

BELLE OF GEORGIA. Fruit large size; color red and white; flesh white, firm and highly flavored. This variety has become one of the standard varieties in the big commercial orchards, both North and South. Stands shipping well and brings top prices. Tree a rapid grower; very productive. Perfect freestone.

EARLY ELBERTA. This is one of the finest of all the Elberta family, being larger than Elberta, finer flavored, as handsome in color, perfect freestone. Whoever plants this variety will be more than satisfied as it is a money maker and a great peach for all purposes. Ripens from one week to ten days earlier than the regular Elberta.

ELBERTA. The leader of all peaches and the greatest commercial variety on the market; 50 per cent of peaches planted are Elbertas. In all probability no peach will succeed over so wide a range of territory as this kind. It will thrive where any peach can be grown. High colored yellow freestone.

J. H. HALE. A description will hardly do justice to this fine variety. In size it is one-third to one-half larger than the Elberta and is more highly colored. The skin is deep crimson, smooth, tight, and without fuzz. Flesh is golden yellow, firm, and has a most delicious flavor. The pit separates easily from the flesh. It is exceptionally valuable as a commercial peach owing to its unusual keeping qualities. Will ship nearly as well as an apple. Fruit ripens about five days before the Elberta, but it will hang on the tree longer. Your collec-

tion is incomplete without it. **Note.**—The J. H. Hale does not have an entirely perfect bloom, and to get best results it should be planted with some other variety.

SHIPPERS' LATE RED. A comparative new peach extremely hardy. Large, very highly colored to attractive red. Yellow fleshed, freestone and good quality. Ripening just after Elberta and Hale. Can be recommended to follow Elberta season.

THE BRACKETT PEACH. This is a comparatively new variety in some sections, but has been tried and proven one of the most profitable peaches in the South. Its season is about five days after Elberta, with a beautiful orange-yellow skin tinged with carmine. Flesh is a deep yellow and much higher flavored than Elberta. This peach sizes up well under heavy crops and is equal to Elberta as a shipper. A perfect freestone. These qualities combined are fast bringing it to the front as one of our best commercial peaches, and can be considered a three-point winner, in color, in size and in quality. Midseason.

MEDIUM LATE VARIETIES

ROBERTA. A new variety that is becoming justly popular. Very similar to Elberta in all respects except its season, which is a week to ten days later. The Roberta is an excellent variety to plant to lengthen the Elberta season.

KEATH CLING (Cling). Very large creamy-white with delicate red blush; flesh white, slightly red at the pit; tender, juicy and sweet; a valuable sort for canning and one that commands fancy prices in all markets.

CRAWFORD'S LATE (Free).

Large, roundish-oval, yellow with broad red cheeks; flesh yellow with red at pit; melting vinous and very good.

VERY LATE VARIETIES

IRON MOUNTAIN. Free, white. Size enormous, egg-shaped; color pure white, with slight blush; good quality; good keeper; very regular bearer.

SALWAY (Free). Large, roundish, deep yellow with rich red cheeks; flesh yellow, firm and juicy and sugary; trees are strong growers and bear plentiful crops. A late market sort.

KRUMMEL'S OCTOBER. A magnificent peach; the most prolific and best late Yellow Freestone, which ripens about two weeks after Salway, or four weeks after Elberta. Large, almost round, deep yellow with a dark carmine blush; very firm, fine texture.

LEVY'S LATE. A large yellow peach, good for either market purposes or home use. One of the best real late yellow freestone peaches. Ripens late in October.



Brackett Peach.

OVER 4,000 TREES GIVE SATISFACTION

Newville, Penna., August 6, 1930.
Bountiful Ridge Nurseries,
Princess Anne, Md.
Gentlemen:

I want to report on the trees bought of you and planted last Fall and this Spring.

They were the finest lot of trees I have ever planted—both peach and apple. Every apple tree grew. Lost something like thirty peach trees or less than one per hundred. These trees are not only living but have made excellent growth. This is quite remarkable in view of the fact that we are experiencing the most severe drought known to the weather bureau in fifty years of its existence.

Very truly yours,

L. O. MOWERY.

Allentown, Pa., Oct. 6, 1930.
Bountiful Ridge Nurseries,
Princess Anne, Md.
Gentlemen:

I received my shipment on Saturday, I placed in Fair week September 18th of two American A. V. 3 ft. and they are beautiful and healthy. I am very much pleased and thank you for sending me the stock that you did.

Yours truly,

FRANCIS J. OSWALD.

FINE TREES IN GOOD CONDITION

Boonsboro, Maryland, Nov. 14, 1929.
Bountiful Ridge Nurseries,
Princess Anne, Md.
Gentlemen:

The 510 Peach trees and Apple trees arrived on the 12th in good condition. They surely were a fine lot of trees. Thanks for the extras. Enclosed find check for payment of same.

Yours truly,

J. LUTHER ITNYRE.

How To Order From Bountiful Ridge Nurseries

10% Cash Discount for Orders Received Before April 1st

Free Delivery On All Orders of \$50.00 or More Up to 500 Miles from Our Nursery

OUR SHIPPING SEASON

We pack and ship all through the winter to Southern States. Our regular spring shipping and packing season usually opens here about the 15th of February and continues until May 10th. Our fall shipping season opens about October 15th and continues to Northern points until December 1st.

OUR TERMS

Our terms are cash except in large orders when satisfactory reference is given; then one-third the amount of the order must be sent and balance on arrival of trees at depot. On early orders one-third the amount can be sent in and balance a few days before shipment. **Prices in this catalog are for the present season, spring and fall of 1931 only.**

GRADING

We guarantee every tree to be as represented in grade and quality, and if upon arrival you do not find our trees to be exactly as we say they are, return them to us securely packed and we will refund to you every dollar you have paid us for them. This is as fair as we can offer.

Do not confuse this well graded stock with stock offered to you at a lower price with only height mentioned. Our stock is graded both in height and thickness, the only true way to grade nursery stock.

ORDER EARLY

We earnestly request our patrons to send their orders in early and specify when you wish them shipped. We pride ourselves on making prompt delivery, but sometimes in our rush seasons we cannot get the orders shipped on the exact time, and we must ask our customers' indulgence for a week or so. We are keeping close check on weather conditions in every part of the country, and shipment will be made just as promptly as possible and in proper season. Often we are compelled to delay fall shipments until the stock is sufficiently mature to make it hardy. If time of shipment is left to us we can assure our customers of receiving stock in perfect condition.

DISCOUNTS

10% Discount for Cash with Order before April 1st. No Discount after April 1st. Free delivery on all order \$50.00 or more up to 500 miles or more from our nursery. Spring 1931 only.

HOW TO REMIT

Remittance should be made either by Postoffice money order, registered letter, or by check on your bank.

SMALL ORDERS

Because of the high cost of labor, packing material, implements and land, we cannot accept orders for less than \$2.00.

MISTAKES

We use every precaution that is humanly possible to avoid mistakes and believe that we are as near free from them as any Nurserymen in the United States; but in the event any of our stock should prove untrue to name under which it is labeled or sold, we will replace the original order or refund the amount paid for such stock. Further than this we are not responsible.

RATES

1 to 6 trees at the each rate; 6 to 50 at the ten rate; 50 to 250 at the 100 rate, and 250 to 1,000 and more at the 1,000 rate.

Write for prices on quantities of 1,000 or more. All boxing, baling and packing free.

RECEIVING STOCK IN COLD WEATHER

In the event that it should turn cold after your stock has been shipped to you and there is a possibility that there is frost in the box in which the stock is shipped, put the box in a place where the temperature is above freezing—a cellar or a frost-proof building, and do not disturb for 5 to 7 days, at which time stock can be removed from the box in first-class condition. Under no circumstances should you open a box when you think there is frost in it, for if the air strikes nursery stock in frozen condition it will kill it. But if allowed to thaw out in box, the stock will not be injured.

OUR REFERENCES

As to our responsibility, we refer you to The Peoples Bank of Somerset County, Princess Anne, Md., and the Salisbury National Bank, Salisbury, Md., and to any of our thousands of customers throughout the country that you might know of whose names you find in this catalogue.



A view of our one-year Richard Delicious apple trees and other varieties. Photo taken October 8, 1930. Note Mr. Homer Kemp reaching the tips of a tree over 7 feet tall at one year. Thrifty, hardy stock grown without the use of any fertilizers. Over 150,000 apple trees one and two year old in this block which continues to the right covering nearly 30 acres.

Why We Can Grow Hardy Stock— Why Our Prices Are Lower

Our long experience in the growing of a general line of Nursery Stock in this and other sections of the country and from close observation of general growing conditions in the North, South and West, leads us to make the frank and plain statement that we believe we have the most ideal growing conditions that are possible to find. We made our first planting of Nursery Stock in Somerset County, Maryland, 24 years ago. At that time we were in business in Western Pennsylvania, but growing conditions were so bad there that we had to seek a new location. The growing season was short and very unfavorable—one year in particular a heavy freeze in September, while our stock was growing rank, froze nearly all of it. After considering many sections of the country we found what we considered ideal conditions here at Princess Anne, Maryland, and made a trial planting. Our experience with this planting of about 28,000 Apple with some Pear and Plum was so gratifying that we at once moved our place of business to Princess Anne, Maryland. We found that we could grow a tree here as large in one year as we could possibly grow one in two or three years in Pennsylvania. We also found that we could produce this growth of 5 to 6 feet in one year without the use of any fertilizers, which gave us a much harder tree, because it was not a forced growth. This was due to our selection of soil, the favorable geographical location, and the generally favorable climatic conditions.

Our soil is a sassafras loam with a yellow clay subsoil. This type of soil is listed in the Biological Survey of Maryland as the best in the State. It produces one of the finest root systems on all classes of Nursery Stock that we have ever seen. It produces a fiber root system that cannot be obtained where stock is grown on sandy soils or where stock has been forced with heavy applications of nitrogenous fertilizers. It is not productive of crown gall. On our present new location, aided by our personal and scientific selection of root stocks, we have been digging practically 100% disease-free stock.

Our location geographically is such that we always have plenty of moisture from early spring till fall. The rainfall is generally uniform and a comparative low elevation gives us moisture from below in periods of threatened drought and, yet we have per-

fect drainage on all of our lands. This insures us a strong and uniform growth on all stock.

To go with these favorable conditions we have a climate that is very hard to equal. We can neither be considered to be located in the South nor in the North. Our temperatures are comparatively uniform with the season, not having any excessive hot periods as in the far South and not having any severe weather or sudden freezes as are experienced in the Northern districts. Our stock, making an early start in the spring, with even temperatures, plenty of moisture, thorough and scientific cultivation through the entire summer months, produces a maximum growth. It is brought to thorough maturity in the fall, with gradually increasing cool weather and frosts, forcing the sap back to the roots, a final killing frost coming from the 1st to 10th of November. Our winter temperatures are such that we can carry all stock through the winter in the open trenches if we desire, giving them the advantage of nature's moisture, without any danger of injury to the smallest twigs from the winter freezes. We have never yet experienced any damage from early frosts in the fall or from winter freezing, during 24 years we have been growing Nursery Stock in Somerset County. You should see the healthy foliage on all of our stock, the remarkable growth and the clean, natural coloring of the bark on all fruit trees.

These conditions, combined with a comparative low wage scale and taxes, enables us to offer our customers the thriftiest and most hardy stock available at prices that are comparatively low with those of most established nurseries. We want you to consider these advantages—compare them with conditions you know to exist with other nurseries. Read the many testimonials listed in this catalog, which vouch for high-grade, hardy stock and unusual care in packing. These people have bought our stock and compared it as to quality, price, hardiness, and productiveness. There is a reason why they get practically every tree to grow for them, and there's a reason why they come to us year after year for Nursery Stock—you should know it—you should give it a trial—you should compare it in every way—**IN JUSTICE TO YOURSELF AS A CONSERVATIVE BUYER AND IN THE WELFARE OF YOUR FUTURE ORCHARD AND HOME SURROUNDINGS.**

Personal Supervision—Direct to Planter No Substitution—No Agents

We know that there is no subject that is more important to any purchaser of Fruit Trees than receiving TRUE-TO-NAME stock for his orchard. NO State official—no Inspector—no Orchardist can realize this more than we do, for we know what it can mean to the planter, and we wish to say that it is our honest and sincere desire to deliver nothing but true-to-name stock to our customers, and we have every reason to believe we are accomplishing our object.

Securing true-to-name buds or grafts is the first step towards delivering true-to-name trees. We realize this, and for that reason secure our buds and grafts from bearing orchards of our customers and various State Experimental Stations in most all cases. These buds are mostly cut by Mr. Geo. W. Kemp, Manager, and Homer S. Kemp, Assistant Manager of our firm, and sent directly to the nursery, properly labeled, for propagation. Their wide experience in the nursery business and careful study of the varieties they grow in the nursery, enables them to select to a type of fruit of the different varieties, thereby breeding the varieties up as one would a definite type of corn. They cut these buds at definite periods, mostly when fruit is on the trees. This alone is a marked advantage to our patrons because these trees, propagated in this way, come into fruiting much earlier and bear more prolific than trees that are grown from buds cut from the nursery row year after year, as is the practice of many nurserymen. Our next step to make our stock

true to name is the careful examination of the stock while growing in the nursery. This examination, which we conduct along the same general lines as the Massachusetts Fruit Growers Association, Inc., do, combined with our many years experience in growing fruit trees and our earnest desire to know the varieties, through our personal contact with them, while growing in the nursery rows, enables us to at once detect any possible mixture that might have gotten in, and have it eliminated immediately. We make at least two such examinations yearly. We have also adopted the policy, that we will not substitute on any customer without instructions to do so from the customer, or properly labelling the stock. Then, too, the personal supervision by members of our firm during the filling and packing of our orders enables us to avoid any mixtures in the packing house.

Another factor is that you are dealing direct with the men that are interested in you. We employ no agents, giving you the direct advantage of the agent's commission, through the low prices we make on our stock. We must and will treat you fair and square. You cannot know the real advantages of doing business this way until you have talked with some members of our firm at the many exhibits we hold—until you have placed an order with us—until you have received the stock—until you have seen, to your own satisfaction, the high quality of it, and the way it grows for you. It is then you will realize we are truly SINCERE in our dealings with every customer.

Cherry Trees

Any well-drained soil will be found to be adapted to the sturdy growth of cherry trees. Our cherries are all budded on imported French stocks and these form a fibrous root which reduces considerably the loss in planting.

Prices of All Varieties of Sweet Cherry.

Sour Cherry Trees, 10c less per tree.	Each.	10.	100.
Large Size, 2 year, 5 to 6 feet....	\$.75	\$6.50	\$60.00
Medium Size, 2 year, 4 to 6 feet	.65	5.50	50.00
Small Size, 2 year, 3 to 4 feet....	.55	4.50	40.00
Large Size, 1 year, 1 1/16 up, 5 ft. up	.65	5.50	50.00
Medium Size, 1 year, 9/16 to 1 1/16, 4 ft. up..	.60	5.00	42.00
Small Size, 1 year, 7/16 to 9/16, 3 ft. up.....	.50	4.00	32.00

Sour Cherries, 1 year are well branched, Sweet Cherries are mostly whips. They are well rooted. 50 trees at 100 rate. Write for special prices for lots of more than 100 trees.

SOUR CHERRIES

10c Less Per Tree

ENGLISH MORELLO. Easily grown, generally producing a heavy crop. Fruit dark red, quality good; rich, acid flavor; late. Hardy for extremely cold latitudes. August.

EARLY RICHMOND. One of the most valuable and popular cherries, unsurpassed for cooking purposes. It is the good old variety that yields such marvelous crops in the gardens. The most hardy of all varieties, uninjured by the coldest winters.

LARGE MONTMORENCY. This is the best of all the sour varieties of Cherries. There is a greater demand on the market for this Cherry than for any other. The trees are the cleanest and best growers and are less subject to disease, less affected by wet weather, and are the best bearers of the best fruit of all other sour varieties. No matter how unfavorable the season may be, Montmorency can be depended upon for a full crop. The Montmorency is a good shipper, very attractive looking and always brings good prices. The canning factories are always calling for them and want them by the hundreds of tons. The fruit is good-sized, fine flavored and bright clear red. Fruit ripens ten days after Early Richmond.

SWEET CHERRIES

BING. This valuable black cherry succeeds everywhere. Flesh very solid, flavor of the highest quality, a fine shipping and market variety. July.

BLACK TARTARIAN. Very large; bright purplish black; half tender; juicy, very rich. Tree a remarkably vigorous and erect grower, and an immense bearer. One of the most popular varieties in all parts of the country. June.

GOVERNOR WOOD. Large, heart-shaped; light yellow, mottled light red, juicy, sweet and rich. Tree vigorous, productive; forms a round head. An old variety still a favorite in many regions.

LAMBERT. One of the largest of all Cherries. It is purple red; firm and rich. Every year sees an enormous crop, and the tree not only grows well but is proof against insect and fungus attacks.

NAPOLEON BIGGAREAU (Royal Ann). A beautiful cherry of large size; pale yellow with bright red cheeks; flesh firm, juicy and sweet; one of best for market and canning. Hardest of light yellow cherries and deservedly popular.

SCHMIDT'S BIGGAREAU. The fruit is of very large size, of deep mahogany color. Flesh dark, tender, very juicy, with a fine rich flavor. Fruit grows in clusters. Is an excellent shipper. July.



Large Montmorency.

WINDSOR. Tree upright, vigorous and a rapid grower; fruit large, roundish, oblong; very firm and juicy; flesh pinkish and sometimes streaked; quality very good; a productive bearer; has attracted attention owing to its large size and dark color; almost black. July.

YELLOW SPANISH. A pale yellow cherry with bright red cheek in the sun. It is one of the best, most beautiful and popular of all the light-colored cherries; vigorous and productive.

FINE STOCK—WELL PLEASED

Sharon, Mass., April 29, 1930.

Bountiful Ridge Nurseries,
Princess Anne, Maryland.

Gentlemen:

The plants I ordered came a few days ago and I wish to thank you for the Bountiful way in which you filled my small order, and the plants are such good ones. I am much pleased and will recommend you to my neighbors.

Yours truly,

M. HAMMOND.

LARGE SHRUBS—DELIGHT CUSTOMER

Mt. Jackson, Va., April 28, 1930.

Bountiful Ridge Nurseries,
Princess Anne, Maryland.

Gentlemen:

The shrubs came today. I am delighted with the size and condition of the plants. Thanks so much for the extra ones you enclosed.

Yours truly,

MRS. D. O. FOLEY.

OVER 400 CHERRY—ARRIVE IN GOOD CONDITION

Lewistown, Penna., April 10, 1930.

Bountiful Ridge Nurseries,
Princess Anne, Maryland.

Gentlemen:

The Cherry Trees came through very nicely and I think in very nice shape. I want to thank you for your promptness and courtesies. I will see you again regarding Apple trees.

Yours respectfully,

P. M. HEADINGS.

Pear Trees

The Pear is the most delicious of modern fruits on account of its fine, juicy texture, exquisite flavor and aroma. While some varieties do better if picked when partially ripe and finished indoors, yet the really enjoyable supply should come from the home orchard, planting a number of varieties that will ripen in succession, from fall to winter. Some points in favor of pears are: they begin bearing in a very few years after planting; seldom miss bearing at least a partial crop, for which there is a ready sale, besides they are one of the most healthful of our fruits.

The soil most congenial to this fruit is a strong clay loam, but it will succeed in any good soil, providing it is moderately rich and dry. The usual distance for planting is about 25 feet each way, but if the soil is not very strong, 20 feet is sufficient. All our standard pears are propagated on imported Japanese blight-resistant stock which insures a strong, hardy growing tree. Do not fertilize pear trees very much, as it encourages blight.

PRICES ALL PEAR TREES, STANDARD AND DWARF

Except Keiffer, Which Are 10c Less Per Tree

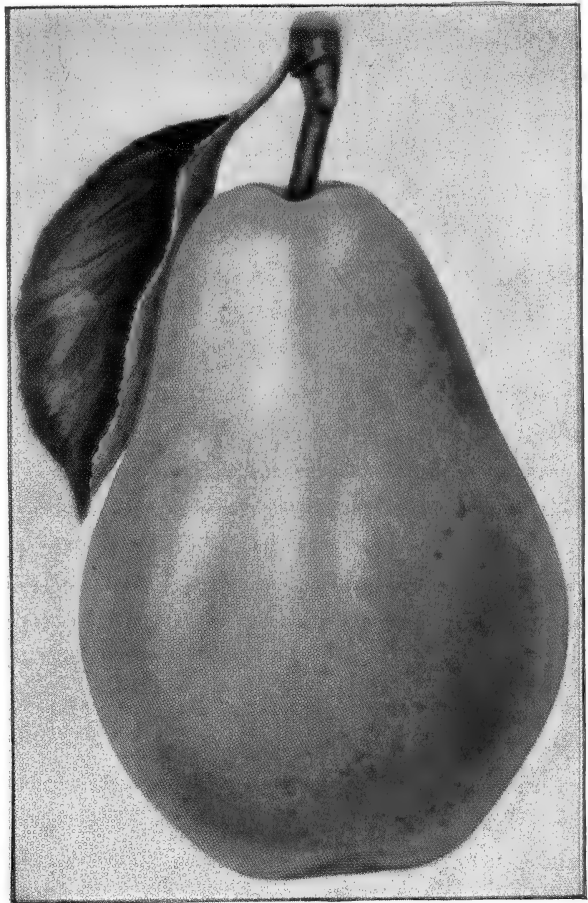
	Each.	10.	100.
Large Size, 2 yr., 5 to 6 ft..	\$.30	\$5.00	\$40.00
Medium Size, 2 yr., 4 to 6 ft..	.70	4.00	35.00
Smaller Size, 2 yr., 3½ to 5 ft.	.60	3.00	25.00
Best One-Year, 4 to 5 ft. buds	.70	4.00	35.00
Medium Size, 1 yr., 3 to 4 ft.	.60	3.00	20.00

SUMMER PEARS

BARTLETT—Lagre Size. Golden yellow when ripe, with a beautiful blush next the sun. Buttery, very juicy, and highly flavored; tree a strong grower, bears early and abundantly; very popular. August, September.

CLAPP'S FAVORITE. A large fine pear resembling the Bartlett; pale lemon-yellow with brown dots, and a fine texture, melting, buttery, juicy with a delicate flavor; tree hardy and productive. August and September.

WILDER. Medium to small, greenish-yellow with brownish-red cheek; melting, sweet and very pleasant; tree vigorous and starts to bear quite young. Early.



Bartlett Pear.

AUTUMN AND WINTER PEARS

ANJOU (Buerre d'Anjou). A large fine pear, buttery and melting, with sprightly flavor; tree a fine grower and very productive. One of the best. October to January.

BEURRE BOSCH. Greatly esteemed. A large, yellow pear; flesh white, rich and delicious; has long stem which allows it to sway in heavy winds without dropping. Tree slow grower, but most productive; keeps until Christmas.

DUCHESS D'ANGOULEME. Very large, greenish yellow, sometimes russeted; makes a beautiful tree, a heavy bearer; buttery, melting and sweet. A dependable cropper and good market sort. October and November.

FLEMISH BEAUTY. Large, juicy, melting and rich; a strong grower and good bearer; very hardy but prefers sunny situation. September and October.

KIEFFER. Large; golden yellow, often blushed in the sun; juicy and melting. Tree healthy, hardy and vigorous.

LAWRENCE. Medium, yellow with brown dots, melting, pleasant, aromatic. November and December.

SECKEL. Small, rich, yellowish-brown; one of the best flavored pears known; very productive. September and October.

SHELDON. A large, round, russet and red pear of very rich fine quality, melting and delicious. Tree vigorous; bears well. October.

WORDEN-SECKEL. This beautiful and delicious pear attracted wide attention when introduced recently. In quality it is rated very high. In size it is much larger than Seckel. It is shaped like Bartlett, but is not as large. October.

Dwarf Pear Trees

The cultivation of Dwarf Pears is very profitable. The trees are low-headed and the fruit is easily handled and comes into bearing usually the second or third year. We recommend the following varieties to be good growers and bearers and to give the best satisfaction as dwarfs:

Bartlett **B. D. Anjou** **Clapp's Favorite**
Duchess **Worden-Seckel** **Seckel**

(For description of these varieties, see Standard Pear.)

GOOD STOCK—WELL ROOTED

Colgate, Md., April 8, 1930.

Bountiful Ridge Nurseries,
 Princess Anne, Maryland.

Dear Sirs:
 Received our order in very good condition. I am indeed very much pleased with the plants they were really above my expectations. They were shipped in a very satisfactory way, although we were unable to go and get them until two days after receiving notice, they were nice and moist.

Yours truly,
 MRS. R. J. PLUEMER.

Hartwood, Va., May 14, 1930.

Bountiful Ridge Nurseries,
 Princess Anne, Md.

Gentlemen:
 I received my order from you in perfect condition last Monday. The finest order I have ever received from any Nursery in my life.
 Yours truly,
 MRS. FLOSSIE MILLS.

Quince Trees

All Varieties, 2 year, 4 to 5 feet, 5/8 inch caliber, 80c each; \$6.00 per 10.

ORANGE. Roundish, bright golden yellow, very large, fine grained, fine quality. Best for cooking. Firm, will stand shipping.

CHAMPION. Fruit very large, fair and handsome. Bears abundantly while young; flesh cooks as tender as an apple without hard spots and cores; flavor delicate; quince taste.

Apricot Trees

All Varieties, Fine 4 to 5 ft. Trees, 60 each; \$4.00 per 10.

ALEXANDER (Russian). Medium to small, light orange, yellow flecked with red; flesh tender, juicy, sweet and good quality; hardy; very productive. July.

MOORPARK. One of the largest; orange yellow with numerous specks and dots; flesh yellow, sweet, juicy and rich. August.

EARLY GOLDEN. A good variety; very large, deep golden yellow, and fine in quality.

Currants

The currant is one of the most valuable of small fruits. They mature just before raspberries and can be used either raw or cooked. Being very hardy, they do not winter-kill and are easy of cultivation, requiring little care. They can be grown in any good garden soil. Currants should be planted four feet apart.

PRICES OF ALL VARIETIES

Two-Year, No. 1, Strong Bushes:
25c each; \$2.00 per 10; \$15.00 per 100.

CHERRY. The largest of all red currants; berries sometimes more than one-half inch in diameter; bunches short; plant very vigorous and productive when grown in good soil and well cultivated.

FAY'S PROLIFIC. For size, beauty and productiveness it is a remarkable red currant. The berry is equal to cherry currant, while the flavor is superior. The stem is long, which permits rapid picking; valuable for both market and home. Fruit hangs on well, never dropping, as in other currants.

PERFECTION. Bright red, and of a size larger than the Fay; size of berries is maintained to end of bunch. It is one of the most productive currants. Rich, mild, sub-acid flavor and having plenty of pulp with few seeds. You can pick Perfections fast as cherries.

WHITE GRAPE. Very large, yellowish white; sweet or very mild acid; excellent for table. The finest of white sorts. Very productive.

WILDER. Very large; bright red and attractive; a splendid sort; not so acid as most. Bush very productive; large bunches; ripens rather early, fruit keeps well.

Gooseberries

The Gooseberry requires a deep soil, well manured, and, if inclined to be dry, should be mulched to retain moisture. The bushes should be thoroughly trimmed and pruned to obtain large, fine fruit.

PRICES OF ALL VARIETIES

Fine, Strong Two-Year Bushes, No. 1:
25c each; 6 to 10, 20c each; 50 to 100, 18c each.

Full Planting Instructions go with every order when shipped.

NUMBER OF TREES OR PLANTS TO THE ACRE (Square System)

Distance	No. of Trees	Distance	No. of Trees	Distance	No. of Trees
1 foot apart each way.....	43,560	9 feet apart each way.....	537	17 feet apart each way.....	150
2 feet apart each way.....	10,890	10 feet apart each way.....	435	18 feet apart each way.....	134
3 feet apart each way.....	4,840	11 feet apart each way.....	360	19 feet apart each way.....	120
4 feet apart each way.....	2,722	12 feet apart each way.....	305	20 feet apart each way.....	108
5 feet apart each way.....	1,745	13 feet apart each way.....	257	25 feet apart each way.....	69
6 feet apart each way.....	1,210	14 feet apart each way.....	222	30 feet apart each way.....	48
7 feet apart each way.....	888	15 feet apart each way.....	193	35 feet apart each way.....	35
8 feet apart each way.....	680	16 feet apart each way.....	170	40 feet apart each way.....	27

We will be glad to be of any service we can in solving your planting problems.

DOWNING. Fruit large, round, light green with distinct veins, soft, juicy and fine flavored; vigorous and productive; smooth skin. One of the best.

HOUGHTON. Medium size, pale red, sweet and juicy; vigorous grower, abundant bearer and free from mildew. Considered by many the best paying sort in cultivation.

RED JACKET (Josselyn). Large size, smooth, prolific and hardy. Has been tested by the side of all leading varieties, is freest from mildew of all. A wonderful cropper, with large, smooth, pale red fruit of first-class flavor.

Asparagus

All Strong, Healthy Roots, 2 year, No. 1: 25 for 60c; \$2 per 100; \$7 per 500; \$12 per 1,000. Write for Price on Large Quantities.

MARTHA WASHINGTON

A new rust-resistant variety of great promise that is being planted largely in every asparagus section. The stalks are large, dark green, with a heavy purple overtone. The tips are tight and firm and do not open until well out of the ground.

PALMETTO.

The most popular variety, both for home garden and commercial planting. Larger, more productive, earlier than Conover's Colossal.

CONOVER'S COLOSSAL.

This variety is much superior in size and quality to any of the old common sorts, being remarkably tender and fine flavored.



Washington Asparagus.

Rhubarb

Each. 10. 100.
Strong Two-Year Plants.....\$.20 \$1.00 \$7.00

MYATT'S LINNAEUS. Those who have never grown this variety, which is of superior quality, will hardly recognize the old "Pie Plant." It is an early, tender variety, without being in the least tough or stringy, with a mild sub-acid flavor.

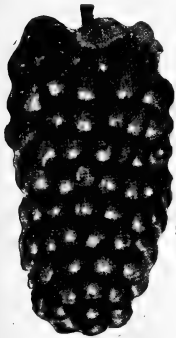
Blackberries

Blackberries are among the best known and most valued of our berries. No fruit of any kind is more wholesome. A liberal use of berries and other good fruits will save doctor bills. Blackberries should be planted in rows 6 to 7 feet apart, 3 to 4 feet in the row. Keep the ground light, rich and clean, and pinch the canes back when they have reached 4 feet in height.

Prices, Strong, Well-Rooted Plants, All Varieties:
\$1.50 per 25; \$4.00 per 100; \$30.00 per 1,000.

BLOWERS. Large size, jet black, good shipper, best quality and unexcelled productiveness are the main characteristics of this splendid new sort.

ELDORADO. Vine is vigorous and hardy; berries are very large, black, borne in clusters; ripens well together; sweet, melting and pleasant to the taste.



Dewberries

The Dewberry is a dwarf and trailing form of the Blackberry. The fruit is highly prized as a market fruit owing to its large size and fine quality. Set the plants 2 feet apart in the row and cover in winter with coarse litter. Should be mulched in the spring to keep them off ground.

	No. 1 Plants, Prices:			
Each.	10.	25.	100.	1,000.
	\$.10	\$.60	\$ 1.00	\$ 2.00
				\$ 16.00

LUCRETIA. Perfectly hardy and remarkably productive; said to be the best of this class of fruit; ripens early, is often 1½ inches long by 1 inch in diameter; sweet, luscious and melting. This variety is highly recommended.

Lucretia.

AUSTIN'S DEWBERRY. Fruit very large. Enormous bearer. The most productive market variety we have ever grown, and is 8 to 10 days ahead of any other. Strong and vigorous grower.

Strawberries

CULTURE OF STRAWBERRIES

The ground should be prepared the same as for the other crops; if not already rich, make it so by manuring. Mark out the rows the desired width and set plants 12 to 17 inches in rows; if set 12 inches in rows, 4 feet apart, an acre will require 10,890 plants—same as if 16 inches in rows 3 feet apart. Keep in rows and cultivate. A new bed should be planted every two or three years.

PRICES STANDARD ONE-CROP VARIETIES

All Varieties, Fine Well-Rooted Plants:
25 for 75c; \$1.50 per 100; \$5 per 500; \$8 per 1,000.
Write for Prices on Lots of 5,000 and More.

Because of the extremely dry season this past year the supply of strawberry plants is limited everywhere. Order early so you will not be disappointed.

EARLY VARIETIES

PREMIER or HOWARD No. 17. The very best of all extra-early varieties. Berries are large, beautifully formed, bright red through and through. It is delicious in flavor and a splendid shipper. We have fruited it for years and consider it the money-making king of all the early varieties. It produces a very heavy crop and you should plant heavily, whether growing for home use, local market or distant shipment.

KLONDIKE. Large; red; flesh firm; red to the core, with a mild and delicious flavor, unlike any other variety. It is very popular with southern growers who ship. Plant tall, compact, vigorous grower; resists frost well and yields good crops. Perfect.

MID-SEASON VARIETIES

AROMA. Perfect. By all means plant Aroma. It is the standard late variety that brings big profits to growers everywhere as it thrives in any climate, the heavy, dark green foliage making it disease-resisting to a remarkable degree. Aroma is a steady producer of big, round, deep red, glossy berries of excellent eating quality.

SENATOR DUNLAP. This berry is the Warfield type, has a perfect blossom, is hardy, productive, a splendid keeper and able to hold its own under any "rough and tumble" methods of culture to which it is likely to be subjected. It is a very heavy bearer.

MISSIONARY (Per.). The originator describes it as follows: "Large size, beautiful color; large double calyx, like Gandy; immensely productive. Very rich and best quality; best shipper."

LATE VARIETIES

LUPTON. A very large handsome berry and an excellent shipper, compares in size with Chesapeake. A good seller on all markets.

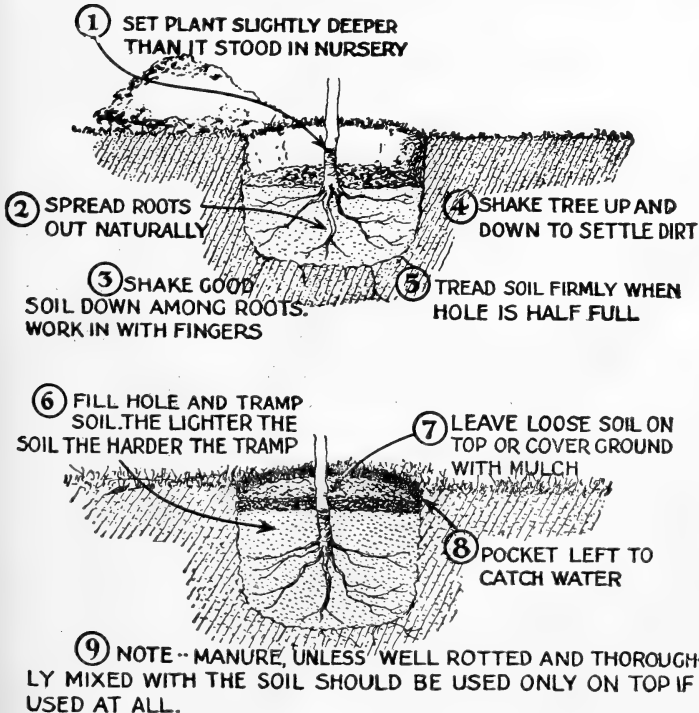
CHESAPEAKE. This very large, high quality berry is considered by all growers to be one of the best late berries in cultivation. Blooms late, nearly always gives a crop.

BIG LATE. A strong growing late berry producing heavy crops of large high quality fruit. It is exceptionally resistant to rust and other common diseases of the berry plant.

GANDY. Large, light crimson; flesh of firm, good quality. Plants vigorous but should be planted in swamp or moist, clay soils. Perfect.

BIG JOE. Perfect. Midseason. Big Joe is one of the highest priced and most popular berries in the New York markets. Plant a strong grower, makes lots of plants, and a good fruiting bed. Berries handsome, firm, and of good quality.

How to Plant a Tree or Shrub



Mastodon Everbearing STRAWBERRY—Best Everbearer Known

Called by some Western Specialist
"The Wonderberry"

We find this to be truly the largest, most delicious and heaviest yielding of all Everbearing sorts. It outyields some of the finest June bearing sorts during their season and continues to bear, throughout summer and fall, berries of amazing size and surpassing quality. For best results (though this is not essential), plants should be disbudded up to July 1. They will then bear banner crops beginning early in August and continue to produce heavy crops of delicious berries right up until severe freezing weather. Tried and proven in the East to be the best.

25 plants ... \$1.00	300 plants ... \$ 6.00
50 plants ... 1.25	500 plants ... 8.00
100 plants ... 2.25	1000 plants ... 12.00

Raspberries

PRICES OF RASPBERRY PLANTS

Fine, Strong, Well Grown Plants, No. 1:

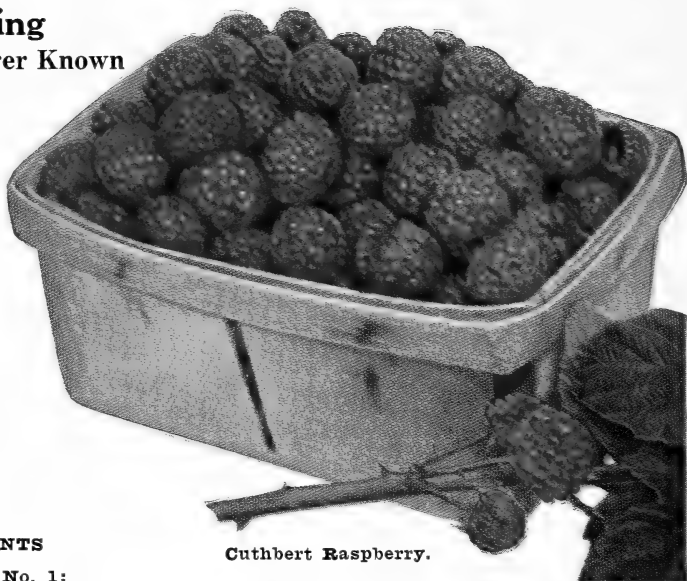
25 for \$1.25; \$3.00 per 100; \$25.00 per 1000.

A ready market can always be found for raspberries. When well cared for they are sure to return a good profit. A patch of raspberries should be renewed about once in five years, as by that time the quality of the berries deteriorates and the fruit becomes small. The plants should be well manured and cultivated at frequent intervals. In training allow only a few canes to grow from each plant, cutting away all suckers to throw the strength into the stalk for bearing; all old canes should be removed immediately after the fruit is all picked. Cut out old and weak shoots each year.

CUTHBERT (Red). Large, bright scarlet-crimson, excellent quality, firm, juicy and refreshing, vigorous grower, hardy and productive; very popular as a home garden and market berry.

KANSAS (Black). Large, round, firm, moderately juicy, strong grower, and very productive; ripens early; considered one of the best market berries on account of handsome appearance.

CUMBERLAND (Black). The largest of all black caps; healthy, vigorous grower, throwing up stout well branched canes that produce immense crops of magnificent berries. Fruit very large, firm, quality about the same as Gregg.



Cuthbert Raspberry.

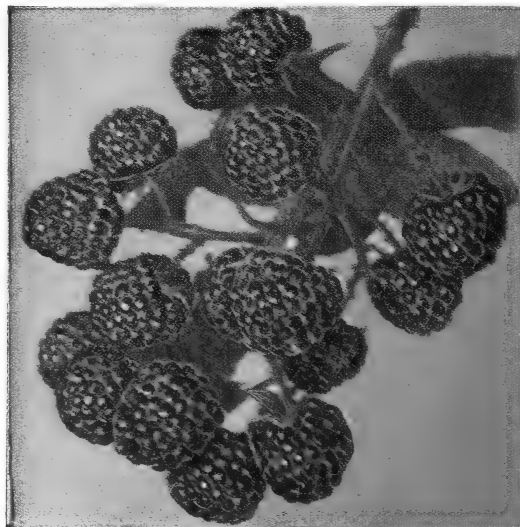
COLUMBIAN (Purple). Berry is firm, dark red and adheres to the bushes for a long time; a strong grower, attaining large size. One of the hardiest and most productive.

PLUM FARMER (Black). It is covered with a grayish bloom, like the bloom on a grape, which makes it very attractive in appearance. It ripens very early and quickly. The fruit is enormously large.

ST. REGIS EVERBEARING (Red). The new everbearing variety. It gives a crop of fruit all summer and autumn, fruiting on the old canes in generous quantities until late in August. By this date berries begin to ripen on the young canes and continue until late in autumn. Berries are a bright crimson of large size and of surprising quality, sugary with full raspberry flavor.

LATHAM (Redpath). The new mosaic-free hardy red raspberry. Without question Latham is the most profitable Red Raspberry for commercial planting. It is absolutely hardy. It cannot be surpassed in productiveness, out-yielding even Cuthbert. Due to its rich brilliant red color it sells readily on market stands, and in addition is a delightful table berry, and almost a perfect berry for canning. The berries are large, round and unusually firm, exceptionally well suited for shipping to distant markets. It ripens evenly over a very long season.

Prices: Strong No. 1 Plants of Latham, 25 for \$2.00; 100 for \$5.00; 500 for \$20.00; 1,000 for \$35.00.



Cumberland Raspberries

STURDY TREES—WELL PACKED

Harrisburg, Penna., April 21, 1930.

Bountiful Ridge Nurseries,
Princess Anne, Maryland.

Gentlemen:

This will acknowledge receipt of the shipment of Nursery stock at Lemoine, Penna.

I want to congratulate you on sending out such fine specimens. The stock was not only very sturdy but had been packed very carefully and was received in very good condition.

Very truly,

BOARD OF GAME COMMISSIONERS.

LONG SHIPMENT—TREES ALL GROW

Stephenville, Texas, May 12, 1930.

Bountiful Ridge Nurseries,
Princess Anne, Md.

The trees were received April 17th so they must have been on the road a month. They are all alive and growing.

Yours truly,

J. E. FITZGERALD.

Grape Vines

Because of their adaptability to any place where there is a bit of soil, grapes are often a source of considerable profit. In fact, some fruit growers say that if you can plant but one kind of fruit, let that be grapes. They require little care and as a rule will produce most abundantly. Rocky hill-sides on which no other fruit would thrive will produce wonderful crops of grapes and show profits that will overshadow any other part of the farm. Good grapes command high prices and will find a ready market anywhere. We have the following varieties. Only the best:

CONCORD PRICES

	Each.	10.	100.
1 Year, No. 1.....	\$.20	\$1.00	\$7.00
2 Year, No. 1.....	.20	1.50	8.00

ALL OTHER VARIETIES

1 Year, No. 1.....	.20	1.25	10.00
2 Year, No. 1.....	.25	1.50	12.00
50 at 100 rate.			

Write for Prices on Lots of 1,000 or More.

AGAWAM. Bunch large, berry large, reddish brown, tender, vinous and of excellent flavor. Very vigorous and productive. Vine hardy and one of the best in its class.

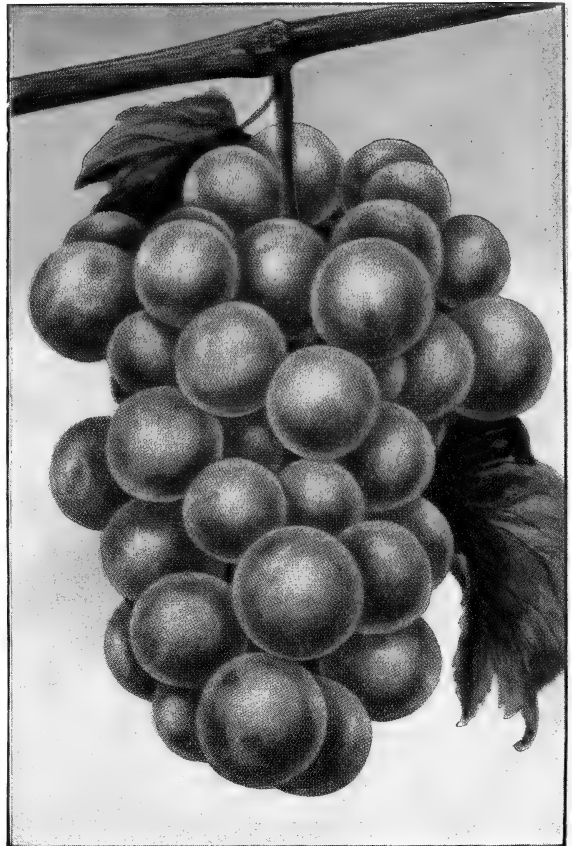
CONCORD. The Standard commercial grape. The old reliable Concord—the standard by which all the other black grapes are judged—a lifetime money maker! Whatever other varieties are grown no vineyard or arbor is complete without a liberal planting of Concord. Our Concord vines are well rooted, and are guaranteed to give perfect satisfaction, producing huge bunches of deepest purple grapes of very finest flavor.

CATAWBA. Bunches medium, shouldered; berries large, deep coppery red, becoming purple when ripe; flesh somewhat pulpy; juicy, sweet, aromatic and rich.

MOORE'S EARLY (Black). Early black; similar to Concord in looks and quality, and ripens about two weeks earlier. Has a peculiarly sweet flavor all its own. Vines are healthy, vigorous, hardy heavy bearers.

NIAGARA. Occupies the same position among the white varieties as Concord among the black. Bunch and berries are large, greenish white, changing to pale yellow when fully ripe. Skin thin but tough; quality much like the Concord.

WORDEN. Seedling of the Concord, which it greatly resembles in appearance and flavor, but the berries are larger. The fruit is said to be better flavored and to ripen several days earlier. These qualities will give it the foremost rank among native grapes.



Caco Grapes.

CACO (Red). This new grape is of the highest quality being so rich in sugar and excellent in flavor it can be eaten two weeks before it is ripe. The grapes are very large, bunches good size, compact and good form. The vines are strong growers, hardy and prolific. Ripens one week before Concord. **Large 2-year No. 1 vines; 50c each; 10 for \$4.00; 25 for \$8.50; 50 for \$15.00; 100 for \$27.**

Nut Trees

PECANS

SCHLEY. Of all the varieties of this luscious and valuable nut family, the Schley and Stewart stand at the head of the list. The Schley is a thrifty, strong grower; nuts long, well-filled, with a very thin paper-like shell. **Trees 3 to 4 ft., \$1.50 each; Trees 2 to 3 ft., \$1.25 each.**

STUART. Probably the best known and most valuable of all the Pecans. Extremely hardy and a strong grower. Nuts of good size and well filled; shell very thin and easily opened. **Trees 3 to 4 ft., \$1.50 each; Trees 2 to 3 ft., \$1.25 each.**

PRICES on large quantities of English Walnuts and Pecans will be given on application.

JAPAN CHESTNUT. Of dwarf growth—not strictly speaking, a tree; productive and bears extremely young; nuts of immense size; fair quality. Not so highly flavored as the native American Chestnut. **Price of 5 to 6 ft. Trees, \$2.00 each; 4 to 5 ft. Trees, \$1.50 each.**

BLACK WALNUT. The common Black Walnut is very productive in nuts, which are liked by many. **Price, 5 to 6 feet, 90c each; 10 for \$8.00. 4 to 5 feet, 80c each; 10 for \$7.50. 3 to 4 feet, 60c each; \$5.00 for 10.**



English Walnut.

ENGLISH WALNUT. Tree valuable for its fruit and shade; the nuts are thin shelled and equal to any you can buy out of the stores; full meated kernels of delicious flavor; hardy and productive. Independent fortunes will be made in growing English Walnuts for the man or woman who now plants an orchard of from one to 500 trees. The investment will prove to be better than the purchase of government bonds. **Price for 3 to 4 ft. Trees, \$1.50 each; Trees 2 to 3 ft., \$1.00 each.**



Barberry Thunbergi.

Ornamental Hedges

RED BARBERRY BUSH

BARBERRY, NEW RED-LEAF (*Berberis Thunbergi* *Atropurpurea*). Similar to Barberry Thunbergi but the foliage of this new variety is of a rich, lustrous, bronzy red. It becomes more brilliant and gorgeous throughout the summer, and in the fall its foliage changes to vivid orange, scarlet and red shades. Scarlet berries remain on the plant the entire winter. All that is required to develop its brilliant coloring at all seasons is that it be planted in full exposure to the sun. Grows 3 feet. Price; 10 to 12 inches, 35c each; 10 for \$3.00; \$23.00 per 100; 15 to 18 inches, 60c each; \$5.00 per 10; 12 to 15 inch, 45c each; \$4.00 for 10.

JAPANESE BARBERRY HEDGE (*Japanese Barberry*). A pretty dwarf species that will fit into almost any planting and will grow in most any place. Handsome foliage of bright green oval-shaped leaves which turn to the most brilliant shades of coppery red and orange in autumn and which remain on until late fall. The slender, graceful little branches are lined with small scarlet berries which hang until well into winter and help give life to the shrubby border, especially when there is snow on the ground. Used for foundation and group plantings and hedges. (Does not harbor wheat rust.) Height 2 to 3 feet. 12 to 18 in., \$2.00 per 10; \$12.00 per 100. 18 to 24 in., heavy, \$2.50 per 10; \$16.00 per 100. 2 to 3 ft., \$3.00 per 10; \$20.00 per 100.

CALIFORNIA PRIVET (*L. Ovalifolium*). California Privet, will give you living fences for less than you can build them of wire. Fences of this kind add a wonderful touch of beauty to the home ground, and they can be sheared into any shape or size or allowed to grow naturally. A few dollars invested in California Privet will add many times their value to your property, besides making it more beautiful. Plant California Privet grown by us and you will soon realize that live fences are best. 12 to 18 in., 60c per 10; \$5.00 per 100; \$30.00 per 1,000. 18 to 24 in., 80c per 10; \$6.00 per 100; \$35.00 per 1,000. 2 to 3 ft., \$1.00 per 10; \$7.00 per 100; \$55.00 per 1,000. 3 to 4 ft., \$1.50 for 10; \$10.00 for 100.

AMOOR RIVER PRIVET NORTH (*L. Amurense*). A valuable ornamental shrub for hedges and borders; very hardy; foliage glossy green, and holds its color almost the entire year; will stand shearing to any extent. Well branched, 18 in.,

\$1.00 for 10; \$8.00 per 100. 2 to 3 ft., 10 for \$1.25; 100 for \$10.00. 3 to 4 ft., 10 for \$1.50; \$11.00 for 100; 4 to 5 ft., \$1.75 for 10; \$15.00 for 100.

GLOBE PRIVET. This is regular California Privet carefully sheared into ball-shaped specimen plants. Each plant is perfect and very dense, giving compact ball effect. Very attractive and are used extensively as markers for driveways, walks, and to border lawns and terraces. Dark green foliage which hangs till late in winter. 9x9 inch ball, 40c each; \$3.00 for 10. 12x12 inch ball, 50c each; \$4.00 per 10. 18x18 inch ball, 60c each; \$5.00 for 10.

Weeping Trees

TEA'S WEEPING MULBERRY (*Morus Tartarica* *Pendula*). A graceful and beautiful hardy tree, forming a perfect umbrella-shaped head, with long slender, willowy branches, drooping to the ground and gracefully swaying in the wind; foliage small, lobed and of a delightful, fresh, glossy green. First class 2-year heads, 5 to 6 ft. stem, \$2.75 each.

WEEPING WILLOW, BABYLONIAN (*S. Babylonica*). The well known, common weeping willow; makes a large tree covered with drooping branches. 6 to 8 ft., \$1.00 each.

WEEPING WILLOW, WISCONSIN (*S. Babylonica*, *var. dolorosa*). Of drooping habits and considered the hardiest; valuable on account of its ability to resist severe cold. 6 to 8 ft., \$1.00.

RECEIVED IN PERFECT CONDITION

Middletown, N. J., Nov. 23, 1929.

Bountiful Ridge Nurseries,

Princess Anne, Md.

Dear Sirs:

I received the trees in perfect condition, and thanks for the extra Richarded Delicious. I was sorry to hear that the Blaxtayan is not grown by you but if they are one-half as good as your trees I will be very well satisfied.

I am

Very truly yours,

WILLIAM KANE.

Cleveland, Ohio, Nov. 23, 1929.

Bountiful Ridge Nurseries,

Princess Anne, Md.

Dear Sirs:

Received trees from you yesterday the 22nd and heeled them in this morning. Am well satisfied with trees.

Yours truly,

M. A. CECIL.



Tea's Weeping Mulberry.

Shade and Ornamental Trees

We give special prices for street and park plantings using 50 trees or more. Write to us giving quantities and grades desired.

ASH, AMERICAN WHITE (*Fraxinus americana*). Its foliage is dark green, lustrous above, whitened beneath. In autumn it changes to the most gorgeous of purple and yellow tones. 4 to 6 ft., 50c each; 6 to 8 ft., 90c each; 8 to 10 ft., \$1.25 each.

ASH, GREEN (*Fraxinus lanceolata*). A medium grower and valuable for planting on the streets or in parks. Does well for windbreaks. 4 to 6 ft., 75c each; 6 to 8 ft., \$1.00 each; 8 to 10 ft., \$1.50 each.

ASH, EUROPEAN MOUNTAIN. Hardy tree; head dense and regular, beautiful fern-like green foliage; covered from July till winter with clusters of bright red berries. The combination of foliage and clustered fruits makes this one of the most striking and beautiful trees that grow. 6 to 8 ft., \$1.00; 8 to 10 ft., \$1.50 each; \$14.00 for 10; 10 to 12 ft., \$2.00 each; \$16.00 for 10.

BECHTEL'S DOUBLE FLOWERING CRAB (*P. Angustifolia*). One of the most beautiful of the flowering crabs; tree of medium size, covered in early spring with large, beautiful fragrant flowers of a delicate pink color. 3 to 4 ft., \$1.00 each.

BIRCH, WHITE (*Betula Alba*). Erect growing. Branches slightly drooping and attractive bark which is almost white. Very beautiful for individual specimen planting. 6 to 8 ft., each \$1.50; 8 to 10 ft., \$2.00 each; \$17.00 for 10.

CATALPA BUNGEI (*Umbrella Catalpa*). Perfectly hardy and flourishes in almost all soils and climates. Leaves large, glossy, heart-shaped, deep green; lie like shingles on a roof; always makes a symmetrical head. Desirable for lawn, park and cemetery planting. 6 ft. stems, 2 year heads, \$1.75 each; 5 ft. stems, 2 year, \$1.50; 5 ft. stems, 1 year, \$1.25.

ELM, AMERICAN WHITE (*U. Americana*). A magnificent tree growing 80 to 100 feet high with drooping spreading branches. One of the grandest of our native trees. 8 to 10 ft., \$2.00 each; 6 to 8 ft., \$1.50 each; \$12.50 for 10.

JUDAS TREE, or RED BUD (*C. Canadensis*). A medium size tree with large irregular head and perfect heart-shaped leaves. The profusion of delicate reddish-pink blossoms with which it is covered in early spring before the foliage appears make it one of the finest ornamental trees. 5 to 6 ft., \$1.00 each; 6 to 8 ft., \$1.25.

MIMOSA. A beautiful shade tree. Spreading in habits of growth and has feathery foliage. Its cotton-like crimson tinted bloom is very ornamental through the summer months. 2 to 3 ft., 70c each; 5 for \$3.00; 3 to 4 ft., \$1.00 each; 5 for \$4.00.

MULBERRY, NEW AMERICAN. Largest fruit; black; delicious flavor; a very attractive lawn tree, with very large leaves. Of rapid growth. Hardy. 6 to 8 ft., \$1.00 each.

MAPLE, NORWAY (*A. Platanoides*). A large, handsome tree, with broad, deep green foliage; has a very compact growth; a valuable tree for parks, lawns or streets. 6 to 8 ft., \$2.00 each; \$17.50 for 10; 8 to 10 ft., \$3.00 each; \$25.00 for 10.

MAPLE, SILVER-LEAVED or SOFT (*A. Dasy-carpum*). A rapid growing tree of large size, irregular rounded form; foliage bright green above and silver beneath; a favorite street and park tree. 6 to 8 ft., 90c each; 8 to 10 ft., \$1.00 each; 10 to 12 ft., \$1.50 each; \$12.50 for 10.

MAPLE, SUGAR or HARD (*A. Saccharum*). A well-known native tree, valuable both for the production of sugar and wood; very desirable. 6 to 8 ft., \$2.00 each; 8 to 10 ft., \$3.00.

MAPLE, WIER'S CUT-LEAVED (*A. Wierii Laciniatum*). A variety of the Silver-leaved, and one of the most beautiful with cut or dissected foliage; rapid growth, shoots slender and drooping. 6 to 8 ft., \$1.50 each.



Catalpa Bungei.

ORIENTAL PLANE, or EUROPEAN SYCAMORE (*P. Orientalis*). A rapid growing, erect tree with bright green foliage; much more esteemed than the American variety as a shade tree; very desirable for parks, street and lawn. 8 to 10 ft., \$2.00 each; 6 to 8 ft., \$1.25 each.

POPLAR, CAROLINA (*P. Eugeni*). Very strong growing tree of broad, columnar shape. Does not produce the annoying "cotton" of the native cottonwoods. 8 to 10 ft., 75c each; 6 to 8 ft., 60c each; 4 to 6 ft., 40c each.

POPLAR, LOMBARDY. This tree grows to an immense height. May be used to good advantage for road-side planting or to break the monotony of low, round-top trees. Also valuable as a screen or windbreak. 8 to 10 ft., \$1.00 each; 6 to 8 ft., 75c each; 4 to 6 ft., 50c each.

TEXAS UMBRELLA TREE. This is a rapid-growing tree which naturally assumes a spreading head, resembling a gigantic umbrella. Its beautiful foliage and natural shape make it a most desirable shade tree. Not hardy north of Southern New York. 3 to 4 ft., 75c each; 4 to 5 ft., \$1.00 each; 5 to 6 ft., \$1.50 each.

TULIP TREE (*L. Tulipifera*). A magnificent rapid growing tree, with light green, glossy fiddle-shaped leaves and greenish-yellow tulip-shaped flowers; also known as white wood. 8 to 10 ft., \$2.00 each. 6 to 8 ft., \$1.50 each.

PRUNUS PISSARDI (*Purple-Leaved*). Leaves when young are a lustrous crimson, changing to dark purple, and retain this beautiful tint until they drop late in the autumn; no other purple-leaves tree retains its color like this. Flowers small, white, single, covering the tree. 4 to 5 ft., \$1.00 each.

PIN OAK. Broadly pyramidal in growth. Comparative fast grower, leaves very attractive. One of our finest shade trees. 6-8 ft., \$2.25; 10 for \$20.00; 8-10 ft., \$2.75 each.

RED OAK. Comparative quick growing tree. Large leaves with rich Autumn coloring of purplish crimson and red. 6-8 ft., \$2.25 each, 10 for \$20.00; 8-10 ft., \$2.75 each.

WHITE OAK. Best planted in spring. The most rugged oak of all. Slow in growth but makes magnificent tree. Very desirable. 6-8 ft., \$2.25 each, 10 for \$20.00; 8-10 ft., \$2.75 each.

Can supply all of above oaks in larger sizes if desired. Write for prices, giving sizes wanted.

Ornamental Shrubbery

In many cases it would be better to plant Shrubs in groups of several to one side of the lawn instead of following the method of planting one in a certain place and spoiling the effect of the open lawn. In most cases, three, six, eight, or twelve of one variety should be used in a particular grouping. Several such groupings make an excellent border or foundation planting.

ALTHEA (Rose of Sharon). Double assorted colors, a very desirable shrub, flowers large in late summer. 2 to 3 ft., 30c each; \$2.50 for 10.

BUTTERFLY BUSH. So named because blooms attract large numbers of butterflies. Blooms profusely, lilac colored tapering panicles, 6 to 10 inches long. Height 3 to 4 feet. No. 1 plants, 2 year, 18 to 24 inch, 35c each; \$3.00 for 10.

INDIAN CURRANT. A slender branched upright shrub, valuable for planting in shady places, as the foliage is very persistent; the fruit is purplish red. 18 to 24 inch, 30c each; \$3.00 for 10.

SNOWBERRY. An upright low-growing shrub with pink flowers in July. Showy white berries in fall. Very effective in mass in the shrubbery border. 18 to 24 inch, 35c each; \$3.00 for 10.

CREPE MYRTLE. Too much cannot be said in favor of the delicate-flowered Lagerstroemia, producing throughout the summer great clusters of delicately fringed flowers. Makes the most charming flowering hedge known. A success with everyone. Perfectly hardy as far north as central New Jersey. We have all colors—Blue, Pink and Red. Fine 2 to 3 ft. trees, 90c each; \$10.00 per dozen; 3 to 4 ft., \$1.05 each.

DEUTZIA-CRENATA. A very hardy shrub with luxuriant foliage and a profusion of double white flowers tinged with rose, produced in late June on long racemes. 18 to 24 inch, 30c each; \$2.50 for 10; 2 to 3 ft., 40c each; \$3.00 for 10; 3 to 4 feet, 50c each; 4 to 5 feet, 60c each.

DEUTZIA (Pride of Rochester). Produces large white flowers, tinged with rose; vigorous grower, profuse bloomer and one of the earliest flowers to bloom. 18 to 24 inch, 30c each; \$2.50 for 10; 2 to 3 ft., 40c each; \$3.00 for 10.

DEUTZIA LEMOINE. Somewhat dwarf habit of growing. In June the plants are literally covered with snow-white flowers. 18 to 24 inch, 40c each; \$3.50 for 10.

KERRIA (Kerria japonica). Another old garden favorite that becomes a mass of golden yellow, globe-shaped flowers in mid-spring. The branches remain green in the winter. Ultimate height, 6 to 8 feet. No. 1 plants, 18 to 24 inch, 60c each.



Deutzia, Pride of Rochester.



Weigelia Rosea.

DOGWOOD (Red-Twigged Dogwood). Good for border groupings, where the smooth, slender, bright red branches in winter make a very pleasing contrast with evergreen and snow. Thrives in shade. Height 6 to 8 feet. 3 to 4 ft., 50c each; \$4.00 per 10; 4 to 5 feet, 65c; \$5.00 for 10.

DOGWOOD (Pink-Flowering). This is a colored form of the native species of Dogwood, resembling it very closely in habits of growth, period of bloom and general behavior, bright deep rose-colored blossoms. Nice 2 to 3 ft. trees, \$3.00 each.

FORTUNE'S FORSYTHIA (Golden Bell). Medium size; flowers are of a bright yellow and appear before the leaves very early in the spring. 2 to 3 ft. bushes, 30c each; \$2.50 for 10; 3 to 4 ft., 45c each; 4 to 5 ft. 50c.

FORSYTHIA (Intermedia). One of the most floriferous. It blooms so early it is frequently covered with its bright golden flowers while the ground is still covered with snow. It does not grow as tall as the Fortunei. 2 to 3 ft. plants, 30c each; \$2.50 for 10; 3 to 4 ft., 40c each; \$3.50 for 10; 4 to 5 ft., 50c each; \$4.50 for 10.

FORSYTHIA (Viridissima). Of the same habits of growth as the Fortunei. The flowers are a little deeper yellow and somewhat twisted. 2 to 3 in. plants, 30c each; \$2.50 for 10; 3 to 4 ft., 40c; 4 to 5 ft., 50c.

HYPERICUM (Prolificum). A free flowering shrub that thrives on most any soil. Continuous bloomer from July to September. Of dwarf habit of growth and particularly desirable for a succession of lemon-yellow flowers. 18 to 24 inch, 40c each; \$3.50 per 10.

Hudson, N. Y., May 3, 1930.

Bountiful Ridge Nurseries,
Princess Anne, Maryland.

Gentlemen:

The Rose Bushes which I ordered from you arrived by Parcel Post on the first instant. We are very much pleased with them, they seem to be very strong and stocky and I am looking forward to a beautiful Rose bed in the near future.

Yours truly,

WM. F. FITZGERALD.

PROMPTNESS AND SATISFACTION

Geneseo, New York, April 24, 1930.

Bountiful Ridge Nurseries,
Princess Anne, Maryland.

Gentlemen:

Nursery stock arrived yesterday in good condition. Thanks for promptness.

Yours respectfully,

CHARLES B. SHEPARD.

FLOWERING ALMOND, DOUBLE PINK (*P. jap. flore pleno rosea*). A vigorous, beautiful tree, covered in May with rose-colored blossoms like small roses; hardy. 18 to 24 in., 40c each; \$3.50 for 10.

FLOWERING ALMOND, DOUBLE WHITE (*P. jap. flore pleno alba*). Same as above except blossoms are pure white. 18 to 24 in., 40c each; \$3.50 for 10.

HONEYSUCKLE, PINK TARTARIAN (*L. Tartarica rosea*). Pink flowers that make a lovely contrast with the foliage. Fine 2 to 3 ft. bushes, 50c each; \$4.00 for 10.

HONEYSUCKLE, RED TARTARIAN (*L. T. var. rubra*). Blooms early in the spring; gives a beautiful bright red. Fine 2 to 3 ft. plants, 50c each; \$4.00 for 10.

JAPAN QUINCE, SCARLET (*C. Japonica*, also *Pyrus Japonica*). Flowers a bright scarlet crimson, borne in great profusion in early spring; foliage bright glossy green. 18 to 24 in., 40c each; \$3.50 for 10.

HYDRANGEA ARBORESCENS STERILIS (Hills of Snow). This grand American shrub deserves increased attention. Handsome foliage and snow white, ball-shaped clusters of flowers make it a most conspicuous object wherever grown. Blooms the greater part of summer. 15 to 18 inch, 30c each; \$2.50 for 10; 18 to 24 inch, 40c each; \$3.75 for 10; 2 to 3 ft., heavy, 50c each; \$4.50 for 10.

HYDRANGEA (*Paniculata Grandiflora*). A beautiful, tall shrub with leaves of bright, shiny green; flowers borne in huge panicles from 8 to 12 inches long, light pink, changing to brown later in the fall; blooms in August and September. 15 to 18 in., 30c each; \$2.00 for 10; 18 to 24 in., 40c each; \$3.50 for 10; 2 to 3 ft., 50c each; \$4.00 for 10; 3 to 4 ft., 60c each; \$5.00 for 10.

HYDRANGEA, P.G. Tree Form. Same as above except trained to single stem with well formed top on it like a tree. Continues to grow like a tree drooping towards ground when in bloom. 3 to 4 ft. stems well topped, \$1.00 each; \$9.00 for 10.

HYDRANGEA, MAURICE HAMAR. A pleasing shade of delicate flesh-pink. No. 1 plants, 2 year, 80c each.

HYDRANGEA OTAKSA. Fine for planting near the dwelling. Flowers generally blue, with a few exceptions when they are a delicate pink. A Japanese variety. 2 year No. 1 plants, 80c each.

SNOWBALL, COMMON (*V. Opulus Sterilis*). Grows 6 to 8 feet high; the old-fashioned Snowball; pure white flowers are produced in May and June and make a very attractive appearance. Fine 2 to 3 ft., 60c each; \$5 for 10.

SPIREA ANTHONY WATERER. A very popular low growing bush, constantly in bloom all summer. Flower clusters large, flat topped and of deep rose color. Well shaped, 18 to 24 in., 40c each; \$3.00 for 10; 12 to 18 in., 30c each; \$2.50 for 10.

SPIREA BILLARDI. Narrow, dense shrub 6 feet high, with dense panicles of rich pink and white flowers from July on. 2 to 3 ft., 40c each. Heavy 3 ft. plants, 50c each; \$4.00 for 10. State color wanted.

SPIREA VAN HOUTTE (*S. Van Houttei*). This is the most popular of all the spireas. Its gracefully arching branches heaped as they are with the white blossoms in spring, and its thriftiness under the most trying of conditions, are the reasons for its popularity. 18 to 24 inch, 30c each; \$2.50 for 10; 2 to 3 ft., 40c each; \$3.00 for 10; 3 to 4 ft., 60c each; \$5.00 for 10.

LILAC, WHITE (*S. Vulgaris Alba*). Too well-known to need description; its flowers are white and fragrant. Fine 18 to 24 in., 50c each; \$4.00 for 10.

LILAC PURPLE (*S. Vulgaris*). The well-known purple variety; always a standard sort. Fine 2 to 3 ft., each 50c; \$4.00 for 10; 18 to 24 in., 40c each; \$3.00 for 10.

LILAC (Persian). A favorite among the purple lilac, having a rich color and unusually fragrant. 18 to 24 in., 50c each; \$4.00 per 10.

LATE LILAC. A late blooming lilac of fine pink color medium sized plant. 18 to 24 in. strong plants, 40c each; \$3.50 for 10.

HENRY LUTESCE LILAC. A vigorous late bloomer of beautiful lavender color. 18 to 24 in. strong plants, 40c each; \$3.50 for 10.

FRINGE, PURPLE (*Smoke Tree, Rhus Cotinus*). A conspicuous spreading shrub; overhung in mid-summer by mist-like clouds of tiny flowers. Grows 6 to 8 feet. 18 to 24 in., 40c each; 2 to 3 ft., 60c each.

ORDER FOR ORNAMENTALS GIVES SATISFACTION

Mt. Clemens, Mich., May 13, 1930.

Bountiful Ridge Nurseries,
Princess Anne, Maryland.

Gentlemen:

Check enclosed. Goods are fine. Will be back this fall for more. What time do you start to ship in fall?

Yours truly,

F. M. PREVOST.

"OVER 1,000 TREES RECEIVED IN GOOD CONDITION"

Aspers, Penna., Mar. 24, 1930.

Bountiful Ridge Nurseries,
Princess Anne, Maryland.

Dear Sirs:

The Peach trees arrived Saturday in good condition and I am well pleased with them.

Yours truly,

JOHN GARRETSON.

So. Zanesville, Ohio, April 8, 1930.

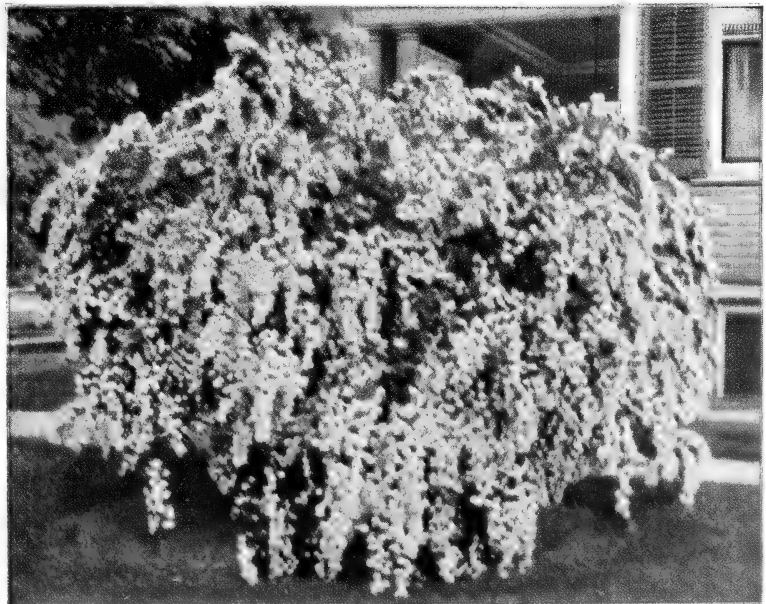
Bountiful Ridge Nurseries,
Princess Anne, Maryland.

Gentlemen:

The Rose bushes arrived in fine shape and I am very much pleased with them.

Yours truly,

LENA McFARLAND.



Spirea Van Houtte.



PHILADELPHUS — Grandiflora (Mock Orange). May or June. Forms a large, spreading bush, with graceful, drooping branches; flowers slightly fragrant. 2 to 3 ft., 30c each; \$2.50 for 10; 3 to 4 ft., 40c each; \$3.00 for 10; 4 to 5 ft., 50c each.

PHILADELPHUS — Coronarius (Mock Orange). A well known shrub with pure white, very fragrant flowers; one of the first to bloom. 2 to 3 ft., 30c each; \$2.50 for 10; 3 to 4 ft., 40c each; \$3.00 for 10; 4 to 5 ft., 50c each.

TAMARIX AFRICANA. Of strong, upright grotesque habit, with airy, slender leaves and a profusion of dainty, soft pink flowers in May. 1½ to 2 ft., 40c each; 2 to 3 ft., 50c each; \$4.00 for 10.

WEIGELA EVA RATHKE. Flowers a brilliant crimson; a beautiful clear, distinct shade. 18 to 24 in. bush, 40c each; \$3.00 for 10.

WEIGELA ROSEA. An elegant variety with fine rose colored flowers appearing in June. 18 to 24 inch, 30c each; \$2.50 for 10; 2 to 3 ft., 40c each; \$3.00 for 10; 3 to 4 ft., 50c each; \$4.00 for 10.

SPIREA THUNBERGII. One of the most charming of all low-growing shrubs, with fine delicate foliage, and a profusion of small white flowers in April and May. Price, 2-year, 18 to 24 inch, 50c each; \$4.50 per 10.

SPIREA BETHLEMENSIS. One of the newer varieties having spikes of rosy pink flowers excellent for cutting. An excellent variety for use in foundation planting. 18 to 24 in., 35c each; \$2.75 for 10.

VARIEGATED WEIGELA (Nana variegata). Variously colored leaves. It stands the sun well and retains its well marked tints until autumn. The flowers are lighter in color than the Rosea. July. Fine 18 to 24 inch bush, 40c each; \$3.50 for 10.

We can supply Large Size Shrubs for Park Planting if desired. Write for prices and kinds desired.

Climbing Vines

PURPLE WISTERIA. Flowers light purple and blue in early spring, borne in large drooping clusters. Well adapted for arbor plantings. Price, 3-year strong plants, 40c each; \$3.50 per 10.

WHITE WISTERIA. Resembles the purple variety, but with white flowers. Hardy and very desirable. Price, 3-year strong plants, 40c each; \$3.50 per 10.

ARISTOLOCHIA SIPHO (Dutchman's Pipe). Brownish, pipe-shaped flowers. Highly useful for its large leaves which make a perfect screen for porches. 2 year, 2 ft., 55c each; \$5.00 for 10.

CLEMATIS PANICULATA (Small Flowering Clematis). A great novelty from Japan. This variety of Clematis has proven to be one of the most desirable, useful and beautiful of hardy garden vines. Price, 2-year, 50c each; \$4.00 for 10.

CLEMATIS JACKMANI (Large Flowering Clematis). It is a strong grower, and produces a mass of intense violet-purple flowers 4 to 6 inches in diameter, from July until October. 2-year, 80c each; \$7.00 for 10.

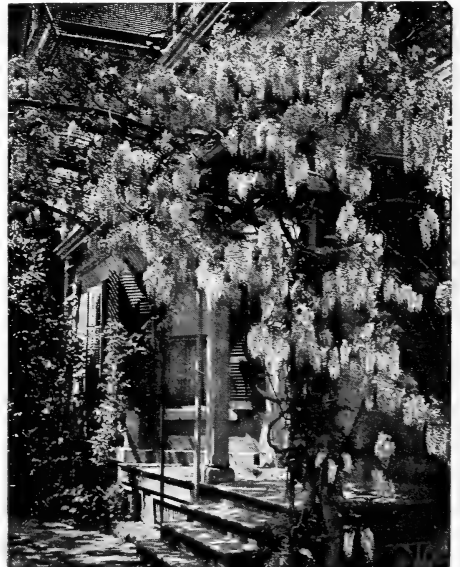
HALL'S JAPAN HONEYSUCKLE (L. Halleana). A strong, vigorous vine with pure white flowers, changing to yellow; foliage remains green well into winter; very fragrant and covered with flowers almost the entire season. 2-year strong plants, 30c each; \$2.50 for 10.

ENGLISH IVY, HEDERA HELIX. This popular evergreen vine with medium-size dark green leaves is extensively used in this country for covering brick and stone walls and dwellings. 3-year, 50c each; \$4.50 for 10.

BOSTON IVY. Foliage handsome in summer, changing to crimson-scarlet in autumn. Clings to walls and fences; fine for brick and stone. 2-year strong plants, 40c each; \$3.50 for 10.

TRUMPET VINE. Trumpet-shaped, scarlet flowers in August. Deep green foliage. 2-year strong plants, 40c each; \$3.50 for 10.

AMPELOPSIS QUINQUEFOLIA (American Ivy). A strong growing hardy trailing vine with beautiful foliage, large orange scarlet trumpet shaped flowers blooming through the entire summer makes this plant very desirable. Strong 2-year plants, 35c each; \$3.00 per 10.



Beautiful Wisteria.

PERENNIALS

Cannas, Dwarf

All roots strong 2 and 3-eye divisions, 12c each; \$1.00 for 10; \$7.00 per 100.

YELLOW KING HUMBERT. A sport of King Humbert, but with green foliage and golden-yellow flowers. Occasionally there will be plants with bronze foliage and scarlet flowers.

KING HUMBERT. Truly the King of Cannas. Its foliage, which is of large size and a deep bronze, is striking; flowers are borne in great profusion and are a rich coppery scarlet.

THE PRESIDENT. Has no competitor as a red canna. The color is a rich glowing scarlet, flowers often 7 inches across on strong erect stems, well above the foliage. Foliage rich green.

Peonies

All Peonies 3 to 5-eye divisions.

FESTIVA MAXIMA. Large, full bloom, color pure white with an occasional carmine spot; strong grower. One of the best of the white varieties. Early. 40c each; \$4.00 per 12.

DELACHEI (Red). Late mid-season, compact, rose type. Deep purple, crimson reflex, a very sure and free bloomer. One of the best of the dark reds. 50c each; \$5.00 per 12.

QUEEN VICTORIA. Opens flesh white, fading to milk white. Center petals tipped with coral blotches. Fragrant. Free bloomer. Extra good in bud. The very best commercial white. Mid-season. 40c each; \$4.00 per 12.

EDULUS SUPERBA (Pink). Large, loose crown type. Bright pink with slight violet shadings at base of petals. Fragrant. Early, strong and upright in habit, very free bloomer. Best early commercial pink. 50c each; \$5.00 per 12.

FELIX CROUSSE (Red). Large, compact. Deep rose red. Fragrant. Strong robust grower. Free bloomer. Called by many growers the best one-color red in cultivation. Medium season. 65c each; \$6.50 per 12.

FLORAL TREASURE (Pink). Large, compact bloomer of a delicate all one color pink, borne in great profusion on erect, medium length stems. One of the best all-around peonies. Extra fine as a commercial sort. Fine to plant for low hedge where one color is desired. Mid-season. Extra. 50c each; \$5.00 per 12.

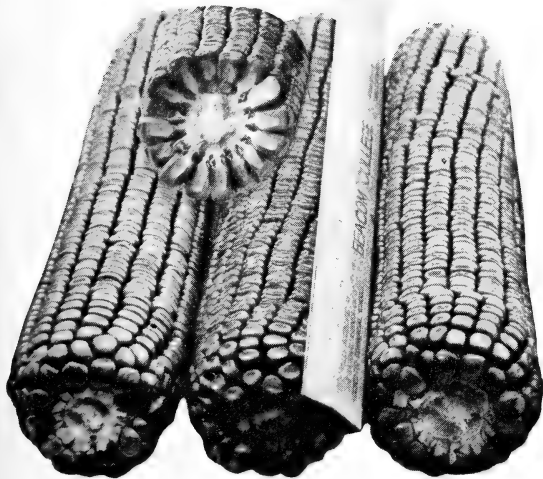


Photo taken October 8, 1930, this year's crop.
Note well filled ears and deep grains.

Kemp's Bountiful Sure Crop Yellow Dent Field Corn

For years Mr. Geo. W. Kemp, General Manager of our Nursery, has been selecting to a type of corn such as pictured above after making a definite cross of Reids Yellow Dent and the Mammoth Yellow Dent. Last year his efforts were rewarded with almost 100% reproduction to type at the same time giving a medium sized stalk that produces to a maximum under all conditions. The ears are produced from 3 to 5 feet from the ground on the stalk and under good growing conditions will run largely two well-developed ears to the stalk. We have never given this corn much fertilization, trying to instill in it the habit of producing a maximum crop on just average soil and this we have succeeded in doing. It can be termed as a 100-day corn and will do equally as well on practically all types of soil.

The above photograph was taken October 8, 1930, from this year's crop. In spite of the very dry season from July 1st to October this corn came through practically a full crop this year and is the best corn we know of in the county and possibly in the State. The ears average long with small to medium sized cob and very deep grains as you can note from the photograph.

We sell only the shelled corn for seed. All ears are carefully selected and the end grains shelled off before shelling for shipment to you. It is all tested for germination which insures you of good stands. Rest assured the corn is right or the Bountiful Ridge Nurseries would not offer it to you.

½ peck, 1.00; ¼ bushel \$3.00; 1 bushel, \$5.00.

Lawn Grass Seed

Again we are passing to our customers the benefits of our experience by offering them Lawn Grass Seed Mixtures that we have tried for years and have proven more than satisfactory for general use and for large estate, park and golf course plantings. Each mixture is prepared to our specifications by one of the best seedsmen of the East. You have a guaranteed purity analysis with each brand. You have a brand for every use whether you desire to plant in the shade or in sunlight.

Write for Special Prices in quantities of more than 100 lbs. Prices below are for seed delivered to your station.

We recommend from 6 to 8 lbs. to 1,000 square feet of lawn where a heavy new sod is desired. To reseed old lawns, 3 to 5 lbs. per 1,000 square feet.

Our Old English General Purpose Mixture containing blue grass, S. Red Top, White Clover, Timothy and Rye grass, makes a quick hardy lawn, suitable for irregular and extreme sandy soils. 98.90% pure. 2-lb. cans, \$1.00; 5-lb. cans, \$2.25; 20-lb. bags, \$3.00; 50-lb. bags, \$18.00

Our Old English Shady Spot Mixture, prepared especially for planting where the sun seldom penetrates to as under trees, and northern exposures. You can now have the best of a lawn in constant shade with this mixture. Contains Poa Trivialis, N. Z. Red Fescue, S. Red Top. 99.30% pure. 2-lb. cans, \$1.25; 5-lb. cans, \$3.00; 20-lb. bags, \$11.00; 50-lb. bags, \$25.00.

Our Old English Evergreen Mixture. Where a real fine heavy turf is desired, we recommend this mixture. Only the best grass seeds used, and will make a lawn of superior quality. Our finest mixture for general planting. Contains Blue Grass, Red Top and White Clover. 99.10% pure. 5-lb. bags, \$2.60; 20-lb. bags, \$10.00; 50-lb. bags, \$23.00.

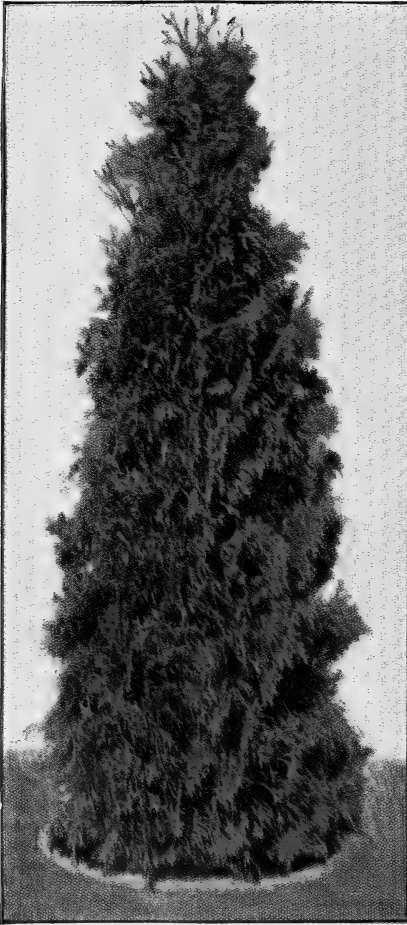
Old English Seashore Mixture of Grasses which will thrive under extremely adverse conditions such as in sand which is low in fertility and moisture and produce a good lawn. Prices same as Old English Evergreen.

Old English White Clover for lawns. 1 lb. 60c; 5 lbs. \$2.75.

Old English Bone Meal for lawns. 50-lb. bags, \$3.00; 100-lb. bags, \$5.00.

Old English Pulverized Sheep Manure for lawns, evergreens and shrubs. 100 lb. \$4.25; 500 lb. lots, \$20.00.

Hardy Evergreens



Pyramidal Arborvitae.

ARBORVITAE (American). It is very hardy and easily transplanted. It grows rapidly and with little care; it soon forms a most beautiful hedge, very dense and perfectly impervious to the sight. It forms a most desirable and ornamental screen to divide the lawn from other grounds. 12 to 18 inch, 60c each; 18 to 24 inch, \$1.15 each; 2 to 3 feet, \$1.60 each; 3 to 4 feet, \$2.50; 4 to 5 feet, \$3.00; 5 to 6 feet, \$4.50.

ARBORVITAE (Hovey's Compacta). It is a semi-dwarf, compact grower with beautiful yellowish green foliage. It is especially desirable for a foundation planting. Price, 18 to 24 inch, \$2.00 each.

ARBORVITAE (Pyramidalis). A superb, new and hardy sort, of very compact habit and grows in a perfect column. Largely planted in cemeteries, owing to the small amount of space it occupies. 18 to 24 inch, \$2.00 each; 24 to 30 inch, \$2.50 each.

ARBORVITAE, GLOBE (Thuja Globosa). A perfect globe when well grown, the spread usually equalling the height. Foliage of light green. 10 to 12 inch, \$1.20 each; 12 to 15 inch, \$1.40 each; 15 to 18 inch, \$1.75 each; 18 to 24 inch, \$2.25 each.

ARBORVITAE, CHINESE (Biota Orientalis). Smaller growing than the American, more compact and regular and pyramidal in outline, with fine feathery deep green foliage. 12 to 18 inch, 60c each; 18 to 24 inch, \$1.00 each; 2 to 3 feet, \$1.50 each; 3 to 4 feet, \$2.00; 4 to 5 feet, \$2.50; 5 to 6 feet, \$3.25 each.

ARBORVITAE, BERCKMAN'S GOLDEN (Biota Aurea Nana). Of beautiful conical form, very dense and compact. A dwarf type with golden foliage. 10 to 12 inch, \$1.60; 12 to 15 inch, \$2.00 each; 15 to 18 inch, \$2.50 each.

PLUME-LIKE CYPRESS (Retinospora Plumosa). A rapid growing variety with gracefully drooping branches of bright green plume-like foliage. Price, 18 to 24 inches, \$1.50 each; 2 to 3 feet, \$2.00 each.

CYPRESS, GOLDEN PLUMED (Retinospora plumosa aurea). One of the hardiest and most desirable of the Retinosporas. Retains its golden foliage continuously. 12 to 18 inches tall, \$1.20 each; 18 to 24 inch, \$1.50 each; 2 to 3 feet, \$2.00 each.

CYPRESS, LAWSON'S (Cupressus Lawsoniana). Native of Southern Oregon. A very beautiful and graceful tree, with delicate, feathery, bluish green foliage. 2 to 3 feet tall, \$2.00 each; 18 to 24 inch, \$1.75 each.

CYPRESS THREAD (Retinospora Filifera). The branches of this variety are gracefully slender and pendulous. The plant grows into a rather broad, dense, pyramidal form. 12 to 18 inch, \$1.30 each; 18 to 24 inch, \$1.75 each.

SILVER CYPRESS (Retinospora Squarrosa). A very showy type, its foliage being of silvery blue-green. Not quite so strong a grower as the preceding varieties, but valuable on account of its color. 12 to 18 inch size, \$1.40 each; \$13.00 per 10; 18 to 24 inch size, \$1.75 each; \$16.00 per 10.

LARGE LUMBER AND BUILDING CONTRACTOR RECEIVED
BEST EVERGREENS, SHRUBBERY AND SHADE TREES
EVER RECEIVED, FROM EAST OR WEST

Coney Island, N. Y., Nov. 3, 1930.

Bountiful Ridge Nurseries,
Princess Anne, Md.

Gentlemen:

Our order of trees and plants arrived last week and merely to say that they were satisfactory would not be doing justice. This was about the nicest shipment of nursery stock we ever received, and we have bought thousands of dollars worth of stock from Coast to Coast in the past few years.

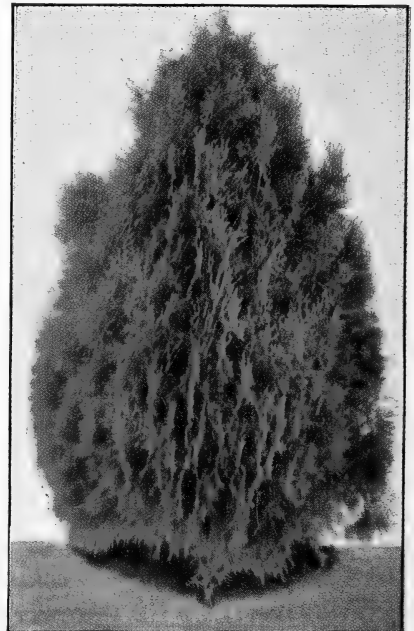
We never knew that some of the stock you shipped us grew as large, and not alone was it the best stock we ever received, but the way it was packed, shows that you certainly know how to look after it.

The case that came by freight weighed 487 lbs. and we expected as usual that a lot of the plants would be broken, but when we opened it we were more than surprised at the way it was packed, and not a single branch broken, the magnolia tree did not even have a leaf damaged.

All the stock is now in the ground, and you could never tell it was just planted. It looks as if it had grown right there, and in fact looks a whole lot better than some of the same kind of plants that we planted last fall.

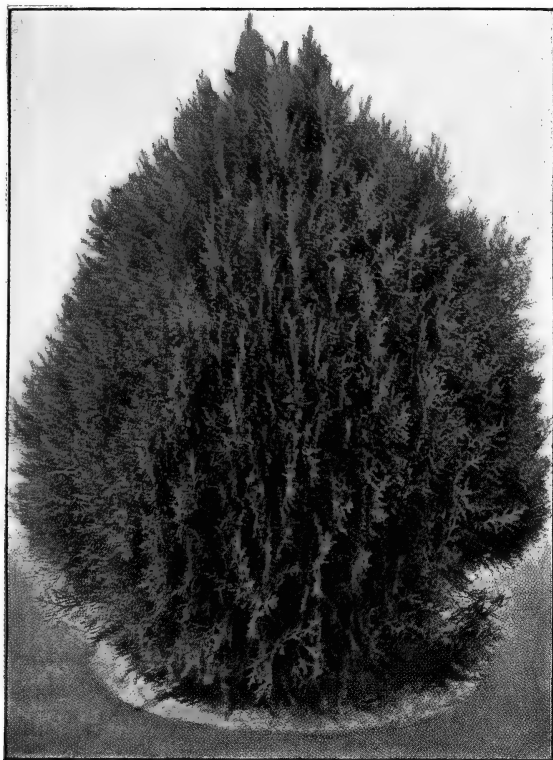
MORRIS LUMBER COMPANY,

H. M. MORRIS.



Berkman's Golden Arborvitae.

Read of the **RICHARD DELICIOUS** and **BLAXTAYMAN**
APPLES. Pages 3 and 4.



Chinese Compacta.

HEMLOCK. An elegant, pyramidal tree, with drooping branches and delicate dark foliage, like that of the Yew; distinct from all other trees. It is a beautiful lawn tree and makes a highly ornamental hedge. 12 to 18 inch, \$1.25; 18 to 24 inch, \$2.00; 24 to 30 inch, \$2.50; 3 to 4 feet, \$3.00.

IRISH JUNIPER. Very erect and tapering in growth, forming a column of deep green foliage; a pretty little tree or shrub, and a general favorite for its beauty and hardihood. 18 to 24 inch, \$1.50; 24 to 30 inch, \$2.00.

PFITZERIANA JUNIPER. A very hardy, valuable, spreading variety, with silvery green color. Both the main stems and lateral shoots have a light, feathery appearance. 15 to 18 inch, \$1.75; 18 to 24 inch, \$2.50 each.

ROSEDALE ARBORVITAE (Biota Rosedale). A beautiful evergreen. Broad, cone shaped, with blue-green foliage of very fine texture. Attains a height of 3 to 4 feet. 12 to 18 inch plants, \$1.50 each; \$13.50 per 10.

CHINESE COMPACT ARBORVITAE (Biota Compacta). A very compact, dwarf form of Chinese Arborvitae. Holds its color well through the winter. We recommend this variety as one of the best of the compact forms of Arborvitae. 12 to 18 inch plants, \$1.35 each; \$12.00 per 10.

SPINY GREEK JUNIPER (J. excelsa stricta). An unusually attractive dwarf pyramidal form with very compact bluish green foliage. Vigorous in growth, and not particular as to soil. 10 to 12 inch, \$2.00 each; 12 to 15 inch, \$2.50 each; 15 to 18 inch, \$3.00 each.

TAXUS CUSPIDATA (Japanese Yew). One of the hardiest of Yews. Bushy, upright, spreading nature, with rich green foliage. A beautiful, medium sized specimen, equally well suited for foundation planting. Price, 12 to 15 inches, \$3.00 each.

DWARF MUGHO PINE. A true dwarf grower, many-stemmed, compact, with good dark green foliage which is retained throughout the winter. Excellent for planting in front of taller evergreens, in foundation plantings, borders, etc. 12 to 15 inch, \$2.00 each; 15 to 18 inch, \$2.50 each.

GOLD DUST RETINOSPORA. Very compact, semi-dwarf evergreen with fine feathery golden foliage. Hardy and very desirable for foundation and formal plantings. 15 to 18 inch shared specimens, \$2.50 each.

BALSAM FIR. Compact, erect pointed tree, with short, soft leaves, which are dark green above, silvery beneath, a good grower. 18 to 24 inch, \$2.00; 24 to 30 inch, \$2.50; 30 to 36 inch, \$3.00 each.

CEDAR DEODAR (Cedrus Deodara). A large growing evergreen and one of the most beautiful grown. Foliage a silvery green, branches drooping and graceful. 18 to 24 inch, \$2.00 each.

CEDAR, RED (J. Virginiana). Well-known native tree; varies much in habit and color of foliage; very attractive in winter when the golden bronze of the young growth contrasts with the dark green of the older. 18 to 24 inch, \$1.00 each; 2 to 3 feet, \$1.75 each; 3 to 4 feet specimens, \$3.50 each. Can supply larger ones. It desired, write us.

SAVIN JUNIPER. A low, many-branched shrub, usually growing not over 2 or 3 feet high. Its branches are spreading, dense, thickly covered with branchlets and heavily clothed with short, tufted foliage. 18 to 24 inch size, \$2.50 each.

COLORADO BLUE SPRUCE. Foliage blue and sage—that distinctive color which is so rare in the East. Tree usually has a symmetrically shaped narrow-pointed or rounding top; is hardy and quick growing. This, of course, has not the blue color of Koster's which is grafted. Selected Blue Spruce. 12 inch, \$2.75; 15 inch, \$3.25; 18 inch, \$4.00.

CONCOLO FIR (also known as "Silver Fir" and "White Fir"). This is the showiest of all Firs, because it is the nearest to blue. It retains its lower branches, has no insect enemies, and is the best Fir tree to withstand the heat and drought. Should be planted as a specimen plant. 12 to 18 inch, \$2.50 each; 18 to 24 inch, \$3.25.

WHITE SPRUCE. One of our Hardest Evergreens grows very compact and symmetrical. Foliage very dense and silvery blue almost like Blue Spruce. 12 to 18 inch, \$1.00; 18 to 24 inch, \$1.50; 24 to 30 inch, \$2.00; 30 to 36 inch, \$2.50.

WELL ROOTED PLANTS—A SATISFIED CUSTOMER

Linwood, N. J., April 21, 1930.

Bountiful Ridge Nurseries,
Princess Anne, Maryland.

Gentlemen:

I received the trees and strawberry plants that you shipped me on the 12th. They arrived at Linwood on the 14th. They were in good condition. I am well pleased with them for the Apple trees and the berry plants both had a nice lot of roots on them. They were nice trees for one year growth. Hoping you much success in your business.

Yours truly,

WILLARD BURROUGHS.



Spiny Greek or Stricta Juniper.



A photo of our display at the Trenton Interstate Fair September 1 to 6, 1930. Note the fine fruit trees to the left, one and two-year trees, the display of Richard Delicious, Blaxtayman, and Mounmouth Beauty fruit, and our fine ornamentals to the right showing (left to right) in the rear Canadian Hemlock, Rhododendron Maximum, Large American Arborvitae and White Birch Shade Trees. Second row, Norway Spruce, small American A. V., Irish Juniper, Balsam Fir, Hemlock, Boxwood, Irish Juniper, Golden Plumed Cypress, Norway Maple in center and Mt. Ash to right. Front row, small American A. V., Boxwood, Globe A. V., Berkman's Golden A. V. and pair of Genuine Selected Blue Spruces with Globe and Berkman's Golden A. V. to right. Stock like this is bound to please.

SPRUCE, DOUGLAS (A. Douglasi). A native of Colorado; large, conical form; branches spreading, horizontal; leaves light green above, silvery white below. 12 to 18 inch, \$1.50 each; 18 to 24 inch, \$2.00 each; 24 to 30 inch, \$2.50; 30 to 36 inch, \$3.00.

SPRUCE, NORWAY. A lofty, elegant tree of perfect pyramidal habit, exceedingly picturesque and beautiful. One of the best evergreens for wind-breaks. 12 to 18 inch, 60c; 18 to 24 inch, \$1.00 each; 24 to 30 inch, \$1.50 each; 30 to 36 inch, \$1.75; 3 to 4 feet, \$2.50.

PINE, AUSTRIAN or BLACK. A remarkably robust, hardy, spreading tree; leaves long, stiff, dark green; growth rapid; valuable for this country. 24 to 36 inch, \$2.00 each; 3 to 4 feet, \$2.75.

PINE, SCOTCH. Is one of the most rapid growers while young, one of the best for shelter planting in the West. It will make the best windbreak in the least time of any; it is a very valuable species. 12 to 18 inch, \$1.35 each; 3 to 4 feet, \$2.75 each.

Hardy Azaleas

AMOENA. A dense, dwarf growing evergreen shrub, with slender branches and semi-double flowers of bright, cheerful rosy-purple, produced in such great numbers as to literally envelop the bush in June. Bushy plants, 8 to 10 inch, \$1.50 each; 10 to 12 inch, \$2.00 each.

HINODEGIRI. Is of broad spreading habit, with beautiful evergreen foliage and many fiery-red single flowers. Bushy plants, 6 to 8 inches, \$1.50 each; 8 to 10 inches, \$1.75 each; 10 to 12 inches, \$2.25.

CALENDULACEA (Flame Azalea). The beautiful blossoms of this plant ranging from flame color through shades of red and yellow remain in bloom for several weeks and make it a plant of unusual beauty. It is not an evergreen but has attractive foliage and every ornamental planting should contain some. Ultimate growth, 6 to 8 feet, bushy plants. 18 to 24 inch, \$1.75 each; \$16.00 for 10; 24 to 30 inch, \$2.25 each; \$20.00 for 10.

BOXWOOD SEMPERVIRENS. A compact grower, thrives in any soil and does well in shaded places. Can be trimmed to any shape and used extensively for hedges, formal gardens and tub specimens. 8 to 10 inch, 70c each; \$6.00 for 10; 10 to 12 inch, 80c each; \$7.50 for 10; 12 to 15 inch, \$1.00 each; \$9.00 for 10.

SEMPERVIRENS ARBORESCENS (True Tree Box). More open and more rank grower than the Sempervirens. 12 to 15 inch, 90c each; \$3.00 for 10; 15 to 18 inch, \$1.00 each; 18 to 24 inch, \$1.25 each.

SUFFRUTICOSA (True Dwarf Box). For edging the borders of flower beds or for planting along walks. Retains its dwarf size, never growing tall. 4 to 6 inch, \$3.25 for 10; \$30.00 per 100; 6 to 8 inch, 45c each; \$40.00 per 100.

EUCNYMUS JAPONICA. Lustrous, deep green leaves; upright bushy habit; evergreen; very desirable for specimen plants. Can be trimmed to any desired shape. 12 to 18 inch, \$1.00; 18 to 24 inch, \$1.50.

EUONYMUS—VARIEGATED. Same as Euonymus Japonica except the leaves are partly tinted with golden color. This makes an unusual and attractive evergreen bush. 12 to 18 inch, \$1.25 each; \$12.00 for 10.

ABELIA GRANDIFLORA. One of the most attractive evergreen shrubs offered. Foliage dark green and glossy, and its arching branches have a distinct tinge of red. From May until frost this plant is covered with small, pinkish-white, bell-shaped flowers. They are somewhat slow to come out after being transplanted. 18 to 24 inch, 60c each; \$5.00 for 10.

JAPANESE SPURGE (Pachysandra) Ground Cover. A trailing plant 6 to 8 inches high, forming broad mats of bright glossy green foliage. A ground cover, which will grow in all shady situations and the only plant which will thrive under pine trees. Some of its main uses are: Under evergreen plantings, under shrub plantings, for shrub and flower bed borders, for bordering walks and drives, for steep terraces in sun or shade. Strong, 1-year, field-grown plants, \$1.50 doz., \$10.00 per 100, \$95.00 per 1,000; 2-year plants, field-grown, \$1.75 doz., \$12.00 per 100, \$115.00 per 1,000. (Set plants 3 inches apart each way.)

HARDY BROAD-LEAVED EVERGREENS



Mass Planting of Rhododendrons.

RHODODENDRONS. This type of stock grows slowly—it is in great demand, and we do not want you to confuse our selected stock with that which is being offered by many nurseries at low prices. You want stock that will grow for you and thrive. This is what we have to offer you, and we have made the prices as reasonable as possible. We request that those who wish to make extensive plantings write to us as to selection and prices in quantity.

RHODODENDRON CAROLINA (Carolinianum). This Hardy Rhododendron with clear pink flowers borne in great masses is the first of the Rhododendrons to bloom in the spring. It has beautiful dark green foliage and does well in most all locations. **Heavy plants, 2 to 3 feet, \$2.50 each; 3 to 4 feet, \$3.00 each.**

RHODODENDRON CATAWBA (Catawbiense). This is a medium large growing Rhododendron and very hardy. It is a great favorite and invaluable for foundation work, and in shady places. It follows the Carolina in blooming, having large clusters of rosy lavender flowers. **Heavy plants, 2 to 3 feet, \$2.75 each; 3 to 4 feet, \$3.25 each.**

RHODODENDRON ROSEBAY (Maximum). This is probably the favorite of many because of its beautiful almost pure white flowers, borne in great profusion, late in the spring. Its large dark green foliage makes it unusually attractive in the winter time. It usually grows more compact than other Rhododendrons, and is extremely hardy. We have an especially fine stock of these running from single-stem plants to plants with 15 or more stems (specimens). **2 to 3 feet, \$2.00 each; 3 to 4 feet specimens, \$3.00 each; 4 to 5 feet specimens, \$4.00 each.**

KALMIA LATIFOLIA. The beauty of this plant is brought out as a specimen plant and as a front for large Rhododendron plantings. Its clusters of delicately variegated blooms blooming early are especially desirable. It should be used with all Rhododendron plantings. It is very hardy and will do well in almost constant shade or sunlight. **18 to 24 inch, \$1.00 each; 2 to 3 feet, \$1.50 each; 3 to 4 feet, \$2.25 each; 4 to 5 feet, selected, \$3.00 each.**

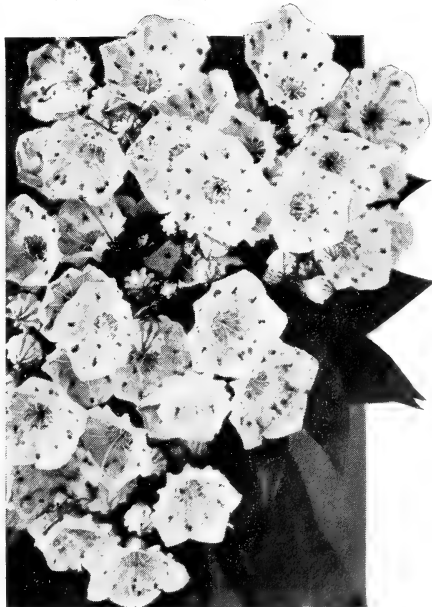
Write for prices on 10 plants or more of any kind.

MAGNOLIA GRANDIFLORA. One of our most beautiful evergreen trees. Its immense pure white flowers in mid-summer are very fragrant and its natural pyramidal growth coupled with its large dark green foliage make it very handsome. It is vigorous in growth and a tree you will always admire. Not hardy north of southern New York. **2 to 3 feet, \$2.00 each; 3 to 4 feet, \$2.50.**

AMERICAN HOLLY. The Christmas Holly. Its bright green, spiny leaves and brilliant scarlet berries make it one of our handsomest evergreen shade trees. Should be severely cut back when transplanted from open ground. **Nursery grown, 2 to 3 feet, \$1.75; collected, 3 to 4 feet, \$2.00; 4 to 5 feet, \$3.00.**

CHERRY-LAUREL (Laurocerasus). A hardy evergreen with dark green, glossy foliage; compact and symmetrical in form. Blooms are yellowish-white, appearing in spring. Useful as a specimen plant or in groups. Very hardy, but prefers full sun with good drainage. **2 to 3 feet, \$1.00 each; \$9.00 for 10.**

LEUCOTHOE GATESBAEI. A beautiful evergreen shrub with large glossy leaves. Blooms a small white flower late spring. Attractive to mix with other shrubs or evergreens and Rhododendrons. **18 to 24 inch plants, \$1.25 each; \$11.00 for 10; 2 to 3 feet, \$1.75 each; \$16.00 for 10.**



Kalmia Latifolia.

ROSES

The Queen of Flowers

Hardy, Field Grown, Ever Blooming, Hybrid Teas and Perpetual Roses

FREE

FREE

With Every Order for Ten Rose Bushes we will give One 2-Year Plant, our selection—FREE

PRICES ALL EVERBLOOMING ROSES

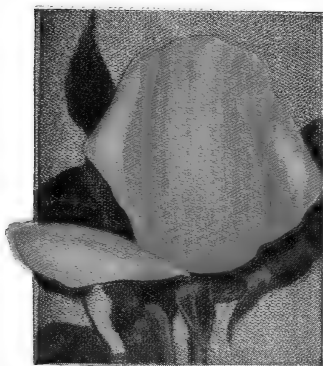
Hybrid Teas, Hybrid Perpetuals, All 2-Year Strong Plants—
50c each; \$4.00 per 10.



La France.



Commonwealth.



Mrs. Calvin Coolidge.



Paul Neyron.



Mrs. A. Ward.



J. B. Clark.

Hybrid Tea Roses

AMERICAN BEAUTY. This well known beautiful red rose is the choice of many gardens. Its large compact buds are especially beautiful being a clear bright red.

BRIARCLIFF. Pure light pink flowers. Buds are perfectly formed, long and pointed.

COLUMBIA. It is a very vigorous grower and a Rose that is always in bloom; in form it is much like the Cochet, but in color it is much superior, it varies from a soft pink to a rich glowing red pink.

COMMONWEALTH. The buds are large, long and pointed and the open flower very double, extra large in size; solid deep pink color, very fragrant; long, strong stems; has fine, large, leathery foliage, free from disease.

PINK MAMAN COCHET. Hardy vigorous grower. Flowers are of enormous size, very full and of great depth. Color rich coral pink, shaded rosy crimson. Long pointed buds.

MRS. CALVIN COOLIDGE. A clear golden yellow Rose, deepening in color, especially in the center, as the flower expands, and retaining its color until the last, not fading.

DUCHESS OF WELLINGTON. The "Gem" of yellow roses. Large, well-formed buds saffron-yellow flowers, stained with crimson and changing to lighter yellow.

FRANK W. DUNLOP (H.T.). A brilliant rose-pink variety of clear color, good bloomer, vigorous grower. Flowers on long stiff stems. Excellent for cutting.

ETOILE DE FRANCE. A strong, vigorous grower, flowers beautiful in the bud borne on strong, upright shoots in profusion. It is distinct from all Roses, being of a rich, velvety crimson with a vivid cerise-red center.

GRUSS an TEPLITZ. The color is brightest scarlet, shading to deep, rich, velvety crimson. It is very fragrant, the freest grower and most profuse bloomer.

GOLDEN EMBLEM. As a perpetual bloomer and bedding rose it is without a rival. Intensely yellow, large well shaped buds. The most striking variety among modern roses.

HADLEY. Valuable as a cut flower variety. Flowers of rich velvety-crimson, borne on long stems, and last a long time after being cut. A strong grower with beautiful foliage.

HOOSIER BEAUTY. Glowing crimson scarlet of dazzling brilliance. Buds of good length opening into a magnificent bloom, very fragrant, strong grower producing long stiff stems.

KILLARNEY, PINK. The exquisite shade of pink of this most beautiful rose is hardly equaled by any other variety. Very fragrant, the buds are exceedingly large and of beautiful form.

KILLARNEY, WHITE. White Killarney has great freedom of bloom, beautiful form and perfect hardiness, which, together with its purity of color, assures for it the same popularity as Pink Killarney.

FRANCIS SCOTT KEY. Color a glowing scarlet and with darker shadings. Buds long and pointed, opening full and double; produced on long, upright stems.

LADY HILLINGDON. A beautiful coppery shade of apricot-yellow, beautiful in the bud; a strong, vigorous grower and very free flowering.

LA FRANCE, PINK. It is of superb form, and double as a Rose can be. It is famed for its delicate color-

ing—silvery rose shaded with pink. Entirely hardy.

LOS ANGELES. A luminous flame-pink overlaid with translucent golden yellow deep at the base. A long pointed bud opening to a most perfect flower of indescribable beauty.

LUXEMBURG. A fine large, fully double Rose of vigorous branching habit, and unusual freedom for the color which is a rich golden yellow.

J. L. MOCK. The flowers, which are produced with the greatest freedom on long, stiff stems, are of large size and of perfect form, of a deep imperial pink.

MADAM BUTTERFLY. All the color tones of Ophelia are intensified making it a harmony of bright pink apricot and gold. The opening flowers are perfect in form, clear and brilliant in color and very fragrant.

OPHELIA. Delicate salmon flesh, shaded with rose. Long, pointed buds on stiff stems. Free bloom, unusually attractive foliage. Strong grower.

GOLDEN OPHELIA. A seedling from the favorite Ophelia. Buds and flowers of fine size and beautifully formed of a bright golden yellow. Hardy and a profuse bloomer.

MRS. F. R. PIERSON. New. A vivid crimson-scarlet sport of Premier. Flowers born singly on strong stems. Has already been awarded three gold medals.

PILGRIM. Beautiful shade bright rose pink. The bud is long compact, and opens perfect. It produces bloms in abundance with long, straight and strong stems. It is very fragrant.

RAPTURE (New). An improved sport of M. Butterfly. Strong grower. Foliage handsome, almost mildew proof. The color, an exquisite salmon shade with golden flush at the base of petals. Large pointed buds on long, strong stems, a beauty for every rose garden.

SOUVENIR DE CLAUDIUS PERNET. One of our most popular yellow roses. Long bud on a long and strong stem, very large and full flower. Superb sun yellow color shaded warmer in the center.

RADIANCE, PINK. This grand, giant-flowering rose stands head and shoulders above all other roses of its class. The flowers are large. The buds are particularly handsome. The plant is vigorous, making strong canes, a brilliant carmine-pink, with salmon-pink and yellow shadings at the base of the petals.

RED RADIANCE. One of the leading if not the leading red rose. It is a vigorous grower, unusually

hardy for a rose of this class and produces blooms continually. The blooms are of a deep red with an intense fragrance.

IMPERIAL POTENTATE. One of the finest new brilliant pink Roses. Very vigorous grower of free-flowering habit.

SENSATION (H. T.). Enormous scarlet-crimson blooms of fine deep form; great size and substance; very sweetly scented. Plant is strong.

MRS. CHARLES RUSSELL or PINK AMERICAN BEAUTY. Bright rose-pink deepening towards center. Equal in size and fragrance to American Beauty with longer and more pointed buds. Vigorous, leathery foliage almost mildew proof. Very prolific bloomer.

SUNBURST. Golden orange and golden yellow giving extremely brilliant effect. A giant rose, long stems, long pointed buds, free bloomer and strong healthy plant.

TALISMAN. This new American rose was awarded gold medals by the American Rose Society when exhibited at the National Flower show in Louisville, Ky., the Philadelphia Flower Show and at the International Flower Show at New York City where it also received the President Coolidge Horticultural Gold Medal in 1929. Its brilliant orange red buds open to a large, fragrant, high pointed bloom of glowing golden yellow stained with copper-red and orange rose on the inside of the petal. The rose will not drop its petals even when fully bloomed out. The plants have proved vigorous and healthy growers outdoors and hardy. Prices: 2-year plants, 90c each; 3 for \$2.50.

MME. CAROLINE TESTOUT. Pink. Decidedly deeper and more brilliant in color than La France, larger flower, and is as good in other ways. Color brilliant satiny rose.

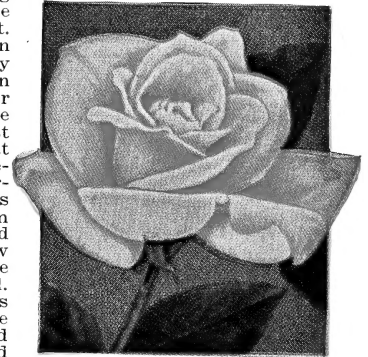
KAISERIN AUGUSTA VICTORIA. White, blended with cream color; very large; full and double, almost perfect in form; a most generous bloomer.

MRS. AARON WARD. The buds are a rich golden buff, developing into large, well-shaped flowers of Indian yellow, tinged salmon. Dwarf habit, well branched, bushy and a free bloomer.

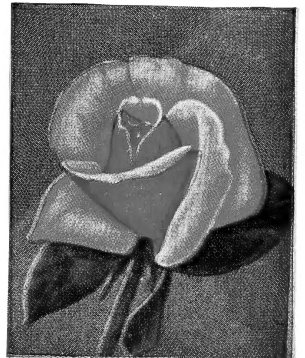
WILLIAM F. DREER. For delicacy of coloring, is not comparable to any other variety. The flowers, similar in shape to Los Angeles. Color a soft, silvery shell-pink, base of petals rich golden yellow, which gives a golden suffusion to the entire flower.



Mme. Caroline Testout.



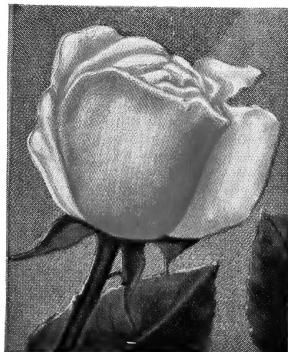
Pink Killarney.



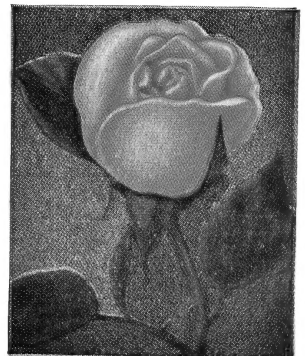
Pink Cochet.



Sunburst.



F. W. Dunlop.



Golden Ophelia.

Hybrid Perpetual Roses

MRS. JOHN LAING (Shell Pink). Easily one of the best pinks of the H. P. class. Flowers are beautifully formed, finely colored, extremely fragrant and borne on long stems.

J. B. CLARKE. Intense scarlet shaded crimson maroon very dark and rich and sweetly fragrant; growth strong and upright, making a large handsome bush almost an everblooming rose.

FRAU KARL DRUCHEKI. Pure, snow-white, without a tinge of yellow, pink or any other color. This great rose is listed by some as Hybrid Tea, as it possesses some of that strain. Extraordinarily strong growing. The glory is in its flowers, which are immense, and produced with great freedom during the whole season.

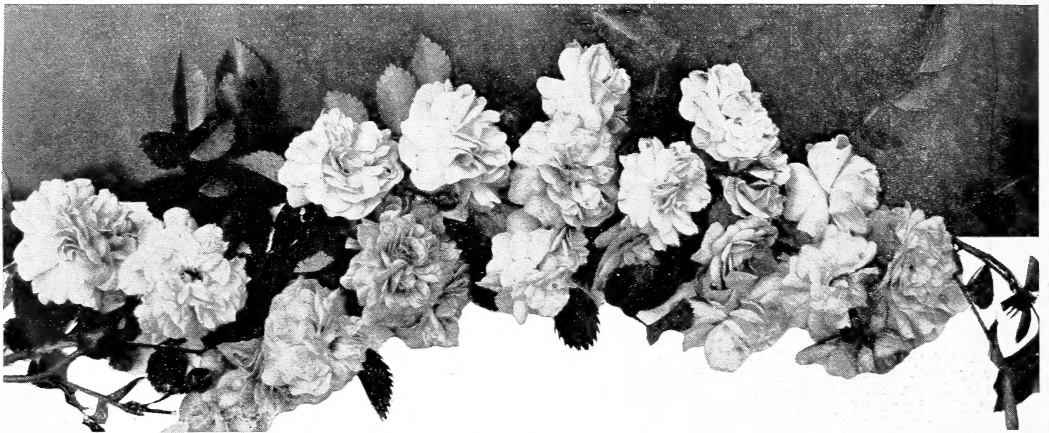
GENERAL JACQUEMINOT. A rich, velvety crimson, changing to scarlet-crimson. A magnificent

Rose, equally beautiful in the bud state or open. The best known of all Hybrid Perpetuals, and is without a rival in fragrance and richness of color.

PAUL NEYRON. Paul Neyron, though an old rose, has the distinction of producing the largest pink rose in the world, very double and full. Long graceful stems. Color a clear pink shaded to rose. Ranks second among the H. P. roses. Blooms profusely about three times each season in our section.

MARSHALL P. WILDER (H. P.). One of the best dark red Hybrid Perpetuals. The flowers are large and perfect in form, on good lengths of stems, making them very desirable for cut flowers. Color, bright cherry red, changing to crimson. Very fragrant. It continues to bloom profusely long after the other Hybrid Perpetuals are out of flower.

Climbing Roses



PRICES OF ALL CLIMBING ROSES
Strong Field-Grown Two-Year Strong Plants:
45c each; \$3.75 per 10.

CLIMBING AMERICAN BEAUTY. Rich red, fragrant. Very vigorous in growth and a prolific bloomer, having hundreds of perfect flowers open at one time.

CRIMSON RAMBLER. The best known and most popular of all the climbing roses. Flowers are borne in clusters of 15 to 25 perfectly shaped blossoms of a rich glowing crimson.

PAUL'S SCARLET CLIMBER. Vivid scarlet, shaded crimson; makes a brilliant display for a long period of time in the garden.

PINK DOROTHY PERKINS. The flowers are clear shell pink, with lovely, oddly wrinkled petals; buds pointed, well formed, borne in great clusters.

GARDENIA. One of the strongest growers, with beautiful glossy foliage. Buds rich creamy yellow and open flowers yellow at first. Very popular among the yellow climbers.

DR. W. VAN FLEET. A rose which on account of its dainty color and exquisitely shaped buds and flowers, appeals to everyone. The long, pointed buds are of a rich flesh-pink on stems 12 to 18 inches long. Splendid for cutting.

EXCELSA (H. W.). This sort is also known as "Red Dorothy Perkins," and carries the glossy, varnished appearance of foliage shown by that sort, assuring a constant shade all summer wherever used. The flowers of scarlet-crimson are borne in large trusses, are very double and large, and are produced with the greatest profusion. It is the most valuable sort of its type.

FLOWER OF FAIRFIELD. The new everblooming Crimson Rambler which puts forth its flowers in rich profusion throughout the entire summer. The flowers are very compact, and much more brilliant than the old Crimson Rambler.

SILVER MOON. Very large; flowers of clear silvery white with bright yellow stamens. Blooms profusely on strong stems and is delicately perfumed. Foliage bronze-green, abundant and practically free from mildew.

MARY WALLACE. A pillar Rose, making a fine, strong, self-supporting plant 6 to 8 feet high, with large glossy foliage, blooming with great freedom in spring and bearing a considerable number of fine buds in summer and fall. Flowers very large, generally exceeding 4 inches across; of a bright clear rose-pink with salmon base to the petals.

LARGE ORDER ARRIVES IN GOOD CONDITION

Charlottesville, Va., April 15, 1930.

Bountiful Ridge Nurseries,

Princess Anne, Md.

Gentlemen:

Last Monday morning we received our shipment of apple trees and other stock. We are very much pleased with all of the stock and the condition in which they arrived.

Very truly yours,

CREST ORCHARDS, W. T. Snodgrass, Mgr.

OVER 500 TREES—BETTER THAN HE EXPECTED

Martinsburg, W. Va., March 24, 1930.

Bountiful Ridge Nurseries,

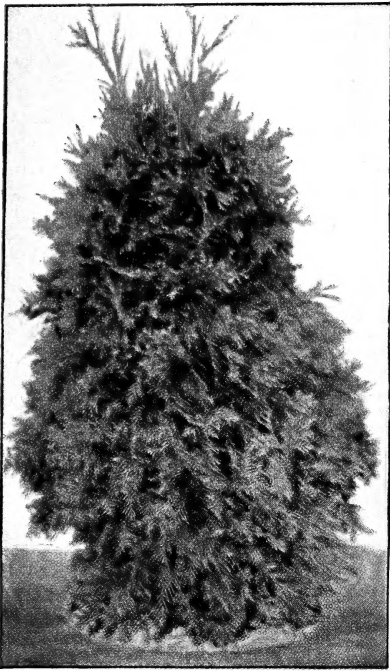
Princess Anne, Md.

Dear Sirs:

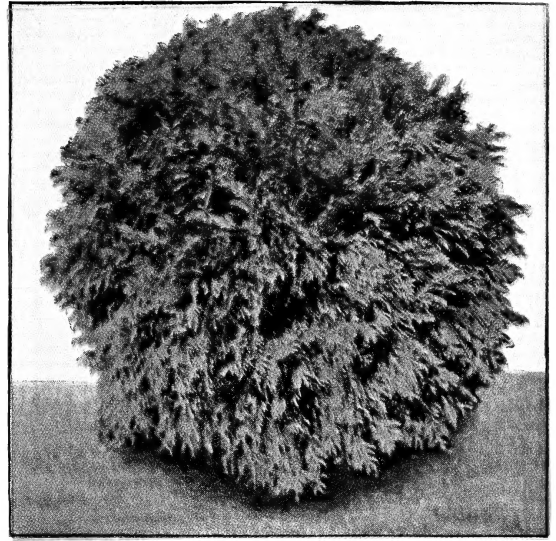
I received my trees and they were better than I expected them to be. They were very good.

Yours truly,

J. E. ORR.



American Arborvitae.



Globe Arborvitae.

THIS EVERGREEN COLLECTION

4 BIG PLANTS \$5.50

- 1 American Arborvitae, 24-30 inch
- 1 Globe Arborvitae, 12-15 inch
- 1 Irish Juniper, 24-30 inch
- 1 Golden Plume Cypress, 24-30 in.

VALUE, \$7.00

Collection Price, - - - **\$5.50**



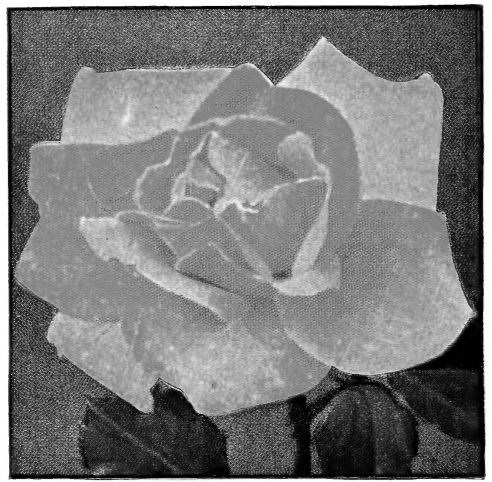
Irish Juniper.



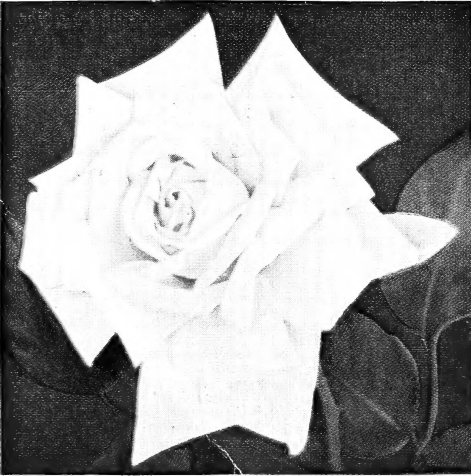
Retinospora Plumosa Aurea.



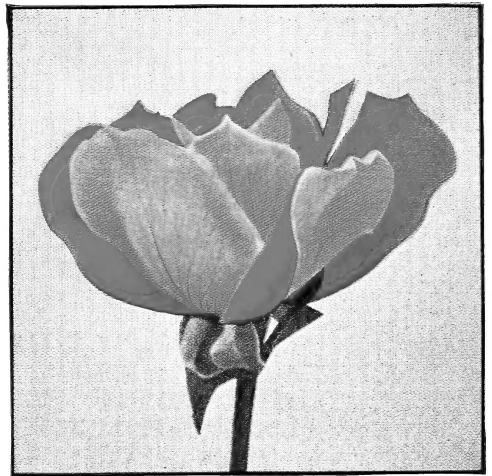
Pink Radiance.



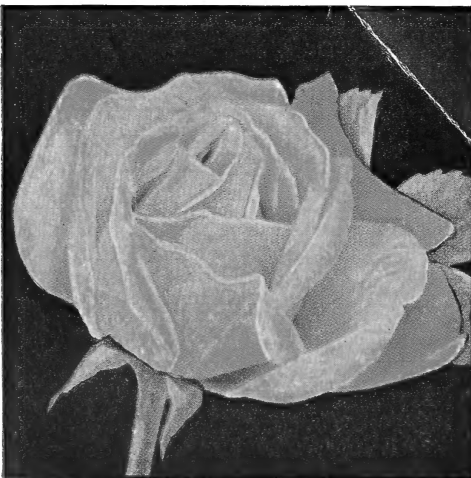
Souv. de Claudius Pernet.



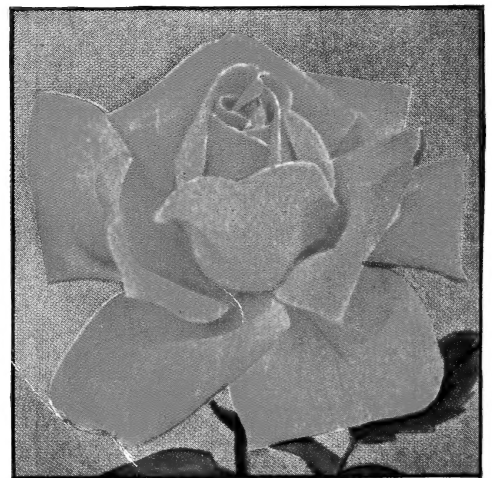
K. A. Victoria.



Talisman—The Rose Beautiful.



Duchess of Wellington.



Luxembourg.

R
O
S
E
S

F
O
R
Y
O
U
R

G
A
R
D
E
N

Our "Beauty" Rose Collection

1 each above beautiful
Rose 2 yr. strong plants

\$2.75