





Digitized by the Internet Archive
in 2012 with funding from
University of North Carolina at Chapel Hill

<http://archive.org/details/wescomb1955west>

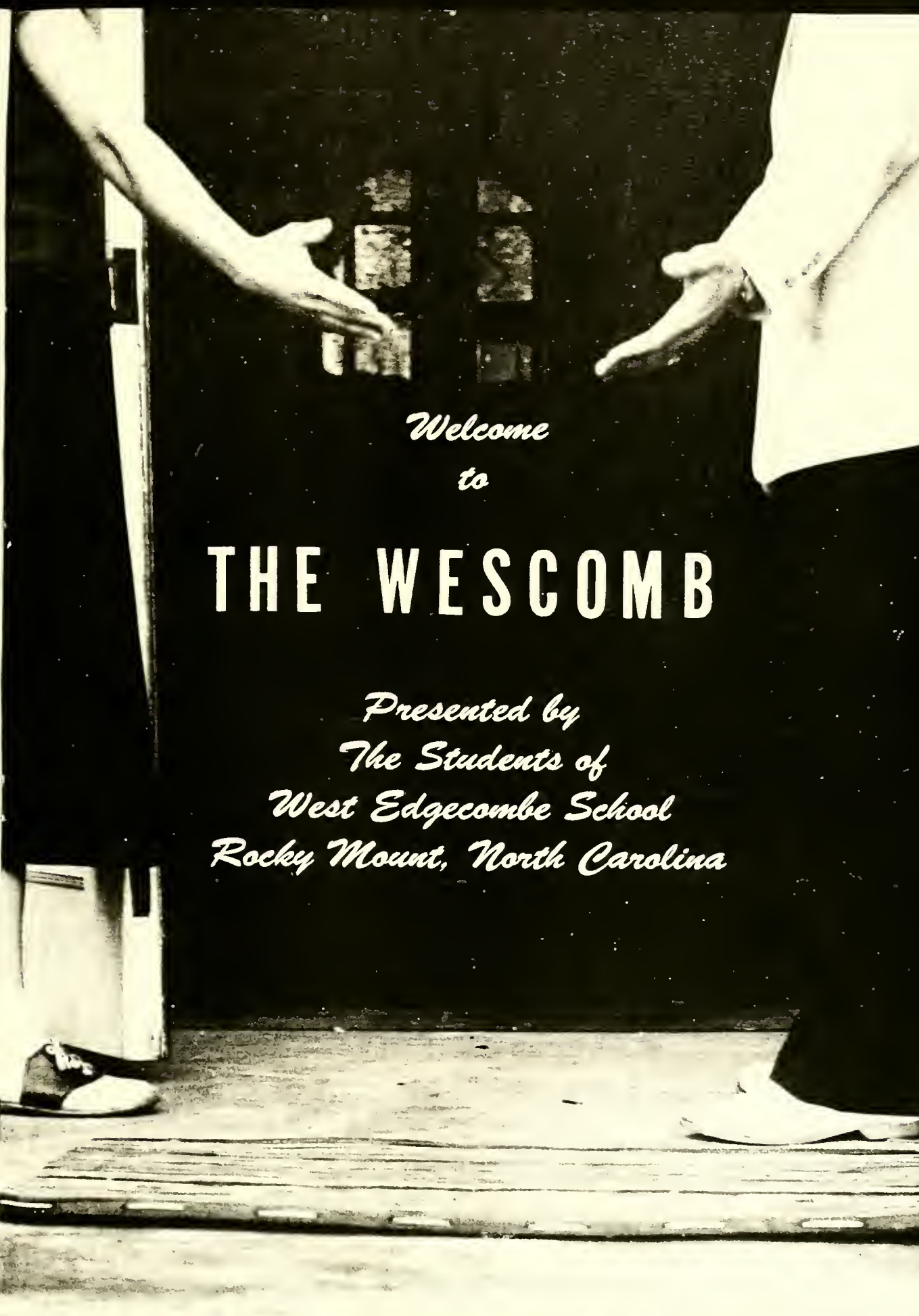
Braswell Memorial Library
727 North Grace Street
Rocky Mount, NC 27804





Braswell Memorial Library
727 North Grace Street
Rocky Mount, NC 27804

Handwritten notes on the left margin, including the name "Hickman" and other illegible text.



*Welcome
to*

THE WESCOMB

*Presented by
The Students of
West Edgcombe School
Rocky Mount, North Carolina*



Foreword

A basketball game---a whispered session in study hall---
the rush to lunch---the banging of locker doors---a crowd-
ed school bus---that bid to the Junior-Senior---the dream
of a diploma and a bright and wonderful future---All these
combine to make the picture of youth, which we have tried to
bring you in this edition of the WESCOMB.



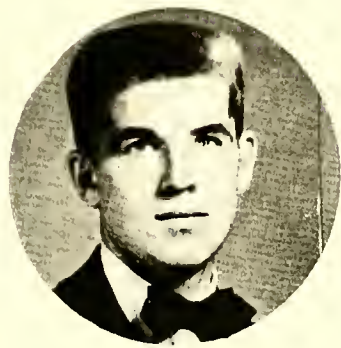
Dedication

To Miss Jane Mitchell, our sponsor, our advisor, and our friend, we dedicate this edition of the WESCOMB. To her we owe many heartfelt "Thank yous" for her leadership and guidance in all that we did. The time she has devoted to us has brought us developments and achievements which cannot be exceeded. Whenever we called upon her we could be assured of her willing assistance until the task was finished. In this small way we would like her to know we appreciate all she has done for us.



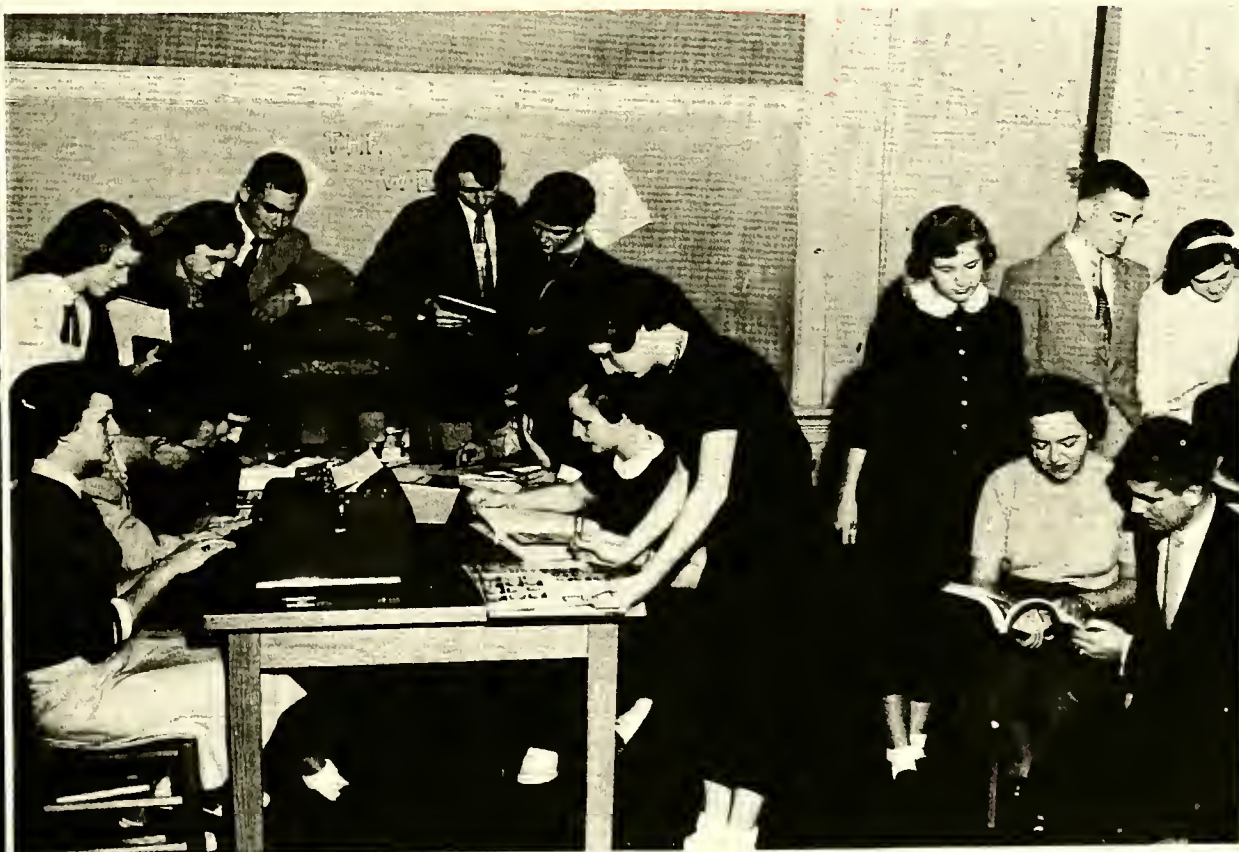
JANET LUI
Editor

The Wescomb Staff



FRANKLIN BROWN
Business Manager

Braswell Memorial Library
727 North Grace Street
Rocky Mount, NC 27804



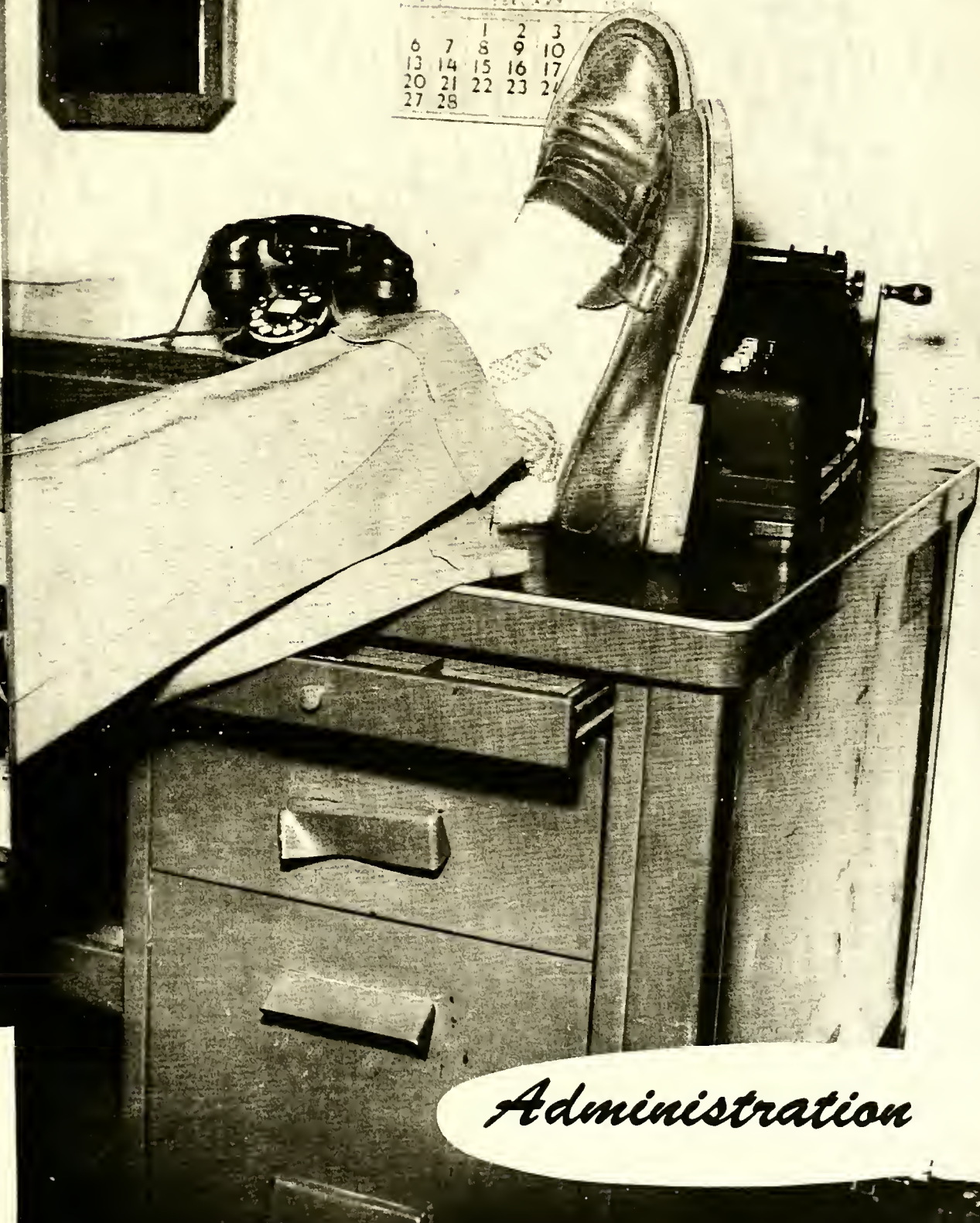
Left to right: Gussie Robinson, Julian Thomas, Mary Sue Proctor, Lois Pope, Margaret Rose, Margi Worsley, Curtis Powell, James Taylor, Ann Tolston, Donald Hill, Donley Joyner, Jeannette Lanier Sally Goff, Janet Luper, Miss Mitchell, Franklin Brown, Bobby Jones, Ann Langston, Phillip Carrav George Worsley.

5	6	7	8	9	10	11
12	13	14	15	16	17	18
19	20	21	22	23	24	25
26	27	28	29	30	31	

1955 JANUARY 1955

3	4	5	6	7	8
10	11	12	13	14	15
17	18	19	20	21	22
25	26	27	28	29	

6	7	8	9	10
13	14	15	16	17
20	21	22	23	24
27	28			



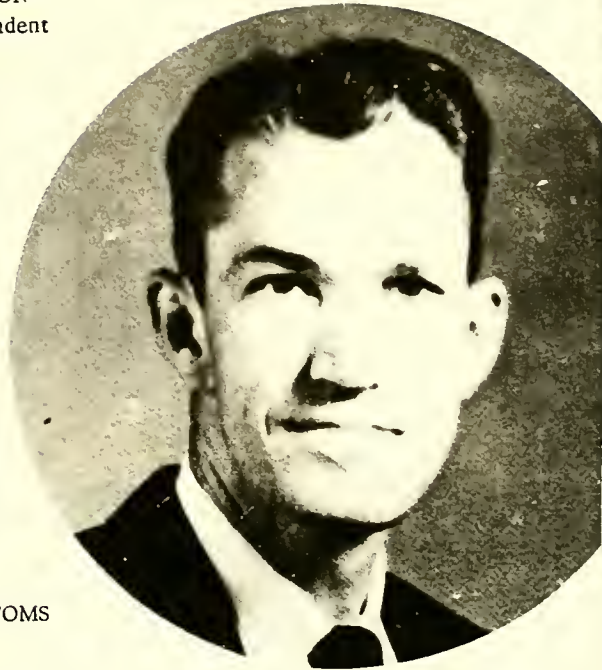
Administration



MR. E. D. JOHNSON
County Superintendent



MRS. RAY BOTTOMS
Secretary



MR. R. M. CASHWELL
Principal



SCHOOL BOARD

Left to right: Mr. C. M. Killebrew, Mr. D. F. Rose, Mr. R. L. Eason, Mr. N. M. Lowe, Mr. J. R. Proctor



MISS MITCHELL



MISS BRAKE



MISS MANGUM



MRS. DUNN



MRS. JONES



MRS. BAILEY

The
High
School
Faculty



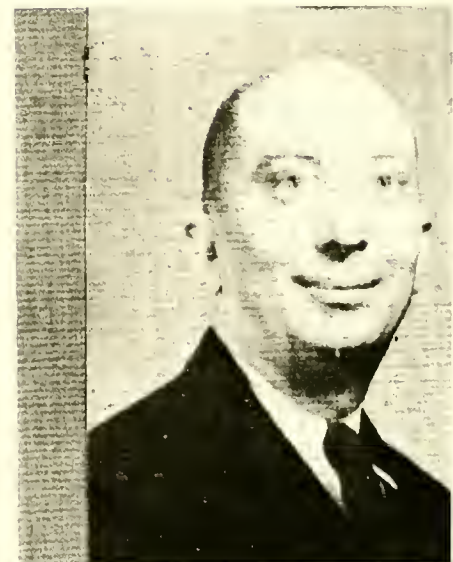
MISS ALEXANDER



MRS. BROWN



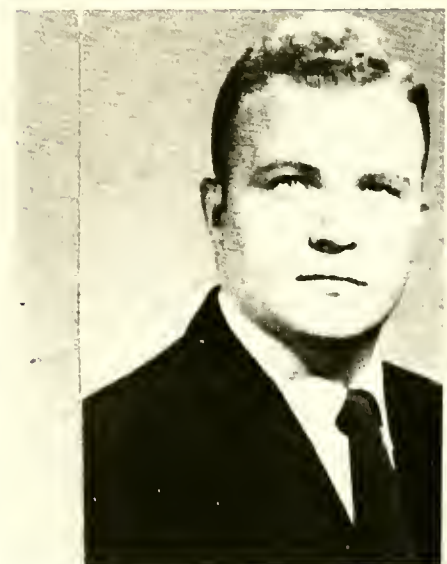
MISS WILDER



MR. LANGFORD



MISS RASTOM



MR. PRICE

The

High

School

Faculty





*Around the Clock
at W.E.H.S.*



Arrival at School



Chapel



Lunch



Gym Practice



*That Last Minute
Get-Together*



Seniors

Senior Class Officers



Left to right: Vice President, LOIS POPE; Reporter, SUSAN GARDNER, President, GEORGE WORSLEY; Secretary, ANN HARDY; Treasurer, ALICE PARKER.

Senior Class Sponsor

MOTTO: "Tonight we
launch... Where shall
we anchor?"



COLORS - Red

FLOWER - Red

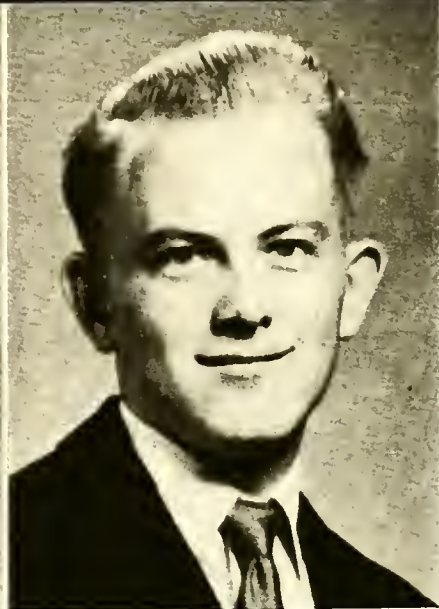
MISS JANE MITCHELL

JOYCE ASHBY

"Happy am I, from care I'm free, why can't they all be contented like me?"
Basketball 1, 2, 3, 4, Captain 4; Miss Basketball 54; Science Club 3; FHA 1, 2, 3, 4; Glee Club 3; We Hi 4; Beta Club 3, 4; Commercial Club 4; Senior Play 4.

PHILLIP CARRAWAY

"It doesn't pay to worry, things are bound to happen anyway."
Beta Club 3, 4; Commercial Club 4; Math Club 4; Basketball 1, 2, 3; FFA 1, 2, 3, Officer 1, 2; Bus Driver 3, 4.



FRANKLIN BROWN

"He has an ore in every man's boat, and a finger in every pie."
4-H Club 1, President 1; FFA 1, 2; Public Speaking Winner 1, 2; Class President 1, 2, 3; Student Council President 4; Chief Marshal 3; Basketball 1, 2, 3, Captain 3; Annual Staff 3, 4; Business Manager 4; We Hi Staff 4; Page N. C. Legislature 2.

JANET BREEDLOVE

"I pin my faith to no man's sleeve, have I not two eyes of my own."
FHA 1, 2, 3, 4; Glee Club 1; Library Club 1; We Hi Staff 4; Commercial Club 4; French Club 3.



SALLY GOFF

"Style that breathes perfection and a love of all things fine."
Glee Club 1, 2, 3, 4; Science Club 3; 4-H Club 1, 2, 3, 4; Superlative 3, 4; Commercial Club 4, President 4; Beta Club 3, 4, Secretary-Treasurer 4; Annual Staff 4; We Hi Staff 3, 4; Student Council Treasurer 4; Class Officer 1, 3; Miss West Edgcombe 4.

SUSAN GARDNER

"Joy rises in me like a summer's morn."
Class Officer 4; Glee Club 1, 2, 3, 4; 4-H Club 1, 2, 3, 4; FHA 3, 4, Treasurer 4; Commercial Club 4; We Hi Staff 3, 4.



d White
arnation



HELEN DAUGHTRIDGE

"Life is real, life is earnest."
Glee Club 1, 2; 4-H Club 1, 2, 3, 4;
Science Club 1, 2; Commercial Club 4;
FHA Club 1, 2, 3, 4; French Club 3; We
Hi Staff 4; Library Club 1, 2.

SHELBY GLISSON

"If she ever had an evil thought, she
spoke no evil word."
French Club 4; Commercial Club 4;
Glee Club 2; FHA 1.

WILLIE SUE GRIFFIN

"Ready in heart, and ready in hand."
Glee Club 1, 2, 3, 4; 4-H Club 1, 2, 3, 4;
Commercial Club 4; FHA 1, 2, 3, 4,
Vice President 3, President 4.

ANNE HARDY

"Behind her blue eyes lies a world of
mischief."
Glee Club 1, 2, 4; 4-H Club 1, 2, 3;
Commercial Club 4; Beta Club 3, 4;
Class Officer 4; Superlative 4; We Hi
Staff 4.



DONALD HILL

"Good natured and slow to anger."
4-H 1; FFA 1, 2, 3, 4; Annual Staff
We Hi Staff 3, 4; Bus Driver 3, 4; S
Play 4; Cheerleader 3; Head Chee
leader 4.

SHIRLEY HILL

"She was always quiet and dignified."
Glee Club 1, 2; FHA 1, 2; Science
3; 4-H Club 1, 2, 3, 4; French Cl
Library Club 3.

CHARLES HURDLE

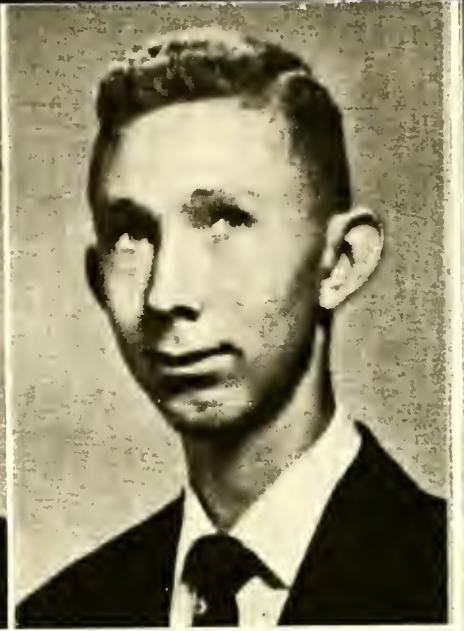
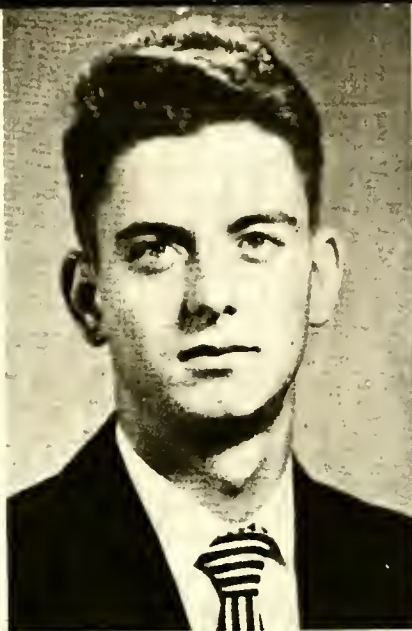
"Happiness is cheaper than worry,
so why pay the price."

FFA 1, 2, 3; Commercial Club 4; We Hi
Staff 4; Bus Driver 4; 4-H Club 1, 2.

JAMES JOHNSON

"O fortune be so good as to save
me from bachelorhood."

4-H 1, 2, 3, 4; FFA 1, 2, 3, 4; Commer-
cial Club 4; We Hi Staff 4; Superlative
3.



BOBBY JONES

"Some say the world is made for fun
and frolic, so do I."

Basketball 1, 2, 3, 4; FFA 1, 2; 4-H 1, 2,
3, 4; Annual Staff 4; Commercial Club
4, Vice President 4.

JEANNETTE LANIER

"Modest and gentle, but purity shines
clearly from her face."

Glee Club 1, 2, 3, 4; Science Club 2, 3;
4-H Club 1, 2, 3, 4; FHA 1, 2, 3, 4; Com-
mercial Club 4; Beta Club 3, 4; We Hi
Staff 4; Annual Staff 4.



WILLIAM LEWIS

"Kind, wholehearted, faithful, and
true."

FFA 1, 2; Basketball 1; Math Club 4;
Glee Club 4; Bus Driver 4; Baseball 1.

JANET LUPER

"True to her word, her work, and her
friends."

Science Club 2, 3, Secretary 3; FHA
1, 2, 3, 4, Vice President 2, President 3;
Superlative 3, 4; Annual Staff 3, 4;
Editor 4; Public Speaking 1; Class Of-
ficer 1, 2, 3; Beta Club 3, 4, Vice Presi-
dent 4; Senior Play 4; Basketball 1, 2.





ALICE PARKER

"Errors like straws the surface flow; s
who seeks for pearls must dive below
FHA 1, 2; Glee Club 1, 2, 4; Science
Club 2, 3, 4; Library Club 1, 2, 3, 4,
Secretary-Treasurer 4; French Club
4, Secretary-Treasurer 4; Class Offi
4; We Hi Staff 4, Assistant Edi or 4;
Senior Play Prompter 4.

CARLEE PARKER

"The way to have a friend is to be o
Science Club 1, 2, 3; FHA 1, 2, 4;
Library Club 3; 4-H Club 1, 2; Com
mercial Club 4; Glee Club 1, 2, 3, 4
Superlative 3.

LOIS POPE

"The sweetest, the dearest, the most
lovable too, best kind of sport; is true
blue."
Beta Club 3, 4; We Hi Staff 4; Annual
Staff 3, 4; Basketball 1, 2, 3, 4, All
Conference 3, Captain 4; Science Club
2, 3, Treasurer 3; FHA 1, 2, 3, 4, Rep.
4; Class Officer 1, 3; Senior Play 4.

BOBBY PROCTOR

"He was so good he would pour rose-
water on a toad."
FFA 1, 2, 3, 4, Vice President 4; Glee
Club 4; We Hi Staff 4; Basketball 3;
Commercial Club 4; Bus Driver 4.



CURTIS POWELL

"Rich in good works."
FFA 1, 2, 3, 4, Rep. 3, Presiden
Science Club 2, 3; Math Club 4
dent 4; Beta Club 3, 4; Annual
We Hi Staff 4; Senior Play 4; B
Driver 3, 4; Homeroom Represe
4.

FREDDY PROCTOR

"When joy and duty clash, let c
to smash."
FFA 1, 2, 4; 4-H Club 1, 2, 3, 4
ball 1, 3; Superlative 3, 4.

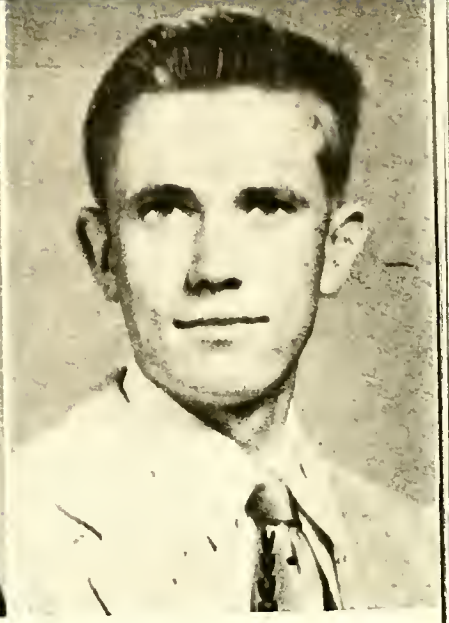


ANN PROCTOR

"Little body with a mighty heart."
 Science Club 1, 2, 4, Secretary-Treasurer 4; FHA 1, 2, 3, 4, Secretary-Treasurer 2; Glee Club 2, 3, 4; Commercial Club 4, Rep. 4; 4-H Club 1, 2, 4, Rep. 2; We Hi Staff 4; Basketball 1, 2.

RICHARD PROCTOR

"Quiet in appearance with motives unknown."
 FFA 1, 2, 3, 4; 4-H 1, 2; Commercial Club 4; Glee Club 4; We Hi Staff 4; Bus Driver 3, 4.



MARY SUE PROCTOR

"To see her is to know her, to know her is to love her."
 Glee Club 1, 2, 3, 4; Science Club 3; Senior Play 4; French Club 3, 4, President 4; Beta Club 3, 4; Annual Staff 4; We Hi Staff 3, 4, Editor 4; 4-H Club 1, 2, 3, 4; Class Officer 2, 3; Superlative 3, 4.

RUBIN PROCTOR

"Whistling, laughing, or singing a song, happy and contented he jogs along."
 FFA 1, 2; Basketball 3, 4; Glee Club 4, President 4; Math Club 4; French Club 3, 4; 4-H Club 1, 2, 3, 4; Bus Driver 4.



GLEND A RADFORD

"To be loved is all I need, and whom I love, I love indeed."
 Student Council 3; Junior Red Cross 2; Typing Club 1; Commercial Club 4; Glee Club 4; Homeroom Representative 1.

GUSSIE ROBINSON

"Full of laughter, full of pep, never quiet, that's her rep."
 Science Club 1, 2, 3, 4, President 4; 4-H Club 1, 2, 3, 4; FHA 1, 2, 3, 4, Treasurer 3; Superlative 3; Glee Club 1, 2, 4; Commercial Club 4; Annual Staff 4; Cheerleader 2, 4; Scorekeeper 3; Senior Play 4.





MARGARET ROSE

"A sunny disposition is half the battle."
FHA 3, 4; Glee Club 3, 4; 4-H Club 3, 4; Beta Club 3, 4, Rep. 4; Homeroom Representative 4; We Hi Staff 3, 4; Annual Staff.

JAMES TAYLOR

"Smile and the whole world smiles with you."
FFA 1, 2, 3, 4; We Hi Staff 3, 4; Annual Staff 4; Commercial Club 4; Bus Driver 4.

MARY ELIZABETH TAYLOR

"Fearless in expressing her beliefs and opinions."
Glee Club 1, 2, 3, 4; FHA 1, 2, 3, 4; Song Leader 3; Basketball 1, 2, 3, 4, Captain 3, 4; Commercial Club 4; 4-H Club 1, 2, 3, Secretary 1; We Hi Staff 4; Bus Driver 4; Superlative 4; Beta Club 4; Science Club 2, 3; Senior Play 4.



RACHEAL TAYLOR

"There is no wisdom like frankness."
FHA 1, 2, 3, 4; Science Club 2, 3; 4-H Club 1, 2, 3, 4; Recreation Leader 2; Basketball 1, 2, 3, 4; Glee Club 1, 2; Commercial Club 4.

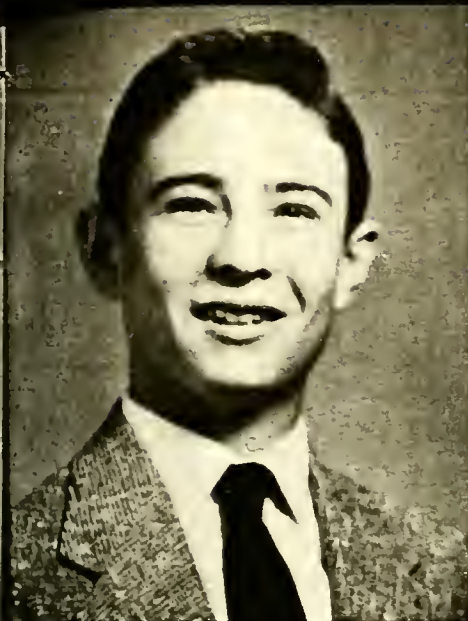
JULIAN THOMAS

"Take life easy. Never do today what you can put off until tomorrow."
Basketball 1, 2; Glee Club 1, 2, 3, 4; FFA 1, 2; Science Club 1, 2, 3; 4-H 1, 2, 3, 4; We Hi Staff 4; Annual Staff 4



LOUISE TYNDAL

"And underneath it all lies a heart of gold."
FHA 1, 2, 3, 4; 4-H Club 1, 2, 3, 4; Commercial Club 4; Science Club 2, 3; Glee Club 1, 2, 3, 4.



GEORGE WORSLEY

"A big heart always wishing to do right, and be friends with everybody."
FFA 1, 2; Basketball 3, 4; Glee Club 1, 4; Math Club 4; French Club 3, 4; Beta Club 3, 4, President 4; Class Officer 3, 4; 4-H 1, 2, 3; Bus Driver 3, 4; We Hi 3, 4; Annual Staff 4; Senior Play 4.



JOSEPHINE WILLIAMS

"For she was the quiet kind, whose nature never varied."
FHA 1, 2, 4; Science Club 2, 3; Glee Club 1, 2; 4-H Club 1, 2, 3, 4; Commercial Club 4; Library Club 3.



JACKIE WILLIAMS

"Life without laughing is a weary blank."
Glee Club 1, 3, 4; FHA 1, 2, 3, 4, Rep. 4; Science Club 1, 2; Commercial Club 4; 4-H Club 1, 2, 3, 4; We Hi Staff 4.

Mascots



CAMMY HINTON



DANNY BAILEY



ALICE PARKER

"Errors like straws the surface flow
who seeks for pearls must dive below"
FHA 1, 2; Glee Club 1, 2, 4; Sci
Club 2, 3, 4; Library Club 1, 2, 3
Secretary-Treasurer 4; French C
4, Secretary-Treasurer 4; Class
4; We Hi Staff 4, Assistant Edi
Senior Play Prompter 4.

CARLEE PARKER

"The way to have a friend is to be
Science Club 1, 2, 3; FHA 1, 2, 4
Library Club 3; 4-H Club 1, 2; C
mercial Club 4; Glee Club 1, 2,
Superlative 3.

LOIS POPE

"The sweetest, the dearest, the most
lovable too, best kind of sport; is true
blue."

Beta Club 3, 4; We Hi Staff 4; Annual
Staff 3, 4; Basketball 1, 2, 3, 4, All
Conference 3, Captain 4; Science Club
2, 3, Treasurer 3; FHA 1, 2, 3, 4, Rep.
4; Class Officer 1, 3; Senior Play 4.

BOBBY PROCTOR

"He was so good he would pour rose-
water on a toad."

FFA 1, 2, 3, 4, Vice President 4; Glee
Club 4; We Hi Staff 4; Basketball 3;
Commercial Club 4; Bus Driver 4.



CURTIS POWELL

"Rich in good works."
FFA 1, 2, 3, 4, Rep. 3, Presiden
Science Club 2, 3; Math Club
dent 4; Beta Club 3, 4; Annual
We Hi Staff 4; Senior Play 4; F
Driver 3, 4; Homeroom Represe
4.

FREDDY PROCTOR

"When joy and duty clash, let
to smash."
FFA 1, 2, 4; 4-H Club 1, 2, 3, 4
ball 1, 3; Superlative 3, 4.

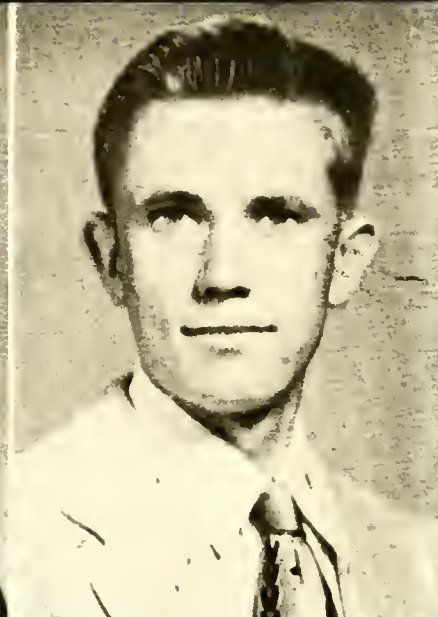


ANN PROCTOR

"Little body with a mighty heart."
Science Club 1, 2, 4, Secretary-Treasurer 4; FHA 1, 2, 3, 4, Secretary-Treasurer 2; Glee Club 2, 3, 4; Commercial Club 4, Rep. 4; 4-H Club 1, 2, 4, Rep. 2; We Hi Staff 4; Basketball 1, 2.

RICHARD PROCTOR

"Quiet in appearance with motives unknown."
FFA 1, 2, 3, 4; 4-H 1, 2; Commercial Club 4; Glee Club 4; We Hi Staff 4; Bus Driver 3, 4.

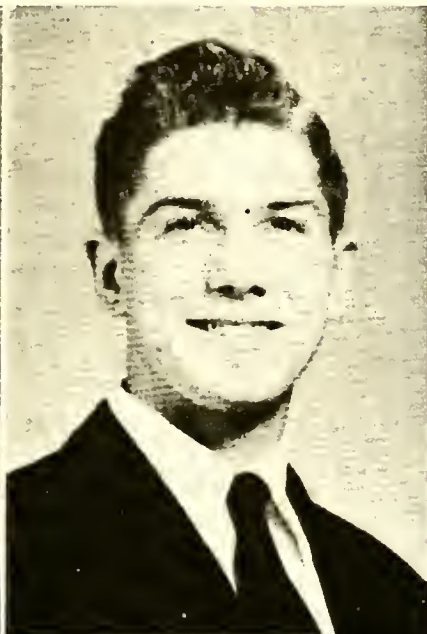


MARY SUE PROCTOR

"To see her is to know her, to know her is to love her."
Glee Club 1, 2, 3, 4; Science Club 3; Senior Play 4; French Club 3, 4, President 4; Beta Club 3, 4; Annual Staff 4; We Hi Staff 3, 4, Editor 4; 4-H Club 1, 2, 3, 4; Class Officer 2, 3; Superlative 3, 4.

RUBIN PROCTOR

"Whistling, laughing, or singing a song, happy and contented he jogs along."
FFA 1, 2; Basketball 3, 4; Glee Club 4, President 4; Math Club 4; French Club 3, 4; 4-H Club 1, 2, 3, 4; Bus Driver 4.



GLENDA RADFORD

"To be loved is all I need, and whom I love, I love indeed."
Student Council 3; Junior Red Cross 2; Typing Club 1; Commercial Club 4; Glee Club 4; Homeroom Representative 1.

GUSSIE ROBINSON

"Full of laughter, full of pep, never quiet, that's her rep."
Science Club 1, 2, 3, 4, President 4; 4-H Club 1, 2, 3, 4; FHA 1, 2, 3, 4, Treasurer 3; Superlative 3; Glee Club 1, 2, 4; Commercial Club 4; Annual Staff 4; Cheerleader 2, 4; Scorekeeper 3; Senior Play 4.





MARGARET ROSE

"A sunny disposition is half the battle."
FHA 3, 4; Glee Club 3, 4; 4-H Club 4; Beta Club 3, 4, Rep. 4; Homeroom Representative 4; We Hi Staff 3, 4; Annual Staff.

JAMES TAYLOR

"Smile and the whole world smiles with you."
FFA 1, 2, 3, 4; We Hi Staff 3, 4; Annual Staff 4; Commercial Club 4; Bus Driver 4.

MARY ELIZABETH TAYLOR

"Fearless in expressing her beliefs and opinions."
Glee Club 1, 2, 3, 4; FHA 1, 2, 3, 4; Song Leader 3; Basketball 1, 2, 3, 4, Captain 3, 4; Commercial Club 4; 4-H Club 1, 2, 3, Secretary 1; We Hi Staff 4; Bus Driver 4; Superlative 4; Beta Club 4; Science Club 2, 3; Senior Play 4.

RACHEAL TAYLOR

"There is no wisdom like frankness."
FHA 1, 2, 3, 4; Science Club 2, 3; 4-H Club 1, 2, 3, 4; Recreation Leader 2; Basketball 1, 2, 3, 4; Glee Club 1, 2; Commercial Club 4.

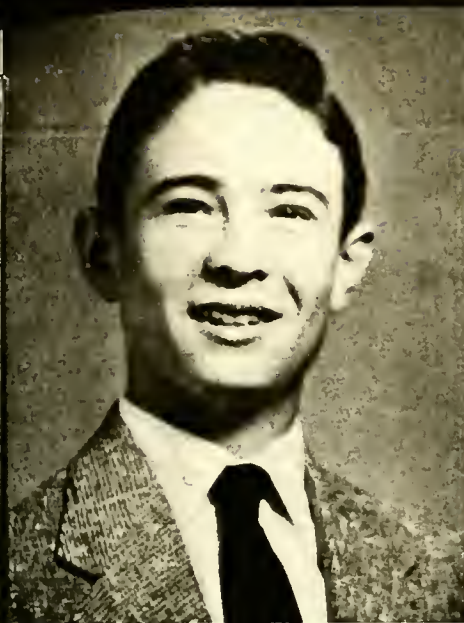


JULIAN THOMAS

"Take life easy. Never do today what you can put off until tomorrow."
Basketball 1, 2; Glee Club 1, 2, 3, 4; FFA 1, 2; Science Club 1, 2, 3; 4-H 2, 3, 4; We Hi Staff 4; Annual Staff.

LOUISE TYNDAL

"And underneath it all lies a heart of gold."
FHA 1, 2, 3, 4; 4-H Club 1, 2, 3, 4; Commercial Club 4; Science Club 2, 3; Glee Club 1, 2, 3, 4.



GEORGE WORSLEY

"A big heart always wishing to do right, and be friends with everybody."
FFA 1, 2; Basketball 3, 4; Glee Club 1, 4; Math Club 4; French Club 3, 4; Beta Club 3, 4, President 4; Class Officer 3, 4; 4-H 1, 2, 3; Bus Driver 3, 4; We Hi 3, 4; Annual Staff 4; Senior Play 4.



JOSEPHINE WILLIAMS

"For she was the quiet kind, whose nature never varied."
FHA 1, 2, 4; Science Club 2, 3; Glee Club 1, 2; 4-H Club 1, 2, 3, 4; Commercial Club 4; Library Club 3.



JACKIE WILLIAMS

"Life without laughing is a weary blank."
Glee Club 1, 3, 4; FHA 1, 2, 3, 4, Rep. 4; Science Club 1, 2; Commercial Club 4; 4-H Club 1, 2, 3, 4; We Hi Staff 4.

Mascots



CAMMY HINTON



DANNY BAILEY





Juniors



CLASS OFFICERS

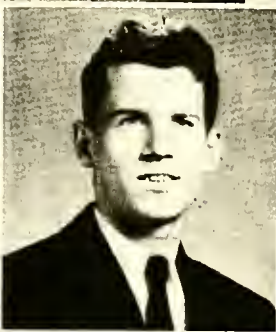
President, MARJORIE WORS
 Vice President, BRENT PAR
 Secretary, ANN TOLSTON
 Treasurer, SHELVY WALLA
 Rep. , CLEON RIVENBARK



SHELVA DEAN NEWSOME
 MILLARD PITT
 LOIS TAYLOR



BRENT PARKER
 MARJORIE PRICE
 CHARLES MORGAN



NANCY LAND
 GEORGE PROCT
 EDNA PROCTO
 HOWARD BATT



SHELVY WALL
 FRANK ELLIS
 ANN LANGSTO
 THOMAS CHER

ALDINE CAUSWAY
DENNIS SESSOMS



MARGARET TREVATHAN
GEROME LYNCH



ERNESTINE ADCOCK
JIMMY FORBES
JOYCE LANCASTER



CLEON RIVENBARK
MARJORIE WORSLEY
DONALD BURGESS

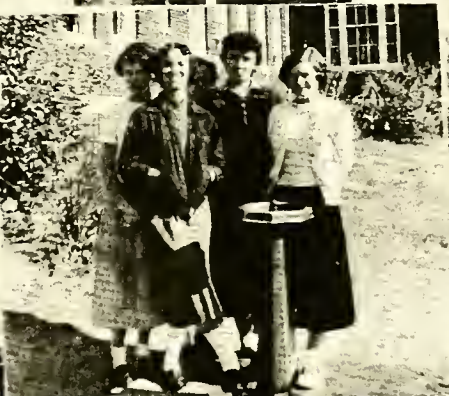


NORMA CARRAWAY
DONLEY JOYNER
MARY ALICE EASON
RONNIE PRICE



ANN TOLSTON
BOB BRAKE
MALDA JENKINS
DORIS FORD







Sophom

CLASS OFFICERS

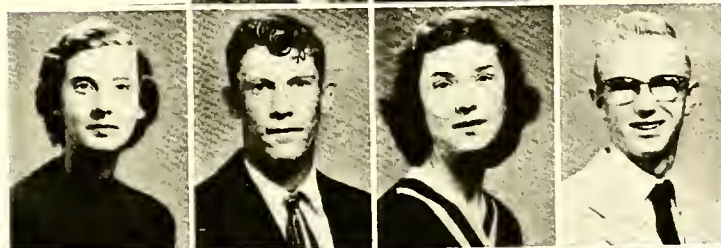
President - - - - - Joyce Shirley
 Vice President - - - - - Alma Horton
 Secretary - - - - - Mary Wall Herring
 Treasurer - - - - - Dora Walston
 Rep. - - - - - Betty Jean Ezzell



Cobbie Webb
 Edwin Worsley
 Gracie Pope



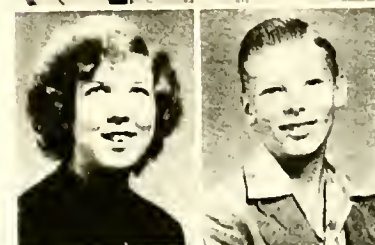
P. D. Proctor
 Doris Ellis
 Bobby Bone
 Alma Horton



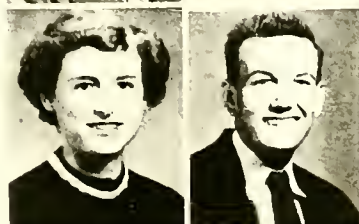
Charles Neal
 Patricia Biggs
 Roland Gay
 Carolyn Lewis
 Phillip Webb



Joyce Logan
 Charles Hill
 Margaret Harris
 James Proctor
 Peggy Proctor



James Davis
 Janet Bunn
 Jimmy Perry
 Judy Harrel
 McRae Price



Barbara Dunn
 Charles Pollard
 Mildred Skinner
 Jimmy Fountain
 Joyce Shirley

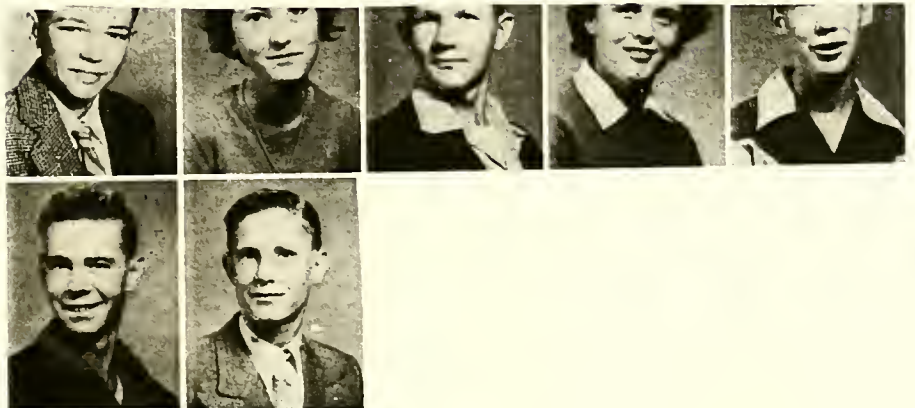
Frances Proctor
Charles Griffin
Dora Walston
Ray Wynn
Annie Holloman

Charles Killebrew
Minnie Belle Rackley
Lanue Lanier
Evelyn Peele
Ed Breedlove

Julia Rackley
H. W. Adkins
Peggy Osborne
James Bass
Ruth Smith

Nereus Lowe
Geraldine Langley
G. A. Burgess
Miranda Proctor
Atlas Newsome

Clyde Tharrington
Ted Proctor
William Coker
Billy Gay
Gene Vester







Freshmen

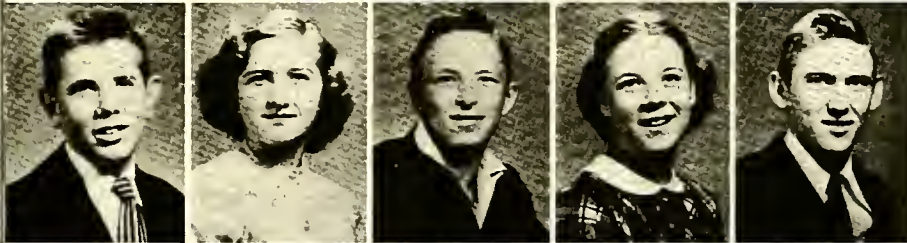


CLASS OFFICERS

President - - - - - Celia Brake
 Vice President - - - - Ray Williams
 Secretary - - - - - Jane Carraway
 Treasurer - - - - - Faye Goff
 Rep. - - - - - Sarah Williams



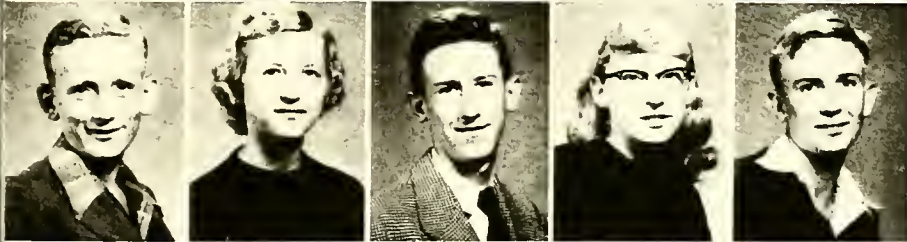
Faye Goff
 Robert Proctor
 Shirley Morgan
 Douglas Williams
 Betty Turner



Robert Proctor
 Synthia Causway
 Richard Brake
 Katie Bottoms
 Elmo Powell



Carolyn Proctor
 Clarence Jenkins
 Dorothy Holloman
 Alvis Joyner
 Margie Cherry



Amos Mosely
 Shirley Davis
 Billy Proctor
 Ann Forbes
 Wayne Glisson



Betty Taylor
 Kenneth Everette
 Addie Marie Griffin
 Bruce Braddy
 Nellie Webb

Linda Daughtridge
Lawrence Bradley
Madge Bridgers
Elmer Walters
Faye Coker



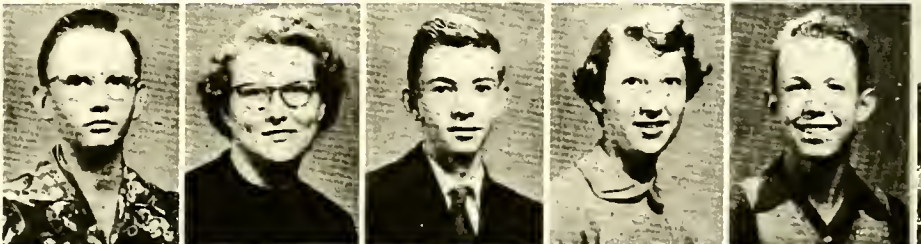
George Manning
Lula Price
Linwood Purvis
Evelyn Pittman
Alan Tolston



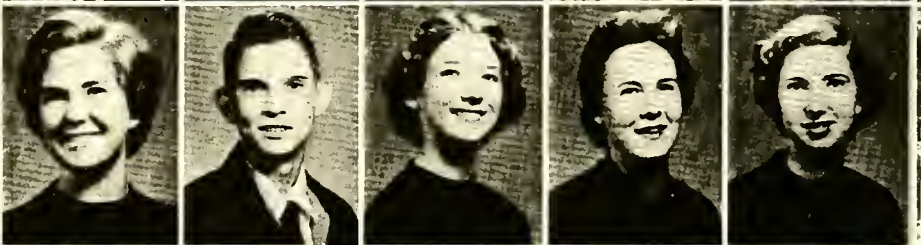
Ida Ruth Bass
Bennett Lewis
Jean Ward
Jerry Stein
Celia Brake



Wilbur Bradley
Arlene Killebrew
Leon Morris
Janice Flye
Ray Williams



Joan Raynor
Jimmy Biggs
Janet Moore
Sylvia Long
Alice Faye Crickmore



Sylvia Edwards
Harriet Horton
Edna Capps
Jean Jackson
Peggy Hardy



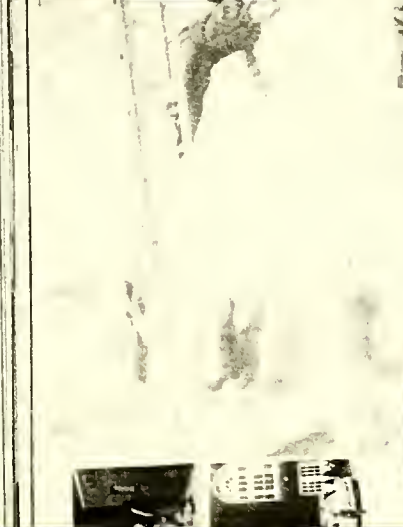
Sarah Williams
Frances Everette
Margaret Ellen Pitt
Shirley Kinkaid
Peggy Worrell



Joan Jenkins
Gwen Rhodes
Nellie Moore
Geraldine Norville
Shirley Lancaster









Underclassmen

Grammar Faculty



MISS BENNETT



MISS PROCTOR



MRS. BARKLEY



MR. FREEMAN



MRS. GORHAM



MRS. PAGE



MRS. LAMM



MRS. THOMAS



MRS. HERRINGTON



MRS. JACOCS



MRS. THURMOND



MISS WILLIAMS

Grammar Faculty



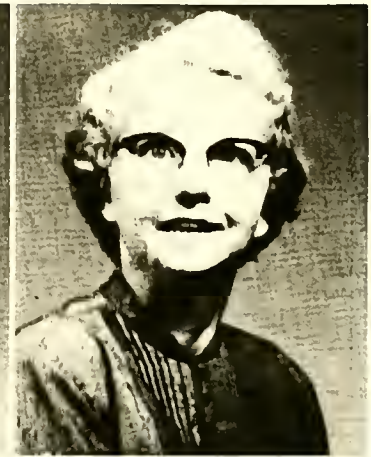
MISS WORSLEY



MRS. COCKRELL



MISS KNIGHT



MISS MEARS



MRS. CASHWELL



MRS. DAVIS



MISS THOMPSON



MRS. BRAKE



MISS BATTS



MISS BOND



MRS. PARKER



MRS. GREATHOUSE

Grade 8





Grade 7



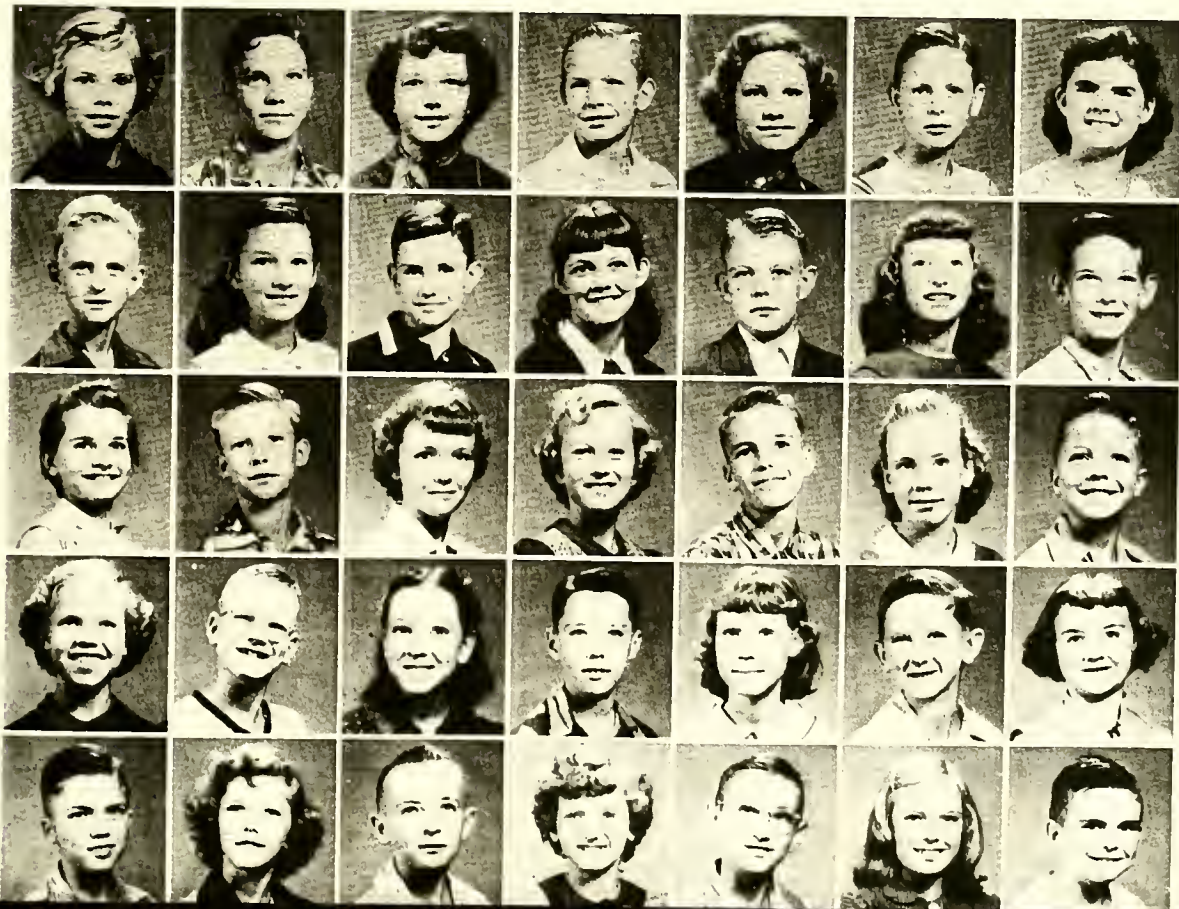
Grade 6



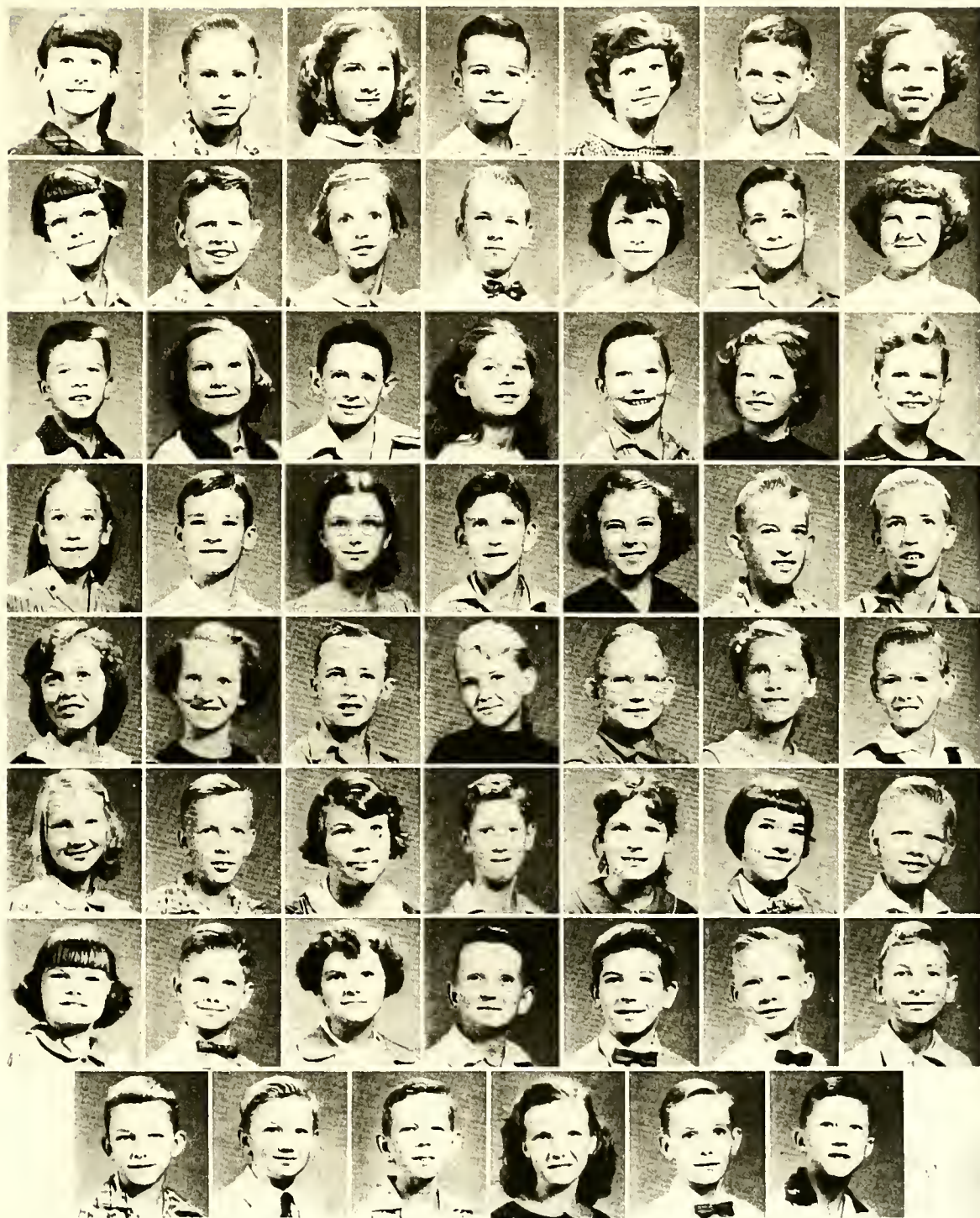
Grade 6



Grade 5



Grade 5



Grade 4



Grade 4



Grade 3



Grade 3



Grade 2



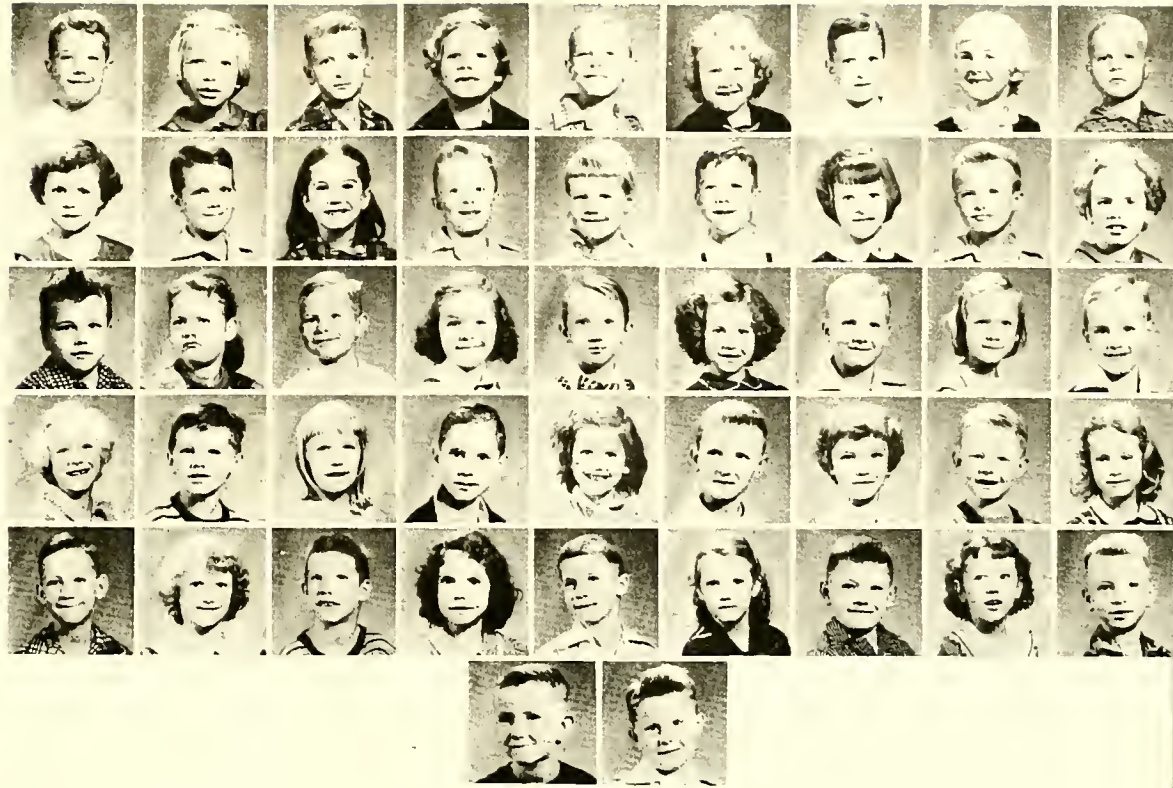
Grade 2



Grade 1



Grade 1



MRS. DOZIER

Music Pupils





Activities



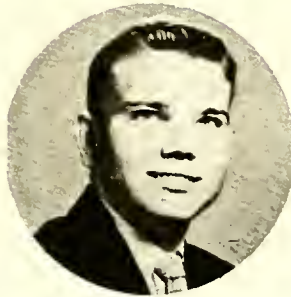
President
Franklin Brown



Miss Lynnette Mangum
Organizer and Sponsor



Treasurer
Sally C.



Vice President
Donley Joyner



Secretary
Patricia Biggs

The Student Council



Beta Club

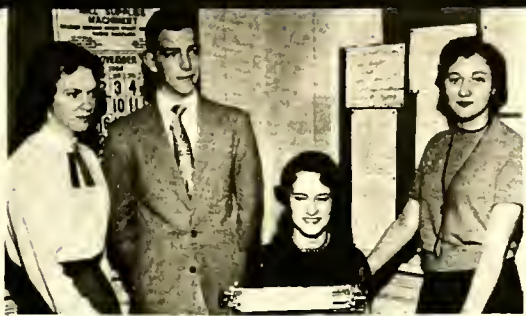


Mary Sue Proctor
Editor

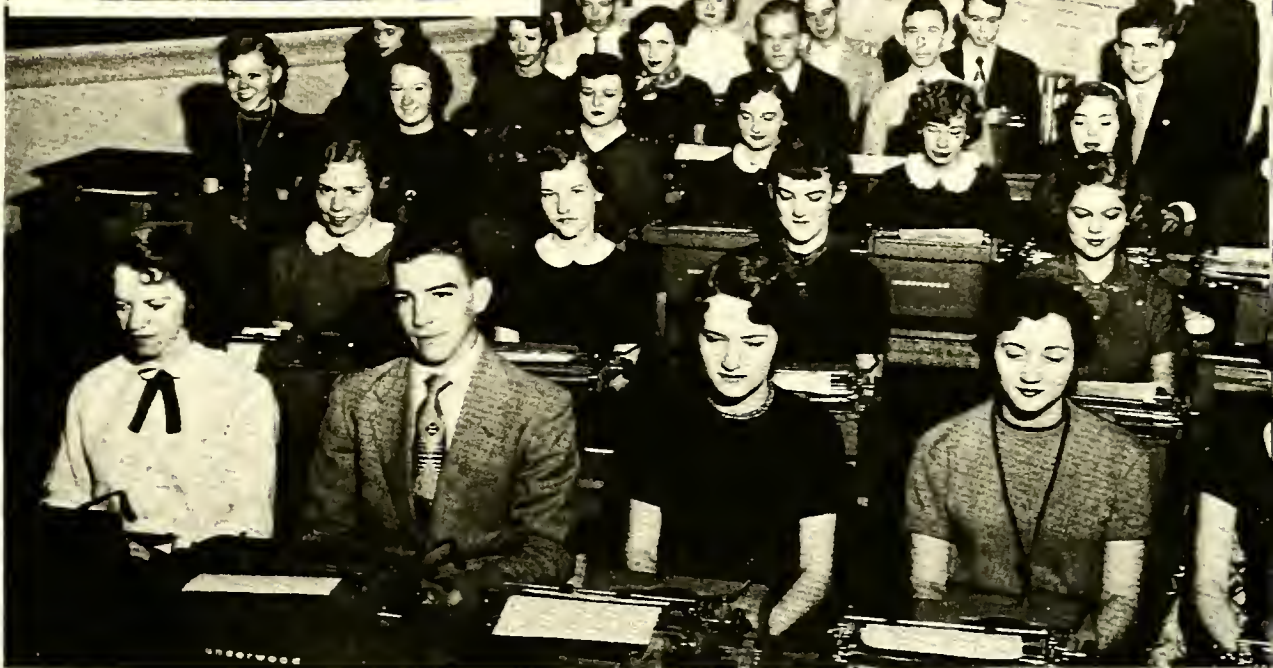
The We Hi Staff



Alice Parker
Assistant Editor



Commercial Club



Science Club



French Club



Bus Drivers



Math Club



Library Club

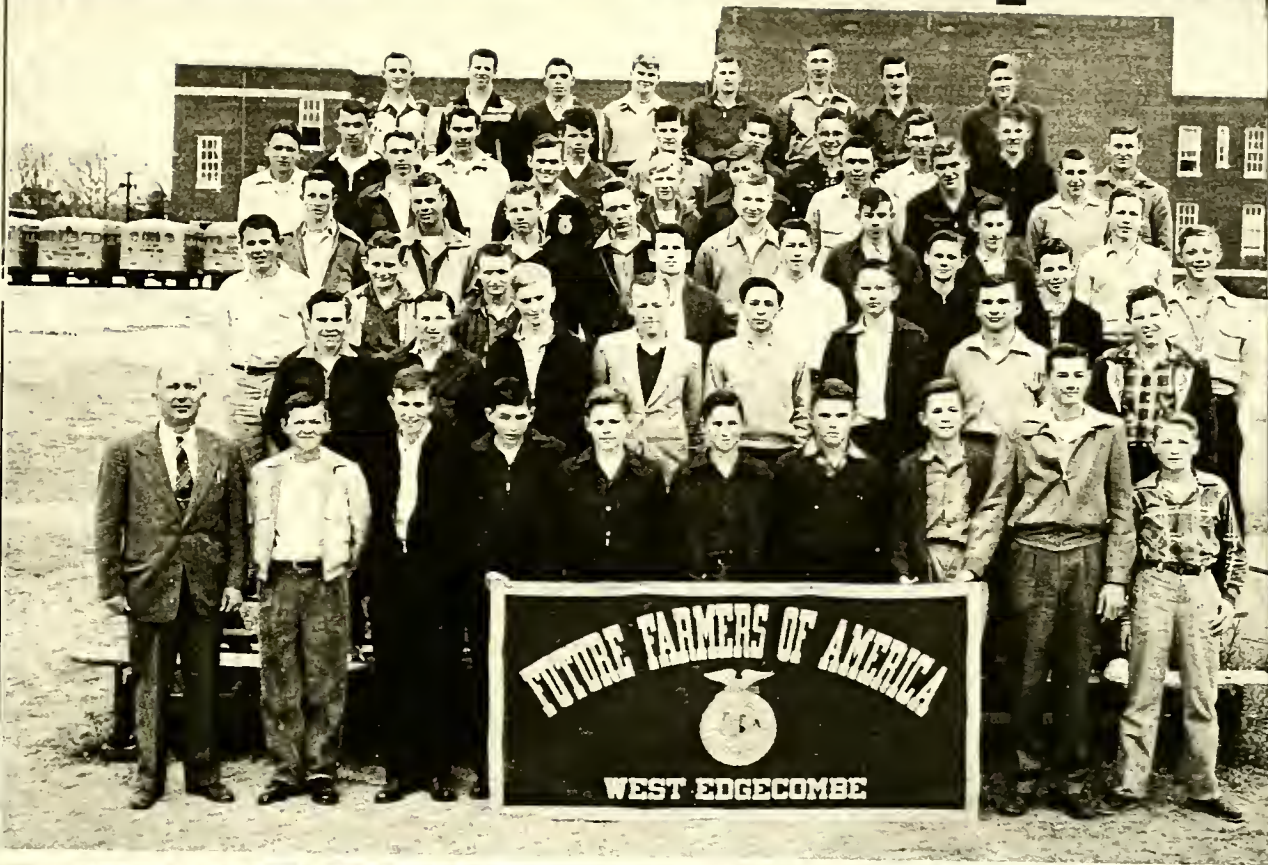


F.H.A.



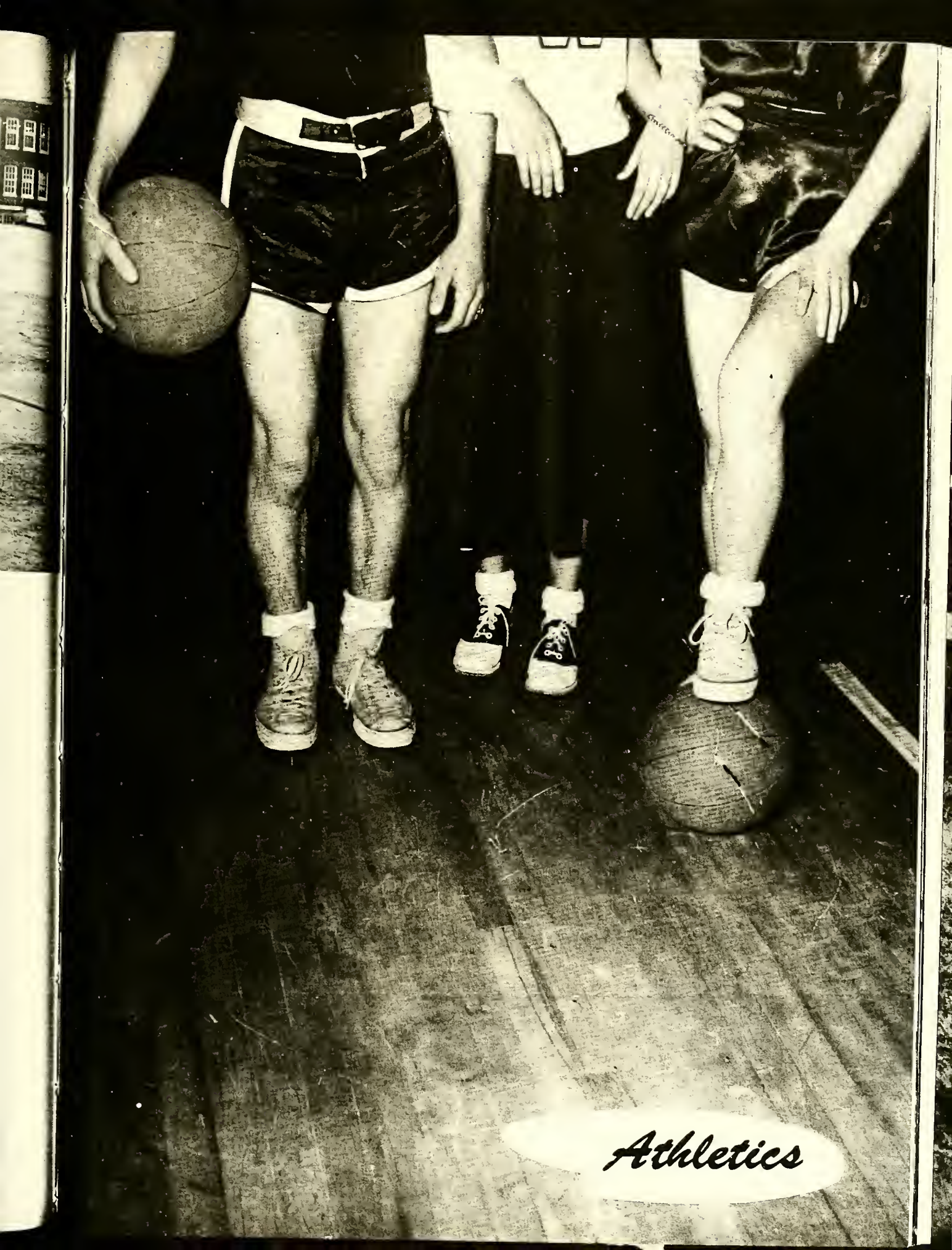
Glee Club





F.F.A.





Athletics



Girls' Basketball Team





Boys' Basketball Team



Cheerleaders



Coach, BOB PRICE





Features



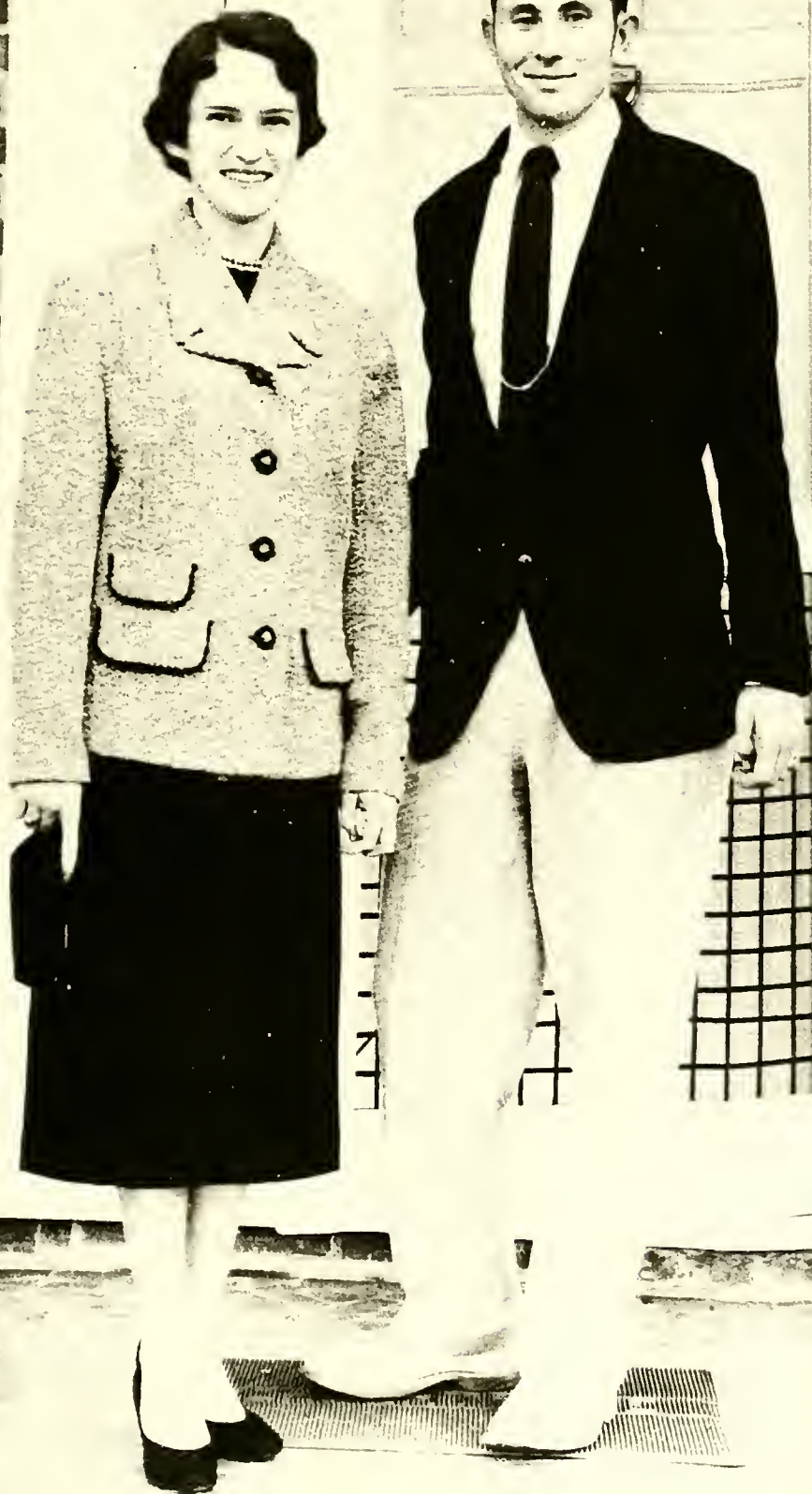
Senior Class Play

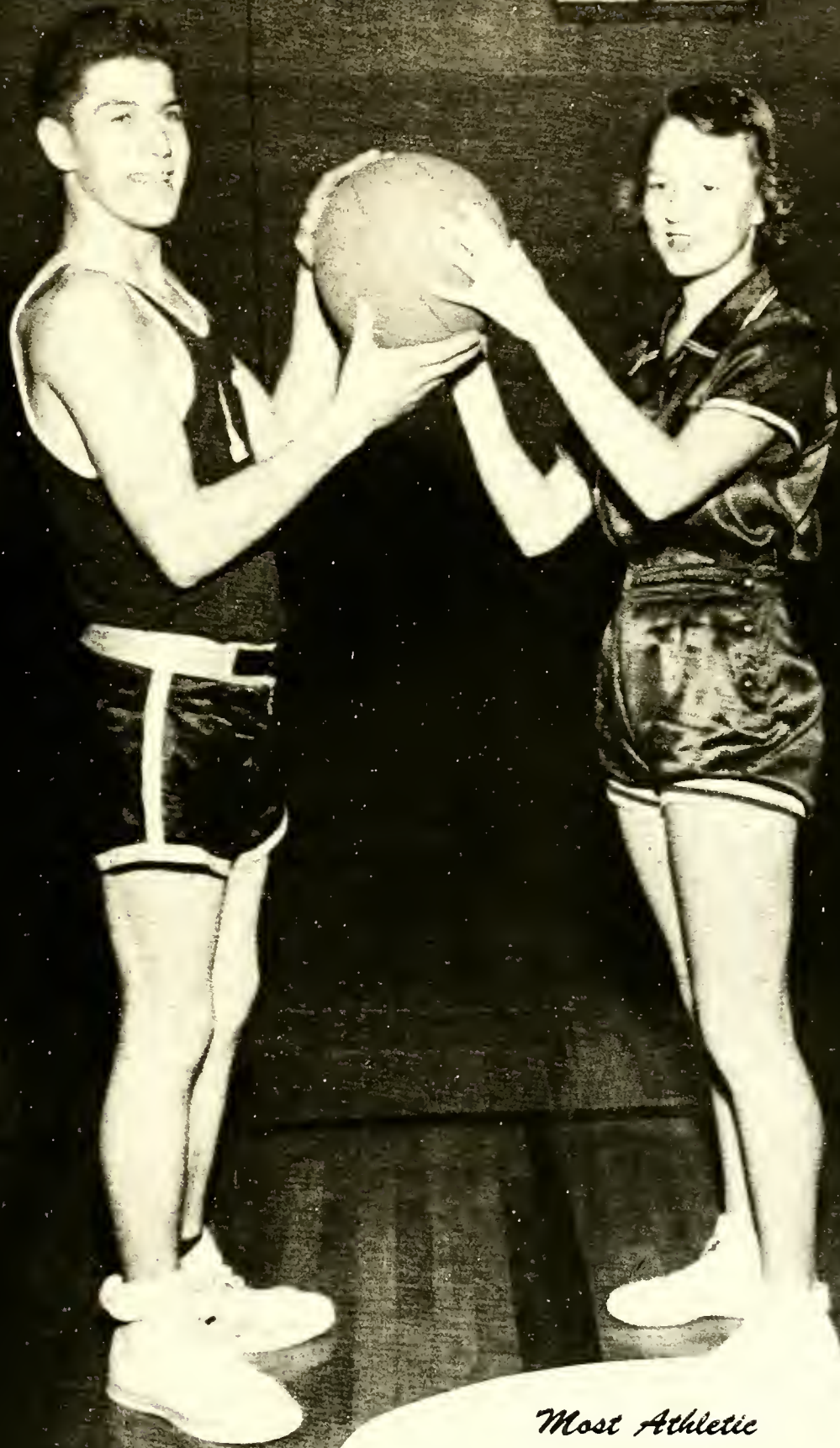
"MOONLIGHT AND APPLESAUCE"

Ellen Barnes - - - - -	GUSSIE ROBINSON
Eli Barnes - - - - -	CURTIS POWELL
Grandmother Barnes - - - - -	SALLY GOFF
Katherine Barnes - - - - -	JANET LUPER
Juanita Barnes - - - - -	LOIS POPE
Hamilton Barnes - - - - -	RUBIN PROCTOR
Oswald Drew - - - - -	GEORGE WORSLEY
Frank Eastup - - - - -	FRANKLIN BROWN
Gertie Sims - - - - -	MARY ELIZABETH TAYLOR
Lillie the Lynx - - - - -	JOYCE ASHBY
Archie the Sapper - - - - -	WILLIAM LEWIS
The Reporter - - - - -	MARY SUE PROCTOR
The Officer - - - - -	DONALD HILL
Prompters - - - - -	MARGARET ROSE ALICE PARKER

Best Dressed

SALLY GOFF
WILLIAM LEWIS





Most Athletic

MARY ELIZABETH TAYLOR
RUBIN PROCTOR



Prettiest Girl *Best Looking Boy*

JANET LUPER

GEORGE WORSLEY



Quietest
SHIRLEY HILL

Wittiest
DONALD HILL

Cutest

MARY SUE PROCTOR
FREDDY PROCTOR





*Most Popular
Most Likely to Succeed
Best All-Around*

FICTION



Neatest
Most Dependable

MARY SUE PROCTOR

Most Dignified
Most Studious

JEANNETTE LANIER



Friendliest

ANN HARDY
JAMES TAYLOR

Most Talented

ANN HARDY

Best Sport

FRANKLIN BROWN





*Five Outstanding
Seniors*

THEY KEEP OUR SCHOOL CLEAN



Lunchroom Staff





to
Barbara
I hope
in Paris
don't
now
to
with
found
of fall
it,
like
my
them
me,
and,
tent
ante ca
ve.
more,
day
we
pray.
I by
at
ur



Advertisements

NU-WAY CLEANERS AND DYERS
522 N. Pine Street

Dial 6-7425

Rocky Mount



Owners
PAUL WILKENS
HARRY PEACOCK

HEILEG-MYERS CO.

Complete Home Furnishings
Small Down Payment
Easy Terms

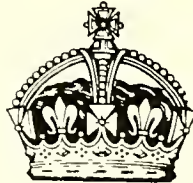
Dial

2326



Rocky Mount

R. LEON JENKINS, JEWELERS
Specializing in Diamonds
and Watches



Rocky Mount, North Carolina

DURHAM LIFE INS. CO.

"We Protect the Family"

Peoples
Bank
Building

Rocky
Mount
N. C.



Home Office

Raleigh

WORSLEY-BROOK INC.
Men's
Clothing and Furnishings

127 South

Main Street



Rocky Mount, North Carolina

DIXIE NEW AND USED CARS



Rocky Mount, North Carolina
Owners

A. O. JOYNER
OLIVER BLOOMERS

THOMAS AND HOWARD COMPANY

DISTRIBUTORS

Quick Biscuit Flour - Gold Metal Flour
Del Monte and Libby Fruits
Superfine Canned Vegetables



Dial 6-6151

Rocky Mount

They go
together



ROCKY MOUNT BOTTLING COMPANY

SUTTON'S

NEW AND USED CARS

USED CAR
Bargains



301 Hi-Way

Rocky Mount, North Carolina

Compliments

ANNE'S DONUT SHOP

West Ridge Street
Dial 2-2231

Rocky Mount, North Carolina

FLORENCE - MAYO

OIL AND GAS TOBACCO CURERS

"The World's Best Tobacco Curer"

W. D. MOORE

Elm City, North Carolina

Authorized Florence-Mayo Dealer

Best Wishes, Seniors



CENTRAL MIX
Rocky Mount

"GO TO CHURCH SUNDAY"

R. V. THOMAS
Builder

P. O. Box 1143
Phone 6-8753

Rocky Mount, North Carolina

Congratulations Seniors

PLANTERS



COTTON OIL
AND
FERTILIZER COMPANY

Rocky Mount, North Carolina

Compliments of

FENNER'S WAREHOUSE



Rocky Mount

North Carolina

JACK LONG MARKET

The Best Meats Since 1933

Quality Groceries

Dial 6-7652

1100 S. Grace Street

Rocky Mount, North Carolina



OTTO C. MERRITT

PLUMBING
CONTRACTOR

All Kinds of
Plumbing

Dial 6-4667

Rocky Mount, N. C.

ATLANTIC
CONSTRUCTION COMPANY
General Construction

Ditching
Fish Ponds
Excavating



Grading
Clearing
Root Rake

Rocky Mount

ELMO WILLIFORD

GENERAL MERCHANDISE

Route #1

Elm City, North Carolina

Compliments of

MOSLEY'S MOTEL

Highway 301



Oldest

Take No Chances

Strongest

Sell Your Tobacco With

TOBACCO PLANTERS WAREHOUSE COMPANY

Leaders of the Rocky Mount Market



Best

Service

Compliments of
SERVICE - SALES
INC.

Your



Dealer

Highway 301 N.
Rocky Mount

MERLIN LEWIS RESTAURANT

Home of
Complimentary Letters

Most Complete
Sea Food Menu on 301

Air Conditioned
Television

Rocky Mount, North Carolina

"ROCKY MOUNT'S OLDEST
INSURANCE COMPANY"

DAIRY BAR



Teen-Agers' Paradise
Welcome .

HILL-PROCTOR

PRINTING CO.

Established 1923

Commercial Printing
Rubber Stamps

Rocky Mount



WHALEY FURNITURE CO.

"Complete Home Furnishers"



Rocky Mount

RADIO HOSPITAL
Radio and Television
Sales and Service
127 S. Wash. Street



Rocky Mount

Congratulations Class of '55

JOHNSON
FUNERAL HOME



C. T. WILLIAMS AND SON

Floor Sanding Service
Painting - Wallpapering
Floor Finishing

624 Clark Street
Dial 6-7930

Rocky Mount

SUNSHINE LAUNDRY
Laundry - Dry Cleaning
Fur Storage
251 Tarboro Street
1618 Sunset Avenue



Rocky Mount

HENDERSON'S LUMBER CO.

"We Supply the Builder"



SAVE

Tarboro, North Carolina

Farmville, North Carolina

"PETE" E. WINTERS

Masonry Sub-Contractor

114 Lexington Street

Phone 6-8066

Rocky Mount, North Carolina

Compliments of

FARMER'S
WAREHOUSE



Rocky Mount



KELLY'S
CLEANERS

Complete
Laundry Service

546 S. Franklin Street

Dial 2-3609

Rocky Mount

Compliments of

COBB-FOXHALL WAREHOUSE



Rocky Mount

SOUTH'S LARGEST
MOTOR CLUB



131 N. Church
Dial 6-5166

Rocky Mount, North Carolina

BILL GOODWIN - District Manager

DIXON'S

VENETIAN BLIND SHOP

Cleaned - Repainted - Repaired

Custom and Stock Blinds

Canvas and
Aluminum Awnings

Enjoy
GOOD FOOD



**WHIT'S
DRIVE-IN**

Rocky Mount, North Carolina



TO SUIT
YOUR
TASTE

BUCK
OVERTON

Rocky Mount, North Carolina

WILLIAMS LUMBER
CORPORATION

Lumber - Building Material

Custom Millwork

Hammond and Pine
Streets

Rocky Mount, North Carolina



PRIDGEN TIRE COMPANY, INC.

U.S. ROYAL

"For Every Wheel on the Farm"

Recapping - Vulcanizing

900 N. Church Street

Rocky Mount

CARBISCO FLOUR &
FEED MILLS INCORPORATED

Gold Strap Feeds
Seeds - Poultry and
Livestock Equipment

Surge Dairy Farm Equipment
Phone 6-4215
Rocky Mount

--- Compliments ---

PIKE FRUIT PLANTATION

Fruits - Xmas Trees - Plants

Highway 301 North

Opposite Airport

Rocky Mount, North Carolina

Exquisite Jewelry



GEHMAN'S JEWELERS

Phone 6-6722

Rocky Mount, North Carolina

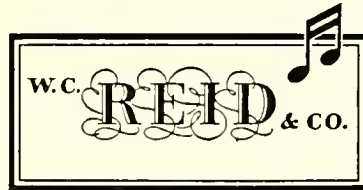
Mutualize to Economize
FRANK WILSON AGENCY

Save Up to 20% on Your Auto,
Fire and Farm Insurance

Short Building



Rocky Mount



"Reid's When You Think
of Music"

Rocky Mount, North Carolina

GAY'S

Funeral Home

Dial - Day or Night - 6-6634
Ambulance Service



130 S. Howard Street
Rocky Mount

TWIN COUNTY GAS COMPANY

Ranges of All Kinds



120 Tarboro Street Rocky Mount

Compliments of
TELEVISION CENTER



Rocky Mount, North Carolina

WILLIAMS
REFRIGERATION SERVICE



122 S. Washington Street
Rocky Mount

GENE & PAUL
GEN. MDSE.

Farm Supplies
Priddy Fertilizers
Sherwin-Williams Paint
1104 Cokey Road
Rocky Mount

CARBISCO

FLOUR AND FEED MILLS, INC.
Gold Strap Feeds
Surge Dairy Farm Equipment
Rocky Mount, North Carolina

Compliments of

T. A. BURGESS

ATTORNEY AT LAW



DAVIS' BROTHERS

GENERAL MERCHANDISE

Hardware



Feed

Rocky Mount

VETERINARY HOSPITAL

DR. R. G. HICKS
Small and Large Animals



238 N. Main Street
Rocky Mount

BLUE BIRD TAXI



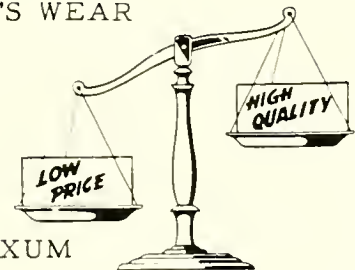
PHONE 6-8101
Rocky Mount, North Carolina

CENTRAL CAFE

"We Specialize in
Hot Dogs - Hamburgers
Sandwiches"

Corner of
Church and Thomas Street
Rocky Mount

MEN'S WEAR



JOHN B. EXUM

112 Tarboro Street
Rocky Mount, North Carolina

Compliments



JOYNER OIL COMPANY



700 Albemarle Avenue

Compliments of

S. H. KRESS

School SUPPLIES

Rocky Mount, North Carolina

THE JEWEL BOX



128 S. Main Street

Rocky Mount, North Carolina

DANIEL'S INC.

"The Shopping Center

for

Women and Junior Misses"

108 S. Main Street

Rocky Mount

HARVEY ROBERTS

MUTUAL INSURANCE AGENCY

Life - Fire - Auto Insurance

With Dividends

Rocky Mount

Compliments of
CHANDLER'S INC.

Self Service
5¢ to \$1.00 Store



Rocky

Mount

Compliments of
MODEL BARBER SHOP



Rocky Mount, North Carolina

3 Styles Radiant Heaters - 3 Styles Cabinet Heaters

J. A. THARRINGTON
&
SONS

Manufacturers of
Tobacco Curers and Home Heaters

"There Is None Just as Good"

The Only Curer With Pyrex Glass for Flame Visibility

1539 S. Church Street
Rocky Mount, North Carolina

SMITH'S
WAREHOUSE

"A Trial Is All We Ask"

Sale Every Day

JIMMY SMITH
LEON CALHOUN

Rocky Mount

Rocky Mount

TILE COMPANY

Ceramic - Tile - Marble Tile
Quarry Tile

1711 S. Church Street

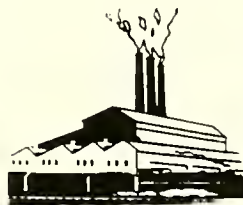
Dial 2-3773

Rocky Mount

ROCKY MOUNT MILLS

Established 1818

Carded Cotton Yarns



Rocky Mount, North Carolina

Compliments of

SUPER FLAME GAS

INC.

Bottle Gas - Bulk Gas - Gas Appliances - Tobacco Curers
Dial 6-6184 - 6-6185



806 Ricks Street
Rocky Mount, North Carolina
Gastobac Curing Systems

Compliments of

STALLINGS

OIL AND COAL CO.

806 Ricks Street
Dial 6-6184

"Your Most Complete Fuel Dealer"

Coal
Gasoline

Fuel Oil
Bottle Gas

Motor Oil
Kerosene

Decorative Fabrics

MARY A. PROCTOR
LELIA D. STEADMAN

INTERIOR DECORATORS

701 Church Street

Rocky Mount, North Carolina

Best Wishes
God Speed!

RAY BANDY'S



HENRY ODOM, Salesman

COLEMAN-LEE OIL CO.

740 Planters Street
Distributors



Gasoline
Motor Oil
Rocky Mount, North Carolina

Fuel Oil
Greases
Rocky Mount, North Carolina

WEBB FOOD STORE

Self-Service

Phone 2021

Pinetops, North Carolina

For the Best in
Beauty Service
VOGUE BEAUTY SHOP

Dial



6-5733

Rocky Mount

Compliments of
FIRESTONE
STORES



Church - Nash
Streets
Rocky Mount

Phone 6-4197 - 6-4198



**IT'S A
PLEASURE!**

DILLON
SUPPLY CO.

Industrial Supplies
Dial 2-2161

348 S. Wash. Street

Rocky Mount, North Carolina



Coal and
Fuel Oil

CITIZEN COAL
AND SUPPLY CO.

Dial 6-8116

Rocky Mount, North Carolina

WIMBERLY
AND
GREGORY

116 S. Franklin Street
Rocky Mount
Phone 6-6195



Compliments of



DAUGHTRIDGE
OIL CO.



"Be Sure With Pure"

Rocky Mount, North Carolina

GUS Z. LANCASTER

MULE BARN

JOE S. LANIER

Owner



"Mules for Sale or Trade Daily"

Rocky Mount, North Carolina

RED'S PLACE

GENERAL MERCHANDISE

Phone



2-3411

J. B. and C. L. PITT
Rocky Mount

JOSH BULLUCK

Barbecue

Brunswick Stew

Fried Chicken

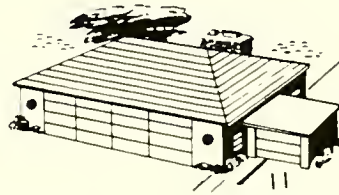
Dial 6-5651

Rocky Mount

Make Your Home Complete
Beautify Your Lawn

KNOX PORTER'S NURSERY

Tarboro Highway



WOOTEN'S SUPER MARKET



Serving the Nicest People
on Earth --- "Our Customers"

701 Branch Street
Rocky Mount

"Ask For---

EDGEMONT HAMS"

Compliments of
W. BOICE WALKER

JEWELER
136 S. Wash. Street

Rocky Mount



Compliments of
NASH COAL COMPANY



100 W. Grand Avenue
Rocky Mount

H. H. WEEKS
SEED AND FEED STORE

Pets and Supplies
219 Tarboro Street



Rocky Mount

TRAVIS
DAVENPORT

GROCERY
200 Rose Street
Rocky Mount



A.C. MOTORS, INC.

"Clean Used Cars and
Best in New"

Your Authorized
Lincoln - Mercury Dealer

Rocky Mount, North Carolina

JAMES M. FOX

JEWELRY COMPANY

Jewelers and Railroad
Watch Inspectors

126 S. Main Street

Rocky Mount, North Carolina

MOTOR BEARINGS & PARTS
COMPANY, INC.



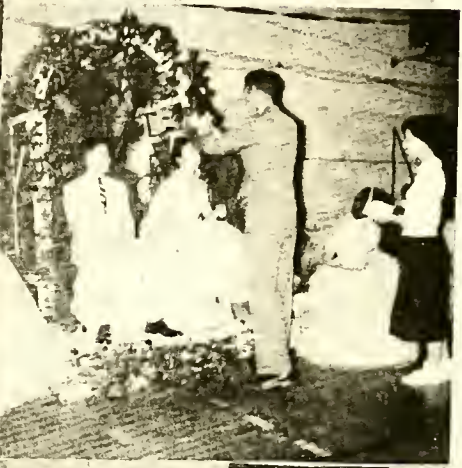
Rocky Mount, North Carolina

MAY & GORHAM

DRUG STORE

Five Points in
Rocky Mount





RADIO SERVICE SHOP

WALTER MEARS

Television
Sales and Service
Zenith and RCA
122 S. Washington Street
Dial 6-8350
Rocky Mount

CENTRAL
BUILDING DISTRIBUTORS



106 W. Bassett Street
Rocky Mount

CAROLINA BUILDING
SUPPLY CO.

Building Material and Mill Work



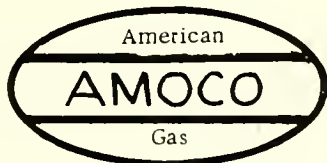
Phone 6-4141 - 6-4217
Rocky Mount

LANE

MANUFACTURING CO.

Architectural Millwork
Building Supplies
Building Hardware
Dial 6-6910
Rocky Mount

PEOPLES OIL CO.



Distributors
"Our Fuel Makes
Warm Friends"



Rocky Mount, North Carolina
Phone 2-6131
Pinetops, North Carolina
Phone 9621

CAMEO BEAUTY SHOP



Dial 2-1634
6173 North Main Street
Rocky Mount

J. S. GORHAM

HARDWARE COMPANY INC.

Hardware and
Farm Implements
Dial 2-6119
Tarboro Street
Rocky Mount

QUINCY'S

GENERAL MERCHANDISE

Seeds - Feeds - Hardware

Batteries - Gas - Oil - Tires

H. G. QUINCY, Owner

Route 2

Dealer of Hotpoint Appliances

Dial 6-8889

Rocky Mount

PROCTOR BROS.

Heavy and Fancy Groceries
Gas and Oil

Beef, Fresh Fish and
Country Produce

Phone 6-6688

Cokey Road

Rocky Mount

DAUGHTRIDGE

SERVICE STATION

J. R. PROCTOR

Proprietor

Gas - Oil - Tires - Tubes

Rocky Mount

1100 Cokey Road

Dial 6-5007

Compliments of

ALLEN MIMS INC.

SALES



SERVICE

Rocky Mount

Compliments of

BRADLEY'S GARAGE



Rocky Mount

JOHNSON'S GROCERY

You Pay Us
So We Can Pay Them
So They Can Pay Him
So He Can Pay You

Cokey Road Ext.

Rocky Mount

DAVID HILL'S GROCERY

The Best in Foods
Feeds and Novelties

Phone 6-6688

Cokey Road

Rocky Mount

Compliments of

Mangum's
WAREHOUSE



Rocky Mount, North Carolina

M. C. COMER

Distributor

GULFPRIDE MOTOR OILS



Fuel Oils

Rocky Mount, North Carolina

MUNN GRIFFEN & COMPANY

Wholesale

Fruits and Produce

502 S. Church Street

Rocky Mount, North Carolina

GARDNER'S DAIRY



Rocky Mount-Wilson-Dunn-Goldsboro

Nutritious
DAIRY PRODUCTS

Homogenized Milk
Gardner's Velvet
Ice Cream

For the Sale of Leaf Tobacco

WORKS WAREHOUSE

"There Is None Better"

Phone 6-5181
1441 S. Church Street
Rocky Mount



THOMAS CAFE

"The Best
Hot Dogs in
Town"

Rocky Mount

ROCKY MOUNT HOME SUPPLY

Household Specialties
Phone 5426

127 W. Grand Avenue

Rocky Mount



Compliments of

EASLEY'S WAREHOUSE

H. A. SANDY EASLEY-GUY BARNES-GENE SIMMONS

Congratulations to Our Future Customers

ROBERSON

PLUMBING AND HEATING CO.
620 Royal Street



Phone 2-1656

Rocky Mount, North Carolina

LINWOOL BASS

Electrical Work
of All Kinds
809 Long Street

Phone 6-7232

Rocky Mount, N. C.



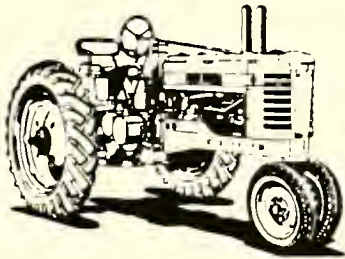
Congratulations to the Class of '55

Your Bigger
and
Better Store



Greatest Values
and
Lowest Prices

"Serving Eastern Carolina"
Rocky Mount, North Carolina



JOHNSON

COTTON CO.

"Cash if You Have It"

"Credit if You Need It"

John Deere Tractor
Sales and Service

Rocky Mount, North Carolina

Rocky Mount Boosters

W. S. WILKINSON
SYDNEY H. SHAW
DANIELS BARBER SHOP
KEEL & KEEL
MARKET CENTER
NETHERCUTT BARBER SHOP
FISHER RADIO AND TV
OTTO C. MERRITT
BULLUCK FURNITURE CO.
D. J. ROSE
JOHN C. DAUGHTRIDGE
HAMBURGER SHOP
C. ROY WILLIFORD, GROC.

Tarboro Booster

FILMORE SUPPLY
COMPANY

RIVERSIDE

VETERINARY HOSPITAL



Nashville Highway
Rocky Mount

Compliments of
STAR DRIVE-IN



Leggett

Highway



F. S. ROYSTER

MERCANTILE CO.

Royster 6-Plant Food Fertilizer

Tarboro, North Carolina



CREECH
THE
FLORIST

*Flowers
by Wire*

"Flowers that
Please"

Tarboro, North Carolina

Joe's
TEXACO



Dial 9923

Tarboro, North Carolina

Compliments of

R. A. LINDSEY
& CO.



Tarboro, North Carolina

Compliments of

PATTY'S
BEAUTY SALON



Tarboro, North Carolina



Storage of
Cotton and Peanuts

State and Federal
Bonded

Tarboro, North Carolina

HURRY



For
Insurance
See
**GEORGE
FOUNTAIN**

Tarboro
Dial 2562

HERBERT'S
DEPARTMENT STORE
426 Main Street

"Where the Sale Is
Never Completed
Until You Are
Thoroughly Satisfied."

Tarboro, North Carolina



Compliments

**PILGRIM
LAUNDRY**

Tarboro, North Carolina



IS OUR
FIRST
THOUGHT

Store Your Cotton With

**FOUNTAIN
BONDED**

WAREHOUSE

C. T. CONNER
Manager

Phone 2697 - Tarboro



**HENDERSON
INC.**

Grain Merchant

Custom Grinding and Mixing Feed

Tarboro - Scotland Neck
Old Sparta - Farmville



Compliments of
W. J. EASON



Highway 64
Tarboro

TARBORO LIVESTOCK MARKET
Daily Buying Station



Tarboro, North Carolina

SHILOH
IMPLEMENT COMPANY

CASE



Tarboro, North Carolina

TOWN & COUNTRY GAS CO.
Metered - Bottled - Bulk Gas



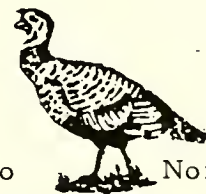
Tarboro - Kinston - Goldsboro

Congratulations Seniors
GENERAL PLYWOOD CORP.



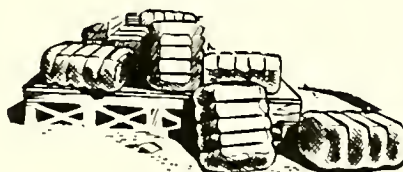
Tarboro North Carolina

Compliments of
TARBORO
FROZEN FOOD LOCKERS



Tarboro North Carolina

Compliments of
HART COTTON MILL
INC.



Tarboro, North Carolina

Compliments

ROSENBAUM'S INC.



Tarboro, North Carolina

EDGECOMBE

BANK AND TRUST COMPANY



Tarboro - Oak City

CHAMPION BUICK COMPANY

Compliments

Sales



Service

Dial 3542

Tarboro, North Carolina

Tobacco Curers



LONG MANUFACTURING COMPANY

Tobacco Harvesters

Tarboro, North Carolina

Compliments of

EDGECOMBE DRUG COMPANY



Tarboro, North Carolina

"Protect What You Have"

LESLIE W. SHOOK

LENIOR G. SHOOK

Insurance of All Kinds

Howard Building - Tarboro

Compliments of
 EDGECOMBE MOTOR COMPANY
 "Your Friendly Ford Dealer"



Tarboro

North Carolina

SEVEN-UP BOTTLING CO.

"The All Family Drink"



Tarboro, North Carolina

Remember!



DAVENPORT-RUSSEL COAL CO.

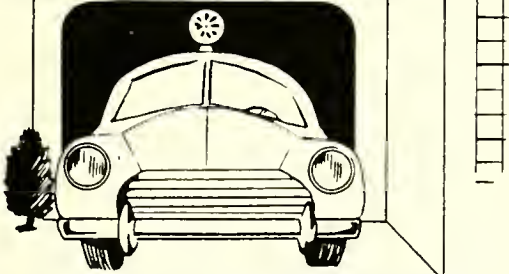
Coal - Wood

Fuel Oil - Kerosene

"We Heat Edgecombe"

Tarboro, North Carolina

AMBULANCE



DAY & NITE

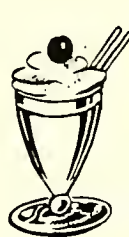
Carlisle

FUNERAL HOME

Home of Tarboro
 MUTUAL BURIAL ASS'N

"We Go Anywhere at Anytime"
 Phones Day 3202 - Night 3245

Tarboro, North Carolina



Your

DEPENDABLE
 DRUGGIST

THORNE'S

DRUG COMPANY

Dial 3849 - Tarboro



"The Neighborhood
 Pharmacy"



ROBERSONS & DUPREE

"Tarboro's
Leading Show Stores"

Tarboro, North Carolina

WOOTEN'S BARBECUE



Tarboro, North Carolina



Hurry To!

BENTON-GREEN
FURNITURE
CO.



Stoves - Radios
Appliances

Dial 3834

Tarboro, North Carolina

Remember!



ALDER'S

DEPARTMENT
STORE

Tarboro, North Carolina

BRAXTON M. WORSLEY MUTUAL
INSURANCE AGENCY

"The Difference in
the Dividend"

Phone 2680 - P. O. Box 309

Edgecombe
Bank Building

Tarboro, North Carolina

MARROW PITT

HARDWARE CO., INC.

Phone 3127



Tarboro, North Carolina

B. & M.

CHEVROLET CO., INC.



Sales - Service

Phone 3145

Tarboro, North Carolina

Compliments of

J. E. SIMMONS

"The Home of Quality Furniture"



Tarboro, North Carolina

Compliments of

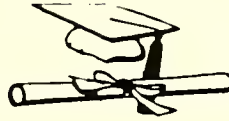
W. G. CLARK



Tarboro, North Carolina

Compliments of

TARBORO
PRINTING CO.



CENTRAL
TV & RADIO

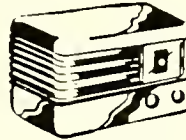
Crosley and General
Electric Dealers



Sales Service
Tarboro, North Carolina

MARTIN'S

HOME & AUTO SUPPLY
RCA Victor Radio and TV



Browning Shotguns and
Hunting Equipment
Tarboro, North Carolina

SHUGAR'S

DEPARTMENT STORE, INC.

"Head-to-Foot-Outfitters"

Tarboro, North Carolina

Compliments

BELK-TYLERS
INC.

Tarboro's Leading Department
Store

Tarboro, North Carolina

BASS AUTO
SUPPLY



Dial 4204 401 Main Street
Tarboro, North Carolina

W. S. CLARK & SONS

"Everything for Everybody"



Tarboro North Carolina

TARBORO DRUG COMPANY

"Your Walgreen Agency"

"Meet Your
Here



Friends
for

Drugs

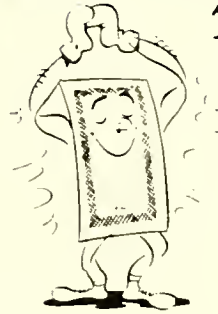
and

Sundaes"

Tarboro, North Carolina

BEST POLICY

AT ALL
TIMES



BARNHART
INSURANCE
AGENCY

Tarboro N. C.

BARNHILL AND LONG INC.

General Contractors



Our Specialty

Ditching and Clearing Land
Dial 2426

Tarboro, North Carolina

**ANDREWS
LAUNDRAMAT**



Complete Laundry
Service

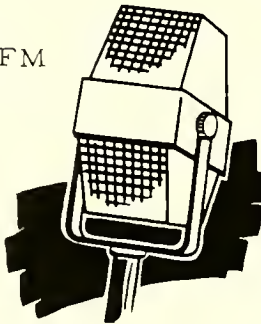
Tarboro, North Carolina

Best Wishes

WCPS-
WCPS-FM

1000 Watts
on FM

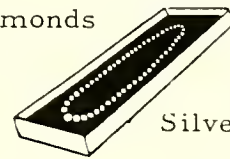
"Your Coastal
Plain
Station"



CARLISLE & TAYLOR, INC.

Watches

Diamonds



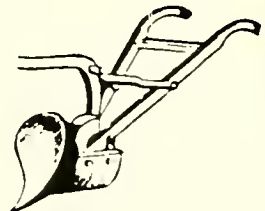
Silverware

Tarboro, North Carolina

Compliments of



**W. L. DUNN
&
SONS**



Pinetops, North Carolina

COTTON BELT INC.

Quality



Bedding

Pinetops, North Carolina

Congratulations Seniors



EDGECOMBE CASKET CO.
Pinetops, North Carolina

CRISP BROTHERS

FURNITURE CO.

Complete Line
of
Home Furnishings

Pinetops, North Carolina

SERVICE DRUG STORE



Phone 9531

Pinetops, North Carolina

COBB AND KITTRELL

INSURANCE

Since



1907

Pinetops, North Carolina

Compliments of
DOMESTIC ELEC. SERVICE, INC.

Serving Edgecombe, Nash
and Wilson Counties

Dial 6-5855

Rocky Mount, North Carolina



**IF IT'S GOOD FOOD
YOU WANT--**

Visit



NEW YORK CAFE
Rocky Mount, North Carolina

Compliments of

SAM PITT

GENERAL MERCHANDISE

Phone 2-4512

VARNELL'S

FLOWER SHOP

"Flowers for Every Occasion"

Specializes in
Hospital - Funeral - Wedding
Arrangements

Nursery - Shrubs for Sale
Phone 6-8717

Compliments of
DRUMMOND'S FLORIST



Phone 6-5324
119 N. Main Street
Rocky Mount

To each advertiser and contributor to our annual, The Wescomb, I would like to express my sincere appreciation. I would also like to thank our principal, Mr. Cashwell, our sponsor, Miss Mitchell, the senior class and the annual staff for their loyal co-operation on this project. But for you, the publishing of the year-book would be impossible. I say again a sincere "thank you."

Editor-in-Chief

JANET LUPER

All finished! Was It worth it???







114 A4 658
11/06/06 168425



-t

BRASWELL MEMORIAL LIB



5401 9100 218 684 4

