

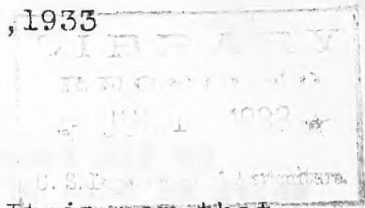
Historic, archived document

Do not assume content reflects current scientific knowledge, policies, or practices.

6287

May 15, 1933

GARDENSIDE NURSERIES INC.
SHELburnE VERMONT.



"WHAT CAN WE PLANT NOW, SAFELY?"

After May 15th, the above is a very common question. It is now, that unexpected losses show up in the Border and Rockery, leaving holes to be filled. Where to get the plants to fill them, without paying extra prices for potted plants, and heavy transportation costs;--Here's our answer.

The plants and bulbs which we are offering here, may be planted with safety, now, and even well into June, in many cases, and if properly cared for, will flower this season. Because of a cold late Spring, they are unusually dormant. We guarantee safe delivery, in good condition, at the prices quoted. You can figure your costs in advance.

You will also find here, a list of bulbs and plants, which we recommend for planting thru June and July. Some of these blossom very early in the Spring, as Anemones, Erythroniums, and Trilliums. Others flower in Fall, after making a green growth in Spring, and for very best results should be planted as early as possible, after the Spring growth dies down. These are Crocus, Colchicums, and Lycoris. We have all the sorts offered, in our own fields, in good quantity, and early orders will be sure to be filled with home-grown bulbs. All orders will be filled in rotation, but shipment can be made at any specified date.

All prices include delivery to the customer, by the best method, except that West of the Mississippi River, we require 5% extra to cover increased postage. PLEASE NOTE, --5 plants, ALL ALIKE, at the ten rate. 25 plants, ALL ALIKE, at the one hundred rate.

HELIANthemUMS.

These plants, commonly called Rockroses, are extremely fine for the dry, sunny, Rockery. They delight in baking sun, if the roots can get to deep moisture, and need only to be protected against the sun in winter for it is sure to find them in their exposed positions, usually not covered with snow. We have no difficulty with them here, even on moist land, if covered with straw, or excelsior, very lightly.

Because of its midsummer season of bloom, it brightens the Rockery at a time noted for its lack of color. A single plant will carpet a good sized area, and be attractive at all times, for the foliage is always good. There is a delightful variety of shape and color of leaf, of habit of growth--some prostrate, others mound-like--and the flowers of all are of good size, and brilliant, the plants smothered in them afresh each morning. They start slowly in Spring, and are therefore fine for late transplanting. All our plants are grown from cuttings, are strong one year old clumps, and will flower this season.

35¢ each; 5 (alike) for 30¢ each; 25 (alike) for 20¢ each.

- APRICOT. A yellowish pink, with broad, blunted, dark green, leaves.
- BOULE DE FEU. A very double dark red flower, on a prostrate sprawling plant
- BURNT ORANGE. A very deep orange, suffused with brownish red. Strong.
- LEMON. Very pale yellow. Strong growing, but with excellent foliage.
- ROSY GEM. A fine rosy pink form, very attractive, and with fine foliage.

SMALL POTTED PLANTS.

Of the long list of Rockery and Border material, from 2" pots, which we have offered in our two previous circulars, the following are still available in quantity. Because of low cost, and the certainty of planting success, they are excellent values. Many are not at all common. Some will soon flower and continue for a good period. All will develop to give good foliage and color this season, filling the empty places, and becoming well established for next years flowering.

-
- ACHILLEA AIZOON. Fine grey foliage, making low broad mounds, and carrying strong sprays of miniature, white, daisylike flowers, in June.
- ACHILLEA SERBICA. Like the preceding, but smaller. Both are very hardy.
- ANDROSACE SARMENTOSA PRIMULOIDES. One inch wide rosettes of soft grey wooly leaves, from which rise little umbels of pink flowers, and runners which root, to form new rosettes at a distance, and extend the colony.
- ANEMONE SEPTEMBER CHARM. A fine new form of the early Fall flowering Anemone, dwarf, very early, and covered with silvery pink flowers.
- ARENARIA MONTANA. A very fine Rockery plant, which covers a good area with mounds of trailing green growths, studded with large white flowers in May and June. Considered one of the finest Rockery plants.
- CHRYSANTHEMUM AMELIA. This is a very early, low growing, double pink flowering 'Mum, that has wintered outside here, nicely. It will flower from August, to freezing weather. 35¢ each.
- DRABA OLYMPICA. Low green mounds of fine green leaves, almost like a tuft of moss. Covered with yellow flowers, in May.
- HELIANTHEMUM APRICOT; BOULE DE FEU; BURNT ORANGE. See descriptions, P. 1.
- HELIANTHEMUM RHODANTHE CARNEUM. This has fine gray foliage, and charming light pink flowers. It is most attractive in every way.
- HYPERICUM POLYPHYLLUM. Blue grey foliage, trailing, forming tangled mats of stems, a foot across, covered in June with large golden yellow blooms.
- TEUCRIUM CHAMAEDRYS. Fine for use as a substitute for Boxwood, where that plant is not hardy, and as a specimen for the rockery. 20¢ each
- TROLLIUS HYBRIDS. These are now growing strongly, and are ready for immediate delivery. Many are blooming, and there is a wide range of color with many deep orange ones. We feel sure that you will be delighted with the results you will attain with these, this summer, and again next Spring. We are sure they will all flower this summer. A fine value at our low price. 20¢ each; 10 for \$1.50; 100 for \$12.50
- TUNICA SAXIFRAGA, DOUBLE PINK. This trailing plant has splendid dark green foliage, and the very double pink flowers are as large as those of Gypsophila Bristol Fairy. Planted to trail over a boulder, or hanging on a wall, it is very fine, and flowers all summer.
- UMBILICUS CHRYSANTHA. An odd, Sempervivum-like plant, with soft wooly rosettes, and straw yellow flowers in midsummer. Increases easily.
- VIOLA APRICOT. We have some fine potted plants of this splendid bedding Viola, just beginning to flower, that will give you bloom, for months. The odd, orange yellow color of this sort, cannot be equalled. 15¢ each.
- VIOLA WHITE JERSEY GEM. Fine potbound plants of this best of white Violas for bedding, or for the Rockery. Will flower all summer. 15¢ each
- VIOLA SYLVESTRIS ROSEA. This pink flowered, woodland Violet from Europe is not fragrant, but the flowers are large, stand well above the leaves, and they appear at intervals, all summer. It is not a rampant grower, but seeds well, and good colonies are formed. Perfectly hardy.
- VIOLA DOUBLE RUSSIAN. Strong potted plants of this old favorite.

All the above at 25¢ each; 5 (alike) for \$1.00; except as noted.

All prices include delivery.

See Page 1.

FIELD GROWN PERENNIALS FOR PLANTING NOW.

The following plants are mostly well known, and descriptions of a number of them have already been sent you, in our earlier circulars, or in the 1932 Catalog. Copies of these will be sent you on request. We list these plants here, with short descriptions, to stress the fact that they are available, in good quantity, and in perfect transplanting growth.

ACONITUM AUTUMNALE. Fall flowering Monkshood. 25¢ each; 10 for \$2.00

A. NAPELLUS, SPARKS VARIETY. July bloomer. 25¢ each; 10 for \$2.00

AJUGA GENEVENSIS. Bronze foliage. Prostrate. 20¢ each; 10 for \$1.50

A. GEN. FOLIIS VARIEGATA. Like the preceding, golden spotted leaves. 25¢ ea.

ANEMONE MAGELLANICA. Creamy yellow flowers. 25¢ each; 10 for \$2.00

ANTHERICUM RANOSUM. Tall white flower spikes. 30¢ each; 10 for \$2.50

AQUILEGIA HENSOL HAREBELL. Dwarf. Violet blue flowers. 30¢ each

ASCLEPIAS TUBEROSA. Heavy roots. 25¢ each; 10 for \$2.00

ASTILBE HYBRIDS. 50¢ each, in the following varieties. DAVIDI; AVALANCHE; GLORIA; JUNO; KRIEMHILDE; MARGARET VON RECHTEREN; PROF. VAN DER WIELEN; QUEEN ALEXANDRA; ROSE PERLE. All heavy clumps, postpaid.

CAMPANULA CARPATICA. A fine lot of heavy plants, in various shades of blue. Extra good for edging. 25¢ each; 10 for \$2.00

C. ROTUNDIFOLIA. Scotch Bluebells. Heavy plants. 25¢ each; 10 for \$2.00

DELPHINIUM CHINENSIS. Dwarf Larkspur. Blue or White. 20¢ each; 10 for \$1.50

ECHINACEA PURPUREA. Purple Coneflower. 25¢ each; 10 for \$2.00

ECHINOPS RITRO. Globe Thistle. 20¢ each; 10 for \$1.50

ERIOPHYLLUM CAESPITOSUM. Oregon sunshine. 25¢ each; 10 for \$2.00

GYPSOPHILA BRISTOL FAIRY. Heavy roots. 50¢ each.

HELENIUM AUTUMNALE. Tall, late yellow. Strong divisions, 10¢ each

H. AUTUMNALE RUBRUM. Deep red form. Strong divisions. 20¢ each; 10 for \$1.50

H. AUT. RIVERTON GEM. Bronzy red. Price same as Rubrum, above.

HEMEROCALLIS HYBRIDS. The following at 75¢ each. GOLDENI; J.A. CRAWFORD:

MRS. WYMAN; BAY STATE; LEMONA. One each of all five for \$3.50

The following at \$1.50 each. D. WYMAN; GOLDEN BELL; GOLDEN DREAM.

The following at \$1.75 each. A. BETSCHER; MRS. AUSTIN; SHIRLEY; SOVEREIGN.

The following at \$2.00 each. GEO. YELD; HYPERION; LATEST; ROYAL.

HEUCHERA HYBRIDS. The following named varieties of Coral Bells are available in strong plants at 35¢ each. All will flower this year.

CASCADE; FLAMBEAU; LA PERLE; PLUIE D'FEU; ROBINSONI; ROSMUNDI; VIRGINALE.

We will send an assortment of ten plants, two each of five good sorts our selection only, for \$3.00

All prices include delivery. Add 5% for points West of the Mississippi.

FIELD GROWN PERENNIALS-²-con.

- IRIS, JAPANESE GOLD BOUND. Fine white sort, with gold stripe. 25¢ each.
I. SIBIRICA HYBRIDS. The following at 25¢ each, 10 for \$2.00. BUTTERFLY; EMPEROR; FLORRIE RIDLER; PEGGY PERRY; PERRY'S BLUE; SUNNYBROOK; SNOW QUEEN.
- LIATRIS PYCHNOSTACHYA. Kansas Gayfeather. 25¢ each; 10 for \$2.00
L. SCARIOSA. Finest form of Liatris. Prices same as above.
L. SCARIOSA ALBA. White form. Very rare. 50¢ each.
- LOBELIA CARDINALIS. Cardinal Flower. Very brilliant color. 25¢ each.
- LUPINUS POLYPHYLLUS HYBRIDS. Fine strain. 35¢ each; 10 for \$3.00
- LYCHNIS CORONARIA. Grey foliage, deep rose flowers. 25¢ each; 10 for \$2.00
- MONARDA DIDYMA, CAMBRIDGE SCARLET. Bright red. 25¢ each; 10 for \$2.00
M. LEMON SCENTED. Leaves have Lemon Verbena fragrance. 25¢ each.
- OENOTHERA MISSOURIENSIS. Large Evening Primrose. 35¢ each.
- PENSTEMON GRANDIFLORUS. The finest Beardstongue. 35¢ each, 10 for \$3.00
P. BARBATUS TORREYI. Tall red Beardstongue. 25¢ each; 10 for \$2.00
- PLATYCODON MARIESII. Chinese Baloon Flower. Blue or White. 35¢ each.
- PRIMULA JAPONICA HYBRIDS. Fine for wet ground. 35¢ each.
P. BULLEYANA. Rich orange yellow. Wet land. Pots. 40¢ each.
P. BEESIANA. Velvety purple. Moist land. Pots. 40¢ each.
- STATICE DUMOSA. Small grey leaved. For Rockery. 25¢ each; 10 for \$2.00
S. LATIFOLIA. Sea Lavender. For cutting and drying. 25¢ each; 10 for \$2.00
- STOKESIA CYANEA. Stoke's Aster. Fine midsummer Blue. 25¢ each; 10 for \$2.00
- TEUCRIUM CHAMAEDRYS. Fine for edging. 30¢ each; 10 for \$2.00
- THYMUS SERPYLLUM. For walks. Very prostrate. 25¢ each, 10 for \$2.00
T. SERP. LANUGINOSUS. Wolly Thyme. Distinct, grey foliage. 25¢ each; 10 for \$2
T. HERBA BARONNA. Has Caraway fragrance. Prostrate. 25¢ each; 10 for \$2.00
- VERONICAS, PROSTRATE OR DWARF TYPES. We have the following varieties described in the March 15th circular. They are fine for midsummer color easily transplanted. Their value is not appreciated. All at 25¢; 10 for \$2
CORYMBOSA STRICTA; ELEGANS; ERICA BLUE; ORCHIDEA; RUPESTRIS; RUPESTRIS ALBA; RUPESTRIS FLEXUOSA; RUPESTRIS NANA; TEUCRIUM; TREHANI.
V. LONGIFOLIA SUBSESSILIS. The best Speedwell. 35¢ each; 10 for \$3.00
- VIOLA, APRICOT. Strong field clumps. 25¢ each; 10 for \$2.00
VIOLA, JERSEY GEM. Strong field clumps. 25¢ each; 10 for \$2.00
VIOLA, JERSEY JEWEL. Field clumps. 35¢ each.
VIOLET, ROSINA. Field plants of this charming pink flowered fragrant Violet. They will flower all summer. 30¢ each; 10 for \$2.50

 All prices include delivery. Add 5% for points West of the Mississipi.

SAXIFRAGES.

We cannot understand the lack of interest in our Saxifrages. The plants do splendidly here. Our selection of varieties is extensive. All who see them here want them, and take them away. But thru the mails, we have not sold them well. Of course it is difficult to describe them in limited space. But a plant of each will do to get acquainted by.

The family as a whole, is most interesting, there are many distinct types, each fitted to some portion of the Rockery. They are true Alpines, native to high mountain cliffs, generally. But the culture is not at all difficult, certainly no more so than Primulas, which are so much in demand. Nearly all are lime lovers, and are benefited by a small amount of powdered lime stone, slaked lime, or old mortar rubble, in the soil. Of the ones we offer, those that are not lime lovers will grow well in neutral or slightly acid garden soil. An encrustation of lime along the edge of the leaves of the group named for this characteristic, is a sure indication of the need of lime, in their soil.

They are perfectly hardy here, so far as cold goes. We protect all plants with a light covering of straw. But nearly all of this family come from high elevations, and suffer most from the hot midsummer sun. It doesn't require too much thought to place them where they are shaded by a rock from midday heat. And surely, part of the joy of gardening, is in succeeding with the unusual, and difficult.

 All at 35¢ each; 5 (alike) for \$1.50, except as noted.

AIZOON. The commonest form, moderate sized clusters, well encrusted, and carrying the new plants on reddish stems, at a little distance from the mother plant, so that it soon becomes a good sized plant. Flowers white.

AIZOON ALBA. A slightly different form, more silvery leaves and we think more heavily encrusted. Otherwise identical with aizoon.

A. BALCANA ROSEA. This is an aizoon variety, similar, but the flowers are spotted with pink. It is smaller, and well encrusted. Grows readily.

A. BALDENSIS. A tiny variety, each individual rosette not more than one quarter inch across, the whole lot so closely grown together, as to resemble a grey moss. Placed between two stones, it will carpet the whole area, and run over the edges of the stones.

A. FLAVESCENS. This is a yellow flowered form of aizoon. Very good.

A. LAGAVEANA. The rosettes are slightly larger than peas, rounded and incurved, and making a close mat, similar to baldensis. The whole plant glistens with lime. Grows very readily, and is splendid for carpeting sharp steep slopes in the Rockery, to hold them from washing. 25¢ each.

CARTILAGINEA. A fine large form of aizoon, with rigid, sharply pointed leaves. The flowers are bluish pink. A fine strong variety.

COTYLEDON PYRAMIDALIS. One of the largest forms, with long rather narrow leaves, well encrusted. The flowers are white on stems 1 to 2 feet high.

CRUSTATA. Small flattened rosettes, and inch across, fairly glistening with lime. One of the best, easily grown, always neat and tidy.

ELLIOTTS SILVER. A tiny hybrid form with narrow leaves heavily encrusted. It is a gem of the family, and should be in every collection.

GAUDINI. Large rosettes, tinged red at the base of the leaves. The flowers on tall arching stems, are white, spotted pink.

HOSTII. Narrow strap like leaves, grey, encrusted. One of the finest from the standpoint of form and color of the rosettes. Rare. White flowers.

 All prices include delivery. Add 5% for points West of the Mississippi.

SAXIFRAGES---con.

LIGULATA BELLARDI. Pale green rosettes, silvery beaded leaves. Erect panicles of white flowers.

L. LANTOSCANA. A fine form of ligulata, with long narrow foliage, grey green, filmed with silver, curling at edge and end. Arching sprays of white flowers.

MACNABIANA. A large, strong growing form that can be depended upon to do well anywhere. Fine tall sprays of white flowers, and well encrusted rosettes, four inches across.

The preceding are all of the lime encrusted types. The next division is the Kabschia section, so called Mossy sorts. These are the finest of Saxifrages. They ask and deserve more care than the others. Give them a light rich soil of loam, leaf mold and sand. Use some lime. If you can surface the ground around them with limestone chips, so much the better. Do not let them get dry in midsummer, nor too wet at other times. They flower early, usually in May and June. All these we offer do well for us, without too much care.

APICULATA. Spiny green rosettes, slightly lime encrusted. Primrose yellow flowers in six inch sprays.

APICULATA ALBA. Like the preceding but with white flowers.

H. S. STOKES. This is not a true Kabschia, but belongs to a mossy section. The leaves are much serrated, light green, and make good sized mounds of foliage, above which rise the light reddish pink flowers which fade to nearly white. This variety grows most readily for us, flowers profusely, and is altogether the best of the type.

CERATOPHYLLA. Called the Staghorn Saxifrage because the stiff, much divided leaves branch like Staghorns. It is a good variety, growing readily for us, forms attractive low mounds, and flowers white, on branching short stems.

DECIPIENS. Crimson Moss. This is much like H. S. Stokes, but the flowers are white. It blossoms profusely in May, and in light shade, slightly moist soil, will carpet a large area, with light green leaves four inches high. These turn bronzy crimson, in winter, hence the name.

The next two sorts are entirely different. They make rosettes of green foliage, something like Primrose leaves. Both are very attractive.

ANDREWSI. A hybrid form, with dark green, shining leaves, the edges of which are notched, and each notch filled with lime encrustation. For the foliage alone, it is worthy of a place in any garden, and the loose branching stems carry pretty pink starry flowers, flecked with purple. Likes shade and damp soil. 50¢ each.

UMBROSA. This is London Pride, St. Patricks Cabbage, Princes Feathers, and Kiss Me By The Garden Gate, according to old English catalogues. A woodland plant, common in England, making clumps of large blunt green leaves, and carrying tall heads of gracefully swaying light pink and white flowers, in profusion.

 We will mail you one each of 20 of these Saxifrages, our selection, for \$6.50. This will serve to get acquainted with the best of them, and will be sure to whet your interest.

We will mail you ten different encrusted forms, our selection for \$2.50. These will all be from small pots.

All prices include delivery. Add 5% for points West of the Mississippi.

PLANTS AND BULBS FOR JUNE AND JULY PLANTING.

So many of the really choice Spring flowering plants, both Native and Foreign, develop so quickly after the snow goes, that even when dug while dormant, they begin to grow in the mails. Practically all of these plants either make a leafy growth following the flowers, or else they die away in June and July, not to appear until another Spring. In either case, they can be planted after blooming, and will flower at their best, next Spring.

ANEMONE VERNALIS. This choice early flowering Anemone, fittingly called Glory of the Snows, puts up its large white cups, flushed with pink on the outside, just as soon as the snow is gone. They are already in seed at this date. The woolly coat of the flower bud is attractive. The fluffy seed heads are interesting, and the foliage is good. The plant is one of the rarest of early Spring bloomers, yet grows readily in any light soil, not too rich, and in full sun. Planted now, it will develop and be a large clump, next Spring. We offer plants in small pots, for delivery at any time, until July. 25¢ each; 10 for \$1.75; 100 for \$15.00.

ANEMONE PULSATILLA. This is the Pasque Flower of the Alps. It is not quite so early as the preceding, but is in bloom now. We have it in three colors. The ordinary form is a pale violet, and is very lovely. The red form is a dark maroon, the flower slightly smaller. The white is a clear color, without trace of coloring, and is very lovely. Please be sure to state which color you desire. The violet and the red are sold at 25¢ each; 10 for \$1.75. The white is 50¢ each; \$4.50 for 10.

CORYDALIS BULBOSA. This, we call the Pink Dutchman's Breeches, as it much resembles a pink form of that native plant. The bulb is like a small Gladiolus corm. After flowering, in May, the plant dies down and does not appear until the next Spring. While dormant, they can be handled very easily. We offer strong bulbs while they last, at 30¢ each; 5 for \$1.

DICENTRAS--CANADENSIS AND CUCULLARIA. These little Spring flowering natives will grow in any good soil, and are charming in the early Spring with their delicate green leaves and yellow white flowers. At this time they are fully dormant, and can be handled easily. Note the low price and order a quantity. 15¢ each; 10 for \$1.00; 100 for \$8.00; 1000 for \$75.00.

HEPATICAS. These can be moved safely at any time, after flowering, and become established for next Springs blooming. We offer collected clumps only, at this time, in lots of ten for \$1.50; 25 or more at 12¢ each.

SAXIFRAGA VIRGINIENSIS. The white flowered native Saxifrage, is in bloom now, whitening the limestone cliffs in the neighborhood. It can be planted in June, safely, and is offered at, 10 for \$1.50; 25 for \$3.00.

PHLOX DIVARICATA. The blue Canadian Phlox is one of the finest of late May flowering plants. It is a perfect sheet of color for a time. As soon as it is thru flowering, it should be cut down, and new growth will sprig up, and look well all summer. This is a good time to move it, and our plants will be sent in June. 25¢ each; 10 for \$2.00; 100 for \$18.00.

PRIMULA POLYANTHUS. We have a fine strain of the Munsted Primroses. The colors are varied, and the plants vigorous. While the plants can be set out in early Spring, a far better way is to divide them to single crowns when thru flowering, and plant them permanently. They will make growth before fall, that will give several flower stems the next Spring, and

FALL FLOWERING BULBS.

The Fall flowering types of Crocus, the Colchicums or Meadow Saffron, and the Hardy Amaryllis, or Lycoris, differ from most bulbs, in that they make a lush growth of foliage in the Spring, then disappear, leaving, in some cases, large seed pods, which have apparently formed without the aid of any flowers. In September, and sometimes even earlier flowers appear from the bare earth, as if by magic, and continue to open for many days. Large and showy, without having over-large bulbs, the Crocus and Colchicums are fine for Fall color in the Rockery and Border. The Spring growth comes before the plants are crowded, and is not apt to bother other things. But they must be planted in July, as soon as the Spring growth is dead, if they are to be at their best; this Fall. Order them now, for delivery when ripe, and plant immediately when received.

COLCHICUM.

AUTUMNALE. Large lavender cups, sometimes two inches across, in succession over a long period. 35¢ each; 10 for \$3.00

AUTUMNALE MAJOR. A slightly larger form, and deeper in color. Very vigorous and has many flowers per bulb. 35¢ each; 10 for \$3.00

AUTUMNALE ALBUM. White form of the common Colchicum. Very lovely and delicate. 35¢ each; 10 for \$3.00

BORNMULLERI. An exquisite rosy-lilac. This variety flowers early, and is the largest of the family. 50¢ each; 10 for \$4.50

CROCUS.

SATIVUS. This is the best of the Fall flowering Crocus, with large lilac purple flowers, with a showy orange center. They flower for a long period, at a time when their color is appreciated. 10¢ each; 10 for 50¢

SPECIOSUS. Bright blue with deep orange anthers. 10¢ each; 10 for 50¢.

ZONATUS. Beautiful large rose-lilac blossoms with yellow center and an orange zone. A striking beauty of delightful coloring. 10¢ each; 10 for 50¢. ---Any of above \$3.00 per 100

LYCORIS.

SQUAMIGERA. This is also called Amaryllis halli. The strong leafy growth dies down in midsummer, and in September, tall stems of pink flowers shoot up with astonishing rapidity, and last for a long time. Very choice and rare. Our stock is limited. \$1.00 each.

Two of the native Western bulbs we have tried have done well here, so that we can offer home-grown bulbs. Camassias should be planted in late midsummer. Erythroniums in July. Both flower readily and are satisfactory here at Shelburne.

CAMASSIAS.

ESCULENTA. Two foot spikes of blue flowers in May, from a strong clump of leaves. Fine for naturalizing, or for clumps in the border. We have strong home grown bulbs. 15¢ each; 10 for \$1.00; \$9.00 per 100

LEICHTLINI. A taller and stronger Western form. Lighter blue flowers. Equally hardy. 15¢ each; 10 for \$1.00.

ERYTHRONIUM.

Of these we have ALBIDUM, white, GRANDIFLORUM ROBUSTUM, large yellow, and JOHNSONI, rose pink, in home grown bulbs. The first two are 10¢ each 75¢ for 10; \$6.00 per 100. Johnsoni at 15¢ each; 10 for \$1.00. Ready in July. Order at once, as they will not last.