

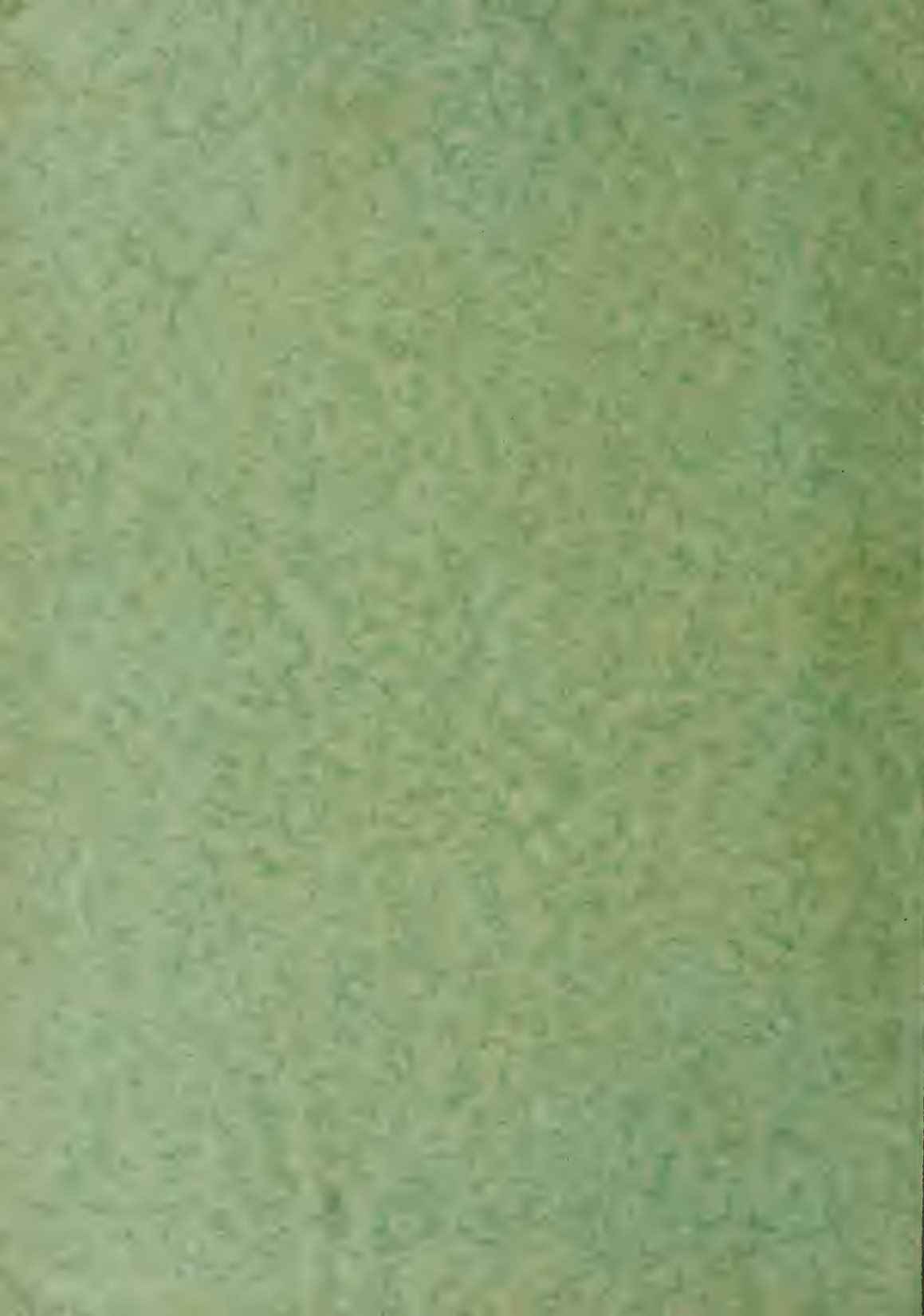





Edna Knowlton

Pomona

Florida





Digitized by the Internet Archive
in 2011 with funding from
University of North Carolina at Chapel Hill

<http://www.archive.org/details/whiteheather1928flor>





FOREWORD

TOGETHER we have laughed, and loved, and lived. A realization of our common aim and purpose, sympathetic ideas and ideals have made possible a spirit of joy and happiness in our work, play, and worship. "When to the sessions of sweet silent thought" we summon up remembrance of things past, may this the eighth issue of the White Heather vivify the recollections of the things we have loved.



CONTENTS

THE COLLEGE
THE CLASSES
ATHLETICS
ORGANIZATIONS
AND
CLUBS
FEATURES
AND
LITERARY
HUMOR



DEDICATION

WE, the members of the class of twenty-eight, dedicate this the eighth issue of the *White Heather* to the spirit of the Southland, that intangible, yet powerful something which has been evidenced in the chivalry and brave gallantry of her manhood, and which caused our grandmothers to sing:

*"My dress, it is of homespun,
My hat's palmetto, too,
But, then, it shows what Southern
girls,
What Southern rights can do."*



THE COLLEGE







*"For I have learned
To look on nature, not as in the hour of thoughtless youth;*



*But hearing oftentimes
The still, sad music of humanity,*



*Nor harsh, nor grating, though of ample power
To chasten and subdue.*



*And I have felt
A presence that disturbs me with the joy of elevated thoughts;*



*A sense sublime
Of something far more deeply interfused*



Whose dwelling is the light of setting suns,



And the blue sky and in the mind of man;



*A motion and a spirit, that impels
All thinking things, all objects of all thought,
And rolls through all things."*



CHARLES GRAVES VARDELL, D.D.
President





HENRY C. HAMMOND, D.D.
Vice-President and Professor of Bible



WHITE HEATHER



PROFESSOR A. H. STRICK
Dean of Conservatory





MISS HAZEL MORRISON
Dean of the Faculty



MISS MARY JOHNSTON
Dean of the College





Faculty

HELENA MABEL RYLAND, B.A., B.S.
Professor of Foods and Cookery

EDWINA FRANCES WHITE
Professor of Piano

ELEANOR SAMPLE
Librarian

MABLE BRIGGS
Assistant Professor of Bible

MRS. ALFRED H. STRICK
Director Publicity Department

ELIZABETH CLARK, M.A.
Assistant Professor of History and Mathematics

MARTHA BELL, B.S., M.A.
Professor of Clothing and Textiles

LOUISE MANDEVILLE, B.M.
Assistant Professor of Voice

MISS ELIZABETH CALDWELL
Professor of Voice

MARY McL. CONOLY, B.A., B.S., M.A.
Professor of Education

MRS. CHRISTINE EWING
Professor of Spanish and German

MARGARET McNEIL, B.M., M.M.
Professor of Piano

EUCEBIA SHULER, B.A., M.A.
Professor of Mathematics

JESSIE MORRISON
Assistant to Treasurer

MISS ELEANOR MOORE
Assistant Physical Director





Faculty

ETTIE BROWN
Professor of French

MRS. W. B. ROBESON
Professor of Violin

S. BROWN MORRISON
Treasurer

ELIZABETH FAIN, B.A., M.A.
Professor of History

DEBORAH PATTERSON
Dictitian

MARY ENGLISH LAW
Secretary to the President

JANE COLSON GLENN, B.S., G.P.H., M.S.
Professor of Chemistry and Physics

SARA GLENN SOMERVILLE, B.A.
Professor of Physical Education

VIRGINIA CONNOR, B.N.
Resident Nurse

NAN ROBERTS, B.S., M.S.
Professor of Biology and Bacteriology

ROBERT LAWSON EASTHAM, B.S.
Assistant Professor of English

HARRIET N. MORRISON, B.A., M.A.
Professor of Latin

EUGENIA PATTERSON
Assistant Professor of Clothing and Textiles

JOHN D. MCLEOD
Business Manager

MARY LOGAN SANDERSON, M.A.
Professor of English



THE CLASSES





SENIORS



MISS NAN ROBERT
Class Adviser

BILLIE BROOKS
Mascot

Senior Class

Colors: Blue and Gold

Flower: Marechal Neil Rose

Motto: "Life is what you make it."

Psalm: 67

Hymn: "Purer Yet and Purer"

OFFICERS

- | | |
|----------------------------|-----------------------|
| CORNELIA GILLIES | <i>President</i> |
| IRENE MCDADE | <i>Vice-President</i> |
| SARAH MCGEACHY | <i>Secretary</i> |
| MARY KIMZEY | <i>Treasurer</i> |





Senior Class

CATHERINE CORNELIA GILLIES, A.B. Chiangmai, Siam

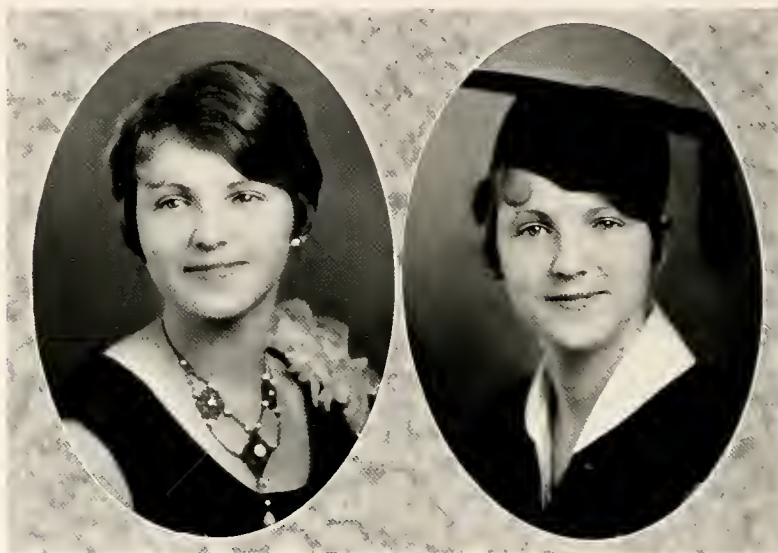
E X

- 1924-'25—Y. W. C. A. Committee, White Heather Staff.
- 1925-'26—Y. W. C. A. Committee, "Pine and Thistle" Staff, Vice-President Class, Prayer Band Leader, Mission Study Leader, Choral Association, College Orchestra, Fire Squad.
- 1926-'27—President Class, Fire Squad, Prayer Band Leader, Class Hockey Team, Varsity Hockey Team, Y. W. C. A. Committee, Commencement Marshal, Executive Committee Epsilon Chi Society, Student Council.
- 1927-'28—Class President, Student Body President, Student Council, Y. W. C. A. Cabinet, Y. W. C. A. Committee, Senior Scribblers Six.

*The soft, sweet fragrance of honeysuckle—
 A brown thrush singing, singing, after an April rain—
 Topaz and amber flecked with gold—The mauve and violet
 pensiveness of great old mountains at Indian summer
 eventide.*

Calm of spirit, clear of thought, steady in judgment, loyal to anything that stands for the right, sometimes quiet, but oftimes gay; a friend at all times—these are typical of Cornelia.





Senior Class

HELEN DOUGLAS ABERNATHY, B.S. Fort Lawson, S. C.

Z

"A crisp, cool summer's day."

"The thing that goes farthest towards making life worth while—that costs the least and does the most, is just a pleasant smile." Helen believes in smiles and she isn't one bit stingy with them either. She is blest with a happy disposition, and will win her way with it wherever she goes.





Senior Class

CORNELIA E. ALDRET, A.B. Summerville, S. C.

Z

1924-'25—Winthrop College.

1925-'26—Winthrop College.

1926-'27—Y. W. C. A. Committee, Choral Association, College Quartet, Class Hockey Team, Class Basketball Team, Varsity Basketball Team, A Capella Choir, College Trio.

1927-'28—Y. W. C. A. Committee, A Capella Choir, Prayer Band Leader, Glee Club, First College Quartet, Fire Squad, Annual Staff, Monogram Club, Champion Hockey Team, Class Basketball Team, Assistant Manager of Hockey Team.

The scarlet of the maples, the sound of shaking tambourines, a joyous red bird pouring forth its soul in song.

Cornelia is like a study in crimson and orange, with a vivid personality, a sparkling wit, and the ability to be a real friend, a good sport, a skillful athlete, and a scholar. Her heart is "like a rhyme with the yellow and the purple and the crimson keeping time."





Senior Class

MARY BIGGER, A.B. Rock Hill, S. C.

E X

There's a place as wide as the heart and the smile of Mary Bigger, in the lives she happens to touch. We seek her out right thankfully, for her honest cheerfulness and ready sympathy have made us grin at the world and with it, and there is a beauty well worthy of envy in her manner of returning much for little. Although she hasn't been with us the full four years, there will be a big lonesome spot that won't be easily filled when she leaves Flora Macdonald.





Senior Class

MARY ELIZABETH BLACK, B.M. Shelby, N. C.

Z

1924-'25—Choral Association Secretary and Treasurer Western North Carolina Club.
1925-'26—Choral Association, Y. W. C. A. Committee, President Western North Carolina Club.
1926-'27—Choral Association.
1927-'28—Glee Club.

"The blue and yellow flowers stood up proudly in the sun."

Mary Elizabeth, or better known to her friends as "Mary Lib," is a typical little Carolina Tar Heel. There are few people who do not know from where "Mary Lib" hails. However trite it may be, we say that she is like a prism with loyalty, thoughtfulness, and frankness sparkling with mischief, daring and tenderness.

For four long years "Mary Lib" has worked diligently for her B.M. goal. You were apt to find her playing softly at the pipe organ, or jazzing at the piano—or yet again rivalling Galli-Curci. What lords of creation have not succumbed to music's matchless spell!





Senior Class

MARY WATKINS BULLOCK, A.B. Red Springs, N. C.

Z

1924-'25—Choral Association.
1925-'26—Class Basketball Team.

*"Dignity formed a mask for her—
But mirth lurked underneath."*

Sensible, optimistic, interesting, witty, these are some of the adjectives with which we would describe Mary "Watt." She has a good mind, and with it all a ready wit that endears her to all who know her.





Senior Class

MYRA FRANCES CAMPBELL, B.M. Salisbury, N. C.

E X

1925-'26—Tennis Champion (doubles).
1926-'27—Monogram Club, Class Cheer Leader, Choral Association.
1927-'28—Secretary Epsilon Chi Society.

*"Haste thee nymph and bring with thee
Jest, and youthful jollity...
Sport that wrinkled care derides
And laughter holding both her sides."*

Salem's loss was our gain! "Fritz" came to us a Sophomore, and had added much to the class of the Gold and Blue. She has personality, spiced with pep, and a frankness of speech seldom found. She is a true "Highland Lassie" with her fair hair, blue eyes and Scotch name, and a way of "flinging" the Highland Fling as no one else can do it. The school will be fortunate indeed that gets nur "Fritz" for a Public School Music instructor.





Senior Class

FRANCES JONES COOPER, B.S. Roanoke, Va.

E X

1925-'26—Y. W. C. A. Committee, Vice-President of Virginia Club, Class Cheer Leader, Fire Squad.

1926-'27—Vice-President of Virginia Club, Associate Business Manager of White Heather, Class Cheer Leader.

1927-'28—Business Manager of White Heather, President of Virginia Club, President of Home Economics Club, Y. W. C. A. Committee.

"In this world it is not what we take up, but what we give up that makes us rich."

Frances came to us from Randolph-Macon in January, 1925, and a lucky day it was for the class of '28 and for F. M. C. As cheer leader of her class for two years she showed what a good sport she is. As manager of the tea-room last year and as business manager of the WHITE HEATHER this year she displayed a business ability we all envy. Whatever life holds for her we know how much she will make of it with her generous heart.





Senior Class

THELMA CROMARTIE, A.B. Elizabethtown, N. C.

E X

1925-'26—Y. W. C. A. Committee.
1926-'27—Secretary of Junior Class Treasurer of Epsilon Chi Society, Prayer Band Leader, Mission Study Class Leader, Y. W. C. A. Committee.
1927-'28—Treasurer of Y. W. C. A., Cabinet Member, Chairman of Finance Committee, Senior Scribblers Six.

A still, quiet pool in the woods.

Have you ever stood by a still, quiet pool in the woods? And watched the glimmer of lights reflected on its drifted, sunken leaves? And felt a calm by being near it? Then you know what Thelma is like—calm, quiet and composed, most reassuring in this hustling, bustling world. Thelma is over obtrusive. You do not know she is there until she is gone, and then you miss her. Hers is the "calm of a well-ordered mind."





Senior Class

SUSAN ELIZABETH DAVIS, A.B. Salisbury, N. C.

E X

- 1925-'26—Y. W. C. A. Committee, Fire Squad.
 1926-'27—Commencement Marshal, Recording Secretary of Epsilon Chi Society, Class Hockey Team, Fire Squad.
 1927-'28—Manager Class Hockey Team, Class Hockey Team, Prayer Band Leader, Censor Epsilon Chi Society, Y. W. C. A. Committee.

*Love her? Well, I guess we do!
 Love her mighty fond and true,
 Love her better every day.
 Dunno why!—it's just her way.*

Betsey hails from one of the Old North State's best towns—Salisbury. She has now a place for herself in the hearts of her class, and—in other hearts, too! Just because she's Betsey. As manager of a hockey team! Why the Seniors carried off the hockey banner this year under her guidance. We know her life will be one of happiness and we wish her much success.





Senior Class

BELLE GAITHER, A.B. Newton, N. C.

Z

1924-'25—Chorus.
1926-'27—Basketball Squad.
1927-'28—Fire Squad. Basketball Squad.

"Fresh-blown roses wash't in dew."

Belle wonders why the rest of us run about and worry so. She has proven that you can certainly get along in this world by taking things calmly, and smiling through it all. Belle has an aptitude for making friends—and best of all, she remembers the good things about them and forgets the rest—a rare gift.





Senior Class

ELIZABETH MARCH HALL, A.B. Hickory, N. C.

E X

- 1924-'25—Y. W. C. A. Committee, Class Hockey Squad, Champion Hockey Team, Fire Squad, Highland Flinger, Class Representative to Athletic Board.
 1925-'26—Y. W. C. A. Committee, Class Tennis Team, Fire Squad, Highland Flinger, Class Representative to Athletic Board.
 1926-'27—Y. W. C. A. Cabinet, Assistant Business Manager "White Heather" Highland Flinger, Fire Squad, Class Tennis Team, Representative to Raleigh and Davidson Conference.
 1927-'28—President Y. W. C. A., Student Council, Second College Quartet, Glee Club, A Capella Choir, Champion Hockey Team, Highland Flinger.

Pink and white apple-blossoms, Puck, a little garden walk, bordered with pinks, larkspur and ragged robbers—dusk and dreams—a tiny toe dancer dressed in pink chiffon and silver.

One can hardly believe in the law of compensation when contemplating "Allie." Cultured, athletic, musical, neat and attractive—that is enough. Yet "Allie" is intellectual and efficient, too. Even that is not all, for

*"To know her is to love her
 And to love her on forever."*





Senior Class

RUTH VIRGINIA HUMBER, A.B. Carthage, N. C.

Z

- 1924-'25—Class Hockey Squad, Choral Association.
- 1925-'26—Y. W. C. A. Committee, Fire Squad, Class Hockey Team, Choral Association.
- 1926-'27—Annual Staff, Class Hockey Team, Varsity Hockey Team, Class Basketball Team, Prayer Band Leader, Mission Study Band Leader, Y. W. C. A. Committee.
- 1927-'28—Class Hockey Team, Varsity Hockey Team, Class Basketball Team, Y. W. C. A. Committee, College Glee Club, Senior Scribbler, Editor-in-Chief "White Heather," Class Lawyer.

A blue hyacinth in a fragile bowl, a gypsy dancing through October woods, a joyous melody with a haunting minor strain, "rain awakes flowers"—all these and more is Ruth.

Freedom from pettiness, the ability to fairly radiate joy, that quality that enables one to generate enthusiasm in others, and absolute truthfulness are a few of the characteristics that make up Ruth's personality. She is like the sky—ever changing, yet everlasting and unfathomable.





Senior Class

RUTH JESSUP, B.S. Eleas, N. C.

Z

1926-'27—Y. W. C. A. Committee.
 1927-'28—Vice-President Home Economics Club.

"I blue forget-me-not in an old-fashioned garden."

Ruth admits she is living out of her time. If it had been left with her, she would have chosen the time when girls made much of "lavender and old lace," and wore long, full skirts and curls. And when we see her big blue eyes, sunshiny hair, and pensive face, we are inclined to agree with her. But her personality as well as her domestic tendencies belong to today. And so—we are glad we have Ruth.





Senior Class

MARY KIMSEY Brevard, N. C.

E X

- 1924-'25—Hockey Team, Basketball Team.
- 1925-'26—Y. W. C. A. Committee, Hockey Team.
- 1926-'27—Y. W. C. A. Committee, Hockey Team, Treasurer Class, First Vice-President Epsilon Chi Society.
- 1927-'28—Fire Squad, Y. W. C. A. Committee, Treasurer Class, Public Debater.

A cozy nook, a story book, the rosy glow of an open fire.

Mary has that extremely rare virtue, perseverance. She sticks to whatever she wants and usually accomplishes it. And mathematics for her is just an interesting puzzle, for which, by her determination and persistence she can easily find the solution. She is quiet and unobtrusive—a girl who goes about her daily tasks, disturbing no one. Generous and kind, pleasantly good-natured, with the gift of sympathy for the joys and sorrows of others—that's Mary.

"A tender heart; a will inflexible."





Senior Class

NOVICE RIVERS KIRVEN, A.B. St. Charles, S. C.

E X

- 1924-'25—Class Hockey Team, Class Basketball Squad, Class Tennis Team.
- 1925-'26—Y. W. C. A. Committee, Manager Hockey Team, Representative to Athletic Board, Varsity Hockey Team, Basketball Team, Class Tennis Champion, Class Tennis Team, Monogram Club.
- 1926-'27—Vice-President Athletic Association Prayer Band Leader, Class Hockey Team, Class Basketball Team, Varsity Hockey Team, Class Tennis Champion, Class Tennis Team, Monogram Club, Fire Squad.
- 1927-'28—Y. W. C. A. Committee, President Athletic Association, Prayer Band Leader, Champion Hockey Team, Class Soccer Team, Varsity Hockey Team, Monogram Club, Basketball Team, Member Student Council.

A spring with clean cool depths, a lilting joyous melody, the restless power and beauty of the sea, eternal youth.

To very few people is given that indefinable thing called an attractive personality—but that possession is Novice's. A thousand things go into the making of it—a ready sympathy, an infectious enjoyment of living and the ability to play the game fairly and squarely are just a few of the many.





Senior Class

EDNA KNOWLTON, B.S. Pomona, Fla.

E X

- 1924-'25—Class Hockey Team.
- 1925-'26—Class Hockey Team, Mission Study Leader, Y. W. C. A. Committee, Recording Secretary Epsilon Chi Society.
- 1926-'27—Y. W. C. A. Committee, Fire Squad.
- 1927-'28—Y. W. C. A. Committee, "White Heather" Staff, Class Historian.

Energetic independence.

Edna is capable of independent thought and action, which is more than can be said of most of us. She is not only capable of it, but usually does take her stand, develop her opinion, or carry out her plan of action entirely on her own initiative. Add to this initiative, energy, to energy, thoroughness, to thoroughness, determination,—and you have only mentioned Edna's most outstanding characteristics.





Senior Class

FLORA MONROE, B.S. Council, N. C.

Z

- 1924-'25—Hockey Squad.
- 1925-'26—Class Hockey Team.
- 1926-'27—Class Hockey Team, Assistant Manager of Junior Tea Room, President of Bladen County Club.
- 1927-'28—Class Hockey Team, Varsity Hockey Team.

Independent, energetic, capable, and—true blue. Those who know Flora best have found beneath her banter a bigness of soul and a heart worth knowing. Flora is one of the workers of the world. While others thrill and squeal, she does the thing to be done, quickly and efficiently. Probably most of us do not realize just how much of the heavy end of the log she carries, nor how willingly and uncomplainingly. But we like her for it.





Senior Class

JANIE MCFARLAND MORRISON, A.B. Statesville, N. C.

E X

1926-'27—Y. W. C. A. Committee.

1927-'28—Y. W. C. A. Committee, Corresponding Secretary of Epsilon Chi Society. Art Editor of "White Heather."

*"The beauteous pansies rise
In purple, gold and blue,
With tints of rainbow hue
Mocking the sunset skies."*

A gift for painting, an ever-ready willingness to be generous with that gift, in creating beauty and pleasure for others, an optimistic view of life and a friendly disposition combine to make Janie a most lovable person. She is forever good-natured, always ready for a laugh even when the joke is on her. Her inevitable good humor and genial manner make her a girl enjoyable to be with and pleasant to know.





Senior Class

BEULAH IRENE McDADE, A.B. Lenoir, N. C.

E X

1924-'25—Class Tennis Manager, Class Basketball Squad,
 1925-'26—Y. W. C. A. Committee, Class Hockey Team, Class Basketball Team,
 1926-'27—Y. W. C. A. Committee, Vice-President Class, Student Council, Prayer Band Leader,
 Type Editor "Pine and Thistle" Class Hockey Team,
 1927-'28—Y. W. C. A. Cabinet, Vice-President Class, Student Council, Class Hockey Team,
 Varsity Hockey Team.

*Have you ever seen a pine tree
 On a pale, blue wintry day,
 And seen that the somber brown of its bark,
 Was pink, and blue, and pearl-grey?*

There's a daintiness, a beauty, and a richness in her heart, often hidden by her quiet outer life. There's a depth of feeling, a loftiness of ideal, a mind strongly schooled to duty, a will that is steady and dependable, and, for good measure, a delightful sense of humor.





Senior Class

KATHERINE ELIZABETH McGEACHY, B.M. St. Pauls, N. C.

E X

- 1924-'25—Y. W. C. A. Committee.
- 1925-'26—Y. W. C. A. Committee, Prayer Band Leader.
- 1926-'27—Y. W. C. A. Committee, Mission Study Leader, Prayer Band Leader, Treasurer of Conservatory, Highland Pinger.
- 1927-'28—Y. W. C. A. Committee, "White Heather" Staff.

"Inner sunshine warms not only the heart of the owner, but all who come in contact with it."

What more need be said of her! For such a nature has a heart of gold. With her personality our Lib will make a success of whatever she chooses to do, and indeed fortunate will be the school that gets her for its teacher of Public School Music. She is a true "Flossie Macker" and will be missed.





Senior Class

SARAH JOHNSON MCGEACHY, B.S. St. Pauls, N. C.

E X

- 1924-'25—Y. W. C. A. Committee.
- 1925-'26—Y. W. C. A. Committee, Prayer Band Leader, Mission Study Class Leader, "White Heather" Staff, Delegate to Blue Ridge.
- 1926-'27—Y. W. C. A. Cabinet.
- 1927-'28—Y. W. C. A. Cabinet, Secretary of Class.

"A breeze of Spring—soft and gentle."

Sarah may not talk as much as some, but when she speaks, you may be sure she has something to say worth listening to. We have always depended on Sarah, and her willingness makes us love her more. Trustworthy, patient and conscientious—thus do we think of her. The class of '28 counts Sarah as one of its most valuable members.





Senior Class

BEULAH McINNIS, B.S. Little Rock, S. C.

Z

1926-'27—Y. W. C. A. Committee.
1927-'28—Y. W. C. A. Committee

"Let me do my work from day to day."

Quiet, reserved, earnest in her work, willing to do more than her share in anything that needs to be done, seeing something good in everyone—these characterize Beulah. It's a joy to know someone who does her work well, and yet says so little about it.





WHITE HEATHER



Senior Class

MARY FOWLER McKEITHEN, B.M. Aberdeen, N. C.

Z

1925-'26—Choral Association, Y. W. C. A. Choir.
 1926-'27—Prayer Band Leader, Y. W. C. A. Committee, Fire Squad, Commencement Marshal,
 Choral Association, Church Choir, Y. W. C. A. Choir.
 1927-'28—Prayer Band Leader, Y. W. C. A. Committee, Corresponding Secretary Zetesian
 Society. (Elected Senior Class Cheer Leader—resigned).

*"I like the laughter that opens the lips and the heart—that shows at the same time pearls
 and the soul."*

"Marie" is one of our most attractive Seniors, for with her sense of humor, her wit, and her accomplishment as a "Master" of the French language, hers is indeed a versatile make-up. There was never a truer friend, nor one so frank. Also there is another serious side, and that is a devotion to duty—seldom found, yet to be desired. We do not know whether she will return to her home in Aberdeen this June or take up a—new one in—well, somewhere else.





Senior Class

JANIE IDELLE MCKENZIE, B.S. Pinehurst, N. C.

E X

1924-'25—Class Hockey Team, Class Basketball Manager, Class Basketball Team, Class Tennis Team (doubles) Class Tennis Winner (singles).
1925-'26—Class Hockey Squad, Class Basketball Squad, Class Tennis Winner (singles), Fire Squad.
1926-'27—Class Hockey Squad, Class Basketball Team, Class Tennis Manager.
1927-'28—Y. W. C. A. Committee.

A smile—pleasant, trusting, and wholesome.

To come through four years of college still smiling, figuratively speaking, is in itself an accomplishment. "Smiles are smiles only when the heart pulls the wire." Idelle is a girl who is constant, loyal, always the same, ready to enjoy the fun, ready to meet difficulties, smiling.





Senior Class

KATIE MAE MCKENZIE, A.B. Wilmington, N. C.

Z

- 1924-'25—Secretary Freshman Class.
- 1925-'26—Y. W. C. A. Committee, Champion Hockey Team, Class Basketball Team, Varsity Hockey Team, Prayer Band Leader, Mission Study Band Leader.
- 1926-'27—Vice-President of Y. W. C. A., Class Hockey Team, Class Basketball Team, Assistant Business Manager of "Pine and Thistle," Manager of Basketball Team.
- 1927-'28—Y. W. C. A. Cabinet, Censor of Zetesian Literary Society, Champion Hockey Team, Class Basketball Team.

A cozy firelit room—spontaneous sparkling things—joyous living.

It is almost incomprehensible that such a little girl, seemingly so free from all care, could think such big thoughts as Katie does. Her classmates have often marvelled at her ability for intense concentration. Perhaps they have even envied her. Katie is brilliant and swift on the athletic field, and let's not forget she is a real honest to goodness friend.





Senior Class

FLORA C. McLAURIN, B.M. McColl, S. C.

Z

1927-'28—Y, W. C. A. Committee.

*I count life just a stuff
To try the soul's strength on.*

The world likes the fellow who won't quit—and that's Flora McLaurin. When Flora sets her mind to a thing she is going to do it or die trying. But you wouldn't know about it. Flora doesn't blow her own horn—and that is Flora, too. To this add artistic talent, genuine kindness of heart, a deal of energy, and you have Flora.





Senior Class

MARTHA McLEOD, B.S. Sanford, N. C.

Z

1926-'27—Associate Editor of "Pine and Thistle."

Shiny red apples—the quiet good-natured happiness of pastoral life.

Martha is even pleasant when she's cross. Her capability has made us admire her and the droll remarks that she draws out when least expected have made us like her.





Senior Class

JESSIE IRENE MCPHAUL, A.B. Red Springs, N. C.

E X

- 1924-'25—Class Hockey Team, Class Basketball Team, Chaplain of Epsilon Chi Society, Glee Club, Y. W. C. A. Committee.
- 1925-'26—Class Hockey Squad, Manager Class Basketball Team, Y. W. C. A. Committee, Glee Club, Prayer Band Leader.
- 1926-'27—Class Hockey Team, Glee Club, First College Quartet, College Trio, Associate Editor of "Pine and Thistle," Y. W. C. A. Committee, Prayer Band Leader.

Rich, red roses, dew-washed and fragrant.

There is richness about Jessie like the color of an American beauty rose; a dignity like its dignity; and a loveliness that is lovelier, even than its sweetness.





Senior Class

DAISY VICTORIA McRAINEY, B.S. Parkton, N. C.

Z

1925-'26—Hockey Squad.
 1926-'27—Y. W. C. A. Committee, Hockey Squad.
 1927-'28—Y. W. C. A. Committee, Tea Room Manager.

"Sunflowers by the sides of brooks, turn'd to the sun."

Daisy is full of pep and energy, and she expends it freely both in her work and play, and does even the hard things cheerfully. Add to this an earnest persistence in everything she undertakes, and a happy disposition, with a joy in passing it on, and you have Daisy.





Senior Class

CHRISTIAN FLETCHER PARKER, B.S. Raeford, N. C.

E X

- 1924-'25—Y. W. C. A. Committee.
- 1925-'26—Y. W. C. A. Committee, College Chorus.
- 1926-'27—Y. W. C. A. Committee, College Chorus.
- 1927-'28—Y. W. C. A. Committee, Assistant Manager of Tea Room.

Of gentle things, soft, gentle, trusting things you would not hurt.

"Her voice was ever soft, gentle, and low, an excellent thing in woman." Chris is a womanly little soul, sweet, high-minded, true to ideals of right and wrong. She has a simplicity, a naturalness, and an unfeigned generosity of nature that we like—and she is worth liking.





Senior Class

MARGARET PURCELL, A.B. Manton, N. C.

E X

"The daisy's for simplicity and unaffected air."

Sincere, loyal, and persevering, Margaret goes about the hardest tasks of her college work with quiet ease. Because she has lived on the campus only one of the two years she has been with us, we feel that we have not had the privilege of knowing her as we should have liked, but she is ever glad to "lend a helping hand" and has a friendly word for all. Our wishes for Margaret are that she may meet with success and have Life's richest gifts showered upon her.





Senior Class

NELLIE RICE, B.S. Pelzer, S. C.

Z

1926-'27—Y. W. C. A. Committee.

Sweet and demure—reminiscent of cozy bungalows and crisp curtains.

Nellie has a quiet manner that one is sure will sometime break, letting the laughter that lies just underneath escape. Common sense, dependability, a sense of humor and vast knowledge of domestic value are among her outstanding characteristics. Nellie doesn't advertise her ability and attainments, being a person of quiet reserve, but she can surely do things when she wills. She is ever loyal, modest and cheerful. Those who know her best appreciate her splendid qualities. "A quiet girl of unassuming mien, whose diligence prevents her being seen."





Senior Class

BESSIE LORENE SPRINGS, A.B. Charlotte, N. C.

E X

1927-'28—Treasurer of Epsilon Chi Society, Y. W. C. A. Committee.

A mahogany table, October roses lifting their golden, yellow heads from a bowl of burnished bronze.

Loyal in friendship, capable, dependable, ever ready to serve, studious and resourceful—Lorene is all of these and more. She is the kind of person who always gives an impression of dependability and true-blueness. Her hearty willingness to accommodate and her spirit of friendship, sympathy and optimism have endeared her to us all.

*"A willing worker, full of mirth,
We need more like her on this earth."*





Senior Class

CAROLINE AMERICA STACY, B.S. Fort Meade, Fla.

Z

1924-'25—Y. W. C. A. Committee.
1925-'26—Mission Study Leader, Y. W. C. A. Committee, Class Historian, Choral Association.
1926-'27—Y. W. C. A. Cabinet, Executive Committee Zetesian Literary Society, Class Historian.
1927-'28—President Zetesian Literary Society, Y. W. C. A. Committee, Member Student Council, Senior Scribbler Six.

*A lone pine tree against a dazxn sky—
The fragile delicacy and strength of a hammered silver bowl;
Water lilies and lilacs.*

There is a quality about Caroline that calls forth love and respect—a quality of quiet poise and deep-founded trustworthiness. Her word carries with it the weight of sound judgment and simple truth. Mixed with all these deeper and more grave characteristics is a sparkling sense of humor like a thread of gold. When we think of Caroline we think of dignity, wit, industry, and wisdom.





Senior Class

INA WINIFRED STEVENSON, A.B. Stony Point, N. C.

Z

1926-'27—Y. W. C. A. Committee.
1927-'28—Y. W. C. A. Committee.

*"Violets of azure blue,
Woodland violets, drenched in dew.*

Dusky tresses and deep brown eyes that look on serenely though mountains topple and fall, poetic feeling and a rare appreciation of beauty in all forms—that's Ina. Her simple, modest and unassuming ways, her cheerfulness, and charming personality are the secrets of her attractiveness. Back of this there lies a combination of understanding and capacity for real friendship that is seldom found.

*"Quiet, gentle and refined,
Thoughtful, always, too, and kind."*





Senior Class

ALICE WICKLIFFE TURNER, B.M. Campbellville, Ky.

Z

- 1924-'25—Treasurer of Freshman Class.
- 1925-'26—Treasurer Sophomore Class, Prayer Band Leader, Y. W. C. A. Committee, Associate Editor "Fine and Thistle," Fire Squad, Choral Association.
- 1926-'27—First Vice-President Zetesian Society, Commencement Marshal, Choral Association.
- 1927-'28—Critic Zetesian Society, Y. W. C. A. Committee, Senior Class Cheer Leader, College Cheer Leader, Senior Scribbler Six.

"Silver threads of music—carefree joy of living."

The fairy god-mothers at her birth gave Alice one of the loveliest possessions on earth—"A soul for music born." When Alice plays nothing more need be said of her talent.





Senior Class

JUNIA GRAVES WHITE, A.B. Yencheng, China

E X

1924-'25—Y. W. C. A. Committee, Prayer Band Leader, Mission Study Class Leader, Class Leader, Class Hockey Team, Class Athletic Representative, Class President, Student Council.

1925-'26—Y. W. C. A. Committee, Prayer Band Leader, Class Hockey Team, Student Volunteer Band Leader, Class President, Student Council.

1926-'27—Y. W. C. A. Cabinet, Class Hockey Team, Critic Epsilon Chi Literary Society.

1927-'28—Y. W. C. A. Committee, Mission Study Class Leader, President Epsilon Chi Literary Society, Student Council, Senior Scribbler Six.

A little gray road through deep woods, a deer poised to listen to a distant sound, fields of waving wheat, a soft gray sky.

To stand by one's ideals, to do what is right in the face of any opposition, to put one's self into one's work—to say this of a person is high praise and it is true of Junia.





Senior Class

CECILIA YOUNG WILLARD, A.B. Hickory, N. C.

E X

- 1924-'25—Y. W. C. A. Committee, Class Hockey Squad.
- 1925-'26—Y. W. C. A. Committee, Class Hockey Team, Champion Hockey Team.
- 1926-'27—Y. W. C. A. Committee, Class Hockey Team, Class Representative to Athletic Board, Class Soccer Manager.
- 1927-'28—Y. W. C. A. Committee, Class Hockey Team, Champion Hockey Team, Class Soccer Manager, "Pine and Thistle" Staff, Fire Chief, Class Poet.

Pine needles glistening in the April sunlight—fall flowers and pure gold.

A dreamer, not without industry, in whom we find a sympathetic understanding and a rare sincerity of friendship, is Celia. She is also a persistent student and a good sport. To Celia we give admiration, emulation, and love!





Senior Class

MARGARET ELVIRA WILSON, A.B. Little River, S. C.

Z

- 1924-'25—Y. W. C. A. Committee.
- 1925-'26—Y. W. C. A. Committee.
- 1926-'27—Y. W. C. A. Committee, Prayer Band Leader.
- 1927-'28—Prayer Band Leader.

A drink of cool spring water on a thirsty day.

Margaret has the ability of doing hard things well and cheerfully, of doing the task at hand without complaining and without delay. Her sturdy, dauntless attitude toward life and work makes her a blessing to all who know her.





Senior Class

DARE WYATT, A.B. Rutherford College, N. C.

E X

- 1924-'25—Rutherford College.
- 1925-'26—Rutherford College.
- 1926-'27—Y. W. C. A. Committee, Y. W. C. A. Cabinet, Delegate to Y. W. C. A. and Y. W. M. C. Conference, Raleigh, Second Vice-President Epsilon Chi Society.
- 1927-'28—Y. W. C. A. Cabinet, Second Vice-President Epsilon Chi Society, Class Hockey Team, Class Soccer Team.

"Steel true and blade-straight."

Though she has only been one of us for two years, we feel that our class family never could have been complete without Dare. A world of common sense does she possess and she knows how to use it, too. Loyal, steadfast, lovable, true—all of these we find in Dare. We call on her for everything, and she never fails us. Surely "no one is useless in the world who lightens the burden of it to anyone else."





Senior Class

SADIE WYATT

1924-'25—Rutherford College.
1925-'26—Rutherford College.
1926-'27—Y. W. C. A. Committee, Prayer Band Leader.

A tiny white cottage—a trellis interlaced with Dorothy Perkins—a little breakfast room window with bits of blue peeping out.

On account of her reticent manner one would not be inclined to think that Sadie had a striking sense of humor and an alluring wit, nor might one realize the charm of her personality until he had come to know her better. On coming to know Sadie one finds that she possesses these qualities and that she is a "good sport." Crowning all is her super-amount of intelligence.





Senior Class

ELIZABETH TINDAL YOUNG, A.B. Milton, Florida

Z

- 1924-'25—Secretary Athletic Association, Basketball Squad.
- 1925-'26—Athletic Representative to Annual, Y. W. C. A. Committee, Fire Squad Choral Association, Athletic Committee.
- 1926-'27—Corresponding Secretary Zetesian Society, Fire Squad, Class Basketball Team.
- 1927-'28—Second Vice-President Zetesian Society, President Florida Club, Class Basketball Manager, Hockey Team, Soccer Team, Basketball Team.

A ray of sunshine, and "all that was ever joyous, clean and fresh."

A pair of twinkling brown eyes, a curly auburn head, and a slender figure that moves with an easy swing—is a tiny sketch of how "Liz" looks. Spontaneous laughter, an enviable ability to play basketball, a warm friendliness, and a heartfelt enthusiasm—a tiny sketch of what "Liz" is.





Senior Class History

AS THE TIME of our graduation draws near and we realize that the ties with our Alma Mater must soon be broken, we feel that we would like to go back and live over again some of the events of the past four years.

In the fall of '24 one hundred and fifty fair daughters of the South caught their first glimpse of the ivy-clad walls of Flora Macdonald. How our hearts beat with premonition as we looked and wondered what was held in store for us within those walls! Our fears were soon dispelled, however, when our Big Sisters found us and took us under their protection. And the College! My, we thought we never would get used to all these halls and stairs; would we ever find our way to meals?

Days slipped by before we hardly knew it and Stunt Night arrived. Such a time as we had braiding our hair in twenty plaits! And those Sophomores counted them too! (I wonder if they thought we didn't know how to count).

*"We're here,
We're here,
We're going to fight
For all that's right!"*

Thus we wended our way through the college with colors and banners flying, showing our allegiance to our new Alma Mater and pledging ourselves to support the Honor System. How we did work in hockey! We didn't win but we made the others fight a good hard battle. Oh, our Freshman days—how full of fun and work and yet we didn't half appreciate it then!

*"Soph'mores, Soph'mores,
Yes, we are the Soph'mores,
Nothing fresh about us, no, ma'am,
We'll play you, we'll fight you,
Our spirit will delight you,
For we are the Soph'mores—
SOPH'MORES!"*

Did you see that last hockey game? Didn't we have to fight that class of '27 to get that much coveted championship? Some work, but the reward was worth it many times over. What thrills!

Then, hardly before we knew it we were singing:

<i>"It's dear old Juniors, It's dear old Juniors, The pride of every student's heart. Come on, ye old ones, Come on, ye new ones, It's dear old Juniors now we cheer: So, hail to the Juniors, hail!"</i>	<i>RAII! RAI!</i> <i>Now is the time, boys, To make a big noise, No matter what the people say— There's naught to fear, The gang's all here!</i>
---	---





Oh, that last hockey game between the Seniors and us! My, wasn't it close—2-1. In fact, we thought we had tied until someone decided at the last minute that one of our goals didn't count. We determined more than ever to fight the next year.

And then—

*"Senior Class, here's to you,
Senior Class, you're so true.
You're the best old class we know,
That's why we love you so.
You bet we'll stick to you!
Senior Class, you're so fine.
You will win in every line,
And on you we'll always bet,
And you bet we won't forget
The dear old Senior Class!"*

How nice it is to be a Senior and have privileges, but it means more work, too, more responsibility. And what a nice, thrilling feeling it gave us to get the hockey championship once again.

B. S. practice house! The less said the better.

We are looking forward to the Junior-Senior and our next semester's work and play. Then will come Senior vacation, the play and graduation. But wait—there's something else—the bon-fire. Into it will go—??? I wonder if there will be any doubt in each girl's mind which book or books she intends to toss in the fire, which note-books to throw away.

After graduation we leave our Alma Mater to go out into the world—each to her own home and work. May each one of us uphold the spirit of Flora Macdonald and cherish the remembrance of the Class of '28.

SENIOR CLASS HISTORIAN.





To Flora Macdonald

*Silent and still we open now the door,
Knowing our paths must separate at last;
And, ere the deep-worn threshold we have passed,
Linger to glance behind us and before.
These years have been our golden hours of youth,
Of laughter and of gentle, carefree fun;
Of future excellence but half begun.
These years have taught us wisdom, taught us truth;
The door is closed. Reluctant, eager feet
That now would turn, and now would forward go,
Bear us along to worlds we do not know,
But where, we know dreams with their testing meet.
Flora Macdonald's precepts and dignity we'll revere
As the years advance and life puts on an aspect more severe.*

CECILIA WILLARD,
Class Poet.





Senior Class Prophecy



HERE is a pine tree on our campus; of course, there are others, but this is an unusual one. It is that tall, stately, lone pine "down by the Senior bench." And because he is so tall, he can see far and, looking into the future, is able to foretell "tomorrow's tale" if he but will. This year, as a token to the Class of '28, girls who probably never more will cast admiring glances at him, who never more will loll upon the needles that cover the ground beneath him, for their school days are over—his token, though!—as I have said, he is a wide, far-seeing tree, and has deigned to disclose to each member of this class her future, and how did he do it? Why, he let fall from his boughs cones, one for each of us, with her name and "future fortune" written thereon. And so these fortunes bring I to you just as they came from him.

Cornelia Gillies has a wonderful cone, for you see she's a wonderful girl. Her future is bright with a rosy hue, for she'll be a "Mrs." quite soon.

Ina is going to be assistant dean at our dear old school. Imagine it!

And Celia! Girls, she is really going to receive her M.D. and become an authority in the medical world.

The next cone is Mary Lib's, who is to become director of Public School Music in North Carolina.

Fritz, as an instructor in aesthetic dancing in Pinehurst in winter and at camp in the Maine woods in summer, will soon change her name and specialize in home-making. Mary Kimzey is to become president of a large bank—lucky girl!

A new French professor at Carolina—Thelma Cromartie! And Junia White is going to hold the position at the University of Arkansas as professor of biology.

When I look at Novice's cone, I see that she is to become a world pet, a second Helen Wills. Daisy and Chris! Little thought we that our "tea room managers" would carry on that work, but they will, and are to own a number of famous coffee shops all through the South, and at these same coffee shops, Katie May will order many of her "after the performance suppers," for she will be a great actress. Also at these same renowned places of good eats will Belle partake of a hasty lunch at noon recess of court, for a successful lawyeress will be in great demand. Frances Cooper is going into politics, and an influential member of Congress she is to be, doing all in her power for the betterment of living conditions among the unfortunate of our cities. And can it be true that Ruth Humber is to be "the sensation" in 1938 as author of a very wonderful play? And we thought she had other plans!

Now here's a cone, a very small but perfect one, with Flora McLaurin's name upon it, and here is another surprise—Flora is to wear a white uniform and is to be head of a large charity hospital, one which Louise Williams will often visit to play the violin for the patients between her concert tours of America and Europe.





By 1938 America will have many lady pilots and owners of aeroplanes, and Cornelia Aldret will lead them in efficiency. Helen Douglas has a long, slender cone, foretelling a long, successful life as director of Home Economics in South Carolina—living in the same town where Mary Bigger, who is to fill the place of a doctor's wife, will have her home.

I find that Liz Young is to have a very exclusive shop on Fifth Avenue, New York—an interior decorator, living in a little flat (beautifully planned and decorated) with Jessie McPhaul, who will be working for her Masters Degree from Columbia in preparation for becoming Director of Education at one of the South's most prominent girls' school.

Margaret Wilson, as professor of Biology, will attain great heights; and Nellie Rice, a welfare worker, whose praise will be on the lips of the public of North Carolina, is here, too.

Betsey, Watt, and Mary McKeithan will live together in a flat in Chicago for a few years; then each will decide that making a home for someone else is a much nicer occupation, and they? Many of the sensations of tomorrow in America will be caused by members of this class—among them will be Katherine Deaton, the outstanding pianist of the time; Janie Morrison's books, and the lectures of Stacy.

Sarah and Elizabeth McGeachy, although they have been together all during college, will follow widely different paths in the future, for Elizabeth will don her wedding dress ere long, while Sarah and Ruth Jessup establish their fame as writers of text books and magazine articles, on Home Economics, of course—and Ed's little modiste shop in New York, very exclusive.

Here is Dare's cone, and it does not surprise me to see that she will become governor of her state, and I also find that Flora Monroe and Beulah both will become members of the legislature. Sadie, our sweet little Sadie, head nurse in the children's ward in a hospital. Now there are only a few cones left—five, in fact.

Idelle and Martha, president and business manager, respectively, of a small and very exclusive girls' school, are thus going to give their contribution to our land.

Lorene and Margaret, to fulfill their prophecies, are to become partners in the profession of dentistry, while Alice Turner, poor girl, will be an old maid. This ends the reading of the fortunes of the Class of '28.

SENIOR CLASS HISTORIAN.





Last Will and Testament

State of North Carolina,
County of Robeson

Red Springs, N. C.

We, the Seniors of Flora Macdonald College, of wide renown for our scintillating wit, brilliant intellect, and ribald laughter (at our own jokes), who like Bon Ami "haven't scratched yet," are now on the verge of emerging from the protective shell which has harbored us safely for four long years. Desiring to bequeath as tokens of regard to those who are as yet unprepared to enter the big wide world, many of the accumulations of the aforesaid four years, we do make and publish our last will and testament.

SECTION I

Article I. To our Alma Mater we leave our love and gratitude for the protection and knowledge she has given us.

Article II. To the faculty we do bequeath the remembrance of our eager studious faces and the echoes of verbal utterances and literary manuscripts of astounding brilliance that have issued from the "mouths of babes and sucklings" (meaning us).

SECTION II

Article I. To the Class of 1929 we will the privilege of tearing down town during walking period and the duty of enlightening the Faculty.

Article II. Upon the rising Juniors we do bestow our venerable blessing, upon their youth and enthusiasm.

Article III. To the incoming Sophs we will the inestimable privilege of disciplining the incoming Freshmen.

SECTION III

Article I. I, Helen Abernathy, will my lack of experiences of any kind to Elinor Erickson.

Article II. I, Cornelia Aldret, will my aquiline nose and my passive and tranquil temperament to Elizabeth Monroe.

Article III. I, Mary Bigger, do will my dignity and respect for faculty members, in general, and in particular, to Iris Robinson.

Article IV. I, Frances Campbell, do will my interest in the medical profession to Dorothy Buchanan.

Article V. I, Frances Cooper, do will my willingness to learn and follow, and the vacant chair (?), which my departure will leave in B.S. practice house, to Helen Porter.

Article VI. I, Thelma Cromartie, will my habits of riotous living and usurping authority to Virginia Cunningham.

Article VII. I, Betsy Davis, do will my impulsive, spontaneous ways to Medora Hambaugh with the admonition that she acquire a bit of pep.

Article VIII. I, Bell Gaither, do will my superfluous energy and husky constitution to Jennie Ennis. She should give more time to study and athletics and less to?

Article IX. I, Allie Hall, do will my pet diversion of pursuing shadows, will o' the wisps, haunts, etc., to Melba McKinney.

Article X. I, Ruth Humber, do will my miraculous control over my sense of humor and my limited vocabulary to Maria Baird.

Article XI. I, Ruth Jessup, do will my athletic prowess and up-to-date ways to Helen Forbis.

Article XII. I, Mary Kimsey, do will many profuse and effusive exhortations to underclassmen that they attain the quality of deliberation of which I am in dire need.

Article XIII. I, Novice Kirven, do will my prissy and feminine ways and abhorrence of anything masculine or unladylike to Emeline Hanna.

Article XIV. I, Edna Knowlton, do will my lazy southern airs and drawling brogue to Margaret Clark.

Article XV. I, Flora Munroe, do will my musical ability and pull with the president to Mary Gamble.

Article XVI. I, Irene McDade, do will my sophistication and light-headedness to Naomi Wood.





WHITE HEATHER

Article XVII. I, Elizabeth McGeachy, do will my business ability and childish ways to Annie Belle Corry.

Article XVIII. I, Sarah McGeachy, do will my extensive course in library methods to Margaret Hooks.

Article XIX. I, Beulah McInnis, will my vivacity and my intensely emotional nature to Madge Hobgood.

Article XX. I, Mary McKeithan, do will my constancy in affairs of the heart to Florence Price.

Article XXI. I, Idelle McKenzie, do will my ability to shoot goals over the head of anyone who attempts to guard me to Isabel Ray.

Article XXII. I, Katie May McKenzie, do will my musical laugh and ability to conceal my emotions to Pearl Wilkinson.

Article XXIII. I, Flora McLaurin, do will two pairs of my number elevens to Emma Dendy, hoping she will have them stretched if they hurt.

Article XXIV. I, Martha McLeod, do will my regal bearing and hasty temper to Irene Sandlin.

Article XXV. I, Jessie McPhaul, do will my airy tread and shattered illusions to Nannie Mae McInnis.

Article XXVI. I, Daisy McRainey, do will my alluring baby ways to Lucille Davis.

Article XXVII. I, Christian Parker, do will my extensive assortment of cosmetics and hair tonic to Mary Ford Miller.

Article XXVIII. I, Margaret Purcell, do will my histrionic ability to Robbie Horne.

Article XXIX. I, Nellie Rice, do will and bequeath my unending jollity and blase repartee to Sarah Currie.

Article XXX. I, Lorene Springs, do will my history notes including Mazzini, Cavour and "Dearest Nicky" papers to Grace Wallace.

Article XXXI. I, Caroline Stacey, do will my undisputed prestige as chairman of all nominating committees and position as faculty adviser to Margaret Law.

Article XXXII. I, Ina Stevenson, do will and bequeath my place "a la table Francaise" and my "cah'ers" to Margaret Buchanan.

Article XXXIII. I, Alice Turner, do will my inimitable and enviable ability to captivate, entrance, and hold spellbound any and all members of the opposite fascinating sex to Alice McConnell.

Article XXXIV. I, Junia White, do will my carefree abandon and happy-go-lucky ways to Jo Stella Rice.

Article XXXV. I, Cecilia Willard, do will my dexterity in "playing the sot" as "drunken porter," "Jeremy" or "Aguecheek" to Annie Carson.

Article XXXVI. We, Elizabeth Young and Mary Lib Black, do will our masculine art gallery to the Class of '31.

Article XXXVII. I, Louise Williams, do will sweet memories too numerous to mention of music, smiles, and May, to all the members of the conservatory.

Article XXXVIII. We, Margaret Wilson and Sadie Wyatt, do will one pair of analytic scales, including one box of weights and one casket of patience, to be used in performing experiments in copper plating, to the incoming Seniors.

Article XXXVIII. I, Dare Wyatt, do will my m'ncing gait and private ownership of one certain geyser in Yellowstone Park to Catherine Galloway.

Article XXXIX. I, Mary Watkins Bullock, do will my indifference and imperturbable calm to Gertrude Crandall.

Article XL. I, Cornelia Gillies, do will my table etiquette, my manly stride, my oriental costume, and Siamese flag to Helen Forbis.

In witness thereof, we, the Class of 1928, set our sign and seal this, the twenty-fifth day of April, in the year of our Lord, one thousand nine hundred and twenty-eight.

Witnesses: MARIA BAIRD,
JULIA SINCLAIR,
MARGARET BURGESS.





JUNIORS



MRS. BARTRAM ROBESON
Class Adviser

ALICE MCCONNELL
Class President

Junior Class

Colors: Red and White

Flower: Red and White Rose

Motto: "Build for Character, Not for Fame."

Psalm: 19

Hymn: "God of Our Fathers"

OFFICERS

ALICE MCCONNELL	<i>President</i>
SARAH CURRIE	<i>Vice-President</i>
MARIA BAIRD	<i>Secretary</i>
ELINOR ERICKSON	<i>Treasurer</i>





Junior Class

NANCY ABERNATHY



LORENA MAE ALEXANDER

MARIA BAIRD



MARIAN BURGESS

MARGARET BUCHANAN



ANNIE CARSON

MARGARET CLARKE



ANNIE BELLE CORRY





WHITE HEATHER

Junior Class



LUCILE DAVIS

EMMA DENDY

JENNIE ENNIS

ELINOR ERICKSON

EDITH ERICKSON

HELEN FORBIS

MARY GAMBLE

MEDORA HAMBAUGH





Junior Class

EMELINE HANNAH



MADGE HOBGOOD



MARGARET HOOKS

ROBBIE HORNE



MARGARET LAW

MELBA MCKINNIE



MARY FORD MILLER

ELIZABETH MUNROE





Junior Class



HELEN PORTER

BURLINE RATELY

JO STELLA RICE

IRIS ROBINSON

IRENE SANDLIN

FLORA STREET





Junior Class

MARY TEETER



GRACE WALLACE



MIRIAM WATSON

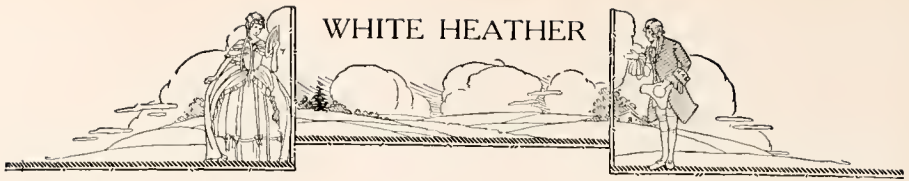
PEARL WILKINSON



DOROTHY BUCHANAN

SARAH CURRIE





Junior Class History

ON SEPTEMBER 15, 1925, one hundred and thirty-two rather frightened girls came to cast their lots in at F. M. C. What a bewildering whirl everything was for the first few days, and how many times some poor lost Freshie would have to ask the way to her own room! But then the "old girls" were very nice about telling us we couldn't expect to learn everything at once, a fact which comforted us immensely. Soon, however, things began to settle down and we began to feel as if we had been at F. M. C. "for ages" (really just about a week). And wasn't it thrilling to have Zetesians and Epsilon Chis rushing us at the same time, both trying to get us to belong to their society?

Just before Christmas we began to feel like a regular class with plenty of class spirit because at that time we elected our first officers. But the thing of greatest importance during our Freshman year was our winning the championship in basketball. My, but weren't we proud of our team and the banner which hung in our manager's room!

The next fall the members of the Class of '29 gathered together again, though only fifty-seven were present at this time. And wasn't it grand to talk over old times together and show off our superior knowledge to the Freshmen? All very well for a few days, but soon we were deep in the Slough of Despond over sophomore English and Trig. In fact, these two bugbears, along with other misunderstandings of Sophomores, kept us miserable to a certain extent for the whole year. But finally the dreary time came to a close, and as we saw our Big Sisters turning the tassels on their caps, we came to the sudden blissful realization that we were Juniors.

But alas! Only thirty-seven loyal twenty-niners returned to take up the responsible work of Juniordom. Saddened though our hearts were by this, we set to work with a will to make '29 have more pep and class spirit than ever. Now we are blissfully looking forward to Junior-Senior, fully believing that all our dreams of it will come true.

JUNIOR CLASS HISTORIAN.





"To the Red Rose and the White"

*Now hie wi' me ye lassies a',
That to your class be leat;
Come fill ye fu' the gauden bowl
And drink her lasting weel.
Then here's to the blude red rose,
And here's to the rose snaw white,
For of our colors, worthy, we
Wha conquer in the fight.*

*These three lang years we've striven here,
And ane mair maun we strive;
Tho' some ha' fa'ed upon the field,
Still canty we survive.
Then here's to the snaw white rose,
And here's to the ane blude red;
For ye ilk doughty knight o' us
Ha' done a doughty deed.*

*We canna bide for aye, my friends,
Wi' this our bonny class;
Sae dinna tarry, fetch the wine,
And fill the foaming tass!
Then here's to the blude red rose,
And here's to the rose snaw white!
We fain wad come anither year
And keep the tryst we plight.*





Tallest



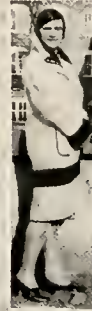
Most Independent

Juniors, Juniors!

Happy, Gay and free.
Juniors, Juniors,
The best at F.M.C.



Best Athlete



Best Looking

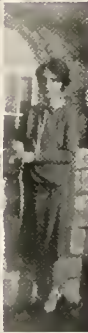
We play
We're neat,
We work
We
Beat,

We simply always

Shine!!



Neatest



Most Capable

Rah, Rah, Rah, for the Juniors

The Class



Most Intelligent



Typical Junior



Best all-around

01
29





SOPHOMORES



WHITE HEATHER



MRS. JANE COLSON GLENN
Class Adviser

MARGARET SMITH
Class President

Sophomore Class

Colors: Blue and Grey

Flower: Sweet Pea

Motto: "To strive, to seek, to build, and not to yield."

Psalm: 91

Hymn: 666

OFFICERS

- MARGARET E. SMITH *President*
 FRANCES MURRAY *Vice-President*
 KATHERINE ALFORD *Secretary*
 ALICE MCGUKIN *Treasurer*





Sophomore Roll

GEORGIA ADAMS
HELEN ALEXANDER
CATHARINE ALFORD
RUTH BAIN

ANNIE SUE BOST
LOUISE BOWEN
EDNA CARLSON
JENNIE CASSADY

DOROTHY COUNCIL
VIRGINIA CUNNINGHAM
CURTIS COPPEDGE
GLADYS CORBETT

NANCY CONDUFF
RUBIE COUNCIL
GERTRUDE CRANDALL
LUCILLE DAVID





Sophomore Roll

EVELYN DRAKE
 NANCY ERWIN
 JEANNETTE FREEMAN
 ELIZABETH HANSEL

RUTH HARRIS
 ORA DELL HENDERSON
 BETTY HICKS
 KATHRYN HUNT

FRANCES MURRAY
 ALICE MCGUKIN
 MARTHA MCKINNON
 FLORENCE PRICE
 MARY EUNICE WELLS

ISABEL RAY
 CARRIE SHEPARD
 BLANCHE STEWART
 ANNIE THOMAS





FRESHMEN



MISS ELIZABETH CLARK
Class Adviser

FRANCES W. CAMPBELL
Freshman Class President

Freshman Class

Class Colors: Purple and White

Class Flower: Violet

Class Motto: "So serve and to grow by serving"

Class Hymn: "Take my life and let it be"

Class Psalm: 121

OFFICERS

FRANCES W. CAMPBELL	<i>President</i>
JANE CARSON	<i>Vice-President</i>
ZAIDEE SMITH	<i>Secretary</i>
AGNES LAPSLEY	<i>Treasurer</i>



WHITE HEATHER



WHITE HEATHER



WHITE HEATHER



WHITE HEATHER





Freshman Roll

BARDIN, SUE LYELL
 BEATTY, LAURA
 EONEY, MARY EMILY
 BOSTIC, OMEGA
 BOWDEN, ESTELLE
 BRADLEY, JULIA
 BRADY, MARY WINTON
 BRYANT, LORINE
 BUIE, ALMIDA
 BURGESS, MARGARET
 CAMPBELL, BLANCHE
 CAMPBELL, FRANCES W.
 CAMPBELL, NELL
 CARSON, JANE
 CATES, LILLIE MAE
 CHANDLER, ERMA
 CONDUFF, ELLEN
 CURRIE, JEAN
 DALTON, KATE
 DEAL, ANNIE
 DORMAN, MAUDE
 ENGLE, MARY
 ERWIN, BEATRICE
 ERWIN, ELIZABETH
 FEARINGTON, MILDRED
 GALLOWAY, KATHERINE
 GARETT, ANN PAGE
 GIBBS, SARAH ELIZABETH
 GIBSON, LUCY
 GRAHAM, MARGARET
 GREYARD, ALICE
 HAMER, WALKER
 HAMILTON, SARAH
 HAROY, VERA
 HARMON, ANNA
 HENDERSON, RUTH
 HENDRIX, LOUISE
 HENRY, ANNE

HERRING, MARY BRIGHT
 HODGIN, SARAH
 HUGGINS, DORA
 HUNTER, ALESE
 HUTCHINS, ESTHER
 INGRAM, MYRTLE
 KENORICK, ELIZABETH
 KIRBY, VIRGINIA
 KIRKLAND, REBECCA
 LAFFERTY, CORNELIA
 LANCASTER, LULA MAE
 LAPSLEY, AGNES
 LEE, MARGARET
 LILES, SALLIE
 LILES, WILLIE MAE
 LUMLEY, KATHERINE
 MILLS, MARY
 MIMS, EMILY
 MONTGOMERY, MARGARET
 MORTON, LUCILE
 MCDANNALD, ELLEN
 McDONALD, KATHERINE
 McDONALD, MARY ALICE
 McDONALD, RUBY
 McELHANEY, ETHEL
 MCGOWEN, ELLA
 McILWINEN, ANNIE
 McINNIS, FLORA K.
 McIVER, MARY LACY
 MCKENZIE, ROBERTA
 McLAUCHLIN, HAZEL
 McMILLAN, MARY E.
 McPHAIL, DOROTHY
 McQUEEN, EMMA NEAL
 NARRON, ERMA
 NARRON, LOLA
 ODOM, MARGARET
 PAGE, LOIS A.
 PARKER, DELPHIA

PARSONS, VIRGINIA
 PEARSON, EDITH
 PENCE, LEE LILA
 PETTEWAY, KATHLEEN
 POMEROY, ELIZABETH
 PURCELL, MARTHA
 PURCELL, MARGARET
 RICHARDSON, PATTY
 RICHMOND, MARY
 RUTT, MARIAN
 SINCLAIR, JULIA
 SLOAN, FRANCES
 SMITH, CHARLOTTE
 SMITH, MARGARET B.
 SMITH, RUBY
 SMITH, ZAIDEE
 SPRINGS, LUCILLE
 STEPHENS, RUTH
 STILES, MIMA
 STONE, JEWEL
 TATE, VIRGINIA
 TAYLOR, ROCKY LEE
 THOMPSON, ANNIE LEE
 WALL, PULINE
 WALLACE, SALLIE P.
 WARD, GRACE
 WATTS, SALLIE
 WELLS, LYDIA C.
 WELLS, RUTH
 WICKER, HELEN
 WIGGINS, MARGARET
 WILLIAMS, AILEEN
 WILLIAMSON, KATHERINE
 WILSON, EDNA
 WILSON, ELIZABETH
 WILSON, MARY REA
 WINECOFF, MARY D.
 WRENN, CORA MAE



WHITE HEATHER



FRESHMEN



ATHLETICS







MARGARET SMITH
Champion Singles, 1927



MARGARET SMITH AND FLORENCE PRICE
Champion Doubles, 1927

Class Tennis Teams, 1927

ELFANOR MOORE	<i>Senior</i>
VERNA MCQUEEN	<i>Senior</i>
ELIZABETH HALL	<i>Junior</i>
NOVICE KIRVEN	<i>Junior</i>
MARION BURGESS	<i>Sophomore</i>
MARGARET STOCKARD	<i>Sophomore</i>
MARGARET SMITH	<i>Freshman</i>
FLORENCE PRICE	<i>Freshman</i>





Athletic Board

MISS SARA SOMERVILLE, *Physical Director*

NOVICE KIRVEN	<i>President</i>
HELEN FORBIS	<i>Vice-President</i>
MARGARET SMITH	<i>Treasurer</i>
LUCILE MORTON	<i>Secretary</i>
CECELIA WILLARD	<i>Senior Representative</i>
MARION BURGESS	<i>Junior Representative</i>
ELIZABETH HANSEL	<i>Sophomore Representative</i>
ANN HENRY	<i>Freshman Representative</i>



WHITE HEATHER



SENIOR HOCKEY TEAM—CHAMPIONS. BETSEY DAVIS, *Manager*



JUNIOR HOCKEY TEAM. ANNIE BELLE CORRY, *Manager*



WHITE HEATHER



SOPHOMORE HOCKEY TEAM. EDNA CARLSON, *Manager*



FRESHMAN HOCKEY TEAM. MARION RUTT, *Manager*



WHITE HEATHER



SENIOR BASKETBALL TEAM. ELIZABETH YOUNG, *Manager*



JUNIOR BASKETBALL TEAM. ALICE MCCONNELL, *Manager*



WHITE HEATHER



SOPHOMORE BASKETBALL TEAM. RUTH BAIN, *Manager*



FRESHMAN BASKETBALL TEAM—CHAMPIONS. JEAN CURRIE, *Manager.*





COLLEGE CHEER LEADER

ALICE TURNER

CLASS CHEER LEADERS

ALICE TURNER, '28 GERTRUDE CRANDALL, '30
MEDORA HAMBROUGH, '29 JULIA SINCLAIR, '31



2011



Monogram Club

NOVICE KIRVEN, CORNELIA GILIES, RUTH HUMBER
FLORENCE PRICE, CORNELIA ALDRET, MARY TEETER
RUTH BAIN, MARGARET SMITH, FRANCES W. CAMPBELL
JULIA BRADLEY, FRANCES M. CAMPBELL, FLORA MUNROE
ORA DELL HENDERSON, CURTIS COPPEDGE, HELEN FORBIS



WHITE HEATHER



McConnell - Hockey



Coppage - Hockey



Campbell - Hockey



Shire - Basket Ball



Brasley - Hockey

Varsity '27 and '28



Torgesen - Basket ball



Munroe Hockey



Dean - Hockey - B



Hansen - Hockey



Adams - Hockey



Giffin - Hockey



Young - Basket Ball







Flora Macdonald Christian Association

THE PURPOSE

The Flora Macdonald Christian Association, affirming the Christian faith in God, the Father, and in Jesus Christ His only Son, our Lord and Saviour; and in the Holy Spirit, the Revealer of Truth and the Source of power for life and service; according to the teaching of the Holy Scriptures and the witness of the church, declares its purpose to be:

- To lead students to faith in God through Jesus Christ;
- To lead them into membership and service in the Christian Church;
- To promote their growth in Christian faith and character, especially through the study of the Bible;
- To influence them to devote themselves in united effort with all Christians to making the will of Christ effective in human society, and to extending the Kingdom of God through the world.

CABINET

ELIZABETH HALL	<i>President</i>
HELEN FORBIS	<i>Vice-President</i>
HELEN PORTER	<i>Secretary</i>
THELMA CROMARTIE	<i>Treasurer</i>
ANNIE BELLE CORRY	<i>Missionary Circle</i>
IRENE MCDADE	<i>Religious Meetings Circle</i>
JESSIE MCPHAUL	<i>Music Circle</i>
DARE WYATT	<i>Social Service Circle</i>
MARGARET BUCHANAN	<i>Library Circle</i>
EDITH ERICKSON	<i>Publicity Circle</i>
SARAH MCGEACHY	<i>Bible Study Circle</i>
KATIE MAY MCKENZIE	<i>Social Circle</i>
CORNELIA GILLIES	<i>President of Student Body</i>



WHITE HEATHER





Student Council

CORNELIA GILLIES
 CAROLINE STACY
 NOVICE KIRVEN

IRENE McDADE
 ALICE McCONNEL

ELIZABET I HALL
 MARGARET SMITH

JUNIA WHITE
 FRANCES W. CAMPBELL
 SARA CURRIE





COMMENCEMENT MARSHALS

HELEN FORBIS, E. X. MARGARET HOOKS, E. X. MARIA BAIRD, E. X.
MEDORA HAMBALGH, Z. *Chief Marshal*
JENNIE ENNIS, Z. MARGARET BUCHANAN, Z. IRENE SANDLIN, Z.





Zetesian Literary Society

Colors: Green and White

Flower: Lily-of-the-Valley

OFFICERS

CAROLINE STACY	President
LOUISE WILLIAMS	First Vice-president
ELIZABETH YOUNG	Second Vice-President
FRANCES MURRAY	Recording Secretary
MARY McKEITHAN	Corresponding Secretary
MEDORA HAMBAUGH	Treasurer
MARGARET BUCHANAN	Chaplain
ALICE TURNER	Critic
KATIE MAE MCKENZIE	Censor





Zetesian Society

CORNELIA ALDRET
 GEORGIA ADAMS
 HELEN ABERNATHY
 LORENA MAE ALEXANDER
 ANNIE BRYAN
 ESTELLE BOWEN
 LOUISE BOWEN
 IRENE BENNETT
 MARY ELIZABETH BLACK
 MARY EMILY BONEY
 MARY WAT BULLOCK
 MARGARET BUCHANAN
 RUTH BAIN
 SUE LYELL BARDEN
 MARY LANE BREWER
 OMEGA BOSTICK
 BLANCHE CAMPBELL
 CONNIE CAGLE
 CURTIS COPPEGE
 ERMA CHANDLER
 FRANCES W. CAMPBELL
 GLADYS CORBETT
 GERTRUDE CRANDALL
 RUBY COUNCIL
 SARAH CURRIE
 VIRGINIA CUNNINGHAM
 LUCILE DAVID
 ANNE DEAL
 EMMA DENDY
 EVELYN DRAKE
 MARIE DUKES
 JENNIE ENNIS
 MILDRED FERRINGTON
 MARY FERGUSON
 BELLE GAITHER
 MARY E. GAMBLE

ANN PAGE GARRETT
 ALICE GREYARD
 MEDORA HAMBAUGH
 ORA DELL HENDERSON
 AMANDA HENSON
 RUTH HUMBER
 ANN HENRY
 VERNA HARDY
 KATHRYN HUNT
 WALKER HAMER
 RUTH HENDERSON
 LOUISE HENDRIN
 SARA HAMILTON
 RUTH JESSUP
 HAYNES JUSTICE
 ELIZABETH KENDRICK
 VIRGINIA KIRBY
 CORNELIA LAFFERTY
 RUBY LEE
 MARGARET LEE
 KATHRYN LUMLEY
 MARY MACMILLAN
 RUBY MACDONALD
 ALICE MCGUKIN
 BEULAH MCINNIS
 NANNIE MAE MCINNIS
 MARY MCKEITHAN
 KATIE MAE MCKENZIE
 ROBERTA MACKENZIE
 FLORA MCLAURIN
 MARTHA MCLEOD
 FLORA MONROE
 FRANCES MURRAY
 LUCILE MORTON
 ELLEN McDANNALD
 ANNIE MCFILWINE

MARY LACY MCIVER
 MARGARET MONTGOMERY
 EMILY MIMS
 EMMA NEAL MCQUEEN
 MARGARET ODOM
 HELEN PORTER
 KATHLEEN PETTEWAY
 VIRGINIA PARSONS
 LEE ILA PENCE
 DELPHIA PARKER
 ISABEL RAY
 JO STELLA RICE
 NELLIE RICE
 IRIS ROBINSON
 MARIAN RUTT
 MARY RICHMOND
 IRENE SANDLIN
 CARRIE SHEPHERD
 CAROLINE STACY
 INA STEPHENSON
 JEWELL STONE
 CHARLOTTE SMITH
 RUTH STEPHENS
 ALICE TURNER
 ANNIE LEE THOMPSON
 DOROTHY WALL
 GRACE WARD
 MARY EUNICE WELLS
 RUTH WELLS
 LOUISE WILLIAMS
 AILEEN WILLIAMS
 MARGARET WILSON
 MARY WILSON
 EDNA WILSON
 HELEN WICKER
 ELIZABETH YOUNG





Epsilon Chi Literary Society

Colors: Yellow and White

Flower: Daisy

OFFICERS

- | | |
|-----------------------------|-------------------------|
| JUNIA WHITE | President |
| MARIAN BURGESS | First Vice-President |
| EUGENIA PATTERSON | Second Vice-President |
| FRANCES CAMPBELL | Recording Secretary |
| JANIE MORRISON | Corresponding Secretary |
| LORENE SPRINGS | Treasurer |
| BETSY DAVIS | Censor |
| ANNIE BELLE CORRY | Chaplain |
| ANNIE CARSON | Critic |





WHITE HEATHER

Epsilon Chi Society

NANCY ABERNATHY
HELEN ALEXANDER
KATHERINE ALFORD
EVELYN ANDERSON
MARIA BAIRD
LAURA BEATTY
MARY BIGGER
ANNIE SUE BOST
JULIA BRADLEY
MARY WINTON BRADY
LORENE BRYANT
DOROTHY BUCHANAN
MARGARET BURGESS
MARIAN BURGESS
FRANCES M. CAMPBELL
EDNA CARLSON

ANNIE CARSON
JANE CARSON
KYLE CARSON
JENNIE CASSADY
LILLIE MAE CATES
MARGARET CLARK
ELLEN CONDUFF
NANCY CONDUFF
FRANCES COOPER
ANNIE BELLE CORRIE
DOROTHY COUNCIL
THELMA CROMARTIE
KATE DALTON
BETSY DAVIS
LUCILE DAVIS
KATHERINE DEATON
RUTH ELKINS

MARY ENGLE
EDITH ERICKSON
ELEANOR ERICKSON
DEATRICE ERWIN
ELIZABETH ERWIN
NANCY ERWIN
HELEN FORBIS
JANETTE FREEMAN
CORNELIA GILLIS
KATHERINE GALLOWAY
SARAH ELIZABETH GIBBS
ELIZABETH HALL
EMELINE HANNA
ELIZABETH HANSEL
RUTH HARRIS
MARY BRIGHT HERRING

BETTY HICKS
MADGE HOBGOOD
SARA HODGIN
MARGARET HOOKS
ROBBIE HORNE
ALESE HUNTER
ESTHER HUTCHINS
MARY KIMZEY
REBECCA KIRKLAND
NOVICE KIRVEN
EDNA KNDWLTON
LULA MAE LANCASTER
ANGNES LAPSLEY

MARGARET LAW
MARY FORD MILLER
MARY MILLS
ELIZABETH MONRDE
JANIE MORRISON
ALICE McCONNELL
KATHERINE McDONALD
IRENE McDADE
ETHEL McELHANEY
ELIZABETH McGEACHY
SARAH McGEACHY
EDELLE McKENZIE
MELBA McKINNEY

HAZEL McLAUCHEIN
JESSIE McPHAL
DAISY McRAINEY
ERMA NARRDN
CHRISTIAN PARKER
DOLLETA PIERSON
ELIZABETH POMEROY
ANNIE NEAL POWERS
FLORENCE PRICE
MARGARET PURCELL





Annual Intersociety Debate



QUERY

*Resolved, That a Limitation of Armaments
Is a Necessary Step toward World Peace.*



Affirmative

MARY KIMSEY, E. X.

ANNIE CARSON, E. X.

Negative

GERTRUDE CRANDALL, Z.

JENNIE ENNIS, Z.



WHITE HEATHER



FIRE SQUAD
CECILIA WILLARD, *Chief*





"We Club"

Motto: "Put your theory into practice."

Colors: Rose and Silver

Flower: American Beauty Rose

Song: "Side by Side"

MARY TEETER	President
JO STELLA RICE	Vice-President
MARGARET CLARK	Secretary
FLORA STREET	Treasurer
MELBA MCKINNEY	BURLINE RATLEY
IRENE SANDLIN	



WHITE HEATHER



SISTER CLUB



ROBESON COUNTY CLUB





Virginia Club

OFFICERS

FRANCES COOPER *President*
 EDITH ERICKSON *Vice-President*
 GERTRUDE CRANDALL *Secretary-Treasurer*





Palmetto Club

Motto: "Palmetto First"

Colors: Blue and White

Flower: Yellow Jessamine

OFFICERS

MARIAN BURGESS	President
GRACE WALLACE	Vice-President
MARGARET LAW	Secretary-Treasurer

MEMBERS

GEORGIA ADAMS
 CORNELIA ALDRET
 IRENE BENNET
 MARY BIGGER
 JULIA BRADLEY
 LORENE BRYANT
 MARGARET BURGESS
 MARIAN BURGESS
 MISS VIRGINIA CONNOR
 CURTIS COPPEDGE
 EMMA DENDY
 MARY FERGUSON

MRS. GLENN
 WALKER HAMER
 DR. HAMMOND
 ORA DELL HENDERSON
 AMANDA HINSON
 NOVICE KIRVEN
 MARGARET LAW
 MISS MARY LAW
 RUBY LEE
 KATHERINE LUMLEY
 MARY MILLS
 RUBY McDONALD
 BELLAH MCINNIS
 FLORA McLAURIN

LEE ILA PENCE
 JO STELLA RICE
 NELLIE RICE
 MISS NAN ROBERT
 MISS EUCEBIA SHULER
 CARRIE SHEPHARD
 JEWEL STONE
 GRACE WALLACE
 GRACE WARD
 EDNA WILSON
 MARGARET WILSON
 DR. C. G. VARDELL





Georgia Club

Colors: Red and Black

Flower: Cherokee Rose

OFFICERS

ANNIE BELLE CORRY *President*
 ALICE MCGUKIN *Secretary and Treasurer*

MEMBERS

ANNIE BELLE CORRY	REBECCA KIRKLAND
VIRGINIA CUNNINGHAM	CORNELIA LAFFERTY
LUCILLE DAVIS	ALICE MCGUKIN
ANNE DEAL	EMILY MIMS
BEATRICE ERWIN	DOLLETTA PEARSON
MARY GAMBLE	HELEN PORTER
RUTH HARRIS	EDITH GRACE WILDMAN





Bladen County Club

MARY D. WINECOFF
MARY WINTON BRADY
THELMA CROMARTIE
AGNES LAPSLEY
MARGARET CLARK

DOROTHY COUNCIL
RUBY COUNCIL
ROBBIE HORNE
EVELYN ANDERSON
RUTH ELKINS

FLORA MONKOE





Florida Club

Flower: Orange Blossom

Colors: Orange and Blue

OFFICERS

LIZ YOUNG *President*
 MARIAN RUTT *Vice-President*
 ANNE HENRY *Secretary and Treasurer*

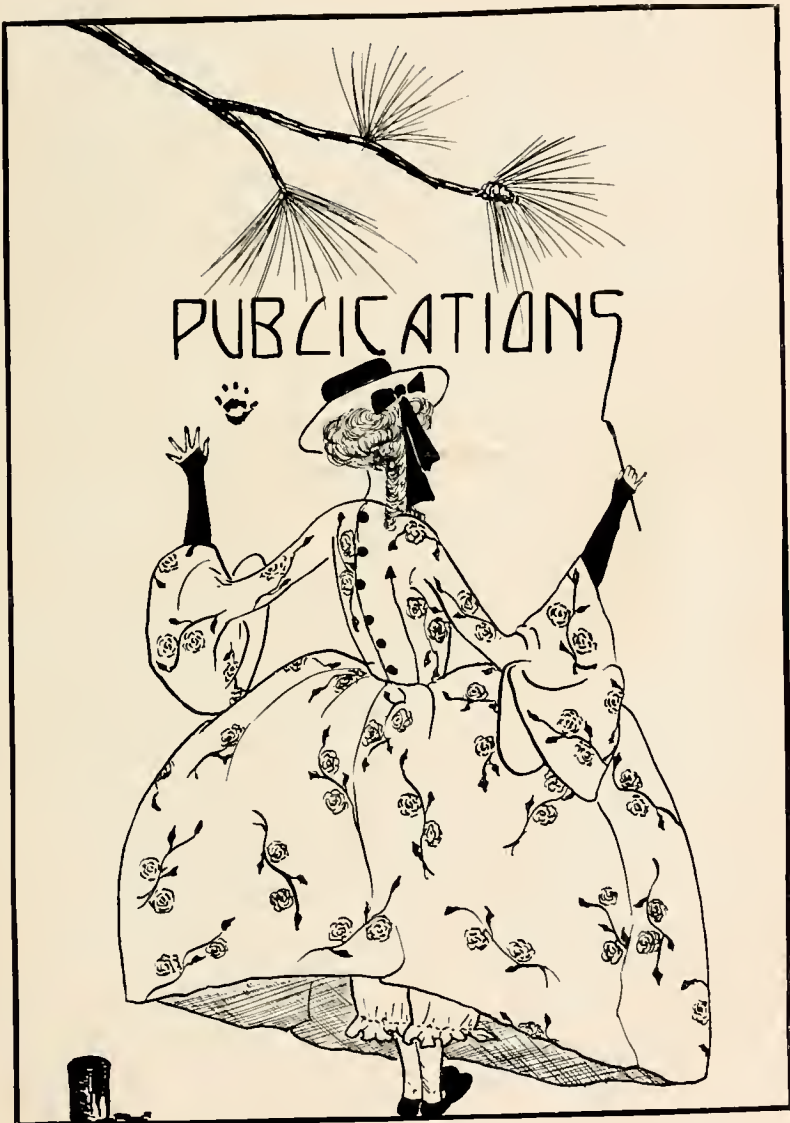
MEMBERS

EONA KNOWLTON CAROLINE STACY MARY ENGLE
 BETTY KENORICK MARGARET MONTGOMERY



LITERARY







RUTH HUMBER
Editor-in-Chief

FRANCES COOPER
Business Manager

White Heather Staff

- DOROTHY BUCHANAN *Assistant Editor-in-Chief*
- MARGARET HOOKS *Assistant Business Manager*
- EDITH ERICKSON *Assistant Business Manager*
- EDNA KNOWLTON *Epsilon Chi Representative*
- CORNELIA ALDRET *Zetesian Representative*
- VIRGINIA CUNNINGHAM *Sophomore Representative*
- MARY ENGLE *Freshman Representative*
- ELIZABETH MCGEACHY *F. M. C. A. Representative*
- MARIA BAIRD *Athletic Representative*
- JULIA I. BRADLEY *Type Editor*
- JANIE MORRISON *Art Editor*
- SUE LYALL BARDEN *Art Editor*

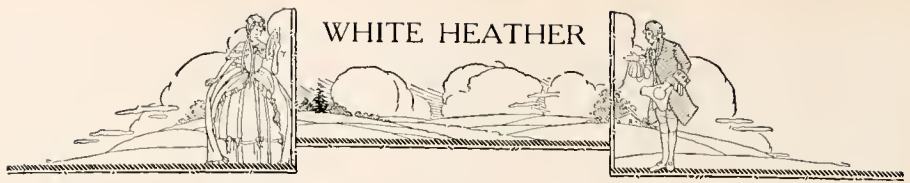


WHITE HEATHER



THE STAFF





ELIZABETH MONROE (E. X.)
Editor-in-Chief

GERTRUDE CRANDALL (Z.)
Business Manager

Pine and Thistle Staff

- JENNIE ENNIS *Assistant Editor-in-Chief*
- IRENE MCDADE *Assistant Business Manager*
- CECELIA WILLARD (E. X.) *Associate Editor*
- KATHARINE ALFORD (E. X.) *Associate Editor*
- ZAIDEE SMITH (E. X.) *Associate Editor*
- HELEN PORTER (Z.) *Associate Editor*
- ALICE MCGURIN (Z.) *Associate Editor*
- FRANCES CAMPBELL (Z.) *Associate Editor*



WHITE HEATHER



THE STAFF



WHITE HEATHER



Ruth Hunter
Thelma Cronin
Juno White
Alice Turner
Cornelia Willis
Caroline Stacy





Caravan

*On winter evenings, when the silent moon
Weaves shifting patterns, etched upon the snow
From blackly shivering trees, that swaying, croon
The night-wind's wailing chant, while murmuring low
Half-sighings steal, all drowsily (as though
The slumbering earth were stirring) from small streams—
There comes a host of fancies, when the glow
Of embers lights the darkening room, that seems
An eastern caravan—my Caravan of Dreams.*

*Like merchant princes, stalwart men of old,
Who ventured far in many a pagan land
To win strange treasures—jewels, ruddy gold,
Rare silks and incense—at their king's command;
Rifted the wealth of storied Samarkand
And Trebizond of golden towers (I
Still see them homeward bound across the sand—
A phantom train of camels pacing by,
That darkly loom, outlined against the starlit sky).*

*So my thoughts bring me treasures rich in store—
Memories of lovely fleeting things—
The sighing ebb of waves along the shore—
The crescent moon, pale gold when twilight brings
To earth her healing—sudden flash of wings
From April-tufted tree-tops—ecstasy
Of early roses where the dew still clings—
The dream-blue color of the summer sea—
These, these are more than all the wealth of Ind to me.*

*And yet more precious, in the darkening room
On winter evenings, as the shadows grow,
I seem to hear your voice from out the gloom—
Faint echoes of your laughter; and I know
That you are near me still. "The flickering glow
Of firelight on the walls,"—all beauty seems
More perfect since we shared it once. And so
I muse—alone—while rich before me gleams
My Treasure-Caravan of Memories—and Dreams.*

DOROTHY BUCHANAN, '29.





If I Were a Boy

IF I were a boy I'd go adventuring to the four corners of the earth, and sail the seven seas. Perhaps I'd work my way to Europe on a cattle boat or maybe a tramp steamer would list me among her crew. Sometimes a big ship and sometimes a small, but always I'd be dipping down below those far horizons to find the country beyond. It might be a schooner, or again an ocean liner, but always and always there would be sunrise over the waters and the shine of stars in the purple night. Fog might come, and the great ship go slipping past with all its lights blurred; or perhaps a storm to slap and tear at the rigging, but always there would be the wind and the rain, and the spray—

Oh, if I were a boy I'd go to China and see the little yellow men; I'd walk the mountainsides of old Japan when spring had drifted them with cherry blooms and the scarlet azalea ran like a flame from hill to hill. The still, bare nights of Korea would know me; and the tangled jungles of Borneo and Annam would flaunt their poisonous creepers, stirred at my passing. Shanghai and Singapore, jade and hyacinth on my necklace of strange stones—ah, if I were a boy!

If I were a boy I'd join the Foreign Legion and fight the desert Arabs. An Arab steed to ride upon and sunset glowing across the sands—yes, I would join the Legion, and some day I would hear a shepherd boy, singing the song of the freed slaves; or high in his tower at evening the muezzin chanting his call to prayer: "Allah Akbar!"—Allah is great! Darkness falling on the narrow streets of Tunis; but out in the desert the moon would be rising.

No legation can last more than six weeks in Afghanistan. If I were a boy I'd be an attache to some embassy and stay there; or maybe I'd go to Tibet, the forbidden land of the yellow-robed priests. Tibet on the roof of the world! Who does not long to see the mighty Himalayas. The Alps would echo my footsteps till I knelt at the side of the lonely Swiss lake, or wandered away to the vineyards of Italy; Florence and Genoa, Venice and Rome, dim cities of glory long past.

How blue and how calm are the waters of the Mediterranean, blue, blue, blue, and Gibraltar is black like iron. I'd see them all if I were a boy.

If I were a boy I'd tramp over England with a knapsack on my back and an ash stick in my hand, whistling my way down honeysuckle lanes and between the fragrant hedgerows, while out on the downs I'd hear the larks singing, singing—

If I were a boy what sights I should see; the Southern Cross hanging low over Argentine, and all the agile kangaroos that hop about Australia; the crackling splendor of the Northern lights and the old dust heaps that once were Babylon. When all had been explored and I had sailed and sailed, I'd go to India, I think, and marry an army officer with a little black moustache—if only I were a boy.

ELIZABETH MUNROE, '29.





Want

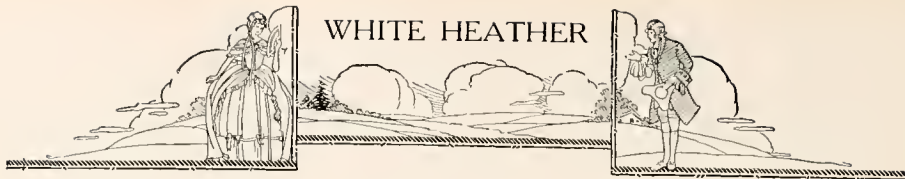
*I want to be
 A cool night, piercing clear,
 With swirling winds
 That soothe hot cheeks,
 And stars in my tangled hair!*

*I want to be
 A flame dawn, startling, brave,
 With streaks of gold
 That give men strength,
 And the poignant joy they crave!*

*I want to be
 A quiet eve, pensive, blue,
 With softest zephyrs
 That still sad hearts,
 And a place in the soul of you!*

A. V. H., '28.





WHITE HEATHER

Deep River



"GIDDAP!" Bunch Roseomon's croak rolled down the store porch steps and down the street and split two black-eyed peas growing by the fence. Uncle Tom, whom Bunch had kicked, called his coat together and stood swaying on his haunches.

"G'ddap yo' self!" Uncle Tom remonstrated. "You ain't goin' run a ole nigger 'way from hyar what's been hyar sence befo' you seen daylight!"

The overhanging frame of Bunch's body dropped a black shadow as big as a young box car all around Uncle Tom, making the old man blacker than ever—blacker and funnier. Bunch roared. "If you aiot'the comicallest rascal I ever saw!" Then taking his monstrous head in like a turtle and hunching his shoulders he grimaced at Tom. "Why don't you work, you good-for-nothin'-doggone-loafin'-jibberin'-idiot! Git outta hyar and do somethin' worthwhile!"

"Now you looka hyar!" Uncle Tom eyed Bunch with the honor of a gentleman. "I been hyar ever sence this yer sto' has, en I be blam-swiggle ef I'se gwine leave. Moreover—"

A flashing, splashiog Studebaker pulled up in the mud and hitched to the fence. At the appearance of the stranger, the two on the store porch riveted their gaze streetward and sat down side by side without a gr-r-r-r from either. Bunch settled his mane like a harmless movie lion; Tom squinched up his nose like a rat terrier.

The stranger mounted the steps at the rate of three smiles per step. "Well, if it isn't old Uncle Tom! You still keeping office hours on this porch, Tom?" The stranger was brown and dusty but beaming. His legs moved like twin penduluous. Approaching the darky, he gave a grandose pat to that part of Tom's coat which was then in session, and then stepped back to eye the effect. Uncle Tom seemed unimpressed. Whether he was pleased or displeased, or whether his old brain had gone to sleep and had forgotten to pull down the shades, was hard to say. "Uncle Tom, you haven't forgotten me—Mr. Brown—have you? Don't you remember I was here last summer? Don't you remember the gentleman who gave you a cigar?"

Tom's whiskers awoke. His mouth wiggled a little too, but those inscrutable eyes were as silent as those rimless spectacles. Indeed, which were his eyes and which h's specs? "Sevvel gen'l'men give me ceegyars—"

"But Tom, don't you remember, I asked you about your office and about your church and about your girl—oh, Tom has forgotten me! and the stranger turned and tick-tocked into the store, leaving the outside pervaded with his absence.

Bunch shifted himself and faced Uncle Tom. The effect was like changing the situation of a house. Tom squinched up his nose and propped his hands on his knees like a catcher waiting for the batter to strike out. "What's all that about?" asked Bunch, shaking his ear in the direction of the inside of the store.

"You mean that gen'l'man?" Tom chuckled. "He's a man what comes up hyar every summer."

"What's his business?"

"Business? He jes' sorta goes 'roun en talks and makes people laugh. Sometimes he preaches."

"Ain't he any more count that a—" Bunch remembered his former wrath. He crashed to the ground and took up the discontinued accusations. "People that just lies around all day or struts around." Tom blooked—"oughta be hung onta the cha'n gang and put to diggin' taters or wells or somethin' useful! Looks like there's plenty barrels an' things to hold this floor down. Why don't you giddap like I tell you and make a man outta you!"

Uncle Tom plopped to the ground. "Who's a ijjut? Who's a loafer?" Bunch fell back. Uncle Tom continued to roll his fists and shuffle his feet. "I tell you, many is called, but few is chosen. I'se chosen by de Lawd; I'se de great Trih-lation Voice spoken to de Children of Dawkness."

Bunch looked dubious. "Are you a preacher?"

"I preaches 'em black en I preaches 'em blue,
I preaches my coat tails half into—"

"Say, Tom, how much money do you make every Sunday?" They sat down again on the porch.

"Sometimes I makes about three dollars en sometimes just about two en a half. If I gets



WHITE HEATHER



the lumbago I ginrally doesn't make but about two en a half." The sun was setting, people were getting home, and various smells of ham, coffee, and eggs filled the street.

At home, Mr. Brown recounted his trip into town. "Everybody seemed so glad to have us back, dear. By the way, I saw that old loafer, Tom. You remember the old spectacled darky who did business up on the store porch?"

"What business?" Mrs. Brown asked politely.

"Mostly chewing and spitting tobacco. He is still there. I declare, he must be fully a hundred years old. I couldn't get any response at all when I spoke to him. His mind must have played out. He didn't remember me at all!"

It was Wednesday night and the little brick church was dimly shining with oil lamps. The organ groaned a prelude, "Shall We Gather at the River?" The folk from away up the Doe Hill road and from away, away toward Monterey were parking their Fords in the churchyard and tiptoeing into church. A stray cow swung up to the door but decided not to enter. Last, late and climacteric, Mr. Brown tick-tocked in at the rate of three miles per tick, shook hands with the middle person in each pew, and ascended the cockpit for his nonstop trans-Sahara flight. The preacher announced that they were very, very glad to have Brother Brown with them again, and that they were overwhelmed with joy at renewing old friendships and old ties of love and affection. With a few other words the preacher announced a hymn, the choir and Brother Brown and a few of the congregation sang it, and then all was silent. Brother arose, smelled, revolved like an electric fan, and smiled. "It is indeed a pleasure to be back with you again, to renew old friendships and old ties of love and affection."

He spoke slowly and emphatically. His voice rose and fell like the breasts of the listeners before him who were asleep after a hard day's work in the fields.

The tide of his voice had been in and out only a dozen times when, away out on the hills there arose a wild, weird chant that, wafted on the night air, came to the waking congregation like a far tintinabulation (if they knew what that is). Chimes of the sky seemed to be set swinging from somewhere. Mr. Brown clutched the Bible. His pendulums were like icicles. If he had trembled he would have shattered. The tintinabulation coiled in and out, taking all shapes from Mah to Mahi, and finally wreathed itself into well familiar human voices—lusty voices—voices in deep, rich incantation—voices chanting, "Deep, deep rivah, dars one mo' rivah to cross!"

Brother Brown cast uncertain eyes at the Bible clutched in his hands. "Let us pray. Oh Lord, forgive us our transgressions and keep us in safety tonight. Ameen!" With uncertain eyes on his pendulums, he staggered out of the pulpit and down the aisle, the congregation staggering after. Bunch had been on the back pew and had slipped out during the benediction. He knew the path up the mountain, and took it in high gear. He hove up into the bright light of a campfire and found h'mself panting in the midst of a "foot-washin"! On a stump over the fire, Tom balanced his lumbago, rolling his eyes, and leading the melody.

"Deep, deep rivah!" wailed Tom.

"One mo' rivah to cross," echoed forty cavernous voices.

Tom: "Lawd, he'p us ovah."

Congregation: "One mo' rivah to cross."

Tom: "Thoo fire en brimstone."

Congregation: "One mo' rivah to cross."

Tom: "Whars de ole fashion gal—"

Congregation: "One mo' rivah to cross."

Tom: "Who's gwine be saved—"

Congregation: "One mo' rivah to cross."

Tom: "From de firey furnace—hip!"

Congregation: "One mo' rivah to cross."

Tom: "He that hath a swallow-tail coat—"

Congregation: "One mo' rivah to cross."

Tom: "En walketh rightuply—"

Congregation: "One mo' rivah to cross."

Tom: "En don't spit his tobacco in nobody's way!"

Congregation: "One mo' rivah to cross."

ZAIIDE SMITH, '31.



WHITE HEATHER



CAST OF "SHE STOOPS TO CONQUER"



FEATURE







Conservatory Officers

MARY EUNICE WELLS	<i>President</i>
HELEN FORBIS	<i>Vice-President</i>
MARGARET HOOKS	<i>Secretary</i>
CARRIE SHEPARD	<i>Treasurer</i>

TEACHERS

MR. ALFRED HOSKEN STRICK	} <i>Piano</i>
MISS EDWINA WHITE		<i>Voice</i>
MISS MARGARET McNEILL		<i>Piano</i>
MISS ELIZABETH CALDWELL		<i>Voice</i>
MISS LOUISE MANDEVILLE		<i>Voice</i>
MRS. BARTRAM ROBESON		<i>Violin</i>



WHITE HEATHER



COLLEGE CHORAL ASSOCIATION



WHITE HEATHER



FIRST, SECOND AND THIRD COLLEGE
VOCAL QUARTETTES AND VIOLIN QUARTETTE



WHITE HEATHER



RECITAL

BY

MISS ALICE TURNER

Graduate in Violin

MR. HERBERT BUIE

Voice

+

PROGRAM 582



From "Elijah"
 (Recitative) "Ye People, Rend Your Hearts"
 Mendelssohn
 (Aria) "If With All Your Hearts" . . . Mendelssohn
 MR. BUIE

Sonata 5, Op. 24 Beethoven
 Allegro
 Adagio molto espressivo
 Scherzo
 Rondo
 MISS TURNER

Arioso—"Vesti La Giubba" Paggiacci
 MR. BUIE

Larghetto Handel
 Souvenir Drdla
 Mazurka, Op. 19, No. 1 Wieniawskie
 MISS TURNER

"In The Luxembourg Gardens" . . . F. E. Weatherly
 "Nirvana" F. E. Weatherly
 MR. BUIE

Concerto No. VII, Op. 76 de Berliot
 Allegro maestoso
 Andante tranquillo
 Allegro moderato
 MISS TURNER





WHITE HEATHER



RECITAL

BY

MISS CATHERINE DEATON
Graduate in Piano

AND

MISS LOUISE WILLIAMS
Graduate in Violin

ASSISTED BY

MISS VIRGINIA CUNNINGHAM
Accompanist



PROGRAM

- Prelude and Fugue in C Minor Bach
(From the Well-Tempered Clavichord)
- Sonata, Op. 31, No. 3 Beethoven
Allegro
Scherzo-Allegretto Vivace
Minuetto-Moderato e grazioso
Presto con fuoco
MISS DEATON
- Sonata, Op. 12, No. 1 Beethoven
Allegro con brio
Andante con Variazioni
Rondo
MISS WILLIAMS
- (a) Nocturne in D Flat, Op. 27 Chopin
(b) Ballade in A Flat, Op. 47 Chopin
MISS DEATON
- Poem Z. Fibich
Nocturne in E Flat Chopin
From the Canebrake Gardner
MISS WILLIAMS
- (a) Bird Song Palmgren
(b) Vespérale Scott
(c) Premiere Arabesque Debussy
MISS DEATON
- Concerto IX, Op. 104 de Beriot
Allegro Maestoso
Adagio
Rondo
MISS WILLIAMS
- Concerto in C Minor, Op. 37 Beethoven
Allegro con brio
MISS DEATON
Second Piano, ALFRED H. STRICK





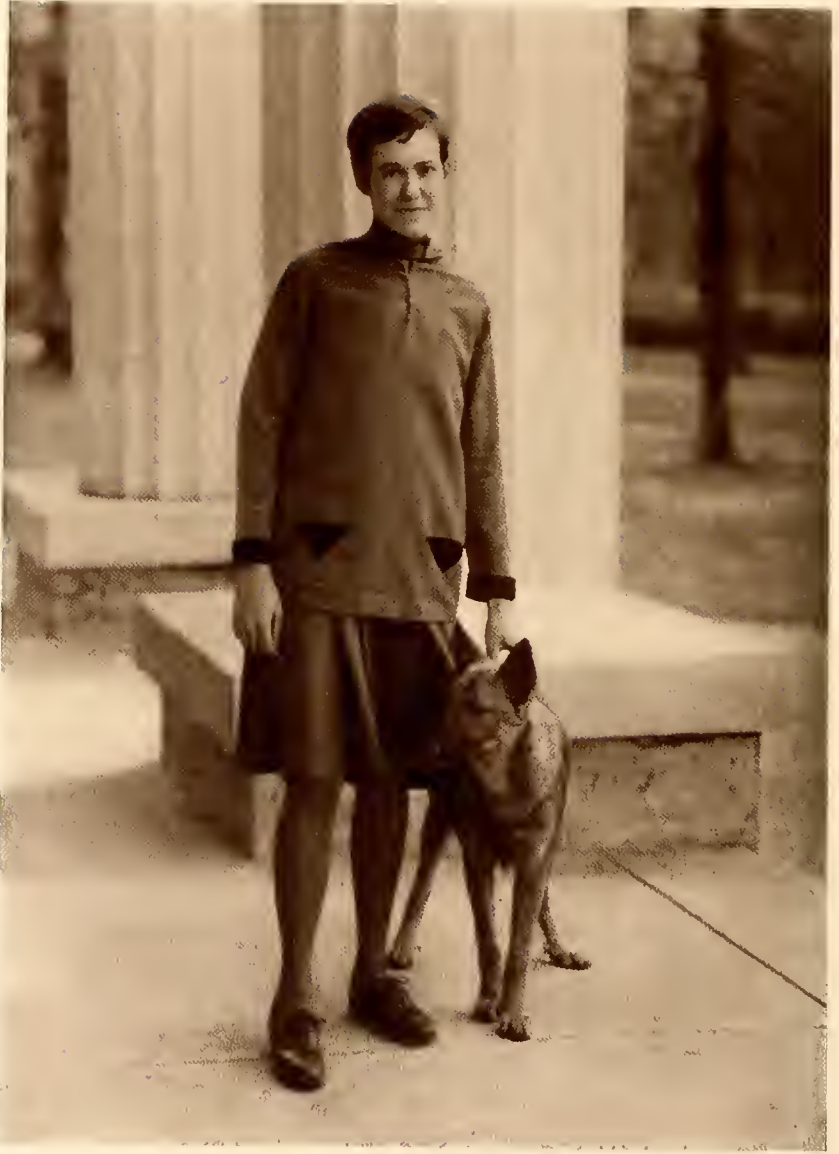
Most Beautiful: ELIZABETH MUNROE



Most Attractive: MEDORA HAMBAUGH



Most Original: ZAIDEE SMITH



Wittiest: CECIL WILLARD



Most Athletic: NOVICE KIRVEN



Most Intelligent: CORNELIA GILLIES



Most Versatile: HELEN FORBES



May Queen: LOUISE WILLIAMS

HUMOR





Jokes

Miss Bell: "Now, girls, what type of face would you wear with this neck line?"

+ + +

"Vell, vell, and it looks like Willie Shakespeare was a doctor, too."

"Vell, for vy you tìok so?"

"Ob, didn't he write that lyrical treatise on Venus and Adenoids."

+ + +

Mary Lib: "Isn't it funny the way things turn up?"

Liz: "Yea, especially noses."

+ + +

Miss Johnston: "This hurts me more than it does you."

Julia: "Don't be too severe with yourself."

+ + +

If your girl plays soccer.

+ + +

Ruth: "You told me that if I slept on this wedding cake I'd dream about my future husband."

Cornelia: "Well, what's the matter?"

Ruth: "The only difficulty is I dreamed about the All-American football team."

+ + +

Girl hikers (to motorist): "Give us a ride, Mister?"

Motorist: "You're walking North and I'm driving South."

Girls: "Well, don't you know how to turn the car around?"

+ + +

Dr. Hammond: "Give me a quotation from the Bible."

Medora: "Judas went out and hanged himself."

Dr. H.: "And another one."

Florence: "Go thou and do likewise."

+ + +

Marion: "Did you ever bear of Marion Talley?"

Helen: "No. You see, I never play bridge."

Miss Robert: "How can you tell a poisonous snake from an unpoisonous one?"

Lucille: "By the bite."

+ + +

Mr. Moore (worried): "I don't feel right about this powder on my coat."

Katie (nonchalantly): "It's quite all right; I have plenty more in my compact."

+ + +

Friend: "And how is life as a freshman?"

Roberta: "I've only a hazy idea."

+ + +

Novice: "What do you think of Dolleta's determination to write a book?"

Cornelia: "Well, it's certainly a novel idea."

+ + +

Miss Morrison: "Who fiddled while Rome burned?"

Mary Bigger: "Hector."

Miss Morrison: "No."

Mary Bigger: "Towser."

Miss Morrison: "Towser! What do you mean? It was Nero."

Mary Bigger: "Well, I knew it was somebody with a dog's name."

+ + +

Celia: "So the class thinks I'm a wit."

Allie: "Well, they're half right."

+ + +

Mrs. Sanderson (incredulous): "And you mean to say you wrote this story?"

Nervous Frosh: "That's my story and I'm gonna stick to it."

+ + +

Mr. Strick: "What was your opinion of Louise Mandeville's voice over the radio?"

Mrs. Robeson: "Well, it seemed to me as if she were coming out of ether."

+ + +

"BLOODY BUT UNBOWED"

Beat me, kick me, cheat me, lick me.

Throw me down the stairs;

Gash me, pound me, slash me, hound me,

Make me say my prayers.

Tho' we'll always have a fight,

Life, I'll love you just for spite.





WHITE HEATHER

Jokes

Dumb Freshie: "There must be some mistake in the marking of this test. I do not think I deserve an absolute zero."

Miss Clarke: "Neither do I, but it's the lowest mark we are allowed to give."

✦ ✦ ✦

Mrs. Glenn: "Where do we get steel wool?"

Celia (after deep thinking): "Really, Mrs. Glenn, I don't know, unless it comes from hydraulic rams."

✦ ✦ ✦

The main trouble with colleges in America is that the professors don't recognize ability and the students don't possess it.

✦ ✦ ✦

Catherine: "Do you eat often?"
Mary Bigger: "Often what?"

✦ ✦ ✦

A college professor: A man who is paid to study sleeping conditions among students.

✦ ✦ ✦

The Annual is a great invention,
The college gets the fame;
The printer gets the money,
And the staff gets *all* the blame.

✦ ✦ ✦

Porter (to F. M. C. graduate on her way home): "Does you all wish to sleep head fust or feet fust?"

F. M. C. Graduate: "That's very sweet of you, but I'd prefer to take all of my sleep at once."

✦ ✦ ✦

WHAT I WANT

*Give me first a porch like this,
And two veranda chairs;
A beautiful night, a beautiful moon,
Two minds devoid of cares,
A strain of music far away,
A breeze to stir your hair;
A touch of sentiment and then—
Remove a single chair.*

Allie: "Celia, if you don't stop pounding that typewriter you'll drive me crazy."

Celia: "Well, if a man can't typewrite in his own room, then I'd like to know where he can. You know, a man's room is his palace."

Allie: "Yeah, but who wants to typewrite in a palace."

✦ ✦ ✦

There was a young freshman called Wigg,
Whose ego was certainly big;

He jostled his way
Through some soph'mores one day—
There *was* a young freshman named Wigg.

✦ ✦ ✦

Mrs. Glenn: "What is the commonest conductor of electricity?"

Belle Gaither: "Why—er—er."

Mrs. Glenn: "Why sho. That's exactly right."

✦ ✦ ✦

Visitor: "You have a lovely campus here."
Freshman (modestly): "Thanks."

✦ ✦ ✦

Fresh: "Where are you going when you finish?"

Senior: "I'm going to Ifornia."

Fresh (apologetically): "I don't think I ever heard of Ifornia."

Senior: "The Cal is silent—as in Coolidge."

✦ ✦ ✦

Betsy: "Where in the world did you get that horrible tie?"

Dugal: "The laugh's on you—you gave it to me for Christmas."

✦ ✦ ✦

Mr. Eastman: "Miss Smith, will you feature the word 'Tennis?'"

Zadie: "Sure. Tennis five times two."

✦ ✦ ✦

An optimist is one who hops out of bed on a cold morning, saying: "Well, old bed, I'll be back to you in seventeen hours."

A pessimist is one who hops in bed saying: "Gee, up again in seven hours."



WHITE HEATHER





FLORA MACDONALD COLLEGE

RED SPRINGS, NORTH CAROLINA

AIM

To be rated not by the number of students, but according to the class of work done.

To make the college an institution for teaching how to take part in the world's activities and the joy of service.

To declare emphatically for development of Christian Character through the study of God's Word.

FACTS

Graduates are securing positions everywhere, and are earning excellent salaries.

Three thousand alumnae are engaged in 60 different occupations.

Forty-one branches of Alumnae Associations have been organized: 41 in North Carolina, 8 in South Carolina, 1 in New York, and 1 in Washington, D. C.

Ten F. M. C. girls are in mission fields: China, Japan, Africa, and Mexico.

THE NORTH CAROLINA STATE BOARD OF EDUCATION HAS
GRANTED TO FLORA MACDONALD A STANDARD
"A" RATING

BELK-STEVENS COMPANY

"Fayetteville's Leading Department Store"

One of the 48 Belk Stores That
Sells It For Less





WHITE HEATHER

"They Keep on Coming"

EVERYTHING TO WEAR
FOR WOMEN AND COLLEGE GIRLS
MAY BE FOUND AT THE

FASHION SHOP

PRICE QUALITY STYLE
AN UNBEATABLE COMBINATION

GRAHAM COMPANY
Red Springs, North Carolina

P
I
O
N
E
E
R
S
I
N
T
R
U
C
K
S
E
R
V
I
C
E

HOWARD-BOBBITT CO., Inc.

FAYETTEVILLE, N. C. HIGH CLASS WHOLESALERS SANFORD, N. C.
OF
FINER FRUITS AND VEGETABLES

P
I
O
N
E
E
R
S
I
N
C
O
L
D
S
T
O
R
A
G
E

Our business is to search the world and assemble here the best in fruits and vegetables. Supplies are drawn from Canada to South America and from Sicily to the Philippines and even farther.

We find in this field unending variety and unlimited opportunity, requiring for its successful operation knowledge equal to that of a college course. Inspiring and interesting, our work is a pleasure, and we put into it that study and effort which gives us a thorough understanding of the business. Together with unexcelled equipment and service, it makes this house a little safer and surer place at which to trade.

Adhering always to those high principles and methods which will ever increase the general respect for the line of business in which we are engaged and hold secure for us the good will of those we serve, we shall continue to render a real service throughout this section.

Our service extends through legitimate channels only to those justly entitled to buy at wholesale, of which this college is one. We do not retail in wholesale quantities.

HOWARD-BOBBITT CO., Inc. FAYETTEVILLE, N. C.
SANFORD, N. C.

"LEADERS IN PROGRESS"





**CAROLINA
ICE CREAM CO.**

Quality First, Therefore Choice
of Those Who Discriminate

Owned and Operated By the
**FAYETTEVILLE ICE
MFG. CO.**

Phone 96 and 97

A. E. DIXON, *Pres't and Gen'l Mgr.*
J. H. DEWEY, *Sec.-Treas. and Asst. Mgr.*
H. R. LAMFORD, *Vice-President*

DISTRIBUTORS
**RED SPRINGS DRUG CO.
TOWNSEND'S PHARMACY**

*Kept in
Electrically Refrigerated Cabinets*

Being the best dressed girl on the
campus is merely a matter of know-
ing how and where to choose one's
attire.

Let Us Aid You in Both



THE CAPITOL

For Discriminating Women

**RED SPRINGS
CITIZEN**
*ENGRAVING AND
PRINTING*

We can handle your order in a manner
pleasing to you, whether it be for the
cheapest sort of program or the highest
class booklet or program. Steel die en-
graved wedding invitations, calling cards,
mourning stationery, birth announcements,
personally engraved stationery, club sta-
tionery, etc.

*HIGH GRADE PAPER AND
ENVELOPES*

At Exceptionally Low Prices

Telephone No. 140

RED SPRINGS, N. C.

Compliments of

THE LARGEST EQUIPMENT
HOUSE IN THE SOUTH

**THE STRAUS
CO.**

RICHMOND, VIRGINIA

Complete Outfitters to
Hotels, Institutions,
Apartments, Kitchen
Equipment
China, Glass, Silver, Supplies



WHITE HEATHER



H. H. H.

Everything in Hardware



Huske Hardware
House

FAYETTEVILLE, N. C.

THERE IS NONE BETTER
THAN

TRINITY
Plain Flour

GOOSE GIRL
Has Proved the Best
Self-Rising

Try It and Be Convinced

MANUFACTURED BY

THE HAMMOND
COMPANY

LAURINBURG, N. C.

J. J. Fallon Co.

Florists

FAYETTEVILLE, N. C.

Any choice from our stock of freshly cut flowers or plants assures you of the very best quality you can secure—flowers that will give you satisfaction in your own home—flowers that you will be pleased to send as a gift. Our delivery service is prompt and satisfactory—whether the delivery is local or across the continent.

DAY PHONE 983

NIGHT PHONE 1227-W

WILMINGTON, N. C. FAYETTEVILLE, N. C.

CITY OPTICAL
COMPANY

Everything Optical

Prescriptions Filled Accurately

LENSES DUPLICATED
BY MAIL





RED SPRINGS DRUG COMPANY

Headquarters for College Girls

CANDIES

Whitman's and Nunnally's

A Complete Line of

TOILET ARTICLES AND STATIONERY

Fountain Service Unsurpassed

We Handle Special Ice Cream Orders
BLOCK AND MOULD

"Every Flossie Mac Knows the Place"



H. R. HORNE & SONS

Phone 1

FAYETTEVILLE, N. C.

Druggists Since 1865

COMPLIMENTS OF
Highland Bookstore

Fayetteville's Oldest and
Largest Book and Office
Supply House

242 HAY ST. PHONE 342
FAYETTEVILLE, N. C.

**FLEISHMAN'S BIG
STORE**

The House of Reputation
Wholesale and Retail Distributors of
DEPENDABLE MERCHANDISE

106-108 Hay Street
FAYETTEVILLE, N. C.





WHITE HEATHER

MEET YOUR FRIENDS AT
TOWNSEND'S PHARMACY
The Rexall Store

WE ALWAYS HAVE
Fresh Hollingsworth and Norris Candies
Parker, Waterman, and Edison Fountain Pens
Spalding Athletic Goods

All the Latest Toilet Requisites
CARA NOME, SHARI, HOUBIGANT
COTY AND HUDNUT'S

All Prescriptions Filled Carefully and Promptly by Registered Druggist

All the Latest Magazines Will Be Found on Our News Stand

WE APPRECIATE YOUR BUSINESS

The Gift Shop

PRINCE CHARLES HOTEL
FAYETTEVILLE, N. C.

"Every Day Is a Gift Day"

J.C. Penney Co.
AN NATION-WIDE INSTITUTION
DEPARTMENT STORES

One of 888 Department Stores

214 HAY ST.
FAYETTEVILLE, N. C.

COMPLIMENTS OF
**Quinn-Miller &
Co.**

Furniture
FAYETTEVILLE, N. C.

THE MODERN BOY

Two dashing eyes,
With masculine stare
A little smile
And parted hair.

Two shuffling feet,
A shoulder sway,
A silly laugh,
A tea-hound way.

A drug store crowd,
A glass of joy,
And there you are—
The modern boy!
—Roanoke, Va.





PHONE 30

PHONE 211

HAMMOND GROCERY CO.

Fancy

Wholesale Grocers



PROMPT AND COURTEOUS SERVICE

LAURINBURG, N. C.

RED SPRINGS ICE AND
COAL CO.

W. B. TOWNSEND

D. M. McMILLAN

RED SPRINGS, N. C.

FORD PRODUCTS

COMPLIMENTS OF
THE COFFEE SHOPPE

McLEAN & STACY
ATTORNEYS AND COUNSELLORS AT LAW
The National Bank Building
LUMBERTON, N. C.

Modern French Dry Cleaning
Company

Master of the Art
Expert Dry Cleaners and Dyers
335 Hay St. FAYETTEVILLE, N. C.

Lafayette Electric Company
CONTRACTORS—DEALERS

Cepland Electric Refrigeration
Radio Sales and Service
FAYETTEVILLE, N. C.

MATTHEWS PHARMACY

Prescriptions Our Specialty
Phone 614 Pittman Hospital Bldg.
FAYETTEVILLE, N. C.

Agent, Page & Shaw's Candy

Sunnyside Floral Nursery

JAMES M. LAMB & SONS, Props.
FLOWERS

FAYETTEVILLE, N. C.



WHITE HEATHER

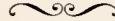


Compliments of

**EGLESTON
JEWELRY CO.**

FAYETTEVILLE, N. C.

“When in Fayetteville, make
the Prince Charles your head-
quarters, where you are always
welcome.”



McNeill & Co.

DEALERS IN

Dry Goods and Notions
Ready-to-Wear

Selby and Walk-Over Shoes

**Prince Charles
Hotel**

FAYETTEVILLE, N. C.

STANLEY B. PROSSER, *Manager*



Hinton James & Co.
Incorporation
COTTON

LAURINBURG, N. C.
TELEPHONES 173, 119, 144

COLLEGE GIRLS
Are Welcome At

**AUSTIN DRUG
COMPANY**

MAXTON, N. C.





*As Usual We Present the
Unusual in*

HATS, ACCESSORIES AND
NOVELTIES

Miss Katie Brown
RED SPRINGS, N. C.

LIBERTY MFG. CO.

Makers of Good
FERTILIZERS

RED SPRINGS, N. C.

The Rexall Store

DRUGS, JEWELRY, STATIONERY
*Any Prescription
Any Time*

**ALTON C. GREEN
DRUG CO.**

Phone 24 MAXTON, N. C.

A Cordial Welcome Awaits
You At

**BANK
OF RED SPRINGS**

Established 1900

Capital and Surplus, \$48,000

Ask For—

THE GLENDALE LINE
SCHOOL STATIONERY

The Hirshberg Co.

ATLANTA, GEORGIA

College Stationery

Invitations, Announcements
Class and Fraternity Stationery
Calling Cards, Diplomas



STYLE SHOP

Exclusive But Not Expensive

We Cater to the Misses

FAYETTEVILLE, N. C.

**J. P. Stevens
Engraving Co.**

Established 1874

103 PEACHTREE ST. ATLANTA, GA.



The South's Foremost College Annual Engravers"

OUR
SUPREMACY

IN THE SOUTHERN
YEAR-BOOK FIELD
IS THE RESULT OF
PERSONAL SERVICE

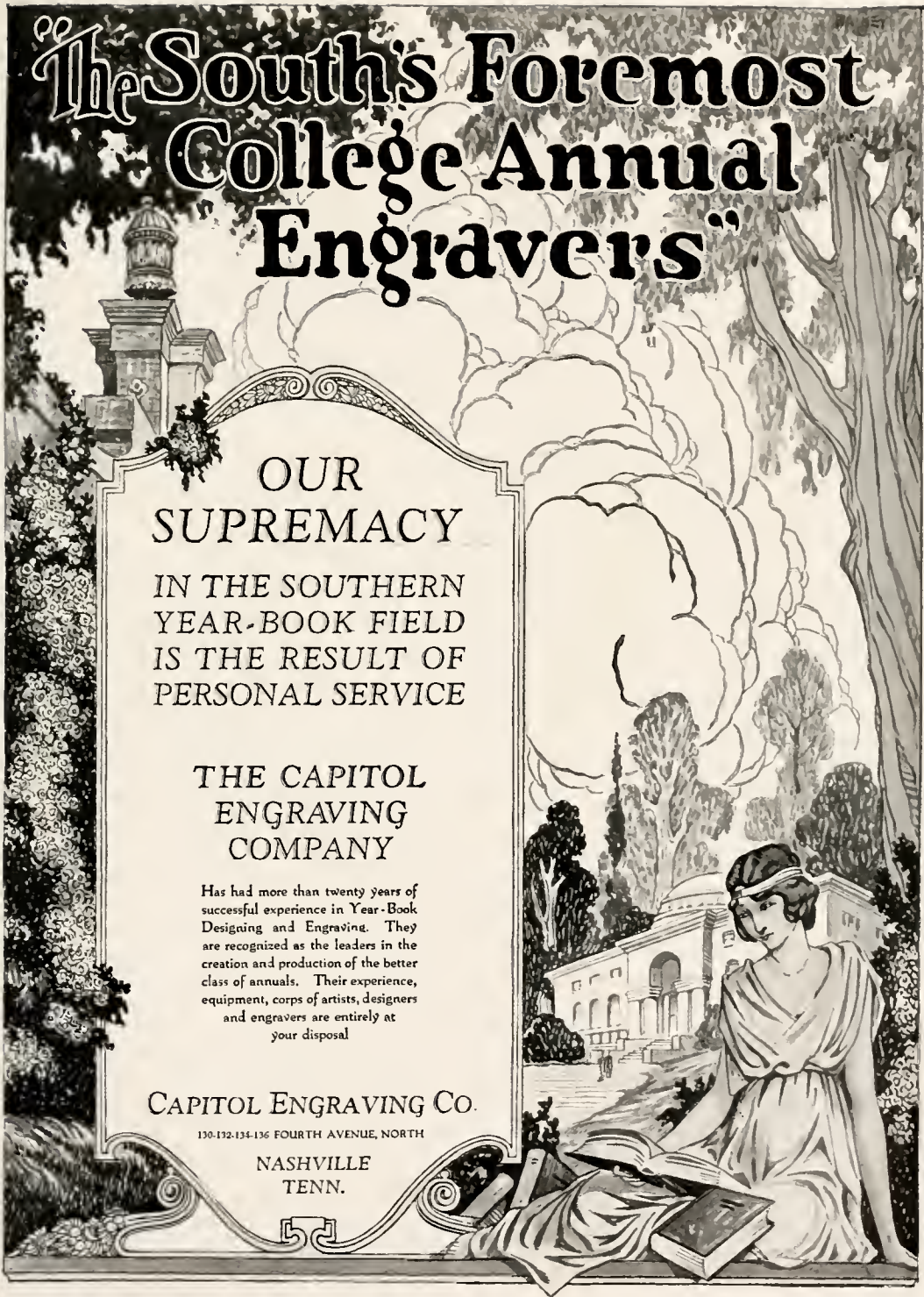
THE CAPITOL
ENGRAVING
COMPANY

Has had more than twenty years of
successful experience in Year-Book
Designing and Engraving. They
are recognized as the leaders in the
creation and production of the better
class of annuals. Their experience,
equipment, corps of artists, designers
and engravers are entirely at
your disposal

CAPITOL ENGRAVING CO.

130-132-134-136 FOURTH AVENUE, NORTH

NASHVILLE
TENN.





GARRETT AND McNEILL'S

*The Oldest and Best Heavy and
Fancy Grocery Store in Town*

Dry Goods, Shoes and Notions

Always Ahead in Service
and Quality

Make Our Store Headquarters

YOURS FOR SERVICE

Phones 26-27

GARRETT AND McNEILL

*North Carolina's
Largest Photographic
Concern*



SIDDELL STUDIO

RALEIGH, NORTH CAROLINA

Cumberland Savings & Trust Company

FAYETTEVILLE, N. C.

+

*"Large enough to protect you,
small enough to know you"*



*Fine China, Watches, Diamonds
Silverware, Cut Glass*

E. T. McCALL, Jeweler
LAURINBURG, N. C.

BOYD'S STUDIO
Photographer

FAYETTEVILLE, N. C.



THIS BOOK PRINTED BY BENSON



LARGEST COLLEGE ANNUAL
PUBLISHERS IN THE WORLD
HIGHEST QUALITY WORKMANSHIP
SUPERIOR EXTENSIVE SERVICE



COLLEGE ANNUAL HEADQUARTERS



WHITE HEATHER

COMPLIMENTS

OF

ARMOUR & CO.

DON'T STOP HERE

but



BEAR IN MIND
THAT **ADS** LIKE THESE
ARE WORTH YOUR TIME





Directory of Students

- ABERNATHY, HELEN . . . Fort Lawn, S. C.
 ABERNATHY, NANCY . Rt. 8, Charlotte, N. C.
 ADAMS, GEORGIA . . . Bennettsville, S. C.
 ALDRET, CORNELIA . . . Summerville, S. C.
 ALEXANDER, HELEN . . . Villa Heights, Charlotte, N. C.
 ALEXANDER, LORENA MAE . . . Connelly Springs, N. C.
 ALFORD, KATHERINE . . . Kenly, N. C.
 BAIN, RUTH Wade, N. C.
 BAIRD, MARIA Mt. Airy, N. C.
 BARDIN, SUE LYELL . . . Chadbourn, N. C.
 BEATTY, LAURA Mt. Holly, N. C.
 BENNETT, IRENE Little Rock, S. C.
 BIGGER, MARY Rock Hill, S. C.
 BLACK, MARY ELIZABETH . . . Shelby, N. C.
 BONEY, MARY EMILY Wallace, N. C.
 BOST, ANNIE SUE Morganton, N. C.
 BOWDEN, ESTELLE Dudley, N. C.
 BOWEN, LOUISE Willard, N. C.
 BRADLEY, JULIA Estill, S. C.
 BRADY, MARY WINTON Dublin, N. C.
 BRYAN, ANNIE RUTH Rt. 2, Wilmington, N. C.
 BRYANT, LORINE Dillon, S. C.
 BUCHANAN, DOROTHY Gifu, Japan
 BUCHANAN, MARGARET Sanford, N. C.
 BULLOCK, MARY W. Red Springs, N. C.
 BURGESS, MARGARET Summerton, S. C.
 BURGESS, MARIAN Summerton, S. C.
 BOSTIC, OMEGA Kenansville, N. C.
 CAGLE, CONNIE Steeds, N. C.
 CAMPBELL, BLANCHE Linden, N. C.
 CAMPBELL, FRANCES 701 S. Fultou St., Salisbury, N. C.
 CAMPBELL, FRANCES WILSON 9 White St., Lexington, Va.
 CARLSON, EDNA Guilford College, N. C.
 CARSON, ANNIE Draper, Va.
 CARSON, JANE Craigsville, Va.
 CARSON, KYLE Rogersville, Tenn.
 CATES, LILLIE MAE Hillsboro, N. C.
 CHANDLER, ERMA Maxton, N. C.
 CLARK, MARGARET Clarkton, N. C.
 CONDUFF, ELLEN Draper, Va.
 CONDUFF, NANCY Draper, Va.
 COOPER, FRANCES 1301 Roanoke St., Roanoke, Va.
 COPPEDGE, CURTIS Bennettsville, S. C.
 CORBETT, GLADYS Currie, N. C.
 CORY, ANNIE BELLE Covington, Ga.
 COUNCIL, DOROTHY Council, N. C.
 COUNCIL, RUBY Council, N. C.
 CRANDALL, GERTRUDE 192 Cedar St., Suffolk, Va.
 CROMARTIE, THELMA Elizabethtown, N. C.
 CUNNINGHAM, VIRGINIA 434 Lawton St., S. W., Atlanta, Ga.
 CURRIE, JEAN Southerd Pines, N. C.
 CURRIE, SARAH Laurinburg, N. C.
 CAMPBELL, NELL Maxton, N. C.
 DAVID, LUCILE Salters Depot, S. C.
 DAVIS, BETSY Salisbury, N. C.
 DAVIS, LUCILLE Blackshear, Ga.
 DEAL, RUBY ANN Statesboro, Ga.
 DENDY, EMMA Wa'halla, S. C.
 DEATON, CATHERINE Mooresville, N. C.
 DRAKE, EVELYN Port Gibson, Miss.
 ENGLE, MARY Lake Alfred, Fla.
 ENNIS, JENNIE Wallace, N. C.
 ERICKSON, EDITH Takamatsu, Japan
 ERICKSON, ELINOR Takamatsu, Japan
 ERVIN, ELIZABETH Glade Valley, N. C.
 ERWIN, BEATRICE Clarkesville, Ga.
 ERWIN, NANCY Pineville, N. C.
 FEARRINGTON, MILDRED Durham, N. C.
 FERGUSON, MARY Great Falls, S. C.
 FORBIS, HELEN 505 N. Elm St., Greensboro, N. C.
 FREEMAN, JANETTE . Rt. 11, Charlotte, N. C.
 GAITHER, BELL Newton, N. C.
 GALLOWAY, KATHERINE Maxton, N. C.
 GAMBLE, MARY E. Macon, Ga.
 GARRETT, ANN PAGE Mt. Sequoyah, Fayetteville, Ark.
 GIBBS, SARAH ELIZABETH Scranton, N. C.
 GILLIES, CORNELIA Siam
 GREYARD, ALICE McDonald, N. C.
 HALL, ELIZABETH Hickory, N. C.
 HAMBAUGH, MEDORA Rt. 8, Box 8, Birmingham, Ala.
 HAMER, WALKER Rt. 3, Dillon, S. C.





Directory of Students

- HANSEL, ELIZABETH Concord, N. C.
 HARDY, VERA La Grange, N. C.
 HARRIS, RUTH Brunswick, Ga.
 HENDERSON, NANCY RUTH Graham, N. C.
 HENDERSON, ORA DELL Little Rock, S. C.
 HENDRIX, LOUISE . Box 86, Jamestown, N. C.
 HENRY, ANN
 1022 Park St., Jacksonville, Fla.
 HERRING, MARY BRIGHT Mt. Olive, N. C.
 HICKS, ELIZABETH BADEN Charlie Hope, Va.
 HINSDON, AMANDA Lynchburg, S. C.
 HOBGOOD, MADGE Greensboro, N. C.
 HOOKS, MARGARET Kenly, N. C.
 HORNE, ROBBIE White Oak, N. C.
 HUMBER, RUTH Carthage, N. C.
 HUNT, KATHRYN
 3410 Westhampton St., Richmond, Va.
 HUNTER, ALESE Rt. 8, Charlotte, N. C.
 HUTCHINS, ESTHER
 26 E. 4th St., Lexington, N. C.
 JESSUP, RUTH Elase, N. C.
 JUSTUS, HAYNES Belhaven, N. C.
 KENDRICK, ELIZABETH Starke, Fla.
 KIMZEY, MARY Brevard, N. C.
 KIRBY, VIRGINIA Kenly, N. C.
 KIRKLAND, REBECCA Fitzgerald, Ga.
 KIRVEN, NOVICE St. Charles, S. C.
 KNOWLTON, EDNA Pomona, Fla.
 LAFFERTY, CORNELIA
 105 Klasing St., Rome, Ga.
 LANCASTER, LULA MAE Vanceboro, N. C.
 LAPSLEY, AGNES Elizabethtown, N. C.
 LAW, MARGARET Elliott, S. C.
 LEE, MARGARET Mt. Olive, N. C.
 LEE, RUBIE Clio, S. C.
 LUMLEY, CATHERINE Greenwood, S. C.
 MILLER, MARY FORD Montreat, N. C.
 MILLS, MARY ESTELLE Bishopville, S. C.
 MIMS, EMILY Sylvania, Ga.
 MONROE, FLORA Council, N. C.
 MONTGOMERY, MARGARET Jasper, Fla.
 MORRISON, JANIE Statesville, N. C.
 MORTON, LUCILLE Kingsport, Tenn.
 MUNROE, ELIZABETH Takamatsu, Japan
 MURRAY, FRANCES Laurioburg, N. C.
 MCCONNELL, ALICE Derita, N. C.
 MCDADE, IRENE
 133 Ridge St., Lenoir, N. C.
 MCDANNALD, ELLEN News Ferry, Va.
 MCDONALD, KATHERINE Cameron, N. C.
 MCDONALD, RUBY Clio, S. C.
 McELHANEY, ETHEL . Rt. 2, Charlotte, N. C.
 McGEACHY, ELIZABETH St. Pauls, N. C.
 McGEACHY, SARAH St. Pauls, N. C.
 McGOWEN, ELLA Willard, N. C.
 MCGUKIN, ALICE Hartwell, Ga.
 McLIWINEN, ANNIE Fayetteville, N. C.
 McINNIS, BEULAH Little Rock, S. C.
 McINNIS, NANNIE MAE
 Rt. 1, Hope Mills, N. C.
 McIVER, MARY LACY Sanford, N. C.
 McKEITHEN, MARY Aberdeen, N. C.
 McKENZIE, IDELLE Pinehurst, N. C.
 McKENZIE, KATIE MAY
 1514 Ann St., Wilmington, N. C.
 McKENZIE, ROBERTA
 1514 Ann St., Wilmington, N. C.
 McKinney, MELBA Crossnore, N. C.
 McLAUCHLIN, HAZEL
 R. F. D., Maxton, N. C.
 McLaurin, FLORA Box 125, McColl, S. C.
 McPAUL, JESSIE Red Springs, N. C.
 McRAINEY, DAISY Parktoo, N. C.
 NARRON, ERMA Kenly, N. C.
 NARRON, LOLA Kenly, N. C.
 PARKER, CHRISTIAN Raegord, N. C.
 PARKER, DELPHIA Farmville, N. C.
 PEARSON, DOLETA . Chalyheate Springs, N. C.
 PENCE, LEE ILA Tatum, S. C.
 PETTEWAY, KATHLEEN Jacksonville, N. C.
 POMEROY, ELIZABETH Graham, N. C.
 PORTER, HELEN Washington, Ga.
 PRICE, FLORENCE Marlinton, W. Va.
 RAY, ISABEL Rockfish, N. C.
 RICE, JO STELLA Rt. 4, Pelzer, S. C.
 RICE, NELLIE Rt. 4, Pelzer, S. C.
 RICHARDSON, PATTYE Dover, N. C.
 RICHMOND, MARY . Box 213, Mebane, N. C.
 RUTT, MARIAN Bradenton, Fla.
 SANDLIN, IRENE Beulaville, N. C.
 SCOTT, HELEN
 1516 Parkwood Ave., Charlotte, N. C.





Directory of Students

- SHEPARD, CARRIE Lanes, S. C.
 SINCLAIR, JULIA . . . Box 367, Marion, N. C.
 SLOAN, FRANCES
 . . . 117 So. 17th St., Wilmington, N. C.
 SMITH, CHARLOTTE Stem, N. C.
 SMITH, MARGARET B. Lexington, N. C.
 SMITH, MARGARET EMILY . . . Soochow, China
 SMITH, ZAIDEE
 . . . 303 Hendrix St., Greensboro, N. C.
 SPRINGS, LORENA . . . Rt. 5, Charlotte, N. C.
 SPRINGS, LUCILLE . . . Rt. 5, Charlotte, N. C.
 STACY, CAROLINE Ft. Meade, Fla.
 STEVENSON, INA . . . Rt. 1, Stody Point, N. C.
 STEWART, BLANCHE Concord, N. C.
 STONE, JEWELL Effingham, S. C.
 STREET, FLORA Glendon, N. C.
 STEPHENS, RUTH Kenansville, N. C.
 SMITH, RUBY Wakulla, N. C.
 TATE, VIRGINIA Graham, N. C.
 TEETER, MARY E. Mooresville, N. C.
 THOMAS, ANNIE Maxton, N. C.
 THOMPSON, ANNIE LEE Maxton, N. C.
 TURNER, ALICE Campbellsville, Ky.
 TAYLOR, ROCKIE LEE Conway, N. C.
 WALL, PAULINE Ellerbe, N. C.
 WALLACE, GRACE Dillon, S. C.
 WALLACE, SALLIE PARROTT Dover, N. C.
 WARD, GRACE Wampee, S. C.
 WATTS, SALLIE Auburn, N. C.
 WELLS, MARY EUNICE Wallace, N. C.
 WHITE, JULINA China
 WICKER, HELEN Gulf, N. C.
 WILDMAN, EDITH GRACE Thomasville, Ga.
 WILKINSON, PEARL Maxton, N. C.
 WILLARD, CECILIA Hickory, N. C.
 WILLIAMS, AILEEN Fayetteville, N. C.
 WILLIAMS, LOUISE Fayetteville, N. C.
 WILLIAMSON, KITTIE
 . . . 212 Bradford Ave., Fayetteville, N. C.
 WILSON, EDNA Little River, S. C.
 WILSON, ELIZABETH . . . Rt. 5, Staunton, Va.
 WILSON, MARGARET Little River, S. C.
 WILSON, MARY REA . . . Box 75, Acme, N. C.
 WINECOFF, MARY D. Clarkton, N. C.
 WOOD, NAOMI Wallace, N. C.
 WRENN, CORA MAY Steeds, N. C.
 WYATT, DARE Box 55, Lexington, N. C.
 WYATT, SADIE Box 55, Lexington, N. C.
 YOUNG, ELIZABETH Milton, Fla.
 ANDERSON, EVELYN Elkton, N. C.
 BUIE, ALMEDA Red Springs, N. C.
 CASSADY, JENNIE Indian Trail, N. C.
 CURRIE, ISABEL Shannon, N. C.
 DALTON, KATE Red Springs, N. C.
 DORMAN, MAUDE Red Springs, N. C.
 ELKINS, RUTH Elkton, N. C.
 GIBSON, LUCY Red Springs, N. C.
 GRAHAM, MARGARET Red Springs, N. C.
 HAMILTON, SARA Red Springs, N. C.
 HANNA, EMMALINE . . . Rt. 1, Red Springs, N. C.
 HARMON, ANNA MCNEILL Slocomb, N. C.
 HOOGIN, SARAH Rt. 1, Red Springs, N. C.
 INGRAM, MYRTLE COOK Wagram, N. C.
 LILES, SALLIE Red Springs, N. C.
 LILES, WILLIE MAE Red Springs, N. C.
 MCKINNON, MARTHA Red Springs, N. C.
 MCLEOD, MARTHA Red Springs, N. C.
 McMILLAN, MARY ELIZABETH
 Red Springs, N. C.
 McPHaul, DOROTHY Shannon, N. C.
 ODOM, MARGARET Red Springs, N. C.
 PARSONS, VIRGINIA Red Springs, N. C.
 PURCELL, MARGARET Maxton, N. C.
 PURCELL, MARTHA Maxton, N. C.
 RATLEY, BURLINE Red Springs, N. C.
 STILES, MIMA Red Springs, N. C.
 WATSON, MIRIAM Red Springs, N. C.
 WELLS, LYDIA CLEORA Benson, N. C.
 WIGGINS, MARGARET ELIZABETH
 Red Springs, N. C.





Autographs





WHITE HEATHER

Autographs





Autographs







