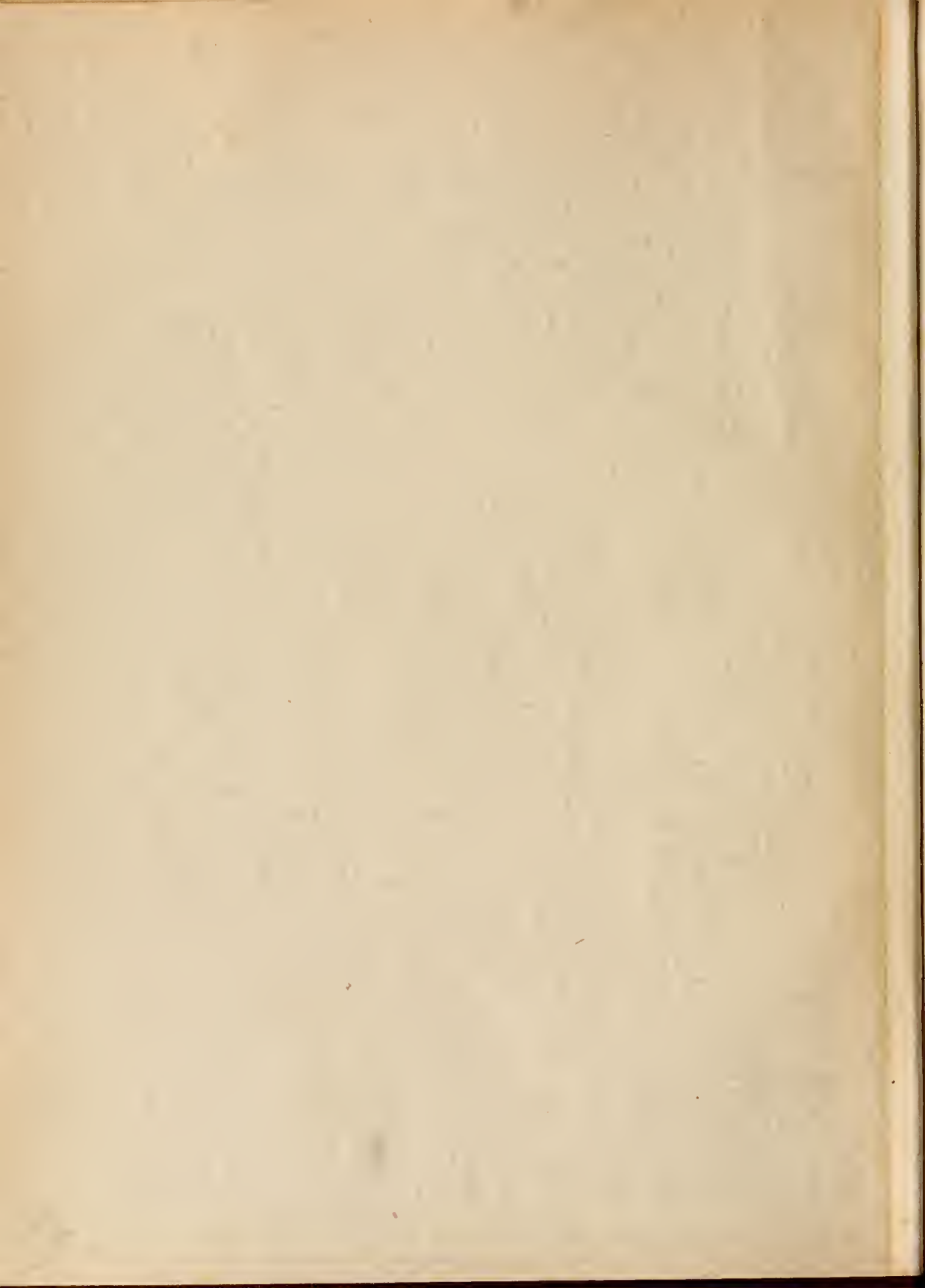
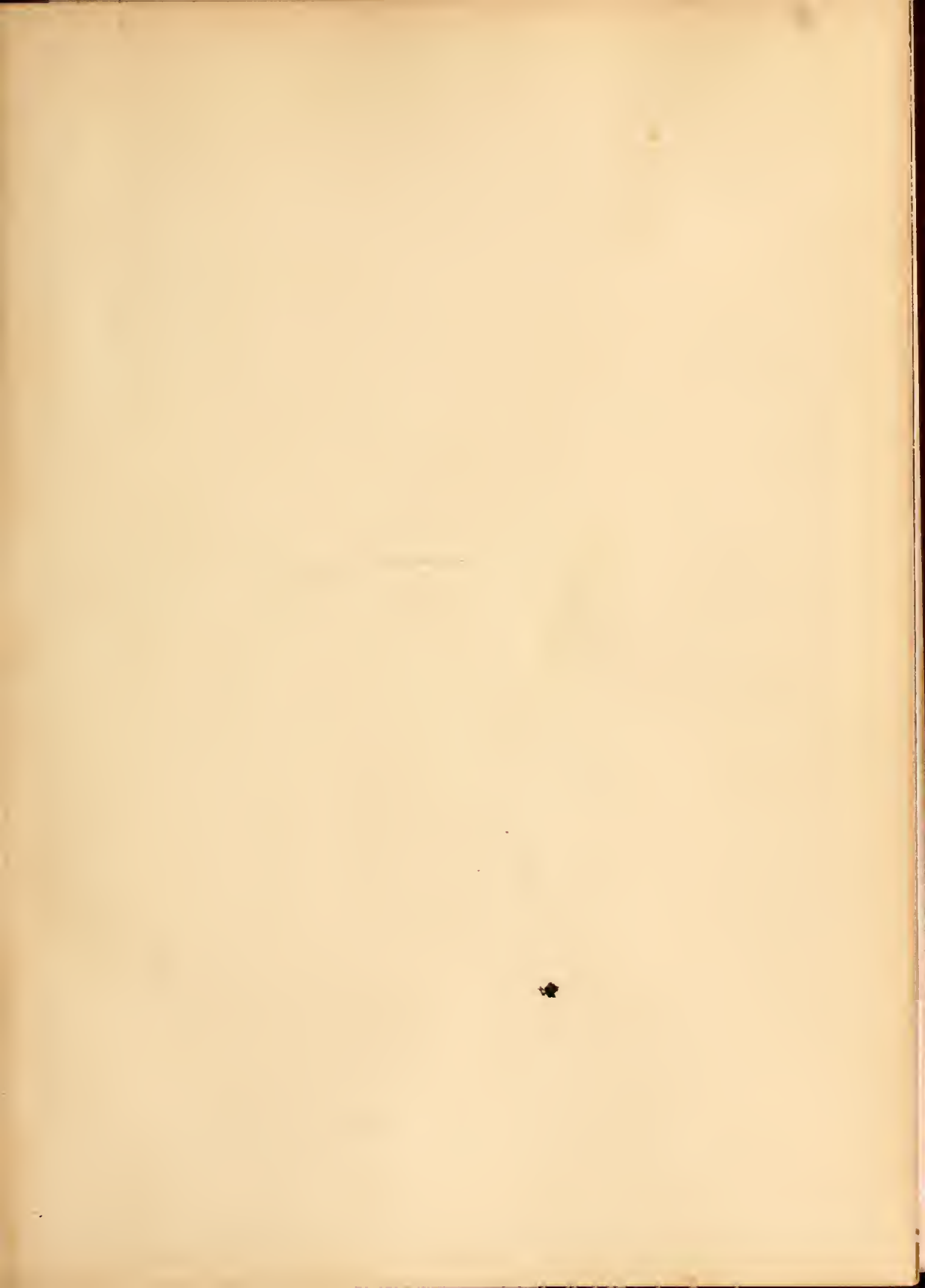


The 1934
WHITE HEATHER

FLORA MACDONALD COLLEGE.







Copyright

DOROTHY SWENDIMAN ~ Editor
FRANCES MALLARD Bus. Mgr.



White Feather

NINETEEN
THIRTY-FOUR

PUBLISHED BY
THE SENIOR
CLASS OF FLORA
MACDONALD
COLLEGE ~ ~ ~
RED SPRINGS, N.C.



WHILE for centuries woman has centered her activities and her achievements about the home, today she has climbed to heights in every walk of life. Her service to mankind and her success in the world present a challenge to all. In recognition of her greatness this volume of the White Heather through its division pages presents outstanding women from the Orient and the Occident, women from varied fields of activity, women who have changed the course of world life.

Foreword

Contents

The COLLEGE

The CLASSES

ORGANIZATIONS

ATHLETICS

FEATURES





THERE stands among women one woman who has indelibly stamped our lives for the better by her love and influence. To each of us she is head and shoulders above every other woman. It is to you, Mother, that we dedicate this volume of the White Heather.

Dedication

To the Mothers





The COLLEGE





AMONG the women of the East who have led in the adoption of Western culture and life stands Selma Ekrem, a Turkish feminist, daughter of a former governor of the Aegean Islands. She is interested in the women of her nation and has been one of their leaders in the securing of greater freedom. She writes and talks with fearlessness and defiance. Her most outstanding book is "Unveiled."

Turkey



Acme

Selma Ekrem

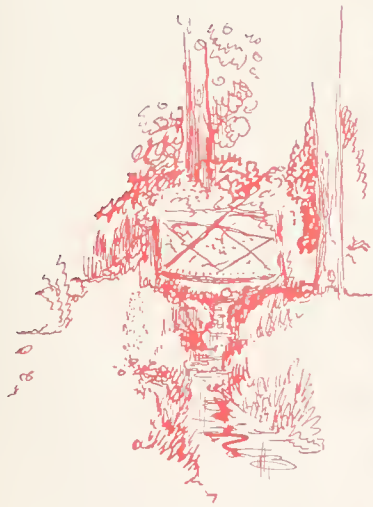




















DR. HENRY GRAYBILL BEDINGER
President

The White Heather

Δ'34/6



DR. CHARLES GRAVES VARDELL
President Emeritus



HUGH P. WILLIAMSON
Dean of Conservatory

The White Heather

'34/6



MISS MARY JOHNSTON
Dean of Women



MISS HAZEL MORRISON
Dean of Faculty

The White Heather

'34

MARY LINDA VARDELL, B.A., M.A.
Professor of Biology and Bacteriology

THELMA M. HALL, B.S., M.A.
Professor of Clothing and Textiles

MARION F. THOMPSON, B.S., M.A.
Professor of Foods and Nutrition

ETHEL BATEMAN, B.A.
Professor of Physical Education

VERA M. KEECH, B.A., M.A.
Professor of Grammar Grade Methods

HARRIET MORRISON, B.A., M.A.
Professor of Latin

EVELYN P. WILLIAMSON
Professor of Voice

JANE L. RICHARDS, B.A., M.A.
Assistant Professor of English

CHRISTINE EWING
Professor of German

ELIZABETH FAIN, B.A., M.A.
Professor of History

ANNIE WEBB, B.A., M.A.
Professor of Mathematics

JANE COLSON GLENN, B.S., G.Ph., M.S.
Professor of Chemistry and Physics



The White Heather

1934-6



ZOULEAN ANDERSON, B.A., M.A.
Professor of Bible

LIDA LAW CHAPMAN, B.M.
Professor of Piano

ETTIE BROWN
Professor of French



LILLIAN FARQUHAR ROBESON
Professor of Violin

MARY McL. CONOLY, B.A., B.S., M.A.
Professor of Education

VIRGINIA CONNOR, R.N.
Resident Nurse



ETHEL KESSLER
Dietitian

BEATRICE McE. BULLOCK
Publicity Secretary

ANNIE WILLIAMS
Secretary to President



BROWN MORRISON
Treasurer

KATHERINE LACKEY
Secretary to Business Manager

ERNEST GRAHAM
Business Manager

CLASSES





AS an advocate of higher education for women and equal suffrage, Baroness Shidzue Ishimoto ranks foremost among her people.

She is a progressive peeress who became Tokio's first business woman. While visiting the United States she maintained herself by lecturing and writing. To become familiar with labor conditions in Manchuria, she and her husband took residence in that country. The baroness is an enterprising and practical young woman who believes in getting her information first hand.

Japan



Acme

Baroness Shidzue Ishimoto



Seniors

CHARLOTTE PAINTER
President



ANNIE LOUISE HERRING
Vice President



EVELYN BROWN
Secretary



ANNA HENDERSON
Treasurer



The White Heather

MABEL BALTZEGAR, B.M.

DONESVILLE, S. C.

Z.

1930-'33—Winthrop College
1933-'34—Glee Club.

"She is a winsome wee thing" if you don't believe it just notice the place Mabel has made for herself this year. She is reticent, but a more energetic, earnest person one never finds.



TILLIE BLACK, B.S.

RED SPRINGS, N. C.

E. X.

1932-'33—May Queen's Court; Glee Club; Commencement Marshal.

1933-'34—Business Manager *Pine and Thistle*; Assistant Tea Room Manager; May Court.

Presenting the living image of "Miss Flora Macdonald"! And what about her? She has a double personality—at times being a reserved dignified young lady, and then again witty and full of fun. She is graceful, neat, and dependable too. If you want to see a charming smile get Tillie to smile for you. Perhaps she will say, "Mercy darn, that's white of you."

Senior Class



CATHERINE BLAKE, A.B.

CHADBOURN, N. C.

Z.

- 1930-'31—Hiking Club.
- 1931-'32—William Bartram Scientific Society; Hiking Club.
- 1932-'33—Hiking Club.

"Miss Catherine," when anyone needs a laugh you can be depended upon to supply it in one form or another! Cheery, witty, and humorous, you have a way of making friends of all who know you. A star song-bird in sight-singing class, and when it comes to rolling up people's hair on paper, you have no equal.

MARY ELLEN BRADY, A.B.

McCONNELL, N. C.

E. X.

- 1931-'32—Secretary Life Service Band.
- 1933-'34—William Bartram Scientific Society; Class Hockey Team; Class Basketball Team.

Conscientious to the Nth degree! Yes, this describes you, Mary, but there is more to tell. You might be called the reserved one among us. And, we do not forget those other virtues of yours—diligence, studiousness, and above all, thoroughness of work well done. By these we shall remember you, and may such traits stick with you always.



The White Heather

CARRIE BROWN, B.M.

RED SPRINGS, N. C.

Z.

You hear a rattling model T and look out just in time to see Carrie get out of her Ford with her usual good-natured smile of greeting. Although we don't actually see her practicing, since she is a day student, we are quite convinced that she does. If she didn't, she couldn't be so calm about everything, and she certainly could not so skillfully render the works of Brahms, Liszt, and other great composers.



EVELYN BROWN, A.B.

PINEVILLE, N. C.

E. X.

1930-'31—Class Hockey and Basketball Teams; Secretary Bible Study Circle.
1931-'32—Class Hockey and Basketball Teams; Secretary Bible Study Circle.
1932-'33—Class Hockey and Basketball Teams; Hockey Varsity; Censor of Epsilon Chi Society; Archery Club; Prayer Band Leader.
1933-'34—Social Leader Bible Study Circle; Secretary Senior Class.

There are those in the world who quietly watch in the background, seeing among the busy throng tasks to be done, which quietly they do; people who seem to see into our own hearts and comfort the feeling there. Evelyn, we appreciate this understanding way of yours, your daintiness, your gentleness, your quaintness. Somehow that quiet, dignified unassuming way of yours wouldn't fit anyone but just you!

Senior Class



CAROLINE BANKS CHAPMAN, A.B.

REM SPRINGS, N. C.

E. X.

1930-'31—Glee Club; Archery Club.
1931-'32—Glee Club; Archery Club.
1932-'33—Glee Club; Archery Club.
1933-'34—Glee Club; Vice President Day Students Club; May Court.

You're a merry, dear thing, and somehow you'll always be a helpful, charming lady. Your musical ability, your interest in everything around you, your good sportsmanship and grace make your personality something quite individual.

LEILA CROWELL, A.B.

MEDIA, PA.

E. X.

1931-'32—Associate Editor Pine and Thistle; Censor E. X. Literary Society; President William Bartram Scientific Society; Class Hockey Team.
1932-'33—Class Secretary; First Vice President E. X. Literary Society; William Bartram Scientific Society; Class Hockey Team; Class Tennis Manager.
1933-'34—F. M. C. A. Cabinet, Chairman Social Circle; Assistant Editor Pine and Thistle; Class Hockey Team; Hockey Varsity; "M" Club; William Bartram Scientific Society; Senior Scribbler; Class Historian.

An expressive face, hands busy with an artist's pencil, and there is Leila. And does she know about things—everything from how to appreciate opera to how to teach English. She finds the time to do good acting and time to appreciate the out-of-doors. To her there is beauty in every bird, flower, tree, and even the tiny insects. And, I believe she gets a thrill from a spider's web.



The White Heather

SARA DAVID, A.B.

SALTERS, S. C.

Z.

1930-'31—Class Hockey Team.
1931-'32—Class Hockey; William Bartram Scientific Society.
1932-'33—Class Hockey Team; William Bartram Scientific Society; Commencement Marshal; Vice President South Carolina Club.
1933-'34—Hockey Varsity; Vice President William Bartram Scientific Society; F. M. C. A. Cabinet, Chairman Bible Study Circle; President South Carolina Club; Secretary Zetesian Literary Society; "M" Club; Class Hockey Team.

"True you are and sweet"—what better words can describe our "cute" little Sara? Although sometimes afflicted with the "FC" trouble she is ever a congenial sympathetic friend. A pretty face and an insatiable curiosity were never more perfectly combined than in her.



AGNES ELLERBE, A.B.

ELLERBE, N. C.

Z.

1930-'31—Class Basketball Team; Baseball Team.
1931-'32—Class Basketball Team; Baseball Team.
1932-'33—Class Basketball Team; Baseball Team.
1933-'34—Baseball Team; Prayer Band Leader.

Agnes is one of those quiet girls who knows her business and goes about it. Although unassertive, she has a mind and will of her own. She's one that takes a part and plays it well.

Senior Class



CLARA MAE ELLIS, A.B.

HENDERSON, N. C.

Z.

1930-'31—Class Basketball Team; Baseball Team, Hockey Team.

1931-'32—Class Basketball and Hockey Teams; William Bartram Scientific Society; Baseball Team.

1932-'33—Class Hockey Team; Assistant Tea Room Manager; Prayer Band Leader; F. M. C. Monogram; President William Bartram Scientific Society; Treasurer Religious Meetings Circle.

1933-'34—Prayer Band Leader; William Bartram Scientific Society; Secretary Library Circle.

"Jimmie Crickets!" and there is Clara Mae with an armful of books—math we suppose. There might have been a test just now, but she goes dashing to the dining room singing a merry song. Such ambition and willingness to stick are not found in everyone. Clara Mae.

RUTHIE FAIRES, B.S.

CHARLOTTE, N. C.

E. X.

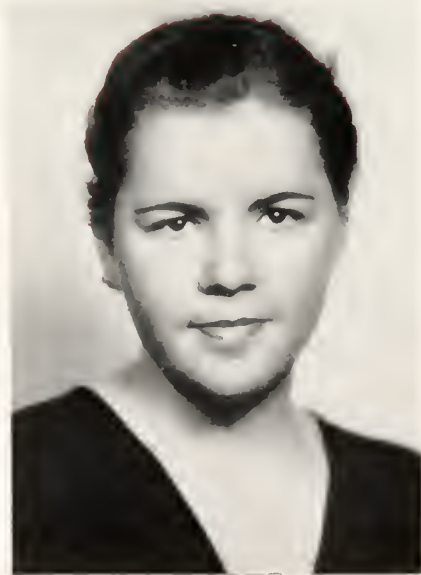
1930-'31—Freshman Hockey Manager; Class Hockey, Basketball, and Tennis Teams; Basketball Varsity; College Orchestra; Glee Club.

1931-'32—Treasurer Athletic Association; Class Tennis, Hockey, and Basketball Teams; Varsity in Hockey, Basketball, and Tennis; Baseball Team; Prayer Band Leader; Conference Delegate; Treasurer Student Volunteers; Sub-Chairman Missionary Circle; Glee Club.

1932-'33—President Athletic Association; Student Council; Class Hockey, Basketball, and Tennis Teams; Tennis Cup; Varsity in Hockey, Basketball, and Tennis; F. M. C. Monogram and Star; Class Statistess; Small Glee Club.

1933-'34—President Athletic Association; Student Council; Class Hockey and Basketball Team; Hockey Varsity; College Statistess; Second Monogram Star; Senior Scribbler; Small Glee Club; "M" Club; Basketball Varsity.

Ever since we first met Ruthie, she impressed us with her extreme unselfishness, and every day the impression deepens in our hearts. And how versatile, athletic, graceful, domestic and musical! But, that is not half—sweetness exudes from her friendly, lovable person. Keep your fun and mischief, Ruthie; it makes you beloved by all!



The White Heather

MARY AGNES GAFFNEY, A.B.

DAVIDSON, N. C.

Z.

1930-'31—Peace College.
1931-'33—Davidson College.
1933-'34—Glee Club; Soccer Team; Class Basketball Team.

Bows and frills, and here comes our dainty exquisite Mary. One can hardly imagine a more gracious and immaculate hostess anywhere. And, we have found that she has dramatic as well as musical talent.



ALICE GAMMON, B.S.

LAURAS, BRAZIL

E. X.

1930-'31—Glee Club.
1931-'32—Prayer Band Leader; Sub-Chairman Finance Circle; Vice President Student Volunteers; Glee Club; Class Hockey Team; Treasurer Conservatory Club.
1932-'33—F. M. C. A Cabinet, Chairman Music Circle; President Student Volunteers; Chaplain Epsilon Chi Literary Society; Commencement Marshal; Glee Club; Class Cheer Leader; Class Hockey Team; Athletic Editor WHITE HEATHER; Baseball Team; William Bartram Scientific Society.
1933-'34—President Epsilon Chi Society; Student Council; College Cheer Leader; Class Cheer Leader; Glee Club; Class Hockey Team; F. M. C. Monogram; "M" Club.

Would you have enthusiasm, attractiveness, "pep"? Then take a trip to Brazil and perhaps there you will absorb something of what Alice has. At one moment the "dignified senior"; the next moment happy-go-lucky, fun loving "Gammon"; and again thoughtful and quiet, graceful, musical behold, the girl of the changing personality!



Senior Class



MABEL VIRGINIA GUSTER, A.B.

SANFORD, N. C.

Z.

1930-'32—Mitchell College.
1932-'33—Sub-Chairman Social Service Circle.
1933-'34—Prayer Band Leader.

Of those who are always willing to do what is asked of them, Mabel stands among the first. Ever ready, dependable, never making excuses for anything, she makes us feel secure about whatever she is to do. Mabel, we wish you all the success possible.

ANNA MCNEILL HARMON, A.B.

FAYETTEVILLE, N. C.

1929-'30—Class Basketball Team; Baseball Team.
1930-'31—Class Basketball Team; Baseball Team.
1932-'33—Class Hockey Team; Baseball Team;
Basketball Team.
1933-'34—Class Basketball Team; Baseball Team.

Anna of the kind heart and willing hand! There is always someone around who is willing to do things people ask them to do, and Anna is one of these girls. You came to our class late, but we have learned to appreciate your energetic spirit, your athletic ability, and your willingness to serve.



ANNA McIVER HENDERSON, A.B.

LITTLE ROCK, S. C.

Z.

1930-'31—Class Hockey Team; Hockey Varsity; Basketball Team; Manager Basketball Team; Monogram Club.

1931-'32—Manager Basketball Team; Class Basketball Team; Hockey Team; Manager Baseball Team; Baseball Team; Treasurer Bible Study Circle; "M" Club.

1932-'33—Tea Room Manager; Treasurer Social Service Circle; Secretary and Treasurer S. C. Club; Prayer Band Leader; Hockey Team; Manager Basketball Team; Basketball Team; Manager Baseball Team; Baseball Team; Class Statistics; F. M. C. Monogram; "M" Club.

1933-'34—Class Treasurer; Athletic Board; Head of Hockey; F. M. C. A. Cabinet, Chairman Social Service Circle; *Pine and Thistle* Staff; Class Hockey Team; Hockey Varsity; Basketball Manager; Secretary and Treasurer S. C. Club; Star for F. M. C. Monogram; William Bartram Scientific Society; "M" Club; Basketball Varsity.

Look at that grin! Of Anna is characterized by her rollicking fun and unquenchable, stubborn, red-headed good-humor. Majoring in and teaching Math, with the quick efficient mind she has, success is inevitable.



ANNIE LOUISE HERRING, A.B.

ROSE HILL, S. C.

E. X.

1931-'32—Archery Club.

1932-'33—Class Hockey Team; Treasurer Class; Prayer Band Leader; Vice President German Club; *Pine and Thistle* Staff; Class Statistics.

1933-'34—Class Hockey Team; Vice President Class; William Bartram Scientific Society; Student Council.

To be able to "look on life with eyes serene" is her strongest characteristic. She is demure, quiet, and calm amid the greatest upheaval. We wonder how such a store of red hair can be minus the traditional temper. Perhaps it is submerged by the poetic, artistic spirit in our quaint little Annie Louise.

Senior Class



HARRIET HODGIN, A.B.

REB SPRINGS, N. C.

E. X.

1930-'31—Treasurer Class.

1931-'32—Treasurer Class; Hockey Team; May Court.

1932-'33—President Day Students Club; Student Council; Class Hockey Team.

1933-'34—President Day Students Club; Student Council; Hockey Varsity, "M" Club; Class Hockey Team.

Harriet, you're a quiet, demure little person, and one might think you quite serious until you flash on that merry grin, which shows what a pleasant and cheery young lady you really are. You are capable and efficient, too.

NANCY HYDE, A.B.

STUARTS DRAFT, VA.

Z.

1930-'31—Class Hockey Team; Glee Club.

1931-'32—Baseball Team; Class Hockey and Basketball Teams; Glee Club; Sub-Chairman Social Service Circle; Prayer Band Leader; Basketball Varsity.

1932-'33—Baseball Team; Class Basketball Team; Chairman Social Service Circle; Chaplain Zetesian Literary Society; Assistant Fire Chief.

1933-'34—Student Council; President F. M. C. A.; Senior Scribbler; Class Hockey and Basketball Teams; Hockey Varsity; Glee Club; William Bartram Scientific Society; College Statistics; "M" Club; Basketball Varsity.

"Saint," how do you manage it? You always have a word of advice or comfort, time to give a helping hand and an understanding heart for any in need—yet you are ever prompt and prepared, with time left for the moon and living up to your ideals. Lack of space rules "out" a lot we would like to say "about" you, but we all love you, you good 'ole Virginian!



The White Heather

MYRA RUTH JACOBS, A.B.

WAYCROSS, GA.

E. X.

1930-'31—Class Basketball Team; Class Hockey Team.

1931-'32—Class Basketball Team; Class Hockey Team; Baseball Team.

1932-'33—Basketball Team; Hockey Team; Baseball Team; William Bartram Scientific Society; Social Leader Bible Study Club.

1933-'34—Athletic Board, Head of Basketball; Class Basketball Team; Class Hockey Team; "M" Club; Hockey Varsity; Sub-Chairman Social Circle; William Bartram Scientific Society; Basketball Varsity.

"Don't tickle, don't tickle!" But we love to pick on her, because she is so good-natured about it. And can she blush! Sweet, unassuming Myra, you are always reliable and always willing to do more than your share.



CARRIE DE LILA LILES, A.B.

RED SPRINGS, N. C.

E. X.

1931-'32—Class Hockey Team.

Lila believes that a smile will overcome any difficulty. That smile has done wonders, too. It chases away every sorrow and sets to flight every care that comes to her friends. And, does she have friends? Just scores of them.

Senior Class



PEARL M. LYMAN, A.B.

ST. AUGUSTINE, FLA.

E. X.

- 1930-'31—Glee Club; Hiking Club.
1931-'32—Glee Club; William Bartram Scientific Society; Archery Club; Hiking Club; Social Leader of Library Circle.
1932-'33—Glee Club; Athletic Board, Head of Archery; Archery Club; Social Leader of Library Circle; William Bartram Scientific Society.
1933-'34—Athletic Board, Head of Archery; Archery Club; Athletic Editor of WHITE HEATHER; Secretary of Epsilon Chi Literary Society; Social Leader of Social Circle; William Bartram Scientific Society; Glee Club.

If it is true that the early bird catches the worm, then Pearl doesn't give the rest of us a chance. Practical, thorough, industrious, and neat—these describe her. And, every May Day she has been some lovely princess or Cinderella whose gracefulness has won our admiration.

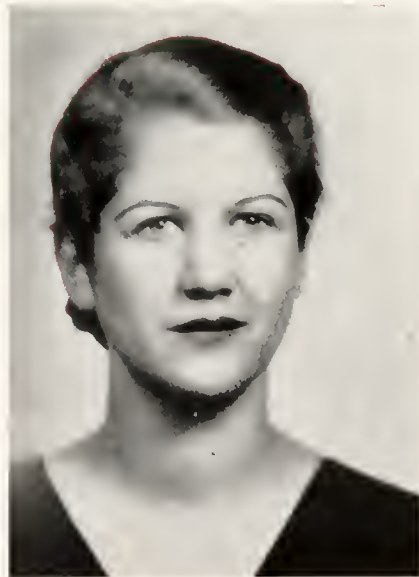
FRANCES MALLARD, A.B.

WILMINGTON, N. C.

E. X.

- 1930-'31—Class Hockey Team; Class Tennis Team; Sub-Chairman of Social Circle; Glee Club; Snap Shot Editor of WHITE HEATHER; Delegate to N. C. C. P. A.
1931-'32—Class Hockey Team; Tennis Team; Business Manager of *Bine and Thistle*; Delegate to N. C. C. P. A.
1932-'33—Class Hockey Team; Hockey Varsity; Assistant Business Manager of WHITE HEATHER; William Bartram Scientific Society; Commencement Marshal; Delegate to N. C. C. P. A.
1933-'34—Class Hockey Team; Hockey Varsity; F. M. C. Monogram; Business Manager of WHITE HEATHER; Treasurer of William Bartram Scientific Society; May Court; "M" Club; Secretary of N. C. C. P. A.

It's time for mail-call and "the good Mallard, is there at the rotunda with her basket of letters. Her executive ability is quite evident to those of us who know her when we notice how businesslike she goes about everything. Whatever she goes after she gets; and, Mallard, does Gny and his orchestra remind you of anything?



The White Heather

HARRIET ELIZABETH MARINER, B.S.

BELHAVEN, N. C.

E. X.

1930-'31—Glee Club.
1931-'32—Glee Club.
1932-'33—Glee Club; Archery Club.
1933-'34—Glee Club.

In case you have the blues and would like a good laugh, drop by "Mariner's"—and if her witty jokes and noted "laugh" don't drive the blues away, you're impossible. She has that rare art of saying things just the way she likes, when she likes, and still it sounds all right. We shall remember not only the laughter in her voice but also her sweet singing. And, sometimes we think that even when "Mariner" becomes a grandmother, she will get homesick.



AMELIA VARDELL MAXWELL, A.B.

TALBOTTON, GA.

E. X.

1930-'31—Glee Club.
1931-'32—William Bartram Scientific Society; Secretary and Treasurer Georgia Club.
1932-'33—William Bartram Scientific Society; Vice President Georgia Club.
1933-'34—William Bartram Scientific Society; President Georgia Club; Sub-Chairman Bible Study Circle; Prayer Band Leader; Treasurer Epsilon Chi Literary Society.

"Y'all!" "Vahdell" is "ouah guhl" from "Geohgia," with the "chahming puhsonality" and the mop of "gohgeous cuhls"! Serious and humorous, capable and appealing, easy-going and studious—a delightful "puhson," whom to know will always be a pleasure.

Senior Class



BERTHA MOORE, A.B.

TAKAMATSU, JAPAN

E. X.

- 1930-'31—Class Hockey Team; Class Basketball Team; Baseball Team; Glee Club.
- 1931-'32—Class President; Head of Tennis; Class Hockey Team; Class Basketball Team; Baseball Team; Bowling Team; Inter-Society Plays; Glee Club; Student Council; College Statistics; Critic E. X. Literary Society.
- 1932-'33—Class President; Chairman of Proctors; Class Hockey Team; Class Basketball Team; Baseball Team; Varsity Basketball; F. M. C. Monogram; Glee Club; Class Statistics; Student Council.
- 1933-'34—President Student Body; Art Editor *Pine and Thistle*; Senior Scribbler; F. M. C. A. Cabinet; Class Hockey; Hockey Varsity; Small Glee Club; Class Prophet; College Statistics; "M" Club; Treasurer Social Circle; Basketball Varsity.

"Marvelous, isn't it?" That is Miss Personality's pet ejaculation. As president of our Student Government Association, we may list to her credit; leadership, capability, and enthusiasm; not to mention her originality, artistic ability, and her sunny hair and disposition.

RADA ST. CLAIR MOORE, A.B.

LEXINGTON, VA.

E. X.

1931-'32—William Bartram Scientific Society.

1933-'34—William Bartram Scientific Society.

Rada is that girl with a steady bright mind combined with a really friendly smile. They say she's going to make the best of teachers and we believe it. Patient, sympathetic, knowing, diligent, interested—she will be a big success!



The White Heather

MARY CATHERINE McCOLL, A.B.

McCOLL, S. C.

Z.

Your ability to make A's on everything astounds us all. How do you do it? And can you teach? Ask the Freshmen! Catherine's power to stick to her work shows grand concentration. And that doesn't say all; as a friend she is always constant. Katrina, has the Montana moon vanished?



POLLY McCORMICK, A.B.

DUNN, N. C.

E. X.

- 1930-'31—Class Hockey Team; Class Basketball Team; Hiking Club.
1931-'32—Associate Editor *Pine and Thistle*; Treasurer Membership Circle; Class Hockey and Basketball Teams; Hiking Club; Archery Club.
1932-'33—Sub-Chairman Missionary Circle; Corresponding Secretary Epsilon Chi Society; Class Hockey Team; Class Basketball Team; Archery Club.
1933-'34—Treasurer Social Service Circle; Tea Room Manager; Fire Chief.

What will we do without Polly, our efficient tea room manager and dependable collector of anything needed? If we want something done, we immediately think of Polly. Kindly, accommodating, seriously humorous, and friendly, we will always remember her as a truly delightful and necessary member of our class.

Senior Class



VIRGINIA McLEAN, A.B.

RED SPRINGS, N. C.

E. X.

- 1930-'31—Class Hockey Team; Glee Club.
1931-'32—Class Hockey Team; Secretary and Treasurer William Bartram Scientific Society.
1932-'33—Class Hockey Team; William Bartram Scientific Society; Class Statistics; College Statistics.
1933-'34—May Queen; Snap-shot Editor WHITE HEATHER; William Bartram Scientific Society.

Her queenly dignity and stylish ultra-modishness, combined with her humorous drawl and gay friendliness make "Jinks" an altogether unique, attractive, and interesting individual.

EDNA MAE NEWTON, A.B.

WILMINGTON, N. C.

Z.

- 1930-'31—Athletic Board, Secretary Athletic Association; Class Hockey Team.
1931-'32—F. M. C. A. Cabinet, Social Chairman; Secretary Zetesian Literary Society; Class Hockey Team; Associate Editor *Pine and Thistle*.
1932-'33—F. M. C. A. Cabinet, Social Chairman; Commencement Marshal; Assistant Advertising Manager WHITE HEATHER; Censor Zetesian Literary Society; Class Hockey Team; Class Statistics.
1933-'34—F. M. C. A. Cabinet, Vice President F. M. C. A.; Second Vice President Zetesian Literary Society; William Bartram Scientific Society; Class Hockey Team; F. M. C. Monogram.

"Say it isn't so"—yes, that is what she would say, but we insist that it is. '34 hasn't a more dependable or faithful member than Ted. She gets things done and she doesn't need a light cut to do it in either. She just has that ability. Ted, while you are nursing Koreans, sing them to sleep with your sight-singing lullabies.



The White Heather

MATTIE HELEN ODOM, A.B.

RED SPRINGS, N. C.

1931-'32—Treasurer Day Students Club.
1932-'33—Treasurer Day Students Club; Archery Club.
1933-'34—Treasurer Day Students Club; Archery Club.

Mattie Helen has a never-ending supply of smiles. Behind her seemingly reserved nature, one finds a true friend and a gentle spirit. Do you wonder that people think she is pretty? Some little first graders may count themselves fortunate to have you as a teacher, Mattie.



CHARLOTTE PAINTER, B.S.

DRAPER, VA.

E. X.

1930-'31—Class Basketball Team; Baseball Team.
1931-'32—Class Hockey Team; Class Basketball Team; Basketball Varsity; Sub-Chairman Circle; Class Tennis Team; Baseball Team; William Bartram Scientific Society.
1932-'33—Class Hockey Team; Class Basketball Team; Basketball Varsity; Baseball Team; Athletic Board, Head of Baseball and Soccer; Class Tennis Team; William Bartram Scientific Society; Assistant Manager *Pear and Thistle*; F. M. C. Monogram.
1933-'34—Class President; Student Council; Class Hockey Team; Hockey Varsity; William Bartram Scientific Society; Manager Class Tennis Team; Monogram Star; Basketball Team; Basketball Varsity; Baseball Team.

Enthusiastic, jolly, dependable, "Painter"—the capable leader of good 'ole '34! "Painter," the class appreciates your leadership, not only in handling all of its affairs so competently; not only because of your athletic leadership; but most of all for your understanding friendly ways that make people like to have you around.

Senior Class



ELEANOR ROBERTSON, B.S.

WAYCROSS, GA.

E. X.

- 1930-'31—Class Hockey Team.
1931-'32—William Bartram Scientific Society;
Archery Club.
1932-'33—William Bartram Scientific Society;
Archery Club.
1933-'34—William Bartram Scientific Society;
Sub-Chairman Social Service Circle; Secretary
and Treasurer Georgia Club.

Sometimes we wonder if she is not a mind reader, so apparent is her ability to say the things we are thinking at the same time we say them. She has keen analytical power and she is quick to grasp situations. Eleanor, we would like to learn your secret of how to get out of a tight corner skillfully.

NELLIE LEE RUSHIN, A.B.

RED SPRINGS, N. C.

Z.

1933-'34—Class Hockey Team; Class Basketball Team.

Nellie, where did you get that ambition and ever-growing determination? We all admire it and wish you the very best of luck. Although you are always busy with your own work, you never fail to do what is asked of you and do it cheerfully. We believe that your dream of success is going to be true.



The White Heather

MATTIE LEE SMITH, A.B.

ROSE HILL, N. C.

E. X.

1931-'32—Class Hockey Team; Sub-Chairman Bible Study Circle; Class Basketball Team.
1932-'33—Class Hockey Team; Prayer Band Leader; Vice President Life Service Band.
1933-'34—Class Hockey Team; Hockey Varsity; Prayer Band Leader; Recorder of Points; Treasurer Bible Study Circle; President Life Service Band; Class Basketball Team; F. M. C. Monogram.

And here's our rare Mattie Lee! You can never appreciate her until you know her—motherly, humorous, thoughtful, learned, and all tied up with her plans for teaching "out west." Luck to you, Mattie Lee, and all those Indian childreo!



LAURA SNEAD, B.M.

LAUREL HILL, N. C.

Z.

1930-'31—Orchestra.
1931-'32—Associate Editor *Pine and Thistle*.
1932-'33—Associate Editor *Pine and Thistle*.
1933-'34—Associate Editor *Pine and Thistle*; Class Poet; Prayer Band Leader; Senior Scribbler.

Just wait until you hear the sweet melody of Laura's violin, with the clear mellow tones coming from the very soul of one who is a true lover of music! Can we describe her aright—Laura with the perfect musical ear; with her poetic, ambitious, keenly perceptive, music loving mind; her good natured frankness; her "moods"; her understanding heart! She is possessor not only of those esthetic qualities, but of strength of mind and will and soul to triumph over the physical. This is only a glimpse of our violinist of the class of '34.

Senior Class



DOROTHY SWENDIMAN, A.B.

TAMPA, FLA.

E. X.

1930-'31—Class President; Student Council.

1931-'32—E. X. Annual Representative; Sub-Chairman Religious Meetings Circle; Prayer Band Leader; Class Hockey Team.

1932-'33—F. M. C. A. Cabinet, Chairman Religious Meetings Circle; Assistant Editor WHITE HEATHER; Chief Marshal; Class Statistics; Class Hockey Team; Archery Club; Delegate to N. C. C. P. A.

1933-'34—Editor-in-Chief WHITE HEATHER; College Statistics; Senior Scribbler; William Bartram Scientific Society; Class Testator; Social Leader Membership Circle; Delegate to N. C. C. P. A.

Capability—that expresses Dot. She always does the finest things in the finest way; her systematic habits are responsible for that. She is a leader; independent in her thoughts; yet charming withal.

MARGARET WOLFE, B.S.

SPARTANBURG, S. C.

Z.

1930-'31—Vice President Class; Class Hockey and Basketball Teams.

1931-'32—Vice President Class; Class Hockey Team; Archery Club; Prayer Band Leader; Sub-Chairman Religious Meetings Circle.

1932-'33—Vice President Class; Secretary and Treasurer Student Body; Student Council; Commencement Marshal; Class Hockey Team; Sub-chairman Social Circle; Conference Delegate.

1933-'34—Vice President Student Body; Student Council.

Somehow those heavenly dimples and your winning personality go straight to our hearts, and we can't help loving you. And, we are always falling victims to your jokes and pranks. What more can we say, than that we have learned to esteem your friendship highly and to respect your judgment.



Senior Snapshots



We'll call this log-rhythm.

Meet Miss Flossie Mac.

Who's who.

One kind of fencing.

The pause that refreshes.

Tree dwellers.

Juniors

PHEBE HARLAN
President



ELIZABETH ROGERS
Vice President



ANNIE McQUEEN
Secretary



SARA KAY
Treasurer



The White Heather

'34/6



KATHERINE BLAND
Rose Hill, N. C.



THELMA BLISS
Pinchurst, N. C.



LORENA CLARK
Barium Springs, N. C.



MARGARET CLARKE
Linden, N. C.



ANNA KATE CRAIG
Marion, N. C.



ANNA MILDRED DANIEL
Parkton, N. C.



CLARA FUSSELL
Scotts Hill, N. C.



ELIZABETH MCINNIS
Red Springs, N. C.

The White Heather

1934/6

ELIZABETH HALL
Katrine, Va.



HAZEL HARDISON
Jamesville, N. C.

PHEBE HARLAN
Kinston, N. C.



BARRARA JARVIS
Spencer, N. C.

SARAH KAY
Red Springs, N. C.



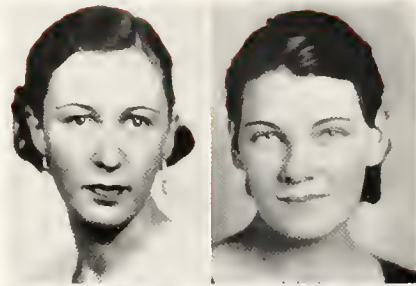
MARGARET KIRKPATRICK
Red Springs, N. C.

RUBY McCUTCHEN
Kingtree, S. C.



The White Heather

1934/6



HELEN MARIE McNEILL
Lumberton, N. C.

SARAH McNEILL
Red Springs, N. C.



ANNIE McQUEEN
Mullins, S. C.

ELIZABETH OVERSTREET
Wakulla, N. C.



ELIZABETH ROGERS
Jacksonville, N. C.

ANNE ROSS
Williston, Fla.

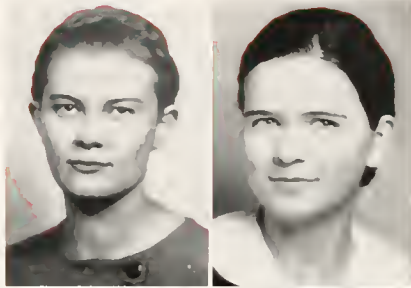


MARGARET RUTTER
Gastonia, N. C.

The White Heather

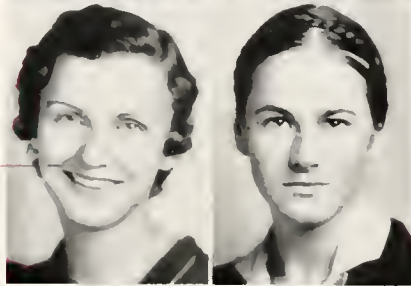
1934/6

HELEN SCGGINS
Wilmington, N. C.



AGNES LACY SMITH
Smithfield, N. C.

JANE HILTON STAINBACK
Charlotte, N. C.



JULIA TAYLOR
Winnabow, N. C.

ANNE PLEASANTS WHITE
Mooreville, N. C.



RUTH WILLIAMS
Hamlet, N. C.

EVELYN WILSON
Charlotte, N. C.



Junior Statistics



Reliable as Gibraltar.

Guess who—she's unique.

Among the intelligensia.

For she's a jolly good fellow.

That certain quality—neatness.

The last word in style.

Originality Pete.

Sophomores

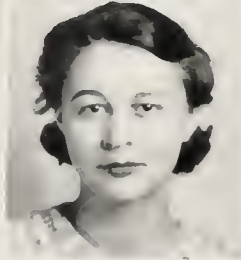
SARA ROSE PETERSON
President



MARGARET BRITTON SIKES
Vice President



LIDA LAW CHAPMAN
Secretary



MARION KELLY TOWNSEND
Treasurer



The White Heather

'34/6



RUTH AUSBAND

NANNIE BIGGS

MARGARET BODIFORD



DOROTHY BONNEY

FRANCES CAIN

FRANCES CALLAHAN



CAROLINE CARLISLE

LIDA CHAPMAN

BLANCHE CONRAD



MIRIAM GARRETT

MARY ELLEN GOCIO

The White Heather

'34/6

VIVIAN GRIFFITH

HELEN GUERRANT

ELLEN MATHESON



JESSIE MATHESON

OPAL MENIUS

JEAN MACALLISTER



ADELENE McARTHUR

MOLLY RUSSELL McARTHUR

MELBA McDANIEL



ELIZABETH MCGUIRE

EDNA McLAUGHLIN



The White Heather

'34/6



EDITH McLAURIN

JEAN McLAURIN

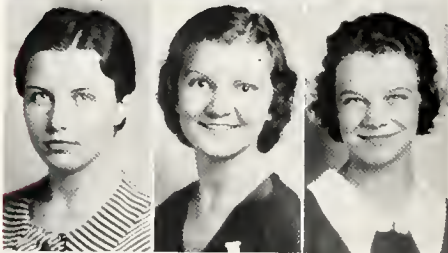
FRANCES McRAE



JEANIE OGILVIE

LONA DARE PARKER

SARA ROSE PETERSON



FLORA PHILLIPS

CLAUDIA PROCTOR

EMMA DEAN ROGERS



LOUISE ROGERS

MARGARET BRITTON SIKES

The White Heather

'34/6

KATE STEWART

KATIE SUGG

FRANCES TOWNSEND



MARION TOWNSEND

REBECCA TURNER

MYRTLE WALTERS



ISABEL WILLCOX

MARY ELIZABETH WILDMAN

MARGARET WILLIFORD



MARY STUART WILSON



Sophomore Snapshots



Seeing double.

Two kinds of limbs.

One way to escape.

Stop what?

Fishing for gold.

Day students only.

Freshmen

MARY MOORE McLAUGHLIN
President



MARY MORRIS TERRY
Vice President



EDNA TEAGUE
Secretary



NELL MOREHEAD
Treasurer



The White Heather

'34/6



ELLA ATKINS

WAKEFIELD BALTZEGAR

CATHERINE BEANE



LOIS BEARD

MARGARET BEARD

LOLA BEATTY



KATHLEEN BETHUNE

NANNIE BOSTICK

HAZEL BRADLEY



MARY ELIZABETH BROWN

HELYN BROWN

HELEN BRUGH

The White Heather

1934/6

VIRGINIA BRUNSON

MARGARET BULLOCK

NANCY BULLOCK



VERA BYRD

EUNICE BYNUM

SARA SHAW CALLAHAN



SARAH CANNON

GRACE NEAL CASHWELL

LILLIAN COOPER



MABLE COVINGTON

MARY CURRIE

JANE DAVIS



The White Heather

'34



EVELYN EDENS

CATHERINE ERWIN

JOSEPHINE EVERETT



JULIA FARRAR

LUCY FERRAN

EUGENIA FORLAW



INEZ FRENCH

MARGARET GAINNEY

MARY GANDY



TRUDINE GRAVES

RUTH GREYARD

MARGARET GRIER

The White Heather

'34

RUTH HALL

THELMA HALL

CLARA ELIZABETH HERRING



EULA MAE HERRING

SUE HERRING

ANN HODGES



LILLIAN HONEYCUTT

CATHERINE JACKSON

EULA JOHNSON



MARJORIE THOMAS

HELEN KERR

LOVIC KERR



The White Heather

1934/5



EDYTH KETCHIE

MARGARET KINNAIRD

HAZEL KNIGHT



MARY ELIZABETH KNIGHT

ELEANOR LEWIS

JENNIE MANNING



ELIZABETH MCBRYDE

SARA ELIZABETH MCCORMICK

MARY MCDANIEL



MARY MCDUFFIE

PAULINE MCGEE

JEAN MCINTYRE

The White Heather

'34/6

ELIZABETH MCKETHAN

MARY MOORE McLAUGHLIN

KATHRYN McLEOD



MARY ALINE McPHAIL

MARY McQUEEN

NELL MOREHEAD



LOUISE ODOM

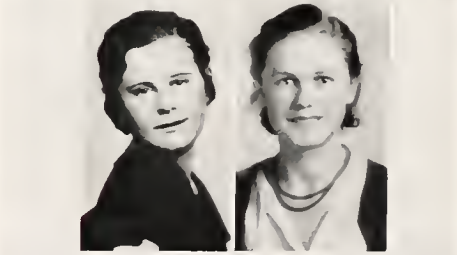
VIRGINIA ORR

RUTH PAXON



RUTH PATE

ONA PATTERSON



The White Heather

'34



GLADYS PEARSALL

HAZEL PERRY

FLORENCE PHILLIPS



JANE PIRIE

SYLVIA PITTENDREIGH

SALLIE PRIDGEN



MARGARET PRITCHARD

PAULINE PROCTOR

MARY REHM



MARGARET REID

BEA ROBESON

The White Heather

1934/6

GERTRUDE ROSS

EDNA BLUE RUDD

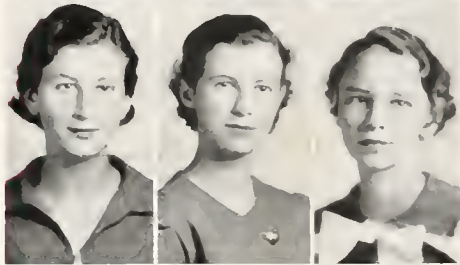
BILLIE RUFF



DOROTHY SINGLETON

PAULINE SLOAN

JANE SMITH



KATHRYN SMITH

VIRGINIA SMYTH

PATSY SMITH



MARY LOUISE SMITH

EUGENIA SOUTHERLAND



The White Heather

'34/6



LILLIAN STANLEY

ETHEL STEEDLY

EDNA STEVENSON



LENA STEWART

EDNA TEAGUE

MARY MORRIS TERRY



MILDRED THOMAS

ANNIE REID THOMPSON

LAURA TOMLIN



SERENE TURNAGE

FRANCES TURNER

The White Heather

1934

MARY ELIZABETH TYSON

RUTH UNDERWOOD

ELIZABETH WALLACE



VIRGINIA WELTON

VIRGINIA WENTZ

CARY WHITE



EDNA WHITED

JACKSIE WIGGINS

CATHERINE WILSON



EUNICE WOODLEY

MARY NORTHWOOD WORSLEY



Freshman Snapshots



Squaws.

And more squaws.



Pals.



Dog-on, what shall we call it?



Dancing daughters.

ORGANIZATIONS





THE beauty, grace, and charm of Queen Marie have long won the admiration of the world but no more so than her statesmanship and the great trust her adopted people have in her. Her graciousness, her good deeds, her sympathy and her love of them and their country have endeared her to the Roumanian people. It has been said that there is no one so queenly as she, and certainly she stands as a symbol of all we would expect of a queen.

Roumania



Underwood and Underwood

Queen Marie



Student Government Association

BERTHA MOORE
President



MARGARET WOLFE
Vice President



ELIZABETH ROGERS
Secretary



PHEBE HARLAN
Chairman of Proctors

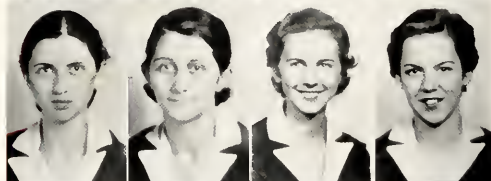


The White Heather

1934/6



MOORE
WOLFE
PAINTER
HERRING



HARLAN
ROGERS
PETERSON
McLAUGHLIN



HYDE
FAIRES
TAYLOR
GAMMON

Student Council

THE PURPOSE

The purpose of this association is to unite the students of Flora Macdonald College in an earnest and loyal effort to hold personal honor as the only true standard for efficient social living; to emphasize the importance of self-control; and to develop the sense of personal responsibility.

MEMBERS

BERTHA MOORE
MARGARET WOLFE
CHARLOTTE PAINTER
ANNIE LOUISE HERRING

PIERRE HARLAN
ELIZABETH ROGERS
SARAH ROSE PETERSON
MARY MOORE McLAUGHLIN
ALICE GAMMON

HARRIET HOBGIN
NANCY HYDE
RUTH FAIRES
JULIA TAYLOR

SWENDIMAN

MOORE

SNEAD



HYDE

CROWELL

FAIRES



Senior Scribblers

Every year girls of literary ability are selected from the rising Senior Class to furnish the write-ups of their classmates for the annual. It is their aim to make these sketches as representative of their classmates as possible. The Scribblers are often called on to furnish copy for other sections of the book.

DOROTHY SWENDIMAN

BERTHA MOORE

LAURA SNEAD

NANCY HYDE

LEILA CROWELL

RUTHIE FAIRES

Chief Scribe

The White Heather

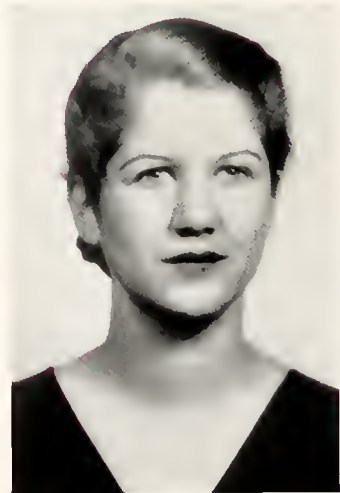
1934/6



DOROTHY SWENDIMAN
Editor-in-Chief

White Heather Staff

FRANCES MALLARD
Business Manager



The White Heather

'34/6

JANE STAINBACK
Assistant Editor

HAZEL HARDISON
Photo Editor

VIRGINIA McLEAN
Snapshot Editor

PEARL LYMAN
Athletic Editor



White Heather Staff



JEAN MACALLISTER
Club Editor

MARY ELLEN GOCIO
Type Editor

RUTH PAXON
Assistant Type Editor

MARGARET RUTTER
Assistant Business Manager

The White Heather

1934/6



JEAN McLAURIN
Editor-in-Chief

Pine and Thistle Staff

TILLIE BLACK
Business Manager



The White Heather

'34

LEILA CROWELL
Assistant Editor

BERTHA MOORE
Art Editor

JEANIE OGILVIE
Type Editor

HELYN BROWN
Assistant Type Editor

STUART WILSON
Exchange Editor



Pine and Thistle Staff



ANNA HENDERSON
Joke Editor

BARBARA JARVIS
Associate Editor

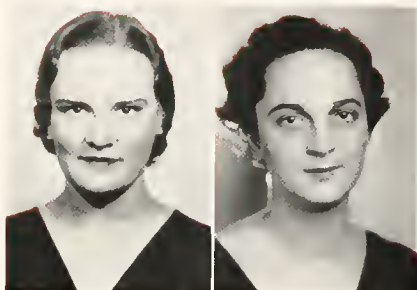
LAURA SNEAD
Associate Editor

EDITH MCLAURIN
Associate Editor

JEAN McALLISTER
Assistant Business Manager

The White Heather

'34/6



NANCY HYDE
President

EDNA MAE NEWTON
Vice President

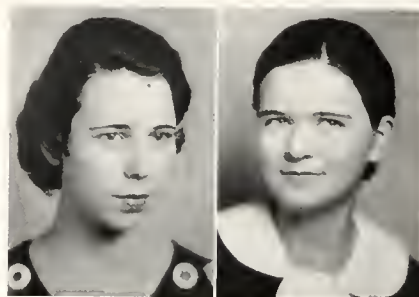
The purpose of the Christian Association is to lead students to faith in God, the Father through Jesus Christ, His Son and our Savior; to lead them into membership and service in the church of God; and to promote their growth in Christian faith and character, especially through the study of His word.

Flora Macdonald Christian Association

It holds before its members the standard of "Let no man despise thy youth: but be thou an example of believers, in word, in conversation, in charity, in spirit, in faith, in purity." The policy of its cabinet is to exert its influence among the students in the interest of a higher standard of friendship, a broader democratic spirit, and a closer fellowship with Christ.

BARBARA JARVIS
Secretary

AGNES SMITH
Treasurer



SARA DAVID

ELIZABETH ROGERS

ANNA HENDERSON

LEILA CROWELL



Cabinet Members



LORENA CLARK

JEANIE OGILVIE

NANNIE BIGGS

EVELYN WILSON

BERTHA MOORE

The White Heather

1934/6



HAZEL HARDISON, Z.
Chief Marshal

KATHERINE BLAND, E. X.
MARGARET RUTTER, E. X.
CLARA FUSSELL, E. X.

PIEBE HARLAN, Z.
HELEN MARIE McNEILL, Z.
JULIA TAYLOR, Z.

The White Heather

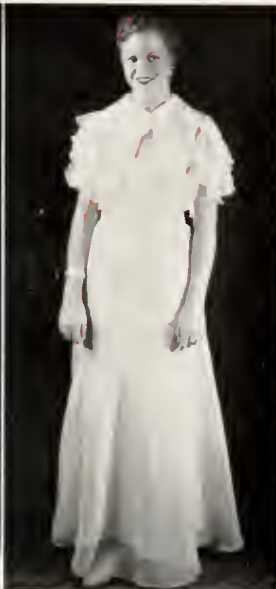
1934



BLAND



RUTTER



FUSSELL

Commencement Marshals



HARLAN



McNEILL



TAYLOR

Ninety-one

The White Heather

1934-6



ALICE GAMMON
President



THELMA BLISS
First V. P.



EVELYN WILSON
Second V. P.



PEARL LYMAN
Rec. Sec.

Epsilon Chi Literary Society

MEMBERS

SALLIE ALLISON
CATHERINE BEANE
LOIS BEARD
MARGARET BEARD
NANNIE BIGGS
DOROTHY BONNEY
MARGARET BRACY
SARA LEE BRACY
TILLIE BLACK
THELMA BLISS
KATHERINE BLAND
MARGARET BODIFORD
MARY BRADY
EVELYN BROWN
EUNICE BYNUM
FRANCES CAIN
FRANCES CALLAHAN
ANNA CAMPBELL
RUTH CASSADY

CAROLINE CHAPMAN
LORINA CLARK
BLANCHE CONRAD
ANNA KATE CRAIG
LEILA CROWELL
MARY CURRIE
JANE DAVIS
RUTH FAIRES
JULIA FARRAR
EMEREA FORLAW
INEZ FRENCH
CLARA FUSSELL
ALICE GAMMON
MARY WELLS GANDY
MIRIAM GARRETT
HELEN GUERRANT
ELIZABETH HALL
RUTH ELLIS HALL
ANNIE LOUISE HERRING

BETSY HERRING
SUE HERRING
HARRIET HODGIN
MYRA JACOBS
CATHERINE JACKSON
BARBARA JARVIS
EULA JOHNSON
SARAH KAY
NELLIE KELLY
HELEN KERR
EDYTHE KETCHIE
ELIZABETH KNIGHT
ELEANOR LEWIS
PEARL LYMAN
FRANCE MALLARD
VARDELL MAXWELL
OPAL MENIUS
BERTHA MOORE
RADA MOORE

The White Heather

1934-6

KATHERINE BLAND
Cor. Sec.



VARDELL MAXWELL
Treasurer



ELIZABETH HALL
Critic



STUART WILSON
Chaplain



Epsilon Chi Literary Society

MEMBERS

- | | | | |
|--------------------|-------------------|-------------------|---------------------|
| ELIZABETH MARINER | FLORA PHILLIPS | MARGARET SIKES | ANNE LAURIE PARNELL |
| NELL MOREHEAD | FLORENCE PHILLIPS | EDNA TEAGUE | LONA DARE PARKER |
| ADELENE McARTHUR | JANE PIRIE | MARY MORRIS TERRY | RUTH PAXON |
| MOLLY McARTHUR | CLAUDIA PROCTOR | LAURA TOMLIN | ONA PATTERSON |
| ELIZABETH McINNIS | PAULINE PROCTOR | MARION TOWNSEND | AGNES SMITH |
| EDNA McLAUGHLIN | MARGARET REID | FRANCES TURNER | MATTIE LEE SMITH |
| MARY M. McLAUGHLIN | FRANCES REYNOLDS | REBECCA TURNER | PATSY SMITH |
| MARY McNEILL | ELEANOR ROBERTSON | MILDRED THOMAS | JANE STAINBACK |
| ANNE McQUEEN | ELIZABETH ROGERS | VIRGINIA WELTON | KATE STEWART |
| MARY McQUEEN | EMMA DEAN ROGERS | VIRGINIA WENTZ | LENA STEWART |
| FRANCES McRAE | ANNIE ROZIER | ANNE P. WHITE | ISABEL WILCOX |
| POLLY McCORMICK | GERTRUDE ROSS | CARY WHITE | EVELYN WILSON |
| JEANIE OGILVIE | MARGARET RUTTER | JACKSIE WIGGINS | STUART WILSON |
| VIRGINIA ORR | DOROTHY SWENDIMAN | CHARLOTTE PAINTER | RUTH WILLIAMS |
| HAZEL PERRY | | | MARY WORSLEY |

The White Heather

1934



JULIA TAYLOR
President

HELEN M. McNEILL
Firs. V. P.

EDNA MAE NEWTON
Second V. P.

SARA DAVID
Rec. Sec.

Zetesian Literary Society

MEMBERS

MANDANE ANDERSON	MARGARET BULLOCK	MARION GADDY	JENNIE MANNING
ELLA TURNER ATKINS	NANCY BULLOCK	MARY ELLEN GOCIO	JESSIE MATHESON
RUTH AUSBAND	SARAH CANNON	TRUDENE GRAVES	ELLEN MATHESON
MABLE BALTZEGAR	LILLIAN COOPER	RUTH GREYARD	LESLIE MAE MALLOY
WAKEFIELD BALTZEGAR	ANNA MILDRED DANIEL	PIEBE HARLAN	AGNES MILLING
LOLA BEATTY	SARA DAVID	EULA MAE HERRING	MARY MONROE
KATHLEEN BETHUNE	RUTH K. DOUGLASS	ANN HODGES	CAROLINE CARLISLE
CATHERINE BLAKE	AGNES ELLERBE	BILL HONEYCUTT	GRACE NEAL CASHWELL
NANNIE BOSTICK	CLARA MAE ELLIS	NANCY HYDE	SARA SIJAW CALLAHAN
HAZEL BRADLEY	JOSEPHINE EVERETT	LOVIC KERR	MARGARET GRIER
HELYN BROWN	LUCY FERRAN	MARGARET KINNAIRD	MARLE GUNTER
CARRIE BROWN	ROSE GAINNEY	HAZEL KNIGHT	ANNA HENDERSON
MARY ELIZABETH BROWN	MARGARET GAINNEY	ELIZABETH LASATER	ELIZABETH MCGUIRE
VIRGINIA BRUNSON	MARY GAFFNEY	NONIE DEL LOVIN	SARA E. MCCORMICK
	MARY McDUFFIE		

The White Heather

1934/6

HELEN SCOGGINS
Treasurer



VIVIAN GRIFFITH
Critic



HAZEL HARDISON
Censor



MARGARET CLARK
Chaplain



Zetesian Literary Society

MEMBERS

MARY McDANIEL	EDNA MAE NEWTON	JANE SMITH	FRANCES TOWNSEND
ELIZABETH McBRYDE	RUTH PATE	KATHRYN SMITH	RUTH UNDERWOOD
ELIZABETH McKEITHAN	GLADYS PEARSALL	MARY LOUISE SMITH	ELIZABETH WALLACE
SARA McNEILL	MARGARET PRITCHARD	VIRGINIA SMITH	CATHERINE WILSON
KATHRYN McLEOD	MARY REHM	ETHEL STEEDLY	EDNA WHITTED
PAULINE McGEE	LOUISE ROGERS	LILLIAN STANLEY	FUNIE WOBBLEY
JEAN McINTYRE	BEA ROBESON	HELEN SCOGGINS	MARY E. WILDMAN
CATHERINE McCOLL	ANN ROSS	KATIE SUGGS	MARY E. WATSON
RUBY Mc CUTCHEON	NELLIE RUSHIN	JULIA TAYLOR	MARGARET WILLIFORD
JEAN McALLISTER	EDNA BLUE RUDD	MARJORIE THOMAS	SYLVIA PITTENDREIGH
JEAN McLAURIN	ETGENIA SOUTHERLAND	ANNIE REID THOMPSON	SALLIE PRIDGEN
EDITH McLAURIN	ULDINE SALTER	MARSHALL TILLMAN	EDNA STEPHENSON
NANCY McINNIS	DOROTHY SINGLETON	SERENE TURNAGE	LAURA SNEAD
HELEN MARIE McNEILL	PAULINE SLOAN	ELIZABETH TYSON	MARGARET WOLFE
		BONNIE WRIGHT	

The White Heather

1934



William Bartram Scientific Society

OFFICERS

JANE STAINBACK
SARA DAVID
STUART WILSON
FRANCES MALLARD

President
Vice President
Secretary
Treasurer

MEMBERS

MANDANE ANDERSON
SARA LEE BRACY
MARY BRADY
MARGARET CLARK
LEILA CROWELL
MILDRED DANIEL
SARA DAVID
CLARA MAE ELLIS
RUTH FAIRES
ALICE GAMMON
ELIZABETH HALL

NANCY HYDE
MYRA JACOBS
ANNA HENDERSON
ANNIE LOUISE HERRING
PEARL LYMAN
VIRGINIA McLEAN
FRANCES MALLARD
VARDIEL MAXWELL
BERTHA MOORE
RADA MOORE

EDNA MAE NEWTON
CHARLOTTE PAINTER
SARAH ROSE PETERSON
ELEANOR ROBERTSON
ELIZABETH ROGERS
AGNES SMITH
JANE STAINBACK
KATIE SUGG
DOROTHY SWENDIMAN
MARY E. WILDMAN
STUART WILSON

The White Heather

'34/6



Business Club

OFFICERS

MARY ELLEN GOCIO
MARGARET KINNAIRD
LOUISE ROGERS
JEANIE OGILVIE

President
Vice President
Secretary
Treasurer

MEMBERS

DOROTHY BONNEY
MARGARET BRACY
HAZEL BRADLEY
HELYN BROWN
VEIRA BYRD
EUNICE BYNUM
SARA SHAW CALLAHAN
ANNA CAMPBELL
LUCY BELLE COLEY
EUGENIA FORLAW
MARY GANDY
MARY ELLEN GOCIO
VIVIAN GRIFFITH
THELMA HALL
ANN HODGES
CATHERINE JACKSON

ECLA JOHNSON
HELEN KERR
EDYTH KETCHIE
MARGARET KINNAIRD
ELEANOR ANN LEWIS
AGNES MILLING
MARY FRANK MONROE
NELLE MOREHEAD
MARGARET MORRIS
MELBA MCDANIEL
JEANIE OGILVIE
RUTH PAXON
GLADYS PEARSALL
JANE PIRIE
GRACE MARIE POWELL

CLAUDIA PROCTOR
PAULINE PROCTOR
LOUISE ROGERS
GERTRUDE ROSS
ANNIE ROZIER
KATHRYN SMITH
LILLIAN STANLEY
FRANCES TURNER
MARY ELIZABETH TYSON
MYRTLE WALTERS
VIRGINIA WENTZ
EDNA WHITTED
JACKSIE WIGGINS
ISABEL WILLCOX
MARY EUNICE WOODLEY
MARY NORTHWOOD WORSLEY

The White Heather

'34/6



VIRGINIA CLUB



FLORIDA CLUB

The White Heather

1934/6



SOUTH CAROLINA CLUB



GEORGIA CLUB



Small Glee Club

MEMBERS

MABLE BALTZEGAR	SUE HERRING
WAKEFIELD BALTZIGAR	PAULINE MCGEE
NANNIE BIGGS	ELIZABETH MCKETHAN
ANNIE KATE CRAIG	KATHRYN MCLEOD
MARY CURRIE	FRANCES McRAE
RUTH FAIRES	BERTHA MOORE
JULIA FARRAR	PATSY SMITH
INEZ FRENCH	EUGENIA SOUTHERLAND
ELIZABETH HALL	EDNA STEVENSON
EULA MAE HERRING	

EDNA TEAGUE

MRS. WILLIAMSON, *Director*



Large Glee Club

MEMBERS

KATHERINE BLAND
DOROTHY BONNEY
VIRGINIA BRUNSON
MARGARET BULLOCK
FRANCES CAIN
GRACE NEAL CASHWELL
RUTH CASSADY
CAROLINE CHAPMAN
FRANCES COLEY
EMMA COLEY
LILLIAN COOPER
LUCY FERRAN
MARY GAFFNEY
ALICE GAMMON

RUTH ELLIS HALL
ANN HODGES
NANCY HYDE
BARBARA JARVIS
ETLA JOHNSON
EDITH KETCHIE
MARGARET KINNAIRD
ELEANOR LEWIS
PEARL LYMAN
JEAN MACALLISTER
ELIZABETH MCBRYOE
SARAH MCCORMICK
RUBY MCCUTCHEEN
MARY MCDANIEL
JEAN MCINTYRE

SARAH MCNEILL
VIRGINIA ORR
GLADYS PEARSALL
SARAH ROSE PETERSON
MARGARET PRITCHARD
ULDINE SALTER
JANE STAINBACK
LAURA TOMLIN
SERENE TURNAGE
ELIZABETH TYSON
VIRGINIA WENTZ
CARY WHITE
CATHRINE WILSON
EVELYN WILSON

The White Heather

'34-'36



HARRIET HODGIN
President



CAROLINE CHAPMAN
Vice President



MARION TOWNSEND
Secretary



MATTIE ODOM
Treasurer

Day Student Organization

MEMBERS

KATHLEEN BETHUNE
CARRIE BROWN
MARGARET BYLOCK
VEIRA BYRD
FRANCES CALLAHAN
SARA SHAW CALLAHAN
ANNA CAMPBELL
LIDA CHAPMAN
CAROLINE CHAPMAN
FLORA CLARKE
EMMA COLEY
FRANCES COLLY
LUCY BELLE COLEY
MABEL COVINGTON
LILLIAN DIXON
EVELYN EDENS
MARGARET GAINNEY
MIRIAM GARRETT
THELMA HALL

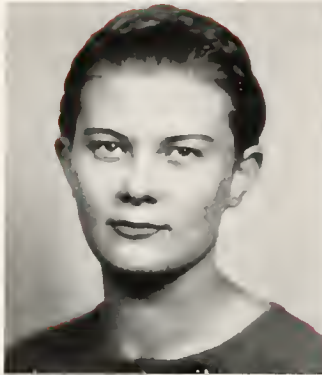
ANNA HARMON
CLARA HERRING
HARRIET HODGIN
CATHERINE JACKSON
SARAH KAY
MARGARET KIRKPATRICK
LILA LILES
NONTIE DEL LOVIN
LESSIE MAY MALLOY
MARY FRANC MONROE
ADELENE McARTHUR
MOLLIE McARTHUR
MELBA McDANIEL
ELDIS McDONALD
ELIZABETH McINNIS
EDNA McLAUGHLIN
VIRGINIA McLEAN
MIGNONNETT McMILLAN
LOUISE McNEILL
MARY McNEILL

ALINE McPHAIL
FRANCES McRAE
LOUISE ODOM
MATTIE HELEN ODOM
ELIZABETH OVERSTREET
ANNIE LAURIE PARNELL
GRACE POWELL
MARY RAY
BEA ROBESON
EMMA DEAN ROGERS
MARGARET SIKES
MARION TOWNSEND
FRANCES TURNER
REBECCA TURNER
MYRTLE WALTERS
MARY ELEANOR WATSON
SARA WATSON
MARGARET WILLIFORD
BONNIE WRIGHT

The White Heather

'34/6

HELEN SCOGGINS
President



HELEN MARIE McNEILL
Vice President



HAZEL HARDISON
Secretary



MARGARET RUTTER
Treasurer



Conservatory Club

MEMBERS

MABEL BALTZEGAR
WAKEFIELD BALTZEGAR
NANNIE BIGGS
KATHERINE BLAND
MARY ELIZABETH BROWN
CARRIE BROWN
FRANCES CAIN
CAROLINE CARLISLE
GRACE NEAL CASHWELL
CAROLINE CHAPMAN
MARY CURRIE
ANNA MILDRED DANIEL
LUCY FERRAN
INEZ FRENCH
ELIZABETH HALL

HAZEL HARDISON
SUE HERRING
LILLIAN HONEYCUTT
BARBARA JARVIS
SARAH KAY
MARGARET KINNAIRD
NONIE DELL LOVIN
JESSIE MANNING
ELLEN MATHESON
SARAH MCCORMICK
RUBY MCCUTCHEN
MARY MCDANIEL
PAULINE MCGEE
ELIZABETH MCGUIRE
ELIZABETH MCKETHAN

KATHRYN McLEOD
HELEN MARIE McNEILL
FRANCES McRAE
BERTHA MOORE
MARGARET RUTTER
ELIZABETH SANDBERSON
HELEN SCOGGINS
LAURA SNEAD
LENA STEWART
EDNA TLAGUE
SERENE TURNAGE
ELIZABETH TYSON
ELIZABETH WALLACE
EDNA WHITTED
CATHERINE WILSON

Senior Recitals



Laura SNEAD
Graduate in Violin



Carrie BROWN
Graduate in Piano

ATHLETICS





SOME fifty years ago Ernestine Schumann-Heink began unaided her long climb to fame and success. You have only to look at her firm chin to know that surrender has never been a part of her nature. Through the years of toil, hardship, and poverty, she has emerged as the world's best-loved contralto. She is loved not only for her voice which has that lovely liquid gold characteristic of Italian singers and the conquering note of one who has mastered her art, but also because she has used her voice so generously in helping rich and poor alike.

Germany



Underwood and Underwood

Ernestine Schumann-Heink



Athletic Association

RUTHIE FAIRES
President



ANNIE McQUEEN
Vice President



MARY MOORE McLAUGHLIN
Secretary



KATE STEWART
Treasurer





ALICE GAMMON
College



KATHARINE BLAND
Junior Class

Cheer Leaders



HELEN GUERRANT
Sophomore Class



RUTH PAXON
Freshman Class



ANNA HENDERSON
Head of Hockey



MYRA JACOBS
Head of Basketball



KATHARINE BLAND
Head of Hiking

Heads of Sports



AGNES SMITH
Head of Tennis



PEARL LYMAN
Head of Archery



NANNIE BIGGS
Head of Baseball



RUTHIE FAIRES
Captain

Senior Hockey

SCORES

Senior	11	Junior	1
Senior	8	Sophomore	2
Senior	11	Freshman	0
Senior	2	Faculty	3

"Good old Senior Hockey! We think the game is simply grand!" So they sang, as well they might, for the Senior team was gloriously victorious over all comers; yet, they were good sports as winners. The playing of Ruthie Faires, Charlotte Painter, Anna Henderson, and, indeed, every one of the others, shall long be a shining example to future hockey players. They were also good losers, for when they were ignominiously beaten by the all-stars of the Faculty, they would have carried their erst-while opponents on their shoulders in a march of victory.



Junior Hockey

SCORES

Junior	1	Senior	11
Junior	3	Sophomore	2
Junior	2	Freshman	1

Purple and White, class colors; and they have been through some battles royal! In the middle of every fray were found Pete Harlan, Katherine Bland, Julia Taylor, and Agnes Smith; in fact the whole team seemed to have a peculiar habit of being everywhere at once. So did the ball! From the first bully to the last goal, each game was an exhibition of fine sportsmanship. Well, Juniors, we know that you'll continue every day, every way, getting better as you play and work, as you go marching along through life.



ANNIE McQUEEN
Captain





STUART WILSON
Captain

Sophomore Hockey

SCORES

Sophomore	2	Senior	8
Sophomore	2	Junior	3
Sophomore	5	Freshman	3

Ground, Sticks! Ground, stieks! Ground, Sticks! There goes the ball! Sometimes our happy warriors seem to drive it; sometimes it seems to lead them; on the whole, however, they seem to have that ball under control, to use it to advantage, to play with it as a cat does a mouse. Indeed, their rivals sang: "Hold that Tiger," but the Freshmen couldn't and the Seniors almost didn't. See that orange colored streak? Well, it's not greased lightning—only a Sophomore going after a ball, and it's more than likely to be Stuart Wilson, Helen Guerrant, Nannie Biggs, and Jean McLauren, closely followed by the rest of the team.



Freshman Hockey

SCORES

Freshman	0	Senior	11
Freshman	1	Junior	2
Freshman	3	Sophomore	5

"Hail, Hail, the gang's all here, rooting for the Freshman team! Cock-a-doodle-doo!" We must admit that the Freshman cheering section, with Ruth(star) Paxton as leader, certainly made itself heard, and the Freshman team most certainly made itself, and its hockey sticks, felt. Well, Freshman, you lost by a knee, Catherine Erwin's; but you had every other team scared for a while. Long may the MacLaughlin, Morehead, Smith, McQueen, Pritchard combination last! Get in there and fight 'em gamecocks!



CATHERINE ERWIN
Captain





ANNA HENDERSON
Captain

Senior Basketball

During basketball season the Seniors added one more championship title to their athletic career. With Charlotte getting the toss-up at the center and the fine passwork between her, Ruthie, and Myra a goal was usually inevitable. The guards were swift and sure, and, when the ball came flying high, Bertha merely raised her arms, and it was hers.

Practice after practice found the Seniors more efficient and more learned in the intricacies of the game. Imagine Opal guarded by Bertha or perhaps I should say David and Goliath playing basketball. Reports were that the Frosh had some unusually good players and so the Seniors went into that game wondering as to the outcome. From the beginning of the game until the end, the team worked hard and rolled up a good score.



Junior Basketball

The Juniors had a difficult time getting girls to come out for basketball this season. However they succeeded in working up a good team. Under the leadership of Evelyn Wilson the team played good clean games, and, whether losing or winning showed good sportsmanship. When Annie McQueen shot for a goal the crowd paused to watch another one of her "pretty long shots." Harlan and Rogers, though this is their first year at the game, played well and are promising material for next year's team. When it comes to guarding Kelly believes in "sticking closer than a brother." and, Sleepy Clarke and Wilson can't keep their feet on *Mater Terra*.

Here we have the line-up: Annie McQueen, Mildred Daniels, and Sarah McNeill—forwards; Lorena Clark, Nellie Kelly, and Evelyn Wilson—guards; and Agnes Smith, Pete Harlan, and Elizabeth Rogers—substitutes.



EVELYN WILSON
Captain





MARIAN TOWNSEND
Captain

Sophomore Basketball

Hey! Hey! Hey! and just in case you are wondering, that is Nan's way of letting the other Sophs know where she is. In fact, all of those Blue and Gold "ites" seem to know exactly where their player is going to be at a given time, and somehow they manage to have the ball there too. You have never seen such capers as Stuart cuts—now here, now there—she runs circles around her guard. And Margaret Williford! Well, when she touches the ball, the teams line up for a center toss. She never misses a shot. Sophomore "town girls" take the prize as guards. Their bulwark proved too strong for every team except their "Big Sisters."

Keep on yelling "Sist-Mcow!" Your team is certainly a bunch of fighting wildcats. You lost to your "Sister Class" this year, but they are leaving it to you to carry on the banner.



Freshman Basketball

"Have you seen those Freshmen teams? Yes, teams. They have four of them." Something like that was the chorus of the upper classes during the first weeks of basketball season. That mass of red and white objects forever ringing goals set a standard for all to work for.

The Freshmen probably have better material for a "cracker-jack" team than any other class. They are not working together very well yet, but we tremble to think of the scores which we shall read several years from now. Even next year, they are going to keep the other teams hustling. But, we must not forget that this year those Gamecocks had the Bulldogs, Wildcats, and Polar Bears lying low until after the first tournament games.

Freshmen! we are betting on you. Get those "hot-cha" players of yours working together, and you will be like "red dust" in the eyes of your opponents next year.



PATSY SMITH
Captain





Archery

Archery has proved to be a popular and fascinating sport to many. Day in and day out girls have practiced on the range, and, from all reports, we judge we may even have some William Tells. This spring, there will be the regular tournament, and there is a rumor that the team will enter the national tournament. Two years ago our team ranked seventeenth among some eighty other teams. We're counting on you, archers, to make that grade again this year and perhaps you will fool us and do even better—we hope so.



Tennis

CHARLOTTE PAINTER
THELMA BLISS
JEAN MACALLISTER
ELIZABETH WALLACE

Senior Manager
Junior Manager
Sophomore Manager
Freshman Manager

The announcement of the meeting of the regular beginners class in tennis last fall resulted in a large group of enthusiastic and would-be tennis players eager to seize the opportunity of becoming perhaps a second Helen Wills. This spring beginners and veterans will compete in the regular class elimination games and so class teams will be selected. Then comes the big tournament when the winner of the singles is presented with a loving cup, and the winning team chalks up so many points toward the Athletic Banner. Following this there will be the selection of varsity which will be of unusual interest, as this team will wind up the season with a game with the team of the Wilmington Tennis Club.



M Club

RUTHIE FAIRES
ANNA HENDERSON
PHIUBE HARLAN

..... *President*
..... *Secretary*
..... *Treasurer*

MEMBERS

EVELYN BROWN
LORINA CLARK
LEILA CROWELL
SARA DAVID
RUTHIE FAIRES

PHIUBE HARLAN
ANNA HENDERSON
HARRIET HODGIN
NANCY HYDE
MYRA JACOBS
FRANCIS MALLARD

BERTHA MOORE
CHARLOTTE PAINTER
AGNES SMITH
MATTIE LEE SMITH
EVELYN WILSON

FEATURES





JANE ADDAMS is preeminent in the group of women social reformers. She is known the world over for her well-organized social settlement work at Hull House in Chicago. Through her forty years of service, the characteristics of executive power, practical rationality, and unselfishness have marked her as one of America's foremost women. Her magnificent character, her magnificent mentality, and her magnificent work nominate her for an outstanding place among the women of all time.

The United States



Underwood and Underwood

Jane Addams





JULIA TAYLOR

Charm



RUTH FAIRES

Versatility



NANCY HYDE

Wisdom



DOROTHY SWENDIMAN

Capability



BERTHA MOORE

Personality



SARAH ROSE PETERSON

Beauty



VIRGINIA McLEAN

May Queen



MAY DAY, 1934



MAY DAY, 1934



MAY DAY, 1933

Snapshots



The White Heather

'34/6



The White Heather

'34/6



The White Heather

'34/6



Advertisements



U. S. Coast Guard Cutters docked at the Custom House on the Cape Fear River, Wilmington, N. C.

FLORA MACDONALD COLLEGE

RED SPRINGS, NORTH CAROLINA

A SENIOR COLLEGE FOR WOMEN

Near Fayetteville, Southern Pines and Pinehurst. Delightful climate, healthful mineral springs and remarkable health record. Bus and Railway connections.

A Standard Senior A Grade College for Women. Strong faculty. Graduates accepted for graduate work by leading universities. Class A teachers' certificates. Home-like atmosphere. Personal attention to students by teachers.

Courses Offered—Bachelor of Arts, Bachelor of Music, Bachelor of Science (Home Economics) degrees. A two-year Secretarial Course and a one-year Business Course.

Athletics. Skillful physical director and coach has general supervision of sports and physical training. Archery, basketball, baseball, hockey, swimming, tennis, hiking, etc., are enjoyed in season.

Social Activities. Receptions, teas, and many other social functions are provided at the college, while many hospitable and delightful homes of the citizens of Red Springs are open to the students.

Wide Patronage. Patronized at present by nine states and four foreign countries. Four thousand alumnae are engaged successfully as home-makers, nurses, teachers, dietitians, home demonstration agents, social workers, missionaries, and in many other useful professions.

Moderate Charges. For catalogue write

HENRY C. BEDINGER, *President*

FLORA MACDONALD COLLEGE

RED SPRINGS, N. C.

MRS. HUTCHINSON'S

PERMANENT WAVE
SHOP

MODERN and
EFFICIENT SERVICE

A WELCOME

*Always Awaits the Faculty
and Students at*

B. C. MOORE & SONS

*Where Quality Tells and Price Sells
You Will Find Them Here*

PRICE—The Friend of the day
QUALITY—The Companion of Years
Your Headquarters

McNEILL CLEANERS

PHONE 94

RED SPRINGS, N. C.

RED SPRINGS REALTY
& INSURANCE AGENCY

GENERAL INSURANCE

All Kinds—Except Life

J. D. McLEAN ARTHUR HAMILTON

IS YOUR SON READY FOR COLLEGE?

IF YOU BELIEVE that the gap between high school and university or senior college is too great for all save the most mature student—

IF YOU DESIRE that your son have a definite continuation of his Christian home atmosphere into his higher educational life—or

IF YOU FEEL that a two-year practical cultural college course with diploma preparatory for business or college is desirable—

FIND OUT what the Synod of North Carolina has provided for you. In an ideal climate (forty miles south of Pinehurst), housed in modern buildings, manned by university-trained Christian male teachers, administered by men with sympathy for youth, offering accredited education at low cost is—

THE PRESBYTERIAN JUNIOR COLLEGE for MEN
MAXTON, NORTH CAROLINA

*A Cordial Welcome Awaits
You At*

**BANK OF RED
SPRINGS**

Established 1900

CAPITAL AND SURPLUS
\$48,000

**LIBERTY
MANUFACTURING CO.**

*Home Made Fertilizers
Cotton Ginning*

Phone 13-J

Red Spring, N. C.

**THE RED SPRINGS
THEATRE**

THE BEST SHOWS

At Popular Prices

F. M. C.

We are backing you 100% with
Good Gulf Gasoline, Goodrich
Safety Silvertown Tires and Tubes.

Goodrich Batteries Accessories

HOTEL SERVICE STATION

GULF SERVICE STATION

McGOOGAN and McNEILL, Mgrs.

The White Heather

'34


THE PLACE OF SATISFACTION

"They Keep On Coming"

GRAHAM COMPANY

IS PARTICULARLY PROUD TO HAVE AMONG
ITS CLIENTELE

The Flora Macdonald Girls and Faculty

LATEST STYLES  REASONABLY PRICED


Red Springs, N. C.



*We Appreciate Your
Patronage*

ALWAYS THE
SAME . . .

Each item before it is offered
for sale, is thoroughly tested
by expert buyers for its
Quality. That is why the
quality of the foods found at
Pender's is always the same—
the highest standard possible.


PENDER'S STORES

MAKE **TOWNSEND'S PHARMACY** YOUR
CHOICE FOR
CANDIES, COSMETICS, MAGAZINES
AND DRUGS

THE LEADING DRUG STORE AND
FAVORITE MEETING PLACE OF

Flora Macdonald Girls

FOR THEIR AFTERNOON "Dope"

Red Springs, N. C.

HEADQUARTERS FOR
FLORA MACDONALD GIRLS

RED SPRINGS DRUG COMPANY

WE CARRY THOSE
POPULAR ITEMS THAT
THE COLLEGE GIRL NEEDS

=====
DEPENDABLE DRUGGISTS
=====

Red Springs, N. C.

**CHARLES
MILL
COMPANY**

•
Fancies
•

RED SPRINGS, N. C.

The White Heather

1934

BRANCH BANKING AND TRUST COMPANY

FAYETTEVILLE, N. C.

Capital \$800,000.00

Surplus and Profits \$325,000.00

RESOURCES OVER
TWELVE MILLIONS

*"Safe Banking and Trust
Service."*

Congratulations

BELK'S DEPARTMENT STORE

CONGRATULATES THE
WHITE HEATHER STAFF

AND TAKES
THIS OPPORTUNITY
TO THANK THE FLORA
MACDONALD GIRLS FOR
THEIR PATRONAGE

Fayetteville, N. C.
Lumberton, N. C.

The Town Shop

*The Exclusive Styles for
Discriminating Shoppers*

SUITS : DRESSES

Over Three Steps Up

Fayetteville, N. C.

Sandlin & Company, Inc.

Wholesale

GROCERIES, GRAIN
HAY and FEED

Phone 397

FAYETTEVILLE, N. C.

1899

1934



HIGHSMITH HOSPITAL

INC.

FAYETTEVILLE, N. C.

"Delicious and Refreshing"

Coca-Cola

COCA-COLA BOTTLING
COMPANY

Fayetteville, N. C.

Compliments from

THE CAPITOL
DEPARTMENT STORE

We Invite Your Patronage

J. S. HALL DRUG
COMPANY

Market Square

FAYETTEVILLE, N. C.

Complete Line

DRUGS : SUNDRIES : SODA

H. R. HORNE & SONS

FAYETTEVILLE, N. C.

Druggists Since 1865

The White Heather

'34/6

Smart Attire for the College Miss

FLEISHMAN'S BIG STORE

106-108 Hay St.

Fayetteville, N. C.

THE STYLE SHOP

*Where Your Patronage is
Always Appreciated*

You will be pleased with our
Styles, Quality and Service

Ask Others About Us

Fayetteville, N. C.

WILMINGTON, N. C.
FAYETTEVILLE, N. C.

CITY OPTICAL CO.

Everything Optical

Prescriptions Filled Accurately

Lenses Duplicated by Mail

*It Must Be As Represented
If It Comes From*
Hatcher's Jewelry Store

103 Hay Street
FAYETTEVILLE, N. C.

"Say it with Flowers"

Sunnyside Floral Nursery

Established 1873 Telephone 49
James M. Lamb & Sons, Proprietors

THE CAROLINAS' LARGEST
PHOTOGRAPHIC STUDIO

SIDDELL STUDIO

RALEIGH, N. C.

Official Photographers

THE WHITE HEATHER

The White Heather

346

S I M O N ' S
LATEST FASHIONS

for the Seasons

LUMBERTON, N. C.

COLLINS DEPT. STORE

Feature

*Good Quality — Correct Styles
Attractive Prices*

LUMBERTON, NORTH CAROLINA
WHITEVILLE, NORTH CAROLINA
CHADBOURN, NORTH CAROLINA
FAIRMONT, NORTH CAROLINA
MULLINS, SOUTH CAROLINA

We Underbuy We Undersell

A Welcome Awaits You At

McMILLAN'S
DRUG STORE

The Rexall Store

LUMBERTON, N. C.

EFIRD'S
DEPARTMENT STORE

LUMBERTON, N. C.

LENNON'S RADIO SERVICE

Complete Service on Any Radio

LUMBERTON, N. C.

D. M. McMILLAN

"Ford Products

Since 1912"

RED SPRINGS, N. C.

FAYETTEVILLE
OFFICE SUPPLY CO.

STATIONERS

PRINTERS

OFFICE OUTFITTERS

218 Hay Street

Fayetteville, N. C.

We Cater to the College Trade

MACK'S 5-10-25c STORES

RED SPRINGS, N. C.

*Big Enough for Values—Small Enough to Feel an
Interest in Our Customers*



Achievement

~ ACHIEVEMENT IN ANY LINE
OF ENDEAVOR IS THE NATURAL
RESULT OF ABILITY AND
EXPERIENCE, PLUS OPPORTUNITY.

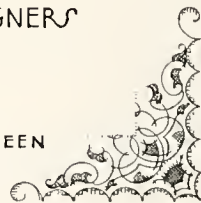
~ THIS ORGANIZATION TAKES PRIDE
IN ITS SUCCESS ~ SUCCESS EARNED
BY THE ABILITY OF ITS MEMBERS,
THE EXPERIENCE GAINED IN
NINETEEN YEARS OF EFFORT,
AND THE OPPORTUNITIES OFFERED
BY ITS CLIENTS.

CHARLOTTE ENGRAVING COMPANY INC.

ARTISTS- PHOTO-ENGRAVERS-DESIGNERS

CHARLOTTE
NORTH
CAROLINA

ESTABLISHED NINETEEN FIFTEEN



BUILDERS DREAMS

VISIONS created by the imagination precede the achievement of any really great accomplishment. The ability to weave the threads of imagination into the finished fabric is equally important.

It has been the privilege of the EDWARDS & BROUGHTON COMPANY to cooperate with the staff in creating their vision into material form.

Such coöperation is one of the "visions" which precede the building of a successful business, and is a part of the working policy of the EDWARDS & BROUGHTON COMPANY.

To those Staffs desiring complete co-operation, we offer unexcelled service.

You, too, may be proud of your annual.

Correspondence is Invited

EDWARDS & BROUGHTON CO.
RALEIGH, NORTH CAROLINA

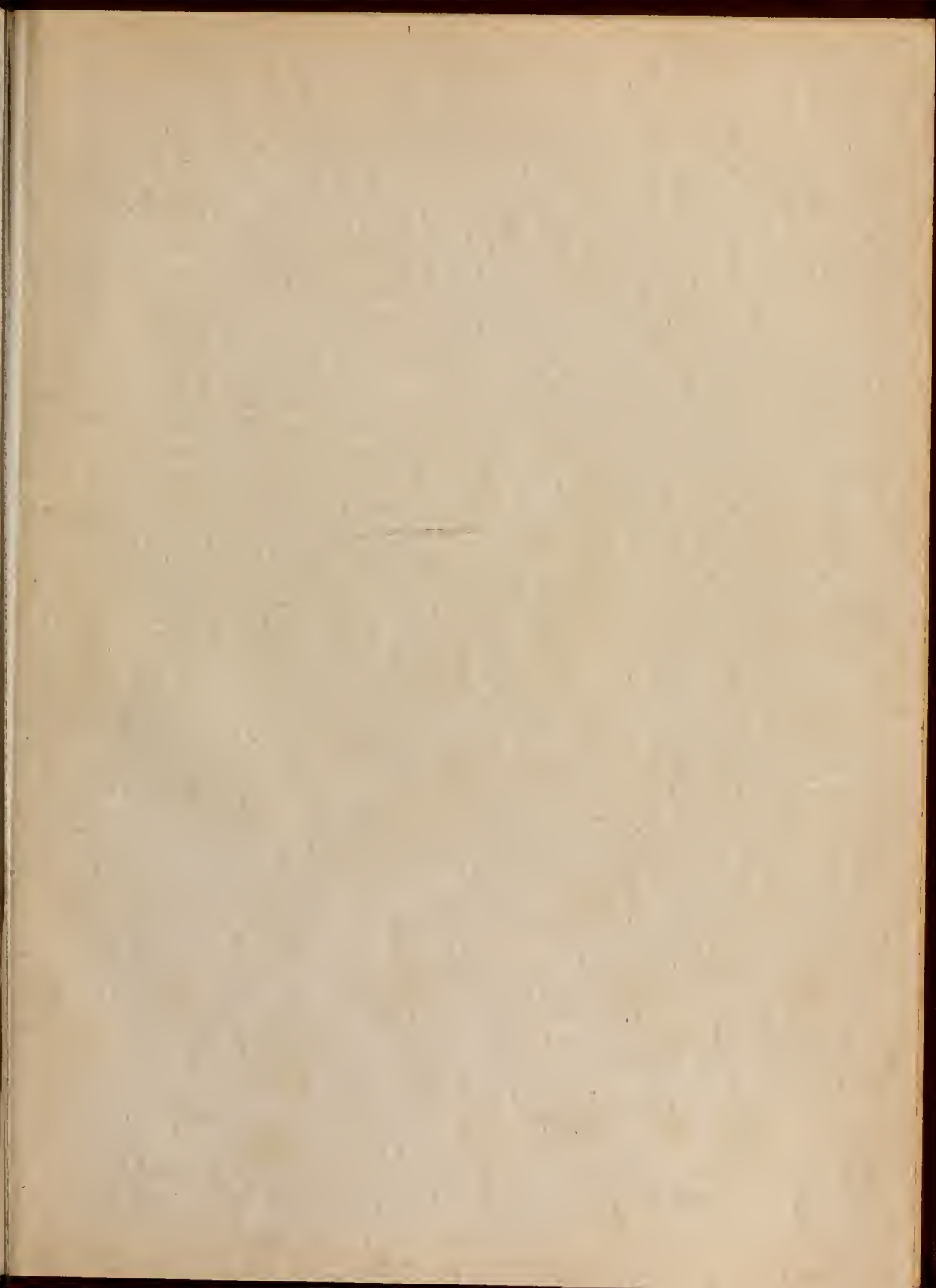


Requiem

AND how do we feel now that the dear old book has gone to press? Well, as you would suppose—relieved of responsibility but knowing that we are going to miss the fun of it all. Witness the staff at work—Dot to the printer, “Now how many lines can you shoot me on that” or to the engraver, “You suggest a scene by moonlight?”; Mallard handing the line of “You have nothing to lose and everything to gain—sign on the dotted line” to prospective ad buyers; Jane pleading with faculty members, “Give the camera another break”; Jenks, “Hold everything while I take it”; Peggy cool and unruffled amid the rush of the Christmas bazaar; everyone rushing around and working at top speed when copy must be in by a certain date.

We can't wait to see the book in its final form and most of all we are hoping you will like it. It is what it is because of the splendid coöperation and help of the photographer, engraver, and printer—and incidentally, the use of some of our own gray matter.





R
388.756
F

19535

