

THE UNIVERSITY OF CHICAGO



1892







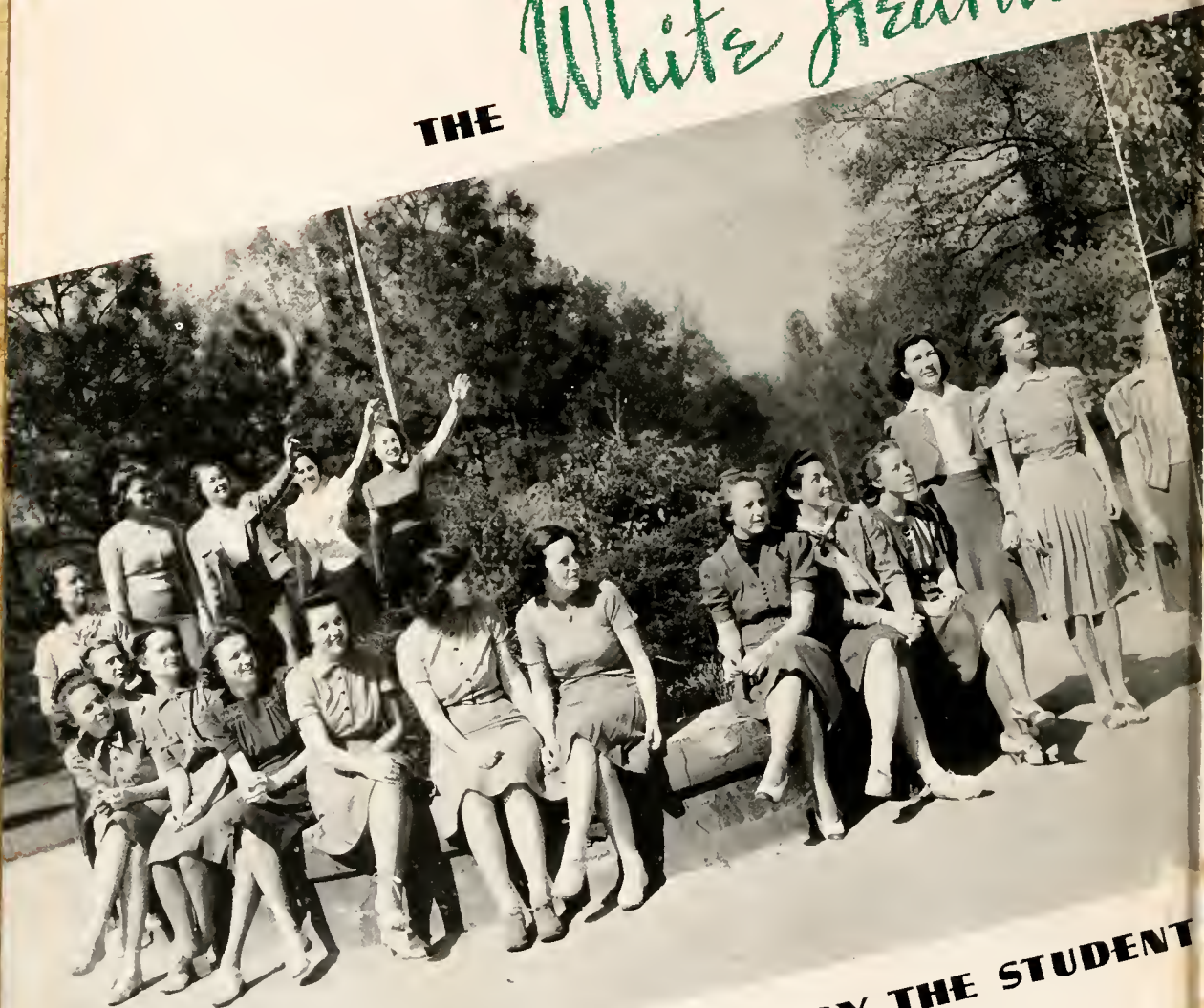
A YEAR AT FLORA MACDONALD

Frances Wimberly
EDITOR

Georgie Howie
BUSINESS MANAGER

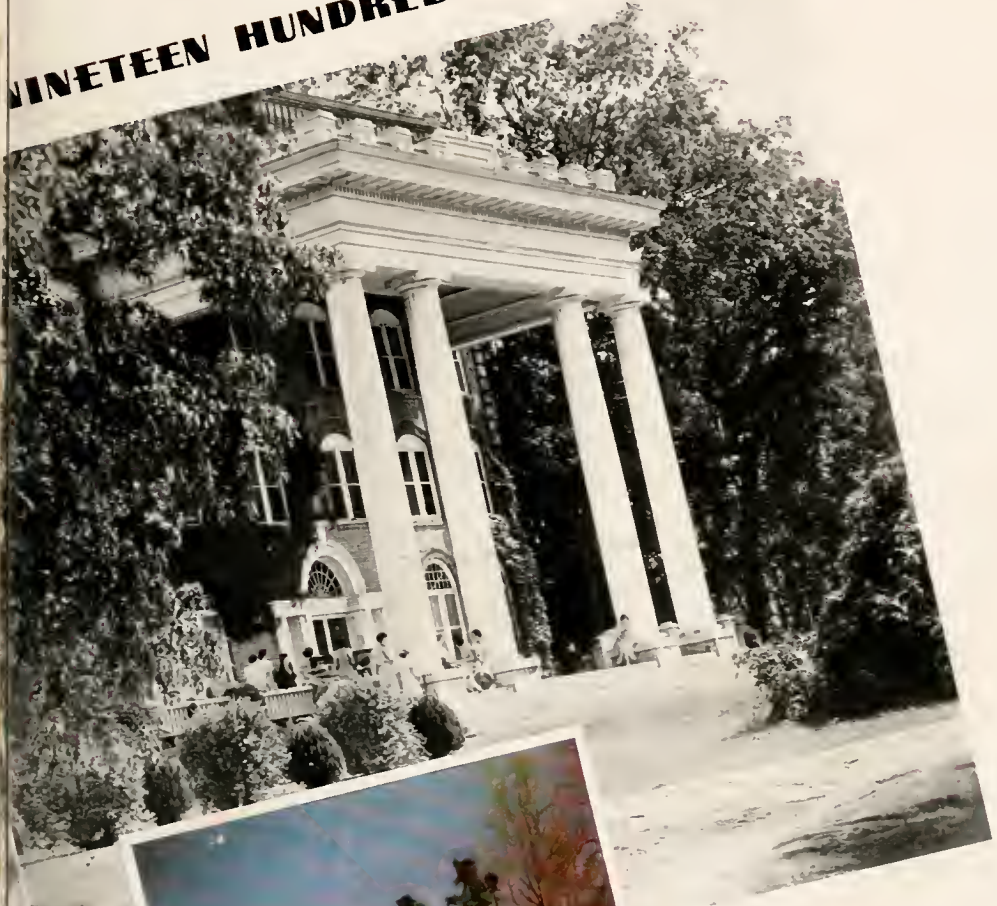


THE *White Heather* **OF**

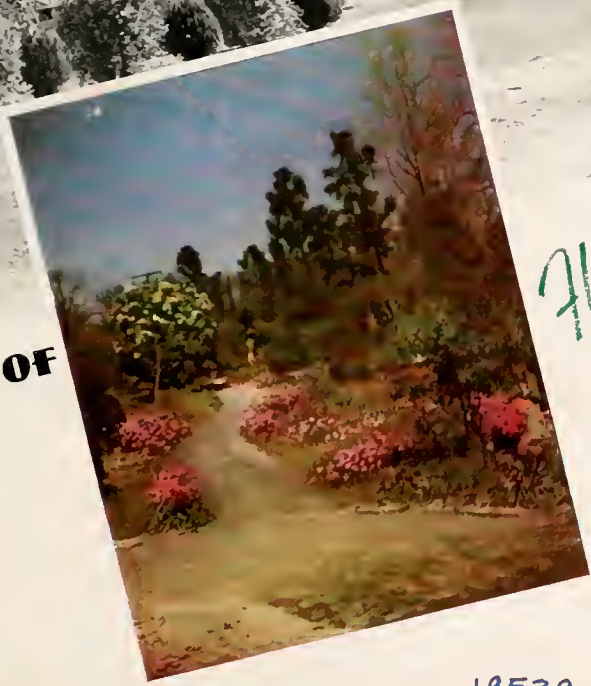


PUBLISHED BY THE STUDENT

NINETEEN HUNDRED THIRTY NINE



BODY OF



Flora Macdonald College

19539

A Year on the Flora

Another link in the chain of Flora Macdonald History has been cast: another class has had its day. In these few pages, it is our task to represent in picture and paragraph what this year has added to that history. It is a difficult task, for much has happened since the day the Class of 1939 became a reality. Furthermore, because Flora Macdonald is favored with the distinction of having a College Annual rather than a Senior Annual, there are three other classes whose achievements during the past eventful year are certainly worthy of re-

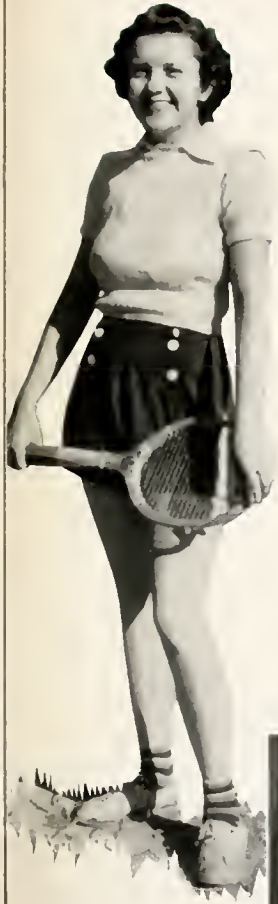


COLLEGE

CLASSES



Macdonald Campus



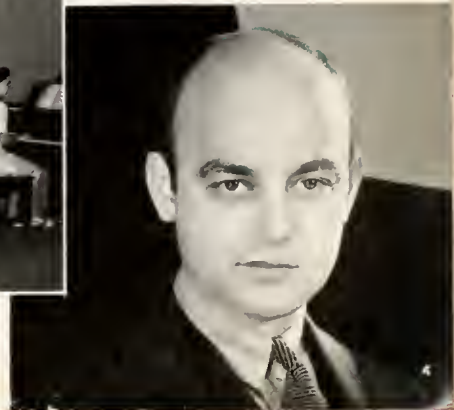
counting. Therefore, from the abundance of material collected, we have selected, we hope wisely, what you will find in the following pages. We have not chosen a definite theme but have tried to recapture, in part at least, the spirit and tradition of the institution it represents.

With these thoughts foremost in mind, the staff of 1939 presents this volume of *THE WHITE HEATHER*.

ACTIVITIES



FEATURES

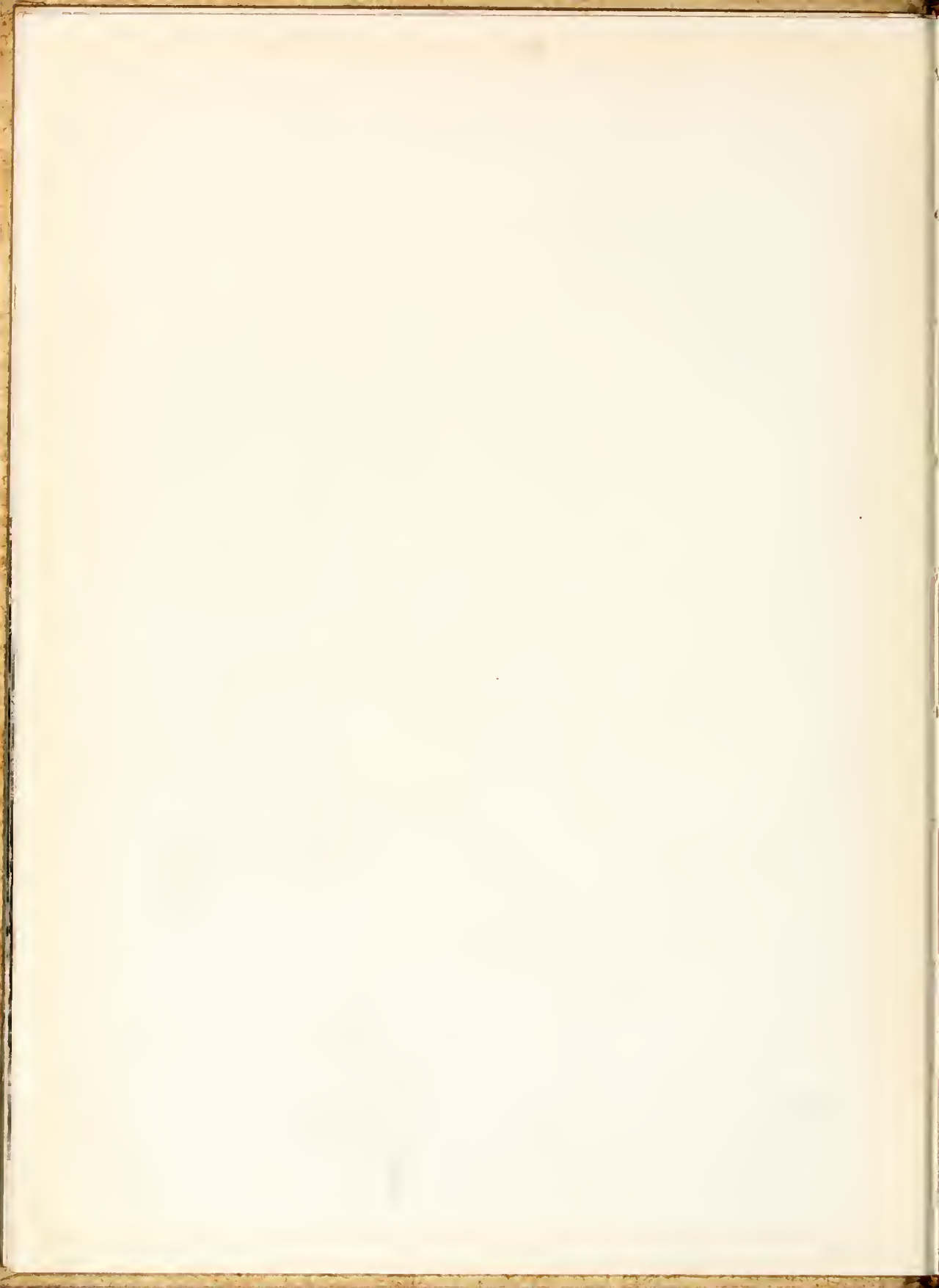


WE DEDICATE THIS *White Heather*

With admiration and respect, We, the Student
Body of 1939 inscribe this volume of the WHITE
HEATHER to one, who in the faithful fulfillment
of her duties has won the esteem and gratitude of
the students of Flora Macdonald.



Mrs. Jane Colson Glenn





DR. BEDINGER

THE COLLEGE



HENRY GRAYBILL BEDINGER, B.A., B.D., D.D.

President

Flora Macdonald College, 1930—

CHARLES GRAVES VARDELL, B.A., D.D.
President Emeritus

HAZEL MORRISON, B.A.
Dean of the Faculty and Registrar

MARY JOHNSON
Dean of Students



Vardell



Morrison



Johnson

FACULTY

ERNEST GRAHAM	<i>Business Manager</i>
LILLIAN FARQUAR ROBESON	<i>Professor of Violin</i>
ZOULEAN ANDERSON	<i>Professor of Bible</i>
ETHEL BATEMAN	<i>Professor of Physical Education</i>
HELEN SCOGGINS	<i>Instructor</i>
EMMA LOUISE JONES	<i>Professor of Public School Music</i>
ELIZABETH CLARKE MCPHAIL	<i>Associate Professor of Bible</i>
VERTIE D. PRINCE	<i>Professor of Mathematics</i>
WILGUS ERERLY	<i>Acting Dean of Conservatory of Music</i>
ETTIE BROWN	<i>Professor of French</i>
ESTELLE COONEY	<i>Acting Professor of Voice</i>
LAWRENCE DAVIS	<i>Chairman of Development Program</i>
HARRIETT MORRISON	<i>Professor of Latin</i>
PRINCIE MAPHET	<i>Associate Professor of Commercial Subjects</i>
THELMA M. HALL	<i>Professor of Home Economics</i>
ANNA JOSEPHINE BRIDGMAN	<i>Associate Professor of Biology and Physics</i>
MARY CONOLY	<i>Professor of Education</i>
ALEXANDER BELL STUMP	<i>Professor of Biology and Bacteriology</i>
GAYNELL CALLAWAY SPIVEY	<i>Professor of English</i>
LIDA LAW CHAPMAN	<i>Professor of Piano</i>
NELL BARNARD BRISCOE	<i>Professor of Commercial Subjects</i>
FRANCES ELIZABETH COMER	<i>Professor of Home Economics</i>
ANNA INEZ MORTON	<i>Associate Professor of English</i>
ELIZABETH FAIN	<i>Professor of History</i>
VIRGINIA CONNOR	<i>Resident Nurse</i>
JEAN DOUGLAS TAIT, <i>Dietitian and Associate Professor of Home Economics</i>	
ROBBIE LOU STUBBS	<i>Secretary of Development Program</i>
ELEANOR SAMPLE	<i>Librarian</i>
ANNIE WILLIAMS	<i>Secretary to President</i>



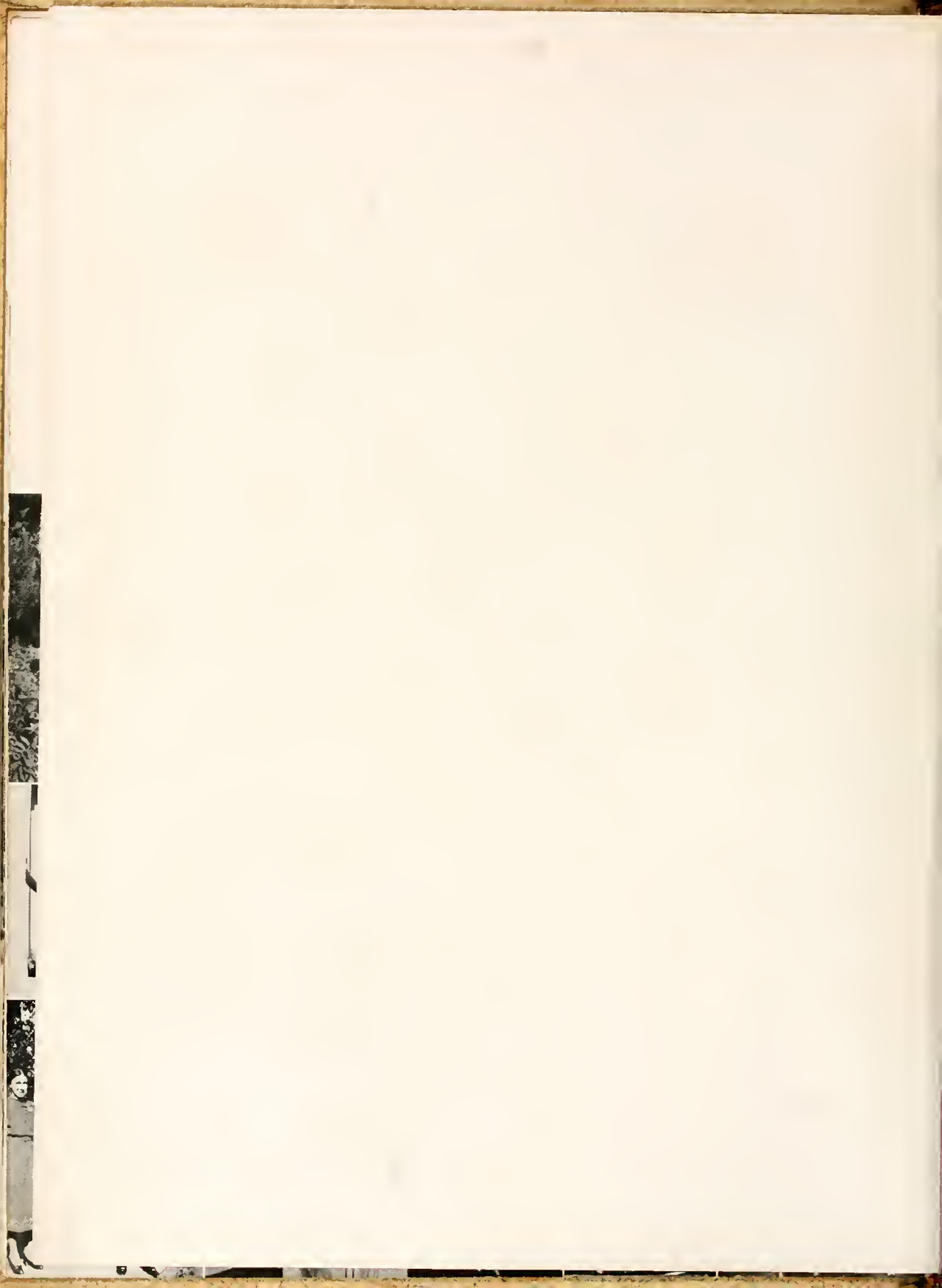
I M P A R T I N G K N O W L E D G E T O U S

Mrs. Ewing. . . . Dr. Bedinger must Apple too. . . . Burning leaves. . . .
 In the midst of books, candles, and china, Dr. Spivey. . . . Miss McCall, we've
 missed you. . . . Two favorites. . . . Miss Prince. . . . Hurrying back from High
 School. . . . Sisters. . . . He'll love this. . . . Miss Hall thumbing home with
 Miss Comer. . . . Yes, I'm really going to Charlotte to have a tooth pulled, Miss
 Johnston. . . . Yessum, Sam might be there. . . . Dr. Stump. . . . Such popularity
 on Sunday is unheard of at Flora Macdonald, Miss Cooney!!



Classes







Ogilvie, Thompson, Turlington, McMillan, Helms, Grantham

SENIOR CLASS

Officers

PEGGY McMILLAN.....	<i>President</i>
LENA THOMPSON.....	<i>Vice President</i>
SARA GRANTHAM.....	<i>Secretary</i>
MARTHA TURLINGTON.....	<i>Treasurer</i>
MARY ALICE HELMS.....	<i>Tearoom Manager</i>
KATE CGILVIE.....	<i>Assistant Tearoom Manager</i>



CAROLINE BAKER

ELIZABETH MITCHELL BELL



Seniors

CAROLINE BAKER
Fayetteville, N. C.

Granddaughters Club '36; William Bartram Scientific Society, Head Sophomore Tennis, Tennis Team, Basketball Team, Granddaughters Club '37; William Bartram Scientific Society, Prayer Band Leader, Basketball Team, Hockey Team, Soccer, Granddaughters Club '38; William Bartram Scientific Society, Prayer Band Leader, Basketball Team, Hockey Team, Glee Club, Granddaughters Club, F.M.C. Monogram, Hockey Varsity '39.

Caroline is a good friend to have, which may be the reason for the many friends she has. Here is a girl who is just what she seems. She's interested in other people, can carry on intelligent conversation and has a fine sense of humor. With her love of science she is sure to find a success that is rightfully hers.

ELIZABETH MITCHELL BELL
Fayetteville, N. C.

Pineland Junior College '36-'37; Hockey Team, Basketball Team, Music Club, Glee Club, Prayer Band Leader '38; Hockey Team, Basketball Team, Music Club, Glee Club, Prayer Band Leader, Class Poet '39.

Those who know her best appreciate her splendid qualities—Lib is a good sport when it's time to play, but on other occasions we see the graver side of her nature. Power of concentration and willingness to work. She writes poetry; poems which are producers of inspiration. Because of this ability we have chosen her for our class poet.



ANNIE ELOISE BUIE

ANNE BURGESS

Seniors

ANNE ELOISE BUIE

Denmark, S. C.

Home Economics Club, Day Students Club '36; Home Economics Club, Day Students '37; Basketball Team, Home Economics Club '38; Basketball Team, Home Economics Club '39.

"Now I may be wrong, but I think—." Yes, she thinks things through and expresses her opinions with conviction. Classes have been made more interesting by Eloise's intelligent questions and the ensuing discussions. With her initiative and purposefulness, she is accommodating, friendly and loyal.

ANNE BURGESS

Summerton, S. C.

Glee Club, South Carolina Club, Home Economics Club '36; Glee Club, South Carolina Club, Prayer Band Leader, Home Economics Club '37; Glee Club, South Carolina Club, Prayer Band Leader, First Vice President Epsilon Chi Society, Vice President Home Economics Club, Home Economics Club '38; Glee Club, South Carolina Club, Prayer Band Leader, Second Vice President Epsilon Chi Society, Home Economics Club '39.

"Ann has us all beat a mile!" She can make high grades, do her work on time, read books and still have a great deal of leisure— all managed with delightful ease. She is everything college life has to offer in the way of a leader, a friend, and a classmate. Her unselfishness and reliability portray a heart of pure gold. Surely she deserves the best Dame Fortune has to give!



VIRGINIA BURNS

MARGARET GENEVA COOK



Seniors

VIRGINIA BURNS

Maxton, N. C.

Corresponding Secretary Epsilon Chi Society, Home Economics Club '36; Censor Epsilon Chi Society, Home Economics Club '37; William Bartram Scientific Society, Home Economics Club, Commencement Marshal, Basketball '38; Home Economics Club, Recording Secretary Epsilon Chi Society, William Bartram Scientific Society, Tennis, Archery, May Court '39.

You honestly can't help liking "Ginger." She's a grand person, absolutely sincere, always courteous, good-looking, well-groomed and a conscientious student. Her attractiveness added much to the May Court just as her originality in decorations, food and clothes added much to the success of all the practice house entertainments. She will surely be missed next year.

MARGARET GENEVA COOK

Leaksville, N. C.

Home Economics Club, Tennis '36; Home Economics Club, Tennis, Prayer Band Leader '37; Hockey, Soccer, Basketball, Prayer Band Leader, William Bartram Scientific Society '38; Hockey, Basketball, Prayer Band Leader, William Bartram Scientific Society, Soccer, Basketball Varsity '39.

In Margaret we have a combination of sincerity, athletic ability, capability and truth. Her's is a loving heart brimful of thoughtful kindness. During a busy four years of college, she has not overlooked little things, which really make college worthwhile. With her patience and love of children she will be in great demand as a teacher.



MARGARETTE LOUISE DALTON

WILMAH DENNING



Seniors

MARGARETTE LOUISE DALTON

Lumberton, N. C.

Hockey Team '36; Hockey Team, Basketball '37; Hockey Team, Basketball, Hockey Varsity '39.

"Give credit where credit is due." Most of all we admire "Baby" for her determination and good sense of humor—to a difficult task she will never yield. To her, work comes first and play afterwards. A better hockey guard would be hard to find! "Baby" is worthy, deserving and ambitious. With such a combination of traits she's sure to be a success in life.

WILMAH DENNING

Dunn, N. C.

Hockey Team, Basketball Team '37; Hockey Team, Basketball Team, Soccer Team, Hockey Varsity, Fire Squad '38; Hockey Team, Basketball Team, Soccer Team, F.M.C. Monogram, William Bartram Scientific Society, Hockey Varsity '39.

You may search this wide world over but you'll never find another Wilmah. At Flora Macdonald she's made a high scholastic average; one which makes us really envious. She not only studied hard but patiently and willingly gave her time to help slower classmates. Wilmah will never stop lower than the top round of the ladder of life.



ANNE DIMMOCK

ANNIE D. BOSE



Seniors

ANNE DIMMOCK
Newport News, Va.

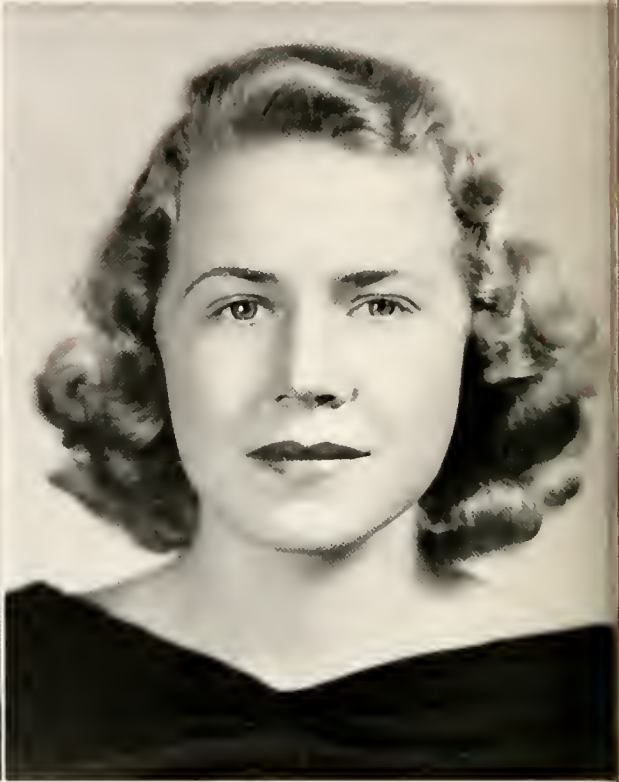
Music Club, Virginia Club, Sub-Chairman of Music Circle '36; Music Club, Madrigal Club, Virginia Club '37; Music Club, Madrigal Club, Prayer Band Leader, Secretary Virginia Club, May Court '38; Secretary Music Club, Madrigal Club, Virginia Club, Senior Scribbler '39.

Perhaps the whole secret to her character is her belief that God has a plan for her life. At any rate she is altogether lovely. Her quick sympathy, and humor, unforged friendliness, picturesque choice of language are unforgettable. She dreams and plans, and things happen. She always shares her fun with others, and seeks and has many friends, and is a good student and teacher.

ANNIE DuBOSE
Gadsden, S. C.

Hockey Team, Prayer Band Leader, William Bartram Scientific Society '37; William Bartram Scientific Society, Treasurer William Bartram Scientific Society, Treasurer F.M.C.A., F.M.C.A. Cabinet '38; William Bartram Scientific Society, Treasurer F.M.C.A., F.M.C.A. Cabinet, Music Club '39.

A more capable and dependable girl than Annie could hardly be found. If you want anything done well, ask Annie to do it. We all know how efficiently she has held the office of treasurer of the Christian Association. She is good on the hockey field, too. In everything she lives up to her high ideals.



HEBB EASTERLING

MARY HELEN FAULK

Seniors

HEBB EASTERLING

Rowland, N. C.

Secretary Highway of Life Enrichment '36; Prayer Band Leader, William Bartram Scientific Society, Delegate to Davidson Conference '37; F.M.C.A. Cabinet, William Bartram Scientific Society, Treasurer Mathematics Club, Fire Squad, Delegate to Davidson Conference '38; Vice President F.M.C.A., President Mathematics Club, William Bartram Scientific Society, Glee Club '39.

Hebb is efficient, loyal, dependable, and an earnest Christian. Her good sense of humor and tact make her the kind of person you enjoy being with. As an assistant to the Dean of Faculty she has proved her secretarial ability. She is admired for her fineness of character and diligence in work.

MARY HELEN FAULK, B.S.

Fairmont, N. C.

Z

Home Economics Club, Basketball Team '35; Home Economics Club '36; May Court, Home Economics Club '37; Tennis Club, Home Economics Club '38.

Mary, so lovely, sweet, serene and unaffected has made a host of friends at Flora Macdonald. Like a flash of shimmering sunlight, her beauty has always made things about her seem brighter and happier. Her innate taste for finer things shows in many outward forms.



MARY ROSA FLEMING

ALICE GORDON GEEKIE



Seniors

MARY ROSA FLEMING

Mebane, N. C.

Prayer Band Leader, Mission Study Leader '37; F.M.C.A. Cabinet '38; Prayer Band Leader '39.

We all admire Mary Rosa. She is an independent thinker and lives up to her convictions. In all of her relations she is sincere, kind and accommodating. It would be hard to find a truer friend than she. When it comes to making public speeches we think Mary Rosa is tops.

ALICE GORDON GEEKIE

Spencer, N. C.

Athletic Board, Secretary Athletic Association, Captain Hockey Team, Hockey Team '36; Treasurer Athletic Association, Hockey Team '37; Head of Hockey, F.M.C. Monogram, Hockey Team, William Bartram Scientific Society, Mathematics Club, Soccer Varsity '38; President Athletic Association, Student Council, William Bartram Scientific Society, Mathematics Club, St. Cecile Music Club, German Club, Hockey Team, Soccer Team, F.M.C. Monogram, Athletic Board, Hockey Varsity '39.

Geekie, the unpredictable. Just when you begin to think you know her, out pops a characteristic you had never suspected. Lest you regard her solely as a good athlete, she will cook you a tasty meal; not altogether domestic, she enjoys good music, bubble sessions, books, and cheese tid-bits. Though almost abrupt in her manner, she is a generous person, jolly and accommodating.



JANE DOUGLAS GIBBS

SARAH GRANTHAM



Seniors

JANE DOUGLAS GIBBS

New Bern, N. C.

Home Economics Club, Glee Club, Secretary Sunday School, Tennis '36; Home Economics Club, Glee Club, Basketball, Archery '37; Home Economics Club, Glee Club, Basketball, Archery, Treasurer Junior Class, Commencement Marshal, William Bartram Scientific Society '38; College Superlative, Home Economics Club, Glee Club, William Bartram Scientific Society, Basketball, Dramatic Club '39.

Jane is able to find beauty in all things, which, perhaps is the secret of her lovely temperament. Dignity, grace, poise and quick laughter make this loyal daughter of New Bern a charming lady and the friendliest girl in school. But another side of Jane reveals a domestic person, who, on a last minute's notice can rig up a hat that will be the envy of all.

*"She's pretty to walk with
And witty to talk with
And pleasant to think with too."*

SARAH GRANTHAM

St. Pauls, N. C.

Vice President of Junior Class, Secretary and Treasurer of Student Body, Student Council, Basketball '37; Secretary of Senior Class, Prayer Band Leader '39.

Contained in Sarah's make-up is that strong durable quality that stands the wear of time. Her friendship, faithfulness and unchanging loyalty to a high standard of living has made her outstanding. Infectious laughter, good natured replies, genial, unassuming, reliable—these aptly describe Sarah.



MARY ALICE HELMS

HELEN HEROLD



Seniors

MARY ALICE HELMS

Bethune, S. C.

Home Economics Club '36; Home Economics Club '37; Assistant Tea Room Manager, Commencement Marshall, Basketball Team, F.M.C. Secretary of Methodist Student Association '38; Tea Room Manager, Assistant Editor of *Pine and Thistle*, Associate Editor of *WHITE HEATHER*, Delegate to North Carolina Collegiate Press Association, F.M.C. Secretary of Methodist Student Association, Dramatic Club '39.

Flossie—suggestive of cool, pillared porches, courageous Southern women, so demure, and as graceful as a Minuet. We remember her dimples, deepening into quick flashes of joy, that light her eyes with glints of gentle mischief along with her perseverance, loyalty, and efficiency. We recognize the superior quality of her friendship, the dignity and charm of her college life and hope that in years to come we will still have the privilege of having her as a friend.

HELEN HEROLD

Summersville, W. Va.

Soccer Team, Hockey Team, Home Economics Club, Basketball '36; Hockey Team, Home Economics Club, Basketball '37; Hockey Team, Home Economics Club, Tea Room Manager, Assistant Business Manager of *WHITE HEATHER* '38; Home Economics Club, Hockey Team '39.

Good things still come in small packages. In Helen, we find a person who is willing to help after the party is over. She has a dry wit, which combined with her West Virginia accent, makes her an entertaining person. The foods and cookery course is benefitted by her presence, and she will likely find the course useful to her. There always seems to be a merry twinkle in her eyes usually on the verge of breaking into laughter.



GEORGIE HOWIE,
MARY HUEY



Seniors

GEORGIE HOWIE

Charlotte, N. C.

Archery Club, William Bartram Scientific Society '36; Archery Club, William Bartram Scientific Society '37; Junior Editor of WHITE HEATHER, Basketball Team, Varsity Basketball, Tennis Club, Archery '38; Business Manager of WHITE HEATHER, President William Bartram Scientific Society, Tennis, College Superlative, Delegate to North Carolina Collegiate Press Association '39.

Georgie was voted our "most capable," and has a long list of accomplishments to prove it. Yet, with her special business-like ability, she has a carefree and fun-loving nature. She is a hard worker and a cheerful and accommodating one. This year, she has very splendidly headed the William Bartram Scientific Society and in the future we expect to hear of her in the scientific world.

MARY HUEY

Wildwood, Fla.

Tennis Club, Florida Club '36; Tennis Club, Florida Club '37; Basketball, Tennis Club, Cheer Leader, Publicity Manager '38; Basketball, Tennis Club, Cheer Leader '39.

Huey possesses a winsome personality that makes us want to know her better and wonder what art of magnetism she uses to fascinate us. Her vigorous ways, quicken swift response. Remember her infectious enthusiasm when she led our class songs and yells? Merry as a little elf—finding the secret of happiness within her own light heart.



VIOLET KERR

FLORIDE LEMMON

Seniors

VIOLET KERR Mooreville, N. C.

Hockey Team, Basketball Team '36; Hockey Team, Hockey Varsity, Basketball Team, William Bartram Scientific Society '37; Hockey Team, Basketball Team, William Bartram Scientific Society '38; William Bartram Scientific Society, F.M.C. Monogram '39.

Vivacious, industrious and friendly, these are the traits for which Violet will be remembered. During her four years here she has taken an active interest in sports, and as a result is a varsity member. Her numerous telephone calls are a sign of her popularity. Here's to Violet—she's sure to be a success.

FLORIDE LEMMON Myrtle Beach, S. C.

Home Economics Club '36; Treasurer Sophomore Class, Home Economics Club, Delegate North Carolina Collegiate Press Association, William Bartram Scientific Society '37; Home Economics Club, Christian Association Cabinet, Assistant Editor-in-Chief of *Pine and Thistle*, Delegate North Carolina Collegiate Press Association, William Bartram Scientific Society '38; Home Economics Club, South Carolina Club, President F.M.A.C., Student Council, Who's Who Among American University and College Students, William Bartram Scientific Society '39.

Original, attractive and friendly is the President of our Christian Association. Affection and understanding are to be found in her clear blue eyes. Besides being a good student, she finds time to take part in social activities. More of us should have Floride's optimistic outlook on life as well as her self-assurance.



MARJORIE MALLOY

CATHERINE WRIGHT MURPHY



Seniors

MARJORIE MALLOY

Lumber Bridge, N. C.

Tennis Club '36; Tennis Club, Basketball '37; Critic Epsilon Chi Society, Tennis Club, Basketball '38; Treasurer Epsilon Chi Society, Commercial Club, Tennis Club, May Court '39.

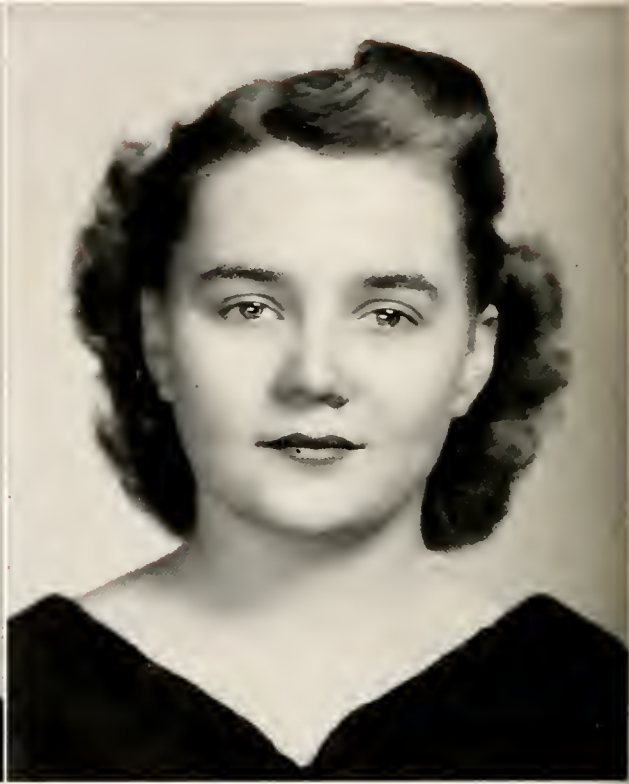
Beautiful and neat—but she's more than that! "Margie" is bubbling over with friendliness and fun. Her well rounded personality furnishes her the ability to meet every situation with confident ease, and her ready smile and charm have won our hearts. We all love "Margie."

CATHERINE WRIGHT MURPHY

Red Springs, N. C.

Montreat Junior College '36; Prayer Band Leader '37; William Bartram Scientific Society '38; William Bartram Scientific Society, Dramatic Club, Day Students Club '39.

In life's throng and press, Kay mingles in such a quiet way that comparatively few are fortunate enough to realize her true worth. Her kindness and generosity of heart, combined with good literary taste and a wide knowledge of books, make her invaluable as a classmate.



MORAG McCALL

LUCY CATHERINE McDONALD



Seniors

MORAG McCALL
Red Springs, N. C.

Day Students Club, Granddaughter's Club, Volleyball '36; Day Students Club, Granddaughter's Club, Volley Ball '37; Day Students Club, Granddaughter's Club Volley Ball '38; Day Students Club, Granddaughter's Club '39.

We have always regretted that Morag had to be a day student, for fortunate as that may be for her, it meant that we have seen considerable less of her than we would otherwise. And Morag is the sort of girl we'd like to see all the time. Capable, intellectual, a friend in need (witness the number of times she picked up frantic seniors rushing muddy to school) and a friend indeed, of a keen sense of humor and a deep interest in people go to make up one. As it is, Morag is a very definite part of our class and we would not have been complete without her.

LUCY CATHERINE McDONALD
Star, N. C.

Music Club, Tennis Club '36; Music Club, Tennis Club '37; Vice President Music Club; Archery Club '38; President Music Club, Senior Scribbler, Archery Club, Senior Piano Recital, German Club, Delegate to National Association of Musicians, Class Testator '39.

True as the tones of Stokowski, sprightly as the lilting measures of a waltz by Strauss, sudden laughter leaving in its wake bright sunshine, lover of fine music who knows whereof she speaks, unobtrusively efficient, wonder and love of all things human—this is Lucy.



ELIZABETH McFARLAND

LUCIA McINNIS



Seniors

ELIZABETH McFARLAND

Manchester, N. C.

Hockey Team '36; William Bartram Scientific Society, Hockey Team, Basketball Team '37; William Bartram Scientific Society, Mathematics Club, Hockey Team, Basketball Team, Prayer Band Leader '38; William Bartram Scientific Society, Mathematics Club, Hockey Team, Basketball Team '39.

Elizabeth with her determination, steadiness and methodical mind, which is well-fitted for mathematical problems, has been a good student. She creates a jolly atmosphere at all times. No matter what the situation may be one can count on her friendship, her faithfulness and her everlasting loyalty. All of these good traits go to make up "Spunky" a good clean sport in the athletic field as well as in the classroom.

LUCIA McINNIS

Little Rock, S. C.

Hockey Team, Home Economics Club, South Carolina Club '36; Home Economics Club, Archery, South Carolina Club '37; William Bartram Scientific Society, Home Economics Club, South Carolina Club, Secretary Sunday School '38; Home Economics Club, South Carolina Club, F.M.C.A. Cabinet, Head of Highway of Leisure Time, William Bartram Scientific Society, Fire Squad '39.

Lucia, in her quiet, unassuming way is loved by all who know her. She has a highly developed sense of humor that makes her good company. Call on her when you need a helping hand, for she is always ready to do her best. From her fine record as a Home Economics student, we know she will make an excellent housewife, and from her work on the Cabinet, we know she will remain in our memories like the pure simplicity of white marble.



MARGARET LOUISE McMILLAN

CELIA NEWTON



Seniors

MARGARET LOUISE McMILLAN

McDonald, N. C.

Prayer Band Leader, Glee Club, St. Cecelia Music Club '36; Prayer Band Leader, Glee Club, Secretary Sophomore Class, Delegate to Davidson Young People's Conference, St. Cecelia Music Club, Mission Study Leader '37; F.M.C.A. Cabinet, St. Cecelia Music Club, Secretary Glee Club, Sextette, Secretary Junior Class, College Cheer Leader, Chief Commencement Marshal '38; President Senior Class, Glee Club, Sextette, Senior Scribbler, Senior Piano Recital '39.

This small space is inadequate to describe the president of our class, who has worked for us long and well. Her love of music, her high ideals, her fairness, her ready sympathy, and her versatility command our respect and admiration, and insure our loyalty. To her we give every good wish for happiness and success.

CELIA NEWTON

Red Springs, N. C.

Day Students Club '36; Day Students Club '37; Day Students Club, William Bartram Scientific Society '38; Day Students Club, William Bartram Scientific Society '39.

Although not many of us know her well, all of us agree that she is one of our most outstanding day students. Her calm, poised manner as she walks through the halls; her brilliant class recitations, and her wonderful grades tend to make us envious. We don't know what her ambitions are, but we feel sure Celia's brilliant mind and conscientious work will make her an outstanding success.



PENIA HAYES NICHOLS

KATE CAMERON OGILVIE



Seniors

PENIA HAYES NICHOLS

Kenly, N. C.

Class Hockey '36; Music Club, Class Hockey, Class Basketball, Class Soccer, Captain Hockey Team, Hockey Varsity '37; Hockey Team, Basketball Team, Soccer Team, Captain Basketball Team, Vice President Athletic Association '38; Hockey Team, Basketball Team, Head of Hockey, Recorder of Points, F.M.C. Monogram, Hockey Varsity '39.

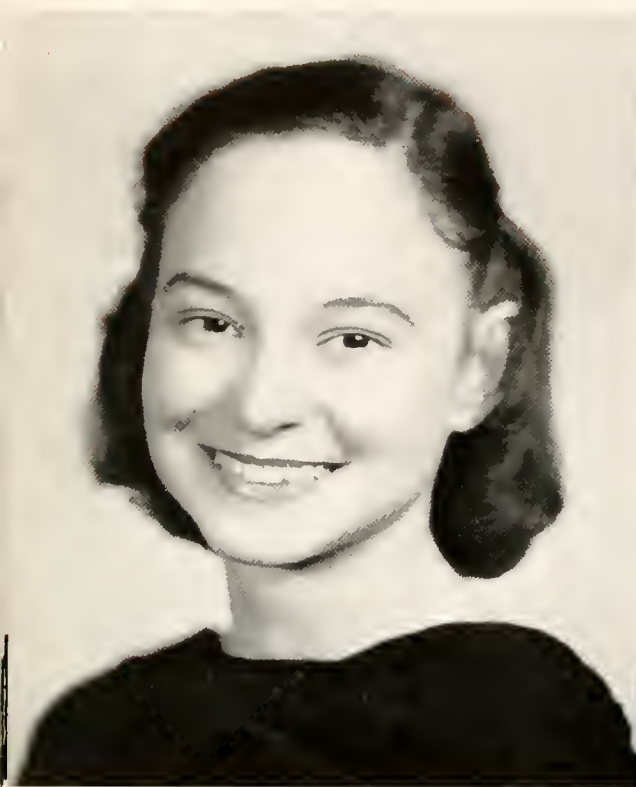
What would we have done without Penia and her infectious pep during hockey season—on the field and in the class meetings. We will remember her for her excellent sportsmanship, attractiveness and fair mindedness along with those unforgettable talks she made before the student body on various occasions. With her poise and ambitious she is destined to reach far for success—and to find it.

KATE CAMERON OGILVIE

Oakwoods, N. C.

Granddaughters Club '36; Granddaughters Club '37; Granddaughters Club, Hockey Team, Soccer Team '38; Granddaughters Club, Hockey Team, Music Club, Assistant Tea Room Manager, Fire Squad, Soccer Team '39.

The mere mention of Kate's name brings words of praise to our lips. With a rapacity for childlike joy, a poise and dignity reminiscent of the old South, firm as the traditions of Flora Macdonald—all these she possesses. We admire her frankness, straight forwardness and loyalty. The memory of Kate will always be liked with our class as she is one of its most indispensable members.



LOU PALMER

BETSY ROBESON



Seniors

LOU PALMER
Savannah, Ga.

Home Economics Club, Hockey '36; Home Economics Club, Archery '37; Home Economics Club, Tennis, William Bartram Scientific Society '38; Home Economics Club, Tennis, William Bartram Scientific Society, Basketball '39.

The girl with the Charlestonian accent and the sweet soft voice that's Lou. She is a most surprising, paradoxical person. She always does her work well and without much effort. She is a loyal friend, kind and sympathetic. Lou knows what she wants from life, and we believe she will get it.

BETSY ROBESON
Tar Heel, N. C.

Hockey Team '36; Basketball Team, Hockey Team, Soccer Team, William Bartram Scientific Society, Salesman Athletic Association '37; Basketball Team, Hockey Team, Soccer Team, William Bartram Scientific Society '38; Basketball Team, Hockey Team, William Bartram Scientific Society, Music Club, Head of Soccer and Baseball, Fire Chief, Sports Editor WHITE HEATHER, F.M.C. Monogram, Tea Room Manager, Hockey Varsity '39.

Merry brown eyes—jolly disposition—the flash of a hockey ball down the field for a goal—frank and sincere—that's Betsy. She gets an amazing number of things done and takes responsibility seriously. Yet she manages to keep up with all the new magazines and books. She has been outstanding in our athletic life as well as being Tea Room Manager and Sports Editor of the WHITE HEATHER. She's really true blue!



ISABEL ROSS

MIRIAM McLEAN SANDERS

Seniors

ISABEL ROSS

Patzcuaro, Michoacan, Mexico

Class Treasurer, Prayer Band Leader, Mission Study Leader, Hockey Team, Fire Squad '36; Treasurer Student Volunteers, Delegate State Student Volunteer Convention, Prayer Band Leader, Hockey Team '37; F.M.C.A. Cabinet, President Student Volunteers, Music Club, Hockey Team, Basketball Team '38; F.M.C.A. Cabinet, Music Club, Hockey Team '39.

"Quail" is just the word that describes Isabel. Her sweet, naive, thoughtful manner has won her a place in all our hearts. We shall never forget what a beautiful "Mary" she made in the Dome Service. There just couldn't be another Isabel, she is absolutely individual and original. Her charming personality and happy disposition make her most attractive and lovable.

MIRIAM McLEAN SANDERS

Willow Springs, N. C.

Commercial Club '39.

Some day we'll wake up to find that Miriam has become a famous scientist. Here is indeed a girl of mild spirit and strong determination. Studious, calm, never worries, frets or blames, and possessing such perseverance she cannot fail.



IRENE SMITH

MARGARET NALL SMITH

Seniors

IRENE SMITH
Lumberton, N. C.

Hockey Team '36; Hockey Team, Basketball Team, Fire Squad, Captain of Basketball Team '37; Hockey Team, Basketball Team, Hockey Varsity '38; Hockey Team, Basketball Team, Head of Basketball, Fire Squad, F.M.C. Monogram, Hockey Varsity, Best Athlete '39.

Look at Irene's Athletic record! She has really lived up to the game in every respect, just as much in the classroom as on the Hockey field. She does everything well, willingly and graciously. Coöperative, dependable, courageous in her daily living has made her an invaluable friend. A fine sense of responsibility and a pleasing disposition made Irene a very worth-while member of the class of '39.

MARGARET NALL SMITH
Agricola, Va.

Lynchburg College '36; Mathematics Club, William Bartram Scientific Society, Virginia Club, Basketball Team '38; Mathematics Club, William Bartram Scientific Society, Virginia Club, Basketball Team '39.

Margaret goes her quiet unassuming way, tackling each day's work thoroughly. She has the rare ability to concentrate; to do hard work, rank as one of the best students on the campus, and still have time to go out for basketball. Margaret doesn't advertise her ability and attainments, being a person of quiet reserve, but her calm and poised manner indicates so many worth-while traits we feel sure she will be a success in whatever she undertakes.



MARJORIE SMITH

IRIS SPENCER



Seniors

MARJORIE SMITH

Mullins, S. C.

South Carolina Club '36; South Carolina Club, Hockey '37; South Carolina Club, Hockey, Basketball '38; South Carolina Club, Basketball, F.M.C. Monogram '39.

Marjorie's initiative and originality helped her keep abreast the style changes in coiffures. Her alertness, sportsmanship and loyalty to her team kept her on top with the Hockey Team and so she was rewarded with a coveted F.M.C. Monogram. Stability and sincerity identify this girl from Mullins as a character altogether worthy.

IRIS SPENCER

Morganton, N. C.

Glee Club, Hockey, Basketball '36; Glee Club, Hockey, Basketball '37; Hockey, Basketball, Fire Squad, Prayer Band Leader, Vice Chairman Highway of Enlistment and Training '38; Hockey, Basketball, Prayer Band Leader '39.

For tact, character, and ability, here's the girl. Iris' pleasant manners, beaming smile and warm friendship have meant much to us. Her sincerity and sympathetic helpfulness have made her work in the Christian Association outstandingly beautiful. A consecrated Christian—one who was unquestionably worthy of being a Prayer Band Leader.



MARY ELIZABETH STANTON

IRMA STEVENSON



Seniors

MARY ELIZABETH STANTON

Red Springs, N. C.

William Bartram Scientific Society, Day Students '36; William Bartram Scientific Society, Day Students Club '37; William Bartram Scientific Society, Day Students Club '38; President Day Students, Student Council, William Bartram Scientific Society '39.

Calm, unruffled certainty, born of knowledge and wisdom. The Day Students respected her judgment so they made her their spokesman on the Council. Mary Lib has been a joy to her teachers because she is an ideal student. With her conscientious and sincere sweetness of character, those with whom she associates, will find her an effective person.

IRMA STEVENSON

Cape Charles, Va.

Virginia Club, Home Economics Club '36; Virginia Club, Home Economics Club, Music Club, Vice President Sophomore Class '37; Home Economics Club, William Bartram Scientific Society, Virginia Club, Music Club, Tennis Club, Secretary Home Economics Club '38; Home Economics Club, Music Club, William Bartram Scientific Society, Tennis Club, Delegate to Home Economics Club Convention, State Chairman of Home Economics Journal Drive, Vice President Zetesian Society, Superlative, President Dramatic Club '39.

Poised, calm, and self possessed were our first impressions of Irma. These impressions are lasting, but are incomplete without an endless list of attributes, which include such outstanding characteristics as: Capability, originality, leadership and intelligence. Combine these with musical talent and friendliness and you'll have Irma—a superlative classmate.



GRACE STRAIN

ELEANOR FRANCES SUGG

Seniors

GRACE STRAIN
Fairmont, N. C.

Home Economics Club, Hockey Team, Basketball Team '36; Home Economics Club, Hockey Team, Basketball Team '37; Home Economics Club, Hockey Team, Basketball Team '38; Home Economics Club, Hockey Team, Basketball Team, Hockey Varsity '39.

Impulsive, loyal Grace! She knows how to "follow through," for to her store of ideas she adds enthusiasm and hard work withal she is friendly, generous and happy-go-lucky, one of the best athletes in our class, and one of its most faithful supporters.

ELEANOR FRANCES SUGG
Wilmington, N. C.

Hockey Team, Soccer Team '35; Hockey Team, Soccer Team, Tennis Club '36; Hockey Team, Fire Squad, Assistant Business Manager WHITE HEATHER, Charter Member and Treasurer St. Cecelia Music Club, Glee Club '37; Hockey Team, Snapshot Editor WHITE HEATHER, President Music Club, College Superlative, Glee Club, Senior Violin Recital, Class Poet, Hockey Varsity '38.

Sugg—a graduate student! Not content with an enviable record of four years she came back to add more accomplishment to her already full list. And how she's worked over in the public school, in the tearoom, in the conservatory with such zeal and enthusiasm as only Sugg could have! Our memories of her will include milk diets, harmonics classes, tearoom sessions, brilliant recitals, practice house rhinnceys, Mrs. Robison's and symphonies on Sunday afternoons.



LENA ADELAIDE THOMPSON

EDYTHE TOWNSEND



Seniors

LENA ADELAIDE THOMPSON

Gastonia, N. C.

Hockey, Home Economics Club '36; Hockey, Basketball, Soccer, Prayer Band Leader, Home Economics Club '37; Hockey, Basketball, Soccer, Captain Hockey Team, Mission Study Leader, William Bartram Scientific Society, Home Economics Club '38; Hockey, Basketball, Soccer, Captain Hockey Team, Vice President Senior Class, Student Council, Home Economics Club, William Bartram Scientific Society, College Superlative, Hockey Varsity '39.

Thorough in all her work; dependable and trustworthy; a good sport on the hockey field and a good sport elsewhere—truly Lena is one of the best all-round girls in college. Here's a hand, Lena. We think you're tops.

EDYTHE TOWNSEND

Hickory, N. C.

Lenoir-Rhyne '36; Hockey Team, Home Economics Club '37; Commencement Marshal, Tearoom Manager, Hockey Team, Prayer Band Leader, Home Economics Club, Archery Club '38; President Home Economics Club, Senior Scribbler, Business Manager *Pine and Thistle*, Tennis, Delegate to North Carolina Collegiate Press Association, May Queen '39.

Sweeping lashes, eyes that laugh always yet carry something secret, fresh and individual charm, a mirror of clear crystal, reflecting in its depth the best and brightest of the world about is characteristic of Edythe. Bubbling over with enthusiasm, gracious, friendly, and at all times a good sport makes her a girl worth knowing. Her flair for smart detail that shows distinctive style and taste, her good looks, grace and winning personality deservedly won for her the honor of wearing the crown as May Queen.



MARTHA WILSON TURLINGTON
HELEN ROSE UNDERWOOD



Seniors

MARTHA WILSON TURLINGTON Salemberg, N. C.

Meredith College '35; Pineland College '36, '37; Glee Club, Tennis Club '38; Glee Club, Class Treasurer, Maid of Honor in May Court, Class Prophet '39.

Never in such a small package was there such a charming person. Lover of things unique, vibrant with the love of life, capable, efficient Martha, is considered first for all important jobs. With originality and good taste, she made our banquet successful. She accomplishes wonders in an unobtrusive way and has the distinction of being Maid of Honor in the May Court!

HELEN ROSE UNDERWOOD Carthage, N. C.

Tennis Club '36; Tennis Club '37; Tennis Club, Archery Club '38; Archery Club, Music Club, Senior Editor WHITE HEATHER, May Court '39.

Dainty as a porcelain lady, fragile grace with gentle ways and charm of quiet laughter, clear, full of life, ready for fun, yet tenderly sweet and sympathetic is descriptive of Rose. Her natural beauty and the distinctive manner she wears clothes makes her outstanding. Her future already definitely planned need only our whole-hearted wishes for happiness.



ALEXA WATSON

MARGARET WHITEHURST



Seniors

ALEXA WATSON

Rowland, N. C.

Secretary and Treasurer of the Library Group of the Highway of Leisure Time '38;
Secretary and Treasurer of the Highway of Enlistment and Training '39.

She never raises her voice, but when she speaks we listen; she never seems to hurry, yet she can always be depended upon to perform efficiently any job she undertakes. We will always remember her thoughtful consideration of others and her friendly way with children.

MARGARET WHITEHURST

Bethel, N. C.

Basketball, Hockey '37; Basketball, Hockey, Soccer '38; Hockey, Basketball, Soccer '39.

On first acquaintance, Margaret might possibly be classified as reserved, but after knowing her for four years, we have discovered fun and a humorous personality beneath her dignity. She has proved herself a loyal friend and a successful teacher.



EVA WICKER

LORRAINE WILLCOX

[68]



Seniors

EVA WICKER
Lillington, N. C.

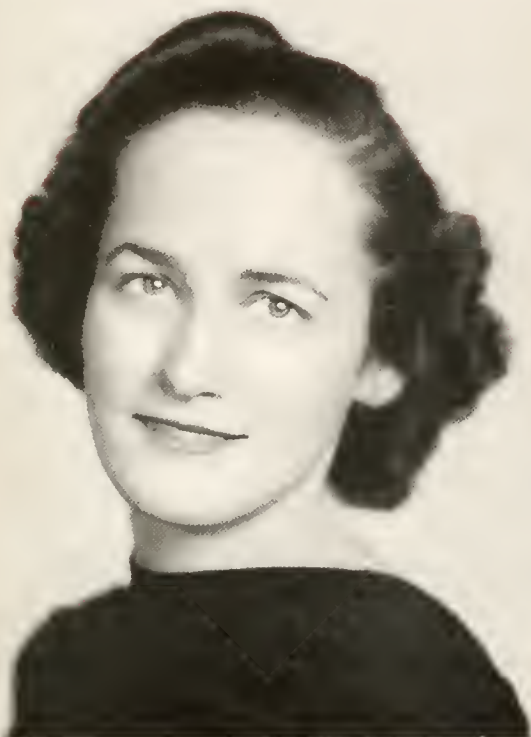
Campbell College '35; Meredith College '36; Madrigal Club, Hockey Team, Basketball Team '37; Hockey Team, Basketball Team '39.

Amiable, conscientious, versatile are inadequate in a description of Eva. Ideals of which simplicity is the keynote, a genuine fondness of fun and her happy disposition make her indispensable as a friend. She holds her place among us as one who is ever willing and eager to do her part.

LORRAINE WILLCOX
Carthage, N. C.

President Junior Class, Commencement Marshal, Student Council, Archery '38; President Student Body, Student Council, Cabinet Member, Mission Study Leader, Senior Scribbler '39.

Because she was representative of Flora Macdonald ideals, we made her President of the Student Body. Because she fulfilled our trust we love her. Because the currents of her life run deep and strong and true, we know she will succeed in whatever her life.



FRANCES KATHERINE WIMBERLEY

DELLA FRANCES WOMBLE



Seniors

FRANCES KATHERINE WIMBERLY
Aberdeen, N. C.

Fire Squad, Home Economics Club '36; Publicity Agent for Home Economics Club, Home Economics Club, William Bartram Scientific Society '37; Commencement Marshal, Assistant Editor WHITE HEATHER, Delegate to North Carolina Collegiate Press Association, Prayer Band Leader, William Bartram Scientific Society, Music Club, Home Economics Club, Publicity Agent Home Economics Club '38; Editor-in-Chief WHITE HEATHER, Chief Scribe Senior Scribblers, Delegate to North Carolina Collegiate Press Association, Second Vice President North Carolina Collegiate Press Association, Reporter for Collegiate Column of the Air, Music Club, Home Economics Club, William Bartram Scientific Society, Fire Squad, College Superlative, May Court '39.

A gay, infectious laugh and friendly greeting introduce you to Wimberly. Then get acquainted if you will with her originality, her charming frankness, her ready line of baldpate; discover for yourself the generosity, thoughtfulness, and the high standards governing her conduct at all times. Note her efficiency in business, and the vein of seriousness underlying her nonchalant exterior. Even then, though you will not know her completely, you will love her.

DELLA FRANCES WOMBLE
Wagram, N. C.

Home Economics Club '36; Basketball, Hockey, Volley Ball, Soccer, Home Economics Club '37; Basketball, Hockey, Home Economics Club '38; Basketball, Home Economics Club '39.

Reliable, hard-working Frances. We had to seek to know her, but once we knew her, we loved her. Her soft voice, her lovely complexion, her generosity, together with her goodness win friends for her at all times. Straight as an arrow in carriage and mind, kindness itself—this is Womble.

After Junior-Senior. . . . Helen and Lena. . . . Irma and Bill Matthews at nursery school. . . . Lou Practicing with the grocery boy. . . . Lucia and Grace. . . . Did you get a call down for those shorts, Flossie? . . . Rose and R. G. . . . Our best boy friend. . . . Eloise. I'm glad I found this one. . . . Baby on the Hockey field. . . . 'n Irene too. . . . Betsey reading the serial in *McCalls* the night before a test. . . . Izzy. You really make this page!!





McDowell, McNair, Tice, Emerson, Lytton, Helms

JUNIOR CLASS

Officers

GRACE McDOWELL.....	<i>President</i>
DOROTHY TICE.....	<i>Vice President</i>
NELL McNAIR.....	<i>Secretary</i>
RUTH EMERSON.....	<i>Treasurer</i>
KATE HELMS.....	<i>Tearoom Manager</i>
MARGARET LYTTON.....	<i>Assistant Tearoom Manager</i>

Juniors:

GERTRUDE LUELLA ALLEN
Kenly, N. C.

POLLY AVANT
Albemarle, N. C.

ANN JONES BELL
Fayetteville, N. C.

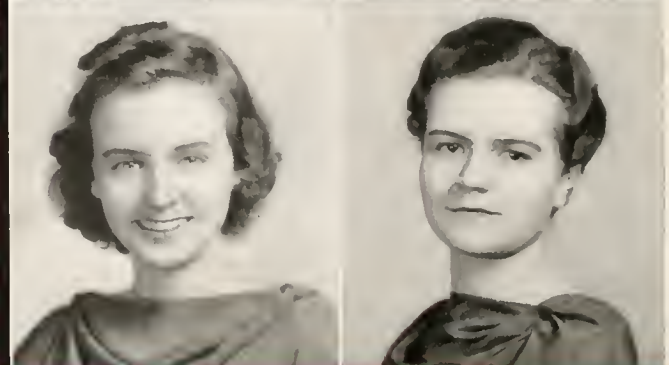
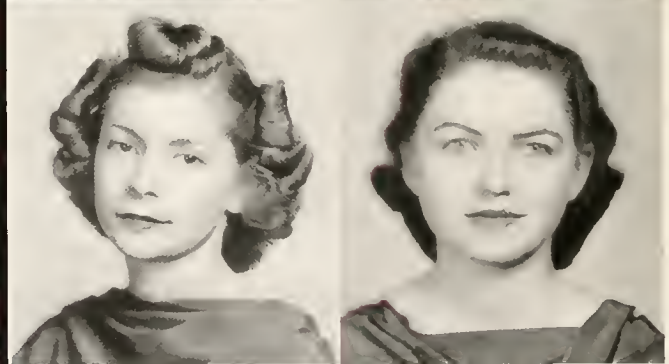
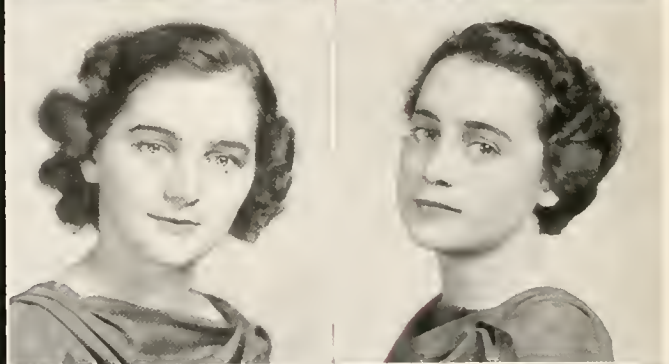
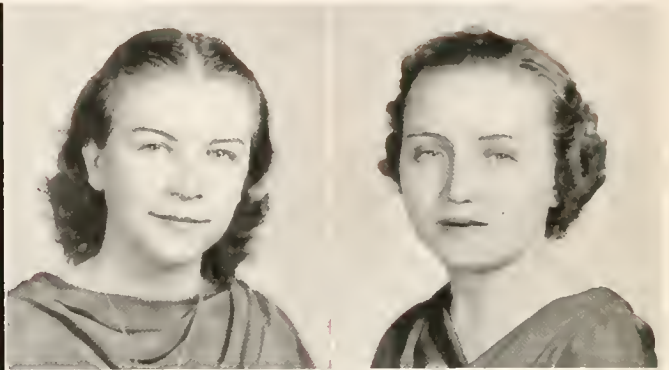
MARY LOVE BETTIS
Earl, N. C.

JANE BRADFORD BLAKE
Baltimore, Md.

HILDA RAY BLUE
Carthage, N. C.

CATHERINE SCMERVILLE BOGGLI
Wilmington, N. C.

MARION BONEY
Blackstock, S. C.



Junior



ELIZABETH BOYD
Mooreville, N. C.

DOROTHY BROOKS
Penns Grove, N. J.



FAYE BREWER
Hemp, N. C.

BILLIE BRISTOW
Fairmont, N. C.



ESTHER MAWN COBB
Pinetops, N. C.

CHRISTINE DAB
Mount Olive, N. C.



NELL DELOATCH
Shelby, N. C.

LOIS ECTOR
Florence, S. C.

Juniors

EVON VIRGINIA ELDRIDGE
Glade Valley, N. C.

RUTH ELLEN EMERSON
Concord, N. C.

VIRGINIA FROST
Salisbury, N. C.

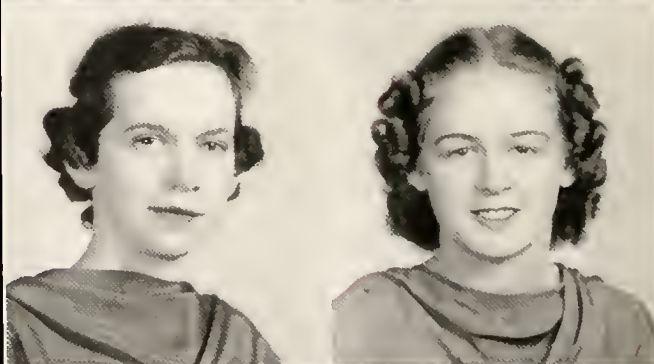
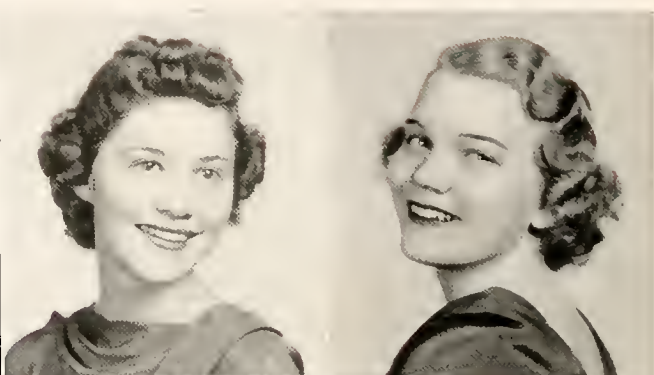
DOROTHY FUSSELL
Rosehill, N. C.

LOUISE GIBSON
Red Springs, N. C.

FLORA NASH GILCHRIST
Philadelphus, N. C.

HENRIETTA GRAY
Philippi, W. Va.

SARAH GRIFFIN
Lynchburg, S. C.

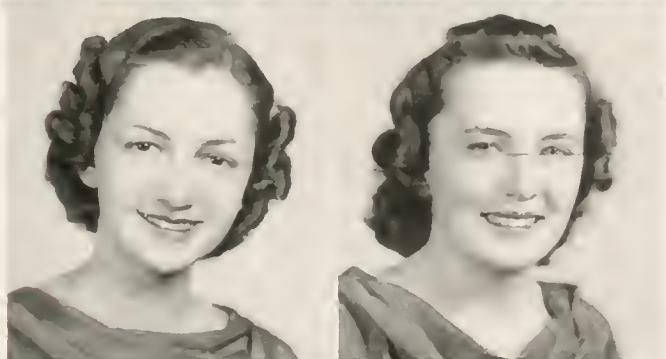


Juniors



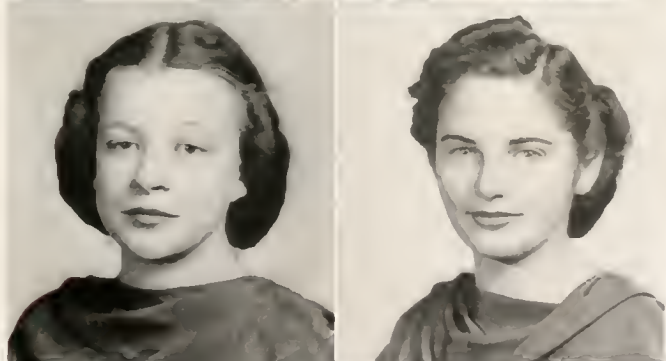
ALICE HAMLETT
Mt. Gilead, N. C.

RUTH ELIZABETH HART
Rocky Mount, N. C.



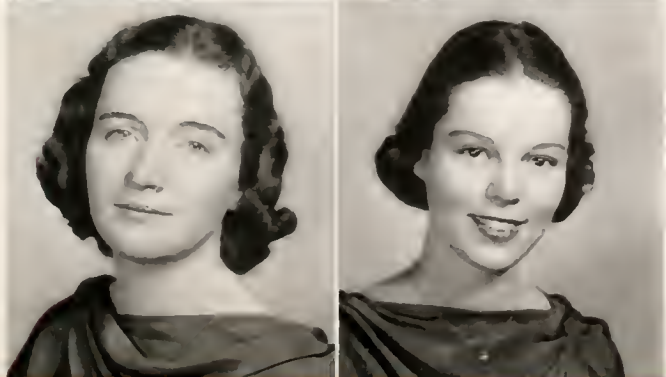
MARJORIE HEATER
Cary, N. C.

KATE LASATER HELMS
Bethune, S. C.



GRACE RICHARDSON HOLLAND
Clayton, N. C.

DOLORES HUNSUCKER
Newton, N. C.



SUSAN HALL INSCOW
Nashville, N. C.

MARGARET WINSTON LEONARD
Rocky Mount, N. C.

Juniors

MARY LENA LEWIS
Eagle Springs, N. C.

HAZEL LONG
Indian Trail, N. C.

MARGARET LYTTON
Gastonia, N. C.

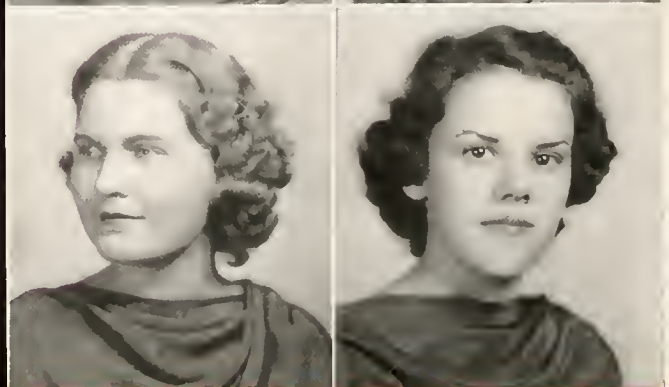
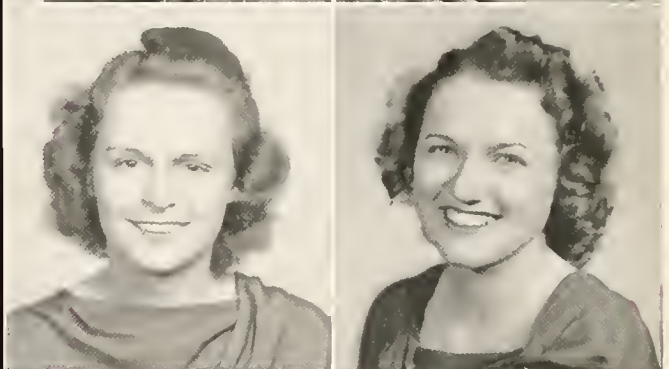
ELLEN COXE MERRITT
Woodsdale, N. C.

LOUISE MOORE
Madison, N. C.

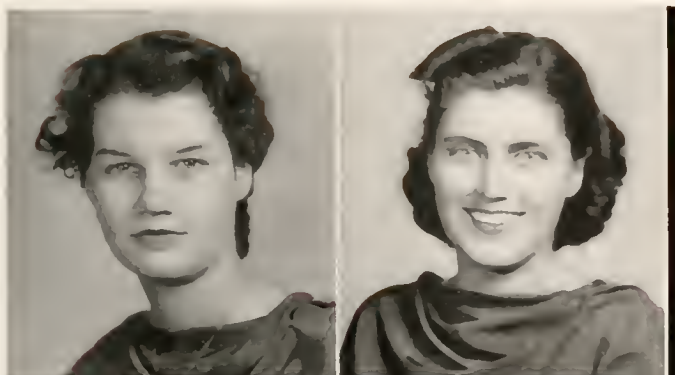
ADDIE McCLARY
Salters, S. C.

JEWELL McDANIEL
Lumberton, N. C.

GRACE McDOWELL
Bluefield, W. Va.



Juniors



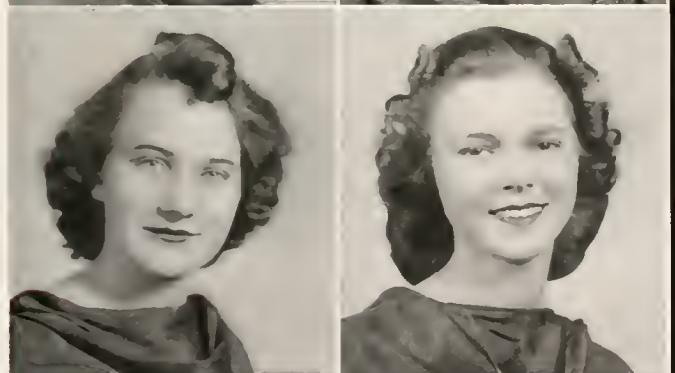
MARGARET McINNIS
Red Springs, N. C.

SARAH CATHERINE McINNIS
West End, N. C.



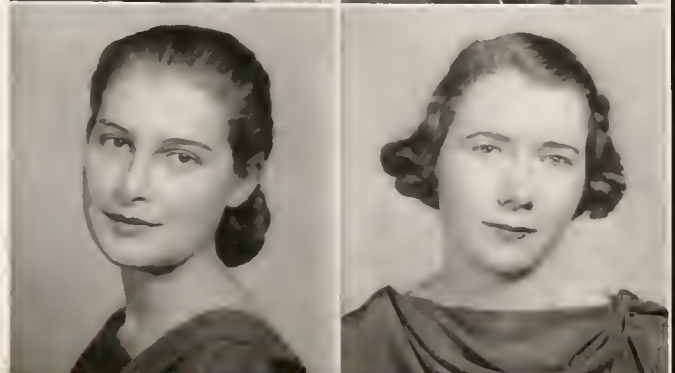
ESTELLE LEE McINTYRE
Clio, S. C.

FLORA BELLE McLEAN
Laurinburg, N. C.



RUTH McLEMORE
Godwin, N. C.

NELL McNAIR
Tar Heel, N. C.



MAUREEN PARROTT
Florence, S. C.

MARY VIRGINIA PATTERSON
St. Pauls, N. C.

Juniors

RACHEL PATTERSON
Moorestville, N. C.



LINDA PORTIA PETERSON
Clinton, N. C.

ESTHER MORRISON PETERSON
Dallas, Texas



AMANDA RUTH STEEDLY
Smoaks, S. C.

MARGARET ELIZABETH STEPHENSON
Angier, N. C.



CAROLINE SUTPHEN
Columbia, S. C.

DOROTHY TICE
Blackey, Ky.



NINA FRANCES TOLAR
Lumber Bridge, N. C.

Juniors



ALICE GARDEN VENABLE
Colora, Md.

MARY SIWERS WALL
Madison, N. C.



CARRIE LEE WARD
Wampee, S. C.

MARY FRANCES WELLS
Teachey, N. C.



KATHRYN JEFFERSON WHITE
Fayetteville, N. C.

EDITH WILLIAMS
Alderson, W. Va.



EVELYN EPPS WILSON
Covington, Va.

Fay, are you and Mary Frances planting flowers for Miss Brown Morrison? . . . This is disgraceful, Nell. . . Down at the spring. . . The night the council checked. . . Ruth and Hilda. . . Popularity. . . Sorry she takes up so much room girls. . . Light Cuts. . . Penny, Frankie, Chris and Whitehurst. . . Jane 'n Karnecagy. . . Kate, don't you know it's agin the rules!!





Stuart, Ferguson, Stuckey, Capel

SOPHOMORE CLASS

Officers

RUTH STUART.....	<i>President</i>
JEANNETTE CAPEL.....	<i>Vice President</i>
BEN STUCKEY.....	<i>Secretary</i>
THELMA FERGUSON.....	<i>Treasurer</i>

Sophes

First row

Charlotte McBryde Austin	Bartow, Fla.
Marguerite Bain	Wade, N. C.
Kay Bentley	River Forest, Ill.
Mary Frances Bingham	Smithfield, N. C.
Margaret Black	York, S. C.
Mary Blue	Parkton, N. C.

Second row

Jean McNeill Boyer	Woodstock, Va.
Claire Jane Brooks	Evergreen, N. C.
Margaret Bundy	Clio, S. C.
Jeannette Capel	Mt. Gilead, N. C.
Elizabeth Cooper	Saluda, N. C.
Mary Louise Cooper	Blackey, Ky.



Sophes

First row

Margaret Cromartie
 Rosa'c Daniel
 Maude Erwin
 Jean Fitzpatrick
 Anne Forbes
 Thelma Ferguson

Garland, N. C.
 Pembroke, N. C.
 Pineville, N. C.
 Ford, Va.
 Orangeburg, S. C.
 Charleston, S. C.

Second row

Eudelle Flowers
 Annie Culbreth Gaitley
 Pauline Goforth
 Mary Woodfin Hazlegrove
 Louise Dorris Heed
 Anna Laura Hulcher

Mt. Olive, N. C.
 Raeford, N. C.
 Kings Mountain, N. C.
 Farmville, Va.
 Westchester, Pa.
 Wilkesboro, N. C.



Sophis

First row

Ruth Hulcher
 Nancy McIntyre Inscoc
 Bernice Johnson
 Mary Elizabeth Jones
 Vera King
 Jackie Larkey.

Wilkesboro, N. C.
 Nashville, N. C.
 Willow Springs, N. C.
 Woodleigh, N. C.
 Hazard, Ky.

Second row

Tallulah Lemmon
 Alverta Lewis
 Wade Deen Love
 Laura Lowery
 Alease Martin
 Janet Louise Martin

Myrtle Beach, S. C.
 Leland, N. C.
 Stanfield, N. C.
 Jefferson, S. C.
 Whiteville, N. C.
 Mt. Olive, N. C.



1924

First row

Thelma Marlowe
Lillian McArthur
Emma Louise McCall
Frances Jean McFayden
Gene McLeod
Madelyn Parks

Tabor City, N. C.
Wakulla, N. C.
Lynchburg, S. C.
Racford, N. C.
Red Springs, N. C.
Wheelerville, N. C.

Second row

Catherine Parker
Edna Neal Pate
Dorothy Pellegrini
Effie Phipps
Dorothy Picard
Alice Purcell

Clinton, N. C.
Fayetteville, N. C.
Red Springs, N. C.
Greensboro, N. C.
Mebane, N. C.
Salisbury, N. C.



Sophes

First row

Sara Redwine		Lexington, N. C.
Betty Ruth Robinson		Charlotte, N. C.
Laura Sue Robinson		Glade Springs, Va.
Rebecca Palmer Rogers		Whiteville, N. C.
Emily Reed Ryburn		South Charleston, West Va.
Emice Saunders		Willow Springs, N. C.

Second row

Pattie Scott		Charlotte Courthouse, Va.
Flora Smith		Wakulla, N. C.
Frances Smith		Salisbury, N. C.
Mildred Snyder		Winchester, Va.
Josephine Stevinson		Willow Springs, N. C.
Ruth Stuart		Troy, N. C.



1921

First row

Margaret Strong
Jessie Hill Stuckey
Nancy Thomas
Edith Kelly Ussery

Kingtree, S. C.
Bishopville, S. C.
Evergreen, N. C.
Sanford, N. C.

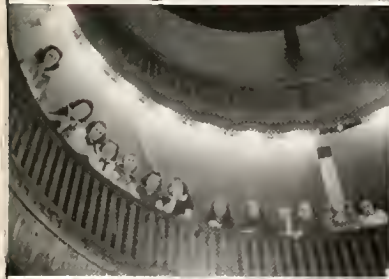
Second row

Sarah Knox Wilson
Catherine Yates
Hilda Yelverton
Eleanor Young

Charlotte, N. C.
Hwaianf, Ku China
Eureka, N. C.
Charlotte, N. C.



Asleep. . . Lib, you're too old for this. . . Dawn Patrol. . . The Pause that Refreshes. . . Rotunda and mail call. . . Soph hockey game. . . What's he doing in here. . . Photographer Bundy and Mary. . . The Three Musketeers. . . Sarah. . . Hope Dr. Beddinger doesn't see you Mary.





Griggs, Hall, McLeod, Bogue

FRESHMEN CLASS

LUCILLE GRIGGS.....*President*
VIRGINIA BOGUE.....*Vice President*
MARGARET McLEOD.....*Secretary*
MARY HALL.....*Treasurer*

Fresh

Kelsie Neill Adams
Laurel Hill, N. C.

Martha Adams
Bowling Green, S. C.

Marjorie Addy
Lexington, N. C.

Marie Anderson
Hertford, N. C.

Kathryn Ashley
Fairmont, N. C.

Sara Meta Baggett
St. Stephens, S. C.

Hilda Bailey
Woodleaf, N. C.

Lola Leach Bain
Fayetteville, N. C.

Gladys Faye Barnes
Kenly, N. C.

Kathleen Black
Red Springs, N. C.

Helena Blue
Carthage, N. C.

Virginia Bogue
Tampa, Fla.

Betty Boykin
Bluefield, W. Va.

Mary Bowen
Burgaw, N. C.

Edna Janette Britt
Warsaw, N. C.

Edith Aileen Bugg
Roanoke Rapids, N. C.

Caroline Buie
Red Springs, N. C.

Grace Salley Buie
Denmark, S. C.





Miriam Bullard
Chadbourn, N. C.

Wayne Burkhead
Woodruff, S. C.

Kathryn Crews Charles
Aberdeen, N. C.

Alice Cherry
Windsor, N. C.

Lena Mabel Cole
Florence, S. C.

Elizabeth Crossman
Greenfield, Mass.

Clara David
Bennettsville, S. C.

Kathryn Davis
Red Springs, N. C.

Agnes Edens
Wakulla, N. C.

Nell Farlowe
Teachey, N. C.

Mary Emma Folger
Pembroke, N. C.

Mary Alice Fulk
Lewisville, N. C.

Doris Floyd
Sanford, N. C.

Vivian Gambrell
Lexington, N. C.

Geraldine Grady
Seven Springs, N. C.

Anna Green
Lexington, N. C.

Maribelle Green
Taylors, S. C.

Lucille Griggs
Cheraw, S. C.

Fresh

Daphne Griffin
Bailey, N. C.

Mary Gaither Hall
Hickory, N. C.

Mary Anne Hannah
Cass, W. Va.

Stella Hogan Harman
Roanoke, Va.

Patsy Harper
Pinetops, N. C.

Willis Catherine Harrington
Plainsfield, Ga.

Margaret Katherine Hines
Winston-Salem, N. C.

Mary Josephine Hudson
Ruffin, N. C.

Margaret Loftin Hunter
Waxhaw, N. C.

Nellie Gertrude Johnson
Barium Springs, N. C.

Kate Coover Jones
Fayetteville, N. C.

Peggy Jones
Wilmington, N. C.

Hazel May Jones
Red Springs, N. C.

Gene Killelte
Elm City, N. C.

Margaret Korueguy
Warsaw, N. C.

Peggy Lanier
Fayetteville, N. C.

Virginia Leatherman
Winchester, Va.

Mary League
Greenville, S. C.





Caroline Tice Long
Salters, S. C.

Mildred Hope Mason
Roanoke, Va.

Nellie Gray Matthis
Warsaw, N. C.

Minnie Myers
Tar Heel, N. C.

Ruth Stuart Moyer
Snow Hill, N. C.

Ruthmary McColl
Linden, N. C.

Pattie McDaniel
Bennettsville, S. C.

Aline McDonald
Hamcr, S. C.

Margaret Virginia McDonald
Macon, Va.

Marjorie McKay
St. Pauls, N. C.

Johnnie Monroe McKellar
Red Springs, N. C.

Catherine Louise McLean
Stanford, Ky.

Margaret McLaughlin
Red Springs, N. C.

Elizabeth Duncan MacLaurin
Columbia, S. C.

Margaret McLeod
Aberdeen, N. C.

Marjorie McManus
Red Springs, N. C.

Jane McNair
Tar Heel, N. C.

Clara Belle McNeill
Archer, Fla.

Fred

Sarah Margaret McPhaul
Red Springs, N. C.

Beth MacPherson
Fayetteville, N. C.

Margaret Newton
Red Springs, N. C.

Josephine Nichols
Fayetteville, N. C.

Rebekah Nichols
Rockingham, N. C.

Catherine Nicholson
Troy, N. C.

Pamplin Oliver
Reidsville, N. C.

Rachel Orr
Richwood, W. Va.

Anna Laura Padrick
Wilmington, N. C.

Emily Marie Pascal
Valdese, N. C.

Muriel Pippin
Fremont, N. C.

Rachel Pearsell
Wilmington, N. C.

Margaret Pons
Valdese, N. C.

Janie Nelson Pope
Edisto Island, S. C.

Mattie Elizabeth Prevatt
St. Pauls, N. C.

Ruth Prevatt
Red Springs, N. C.

May Price
Wilmington, N. C.

Evelyn Robertson
Ahoskie, N. C.





Jean Keys Ryburn
South Charleston, W. Va.

Hazel Sanders
Four Oaks, N. C.

Julia Seabrook
Edisto Island, S. C.

Alma Lou Spivey
Elizabethtown, N. C.

DeLillian Snowden
Indiantown, S. C.

Elizabeth Stafford
Kernersville, N. C.

Miriam Lavada Stont
Saoford, N. C.

Nell Elizabeth Thomas
Florence, S. C.

Mary Lib Trawick
Raeford, N. C.

Josie Trotti
Chesterfield, S. C.

Mary Louise Turner
St. Stephens, S. C.

Mary Mae Watson
Red Springs, N. C.

Elizabeth Wilkerson
North Wilkesboro, N. C.

Mary Alice Wilson
Tar Heel, N. C.

Grace Elizabeth Withers
Spencer, N. C.

Freckles and Virginia. . . . Don't you see it, Nell? . . . Catherine 'n Charlie. . . . She'll kill me for this. . . . Dramatic eh what. . . . nice dogs, aren't they girls. . . . Mary Hall alias Council Member. . . . Ama, where's Vivian? . . . Rats. . . . The one in the middle married. . . . Chees'it girls, more rats. . . . Yankee Betty. . . . The Council checking causes such things. . . . Tallu'ah, this is a freshman trick!!



Activities



The WHITE HEATHER is the annual publication of the students of Flora Macdonald College. The editor-in-chief and business manager are elected from the student body. The assistant editor and business manager are elected from the rising junior class, and other staff members are appointed by the editor-in-chief and business manager from different classes and organizations.

Several changes have been made this year in order to obtain a more colorful and accurate picture of Flora Macdonald College life. A definite theme is not used, but in its place, for the first time, there are introduced natural color photographs of campus scenes. Note the larger amount of space allotted the senior section. The staff sponsored a snapshot contest in order to secure representative pictures as well as to awaken an interest among the students in the yearbook.

The student body has been most cooperative in making this volume of the WHITE HEATHER a reality, and we, members of the staff, hope that in years to come this volume, through its pictures and paragraphs, may bring back to you delightful memories of college life.



FRANCES WIMBERLEY
Editor-in-Chief

THE WHITE



Blue

Underwood

Brooks

Goforth

Crossman



GEORGIE HOWIE
Business Manager

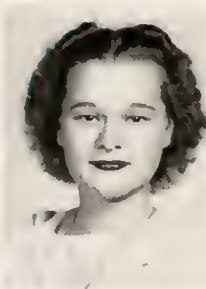
Staff Members

HILDA BLUE	<i>Assistant Editor</i>
ROSE UNDERWOOD	<i>Senior Editor</i>
DOROTHY BROOKS	<i>Junior Editor</i>
POLLY GOFORTH	<i>Sophomore Editor</i>
BETTY CROSSMAN	<i>Freshman Editor</i>
KATE HELMS	<i>Assistant Business Manager</i>
TANKY SMITH	<i>Typing Editor</i>
KAY BENTLY	<i>Art Editor</i>
CHARLOTTE AUSTIN	<i>Business Editor</i>
FLOSSIE HELMS	<i>Snapshot Editor</i>
BETSEY ROBESON	<i>Sports Editor</i>

HEATHER



Helms



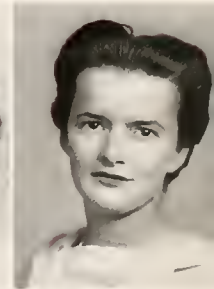
Smith



Bently



Helms



Robeson

The *Pine and Thistle*, campus literary magazine, is published four times during the college year. Each issue brings to light new literary talent, as embryo authors see their first book review or short story in print.

Under the capable management of Dorothy Brooks, Editor-in-Chief, the magazine has improved in appearance this year by having its covers designed by students and its size changed from 7¼" by 10" to 8¼" by 10½". The staff sponsored a short story contest among the students to promote interest.

The *Pine and Thistle* receives financial support from the student budget fund and from advertising under the supervision of the advertising manager; advertising is solicited. The magazine is distributed to members of the student body and faculty.



DOROTHY BROOKS
Editor-in-Chief

PINE AND



Helms



Blake



Parker



Stuckey



Snyder



EDYTHE TOWNSEND
Business Manager

Staff Members

MARY ALICE HELMS	<i>Assistant Editor</i>
JANE BLAKE	<i>Associate Editor</i>
CATHERINE PARKER	<i>Associate Editor</i>
BEN STUCKEY	<i>Typing Editor</i>
MILDRED SNYDER	<i>Associate Editor</i>
EDYTHE WILLIAMS	<i>Assistant Business Manager</i>
KAY BENTLEY	<i>Art Editor</i>
PAULINE GOFORTH	<i>Associate Editor</i>
THELMA FERGUSON	<i>Associate Editor</i>
MARY FRANCES BINGHAM	<i>Associate Editor</i>

THISTLE



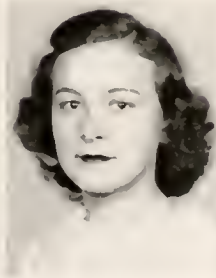
Williams



Bentley



Goforth



Ferguson



Bingham



FRANCES WIMBERLEY, *Chief Scribe*

Senior Scribblers

The Senior Scribblers date back to nineteen twenty-one when the first editor-in-chief asked for assistance in writing the personality sketches of the Seniors.

Today the Senior Scribblers are chosen out of the senior class; and with the Editor acting as Chief Scribe, they endeavor to write representative personality sketches of their classmates.



McMillan

Townsend

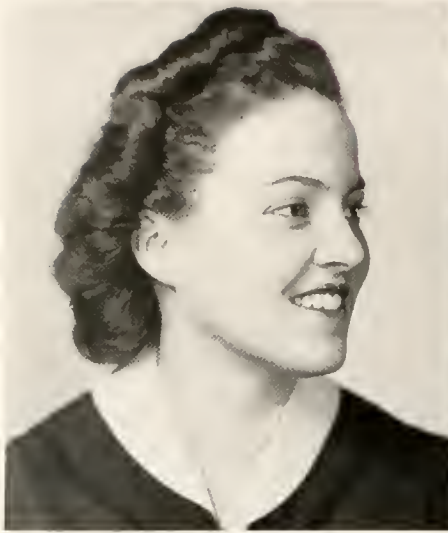
Wilcox

Dimmock

McDonald



ORGANIZATIONS



LORRAINE WILLCOX
President



Parrott
McDowell



Tice
Stanton



Student Government Association

Officers

LORRAINE WILLCOX
President

MAUREEN PARROT
Vice President

DOROTHY TICE
Secretary

GRACE McDOWELL
Chairman Proctor Committee

MARY ELIZABETH STANTON
President Day Students

The purpose of this association is to unite the students of Flora Macdonald College in an earnest and loyal effort to hold personal honor as the only true standard for efficient social living; to emphasize the importance of self-control; and to develop the sense of personal responsibility.

Student Council

The council has endeavored during the past year to secure the coöperation of the students by having open council meetings in which criticisms and advice could be given for mutual benefit. It has conducted chapel programs stressing the principles that govern our everyday living and has held business meetings at which various regulations were explained.

The generous coöperation of every girl has caused student government to develop successfully over a period of years. It is our hope that it will continue to develop and broaden in the future as it has in the past, to remain always one of our most cherished traditions.

PEGGY McMILLAN
President Senior Class

RUTH STUART
President Sophomore Class

LENA THOMPSON
Vice President Senior Class

ALICE GORDON GEEKIE
President Athletic Association

ELLEN COXE MERRITT
President Epsilon Chi Society

FLORIDE LEMMON
President Christian Association

EVON ELDRIDGE
President Zetesian Society

LUCILLE GRIGGS
President Freshman Class

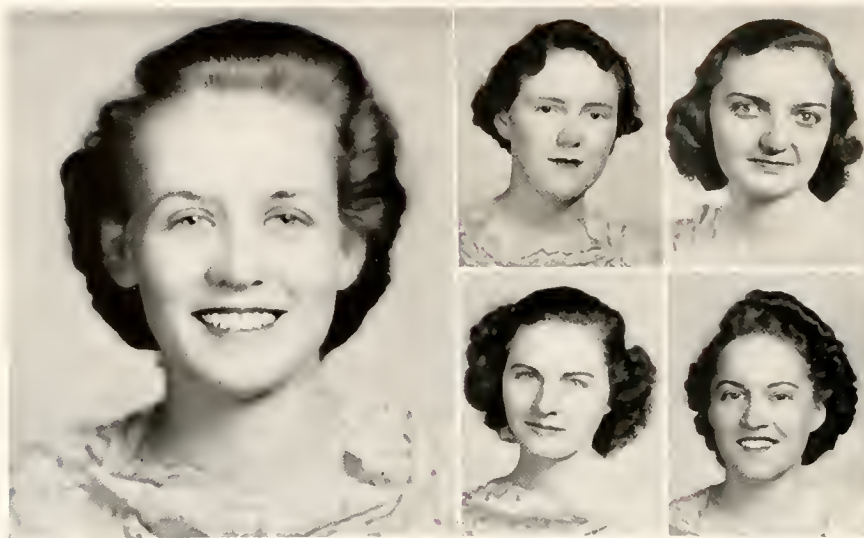


McMillan
Stuart

Thompson
Geekie

Merritt
Lemmon

Eldridge
Griggs



FLORIDE LEMMON
President

Easterling
Cooper

DuBose
Wilcox

Flora Macdonald Christian Association

Officers

FLORIDE LEMMON
President

HEBB EASTERLING
Vice President

ANNIE DuBOSE
Treasurer

MARY LOUISE COOPER
Secretary

LORRAINE WILCOX
President Student Body

The Flora Macdonald Christian Association was particularly fortunate this year in securing the Reverend Cecil Braerly and the Reverend Carl Pritchard as the fall and spring speakers. Mr. Braerly centered his talks around Christ as the answer to all evils of the modern world, bringing in the necessity of having a strong, unswerving faith. Mr. Pritchard discussed integrity of character and the importance of building such integrity from early youth. Other subjects he discussed were: Power, Faith, Valley of Humiliation and the Cross.

Cabinet Members

The traditional ceremonies that mark the Christian Association year were observed from the Installation service, reception for freshman, candle light service, to the White Gift Service and Dome Service at Christmas time. In such ways the association fosters an awareness, and promotion of growth in Christian faith and character; and seeks to influence all Christians to make the will of Christ effective in human society today.

<p>ISABEL ROSS <i>Highway of Comradeship</i></p> <p>LUCIA McINNIS <i>Highway of Leisure Time—Library</i></p> <p>SANDY YATES <i>Highway of World Fellowship</i></p> <p>EDITH WILLIAMS <i>Highway of Life Enrichment Religious Meetings</i></p>	<p>SUSAN INSCOE <i>Highway of Learning—Publicity</i></p> <p>HENRIETTA GRAY <i>Highway of Leisure Time—Social</i></p> <p>MARY BLUE <i>Highway of Life Enrichment—Music</i></p> <p>HILDA BLUE <i>Highway of Learning—Sunday School</i></p>
---	--



Ross
McInnis

Yates
Williams

Inscoe
Gray

Blue
Blue



Day Students Club

The Day Students Club is so organized that the president represents the group on the weekly Student Council meetings. Thus having an active part in the government of the school, it has participated frequently in campus affairs. The Club members have contributed much to the social life of the boarding students.



MARY ELIZABETH STANTON
President



William Bartram Scientific Society

The membership in this society is based upon scholastic standing in mathematics or science. After each semester a limited number of potential members is recommended by Miss Prince, Miss Bridgman, and Dr. Stump. This society sponsors the study and discussions of some definite subject each year to increase interest in the scientific world. This year an extensive study of photography was made with the coöperation of the Eastman Kodak Company, under the supervision of Dr. Stump, Georgie Howie and Susan Incoe. Other officers of the clubs are Susan Incoe, vice president; Edith Williams, secretary; and Dorothy Brooks, treasurer.



GEORGIE HOWIE
President

Officers

ELLEN COXE MERRITT.....*President*
ALICE HAMLETT.....*First Vice President*
ANN BURGESS.....*Second Vice President*
VIRGINIA BURNS.....*Recording Secretary*
NELL MCNAIR.....*Corresponding Secretary*
MARJORIE MALLOY.....*Treasurer*
POLLY GOFORTH.....*Censor*
MARY BLUE.....*Critic*
JEANETTE CAPEL.....*Chaplain*



ELLEN COXE MERRITT
President

Epsilon Chi Society

Members

Adams, Anderson, Austin, Bain, Baker, Bettis, Bingham, Blue, Boyd, Bracey, Brooks, E. Buie, G. Buie, Burgess, Burkhead, Burns, Black, Capel, Charles, Cherry, Cobb, Cooper, Dail, Dalton, David, Davis, DeLoatch, Denning, Driggers, Emerson, Erwin, Ferguson, Flowers, Floyd, Forbes, Forlaw, Frost, Fulk, Fussell, Gaitley, Gambrill, Geekie, Goforth, Grantham, A. Green, M. Green, Hamlett, Harrington, Heater, Holland, Howie, Hunsucker, S. Insoe, N. Insoe, Johnson, K. Jones, M. E. Jones, Kerr, League, F. Lemmon, T. Lemmon, Lowry, Lytton, Malloy, J. Martin, A. Martin, Merritt, Moye, Myers,

L. McColl, R. McColl, McFadyen, McFarland, McKay, McLaurin, C. McLean, F. McLean, McLemore, McLeod, N. McNair, J. McNair, McNeill, McPherson, Nicholas, Ogilvie, Oliver, Orr, Palmer, Parker, Pascal, M. V. Patterson, R. Patterson, Peterson, Phipps, Pons, Prevatt, Pellegrini, Redwine, Robeson, Robertson, Robinson, Ross, E. Ryburn, J. Ryburn, E. Sanders, M. Sanders, H. Sanders, Seabrook, F. Smith, M. Smith, T. Smith, Stafford, Spivey, Stout, Stephenson, Thompson, Tolar, Trawick, Trotti, Underwood, Ussery, Well, Withers, Wilkerson, Wilcox, Williams, M. A. Wilson, S. Wilson, Wimberly, Womble, Young, Yelverton.



Hamlett
Malloy

Burgess
Goforth

Burns
Blue

McNair
Capel

Officers

EVON ELDRIDGE.....*President*
IRMA STEVENSON.....*First Vice President*
JANE BLAKE.....*Second Vice President*
RUTH HART.....*Recording Secretary*
CAROLINE SUTPHEN....*Corresponding Secretary*
FAYE BREWER.....*Treasurer*
SANDY YATES.....*Censor*
MARGARET CROMARTIE.....*Critic*
RUTH STUART.....*Chaplain*



EVON ELDRIDGE
President

Zetesian Society

Members

Addy, Allen, Ashley, Adams, Baggett, Bailey, Barnes, A. J. Bell, E. Bell, Blake, H. Blue, H. Blue, K. Black, M. Black, Bain, Boegli, Bogue, Boney, Boyer, Boykin, Brewer, Bristow, Bitt, Brooks, Bugg, Bullard, Bundy, Cole, Cook, Cooper, Cromartie, Crossman, Daniel, Dimmock, DuBose, Edmunds, Easterling, Ector, Eldridge, Faulk, Folger, Fleming, Fitzpatrick, Gibbs, Gilchrist, Grady, Gray, Grantham, D. Griffin, S. Griffin, Griggs, Hall, Hamilton, Hannah, Harmon, Harper, Hart, Hazlegrove, K. Helms, M. A. Helms, Heed, Hines, Huey, Hudson, R. Hulcher, A. L. Hulcher, Hunter, Johnson, P. Jones, H. Jones, Killette, King, Kornegay, Larkey, Leatherman, Leonard, A. Lewis, E. Lewis, M. L. Lewis, C. Long, H. Long, Love, McArthur, M. McColl, E. L. McColl, McConnaughey,

McDaniel, L. McDonald, M. McDonald, A. McDonald, G. McDowell, V. McDowell, McKellar, McLeod, McMillan, McManus, L. McInnis, M. McInnis, S. C. McInnis, McIntyre, McPhaul, Marlowe, Mason, Matthis, Moore, Murphy, Nichols, Nicholson, Padrick, Parker, Parrott, Pate, Pearsall, Peterson, Phillips, Pickard, Pippin, Pope, Price, Purell, Prevatte, Robinson, Rogers, Saunders, Scott, I. Smith, M. Smith, M. Smith, Snowden, Snyder, Spencer, Steedly, Stevenson, Strain, Stuart, Stubbs, Stuckey, Strong, Sugg, Sutphen, Tice, N. Thomas, N. Thomas, Townsend, Turlington, Turner, Venable, Wall, Ward, Watson, White, Whitehurst, Wicker, Wilson, Yates.



Stevenson
Brewer

Blake
Yates

Hart
Crombie

Sutphen
Stuart



Commercial Club

This club is a social institution organized by the business students to combine pleasure with studies of modern business trends and personalities in the business world, striving to increase attention to such topics. The members of the club form a united group and in their meetings attempt to establish student-faculty relationships outside the classroom.



JESSIE HILL STUCKEY
President



Home Economics Club

All girls majoring in Home Economics are eligible for membership in this club, which promotes development of pleasing personalities, good taste, poised hostesses, and ability to use the knowledge gained from the various courses. This year under the leadership of Edythe Townsend, the programs have been interesting with students, faculty and outside speakers participating. Several outstanding speakers in the field of Home Economics in North Carolina have visited the club and given talks on the different types of vocations now open to science students, the requirements, and the opportunities offered to college graduates.

The Club entertained for the freshmen at the first of the school year and has had several informal receptions for outside speakers.



EDYTHE TOWNSEND
President

Granddaughters' Club

The Granddaughters Club at present numbers twenty-one members. These girls help keep alive the tradition of our Alma Mater and help to make a tangible bond between the college and the almnae.

Virginia Club

The Virginia Club is one of the oldest state clubs on the campus. This year it has had many profitable and enjoyable meetings. On Thanksgiving night the members sang their state song at the banquet in the dining room.

West Virginia Club

Although in membership they are small, the girls from West Virginia are outstanding in the student body. Three of the nine hold offices in the student body, out of the remaining six, four are freshmen.

South Carolina Club

The South Carolina Club is the largest state club on the campus, having thirty-five members. These girls make our school life more interesting and promote a fine feeling of loyalty to our sister state.



GRANDDAUGHTERS
CLUB



VIRGINIA
CLUB



WEST VIRGINIA
CLUB



SOUTH CAROLINA
CLUB



CONSERVATORY

MUSIC



EBERLY

WILGUS EBERLY

Acting Dean of Conservatory

A. B. University of Nebraska; Graduate Student New York University, New York City, Summers 1938, 1939; Choral Conducting with Robert McLeod, Hugh Ross, and Noble Cain; Student for six years with Paul Reuter, Lincoln, Nebraska; Student of Maurice Dumesnil; Student of Edwin Hughes, Summers 1936, 1937, 1938. Acting Dean of the Conservatory of Music, Flora Macdonald College, 1938-39.

The Conservatory of Music offers regular courses leading to the degree of Bachelor of Music. This degree is conferred upon students who have completed in a creditable manner the courses prescribed in Pianoforte, Organ, Violin, Voice, Music Pedagogy, or Public School Music.

At regular intervals during the year afternoon recitals were given by each department of the conservatory. Quarterly recitals have been given with selected students from each department participating. Mr. Eberly, Mrs. Robeson and Miss Cooney have been presented in faculty recitals. Other concerts were given by the Curtis String Quartet; The Osear Seagle Singers; Mischa Levitzki, Pianist; Edwin and Jewel Bethany Hughes, Duo-pianists.

FACULTY

EMMA LOUISE JONES, B.A., *Professor of Public School Music*

B.A. Roanoke College; Voice, four years, *ibid.*; Student of Paul de Lannay; Student of Herr Felix Heink; Student Summer Session, University of North Carolina, 1918; Mrs. Crosby Adams' Teachers Class, 1919; Student Summer Session, Columbia University, 1923; Student Summer Session, University of California, 1924; Student Summer Session, Asheville Normal, 1926; Student Summer Sessions, Columbus University, 1928, 1929; (Dramatic courses with Milton Smith; Eurythmics with Theodore Appia.) Work in Public School Music and Dramatics, University of North Carolina, Summer Session, 1934; Student Summer Session, Juilliard School of Music, New York, 1938; Member of the Carolinn Playmakers; Professor of Public School Music, Flora Macdonald College, 1932—.

HELEN SCOGGINS, B.Mus., *Instructor*

B.Mus. Flora Macdonald College, 1935; Pupil of Edwin Hughes, New York City, Summer, 1937; Instructor and Official Accompanist of the Conservatory of Music, Flora Macdonald College, 1935—.

LILLIAN FARQUHAR ROBESON, *Professor of Violin*

Graduate Halifax Conservatory; Post-graduate work in Weil School of Music; Leipzig Conservatory, two years; Theoretical work under August Schreck, Leitzig; Private Lessons under Arno Hill; Summer work with Sascha Jacobsen and Max Rosen, New York City; Summer study with Ruth Breton, Georgetown, Conn., 1936; Professor Violin and Conductor of Orchestra, Flora Macdonald College, 1908-1910; *ibid.*, 1922—.

ESTELLE LOUISE COONEY, *Acting Professor of Voice*

Graduate Music School, Yale University; Student Woman's College, New Haven, Conn.; Yale School of Drama; Studied under Constance Welch; Pupil of Oscar Seagle in New York City, and Summer Colony at Schroon Lake, New York; Coaching with Mr. Wagner (Paris), and Nathan Price (Schroon Lake), 1936; Acting Professor of Voice, Flora Macdonald College, 1938—.

LIDA LAW CHAPMAN, B.M., *Professor of Piano*

B.M. Flora Macdonald College; Postgraduate, *ibid.*, Study of Pianoforte and Theory at Stern Conservatory of Music, Berlin, Germany; Summer Session 1933 with Edwin Hughes; Work with Edwin Hughes, Summer 1936; Attended Harold Bauer's Master Classes at New England Conservatory, Boston; also attended lectures at Boston University, Summer School of 1938; Teacher of Pianoforte, Flora Macdonald College, 1910-1911; Private teaching, eight years; Professor of Piano, Flora Macdonald College, 1930—.



JONES



SCOGGINS



ROBESON



COONEY



CHAPMAN

FLORA MACDONALD COLLEGE

RED SPRINGS, N. C.

CONSERVATORY of MUSIC

Wilgus Eberly, Dean

presents

LOUISE McMILLAN

in

SENIOR PIANO RECITAL

Monday Evening, April 3, 1939

8:15 o'clock

Prelude and Fugue in b flat minor (Well-Tempered Clavichord Vol. 1, No. 22)	Bach
Sonata Op. 26 Andante con variazioni Scherzo Marcia funebre Rondo	Beethoven
Preludes Op. 28, Nos. 3, 21, and 22.	Chopin
Nocturne in B Major	Chopin
Polonaise in c minor	Chopin
Silver Cascade	Niemann
Barcarolle	Liadow
Rhapsody in C Major	Dobnanyi

FLORA MACDONALD COLLEGE

RED SPRINGS, N. C.

CONSERVATORY of MUSIC

Wilgus Eberly, Dean

presents

LUCY McDONALD

in

SENIOR PIANO RECITAL

Monday Evening, April 17, 1939

8:15 o'clock

Prelude and Fugue in D Major (Well-Tempered Clavichord Vol. 1 No. 5)	Bach
Sonata Op. 81 a Das Lebewohl Die Abwesenheit Das Wiedersehn	Beethoven
Etude Op. 25, No. 7	Chopin
Waltz in c minor	Chopin
Vision Fugitive	Prokofieff
March (from "The Love of Three Oranges")	Prokofieff
Concerto in a minor Allegro	Grieg

Orchestral parts on a second piano by Wilgus Eberly

Conservatory



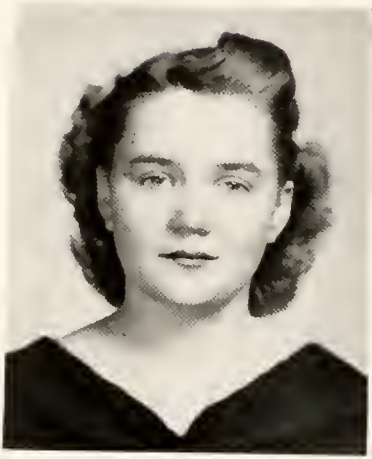
PHY McDONALD
Piano

PEGGY McMILLAN
Piano

ANN DIMMOCK
Public School Music

IRMA STEVENSON
Organ

ELEANOR SUGG
Violin



LUCY McDONALD
President

Conservatory Club

Officers

LUCY McDONALD.....*President*

ANN DIMMOCK.....*Secretary*

MARY BLUE.....*Treasurer*

The Conservatory Club is a member of the National Federation of Music Clubs and of the North Carolina Federation of Music Clubs. The President, Lucy McDonald and the former president, Eleanor Sugg represented the club at the Federation meeting held in Washington, D. C. during the Christmas holidays. The organization has also sponsored concerts given in the college as well as the Karsten Flagsted concert in Durham and the Nelson Eddy and Paderewski concerts in Raleigh. Throughout the year, the club has added to the musical library of the conservatory.



Dimmock
Blue

Madrigal Club

Three times a week, fifty-three glee club members drill in scales and in all types of choral music, both sacred and secular. Each member has been individually selected after thorough tryouts in the fall by Mr. Wilgus Eberly, dean of the Music Department, and leader and director of the club. Work with the club provides both entertainment and educational experience in the field of music. Each year the members of this group sing at the White Gift Service on the Sunday night before Christmas vacation.

Members

Burgess, A.	McMillan, P.	Dimmock, A.
Turlington, M.	Bugg, E.	Hines, M.
Ryburn, E.	Parks, M.	McNair, S.
Anderson, M.	Sutphen, C.	McNair, J.
Black, K.	Easterling, H.	Griggs, L.
Jones, H.	Davis, K.	Daniel, R.
Long, C.	Ector, L.	Gambreill, V.
Blue, M.	McKeller, J.	Gibbs, J.
Pippin, M.	Emerson, R.	Leathermore, V.
Hart, R.	Bain, M.	Redwine, S.
Parker, C.	Killette, Jean	Blue, H.
Buie, C.	Bain, L. L.	Cromartie, M.
Bettis, M. L.	Bell, E.	Melnnis, M.
Baker, C.	White, K.	Inscoe, N.
Moye, R.	Sugg, E.	Larkey, J.
Blake, J.	Boyer, J.	Venerable, A.
McArthur, L.	Heed, L.	



Sextette

As every phase of college life leaves its special impression, so that of being part of the sextette is an experience unique and beautiful. Representing the college, the group has sung for church, Rotary club, Parent-Teachers Associations, and Woman's Clubs throughout this part of the state. They have been an invaluable asset to Mr. Davis, Chairman of the Development Program, in his programs.

The students will remember them for "The Brownies" and "American Lullaby," but more impressive still—their beautiful contributions to the Dome Service.



Buie

Hart

McArthur

Stubbs

McMillan

Ector



Geekie
Wilson

Hunsucker
Crossman

Athletic Association

ALICE GORDAN GEEKIE
President

DELORIS HUNSUCKER
Vice President

BETTY CROSSMAN
Secretary

SARAH WILSON
Treasurer

The Athletic Association, under the capable leadership of Alice Gordon Geekie has meant more than physical recreation necessary to health and clear thinking. Highest ideals of good sportsmanship have been upheld, and a spirit of genuine service has been fostered. Every student is encouraged to participate in one or more of the eight forms of sport—tennis—archery—hockey—basketball—soccer—swimming—hiking—baseball. Tournaments are sponsored, games being played between the classes, thus promoting both class loyalty and a keen spirit of rivalry. The association traditionally entertained the whole school at a Hallowe'en party in the fall. The crowning of the Queen of May and the beautifully staged pageant closed the activities of the year.

Heads of Sports

So much of the success of the Athletic program for the year is dependent upon the Athletic Board, whose membership is comprised of the Athletic Association Officers, Heads of Sports, and captains of the four class hockey and basketball teams. They determine which girls would receive the distinction of being elected to varsity and the Best All-Round Athletes in school. The varsity selection is announced in Chapel and awards are given but the Best All-Round Athlete is kept secret until announced by the WHITE HEATHUR in late spring. The board bases their choice on skill, scholarship and sportsmanship.

Hockey again proved to be the favorite sport with Penia Hayes Nicholas to arrange schedules and superintend the practice games. She trained a good freshman team and worked the other class teams strenuously. The outstanding success of the tournament was due largely to her enthusiasm and constant guidance. It is hoped that in the near future those players making the varsity team will be able to challenge other college teams.

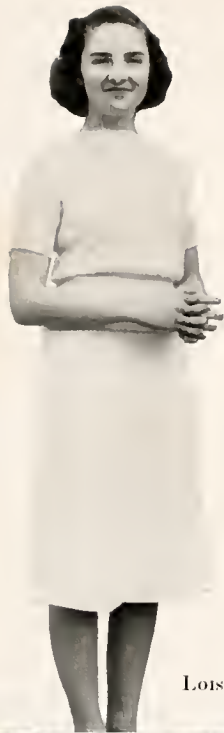
Congratulations are in order for Irene Smith, who, for the second consecutive season, successfully headed basketball. She brought forth four good teams to compete in the tournament. Each team was loyally supported. Basketball has the advantage of being a major winter sport and enjoys great popularity. Enjoyable Hikes were arranged on Saturday afternoons by Virginia O'Berry, Head of Hiking. This form of activity enabled many girls, meeting the requirements for the F.M.C. Monogram, to secure points.

BETSY ROBESON
Soccer—Baseball

PENIA HAYES NICHOLAS
Hockey

IRENE SMITH
Basketball





Cheer

Leaders

LOIS ECTOR, *College Cheer Leader*



MARY HUEY
Senior

MARGARET CROMARTIE
Sophomore

HILDA BLUE
Junior

MILDRED MASON
Freshman

Senior Hockey Team

Seniors 2

Juniors 0

Seniors 2

Sophomores 1

Seniors 10

Freshmen 2

After tying with the class of '38, the Senior team kept up its fine record by winning the tournament this year. The Polar Bears, however, were handicapped by the loss of one of their best players, Violet Kerr, but under the guidance of Lena Thompson, the captain, the team made an enviable record. The splendid backing this team receives from its class did much to influence the fine games played.

Junior Hockey Team

Juniors 0

Seniors 2

Juniors 0

Sophomores 1

Juniors 2

Freshmen 0

The Juniors put up a good fight this year but were seriously handicapped by the illness of several players during the tournament. Fine teamwork was an outstanding feature of their playing and the strength and courage gained from the excellent substitutes cannot be overlooked. The season ended with a grim determination to recapture their laurels next year. Best 'o luck, Juniors!



LENA THOMPSON
Captain

DOLORES HUNSUCKER
Captain



SENIOR HOCKEY TEAM

First row: Smith, Whitehurst, Nichols, McFarland, Thompson, Bell, Denning, Robeson, Ross.

Second row: Baker, Cook, Spencer, Strain, Womble, Smith, Geekie, Dalton, Herold, Wicker.

JUNIOR HOCKEY TEAM

First row: Avant, Allen, Wilson, McLemore, Hunsucker, McLean, Peterson, Wall, Wells.

Second row: Tice, Brooks, Steedly, Bell, Eldridge, Patterson, Parrott, Blue, Blake, Venable, Merritt.

Sophomore Hockey Team

SCORES

Sophomores 1 Seniors 2 Sophomores 1 Juniors 0
Sophomores 4 Freshmen 2

The Sophomore Hockey Team made a good record this year. With the old stand-bys and the new players fighting with zeal, enthusiasm, and determination, the Roosters came out victorious over all except their sister class.

Freshman Hockey Team

SCORES

Freshmen 2 Seniors 10 Freshmen 0 Seniors 2
Freshmen 2 Sophomores 4

The freshmen, enthusiastic and game, came out in large numbers this year to learn to play hockey, a sport new to most of them. They made a fine showing against the upper-classmen, and although they did not win in the tournament, they did win our admiration by their persistence and good sportsmanship.



MARY LOUISE COOPER
Captain



MARGARET KORNEGAY
Captain



SOPHOMORE HOCKEY TEAM

Phipps, Insee, Lewis, Scott, Pate, Smith, Irwin, Boyer, McLeod, McDonald, Cooper, Hazlegrove, Wilson, Young, Bain, Stephenson, Marlowe, Blue, Lemmon

FRESHMAN HOCKEY TEAM

McPherson, Anderson, David, Cole, Bugg, Boykin, Baggett, Pope, Blue, McLanrin, Nicholson, Kornegay, Thomas, Crossman, Griggs, Bain, Harmon, Hannah, Barnes, Spivey, Ryburn

Senior Basketball

SCORES

Seniors 16	Juniors 11	Seniors 10	Sophomores 22
Seniors 24	Juniors 12	Seniors 14	Freshmen 8

Failed last year—triumphant this year! Yes, the Seniors won the tournament—a surprise to all, especially the Juniors who thought they had us cornered. You can't freeze out polar bears though, because they have what it takes to win a game: clean playing, fairness, and good sportsmanship.

Honorable mention does not go to a few only, but to the whole team—players and non-players for their splendid loyalty and ready willingness to aid the playing team.

Junior Basketball

SCORES

Juniors 11	Seniors 16	Juniors 27	Sophomores 20
Juniors 12	Seniors 24	Juniors 25	Sophomores 13
	Juniors 32	Freshmen 16	

The Juniors showed their outstanding skill and good sportsmanship in basketball as well as in hockey this year. The splendid forwards, who missed very few goals, were assisted in running up the score by the quick passwork of the tall guards.

With such a good record behind them, they are looking forward to greater success next year.



PETA HAYES NICHOLS, *Captain*
MARY FRANCES WELLS, *Captain*



SENIOR BASKETBALL TEAM

First row: Smith, Denning, Wicker, McFarland, Whitehurst.

Second row: Robeson, Thompson, Dalton, Cook, Strain, Womble, Smith, Bell, Nichols, Baker.

JUNIOR BASKETBALL TEAM

First row: McLean, Dail, Peterson, Patterson, McLemore, Fussell, Wells.

Second row: Patterson, Bettis, Venable, O'Berry, Hunsucker, DeLoatch, Blue, Eldridge, Helms, Allen

Sophomore Basketball

Sophomores 22.	Seniors 10	Sophomores 13	Juniors 25
Sophomores 20	Juniors 27	Sophomores 20	Freshmen 14

Remembering their victory of last year, the Sophomores set out with renewed vim and force at the beginning of this year. Practice, concentrated and coöperative, brought co-ordination to the team work of all the players. The players showed strong pertinacity in their playing; even when defeat seemed inevitable in two of the games, they kept on, never ceasing to strive desperately for victory. And they won—not as they did last year; but they were in there to the finish—fighting. Better luck in '40, Sophs. Keep that fighting spirit!

Freshman Basketball

Freshmen 8	Seniors 14	Freshmen 16	Juniors 32
	Freshmen 14	Sophomores 20	

The freshmen came out in droves to play basketball. They quickly organized into a team which could not be ignored. Although they did not win the tournament they were good losers and supported their sister class loyally in each game.



MARGUERITE BAIN
Captain

BETTY CROSSMAN
Captain



SOPHOMORE BASKETBALL TEAM

First row: Bain, Smith, Murphy, McLeod, Boyer, McFadyen
Second row: Inscoc, Hazlegrove, McDowell, Thomas, Cooper, Pate, Lewis, Lowry, Phipps

FRESHMAN BASKETBALL TEAM

First row: Bowen, Griggs, Greene, Pippin, Ryburn, Spivey, Anderson, David, Johnson, Addy
Second row: Adams, Hines, Bailey, Grady, Kornegay, McLaurin, Pope, Gambrell, Cole, Harmon, Barnes, Trawick
Third row: Stafford, Boykin, Totti, Forlaw, Crossman, Thomas, Nicholson, McDonald, Harrington, Baggett, Hunter, Bain, McPherson

Tennis

Probably the most popular of Spring sports, tennis claims players during the entire year because of the mild climate enjoyed here. Three fine courts add a great deal to the enjoyment of the sport, and keen competition is felt in the inter-class games. This year, under the supervision of Miss Bateman, a beginners' class was organized and has become a part of the regular physical education curriculum.



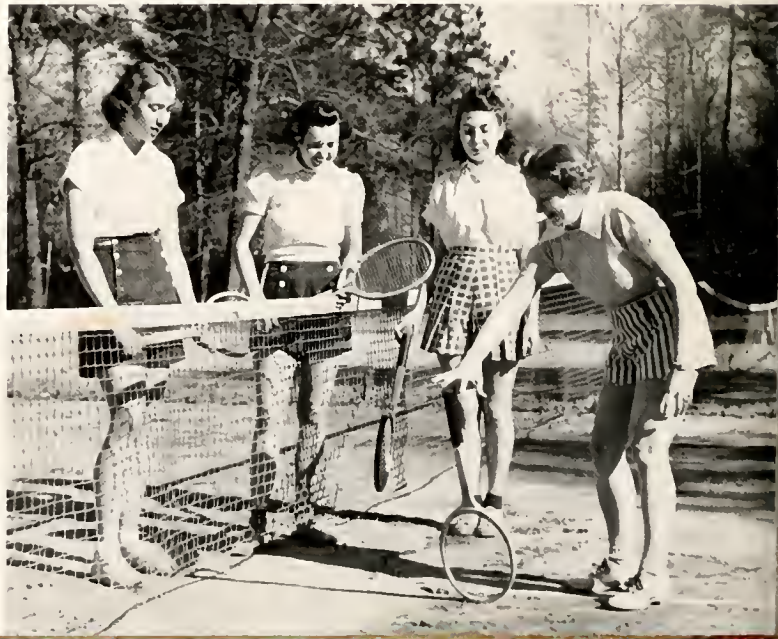
Helms

Bently

Helms

Fitzpatrick

Huey





Austin

Green

Moore

Archery

Archery is one of Flora Macdonald's most enjoyable sports, popular with the athletic and not-so-very athletic girls. The range, situated in an excellent spot, is convenient to both the dormitory and gymnasium. Because it tends to develop good posture, grace and poise, archery has a decided advantage over other sports.

Come on Huey, we're waiting. . . . Lou Moore teaching Anna and Charlotte how to hold the bow 'n' arrow. . . . Jeepers Creepers—Where's Betsey's Peepers. . . . Flinging it. . . . Dolores, we're proud of you. . . . Geckie. . . . On the archery range. . . . Yes, she posed for this but it's still a good one don't you think?



Features







Miss Jane Gibbs

Friendliness



Miss Linn Thompson

Sportsmanship



Miss Frances Wimberley
Personality



Miss Georgie Howie

Capability



Miss Irma Stevenson

Versatility



Miss Nell McNair

Beauty



Miss Edythe Townsend
May Queen





MAY DAY



EDYTHE TOWNSEND
Queen
MARTHA TURLINGTON
Maid of Honor

Attendants- ELIZABETH COOPER, VIR-
GINIA BYRNS, THELMA FERGUSON, NELL
McNAIR.





Attendants
FRANCES WIMBERLY, ROSE UNDERWOOD, MARY HALL,
MARJORIE MALLOY.
Train Bearers
KATHERINE MACDONALD
MYRTICE BOONE JOHNSON
Crown Bearer
CHARLES STEARNES





Hilda's really enjoying this . . . Lou Moore and Virginia Bogue, main characters in May Day . . . Caroline Sutphen, admiring the shopkeeper's beautiful doll Dorothy Fussell . . . Dot Brooks flinging it high . . . Graceful junior in action . . . and Ruth, Lola and Ann watched.





Camera-shy Katherine Macdonald . . . the Mama-Papa dolls . . . Boy, were we Bingham, the shop-keeper . . . Emily Jackie Larkey, the clown . . . and they v Note Alverta's expression.





ELLEN COXE



NELL MCNAIR, EX.



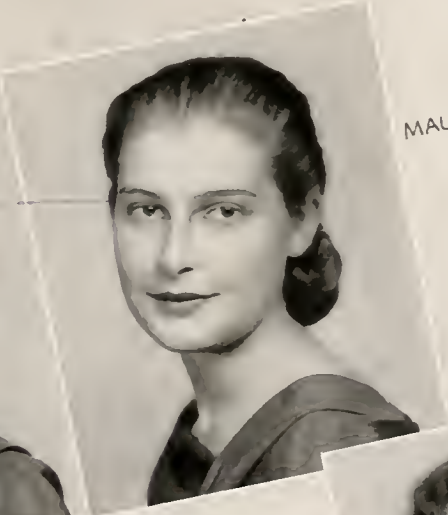
ALICE HAMLETT, EX.

ERRITT, EX. Chief Marshal

Marshals



EVON ELDRIDGE, Z



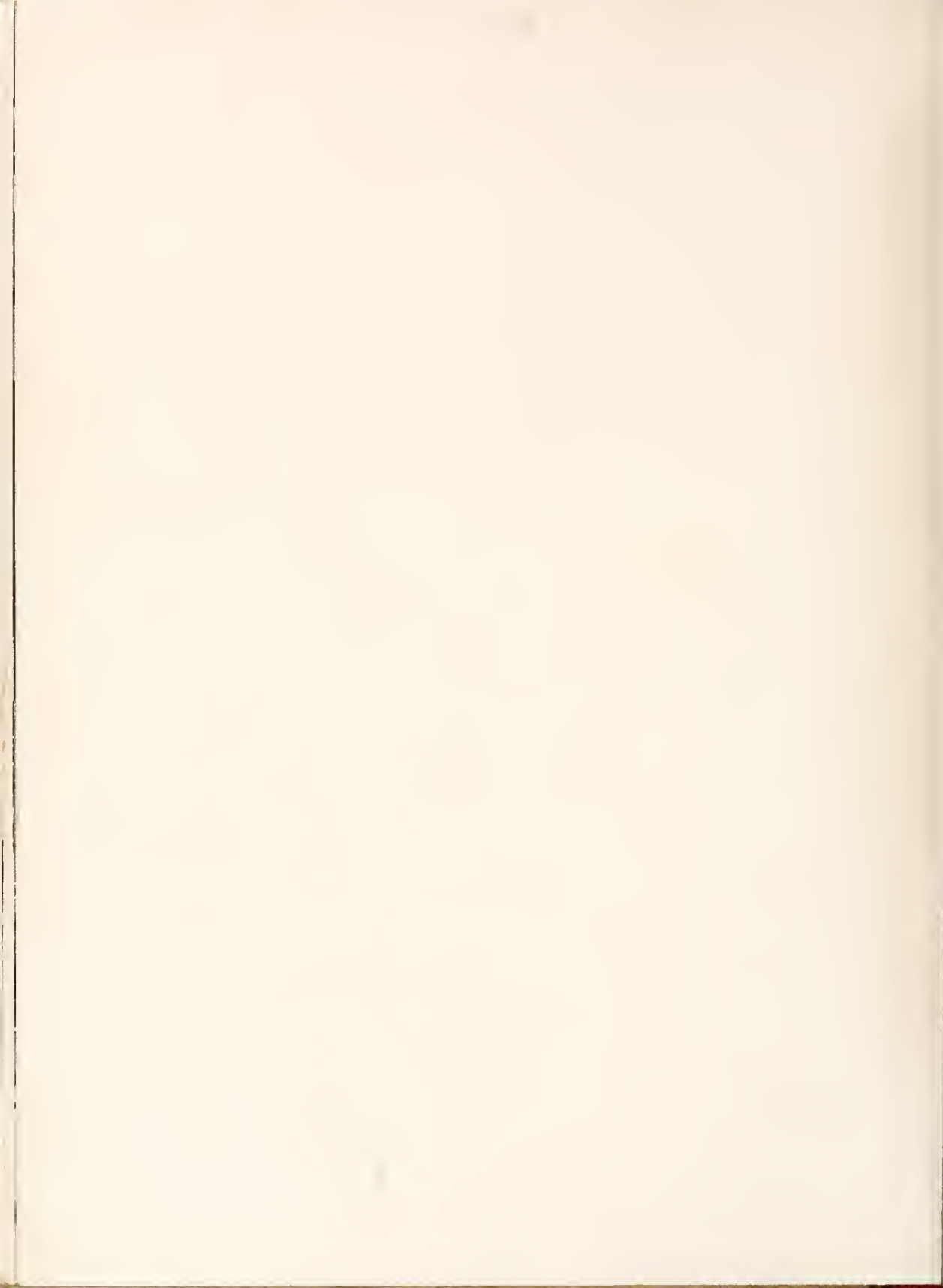
MAUREEN PARROTT, Z.



LOIS ECTOR, Z.



MARJORIE HEATER, EX.





The Store of Satisfaction is Particularly Proud to have among its Clientele the Flora Macdonald Faculty and Girls. Latest Styles Reasonably Priced.

Graham Company

"Where Style and Quality Outlive Price"

RED SPRINGS

#12

NORTH CAROLINA

History of Growth



1896



1916



1939



1945

The Flora Macdonald Development Program

Patronize our Advertisers

MACK'S 5, 10, and 25c STORES

THE FRIENDLY PLACE

Red Springs, N. C.

Insist on . . .

LANCE'S

Peanut Butter Sandwiches
and Candies

Always Fresh · Always Delicious

*Where Highest Quality
Meets Lowest Prices*

PENDER

Modern FOOD Markets

TOWNSEND'S PHARMACY

THE REXALL STORE



We Carry a Complete Line of the
College Girl's Needs

Meet Your Friends at Our Fountain

DEPENDABLE DRUGGISTS : LET US SERVE YOU



Red Springs : North Carolina

CORNER GROCERY

A Complete Line of
Groceries and Meats

SIGHT IS PRICELESS
LIGHT IS CREAP—

**Carolina Power & Light
Company**

MAXTON, N. C.

BLAKE FLORIST

Prince Charles Hotel Building

Fayetteville, N. C.

Day Phone 2683 Night Phone 2834

Let Liberty Manufacturing Company
Help Your Farm

Gold Medal Fertilizer

Liberty Premium for Tobacco
Modern Gin System

**Liberty Manufacturing
Company**

RED SPRINGS, N. C.

D. M. McMILLAN

"Ford Products Since 1912"

RED SPRINGS, N. C.

The . . .

SCOTTISH BANK

LUMBERTON - PEMBROKE
RED SPRINGS

Member

Federal Deposit Insurance Corporation

SPRING SIDE DAIRY

GRADE A MILK
CREAM

PHONE 43

When in Maxton Stop at the

AUSTIN DRUG CO.

**Maxton Oil & Fertilizer
Company**

MAXTON, N. C.

CONGRATULATIONS

To the WHITE HEATHER from

RED SPRINGS DEPT. STORE

Red Springs, N. C.

Compliments of
A FRIEND

Compliments of
Huggins Shoe Shop

Compliments of
The Robesonian
THREE TIMES A WEEK
Lumberton : North Carolina

THE STATE BANK

Sound Banking Since 1907

MEMBER F.D.I.C.

Laurinburg - Maxton

HOTEL RAEFORD

W. E. STREET, JR., Proprietor

PHONE 296-1

50 Rooms, With or Without Bath. Newly
Renovated. Fireproof. Steam Heat. A
Dining Room Unexcelled. Grill. Home
Cooking.

Rates: From \$1.25 to \$2.00

On Highway 15A

Raeford, North Carolina

We Have What Your Car Needs
Complete Line Accessories
We Live to Serve and Serve to Live

GULF SUPER SERVICE

Telephone 9107

A.A. One Stop Service

RED SPRINGS, NORTH CAROLINA

Compliments of

**SOUTHERN FRUIT
COMPANY**

CHARLOTTE, N. C.

**Evans Book & Stationery
Company**

OFFICE SUPPLIES
PRINTING

Laurinburg : North Carolina

GARRETT & McNEILL'S

Extend Their Compliments

RED SPRINGS, N. C.

HUNTER BROTHERS

(Incorporated)

Electrical Merchandising

**RADIO - REFRIGERATORS - GIFTS
CHINA - GLASSWARE**

FAYETTEVILLE, N. C.

**BELK & HENSDALE
COMPANY**

**DEPARTMENT
STORE**

Congratulates the
White Heather Staff

And Takes This Opportunity to
Thank the Flora Macdonald
Girls for Their Patronage

-:-

FAYETTEVILLE, N. C.
LUMBERTON, N. C.

Travel Luxuriously . . .
Yet Economically

**FAST BUT
SAFE**

**QUEEN CITY
COACH CO.**

Compliments

— of —

**SINCLAIR SERVICE
STATION**

Compliments

— of —

**TOWN OF
RED SPRINGS
North Carolina**

M. H. McLEAN, Jr.

**Wholesale Candies
and Groceries**

LUMBERTON, N. C.

Compliments of

**THE CAPITOL
DEPARTMENT STORE**

FAYETTEVILLE, N. C.

We Invite Your Patronage

RED SPRINGS
THEATRE



It is the policy of this theatre
to provide the best pictures
obtainable especially for our
Floro Macdonold patrons.



Pleasure by the Hour

Compliments of
SANDLIN & CO., Inc.

Wholesale Grocers

FAYETTEVILLE, N. C.

Anne Green's
Permanent Wave Shoppe

We Serve You to Serve Again

RED SPRINGS, N. C.

Efird's
DEPARTMENT STORE

FAYETTEVILLE, N. C.

Compliments

THE
FAYETTEVILLE
OBSERVER

PURE AS SUNLIGHT

... Drink ...

Coca-Cola

The Pause That Refreshes

Coca-Cola Bottling
Company

FAYETTEVILLE, N. C.

PERKINS
Cleaning & Dye Works

State License No. 131

122 Maxwell Street

PHONE 4134 FAYETTEVILLE, N. C.

Boatwright Chevrolet Co.

RED SPRINGS, N. C.

LESTER'S ESSO
SERVICE

Telephone 16

Red Springs, N. C.

— USE —

Merita

BREAD and CAKES



AMERICAN
BAKERIES COMPANY

Fayetteville, N. C.

You Will Be Pleased With Our
QUALITY and SERVICE

RED SPRINGS DRUG COMPANY

HEADQUARTERS FOR FLORA MACDONALD GIRLS

RED SPRINGS : NORTH CAROLINA

FLORA MACDONALD COLLEGE

RED SPRINGS, N. C.

A SENIOR COLLEGE FOR WOMEN

Near Fayetteville, Southern Pines and Pinehurst. Delightful climate, healthful mineral springs and remarkable health record. Bus and Railway connections.

A Standard Senior Grade A College for Women. Strong faculty. Graduates accepted for graduate work by leading universities. Class A teacher's certificates. Home-like atmosphere. Personal attention to students by teachers.

Courses offered: Bachelor of Arts, Bachelor of Music, Bachelor of Science (Home Economics) degrees. A Secretarial Course.

Athletics. Skillful physical director and coach has general supervision of sports and physical training. Archery, basketball, hockey, swimming, tennis, hiking, etc., are enjoyed in season.

Social activities. Receptions, teas, and many other social functions are provided at the college, while many hospitable and delightful homes of the citizens of Red Springs are open to the students.

Wide patronage. Patronized at present by eleven states and four foreign countries. Four thousand alumnae are engaged successfully as home-makers, nurses, teachers, dietitians, home demonstration agents, social workers, missionaries, and in many other useful professions.

MODERATE CHARGES : FOR CATALOGUE WRITE

HENRY C. BEDINGER, *President*

FLORA MACDONALD COLLEGE : Red Springs, N. C.

THE CAROLINA'S LARGEST PHOTOGRAPHIC STUDIO



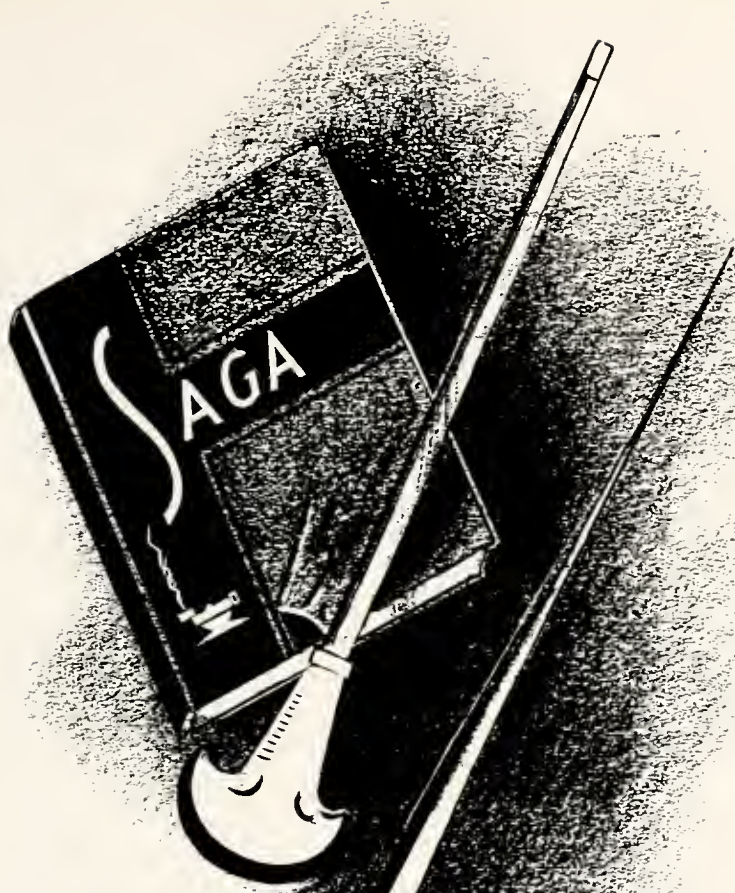
SIDDELL STUDIO

RALEIGH, N. C.



OFFICIAL PHOTOGRAPHERS

THE WHITE HEATHER



CHARLOTTE ENGRAVING CO.

School Annual Engravers

Charlotte, North Carolina

AUTOGRAPHS

AUTOGRAPHS

BUILDERS DREAMS

VISIONS created by the imagination precede the achievement of any really great accomplishment. The ability to weave the threads of imagination into the finished fabric is equally important.

It has been the privilege of the EDWARDS & BROUGHTON COMPANY to cooperate with the staff in creating their vision into material form.

Such cooperation is one of the "visions" which precede the building of a successful business, and is a part of the working policy of the EDWARDS & BROUGHTON COMPANY.

To those Staffs desiring complete cooperation, we offer unexcelled service.

You, too, may be proud of your annual.

Correspondence is Invited

EDWARDS & BROUGHTON CO.
RALEIGH, NORTH CAROLINA







388.756
F

11

