



THE
1941
White Heather



Annie Williams.

THE *White Heather*

OF NINETEEN FORTY ONE



GENE McLEOD
Editor

POLLY GOFORTH
Business Manager

PRESENTING THE *White*

*Published by the Student Body
of Flora Macdonald College
Red Springs, North Carolina*

Leather OF NINETEEN FORTY ONE





Lives of great men all remind us
We can make our lives sublime,
And, departing, leave behind us
Footprints on the sands of time.

—Longfellow.



Century of Progress

As we, the class of 1941, bring to a close our four years of comradeship, study, and preparation for the future, we add the one-hundredth year to the establishment of higher education for young women in Robeson County, North Carolina. It is our purpose, therefore, in this volume of the WHITE HEATHER to revive memories of the past century.



Dedication

TO

DR. AND MRS. C. G. VARDELL

Whose great strength and
untiring efforts,
Whose loyalty and devotion
to the college,
Have taught us the value of
doing all things well,

We, the student body, with
respect and admiration
dedicate this volume
of the
WHITE HEATHER



DR. AND MRS. CHARLES GRAVES VARDELL

IN Memoriam

MISS ETTIE BROWN

Died April 26, 1940

"A worthy woman who can find?

For her price is far above rubies. . . .

Many daughters have done worthily,

But thou excellest them all."



MISS ETTIE BROWN



HENRY GRAYBILL BEDINGER, B.A., B.D., D.D.

President

Flora Macdonald College, 1930—

MARY JOHNSTON
Dean of Students



J. WILGUS EBERLY
Dean of Conservatory



HAZEL MORRISON
Dean of Faculty and Registrar



FACULTY

MISS HARRIET N. MORRISON, B.A., M.A., *Professor of Latin*

MRS. LIDA LAW CHAPMAN, B.M., *Professor of Piano*

MRS. ELIZABETH C. MCPHAUL, B.A., *Associate Professor of Bible*

MISS EMMA LOUISE JONES, B.A., *Professor of Public School Music*

DR. ALEXANDER B. STUMP, B.S., M.S., Ph.D., *Professor of Biology, Nature Study, and Geography*

MRS. LILLIAN FARQUHAR ROBESON, *Professor of Violin*

MISS MARY MACLEAN CONOLY, B.A., B.S., M.A., *Professor of Education and Psychology*

MRS. GENEVIEVE MACMILLAN NEIGHBORS, B.A., M.A., *Associate Professor of Education and Social Science*

MISS NELL BARNARD BRISCOE, B.C.S., B.A., *Professor of Commercial Branches*

MISS VERTIE D. PRINCE, B.A., M.A., *Professor of Mathematics*

MISS FRANCES ELIZABETH COMER, B.S., M.S., *Professor of Foods and Nutritions*

MISS V. ZOULEAN ANDERSON, B.A., M.A., *Professor of Bible*

MISS ETHEL BATEMAN, B.A., M.A., *Professor of Physical Education and Health*

MISS PRINCIE MAPHET, B.A., *Assistant Professor of Commercial Subjects*

MISS RUTH TOWNSEND, B.A., *Professor of French and German*



Morrison
Robeson
Comer

Chapman
Conoly
Anderson

McPhaul
Neighbors
Bateman

Jones
Briscoe
Maphet

Stump
Prince
Townsend

FACULTY

MRS. JANE COLSON GLENN, B.S., M.S., *Professor of Chemistry and Physics*
 MR. ALEXANDER H. MCLEOD, B.A., M.A., *Professor of History*
 MISS MARGARET STIREWALT, B.S., M.S., Ph.D., *Associate Professor of Physics and Biology*
 MISS VERA BURNETTE, B.S., M.S., *Professor of Clothing and Textiles*
 MISS ANNIE WILLIAMS, *Secretary to the President*

MISS HELEN SCOGGINS, B.M., *Instructor and Official Accompanist of the Conservatory of Music*
 MISS MARY CORNELIA HAMILTON, B.A., *Professor of French*
 MISS MARY MAGGINIS, B.A., M.A., *Associate Professor of English*
 MISS HELEN BURCH, B.A., M.A., *Associate Professor of Education*
 MISS BROWN MORRISON, *Treasurer*

MISS MARTHA LOIS SMITH, B.A., M.A., *Professor of English*
 MISS ESTELLE LOUISE COONEY, *Professor of Voice*
 MISS JEAN DOUGLAS TAIT, B.S., *Dietitian*
 MISS ELEANOR SAMPLE, *Librarian*
 MISS VIRGINIA CONNOR, R.N., *Resident Nurse*



Glenn
Scoggins
Smith

McLeod
Hamilton
Cooney

Stirewalt
Magginis
Tait

Burch
Sample
Burnette

Williams
B. Morrison
Connor

FLORAL COLLEGE

A charter was granted in January 1841, by the Legislature of North Carolina for the establishment of Floral College. The following June this institution opened its doors to young women seeking a higher literary education, with Christian and social training.

Rev. John R. McIntosh was elected the first principal, and with the assistance of four other faculty members this progressive school rapidly developed into a school long desired by the Scotch settlers of this community.

The school term was for ten months with instruction in the following subjects: Chemistry, Natural Philosophy, Evidences of Christianity, Drawing, Painting, Embroidery, Botany, Mathematics, Intellectual Philosophy, Grammar, Geography, History, Vocal and Instrumental Music.

Before being awarded diplomas, students were examined on subjects before the Board of Trustees and the audience. Large crowds attended both Commencement and May Day exercises as these were the outstanding events of the year.

Floral College was located on the east side of Lumber River in Robeson County, North Carolina, this being the home of Centre Church and a logical location for the institution.

The college operated continuously from 1841, but was closed during the period of the War Between the States. It reopened in 1866, but due to the Reconstruction Period closed its doors again in 1878. At its height the student body of Floral College numbered one hundred and fifty.

Classes





Aw, take it away . . . She who draws pictures on the wall . . . Passing the time away . . .
 Claire buried in American Lit again . . . Ain't it a scream? . . . Industrious
 Sandy . . . Kitty saw it all the time . . . Tops among us . . . Willie "facin'" us . . .
 What is it Cromartie? . . . Sophistication . . . Yes, we have no bannanas today.

SENIORS

OFFICERS

- JEAN BOYER *President*
FRANCES MCFAYDEN *Vice President*
REBECCA ROGERS *Secretary*
DOROTHY PICKARD *Treasurer*
ELEANOR YOUNG *Tea Room Manager*
(Not Photographed)
CATHERINE PARKER, *Assistant Tea Room Manager*
(Not Photographed)
DR. ALEXANDER STUMP *Faculty Adviser*
JAMES SINGLETON, III *Mascot*





Seniors

CHARLOTTE MCBRYDE AUSTIN, B.A.

Bartow, Florida

E. X.

Florida Southern College '38; William Bartram Scientific Society '39, '40, '41; Business Editor WHITE HEATHER '39, '40; Assistant Tea Room Manager, Marshal, May Court, Basketball '40; Delegate to N. C. Collegiate Press Association '40, '41; Business Manager *Pine and Thistle*, May Queen, '41.

A paradox; Platinum; Lucien Lelong; English tweed; Nutmeg . . . A flair for smart detail that shows distinctive style and taste.

MARGUERITE PEARL BAIN, B.M.

Wade, N. C.

Z

Music Club '38, '39, '40, '41; Basketball, Soccer '38; Glee Club '39, '40, '41; German Club, Hockey, Captain Class Basketball '39; Vice-President Athletic Association, Basketball, Hockey '40; F.M.C. Monogram, Basketball, Tennis, Hockey '41.

Sunlit gardens; Friendship; A cozy home; Blue sweaters . . . A loving heart brimful of thoughtful kindness.

Seniors

MARY FRANCES BINGHAM, B.A.
Smithfield, N. C.

E. X.

Archery '38; William Bartram Scientific Society, Dramatic Club '39, '40, '41; Associate Editor *Pine and Thistle*, Tennis '39; Editor-in-Chief *Pine and Thistle*, Delegate to North Carolina Collegiate Press Association '40; Glee Club, Editor-in-Chief *Pine and Thistle* '41.

Warm firelit room with lurking shadows: Strong coffee; "The Laughing Cavalier"; Haunting melodies; Byron; Midnight oil; Printer's ink . . . A sense of the truly artistic that catches the essence of all its deems worth seeing.

MARY BLUE, B.M.
Parkton, N. C.

E. X.

Music Club '38, '39, '40, '41; Hockey '38; Cabinet, Glee Club, Critic Epsilon Chi Literary Society, Hockey '39; Delegate to Davidson Conference '39, '40; President Junior Class, Student Council, Marshal, Treasurer Music Club '39, '40; President of Student Body, Student Council, Glee Club, Senior Piano Recital, Scotch Folk Dancer in "The Highland Call"; *Who's Who Among Students In American Universities and Colleges* '41.

Rows of daffodils; Bread and butter and honey; Collie puppies; Sprigged dimity; White steeples . . . "Gentle as a blessing that falls on listening ears with the sound of muted bells at twilight."





Seniors

JEAN MCNEILL BOYER, B.S.
Woodstock, Va.

Z

Glee Club, William Bartram Scientific Society '39, '40, '41; Hockey, College Basketball Varsity '39; Vice-president Student Body, Student Council, Marshal, Editor *College Handbook* '40; *Who's Who Among Students In American Universities and Colleges* '40, '41; "The Highland Call" '40, '41; President Senior Class, Student Council, Senior Scribbler, Maid of Honor in May Court '41.

Silver fox; Finger bowls; Evening stars; Pearls on gray velvet; Poinsettias . . . Leader always ready for the thing that comes. Cool, unruffled certainty born of knowledge.

CLAIRE JANE BROOKS, B.A.
Evergreen, N. C.

Z

William Bartram Scientific Society '39, '40, '41; Tennis '39; Tennis '40; Treasurer Zetesian Literary Society, Commercial Club, Prayer Band Leader '41.

Red Nail polish; "Navy Blues"; Bookshelves; Cara Nome . . . A gift of mimicry and a joy of living.

Seniors

FRANCES JEANNETTE CAPEL

Mt. Gilead, N. C.

E. X.

Home Economics Club '38, '39, '40, '41; Hockey '38; Chaplain of Epsilon Chi Society. Vice-President of Sophomore Class, Wake Forest Summer School '39; Secretary Junior Class. Censor of Epsilon Chi Society. Prize Winner in North Carolina State Textile Style Show '40; President of Epsilon Chi Society. Student Council, William Bartram Scientific Society, *Who's Who Among American University and College Students* '41.

Pink rosebuds; Silver service; Home Ec uniforms; A china sheperdess with hazel eyes . . . Laughing ways that quicken swift response.

ESTHER MAWN COBB, B.A.

Pinetops, N. C.

E. X.

Peace College '36 and '37; Wake Forest Summer School '39; Fire Chief '40; May Court '41.

Red Taffeta; Sloppy Joes; Jam Sessions; Flashy Jewelry . . . "Don't Worry About Me."





Seniors

ELIZABETH COOPER, B.A.

Saluda, N. C.

E. X.

Winthrop College '37; University of South Carolina '38; May Court '39; Critic of Epsilon Chi Literary Society, Marshal, May Court '40; First Vice-President Epsilon Chi Literary Society '41.

Snow on the Alps; Long red gloves; Johnny-jump-ups; Quicksilver . . . Love of high, far-seeing places—fresh and individual charm—eager and willing to probe beauty.

MARGARET HELEN CORBETT, B.A.

Buckroe Beach, Va.

Z

Louisburg College '37; Louisburg College '38; Hiking, Ping-Pong '40; Hiking, Archery, Virginia Club '41.

Brownies; Moccasins; Books; Spring skies . . . Quiet peace of sunlit meadows in her smile.

Seniors

MARGARET CUSTIS CROMARTIE, B.S.
Garland, N. C.

Z

Home Economics Club, Glee Club '38, '39, '40, '41; Captain Class Basketball '38; Mission Study Leader, Prayer Band Leader, Class Cheer Leader, Critic Zetesian Literary Society '39; College Cheer Leader, Marshal, Mission Study Leader, First Vice President Zetesian Society, Tennis '40; President Zetesian Society, Student Council, Senior Voice Recital. *Who's Who Among Students In American Universities and Colleges* '41.

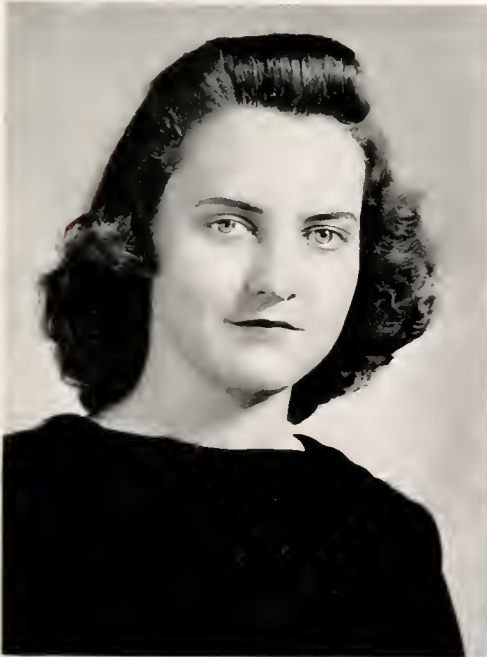
Red dahlias: Old silver: Open fires: Schubert; Mahogany . . . Possessor of the true beauty which comes from within.

ROSALIE DANIEL, B.M.
Parkton, N. C.

Z

Music Club '38, '39, '40, '41; Basketball '38; Glee Club, Archery '39; Mission Study Leader, Glee Club, Hockey '40; Prayer Band Leader, Glee Club, Hockey, Senior Piano Recital '41.

Nosegays: White Organdie; Moods; Candles; Distant Hills . . . Sincere and constant devotion to art and all things lovely.





Seniors

MAUDE ERWIN. B.A.

Pineville, N. C.

E. X.

Hockey, Basketball, Captain Soccer '33; William Bartram Scientific Society '39, '40, '41; Salesman Athletic Association, Hockey '39; Prayer Band Leader, Head of Soccer, Tea Room Manager, Mathematics Club, Captain Class Hockey '40; President Athletic Association, Student Council, Mathematics Club, Hockey, Basketball, *Who's Who Among Students In American Universities and Colleges* '41.

Vivid colors; Tennis balls; Slacks; Woodland trails; Saddle oxfords . . . Quick to joyous laughter.

JEAN FITZPATRICK. B.M.

Ford, Va.

Z

Music Club, Sophomore Piano Recital '39; Vice-President Music Club, Marshal, May Court, Junior Piano Recital '40; Scotch Folk-Dancer in "The Highland Call" '40, '41; Vice-President Music Club, Chaplain Zetesian Literary Society, Senior Piano Recital '41.

Calla lilies; Rich harmony—sparkling melody; Rare perfume; Rain in summer . . . A style that breathes perfection and a love of all things fine.

Seniors

EUELLE FLOWERS, B.A.

Calypso, N. C.

E. X.

Hockey, Archery '38; Archery '39; Tennis, Archery '40.

Tweed coats; Red zinnias; Tea Room politics; Spicy tang of Autumn air . . . Clever and care-free.

ANNIE CULBRETH GAITLEY, B.S.

Red Springs, N. C.

E. X.

Granddaughters' Club '38, '39, '40, '41; Home Economics Club '38, '39, '40, '41; Hockey '38; Basketball, Hockey '39.

Apple blossoms; "House and Garden"; China dolls; Flowered taffeta . . . Quaint charm of a garden filled with graceful flowers.





Seniors

PAULINE GOFORTH, B.S.
Kings Mountain, N. C.

E. X.

Home Economics Club '38, '39, '40, '41; Freshman Editor WHITE HEATHER, Archery '38; Sophomore Editor WHITE HEATHER, Associate Editor *Pine and Thistle*, Censor Epsilon Chi Literary Society, Archery '39; Assistant Business Manager WHITE HEATHER, May Court, Marshal '40; Delegate to North Carolina Collegiate Press Association '40, '41; Business Manager WHITE HEATHER, Second Vice-President of North Carolina Collegiate Press Association, May Court '41.

"Vogue": Carbonated water; Valentine candy; Special deliveries; Tea roses . . . A quick vivacity that sparkles like fountains in the sun—vibrant with the love of life.

LOUISE DORRIS HEED, B.A.
West Chester, Pa.

Z

Basketball '38; Glee Club, William Bartram Scientific Society '39, '40, '41; Basketball, Music Club, Treasurer Dramatic Club '39; Camera Club, Secretary Dramatic Club, Literary Editor WHITE HEATHER '40; Secretary Dramatic Club, Camera Club, First Vice-President Zetesian Literary Society, Senior Scribbler '41.

Dress rehearsals: Rain on the roof; Manuscripts; City twilights . . . Clever as tomorrow's wit.

Seniors

MARY FLORENCE HUGHES, B.S.

Parkton, N. C.

E. X.

Woman's College of the University of North Carolina '37 and '38; Mary Washington College '40; Home Economics Club '41.

Solemn teddy bears; Lilacs; Tiny tots; Quiet pools . . . Gentle, kind, and shy, but with a mischief in her eye.

NANCY MCINTYRE INSCOE, B.S.

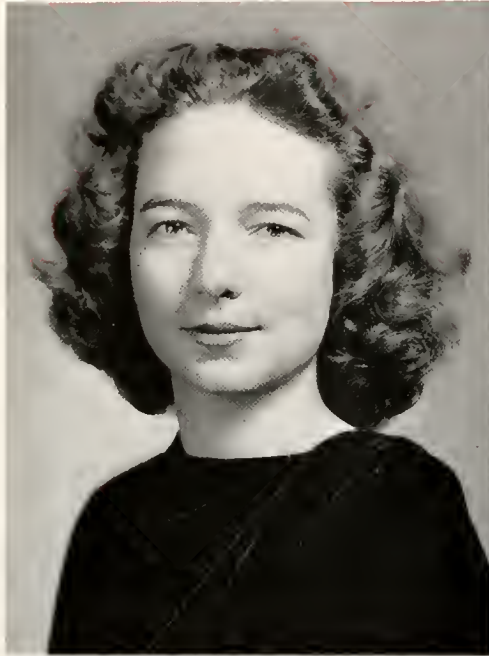
Nashville, N. C.

E. X.

Home Economics Club, Music Club, Granddaughters' Club, Hockey, Basketball '38, '39, '40, '41; Prayer Band Leader, William Bartram Scientific Society '39; Glee Club '39, '40, '41; WHITE HEATHER Staff, Prayer Band Leader, Mission Study Leader '40; Secretary of Christian Association, President of Student Volunteers '41.

Candlelight; Warm brown eyes; Cream lace; Gentle hands . . . In her soft voice lies the peace of tranquil hearts.





Seniors

JOSEPHINE JEROME, B.S.

Coats, N. C.

E. X.

Home Economics Club, Tennis '33; Campbell College, Wake Forest Summer School '39; Home Economics Club, Dramatic Club, Fire Squad, Wake Forest Summer School '40; President Home Economics Club, Treasurer Dramatic Club, Archery '41.

Bouquets; Polo coats; Tea parties; Marionettes . . . Swift to crinkly laughter—generous as a sun-beam with warm light.

BERNICE JOHNSON, B.A.

Willow Springs, N. C.

Z

Volley Ball '38; Archery, William Bartram Scientific Society '39; Archery, William Bartram Scientific Society '40; Commercial Club, William Bartram Scientific Society '41.

Blue dimity; White iris; Embroidery hooks; "Jack and Jill" . . . Gentle ways of winning sweetness.

Seniors

DORIS GRAHAM JOHNSON. B.S.

St. Pauls, N. C.

E. X.

Montreat Junior College '38, '39: Hockey, Home Economics Club '40, '41: Wake Forest Summer School '40.

Red jackets: Football games: Buicks: Crepe de chine . . . Artless nonchalance of carefree winds in April.

TALLAH LEMMON. B.A.

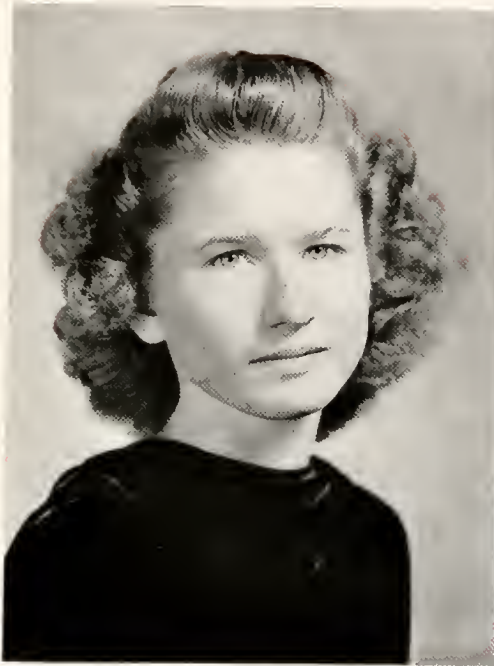
Myrtle Beach, S. C.

E. X.

Prayer Band Leader. Recording Secretary Epsilon Chi Literary Society. Associate Editor of *Pine and Thistle*. South Carolina Club '40: Prayer Band Leader. Recording Secretary of Epsilon Chi Literary Society. Associate Editor of *Pine and Thistle*. South Carolina Club '41.

Sunlight on the ocean: Fairies: Sea shells: Morning glories . . . Merry as a little elf finding the secret of happiness within her own light heart.





Seniors

MARGARET ALVERTA LEWIS, B.A.
Leland, N. C.

Z

Hockey, Basketball '38; Hockey, Basketball, Tennis '39; Archery, Tennis '40; Fire Squad, Tennis, Basketball '41.

Peppermint stripes; Four o'clocks; Shadowed forests; Brown bunnies . . . Wistful eyes that hold a child's soft wonder.

ZILPIHA ALEASE MARTIN, B.A.
Whiteville, N. C.

E. X.

William Bartram Scientific Society '38, '39, '40, '41; Hockey, Basketball '38; Hockey, Basketball, Tennis, Fire Squad '39; Prayer Band Leader, Delegate to Davidson Conference, Tennis '40; Commercial Club, Corresponding Secretary of William Bartram, Cabinet Member, F.M.C.A. Librarian '41.

Crystal beads; Rambler roses; Rainbows; Curly; Clicking heels . . . A nature that is prodigal with its love of kindness.

Seniors

JEAN BEATTY MURPHY. B.S.
Red Springs, N. C.

Z

Day Students' Club '38, '39, '40, '41; Basketball '38; Hockey, Basketball '39; Home Economics Club, Hockey '40; Home Economics Club, Hockey, Basketball, President of Day Students' Club, Student Council '41.

*Poppy fields: Venetian linen: Pewter plates:
Dark eyes . . . Selfless love of quiet unobtrusive
giving.*

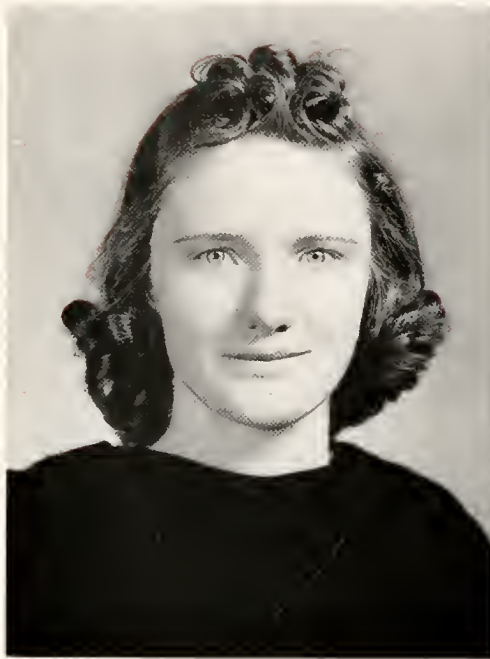
LILLIAN McARTHUR. B.M.
Goldsboro, N. C.

Z

Glee Club, Sextette, Music Club '38, '39, '40, '41;
Class Cheer Leader, German Club '38; Archery,
German Club '39; Trio, Archery '40; President
Glee Club, College Cheer Leader, Senior Voice
Recital, Archery '41.

*Tweed perfume: Laughter: Warm lamplight:
Full, rich tones . . . A charm that overflows in
song and irrepressible bursts of wit.*





Seniors

VIVIAN McDOWELL, B.A.
Elizabethtown, N. C.

Z

William Bartram Scientific Society, Mathematics Club '38, '39, '40, '41; Hockey '38, '39; Prayer Band Leader, Basketball, Hockey '40; Prayer Band Leader, Commercial Club '41.

Gingerbread; Checked gingham; "Little Women"; Cherokee roses . . . Kindness itself doing all things well, the while she smiles.

FRANCES JEAN MCFADYEN, B.S.
Raeford, N. C.

E. X.

Hockey, Basketball '38; Home Economics Club, Mathematics Club, William Bartram Scientific Society '39, '40, '41; Prayer Band Leader, Hockey '39; Delegate to S.C.A. '39, '40; Secretary Cabinet, College Hockey, Varsity '40; Scotch Folk-Dancer in "The Highland Call" '40, '41; Vice-President Senior Class, Student Council, Hockey, Basketball. *Who's Who Among Students In American Universities and Colleges*, May Court '41.

Peppermint candy; Pearls on black sweaters; Mountain Missions; "The Highland Call" . . . An amazing blend of gravity and mischief.

Seniors

MARTHA EUGENIA MACLEOD, B.A.

Red Springs, N. C.

Z

Day Students' Club '38, '39, '40, '41; Mathematics Club, William Bartram Scientific Society '39, '40, '41; Hockey, Basketball '33; Hockey, College Basketball, Varsity '39; Assistant Editor WHITE HEATHER, Basketball, College Hockey Varsity, Delegate to North Carolina Collegiate Press Association '40, '41; Scotch Folk-Dancer in "The Highland Call" '40, '41; Editor WHITE HEATHER, Chief Scribe Senior Scribblers, Hockey, Basketball, Superlative, May Court '41.

Red cardigans: Pen and ink drawings: Scotch kilts: Music boxes: Annual proofs . . . Poise and dignity, but bubbling over with clear laughter.

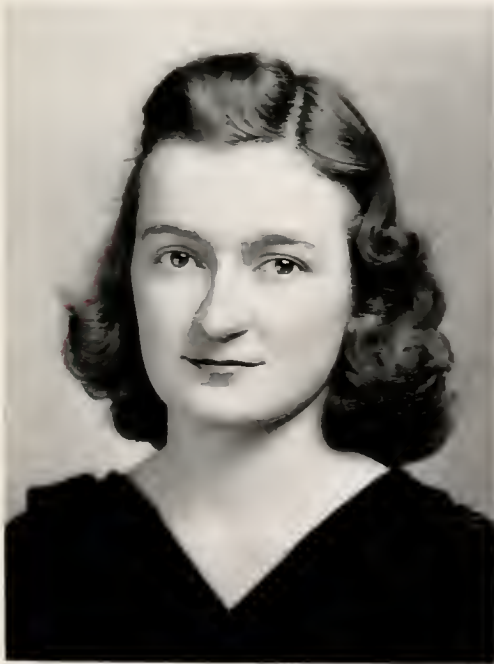
MARY EMILY MACMILLAN, B.A.

Wadesboro, N. C.

Z

Day Students' Club '38, '39, '40, '41; President of Day Students' Club '40; Student Council '40.

Ginger: Dutch kitchen: Black-eyed Susans: Apple jelly . . . An interest in the small and happy things that make a life.





Seniors

CATHERINE ELAINE PARKER, B.A.

Clinton, N. C.

E. X.

Music Club, William Bartram Scientific Society '38, '39, '40, '41; Associate Editor *Pine and Thistle*, *Tennis* '39; Recording Secretary William Bartram '40; Glee Club '39, '40, '41; Delegate to N. C. Collegiate Press Association '40, '41; Assistant Editor *Pine and Thistle*, Archery '40, '41; Senior Editor WHITE HEATHER, Assistant Tea Room Manager, May Court '41.

"Mademoiselle"; Schroom Lake; Carrots; Spinning Wheels and Spool Rugs . . . Cleverness that seeks below the surface.

MADelyn BURROUGHS PARKS, B.M.

Weaverville, N. C.

Z

Glee Club '38, '39, '40, '41; Sextette '39; Vice-president Junior Class, Student Council, Marshal, Delegate to Davidson Conference, Junior Piano Recital '40; President Music Club '40, '41; Cabinet, Vice-president Christian Association, Senior Scribbler, Dramatic Club, Senior Piano Recital, "The Highland Call," *Who's Who Among Students In American Universities and Colleges*, Superlative '41.

Blue gentians; Smiles; Husky tones of a muted violin; Leather bound books . . . A lover of fine music who knows whereof she speaks.

Seniors

EDNA NEAL PATE, B.S.
Fayetteville, N. C.

Z

Home Economics Club, Hockey, Basketball '38; Home Economics Club, Basketball, College Hockey Varsity '39; Home Economics Club, Hockey, Captain Basketball '40; Head of Basketball, Secretary Home Economics Club, F.M.C. Monogram, Hockey, Basketball '41.

Basketballs and hockey sticks: Sly wit: Hot rolls: Flowered chintz . . . Clever way of putting things in brief.

EFFIE PHIPPS, B.S.
Greensboro, N. C.

E. X.

Home Economics Club, Hockey, Basketball '38, '39, '40; Recorder of Points, Home Economics Club, Captain of Hockey, Basketball '41.

Chipmunks: Little boys and bow ties: Pink cotton candy: Reversibles . . . Manner of deceptive seriousness belied by twinkling eyes that seem to smile at life.





Seniors

DOROTHY BOONE PICKARD. B.M.
Mebane, N. C.

Z

President of Freshman Class, Student Council '38; Music Club '38, '39, '40, '41; Tennis '39; Treasurer of Junior Class, Tennis '40; Glee Club, Treasurer of Senior Class, Senior Piano Recital, "The Highland Call" '41.

Symphonic chopsticks; Circus clowns; Butter scotch; Piano recitals; Pink angora sweaters . . . A "pick"-ant fresh charm.

REBECCA PALMER ROGERS. B.S.
Whiteville, N. C.

Z

Granddaughter Club, Home Economics Club '38, '39, '40, '41; Tennis '38, '39; Scotch Dancer in "The Highland Call" '40, '41; Second Vice-President of Zetesian Literary Society, Secretary of Senior Class '41.

Jaunty red feathers; Pinafores; "Chem" lab sheets; Vibrant grace . . . Little ranning bursts of laughter.

Seniors

EMILY REED RYBURN, B.A.

South Charleston, W. Va.

E. X.

West Virginia Club '38, '39, '40; Glee Club, Prayer Band Leader '39; Head of Ping Pong, Junior Editor WHITE HEATHER, Prayer Band Leader, Glee Club '40; Cabinet, Head of Ping Pong, Literary Editor WHITE HEATHER, Glee Club '41.

Red roses; Wool; White mittens; Snow at twilight; Scarlet tanagers . . . Quick and agile merriment lurking in velvet brown eyes.

PATTIE SCOTT, B.A.

Charlotte Court House, Va.

Z

Virginia Club '38, '39, '40, '41; Hockey, Basketball '38; William Bartram Scientific Society '38, '40, '41; Hockey '39; *Pine and Thistle* Staff, Camera Club, Tennis '40; *Pine and Thistle*, Camera Club, Fire Squad '41.

Quaker bonnets; Dry wit; Red apples; Little girl hair bows . . . Puck and Priscilla share her nature.





Seniors

FLORA McARTHUR SMITH, B.A.

Wakulla, N. C.

E. X.

Volley Ball '38; Archery '39; Archery '40; Commercial Club, Swimming, Tennis '41.

Hollyhocks; Ford V-8; Picture shows; Red jersey . . . Eyes holding laughter that when spilt warms the air.

RUBY SPAINHOUR, B.A.

Morganton, N. C.

E. X.

Mitchell College '38, '39; Dramatic Club, Hockey, Tennis '40; Fire Chief, Prayer Band Leader, Hockey, Tennis, Superlative '41.

Tennis rackets; Cornell; Mountain streams; Purple wool . . . Quickly gay as the windswept autumn leaves in the air.

Seniors

JOSEPHINE STEPHENSON, B.A.
Willow Springs, N. C.

E. X.

Hockey, Basketball '38; Mathematics Club, Hockey, Basketball '39; Treasurer Mathematics Club, Prayer Band Leader, Hockey, Tennis '40; Mathematics Club, Hockey, Basketball '41.

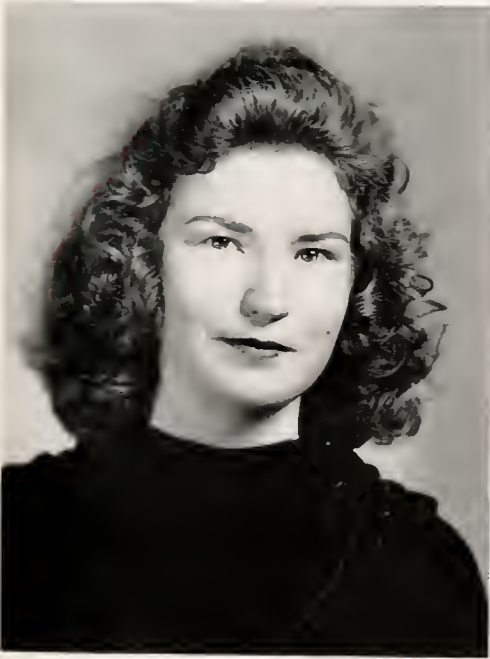
Pastels; Japanese bridges; Yellow chrysanthemums; Strawberry ice cream sodas . . . Contagious, gladdening bursts of quick mirth.

MARGARET ELIZABETH STRONG, B.A.
Kingstree, S. C.

Z

South Carolina Club '38, '39, '40, '41; Commercial Club, Hockey, Soccer '38; William Bart-ram Scientific Society '39, '40, '41; Secretary Sunday School Class, U.S.C. Summer School '40; Hiking '41.

Brown wrens; Yellow daisies; Sweaters and skirts; Warm Southern voices . . . Dry and quiet flashes of subtle humour.





Seniors

RUTH GILCHRIST STUART, B.A.
Troy, N. C.

Z

Music Club '38, '39, '40, '41; Vice-President Freshman Class '38; President Sophomore Class. Student Council, Chaplain Zetesian Society. Mission Study Leader. Tennis '39; Chief Marshal. Cabinet, Class Cheer Leader, Dramatic Club. Tennis '40; President Christian Association, Student Council, Dramatic Club. Scotch Folk-Dancer in "The Highland Call," Senior Scribbler. *Who's Who Among Students In American Universities and Colleges*, Superlative '41.

Sunlight on blue lakes: Hand painted china; Forget-Me-Nots and lace . . . Deep and inner wisdom.

JANE WOOD TOMERLIN, B.M.
Roanoke Rapids, N. C.

Z

Drake University '38; Arthur Jordan Conservatory '39, '40; Music Club, Glee Club, Senior Voice Recital '41.

Symphony concerts; Costume jewelry; Whipped cream; Black velvet; Song . . . "Laughter holding both his sides."

Seniors

GLADYS JOSEPHINE WALTERS, B.A.
Wakulla, N. C.

E. X.

Louisburg College '38, '39; Day Students' Club, A.S.T.C. Summer School '40; Tennis, Camera Club, William Bartram Scientific Society '41.

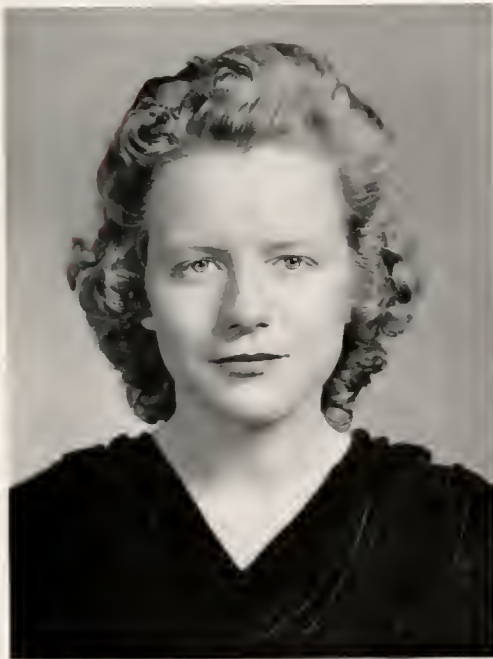
*Puffed sleeves: "My heart's in the highlands";
Jonquils: Minuets . . . A nature generous and
bright as warming sunshine.*

SARAH KNOX WILSON, B.A.
Charlotte, N. C.

E. X.

Hockey '38, '39, '40, '41; Prayer Band Leader, College Hockey, Varsity, Mathematics Club '39; Cabinet, Vice-President of Mathematics Club, College Hockey, Varsity, William Bartram Scientific Society '40; Treasurer of Christian Association, President of Mathematics Club, Head of Hockey, Athletic Board, William Bartram Scientific Society '41.

*Walks in the rain: Toy animals; Poetry:
Autumn leaves . . . True as the swiftly certain
flight of birds.*





Seniors

CATHERINE MERLE YATES, B.A.

Hwaiianfu, Ku China

Z

Class Treasurer, Hockey '38; Cabinet Member, Censor of Zetesian Literary Society, Dramatic Club '39; Cabinet Member, Censor of Zetesian Literary Society '40; Cabinet Member, Critic Zetesian Literary Society '41.

Steamship labels; Winnie-the-Pooh; Chinese silk; Mother-of-Pearl . . . The zeal of a Crusader.

HILDA YELVERTON, B.A.

Eureka, N. C.

E. X.

Music Club '38, '39, '40, '41; Tennis '38, '39, '40, '41; Fire Squad '41.

Candlewick spreads; Ivory keys; Blue angora; Copper . . . A taste for finer things that show in outward forms of simple charm that lends a grace to life.

Seniors

ELEANOR YOUNG, B.A.

Charlotte, N. C.

E. X.

Mathematics Club, William Bartram Scientific Society, Hockey '38, '39, '40, '41; Prayer Band Leader '39, '40, '41; College Hockey, Varsity '40; Dramatic Club, Glee Club '40, '41; Tea Room Manager, Head of Tennis, President of William Bartram Scientific Society, Treasurer of Mathematics Club, Senior Scribbler, Tennis '41.

Holly: All-day suckers; Kate Greenaway illustrations; Consistent good humor; Classic literature . . . Gifted with a facile blend of naïvete and a "savoir faire" distinctly modern.

MRS. PANSY K. POWERS

Lumberton, N. C.

Special Student '41.





Do look at that apple core . . . Geraldine posing . . . The prize winner in our snap shot contest . . . Which "one" was it, Mary Lib? . . . And they're all three human . . . Short cut to town . . . Time out for Miriam . . . Grace and "Mildew" in Florida . . . "Little Helper," at the fire . . . Now is that nice, we ask you?

JUNIORS

OFFICERS

CATHERINE NICHOLSON *President*
NELL THOMAS *Vice President*
PATSY HARPER *Secretary*
MINNIE MYERS *Treasurer*
MARIBELLE GREEN *Tea Room Manager*
MARY ELIZABETH TRAYWICK
Assistant Tea Room Manager
MR. ALEXANDER H. MCLEOD . . . *Faculty Adviser*



KELSIE NEILL ADAMS
Laurel Hill, N. C.



MARTHA ADAMS
Robersonville, N. C.

META BAGGETT
St. Stephens, S. C.



HILDA BAILEY
Woodleaf, N. C.

MARGARET BARKER
Milton, N. C.



VIRGINIA BOGUE
Tampa, Fla.

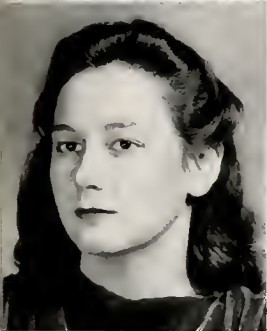
EDITH BUGG
Roanoke Rapids, N. C.



CAROLINA BUIE
Red Springs, N. C.



MIRIAM BULLARD
Chadbourn, N. C.



MARGARET BUNDY
Clio, S. C.



ROBERTA DONAHO
Leaksville, N. C.

CLARA DAVID
Bennettsville, S. C.



AGNES EDENS
Wakulla, N. C.

ELAINE ELLIS
Hampton, S. C.

MARY EMMA FOLGER
Red Springs, N. C.

MARY ALICE FULK
Lewisville, N. C.

GERALDINE GRADY
Seven Springs, N. C.



MARIBELLE GREEN
Greenville, S. C.

NINA GREEN
Conway, S. C.



DAPHNE GRIFFIN
Bailey, N. C.

LUCILLE GRIGGS
Sheffield, Mass.



SCOTT HALE
Waterproof, La.

MARY HALL
Hickory, N. C.



PATSY HARPER
Pinetops, N. C.



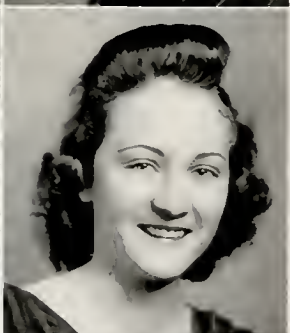
MARGARET ROSE HEFNER
Hamlet, N. C.

ANGELIA HUBBARD
Clio, S. C.



MARY HUDSON
Ruffin, N. C.

ESTELLE HUGGINS
Fayetteville, N. C.



HAZEL MAY JONES
Red Springs, N. C.

DOROTHY KINLAW
St. Pauls, N. C.



MARGARET KORNEGAY
Warsaw, N. C.

LAURA LOWERY
Jefferson, S. C.

MILDRED HOPE MASON
Roanoke, Va.



NELLIE GRAY MATHIS
Warsaw, N. C.

MINNIE MYERS
Tar Heel, N. C.



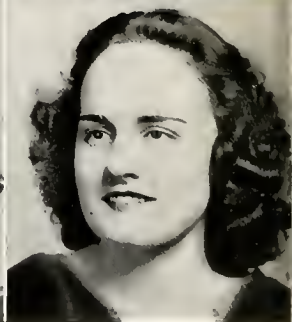
PATTIE MCDANIEL
Bennettsville, S. C.

ALINE MACDONALD
Hamer, S. C.



MARJORIE MCKAY
St. Pauls, N. C.

JOHNNIE MONROE MCKELLAR
Red Springs, N. C.

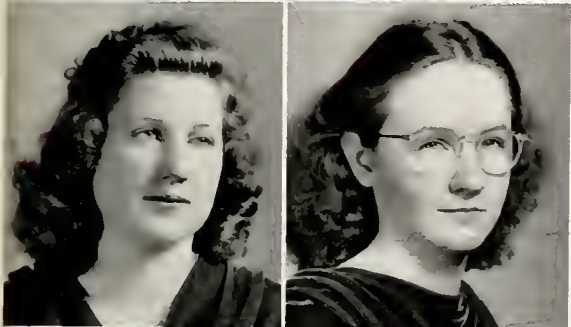


JEANNE MCKENZIE
Rockingham, N. C.



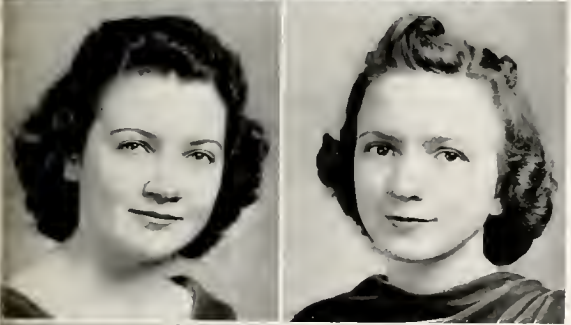
GRACE MCKENZIE
Rockingham, N. C.

ELISABETH DUNCAN MACLAURIN
Columbia, S. C.



CAROLYN MCLEAN
Rae ford, N. C.

MARGARET MCLEOD
Aberdeen, N. C.



MARJORIE McMANUS
Red Springs, N. C.

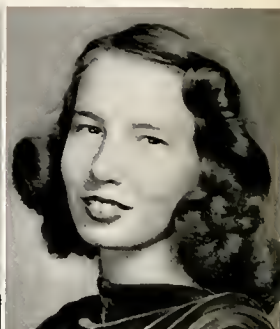
CLARA BELLE McNEILL
Archer, Fla.



SARAH MARGARET McPHAUL
Parkton, N. C.

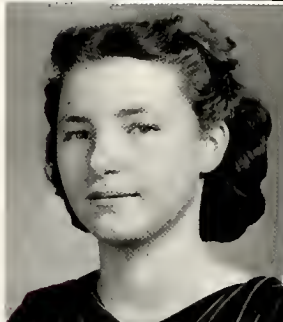
ELIZABETH MACPHERSON
Fayetteville, N. C.

MARGARET RAY NEWTON
Red Springs, N. C.



CATHERINE NICHOLSON
Troy, N. C.

CLEO OSBORNE
Vannoy, N. C.



DOROTHY RUTH PACE
Jacksonville, Fla.

RUTH PREVATT
Red Springs, N. C.



JULIA ANN PROCTOR
Wilsons Mills, N. C.

EVELYN ROBERTSON
Ahoskie, N. C.



BETTY RUTH ROBINSON
Charlotte, N. C.



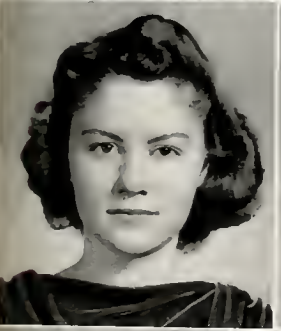
JEAN RYBURN
South Charleston, W. Va.

HAZEL SAUNDERS
Four Oaks, N. C.



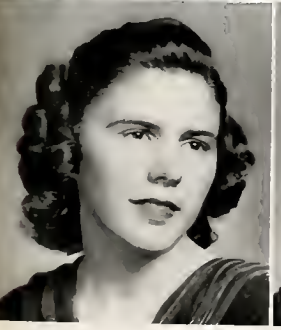
MARY CLYDE SHEPHERD
Lansing, N. C.

ALMA LOU SPIVEY
Elizabethtown, N. C.



GERALDINE STROUD
Pink Hill, N. C.

WILLIE FRANK STUBBS
Gibson, N. C.



ELIZABETH THOMAS
Beaufort, N. C.

NELL THOMAS
Florence, S. C.

MARY LIB TRAYWICK
Raeford, N. C.

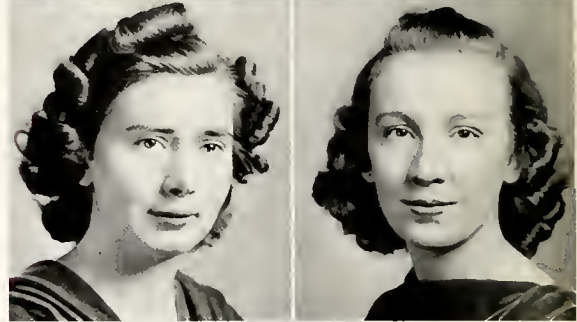


JOSIE TROTTI
Chesterfield, S. C.



EDITH USSERY
Sanford, N. C.

MARY MAC WATSON
Red Springs, N. C.



ANGELLE WILLIAMSON
Chadhour, N. C.

GRACE WITHERS
Spencer, N. C.

EDITH AREY WOMBLE
Wagram, N. C.



MADelyn PARKS

JEAN BOYER

MARGARET CROMARTIE

JEANNETTE CAPEL

MARY HALL

MAUDE ERWIN

CATHERINE NICHOLSON

MARY BLUE

RUTH STUART

FRANCES MCFADYEN



WHO'S WHO AMONG STUDENTS in American Universities and Colleges, 1941



A familiar scene . . . There she was waiting at the gate . . . Off for a Sunday stroll . . . Fiddler Carolyn . . . No time for posing . . . Group I . . . Group II, Anne Ruth. how do you rate! . . . Roll the scroll, Jennie . . . What's the occasion . . . Pretty fish.

SOPHOMORES

OFFICERS

SUE MACPHERSON *President*
MARGARET JENKINS *Vice President*
LEILA MCCORMICK *Secretary*
VIOLA WILLIAMS *Treasurer*
MRS. ELBERT MCPHAUL *Faculty Adviser*





BETTY LEE ANDREWS
Tryon, N. C.

MARY LILY AREY
Raleigh, N. C.

FRANCES BALDWIN
Ramseur, N. C.

CELESTE BARNETT
Bartow, Fla.

JANE BLACK
York, S. C.

SARAH BULLOCK BOWDEN
Warsaw, N. C.

ELIZABETH BRITAIN
Summerfield, N. C.

KATHERINE BRUNER
Cleveland, N. C.

WYATTE BULLARD
Hope Mills, N. C.

LOUISE BUNN
Rocky Mount, N. C.

LOUISE CABLE
Madison, N. C.

MARGARET CAMPBELL
Parkton, N. C.

GRACE CHERRY
Washington, N. C.

ANNE CREACH
Pollockville, N. C.

IRENE EDENS
Red Springs, N. C.

BETTY ELMORE
Bladenboro, N. C.

ANNE RUTH ENNIS
Dunn, N. C.

JESSAMINE FLEMING
Mebane, N. C.

MARTHA GAITLEY
Red Springs, N. C.

CATHERINE GILCHRIST
Red Springs, N. C.





LOUISE PREVOST HALL
Rowland, N. C.

MARY BELLE HENRY
Rocky Point, N. C.

KATHRYN HIGHSMITH
Rocky Point, N. C.

FRANCES JACKSON
Fayetteville, N. C.

MARY MONICA JACKSON
Wilmington, N. C.

MARGARET JENKINS
Mayesville, S. C.

CHRYSTELLE JOHNSON
Coats, N. C.

MARY ELIZABETH JOHNSON
Fayetteville, N. C.

MARY ELEANOR JOHNSTON
Charlotte, N. C.

MARTHA KENDRICK
Gastonia, N. C.

ANNE LEWIS
Proctorville, N. C.

BUNNY LINGLE
Salisbury, N. C.

BARBARA LYTCH
Laurinburg, N. C.

JEAN MCKAY LYTCH
Rowland, N. C.

DOROTHY MARTIN
Whiteville, N. C.

RUTH MONROE
Eagle Springs, N. C.

FLORENCE MOORE
Ashland, Va.

JEAN KATHRYN MCBRYDE
Lumberton, N. C.

LEILA MCCORMICK
Rowland, N. C.

BONNIE MCCUBBINS
Florence, S. C.





CAROL McDANIEL
Bennettsville, S. C.

VIRGINIA McDANIEL
Red Springs, N. C.

PEGGY MCKAY
Wagram, N. C.

MARJORIE MCKENZIE
Red Springs, N. C.

CAROLYN McNEILL
Raeford, N. C.

KATHLEEN GAYLE McPHERSON
Shiloh, N. C.

SUE HARDEN MACPHERSON
Fayetteville, N. C.

JOYCE McQUACE
Clio, S. C.

SARA NELL OGBURN
Sanford, N. C.

HAZEL OLIPHANT
Moorestville, N. C.

LOIS PARKER
Clinton, N. C.

LAUREE PARLER
Red Springs, N. C.

MARY PARROTT
Florence, S. C.

BILLY PATE
Gibson, N. C.

PEGGY PORTER
Sanford, N. C.

LOUISE POWERS
St. Pauls, N. C.

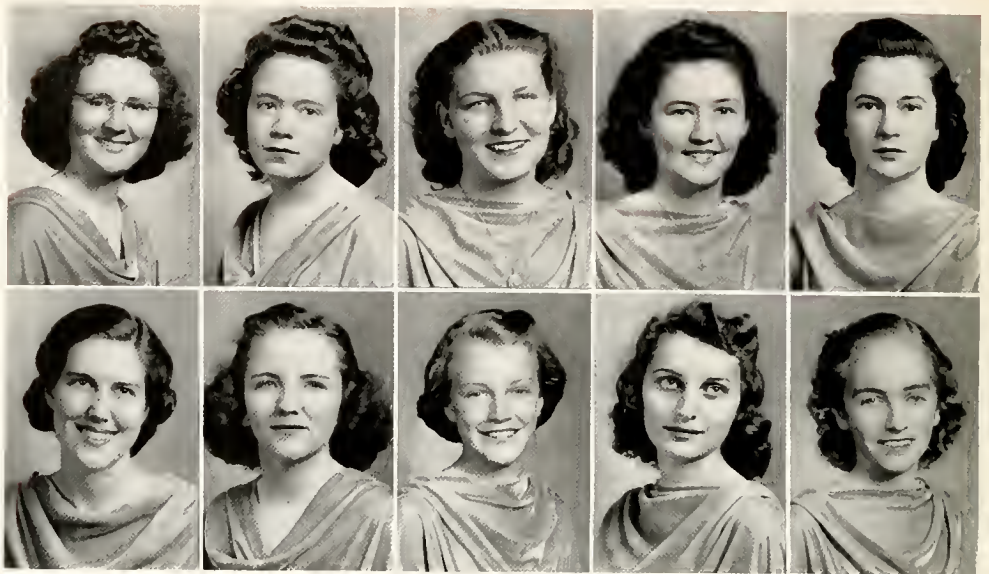
PHYLLIS POWERS
St. Pauls, N. C.

RACHEL POWERS
St. Pauls, N. C.

JEAN ROSS
Patzcuaro, Mexico

LUCILLE PROCTOR
Wilsons Mills, N. C.





GLADYS SANDERS
Raeford, N. C.

LOIS SHOOK
Red Springs, N. C.

MARGARET SINCLAIR
Wilmington, N. C.

MABLE MACNEILL SMITH
Red Springs, N. C.

SARAH BELLE SMITH
Elizabeth City, N. C.

VIRGINIA STEGALL
Lubondai, Belgian Congo, Africa

GARY PAGE STONE
Sweet Hall, Va.

MARTHA SUTHERLAND
Laurinburg, N. C.

MARJORIE SUTTON
Goldsboro, N. C.

EVELYN TEACHEY
Rose Hill, N. C.

HELEN TESTER
Bennettsville, S. C.

HELEN THOMAS
Barium Springs, N. C.

LUCY THOMAS
Florence, S. C.

CAROLYN VIDAL
Gainesville, Fla.

MARY OLIVE WALKER
Greeleyville, S. C.

LENNON JANE WARREN
Clinton, N. C.

ELIZABETH HOPE WEAVER
Red Springs, N. C.

JUNE WELLS
Hamlet, N. C.

VIOLA WILLIAMS
Eagle Springs, N. C.





Who let them in? . . . Rates, eh? . . . Not a river but a stream . . . Spring has sprung . . . How can you smile, Dixie? . . . It's a good snap, Gwen . . . Anne, I just don't believe she's interested . . . I do.

FRESHMEN

OFFICERS

- MARGARET LEWIS *President*
JACKIE HERRING *Vice President*
(Not Photographed)
MARY GOFORTH *Secretary*
HELEN WALKER *Treasurer*
MISS MARY MAGGINIS *Faculty Adviser*



FRESHMEN



RUTH BASKHEAD
Monroe, N. C.

MARY ELIZABETH BANKS
Richlands, N. C.

LAURA BELLE BARKER
Milton, N. C.



YVONNE BAUCOM
Red Springs, N. C.

DORIS BANLEY
St. Pauls, N. C.

LILLIAN BELL
Winter Haven, Fla.



INA ISABEL BETHUNE
Racford, N. C.

ANN BLALOCK
Red Springs, N. C.

ANNIE MARGARET BREWER
Hemp, N. C.



ELISE BRINDEL
Tampa, Fla.

SUE ELLA BRITT
Lumberton, N. C.

COLLEEN CAMPBELL
Kings Mountain, N. C.



ALICE CARNEY
Pulaski, Va.

FRANCES ELIZABETH COLE
Timmonsville, S. C.

GRACE COOLLY
Wagram, N. C.



MAGDALENE COX
Mayodan, N. C.

NANCY DALIGNY
Troy, N. C.

MILDRED JANETTE DILLARD
Rocky Mount, N. C.

FRESHMEN

GWENOLEN EASTRIDGE
Charlotte, N. C.

SYLVIA EDMLND
Cerro Gordo, N. C.

PAXTON ELLIOTT
Montroe, N. C.



NANCY ELLIS
Goldston, N. C.

MILDRED FRANCES FLOWERS
Calypso, N. C.

MARY EVELYN GOFORTH
Kings Mountain, N. C.



JANE TEMPLE GRAHAM
Blountville, Tenn.

JANE MCBRYDE GRANTHAM
St. Pauls, N. C.

LUCY HARRINGTON
Broadway, N. C.



FRANCES HENDERSON
Montroe, N. C.

CLYDE HERRING
Fayetteville, N. C.

ELIZA HOLMES
Fayetteville, N. C.



HARRIETT HORTON
Montoe, N. C.

MARY LEE HUGHES
Wilmington, N. C.

LUCILLE JONES
St. Pauls, N. C.



ANYCE KALLAM
Stoneville, N. C.

FLORIEDEL KENNEDY
Clinton, N. C.

ELIZABETH ANNE KINZLE
Sumter, S. C.



FRESHMEN



MARGARET LEWIS
Hemp, N. C.

FRANCES LIFRAGE
Salters, S. C.

HELEN LITTLE
Charlotte, N. C.

FRANCES LOY
Fayetteville, N. C.

RUTH MILLS
Red Springs, N. C.

ALICE MOORE
Clinton, N. C.

HELEN ELIZABETH MORRISON
Lueba, Belgian Congo, Africa

KATE MUSE
Red Springs, N. C.

ANNIE CATHERINE McDUFFIE
Hemp, N. C.

MARGARET MCKENZIE
Pinehurst, N. C.

CATHERINE MACMILLAN
Red Springs, N. C.

ELIZABETH McNAIR
Tar Heel, N. C.

LILLIAN NICHOLS
Rockingham, N. C.

CAROLYN PARROTT
Florence, S. C.

ELOISE PENNY
Coats, N. C.

ELSIE PILAND
Corapeake, N. C.

DOROTHY POPHAL
St. Pauls, N. C.

NANCY RAMSEUR
Greenville, S. C.

FRESHMEN

JEANNE ROBESON
Tar Heel, N. C.

MARION SKINNER
Elliott, S. C.

CATHERINE VAIL SMITH
Goldshoro, N. C.

DIXIE SMITH
Raeford, N. C.

SARAH SMITH
Greensboro, N. C.

MILDRED STOWE
Clover, S. C.

MARY STRINGER
Red Springs, N. C.

FRANCES TAIT
Blacksburg, Va.

MARGARET TEABEAUT
Fayetteville, N. C.

HELEN WALKER
Hemp, N. C.

MARGARET WALL
Morven, N. C.

DOROTHY WELLS
Winston-Salem, N. C.

LUCENE WHITE
Barium Springs, N. C.

LOLETA WILKERSON
Fairmont, N. C.

CHRISTINE WILLIAMSON
Lumberton, N. C.

FRANCES WILLIAMSON
Turkey, N. C.

JOYCE WINCHESTER
Mouroe, N. C.

MASON WORLEY
Pink Hill, N. C.

NANCY CATHERINE YELTON
Gold Hill, N. C.





CONCERT AND LECTURE COURSE

ROSA TENTONI -----Soprano STRADIVARIUS STRING QUARTET
EGON PATRIA -----Pianist PIERRE VAN PAASSEN----Lecturer

CONSERVATORY
OF MUSIC





WILGUS EBERLY
Dean

MUSIC FACULTY

WILGUS EBERLY, Dean of Conservatory

B.A. University of Nebraska; Graduate Student New York University, New York City, Summers 1938, 1939; Choral Conducting with Robert McLeod, Hugh Ross, and Noble Cain; Student for six years with Paul Reuter, Lincoln, Nebraska; Student of Maurice Dumesnil; Student of Edwin Hughes, Summers 1936, 1937, 1938. Acting Dean of the Conservatory of Music, Flora Macdonald College 1938-39, 1940-41.

ESTELLE LOUISE COONEY, Professor of Voice

Graduate Music School, Yale University; Student Woman's College, New Haven, Conn.; Yale School of Drama; Studied under Constance Welch; Pupil of Oscar Seagle in New York City, and Summer Colony at Schroon Lake, New York; Coaching with Mr. Wagner (Paris), and Nathan Price (Schroon Lake); Acting Professor of Voice, Flora Macdonald College 1938—.

LILLIAN FARQUHAR ROBESON, Professor of Violin

Graduate Halifax Conservatory; Postgraduate work in Weil School of Music; Leipzig Conservatory, two years; Theoretical work under August Schreck, Leipzig; Private Lessons under Arno Hill; Summer work with Sascha Jacobsen and Max Rosen, New York City; Summer study with Ruth Breton, Georgetown, Conn., 1936; Professor Violin and Conductor of Orchestra, Flora Macdonald College 1908-1910; *ibid.*, 1922—.

EMMA LOUISE JONES, B.A., Professor of Public School Music

B.A. Roanoke College; Voice, four years, *ibid.*, Student of Paul de Lannay; Student of Herr Felix Heink; Student Summer Session, University of North Carolina 1918; Mrs. Crosby Adams' Teachers Class 1919; Student Summer Session, Columbia University 1923; Student Summer Session, University of California 1924; Student Summer Session, Asheville Normal 1926; Student Summer Sessions, Columbia University 1928, 1929; (Dramatic courses with Milton Smith; Eurythmics with Theodore Appia.) Work in Public School Music and Dramatics, University of North Carolina, Summer Session 1934; Student Summer Session, Juilliard School of Music, New York 1938; Member of the Carolina Playmakers; Professor of Public School Music, Flora Macdonald College 1932—.

LIDA LAW CHAPMAN, B.M., Professor of Piano

B.M. Flora Macdonald College; Postgraduate, *ibid.*, Study of Pianoforte and Theory at Stern Conservatory of Music, Berlin, Germany; Summer Session 1933 with Edwin Hughes; Work with Edwin Hughes, Summer 1936; Attended Harold Bauer's Master Classes at New England Conservatory, Boston; also attended lectures at Boston University, Summer School of 1938; Teacher of Pianoforte, Flora Macdonald College 1910-1911; Private teaching, eight years; Professor of Piano, Flora Macdonald College 1930—.

HELEN SCOGGINS, B.Mus., Instructor

B.Mus. Flora Macdonald College 1935; Pupil of Edwin Hughes, New York City, Summer 1937; Instructor and Official Accompanist of the Conservatory of Music, Flora Macdonald College 1935—.



CONSERVATORY

I

The Spirit's Song
Se Florindo è fedele
Air from "Comus" (1738)
The Pretty Creature

Haydn
Scarlati
Dr. Arne
Storace

II

Wohin
Aus dem Wasser Zu singen
Zum Schluss
Dan ist ein Flöten und Geigen
Ein Jüngling liebt ein Mädchen

Schubert
Schubert
Schumann
Schumann
Schumann

III

"Musetta's Waltz Song" (La Boheme)

Puccini



MARGUERITE BAIN, B.M.
Public School Music

IV

Aminta
"Maman, ditès moi"
"J'ai pleuré en rêve"
"L'Esclave"
"Chanson espagnole"

Old French Bergerette
Old French Bergerette
George Hut
Edouard Lalo
Maurice Ravel

V

O Faithful Cross
Do Not Go, My Love
Stresa
The Butcher's Boy

Pietro Yon
Richard Hageman
Winter Writs
Richard Malaby



MARGARET CROMARTIE, B.S.
Voice

I

Prelude and Fugue in G major
(The Well Tempered Clavichord)
Sonata in E flat major, opus 7

Bach
Beethoven

II

Polonaise in E flat minor, opus 26, No. 2
Kinderscenen, opus 15

Chopin
Schumann

III

Danseuses de Delphes
La Danse de Puck
La Cathedrale engloutie
Minstrels

Debussy

IV

Concert-Stuck, opus 79

Weber



MARY BLUE, B.M.
Piano



MADELYN PARKS, B.M.
Piano

- I
Concerto in C Major *Mozart*
Allegro Maestoso
Andante
Allegro Vivace Assai
- II
Novelletten in D Major *Schumann*
Nocturne in D flat Major *Chopin*
St. Francois de Paule.
Marchant sur les flots *Liszt*
Reflets dans l'eau *Debussy*
- III
Prelude in G Major *Chasins*
Kunstlerleben *Strauss-Schutt*



LILLIAN McARTHUR, B.M.
Voice

GRADUATES OF

I

- Prelude and Fugue in c minor *Bach*
Sonata in D Major *Mozart*

II

- Waltz in c sharp minor *Chopin*
Ballade in F Major *Chopin*
Nocturne in e minor *Chopin*
Polonaise in c sharp minor *Chopin*

III

- Jeux d'Eau *Ravel*
Pavane (Pour une Infante defunte) *Ravel*
Malaguena *Lecuona*



JEAN FITZPATRICK, B.M.
Piano

- I
I Know That My Redeemer Liveth *Handel*
If Thou Be Near *Bach*
- II
Verborgenheit *Wolf*
In dem Schatten Meiner Lacken *Wolf*
Immer leiser wird mein Schlummer *Brahms*
Vergebliche Standchen *Brahms*
Meine liche ist grun *Brahms*
- III
Voce di Donna (La Gioconda) *Ponchielli*
- IV
The Unforeseen *Cyril Scott*
Mamselle Marie *David Guion*
Twenty Eighteen *Deems Taylor*
The Sea *Grant-Schaefer*
Spring Came *Edwin McArthur*

CONSERVATORY

I
 Prelude and Fugue in B Major *Bach*
 Sonata Opus 27. No. 2 *Beethoven*
 Adagio sostenuto
 Allegretto
 Finale

II
 Nocturne in c minor *Chopin*
 Mazurka in c sharp minor *Chopin*
 Mazurka in C Major *Chopin*
 Intermezzo in b flat minor *Brahms*
 Rhapsody in E flat Major *Brahms*

III
 Variation on a Nursery Rhyme *Dohnanyi*



ROSALIE DANIEL, B.M.
Piano

I
 Virgin Tutto amour *Durante*
 Danza Danza *Donizetti*
 Che Tarò *Gluck*

II
 Von E wiger Liebe *Brahms*
 Der Sonntag *Brahms*
 Die Maenacht *Brahms*
 Die Schwan *Grieg*
 Der Travm *Grieg*

III
 O Mio Ternando *Donizetti*

IV
 Every Valley Shall Be Exalted *Handel*
 Into a Ship Dreaming *Crist*
 Queen of Heaven *Dunhill*
 The American Lullaby *Rich*



DOROTHY PICKARD, B.M.
Piano

I
 Prelude and Fugue in E Major *Bach*
 Sonata in G Major *Haydn*

II
 Valse Oubliee *Liszt*
 Intermezzo *Brahms*
 Polonaise in d minor *Chopin*

III
 Moment Musical *Rachmaninoff*
 Ballade *Debussy*
 General Levine—Eccentric *Debussy*

IV
 Concerto in C Major *Beethoven*
 First Movement



JANE TOMERLIN, B.M.
Voice



MADelyn PARKS
President

MUSIC CLUB The St. Cecelia Music Club is composed of members of the Conservatory of Music. The organization has as its purpose a broadening of the student's knowledge and an increasing of her appreciation for the lives and works of the masters. Through the social aspect of the club a unity in the membership of the conservatory is brought about.

GLEE CLUB The Glee Club is open to all students, selection being made by tryout. Special study is done each year on works originally written for female voices. The club makes frequent appearances in churches and on special occasions at the college.

SEXTETTE The Flora Macdonald Sextette is an organization of voice students under the direction of Miss Estelle L. Cooney. Their religious programs of song are heard in churches, on the radio, and as a solo organization with the Glee Club on its tours.

MUSIC CLUB



GLEE CLUB



SEXTETTE



RED SPRINGS SEMINARY

Red Springs Seminary was founded by the Fayetteville Presbytery, in 1896, with Dr. C. G. Vardell as president, a lady principal, and a faculty of ten. The establishment of the Seminary brought joy and gladness to the hearts of our people who had long felt the need of an institution of higher learning for its young womanhood.

The purpose of the Seminary was for the Glory of God through the Higher Christian Education of Women, and to place this education within the reach of all persons.

The Seminary was advertised in its first catalogue as being not only a fine educational institution, but also a health resort because of the unusually good climate and mineral springs.

The school terms were the same as now with the exception of only one week for Christmas holidays. Expensive and elaborate clothing were discouraged among students and faculty.

Organizations





GENE MACLEOD
Editor-in-Chief

WHITE HEATHER

The WHITE HEATHER is the annual publication of the students of Flora Macdonald College. The editor-in-chief and business manager are elected from the student body, while their assistants are elected from the rising junior class, and other staff members are appointed from different classes and organizations by the editor-in-chief and business manager.

This year several changes are made in the construction of the annual. Conservative types of printing and coloring are used. In carrying out the theme, "A Century of Progress," a brief historical sketch of the college is given.

The Athletic section includes this year the teams in action and also many snapshots of the games. A snapshot contest was held for the purpose of presenting a wider variety of photographs and of arousing interest in the yearbook among the students.



Smith



Ryburn
Coforth



Robinson
E. Ryburn



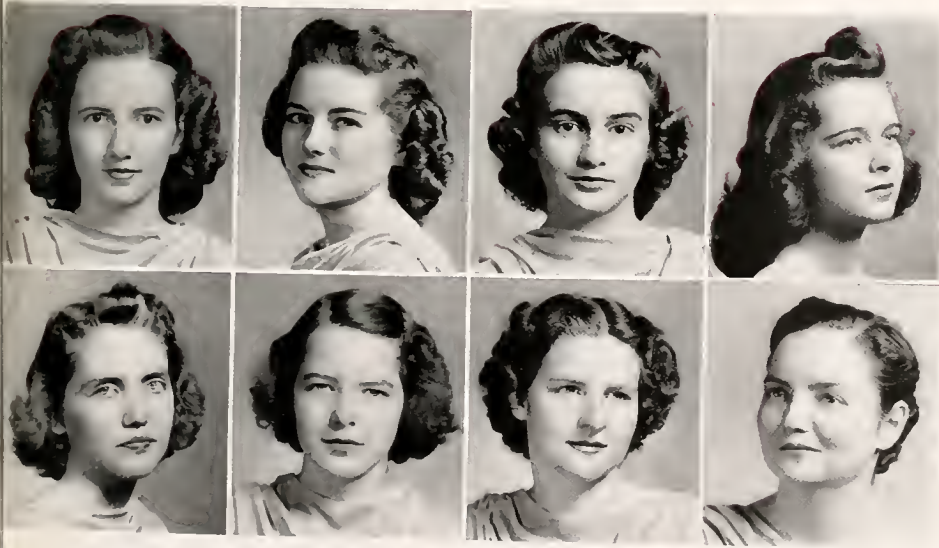
NINETEEN FORTY-ONE

STAFF MEMBERS

- JEAN RYBURN *Assistant Editor-in-Chief*
 BETTY RUTH ROBINSON . . . *Assistant Business Manager*
 CATHERINE PARKER *Senior Class Editor*
 CLARA DAVID *Junior Class Editor*
 LOIS PARKER *Sophomore Class Editor*
 ALICE CARNEY *Freshman Class Editor*
 EMILY RYBURN *Literary Editor*
 FRANCES BALDWIN *Typing Editor*
 MARTHA KENDRICK *Typing Editor*
 MARGARET BUNDY *Snapshot Editor*
 SCOTT HALE *Snapshot Editor*
 MARY GOFORTH *Business Editor*
 MISS MARTHA LOIS SMITH *Faculty Adviser*



POLLY GOFORTH
Business Manager



C. Parker
Baldwin

David
Kendrick

L. Parker
Bundy

Carney
Hale



Magginis



Parker
Bell



Fulk
Baldwin



PINE AND THISTLE

The Pine and Thistle is the college magazine, published every quarter by the student body, in collaboration with the *Pine and Thistle* staff.

This year quite a few changes were made in the magazine—a change from book paper to enamel finish, the use of photographs and snapshots throughout each issue, a change in type, and slight changes in page make-up. Too, this year the magazine acquired an office, which it has never had before.

The Pine and Thistle—published by the students—is an evidence of the excellent literary talent in the school.

MARY FRANCES BINGHAM
Editor-in-Chief





Lytch
Mason

McLaurin
McCubbins

Scott
Jackson

Lemmon
Bullard

STAFF MEMBERS

- CATHERINE PARKER *Assistant Editor-in-Chief*
- BARBARA LYTCH *Assistant Business Manager*
- TALULAH LEMMON *Epsilon Chi Associate Editor*
- BETTY McLaurin *Epsilon Chi Associate Editor*
- MARY ALICE FULK *Epsilon Chi Associate Editor*
- MARY MONICA JACKSON *Zetesinn Associate Editor*
- BONNIE McCUBBINS *Zetesian Associate Editor*
- MILBRED MASON *Zetesian Associate Editor*
- LILLIAN BELL *Freshman Editor*
- PATTIE SCOTT *Exchange Editor*
- WYATTE BULLARD *Typing Editor*
- FRANCES BALDWIN *Assistant Typing Editor*
- DR. STUMP and the Camera Club. *Photographic Editors*
- MISS MARY MAGGINIS *Faculty Adviser*

CHARLOTTE AUSTIN
Business Manager





The newly elected . . . Wyatte for the *Pine and Thistle*, Frances for the *WHITE HEATHER* . . . Nell getting some good ideas for next year . . . Bing, is this a fake? . . . More staff . . . They brought in the ads . . . What would Bing do without them?



GENE MACLEOD
Chief

SENIOR SCRIBBLERS

This year the Senior Scribblers, existing for the purpose of providing Senior write ups, have endeavored to reveal the true personalities and characters of their classmates.



The members of the student council are elected by the student body and serve as its representatives. The purpose of the council is to unite the student body in an effort to uphold the personal honor of each individual and to cooperate in all matters of government.

This year, the student council has worked with the government board of the faculty in the capacity of a "Coöperative Committee," composed of members from the student council and from the government board. The purpose of this committee is to study and recommend certain plans for the improvement of the government.



MARY BLUE
President

STUDENT GOVERNMENT ASSOCIATION



Hall
Nicholson



Stuart
Thomas



Murphy
Lewis

Members of the student council are: Mary Blue, President of the student body; Mary Hall, Vice-President of the student body; Frances McFadyen, Secretary of the student body, Vice-President of the Senior class; Nell Thomas, Treasurer of the student body, Vice-President of the Junior class; Jean Boyer, President of the Senior class; Catherine Nicholson, President of the Junior class; Sue McPherson, President of the Sophomore class; Margaret Lewis, President of the Freshman class; Jean Murphy, President of the Day Students; Margaret Cromartie, President of the Zetesian Literary Society; Jeanette Capel, President of the Epsilon Chi Literary Society; and Maude Erwin, President of the Athletic Association.



Boyer
Cromartie

McFadyen
Capel

MacPherson
Erwin



Parks
Ryburn

Inscow
Withers

Wilson
Ross

FLORA MACDONALD CHRISTIAN ASSOCIATION

"Let no man despise thy youth, but be thou an example to them that believe, in word, in manner of life, in faith, in purity." 1 Tim. 4:12.



RUTH STUART
President

The Flora Macdonald Christian Association has as its purpose increased Christian faith, character, and fellowship. It strives to influence students to seek the will of God for their own lives, and to present the deeper, truer, and more vital meaning of Christianity.

The Association is divided into ten groups called "highways for organized work." The chairmen of these highways are: Emily Ryburn, Religious Meetings, Life Enrichment; Grace Withers, Music, Life Enrichment; Jean Ross, World Fellowship; Madelyn Parks, Enlistment and Training; Lucille Griggs, Sunday school, Learning; Pattie McDaniel, Publicity; Nancy Incoe, Stewardship; Sarah Wilson, Stewardship; Catherine Yates, Comradeship; Leila McCormick, Social, Leisure Time; Alcase Martin, Library, Leisure Time; and Miss Zoulean Anderson is the Faculty Adviser of the Cabinet.

The Christian Association takes part in social service work on the campus and in the community. A special series of services conducted by an outside speaker is held in the fall, and again in the spring. Rev. James Appleby of Anderson, South Carolina, was our fall speaker, and Dr. Woodbridge of Salisbury, held our spring services this year.



Griggs
McCormick

McDaniel
Martin

Yates
Blue



NANCY INSCOE
President

STUDENT VOLUNTEERS

"Not by might, nor by power, but by my spirit,
saith the Lord of hosts." Zechariah 4:6.

The Student Volunteers strive to stimulate in the college an interest in the work that is being done in the foreign and home missions, and to bring to the students a realization of the ever-increasing needs of these two. The organization is composed of two groups; those girls planning to give their lives to full-time mission work, and the others who are interested in the fields. Miss Prince Maphet is the adviser, and the officers are: President, Nancy Inscoe; Vice-President, Carol McDaniel; Secretary, Mary Olive Walker; Treasurer, Helen Thomas; and Librarian, Geraldine Grady.

Each Sunday night the organization meets for an hour in order to discuss the lives of missionaries and the work in general of the different fields. From time to time, returned missionaries speak at the meetings, and when calls for help come from the mission points, the group strives to answer to the best of its ability. For instance, in December money was sent to Africa to buy dried milk for the native orphaned babies. Another objective of the organization is to build up material on missions in the F.M.C.A. library, and to encourage the reading of this material.





PRAYER BAND LEADERS

Our Prayer Bands afford one of the most effective means of making personal religious contacts. Every member of the student body is placed in a prayer group, which meets each Wednesday in a morning watch. An atmosphere of sacredness and spirituality is attained in these groups, which is priceless to the progress of the Kingdom in our college.

The treasured opportunity of every prayer band leader is to help each member of her little group to realize the privilege that is hers in having a special period each morning when she may lay hold on Christ's wise words of council when He said: "Be still, and know that I am God."

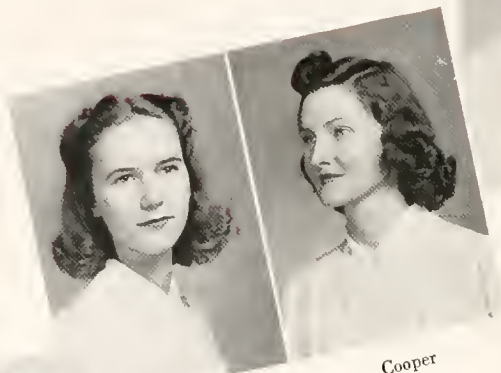


FLORENCE MOORE
President

EPSILON CHI



Capel



Cooper

Ryburn

Lemmon



Lytch

OFFICERS

- JEANNETTE CAPEL *President*
 ELIZABETH COOPER *First Vice President*
 JEAN LYTCH *Second Vice President*
 TALULAH LEMMON *Recording Secretary*
 JEAN RYBURN *Corresponding Secretary*
 MARIBELLE GREEN *Treasurer*
 BETTY RUTH ROBINSON *Censor*
 LOIS PARKER *Critic*
 LOUISE HALL *Chaplain*



Robinson

Green



Hall

Parker

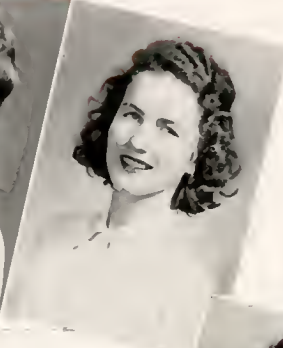
ZETESIAN



Cromartie



Heed



Rogers



Bogue



Jenkins

OFFICERS

- MARGARET CROMARTIE *President*
 LOUISE HEED *First Vice President*
 REBECCA ROGERS *Second Vice President*
 VIRGINIA BOGUE *Recording Secretary*
 MARGARET JENKINS *Corresponding Secretary*
 CLAIRE BROOKS *Treasurer*
 PATSY HARPER *Censor*
 SANDY YATES *Critic*
 JEAN FITZPATRICK *Chaplain*



Harper



Brooks



Yates



Fitzpatrick

MARSHALS



MARY HALL, ZETESIAN

NELL THOMAS, ZETESIAN

LUCILLE GRIGGS, ZETESIAN

VIRGINIA BOGUE, ZETESIAN

JEAN RYBURN, EPSILON CHI

CHIEF MARSHAL

EVELYN ROBERTSON, EPSILON CHI



MacLean



Green



Myers

MINNIE MYERS, EPSILON CHI

MARIBELLE GREEN, EPSILON CHI

CAROLYN MACLEAN, EPSILON CHI



WILLIAM BARTRAM SCIENTIFIC SOCIETY

Members of the William Bartram Scientific Society are selected on the basis of academic merit in Mathematics and Science upon recommendation of the faculty advisers, Miss Prince, Dr. Stirewalt, and Dr. Stump. Officers of the society are:

Eleanor Young, president; Lucille Griggs, vice president; Alease Martin, corresponding secretary; Betty McLaurin, recording secretary; and Marjorie McKay, treasurer.

In the monthly meetings this year the members have studied the medical sciences, their history, and recent developments.



ELEANOR YOUNG
President

CAMERA CLUB

The Camera Club has grown out of the interest shown in photography by members of the William Bartram Scientific Society. Any student who is a member of this society may join the camera group. The girls take pictures around the college campus, develop and print them, and at regular meetings the best of these are displayed and discussed. In the spring the club takes trips for the purpose of making interesting pictures. The students are very fortunate in having Dr. Stump direct them in their photography.



BETTY McLAURIN
President





HOME ECONOMICS

The Home Economics Club is composed of all the girls majoring in this subject. Its purpose is to develop pleasing personalities, good taste, and poised hostesses, with an ability to use the knowledge gained from various courses. At the first of the

year the club had a "get acquainted" program with a festive Thanksgiving background. The programs under the leadership of Josephine Jerome, president, and Evelyn Robertson, vice-president, have been very interesting, with outside speakers, faculty speakers, and students participating. Edna Neal Pate is secretary, and Kathryn Highsmith, treasurer.



JOSEPHINE JEROME
President



MATHEMATICS CLUB

The Mathematics Club is composed of those members of the student body who have obtained a high scholastic standing in some course in mathematics. It is the aim of the club to further the interest in mathematics among the students, and to offer a means of fellowship to those interested in this field. All members enjoy the social activities of this club. The interesting programs are due to the hard work of the vice-president, Hilda Bailey, the secretary, Sue MacPherson, and the treasurer, Eleanor Young.



SARAH WILSON
President



FRANCES BALDWIN
President

COMMERCIAL CLUB

FRANCES BALDWIN *President*
MARGARET MCLEOD *Vice-President*
MARY LILY AREY *Secretary-Treasurer*

The Commercial Department provides training for students who desire a business career as a profession and for those who wish to use the work as a stepping stone to attain some desired goal. The curriculum is divided into a one-year and a two-year course. Students completing the two-year course receive a certificate at graduation.





JEAN RYBURN
President

DRAMATICS CLUB

The aim of the Dramatics Club is to increase knowledge and appreciation of the art of drama. Those students who are interested and talented in dramatics are eligible for membership.

Under the able supervision of its faculty adviser, Miss Emma Jones, and aided by its officers: president, Jean Ryburn; vice-president, Mildred Mason; secretary, Louise Heed, treasurer, Josephine Jerome, the Club endeavors to present at least one three-act play or three one-act plays annually.





DAY STUDENTS



JEAN MURPHY
President

There are thirty-six day students from Red Springs and vicinity, who have this year organized themselves into a club with Miss Mary Conoly as adviser. There is a new spirit of enthusiasm and interest in the various activities of the college and many plans have been made to further the relationships of the day and boarding students. The college has given encouragement by many improvements, and with the adviser, Jean Murphy, the president, and the other officers, Mary Mac Watson, vice-president, and Marjorie McManus, secretary and treasurer, the club has had a most successful year.

GRANDDAUGHTERS'
CLUB



VIRGINIA
CLUB



FLORIDA
CLUB



SOUTH CAROLINA
CLUB



SOUTHERN PRESBYTERIAN COLLEGE and CONSERVATORY OF MUSIC

During the seven years of the life of the Red Springs Seminary the Music department, under the most efficient management of Mrs. C. G. Vardell, became recognized as one of the most outstanding musical centers of the South. Due to the wide recognition of this department, the name of the institution, in 1903, was changed to the "Southern Presbyterian College and Conservatory of Music."

The College had standard entrance requirements and conferred the degrees of A.B.; B.Litt.; and the Conservatory degree of B.M. in music. It was also an institution of the Church, and her students were systematically trained for service in the Church.

Southern Presbyterian College and Conservatory of Music continued to grow, and the wooden structures were gradually replaced by brick dormitories of modern construction and conveniences.

Athletics



ATHLETIC ASSOCIATION

In every school there is a need for recreation and physical exercise. The Athletic Association meets this need very efficiently with its sponsorship of sports and other entertainments throughout the year. A keen spirit of rivalry and class loyalty is promoted by the inter-class hockey, basketball, and tennis tournaments. Every student is encouraged to participate in at least one of the many sports offered by the association, and the highest ideals of good sportsmanship are carried out in everything.



Thomas

Bethune

Williams

Bailey

Erwin

OFFICERS

MAUDE ERWIN	<i>President</i>
HILDA BAILEY	<i>Vice-President</i>
HELEN THOMAS	<i>Treasurer</i>
ISABEL BETHUNE	<i>Secretary</i>
VIOLA WILLIAMS	<i>Salesman</i>

CHEER LEADERS

LILLIAN McARTHUR	College
JOSEPHINE JEROME	Senior
MILDRED MASON	Junior
LUCY THOMAS	Sophomore
JANETTE DILLARD	Freshman

HEADS OF SPORT

SARAH WILSON	Hockey
EDNA NEAL PATE	Basketball
ELEANOR YOUNG	Tennis
VIRGINIA BOGUE	Archery
EMILY RYBURN	Ping Pong
BUNNY LINGLE	Hiking and Swimming
JOSIE TROTH	Soccer and Baseball



Bogue Wilson Trotti Ryburn Lingle Young Pate



SENIOR HOCKEY

Seniors	2	Juniors	2
Seniors	4	Sophomores	4
Seniors	4	Freshmen	2



EFFIE PHIPPS
Captain





JUNIOR HOCKEY

Juniors	2	Seniors	2
Juniors	3	Sophomores	0
Juniors	4	Freshmen	1



JOSIE TROTTI
Captain



SOPHOMORE HOCKEY

Sophomores	4	Seniors	4
Sophomores	0	Juniors	3
Sophomores	3	Freshmen	1



MARTHA KENDRICK
Captain





FRESHMAN HOCKEY

Freshmen	2	Seniors	4
Freshmen	1	Juniors	4
Freshmen	1	Sophomores. . . .	3



NANCY ELLIS
Captain



SENIOR BASKETBALL

Seniors	26	Juniors	9
Seniors	11	Sophomores	12
Seniors	14	Freshmen	15



JEAN BOYER
Captain



JUNIOR BASKETBALL

Juniors	9	Seniors	26
Juniors	13	Sophomores	22
Juniors	7	Freshmen	13



HILDA BAILEY
Captain



SOPHOMORE BASKETBALL

Sophomores . . . 12	Seniors 11
Sophomores . . . 22	Juniors 13
Sophomores . . . 9	Freshmen 13



VIOLA WILLIAMS
Captain



FRESHMAN BASKETBALL

Freshmen	15	Seniors	14
Freshmen	13	Juniors	7
Freshmen	13	Sophomores	9



ELOISE PENNY
Captain



TENNIS

Under the supervision of Miss Ethel Bateman, director of physical education, a class tournament in tennis was held in the early fall. After a few weeks of "warming-up" the competition began, and the following proved to be the college champions:

MAUDE ERWIN *Senior*

BETH MACPHERSON *Junior*

LUCY THOMAS *Sophomore*

NANCY RAMSEUR *Freshman*



Ramsour
Erwin

MacPherson
Thomas



ARCHERY

With Virginia Bogue as their leader this year, the archers have enjoyed an excellent season. There was new equipment and thus more than the usual number of enthusiastic supporters.



Harper

Austin

Bogue

Parks



Good advertisement . . . After dinner mail call . . . Pronounced judgment on the Rats . . . At the end of Paradise . . . Child Psychology . . . Viv. swinging on the gate . . . Barbara Farnsworth . . . "Cutie" can't be studying! . . . Well, tickle my ribs . . . Miss Burch, *Do* tell that one in class . . . Our pets on a honeysuckle diet . . . Miss Tentoni's concert . . . Belonging to Fitzy . . . Worrying over those witches costumes? . . . Shoot-em-up Stirewalt . . . Carol and the yellow hell . . . Tarzan's friends . . . We Three.

FLORA MACDONALD COLLEGE

At a meeting in Fayetteville, North Carolina, of the Scottish Society of America, in 1914 a suggestion was offered by Dr. James A. Macdonald of Toronto, Canada, that the name of our college be changed to Flora Macdonald as a memorial to the courageous and self-sacrificing Scottish heroine, who lived in this section of North Carolina for five years.

The Scottish Society of America, at their annual meeting on May 18, 1915, after due consideration and examination of the "Southern Presbyterian College and Conservatory of Music," adopted resolutions and, with the consent of the college authorities, the name was changed to Flora Macdonald College.

With this change the endowment was increased and the educational standards were raised. In 1925, Flora Macdonald College was recognized by the North Carolina Department of Education as a standard "A" grade college.

At the close of his thirty-fourth year of devoted service to the college as President and Father of the student body, Dr. Vardell, voluntarily laid aside his responsibilities as chief executive and became President Emeritus.

Dr. Henry G. Bedinger was called to succeed him, and under his direction Flora Macdonald College has continued successfully in preparing young women for useful and happy lives.

Features





MARTHA SUTHERLAND

Beauty





RUTH STUART

Friendliness

— GENE MACLEOD —

Capability



RUBY SPAINHOUR

Sportsmanship





MADELYN PARKS

Personality



MARY HALL

Versatility

May Day

AT FLORA MACDONALD



CHARLOTTE MCBRYDE AUSTIN

May Queen



SWANS

JANETTE DILLARD	JEAN BOYER	CHARLOTTE AUSTIN	CATHERINE PARKER
GENE MACLEOD	<i>Maid of Honor</i>	<i>May Queen</i>	LUCILLE GRIGGS
FRANCES MCFADYEN			MARTHA SUTHERLAND
POLLY GOFORTH		KATHRYN MCBRYDE	
NELL THOMAS		ESTHER COBB	
BETTY JEAN HUGGINS			
ANNE HUGGINS			
JAMES SINGLETON, III			



May Day Scenes



The Quest of the Fire Bird

THE NEW GYMNASIUM

The new gymnasium is the latest building erected on the college campus. It fills a long felt need of the student body, for it is the gathering place for the girls on many occasions.

This is another of Dr. Vardell's completed visions, one which has afforded much pleasure and satisfaction not only to the students and faculty, but also to the friends of the college. The building of this gymnasium gave the necessary space for the lovely new library, which has been largely equipped by the alumnae and other friends. A fitting and interesting section is the corner devoted to our Scotch material.

With these two assets, we feel that Flora Macdonald College as she stands today, surrounded by sturdy oaks, lofty pines, and gardens of native plants and natural growth, is indeed a part of "A Century of Progress."

Advertisements



TOWNSEND'S PHARMACY

THE REXALL STORE



WE CARRY A COMPLETE LINE OF THE
COLLEGE GIRL'S NEEDS

Meet Your Friends at Our Fountain

DEPENDABLE DRUGGISTS : LET US SERVE YOU



Red Springs : North Carolina

You Will Be Pleased With Our
QUALITY and SERVICE

RED SPRINGS DRUG COMPANY

Headquarters for Flora Macdonald Girls

RED SPRINGS : NORTH CAROLINA

Insist on . . .

LANCE'S

**PEANUT BUTTER SANDWICHES
and CANDIES**

Always Fresh - Always Delicious

• There is a close relationship between the athlete's physical perfection and his diet. The Olympic Stars at Los Angeles in 1932 averaged one serving of Ice Cream each day . . . or five times as much as the average American.

• Be sure to include plenty of Southern Dairies Ice Cream in your diet, for it is especially rich in the food elements that build healthy bodies.



Compliments of

**THE
FAYETTEVILLE
OBSERVER**

BEN FRANKLIN STORE

5, 10, \$1.00 and Up

Home Owned Five and Ten

Red Springs, N. C.

A WELCOME

*Always Awaits the Faculty
and Students at*

B. C. MOORE AND SONS

The . . .

SCOTTISH BANK

LU MBERTON - PEMBROKE
RED SPRINGS

Member

Federal Deposit Insurance Corporation

We Have What Your Car Needs

Complete Line Accessories

We Live to Serve and Serve to Live

GULF SUPER SERVICE

Telephone 9107

A.A. One Stop Service

RED SPRINGS, NORTH CAROLINA

Compliments of

**SOUTHERN FRUIT
COMPANY**

CHARLOTTE, N. C.

**Maxton Oil & Fertilizer
Company**

Maxton, N. C.

Boatwright Chevrolet Co.

RED SPRINGS, N. C.

When in Maxton Stop
at the

AUSTIN DRUG CO.

NEW YORK OFFICE
450 Seventh Avenue

**BELK - HENSDALE
COMPANY**

FAYETTEVILLE, N. C.

Congratulates the

White Heather Staff

Remember: "You Always Save at
Belk's"

*Make Our Store Your Headquarters
When in Fayetteville*

Your Patronage Appreciated

Compliments of

**ODOM'S
GROCERY**

**WHERE QUALITY
and
SERVICE
PREDOMINATE**

RED SPRINGS, N. C.

**LESTER'S ESSO
SERVICE**

Telephone 16

RED SPRINGS, N. C.

CORNER GROCERY

A Complete Line of
GROCERIES and MEATS

HUNTER BROTHERS

(Incorporated)

ELECTRICAL MERCHANDIZING

RADIO - REFRIGERATORS - GIFTS
CHINA - GLASSWARE

FAYETTEVILLE, N. C.

USE

MERITA

BREAD and CAKES



**AMERICAN
BAKERIES COMPANY**

FAYETTEVILLE, N. C.

**Anne Green's
Permanent Wave Shoppe**

We Serve You to Serve Again

Red Springs, N. C.

D. M. McMILLAN

"Ford Products Since 1912"

Red Springs, N. C.

**PERKINS
Cleaning & Dye Works**

State License No. 131

122 Maxwell Street

PHONE 4134 FAYETTEVILLE, N. C.

BLAKE FLORIST

Prince Charles Hotel Building

Fayetteville, N. C.

Day Phone 2683 Night Phone 2834

SAUNDERS DRUG STORE

*Fayetteville's Exclusive
Cut-Rate Drug Store*

FAYETTEVILLE, N. C.

Compliments of

THE CAPITOL

Department Store

FAYETTEVILLE, N. C.

We Invite Your Patronage

Efird's
DEPARTMENT STORE

Fayetteville, N. C.

*"This is the way
to feel refreshed"*



BOTTLED UNDER AUTHORITY OF THE COCA-COLA COMPANY BY
FAYETTEVILLE BOTTLING COMPANY
Fayetteville, N. C.

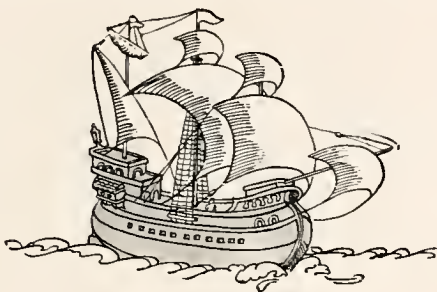
THE CAROLINA'S LARGEST
PHOTOGRAPHIC STUDIO

SIDDELL STUDIO

RALEIGH, N. C.

OFFICIAL PHOTOGRAPHERS

THE WHITE HEATHER



The Store of Satisfaction is Particularly Proud to have among its Clientele the Flora Macdonald Faculty and Girls. Latest Styles Reasonably Priced.

Graham Company

"Where Style and Quality Outlive Price"

RED SPRINGS

..

NORTH CAROLINA



CHARLOTTE ENGRAVING CO.

School Annual Engravers

Charlotte, North Carolina

**FAYETTEVILLE
WHOLESALE CO.**

Successors to the Howard-Bobbitt Co.

In Fayetteville Since Nov. 1, 1938

Corner Orange and Chance Sts.

PHONE 2131

Fayetteville, N. C.

Featuring Fresh

**FRUITS AND
VEGETABLES**

Compliments of

H. R. HORNE & SONS

Fayetteville, N. C.

DRUGGISTS SINCE 1865

Compliments of

Red Springs Golf Club

Special Rates to College Students

Bring Your Clubs

Garrett and McNeill

The Oldest and Best

Grocery in Town

PHONE 227-1

Compliments of

**TOWN OF
RED SPRINGS**

NORTH CAROLINA

SPRING SIDE DAIRY

GRADE A MILK
CREAM

Phone 2431

**MACK'S 5, 10, and 25c
STORES**

The Friendly Place

Red Springs, N. C.

Compliments of

SANDLIN & CO., Inc.

Wholesale Grocers

Fayetteville, N. C.

Compliments of
Huggins Shoe Shop
Red Springs, N. C.

Compliments of
The Robesonian
THREE TIMES A WEEK
Lumberton : North Carolina

S. F. CALDWELL & CO.
HARDWARE and BUILDING
MATERIAL
Wholesale and Retail
210 Elm Street
LUMBERTON, N. C.

*Travel Luxuriously . . .
Yet Economically*

**FAST BUT
SAFE**

**QUEEN CITY
TRAILWAYS**

M. H. McLEAN, JR.

Wholesale
CANDIES
and
GROCERIES

LUMBERTON, N. C.

Compliments of
The Rainbow Grill
FAYETTEVILLE, N. C.

Compliments of
Roy Butner Recording Studio
306 Husk Building
FAYETTEVILLE, N. C.

ELECTRICITY—
a GREAT Service
Yet It's CHEAP!
Carolina Power & Light Company

RED SPRINGS THEATRE

It is the policy of this theatre
to provide the best pictures
obtainable especially for our
Flora Macdonald patrons.



Pleasure by the Hour

Gold Medal Fertilizers
Liberty Premium Fertilizers

Modern Gin System
Modern Seed Cleaning Equipment

Liberty Manufacturing Co.
Red Springs, N. C.

*Patronize Our
Advertisers*

COMPLIMENTS OF
A FRIEND

FLORA MACDONALD COLLEGE

RED SPRINGS, N. C.

A SENIOR COLLEGE FOR WOMEN

Near Fayetteville, Southern Pines and Pinehurst. Delightful climate, healthful mineral springs and remarkable health record. Bus and Railway connections.

A Standard Senior Grade A College for Women. Strong faculty. Graduates accepted for graduate work by leading universities. Class A teacher's certificates. Homelike atmosphere. Personal attention to students by teachers.

Courses offered: Bachelor of Arts, Bachelor of Music, Bachelor of Science (Home Economics) degrees. A Secretarial Course.

Athletics. Skillful physical director and coach has general supervision of sports and physical training. Archery, basketball, hockey, swimming, tennis, hiking, etc., are enjoyed in season.

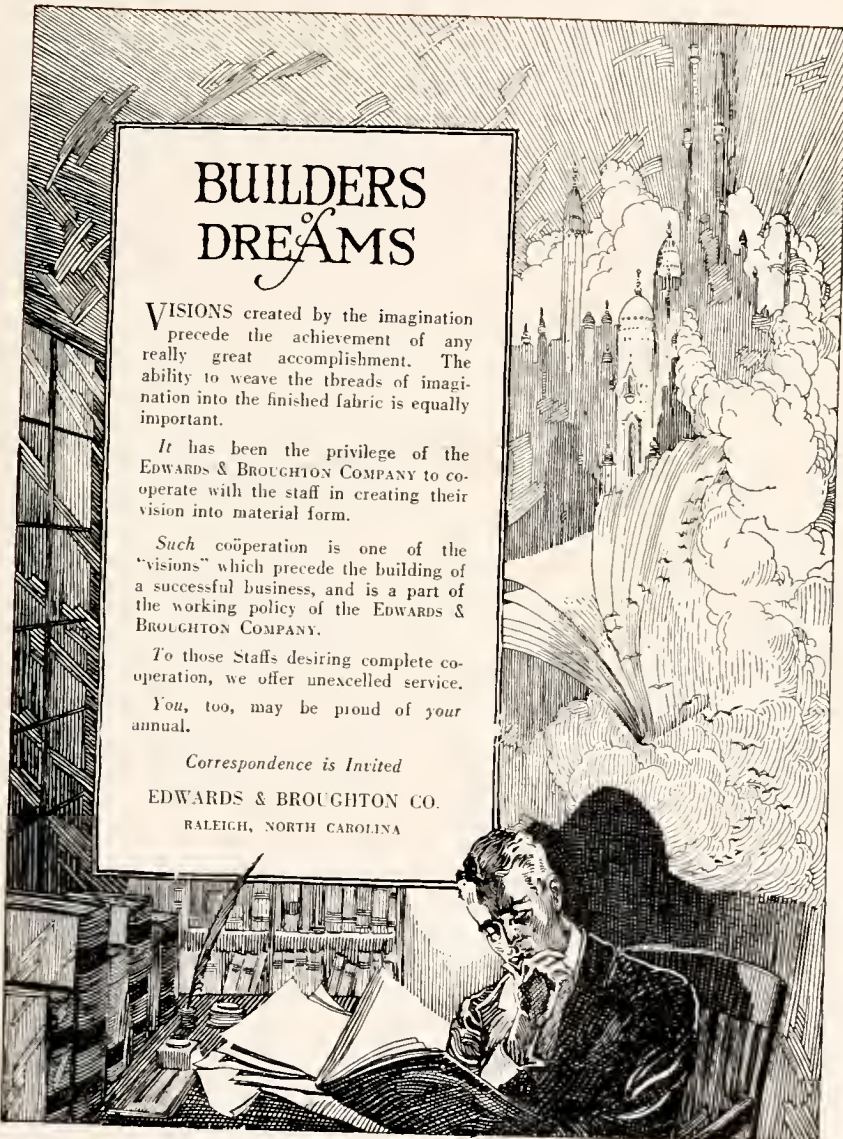
Social activities. Receptions, teas, and many other social functions are provided at the college, while many hospitable and delightful homes of the citizens of Red Springs are open to the students.

Wide patronage. Patronized at present by eleven states and four foreign countries. Four thousand alumnae are engaged successfully as home-makers, nurses, teachers, dietitians, home demonstration agents, social workers, missionaries, and in many other useful professions.

MODERATE CHARGES : FOR CATALOGUE WRITE

HENRY C. BEDINGER, *President*

FLORA MACDONALD COLLEGE : Red Springs, N. C.



BUILDERS DREAMS

VISIONS created by the imagination precede the achievement of any really great accomplishment. The ability to weave the threads of imagination into the finished fabric is equally important.

It has been the privilege of the EDWARDS & BROUGHTON COMPANY to cooperate with the staff in creating their vision into material form.

Such cooperation is one of the "visions" which precede the building of a successful business, and is a part of the working policy of the EDWARDS & BROUGHTON COMPANY.

To those Staffs desiring complete cooperation, we offer unexcelled service.

You, too, may be proud of your annual.

Correspondence is Invited

EDWARDS & BROUGHTON CO.
RALEIGH, NORTH CAROLINA

AUTOGRAPHS

AUTOGRAPHS

AUTOGRAPHS

AUTOGRAPHS

AUTOGRAPHS

AUTOGRAPHS

AUTOGRAPHS

AUTOGRAPHS

AUTOGRAPHS

AUTOGRAPHS

AUTOGRAPHS



R
388.756
F

19543

