



1943









The 1946

White Heather

the White Heather

Published by the Students

Barbara Lylch, Editor



of Flora Macdonald
Billie Pate, Business Manager

A Word in

THIS has been an unusual year at Flora Macdonald. We have been affected in so many ways by the changing world order. Each student has, however, been vitally interested in making her work here of some immediate asset for Victory. . . . We sponsored the selling of war stamps and bonds. . . . We took

part in the launching of a liberty freighter, which was christened by the president of the student body, the S. S. *Flora Macdonald*. . . . We boarded a big truck one day and went out to nearby farms to help the farmers pick their cotton. . . . We went to camps to entertain the service men with programs of sacred music. . . . There has been little complaining about these changes; in fact, the majority of us are



ALL OUT
FOR
VICTORY



Our Defense

much happier when we feel that we are doing something directly connected with the war effort. . . . We only hope that by the time another year has gone by we will have rolled twice as many bandages, launched a dozen ships and exhausted every resource within our reach to bring to our land and to our college a new and deeper realization of the meaning of liberty and peace.

The WHITE HEATHER has also undergone changes because of the shortage of materials vital to the war, but we hope that everyone will be willing to overlook any deficiencies that have occurred and will find this volume a true representation of a year at our cherished alma mater. . . . Wars may come and wars may go, but always there will be in our hearts a deep and overshadowing devotion to our fortress and our home during these tumultuous years.



LOWLY
RATS





Miss Emma Louise Jones

Dedication

TO MISS EMMA LOUISE JONES

IN APPRECIATION OF HER FINE FRIENDSHIP. HER FAITHFUL
EFFORTS AND INTEREST IN THE STUDENTS AND THEIR ACTIV-
ITIES, HER SPLENDID SPIRIT AND OF THE LOVE THE STUDENTS
BEAR HER. WE THE STUDENT BODY HEREBY DEDICATE

THE 1943 WHITE HEATHER



The President

HENRY GRAYBILL BEDINGER, B.A., B.D., D.D.

President

Deans of Flora Macdonald College

HAZEL MORRISON

Dean of Faculty and Registrar

LUCILLE SHAW WILSON

Dean of Students

J. WILGUS EBERLY

Dean of Conservatory



The Faculty

HARRIET N. MORRISON, B.A., M.A.
Professor of Latin

LILLIAN FARQUHAR ROBESON
Professor of Violin

LIDA LAW CHAPMAN, B.A., B.M.
Professor of Piano and Organ

MARY MACLEAN CONOLY, B.A., M.A., B.S.
Professor of Education

V. ZOULEAN ANDERSON, B.A., M.A.
Professor of Bible

ELIZABETH CLARKE MCPHAUL, B.A.
Associate Professor of Bible

ETHEL BATEMAN, B.A., M.A.
Professor of Physical Education and Health

EMMA LOUISE JONES, B.A.
Professor of Public School Music

PRINCIE MAPHET, B.A.
Professor of Commercial Subjects

VERTIE D. PRINCE, B.A., M.A.
Professor of Mathematics

FRANCES ELIZABETH COMER, B.S., M.S.
Professor of Home Economics

MARY HAMILTON STEPHENS, B.A., M.A.
Professor of French

HAROLD TUPPER MEAD, A.B., M.S., Ph.D.
Acting Professor of Biology and Bacteriology

MARY ELIZABETH MASSEY, B.A., M.A.
Professor of History

KATHERINE CAMERON, B.S., M.S.
Professor of Home Economics

VIVIAN FARLOW, B.A., M.A.
Associate Professor of Biology



Comer
Chapman
Anderson

Jones
McPhaul
Maphet

Anderson, H.
Stephens
Morrison

Cameron
Farlow
McIntyre

The Faculty

LETA WERTHA MCINTYRE, B.S.
Professor of Business Subjects

JANET FRANCES HALL
Acting Professor of Voice

HARRIET ANDERSON, B.A., M.A.
Associate Professor of English

MARGARET BAKER EBERLY
Associate Professor of Piano

VIRGINIA CONNOR, R.N.
Resident Nurse

ETHEL KESTLER PARSONS
Dietitian

ANNIE WILLIAMS
Secretary to the President

S. BROWN MORRISON, B.L.
Bursar

ZELLA AVON DEW
Laundry Superintendent

NOT PHOTOGRAPHED

JANE COLSON GLENN, B.S., G.Ph., M.S.
Professor of Physics and Chemistry

GENEVIEVE McMILLAN NEIGHBORS, B.A., M.A.
Associate Professor of Education and Social Sciences

ANNIE MOORE CHERRY, B.A., M.A.
Professor of Education

MARY LOGAN SANDERSON, B.A., M.A.
Professor of English

CHRISTINE W. EWING
Professor of Spanish and German

ELEANOR SAMPLE
Librarian



Morrison, H.
Prince
Morrison, B.

Robeson
Mead
Williams

Conally
Hall
Connor

Bateman
Massey
Parsons

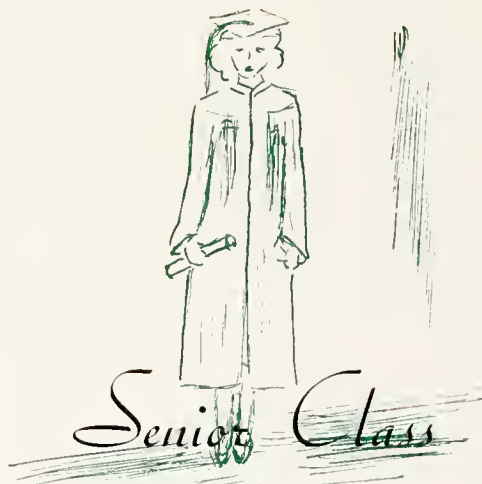
Maphet
Eberly
Dew

“ . . . got a class . . . ”

. . . an established excuse generally used by freshmen and plagiarized by upperclassmen as well, because of its utility in explaining a majority of inexcusable situations . . . an explanation preceding lengthy lectures, laborious labs, quick quizzes and sometimes cuts. . . Throughout four tedious years of college life, the modern student strives patiently, earnestly, valiantly, ever advancing on her road to success. . . Rewarded for her perseverance, she at last receives her armor . . . defense against the perils of future battles . . . a college degree.

Classes





OFFICERS

SARAH BELLE SMITH . . . <i>President</i>	KATHRYN MCBRYDE
RUTH MONROE . . . <i>Vice President</i>	<i>Tea Room Manager</i>
MARGARET JENKINS . . . <i>Secretary</i>	GRACE MCKENZIE
MONICA JACKSON . . . <i>Treasurer</i>	<i>Assistant Tea Room Manager</i>
ALBERT BALDWIN . . . <i>Mascot</i>	
MRS. ELBERT MCPHAUL . . . <i>Adviser</i>	



Monroe, Smith, Jenkins, Jackson
McBryde, Baldwin, McKenzie, McPhaul

Senior Class



CATHERINE CELESTE BARNETT
Raleigh, N. C.

B.A.

Epsilon Chi Literary Society; William Bartram
Scientific Society '42, '43.

Celeste is one of those well-informed people who know something about almost everything. Little annoyances upset her, but she usually maintains a nonchalant air. A dyed-in-the-wool gadabout, she loves to go places and do things. The subject of clothes intrigues her and she's especially partial to Florida, as anyone can tell you. A music lover, she likes both the classics and current tunes.

SARAH BULLOCK BOWDEN
Warsaw, N. C.

B.A.

Zetesian Literary Society; William Bartram
Scientific Society '41, '42, '43; Student Volunteers
'41, '42, '43; Librarian of Student Volunteers
'43; Prayer Group; Volley Ball.

Dignified in spite of her freckles, Sarah is a meek hard-worker who blushes easily and reads a lot. Though conservative and very ambitious, Sarah has a spark of fun and mischief lurking close by. We enjoy her vivid imagination. She likes bikes, hikes, and yellow flowers.

SENIOR CLASS

ELIZABETH BRITTAIN
Summerfield, N. C.

B.A.

Zetesian Literary Society; Student Volunteers '40, '41, '43; Hiking '40, '41; Music Club '43.

There is a quiet serenity about "Bibs." And with it is her rare ability to take college life leisurely. She is another of our Seniors who is poised in any situation. A deep thinker, she always reasons things out before doing them. We need more people like "Bibs."

KATHERINE BURTON BRUNER
Cleveland, N. C.

B.S.

Zetesian Society; Prayer Band Leader '42, '43; Home Economics Club '40, '41, '42, '43; Second Vice President Society '42; Music Club '41; State Winner Style Show '42; Wake Forest Summer School '42.

Bruner is one whose personality invites friendship and admiration. There are few things she can't do. In cooking and sewing she is hard to surpass. Whatever Bruner attempts, we know it will be done in the very best way possible. Her dainty, neat appearance and her attractive, winsome manner fill us all with envy.





MARIAN BULLARD

Wagram, N. C.

B.S.

Zetesian; Prayer Band Leader '42, '43; Home Ec. Club '40, '41, '42, '43; Hockey '41, '42; Basketball '40, '41, '42, '43; Wake Forest Summer Session '42.

Reserve and refinement contrasted with a warm, sincere friendliness. Marian is a diligent worker and has drained all the knowledge out of a Home Economics course and now she's going to pour it into the heads of high school pupils somewhere. We feel in her presence a wholesomeness and deep tranquillity.



LOUISE BUNN

Rocky Mount, N. C.

B.S.

Epsilon Chi Literary Society; Transfer from W.C.U.N.C.; Home Economics Club '40, '41, '42, '43; Reporter '43; William Bartram Scientific Society '42, '43; Camera Club '43; Prayer Band Leader '43; Adelpian Society at W.C. '40; 4-11 Club '40; Program Chairman.

Her snapping brown eyes are a key to her personality; mischievous and fun-loving, "Bunny" is a tonic to sombre spirits. Along with these qualities, Louise reveals, to those who know her, a very serious side. She has sound judgment, and excellent taste, with a characteristic streak of ingenuity. She is always ready to lend aid to other people, though she leads a very busy life herself.

**SENIOR
CLASS**

LOUISE CABLE
Madison, N. C.

B.S.

Zetesian Society; Home Economics '40, '41, '42, '43; Wake Forest Summer School '42, '43.

Call on Cable! Always capable. Accommodating and obliging.

Neat as a bobby pin.

Orderly as the part in your hair.

Busy as a jeep.

Sagacious as a general.

She likes dainty things, pretty clothes, fancy cooking. Quiet and reserved. Louise is serious and understanding. We recommend her as the ideal home-keeper.

MARGARET CAMPBELL
Parkton, N. C.

B.A.

Day Students Club '40, '41, '42. Vice President '43; Dramatics Club '43; Marshal '42; Zetesian Society.

She has always seemed to us a person quiet and rather reserved in manner, but those who know her best tell that Margaret thoroughly enjoys participation in good times too. A neat personal appearance is but a reflection of a mind which works quickly and efficiently. We extend bouquets to one who has experienced the much-coveted success in practice teaching and wish for her continued happiness in her work.





ANNE CREACH
Pollocksville, N. C.

B.S.

Epsilon Chi Literary Society; *Pine and Thistle* Staff '43; Senior Class Testator; Fire Captain '42, '43; French Club '42.

Few people know what an interesting person Anne is. She is extremely well-read, can talk intelligently and sympathetically on almost any subject, has a splendid inexhaustible sense of humor that is without malice; and, as if this weren't enough, she writes poetry of real merit. Her reticence about herself has kept many of us from knowing her well, but she has slowly but surely been found out, and all who know her sing her praises. Her personality, intelligence and depth of feeling make her one of those rare people you never tire of being with.



MARGARET MCLIVER COLE
Woodleaf, N. C.

A.B.

Mitchell College '40, '41; S.C.A. Cabinet '40, '41; Marshal '41; Superlative '41; May Queen '41. Flora Macdonald College '42, '43; Prayer Band Leader '42; Christian Association Cabinet '43; President Mathematics Club '43; Treasurer Zetesian Society '43; Hockey Varsity '43; Glee Club '42, '43; Who's Who '43.

Behind cool blue eyes and underneath light blond hair lies wisdom unsuspected of one possessing such calm fragile charm. McIver is respected equally for her skill in manipulating calculus equations and for her prowess on the senior hockey forward line. In these two years McIver has proved herself deserving of the positions which she has attained in our group.

SENIOR
CLASS

JO CRAIG
Marion, N. C.

B.M.

Montreat College '40, '41; President Music Club '40, '41; Music Editor of School Publications '40; President Choir '41; Dramatics Club '40, '41; Vice President Orchestra '40, '41. Flora Macdonald '42, '43; Glee Club '42, '43. Vice President '43; Senior Editor WHITE HEATHER '43; Dramatics Club '43; Music Club '42, '43.

Activity—her by-word—Jo is never at a loss for something to do, whether it be a game of tennis or a session with a piano. She can talk rings around any body on any subject and still leave them begging for more. Sparkling with wit, she is the life of any party and has been unquestionably the "original" one of our class.

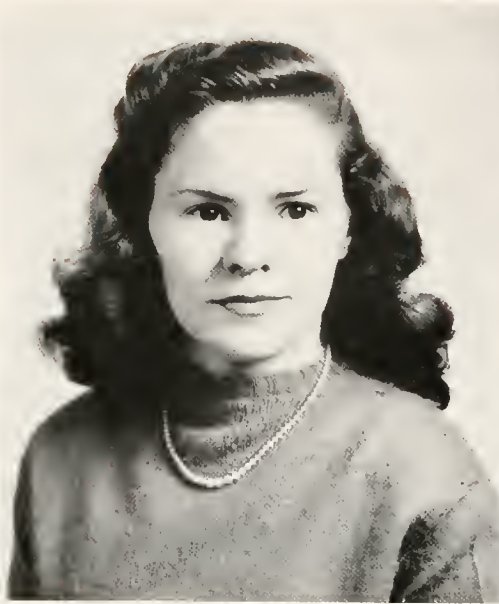
IRENE EDENS
Red Springs, N. C.

B.A.

Epsilon Chi Literary Society; Day Students Club '40, '41, '42, '43; Mathematics Club '40, '41, '42, '43; William Bartram Scientific Society '41, '42, '43; Archery '42; May Court '43.

The trim neatness of a tall slender figure, glossy nut brown hair, sparkling eyes, and lovely complexion add to Irene's friendly charm. Her ability for working mathematical equations is almost uncanny. She also possesses the rare quality of being a good teacher. Capable and charming, Irene has proved herself an asset to Flossie Mac.





CATHERINE GILCHRIST

Red Springs, N. C.

B.S.

Epsilon Chi Literary Society; Home Economics Club '40, '41, '42, '43; Wake Forest Summer School '42; Tennis Club '41; William Bartram Scientific Society '41, '42, '43.

Waves of soft brown hair about a face which looks calmly upon a troubled world—so we see Catherine. She is one of those people with whom are associated the laughter of small children at play, soft shades of pastel wools, the trickling tones of light music and poetry.

BOBBY HEFNER

Hamlet, N. C.

B.S.

W.C.U.N.C. Transfer. Adelpian Society; Business Staff of *Pine Needles*; Archery Club; Member of Hall Board; Costumes for Play Makers; Square Dance Club. Wake Forest Summer School '40. Flora Macdonald College. Epsilon Chi Literary Society; Home Economics Club '40, '41, '42, '43; Second Vice President of Society '42; Censor of Society '43; William Bartram Scientific Society '42, '43; Camera Club '43; President Home Economics Club '43.

There's no doubt about it. Bobby's just plain fun to be around. Her's is that special brand of dry wit that catches you unawares if you're not on your toes. And woe be to pretenders and shallow ones; Bobby sees straight through 'em! This same level-headedness makes her the capable person to whom we look for advice, with a comforting sureness she won't fail.

**SENIOR
CLASS**

MARY BELLE HENRY
Rocky Point, N. C.
B.S.

W.C.U.N.C. '40; Zetesian Literary Society, Flora Macdonald College '41, '42, '43; Wake Forest Summer School '42; Home Economics Club '41, '42, '43.

Mary Belle will always be remembered for her sweet, friendly smile, her lovely disposition, and her willingness to help others. Her gentle and reserved manner has won a warm spot in the hearts of all her classmates.

MARY ELLA INGRAM
Wagram, N. C.
B.S.

Epsilon Chi Literary Society; Home Economics Club '40, '41, '42, '43; Day Students Club '40, '41, '42, '43; Granddaughter's Club '40, '41, '42, '43; Wake Forest Summer School '41; Prize Winner in North Carolina State Textile Style Show '42; William Bartram Scientific Society '43.

She has an innate ability to put just the right thing, in just the right place, at just the right time when it will do the most good. She has a flare for concocting delicious morsels. Kindly, accommodating, and friendly, we will always remember her as a delightful member of our class.





MARY MONICA JACKSON

Wilmington, N. C.

B.A.

Zetesian; Glee Club '40, '41, '42, '43; Secretary Glee Club '42; French Club '42, '43, Vice President '43; Associate Editor of *Pine and Thistle* '41, '42; Flora Macdonald Christian Association, Cabinet '42, '43; Class Treasurer '42, '43; Senior Scribbler; Archery '42; Class Poet; Marshal '42.

Monica's infectious gaiety and boundless enthusiasm kindle a spark that warms our hearts. Her sensitivity gives her a sympathetic understanding of the moods and the emotions of those about her. Her sense of the truly artistic makes her appreciative of beauty in any form. Monica is sterling!



MARGARET JENKINS

Mayesville, S. C.

B.A.

Zetesian Society; Class President '40; Council '40, '42; South Carolina Club '40, '41, '42, '43; Granddaughter's Club '40, '41, '42, '43; Corresponding Secretary Zetesian Literary Society '41; Music Club '41; Glee Club '41; Archery Club '40, '41, '42; Vice President Class '41; Vice President Class '42; Vice President "L'Alliance Française"; Secretary Class '43; *Pine and Thistle* Staff; Prayer Band Leader '43; President "L'Alliance Française" '43.

"A gift of fascination and the power to charm." We forget her unassuming absent-mindedness when she attracts us by her witty, facetious nonsense, wide blue eyes, and winning personality. And still we know her qualities surpass even her charms.

SENIOR
CLASS

CAROLYN KLUSMEIER

Charlotte, N. C.

B.S.

Brevard College '40, '41; Concert Choir, Fireside Club; Boosters Club; Vice President Euterpean Literary Society '41; May Queen '41; Flora Macdonald College '42, '43; Home Economics Club; Zetesian Literary Society; Wake Forest Summer School '42.

"Everything that is exquisite hides itself," but Carolyn's modesty has not kept us from appreciating her grace and talent in the two years we have known her. Bright eyes and shining hair, clear complexion—she models well the clothes she designs so originally. We'll let you in on a secret: she doodles, and she likes the Navy (don't we all?).

MERLE ETTA LANCASTER

Parkton, N. C.

B.S.

Campbell College '40, '41; Astro Society '40, '41; Home Economics Club '40, '41; Dramatic Club '40. Flora Macdonald College Epsilon Chi Literary Society; Home Economics Club '42, '43; Wake Forest College Summer '42.

We admire her for her determination in all that she does, for her intense interest in her chosen profession, and for her conscientious study. Merle Etta's neat, precise habits are especially commendable, her candid comments keep us cautious, and her impish pranks keep life from being dull or uninteresting.





BARBARA LYTCH
Laurinburg, N. C.
B.M.

Zetesian Literary Society; Music Club '40, '41, '42, '43; Glee Club '40, '41, '42, '43, Vice President '41, '42, President '43; Dramatics Club '41, '42, '43; Tennis '40, '41, '42; Sophomore Organ Recital; Assistant Business Manager *Pine and Thistle* '41; Delegate to N. C. College Press Association '41; Junior Organ Recital; Business Manager *Pine and Thistle* '42; Superlative '43; College Cheer Leader '43; Senior Organ Recital '43; Archery '42; Editor-in-Chief WHITE HEATHER and Chief Scribe '43; Who's Who Among Students in American Colleges and Universities '43.

Her charm and her personal magnetism, her sparkling wit, her untiring vitality and resourcefulness, together with the regal bearing that she alone possesses, make Lytchie "tops" in the estimation of all who know her.

JEAN LYTCH
Rowland, N. C.
B.S.

Epsilon Chi Society; Home Economics Club '40, '41, '42, '43; Archery Club '40, '41, '42, '43; Corresponding Secretary of Epsilon Chi Society '41, '43, First Vice President '42; Wake Forest Summer School '42.

"Charming" is the word for Jean. She has an interest in people that makes her quick to sympathize with all woes, although she is very independent herself. Poised and good-looking, she wears clothes so well we envy her stylishness. She's a wonderful social asset to any group, because she's fun-loving and always ready to enter into a rollicking good time. More than this, she has fine ideals and tries to live up to them. P. S. She can Charleston, too!

**SENIOR
CLASS**

DOROTHY MARTIN

Whiteville, N. C.

B.S.

Epsilon Chi Society; Hockey '10; William Bartram Scientific Society '10, '11, '42, '43; Home Economics Club '40, '41, '42, '43; Glee Club '40, '41, '42, '43; Prayer Band Leader '41; Associate Editor WHITE HEATHER '42; Recording Secretary Epsilon Chi Society '42; Basketball '43; First Vice President Epsilon Chi '43.

Composed and even-tempered, that's another one of our capable Seniors. Definite of opinion and frank of expression, we can count on her counsel. Endowed with an alert mind, she easily grasps the knowledge we have to dig for. She is a steadfast friend, sincere and true always. We seek her company for the humor and stability we find there.

RUTH MONROE

Eagle Springs, N. C.

B.S.

Zetesian Literary Society; Home Economics Club '40, '41, '42, '43; William Bartram Scientific Society '40, '41, '42, '43; Wake Forest Summer Session '11; Vice President of Class '43; Student Council '43.

One cannot help but feel a little better when Ruth is around. With such naturalness she amuses, charms, and fascinates us. We never tire of her. There is always a quirk of a smile at one corner of her mouth or that inviting twinkle in her eye that we cannot resist. Her abilities have been revealed through her capability, and she has so much common sense we go to her for practical advice as well as an uplifting of spirit.





FLORENCE MOORE

Ashland, Va.

B.A.

Zetesian Literary Society; Freshman Editor of *Pine and Thistle*; Prayer Band Leader '41, '42, President '41, '42; William Bartram Scientific Society '41, '42, '43; Hockey Varsity '40, '41, '42, '43; College Varsity '41; Mission Study Leader '41, '42; Librarian of Student Volunteers '41, '42; Secretary of French Club '41, '42; President F.M.C.A. '43; Student Council '43; Who's Who Among College and University Students '43.

Never in a million years will there be another Florence! She is a combination of many qualities: spontaneous enthusiasm, a genuine love of people, and true depth of character. This, has made her valuable as president of our Christian Association. Her sympathy and understanding have meant much to us. Florence is one of those "jellowshippy people," willing to dispense with "mere technicalities."

KATHRYN MCBRYDE

Lumberton, N. C.

B.S.

Epsilon Chi Literary Society; Home Economics Club '40, '41, '42, '43; Archery Club '40, '41, '42, '43; Glee Club '40, '41, '42; Censor of Epsilon Chi '41; May Court '41, '42; Manager of Tea Room '42, '43; Wake Forest Summer School; Treasurer of Epsilon Chi Society.

There is something marvelously attractive about "C. B." Maybe it's because she is one of those few people who have the courage to appear as they really are. Her charm and gracious manner make her at ease in any situation. Her contagious smile and friendliness make her a pleasant companion, and her faithfulness and sincerity reveal a true friend.

**SENIOR
CLASS**

VIRGINIA McDANIEL
Red Springs, N. C.

A.B.

Epsilon Chi Literary Society; Day Students Club '40, '41, '42, '43; Glee Club '40; Archery '42; May Queen '43; Epsilon Chi Associate Editor of *Pine and Thistle* '43.

And well she deserves the honor of having been chosen as our class May Queen. Virginia, as one who has combined the beauty of persona with the beauty of personality, has carved for herself a unique place in our group. Small wonder that the first graders responded so well to a teacher whose striking hair and matchless complexion resembled their idea of angels. More than that, though, Virginia's soft manner of speaking and her genuine interest in others have won an increasing circle of friends.

JANET MACDONALD
Cameron, N. C.

A.B.

Transfer from Montreat College; Y.P.C. Montreat '41; Class Treasurer '41; Superlative. Most Intellectual '40, '41; Flora Macdonald College; William Bartram Scientific Society '43; Mathematics Club '43; Flora Macdonald Christian Association Cabinet '43; Zetesian Literary Society.

A mass of chestnut ringlets set off by keen gray eyes and a deep-toned voice giving evidence of true intelligence. Janet possesses the efficiency of straight forward thinking. She reads Shakespeare or Keats with ianate appreciation and delivers with equal insight a challenging vesper talk. She is not all seriousness, but comes forth at times with her capering wit as invigorating as her hearty laugh. She is also a good tennis player and talented artist. We cherish her deep spirituality, her versatility, her friendship.





GRACE MCKENZIE
Rockingham, N. C.
B.S.

Epsilon Chi Society; W.C.U.N.C. '40; Adelpian Society; Wake Forest Summer School '41; Assistant Tea Room Manager '43; Second Vice President of Epsilon Chi '42, '43; Associate Editor of WHITE LEATHER '42, '43; Home Economics Club '41, '43; May Court '43.

We find behind that slap-happy, ironic air the true character of Grace. She has a way with people that attracts everyone, and we admire her friendliness, frankness, and attractive personality. Laughter, nonsense, Satire, and Sun, as well as seriousness follow wherever she goes; and we never cease to wonder what she will do and say next.



MARJORIE MCKENZIE
Red Springs, N. C.
B.S.

Epsilon Chi Society; Day Students Club '40, '41, '42, '43; Home Economics Club '40, '41, '42, '43; Secretary and Treasurer Home Economics Club '43; Wake Forest Summer School.

Engaging manner, soft voice, nice brown eyes, blushes and rippling laughter bear outward witness to Margie's agreeable personality as well as her kind heart and intelligent insight. All through her school career, Margie has been an excellent student. With the qualities she has exhibited, we feel confident in prophesying a bright future for her.

SENIOR
CLASS

MARY McLAUGHLIN

Vass, N. C.

B.S.

Epsilon Chi Literary Society; Peace Junior College '40, '41; Sigma Phi Kappa '40, '41; Home Economics Club '42, '43; Flora Macdonald; Wake Forest Summer School '42.

"Shorty" is a good nickname for Mary. Though barely five feet, she makes up for her height in other ways. Her reserve is but the veneer of an original wit and hearty love of fun. We also know that she dresses in good taste. Her ready humor makes her an enjoyable companion.

JEAN McPAUL

Parkton, N. C.

B.A.

Zetesian Literary Society; Basketball Varsity '41, '42, '43; Camera Club '43; Captain Senior Hockey Team '43; Granddaughter's Club; Hockey Varsity '42, '43; Mathematics Club '42, '43; President Day Students '43; William Bartram Scientific Society '42, '43; Who's Who Among Students in American Universities and Colleges '43.

To us Jean represents ideal sportsmanship. She has the ability to win with a smile, or to lose without discouragement; to do her share of the work, and to be cheerful and to keep others happy. She has been an inspiring leader of the Day Students and has the admiration and respect of all who know her.





SUE HARDEN MACPHERSON
Fayetteville, N. C.

B.A.

Epsilon Chi Literary Society; Class Treasurer '40; Math Club '40, '41, '42; William Bartram '40, '41, '42, '43; Hockey '40, '41, Varsity '42; Class President '41; Student Council '41; Glee Club '41, '42, '43; Corresponding Secretary Math Club '41; Asst. Editor *WHITE HEATHER* '42; Assoc. Editor *Pine and Thistle* '42; Pres. Math Club '42; Prayer Band Leader '42; Mission Study Leader '42; French Club '42, '43; Pres. S.C. '43; Student Council '43; Cabinet '43; Scribbler; Who's Who in American Colleges and Universities; Class Historian '43; Sponsor S.S. *Flora Macdonald*; Superlative.

Because her heart is so true, her vision so clear, her understanding so complete, her life so quiet and strong and true, and then because she can love and laugh and play like the rest of us, she has steered the student body through a happy, successful year.



HAZEL OLIPHANT
Mooresville, N. C.

B.S.

Zetesian Literary Society; Home Economics Club '40, '41, '42, '43; Prayer Band Leader '42, '43; Wake Forest Summer School '42, '43; State Style Show '42.

Hazel is another of our seniors whom too few of us know well. From warm brown eyes shine friendliness and deep sincerity. For some of us, Wednesday mornings have been made memorable by the prayer band meetings with Hazel. A steady worker, she can always be depended upon to carry through to successful completion any job which she undertakes.

SENIOR CLASS

LOIS PARKER
Clinton, N. C.

B.S.

Epsilon Chi Literary Society, Critic '41, President '42; Music Club '40; William Bartram '40, '41, '42, '43; Granddaughter's Club '40, '41, '42, '43; Home Economics Club '40, '41, '42, '43; Sophomore Class Editor WHITE HEATHER '41; Archery '41, '42; Secretary Junior Class '42; Student Council '42, '43, Vice President '43; May Court '43; Who's Who Among Students '42, '43; Glee Club '42, '43; Maid of Honor at Launching of S.S. *Flora Macdonald* '43.

"Lois, where did you get those long eyelashes?" we wail enviously, for Lois is one of the best looking girls in school as well as one of the most capable. Independent, resourceful, with definite ideas and the determination necessary to carry them through, she's been a valuable campus leader. She's good company, too, and very attractive—in fact, she's our candidate for "best-all-round."

BILLIE PATE
Gibson, N. C.

B.A.

Epsilon Chi Literary Society; Granddaughter's Club '40, '41, '42, '43; Wake Forest Summer School '41; Tea Room Manager '42; Archery '41, '42; Assistant Business Manager WHITE HEATHER '42, Manager '42; May Court '43.

There's a very trite saying about the best things coming in small packages. Well, Billy may be a little slip of a girl, but she figures largely in our group. "Billy will do it," we say when we need some persuading done. And she will too. People can't resist her! This quality has made her indispensable to the annual staff for two years.





ANNIE LOUISE POWERS

St. Pauls, N. C.

B.S.

Zetesian Literary Society; Home Economics Club '40, '41, '42, '43; William Bartram Scientific Society '41, '42, '43; Wake Forest Summer School '42.

Louise is our idea of a grand all-around person. Charming and gracious, she is at the same time steadfast and sure—an efficient manager and a fine student. A lover of good fun, she has a merry twinkle in her eye that goes well with her ambition to study medicine.

PHYLLIS POWERS

St. Pauls, N. C.

B.A.

Zetesian Literary Society; Glee Club '40, '41, '42, '43; Hockey '40, '41, '42, '43; Prayer Band Leader '41, '42, '43; Dramatic Club '41, '42, '43; Dancer in "The Highland Call" '41; French Club '42, '43; Archery '42; Chief Marshal '42; May Court '42, '43; William Bartram Scientific Society '43; Camera Club '43.

Graceful, poised, with the poignant daintiness of a fairy queen she walks in beauty in our midst. Though small in stature, she has an uncanny gift for doing big things. Her cheery smile makes many a dull day brighter as she casts an effervescent radiance over all with whom she comes in contact.

**SENIOR
CLASS**

RACHEL ELIZABETH POWERS

St. Pauls, N. C.

B.S.

Zetesian Literary Society; Home Economics Club '40, '41, '42, '43; William Bartram Scientific Society '41, '42, '43; Wake Forest Summer School '42.

Rachel is so quiet and modest that not everyone knows what she is thinking and doing. To those who have penetrated her reserve, she is talkative and individual, and a teasing somebody.

She is always considerate of others, studious and hard-working, and a dependable person to assign to any task. A predominant characteristic of Rachel is her love for teaching.

LUCILLE PROCTOR

Wilson's Mills, N. C.

B.A.

Zetesian Literary Society; Peace Junior College '40, '41; Wake Forest Summer School '40.

"Silence is the surest sign of wisdom and capability." Lucille is an example of this. She is a very skillful person and her originality makes her decidedly unique. Instilled in her is a disposition as bright as the sun, and her willingness is always manifest. Here's to a girl that's good and true.





JEAN McRAE ROSS
Patzcauro, Michoacan, Mexico
B.A.

Glee Club '12, '43; Music Club '11, '42, '43; Hockey Team '11, '42, '43; Hockey Varsity '43; Basketball '41, '42, '43; William Bartram '40, '41, '42, '43; Math Club '40, '41, '42, '43; Zetesian Literary Society, Chaplain '42. Critic '43; Marshal '42; Delegate to Davidson Conference '11, '42; President State S.C.A. '42, '43; F.M.C.A. Cabinet '41, '42, '43. Vice President '43; Senior Scribbler '43; Who's Who Among Students '43.

That unpredictable Jean! She always comes forth with the most unexpected remark, which brings the house down. She combines the naivety of youth with the wisdom of a philosopher. The purity of her life and the beauty of her character reveal depths of spirituality and inspiration.

VAUNE ROWE
Miami, Florida
B.A.

W.C.U.N.C. '10, '41; Altheian Society '40, '41; Hockey '40; Volley Ball '40; Athletic Association '40, '41; Square Dance Club '41; Home Economics Club '40, '41. Flora Macdonald College '42, '43; Zetesian Literary Society; Senior Hockey Team '43.

Chic. Up-to-the-minute. Finely molded features, expressive eyes. Intelligent, understanding, and appreciative. Hard-working, full of fun, and possessed of a personality that is entirely charming.

SENIOR
CLASS

GLADYS SANDERS

Rae-ford, N. C.

B.A.

Zetesian Literary Society; Mathematics Club '40, '41, '42, '43; William Bartram Scientific Society '40, '41, '42, '43; Student Volunteers '40, '41, '42, '43; Prayer Band Leader '41, '42; Secretary of Math Club '42; French Club '42, '43; Christian Association Cabinet '43; Secretary of Christian Association '43.

Soft low voice and quiet manner—yes, but stoppiag there you fail to see the broader personality of one who has served capably and well as a member of the Christian Association's Cabinet. Gladys is one of those interesting people who are well-informed and can speak intelligently from knowledge of a variety of fields. Always willing to help, she is an able assistant to those who need her. And note, too, that Gladys, the inscrutable, is our budding pianist!

LOIS SHOOK

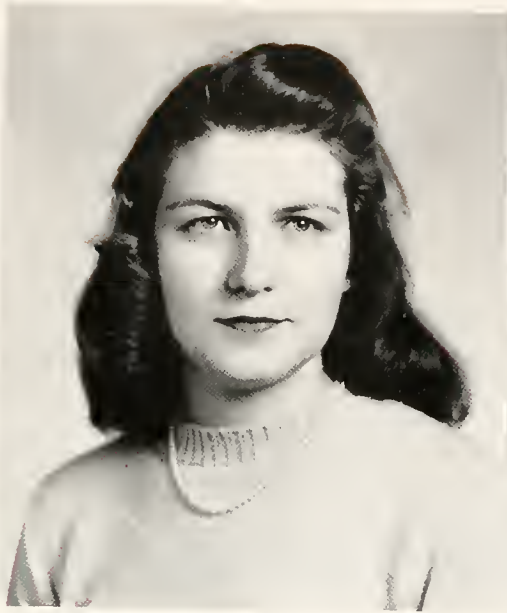
Red Springs, N. C.

B.S.

Epsilon Chi Society; Day Students Club '40, '41, '42, '43; Home Economics Club '40, '41, '42, '43; A.S.T.C. Summer School '41; Wake Forest Summer School '42.

The elfish sparkle in Lois' eyes is an evidence of her fun-loving disposition. She has a keea personal interest in people and for that reason is liked by all. She is also one of these hard working home ec. students. Being Lois, it is only natural that she should love popular music and dancing.





MARGARET SINCLAIR
Wilmington, N. C.
B.A.

Zetesian Literary Society; Glee Club '42; Fire Captain '42, '43; Editor *Pine and Thistle* '43.

A unique person is "Sin"—no pretense or insincerity, just "Sin"—with challenging eyes as blue as the sky on a frosty morn. Frankness, efficiency, and poise are true marks of her character. Love and talent for music make "Sin" the fine person we know.

MABLE MCNEILL SMITH
Red Springs, N. C.
B.S.

Epsilon Chi Literary Society; Day Student's Club '40, '41, '42, '43; Home Economics Club '40, '41, '42, '43; Flora Macdonald Summer School '41; Wake Forest Summer School '42.

The "nameless grace that waves in every raven tress" of Mable's blue-black hair accentuates her striking looks. Her easy-going disposition is no obstacle to an individuality that is manifested in clothes designing and in demonstrations.

SENIOR CLASS

SARAH BELLE SMITH
Elizabeth City, N. C.

B.A.

Epsilon Chi Literary Society; Marshal '42; Archery '42; Commercial Club '42; Class President '42, '43; Member Student Council '42, '43; French Club '42, '43; Who's Who in American Colleges and Universities '42, '43; William Bartram Scientific Society '43; Hockey '43; Maid of Honor at Launching of S.S. *Flora Macdonald* '43; Senior Scribbler '43.

"Ambition has no rest"—this is true of Suzzy, whom we think of as a genuine jewel. Our president for two years, she has served her office efficiently; and where would we have been without her perseverance and determination. Because "a little nonsense now and then is relished by the wisest men," we are not surprised at a sudden burst of giggles from her at any time. Her trim glossy hair adds to her attractiveness. Little wonder that she is highly esteemed.

MARY VIRGINIA STEGALL
Lubondai, Belgian Congo, Africa

B.A.

Zetesian Literary Society; Prayer Band Leader '40, '43; Student Volunteers '40, '41, '42, '43; President Student Volunteers '43; Mission Study Leader '40, '41, '43; Wake Forest Summer School '41; French Club '42, '43; William Bartram Scientific Society '41.

Ginny has brought to us the warm, tropical atmosphere of Africa, the land of her birth. Those soft, brown eyes are not always peaceful and serene. At times they can sparkle with satirical wit as she makes some wise crack or reads "Winnie the Pooh." She has served well as president of Student Volunteers and is a true friend. Africa is entitled to a good missionary in Ginny.





GERALDINE STROUD

Pink Hill, N. C.

B.A.

Zetesian Literary Society; Hockey '40, '41, '42, '43; Head of Hockey '43.

Gerry's pert, gay manner is enhanced by a pair of twinkling brown eyes and a contagious laugh. She has a buoyant personality and is never too busy or tired to be jolly. She is friendly, dependable, hard working, and above all a good sport. With her love for children she should make an excellent teacher.

MARTHA SUTHERLAND

Laurinburg, N. C.

B.S.

Epsilon Chi Society; Hockey '40; Basketball '40, '41, '42, '43; Home Economics Club '40, '41, '42, '43; Tennis '41, '42; Vice President Home Economics Club '41; College Superlative '41, '43; May Court '41, '43; William Bartram Scientific Society '42, '43; Head of Tennis '42; Corresponding Secretary Epsilon Chi Society '42; Marshal '42; Assistant Tea Room Manager '42; Archery '42; Basketball Varsity '42; President Epsilon Chi Society '43; Student Council '43; Camera Club '43; Who's Who Among Students in American Colleges and Universities '43.

"She walks in beauty . . ." and she has walked right away with our hearts. But this is just one facet of her personality. People are attracted at once by Martha's charm and poise, intelligence and good humor. Eyes dancing with mischief, she loves a little fun and blarney, too. We salute a lovely person!

**SENIOR
CLASS**

LILLIAN TATE
Gastonia, N. C.

B.A.

W.C.U.N.C. transfer. Wake Forest Summer School '41. Flora Macdonald College '42, '43; Archery '41, '42; Math Club '42, '43; William Bartram Scientific Society '43; Epsilon Chi Literary Society.

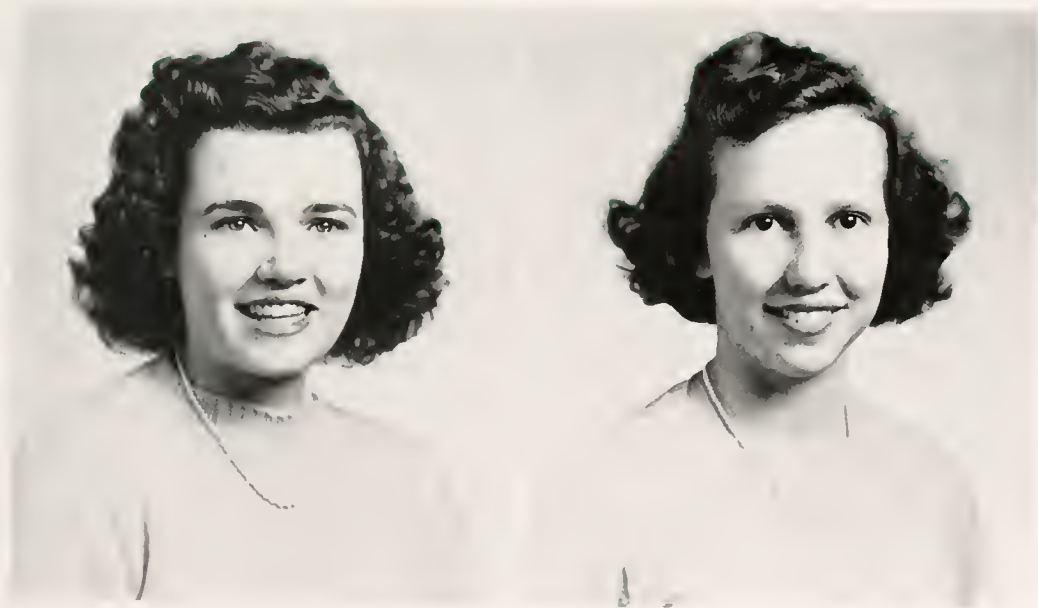
Although Lillian has only been here two years, we all feel that she is an integral part of our group. Her jollity and uplifting countenance fill an empty niche in the lives of many about her. She's a good worker, a promising teacher and a grand sport!

HELEN THOMAS
Barium Springs, N. C.

B.S.

Epsilon Chi Literary Society; Hockey Varsity '39, '40; Class Hockey '39, '40, '41, '42; Basketball '39, '40, '41, '42; Secretary of the Athletic Association '39; Treasurer of Athletic Association '40, '41; Hockey Captain '39, '41; Home Economics Club '39, '40, '41, '42; Prayer Band Leader '40; Cabinet '40, '41; Student Volunteers '39, '40; Treasurer of Student Volunteers '40.

Her generosity and enthusiasm are the outcome of Helen's good sportsmanship. She is as friendly as a basket of puppies. We can never forget how effectively she has put across many social functions, always willing to contribute her ability along domestic lines. We value her leadership especially as captain of our hockey team.





CAROLINE VIDAL
Gainesville, Fla.

B.M.

Epsilon Chi Literary Society; Music Club '40, '41, '42, '43; Glee Club '41, '42, '43; Sophomore Violin Recital '41; Junior Violin Recital '42; Senior Violin Recital '43; F.M.C.A. Chairman of Music '43; Member of Sextet '43; Senior Scribbler '43.

Artistry combined with keen insight into the true worth of beauty. Rugged individualism combined with a passion for adventure. Her zest for living stimulates an awareness of life's ebb and flow. The soul of an artist with the heart of a clown.



MARY OLIVE WALKER
Greeleyville, S. C.

B.A.

South Carolina Club '40, '41, '42, '43; Student Volunteers '40, '41; Secretary Student Volunteers '41; Prayer Band Leader '41; Volley Ball '40, '41; Delegate to Davidson Conference '41; Tennis '41, '42, '43; Mission Study Leader '41; Flora Macdonald Christian Association Cabinet '42, '43; Treasurer of Flora Macdonald Christian Association '43; Basketball '43; Hockey '43; William Bartram Scientific Society '43; Camera Club '43.

M. O. stands high in our estimation for her loyalty, her strong ideals, her good judgment, her warm sincerity, and her ability. She can be depended upon to do a good job of whatever she undertakes. In her four years she has excelled as an enthusiastic participant in sports, as a cabinet leader, as a gifted teacher and student. To all of us she has proved a loyal friend.

**SENIOR
CLASS**

BESSIE ROSE WATSON

Red Springs, N. C.

B.S.

Epsilon Chi Society; Day Students Club '40, '41, '42, '43; Secretary and Treasurer '41; Home Economics Club '40, '41, '42, '43; Glee Club '43.

Bessie Rose is one to whom we can turn in time of perplexity, with the assurance that she who is not easily ruffled can counsel us well. Yet often we are surprised by a flash of keen, dry wit. Deep spiritual perception combines with musical talent to make Bessie Rose an active leader in her church's work.

LELLON WARREN

Clinton, N. C.

B.M.

Zetesian Literary Society; Music Club '40, '41, '42, '43; Glee Club '41, '42, '43; Vice President of Music Club '43; Secretary-Treasurer of Glee Club '43; Sophomore Piano Recital '41; Junior Piano Recital '42; Graduation Piano Recital '43.

Lellon cannot be read at a glance, partly because there is an element of unanswering progress in her make-up that few of us can comprehend or appreciate. Though impatient with triflers, she is interested in all who are conscientious. Not only an unusual musical ability, but a gracious human sympathy and gaiety pervade her nature. Though steady and sensible, Lellon will long be remembered as one of the conservatory's notorious pranksters, and some day we will be proud to say, "We attended classes with her at Flora Macdonald."





HOPE WEAVER
Red Springs, N. C.
B.A.

Zetesian Literary Society; Day Student's Club '40, '42; Archery '41; Mathematics Club '41, '42, '43; Glee Club '42, '43; William Bartram Scientific Society '42, '43; Washington and Lee University Summer School '42.

Hope's smart dignity and attractive personality together with her aristocratic poise are only a few qualities of such a lovely person. She is thoughtful and self-reliant and is high in mind and character. Hope is one of our Day Students who always wears a smile of welcome.



VIOLA WILLIAMS
Eagle Springs, N. C.
B.A.

Zetesian Society; Class Basketball Team '40, '41, '42, '43; Basketball Varsity '40, '41, '42, '43; Captain of Basketball '40, '41, '42, '43; Class Hockey Team '41, '42, '43; Class Treasurer '41; William Bartram Scientific Society '41, '42, '43; Math Club '41, '42, '43; Camera Club '42; Salesman of Athletic Association '41; President of Athletic Association '42, '43; Student Council '42, '43; Who's Who Among American Universities and Colleges '42, '43; College Superlative '43.

Sportsmanship is her main attribute—basketball goals, her work of art. Viola has proved herself worthy of our respect by her earnestness, zeal, and never failing sincerity. She is in herself a collection of the best things. Here is true character worthy of our praise.

SENIOR
CLASS

FRANCES WILLIAMSON

Turkey, N. C.

B.S.

W.C.U.N.C. '40: Home Economics Club '40; Altheian Society '40. Flora Macdonald College '41, '42, '43; Home Economics Club '41, '42, '43; Zetesian Literary Society.

Quiet, sweet, dignified, witty, choosey. Soft brown eyes, and an attractive countenance that ignites the room when she smiles. Likes light-scented perfumes, loves flowers and children.

REBECCA WILSON

Blanche, N. C.

B.S.

W.C.U.N.C. Transfer. Adelpian Society '40; Home Economics Club '40; Basketball '40; Democrats Club '40. Flora Macdonald College '41, '42, '43. Home Economics Club '41, '42, '43; Camera Club '43; William Bartram Scientific Society '41, '42, '43; Zetesian Literary Society.

There is something stately in her air that reminds us of a woman who knows what she wants and how to get it. Becky is the kind of a blue-eyed gal we like to go to and tell our troubles, with the assurance that she will lend a willing ear and make things better with her sympathetic understanding. Becky makes a friend of every oae she meets, and she is the sort of person that oae never forgets.





Junior Class Officers

FRANCES LIFRAGE . . . <i>President</i>	PEGGY WALL . . . <i>Tea Room Manager</i>
MARGARET TEABEAUT, <i>Vice President</i>	NANCY RAMSEUR <i>Assistant Tea Room Manager</i>
CATHERINE McDUFFIE . . . <i>Secretary</i>	MISS MARY ELIZABETH MASSEY <i>Adviser</i>
MAGDALENE COX . . . <i>Treasurer</i>	



Lifrage, Teabeaut, Wall
Cox, Massey, Ramseur

Junior Class



JUNIOR CLASS

First row:

BANKS, MARY ELIZABETH Richlands, N. C.
 BARKER, LAURA BELLE Milton, N. C.
 BAUCOM, FREIDA YVONNE Red Springs, N. C.
 BAUCOM, NELDA IMOGENE Red Springs, N. C.
 BAXLEY, DORIS St. Pauls, N. C.

Second row:

BRITTEN, MARY ELIZABETH Kinston, N. C.
 COLE, FRANCES ELIZABETH Timmons ville, S. C.
 COX, MAGDALENE Mayodan, N. C.
 EASTRIDGE, GWENDOLYN Shelby, N. C.
 ELLIS, NANCY JEANNETTE Goldston, N. C.



First row:

GRANTHAM, JANE MCBRYDE St. Pauls, N. C.
HARRINGTON, LUCY RUTH Broadway, N. C.
HELMS, FRANCES Bethune, S. C.
HERRING, JACKIE Fayetteville, N. C.
HUGHES, MARY LEE Wilmington, N. C.

Second row:

KALLAM, ANYCE LORENE Stoneville, N. C.
KELLY, FLORA MAE Carthage, N. C.
KERR, BETTY Kerr, N. C.
KURFEES, CAROLYN Mocksville, N. C.
LEWIS, ELLA ADAMS Faison, N. C.

**WHITE
HEATHER**



JUNIOR CLASS

First row:

LEWIS, MARGARET Hemp, N. C.
 LIFRAGE, FRANCES Salters Depot, S. C.
 LITTLE, HELEN Charlotte, N. C.
 LOY, FRANCES Fayetteville, N. C.
 MERCER, MILDRED Shammon, N. C.

Second row:

McDUFFIE, CATHERINE Hemp, N. C.
 McKETHAN, REBECCA Fayetteville, N. C.
 McLEOD, MARTHA McDONALD Aberdeen, N. C.
 MITCHNER, LUCY FRANCES Wilson's Mills, N. C.
 MORRISON, HELEN ELIZABETH
 Luebo, Belgian Congo, Africa

First row:

NOBLES, ELEANOR RUTH Greenville, N. C.
PARROTT, CAROLYN MEEKS Florence, S. C.
PUCKETT, LUCY MARIE Oxford, N. C.
RAMSEUR, NANCY Columbia, S. C.
SKINNER, MARION HENRI Elliot, S. C.

Second row:

STOWE, MILDRED LEE Clover, S. C.
TEABEAUT, MARGARET MCLEOD . . . Fayetteville, N. C.
WALKER, KAY LEE Elkin, N. C.
WALL, MARGARET CALDWELL Morven, N. C.
WORLEY, CLARA MASON Pink Hill, N. C.

WHITE HEATHER





Sophomore Class Officers

CLAIRE WILCOX . . . *President* MARTHA PENCE . . . *Secretary*
MARY JOHNSON . . . *Vice President* CAROLYN MCKAY . . . *Treasurer*
MRS. MARY H. STEPHENS, *Adviser*



Wilcox, Stephens, Pence, McKay, Johnson

Sophomore Class



SOPHOMORE CLASS

First row:

ATKINS, JO ANNE	Kernersville, N. C.
AUTREY, JOHNNIE ALLIE	Red Springs, N. C.
BARRINGER, BETTY	Carthage, N. C.
BOWDEN, MARTHA NELL	Warsaw, N. C.
BRODIE, PAIGE LEWIS	Dunn, N. C.

Second row:

BURNS, MARY LEE	Goldsboro, N. C.
CHAPIN, MARION ETHEL	Sheffield, Mass.
CLARK, DOROTHY	Clarkton, N. C.
DUKE, NOVELLA	Falkland, N. C.
FENNELLS, DOROTHY	Loris, S. C.

Third row:

GOODWILL, PAMALA	Roanoke, Va.
GORDON, JOCELYN	Spray, N. C.
GORE, FRANCES	Taber City, N. C.
GRIGGS, MARTHA	Hopewell, Va.
HIPP, AILEEN	Charlotte, N. C.

First row:

HUGGINS, ERNESTINE VIRGINIA Aynor, S. C.
 HUNTLEY, MARY ANNA Peachland, N. C.
 HURLEY, MIRIAM FRANCES Troy, N. C.
 INNES, ALICE Rocky Mount, N. C.
 JOHNSON, MARY ALLENE Kenly, N. C.

Second row:

JOHNSON, MARY ELIZABETH Elizabethtown, N. C.
 KIRKPATRICK, KATIE MACNEILL Maxton, N. C.
 KNIGHT, LOUISE Maxton, N. C.
 LATHAM, JANE Leaksville-Spray, N. C.
 LEE, VIRGINIA PITTMAN Dunn, N. C.

Third row:

LOVETT, RUTH Fair Bluff, N. C.
 LYTTON, CATHERINE SHERRILL Gastonia, N. C.
 MATHESON, BETTY ROSS Conover, N. C.
 MOORE, ELEANOR BIDDLE Wilmington, N. C.
 MOORE, WEYBURN Madison, N. C.

**WHITE
HEATHER**





SOPHOMORE CLASS

First row:

MUSSELWHITE, VIRGINIA MAE Lumberton, N. C.
 MCCONNAUGHEY, JANE SHELTON Red Springs, N. C.
 MCCORMICK, MARY CATHERINE St. Pauls, N. C.
 MACDONALD, MURPHY Maxton, N. C.
 MCEACHERN, SARA MARGARET Clinton, N. C.

Second row:

McKAY, CAROLYN St. Pauls, N. C.
 McKAY, JANE GRAHAM Maxton, N. C.
 McNAIR, MARY Hartsville, S. C.
 McNEILL, MYRTLE LEE Red Springs, N. C.
 PENCE, MARTHA BOGGAN Tatum, S. C.

Third row:

PRIDGEN, MARTHA LAWRENCE Warsaw, N. C.
 RANDLE, EVELYN LIVINGSTON Clarksville, Tenn.
 ROWE, MARY CATHERINE Miami, Fla.
 SANDERS, MILDRED ELIZABETH Raeford, N. C.
 SANDERSON, RUTH Magnolia, N. C.

First row:

SANSBURY, ELIZABETH ANN Darlington, S. C.
SHINN, PEGGY JANE Leaksville-Spray, N. C.
SHOOK, DOROTHY JANE Red Springs, N. C.
SIKES, VIRGINIA Greensboro, N. C.
SIMPSON, ANNA LEE Glen Alpine, N. C.

Second row:

TOMLINSON, JANET Black Creek, N. C.
TONTZ, JUANITA LOUISE Baltimore, Md.
USHER, KITTY Gibson, N. C.
WEAVER, HARRIET Red Springs, N. C.
WHISNANT, EVELYN Leaksville-Spray, N. C.

WHITE HEATHER

Third row:

WHITMORE, DOROTHY ELOISE Natural Bridge, Va.
WILLCOX, VIRGINIA CLAIRE Carthage, N. C.
WORLEY, FANNIE GREY Pink Hill, N. C.
YOUNT, RENA GLENN Huttonsville, W. Va.
ZEMP, ELIZABETH VAN WYCK Sumter, S. C.





ESTHER MAE GRIER . . . *President* FAY MANESS *Secretary*
GERRIE McGEATH. *Vice President* MARY BESS VERNON . . . *Treasurer*
MRS. JANE GLENN *Adviser*



Grier, Maness, McGeath, Glenn, Vernoy

Freshman Class

FRESHMAN CLASS

First row:

ABAMS, MARY	Barium Springs, N. C.
ALFORD, BETTY	Calivan's Ferry, S. C.
ANTHONY, HURLEY	Wilson, N. C.
ASHLEY, IDA ROSS	Fairmont, N. C.
ATKINSON, LAUBA SHAW	Fairmont, N. C.
AUSTIN, SARA JEAN	Thomasville, N. C.
BARKSDALE, BETTY	Halifax, Va.
BARNES, EMBLYN	Fair Bluff, N. C.

Second row:

BATEMAN, MARGARET	Claudeville, Va.
BEEKS, ELOISE	Ware Shoals, N. C.
BOGGAN, MITTIE ISOBEL	Pee Dee, N. C.
BOWEN, GRACE	Washington, N. C.
BRITTON, SARAH	Whiteville, N. C.
BROCKINGTON, FRANCES	Kingstree, S. C.
BROWN, JANE	Mintvale, Va.
BROWN, JULIA LEE	Myrtle Beach, S. C.

Third row:

BUMPAS, ELIZABETH	Virgilina, Va.
BYNUM, LINDA	Pinetops, N. C.
CERRY, LILLIAN	Bartow, Fla.
COLLIER, EVELYN	Wade, N. C.
CURRIE, SARAH	Red Springs, N. C.
DAVIS, MARTHA	Sumter, S. C.
DILLING, LIBBY	Gastonia, N. C.
EDMUND, SYLVIA	Cerro Gordo, N. C.



First row:

ELLER, FRANCES	Wadesboro, N. C.
ESTES, BILLIE ELEANOR	York, S. C.
FARLOW, NAN	Sophia, N. C.
FIELDS, HELEN	Pinehurst, N. C.
FINLEY, KATHERINE	North Wilkesboro, N. C.
GARRELL, LOUISE	Clarendon, N. C.
GENTRY, JUANITA	Red Springs, N. C.
GILLIAM, KATHERINE	Windsor, N. C.

Second row:

GRACEY, ANN	Dallas, Texas
GRAHAM, LILLIAN	Windsor, N. C.
GRANTHAM, JANE	Fairmont, N. C.
GRIER, ESTHER MAE	Charlotte, N. C.
GRIER, MARY MARTIN	Waxhaw, N. C.
GRIFFIN, ELEANOR	Goldsboro, N. C.
HARRELSON, FLETA	Clarkton, N. C.
HENDRY, GLORIA	Washington, N. C.

Third row:

HIGHT, DOROTHY	Florence, S. C.
HOLDER, ELIZABETH	Broadway, S. C.
HOLLIDAY, WINIFRED	Florence, S. C.
HOWELL, GLORIA	Gibson, N. C.
HOYT, CARLISLE	Millboro, Va.
JACKSON, CAROLYN	Florence, S. C.
JONES, BETTY	Florence, S. C.
JONES, CARRIE LEE	Beaufort, N. C.

WHITE HEATHER



FRESHMAN CLASS

First row:

JONES, MARJORIE	Whiteville, N. C.
KANOR, DOROTHY	Fayetteville, N. C.
KEASLER, CABOLYN	Charlotte, N. C.
LANCASTER, NELL	Shelfar, Va.
LEACH, MARY ELIZABETH	Kinston, N. C.
LEWIS, ELWYNE	Florence, S. C.
LEWIS, ELENA ANN	Bartow, Fla.
MANESS, FAYE	Biscoe, N. C.

Second row:

MARKEY, ELIZABETH	Charlotte, N. C.
MARKS, FAY	Pee Dee, N. C.
MASSEY, LOUISE	Smithfield, N. C.
MEEKINS, NANCY	Columbia, N. C.
MILLS, KATHLEEN	Durham, N. C.
MOBENE, SYLVIA	Gibsonville, N. C.
MARGAN, ELIZABETH	Red Springs, N. C.
MUNROE, FRANCES	Quincey, Fla.

Third row:

McDANIEL, ANNIE MAE	Bennettsville, S. C.
McFALL, SARAH	Lumberton, N. C.
McGEATH, GERALDINE BARBARA	Allegan, Mich.
McINNIS, KATHERINE	Little Rock, S. C.
McINNIS, VIOLET	Clio, S. C.
McINNIS, VIVIAN	Shannon, N. C.
McPAUL, FRANCES	Red Springs, N. C.
O'BRIEN, KATHERINE	Laurinburg, N. C.



First row:

OLIVER, JEAN ELIZABETH	Fairmont, N. C.
OLIVIE, BARBARA FORSYTH	North Wilkes-boro, N. C.
POWELL, MARJORIE LEE	Clarkton, N. C.
ROBBINS, ELIZABETH WARREN	Washington, N. C.
ROGERS, NORMA ELIZABETH	Whiteville, N. C.
ROGERS, MARY ELIZABETH	Fair Bluff, N. C.
SHAW, ANN McDUFFIE	Wagram, N. C.
SHAW, HAZEL	St. Pauls, N. C.

Second row:

SMITH, CAROLYN	Thomasville, N. C.
SMITH, EMMA SWINDELL	Washington, N. C.
SPENCE, DOROTHY	Lillington, N. C.
STEVENSON, VIRGINIA	Hamilton, N. C.
TAPP, MARGARET	Red Springs, N. C.
THOMAS, EDNA RUTH	Florence, S. C.
THOMPSON, CORETTA CLARK	Morehead Cty, N. C.
THOMPSON, FREEZINE	Mebane, N. C.

Third row:

THOMPSON, RACHEL	Rockingham, N. C.
USSERY, MARY GLENN	Glens Falls, N. C.
VERNOY, MARY BESS	Clinton, N. C.
WARREN, MABEL	Charleston, S. C.
WATTS, LUCILLE JANE	Hallsboro, N. C.
WAYNE, MARGARET HENRIE TA	Raleigh, N. C.
WHITLEY, EDNA EARLE	Carthage, N. C.
WILCOX, MARY GEE	Lumberton, N. C.
WILKERSON, MARY LOIS	

WHITE HEATHER



WE are very fortunate in having a fine music course. During the year we enjoy concerts by the leading artists of the day and also have the advantage of becoming more familiar with music through the recitals given by the music faculty and the students.

The Conservatory of Music



Graduates of

CAROLYN VIDAL, *Violinist*
February 13, 1943



Vidal
Warren

I
Sonata, Opus 24 *Beethoven*
Allegro
Adagio molto espressivo
Scherzo-Allegro molto
Rondo-Allegro ma non troppo

II
Introduction and
Rondo Capriccioso, Opus 28 . . *Saint-Saens*

III
Concerto in c minor, Opus 64 . . *Mendelssohn*
Allegro molto appassionato
Andante
Allegretto ma non troppo
Allegro molto vivace

MARGARET BAKER EBERLY, *Accompanist*
LELLON WARREN, *Pianist*
November 23, 1942

I
Prelude and Fugue in g minor . . . *Bach*
(From "The Well Tempered Clavichord"
Vol. II)
Sonata in e minor Opus 90 . . . *Beethoven*

II
Nocturne in B Major *Chopin*
Scherzo in c sharp minor *Chopin*
La terrasse des audiences du clair de
lune *Debussy*
Etude-Tableau in E Flat
Major *Rachmaninoff*

III
Concerto in b flat minor *Tschaikowsky*
Andante non troppo-Allegro con spirito

Conservatory

BARBARA PATTERSON LYTCH, *Organist*
April 17, 1913

I

Chorale Preludes:

"As Jesus Stood Beside the
Cross" *Samuel Scheidt*

"Good News from Heaven the
Angels Bring" *Johann Pachelbel*

"We Thank Thee, Lord Jesus Christ,"
J. S. Bach

II

Prelude and Fugue in g minor *Bach*

III

Suite for the Organ *James H. Rogers*
Prologue
March
Intermezzo
Toccata



Lytch
Craig

Glee Club

The Glee Club is open to all students, selection being made by try-out. Special study is done each year on works originally written for female voices. The club makes frequent appearances in churches and on special occasions at the college.

BARBARA LYTCH, *President*

Jo Anne Atkins
Betty Barksdale
Emily Barnes
Jo Craig
McIver Cole
Louise Garrell
Mary Grier
Martha Griggs
Frances Helms
Kathryn Highsmith
Dorothy Hight
Miriam Hurley
Mary Monica Jackson
Mary Johnson
Carolyn Keasler
Betty Kerr

Virginia Lee
Elwyne Lewis
Frances Lifrage
Frances Loy
Faye Maness
Louise Massey
Dorothy Martin
Nancy Meekins
Eleanor Moore
Catherine McDuffie
Sara M. McEachern
Carolyn McKay
Rebecca McKethan
Mary McNair
Frances McPbaul
Sue MacPherson
Barbara Ogilvie

Lois Parker
Marjorie Powell
Phyllis Powers
Martha Pridgen
Jean Ross
Marion Skimmer
Peggy Teabeaut
Freezine Thompson
Coretta Thompson
Janet Tomlinson
Kay Walker
Lellon Warren
Bessie Rose Watson
Hope Weaver
Eloise Whitmore
Beth Zemp





Music Club

The St. Cecelia Music Club is composed of members of the Conservatory of Music. The organization has as its purpose a broadening of the student's knowledge and an increasing of her appreciation for the lives and works of the great masters. Through the social aspect of the club a unity in the membership of the conservatory is brought out.

PEGGY TEABEAUT. *President*

Jo Anne Atkins
 Jo Craig
 Mary Grier
 Miriam Hurley
 Mary Johnson
 Betty Kerr
 Carolyn Keasler
 Virginia Lee
 Frances Lifrage

Frances Loy
 Barbara Lytch
 Faye Maness
 Lib Markey
 Nancy Meekins
 Eleanor Moore
 Catherine McDuffie
 Mary Catherine McCormick
 Carolyn McKay
 Jane Graham McKay

Rebecca McKethan
 Frances McPhaul
 Barbara Ogilvie
 Marjorie Powell
 Betty Rogers
 Coretta Thompson
 Carolyn Vidal
 Kay Lee Walker
 Lellon Warren

“... the people's choice. . . .”

. . . Excellence in their field of art . . . we said this of Eisenberg and Vivalta. . . . We were overwhelmed by their strong power to translate mere notes on 'cello and piano into meaningful and uplifting messages that filled us with awe and wonder. . . . Just so these girls represent the qualities which we all admire in a college girl. . . . The type of girl that Flora Macdonald has always tried to produce since her first years of existence. . . . We each feel a part of the responsibility and pride for having made F.M.C. as it is, but are willing and eager to elect several of our number for these honors.

Features





Viola Williams

Sportsmanship



Anyce Kallam

Friendliness



Sue MacPherson

Capability



Barbara Lytch

Versatility



Marion Skinner

Personality



Martha Sutherland

Beauty

May Day



VIRGINIA McDANIEL
May Queen



at Flora Macdonald

THE
MAY
COURT



THE
HIGHLAND
FLING



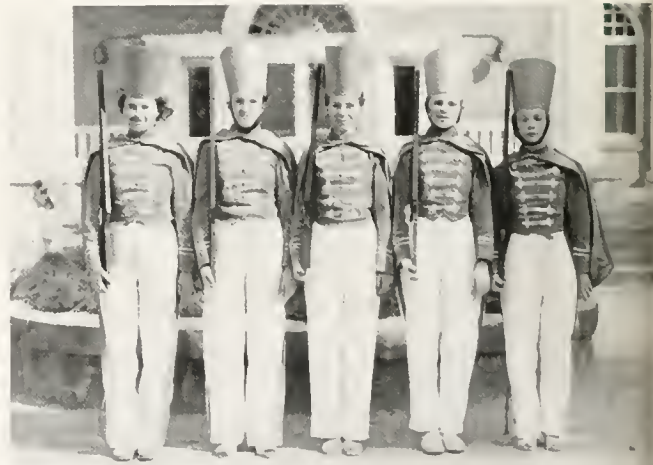


May

THE NUTCRACKER

Music by Tschaiikowsky

A little girl's dreams on Christmas night. Her queer, hopelessly unromantic gift of a nutcracker comes to life and commands the tin soldiers in battle against the Mouse-King and his lively cohorts, who would have triumphed had not Marie slain their furry commander with her slipper. This breaks the spell over the nutcracker and he becomes a handsome prince who flies with Marie to the fascinating domain of the Sugar Plum Fairy somewhere in Araby. The dolls and toys and even the flowers in the kingdom join in one great frolic to celebrate the romance of the little girl and her Prince Charming.



DANCES

Marie

Dance of the Mice

The Nutcracker

March of the Tin Soldiers

The Nutcracker and Marie

Dance of the Sugar Plum Fairy

Russian Dance—Trepak

Arab Dance

Chinese Dance

Dance of the Flutes

Dances of the Flowers

Finale



Day



“ . . . we launch a Liberty Freighter. . . .”

. . . Our campus is covered with clubs to include every phase of college life, so that students with parallel interests may have the opportunity of coming in contact with one another and enjoying the benefits of mutual opinions. . . . Along with the growth of the school, the campus organizations have become a vital factor in the welfare of the student. . . . By living in close contact every day we become possessors of an everlasting feeling of mutual understanding and tolerance that is so necessary in a democracy. . . .

Activities





Mrs. Stephens

Lytch

Pate

The 1943 White

BARBARA LYTCH, *Editor*

BILLIE PATE, *Business Manager*

MARY HAMILTON STEPHENS, *Faculty Adviser*

The WHITE HEATHER is the annual publication of the students of Flora Macdonald College. The editor-in-chief and the business manager are elected from the student body. The assistant editor and business manager are elected from the rising junior class, and the other staff members are appointed by the editor-in-chief and business manager. These members come from the various classes and organizations.

The student body has been most cooperative in making this volume of the WHITE HEATHER a reality, and we, the members of the staff, hope that in years to come this volume, through its pictures and paragraphs, may bring to you delightful memories of college life.



Kerr
Ellis

McKethan
Whisnant

The Staff

BETTY KERR, *Assistant Editor*; REBECCA MCKETHAN, *Assistant Business Manager*; JO CRAIG, *Senior Editor*; JACKIE HERRING, *Junior Class Editor*; MARY JOHNSON, *Sophomore Class Editor*; BILLIE ESTES, *Freshman Class Editor*; NANCY ELLIS, *Snapshot Editor*; EVELYN WHISNANT, *Snapshot Editor*; MAGGIE COX, *Literary Editor*; GRACE MCKENZIE, *Business Editor*; ALICE INNES, *Typing Editor*; AILEEN HIPPI, *Typing Editor*.

Heather



Craig
Cox

Herring
McKenzie

Johnson
Innes

Estes
Hipp



Anderson

Sinclair

Loy

The 1943 Pine

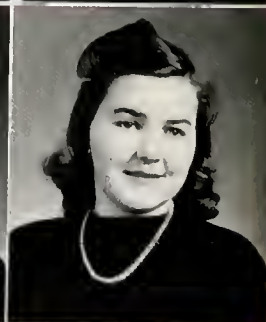
MARGARET SINCLAIR, *Editor*

FRANCES LOY, *Business Manager*

MISS HARRIET ANDERSON, *Faculty Adviser*

The *Pine and Thistle*, campus literary magazine, is published four times during the year. Each issue brings to light new literary talent, as young authors see their first book review or short story in print. The editorial staff is selected by the two literary societies, with the exception of the editor-in-chief and the business manager, who are elected by the student body.

The *Pine and Thistle* receives financial support from the student budget fee and from advertising under the supervision of the business manager.



Ramseur
Griggs

McKay
Simpson

The Staff

NANCY RAMSEUR, *Assistant Editor-in-Chief*

CAROLYN MCKAY, *Assistant Business Manager*; BETH ZEMP, *Zetesian Associate Editor*; MARGARET JENKINS, *Zetesian Associate Editor*; MASON WORLEY, *Zetesian Associate Editor*; ANNE CREAGH, *Exchange Editor*; FAYE MANESS, *Freshman Editor*; MARTHA GRIGGS, *Typing Editor*; ANNA LEE SIMPSON, *Assistant Typing Editor*; VIRGINIA MCDANIEL, *Epsilon Chi Associate Editor*; PAIGE BRODIE, *Epsilon Chi Associate Editor*; ELEANOR NOBLES, *Epsilon Chi Associate Editor*; PEGGY SHINN, *Photographic Editor*.

and Thistle



Zemp
McDaniel

Jenkins

Brodie

Worley

Nobles

Creagh

Maness
Shinn



Senior Scribblers

BARBARA LYTCH, *Chief Scribe*

Carolyn Vidal

Jean Ross

Mary Monica Jackson

Sue MacPherson

Sarah Belle Smith

Sue MacPherson

Lois Parker

Barbara Lytch

Jean Ross

Sarah Belle Smith

Frances Lifrage

Jean McPhaul

McIver Cole

Florence Moore

Viola Williams

Martha Sutherland

*Who's
Who*





SUE MACPHERSON
President

Student Government Association

The true purpose of the Student Government Association at Flora Macdonald is to unite the Student Body in an endeavor to uphold personal honor as the basis for efficient social living, and to develop in every student the feeling of personal responsibility in our governing system.

The president and vice president are elected by the student body; the other members are elected by the organizations which they represent.

The Student Council

The members of the Student Council are: Sue MacPherson, President of the Student Body; Lois Parker, Vice President of the Student Body; Sarah Belle Smith, President of Senior Class; Ruth Munroe, Secretary of the Student Body, Vice President of Senior Class; Frances Lifrage, President of Junior Class; Margaret Teabeaut, Treasurer of the Student Body, Vice President of Junior Class; Claire Wilcox, President of Sophomore Class; Esther Mae Grier, President of Freshman Class; Florence Moore, President of Christian Association; Martha Sutherland, President of Epsilon Chi Literary Society; Margaret Lewis, President of Zetesian Literary Society; Jean McPhaul, President of Day Students; Viola Williams, President of Athletic Association.





FLORENCE MOORE
President

Flora Macdonald Christian Association

The Flora Macdonald Christian Association seeks to promote growth in Christian faith, character and fellowship. It strives to influence the students to devote themselves to seeking the will of God for their own lives. The association endeavors to make every phase of college life more abundant and more meaningful through a closer and more vital fellowship with Christ and with fellow students. The membership is divided into ten highways for the purpose of more intimate work.

"Let no man despise his youth, but be thou an example of the believers, in work, in conversation, in charity, in spirit, in faith, in purity." 1 Timothy 4:12.



Harrington
McCormick

The Cabinet

- Highway of Life Enrichment* . . . Melver Cole, Carolyn Vidal
Highway of World Fellowship Janet McDonald
Highway of Enlistment and Training Jean Ross
Highway of Learning: Sunday school, Sara Margaret McEachern.
Publicity, Mary Monica Jackson.
Highway of Stewardship . . . Mary Olive Walker, Gladys Sanders
Highway of Comradeship Anyce Kallam
Highway of Leisure Time: Social Activities, Mary Catherine Mc-
Cormick. Library, Lucy Harrington.
President of Student Body Sue MacPherson



McEachern
Sanders

Vidal
Walker

Cole
McDonald

Jackson
Ross

Kallam
MacPherson



Student Volunteers

"Not by might nor by power, but by my spirit, saith the Lord of hosts." Zechariah 4:6

Girls who plan to be home or foreign missionaries and those who are interested in missions attend the Student Volunteer meetings. To make mission work more real, Dr. and Mrs. E. R. Kellersberger of the American Mission to Lepers gave informative and inspiring talks.

VIRGINIA STEGALL, *President*

Gladys Sanders
 Frances Elizabeth Cole
 Helen Morrison
 Sarah Bowden
 Martha McLeod
 Jocelyn Gordon
 Mary Johnson

Gerrie McGeath
 Elizabeth Holder
 Frances Brockington
 Evelyn Collier
 Carlisle Hoyt
 Elena Anne Lewis
 Julia Lee Brown

Freezine Thompson
 Doris Baxley
 Elizabeth Brittain
 Mary Martin Grier
 Phyllis Powers
 Mae McDaniel
 Murphy McDonald



Prayer Band Leaders

"Be still and know that I am God." Psalm 46:10

Each Wednesday morning small groups of girls gather for prayer and meditation. The Practice of the Presence through these intimate prayer circles is one of the strongest spiritual forces on our campus.

Katherine Bruner
Louise Bunn
Kathryn Highsmith
Margaret Jenkins
Hazel Oliphant
Gladys Sanders
Virginia Stegall
Lucy Harrington

Jackie Herring
Helen Morrison
Mildred Stowe
Mason Worley
Mary Johnson
Mary Lib Johnson
Katie M. Kirkpatrick
Betty Matheson

Mary Catherine McCormick
Carolyn McKay
Phyllis Powers
Mildred Sanders
Elizabeth Ann Sandsbury
Peggy Shiin
Evelyn Whisnant
Beth Zemp

Epsilon Chi

OFFICERS

- MARTHA SUTHERLAND *President*
DOROTHY MARTIN . . . *First Vice President*
GRACE MCKENZIE . . . *Second Vice President*
BRYDIE GRANTHAM . . . *Recording Secretary*
KATHRYN MCBRYDE *Treasurer*
JEAN LYTCH . . . *Corresponding Secretary*
BOBBY HEFNER *Censor*
PEGGY WALL *Critic*
CAROLYN MCKAY *Chaplain*



Sutherland



Martin
Lytch

McKenzie
Hefner

Grantham
Wall

McBryde
McKay

Zetesian

OFFICERS

- MARGARET LEWIS *President*
VIRGINIA LEE *First Vice President*
KATHERINE BRUNER, *Second Vice President*
MARION SKINNER *Recording Secretary*
MCIVER COLE *Treasurer*
MASON WORLEY *Corresponding Secretary*
KATHERINE MCDUFFIE *Censor*
JEAN ROSS *Chaplain*
ANYCE KALLAM *Chaplain*

Lewis



Lee
Worley

Bruner
McDuffie

Skinner
Ross

Cole
Kallam

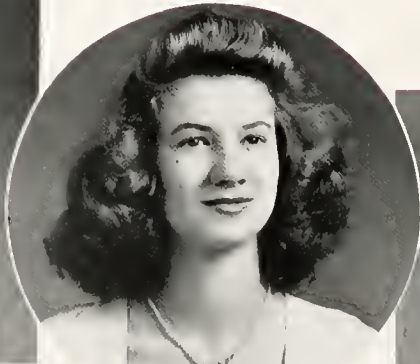


BETTY KERR
Chief

Marshals



Wall



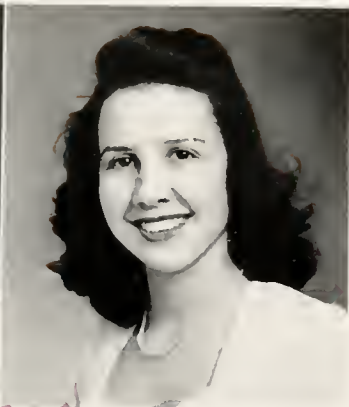
Kurfees



Teabeut



McKethan



Lewis

Nineteen Forty-three

Grantham



Skinner



Liffage



William Bartram Scientific Society

Members of the William Bartram Scientific Society are selected on the basis of academic merit in Mathematics and Science upon recommendation of the faculty.

MILDRED STOWE, *President*

Betty Barksdale
Imogene Baucom
Yvonne Baucom
Nell Bowden
Sarah Bowden
Marion Chapin
Novella Duke
Gwendolyn Eastridge
Nan Farlow
Lucy Harrington

Carlisle Hoyt
Mary Anna Huntley
Mary Lib Johnson
Sue MacPherson
Helen Morrison
Mary Catherine McCormick
Janet McDonald
Gladys Sanders
Mildred Sanders
Rebecca Wilson



Math Club

The Mathematics Club is composed of those members of the Student Body who have attained a high scholastic standing in some course in Mathematics. It is the aim of the Club to further interest in mathematics among the students, and to offer a means of fellowship to those interested in this field.

McIVER COLE, *President*

Laura Shaw Atkinson
Johnnie Autry
Sarah Britten
Frances Brockington
Irene Edens
Esther Mae Grier
Pamala Goodwill
Lucy Harrington
Carlisle Hoyt
Alice Innes
Mary Elizabeth Johnson
Mary Elizabeth Leech
Mildred Mercer
Helen Morrison

Mary Catherine McCormick
Sarah Margaret McEachern
Jean McPhaul
Lucy Puckett
Jean Ross
Gladys Sanders
Mildred Sanders
Mildred Stowe
Peggy Shinn
Lillian Tate
Lucy Watts
Harriet Weaver
Hope Weaver
Mason Worley



Home Economics Club

The Home Economics Club is composed of all the girls majoring in this subject and has as its purpose the development of good taste and poise in entertaining. It is affiliated with the National and State Home Economics Clubs of America.

BOBBY HEFNER, *President*

Mary Elizabeth Banks
 Laura Belle Barker
 Katherine Bruner
 Marion Bullard
 Louise Bunn
 Mary Lee Burns
 Louise Cable
 Dorothy Clark
 Evelyn Collier
 Dorothy Fennell
 Catherine Gilchrist
 Pamala Goodwill
 Mary Belle Henry
 Kathryn Highsmith
 Ernestine Huggins

Mary Ella Ingram
 Carolyn Klusmeier
 Louise Knight
 Merle Etta Lancaster
 Margaret Lewis
 Jean Lytch
 Dorothy Martin
 Betty Matheson
 Mary MacLaughlin
 Marjorie MacKenzie
 Kathryn McBryde
 Jane McConnaughey
 Carolyn McKay
 Ruth Munroe
 Virginia Musslewhite

Hazel Oliphant
 Louise Powers
 Rachel Powers
 Lois Parker
 Martha Pridgen
 Lois Shook
 Mable Smith
 Martha Sutherland
 Peggy Wall
 Bessie Rose Watson
 Evelyn Whisnant
 Frances Williamson
 Rebecca Wilson
 Fannie Gray Worley
 Helen Thomas



Dramatics Club

The aim of the Dramatics Club is to increase knowledge and appreciation of the art of drama. Membership is open to those girls interested and talented in dramatics. The program serves as a means of bringing notice to the current professional productions, as well as a means of self expression.

MARION SKINNER, *President*

Sara Jean Austin
Mary Britten
Paige Brodie
Marion Chapin
Josephine Craig
Elizabeth Dilling
Martha Griggs
Aileen Hipp
Ernestine Huggins
Mary Johnson

Marjorie Jones
Carolyn Kurfees
Martha Lassiter
Virginia Lee
Ella Lewis
Frances Lifrage
Barbara Lytch
Carolyn McKay
Rebecca McKethan
Nancy Meekins
Phyllis Powers

Nancy Ramseur
Evelyn Randle
Carolyn Smith
Margaret Teabeaut
Edna Ruth Thomas
Freezine Thompson
Juanita Tontz
Harriet Weaver
Eloise Whitmore
Elizabeth Zemp



French Club

The French club was organized to develop a greater proficiency in and enjoyment of the living French language. It emphasizes conversational French through the use of French songs and games. This club endeavors to give its members a deep appreciation of what French civilization, culture, and literature have meant to the world.

MARGARET JENKINS, *President*

Nell Bowden
Frances E. Cole
Novella Duke
Lucy Harrington
Mary Monica Jackson
Anyce Kallam

Katie McNeill Kirkpatrick
Sue MacPherson
Murphy McDonald
Jane G. McKay
Florence Moore
Weyburn Moore

Helen Morrison
Eleanor Nobles
Evelyn Randle
Sarah Belle Smith
Mildred Stowe
Mary Bess Vernoy



Commercial Club

All students in the Commercial Department are eligible for membership in the club. Business and pleasure merge into one in the meetings of this organization which binds together all business students.

Martha Griggs
 Aileen Hipp
 Alice Innes
 Ruth Sanderson
 Anna Lee Simpson
 Angelyn Smith
 Margaret Bateman
 Grace Bowen
 Martha Davis
 Libby Dilling
 Frances Eller
 Helen Fields
 Juanita Gentry

Katherine Gillam
 Lillian Graham
 Jane Grantham
 Eleanor Griffin
 Gloria Hendry
 Winifred Holliday
 Gloria Howell
 Carolyn Jackson
 Betty Jones
 Marjorie Jones
 Carolyn Keasler
 Elizabeth Markey
 Fay Marks

Louise Massey
 Elizabeth Morgan
 Frances Monroe
 Sara Musselwhite
 Katherine O'Brien
 Elizabeth Robbins
 Mary Elizabeth Rogers
 Virginia Sikes
 Emma Smith
 Carolyn Smith
 Margaret Tapp
 Edna Ruth Thomas
 Mary Glenn Ussery



Day Students Club

The Day Students are very much a part of our Student Body. Their activities as a club are outstanding, and they contribute greatly to the spirit of life at Flora Macdonald.

JEAN MCPHAUL, President

Johnnie Autry
 Imogene Baucom
 Yvonne Baucom
 Sarah Currie
 Irene Edens
 Anne Gracey
 Mary Ella Ingram

Merle Etta Lancaster
 Jane McConnaughey
 Virginia McDaniel
 Marjorie McKenzie
 Frances McPhaul
 Mildred Mercer
 Elizabeth Morgan

Dorothy Shook
 Lois Shook
 Mabel Smith
 Mary Stringer
 Margaret Tapp
 Harriet Weaver
 Hope Weaver



Camera Club

The Camera Club has grown out of the interest shown in photography by members of the William Bartram Scientific Society. The club members take pictures of various activities of the college and beautiful scenes on the campus, develop and print these pictures, and at regular meetings display and discuss them.

MILDRED STOWE, President

Louise Bunn
Marion Chapin
Nancy Ellis

Jackie Herring
Anyce Kallam
Mildred Mercer
Helen Morrison

Murphy McDonald
Evelyn Randle
Mary Olive Walker



Latham
Little

Williams
Lancaster

Ellis
Weaver

Athletic Association

OFFICERS

VIOLA WILLIAMS	<i>President</i>	HELEN LITTLE	<i>Treasurer</i>
NANCY ELLIS	<i>Vice President</i>	NELL LANCASTER, <i>Freshman Representative</i>	
HARRIET WEAVER	<i>Secretary</i>	JANE LATHAM	<i>Salesman</i>

The purpose of the Flora Macdonald Athletic Association is to encourage good sportsmanship and fair play, not only on the athletic field but in the class work, in the honor system, and other phases of college life; also to prepare the girls physically, mentally, and morally for their future work.

Heads of Sports

LUCY HARRINGTON
HORSE SHOES

JERRY STROUD
HOCKEY

PEGGY SHINN
TABLE TENNIS

NANCY ELLIS
BASKETBALL

HELEN LITTLE
TENNIS

GERRIE McGEATH
SWIMMING

BETTY BARRINGER
VOLLEY BALL

CATHERINE McDUFFIE
ARCHERY



Harrington, Stroud, Shinn, Ellis
Little, McGeath, Barringer

Cheer Leaders

LUCY WATTS, *Freshman*

BILLIE PATE, *Senior*



LIBBY DILLING, *Sophomore*

BARBARA LYTCH, *College*

WOONIE SKINNER, *Junior*



Hockey

SENIOR

Marion Bullard, McIver Cole, Florence Moore, Jean McPhaul, Sue McPherson, Phyllis Powers, Jean Ross, Sarah Belle Smith, Geraldine Stroud, Helen Thomas, Mary Olive Walker, Viola Williams, Vaune Rowe.

JUNIOR

Doris Baxley, Nancy Ellis, Frances Helms, Margaret Lewis, Anyce Kallam, Mildred Mercer, Lucy Mitchiner, Helen Morrison, Carolyn Parrott, Mildred Stowe, Margaret Teabeaut, Janet Tomlinson, Laura Belle Barker.

SCORES

Seniors	1
Freshmen	0
Seniors	4
Sophomores	7
Juniors	1
Sophomores	3
Juniors	6
Freshmen	3
Seniors	1
Sophomores	0

Hockey



SOPHOMORE

Mary Lee Burns, Pam Goodwill, Louise Knight, Jane Latham, Virginia Musselwhite, Martha Pence, Evelyn Randle, Harriet Weaver, Evelyn Whisnant, Fanny Grey Worley, Mary McNair.

FRESHMAN

Gerrie McGeath, Mary Adams, Flora Adcock, Betty Barksdale, Eloise Beeks, Mittie Boggan, Jane Brown, Julia Lee Brown, Billie Estes, Esther Mae Grier, Nell Lancaster, Mary Elizabeth Leach, Annie Mae McDaniel, Vivian McInnis, Virginia Stevenson, Freezine Thompson.



Basketball



SENIOR

Marion Bullard, Jean McPhaul, Billy Pate,
Martha Sutherland, Helen Thomas, Mary
Olive Walker, Viola Williams.

JUNIOR

Margaret Lewis, Nancy Ellis, Mildred
Stowe, Helen Morrison, Doris Baxley,
Anyce Kallam, Eleanor Nobles, Carolyn
Parrott, Janet Tomlinson, Mary Britten,
Marion Skinner, Rebecca McKeithan,
Frances Helms, Ella Lewis, Brydie
Grantham, Frances Loy, Jocelyn Gordon,
Laura Belle Barker, Lucy Mitchiner.



Basketball

SOPHOMORE

Mary Lee Burns, Pam Goodwill, Louise Knight, Virginia Musslewhite, Rachel Thompson, Jane McConnaughey, Murphy McDonald, Martha Pence, Carolyn McKay, Harriet Weaver, Evelyn Randel, Mary McNair.

FRESHMAN

Winifred Holiday, Nell Lancaster, Mary Bess Vernoy, Vivian McInnis, Juanita Gentry, Lucy Watts, Virginia Stevenson, Flora Adcock, Jane Brown, Katherine Gillam, Sara Musselwhite.



Tennis

A favorite outdoor sport at Flora Macdonald College is Tennis. There are many enthusiastic players among the students this year and a keen spirit of sportsmanship is shown.



Archery

Archery is one of the favorite sports at Flora Macdonald. On many a crisp fall afternoon a group of girls may be seen trying their best to hit the Bull's-eye. The graceful sport has rapidly gained the interest of a large number of students.





Between halves . . . They really placed

Gloria on a pedestal! . . . Going home . . .

Smiling Martha . . . Three smart girls

. . . What's the joke, Mrs. Wilson? . . .

Proctor . . . Viola in the snow . . .

Hazel . . . Hipp in her boudoir.



Are you supposed to be keeping score?

. . . Jo, the horsewoman and Lytch, the

horse . . . Suzzy . . . Moran Zemp . . .

Rats . . . Rats again, but in more

detail . . . Eloise . . . Lib, Carolyn, Lib

Markey, Monroe and Libba . . . Jackie

. . . Mrs. Stephens . . . Louise, Margaret

and Emilyn . . . How domestic you look,

girls . . . Carolyn, Grace and Ross.





Fashion parade? . . . Jerry and . . . well, who could that be? . . . At the "spring of crystal" . . . What's so interesting, Miss Prince? . . . He really can pick them . . . Baby Martha . . . Dignified Seniors? . . . Beauty treatment . . . Study hour . . . Sunday afternoon.



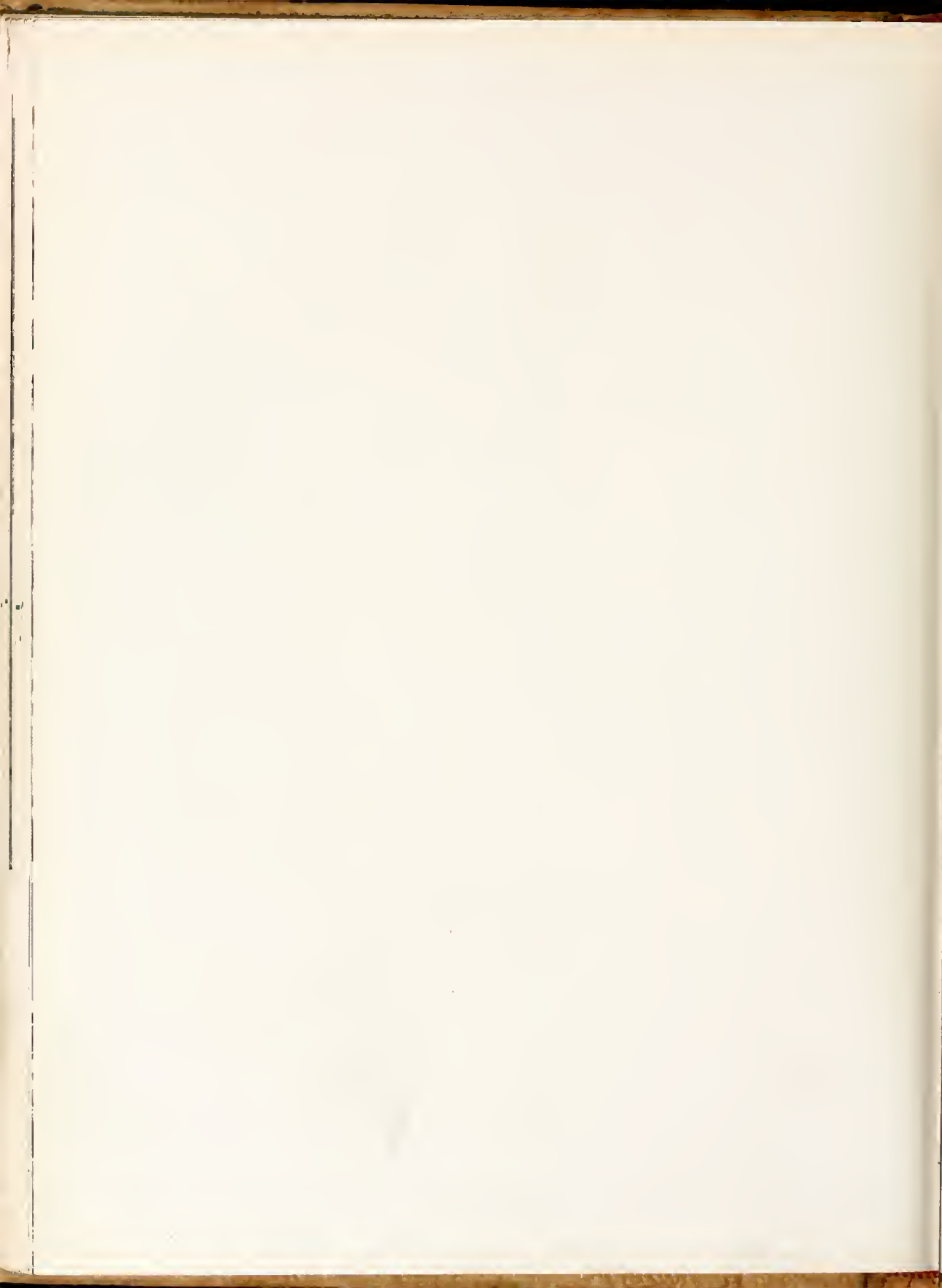
Wishing? . . . Happy little commercials! . . . The great profile . . . Waiting for a horse? . . . Junior-Freshmen picnic . . . The campus "cut-ups" . . . Why so blissful Stevie? . . . A place in the sun, eh what.



Rail fun . . . How she gets around . . . Ditto . . . Picnickers . . . Snow foolin' . . .
Martha and Eloise . . . Happy little moran . . . The Big Five.

Lellon at the grand . . . Hope and
 Jean . . . Mittie Belle . . . Carolyn. I
 really like your hat! . . . The mob . . .
 Bad colds? . . . Wider, Janet, you won't
 make it . . . Picnickers . . . Snow
 fight . . . Rat court jury . . . Eloise
 and Martha . . . Practice house family
 . . . Sara and Rachel . . . The marshals
 . . . A lowly rat . . . C. B. . . Carolyn
 at work . . . Early risers . . . Wait and
 let me tie my shoe . . . Eloise . . . A
 real lapfull . . . Bruner, Marian and
 Helen . . . Miss Cameron's table . . .
 B. O. in action . . . Jean . . . Going
 up? . . . Sunday stroll . . . Choir? . . .
 Shakespeare slept here. West 2 . . .
 Lifrage and Loy . . . What's that Jean?





TOWNSEND'S PHARMACY

THE REXALL STORE



We CARRY A COMPLETE LINE OF THE
COLLEGE GIRL'S NEEDS

Meet Your Friends at Our Fountain

Dependable Druggists : Let Us Serve You



Red Springs, North Carolina

Use

MERITA

BREAD and CAKES



AMERICAN
BAKERIES COMPANY

FAYETTEVILLE, N. C.

WE APPRECIATE
SERVING
YOU



GRAHAM'S

Red Springs, N. C.

Photographs
for the
White Heather
By
Dunbar Studio



Portraits
College and School Annuals



Charlotte, North Carolina

• There is a close relationship between the athlete's physical perfection and his diet. The Olympic Stars at Los Angeles in 1932 averaged one serving of Ice Cream each day . . . or five times as much as the average American.

• Be sure to include plenty of Southern Dairies Ice Cream in your diet, for it is especially rich in the food elements that build healthy bodies.



City Optical Company

Wilmington - Fayetteville
and Greensboro, N. C.

H. M. SMITH, Mgr. TELEPHONE 2357

**Patronize
Our Advertisers**

FLORA MACDONALD COLLEGE

Red Springs, N. C.

A SENIOR COLLEGE FOR WOMEN

Near Fayetteville, Southern Pines and Pinchurst. Delightful climate, healthful mineral springs and remarkable health record. Bus and Railway connections.

A Standard Senior Grade A College for Women. Strong faculty. Graduates accepted for graduate work by leading universities. Class A teacher's certificates. Homelike atmosphere. Personal attention to students by teachers.

Courses offered: Bachelor of Arts, Bachelor of Music, Bachelor of Science (Home Economics) degrees. A Secretarial Course. Bachelor of Arts in Music.

Athletics. Skillful physical director and coach has general supervision of sports and physical training. Archery, basketball, hockey, swimming, tennis, hiking, etc., are enjoyed in season.

Social Activities. Receptions, teas, and many other social functions are provided at the college, while many hospitable and delightful homes of the citizens of Red Springs are open to the students.

Wide Patronage. Patronized at present by twelve states and two foreign countries. Four thousand alumnae are engaged successfully as home-makers, nurses, teachers, dietitians, home demonstration agents, social workers, missionaries, and in many other useful professions.

MODERATE CHARGES : FOR CATALOGUE WRITE

HENRY C. BEDINGER, *President*

FLORA MACDONALD COLLEGE : Red Springs, N. C.

*"This is the way
to feel refreshed"*



Bottled Under Authority of The Coca-Cola Company by
**FAYETTEVILLE COCA-COLA
BOTTLING COMPANY, INC.**

Compliments of
**THE CAPITOL
Department Store**

●
FAYETTEVILLE, N. C.
We Invite Your Patronage

**THE FAYETTEVILLE
OBSERVER**

*North Carolina's Oldest
Newspaper*

Established 1817

D. M. McMILLAN

"Ford Products Since 1912"

Red Springs, N. C.

Highland Cafeteria

Fayetteville's New and Best

Fayetteville, N. C.

Garrett and McNeill

The Oldest and Best

Grocery in Town

PHONE 227-1

Compliments of
Huggins Shoe Shop

Red Springs, N. C.

Boatwright Chevrolet Co.

RED SPRINGS, N. C.

Compliments of
H. R. HORNE & SONS

Fayetteville, N. C.

Druggists Since 1865

Compliments of

**FLEISHMAN'S
BIG STORE**

FAYETTEVILLE, N. C.

We Have What Your Car Needs

Complete Line Accessories

We Live to Serve and Serve to Live

GULF SUPER SERVICE

Telephone 9107

A.A. One Stop Service

RED SPRINGS, NORTH CAROLINA

*Congratulations
to the
White Heather Staff*

**BELK-HENSDALE
COMPANY**

Fayetteville, N. C.

Remember: *"You always save at
Belk's"*

Make Our Store Your
Headquarters
When in Fayetteville

Spring Side Dairy

GRADE "A" MILK
CREAM

Phone 2431

Gold Medal Fertilizers
Liberty Premium Fertilizers
Modern Gin System
Modern Seed Cleaning Equipment

**Liberty Manufacturing
Company**

Red Springs, N. C.

**THE . . .
SCOTTISH BANK**

LUMBERTON - PEMBROKE
RED SPRINGS

*Member Federal Deposit
Insurance Corporation*

Compliments of

SANDLIN & CO., Inc.

Wholesale Grocers

FAYETTEVILLE, N. C.

Travel Luxuriously
...Yet Economically

**FAST BUT
SAFE**



**Queen City
Trailways**

BLAKE FLORIST

Prince Charles Hotel Building

Fayetteville, N. C.

Bonded Members F. T. D.

Day Phone 2683

Night Phone 2834

McNEILL'S

Cleaners : Tailors

Dependable Service Since 1928

RED SPRINGS and RAEFORD, N. C.

Compliments of

TOWN OF RED SPRINGS

North Carolina

Compliments of

**McKEITHAN
HARDWARE**

RED SPRINGS, N. C.

SAUNDERS DRUG STORE

Fayetteville's Exclusive

Cut-Rate Drug Store

FAYETTEVILLE, N. C.

HUNTER BROTHERS

(Incorporated)

ELECTRICAL MERCHANDIZING

RADIO - REFRIGERATORS - GIFTS

CHINA - GLASSWARE

FAYETTEVILLE, N. C.

Insist on . . .

LANCE'S

PEANUT BUTTER SANDWICHES
and CANDIES

Always Fresh - Always Delicious

SOUTHERN

FRUIT

COMPANY

CHARLOTTE, N. C.

**MAXTON OIL &
FERTILIZER CO.**

Maxton, North Carolina

●
Compliments

of


A Friend
●



CHARLOTTE ENGRAVING CO.

School Annual Engravers

Charlotte, North Carolina



BUILDERS DREAMS

VISIONS created by the imagination precede the achievement of any really great accomplishment. The ability to weave the threads of imagination into the finished fabric is equally important.

It has been the privilege of the EDWARDS & BROUGHTON COMPANY to cooperate with the staff in creating their vision into material form.

Such cooperation is one of the "visions" which precede the building of a successful business, and is a part of the working policy of the EDWARDS & BROUGHTON COMPANY.

To those Staffs desiring complete cooperation, we offer unexcelled service

You, too, may be proud of your annual.

Correspondence is invited

EDWARDS & BROUGHTON CO.
RALEIGH, NORTH CAROLINA

AUTOGRAPHS

AUTOGRAPHS

AUTOGRAPHS

AUTOGRAPHS

AUTOGRAPHS

AUTOGRAPHS

AUTOGRAPHS

AUTOGRAPHS

AUTOGRAPHS

AUTOGRAPHS

AUTOGRAPHS

