



Mildred Sanders

Kit Finley

Weyburn Moore
Carolyn Mc Kay

"Haupt" Ritter
Betsy Matheson

Barn Goodwill
Connie Tomlinson

Couette Thompson

Jannie Grey Harley

Dak Clark

Juanita Tonty

Evelyn Collier
Lillian

Evelyn Williams

"Teenie" Higgins
Nell Swadlow

Mary Lee Johnson
Mary Lee Johnson

Fatie Mac Husbands
Virginia Musselwhite

Ruth Bennett

Miriam Sherley
Si Anna Atkins

Murphy Macdonald

Louise Knight
Alma Lawson
Carrie Lee Jones
Dorothy Tennell

"cat" Bygones

Mary Lee Burns
Newbarlow

Sarah Brown

Martha

Prilgen

Peggy Shinn

Kitty Gleser

Jane Graham Mc Kay

Nella Parker

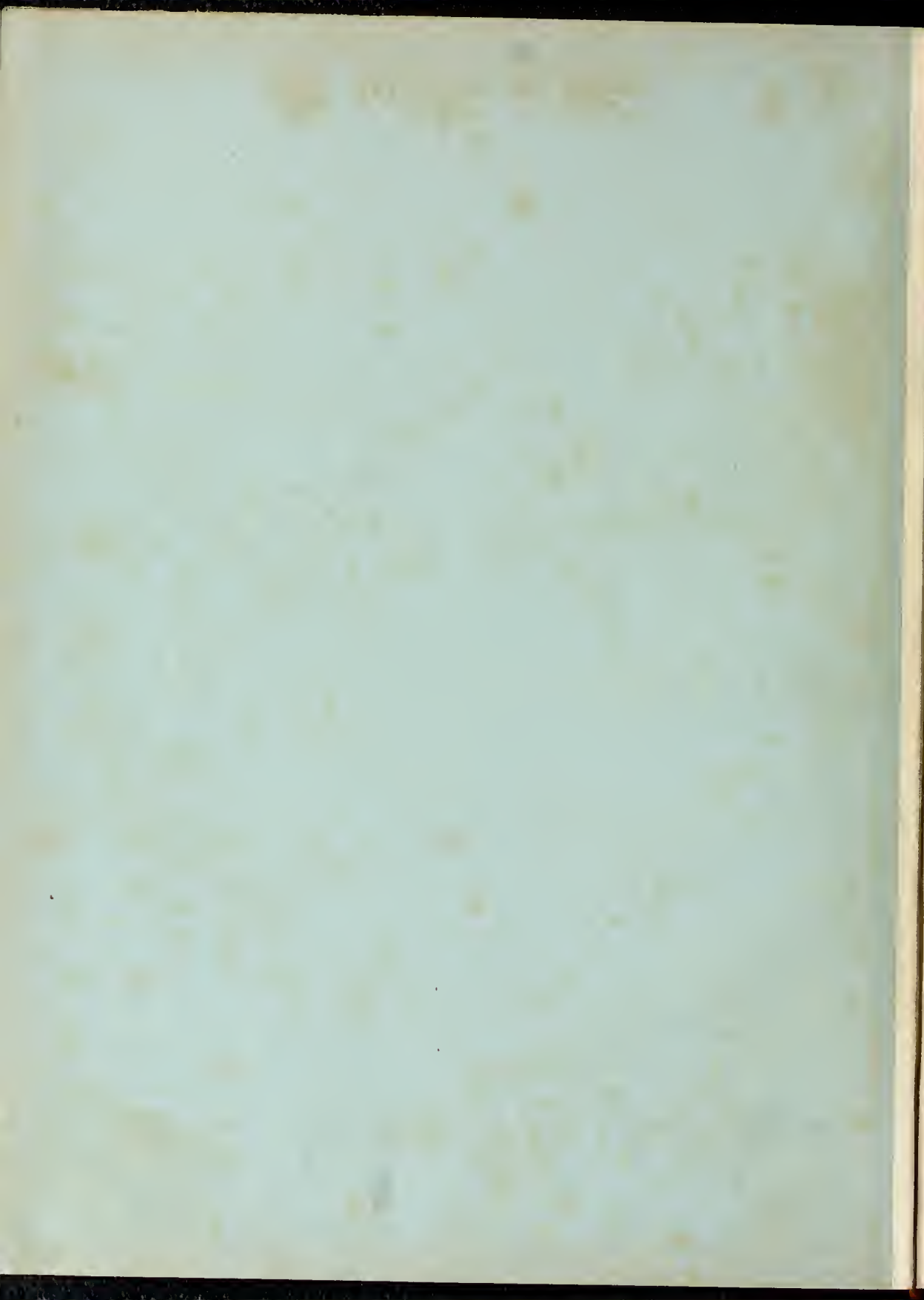
Frances Love

Mary Stringer

Peggy Wall
 Cathy Rowe
 Mrs Belle Barker
 Martha Lassiter
 Imogene Baucom
 Nettie Mc Graw
 Lucie Pecked
 Martha McLeod
 Frances Helms
 Lucy Mitchener
 Frances Elizabeth Cole
 Mason Worley
 Helen Blalock
 Helen Morrison
 Becky McKeith
 "Katie" Skinner
 Catherine McDuffie
 Lucy Harrington
 Margaret Lewis
 Nancy Ellis
 Nancy
 Remond
 Frances
 Peggy Teabeaut
 Bridie Grantman
 Yvonne Baucom
 "Maggie" Cox
 Mary Lee Hughes
 Anyce Tallam
 Doris Barber
 Kate Barber
 Carolyn Kufees
 Flora Mae Kelly
 Mary Elizabeth Clay

Jacelyn Jordan

Mildred Mason





The WHITE HEATHER of 1944

REBECCA MCKETHAN, *Editor*

PEGGY WALL, *Business Manager*



White Heather

Published by the Student Body of

FLORA MACDONALD COLLEGE

Red Springs, North Carolina



Flora Macdonald

TO Flora Macdonald, her Campus and her life, we present the 1944 WHITE HEATHER, hoping that it will bring to memory in later years the underlying spirit and meaning of Flora Macdonald; and we hope



1944

that these words and pictures will bring back many happy memories.

Flora Macdonald — remember it and keep it close to your hearts.





Dedicated to J. WILGUS EBERLE

TO J. WILGUS EBERLE in appreciation
of his genuine good humor, his efficient
teaching, his popularity on the campus, and
the continued cooperation that he has given
us throughout our college days, we sincerely
and with a great deal of pleasure dedicate
this nineteen hundred forty-four

WHITE HEATHER.





Although we were confronted with a war—one in which we had to do our part, and forego many luxuries and other things to which we were accustomed, this did not daunt Flora Macdonald—we have continued to meet the emergencies of the present as our predecessors have met those of the past.

For forty-eight years Flora Macdonald has lived up to its Christian educational standards and has given to the world women who have made and will, by these standards, continue to make the foundations of a future world of peace.



DR. CHARLES GRAVES VARDELL
President, Emeritus

A man of unusual ability, tireless energy, great strength of character, splendid executive power and fine spirit—one whom we all love. It is the hope of all who know his past successes that he will succeed completely in the future plans for Flora Macdonald.



THE PRESIDENT'S MESSAGE

Life consists of Anticipation, Realization, and Retrospect.

Once you dreamed of college days, new friends, interesting and helpful experiences, worthwhile tasks, and graduation.

Realization you have in part today; only the future will reveal its full measure.

Tomorrow you will dream again in retrospect. May this volume, full of familiar scenes and faces, be a pleasant reminder of these warm friendships and happy days.

HENRY GRAYBILL BEDINGER.

ADMINISTRATION

HAZEL MORRISON, B.A.

Dean of Faculty and Registrar

LUCILLE SHAW WILSON, B.A., M.A.

Dean of Women

J. WILGUS EBERLE, B.A., M.A.

Dean of Conservatory



Morrison



Wilson



Eberle



THE FACULTY

HARRIET N. MORRISON, B.A., M.A.,
Professor of Latin

LILLIAN FARQUHAR ROBESON, *Profes-*
sor of Violin

LIDA LAW CHAPMAN, B.A., B.M., *Pro-*
fessor of Piano and Organ

ELIZABETH CLARKE MCPHAUL, B.A.,
Associate Professor of Bible

ETHEL BATEMAN, B.A., M.A., *Profes-*
sor of Physical Education and
Health

PRINCIE MAPHET, B.A., *Professor of*
Business Subjects

FRANCES ELIZABETH COMER, B.S.,
M.S., *Professor of Home Economics*

MARY HAMILTON STEPHENS, B.A.,
M.A., *Professor of French*

MARY ELIZABETH MASSEY, B.A., M.A.,
Professor of History

NOT PHOTOGRAPHED

JANE COLSON GLENN, B.S., G.Ph., M.S., *Professor*
of Chemistry and Physics; MARY MACLEAN
CONOLY, B.A., B.S., M.A., *Professor of Education*;
GENEVIEVE MACMILLAN NEIGHBORS, B.A., M.A.,
Associate Professor of Education and Social
Science; ALEXANDER BELL STUMP, B.S., M.S.,
Ph.D., *Professor of Biology and Bacteriology.*

THE FACULTY

KATHERINE CAMERON, B.S., M.S.,
Professor of Home Economics

ANNIE MOORE CHERRY, B.A., M.A.,
Professor of Education

MARGARET BAKER EBERLE, B.F.A.,
*Associate Professor of Piano and
Theory*

LETA WELTHA MCINTYRE, B.S., Pro-
fessor of Business Subjects

ESTHER LEE, A.B., M.A., Ph.D., Pro-
fessor of English

NATALIE CRAWFORD MOFFETT, B.A.,
Professor of Bible

EDNA EARL SHELTON, B.A., M.A., As-
sociate Professor of English

LOIS J. LAMBIE, B.M., M.A., *Professor
of Public School Music*

CLARA TARRANT BAILEY, B.A., B.S.,
Professor of Voice

S. BROWN MORRISON, B.L., *Bursar*

NOT PHOTOGRAPHED

VERTIE PRINCE KING, B.A., M.A., *Professor of
Mathematics*; OTTO WALTER FERRENE, B.S., M.A.,
Associate Professor of Biology; ROBERT ABNER
MACLEAN, A.A., A.B., *Instructor in Spanish*;
VIRGINIA CONNOR, R.N., *Resident Nurse*; ELEANOR
SAMPLE, *Librarian*; OLIVIA LEDBETTER, *Secretary
to the President*; BESSIE M. COX, *Dietitian*.



Classes

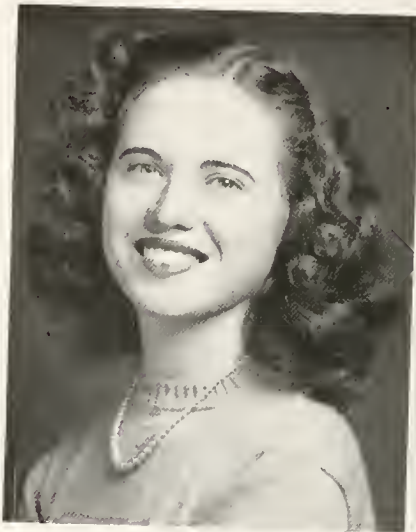


Seniors



- FRANCES LIFRAGE, *President*
CATHERINE McDUFFIE, *Vice President*
MARGARET LEWIS, *Secretary*
MARY LEE HUGHES, *Treasurer*
MAGGIE COX, *Tea Room Manager*
BRYDIE GRANTHAM, *Asst. Tea Room Manager*
MISS MARY ELIZABETH MASSEY, *Adviser*
ANN BODENHEIMER, *Mascot*

SENIORS



The White Heather

LAURA BELLE BARKER
Milton, N. C.

B.S.

Epsilon Chi Literary Society, Second Vice President '44; Home Economics Club '41, '42, '43, '44; Basketball '41, '42, '43, '44, Captain '43; Varsity '42, '43; Hockey '41, '42, '43, '44, Captain '42, '43, Head of Hockey '43; Atlantic Christian College Summer School '41; Wake Forest College Summer School '42; Monogram Club '43, '44.

Banquets . . . Nonchalance . . . Unexcelled in sports . . . Friendly . . . Slacks and sweaters . . . Carefree, fun-loving nature.

FRIEDA YVONNE BAUCOM
Red Springs, N. C.

B.A.

Epsilon Chi Literary Society; William Bartram Scientific Society '43, '44; Day Student's Club '41, '42, '43, '44, Secretary-Treasurer '43, President '44; Student Council '44.

Checked gingham . . . brown bunnies . . . trench coats . . . steady . . . dependable . . . unaffected . . . Quiet peace of sunlit meadows in her eyes.



SENIORS



Nineteen Forty-four

NELDA IMOGENE BAUCOM
Red Springs, N. C.
B.A.

Epsilon Chi Literary Society; William Bartram Scientific Society '43, '44;
Day Student's Club '41, '42, '43, '44.

*Sly . . . Reserved . . . Efficient . . . Sincere friendliness . . . Intel-
ligent . . . Understanding . . . Appreciative . . . Hard-working . . .
Yellow daisies . . . Selfless love of quiet, unobtrusive giving.*

DORIS WINIFRED BANLEY
St. Pauls, N. C.
B.A.

Zetesian Literary Society; Class Basketball Team '41, '42, '43, '44; Basket-
ball Varsity '42, '43; Hockey Team '42, '43, '44; Hockey Varsity '43; Student
Volunteers '41, '42, '43, '44; William Bartram Scientific Society '44; Pres-
ident of Athletic Association '44; Student Council '44; *Who's who in
American Universities and Colleges* '44.

*Basketball and hockey sticks . . . Gingerbread . . . Autumn leaves . . .
Clever way of putting things in brief.*



SENIORS

HELEN JOHNSON BLALOCK
Bahama, N. C.
B.S.

W.C.U.N.C. Transfer, Alethian Society; Epsilon Chi Literary Society; Home Economics Club '41, '42, '43; Dormitory Devotional Chairman '42; Y.W.C.A. '41. Duke University Summer School '43; Flora Macdonald College.

Fathomless eyes . . . White iris . . . Fire-light . . . Sly wit . . . Original . . . Generous as a sunbeam with warm light.



MARY ELIZABETH CLAY
Richlands, N. C.
B.S.

Transfer from East Carolina Teachers College '40; Zetesian Literary Society; Home Economics Club '41, '42, '43, '44; Atlantic Christian College Summer School '41; Wake Forest Summer School '42.

Mr. Clay . . . Week-ends . . . Pen and ink drawings . . . Dry wit . . . Picturesque choice of language . . . To know her is to love her.



The White Heather



SENIORS



FRANCES ELIZABETH COLE

Timmonsville, S. C.

B.A.

Zetesian Literary Society; South Carolina Club '41, '42, '43, '44; French Club '42, '43; Student Volunteers '43, '44; Vice President '44; Prayer Band Leader '44; William Bartram Scientific Society '44.

Little Women . . . Curly hair . . . Twinkling eyes . . . Morning glories . . . Merry as a little elf finding the secret of happiness within her own light heart . . . Precious things come in small packages.



MAGDALENE COX

Albemarle, N. C.

B.A.

Zetesian Literary Society; Tennis '42, '43; Archery '43; Class Treasurer '43; Literary Editor WHITE HEATHER '43; Commercial Club '44; Tea Room Manager '44; Associate Editor *Pine and Thistle* '44.

Sparkling blue eyes that reveal mischievousness . . . dimples . . . pinafores . . . dainty . . . carefree . . . Fresh and individual charm.

Nineteen Forty-four



SENIORS



The White Heather

GWENDOLYN EASTRIDGE

Shelby, N. C.

B.A.

Zetesian Literary Society; William Bartram Scientific Society '41, '42, '43; Mathematics Club '41, '42, '43, Vice President '43; Glee Club '42, '43, '44; Prayer Band Leader '42; Flora Macdonald Christian Association Cabinet '43, Association Librarian '43; Music Club '41, '42, '43; Camera Club '41, '42, '43; Delegate to Davidson Conference '42; Student Volunteers '41, '42, '43; Fire Squad '42; Archery '42, '43; Senior Sunday school Class President '44.

Pink Sheets . . . Hard-working . . . Cheerful . . . Accommodating . . . Violets . . . Davidson Conference . . . It would be hard to find a truer friend than she.

NANCY JEANETTE ELLIS

Goldston, N. C.

B.A.

Epsilon Chi Literary Society; Head of Basketball '42, '43, '44; Varsity Basketball '42, Captain '42; Hockey '41, '42, '43, '44; Varsity Hockey '43, Captain '43; Vice President of Athletic Association '43; Tennis '41, '42, '43, '44, Captain '44; French Club '42; Snapshot Editor of WHITE HEATHER '43; Archery '43; Monogram Club '43, '44; Athletic Board '44, '42, '43, '44.

Tweed coats . . . Spicy tang of Autumn air . . . Tennis balls . . . Coffee . . . Dreamy eyes . . . Sweeping lashes . . . Moods . . . Rain on the Roof.



SENIORS



Nineteen Forty-four

ELIZABETH JOCELYN GORDON
Spray, N. C.
B.S.

Columbia Bible College '44, '42. Flora Macdonald College '43, '44; Prayer Band Leader '44; Home Economics Club '43, '44; Student Volunteers '43, '44. Secretary '44; Hockey '43, '44; U.S.C. Summer School '42. Winthrop College Summer School '43. Wake Forest Summer School '41. *Who's Who Among Students in American Colleges and Universities* '44.

Home Ec. Uniforms . . . dark eyes . . . wide knowledge of books . . . high ideals . . . drifted snow . . . Gentle ways of willing sweetness.

JANE MCBRYDE GRANTHAM
St. Pauls, N. C.
B.A.

Epsilon Chi Literary Society. Recording Secretary '43, '44; Prayer Band Leader '42, '43; Basketball '41, '42, '43, '44; Assistant Tea Room Manager '44; Mission Study Leader '44; Commercial Club '44; Marshal '43.

"fitter-bug" . . . record players . . . Fort Bragg . . . lively and fun-loving . . . Refreshingly individual.



SENIORS

LUCY RUTH HARRINGTON

Broadway, N. C.

B.A.

Epsilon Chi Literary Society; Mathematics Club '41, '42, '43, '44; William Bartram Scientific Society '42, '43, '44; Treasurer '44; L'Alliance Francaise '42, '43, '44; President '44; Prayer Band Leader '43; Mission Study Leader '43; Christian Association Cabinet '43, '44; Secretary of Christian Association '44; Head of Sports '43, '44; *Who's Who Among Students in American Colleges and Universities.*

Brown wrens . . . Puck and Priscilla . . . Dry and quiet flashes of subtle humor . . . Deep and inner wisdom.



SARA FRANCES HELMS

Bethune, S. C.

B.A.

Montreat Junior College '41. Zetesian Literary Society; Glee Club '42, '43, '44; Basketball '42, '43, '44; Hockey '42, '43, '44; William Bartram Scientific Society '43, '44; Archery '42, '43; Monogram Club '44; Class Testator '44.

Contagious, gladdening bursts of quick mirth . . . Fudge . . . Jam sessions . . . Hot rolls . . . Vibrant with love of life.



The White Heather



SENIORS



CLYDE FENNELL "Jackie" HERRING

Fayetteville, N. C.

B.A.

Zetesian Literary Society, Censor '44; Vice President of Freshman Class '41; Sophomore Editor of WHITE HEATHER '42; Cheer Leader '42; Archery Club '41, '42, '43; Prayer Band Leader '43; Junior Editor of WHITE HEATHER '43; William Bartram Scientific Society '43, '44; Camera Club '43, '44; Dramatics Club '44; Superlative '42, '44; College Cheer Leader '44; Senior Scribbler '44.

"Chicken" . . . tailored suits . . . Helena Rubenstein . . . charming frankness . . . mail . . . consistent good humor . . . A nature generous and bright as warming sunshine.



MARY LEE HUGHES

Wilmington, N. C.

B.A.

Epsilon Chi Literary Society; French Club '41, '42; Archery '43; William Bartram Scientific Society '44; Class Treasurer '44.

Graceful as a minuet . . . Charming elusiveness . . . Clicking heels . . . "Vogue" . . . Dates . . . Sea shells and sand . . . Artless nonchalance of carefree winds in April.

Nineteen Forty-four



SENIORS



The White Heather

ANYCE KALLAM
Stoneville, N. C.

B.A.

Zetesian Literary Society, Chaplain '42; William Bartram Scientific Society '42, '43, '44; Hockey '41, '42, '43, '44; French Club '41, '42, '43, '44; Flora Macdonald Christian Association Cabinet '42, '43, '44, President '44; Student Council '44; *Who's Who Among Students in American Colleges and Universities* '44; Superlative '43, '44.

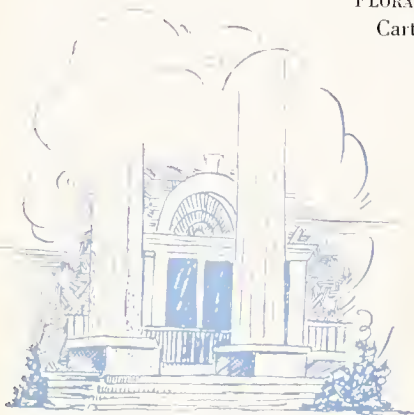
*Bread . . . Butter . . . Honey . . . Siesta . . . Byron . . . Smiles . . .
Friendliness . . . Kitty-kats . . . White Steeples . . . In her soft
voice lies the peace of tranquil hearts.*

FLORA MAE KELLY
Carthage, N. C.

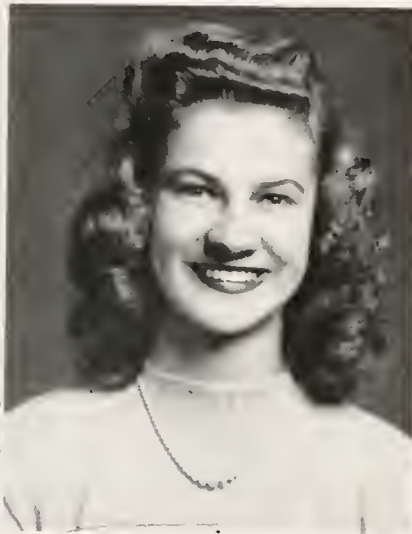
B.A.

Montreat Junior College '41, '42; Tritonian Literary Society; Prayer Band Leader '42; United Youth Club '41, '42; Bio-Chemist Club '41, '42. Flora Macdonald College, Epsilon Chi Literary Society. Atlantic Christian College Summer School '43.

*Apple blossoms . . . Hamburger and onions . . . Utterly unselfish
. . . Kind . . . Hardworking . . . Companionable . . . Coöperative.*



SENIORS



Nineteen Forty-four

MARY ELIZABETH KERR
Kerr, N. C.
B.M.

Transfer from Davidson College '42. Epsilon Chi Society; Sophomore Voice Recital '42; Chief Marshal '43; Assistant Editor of WHITE HEATHER; Sextette '43, '44; Junior Voice Recital '43; Senior Voice Recital '44; Glee Club '42, '43, '44; Music Club '42, '43, '44; Tennis '42, '43, '44; Assistant Business Manager Tea Room '43; Class Prophet '44.

Independent . . . Poise . . . Schubert's Lieder . . . Blue shoes . . . A charm that overflows in song . . . An irrepressible burst of wit.

CAROLYN SUE KURFEES
Mocksville, N. C.
B.A.

Mitchell College '41, '42. Flora Macdonald College '43, '44; Epsilon Chi Literary Society, President '44; Marshal '43; Dramatic Club '43, '44; Senior Scribbler; Student Council '44; May Court '43.

Twilight . . . May Day . . . Keats . . . Infectious enthusiasm . . . Cool, clear springs . . . Walks in the rain . . . Kindness itself, doing all things well the while she smiles.



SENIORS

MARTHA REBECCA LASSITER
Clayton, N. C.
B.S.

W.C.U.N.C. transfer, Aethelian Society. Wake Forest College Summer School '43. Flora Macdonald College. Zetesian Literary Society; Home Economics Club '43, '44; Secretary and Treasurer '44; Second Vice President of Zetesian Literary Society '44.

*"Pearse" . . . pastels . . . style . . . true-blue
. . . Her future already definitely planned
needs only our whole-hearted wishes for
happiness.*



ELLA ADAMS LEWIS
Faison, N. C.
B.S.

Louisburg College '41, '42; Y.W.C.A.; Dramatics Club '41, '42; *Whispering Oak*, Art Editor '41; Home Economics Club '41, '42, Vice President '42; Women's Student Council '42; *The Oak*, Feature Editor '42; May Court '41; May Queen '42; Superlative '42; Beta Phi Gamma '42. Flora Macdonald College '43, '44; Zetesian Literary Society; Dramatics Club '43, '44; Home Economics Club '43, '44, Vice President '44. Wake Forest Summer School '43.

*Pearls on black sweaters . . . Red . . . Ebony
hair . . . Practice house . . . Queenly . . .
Amiable . . . Conscientious.*



The White Heather



SENIORS



MARGARET LUCINDA LEWIS
Hemp, N. C.
B.S.

Zetesian Literary Society; Recording Secretary '42. President '43; Class President '44; Student Council '41, '43; Class Secretary '44; Basketball '41, '42, '43, '44; Hockey '43, '44; Tennis '41, '42, '43, '44; College Marshal '43; Home Economics Club '41, '42, '43, '44; Dramatics Club '44; William Bartram Scientific Society '43, '44; Business Editor WHITE HEATHER '44; War Relief Committee '44; Wake Forest College Summer School '43; Monogram Club '44; May Queen '44.

*May Queen . . . Gracious . . . Friendly . . .
Wake Forest . . . Her natural beauty and
the distinctive manner in which she wears
her clothes make her outstanding.*



FRANCES LOUISE LIFRAGE
Salters Depot, S. C.
B.M.

Zetesian Literary Society, Critic '42; Glee Club '41, '42, '43, '44; Music Club '41, '42, '43, '44; Prayer Band Leader '42; Vice President of Sophomore Class '42; Class President '43, '44; Student Council '43, '44; College Marshal '43; College Sextette '42, '43, '44; Dramatic Club '43, '44; *Who's Who in American Colleges and Universities* '43, '44; Senior Scribbler '44; South Carolina Club '41, '42, '43, '44; Superlative '44.

*Tact . . . character . . . ability . . . warm
southern voice . . . genuine . . . quaint
The Citadel . . . Chocolate judge . . .
Sparkling melody . . . Capable of doing all
things well.*

Nineteen Forty-four



SENIORS



The White Heather

HELEN IRENE LITTLE

Charlotte, N. C.

B.A.

Zetesian Literary Society, First Vice President '44; Head of Tennis '43; Treasurer of Athletic Association '43; Archery Club '42, '43, '44; Commercial Club '44; Tennis Club '41, '42, '43, '44.

*"Do-Nothin'" . . . Toy animals . . . Tiny tots . . . Scotch kilts . . .
A china shepherdess with hazel eyes . . . Clever as tomorrow's wit.*

FRANCES ROXANNA LOY

Fayetteville, N. C.

B.M.

Zetesian Literary Society, Critic '44; Glee Club '41, '42, '43, '44, President '44; Mathematics Club '41, '42, '43; William Bartram Scientific Society '41, '42, '43; Music Club '41, '42, '43, '44; Sophomore Violin Recital '42; Junior Violin Recital '43; Senior Violin Recital '44; Head of Horseshoes '42; Athletic Board '42; Associate Editor of *Pine and Thistle* '42, Business Manager '43; WHITE HEATHER Staff '42, '44; College Sextette '44.

*Opals . . . Little girl hair bows . . . Ambitious . . . Determined . . .
Soft woolens . . . Husky tones of a muted violin.*



SENIORS



Nineteen Forty-four

MILDRED MERCER
Shannon, N. C.
B.A.

Epsilon Chi Literary Society; Day Students Club '41, '42, '43, '44; William Bartram Scientific Society '41, '42, '43, '44; Mathematics Club '41, '42, '43, '44; Camera Club '43, '44; Hockey '43; P. J. C. Summer School '43.

*Accents . . . "Sloppyjoes" . . . Song . . . Laughter . . . Energy . . .
An amazing blend of gravity and mischief.*

LUCY MITCHINER
Wilson Mills, N. C.
B.S.

Peace transfer, Zetesian Literary Society; Hockey Team '41, '42, Basketball Team '41, '42; Peace May Court; Peace Stunt Night. Wake Forest Summer School. Home Economics Club '42, '43; President Home Economics Club '43, '44; Hockey Team '43, '44; Basketball Team '43, '44.

*Unassuming . . . Thorough . . . A good sport . . . Quiet dignity
coupled with good nature . . . A flair for smart details.*



SENIORS

HELEN ELIZABETH MORRISON
Luebo, Belgian Congo, Africa

B.A.

Zetesian Literary Society; Hockey '41, '42, '43, '44; Basketball '41, '42, '43, '44; Tennis '41; Mathematics Club '41, '42, '43, '44; William Bartram Scientific Society '41, '42, '43, '44, Corresponding Secretary '42, Vice President '43, President '44; L'Alliance Francaise '42, '43, '44; Camera Club '43, '44; Athletic Association Salesman '42; Associate Editor *Pine and Thistle* '42; Student Volunteers '41, '42, '43, '44, Treasurer '43; Prayer Band Leader '42, '43; Mission Study Leader '42, '43, '44; Granddaughters' Club '41, '42, '43, '44.

Reliable . . . Genial . . . Unassuming . . . In soul sincere, in action faithful, in honor clear.

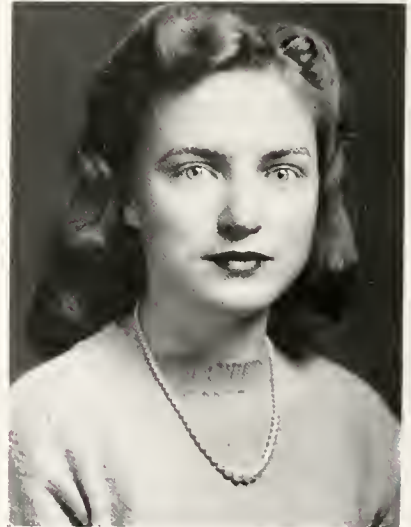


ANNIE CATHERINE McDUFFIE
Robbins, N. C.

B.A.

Zetesian Literary Society, Censor '43; French Club '41, '42; Archery Club '42, '43; William Bartram Scientific Society '42, '43, '44; Camera Club '43; Head of Archery '43; Athletic Board '43; Music Club '43; Glee Club '43, '44; Secretary of Class '43, Vice President '44; Commercial Club '44; Secretary of Student Body '44; Student Council '44; May Court '44.

Sunlight on blue lakes . . . Hand painted china . . . Vibrant grace . . . Poise and dignity, with flushes of unexpected humor.



The White Heather

SENIORS



HARRIETTE WATSON MCGRAW

Carthage, N. C.

B.A.

W.C.U.N.C. Transfer, Flora Macdonald College '43. '44: Hockey '43. '44: WHITE HEATHER Staff '44; Pine and Thistle Staff '44; Class Poet '44; Basketball '44; Mission Study Leader '44; To graduate in Summer School '44.

Original . . . fineness of character . . . independent thinker . . . perfumes . . . dances . . . She dreams and plans and things happen.



MARTHA MACDONALD MACLEOD

Aberdeen, N. C.

B.A.

Epsilon Chi Literary Society; Montreat College '41. '42; Flora Macdonald Christian Association Cabinet; Chairman of World Fellowship '44; Pine and Thistle Staff, Poetry Editor '44; President Student Volunteers '44.

Leather-bound books . . . poetry . . . evening stars . . . cool, unruffled certainty born of knowledge . . . A nature that is prodigal with its love of kindness.

Nineteen Forty-four



SENIORS

The White Heather



REBECCA CAMPBELL MCKETHAN
Fayetteville, N. C.
B.M.

Mitchell College '40, '41. Flora Macdonald College. Zetesian Literary Society '42, '43, '44; Music Club '42, '43, '44; Glee Club '42, '43, '44; Vice President '44; Dramatics Club '42, '43, '44, Vice President '43, '44; College Sextette '43, '44; Class Basketball Team '42, '43, '44; Junior Voice Recital '43; Marshal '43; Assistant Business Manager WHITE HEATHER '43; Business Manager of Tea Room '43; Editor-in-Chief WHITE HEATHER '44; May Court '44; Superlative '44; Chief Scribe '44; War Bond Committee '44; Tennis '42, '43, '44.

*Candlelight . . . Printer's ink . . . Symphony and Swing . . .
Midnight oil . . . Charm . . . Orchids . . . Ideals, of which
simplicity is the keynote.*

ELEANOR RUTH NOBLES
Greenville, N. C.
B.A.

W.C.U.N.C. Transfer, Christian Association Cabinet; Altheneian Society. Flora Macdonald College '43, '44; Epsilon Chi Literary Society; Assistant Editor *Pine and Thistle* '43, Business Manager '44; Basketball '43, '44; Hockey '44; Chairman of Student War Bond Drive '44; French Club '43, Secretary '43.

*War Bonds . . . Plaid shirts . . . Saddle shoes . . . Charm bracelets
. . . Sparkling eyes and quick vivacious laughter.*



SENIORS



Nineteen Forty-four

CAROLYN MEEKS PARROTT
Florence, S. C.
B.A.

Zetesian Literary Society; Hockey '40, '41, '42, '43; Basketball '40, '41, '42, '43; William Bartram Scientific Society '44; South Carolina Club '41, '42, '43, '44; Camera Club '44.

Sweaters and skirts . . . red zinnias . . . bungalows . . . A reserve and refinement contrasted with a warm, sincere friendliness.

LUCY MARIE PUCKETT
Oxford, N. C.
B.A.

Zetesian Literary Society; Montreat College '41, '42. Flora Macdonald College '43, '44; Mathematics Club '44; William Bartram Scientific Society '44; Prayer Band Leader '44.

Persian Kittens . . . Spinning wheels and spool rugs . . . Conscientious work . . . Her soft smile attracts the soul.



SENIORS

NANCY FAIRLEY RAMSEUR
Columbia, S. C.
B.A.

Zetesian Literary Society; South Carolina Club '41, '42, '43, '44; Assistant Editor *Pine and Thistle* '43; Dramatics Club '43, '44; WHITE HEATHER Staff '44; Senior Scribbler '44; Tennis '41, '42, '43, '44; Class Testator '44. University of South Carolina Summer School '43.

*Skits . . . "Between-the-Book-Ends" . . .
Aristocratic . . . High ideals . . . Mahogany
. . . Moods . . . Tea room politics . . .
Laughter holding both its sides.*



MARY CATHERINE ROWE
Miami, Fla.
B.A.

Coker College '42. University of North Carolina Summer School '42. Flora Macdonald College '43, '44; Zetesian Literary Society; William Bartram Scientific Society '43, '44. Vice President '44; L'Alliance Francaise '44.

*"Cathy" . . . Sun tans . . . Science . . . Quiet
efficiency that lends poise . . . Grace . . . With
her brilliant mind and conscientious work
she will make an outstanding success.*



The White Heather



SENIORS



MARION HENRI SKINNER
Bishopville, S. C.
B.A.

Zetesian Literary Society; Glee Club '41, '42, '43, '44; Music Club '41, '42; Dramatics Club '41, '42, '43, '44; Secretary '42, President '43, '44; Cheer Leader '43, '44; South Carolina Club '41, '42, '43, '44; Corresponding Secretary of Zetesian Literary Society '43; May Court '43, '44; William Bartram Scientific Society '43; Superlative '43; College Marshal '43; WHITE HEATHER Staff '44; Winthrop College Summer School '43; War Bond Committee '44.

Droopy . . . Unpredictable . . . Expressive brown velvet eyes . . . R.S.V.P. . . . "Chloe" . . . Vivid colors . . . Marines . . . A quick vivacity that sparkles like fountains in the sun.



MILDRED LEE STOWE
Gastonia, N. C.
B.A.

Zetesian Literary Society; Hockey '41, '42, '43, '44; Basketball '41; Mathematics Club '41, '42, '43, '44; Secretary '43; William Bartram Scientific Society '41, '42, '43, '44; President '43; Treasurer '44; Camera Club '42, '43, '44; President '43; French Club '42, '43; Fire Captain '42, '44; Mission Study Leader '43; Prayer Band Leader '43; L'Alliance Francaise '42, '43.

Affection . . . Understanding and ever-ready . . . Unobtrusively efficient . . . "Jinks" . . . Tiffany . . . Quaint charm of a garden filled with graceful flowers.

Nineteen Forty-four



SENIORS

The White Heather



MARY PRUDENCE STRINGER
Red Springs, N. C.
B.A.

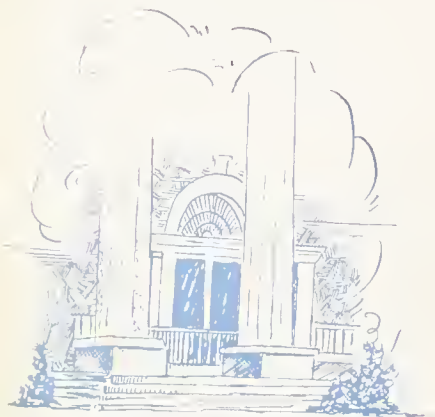
Zetesian Literary Society; Day Students Club '41, '42, '43, '44; Assistant Business Manager of *Pine and Thistle* '44.

Philosophical . . . Studious . . . Perseverance . . . Lavender and old Lace . . . Straight as an arrow in carriage and in mind.

MARGARET MCLEOD TEABEAUT
Fayetteville, N. C.
B.M.

Epsilon Chi Literary Society; Glee Club '41, '42, '43, '44; Dramatics Club '41, '42, '43, '44; Hockey '41, '42, '43, '44, Varsity '43; Vice President of Class '43; Treasurer of Student Body '43; Student Council '43, '44; Archery Club '42; Music Club '41, '42, '43, '44, President '43; Head of Swimming '42; Member of Athletic Board '42; Granddaughters' Club '41, '42, '43, '44; College Marshal '43; Junior Piano Recital '43; Associate Editor of *Pine and Thistle* '41; Senior Scribbler '41; Christian Association Cabinet '44; Senior Piano Recital '44; Class Historian '41; President of Student Government '44; *Who's Who Among Students in American Universities and Colleges*

"T-Bo" . . . Individual . . . Efficient . . . Beethoven Sonatas . . . New York . . . L'Origan . . . Angora socks . . . Carbonated water . . . We have discovered fun and a humorous personality beneath her dignity.



SENIORS



Nineteen Forty-four

KAY LEE WALKER
Elkin, N. C.
B.M.

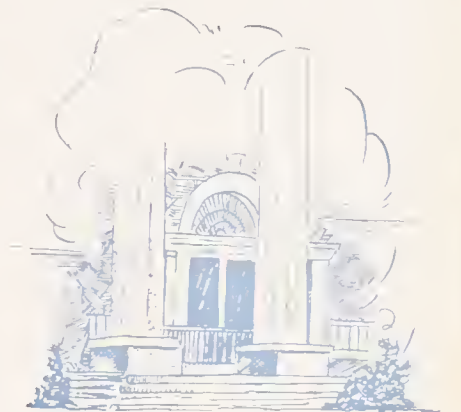
Epsilon Chi Literary Society, Treasurer '44; Mars Hill College '41; Flora Macdonald College '42, '43, '44; Glee Club '42, '43, '44; St. Cecelia Music Club '42, '43, '44; College Sextette '42, '43, '44; College Marshal '44; Junior Voice Recital.

*"Bob" . . . Piano exams . . . Loyal kindness and generosity of heart
. . . Green . . . Toujours Moi . . . Altogether lovely.*

MARGARET CALDWELL WALL
Morven, N. C.
B.S.

Epsilon Chi Literary Society; Home Economics Club '41, '42, '43, '44; Wake Forest Summer School '42; Tea Room Manager '43; Basketball '41, '42, '43, '44; Hockey '41; Dramatics Club '44; Critic of Epsilon Chi Literary Society '43; Business Manager WHITE HEATHER '44; War Relief Committee '44.

*Coöperative . . . Fun-lovin' . . . Dependable . . . Annual ads . . .
Gardenias . . . The best proof of ability is Action.*



SENIORS

CLARA MASON WORLEY
Pink Hill, N. C.
B.A.

Zetesian Literary Society; President '44; Mathematics Club '41, '42; William Bartram Scientific Society '43; Prayer Band Leader '43; Archery Club '43; Corresponding Secretary of Zetesian Society '43; Associate Editor *Pine and Thistle* '43; Student Council '44; Commercial Club '44; *Who's Who Among Students in American Colleges and Universities*.

*Dutch dolls . . . Daffodils . . . Winsome . . .
Pretty . . . Dainty . . . Demure . . . Admired
for her fineness of character and diligence
in work.*



The White Heather





Senior Scribblers

REBECCA MCKETHAN, *Chief Scribe*

JACKIE HERRING

FRANCES LIFRAGE

MARGARET TEABEAUT

NANCY RAMSEUR

CAROLYN KURFEES

The Senior Scribblers are chosen from the rising senior class by the Scribblers of the retiring senior class. Their job is to write representative personality sketches of their classmates.

WHO'S WHO

Qualifications for membership in WHO'S WHO are character, scholarship, and leadership in extra-curricular activities. Both Juniors and Seniors are eligible for this honor. This recognition has served as an incentive to all students to get the best results from their college experiences.



PEGGY TEABEAUT

DORIS BAXLEY

MARY JOHNSON

CAROLYN MCKAY

LUCY HARRINGTON

JOCELYN GORDON

ANYCE KALLUM

FRANCES LIFRAGE

MASON WORLEY



S.R. F.M.C.? . . . T-Bo and Becky . . . Rats . . . Turning
the tables on you. Peggy . . . Must be exams . . .
Tripping the light fantastic . . . Did you see it, Correta?
. . . Waiting at the gate . . . Ramseur, a la pajamas . . .
Miss Bateman.



A big smile, please! . . . Make it good, T-Bo . . . May
day practice? . . . This is too much . . . D.E.K.'s plus
Bunny . . . Good for Blackmail, Betty! . . . Surely not
at F.M.C.? . . . Margie . . . Musician's row.



Juniors



CAROLYN MCKAY, *President*
CATHERINE LYTTON, *Vice President*
MIRIAM HURLEY, *Secretary*
BETTY BARRINGER, *Treasurer*
MURPHY McDONALD, *Tea Room Manager*
JANE LATHAM, *Assistant Tea Room Manager*
MARY HAMILTON STEPHENS, *Adviser*

JUNIORS

ATKINS, JO ANN, Kernersville, N. C.

AUTRY, JOHNNIE, Raeford, N. C.

BARRINGER, ELIZABETH, Carthage, N. C.

BOWDEN, MARTHA NELL, Warsaw, N. C.

BRITTEN, MARY, Kinston, N. C.

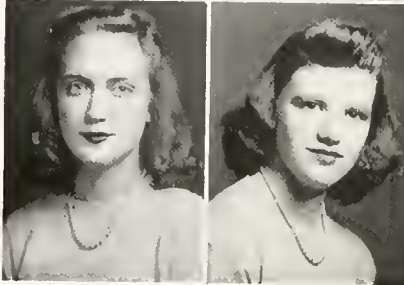
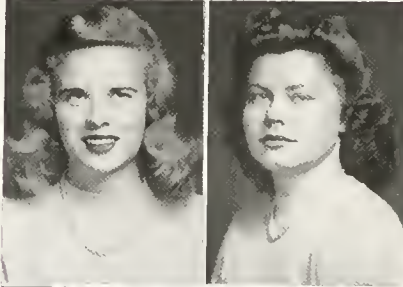
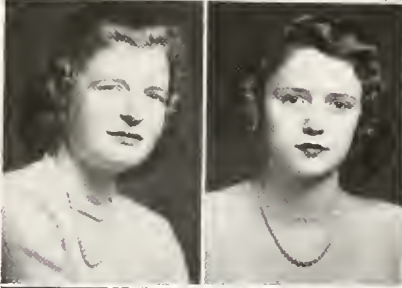
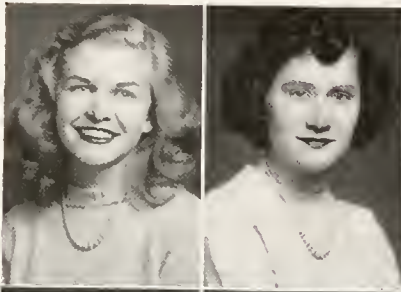
BURNS, MARY LEE, Goldsboro, N. C.

COLLIER, EVELYN, Wade, N. C.

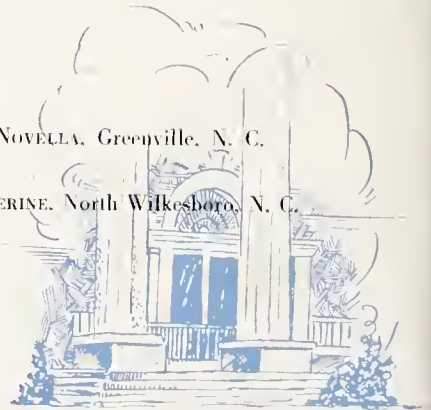
FENNELL, DOROTHY, Loris, S. C.

DUKE, LILLIAN NOVELLA, Greenville, N. C.

FINLEY, KATHERINE, North Wilkesboro, N. C.



The White Heather



JUNIORS

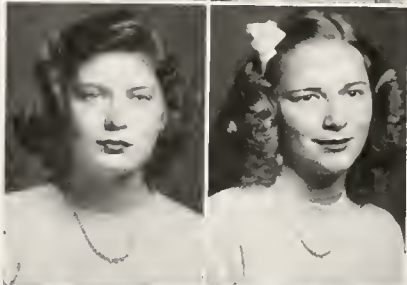
GOODWILL, PAMALA, Roanoke, Va.

GORE, FRANCES, Tabor City, N. C.



HALL, ELIZABETH, Plumtree, N. C.

HUGGINS, ERNESTINE, Aynor, S. C.



HUNTLEY, MARY ANNA, Peachland, N. C.

HURLEY, MIRIAM, Troy, N. C.



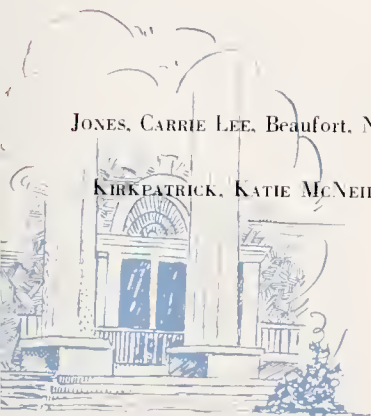
JOHNSON, MARY ALLENE, Kenly, N. C.

JOHNSON, MARY ELIZABETH, Elizabethtown, N. C.



JONES, CARRIE LEE, Beaufort, N. C.

KIRKPATRICK, KATIE McNEIL, Maxton, N. C.



Nineteen Forty-four

JUNIORS

KNIGHT, LOUISE, Maxton, N. C.

LATHAM, JANE, Spray, N. C.

LAWSON, ALMA, Leaksville, N. C.

LEE, VIRGINIA, Dunn, N. C.

LOVETT, RUTH, Fairbluff, N. C.

LYTTON, CATHERINE, Gastonia, N. C.

MATHESON, BETTY, Conover, N. C.

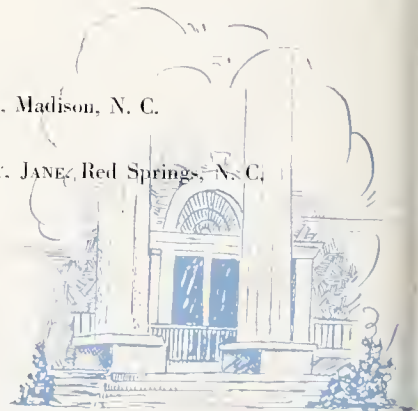
MUSSELWHITE, VIRGINIA, Lumberton, N. C.

MOORE, WEYBURN, Madison, N. C.

McCONAUGHEY, JANE, Red Springs, N. C.



The White Heather



JUNIORS

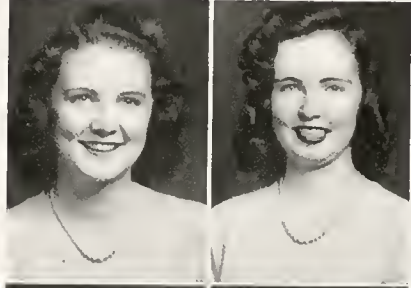
MCCORMICK, MARY CATHERINE, St. Pauls, N. C.

MACDONALD, MURPHY, Maxton, N. C.



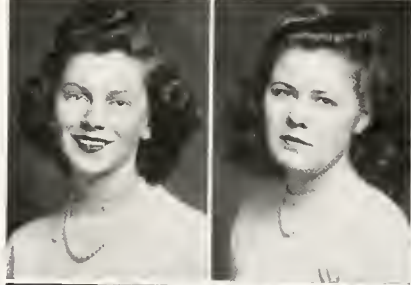
McKAY, CAROLYN, St. Pauls, N. C.

McKAY, JANE GRAHAM, Maxton, N. C.



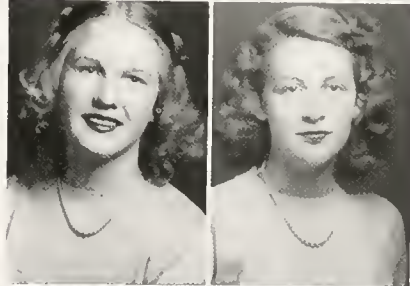
NIBLOCK, MARY, Concord, N. C.

OLIVER, ELSIE, Fairmont, N. C.



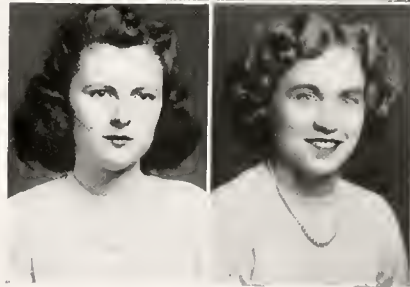
PENCE, MARTHA, Tatum, S. C.

PRIDGEN, MARTHA, Warsaw, N. C.



SANDERS, MILDRED, Raeford, N. C.

SHINN, PEGGY, Spray, N. C.



Nineteen Forty-four



JUNIORS

SHOOK, DOROTHY, Red Springs, N. C.

THOMPSON, CORETTA, Morehead City, N. C.

THOMPSON, RACHEL, Colerain, N. C.

TOMLINSON, JANET, Black Creek, N. C.

TONTZ, JUANITA, Baltimore, Md.

USHER, KITTY, McColl, S. C.

WHISNANT, SARA EVELYN, Norfolk, Va.

WORLEY, FANNIE GREY, Pink Hill, N. C.



The White Heather



Tennis champs . . . Going out? . . . Roommates . . . Leg
art . . . Pretty Kinney . . . What happened to Whis? . . .
What will we have for lunch? . . . Dot . . . Home-
eckers . . . Keep 'em flying . . . Lover's lane.

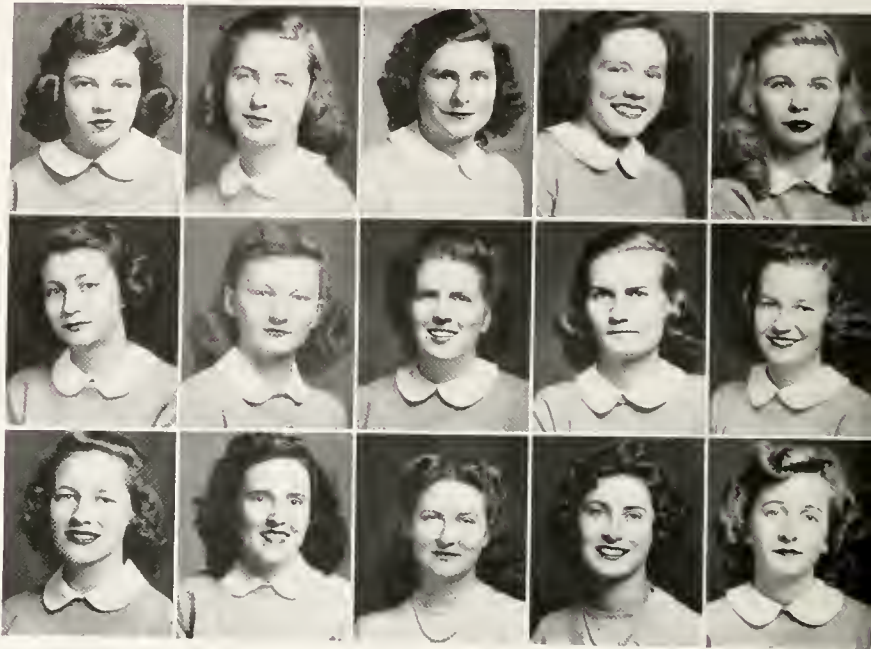


Sophis



MARY GEE WILCOX, *President*
BILLY ESTES, *Vice President*
NELL LANCASTER, *Secretary*
NANCY MEEKINS, *Treasurer*
JANE COLSON GLENN, *Adviser*

SOPHOMORES

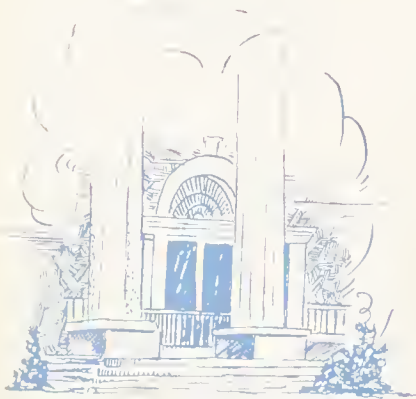


The White Heather

ADAMS, MARY ELIZABETH, Barium Springs, N. C.
 ALFORD, BETTY, Galivants Ferry, S. C.
 ANTHONY, HURLEY, Wilson, N. C.
 ATKINSON, LAURA SHAW, Fairmont, N. C.
 AUSTIN, SARA JEAN, Thomasville, N. C.

BARKSDALE, ELIZABETH ANNE, Halifax, Va.
 BRITTON, SARAH VIRGINIA, Whiteville, N. C.
 BROCKINTON, FRANCES, Kingtree, S. C.
 BROWN, JANE, Montvale, Va.
 BROWN, JULIA LEE, Myrtle Beach, S. C.

BYNUM, LINDA VINES, Pinetops, N. C.
 CHERRY, LILLIAN, St. Bartow, Fla.
 CLARK, DOROTHY, Claykton, N. C.
 CRAVEN, SARAH, Mooresville, N. C.
 CURRIE, SARA LOUISE, Red Springs, N. C.

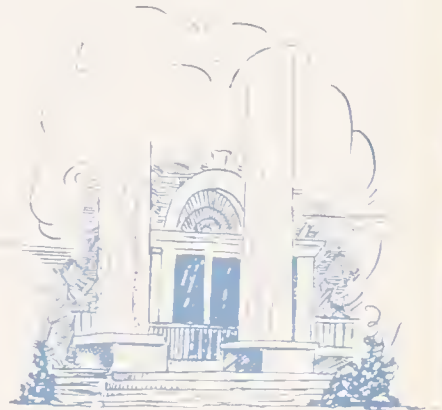


SOPHOMORES



Nineteen Forty-four

- ESTES, BILLY, York, S. C.
 GARRELL, HELEN LOUISE, Clarendon, N. C.
 GASKIN, MARGUERITE, Smithfield, N. C.
 GOODWIN, SARA HALL, Lumberton, N. C.
 GRIER, ESTHER MAE, Charlotte, N. C.
- HARRELSON, FLETA, Clarkton, N. C.
 HODGIN, ELIZABETH, Red Springs, N. C.
 HOYT, VIRGINIA CARLISLE, Millboro, Va.
 JONES, MEADE RANDOLPH, Staunton, Va.
 LANCASTER, NELL, Shellfar, Va.
- LEACH, MARY ELIZABETH, Kinston, N. C.
 LEWIS, ELENA ANN, Bartow, Fla.
 MANESS, MARGARET FAYE, Biscoe, N. C.
 MEEKINS, NANCY, Columbia, N. C.
 MILLS, KATHLEEN, Durham, N. C.



SOPHOMORES



The White Heather

McDANIEL, ANNIE MAE, Bennettsville, S. C.
 McINNIS, KATHERINE, Little Rock, S. C.
 McINNIS, VIVIAN, Shannon, N. C.
 McINNIS, VIOLET, Clio, S. C.
 McLEOD, ELIZABETH, Lumberton, N. C.

McPAUL, FRANCES, Red Springs, N. C.
 OGLVIE, BARBARA, North Wilkesboro, N. C.
 POWELL, MARJORIE, Elizabethtown, N. C.
 ROGERS, BETTY, Whiteville, N. C.
 SHAW, HAZEL, St. Pauls, N. C.

SPENCE, DOROTHY, Lillington, N. C.
 STEVENSON, VIRGINIA, Hamilton, N. C.
 STRINGER, KATHERINE, Red Springs, N. C.
 TERRELL, ROBERTA, Buckner, Va.
 WARREN, MABEL, Clinton, N. C.



SOPHOMORES



Nineteen Forty-four

WATTS, LUCILLE, Reading, Mass.

WAYNE, MARGARET, Hallsboro, N. C.

WILKERSON, MARY LOIS, Lumberton, N. C.

WILLCOX, MARY GEE, Carthage, N. C.

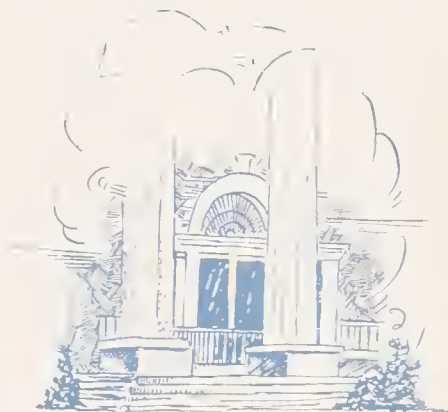
SPECIAL STUDENTS

JONES, MARJORIE, Whiteville, N. C.

MARKEY, ELIZABETH, Charlotte, N. C.

MUNROE, FRANCES, Quincy, Fla.

O'BRIEN, KATHERINE, Laurinburg, N. C.





Compliments of Betty K. . . . Is it cold? . . . Hockey
Tournament . . . Jockey Britton . . . Little Miss Mascot . . .
Oh, Glory! . . . Hairless Joe . . . P.E. 16 . . . Sub-
stituting? . . . Maggie, Helen, and Em.



It won't work! . . . What's funny? . . . Laziness personified! . . . Rebel and Yankee . . . Ballerina Jean . . . A rift in friendship? . . . Time out for a chat . . . Holliday and Carr.



Frosh



GOLDIE KNOWLES, *President*
EVELYN LYTTON, *Vice President*
DOT UNDERWOOD, *Secretary*
RUTH KINNEY, *Treasurer*
J. WILCUS EBERLE, *Adviser*

FRESHMEN

ALEXANDER, ELIZABETH, Wilkesboro, N. C.

ALLEN, CARRIE JEAN, Charlotte, N. C.

ANDREWS, DORIS, McColl, S. C.

ANGLE, LOIS, Milton, N. C.

ASKEW, VIRGINIA, Kenly, N. C.

ATKINSON, LULU, Kenly, N. C.

AUTRY, JUDITH, Charlotte, N. C.

AVERY, ARNETTE, Southern Pines, N. C.

BALDWIN, IRENE, Lansing, N. C.

BAKER, MARY RUTH, Draper, N. C.

BARFIELD, SHIRLEY, Wilmington, N. C.

BARKER, FRANCES, Milton, N. C.

BEEKS, ELOISE, Ware Shoals, N. C.

BENTON, JACQUELINE, Roseboro, N. C.

BLACK, EVELYN, Hamlet, N. C.

BOGGAN, MITTIE, Pee Dee, N. C.

BRISSON, MARZELLE, Fayetteville, N. C.

BRITT, MARTHA, Fayetteville, N. C.

BROADWAY, HAZEL COLLEEN, Ashboro, N. C.

BROCKINTON, MARGARET IRENE, Kingstree, S. C.

BROOKS, RACHEL, Evergreen, N. C.

BUE, OPAL, Clarkton, N. C.

BUMPAS, ELIZABETH, Virgilina, N. C.

CALHOUN, LOUISE, Clio, S. C.



FRESHMEN

CAMPBELL, JEAN, Lumberton, N. C.

CAMPEN, BEATRICE, Carolina Beach, N. C.

CARR, FRANCES, Durham, N. C.

CLARK, GERTRUDE, Clarkton, N. C.

CLINE, MILDRED, Hickory, N. C.

COLEMAN, MARY HELEN, Red Springs, N. C.

COMER, FRANCES, Stoneville, N. C.

COOLEY, FRANCES, Wagram, N. C.

COUSINS, HAZEL, Enfield, N. C.

COX, EMILY, Albemarle, N. C.

DABBS, SARAH, Lexington, N. C.

DAVIS, BETTY JO, Mooresville, N. C.

DAVIS, JULIETTE, Burgaw, N. C.

DENNIS, BLONDELL, Troy, N. C.

ERVIN, ELLA, Catawba, N. C.

FARLOW, LYDIA, Sophia, N. C.

FIEDLER, ALICE, Ottumwa, Iowa

FIELDS, HELEN, Pinehurst, N. C.

MCQUEEN, VIVIAN, Mullins, S. C.

GAITLEY, HELEN, Red Springs, N. C.

GAITLEY, JEAN, Red Springs, N. C.

GAY, MARY JORDAN, Jackson, N. C.

GIBSON, VIRGINIA, Hoffman, N. C.

GILCHRIST, SARAH JOHN, Red Springs, N. C.

FRESHMEN

GORE, SYLVIA, Nakina, N. C.

GRAHAM, DOTTIE LOUISE, Marion, S. C.

GRIFFIN, SUE NELL, Unionville, N. C.

GUY, MARY LOU, Fayetteville, N. C.

HAMBRIGHT, ROXANNA, Huntersville, N. C.

HARRIS, MARY MARGARET, Concord, N. C.

HAWKINS, BETTY FAYE, Gastonia, N. C.

HEDGEPEATH, THELMA, Fairmont, N. C.

HOLDER, ELIZABETH, Broadway, N. C.

HOLLIDAY, BETTY LYNN, Florence, S. C.

HOLT, MARY CATHERINE, Asheboro, N. C.

HOWELL, VIRGINIA, Florence, S. C.

HUDSON, CATHERINE, Cramerton, N. C.

HUGHES, MILDRED, Wilmington, N. C.

HUNEYCUTT, MELICENT, Laurel Hill, N. C.

HURT, NANCY JANE, North Tazewell, Va.

HURT, SUZANNE, North Tazewell, Va.

JORDAN, MARY, Kinston, N. C.

KINNEY, RUTH, Charlotte, N. C.

KANON, DOROTHY, Fayetteville, N. C.

KNAPP, BARBARA, Shrewsburg, N. J.

KNOWLES, GOLDIE LEE, Wadesboro, N. C.

LASSITER, HAZEL, Four Oaks, N. C.

LEE, HARRIET JOSEPHINE, Smithfield, N. C.



FRESHMEN

LEWIS, EDITH, Troy, N. C.

LISKE, COZETTE, Mt. Gilead, N. C.

LYTTON, EVELYN, Gastonia, N. C.

MERRITT, NANCY, Woodsdale, N. C.

MILLER, MAYSIE, Chadbourn, N. C.

MILLS, RACHEL, Wilmington, N. C.

MORRIS, IRIS, Concord, N. C.

MCCALLUM, BETTY BLUE, Rowland, N. C.

MCDONALD, WANDA, St. Pauls, N. C.

MCINNIS, MARY CAROLYN, Red Springs, N. C.

McGOOGAN, ESTELLE, Red Springs, N. C.

McKENZIE, MARTHA, Wagram, N. C.

McMILLAN, FLORINE, Red Springs, N. C.

MCNEILL, SARA CATHERINE, Red Springs, N. C.

MCNETT, ELIZABETH, Norbeth, Pa.

McPHATTER, ANN, Proctorville, N. C.

NEAL, ANNE, Blacksburg, Pa.

NEWMAN, SALLIE GAYLE, Clinton, N. C.

NURNBERGER, JULIA ANN, Red Springs, N. C.

PARKER, MARY, Clinton, N. C.

PARKS, DOROTHY, Laurinburg, N. C.

PARRISH, SUE, Smithfield, N. C.

PENDLEY, LEA FRANCES, Fort Bragg, N. C.

POWERS, EDNA WINIFORD, Fayetteville, N. C.

FRESHMEN

PRICE, SARA FRANCES, Hamer, S. C.
 PRIDGEN, FRANCES, Chadbourne, N. C.
 PURSLEY, ETHEL LEE, Clover, S. C.

QUINN, LAURA, Chinquapin, N. C.
 RHODES, DOROTHY, St. Pauls, N. C.
 RHYNE, JANET, Stanley, N. C.

RIDAUGHT, BETTY JANE, Wilmington, N. C.
 RILES, BETTY JANE, Timmons ville, S. C.
 ROBERTSON, ANNE, Madison, N. C.

SANDERS, EDITH, Raeford, N. C.
 SHAW, ANN, Wagram, N. C.
 SMITH, LOU ELLEN, Wilmington, N. C.

SPENCE, SARA ELIZABETH, Fuquay Springs, N. C.
 SPIVEY, CLARA, Elizabethtown, N. C.
 TAYLOR, JULIA, Clinton, S. C.



NOT PHOTOGRAPHED

BECKERDITE, BETTY ROSE, Winston-Salem, N. C.
 McEACHERN, BARBARA, Dillon, S. C.
 McLAUGHLIN, Mrs. CLAUDE, Red Springs, N. C.
 FOGLEMAN, HELEN LUCILLE, Fayetteville, N. C.
 BARNETTE, CELESTE, Miami, Fla.

FRESHMEN

TEW, MARY HELEN, Clinton, N. C.

THAMES, BETTY JO, Laurinburg, N. C.

THOMAS, LUCILLE, Maxton, N. C.

THROWER, MARGARET, Red Springs, N. C.

TOWNSEND, CAROLYN, Buies, N. C.

UNDERWOOD, DOROTHY, Gastonia, N. C.

WADDELL, BETTY, Fair Bluff, N. C.

WAGNER, KATHRYN, Lumberton, N. C.

WALKER, ALICE IDA, Greeleyville, S. C.

WALKER, DORIS, Currie, N. C.

WALKER, DOROTHY, Elkin, N. C.

WEATHINGTON, MARY FRANCES, Roseboro, N. C.

WEAVER, LILLIAN, Lansing, N. C.

YOUNGBLOOD, ANNE, Smithfield, N. C.

NOT PHOTOGRAPHED

BELL, ANNE JONES, Fayetteville, N. C.

COVINGTON, MRS. PRESTON, Red Springs, N. C.

DIXON, MRS. ROBERT B., Red Springs, N. C.

MCQUEEN, MARY.

WALLACE, MRS. BETTY JEAN, Red Spring, N. C.



Beauty . . . Freshman grandstand . . . A dip on the roof . . . They really have them on! . . . Aw, get up! . . . "You can ride til six, Nancy!" . . . Rare friendship . . . Well, Carolyn! . . . Stairsteps . . . Hen session.



Comfortable? . . . Right on front campus, too! . . . Don't do it, please! . . . In the dome . . . May day from the roof . . . Maneuver fever . . . Barker's Adolph . . . Isn't she precious? . . . Sunday afternoon . . . Where have you been, girls?



Music



“... Meanwhile thy spirit lifts its pinions
In music’s most serene dominions . . .”

—*Shelley.*



Conservatory
Graduates

FRANCES LIFRAGE

MARGARET TEABEAUT



BETTY KERR

KAY WALKER



BECKY MCKETHAN

FRANCES LOY



SAINT CECELIA MUSIC CLUB

The Saint Cecilia Music Club is composed of members of the Conservatory of Music. The purpose of this club is to develop and increase an appreciation for the lives and works of the great composers. Through the social aspect of the club the members are brought together for musical programs and evenings of genuine enjoyment.

VIRGINIA LEE
President

JO ANNE ATKINS
Vice President

BARBARA OGILVIE
Secretary and Treasurer



Membership in the Glee Club is by try-out. The Club appears in churches and on special occasions at the College.

GLEE CLUB

FRANCES LOY, *President*

BECKY MCKETHAN, *Vice President*

MIRIAM HURLEY, *Secretary*

MARJORIE POWELL, *Treasurer*

MR. EBERLE, *Director*

VIRGINIA LEE, *Accompanist*





COLLEGE SEXTETTE

The Sextette is one of the organizations on our campus of which we are very proud. These girls represent our school in various places during the school year. They are all students of the Conservatory.

BETTY KERR
CAROLYN MCKAY
REBECCA MCKETHAN
JO ANNE ATKINS
FRANCES LOY
FRANCES LIFRAGE

MISS CLARA BAILEY, *Director*

VIRGINIA LEE, *Accompanist*

Activities



THE 1944



McKethan



Wall



Stephens

The WHITE HEATHER is the annual publication of the students of Flora Macdonald College. The editor-in-chief and the business manager are elected by the student body from the rising senior class. The assistant editor and business manager are elected from the rising junior class, and the other staff members are appointed by the editor-in-chief and business manager. These members come from the various classes and organizations.

The student body has been most coöperative in making this volume of the WHITE HEATHER a reality, and we, the members of the staff, hope that in years to come this volume, through its pictures and paragraphs, may bring to you delightful memories of college life.

REBECCA MCKETHAN, *Editor*
MARGARET WALL, *Business Manager*
MARY HAMILTON STEPHENS, *Adviser*

WHITE HEATHER

TEENY HUGGINS, *Assistant Editor*

RACHEL THOMPSON, *Asst. Bus. Mgr.*

MARION SKINNER, *Senior Class Editor*

JUANITA TONTZ, *Junior Class Editor*

LUCY WATTS, *Sophomore Class Editor*

ZIBBIE MCNETT, *Freshman Class Ed.*

MARY BRITTEN, *Snapshot Editor*

BARBARA OGILVIE, *Snapshot Editor*

NANCY RAMSEUR, *Literary Editor*

MARGARET LEWIS, *Business Editor*

FRANCES LOY, *Typing Editor*

HARRIETTE MCGRAW, *Typing Editor*



Huggins
McNett

Thompson
Ramseur

Lewis
Britten

Skinner
Ogilvie

Tontz
Loy

Watts
McGraw

THE PINE AND THISTLE

The *Pine and Thistle*, campus literary and humor magazine, is published at intervals during the year. It is composed entirely of student writings—poetry, short stories, essays and book reviews. The editorial staff comes from the two literary societies, while the editor-in-chief and the business manager are elected by the student body.

The *Pine and Thistle* receives financial support from the student budget fee and from advertising under the supervision of the business staff.



BETTY KERR
Editor



ELEANOR NOBLES
Business Manager



DR. ESTHER LEE
Adviser



Meekins
Ogilvie

Stringer
Hall

McGraw
Estes
Marky

McLeod
Cox
Munroe

Shinn
Moore

Hudson
Jones

THE STAFF

NANCY MEEKINS, *Assistant Editor*
 MARY STRINGER, *Asst. Business Mgr.*
 HARRIETTE MCGRAW, *Exchange Editor*
 MARTHA MCLEOD, *Poetry Editor*
 PEGGY SHINN, *Art Editor*
 TEETA HUDSON, *Freshman Editor*
 BARBARA OGILVIE
Epsilon Chi Asso. Editor
 LIB HALL, *Epsilon Chi Asso. Editor*

BILLIE ESTES, *Epsilon Chi Asso. Editor*
 MAGGIE COX, *Zetesian Asso. Editor*
 WEYBURN MOORE
Zetesian Asso. Editor
 CARRIE LEE JONES
Zetesian Asso. Editor
 FRANCES MUNROE, *Typist*
 LIB MARKY, *Typist*
 DR. ESTHER LEE, *Adviser*



MARGARET TEABEAUT
President

STUDENT

The purpose of the Student Government Association of Flora Macdonald is to unite the students in an earnest and loyal effort to hold personal honor as the only true standard for efficient social living, to emphasize the importance of self-control, and to develop the sense of personal responsibility.

The president and the vice president are elected by the Student Body; the other members are elected by the organizations which they represent.

MARY JOHNSON, *Vice President of the Student Body*
 FRANCES LIFRAGE, *President of Senior Class*
 CATHERINE McDUFFIE
Secretary of Student Body, V. Pres. Senior Class
 CAROLYN MCKAY, *President of Junior Class*
 CATHERINE LYTTON, *Treas. Student Body, V. P. Junior Class*
 MARY GEE WILCOX, *President of Sophomore Class*
 GOLDIE KNOWLES, *President of Freshman Class*
 ANYCE KALLUM, *President of Christian Association*
 CAROLYN KURFEES, *President, Epsilon Chi Literary Society*
 MASON WORLEY, *President Zetesian Literary Society*
 YVONNE BAUCOM, *President of Day Students*
 DORIS BAXLEY, *President of Athletic Association*

GOVERNMENT



Johnson
Knowles

McDuffie
Kallam

Lytton
Kurfees

Lifrage
Worley

McKay
Baxley

Wilcox
Baucom



ANYCE KALLAM
President

THE FLORA MAC

The Flora Macdonald Christian Association seeks to promote growth in Christian faith, character, and fellowship. It also strives to influence the students to devote themselves in united effort with all Christians to making the will of Christ effective in human society. The Association endeavors to maintain a higher standard of friendship, a broader democratic spirit and a closer fellowship with Christ. The theme for the year has been: "Jesus shall go before us."

"Let no man despise his youth, but be thou an example of the believers, in work, in conversation, in charity, in spirit, in faith, in purity."

1 Timothy 4:12.

THE CABINET

Highway of Life Enrichment, Ester Mae Grier, Faye Maness
 Highway of World Fellowship, Martha McLeod
 Highway of Enlistment and Training, Mildred Sanders
 Highway of Learning: Sunday school, Evelyn Whisnant; Publicity, Mary Elizabeth Johnson
 Highway of Stewardship, Mary Catherine McCormick, Lucy Harrington
 Highway of Comradeship, Katie Mac Kirkpatrick
 Highway of Leisure Time, Social Activities: Nell Lancaster, Library: Betty Matheson
 President of Student Body, Peggy Teabeaut
 Chairman of Prayer Bands, Peggy Shinn

DONALD CHRISTIAN ASSOCIATION



Grier
Whisnant
Kirkpatrick

Maness
Johnson
Lancaster

Matheson

McLeod
McCormick
Teabeaut

Sanders
Harrington
Shinn



STUDENT VOLUNTEERS

“Not by might nor by power, but by my spirit, saith the Lord of hosts.”

The Student Volunteers are those girls who are interested in the work of missions in the home and foreign fields. Some of them are planning to give their lives in service to Him as missionaries.

PRAYER BAND LEADERS

"And we know that all things work together for good to them that love God." Romans 8:28.

Prayer Bands meet each Wednesday morning in groups of about fifteen for the purpose of prayer, inspiration, meditation, and devotion. This period each Wednesday is during the regular quiet hour. This has been found one of the best ways to meet the personal spiritual needs of many of the girls.

PEGGY SHINN, *Chairman*

Evelyn Collier	Lynda Bynum
Frances Elizabeth Cole	Nancy Meekins
Jocelyn Gordon	Barbara Ogilvie
Lucy Puckett	Vivian McInnis
Sara Cravan	Kathrine Finley
Frances Brockington	Frances Gore
Betty Barksdale	Amie Mae McDaniel





Kurfees



EPSILON CHI

OFFICERS

CAROLYN KURFEES
President

JANET TOMLINSON
First Vice President

LAURA BELLE BARKER
Second Vice President

BRYDIE GRANTHAM
Recording Secretary

KAY WALKER
Treasurer

BETTY BARRINGER
Corresponding Secretary

BILLIE ESTES
Censor

PEGGY SHINN
Critic

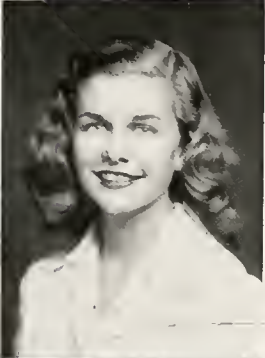
BETTY BARKSDALE
Chaplain

Tomlinson
Grantham
Barringer
Shinn

Barker
Walker
Estes
Barksdale



Worley



ZETESIAN

OFFICERS

MASON WORLEY

President

HELEN LITTLE

First Vice President

MARTHA LASSITER

Second Vice President

VIRGINIA LEE

Recording Secretary

JO ANNE ATKINS

Corresponding Secretary

FANNIE GREY WORLEY

Treasurer

JACKIE HERRING

Censor

FRANCES LOY

Critic

MIRIAM HURLEY

Chaplain



Little
Lee
Worley
Loy

Lassiter
Atkins
Herring
Hurley

MARSHALS
1944



MARY JOHNSON, Z. *Chief*



JO ANN ATKINS, Z



MIRIAM HURLEY, Z



MARY ELIZABETH JOHNSON, E. X.



KAY WALKER, E. X.



CAROLYN MCKAY, E. X.



WEYBURN MOORE, Z.



VIRGINIA LEE, Z.



CATHERINE LYTTON, E. X.

The Marshals, who represent the College in all public performances, are members of the Junior Class, chosen by popular vote by the Zeta-sian and Epsilon Chi societies. The Chief Marshal is selected alternately each year by the societies.

HELEN MORRISON
President



PEGGY SHINN
President

THE WILLIAM BARTRAM SCIENTIFIC SOCIETY

Membership in the William Bartram is awarded upon outstanding scholastic achievement in Mathematics and Science, and upon the recommendation of the club's faculty advisers: Dr. Stump and Mrs. King. This year the club has been studying the uses of sciences in the present-day world.

CAMERA CLUB

The Camera Club is made up of any members of the William Bartram Scientific Society interested in photography. Due to lack of materials this year the Camera Club has been somewhat restricted in its activity, but is working hard to get a developing program under way.



OFFICERS

HELEN MORRISON
President

MARY CATHERINE ROWE
Vice President

MARY CATHERINE MCCORMICK
Recording Secretary

MARY LEE BURNS
Corresponding Secretary

MILDRED STOWE
Treasurer



PEGGY SHINN
President

MURPHY McDONALD
Vice President



LUCY MITCHINER
President



MILDRED SANDERS
President

HOME ECONOMICS

The aim and purpose of the Home Economics Club is: to develop in the members a greater interest in and appreciation for all the phases of home economics; to learn more about the state and national organization and leaders in the field; to encourage a better standard of living on the campus; and to foster ideals and appreciation of home life.

THE MATHEMATICS CLUB

The Mathematics Club is composed of those members of the student body who have attained a high scholastic standing in some course in mathematics. It is the aim of the club to further interest in mathematics among the students, and to offer a means of fellowship to those interested in this field.



*President, LUCY MITCHNER
Vice President, ELLA LEWIS*

*MARTHA LASSITER
Secretary and Treasurer*



*MILDRED SANDERS
President*

*MARY ELIZABETH JOHNSON
Vice President*

*LUCY PUCKETT
Recording Secretary*

*ESTHER MAE GRIER
Corresponding Secretary*

*LAURA SHAW ATKINSON
Treasurer*



COMMERCIAL CLUB

Membership in the Commercial Club is open to all those who are in the Commercial department. It is organized for the purpose of giving the members an opportunity to discuss problems and changing trends in the business world.

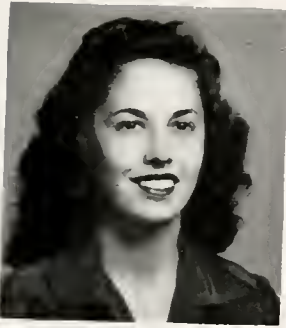
President, CELESTE BARNETT

Vice President, BEATRICE CAMPEN

Secretary-Treasurer, JULIETTE DAVIS



Celeste Barnett



Marion Skinner

DRAMATICS CLUB

President, MARION SKINNER

Vice President, REBECCA MCKETHAN

Secretary-Treasurer, SARA JEAN AUSTIN

The aim of the Dramatics Club is to increase knowledge and appreciation of the art of drama. Membership, although limited, is open to those girls interested and talented in dramatics. Under the able supervision of its faculty adviser, Miss Lois Lambie, and aided by its officers, the club endeavors to present at least one three-act play or three one-act plays annually.



Yvonne Baucom

DAY STUDENTS

This year there are twenty-three Day Students, and of that number many are freshmen who enter into the activities and organizations of the College with great enthusiasm.

The Day Student Body is composed of a friendly group, outstanding in scholarship and initiative. The president is a member of the Council.

President, YVONNE BAUCOM

Vice President, JOHNNIE AUTREY

Secretary and Treasurer, DOROTHY SHOOK

Faculty Adviser, MISS MARY CONOLY



GRANDDAUGHTERS
CLUB



VIRGINIA CLUB



FLORIDA CLUB



SOUTH CAROLINA
CLUB



L'ALLIANCE FRANCAISE

L'Alliance Francaise was organized to develop a greater proficiency in and enjoyment of the living French language. It emphasizes conversational French through the use of French games and songs and the production of French plays. This club endeavors to give its members a deep appreciation of what French civilization, culture and literature have meant to the world.



Lucy Harrington

OFFICERS

President, LUCY HARRINGTON

Vice President, NANCY MEEKINS

Secretary, MARGARET WAYNE

Sports



ATHLETIC ASSOCIATION

DORIS BAXLEY, *President*

JANE LATHAM, *Vice President*

NELL LANCASTER, *Secretary*

FANNIE GREY WORLEY, *Treasurer*

SUZANNE HURT, *Freshman Representative*

VIVIAN MCINNIS, *Salesman*



MARION SKINNER
Senior

DOT CLARK
Junior

FRANCES MUNROE
Sophomore

JULIA TAYLOR
Freshman

CHEER LEADERS



HEADS OF SPORTS

- Basketball—NANCY ELLIS
- Hockey—LAURA BELL BARKER
- Tennis—KATHERINE FINLEY
- Ping Pong—SARAH BRITTON
- Horseshoes—LUCY HARRINGTON
- Archery—WEYBURN MOORE
- Hiking—MILDRED SANDERS

College Cheer Leader—JACKIE HERRING

THE MONOGRAM CLUB

This club is composed of those students who are outstanding not only in athletics but in other activities of the college. The primary requirements for membership are: an excellent scholastic record, good sportsmanship, good health, and to have obtained at least twenty points in the college point system for leadership in student activities.

Seniors and Juniors, on meeting these requirements, are given for five hundred points a monogram, and for one thousand points a monogram and a star.

Laura Belle Barker, Margaret Teabeaut, Margaret Lewis, Nancy Ellis, Doris Baxley, Jane Latham, Juanita Tontz, Fannie Grey Worley, Frances Helms, Lucy Mitchner.



SENIOR
HOCKEY
TEAM



Laura Belle Barker

LAURA BELLE BARKER, *Captain*

Mildred Stowe	Helen Morrison
Peggy Teabeaut	Lucy Mitchener
Doris Baxley	Anyce Kallan
Frances Helms	Jocelyn Gordan
Margaret Lewis	Eleanor Nobles
Nancy Ellis	Carolyn Parrot
Peggy Wall	Janet Tomlinson
Harriette McGraw	

SCORES

Seniors	2	Sophomores	1
Seniors	2	Freshman	2
Seniors	1	Juniors	0

JUNIOR HOCKEY TEAM

Murphy McDonald
Captain

Betty Barringer

Marguerite Gaskin

Pam Goodwill

Louise Knight

Jane Latham

Mary Catherine McCormick

Virginia Mussellwhite

Martha Pence

Evelyn Whisnant

Fannie Grey Worley

Juanita Tontz

SCORES

Juniors	3	Freshmen	1
Juniors	4	Sophomores	2
Juniors	0	Seniors	1



Murphy McDonald





SOPHOMORE HOCKEY TEAM

Mary Adams	Betty Barksdale
Jane Brown	Ester Mae Grier
Julia Lee Brown	Virginia Stevenson
Mittie Bell Boggan	Lucy Watts
Mary Lib Leach	Vivian McInnis
Carlisle Hoyt	<i>Captain</i>
Nell Lancaster	



Vivian McInnis

SCORES

Sophomores	1	Seniors	2
Sophomores	2	Juniors	5
Sophomores	2	Freshmen	2

FRESHMEN HOCKEY TEAM

Margaret Harris
Captain

Irene Baldwin	Ethel Lee Pursley
Frances Barker	Janet Rhyne
Colleen Broadway	Clara Spivy
Susan Hurt	Lillian Weaver
Goldie Knowles	Emily Cox
Evelyn Lytton	Betty Jo Davis
Nancy Hurt	

SCORES

Freshmen	1	Juniors	3
Freshmen	2	Seniors	2
Freshmen	2	Sophomores	2



Margaret Harris



SENIOR BASKETBALL



Laura Bell Barker

Laura Bell Barker
Captain

Margaret Lewis

Peggy Wall

Lucy Mitchiner

Ella Lewis

Doris Baxley

Becky McKethan

Nancy Ellis

Frances Helms

Brydie Grantham

Helen Morrison

JUNIOR BASKETBALL

Evelyn Whisnant
Captain

Fanny Grey Worley	Louise Knight
Virginia Musselwhite	Murphy Macdonald
Janet Tomlinson	Mary Catherine McCormick
Mary Britten	Mary Lee Burns
Juanita Tonz	Jane Latham
Martha Pence	Carolyn McKoy



Evelyn Whisnant





SOPHOMORE BASKETBALL

Jane Brown
Captain
Nell Lancaster
Sara Currie
Carlisle Hoyt
Roxanna Hambright
Bobby Terrell
Julia Lee Brown
Lucy Watts
Virginia Stevenson
Vivian McInnis
Mittie Bell Boggan



Jane Brown

FRESHMEN BASKETBALL

Lillian Weaver

Captain

Frances Comer
Ethel Lee Pursley
Ruth Kenny
Peggy Harris
Clara Spivey
Florine McMillan
Lucille Thomas
Emily Cox
Suzanne Hurt
Sue Parrish
Evelyn Lytton
Nancy Hurt
Virginia Askew
Goldie Knowles
June Allen
Eugenia Quinn
Sallie Gayle Newman
Mary Helen Tew

Doris Walker
Irene Baldwin
Frances Barker
Vivian McQueen
Frances Pendley
Mary Jordan Gay
Dorothy Rhodes
Wanda Macdonald
Ella Erwin
Sara Catherine McNeill
Anne Youngblood
Mary McInnis
Margaret Thrower
Frances Carr
Betty Lynn Holliday
Anne McPhatter
Estelle McGoogan
Sarah Spence



Lillian Weaver



TENNIS



Holliday

Davis
Ramseur

Finley
McKay

Ellis
Merritt

Lewis
Knowles

Tennis is a favorite year-round sport at Flora Macdonald. Many enthusiastic players participated in the Fall and Spring Tournaments.

ARCHERY

Archery is becoming more and more a favorite outdoor sport at Flora Macdonald. On any pretty afternoon, one may see a group of girls displaying their skill. Although there are no Robin Hoods in the class, they try to make a perfect score.

Niblock

Currie

Barksdale

Meekins



Features





Miss Nell Lancaster

Personality



Miss Anyce Kallam
Friendliness



Miss Frances Lifrage
Capability



Miss Jackie Herring
Sportsmanship



Miss Rebecca McKethan

Versatility



Miss Juanita Contz
Beauty



MARGARET LEWIS
May Queen

MAY DAY . . .

A RUSSIAN TOY SHOP (By LOUIS H. CHALIF)

In the Russian Toy Shop of our story there are many marvels in mechanical toys and dolls. Most marvelous of all are a pair of dancing dolls who perform beautifully together as partners. A father, mother and daughter come into the shop to choose a doll for the little girl. The shopkeeper shows them all his other beautiful specimens. Unsatisfied, they turn to leave without making the purchase. At this, the shopkeeper asks them to wait, and then produces his favorite dolls. With ecstatic delight the little girl beholds the dolls dance. She cannot hope to own both.

Britten

Kenney

Thompson



Flora Macdonald

so the girl doll is her choice. "Ah," pleads the shop-keeper, "do take both! They were made for each other — they should not be separated." Only the girl is bought, however; and as she is taken away, the boy collapses with grief, and all efforts to straighten him out are unavailing.

Very soon the lady and her daughter come back with the girl doll, who has broken down also. The shop-keeper tells them that these dolls have been too well made — too nearly like living creatures; and that their hearts have been broken by the separation. The lady agrees to buy them both, to be sent to her home next day. At this, the dolls are found to be in perfect order again and able to dance as beautifully as before.

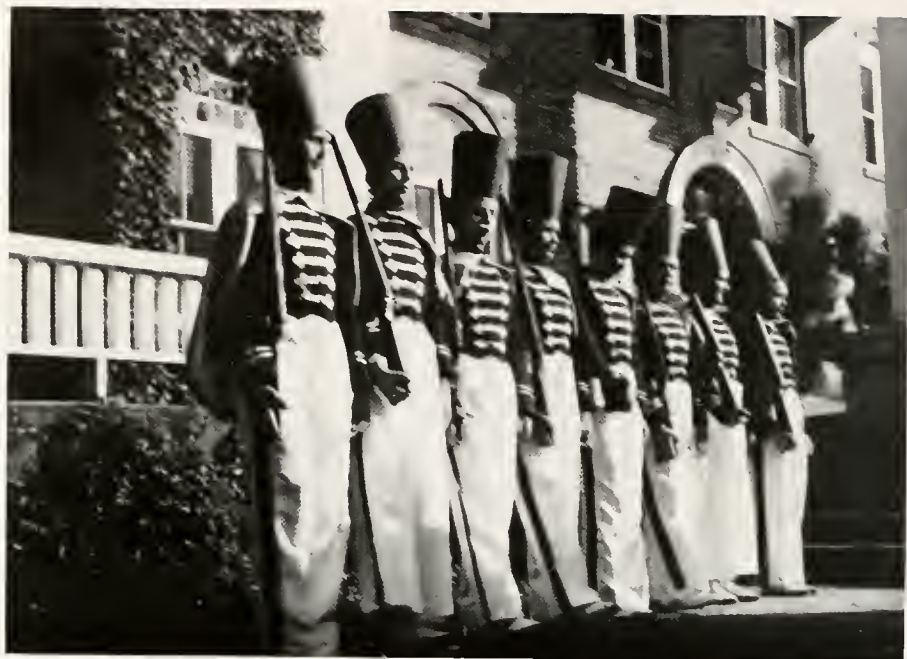


PEGGY WALL
Maid-of-Honor

McKethan Tontz Wall Lewis Britten Skinner McDuffie Davis Wilcox
Patricia Lewis Donald McLamb Anna Belle Ray



MAY DAY



Tin Soldiers



The Court



1944

CHARACTERS

The Shopkeeper Pamala Goodwill

The Customers Father—Katherine Finley
 Mother—Mary Lee Burns
 Daughter—Ann McPhatter

The Fairy Dolls Girl—Weyburn Moore
 Boy—Marjorie Powell

The Shopkeepers
 Assistants Margaret Brockinton
 Helen Gaitley
 Doris Walker
 Evelyn Collier
 Mary Catherine McCormick
 Virginia Musselwhite



Highland fling



Ballerina

Figurines



M. M. SMITH STORAGE WAREHOUSE

BONDED FIREPROOF WAREHOUSES

Local and Long Distance Hauling



M. M. SMITH FURNITURE CO.

FURNITURE FOR EVERY HOME

Wholesale and Retail

325 Hay Street

Fayetteville, North Carolina

RED SPRINGS SUPPLY COMPANY, Inc.

GENERAL MERCHANTS



Fertilizers and Cotton

Livestock

Hardware

Grocery

Market



Dial 3701

RED SPRINGS, NORTH CAROLINA

Compliments of
Huggins Shoe Shop
Red Springs, N. C.

If It's Good to Eat We Have it—
GROCERIES : MEATS
FISH
F. B. Thrower's Market
Dial 3831

Compliments of
**McKEITHAN
HARDWARE**
RED SPRINGS, N. C.

*Congratulations
to the
White Heather Staff*
**BELK-HENSDALE
COMPANY**
Fayetteville, N. C.

Remember: "You always save
at Belk's"

Make Our Store Your
Headquarters
When in Fayetteville

WE APPRECIATE
SERVING
YOU

●
GRAHAM'S

RED SPRINGS, N. C.

City Optical Company

Wilmington - Fayetteville
and Greensboro, N. C.

H. M. SMITH, Mgr. TELEPHONE 2357

Compliments of
**SOUTHERN FRUIT
COMPANY**
CHARLOTTE, N. C.

McNEILL'S
Cleaners : Tailors

Dependable Service Since 1928
RED SPRINGS and RAEFORD, N. C.



**"It's
right on
the
beam"**

"Hi. Recognize me? I'm one of your crowd. You see, I speak for Coca-Cola, and its abbreviation 'Coke'. I speak for both. They mean the same thing. The gang say I look just like 'Coke' tastes. And you won't get that delicious and refreshing taste this side of Coca-Cola. There's no comparison."

BOTTLED UNDER AUTHORITY OF THE COCA-COLA CO. BY
FAYETTEVILLE COCA-COLA BOTTLING CO., INC.

Travel Luxuriously
...Yet Economically

**FAST BUT
SAFE**

●
Queen City
Trailways

College Girls!

Shop at

SEARS

and Save

★

**Buy War Bonds
and
Stamps**

★

**SEARS ROEBUCK
& COMPANY**

Fayetteville, N. C.

Phone 6171 420 Hoy Street

Efird's
DEPARTMENT STORE

Fayetteville, N. C.

PRETTY as a PICTURE

that's the kind of "whispering
campaign" you'll start when you
wear your lovely new clothes

from

MONTALDO'S

Greensboro, N. C.

Compliments of
SANDLIN & CO., Inc.

Wholesale Grocers

FAYETTEVILLE, N. C.

**MACK'S 5, 10, and 25c
STORES**

The Friendly Place

Red Springs, N. C.

A WELCOME

Always Awaits
the
Faculty and Students

at

**B. C. MOORE
& SONS**

RED SPRINGS, N. C.

Compliments of
**THE CAPITOL
Department Store**



FAYETTEVILLE, N. C.
We Invite Your Patronage

Insist on . . .

LANCE'S
PEANUT BUTTER SANDWICHES
and CANDIES

Always Fresh - Always Delicious

• There is a close relationship between the athlete's physical perfection and his diet. The Olympic Stars at Los Angeles in 1932 averaged one serving of Ice Cream each day . . . or five times as much as the average American.

• Be sure to include plenty of Southern Dairies Ice Cream in your diet, for it is especially rich in the food elements that build healthy bodies.



Compliments of

**FLEISHMAN'S
BIG STORE**

FAYETTEVILLE, N. C.

**You Will Be Pleased
with Our Quality
and Service**



**RED SPRINGS
DRUG STORE**

*Headquarters for
Flora Macdonald Girls*

RED SPRINGS, N. C.

FLORA MACDONALD COLLEGE

RED SPRINGS, N. C.

A SENIOR COLLEGE FOR WOMEN

Near Fayetteville, Southern Pines and Pinehurst. Delightful climate, healthful mineral springs and remarkable health record. Bus and Railway connections.

A Standard Senior Grade A College for Women. Strong faculty. Graduates accepted for graduate work by leading universities. Class A teacher's certificates. Homelike atmosphere. Personal attention to students by teachers. Courses offered: Bachelor of Arts, Bachelor of Music, Bachelor of Science (Home Economics) degrees. A Secretarial Course.

Athletics. Skillful physical director and coach has general supervision of sports and physical training. Archery, basketball, hockey, swimming, tennis, hiking, etc., are enjoyed in season.

Social activities. Receptions, teas, and many other social functions are provided at the college, while many hospitable and delightful homes of the citizens of Red Springs are open to the students.

Wide patronage. Patronized at present by eleven states and four foreign countries. Four thousand alumnae are dietitians, home demonstration agents, social workers, missionaries, and in many other useful professions.

MODERATE CHARGES : FOR CATALOGUE WRITE

HENRY C. BEDINGER, *President*

FLORA MACDONALD COLLEGE : Red Springs, N. C.

USE
MERITA

BREAD and CAKES



**AMERICAN
BAKERIES COMPANY**

FAYETTEVILLE, N. C.

HUNTER BROTHERS

(Incorporated)

ELECTRICAL MERCHANDIZING

RADIO - REFRIGERATORS - GIFTS

CHINA - GLASSWARE

FAYETTEVILLE, N. C.

D. M. McMILLAN

"Ford Products Since 1912"

RED SPRINGS, N. C.

Compliments of

Bender's Drug Store

A Real Drug Store

201 Hoy St. : Fayetteville, N. C.

**Anne Green's
Permanent Wave Shoppe**

We Serve You to Serve Again

RED SPRINGS, N. C.

BEN FRANKLIN STORE

5, 10, \$1.00 and Up

Home Owned Five and Ten

Red Springs, N. C.

Compliments of

**THE
FAYETTEVILLE
OBSERVER**

The . . .

SCOTTISH BANK

LUMBERTON - PEMBROKE

RED SPRINGS

ST. PAULS - GARLAND

Member

Federal Deposit Insurance Corporation

TOWNSEND'S PHARMACY

THE REXALL STORE



WE CARRY A COMPLETE LINE OF THE
COLLEGE GIRL'S NEEDS

Dependable Druggists : Let Us Serve You

Meet Your Friends at Our Fountain



RED SPRINGS : NORTH CAROLINA

Gold Medal Fertilizers
Liberty Premium Fertilizers
Modern Gin System
Modern Seed Cleaning Equipment

**Liberty Manufacturing
Company**

Red Springs, N. C.

Compliments of

**TOWN
OF
RED SPRINGS**
NORTH CAROLINA

SPRING SIDE DAIRY

GRADE A MILK
CREAM

Phone 2431

**MAXTON OIL &
FERTILIZER CO.**



Maxton, North Carolina

Perkinson's
Jewelers

*It Costs No More, Often Less,
To Shop at a Quality Store*

Compliments of

Western Auto Store

Boatwright Chevrolet Co.

RED SPRINGS, N. C.

**RED SPRINGS
THEATRE**

It is the policy of this theatre
to provide the best pitures
obtainable especially for our
Flora Macdonald patrons.



Pleasure by the Hour

Compliments of a Friend

Official Photographer
for
THE WHITE HEATHER
SIDDELL STUDIO



CAROLINA'S PORTRAIT PHOTOGRAPHERS
and
PIONEER PHOTO-FINISHERS



126½ Fayetteville Street
Raleigh, North Carolina



CHARLOTTE ENGRAVING CO.

School Annual Engravers

Charlotte, North Carolina



BUILDERS DREAMS

VISIONS created by the imagination precede the achievement of any really great accomplishment. The ability to weave the threads of imagination into the finished fabric is equally important.

It has been the privilege of the EDWARDS & BROUGHTON COMPANY to cooperate with the staff in creating their vision into material form.

Such coöperation is one of the "visions" which precede the building of a successful business, and is a part of the working policy of the EDWARDS & BROUGHTON COMPANY.

To those Staffs desiring complete co-operation, we offer unexcelled service

You, too, may be proud of your annual.

Correspondence is Invited

EDWARDS & BROUGHTON CO.
RALEIGH, NORTH CAROLINA

AUTOGRAPHS

AUTOGRAPHS

AUTOGRAPHS



Mildred Sanders

Weyburn Moore
Barbara Mc Kay

"Kauf" Ritter
Betty Matheson

Kit Finley

Sam Goodwill
Connie Tomlinson

Colette Thompson

Jeanie Jouty

Jannie Grey Harley
Dorothy Whismant
Dot Clark

"Jeannie" Higgins
Nell Bowden

Evelyn Collier
Lorraine

Fatie Mae Hepaticke
Virginia Musserwhite

Virginia Lee
Marian Sherley

Mary Lee Johnson
Mary Lee Johnson

Mary Niblock

Si Anne Atkins
Louise Knight

Murphy Macdonald

Mary Lee Burns
New Orleans

Alma Lawson
Carrie Lee Jones
Dorothy Fennell

"cat" Bygones

Martha

Peggy Shum

Ruth Bennett

Barb Cannon

Kitty Usher

Jane Graham Mc Kay

Novella Park

Frances Bove

Mary Stringer

Peggy Wall
Cathy Rowe
Laura Belle Barker
Martha Lassiter
Bessy McKethan
"Thonie" Skinner
Catherine McKuffie
Lucy Harrington
Margaret Lewis
Nancy Ellis
Nancy Ramsey
Frances Ziegler

Imogene Baucom
Lottie McGraw
Yvonne Baucom
Lucy Peckard
Martha McLeod
Frances Helms
Betty Kerr
Donis Bailey
Mary Lee Cox
Annye Kellom
Peggy Teabeaut
Bridie Grantham
"Maggie" Cox
Mary Lee Hughes
Frances Ziegler

Jocelyn Gordon
Lucy Mitchener
Frances Elizabeth Cole
Helen Blacklock
Flora Mae Kelly
Mason Morley
Helen Morrison
Mary Elizabeth Clay
Carolyn Hurpees
Mildred Mason

