

White Heather  
1946











*the  
White Heather*



*of 1946*

BILLIE ESTES  
*Editor-in-Chief*

MARY LOIS WILKERSON  
*Business Manager*



---

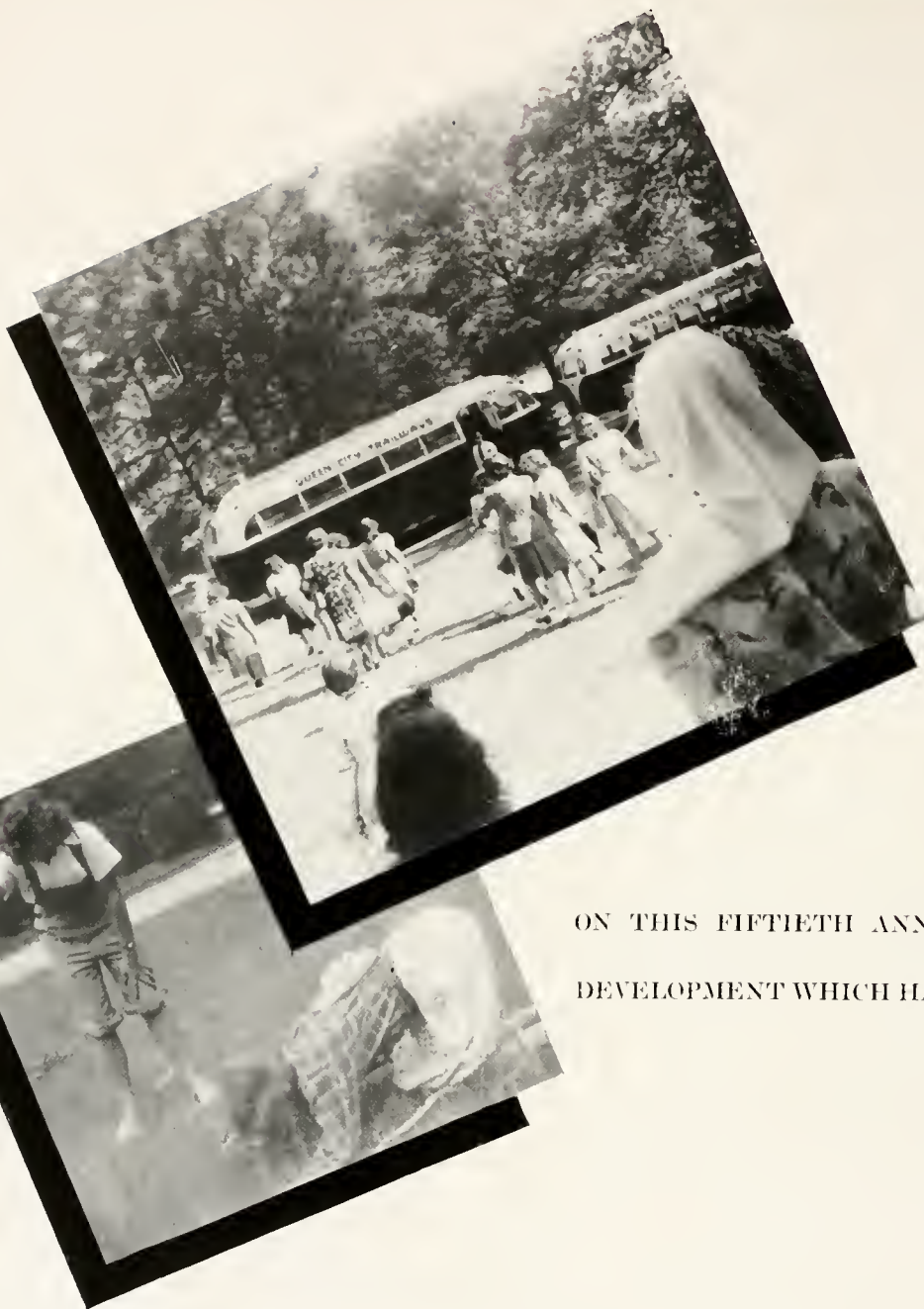
# The White Heather of 1946

*Published by the Students*



of the Flora Macdonald College





*#lora*

ON THIS FIFTIETH ANNIVERSARY OF OUR  
DEVELOPMENT WHICH HAS BEEN ACHIEVED.

---

**In this Book** CLASSES . . . ATHLETICS . . .

# Macdonald....1946

IN PRESENTING THE 1946 WHITE HEATHER we bring to you, Flora Macdonald, a record of our life together.

May these pictures and words serve as a guide for our thoughts now and in years to come, filling our hearts with happy memories.

ALMA MATER WE ARE REMINDED OF THE SUCCESS AND  
WE WISH FOR HER MANY MORE YEARS OF SUCCESS.



ACTIVITIES . . . FEATURES



" To Dr. Charles Graves Vardell, we Dedicate

WITH A FEELING OF FONDNESS AND APPRECIATION WE DEDICATE THIS, OUR RECORD

OF TREASURED TIMES, TO

DR. CHARLES GRAVES VARDELL



*this Book "*



# Fiftieth Anniversary

WHEN NEED IS FELT, man strives to supply it. In 1896, there was a definite need in southeastern North Carolina for a college for women.

Flora Macdonald College, under the name of the Red Springs Seminary, was founded in 1896 by Fayetteville Presbytery. Later Orange and Wilmington Presbyteries united with Fayetteville in the ownership and control of the college.

The town of Red Springs was chosen because it was well located and noted for its healthy climate and beauty of surroundings.

The choice of a leader for this great undertaking was a most fortunate one. Dr. Charles G. Vardell, a young Presbyterian minister of vision, forceful character, and tire-





# 1946 of Flora Macdonald

less zeal, became the founder and first president. During the thirty-four years of his presidency the college grew from one small building with few students to eight buildings and an average yearly enrollment of about three hundred. Dr. Vardell resigned in 1930 and Dr. Henry G. Bedinger was called to succeed him.

The name was changed in 1903 to that of the Southern Presbyterian College and Conservatory of Music and again in 1914 to that of Flora Macdonald. This latter name was given to honor the Scottish heroine, Flora Macdonald, who had lived for five years in this section of North Carolina.

In the fifty years of her history, Flora Macdonald College has sent out graduates well equipped to fill important places in life. Her place is well assured and her future bright with prospects of greater usefulness.



# Administration



*President*

HENRY GRAYBILL BEDINGER  
B.A., B.D., D.D.

## Deans



HAZEL MORRISON, B.A.  
*Dean of Faculty and  
Registrar*



MARY HAMILTON STEPHENS  
B.A., M.A.  
*Dean of Students*



ROBERT REUTER, M.Mus.  
*Dean of Conservatory*



# Faculty

(In order of appointment)

HENRY GRAYBILL BEDINGER, B.A., B.D.,  
D.D., *President*

CHARLES GRAVES VARDELL, B.A., D.D.,  
*President Emeritus*

LINDA L. VARDELL, *Dean Emeritus of the  
Consercratory of Music*

HAZEL MORRISON, B.A., *Dean of the  
Faculty*

ROBERT REUTER, B.A., M.Mus., *Dean of  
the Consercratory*

MARY HAMILTON STEPHENS, B.A., M.A.,  
*Dean of Women and Professor of French*

MARY MACLEAN CONOLY, B.A., B.S.,  
M.A., *Professor of Education*

HARRIET N. MORRISON, B.A., M.A., *Pro-  
fessor of Latin*

LILLIAN FARQUHAR ROBESON, *Professor of  
Violin*

JANE COLSON GLENN, B.S., G.Ph., M.S.,  
*Professor of Chemistry and Physics*

*Top: Moffett, Neighbors, McPhaul, Robertson.  
Bottom: Boney, Chew, Mullinnix.*



# Faculty

LIDA LAW CHAPMAN, B.A., B.M., *Professor of Piano and Organ*

ELIZABETH CLARKE MCPHAUL, B.A., *Associate Professor of Bible*

GENEVIEVE MACMILLAN NEIGHBORS, B.A., M.A., *Associate Professor of Education and Social Science*

ETHEL BATEMAN, B.A., M.A., *Professor of Physical Education and Health*

ALEXANDER BELL STUMP, B.S., M.S., Ph.D., *Professor of Biology and Bacteriology*

FRANCES ELIZABETH CONER, B.S., M.S., *Professor of Home Economics*

ANNIE MOORE CHERRY, B.A., M.A., *Professor of Education*

LETA WELTHA MCINTYRE, B.S., *Professor of Business Subjects*

NATALIE CRAWFORD MOFFETT, B.A., *Professor of Bible*

LOIS J. LAMBIE, B.M., M.A., *Professor of Public School Music*

CLARA TARRANT BAILEY, B.A., B.S., *Professor of Voice*

CAROL ROBERTSON, B.A., M.A., *Professor of History*

*Top: Stump, Wray.  
Center: Conoly, Comer, Cherry, Payne.  
Bottom: Barrow, Council, Connor, Morrison.*





# Faculty

KATE MACLEAN STEWART, B.A., *Instructor of Business Subjects*

JOE W. WRAY, B.S., M.S., *Professor of Mathematics*

VIRGINIA BONEY, B.A., M.A., *Associate Professor of English*

JEANNE MAURER CHEW, B.A., *Professor of French and Spanish*

LUCILLE BRADBRIDGE DAVIS, B.S., *Associate Professor of Voice and Piano*

AILEEN McMILLAN, B.M., *Associate Professor of Piano*

LAVINIA L. MULLINNIX, B.S., *Associate Professor of Biology*

LYCIA M. PAYNE, B.S., M.A., *Professor of Home Economics*

HELEN HARRIET SALLS, B.A., M.A., *Professor of English*

ELIZABETH STENHOUSE, B.L., *Associate Professor of Business Subjects*

VIRGINIA BARROW, B.S., M.S., *Dictitian*

VIRGINIA CONNOR, R.N.

BROWN MORRISON, B.L., *Bursar*

JANE COUNCIL, B.A., *Librarian*

*Top: Bateman, Davis, McMillan.  
Center: Bailey, Robeson, Lambie.  
Bottom: Stewart, Morrison, McIntyre, Stenhouse,  
Gaitley.*





---

"Here we are





Divided "



## Officers

MARY GEE WILLCOX, *President*

SARAH BRITTON, *Vice President*

FLETA HARRELSON, *Secretary*

FRANCES GILLIS, *Treasurer*

ANN SHAW, *Tea Room Manager*

KATHRYN McINNIS, *Assistant Tea Room Manager*

MRS. JANE COLSON GLENN, *Adviser*

KAY EPTON, *Mascot*



**T**HE SENIOR CLASS of 1946 considers it an honor to be graduated in the semicentennial year of the history of Flora Macdonald. Nineteen forty-six is a stepping stone in the life of the college. It is likewise a momentous year in the lives of the members of the senior class.

The college has rendered a great service for the past fifty years and shall continue to grow in usefulness in the next half-century. The girls in the class of 1946 have done outstanding work during their four years at Flora Macdonald. They give promise of reaching an even higher plane of service as they enter upon life's work. They have received superior instruction in the great fields of knowledge and the most careful guidance in Christian living.



**Seniors**

**1946**

MARY ELIZABETH ADAMS, B.A.  
*Science and Math*  
 Kannapolis, N. C.

Zetesian Literary Society, Corresponding Secretary 3, First Vice President 4; William Bartram Scientific Society 1, 2; Mathematics Club 2; International Relations Club 3, 4, Vice President 3, 4; Hockey Team 1, 2, 3, 4, Captain 3, 4, Varsity 3; Class Secretary 3; Senior Editor WHITE HEATHER 4.

*"I, B." . . . petite . . . hair bands . . . bobbing curls . . . independent . . . hockey . . . frank . . . politician . . . unpredictable.*

CATHERINE HURLEY ANTHONY, B.S.  
*Home Economics*  
 Wilson, N. C.

Zetesian Literary Society, Second Vice President 4; Home Economics Club 1, 2, 3, 4; Tea Room Manager 3; Fire Chief 3; Atlantic Christian College Summer School.

*Marines . . . "Rusty" . . . cake bottles . . . talkative . . . individuality . . . frills . . . blouses.*

LAURA SHAW ATKINSON, B.A.  
*Mathematics and French*  
 Fairmont, N. C.

Zetesian Literary Society, Treasurer 3; Mathematics Club 1, 2, 3, 4, Treasurer 2, Secretary 3, President 4; William Bartram Scientific Society 1, 2, 3, 4; L'Alliance Francaise 2, 3, 4, Secretary 3; Mission Study Leader 2; Prayer Band Leader 3; Archery 2, 3; Athletic Board 1; St. Cecelia Music Club 2, 4; International Relations Club 3, 4; Secretary Christian Association 1; *Who's Who Among Students in American Colleges and Universities* 4.

*Dependable . . . quiet dignity . . . math . . . cabinet . . . understanding . . . "How many for breakfast?"*

SARA JEAN AUSTIN, B.A.  
*Social Science and Bible*  
 Albemarle, N. C.

Epsilon Chi Literary Society; Highland Players 1, 2, 3, 4, Secretary 2, President 4; International Relations Club 3, 4; Epsilon Chi Critic 4; Feature Editor *Pine and Thistle* 3; Literary Editor WHITE HEATHER 4; Senior Class Cheer Leader.

*"Pete" . . . bracelets . . . high heels . . . dramatic . . . barette . . . infectious laughs . . . humming . . . ballet . . . dark lip stick.*

ISABEL FIELDS BAILEY, B.A.  
*English and French*  
 Carthage, N. C.

Zetesian Literary Society; Montreal College 1, 2; High Point Summer School 3; L'Alliance Francaise 3, 4; Highland Players 3, 4; Student Volunteers 3, 4, Secretary 4; Basketball 3, 4, Captain 4; Hockey Team 1.

*"Miss Salls" . . . friendly . . . unobtrusive . . . "McKinnons" . . . genuine . . . practical.*

ELEANOR WILKERSON BOYD, B.M.  
*Public School Music*  
 Durham, N. C.

Epsilon Chi Literary Society; Woman's College 1, 2; Glee Club 3, 4; St. Cecelia Music Club 3, 4; Volley Ball 3; Basketball 3.

*"Duke" . . . summer school . . . hikes . . . care free . . . checks and plaids.*



the 1946 White Heather

## Seniors

---





SARAH VIRGINIA BRITTON, B.A.  
*Math, Social Science, Bible*  
 Whiteville, N. C.

Epsilon Chi; Math Club 1, 2, 3, 4; President 3; William Bartram 1, 2, 3, 4; I.R.C. 1, 2, 3, 4; Camera Club 1, 2, 3, 4; Granddaughter's Club 1, 2, 3, 4; May Court 2; Athletic Board 2; Student Council 3, 4; Vice President Class 3, 4; Treasurer Student Body 3; Secretary 4.

*"Krahuke" . . . wedding bells . . . moody . . . conscientious . . . "P. O." . . . Luke Waccamaw . . . sport clothes . . . "I know mother would understand."*

FRANCES DAVIS BROCKINTON, B.A.  
*Primary Methods*  
 Kingstree, S. C.

Zetesian; S. C. Club 1, 2, 3, 4; William Bartram 1, 2, 3, 4; Mathematics Club 1, 2, 3, 4; Prayer Band Leader 2, 3, 4; Student Volunteers 1, 2, 3, 4; Secretary 4.

*Squaking rocker . . . unselfish . . . comely . . . southern accent . . . twin . . . canned heat . . . South Carolina . . . quiet . . . neat.*

JANE BAXTER BROWN, B.S.  
*Home Economics*  
 Montvale, Va.

Zetesian, Second Vice President 3; Home Economics Club 1, 2, 3, 4; William Bartram 3, 4; I.R.C. 3, 4; Monogram Club 4; Virginia Club 1, 2, 3, 4; Basketball Team 1, 2, 3, 4; Sportsman's Superlative 3, 4; Christian Association Cabinet 4; Prayer Band Leader 3; Student Volunteers 3, 4; *Pine and Thistle* Staff 4.

*"Ya." . . . sportsmanship . . . a mind of her own . . . "Dick" . . . unaffected . . . sincere . . . helpful.*

JULIA LEE BROWN  
*Mathematics and Social Science*  
 Myrtle Beach, S. C.

Zetesian; Math Club 2, 3, 4; Treasurer 3; Social Chairman 4; Camera Club 3; L'Alliance Francaise 2; I.R.C. 3, 4; Hockey Team 1, 2, 3, 4; Baseball 1, 2; College Marshal 3; U.N.C. Summer School 3.

*"Cal" . . . Myrtle Beach . . . Practice teaching . . . inquisitive . . . candy . . . poise.*

LINDA VINES BYNUM, B.A.  
*Social Science, English, and French*  
 Pinetops, N. C.

Epsilon Chi, Secretary 4; William Bartram 2, 3, 4; Treasurer 3; L'Alliance Francaise 2, 3, 4; Vice President 4; I.R.C. 3, 4; Program Committee 3, 4; Corresponding Secretary 4; Prayer Band Leader 2, 3, 4; *Pine and Thistle* Staff 4.

*Loyal . . . gentle . . . thorough . . . composed . . . even tempered.*

FRANCES PAULINE CALDWELL, B.S.  
*Home Economics*  
 Carthage, N. C.

Epsilon Chi Literary Society; Mars Hill College 1; Woman's College, University of North Carolina 2; Home Economics Club 3, 4; William Bartram Scientific Society 4.

*Lookie . . . "well done" . . . W. C. . . "and so forth" . . . conscientious . . . "my folks" . . . serious.*



the 1946 White Heather

## Seniors

---



MRS. BETTY ROGERS COOK, B.M.  
*Voice and Public School Music*  
 Whiteville, N. C.

Epsilon, First Vice President 4; Glee Club 1, 2, 3, 4, President 4; Music Club 1, 2, 3, 4; Class President 3; Student Council 3; Chief Marshal 3; May Court 3; *Who's Who Among Students in American Colleges and Universities* 3; College Cheer Leader 4.

"Lyn" . . . charming . . . Beethoven . . . reserved  
 . . . kind . . . true lover of music.

HAZEL LEONA COUSINS, B.A.  
*Bible and Social Science*  
 Enfield, N. C.

Zetesian; Woman's College University of North Carolina 1, Representative to Wesley Foundation Council 1, Prayer Band Leader 3, 4; William Bartram Scientific Society 3, 4; Camera Club 3, 4; Head Volley Ball 3, 1; *Pine and Thistle* Staff 3, 4; President Methodist Students 4.

Conference . . . dramatic . . . positive . . . "Moffett"  
 . . . Methodist . . . black . . . well dressed.

SARA LOUISE CURRIE, B.S.  
*Home Economics*  
 Red Springs, N. C.

Epsilon Chi, Second Vice President 4; William Bartram 2, 3, 4; Home Ec. 2, 3, 4; Reporter 3; President 4; Day Students 1; Granddaughters 1, 2, 3, 4; Hockey 2, 3; Varsity 3; Basketball 2, 3; Assistant Manager Tea Room 3; Assistant Business Manager WHITE HEATHER 3; Atlantic Christian College Summer School.

"Hector" . . . refreshments . . . sincere . . . opaque  
 . . . domestic . . . dependable.

BILLIE ELEANOR ESTES, B.S.  
*Home Economics*  
 York, S. C.

Epsilon Chi, Critic 2, Second Vice President 3; William Bartram 2, 3, 4; Home Ec. 2, 3, 4; I.R.C. 3, 1, Program Committee 1, 2, 3, 4; Vice President Class 2; South Carolina Club 1, 2, 3, 4; Centennial Committee 1, 2, 3, 4; Treasurer Class 3; Associate Editor *Pine and Thistle* 2, Feature Editor 3; Freshman Editor WHITE HEATHER, Editor-in-Chief 4; Chief Scribe 4; College Marshal 3; Hockey Team 1, 2; Basketball 1, 2; Winthrop Summer School.

Poise . . . WHITE HEATHER . . . unburn hair . . .  
 clever . . . well modulated voice fashionable . . .  
 unique attractiveness . . . outstanding.

LYDIA LUE FARLOW, B.A.  
*Social Science*  
 Sophie, N. C.

Zetesian, Treasurer 4; W.C.U.N.C. 1; Cornelian Society 1; I/Alliance Francaise 3, 4; I.R.C. 3, 4; William Bartram 3, 4; W.C. Summer School.

Dark eyes . . . stylish . . . generous . . . cafe . . .  
 "Clinton" . . . frank . . . unassuming.

MARGARET NELL FLEMING, B.A.  
*Science and Mathematics*  
 Woodleaf, N. C.

Epsilon Chi Literary Society; Mitchell Junior College 1, 2; William Bartram Scientific Society 3, 4; Mathematics Club 3, 4.

Golden tresses . . . pleated skirts . . . unfathomable  
 . . . Mr. Wray . . . unbling walk.



the 1946 White Heather



## Seniors

---



RUTH FLEMING, B.A.

*Piano*

Hillsboro, W. Va.

Epsilon Chi; Montreat College 1, 2; Glee Club 3; Music Club 3, 4; Class Cheer Leader 3.

*Nonchalant . . . unpredictable . . . rapid . . . disagreements . . . vivacious eyes . . . rhythmical . . . Chopin's Polonaise.*

HELEN LOUISE GARRELL, B.A.

*Science and English*

Clarendon, N. C.

Epsilon Chi; Commercial Club 1; Home Economics Club 1; Mathematics Club 2, 3, 4; William Bartram 2, 3; L'Alliance Francaise 2, 3, 4; I.R.C. 3, 4; Glee Club 1, 2; Archery 2; Hockey Team 3, 4; Varsity 3; Typing Editor *Pine and Thistle* 4; Senior Scribbler 4.

*Wholesome simplicity . . . scientific . . . "Joe" . . . Razor City.*

FRANCES BETHEA GILLIS, B.A.

*Bible and English*

Fayetteville, N. C.

Zetesian; Montreat Junior College 1, 2; I.R.C. 3, 4; Student Volunteers 3, 4; Prayer Band Leader 4; Mathematics Club 3, 4; Class Treasurer 4.

*Conscientious . . . thorough . . . reserved . . . easy laughter . . . friendly . . . determined.*

ESTER MAE GRIER, B.A.

*English, Social Science, French*

Charlotte, N. C.

Epsilon Chi; Class President 1; Student Council 1; Mathematics Club 1, 2, 3, Corresponding Secretary 2, Social Chairman 3; William Bartram 1, 2, 3; L'Alliance Francaise 2, 3, 4, Vice President 3; Music Club 3; I.R.C. 3, 4; Student Volunteers 1, 4; Hockey 1, 2, 3, 4; Associate Editor *Pine and Thistle* 3, Snapshot Editor 4; Christian Association Cabinet, Chairman Life Enrichment 2, Secretary 3, Chairman Prayer Band Leaders 4; Recorder of Points 4; *Who's Who Among Students in American Universities and Colleges* 4.

*Prayer hands . . . neat . . . conscientious . . . civic minded . . . unselfish . . . considerate . . . dependable.*

FLETA LEE HARRELSON, B.S.

*Home Economics*

Clarkton, N. C.

Epsilon Chi; Home Economics Club 2, 3, 4, Secretary-Treasurer 4; William Bartram 2, 3, 4; Prayer Band Leader 4; Class Secretary 4; Atlantic Christian College Summer School 2, 3.

*Secretary . . . slow . . . blue grass . . . fresh . . . exact . . . poised . . . Home Ec*

MARY ELIZABETH HOLDER, B.S.

*Home Economics*

Broadway, N. C.

Epsilon Chi; William Bartram 3, 4; Home Economics Club 4; Basketball 1, 2, 3, 4; Student Volunteers 1, 2, 3, 4; Woman's College University of North Carolina Summer School; Atlantic Christian College Summer School.

*"Pot" . . . carefree . . . genuine love of people . . . tasty dishes . . . outspoken.*



the 1946 White Heather



## Seniors

---



VIRGINIA CARLISLE HOYT, B.A.

*Bible and English*  
Goshen, Va.

Zetesian; William Bartram 1, 2; Mathematics 1, 2; St. Cecelia 1, 2; I.R.C. 3, 4; Glee Club 2, 3, 4; Virginia Club 1, 2, 3, 4; Basketball 1, 2, 3, 4; Hockey 1, 2, 3, 4; Athletic Asso. Treas. 3; Prayer Band 4; Student Volunteers 1, 2, 3, 4, V. P. 3, Pres. 4.

*Modest . . . student volunteers . . . diligent . . .  
kind . . . appreciative . . . practical . . . jarkets.*

MARY JORDON, B.M.

*Voice*  
Kinston, N. C.

Zetesian; Glee Club 1, 2, 3, 4; St. Cecelia Club 1, 2, 3, 4, President 3, 4; Prayer Band Leader 3, 4; Senior Scribbler 4; College Sextet 3, 4; Voice Recital 2, 3, 4.

*"Ramond" . . . poise . . . red roses . . . "My  
Johne" . . . zensp zeast . . . understanding . . .*

NELL COSBY LANCASTER, B.A.

*English and Social Science*  
Shelfar, Va.

Zetesian, Chaplain 3; William Bartram 2, 3, 4; Home Ec. 1; Music Club 3; I.R.C. 3, 4; Hockey Team 1, 2, 3, 4, Varsity 2; Basketball 1, 2, 3, 4, Varsity 2, 3; Athletic Board 1, 2; Monogram Club 3, 4; Mission Study Leader 1; Christian Asso. Cabinet 2, 3, 4, V. P. 3; Marshal 3; Superlative 2, 3, 4; Class Secretary 2; Pres. Student Body 4; Council 4; Senior Scribe 4; *Who's Who Among Students* 3, 4.

*Capable . . . willing . . . attractive . . . pleasing  
voice . . . friendly . . . "Vic" . . . council.*

NORMA ANN LEWIS, B.A.

*Science and Social Science*  
Besemer City, N. C.

Epsilon Chi; Pfeiffer Junior College 1, 2; William Bartram 3, 4; Appalachian State Teachers College Summer School.

*Ballet . . . spontaneous laughter in chapel . . .  
modest . . . coiffures . . . fun loving.*

MARGARET FAYE MANESS, B.M.

*Piano, Public School Music, English*  
Biscoe, N. C.

Epsilon Chi, Chaplain 3; Secretary Class 1; Freshman Editor *Pine and Thistle*; Mission Study Leader 1; Christian Asso. Cabinet, Chm. Life Enrichment Music 2; Chm. Prayer Bands 3, Pres. 4; Music Club 1, 2, 3, 4, Treas. 3; Glee Club 1, 2, 3, 4; Student Volunteers 3, 4; Council 4; *Who's Who Among Students* 4; Piano Recital 2, 3, 4.

*Sterling . . . intelligent . . . Harold . . . Mira's  
chemistry . . . "one must, mustn't one?"*

NANCY SPURILL MEEKINS, B.A.

*Social Science, English, French*  
Columbia, N. C.

Epsilon Chi, President 3, 4; Glee Club 1, 2, 3, 4; Highland Players 1, 2, 3, 4; William Bartram 1, 2, 3, 4, V. P. 3; Camera Club 2, 3; L'Alliance Francaise 1, 2, 3, 4, V. P. 2; I.R.C. 3, 4; Prayer Band 2; Class Treasurer 2; Asso. Editor *Pine and Thistle* 2; Marshal 3; Sextet 4; Superlative 4; Council 3, 4; Semicentennial Committee 4.

*"Best all round" . . . red hair . . . poetry . . .  
Shakespeare . . . scholarly . . . helpful . . . stylish.*



the 1946 White Heather

## Seniors

---





KATHLEEN MILLS, B.A.

*Latin, French, Bible*

Durham, N. C.

Zetesian Literary Society; William Bartram Scientific Society 1, 2, 3, 4, Corresponding Secretary 3; L'Alliance Francaise 2, 3, 4, President 3, Secretary 4.

*Politician . . . unpredictable . . . pessimistic . . .  
Latin . . . suits . . . Durham.*

HANNAH LEWIS MOGER, B.A.

*Social Science and Bible*

Pine Bluff, N. C.

Epsilon Chi Literary Society; Montreat College 1, 2; Camera Club 3; Glee Club 3, 4; William Bartram Scientific Society 3, 4; Highland Players 3, 4; International Relations Club 3, 1.

*Bubbling laughter . . . domestic . . . temperamental  
. . . U.N.C. . . Black.*

ANNIE MAE McDANIEL, B.A.

*Bible and Science*

Bennettsville, S. C.

Zetesian Literary Society; William Bartram Scientific Society 4; International Relations Club 3, 4; South Carolina Club 1, 2, 3, 4; Hockey 1, 2, 3, 4; Basketball 1, 2, 3, 4; Archery 2; Monogram Club 4; Prayer Band Leader 2; Christian Association Cabinet 3, 4; Highway of Life Enrichment 3, Treasurer 4; Student Volunteers 1, 2, 3, 4, President 3; College Marshal 3.

*Quiet . . . sincere . . . patient . . . Johns Hopkins . . .  
food . . . diligent.*

KATHRYN McEACHERN McINNIS, B.A.

*Primary Methods*

Little Rock, S. C.

Zetesian Literary Society; South Carolina Club 1, 2, 3, 4; William Bartram Scientific Society 3, 4; Assistant Tea Room Manager 4.

*Attractive . . . peaches and cream complexion . . .  
ear bobs . . . P. E. 16 . . . week-ends.*

VIVIAN McINNIS, B.S.

*Home Economics*

Shannon, N. C.

Zetesian Literary Society, President 3; Home Economics Club 2, 3, 4, Vice President 3; William Bartram Scientific Society 2, 3, 4; International Relations Club 3, 4; Hockey Team 1, 2, 3, 4, Captain 2; Basketball 1, 2, 3, 4; Athletic Board 2, Salesman for Athletic Association 2; Prayer Band Leader 2; Student Volunteers 3, 4; College Marshal 3; Student Council 3, 4, Vice President Student Body 4; Monogram Club 4; *Who's Who Among Students in American Universities and Colleges* 4.

*Nothing pressing . . . "Pie" . . . extreme . . . ear  
bobs . . . diets . . . sincere . . . shoes . . . individual.*

VIOLET McINNIS, B.A.

*Primary Methods*

Clio, S. C.

Zetesian Literary Society; South Carolina Club 1, 2, 3, 4; International Relations Club 3; William Bartram Scientific Society 3, 4.

*Unaffected . . . nonchalant . . . dry wit . . . slow  
. . . diamond ring . . . silence is golden.*



the 1946 White Heather

## Seniors

---



ELIZABETH BENNET McLEOD, B.A.

*Primary Methods*

Lumberton, N. C.

Epsilon Chi, Corresponding Secretary 4; Woman's College U.N.C. 1; Corinthian Society; William Bartram 3, 4; WHITE HEATHER Staff, Snapshot Editor 4; *Pine and Thistle* Staff 3; Camera Club 3; Presbyterian Jr. College S. S. 1.

*Fragile . . . Lumberton . . . Tabu . . . witty . . . orchid lipstick . . . unpredictable . . . "Miss Cherry."*

FRANCES McPAUL, B.M.

*Organ and Public School Music*

Red Springs, N. C.

Epsilon Chi; Day Students Club 1, 2, 3; Glee Club 1, 2, 3, 4; St. Cecelia Club 1, 2, 3, 4; College Marshal 3; May Court 3; Piano Recitals 2, 3; Organ Recitals 3, 4; Flora Macdonald College Summer School 1, 2, 3.

*Organ . . . Reuter's . . . melodies? . . . fickle . . . formal . . . attractive.*

BARBARA FORSYTH OGILVIE, B.M.

*Piano and Public School Music*

North Wilkesboro, N. C.

Epsilon Chi; Prayer Band Leader 2; F.M.C.A. Cabinet 3; Westminster Fellowship Council 3; Glee Club 1, 2, 3, 4; St. Cecelia Club 1, 2, 3, 4; Treasurer 2; Vice President 3; Snapshot Editor WHITE HEATHER 2; *Pine and Thistle* Staff; Piano Recitals 1, 2, 3, 4; Flora Macdonald College Summer School 2, 3.

*Flouring melodies . . . versatile . . . short bob . . . apples . . . tailored clothes . . . "B. O." . . . Revolutionary Etude . . . brush and pallet.*

ANNE McDUFFIE SHAW, B.A.

*Primary Methods*

Wagram, N. C.

Epsilon Chi; William Bartram 3, 4; Basketball 2, 3, 4; WHITE HEATHER Staff 4; Tea Room Manager 4; *Pine and Thistle* Staff 3; Camera Club 3; Atlantic Christian College Summer School 2.

*Quick . . . clothes . . . Tea Room . . . L.M.A.B . . . frank opinions . . . neat . . . Buicks . . . prompt . . . bird nests.*

HAZEL POCAHONTAS SHAW, B.S.

*Home Economics*

St. Pauls, N. C.

Epsilon Chi; Home Ec. Club 2, 3, 4; Foods Chairman 3; William Bartram 2, 3, 4; Secretary 3; Hockey Team 1, 2, 3; Basketball 1, 2, 3; *Pine and Thistle* Staff, Assistant Business Manager 3; Assistant Editor 4; Senior Scribe; U.N.C. Summer School.

*Unassuming . . . well dressed . . . nurse maid . . . blue . . . hand tailored suits . . . easy laughter.*

DOROTHY MARJORIE SPENCE, B.A.

*English and French*

Lillington, N. C.

Epsilon Chi; Commercial Club 1; St. Cecelia Club 1; William Bartram 2, 3, 4; L'Alliance Francaise 2, 3, 4; President 4; Camera Club 3.

*Studious . . . red . . . fragile . . . fussy clothes . . . dignified . . . french . . . lovely brunette.*



the 1946 White Heather



## Seniors

---



VIRGINIA MAY STEVENSON, B.A.  
*Social Science, English, Bible*  
 Hamilton, N. C.

Epsilon Chi Literary Society; L'Alliance Francaise 2, 3; International Relations Club 3, 4; Secretary-Treasurer 4; Hockey Team 1, 2, 3, 4; Basketball Team 1, 2, 4; Head Softball 3, 4; Athletic Board 3; Monogram Club 4; Student Volunteers 1, 2, 3.

*"Stevie" . . . sports . . . sparkling brown eyes . . . moody . . . proctor . . . independent thinker.*

ZUNITA HOYTEENE WAKEFIELD, B.M.  
*Piano and Public School Music*  
 Barnardsville, N. C.

Zetesian Literary Society; Montreat College 1, 2; St. Cecelia Music Club 3, 4; Glee Club 3, 4; Christian Association Cabinet 4.

*Unapparent depth of thought . . . witty . . . original . . . P.S.M. . . cuts . . . jiddle . . . Bach . . . contagious laugh . . . diligent worker.*

MABEL WARREN, B.A.  
*English and Bible*  
 Clinton, N. C.

Zetesian Literary Society; William Bartram Scientific Society 2, 3, 4; Mathematics Club 2, 3, 4; Camera Club 3, 4; International Relations Club 4; St. Cecelia Music Club 2; Archery 3; Atlantic Christian College Summer School 2; Columbia Bible College Summer School 3.

*Quiet . . . kind . . . cooperative . . . pink sweaters reserved . . . determined.*

MAYLENE WARREN, B.S.  
*Home Economics*  
 Salemburg, N. C.

Epsilon Chi Literary Society; Pineland Junior College 1, 2; Theta Kappa Sigma Sorority 1, 2; Secretary 2; Glee Club 1, 2; International Relations Club 2; Home Economics Club 1, 2, 3, 4; Vice President 2; Class Vice President 2; William Bartram Scientific Society 3, 4; Atlantic Christian College Summer School.

*Vivacious . . . unselfish . . . assisting . . . winsome . . . long pearls . . . original.*

MARGARET WAYNE, B.A.  
*English and Social Science*  
 Hallsboro, N. C.

Epsilon Chi Literary Society; William Bartram Scientific Society 2, 3, 4; Mathematics Club 2, 3, 4; Corresponding Secretary 3; L'Alliance Francaise 2, 3, 4; Secretary-Treasurer 2; International Relations Club 3, 4; Editor-in-Chief Pine and Thistle 4.

*"Wayne" . . . efficient . . . well informed . . . creative . . . Robert Frost . . . individuality . . . delightful wit.*

RUBY MAE WILDER, B.M.  
*Public School Music*  
 Lillington, N. C.

Epsilon Chi Literary Society; Bob Jones College 1; Campbell College 2, 3; St. Cecelia Music Club 4, 5; Glee Club 4, 5; International Relations Club 5; Flora Macdonald Summer School 4.

*Conscientious . . . reserved . . . P.S.M. . . unusual . . . mature dignity.*



the 1946 White Heather



## Seniors

---



## Seniors



MARY LOIS WILKERSON, B.A.  
*Primary Methods*  
Lumberton, N. C.

Zetesian Literary Society; William Bartram Scientific Society 4; Assistant Tea Room Manager 3; Junior Editor WHITE HEATHER 3; Business Manager 1.

*Enthusiastic . . . Fordell II . . . ads . . . trips to Lumberton . . . fudge . . . full of pep.*

MARY GEE WILLCOX, B.A.  
*Primary Methods*  
Carthage, N. C.

Epsilon Chi Literary Society; Recording Secretary 3; William Bartram Scientific Society 4; Hockey Team 3, 4; Assistant Editor WHITE HEATHER 3; Tea Room Manager 3; May Court 2, 3, 4; Class President 2, 4; Student Council 2, 4; *Who's Who Among Students in American Universities and Colleges* 4.

*Bangs . . . mischievous . . . poise . . . hikes . . . gift to the college?*

MARJORIE POWELL, B.S.  
*Home Economics*  
Elizabethtown, N. C.

Epsilon Chi Literary Society; Home Economics Club 2, 3, 4; Glee Club 1, 2, 3, 4; Treasurer 3; St. Cecilia Music Club 1, 2, 4; College Sextet 2; Double Sextet 3, 4; Basketball 2, 3; Tennis 1, 2, 3, 4; Athletic Board 3; Dance Lead in May Day Pageant 2, 3; Presbyterian Junior College Summer School 2, 3.

*P.J.C. . . . pan cake make up . . . coopération . . . Rhythmical . . . May Day . . . glamorous . . . coffee.*



the 1946 White Heather



## Officers

ANN YOUNGBLOOD, *President*

MARY HELEN TEW, *Vice President*

SUE PARRISH, *Secretary*

MARY ELEANOR PARKER, *Treasurer*

JANET RHYNE, *Tea Room Manager*

BETTY BLUE McALLUM, *Assistant Tea Room Manager*

MISS JEANNE CHEW, *Adviser*





## Junior Class of

ASKREW, VIRGINIA  
Kenly, N. C.

ATRINSON, LULU L.  
Kenly, N. C.

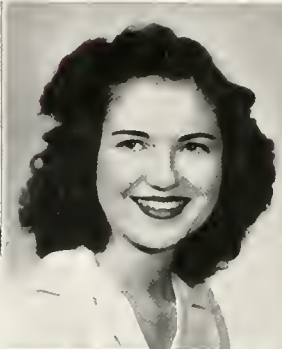
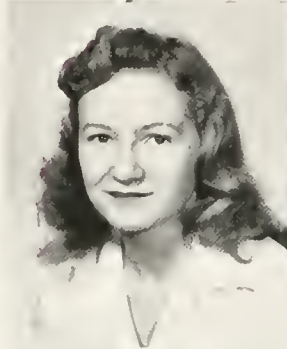
AUTRY, JUDITH ELLA  
Charlotte, N. C.



BALDWIN, IRENE  
Lansing, N. C.

BARKER, FRANCES  
Milton, N. C.

BOGGAN, MITTIE BELLE  
Pee Dee, N. C.



BRINSON, MARY CATHERINE  
New Beth, N. C.

BROADAWAY, COLLEEN  
Asheboro, N. C.

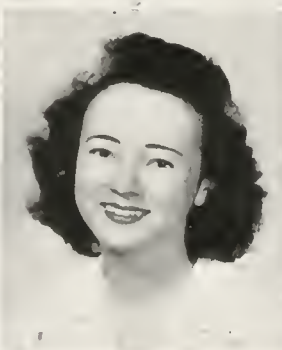
BROCKINGTON, MARGARET  
Kingstree, S. C.



CLARK, TRUDIE  
Clarkton, N. C.

ERVIN, ELLA STEPHANNA  
Catawba, N. C.

GAITLEY, HELEN  
Red Springs, N. C.



## Nineteen Forty-six



GRIFFIN, SUE NELL  
Unionville, N. C.

HALL, BETSEY HAYWOOD  
Rose Hill, N. C.

HALL, MARGARET  
Plumtree, N. C.

HARRIS, MARY MARGARET  
Concord, N. C.

HUDSON, LUCY  
Lillington, N. C.

HUNEYCUTT, MELICENT  
Laurel Hill, N. C.

IDOL, BETTY JEAN  
Fayetteville, N. C.

KANOV, DOROTHY  
Roxboro, N. C.

KNOWLES, GOLDIE  
Wadesboro, N. C.

LEE, HILDA  
Fuquay Springs, N. C.

LEWIS, BYRNES  
Middlesex, N. C.

LYTTON, EVELYN  
Gastonia, N. C.

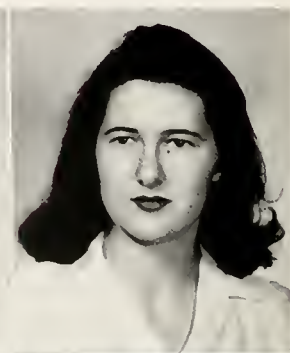


## Junior Class of

McCALLUM, BETTY BLUE  
Rowland, N. C.

McINNIS, MARY  
Red Springs, N. C.

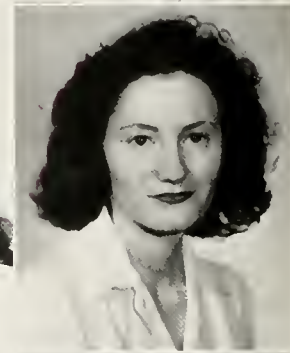
McLEAN, ROSE COCHRAN  
Eagle Springs, N. C.



McNETT, ELIZABETH VARDELL  
Narberth, Pa.

McQUEEN, VIVIAN  
Mullins, S. C.

NEWSOME, MARY ELIZABETH  
Fayetteville, N. C.



NURNBERGER, JULIA ANN  
Red Springs, N. C.

NYE, SARAH POWELL  
Fairmont, N. C.

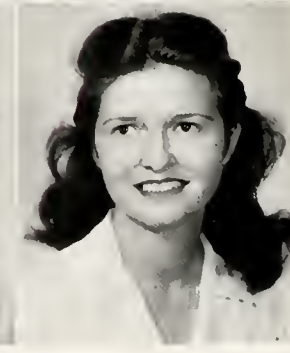
PARKER, MARY ELEANOR  
Clinton, N. C.



PARRISH, SUE  
Smithfield, N. C.

PENDLEY, LEA FRANCES  
Fort Bragg, N. C.

POWERS, FRANCES  
St. Pauls, N. C.





## Nineteen Forty-six



PRIDGEN, FRANCES VARUE  
Chadbourn, N. C.

RHYNE, JANET PEGRAM  
Stanley, N. C.

ROWE, ERNA  
Arapahoe, N. C.

SIDES, NELLIE GRAY  
Statesville, N. C.

SPENCE, SARAH ELIZABETH  
Fuquay Springs, N. C.

SPIVEY, CLARA  
Elizabethtown, N. C.

STRINGER, KATHERINE  
Red Springs, N. C.

TEW, MARY HELEN  
Clinton, N. C.

WALKER, ALICE IDA  
Forest City, N. C.

WILLIAMS, JANIE DUNLAP  
Laurinburg, N. C.

YOUNGBLOOD, ANNE  
Smithfield, N. C.

## **SOPHOMORE CLASS**

THE GIRLS in the sophomore class have come a long way since they first began their college life at Flora Macdonald. Their ability to achieve their set goal has proven itself time and again.

The sophomores watched the freshman class come in with eagerness this fall. This event made them feel the responsibility of being upper classmen. They looked after the "rats" in the traditional style.

The class of 1949 has been an outstanding class. Their loyalty to the college and their classmates will make them well remembered.



## Officers

MIRIAM WATSON, *President*

HARRIET AMIS, *Vice President*

HELEN TURNER, *Secretary*

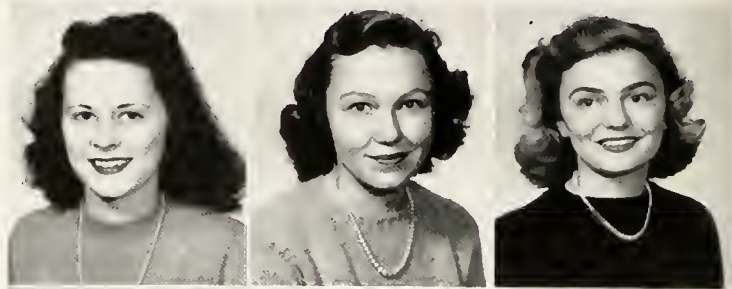
JACQUELINE HODGIN, *Treasurer*

MISS CAROL ROBERTSON, *Adviser*



## Sophomore Class

ADDOR, SUE, Addor, N. C.  
 AMIS, HARRIET, Norfolk, Va.  
 ANDREWS, BETTY, Rocky Mount, N. C.



ARNETTE, MARY FRANCES, Conway, S. C.  
 AUSTIN, LOUISE, Albemarle, N. C.  
 AUSTIN, SARA ALICE, Manton, N. C.



BARDEN, IRENE, Fairmont, N. C.  
 BARROW, THELMA JEANNETTE, LaGrange, N. C.  
 BEST, KATHRYN, Hallsboro, N. C.

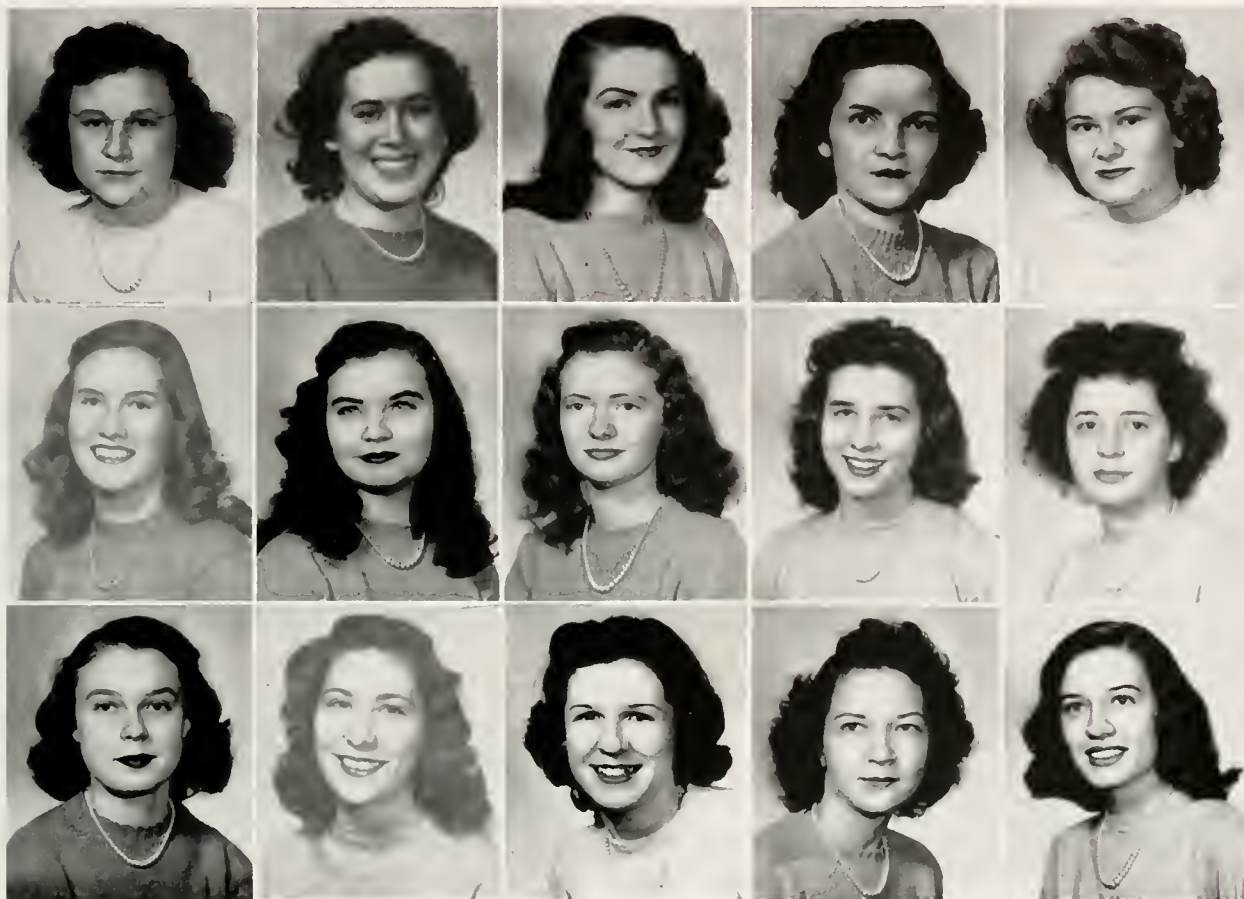


BOWDEN, REREKAH SUE, Durham, N. C.  
 COLLIER, MARGARET, Wade, N. C.  
 DABES, CHRISTINE, Lexington, N. C.



DRINKARD, ELLA MAE, Lynchburg, Va.  
 DULL, FRANCES, Cameron, N. C.  
 DUNCAN, SUSAN, Red Springs, N. C.





EPPS, KATHLEEN, Kingstree, S. C.

FISLER, MARION, Ivanhoe, N. C.

FULCHER, AUDREY, Rocky Mount, N. C.

GAYLORD, MARY GRACE, Winterville, N. C.

HARDIN, WILMA GRACE, Fairmont, N. C.

HARRIS, FRANCES, Tarboro, N. C.

HAYWOOD, CATHERINE DAVIS, Mt. Gilead, N. C.

HOBBS, JANE, Wilmington, N. C.

HONGIN, JACQUELINE, Red Springs, N. C.

JOHNSON, CATHERINE, Red Springs, N. C.

KORNEGAY, AUDREY, Warsaw, N. C.

KNIERIM, MILLICENT, Kingsport, Tenn.

LANE, ELOISE, Wagram, N. C.

LEGGETT, DORIS, Proctorville, N. C.

LEWIS, LINDA, Bessemer City, N. C.





## White Heather

MURRAY, JANE DICKSON, Lexington, Va.

McCASKILL, ALICE JEAN, Carthage, N. C.

McDANIEL, PEGGY, Red Springs, N. C.

McDOWELL, CAROLYN, Elizabethtown, N. C.

McINTOSH, BONNIE LEE, Kings Mountain, N. C.

McINTYRE, SARA JANE, Dillon, S. C.

McKAY, CATHERINE HILL, Maxton, N. C.

McLEAN, MARGARET, Woodstock, Va.

McLEOD, MARY EVELYN, McBee, S. C.

McRAINEY, EDNA MITCHELL, Parkton, N. C.

NEWMAN, FRANCES, Tryon, N. C.

NEWTON, JEAN RICHARDS, McColl, S. C.

NORTON, DORIS, Raeford, N. C.

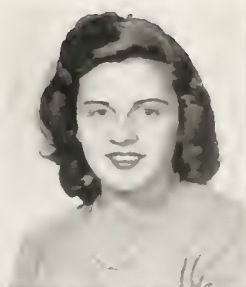
PARSONS, ELEANOR EUNICE, Mt. Gilcad, N. C.

SNEED, LILLIEN, Monks Corner, S. C.



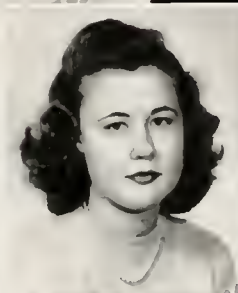


## Sophomore Class



SQUIER, MARY LOU, Atlanta, Ga.

SUTTON, ALICE ELIZABETH, Dublin, Va.



TILLINGHAST, MARY SUE, Dillon, S. C.

TURNER, HELEN GENEVA, Fair Bluff, N. C.

VANN, IDA RAY, Clinton, N. C.



VANNOY, FRANCES, Reddies River, N. C.

WADDELL, EVELYN, Fair Bluff, N. C.

WALLACE, JULIA, Norfolk, Va.



WATSON, MARY GAY, Red Springs, N. C.

WATSON, MIRIAM, Jonesboro, N. C.

WAYNE, BETTY JOYCE, Hallsboro, N. C.



WILSON, HARRIET, News Ferry, Va.

WOMBLE, MARY, Wagram, N. C.

*Not photographed*

MCCORMICK, IMOGENE, Whiteville, N. C.

PACE, GURLINE, Orlando, Fla.

STONE, MARY KATHERINE, Lumberton, N. C.

## FRESHMAN CLASS

THE 1949 CLASS has just begun its steady climb. Already the freshmen have won a place for themselves on the campus.

They have offered talent in the various fields and have shown both loyalty and coöperation.

In athletics they have been particularly outstanding. They have proven this by winning the annual basketball tournament. And although hockey was new to many of them their team showed up well on the field.

These girls are the freshmen of 1946 but they will be the seniors of 1949. They have made a fine beginning and we hope for them a successful four years.



## Officers

IRIS SWEARINGER, *President*

VERA KING, *Vice President*

PAT FERNER, *Secretary*

FAITH CANTRELL, *Treasurer*

MRS. ELIZABETH CLARKE, McPHAUL, *Adviser*





the



ARNETTE, NANCY GAYNELL, Fairmont, N. C.; ATKINSON, ANNIE LOU, Fairmont, N. C.; BACON, FRANCES REBECCA, Hillsboro, N. C.; BAIN, DORIS ANNE, Wade, N. C.; BEAM, EVA MAE, Rutherfordton, N. C.; BEASLEY, WINIFRED, Lumberton, N. C.

BEDINGER, ALICE, Red Springs, N. C.; BERRYHILL, NINA COIT, Barium Springs, N. C.; BISHOP, NANCY, Greenville, S. C.; BORDEAUX, RENA MAE, Burgaw, N. C.; BRINDELL, BARBARA ANN, Wilmington, N. C.; BRITTEN, NEIL, Mullins, S. C.

BUE, DIXIE LEE, Barium Springs, N. C.; BULLOCK, CATHERINE, Fairmont, N. C.; CANTRELL, FAITH, Cowpens, S. C.; CARR, ELLEN OSBORN, Wallace, N. C.; CARROLL, EVELYN ANN, Greenville, N. C.; CARTER, BETTY LOU, Zebulon, N. C.

CAUDELL, JANE, St. Pauls, N. C.; CHAPPELL, ELIZABETH, Caidor, N. C.; CLARK, DORIS, Fayetteville, N. C.; CONKLING, NAOMI, Jacksonville, N. C.; COX, NINA G., Tabor City, N. C.; CROWELL, HELEN, Clinton, S. C.

DAVIS, JOLINE, Bladenboro, N. C.; DUNCAN, MARGARET, Asheboro, N. C.; DYER, JUNE MAUREEN, Bartow, Fla.; EDENS, BLANCHE, Red Springs, N. C.; GRAHAM, NELL, Pembroke, N. C.; WORLEY, RAMONA, Pink Hill, N. C.

## Freshman Class . . . 1946

FELTON, MARGARET ANN, Carthage, N. C.; FELTON, PEGGY McNEILL, Hertford, N. C.; FIELDS, DOROTHY, Carthage, N. C.; FISHER, PHYLLIS, Kannapolis, N. C.; FONVIELLE, ANITA LOUISE, Tabor City, N. C.; GALLOWAY, JOSIE, Walstonburg, N. C.; GORE, FLORA BELLE, Tabor City, N. C.; GREENE, CAROLYN, Norwood, N. C.

GRIFFIN, BLOSSOM, Unionville, N. C.; GRIFFIN, ESTEE, Fairmont, N. C.; HALL, RACHEL, Mariou, S. C.; HAMILTON, MARION OLIVER, Fairmont, N. C.; HERRING, KATHRYNE, Clinton, N. C.; HERRING, SALLY GREY, Rose Hill, N. C.; HINES, ANNA MARGARET, Washington, N. C.; HOLLINGSWORTH, JOCELYN, Cross Hill, S. C.

HOOVER, FLORENCE, Batesburg, S. C.; KATSOS, MARY, Carthage, N. C.; KING, VERA, Fayetteville, N. C.; KINLAW, FRANCES DALE, Lumberton, N. C.; KNIGHT, HELEN, Roanoke Rapids, N. C.; KNIGHT, MIRIAM, Orlando, Fla.; KUNZE, MARIANNE LEE, Leaksville, N. C.; LANDIS, HELEN, Pulaski, Va.







LEAMAN, BETTY WELDON, Cross Hill, S. C.; LEDBETTER, NANCY, Norman, N. C.; LEE, LORRAINE EUGENIA, Hampton, Va.; LIFRIGE, ROBERTA, Salters, S. C.; LIVINGSTON, FLORENCE DIXON, Fayetteville, N. C.; LYTLE, DONNIE MAE, Red Springs, N. C.

MANESS, MYRA ANNE, Biscoe, N. C.; MANN, MARTHA RUTH, McBade, N. C.; MARTIN, CLARA DELLE, Fayetteville, N. C.; MAULDIN, EMILYN, Chesterfield, S. C.; MONROE, FLORA, Laurinburg, N. C.; MORRISON, IRIS FAYE, Roseboro, N. C.

MCCASKILL, BETTY JO, Carthage, N. C.; MCCORMICK, LOIS, Jonesboro, N. C.; McDONALD, ELIZARETH, Red Springs, N. C.; McDUGALD, LAURA, Raeford, N. C.; MCKENZIE, BETTY LOU, Cordova, N. C.; McLEOD, SARAH CRANOR, Aberdeen, N. C.

MCNEILL, ANNIE MAE, Jonesboro, N. C.; MCNEILL, NANCY KATHERINE, Greensboro, N. C.; NASSIF, MARY FRANCES, Laurinburg, N. C.; OWENS, PHILA, Gibson, N. C.; PARKER, SHIRLEY, Jacksonville, Fla.; PAYNE, MARY WRIGHT, Washington, N. C.

PIERCE, VIOLET, Apex, N. C.; PREVATTE, MARY DELL, Fairmont, N. C.; PRICE, BETTY, Pineville, N. C.; RIGGAN, FLORA ED, Henderson, N. C.; ROGAN, FLORENCE EDELYN, Greeleyville, S. C.; ROHANNA, JASMINE, Elizabeth City, N. C.



## Freshman Class . . . 1946

ROSSER, MARY ELEANOR, Broadway, N. C.; RUSSELL, HELEN PAYNE, Kinston, N. C.; RUSSELL, MARY ANN, Sanford, N. C.; SMITH, JANET, Whitsett, N. C.; SPIVEY, RUBY NELL, Elizabethtown, N. C.; SPRING, MARGARET ALICE, Lovettsville, Va.; SWEARINGER, IRIS INEZ, Orlando, Fla.

TAPP, BETTY LOU, Chapel Hill, N. C.; THOMAS, NELL, Florence, S. C.; THOMPSON, Verna, Candor, N. C.; TOWNSEND, SARA HIX, Lockhart, S. C.; TUGWELL, NINA RUTH, Farmville, N. C.; TURNAGE, MARY ANN, Farmville, N. C.; TURNER, MARY ELIZABETH, North Charleston, S. C.

VANDEVENTER, JEAN, Hamilton, Va.; WARD, TILLIE RUTH, Bladenboro, N. C.; WATT, MARGARET, Americus, Ga.; WHITE, HATTIE ELIZABETH, Red Springs, N. C.; WHITTEMORE, CASSIE FAYE, Graham, N. C.; WILLIAMS, MARGARET ELIZABETH, Indian Valley, Va.; WOODWARD, VERNIESE, Murrells Inlet, S. C.

### *Not Photographed*

OUEDA HORRS, Whiteville, N. C.; ANN HUMPHREY, Lumberton, N. C.; WILLIE McCURE, Charlotte, N. C.





## Commercial Class Officers

ANN MCGILL, *President*

FLORA JACOBS, *Vice President*

HELEN KARANIKAS, *Secretary-Treasurer*

MISS LETA WELTHIA MCINTYRE, *Adviser*

## Second Year Commercials

MARTHA ANN BAKER

Rocky Mount, N. C.

Zetesian Literary Society, Commercial Club 1, 2, President 2, Glee Club 1, 2, WHITE  
HEATHER Staff 2.

FLORA BELLE GADDY

Morven, N. C.

Zetesian Literary Society, Commercial Club.

FLORA EVELYN JACOBS

Waycross, Ga.

Georgia State College for Women, Epsilon Chi Literary Society, Commercial Club  
1, 2, Vice President 2, WHITE HEATHER Staff 2, Glee Club 1, 2, Highland Players 2.

ANN N. MCGILL

Lumberton, N. C.

Louisburg College, Zetesian Literary Society, Commercial Club 1, 2, President 2,  
WHITE HEATHER Staff 2.

(not photographed)

FLORENCE L. GINN

Clinton, S. C.

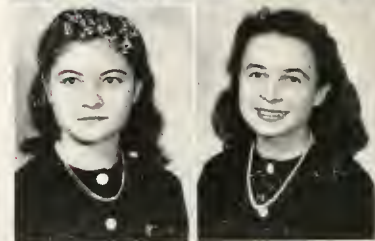
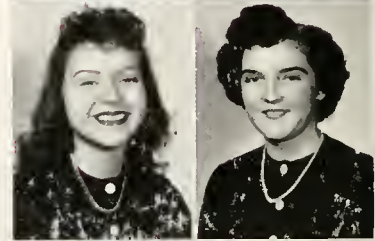
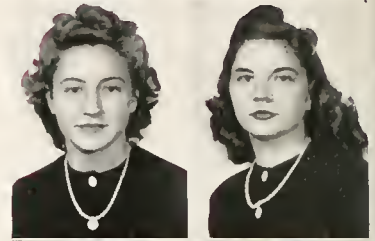
Florida State College for Women, Commercial Club, Epsilon Chi Literary Society.





## Commercial Class

- Acree, Betty, Bartow, Fla.  
 Ballard, Mary Lorena, Tarboro, N. C.  
 Froehlich, Donna Jean, West Palm Beach, Fla.  
 George, Mary Edna, Red Springs, N. C.  
 Graham, Emily Lee, Fayetteville, N. C.  
 Hartness, Janie M., Statesville, N. C.  
 Holmes, Mary Louise, Fayetteville, N. C.  
 Horner, Bette Josephine, Graham, N. C.
- Briley, Joyce, Greenville, N. C.  
 Britt, Helen Coleman, Red Springs, N. C.  
 Humphrey, Jean, Burgaw, N. C.  
 Inman, Doris Elizabeth, Fairmont, N. C.  
 Inman, Dorothy Jane, Fairmont, N. C.  
 Johnson, Virginia Fay, Fayetteville, N. C.  
 Karanikas, Helen, Ahoskie, N. C.  
 Loftis, Marilyn June, Hope Mills, N. C.
- Brunson, Mary Pope, Chester, S. C.  
 Cameron, Eva, Broadway, N. C.  
 McFarland, Mattie Brown, Broadway, N. C.  
 McMillan, Mildred, Laurinburg, N. C.  
 Mitchell, Emogene, Fairmont, N. C.  
 Norton, Katherine Lucille, Fayetteville, N. C.  
 Paterson, Laura, Bartow, Fla.  
 Poole, Mary Ruth, Jackson Springs, N. C.
- Campbell, Helen Kendall, Claussen, S. C.  
 Clark, Kathryn, Fayetteville, N. C.  
 Powe, Mary Emma, Cheraw, S. C.  
 Richardson, Mary Alice, Florence, S. C.  
 Searcy, Christine, Rocky Mount, N. C.  
 Smith, Peggy Joyce, Graham, N. C.  
 Steele, Jean Murray, Leaksville, N. C.  
 Teachey, Johnnye, Rose Hill, N. C.
- Farrior, Mary Anne, Burgaw, N. C.  
 Ferner, Julia Patricia, West Palm Beach, Fla.  
 Thomas, Janice, Greeleyville, S. C.  
 Townsend, Mary Mikell, Orlando, Fla.  
 Wallace, Marguerite, Carthage, N. C.  
 Wilkerson, Margaret, Lumberton, N. C.  
 Wilson, Sue, Linden, N. C.





The 1946 White Heather



## Senior Music Recitals

### GRADUATION RECITAL BETTY COOK, Soprano

April 6, 1946

Ah! Rendimi (from "Mitrane")	Rossi
Care Selve (from "Atalanta")	Handel
Je suis Titania (Polonaise from "Mignon")	Thomas
Du Bist die Ruh	Schubert
Der Neugierige	Schubert
Ungeduld	Schubert
Morgengruss	Schubert
Du denkst, mit einem Faedchen	Wolf
Verschwiegene Liebe	Wolf
Ich hab in Penna einen Liebsten	Wolf
Minuet	Boccherini
The Owl	Liza Lehmann
Echo Song	Bishop

Faye Maness at the Piano

### SENIOR RECITAL RUTH FLEMING, Pianist

April 29, 1946

French Suite No. 5	Bach
Allemande — Courante — Sarabande — Gavotte — Bourree — Loure — Gigue	
Sonata, Opus 31, No. 3	Beethoven
Allegro — Allegretto vivace — Minuetto (trio) — Presto con fuoco	
Polonaise in A Flat Major, Opus 53	Chopin
Mazurka in D Flat Major, Opus 8, No. 1	Aleneff
La Vie Breve	de Falla
Meditation (from Thais)	Massenet
Concerto in A Major	Mozart
Allegro	

### GRADUATION RECITAL MARY JORDAN, Soprano

April 22, 1946

Ahi, Troppo E Duro	C. Monteverde
Divinites du Styx (from Alceste)	Gluck
Dove Sono (from Le Nozze di Figaro)	Mozart
Wie Melodien zieht es mir	Brahms
Sapphische Ode	Brahms
Zueignung	R. Strauss
Allerseelen	R. Strauss
The Wounded Birch	Gretchaninoff
Cradle Song	Gretchaninoff
Midsummer-day's Dream	Palmgren
It Was a Lover and His Lass	Harris

Zunita Wakefield at the Piano

### GRADUATION RECITAL FAYE MANESS, Pianist

March 16, 1946

Prelude and Fugue in G Minor No. XVI (Well-Tempered Clavichord, Book I)	Bach
Sonata, Opus 27, No. 2 ("Moonlight")	Beethoven
Adagio — Allegretto — Presto agitato	
Mazurkas, Opus 33, Nos. 1, 2, 3, 4	Chopin
Ballade, Opus 23	Chopin
Prelude, Opus 9, No. 1	Scriabine
Nocture, Opus 9, No. 2 (left hand alone)	
Concerto in G Minor, Opus 25	Mendelssohn
Molto allegro con fuoco	

### GRADUATION RECITAL FRANCES McPAUL, Organist

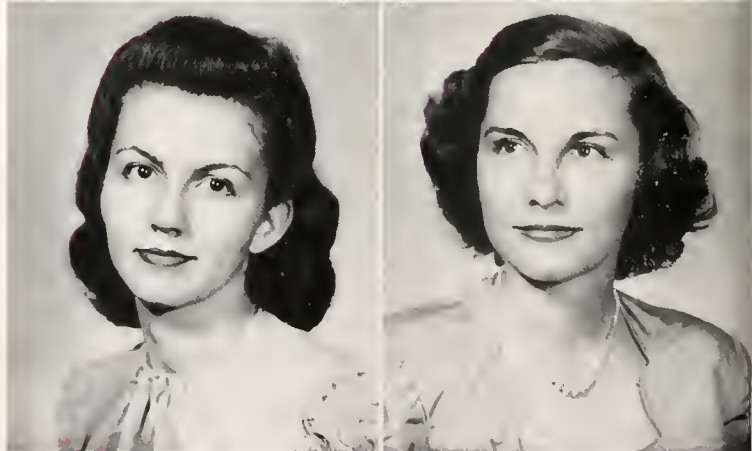
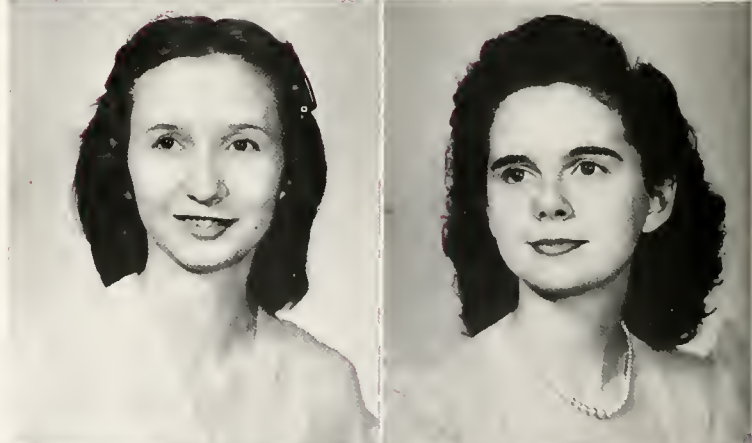
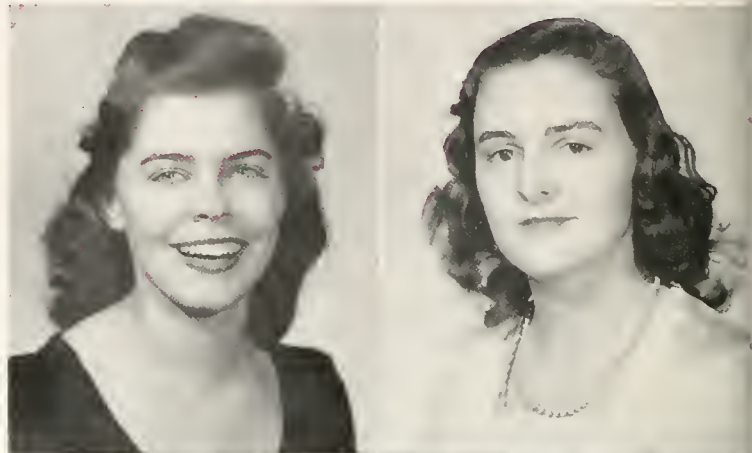
April 15, 1946

Choral Preludes:	
(a) O Lamm Gottes, unschuldig	Bach
(b) Nun freut euch, lieben Christen g'mein	Bach
Prelude and Fugue in D minor (Doric)	Bach
Harpichord Suite in G minor	Handel
Allegro — Largo — Allegro	
Sonata No. 6 (Our Father Who Art in Heaven)	Mendelssohn
Chorale and Variations — Fuga — Finale	
Andante Cantabile (from Symphony IV)	Widor
Piece Heroique	Franck

### GRADUATION RECITAL BARBARA OGILVIE, Pianist

March 25, 1946

Prelude and Fugue in E Flat minor, No. VIII (Well-Tempered Clavichord, Book I)	Bach
Sonata in G Major, Opus 31, No. 1	Beethoven
Allegro vivace — Adagio grazioso — Rondo (allegretto)	
Preludes, Opus 28	Chopin
Agitato — Lento — Vivace — Largo — Allegro molto — Lento assai — Andantino — Molto agitato — Largo — Allegro molto — Vivace — Presto — Lento — Allegro — Sostenuto — Presto con fuoco — Allegretto — Allegro molto — Vivace — Largo — Cantabile — Molto agitato — Moderato — Allegro appassionato	
Concerto in A minor, Opus 16	Grieg
Allegro moderato	





# Guest Artists

EACH YEAR, Flora Macdonald College has on her campus five guest artists who are sponsored by the Concert-Lecture Course Series. A variety of attractions are provided. Among them are musicians, authors, and world analysts of the highest caliber.

Not only do the students enjoy the outstanding programs, but they have an opportunity to become acquainted with the visiting personalities themselves. This has inspired many students to greater achievements.



CLAUDIA ARRAU  
*Pianist*



JEANNE WEITZ  
*Monodramatist*



JOSEPH SZIGETI  
*Violinist*

## Dean Reuter

A MASTER of music, a tireless teacher, a cheerful and understanding friend, characterizes Dean Reuter. He has accomplished much in the two years that he has been at Flora Macdonald.

In addition to his work at the college, he is organist for the Village Chapel in Pinhurst, N. C., has given a number of concerts throughout the southern states, at the University of Florida, Gainesville, Florida; Riverside Presbyterian Church, Jacksonville, Florida; Augusta, Georgia; Florence, South Carolina; and many other places.



## St. Cecilia Music Club

THESE GIRLS are bound together by the force of common interest in music. Their purpose is to increase knowledge of music among the other students and to continue their learning in this field. Their meetings are both instructional and inspirational.







## The Glee Club

THE FLORA MACDONALD College Glee Club has made a name for itself. It has been very much in demand for entertainments throughout this vicinity, including the various army camps. In addition to these, it has presented numerous radio programs over the Fayetteville station.

This club is composed of eighty voices. The entire glee club meets twice a week for full rehearsals. Aside from these there are several sectional rehearsals a week.

The Flora Macdonald College Glee Club has attained a high standing and the college is proud to be represented by it on so many occasions.



## Double Sextet

THIS GROUP of girls was selected from the glee club because of outstanding talent. These girls have been very much in demand in Red Springs and in the surrounding towns and cities. They have given many programs on Mondays over the Fayetteville radio station.





---

"After Classes



are Over "





Estes

THE WHITE HEATHER is the annual publication of the students of Flora Macdonald. The editor and business manager are elected from the rising senior class each year by the student body at large. The assistant editor and assistant business manager are elected by the junior class. Other members of the staff are named by the editor and business manager and are taken from the different classes and organizations in the college.

## The 1946

BILLIE ESTES  
*Editor-in-Chief*

MARY LOIS WILKERSON  
*Business Manager*

MRS. GENEVIEVE MACMILLAN NEIGHBORS  
*Adviser*







Wilkerson

# White Heather

Neighbors  
Adams  
Estes



MARY CATHERINE BRINSON, *Assistant Editor*  
BYRNES LEWIS, *Assistant Business Manager*  
MARY ADAMS, *Senior Class Editor*  
MARY ELYANOR PARKER, *Junior Class Editor*  
HARRIET AMIS, *Sophomore Class Editor*  
MARY TOWNSEND, *Freshman Editor*  
ANN SHAW, *Snapshot Editor*  
ELIZABETH McLEOD, *Snapshot Editor*  
JEAN AUSTIN, *Literary Editor*  
JANIE DUNLAP WILLIAMS, *Business Editor*  
ANN MCGILL, *Typing Editor*  
FLORA JACOBS, *Typing Editor*

FLORA MACDONALD is located in a section of North Carolina which was settled largely by the Scotch, therefore the college bears the name of the Scottish heroine. In keeping with this, our annual takes its name from the heather or national flower of Scotland. The first edition of the WHITE HEATHER was published in 1921 and has been continued by the students since that time.



Wayne



## The Pine

*The Pine and Thistle*, literary and humor magazine, is published quarterly. It presents the interesting events in our college life through a series of articles, features, and editorials.

The magazine furnishes valuable training in the field of journalism to the staff and other coöperating members of the student body.

The editor and business manager are elected by the student body at large. The editorial staff comes from the two literary societies.

Lytton



HAZEL SHAW, *Assistant Editor*

TRUDY CLARE, *Assistant Business Manager*

LINDA BYNUM, *Epsilon Chi Associate Editor*

MILLCENT KNIERIM, *Epsilon Chi Associate Editor*

MARY MCINNIS, *Epsilon Chi Associate Editor*

LULU ATKINSON, *Zetesian Associate Editor*

FRANCES DULL, *Zetesian Associate Editor*

ALICE WALKER, *Zetesian Associate Editor*

JULIA WALLACE, *Poetry Editor*

JANE HOBBS, *Feature Editor*

## and Thistle

ESTER MAE GRIER, *Photographic Editor*

JANE BROWN, *Photographic Editor*

LOUISE GARRELL, *Typing Editor*

HAZEL COUSINS, *Typing Editor*

IRIS SWEARINGER, *Freshman Editor*



Lytton

Wryne

Boney

MARGARET WAYNE, *Editor-in-Chief*

EVELYN LYTTON, *Business Manager*

MISS VIRGINIA BONEY, *Adviser*



NELL LANCASTER  
*President*



## The Student Government

THE STUDENT GOVERNMENT Association at Flora Macdonald is one of the most integral parts of the college life. It impresses upon the student the necessity of personal honor, self-control, and individual responsibility.

Every student at Flora Macdonald is a member of the Association. The governing board, generally known as the Council, is presided over by the President of the Student Body.

VIVIAN McINNIS, *Vice President of Student Body*  
 SARAH BRITTON, *Secretary of Student Body, Vice President of Senior Class*  
 MARY HELEN TEW, *Treasurer of Student Body, Vice President of Junior Class*  
 MARY GEE WILLCOX, *President of Senior Class*  
 ANN YOUNGBLOOD, *President of Junior Class*  
 MIRIAM WATSON, *President of Sophomore Class*  
 IRIS SWEARINGER, *President of Freshman Class*  
 FAYE MANESS, *President of Christian Association*  
 NANCY MEEKINS, *President of Epsilon Chi Literary Society*  
 MARY MARGARET HARRIS, *President of Zetesian Literary Society*  
 IRENE BALDWIN, *President of Athletic Association*  
 HELEN GAITLEY, *President of Day Students*

. . . 1946

Baldwin, Watson, Tew, Youngblood, Willcox, McInnis, Lancaster, Britton, Maness, Meekins, Swearinger, Gaitley. *Not photographed: Harris.*



FAYE MANESS  
*President*



## F. M. C. Christian Association

THE FLORA MACDONALD Christian Association is an organization which is held in the very highest esteem by everyone on the campus. It strives to promote growth of Christian faith, fellowship and character in the student body at Flora Macdonald. The students at F.M.C. when in need of help, whether spiritual, or physical always feel free to go to the association for assistance.

In order that the Association might operate on a firm foundation a number of highways are established. The highway leader, with the president of the student body, the president of the Association, and the faculty adviser compose the Cabinet. The religious influences in the college emanate from the Association under the guidance of these leaders.



GOLDIE KNOWLES, *Vice President*  
 LAURA SHAW ATKINSON, *Secretary*  
 MAE McDANIEL, *Treasurer*  
 ESTHER MAE GRIER, *Chairman of Prayer Bands*  
 GOLDIE KNOWLES, *Enlistment and Training*  
 ALICE WALKER, *Sunday school, Learning*  
 ELIZABETH SUTTON, *Publicity, Learning*  
 FRANCES PENDLEY, *Comradeship*  
 MARGARET McLEAN, *World Fellowship*  
 LAURA SHAW ATKINSON, *Stewardship*  
 MAE McDANIEL, *Stewardship*  
 JANE HOBBS, *Librray, Leisure Time*  
 JANE BROWN, *Social Activities, Leisure Time*  
 VIVIAN McQUEEN, *Religious Meetings, Life Enrichment*  
 ZUNITA WAKEFIELD, *Music, Life Enrichment*

*Seated:* Grier, Knowles, Moffitt, Maness, Lancaster, Atkinson, McDaniel.  
*Standing:* Sutton, McLean, Wakefield, Hobbs, Pendley, Brown, McQueen, Walker.





ESTES, *Chief*  
 LANCASTER  
 SHAW  
 GARRELL  
 JORDON  
 COOK, *not photographed*

## Senior Scribblers

EACH YEAR FIVE SCRIBBLERS are chosen from the rising senior class by the scribblers of the retiring senior class. The Editor-in-Chief of the annual automatically becomes the Chief Scribe. It is the duty of the scribblers to write concise personality sketches of their classmates. These sketches appear in print for the first time in the annual.

ESTES  
 GARRELL





EACH YEAR THE STUDENT body eagerly awaits the announcement of the new members of Who's Who. These members are chosen carefully from the Junior and Senior classes on the basis of scholarship, character, and leadership in extra-curricular activities. They represent Flora Macdonald College in the national society of Who's Who Among Students in American Universities and Colleges. We are proud of these girls, not only because they are outstanding leaders on our college campus, but because they are recognized as the leaders of the youth of America. This year six students were selected: Seniors, Ester Mae Grier, Vivian McInnis, Fay Maness, Mary Gee Wilcox, Laura Shaw Atkinson and one Junior, Mary Margaret Harris. Nell Lancaster, a member of last year, was automatically included.

## WHO'S WHO

Harris, Wilcox, Grier, Maness, McInnis, Atkinson, Lancaster







Betty Cook, *First Vice President*; Sarah Currie, *Second Vice President*; Linda Bynum, *Recording Secretary*; Elizabeth McLeod, *Corresponding Secretary*.

Lynda Lewis, *Treasurer*; Margaret Hall, *Critic*; Jean Austin, *Censor*; Jane Hobbs, *Chaplain*.

## Epsilon Chi Society

THERE are two literary societies at Flora Macdonald. They play an important role in the college life.

Epsilon Chi is one of these. The regular programs are well planned to give the students opportunity of appearing in public, thus training them in the acquisition of poise and logical presentation.

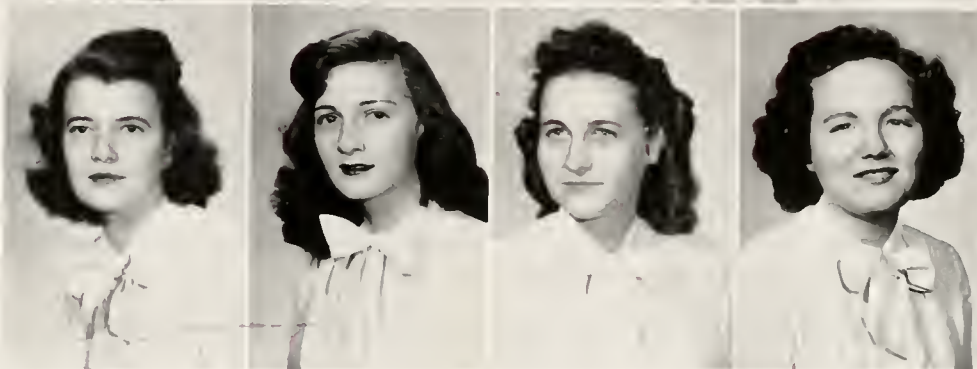


NANCY MEEKINS  
*President*

Mary Adams, *First Vice President*; Hurley Anthony, *Second Vice President*; Harriet Amis, *Recording Secretary*; Lulu Atkinson, *Corresponding Secretary*.



Lydia Farlow, *Treasurer*; Virginia Aske w, *Critic*; Dorothy Kanoy, *Censor*; Goldie Knowles, *Chaplain*.



## Zetesian Society



MARY MARGARET HARRIS  
*President*

THE OTHER society, Zetesian, holds instructional meetings. Interest is divided between drama, music, and literature.

Both societies meet occasionally with a lighter purpose. The members enjoy picnics, an annual banquet after "rush week," and whole-hearted singing of society songs.

MARY MARGARET HARRIS, Z.  
*Chief Marshal*



EVELYN LYTTON, Ex.

## Marshals



VIVIAN McQUEEN, Ex.



BETTY BLUE McCULLEN, Z.





DOROTHY KANoy, Z.



ANN YOUNGBLOOD, Ex.

of 1946



GOLDIE KNOWLES, Z.



TRUDIE CLARK, Ex.



ELIZABETH McNETT, Ex.

## Club Presidents

THESE GIRLS LEAD THE STUDENTS in club work and extra-curricular activities. Anytime of the day one might hear them talking "shop" or scurrying through the halls bent upon calling a special meeting. When the going gets rough, they are still in there pitching, ready to give encouraging words to their club members and associates. Hats off to you girls, you've done a grand job!



ELIZABETH McNETT  
*International Relations Club*



Dorothy Spence, L'Alliance Francaise; Sarah Currie, Home Economics; Frances Penley, William Bartram Scientific Society; Helen Gaitley, Day Students; Jean Austin, Highland Players; Laura Shaw Atkinson, Mathematics.



## STUDENT VOLUNTEERS

THIS GROUP REPRESENTS those girls at Flora Macdonald who are interested in home and foreign missions. They meet each Sunday night to study the needs in the field and to pray for guidance in this vital work. They are another contributing factor to the spiritual growth on the campus.



## PRAYER BAND LEADERS

*"Be still and know that I am God." Psalm 46:10*

EVERY WEDNESDAY morning during quiet hour, the girls at Flora Macdonald meet in the rooms of the leaders for prayer and meditation. These devotional circles serve as a guiding light to the students and create many intimate spiritual experiences among the girls on the campus.

## WILLIAM BARTRAM SCIENTIFIC SOCIETY

MEMBERSHIP in the William Bartram Scientific Society is awarded to those students who attain high rank in mathematics and the physical sciences. Each year new members are recommended by the club advisers, Dr. Stump and Mr. Wray. Regular meetings are held and programs built around various phases of the scientific world



## CAMERA CLUB

THE CAMERA CLUB has been making great strides since its reorganization. Now that the war is over, and materials will once again be available, the club can contribute much to campus life.



## L'ALLIANCE FRANCAISE

THE FRENCH CLUB, known as L'Alliance Francaise, has been one of Flora Macdonald's most popular clubs. At the monthly meetings only French is spoken, and topics of cultural interest and current events in France are discussed. It emphasizes conversational French, the use of French songs, games, and plays. Thus, it endeavors to give its members a deeper appreciation of French civilization and the broad scope of its influence.



## MATHEMATICS CLUB

STUDENTS who have attained a high scholastic standing in mathematics are eligible for membership in this club. The purpose of the club is to create interest in this science throughout the student body and provide a medium of exchange of knowledge and interest among "kindred souls."





## GRANDDAUGHTER'S CLUB

THIS IS AN HONORARY club at Flora Macdonald. It is open only to those students whose mothers attended college here at F.M.C. The present day student is the granddaughter, her mother is the mother and Flora Macdonald College is the grandmother.

The students prize highly their membership in this club.

## HIGHLAND PLAYERS

INTEREST in dramas has been awakened by the reorganization of the dramas club under the new name of the Highland Players. The semi-monthly meetings provide instructional service as well as entertainment. Louisa Mac Aleott's immortal "Little Women" was presented with great success. The players this year hope to make dramas permanently an integral part of the extra-curricular activities at Flora Macdonald.



## Commercial Club

THE COMMERCIAL CLUB is an asset at Flora Macdonald. The members are tireless workers who are ready and willing to help their fellow students with typing, mimeographing, or anything else which falls within their sphere.

# Home Economics Club

IN THE HOME ECONOMICS Club the members have an opportunity to enjoy the lighter side of living. Both formal and informal entertainments are held at the Home Management house, where the members often relax in the atmosphere of home. This club is affiliated with the National and State Home Economics clubs of America.





# Day Students Club

THE DAY STUDENTS Club is composed of those girls who live in Red Springs and vicinity. They enter enthusiastically into the activities and organizations on the campus.

These girls are represented on the Student Council by their president. They form an integral part of the student body.





## International Relations Club

COMMONLY KNOWN as the I.R.C., this club has risen to the foreground of importance among the Flora Macdonald clubs. It was established in 1944 and in two short years, it has become one of the largest and most influential clubs on the campus.

The one requirement for membership is a paper submitted to the club sometime during the school year by the prospective member on a problem of present day world affairs. At the semi-monthly meetings, topics of current interest are discussed. The students appreciate an opportunity to become more familiar with international events and strive to maintain a standard of excellence in the club.



---

"Our World





of Sports "



Austin  
Farrell  
Brinson  
Herring  
Cook

## Cheer Leaders

JEAN AUSTIN, '46

DOROTHY FARRELL, '48

CATHERINE BRINSON, '47

SALLY HERRING, '49

BETTY COOK,

COLLEGE, not photographed



## Athletic Board

IRENE BALDWIN, *President*; JANE BROWN, *Vice President*; BETTY IDOL, *Secretary*; VIVIAN McQUEEN, *Treasurer*; ELLA MAE DRINKARD, *Salesman*; JANE BROWN, *Basketball*; FRANCES BARKER, *Hockey*; HAZEL COUSINS, *Volley Ball*; LAURA SHAW ATKINSON, *Archery*; JANE HOBBS, *Table Tennis*; HARRIET WILSON, *Tennis*; ELIZABETH McNETT, *Bowling*; AUDREY KORNEGAY, *Hiking*; VIRGINIA STEVENSON, *Softball*; REBECCA BOWDEN, *Harseshoe*.



# Monogram Club

THE REQUIREMENTS for membership in the Monogram Club are outstanding accomplishments in athletics, high scholastic record, good sportsmanship, good health, twenty points in the college point system awarded for leadership in student activities.

**F. M.**

It is an honor to wear the monogram.



Baldwin, Lancaster, McInnis, Brown, McDaniel, Stevenson, Hoyt, Barker, McQueen





## Senior Hockey

Mary Adams, *Captain*; Vivian McInnis, Nell Lancaster, Virginia Stevenson, Louise Garrell, Mary Gee Wilcox, Julia Brown, Carlisle Hoyt, Jane Brown, Mae McDaniel, Sarah Currie, Isabel Bailey.

## Junior Hockey

Frances Barker, *Captain*; Irene Baldwin, Clara Spivey, Goldie Knowles, Peggy Harris, Ann Youngblood, Janet Rhyne, Colleen Broadway, Vivian McQueen, Evelyn Lytton, Mittie Boggan, Mary Tew, Hilda Lee, Byrnes Lewis, Sue Parrish.

# Hockey





## Sophomore Hockey

*Jean Newton, Captain; Linda Lewis, Ella Mae Drinkard, Marion Fidler, Eloise Lane, Edna McRainey, Gurline Pace, Harriet Wilson, Mary Womble, Ruby Wood, Jane Hobbs, Harriet Amis, Kathryn Best, Kathleen Epps, Audrey Fulcher, Nell Graham, Flora Jacobs, Mellicent Kuierim, Margaret McLean, Frances Vannoy.*

. . . 1946

## Freshman Hockey

*June Dyer, Captain; Violet Pierce, Janice Thomas, Mary Ann Farrior, Helen Knight, Helen Landis, Margaret Williams, Nell Spivey, Christine Searcy, Mary Ann Kuntz, Emilyn Mauldin, Sara McLeod, Flora Regan, Dorothy Fields.*







*Top: Brown, Stevenson, McInnis, Currie.  
Bottom: Shaw, Brown, Lancaster, McDaniel, Bailey.*

## Senior Basketball

Isabel Bailey, *Captain*; Vivian McInnis, Nell Lancaster, Jane Brown, Mae McDaniel, Carlisle Hoyt, Virginia Stevenson, Maylene Warren, Elizabeth Holder, Julia Brown, Laura Shaw Atkinson.

## Junior Basketball

Vivian McQueen, *Captain*; Irene Baldwin, Peggy Harris, Frances Pridgen, Mary Helen Tew, Trudie Clark, Evelyn Lytton, Ann Youngblood, Goldie Knowles, Sue Parrish, Janet Rhyne, Winiford Powers, Frances Barker.

# Basketball



*Top: Pridgen, Powers, Boggan, Baldwin,  
Bottom: Lytton, Spivey, McQueen,  
Youngblood, Parrish, Rhyne,  
Clark.*



*Top:* Vannoy, Womble, Lane, McLean,  
Best, Fulcher, Pace.

*Bottom:* Wilson, Drinkard, Lewis, Fisler,  
Wood, Hobbs.



## Sophomore Basketball

Linda Lewis, *Captain*; Ella Mae Drinkard, Mary Womble, Eloise Lane, Frances Vannoy, Kathleen Epps, Kathryn Best, Gurlene Pace, Margaret McLean, Marion Fisler, Ruby Wood, Harriet Anis, Audrey Fulcher, Harriet Wilson.

...1946

## Freshman Basketball

Eleanor Rosser, *Captain*; Emily Mauldin, Mary Ann Kunze, Lois McCormick, Doris Ann Bain, Jasmine Rohanna, Violet Pierce, Dorothy Fields, Nancy Ledbetter, Sally Herring, Helen Landis, Faye Morrison, June Dyer, Christine Searcy, Nell Spivey.

*Top:* Morrison, Reagan, Rosser, Kunze,  
Rohanna, Searcy, Ledbetter.

*Bottom:* Dyer, Farrior, Spivey, Mc-  
Cormick, Mauldin, Thomas.





*Top: Wilson, Wadell, Turner, Spivey,  
Parker, Britton, Rhyne.  
Bottom: Drinkard, McIntyre, Hobbs.*

## Tennis

IN THE AUTUMN and spring the tennis courts at Flora Macdonald are filled with eager players. The Athletic Association maintains the courts in excellent condition. Competition in the finals is keen.

## Archery

ARCHERY is always one of the most popular sports at F.M.C. Both athletic and not-so-athletic girls participate. Single and group practices are held throughout the year and at intervals all types of competitive exercises are conducted.





# Athletic Captains

MARY ADAMS, Senior Hockey

JUNE DYER, Freshman Hockey

FRANCES BARKER, Junior Hockey

ISABEL BAILEY, Senior Basketball

JEAN NEWTON, Sophomore Hockey

VIVIAN McQUEEN, Junior Basketball

LINDA LEWIS, Sophomore Basketball

PLENTY OF SKILL, energy, and popularity among the students plus encouraging smiles for the players characterize the athletic captains. They are the ones to whom the girls look for leadership and guidance. They have done a good piece of work this year and F.M.C. is proud of you.

*Top: McQueen, Lewis, Newton. Bottom: Barker, Adams, Dyer, Bailey.*







---

"Persons and



---

Events "





## Superlatives

FRIENDLINESS.....GOLDIE KNOWLES, Wadesboro, N. C.  
PERSONALITY.....CATHERINE BRINSON, New Bern, N. C.  
SPORTSMANSHIP.....JANE BROWN, Montvale, Va.





## of 1946 . . .

BEAUTY.....VIVIAN McQUEEN, Mullins, S. C.  
CAPABILITY.....NELL LANCASTER, Shelfar, Va.  
VERSATILITY.....NANCY MEEKINS, Columbia, N. C.

# May Day



JULIA BROWN, *May Queen*



NELL LANCASTER  
*Maid of Honor*

TIME: One afternoon in April 1796.

SCENE: At the wishing well in the pasture near Clanranald Castle at Nunton.

In the center of the pasture back of Clanranald Castle is a large wishing well. It has long been the custom of the Nunton folk to observe Good Saint's Day by dressing the Wishing Well with flowers. Every year at this time the children of the droivers and tacksmen and shepherds in the shire of Clanranald spend the afternoon at Nunton, singing folk songs, dancing and dressing the well with garlands of flowers. After this is done, it is time for wish making . . .

"I wish I may  
I wish I may  
See the May Queen  
Crown'd this day . . ."

Betty Idol, Evelyn Lytton, Frances McPhaul, Sara Jane McIntyre, Sue Addor, Nell Lancaster, Julia Brown, Vivian McQueen, Mary Gee Willcox, Iris Swearingen, Mary Alice Richardson, Sarah Currie.





# Flora Macdonald

FLORA MACDONALD IN SCOTLAND, a symphonic drama by Clare Johnson Marley, was one of the highlights of the Semicentennial celebration.

Other than girls from the Highland Players of Flora Macdonald College, the cast was made up of student actors from the University of North Carolina, Furman University, Raleigh Little Theatre, Cary Little Theatre, and Red Springs School.

Most of the costumes were designed and furnished by Van Horn, Philadelphia, and Irene Smart of the Carolina Playmakers. Clare Johnson Marley's drama was written at the University of North Carolina under the direction of the late Dr. Fredrick H. Koch, Founder and Director of the Carolina Playmakers.

It is beautifully expressed in blank verse and depicts an episode of Scottish history. Song and dance are interspersed throughout the play, making it a symphonic work of dramatic art.

JANE GREY SANDERLIN  
*Flora Macdonald*

JANE MURRAY  
*Countess of Eglinton*

LINDA LEWIS  
*Lady Primrose*

ELIZABETH McNETT  
*Lady Clanranald*



# In Scotland

MARION FISLER  
*Old Nurse*



BILLIE ESTES  
*Lady Margaret Macdonald*



JUNE DYER  
*Hag O' Doon*







Page 105:

Pretty airplane . . . Superlady—evidently! . . .  
 “Mo.” where are your legs? . . . Lucy—  
 hm-m? . . . Runabouts . . . bum-mers! . . .  
 Happy, Betty . . . Hubba, hubba! . . . Yeah,  
 “rats” . . . Nell and ?



Page 104 at left:

"Some Sunday afternoon" . . . going home via  
 Trailways . . . Peggy and Shirley . . . two in-  
 separables . . . must be another joke . . . Canada  
 or Flossie . . . Hi King . . . we want a drag!  
 . . . Cal and Julia . . . what's this? . . . Fresh-  
 Soph Banquet . . . jam session . . . Why, C. B. !  
 . . . crazy girl!





That's Bill! . . . 'top it, 'top it! . . . Before Krahuke came! . . . No, no, no! . . . Girls, F.M.C.'s not that bad? . . . We didn't know! . . . Miss 'em? . . . just resting—Sunday . . . Sarah's Krahuke . . . Totem Pole? . . . Cold or hungry? . . . Zeigfield? . . . Having fun—huh?





Before the 5:00 o'clock bell . . . Hockey . . . propping up the Sundial . . . "The two Mary's" . . . wisteria . . . No! I'm taking this one . . . what's cooking, Hazel? . . . glamour a la suntan . . . smile please! . . . she's a big girl? . . . How'd you get in there? . . . Newlyweds . . . the wishing bone.



# PRESBYTERIAN JUNIOR COLLEGE

extends greetings to *White Heather* in appreciation of the cordial  
relations between Flora Maedonald College and  
Presbyterian Junior College.

Preparatory Department, at tenth, eleventh and twelfth grade levels;  
one- and two-year Commercial Course; Aeronautics; two years of  
standard college work leading to Associate in Science, or Associate  
in Art degree.



## SUMMER SCHOOL



*Office of the President*

PRESBYTERIAN JUNIOR COLLEGE

Maxton, North Carolina

## McNEILL'S

CLEANERS  
and  
TAILORS



***Dependable Service***  
***Since 1928***



LICENSED SANITONE CLEANER

Phone 294-1

*Compliments*

*of*

**The Editor**

*and*

**Business Manager**



***"Thanks to all***

***the***

***Contributors"***

# Hammond Grocery Company

R. L. Hammond, Owner



Plee-zing Distributors of  
CAMEL FLOUR



LAURINBURG, NORTH CAROLINA

LAURINBURG  
MILLING COMPANY

LAURINBURG, N. C.

*Compliments of*  
S. F. CALDWELL & CO.

"The Complete Hardware"

Lumberton, N. C.

*Compliments of*

A. WEINSTEIN  
& SONS



LUMBERTON, N. C.

*Compliments of*

PEPSI-COLA  
BOTTLING  
CO.



FAYETTEVILLE, N. C.

***You Will Be Pleased  
with Our Quality  
and Service***



RED SPRINGS  
DRUG STORE

*Headquarters for  
Flora Macdonald Girls*

RED SPRINGS, N. C.

Red Springs Supply Company, Inc.  
GENERAL MERCHANTS

***The Friendly Store***



FERTILIZERS and COTTON  
LIVESTOCK                      HARDWARE  
GROCERY                      MARKET  
BUILDING MATERIAL



DIAL 3701

RED SPRINGS, NORTH CAROLINA



DIXIE GUANO CO.  
FERTILIZERS



Telephones No.

63 - 65 - 66



Laurinburg, N. C.

USE

MERITA

BREAD and CAKES



AMERICAN  
BAKERIES COMPANY

FAYETTEVILLE, N. C.

WE APPRECIATE  
SERVING  
YOU



GRAHAM'S

RED SPRINGS, N. C.

RIVERSIDE THEATRE

*"The Home of Better Pictures"*

LUMBERTON, N. C.

CITY OPTICAL COMPANY

WILMINGTON - FAYETTEVILLE  
and GREENSBORO, N. C.

H. M. SMITH, Mgr.

TELEPHONE 2357

*Compliments of*  
BENDER'S DRUG STORE

*A Real Drug Store*

201 Hay Street

Fayetteville, N. C.

*Compliments of*

**JOHN F. McNAIR INC.**



**A MODERN  
DEPARTMENT  
STORE**



**LAURINBURG, N. C.**

**M. M. SMITH  
FURNITURE CO.**

Furniture For  
Every Home



*Wholesale and Retail*



325 Hay Street  
FAYETTEVILLE, N. C.

*Compliments of*

**THE STATE  
BANK**



**LAURINBURG  
and  
MAXTON, N. C.**

*Compliments of*

**SANITARY CAFE**

LUMBERTON, N. C.

*Compliments of*

**HUGGINS SHOE SHOP**

Red Springs, N. C.

*Compliments of*

**AMOS FURNITURE CO.**

Red Springs, N. C.

*Compliments of*

**BELK-HENSDALE  
COMPANY**



LUMBERTON, N. C.

*Compliments of*

**WESTERN AUTO  
STORE**

*Compliments of*

**FLEISHMAN'S**  
*The Ladies Shop of*  
Lumberton, N. C.

*Compliments of*

**BAXLEY-JOHNSON  
CHEVROLET CO., Inc.**  
Red Springs, N. C.

*Compliments of*

**WILKERSON & HOOD INC.**



**"Complete Insurance Service"**



Lumberton, N. C.  
Phone 419

*Compliments of*

**ADAMS' CAFE**

Lumberton, N. C.

*Compliments of*

**COLLINS' DEPARTMENT STORE**  
LUMBERTON, N. C.

*Compliments of*

**HOOD MOTORS, Inc.**  
Your Dodge-Plymouth Dealer



LUMBERTON, N. C.  
PHONE 21

*Compliments of*

**POLLY ANN DRESS SHOP**  
Lumberton, N. C.



Travel Luxuriously . . .

Yet Economically



FAST BUT

SAFE



Queen City  
Trailways

Congratulations

to the

White Heather Staff

**BELK-HENSDALE  
COMPANY**

FAYETTEVILLE, N. C.



REMEMBER YOU ALWAYS SAVE  
AT BELK'S



*Make Our Store Your  
Headquarters  
When in Fayetteville*

College Girls!

*Shop at*

**SEARS**

*and Save*



Buy Savings Bonds  
and Stamps



**SEARS ROEBUCK  
& COMPANY**

FAYETTEVILLE, N. C.

PHONE 6171

420 HAY STREET

*Compliments of*

SANDLIN & CO., INC.

---

**Wholesale Grocers**

---

Fayetteville, N. C.

**The  
FAYETTEVILLE  
OBSERVER**

*"North Carolina's Oldest  
Newspaper"*

Established 1817

# NEIGHBORS



RED SPRINGS EXCLUSIVE  
SHOE STORE



PHONE 398-1

---

## TOWNSEND'S PHARMACY

*The Rexall Store*



WE CARRY A COMPLETE LINE OF THE  
COLLEGE GIRL'S NEEDS

Dependable Druggist : Let Us Serve You

Meet Your Friends at Our Fountain



RED SPRINGS : NORTH CAROLINA

PHONE 2631

# SERVICE TRADING CO., INC.

MAXTON, NORTH CAROLINA

---

COMPLETE LINE HOME FURNISHINGS

PHILCO *and* RCA RADIOS

PHILCO *and* KELVINATOR REFRIGERATORS

THOR WASHERS *and* IRONERS

DUO-THERM *and* ALLEN OIL HEATERS

MANY OTHER ELECTRIC APPLIANCES

CASH *or* TERMS

---

Phone 177-W

*Compliments of*

**SOUTHERN  
FRUIT  
COMPANY**



CHARLOTTE, N. C.

**GEORGE'S MARKET**



**QUALITY MEATS  
and GROCERIES**



RED SPRINGS, N. C.  
DIAL 227-1

*Compliments of*

**McKEITHAN  
HARDWARE**

---

RED SPRINGS, N. C.



WHEN IN MAXTON

*Stop at the*

AUSTIN DRUG  
COMPANY

*Compliments of*

THE  
BANK OF RAEFORD

RAEFORD, N. C.

*Compliments of*

RAYLASS  
Department Store

LUMBERTON, N. C.

*Compliments of*

HOKE DRUG COMPANY

Prescription Druggist

Rae ford, N. C.

*Compliments of*

C. P. KINLAW  
"JEWELER"

RAEFORD, N. C.

BAUCOM  
APPLIANCE COMPANY

**FRIGIDAIRE**

*Refrigerators, Ranges,  
Water Heaters*

**MAYTAG and EASY**

*Washing Machines*

**ZENITH and MOTOROLA**  
*Radios*

RAEFORD, N. C.

Gold Medal Fertilizers

Liberty Premium Fertilizers

Modern Gin System

Modern Seed Cleaning  
Equipment

LIBERTY  
MANUFACTURING  
COMPANY

RED SPRINGS, N. C.

ANNE GREEN'S  
Permanent Wave Shoppe

---

*We Serve You to Serve Again*

---

Red Springs, N. C.

---

*Compliments of*  
  
**McNEILL SHOP**

---

LAURINBURG, N. C.

**SULLIVAN & PEACOCK**

Shoes, Hosiery, Bags

Lumberton, N. C.

---

**ED. S. LYTCH**

*Radio and Electric Service*

Laurinburg, N. C.



PRICES THAT SPELL SAVINGS

On the Corner Red Springs, N. C.  
COLONIAL STORES, INC.

**D. M. McMILLAN**

*"Ford Products Since 1912"*

Red Springs, N. C.

---

**FIRESTONE HOME  
and  
AUTO SUPPLIES**

Maxton, N. C.

---

**HOME FURNITURE CO.**  
FURNITURE, CARPETS,  
STOVES, RANGES, RADIOS

---

Red Springs, N. C.



*"SINCE 1912"*

THE

*Capitol*

OF

FAYETTEVILLE

---

# FLORA MACDONALD COLLEGE

Red Springs, N. C.

## A SENIOR COLLEGE FOR WOMEN

---

Near Fayetteville, Southern Pines and Pinehurst. Delightful climate, healthful mineral springs and remarkable health record. Bus and Railway connections.

A Standard Senior Grade A College for Women. Strong faculty. Graduates accepted for graduate work by leading universities. Class A teacher's certificates. Homelike atmosphere. Personal attention to students by teachers. Courses offered: Bachelor of Arts, Bachelor of Music, Bachelor of Science (Home Economics) degrees. A Secretarial Course.

Athletics. Skillful physical director and coach has general supervision of sports and physical training. Archery, basketball, hockey, swimming, tennis, hiking, etc., are enjoyed in season.

Social activities. Receptions, teas, and many other social functions are provided at the college, while many hospitable and delightful homes of the citizens of Red Springs are open to the students.

Wide patronage. Patronized at present by ten states. Four thousand alumnae are teachers, church secretaries, dietitians, home demonstration agents, social workers, missionaries, and in many other useful professions.

---

*Moderate Charges : For Catalogue Write*

HENRY G. BEDINGER, President

FLORA MACDONALD COLLEGE : Red Springs, N. C.



“Have a Coke”



It's the  
friendly  
high-sign

BOTTLED UNDER AUTHORITY OF THE COCA-COLA COMPANY BY  
FAYETTEVILLE COCA-COLA BOTTLING COMPANY, INC.  
FAYETTEVILLE, NORTH CAROLINA

# PHOTOGRAPHS of Excellence



- Advertising
- Commercial
- Kodachromes
- Aerials
- Portraits
- News

“School Annuals”



PHONE 3-8230

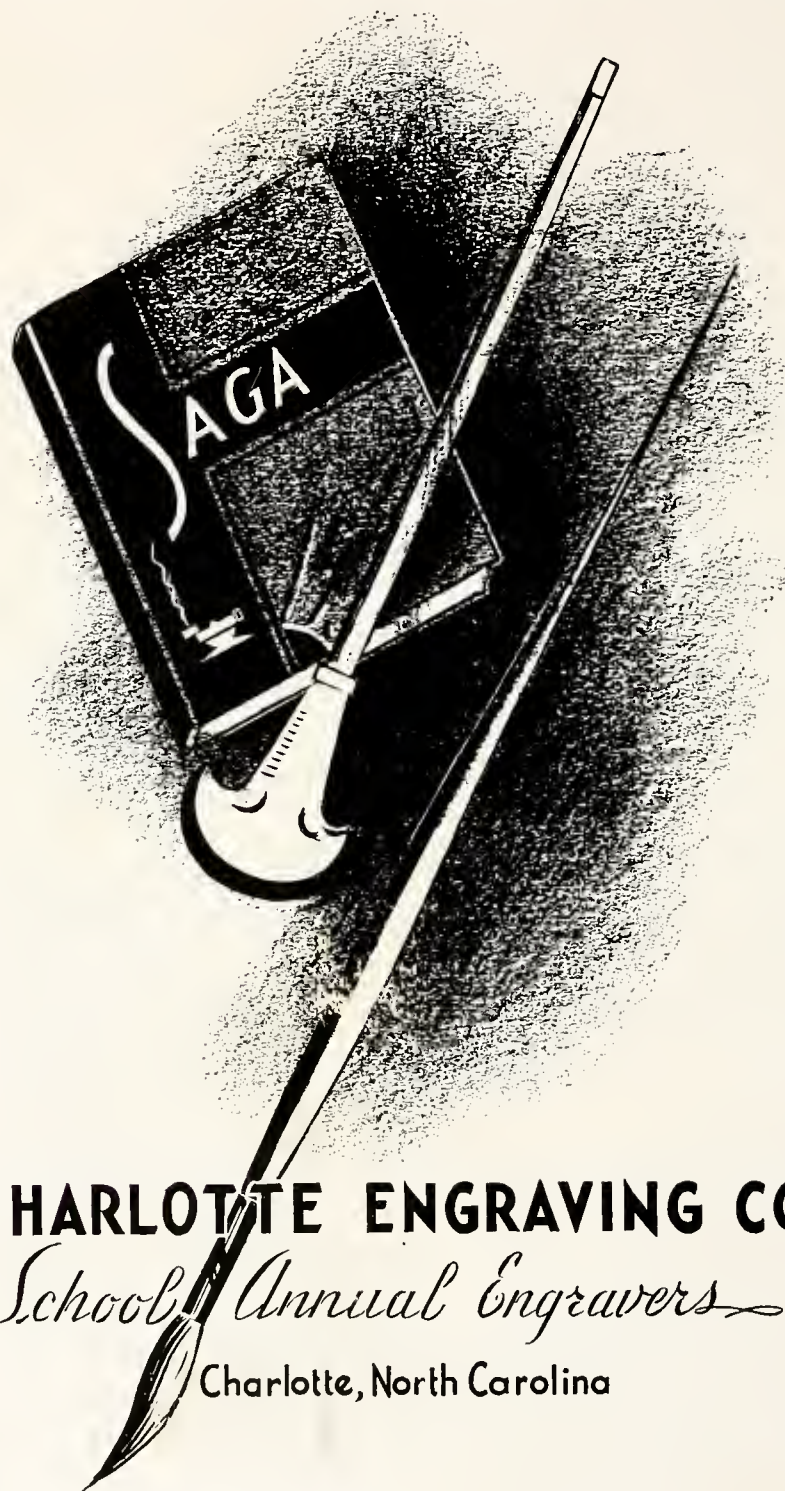
“Assignments Anywhere”



## DUKE PHOTO CO.

404 WEST TRADE STREET

CHARLOTTE, NORTH CAROLINA



**CHARLOTTE ENGRAVING CO.**

*School Annual Engravers*

Charlotte, North Carolina



# BUILDERS DREAMS

**V**ISIONS created by the imagination precede the achievement of any really great accomplishment. The ability to weave the threads of imagination into the finished fabric is equally important.

It has been the privilege of the EDWARDS & BROUGHTON COMPANY to cooperate with the **White Heather** staff in creating their vision into material form.

Such cooperation is one of the "visions" which precede the building of a successful business, and is a part of the working policy of the EDWARDS & BROUGHTON COMPANY.

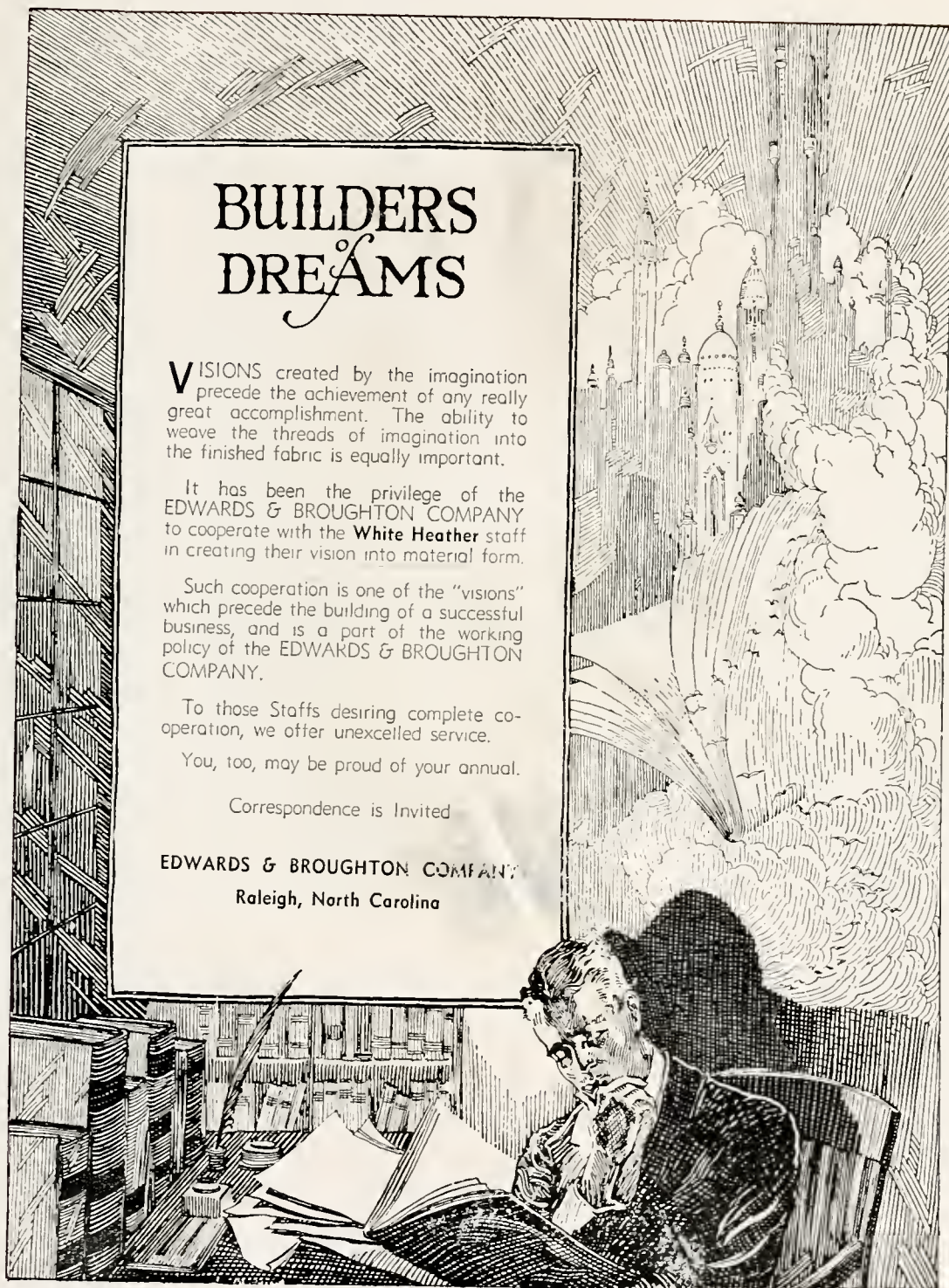
To those Staffs desiring complete cooperation, we offer unexcelled service.

You, too, may be proud of your annual.

Correspondence is Invited

EDWARDS & BROUGHTON COMPANY

Raleigh, North Carolina



AUTOGRAPHS









