

White Feather 1947





Nineteen Forty-seven

Flora Macdonald



PUBLISHED BY THE STUDENTS OF FLORA MACDONALD

Mary Eleanor Parker

EDITOR-IN-CHIEF



White Feather

COLLEGE, RED SPRINGS, NORTH CAROLINA

Elizabeth Vardell McNett

BUSINESS MANAGER

19549



With a Face to the Future

WE LOOK UPON the beginning of a new era—a span of fifty years of growth, development, and fulfillment of our dreams of a college which will be far better than the one of today. This dream has been inspired by the minds and souls of the Christian men and women who formed the real cornerstone.

Mere dreams are materializing every day in the thousands of dollars pouring into our improvement fund. The concrete evidence will be in a new water tank, reflooring, improved lighting system, new equipment for classrooms and dormitories and other necessary alterations.

It is we who must have vision. The realization of our dreams will inspire our children and our children's children.

We have seen the semi-centennial year. Perhaps it will be our granddaughters who will witness the one hundredth anniversary of our Alma Mater. We wish for them success and happiness through their college years. May they have the crowning joy we have experienced in publishing this annual.

Polly and Libbie

We dedicate the 1947 White Heather to

Miss Carol Robertson

THE TRUST and faith she holds in our generation will be a treasured memory. By her example we are inspired to study in order that we may fulfill efficiently our duties as citizens.



She possesses political acumen



a quality rarely found in woman.



"Stands our cherished Alma Mater"



"Springs of crystal rise"



"Far away from noisy tumult"





HENRY GRAYBILL BEDINGER, B.A., B.D., D.D.
President

Administration

AS DIRECTOR of our improvement campaign, Dr. Bedinger has shown deep concern for our future. Under his supervision we are reaching the goal. In all that he undertakes, we perceive the absolute sincerity that rules his every move.

DEAN FRANCES ALEXANDER McLEOD, B.A.
Dean of Women

A SAVING sense of humor is what the girls admire most in Dean McLeod. Her power of understanding, vital interest in college problems, and standard of values have been an inspiration in 1947.

DEAN ROBERT REUTER, B.Mus., M.Mus.
Dean of the Conservatory

HIS ABILITY in leadership in the F.M.C. conservatory has made the music department very outstanding. Success as a teacher has made Dean Reuter an outstanding person on the campus.

DEAN HAZEL MORRISON, B.A.
Dean of the Faculty and Registrar

SHE EMERGES from copies of grades, schedules and other detail office work to hold conferences. Her patient consideration is a great help to all Flora Macdonald students.

CHARLES GRAVES VARDELL
 B.A., D.D.
President Emeritus



DR. VARDELL

FIFTY YEARS AGO there was a man and a dream. The man was Dr. Charles Vardell, the dream grew and became a life work—it was Flora Macdonald College.

The Deans

McLeod



Reuter



Morrison



Faculty

Bible:

NATALIE CRAWFORD MOFFETT, B.A. *Professor*
ELIZABETH CLARKE MCPHAUL, B.A.
Associate Professor

Biology:

ALEXANDER BELL STUMP, B.S., M.S., Ph.D.
Professor
LAVINIA L. MULLINNIX, B.S. *Associate Professor*

Chemistry:

JANE COLSON GLENN, B.S., G.Ph., M.S. *Professor*

Education:

MARY McLEAN CONOLY, B.A., B.S., M.S. *Professor*
GENEVIEVE McMILLAN NEIGHBORS, B.A., M.A.
Associate Professor
ANNIE MOORE CHERRY, B.A., M.A. *Professor*

English:

HELEN H. SALLS, B.A., M.A. *Professor*
VIRGINIA BONEY, B.A., M.A. *Associate Professor*

History and Social Science:

CAROL ROBERTSON, B.S., M.A. *Professor*
GENEVIEVE McMILLAN NEIGHBORS, B.A., M.A.
Associate Professor

Home Economics:

FRANCES ELIZABETH COMER, B.S., M.A. *Professor*
MRS. E. T. CROWSON, B.S. *Associate Professor*

Latin:

HARRIET N. MORRISON, B.A., M.A. *Professor*

Mathematics:

ELLEN RASOR, B.A., M.A. *Professor*

Modern Languages:

ELIZABETH L. MOORE, B.A., M.A., Ph.D.
Professor of French
JEANNE MAURER CHEW, B.A.
Associate Professor of Spanish

Music:

ROBERT REUTER, B.Mus., M.Mus. *Dean of Conservatory and Professor of Organ and Piano*
LILLIAN FARQUHAR ROBESON, *Professor of Violin; Harmony; Counterpoint; Ear Training and Sight Singing*
LIDA LAW CHAPMAN, B.A., B.M. *Professor of Organ, Piano, History of Music, and Music Appreciation*
LOIS J. LAMBIE, B.A., M.A. *Professor of Public School Music*
ETHEL M. ROWLAND, B.S. *Professor of Voice*
AILEEN McMILLAN, B.Mus. *Associate Professor of Piano*

Physics:

JOHN F. CAMPRELL, B.S. *Associate Professor*

Physical Education:

ETHEL BATEMAN, B.A., M.A. *Professor*
VIRGINIA CONNOR, R.N. *Associate Professor of Home Nursing*

Business Subjects:

LETA WELTHA MCINTYRE, B.S. *Professor*
ELIZARETH STENHOUSE, B.L. *Associate Professor*
KATE McLEAN STEWART, B.A. *Instructor in English, Rapid Calculation and Spelling*

Bursar:

BROWN MORRISON, B.L.



Dietitian:

MRS. LUTHER GAMBILL, B.S.

Librarian:

MRS. FLORA M. PERRY, B.A., B.S.

Housekeeper:

MRS. MARY HELTON

Faculty



First row, left to right: Bateman, Boney, Cherry, Chew, Comer, Conoly. Second row: Crowson, Gaitley, Helton, McIntyre, McMillan, Moffett. Third row: Moore, Morrison B., Morrison H., Mullinix, Neighbors, Perry. Fourth row: Rasor, Robertson, Rowland, Stenhouse, Stewart, Stump, Lambie.



"Through These Portals"

Classes



Rhyne, Parrish, Lytton, Nye, Youngblood

"For the last time"



"OUR COLLEGE FRIENDSHIP is the finest" is sung for another "last time" by an F.M.C. graduating class. Forty-nine seniors suddenly realize that days of themes, quarterly exams, "campuses," and the classic "week-end" are over. This being the twentieth century, they also realize it's no bright shining world they are stepping into, but an old confused planet which needs everything they have to give. May those dreams of college life come alive for a better tomorrow in the world of the Class of 1947.

Senior Class Officers

ANNE ELIZABETH YOUNGBLOOD, *President*
EVELYN SUE LYTTON, *Vice President*
ELEANOR SUE PARRISH, *Secretary*
SARAH NYE, *Treasurer*
JANET PEGRAM RHYNE, *Tea Room Manager*
BETTY BLUE McCALLUM
Assistant Tea Room Manager
MISS JEAN CHEW, *Adviser*
JAMES DICKSON McLEAN, III, *Mascot*



Mascot

VIRGINIA DARE ASKEW, B.A.
Grammar Grade Methods

Kenly, N. C.

Zetesian Literary Society, Critic 3; William Bartram Scientific Society 1, 2; Basketball 1, 2; Hockey 1, 2; Atlantic Christian College; Summer School 2.
"Miss Cherry" . . . reserved . . . attractive . . . twinkling eyes . . . East III . . . "Sarah" white blouse and black skirt at breakfast.

LULU LITTLE ATKINSON, B.A.
English and Social Science

Kenly, N. C.

Zetesian Literary Society, Corresponding Secretary 3; William Bartram Scientific Society 2, 3, 4; L'Alliance Francaise 3, 4; President 4; Home Economics Club 3, 4; Prayer Band Leader 3; Westminister Fellowship 3; Tennis 1, 2; Archery 2, 3, 4; Pine and Thistle Staff 3, 4; Editor-in-Chief 4; Atlantic Christian College Summer School 1; Mission Study Leader 3.
"Little Lulu" . . . unpredictable . . . moody . . . "P and T" . . . Dick . . . frank . . . precious things come in small packages . . . "Miss Boney" . . . generous.

JUDITH ELLA AUTRY, B.M.

Church Music

Charlotte, N. C.

Epsilon Chi Literary Society; Glee Club 1, 2, 3, 4; Secretary 2, Section Leader 3, 4; President 4; Music Club 1, 2, 3, 4; Secretary 3; President 4; Organ-Piano Recital 2; Junior Organ Recital 3; Graduation Organ Recital 4; Prayer Band Leader 3, 4; Senior Scribe 4; Flora Macdonald Summer School 1, 3; Double Sextette 2.
"Judy" . . . sectional rehearsals . . . spontaneous laughter . . . early morning rendezvous in conserve . . . Mr. Reuter . . . independent . . . talented musician . . . fun loving . . . "You old hag."

IRENE BALDWIN, B.A.

Science and Math

Lansing, N. C.

Zetesian Literary Society; Home Economics Club 1; L'Alliance Francaise 1, 2, 3; Mathematics Club 2, 3, 4; William Bartram Scientific Society 1, 2, 3, 4; Vice President 3; Mission Study Leader 1; Prayer Band Leader 2; Typing Editor WHITE HEATHER 2; Monogram Club 3, 4; Basketball 2, 3, 4; Varsity 2; Hockey 1, 2, 3, 4; Varsity 3; Athletic Board, Salesman 2; President 3; Student Council 3, 4; President Student Body 4; Christian Association Cabinet 4; Superlative 4; Who's Who Among Students in American Colleges and Universities.
"Brain" . . . Lansing and them thar hills . . . capable . . . good athlete . . . our candidate for best all round . . . sincere . . . hard worker . . . black robes and candlelight . . . scientist.

FRANCES CRAIG BARKER, B.S.

Home Economics

Milton, N. C.

Epsilon Chi Literary Society; Home Economics Club 2, 3, 4; William Bartram Scientific Society 3, 4; Hockey 1, 2, 3, 4; Captain 2, 3, 4; Head of Hockey 3; Varsity 2, 3; Monogram Club 3, 4; Athletic Board 2, 3, 4; President Athletic Association 4; Student Council 4; Atlantic Christian College Summer School 1, 2.
"Gracious" . . . hockey captain . . . Harry and P.J.C. . . Miss Comer . . . good natured . . . laughter . . . "Lucy" . . . pies.

MITTIE ISABELL BOGGAN, B.S.

Home Economics

Pee Dee, N. C.

Epsilon Chi Literary Society; William Bartram Scientific Society 2, 3, 4; Camera Club 2, 3, 4; Home Economics Club 2, 3, 4; Granddaughters' Club 1, 2, 3, 4; Hockey 1, 2, 3, 4; Basketball 2, 3, 4; Tennis 1; Atlantic Christian College Summer School 2; International Relations Club 4.
"Roger" . . . Pee Dee . . . good-hearted and gracious . . . black . . . "Mittie Grace" . . . gentle, kind, and shy but with mischief in her eye.

Seniors





The 1947 White Heather

HAZEL COLLEEN BROADWAY, B.A.
Social Science and Mathematics
 Asheboro, N. C.

Zetesian Literary Society, Corresponding Secretary 4; William Bartram Scientific Society 1, 2, 3, 4; Mathematics Club 1, 2, 3, 4; International Relations Club 3, 4; Secretary-Treasurer 4; L'Alliance Francaise 2, 3, 4; Hockey 1, 2, 3, Varsity 3; Woman's College of University of North Carolina Summer School 2.
"Teacher" . . . long hair . . . there is no place like Asheboro . . . willing . . . "Well."

MARGARET IRENE BROCKINTON, B.A.
Grammar Grade Methods
 Kingstree, S. C.

Zetesian Literary Society; South Carolina 1, 2, 3; William Bartram Scientific Society 1, 2, 3, 4; Mathematics Club 1, 2, 3, 4; Prayer Band Leader 3; Christian Association Cabinet 4; Student Volunteers 1, 2, 3, 4; Atlantic Christian College Summer School 3.
"Little B" . . . South Carolina . . . "Greetings" . . . judge . . . outspoken . . . "nice" rocking chair . . . prophetess.

TRUDIE CLARK, B.A.
Primary Methods
 Clarkton, N. C.

Epsilon Chi Literary Society; William Bartram Scientific Society 3, 4; Highland Players 2, 3, 4; Hockey 1, 2, 3; Basketball 1, 2, 3; St. Cecilia Music Club 1, 4; College Marshal 3; Pine and Thistle Staff, Assistant Business Manager 3, Business Manager 4; L'Alliance Francaise 2, 3, 4; May Court 2.
Exact and precise . . . deep brown eyes; that say more than she does . . . lithe . . . dignified and charming . . . "commonest thing I ever heard" . . . walking in the rain . . . White Lake.

SARAH CHRISTINE DABBS, B.A.
Social Science and Bible
 Lexington, N. C.

Epsilon Chi Literary Society; Commercial Club 1; International Relations Club 3, 4; Highland Players 4; William Bartram Scientific Society 3, 4; Wake Forest Summer School 2, 3; WHITE HEATHER Staff 4.
"Polly" . . . Wake Forest . . . wavy hair . . . fraternity pins . . . Room 304 . . . unapparent depth . . . quick to joyous laughter . . . "carefree and happy am I" . . . P.J.C. . . politician . . . surprisingly active.

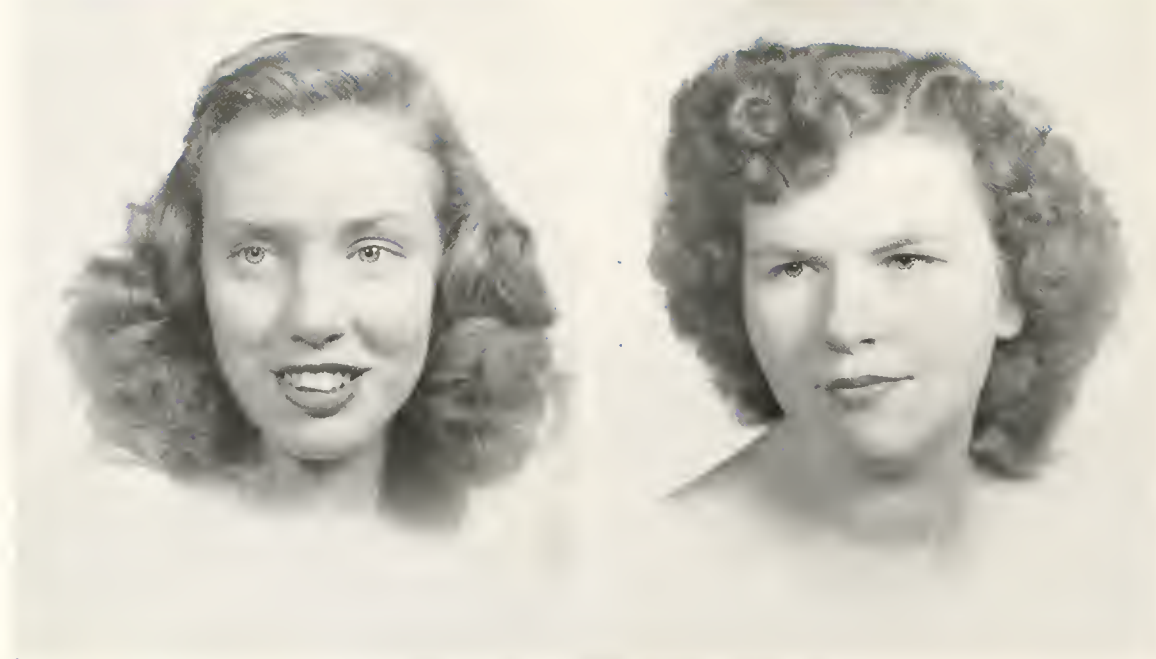
ELLA STEPHANNA ERVIN, B.S.
Home Economics
 Catawba, N. C.

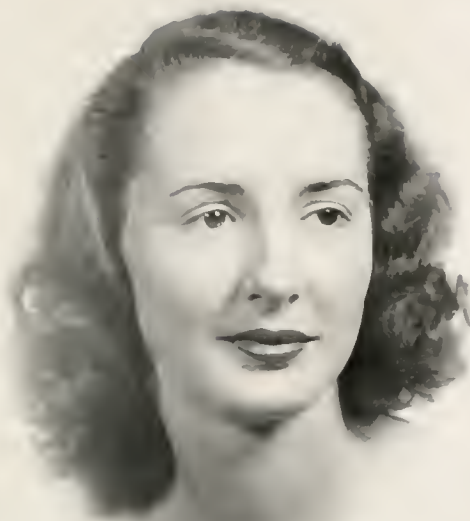
Zetesian Literary Society; William Bartram Scientific Society 2, 3, 4; Camera Club 2, 3, 4; Home Economics Club 2, 3, 4; International Relations Club 4; Student Volunteers 2, 3; Hockey 2; Basketball 1, 2, 3, 4.
"I'm sorry" . . . unobtrusive . . . studious . . . simplicity . . . more modest than meek.

HELEN GAITLEY, B.A.
Primary Methods
 Red Springs, N. C.

Epsilon Chi Literary Society; Day Student's Club 1, 2, 3, 4; Secretary-Treasurer 2, President 3; Student Council 3; Granddaughters' Club 1, 2, 3, 4; William Bartram Scientific Society 1, 2, 3, 4; Athletic Christian College Summer School 3.
Quiet . . . dependable . . . sincere . . . day student . . . "one of the Gaitleys."

Seniors





The 1947 White Heather

SUE NELL GRIFFIN, B.A.

Primary Methods

Unionville, N. C.

Zetesian Literary Society; St. Cecilia Music Club 3, 4; Glee Club 3, 4; Archery 2; Senior Class Cheer Leader 4; Atlantic Christian College Summer School 2; Catawba College Summer School 3.
"Suen'l" . . . bangs . . . primary education . . . happy-go-lucky . . . pickles and crackers.

BETSY HAYWOOD HALL, B.A.

Piano

Rose Hill, N. C.

Epsilon Chi Literary Society; Peace College 1, 2; Rho Delta Chi; Chief Marshal 2; May Queen 2; St. Cecilia Music Club 3, 4; L'Alliance Francaise 4; Granddaughters' Club 3, 4; May Court 4.
"Tubby" . . . graceful . . . stylish . . . queenly . . . independent . . . wasp-waist . . . demure.

MARGARET HALL, B.A.

English and Bible

Plumtree, N. C.

Epsilon Chi Literary Society; Critic 3; Mitchell Junior College 1; International Relations Club 2; William Bartram Scientific Society 3.
Unfathomable . . . unpredictable . . . sweet . . . witty . . . soft . . . studious.

MARY-MARGARET HARRIS, B.A.

Social Science and English

Concord, N. C.

Zetesian Literary Society; Censor 2; President 3; William Bartram Scientific Society 3, 4; International Relations Club 2, 3, 4; Hockey 1, 2, 3, 4; Captain 1, Varsity 3; Basketball 1, 2, 3, 4; Varsity 3; Monogram 3, 4; Highland Players 3, 4; Glee Club 3, 4; Class President 2; Student Council 2, 3; Mission Study Leader 1; Prayer Band Leader 2; Christian Association Cabinet, Chairman; Highway of Learning; Sunday School 4; Student Volunteers 3, 4; Chief College Marshal 3; Exchange Editor Pine and Thistle 4; Senior Scribe 4; Who's Who Among Students in American Universities and Colleges 3, 4; Superlative 4.
"Peggy" . . . true sportsman . . . valuable . . . congenial . . . sport clothes . . . red pajamas . . . Neil . . . well done . . . right sense of values . . . spirit of Flossie Mac.

LUCY DAUGHTRY HUDSON, B.A.

Primary Methods

Lillington, N. C.

Epsilon Chi Literary Society; Campbell College Transfer '45; Campbell College Summer School 2.
Deep, mellow, and infectious laughter . . . "Natural situation" . . . humorous . . . non-sensical.

MELICENT HUNEYCUTT, B.A.

Bible, English, and French

Laurell Hill, N. C.

Zetesian Literary Society; Woman's College of University of North Carolina 2; Delphian Society 2; Honor Roll 2; Classical Club 2; William Bartram Scientific Society 3, 4; Camera Club 3, 4; St. Cecilia Music Club 1, 3, 4; Highland Players 4; L'Alliance Francaise 4; Student Volunteers 1, 3, 4; President 4; Sappho Poetry Club 4; President 4.
Intelligence . . . Shakespeare . . . subtle humor . . . Student Volunteers . . .
"Mademoiselle" hair-do's

Seniors





The 1947 White Heather

BETTY JEAN IDOL, B.A.

Primary Methods

Florence, S. C.

Zetesian Literary Society; Presbyterian College 1; St. Cecilia Music Club 2; South Carolina Club 2, 3, 4; Athletic Board, Secretary 3; Sophomore Cheer Leader 2; May Court 3, 4.
Long eye lashes . . . Dresden China . . . artless nonchalance . . . trips to Lib's . . . ready helper . . . Dainty.

DOROTHY KANOF, B.S.

Home Economics

Roxboro, N. C.

Zetesian Literary Society, Censor 3, Second Vice President 4; Home Economics 3, 4; William Bartram Scientific Society 2, 3; Pine and Thistle Staff, Art Editor 4; College Marshal 3; Camera Club 2; Archery 2; Hockey 4; Senior Scribe 4; Athletic Christian College Summer School 3, 4.
Coöperative . . . understanding . . . petite . . . grateful . . . telephone duty . . . genuine . . . deliberate . . . olive complexion . . . quiet

GOLDIE LOIS KNOWLES, B.S.

Home Economics

Wadesboro, N. C.

Zetesian Literary Society, Chaplain 3; William Bartram 1, 2, 3, 4; Home Economics 2, 3, 4; St. Cecilia Music Club 4; International Relations Club 2, 3, 4; Highland Players 4; Camera Club 1, 2, 3; Student Volunteers 1, 2, 3, 4; Hockey 1, 2, 3, 4; Varsity 1; Basketball 1, 2, 3, 4; Monogram Club 3, 4; Christian Association Cabinet, Chairman Comradeship 2, Chairman Enlistment and Training 3; President Christian Association 4; Class President 1; Student Universities and Colleges 4.
Council 1, 4; College Marshal 3; Superlative 3, 4; *Who's Who Among Students in American "G. K." . . . "Top of the morning" . . . bubbling . . . cabinet . . . conscientious and consecrated . . . "y'all" . . . Wadesboro . . . "let me hold that" . . . true love of Flora Macdonald . . . vim, vigor, and vitality . . . friendliest.*

HILDA LEE, B.M.

Piano

Fuquay Springs, N. C.

Zetesian Literary Society; Campbell Junior College 1, 2; Astro Literary Society 1, 2, President 2; B.S.U. Council 2; Y.W.A. 1, 2; Glee Club 1, 2, 3, 4; St. Cecilia Music Club 4; Hockey 3; Christian Association Cabinet 4; Student Volunteers 1, 2, 3, 4; Piano Recital 2, 3, 4.
Hard worker and dependable . . . conservatory . . . a mind of her own . . . quiet dignity . . . "Byrnes" . . . pleated skirts.

BRYNES LEWIS, B.A.

Science and Social Science

Middlesex, N. C.

Zetesian Literary Society, Corresponding Secretary 4; Campbell College 1, 2; Class Vice President 1; Astro Literary Society 1, 2; B.S.U. Council 2; Y.W.A. 1, 2; Volley Ball 1, 2, Captain 1; Glee Club 1, 4; St. Cecilia Music Club 4; Basketball 1, 2, 4; Hockey 3; Student Volunteers 1, 2, 3, 4; WHITE HEATHER Staff, Assistant Business Manager 3.
Campbell . . . "A. G." . . . neat . . . reliable . . . "Hilda" . . . coöperative . . . pickles and coffee . . . "little red caboose behind the train."

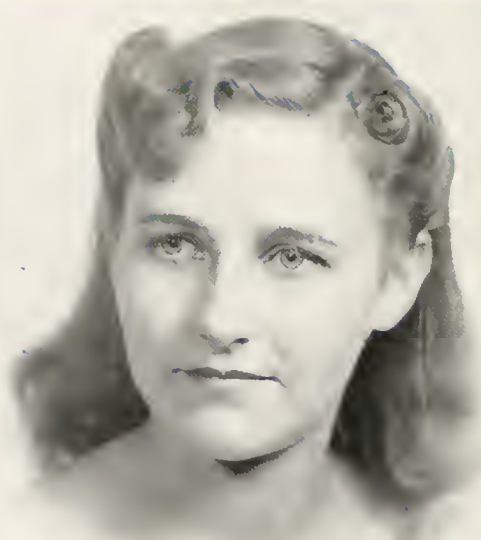
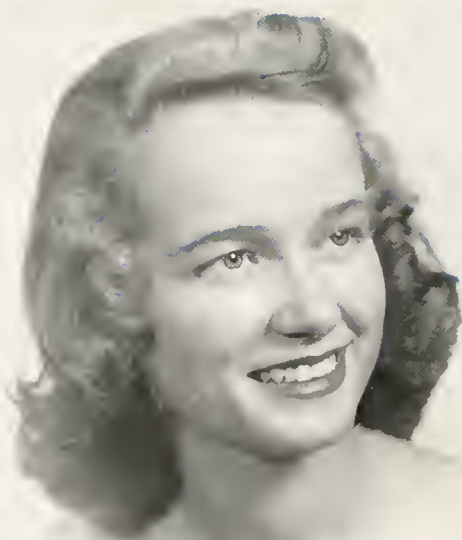
EVELYN SUE LYTTON, B.S.

Home Economics

Gastonia, N. C.

Epsilon Chi Literary Society, Class Vice President 1, 4; Class Secretary 2; Home Economics Club 1, 2, 3, 4; President 4; William Bartram Scientific Society 1, 2, 3, 4; Camera Club 1, 2, 3, 4; St. Cecilia Music Club 3, 4; Glee Club 4; Highland Players 3, 4; Basketball 1, 2, 3, 4; Hockey 1, 2, 3, 4; Pine and Thistle Staff, Epsilon Chi Associate Editor 2, Business Manager 3; College Marshal 3; May Court 3, 4.
Stylish clothes . . . hair twisting . . . wide belts . . . skilled seamstress . . . immaculate . . . mellow laugh . . . creature . . . poised . . . aristocratic.

Seniors





The 1947 White Heather

ELIZABETH BLUE MCCALLUM, B.M.

Piano

Rowland, N. C.

Zetesian Literary Society, Critic 4; Glee Club 2, 3, 4; St. Cecilia Music Club 1, 2, 3, 4, Vice President 3; Junior Piano Recital 3; Senior Piano Recital 4; Archery 2; Granddaughters' Club 1, 2, 3, 4; College Marshal 3; Assistant Manager Tea Room 3; Flora Macdonald College Summer School 3.

"Bee Bee" . . . scarlet blushes . . . P.S.M. . . . Mozart . . . wander lust after tight bell . . . L.S.M.F.T. . . . Rowland . . . generous.

MARY McINNIS, B.A.

Science and Social Science

Red Springs, N. C.

Epsilon Chi Literary Society; Glee Club 1, 2, 3, 4, Secretary 3; William Bartram Scientific Society 4; Day Student's Club 1, 2, 3, 4; Hockey 2; Basketball 2; Pine and Thistle Staff, Epsilon Chi Associate Editor; Who's Who Among Students in American Universities and Colleges.

Frank . . . witty . . . outspoken . . . Presbyterian . . . sincere . . . genuine . . . taxi accommodation with Bernice.

KATHERINE HILL MCKAY, B.A.

Primary Methods

Maxton, N. C.

Epsilon Chi Literary Society; William Bartram Scientific Society 3; St. Cecilia Music Club 3; L'Alliance Francaise 2, 3; Day Student's Club 2, 3; Presbyterian Junior College Summer School.

Flowers for the teacher . . . sweaters and skirts . . . college in three years . . . P. J. C. . . . day student.

ROSE COCHRAN McLEAN, B.S.

Home Economics

Eagle Springs, N. C.

Epsilon Chi Literary Society; Montreat College 1, 2; Home Economics Club 3, 4; Prayer Band Leader 4; Atlantic Christian College Summer School 3.

"Montreat" . . . men . . . unselfish . . . candid . . . on the go . . . Eagle Springs.

MARGARET McLELLAND, B.A.

English and Bible

Mooresville, N. C.

Epsilon Chi Literary Society; Queens, Salem, Davidson, Davidson Summer School 4; St. Cecilia Music Club 4; Student Volunteers 3, 4; Sappho Poetry Club 4.

Grateful and generous . . . T. Mikel . . . bicycle . . . "better late than never" . . . "Let's go on with the class, Miss Salls."

ELIZABETH VARDELL McNETT, B.A.

English and Bible

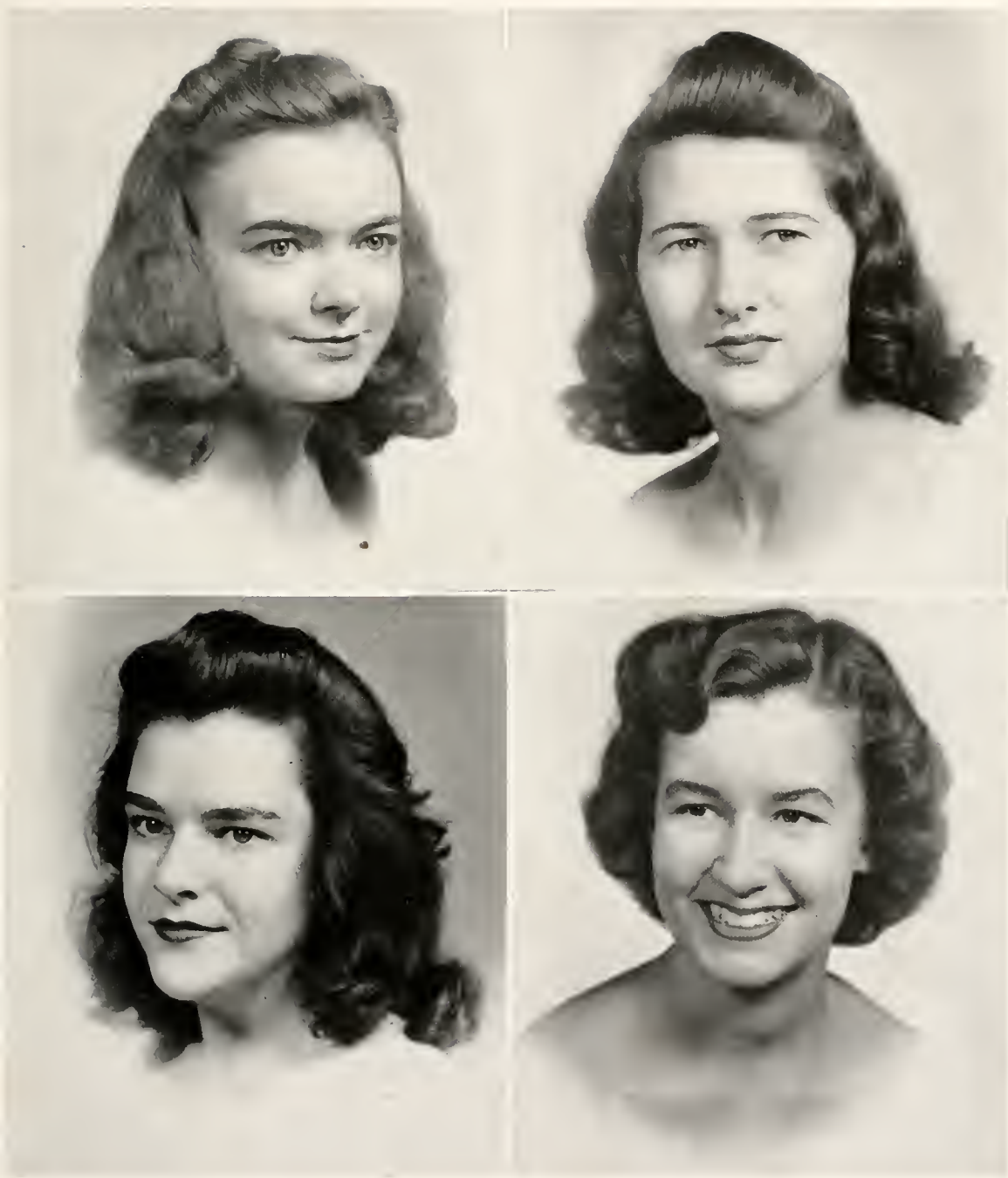
Philadelphia, Pa.

Epsilon Chi Literary Society, First Vice President 2; Glee Club 1, 2, 3; St. Cecilia Music Club 1, 2, 3, 4; Highland Players 2, 3, 4; International Relations Club 2, 3, 4, President 2, 3, Program Committee 4; William Bartram Scientific Society 2, 3, 4; Mathematics Club 3, 4; Sappho Poetry Club 4; Granddaughters' Club 1, 2, 3, 4; Archery 3; Athletic Board 3; College Sextette 2; College Marshal 3; Pine and Thistle Staff, Literary Editor 4; White Heather Staff, Freshman Editor 1, Business Manager 4; May Court 4; Chairman Dance Committee 4; Temple University Summer School 3.

Raleigh . . . 304 . . . ingenious . . . individual . . . versatile . . . "Bills" . . . college car and Maxton . . . striking . . . fuses . . . "Grandpa."

Seniors





The 1947 White Heather

VIVIAN MCQUEEN, B.A.

Social Science

Mullins, S. C.

Epsilon Chi Literary Society; Tampa University 1; Christian Association Cabinet, Chairman
Life Enrichment 3; Mission Study Leader 4; International Relations Club 2, 3, 4; St. Cecilia
Music Club 4; Highland Players 4; Monogram Club 3, 4; Glee Club 4; South Carolina Club 1, 2,
3, 4; Hockey 2, 3, 4; Basketball 2, 3, 4; Captain 2, 3; Varsity 2, 3; Athletic Board, Head of
Basketball 2, Treasurer 3; Class Treasurer 2; College Marshal 3; Pine and Thistle Staff, Typing
Editor 2, Exchange Editor 4; Vice President Student Body 4; Student Council 4; Superlative 3;
May Court 3, May Queen 4.
"Viviana" . . . that South Carolinian drawl . . . altogether lovely . . . softness of a
little kitten . . . unassuming . . . baths . . . "my land" . . . May Queen.

MARY ELIZABETH NEWSOME, B.S.

Home Economics

Fayetteville, N. C.

Epsilon Chi Literary Society; Montreat College 1, 2; International Relations Club 3, 4, Program
Committee 4; Home Economics Club 3, 4; Secretary-Treasurer 4; Prayer Band Leader 4.
Diligent . . . capable . . . reserved and quiet . . . admirable . . . Singer Sewing Center
. . . frail . . . flare for design.

JULIA ANN NURNBERGER, B.A.

Primary Methods

Red Springs, N. C.

Epsilon Chi Literary Society; Day Student's Club 1, 2, 3, 4, Vice President 2; Glee Club 1, 3;
Tennis 1; Archery 3; Wake Forest College Summer School 3.
"Judy" . . . theater box office . . . "my brother" . . . auburn hair . . . men . . . dances
. . . artistic.

SARAH POWELL NYE, B.A.

Primary Methods

Fairmont, N. C.

Epsilon Chi Literary Society; Woman's College University of North Carolina 1; William
Bartram Scientific Society 3, 4; Archery 3; Class Treasurer 4; Presbyterian Junior College
Summer School 1.
Little children . . . sweet . . . efficient treasurer . . . ardent . . . steady . . . P.J.C. . . .
unaffected . . . thoughtful kindness.

MARY ELEANOR PARKER, B.A.

Social Science and English

Clinton, N. C.

Epsilon Chi Literary Society; William Bartram Scientific Society 1, 2, 3, 4; Mathematics Club
1, 2, 3; Glee Club 1, 2; L'Alliance Francaise 1, 2; Highland Players 2, 3; Granddaughters' Club
1, 2, 3, 4; St. Cecilia Music Club 1, 2; Class Treasurer 3; International Relations Club 2, 3, 4;
Archery 1; Tennis 1, 2, 3; WHITE HEATHER Staff, Junior Editor 3, Editor-in-Chief 4; Chief Scribe
4; University of North Carolina Summer School 3.
"Polly" . . . blonde . . . well dressed . . . trim . . . poise . . . keen mind . . . Carolina
. . . competent . . . WHITE HEATHER . . . modest . . . blouses . . . business like.

ELEANOR SUE PARRISH, B.A.

Primary Methods

Smithfield, N. C.

Zetesian Literary Society; Class Secretary 3, 4; Highland Players 3, 4; L'Alliance Francaise
3, 4; Secretary 4; St. Cecilia Music Club 1; Basketball 1, 2, 3, 4; Hockey 2, 3, 4; Monogram
Club 4; Pine and Thistle Staff, Assistant Business Manager 4; Atlantic Christian College Summer
School.
Hair rats . . . diligent secretary . . . blue eyes . . . F.B.I. . . . warm . . . athlete.

Seniors





The 1947 White Heather

LEA-FRANCES PENDLEY, B.A.
Piano and English
 Fort Bragg, N. C.

Zetesian Literary Society; Glee Club 4; St. Cecilia Music Club 1, 2, 3, 4; William Bartram Scientific Society 1, 2, 3, 4; President 3; Mathematics Club 1, 2, 3, 4; Treasurer 4; International Relations Club 3, 4; Camera Club 3, 4; Christian Association Cabinet 3, 4; Flora Macdonald College Summer School 3.
"Pendley" . . . Fort Bragg . . . generosity . . . cheerful . . . animated . . . well informed . . . everybody's friend.

FRANCES A. POWERS, B.A.
Grammar Grade Methods
 St. Pauls, N. C.

Zetesian Literary Society; Woman's College University of North Carolina 1, 2; Alethian Society 1, 2; Medical Technologist Club 2; William Bartram Scientific Society 3, 4.
Unobtrusive . . . auburn hair . . . secretive . . . reserved . . . tacit . . . sock curlers.

FRANCES VARUE PRIDGEN, B.A.
Primary Methods
 Chadbourn, N. C.

Zetesian Literary Society. First Vice President 4; Commercial Club 1, Prayer Band Leader 3; Archery 2; Hockey 3, 4; Basketball 3, 4; Atlantic Christian College Summer School 2; Lenoir-Rhyne College Summer School 3.
State and Robert . . . records . . . laughing eyes . . . cute clothes . . . neat . . . sweet . . . cooking . . . tactful.

JANET PEGRAM RHYNE, B.S.
Home Economics
 Stanley, N. C.

Zetesian Literary Society; Home Economics Club 1, 2, 3, 4; William Bartram Scientific Society 2, 3, 4; Camera Club 2, 3, 4; Fire Chief 3; Tea Room Manager 3, 4; Senior Scribe 4; Pine and Thistle Staff, Feature Editor 4; Hockey 1, 2, 3, 4; Varsity 3; Basketball 1, 2, 3, 4; Tennis 1, 2, 3; Monogram Club 4; Lenoir-Rhyne College Summer School; Atlantic Christian College Summer School.
"Pegram" . . . sleepy . . . half-pint . . . shorts and sweaters . . . carefree . . . artistic . . . fashionable . . . lovable . . . unique . . . T-Room . . . Peter Pan colors . . . dimples.

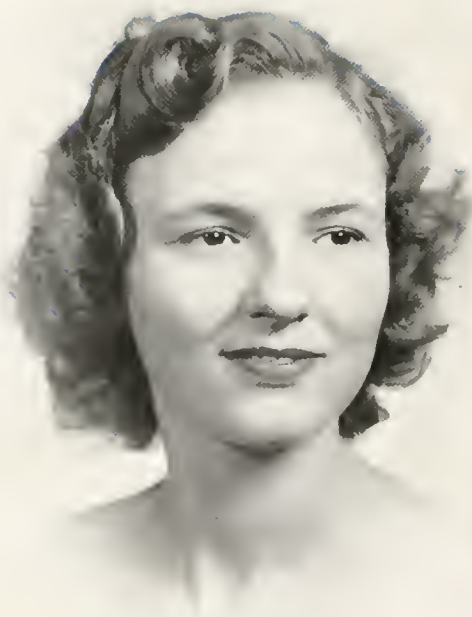
ERNA ROWE, B.A.
Social Science and Science
 Arapahoe, N. C.

Epsilon Chi Literary Society; Mars Hill Junior College 1; Clio-Phi 1; William Bartram Scientific Society 3, 4; International Relations Club 4; Wake Forest Summer School 2.
State . . . riding . . . Erique . . . good looking . . . long hair . . . physics . . . 613 . . . grateful . . . striking clothes.

NELLIE GRAY SIDES, B.A.
Bible and Social Science
 Statesville, N. C.

Epsilon Chi Literary Society; Mitchell Junior College 1, 2; Student Council 2; Dramatic Club 1, 2; Historical Society, Vice President 2; Spanish Club 1, 2; Science Club 2; Marshal 2; Student Christian Association, Vice President 1, President 2; Student Volunteers 3, 4; Christian Association Cabinet, Chairman Life Enrichment Religious Meetings 4; Glee Club 1, 2, 3, 4, Treasurer 4.
Quiet . . . deep thinker . . . Mitchell . . . knitting . . . reserved . . . earnest.

Seniors





The 1947 White Heather

SARAH ELIZABETH SPENCE, B.A.

Grammar Grade Methods

Fuquay Springs, N. C.

Zetesian Literary Society; William Bartram Scientific Society 1, 2; Glee Club 3; St. Cecilia Music Club 3; Basketball 1, 2; Atlantic Christian College Summer School 2.
White blouse and skirt at breakfast . . . fried potatoes . . . dignified . . . East III . . . concerts (?) . . . "Jimmy" . . . stately attractiveness.

CLARA GENEVA SPIVEY, B.A.

Primary Methods

Elizabethtown, N. C.

Zetesian Literary Society; William Bartram Scientific Society 3, 4; Student Volunteers 1; L'Alliance Francaise 2, 3, 4; Camera Club 3, 4; Hockey 1, 2, 3, 4; Tennis 2, 3; Basketball 1, 2, 3; International Relations Club 4; Atlantic Christian College Summer School 3.
"Clabber" . . . Impulsive . . . hockey . . . temperamental . . . shy . . . Primary major . . . diligent.

KATHERINE STRINGER, B.A.

Social Science and English

Red Springs, N. C.

Epsilon Chi Literary Society; Bob Jones College 2; Day Students Club 1, 3, 4; William Bartram Scientific Society 1, 3, 4; Math Club 1, 3, 4; *Pine and Thistle* Staff, Associate Poetry Editor 4.
Mrs. Campbell . . . poetry . . . "Ben" . . . natural beauty . . . impartial . . . discreet . . . sensible.

MARY HELEN TEW, B.S.

Home Economics

Clinton, N. C.

Epsilon Chi Society; William Bartram Scientific Society 2, 3, 4; Home Economics Club 2, 3, Program Chairman 4; St. Cecilia Music Club 1, 2, 3; Hockey 3, 4; Basketball 1, 2, 3, 4; Archery 2, 3; Volley Ball 1, 2; Class Vice President 3; Student Council 3; Atlantic Christian College Summer School 1.
"Too" . . . Boone . . . Huge gold sweater . . . moody . . . intelligent . . . understanding . . . conscientious.

ALICE IDA WALKER, B.A.

Piano and Bible

Forest City, N. C.

Zetesian Literary Society; Mission Study Leader 1; Christian Association Cabinet, Chairman World Fellowship 2; Chairman Enlistment and Training 4; Vice President Christian Association 4; St. Cecilia Music Club 1, 2, 3, 4; Vice President 4; Glee Club 1, 2, 3, 4; Sectional Leader 2, 4; Double Sextette 2; Piano Recitals 1, 2, 3, 4; Student Volunteers 2, 3; William Bartram Scientific Society 2, 3, 4; Camera Club 2, 3; College Cheer Leader 4; *Pine and Thistle*, Associate Editor 3; *Who's Who Among Students in American Universities and Colleges* 4.
Optimistic . . . loyal . . . cabinet . . . leadership . . . industrious . . . thorough . . . "my folks" . . . constructively aggressive . . . people . . . prompt.

JANIE DUNLAP WILLIAMS, B.A.

English and Social Science

Laurinburg, N. C.

Epsilon Chi Literary Society; Woman's College University of North Carolina 1; Adelpian Society 1; Glee Club 2, 3; Double Sextette 2, 3; William Bartram Scientific Society 2; International Relations Club 2, 3; Day Student 4; *WHITE HEATHER* Staff, Business Editor 3.
"Possum" . . . dramatic . . . energetic . . . practice teaching . . . "In my class" . . . P.J.C. . . Christmas 1945 . . . helpful.

ANNE ELIZABETH YOUNGBLOOD, B.S.

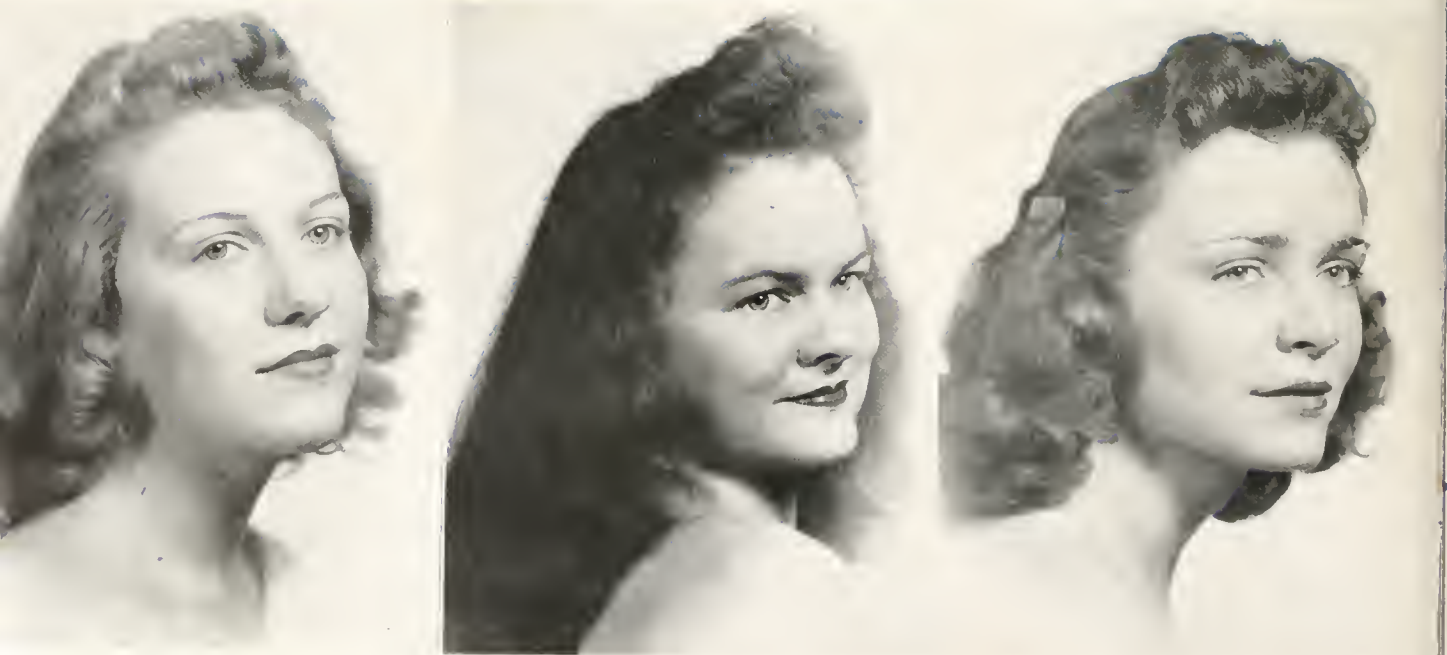
Home Economics

Smithfield, N. C.

Zetesian Literary Society; William Bartram Scientific Society 2, 3, 4; Camera Club 3, 4; Home Economics Club 2, 3, 4; Vice President 4; Highland Players 4; St. Cecilia Music Club 4; Monogram Club 4; College Marshal 3; Hockey 2, 3, 4; Varsity 3; Basketball 1, 2, 3, 4; Class Vice President 2; Class President 3, 4; Student Council 3, 4; *Pine and Thistle* Staff, Sports Editor 2, Exchange Editor 4; Atlantic Christian College Summer School 2; *Who's Who Among Students in American Universities and Colleges* 4.

"A. Y." . . . Johnston County . . . Postoffice . . . ideal class president . . . full of fun . . . council . . . Betty . . . Flossie Cameron . . . mischievous . . . "My gals a corker."

Seniors





The 1947 White Heather



Pace, Robertson, Wilson
Legette, Newton, Reaves, Kanoy

"Three Down . . . one to go!"



BEING A JUNIOR was definitely an improvement as far as the juniors were concerned. How they did enjoy those special privileges! They meant added responsibilities but with the pleasing prospect of being seniors soon. So the Class of '48 looks forward.

Junior Class Officers

HARRIET WILSON, *President*

DORIS LEGETTE, *Vice President*

GURLINE PACE, *Secretary*

JEAN NEWTON, *Treasurer*

JEANNE KANOY, *Tea Room Manager*

LOUISE REAVES, *Assistant Tea Room Manager*

Juniors



ADDOR, SUE
Addor, N. C.

ADKINS, BETTY JANE
Marion, N. C.

AMIS, HARRIET ANN
Norfolk, Va.

ARNETTE, MARY FRANCES
Conway, S. C.

AUSTIN, SARA ALICE
Maxton, N. C.

BARDEN, IRENE
Fairmont, N. C.

BARROW, THELMA
La Grange, N. C.

BECKWITH, GRACE
Fayetteville, N. C.

BULLOCK, PANTHEA
Roxboro, N. C.

COLLIER, MARGARET
Wade, N. C.

DRINKARD, ELLA MAY
Lynchburg, Va.

DULL, FRANCES MAE
Cameron, N. C.

The 1947 White Heather



EPPS, KATHLEEN
Kingstree, S. C.

FISLER, MARION
Ivanhoe, N. C.

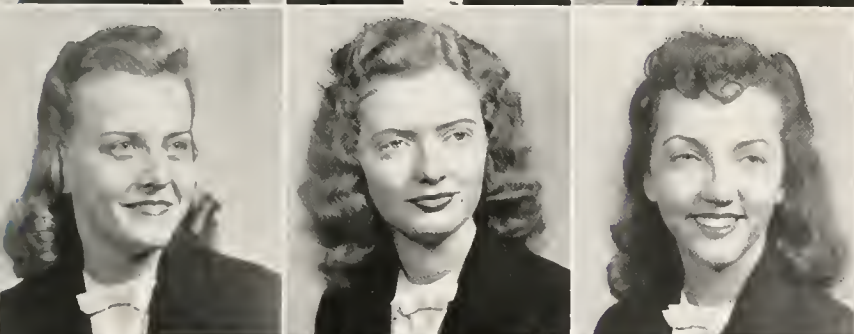
FULCHER, AUDREY LANE
Rocky Mount, N. C.



GAYLORD, MARY GRACE
Winterville, N. C.

GOODMAN, DAPHNE
Marion, N. C.

HARDIN, GRACIE
Fairmont, N. C.



HELTON, MARY GRAY
Timberland, N. C.

HOBBS, JANE STEVENS
Wilmington, N. C.

HODGIN, CHRISTINE
Red Springs, N. C.



HUMPHREY, SARAH E.
Warsaw, N. C.

HUNTLEY, LELA FLAX
Morven, N. C.

JOHNSON, CATHERINE
Red Springs, N. C.



Juniors

KANOE, JEANNE
Roxboro, N. C.

KOONTS, CLARA VIOLET
Greensboro, N. C.

KORNEGAY, AUDREY ESTON
Warsaw, N. C.

LANE, ELOISE JOHNSON
Wagram, N. C.

LEGGETTE, DORIS
Proctorville, N. C.

LEWIS, LINDA
Bessemer City, N. C.

McCANTS, MARGARET
Asheville, N. C.

McCASKILL, JEAN
Carthage, N. C.

McDOWELL, CAROLYN
Elizabethtown, N. C.

McINTOSH, BONNIE LEE
Kings Mountain, N. C.

McLEAN, MARGARET
Woodstock, Va.

McLEOD, MARY EVELYN
McBee, S. C.



MCRATNEY, EDNA MITCHELL
Parkton, N. C.

NEWMAN, FRANCES
Tryon, N. C.

NEWTON, JEAN
McColl, S. C.

NORTON, DORIS LEE
Raeford, N. C.

PACE, JANE GURLINE
Orlando, Fla.

REAVES, LOUISE
Fayetteville, N. C.

SINGLETON, JACQUELINE H.
Red Springs, N. C.

SMITH, MARTHA
Charlotte Courthouse, Va.

SNEED, LILLIAN PARKS
Monks Corner, S. C.

STONE MARY KATHERINE
Lumberton, N. C.

SUTTON, ELIZABETH
Dublin, Va.

TILLINGHAST, MARY SUE
Dillon, S. C.

The 1947 White Heather

Juniors



TURNER, HELEN GENEVA
Fair Bluff, N. C.

VANN, IDA RAY
Clinton, N. C.

VANNOY, FRANCES
Reddies River, N. C.

WADDELL, EVALYN OGLESBY
Fair Bluff, N. C.

WATSON, GAY
Red Springs, N. C.

WATSON, MIRIAM
Jonesboro, N. C.

WAYNE, BETTY JOYCE
Hallsboro, N. C.

WILSON, HARRIET
News Ferry, N. C.

WOMBLE, MARY ATWATER
Wagram, N. C.

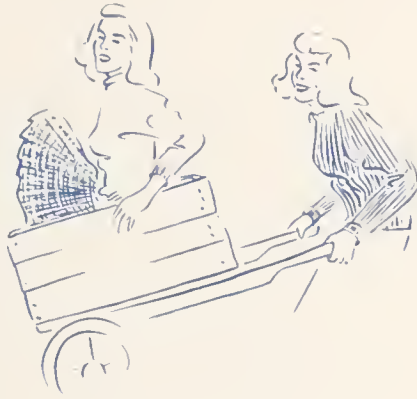
WOOD, RUBY
Rockfish, N. C.





Hall, Knight, Parker, McPhaul, Herring

"Just in between"



THEY CAME BACK this September with a blasé air which enabled them to stride through difficulties involved in being sophomores. Their motto: "Eat, drink, and be merry, for next year we'll be juniors and then we'll have to behave!" Full of fun, spirit, and ideas, F.M.C. would be duller without the Class of '49.

Sophomore Class Officers

SHIRLEY PARKER, *President*

RACHEL HALL, *Vice President*

KATHARYNE HERRING, *Secretary*

MIRIAM KNIGHT, *Treasurer*

MRS. ELIZABETH CLARKE McPAUL, *Adviser*

Sophomores

ATKINSON, ANNIE LOU, Fairmont, N. C.; ALLRED, MARIAN, Savannah, Ga.; ARNETTE, GAYNELLE, Fairmont, N. C.; BAIN, DORIS, Wade, N. C.; BACON, REBECCA, Hillsboro, N. C.

BEAM, EVA MAE, Rutherfordton, N. C.; BEASLEY, WINIFRED, Lumberton, N. C.; BEDINGER, ALICE, Red Springs, N. C.; BERRYHILL, NINA, Barium Springs, N. C.; BISHOP, NANCY, Greenville, S. C.

BRADY, BETTY, Chadbourn, N. C.; BRITTAIN, NELL ELIZABETH, Mullins, S. C.; BUNTING, CAROLINE, New Bern, N. C.; BULLOCK, CATHERINE, Fairmont, N. C.; CLARK, DORIS McNATT, Fayetteville, N. C.

CANTRELL, FAITH CYNELL, Chesnee, S. C.; CAUDELL, MARGARET JANE, St. Pauls, N. C.; CHAPPELL, ELIZABETH, Candor, N. C.; CONKLING, NAOMI, Jacksonville, N. C.; COX, NINA GERTRUDE, Tabor City, N. C.

CRADDOCK, SARAH, Hamlet, N. C.; CRAWFORD, GLADYS, Greenville, N. C.; CROWELL, HELEN BEATRICE, Atlanta, Ga.; DAVIS, JOLINE, Bladenboro, N. C.; DELINGER, BARBARA ANNA, Davidson, N. C.

DYER, JUNE, Bartow, Fla.; FIELDS, DOROTHY MAE, Carthage, N. C.; FISHER, PHYLLIS, Kannapolis, N. C.; FONVILLE, ANITA LOUISE, Tabor City, N. C.; GORE, FLORA BELLE, Tabor City, N. C.

Atkinson
Beam



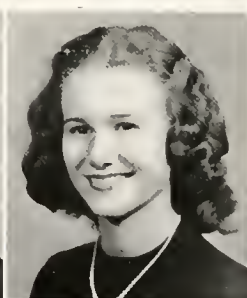
Allred
Beasley



Arnette
Bedinger



Bain
Berryhill



Bacon
Bishop





Brady
Cantrell
Craddock
Dyer

Brittain
Caudell
Crawford
Fields

Bunting
Chappell
Crowell
Fisher

Bullock
Conkling
Davis
Fonville

Clark
Cox
Delinger
Gore

The 1947 White Heather

SOPHOMORES

GREENE, VIRGINIA CAROLYN, Norwood, N. C.; GRIFFIN, BLOSSOM, Unionville, N. C.; HALL, RACHEL DARDEN, Marion, S. C.; HAMILTON, MARION, Fairmont, N. C.; HERRING, KATHARYNE PRUDENCE, Clinton, N. C.

HINES, ANNA MARGARET, Washington, N. C.; HOOVER, FLORENCE, Batesburg, S. C.; HUFFINES, JANE, Fairmont, N. C.; HUMPHREY, PATRICIA ANN, Lumberton, N. C.; JOHNSON, PATRICIA, Richmond, Va.

KING, VERA, Fayetteville, N. C.; KNIGHT, HELEN JOY, Roanoke Rapids, Va.; KNIGHT, MIRIAM, Orlando, Fla.; KUNZE, MARIANNE, Leaksville, N. C.; LEE, LORRAINE, Hampton, Va.

LEDBETTER, NANCY LUCILLE, Norman, N. C.; LIFRAGE, ROBERTA, Salters, S. C.; LYTLE, DONNIE, Red Springs, N. C.; MANESS, MYRA ANNE, Biscoe, N. C.; MANN, MARTHA RUTH, Mebane, N. C.

MAULDIN, EMILYN, Chesterfield, S. C.; MORRISON, IRIS FAYE, Roseboro, N. C.; McCASKILL, BETTY Jo, Carthage, N. C.; McLEOD, SARAH, Aberdeen, N. C.

McNEELY, ANN ELIZABETH, Elkin, N. C.; NASSIF, FRANCES, Laurinburg, N. C.; PARKER, SHIRLEY, Jacksonville, Fla.; PAYNE, MARY WRIGHT, Washington, N. C.; PIERCE, VIOLET, Apex, N. C.

Greene
Hines



Griffin
Hoover



Hall
Huffines



Hamilton
Humphrey



Herring
Johnson





King
Ledbetter
Mauldin

Nassif

Knight, H.
Lifrage
Morrison

Parker

Knight, M.
Lytte
McCaskill

Payne

Kunze
Maness
McLeod

Pierce

Lee
Mann
McNeely

The 1947 White Heather

Sophomores

PREVATTE, MARY DELLE, Fairmont, N. C.; PRICE, BETTY, Pineville, N. C.; REILY, ROSEMARY, Washington, D. C.; RIGGAN, FLORA ED, Henderson, N. C.; ROGAN, FLORENCE, Greeleyville, S. C.

ROHANNA, JASMINE, Elizabeth City, N. C.; RUSSELL, HELEN PAYNE, Kinston, N. C.; RUSSELL, MARY ANN, Sanford, N. C.; SMITH, JANET, Whitsett, N. C.; SPIVEY, RUBY NELL, Elizabethtown, N. C.

SWEARINGEN, IRIS, Orlando, Fla.; TOWNSEND, SARA, Lockhart, S. C.; TUGWELL, NINA RUTH, Farmville, N. C.; TURNAGE, MARY ANNE, Farmville, N. C.; TURNER, MARY, North Charleston, S. C.

WARD, TILLIE RUTH, Bladenboro, N. C.; WATT, MARGARET, Americus, Ga.; WHITEMORE, CASSIE, Graham, N. C.; WILBORN, CLETA, Lillington, N. C.; WILLIAMS, MARGARET, Indian Valley, Va.

WILSON, SUE, Linden, N. C.; WOODWARD, VERNIESE, Murrells Inlet, S. C.; WORLEY, RAMONA, Pink Hill, N. C.

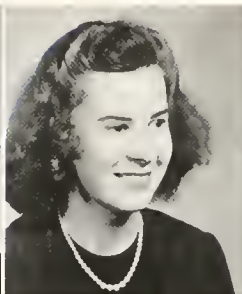
Not photographed:

BREWER, ANNIE MARGARET, Carthage, N. C.
McCORMICK, IMOGEN, Whiteville, N. C.

Prevatte
Rohanna



Price
Russell, H.



Reily
Russell, M. A.



Riggan
Smith



Rogan
Spivey





Turnage
Whittemore

Swearingen

Turner
Wilborn
Woodward

Townsend

Ward
Williams
Worley

Tugwell

Watt
Wilson

The 1947 White Heather



Buie, Gardner, Allred, Williamson

"Strength in numbers"

FRESHMEN

It did not take this Freshman Class long to become used to college life at F.M.C. Small in size, they make up for this in quality. Already they have shown good future leadership. They came in with F.M.C.'s first dance—may that joyous spirit always be a part of the class of '50.

Freshman Class Officers

LAJEANA WILLIAMSON, *President*

DEWIE BUIE, *Vice President*

DOROTHY ALLRED, *Secretary*

CECILIA GARDENER, *Treasurer*

MISS ELLEN RASOR, *Adviser*

Freshman Class

ALLRED, DOROTHY ANN
 Candor, N. C.
 ANDREW, BETTY JANE
 Bishopville, S. C.
 BAGGETT, ELIZABETH ANN
 Greeleyville, S. C.
 BUIE, DEWIE BELLE
 Barium Springs, N. C.
 CARSWELL, MADELINE
 Sanford, N. C.
 CLARK, MARSHALL
 Roanoke Rapids, N. C.
 COLLINS, MARGARET JEAN
 Glade Valley, N. C.
 COOK, MARY BURKE
 Logan, W. Va.
 DAVIS, SARA LOUISE
 Walhalla, S. C.
 DUNBAR, MARY BLAND
 Petersburg, Va.
 DUNNAWAY, JEAN
 Clinton, S. C.
 ELLIOTT, LEE
 Edenton, N. C.
 EVERETTE, ELSIE
 Raeford, N. C.
 FERNER, PATRICIA
 West Palm Beach, Fla.
 GARRETT, MARIAN ELIZABETH
 Lynchburg, S. C.
 GRAHAM, COROLYN
 Red Springs, N. C.
 GREGORY, MARY
 Kershaw, S. C.
 GODFREY, BARBARA
 Beltsville, Md.
 INGRAM, ANNA JANE
 Wadesboro, N. C.
 KIRBY, EDITH
 Kenly, N. C.
 KITTRELL, ANNE ELIZABETH
 Robersonville, N. C.
 LIVINGSTON, HELEN
 Binghamton, N. Y.
 LUCAS, DERETHEA
 Clinton, S. C.
 MAYNARD, BARBARA
 Cheraw, S. C.





The 1947 White Heather

MELVIN, SARA
Kerr, N. C.

MERRIMAN, GERALDINE
Chesterfield, S. C.

MCCALL, MARIAN RUTH
Timmons ville, S. C.

McKAY, LOIS
Hamlet, N. C.

McLEAN, BETTY
Raeford, N. C.

NOWARAH, JOYCE
Roper, N. C.

OTERSEN, CAMILLE
Wilmington, N. C.

PARKS, MARY ALICE
Charlotte, N. C.

PEARCE, EMMA JO
Corpus Christi, Texas

PEARSON, BETTY FRANCES
Gibson, N. C.

PHILLIPS, RACHEL JEAN
Pageland, S. C.

PLEMMONS, FAYE
Lynn, N. C.

POWERS, JUDITH ANNE
St. Pauls, N. C.

RICHARDSON, MICKEY
Durham, N. C.

SMITH, MARGARET
Pageland, S. C.

SMITH, MARYLYN ELLSWORTH
Washington, N. C.

SPRING, MARGARET
Lovettsville, Va.

TILLINGHAST, HELEN
Fayetteville, N. C.

TOMLINSON, HAZEL
Fayetteville, N. C.

TURNER, LILLIAN
Trenton, N. J.

WALLACE, MARCELLA
Bennettsville, S. C.

WILLIAMS, CLARIE MAXINE
Washington, D. C.

WILLIAMS, DOROTHY MAY
Indain Valley, Va.

WILLIAMSON, EVA LAJEANA
Logan, W. Va.

WIMMER, FRANCES
Roanoke, Va.

YELVINGTON, ELIZABETH ANNE
Clayton, N. C.

MARY TOWNSEND
President

ELIZABETH ACREE
Vice President

FLORA J. DUNNWAY
Secretary-Treasurer

MISS LETA MCINTYRE
Adviser



"Dear Gentlemen . . . Sincerely yours"

Second Year Commercial

ACREE, ELIZABETH. Bartow, Fla.; GINN, FLORENCE. Clinton, S. C.; McNEILL, NANCY KATHERINE, Greensboro, N. C.; PATTERSON, RUTH CARTER, Stony Point, N. C.; PATTERSON, LAURA, Bartow, Fla.; POOLE, MARY RUTH, Jackson, Springs, N. C.; STEELE, JEAN MURRAY, Leaksville, N. C.; THOMAS, LILLIAN JANICE, Greeleyville, S. C.; TOWNSEND, MARY MIDELL, Orlando, Fla.



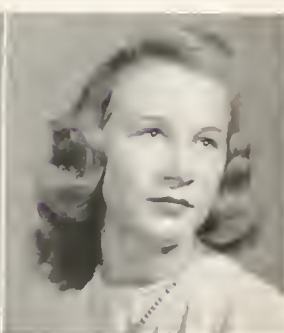
Acree



Ginn



McNeill



Patterson, C.



Patterson, L.



Poole



Steele



Thomas



Townsend

Commercial Class

First row, left to right:

ANTHONY, BERTHA, Greensboro, N. C.; BLOUNT, JEAN, Savannah, Ga.; GARDNER, CECELIA, Fayetteville, N. C.; GARDNER, REBECCA, Fayetteville, N. C.; GLADDEN, MARY ELIZABETH, Sanford, N. C.; GOODSON, DOROTHY, Barnwell, S. C.; HUNTLEY, LILLIAN, Lenoir, N. C.

Second row:

JACKSON, BETTIE JANE, Florence, S. C.; KATSOS, MARY, Carthage, N. C.; KNOX, HILDA, Hunterville, N. C.; LONG, MAY MARGARET, Greenville, S. C.;

MARTIN, RUTH MARY, Thomasville, Ga.; MARTIN, SALLY, Arlington, Va.; MONROE, FLORA, Laurinburg, N. C.

Third row:

McKISSICK, JOYCE, Blackstone, Va.; McNEILL, ANNIE MAE, Jonesboro, N. C.; SMITH, BONNIE M., Wilmington, N. C.; SMITH, WILHELMINA, Olyphic, N. C.; TOLSON, DOROTHY, Florence, S. C.; WEBB, JONI, Winter Park, Fla.



Anthony
Jackson
McKissick

Blount
Katsos
McNeill

Gardner, C.
Knox
Smith, B.

Gardner, R.
Long
Smith, W.

Gladden
Martin, R.
Tolson

Goodson
Martin, S.
Webb

Huntley
Monroe

Music

Glee Club



"THERE comes a pause in the days occupation that is known as the Glee Club hour." When the F.M.C. Glee Club sings, we appreciate the results of those practice hours and the spirit of coöperation between the seventy-four girls and their director, Mr. Reuter. With a reputation for fine performance the F.M.C. Glee Club has the admiration of the whole college. Its music truly "hath charms to soothe."

Guest Artists

"F.M.C. IS PROUD to present"—five outstanding guest artists each year. The appearance of renowned musicians, lecturers, and authors bring glamour from the outside world to busy college life. Such visits inspire, as well as entertain. Witness the renewed diligence of practicing in the conserve following the appearance of a maestro! Three of the visiting artists of 1947 were: Mack Harrell, Baritone; Gordon String Quartet; and Rosalyn Truett, Pianist.





“As for the

Activities

brighter side"



MARY ELEANOR PARKER
Editor-in-Chief

The White



ELIZABETH VARDELL MCNETT
Business Manager

MRS. GENEVIEVE MACMILLAN NEIGHBORS
Adviser

MEMORIES of the days at F.M.C. are recorded in the annual publication, *THE WHITE HEATHER*. Each year the student body elects from the rising senior class an editor and a business manager. The Junior class selects assistants for these positions. The rest of the staff is taken from the Sophomore and Freshman classes and other organizations in the college. This staff starts early in the fall with the difficult job of putting Flora Macdonald down in black and white.



McNett
Parker
Neighbors

Heather of 1947

LINDA LEWIS, *Assistant Editor*
AUDREY ESTON KORNEGAY, *Assistant Business Manager*
MARY HELEN TEW, *Senior Class Editor*
IDA RAY VANN, *Junior Class Editor*
MYRA ANNE MANESS, *Sophomore Class Editor*
CAMILLE OTERSON, *Freshman Class Editor*
SARAH CHRISTINE DABBS, *Snapshot Editor*
AUDREY LANE FULCHER, *Snapshot Editor*
MARIANNE KUNZE, *Snapshot Editor*
IRIS SWEARINGEN, *Literary Editor*
ELLA MAY DRINKARD, *Business Editor*
MARY RUTH POOLE, *Typing Editor*
KATHARYNE HERRING, *Typing Editor*



Poole, Dabbs, Drinkard, Parker, Kornegay, Herring.
Lewis, Swearingen, Tew, Fulcher, Vann, Maness, Otersen.

The Pine and Thistle

THE PINE AND THISTLE, a literary and humorous magazine, is published quarterly. The editor and business manager are elected by the student body and the other members of this staff are taken from the two literary societies. Through the medium of this magazine, its editors gain experience in writing and in the organization of material submitted by the students. Each individual student has opportunity to call attention to grievances, express opinions, and see creative attempts in print.



LULU ATKINSON
Editor-in-Chief

"The Greatest Discoverer"



Atkinson
Boney
Clark



Townsend, Elliott, Hoover, Sneed, Knight, McInnis, Harris, McQueen, Drinkard, King, H. Knight, Lifrage, Watt, Kanoy, Russell, Rhyne, Parrish, Atkinson, Clark, Youngblood.

of the Best Talent"



TRUDIE CLARK
Business Manager

MARGARET WATT, *Assistant Editor*
 SUE PARRISH, *Assistant Business Manager*
 ELIZABETH MCNETT, *Literary Editor*
 MIRIAM WATSON, JANET RHYNE, ELLA MAY DRINKARD,
Feature Editors
 JUNE DYER, MIRIAM KNIGHT, MARY MCINNIS, *Epsilon*
Chi Editors
 ROBERTA LIFRAGE, HELEN KNIGHT, VERA KING, *Zetesian*
Editors
 KITTY STRINGER, LILLIAN SNEED, *Poetry Editors*
 FLORENCE HOOVER, MARY TOWNSEND, *Typing Editors*
 VIVIAN MCQUEEN, PEGGY HARRIS, ANNE YOUNGBLOOD,
Exchange Editors
 MARY ANN RUSSELL, DOT KANOY, *Art Editors*
 MISS VIRGINIA BONEY, *Adviser*



The Student

IRENE BALDWIN
President

"LAW AND ORDER" is brought to F.M.C. under the auspices of the Student Council, composed of the leaders of school activities. Theirs is the task of making a Student-Faculty Coöperative Government operate successfully. The President of the Student Body is the leader and presiding officer of the Student Council. The motivating force of this organization is to help the girls realize their sense of personal responsibility and honor in carrying out the rules of the college.

Williamson, Parker, Leggette, Wilson,
Youngblood, McQueen, Baldwin, Lytton,
Knowles, Hobbs, Amis, Barker, Watson.

Government

VIVIAN MCQUEEN, *Vice President of Student Body*
ANNE YOUNGBLOOD, *President of Senior Class*
HARRIET WILSON, *President of Junior Class*
SHIRLEY PARKER, *President of Sophomore Class*
LAJEANA WILLIAMSON, *President of Freshman Class*
EVELYN LYTTON, *Secretary of Student Body, Vice President of Senior Class*
DORIS LEGGETTE, *Treasurer of Student Body, Vice President of Junior Class*
GOLDIE KNOWLES, *President of Christian Association*
JANE HOBBS, *President of Epsilon Chi Literary Society*
HARRIET AMIS, *President of Zetesian Literary Society*
FRANCES BARKER, *President of Athletic Association*
GAY WATSON, *President of Day Students*





F. M. C. Christian

GOLDIE KNOWLES
President

From the very first dome service to the beautiful Christmas pageant and beyond, the F.M.C. Christian Association strives to inspire the deeper side of college life. It is guided by a cabinet, composed of the different highway leaders, the president of the association and the faculty adviser. We are grateful for the work these leaders do to help us make the most of these days at F.M.C.

Association

ALICE WALKER, Vice President
MIRIAM WATSON, Secretary
ELIZABETH SUTTON, Treasurer
MARGARET McLEAN, Chairman of Prayer Bands
ALICE WALKER, Enlistment and Training
MARY-MARGARET HARRIS, Sunday School, Learning
MARGARET BROCKINGTON, Publicity, Learning
MARION FISLER, World Fellowship
MARTHA RUTH MANN, Comradeship
MIRIAM WATSON, Stewardship
ELIZABETH SUTTON, Stewardship
FRANCES PENDLEY, Library, Leisure Time
ROBERTA LIFRAGE, Social Activities, Leisure Time
NELLIE GRAY SIDES, Religious Meetings, Life Enrichment
HILDA LEE, Music, Life Enrichment
MISS NATALIE C. MOFFETT, Faculty Adviser of the Cabinet

First row, left to right: Fisler, Sides, Harris, Baldwin, Walker, Lee, McLean. Second row: Lifrage, Mann, Moffett, Knowles, Pendley Brockington, Sutton.





Standing, left to right: Kanoy, Rhyne, Lytton. Seated: Autry, Parker, Chief Scribe; Harris.

Senior Scribblers



LYTTON

PARKER

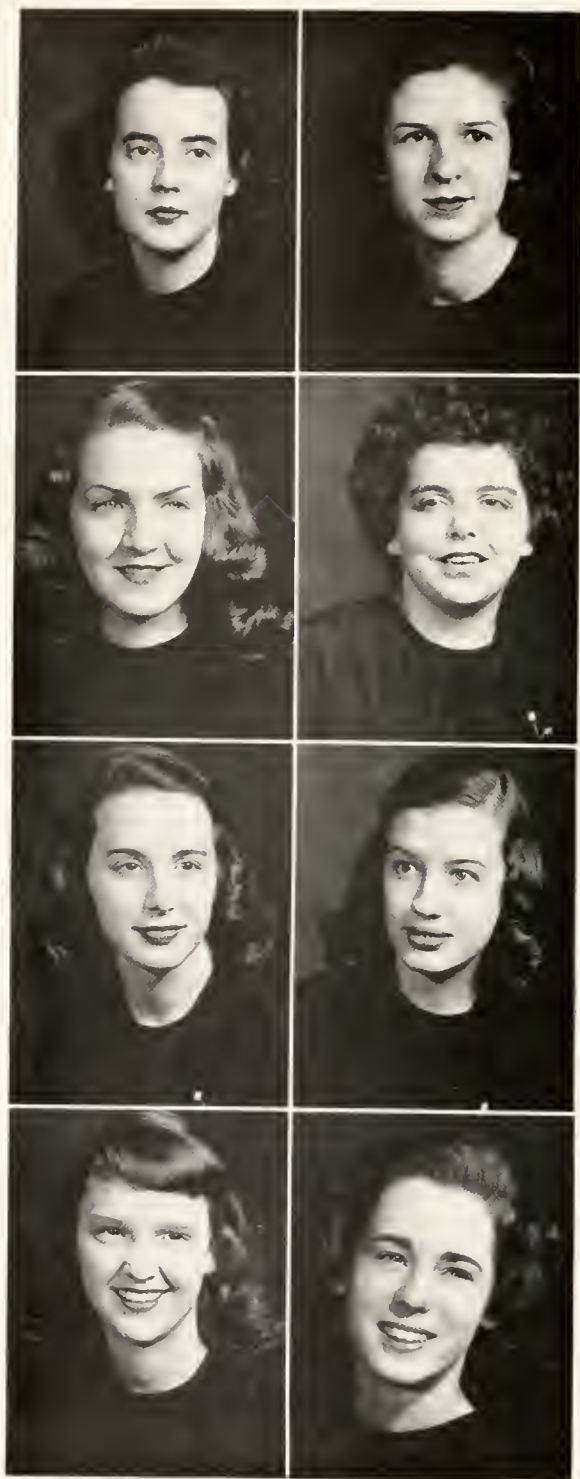
Concise . . . understanding . . . interesting . . . ingenious . . . hardworking . . . aptly describe the six senior scribblers. They are chosen each spring in a dramatic tapping service by the retiring scribblers. The Editor-in-Chief of the annual becomes Chief Scribe. Assigned to write revealing personality sketches of their fellow seniors, they endeavor to represent each as she really is.



WHO'S WHO

Youngblood, Walker, Knowles, Baldwin, Harris, McInnis.

One of the highest honors that can come to an F.M.C. girl is to be listed in the *Who's Who Among Students in American Universities and Colleges*. This year six seniors received the thrill of finding news of such a distinction in their mail boxes. They are: Irene Baldwin, Peggy Harris, Mary McInnis, Anne Youngblood, Alice Walker, and Goldie Knowles.



Epsilon Chi Society

GURLINE PACE
First Vice President

ELOISE LANE
Second Vice President

AUDREY FULCHER
Recording Secretary

IDA RAY VANN
Corresponding Secretary

ELLA MAY DRINKARD
Treasurer

LINDA LEWIS
Critic

MARY WRIGHT PAYNE
Censor

MIRIAM WATSON
Chaplain

"Epsilon Chi we sing to you" . . .
lustily at every meeting. One of the
two literary societies at F.M.C., the
members alternate entertaining and
being entertained, with an apprecia-
tive audience at every meeting!

JANE STEVENS HOBBS
President



Zetesian Society

FRANCES PRIDGEN
First Vice President

DOROTHY KANOF
Second Vice President

BRYNES LEWIS
Recording Secretary

COLLEEN BROADWAY
Corresponding Secretary

FLORENCE HOOVER
Treasurer

BETTY BLUE MCCALLUM
Critic

KATHARYNE HERRING
Censor

ROBERTA LIFRAGE
Chaplain

"Friendship our motto" . . . comes just as heartily from the other literary society across the hall on certain Saturday nights. Here too, is the same kind of easy fun and informality. The friendly rivalry between the two societies is the F.M.C. spirit at its best.



HARRIET ANN AMIS
President





Audrey Lane Fulcher
CHIEF MARSHAL

Marshals



Miriam Watson, EX



Harriet Amis, Z

. . . 1947

The 1947 White Heather



Gurline Pace, EX



Margaret McLean, EX



Jean Newton, EX



Frances Arnette, Z



Elizabeth Sutton, Z



Mary Evelyn McLeod, Z

Club Presidents

"Attendance at the called meeting is required!" announces a hard-working club president in chapel. The girls who lead the extra-curricular activities here find their time well occupied, for it is no easy job. The success of an organization is dependent upon its president. Note the accomplishments of F.M.C. clubs!

MELICENT HUNEYCUTT, *Student Volunteers and Sappho Poetry Club*

LINDA LEWIS, *William Bartram Scientific Society and Highland Players*

LULU ATKINSON, *L'Alliance Francaise*

ELLA MAY DRINKARD, *Mathematics Club*

EVELYN LYTTON, *Home Economics Club*

JUDITH AUTRY, *St. Cecilia Music Club*

MARY TOWNSEND, *Commercial Club*

GAY WATSON, *Day Students Club*

FRANCES ARNETTE, *International Relations Club*



Standing: Arnette, Townsend, Atkinson, Lytton.
Seated: Huneycutt, Drinkard, Autry, Lewis.

Student Volunteers

Every Sunday night those girls interested in home and foreign missions meet together for study. They keep in touch with needs of all peoples and so stimulate the thought that this is "one world."



The White Heather

Early morning quiet hour is one of the nice things about F.M.C. Every Wednesday morning groups gather in the rooms of prayer band leaders for meditation. In these hours of close association we have all tried to realize the truth of "Be still and know that I am God."



Prayer Band Leaders

William Bartram Scientific Society



Membership in this society is awarded to those girls making high grades in mathematics or science. The regular meetings consist of programs concerned with phases of scientific interest.

Nineteen Forty-seven



"The Sappho Club is young but brave. We meet to read Millay, Keats, Milbans, Seegar, Brooks—all poets of today. We try to make our rhythm and rhyme unite with inspiration and with Miss Salls to criticize, we'll soon be a sensation."

Soppo Poetry Club

L'Alliance Francaise

One of F.M.C.'s most popular clubs is the L'Alliance Francaise. At monthly meetings only French is spoken and topics of interest and current events are discussed.



The White Heather

Those who are able to find "x" equal to "y" at least half the time, are eligible for membership in the Mathematics Club. Its aims are to promote high scholastic standing in mathematics, to create interest in this science throughout the college, and to provide or exchange knowledge outside the classroom.



Mathematics Club

Granddaughters' Club



"Why I remember when your mother sat in that very same front seat!" If a teacher tells a Flossie Mac girl this, it means she's entitled to membership in the Granddaughters' Club. F.M.C. represents the grandmother; the modern girl, the granddaughter.

Nineteen Forty-seven



"The house lights dim—the curtain—" well, it would if you'd pull harder over there! The Highland Players are at it again. It may be a semi-monthly meeting or the hit of the season, but the players are in place, the stage crews support the back wall, and the prompters settle down. With limited equipment matched with unlimited energy, every member learns the meaning of "The show must go on!"

Highland Players

Home Economics Club

"Can she bake a cherry pie?" She can do this and make many more tempting dishes if she belongs to the Home Ec Club. The pleasant part is that these girls can enjoy all this in the homelike atmosphere of the "Practice House" where formal and informal entertainments are held.



The White Heather

"And we shall have music wherever we go." Those girls who have an interest in this part of F.M.C. life continue it in this club. Its membership is limited to music students. However, it is one of the most extensive in the college.



St. Cecelia Music Club



Nineteen Forty-seven

Commercial Club

Always an asset at F.M.C., the Commercial Club has been an invaluable aid in this year of campaign work. The time and effort spent in every kind of office work have done much toward making it a success.



Day Students Club

Those girls who "commute" to F.M.C. from Red Springs and vicinity belong to the Day Students Club. They enter enthusiastically into all campus activities, except those continued after 11:00 p.m., and occasionally stay to participate in these!



International Relations Club

Are you concerned over the condition of Russia or the latest foreign scandal? Then contact one of the International Relations Club members! Referred to as "I.R.C." this group is one of the largest and most active organizations in college. Members are made personally responsible for the programs of the semi-monthly meetings—good training for the performer, good listening for the audience.



“Three to

Athletics

Get Ready"



Cheer Leaders

ALICE WALKER
College

SUE NELL GRIFFIN
'47

MARY SUE TILLINGHAST
'48

MARY WRIGHT PAYNE
'49

BETTY JANE ANDREWS
'50

Athletic Board

FRANCES BARKER
President
ELLA MAY DRINKARD
Vice President
JUNE DYER
Secretary
EMILYN MAULDIN
Salesman
JEAN NEWTON
Hockey
NANCY LEDBETTER
Basketball
IRIS SWEARINGEN
Volley Ball
HELEN TURNER
Tennis
MARGARET COLLIER
Archery
BETTY WAYNE
Horseshoe
LINDA LEWIS
Hiking
THELMA BARROW
Bowling and Swimming
MIRIAM WATSON
Table Tennis



Monogram Club

Good sportsmanship, accomplishments in athletics, a good scholastic record, and twenty points in the college point system are the requirements for membership in the Monogram Club. They involve work that makes wearing the monogram a hard won honor.

First row, left to right: Anne Youngblood, Evelyn Lytton, Janet Rhyne, Mittie Belle Boggan, Mary-Margaret Harris, Frances Barker, Jean Newton. Second row: Jane Hobbs, Harriet Amis, Kathleen Epps, Irene Baldwin, Goldie Knowles. Third row: Audrey Fulcher, Vivian McQueen, Mary Helen Tew.





SENIOR HOCKEY TEAM

Frances Barker, *Captain*; Goldie Knowles, Peggy Harris, Clara Spivey, Irene Baldwin, Vivian McQueen, Colleen Broadway, Sue Parrish, Anne Youngblood, Janet Rhyne, Evelyn Lytton, Mittie Belle Boggan, Mary Helen Tew, Frances Pridgen, Dorothy Kanoy, Byrnes Lewis.

JUNIOR HOCKEY TEAM

Jean Newton, *Captain*; Ella May Drinkard, Jane Hobbs, Ruby Wood, Harriet Wilson, Audrey Fulcher, Mary Womble, Marion Fisler, Edna McRainey, Kathleen Epps, Margaret McLean, Frances Vanoy, Gracie Hardin, Gurline Pace, Betty Wayne, Harriet Amis, Linda Lewis.





SOPHOMORE HOCKEY TEAM

Marianne Kunze, *Captain*; Doris Bain, Nancy Bishop, June Dyer, Dorothy Fields, Emilyn Mauldin, Sarah McLeod, Violet Pierce, Nell Spivey, Janice Thomas, Ruth Tugwell, Blossom Griffin, Betty McCaskill, Gladys Crawford, Phyllis Fisher, Eva Mae Beam.

FRESHMAN HOCKEY TEAM

Blandy Dunbar, *Captain*; Louise Davis, Betty Pearson, Margaret Long, Mickey Richardson, Lillian Turner, Mary Alice Parks, Lee Elliott, Anna Jane Ingram, Marcella Wallace, Anne Kitrell.





SENIOR BASKETBALL

Vivian McQueen, *Captain*; Irene Baldwin, Frances Barker, Trudie Clark, Ella Ervin, Peggy Harris, Goldie Knowles, Evelyn Lytton, Sue Parrish, Frances Pridgen, Janet Rhyne, Mary Helen Tew, Anne Youngblood.

JUNIOR BASKETBALL

Kathleen Epps, *Captain*; Harriet Amis, Margaret Collier, Marion Fisler, Daphne Goodman, Gracie Hardin, Jane Hobbs, Margaret McLean, Edna McRaney, Jean Newton, Gurline Pace, Helen Turner, Frances Vanoy, Betty Wayne, Mary Womble, Ruby Wood.





SOPHOMORE BASKETBALL

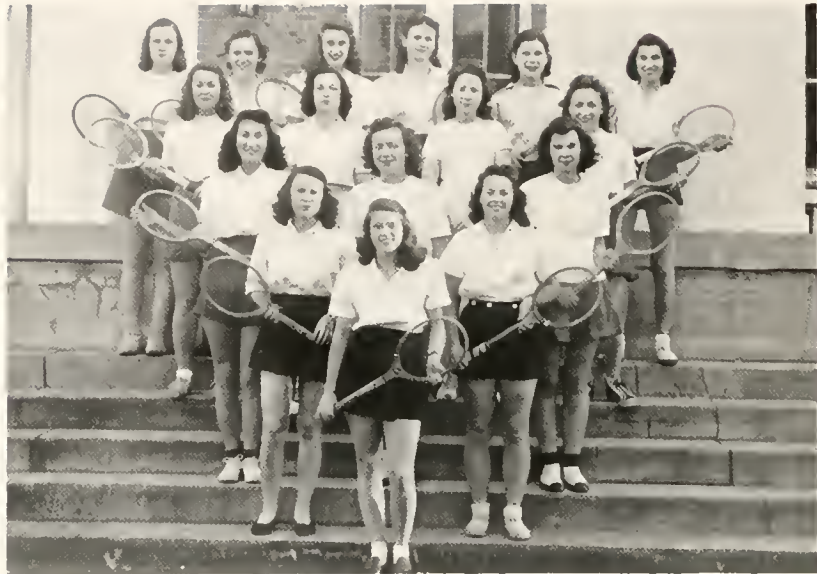
Nancy Ledbetter, *Captain*; Doris Bain, Eva Mae Beam, Nancy Bishop, Sarah Craddock, Dot Fields, Carolyn Greene, Blossom Griffin, Tootie Johnson, Mike Kunze, Lorraine Lee, Emilyn Mauldwin, Faye Morrison, Violet Pierce, Flora Riggan, Jasmine Rohanna, Janice Thomas.

FRESHMAN BASKETBALL

Blandy Dunbar, *Captain*; Ruth McCall, Jean Collins, Marian Garrett, Dot Goodson, Anna Ingram, Jand Jackson, Dot Tolson, Ruth Martin, Sally Martin, Mary Alice Parks, Marlyn Smith, Nancy Walker, Ann Yelvington.



Atkinson
 Rhyne
 Pridgen
 Katsos,
 Monroe
 Price
 Turner
 Prevatte
 Knight
 Acree
 Riggan
 Lee
 McIntosh
 Sneed
 Arnette
 Cantrell



TENNIS

"Intermission to find a ball!" When the weather makes looks stray outside in longing, enthusiasts reach for tennis racquets and the games are on.

ARCHERY

"I shot an arrow into the air, it fell to earth—" but just because you did not aim it correctly, my dear girls. So the group of would be William Tells raise their bows and try again.

Berryhill
 Waddell
 Patterson
 McLeod
 Bullock
 Sutton
 Collier
 Newman
 Hobbs
 Addor
 Turner



Athletic Captains

Come on team, let's go! The work of the girls who lead F.M.C. sport teams does not end here. Time, energy, and patience go into the making of a good team, and it is the captain's job to put them together. Spirit of the hockey and basketball tournaments show how successful they were.

FRANCES BARKER
Senior Hockey

VIVIAN McQUEEN
Senior Basketball

JEAN NEWTON
Junior Hockey

KATHLEEN EPPS
Junior Basketball

MARIANNE KUNZE
Sophomore Hockey

NANCY LEDBETTER
Sophomore Basketball

BLANDY DUNBAR
Freshman Hockey

BLANDY DUNBAR
Freshman Basketball



First row, left to right: Frances Barker, Senior Hockey; Vivain McQueen, Senior Basketball; Jean Newton, Junior Hockey.

Second row: Nancy Ledbetter, Sophomore Basketball; Marianne Kunze, Sophomore Hockey; Blandy Dunbar, Freshman Hockey and Basketball; Kathleen Epps, Junior Basketball.



"Ladies and Gentlemen,

Features

We Present."

1947 White Heather

IRENE BALDWIN
Capability



RUTH MARTIN
Beauty

GOLDIE KNOWLES
Friendliness



Superlatives . . .

Superlatives

MIRIAM WATSON

Versatility



Flora Macdonald



IDA RAY VANN

Personality

MARY-MARGARET HARRIS

Sportsmanship



Vivian McQueen

Queen of May Day . . . 1947

May Day

Spring has come. The gardens are a veritable fairyland only a few steps away. Then a very special May morning arrives, the sun shines brighter and the sky is bluer than ever. F.M.C.'s loveliest tradition, May Day, is here!

ELIZABETH VARDELL MCNETT
Maid of Honor



THE COURT

Edith Kirby, Sue Addor, Evelyn Lytton, Audrey Fulcher, Betty Idol, Elizabeth McNett, Vivian McQueen, Ruth Martin, Gurline Pace, Marion Hamilton, Betsy Hall, Doris Bain.



"The Blue"



Moon Came"



"It's a Natural"

Going Home!!!!!! . . . In the dog

house again . . . The Thinker (?)

. . . We keep our barracks nice

and clean (What Mrs. Helton?)

. . . "My Gal's a Corker" . . .

Campaigning . . . Goblet over-

board!!!! . . . It's their lazy day

. . . Night riding girls???? . . .

Rats . . . All penned up . . . So

Yankees don't wear shoes

either!!!! . . . It's all over now

. . . Murray's home . . . again.



Situation"



Huggin' and Chalkin' . . .

Wheeeeeee!!!! . . . Dogs . . . Rear

View . . . Ain't love grand????

. . . But you can't even trust your

roommate . . . Mr. and future

Mrs. Marley . . . P.J.C. . . . Snow

Hill . . . Flossie Mac's co-eds . . .

Chief cook . . . Beauty Queen—

one year later . . . The Family . . .

In the good old summer time . . .

How are things at Cow College,

Sam????? . . . Sleeping Beauty.







Get it on straight, Lulu . . . That innocent look doesn't fool any one, P. D. . . . Georgia "Peaches" . . . Hungry???? . . . Off campus at last . . . Bathing Beauty!!!! . . . Our "dignified" Editor . . . Little Red!!!!!! Her necks dirty.

After school . . .
have a Coke



BOTTLED UNDER AUTHORITY OF THE COCA-COLA COMPANY BY
Fayetteville Coca-Cola Bottling Co., Inc.
Fayetteville, North Carolina



**MODERN
FURNITURE
COMPANY**



LUMBERTON, NORTH CAROLINA



***"Where You Enjoy
Shopping"***

AIRPORT RENDEZVOUS



Dine, Dance



On Highway 301

3 Miles South of Lumberton, N. C.

Barnes Aircraft

Sales : Service : Charter

Lumberton Municipal Airport
LUMBERTON, NORTH CAROLINA

Midway Between Miami and New York
9119 PHONES 8194

Airport Restaurant

LUMBERTON, NORTH CAROLINA

Western Steaks Fried Chicken

24 Hour Service

**COWAN AVIATION
ENTERPRISES**

—
Phone 980
—

**Municipal Airport
Lumberton, North Carolina**

**M. M. SMITH
FURNITURE COMPANY**

Furniture for Every Home



Wholesale and Retail



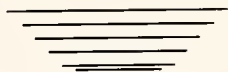
325 Hay Street

Fayetteville, North Carolina



A. WEINSTEIN & SONS

Lumberton, North Carolina



LUMBERTON FLORAL CO. *Flowers for All Occasions*

Phone 320

Lumberton, North Carolina

Riverside Theatre

"The Home of Better Pictures"

LUMBERTON, NORTH CAROLINA

Compliments of

LUMBERTON JEWELRY COMPANY

LUMBERTON, NORTH CAROLINA

Compliments of

Fleishman's



THE LADIES SHOP OF
LUMBERTON, NORTH CAROLINA

Compliments of

POLLY ANN DRESS SHOP

Lumberton, North Carolina

Compliments of

Raylass Department Stores

LUMBERTON, NORTH CAROLINA

Compliments of

BELK-HENSDALE COMPANY



Lumberton, North Carolina

IDEAL DRESS SHOP

LADIES WEARING APPAREL AND GIFT SHOP

LUMBERTON, NORTH CAROLINA

Compliments of

LUMBERTON BAKERY

A. J. HOLMES, JEWELER

"There's no place like Holmes"

Corner of Fourth and Chestnut Streets

LUMBERTON, NORTH CAROLINA

Compliments of

Hood Motors, Inc.

Your DODGE-PLYMOUTH Dealer

LUMBERTON, NORTH CAROLINA

PHONE 21

LUMBERTON OPTICAL CO.

415 North Elm Street

LUMBERTON, NORTH CAROLINA



High Quality Prescription Service

Compliments of

S. F. CALDWELL & CO.

"The Complete Hardware"

Lumberton, North Carolina

Compliments of

Wilkerson, Inc.

LUMBERTON, NORTH CAROLINA

PHONE 419

Compliments of

SANITARY CAFE

Lumberton, North Carolina

Compliments of

**FIRESTONE HOME AND
AUTO SUPPLIES**

LUMBERTON, NORTH CAROLINA

D. M. McMILLAN

"Ford Products Since 1912"

Red Springs, North Carolina

You Will Be Pleased
With Our Quality
and Service

**RED SPRINGS
DRUG STORE**

*Headquarters for
Flora Macdonald Girls*

RED SPRINGS, NORTH CAROLINA

McNEILLS
CLEANERS
and
TAILORS

***Dependable Service
Since 1928***

Licensed Sanitone Cleaner

PHONE 2941

Red Springs Supply Company, Inc.
GENERAL MERCHANTS

The Friendly Store



FERTILIZERS AND COTTON
LIVESTOCK HARDWARE
GROCERY MARKET
BUILDING MATERIAL



DIAL 3701

RED SPRINGS, NORTH CAROLINA

Townsend's Pharmacy

The Rexall Store



We Carry a Complete Line of the
College Girl's Needs



DEPENDABLE DRUGGIST : LET US SERVE YOU

Meet Your Friends at Our Fountain

NEIGHBORS



Red Springs' Exclusive
Shoe Store



PHONE 3981

Compliments of

GRAHAM'S
DEPARTMENT
STORE, INC.



RED SPRINGS, NORTH CAROLINA

Modern Tire and Electric Corporation

Goodyear

Westinghouse

PHONE 430-1

RED SPRINGS, NORTH CAROLINA

Compliments of

**BAXLEY-JOHNSON
CHEVROLET CO., INC.**

RED SPRINGS, NORTH CAROLINA

Compliments of

AMOS FURNITURE CO.

Red Springs, North Carolina

Compliments of

**McKEITHAN
HARDWARE**

RED SPRINGS, NORTH CAROLINA

L. J. CALLAHAN

Market and Groceries

MID-STATE CLOTH MILLS

RED SPRINGS, NORTH CAROLINA

M. and S. MOTOR COMPANY

Chrysler and Plymouth Cars

Sales and Service

Red Springs, North Carolina

McNeill's Taxi

Phone 3921

RED SPRINGS, NORTH CAROLINA

Burrough's Cut Rate Store

Phone 4271

Red Springs, North Carolina

BLACKWOODS ASSOCIATE

A. C. Stephenson, Owner

PHONE 3851

RED SPRINGS, NORTH CAROLINA

HOME FURNITURE CO., INC.

FURNITURE : CARPETS

STOVES : RANGES : RADIOS

RED SPRINGS, NORTH CAROLINA

**BELK-HENSDALE
COMPANY**

***Remember You Always Save
at Belk's***

FAYETTEVILLE, NORTH CAROLINA
RED SPRINGS, NORTH CAROLINA

Compliments of

BENDER'S DRUG STORE

A Real Drug Store

201 Hay Street
FAYETTEVILLE, NORTH CAROLINA

CITY OPTICAL COMPANY

WILMINGTON

FAYETTEVILLE

and GREENSBORO, NORTH CAROLINA

Joseph P. Cooper, Mgr.

Phone 2357

Flora Macdonald Beauty Box

On site of Flora Macdonald's Fayetteville Home

Specializes in all Types of Permanents

DIAL 5849

FAYETTEVILLE, N. C.

Compliments of

EDEN'S FLORIST SHOP

Flowers for All Occasions

EAST FOURTH AVENUE PHONE 2241
RED SPRINGS, NORTH CAROLINA

DAN'S SNACK BAR

Flot Iron Building

Extra Hot Hot Dogs

RED SPRINGS, NORTH CAROLINA

Compliments of

Red Springs Florist Shop



"SINCE 1912"

THE

Capitol

OF

FAYETTEVILLE

FAYETTEVILLE, NORTH CAROLINA

College Girls!

SHOP AT

**SEARS ROEBUCK
AND CO.**

FAYETTEVILLE, NORTH CAROLINA



PHONE 6171

420 Hay Street

Gold Medal Fertilizers

Liberty Premium Fertilizers

Modern Gin System

Modern Seed Cleaning Equipment



**LIBERTY
MANUFACTURING
COMPANY**

Red Springs, North Carolina

Compliments of

**B. C. Moore and Sons, Inc.
and
Moore's Department Store,
Inc.**

"Buy Moore and Save More"

RED SPRINGS, NORTH CAROLINA



Compliments of

**PEPSI-COLA
BOTTLING
CO.**

FAYETTEVILLE, NORTH CAROLINA



USE
MERITA
BREAD and CAKES

●
AMERICAN
BAKERIES COMPANIES

●
Fayetteville, North Carolina

Pontiac
Studebaker
International Harvester
Sales and Service

—
**SINGLETON and
McMILLAN, INC.**

—
PHONE 3901
RED SPRINGS, NORTH CAROLINA

**BAUCOM
APPLIANCE COMPANY**

FRIGIDAIRE

Refrigerators : Ranges
Water Heaters : Deep Freezers

"Easy" and "Maytag"
Washing Machines

Zenith : Motorolas : Bendix Radios

New Home Sewing Machines

Small Appliances

Electrical Wiring Supplies

—
RAEFORD, NORTH CAROLINA

Compliments of
**ROGERS AND BREECE
FUNERAL HOME**

—
123 Bow Street
Fayetteville, North Carolina

—
Phone 2191 and 2192

Hammond Grocery Company

R. L. Hammond. Owner



Plee-zing Distributors of

CAMEL FLOUR



LAURINBURG. NORTH CAROLINA

Compliments of
JOHN F. McNAIR, INC.



**A MODERN
DEPARTMENT STORE**



LAURINBURG, NORTH CAROLINA

DIXIE GUANO COMPANY

Fertilizers



Telephones No.

63 - 65 - 66



LAURINBURG, NORTH CAROLINA

Presbyterian Junior College

Extends Greetings to "White Heather"

in appreciation of the cordial relations between Flora Macdonald
College and Presbyterian Junior College.

Preparatory Department at Tenth, Eleventh, and Twelfth Grade
Levels. One- and Two-year Commercial Course; Aeronautics; Vo-
cational Courses; two years of Standard College Work leading to
associate in Science, of associate in Art degree.



SUMMER SCHOOL

Office of the President

PRESBYTERIAN JUNIOR COLLEGE

Maxton, North Carolina

Service Trading Company, Inc.

Maxton, North Carolina



COMPLETE LINE HOME FURNISHINGS

Philco and Car Radios and Radio Service

Philco and Kelvinator Refrigerators

Thor Washers and Ironers

DUO-THERM and ALLEN OIL HEATER

Many Other Electrical Appliances



CASH OR TERMS

PHONE 177-W

Compliments of

**WESTERN AUTO
STORE**



RED SPRINGS, NORTH CAROLINA

When in Maxton

Stop at the
Austin Drug Company

**LAURINBURG
MILLING COMPANY**



Laurinburg, North Carolina

Compliments of

**Britt and McLeod
Hardware Company**



Lumberton, North Carolina

**ANNE GREEN'S
PERMANENT WAVE SHOP**



We Serve You To Serve Again



RED SPRINGS, NORTH CAROLINA

Travel by **TRAILWAYS**

SAFE

CONVENIENT

ECONOMICAL

Queen City Trailways

CHARLOTTE, NORTH CAROLINA

General Auto Sales, Inc.

OLDSMOBILE and G.M.C. TRUCKS

Full Line of Parts :- Expert Mechanics

RED SPRINGS, NORTH CAROLINA

Telephone 2381

THE FAYETTEVILLE OBSERVER



*"North Carolina's Oldest
Newspaper"*



Established 1817

Compliments of

HUGGINS SHOE SHOP

RED SPRINGS, NORTH CAROLINA

Compliments of

HOKE DRUG COMPANY

Prescription Druggist

Raeford, North Carolina

Compliments of

Kennedy's Jewellery and Gift Shop

FINE WATCH REPAIRING

RED SPRINGS, NORTH CAROLINA

DIAMONDS

WATCHES

REPAIRING

THE JEWEL SHOP

RED SPRINGS, NORTH CAROLINA

R. E. HURCHINSON

W. H. ATKINSON

Compliments of

C. P. KINLAW

"Jeweler"

Keepsake Diamond Rings

Raeford, North Carolina

FIRESTONE HOME

and

AUTO SUPPLIES



MAXTON, NORTH CAROLINA

HOTEL

PRINCE

CHARLES



FAYETTEVILLE, NORTH CAROLINA

Compliments of

Fleishman's Style Shop

"Smart Apparel for Smart Women"



DIAL 2567

114 Hay Street



Fayetteville, North Carolina

FLORA MACDONALD COLLEGE

Red Springs, N. C.

A SENIOR COLLEGE FOR WOMEN



Near Fayetteville, Southern Pines and Pinehurst. Delightful climate. healthful mineral springs and remarkable health record. Bus and Railway connections.

A Standard Senior Grade A College for Women. Strong faculty. Graduates accepted for graduate work by leading universities. Class A teacher's certificates. Homelike atmosphere. Personal attention to students by teachers. Courses offered: Bachelor of Arts, Bachelor of Music, Bachelor of Science (Home Economics) degrees. A Secretarial Course.

Athletics. Skillful physical director and coach has general supervision of sports and physical training. Archery, basketball, hockey, swimming, tennis, hiking, etc., are enjoyed in season.

Social Activities. Receptions, teas, and many other social functions are provided at the college, while many hospitable and delightful homes of the citizens of Red Springs are open to the students.

Wide Patronage. Patronized at present by ten states. Four thousand alumnae are teachers, church secretaries, dietitians, home demonstration agents, social workers, missionaries, and in many other useful professions.



Moderate Charges :-: For Catalogue Write

Henry G. Bedinger, President

Flora Macdonald College : Red Springs, North Carolina

WALLER & SMITH
PHOTOGRAPHERS



OFFICIAL PHOTOGRAPHERS

— for —

THE WHITE HEATHER



12 E. Hargett Street

Raleigh, N. C.



**CHARLOTTE
ENGRAVING
COMPANY**

Engravers and Designers of College Yearbooks
CHARLOTTE, N. C.



BUILDERS DREAMS

VISIONS created by the imagination precede the achievement of any really great accomplishment. The ability to weave the threads of imagination into the finished fabric is equally important.

It has been the privilege of the EDWARDS & BROUGHTON COMPANY to cooperate with the **White Heather** staff in creating their vision into material form.

Such cooperation is one of the "visions" which precede the building of a successful business, and is a part of the working policy of the EDWARDS & BROUGHTON COMPANY.

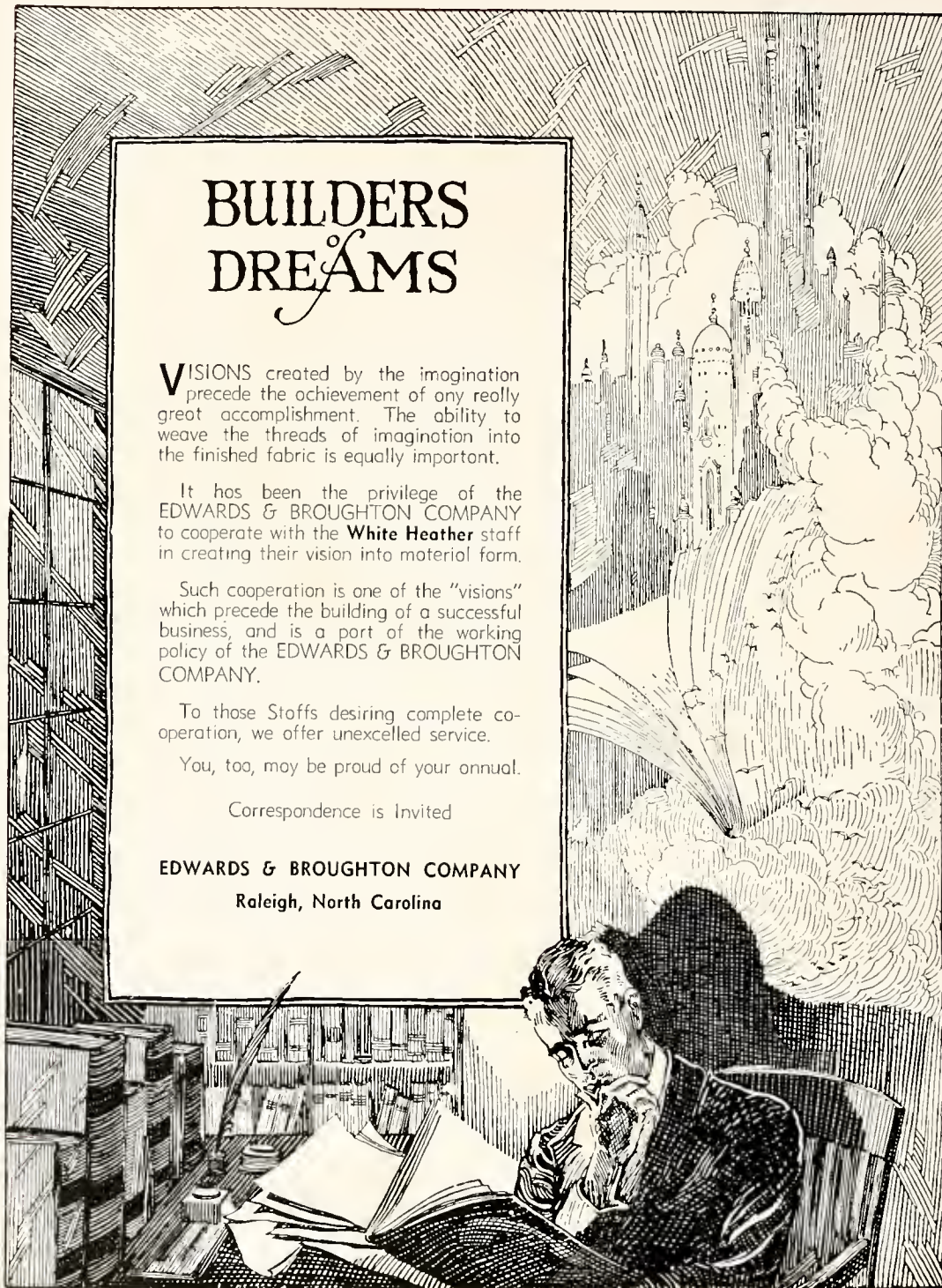
To those Stoffs desiring complete cooperation, we offer unexcelled service.

You, too, may be proud of your annual.

Correspondence is invited

EDWARDS & BROUGHTON COMPANY

Raleigh, North Carolina



AUTOGRAPHS

AUTOGRAPHS





R
388.756
F

19549

