



the 1948 White Heather









the 1948



Published Annually by the Students of
Flora Macdonald College, Red Springs, N. C.
Ida Ray Vann, Editor
Harriet Amis, Business Manager

White Heather





Flora Macdonald holds for each of us memories--. As you daydream in of intangible college years, may this WHITE HEATHER be your definite hold ing memories. Here we offer not cold, interesting spots on the campus for which future years. May this annual help to keep friendships, beautiful thoughts, and other college years.



a confusion of
years to come
volume of the
upon those fad-
bare facts, but
you will long in
live all the
treasures of your
'IRV' and 'AMIS'



DEDICATION

*We dedicate this WHITE HEATHER to
Mr. Gunnar Constantine Lang*



The student body of 1948 wishes to use this yearbook as an expression of appreciation to Mr. Lang. His cheerful response to the innumerable requests of the college girls is indicative of his efficient management and sterling character.

a loyal





friend to each of us



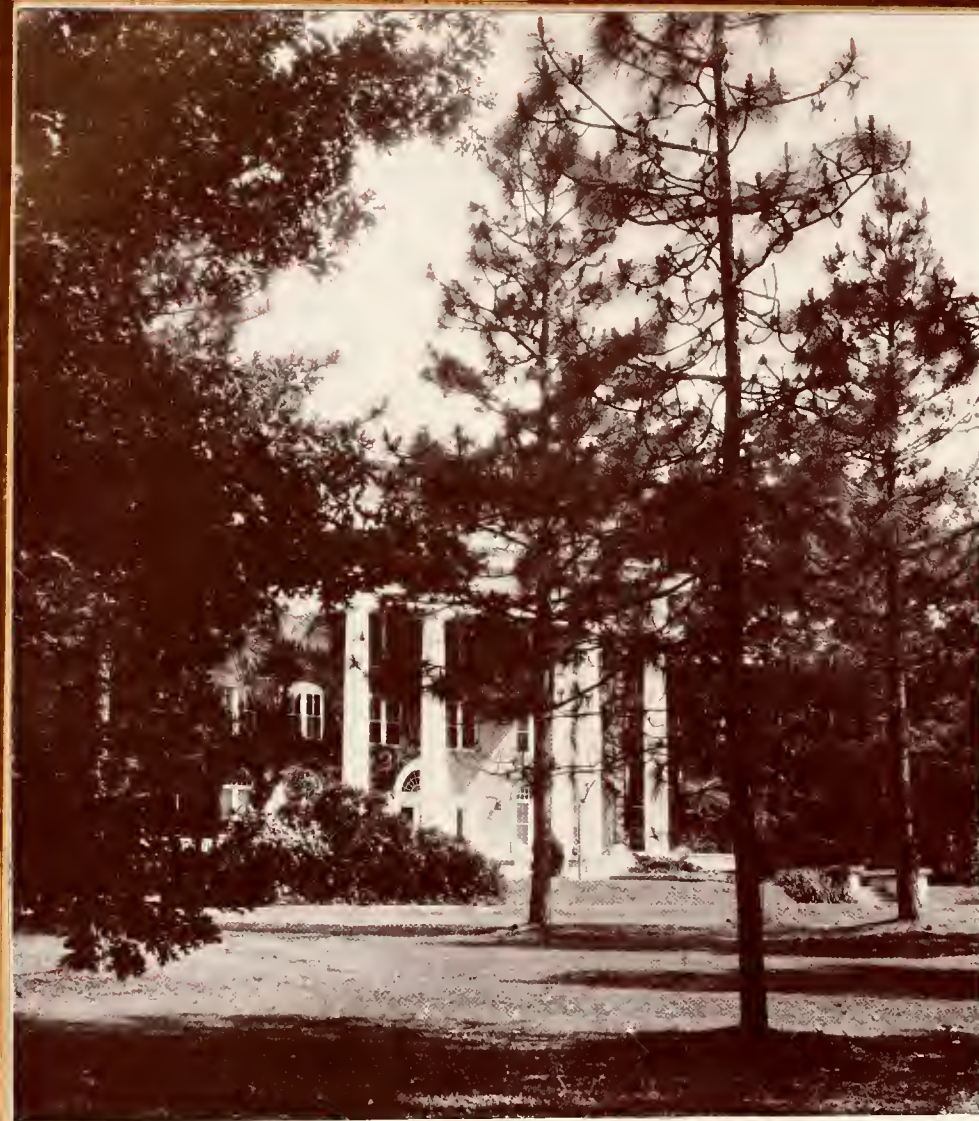
"Those good ole days won't be forgotten"

"Across the Way"



"Peaceful spot for Pleasant Memories"





"GOLDEN MEMORIES"

"Stately Pine Trees Waving O'er Her"

"Peace and Solitude"





Quiet Streams

OF COLLEGE YEARS"

Fires, Fun, Food, Frolic





HENRY GRAYBILL BEDINGER, B.S., B.D., D.D.
President

DR. BEDINGER is a kind, genial man who is ever interested in the aspirations and ideals of youth. The improvements on the campus are typical of his enthusiastic and progressive plans for the college.

ADMINISTRATION

DR. CHARLES GRAVES VARDELL, B.B., D.D.

President Emeritus

His very presence makes us appreciate our opportunities at Flora Macdonald. Dr. Vardell's life is a shining example of Christian love and faith.

DEAN FRANCES ALEXANDER McLEOD, B.A.

Dean of Women

She is friend and counselor to the girls. When the students need advice, she always lends a sympathetic ear. Her thoughtfulness of others has made her one of the most beloved deans who has ever been at F.M.C.

DEAN ROBERT REUTER, M.Mus., M.Mus.

Dean of the Conservatory

"Music hath charm" when he is at the piano, the organ, or directing the College Choir. Under his supervision, the Conservatory ranks as one of the best.

DEAN HAZEL MORRISON, B.A.

Dean of the Faculty and Registrar

She guides us safely through registration and on the way to graduation. Patience is one of her most admirable traits.

MR. WILLIAM COXHEAD

Business Manager

We have learned in one short year just how much an efficient business manager can mean to a school. We welcome Mr. Coxhead's tireless energy, his helpful ways, his knack for making the college car go when others have failed.



DR. CHARLES GRAVES VARDELL

McLEOD

REUTER

MORRISON

COXHEAD



FLORA MACDONALD

Bible:

ANNIE SIKES, M.A. *Professor.*
ELIZABETH CLARKE MCPHAUL, B.A. *Assistant Professor*

Biology:

ETHEL HANSEN, Ph.D. *Professor*
FANNIE R. HARMON, M.A. *Assistant Professor*

Chemistry:

JANE COLSON GLENN, B.S., G.Ph., M.S. *Associate Professor*

Education:

MARY MCLEAN CONOLY, B.A., B.S., M.S. *Professor*
GENEVIEVE McMILLAN NEIGHBORS, B.A., M.A. *Assistant Professor*
ANNIE MOORE CHERRY, B.A., M.A. *Assistant Professor*

English:

ELEANOR B. SCOTT, Ph.D. *Professor*
VIRGINIA BONEY, B.A., M.A. *Assistant Professor*

History and Social Science:

CAROL ROBERTSON, B.S., M.A. *Professor*
GENEVIEVE McMILLAN NEIGHBORS, B.A., M.A. *Assistant Professor*

Home Economics:

FRANCES ELIZABETH COMER, B.S., M.A. *Professor*
MARGARET GIBSON, B.S. *Instructor*

Latin:

HARRIET M. MORRISON, B.A., M.A. *Professor*

Mathematics:

LOUISA VAN DYKE, Ph.D. *Professor*

Modern Languages:

ELEANOR MARKS, Ph.D. *Associate Professor*
MARIE ALMA TURNER, M.A. *Assistant Professor of Spanish*

McIntyre
Robertson
Stenhouse



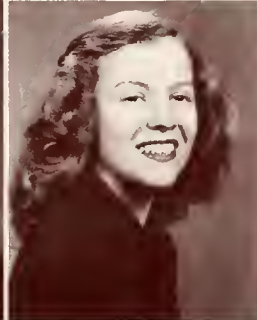
McMillan
Rowland
Van Dyke



McPhaul
Scott
Bowden



Neighbors
Sikes
Patterson



FACULTY . . . 1948

Music:

ROBERT REUTER, B.Mus. *Dean of Conservatory and Professor of Organ and Piano*

LILLIAN FARQUHAR ROBESON, *Assistant Professor of Violin; Harmony; Counterpoint; Ear Training, and Sight Singing*

LIDA LAW CHAPMAN, B.A., B.M. *Assistant Professor of Organ, Piano, History of Music, and Music Appreciation*

LOIS J. LAMBIE, B.A., M.A. *Assistant Professor of Public School Music*

ETHEL M. ROWLAND, B.S. *Assistant Professor of Voice*

AILEEN McMILLAN, B.Mus. *Assistant Professor*

Physics:

LOUISA VAN DYKE, Ph.D. *Professor*

Physical Education:

ETHEL BATEMAN, B.A., M.A. *Assistant Professor*

VIRGINIA CONNOR, R.N. *Assistant Professor of Home Nursing.*

Business Subjects:

LETA WELTHA MCINTYRE, B.S. *Associate Professor*

ELIZABETH STENHOUSE, B.L. *Assistant Professor*

Bursar:

BROWN MORRISON, B.L.

Bateman
Comer
Harmon



Boney
Conoly
Lambie



Cherry
Gibson
Marks



Chapman
Hansen
Morrison



Classes



"FOUR GLORIOUS YEARS"



Beckwith, Arnette, Tillinghast, Hobbs, Barden, Turner.

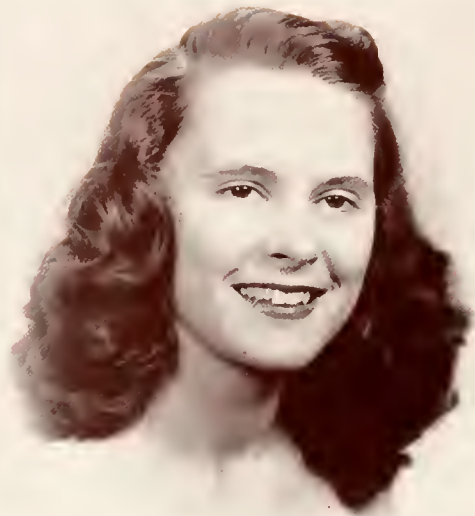
Senior Class

OUR MINDS are filled with memories as we look back over our four years of toil and fun. This year has been one filled with phrases of "last time" and even tears for some of us. Our knees become shaky when we think of becoming a part of this ever changing world. We can't help wondering what is waiting around the corner for each of us.

White Heather

JANE HOBBS, *President*
FRANCES ARNETTE, *Vice President*
GRACE BECKWITH, *Secretary*
MARY SUE TILLINGHAST, *Treasurer*
HELEN TURNER, *Tea Room Manager*
IRENE BARDEN, *Asst. Tea Room Mgr.*
MISS CAROL ROBERTSON, *Adviser*

Senior Class



JIMMIE SUE ADDOR, B.A.

English and French

Addor, N. C.

Epsilon Chi Literary Society; Rabun Gap Junior College 1; William Bartram Scientific Society 3, 4; French Club 3, 4, Vice President 4; Archery 3, 4; Feature Editor *Pine and Thistle* Staff 4; Highland Players 4; Chairman Dance Committee 4; May Court 2, 3, 4, Maid-of-Honor 4.

Artless nonchalance . . . quiet beauty . . . blue-black hair . . . wool shirts and loafers . . . intellectual.

BETTY JANE ADKINS, B.S.

Home Economics

Marion, N. C.

Epsilon Chi Literary Society; Montreat College 1, 2; Home Economics Club 3, 4; International Relations Club 3; Hockey 3; Atlantic Christian College Summer School 3; Assistant Business Manager *Pine and Thistle* 4; Senior Scribe.

Pete . . . Coffee . . . Becky . . . spontaneous laughter . . . lovable . . . forever blowing bubble gum! . . . uncurled tresses . . . noble spirit.



HARRIET ANN AMIS, B.A.

Math and Social Science

Norfolk, Va.

Zetesian Literary Society, Recording Secretary 2, President 3; Student Council 3; Vice President of class 2; Glee Club 1, 2, 3, 4, Sextette 1, 2; Math Club 1, 2, 3, 4, Vice President 2; Marshal 3; Class Editor *WHITE HEATHER* 2, Business Manager 4; Highland Players 2, 3, 4; International Relations Club 3, 4; Monogram Club 3, 4; College cheerleader 4; St. Cecilia Music Club 1, 2, 3; Hockey 1, 2, 3, 4; Basketball 1, 2, 3, 4.

Wee Willie . . . KA pin . . . Peter Pan collars and saddle shoes . . . knees (?) . . . self-assurance . . . talented.

AMIS



ADDOR
ADKINS

Senior Class

SARA ALICE AUSTIN, B.A.

Social Science

Maxton, N. C.

Epsilon Chi Literary Society; Day Students Club
2, 3, 4.

Viracious . . . unapparent depth . . . drippy nose
. . . "Faithful Flivver" . . . punctuality (?) . . .
Heart of gold.

MARY FRANCES ARNETTE, B.A.

Social Science and Bible

Conway, S. C.

Zetesian Literary Society; Secretary Student Council 4, Class Vice President 4, Marshal 3; International Relations Club 2, 3, 4, President 3; Senior Scribe; William Bartram Scientific Society 1, 2, 3, 4; Math Club 1, 2, 3, Treasurer 2; Grand-daughters Club; Tennis 2, 3; May Queen 4; Who's Who Among Students in American Universities and Colleges 4.

"My husband Monk" . . . dimples . . . charming
. . . queenly grace . . . well-informed . . . model
hands . . . altogether lovely.

ALICE IRENE BARDEN, B.A.

English and Social Science

Fairmont, N. C.

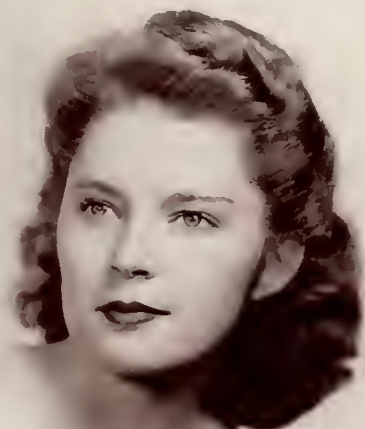
Epsilon Chi Literary Society; L'Alliance Francaise 2, 3, 4; William Bartram Scientific Society 2, 3, 4, Corresponding Secretary 4; Volley Ball 1, 2, Tennis 3; Prayer Band Leader 3, 4; International Relations Club 4; Appalachian State Teachers College Summer School 3; Assistant Tea Room Manager 4.

Sapphire eyes . . . Bernard . . . waves and hair-nets . . . Doris . . . literary.

BARDEN



AUSTIN
ARNETTE



Senior Class



BARROW
BECKWITH

THELMA JEANETTE BARROW, B.A.

English, Bible and Social Science

La Grange, N. C.

Epsilon Chi Literary Society; Math Club 1; William Bartram Scientific Society 2, 3, 4, President 4; International Relations Club 2, 3; Sappho Poetry Club 3, 4; Vice President 3; Prayer Band Leader 4; Athletic Board 3; Volley Ball 1, 2; Bowling 3; Pine and Thistle Staff 4; Student Volunteers 1, 4.

*Eruditical . . . P and T . . . efficient . . . punctual
. . . unobtrusive . . . sweet . . . willing.*

SARAH GRACE BECKWITH, B.A.

English and French

Fayetteville, N. C.

Epsilon Chi Literary Society; Mars Hill Junior College 1, 2; Clio Literary Society 1, 2; Homemaker's Guild 2; L'Alliance Francaise 3, 4; Class Secretary 4.

*Becky . . . "Sweet William" . . . well-groomed
. . . reliable . . . Mars Hill . . . keen sense of humor
. . . Vienna sausage . . . bronze bangs.*

ANN JEAN BROWNING, B.A.

Social Science and Bible

Abingdon, Va.

Epsilon Chi Literary Society; Montreat College 1, 2, 3.

*Tomboyish . . . sleeveless sweaters . . . nonchalant . . . Montreat . . . friendly . . . sleepy head
. . . (scribbler's note: see remarks below.)*

BROWNING



Senior Class

RUBY JANE BROWNING, B.A.

Social Science and Bible

Abingdon, Va.

Epsilon Chi Literary Society; Montreat College 1, 2, 3.

"Litttest twin" . . . studious . . . the Corn Hill Montreat . . . "Have you seen Ann?" . . . amazing blend of gravity and mischief . . . (scrib-ler's note: see remarks above.)

PANTHES BULLOCK, B.A.

Primary Methods

Roxboro, N. C.

Epsilon Chi Literary Society; Meredith College 1, 2; Philaretion Society 1, 2; Granddaughters Club 1, 2; YWA 1, 2; International Relations Club 3, 4; Basketball 4; B.S.U. Council 4; Meredith College Summer School 2; Wake Forest College Summer School 3.

"Panny" . . . secretly mischievous . . . cousinly visits in town . . . Detours via Meredith . . . Wake Forest . . . kind hearted.

FAITH CANTRELL, B.M.

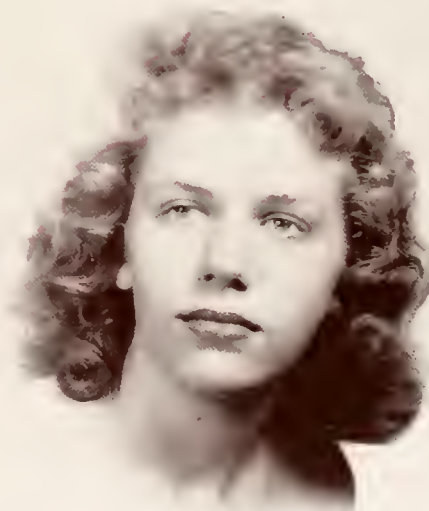
Public School Music

Chesnee, S. C.

Zetesian Literary Society; Corresponding Secretary 3; St. Cecelia Music Club 1, 2, 3; Vice President 3; Glee Club 2, 3; Class Treasurer 1; Prayer Band Leader 3; Tennis Club 2, 3; Student Volunteers 1, 2, 3; Limestone College Summer School; Wofford College Summer School.

P.S.M. . . . composed . . . oriental look . . . independent . . . diligent . . . tortoise shell glasses.

CANTRELL



BROWNING
BULLOCK



Senior Class



MARGARET LORRAINE COLLIER, B.A.

Grammar Grade Methods

Wade, N. C.

Zetesian Literary Society; William Bartram Scientific Society 1, 2, 3, 4; Treasurer 4; St. Cecelia Music Club 3, 4; L'Alliance Francaise 2, 3, 4; Archery Club 2, 3, 4; Head of Archery 3; Athletic Board 3; Basketball 3, 4; Recorder of Points 4; Student Volunteers 4; Prayer Band Leader 4.

"Marge" . . . "good ole girl" . . . Morgan . . . thoughtful . . . unaffected.

ELLA MAY DRINKARD, B.A.

Math and Science

Lynchburg, Va.

Epsilon Chi Literary Society; Treasurer 3; WHITE HEATHER Staff, Business Editor 3, 4; Pine and Thistle Staff 3; Math Club 1, 2, 3, 4; President 3; William Bartram Scientific Society 2, 3, 4; Athletic Board 2, 3; Salesman 2; Vice President 3; International Relations Club 2, 3, 4; Highland Player 3, 4; Hockey 1, 2, 3, 4; Varsity 2, 3; Captain 4; Lynchburg College Summer School 2; Monogram Club 3, 4; Senior Scribe.

"Drinkard" . . . Paul . . . knitting . . . heavy socks, loafers and boys coats . . . ballet . . . helpful . . . a loyal friend . . . independent thinker.



FRANCES DULL, B.A.

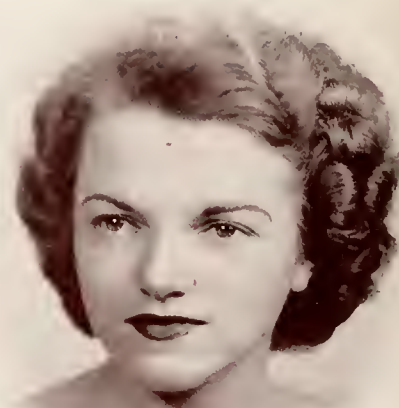
Bible, English and French

Cameron, N. C.

Zetesian Literary Society; Math Club 1, 2, 3, 4; William Bartram Scientific Society 1, 2, 3, 4; Sappho Poetry Club 3, 4; Pine and Thistle Staff 3; Society Editor 2; Student Volunteers 1, 2, 3, 4; International Relations Club 2; President Christian Association 4; Student Council 4.

"Little Dull" . . . friendly . . . heart of gold . . . sparkling wit . . . all this and brains too.

DULL



COLLIER
DRINKARD

Senior Class

KATHLEEN EPPS, B.A.

Grammar Grade Methods

Kingstree, S. C.

Epsilon Chi Literary Society; Vice President Athletic Association 4; William Bartram Scientific Society 3, 4; Monogram Club 3, 4; Basketball 2, 3, 4; Captain 3, 4; Varsity 2, 3; Hockey 2, 3; Athletic Board 3, 4; Atlantic Christian College Summer School 2, 3.

Well-rounded sportswoman . . . white gym suits . . . deliberate . . . unassuming.

MARION FISLER, B.A.

English and Social Science

Ivanhoe, N. C.

Epsilon Chi Literary Society; Mission Study Leader 2; Christian Association Cabinet, Chairman World Fellowship 3, Secretary and Co-Chairman World Fellowship 4; Student Volunteers 1, 2, 3, 4; International Relations Club 4; Glee Club 1, 2, 3, 4; St. Cecilia Music Club 1, 2; Hockey 1, 2, 3; Varsity 3; Basketball 1, 2, 3, 4; Monogram Club 3, 4; Recorder of Points 3; Summer School Session University of Richmond 3.

Expressive dark eyes . . . easy laughter revealing thirty-two molars . . . Ivanhoe . . . Jack . . . well-informed . . . bubbling.

DAPHNE ANNE GOODMAN, B.A.

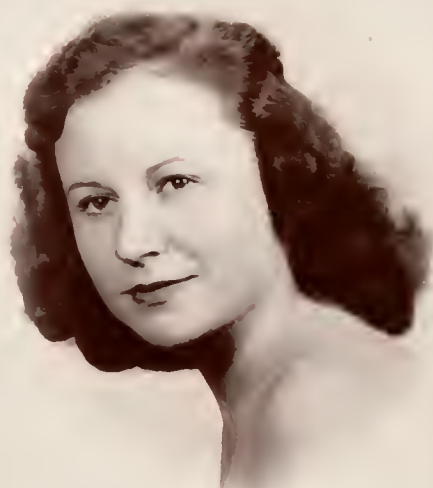
Piano

Marion, N. C.

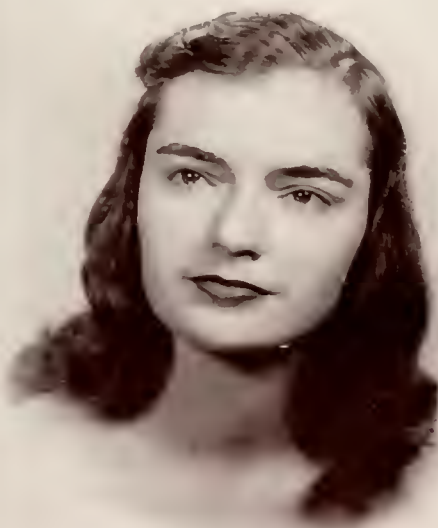
Epsilon Chi Literary Society; Western Carolina Teachers College 1, 2; International Students' Society 1, 2; Vice President 2; Orchestra 1, 2, President 1; Glee Club 1, 2, 4; McDowell Music Club 1, 2; Basketball 1, 2, 3, 4; Flora Macdonald Summer School 3; Highland Players 4; L'Alliance Française 4; St. Cecilia Music Club 3, 4; Piano Recital 2, 3, 4.

"Daffy" . . . life on Vardell . . . Bumble Boogie . . . happy go-lucky . . . "Midnight Serenade" . . . generous.

GOODMAN



EPPS
FISLER



Senior Class



FLORA BELLE GORE, B.A.

Primary Methods

Tabor City, N. C.

Zetesian Literary Society; St. Cecilia Music Club 3;
Atlantic Christian College Summer School 1, 2.

A.C. . . . Miss Cherry . . . determination . . .
auburn lights of hair and eyes . . . questions.

WILMA GRACE HARDIN, B.A.

French and English

Fairmont, N. C.

Epsilon Chi Literary Society; L'Alliance Francaise
2, 3, 4; Secretary 3; President 4; William Bartram
Scientific Society 3, 4; Recording Secretary 4;
Prayer Band Leader 3, 4; School 3; Basketball 3;
Hockey 3; International Relations Club 2; Atlantic
Christian College Summer School 3.

"Gracie" . . . the skin you love to touch . . .
L'Alliance Francaise . . . pastel colors . . . gentle
as a lamb . . . loosely waving blond hair.

JANE STEVENS HOBBS, B.A.

General Science and Math

Wilmington, N. C.

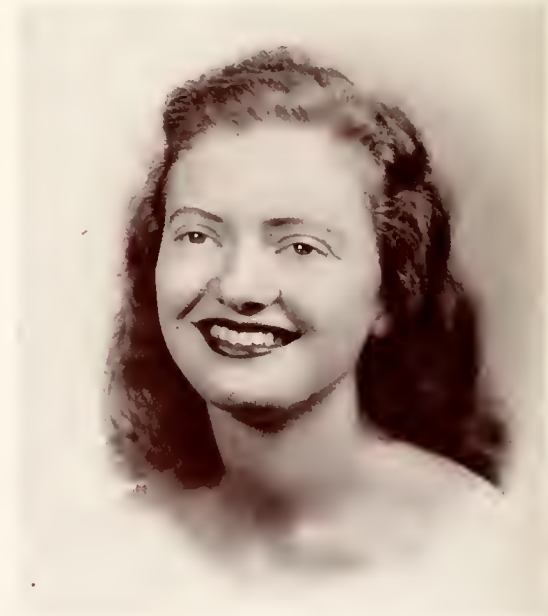
Epsilon Chi Literary Society, Chaplin 2, President
3; William Bartram Scientific Society 1, 2, 3, 4;
Math Club 1, 2, 3, 4; International Relations Club
2, 4, Camera Club 1, 2; Christian Association Cabin-
et, Chairman Highway of Leisure Time 2; Ath-
letic Board 2, Head of Table Tennis; Feature Editor
of *Pine and Thistle* 2; Student Council 3, 4; Class
President 4; Basketball 1, 2, 3, 4; Hockey 1, 2, 3,
4; Tennis 1, 2; Archery 2, 3; Highland Players 1,
2, 3, 4; Vice President 2; Alpha Psi Omega 3, 4;
Treasurer 3, 4; Glee Club 1, 2, 3, 4; Secretary 2;
Sextet 1, 2; Dance Committee 3; *Who's Who Among*
Students in American Universities and Colleges.

"Hobbs" . . . speckled Suntan . . . versatile . . .
school spirit . . . individualistic . . . tripping on
her light fantastic toes . . . tops as class presi-
dent.

HOBBS



GORE
HARDIN



Senior Class

CHRISTINE HODGIN, B.A.
English and Social Science

Red Springs, N. C.
Epsilon Chi Literary Society; Day Students Clubs
1, 2, 3, 4; Glee Club 1; French Club 3, 4; William
Bartram Scientific Society 2, 3, 4.

Accommodating . . . Leaping Lena . . . R.S. . . .
diligent . . . one of the privileged few . . .
photogenic.

ESTELLE HUGGINS, B.S.
Home Economics
Fayetteville, N. C.

Zetesian Literary Society; Day Students Club 1, 2,
3; Home Economics Club 4; Atlantic Christian Col-
lege Summer School 3.

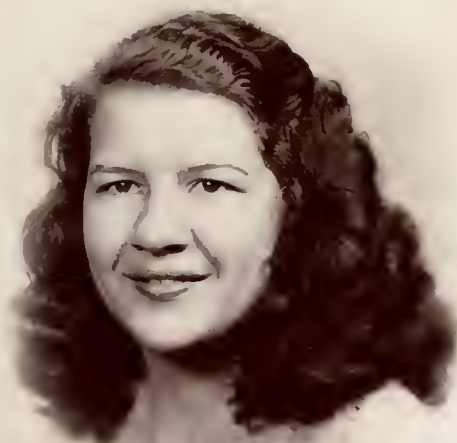
Unobtrusive . . . sews a fine seam . . . trim . . .
never a complaint . . . Singer Sewing Center.

SARAH ELIZABETH HUMPHREY, B.A.
Bible and Social Science
Warsaw, N. C.

Zetesian Literary Society; Campbell College 1, 2;
Training Union 1, 2, 4, Officer 2; YWA 1, 2, 4, officer
2; B.S.U. 1, 2, president 4; Creek Pebble Staff
1, 2; Glee Club 1, 2; International Relations Club
1, 2, 3, 4; Sappo Poetry Club 3, secretary 4; St.
Cecilia Music Club 3; Pine and Thistle Staff 4; Stu-
dent Volunteers 1, 2, 3.

"Breakfast?" (click) . . . BAPTIST . . . methodi-
cal . . . attractive posters . . . poetess.

HUMPHREY



HODGIN
HUGGINS



Senior Class



HUNTLEY
JOHNSON

LELA FLAX HUNTLEY, B.S.

Home Economics

Morven, N. C.

Epsilon Chi Literary Society; Brevard College 1, 2; Christian Workers' Club 1, 2; Mynesonian Literary Society 1, 2; House Council 2; Home Economics Club 1, 2, 3, 4; Basketball 2, 4; Mu Delta 1, 2; Atlantic Christian College Summer School 3.

*Willowly . . . Brevard . . . eyes as soft as a fawn
. . . pokey . . . artful design.*

CATHERINE DUKES JOHNSON, B.A.

Grammar Grade Methods

Social Science

Epsilon Chi Literary Society; Duke University Summer School 1, Glee Club 2, 3, 4.

*Upswept coiffure . . . Charles . . . Duke . . .
"Daddy said . . ." . . . cheerful helper.*

CAROLYN JEANNE KANOE, B.A.

Primary Methods

Roxboro, N. C.

Zetesian Literary Society, Second Vice President 4; Louisburg College 1, 2; Vice President of Student Council 2; Tea Room Manager 3; Senior Scribe, 4; Atlantic Christian College Summer School.

John . . . A.C. . . reserved . . . appealing countenance . . . bangs . . . Dot

KANOE



Senior Class

CLARA VIOLET KOONTS, B.S.

Home Economics

Greensboro, N. C.

Epsilon Chi Literary Society; Montreat College 1, 2; Class President 2; Home Economics Club 3, 4; Glee Club 3, 4; St Cecelia Music Club 4; May Court 4; Atlantic Christian College Summer School 3.

Gene . . . Chic . . . petite . . . giggles . . . cheerful
. . . gracious manners.

AUDREY ESTON KORNEGAY, B.A.

French and Social Science

Warsaw, N. C.

Epsilon Chi Literary Society; William Bartram Scientific Society 1, 2, 3, 4; Athletic Board 2; Head of Hiking 2; Archery 2; Volley Ball 3; L'Alliance Francaise 2, 3, 4; Vice President 3; Assistant Business Manager WHITE HEATHER 3; Student Council 4; Vice President Student Body 4; Wake Forest Summer School 3; Who's Who in American Universities and Colleges.

Wake Forest . . . pan cake make-up . . . velvet hair bands . . . scholarly . . . dependable.

ELOISE JOHNSON LANE, B.S.

Home Economics

Wagram, N. C.

Epsilon Chi Literary Society, Second Vice President 3; Home Economics Club 2, 3, 4, President 4; Hockey 1, 2, 3, Varsity 2; Pine and Thistle Staff, Exchange Editor 4.

Ellie . . . "Jenkins J. Jenkins" . . . walks from airport . . . gray Plymouth . . . "gentle, kind, and shy, but with mischief in her eye."

LANE



KOONTS
KORNEGAY



Senior Class



DORIS COVINGTON LEGGETTE, B.A.

English and Social Science

Proctorville, N. C.

Epsilon Chi Literary Society; L'Alliance Francaise 2, 3, 4; William Bartram Scientific Society 4; Volley Ball 1, 2; Tennis 3; Class Vice President 3; Student's Council 3; Treasurer of Student Body 3; International Relations Club 4; Appalachian State Teachers College Summer School 3.

Mrs. McLeod's right hand . . . plaid skirts . . . Irene . . . Energetic walk . . . true to her word, her work, and her friends . . . agile merriment.

LINDA LEWIS, B.A.

Biology and English

Bessemer City, N. C.

Epsilon Chi Literary Society; Treasurer 2, Critic 3, Vice President 4; William Bartram Scientific Society 1, 2, 3, 4; President 3, Highland Players 2, 3, 4; President 3, 4; Glee Club 2, 3, 4; Treasurer 4; St. Cecilia Music Club 1, 2, 3; WHITE HEATHEA Staff 3, 4, Assistant Editor 3, Feature Editor 4; Pine and Thistle Staff, Feature Editor 4; Hockey 1, 2, 3, Varsity 2; Basketball 2, 3, Captain 2; Cheerleader 1; Monogram Club 4; Prayer Band Leader 4; Athletic Board 3; Superlative 4; Alpha Psi Omega 3, 4; Who's Who in American Universities and Colleges 4; Appalachian State Teachers College Summer School; Atlantic Christian College Summer School.

Dramatic . . . giggling announcements . . . Little Red . . . Hedda Hopper Hats . . . Hey-Bop-a-Ree Bah . . . Versatile.

MARGARET TURNER McCANTS, B.A.

English

Asheville, N. C.

Epsilon Chi Literary Society; St. Cecilia Music Club 1, 2, 3, 4; Mathematics Club 1, 3, 4; Asheville-Biltmore Junior College 2; Glee Club 2; International Relations Club 2; Commercial Club 2; William Bartram Scientific Society 4; Asheville-Biltmore Summer School 3.

Reserved . . . unfathomable . . . Asheville . . . confiding manner . . . earnest.

McCANTS



LEGGETTE

LEWIS



Senior Class

CAROLYN McDOWELL, B.A.

Bible and Mathematics

Elizabethtown, N. C.

Zetesian Literary Society; Glee Club 1, 2, 3, 4; Math Club 1, 2, 3, 4; Secretary 3; Prayer Band Leader 3; Cabinet 4; William Bartram Scientific Society 1, 2, 3, 4; Treasurer 3; Hockey 1; St. Cecilia Music Club 2.

Staunch Methodist . . . unbendable back bone . . . conferences . . . inquisitive . . . Hard worker . . . door to door renditions of "I love you darling."

ALICE JEAN McCASKILL, B.S.

Home Economics

Carthage, N. C.

Epsilon Chi Literary Society; Student Volunteers 1, 2; Home Economics Club 2, 3, 4; Secretary-Treasurer 4; Atlantic Christian Summer School 2.

Slow but sure . . . jinx on Johns . . . dry wit . . . twinkling eyes . . . gentle winsome ways.

BONNIE LEE McINTOSH, B.A.

Organ

Kings Mountain, N. C.

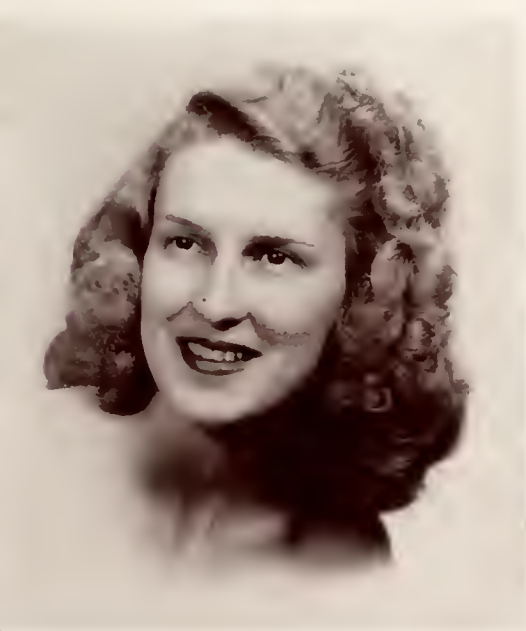
Epsilon Chi Literary Society; Music Club 1, 2, 3, 4; Math Club 1, 2, 3, 4; William Bertram Scientific Society, 2, 3, 4; Organ Recital 3, 4; Flora Macdonald Summer School.

Flippant . . . flashing brown eyes . . . "True Love" attractive blond . . . organist.

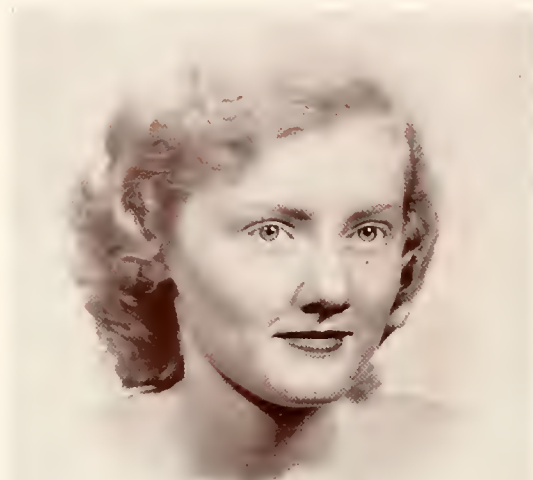
McINTOSH



McDOWELL
McCASKILL



Senior Class



MARGARET PATTERSON McLEAN, B.S.

Home Economics

Richmond, Va.

Epsilon Chi Literary Society; Glee Club 1, 2, 3, 4; St. Cecilia Music Club; William Bartram Scientific Society 1, 2; Home Economics Club 1, 2, 3, 4; Student Volunteers 1, 2, 3, 4; Hockey 1, 2, 3, Varsity 3; Basketball 2, 3; Monogram Club 4; Christian Association Cabinet, Chairman of Highway of World Fellowship 2; Chairman Prayer Bands 3; Vice President Christian Association 4; College Marshal 3; University of Richmond Summer School 3; Who's Who Among Students in American Universities and Colleges.

"Bunny" . . . cabinet . . . energetic . . . my family
. . . blond halo . . . consecrated worker.



MARY EVELYN McLEOD, B.M.

Public School Music

McBee, S. C.

Epsilon Chi Literary Society; Marshal 3; William Bartram Scientific Society 2; Glee Club 2, 3, 4; St. Cecilia Music Club 1, 2, 3, 4; Business Manager *Pine and Thistle* 4; Prayer Band Leader 2; International Relations Club 2, 3, 4; Delegate to Southeastern District of I.R.C. 3; Archery 3; May Court 4.

"M.E." . . . onyx hair . . . P.S.M. . . . classic beauty . . . Carter . . . diligent worker . . . magnolia petal complexion.

EDNA MITCHELL McRAINEY, B.A.

Science and Social Science

Parkton, N. C.

Epsilon Chi Literary Society; Student Volunteers 1, 2; International Relations Club 2, 3, 4; Hockey 2, 3; Basketball 2, 3, 4; Presbyterian Junior College Summer School 3; Highland Players 4; Math Club 4; William Bartram Scientific Society 4; Monogram Club 4.

"Mac" . . . class loyalty . . . red top . . . Guardian of the goal . . . perseverance . . . jolly.

McRAINEY



McLEAN
McLEOD

Senior Class

SARA FRANCES NEWMAN, B.A.

Bible and English

Tryon, N. C.

Epsilon Chi Literary Society; St. Cecelia Music Club.
2, 3; Student Volunteers 4; L'Alliance Francaise Club
2, 3, 4.

*Demure . . . petite . . . unassuming . . . Tryon
Daily Messenger . . . beaucoup shoes of minute
size.*

JEAN RICHARDS NEWTON, B.A.

Grammar Grade Methods

Gibson, N. C.

Zetesian Literary Society, President 4; William Bar-
tram Scientific Society 3, 4; International Relations
Club 3, 4; Hockey 1, 2, 3; Captain 2, 3; Varsity 3;
Basketball 1, 2, 3, 4; Varsity 3; Monogram Club 3, 4;
Student Council 4; Student Volunteers 4; Marshal
3; Class Treasurer 3; St. Cecelia Music Club 2, 3,
4; Athletic Board 2, 3; Head of Hockey 3; Presby-
terian Junior College Summer School.

*"Sammy" . . . first '48'er headed for matrimony
. . . serenely sweet . . . comely . . . athletic
leader.*

DORIS LEE NORTON, B.S.

Home Economics

Raeford, N. C.

Zetesian Literary Society; Home Economics Club
1, 2, 3, 4; Student Volunteers 2; Volley Ball 1, 2,
3; Atlantic Christian College Summer School 2.

*The helping hand . . . outspoken . . . well-groomed
hair . . . good natured . . . sleeveless sweaters.*

MORTON



NEWMAN
NEWTON



Senior Class



JANE GURLINE PACE, B.A.
English and Social Science
Orlando, Fla.

Epsilon Chi Literary Society, First Vice President 3; President 4; Student Council 4; Secretary Class 3; Marshal 3; May Court 3, 4; Highland Players 3, 4; Pine and Thistle Staff 4; Hockey 2, 3; Basketball 2, 3; College of Charleston 1.

*Madame Pompadour . . . "Brown" . . . genuine
Epsilon Chi . . . original . . . dignified . . . a beauty
of her own.*



LOUISE REAVES, B.A.
Primary Education
Fayetteville, N. C.

Zetesian Society 3, 4; Assistant Tea Room Manager 3; Louisburg College 1, 2; May Court 2; Student Council 2; YWCA Cabinet.

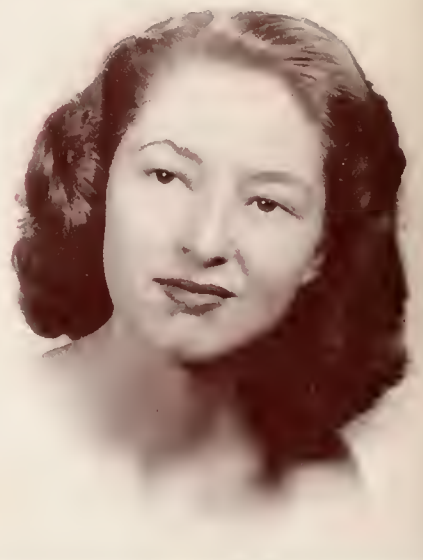
*Showers of candy and flowers . . . interesting
eyes . . . quiet dignity . . . opaque . . . Nathan.*

HELEN PAYNE RUSSELL, B.S.
Home Economics
Kinston, N. C.

Epsilon Chi Literary Society; International Relations Club 3; Home Economics Club 3, 4; Reporter 4; Commercial Club 1; Granddaughters' Club; Tennis 2, 3; Atlantic Christian College Summer School 2; Wake Forest Summer School 3.

*Creator of clever designs . . . industrious . . .
"Senorita" . . . ambling walk . . . elfish glasses
. . . coöperative.*

RUSSELL



PACE
REAVES



Senior Class

MARTHA CAROLINE SMITH, B.A.

Bible and English

Jellico, Tenn.

Zetesian Literary Society; Montreat College 1, 2;
Student Volunteers 3, 4; Prayer Band Leader 4.

*Expressive eyes . . . courteous . . . gliding walk
. . . reserved . . . loyal Virginian.*



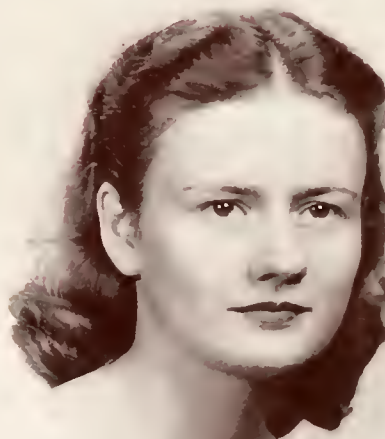
LILLIAN PARKS SNEED, B.A.

Social Science

Monks Corner, S. C.

Epsilon Chi Literary Society; Math Club 1, 2; William Bartram Scientific Society 1, 2, 3, 4; Treasurer 2, Vice President 3; International Relations Club 2, 3, 4; Custodian of the Scrapbook 3, Vice President 4; Pine and Thistle Staff 1, 3; St. Cecelia Music Club 1, 2, 3, 4; Glee Club 4; Archery; Tennis 3; Prayer Band Leader 3; Christian Association Cabinet, Chairman Highway of Stewardship 4.

*"Lil" . . . smiling eyes . . . gentle ways . . .
conscientious and consecrated . . . scholarly . . .
natural beauty.*



MARY KATHRYN STONE, B.S.

Home Economics

Lumberton, N. C.

Epsilon Chi Literary Society, Home Economics Club 2, 3, 4; William Bartram Scientific Society 3, 4; Volley Ball 1, 2, 3; Vice President of College B.T.U. 4; Wake Forest Summer School 1, 2.

*"Mary K." . . . hard worker . . . "My cousin" . . .
helpful . . . unselfish . . . checks and plaids.*

STONE



SMITH
SNEED



Senior Class



SUTTON
TILLINGHAST

ALICE ELIZABETH SUTTON, B.A.

English and Bible

Dublin, Va.

Zetesian Literary Society; French Club 1, 2; Student Volunteers 1, 2, 3, 4; Vice President 2; Christian Association Cabinet, Chairman of Publicity 2; Treasurer 3; Chairman of Prayer Band Leaders 4; College Marshal 3; Superlative 4; Who's Who in American Universities and Colleges 4; Radford College Summer School.

"Lib" . . . Eternally Busy . . . "praying hands" original . . . radiant light from within . . . love of little children.

MARY SUE TILLINGHAST, B.A.

Mathematics

Dillon, S. C.

Epsilon Chi Literary Society; Corresponding Secretary 4; Class Treasurer 2; Double-sextet 2; Glee Club 1, 2, 4; Treasurer 2; Math Club 1, 2, 3, 4; President 4; Cheerleader 3, 4; WHITE HEATHER Class Editor 4; St. Cecilia Music Club 1, 2, 4; Archery 2.

"Satan" . . . James . . . Dillon . . . hay fever . . . South Carolina drawl . . . frank . . . cuter than a pixie itself . . . duck walk.

HELEN GENEVA TURNER, B.A.

Grammar Grade Methods

Social Science

Fair Bluff, N. C.

Epsilon Chi Literary Society; William Bartram scientific Society 3, 4; Vice President 4; St. Cecilia Music Club 3, 4; International Relations Club 2, 3, 4; Class Secretary 2; Tea Room Manager 4; Athletic Board 3; Head of Tennis 3; Basketball 3, 4; Coker College Summer School 2.

Mischievous brown eyes . . . "Cherry blossom" . . . "when I was in high school" . . . well-dressed . . . cute.

TURNER



Senior Class

IDA RAY VANN, B.S.

Home Economics

Clinton, N. C.

Epsilon Chi Literary Society; Corresponding Secretary 3; Highland Players 2, 3, 4; Home Economics Club 1, 2, 3, 4; Vice President 4; Archery 3; College Chairman of War Fund Drive 2; Fire Chief 3; White Heather Staff, Class Editor 3, Editor-in-Chief 4; Superlative 3, 4; Chief Scribe 4; Appalachian State Teacher's College Summer School.

"Irv" monograms . . . a capacity to enjoy life . . . "Rider Ray" . . . S.A.B. . . puddles . . . "unobtrusive" . . . nightly rendezvous with bobby pins . . . discerning selection of stylist clothes . . . one whose carefree ways oft-times cover her fine qualities that have so enriched our college days.

VIRGINIA FRANCES VANNOY, B.A.

English and Social Science

Reddies River, N. C.

Zetesian Literary Society; Chaplin 4; William Bartram Scientific Society 2, 3, 4; International Relations Club 2, 3, 4; Student Volunteers 1, 2, 3, 4; treasurer 2; President 4; Prayer Band Leader 2, 3, 4; Basketball 2, 3; Hockey 1, 2, 3; Atlantic Christian College Summer School 3.

Student Volunteers . . . sincere . . . "mountaineer" . . . Bible stories to colored tots . . . lavender . . . practical.

EVALYN OGLESBY WADDELL, B.A.

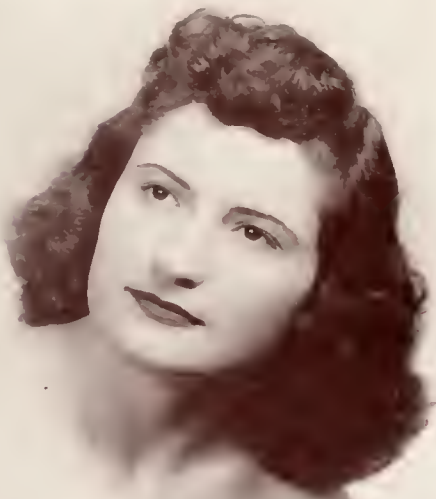
English and Social Science

Fair Bluff, N. C.

Epsilon Chi Literary Society; Glee Club 2, 3, 4; St. Cecilia Music Club 2, 3; I.R.C., Vice President 3; President 4; Archery 3; Tennis 2; Delegate to Southeastern District I.R.C. Convention 3; Prayer Band Leader 3; Mission Study Leader 3; Editor of Pine and Thistle 4; Appalachian State Teacher's College Summer School 2; University of North Carolina Summer School 3.

"That new look" . . . immaculate . . . "Peruna" . . . "Miss efficient" . . . face enhanced by ebony hair . . . valuable.

WADDELL



VANN
VANNOY



Senior Class



MARGARET GAY WATSON, B.A.

Red Springs, N. C.

Epsilon Chi Literary Society; William Bartram Scientific Society, 2, 3; Day Students Club, President 3, 4; Glee Club 1, 2, 3, 4; Pine and Thistle Staff 4; Student Council 3, 4.

"Genius" . . . sly humor . . . our boarding day student . . . wholehearted participation in college activities . . . overflowing box office . . . genuine.



MIRIAM WATSON, B.A.

Organ

Jonesboro, N. C.

Epsilon Chi Literary Society, Chaplin 3; Glee Club 1, 2, 3, 4, President 4; Sextet 1, 2; Music Club 1, 2, 3, 4, Treasurer 3; William Bartram Scientific Society 2, 3, 4; Athletic Board, Head of Table Tennis 3; Feature Editor Pine and Thistle 3; Marshal 3; Class President 1, 2; Christian Association Cabinet 3, 4; Secretary 3; Superlative 3, 4; Senior Scribe; President Student Body 4; Student Council 1, 2, 4; Who's Who Among Students in American Colleges and Universities.

Capable . . . musical soul . . . laughter of real merriment . . . pleasing to the eyes . . . the true spirit of Flora Macdonald.

BETTY JOYCE WAYNE, B.A.

Math and Science

Hallsboro, N. C.

Epsilon Chi Literary Society; Basketball 3, 4; Hockey 3, 4; Athletic Board 3; Math Club 4; International Relations Club 4; Highland Players 4.

A mischievous twinkle reveals her real self . . . chemistry lab . . . abbreviated bangs . . . unaffected . . . generous

WAYNE



WATSON, M. G.

WATSON, M.



CLETA NELL WILBORN, B.A.

Primary Methods

Lillington, N. C.

Epsilon Chi Literary Society; Mars Hill Junior College 1, 2; Nonpareil Literary Society 1, 2; Glee Club 1, 2, 3, 4; St. Celia Music Club 3.

George . . . sarcastic wit . . . beauty shop appointments . . . "A little nonsense now and then is relished by the best of men" straight forward.

HARRIET WILSON, B.A.

Math and Science

News Ferry, Va.

Zetesian Literary Society; Math Club 1, 2, 3, 4; William Bartram Scientific Society 1, 2, 3, 4; Prayer Band Leader 2, 3; Student Volunteers 1, 2, 3; Basketball 2, 3, 4; Hockey 1, 2, 3; Varsity 3; Monogram Club 3, 4; Athletic Board; Head of Tennis 2; Student Council; President of Class 3.

Sterling . . . "I thought I'd Split" . . . understanding . . . silken blond hair . . . the simplicity of a noble heart and lofty mind.

MARY ATWATER WOMBLE, B.A.

Bible and English

Wagram, N. C.

Epsilon Chi Literary Society; Math Club 1, 2, 3, 4; Corresponding Secretary 3; Hockey 1, 2, 3; Basketball 1, 2, 3, 4; Exchange Editor *Pine and Thistle* 4; Atlantic Christian College Summer School 2.

Conscientious . . . opinionated . . . "Little B" the second . . . glossy hair . . . oxfords . . . earnest worker.

RUBY LORENE WOOD, B.A.

Primary Methods

Rockfish, N. C.

Zetesian Literary Society; William Bartram Society 2, 3, 4; International Relations Club 4; L'Alliance Francaise 2, 3, 4; Basketball 2, 3, 4; Hockey 2, 3; Athletic Board Treasurer 3; Student Volunteers 4.

Silence is golden . . . sportsmanship . . . "little bit" . . . carefree walk . . . cooperative.



WILBORN



WILSON

WOOD



WOMBLE





Bishop, Caudell, Smith, Berryhill, Griffin, Herring.

The Junior Class

"THERE'S A NEW DAY COMING." Coming up a step from the Sophomore level, the Juniors became known as "upperclassmen." This title is the "open sesame" to innumerable privileges, but next year will be the year for which they have been striving—graduation in 1949.

White Heather

OFFICERS

NANCY BISHOP.....	<i>President</i>
JANE CAUDILL.....	<i>Vice President</i>
JANET SMITH.....	<i>Secretary</i>
NINA BERRYHILL.....	<i>Treasurer</i>
BLOSSOM GRIFFIN.....	<i>Tea Room Mgr.</i>
KATHARYNE HERRING,	
Asst. Tea Room Mgr.	

ALLRED, MARIAN
Savannah, Ga.

ARNETTE, GAYNELL
Fairmont, N. C.

BACON, REBECCA
Hillsboro, N. C.

BAIN, DORIS ANNE
Lenoir, N. C.

BEAM, EVA MAE
Rutherfordton, N. C.

BEASLEY, WINIFRED
Lumberton, N. C.

BEDINGER, ALICE
Red Springs, N. C.

BERRYHILL, NINA
Charlotte, N. C.

BISHOP, NANCY
Greenville, S. C.

BOGGS, EDITH
Charlotte, N. C.

BREWER, ANNIE MARGARET
Carthage, N. C.

BULLOCK, CATHERINE
Fairmont, N. C.

CAUDELL, JANE
St. Paul, N. C.

CHAPPELL, ELIZABETH
Candor, N. C.

CLARK, DORIS
Fayetteville, N. C.



JUNIORS



COLLINS, MRS. SARAH C.
Red Springs, N. C.

CONKLING, NAOMI
Jacksonville, N. C.

COX, NINA
Tabor City, N. C.

CROWELL, HELEN
Clinton, S. C.

DAVIS, DOVIE
Lumberton, N. C.

DAVIS, JOLINE
Bladenboro, N. C.

FIELDS, DOROTHY
Carthage, N. C.

FISHER, PHYLLIS
Kannapolis, N. C.

FONVILLE, ANITA
Tabor City, N. C.

GAYLORD, MARY GRACE
Winterville, N. C.

GRAHAM, JULIA MAE
Jackson Springs, N. C.

GREENE, CAROLYN
Norwood, N. C.

GREEN, SARAH ELIZABETH
Henderson, N. C.

GRIFFIN, BLOSSOM
Unionville, N. C.

HALL, MRS. MARION F.
Fayetteville, N. C.

of 1948

HALL, RACHEL
Marion, S. C.

HAMILTON, MARION OLIVER
Fairmont, N. C.

HARVELL, DOROTHY
Varina, N. C.

HERNDON, GRACE
Sanford, N. C.

HERRING, KATHARYNE
Clinton, N. C.

HINES, ANNA
Washington, N. C.

HOOVER, FLORENCE
Batesburg, S. C.

HUNSUCKER, REBEKAH NELL
Newton, N. C.

KNIGHT, HELEN
Roanoke Rapids, N. C.

KNIGHT, MIRIAM
Orlando, Fla.

LEDBETTER, NANCY
Norman, N. C.

LONG, BOBBIE
Wadesboro, N. C.

LYTLE, DONNIE
Red Springs, N. C.

MANESS, MYRA
Biscoe, N. C.

MAULDIN, EMILYN
Chesterfield, S. C.



JUNIORS



MORRISON, FAYE
Roseboro, N. C.

MUSE, MRS. LOIS
Laurinburg, N. C.

McCASKIL, JO
Carthage, N. C.

McFADYEN, IRIS
Vass, N. C.

McLEOD, SARAH
Aberdeen, N. C.

McNEELY, BETTE
Elkin, N. C.

NASSIF, FRANCES
Laurinburg, N. C.

PLEMMONS, FAYE
Lynn, N. C.

PREVATTE, MARY DELL
Fairmont, N. C.

PRICE, BETTY
Pineville, N. C.

PRUITT, LUCY
Fuquay Springs, N. C.

RANDAL, ADA LEE
Polkton, N. C.

ROHANNA, JASMINE
Elizabeth City, N. C.

RIGGAN, FLORA
Henderson, N. C.

ROGAN, FLORENCE
Greeleyville, S. C.

RUSSEL, MARY ANNE
Sanford, N. C.

SMITH, JANET
Whitsett, N. C.

SMITH, SUSIE
Pink Hill, N. C.

SPIVEY, NELL
Elizabethtown, N. C.

TUGWELL, NINA RUTH
Farmville, N. C.

TURNAGE, ANN
Farmville, N. C.

WATT, MARGARET
Americus, Ga.

WHITAKER, SALLIE MAE
Rockford, N. C.

WILLIAMS, MARGARET
Indian Valley, Va.

WILSON, MARIE
Oxford, N. C.

WILSON, SUE
Fayetteville, N. C.

WOODARD, VERNIESE
Murrell's Inlet, S. C.



JUNIORS





Gregory, Allred, Cook, McKay.

The Sophomore Class

"THERE WILL COME A TIME." With two years down and two to go, the Sophomores courageously believe that "there will come a time." Thus, the Class of 1950 surges onward.

White Heather

OFFICERS

DOROTHY ALLRED *President*
MARY BURKE COOK..... *Vice President*
LOIS MCKAY..... *Secretary*
MARY GREGORY..... *Treasurer*

Sophomores



ALLRED, DOROTHY
Norman, N. C.

BAGGETT, BETTY
Greeleyville, S. C.

BALL, CORNELIA
Dillon, S. C.

BENNETT, ELAINE
Southern Pines, N. C.

BUIE, DEWIE
Norfolk, Va.

CARSWELL, MADELINE
Sanford, N. C.

COLLINS, JEAN
Glade Valley, N. C.

COOK, MARY BURKE
Logan, West Va.

DAVIS, LOUISE
Wallhalla, S. C.

DUNBAR, MARY BLAND
Petersburg, Va.

ELLIOTT, LEE
Edenton, N. C.

GRAHAM, CAROLYN
Red Springs, N. C.

GREGORY, MARY
Kershaw, S. C.

JORDAN, ANNA
Bishopville, S. C.

KINLAW, LOIS
Lumberton, N. C.

MELVIN, SARA
Kerr, N. C.

MOULDER, CARLEEN
Hope Mills, N. C.

MCCALL, RUTH
Timmons ville, S. C.

Sophomores

McKAY, LOIS
Hamlet, N. C.

McCUBBINS, NANCY
Florence, S. C.

McLEAN, BETTY
Raeford, N. C.

NOWARAH, JOYCE
Roper, N. C.

PARKS, MARY ALICE
Charlotte, N. C.

PEARCE, JO
Corpus Christi, Texas

PHELPS, LEAH
Ash, N. C.

POWERS, JUDITH
St. Pauls, N. C.

SMITH, BONNIE
Wilmington, N. C.

SMITH, MARGARET
Pageland, N. C.

SNELL, JO
Charlotte, N. C.

TILLINGHAST, HELEN
Fayetteville, N. C.

WALLACE, MARCELLA
Bennetsville, S. C.

WILLIAMS, CLAIRE
Washington, D. C.

WILLIAMS, DOROTHY
Indian Valley, Va.

WILLIAMSON, LAJEANA
Logan, West Va.

WIMMER, FRANCES
Roanoke, Va.

YELVINGTON, ANN
Clayton, N. C.

YOUNG, DONNA
Maxton, N. C.





Jordan, Jones, Leckie, McMillan

Freshman Class

ALTHOUGH the Class of '51 has been at F.M.C. just a short time, it has already made a place for itself on the campus. With it as our leaders of tomorrow, what do we have to worry about?

White Heather

OFFICERS

ANN JORDAN.....*President*
BETTY Jo McMILLAN.....*Vice President*
PATTY JONES.....*Secretary*
HELEN LECKIE.....*Treasurer*

ARRINGTON, PATRICIA ANN
Southport, N. C.

BARROW, AGNES ROBERTA
LaGrange, N. C.

BLUE, NANCY
Jonesboro, N. C.

BROWNE, SARA JANE
Red Springs, N. C.

BUJE, MARY VARDELL
Charleston, S. C.

BYRD, YVONNE
Erwin, N. C.

CANTLEY, MARY EMMA
Kingstree, S. C.

CARTER, PATSY
Chadbourn, N. C.

CATES, COLEENE
Burlington, N. C.

COX, SUE LEE
Franklinton, N. C.

CURRIE, BETTY LYNN
Red Springs, N. C.

DAVENPORT, MARTHA
Charlotte, N. C.

DEATON, KATHRYN GARR
Pinebluff, N. C.

DORSEY, GENEWOOD
Gurly, S. C.

DYER, PHYLLIS
Leaksville, N. C.

ELLIOTT, MARGARET ELIZABETH
Tabor City, N. C.

EVANS, MARGARET JANE
Greensboro, N. C.

FIELDS, BETTY LLEWELLYN
Darlington, S. C.

FOUST, IDA TATE
Ramseur, N. C.

GOLDEN, MARILYN ANN
Ware Shoals, S. C.

GRANTHAM, ZELMA
Fairmont, N. C.

HARRIS, PATRICIA
Concord, N. C.

HATLEY, MARY LAGENE
Hudson, N. C.

HENDERSON, LOUISE MORRIS
Huntersville, N. C.

HUBBLE, KATRINA BROWN
Bland, Va.

HUNEYCUTT, CAROLYN
Black Sock, S. C.

HUNT, MARY SUSAN
Wake Forest, N. C.



Freshmen



of 1948

IVES, JANE C.
Orlando, Fla.

JACKSON, LOIS
Fair Bluff, N. C.

JOHNSON, ROBERTA LILLIAN
Rupert, West Va.

JONES, DORIS LOUISE
Oak Ridge, Tenn.

JONES, PATRICIA ANN
Wilmington, N. C.

JORDAN, ANN
Wilmington, N. C.

JOSEY, BEVERLY ANN
Manning, S. C.

KECK, MAXINE
Burlington, N. C.

KELLY, EVA BERT
Carthage, N. C.

LANIER, ELEANOR
Elizabeth City, N. C.

LATTA, BETSY
Hillsboro, N. C.

LEE, MATTIE LOU
Willow Springs, N. C.

LEWIS, MARY HILDRED
Mullens, West Va.

LITTLE, MARGARET CATHERINE
St. Pauls, N. C.

LOVETT, MARJORIE
Fair Bluff, N. C.

LOWE, NELL
Clinton, N. C.

MELVIN, BETTY GRAY
Kerr, N. C.

MILLER, MAXSIE
Chadbourn, N. C.

MOORE, MARY ANN
Jacksonville, Fla.

MORROW, ALICE
Lexington, Va.

MACDONALD, JEAN DALRYMPLE
Carthage, N. C.

McMILLAN, BETTY JO
Selma, N. C.

McRAE, PATRICIA JOYCE
Lillington, N. C.

OGILVIE, CAROLINE
North Wilkesboro, N. C.

OLIVER, MARGARET CLARKE
Whiteville, N. C.

POPE, ELEANOR
Charlotte, N. C.

POWELL, MARGARET
Smithfield, N. C.



PRICE, HANNAH
Charlotte, N. C.

RATCHFORD, WILMA REBECCA
Bessemer City, N. C.

REESER, PATRICIA
Leaksville, N. C.

REYNOLDS, CAROLYN
Smithfield, N. C.

RIVENBARK, FLORENCE
Willard, N. C.

ROSENBAUM, JO ANNE
Jonesville, Va.

RUSS, SARAH JOY
Shallotte, N. C.

RUSSELL, ANNIE FLORENCE
Rocky Mount, N. C.

RUSSELL, ELLEN
High Point, N. C.

SHAVER, LULA MARGUERITE
Fishersville, Va.

SHERRILL, HELEN
Fayetteville, N. C.

SMITH, PATRICIA ADKINS
Red Springs, N. C.

SOUTHERLAND, PATTY MARIE
Wilmington, N. C.

STANLAND, MARILYN
Charleston, S. C.

STEVENS, CYNTHIA
Smithfield, N. C.

SUMMERS, CATHERINE GROTHY
Norfolk, Va.

SUMMERVILLE, JEAN
Charlotte, N. C.

SUTLIFF, FAYE
Leaksville, N. C.

TAYLOR, JEANINE
Robersonville, N. C.

THOMPSON, SYLVIA
Chadbourn, N. C.

WALKER, CAROLYN
Wilmington, N. C.

WALKER, NANCY
Baltimore, Md.

WATSON, SARANEL
Greenville, S. C.

WALL, BETTY ANN
Wadesboro, N. C.



Freshmen

COMMERCIAL DEPARTMENT



JOYCE McKISSICK.....President

MAYSIE MILLER.....Vice President

JO-ANNE ELLIOT.....Secretary-Treasurer

MISS LETA MCINTYRE.....Adviser

Elliot, McIntyre, Miller, McKissick.



SECOND YEAR COMMERCIAL

BETHEA, MARY CHRISTINE
Lillington, N. C.



KATSOS, MARY
Carthage, N. C.



MONROE, FLORA
Laurinburg, N. C.



McKISSICK, JOYCE
Blackstone, Va.



First Year Business

First row, left to right: ALFORD, POLLY, Hamer, S. C.; ASCOUGH, ROMANA JOAN, Cummock, N. C.; BOSTIC, DORIS RAYE, Kenansville, N. C.; BRAGDON, MARIANNE, Florence, S. C.; BULLARD, PEGGY ANN, Fayetteville, N. C.; BULLOCK, CLETUS DALE, Lumberton, N. C.; CAMPBELL, ELIZABETH McLEAN, Laurinburg, N. C.; CREECH, JEAN WOODLEY, Princeton, N. C.

Second row: CULCLASURE, JACQUELINE, Greensboro, N. C.; DeLANCEY, TONI, Charlotte, N. C.; DOWDA, WILMA GERALDINE, Sanford, N. C.; ELLIOTT, JOANNE, Blacksburg, S. C.; GILMORE, RACHEL ESTELL, Ramseur, N. C.; HALL, JOYCE MARIE, Rocky Mount, N. C.; HARRIS, KATHERINE O'NEAL, Blackstone, Va.; HEDGPETH, BETTY, Fairmont, N. C.

Third row: HOLMES, GENE ROSE, Fayetteville, N. C.; HUFFSTETLER, ANN ELIZABETH, Gastonia, N. C.; JACKSON, HAZEL RUTH, Maxton, N. C.; JAMES, CHARLOTTE, Durham, N. C.; JOYNER, BLANCHE MARIE, Elm City, N. C.; KIRBY, EDITH LEIGH, Kenly, N. C.; KORNEGAY, EVA BELLE, Warsaw, N. C.; LASSITER, GILDA ALLYN, Lumberton, N. C.



First Year Business



LAWRENCE, NELLE CAROLYN, Spruce Pine, N. C.; LECKIE, MARY HELEN, Charlotte, N. C.; MAY, ELIZABETH ANN, Pink Hill, N. C.



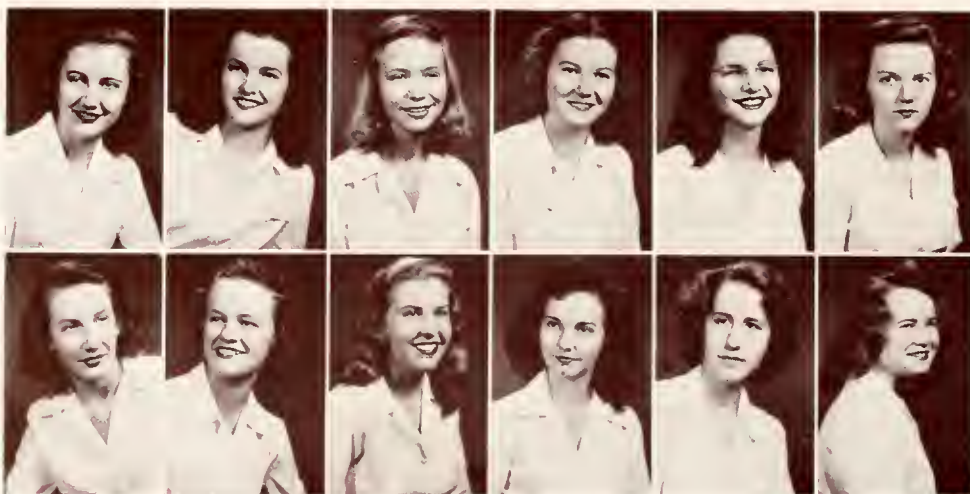
MILLS, ERNESTINE, Jacksonville, Fla.; MOORE, MARY LUCILLE, Wilmington, N. C.; MYERS, JEANETTE LANIER, Williamston, N. C.



McGUGAN, JEAN, Red Springs, N. C.; McSHANE, VIRGINIA, Stanford, Conn.; POORE, BETTY JEAN, Ware Shoals, S. C.

First row, left to right: QUICK, JACQUELINE, McCall, S. C.; RANSBALL, JOSEPHINE, Carthage, N. C.; SHOOK, GERALDINE, Red Springs, N. C.; SMITH, ELSIE, Kenansville, N. C.; SPIVEY, EULA MAE, Chadbourn, N. C.; STOREY, ELIZABETH THOMAS, Rockingham, N. C.

Second row: SWAIN, BETTY, Creswell, S. C.; WATSON, ROSA LEE, Red Springs, N. C.; WEBSTER, PRISCILLA, South Weymouth, Mass.; WHEELLESS, HELEN TAYLOR, Willow Springs, N. C.; WILLIAMS, ROSA LUCILLE, Fayetteville, N. C.; WILSON, MABLE LOUISE, Greenville, N. C.



Music





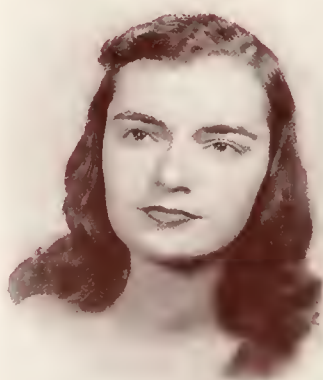
ROBERT REUTER
Dean of Conservatory

SENIOR MUSIC RECITALS

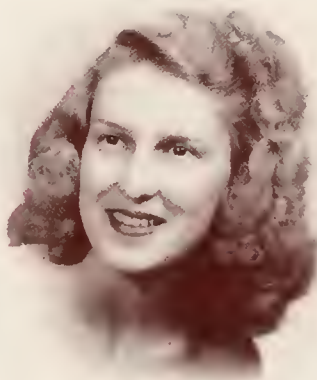
DAPHNE GOODMAN.....*Pianist*

BONNIE LEE MCINTOSH.....*Organist*

MIRIAM WATSON.....*Organist*



Goodman



McIntosh



Watson

Dean's Studio



Conservatory Hall



GLEE CLUB

"There is music in the air" quite frequently at Flora Macdonald when eighty voices are blended under the direction of Dean Reuter. The Glee Club is one of the finest organizations on the campus. The specialized training, in diction and tone quality is rarely found among college glee clubs. Flora Macdonald is proud to have such an outstanding Glee Club.

OFFICERS

MIRIAM WATSON.....*President*

CLAIRE WILLIAMS*Secretary*

LINDA LEWIS*Treasurer*



GUEST ARTISTS

Each year Flora Macdonald College has on her campus a group of guest artists who are sponsored by the Concert-Lecture Course Series. A variety of attractions are provided. This year we were fortunate in having on our campus Alexander Uninsky, Margaret Bourke-White, Anna Turkel, Jeanne Welty, William A. Lydgate and Miriam Solovieff.



Anna Turkel



Miriam Solovieff



Alexander Uninsky

Activities



"And in our Spare Time..."

Amis
Neighbors
Vann



The 1948

IDA RAY VANN
Editor-in-Chief

HARRIET AMIS
Business Mgr.



THE WHITE HEATHER is the illustrated story of each year's activity at Flora Macdonald. The editor and business manager are elected from the rising senior class each year by the student body at large. The assistant editor and assistant business manager are elected by the junior class. Other members of the staff are named by the editor and business manager, and are taken from the different classes and organizations in the college.

JULIA GRAHAM, *Assistant Editor*
IRIS MCFADYEN, *Assistant Business Manager*
MARY SUE TILLINGHAST, *Senior Class Editor*
MARIAN ALLRED, *Junior Class Editor*
CLAIRE WILLIAMS, *Sophomore Class Editor*
PAT HARRIS, *Freshman Editor*
BLOSSOM GRIFFIN, *Snapshot Editor*
KATHARYNE HERRING, *Snapshot Editor*
MIRIAM KNIGHT, *Literary Editor*
LINDA LEWIS, *Literary Editor*
ELLA MAY DRINKARD, *Business Editor*
JOYCE MCKISSICK, *Typing Editor*
MRS. GENEVIEVE MACMILLAN NEIGHBORS, *Adviser*

White Heather



THIS LITERARY MAGAZINE produces the budding Shakespeares of Flossie Mac. Four times a year each student finds a copy of the magazine in the postoffice box. All students read with interest the poems, stories, and editorials. The lives of the editor, business manager, and the staff are a series of deadlines, getting ads, and doing the things necessary to make a really fine magazine.



EVALYN WADDELL
Editor-in-Chief

Pine and Thistle





MARY EVELYN McLEOD, *Business Manager*



McLeod, Waddell, Boney

. . . 1948

MARGARET WATT, *Assistant Editor*

BETTY ADKINS, *Assistant Business Manager*

LEE ELLIOTT, *Literary Editor*

DORIS BAIN, MARY ANN RUSSELL, *Art Editors*

SUE ADDOR, GURLINE PACE, BETTE McNEELY, LINDA LEWIS, VERNIESE
WOODWARD, *Feature Editors*

LAJEANA WILLIAMSON, GAY WATSON, PHYLLIS FISHER, *Epsilon Chi Editors*

RACHEL HALL, HELEN KNIGHT, *Zetesian Editors*

MARY KATSOS, ANNE BREWER, BONNIE SMITH, *Typing Editors*

SARAH HUMPHREY, SARAH McLEOD, *Poetry Editors*

THELMA BARROW, *Book Reviewer*

CARLEEN MOULDER, JASMINE ROHANNA, *Make-Up Editors*

KITTY BULLOCK, ELOISE LANE, MARY WOMBLE, *Exchange Editors*

MISS VIRGINIA BONEY, *Faculty Adviser*

MIRIAM WATSON
President



The STUDENT

THE STUDENT COUNCIL plays an important part in our life at Flora Macdonald. Through it the students and faculty are united. Our council impresses upon the student the necessity of personal honor, self-control, and individual responsibility.

AUDREY KORNEGAY, *Vice President of Student Body*
 FRANCES DULL, *President of Christian Association*
 JANE HOBBS, *President of Senior Class*
 FRANCES ARNETTE, *Vice President of Senior Class*
 NANCY BISHOP, *President of Junior Class*
 JANE CAUDELL, *Vice President of Junior Class*
 DOROTHY ALLRED, *President of Sophomore Class*
 ANN JORDAN, *President of Freshman Class (not pictured)*
 GURLINE PACE, *President of Epsilon Chi Society*
 JEAN NEWTON, *President of Zetesian Society*
 NANCY LEDBETTER, *President of Athletic Association*
 GAY WATSON, *President of Day Students*

GOVERNMENT . . . 1948



FRANCES DULL
President



F.M.C. CHRISTIAN ASSOCIATION

"A MIGHTY FORTRESS IS OUR GOD." This inter-denominational organization promotes growth in Christian faith and character. The highlights of the Christian Association year were the Fall and Spring Religious Emphasis Weeks, the Installation service, reception for the Freshmen, the candle light service, the White Gift Service, and the Dome Service. The president of the association, the highway leaders, and the faculty adviser make up the Cabinet which guides this organization. "Let your light so shine" was the theme for this year's activities, as the association sought to make our God effective in human society today.

OFFICERS

MARGARET McLEAN, *Vice President*

MARION FISLER, *Secretary*

LILLIAN SNEED, *Treasurer*

MIRIAM WATSON, *Ex-officio President of the Student Body*

FLORA RIGGAN, *Religious Meetings, Life Enrichment*

MARGARET WILLIAMS, *Music, Life Enrichment*

CAROLYN McDOWELL, *World Fellowship*

SARA MEVLIN, *Social Activities, Leisure Time*

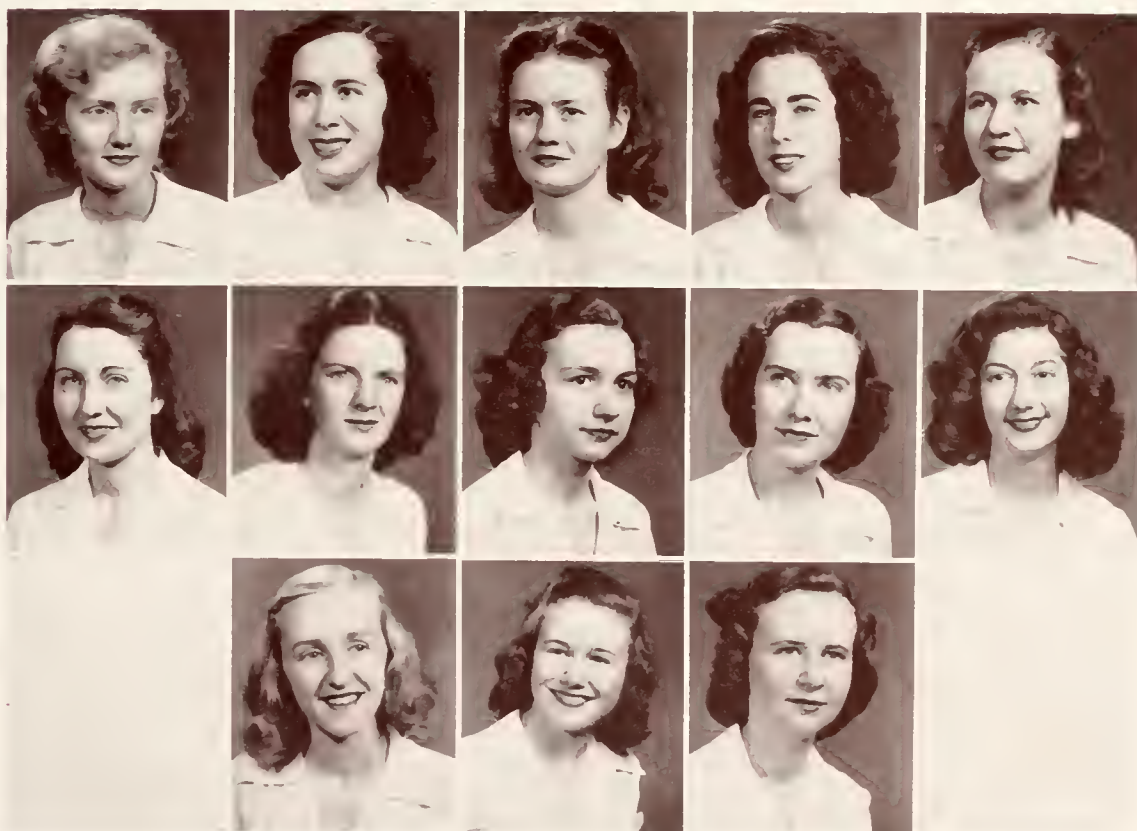
BETTY McLEAN, *Library, Leisure Time*

NINA BERRYHILL, *Sunday School, Learning*

MARY ANN RUSSELL, *Publicity, Learning*

DORIS ANN BAIN, *Comradeship*

ELIZABETH SUTTON, *Prayer Band Chairman*



SENIOR SCRIBBLERS



Ida Ray Vann, Chief Scribe; Miriam Watson, Betty Adkins, Frances Arnette, Jeanne Kanoy, Ella Mae Drinkard.

EACH YEAR five Scribblers are chosen from the rising senior class by the scribblers of the retiring senior class. The Editor-in-Chief of the annual automatically becomes the Chief Scribe. This year the scribblers have endeavored to reveal the true personalities and characters of their classmates.

WHO'S WHO

FLORA MACDONALD'S outstanding seniors are chosen each year to be listed in the *Who's Who Among Students in American Universities and Colleges*. These girls are chosen for their leadership, scholarship and character. This year six girls were chosen. They are: Miriam Watson, Jane Hobbs, Audrey Kornegay, Margaret McLean, Linda Lewis, and Elizabeth Sutton.

Standing, left to right: Arnette, Kornegay, Lewis, Watson. Seated: Hobbs, Sutton, McLean.



EPSILON CHI SOCIETY

"EPSILON CHI, WE SING TO YOU"—can be heard at each meeting of this society. The school spirit of F.M.C. could not be exhibited in a finer way than in these two literary societies.

LINDA LEWIS
First Vice President

ELIZABETH CHAPPELL
Second Vice President

JASMINE ROHANNA
Recording Secretary

MARY S. TILLINGHAST
Corresponding Secretary

BETTY MCLEAN
Treasurer

PHYLLIS FISHER
Critic

ANNE YELVINGTON
Censor

MIRIAM KNIGHT
Chaplain (not pictured)

GURLINE PACE
President





ZETESIAN SOCIETY

"ZETESIAN TO YOU"—comes forth just as loudly from the other hall. From "Rush Day" on, there is friendly competition between the societies. This plays an important part in our school life.

OFFICERS

DORIS ANN BAIN
First Vice President

JEANNE KANNOY
Second Vice President

RACHEL HALL
Recording Secretary

FAITH CANTRELL
Corresponding Secretary

MARIAM HAMILTON
Treasurer

DORIS CLARK
Critic

CLAIRE WILLIAMS
Censor

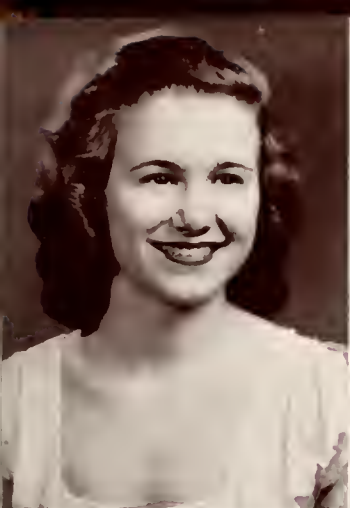
FRANCIS VANNOY
Chaplain

JEAN NEWTON
President



MARION HAMILTON
Chief Marshal





DORIS BAIN, Z



NINA BERRYHILL, Z



RACHEL HALL, Z



VERNIESE WOODWARD, Z

MARSHALS

Each year four marshals are chosen from the two literary societies. The selection of Chief Marshal alternates yearly between the societies. All marshals come from the junior class. Their ability to mingle with people, their congeniality and their dependability are deciding factors in the election of these nine girls. Their duties consist not only of serving as ushers at various concerts, but also they are responsible for stage and parlor decorations, planning receptions and acting as college hostesses. We are grateful for their coöperation and the thorough manner in which they have carried out their duties.

MARIAN ALLRED, EX



ELIZABETH CHAPPELL, EX



PHYLLIS FISHER, EX



MYRA MANESS, EX



OUR CLUB



Barrow, McLeod, Lane, Beasley, McKissick, Lewis, Waddell, Vannoy, Watson, Hardin, Tillinghast.

PRESIDENTS

IF YOU SEE a blinding flash don't be alarmed, because it's just one of the club presidents who is busy with her many errands. They stay constantly busy, keeping the clubs running smoothly and progressing steadily. We all appreciate their hard work.

CLUB PRESIDENTS

THELMA BARROW, *William Bartram Scientific Society*

SARAH MCLEOD, *Sappho Poetry Club*

ELOISE LANE, *Home Economics Club*

WINIFRED BEASLEY, *St. Cecelia Music Club*

JOYCE MCKISSICK, *Commercial Club*

LINDA LEWIS, *Highland Players*

EVALYN WADDELL, *International Relations Club*

FRANCES VANNOY, *Student Volunteers*

MIRIAM WATSON, *Glee Club*

GRACIE HARDIN, *L'Alliance Francaise*

MARY SUE TILLINGHAST, *Math Club*

Student Volunteers



THIS GROUP represents those girls at Flora Macdonald who are interested in home and foreign missions. They meet each Sunday night to study the needs in the field and to pray for guidance in this vital work. They are another factor which contributes to the spiritual growth on the campus.

OFFICERS

FRANCES VANNOY, *President*
SARAH McLEOD, *Vice President*
LOIS McKAY, *Secretary*
HELEN TILLINGHAST, *Treasurer*
BETTY PRICE, *Librarian*

Prayer Bands

"SWEET HOUR OF PRAYER."

Each Wednesday morning during Quiet Hour, small groups gather in their prayer band leaders' rooms to think and pray together with God. The unity felt at these meetings makes us realize that "God is nigh."



William Bartram Scientific Society

THIS SOCIETY is composed of F.M.C.'s students who are interested in science. If you are in the mood for a lecture or discussion of bacteriological warfare, atomic energy, and radar, just drop into one of their monthly meetings.

THELMA BARROW, *President*
HELEN TURNER, *Vice President*
IRENE BARDEN, *Corresponding Sec.*
GRACIE HARDIN, *Recording Sec.*
MARGARET COLLIER, *Treasurer*



Sappho Poetry Club



OUR SCHOOL'S YOUNGEST—this club is composed of the girls interested in writing original poetry. The members also study style, versification, and mechanics of poetry. They read and criticize their own and others poetry. Who knows but twenty years hence the Poetry Club can claim as its own a dozen Miltons?

OFFICERS

SARAH MCLEOD, *President*
LILLIAN TURNER, *Vice President*
SARAH HUMPHREY, *Secy.-Treas.*

L'Alliance Francaise



"Parlez-vous, francais?" If you do speak and understand French, you would like to attend a monthly meeting of this active club. At these meetings, an attempt is made to better understand the customs and habits of the French people.

OFFICERS

GRACIE HARDIN, *President*
SUE ADDOR, *Vice President*
DORIS ANN BAIN, *Secy.-Treas.*

Math Club

FOR THOSE who enjoy finding the diameter of a circle or why X equals Y, the Math Club has been formed. Its aims are to promote high scholastic standing in mathematics, to create interest in this science throughout the college, and to provide or exchange knowledge outside the classroom.

OFFICERS

MARY SUE TILLINGHAST, *President*
CAROLYN McDOWELL, *Vice Pres.*
MARY BURKE COOK, *Recording Sec.*
HELEN KNIGHT, *Corresponding Sec.*
BETTY PRICE, *Treasurer*
BETTY McLEAN, *Chairman of Social Activities*



Highland Players

IF YOU hear crashes and bangs in the auditorium, it's not the atomic bomb—it's the Highland Players putting up its shaky scenery. Constant rehearsing and hard manual labor under the direction of Miss Boney has made this one of the most active groups on the campus.

LINDA LEWIS, *President*
JANE CAUDELL, *Vice President*
MARGARET WATT, *Secy.-Treas.*



International Relations Club



THE I.R.C. is an organization whose members are interested in world affairs. The aim is to keep alive this interest and train the members to understand present conditions in order to adjust to the world of tomorrow.

EVALYN WADDELL
President

LILLIAN SNEED
Vice President

JANET SMITH
Secretary-Treasurer

FLORA RIGGAN
Club Reporter, Custodian of Scrapbook

MISS CAROL ROBERTSON
Faculty Adviser

Home Economics Club



WITH the homes of tomorrow in view, this group is particularly interested in the daily problems of homelife. Many happy hours are spent by these girls at the "Practice House" where they enjoy social entertainment throughout the year.

OFFICERS

ELOISE LANE
President

IDA RAY VANN
Vice President

JEAN McCASKILL
Secretary-Treasurer

HELEN RUSSELL
Custodian Scrapbook

St. Cecilia Music Club

"WITH songs in their hearts," these music students meet to further appreciate and discuss the works of such famous composers as Bach, Beethoven, and Mendelsohn. With the motto, "Music—the universal language of man," the club has tried to create appreciation for good music among the students of F.M.C.

OFFICERS

WINFRED BEASLEY, *President*

FAITH CANTRELL, *Vice President*

FRANCES NASSIF, *Secy.-Treas.*



Day Students Club

THE DAY STUDENTS, envied by us all because of their freedom, have formed this club. It meets almost every day at the soda shop. This is probably F.M.C.'s most active club.

GAY WATSON
President



Commercial Club



MEMBERS OF the Commercial classes and those taking commercial subjects are eligible for membership in this club. Annual Christmas parties and "chicken fries" are the highlights of the club's activities. At monthly meetings guest speakers give the members many helpful hints. Each department at F.M.C. receives a great deal of help from these girls. Our thanks go to the Commercial Department for service cheerfully rendered.

JOYCE McKISSICK
President

MAYSIE MILLER
Vice President

JO ANNE ELLIOT
Secretary and Treasurer

Athletics



"Girls Like to Play"

Cheerleaders



Tillinghast, Amis, Williams

HARRIET AMIS
College Cheerleader

MARY SUE TILLINGHAST
Class of '48

CLAIRE WILLIAMS
Class of '50

Others not elected

NANCY LEDBETTER, *President*
KATHLEEN EPPS, *Vice President*
BLANDY DUNBAR, *Secretary*
EMILYN MOULDIN, *Treasurer*
ANN YELVINGTON, *Salesman*
HELEN CROWELL, *Head of Bowling*
BETTY MCNEELY, *Head of Table Tennis*
HELEN KNIGHT, *Head of Tennis*
DOT FIELDS, *Head of Hockey*
JUDITH POWERS, *Head of Hiking*
LIE CHAPPELL, *Head of Archery*
JASAMINE ROHANNA, *Head of Basketball*
JO PIERCE, *Head of Volley Ball*
MISS ETHEL BATEMAN, *Faculty Adviser*



Athletic Board

Monogram Club

THE REQUIREMENTS for membership in the Monogram Club are outstanding accomplishments in athletics, high scholastic record, good sportsmanship, good health, twenty points in the college point system awarded for leadership in student activities. This is an honorary club with no meeting to attend and no dues to pay.

MEMBERS

Ella Mae Drinkard

Doris Bain

Dot Fields

Edna Mac Rainey

Harriet Wilson

Jean Newton

Harriet Amis

Bunny McLean

Jane Hobbs

Marion Fisler

Nancy Ledbetter

Jasamine Rohanna

Linda Lewis

Kathleen Epps



Senior Hockey Team



Back row: Audrey Kornegay, Edna McRainey, Irene Barden, Jane Hobbs, Doris Leggette, Linda Lewis, Marion Fisler. *Front:* Gracie Hardin, Mary Tillinghast, Ella Drinkard, Helen Turner, Harriet Amis.

Junior Hockey Team



Ruth Tugwell, Sarah McLeod, Mary Grace Gaylord, Flora Ed Riggan, Doris Bain, Eva Mae Beam, Jo McCaskill, Margaret Williams, Dot Fields, Nell Spivey.

*Sophomore
Hockey
Team*



Margaret Smith, Dot Williams, Louise Davis, Judy Powers, Jo Pearce, Betty McLean, Dot Allred, Ruth McCall, Mary Alice Parks, Ann Yelvington.

Mary Lewis, Nancy Walker, Margaret Powell



Bertha Howard, Zelma Grantham, Pat Harris, Pete Hubble.

*Freshman
Hockey
Team*

Senior Basketball



Ruby Wood

Helen Turner

Bunny McLean

Harriet Wilson

Daphne Goodman

Lela Huntley

Margaret Collier

Jane Hobbs

Harriet Amis

Junior Basketball

Emilyn Mauldin

Dovie Davis

Dot Harvell

Jasmine Rohanna

Nancy Bishop

Flora Riggan

Dot Fields

Doris Bain

Nancy Ledbetter

Eva Mae Beam



Sophomore Basketball

Mary Gregory

Louise Davis

Lois Kinlaw

Helen Tillinghast

Ann Yelvington

Priscilla Webster

Margaret Smith

Ruth McCall

Blandy Dunbar



Freshman Basketball



Jean Holms
 Sue Hunt
 Jackie Quick
 Lois Jackson
 Margaret Elliot
 Jeanewood Dorsey
 Llewellyn Fields
 Marilyn Golden
 Betty Poore
 Elsie Smith, *Captain*
 Phyllis Dyer
 Jeanine Taylor
 Nell Lawrence
 Bert Kelly
 Jeanne McDonald
 Hannah Price
 Eva Bell Kornegay
 Mary Lewis
 Nancey Walker



Tennis

In the autumn and spring, the tennis courts at F.M.C. are crowded with enthusiastic players. All of us cannot be champions but this does not keep us from trying. Mary Alice Parks won the championship this year.



Archery

Archery is always one of the most popular sports at F.M.C. Of course most of us spend our time chasing arrows.

Nancy Ledbetter
Clara Koonts
Elizabeth Chappell
Myra Maness
Mary Gregory
Marie Wilson

Athletic Captains

KATHLEEN EPPS, *Senior Basketball*

FLORA RIGGAN, *Junior Basketball*

ANN YELVINGTON, *Sophomore Basketball*

ELSIE SMITH, *Freshman Basketball*

DOT FIELDS, *Junior Hockey*

BLANDY DUNBAR, *Sophomore Hockey*

*Standing, left to right: Smith Yelvington.
Seated: Fields, Epps, Riggan, Drinkard,
Dunbar.*



Features



"It Could Happen to You"



1948 . .

Miriam Watson

CAPABILITY



Linda Lewis

VERSATILITY

SUPERLATIVES

Jo Ransdall

BEAUTY



Ida Ray Vann

PERSONALITY



Superlatives

Elizabeth Sutton

FRIENDLINESS



Anne Yelvington

SPORTSMANSHIP

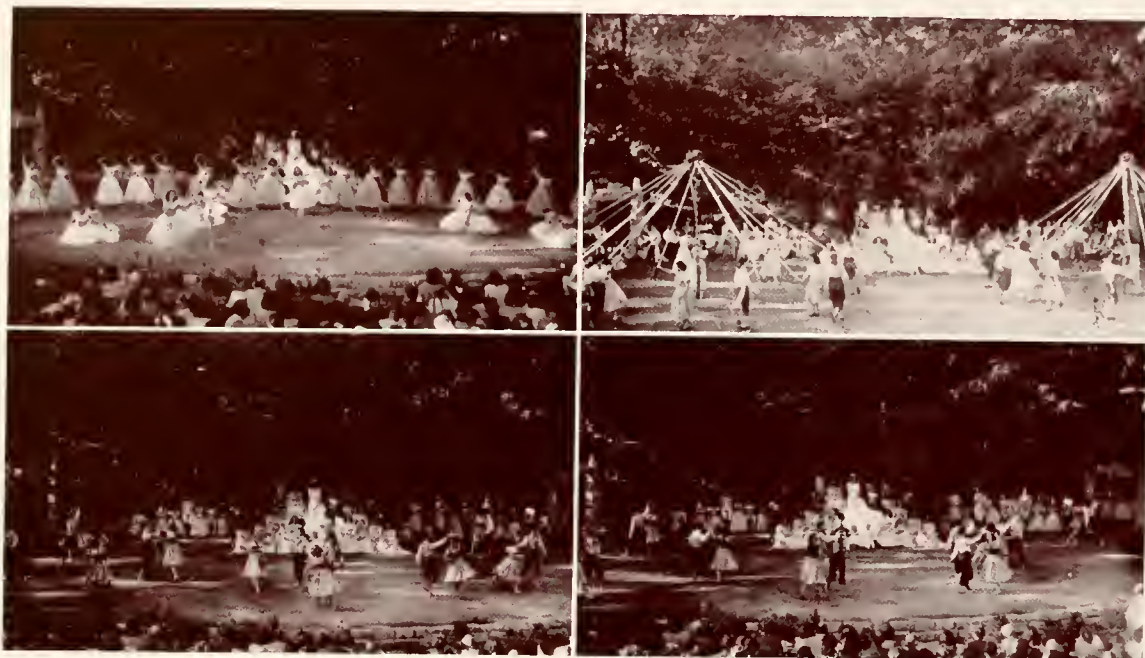
MAY DAY at Flora Macdonald

Frances Arnette

MAY QUEEN



MAY DAY



"A pretty girl is like a melody." When we see fairies, jesters, beautiful ladies of court, and a lovely queen, we begin to think we live in fairy-land. The traditional May Day at Flora Macdonald is a day anticipated by all, for this is a day dedicated to beauty and to Spring.

SUE ADDOR
Maid of Honor



Nineteen Hundred Forty-Eight

Betty Jo McMillan, Rebecca Bacon, Marian Allred, Gurline Pace, Clara Koonts,

Frances Arnette, Queen Sue Addor, Maid of Honor, Joyce McKissick, Mary

Evelyn McLeod, Mary Gregory, Betty Hedgepeth, Marion Hamilton.



Day By Day

"Lazy Country Side." . . . "Smiling Through." . . . "Swinging on a Star." . . . "Bicycle Built for Two." . . . "Sweet and Lovely." . . . "Side by Side." . . . "Harmony." . . . "After the Ball is Over" . . . "On the Sunny Side of the Street." . . .

"Nobody Knows the Trouble I Seen." . . . "Memories." . . . "We Three." . . . "Hey - Baba - Re - Bop." . . . "Friendship." . . . "Till We Meet Again." . . . "O Lady Be Good." . . . "Miss You." . . . "Who." . . . "My Hero." . . . "Feudin' and Fightin'." . . . "I'll Be Around." . . . "Put That Ring On My Finger." . . . "I'm Forever Blowing Bubbles." . . . "Love Letters." . . .





Day By Day

"Everybody Has a Laughing Place."

... "You Call It Madness." ... "Betty." ... "Sun of Your Smile." ...

"Let it Snow." ... "Saturday night is the Loneliest Night In the Week." ...

"These Foolish Things." ... "There's is a Song In The Air." ... "Doing What Comes Naturally." ... "You Are Everywhere." ...

"It Isn't Any Trouble Just To S-M-I-L-E." ... "Scatter Brain." ...

"11:60 P.M." ... "Sleepy Time Gal."

... "Three Blind Mice." ... "Our College Friendship Is the Finest." ...

"I'll Dance at Your Wedding." ...

"Lady of the Garden." ... "How Soon." ... "A Little on the Lonely Side." ...

"Rugged But Right." ...

"My Task." ... "Reading, Ritin', and Rithmetic." ... "My Bonnie." ...

"My How The Time Goes By." ...



FLORA MACDONALD COLLEGE

Red Springs, N. C.

A SENIOR COLLEGE FOR WOMEN



Near Fayetteville, Southern Pines and Pinehurst. Delightful climate, healthful mineral springs and remarkable health record. Bus and Railway connections.

A Standard Senior Grade A College for Women. Strong faculty. Graduates accepted for graduate work by leading universities. Class A teacher's certificates. Homelike atmosphere. Personal attention to students by teachers. Courses offered: Bachelor of Arts, Bachelor of Music, Bachelor of Science (Home Economics) degrees. A Secretarial Course.

Athletics. Skillful physical director and coach has general supervision of sports and physical training. Archery, basketball, hockey, swimming, tennis, hiking, etc., are enjoyed in season.

Social Activities. Receptions, teas, and many other social functions are provided at the college, while many hospitable and delightful homes of the citizens of Red Springs are open to the students.

Wide Patronage. Patronized at present by ten states. Four thousand alumnae are teachers, church secretaries, dietitians, home demonstration agents, social workers, missionaries, and in many other useful professions.



Moderate Charges :- For Catalogue Write

Henry G. Bedinger, President

Flora Macdonald College : Red Springs, North Carolina

TOWNSEND'S PHARMACY

The Rexall Store



WHERE THE COLLEGE GIRLS MEET



DEPENDABLE DRUGGISTS



RED SPRINGS, NORTH CAROLINA

BELK-HENSDALE COMPANY

*Remember You Always
Save at Belks*

Red Springs, North Carolina

McNEILL'S
Cleaners and Tailors



Red Springs, North Carolina

Phone 2941

Compliments of
**McKEITHAN
HARDWARE**

Red Springs, North Carolina

McNeill's Taxi

PHONE 3921

Red Springs, North Carolina

Compliments of
Kennedy's Jewelry and Gift Shop
FINE WATCH REPAIRING
Red Springs, North Carolina

Compliments of
MACKS' 5-10-25c STORES

Red Springs, North Carolina

Compliments of
Huggins Shoe Shop
Red Springs, North Carolina

RED SPRINGS FLORIST
"Flowers are love's sweetest language"
MRS. R. B. McCracken PHONE 3691

Red Springs, North Carolina

BURROUGH'S CUT RATE STORE

Phone 4271

Red Springs, North Carolina

HOME FURNITURE CO., Inc.

Furniture : Carpets
Stoves : Ranges : Radios

Red Springs, North Carolina

ANNE GREENE'S
Permanent Wave Shop



We Serve You to Serve Again



Red Springs, N. C.

Compliments of
**RED SPRINGS
CAFE**

Red Springs, N. C.

Compliments of

MOORE'S DEPARTMENT STORE

PHONE 451-6

and

B. C. MOORE AND SONS, INC.

PHONE 339-1

"Buy from Moore and Save More"

RED SPRINGS, NORTH CAROLINA

Compliments of

GRAHAM'S
Department Store, Inc.



Phones

308-1

257-1



Red Springs, North Carolina

Pontiac
Studebaker
International Harvester

Sales and Service

SINGLETON AND
McMILLAN, INC.

Phone 3971

Red Springs, North Carolina

Red Springs Supply Company, Inc.

GENERAL MERCHANTS

The Friendly Store



Fertilizers and Cotton

Livestock

Hardware

Grocery

Market

Building Material



DIAL 3701

RED SPRINGS, NORTH CAROLINA

NEIGHBORS SHOE STORE



*Red Springs' Exclusive
Shoe Store*



Phone 3981

Red Springs, N. C.

Gold Medal Fertilizers

Liberty Premium Fertilizers

Modern Gin System

Modern Seed Cleaning Equipment



LIBERTY MANUFACTURING COMPANY

Red Springs, North Carolina

LENOIR'S JEWEL SHOP

Quality Jewelers

Red Springs, N. C.

Allen & McLean, Inc.



Lumber : Building Material
Plumbing and Heating



Phone 2386
Red Springs, North Carolina

D. M. McMILLAN

"Ford Products Since 1912"

Red Springs, North Carolina

ODOM AND SONS

FRESH MEATS

FANCY GROCERIES - COUNTRY PRODUCE

Red Springs, North Carolina

RED SPRINGS IMPLEMENT CO.

Allis-Chalmers Dealers

Hotpoint Electrical Appliances

Red Springs, North Carolina

E. H. ALEXANDER

... Cotton ...

Red Springs, North Carolina

Compliments of

**BAXLEY-JOHNSON
CHEVROLET CO., INC.**

Red Springs, North Carolina

**SARAMAC
FURNITURE STORE**

Phone 4381
Red Springs, North Carolina

General Auto Sales, Inc.

OLDSMOBILE and G.M.C. TRUCKS

Full Line of Parts : Expert Mechanics

RED SPRINGS, NORTH CAROLINA

Phone 2381

M. & S. MOTOR CO.

CHRYSLER and PLYMOUTH CARS
Sales and Service

RED SPRINGS, NORTH CAROLINA

Phone 248-1

When better Automobiles are built

BUICK

will build them



COMMUNITY MOTOR CO.

Phone 1099

Lumberton, North Carolina

Compliments of

BELK-HENSDALE CO.

RAEFORD, N. C.

Compliments of

**WESTERN AUTO
STORE**



RED SPRINGS, NORTH CAROLINA

RIVERSIDE THEATRE

"The Home of Better Pictures"

Lumberton, North Carolina

Compliments of

STAR CAFE

Lumberton, North Carolina

BLACKWOODS ASSOCIATE

A. C. Stephenson, Owner

Phone 3851

RED SPRINGS, NORTH CAROLINA

*You Will Be Pleased
With Our Quality
and Service*



**RED SPRINGS
DRUG STORE**

*Headquarters for
Flora Macdonald Girls*



Red Springs, North Carolina

**MODERN FURNITURE
COMPANY**

LUMBERTON, NORTH CAROLINA

*"Where You Enjoy
Shopping"*

A. WEINSTEIN & SONS

Lumberton, North Carolina

LUMBERTON FLORAL CO.

Flowers for All Occasions

Phone 320

Lumberton, North Carolina

Compliments of

HONEY DEW SODA SHOP

Phone 1017

Lumberton, North Carolina

HEDGPETH PHARMACY

Two Registered Druggists

Lorraine Hotel Building

Lumberton, North Carolina

Compliments of

SHAW FURNITURE COMPANY

West Second Street

Lumberton, North Carolina

NORMENT MOTOR CO.

Sales

There's a



Service

Lumberton, North Carolina

Compliments of

**BELK-HENSDALE
COMPANY**



LUMBERTON, NORTH CAROLINA

Lumberton Optical Co.

415 North Elm Street
Lumberton, North Carolina

High Quality Prescription Service

Visit

Raylass Department Store

Lumberton, North Carolina



Complete Stocks of
Smart Ready-to-Wear

Compliments of

POLLY ANN DRESS SHOP

LUMBERTON, NORTH CAROLINA

Compliments of

SANITARY CAFE

LUMBERTON, NORTH CAROLINA

THE ROBESONIAN

ESTABLISHED 1870

Robeson County's Leading Newspaper

Published Daily Except Saturday and Sunday by
THE ROBESONIAN, INC.

Lumberton, North Carolina

Compliments of

THE JEWEL SHOP

Lumberton, North Carolina

Compliments of

HOOD MOTORS, INC.

Your DODGE - PLYMOUTH Dealer



Lumberton, North Carolina

Phone 21

Compliments of

LUMBERTON BAKERY

LUMBERTON, NORTH CAROLINA

Compliments of

S. F. CALDWELL & CO.



"The Complete Hardware Store"



Lumberton, North Carolina

McDUFFIE FURNITURE CO., Inc.

"If It's for the Home We Have It"

Behind Court House

LUMBERTON, NORTH CAROLINA

BELK-HENSDALE CO.



*You Always Save At
Belk's*



Fayetteville, North Carolina

Compliments of

BENDER'S DRUG STORE

A Real Drug Store

201 Hay Street

Fayetteville, North Carolina

FLORA MACDONALD BEAUTY BOX

On site of Flora Macdonald's Fayetteville Home

Specializes in All Types of Permanents

DIAL 5849

Fayetteville, N. C.

Compliments of

HENEBRY & SON

Registered Jewelers, American Gem Society

110 Hay Street

FAYETTEVILLE, NORTH CAROLINA

HOTEL PRINCE CHARLES



Fayetteville, North Carolina



Fayetteville, North Carolina

"SINCE 1912"

THE



Capitol
OF
Fayetteville

Fayetteville, North Carolina

M. M. SMITH
FURNITURE COMPANY



FURNITURE
FOR EVERY HOME

Wholesale and Retail



325 Hay Street
FAYETTEVILLE, NORTH CAROLINA

M. M. SMITH
STORAGE WAREHOUSE

BONDED
FIREPROOF WAREHOUSES



Local and Long Distance
Hauling



Phone 2194
FAYETTEVILLE, NORTH CAROLINA

COLLEGE GIRLS!

Shop at

SEARS ROEBUCK
AND CO.

Fayetteville, North Carolina



Phone 6171
420 Hay Street

Compliments of

PEPSI-COLA
BOTTLING
CO.



Fayetteville, North Carolina

Compliments of

ROGERS AND BREECE
FUNERAL HOME



123 Bow Street
Fayetteville, North Carolina



Phone 2191 and 2192

Compliments of

CANNON'S SHOE STORE
Shoes for the Entire Family
116 Hay Street
FAYETTEVILLE, NORTH CAROLINA

FIRESTONE HOME
and
AUTO SUPPLIES

Maxton, North Carolina

Compliments of

McGIRT'S PLUMBING and
ELECTRICAL SERVICE

Maxton, North Carolina

If You Live in Southeastern North Carolina.

It's the
FAYETTEVILLE OBSERVER
"North Carolina's Oldest Newspaper"

For Complete
NEWS COVERAGE

Compliments of

MAXTON SUPPLY CO.

MAXTON, NORTH CAROLINA

USE
MERITA
BREAD and CAKES

AMERICAN
BAKERIES COMPANIES

Fayetteville, North Carolina

Compliments of

Fayetteville Wholesale Company

Featuring Fresh Fruits and Vegetables



PHONE 2131



FAYETTEVILLE, NORTH CAROLINA

City Optical Company

Wilmington : Fayetteville : Greensboro

304 Hay Street

Phone 7179

Fayetteville, North Carolina

Courtesy of

J. C. PENNEY CO., INC.

Fayetteville, North Carolina



The C S Rooster

*Pay him a visit and you'll be a booster
For that wonderful bird, the C S Rooster;
Just follow him to your Colonial Store
Where shopping's a joy, and your dollar buys more.*

COLONIAL STORES
Incorporated

Service Trading Company, Inc.

Maxton, North Carolina

COMPLETE LINE HOME FURNISHINGS



Philco and Car Radios and Radio Service

Philco and Kelvinator Refrigerators

Thor Washers and Ironers

DUO-THERM AND ALLEN OIL HEATER

Many Other Electrical Appliances



CASH OR TERMS

PHONE 265

Compliments of

JOHN F. McNAIR, INC.



A MODERN
DEPARTMENT STORE



LAURINBURG, NORTH CAROLINA

MAXTON COTTON CO.

Incorporated

=====
COTTON MERCHANTS
=====

Maxton, North Carolina

LAURINBURG
MILLING COMPANY

Manufacturers of

HIGH GRADE FLOUR AND
MIXED FEEDS

Laurinburg, North Carolina

MARY RICE

38 MAIN STREET

HAMLET, NORTH CAROLINA

"WHERE SMART GIRLS MEET"

Compliments of

SOUTHERN DAIRIES

Sealtest

Ice Cream

Compliments of

McLAUCHLIN CO., INC.

RAEFORD, NORTH CAROLINA

CASTEVEN'S JEWELRY STORE

Pleasing You . . . Pleases Us

WATCHES - DIAMONDS - ALL GIFTS

Phone 223-W

MANTON, NORTH CAROLINA

BAUCOM APPLIANCE COMPANY

Raeform, North Carolina

FRIGIDAIRE PRODUCTS

MAYTAG WASHERS

EASY WASHERS

ELECTRICAL SUPPLIES

Small Appliances, Etc.

QUALITY IS OF FIRST IMPORTANCE

RAEFORD FURNITURE CO.

"Hoke County's Oldest Furniture Store"

RAEFORD, NORTH CAROLINA

Compliments of

C. P. KINLAW
"Jeweler"

Keepsake Diamond Rings

Raeford, North Carolina

HOTEL RAEFORD

GIFT AND ANTIQUE SHOP

Raeford, North Carolina

Compliments of

ADAM'S RESTAURANT
"The Blue Room"

Lumberton, North Carolina

Travel by

TRAILWAYS

Safe

Convenient

Economical

QUEEN CITY TRAILWAYS

Charlotte, North Carolina

RED SPRINGS THEATRE

It is the policy of this theatre to provide
the best pictures obtainable
especially for our Flora
Macdonald patrons.

PLEASURE BY THE HOUR

The pause that refreshes
-Have a Coke



BOTTLED UNDER AUTHORITY OF THE COCA-COLA COMPANY BY
FAYETTEVILLE COCA-COLA BOTTLING CO., Inc.

WALLER & SMITH
PHOTOGRAPHERS



OFFICIAL PHOTOGRAPHERS

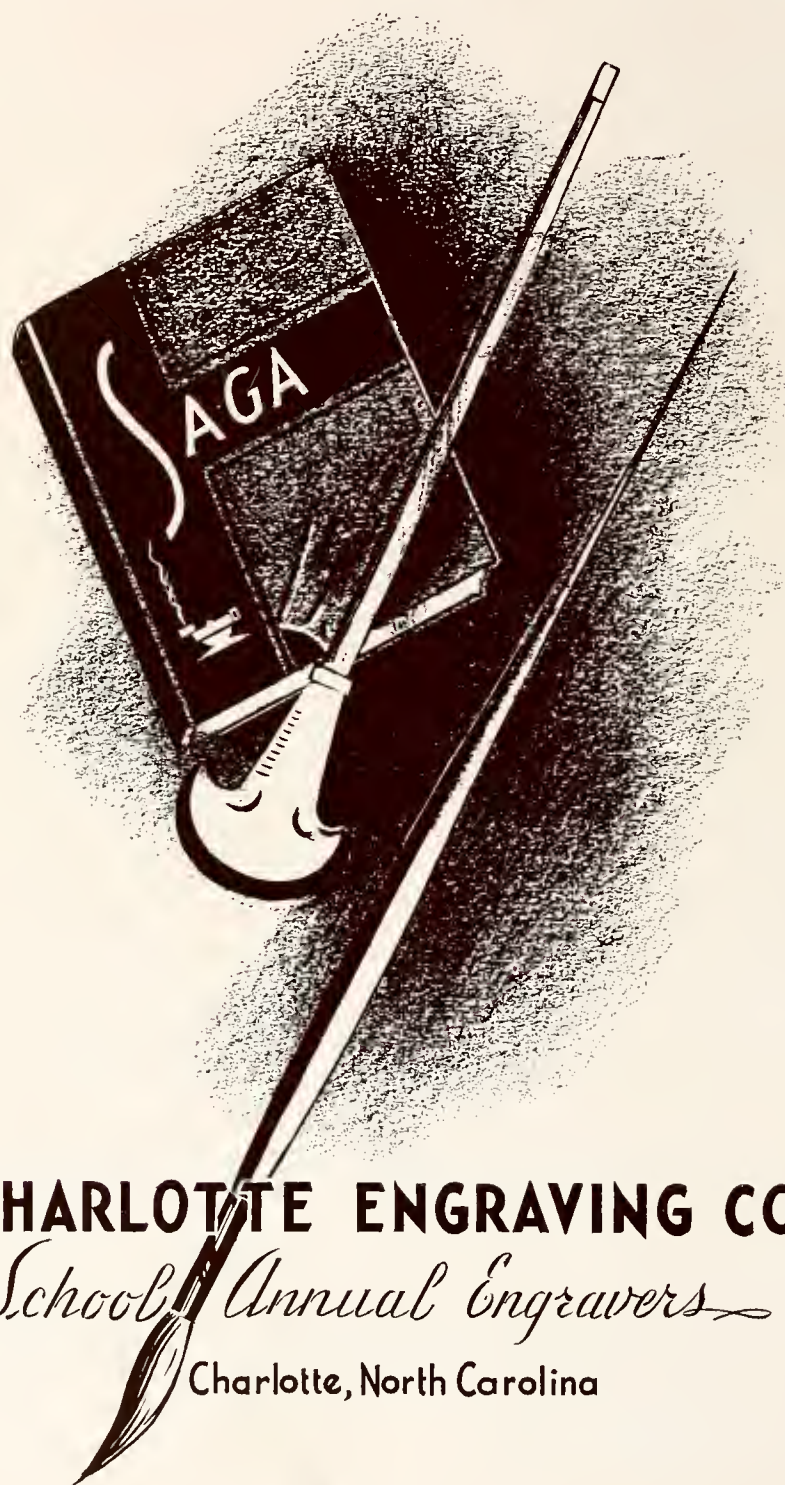
— for —

THE WHITE HEATHER



12 E. Hargett Street

Raleigh, N. C.



CHARLOTTE ENGRAVING CO.

School Annual Engravers

Charlotte, North Carolina



Will we...

... keep our place in the world?

UNITED STATES OF AMERICA—first among nations in national income! First in production of wheat, corn, cotton, petroleum, coal, and iron! First in communications, in motor vehicles per capita—first in many essentials to good living and prosperity.

And directly related to that position of leadership is our standard of education—for it has been shown that a country's wealth and welfare rise along with its educational standards. And countries rich in natural resources *can be poor and backward* without the benefits of education.

Yes, the United States is a leader in the field of education too—but *for how long?* Appalling conditions prevail today in many of our schools. Many of our most brilliant teachers are working against

odds—crowded classrooms, shortages of equipment and textbooks, long hours. . . . *Thousands* have left the profession for other work.

You, and every United States citizen, will suffer from this situation, because it cannot help affecting our national prosperity before long.

WHAT TO DO?

Today—make it your business to take these two steps:

1. Check up on educational conditions in your local schools; 2. Back up and work with organizations seeking to improve teachers' working and living conditions. For only by *keeping* our educational standards high can we hold our place in the world—and assure a prosperous future for our children.

Printed as a public service by

EDWARDS & BROUGHTON COMPANY

Printers : Stationers : Lithographers : Engravers
Raleigh, North Carolina





R
388.756
F

19551

