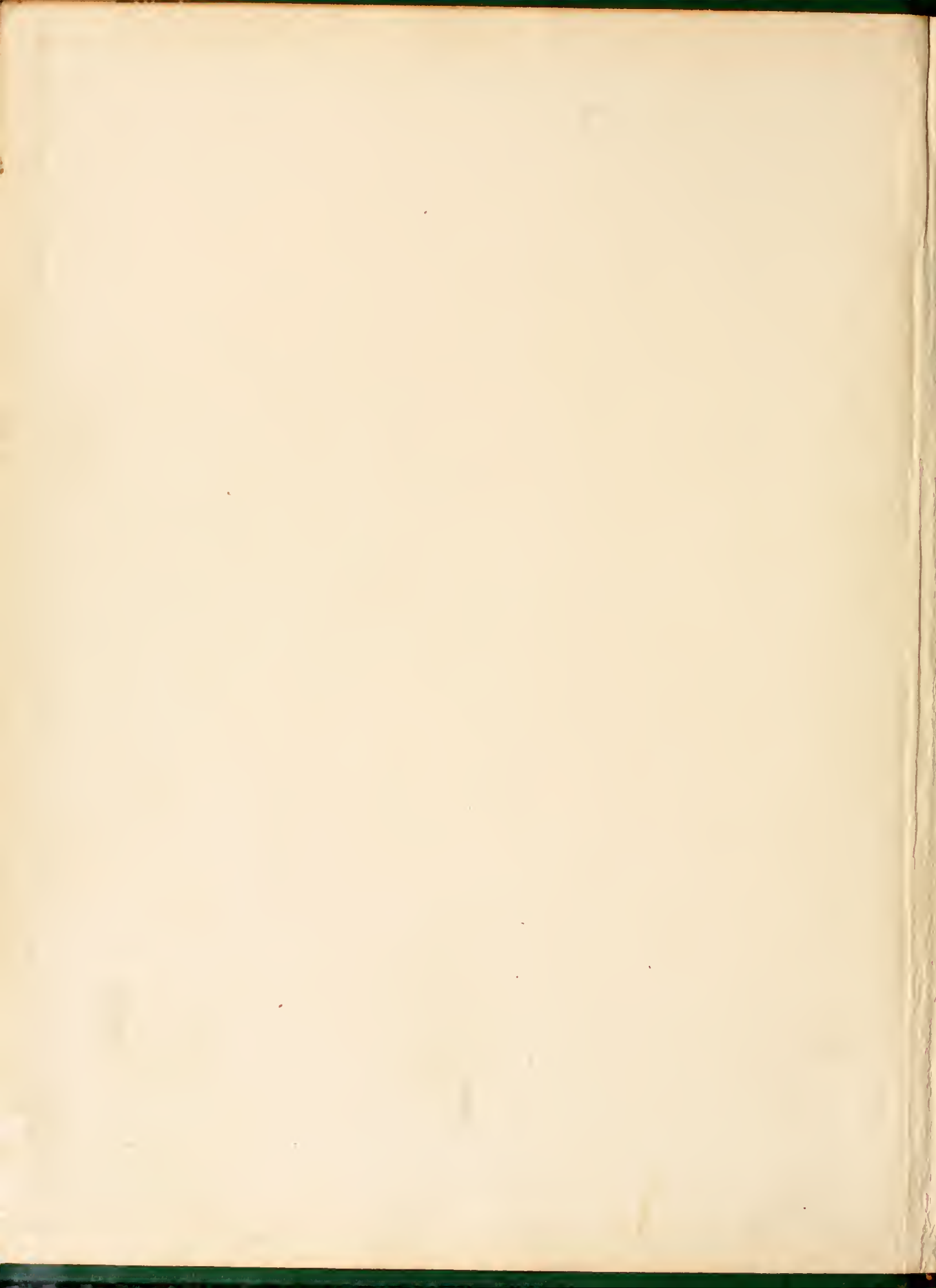
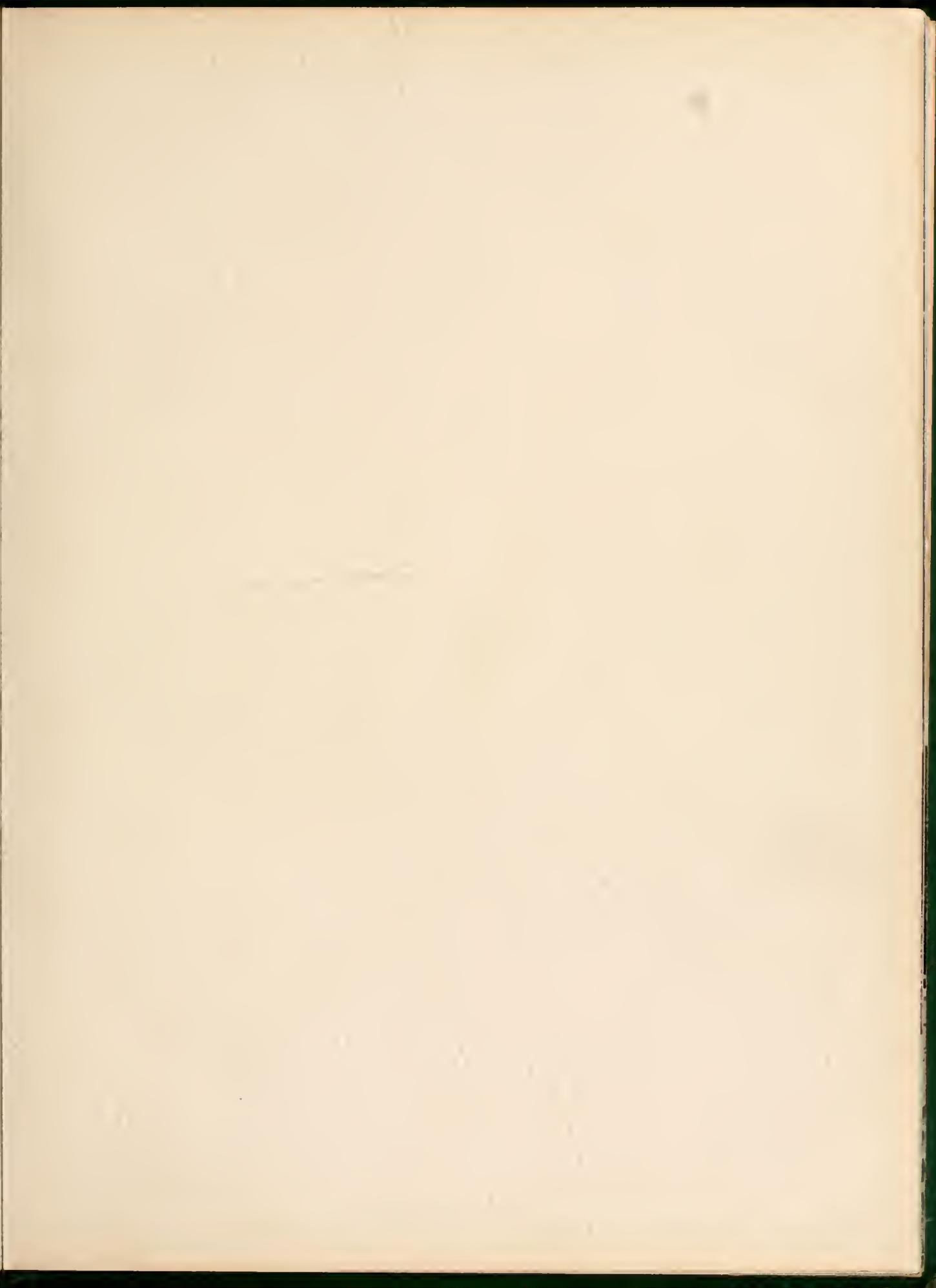


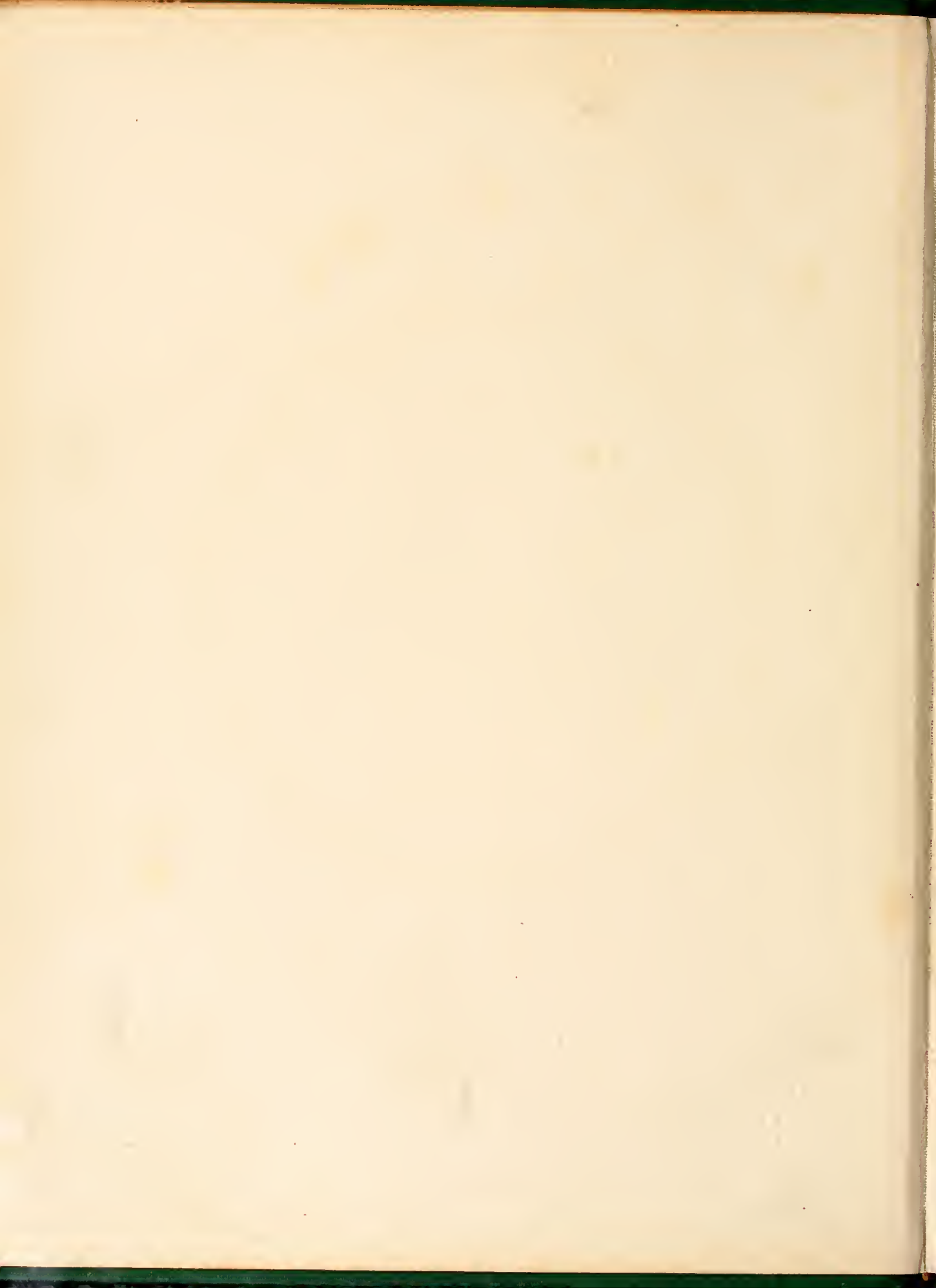



White Heather
1949

ANN ELIZABETH McNEELY









1949

WHITE HEATHER

.. Just a book of WHITE HEATHER—but you can be sure we'll keep it
always

For this keepsake does constantly remind us of the most wonderful,
most varied of experiences, and the real warmth of the welcome
we found at Flora Macdonald College

Just a book of WHITE HEATHER but it calls up so many pleasant memo-
ries. . . .

THE 1949

White Heather

PUBLISHED ANNUALLY

BY THE STUDENTS OF FLORA



MACDONALD . . . RED SPRINGS, NORTH CAROLINA

||

... presents

Through this Door of

BETTE McNEELY, *Editor-in-Chief*

ELIZABETH CHAPPELL,

IN THIS BOOK . . . THE CLASSES . . . ACTIVITIES . . .



Orway
Flora Macdonald

11

Business Manager

ATHLETICS . . . FEATURES . . . ADVERTISEMENTS



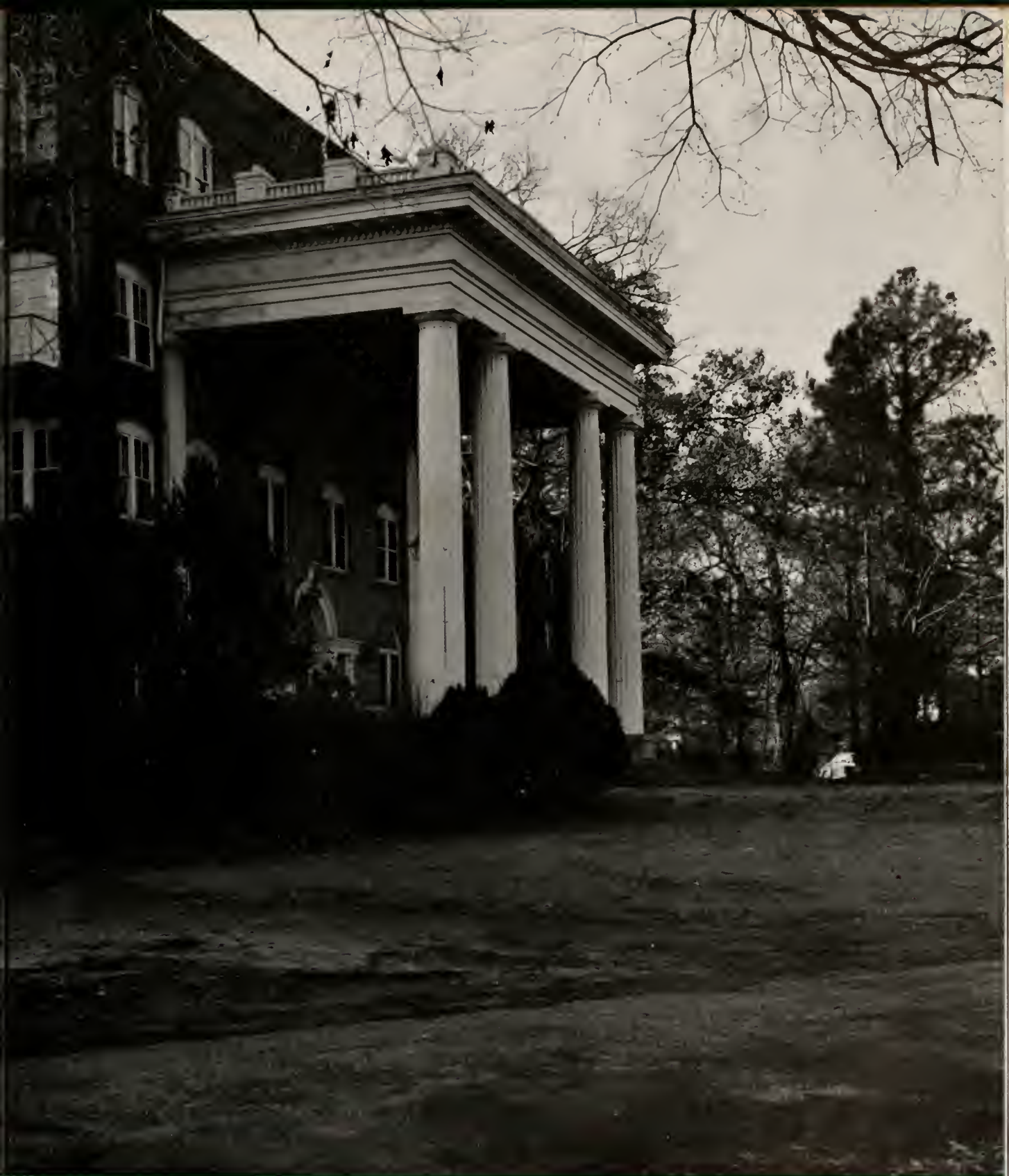
AT THE ENTRANCE . . .



. . . WE COME AND GO



SHADOWS



STILLNESS

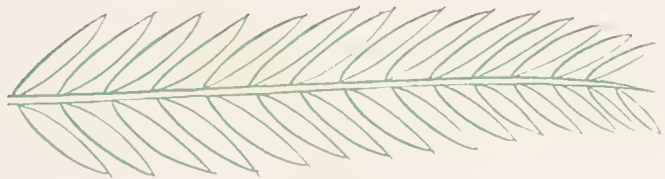


THROUGH THE PINES



DEDICATION

We, the students of Flora Macdonald College, dedicate this annual to someone who is not with us but whose work helped to make this *WHITE HEATHER* possible, and whose charming and winning personality will ever remain with us—our business manager, classmate, and friend, Katharyne Prudence Herring.





HALBERT M. JONES
PRESIDENT

Mr. Jones has long been associated with Flora Macdonald College in the capacity of trustee and chairman of the board of trustees. This year he was called upon to act in the new role of president in the absence of a permanent one.

Progressive in viewpoint and decisive in action, Mr. Jones is a valuable asset to the administration of Flora Macdonald College.

ADMINISTRATION AND FACULTY

Flora Macdonald College is greatly indebted to the members of its administration and faculty who have taken such an interest in the girls. They have done their best to promote Christian ideals and a liberal education for all the students.



DR. CHARLES GRAVES VARDELL,
B.B., D.D.
President Emeritus

He is the very "guardian angel" of Flora Macdonald College. Dr. Vardell's sympathy, understanding, and quiet wit make him a dearly loved figure about the campus.

MISS HAZEL MORRISON, B.A.
Dean of the Faculty and Registrar

She bears the responsibility of seeing us safely through our four years to graduation. However, in spite of her continual rush, she always has an endless store of patience and a friendly smile for everyone.

MRS. FRANCES ALEXANDER McLEOD, B.A.
Dean of Women

Equipped with dry wit, patience, and understanding, she is a favorite among the girls. She is liked not only as our Dean but as a friend to everyone.



FACULTY

BIBLE:

LESLIE BULLOCK, Th.M., *Professor*
 ELIZABETH CLARKE McPHAIL, B.A., *Assistant Professor*

BIOLOGY:

ETHEL HANSEN, B.A., M.A., Ph.D., *Professor*
 FANNIE R. HARMON, M.A., *Assistant Professor*

CHEMISTRY:

JANE COLSON GLENN, B.S., G.Ph., M.S. *Associate Professor*

EDUCATION:

MARY MacLEAN CONOLY, B.A., B.S., M.A. *Professor*
 GENEVIEVE McMILLAN NEIGHBORS, B.A., M.A. *Assistant Professor*
 ANNIE MOORE CHERRY, B.A., *Assistant Professor*

ENGLISH:

ELEANOR B. SCOTT, B.A., M.A., Ph.D., *Professor*
 ANN SHEALY, B.A., M.A., *Assistant Professor*

HISTORY AND SOCIAL SCIENCE:

CAROL ROBERTSON, B.A., M.A., *Professor*
 GENEVIEVE McMILLAN NEIGHBORS, B.A., M.A., *Assistant Professor*

HOME ECONOMICS:

FRANCES E. COMER, B.S., M.S., *Professor*
 JOSEPHINE BERLY BETTS, B.S., M.A., *Associate Professor*

LATIN:

HARRIET M. MORRISON, B.A., M.A., *Professor*

MATHEMATICS:

LOUISA VAN DYKE, B.A., M.A., Ph.D., *Professor*

MODERN LANGUAGES:

ELEANOR MARKS, B.A., M.A., Ph.D., *Associate Professor*
 MARIE ALMA TURNER, B.A., M.A., *Assistant Professor*

Bateman
Morrison

Betts
McMillan

Bullock
McPhail

Chapman
Perry

Cherry
Robertson

Comer
Rowland





DEAN ROBERT REUTER, B.Mus., M.Mus.
Dean of the Conservatory

Known throughout the state as a very able Dean of Conservatory, Mr. Reuter is an outstanding faculty member not only for his musical skill but for his well-known teaching ability as well.

MR. WILLIAM G. CONHEAD
Acting Vice-President and Business Manager

This is that "Florida Man" about whom you hear so much. Entertaining and fun to be around, he is recognized as much as a friend as our very capable business manager.

1949

MUSIC:

ROBERT REUTER, B.A., M.Mus., *Dean of Conservatory and Professor of Organ and Piano.*
LILLIAN FARGUHAN ROBESON, *Assistant Professor of Violin and Theoretical Subjects*
LIDA LAW CHAPMAN, B.A., B.M., *Assistant Professor of Organ Piano and Theoretical Subjects*
LOIS J. LAMBIE, B.M., M.Mus., *Assistant Professor*
ETHEL M. ROWLAND, B.S., *Assistant Professor of Voice*
AILEEN McMILLIAN, B.Mus., *Assistant Professor*

PHYSICS:

LOUISA VAN DYKE, B.A., M.A., Ph.D., *Professor*

PHYSICAL EDUCATION:

ETHEL BATEMAN, B.A., M.A., *Assistant Professor*
VIRGINIA CONNOR, R.N., *Nurse and Assistant Professor of Home Nursing*

BUSINESS SUBJECTS:

LETA WELIHA MCINTYRE, B.S., *Associate Professor*
ELIZABETH STENHOUSE, B.L., *Assistant Professor*

BURSAR:

BROWN MORRISON, B.L.

OFFICE:

JOAN ELLIOT, *Secretary to Business Manager*
MARTHA HELMS, B.A., *Secretary to Dean of Faculty*

LIBRARY:

FLORA PERRY, A.B., B.S. in L.S., *Librarian*
EVA BOWDEN, A.B., A.B. in L.S., *Catalogist*

PUBLICITY:

MRS. WALTER BULLOCK, *Editor of College Bulletin*

Connor Scott Conoly Shealy Dorrah Stenhouse Helms Turner Lambie Van Dyke Marks





Classes

Seniors, Juniors, Sophomores, and Freshmen, they are the student body of Flora Macdonald. It is through their united zeal and effort that the F. M. C. spirit is maintained. Their friendship and loyalty are unique; their fun and enjoyment of life are to be envied; their steadfast outlook on life is to be admired.



Seniors

These are the Seniors who, although a bit woe-be-gone at leaving, will take with them such pleasant memories as Senior privileges, the long afternoon siestas—for the fortunate few, the late-at-night bull sessions over a coke or coffee, and on the more serious side, the crammed schedules, practice teaching, and the headaches following exams. Without them, Senior Hall and the “tea-hole” will be strangely desolate.

OFFICERS

NANCY BISHOP, *President*

FLORA ED RIGGAN, *Vice-President*

MIRIAM KNIGHT, *Secretary*

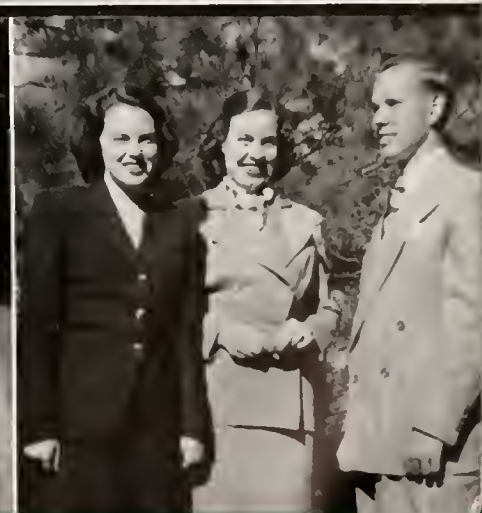
NAOMI CONKLING, *Treasurer*

FRANCES NASSIF, *Tea Room Manager*

CAROLYN GREENE, *Asst. Tea Room Manager*

MRS. ELBERT MCPHAUL, *Adviser*

1949



White Heather

ADA MARIAN ALLRED, B.A.
General Science and Biology
 Savannah, Ga.

Mischievous . . . idealist . . . attractive . . . artistic . . . nonchalant . . . "Georgia Belle."
 Epsilon Chi Literary Society; Armstrong Junior College 1; Class Editor WHITE HEATHER 3; May Court 3, 4; Marshal 3; William Bartram Scientific Society 3, 4; Math Club 3, 4; St. Cecilia Music Club 4; Spanish Club 4; Glee Club 3, 4; Bowling 3, 4; Wake Forest Summer School 3.

GAYNELL ARNETTE, B.A.
Primary Education
 Fairmont, N. C.

Neat . . . genteel . . . earnest . . . likable . . . "Dry wit" . . . Loyal . . .
 Zetesian Literary Society, Chaplain 4; Tennis 2, 3; Prayer Band Leader 4, Atlantic Christian College Summer School 2; Presbyterian Junior College Summer School 3.

FRANCES REBECCA BACON, B.A.
Biology and History
 Hillsboro, N. C.

Reserved beauty . . . immaculate . . . agreeable . . . natural . . . remote . . . "Becky."
 Epsilon Chi Literary Society, Atlantic Christian College Summer School 2, Wake Forest Summer School 3; International Relations Club 4, May Court 3; Maid of Honor 4.

DORIS ANN BAIN, B.A.
French and Bible
 Lenoir, N. C.

Versatile . . . original . . . reliable . . . sparkling . . . artistic . . . "D. B."
 Zetesian Literary Society, First Vice-President 3; Glee Club 1, 2, 3, 4; St. Cecilia Music Club 1, 2; Highland Players 2, 3, 4; President 4; Christian Association Cabinet, Chairman Highway of Comradeship 3, Chairman Circle of Publicity 4; Marshal 3; May Court 2, Art Editor of *Pine and Thistle* 3, 4; William Bartram Scientific Society 1, 2, 3, 4; International Relations Club 4; L'Alliance Francaise 2, 3, 4, Vice-President 3; Chairman Dance Committee 4; Social Committee 3; Basketball 1, 2, 3, 4; Varsity 2; Captain 4; Hockey 2, 3; Monogram Club 3, 4.

EVA MAE BEAM, B.S.
Home Economics
 Rutherfordton, N. C.

Cute . . . twinkling giggles . . . "Yawl" . . . effervescent . . . winsome personality . . . "Evil."
 Epsilon Chi Literary Society, 2nd Vice-President 4, Student Volunteer 3, 4, Secretary 4, Home Economics Club 1, 2, 3, 4, Vice-President 4; International Relations Club 2, 3; Basketball 1, 2, 3; Hockey 2, 3; Prayer Band Leader 4; French Club 3; Senior Scribe 4; Atlantic Christian College Summer School 1.

MYRTIE WINIFRED BEASLEY, B.M.
Church Music and Organ
 Lumberton, N. C.

Conservatory . . . energetic . . . Bob . . . stubborn . . . dependable . . . speedy gait
 Zetesian Literary Society, President 4, St. Cecilia Music Club 1, 2, 3, 4, President 4; Tennis Club 2, 3, Glee Club 1, 2, 3, 4, Secretary 3, 4; Student Council 4.

SENIOR CLASS



Alfred



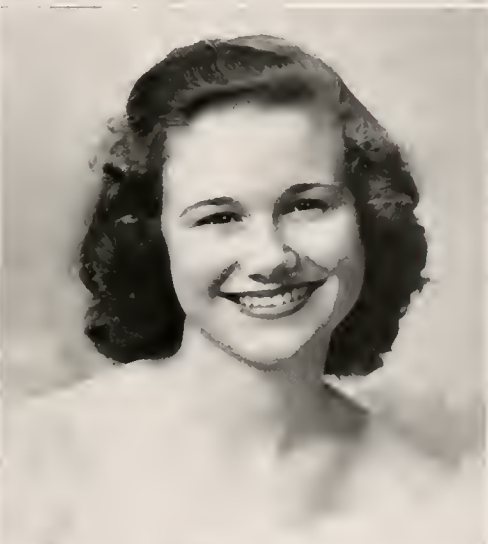
Arnette



Bacon



Bain



Beam



Beasley



Berryhill



Bishop



Brewer



Bullock



Caudell



Chappell



White Heather

NINA GOIT BERRYHILL, B.A.

Bible

Charlotte, N. C.

Friendly . . . teasing . . . cheerful . . . "C.A." . . . noble . . . outstanding.

Zetesian Literary Society; William Bartram Scientific Society 4; Student Volunteers 1, 2, 3, 4, Treasurer 2, International Relations Club 2, 3; L'Alliance Francaise 2, 3; Highland Players 2, 3, 4, Marshal 3; Class Treasurer 3; Prayer Band Leader 2; Christian Association Cabinet, Chairman of Highway of Learning, Sunday School 3; President Christian Association 4; Student Council 4.

NANCY ELIZABETH BISHOP, B.A.

Bible and Social Science

Greenville, S. C.

Independent thinker . . . campus minded . . . leader . . . ambitious . . . capable . . . "Bish."

Zetesian Literary Society; Class President 3, 4; Student Council 3, 4; William Bartram Scientific Society 3, 4; Highland Player 3, 4; International Relations Club 2, 3, 4; Collegiate Council for United Nations 3, 4; Prayer Band Leader 2; Hockey 2, 3; Basketball 2, 3, 4; Volleyball 4; Monogram Club 3, 4; Student Volunteer 2, 3; Glee Club 4; *Who's Who in American Colleges and Universities* 4.

ANNIE MARGARET BREWER, B.A.

Social Science and Biology

Carthage, N. C.

Reliable . . . business-like . . . "Chief" . . . rare . . . traveler . . . smiling eyes.

Zetesian Literary Society; Tennis 1, 2, 3; International Relations Club 3, 4; *Pine and Thistle* Staff 3; Prayer Band Leader 4; University of North Carolina Summer School 3.

CATHERINE JAMES BULLOCK, B.A.

Primary Education

Fairmont, N. C.

Carefree . . . lovely . . . understanding . . . unlucky . . . men . . . "Kitty."

Epsilon Chi Literary Society; Home Economics Club 1, 2; Glee Club 2, 3, 4; International Relations Club 2, 3, 4, Vice-President 4; Archery 2; Tennis 3; Exchange Editor *Pine and Thistle* 3, 4; Snapshot Editor *WHITE HEATHER* 4; Prayer Band Leader 4; May Court 4; Atlantic Christian College Summer School 2; Presbyterian Junior College 3.

MARGARET JANE CAUPELL, B.A.

English and Bible

St. Pauls, N. C.

Leadership . . . moody . . . conscientious . . . friendly . . . conferences . . . "St. Pauls."

Zetesian Literary Society; Class Vice-President 3; Treasurer Student Council 3; International Relations Club 2, 4; Program Committee 4; Christian Association Cabinet, Chairman of Sunday School 4; Student Volunteers 1, 2; Prayer Band Leader 2; Highland Players 2, 3, 4; Vice-President 3; Alpha Psi Omega 4; Vice-President 4; *Pine and Thistle* Staff 4; Glee Club 1, 2, 3, 4; Tennis 3.

NARCIE ELIZABETH CHAPPELL, B.S.

Home Economics

Candor, N. C.

Giggles . . . tenderhearted . . . inward beauty . . . immaculate . . . Mexico . . . "Lib Narcissus."

Epsilon Chi Literary Society; Second Vice-President 3; Vice-President 4; Marshal 3; Home Economics Club 1, 2, 3, 4; President 4; Archery 2, 3; Head of Archery 3; Athletic Board 3; Prayer Band Leader 3; Christian Association Cabinet, Chairman of Circle of Religious Meetings, Atlantic Christian College Summer School 1, 2.

SENIOR CLASS



White Heather

DORIS McNATT CLARK, B.A.

Primary Education
Fayetteville, N. C.

Neat . . . candy . . . sincere friend . . . "I'm dumb" . . . drawl . . . movies.

Zetesian Literary Society, Critic 3; Recorder of Points 3; Tennis 2, 3; Atlantic Christian College Summer School 2; High Point College Summer School 3.

CARRIE NAOMI CONKLING, B.M.

Voice
Jacksonville, N. C.

Spontaneous laughter . . . emotional . . . dancer . . . lilting soprano . . . lovable . . . "Tollie."

Epsilon Chi Literary Society; St. Cecilia Music Club 1, 2, 3, 4; Class Treasurer 4; Senior Scribe 4; Glee Club 1, 2, 3; Tennis 2, 3; Assistant Business Manager *Pine and Thistle* 4; Atlantic Christian College Summer School 2; Appalachian State Teachers College 3.

NINA GERTRUDE COX, B.M.

Public School Music
Tabor City, N. C.

Coöperative . . . pastels . . . beautician . . . dry wit . . . white shoes and socks . . . always busy.

Zetesian Literary Society, Glee Club 2, 3, 4; Treasurer 4; St. Cecilia Music Club 1, 2, 3, 4; Sappho Poetry Club 2, 3, 4; Tennis 1, 2, 3, 4; Poetry Editor *Pine and Thistle* 4; Methodist Youth Fellowship President 3; Wake Forest College Summer School 1.

HELEN BEATRICE CROWELL, B.A.

Bible and French
Atlanta, Georgia

Good hearted . . . boraxing . . . blouses and skirts . . . poetry club . . . quiet vigor . . . reliable.

Zetesian Literary Society, Basketball 1; Bowling 2, 3, 4; L'Alliance Francais 2, 3, 4; Sappho Poetry Club 2, 3, 4; President 4; Student Volunteers 1.

DOVIE NAOMI DAVIS, B.A.

Bible and Social Science
Lumberton, N. C.

Sympathic . . . faithful . . . gentle . . . China . . . good natured . . . unaffected.

Zetesian Literary Society, Basketball 2, 3, 4; Volleyball 4; Student Volunteers 2, 3, 4; International Relations Club 4; Mars Hill Junior College 1, 2.

JOLINE DAVIS, B.A.

Grammar Grade Education
Bladenboro, N. C.

Laughing eyes . . . generous . . . "my little sister" . . . radio-fan . . . Appalachian . . . "Jo."

Epsilon Chi Literary Society; William Bartram Scientific Society 2; Highland Players 2, 3, 4; Student Volunteers 1, 2, 3, 4; Bowling 3; International Relations Club 4; L'Alliance Francaise 4; Appalachian State Teacher's College Summer School 3.

SENIOR CLASS



Clark



Conkling



Cox



Crowell



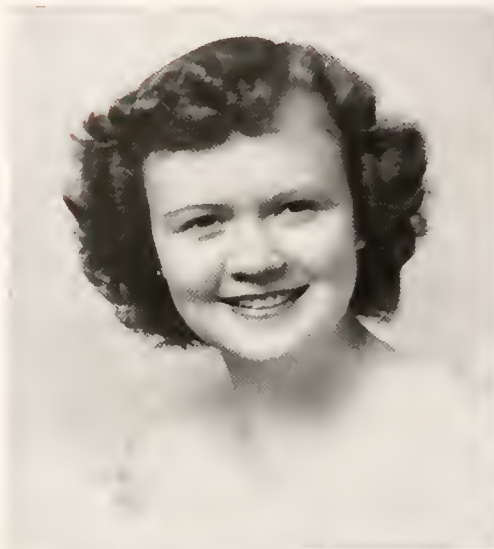
Davis



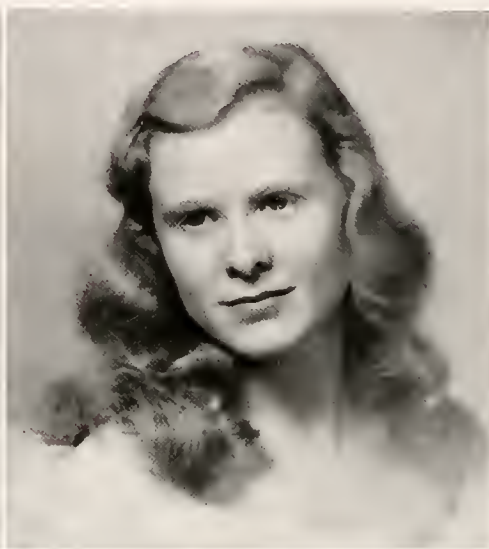
Davis



Fields



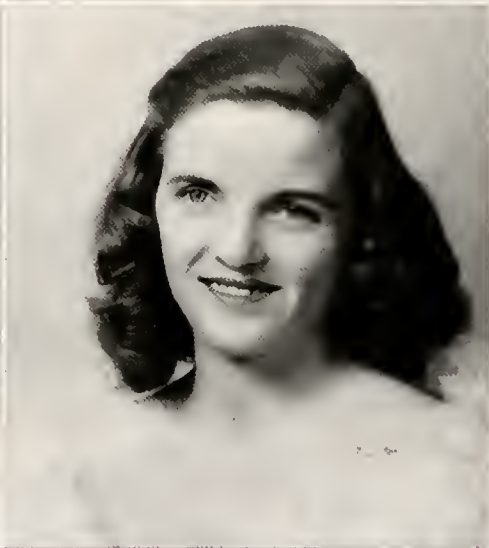
Fisher



Fonvielle



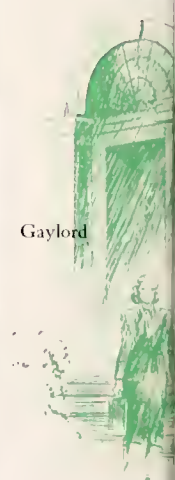
Gaylord



Graham



Greene



White Heather

DOROTHY MAE FIELDS, B.S.

Home Economics
Carthage, N. C.

Sports . . . tardy . . . unpredictable . . . notes . . . congenial . . . "Dot."

Epsilon Chi Literary Society; Home Economics Club 1, 2, 3, 4; International Relations Club 2, 3, 4; Student Volunteers 1, 2, 3; Hockey 1, 2, 3; Captain 3; Athletic Board 3; Basketball 1, 2, 3, 4; Varsity Basketball 3; Monogram Club 3, 4; Student Council 4.

PHYLLIS LEE FISHER, B.A.

Primary Education
Kannapolis, N. C.

Taffy hair . . . "Choog" . . . dependable . . . "kind, sweet 'n petite" . . . green . . . "Little Red."

Epsilon Chi Literary Society; Critic 3; Home Economics Club 1; L'Alliance Francaise Club 2; Highland Players 2, 3, 4; Hockey 2, 3; Prayer Band Leader 3; Marshal 3; *Pine and Thistle* Staff 3; Business Manager *Pine and Thistle* 4; Atlantic Christian College Summer School 2.

ANITA LOUISE FONVIELLE, B.M.

Piano
Tabor City, N. C.

Musical . . . never in a hurry . . . devoted . . . industrious . . . "Nita."

Zetesian Literary Society; St. Cecilia Music Club 1, 2, 3, 4; Glee Club 4; Piano Recital 3, 4; Granddaughter's Club 1, 2, 3, 4.

MARY GRACE GAYLORD, B.A.

Grammar Grade Education
Greenville, N. C.

Fayetteville, good taste . . . "something wide" . . . dependable . . . pessimistic . . . "I kid you not."

Epsilon Chi Literary Society; Hockey 3; Archery 2; Student Volunteer 3; International Relations Club 3, 4; L'Alliance Francaise 2, 3; Atlantic Christian College Summer School 2; Eastern Carolina Teacher's College Summer School 3.

JULIA MAE GRAHAM, B.A.

English and Bible
Jackson Springs, N. C.

Thoughtful . . . Jackson Springs . . . "282-1" . . . efficient worker . . . Iris . . . Refreshing optimism

Epsilon Chi Literary Society; Montreat College 1, 2; Tea Room Manager 3; Assistant Business Manager the *White Heather* 3; Sappho Poetry Club 3; Student Volunteers 3, 4; Exchange Editor *Pine and Thistle* 4; Highland Players 3, 4; International Relations Club 4; Prayer Band Leader 4.

CAROLYN GREENE, B.M.

Voice and Public School Music
Norwood, N. C.

Temperamental . . . kleenex . . . contralto . . . "aw-sha" . . . inquisitive . . . talented.

Zetesian Literary Society; Glee Club 1, 2, 3, 4; St. Cecilia Music Club 1, 2, 3, 4; International Relations Club 2; Voice Recital 3, 4; Fire Chief 4; Assistant Tea Room Manager 4; Voice Monitor 4.

SENIOR CLASS



White Heather

SARAH ELIZABETH GREEN, B.A.
Social Science and Piano
 Henderson, N. C.

Chocolate Fudge . . . knitting . . . modest . . . Peace . . . music lover . . . solemn.
 Epsilon Chi Literary Society; Peace College 1, 2; St. Cecilia Music Club 3, 4; International Relations Club 4; W.C.U.N.C. Summer School 2; Flora Macdonald College Summer School 3.

CARY ELIZABETH GRIFFIN, B.A.
Grammar Grade Education
 Unionville, N. C.

Unconcerned . . . bubbling laughter . . . "Let me tell you" . . . skirts . . . amiable . . . pleasing . . . "Blossom"
 Zetesian Literary Society; Glee Club 1, 2, 3, 4; St. Cecilia Music Club 2; Tea Room Manager 3; WHITE HEATHLE Staff 3, 4; Senior Scribe 4; Atlantic Christian College Summer School 2; Lenoir Rhyne College Summer School 3.

MARIAN BARRETT HALL, B.A.
Mathematics and General Science
 Fayetteville, N. C.

Genuine . . . obliging . . . Charles . . . scholar . . . determination . . . non-gossiper.
 Epsilon Chi Literary Society; Presbyterian Junior College 1, 2; Marh Club 3, 4; Sallie Southall Cotten Scholarship Award; Day Student's Club 3, 4; President 4; Student Council 4.

RACHEL DARDEN HALL, B.A.
Primary Education
 Marion, S. C.

Adorable . . . lady-like . . . notes . . . sensible . . . serene . . . excellent council member.
 Zetesian Literary Society, Recording Secretary 3; Marshal 3; William Bartram Scientific Society 3, 4; Zetesian Editor *Pine and Thistle* Staff 3; Math Club 2; St. Cecilia Music Club 4; International Relations Club 2; Prayer Band Leader 3; Bowling 2, 3; Senior Scribe 4; Class President 2; Vice-President Student Body 4; Student Council 2, 4.

MARIAN OLIVER HAMILTON, B.A.
Primary Education
 Fairmont N. C.

Stately . . . "sharer" . . . lustrous hair . . . Fairmont . . . quiet manners well-dressed.
 Zetesian Literary Society, Treasurer 3; Tennis 2, 3; Chief Marshal 3; May Court 2, 3; Presbyterian Junior College Summer School 2, 3.

MINNIE GRACE HERNDON, B.M.
Public School Music
 Sanford, N. C.

Precise . . . checkbook . . . aloof . . . angora . . . neatness personfied . . . "Minnie Grace."
 Epsilon Chi Literary Society; Peace Junior College 1; Woman's College of UNC 2; St. Cecilia Music Club 3, 4; Glee Club 3, 4.

SENIOR CLASS



Green



Griffin



Hall



Hall



Hamilton



Herndon



Herring



Hines



Hoover



Hufisucker



Knight



Knight



KATHARYN PRUDENCE HERRING, B.A.

Primary Education
Clinton, N. C.

Creative . . . fun-loving . . . captivating . . . White Lake . . . Johnson . . . tearoom.

Zetesian Literary Society, Censor 2, Math Club 2; Glee Club 4, St. Cecilia Music Club 4; William Bartram Scientific Society 2, 3; Commerical Club 3; Junior Dance Committee 3; Tea Room Manager 3; Snapshot Editor WHITE HEATHER 3; Business Manager WHITE HEATHER 4, Secretary of Class 2; Basketball 1, 2; Hockey 3.

ANNA MARGARET HINES, B.A.

Music and Social Science
Washington, N. C.

Studious . . . unique . . . diligent . . . artist . . . delicate . . . quiet personality.

Zetesian Literary Society; Math Club 1, 2; St. Cecilia Music Club 1, 2, 3, 4, Vice-President 4; International Relations Club 3, 4, Secretary-Treasurer 4; Piano Recitals 1, 2, 3, 4.

CLEO FLORENCE HOOVER, B.A.

English and Social Science
Batesburg, S. C.

Striking . . . "What did I do" . . . gay . . . prowler . . . mischievous . . . unlimited talker.

Zetesian Literary Society, Treasurer 2; Highland Players 1, 2, 3, 4, Treasurer 2; Alpha Psi Omega Dramatic Fraternity 3, 4, President 3; Glee Club 2, 3, 4, Pine and Thistle Staff 2; William Bartram Scientific Society 1, 2; Math Club 1, 2; L'Alliance Francaise 2, 3; Prayer Band Leader 2; Volleyball 2; Tennis 3; WHITE HEATHER Staff, Class Editor 4; Class Cheerleader 4, Senior Dance Committee.

REBEKAH NELL HUNSUCKER, B.S.

Home Economics
Newton, N. C.

Understanding . . . easy-going . . . Pfeiffer . . . economical . . . Home Ec . . . "Becky."

Epsilon Chi Society; Pfeiffer Junior College 1, 2, Home Economics Club 3, 4, Appalachian State Teacher's College Summer School 3.

HELEN JOY KNIGHT, B.A.

Bible and General Science
Roanoke Rapids, N. C.

Joyful . . . schedules . . . "P and T" . . . Lepidoptera . . . zestful . . . nature lover.

Zetesian Literary Society; Math Club 1, 2, 3, 4, Corresponding Secretary 3; William Bartram Scientific Society 1, 2, 3, 4; Highland Players 3, 4; Student Volunteers 1, 2, 3, 4; Hockey 1; Tennis 2, 3, Head of Tennis 3; Athletic Board 3; Volleyball 4; Basketball 3, 4; Monogram Club 4, Pine and Thistle Staff 2, 3, 4, Zetesian Editor 2, 3, Editor-in-chief 4.

MIRIAM EDWARDS KNIGHT, B.A.

English and Organ
Orlando, Fla.

Orlando . . . Scott-ish wedding bells . . . organist . . . "That ivory look" . . . sincerely good . . . "Mimi."

Epsilon Chi Literary Society, Chaplain 3, 4; Class Treasurer 2; Pine and Thistle Staff 2; Highland Players 1; Glee Club 1, 2, 3, 4; Prayer Band Leader 3, 4; Literary Editor WHITE HEATHER 3; Secretary of Class 4, *Who's Who in American Colleges and Universities* 4.

White Heather

SENIOR CLASS



White Heather

NANCY LUCILLE LEDBETTER, B.S.
Home Economics
 Norman, N. C.

Well-groomed . . . excitable . . . efficiency plus . . . praise worthy . . . essential . . . "Let's get organized."
 Epsilon Chi Literary Society; Basketball 1, 2, 3, 4; Basketball Varsity 2, 3; Athletic Board 2, 3; Monogram Club 3, 4; President Athletic Association 3; William Bartram Scientific Society 1, 2, 3, 4; Home Economics Club 1, 2, 3, 4; Christian Association Cabinet 4; Student Council 3, 4; President 4; President of Student Body 4; *Who's Who in American Colleges and Universities* 4.

BOBBIE MARIE LONG, B.A.
Grammar Grade Education
 Wadesboro, N. C.

Orderly . . . talker . . . "early to bed" . . . dry wit . . . "Really?" . . . authentic.
 Epsilon Chi Literary Society; Mars Hill College 1, 2; Tennis 3; Prayer Band Leader 4; Baptist Student Union Council 4.

DONNIE MAE LYTTLE, B.A.
Social Science and English
 Red Springs, N. C.

Spirited . . . commuter . . . true friend . . . good student . . . drug store . . . conversationalist.
 Epsilon Chi Literary Society; Day Student's Club 1, 2, 3, 4; Math Club 2; L'Alliance Francaise 1, 2; William Bartram Scientific Society.

MYRA ANNE MANESS, B.S.
Home Economics
 Biscoe, N. C.

Dimpled smile . . . quiet mannerisms . . . fun loving . . . changeable moods . . . competent . . . inspires "poetry?"
 Epsilon Chi Literary Society; Glee Club 1, 2, 3, 4; Home Economics Club 1, 2, 3, 4; Secretary and Treasurer 4; St. Cecilia Music Club 1; Prayer Band Leader 2, 3; Christian Association Cabinet 4; Chairman of Circle of Social Activities; Marshal 3; Archery 3; Elon College Summer School 1; Atlantic Christian College Summer School 2.

EMILYN CARLEEN MAULDIN, B.A.
Social Science
 Chesterfield, S. C.

Vero . . . tom-boy . . . unlimited helper . . . storehouse of knowledge . . . "the handbook says" . . . indispensable.
 Zetesian Literary Society; Highland Players 2; Glee Club 2, 3, 4; Hockey 1, 2, 3; Basketball 1, 2, 3, 4; Athletic Board, Salesman Athletic Association 2; Treasurer Athletic Association 2; Math Club 1, 2, 3.

IRIS FAYE MORRISON, B.A.
Primary Education
 Roseboro, N. C.

Good-looking . . . charming . . . lost glasses . . . St. George . . . never on time . . . naughty.
 Zetesian Literary Society; William Bartram Scientific Society 1, 2; L'Alliance Francaise 3, 4; International Relations Club 1, 2; Basketball 1, 2, 3; Varsity 2; Volleyball 2; Glee Club 3; Day Student's Club 4; Atlantic Christian College Summer School 1; Wake Forest Summer School 2.

SENIOR CLASS



Ledbetter



Long



Lytle



Maness



Mauldin



Morrison



Musc



McCaskill



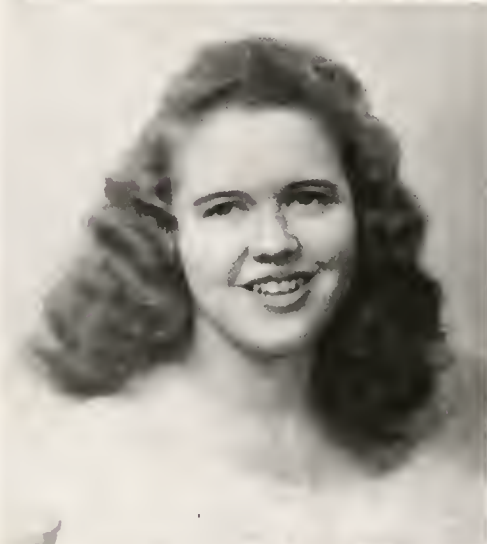
McFadyen



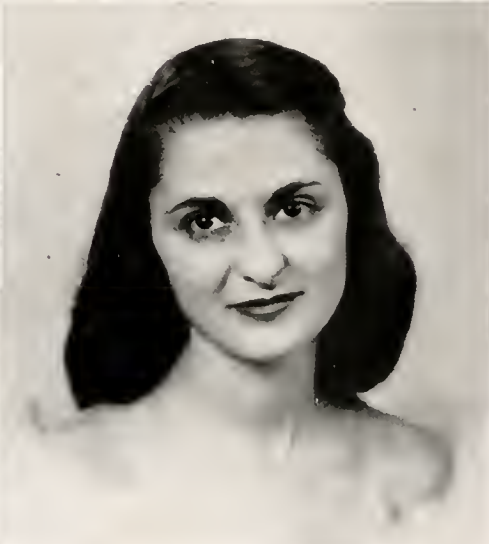
McNeely



McLeod



Nassif



White Heather

LOIS CARMICHAEL MUSE, B.A.
Social Science and English
Laurinburg, N. C.

Competent . . . school teacher . . . diets . . . on the go . . . accommodating . . . Johnnie.
Epsilon Chi Literary Society, Coker College 1, 2, Day Student's Club 3, 4.

BETTY JO McCASKILL, B.A.
General Science and Mathematics
Carthage, N. C.

Sweet . . . lads . . . well-mannered . . . "Dear Gussie" . . . studious . . . sincere.
Epsilon Chi Literary Society, Mathematics Club 1, 2, 3, 4, President 4, L'Alliance Francaise 1, 2, 3, International Relations Club 2, Student Volunteers 2; Treasurer of Christian Association 4; Cabinet 4; Hockey 2, 3; William Bartram Scientific Club 4; Wake Forest Summer School 3.

CLYDE IRIS McFADYEN, B.A.
English and Bible
Vass, N. C.

Full of pep . . . bangs . . . carefree . . . Ervin . . . Golf Course . . . Lohelia.
Zetesian Literary Society, Montreat College 1, 2, Tea Room Manager 3; Assistant Editor, WHITE HEATHER 3; Student Volunteers 3, 4, Sappho Poetry Club 4, William Bartram Scientific Society 4.

SARA CRANOR McLEOD, B.A.
General Science and Bible
Aberdeen, N. C.

Scientific minded . . . rarely angry . . . Eck . . . unobtrusive . . . In love . . . long tresses.
Epsilon Chi Literary Society; Prayer Band Leader 3, 4; Pine and Thistle Staff 3, 4, Sappho Poetry Club 2, 3, 4, President 3; Student Volunteers 2, 3, 4, Vice-President 3, William Bartram Scientific Society 2, 3, 4, International Relations Club 2, Hockey 1, 2, 3; Volley ball 4, Archery 2.

ANN ELIZABETH McNEELY
General Science and Social Science
Elkin, N. C.

Individuality . . . "simply wild" . . . Carolina . . . woguish . . . notable . . . refreshing.
Epsilon Chi Literary Society; International Relations Club 3, 4, Reporter and Custodian of Scrapbook 4; L'Alliance Francaise 3, 4; William Bartram Scientific Society 4; Math Club 4, Feature Editor Pine and Thistle 3; Junior Dance Committee; Chairman Senior Dance Committee; Athletic Board 3; Chief Scribe 4, Editor-in-chief WHITE HEATHER 4, Who's Who in American Colleges and Universities 4, University of North Carolina Summer School 1, 2, 3, 4.

MARY FRANCIS NASSIF, B.M.
Voice
Laurinburg, N. C.

Song bird . . . unpredictable . . . efficient . . . "Once in a While" . . . devilish . . . Coke bottles.
Epsilon Chi Literary; Glee Club 1, 2, 3, 4, First Soprano Monitor 2, 3, 4, President 4; St. Cecilia Music Club 1, 2, 3, 4, Secretary 2, 3, President 4; College Cheerleader 3, 4, Manager of Tea Room 4; Recital 3; Graduation Recital 4.

SENIOR CLASS



White Heather

FAYE PLEMMONS, B.S.

Home Economics
Lynn, N. C.

Curly lashes . . . "argue-er" . . . nervous giggles . . . Sat. night candy . . . wasp waist . . . likable.
Zetesian Literary Society; Meredith College 1; Home Economics Club 2, 3, 4; Spanish Club 4; Tennis 2; Student Volunteers 2, 3; Prayer Band Leader 4; Devotional President Baptist Student Union 3.

EDNA WINIFORD POWERS, B.M.

Public School Music
Fayetteville, N. C.

Happy . . . Chapel Hill . . . "heart of gold" . . . admirable . . . energetic . . . "Winnie."
Zetesian Literary Society; St. Cecilia Music Club 1, 2, 3, 4; Basketball 2, 3; Student Volunteers 1, 2, 3; Baptist Student Union 4; Meredith College Summer School 1; University of North Carolina Summer School 3; Flora Macdonald Summer School 1, 3.

MARY DELL PREVATIE, B.A.

Primary Education
Fairmont, N. C.

Saddles . . . cool and unruffled . . . Baker . . . punctual . . . thorough . . . prim.
Epsilon Chi Literary Society; Tennis 2, 3; Presbyterian Junior College Summer School 2, 3.

BETTY PRICE

Primary Education
Charlotte, N. C.

Bright eyes . . . friendly . . . tolerant . . . meek . . . home loving . . . poetry
Epsilon Chi Literary Society; Student Volunteers 1, 2, 3, 4; Librarian 3; Math Club 2, 3, 4; Treasurer 3; L'Alliance Francaise 2; Volleyball 4.

LUCY BELLE PRUITT, B.A.

Grammar Grade Education
Fuquay Springs, N. C.

Shy . . . curly hair . . . freckles . . . always smiling . . . kind . . . pancake.
Epsilon Chi Literary Society; Campbell College 1, 2; Baptist Student Union 3, 4; Vice-President Sunday School 3.

ADA LEE RANDALL, B.A.

English and Social Science
Ensonville, N. C.

Composed . . . loyal . . . Seniorita . . . grace . . . indescribable beauty . . . "just plain good."
Epsilon Chi Literary Society; High Point College 1; Spanish Club 4; Tennis 3; International Relations Club 4; Sappho Poetry Club 4; Prayer Band Leader 4; Feature Editor *Pine and Thistle* Staff 4; Basketball 4; Senior Scribe; May Court 4; W.C.U.N.C. Summer School 2; Wake Forest Summer School 3.

SENIOR CLASS



Plemmons



Powers



Prevatte



Price



Pruitt



Randall



Riggan



Rogan



Rohanna



Russell



Scarboro



Smith



White Heather

FLORA EDWARD RIGGAN, B.A.

Social Science and Bible
Townsville, N. C.

Mental activity . . . I.R.C. . . "just checking" . . . clear thinker . . . orator . . . "Flo."

Zetesian Literary Society; Christian Association Cabinet, Chairman of the Highway of Life Enrichment; Religious Meetings 3; Glee Club 3, 4; International Relations Club 2, 3, 4; Reporter and Custodian of Scrapbook 3; President 4; Collegiate Council for United Nations; Class Vice-President 4; Secretary Student Council 4; *Who's Who in American Colleges and Universities* 4.

FLORENCE EDELYN ROGAN, B.A.

Social Science and English
Greeleyville, S. C.

"Greeleyville brogue" . . . a dear . . . food . . . cheerful . . . discrete . . . "Little bit."

Zetesian Literary Society; William Bartram Scientific Society 2, 3, 4; Vice-President 4; St. Cecilia Music Club 1, 2, 3, 4; Student Volunteers 1, 2; L'Alliance Francaise 2, 3, 4; International Relations Club 4; Prayer Band Leader 4.

JASMINE BARBARA ROHANNA, B.A.

English and Social Science
Elizabeth City, N. C.

Determined . . . vivacious . . . B.S.U. . . sailor . . . works . . . "Jazz."

Epsilon Chi Literary Society, Recording Secretary 3, 4; Dance Chairman 3; International Relations Club 4; Baptist Student Union Vice-President 3; President 4; Prayer Band Leader 4; Alpha Psi Omega Dramatic Fraternity 3, 4; Secretary-Treasurer 4; Highland Players 1, 2, 3, 4; Reporter 3; Math Club 2, 3, 4; Reporter 3; Make-up Ed. *Pine and Thistle* 3; Athletic Board, Monogram Club 3, 4.

MARY ANN RUSSELL, B.A.

Bible and History
Sanford, N. C.

Original . . . self-assured . . . devoted . . . refined . . . sunny . . . "Kitten."

Epsilon Chi Literary Society; Glee Club 2, 3, 4; *Pine and Thistle* Staff, Art Editor 2, 3; Christian Association Cabinet 3, 4; Chairman of Publicity 3; Vice-President of Christian Association 4; Chairman of Enlistment and Training Circle 4; Senior Scribe.

AUDREY FULCHER SCARBORO, B.A.

Social Science and Bible
Rocky Mount, N. C.

Conversationalist . . . frankness . . . handsome beauty . . . admirable . . . woodhug . . . "Don and Cal."

Epsilon Chi Literary Society, Secretary 3, Class Secretary 1; Commercial Club 1; Hockey Team 1, 2, 3; Glee Club 1, 2, 3, 4; Highland Players 2, 3, 4; Vice-President 2; Math Club 2, 3, 4; International Relations Club 2, 3, 4; Basketball 2, 3; William Bartram Scientific Club 2, 3, 4; WHITE HEATHER Staff 3; St. Cecilia Music Club 3, 4; May Court 3; May Queen 4.

JANET SMITH, B.A.

Social Science and Bible
Whitsett, N. C.

Attentive . . . promising . . . serious minded . . . deserving . . . hidden talents . . . "Epsilon Chi."

Epsilon Chi Literary Society, President 4; International Relations Club 2, 3, 4; Secretary and Treasurer 3; Class Secretary 3; Glee Club 1, 2, 4; L'Alliance Francaise 4; Collegiate Council for United Nations 3, 4; Publicity Chairman 3, 4; Prayer Band Leader 3; Student's Social Committee 4; Chairman 4; Student Council 4; *Who's Who in American Colleges and Universities* 4.

SENIOR CLASS



White Heather

RUBY NELL SPIVEY, B.A.
English and Bible
Elizabethtown, N. C.

Fun contributing . . . changeable . . . alert . . . unforgettable . . . plain spoken . . . "Easy on the Eye."
Zetesian Literary Society, First Vice-President 4; William Bartram Scientific Society 1, 2, 3, 4; International Relations Club 2; L'Alliance Francaise 1, 2, 3, 4; Hockey 1, 2, 3; Basketball 1; Feature Editor *Pine and Thistle* 4; Wake Forest Summer School 3.

NINA RUTH TUGWELL, B.A.
French and Social Science
Farmville, N. C.

Pleasant . . . tactful . . . quiet . . . French . . . contented . . . book-lover.
Epsilon Chi Literary Society; International Relations Club 2; Hockey 2, 3; Archery 2; Volleyball 4; L'Alliance Francaise 2, 3, 4; President 4; Student Volunteers 3.

MARY ANN TURNAGE, B.S.
Home Economics
Farmville, N. C.

Concerned . . . lovely skin . . . day dreamer . . . informative . . . "Our oil stove" . . . good cook.
Epsilon Chi Literary Society; Home Economics Club 1, 2, 3, 4; Program Chairman 4; Volleyball 2; Tennis 3; Atlantic Christian College Summer School 2, 3.

SENIOR CLASS

MARGARET McKAY WATT, B.A.
English and Social Science
Nashville, Tenn.

Versatile . . . Davidson . . . frank . . . contagious laughter . . . independent . . . unpredictable remarks.
Epsilon Chi Literary Society; Highland Players 2, 3, 4; Secretary and Treasurer 3, 4; Alpha Psi Omega Dramatic Fraternity 3, 4; Vice-President 3; President 4; International Relations Club 2; Assistant Editor *Pine and Thistle* 2, 3, 4; Superlative 4; Christian Association Cabinet, Chairman of World Fellowship 4.

SALLIE WHITAKER, B.S.
Home Economics
Rockford, N. C.

Sympathetic . . . Pfeiffer . . . "Honey" . . . never-ending chatter . . . assistant . . . flaming hair.
Epsilon Chi Literary Society; Pfeiffer Junior College 1, 2; Home Economics Club 3, 4; L'Alliance Francaise 4; A. S. T. C. Summer School 3.



Spivey



Tugwell



Turnage



Watt



Whitaker



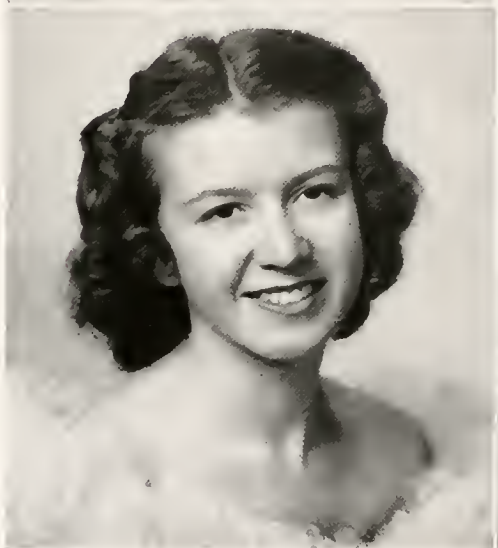
Williams



Wilson



Wilson



Woodward



White Heather

MARGARET WILLIAMS, B.A.
Bible and Church Music
Indian Valley, Va.

Music room . . . organist . . . genuine . . . particular . . . trustworthy . . . solemnity.

Zetesian Literary Society, St. Cecilia Music Club 1, 2, 3, 4, Student Volunteers 1, 2, 3, 4, President 4, Home Economics Club 1; Math Club 2; William Bartram Scientific Society 2; Cabinet 3, 4, Glee Club 2, 3, 4, Secretary 4, Prayer Band Leader 2, Hockey 1.

MARIE WILSON
Bible and Social Science
Oxford, N. C.

Brevard . . . easy going . . . modest . . . conferences . . . noiseless . . . sleepy.

Epsilon Chi Literary Society; Brevard College 1, 2, William Bartram Scientific Society 4, Student Volunteers 3, 4; Prayer Band Leader 3, 4.

SUE WILSON, B.M.
Public School Music
Fayetteville, N. C.

Conseratory . . . Pedro . . . plaids . . . Itkable . . . commendable . . . responsible.

Zetesian Literary Society; Tennis 2, 3; Commercial Club 1; St. Cecilia Music Club 1, 2, 3, 4, Glee Club 1, 2, 3, 4, Wake Forest Summer School 2; Flora Macdonald College Summer School 3.

VERNIESE WOODWARD, B.M.
Voice
Murrell's Inlet, S. C.

"Carnen" . . . sophisticated beauty . . . superficial . . . coffee and tea . . . melodramatic . . . "Woody."

Zetesian Literary Society; St. Cecilia Music Club 1, 2, 3, 4, Glee Club 1, 2, 3, 4, L'Alliance Francaise 2, 3, 4, Pine and Thistle Staff 3, 4, Highland Players 1, 2, 3, 4; Alpha Psi Omega 3, 4.

SENIOR CLASS



JUNIORS

Here are the Juniors who, though few in number, more than make up for it by their class spirit and team work. They leave no doubt whatsoever as to the success of the class of '50.

OFFICERS

JO SNELL, *President*

DOROTHY WILLIAMS, *Vice-President*

CAROLYN ELLIOTT, *Secretary*

MADLINE CARSWELL, *Treasurer*

ANN YELVINGTON, *Tea Room Manager*

MARY ALICE PARKS, *Asst. Tea Room Manager*

DR. ELEANOR SCOTT, *Adviser*

1949





JUNIORS

First row, left to right:

BLACKWELL, JACQUELINE ADELE
Florence, S. C.

BRIDEWELL, CHARLOTTE
Donaldsonville, La.

BUIE, DEWIE
Norfolk, Va.

CARSWELL, MADELINE MAPP
Sanford, N. C.

ELLIOTT, CAROLYN LEE
Edenton, N. C.

Second row:

FREEMAN, MARY RAYE
Racford, N. C.

GREGORY, MARY
Kershaw, S. C.

GODWIN, EULA ESTELLE
Kenly, N. C.

HOOKER, FRANCES VIRGINIA
Bayboro, N. C.

JORDAN, ANNA ALETHA
Bishopville, S. C.

Third row:

KINLAW, LOIS
Lumberton, N. C.

MOULDER, CARLEEN
Hope Mills, N. C.

MCCAIN, DELORIS
Effingham, S. C.

MCCUBBINS, NANCY ELIZABETH
Florence, S. C.

MCLEAN, BETTY CULBRETH
Racford, N. C.





OF 1949

First row, left to right:

MELVIN, SARA OCTAVIA
Kerr, N. C.

PARKS, MARY ALICE
Charlotte, N. C.

PATTERSON, UNA FRANCES
Huntersville, N. C.

PEARCE, EMMA JO
Corpus Christi, Texas

PHELPS, LEAH CAROLYN
Ash, N. C.

Second row:

POWERS, JUDITH ANN
St. Pauls, N. C.

SMITH, MARGARET
Pageland, S. C.

SMITH, EDITH SUSAN
Pink Hill, N. C.

SNELL, JO
Charlotte, N. C.

TURNER, LILLIAN BERTHA
Trenton, N. J.

Third row:

WILLIAMS, DOROTHY MAE
Indian Valley, Va.

YELVINGTON, ELIZABETH ANNE
Clayton, N. C.

SOPHOMORES

Meet the Sophomores! This is the class that is noted for its ability to put over successfully anything it attempts. The "Up and coming" younger generation of F. M. C., its members are looking forward to grand and glorious times as upperclassmen.

OFFICERS

PHYLLIS DYER, *President*

CAROLINA OGILVIE, *Vice-President*

BETTE WALL, *Secretary*

PAT McRAE, *Treasurer*

MR. COXHEAD, *Adviser*

1949



SOPHOMORES



ARRINGTON, PAT
Southport, N. C.

ASCOUGH, RAMONA
Cummock, N. C.

BARROW, AGNES
La Grange, N. C.



BLACKWELL, VERIDA
Florence, S. C.

BROWNE, SARA JANE
Red Springs, N. C.

BUIE, MARY VARDELL
Clarkton, N. C.



BYRD, DORIS YVONNE
Erwin, N. C.

CANTLEY, MARY EMMA
Kingstree, S. C.

COVINGTON, MARY STEWART
Racford, N. C.



DAVENPORT, MARTHA MAE
Charlotte, N. C.

DORSEY, GENEWOOD
Gurley, S. C.

DYER, PHYLLIS
Leaksville, N. C.



FIELDS, LLEWELLYN
Darlington, S. C.

FOUST, IDA TATE
Ramscur, N. C.

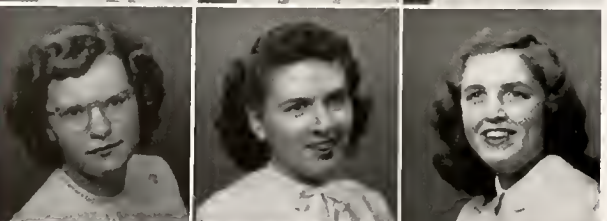
GRANTHAM, ZELMA
Fairmont, N. C.



HARRIS, PATRICIA ANNE
Concord, N. C.

HATLEY, MARY
Hudson, N. C.

HUBBLE, KATRINA
Bland, Va.



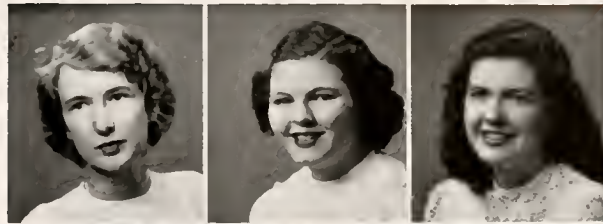
HUNEYCUTT, CAROLYN
Blackstock, S. C.

HUNT, MARY SUSAN
Wake Forest, N. C.

JACKSON, LOIS
Fair Bluff, N. C.



JAMES, CHARLOTTE
Durham, N. C.
JOHNSON, ROBERTA
Rupert, West Va.
JORDAN, MARY ANN
Wilmington, N. C.



JOSEY, BEVERLEY
Manning, S. C.
KELLY, BERT
Carthage, N. C.
KITTRELL, ELSA JANIS
Lumberton, N. C.



LANIER, ELEANOR
Elizabeth City, N. C.
LAITA, BETSY
Hillsboro, N. C.
LEE, MATTIE LOU
Willow Springs, N. C.



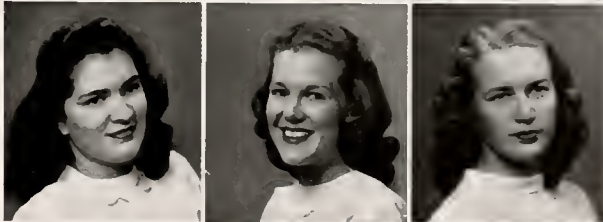
LITTLE, MARGARET
St. Pauls, N. C.
LOWE, NELL
Clinton, N. C.
LOVETT, MARJORIE
Fair Bluff, N. C.



MELVIN, BETTY GREY
Kerr, N. C.
MILLER, MAYSIE
Chadbourn, N. C.
MORRISON, MARY JANETTE
Atlanta, Ga.



MCDONALD, JEAN
Charthage, N. C.
MCMILLAN, BETTY JO
Selma, N. C.
McRAE, PAT
Lillington, N. C.



OGLIVIE, CAROLINE
North Wilkesboro, N. C.
OLIVER, MARGARET
Whiteville, N. C.
POWELL, MARGARET
Smithfield, N. C.





PRICE, HANNAH
Charlotte, N. C.
RATCHFORD, BETTY
Gastonia, N. C.
RATCHFORD, WILMA
Bessemer City, N. C.

REDMAN, JANE
Pilot Mountain, N. C.
REYNOLDS, CAROLYN
Smithfield, N. C.
RIVENBARK, FLORENCE
Willard, N. C.

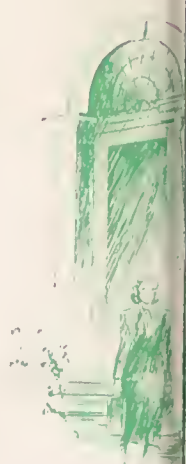
RUSS, JOY
Shallotte, N. C.
RUSSELL, ANN
Rocky Mount, N. C.
SHAVER, LULA
Fishersville, Va.

SHERRILL, HELEN
Fayetteville, N. C.
SMITH, PATRICA
Red Springs, N. C.
SOUTHERLAND, PATTY
Wilmington, N. C.

STEVENS, CYNTHIA
Smithfield, N. C.
SUMMERS, CATHERINE
Norfolk, Va.
SUTLIFE, FAYE
Leaksville, N. C.

TAYLOR, JEANINE
Robersonville, N. C.
THOMPSON, SYLVIA
Chadbourn, N. C.
WALKER, CAROLYN
Wilmington, N. C.

WALKER, NANCY
Baltimore, Md.
WALL, BETTIE ANN
Wadesboro, N. C.
WATSON, SARANEL
Greenville, S. C.



... a coke at Townsend's



... mad rush at 10:20



... Student Council gives formal



... they help us in the Library



FRESHMEN

Having survived the rigors of Rat Court and semester exams the Freshman Class stands ready to make a name for itself, not only scholastically but in leadership and originality as well.

OFFICERS

ELAINE PIERCE, *President*

EMILY NAN GRIER, *Vice-President*

JEANNE FULLER, *Secretary*

HARRIETT WATSON, *Treasurer*

MISS ETHEL BATEMAN, *Adviser*

1949





FRESHMEN

First row, left to right:

Barrow, Lindley Anne, La Grange, N. C.
 Brown, Emily Lois, Hamlet, N. C.
 Brunson, Betty Ann, Fayetteville, N. C.
 Charles, Mary Kathryn, Winston-Salem, N. C.
 Clark, Barbara Ann, Daytona Beach, Fla.
 Clarke, Clara Revers, Roanoke Rapids, N. C.
 Comer, Margaret Ruth, Ellerbe, N. C.
 Farrior, Jean, Morehead, N. C.

Second row:

Fuller, Edith Jeanne, Ft. Bragg, N. C.
 Goodman, Margaret Ann, Chadbourn, N. C.
 Grady, Enid Long, Charlotte, N. C.
 Grier, Emily Nan, Charlotte, N. C.
 Hall, Frances, Rose Hill, N. C.
 Hearne, Allison Reynolds, Greenville, N. C.
 Hobbs, Frances, Council, N. C.
 Hopkins, Annie Lee, Cameron, N. C.

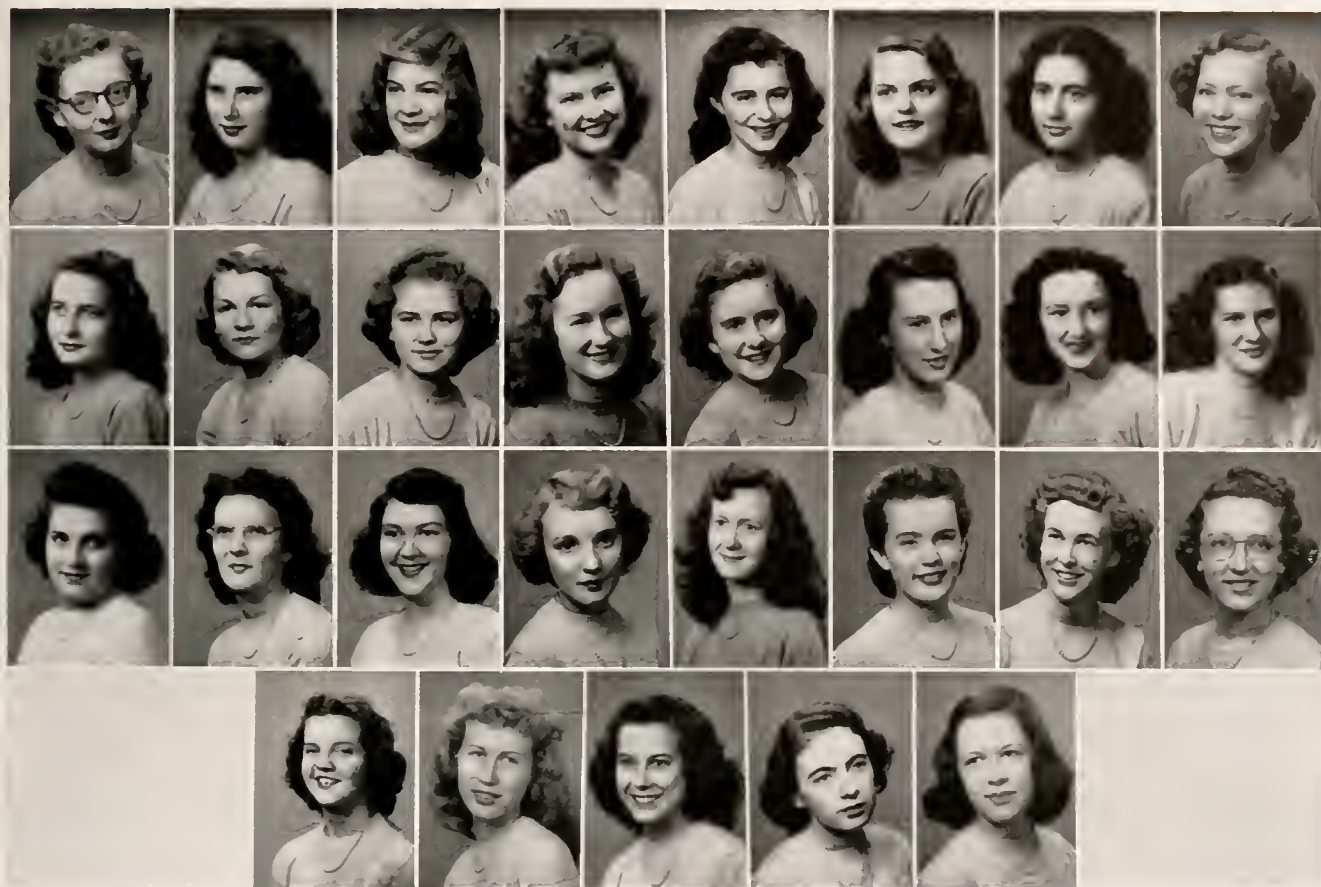
Third row:

Hulak, Nadya Dorothy, Burgaw, N. C.
 Hussey, Artense, Fayetteville, N. C.
 Ledbetter, Betty Ann, Norman, N. C.
 Lovick, Janice, Wade, N. C.
 Martin, Marianne, Charlotte, N. C.
 Monroe, Mildred Elizabeth, Fayetteville, N. C.
 Murdoch, Janice Lee, Wildwood, N. C.
 Murphy, Priscilla Elaine, Arlington, Va.

Fourth row:

McDowell, Alma Gene, Elizabethtown, N. C.
 McIntyre, Mary Elizabeth, Godwin, N. C.
 McPhaul, Faye, Parkton, N. C.
 McArthur, Mildred Louise, Red Springs, N. C.
 McCallum, Dorothy, Rowland, N. C.
 McCaskill, Rachel, Carthage, N. C.





OF 1949

First row, left to right:

Nester, Patsy Mae, Wake Forest, N. C.
 Padgett, Betty Louise, Burgaw, N. C.
 Partin, Jeanne, Petersburg, Va.
 Pearce, Ann Frances, Corpus Christi, Texas
 Pierce, Elaine, Evergreen, N. C.
 Poff, Barbara, Christiansburg, Va.
 Raston, Junette, Elizabethtown, N. C.
 Ritchie, Nora Emalyne, Raleigh, N. C.

Second row:

Rogers, Ethel Council, Whiteville, N. C.
 Rummage, Gloria Ann, Ellerbe, N. C.
 Rumpfc, Audrey, Westfield, N. J.
 Shaw, Ann, St. Pauls, N. C.
 Smith, Amanda Grey, Petersburg, Va.
 Singletary, Hattie, Bladenboro, N. C.
 Shaw, Emily, St. Pauls, N. C.
 Tarrant, Love Leonore, Fayetteville, N. C.

Third row:

Taylor, Frances Burke, New Bern, N. C.
 Thomas, Rebecca, Beulaville, N. C.
 Thompson, Janie, Rocky Mount, N. C.
 Tisdale, Nellie, New Bern, N. C.
 Townsend, Doris, Red Springs, N. C.
 Watson, Harriett, Parkton, N. C.
 West, Fannie Belle, Fayetteville, N. C.
 White, Cora Eleanor, Lenoir, N. C.

Fourth row:

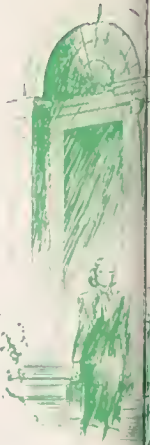
White, Helen, Wilmington, N. C.
 Whitfield Angeline, Rocky Mount, N. C.
 Williamson, Joan, Atlanta, N. C.
 Workman, Betsy Ann, Mebane, N. C.
 Zea, Sophia McLeod, Strasburg, Va.



The White

COMMERCIAL DEPARTMENT

To the tune of clicking typewriters these girls are working eagerly towards the time when they will be declared competent business women and go out to represent F. M. C. in the world of business. This year six girls will receive their diplomas for completing a two year course.



SECOND YEAR BUSINESS

First row, left to right:

LECKIE, HELEN
Charlotte, N. C.

MAY, ELIZABETH ANN
Pink Hill, N. C.

SMITH, ELSIE JANE
Kenansville, N. C.

Second row:

WATSON, ROSA LEE
Red Springs, N. C.

WHITE, ALICE
Timmonsville, N. C.

WILLIAMS, ROSA LUCILLE
Fayetteville, N. C.

Heather 1949





FIRST YEAR BUSINESS

First row, left to right:

Adams, Lucy Joyce, Mount Olive, N. C.; Anderson, Kay, Wilmington, N. C.; Anderson, Louise, Wadesboro, N. C.; Bailes, Anita Stewart, Mount Holly, N. C.; Baldwin, Ernestine, Whiteville, N. C.; Barnes, Peggy Ann, Rocky Mount, N. C.; Buie, Sadie, Norfolk, Va.; Cole, Nancy Lee, Raeford, N. C.

Second row:

Cox, Sue Lee, Franklinton, N. C.; DeVane, Donnice, Chadburn, N. C.; Elliott, Margaret Elizabeth, Green Sea, S. C.; Gooden, Mary Eleanor, Elizabethtown, N. C.; Hardee, Peggy, Lumberton, N. C.; Harrington, Betty Lucille, Broadway, N. C.; Highsmith, Anne Beatrice, Burgaw, N. C.; Jarrell, Betty Ruth, Rockingham, N. C.

Third row:

Jones, Mary Isabel, Rowland, N. C.; Kerr, Doris Jean, Mount Airy, N. C.; Kilpatrick, Jean, Greensboro, N. C.; Kornegay, Dorothy Jean, Pine Level, N. C.; Manus, Bradley Jean, Charlotte, N. C.; Moore, Jane Lea, Wilmington, N. C.; Morgan, Jacqueline, Red Springs, N. C.; Morrison, Peggy, Clinton, N. C.

Fourth row:

Mullis, Patricia, Salisbury, N. C.; McCulloch, Sarah Louise, Elkton, N. C.; McEachin, Marjorie, Maxton, N. C.; McPhail, Hettie Lee, Rowland, N. C.; Parker, Jean Hudgins, Pollocksville, N. C.; Patrick, Marion Joyce; Roper, N. C.; Rhodes, Betty Lou, Fairmont, N. C.; Robinson, Fredia Joy, Boone, N. C.

Fifth row:

Slate, Sarah Ella, Wagram, N. C.; Squier, Elizabeth Ann, Atlanta, Ga.; Stevens, Annie Ruth, Fayetteville, N. C.; Taylor, Lila Blondell, Lumberton, N. C.; Thomas, Violet, Broadway, N. C.; Tipton, Eunice, Chadburn, N. C.; Townsend, Blanche Geneva, Rowland, N. C.; Underwood, Dorothy Alease, Stoneville, N. C.



THERE SHALL BE MUSIC





MUSIC

The conservatory, noted throughout this section of the South for its high standards and exceptional faculty, is one of the most outstanding and important departments of the college. The faculty, under the able guidance of Dean Robert Reuter, has proven its ability by the excellent quality of the students' work.

Each year, the college is particularly proud to present its Senior music recitals, as the performances of these girls best express the fine training of the conservatory. Through such public performances, the girls learn stage control, poise, and ease. There were eight recitals in 1949, given by: Carolyn Greene, Contralto; Frances Nassif, Soprano; Sarah Green, pianist; Verniese Woodward, Soprano; Anna Hines, pianist; Winifred Beasley, pianist; Miriam Knight, organist; Anita Fonvielle, pianist.

Beasley
Green



Fonvielle
Nassif



Hines
Woodward



Greene





Drop around any Tuesday or Thursday afternoon and you will hear the auditorium resounding with "heavenly music." The 70 members of the Glee Club chosen by voice tests from every college department, are noted for their outstanding choral work. The work of sectional and the twice-weekly regular rehearsals really bears fruit at the Christmas and Spring Concerts of sacred and secular music. Because of its popularity and success our Glee Club has gone on tours throughout the state. The Club is under the able and expert direction of our Dean of Music, Robert Reuter.

GLEE CLUB

ST. CECILIA MUSIC CLUB

Miss McMillan and Anita Fonvielle

The St. Cecilia Music Club holds its meeting the first Friday night of every month. Anyone who has taken an applied or theoretical course in music is eligible to belong.

During the year, projects are carried on to improve the conservatory. This year the projects were: enlargement of the record library, curtains for practice rooms, and the teaching of music appreciation in the colored school each week.

OFFICERS

FRANCES NASSIF, *President*

ANNA HINES, *Vice-President*

MARTHA DAVENPORT, *Sec. and Treas.*



St. Cecilia Music Club



ACTIVITIES

A large part of each girl's time is spent in extra-curricular activities as well as in class work. Here is a scene-by-scene portrayal of some of the busy organizations within the doorway.

1949



STUDENT GOVERNMENT



NANCY LUCILLE LEDBETTER
President

The Student Council holds an important place in the life of a Flora Macdonald girl. From the first night of hearing pledges repeated by each student until the end of school, the council is busily at work. Tuesday nights, others if necessary, they hold their weekly meetings and over a pot of coffee discuss the current problems of the day as concerns Flora Macdonald. The Council strives to instill in each student the importance of having and abiding by rules in order that we might all live harmoniously together. With a mighty force of thirteen members and the Dean of Women as adviser, the council moves forward for an "ever-growing" student body.

. . Nineteen Hundred Forty-nine



RACHEL HALL, *Vice-President of Student Body*

NINA BERRYHILL, *President of Christian Association*

NANCY BISHOP, *President of Senior Class*

FLORA ED RIGGAN, *Vice-President of Senior Class*

JO SNELL, *President of Junior Class*

DOT WILLIAMS, *Vice-President of Junior Class*

PHYLLIS DYER, *President of Sophomore Class*

ELAINE PIERCE, *President of Freshman Class* (not pictured)

JANET SMITH, *President of Epsilon Chi Society*

WINIFRED BEASLEY, *President of Zetesian Society*

DOT FIELDS, *President of Athletic Association*

MARIAN HALL, *President of Day Students*

MARY ANN RUSSELL, *Vice-President*
 BETTY MCLEAN, *Secretary*
 JO McCASKILL, *Treasurer*
 NANCY LEDBETTER, *Ex Officio, President of Student Body*
 ELIZABETH CHAPPELL, *Circle of Religious Meetings*
 MARGARET WILLIAMS, *Circle of Music*
 JO PEARCE, *Circle of Home Missions*
 MARGARET WAFF, *Circle of Foreign Missions*
 MYRA MANESS, *Circle of Social Activities*
 DORIS ANN BAIN, *Circle of Publicity*
 SARA MELVIN, *Circle of Hospitality*
 BETTY GREY MELVIN, *Circle of Library*
 LOU FIELDS, *Circle of Comradeship*
 JANE CAUDELL, *Circle of Sunday School*
 DEWIE BUIE, *Circle of Christian Growth* (not pictured)

F. M. C. CHRISTIAN





NINA COIT BERRYHILL
President of Flora Macdonald

ASSOCIATION . . . 1949

The Flora Macdonald Christian Association has as its aim to promote the growth of Christian faith, character, and fellowship among its students.

The outstanding events of the year are the installation service, the candlelight service, the White Gift service, the Dome service, and a special series of services conducted by capable speakers in both fall and spring—known as Religious Emphasis Week.

The cabinet which consists of the President of the Christian Association, the adviser—Mrs. Elbert McPhaul, and the circle chairman has been an invaluable guide to the Association in carrying out its great program of work.

Our theme for the year, “Remember now thou Creator in the days of thy Youth” has been a challenge to many students for growing in faith and maintaining a closer fellowship with our Creator.



JANET SMITH
President

EPSILON CHI LITERARY SOCIETY

"Epsilon Chi, we sing to you"—our society strives to develop poise and literary enlightenment among our members, as well as providing such entertainment as the yearly picnics and dance.

ELIZABETH CHAPPELL
First Vice-President

EVA MAE BEAM
Second Vice-President

JASMINE ROHANNA
Recording Secretary

CATHERINE SUMMERS
Corresponding Secretary

ELEANOR LANIER
Treasurer

ANN YELVINGTON
Critic

ZELMA GRANTHAM
Chaplain

MIRIAM KNIGHT
Censor



ZETESIAN LITERARY SOCIETY

With friendship as our motto, the members of our society strive to carry out the spirit and tradition of Flora Macdonald friendship, and at the same time promote higher intellectual achievements among its members. The highlights of the year are the society dance, parties, and informal meetings.



WINIFRED BEASLEY, *President*

NELL SPIVEY
First Vice-President

JUDITH POWERS
Second Vice-President

BETSY LATTA
Recording Secretary

JEAN McDONALD
Corresponding Secretary

HELEN SHERRILL
Treasurer

BETTY JO McMILLIAN
Critic

HANNAH PRICE
Censor

GAYNELL ARNETTE
Chaplain





KATHARYNE PRUDENCE HERRING
Business Manager



ANN ELIZABETH MCNEELY
Editor-in-chief

THE 1949

In the 1949 WHITE HEATHIER, the staff has tried to portray the daily life of Flora Macdonald girls. If you follow us through the open doorway, you will see the gay campus scenes and take part in our unending college activities. We hope that this record will preserve some of our priceless memories, and that when we re-read our annual the best years of our lives will be brought back to us—our Flora Macdonald College Days.



Herring, McNeely, Conoly

CAROLYN LEE ELLIOTT, *Assistant Editor*
 MARY GREGORY, *Assistant Business Manager*
 FLO HOOVER, *Senior Class Editor*
 DEWIE BUIE, *Junior Class Editor*
 BETTIE WALL, *Sophomore Class Editor*
 JEANIE PARTIN, *Freshman Class Editor*
 KITTY BULLOCK, *Snapshot Editor*
 ELEANOR LA NIER, *Snapshot Editor*
 PAT ARRINGTON, *Literary Editor*
 BARBARA CLARK, *Literary Editor*
 BLOSSOM GRIFFIN, *Business Editor*
 HELEN LECKIE, *Typing Editor*
 MISS MARY CONOLY, *Adviser*



ELIZABETH CHAPPELL
Acting Business Manager

WHITE HEATHER



PINE and

Creative writing: stories, poems, essays—the best the Flora Macdonald students are capable of producing, is found in the college literary magazine. *The Pine and Thistle*, which is published quarterly, has set for its goals the encouragement of creative writing, and the development of an appreciation of good literature on the part of the Flora Macdonald students.



HELEN JOY KNIGHT
Editor

Knight, Shealy, Fisher



THISTLE

MARGOT WATT, *Assistant Editor*

NAOMI CONKLING, *Assistant Business Manager*

CAROLYN LEE ELLIOTT, HELEN SHERRILL, *Literary Editors*

PAT ARRINGTON, VERNEISE WOODWARD, NEIL SPIVEY, NANCY McCUBBINS, ADA LEE RANDALL, *Feature Editors*

ROBERTA JOHNSON, SUE HUNT, *Epsilon Chi Editors*

SYLVIA THOMPSON, *Zetesian Editor*

SARAH McLEOD, NINA CO., *Poetry Editors*

ROSA WILLIAMS, ROSA WATSON, ELSIE SMITH, *Typing Editor*

DORIS BAIN, MARGARET OLIVER, *Art Editors*

JULIA MAE GRAHAM, CATHERINE BULLOCK, *Exchange Editors*

JANE CAUDELL, *Book Reviewer*

CARLEEN MOULDER, BELTE WALL, *Make-up Editors*

MISS ANN SHEALY, *Adviser*



PHYLLIS FISLER
Business Manager



WHO'S WHO

Six of the outstanding seniors of Flora Macdonald are chosen each year to be registered in *Who's Who Among Students in American Colleges and Universities*. In 1949 the girls chosen were Nancy Ledbetter, Nancy Bishop, Flora Ed Riggan, Bette McNeely, Miriam Knight, and Janet Smith. These girls combine the traits of leadership, scholarship, and character.

BISHOP
McNEELY



KNIGHT
RIGGAN



LEDBETTER
SMITH





SENIOR SCRIBBLERS

Closely to depict in a few phrases a true and unforgettable picture of each of their classmates, these five senior Scribes with the WHITE HEATHER Editor as Chief Scribe, use their ingenuity through the year to prepare these sketches for the annual. The scribes are selected and "tapped" by the retiring scribes at the end of each year.

HALL
RUSSELL
GRIFFIN
MCNEELY
CORKLING
BEAM



EL CIRCULO ESPANOL

Habla Vd. Espanol? Then you are probably a member of El Circulo Espanol. The aim of the Spanish Club is to familiarize its members with all phases of Spanish life and to help them develop better knowledge of the language itself.

OFFICERS

PAT ARRINGTON, *President*
BETTY JO McMILLAN, *Vice-President*
LLEWELLYN FIELDS, *Secretary-Treasurer*
MISS ALMA MARIE TURNER, *Adviser*

MATH CLUB

The Math Club is composed of students who have made an average of B or above on their first semester course of math or physics. The Head of the Mathematics Department always serves as the club's faculty adviser. The programs usually include a discussion of a famous mathematician and his contribution to mathematics. This aids in promoting our objective which is to promote a greater interest in math among the members.

OFFICERS

JO McCASKILL
President

DOT WILLIAMS
Vice-President

MADÉLINE CARSWELL
Secretary

ANN RUSSELL
Treasurer

DR. LOUISA VAN DYKE
Adviser



OFFICERS

DOROTHY WILLIAMS
President

FLORENCE ROGAN
Vice-President

LOIS KINLAW
Corresponding Secretary

MARGARET SMITH
Recording Secretary

BETTE WALL
Treasurer

DR. HANSEN
MISS HARMON, *Advisers*



WILLIAM BARTRAM SCIENTIFIC SOCIETY

The purpose of the William Bartram Scientific Society is to encourage among the students an interest in and a better understanding of science. The Club endeavors to accomplish this purpose through scientific programs presented at the monthly meetings through various projects held throughout the year. Our Club forms a "nucleus" from which we hope will "fission" future energetic "atomic" experts.



STUDENT VOLUNTEERS

The Student Volunteer Organization is composed of girls interested in foreign and home missions. Their informal meetings are held on Sunday nights, when there is a study of missions. This group contributes to the spiritual growth on the campus and its work is inspirational.

OFFICERS

MARGARET WILLIAMS
President

MADILINE CARSWELL
Vice-President

EVA MAE BEAM
Secretary

WILMA RATCHFORD
Treasurer

CATHERINE SUMMERS
Librarian

PRAYER BANDS

Realizing the power and need of prayer in our daily lives, groups of girls meet together each Wednesday morning for a period of prayer, meditation, inspiration, and devotion. Our prayer bands afford one of the most effective means of making personal religious contact. Each member of the student body is placed in one of these groups.

The treasured opportunity of a prayer band leader is to help each member of her small group to realize the privilege that is hers.



DEWIE BUIE
Chairman of Prayer Bands

OFFICERS

HELEN CROWELL
President

LILLIAN TURNER
Vice-President

SARA McLEOD
Secretary-Treasurer

DR. ELEANOR SCOTT
Adviser



SAPPHO POETRY CLUB

The purpose of the poetry club is to cultivate greater understanding and enjoyment of poetry through well-organized and entertaining programs. Creative work among the club members is encouraged.

FRENCH CLUB

The singing of the "Marseillaise" opens many of the monthly meetings of the French Club. Here, an attempt is made to motivate enthusiasm in the French language and to become better acquainted with French civilization through games, drama, and informal talks. Recordings, also, are used as an aid to familiarize the members with French culture and in perfecting pronunciation.

OFFICERS

RUTH TUGWELL
President

JO PEARCE
Vice-President

DEWIE BUIE
Secretary-Treasurer

DR. ELEANOR MARKS
Adviser



INTERNATIONAL RELATIONS CLUB

Never before has an organization of this sort had such a challenge as now. This inter-collegiate organization sponsored by the Carnegie Endowment of the advancement of peace, brings before the students of American Colleges the problems facing the United Nations. Through active participation and interest, the I. R. C. serves to promote an understanding of these problems so that young people can prepare to take their places in and do their share of the world's business.



HIGHLAND PLAYERS

The show must go on! The Highland Players, with their limited facilities, are often doubtful as to whether the show will go on. However, their hard work and intense interest never fails—and instead has made the club one of the most enjoyable for the other students as well as for its members.

OFFICERS

FLORA ED RIGGAN
President

KATHERINE BULLOCK
Vice-President

ANNA HINES
Secretary-Treasurer

BETTE MCNEELY
*Reporter-Custodian of
Scrapbook*

MISS CAROL ROBERTSON
Adviser

OFFICERS

DORIS ANN BAIN
President

CAROLYN LEE ELLIOT
Vice-President

MARGARET WATT
Secretary-Treasurer

CATHERINE SUMMERS
News Reporter

BETTY JO McMILLIAN
Scrapbook Custodian

HOME ECONOMICS CLUB

Any Home Economics major is eligible for membership in the Home Economics Club. At their monthly meetings they strive to further their knowledge in their own and in related fields. Interesting lectures, demonstrations, and exhibits are characteristic of their programs.

OFFICERS

ELIZABETH CHAPPELL
President

EVA MAE BEAM
Vice-President

MYRA MANESS
Secretary-Treasurer

ANN TURNAGE
Program Chairman

SARA MELVIN
Scrapbook Custodian

MISS FRANCES COMER
Faculty Adviser



OFFICERS

MARION HALL
President



DAY STUDENTS' CLUB

Cars, spaghetti suppers, scavenger hunts, cokes at Townsend's—that's the life of the Day Students at F. M. C. Their club is the most active and the most envied on the campus. Its activities are restricted only to the hours 1-12 A.M. and 1-12 P.M. It boasts only the finest alumnae, among whom is Miss Mary Conoly, the capable and patient adviser of the Day Students Club.



ALPHA PSI OMEGA

The Kappa Lambda Chapter of Alpha Psi Omega national dramatic fraternity is a new organization on our campus. It is an honorary group of the students who have acquired a minimum of fifty points for their work in dramatics.

OFFICERS

MARGOT WATT
President

JANE CAUDELL
Vice-President

JASMINE ROHANNA
Secretary-Treasurer

COMMERCIAL CLUB

The Flora Macdonald Commercial Club is made up of about fifty girls who are either regularly enrolled in the commercial classes or taking subjects taught in that department. Meetings are held monthly featuring guest speakers, who talk on subjects pertaining to the business world. The social highlights of the club's activities include weiner roasts, Christmas parties, and teas.



OFFICERS

ROSA WATSON
President

PEGGIE HARDIE
Vice-President

ROSA WILLIAMS
Secretary-Treasurer

MISS LETA MCINTYRE
AND MISS ELIZABETH
SIENHOUSE, *Advisers*

ATHLETICS

One of the aims of Flora Macdonald College is to help each student build a sound body as well as a sound mind and spirit. The girls attain physical development and qualities of sportsmanship through their enthusiastic participation in sports.

1949



The members of the Athletic Board show outstanding ability and leadership in each sport on the campus. They are chosen as leaders of their respective sports.

MARY ALICE PARKS
Vice-President

KATRINA HUBBLE
Secretary

JO PEARCE
Treasurer

ELEANOR LANIER
Salesman

LOIS KINLAW
Tennis

HELEN CROWELL
Bowling

JO PEARCE
Volley Ball

ELSIE SMITH
Basketball

MADLINE CARSWELL
Table Tennis

MISS ETHEL BATEMAN
Adviser



DOROTHY FIELDS

ATHLETIC ASSOCIATION



CHEERLEADERS

The girls chosen to lead the college in cheers for the various teams must possess bubbling personalities, enthusiasm, and school spirit. Those selected for 1949 were: Flo Hoover, Senior; Jac Adele Blackwell, Junior; Caroline Ogilvie, Sophomore; Ernestine Baldwin, Freshman; and Fran Nas-sif, College cheerleader.



The Monogram Club is an honorary organization. Girls are chosen for membership because of outstanding achievements in athletics, fine qualities of sportsmanship, good health, and all-round development. They must have a high scholastic record and twenty points for leadership in student activities. Those representing the monogram club were: Dorothy Fields, Nancy Ledbetter, Flora Ed Riggan, Doris Ann Bain, Jasmine Rohanna, Nancy Bishop. *Not pictured:* Helen Knight, and Audrey Fulcher Searboro.



MONOGRAM CLUB

VOLLEYBALL



SENIORS

Seated

Carleen Moulder
Jo Pearce
Dewie Buie
Lois Kinlaw
Margaret Smith
Ann Yelvington

Standing

Jac Adele Blackwell
Mary Alice Parks
Nancy McCubbins
Betty McLean
Mary Gregory
Judith Powers
Doloris McCain
Dot Williams

Betty Price
Dot Fields
Flora Ed Riggan
Nancy Bishop
Doris Ann Bain
Dovie Davis

JUNIORS



1949

Seated:

Ann Highsmith
Elsie Smith
Peggy Hardee
Burt Kelly
Maysie Miller

Standing

Pete Hubble
Carolyn Reynolds
Cynthia Stevens
Phyllis Dyer
Faye Sutliff



SOPHOMORES

Seated

Betty Ann Squire
Priscilla Murphy
Geneva Townsend
Barbara Poff
Jean Kilpatrick
Audrey Rumble
Emily Richie
Ann Shaw
Jean Fuller
Betty Ann Brunson
Jane Moore
Harriett Watson
Frances Hall
Joyce Adams

Standing

Emily Shaw
Mary Ann Martin
Lois Brown
Enid Grady
Sophia Zea
Jo Ann Williams
Donnice De Vane
Janice Murdoek
Emily Grier
Ann Pearce
Jean Farrior
Rachel McCaskill
Jenie Partin

FRESHMEN



SENIOR BASKETBALL

Betty Price
Dorothy Fields
Flora Ed Riggan
Nancy Bishop
Doris Ann Bain, *Captain*
Dovie Davis
Nancy Ledbetter
Ada Lee Randall
Emilyn Mauldin
Helen Knight
Rebekah Hunsucker



BASKETBALL

Anne Yelvington
Dorothy Williams
Judith Powers
Mary Alice Parks, *Captain*
Betty McLean
Lee Elliot



JUNIOR BASKETBALL

SOPHOMORE BASKETBALL



Jean McDonald, *Captain*
 Peggie Hardie
 Margie Lovett
 Margaret Elliott
 Lois Jackson
 Genewood Dorsey
 Bert Kelly
 Nancy Walker
 Sue Hunt
 Pete Hubble
 Elsie Smith
 Anne Highsmith

- 1949



Betsy Workman
 Barbara Poff
 Mary Anne Martin
 Janie Thompson
 Enid Grady
 Sophia Zea
 Rebecea Thomas
 Janice Murdoch
 Pat Nester
 Emily Nan Grier
 Harriett Watson
 Anne Shaw
 Frances Hall
 Betty Ann Squire
 Pricilla Murphy
 Geneva Townsend
 Donnice De Vane
 Jean Kilpatric
 Audrey Rumble
 Emily Richie
 Jeannie Partin
 Jean Fuller
 Jane Moore
 Annie Lee Hopkins
 Joyee Adams
 Lucille Harrington
 Violet Thomas

FRESHMAN BASKETBALL



Tennis offers a year around sport at Flora Macdonald. Many students participate in and enjoy this sport.

TENNIS

Much enthusiasm is shown for bowling on our newly equipped alleys. This popular sport is a favorite pastime for many students.



BOWLING

Judith Powers

Lillian Turner

Mary Gregory



ARCHERY

ATHLETIC CAPTAINS



DOROTHY FIELDS
Senior Volley Ball

DEWIE BUIE
Junior Volley Ball

PEGGY HARDIE
Sophomore Volley Ball

ANN SHAW
Freshman Volley Ball

DORIS ANN BAIN
Senior Basketball

MARY ALICE PARKS
Junior Basketball

JEAN McDONALD
Sophomore Basketball

JEANIE PARTIN
Freshman Basketball

FEATURES

It is such extra-curricular features as these that make life at Flora
Macdonald complete.

1949



MAY QUEEN

AUDREY FULCHER SCARBORO





REBECCA BACON

MAID OF
HONOR

MAY DAY

One of the highlights of the year is May Day. The beauty of the queen and her bevy of attendants, combined with the beauty of the campus and the presentation of folk dancers and songs, make the ceremony a statewide attraction.

MAY DAY NINETEEN

May Queen

AUDREY FULCHER SCARBORO

Maid of Honor

REBECCA BACON

Senior Attendants

ADA LEE RANDALL

MARION ALLRED

CATHERINE BULLOCK

Junior Attendants

JAC ADELE BLACKWELL

MARY GREGORY

LOIS KINLAW

Sophomore Attendants

ANN MAY

PAT McRAE

Freshman Attendants

ANN PEARCE

HARRIET WATSON



HUNDRED FORTY NINE

The May Day celebration at Flora Macdonald is its most colorful and varied single event. Many people come to join us in our celebration of the coming of Spring. Every girl takes part in May Day; thus, it is a joyous and thrilling occasion. Whether presented on the stately front lawn, or in the rustic outdoor theatre, the pageant is a beautiful spectacle. The celebration is presented before the splendor of the court, under the excellent direction of Miss Ethel Bateman.





CHIEF MARSHAL

BETTY McLEAN

MARSHALS 1949

To represent the students of Flora Macdonald in the numerous social events during the year, four marshals are chosen from each of the two literary societies and a chief marshal representing each society in alternate years. These girls serve as receptionists and hostesses, planning the entertainment and decoration for all social functions. They are elected from the Junior Class and are chosen carefully to present a pleasing example of the Flora Macdonald girl to our guests.

Epsilon Chi Literary Society Marshals: Sara Melvin, Mary Gregory, Jo Pearce, Jo Snell.
Zetesian Literary Society Marshals: Dewie Buie, Lois Kinlaw, Anna Jordan, Judith Powers.



GUEST ARTISTS



Ophelia and Polonius in a scene
from "Hamlet"



EUGENE CONLEY, *tenor*



HENRIETTAT SCHUMANN, *pianist*

The guest artists of the concert-lecture series are some of the greatest attractions of the school year. This year we enjoyed tenor Eugene Conley, pianist Henrietta Schumann, organist Marcel Dupre, Dr. Luther Gable, lecturer on the atomic theory, Ellis Arnall, former governor of Georgia, and the Abingdon Barter Theater's interpretation of "Hamlet." These concerts and lectures are an important part of our school activities.

MARCEL DUPRE, *organist*





BEAUTY . . . Ann May, inner and outer loveliness

SUPERLATIVES

CAPABILITY . . . NANCY BISHOP, leadership and ability to hold responsible positions.

VERSATILITY . . . MARGARET WATT, unusual ability to do many things well.





PERSONALITY . . . PHYLLIS DYER, great personal charm and warmth.

SPORTSMANSHIP . . . CAROLYN WALKER, a true spirit of honor and
fairness in daily life.

FRIENDLINESS . . . NINA BERRYHILL, a spirit that reaches out to others in sincerity.

WHITE HEATHER FEATURE GIRL . . . MARION HALL, selected by the Staff as the best all around student.





Crows in a row



Best hand forward

Happy days at the Practice House



Run girls, council members

Dr. Hansen and botany interns



In the good ol' summer time

Two inseparables

Posing one Sunday afternoon



No, this can't be true

Thirty trips a day

I hope there's not a fire

Flipping, who won Phyllis??



Roommates

It's all over now!!

It's not that bad, is it???

Yeah, co-ed College . . .



Gosh, don't we miss them??







Dome Service with Flossie
Mac angels



We're forever blowing bub-
bles!!

"Mother McCod" and
some of her girls

'Twas the night before
Christmas . . . holidays



Main Street of down town,
Red Springs



No escalator in the garden,
sorry

Look a'there ain't she Purty?

They don't look green, do
they???

"Wink'em "Blink'em . . .
Where's Nod

Having fun, eh Sandy?



High I. Q.

Up and coming leaders of
"Flossie Mac"

Spring Holidays, Myrtle
Beach

There's Santa, but where's
the snow???

Vero and Emilyn!!

Christmas Banquet



"HERE ENDS YOUR WHITE HEATHER"

RED SPRINGS SUPPLY COMPANY, INC.
GENERAL MERCHANTS

The Friendly Store

Fertilizers and Cotton
Livestock Hardware
Grocery Market
Building Material

DIAL 3701 and 3271

RED SPRINGS, NORTH CAROLINA

**NEIGHBORS
SHOE STORE**

*Red Springs' Exclusive
Shoe Store*

Phone 3981

RED SPRINGS, NORTH CAROLINA

GOLD MEDAL FERTILIZERS
LIBERTY PREMIUM FERTILIZERS
MODERN GIN SYSTEM
MODERN SEED CLEANING EQUIPMENT



**LIBERTY
MANUFACTURING
COMPANY**

RED SPRINGS, NORTH CAROLINA

TOWNSEND'S PHARMACY

The Rexall Store

WHERE THE COLLEGE GIRLS MEET

DEPENDABLE DRUGGISTS

RED SPRINGS, NORTH CAROLINA

*You Will Be Pleased
With Our Quality
and Service*



**RED SPRINGS
DRUG STORE**

*Headquarters for
Flora Macdonald Girls*



RED SPRINGS, NORTH CAROLINA

General Auto Sales, Inc.

OLDSMOBILE and G.M.C. TRUCKS
Full Line of Parts : Expert Mechanics

Phone 2381

RED SPRINGS, NORTH CAROLINA

LENOIR'S JEWEL SHOP

Quality Jewelers

RED SPRINGS, NORTH CAROLINA

M. & S. MOTOR CO.

CHRYSLER and PLYMOUTH CARS
Sales and Service

RED SPRINGS, NORTH CAROLINA
Phone 248-1

Compliments of

**RED SPRINGS
CAFE**

RED SPRINGS, N. C.

Compliments of

**McKEITHAN
HARDWARE**

RED SPRINGS, NORTH CAROLINA

Compliments of

MAXTON SUPPLY CO.

MAXTON, N. C.

RED SPRINGS FLORIST

"Flowers are love's sweetest language"

MRS. R. B. McCracken PHONE 3691
RED SPRINGS, NORTH CAROLINA

Compliments of

Kennedy's Jewelry and Gift Shop

FINE WATCH REPAIRING

RED SPRINGS, NORTH CAROLINA

**SARAMAC
FURNITURE STORE**

Phone 4381

RED SPRINGS, N. C.

D. M. McMILLAN

"Ford Products Since 1912"

RED SPRINGS, NORTH CAROLINA

Compliments of

**BAXLEY-JOHNSON
CHEVROLET CO., INC.**

RED SPRINGS, N. C.

Compliments of

MACKS' 5-10-25c STORES

RED SPRINGS, NORTH CAROLINA

Pontiac
Studebaker
International Harvester

Sales and Service

**SINGLETON AND
McMILLAN, INC.**

Phone 3971

RED SPRINGS, NORTH CAROLINA

Bud's  Service

GLENN PARLER - WATSON McNEILL

GAS - OIL - WASHING - GREASING

Phone 3921

RED SPRINGS, NORTH CAROLINA

AUTO SERVICE CENTER

AND

RED SPRINGS FUEL OIL CO.

AUTO PARTS AND REPAIR - WELDING

Gasoline - Fuel Oils - Tires

Phone 3061

RED SPRINGS, NORTH CAROLINA

TRAVEL BY

TRAILWAYS

CHARTER BUSES

To

ANY POINT IN THE
UNITED STATES
CANADA and MEXICO

QUEEN CITY TRAILWAYS

CHARLOTTE, NORTH CAROLINA

Emblem of Economy . . .



The CS Rooster

*He's your personal guide to Colonial
Stores and grand things inside*



COLONIAL STORES

INCORPORATED

Compliments of

HOOD MOTORS, INC.

Your DODGE - PLYMOUTH Dealer

Est. 1933

LUMBERTON, NORTH CAROLINA

Phone 21

A. WEINSTEIN & SONS

LUMBERTON, NORTH CAROLINA

Compliments of

HONEY DEW SODA SHOP

Phone 1017

LUMBERTON, NORTH CAROLINA

LUMBERTON OPTICAL CO.

415 North Elm Street

LUMBERTON, NORTH CAROLINA

High Quality Prescription Service

Compliments of

SHAW FURNITURE COMPANY

West Second Street

LUMBERTON, NORTH CAROLINA

LUMBERTON FLORAL CO.

Flowers for All Occasions

Phone 320

LUMBERTON, NORTH CAROLINA

**MODERN FURNITURE
COMPANY**

LUMBERTON, NORTH CAROLINA

*"Where You Enjoy
Shopping"*

Compliments of

LUMBERTON BAKERY

LUMBERTON, NORTH CAROLINA

"SINCE 1912"



THE

Capitol

OF

FAYETTEVILLE

Compliments of

POLLY ANN DRESS SHOP

LUMBERTON, NORTH CAROLINA

FAYETTEVILLE, NORTH CAROLINA

PRESBYTERIAN JUNIOR COLLEGE

GREETINGS

THE WHITE HEATHER

In recognition of the cordial relations between the two colleges

WE OFFER

Standard Two-Year College Courses leading to the A.A. and A.S. degrees. Preparatory Courses in the tenth, eleventh, and twelfth grades. Business Administration. One- and Two-Year Commercial Courses. Flying. Two Terms of Summer School.

Small classes, individual attention, athletics, student activities, Christian emphasis, thorough instruction, excellent faculty. Apartments for married students.

Box BH - Maxton, North Carolina

Compliments of

HALLUM FURNITURE CO.

ROCKINGHAM, NORTH CAROLINA

R. W. GOODMAN COMPANY

FURNITURE and CLOTHING

=====

Phone 81

South Lee Street

=====

ROCKINGHAM, NORTH CAROLINA

Compliments of

GRAHAM'S

Department Store, Inc.

=====

Phones

308-1

257-1

=====

RED SPRINGS, NORTH CAROLINA

**CROWDER BROTHER'S
SINCLAIR SERVICE STATION**

Phone 9191

RED SPRINGS, N. C.

**McDONALD'S CLEANERS
QUALITY CLEANING**

Phone 4111

RED SPRINGS, N. C.

Compliments of

WOODS 5-10-25c STORES, INC.

RED SPRINGS, NORTH CAROLINA

BURROUGHS CUT-RATE STORE

Phone 4271

RED SPRINGS, NORTH CAROLINA

SCHOOL SUPPLIES

STATIONERY : SANDWICHES

CANDY : TOILET ARTICLES : DRINKS

EDEN'S FLOWER SHOP

RED SPRINGS, N. C.

Dial 2241

"We Wire Flowers Anywhere"

Compliments of

COLONIAL FROZEN FOODS

RED SPRINGS, NORTH CAROLINA

ALLEN BUILDERS SUPPLIES

Inc.

LUMBER : BUILDING MATERIAL
PLUMBING and HEATING

Phone 2396

RED SPRINGS, N. C.

**McNEILL'S
CLEANERS and TAILORS**

RED SPRINGS, NORTH CAROLINA

Phone 2941

HOME FURNITURE COMPANY

*A Complete Line of
Home Furnishings*

RED SPRINGS, NORTH CAROLINA

Compliments of

WESTERN AUTO STORE

RED SPRINGS, N. C.

Compliments of

ROSE'S 5-10-25c STORE

ROCKINGHAM, NORTH CAROLINA

"Always First with the Finest"

BEST WISHES FROM

ROBBINS CLOTH MILLS, INC.

Red Springs Division

MAXTON ROAD

PHONES 228-1 and 448-1

Compliments of

JOHN F. McNAIR, INC.

**A MODERN
DEPARTMENT STORE**

LAURINBURG, NORTH CAROLINA

**LAURINBURG
MILLING COMPANY**

Manufacturers of
**HIGH GRADE FLOUR AND
MIXED FEEDS**

LAURINBURG, NORTH CAROLINA

Compliments of

FLEISHMANS

317 North Elm Street

•
LUMBERTON, NORTH CAROLINA

FREDDIE'S SUPPER CLUB

PIT COOKED BAR-BE-CUE
STEAKS : FRIED CHICKEN

Curb Service

Dine and Dance

OPEN 4 P.M. to 1 A.M.

Closed Mondays

DIAL 211-0

LUMBER BRIDGE, N. C.

Compliments of

McLAUHLIN CO., INC.

RAEFORD, NORTH CAROLINA

W. A. McCORMICK & SONS

Complete Self-Service Food Store

DISTRIBUTORS OF

BALLARD'S INSURANCE FEEDS

SAINT PAULS, NORTH CAROLINA

Compliments of

GRANTHAM DRUG COMPANY

SAINT PAULS, NORTH CAROLINA

Compliments of

Z. V. PATE, INC.

LAUREL HILL, NORTH CAROLINA

HOTEL RAEFORD

MR. AND MRS. O. W. HOLTZCLAW, *Lessee Owners*

U. S. HIGHWAY 15-A
AND N. C. 211

RAEFORD, N. C.

THE ROBESONIAN

Robeson County's Daily Newspaper

Established 1870



PUBLISHED FIVE DAYS EACH WEEK

AT

LUMBERTON, NORTH CAROLINA

**Johnson Cotton Company
of Raeford, Inc.**

Everything for the Home and Farm

Compliments of

COLLINS DEPARTMENT STORE

RAEFORD, NORTH CAROLINA

When better Automobiles are built

BUICK

will build them

COMMUNITY MOTOR CO.

Phone 1099

LUMBERTON, NORTH CAROLINA

Compliments of
AUSTIN DRUG COMPANY
The Rexall Store

MAXTON, NORTH CAROLINA

Compliments of
LIBERTY CAFE

MAXTON, NORTH CAROLINA

**FIRESTONE HOME &
AUTO SUPPLIES**

A. C. GREENE, *Owner*

Phone 206-W

MAXTON, NORTH CAROLINA

**SERVICE TRADING
COMPANY, INC.**

MAXTON, NORTH CAROLINA

COMPLETE LINE
HOME FURNISHINGS



WESTINGHOUSE APPLIANCES
REFRIGERATORS : RANGES

VACUUM CLEANERS

EVANS OIL HEATERS

RCA - PHILCO - WESTINGHOUSE
RADIOS



CASH or TERMS

PHONE 265

Compliments of
**McGIRT'S PLUMBING AND
ELECTRICAL SERVICE**
SUPPLIERS and CONTRACTORS

MAXTON, NORTH CAROLINA

If You Live in Southeastern North Carolina,

It's the

FAYETTEVILLE OBSERVER

"North Carolina's Oldest Newspaper"

For Complete

NEWS COVERAGE

MAXTON CAFE

*Specializing Western Branded Steaks - Chops
and Best of Seafood in Season*

MAXTON, NORTH CAROLINA

Compliments of

CATO'S DRESS SHOP

More Style for Your Money

LUMBERTON, NORTH CAROLINA

FREEMAN PRINTING COMPANY

"Over Fifty Years of Quality Printing"

D. T. LAMBETH, *Manager*

LUMBERTON, NORTH CAROLINA

HOTEL

PRINCE CHARLES

AIR-CONDITIONED DINING ROOM

FAYETTEVILLE, NORTH CAROLINA

Compliments of

QUINN-MILLER COMPANY

FAYETTEVILLE, NORTH CAROLINA

Compliments of

HENEBRY'S of Fayetteville, Inc.

Registered Jewelers, American Gem Society

110 Hay Street

FAYETTEVILLE, NORTH CAROLINA

Compliments of

NEW YORK RESTAURANT

FAYETTEVILLE, NORTH CAROLINA

Compliments of

CENTRAL RESTAURANT

FAYETTEVILLE, NORTH CAROLINA

Compliments of

PEPSI-COLA

BOTTLING

CO.



FAYETTEVILLE, NORTH CAROLINA

Compliments of

EFIRD'S

DEPARTMENT STORE

FAYETTEVILLE, NORTH CAROLINA

Compliments of

FIELDS COMPANY

FAYETTEVILLE, NORTH CAROLINA

BELK-HENSDALE COMPANY
DEPARTMENT STORES

LUMBERTON : FAYETTEVILLE : RAEFORD
RED SPRINGS

The 275 Belk Stores Are the South's
Largest Distributors of
Reliable Merchandise

“SHOP AND SAVE AT BELKS”

**USE
MERITA
BREAD and CAKES**

**AMERICAN
BAKERIES COMPANIES**

FAYETTEVILLE, NORTH CAROLINA

COLLEGE GIRLS!

Shop at
**SEARS ROEBUCK
AND CO.**

FAYETTEVILLE, NORTH CAROLINA



Phone 6171

420 Hay Street

Compliments of

BENDER'S DRUG STORE

A Real Drug Store

201 Hay Street

FAYETTEVILLE, NORTH CAROLINA

CITY OPTICAL COMPANY

Wilmington : Fayetteville : Greensboro

304 Hay Street

Phone 7179

FAYETTEVILLE, NORTH CAROLINA

BAUCOM APPLIANCE COMPANY

RAEFORD, NORTH CAROLINA

FRIGIDAIRE PRODUCTS

MAYTAG WASHERS EASY WASHERS

ELECTRICAL SUPPLIES

SMALL APPLIANCES, ETC.

QUALITY IS OF FIRST IMPORTANCE

Compliments of

Fayetteville Office Supply Co.

PRINTERS : STATIONERS

OFFICE OUTFITTERS

513 HAY STREET : DIAL 2768

FAYETTEVILLE, NORTH CAROLINA

Compliments of

HUNTER BROTHERS, Inc.

467-469 Hay Street

FAYETTEVILLE, NORTH CAROLINA

Compliments of

FAYETTEVILLE WHOLESALE COMPANY

Featuring

FRESH FRUITS and VEGETABLES

PHONE 2131

FAYETTEVILLE, NORTH CAROLINA

M. M. SMITH FURNITURE COMPANY



FURNITURE
FOR EVERY HOME

Wholesale and Retail



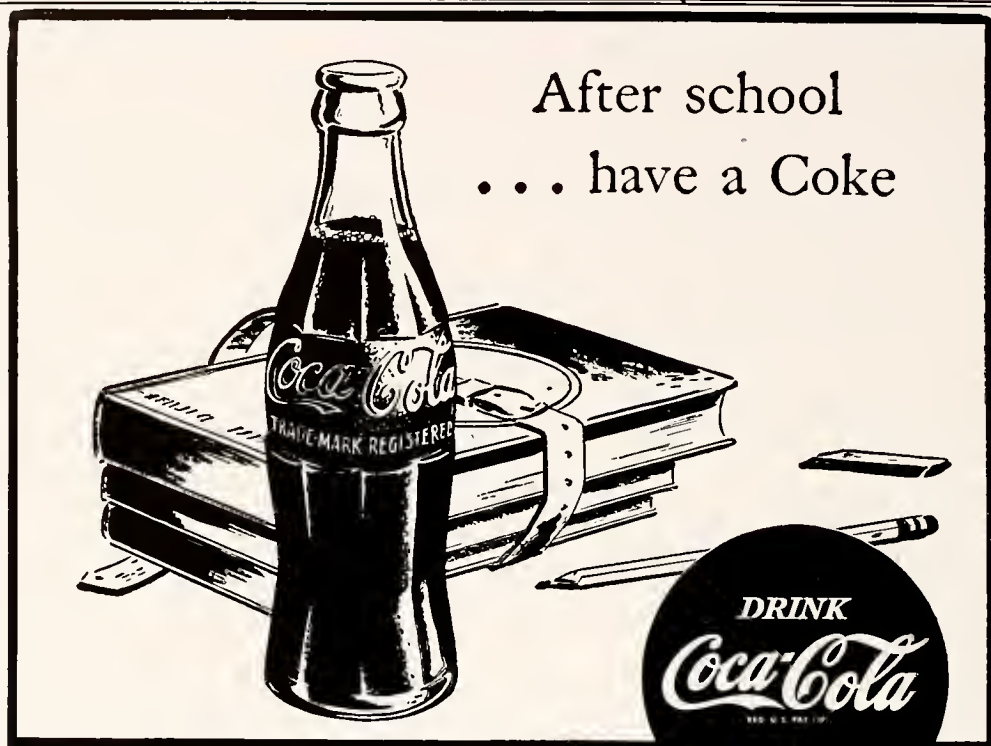
325 Hay Street
FAYETTEVILLE, NORTH CAROLINA

M. M. SMITH STORAGE WAREHOUSE

BONDED
FIREPROOF WAREHOUSES
Agt. ALLIED VAN LINES, Inc.

LOCAL and LONG DISTANCE
HAULING

Phone 2194
FAYETTEVILLE, NORTH CAROLINA



BOTTLED UNDER AUTHORITY OF THE COCA-COLA COMPANY BY
 FAYETTEVILLE COCA-COLA BOTTLING CO., Inc.

Compliments of

BUTTERCUP ICE CREAM

HAMLET, NORTH CAROLINA

B. C. MOORE and SONS, Inc.

Phone 243-6

"Buy from Moore and Save More"

Compliments of

A FRIEND

RED SPRINGS, NORTH CAROLINA

FLORA MACDONALD COLLEGE

RED SPRINGS, NORTH CAROLINA

53rd YEAR

UNDER THE AUSPICES OF THE PRESBYTERIAN CHURCH

A small, high-grade Liberal Arts College with Conservatory of Music, granting B.A., B.S. in Home Economics, and B.Mus. Degrees.

One- and two-year Business Courses.

Good Faculty, small classes, assuring personal attention to individual students.

Adequate, comfortable buildings —

Attractive campus, lovely gardens —

Healthful surroundings —

Competent Dietitian, good food —

Emphasis on health and physical education —

Sports: Hockey, Basketball, Volley Ball, etc. —

Parties, dances, teas, receptions —

A variety of extra-curricular activities, to engage the talents of all — Christian Association, Glee Club of eighty voices, Dramatics Club, Literary Magazine, International Relations Club, Epsilon Chi and Zetesian Societies open to all students, Concert and Lecture Course, etc.

Outstanding for friendly, Christian atmosphere

Moderate Charges

HALBERT M. JONES, *Acting President*



Are

“Yours for a Lovely Home”

BEDSPREADS

BATH SETS

DRAPES

DISH CLOTHS

SCATTER RUGS

DISH TOWELS

PRODUCED IN NORTH CAROLINA

Sold by fine stores everywhere

MORGAN-JONES, INC.

58 Worth Street

NEW YORK, N. Y.

REDMON'S STUDIOS

ELKIN, NORTH CAROLINA

•

Official Photographers

for

THE WHITE HEATHER

•

All Pictures Personally Made By

T. A. REDMON



CHARLOTTE ENGRAVING CO.

School Annual Engravers

Charlotte, North Carolina



Will we...

... keep our place in the world?

UNITED STATES OF AMERICA—first among nations in national income! First in production of wheat, corn, cotton, petroleum, coal, and iron! First in communications, in motor vehicles per capita—first in many essentials to good living and prosperity.

And directly related to that position of leadership is our standard of education—for it has been shown that a country's wealth and welfare rise along with its educational standards. And countries rich in natural resources *can be poor and backward* without the benefits of education.

Yes, the United States is a leader in the field of education too—but *for how long?* Appalling conditions prevail today in many of our schools. Many of our most brilliant teachers are working against

odds—crowded classrooms, shortages of equipment and textbooks, long hours. . . . *Thousands* have left the profession for other work.

You, and every United States citizen, will suffer from this situation, because it cannot help affecting our national prosperity before long.

WHAT TO DO?

Today—make it your business to take these two steps: 1. Check up on educational conditions in your local schools; 2. Back up and work with organizations seeking to improve teachers' working and living conditions. For only by *keeping* our educational standards high can we hold our place in the world—and assure a prosperous future for our children.

Printed as a public service by

EDWARDS & BROUGHTON COMPANY

Printers : Stationers : Lithographers : Engravers

Raleigh, North Carolina



AUTOGRAPHS

AUTOGRAPHS

AUTOGRAPHS

