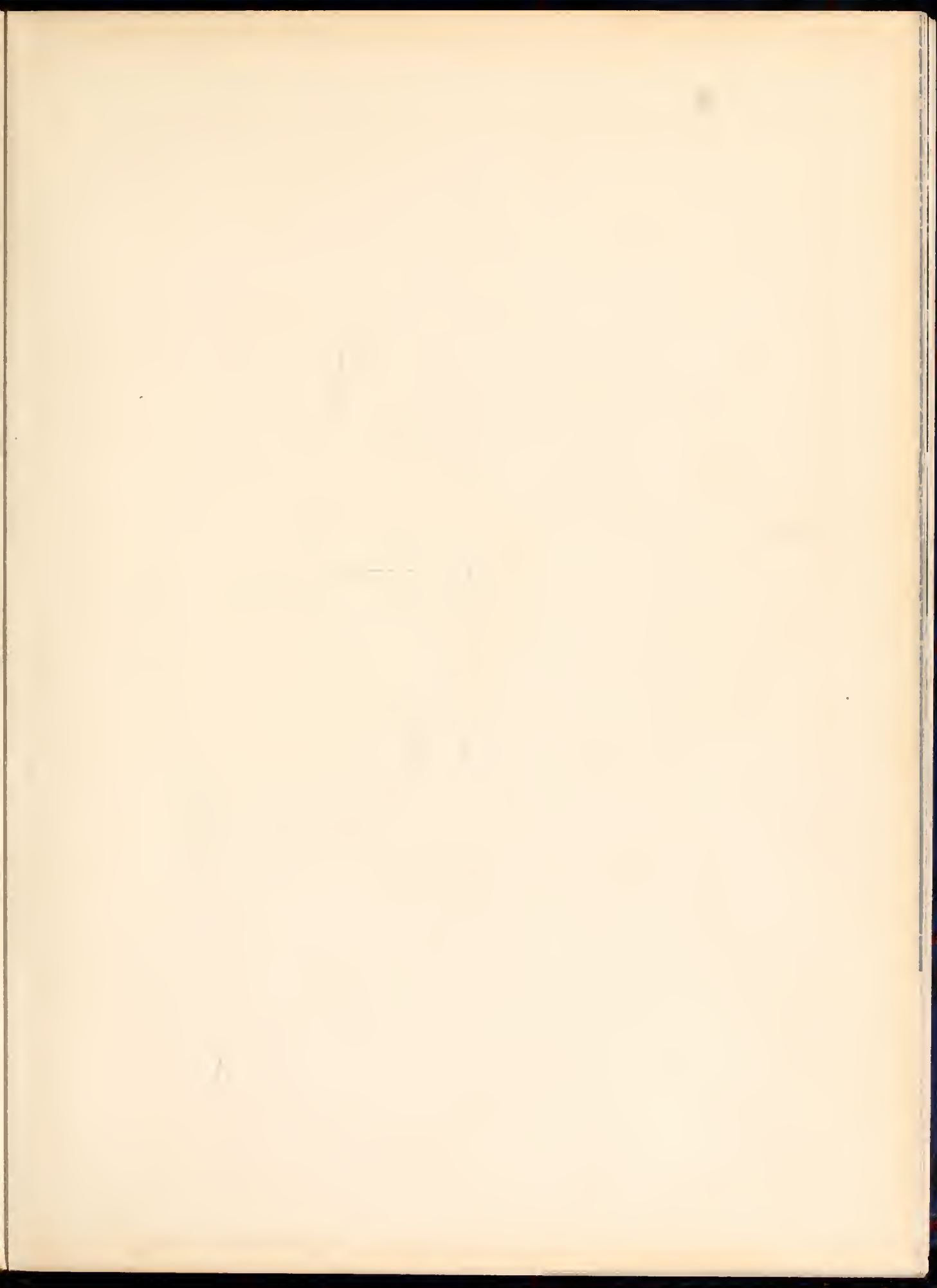


WHITE

H  
A  
T  
H  
E  
R

1951









Through these Gates . . .



HANNAH PRICE, Editor-in-Chief  
KATRINA HUBBLE, Business Manager

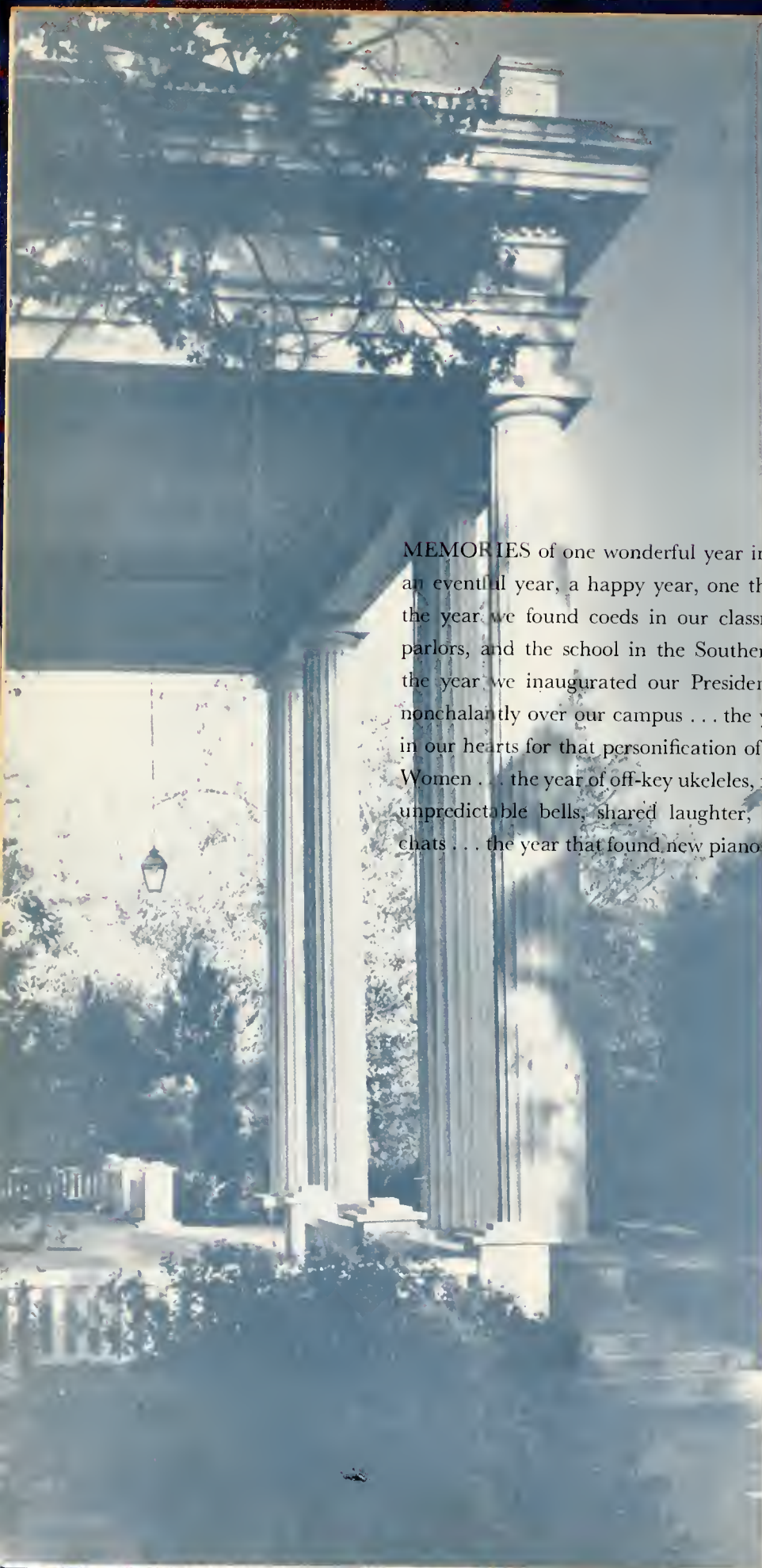
Published annually by the  
students of Flora Macdonald College  
Red Springs, North Carolina

THE 1951

*White*



*Heather* CAPTURES...

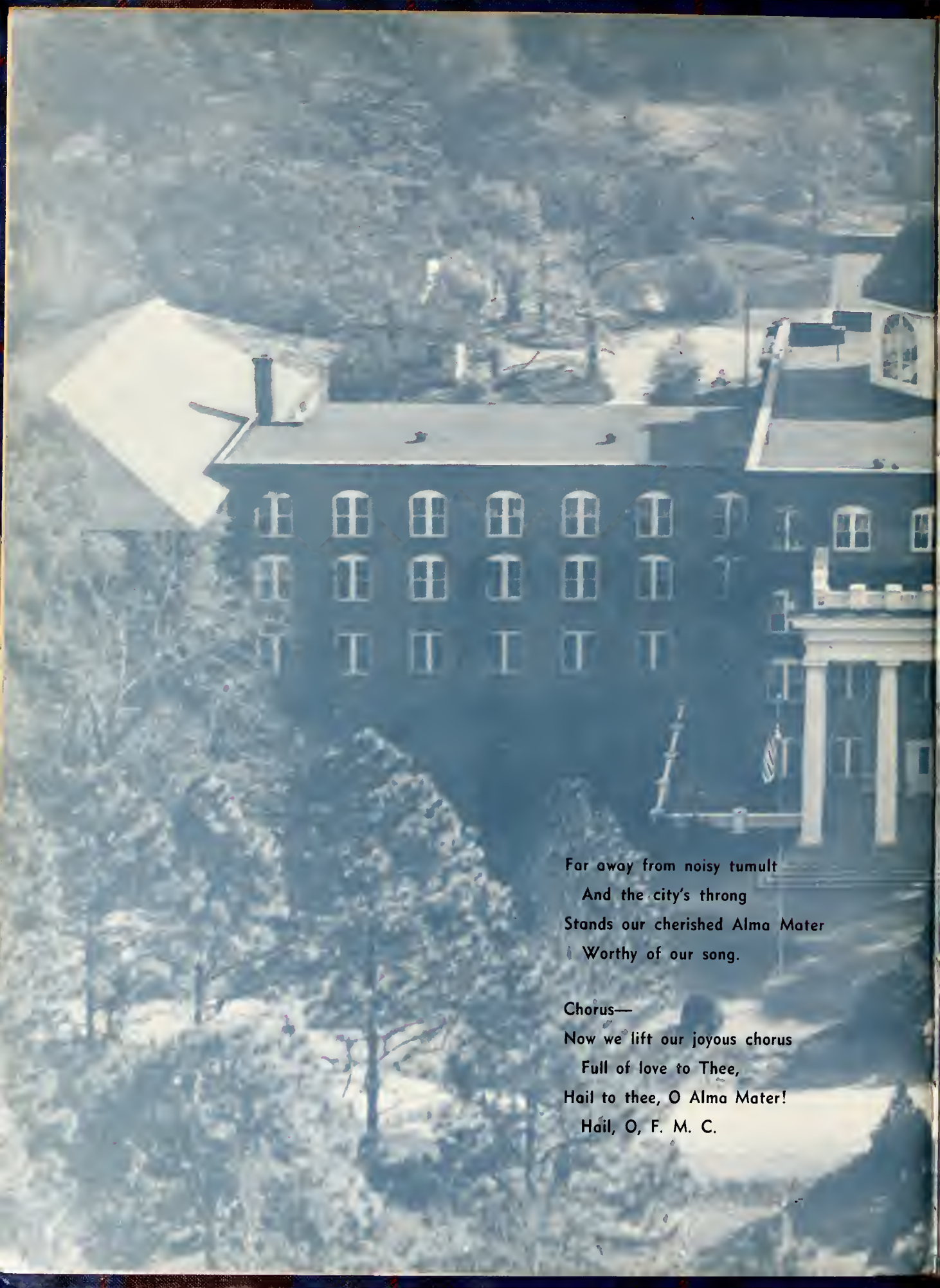


MEMORIES of one wonderful year in the history of our college. . . an eventful year, a happy year, one that will never be forgotten . . . the year we found coeds in our classrooms, the "new look" in our parlors, and the school in the Southern Association of Colleges . . . the year we inaugurated our President, with big wheels wandering nonchalantly over our campus . . . the year we reserved a special place in our hearts for that personification of motherhood, our new Dean of Women . . . the year of off-key ukeleles, five A.M. student body meetings, unpredictable bells, shared laughter, breakfast clothes, and fireside chats . . . the year that found new pianos in the conserve, a Steinway on



the stage, and youthful faces among the faculty . . . a coke machine in the "Tea Hole," bright colored upholstering in the Rotunda, and new china in the dining hall . . . strange voices blaring out of the P. A. System, heavy competition between the societies, "far" drills at any hour of the day, mid-night searches for mascots during the tournaments, and an abundance of men on Saturdays and Sundays . . . the year we discovered that F. M. C. was not "just a country club" . . . Yes, this we have attempted; to make tangible those so intangible things we hold so dear—those unexplainable qualities which, blended together, make this truly our beloved Alma Mater. . . .



An aerial photograph of a large, multi-story brick building, likely a school or university building. The building has a prominent portico with several columns on the right side. The roof is dark, and there are many windows. The building is surrounded by trees, and the overall scene is captured from a high angle, looking down at the building and its surroundings.

Far away from noisy tumult  
And the city's throng  
Stands our cherished Alma Mater  
Worthy of our song.

Chorus—  
Now we lift our joyous chorus  
Full of love to Thee,  
Hail to thee, O Alma Mater!  
Hail, O, F. M. C.



On her wide and spacious campus  
Springs of Crystal rise,  
Which for joy and health and beauty  
She shall ever prize.

Stately pine trees waving o'er her,  
Proud her guards to be,  
Whisper faith and hope and courage,  
Faithful listens she.

*Dedicated to...*





## Mr. Philip Leslie Bullock

Because he is a patient and understanding councilor, a strong but humble leader, a friend to all; and because he exemplifies for us in his daily living those characteristics of one dedicated to the service of God and others, we sincerely dedicate our 1951 WHITE HEATHER to Mr. Philip Leslie Bullock.

# ADMINISTRATION AND FACULTY

---

TO THE CLASS OF 1951:

Greetings!

The Class of 1951 is a grand class. Flora Macdonald is proud of every one of you. Each of you has made a worthy contribution to the life of the campus, and as a group, you have added richly to the spirit of F. M. C. We are grateful for your four years with us. You have made a fine record and we shall treasure in our hearts through the coming years the blessed memories of our fellowship with you.

We know from the splendid manner in which you have fulfilled your obligations in the classroom and on the campus that each individual member of the class will reflect credit upon the institution which so proudly places a diploma in your hand.

May the blessings of God attend your way in the days of challenge which lie ahead and may your lives become benedictions of grace upon all who shall pass your way.

Affectionately yours,





MARSHALL SCOTT WOODSON, B.A., B.D., M.A., Th.D., *President.*

The students and faculty of Flora Macdonald feel extremely fortunate in having as their president Dr. Marshall Scott Woodson. Though he has been with us for only a year, we have had time to observe and feel the effects of his inspired guidance and leadership. Dr. Woodson has proved himself an able leader, sincerely dedicated to the work of preparing young women for a happy and successful future through Christian Education.



CHARLES G. VARDELL, B.A., B.D.,  
D.D.

*President Emeritus*

HOLLAND H. MCSWAIN, B.A.

*Business Manager*

PRICE H. GWYNN, JR., B.A., M.A.,  
B.D., Ph.D.

*Dean of Faculty*

MISS HAZEL MORRISON, B.A.

*Registrar and Dean of Admissions*

ROBERT SMITH, M.C., M.I.S.M., L.R.-  
A.M.

*Dean of Conservatory*

MRS. P. P. MCCAIN, B.A., M.A.

*Dean of Women*

Vardell  
Gwynn  
Smith

McSwain  
Morrison  
McCain

We are grateful for an administration and faculty that takes the student to heart and leaves her with a richer personality and a fuller understanding of Christian principals.



# FACULTY

CAROL ROBERTSON, B.A., M.A., *Professor of History*

ELAINE PENNINGER, B.A., M.A., *Assistant Professor of English*

GENEVIEVE M. NEIGHBORS, B.A., M.A., *Assistant Professor of Education and Social Science.*

LOUISA A. M. VAN DYKE, B.A., M.A., Ed.D., *Professor of Mathematics and Physics.*

MARY M. CONOLY, B.A., B.S., M.A., *Professor of Education.*

HARRIET N. MORRISON, B.A., M.A., *Professor of Latin.*

ELEANOR B. SCOTT, B.A., M.A., Ph.D., *Professor of English.*

ANNIE M. CHERRY, B.A., M.A., *Assistant Professor of Education.*



*Left to right:* Robertson, Penninger, Neighbors, Van Dyke, Conoly, Morrison, Scott, Cherry.

# FACULTY

ETHEL BATEMAN, B.A., M.A., *Director of Physical Education and Assistant to Dean of Women.*

ELIZABETH C. MCPHAUL, B.A., *Assistant Professor of Bible.*

EDNA E. ESTES, B.S., M.S., *Assistant Professor of Biology.*

PHILIP LESLIE BULLOCK, B.A., B.D., TH.M.,  
*Professor of Bible.*

JANE C. GLENN, B.S., G.Ph., M.S., *Associate Professor of Chemistry.*

T. E. WRIGHT, B.A., M.A., *Professor of French and Spanish.*

ETHEL B. HANSEN, B.A., M.A., Sc.D., *Professor of Biology.*

MARIE ALMA TURNER, B.A., M.A., *Assistant Professor of French and Spanish.*

LETA W. MCINTYRE, B.S., *Associate Professor of Business Subjects.*



*Left to right, seated: Bateman, McPhaul, Estes. Standing: Wright, McIntyre, Hansen, Turner, Bullock.*



Left to right, seated: Comer, Currin. Standing: Chapman, J., Chapman, L., Rowland.

FRANCES E. COMER, B.S., M.S., *Professor of Home Economics.*

MARY CURRIN, B.S., M.S., *Assistant Professor of Home Economics.*

JAMES C. CHAPMAN, B.M., M.M., *Assistant Professor of Organ and Theory.*

LIDA L. CHAPMAN, B.A., B.M., *Assistant Professor of Piano and Organ.*

ETHEL M. ROWLAND, B.S., *Assistant Professor of Voice.*

LILLIAN F. ROBESON, *Assistant Professor of Violin.*

RACHEL T. PROTHEROE, B.M., *Assistant Professor of Music Education.*

NYRA TURBEVILLE, B.A., B.M., *Assistant Professor of Piano.*



Left to right, seated: Elliott, Bullock, Connor, Morrison, Hardee. Standing: Williams, Perry, Dorroh, Wright.

JOAN ELLIOTT, *Secretary, Office of the President.*

NAN H. BULLOCK, B.L., *Editor of the College Bulletin and Publicity Secretary.*

VIRGINIA CONNOR, R.N.

BROWN MORRISON, B.L., *Bursar.*

PEGGY HARDEE, *Assistant to the Librarian.*

FLORA M. PERRY, B.A., B.S.L.S., *Librarian.*

HELEN T. DORROH, *Supervisor of Dormitories.*

MYRTLE K. WRIGHT, *Secretary, Office of the Business Manager and Bursar.*

MARGARET HARRIS, *Field Secretary.*

ANNIE WILLIAMS, *Secretary, Office of Registrar.*





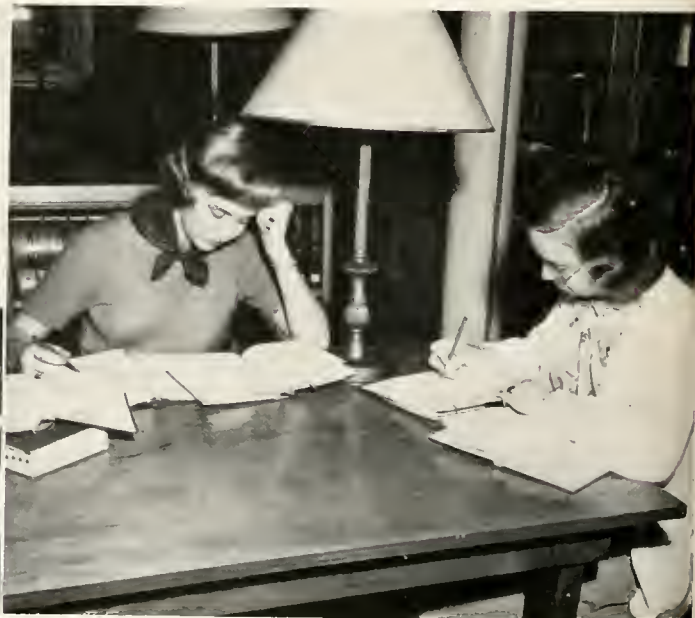


Speed Demons!

## Labs, Lectures, Learning

Now, Ann, with Glee Club that gives you 16 hours. . .

Freshmen, no doubt.



Although each class has its own special privileges, actually there is little distinction between Freshman and Senior in most of our school affairs.

Members of each class must spend 60 minutes (and sometime 65) in class, become acquainted with afternoon labs, and squirm through 30 minutes of chapel a day. Each person, regardless of rank, is an important part of our Student Body.



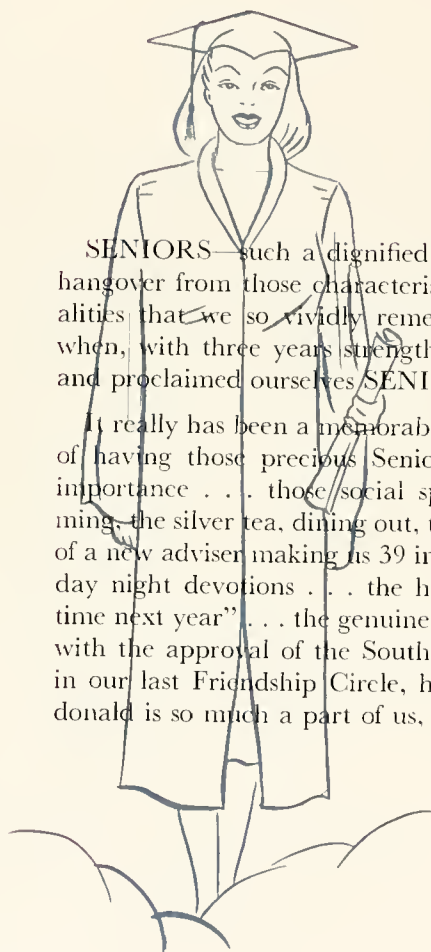
Dean Smith must not be here today.

Changing classes on a Tuesday morning.



Why didn't someone tell us we are having semester exams?





SENIORS—such a dignified title, and yet within each of us is still a slight hangover from those characteristic Freshman, Sophomore, and Junior personalities that we so vividly remember. How well we recall “going up Day” when, with three years strength to make it possible, we climbed to the dome and proclaimed ourselves SENIORS!

It really has been a memorable year, this last one. Remember? . . . the thrill of having those precious Senior privileges that made us feel and show our importance . . . those social specialties: the 11:00 P.M. Christmas-tree-trimming, the silver tea, dining out, teas for the teachers, Senior Day . . . the election of a new adviser making us 39 in number . . . those serious moments at Wednesday night devotions . . . the hours spent wondering where we shall be “this time next year” . . . the genuine pride of being the first to get diplomas stamped with the approval of the Southern Association . . . and finally, joining hands in our last Friendship Circle, having the assurance that, because Flora MacDonald is so much a part of us, we shall ever remain a part of it.

## SENIORS





*Left to right, seated: Ascough, McRae, Byrd, Harris. Standing: Dorsey, Lovett.*

## Senior Officers

PAT HARRIS, *President*

MARJORIE LOVETT, *Treasurer*

RAMONA ASCOUGH, *Vice-President*

GENEWOOD DORSEY, *Tea Room Manager*

PAT McRAE, *Secretary*

YVONNE BYRD, *Assistant Tea Room Manager*

Ascough



Barrow



Byrd



Cantley



Cashwell



Cross



# SENIORS



RAMONA JOAN ASCOUGH, B.A.

*English and French*  
Cumnock, N. C.

*Literary . . . tuna fish . . . excitable . . . "W-e-l-f" . . . correspondent fiend . . . Wake Forest.*

Epsilon Chi Literary Society; Commercial Club 1; L'Alliance Francais 2, 4; Mathematical Honor Society 2, 3, 4; William Bartram Scientific Society 3, 4, Corresponding Secretary 4; Prayer Band Leader 2, 3; *Pine and Thistle* Staff 3; Wake Forest Summer School 2, 3; Secretary Student Council 4; Bowling 2, 3; Vice-President Class 4.

AGNES ROBERTA BARROW, B.A.

*Primary Education*  
La Grange, N. C.

*Gets things done . . . "teacher" . . . one of the Barrow sisters . . . modest . . . one-half of the Education class . . . sweetest of all smiles.*

Epsilon Chi Society, Chaplain 4; Prayer Band Leader 3, 4; Spanish Club 2, 3, 4; William Bartram Scientific Society 2, 3, 4; Bowling 3; Volleyball 3; Table Tennis 2; Atlantic Christian College Summer School 3.

DORIS YVONNE BYRD, A.B.

*Grammar Grade Education*  
Bunnlevel, N. C.

*"MERCY" . . . unique . . . curly curls . . . forever giggling . . . Pat . . . "on fire."*

Epsilon Chi Literary Society; Assistant Tea Room Manager 4; Highland Players 4; Sappho Poetry Club 1, 2; L'Alliance Francais 1, 2; Bowling 2, 3; Campbell College Summer School 2; Atlantic Christian College Summer School 3; Hockey 1; Tennis 2; Chorus 4.

MARY EMMA CANTLEY, B.A.

*Social Science*  
Kingtree, S. C.

*"I'm just petrified !!!" . . . Alpha Psi Omega . . . numerous complaints . . . willing . . . Charleston brogue . . . dramatic impulses.*

Zetesian Literary Society; Highland Players 1, 2, 3, 4, Reporter, Custodian of Scrapbook 2; Spanish Club 3, 4; International Relations Club 4; Chorus 4; Student Volunteers 4; Alpha Psi Omega 4, President 4.

EMILY CASHWELL, B.S.

*Home Economics*  
Hope Mills, N. C.

*Life began in summer school . . . attractive . . . nonchalant . . . long, flowing tresses . . . sparkling . . . flippant.*

Zetesian Literary Society, Second Vice-President 4; Basketball 3, 4; Home Economics Club 3, 4, Finance Chairman; Junior-Senior Dance Committee 3; Vice-President Athletic Association 4; WHITE HEATHER Staff 3; Monogram Club 4; Cheerleader 4; Montreat College 1, 2; Atlantic Christian College Summer School 3.

RUTH GRAHAM CROSS, B.A.

*Primary Education*  
Red Springs, N. C.

*MRS. Degree . . . Chrysler . . . "Cross" . . . P. E. 403 . . . 82nd Airborne . . . assisting.*

Zetesian Literary Society; Day Students Club 4; Queen's College 1, 2, 3.

Left to right: Cantley, Cross, Ascough, Barrow, Bryd, Cashwell



Davenport



Dedmon



Dorsey



Dyer



Grantham



Harris



# SENIORS



MARTHA DAVENPORT, B.M.  
Organ  
Charlotte, N. C.

*"Tea" . . . photographer . . . white organ shoes . . . bus drivers . . . chow hound . . . practice and more practice . . . conscientious.*

Epsilon Chi Literary Society; Volleyball 2, 3, 4, Captain 4; Varsity 3; Council Dance Committee 4; Prayer Band Leader 3, 4; St. Cecilia Music Club 1, 2, 3, 4; Choral Club 1, 2, 3, 4; Organ Recital 3, 4.

LOU JEAN DEDMON, B.S.  
Home Economics  
Shelby, N. C.

*Giggles . . . will do the dirty work . . . Gardner-Webb . . . weakness for redheads . . . third finger all aglow . . . "do now."*

Epsilon Chi Literary Society; Gardner-Webb Junior College 1, 2; Highland Players 3; Home Economics Club 3, 4, President 4; State Secretary of Home Economics Club Workshop 4.

GENEWOOD DORSEY, B.A.  
Primary Education  
Gurley, S. C.

*Devlish . . . cackling noises . . . night prowler . . . unpredictable . . . original . . . country-cured wit.*

Zetesian Literary Society; Basketball 2, 3, 4; Volleyball 2, 3; William Bartram Scientific Society 2, 3, 4; Highland Players 4; Sappho Poetry Club 1, 2; Spanish Club 1, 2; Tearoom Manager 4; Hockey 1; Bowling 2, 3; Tennis 2; Appalachian State Teachers' College Summer School 3.

PHYLLIS JOYCE DYER, B.M.  
Voice  
Leaksville, N. C.

*Leadership . . . "like a melody" . . . sincere . . . personifies friendly F.M.C. Fine! Fine! Fine! . . . weakness: Norwood (vice-versa).*

Epsilon Chi Literary Society; Marshal 3; Class President 2, 3; Choral Club 1, 2, 3, 4; Basketball 1, 2, 3, 4; Volleyball 3, 4; College Cheerleader 3; Student Council 2, 3, 4; Senior Scribe 4; Superlative 2; Monogram Club 4; International Relations Club 2; French Club 3; Voice Recital 3, 4; Christian Association Cabinet 4; Student Body President 4; *Who's Who in American Colleges and Universities.*

ZELMA GRANTHAM, B.M.  
Public School Music  
Fairmont, N. C.

*Fridays . . . striking . . . can-can . . . horrified at mice . . . Hemo . . . amusing repertoire of jokes . . . talented.*

Epsilon Chi Literary Society, Critic 2, President 3, Treasurer 4; Prayer Band Leader 2; Highland Players 1, 2, 3, 4, President 4; St. Cecilia Music Club 1, 2, 3, 4; Presbyterian Junior College Summer School 3; Archery 3; Choral Club 1, 2, 3, 4, Secretary 4; Senior Scribe 4; May Court 4; Student Council 3; Alpha Psi Omega 3, 4; Typing Editor WHITE HEATHER 4.

PATRICIA ANN HARRIS, B.A.  
Bible  
Concord, N. C.

*Reserved . . . natural beauty . . . depth . . . mischievous . . . domestic . . . valuable.*

Zetesian Literary Society, President 3; Class President 4; Marshal 3; Class Editor of WHITE HEATHER 1; St. Cecilia Music Club 1, 2; Highland Players 1, 2, 3, 4; May Court 4; Student Council 3, 4; *Who's Who in American Colleges and Universities.*

Left to right: Grantham, Dedmon, Davenport, Dorsey, Harris, Dyer



Hubble



Huneycutt



Jackson



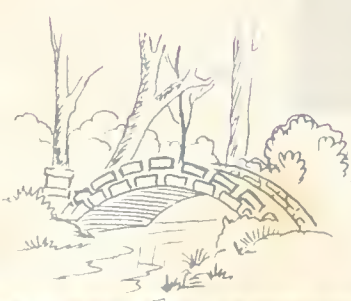
Jordan



Kelly



Lanier



# SENIORS



**KATRINA BROWN HUBBLE, B.A.**  
*Grammar Grade Education*  
 Bland, Va.

*"Pete" . . . talkative scatterbrain . . . enthusiastic . . . hair? . . . swimming . . . generous . . . late for class . . . "I know it."*

Epsilon Chi Literary Society; Highland Players 1, 2, 3, 4; Alpha Psi Omega 4; Spanish Club 2; International Relations Club 3, 4; Volleyball 2, 3, 4; Varsity 3; Monogram Club 4; Athletic Association Secretary 2, President 3; Head of Table Tennis 4; Athletic Board 2, 3, 4; Student Council 3; William Bartram Scientific Society 3, 4; Business Manager WHITE HEATHER 4; Radford College Summer School 3.

**LOIS ANN JACKSON, B.A.**  
*Primary Education*  
 Green Sea, S. C.

*Sleep snatcher . . . twisted smile . . . loyal . . . "he's in the army now" . . . artistic . . . determination.*

Zetesian Literary Society; L'Alliance Francaise 2, 3, 4; William Bartram Scientific Society 2, 3, 4, Secretary 4; Basketball 2, 3, 4; Bowling 2, 3; Appalachian State Teachers College Summer School 2, 3.

**EVA BERT KELLY, B.A.**  
*Primary Education*  
 Carthage, N. C.

*Anti-chapel . . . assisting . . . executive stationery . . . heart of gold . . . secretly mischievous . . . efficient.*

Epsilon Chi Literary Society; Prayer Band Leader 3, 4; Student Volunteers 3; International Relations Club 2, 3, 4, Vice-President 4; Highland Players 3, 4, Vice-President 4; William Bartram Scientific Society 3, 4; Hockey 1; Basketball 2, 3, 4; Volleyball 2, 3; Bowling 2, 3; Class Editor WHITE HEATHER 4; Chorus 4.

**CAROLYN HUNEYCUTT, B.M.**  
*Organ*  
 Monroe, N. C.

*Dependable . . . choir practice . . . independent . . . depth of thought . . . blushing hair . . . energetic walk.*

Zetesian Literary Society; Choral Club 1, 2, 3, 4; St. Cecilla Music Club 1, 2, 3, 4; Art Editor of *Pine and Thistle* 3, Business Manager 4; Prayer Band Leader 3; Writer's Club 3, 4, Treasurer 4; Student Volunteers 1, 2, 4; International Relations Club 2; Sappho Poetry Club 1, 2; Organ Recital 3, 4; Superlative 4; *Who's Who in American Colleges and Universities.*

**MARY ANN JORDAN, B.A.**  
*Grammar Grade Education*  
 Wilmington, N. C.

*Talks with her eyebrows . . . Jean's twin . . . enjoys knowing people . . . gracious . . . black note book . . . PRESBYTERIAN.*

Epsilon Chi Literary Society, Pianist 3; Student Council 1; Class President 1; Choral Club 1, 2, 3, 4; International Relations Club 2, 3, 4; Prayer Band Leader 2; L'Alliance Francaise 2; College Social Committee 2; Superlative 3; F.M.C. Representative to Red Springs Community Council 3; Christian Association Cabinet 3, 4, Chairman Prayer Band Leaders 3, Treasurer 4; Student Volunteers 2, 4; Volleyball 3, 4; William Bartram Scientific 4; Typing Editor WHITE HEATHER 4; Senior Scribe 4; *Who's Who in American Colleges and Universities.*

**JULIA ELEANOR LANIER, B.A.**  
*Biology and Chemistry*  
 Elizabeth City, N. C.

*Eyes that crinkle when laughing . . . "ni-ther" . . . immaculate grooming . . . complimentary . . . men-men-men . . . beauty with brains.*

Epsilon Chi Literary Society, Treasurer 2, Second Vice-President 3; Assistant Tea Room Manager 3; Mathematical Honor Society 2, 3, 4, Vice-President 3; William Bartram Scientific Society 2, 3, 4, President 3; L'Alliance Francaise 2, 3; International Relations Club 2, 3, 4; Salesman Athletic Association 2; Volleyball 3, 4; Tennis 3, 4; May Court 3, Maid of Honor 4; Snapshot Editor WHITE HEATHER 2; Society Dance Committee 3; Chairman Junior Dance Committee 3.

Left to right: Jordan, Hubble, Huneycutt, Kelly, Lanier, Jackson





Little



Lovett



Lowe



Melvin



Miller



McCain





# SENIORS



MARGARET CATHERINE LITTLE, B.A.

*Bible and Biology*  
Parkton, N. C.

*Miss Conner's assistant . . . kinda quite, but oh, so nice . . . turtle pace . . . soft Southern drawl . . . likable . . . helpful.*

Epsilon Chi Literary Society; William Bartram Scientific Society 1, 2, 3, 4; Bowling 3.

MARJORIE LOVETT, B.S.

*Home Economics*  
Nichols, S. C.

*Plans for the future . . . everybody's friend . . . outspoken . . . Chairman of social committees . . . casual . . . independent.*

Zetesian Literary Society; Home Economics Club 1, 2, 3, 4; L'Alliance Francais 1, 2; Basketball 1, 2, 3, 4, Captain 3; Marshal 3; Class Treasurer 4; Appalachian State Teachers' College Summer School 2, 3.

NELL McCULLOCH LOWE, B.A.

*History*  
Clinton, N. C.

*The I.B.C. . . Chevrolets . . . frankly speaking . . . black, uncurly locks . . . interesting eyes . . . willing.*

Epsilon Chi Literary Society; L'Alliance Francais 1, 2; International Relations Club 2, 3, 4, Custodian of Scrapbook 3, President 4; Tea Room Manager 3; Dance Chairman 4; Chorus 4.

BETTY GRAY MELVIN, B.S.

*Home Economics*  
Kerr, N. C.

*Neat . . . HABRELL'S STORE . . . practice house . . . talks through a mouth full of needles . . . smooth, shinning hair . . . hard worker.*

Epsilon Chi Literary Society; Christian Association Cabinet 2, 3; Chairman of Library Circle 2, Chairman Social Activities Circle 3; Home Economics Club 1, 2, 3, 4, Secretary-Treasurer 3; Volleyball 2, 3; Vice-President B.S.U. 4; Senior Scribe 4; Chorus 4.

MAYSIE PEARL MILLER, B.A.

*Biology and History*  
Chadbourn, N. C.

*There's a "Ford" in her future . . . West Point p.j.'s . . . postmistress . . . keys . . . Epsilon Chi . . . desk sitter.*

Epsilon Chi Literary Society, President 4, Treasurer 3; Marshal 3; Athletic Board 3; Commercial Club, Vice-President 1; William Bartram Scientific Society 2, 3, 4; Volleyball 2, 3; Table Tennis 2; Dance Chairman 3; International Relations Club 2; Spanish Club 2, 3; Student Council 4; *Who's Who in American Colleges and Universities.*

AMORETTA DELORIS McCAIN, B.A.

*Grammar Grade Education*  
Effingham, S. C.

*Men . . . tobacco market . . . Patty . . . "Dre" . . . helpful . . . one of the majors.*

Epsilon Chi Literary Society; Montreat College 1, 2; L'Alliance Francais 3; William Bartram Scientific Society 3, 4; Student Volunteers 3, 4; Treasurer 4; Prayer Band Leader 4; Tennis 4; Volleyball 3, 4; Basketball 3, 4.

Left to right: Melvin, Lovett, Miller, Little, Lowe, McCain



McDonald



McMillan



McRae



Powell



Price



Ratchford



# SENIORS



JEAN DALRYMPLE McDONALD, B.A.

Primary Education  
Carthage, N. C.

*Miss Cherry's disciple . . . congenial . . . that walk! . . . Sher'f's daughter . . . unpredictable remarks . . . tolerant.*

Zetesian Literary Society, Corresponding Secretary 2, Marshal 3; Student Volunteers 4; Prayer Band Leader 3; Christian Association Cabinet 4, Chairman of Christian Fellowship 4; Mathematical Honor Society 1, 2, 3, 4, Reporter 3; International Relations Club 2, 3, 4; William Bartram Scientific Society 2, 3, 4; Chorus 4; Basketball 1, 2, 3, 4, Captain 2, Head of Basketball 3; Volleyball 3, 4; Monogram Club 4; Fire Chief 3; Senior Scribe 4; High Point College Summer School 2; Society Dance Co-Chairman 4.

PATRICIA JOYCE McRAE, B.A.

Grammar Grade Education  
Lillington, N. C.

*Goodlooking . . . breakfast? . . . "my lit-tle" . . . Yvonne . . . non-sock-wearer . . . gracious dining room hostess.*

Epsilon Chi Literary Society, First Vice-President 3; Class Treasurer 2; Class Secretary 4; Prayer Band Leader 2, 3; Marshal 3; William Bartram Scientific Society 2, 3, 4; L'Alliance Francais 1, 2; Volleyball 3, Captain 3; Basketball 3, 4; Bowling 2, 3; May Court 2, 3, 4; Chorus 4; Hockey 1; Campbell College Summer School 2.

HANNAH BLAKE PRICE, B.A.

Grammar Grade Education  
Charlotte, N. C.

*"Hanner" . . . nose to the grind for THE WHITE HEATHER . . . organized to a T . . . "I 'bout died" . . . knows when and what to wear . . . thoroughly thoughtful.*

Zetesian Literary Society, Censor 2; L'Alliance Francais 2, 3; Volleyball 2, 3; Basketball 2, 3, 4, Varsity 3; Tennis 3; Cheerleader 2; Monogram Club 4; Glee Club 3; William Bartram Scientific Society 4; Assistant Editor WHITE HEATHER 3; Chief Scribe 4; Editor-in-Chief WHITE HEATHER 4; *Who's Who in American Colleges and Universities.*

BETTY JO McMILLAN, B.A.

Primary Education  
Selma, N. C.

*"Just a good friend" . . . flirtatious heartbreaker . . . gullible . . . petite . . . faux pas . . . Spirit of Flora Macdonald.*

Zetesian Literary Society, Critic 2; Chief Marshal 3; Christian Association Cabinet 3, 4, Vice-President 3, President 4; Prayer Band Leader 2; Class Vice-President 1; May Court 1; Highland Players 1, 2, 3, 4, Custodian 1, 2; Alpha Psi Omega 4; William Bartram Scientific Society 3, 4; Glee Club 1, 2, 3, 4; Spanish Club 1, 2, Vice-President 2; Student Council 4; Superlative 3, 4; *Who's Who in American Colleges and Universities.*

MARGARET LOUISE POWELL, B.S.

Home Economics  
Smithfield, N. C.

*Perfect lady . . . "I says" . . . calm . . . crisp looking . . . wasp-waist . . . trim.*

Epsilon Chi Literary Society; Vice-President Class 2; L'Alliance Francais 1; Hockey 1; Bowling 2, 3; Class Treasurer 3; Marshal 3; Home Economics Club 1, 2, 3, 4, Vice-President 4; May Court 3; Prayer Band Leader 3; Wake Forest College Summer School 2; Atlantic Christian College Summer School 3.

WILMA REBECCA RATCHFORD, B.A.

Bible and Social Science  
Dallas, N. C.

*Determination . . . "my church" . . . casually appearing . . . wholesome . . . Marie . . . unaffected.*

Epsilon Chi Literary Society; Christian Association Cabinet 3, Chairman Circle Music 3; Student Volunteers 1, 2, 3, 4, Vice-President 3, Treasurer 4; Glee Club 2, 3; International Relations Club 2, 3, 4, Secretary-Treasurer 4; St. Cecilia Music Club 1, 2, 3; L'Alliance Francais 1, 2, 3; *Pine and Thistle* Staff 3; Highland Players 4; Westminster Fellowship Council 4.

Left to right: McDonald, Powell, Ratchford, Price, McMillan, McRae



Rivenbark



Russ



Russell



Sherrill



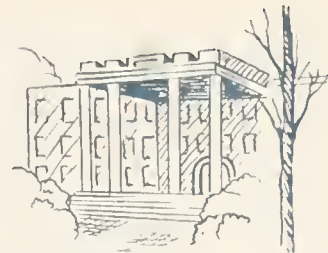
Smith



Taylor



# SENIORS



FLORENCE LITTLE RIVENBARK, B.S.

*Home Economics*  
Willard, N. C.

*B.S.U. . . . homemaker . . . optimistic . . . "Hoover Vacuum Cleaners" . . . natural . . . generous.*

Zetesian-Literary Society; William Bartram Scientific Society 3, 4; Home Economics Club 1, 2, 3, 4, Reporter 3; High Point College Summer School 3; Baptist Student Union President 4; Bowling 2, 3.

ANN FLORENCE RUSSELL, B.A.

*Mathematics*  
Rocky Mount, N. C.

*Hardy and tardy . . . June . . . a seamstress . . . giggles . . . brace-breaker . . . Sunday School.*

Epsilon Chi Literary Society; Prayer Band Leader 2, 3; Christian Association Cabinet 4; Mathematical Honor Society 1, 2, 3, 4, Treasurer 2; L'Alliance Francais 1, 2; Student Volunteers 1, 2, 3; Vice-Chairman of Library Circle 2, 3.

HELEN LEONIA SHERRILL, B.A.

*Bible and Math*  
Fayetteville, N. C.

*ZETESIAN . . . capable . . . walking dictionary . . . unusual . . . thorough . . . "I move we make it unanimous."*

Zetesian Literary Society, President 4, First Vice-President 3; Marshal 3; Christian Association Cabinet 3, Secretary of Christian Association 3; Mathematical Honor Society 1, 2, 3, 4, President 3; William Bartram Scientific Society 2, 3, 4; Glee Club 1; Highland Players 1, 2, 3, 4; Alpha Psi Omega 2, 3, 4, President 3; Writer's Club 3; International Relations Club 2, 3, 4; Student Council 4; Volleyball 3, 4, Varsity 3; Tennis 2, 3; *Pine and Thistle* Staff 2; University of Miami Summer School 3; Sallie Southall Cotten Scholarship Award; Superlative 4; *Who's Who in American Colleges and Universities.*

SARAH JOY RUSS, B.A.

*Primary Education*  
Shalotte, N. C.

*"Far" chief . . . "Rusty" . . . excitable . . . chatterbox . . . "my little nephew, Sammy" . . . prissy missy . . . inquisitive.*

Epsilon Chi Literary Society; Highland Players 1, 2, 3, 4; International Relations Club 2; L'Alliance Francais 2; *Pine and Thistle* Staff 4; Presbyterian Junior College Summer School 2; High Point College Summer School 3; Fire Chief 4; Bowling 2, 3.

PATRICIA ATKINS SMITH, B.A.

*Mathematics*  
Red Springs, N. C.

*Tall and graceful . . . day student . . . "She's lovely, she's engaged" . . . Smith and Smith . . . dimpled smile . . . May Queen.*

Zetesian Literary Society; Day Students Club 1, 2, 3, 4, President 3; Mathematical Honor Society 1, 2, 3, 4; International Relations Club 2, 3, 4; L'Alliance Francais 4; May Queen 4.

SHIRLEY JEANINE TAYLOR, B.M.

*Public School Music*  
Robersonville, N. C.

*"Boo-boo" . . . pessimistic . . . ROBERSONVILLE . . . "Abright y-a-iv-l" . . . generous . . . church-cutler . . . room brotser.*

Zetesian Literary Society; St. Cecilia Music Club 1, 2, 3, 4; Glee Club 1, 2, 3, 4, Business Manager 2, Librarian 4; Class Vice-President 3; Student Body Vice-President 4; Student Council 3, 4, Treasurer 3; Basketball 3, 4; Volleyball 3, 4; Freshmen-Sophomore Dance Chairman 2; *Who's Who in American Colleges and Universities.*

Left to right: Russ, Smith Rivenbark, Sherrill, Russell Taylor



Walker



Thrower



CAROLYN JOYCE WALKER, B.A.  
*Primary Education*  
Wilmington, N. C.

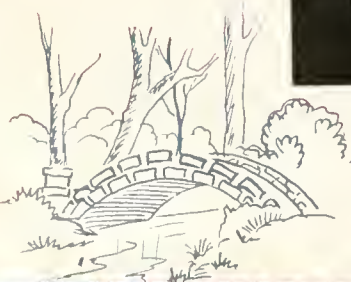
*"Smarty" Walker . . . beloved . . . sincere . . . "me and my big mouth" . . . dependable . . . thoughtful.*

Zetesian Literary Society; Prayer Band Leader 3, 4; Superlative 2, 4; International Relations Club 3, 4; Student Volunteers 2, 3, 4; Wilmington College Summer School 3.

JANE BROWNE THROWER, B.A.  
*History and Math*  
Red Springs, N. C.

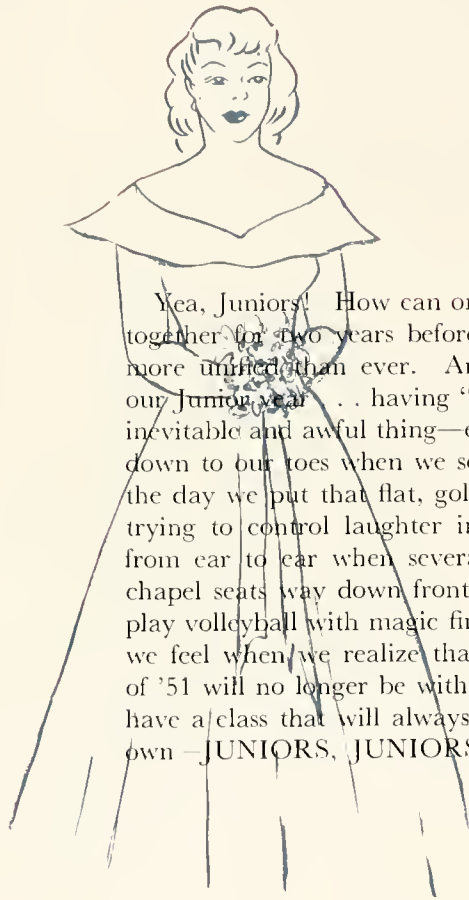
*Brain . . . Harold . . . P.D.S. . . . that married look . . . fragile . . . Dr. V.D.*

Epsilon Chi Literary Society; Mathematical Honor Society 1, 2, 3, 4; International Relations Club 2, 3, 4; Day Students Club 1, 2, 3, 4, President 4; Student Council 4; *Who's Who in American Colleges and Universities.*





*These things  
we do*



Yea, Juniors! How can one small class be so wonderful? Sure, we've been together for two years before this, but our third year has made us stronger, more unified than ever. And we have so many things to remember about our Junior year . . . having "little sisters" to watch over . . . having to do that inevitable and awful thing—choosing a major . . . the pride we feel all the way down to our toes when we see our prettiest girls marshaling at a concert . . . the day we put that flat, gold, oh-so-significant school ring on our finger . . . trying to control laughter in chapel on "those certain days" . . . grinning from ear to ear when several Juniors capped superlatives . . . those sacred chapel seats way down front . . . tremendous joy at seeing our girls in white play volleyball with magic fingertips . . . the tears we fight back, the dull ache we feel when we realize that those light-hearted, helpful, oh-so-close Seniors of '51 will no longer be with us next year . . . and yet we know that finally we have a class that will always come first in our hearts, a class that is our very own—JUNIORS, JUNIORS, JUNIORS!

## JUNIORS





*Left to right:* Hobbs, Tarrant, Pierce, Shaw, A., Lovick, Shaw, E.

## Junior Officers

FLAINE PIERCE, *President*

LOVE TARRANT, *Treasurer*

JANICE LOVICK, *Vice-President*

ANN SHAW, *Tea Room Manager*

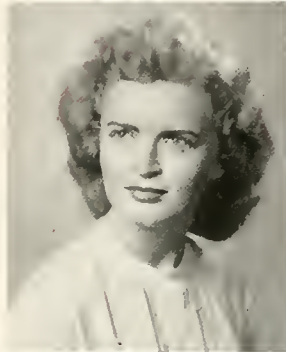
FRANCES HOBBS, *Secretary*

EMILY SHAW, *Assistant Tea Room Manager*



BLACKWELL, VERIDA  
Florence, S. C.

BONEY, MOLLIE ANN  
Wallace, N. C.



BROWN, LOIS  
Hamlet, N. C.

BRUNSON, BETTY ANN  
Fayetteville, N. C.



CARTER, BARBARA  
Jackson Springs, N. C.

CHARLES, MARY KATHRYN  
Winston-Salem, N. C.



COMER, MARGARET  
Ellerbe, N. C.

DEATON, KATHRYN  
Pine Bluff, N. C.



EVANS, ANNE  
Wilson, N. C.

GRADY, ENID  
Charlotte, N. C.



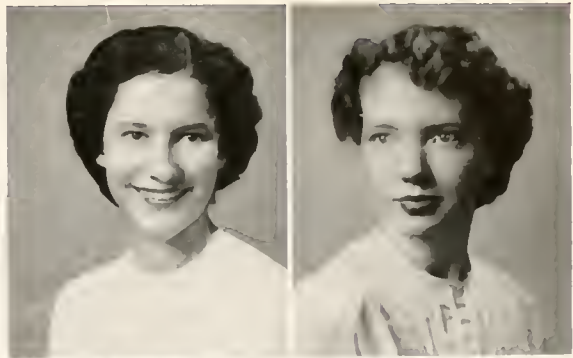
# JUNIOR

GRIER, EMILY NAN  
Charlotte, N. C.

HOBBS, FRANCES  
Council, N. C.

HOWIE, EMILY  
Fayetteville, N. C.

LOVICK, JANICE  
Wade, N. C.



MONROE, MILDRED  
Fayetteville, N. C.

MURDOCK, JANICE  
Wildwood, N. C.



McARTHUR, MILDRED  
Wakulla, N. C.

McCALLUM, DOROTHY  
Rowland, N. C.



McDOWELL, GENE  
Elizabethtown, N. C.

McINTYRE, MARY ELIZABETH  
Godwin, N. C.



# CLASS



McPHAUL, FAYE  
Parkton, N. C.

PEARCE, ANN  
Corpus Christi, Texas



PIERCE, ELAINE  
Evergreen, N. C.

RASTOM, JUNETTE  
Laurinburg, N. C.



ROBERTSON, ISABELLE  
Rowland, N. C.

ROGERS, ETHEL  
Whiteville, N. C.



RUMMAGE, GLORIA  
Ellerbe, N. C.

SHAW, ANN  
St. Pauls, N. C.



SHAW, EMILY  
St. Pauls, N. C.

SINGLETARY, HATTIE  
Bladenboro, N. C.



# JUNIOR

SMITH, AMANDA  
Petersburg, Va.



TARRANT, LOVE  
Fayetteville, N. C.



WATSON, HARRIET  
Parkton, N. C.

WEST, FANNIE  
Fayetteville, N. C.

# CLASS

WHITAKER, CLAUDINE  
Kannapolis, N. C.



WILLIAMSON, JOAN  
Atlanta, Ga.

WORKMAN, BETSY  
Mebane, N. C.

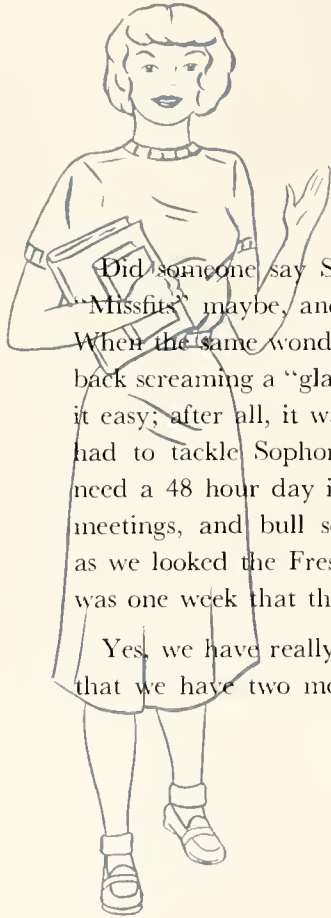


## *Second Year Business*

CLARKE, CLARA  
Roanoke Rapids, N. C.



RICHARDSON, MARGARET  
Jackson Springs, N. C.



Did someone say SILLY Sophs? Not on your life. "Mighty Sophs," or "Missfits" maybe, and, well, just a wee bit inclined to giggle now and then. When the same wonderful girls who braved the Freshman year together came back screaming a "glad to see ya," we were all prepared to settle back and take it easy; after all, it was a long time before we would be Seniors. Instead we had to tackle Sophomore Lit, and we soon discovered the Sophs actually need a 48 hour day in order to squeeze in all the concerts, recitals, lectures, meetings, and bull sessions. But Chauser and Shakespeare were forgotten as we looked the Freshman Class over with a cat's gleam in our eyes. That was one week that the Sophs got top rating for clean rooms.

Yes, we have really put the Soph class of '51 on the map, and are we glad that we have two more years to go. What a class!

## SOPHOMORES



*Left to right: Sandifer, Fields, McArthur, McKenzie*

## Sophomore Officers

JEAN SANDIFER.....*President*

EVELYN FIELDS.....*Secretary*

MARY L. MCKENZIE.....*Vice-President*

ANN MCARTHUR.....*Treasurer*

# SOPHOMORE

*First row, left to right:*

Abernethy, Evelyn, Charlotte, N. C.; Austin, Ada, Maxton, N. C.; Barham, Mary, Red Springs, N. C.; Booker, Nancy, Leaksville, N. C.; Boyd, Evelyn, Burlington, N. C.

*Second row:*

Brinn, Ann, Creswell, N. C.; Buhler, Virginia, Graham, N. C.; Calloway, Doris, Concord, N. C.; Carter, Jackie, Fayetteville, N. C.; Cashwell, Margaret, Hope Mills, N. C.

*Third row:*

Dudley, Frances, Wilmington, N. C.; Duncan, Eunice, Red Springs, N. C.; Elliot, Peggy, Darlington, S. C.; Fields, Evelyn, Walstonburg, N. C.; Garrison, Madge, Waxhaw, N. C.





# CLASS

*First row, left to right:*

Grantham, Joyce, Goldsboro, N. C.; Gray, Virginia, Arlington, Va.; Hammond, Nancy, Cerro Gordo, N. C.; Heyer, Frances, Rose Hill, N. C.; Hill, Barbara, Graham, N. C.

*Second row:*

Hughes, Delena, New Bern, N. C.; Keisler, Rachel, Conover, N. C.; Leggette, Sara Margaret, Lumberton, N. C.; Lewis, Lynette, Lillington, N. C.; May, Elsie, Farmville, N. C.

*Third row:*

McArthur, Ann, Wakulla, N. C.; McDuffie, Frances, St. Pauls, N. C.; McGoogan, Elizabeth, Hamlet, N. C.; McKenzie, Mary Lucille, Laurinburg, N. C.; McNeill, Doris Whyte, Raeford, N. C.



---

# SOPHOMORE CLASS

*First row, left to right:*

Phillips, Doris, Mebane, N. C.; Pickett, Jane, Newark, Del.; Register, Mary Ann, Clinton, N. C.; Sandifer, Jean, Charlotte, N. C.

*Second row:*

Shealy, Betty, Hamlet, N. C.; Shillinglaw, Romona, Sharon, S. C.; Smith, Julia Marie, Wilmington, N. C.; Smith, Ruth, Rowland, N. C.

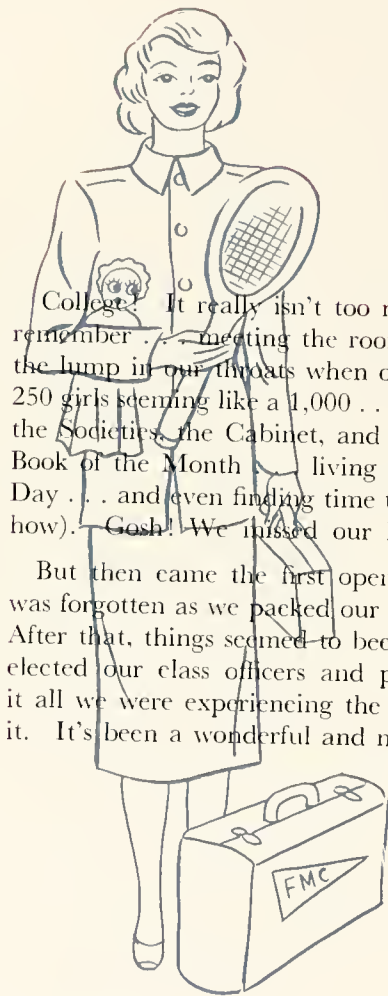
*Third row:*

Underwood, Margaret, Chadbourn, N. C.; Wagner, Mary Jo, Lumberton, N. C.; Watt, Mary, Nashville, Tenn.





*Here and  
there...  
at random*



College. It really isn't too rough. Those first weeks though, we'll always remember . . . meeting the roommate we knew in name only . . . swallowing the lump in our throats when our parents left us in that bare, bare room . . . 250 girls seeming like a 1,000 . . . all the attention shown us by our "big sisters," the Societies, the Cabinet, and the Council . . . the Handbook becoming our Book of the Month . . . living through the uncomfortable experiences of Rat Day . . . and even finding time to study once in a while, (those of us who knew how). Gosh! We missed our high school teachers.

But then came the first open week-end, and the hard life of a Freshman was forgotten as we packed our bags (with books, not clothes) and went home. After that, things seemed to become routine as our greenness wore off and we elected our class officers and planned our Freshman-Sophomore. Through it all we were experiencing the Flora Macdonald spirit and striving to attain it. It's been a wonderful and memorable year for the Class of '54.

## FRESHMEN



*Left to right: Lassiter, Duncan, Carswell, Hardesty*

## Freshmen Officers

JOAN HARDESTY.....*President*

JOAN DUNCAN.....*Secretary*

JANE CARSWELL.....*Vice-President*

SHIRLEY LASSITER.....*Treasurer*

# FRESHMAN

Abernethy, Ruth, Charlotte, N. C.;  
Abernathy, Sylvia, Mt. Holly, N. C.;  
Adams, Elizabeth Ann, Gibson,  
N. C.; Adams, Ruby, Angier, N. C.;  
Adams, Shirley Anne, Lake Wac-  
camaw, N. C.



Allen, Harriet, Bennettsville, S. C.;  
Andrews, Nancy, Spencer, N. C.;  
Barr, Elizabeth Ann, Lansing, N. C.;  
Betha, Beth, Latta, S. C.; Blalock,  
Jessie, Hamlet, N. C.



Bland, Frances, Wilmington, N. C.;  
Boggs, Mary, Morganton, N. C.;  
Boney, Delanie, Wallace, N. C.;  
Boseman, Joyce, Rocky Mount,  
N. C.; Brice, Yvonne, Elizabeth  
City, N. C.



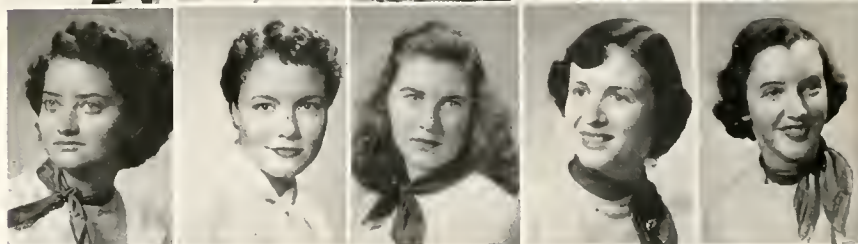
Calhoun, Charlotte, Wilmington,  
N. C.; Carswell, Jane, Manchester,  
N. C.; Carter, Peggy, Wilson, N. C.;  
Codas, Cleo, Henderson, N. C.;  
Coleman, Mary Sue, Asheville, N. C.



Covington, Mildred, Rockingham,  
N. C.; Davidson, Dorothy, Gas-  
tonia, N. C.; Davis, Betty Lou,  
Lumberton, N. C.; Davis, Marjorie,  
Fayetteville, N. C.; Davis, Saradee,  
Quincy, Florida.



Dew, Grace, Delco, N. C.; Driggers,  
Hattie, Clinton, S. C., Drummond,  
Jo Ann, Graham, N. C.; Duncan,  
Joan, Statesville, N. C.; Ellis, Ra-  
chel, Wilmington, N. C.



# CLASS . . . 1951



Frazier, Jean, Rockingham, N. C.;  
Frazier, Marguerite, McDonald,  
N. C.; Freeman, Carrie, Bladenboro,  
N. C.; Gallop, Nancy, Wilmington,  
N. C.; Garvin, Louise, Bethesda,  
Md.



Gilliland, Betty Jean, Rocky Mount,  
N. C.; Goddard, Novella, Dunn,  
N. C.; Grimes, Patsy, Coates, N. C.;  
Hardesty, Joan, Shannon, N. C.;  
Henry, Corrine, Lakedale, N. C.



Hinson, Dana, Tatum, N. C.; Hooks,  
Imogene, Whiteville, N. C.; Houck,  
Elizabeth, Candor, N. C.; Ingram,  
Elsie, Gibson, N. C.; Jarman, Sarah,  
Morven, N. C.



Jones, Marlene, Grassy Creek, N. C.;  
Jordan, Barbara, Wadesboro, N. C.;  
King, Kathryn, St. Pauls, N. C.;  
Knox, Ann, Davidson, N. C.; La-  
Frange, Mary Helen, Fort Mill, S. C.



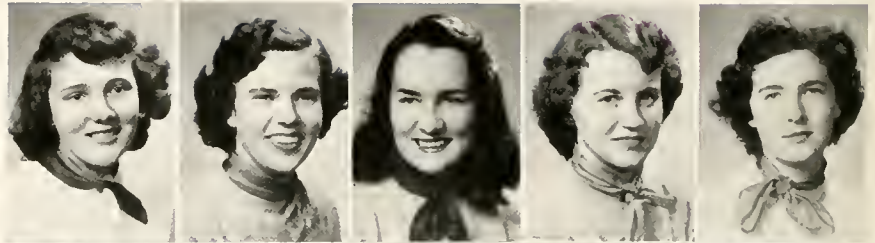
Lancaster, Enid, Tabor City, N. C.;  
Lassiter, Shirley, Four Oaks, N. C.;  
Lee, Agnes, Benson, N. C.; Leggett,  
Phyllis, Rocky Mount, N. C.; Li-  
frage, Barbara, Salters, S. C.



Little, Mary, Pollockville, N. C.;  
Littlewood, Mary Sue, Sturgills,  
N. C.; Love, Sanford C., Jr., Red  
Springs, N. C.; Lyles, Louise, War-  
renton, N. C.; Madden, Jane, Che-  
raw, S. C.

# FRESHMAN

Maness, Marion, Burlington, N. C.;  
Marlowe, Harriet, Whiteville, N. C.;  
Massey, Grace, Smithfield, N. C.;  
Melvin, Betty Reid, White Oak,  
N. C.; Miller, Carolyn, Asheville,  
N. C.



Miller, Jean, Chadbourn, N. C.;  
Milligan, Audrey, Shallotte, N. C.;  
Murdock, Margaret, Wildwood,  
N. C.; McArtan, Joyce, Linden,  
N. C.; McDonald, Mary Louise,  
Carthage, N. C.



McElroy, Mae, Quitman, Ga.; Mc-  
Kcown, Nancy, Blackstock, S. C.;  
McLeod, Ann, Maxton, N. C.;  
McLeod, Sarah Margaret, Carthage,  
N. C.; McNeill, Billy, Red Springs,  
N. C.



McNeill, Warren, Red Springs, N. C.  
Nelson, Frances, Clio, S. C.; Owen,  
Virginia, Cluster Springs, Va.; Par-  
ker, Retta, Pollocksville, N. C.;  
Peele, Betty, Wagram, N. C.



Pierce, Mary Elizabeth, Raleigh,  
N. C.; Powers, Mable, St. Pauls,  
N. C.; Prevatt, Jane Page, Lumber-  
ton, N. C.; Robinson, Sarah, Lum-  
berton, N. C.; Smith, Barbara,  
Albemarle, N. C.





# CLASS . . . 1951

---



Smith, Elizabeth Neal, Lumberton, N. C.; Spillers, Doris, Lumberton, N. C.; Spivey, Betty Ruth, Lake View, S. C.; Stephens, Martha, Lumberton, N. C.; Stevens, Joan, Red Springs, N. C.

Stevenson, Marjorie, Stoney Point, N. C.; Stewart, Sara, Wilmington, N. C.; Stikeleather, Nancy, Statesville, N. C.; Stogner, Faye, Wadesboro, N. C.; Strickland, Floree, Fair Bluff, N. C.

Taylor, Betty Rose, Lumberton, N. C.; Teer, Patsy, Hillsboro, N. C.; Thompson, Florene, Whiteville, N. C.; Thompson, Norma Jean, Glade Valley, N. C.; Thrower, Josephine, Clinton, N. C.

Travis, Sue, Statesville, N. C.; Tucker, Mary Lisle, McKenney, Va.; Vance, Anne Katherine, Fair Bluff, N. C.; Weeks, Katherine, Wilmington, N. C.; Weir, Sandra, Wananish, N. C.

Wessell, Jane, Hallsboro, N. C.; Wilds, Kathryn, Columbia, S. C.; Worrell, Geraldine, Rocky Mount, N. C.; Worth, Betty, Aberdeen, N. C.; Wrape, Mary Charles, Cordova, N. C.

# MUSIC . . . A Universal Language

---





MARTHA DAVENPORT, *Organ*



PHYLLIS DYER, *Voice*



CAROLYN HUNEYCU TT, *Organ*

## Senior Recitals

Each Spring we see the results of four years of intensive study of music when the Senior music students give their recitals. The poise, stage control, and ease with which the girls fascinate their audience are evidence that they have had the finest training possible in their special field of music. The girls who gave their recitals this year are Martha Davenport, Phyllis Dyer, and Carolyn Huneycutt.

## The Choral Club

This year the stage is almost too small to hold the eighty girls who compose the College Choral Club. Several nights in the week you may hear these voices, ranging from deep "cello" altos to lyric sopranos, giving forth with almost every type of music imaginable. The members of the Choral Club are chosen by a voice test, and they must maintain certain scholastic standards in order to remain a member. The officers for 1950-51 were: Lois Brown, president; Zelma Grantham, secretary; Madge Garrison, treasurer; and Dean Robert Smith, director.





## St. Cecelia Music Club

The purpose of this organization is to broaden the student's knowledge and increase her appreciation for the lives and works of the masters. Anyone who has taken applied or theoretical courses in music may become a member. The club meets on the first Friday afternoon of every month in Studio E. This year the project of the club was to contribute some new records to the conservatory record library. The officers of the club for this year were: Junette Rastom, president; Ruth Smith, vice-president; Dorothy McCallum, secretary-treasurer; and Miss Rachel Protheroe, adviser.

## The Chorus

The Chorus is made up of girls who like to sing for the fun of it, and perhaps do not have time for a more thorough study of music. No voice test is required, and the enjoyment of song is the main object. The members meet every Thursday night for rehearsals under the direction of Dean Robert Smith.





# Activities







“Look out for the girls  
with blue and white rib-  
bons on their dresses . . .”

*Handbook*

## The Extra-Curricular “Flossie Mac”

Any dates downstairs?



Are you girls booked up for next season?





Some of us are tied up with clubs; some with publications, while others become "V.I.P.'s" in our student organizations; therefore our campus whirls with various activities that students engage in because they want to. Each finds her own place in some purposeful work, and her own fun and satisfaction in these extra-curricular activities.

Charlie takes the floor.



Du-u-uh!



It has been reported to us . . .



# STUDENT

The Student Council, elected by the entire student body, serves as the guide and overseer through thick and thin. The council, composed of representatives from all classes, endeavors to unite the student body in an effort to uphold the personal honor of each individual and the school as a whole.



PHYLLIS DYER, *President of the Student Body*

Receiving the Freshmen, hearing the pledges, sponsoring the first dance, directing the elections, making decisions, and rendering proper punishment to the wayward are the many duties that fill the days of the council members. When the council meets, everyone expects and gets results. A strong and determined group, with the student body constantly in mind, served a fruitful year. Tuesday night is "Council night." Take care and do not "deviate from the path of rectitude!"

# GOVERNMENT

## OFFICERS

JEANINE TAYLOR, *Vice-President of the Student Body*

RAMONA ASCOUGH, *Secretary of the Student Body*

JANICE LOVICK, *Treasurer of the Student Body*

PAT HARRIS, *President of the Senior Class*

ELAINE PIERCE, *President of the Junior Class*

JEAN SANDIFER, *President of the Sophomore Class*

JOAN HARDESTY, *President of the Freshman Class*

BETTY JO McMILLAN, *President of the Flora Macdonald Christian Association*

JANICE MURDOCK, *President of the Athletic Association*

HELEN SHERRILL, *President of the Zetesian Society*

MAYSIE MILLER, *President of the Epsilon Chi Society*

JANE B. THROWER, *President of the Day Students*

*Left to right, seated: Lovick, Ascough, Taylor, Dycr. Standing: Pierce, Miller, Murdock, Brown, Sandifer, Hardesty, Sherrill, Harris, McMillan.*



# Flora Macdonald Christian Association

"In His Steps," the 1950-51 theme of the Christian Association, served as the guide in Christian living for the year. The Association strives to influence students to fulfill God's purpose, and to promote perfect fellowship in the school.

The Cabinet, which guides the organization, is composed of the officers, chairmen, and a faculty adviser. During the year the Association sponsored Religious Emphasis Weeks, sending Thanksgiving baskets to the needy, a Christmas party for the servants, the Dome Service, the White Gift Service, and Capsule Day. This organization of the student body is the very source of the life-spring at Flora Macdonald.

*Left to right, seated:* Rummage, Jordan, Pearce, McMillan. *Standing:* Workman, Eoyd, McDonald, Dyer, Watson, Charles, Russell.



BETTY JO McMILLAN, *President of  
the Christian Association*



#### OFFICERS

ANN PEARCE, *Vice-President*

GLORIA RUMMAGE, *Secretary*

ANN JORDAN, *Treasurer*

MRS. ELBERT McPHAUL, *Faculty Adviser of the Cabinet*

PHYLLIS DYER, *Ex-Officio, President of the Student Body*

HARRIET WATSON, *Chairman Worship Committee*

MARY KATHRYN CHARLES, *Chairman Social Service  
Committee*

JEAN McDONALD, *Chairman Fellowship Committee*

BETSY WORKMAN, *Chairman Outreach Committee*

ANN RUSSELL, *Leader of Sunday Morning Chapel Services*

EVELYN BOYD, *Chairman of Prayer Bands*

# WHITE HEATHER 1951

HANNAH PRICE, *Editor-in-Chief*

KATRINA HUBBLE, *Business Manager*

MR. LESLIE BULLOCK, *Adviser*



Hubble, Bullock, Price looking the situation over.

Blackwell, McCallum, Grady explaining the economy of a \$100.00 ad.



Early in the Spring, work is begun on the following year's WHITE HEATHER. Contracts are signed, conferences are held, and big plans are made. Then the work really begins when you find that you have overstepped your budget, left out several faculty members, and forgotten to include the Sophomore Class. Half of the school year is spent in avoiding the girls who insist on having their picture on every page, and you lose ten pounds trying to beat the dead-line before it beats you. When it is all over, though, you admit it has

been quite an experience, and have only one thing to say—WHEW!"

#### THE 1951 WHITE HEATHER STAFF

ENID GRADY, *Assistant Editor*

DOROTHY MCCALLUM, *Assistant Business Manager*

BERT KELLY, *Senior Class Editor*

MARGARET COMER, *Junior Class Editor*

MARY L. MCKENZIE, *Sophomore Class Editor*

BARBARA LIFRAGE, *Freshman Class Editor*

BARBARA HILL AND VERIDA BLACKWELL, *Literary Editors*

NANCY HAMMOND AND BETTY ANN BRUNSON, *Snapshot Editors*

ANN JORDAN AND ZELMA GRANTHAM, *Typing Editors*

*Left to right, seated:* Price, Blackwell, Kelly, McCallum, Hammond, McKenzie, Jordan. *Standing:* Lifrage, Comer, Brunson, Grady, Hubble, Hill.





Left to right: Rogers, Thrower, Smith, Lyles, Elliott, McArthur, Richardson, Clarke, Fields, Williamson, Tucker

# PINE AND THISTLE

AMANDA SMITH, *Editor-in-Chief*

CAROLYN HUNEYGUTT, *Business Manager*

DR. ELEANOR SCOTT, *Adviser*





The *Pine and Thistle* presents the literary geniuses of Flora Macdonald the opportunity of seeing their works in print. It is a very fine magazine, published quarterly, that includes poems, short stories, editorials, book reviews, etc. The emphasis this year was on creative writing. The staff of the magazine spends much time on each edition, and the results are a cultured and progressive magazine of which we are proud.

#### THE 1951 PINE AND THISTLE STAFF

ETHEL ROGERS, *Assistant Editor*

HARRIETT WATSON, *Assistant Business Manager*

ANN MCARTHUR, EVELYN FIELDS, PEGGY ELLIOTT,

JAN WILLIAMSON, *Literary Staff*

CLARA CLARK, MARGARET RICHARDSON, LOUISE LYLES,

JO THROWER, MARY LISLE TUCKER, *Business Staff*

EMILY SHAW, SARA MARGARET LEGGETT, JOY RUSS, *Art Editors*

Smith, Scott, Huneycutt take time out for the photographer.



Richardson and Clarke beating the deadline.





Left to right: Barrow, Grady, Grantham, Whitaker, Miller, Hobbs, Grier, Brown, Pickett

## Epsilon Chi Literary Society

The Epsilon Chi Society is composed of a group of girls who show true school spirit and enthusiasm. Interesting monthly programs, plus various types of exciting entertainment, fill the days with an active social life on the campus. There is a genuine fellowship among the members which cannot be compared.

### OFFICERS

MAYSIE MILLER, *President*  
ENID GRADY, *First Vice-President*  
LOIS BROWN, *Second Vice-President*  
EMILY NAN GRIER, *Corresponding Secretary*  
FRANCES HOBBS, *Recording Secretary*  
ZELMA GRANTHAM, *Treasurer*  
JANE PICKETT, *Critic*  
BETTY SHEALY, *Censor*  
AGNES BARROW, *Chaplain*  
CLAUDINE WHITAKER, *Pianist*

MAYSIE MILLER, *President*





Seated: Buhler, Sherrill, Cashwell. Standing: Hamond, Watson, Workman, McNeill, Fields, McArthur, May.

## Zetesian Literary Society

"Friendship our motto; knowledge our quest." . . . With this in mind the Zetesians highlighted the year with an old fashioned minstrel, debates, and oratorical contests, which gave the intellectual Zetesians a chance for real fun and fellowship. This year the Zetesians started a society newspaper, "Z News," which keeps the members posted on the various happenings in the society. It was a great year for the Zetesians.



### OFFICERS

- HELEN SHERRILL, *President*  
 MARY V. BUHLER, *First Vice-President*  
 EMILY CASHWELL, *Second Vice-President*  
 ANN McARTHUR, *Corresponding Secretary*  
 HARRIET WATSON, *Recording Secretary*  
 NANCY HAMMOND, *Treasurer*  
 DORIS WHYTE McNEILL, *Critic*  
 ELSIE MAY, *Censor*  
 EVELYN FIELDS, *Chaplain*  
 BETSY WORKMAN, *Pianist*

HELEN SHERRILL, *President*



Phyllis Dyer, Pat Harris, Carolyn Huneycutt, Ann Jordan, Maysie Miller, Betty Jo McMillan, Hannah Price, Helen Sherrill, Jeanine Taylor, and Jane B. Thrower.

## WHO'S WHO

Names at Flora Macdonald which will always be remembered are those of the select Who's Who group.

These girls are seniors who have shown outstanding ability and personality. These students, whose names are listed in *Who's Who Among Students in American Universities and Colleges*, are shining examples of the ideal Christian College student. This year the following ten were selected: Phyllis Dyer, Pat Harris, Carolyn Huneycutt, Ann Jordan, Betty Jo McMillan, Maysie Miller, Hannah Price, Helen Sherrill, Jeanine Taylor, and Jane B. Thrower.

## Scribblers



*Left to right: Dyer, Price, Jordan, Grantham, McDonald, Melvin*

Night owls with permission is their main gloating point. After every one else has gone to bed, they gather and put down in black and white what they actually think of their fellow-classmates, the Seniors. They print it too, and the classmates love it.

The WHITE HEATHER Editor serves as Chief Scribe and the others are "tapped" by the retiring scribes at the end of the year.

In order to further students acquaintance with the Spanish customs and language, the Spanish Club was organized. Monthly meetings are held in Epsilon Chi Hall at which time they have discussions and informative lectures. This is a group striving beyond the classroom.

## Spanish Club

### OFFICERS

VIRGINIA GRAY  
*President*

CLAUDINE WHITAKER  
*Vice-President*

BETTY SHEALY  
*Secretary-Treasurer*

MR. THOMAS WRIGHT  
*Adviser*



#### OFFICERS

BETTY ANN BRUNSON  
*President*

EMILY NAN GRIER  
*Vice-President*

JOAN WILLIAMSON  
*Recording Secretary*

ELSIE MAY  
*Corresponding Secretary*

FRANCES DUDLEY  
*Treasurer*

JANE PICKETT  
*Social Activities Chairman*

ANN McARTHUR  
*Press Correspondent*



## Mathematical Honor Society

The Math Club is made up of girls who have made an average of B or above on their first semester's work in Math or Physics. The aims of the club are to promote high scholastic standing in mathematics, to create interest throughout the college, and to provide knowledge outside the classroom through programs on famous mathematicians and their contributions. Dr. Van Dyke, head of the Department, is the adviser.

## William Bartram Scientific Society

This is a scientific student organization which promotes serious thought concerning a better knowledge and understanding of the fields of science. Monthly meetings include open discussions and allow self-expression for each member.

#### OFFICERS

KITTY DEATON  
*President*

JULIA MARIE SMITH  
*Vice-President*

RAMONA ASCOUGH  
*Secretary*

WILMA RATCHFORD  
*Treasurer*

DR. ETHEL HANSON  
*Adviser*





#### OFFICERS

MOLLIE ANN BONEY  
*President*

BARBARA HILL  
*Vice-President*

BARBARA LIFRAGE  
*Secretary*

FRANCES DUDLEY  
*Treasurer*

## Student Volunteers

The "Rope Holders" is composed of the girls on the campus who are interested in the work that is being done in the foreign and home missions. The group meets every Friday morning for a period of devotion, and has a regular monthly meeting to discuss the lives of missionaries and to study the needs on the mission fields. Outside speakers, including returned missionaries, speak to the organization during the year. The Student Volunteers sponsor the teaching of Bible in the Colored School of Red Springs.

"Be still, and know that I am God."

One of the most effective means of making personal religious contacts is through the Prayer Bands. Every member of the student body is placed in a prayer group, which meets each Thursday morning. An atmosphere of sacredness and spirituality is attained in these groups, and the prayer band leader helps the members of her group to realize the privilege that is theirs in having this special period of meditation.

## Prayer Bands



#### OFFICERS

EVELYN BOYD  
*Chairman*



#### OFFICERS

PEGGY ELLIOTT  
*President*

DORIS PHILLIPS  
*Vice-President*

ELSIE MAY  
*Secretary*

CAROLYN HUNEYCUTT  
*Treasurer*

DR. ELEANOR SCOTT  
*Adviser*

## Writers Club

Those who wish to exercise their gift of literary talent belong to this club. Deep thought and hard work, yielding surprisingly pleasing results, causes these ambitious writers to probe the very depth of their minds in order to produce original work.

## L'Alliance Francaise

The French club is organized primarily to interest students in the customs, languages, and culture of the French people. This is done through games, recordings, songs, and informal talks at their monthly meetings. With Mr. Thomas Wright, head of the language department, as their adviser, the members have stayed up to date on the events taking place in France, and have gained a better understanding of the people.



#### OFFICERS

MARGARET COMER  
*President*

EMILY NAN GRIER  
*Vice-President*

GLORIA RUMMAGE  
*Secretary-Treasurer*



#### OFFICERS

ZELMA GRANTHAM  
*President*

BERT KELLY  
*Vice-President*

JANE PICKETT  
*Secretary-Treasurer*

VIRGINIA GRAY  
*Custodian of Scrapbook*

MISS ELAINE PENNINGER  
*Adviser*



## Highland Players

Dramatics for entertainment is their aim. The fun and amusement involved dissolves the thought and dread of the hard work which is also included in their productions. Membership is gained through "tryouts," and the initiation is something everyone likes to "spy upon."

*A Mid Summer Night's Dream*, parts of which were presented in February, was one of their many successes of the year.

## International Relations Club

The I.R.C. is one of the most outstanding organizations on the campus. Affiliated with the Carnegie Endowment for International Peace, the club meets bi-monthly to discuss in an open forum current international problems. The theme for discussion this year was "The Balance of Power . . . Democracy versus Communism." The I.R.C. deserves special recognition for its part in keeping the students aware of issues of vital importance.

#### OFFICERS

NELL LOWE  
*President*

BERT KELLY  
*Vice-President*

WILMA RATCHFORD  
*Secretary-Treasurer*

EMILY NAN GRIER  
*Custodian of Scrapbook*

MISS CAROL ROBERTSON  
*Adviser*



#### OFFICERS

LOU JEAN DEDMON  
*President*

MARGARET POWELL  
*Vice-President*

HATTIE SINGLETARY  
*Secretary*

FRANCES HEYER  
*Treasurer*

MISS FRANCES COMER  
*Adviser*



## Home Economics Club

This club is composed of an ambitious group desiring to learn the art of ideal "Home Making." They practice their knowledge on the campus, and have beautified our parlors and reception hall a great deal. Their handywork shows in all parts of the campus.

## Day Students Club

The members of the Day Students Club are the lassies (and this year three laddies) that go home after classes. This club is the most active and the most envied on the campus. Their activities consist of parties, riding regardless of weather, cokes at Townsend's, and having an unlimited amount of chapel cuts. This year Jane B. Thrower was president, and Miss Mary Conoly was their capable adviser.

#### OFFICERS

JANE B. THROWER  
*President*

MISS MARY CONOLY  
*Adviser*





#### OFFICERS

MARY EMMA CANTLEY  
*President*

JANE PICKETT  
*Vice-President*

BETTY JO McMILLAN  
*Secretary-Treasurer*

## Alpha Psi Omega

Kappa Lambda Chapter of the National Alpha Psi Omega Dramatic Honorary Fraternity is the campus chapter at Flora Macdonald. A point system has been arranged in order to obtain membership. Points are gained through the Highland Players Club activities, and is the highest honor which a Highland Player may receive.

## Commercial Club

These young women, with thoughts of the future business world, meet in order to hear those of experience. They also train themselves socially with entertainments and parties. Miss Leta McIntyre is the valuable adviser.



#### OFFICERS

MARGARET RICHARDSON  
*President*

BARBARA JORDAN  
*Vice-President*

JOAN DUNGAN  
*Secretary*

CLARA CLARKE  
*Treasurer*



*Features*







The societies throw a big one.

## Laurels, Loveliness, Leadership

It must have been a good one.



The reason the students had to sit in the balcony during the Inauguration,



In the flurry of activity, once in a while the students find a red-letter day marked on the calendar. Perhaps it is one of the big dances, maybe it is the day we elect our superlatives, or it could even be our colorful presentation of May Day. At such times our college shines a little more than usual—even the floors seem to have more polish, and the lights seem to be brighter. . . . Here we offer proof that Flora Macdonald girls are not lacking in poise and personality.



We grow them young.

The Old Lamplighter alias Mr. Chapman.



Senorita Pearce serenading Senor Austin.



May Queen  
Patricia Smith







*Maid of Honor*  
ELEANOR LANIER

MAY DAY  
1951



MARGUERITE FRAZIER  
*Freshman Class Attendant*



SARADEE DAVIS  
*Freshman Class Attendant*

19  
MAY

One of the most outstanding events of the year at Flora Macdonald is May Day. At this time the students present their loveliest ladies in the May Court and are at their best in presenting the pageantry for the event.

*Left to right: LOIS BROWN, Junior Class Attendant; HARRIET WATSON, Junior Class Attendant; ANN PEARCE, Junior Class Attendant.*



# 51 DAY



VIRGINIA GRAY  
*Sophomore Class Attendant*



DORIS WHYTE MCNEILL  
*Sophomore Class Attendant*

People come from all over the state to witness the color and beauty of May Day. Miss Ethel Bateman, the Physical Education director, is in charge of the entire program, which is always given on the first Tuesday in May.

*Left to right: ZELMA GRANTHAM, Senior Class Attendant; PATRICIA McRAE, Senior Class Attendant; PATRICIA HARRIS, Senior Class Attendant.*





# MARSHALS

LOIS BROWN, *Chief*, EX

DOROTHY McCALLUM, Z

ELAINE PIERCE, Z

HARRIET WATSON, Z

JANICE LOVICK, Z

MARGARET COMER, EX

JANICE MURDOCK, EX

GLORIA RUMMUGE, EX

ANN PEARCE, EX



# LEADING LADIES

---

Because of their capability, beauty, personality, dependability, versatility, and sportsmanship, these girls have been chosen by the student body as the leading ladies of 1951.



*Capability*

HELEN SHERRILL . . .

. . . because of her desire to achieve.

. . . because of her high standard of value.

. . . because she is known for her efficiency and ability.

*Beauty*

HARRIET WATSON . . .

- . . . because of her gracious manner.
- . . . because of her unique stylishness.
- . . . because of her day by day loveliness.





*Personality*

BETTY JO McMILLAN . . .

- . . . because she is friendly and sincere.
- . . . because she is poised in any situation.
- . . . because of her popularity that spreads and spreads.



*Dependability*

ELAINE PIERCE . . .

- . . . because she is not afraid of responsibility.
- . . . because she never underestimates an obligation.
- . . . because of her genuine interest in accomplishments.





*Best All-Around*

CAROLYN HUNEYCUTT . . .

. . . because of her knack for doing many things well.

. . . because she cooperates willingly.

. . . because of her unselfish spirit.

*Sportsmanship*

CAROLYN WALKER . . .

. . . because of her enthusiasm and school spirit.

. . . because of her endless efforts.

. . . because of her sincere interest in all things





# Athletics







JANICE MURDOCK, *President*

# Athletic Association

## OFFICERS

- EMILY CASHWELL, *Vice-President*
- MARY V. BUHLER, *Secretary*
- EMILY NAN GRIER, *Treasurer*
- ELIZABETH MCGOOGAN, *Salesman*
- GENE MCDOWELL, *Head of Volleyball*
- KATRINA HUBBLE, *Head of Table Tennis*
- MARY WATT, *Head of Bowling and Swimming*
- FAYE MCPHAUL, *Head of Basketball*
- JOAN WILLIAMSON, *Head of Tennis*
- ANN SHAW, *Head of Softball*

The Athletic Association, composed of the entire student body, is governed by the Athletic Board. The purpose of the Association is to furnish organized recreation, and to sponsor sports competition among the four classes. This year interest was high during the tournaments, which included volleyball, basketball, and softball. At the end of the year a trophy was given to the class with the best record for ability and sportsmanship. Every year the "pride and joy" of the Association is the unique presentation of the May Day festivities under the guidance of Miss Ethel Bateman, director of Physical Education.

*Left to right, seated:* Murdock, Cashwell, Buhler, Grier, McGoogan. *Standing:* Williamson, Watt, McDowell, Hubble





*Left to right:* Teer, Cashwell,  
Lewis, Grady, Rastom

## Cheerleaders

The main duties of the cheerleaders are: leading the College Friendship Song, leading the cheers for their respective classes during the intramural tournaments, and guarding their class mascots with their lives. The girls chosen for this year were: Junette Rastom, College cheerleader; Emily Cashwell, Senior cheerleader; Enid Grady, Junior cheerleader; Lynn Lewis, Sophomore cheerleader; and Pasty Teer, Freshman cheerleader.

## Monogram Club

The proud owners of Block M's are Emily Cashwell, Phyllis Dyer, Emily Nan Grier, Katrina Hubble, Jean McDonald, Janice Murdock, and Hannah Price. Hard work plus muscles adds up to this honor. Five hundred points obtained through athletics and other college activities gains membership.



*Left to right:* Murdock, Mc-  
Donald, Grier, Hubble, Cash-  
well, Dyer, Price

*Left to right:*  
Cashwell  
Dorsey  
Dyer  
Price  
Taylor



## Senior Basketball

## Junior Basketball



*Left to right:*  
Watson  
Murdock  
McDowell  
Grier  
Brown





*Left to right:*  
 Fields  
 Abernathy  
 Booker  
 Buhler  
 Hill  
 Sandifer

## Sophomore Basketball

## Freshman Basketball

*Left to right, First row:*

Garvin  
 Gilliland  
 Hardesty  
 Davis  
 Miller  
 Lyles

*Second row:*

Tucker  
 McArten  
 Madden  
 Frazier  
 Lee  
 Goddard





*Left to right:*  
Jordan  
McDonald  
Dyer  
Dorsey  
Cashwell  
Taylor  
Price

## Senior Volleyball

## Junior Volleyball



*Left to right:*  
McDowell  
Williamson  
Brown  
Watson  
Murdock  
Grier

*Left to right:*  
 Abernathy  
 Richardson  
 Phillips  
 Fields  
 Sandifer  
 Hill  
 Buhler  
 Heyer  
 Booker



## Sophomore Volleyball

## Freshman Volleyball



*First row, left to right:*

Lee  
 Frazier  
 Madden  
 Goddard

*Second row:*

Garvin  
 Tucker  
 Miller  
 Lyles  
 Davis

*Third row:*  
 Gilliland  
 Hardesty



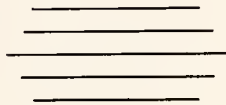
1. Roommates. 2. Sunday receiving line. 3. Comparing notes during intermission. 4. Hey, Kid, check this!  
 5. Oh for the life of a Home Ec. major. 6. Glub! Glub! 7. On this side of the tracks. 8. We ain't got no body.  
 9. Sweater by Jantzen. 10. They smiled becomingly. 11. "Five foot two . . ." 12. Dignified Seniors.



1. Does that thing chime? 2. Where are the bag lunches? 3. So 1 says to him "Well!" 4. Milk Bar bound. 5. Dear Joe . . . 6. Are you girls supporting "Flossie Mac?" 7. Just Phyllis. 8. Hey, look at us, hey. 9. Wait a minute! We're not ready. 10. Memo to all males upon entering F.M.C. 11. This is the way it is done in Florida. 12. Orchids to you. 13. Doing the camera a favor.



# ADVERTISEMENTS



To these advertising merchants, we, the staff of the 1951 WHITE HEATHER, give our thanks for making this annual a financial possibility.

To all the students and faculty of Flora Macdonald College, we say



PATRONIZE OUR ADVERTISERS

THEY'LL TREAT YOU RIGHT — THEY DID US

Pontiac  
Studebaker  
International Harvester  
*Sales and Service*

---

**SINGLETON AND  
McMILLAN, Inc.**

---

Phone 3971  
RED SPRINGS, NORTH CAROLINA

*Compliments of*  
**BAXLEY-JOHNSON  
CHEVROLET CO., INC.**  
RED SPRINGS, NORTH CAROLINA

---

*Compliments of*  
**MACKS' 5-10-25c STORES**  
RED SPRINGS, NORTH CAROLINA

---

*Compliments of*  
**Woods 5-10-25c Stores, Inc.**  
RED SPRINGS, NORTH CAROLINA

**General Auto Sales, Inc.**  

---

**OLDSMOBILE and G.M.C. TRUCKS**  
FULL LINE OF PARTS  
*Expert Mechanics*  

---

Phone 2381  
RED SPRINGS, NORTH CAROLINA

---

**LENOIR'S JEWEL SHOP**

INTERNATIONAL SILVER  

---

*Quality Jewelers*  

---

TIFFIN CRYSTAL  
RED SPRINGS, NORTH CAROLINA

**B. C. MOORE AND  
SONS, Inc.**

Air-Conditioned for Your  
Shopping Comfort  
  
PHONE 243-6

---

*"Buy from Moore and Save More"*

---

WE FEATURE CARROLL-KING  
DRESSES FOR JUNIORS  
Sizes 9-15

RED SPRINGS, NORTH CAROLINA



**HOME FURNITURE COMPANY**

*A Complete Line of  
Home Furnishings*

RED SPRINGS, NORTH CAROLINA

**North State Motor Company**

*Sales PACKARD Service*

444 Franklin Street  
FAYETTEVILLE, NORTH CAROLINA

**BURROUGHS CUT-RATE STORE**

Phone 4271

RED SPRINGS, NORTH CAROLINA

SCHOOL SUPPLIES  
STATIONERY : SANDWICHES  
CANDY : TOILET ARTICLES : DRINKS

**BAUCOM APPLIANCE COMPANY**

RAEFORD, NORTH CAROLINA

FRIGIDAIRE PRODUCTS  
MAYTAG WASHERS EASY WASHERS  
ELECTRICAL SUPPLIES  
SMALL APPLIANCES, ETC.

*Quality is of First Importance*

*Compliments of*

**COLONIAL FROZEN FOODS**

RED SPRINGS, NORTH CAROLINA

**NEW YORK RESTAURANT**

226 Hay Street

*The Oldest and Leading Eating Place  
in*

FAYETTEVILLE, NORTH CAROLINA

*Compliments of*

**SARAH'S**

RED SPRINGS, NORTH CAROLINA

*"The right clothes  
for the right gal"*

*Compliments of*

**Fayetteville Office Supply Co.**

PRINTERS : STATIONERS  
OFFICE OUTFITTERS

513 Hay Street : Dial 2768  
FAYETTEVILLE, NORTH CAROLINA

*Compliments of*

**RICE'S DRUG AND GIFT SHOP**

MAXTON, NORTH CAROLINA

**CITY OPTICAL COMPANY**

Wilmington : Fayetteville : Greensboro

Prince Charles Hotel  
Phone 7179

**JOHN'S-JENKINS AND CO.  
COTTON**

PHONE 72  
ROWLAND, NORTH CAROLINA

FAYETTEVILLE, NORTH CAROLINA

**W. A. McCormick & Sons**  
*Complete Self-Service Food Store*

DISTRIBUTORS OF  
**BALLARD'S INSURANCE FEEDS**  
SAINT PAULS, NORTH CAROLINA

**HOTEL RAEFORD**  
Mr. and Mrs. O. W. Holtzclaw, *Lessee Owners*  
**MODERN COFFEE SHOP**  
U. S. HIGHWAY 15-A AND N. C. 211  
Telephone 2691  
RAEFORD, NORTH CAROLINA

*Compliments of*

**GRANTHAM DRUG COMPANY**

SAINT PAULS, NORTH CAROLINA

**FREEMAN PRINTING COMPANY**  
*"Over Fifty Years of Quality Printing"*

D. T. LAMBETH, *Manager*  
Dial 3925  
LUMBERTON, NORTH CAROLINA

*Compliments of*

**Z. V. PATE, INC.**  
*"A Modern Department Store"*

LAUREL HILL, NORTH CAROLINA

*Compliments of*

**AUSTIN DRUG COMPANY**  
*The Rexall Store*

MAXTON, NORTH CAROLINA

*Compliments of*

**WESTERN AUTO STORE**

RED SPRINGS, NORTH CAROLINA

*Compliments of*

**A. WEINSTEIN & SONS**

LUMBERTON, NORTH CAROLINA

**GRANTHAM INSURANCE  
AND REALTY COMPANY**

SAFETY - SECURITY - SERVICE

Phone 330-1  
RED SPRINGS, NORTH CAROLINA

**NEIGHBORS SHOE STORE**

*Red Springs Exclusive  
Shoe Store*

RED SPRINGS, NORTH CAROLINA  
Phone 3981

**ROBESON OFFICE SUPPLIES**

STATIONERS : OFFICE OUTFITTERS  
PRINTERS

LUMBERTON, NORTH CAROLINA

# TOWNSEND'S PHARMACY

*The Rexall Store*

DEPENDABLE DRUGGISTS

WHERE THE COLLEGE GIRLS MEET

RED SPRINGS, NORTH CAROLINA

## DUNN'S AUTO SALES

*"If you want a car that will run—  
Buy it from Dunn"*

NEW AND USED CARS

*We Sell to Satisfy*

Phone 276

MAXTON, NORTH CAROLINA

## MAXTON HARDWARE COMPANY

Hardware      Paints & Varnishes  
Builders' Supplies

MAXTON, NORTH CAROLINA

*Compliments of*

## FREEMAN MOTOR CO.

LUMBERTON, NORTH CAROLINA

COBLE D. WILSON  
RED FREEMAN

*In Robeson County,*

*It's . . .*

## The Robesonian

For Local and County News  
Plus Associated Press Service

*Five Days Each Week*

ESTABLISHED 1870

## HESTER-KINLAW FURNITURE COMPANY, INC.

Box 206      Phone 258  
MAXTON, N. C.



*"Complete Home Furnishings"*

*Roadside Invitation  
To Drive Refreshed*



BOTTLED UNDER AUTHORITY OF THE COCA-COLA COMPANY BY

Fayetteville Coca-Cola Bottling Co., Inc.

ROWLAND MOTOR CO.

Sales  Service

Phone 32

●  
ROWLAND, N. C.

**Burkhead-DeVane  
Printing Company**

*Commercial Printers  
Office Supplies*

218 Franklin Street  
Phone 3007  
FAYETTEVILLE, NORTH CAROLINA

*We Specialize in*  
SEAFOOD - STEAKS  
CHICKEN - IN - THE - BASKET

**CHARLIE'S PLACE**

Two Miles North on Highway 301  
DILLON, S. C.

PHONE 9127

C. A. STURGEON, *Manager*

**THE BANK OF ROWLAND**

Telephone 4  
ROWLAND, N. C.



*Member of Federal Deposit  
Insurance Corporation*

*Compliments of*

**PEPSI-COLA  
BOTTLING  
COMPANY**

FAYETTEVILLE, NORTH CAROLINA

If You Live in Southeastern  
North Carolina

*It's the*

**FAYETTEVILLE OBSERVER**

*"North Carolina's Oldest Newspaper"*

For Complete  
NEWS COVERAGE

*Compliments of*

**BENDER'S DRUG STORE**  
*A Real Drug Store*

201 Hay Street  
FAYETTEVILLE, NORTH CAROLINA

Hotel

**PRINCE CHARLES**



AIR-CONDITIONED DINING ROOM



FAYETTEVILLE, NORTH CAROLINA

*Compliments of*

**HENEBRY'S of Fayetteville, Inc.**  
*Registered Jewelers, American Gem Society*

110 Hay Street  
FAYETTEVILLE, NORTH CAROLINA

**DIANA SHOPS**

*Smartest in Feminine  
Apparel*

123-25 Hay Street : Phone 6473  
FAYETTEVILLE, NORTH CAROLINA



FAYETTEVILLE, NORTH CAROLINA

*Compliments of*  
**RAYLASS DEPT. STORE**

FAYETTEVILLE, NORTH CAROLINA

**SINGER SEWING MACHINE CO.**

130 Hay Street : Phone 2688  
FAYETTEVILLE, NORTH CAROLINA

SEWING COURSES — 8 LESSONS  
Adults \$10.00 : Teenagers \$8.00

*Compliments of*

**Sterling  
Jewelers**

FAYETTEVILLE, NORTH CAROLINA

*Sales*

*Service*

**Electric Motor and Repair Co.**

Phone 3532

439 Gillespie Street  
FAYETTEVILLE, NORTH CAROLINA

WESTINGHOUSE PRODUCTS

**McNEILL CLEANERS**



116 South Main Street  
PHONE 2941

RED SPRINGS, NORTH CAROLINA

**McFADYEN**

*Music and Jewelry Store*

118 Hay Street  
FAYETTEVILLE, NORTH CAROLINA

**COLE'S FEED AND SEED STORE**

*Feeds U Need*

RED SPRINGS, NORTH CAROLINA

*"Your loveliness is  
my business"*

**Modern Beauty Shop**

Phone 2431

RED SPRINGS, NORTH CAROLINA

**Auto Service Center**

*Dealers in Case Farm Machinery  
and Auto Parts*

ESSO GASOLINE FUEL OILS  
MOTOR OIL and GREASES

RED SPRINGS, NORTH CAROLINA

*Compliments of*

**Polly Ann Shop**

LUMBERTON, NORTH CAROLINA

**FOX'S ROYAL BAKERY**

E. D. PARNELL

*Distributor*

*of*

**Sally Ann Bread**



PHONE 3135



RED SPRINGS, NORTH CAROLINA

**McDONALDS CLEANERS**

QUALITY CLEANING



Lumberton Road

RED SPRINGS, NORTH CAROLINA

*Compliments of*

**SEARS-ROEBUCK  
AND CO.**



420 Hay Street

FAYETTEVILLE, NORTH CAROLINA

**BELK-HENSDALE COMPANY**

DEPARTMENT STORES

LAURINBURG - FAYETTEVILLE - LUMBERTON  
RAEFORD - RED SPRINGS

**SHOP AND SAVE AT BELK'S**

Belk Stores are the Carolinas'  
Largest Distributors of  
Reliable Merchandise

*Compliments of*

# FAYETTEVILLE WHOLESALE COMPANY

Featuring

FRESH FRUITS and VEGETABLES

PHONE 2131

Corner of Chance and Orange Streets  
FAYETTEVILLE, NORTH CAROLINA

## M. M. SMITH FURNITURE COMPANY



FURNITURE  
FOR EVERY HOME

*Wholesale and Retail*



325 Hay Street  
FAYETTEVILLE, NORTH CAROLINA

## M. M. SMITH STORAGE WAREHOUSE

BONDED  
FIREPROOF WAREHOUSES  
Agt. ALLIED VAN LINES, Inc.



LOCAL and LONG DISTANCE  
HAULING



Phone 2194  
FAYETTEVILLE, NORTH CAROLINA



**M. & S. MOTOR CO.**

CHRYSLER and PLYMOUTH CARS

*Sales and Service*

RED SPRINGS, NORTH CAROLINA

Phone 248-1

**ALLEN BUILDERS SUPPLIES**

Inc.

LUMBER : BUILDING MATERIAL  
PLUMBING

Phone 2396

RED SPRINGS, NORTH CAROLINA

*Compliments of*

**MAXTON SUPPLY CO.**

MAXTON, N. C.

*Compliments of*

**McGIRT'S PLUMBING AND  
ELECTRICAL SERVICE**

SUPPLIERS and CONTRACTORS

Phone 230

MAXTON, NORTH CAROLINA

**RED SPRINGS  
SUPPLY CO., Inc.**

**General Merchants**

*The Friendly Store*



FERTILIZERS AND COTTON  
LIVESTOCK                      HARDWARE  
GROCERY                         MARKET  
BUILDING MATERIAL



Dial 3701 and 3271

RED SPRINGS, NORTH CAROLINA

*Compliments of*

**HOOD MOTORS, INC.**

*Your DODGE - PLYMOUTH Dealer*

Est. 1933

LUMBERTON, NORTH CAROLINA

Phone 21

**LUMBERTON OPTICAL CO.**

415 North Elm Street

LUMBERTON, NORTH CAROLINA

*High Quality Prescription Service*

**ROWLAND AUTO SALES, INC.**

Sales  Service

ROWLAND, N. C.  
PHONE 101

*Compliments of*

**HALLUM FURNITURE CO.**

ROCKINGHAM, N. C.

**LONG'S  
HABERDASHERS TAILORS**

*"Tomorrow's Styles Today"*

RED SPRINGS, N. C.

**RED SPRINGS FLORIST**

*"Flowers Are Love's Sweetest  
Language"*

MRS. R. B. McCracken      PHONE 3691  
RED SPRINGS, N. C.

*Compliments of*

**HUNTER BROTHERS, INC.**

113-119 Winslow Street  
FAYETTEVILLE, N. C.

**D. M. McMILLAN**

*"Ford Products Since 1912"*

RED SPRINGS, N. C.

YOU WILL BE PLEASED WITH OUR  
*QUALITY AND SERVICE*

**RED SPRINGS DRUG STORE**

*Headquarters for  
Flora Macdonald College*

RED SPRINGS, N. C.

**D. R. "DOC" COVINGTON  
GOOD USED CARS**

●  
TELEPHONE 2651  
RED SPRINGS, N. C.

*Compliments of*

**FIELD'S**

*"for college fashions"*

112 Hay Street  
FAYETTEVILLE, N. C.      PHONE 4466

*When better Automobiles are built*

**BUICK**

*will build them*

**COMMUNITY MOTOR CO.**

Phone 4391  
LUMBERTON, NORTH CAROLINA

**IDA'S DRESS SHOPPE**

*Ladies' Wear that Ladies Wear*

Dial 3146  
ST. PAULS, N. C.

*Compliments of*

**W. LEE FLOWERS & COMPANY**  
Wholesale Grocers

606 E. 21st Street  
LUMBERTON, N. C.

Enjoy Life  
Eat Out  
More Often

*Air Conditioned*

**BLANCHARD'S RESTAURANT**

*"In the Heart of Tobaccoland"*

ON U.S. HIGHWAY 301

Phone 3136

Lumberton, N. C.

**GOOD FOOD**

CHARCOAL BROILED STEAKS      SEAFOOD  
HOME MADE PASTRIES

**ST. PAULS DRUG CO., INC.**

*Save With Safety*



PRESCRIPTION DRUGGISTS  
ST. PAULS, N. C.

*Compliments of*

**KENNEDY'S JEWELRY AND  
GIFT SHOP**

FINE WATCH REPAIRING

RED SPRINGS, N. C.

*"We Discount for Flora Macdonald  
College Students."*

**HONEY DEW SODA SHOP**

*Ice Cream - Sodas - Magazines*

Phone 6392

Next to Western Union  
LUMBERTON, N. C.

**J. C. WARD'S STORE**

General Merchandise



Phone 87  
ROWLAND, N. C.

GOLD MEDAL FERTILIZERS  
LIBERTY PREMIUM FERTILIZERS  
MODERN GIN SYSTEM

*Modern Seed Cleaning Equipment*



**LIBERTY  
MANUFACTURING  
COMPANY**

RED SPRINGS, NORTH CAROLINA

**HEDGPETH  
PHARMACY**

*Two Registered Druggists*



Lorraine Hotel Building  
LUMBERTON, NORTH CAROLINA

*Compliments of*

**PEPSI-COLA  
BOTTLING  
COMPANY**



FAYETTEVILLE, NORTH CAROLINA

**STEINWAY**

*The World's Finest Piano*

The world's greatest musicians, the leading conservatories, the principal radio and television stations, the finest symphony orchestras hail the Steinway for its superior tone, action and stamina. Every Steinway piano contains the patented Accelerated Action, a true help in developing sensitive touch; and the patented diaphragmatic Sound board, which produces big piano tone in even the smallest model. So enduring are the qualities of the Steinway that, judged in terms of performance and service, it is actually the most economical of all pianos.

**THE ANDREWS MUSIC CO.**

*"Our 59th Year"*

231 North Tryon Street  
CHARLOTTE, N. C.

*Compliments of*

**ROBBINS MILLS (N. C.), INC.**

**RED SPRINGS DIVISION**

**McCRORY'S**  
5 AND 10c STORE

208 Hay Street  
FAYETTEVILLE, NORTH CAROLINA

**Adams Fruit and Produce**

LUMBERTON, NORTH CAROLINA

**LEDER BROTHERS, INC.**

TWELVE COMPLETE MODERN DEPARTMENT STORES  
*Everything in Ready-to-Wear*

WHITEVILLE, N. C.  
WILSON, N. C.  
GOLDSBORO, N. C.  
CLINTON, N. C.  
JACKSONVILLE, N. C.

ROCKINGHAM, N. C.  
SMITHFIELD, N. C.  
PLYMOUTH, N. C.  
WILLIAMSTON, N. C.  
MARION, S. C.

*Compliments of*

**TRU-ADE BOTTLING CO.**

FAYETTEVILLE, NORTH CAROLINA

*Compliments of*

**McKEITHAN  
HARDWARE**

RED SPRINGS, NORTH CAROLINA

*Compliments of*

**JOHN F. McNAIR, INC.**

**A MODERN  
DEPARTMENT STORE**

LAURINBURG, NORTH CAROLINA

*Compliments of*

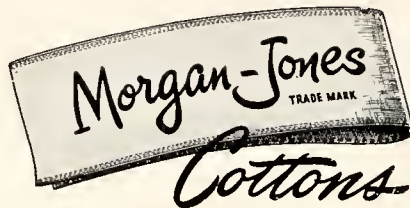
**GRAHAM'S  
Department Store, Inc.**

Phones

308-1

257-1

RED SPRINGS, NORTH CAROLINA



Are

“Yours for a Lovely Home”

---

BEDSPREADS  
DRAPES  
COTTON RUGS

BATH SETS  
DISH CLOTHS  
DISH TOWELS

PRODUCED IN NORTH CAROLINA

*Sold by fine stores everywhere*

---

**MORGAN-JONES, INC.**

58 Worth Street

NEW YORK, N. Y.

# REDMON'S STUDIOS

ELKIN, NORTH CAROLINA



PHOTOGRAPHERS



All Pictures Personally Made by

T. A. REDMON

---

## **BILL BELCHE**

PHOTOGRAPHER



Commercial Photography : Custom Framing



137 Robeson Street    :-    Phone 5468

FAYETTEVILLE, NORTH CAROLINA

# CONGRATULATIONS, SENIORS!

Your Alma Mater is more than proud to have had you as students during your college career. Your presence here has made a definite contribution to the happy Christian atmosphere that is so evident at Flora Macdonald. Your scholarship attainments have also added to the wonderful record which the college has enjoyed for many years.

As you join the ranks of the alumnae we are confident you will measure up to the finest and best.



## FLORA MACDONALD COLLEGE

RED SPRINGS, N. C.

MARSHALL SCOTT WOODSON

*President*



# BUILDERS DREAMS

The Staff of THE WHITE HEATHER

and the

EDWARDS & BROUGHTON  
COMPANY

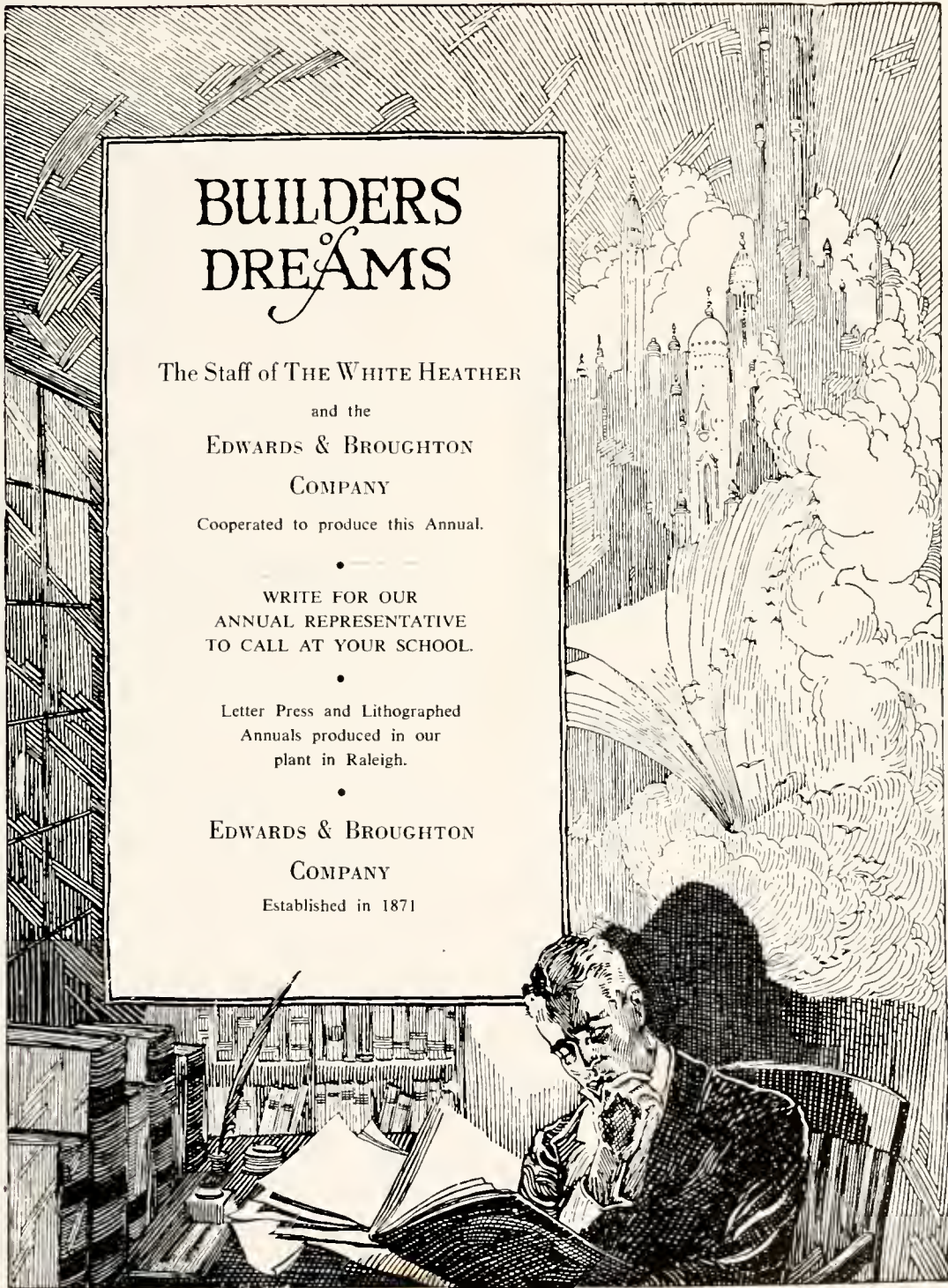
Cooperated to produce this Annual.

•  
WRITE FOR OUR  
ANNUAL REPRESENTATIVE  
TO CALL AT YOUR SCHOOL.

•  
Letter Press and Lithographed  
Annuals produced in our  
plant in Raleigh.

•  
EDWARDS & BROUGHTON  
COMPANY

Established in 1871



# STUDENT DIRECTORY

- Abernathy, Evelyn, Route 8, Box 530, Charlotte, N. C.  
Abernathy, Ruth, Route 8, Box 530, Charlotte, N. C.  
Abernathy, Sylvia, 521 North Main Street, Mount Holly, N. C.  
Adams, Elizabeth Ann, Gibson, N. C.  
Adams, Shirley Anne, Box 22, Lake Waccamaw, N. C.  
Adams, Ruby, Route 1, Angier, N. C.  
Allen, Harriet, 127 Cook Street, Bennettsville, S. C.  
Andrews, Nancy, 300 North Salisbury Avenue, Spencer, N. C.  
Ascough, Ramona Joan, Cumnock, N. C.  
Austin, Ada, Maxton, N. C.  
Barham, Mary, Red Springs, N. C.  
Barr, Elizabeth Ann, Lansing, N. C.  
Barrow, Agnes, Route 1, LaGrange, N. C.  
Bethea, Elizabeth, Box 263, Latta, S. C.  
Blackwell, Verida, Boxwood Plantation, Route 2, Florence, S. C.  
Blalock, Jessie, 602 Jefferson Street, Hamlet, N. C.  
Bland, Frances, 706 Caldwell Avenue, Wilmington, N. C.  
Boggs, Mary, Box 124, Morganton, N. C.  
Boney, DeLanie, West Boney Street, Wallace, N. C.  
Boney, Mollie Anne, Box 93, Wallace, N. C.  
Booker, Nancy, 608 Moir Street, Leaksville, N. C.  
Boseman, Joyce, Route 3, Rocky Mount, N. C.  
Boyd, Sidney Evelyn, 700 Grace Avenue, Burlington, N. C.  
Brice, Yvonne, 405 West Colonial Avenue, Elizabeth City, N. C.  
Brinn, Ann, Creswell, N. C.  
Brown, Lois, 117 Spring Street, Hamlet, N. C.  
Brunson, Betty Ann, 106 Scott Avenue, Fayetteville, N. C.  
Buhler, Mary Virginia, Route 1, Graham, N. C.  
Byrd, Yvonne, Bunnlevel, N. C.  
Calhoun, Charlotte, 321 South 4th Street, Wilmington, N. C.  
Calloway, Doris, 211 Meisenheimer Avenue, Concord, N. C.  
Cantley, Mary Emma, Route 1, Box 108, Kingstree, S. C.  
Carswell, Jane, Manchester, N. C.  
Carter, Barbara, Jackson Springs, N. C.  
Carter, Jacqueline, 207 Bethune Street, Fayetteville, N. C.  
Carter, Peggy Joyce, Route 1, Wilson, N. C.  
Cashwell, Emily, Hope Mills, N. C.  
Cashwell, Margaret, Hope Mills, N. C.  
Charles, Mary Kathryn, 116 East Spraguc Street, Winston-Salem, N. C.  
Clarke, Clara, 79 Hamilton Street, Roanoke Rapids, N. C.  
Codas, Cleo, 409 Young Street, Henderson, N. C.  
Coleman, Mary Sue, Biltmore Farms, Asheville, N. C.  
Comer, Margaret, Ellerbe, N. C.  
Covington, Mildred McNeely, Drawer 207, Rockingham, N. C.  
Cross, Ruth, Red Springs, N. C.  
Davenport, Martha, 3229 Wilkson Boulevard, Charlotte, N. C.  
Davidson, Dorothy, 534 Harvie Avenue, Gastonia, N. C.  
Davis, Betty Lou, Box 134, Lumberton, N. C.  
Davis, Marjorie, Route 7, Fayetteville, N. C.  
Davis, Saradee, Route 3, Box 200, Quincy, Fla.  
Deaton, Kathryn, Pine Bluff, N. C.  
Dedmon, Lou Jean, Route 1, Shelhy, N. C.  
Dew, Grace, Delco, N. C.  
Driggers, Hattie, Thornwell Orphanage, Clinton, S. C.  
Drummond, Jo Ann, 408 New Street, Graham, N. C.  
Dorsey, Genewood Helen, Gurley, S. C.  
Dudley, Frances, 4503 Wrightsville Avenue, Wilmington, N. C.  
Duncan, Eunice, Red Springs, N. C.  
Duncan, Joan, 317 Stockton Street, Statesville, N. C.  
Dyer, Phyllis, Irvin Avenue, Leaksville, N. C.  
Elliot, Peggy, 140 Warley Street, Darlington, S. C.  
Ellis, Rachel, 5 Pinecrest Terrace, Wilmington, N. C.  
Evans, Ann, 1108 South Tarboro Street, Wilson, N. C.  
Fields, Evelyn, Walstonburg, N. C.  
Frazier, Jean, Route 3, Rockingham, N. C.  
Frazier, Marguerite, Box 56, McDonald, N. C.  
Freeman, Carrie, Elm Street, Bladenboro, N. C.  
Gallop, Nancy, 305 Church Street, Wilmington, N. C.  
Garrison, Madge, Box 154, Waxhaw, N. C.  
Garvin, Louise, 9118 Georgetown Road, Bethesda, 14, Md.  
Gilliland, Betty Jean, Route 1, Rocky Mount, N. C.  
Goddard, Novella, Box 534, Dunn, N. C.  
Grady, Enid, 413 West 9th Street, Charlotte, N. C.  
Grantham, Joyce, Route 1, Box 145, Goldsboro, N. C.  
Grantham, Zelma, 103 Mitchell Street, Fairmont, N. C.  
Gray, Virginia, 3162 Key Boulevard, Arlington, Va.  
Grier, Emily Nan, Route 3, Box 160, Charlotte, N. C.  
Grimes, Patsy, Box 41, Coates, N. C.  
Hammond, Nancy, Cerro Gordo, N. C.  
Hardesty, Joan, Shannon, N. C.  
Harris Patricia Anne, Route 2, Box 507, Concord, N. C.  
Henry, Corrine, Box 15, Lakedale, N. C.  
Heyer, Frances, Rose Hill, N. C.  
Hill Barbara, 246 W. Elm Street, Graham, N. C.  
Hinson, Dana, Tatum, S. C.  
Hobbs, Frances, Council, N. C.  
Hooks, Imogene, Route 1, Box 63, Whiteville, N. C.  
Houck, Elizabeth, Box 296, Candor, N. C.  
Howie, Emily, 1002 Clarendon Street, Fayetteville, N. C.  
Hubble, Katrina, Bland, Virginia  
Hughes, DeLana, 2112 Trent Blvd., New Bern, N. C.  
Huneycutt, Carolyn, Route 4, Monroe, N. C.  
Ingram, Elsie, Gibson, N. C.  
Jackson, Lois, Star Route, Fair Bluff, N. C.  
Jarman, Sarah, Route 1, Morven, N. C.  
Jones, Marlene, Route 2, Box 89, Grassy Creek, N. C.  
Jordan, Ann, Box 672, Wilmington, N. C.  
Jordan, Barbara, Route 3, Wadesboro, N. C.  
Keisler Rachel, Route 1, Conover, N. C.  
Kelly, Bert, Route 3, Carthage, N. C.  
King, Kathryn, St. Pauls, N. C.  
Knox, Ann, Route 2, Davidson, N. C.  
LaFrage, Mary Helen, Route 2, Fort Mill, S. C.  
Lancaster, Enid, Route 2, Tabor City, N. C.  
Lanier, Eleanor, Box 87, Elizabeth City, N. C.  
Lassiter, Shirley, Four Oaks, N. C.  
Lee, Agnes, Route 2, Box 228, Benson, N. C.  
Leggett, Phyllis, 814 S. Church Street, Rocky Mount, N. C.  
Leggette, Sarah Margaret, Route 3, Lumberton, N. C.  
Lehman, Louise, 3417 Putty Hill Avenue, Hamilton 14, Md.  
Lewis, Lynette, Lillington, N. C.  
Lifrage, Barbara, Saiters, S. C.  
Little, Margaret, St. Pauls, N. C.  
Little, Mary, Pollocksville, N. C.  
Littlewood, Sue, Sturgills, N. C.  
Love, Sanford C., Jr., Red Springs, N. C.  
Lovett, Marjorie, Route 2, Box 110, Nichols, N. C.  
Lovick, Janice, Box 118, Wade, N. C.  
Lowe, Nell, Clinton, N. C.  
Lyles, Louise, Warrenton, N. C.

Madden, Jane, 101 Third Avenue, Cheraw, S. C.  
Maness, Marion, 409 Grace Avenue, Burlington, N. C.  
Marlowe, Harriett, Route 3, Box 2A, Whiteville, N. C.  
Massey, Grace, 112 W. Johnston Street, Smithfield, N. C.  
May, Elsie, Route 1, Farmville, N. C.  
Melvin, Betty Gray, Kerr, N. C.  
Melvin, Betty Reid, White Oak, N. C.  
Monroe, Mildred, Fayetteville, N. C.  
Miller, Carolyn, 342 S. French Broad, Asheville, N. C.  
Miller, Jean, Box 205, Chadbourn, N. C.  
Miller, Maysie, Box 205, Chadbourn, N. C.  
Milligan, Audrey, Route 1, Box 104, Shallotte, N. C.  
Murdock, Janice, Wildwood, N. C.  
McArtan, Joyce, Linden, N. C.  
McArthur, Ann, Wakulla, N. C.  
McArthur, Mildred, Wakulla, N. C.  
McCain, Delores, Effingham, S. C.  
McCallum, Dorothy, Rowland, N. C.  
McDonald, Jean, Carthage, N. C.  
McDowell, Gene, Elizabethtown, N. C.  
McDuffie, Frances, Route 2, St. Pauls, N. C.  
McElroy, Mae, 203 West Gordon Street, Quitman, Georgia  
McGirt, Virginia, 110 Caledonia Street, Laurinburg, N. C.  
McGoogan, Elizabeth, 315 Fourth Street, Hamlet, N. C.  
McIntyre, Mary Elizabeth, Godwin, N. C.  
McKenzie, Mary Lucille, Route 3, Laurinburg, N. C.  
McKeown, Nancy, Route 1, Blackstock, S. C.  
McLeod, Ann, Box 293, Maxton, N. C.  
McLeod, Sarah Margaret, Route 3, Carthage, N. C.  
McMillan, Betty Jo, 312 North Sumner Street, Selma, N. C.  
McNeill, Billy, Red Springs, N. C.  
McNeill, Doris Whyte, Route 1, Raeford, N. C.  
McNeill, Warren, Red Springs, N. C.  
McPhaul, Faye, Parkton, N. C.  
McRae, Patricia, Route 3, Lillington, N. C.  
Nelson, Frances, Clio, S. C.  
Owen, Virginia, Cluster Springs, Va.  
Parker, Retta, Pollocksville, N. C.  
Pearce, Ann, 1645 16th Street, Corpus Christi, Tex.  
Peele, Betty, Wagram, N. C.  
Phillips, Doris, Route 1, Mebane, N. C.  
Pickett, Jane, 108 Briar Lane, Newark, Del.  
Pierce, Elaine, Evergreen, N. C.  
Pierce, Mary Elizabeth, Methodist Orphanage, Raleigh, N. C.  
Powell, Margaret, Route 1, Smithfield, N. C.  
Powers, Mable, St. Pauls, N. C.  
Prevatte, Jane Page, Box 553, Lumberton, N. C.  
Price, Hannah, 1907 Vail Avenue, Charlotte, N. C.  
Raston, Junette, Laurinburg, N. C.  
Ratchford, Wilma, Route 1, Box 140, Bessemer City, N. C.  
Register, Mary Ann, 200 Main Street, Clinton, N. C.  
Richardson, Margaret, Jackson Springs, N. C.  
Rivenbark, Florence, Willard, N. C.  
Robertson, Isabelle, Rowland, N. C.  
Robinson, Sarah E., Lumberton, N. C.  
Rogers, Ethel, 301 Washington Street, Whiteville, N. C.  
Rummage, Gloria, Ellerbe, N. C.  
Russ, Joy, Shallotte, N. C.  
Russell, Ann, 1501 Hammond Street, Rocky Mount, N. C.  
Sandifer, Jean, Route 7, Box 1282, Charlotte, N. C.  
Shaw, Ann, St. Pauls, N. C.  
Shaw, Emily, Route 2, St. Pauls, N. C.  
Shealy, Betty, 435 Lackey Street, Hamlet, N. C.  
Sherrill, Helen, Route 7, Fayetteville, N. C.  
Shillinglaw, Ramona, Box 99, Sharon, S. C.  
Singletary, Hattie, Bladenboro, N. C.  
Smith, Amanda, Box 430, Petersburg, Va.  
Smith, Barbara, 920 Lowder Street, Albemarle, N. C.  
Smith, Elizabeth Neal, Route 5, Lumberton, N. C.  
Smith, Julia Marie, Box 453, Route 3, Winter Park, Wilmington, N. C.  
Smith, Patricia, Red Springs, N. C.  
Smith, Ruth, Rowland, N. C.  
Spillers, Doris, Route 5, Lumberton, N. C.  
Spivey, Betty Ruth, Route 2, Box 565, Fairmont, N. C.  
Stephens, Martha, 108 W. 10th Street, Lumberton, N. C.  
Stevens, Joan, Red Springs, N. C.  
Stevenson, Marjorie, Route 1, Stony Point, N. C.  
Stewart, Sara, Route 2, Box 265, Wilmington, N. C.  
Stikeleather, Nancy, Route 7, Box 361, Statesville, N. C.  
Stogner, Faye, Mowen Road, Wadesboro, N. C.  
Strickland, Floree, Route 1, Fair Bluff, N. C.  
Tarrant, Love, Route 5, Box 214, Fayetteville, N. C.  
Taylor, Betty Rose, Route 5, Lumberton, N. C.  
Taylor, Jeanine, South Main Street, Robersonville, N. C.  
Teer, Patsy, Box 284, Hillsboro, N. C.  
Thompson, Norma Jean, Glade Valley, N. C.  
Thrower, Jane Brown, Red Springs, N. C.  
Thrower, Josephine, Thornwell Orphanage, Clinton, S. C.  
Travis, Sue, Route 3, Box 155, Statesville, N. C.  
Tucker, Mary Lisle, McKenney, Va.  
Underwood, Margaret Jean, Chadbourn, N. C.  
Vance, Anne Katherine, Fair Bluff, N. C.  
Wagner, Jo, 310 E. 5th Street, Lumberton, N. C.  
Walker, Carolyn, 39 Pinecrest Parkway, Wilmington, N. C.  
Watson, Harriet, Box 14, Parkton, N. C.  
Watt, Mary, P. O. Box 330, Nashville, Tenn.  
Weeks, Katherine, 315 Wrightsville Avenue, Wilmington, N. C.  
Weir, Sandra, Wananish, N. C.  
Wessell, Jane, Hallsboro, N. C.  
West, Fannie, Box 314, Lakedale, N. C.  
Whitaker, Claudine, 202 Sloop Street, Kannapolis, N. C.  
Wilds, Lucille, 615 Wildwood Avenue, Columbia, S. C.  
Williamson, Joan, 4128 Redding Road N. E., Route 1, Chamblee, Ga.  
Workman, Betsy, Box 42, Mebane, N. C.  
Worrell, Geraldine, 915 Mitchell Street, Rocky Mount, N. C.  
Worth, Betty, Aberdeen, N. C.  
Wrape, Mary Charles, Box 93, Cordova, N. C.

AUTOGRAPHS

