

*the 1952*

**white**

**heather**

PHILLIP LESLIE BULLOCK













**Nineteen**

**Fifty-two**



**Annual**

**Student Publication**

**. . . Flora Macdonald College**

**Red Springs**

**North Carolina**

**Enid Grady**

**Editor**

**Amanda Smith**

**Business**

**Manager**







*the  
story of*

*...flora macdonald*

1952

# Autu

The Story of Flora Macdonald in 1952 is a seasonal one, with its beginning in the fall of '51. Cars poured in between the gray stone gates, and the halls took on a crazy pattern of trunks and boxes. Then suddenly and disappointingly the chaos dissolved into order, the lines into classes. The long length of Vardell became tinged with autumnal red, and on Saturday afternoons girls gathered around a radio to listen to a football game. . . .

# Win

Then one day you lingered by the radiator before taking your seat in chapel, and that night you threw another blanket on the bed. Out at the gym a few girls huddled over in one corner while the sound of a lonely ball echoed in the hollow darkness. The walk back from town became longer and colder, for these were the Days of the Red Noses and Frozen Feet. . . .

# Spr

Then slowly you inched your windows up at night, and after dinner you migrated to the front campus. And so it was Spring. The wisteria produced the traditional wonder, and the campus was suddenly and miraculously green. You marveled at the seasonal beauty of your college, and yet you knew that while her campus and curriculum changed with these seasons, the spirit of Flora Macdonald remained the same—Autumn, Winter, and Spring.







# *To* **Mrs. P. P. McCain**

... IF you have ever noticed the ready smile that accents her wit  
 ... IF on a freezing January night you have waited with her for a one a.m. bus  
 ... IF you have ever heard her take a do-or-die stand in favor of a wayward student  
 ... IF you have even the harest acquaintance with her  
**THEN** there need be no explanation as to why this book is dedicated to her. You have the answer.



MRS. P. P. MCCAIN  
 Dean of Students





## **The President**

**Dr. Marshall Scott Woodson**

His untiring effort, hard work, and loyal devotion to the office of the president have enabled Flora Macdonald to progress rapidly during the two years it has been under his leadership. The thoughtfulness, friendliness, and concern which he has shown toward each girl have won him a warm place in our hearts.



DR. CHARLES G. VARDEHL  
President Emeritus

# Officers of Administration

Price H. Gwynn, Jr., B.A., M.A., B.D., Ph.D.  
Dean of Faculty

Charles G. Vardell, Jr., B.A., M.A., Ph.D.  
Dean of Conservatory

Gwynn

Vardell

Morrison

McCain



Miss Hazel Morrison, B.A.  
Registrar and Dean of Admissions

Mrs. P. P. McCain, B.A., M.A.  
Dean of Students





Left to right, seated: Morrison, Lyles, McLaughlin, Lassiter,  
Standing: Williams, Perry, Connor, Wright, Dearen.

## Administration and Faculty

Brown Morrison, B.L., Bursar

Flora M. Perry, B.A., B.S.L.S., Librarian

Louise Lyles, Secretary, Office of the President

Annie Williams, Secretary, Office of Registrar

Myrtle K. Wright, Secretary, Office of the Bursar

Nan H. Bullock, B.L., Editor of the College Bulletin and Publicity Secretary

Beatrice H. McLaughlin, B.A., Field Secretary

Shirley Lassiter, Assistant to Librarian

Martha L. Gambill, Dietitian

Virginia Connor, R.N., Resident Nurse

C. T. Johnson, M.D., Physician

G. C. Lang, Superintendent of Buildings and Grounds

Elizabeth S. Dearen, Manager of Laundry

Helen T. Dorroh, Supervisor of Dormitories

# Faculty

Left to right: McPhaul, Robertson, Conoly, Cherry, Bullock, Bowen.

PHILLIP LESLIE BULLOCK, B.A.,  
B.D., Th.M., Th.D., Professor of Bible.

ELIZABETH C. McPHAUL, B.A., As-  
sistant Professor of Bible.

MARGARET BOWEN, B.A., M.A., As-  
sociate Professor of Bible and Christian  
Education

MARY M. CONOLY, B.A., B.S., M.A.,  
Professor of Education.

ANNIE M. CHERRY, B.A., M.A. As-  
sistant Professor of Education.

GENEVIEVE M. NEIGHBORS, B.A.,  
M.A., Assistant Professor of Education  
and Social Science.

CAROL ROBERTSON, B.A., M.A.,  
Professor of History.

JOHN E. WILLIAMS, B.M., M.M.,  
Assistant Professor of Organ and  
Theory.

RACHEL T. PROTHEROE, H.M., As-  
sistant Professor of Music Education.

NYRA TURBEVILLE, B.A., B.M., As-  
sistant Professor of Piano.

LIDA L. CHAPMAN, H.A., B.M., As-  
sistant Professor of Piano and Organ.

JAMES V. COBB, B.A., B.M., Assistant  
Professor of Voice and Choral Director.

ETHEL M. ROWLAND, B.S., Assistant  
Professor of Voice.

LILLIAN F. ROBESON, Assistant Pro-  
fessor of Violin.



Left to right: Turbeville, Rowland, Cobb, Protheroe, Williams.

# Flora



# ..1952

Left to right, first row: Bateman, Estes, Stenhouse. Seco id row: Comer, Hansen, Watson.



JANE C. GLENN, B.S., G.Ph., M.S., Associate Professor of Chemistry.

FRANCES E. COMER, B.S., M.S., Professor of Home Economics.

MARY V. WATSON, B.S., M.S., Assistant Professor of Home Economics.

ETHEL B. HANSEN, B.A., M.A., Sc.D., Professor of Biology.

EDNA E. ESTES, B.S., M.S., Assistant Professor of Biology.

LETA W. MCINTYRE, B.S., Associate Professor of Business Subjects.

ELIZABETH STENHOUSE, B.L., Assistant Professor of Business Subjects.

ELEANOR B. SCOTT, B.A., M.A., Ph.D., Professor of English.

NEIL WATSON, B.S., M.A., Assistant Professor of English.

THOMAS E. WRIGHT, B.A., M.A., Professor of French and Spanish.

WILLIAM F. REAGAN, B.A., M.A., Assistant Professor of French.

ELLIE M. SOWDER, B.A., M.A., Associate Professor of Mathematics.

HARRIET N. MORRISON, B.A., M.A., Professor of Latin.

ETHEL BATEMAN, B.A., M.A., Director of Physical Education and Assistant to Dean of Students.



Left to right: Watson, Scott, Reagan, Morrison, Sowder, Wright.

# Macdonald



*Autumn*





**T**HIS is the Beginning, the Starting Point.

A hot and wornout summer has slowly turned  
into September, when the 1950 Debutante  
folds her Net Dream, places it lovingly  
in the shiny gold box, and reaches for  
her harlequin glasses. Thus it is autumn—  
a challenging yellow season, a season for  
athletics, for books, for never-ending  
lines. This is the time for closed weekends,  
for academic arguments, for homesickness.  
This is yours, underclassmen. This is the  
story of autumn.

*mm*... **the Starting Point**

Rat Boyd being painfully embarrassed by an unmerciful sophomore.



Fay Reynolds came out on top as Queen of the Mardi Gras.



Hup 2-3-4! Remember the annual trek down Main Street during the Harvest Festival?

F.M.C. stole the show by displaying a novel float adorned with several campus cuties.







The societies vied for members.



Epsilon Chi and Zetesian gave us a bang-up weiner roast.

## Three Months . . .

. . . were filled with a flurry of activity, including the usual and the unusual. . . Among the unusual was Dr. Vardell and his "Cookie Jar," which he played on his fall recital October 12. . . A few weeks later we matched paces with the best of them in the Red Springs Harvest Festival, and it was about this time that the new Postal System went into effect—no mail until after chapel. . . On November 3, the Student Council stepped down from its seat of Justice to sponsor the first dance of the year, choosing the theme, "Sea of the Moon." . . Hospitality Weekend rolled around and we greeted our high school visitors with a Scottish handshake. . . Something novel in the way of entertainment was introduced on Saturday nights—movies in the auditorium. The first one slated was "A Letter to Three Wives." . . Frances Yeend captivated her audience in her concert on October 25, her gold and white dress still being the topic of conversation in many bull-sessions. . . We were reprimanded for our unruly conduct in the dining hall at the Halloween banquet. . . The Student Body petitioned for Thanksgiving holidays, and got them! . . . And it was along in here that we discovered it was no longer autumn.



We courageously formed the usual lines in the fight against typhoid fever.

# Freshmen

Time was when this confident, swaggering group was as green as the summer grass and as blue as a summer sky. After undergoing the long and torturous hours of Rat Day, braving a thousand parties during rush week, and discovering that their roommates were human beings after all, they settled down and decided to stay. We're glad they did, for they are truly a fresh addition to an otherwise aging student body.

## OFFICERS

Betty Lou Lamh, President  
Joan Crawley, Vice-President  
Ellen Williams, Secretary  
Ann Stephenson, Treasurer

Left to right: Lamb, Crawley, Williams, Stephenson.



Freshma







## ss of 1952

### First row:

ADDOR, Billigene, Addor, N. C.; ANDERSON, Dorothy, Whiteville, N. C.; ARRINGTON, Rebecca, Rowland, N. C.; BASS, Juanita, Lillington, N. C.; BOONE, Margaret, Rocky Mount, N. C.; BOONE, Peggy, Rocky Mount, N. C.; BOWDEN, Ann, Warsaw, N. C.

### Second row:

BOYD, Bevis, Greeleyville, S. C.; BOYD, Eunice, Christiansburg, Va.; BRANTLEY, Alice, Selma, N. C.; BROWN, Bobbie, Roanoke, Va.; BRYAN, Mildred, Lumberton, N. C.; BUDD, Evelyn, Red Springs, N. C.; BULLOCK, Doris, Oxford, N. C.

### Third row:

BURGESS, Ann, New York, N. Y.; BYNUM, Mary Etta, Kinston, N. C.; BYRD, Annie, Elizabethtown, N. C.; CAIN, Doris, Fayetteville, N. C.; CALLAHAN, Peggy, Whiteville, N. C.; CAMPBELL, Kathryn, Laurinburg, N. C.; CASHWELL, Sara, Hope Mills, N. C.

### Fourth row:

CARR, Bobbie, Wallace, N. C.; CHERRY, Ann, Charlotte, N. C.; CLINE, Patricia, Cherryville, N. C.; COLE, Nadine, Fayetteville, N. C.; COOK, Jean, Fayetteville, N. C.; CRAWLEY, Joan, Henderson, N. C.; CURRIE, Lydia, Jackson Springs, N. C.

### Fifth row:

DAVIS, Helen, Wadesboro, N. C.; DORMAN, Nan, Red Springs, N. C.; DUDLEY, Sarah, Wilmington, N. C.; DUNN, Doris, Charlotte, N. C.; ELKINS, Mary Hazel, Elizabethtown, N. C.; FARLEY, Ann, Hallsboro, N. C.; FITZGERALD, Shirley, Waynesboro, Va.



## Freshman

### First row:

FLEMING, Lucy, Mehane, N. C.; FULFORD, Joan, Supply, N. C.; FULGHUM, Barbara, Rocky Mount, N. C.; GANCI, Nellie, Cherry Point, N. C.; GANDY, Olive, Society Hill, S. C.; GIBSON, Katherine, Laurinburg, N. C.; GORE, Betty Jo, Shallotte, N. C.

### Second row:

GRAHAM, Lucille, Olivia, N. C.; GRIFFIN, Nancy Jane, Rocky Mount, N. C.; HALE, Mary, Wilmington, N. C.; HAMILTON, Dot, Huntington, West Va.; HARGROVE, Blanche, Mt. Olive, N. C.; HEATON, Betty, Andrews, N. C.; HOLMES, Jane, Bolton, N. C.

### Third row:

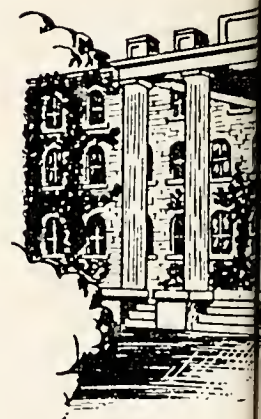
HUBBARD, Consulla, Clio, S. C.; INMAN, Shirley, Barium Springs, N. C.; JACKSON, Flora Mae, Fair Bluff, N. C.; JENKINS, Faye, Union, S. C.; JERNIGAN, Mickie, Fairmont, N. C.; KELLY, Norma, Charlotte, N. C.; LAMB, Betty Lou, Wilmington, N. C.

### Fourth row:

LANE, Ann, Orlando, Florida; LEE, Naomi, Wilmington, N. C.; LEMMON, Una May, Spencer, N. C.; LENNON, Nell, Bladenboro, N. C.; LEWIS, Jackie, Tabor City, N. C.; MALONEY, Christine, Cullen, Va.; MANGUM, Annie Ruth, Boardman, N. C.

### Fifth row:

MARTIN, Mary Jane, Reidsville, N. C.; MAULDIN, Vencie, Williston, Fla.; MAYS, Martha, Thomasville, Ga.; MOZINGO, Doris, Bowden, N. C.; MIZE, Mary Ella, Commerce, Ga.; MORRIS, Jean, Maxton, N. C.; MORRISON, Martha, Rowland, N. C.







## Class of 1952



### First row:

McBANE, Shirley, Mehane, N. C.; McCracken, Mary, Winston-Salem, N. C.; McCraw, Dorothy, Clio, S. C.; McDonald, Ann, Parkton, N. C.; McElroy, Mamie Jo, Quitman, Ga.; McGirt, Ann, Laurinburg, N. C.; McLaughlin, Bobbie, Effingham, S. C.

### Second row:

McMillan, Effie, Laurinburg, N. C.; McNeill, Marjorie, Broadway, N. C.; Neel, Peggy, Barium Springs, N. C.; Parks, Patty, Weaverville, N. C.; Patterson, Carolyn, Lumberton, N. C.; Phillips, Hilda, Rocky Mount, N. C.; Pittard, Geraldine, Warrenton, N. C.

### Third row:

Preble, Barbara, Salishury, N. C.; Prevatte, Barbara, Lumberton, N. C.; Proctor, Lou, Durham, N. C.; Query, Peggy, Hamlet, N. C.; Rawls, Hazel, Rocky Mount, N. C.; Reynolds, Fay, Rocky Mount, N. C.; Sanders, Sara, Badin, N. C.

### Fourth row:

Smith, Betty Ann, Red Springs, N. C.; Smith, Nelle Ruth, Dalton, Ga.; Stephenson, Ann, Raleigh, N. C.; Sweeley, Marijane, Laurinburg, N. C.; Tanner, Jean, Marion, S. C.; Thomas, Peggy, Maxton, N. C.; Thompson, Janie, Yanceyville, N. C.

### Fifth row:

Tripp, Cecelia, Shallotte, N. C.; Tripp, Mary Emma, Shallotte, N. C.; Walker, Sara, Burlington, N. C.; Warwick, Mildred, Orrum, N. C.; Wicker, Margaret, Sanford, N. C.; Williams, Ellen, Rocky Mount, N. C.; Willis, Shirley, Morehead City, N. C.; Winstead, Bernadine, Roxboro, N. C.



Boney, Davis, Carter, Hardesty.



## Sophomore

# Sophomores

Perhaps better known as the "silly sophs", this is the class that has been thrust into the world of Beowulf and Gawain. After putting the lowly Freshmen through the "Debutant Bawl," they set-

tled down to work, discovering that one can live on two hours of sleep a week, if one finds it necessary. Those days were good, but—never again!

## OFFICERS

Joan Hardesty, President  
Peggy Carter, Vice-President

Saradee Davis, Secretary  
Delanie Boney, Treasurer



First row:

ABERNATHY, Sylvia, Mount Holly, N. C.; ALLEN, Harriet, Bennettsville, S. C.; ANDREWS, Nancy, Spencer, N. C.; BAIN, Gladys, Raeford, N. C.; BETHEA, Beth, Latta, S. C.; BLALOCK, Jessie, Hamlet, N. C.

Second row:

BONEY, Delanie, Wallace, N. C.; BOSEMAN, Joyce, Rocky Mount, N. C.; BRICE, Yvonne, Elizabeth City, N. C.; BROWN, Geraldine, Chadbourn, N. C.; CALHOUN, Charlotte, Wilmington, N. C.; CARSWELL, Jane, Spring Lake, N. C.

Third row:

CARTER, Peggy, Wilson, N. C.; CODAS, Cleo, Henderson, N. C.; COLEMAN, Mary Sue, Asheville, N. C.; DAVIS, Betty Lou, Red Springs, N. C.; DAVIS, Marjorie, Fayetteville, N. C.; DAVIS, Saradee, Quincy, Florida.

Fourth row:

DEW, Grace, Delco, N. C.; DRIGGERS, Hattie, Clinton, S. C.; DRUMMOND, Jo Ann, Graham, N. C.; EDWARDS, Faye, Maxton, N. C.; ELLIS, Rachel, Wilmington, N. C.; GALLOP, Nancy, Wilmington, N. C.

## Class . . . 1952



First row:

GILLILAND, Betty Jean, Rocky Mount, N. C.; GRIMES, Patsy, Coats, N. C.; HARDESTY, Joan, Shannon, N. C.; HELMS, Jane, Monroe, N. C.; HENRY, Corrine, Fayetteville, N. C.; HINSON, Dana, Tatum, S. C.

Second row:

HOOKS, Imogene, Whiteville, N. C.; HOUCK, Betty, Rowland, N. C.; INGRAM, Elsie Faye, Gibson, N. C.; IVEY, Fannie Gray, Boardman, N. C.; JOHNSON, Jean, Benson, N. C.; JONES, Marlene, Grassy Creek, N. C.

Third row:

KELLY, Anise, Mount Olive, N. C.; LATHAM, Anne, Rose Hill, N. C.; LEGGETT, Phyllis, Rocky Mount, N. C.; LIFRAGE, Barbara, Salters, S. C.; LITTLE, Mary Hagood, Pollockville, N. C.; LITTLEWOOD, Mary Sue, Sturgills, N. C.

Fourth row:

LOVE, Sanford, Red Springs, N. C.; MADDEN, Jane, Cheraw, S. C.; MANESS, Marion, Burlington, N. C.; MILLER, Jean, Chadbourn, N. C.; MILLIGAN, Audrey, Shallotte, N. C.; MURDOCH, Margaret, Wildwood, N. C.; McELROY, Mae, Quitman, Ga.



## Sophomore







First row:

McINTOSH, Elizabeth, Fayetteville, N. C.; McLEOD, Ann, Maxton, N. C.; McLEOD, Sarah, Carthage, N. C.; NANCE, Mary Grace, Chadbourn, N. C.; NELSON, Frances, Olivia, N. C.; OWEN, Virginia, Cluster Springs, Va.

Second row:

PARKER, Retta, Pollocksville, N. C.; PIERCE, Mary Elizabeth, Raleigh, N. C.; POWERS, Mable, St. Pauls, N. C.; PREVATT, Jane Page, Lumberton, N. C.; REYNOLDS, Sara, Laurinburg, N. C.; ROBINSON, Elizabeth, Burgaw, N. C.

Third row:

SMITH, Barbara, Albemarle, N. C.; SPIVEY, Betty Ruth, Fairmont, N. C.; STEPPE, Jean, Barium Springs, N. C.; STEVENSON, Marjorie, Stony Point, N. C.; STIKELEATHER, Nancy, Statesville, N. C.; SUGGS, Ruby, Tabor City, N. C.

Fourth row:

TEER, Patsy, Hillsboro, N. C.; THOMPSON, Florene, Whiteville, N. C.; THOMPSON, Norma J., Glade Valley, N. C.; TUCKER, Mary Lisle, McKenney, Va.; WILDS, Lucile, Columbia, S. C.; WORRELL, Geraldine, Rocky Mount, N. C.; WORTH, Betty, Aberdeen, N. C.

Class . . . 1952



## **Choral Club**

The Flora Macdonald College Choral Club is composed of seventy voices, and is directed by Mr. James V. Cobb. Under his youthful but discriminating leadership the chorus has sought to produce a high quality of music for its enthusiastic audiences. The Choral Club is open to students from all departments who are interested in singing, selection being made upon careful voice tests. Because of its popularity and success this musical organization has appeared at Presbytery rallies, made weekend tours, presented several formal concerts, and given a radio broadcast.

## **St. Cecelia Music Club**

These music enthusiasts meet on the first Friday of the month at the home of their adviser, Miss Rachel Protheroe, where they delve into the more technical side of the art. This year they have studied contemporary American composers, among them being Walter Piston and Paul Hindemith. A comparison was made at the completion of the study. The main project of the club this year has been to increase the number of records in the Flora Macdonald record library.



**at F. M. C.**



**Harriett Watson**  
President

**Junette Rastom**  
Vice-President

**Dot McCallum**  
Secretary

**Sylvia Abernathy**  
Treasurer



**Ruth Smith**  
President

**Mae McElroy**  
Vice-President

**Harriet Allen**  
Secretary-Treasurer

# Athletic Association

The purpose of this organization is to promote good sportsmanship among the students, and to offer to all the opportunity to participate in athletics at Flora Macdonald. Chief among their activities this

year was the redecoration of the "Wreck Room." They also found time to sponsor a unique float in the Harvest Festival, and stirred up much class competition with the volleyball and basketball tournaments.

Ginnie Buhler, President



## OFFICERS

Betty Ann Brunson, Vice-President  
 Hattie Driggers, Secretary  
 Margaret Cashwell, Treasurer  
 Patsy Teer, Salesman  
 Emily Nan Grier, Head of Volleyball  
 Betty J. Gilliland, Head of Basketball  
 Patsy Grimes, Head of Tennis  
 Peggy Elliott, Head of Swimming  
 Ann Shaw, Head of Softball  
 Julia M. Smith, Head of Table Tennis and Bowling  
 Lucille Graham, Freshman Representative  
 Miss Ethel Bateman, Adviser

Seated, left to right: Brunson, Driggers, Cashwell, Teer. Standing: Bateman, Shaw, Grier, Graham, Gilliland, Smith.





# Cheerleaders

With vim, vigor, and vitality, these girls are the ones who injected enthusiasm into our ball games. So . . . fifteen rahs for the cheerleaders!

Lynn Lewis, College Cheerleader  
Enid Grady, Senior  
Beth Farrior, Junior  
Patsy Teer, Sophomore  
Peggy Callahan, Freshman



Because this is one of the hardest clubs on the campus to gain membership in, it is indeed an honor to wear the F. M. C. monogram.

Lois Brown  
Betty Brunson  
Ginnie Buhler  
Margaret Cashwell  
Peggy Elliott  
Emily Nan Grier  
Janice Murdoch  
Lib McGoogan  
Jean Sandifer  
Ann Shaw  
Emily Shaw  
Harriett Watson  
Jan Williamson



# Monogram Club



### **Senior Volleyball**

Shaw, Brunson, Howie, Grier, McDowell, Brown, Murdoch, Williamson, Watson.



### **Junior Volleyball**

Left to right, First row: McArthur, Cashwell, Sandifer.

Second row: Elliott, Heyer, Buhler.



### **Sophomore Volleyball**

Left to right, First row: Wilds, Milligan, Worrell, Gilliland, Davis, Stevenson.

Second row: Thompson, Andrews, Calhoun, Tucker, Hardesty.



### **Freshman Volleyball**

Left to right, First row: McNeill, Burgess, Fulghum, Boone, Preble, Mauldin, Morris, Pittard, Rawls, Hale, McCracken.

Second row: Lane, Thompson, Graham, Dunn, Bullock, Cashwell.



## Senior Basketball

Left to right, First row: Watson, Shaw, Howie.

Second row: Murdoch, McDowell, McPhaul, Grier.



## Junior Basketball

Left to right, First row: McArthur, Sandifer, Cashwell.

Second row: Buhler, Heyer, Elliott.



## Sophomore Basketball

Left to right, First row: Milligan, Wilds, Stevenson, Hardesty, Gilliland, Davis.

Second row: Andrews, Parker, Teer, Tucker, Carswell, Prevatt.



## Freshman Basketball

Left to right, First row: Morris, Thompson, Pittard, Graham, Bullock, Burgess.

Second row: Mauldin, Preble, Query, McCracken, Dunn, Hale, Cashwell.





*Wint*





AND suddenly it's winter—a rip-roaring, fast-moving winter! The bells send crisp staccato warnings through the tense halls, lights burn in the first floor classrooms late into the night, and tires crunch on the frozen ground. These are the quick-paced months of intense study, of honest adolescent wondering, of a maturing and developing mind, when the dormitory students turn their radiators up, and the tardy day students come straggling into class. Button up your overcoats, Juniors, and take it from here. It's all yours—and it's high winter.

*ter* ... the Quick-paced Months

You say it didn't snow? Aw-w-w!

We played a few quick hands between classes.



## The Days



The Christmas dance held all the glitter for which F.M.C. dances are well-known.

The seniors retained their privilege of bedecking the huge Christmas tree.







The unforgettable Christmas Dance.



Hold that tiger!

## Grew Short...

and the classes grew longer. The usual number of us were campused for various reasons, while some covered in the infirmary with the inevitable winter colds. . . . We donned our evening dresses to hear Jean Casadesus and his magic piano, saving our concert cuts for a rainy day. . . . The higher authorities pleaded with us to conserve electricity, and thus was born the motto, "When not in use, turn off the juice." . . . Paul Engle surprised us with a uniquely interesting lecture on his poetry, and soon after this the two societies collahorated to produce a sparkling Christmas dance. . . . Sleet and ice gave us a scare on December 20, as we prepared to close up shop. But we all managed to leave, despite the disagreeable weatherman. . . . We returned to find the floors slickly polished and our books exactly as we left them. It was during this interval that Dudley, Mollie Ann, and Ann McLeod expounded on the superior qualities of Kansas. . . . "Rhapsody in Blue" was one of the best of the mid-winter movies, while several faculty recitals topped the agenda for January. . . . Capsule Day brought the usual chuckles, and a little later we saw the end of winter.



Once again the Dome Service summed up our feelings about Christmas at F.M.C.

# Juniors

Having struggled through two years of hard work to become upperclassmen, the Juniors have become closely knit together as the Class of '53. Informal parties, get-togethers at their advisers', the Bullocks, ordering class rings, all were among their more outstanding activities. Elections and Going-Up Day confirm the fact that they have reached the top.

## OFFICERS

Ann McArthur, President

Jean Underwood, Vice-President

Mary Ann Register, Secretary

DeLena Hughes, Treasurer

Betty Shealy, Tea Room Manager

Julia M. Smith, Assistant Manager

—Flora Maedo



Left to right, first row: McArthur, Underwood, Register. Second row: Shealy, Smith, Hughes.







First row:

AUSTIN, Ada, Maxton, N. C.; BAKER, Ruby Grey, Buies Creek, N. C.; BARHAM, Mary, Red Springs, N. C.; BOYD, Evelyn, Abingdon, Va.; BRINN, Ann, Creswell, N. C.

Second row:

BUHLER, Ginnie, Graham, N. C.; CALLOWAY, Doris, Concord, N. C.; CASHWELL, Margaret, Hope Mills, N. C.; DUDLEY, Frances, Wilmington, N. C.; EARP, Sidney, Taylorsville, N. C.

Third row:

ELLIOTT, Peggy, Darlington, S. C.; ESSEY, Marie, Maxton, N. C.; FARRIOR, Beth, Fairmont, N. C.; GARRISON, Madge, Waxhaw, N. C.; GRANTHAM, Joyce, Goldsboro, N. C.

Fourth row:

GRAY, Gina, Arlington, Va.; HAMMOND, Nancy, Cerro Gordo, N. C.; HEYER, Frances, Rose Hill, N. C.; HILL, Barbara, Graham, N. C.; HUGHES, DeLena, New Bern, N. C.

First row:

KEISLER, Rachel, Conover, N. C.; LEWIS, Lynn, Lillington, N. C.; MAY, Elsie, Farmville, N. C.; MORGAN, Flora Lou, Maxton, N. C.; McARTHUR, Ann, Wakulla, N. C.

Second row:

McDUFFIE, Frances, St. Pauls, N. C.; McGOOGAN, Lib, Hamlet, N. C.; McKENZIE, Tink, Laurinburg, N. C.; McNEILL, Pat, Lumberton, N. C.; PHILLIPS, Doris, Mehane, N. C.

Third row:

RAY, Rebecca, Willard, N. C.; REGISTER, Mary Ann, Clinton, N. C.; SANDIFER, Jean, Charlotte, N. C.; SHEALY, Betty, Hamlet, N. C.; SHELBY, Pat, Spencer, N. C.

Fourth row:

SMITH, Julia Marie, Wilmington, N. C.; SMITH, Ruth, Rowland, N. C.; SWEAT, Joyce, Talladega, Ala.; UNDERWOOD, Jean, Chadhour, N. C.





• **Second  
Year  
Business**



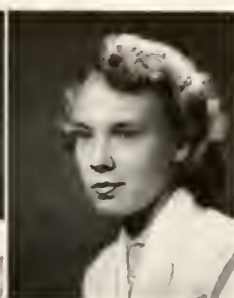
Cross, Betty  
Laurel Hill, N. C.



Melvin, Betty Reid  
White Oak, N. C.



Miller, Carolyn  
Asheville, N. C.



Strickland, Floree  
Fair Bluff, N. C.

## Marshals ... 1952

Nancy Hammond, Z, Chief

Gina Gray, EX  
Lib McGoogan, EX  
Tink McKenzie, EX  
Jean Sandifer, EX

Ginnie Buhler, Z  
Barbara Hill, Z  
Lynn Lewis, Z  
Jean Underwood, Z



# Student Government



Elaine Pierce  
President of the Student Body

With thirteen members representing all classes and organizations, the Student Council directs the governmental part of the school. It seeks to establish in each girl a high personal honor and the importance of abiding by rules in order to produce harmony among the students. Every Tuesday night, and others when necessary, these girls have the thankless job of dealing out justice to the offenders of its honor system. Though the executive activities keep the council busy, it still sponsors a dance, hospitality weekend, and pleads for special concessions for the student body. The Council adviser is the Dean of Students.

Left to right, seated: Lovick, Rummage, McKenzie. Standing: Buhler, Brown, McArthur, Lamb, Comer, Hardesty, Barham, Pearce, Carter.

## OFFICERS

Janice Lovick, Vice-President of Student Body; Gloria Rummage, Secretary of Student Body; Tink McKenzie, Treasurer of Student Body; Margaret Comer, President of Senior Class; Ann McArthur, President of Junior Class; Joan Hardesty, President of Sophomore Class; Betty Lou Lamb, President of Freshman Class; Ann Pearce, President of Christian Association; Ginnie Buhler, President of Athletic Association; Barbara Carter, President of Zetesian Society; Lois Brown, President of Epsilon Chi Society; Mary Barham, President of Day Students.





# Christian Association

The Flora Macdonald Christian Association has as its aim the promoting and fostering of the religious life of the students. At the center of the organization is a cabinet composed of six committee chairmen in addition to the officers. During the year it has presented socials, the annual installation service, a candlelight service, the White Gift Service, the Dome Service, sponsored a toy workshop for underprivileged children, and given us two Spiritual Enrichment Weeks with excellent speakers. The theme "Rooted in Christ" has been a challenge to a deeper, truer, and more vital Christianity for each of us. Mrs. Elbert McPhaul is the cabinet adviser.



Ann Pearce  
President of the Christian Association

Left to right, seated: Boyd, May, Williamson. Standing: Garrison, Tucker, Boney, Sandifer, Murdoch, Hammond, Pierce.



## OFFICERS

Evelyn Boyd, Vice-President; Elsie May, Secretary; Jan Williamson, Treasurer; Nancy Hammond, Chairman Worship Committee; Janice Murdoch, Chairman Social Service Committee; Jean Sandifer, Chairman Fellowship Committee; Mollie Ann Boney, Chairman Outreach Committee; Madge Garrison, Chairman Sunday School Committee; Mary Lisle Tucker, Chairman of Prayer Band; Elaine Pierce, Ex-Officio.

# 1952 White Heather

Enid Grady  
Editor-in-Chief

Amanda Smith  
Business Manager



Enid Grady



Amanda Smith

It is traditional for the staff to save all their laments and pour them out on this page in one big gripe, and who are we to depart from custom? Besides trying to keep one step ahead of the bank statements, we have had our share of

hard knocks, dark worries, and sneaky deadlines. The majority of us have survived, however, and we give you now the results of our work, the 1952 Story of Flora Macdonald as seen through the eyes of the "White Heather."

Allen, Reynolds, Smith, Abernathy, Lewis, Brinn, Sweat, McCallum, McGoogan, Strickland.



Dr. Leslie Bullock  
Adviser

The 1952 "White Heather" Staff: Ann Brinn, Assistant Editor; Lib McGoogan, Assistant Business Manager; Dot McCallum, Senior Class Editor; Lynn Lewis, Junior Class Editor; Harriet Allen, Sophomore Class Editor; Fay Reynolds, Freshman Class Editor; Geraldine Worrell and Mary K. Charles, Literary Editors; Sylvia Abernathy and Joyce Sweat, Snapshot Editors; Barbara Smith and Floree Strickland, Typing Editors.





Frances Dudley



Peggy Elliott

# Pine and Thistle

Peggy Elliott  
Editor-in-Chief

Frances Dudley  
Business Manager

The "Pine and Thistle" is the college publication which offers to all students and faculty an opportunity to express themselves creatively. In spite of the great pressure of lack of time and many duties, three editions have been published

by the staff this year. These editions contain poems, sketches, editorials, essays, and short stories contributed by students and faculty writers. The business staff co-operated well with the literary staff in getting out each edition.

Phillips, Smith, May, Brice, Davis, Melvin, Driggers, Gibson, Carswell, Parks, Littlewood, Cross.



Dr. Eleanor B. Scott  
Adviser

The 1952 "Pine and Thistle" Staff:  
Doris Phillips, Assistant Editor;  
Betty Reid Melvin, Assistant Business Manager; Elsie May, Yvonne Brice, Sue Littlewood, Jane Carswell, Literary Staff; Emily Shaw, Betty Lou Lamb, Art Staff; Hattie Driggers, Helen Davis, Katherine Gibson, Betty Cross, Patty Parks, Barbara Smith, Business Staff.



# Zetesian Literary Society

## OFFICERS

Barbara Carter, President  
 Nancy Hammond, First Vice-President  
 Geraldine Worrell, Second Vice-President  
 Margaret Cashwell, Recording Secretary  
 Patsy Teer, Corresponding Secretary  
 Phyllis Leggett, Treasurer  
 Ann McLeod, Critic  
 Marion Maness, Censor  
 Barbara Lifrage, Chaplain  
 Betsy Workman and Harriet Allen, Pianists

"Always with fond memories," the spirited year of 1951-52 will be remembered by the Zeta Theta Psi's, who expressed their loyalty to Zetesian Society by their splendid co-operation in the year's activities. A weiner roast for the new students was first on the list of fall frolics, followed closely by the joint society Mardi Gras. Other projects were the renovation of the hall, including the White Piano Episode, and record parties, with the Zetesian minstrel highlighting the spring happenings.



Barbara Carter  
 President

Seated, left to right: Teer, Cashwell, Hammond, Worrell. Standing: Maness, Lifrage, Leggett, Allen, Workman.





# Epsilon Chi Literary Society

With hearty shouts of "Epsilon Chi, we sing to you," these enthusiastic members have tightened the chains of friendship in their society this year. The more robust of their number ascended ladders to repaint the hall, and others extended invitations to the new freshmen. The Golden Horseshoe Supper Club was their big production during rush week, while the Christmas dance was the main mid-winter activity. The comedy, "And the Lights Went Out," and Senior take-offs were scheduled for spring. Epsilon Chi in any language means friends, fun, and society faithfulness.

## OFFICERS

Lois Brown, President  
Jean Sandifer, First Vice-President  
Retta Parker, Second Vice-President  
Frances Hobbs, Recording Secretary  
Delanie Boney, Corresponding Secretary  
Emily Nan Grier, Treasurer  
Lib McGoogan, Critic  
Jean Miller, Censor  
Kitty Deaton, Chaplain  
Nancy Gallop, Pianist

Seated, left to right: Sandifer, Parker, Hobbs, Boney. Standing: McGoogan, Gallop, Deaton, Grier, Miller.



Lois Brown  
President





Left to right, Seated: Shaw, R. Smith, Singletary, Workman. Standing: Whitaker, Watson, Grier, Miller, Brice, Charles, J. Smith.

## Club Presidents

Claudine Whitaker, President of Spanish Club

Emily Nan Grier, President of Mathematical Honor Society

Julia M. Smith, President of Wm. Bartram Scientific Society

Betsy Workman, President of French Club

Yvonne Brice, President of Writers Club

Mary K. Charles, President of International Relations Club

Emily Shaw, President of Highland Players

Sylvia Abernathy, President of Latin Club

Hattie Singletary, President of Home Economics Club

Mary Barham, President of Day Students Club

Mollie Ann Boney, President of Student Volunteers

The value of organizations to the campus is shown in the worth-while activities which they sponsor. The meetings of these clubs are varied—some humorous, some serious. In retrospect, they're rather hard to evaluate, but they've

undoubtedly taught us that democracy requires a lot of time. Whether based on scholarship or fellowship, these clubs offer many good opportunities to the Flora Macdonald student.



# Spanish Club



To foster and broaden appreciation of the Spanish language, monthly meetings are held, at which time this club has discussions and informative lectures.

## OFFICERS

Claudine Whitaker, President  
 Sylvia Abernathy, Vice-President  
 Ann McLeod, Secretary-Treasurer  
 Mr. Thomas E. Wright, Adviser



Proving themselves to be interested not only in the Pythagorean Theorem but also in other phases of school life, this club is composed of those with a high average in mathematics.

## OFFICERS

Emily Nan Grier, President  
 Jean Underwood, Vice-President  
 Norma J. Thompson, Recording Secretary  
 Marjorie Stevenson, Corresponding Secretary  
 Betty Jean Gilliland, Treasurer  
 Geraldine Worrell, Reporter  
 Frances McDuffie, Finance  
 Miss Ellie Mae Sowder, Adviser

# Mathematical Honor Society

# William Bartram Scientific Society

Members of this group include those who are more seriously interested in the fields of science. One of their projects this year was the colorful Christmas decoration on the front campus.

## OFFICERS

Julia M. Smith, President  
 Love Tarrant, Vice-President  
 Peggy Carter, Recording Secretary  
 Jane Page Prevatt, Corresponding Secretary  
 Peggy Elliott, Treasurer  
 Miss Edna Estes, Dr. Ethel B. Hansen, Advisers



Backed by increasing student interest and support, "L'Alliance Francais" promotes a better understanding of the customs, culture, and language of the French.

## OFFICERS

Betsy Workman, President  
 Kitty Deaton, Vice-President  
 Geraldine Worrell, Secretary-Treasurer  
 Mr. William Reagan, Adviser



# French Club



# Writers Club



Striving to arouse and encourage interest in creative writing, these budding authors meet monthly to exercise their gifts of literary talent.

## OFFICERS

Yvonne Brice, President  
Phyllis Leggett, Vice-President  
Ann McArthur, Secretary  
Lois Brown, Treasurer  
Dr. Eleanor B. Scott, Adviser



This organization seeks to serve the students by keeping them up-to-date on current issues of vital importance in this changing world.

## OFFICERS

Mary K. Charles, President  
Amanda Smith, Vice-President  
Fannie West, Secretary-Treasurer  
Betty Shealy, Reporter and Custodian of Scrapbook  
Miss Carol Robertson, Adviser

# International Relations Club

# Highland Players

An outstanding club on the campus, this is the organization for our dramatic aspirants. Two of its members, Ann and Emily Shaw, are members of the National Alpha Psi Omega Dramatic Honorary Fraternity.

## OFFICERS

Emily Shaw, President  
Ann Shaw, Vice-President  
Frances Hobbs, Secretary-Treasurer  
Gina Gray, Reporter and Custodian  
Mr. and Mrs. Neil Watson, Mr. William Reagan, Advisers



These Latin students have only recently organized themselves into an active club, contradicting the belief that Latin is a dead language.

## OFFICERS

Sylvia Abernathy, President  
Lucy Fleming, Vice-President  
Mary McCracken, Secretary-Treasurer  
Miss Harriet Morrison, Adviser



# Latin Club



# Home Economics Club



Rapidly gaining a place of prominence among clubs, these ambitious home-makers can be found behind the lines at our receptions, banquets, and other social functions.

## OFFICERS

Hattie Singletary, President  
 Frances Heyer, Vice-President  
 Cleo Cotas, Secretary  
 Joyce Grantham, Treasurer  
 Mary Lib McIntyre, Program Chairman  
 Patsy Teer, Custodian of Scrapbook  
 Miss Frances Comer, Mrs. Neil Watson, Advisers



The envy of the other students, these girls from Raeford, Maxton, and other surrounding communities still find time to enter into the campus activities.

## OFFICERS

Mary Barham, President

# Day Students Club

# Commercial Club

With an outlook to the future, these young secretaries find much pleasure in their world of shorthand and accounting.

## OFFICERS

Carolyn Miller, President  
Gladys Bain, Vice-President  
Betty Reid Melvin, Secretary  
Anise Kelly, Treasurer  
Miss Leta McIntyre, Adviser



Each Wednesday morning small groups led by carefully chosen prayer band leaders meet together for meditation, inspiration, and devotions.

## OFFICERS

Mary Lisle Tucker, Chairman



# Prayer Bands



# Student Volunteers



This club has become well known at F.M.C. by sending three of their members to a Student Volunteer Conference in Kansas, sponsoring a Christmas bookstore, and proving themselves to be on the ball in many ways.

## OFFICERS

Mollie Ann Boney, President  
Margaret Murdoch, Vice-President  
Peggy Carter, Secretary  
Barbara Hill, Treasurer



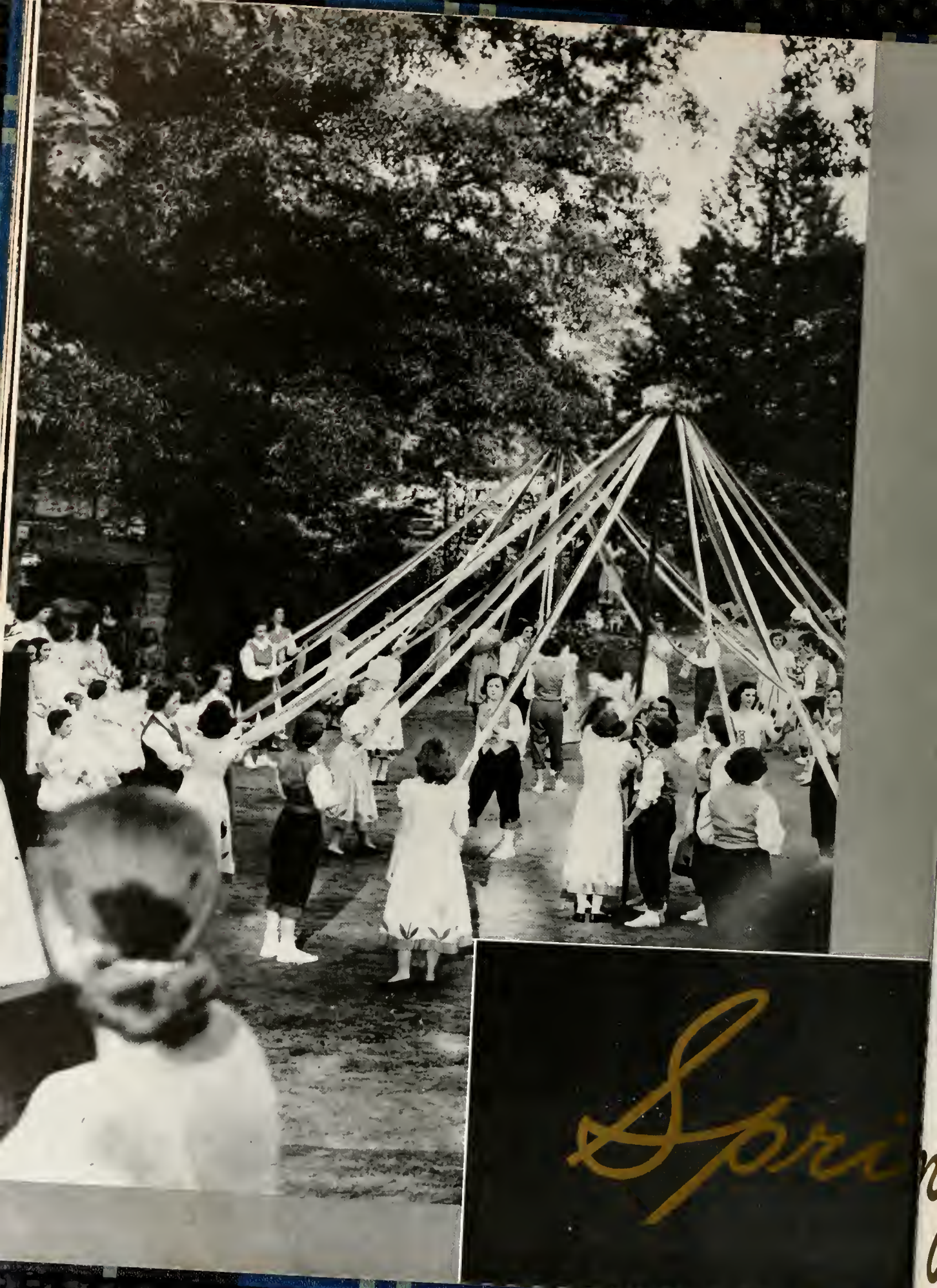
Having been tapped by the preceding year's scribblers, these six girls meet until the wee hours of the night attempting to describe their classmates for the yearbook.

## SCRIBES

Enid Grady, Chief Scribe  
Mollie Ann Boney  
Barbara Carter  
Janice Murdoch  
Dot McCallum  
Elaine Pierce

# Senior Scribblers









AND so it is spring. The long gray months of winter have ripened into a warm and vibrant season, when the dome throws a longer shadow across the new grass, and the gardens burst into a fascinating world of color. This is the time when anything is good for a laugh, when nonchalance dominates the curriculum, and the graduating class gets a little sentimental. Thus it is to the Seniors that we present the story of spring, hoping that when the ink is on the sheepskin, you will let this one be— just for the memory. . . .

*ng* ... **Just for the Memory**

The warm afternoons found us studying (?) out-of-doors.



Spring Holidays found us lining up for busses to all points.

## Time Was



The braver, more warm-blooded of us took daily dips in our large modern pool.

We unsuccessfully attempted to recover from spring fever, which was especially rampant in the classroom.







Just a typical May morning. . . .



The better seamstresses complete May Day costumes.

## Running Out...

. . . and we ran with it. There were a million things to squeeze into a few short months. . . . Elections were foremost in the minds of many, and campus politicians were a dime a dozen. . . . We saw our Spring Holidays come and go, and soon could not even remember having had them. . . . As windows were opened, the music from a thousand pianos all playing a different tune drifted up to the dormitories. . . . Cotton dresses appeared one by one. . . . The more talented seniors very successfully presented their music recitals, and the plans for May Day seemed enormous and impossible. . . . Iced tea appeared on the tables at night, and the study hour hell had little success in dragging the nature lovers indoors after supper. . . . The Biology majors took to the woods with nets, and we stumbled over members of the art class sprawled about the campus. . . . Astonishingly enough, we took the strain and stress of May Day in our stride and watched with open mouths as it came off in a smooth and creditable manner. . . . Going-up Day and the take-offs highlighted the last weeks, and we turned our thoughts to graduation. . . .



We turned out a fine crew of leaders in our Student Body Elections.

# Senior Class



Seniorhood—that time when feverish activity blends with near nostalgia. This is the bewildered Freshman Class of 1948, who returned the next year to make Sophomore Lit a two-year course. These are the confident juniors who, with much mutilation of trash cans and loud jeers to the underclassmen, proclaimed themselves seniors on

Going-Up Day. Theirs is the past at Flora MacDonald—no longer the future.

## OFFICERS

Margaret Comer, President  
Love Tarrant, Vice-President  
Barbara Carter, Secretary  
Ethel Rogers, Treasurer  
Ann Shaw, Tea Room Manager  
Hattie Singletary, Assistant Manager

Singletary, Shaw, Rogers, Comer, Tarrant, Carter.







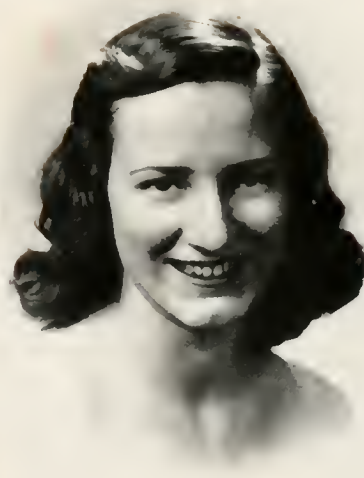
## Nineteen Fifty-two



Barrow



Biddle



Boney

LINDLEY ANN BARROW, B.A. Grammar Grade Education

La Grange, N. C.

Loquacious . . . The Wink . . . 21 hours . . . self-assured . . . frank . . . Borrow Sister  
Number Three . . . efficient . . . foot swinger

Epsilon Chi Literary Society; Prayer Band Leader 4; Atlantic Christian College Summer  
School 2.

MARGARET ELIZABETH BIDDLE, B.A. Grammar Grade Education

St. Pauls, N. C.

Family . . . interesting . . . commuter . . . on verge of being a genius . . . top grades . . .  
unperturbable . . . ambition plus . . . a friend indeed.

University of North Carolina 1, 2; Day Students Club 3, 4.

MOLLIE ANN BONEY, B.A. Grammar Grade Education

Wallace, N. C.

Student Volunteers . . . conference hound . . . unchanging disposition . . . cordial transfer  
. . . consecrated . . . slow but poised.

Epsilon Chi Literary Society; Peace Junior College 1, 2; Student Volunteers 3, 4; President 3, 4;  
Christian Association Cabinet 4; Outreach Chairman 4; Choral Club 3, 4; Mathematical Honor  
Society 3, 4; Writers Club 3; International Relations Club 4; Senior Scribe 4

# Senior Class



EMILY LOIS BROWN, B.M. Piano

Hamlet, N. C.

Epsilon Chi . . . conscientious . . . a kitten at the keyboard . . . versatile perfectionist . . . unaffected loveliness . . . outstanding.

Epsilon Chi Literary Society, Chaplain 2, Second Vice-President 3, President 4; St. Cecelia Music Club 1, 2, 3, 4; Writers Club, Treasurer 4; Choral Club 1, 2, 3, 4, President 3; Monogram Club 4; Volleyball 1, 2, 3, 4, Captain 3, Varsity 2, 3, 4; Basketball 2, 3; Society Dance Chairman 3; Piano Recital 3, 4; Chief Marshal 3; May Court 2, 3, 4; Maid of Honor 4; Student Council 4; Who's Who in American Colleges and Universities.

BETTY ANN BRUNSON, B.A. Grammar Grade Education

Fayetteville, N. C.

"Billie" . . . May Day . . . perennial chairman . . . nonslanderer . . . lithe . . . "my aunt" . . . volleyball . . . willing worker.

Epsilon Chi Literary Society; Spanish Club 1, 2, 3, 4, President 2, Press Correspondent 3; Mathematical Honor Society 1, 2, 3, 4, President 3; William Bartram Scientific Society 2, 3, 4; Prayer Band Leader 2, 3; Snapshot Editor WHITE HEATHER 3; Chorus 3; Athletic Board 4, Vice-President 4; Volleyball 2, 3, 4, Captain 2, Varsity 3, 4, Monogram Club 4; Recorder of Points 4.

BARBARA RUTH CARTER, B.A. Grammar Grade Education

Jackson Springs, N. C.

Zetesian . . . Harris . . . small order of cuteness . . . elaborate use of initials . . . air mail letters . . . "knocks me out" . . . repertoire of Alma Maters.

Zetesian Literary Society, President 4; Lees-McRae Junior College 1, 2; Student Volunteers 3; Spanish Club 3; Tennis 3; Mathematical Honor Society 4; Class Secretary 4; Student Council 4; Senior Scribe 4.

MARY KATHRYN CHARLES, B.A. Primary Education

Winston-Salem, N. C.

"Charlie" . . . frequent mumbles in class . . . original . . . elephants . . . arguments . . . intolerant, yet kind . . . nonconformist.

Zetesian Literary Society, Critic 2; St. Cecelia Music Club 1, 2; Spanish Club 1, 2, 3; William Bartram Scientific Society 3; International Relations Club 3, 4; President 4; Christian Association Cabinet 3, Chairman of Social Service 3; Fire Chief 4, Literary Editor WHITE HEATHER 4; Choral Club 1, 2, Treasurer 2; Volleyball 3; Prayer Band Leader 4.

MARGARET RUTH COMER, B.A. Bible and French

Ellerbe, N. C.

Seniorhood personified . . . stately charm . . . expressive eyes . . . high school admirers . . . reserved . . . queenly.

Epsilon Chi Literary Society; Marshal 3; Student Council 4; Class President 4; Class Vice-President 2; Class Editor WHITE HEATHER 3; L'Alliance Francais 1, 2, 3, 4, President 3; William Bartram Scientific Society 3, 4; Prayer Band Leader 2, 3; High School Bible Teacher 4.

MILDRED MONROE COXE, B.A. History

Red Springs, N. C.

Intelligent but avoids work . . . cute nose . . . advocates marriage . . . "my husband" . . . shoes . . . newly acquired happiness.

Epsilon Chi Literary Society; Tennis 2, 3; Day Students Club 4; William Bartram Scientific Society 4; International Relations Club 4.

KATHRYN GARR DEATON, B.A. Grammar Grade Education

Pinebluff, N. C.

"Kitty" . . . Fort Bragg . . . soft voice . . . eyebrow raiser . . . uniquely interested in her major . . . considerate and helpful.

Epsilon Chi Literary Society, Chaplain 4, L'Alliance Francais 1, 2, 3, 4, Vice-President 4; William Bartram Scientific Society 2, 3, 4, President 3; Choral Club 1, 2, 3, 4.

ETHEL ANNE EVANS, B.S. Home Economics

Wilson, N. C.

Campus Winchell . . . politician . . . inquisitive . . . jokes . . . high priestess of bull sessions . . . home-lover . . . gad-about.

Epsilon Chi Literary Society; Home Economics Club 1, 2, 3, 4; International Relations Club 2; Atlantic Christian College Summer School 2, 3; William Bartram Scientific Society 3.



Brown  
Comer





## Nineteen Fifty-two

---



Brunson  
Coxe

Carter  
Deaton

Charles  
Evans

# Senior Class



Grady  
Howie

Grier  
Lovick

Hamer  
Murdoch



# Nineteen Fifty-two

ENID LONG GRADY, B.A. Grammar Grade Education

Charlotte, N. C.

Uniquely darling . . . touch of genius . . . impish . . . thoroughly interesting . . . devoted worker . . . spirited cheerleader . . . outstanding originality.

Epsilon Chi Literary Society, Critic 2; First Vice-President 3; St. Cecelia Music Club 1, 2; Highland Players 2; L'Alliance Francais 1, 2; Choral Club 1, 2, 3; Volleyball 1; Cheerleader 2, 3, 4; Superlative 4; Chief Scribe 4; Snapshot Editor WHITE HEATHER 2; Assistant Editor 3; Editor-in-Chief 4.

EMILY NAN GRIER, B.A. Mathematics

Charlotte, N. C.

Heart of gold . . . loyal supporter . . . sports enthusiast . . . accordion . . . profusive in thanks . . . unpaid tutor . . . Steele Creek.

Epsilon Chi Literary Society, Corresponding Secretary 3; Treasurer 4; Class Vice-President 1; Class President 2; Student Council 2; Mathematical Honor Society 1, 2, 3, 4; Vice-President 3; President 4; L'Alliance Francais 1, 2, 3, 4; Vice-President 3; Volleyball 1, 2, 3, 4; Varsity 2, 3; Basketball 1, 2, 3, 4; Varsity 1, 2; Athletic Board 3, 4; Treasurer 3; Head of Volleyball 4; Monogram Club 4; Who's Who in American Colleges and Universities.

SARAH NEAL HAMER, B.A. History

Maxton, N. C.

Neat . . . shoulder bag . . . jackets . . . brainy . . . recent transfer . . . one of the Maxtonians . . . composed . . . vaguely known.

Zetesian Literary Society; P.J.C. 1, 2; W.C.U.N.C. 3; Day Students Club 4.

FRANCES BENNETT HOBBS, B.A. Primory Education

Council, N. C.

"Fran" . . . strawberry blonde . . . "Honey" . . . congenial . . . easy going . . . "lemme tell ya" . . . girdle . . . blushes . . . lemonade passion.

Epsilon Chi Literary Society, Censor 2; Recording Secretary 3, 4; Highland Players 2, 3, 4; Secretary-Treasurer 4; Prayer Band Leader 3; Bowling 2, 3; Class Secretary 3; Student Volunteers 3; Chorus 3; High Point College Summer School 3

EMILY ANN HOWIE, B.A. Primary Education

Fayetteville, N. C.

Placid expression . . . anti-rules . . . never in a hurry . . . individual . . . the unexpected . . . casual . . . pensive.

Epsilon Chi Literary Society; William Bartram Scientific Society 3, 4; Latin Club 4; Highland Players 3, 4; Volleyball 3, 4; Basketball 3, 4; Captain 3; Queens College 1, 2

JANICE RAMONA LOVICK, B.A. Grammar Grade Education

Wade, N. C.

Nightcop . . . "Oh Horse" . . . exuberant . . . toothpaste smile . . . firm . . . nonchalant . . . meticulous . . . natural loveliness.

Zetesian Literary Society; Marshal 3; Choral Club 1, 2, 3, 4; St. Cecelia Music Club 1, 2, 3, 4; Vice-President 2; Spanish Club 3; Mathematical Honor Society 3, 4; International Relations Club 4; Highland Players 3; Tennis 3; Prayer Band Leader 2; Class Vice-President 3; Student Body Vice-President 4; Student Council 3, 4; May Court 4; Atlantic Christian College Summer School 3; Who's Who in American Colleges and Universities.

JANICE LEE MURDOCH, B.A. Music

Wildwood, N. C.

Humble . . . sincere . . . well-rounded . . . "Extra place at your table?" . . . yam lover . . . beach nut . . . sense of values . . . friendly spirit.

Epsilon Chi Literary Society; Marshal 3; International Relations Club 2; Mathematical Honor Society 3; Choral Club 2, 3, 4; Athletic Association Secretary 2; President 3; Volleyball 1, 2, 3, 4; Captain 4; Varsity 1, 2, 3, 4; Basketball 1, 2, 3, 4; Captain 2; Varsity 1, 2; Monogram Club 3, 4; Student Council 3; Dining Room Hostess 4; Senior Scribe 4; Council Dance Chairman 4; Superlative 4; Christian Association Cabinet 4; Chairman of Social Service 4

MILDRED LOUISE McARTHUR, B.S. Home Economics

Wakulla, N. C.

December wedding bells . . . changeable hair . . . joy driver . . . engineers herself into many good times . . . boarding student chauffeur.

Zetesian Literary Society; Home Economics Club 1, 2, 3, 4; Day Students Club 1, 2, 3, 4; P.J.C. Summer School 1; Appalachian State Teacher's College Summer School 3, 4.

Hobbs  
McArthur

# Senior Class



DOROTHY McCALLUM, B.A. Primary Education

Rowland, N. C.

"Dot" . . . "I just got up" look . . . angelic expression . . . individual walk . . . surprisingly smart . . . mellow-voiced . . . summer school . . . cute clothes . . . unusual.

Zetesian Literary Society; Marshal 3; Choral Club 1, 2, 3, 4, Secretary 4; St. Cecelia Music Club 1, 2, 3, 4, Secretary-Treasurer 3; Spanish Club 3; Mathematical Honor Society 4; International Relations Club 4; Highland Players 3, 4; Senior Scribe 4; Assistant Business Manager WHITE HEATHER 3, Class Editor 4; Tennis 2, 3; P.J.C. Summer School 1, 2; Atlantic Christian College Summer School 3, Dance Chairman 3.

ALMA GENE McDOWELL, B.S. Home Economics

Elizabethtown, N. C.

"Sailor" . . . sensible . . . opinionated . . . farmerette . . . outspoken . . . Methodist . . . that look . . . alto-voiced.

Epsilon Chi Literary Society; L'Alliance Francais 1; Volleyball 2, 3, 4, Varsity 2; Basketball 3, 4, Athletic Board 3, Head of Volleyball 3; Home Economics Club 1, 2, 3, 4; Clemson College Summer School 1, 3.

MARY ELIZABETH McIntYRE, B.S. Home Economics

Godwin, N. C.

"Mary Lib" . . . forever cooking . . . voices opinions easily . . . luxuriant dark hair . . . sweet disposition . . . values friendship.

Zetesian Literary Society; Home Economics Club 1, 2, 3, 4, Program Chairman 4; Prayer Band Leader 2; Chorus 3; International Relations Club 2; Student Volunteers 2, 3; Atlantic Christian College Summer School 3; William Bartram Scientific Society 2, 3, 4.

MARGARET FAYE McPAUL, B.A. Grammar Grade Education

Parkton, N. C.

Lingering smile . . . "Bill" . . . diamond-studded . . . basketball . . . sweet and slow . . . modest . . . marriage-approachee.

Zetesian Literary Society; Day Students Club 1, 2, 4, Basketball 1, 2, 3, 4; Varsity 3; Athletic Board 3, Head of Basketball 3; University of Delaware Summer School 2.

ANN FRANCES PEARCE, B.A. Bible

Corpus Christi, Texas

TEXAS . . . Herff . . . natural model . . . has never met a stranger . . . simply dimply . . . radiates sunshine . . . valuable.

Epsilon Chi Literary Society; Marshal 3; Christian Association 3, 4, Vice-President 3, President 4; Choral Club 1; Mathematical Honor Society 1, 2, 3, 4; L'Alliance Francais 1, 2, 3; Spanish Club 1, 2, 3; International Relations Club 4; Literary Editor WHITE HEATHER 2; Assistant Business Manager Pine and Thistle 2; Superlative 2; May Court 1, 3, 4, May Queen 4; Student Council 4; Who's Who in American Colleges and Universities.

BERNICE ELAINE PIERCE, B.M. Piano

Evergreen, N. C.

Capable of the impossible . . . "Poco Minuto" . . . sentimental . . . sincere . . . "precious" . . . ideal student . . . an outreaching love.

Zetesian Literary Society; Corresponding Secretary 2; Marshal 3; Class President 1, 3; Choral Club 1, 2, 3, 4; Piano Recital 3, 4; St. Cecelia Music Club 1, 2, 3, President 2; Prayer Band Leader 2; Class Editor WHITE HEATHER 2; Student Volunteers 3; Superlative 3; Student Council 1, 3, 4; Student Body President 4; Christian Association Cabinet 4; Senior Scribe 4; Who's Who in American Colleges and Universities.

JUNETTE GEORGE RASTOM, B.M. Voice and Public School Music

Laurinburg, N. C.

"Junie" . . . infectious laughter . . . unpredictable . . . temper . . . sterling . . . "Let all my life be music."

Epsilon Chi Literary Society; St. Cecelia Music Club 1, 2, 3, 4, Secretary-Treasurer 2, President 3; Choral Club 1, 2, 3, 4, Vice-President 4; L'Alliance Francais 1; Library Club 1; College Cheerleader 3; P.J.C. Summer School 3, Voice Recital 3, 4; May Court 4.

ETHEL COUNCIL ROGERS, B.A. Primary Education

Whiteville, N. C.

Bouncy . . . Aunt Jane . . . "Mu-mu" . . . curly hair . . . expressive eyes . . . studious plus . . . little-girlish . . . poise.

Zetesian Literary Society; L'Alliance Francais 1, 2; Prayer Band Leader 2; Mathematical Honor Society 1, 2, 3; St. Cecelia Music Club 1, 2, 3; Choral Club 3; Literary Staff of Pine and Thistle 2, 3, Assistant Editor 3; Class Treasurer 4.



McCallum  
Pearce





## Nineteen Fifty-two

---



McDowell  
Pierce

McIntyre  
Rastom

McPhaul  
Rogers

# Senior Class



Rummage  
Smith



E. Shaw  
Tarrant



A. Shaw  
Watson







# Nineteen Fifty-two



GLORIA ANN RUMMAGE, B.A. English and French

Ellerbe, N. C.

Lewis . . . records . . . scrubbed look . . . punctuates conversation with listener's name . . . prim and precious.

Epsilon Chi Literary Society; Marshal 3; L'Alliance Francais 1, 2, 3, 4; Secretary-Treasurer 2, 3; William Bartram Scientific Society 3; Athletic Board 2; Salesman 2; Bowling 2; Tennis 3; Prayer Band Leader 2; Christian Association Cabinet 3; Secretary 3; Student Body Secretary 4; Student Council 4; Wake Forest College Summer School 3.

EMILY KATHERINE SHAW, B.A. Biology

St. Pauls, N. C.

Dramatic impulses . . . outstanding bull-shooter . . . always on the go . . . men . . . animated announcements.

Epsilon Chi Literary Society; Choral Club 1, 2; Assistant Tea Room Manager 3; Highland Players 1, 2, 3, 4; President 4; Alpha Psi Omega 2, 3, 4; President 4; St. Cecelia Music Club 1, 2, 3, 4; Art Editor Pine and Thistle 3, 4; William Bartram Scientific Society 1, 2; Mathematical Honor Society 2, 3, 4; International Relations Club 2, 3; Junior-Senior Dance Chairman 3; Volleyball 1, 2, 3, 4; Monogram Club 4.

MARY ANN SHAW, B.A. Biology

St. Pauls, N. C.

Ann . . . Santa Claus laugther . . . class spirit . . . blue eyes . . . Tea Room . . . boisterous . . . wholehearted . . . F.M.C.'s right-hand man.

Epsilon Chi Literary Society; Highland Players 1, 2, 3, 4; Vice-President 4; Alpha Psi Omega 3, 4; Vice-President 4; William Bartram Scientific Society 3, 4; Tea Room Manager 3, 4; Chorus 3; Spanish Club 4; Business Department 2; Commercial Club 2; Basketball 1, 2, 3, 4; Volleyball 1, 2, 3, 4; Captain 1; Athletic Board 3, 4; Head of Softball 3, 4; Monogram Club 4; Society Dance Chairman 3; P.J.C. Summer School 1, 2; East Carolina College Summer School 3; Superlative 4.

HATTIE ELIZABETH SINGLETARY B.S. Home Economics

Bladenboro, N. C.

Woman of few words . . . interesting hair . . . hidden talents . . . striking . . . skillful with a needle.

Zetesian Literary Society; L'Alliance Francais 1; International Relations Club 2; William Bartram Scientific Society 2, 3, 4; Home Economics Club 1, 2, 3, 4; Secretary 3; President 4; Prayer Band Leader 2; Assistant Tea Room Manager 4; Atlantic Christian College Summer School 3.

AMANDA GRAY SMITH, B.A. Bible

Petersburg, Virginia

Tiny features . . . Virginian to the bone . . . neat . . . undecided expression . . . studies come first . . . blind-date success story.

Zetesian Literary Society; Censor 2; Prayer Band Leader 2; Choral Club 2, 3; William Bartram Scientific Society 2, 3; St. Cecelia Music Club 1, 2, 3; Editor Pine and Thistle 3; Writers Club 3; L'Alliance Francais 3, 4; International Relations Club 3, 4; Vice-President 4; Business Manager WHITE HEATHER 4; Who's Who in American Colleges and Universities.

LOVE LEONORE TARRANT, B.A. Grammar Grade Education

Fayetteville, N. C.

Non-talker . . . "my husband" . . . twisted smile . . . quiet and conservative . . . turtle-paced . . . calm brown eyes.

Epsilon Chi Literary Society; L'Alliance Francais 1, 2, 4; William Bartram Scientific Society 3, 4; Vice-President 4; Prayer Band Leader 4; Class Treasurer 3; Class Vice-President 4; Bowling 2, 3.

HARRIETT CONSTANCE WATSON, B.A. Primary Education

Parkton, N. C.

Ingenuity with clothes . . . Hennie . . . baby pictures . . . "I don't know this stuff" . . . undefinable charm . . . beauty from within.

Zetesian Literary Society; Recording Secretary 2, 3; Marshal 3; Christian Association Cabinet 3; Chairman of Christian Worship 3; Prayer Band Leader 2, 4; Class Treasurer 1; May Court 1, 3, 4; Superlative 3; Business Staff Pine and Thistle 2; Assistant Business Manager 3; Volleyball 1, 3, 4; Basketball 1, 2, 3, 4; Choral Club 1, 2, 3, 4; Secretary 2; President 4; Monogram Club 4; William Bartram Scientific Society 2, 3; St. Cecelia Music Club 1, 2, 3; Florida State University Summer School 3; Society Dance Chairman 4.

FANNIE BELLE WEST, B.A. Grammar Grade Education

Fayetteville, N. C.

Understanding . . . dry wit . . . pronunciation slayer . . . voguish . . . slow drawl . . . that Halo look . . . gullible

Epsilon Chi Literary Society; Wake Forest College Summer School 1; P.J.C. Summer School 2; International Relations Club 2, 3, 4; Secretary-Treasurer 4; William Bartram Scientific Society 3, 4; L'Alliance Francais 1, 2, 3; Bowling 2, 3.

Singletary  
West

# Senior Class



Whitaker

Williamson

Workman

CLAUDINE ELIZABETH WHITAKER, B.A. *Grammar Grade Education* Kannapolis, N. C.  
Controlled disposition . . . *Senorita-in-chief* . . . *gored skirts* . . . *easy going manner* . . .  
*weekly bouts with the Episcopal organ.*

Epsilon Chi Literary Society, Pianist 3; W.C.U.N.C. 1; Mathematical Honor Society 2, 3; Spanish Club 2, 3, 4, Vice-President 3, President 4.

JOAN WILLIAMSON, B.A. *Mathematics and Biology* Atlanta, Georgia  
"Jon" . . . *bug dissector* . . . *Harold* . . . *crowded cranium* . . . *tennis* . . . *class brain* . . .  
*makes a rhyme any old time* . . . *silly moods* . . . *genuine.*

Epsilon Chi Literary Society; Christian Association Cabinet 2, 4, Chairman of Publicity 2, Treasurer 4; Prayer Band Leader 3; Student Volunteers 1, 2, Treasurer 2; Mathematical Honor Society 1, 2, 3, 4, Social Chairman 2, Recording Secretary 3; International Relations Club 2, 3, 4; Choral Club 1, 2, 3; Literary Staff *Pine and Thistle* 3; Volleyball 1, 2, 3, 4, Varsity 1, 2, 3, 4; Athletic Board 3, Head of Tennis 3; Monogram Club 4; Sallie Southall Cotten Scholarship Award 4; Superlative 4.

BETSY ANN WORKMAN, B.A. *Bible and French* Mebane, N. C.  
"Our Best to You" . . . *sleep snatcher* . . . *pop-test jitters* . . . *at home at the piano* . . .  
"yaw!" . . . *owed expression* . . . *la petite fille* . . . *non-worrier*

Zetesian Literary Society, Pianist 2, 3, 4; L'Alliance Francais 1, 2, 3, 4, President 4; Choral Club 1, 2, 3, 4; Student Volunteers 2, 3, 4, Christian Association Cabinet 2, 3, Chairman of Religious Meetings 2, Chairman of Outreach 3; Prayer Band Leader 4.





# Nineteen Fifty-two

... a year of many moods.



# Who's Who

Each year there are certain seniors who attain positions of prominence on the campus through their interest in organizations, student government, scholarship, publications, leadership—in short, all the things that make Flora Macdonald a college and not just an institution. The follow-

ing students were chosen as members of the 1952 "Who's Who in American Colleges and Universities": Lois Brown, Emily Nan Grier, Janice Lovick, Ann Pearce, Elaine Pierce, Amanda Smith.

Brown  
Pearce



Grier  
Pierce



Lovick  
Smith







Lois Brown  
Piano



Junette Rastom  
Voice



Elaine Pierce  
Piano

## Senior Music Recitals

The little girl banged her fist down on the shiny piano keys and threw "Teaching Little Fingers to Play" on the floor. This was just too much. She could never, never learn. . . . Yet with all the intricacies and technicalities to be mastered, some students do turn out to be quite proficient in their field of music, be it voice or piano. This year three of these more talented individuals

each gave us an unusual and beautifully-executed recital, proving that the four years which they have spent in intense study and practice have not been in vain.

Lois Brown, Piano  
Junette Rastom, Voice  
Elaine Pierce, Piano



**ANN PEARCE**  
May Queen

**Lois Brown**  
Maid of Honor





# Day ... 1952

"A heel, a toe, and a polka step!" By the first of May, these words become quite familiar to the majority of the student body. Miraculously, it is at this time that awkward feet become twinkling toes, the hard-working student is turned into a lithe nymph, and the May Day dell is transformed into a fairyland of color. People come from all over the state to witness the splendor and beauty of a Flora Macdonald May Day. Miss Ethel Bateman of the Physical Education Department is the Director.



Wisteria and violets suddenly bloom in strange places on May Day.

The court is entertained by a group of dancers.





Janice Lovick  
Senior Class Attendant



Junette Rastom  
Senior Class Attendant



Harriett Watson  
Senior Class Attendant

## May Day

Jean Underwood  
Junior Class Attendant



Ann Brinn  
Junior Class Attendant







Sylvia Abernathy  
Sophomore Class Attendant



Gladys Bain  
Sophomore Class Attendant



## nt F. M. C.

Marie Essey  
Junior Class Attendant



Ellen Williams  
Freshman Class Attendant



Ann Burgess  
Freshman Class Attendant





# Superlat

Beauty  
ANN BRINN



Personality  
TINK McKENZIE



Capability  
JANICE MURDOCH





# tives...1952

Sportsmanship  
ANN SHAW



Best All Around  
ENID GRADY



Dependability  
JAN WILLIAMSON









FLORA MAC DONAL





# Student Directory

Abernathy, Sylvia, 521 N. Main St., Mount Holly, N. C.  
 Addor, Billiegene, Addor, N. C.  
 Allen, Harriet, 127 Cook St., Bennettsville, S. C.  
 Anderson, Dorothy, 501 E. Calhoun St., Whiteville, N. C.  
 Andrews, Nancy, 300 N. Salisbury Ave., Spencer, N. C.  
 Arrington, Rebecca, Box 332, Rowland, N. C.  
 Austin, Ada, Maxton, N. C.

Bain, Gladys, 209 W. Donaldson Ave., Raeford, N. C.  
 Baker, Ruby Grey, Buies Creek, N. C.  
 Barham, Mary, Red Springs, N. C.  
 Barrow, Lindley, Route 1, LaGrange, N. C.  
 Bass, Juanita, Box 233, Lillington, N. C.  
 Bethea, Elizabeth, Box 263, Latta, S. C.  
 Biddle, Margaret W., St. Pauls, N. C.  
 Blalock, Jessie, 602 Jefferson St., Hamlet, N. C.  
 Boney, Delanie, Box 93, Wallace, N. C.  
 Boney, Mollie Ann, Box 93, Wallace, N. C.  
 Boone, Margaret, 817 S. Franklin St., Rocky Mount, N. C.  
 Boone, Peggy, Charlotte St., Rocky Mount, N. C.  
 Boseman, Joyce, Route 3, Rocky Mount, N. C.  
 Boyd, Eunice Ann, Victory Heights, Christiansburg, Va.  
 Boyd, Bevis, Greeleyville, S. C.  
 Boyd, Evelyn, Abingdon, Va.  
 Brantley, Alice, 604 N. Pollock, Selma, N. C.  
 Brice, Yvonne, 405 W., Colonial Ave., Elizabeth City, N. C.  
 Bunn, Blonnie, Whiteville, N. C.  
 Brinn, Ann, Creswell, N. C.  
 Brown, Bobbie, 1939 Grandin Rd., S.W., Roanoke, Va.  
 Brown, Lois, 117 Spring St., Hamlet, N. C.  
 Brown, Geraldine, Route 2, Chadbourn, N. C.  
 Brunson, Betty Ann, 106 Scott Ave., Fayetteville, N. C.  
 Bryan, Mildred, Route 5, Box 217, Lumberton, N. C.  
 Buhler, Ginnie, 1200 S. Main St., Graham, N. C.  
 Bullock, Doris Jean, Route 1, Box 103, Oxford, N. C.  
 Burgess, Ann, 3107 49th St., Woodside, New York, N. Y.  
 Budd, Evelyn, Lumberton, N. C.  
 Eynum, Mary Etta, 1110 N. Heritage St., Kinston, N. C.  
 Byrd, Annie, Pine St., Elizabethtown, N. C.

Cain, Doris, Route 7, Fayetteville, N. C.  
 Calhoun, Charlotte, 321 S. Fourth St., Wilmington, N. C.  
 Callahan, Peggy, Box 131, Whiteville, N. C.  
 Calloway, Doris, 211 Misenheimer Ave., Concord, N. C.  
 Campbell, Eva, Laurinburg, N. C.  
 Campbell, Kathryn, E. Covington St., Laurinburg, N. C.  
 Carr, Bobbie, Box 391, Wallace, N. C.  
 Carswell, Jane, Route 1, Spring Lake, N. C.  
 Carter, Barbara, Jackson Springs, N. C.  
 Carter, Peggy, Route 1, Wilson, N. C.  
 Cashwell, Margaret, Route 1, Hope Mills, N. C.  
 Cashwell, Sara, Route 1, Hope Mills, N. C.  
 Charles, Mary Kathryn, 116 E. Sprague St., Winston-Salem, N. C.  
 Cherry, Ann, Route 6, Box 730, Charlotte, N. C.  
 Cline, Patricia, Route 1, Cherryville, N. C.  
 Codas, Cleo, 409 Young St., Henderson, N. C.  
 Cole, Nadine, Route 5, Fayetteville, N. C.  
 Coleman, Mary Sue, Biltmore Farms, Asheville, N. C.  
 Comer, Margaret, Ellerbe, N. C.  
 Cook, Jean, Route 3, Box 293, Fayetteville, N. C.  
 Cox, Mildred, Red Springs, N. C.  
 Crawley, Joan, RFD 3, Box 317, Henderson, N. C.  
 Cross, Betty, Box 223, Laurel Hill, N. C.  
 Currie, Lydia, Jackson Springs, N. C.

Davis, Betty Lou, Red Springs, N. C.  
 Davis, Helen, Route 3, Wadesboro, N. C.  
 Davis, Marjorie, Route 7, Fayetteville, N. C.  
 Davis, Saradee, Route 3, Box 200, Quincy, Florida  
 Deaton, Kathryn, Pinebluff, N. C.  
 Dew, Grace, Box 83, Delco, N. C.  
 Dorman, Nan, Red Springs, N. C.  
 Driggers, Hattie, Box 60, Clinton, S. C.  
 Drummond, Jo Ann, 408 New Street, Graham, N. C.  
 Dudley, Frances, 4503 Wrightsville Ave., Wilmington, N. C.  
 Dudley, Sarah, 4503 Wrightsville Ave., Wilmington, N. C.  
 Dunn, Doris, Route 4, Box 200, Charlotte, N. C.

Earp, Sidney, Route 3, Taylorsville, N. C.  
 Edwards, Faye, Maxton, N. C.  
 Elkins, Mary Hazel, Route 1, Box 244, Elizabethtown, N. C.  
 Elliott, Peggy, 140 Warley St., Darlington, S. C.  
 Ellis, Rachel, 5 Pinecrest Terrace, Wilmington, N. C.  
 Essey, Marie, Maxton, N. C.  
 Evans, Anne, 1108 S. Tarboro St., Wilson, N. C.

Farley, Anne, Hallsboro, N. C.  
 Farrior, Beth, Route 2, Fairmont, N. C.  
 Fitzgerald, Shirley, Route 1, Waynesboro, Va.  
 Fleming, Lucy, RFD 1, Mebane, N. C.  
 Fulford, Joan, Supply, N. C.  
 Fulghum, Barbara, 318 Melton St., Rocky Mount, N. C.

Gallop, Nancy, 305 Church St., Wilmington, N. C.  
 Ganci, Nellie, MEMO 655-U.S.M.C., Cherry Point, N. C.  
 Gandy, Olive, Pressly Ave., Society Hill, S. C.  
 Garrison, Madge, Box 154, Waxhaw, N. C.  
 Gibson, Katherine, Route 1, Laurinburg, N. C.  
 Gilliland, Betty Jean, Route 1, Box 310, Rocky Mount, N. C.  
 Gore, Betty Jo, Shallotte, N. C.  
 Grady, Enid, 413 W. Ninth St., Charlotte, N. C.  
 Graham, Lucille, Olivia, N. C.  
 Grantham, Joyce, Route 1, Box 145, Goldsboro, N. C.  
 Gray, Virginia, 3162 Key Blvd., Arlington, Va.  
 Grier, Emily Nan, Route 3, Box 160, Charlotte, N. C.  
 Griffin, Nancy Jane, Route 1, Rocky Mount, N. C.  
 Grimes, Patsy, Box 41, Coats, N. C.

Hale, Mary, 103 N. 15th St., Wilmington, N. C.  
 Hamer, Sarah Neal, Maxton, N. C.  
 Hamilton, Dot, 905 Tenth Ave., Huntington, W. Va.  
 Hammond, Nancy, Cerro Gordo, N. C.  
 Hardesty, Joan, Shannon, N. C.  
 Hargrove, Blanche, Box 307, Mount Olive, N. C.  
 Heaton, Betty, Andrews, N. C.  
 Helms, Annie Jane, Plyler Mill Rd., Box 132, Monroe, N. C.  
 Henry, Corrine, 2208 Cumberland Rd., Fayetteville, N. C.  
 Heyer, Mary Frances, Rose Hill, N. C.  
 Hill, Barbara, 246 West Elm St., Graham, N. C.  
 Hinson, Dana, Tatum, S. C.  
 Hobbs, Frances, Route 1, Council, N. C.  
 Holmes, Jane, Route 1, Box 40, Bolton, N. C.  
 Hooks, Imogene, Route 1, Box 63, Whiteville, N. C.  
 Houck, Betty, Route 2, Rowland, N. C.  
 Howie, Emily, 520 Valley Rd., Fayetteville, N. C.  
 Hubbard, Consulla, Clio, S. C.  
 Hughes, Delena, 2112 Trent Blvd., New Bern, N. C.

Ingram, Elsie Faye, Gibson, N. C.  
 Inman, Shirley, Barium Springs, N. C.  
 Ivey, Fannie Gray, Route 1, Box 91, Boardman, N. C.

Jackson, Flora Mae, Route 1, Box 82, Fair Bluff, N. C.  
 Jenkins, Faye, Route 3, Union, S. C.  
 Jernigan, Mickie, 117 Walnut St., Fairmont, N. C.  
 Johnson, Jean, Benson, N. C.  
 Jones, Marlene, Route 2, Box 89, Grassy Creek, N. C.

Keisler, Rachel, Conover, N. C.  
 Kelly, Anise, Kenansville, N. C.  
 Kelly, Norma, 2416 Shenandoah Ave., Charlotte, N. C.

Lamb, Betty Lou, 112 N. 42nd Street, Wilmington, N. C.  
 Lane, Anne, 613 E. Pine St., Orlando, Fla.  
 Latham, Anne, Box 186, Rose Hill, N. C.  
 Lee, Naomi, 509 Market St., Wilmington, N. C.  
 Leggett, Phyllis, 814 S. Church St., Rocky Mount, N. C.  
 Lemmon, Una May, 305 Fourth St., Spencer, N. C.  
 Lennon, Nell, R.F.D., Bladenboro, N. C.  
 Lewis, Jackie, Route 2, Box 165, Tabor City, N. C.  
 Lewis, Lynn, Lillington, N. C.  
 Lifrage, Barbara, Salters, S. C.  
 Little, Mary Hagood, Pollocksville, N. C.  
 Littlewood, Mary Sue, Sturgills, N. C.  
 Love, Sanford C., Red Springs, N. C.  
 Lovick, Janice, Box 118, Wade, N. C.



Madden, Jane, 101 Third St., Cheraw, S. C.  
 Maloney, Christine, Route 1, Cullen, Va.  
 Maness, Marion, 409 Grace Ave., Burlington, N. C.  
 Mangum, Annie Ruth, Boardman, N. C.  
 Martin, Mary Jane, 1214 Richardson Rd., Reidsville, N. C.  
 Mauldin, Voncile, Williston, Fla.  
 May, Elsie, Route 1, Farmville, N. C.  
 Mays, Martha, 1315 N. Dawson, Thomasville, Ga.  
 Melvin, Betty Reid, White Oak, N. C.  
 Miller, Carolyn, 342 S. French Broad, Asheville, N. C.  
 Miller, Jean, Box 205, Chadbourn, N. C.  
 Milligan, Audrey, Route 1, Box 104, Shallotte, N. C.  
 Mize, Mary Ella, 15 Pine St., Commerce, Ga.  
 Morgan, Flora Lou, Maxton, N. C.  
 Morris, Jean, Maxton, N. C.  
 Morrison, Martha Ann, Box 164, Rowland, N. C.  
 Mozingo, Doris, Bowden, N. C.  
 Murdoch, Janice, Wildwood, N. C.  
 Murdoch, Margaret, Wildwood, N. C.

McArthur, Ann, Wakulla, N. C.  
 McBane, Shirley, Mebane, N. C.  
 McCallum, Dorothy, Rowland, N. C.  
 McCracken, Mary, 2507 Miller Park Circle, Winston-Salem, N. C.  
 McCraw, Dorothy, Clio, S. C.  
 McDonald, Ann, Parkton, N. C.  
 McDowell, Gene, Route 1, Box 40, Elizabethtown, N. C.  
 McDuffie, Frances, Route 2, St. Pauls, N. C.  
 McElroy, Mae, Thomasville Rd., Quitman, Ga.  
 McElroy, Mamie Jo, Thomasville Rd., Quitman, Ga.  
 McGirt, Ann, 110 Caledonia Rd., Laurinburg, N. C.  
 McGoogan, Lib, 315 Fourth St., Hamlet, N. C.  
 McIntosh, Elizabeth, 125 Oakridge Ave., Fayetteville, N. C.  
 McIntyre, Mary Elizabeth, Godwin, N. C.  
 McKenzie, Tink, Route 3, Laurinburg, N. C.  
 McLaughlin, Bobbie, Route 1, Effingham, S. C.  
 McLeod, Ann, Box 293, Maxton, N. C.  
 McLeod, Sarah Margaret, Route 3, Carthage, N. C.  
 McMillan, Effie, Route 2, Laurinburg, N. C.  
 McNeill, Marjorie, Route 1, Broadway, N. C.  
 McNeill, Pat, 1002 Maple St., Lumberton, N. C.  
 McPhaul, Faye, Parkton, N. C.

Nance, Mary Grace, Route 2, Box 140, Chadbourn, N. C.  
 Neel, Peggy, Barnum Springs, N. C.  
 Nelson, Frances, Olivia, N. C.

Owen, Virginia, Cluster Springs, Va.

Parker, Retta, Box 46, Pollocksville, N. C.  
 Parks, Patty, Box 56, Weaverville, N. C.  
 Patterson, Carolyn, Route 1, Lumberton, N. C.  
 Pearce, Ann, 1645 16th St., Corpus Christi, Texas  
 Phillips, Doris, Route 1, Mebane, N. C.  
 Phillips, Hilda, 504 N. Mercer St., Rocky Mount, N. C.  
 Phillips, Mildred, Red Springs, N. C.  
 Pierce, Elaine, Evergreen, N. C.  
 Pierce, Mary Lib, Methodist Orphanage, Raleigh, N. C.  
 Pittard, Geraldine, Box 388, Warrenton, N. C.  
 Powers, Mable, St. Pauls, N. C.  
 Preble, Barbara, 133 Mocksville Ave., Salisbury, N. C.  
 Prevatte, Barbara, Lumberton, N. C.  
 Prevatt, Jane Page, East Fourth St., Lumberton, N. C.  
 Proctor, Lou, 1702 Delaware Ave., Durham, N. C.

Query, Margaret, 804 Rice St., Hamlet, N. C.

Rastom, Junette, Laurinburg, N. C.  
 Rawls, Hazel, 831 Western Ave., Rocky Mount, N. C.  
 Ray, Rebecca, Willard, N. C.  
 Register, Mary Ann, 200 Main St., Clinton, N. C.  
 Reynolds, Fay, 308 S. Howell St., Rocky Mount, N. C.  
 Reynolds, Sara, 317 Covington St., Laurinburg, N. C.  
 Robinson, Elizabeth, Burgaw, N. C.  
 Rogers, Ethel, 301 Washington St., Whiteville, N. C.  
 Rummage, Gloria, Ellerbe, N. C.

Sanders, Sara, 22 Henderson St., Badin, N. C.  
 Sandifer, Jean, Route 7, Box 1282, Charlotte, N. C.  
 Shaw, Emily, Route 2, St. Pauls, N. C.  
 Shaw, Ann, St. Pauls, N. C.  
 Shealy, Betty, 435 Lackey St., Hamlet, N. C.  
 Shelby, Patricia, Box 461, Route 4, Salishury, N. C.  
 Singletary, Hattie, Bladenboro, N. C.  
 Smith, Amanda, Duprey Rd., Petersburg, Va.  
 Smith, Barbara, 920 Lowder St., Albemarle, N. C.  
 Smith, Betty Ann, Red Springs, N. C.  
 Smith, Julia Marie, Box 453, Route 3, Wilmington, N. C.  
 Smith, Nelle Ruth, 710 Trammel St., Dalton, Ga.  
 Smith, Ruth, Box 303, Rowland, N. C.  
 Spivey, Betty Ruth, Route 2, Box 56, Fairmont, N. C.  
 Stephenson, Ann, 111 E. Whitaker Mill Rd., Raleigh, N. C.  
 Steppe, Jean, Barium Springs, N. C.  
 Stevenson, Marjorie, Route 1, Stoney Point, N. C.  
 Strikeleather, Nancy, Route 7, Box 361, Statesville, N. C.  
 Strickland, Floree, Fair Bluff, N. C.  
 Stewart, Eleanor, Benson, N. C.  
 Suggs, Ruby, Tabor City, N. C.  
 Sweat, Joyce, Box 498, Talladega, Ala.  
 Sweeley, Marijane, Laurinburg, N. C.

Tanner, Betty Jean, Route 1, Marion, S. C.  
 Tarrant, Love, Route 5, Box 214, Fayetteville, N. C.  
 Teer, Patsy, Hillsboro, N. C.  
 Thomas, Peggy, Maxton, N. C.  
 Thompson, Florene, 105 E. Webster St., Whiteville, N. C.  
 Thompson, Janie, Blanch, N. C.  
 Thompson, Norma Jean, Glade Valley, N. C.  
 Tripp, Cecelia, Shallotte, N. C.  
 Tripp, Mary Emma, Shallotte, N. C.  
 Tucker, Mary Lisle, McKenney, Va.

Underwood, Margaret Jean, Chadbourn, N. C.

Walker, Sara, Route 5, Burlington, N. C.  
 Warwick, Mildred, Route 1, Orrum, N. C.  
 Watson, Harriett, Parkton, N. C.  
 West, Fannie, Box 314, Lakedale, N. C.  
 Whitaker, Claudine, 202 Sloop St., Kannapolis, N. C.  
 Wicker, Margaret, R.F.D. 3, Sanford, N. C.  
 Wilds, Lucile, 615 Wildwood Ave., Columbia, S. C.  
 Williams, Ellen, 1301 Branch St., Rocky Mount, N. C.  
 Williamson, Jan, 4128 Redding Road, N.E., Chamblee, Ga.  
 Willis, Shirley, 2312 Fisher St., Morehead City, N. C.  
 Winstead, Bernadine, Route 1, Roxboro, N. C.  
 Workman, Betsy, 300 Fifth St., Mebane, N. C.  
 Worrell, Geraldine, 915 Mitchell St., Rocky Mount, N. C.  
 Worth, Betty, Aberdeen, N. C.

*Compliments of*

**GRAHAM'S**  
**Department Store, Inc.**

Phones

308-1

257-1

RED SPRINGS, NORTH CAROLINA

**FOX'S ROYAL BAKERY**

E. D. PARNELL

*Distributor of*

**SALLY ANN BREAD**

Phone 3135

RED SPRINGS, NORTH CAROLINA

**M. & S. MOTOR CO.**

CHRYSLER and PLYMOUTH CARS

*Sales and Service*

RED SPRINGS, NORTH CAROLINA

Phone 248-1

*Compliments of*

**Woods 5-10-25c Stores, Inc.**

RED SPRINGS, NORTH CAROLINA

*"Your loveliness is  
my business"*

**Modern Beauty Shop**

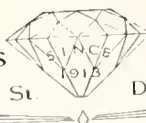

Phone 2131

RED SPRINGS, NORTH CAROLINA

*Compliments of*

**McNAIR'S**

**A MODERN  
DEPARTMENT STORE**

**Hatcher's**  **Jewelers**  
103 Hay St. Dial 2000  
Fayetteville, N. C.  
Registered Jewelers  American Gem Society

LAURINBURG, NORTH CAROLINA



*Compliments of*

**WESTERN AUTO STORE**

RED SPRINGS, NORTH CAROLINA

**McNEILL CLEANERS**



116 South Main Street

PHONE 2941

RED SPRINGS, NORTH CAROLINA

**McFADYEN**

*Music and Jewelry Store*

118 Hay Street  
FAYETTEVILLE, NORTH CAROLINA

**COLE'S FEED AND SEED STORE**

*Feeds U Need*

RED SPRINGS, NORTH CAROLINA

*Compliments of*

**RAYLASS DEPT. STORE**

FAYETTEVILLE, NORTH CAROLINA

**B. C. MOORE AND  
SONS, Inc.**

Air-Conditioned for Your  
Shopping Comfort

PHONE 243-6

"Buy from Moore and Save More"

WE FEATURE CARROLL-KING  
DRESSES FOR JUNIORS

Sizes 9-15

RED SPRINGS, NORTH CAROLINA

**AUTO SERVICE CENTER**

*Dealers in Case Farm Machinery  
and Auto Parts*

ESSO GASOLINE FUEL OILS  
MOTOR OIL and GREASES

RED SPRINGS, NORTH CAROLINA

*Compliments of*

**POLLY ANN SHOP**

LUMBERTON, NORTH CAROLINA

M. M. SMITH  
FURNITURE COMPANY



FURNITURE  
FOR EVERY HOME

*Wholesale and Retail*



325 Hay Street  
FAYETTEVILLE, NORTH CAROLINA

M. M. SMITH  
STORAGE WAREHOUSE

BONDED  
FIREPROOF WAREHOUSES  
Agt. ALLIED VAN LINES, Inc.



LOCAL and LONG DISTANCE  
HAULING



Phone 2194  
FAYETTEVILLE, NORTH CAROLINA

*Roadside Invitation  
To Drive Refreshed*



BOTTLED UNDER AUTHORITY OF THE COCA-COLA COMPANY BY

Fayetteville Coca-Cola Bottling Co., Inc.



Pontiac  
Studebaker  
International Harvester

*Sales and Service*

---

**SINGLETON AND  
McMILLAN, Inc.**

---

Phone 3971  
RED SPRINGS, NORTH CAROLINA

*Compliments of*  
**BAXLEY-JOHNSON  
CHEVROLET CO., INC.**

RED SPRINGS, NORTH CAROLINA

---

**FREEMAN PRINTING COMPANY**  
*"Over Fifty Years of Quality Printing"*

D. T. LAMBETH, *Manager*

Dial 3925  
LUMBERTON, NORTH CAROLINA

---

*Compliments of*  
**Austin-Gilbert Drug Company**  
*The Rexall Store*

MAXTON, NORTH CAROLINA

**General Auto Sales, Inc.**

OLDSMOBILE and G.M.C. TRUCKS  
FULL LINE OF PARTS  
*Expert Mechanics*

Phone 2381  
RED SPRINGS, NORTH CAROLINA

---

**LENOIR'S JEWEL SHOP**  
INTERNATIONAL SILVER

*Quality Jewelers*

TIFFIN CRYSTAL  
RED SPRINGS, NORTH CAROLINA

*Compliments of*  
**A. WEINSTEIN & SONS**

LUMBERTON, NORTH CAROLINA

---

**NEIGHBORS SHOE STORE**

*Red Springs Exclusive  
Shoe Store*

RED SPRINGS, NORTH CAROLINA  
Phone 3981

---

**ROBESON OFFICE SUPPLIES**

STATIONERS : OFFICE OUTFITTERS  
PRINTERS

LUMBERTON, NORTH CAROLINA



Are

"Yours for a Lovely Home"

---

BEDSPREADS

DRAPES

COTTON RUGS

BATH SETS

DISH CLOTHS

DISH TOWELS

PRODUCED IN NORTH CAROLINA

*Sold by fine stores everywhere*

---

**MORGAN-JONES, INC.**

58 Worth Street

NEW YORK, N. Y.



**ROWLAND AUTO SALES, INC.**

*Sales*



*Service*

ROWLAND, NORTH CAROLINA

Phone 3423

*Compliments of*

**BENDER'S DRUG STORE**

*A Real Drug Store*

201 Hay Street

FAYETTEVILLE, NORTH CAROLINA

**LONG'S**

**HABERDASHERS**

**TAILORS**

*"Tomorrow's Styles Today"*

RED SPRINGS, NORTH CAROLINA

**D. M. McMILLAN**

*"Ford Products Since 1912"*

RED SPRINGS, NORTH CAROLINA

*Compliments of*

**HUNTER BROTHERS, INC.**

113-119 Winslow Street

FAYETTEVILLE, NORTH CAROLINA

**D. R. "DOC" COVINGTON**

**GOOD USED CARS**



TELEPHONE 2651

RED SPRINGS, NORTH CAROLINA

YOU WILL BE PLEASED WITH OUR  
*QUALITY AND SERVICE*

**RED SPRINGS DRUG CO.**

*Headquarters for*

*Flora Macdonald College Students*

RED SPRINGS, NORTH CAROLINA

**Burkhead-DeVane  
Printing Company**

*Commercial Printers*

*Office Supplies*

218 Franklin Street

Phone 3007

FAYETTEVILLE, NORTH CAROLINA

*When better Automobiles are built*

**BUICK**

*will build them*

**COMMUNITY MOTOR CO.**

Phone 4391

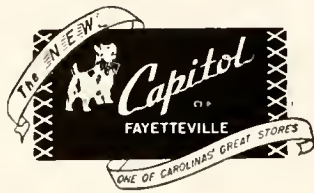
LUMBERTON, NORTH CAROLINA

**GRANTHAM INSURANCE  
AND REALTY COMPANY**

SAFETY - SECURITY - SERVICE

Phone 330-1

RED SPRINGS, NORTH CAROLINA



FAYETTEVILLE, NORTH CAROLINA

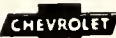
**McDONALDS CLEANERS**  
QUALITY CLEANING



TEL. 453-6

Lumberton Road  
RED SPRINGS, NORTH CAROLINA

**ROWLAND MOTOR CO.**

Sales  Service



Phone 3582  
ROWLAND, N. C.

Hotel  
**PRINCE CHARLES**



AIR-CONDITIONED DINING ROOM



FAYETTEVILLE, NORTH CAROLINA

*Compliments of*

**ROBBINS MILLS (N. C.), INC.**

**RED SPRINGS DIVISION**



*Compliments of*

**McKEITHAN  
HARDWARE**

RED SPRINGS, NORTH CAROLINA

*Compliments of*

**HOOD MOTORS, INC.**

*Your DODGE - PLYMOUTH Dealer*  
Est. 1933

LIMBERTON, NORTH CAROLINA

Phone 4316

**ALLEN BUILDERS SUPPLIES  
Inc.**

LUMBER : BUILDING MATERIAL

Phone 2386

RED SPRINGS, NORTH CAROLINA

*Compliments of*

**MAXTON SUPPLY CO.**

MAXTON, N. C.

*Compliments of*

**KENNEDY'S JEWELRY AND  
GIFT SHOP**

FINE WATCH REPAIRING

RED SPRINGS, N. C.

*"We Serve to Serve Agnin"*

*Compliments of*

**HENE'BRY'S of Fayetteville, Inc.**

*Registered Jewelers. American Gem Society*  
*"Gifts for the College Crowd"*

110 Hay Street

FAYETTEVILLE, NORTH CAROLINA

**HOME FURNITURE COMPANY**

*A Complete Line of  
Home Furnishings*

RED SPRINGS, NORTH CAROLINA

**BURROUGHS CUT-RATE STORE**

Phone 4271

RED SPRINGS, NORTH CAROLINA

SCHOOL SUPPLIES

STATIONERY : SANDWICHES

PANGBURN'S CANDY : TOILET ARTICLES  
DRINKS

*Compliments of*

**SARAH'S**

RED SPRINGS, NORTH CAROLINA

*"The right clothes  
for the right gal"*

**DIANA SHOPS**

*Smartest in Feminine  
Apparel*

123-25 Hay Street : Phone 6473

FAYETTEVILLE, NORTH CAROLINA

*Compliments of*

LIBERTY  
MANUFACTURING  
COMPANY

RED SPRINGS, NORTH CAROLINA

RED SPRINGS  
SUPPLY CO., Inc.  
General Merchants

*The Friendly Store*



FERTILIZERS AND COTTON  
HARDWARE

GROCERY MARKET

BUILDING MATERIAL

*Allis-Chalmers Farm Machinery*



Dial 3701 and 3271

RED SPRINGS, NORTH CAROLINA

**BELK-HENSDALE COMPANY**  
DEPARTMENT STORES

LAURINBURG - FAYETTEVILLE - LUMBERTON

RAEFORD - RED SPRINGS

ELIZABETHTOWN - FAIRMONT

**SHOP AND SAVE AT BELK'S**

Belk Stores are the Carolinas'  
Largest Distributors of  
Reliable Merchandise



# TOWNSEND'S PHARMACY

*The Rexall Store*

---

DEPENDABLE DRUGGISTS  
WHERE THE COLLEGE GIRLS MEET

---

RED SPRINGS, NORTH CAROLINA

Quality Clothiers Since 1920

## THE QUALITY SHOP

Clothing for the Family

★

129 S. Main St.

Dial 5116

RED SPRINGS, NORTH CAROLINA

*Compliments of*

SEARS-ROEBUCK  
AND CO.

★

420 Hay Street

FAYETTEVILLE, NORTH CAROLINA

If You Live in Southeastern  
North Carolina

*It's the*

## FAYETTEVILLE OBSERVER

*"North Carolina's Oldest Newspaper"*

*"Est. 1817"*

For Complete  
NEWS COVERAGE

**CITY OPTICAL COMPANY**  
Wilmington : Fayetteville : Greensboro

Prince Charles Hotel  
Phone 7179  
FAYETTEVILLE, NORTH CAROLINA

**NEW YORK RESTAURANT**

226 Hay Street  
34 Years Under Same Management  
FAYETTEVILLE, NORTH CAROLINA

*Compliments of*

**S. H. KRESS AND CO.**

FAYETTEVILLE, NORTH CAROLINA

**POPE & TART**

*Manufacturers of*  
**ROUGH AND DRESSED LUMBER**  
**GENERAL MERCHANDISE**

Fertilizers - Farm Implements - Horses  
Mules - Cows  
Cotton Seed and Cotton Buyers and Ginners

WADE, N. C.

**HIGHLAND LUMBER COMPANY**

*Lumber and Building Supplies*



Plant and Offices 325 Blount Street  
Phones 3191 and 3192  
FAYETTEVILLE, NORTH CAROLINA

*Compliments of*

**CARO-MAID**  
**ICE CREAM**  
**COMPANY**

DILLON, S. C.

*Compliments of*

**FAYETTEVILLE**  
**WHOLESALE**  
**COMPANY**

**Featuring**  
**FRESH FRUITS and**  
**VEGETABLES**

**Phone 2131**

Corner of Chance and Orange Streets  
FAYETTEVILLE, NORTH CAROLINA



Enjoy Life  
Eat Out  
More Often

*Air Conditioned*

## BLANCHARD'S RESTAURANT

*"In the Heart of Tobaccoland"*

ON U.S. HIGHWAY 301

PHONE 3136

LUMBERTON, N. C.

### GOOD FOOD

CHARCOAL BROILED STEAKS : SEAFOOD  
HOME MADE PASTRIES

*Sales*

*Service*

## Electric Motor and Repair Co.

Phone 31532

439 Gillespie Street

FAYETTEVILLE, NORTH CAROLINA

WESTINGHOUSE PRODUCTS

## McCRORY'S

5 AND 10c STORE

203 Hay Street

FAYETTEVILLE, NORTH CAROLINA

## BAUCOM APPLIANCE COMPANY

RAEFORD, NORTH CAROLINA

FRIGIDAIRE PRODUCTS  
MAYTAG WASHERS EASY WASHERS  
ELECTRICAL SUPPLIES  
SMALL APPLIANCES, ETC.

*Quality is of First Importance*

## HOTEL RAEFORD

JOHN W. BEST, *Proprietor*

*"Tops in Restaurant Stops"*

U.S. Highway 15-A and N.C. 211

TELEPHONE 3531

RAEFORD, NORTH CAROLINA

*Compliments of*

## McGIRT'S PLUMBING AND ELECTRICAL SERVICE

SUPPLIERS *and* CONTRACTORS

Phone 230

MAXTON, NORTH CAROLINA

## THE BANK OF ROWLAND

Dial 3732

ROWLAND, N. C.

★

*Member of Federal Deposit  
Insurance Corporation*

## HEDGPETH PHARMACY

*Two Registered Druggists*

Lorraine Hotel Building

LUMBERTON, NORTH CAROLINA

*Compliments of*

## W. LEE FLOWERS & COMPANY Wholesale Grocers

606 E. 21st Street

LUMBERTON, NORTH CAROLINA



*In Robeson County,  
It's . . .*

### **The Robesonian**

For Local and County News  
Plus Associated Press Service

*Five Days Each Week*

ESTABLISHED 1870

### **DUNN'S AUTO SALES**

*"If you want a car that will run—*

*Buy it from Dunn"*

**NEW AND USED CARS**

*We Sell to Satisfy*

Phone 276

MAXTON, NORTH CAROLINA

### **McLEOD MOTORS, INC.**

CHRYSLER : PLYMOUTH  
*Sales and Service*

LUMBERTON, NORTH CAROLINA

Phone 3574

### **MAXTON HARDWARE COMPANY**

Hardware      Paints & Varnishes  
Builders' Supplies

MAXTON, NORTH CAROLINA

### **JACK PAIT FURNITURE CO.**

*Furniture, Radios and Appliances*

Chestnut Street

Phone 5608

LUMBERTON, NORTH CAROLINA

### **J. C. WARD'S STORE** **General Merchandise**



Office 3606    PHONE    Store 3433  
ROWLAND, NORTH CAROLINA

### **GEORGE B. CROFTON**

STANDARD "Gro-More" FERTILIZERS  
FLORENCE-MAYO OIL BURNERS  
*Insecticides and Irrigation Equipment*

LUMBERTON, NORTH CAROLINA

*Compliments of*

### **SOUTH OF THE BORDER**

On Highway 301

At N. C. and S. C. State Line



**W. A. McCormick & Sons**  
*Complete Self-Service Food Store*

DISTRIBUTORS OF  
**BALLARD'S INSURANCE FEEDS**  
ST. PAULS, NORTH CAROLINA

*Compliments of*

**SINCLAIR SERVICE STATION**

AL PARNELL  
RED SPRINGS, NORTH CAROLINA

*Compliments of*

**MONTGOMERY WARD**

FAYETTEVILLE, NORTH CAROLINA

**Robeson Auto Finance Corporation**

*Auto Loans - Financing - Re-Financing*

Dial 6748  
118 West Third Street  
LUMBERTON, NORTH CAROLINA

*Compliments of*

**TEXACO SERVICE STATION**

RED SPRINGS, NORTH CAROLINA

*Compliments of*

**PARNELL AND McCOLL**

INCORPORATED

ST. PAULS, NORTH CAROLINA

WE WISH TO THANK OUR  
ADVERTISERS FOR THEIR  
LOYAL SUPPORT

# FLORA MACDONALD COLLEGE

RED SPRINGS, NORTH CAROLINA

56th YEAR

A FULLY ACCREDITED SENIOR COLLEGE  
UNDER THE CONTROL OF THE PRESBYTERIAN CHURCH

The aim of the college is to train and educate young women for Christian life and service by bringing them to physical, mental, emotional, social, and spiritual maturity and thus preparing them for useful vocations and successful living in the home, the church, the school, and the world.

To achieve this goal, Flora Macdonald College offers a creative experience in a rich and stimulating environment, which fosters scholastic excellency, happy human relationships, disciplined moral character, and a vital faith in God as revealed in Christ.

MARSHALL SCOTT WOODSON, *President*



# **REDMON'S STUDIOS**

ELKIN, NORTH CAROLINA



PHOTOGRAPHERS



All Pictures Personally Made by

T. A. REDMON

---

## **BILL BELCHE**

PHOTOGRAPHER



Commercial Photography : Custom Framing



137 Robeson Street    :-    Phone 5468

FAYETTEVILLE, NORTH CAROLINA

# **EDWARDS & BROUGHTON CO.**

PRINTERS - LITHOGRAPHERS - ENGRAVERS

THE 1952 WHITE HEATHER

*Was Produced in Our Plant*

Established 1871

RALEIGH, NORTH CAROLINA

---

# **CHARLOTTE ENGRAVING CO.**

ENGRAVERS FOR THE

1952 WHITE HEATHER

CHARLOTTE, NORTH CAROLINA













