


1954 White Heather







*Presenting the
Nineteen Hundred and
Fifty-Four*

...WHITE

HEATHER

*A Senior Class Publication
of Flora Macdonald College
Red Springs, N. C.*

GERALDINE WORRELL
Editor

SARAH MARGARET McLEOD
Business Manager







Value Beyond Price

Yes, this year at Flora Macdonald has had value beyond price. And it wasn't the financial campaign that made us realize it. It just confirmed what we know to be a fact. The activities of the financial campaign have permeated the atmosphere of our campus, and each day we have realized that this will be a memorable year in the history of our college. This year has opened the door to progress. We, the student body of 1954, are glad that we were here when this program of progress was initiated. As the campaign proclaims to the public that Flora Macdonald is a college with value beyond price, we would like to say that we agree. We feel that much of the value is found in the simple experiences of each day—life up on the halls, life in the classrooms and the Conserve, life in the library, and in general, the intimate life of Flora Macdonald which can never be shared with the public. We are conscious of many of the values we have received here, but the ones we treasure most are those which can't quite be put into words and described—the ones which have strengthened our character and made us sensitive to the finer things in life.



Dedication

Dr. Gwynn came to Flora Macdonald in January, 1951. Since then, he has desired only the best for the college as a whole and for the students as individuals. With this interest at heart, his intelligence mingled with his sincere humility have been responsible for many improvements. His influence on our campus is tremendous. But his influence is not limited. He is a respected citizen of North Carolina and his abilities are recognized even beyond our state. His name adds distinction to our college. As he dedicates his life in service here, we dedicate this Annual to him in an effort to say, "We love and respect you as a person with integrity. We are thankful for our acquaintance with you."



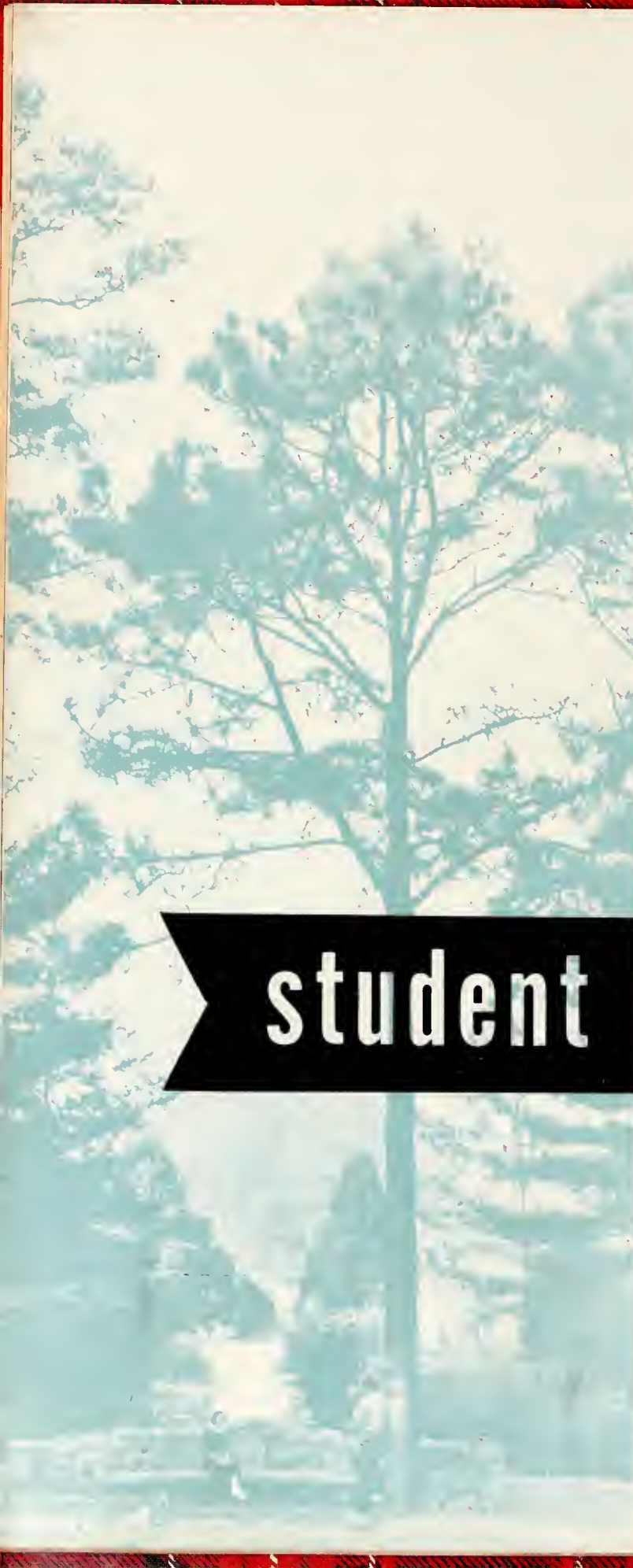
Dr. Gwynn drops a letter in the mailbox before going home for the day.



The Gwynns gather around the piano and sing Christmas carols.



DR. PRICE H. GWYNN, JR.



The Date Section of our Rule Book doesn't exactly put its stamp of approval on this, but we can dream, can't we?

LIFE at Flora Mac is quite an experience—a nice one, we might add. A stroll down most any hall on a Saturday night would reveal student life at its best: in one room a group of pajama-clad girls discuss the latest rumor; next door, roommates write to their boy-friends; across the hall two girls have one last glance in the mirror before going downstairs to sign in the date book; with shampoo and hair spray, one girl heads for the tub room; at the end of the hall someone presses the blouse she will wear tomorrow; the smell of coffee and popcorn announces that a room full of freshmen are behind a closed door having their weekly feast; and draped over the rotunda are several girls in tommy coats trying to get the attention of someone on first floor: they want something from the tea hole. And looking over the rotunda we see girls with their dates patrolling from the Conserve to Vardell and back again.

student

life....





There is one good thing about waiting in line: it gives us an opportunity to hear about each other's summer experiences.

The screaming and yelling of upperclassmen as they greeted each other only added to the confusion of boxes, trunks, Teddy bears, and tennis rackets. But freshmen soon decided the upperclassmen were sane and actually anxious to help teach them the mechanics of college life. Pretty soon we were knee deep in parallel reading and term papers. The days before Christmas were filled with many things to do: classes and homework were slighted as we went from one party

to another; roommates exchanged gifts and declared, "That's just what I wanted;" book reports were hastily written, and before we knew it, the 19th was here. The last days of our vacation were marred by the thoughts of impending doom: exams in January. But we returned, took a deep breath, closed our eyes, and ploughed through them. We opened our eyes to find many exciting events of the spring months awaiting us. Completion of our Prayer Chapel served as the highlight.

Dame Flora gives an interesting account of the life of Flora Macdonald. The audience was fascinated by Dame Flora's delightful and charming manner.



Sarah Margaret McLeod seems to be enjoying talking with her relatives, the McLeod twins. Throughout the day they were surrounded by interested students.





In fear and trembling (and giggles), wretched rats await their judgment to be pronounced by the cat court.

Washing hair is a major undertaking at Flora Macdonald. Holding the spray with one hand, putting shampoo on the hair with the other hand, and rubbing the head at the same time is a delicate operation. Bonnie Bunn helps Ursula Goodson perform the task.



The two societies went professional with their minstrel given during orientation week. Wonder who the lovely mysterious lady is?

The societies present Flora Macdonald students of yester-year. "The good ole days," my foot!! Can't you just see us going to class dressed in one of those costumes!



Student Government

"The Council will please come to order" . . . twelve black-robed students cease talking and give their attention to Phyllis Leggett, student body president. They discuss any important business. They listen to girls who have willfully violated rules and know that they must be punished. They make plans and suggestions for the improvement of student life. They make recommendations to the college in the interest of the students. On Wednesday morning during Chapel period, the Council discusses with the entire student body the conclusions it reached the night before. The Council serves the student body.

As president, Phyllis Leggett has capably led a conscientious group of Council members: Norma Jean Thompson, vice-president; Alice Brantley, secretary; Pat Farmer, treasurer; Saradee Davis, Christian Association president; Mary Lisle Tucker, Athletic Association president; DeLanie Boney, senior class president; Mickie Jernigan, junior class president; Carolyn Robinson, sophomore class president; Norma Pittard, freshman class president; Patsy Teer, Zetesian Society president; Retta Parker, Epsilon Chi Society president; Betty Lou McDonald, Day Students president. Mrs. P. P. McCain is adviser.



PHYLLIS LEGGETT
Student Body President



Around the table ready for a Council meeting are, seated: McDonald, Parker, Teer, Robinson, Jernigan, Boney, Davis, Tucker. Standing: Farmer, Thompson, Brantley.

Christian Association



SARADEE DAVIS
Christian Association President

"If each student will move fifty bricks, the workers can start building our Prayer Chapel." This year a student Prayer Chapel has become a reality on our campus. In Vardell court a small colonial style chapel stands, welcoming students to come in for a few moments of private meditation and prayer. The Christian Association through its many projects and activities strives to make this a Christ-centered student body. Thursday night vespers, hymn sings, prayer bands, Santa Claus workshop, Thanksgiving baskets, special programs at Christmas, hall devotions, and devotions in the dining hall on Saturday mornings are a few of the programs sponsored by the Christian Association. In the fall, Reverend Murphy Williams came to our campus and enriched us spiritually with his talks on "That I May Know Him." Reverend Walter Dickson spoke to us on "Let Go and Let God" in our spring spiritual enrichment week. Serving on the Cabinet with Saradee Davis, president, are: Betty Lou Lamb, vice-president; Charlotte Calhoun, secretary; Ellen Williams, treasurer; Phyllis Leggett, ex-officio; and the following chairmen: Lucy Fleming, worship; Peggy Carter, social service; Emojeane Womeldorf, fellowship; Letty Hill, outreach; Shirley Fitzgerald, prayer bands. Mrs. Elbert McPhaul is adviser.



In Watkins' hall are Cabinet members: Lamb, Calhoun, Williams, Leggett, Hill. Carter, Womeldorf, Fleming, Fitzgerald.



Relaxing at the bridge are Zetesian officers: Byrd, Williamson, Hatcher, Sellers, Coda.



PATSY TEER
President

Zetesian Society

"Go green and white to the right," is the welcome and invitation of the Zetesians to the freshmen. The highlights of Rush Week were dining hall skits, a hay ride and weiner roast at the fish hatchery, and the minstrel that was sponsored by both societies. Other events of the year were the monthly meetings, the Christmas dance, spring party, high school debates, and Senior "take-offs." Officers for this year are: Patsy Teer, president; Cleo Coda, vice-president; Marie Sellers, secretary; Anita Williamson, treasurer; Betty Jo Hatcher, censor; Lucy Fleming, chaplain; Annie Byrd, pianist.

The decision is made. They cast their lot with Zetesian. Sign-up night is always an important event in the life of a freshman.



At the steps on front campus are Epsilon Chi officers: Mize, Dudley, Kelly, Addor, Blalock. Standing, Callahan.



RETTA PARKER
President

Epsilon Chi Society

During the whirl of orientation the freshmen were entertained many times by both societies. Epsilon Chi had a bang-up square dance in the gym with P.J.C. boys gladly serving as partners. After the excitement of sign-up night, the new members joined right into the warm fellowship of the Epsilon Chi group and took part in its many activities and entertainment. Officers for this year are, Retta Parker, president; Billiegene Addor, vice-president; Peggy Callahan, secretary; Jessie Blalock, treasurer; Mary Ella Mize, censor; Norma Kelly, chaplain; Sarah Dudley, pianist.

Epsilon Chi's are hard at work on the decorations for the "Night Before Christmas" dance sponsored by both societies.



GERALDINE WORRELL, Editor-in-Chief

SARAH MARGARET McLEOD, Business Manager

DR. LESLIE BULLOCK, Adviser



WORRELL

1954 White Heather

The staff members meet in the pressroom. Left to right, are: Thompson, Clark, Hudgins, Bowles, McMillan, Brown. Standing, are: Jenkins and Dudley.





McLEOD

With the hope of "maybe we can do it," the WHITE HEATHER staff began, in the spring of 1953, to make plans for the 1954 Annual. We returned to school in the fall with high hopes of keeping within the budget, selling more ads than ever before, and making pictures that would cause the students to sit up and take notice when they saw them in the Annual. There were times, though, when we were ready to give up in despair. We seemed to have a talent for scheduling pictures when students couldn't come; the college kept promising us a car, but it was January before we could go into neighboring towns for ads, and after we got to the towns, we discovered the financial campaign had already been there. But we continued to work and had our moments of inspiration. After meeting all the schedules and deadlines, we anxiously awaited the day when the finished copy, bound in a bright plaid, would arrive.

THE 1954 WHITE HEATHER STAFF

SARAH DUDLEY
Assistant Editor

SHIRLEY HUDGINS
Assistant Business Manager

FLORENE THOMPSON
Senior Class Editor

NAN DORMAN
Junior Class Editor

PAT CLARK
Sophomore Class Editor

JOANNE McMILLAN
Freshman Class Editor

FAYE JENKINS
Literary Editor

MARY ARCHIE BROWN
Snapshot Editor

DORIS BOWLES
NELL LENNON
GALE SIMPSON
Typing Editors



Wearing polka dot tommy coats to inspire them, the Senior Scribblers meet. Around the table, are: Lucile Wilds, Mary Lib Pierce, Charlotte Calhoun, Geraldine Worrell, Chief, Sarah Margaret McLeod, and Elsie Ingram.

During the last week of school five girls from the rising senior class are tapped as Scribblers. Hardly knowing what its all about, they nevertheless accept the invitation. They are duly initiated by the old Scribblers, and from then on, the job is theirs. Early the next fall they begin the task of describing their fellow classmates. At first their pens are poison for they are tempted to use such words as "peculiar," "different," and "numbskull." But after a few meetings they realize the seriousness of their job and make honest endeavors to describe accurately the girls with whom they have been going to school for four years.

SUE LITTLEWOOD
Editor-in-Chief



KATHLEEN MURCHISON, assistant editor; NELL LENNON, assistant business manager; SHIRLEY THORNTON, EMOJEANE WOMELDORF, DELANIE BONEY, SHIRLEY HUDGINS, literary staff; BILLIEGENE ADDOR AND JO MAYS, art staff; PAT RITTER, SALLY BALD, JEAN WEEKS, KATHERINE MCNEILL, business staff.



Discussing plans for an issue of the *Pine and Thistle* in the English classroom are staff members, seated: Boney, Thornton, Womeldorf, Ritter, Murchison, McNeill, Addor. Standing: McGuire, Hudgins, Bald, Weeks, Mays.

Pine and Thistle

Struggling to stay on its feet, the *Pine and Thistle* has fought a courageous battle this year. The struggle has not affected the quality of the literary magazine. The three issues published this year have been superior in quality and this has been shown by the fact that the student body has read them with keen appreciation. This magazine contains an editorial, short stories, poems, essays, and humorous writings—all written by members of the student body. The covers were sketched by students. Dr. Eleanor Scott is adviser. The *Pine and Thistle* is a long-time favorite among the students and it is hoped that it will continue to be published.



BETTY MCGUIRE
Business Manager

The Skirl



ANN MCGIRT, Editor-in-Chief

"Go to the mailbox and get your *Skirl*." Every two weeks the college newspaper is published. Students read it avidly for it contains all the latest happenings on the campus: it tells of coming events; it covers the activities of the clubs; it records the opinions of students on various topics; it gives news from the Conservatory; it informs the students of the latest world news; it presents a personality profile of outstanding students; and it serves as a medium by which the students may express their views in an editorial. The *Skirl* is the newest publication of the student body, and it is here to stay.



MARY MCCrackEN
Business Manager

MARY ELLA MIZE, associate editor; MARTHA MORRISON, associate business manager; MARY HALE, photography editor; DORIS DUNN, art editor; ANN BOWDEN, NAN DORMAN, BETTY JEAN GILLILAND, LUCILE GRAHAM, DOT HAMILTON, FAYE JENKINS, AUDREY MILLIGAN, ELLA RUTH MCNEILL, ALLENE POWERS, ROSA MOORE, reporters; BARBARA ARRINGTON, MARY SUE WILLIAMS, FRANCES BOBBITT, EVELYN TAYLOR, MARY THOMPSON, GALE SIMPSON, ELMIRA STANFORD, JUNE JARRETT, advertising staff; JEAN MORRIS, circulation manager; HARRIETT MCAULEY and KATHERINE RAY, associate circulation managers; DORIS BOWLES, SHIRLEY COX, BETTY JOE HATCHER, JEAN JONES, JOANNE McMILLAN, JEANETTE MCNEILL, NORMA PITTARD, typists

Out on the front campus the *Skirl* staff gets together. They have done an excellent job this year and are to be commended for their hard work.





Nancy Stikeleather conveys a mood of melancholy.

Early in the fall auditions are held, and students wait anxiously for the list to be posted, telling them whether or not they will be a member of the Choral Club. Shouts of "I made it" are heard as girls quickly scan the list and discover their own name. Every Monday, Wednesday, and Friday practice is required from all. A beautiful concert is ample reward for the many hours spent in practice. The Choral Club serves not only as a class in choral music, but provides the college with some of its best advertising. The entire ensemble tours in the Red Springs area with its Christmas program each year, and prepares itself for a longer trip later in the year. Special features of the 1953-54 program were two joint concerts with the men's choir from Presbyterian college, and an appearance as one of the regular concerts on the Pinehurst Forum.

... *Flora*

ST. CECILIA is a club open only to students who have taken an applied music course. This club sponsors projects for the improvement of the Conservatory. Officers are: Florene Thompson, president, Jessie Blalock, vice-president; Sallie Ann Munroe, secretary-treasurer.





In the spring, Marlene Jones gave her senior voice recital. Presenting organ recitals were: Nancy Stikeleather, Mae McElroy, Charlotte Calhoun, and Betty Houck.

Presenting senior piano recitals were, seated: Nancy Gallop and Florene Thompson. Standing: Jessie Blalock, Barbara Lambert, Voice Recital, Frances Nelson.

Macdonald Conservatory

CHORAL CLUB

Under the direction of Mr. Cobb, the Choral Club has had a most successful year. Officers for this year are: Nancy Stikeleather, president; Peggy Carter, first vice-president; Jessie Blalock, second vice-president; Frances Nelson, third vice-president; Kathryn Campbell, secretary; Mary Archie Brown, treasurer; Shirley Thornton, chaplain.





DAVID LLOYD, Tenor



BENNETT CERF, Lecturer



CAROL SMITH, Contralto



LEONARD PENNARIO, Pianist

Concert Series

David Lloyd, Tenor, came to our campus October 26 and won the hearts of all the Flora Macdonald girls with his powerful voice and charming manner. Leonard Pennario, Pianist, gave a most impressive concert November 19. On January 27, Carol Smith, Contralto, made us completely forget that we had just gone through a week of exams. Camilla Wicks, Violinist, gave a delightful concert on March 13. Bennett Cerf closed our series with a most entertaining lecture on April 6.



CAMILLA WICKS, Violinist

Marshals

In lovely dresses of white satin and tulle, nine marshals direct people to seats at our concerts and lectures. They greet them at the door and hand them a copy of the evening's program. At the reception which generally follows a concert the marshals see that everything runs smoothly, and they converse with the visitors. Serving as marshals this year for Epsilon Chi are: Peggy Callahan, Sarah Dudley, Billiegene Addor, and Shirley Fitzgerald. Zetesian marshals are: Ellen Williams, Alice Brantley, Doris Mozingo, and Mickie Jernigan. Zetesian and Epsilon Chi alternate every year in choosing the chief marshal. A special duty of the chief marshal is to remain backstage with the guest artist and then, after the performance, go with him to the reception.

Lucy Fleming, member of Zetesian society, serves as chief marshal.

Seated at the back, are: Brantley, Dudley, Mozingo. Sitting on the floor, are: Jernigan, Williams, Fitzgerald, Callahan, Addor.



Billiegene Addor, Beauty

... because she possesses inner and outer loveliness





Nancy Andrews, Dependability

. . . because she accomplishes her tasks



*Gaddis
McDonald
Sportsmanship*

... because he participates in
school activities



Geraldine Worrell. Capability

... because she does many things well



Charlotte Calhoun, Best All-Around

... because she unselfishly uses her many talents

Mary Jane Martin. Personality

. . . because she is friendly and sincere





SARADEE DAVIS
May Queen

*Flora
May*



MARY ELIZABETH PIERCE
Maid of Honor

Senior class attendants are: Retta Parker, Frances Nelson, Sarah Margaret McLeod.



Macdonald

Day . . . 1954

On the first Tuesday in May, our campus is transformed into a lovely and delicate fairyland. Colorful costumes adorn graceful dancers as they honor the Queen of May and her court of attendants. People from all over the state come to enjoy the performance.

Freshmen class attendants are: Ann Turner and Betty Turner.



Junior class attendants are: Billiegene Addor, Kathleen Murchison, Nan Dorman.

Sophomore class attendants are: Frances Shaw and Mary McLean.



Flora Macdonald Athletic Association

Good fun and fellowship for the Flora Macdonald girls is the aim of the Athletic Association. The A.A. Board tries to guide this program throughout the year as they work together and plan out the details of organized entertainment and sports events. One of their main objectives this year has been the planning of supervised recreation every Saturday night. High lights of this year have been the volleyball, basketball, and tennis tournaments; special swimming and tennis instruction for girls desiring it; purchase of badminton equipment; repair of the bowling alleys; a spring dance and a new coat of paint for the swimming pool. The A.A. also sponsored a trip to New York during spring holidays. Serving with the executive officers on the Athletic Board are: Delores Stone, salesman; Pat Powell, freshman representative; Marjorie Stevenson, head of volleyball; Betty Jean Gilliland, head of basketball; Mary Ruth Matze, head of tennis; Eva Gray Davis, head of softball; Mary Ella Mize, head of swimming; Shirley Thornton, head of ping pong; Mary Archie Brown, cheerleader.



MARY LISLE TUCKER
*Athletic Association
President*

MARJORIE DAVIS
Vice-President

SALLIE ANN MUNROE
Secretary

LUCILLE GRAHAM
Treasurer

MISS ETHEL BATEMAN
Adviser

Meeting in the post office, left to right around the table, are Board members: Graham, Powell, Stone, Matze, Thornton, Gilliland, Mize, Davis, Stevenson, Munroe.





Monogram Club

As recognition for participation in sports and other student activities these girls are presented with the FMC Monogram when they accumulate five hundred points. A specified number of points are given with each activity. Winning their Monograms this year are front row, left to right: Charlotte Calhoun, Audrey Milligan, Nancy Andrews, Lucille Graham. Back row, left to right: Marjorie Stevenson, Betty Jean Gilliland, Mary Lisle Tucker, Patsy Teer, Sarah Margaret McLeod.

Cheerleaders

These girls are found at the Volleyball and Basketball games leading their respective classes in cheers and yells for their team. They create enthusiasm and school spirit. In the dining hall they lead the student body in singing our "Friendship

Song." Cheerleaders this year are, left to right: Pat McNeill, senior; Peggy Callahan, junior; Barbara Wingo, sophomore; Joanne McMillan, freshman, and Mary Archie Brown, college cheerleader. They are shown out on front campus practicing their yells.





Volleyball

Senior

The seniors won every game they played and took possession of the trophy by defeating the juniors 27-19. Front row: Tucker, McLeod, Stevenson, Calhoun (captain), Davis, Gilliland, Thompson. Second row: McNeill, Spivey, Andrews.



Junior

The juniors came out second place in the tournament. Front row: McNeill, Liles, Maloney, Dunn, Willis, Hale, Hamilton. Second row: Williams, Graham, Kelly, Lamb (captain).



Sophomore

Although they did not win a time, these girls played some good games. Front row: Matze, Howard, Williamson (captain), Munroe, Ritter, Davis, Stone. Second row: McAuley, Womeldorf, Farmer.

Freshmen

The freshmen are proud of their 22-21 victory over the sophomores. Front row: Richardson, Melvin, Turner (captain), Pittard, Stickley, McMillan. Second row: Cox, Powell, Jones.





Left to right: Andrews, McLeod, Stevenson, Gilliland, Davis (captain), Tucker, Spivey.



Left to right: McNeill, Dunn, Graham (captain), Lamb, Kelly, Hamilton, Liles, Willis.

Senior

Although they were victorious in the Volleyball tournament, the seniors were unable to do a repeat performance in the Basketball tournament. The fast-moving underclassmen proved to be too much for them. They did, however, defeat the juniors in the final game by a score of 72-53.

Junior

The juniors, at the expense of their little sisters, the freshmen, managed to win one game of the tournament. On the second day they defeated the freshmen by making 70 points while the freshmen were able to make only 49. The little sisters took this beating good naturedly though.

Basketball

Sophomore

For the second year in a row, this class has won the Basketball tournament. As freshmen, they walked off with the honors, and this year, they claimed the golden trophy again. Winning every game they played, the sophomores breezed through the tournament and two of their players were chosen to be on the College Varsity team.

Freshmen

Early after Thanksgiving, all four teams began Basketball practice. In the tournament the freshmen got off to a good start by defeating the seniors 48-46 in a most exciting game. Luck was not with them after that and they were unable to win another game during the remaining days of the tournament.

Left to right: Williamson, Matze, Howard, Ritter, Munroe (captain), Womeldorf, Davis, Farmer, McAuley, Stone.

Left to right: McMillan, Turner, Stickley, Melvin, Jones (captain), Cox, Williams, Pittard, Powell, Thomas, Richardson.





These girls take time out from their studies to enjoy our pool. Looks like fun, doesn't it?

Swimming

One of the projects of the Athletic Association was the painting of the college pool. This project was successfully carried out and has improved the looks of the pool considerably. All girls interested in learning to swim are taught by students qualified to do so. At the end of the course they receive Red Cross certificates. Each spring we eagerly look forward to the day when it will be warm enough to go swimming. After a day of classes a nice swim is a welcomed relief.

Tennis

This year the Athletic Association has tried to promote student interest in tennis by sponsoring tournaments and by giving lessons to those girls wishing to learn the game. A glance at the courts any afternoon would reveal that they are successful. Tennis is fast becoming a favorite sport on our campus.



Playing doubles are: Billie Suggs, Delores Stone, Becky Ingram, and Pat Powell.

Highland Players

The Highland Players aim to provide entertainment and to encourage appreciation of drama, both by players and audience. This aim was realized in their successful production of "Our Town," "A Date with the Professor," and a major production in the spring.

Officers: Lucile Wilds, president, Sue Littlewood, vice - president; Martha Morrison, secretary-treasurer; Betty Joe Hatcher, scrapbook custodian. Mr. Reagan and Mr. Tatem serve as directors.



Left to right: Sue Littlewood, president; Dorothy Anderson, business manager; Lucile Wilds, vice-president.



Alpha Psi Omega

Kappa Lambda is the Flora Macdonald chapter of the national Alpha Psi Omega Dramatic Fraternity. It gives recognition to those students who have been outstanding in college dramatics. Hard work and many hours spent serving on make-up committees, lighting crews and other back-stage work, student directing, and acting are behind this honor.

Day Students

The Day Students have really become an active part of the student body this year through their regular chapel attendance, prayer band, column in the *Skirl*, membership on dance committees, regular day student meetings, and — ough — fulfilling all vaccination requirements. Betty Lou McDonald is president; Mildred Dedas is secretary.



Mathematical Honor Society

This club strives to promote high scholastic standing in math, and to create interest in the subject among the students. Officers this year are: Marjorie Stevenson, president; Betty Lou Lamb, vice-president; Anita Williamson, recording secretary; Eva Gray Davis, corresponding secretary; Harriet McAuley, treasurer, Kit-tye Oliver, finance chairman.



International Relations Club

The I.R.C. theme for the year is "The World's Struggle for Peace." This club deserves recognition for its part in keeping the students informed and interested in current events. Officers are: Nancy Andrews, president; Faye Jenkins, vice-president; Yvonne Brice, secretary; Jo Ann Drummond, treasurer; Beth Bethea, custodian of scrapbook.





Classical Club

Composed of the Latin and Classical Civilization students, this club purposes to instill in its members a greater appreciation for the contributions of the Greeks and Romans to modern civilization. Officers are: Ruby Bierman, president, Mary Sue Williams, vice-president; Barbara Wingo, secretary-treasurer.

William Bartram Scientific Society

Open only to science students with a grade average of B, this club studies and discusses latest scientific findings. It strives to promote fellowship among serious minded students of science. Officers are: Grace Dew, president; Beth Bethea, vice-president; Betty Jo Gore, secretary; Mary Sue Coleman, treasurer.



Virginia Club

The newest club on our campus, these 23 girls from the Old Dominion banded together in an effort to have planned socials and discussions of their favorite topic of conversation, namely, Virginia. Their aim is to double the number of students from Virginia at this North Carolina college. We hope they're successful, but what would we do with 46 Virginians? Mickie Ozlin is president.

French Club

Admiring the portrait of Miss Ettie Brown, professor of French from 1898-1940, are the members of the French club. This club is interested in studying the civilization of France. Officers this year are: Audrey Milligan, president; Mary Ella Mize, vice-president; Mickie Ozlin, secretary-treasurer.



Spanish Club

Programs on the peoples and customs of the neighboring Latin-American countries have been most interesting to Flora Macdonald students of Spanish. Officers are: Christine Maloney, president; Gladys McCain, vice-president; June Jarrett, secretary; Catherine Carter, treasurer.



Home Economics

Round-table discussions relating to family home economics, films, talks, open house, and dessert parties are some of the programs presented by this club. Officers are: Doris Mozingo, president; Lucile Wilds, vice-president; Sally Bald, secretary; Cleo Cudas, treasurer; Mary Hagood Little, reporter.



Writers Club

Glenn Rounds, noted author of children's literature spoke to this club last fall. The club tries to have programs that will stimulate interest in creative writing. Officers are: Billiegene Addor, president; Shirley Thornton, vice-president; Naomi Lee, secretary; Emojeane Womeldorf, treasurer.



Prayer Bands


"A prayer in its simplest definition is merely a word turned Godward." These girls lead a small group once a week in a period of meditation and prayer. They also assist the Christian Association Cabinet in carrying out its activities. Shirley Fitzgerald is chairman.



Student Volunteers

Christian missions is the main interest of this group. Officers are: Charlotte Calhoun, president; Mary Sue Coleman, vice-president; Hilda Phillips, secretary; Sara Sanders, treasurer; Letty Hill, C. A. representative; Mary McLean, representative from group at large; Becky Williams, freshman representative.





Miss Hazel Morrison, Mrs. McCain, and Dr. Vardell meet in Dr. Woodson's office.

7 HERE is value beyond price in the Administrators at Flora Macdonald. The enthusiasm with which the entire staff has supported the financial campaign has made the student body realize anew that they are behind us whole-heartedly. They are interested in Flora Macdonald College and its students, and they wish to see it go forward in the years that lie ahead. Their interest is not just professional. They have a personal interest in the progress of the college, which is revealed in the many times they go beyond what is required of them. They are often seen performing tasks which are not required of their positions. Many hours are devoted to meetings in which plans and suggestions for the improvement of the college are made. These plans are later successfully executed. Special attention is given to students having difficulties with their studies. Professors gladly give of their time to help individual students. And the co-operation which is shown among the administrators is an incentive for better student co-operation. The students recognize and appreciate the value that is found in our administrators.

“with our

administration”





MARSHALL SCOTT WOODSON, B.A., M.A., Th.D., LL.D.
President



DR. CHARLES G. VARDELL
President Emeritus

Even as Dr. Vardell devoted his life to Flora Macdonald, so has Dr. Woodson. His complete dedication of himself to the work of the financial campaign has been an inspiration to the student body this year. His tireless efforts to promote public interest in our college have deepened our respect for him. Dr. Woodson has faith in Flora Macdonald College. He has faith in its students. His strong and abiding faith causes our own to be strengthened.

Administrators



PRICE H. GWYNN, JR.
B.A., M.A., B.D., Ph.D.
Dean of the College

MRS. P. P. MCCAIN, B.S., M.A.
Dean of Students



CHARLES G. VARDELL, JR., B.A., M.A., Ph.D.
Dean of the Conservatory





Miss Connor sews while she visits with Mrs. Dorroh in her room on West Second. A visit with Mrs. Dorroh in her clean and attractive room is always enjoyed.

Mrs. Garnbill looks up from her desk in her office in the kitchen.

A new addition to our college this year was the purchase of a Ford station wagon. Miss Frances Dudley, field representative, is getting in, ready for another trip.

Miss Bateman and Miss Williams enjoy cokes in Miss Bateman's office at the gym.

Flora Macdonald

MISS HAZEL MORRISON, B.A.
Dean of Admission and Registrar



E. GLENN OVERTON, B.A., M.A.
Business Manager



Enjoying our Flora Macdonald gardens are, N. Bullock, Meese, Johnson, Dorroh, Cherry, and Wright.

ETHEL BATEMAN, B.A., M.A., *Director of Physical Education and Assistant to Dean of Students.*

MARGARET BOWEN, B.A., M.A., *Associate Professor of Bible.*

PHILIP LESLIE BULLOCK, B.A., B.D., TH.M., Th.D., *Professor of Bible.*

ANNIE M. CHERRY, B.A., M.A., *Assistant Professor of Education.*

MARY M. CONOLY, B.A., B.S., M.A., *Professor of Education.*

ELIZABETH C. CURRIE, B.S., *Assistant Professor of Home Economics.*

Our

RODGER W. DECKER, A.B., M.A., *Guidance Director and Assistant Professor of Psychology.*

LOIS FRAZIER, B.S., M.S., *Associate Professor of Business Education.*

ETHEL B. HANSEN, B.A., M.A., Sc.D., *Professor of Biology.*

DORIS H. HAWSE, B.A., M.A., *Assistant Professor of Biology.*

AMY LEVESCONTE, B.A., M.S., Ph.D., *Professor of Chemistry.*

LETA W. MCINTYRE, B.S., M.Ed., *Associate Professor of Business Subjects.*

ELIZABETH C. MCPHAUL, B.A., *Assistant Professor of Bible.*

HARRIET N. MORRISON, B.A., M.A., *Professor of Latin.*

GENEVIEVE M. NEIGHBORS, B.A., M.A., *Assistant Professor of Education and Social Science.*

WILLIAM F. REAGAN, B.A., M.A., *Assistant Professor of French.*

Listening to Dr. Bullock play his recorder are, seated, LeVesconte, Stenhouse, H. Morrison, German, and standing, Venters.





Relaxing at the faculty mailbox after lunch are, seated: Williams, Reagan, Query, Connor, Bateman; standing: Scott and Sinclair.

CAROL ROBERTSON, B.A., M.A., *Professor of History.*
 ELEANOR B. SCOTT, B.A., M.A., Ph.D., *Professor of English.*
 ELLIE M. SOWDER, B.A., M.A., *Associate Professor of Mathematics*
 ELIZABETH STENHOUSE, B.L., *Assistant Professor of Business Subjects.*

Faculty

DAVID TATEM, B.A., M.A., B.S., *Assistant Professor of English.*
 LESLIE M. VENTERS, B.S., M.A., *Special Teacher.*
 THOMAS E. WRIGHT, B.A., M.A., *Professor of French and Spanish.*
 CHARLOTTE WOMBLE, B.A., M.S., *Professor of Home Economics.*
 JAMES V. COBB, B.A., B.M., M.A., *Assistant Professor of Voice.*
 IRENE GERMAN, B.M., *Assistant Professor of Public School Music and Voice.*
 DAVID MEESE, B.M., M.M., *Professor of Theory.*
 JOHN SINCLAIR, B.M., M.M., *Assistant Professor of Piano.*
 JOHN WILLIAMS, B.M., M.M., *Assistant Professor of Organ.*
 JANE K. CROSSWELL, B.S., B.R.E., *Instructor of Piano.*

In time for the 8:15 bell are Hansen, Neighbors, Lang, Robertson, Conoly, Decker, and McPhaul.





Mrs. Perry explains the castle in the library to new faculty members: Hawse, Tatem, Short, Currie, Womble, Crosswell, McQueen, and Frazier.

NAN H. BULLOCK, B.L., *Editor of Bulletin and Publicity Secretary.*
 DORIS CAIN, *Secretary, Office of the President.*
 VIRGINIA CONNOR, R.N., *Resident Nurse.*
 HELEN T. DORROH, *Supervisor of Dormitories.*
 FRANCES DUDLEY, B.A., *Field Secretary.*
 MARTHA L. GAMBILL, *Dietitian.*
 C. T. JOHNSON, M.D., *Physician.*
 G. C. LANG, *Superintendent of Buildings and Grounds.*
 BROWN MORRISON, B.L., *Bursar.*
 MARGUERITE MCQUEEN, *Assistant Librarian.*
 FLORA M. PERRY, B.A., B.S.L.S., *Librarian.*
 PEGGY QUERY, *Secretary, Office of Dean of Faculty.*
 ANNIE WILLIAMS, *Secretary, Office of Dean of Admissions.*
 ELIZABETH DEORIN, *Manager of Laundry.*

Mrs. McPhaul, Mrs. Bullock, and Mrs. McCain enjoy a mid-morning cup of tea in Mrs. McCain's apartment.



Miss Womble and Mrs. Currie work on Christmas decorations in the Home Ec department. Ronnie, Mrs. Currie's son, supervises the job.



Deeply absorbed in a Saturday afternoon football game are, Overton, Tatem, Decker, Bullock, and Meese.



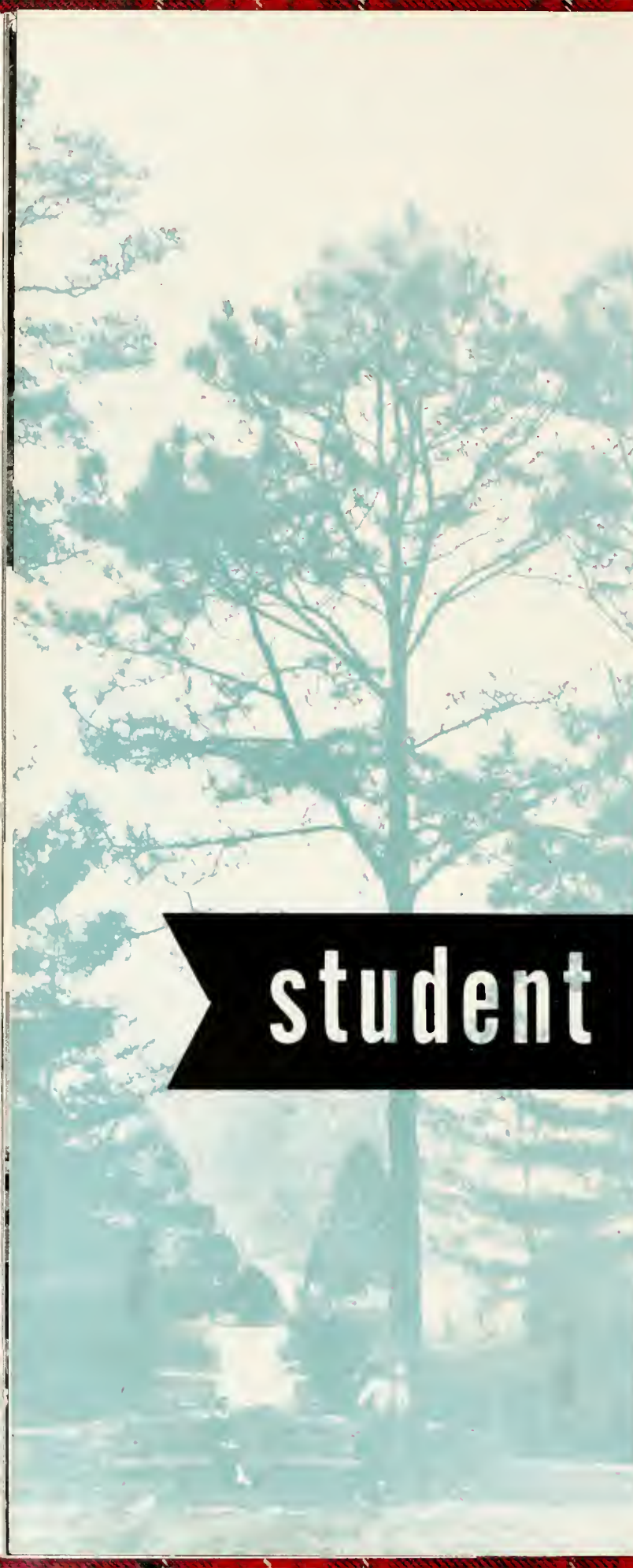
The relationship that exists between students and faculty is a warm, friendly one at FMC. We know and like our professors as persons with ambitions and interests similar to our own. Each Friday in chapel a professor is in charge of the program. These services give us an opportunity to hear them tell of their personal experiences and to hear their opinions on various subjects. And the relationship among our faculty members is good. Most of them belong to the Faculty Club. This club meets informally each month in the homes of different members. Mr. Decker is president this year. Every Wednesday morning faculty and staff members gather in the parlors for a coffee hour. After the coffee hour a faculty prayer meeting is held in the Bible classroom. Along with the student prayer bands, the faculty prayer band filled a Thanksgiving basket for a needy family. They also filled a stocking which was given at the Christmas party for the colored servants.



Mr. Cobb pours coffee for his wife. They graciously welcomed the photographer into their home and even served him a cup of coffee before he took their picture.

Visiting Miss Bowen in her apartment are, left to right: Williams, Dudley, Bowen, Cain, Cobb, Sowder.





During the first days of school before boxes were assigned, we all sat on the floor, hoping that a letter would be thrown over the rotunda to us.

student

body...

EVERY member of the student body begins each day in the same manner. The 7:25 bell rings, and instead of awakening them, it only throws them in a deeper sleep. But at the 7:30 bell, 250 girls arise (still in a deep sleep), put skirts on over pajamas, grab windbreakers, and start on the three mile hike to the dining hall. (Hair is combed while students grope their way down-stairs.) Arriving at the dining hall at 7:32—or later, 250 girls fall in their chairs and continue to sleep. The clatter of cups and silver awaken them gradually, and before long, the steady hum of voices is heard throughout the dining hall. Before breakfast is over the student body becomes wide awake and excitement fills the air as plans for the day are discussed. Classes, piano practice, chapel, parallel reading, labs, student teaching, club meetings, and many other activities claim the hours of each girl. But as each girl pursues her own special interests there exists among them a feeling of oneness that unites them and molds them into a student body with value beyond price.





The Christian Association Cabinet inspects the first work that was done in the building of our Prayer Chapel.

"Will you be chairman of the fall dance?" . . . "Will you go to Fayetteville and buy decorations for the club party?" . . . "Will you have the IRC program next week?" . . . "Will your prayer band have chapel Monday?" . . . and so it goes: one thing right on top of another to be done. "When will we ever study?" we cry. Wondering how one small college can possibly have so many clubs and organizations, we nevertheless continue to make the rounds because it's fun. Actually our extra-curricular activities promote a varied and interesting social life, and we wouldn't have college life any other way. From September till June its a steady whirl of activities and we love it!

The crowd at the reception for Dame Flora and her twin grandsons waited patiently to shake hands with the famous visitors.



With that expression on her face, Shirley Fitzgerald obviously is not talking about anything even remotely related to school work.



This Is Why

Reverend Murphy Williams holds the attention of the group as he emphasizes a point in their discussion.



Senior Class mascot, Sidney Campen, smiles sweetly at DeLanie Boney, class president.



These girls have put in many long hard hours of work in the financial campaign office.

Ruby Bierman and Barbara Wingo enjoy reading a letter while taking in some fresh air.



We Didn't Make A's

Drying their hair out on the fire escape are Bonnie Bunn and Ursula Goodson.



Go to the Rec. Room on Saturday night and you'll find girls and their dates enjoying ping pong, checkers, cards, dancing, or just talking.



Harriet McAuley is in the process of dusting her fifth row of books. Don't tell us this has to be done every day!





At the entrance gate are, left to right, Boney, Andrews, Davis, Stevenson, Spivey, Codas.

OFFICERS

DELANIE BONEY
President

MARJORIE DAVIS
Vice-President

NANCY ANDREWS
Secretary

MARJORIE STEVENSON
Treasurer

BETTY RUTH SPIVEY
Tea Room Manager

CLEO CODAS
Assistant Manager

Senior Class

Marching out of the auditorium ahead of the underclassmen after that first chapel service in September made these girls realize that Seniorhood was upon them. Of all their four years at Flora Macdonald, they feel that this has been the best one yet. Student teaching, senior recitals, twelve o'clock light bell, decorating the Christmas tree, senior devotions, ordering graduation announcements, selecting commencement and baccalaureate speakers, the silver tea, senior day, trying on caps and gowns, making wedding plans, and signing contracts for jobs next fall have been experiences reserved only for them. This year has had value beyond price, and they cherish the memories of it.

NANCY HATHAWAY ANDREWS, B.A.

History

Spencer, N. C.

Hathaway . . . I.R.C. . . . springy curls . . . white blouses . . . sports fan . . . talkative . . . good humored

Zetesian Society; Student Volunteers 1, 2; Math Club 2, 3, 4; Spanish Club 2, 3; International Relations Club 2, 3, 4, Vice-President 3; President 4; Classical Club 3; Christian Association Cabinet 3; Treasurer 3; Volleyball 2, 3, 4; Basketball 1, 2, 3, 4; Class Secretary 4; Superlative 4.

ELIZABETH ANN BETHEA B.A.

Biology

Latta, S. C.

Beth . . . generous . . . matter of fact . . . mon hater . . . petite cranium . . . wistful . . . until you know her.

Epsilon Chi Society; Choral Club 1, 2; Math Club 1; French Club 2, 3, 4; William Bartram Scientific Society 2, 3, 4, Vice-President 4; International Relations Club 2, 3, 4, Treasurer 3; High Point Summer School 3.

JESSIE BLALOCK, B.M.

Piano

Hamlet, N. C.

Fifi . . . easy-going . . . perfume addict . . . black seams . . . practice and more practice . . . movie magazines . . . "nice-acting."

Epsilon Chi Society, Marshal 3; Treasurer 4; Choral Club 1, 2, 3, 4, Second Vice-President 4; St. Cecilia Music Club 1, 2, 3, 4, Vice-President 4; Volleyball 3; Piano Recital 4; Summer work in piano under Dr. Vardell.

DeLANIE HALTON BONEY, B.A.

English and Bible

Wallace, N. C.

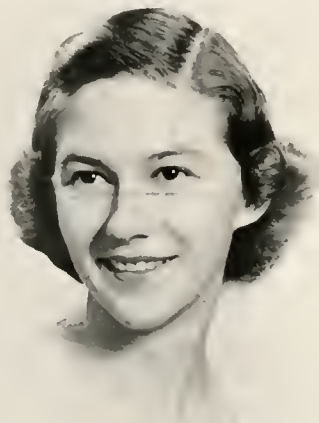
Expressive . . . senior class meetings . . . she sews, she cooks, she makes A's . . . Boney nose . . . positive approach . . . dignified . . . etiquette book.

Epsilon Chi Society, Secretary 2; Marshal 3; Writers Club 1; Volleyball 1; Class Treasurer 2; Dance Chairman 2; Prayer Band Leader 2; Math Club 1, 2, 3, Vice-President 3; Christian Association Cabinet Secretary 3; International Relations Club 1, 2, 3, Program Staff 3; Skirl Staff 3; Pine and Thistle Staff 4; Class President 4; Student Council 4; Student Volunteers 1, 2, 3, 4; Who's Who in American Colleges and Universities.

Andrews
Blalock

Bethes
Boney

Seniors



RETTA PARKER, Who's Who in American Colleges and Universities.





MARY LISLE TUCKER, *Who's Who in American Colleges and Universities*.

Senior

Brice
Codas

YVONNE JANET BRICE, B.A.
History and French
Elizabeth City, N. C.

Pic . . . natural wit . . . unconsciously adorable . . . sensitive . . . great worrier . . . fastidious.
Epsilon Chi Society; French Club 1, 2, 4; Writers Club 2, 3, President 2; Highland Players 2; Pine and Thistle Literary Staff 2, Assistant Editor 3; International Relations Club 3, 4, Secretary 4.

GERALDINE BROWN, B.A.
Grammar Grade Education
Evergreen, N. C.

Gerry . . . steady worker . . . ever-smiling . . . "Baptist girls will meet" . . . placid.
Epsilon Chi Society; Mars Hill College 1; German Club 2, 3, 4; I.R.C. 2, 3, 4; Classical Club 2, 3, 4; William Bartram Scientific Society 2, 3, 4.

CHARLOTTE WILLARD CALHOUN, B.M.
Church Music
Lavras, Minas, Brazil

Scrubbed look . . . fun to be with . . . well-rounded . . . pranks at midnight . . . virtuous . . . the ridiculous and the sublime.

Zetesian Society; St. Cecilia Music Club 1, 2, 3, 4; Choral Club 1, 2, 3, 4; Student Volunteers 1, 2, 3, 4, Vice-President 3; President 4; International Relations Club 3, 4; Class Officer 3; Volleyball 1, 2, 3, 4, Captain 2, 4, Varsity 3, 4; Athletic Board 3; Monogram Club 3, 4; Senior Recital; Outstanding Athlete 3; Scribbler 4; Superlative 4; *Who's Who in American Colleges and Universities*.

PEGGY JOYCE CARTER, B.A.
Bible
Wilson, N. C.

Lourinburg . . . tranquil beauty . . . C. A. announcements . . . ebony hair . . . a dedicated life.
Zetesian Society, Marshal 3; Spanish Club 1, 2; William Bartram Scientific Society 2, Secretary 2; Class Officer 2; Prayer Band Leader 3; Choral Club 2, 3, 4, Secretary 3, First Vice-President 4; Classical Club 3; Westminster Fellowship President 3; Student Volunteers 1, 2, 3, Secretary 2; Christian Association Cabinet 4, Chairman of Social Service.

CLEO CODAS, B.S.
Home Economics
Henderson, N. C.

"Hey purty" . . . giggle-box . . . extensive wardrobe . . . cats and rabbits . . . fun-loving.
Zetesian Society, Vice-President 4; Home Economics Club 1, 2, 3, 4, Secretary 2, Treasurer 4; Highland Players 1, 2, 3, 4, Classical Club 2, 3; International Relations Club 3; Atlantic Christian College Summer School 1; Assistant Tea Room Manager 4.

MARY SUE COLEMAN, B.A.
Bible
Asheville, N. C.

Martin . . . June wedding . . . matchless laugh . . . conference hound . . . patient . . . earnest.
Epsilon Chi Society; French Club 1; Prayer Band Leader 3; Student Volunteer 2, 3, 4, Vice-President 4; William Bartram Scientific Society 3, 4, Treasurer 4; Classical Club 2, 3, 4.

MARJORIE MARIE DAVIS, B.A.
Grammar Grade Education
Fayetteville, N. C.

Kindhearted . . . basketball . . . reticent . . . long eyelashes . . . reliable.
Zetesian Society; Student Volunteers 1; French Club 1, 2, 3; Commercial Club 1; Basketball 1, 2, 3, 4, Varsity 3; Volleyball 1, 2, 3, 4; Athletic Board 3, Vice-President 4; Math Club 3; International Relations Club 3; Typing Editor WHITE HEATHER 3; Class Officer 3, 4; Prayer Band Leader 4.

SARADEE OLEAN DAVIS, B.A.
Bible
Quincy, Florida

King's daughter . . . tenderhearted . . . outreaching love . . . modest . . . "nite and rite" . . . that smile . . . radiant.

Zetesian Society; Volleyball 1, 2, 3; Basketball 1, 2; Highland Players 1; Math Club 1, 2; Student Volunteers 1, 2, 3, 4; International Relations Club 1, 2, 3, 4; Mardi Gras Queen 1; May Court 1, 3, Queen 4; Prayer Band Leader 2, Classical Club 2, 3; Class Officer 2, President 3; Christian Association Cabinet, Chairman Prayer Bands 3, President 4; Student Council 3, 4; *Who's Who in American Colleges and Universities*.



Class of 1954

Brown
Coleman



Calhoun
Davis, M.



Carter
Davis, S.



Senior Class of

Dedas
Gallop



Dew
Gilliland



Drummond
Houck



1954



PHYLLIS LEGGETT, Who's Who in American Colleges and Universities.

Ellis
Ingram



MILDRED SANDERS DEDAS, B.A.

History

Raeform, N. C.

From Raeform to Red Springs . . . "my little boys" . . . friendly . . . hard worker . . . a fine person.
Epsilon Chi Society; 1941-1944, 1954; Prayer Band Leader; William Bartram Scientific Society 2, 3; Math Club 2, 3, President 3; Christian Association Cabinet Vice-President 3; International Relations Club 4; Classical Club 4.

GRACE JANE DEW, B.A.

Grammar Grade Education

Delco, N. C.

Wistful eyes . . . laundry . . . four years on Morgan II . . . "Gracious" . . . quiet . . . unobtrusive . . . sincere.

Zetesian Society; William Bartram Scientific Society 2, 3, 4, Treasurer 3, President 4; Home Economics 2; Classical Club 2, 3; Wilmington College Summer School.

JO ANN DRUMMOND, B.A.

Grammar Grade Education

Graham, N. C.

Long locks . . . bubbles over with laughter . . . twinkly eyes . . . absent-minded school teacher . . . detailed . . . desires the best.

Epsilon Chi Society; Choral Club 1; Math Club 1, 2, 3; Student Volunteers 1, 2, 3; International Relations Club 2, 3, 4, Program Committee 3, Treasurer 4; French Club 1, 2, William Bartram Scientific Society 3.

RACHEL ELIZABETH ELLIS, B.A.

Bible

Wilmington, N. C.

Nicky . . . ballet shoes . . . widow's peak . . . Charleston . . . curator . . . graceful

Epsilon Chi Society; Spanish Club 1, 2; Math Club 1, 2, 3; Classical Club 4; Prayer Band Leader 4.

NANCY ANN GALLOP, B.M.

Piano

Wilmington, N. C.

"Let me have music and I ask no more delight" . . . evening dresses . . . dreamer . . . florist flowers . . . diligent.

Epsilon Chi Society; Pianist 2, 3; Choral Club 1, 2, 3, 4, Accompanist 1, 2, 3, 4; St. Cecelia Music Club 1, 2, 3, 4; Tennis 3; Prayer Band Leader 3; Wilmington College Summer School 2, 3; Joint Piano Recital 3; Piano Recital 4.

BETTY JEAN GILLILAND, B.A.

Mathematics

Rocky Mount, N. C.

Athletic . . . pretty hair . . . a - b? . . . neatly dressed . . . State College basketball . . . finds time for fun.

Epsilon Chi Society; Math Club 1, 2, 3, 4, Treasurer 2, President 3, French Club 1; Volleyball 1, 2, 3, 4, Captain 3, Varsity 3, 4; Basketball 1, 2, 3, 4, Varsity 2, 3; Athletic Board Head of Basketball 2, 4; Monogram Club 3, 4; Skirt Staff 4.

ELIZABETH STEPHENSON HOUCK, B.M.

Organ

Rowland, N. C.

Houckstein . . . "confound it" . . . impatient . . . Kleenex . . . pipes, pistons, pedals . . . a good student.

Epsilon Chi Society; Choral Club 1, 2, 3, 4, St. Cecelia Music Club 1, 2, 3, 4; Organ Recital 4.

ELSIE FAYE INGRAM, B.A.

Elementary Education

Gibson, N. C.

Elsie Fee . . . kittens . . . deep dimples . . . yakety-yak . . . red toboggan and polka dots . . . hidden potentialities.

Zetesian Society; Spanish Club 1, 2; William Bartram Scientific Society 1, 2; St. Cecelia Music Club 1, 2, 3, 4, Choral Club 1, 2, 3, Second Vice-President 3; Student Volunteers 2, 3, 4, Secretary 3; International Relations Club 3; Senior Scribbler.





SARADEE DAVIS, *Who's Who in American Colleges and Universities*.

Senior

John Leggett

JOAN HARDESTY JOHN, B.A.
English
Shannon, N. C.

Sophomore bride . . . stately . . . gentle voice . . . literary . . . at home in the classroom.
Zetesian Society; Class President 1, 2; Student Council 1, 2; International Relations Club 2;
Spanish Club 1, 2; Writers Club 1, 2; Student Volunteers 1, 2; Basketball 1, 2; Volleyball 1, 2, 3;
Pine and Thistle Staff 3; Day Students Club 3, 4.

JEAN STUART JOHNSON, B.A.
Grammar Grade Education
Benson, N. C.

Dimples . . . fingernail polish . . . pint-size . . . hay fever . . . always on the go! . . .
Zetesian Society; Marshal 3; Meredith College 1; Campbell College Summer School 1, 2; Spanish
Club 2, 3; Classical Club 3; Associate Editor of *Skirl* 3; Dance Committee 3.

MARLENE JONES, B.M.
Voice and Public School Music
Lansing, N. C.

Ravishing redhead . . . men, men . . . cosmetics . . . impressive . . . ambitious . . . vocalist. . .
Epsilon Chi Society; Marshal 3; St. Cecelia Music Club 1, 2, 3, 4; Glee Club 1, 2, 3, 4, President 3;
Spanish Club 1; Southwestern Summer School 3; May Court 3.

BARBARA SMITH LAMBERT, B.M.
Music Education
Albemarle, N. C.

Max . . . unlimited weekends . . . tense . . . accommodating . . . enjoys teaching school . . .
good housekeeper.
Zetesian Society; St. Cecelia Music Club 1, 2, 3, 4; Choral Club 1, 2, 3, 4; WHITE HEATHER Staff 2;
Pine and Thistle Staff 2, 3; International Relations Club 4; Joint Recital 4.

PHYLLIS SONDRAL LEGGETT, B.A.
Bible and History
Rocky Mount, N. C.

. . . Madam president . . . amiable . . . poised . . . orator . . . invaluable . . . a gracious lady. . .
Zetesian Society; Treasurer 2; Dance Committee 1; Math Club 1, 2, 3; Writers Club 1, 2, 3; Vice-
President 2; Critic 3; Choral Club 1, 2, 3; International Relations Club 2, 3, 4; Classical Club 2, 3, 4;
William Bartram Scientific Society 2, 3; Prayer Band Leader 2; Student Volunteers 3; Christian
Association Cabinet 4; Student Council Treasurer 3; Student Body President 4; *Who's Who in*
American Colleges and Universities.

MARY HAYGOOD LITTLE, B.S.
Home Economics
Pollocksville, N. C.

"I was just wondering" . . . meticulous . . . detailed conversation . . . "Faye says" . . . hand
gestures . . . thorough. . .
Epsilon Chi Society; Home Economics Club 1, 2, 3, 4; French Club 1; Student Volunteers 1, 2, 3, 4;
Prayer Band Leader 3; Atlantic Christian College Summer School 3; Choral Club 4.

MARY SUE LITTLEWOOD, B.A.
Bible
Lansing, N. C.

"Miss Littlewood" . . . devout Methodist . . . takes the initiative . . . "I move" . . . studies after
midnight . . . best foot forward . . .
Epsilon Chi Society; William Bartram Scientific Society 1, 2, 3, 4; Vice-President 3; St. Cecelia
Music Club 1, 2; Mathematical Honor Society 1, 2; Spanish Club 1, 2, 3; Prayer Band Leader 2;
Appalachian State Teachers College Summer School 2; Choral Club 1, 2, 3, 4; Student Volunteers
3, 4; Highland Players 3, 4; Vice-President 4; Alpha Psi Omega 4; President 4; Pine and Thistle
Literary Staff 2; Business Manager 3; Editor-in-Chief 4.

NELLIE JEAN MILLER, B.A.
Elementary Education
Chadhourn, N. C.

Chapel sneezes . . . practical joker . . . veterinarian . . . Daddy's little girl . . . goodness of heart
. . . intelligent but ignores studies. . .
Highland Players 3, 4; St. Cecelia Music Club; Presbyterian Junior College Summer School 2;
Epsilon Chi Society; Censor 2; Choral Club 1, 2, 3; Student Volunteers 1; Classical Club 2, 3;

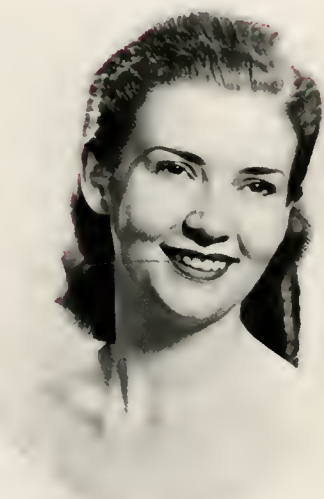


Class of 1954

Johnson
Little



Jones
Littlewood



Lambert
Miller

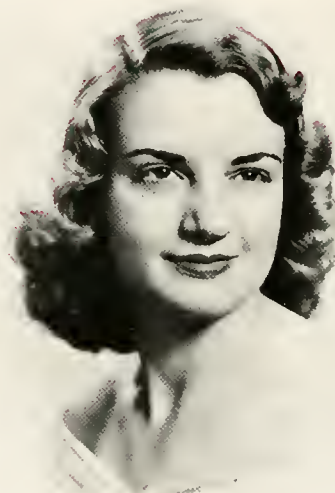


Senior Class of

Milligan
McLeod



McDonald
Nelson



McElroy
Parker



1954



GERALDINE WORRELL and CHARLOTTE CALHOUN, Who's Who in American Colleges and Universities.

McIntosh
Pierce



AUDREY ERNESTINE MILLIGAN, B.A.
French and History
Shallotte, N. C.

Sterling . . . la maitress excellente . . . that Southport dialect . . . sleep walker . . . humble . . . crochets.
Epsilon Chi Society, Censor 2; Choral Club 1, 2, 3; Student Volunteers 1; Classical Club 2, 3; Tea Room Manager 3; William Bartram Scientific Society 3, 4; Skirl Staff 4.

BETTY LOU McDONALD, B.A.
French and History
Red Springs, N. C.

Mrs. . . . nothing less than an A . . . load of books . . . inexhaustible . . . frantic frenzy . . . obliging.
Epsilon Chi Society; International Relations Club 2, 3, 4; French Club 1, 2, 3, 4; William Bartram Scientific Society 3; Day Students Club 1, 2, 3, 4, President 3, 4; Student Council 3, 4; Who's Who in American Colleges and Universities.

MAE McELROY, B.M.
Organ
Quitman, Georgia

Dresden doll . . . non-conformist . . . natural born organist . . . "Heavens" . . . delightfully refreshing . . . naive.
Epsilon Chi Society; St. Cecelia Music Club 1, 2, 3, 4, Vice-President; Choral Club 1, 2, 3, 4; Senior Recital 4.

ELIZABETH GIBSON McINTOSH, B.A.
Bible
Fayetteville, N. C.

Crescendo explanations . . . "my family" . . . W. F. . . . Girl Scouts . . . will make a good church worker . . . enthusiasm.
Zetesian Society; Queens College 1; Student Volunteers 1, 2, 3, 4; Spanish Club 2, 3; William Bartram Scientific Society 2, 3; Math Club 3; Skirl Staff 3; Prayer Band Leader 3; Westminster Fellowship President 4; Queens College Summer School 1952.

SARAH MARGARET McLEOD, B.A.
History
Carthage, N. C.

Innocent little girl . . . bangs . . . indispensable . . . cute as a button . . . sock curls . . . loyal.
Zetesian Society, Marshal 3; French Club 1, 2; Latin Club 2; Student Volunteers 1, 2; Home Economics Club 1; International Relations Club 2, 3, 4; Basketball 1, 2, 3, 4; Volleyball 2, 3, 4; Prayer Band Leader 3; WHITE HEATHER Staff 3, 4, Class Editor 3, Business Manager 4; Class Officer 3; May Court 4.

FRANCES LOUISE NELSON, B.M.
Piano
Olivia, N. C.

Flashing eyes . . . look at that suntan . . . "I love Chopin" . . . particular . . . Vardell devotee . . . music book store.
Zetesian Society; Choral Club 1, 2, 3, 4, Third Vice-President 4; St. Cecelia Music Club 1, 2, 3, 4, President 3; International Relations Club 3, 4; Summer piano study with Vardell 3, 4; Piano Recital 4; May Court 4.

RETTA PARKER, B.S.
Home Economics
Pollocksville, N. C.

Roommate of Patsy . . . cosmopolitan air . . . efficient . . . trim . . . "scrounge" . . . confident.
Epsilon Chi Society, Vice-President 2, Chief Marshal 3, President 4; Home Economics Club 1, 2, 3, 4; William Bartram Scientific Society 2; Volleyball 2; Classical Club 1, 2; Student Volunteers 2, 3; Student Council 4; May Court 4; Who's Who in American Colleges and Universities.

MARY ELIZABETH PIERCE, B.A.
Primary Education
Phoebus, Va.

Happy all the time . . . "la donna es mobile" . . . frequent shampoos . . . "I can't" . . . responsive . . . delightful.
Epsilon Chi Society; Choral Club 1; St. Cecelia Music Club 1; Day Students Club 2, 3; Spanish Club 2; Classical Club 3; East Carolina College Summer School 2; May Court 3, 4; Scribbler 4.





BETTY LOU McDONALD and DeLANIE BONEY, Who's Who in American Colleges and Universities.

Senior

MILDRED AULENE POWERS, B.A.

Bible
Lansing, N. C.

Coiffeur . . . music lover . . . unusual . . . distinctive walk . . . composer . . . Appalachian.
Epsilon Chi Society; Lees McRae College 1, 2, Classical Club 3; Spanish Club 3; St. Cecelia Music Club 3, 4; Skirl Reporter 3, 4; Prayer Band Leader 4.

SARA ELIZABETH ROBINSON, B.A.

Bible
Burgaw, N. C.

Beth . . . shy . . . abrupt . . . enjoys singing . . . wears red well . . . enviable hair . . . conservative.
Epsilon Chi Society, Choral Club 1, 2, 3, 4; St. Cecelia Music Club 1, 2, 3; Volleyball 3; Student Volunteers 3, 4; Spanish Club 3, 4.

MARIE SELLERS, B.A.

Elementary Education
Whiteville, N. C.

Maa-rie . . . repertoire of alma maters . . . well-groomed . . . strong convictions . . . admirable.
Zetesian Society, Secretary 4; Bob Jones University 1; ECC Summer School 2; ACC Summer School 3; Basketball 3; French Club 3; May Court 3; Prayer Band Leader 4.

BETTY RUTH SPIVEY, B.A.

Grammar Grade Education
Lake View, S. C.

Ruthie . . . tea-hole . . . active in sports . . . custodian of movie projector . . . warm hearted . . . jolly good fellow.
Epsilon Chi Society; Math Club 1, 2, 3, 4; Spanish Club 1, 2; Basketball 1, 3, 4; ACC Summer School 2; Class Officer 3, 4; Tea Room Manager.

MELBA JEANE STEPPE, B.S.

Home Economics
Barium Springs, N. C.

Teenie-tiny . . . indifferent . . . imaginative . . . flare for drama . . . "honey" . . . recluse.
Zetesian Society; W.C.U.N.C. 1; Lynchburg College Summer School 3; Highland Players 2, 3, 4; Vice-President 3; Home Economics Club 2, 3, 4.

MARJORIE ALICE STEVENSON, B.A.

Mathematics
Stoney Point, N. C.

Stevie-jo . . . unruly hair . . . spiker . . . abilities . . . calculating calculist . . . smart.
Zetesian Society; Math Club 1, 2, 3, 4, Corresponding Secretary 2, President 4; Spanish Club 1, 2; Volleyball 1, 2, 3, 4, Varsity 3, 4; Basketball 1, 2, 3, 4, Captain 3, Varsity 3; Prayer Band Leader 2; Assistant Business Manager WHITE HEATHER 3; Classical Club 3; Monogram Club 3, 4; Class Dance Decorations Chairman 3; Recorder of Points 3; Athletic Board 4; Class Treasurer 4.

NANCY ELLEN STIKELEATHER, B.M.

Organ
Statesville, N. C.

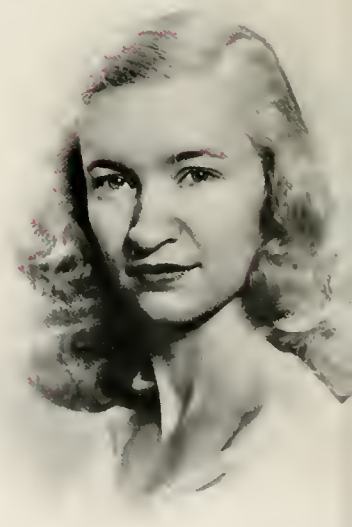
Pony-tail . . . know-how . . . squeals . . . sews a fine seam . . . dignified . . . versatile.
Epsilon Chi Society, Marshal 3; St. Cecelia Music Club 1, 2, 3, 4; Choral Club 1, 2, 3, 4, President 4; Prayer Band Leader 2; Christian Association Cabinet 3; Worship Chairman; Dance Committee 2, 4, Chairman 4.

PATSY CAROLYN TEER, B.S.

Home Economics
Hillsboro, N. C.

Roommate of Retta . . . engaged to Paul . . . collegiate . . . sophisticated clothes . . . personality . . . adaptable.
Zetesian Society, Recording Secretary 2, President 3, 4; Class Cheerleader 1, 2, College Cheerleader 3; Spanish Club 1, 2; Choral Club 1, 2; Home Economics Club 1, 2, 3, 4, Scrapbook Custodian 2; Student Volunteers 1, 2, 3; Athletic Association Salesman 2, Vice-President 3; Basketball 1, 2, 3, 4; Volleyball 2, 3; Student Council 3, 4; Who's Who in American Colleges and Universities.

Powers
Steppe



Class of 1954

Robinson
Stevenson



Sellers
Stikeleather



Spivey
Teer



Senior Class of

Thompson, F.
Warren



Thompson, N.
Wilds



Tucker
Worrell



1954



PATSY TEER, *Who's Who in American Colleges and Universities*.

FLORENE THOMPSON, B.M.

Piano
Whiteville, N. C.

Mighty Mouse . . . Wade . . . gracious . . . house plans . . . hair twister . . . cute . . .

Zetesian Society; Glee Club 1, 2, 3, 4; St. Cecelia Music Club 1, 2, 3, 4, Vice-President 3, President 4; Volleyball 3, 4; International Relations Club 3, 4; Dance Committee 3; Summer Piano under Dr. Vardell 3; Senior Class Editor of WHITE HEATHER 4; Senior Piano Recital 4.

NORMA JEAN THOMPSON, B.A.

Mathematics
Glade Valley, N. C.

Those fingernails! . . . rises to any occasion . . . expert mathematician . . . "her voice was ever gentle" . . . congenial . . .

Zetesian Society; Math Club 1, 2, 3, 4; International Relations Club 2, 3; French Club 1, 2; Choral Club 1, 2, 3; Dance Chairman 3, 4; Volleyball 1, 2, 3, 4; WHITE HEATHER Assistant Editor 3; Student Volunteers 3; Student Council Vice-President 4.

MARY LISLE TUCKER, B.A.

Bible and Elementary Education
McKenney, Va.

College spirited . . . vivacious . . . runny nose . . . amiable . . . trips . . . Montreat . . . actress.

Zetesian Society; St. Cecelia Music Club 1; Choral Club 1, 2, 3, 4; Highland Players 1, 2; Pine and Thistle Staff 1; Math Club 1, 2; Basketball 1, 2, 3, 4, Captain 1; Volleyball 1, 2, 3, 4; Spanish Club 1, 2; Student Volunteers 1, 2, 3, 4, President 3; Christian Association Cabinet 2, Chairman of Prayer Bands 2; International Relations Club 2, 3, 4; Class Cheerleader 3; Prayer Band Leader 3; Superlative 3; Monogram Club 3, 4; Athletic Association Board 1, 3, 4; Treasurer 3, President 4; Student Council 4; *Who's Who in American Colleges and Universities*.

SUE WARREN, B.A.

Primary Education
Salemberg, N. C.

"S-o-o-u" . . . home lover . . . happy-go-lucky . . . unruffled . . . enjoys life.

Epsilon Chi Society; Pineland College Transfer 1, 2.

LUCILE WILDS, B.S.

Home Economics
Columbia, S. C.

Highland Players . . . seamstress . . . sniffles . . . friend of the Watsons . . . praiseworthy . . . candid.

Zetesian Society; Spanish Club 1; Volleyball 1, 2, 3, 4; Home Economics Club 1, 2, 3, 4, Vice-President 4; *Skirl* Staff 3; Dance Committee 3; Highland Players 2, 3, 4, Secretary-Treasurer 3; President 4; Scribbler 4.

GERALDINE WORRELL, B.A.

Bible
Rocky Mount, N. C.

Gerl . . . invaluable . . . a sense of humor . . . "Mother" . . . Miz Publicity's right arm . . . capable . . . John.

Zetesian Society, Vice-President 2; Prayer Band Leader 2; French Club 1, 2, 3, Secretary-Treasurer 2, President 3; Math Club 1, 2; Pine and Thistle Staff 3; Christian Association Cabinet 3, Chairman of Social Service; Writers Club 1, 2; Student Volunteers 1, 2, 3; Volleyball 3; Superlative 4; Literary Editor WHITE HEATHER 2, Editor-in-Chief 4, Chief Scribe 4; *Who's Who in American Colleges and Universities*.



Mary McCracken signs out in the date book. Notice that ring on her left hand.



Christine Maloney, Ellen Williams, and Joan Hester have an afternoon snack in the tea hole.

Three Down One to Go—

As Lucille Graham irons a blouse, Norma Kelly explains to her the wisdom in sleeping two hours before trying to study for a test.



Mickie Jernigan, Nan Dorman, Betty Lou Lamb, and their dates check their dance cards during intermission.

Junior Class

With thoughts of "it won't be as long as it has been," the juniors have gone through this year full of enthusiasm and excitement. Acting as big sisters to the freshmen, taking subjects of their choice, ordering class rings, marching from the auditorium after the seniors, enjoying three nights out a week, and learning the highland fling have kept them busy most of the time. Spring elections placed on their shoulders the responsibility of leading the student body for the coming year. Officers for the juniors are: Mickie Jernigan, president; Norma Kelly, vice-president; Doris Mazingo, secretary; Christine Maloney, treasurer; Doris Dunn, tea room manager; Lucille Graham, assistant manager.

Proudly wearing their college blazers are, left to right, Mazingo, Kelly, Maloney, Dunn, Graham, Jernigan.





First row:

ADDOR, BILLIEGENE, Addor, N. C.
 ANDERSON, DOROTHY, Whiteville, N. C.
 BOWDEN, ANN, Warsaw, N. C.
 BRANTLEY, ALICE, Selma, N. C.
 BYRD, ANNIE, Elizabethtown, N. C.
 CALLAHAN, PEGGY, Whiteville, N. C.

Second row:

CAMPBELL, KATHRYN, Laurinburg, N. C.
 DORMAN, NAN, Red Springs, N. C.
 DUDLEY, SARA, Concord, N. C.
 DUNN, DORIS, Charlotte, N. C.
 FITZGERALD, SHIRLEY, Waynesboro, Va.
 FLEMING, LUCY, Mebane, N. C.

Third row:

GORE, BETTY JO, Shallotte, N. C.
 GRAHAM, LUCILLE, Olivia, N. C.
 HALE, MARY, Wilmington, N. C.
 HAMILTON, DOT, Hampton, Va.
 HESTER, JOAN MARIE, Wendell, N. C.
 HUDGINS, SHIRLEY, Lumberton, N. C.

Fourth row:

INGOLD, JEAN KEETER, Fayetteville, N. C.
 JENKINS, FAYE, Union, S. C.
 JERNIGAN, MICKIE, Fairmont, N. C.
 JONES, LULA, Laurinburg, N. C.
 KELLY, NORMA, Charlotte, N. C.
 LAMB, BETTY LOU, Wilmington, N. C.

Junior



Class

First row:

LEE, NAOMI, Wilmington, N. C.
 LENNON, NELL, Bladenboro, N. C.
 LILES, CLARA MAE, Garland, N. C.
 MALONEY, CHRISTINE, Cullen, Va.
 MARTIN, MARY JANE, Reidsville, N. C.

Second row:

MAYS, JO ANN, Taylorsville, N. C.
 MIZE, MARY ELLA, Commerce, Ga.
 MORRIS, JEAN, Maxton, N. C.
 MORRISON, MARTHA ANN, Rowland, N. C.
 MOZINGO, DORIS, Bowden, N. C.

Third row:

MURCHISON, KATHLEEN, Concord, N. C.
 McCRACKEN, MARY, Winston-Salem, N. C.
 McGIRT, ANN, Laurinburg, N. C.
 McNEILL, MARJORIE, Broadway, N. C.
 NICHOLSON, KATHRYN, Mount Gilead, N. C.

Fourth row:

PHILLIPS, HILDA, Rocky Mount, N. C.
 SANDERS, SARA, Badin, N. C.
 SPILLMAN, MILDRED, Wilmington, N. C.
 WILLIAMS, ELLEN, Rocky Mount, N. C.
 WILLIS, SHIRLEY, Morehead City, N. C.



DORIS BOWLES, Niagara, N. C.

URSULA GOODSON, Valdosta, Ga.

BARBARA HARLOW, Orange, Va.



JEANNETTE McNEILL, Laurel Hill, N. C.

KATHERINE McNEILL, Laurinburg, N. C.

BETTY JOEL PRICE, Lilesville, N. C.

Bowles
McNeill, J.

Goodson
McNeill, K.

Harlow
Price

Second Year Business

Need a secretary? Call FMC. These girls are learning to become efficient in the business world by first studying and then applying their knowledge by typing letters for the school, mimeographing hundreds of stencils, addressing pamphlets

for the financial campaign, and, in general, helping the business office. Their annual tea, honoring some faculty member, and the treat of picnics, add to their fun and fellowship. Students can earn a B.A. with major in Business in four years.

Business Club

Serving as officers in the Business Club this year are: Doris Bowles, president; Nell Lennon, vice-president; Katherine McNeill, secretary; Barbara Arrington, treasurer; Gale Simpson, reporter; Misses Stenhouse and Frazier, advisors.





Walking in Vardell Court are Robinson, McLean, Oliver, and Thornton.

Sophomore Class

In September, freshmen found themselves no longer freshmen but sophomores. They were ready to conquer what the year had to offer. And it offered plenty: sophomore lit, zoo and botany labs, Bible charts, history outlines, and ten thousand (so it seemed) library books which had to be read. But before they could realize it, the freshman-sophomore dance was upon them. Studies were forgotten as they danced to the tune of *Ebb Tide*. Deciding on what to major in and thoughts of "I'll be a junior next year" filled the spring months. Serving as sophomore officers are Carolyn Robinson, president; Mary McLean, vice-president; Kittye Oliver, secretary; Shirley Thornton, treasurer.

Sophomore

BALD, SARA CAROLYN
Bamburg, S. C.
BASS, JUANITA
Lillington, N. C.
BETHEA, HAZEL
Hamer, S. C.
BIERMAN, RUBY
Washington, N. C.

BOBBITT, FRANCES
Aberdeen, N. C.
BOLIN, SHIRLEY
Siler City, N. C.
BROWN, MARY ARCHIE
Saint Pauls, N. C.
BUCK, FAY
Wilmington, N. C.

BUNN, BONNIE
Rocky Mount, N. C.
CARTER, CATHERINE
Wilson, N. C.
CLARK, PAT
Daytona Beach, Fla.
COCKRELL, BARBARA
Rocky Mount, N. C.

DAVIS, EVA GRAY
Hamlet, N. C.
DRUMHELLER, MILDRED
Waynesboro, Va.
FARMER, PAT
West End, N. C.
GOODMAN, CAROLINE
Churchville, Va.

GRAHAM, BETSY
Fayetteville, N. C.
HAMILTON, BETTY
Alexandria, Va.
HATCHER, BETTY JOE
Garner, N. C.
HILL, LETTY
Charlotte, N. C.

HOWARD, ELLEN
Willow Springs, N. C.
HUDSON, ELISE
Clinton, S. C.
INGRAM, BECKY
Parkton, N. C.
JARRETT, JUNE
Kannapolis, N. C.

LONG, CAROLYN
Clarkton, N. C.
MATZE, MARY RUTH
South Boston, Va.
MEDLIN, ANNE
Mebane, N. C.
MUNROE, SALLIE ANNE
Clarkton, N. C.



Class . . . 1954



MUSSELWHITE, CAROLYN
Lumberton, N. C.
McAULEY, HARRIET
Statesville, N. C.
McCain, GLADYS
Waxhaw, N. C.
McGUIRE, BETTY
Algonquin, Ill.

McINNIS, LILLIAN
Ellerbe, N. C.
McKENZIE, CAROLYN
Shannon, N. C.
McLEAN, MARY
Raeford, N. C.
McNEILL, ELLA RUTH
Aberdeen, N. C.

McNETT, LINDA
Radnor, Pa.
NAUGLE, JULIA
Blackstone, Va.
NELSON, MARY LOUISE
Horsepen, Va.
OLIVER, KITTYE
Reidsville, N. C.

OZLIN, MARGARET
Chase City, Va.
RICHARDSON, BETTY Jo
Laurinburg, N. C.
RITTER, PAT
Rockfish, N. C.
ROBINSON, CAROLYN
Gastonia, N. C.

SHAW, FRANCES
Lumber Bridge, N. C.
SINCLAIR, JANE
Raeford, N. C.
STANFORD, ELMIRA
Bartow, Fla.
STONE, DELORES
Laurel Hill, N. C.

TAYLOR, EVELYN
Kannapolis, N. C.
THIGPEN, JOYCE
Mount Olive, N. C.
THOMAS, JEAN
Lumberton, N. C.
THORNTON, SHIRLEY
Reidsville, N. C.

WHITE, MARTHA
Charlotte, N. C.
WILLIAMS, MARY SUE
Godwin, N. C.
WILLIAMSON, ANITA GRAY
Rocky Mount, N. C.
WINGO, BARBARA
Jetersville, Va.
WOMELDORF, EMOJEANE
Lexington, Va.



At the back campus gate are, left to right, Owen, Pittard, McMillan, and Turner.

Freshman Class

"Innocent Freshmen." But not forever. It didn't take these girls long to find their way around. They quickly got into the swing of things, and before they knew it, upperclassmen were looking at them with respect and admiration. Realizing the importance of college training, they settled down and began to study in earnest. But they found time for fun. Each night at 10:15 they could be found in the halls performing gymnastic stunts or learning a new dance step. They took time out for the volleyball and basketball tournament, they raised money for their class by selling hot dogs, and they supported the U. S. Mails by writing home (?) every day. Officers of the Freshman Class are: Norma Pittard, President; Ann Turner, Vice-President; Joanne McMillan, Secretary; Sue Owen, Treasurer.

First row:

Arrington, Barbara, Rowland, N. C.; Barlow, Julene, N. Wilkesboro, N. C.; Barnes, Phyllis, Union Point, Ga.; Bell, Nancy Jean, Clinton, S. C.; Bissett, Doris, Tampa, Fla.; Blalock, Jean, Bunn Level, N. C.; Brewer, Betsy, Sanford, N. C.

Second row:

Brumbles, Yvonne, Whiteville, N. C.; Bryant, Janie Ann, Clinton, N. C.; Buffkin, Juanita, Nichols, S. C.; Bullard, Shirley, Chadbourn, N. C.; Butler, Mildred, Whiteville, N. C.; Byrd, Edith Ann, Hartsville, S. C.; Carter, Joy, Columbia, S. C.

Third row:

Caveness, Shirley, Raleigh, N. C.; Cha, Young Sun, Asheboro, N. C.; Chadwick, Shirley, Fayetteville, N. C.; Corbett, Shirley Mae, Atkinson, N. C.; Cox, Shirley, Reidsville, N. C.; Douglas, Mozelle, Sanford, N. C.; Edwards, Barbara, Laurel Hill, N. C.

Fourth row:

Faggart, Alice Judson, Concord, N. C.; Ferguson, June, Gastonia, N. C.; Fleshman, Betsy, Brookneal, Va.; Floyd, Sara Margaret, Fairmont, N. C.; Gamble, Nancy, Warrenton, N. C.; Garner, Ruth Ann, Hope Mills, N. C.; Gibbs, Julia, Easley, S. C.

Freshman Class . . . 1954



First row:

Goodlett, Carolyn, Parkton, N. C.; Graham, Peggy, Wananish, N. C.; Grizzard, Lois Jean, Courtland, Va.; Hall, Ann, Rose Hill, N. C.; Harris, Margaret, Durham, N. C.; Haynes, Rebekah, Burlington, N. C.; Hinds, Sybil, Lumberton, N. C.; Honeycutt, Jessie Ruth, Wadesboro, N. C.; Ivey, Joyce Lea, Fairmont, N. C.

Second row:

Jones, Carol, Beaufort, N. C.; Jones, Elizabeth, Fayetteville, N. C.; Jones, Jean, Wilmington, N. C.; Johnson, Carolyn, Fayetteville, N. C.; Kearns, Shirley Anne, Asheboro, N. C.; Kiger, Shirley Ann, Rural Hall, N. C.; Kittrell, Carol, Sanford, N. C.; Lambert, Ricardo, Albemarle, N. C.; Lemons, Shirley Ann, Red Springs, N. C.

Freshman



Third row:

Lewis, Patricia, Parkton, N. C.; Lipscomb, Anne, Angier, N. C.; Lovett, Martha Sara, Lake City, S. C.; Maness, Helen, Indian Trail, N. C.; Markham, Agnes, Greenville, N. C.; Marshall, Anna Jean, Englehard, N. C.; Matthews, Dorothy Ann, Lillington, N. C.; Melvin, Patricia, Jackson Springs, N. C.; Middleton, Catherine, Laurinburg, N. C.

Fourth row:

Moore, Rosa Mae, Battleboro, N. C.; McDonald, Gaddis, Hope Mills, N. C.; McKeithan, Norma, Raeford, N. C.; McKellar, Ann, Maxton, N. C.; McLean, Sara, Rowland, N. C.; McMillan, Joanne, Greensboro, N. C.; Nethreutt, Lou Ann, Beulaville, N. C.; Owen, Sue, Cluster Springs, Va.; Pittard, Norma, Warrenton, N. C.

First row:

Powell, Patricia, South Boston, Va.; Ray, Katherine, Newland, N. C.; Rhodes, Neta Rose, Proctorville, N. C.; Ribet, Julia Lee, Valdese, N. C.; Rice, Shirley, Lumberton, N. C.; Richardson, Lucy, Whiteville, N. C.; Rogan, Hazel Lulu, Greeleyville, S. C.; Rouse, Jean, Snow Hill, N. C.; Rudd, Betty Frances, Mebane, N. C.

Second row:

Sessoms, Jean, Suffolk, Va.; Shannon, Edna, Gastonia, N. C.; Sheets, Jane, Staunton, Va.; Simpson, Gale, Shannon, N. C.; Smith, Donna, N. Wilkesboro, N. C.; Stephens, Barbara, Dillon, S. C.; Steppe, Martha, Marion, N. C.; Stickley, Joan Linda, Strasburg, Va.; Suggs, Billie, Chadbourn, N. C.

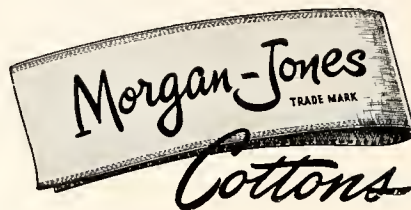


Third row:

Tedder, Lois, Chadbourn, N. C.; Thomas, Sara, Dunn, N. C.; Thompson, Mary Willie, Yanceyville, N. C.; Turner, Anne, Mayesville, S. C.; Turner, Betty Jean, Charlotte, N. C.; Tyner, Elvira, Greenville, S. C.; Vesper, Alice, Fayetteville, N. C.; Wallace, Carol, Rowland, N. C.; Webb, Ann, Wadesboro, N. C.

Fourth row:

Weeks, Jean, Godwin, N. C.; West, Ella Mae, Warsaw, N. C.; Williams, Aletha, Angelus, S. C.; Williams, Becky, Miami, Fla.; Williams, Frances Anne, Emporia, Va.; Womble, Lottie Raynor, Wagram, N. C.; Wood, Jane Alice, Draper, Va.; Yeargin, Patterson, Thomasville, Ga.



Are

"Yours for a Lovely Home"

BEDSPREADS

BATH SETS

DRAPES

DISH CLOTHS

SCATTER RUGS

DISH TOWELS

PRODUCED IN NORTH CAROLINA

Sold by fine stores everywhere

MORGAN-JONES, INC.

58 Worth Street

NEW YORK, N. Y.

RAEFORD LUMBER CO.

LUMBER : BUILDING MATERIALS

RAEFORD, NORTH CAROLINA

**JOHNSON COTTON CO.
of RAEFORD, Inc.**

Furniture, Electric and Gas Appliances

FAST FLAME GAS SERVICE

RAEFORD, NORTH CAROLINA

Compliments of

THE JOHNSON COMPANY

Cotton, Fertilizer, Seed, Insurance

RAEFORD, NORTH CAROLINA

MORGAN MOTOR CO.

RAEFORD, NORTH CAROLINA

When Better Automobiles Are Built

BUICK

Will Build Them

BAUCOM APPLIANCE COMPANY

RAEFORD, NORTH CAROLINA

FRIGIDAIRE PRODUCTS

MAYTAG WASHERS EASY WASHERS

ZENITH RADIO AND TELEVISION

SMALL APPLIANCES, ETC.

Quality Is of First Importance

**WILLIAM L. POOLE
INSURANCE COMPANY**



RAEFORD, NORTH CAROLINA

Compliments of

**McKEITHAN
HARDWARE**



RED SPRINGS, NORTH CAROLINA

HOTEL RAEFORD

equipped with

AIR CONDITIONED CAFETERIA

RAEFORD, NORTH CAROLINA

HOME FURNITURE COMPANY

A Complete Line of

Home Furnishings

RED SPRINGS, NORTH CAROLINA

Compliments of

HOKE CONCRETE WORKS

RAEFORD, NORTH CAROLINA

You are cordially invited to visit

SARAH'S

for the latest in styles and fashions

SARAH'S

RED SPRINGS, NORTH CAROLINA

**POWERS FURNITURE
COMPANY, INC.**

ST. PAULS, NORTH CAROLINA

St. Pauls Drug Co., Inc.

The Rexall Store
PRESCRIPTION DRUGGISTS
Phone 223-6

ST. PAULS, NORTH CAROLINA

Compliments of
GRANTHAM DRUG COMPANY

ST. PAULS, NORTH CAROLINA

LENOIR'S JEWEL SHOP

INTERNATIONAL SILVER

Quality Jewelers

TIFFIN CRYSTAL

RED SPRINGS, NORTH CAROLINA

Compliments of
MODERN BEAUTY SHOP

Mrs. Bert Kasilevich
Phone 2431

RED SPRINGS, NORTH CAROLINA

**GRAHAM'S
DEPARTMENT STORE, INC.**

PHONE 257-1

RED SPRINGS, NORTH CAROLINA



McNEILL CLEANERS



116 South Main Street

PHONE 294-1

RED SPRINGS, NORTH CAROLINA

MILK BAR

Steaks
Chicken in Basket
Milk Shakes *Ice Cream*

Lumberton Road

RED SPRINGS, NORTH CAROLINA

Belk-Hensdale



Home of Better Values

FAYETTEVILLE · LUMBERTON · RAEFORD
RED SPRINGS · ELIZABETHTOWN · FAIRMONT



*Belk Stores Are the Carolinas' Largest
Distributors of Reliable Merchandise*

M. M. SMITH FURNITURE COMPANY

FURNITURE
FOR EVERY HOME
Wholesale and Retail

325 Hay Street
FAYETTEVILLE, NORTH CAROLINA



420 Hay Street
FAYETTEVILLE, NORTH CAROLINA

Compliments of

**FAYETTEVILLE
WHOLESALE
COMPANY**

**Featuring
FRESH FRUITS and
VEGETABLES**

Phone 22131

Corner of Chance and Orange Streets
FAYETTEVILLE, NORTH CAROLINA

Compliments of

**CARO-MAID
ICE CREAM
COMPANY**

DILLON, S. C.

Compliments of

S. H. KRESS AND CO.

FAYETTEVILLE, NORTH CAROLINA

DIANA SHOPS

*Smartest in Feminine
and Children's Apparel*

123-25 Hay Street : Phone 6473
FAYETTEVILLE, NORTH CAROLINA

NEW YORK RESTAURANT

226 Hay Street

36 Years Under Same Management

FAYETTEVILLE, NORTH CAROLINA

Compliments of

BENDER'S DRUG STORE

Your REXALL Store

201 Hay Street
FAYETTEVILLE, NORTH CAROLINA

*Always for the Schools and
Community*

RAYLASS DEPARTMENT STORES

FAYETTEVILLE, NORTH CAROLINA

**McCRORY'S
5 and 10c Store**

203 Hay Street
FAYETTEVILLE, NORTH CAROLINA



CITY OPTICAL OPTICIANS

Fayetteville
Price Charles Hotel

Phone 2-4228

FAYETTEVILLE, NORTH CAROLINA



103 Hay Street : Dial 2-2000

FAYETTEVILLE, NORTH CAROLINA

Registered Jewelers : American Gem Society

BURKHEAD-DEVANE PRINTING CO.

Printers : Office Outfitters

Phone 2-3007

218 Franklin Street

FAYETTEVILLE, NORTH CAROLINA

Hotel PRINCE CHARLES

AIR-CONDITIONED
DINING ROOM

FAYETTEVILLE, NORTH CAROLINA



FAYETTEVILLE, NORTH CAROLINA

Highland Lumber Company

Lumber and Building Supplies

Plant and Offices 325 Blount St.

Phones 3191 and 3192

FAYETTEVILLE, NORTH CAROLINA

Compliments of

**BAXLEY-JOHNSON
CHEVROLET CO., INC.**

RED SPRINGS, NORTH CAROLINA

**D. R. "DOC" COVINGTON
GOOD USED CARS**

Telephone 2651
RED SPRINGS, NORTH CAROLINA

TOWNSEND'S PHARMACY
The Rexall Store

DEPENDABLE DRUGGIST
Where the College Girls Meet

RED SPRINGS, NORTH CAROLINA

Compliments of

WOODS 5-10-25c STORES, INC.

RED SPRINGS, NORTH CAROLINA

D. M. McMILLAN

"Ford Products Since 1912"

RED SPRINGS, NORTH CAROLINA

BURROUGHS CUT-RATE STORE

Phone 4271

RED SPRINGS, NORTH CAROLINA

SCHOOL SUPPLIES
STATIONERY : SANDWICHES
PANGBURN'S CANDY : TOILET ARTICLES
— DRINKS —

BODENHEIMER FURNITURE CO.

RED SPRINGS, NORTH CAROLINA

THE QUALITY SHOP

Clothing for the Family

129 S. Main Street DIAL 5116
RED SPRINGS, NORTH CAROLINA

**SANDERS FURNITURE
COMPANY**

RED SPRINGS, NORTH CAROLINA

**RED SPRINGS
SUPPLY CO., INC.**

GENERAL MERCHANTS

The Friendly Store

Fertilizers and Cotton
Hardware
Grocery :- Market
Building Material

Allis-Chalmers Farm Machinery

Dial 3701 and 3271
RED SPRINGS, NORTH CAROLINA

Red Springs Funeral Home

AMBULANCE SERVICE

Phone 2711 - 3711

WAVERLY BARHAM

RED SPRINGS, NORTH CAROLINA

McDONALD'S CLEANERS QUALITY CLEANING

Lumberton Road

RED SPRINGS, NORTH CAROLINA

Compliments of

ROBBINS MILLS (N.C.), INC.

Red Springs Division



B. C. MOORE AND SONS, INC.

*Air-Conditioned for Your
Shopping Comfort*

PHONE 6211

RED SPRINGS, NORTH CAROLINA

"Buy From Moore and Save More"

ALLEN BUILDERS SUPPLIES, INC.

LUMBER : BUILDING MATERIAL

Phone 3221

RED SPRINGS, NORTH CAROLINA

YOU WILL BE PLEASED WITH OUR
QUALITY AND SERVICE

RED SPRINGS DRUG CO.

*Headquarters for
Flora Macdonald College Students*

RED SPRINGS, NORTH CAROLINA

Pontiac
Studebaker
International Harvester
Sales and Service

●
**SINGLETON AND
McMILLAN, Inc.**
●

Phone 3971
RED SPRINGS, NORTH CAROLINA

Compliments of
EDEN'S FLOWER SHOP
"We Wire Flowers Anywhere"

East 4th Avenue Phone 2241
RED SPRINGS, NORTH CAROLINA

NEIGHBORS SHOE STORE

*Red Springs Exclusive
Shoe Store*

RED SPRINGS, NORTH CAROLINA
Phone 3981

Compliments of
**KENNEDY'S JEWELRY AND
GIFT SHOP**

Fine Watch Repairing
RED SPRINGS, NORTH CAROLINA
"We Serve to Serve Again"

**GRANTHAM INSURANCE
AND REALTY COMPANY**

SAFETY - SECURITY - SERVICE

Phone 330-1
RED SPRINGS, NORTH CAROLINA

General Auto Sales, Inc.

OLDSMOBILE and G.M.C. TRUCKS

*Full Line of Parts
Expert Mechanics*
Phone 2381

RED SPRINGS, NORTH CAROLINA

Compliments of
WESTERN AUTO STORE

RED SPRINGS, NORTH CAROLINA

M. & S. MOTOR CO.
CHRYSLER and PLYMOUTH CARS

Sales and Service
RED SPRINGS, NORTH CAROLINA
Phone 248-1

WHERE ARE YOU GOING?

In only a few years now you will be establishing your *own* home—somewhere.

Will you settle somewhere else or come back home?

Before you decide, be sure to look around carefully at the advantages of the Carolinas—the opportunities for a full and profitable life—the chance to live and work in a growing and progressive area and to help build an even Finer Carolina in the years ahead!

Carolina Power & Light Company

SAFEWAY MARKET

Meats - Groceries & Frozen Foods

Phone 7
MAXTON, NORTH CAROLINA

HESTER-KINLAW FURNITURE COMPANY, INC.

Box 206 Phone 258
MAXTON, NORTH CAROLINA

"Complete Home Furnishings"

BULLARD INSURANCE AGENCY Fire & Casualty

"We Strive to Please"

Phone 67
MAXTON, NORTH CAROLINA

Compliments of
LOUIS J. ESSEY, Ltd.

CLOTHIERS
JONATHAN LOGAN DRESSES
INTERWOVEN SOCKS
JARMAN SHOES : ARROW SHIRTS
MAXTON, NORTH CAROLINA

Compliments of
Austin-Gilbert Drug Company

The Rexall Store
MAXTON, NORTH CAROLINA

MAXTON HARDWARE COMPANY

*Hardware - Paints and Varnishes
Builders Supplies*
Phone 88
MAXTON, NORTH CAROLINA

Compliments of
MAXTON SUPPLY CO.

MAXTON, N. C.

HEDGPETH PHARMACY, INC.

Two Registered Druggists

Lorraine Hotel Building
LUMBERTON, NORTH CAROLINA

Try Trailways Thru-Liners

Same Coach — Same Seat
All the Way

Daily Thru-Liner Service from Red Springs to:

Charlotte
Asheville
Chattanooga
Knoxville
Nashville
Memphis
Wilmington
Kinston

and many other cities.

Charter Trips a Specialty

Let us help you and your group plan a trip in your own "private" coach. New air-conditioned buses are available for special trips to any point in North America. Charter rates are often less than individual fares.

Write or Telephone

QUEEN CITY TRAILWAYS

CHARLOTTE, N. C.

FOR GROCERY NEEDS

Shop Your Friendly

PROGRESSIVE STORES

MAXTON - RED SPRINGS - RAEFORD
NORTH CAROLINA

Lumberton Appliance Co.



LUMBERTON, NORTH CAROLINA

INSURE WITH US

FIRE -:- AUTO -:- HAIL
PROTECTIVE AGENCY, INC.

Phone 3217
LUMBERTON, NORTH CAROLINA

*Graduate To Greater Food Savings
At Your Friendly*

COLONIAL STORE

3rd and Main Streets
RED SPRINGS, NORTH CAROLINA

ROBESON OFFICE SUPPLIES

STATIONERS : OFFICE OUTFITTERS
PRINTERS

LUMBERTON, NORTH CAROLINA

K. M. BIGGS, INC.

"The Friendly Family Store"

Established 1903

Elm Street
LUMBERTON, NORTH CAROLINA

Compliments of

A. WEINSTEIN & SONS

LUMBERTON, NORTH CAROLINA

Compliments of

SINCLAIR SERVICE STATION

AL PARNELL
RED SPRINGS, NORTH CAROLINA

FREEMAN PRINTING COMPANY

"Fifty-eight Years of Quality Printing"

D. T. LAMBETH, Manager

Dial 3925
LUMBERTON, NORTH CAROLINA

Compliments of

W. Lee Flowers & Company
Wholesale Grocers

606 E. 21st Street
LUMBERTON, NORTH CAROLINA

Compliments of

THE SCOTTISH BANK

**SCARBOROUGH BUILDERS
SUPPLY COMPANY**

Complete Building Service

Fayetteville Road
LUMBERTON, NORTH CAROLINA

JACK PAIT FURNITURE CO.

Furniture - Radios - Appliances

Phone 572
Chestnut Street
LUMBERTON, NORTH CAROLINA

Compliments of

S. L. ADAMS CO.

ROWLAND, NORTH CAROLINA

THE LUMBERTON MUSIC STORE

LUMBERTON, NORTH CAROLINA

*Home of Baldwin Pianos and
Electronic Organs*

Phone 3730 112 Chestnut St.

THE BANK of ROWLAND

DIAL 3732

ROWLAND, NORTH CAROLINA

*Member of Federal Deposit
Insurance Corporation*

Compliments of

**LIBERTY
MANUFACTURING
COMPANY**

RED SPRINGS, NORTH CAROLINA

Good Luck



BOTTLED UNDER AUTHORITY OF THE COCA-COLA COMPANY BY
FAYETTEVILLE COCA-COLA BOTTLING COMPANY

Nance Wholesale Confections, Inc.

DISTRIBUTORS OF
 QUALITY FOOD PRODUCTS

154 McIver Street P. O. Box 851
 SANFORD, NORTH CAROLINA

McFADYEN

Music and Jewelry Store

118 Hay Street
 FAYETTEVILLE, NORTH CAROLINA

ROWLAND MOTOR CO.

Sales



Service

Phone 32

ROWLAND, NORTH CAROLINA

ENJOY LIFE
 EAT OUT
 MORE OFTEN

Air-Conditioned

BLANCHARD'S RESTAURANT

"In the Heart of Tobaccoland"

On U.S. Highway 301
 PHONE 3136 LUMBERTON, N. C.

Good Food
 Charcoal Broiled Steaks Sea Food
 Homemade Pastries

Our Lumberton Sponsors

Whiting Supply Company

Sugar's Men's Shop

Stanley Jewelers

Sullivan-Peacock Shoes

MARGARET L. McGOOGAN

WILLIAM T. McGOOGAN

THE PHOTO SHOP

COMMERCIAL PHOTOGRAPHY

PHONE 549-1

Scottish Heights

RED SPRINGS, NORTH CAROLINA

MERRIMAC MUSIC CO.

Records Lester "Betsy Ross" Pianos
Conn Band Instruments Sheet Music
H. T. McDUFFIE

Phone 4047 410 Chestnut Street
LUMBERTON, NORTH CAROLINA

Our Lumberton Sponsors

Ideal Dress Shop

The Robesonian, Inc.

M. H. McLean, Jr.

Lumberton Trading Company, Inc.



FLORA MACDONALD COLLEGE

RED SPRINGS, NORTH CAROLINA

58th Year

ACCREDITED SENIOR COLLEGE AND CONSERVATORY
B.A., B.S., and B.M. DEGREES

Flora Macdonald College has "that something." You can't quite describe it. You feel it — just as soon as you step on the campus. It's "something" intangible but real. Ask any student who has lived in the elevating and energizing atmosphere of the college. You will be told it's "something" that gets into one's heart, mind, and soul — "something" that awakens the best — "something" that lays hold of the best — "something" that brings out the best. It's "something" a student feels when studying in the library or listening to a lecture in the classroom or playing basketball in the gym or walking through the college gardens. It's "something" that makes a student want to work and play and live with zest and joy and abandonment. It's "something" a student finds at Flora Macdonald — "something" that lives in her and with her during her college years — "something" which goes with her out into life and makes her a unique person, radiant in personality, unselfish in spirit, and successful in her career as a teacher or nurse or pastor's assistant or technician or secretary or wife and mother or leader in her church and community. "That something" is the plus in education which Flora Macdonald offers you. It's "that something" which money cannot buy but which no girl who has found it would exchange for all the wealth of India.

MARSHALL SCOTT WOODSON, *President*

OFFICIAL PHOTOGRAPHERS

for the

1954 WHITE HEATHER

Colonna Studios, Inc.

114 Park Row : New York 7 : New York



CHARLOTTE ENGRAVING CO

School Annual Engravers

Charlotte, North Carolina

BUILDERS DREAMS

THE ANNUAL STAFF
and the
EDWARDS & BROUGHTON
COMPANY

Co-operated to produce this Annual

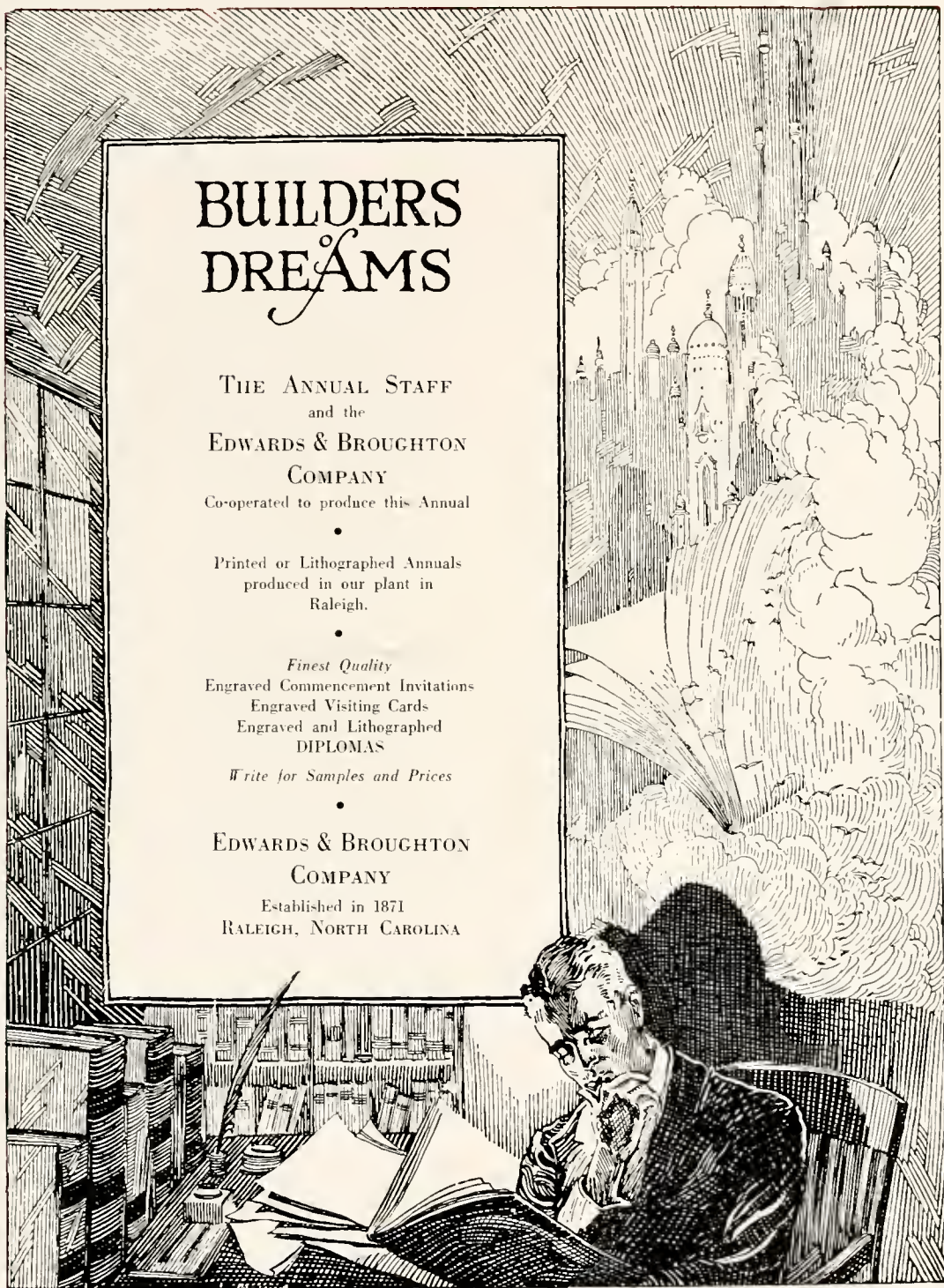
Printed or Lithographed Annuals
produced in our plant in
Raleigh.

Finest Quality
Engraved Commencement Invitations
Engraved Visiting Cards
Engraved and Lithographed
DIPLOMAS

Write for Samples and Prices

EDWARDS & BROUGHTON
COMPANY

Established in 1871
RALEIGH, NORTH CAROLINA



Student Directory

- Addor, Billiegene, Addor, N. C.
 Anderson, Dorothy, Whiteville, N. C.
 Andrews, Nancy, 300 Salisbury Ave., Spencer, N. C.
 Arrington, Barbara, Rowland, N. C.
 Bald, Sally, Box 474, Bamburg, S. C.
 Barlow, Julene, Rt. 1, Box 211, North Wilkesboro, N. C.
 Barnes, Phyllis, 106 Scott St., Union Point, Ga.
 Bass, Juanita, Box 233, Lillington, N. C.
 Bell, Nancy, Thornwell Orphanage, Clinton, S. C.
 Bethea, Elizabeth Ann, Box 263, Latta, S. C.
 Bethea, Hazel, Rt. 1, Hamer, S. C.
 Bierman, Ruby, 902 E. Sixth St., Washington, N. C.
 Bissett, Doris, 926 Cornelius St., Tampa, Fla.
 Blalock, Jean, Box 1, Bunn Level, N. C.
 Blalock, Jessie, 602 Jefferson St., Hamlet, N. C.
 Bobbitt, Frances, Aberdeen, N. C.
 Bolin, Shirley, 217 S. Sixth Ave., Siler City, N. C.
 Boney, DeLanie, Box 93, Wallace, N. C.
 Bowden, Ann, Rt. 2, Warsaw, N. C.
 Bowles, Doris, Box 2, Niagara, N. C.
 Brantley, Alice, 604 N. Pollock St., Selma, N. C.
 Brewer, Betsy, 317 E. Main St., Jonesboro Heights, Sanford, N. C.
 Brice, Yvonne, 405 W. Colonial Ave., Elizabeth City, N. C.
 Brown, Geraldine, Rt. 2, Chadbourn, N. C.
 Brown, Mary Archie, St. Pauls, N. C.
 Brumbles, Yvonne Darlene, Rt. 3, Box 90, Whiteville, N. C.
 Bryant, Janie Ann, Rt. 2, Box 120, Clinton, N. C.
 Buck, Fay, 223 Pauline Ave., Wilmington, N. C.
 Buffkin, Juanita, Rt. 2, Nichols, S. C.
 Bullard, Shirley Rich, Rt. 2, Chadbourn, N. C.
 Bunn, Bonnie, 112 S. George St., Rocky Mount, N. C.
 Butler, Mildred, Rt. 1, Whiteville, N. C.
 Byrd, Annie, Pine St., Elizabethtown, N. C.
 Byrd, Edith Ann, Rt. 1, Hartsville, S. C.
 Calhoun, Charlotte, 321 S. Fourth St., Wilmington, N. C.
 Callahan, Peggy, Whiteville, N. C.
 Campbell, Kathryn, E. Covington St., Laurinburg, N. C.
 Carter, Catherine, Rt. 1, Wilson, N. C.
 Carter, Joy, 3221 Devereaux Rd., Columbia, S. C.
 Carter, Peggy, Rt. 1, Wilson, N. C.
 Caveness, Shirley, 1405 Canterbury Rd., Raleigh, N. C.
 Cha, Young Sun, Box 669, Asheboro, N. C.
 Chadwick, Shirley, Rt. 3, Fayetteville, N. C.
 Clark, Patricia, 211 Second Ave., Daytona Beach, Fla.
 Cockwell, Barbara, Rt. 4, Box 99, Rocky Mount, N. C.
 Codas, Cleo, 409 Young St., Henderson, N. C.
 Coleman, Mary Sue, Biltmore Farms, Asheville, N. C.
 Corbett, Shirley Mae, Atkinson, N. C.
 Correll, Blanche Bonner, 306 W. Church St., Laurinburg, N. C.
 Cox, Shirley, 505 Silver St., Reidsville, N. C.
 Cromartie, Mrs. Adelaide Boger, Box 507 St. Pauls, N. C.
 Davis, Eva Gray, Rt. 1, Box 294-C, Hamlet, N. C.
 Davis, Marjorie, Rt. 7, Fayetteville, N. C.
 Davis, Saradee, Rt. 3, Quincy, Fla.
 Dedas, Mrs. Mildred Sanders, Rt. 1, Raeford, N. C.
 Dew, Grace, Box 83, Delco, N. C.
 Dorman, Nan, Red Springs, N. C.
 Douglas, Mozelle Marie, Rt. 1, Sanford, N. C.
 Drumheller, Mildred Russell, Rt. 1, Waynesboro, Va.
 Drummond, Jo Ann, 408 New St., Graham, N. C.
 Dudley, Sarah McKinnonway, Concord, N. C.
 Dunn, Doris, Rt. 4, Box 200, Charlotte 8, N. C.
 Edwards, Barbara Jean, Church St., Laurel Hill, N. C.
 Ellis, Rachel, 5 Pinecrest Terrace, Wilmington, N. C.
 Farmer, Patricia, West End, N. C.
 Ferguson, June Beatrice, Armstrong Circle, Gastonia, N. C.
 Fitzgerald, Shirley, Rt. 1, Waynesboro, Va.
 Fleming, Lucy, Mebane, N. C.
 Fleshman, Betsy Ross, Rt. 1, Brookneal, Va.
 Floyd, Sara Margaret, Rt. 2, Box 225, Fairmont, N. C.
 Gallop, Nancy, 305 Church St., Wilmington, N. C.
 Gamble, Nancy Patricia, Box 584, Warrenton, N. C.
 Garner, Ruth Ann, Rt. 1, Box 87, Hope Mills, N. C.
 Gibbs, Julia, Rt. 3, Easley, S. C.
 Gilliland, Betty Jean, Rt. 1, Rocky Mount, N. C.
 Goodlett, Carolyn June, Parkton, N. C.
 Goodman, Caroline, Churchville, Va.
 Gore, Betty Jo, Shallotte, N. C.
 Graham, Betsy, Rt. 3, Box 387, Fayetteville, N. C.
 Graham, Lucille, Olivia, N. C.
 Graham, Peggy Ann, Wananish, N. C.
 Grizzard, Lois Jean, Courtland, Va.
 Hale, Mary, 103 N. 15 St., Wilmington, N. C.
 Hall, Ann Herring, Rose Hill, N. C.
 Hall, Mrs. James E., Jr., Box 235, Parkton, N. C.
 Hamilton, Betty, 2502 Hayes St., Alexandria, Va.
 Hamilton, Dorothy, Box 1374 Wythe, Hampton, Va.
 Harlow, Barbara, Rt. 2, Box 250, Orange, Va.
 Harris, Margaret Everett, 1306 B. St., Durham, N. C.
 Hatcher, Betty Joe, Rt. 1, Garner, N. C.
 Haynes, Rebekah Hoyte, 1218 S. Church St., Burlington, N. C.
 Hester, Joan Marie, Wendell, N. C.
 Hill, Letty, 1715 Plaza, Charlotte, N. C.
 Hinds, Sybil, 809 S. Third St., Lumberton, N. C.
 Honeycutt, Jessie Ruth, Rt. 3, Wadesboro, N. C.
 Houck, Betty, Rt. 2, Rowland, N. C.
 Howard, Ellen, Rt. 1, Willow Springs, N. C.
 Huddins, Mrs. Thomas, 308 W. 17th St., Lumberton, N. C.
 Hudson, Elise, Box 60, Clinton, S. C.
 Ingold, Jean Keeter, 2007 Harles St., Fayetteville, N. C.
 Ingram, Elsie Faye, Gibson, N. C.
 Ingram, Sara Rebecca, Box 226, Parkton, N. C.
 Ivey, Joyce Lea, Fisher Park, Fairmont, N. C.
 Jarrett, June, Box 120C, Rt. 3, Kannapolis, N. C.
 Jenkins, Faye, Rt. 3, Union, S. C.
 Jernigan, Mickie, 117 Walnut St., Fairmont, N. C.

John, Mrs. Joan Hardesty, Shannon, N. C.
 Johnson, Elizabeth Carolyn, 1016 Goldsboro Ave., Sanford, N. C.
 Johnson, Jean, Mebane, N. C.
 Jones, Carol Elizabeth, 117 Queen St., Beaufort, N. C.
 Jones, Elizabeth Ann, Rt. 7, Fayetteville, N. C.
 Jones, Jean Eloise, 2909 Market St., Wilmington, N. C.
 Jones, Lula, 326 Covington St., Laurinburg, N. C.
 Jones, Marlene, Grassy Creek, N. C.
 Kearns, Shirley Ann, 1031 W. Salisbury St., Ashboro, N. C.
 Kelly, Norma, 2416 Shenandoah Ave., Charlotte, N. C.
 Kiger, Shirley Ann, Rt. 1, Rural Hall, N. C.
 Kittrell, Carol, Rt. 2, Sanford, N. C.
 Lamb, Betty Lou, 112 N. 42nd St., Wilmington, N. C.
 Lambert, Lucia Ricardo, Rt. 4, Albemarle, N. C.
 Lambert, Mrs. Max. L., 1826 Charlotte Rd., Albemarle, N. C.
 Lee, Naomi, 509 Market St., Wilmington, N. C.
 Leggett, Phyllis, 814 S. Church St., Rocky Mount, N. C.
 Lemons, Shirley, Rt. 2, Red Springs, N. C.
 Lennon, Nell, Bladenboro, N. C.
 Lewis, Margaret, Rt. 2, Fairmont, N. C.
 Lewis, Mrs. Patricia McNeill, Box 186, Parkton, N. C.
 Liles, Clara Mae, Garland, N. C.
 Lipscomb, Anne Elizabeth, Rt. 2, Angier, N. C.
 Little, Mary Hagood, Pollocksville, N. C.
 Littlewood, Mary Sue, Sturgills, N. C.
 Long, Carolyn, Box 14, Clarkton, N. C.
 Lovett, Martha Sara, Rt. 4, Lake City, S. C.
 Maness, Helen Frances, Indian Trail, N. C.
 Markham, Agnes, 1405 Myrtle Ave., Greenville, N. C.
 Martin, Mary Jane, 1214 Richardson Rd., Reidsville, N. C.
 Marshall, Anna Jean, Englehard, N. C.
 Matthews, Dorothy Ann, Rt. 2, Lillington, N. C.
 Matze, Mary Ruth, 1229 Fenton St., South Boston, Va.
 Mays, Jo Ann, Box 304, Taylorsville, N. C.
 McAuley, Harriet, Statesville, N. C.
 McCain, Gladys, Waxhaw, N. C.
 McCracken, Mary, 2507 Miller Park Cr., Winston-Salem, N. C.
 McDonald, Mrs. Betty Lou Davis, Red Springs, N. C.
 McDonald, Mr. Gaddis Marion, Box 472, Hope Mills, N. C.
 McElroy, Mae, Box 407, Quitman, Ga.
 McGirt, Anne, 110 Caledonia Rd., Laurinburg, N. C.
 McGuire, Betty, Box 52, Algonquin, Ill.
 McInnis, Lillian, Rt. 1, Ellerbe, N. C.
 McIntosh, Elizabeth, 125 Oakridge Ave., Fayetteville, N. C.
 McKellar, Ann, Rt. 2, Maxton, N. C.
 McKenzie, Carolyn, Rt. 1, Shannon, N. C.
 McLean, Mary, Raeford, N. C.
 McLean, Sara McIntyre, Rowland, N. C.
 McLeod, Sarah Margaret, Rt. 3, Carthage, N. C.
 McMillan, Joanne, Rt. 5, Box 100, Greensboro, N. C.
 McNeill, Ella Ruth, Box 295, Aberdeen, N. C.
 McNeill, Jeannette, Laurel Hill, N. C.
 McNeill, Katherine, Aberdeen Rd., Laurinburg, N. C.
 McNeill, Marjorie, Rt. 1, Broadway, N. C.
 McNeill, Patricia, Lumberton, N. C.
 McNett, Linda, Radnor, Pa.
 Medlin, Anne, Mebane, N. C.
 Melvin, Patricia Ann, Jackson Springs, N. C.
 Middleton, Catherine Evans, 140 Aberdeen Rd., Laurinburg, N. C.
 Miller, Jean, Chadbourn, N. C.
 Milligan, Audrey, Shallotte, N. C.
 Mize, Mary Ella, 15 Pine St., Commerce, Ga.
 Moore, Rosa Mae, Rt. 2, Battleboro, N. C.
 Morris, Jean, Rt. 1, Maxton, N. C.
 Morrison, Martha Ann, Rowland, N. C.
 Mozingo, Doris, Bowden, N. C.
 Munroe, Sally Ann, Clarkton, N. C.
 Musselwhite, Carolyn, Rt. 1, Lumberton, N. C.
 Murchison, Kathleen, 150 N. Union St., Concord, N. C.
 Naugle, Julia, 408 N. Main St., Blackstone, Va.
 Nelson, Frances, Olivia, N. C.
 Nelson, Mary Louise, Horsepen, Va.
 Nethercutt, Lou Ann, Beulaville, N. C.
 Nicholson, Kathryn, Mt. Gilead, N. C.
 Oliver, Kittye, 704 Crescent Dr., Reidsville, N. C.
 Owen, Sue, Cluster Springs, Va.
 Ozlin, Margaret Andrews, 145 Walker St., Chase City, Va.
 Parker, Retta, Box 46, Pollocksville, N. C.
 Phillips, Hilda, 504 N. Mercer St., Rocky Mount, N. C.
 Pierce, Mary Elizabeth, Methodist Church, Roanoke Rapids, Va.
 Pittard, Norma, Warrenton, N. C.
 Powell, Patricia Ann, 608 Main St., South Boston, Va.
 Price, Betty Joel, Lilesville, N. C.
 Powers, Allene, Lansing, N. C.
 Ray, Katherine, Newland, N. C.
 Rhodes, Neta Rose, Proctorville, N. C.
 Ribet, Julia Lee, Box 205, Valdese, N. C.
 Rice, Shirley Gay, Rt. 3, Lumberton, N. C.
 Richardson, Betty Jo, Rt. 3, Laurinburg, N. C.
 Richardson, Lucy Annie, Rt. 4, Box 7-A, Whiteville, N. C.
 Ritter, Patricia, Rt. 2, Raeford, N. C.
 Robinson, Carolyn, Rt. 3, Union Rd., Gastonia, N. C.
 Robinson, Elizabeth, Burgaw, N. C.
 Rogan, Hazel Lulu, Greeleyville, S. C.
 Rouse, Shelby Jean, Rt. 3, Snow Hill, N. C.
 Rudd, Betty Frances, 416 S. Fourth St., Mebane, N. C.
 Sanders, Sara, 22 Henderson St., Badin, N. C.
 Sellers, Marie, Rt. 4, Box 1-A, Whiteville, N. C.
 Sessoms, Jean McLean, 109 N. Broad St., Suffolk, Va.
 Shannon, Edna Earl, Rt. 4, Gastonia, N. C.
 Shaw, Frances, Lumber Bridge, N. C.
 Sheets, Jane, 939 W. Beverley St., Staunton, Va.
 Simpson, Gale, Rt. 1, Shannon, N. C.
 Sinclair, Jane, Raeford, N. C.
 Smith, Donna, 1007 Trogon St., North Wilkesboro, N. C.
 Spivey, Betty Ruth, Rt. 2, Box 56, Fairmont, N. C.
 Spillman, Mildred, 1716 Chestnut St., Wilmington, N. C.
 Stanford, Elmira, 375 W. Vine St., Bartow, Fla.

Stephens, Barbara Ann, 407 E. Roosevelt St.,
 Dillon, S. C.
 Steppe, Jean, Barium Springs, N. C.
 Steppe, Martha Virginia, 50 Oak St., Marion,
 N. C.
 Stickley, Joan, 406 W. King St., Strasburg, Va.
 Stikeleather, Nancy, Rt. 7, Box 361, Statesville,
 N. C.
 Stone, Delores, Laurel Hill, N. C.
 Suggs, Mrs. Billie Dutton, Box 151, Chadbourn,
 N. C.
 Taylor, Evelyn, Rt. 3, Box 177, Kannapolis, N. C.
 Tedder, Lois, Chadbourn, N. C.
 Teer, Patsy, Box 284, Hillsboro, N. C.
 Thigpen, Joyce, Rt. 4, Mount Olive, N. C.
 Thomas, Helma Jean, Harleyville 23, Lumberton,
 N. C.
 Thomas, Sara Frances, 211 S. Wilson Ave., Dunn,
 N. C.
 Thompson, Florene, 105 E. Webster St., White-
 ville, N. C.
 Thompson, Mary Willie, Yanceyville, N. C.
 Thompson, Norma Jean, Glade Valley, N. C.
 Thornton, Shirley, Rt. 6, Box 425, Reidsville, N. C.
 Tucker, Mary Lisle, McKenney, Va.
 Turner, Betty Jean, 2100 Beverly Drive, Char-
 lotte, N. C.
 Turner, Marianne Frost, Mayesville, S. C.
 Tyner, Elvira Jane, Rt. 4, Box 381, Greenville,
 S. C.
 Vesper, Alice, 1510 Ashford Ave., Fayetteville,
 N. C.
 Wallace, Carol, Rowland, N. C.
 Warren, Sue, Pineland College, Salemburg, N. C.
 Webb, Ann Elizabeth, Rt. 3, Wadesboro, N. C.
 Weeks, Jean, Rt. 1, Godwin, N. C.
 West, Ella Mae, Box 254, Warsaw, N. C.
 White, Martha, 1412 N. Harrill St., Charlotte,
 N. C.
 Wilds, Lucile, 615 Wildwood Ave., Columbia,
 S. C.
 Williams, Aletha, Rt. 1, Angelus, S. C.
 Williams, Isola Rebecca, 783 N. W. 39th St.,
 Miami, Fla.
 Williams, Mary Sue, Rt. 1, Godwin, N. C.
 Williamson, Anita, 609 S. Pine St., Rocky Mount,
 N. C.
 Willis, Shirley, 2312 Fisher St., Morehead City,
 N. C.
 Wingo, Barbara, Jetersville, Va.
 Womeldorf, Emojeane, Lexington, Va.
 Womble, Lottie Raynor, Wagram, N. C.
 Wood, Jane Alice, Draper, Va.
 Worrell, Geraldine, 810 Sunset Ave., Rocky
 Mount, N. C.
 Yeargin, Patterson, 436 Hansell St., Thomasville,
 Ga.

