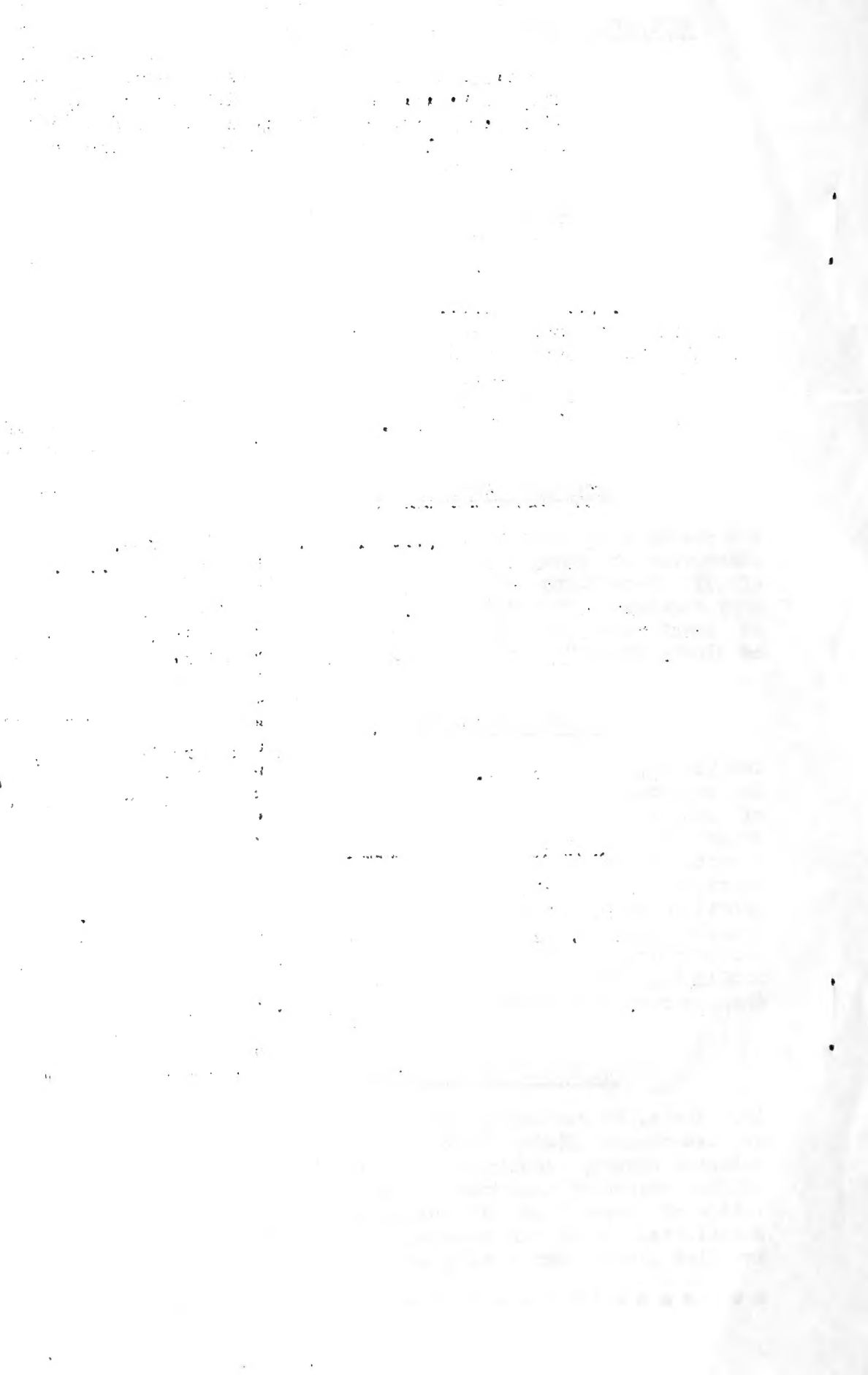


Historic, archived document

Do not assume content reflects current scientific knowledge, policies, or practices.



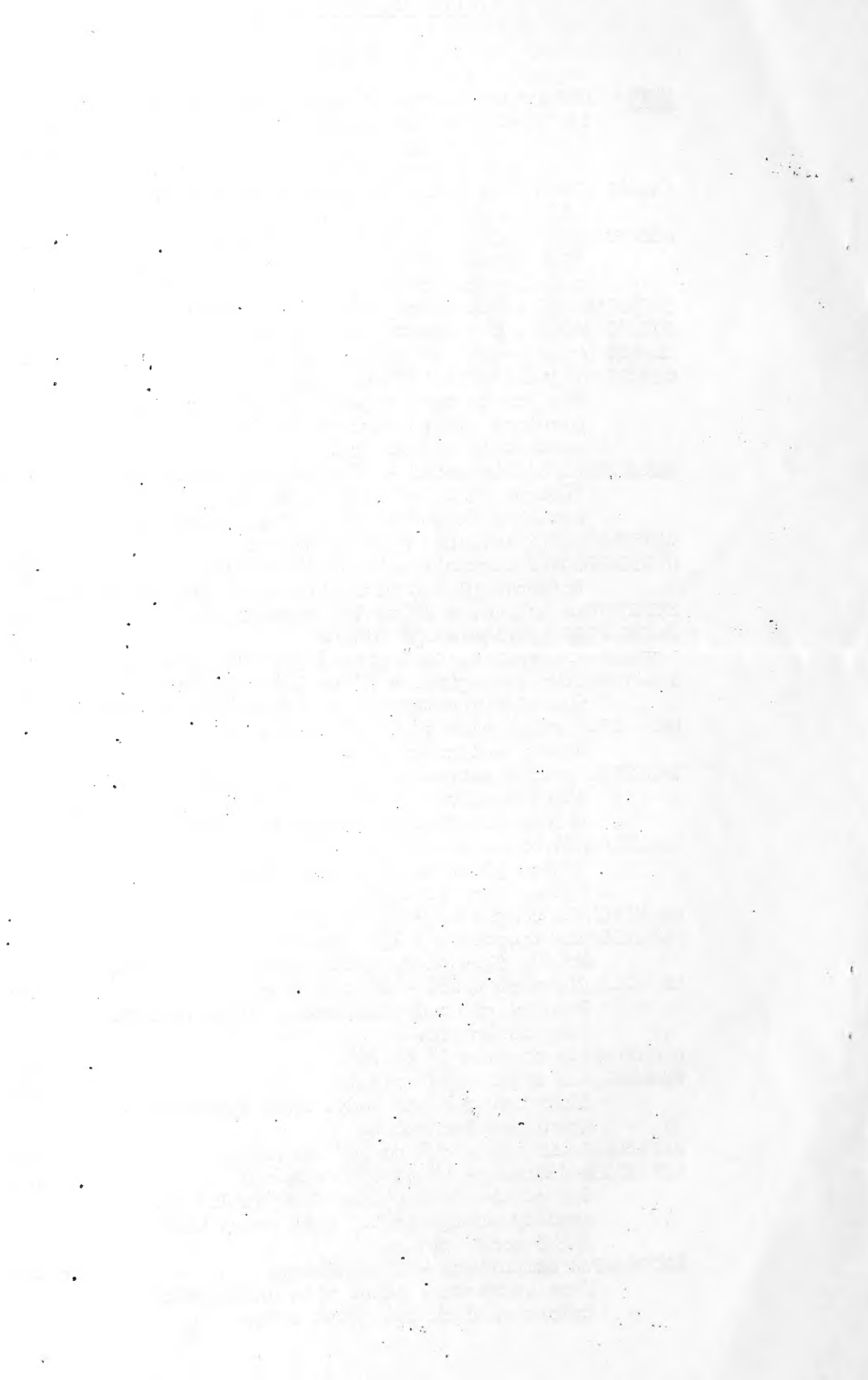


GENERAL PRICE LIST

CACTI

NOTE: Reference numbers in parentheses refer to the illustrations in "CACTI FOR THE AMATEUR."

	<u>Prices - and</u>	
	<u>No. of Plants</u>	
	(10)	(100)
	¢	¢
ANGELS WINGS - ANGORA BUNNY EARS - See <i>Opuntia microdasys</i>		
ASTROPHYTUM <i>myriostigma</i> - 1" to 1½" seedlings "Bishop's Cap." Beautiful silvery-gray usually five ribbed, spineless. (Pl. 69)	.90	7.50
BISHOP'S CAP - See <i>Astrophytum myriostigma</i>		
BOXING GLOVE - See <i>Opuntia mamillata</i>		
CEREUS hybrid - 2½" to 3½" seedlings	.40	3.50
CEREUS hybrid - 4" to 5" seedlings One of the most popular plants for dish gardens. Erect dark green, truly cactoid in appearance.	.60	5.00
CHAMAECEREUS <i>silvestrii</i> - 2" with many small branches "Peanut Cactus." Small, round, silvery-green branches about the size of a peanut. (Pl. 38)	.40	3.50
CLEISTOCACTUS <i>baumanii</i> - 3" seedlings	.40	3.50
CLEISTOCACTUS <i>baumanii</i> - 5" to 6" seedlings Columnar plants with attractive yellow spines.	.60	5.00
ECHINOPSIS hybrids - 1" to 1½" seedlings	.40	3.50
ECHINOPSIS hybrids - 1½" plants Attractive, dark green, globular plants.	.50	4.00
HAMATOCACTUS <i>setispinus</i> - 1" to 1½" seedlings Spherical; attractive, yellow spines. (Pl. 54)	.50	4.00
HARRISIA <i>erriophora</i> - 3" to 4" seedlings Sturdy columnar type.	.40	3.50
HARRISIA hybrid <i>robusta</i> - 2½" to 3½" seedlings Slender curved plants of unusually dark maroon color. Especially recommended for "Tails."	.40	3.50
MAMMILLARIA <i>bocasana</i> - 1" to 1½" seedlings Entire plant covered with fine silky white hair. Very popular.	.60	5.00
MAMMILLARIA <i>compressa</i> - 1" to 1½" seedlings	.60	5.00
MAMMILLARIA <i>compressa</i> - 1½" plants Stiff, flattened, white spines. (Fig. Pg. 43)	.75	6.00
MAMMILLARIA <i>martinezii</i> - 1" seedlings Densely covered with short, white spines. Very desirable.	.60	5.00
MAMMILLARIA <i>nigra</i> - 1" to 1½"	.60	5.00
MAMMILLARIA <i>nigra</i> - 1½" plants Olive green plant body, dark spines on prominent tubercles.	.75	6.00
MONVILLEA <i>diffusa</i> - 2½" to 3½" seedlings	.40	3.50
MONVILLEA <i>diffusa</i> - 4" to 6" seedlings One of the best plants for "Tails" in novelty animal pots. Dark green with light soft spines.	.60	5.00
NOTOCACTUS <i>mammulosus</i> - 1" seedlings Very attractive plant with short stiff spines on dark red plant body.	.60	5.00



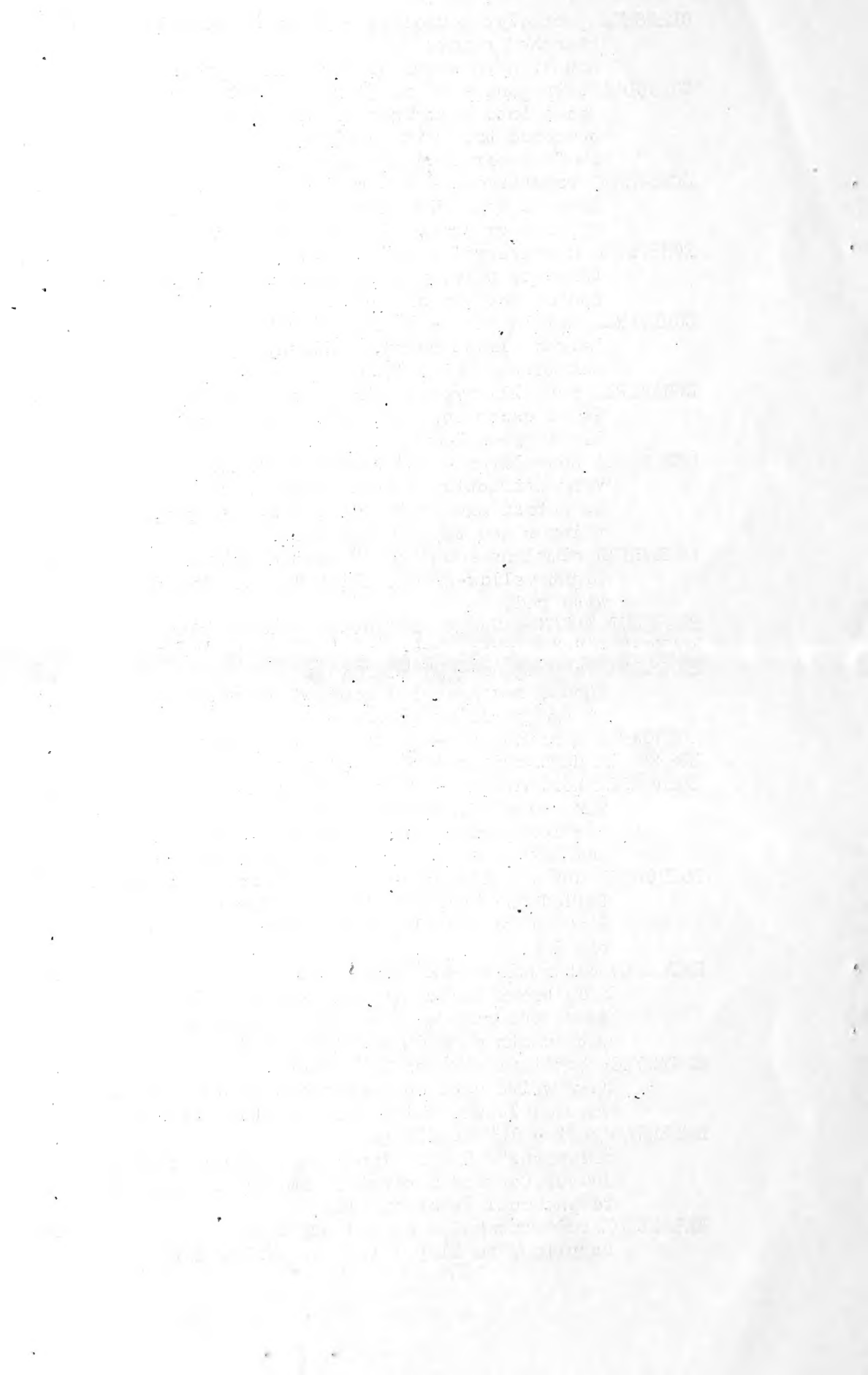
		<u>Prices - and</u>	
		<u>No. of Plants</u>	
		\$.40	\$3.50
OPUNTIA	cylindrica - 3" rooted cuttings		
OPUNTIA	cylindrica - 5" plants	.60	5.00
	Bright green, almost smooth, short widely spaced spines.		
OPUNTIA	elata - 3" rooted cuttings	.50	4.00
	Shiny, dark green, spineless.		
OPUNTIA	elata var. oblongata - 3" rooted cuttings	.50	4.00
	Smooth, dark green, oblong, spineless.		
OPUNTIA	mamillata - 2½" to 3" rooted cuttings	.50	4.00
	"Boxing Glove." Twisted, monstrose, club shaped plants.		
OPUNTIA	mamillata crest - 3" to 4" in diameter	1.25	----
	Actual crests of this popular plant, not just the ordinary semi-monstrose form.		
OPUNTIA	microdasys - 2½" to 3" rooted cuttings	.50	4.00
	Small, flat stems dotted with yellow clusters of small spinelets. Very popular. (Pl. 17)		
OPUNTIA	microdasys - White spined variety - 2" to 2½" eared rooted cuttings	.60	5.00
	("Angora Bunny ears, Angels Wings") A new tiny variety distinct because of the clusters of pure white spines that are soft and harmless.		
OPUNTIA	monacantha - eared fruit	.40	3.50
	Bright green pods with three or more flat branches or "ears."		
OPUNTIA	monacantha - 2½" rooted cuttings	.40	3.50
	Spineless, bright green, thin stems.		
OPUNTIA	monacantha variegata - 4" to 6" rooted cuttings	.75	6.00
	Light yellow and green mottled; new growth often pink.		
OPUNTIA	schickendantzii - 3" rooted cuttings	.50	4.00
OPUNTIA	schickendantzii - 4" to 6"	.60	5.00
	Narrow tapering joints, light yellow-green short spines.		
OPUNTIA	schickendantzii - eared fruit	.40	3.50
	Two or more "ears."		
OPUNTIA	verschaffeltii - 2" branched plants	.60	5.00
	Smooth, round joints about the diameter of a pencil, bearing cylindrical leaves near the top of the stems.		
OPUNTIA	vilis - 2½" well branched rooted cuttings	.50	4.00
	Cylindrical trunk; branches like a small tree.		
OPUNTIA	vulgaris - 2½" rooted cuttings	.40	3.50
	Small, flat dark green, very few spines.		
PEANUT CACTUS	- See Chamaecereus silvestrii		
PILOCEREUS	palmeri - 2" to 2½" seedlings	.60	5.00
	Columnar plant, light brown spines, small tufts of white wool growing from the crown.		
TRICHOCEREUS	spachianus - 1½" to 2" seedlings	.40	3.50
	Columnar type; bright green, round, plump plant with short, yellowish spines. (Fig. Pg. 43)		

SUCCULENTS

<u>NOTE:</u> Reference numbers in parentheses refer to illustrations in "SUCCULENTS FOR THE AMATEUR."		<u>Prices - and</u>	
		<u>No. of Plants</u>	
		\$.90	\$7.50
ADROMISCHUS cooperi - 2" plants	Leaves elongated, round, almost egg shaped of light gray green color, marked irregularly with reddish brown spots. Very attractive. (Fig. 142)		
AEONIUM haworthii - 2" rooted cuttings	Large rosette type with red edged leaves. (Fig. 206)	.35	3.00
AFRICAN LIVING ROCK - See Pleiospilos nelii			
AGAVE attenuata - 3" to 4" plants	Soft green rosettes.	.35	3.00
AGAVE ferox - 3" to 4" seedlings	Long tapered blue gray leaves in loose rosettes.	.35	3.00
AGAVE sisalana - 2½" to 3½" plants	Beautifully formed rosettes of flexible tapered leaves.	.35	3.00
ALOE africana - 2½" seedlings	Beautiful tree like plant with yellow teeth on the margin of light green leaves.	.50	4.00
ALOE brevifolia - 2½" plants	Small species with short, thick gray leaves; grows easily, recommended for dish gardens. (Fig. Pl. 63)	.50	4.00
ALOE ferox - 2½" seedlings	Dark green leaves lined with reddish brown teeth on the margins.	.50	4.00
ALOE striata - 2½" seedlings	Handsome plant. Leaves grayish bordered with red, completely spineless. (Fig. 238)	.50	4.00
CHEIRIDOPSIS candidissima - 2" seedlings	"Elephant Tusks." Beautiful species. Small clumps of silvery gray leaves tipped with purple. (Fig. 86)	.35	3.00
COBWEB - See Sempervivum arachnoideum			
CORN COB CACTUS - See Euphorbia sub-mammillaris			
CRASSULA albiflora - 2" to 2½" plants	Dark green, oblong leaves deeply edged with intense dark red. One of the most colorful of all Succulents.	.35	3.00
CRASSULA arborescens - 3" to 4" branched rooted cuttings	Round, thick, shiny green leaves edged with red. (Fig. 151)	.35	3.00
CRASSULA impressa - (Syn. Schmidtii, rubicunda) 2" plants	Leaves thin, flexible, dark green tinged with crimson. Blooms are clusters of tiny bright red, long lasting flowers. These plants are now in flower.	.40	3.50
CRASSULA perforata - 2½" rooted cuttings	(Rosary Plant) The thick leaves clasp the slender stems like the beads of a rosary.	.40	3.50



	Prices - and	
	No. of Plants	
	\$	\$
CRASSULA pseudolycopodioides - 3" to 4" heavily branched plants Round, hard stems of dark olive green.	.35	3.00
CRASSULA tetragona - 4" to 5" rooted cuttings Grows into symmetrical, miniature branched tree with conical green leaves in four cornered arrangements.	.35	3.00
ECHEVERIA bradburyana - 2½" rooted cuttings Rosette type with long tapered leaves of silvery gray, flecked with maroon.	.40	3.50
ECHEVERIA derenbergii - 1½" plants Compact, silvery white with a small point of red on the tip of each leaf. (Pl. 43)	.60	5.00
ECHEVERIA multicaulis - 2" rooted cuttings Leaves almost round, reddish, metallic. (Fig. 162)	.50	4.00
ECHEVERIA perbella hybrid - 2½" rooted cuttings Grows exceptionally well, Very firm light green leaves.	.35	3.00
ECHEVERIA set-oliver - 2½" rooted cuttings Very attractive plant. Similar to E. setosa except the leaves are longer, thinner and tipped with red.	.35	3.00
ECHEVERIA simulans - 2½" to 3" rooted cuttings Light yellow-green, thick leaves tinged with red.	.40	3.50
ELEPHANT TUSKS - See Cheiridopsis candidissima		
ELKHORN - See Hereroa dyeri		
EUPHORBIA heptagona - 3" seedlings Stout, seven-angled rounded branches of bright shiny green.	.60	5.00
EUPHORBIA hermentiana - 4" to 5" rooted cuttings	.60	5.00
EUPHORBIA hermentiana - 6" to 7" plants	.75	6.00
EUPHORBIA hermentiana - 8" to 12" plants Three-angled, columnar plants with marbled surface and ornamented with small rows of leaves on the angles.	.90	7.50
EUPHORBIA sub-mammillaris - 2½" to 3" rooted cuttings Called the "Corn Cob Cactus" because it looks like a small, green corn cob. Very popular.	.50	4.00
FAUCARIA tuberculosa - 2" seedlings Wide brown leaves thickly covered with large tubercles, white dot in center, with teeth on ridges. (Fig. 93)	.35	3.00
GASTROLEA beguinii - 2" to 2½" plants Many white dots on both sides of dark green tapered leaves which form an attractive rosette.	.75	6.00
HEREROA dyeri - 1½" seedlings "Elkhorn." Small plant with curious club-like leaves forming a cluster similar in appearance to the antlers of an elk.	.35	3.00
KALANCHOE fedtschenkoi - rooted cuttings Purplish, scalloped leaves. (Fig. 187)	.35	3.00



	Prices - and	
	No. of Plants	
	\$.75	\$6.00
KALANCHOE pilosa - 2½" to 3" plants (Plush Plant. Syn. tomentosa) Attractive wide thickly felted leaves, scalloped tips marked with distinct brown spots. These unusual characteristics sell this plant on sight. (Fig. 185)		
PACHYVERIA hybrid orpetii - 2½" to 3½" rooted cuttings	.40	3.50
Oblong, rounded, bluish leaves overlaid with white powder.		
PLEIOSPILOS bolusii - 1½" to 2"	.60	5.00
Imitates pieces of granite; always excites curiosity. (Fig. 25)		
PLEIOSPILOS nelii - 1" to 1½" seedlings	.60	5.00
"African Living Rock." Leaves nearly round, reddish brown in color.		
PLEIOSPILOS simulans - 1½" to 2"	.60	5.00
Similar to P. bolusii, but the thick leaves are flat on top, triangular below.		
PLUSH PLANT - See Kalanchoe pilosa		
PORTULACARIA afra variegata - 3" to 4" plants	.60	5.00
Small, compact plant. Stems red; leaves round, waxy yellow edged with brick red. Grows easily and holds up well.		
PUYA chilensis - 3" to 4" seedlings	.40	3.50
PUYA chilensis - 6" to 7" plants	.60	5.00
Striking plant of the pineapple family, leaves very thin, light green on upper side, silvery gray underneath.		
ROSARY PLANT - See Crassula perforata		
SEDUM adolphii - rooted cuttings	.35	3.00
Colorful, waxy, yellow, thick oblong leaves. (Fig. 51)		
SEDUM guatemalense - rooted cuttings	.25	2.00
Stems, densely covered with berry-like leaves, shiny green tinged red. (Fig. 195-A)		
SEDUM oxacantum - branched rooted cuttings	.35	3.00
Dwarf plant, branches freely leaves gray-green, rounded.		
SEDUM pachyphyllum - well rooted cuttings	.30	2.50
Similar to S. guatemalense but leaves are cylindrical light gray tipped pink to red. (Fig. 195)		
SEDUM prealtum crest - 2½" rooted cuttings	.40	3.50
Unusual flattened stems of "Cockscomb" formation. Leaves small, light yellow-green. (Fig. 194)		
SEDUM winkleri - branched rooted cuttings	.35	3.00
Small, light green rosette. (Fig. 196)		
SEMPERVIVUM arachnoideum - 1" to 1½" with many small offsets. "Cobweb." Small compact rosettes with the crown thickly covered with webs of fine wool.	.50	4.00
SEMPERVIVUM calcareum - 1½" to 2" rooted cuttings	.35	3.00
Elegant, small, rosette plant with numerous short broad, gray leaves, sharply tipped with dull crimson. (Fig. 213)		

Return Postage Guaranteed By:

ALBERT AROZENA NURSERY
1518 EAST ROSECRAWS AVE.,
COMPTON, CALIFORNIA.



LIBRARY,

U. S. DEPARTMENT OF AGRICULTURE,

WASHINGTON 25, D. C.