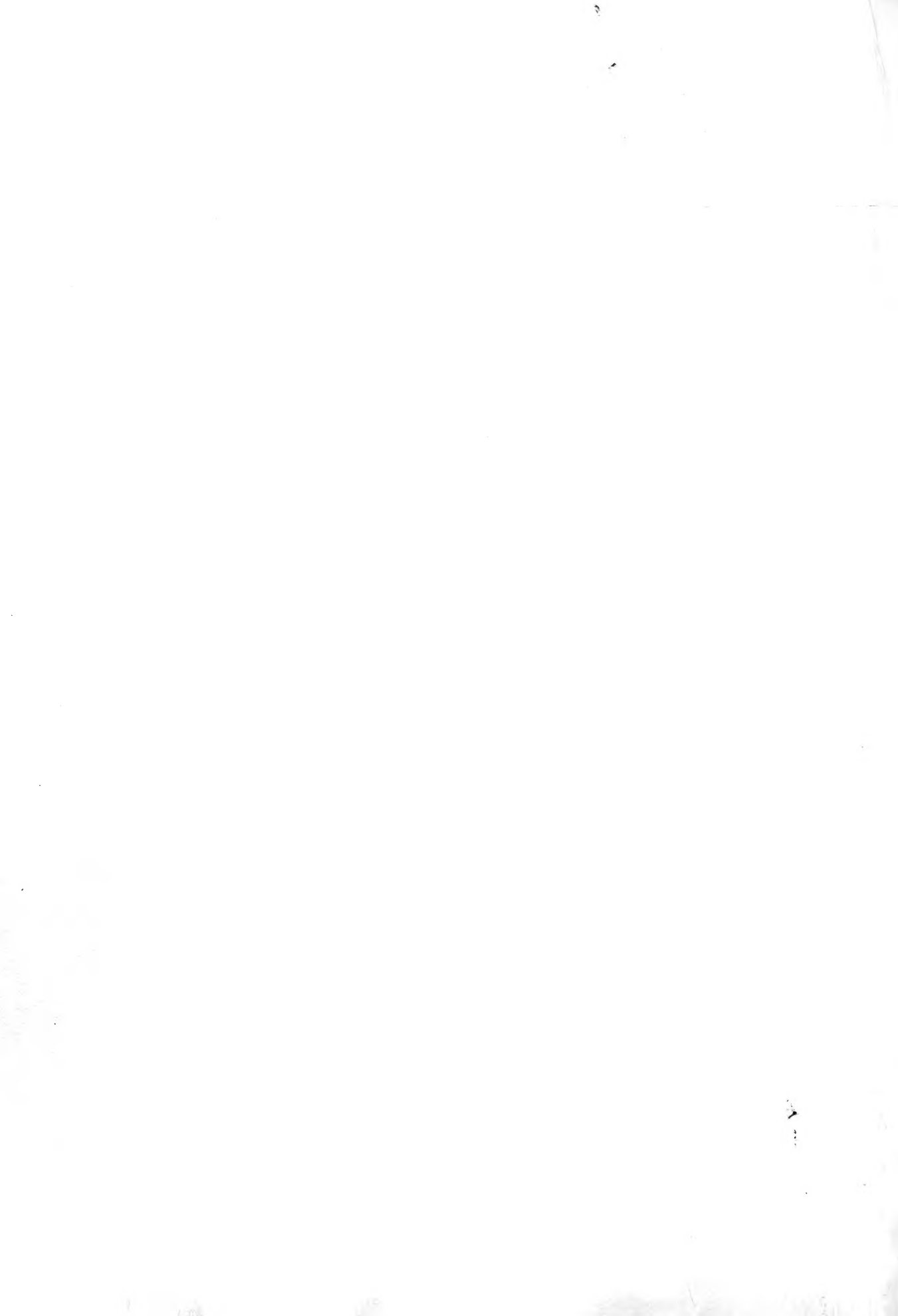


## Historic, archived document

Do not assume content reflects current scientific knowledge, policies, or practices.



2.09

WHOLESALE GROWERS OF CACTI AND SUCCULENTS

AUG 8 - 1946  
U. S. Department of Agriculture

ALBERT AROZENA NURSERY  
1518 EAST ROSECRANS AVE.,  
COMPTON CALIFORNIA

AUGUST - 1946

PRICE LIST

AUGUST - 1946

SALES CONDITIONS: Prices include packing but not transportation costs. Quantities quoted are minimum at these prices. This list is complete as to the stock available at present and supersedes and cancels all previous lists. Cash should accompany all orders unless goods are shipped C.O.D. or unless credit has already been established. 2% discount will be allowed for cash with orders. All material is offered subject to the prior sale of stock on hand.

ECHEVERIA ASSORTMENT

100 plants . . . . . \$3.00  
Echeverias are among the most colorful of all Succulents and have a great many fancieres. This collection contains at least ten varieties of well rooted plants from 2" to 3" in size.

CACTUS ASSORTMENT #1

100 plants, ten varieties . . . . . \$3.50  
An economical well balanced collection of sturdy plants that will hold up under almost any conditions. A typical assortment would consist of Cereus hybrids, Echinopsis hybrids, Harrisia hybrid robusta, Opuntia schickendantzii, Opuntia cylindrica, Opuntia monacantha eared fruit, Opuntia microdasys, Opuntia mamillata, Nyctocereus serpentinus and Chamaecereus silvestrii.

COMBINATION ASSORTMENT

100 plants, 20 varieties, unlabeled \$3.00  
An assortment giving wide range of colorful plants, combining a selection of five plants of each kind of 10 varieties of Cacti and 10 varieties of Succulents. Ideal for planting attractive dish gardens and novelty containers.

HAWORTHIA ASSORTMENT

100 unlabeled plants 1" to 2" . . . . \$7.50  
Haworthias are most desirable and sell readily because of their striking appearance and their ability to stand up under adverse conditions. This assortment is made up of a variety of types, including some of the rarer species.

CACTUS ASSORTMENT #2

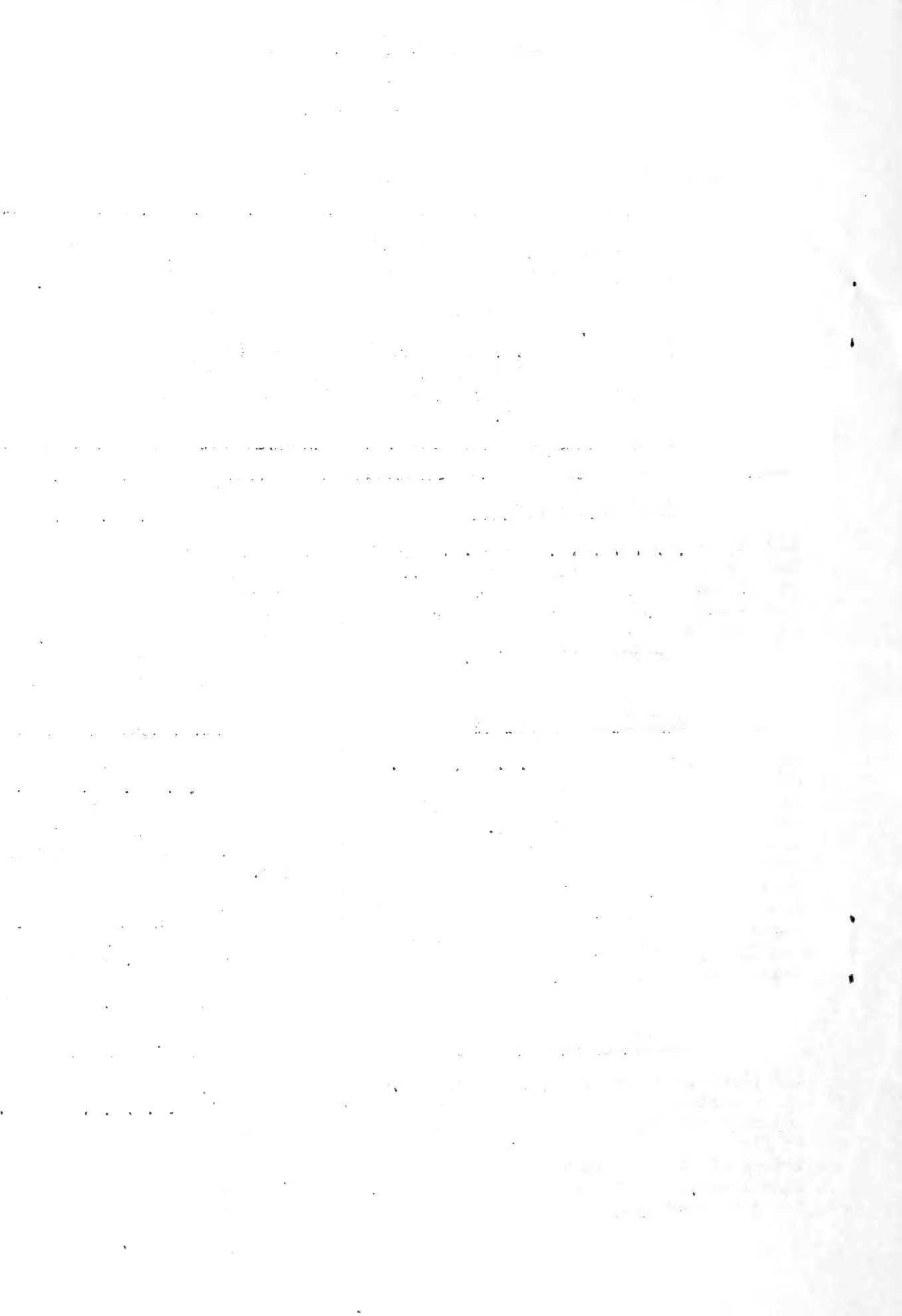
100 plants, twenty-five varieties of Cacti only . . . . . \$5.00  
This selection will please you. Four plants of each kind giving a variation of size, form and color that mean quick sales.

SUCCULENT ASSORTMENT

100 rooted plants, 10 varieties \$2.50  
Includes Echeverias, Crassulas & Sedums in a colorful array.

ALL-IN-ONE ASSORTMENT

100 plants, unlabeled, 50 varieties, two of each kind . . . . . \$5.00  
This assortment continues to be our most popular assortment. Try it if you are seeking more variety. Fifty different varieties of both Cacti and Succulents in a well balanced collection.



GENERAL PRICE LIST

CACTI

NOTE: Reference numbers in parentheses refer to illustrations in "CACTI FOR THE AMATEUR."

	<u>Prices - and</u>	
	<u>No. of Plants</u>	
	(10)	(100)
<u>ASTROPHYTUM myriostigma</u> - 1" to 1½" seedlings . . . . .	\$ .90	\$7.50
"Bishop's Cap." Beautiful silvery-gray usually five ribbed, spineless. (Pl. 69)		
BISHOP'S CAP - See <u>Astrophytum myriostigma</u>		
<u>CEREUS hybrid</u> - 2½" to 3½" seedlings . . . . .	.40	3.50
<u>CEREUS hybrid</u> - 4" to 5" seedlings . . . . .	.60	5.00
One of the most popular plants for dish gardens. Erect dark green, truly cactoid in appearance.		
<u>CHAMAECEREUS silvestrii</u> - 2" with many small branches . . . . .	.40	3.50
"Peanut Cactus." Small, round, silvery green branches about the size of a peanut. (Pl. 38)		
<u>CLEISTOCACTUS baumanii</u> - 3" seedlings . . . . .	.40	3.50
<u>CLEISTOCACTUS baumanii</u> - 5" to 6" seedlings . . . . .	.60	5.00
Small, columnar plants with attractive yellow spines.		
<u>ECHINOPSIS hybrids</u> - 1" to 1½" seedlings . . . . .	.40	3.50
Attractive, dark green, globular plants.		
<u>HAMATOCACTUS setispinus</u> - 1" to 1½" seedlings . . . . .	.40	3.50
Spherical; attractive, yellow spines. (Pl. 54)		
<u>HARRISIA eriophora</u> - 3" to 4" seedlings . . . . .	.40	3.50
Sturdy columnar type.		
<u>HARRISIA hybrid robusta</u> - 2½" to 3½" seedlings . . . . .	.40	3.50
Slender curved plants of unusually dark maroon color. Especially recommended for "Tails."		
<u>MAMMILLARIA bocasana</u> - 1" to 1½" seedlings. . . . .	.60	5.00
Entire plant covered with fine silky white hair, very popular plant.		
<u>MAMMILLARIA compressa</u> - 1" to 1½" seedlings . . . . .	.60	5.00
Stiff, flattened, white spines. (Fig. Pg. 43)		
<u>MAMMILLARIA martinezii</u> - 1" seedlings . . . . .	.60	5.00
Densely covered with short, white spines. Very desirable.		
<u>MAMMILLARIA nigra</u> - 1" to 1½" . . . . .	.60	5.00
Olive green plant body, dark spines on prominent tubercles.		
<u>MONVILLEA diffusa</u> - 2½" to 3½" seedlings . . . . .	.40	3.50
<u>MONVILLEA diffusa</u> - 4" to 6" seedlings . . . . .	.60	5.00
One of the best plants for "Tails" in novelty animal pots. Dark green with light soft spines.		
<u>NOTOCACTUS mammulosus</u> - 1" seedlings . . . . .	.60	5.00
Very attractive plant with short stiff spines on dark red plant body.		

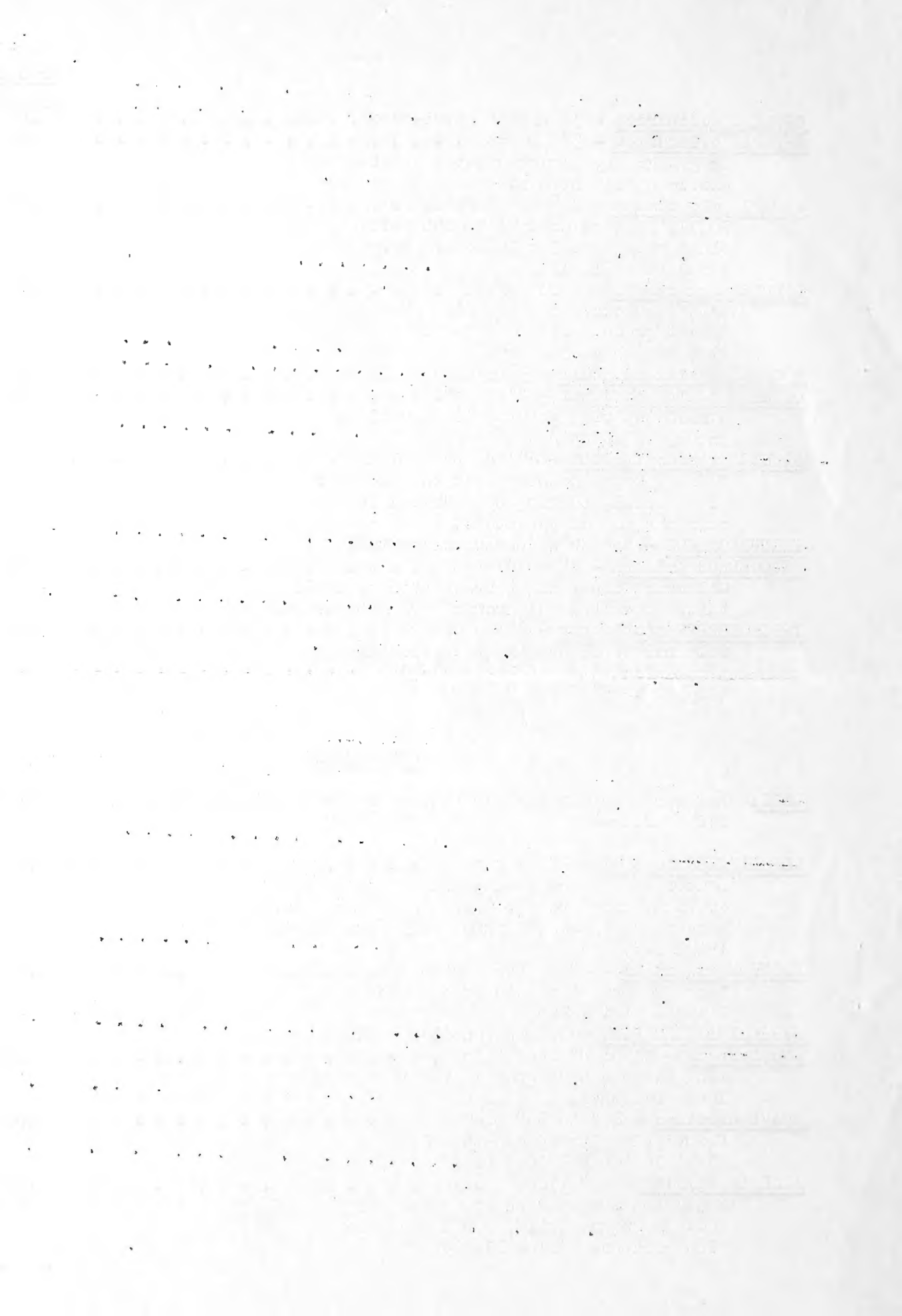


	<u>Prices - and</u>	
	<u>No. of Plants</u>	
<u>OPUNTIA cylindrica</u> - 3" rooted cuttings . . . . .	\$.40	\$3.50
<u>OPUNTIA cylindrica</u> - 5" plants . . . . .	.60	5.00
Bright green, almost smooth, short widely spaced spines.		
<u>OPUNTIA microdasys</u> - 2½" to 3" r. c. . . . .	.50	4.00
Small, flat stems dotted with yellow clusters of small spinelets. Very popular. (Pl. 17)		
<u>OPUNTIA monacantha</u> - eared fruit . . . . .	.40	3.50
These are exceptionally fine plants. Bright green pads with four or more flat branches or "ears."		
<u>OPUNTIA schickendantzii</u> - 3" rooted cuttings . . . . .	.50	4.00
<u>OPUNTIA schickendantzii</u> - 4" to 6". . . . .	.60	5.00
Narrow tapering joints, light yellow-green, short spines.		
<u>OPUNTIA verschaffeltii</u> - 2" branched plants . . . . .	.60	5.00
Smooth, round joints about the diameter of a pencil, bearing cylindrical leaves near the top of the stems.		
<u>PEANUT CACTUS</u> - See <u>Chamaecereus silvestrii</u>		
<u>PILLOCEREUS palmeri</u> - 2" seedlings . . . . .	.60	5.00
Columnar plant, light brown spines, small tufts of white wool growing from the crown.		
<u>TRICHOCCEREUS spachianus</u> - 2" seedlings . . . . .	.40	3.50
Columnar type; bright green, round, plump plant with short, yellowish spines. (Fig. Pg. 43)		

SUCCULENTS

NOTE: Reference numbers in parentheses refer to illustrations in "SUCCULENTS FOR THE AMATEUR."

<u>ADROMISCHUS cooperi</u> - 2" plants . . . . .	.90	7.50
Leaves elongated, round, almost egg shaped of light gray green color, marked irregularly with reddish brown spots. Very attractive. (Fig. 142)		
<u>AECNIUM haworthii</u> - 2" rooted cuttings . . . . .	.35	3.00
Large rosette type with red edged leaves. (Fig. 206)		
<u>AFRICAN LIVING ROCK</u> - See <u>Pleiospilos nelii</u>		
<u>AGAVE ferox</u> - 3" to 4" seedlings . . . . .	.35	3.00
Long, tapered blue gray leaves in loose rosettes.		
<u>AGAVE sisalana</u> - 2½" to 3½" plants . . . . .	.35	3.00
Beautifully formed rosettes of flexible tapered leaves.		
<u>ALOE brevifolia</u> - 2½" plants . . . . .	.50	4.00
Small species with short, thick, gray leaves; grows easily, recommended for dish gardens. (Fig. Pl. 63)		

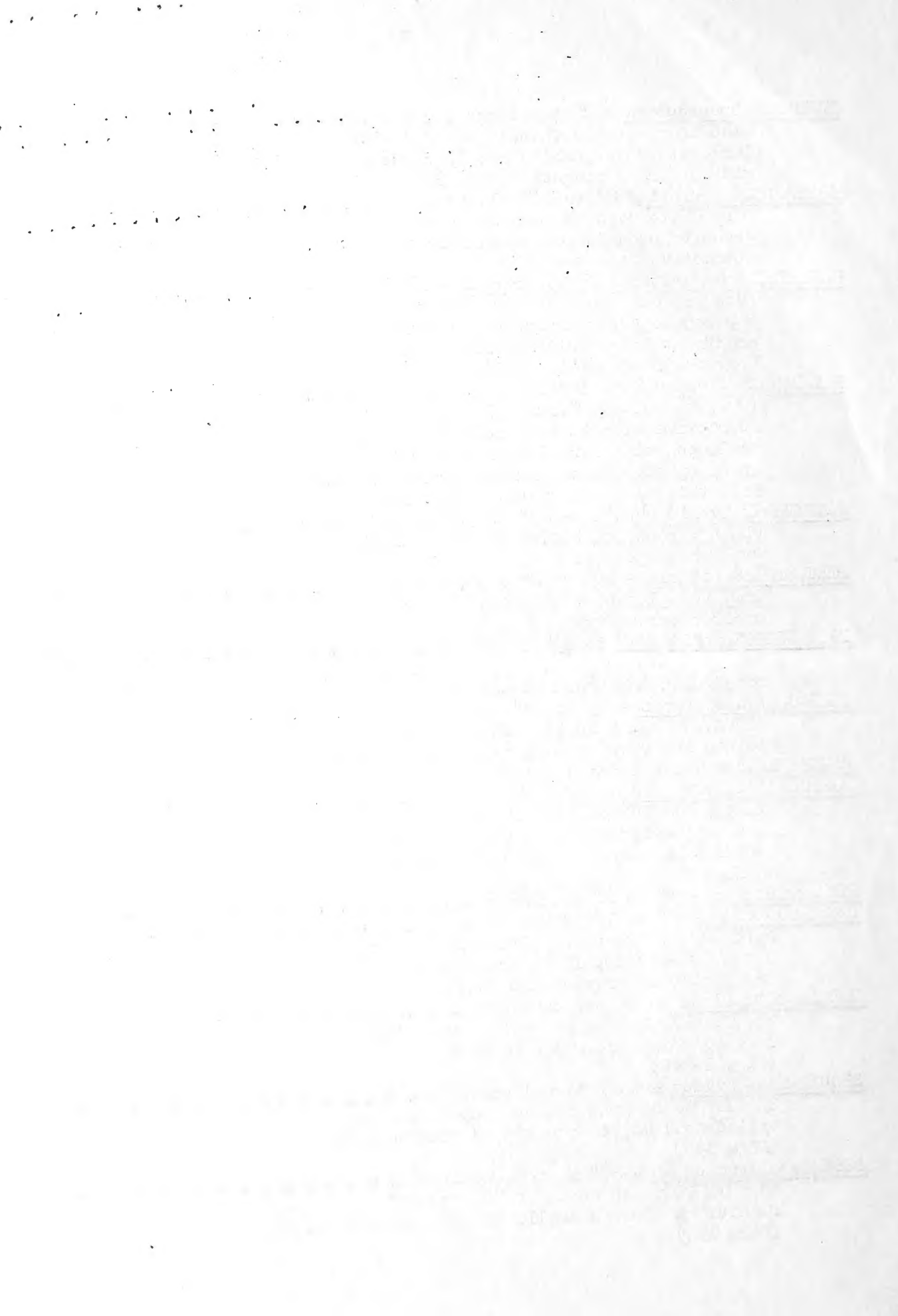




	<u>Prices - and</u>	
	<u>No. of Plants</u>	
	(10)	(100)
<u>CORN COB CACTUS</u> - See Euphorbia sub-mammillaris		
<u>CRASSULA albiflora</u> - 2" to 2½" . . . . .	.35	3.00
Dark green, oblong leaves deeply edged with intense dark red. One of the most colorful of all Succulents.		
<u>CRASSULA arborescens</u> - 3" branched rooted cuttings . . . . .	.35	3.00
Round, thick, shiny green leaves edged with red. (Fig. 151)		
<u>CRASSULA impressa</u> - (Syn. Schmidtii, rubicunda) 2" . . . . .	.40	3.50
Leaves thin, flexible, dark green tinged, with crimson. Blooms are clusters of tiny bright red, long lasting flowers. These plants are now in bud and will soon flower.		
<u>CRASSULA pseudolycopodioides</u> - 3" heavily branched . . . . .	.35	3.00
Round, hard stems of dark olive green.		
<u>CRASSULA tetragona</u> - 4" to 5" rooted cuttings . . . . .	.30	2.50
Grows into symmetrical, miniature branched tree with conical green leaves in four cornered arrangements.		
<u>DYCKIA sulphurea</u> - 2½" seedlings . . . . .	.50	4.00
Stiff bright green leaves striped lengthwise with lighter green; recurved in star-like arrangement.		
<u>ECHEVERIA bradburyana</u> - 2½" rooted cuttings . . . . .	.40	3.50
Rosette type with long tapered leaves of silvery gray, flecked with maroon.		
<u>ECHEVERIA elegans</u> - 2½" rooted cuttings . . . . .	.40	3.50
Very attractive, compact, silvery white rosette. (Fig. 159)		
<u>ECHEVERIA multicaulis</u> - 2" rooted cuttings . . . . .	.50	4.00
Leaves almost round, reddish, metallic. (Fig. 162)		
<u>ECHEVERIA perbella hybrid</u> - 2½" rooted cuttings . . . . .	.35	3.00
Grows exceptionally well. Very firm, light green leaves.		
<u>ECHEVERIA pulv-oliver</u> - 2½" to 3" rooted cuttings . . . . .	.35	3.00
Long, tapered, felted, flexible leaves tipped with red.		
<u>ECHEVERIA set-oliver</u> - 2½" rooted cuttings . . . . .	.35	3.00
Very attractive plant. Similar to E. setosa except the leaves are longer, thinner and tipped with red.		
<u>ECHEVERIA simulans</u> - 2½" to 3" rooted cuttings . . . . .	.40	3.50
Light yellow-green, thick leaves tinged with red.		
<u>EUPHORBIA hermentiana</u> - 4" to 5" rooted cuttings . . . . .	.60	5.00
<u>EUPHORBIA hermentiana</u> - 6" to 7" plants . . . . .	.75	6.00
<u>EUPHORBIA hermentiana</u> - 8" to 12" plants . . . . .	.90	7.50
Three-angled, columnar plants with marbled surface and ornamented with small rows of leaves on the angles.		
<u>EUPHORBIA sub-mammillaris</u> - 2" to 2½" rooted cuttings . . . . .	.40	3.50
Called the "Corn Cob Cactus" because it looks like a small, green corn cob. Very popular.		



	Prices - and	
	No. of Plants	
	(10)	(100)
<u>FAUCARIA tuberculosa</u> - 2" seedlings . . . . .	\$ .35	\$3.00
Wide brown leaves thickly covered with large tubercles, white dot in center, with teeth on ridges. (Fig. 93)		
<u>GASTROLEA beguinii</u> - 2" to 2½" plants . . . . .	.75	6.00
Many white dots on both sides of dark green tapered leaves which form an attractive rosette.		
<u>HAWORTHIA margaritifera</u> var. <u>granata</u> - 2" to 2½" seedlings . . . . .	1.25	10.00
Erect rosette type of dark green, thick tapered leaves generously sprinkled with prominent large white pearly tubercles. Very desirable. (Fig. 251)		
<u>KALANCHOE pilosa</u> - 2½" plants . . . . .	.75	6.00
(Syn. <u>toментosa</u> ) "Plush Plant." Attractive wide thickly felted leaves, scalloped tips marked with distinct brown spots. These unusual characteristics sell this plant on sight. (Fig. 185)		
<u>PACHYVERIA hybrid orpetii</u> - 2½" to 3½" rooted cuttings . . . . .	.40	3.50
Oblong, rounded, bluish leaves overlaid with white powder.		
<u>PLEIOSPILOS bolusii</u> - 1½" to 2" . . . . .	.60	5.00
Imitates pieces of granite; always excites curiosity. (Fig. 25)		
<u>PLEIOSPILOS nelii</u> - 1" to 1½" seedlings . . . . .	.60	5.00
"African Living Rock," Leaves nearly round, reddish brown in color.		
<u>PLEIOSPILOS simulans</u> - 1½" to 2" . . . . .	.60	5.00
Similar to <u>P. bolusii</u> , but the thick leaves are flat on top, triangular below.		
<u>PLUSH PLANT</u> - See <u>Kalanchoe pilosa</u>		
<u>PORTULACARIA afra variegata</u> - 3" to 4" plants . . . . .	.60	5.00
Small, compact plant. Stems red; leaves round, waxy yellow edged with brick red. Grows easily and holds up well.		
<u>PUYA chilensis</u> - 3" to 4" seedlings . . . . .	.40	3.50
<u>PUYA chilensis</u> - 6" to 7" plants . . . . .	.60	5.00
Striking plant of the pineapple family, leaves very thin, light green on upper side, silvery gray underneath.		
<u>SEDUM guatemalense</u> - rooted cuttings . . . . .	.25	2.00
Stems, densely covered with berry like leaves, shiny green tinged red. (Fig. 195-A)		
<u>SEDUM pachyphyllum</u> - well rooted cuttings . . . . .	.30	2.50
Similar to <u>S. guatemalense</u> but leaves are cylindrical light gray tipped pink to red. (Fig. 195)		
<u>SEDUM prealtum</u> <u>crost</u> - 2½" rooted cuttings. . . . .	.40	3.50
Unusual flattened stems of "Cockscomb" formation. Leaves small, light yellow-green. (Fig. 194)		



	<u>Prices - and</u>	
	<u>No. of Plants</u>	
	(10)	(100)
<u>SEDUM treleasei</u> - 3" rooted cuttings . . . . .	\$ .35	\$3.00
A very attractive, chalky white plant forming small rosettes, (Fig. 195)		
<u>SEMPERVIVUM arachnoideum</u> - 1" to 1½" with many small offsets . . . . .	.50	4.00
"Cobweb." Small compact rosettes with the crown thickly covered with webs of fine wool.		
<u>SEMPERVIVUM calcareum</u> - 1½" to 2" rooted cuttings . . . . .	.35	3.00
Elegant, small, rosette plant with numerous short broad, gray leaves, sharply tipped with dull crimson. (Fig. 213)		

BOOKS EVERY DEALER SHOULD HAVE

<u>CACTI FOR THE AMATEUR</u> - Bound Edition @ \$2.00 , . . . . .	Retail
<u>SUCCULENTS FOR THE AMATEUR</u> - Paper Edition @ \$1.50 - Cloth \$2.00 . . . . .	"
<u>CACTI AND SUCCULENTS AND HOW TO GROW THEM</u> - @ 25 cents each . . . . .	"

THESE BOOKS ARE PROFUSELY ILLUSTRATED with photographic reproductions, also color plates, showing a large number of the plants we list. These illustrations will assist you in selecting stock and in interesting your customers. Copies for resale can be obtained at liberal dealers' discounts from the publisher.

ABBEY PRESS, BOX 101, PASADENA, CALIFORNIA.

Return Postage Guaranteed by:

ALBERT AROZENA NURSERY  
1518 EAST ROSECRANS AVE.,  
COMPTON CALIFORNIA



U. S. DEPARTMENT OF AGRICULTURE,  
LIBRARY,  
WASHINGTON 25,  
D. C.