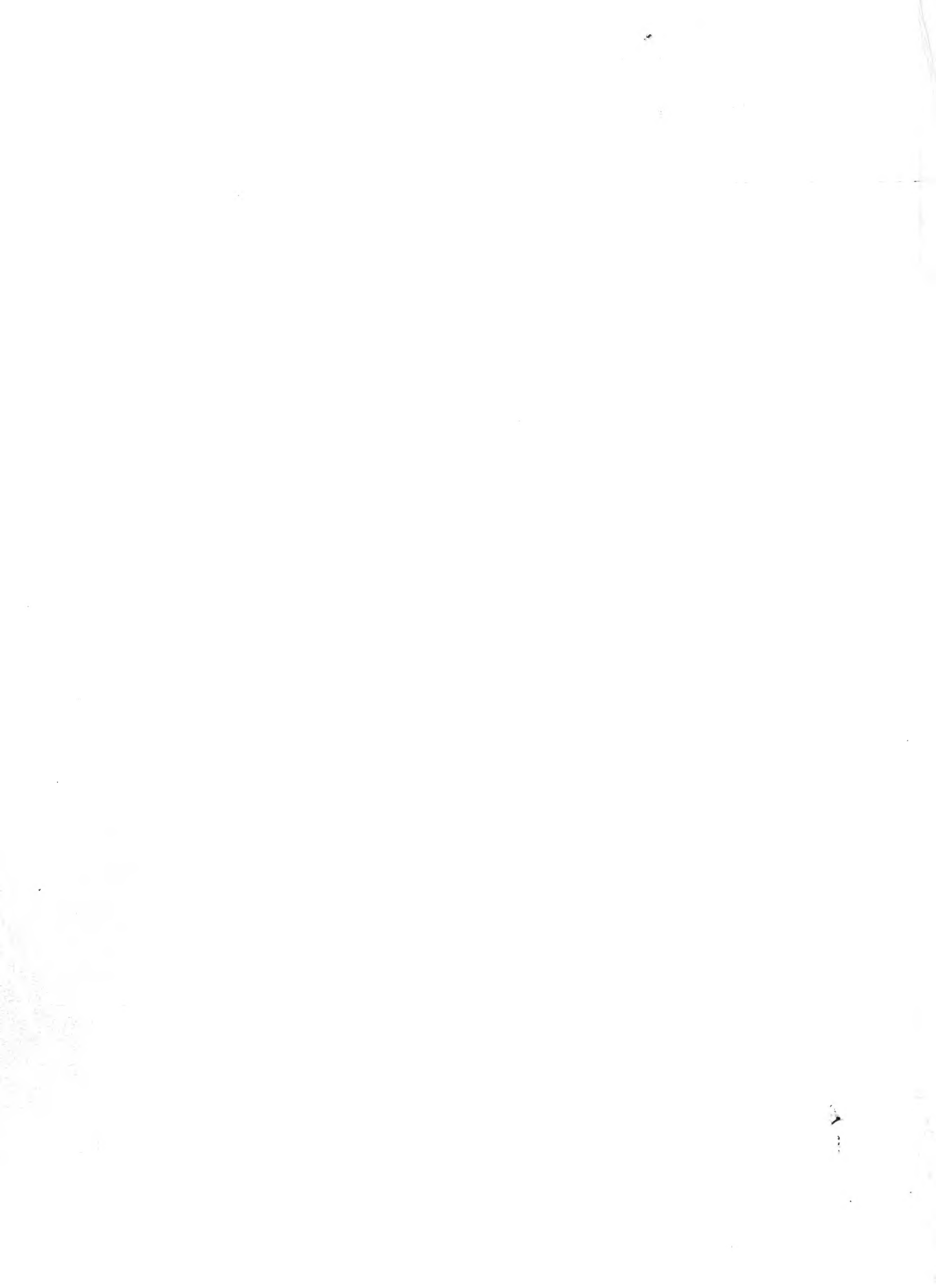


## Historic, archived document

Do not assume content reflects current scientific knowledge, policies, or practices.



109

RECEIVED  
MAY 10 1946  
U.S. Department of Agriculture

WHOLESALE GROWERS OF CACTI AND SUCCULENTS

ALBERT AROZENA NURSERY  
1518 EAST ROSECRANS AVE.,  
COMPTON CALIFORNIA

MAY - 1946

MAY - 1946

SALES CONDITIONS: Prices include packing but not transportation costs. Quantities quoted are minimum at these prices. This list is complete as to the stock available at present and supersedes and cancels all previous lists. Cash should accompany all orders unless goods are shipped C.O.D. or unless credit has already been established. 2% discount will be allowed for cash with orders. All material is offered subject to the prior sale of stock on hand.

ALL-IN-ONE ASSORTMENT

100 plants, unlabeled, 50 varieties, 2 of each kind \$5.00  
This assortment continues to be our most popular assortment. Try it if you are seeking more variety. 50 different varieties of both Cacti and Succulents in a well balanced collection.

CACTUS ASSORTMENT #1

100 plants, ten varieties ..... \$3.50  
An economical well balanced collection of sturdy plants that will hold up under adverse conditions. A typical assortment would consist of Cereus hybrids, Echinopsis hybrids, Harrisia hybrid robusta, Opuntia schickendantzii, Opuntia cylindrica, Opuntia monacantha - eared fruits, Opuntia microdasys, Opuntia mamillata, Opuntia vilis and Chamaecereus silvestrii.

CACTUS ASSORTMENT #2

100 plants, 25 varieties of Cacti only ..... \$5.00  
This selection will please you. Four plants of each kind giving a variation of size, form and color that mean quick sales.

COMBINATION ASSORTMENT

100 plants, 20 varieties, unlabeled ..... \$3.00  
An assortment giving wide range of colorful plants combining a selection of five plants of each kind of ten varieties of Cacti and ten varieties of Succulents. Ideal for planting attractive dish gardens and novelty containers.

SUCCULENT ASSORTMENT

100 rooted plants, 10 varieties ..... \$2.50  
Included are Echeverias, Crassulas and Sedums in a colorful array.

Faint, illegible text at the top of the page, possibly a header or introductory paragraph.

Second block of faint, illegible text, appearing as several lines of a paragraph.

Third block of faint, illegible text, continuing the document's content.

Fourth block of faint, illegible text, showing some structural elements like a list or table.

Fifth block of faint, illegible text at the bottom of the page, possibly a conclusion or footer.

GENERAL PRICE LIST

CACTI

NOTE: Reference numbers in parentheses refer to illustrations in "CACTI FOR THE AMATEUR."

	<u>Prices - and</u>	
	<u>No. of</u>	<u>Plants</u>
	(10)	(100)
ASTROPHYTUM myriostigma - 1" seedlings .....	\$.90	\$7.50
"Bishop's Cap." Beautiful silvery-gray usually five ribbed, spineless. (Pl. 69)		
BISHOP'S CAP - See Astrophytum myriostigma		
BOXING GLOVE - See Opuntia mamillata		
CEREUS hybrid - 3" to 3½" seedlings .....	.40	3.50
CEREUS hybrid - 4" to 5" seedlings .....	.60	5.00
One of the most popular plants for dish gardens, Erect dark green, truly cactoid in appearance.		
CHAMAEYCEREUS silvestrii - 1½" to 2" with many small branches	.40	3.50
"Peanut Cactus." Small, round, silvery green branches about the size of a peanut. (Pl. 38)		
CLEISTOCACTUS baumanii - 2½" seedlings .....	.40	3.50
Small, columnar plants with attractive yellow spines.		
ECHINOPSIS hybrids - 1" to 1½" seedlings .....	.40	3.50
Attractive, dark green, globular plants.		
HARRISIA eriophora - 2½" seedlings .....	.40	3.50
Sturdy columnar type.		
HARRISIA hybrid robusta - 2½" to 3½" seedlings .....	.40	3.50
Slender curved plants of unusual dark maroon color. Especially recommended for "Tails."		
MAMMILLARIA bocasana - 1" to 1½" seedlings .....	.60	5.00
Entire plant covered with fine silky white hair, very popular plant.		
MAMMILLARIA compressa - 1" to 1½" seedlings .....	.60	5.00
Stiff, flattened, white spines. (Fig. Pg. 43)		
MAMMILLARIA elongata - 1" seedlings .....	.60	5.00
Bright yellow spines. (Pl. 100)		
MAMMILLARIA martinezii - 1" seedlings .....	.60	5.00
Densely covered with short, white spines. Very desirable.		
MAMMILLARIA nigra - 1" to 1½" .....	.60	5.00
Olive green plant body, dark spines on prominent tubercles.		
MONVILLEA diffusa - 2½" to 3½" seedlings .....	.40	3.50
One of the best plants for "Tails" in novelty animal pots. Dark green with light soft spines.		
OPUNTIA cylindrica - 2½" rooted cuttings .....	.40	3.50
Bright green, almost smooth, short widely spaced spines.		
OPUNTIA mamillata - 2" to 2½" rooted cuttings .....	.40	3.50
"Boxing Glove." Dark, brown, monstrose, club-like stems.		

CONFIDENTIAL

SECRET

1. The purpose of this document is to provide a comprehensive overview of the current state of the project and to identify the key challenges that must be addressed in order to ensure its successful completion.

2. The project has made significant progress since its inception, with several key milestones having been achieved. However, there are a number of areas where the project is currently lagging behind schedule.

3. The primary challenge facing the project is the lack of sufficient resources, particularly in the area of personnel. This has resulted in a number of critical tasks being delayed or, in some cases, not completed at all.

4. In order to address these challenges and get the project back on track, it is necessary to take a number of key actions. These include recruiting additional personnel, reassigning resources from other areas of the organization, and implementing a more rigorous project management process.

5. It is also necessary to ensure that all project team members are fully aware of the current state of the project and the actions that need to be taken. This will require a series of regular meetings and reports to be implemented.

6. The project team must also be encouraged to take a proactive approach to identifying and addressing potential risks. This will help to ensure that the project is able to adapt to any changes in circumstances and to avoid any major setbacks.

7. Finally, it is important to maintain a high level of communication and transparency throughout the project. This will help to ensure that all stakeholders are kept up to date on the project's progress and that any issues are identified and resolved as quickly as possible.

8. The project team is committed to working hard to overcome these challenges and to ensuring that the project is completed on time and to the highest possible quality. We will continue to report on the project's progress and any issues that arise.

9. We will also be working closely with all stakeholders to ensure that their needs and expectations are being met. This will help to ensure that the project is able to deliver the maximum possible value to the organization.

10. We will continue to monitor the project's progress closely and will take any necessary actions to ensure that it remains on track. We will also be working to identify any opportunities for improvement and to implement them as quickly as possible.

11. We will also be working to ensure that the project is able to adapt to any changes in circumstances and to avoid any major setbacks. This will require a high level of flexibility and a willingness to take on new challenges.

12. We will continue to work hard to ensure that the project is completed on time and to the highest possible quality. We will also be working to ensure that the project is able to deliver the maximum possible value to the organization.

13. We will continue to monitor the project's progress closely and will take any necessary actions to ensure that it remains on track. We will also be working to identify any opportunities for improvement and to implement them as quickly as possible.

14. We will continue to work hard to ensure that the project is completed on time and to the highest possible quality. We will also be working to ensure that the project is able to deliver the maximum possible value to the organization.

OPUNTIA microdasys - 2" rooted cuttings .....	\$ .40	\$3.50
Small, flat stems dotted with yellow clusters of small spinelets. Very popular. (Pl. 17)		
OPUNTIA monacantha - eared fruit .....	.40	3.50
These are exceptionally fine plants. Bright green pads with four or more flat branches or "ears."		
OPUNTIA schickendantzii - 2½" rooted cuttings .....	.40	3.50
Narrow tapering joints, light yellow-green, short spines.		
OPUNTIA vilis - 2½" to 3" well branched plants .....	.40	3.50
Cylindrical trunk; branched like a small tree.		
PEANUT CACTUS - See Chamaecereus silvestrii		
PILOCEREUS palmeri - 2" seedlings .....	.60	5.00

SUCCULENTS

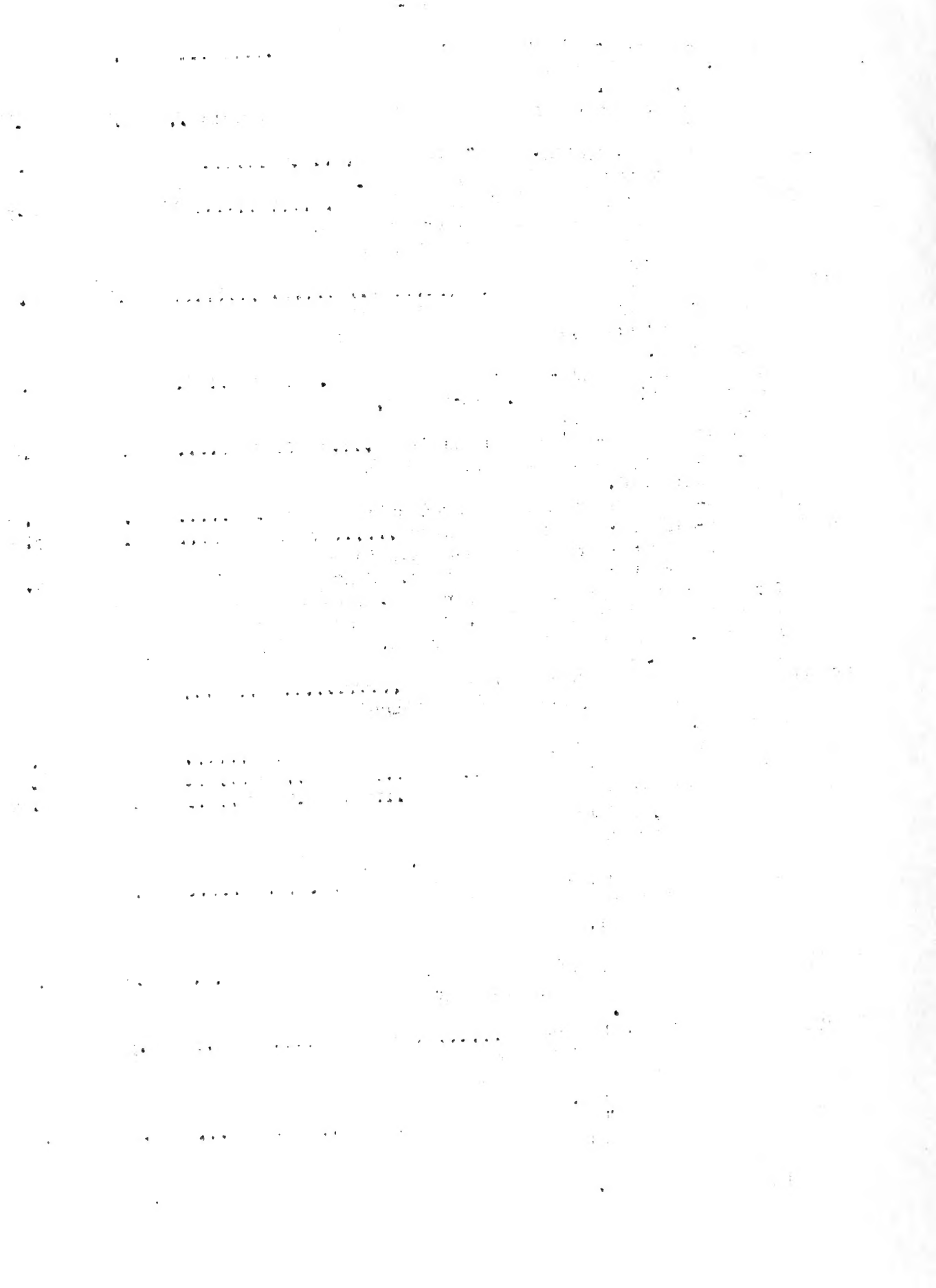
NOTE: Reference numbers in parentheses refer to illustrations in "SUCCULENTS FOR THE AMATEUR."

AEONIUM haworthii - 2½" rooted cuttings .....	.30	2.50
Large rosette type with red edged leaves. (Fig. 206)		
AEONIUM tournefortii - 1½" to 2" plants .....	.30	2.50
Small rosettes of gray-green leaves with small brown spots on the under side.		
AFRICAN LIVING ROCK - See Pleiospilos nelii		
AGAVE ferox - 3" to 4" seedlings .....	.35	3.00
Long tapered blue gray leaves in loose rosettes.		
AGAVE sisalana - 2½" to 3" plants .....	.35	3.00
Beautifully formed rosettes of flexible tapered leaves.		
ALOE africana - 2½" seedlings .....	.40	3.50
Beautiful tree like plants with yellow teeth on the margin of light green leaves.		
ALOE brevifolia - 2½" plants .....	.50	4.00
Small species with short, thick, gray leaves; grows easily, recommended for dish gardens. (Fig. Pl. 63)		
ALOE humvir - 2½" to 3" plants .....	.60	5.00
Erect growth in rosette form. Leaves about ¼" across and almost round. Light green color. This plant is distinct because of the wiry, hard texture of it's cylindrical bright green leaves.		
CORN COB CACTUS - See Euphorbia submammillaris		
CRASSULA albiflora - 2" to 2½" .....	.35	3.00
Dark green, oblong leaves deeply edged with intense dark red. One of the most colorful of all Succulents.		





CRASSULA arborescens - 3" branched rooted cuttings .....	\$ .35	\$3.00
Round, thick shiny green leaves edged with red. (Fig. 151)		
CRASSULA lycopodioides - 2½" to 3" heavily branched plants ..	.35	3.00
(Pl. 40)		
CRASSULA pseudolycopodioides - 2½" branched .....	.35	3.00
Round, hard stems of dark olive green.		
CRASSULA tetragona - 3" to 4" rooted cuttings .....	.30	2.50
Grows into symmetrical, miniature branched tree with conical green leaves in four cornered arrangements.		
DYCKIA sulphurea - 2" seedlings .....	.50	4.00
Stiff bright green leaves striped lengthwise with lighter green; recurved in star-like arrangement.		
ECHEVERIA perbella hybrid - 2" rooted cuttings .....	.35	3.00
Grows exceptionally well. Very firm, light green leaves.		
ECHEVERIA pulv-oliver - 2" rooted cuttings .....	.35	3.00
Long, tapered, felted, flexible loaves tipped with red.		
ECHEVERIA set-oliver - 2" to 2½" rooted cuttings .....	.35	3.00
ECHEVERIA set-oliver - 2½" budded plants .....	.40	3.50
ECHEVERIA set-oliver - branched budded plants each with at least three flowering stems. Suitable for 3" pots	.75	6.00
Very attractive plant. Similar to E. setosa except the leaves are longer, thinner and tipped with red. Flowers large bell shaped, light red, long lasting.		
ECHEVERIA simulans - 2½" rooted cuttings .....	.40	3.50
Light yellow-green, thick leaves tinged with red.		
EUPHORBIA hermentiana - 4" to 5" rooted cuttings .....	.60	5.00
EUPHORBIA hermentiana - 6" plants .....	.75	6.00
EUPHORBIA hermentiana - 7" to 8" plants .....	.90	7.50
Three-angled, columnar plants with marbled surface and ornamented with small rows of leaves on the angles.		
EUPHORBIA sub-mammillaris - 2" rooted cuttings .....	.40	3.50
Called the "Corn Cob Cactus" because it looks like a small, green corn cob. Very popular.		
FAUCARIA tigrina - 1½" to 2" seedlings .....	.35	3.00
"Tiger's Jaw." Leaves marbled gray-green with white teeth.		
FAUCARIA tuberculosa - 1½" to 2" .....	.35	3.00
Wide brown leaves thickly covered with large tubercles, white dot in center, with teeth on ridges. (Fig. 93)		
GASTROLEA beguinii - 1½" to 2" plants .....	.75	6.00
Many white dots on both sides of dark green tapered leaves which form an attractive rosette.		



KALANCHOE pilosa - 2½" to 3" plants .....	\$ .75	\$6.00
(Syn. tomentosa) "Plush Plant." Attractive wide thickly felted leaves, scalloped tips marked with distinct brown spots. These unusual characteristics sell this plant on sight. (Fig. 185)		
PACHYVERIA hybrid orpetii - 2" to 3" rooted cuttings .....	.40	3.50
Oblong, rounded, bluish leaves overlaid with white powder.		
PLEIOSPILOS bolusii - 1½" to 2" .....	.60	5.00
Imitates pieces of granite; always excites curiosity. (Fig. 25)		
PLEIOSPILOS nelii - 1" to 1½" seedlings .....	.60	5.00
"African Living Rock." Leaves nearly round, reddish brown in color.		
PLEIOSPILOS simulans - 1½" to 2" .....	.60	5.00
Similar to P. bolusii, but the thick leaves are flat on top, triangular below.		
PLUSH PLANT - See Kalanchoe pilosa		
PORTULACARIA afra - 3" to 4" .....	.35	3.00
Small, shiny leaves on reddish stems, branching like a small tree. (Fig. 264)		
PORTULACARIA afra variegata - 3" plants .....	.60	5.00
Small, compact plant. Stems red; leaves round, waxy yellow edged with brick red. Grows easily and holds up well.		
PUYA chilensis - 3" seedlings .....	.50	4.00
PUYA chilensis - 5" to 6" plants .....	.75	6.00
Striking plant of the pineapple family, leaves very thin, light green on upper side, silvery gray underneath.		
SEDUM adolphii - 3" rooted cuttings .....	.30	2.50
Colorful, waxy, yellow, thick, oblong leaves. (Fig. 51)		
SEDUM guatemalense - branched rooted cuttings .....	.25	2.00
Stems, densely covered with berry like leaves, shiny green tinged red. (Fig. 195-A)		
SEDUM pachyphyllum - well rooted cuttings .....	.25	2.00
Similar to S. guatemalense but leaves are cylindrical light gray tipped pink to red. (Fig. 195)		
SEMPERVIVUM arachnoideum - 1" with small offsets .....	.50	4.00
"Cobweb." Small compact rosettes with the crown thickly covered with webs of fine wool.		
SEMPERVIVUM calcareum - 2" rooted cuttings .....	.35	3.00
Elegant, small, rosette plant with numerous short broad, gray leaves sharply tipped with dull crimson. (Fig. 213)		
TIGER JAW - See Faucaria tigrina		

BOOKS

CACTI FOR THE AMATEUR - Bound Edition @ \$2.00 .....	- Retail
SUCCULENTS FOR THE AMATEUR - Paper " @ \$1.50 - Cloth \$2.00 .....	- Retail
CACTI AND SUCCULENTS AND HOW TO GROW THEM - @ 25 cents each .....	- Retail

Return Postage Guaranteed by:

ALBERT AROZENA NURSERY  
1518 EAST ROSECRANS AVE.,  
COMPTON CALIFORNIA.



LIBRARY,  
U. S. DEPARTMENT OF AGRICULTURE,  
WASHINGTON, 25  
D. C.