

Historic, archived document

Do not assume content reflects current scientific knowledge, policies, or practices.



WHOLESALE GROWERS OF CACTI AND SUCCULENTS

RECEIVED
MAY 10 1946
U. S. Department of Agriculture

ALBERT AROZEMA NURSERY
1518 EAST ROSECRANS AVE.,
COMPTON CALIFORNIA

APRIL - 1946

APRIL - 1946

SALES CONDITION: Prices include packing but not transportation costs. Quantities quoted are minimum at these prices. This list is complete as to the stock available at present and supersedes and cancels all previous lists. Cash should accompany all orders unless goods are shipped C.O.D. or unless credit has already been established. 2% discount will be allowed for cash with orders. All material is offered subject to the prior sale of stock on hand.

ALL-IN-ONE ASSORTMENT

100 plants, unlabeled, 50 varieties, 2 of each kind \$5.00
This assortment continues to be our most popular assortment. Try it if you are seeking more variety. 50 different varieties of both Cacti and Succulents in a well balanced collection.

CACTUS ASSORTMENT #1

100 plants, ten varieties \$3.50
An economical well balanced collection of sturdy plants that will hold up under adverse conditions. A typical assortment would consist of Cereus hybrids, Echinopsis hybrids, Harrisia hybrid robusta, Opuntia schickendantzii, Opuntia cylindrica, Opuntia monacantha - eared fruits, Opuntia microdasys, Opuntia mamillata, Opuntia vilis and Chamaecereus silvestrii.

CACTUS ASSORTMENT #2

100 plants, 25 varieties \$5.00
This selection will please you. Four plants of each kind giving a variation of size, form and color that mean quick sales.

COMBINATION ASSORTMENT

100 plants, 20 varieties, unlabeled \$3.00
An assortment giving wide range of colorful plants combining a selection of five plants of each kind of ten varieties of Cacti and ten varieties of Succulents. Ideal for planting attractive dish gardens and novelty containers.

SUCCULENT ASSORTMENT

100 rooted plants, 10 varieties \$2.50
Included are Echeverias, Crassulas and Sedums in a colorful array.

GENERAL PRICE LIST

CACTI

	Prices - and	
	No. of Plants	
	(10)	(100)
ASTROPHYTUM myriostigma - 1" seedlings	\$.90	\$7.50
"Bishop's Cap." Beautiful silvery-gray usually five ribbed, spineless. (Pl. 69)		
BISHOP'S CAP - See Astrophytum myriostigma		
BOXING GLOVE - See Opuntia mamillata		
CEREUS hybrid - 3" to 3½" seedlings40	3.50
CEREUS hybrid - 4" to 5" seedlings60	5.00
One of the most popular plants for dish gardens. Erect dark green, truly cactoid in appearance.		
CHAMAEcereus silvestrii - 1½" to 2" with many small branches	.40	3.50
"Peanut Cactus." Small, round, silvery green branches about the size of a peanut. (Pl. 38)		
CLEISTOCACTUS baumanii - 2½" seedlings40	3.50
Small, columnar plants with attractive yellow spines.		
ECHINOPSIS hybrids - 1" seedlings40	3.50
Attractive, dark green, globular plants.		
HARRISIA eriophora - 2" to 2½" seedlings35	3.00
Sturdy columnar type.		
HARRISIA hybrid robusta - 2½" to 3" seedlings40	3.50
Slender curved plants of unusual dark maroon color. Especially recommended for "Tails."		
MAMMILLARIA bocasana - 1" seedlings60	5.00
Entire plant covered with fine silky white hair, very popular plant.		
MAMMILLARIA compressa - 1" seedlings60	5.00
Stiff, flattened, white spines. (Fig. Pg. 43)		
MAMMILLARIA elongata - 1" seedlings60	5.00
Bright yellow spines. (Pl. 100)		
MAMMILLARIA pringlei - 1" to 1½" seedlings60	5.00
Very popular neat plant with recurved golden spines.		
MAMMILLARIA nigra - 1" to 1½"60	5.00
Olive green plant body, dark spines on prominent tubercles.		
MONVILLEA diffusa - 2½" 3½" seedlings40	3.50
One of the best plants for "Tails" in novelty animal pots. Dark green with light soft spines.		
MYRTILLOCACTUS geometrizzans - 2½" seedlings60	----
Beautiful light blue, columnar type, usually five ribbed; a clean, colorful plant.		
NYCTOCEREUS serpentinus - 5" to 7" rooted cuttings90	7.50
Well known type of "Night Blooming Cereus." Recommended for dish gardens. (Fig. 113)		

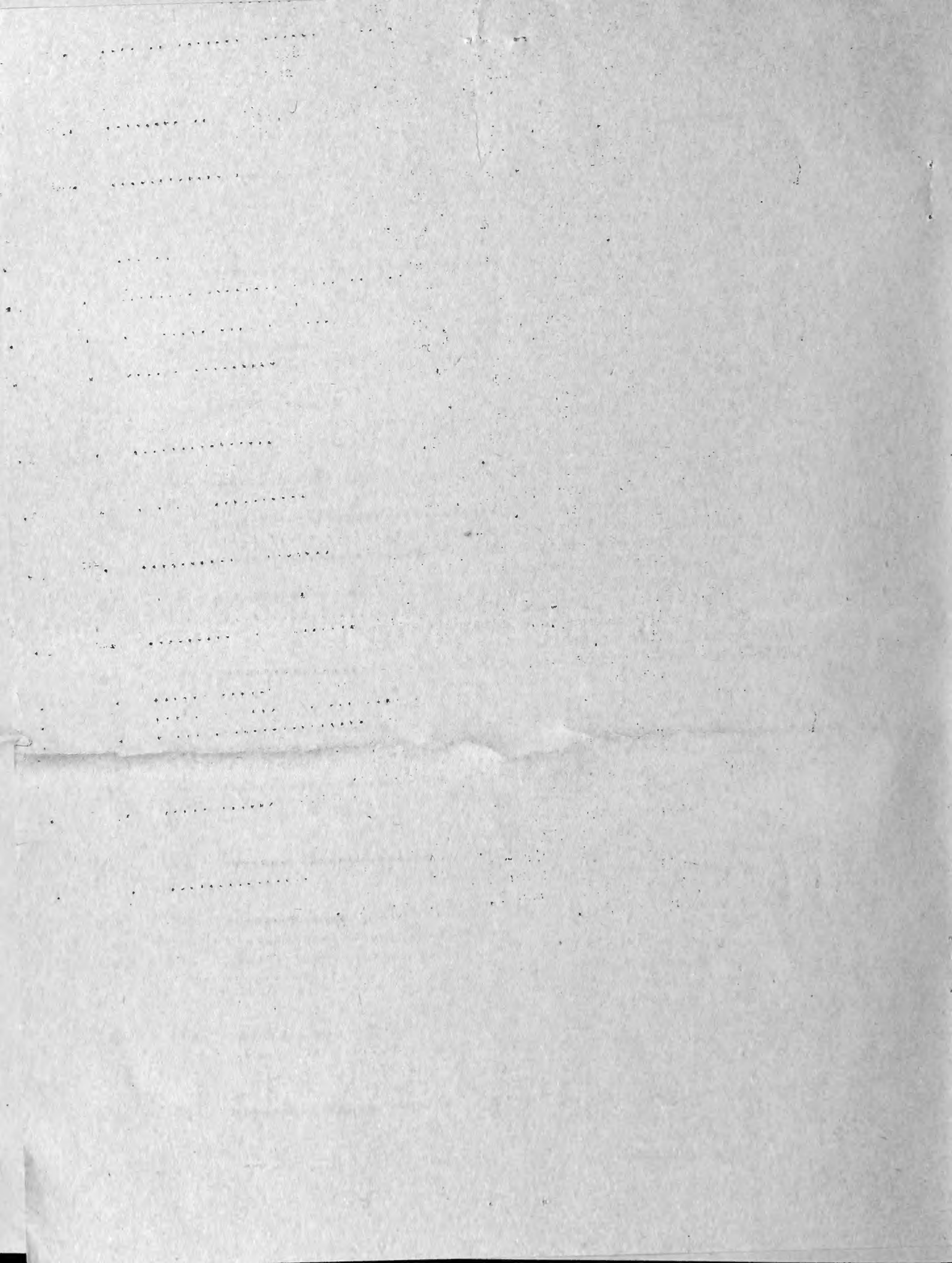
	Prices - and	
	No. of	Plants
	(10)	(100)
OPUNTIA cylindrica - 2½" rooted cuttings40	3.50
Bright green, almost smooth, short widely spaced spines.		
OPUNTIA elata var. <i>oblongata</i> - 2½" rooted cuttings40	3.50
Smooth, shiny, dark green, oblong, spineless.		
OPUNTIA mamillata - 2" rooted cuttings40	3.50
"Boxing Glove." Dark, brown, monstrose, club-like stems.		
OPUNTIA microdasys - 2" rooted cuttings40	3.50
Small, flat stems dotted with yellow clusters of small spinelets. Very popular. (Pl. 17)		
OPUNTIA monacantha - eared fruit40	3.50
These are exceptionally fine plants. Bright green pads with four or more flat branches or "ears."		
OPUNTIA schickendantzii - 2½" to 3" rooted cuttings40	3.50
Narrow tapering joints, light yellow-green, short spines.		
OPUNTIA vilis - 2½" to 3" well branched plants40	3.50
Cylindrical trunk; branched like a small tree.		
PEANUT CACTUS - See <i>Chamaecereus silvestrii</i>		
PILOCEREUS palmeri - 2" seedlings60	5.00
White, wooly plant of columnar growth.		

SUCCULENTS

NOTE: Reference numbers in parentheses refer to illustrations in "SUCCULENTS FOR THE AMATEUR."

AEONIUM haworthii - 2½" rooted cuttings30	2.50
Large rosette type with red edged leaves. (Fig. 206)		
AFRICAN LIVING ROCK - See <i>Pleiospilos noli</i>		
AGAVE forox - 3" to 4" seedlings35	3.00
Long tapered blue gray leaves in loose rosettes.		
AGAVE sisalana - 2½" to 3" plants35	3.00
AGAVE sisalana - 8" to 10" plants75	6.00
Beautifully formed rosettes of flexible tapered leaves.		
ALOE africana - 2½" seedlings40	3.50
Beautiful tree like plants with yellow teeth on the margin of light green leaves.		
ALOE brevifolia - 2½" rooted cuttings50	4.00
Small species with short, thick, gray leaves; grows easily, recommended for dish gardens. (Fig. Pl. 63)		

	Prices - and	
	No. of	Plants
	(10)	(100)
ALOE humvir - 2½" to 3" rooted cuttings60	\$5.00
Erect growth in rosette form. Leaves about ¼" across and almost round. Light green color. This plant is distinct because of the wiry, hard texture of its cylindrical bright green leaves.		
CORN COB CACTUS - See Euphorbia submammillaris		
CRASSULA albiflora - 2" to 2½"35	3.00
Dark green, oblong leaves deeply edged with intense dark red. One of the most colorful of all Succulents.		
CRASSULA arborescens - 3" branched rooted cuttings35	3.00
Round, thick shiny green leaves edged with red. (Fig. 151)		
CRASSULA imperialis - 2" to 2½" branched plants40	3.50
Similar to C. lycopodioides except the stems are twice as thick and the plant branches more freely.		
CRASSULA lycopodioides - 2½" to 3" well branched plants35	3.00
(Pl. 40)		
CRASSULA orbiculata - 2" to 2½"40	3.50
Flat rosettes of bright green leaves.		
CRASSULA perforata - 3" rooted cuttings40	3.50
"Rosary Plant." (Fig. 5)		
CRASSULA tetragona - 3" to 4" rooted cuttings30	2.50
Grows into symmetrical, miniature branched tree with conical green leaves in four cornered arrangements.		
ECHEVERIA perbella hybrid - 2" rooted cuttings35	3.00
Grows exceptionally well. Very firm, light green leaves.		
ECHEVERIA pulv-oliver - 2" rooted cuttings35	3.00
Long, tapered, felted, flexible leaves tipped with red.		
ECHEVERIA set-oliver - 2" rooted cuttings35	3.00
Very attractive plant. Similar to E. setosa except the leaves are longer, thinner and tipped with red.		
ECHEVERIA simulans - 2" rooted cuttings40	3.50
Light yellow-green, thick leaves tinged with red.		
EUPHORBIA hermentiana - 4" to 5" rooted cuttings60	5.00
EUPHORBIA hermentiana - 6" plants75	6.00
EUPHORBIA hermentiana - 7" to 8" plants90	7.50
Three-angled, columnar plants with marbled surface and ornamented with small rows of leaves on the angles.		
EUPHORBIA pfersdorffii - 1½" to 2" branched plants75	6.00
Small round bright green branches, clusters freely making the plant resemble a small compact tree.		
EUPHORBIA sub-mammillaris - 2" rooted cuttings40	3.50
Called the "Corn Cob Cactus" because it looks like a small, green corn cob. Very popular.		



	Prices - and	
	No. of Plants	
	(10)	(100)
FAUCARIA tigrina - 1½" to 2" seedlings35	3.00
"Tiger's Jaw." Leaves marbled gray-green with white teeth.		
FAUCARIA tuberculosa - 1½" to 2" seedlings35	3.00
Wide brown leaves thickly covered with large tubercles, white dot in center, with teeth on ridges. (Fig. 93)		
KALANCHOE pilosa - 2½" to 3" plants75	6.00
(Syn. tomentosa) "Plush Plant." Attractive wide thickly felted leaves, scalloped tips marked with distinct brown spots. These unusual characteristics sell this plant on sight. (Fig. 185)		
PACHYVERIA hybrid orpetii - 2" to 3" rooted cuttings40	3.50
Oblong, rounded, bluish leaves overlaid with white powder.		
PLEIOSPILOS bolusii - 1½" to 2"60	5.00
Imitates pieces of granite; always excites curiosity. (Fig. 25)		
PLEIOSPILOS nelii - 1" to 1½" seedlings60	5.00
"African Living Rock." Leaves nearly round, roddish brown in color.		
PLEIOSPILOS simulans - 1½" to 2"60	5.00
Similar to P. bolusii, but the thick leaves are flat on top, triangular below.		
PLUSH PLANT - See Kalanchoe pilosa		
PORTULACARIA afra - 3" to 4" rooted cuttings35	3.00
Small, shiny leaves on reddish stems, branching like a small tree. (Fig. 264)		
PORTULACARIA afra variegata - 2½" plants60	5.00
Small, compact bushy plant. Stems red; leaves round, waxy yellow edged with brick red. Grows easily and holds up well.		
PUYA chilensis - 3" seedlings50	4.00
PUYA chilensis - 5" to 6" plants75	6.00
Striking plant of the pineapple family, leaves very thin, light green on upper side, silvery gray underneath.		
ROSARY PLANT - See Crassula perforata		
SEDUM adolphii - 3" rooted cuttings30	2.50
Colorful, waxy, yellow, thick, oblong leaves. (Fig. 51)		
SEDUM guatemalense - branched rooted cuttings25	2.00
Stems, densely covered with berry like leaves, shiny green tinged red. (Fig. 195-A)		
SEDUM pachyphyllum - well rooted cuttings25	2.00
Similar to S. guatemalense but leaves are cylindrical light gray tipped pink to red. (Fig. 195)		
SEMPERVIVUM calcarum - 2" rooted cuttings35	3.00
Elegant, small, rosette plant with numerous short broad, gray leaves sharply tipped with dull crimson. (Fig. 213)		
TIGER JAW - See Faucaria tigrina		

Return Postage Guaranteed By:

ALBERT AROZENA NURSERY
1518 EAST ROSECRANS AVE.,
COMPTON, CALIFORNIA



LIBRARY
U. S. DEPARTMENT OF AGRICULTURE,
WASHINGTON 25,
D. C.

IN RULE CO.