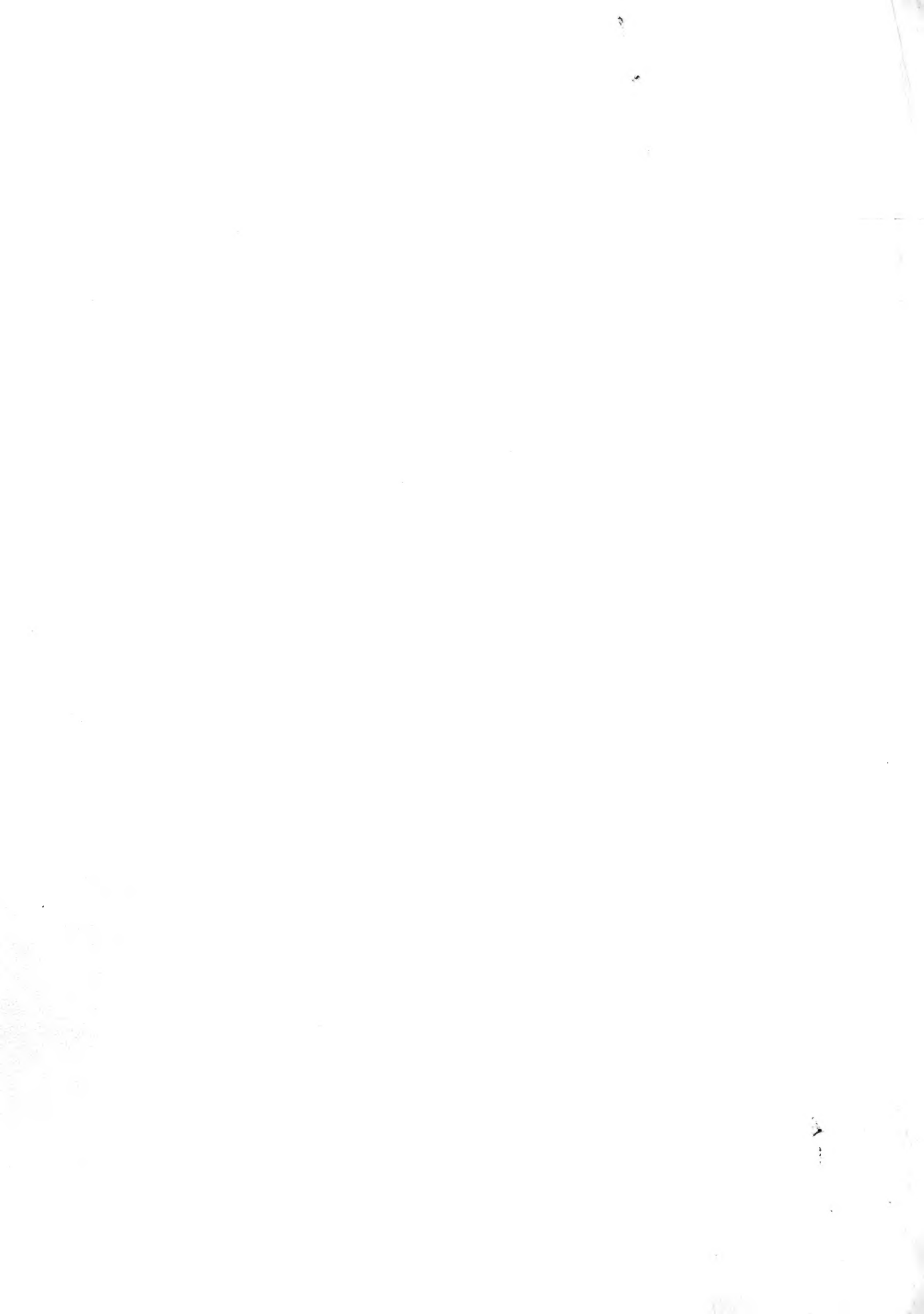


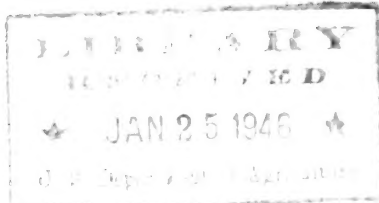
Historic, archived document

Do not assume content reflects current scientific knowledge, policies, or practices.



9

WHOLESALE GROWERS OF CACTI AND SUCCULENTS



ALBERT AROZENA NURSERY
1518 EAST ROSECRANS AVE.,
COMPTON CALIFORNIA

JANUARY - 1946

PRICE LIST

FEBRUARY - 1946

SALES CONDITIONS: Prices include packing but not transportation costs. Quantities quoted are minimum at these prices. This list is complete as to the stock available at present and supersedes and cancels all previous lists. Cash should accompany all orders unless goods are shipped C.O.D. or unless credit has already been established. 2% discount will be allowed for cash with orders. All material is offered subject to the prior sale of stock on hand.

SUCCULENT ASSORTMENT

100 rooted plants, 10 varieties - \$2.50
Includes Echeveria, Crassulas and
Sedums in a colorful array.

CACTUS ASSORTMENT #1

100 plants, ten varieties \$3.50
An economical well balanced collection of sturdy plants that will hold up under adverse conditions. A typical assortment would consist of Cereus hybrids, Echinopsis hybrids, Harrisia hybrid robusta, Opuntia schickendantzii, Opuntia cylindrica, Opuntia monacantha eared fruits, Opuntia microdasys, Opuntia mamillata, Opuntia vilis & Chamaecereus silvestrii.

CACTUS ASSORTMENT #2

100 plants, 25 varieties \$5.00
We have had many requests for an assortment of this kind and know that this selection will please you. Four plants of each kind giving a variation of size form and color that means quick sales.

ECHEVERIA ASSORTMENT

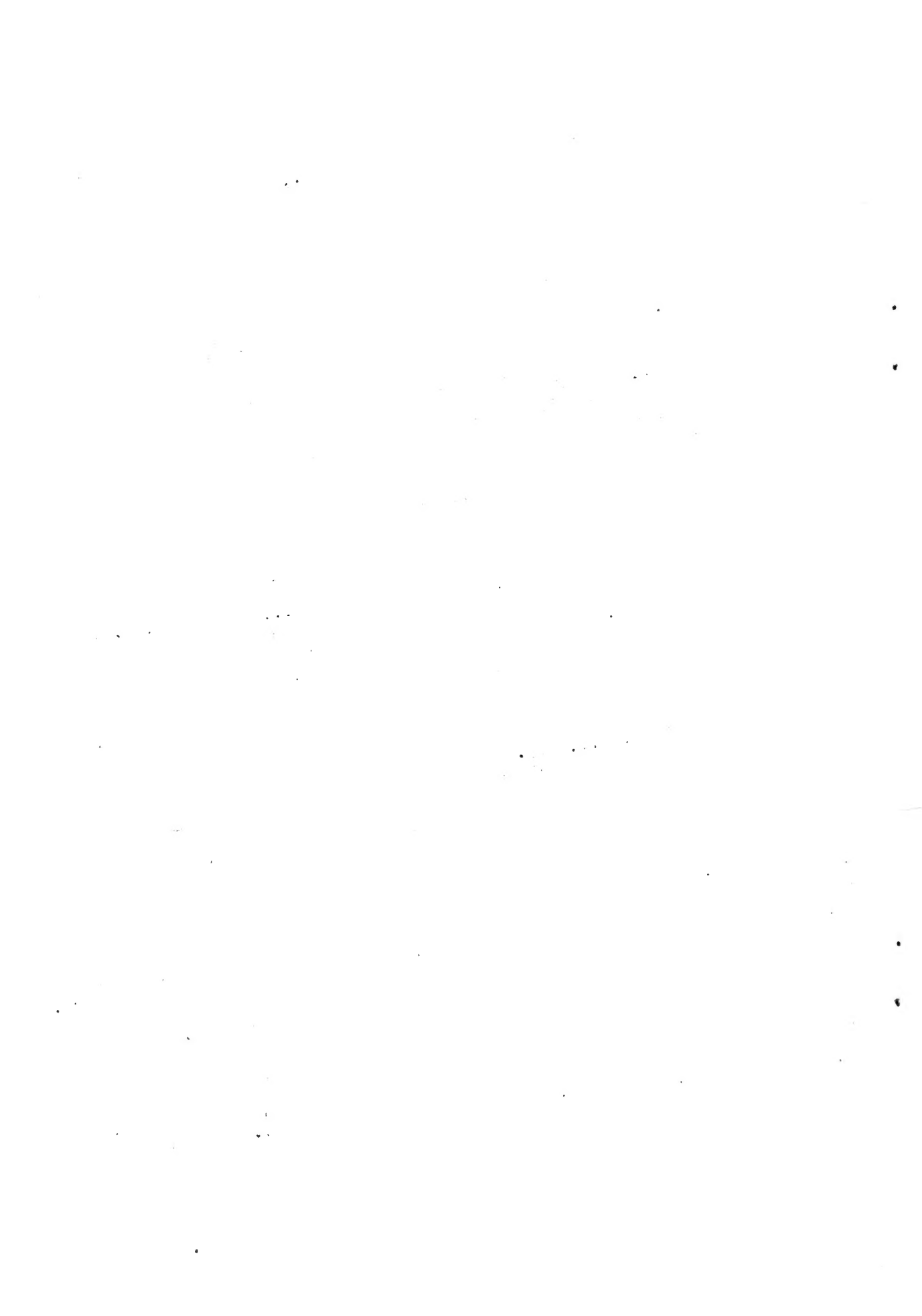
100 plants \$3.00
Echeverias are among the most colorful of all Succulents and have a great many fanciers. This collection contains at least ten varieties of well rooted plants from 2" to 2½" in size.

COMBINATION ASSORTMENT

100 plants, 20 varieties, unlabeled \$3.00
An assortment giving wide range of colorful plants, combining a selection of five plants of each kind of 10 varieties of Cacti and 10 varieties of Succulents. Ideal for planting attractive dish gardens and novelty containers.

ALL-IN-ONE ASSORTMENT

100 plants, unlabeled, 50 varieties, two of each kind \$5.00
This assortment continues to be our most popular assortment. Try it if you are seeking more variety. 50 different varieties of both Cacti and Succulents in a well balanced collection.

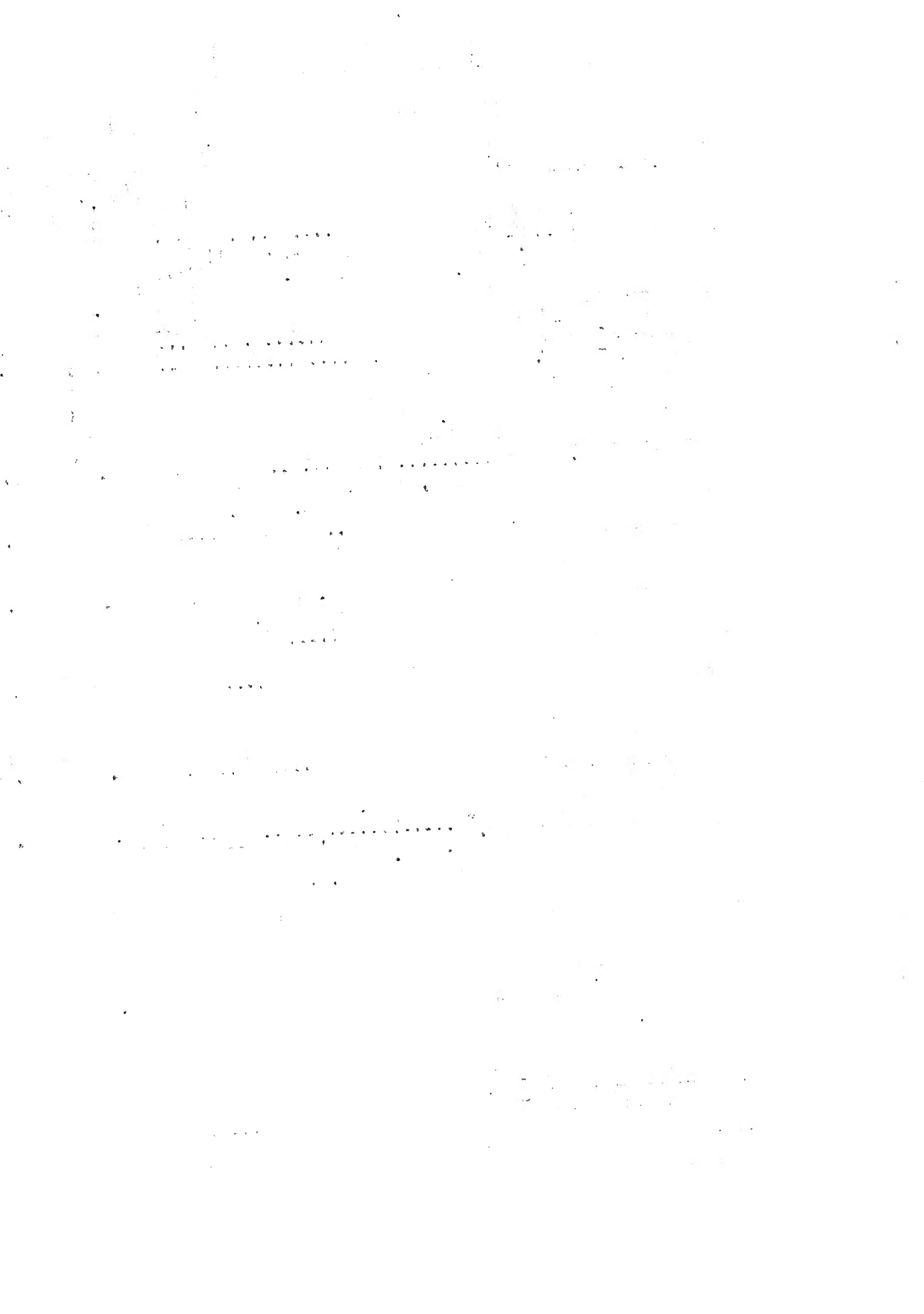


GENERAL PRICE LIST

CACTI

NOTE: Reference numbers in parentheses refer to illustrations in "Cacti For The Amateur."

	Prices - and	
	No. of Plants	
	(10)	(100)
<u>ASTROPHYTUM myriostigma</u> - 1" seedlings	\$.90	\$ 7.50
"Bishop's Cap." Beautiful silvery-gray usually five ribbed, spineless. (Pl. 69)		
<u>BISHOP'S CAP</u> - See <u>Astrophytum myriostigma</u>		
<u>BOXING GLOVE</u> - See <u>Opuntia mamillata</u>		
<u>CEREUS hybrid</u> - 2½" to 3½" seedlings40	3.50
<u>CEREUS hybrid</u> - 4" to 5" seedlings60	5.00
One of the most popular plants for dish gardens. Erect dark green, truly cactoid in appearance.		
<u>CHAMAECEREUS silvestrii</u> - 1½" rooted cuttings with small branches35	3.00
"Peanut Cactus." Small, round, silvery green branches about the size of a peanut. (Pl. 38)		
<u>CLEISTOCACTUS baumanii</u> - 2½" seedlings40	3.50
Small, columnar plants with attractive yellow spines.		
<u>ECHINOPSIS hybrids</u> - 1" to 1½" seedlings40	3.50
Attractive, dark green, globular plants.		
<u>HARRISIA eriophora</u> - 2" seedlings35	3.00
Sturdy columnar type.		
<u>HARRISIA hybrid robusta</u> - 2" to 3" seedlings40	3.50
Slender curved plants of unusual dark maroon color. Especially recommended for "Tails."		
<u>MAMMILLARIA bocasana</u> - 1" to 1½" seedlings60	5.00
Entire plant covered with fine silky white hair, very popular plant.		
<u>MAMMILLARIA nigra</u> - 1" to 1½"60	5.00
Olive green plant body, dark spines on prominent tubercles. Grows easily, mature plants flower freely.		
<u>MONVILLEA diffusa</u> - 2½" to 3½" seedlings40	3.50
One of the best plants for "Tails" in novelty animal pots. Dark green with light soft spines.		
<u>MYRTILLOCACTUS geometrizans</u> - 2½" seedlings60	5.00
Beautiful, light blue, columnar type, usually five ribbed; a clean, colorful plant.		
<u>NYCTOCERUS serpentinus</u> - 3" to 4" rooted cuttings60	5.00
<u>NYCTOCERUS serpentinus</u> - 5" to 7" rooted cuttings90	7.50
Well known type of "Night Blooming Cereus." Recommended for dish gardens. (Fig. 113)		
<u>OPUNTIA cylindrica</u> - 2½" to 3" rooted cuttings40	3.50
Bright green, almost smooth, short widely spaced spines.		



	Prices - and	
	No. of Plants	
	(10)	(100)
<u>OPUNTIA elata var. oblongata</u> - 2½" rooted cuttings40	3.50
Smooth, shiny, dark green, oblong, spineless.		
<u>OPUNTIA mamillata</u> - 2½" to 3" rooted cuttings40	3.50
"Boxing Glove." Dark, brown, monstrose, club-like stems.		
<u>OPUNTIA microdasys</u> - 2" to 2½" rooted cuttings40	3.50
Small, flat stems dotted with yellow clusters of small spinelets. Very popular. (Pl. 17)		
<u>OPUNTIA monacantha</u> - 2" to 3" rooted cuttings40	3.50
Spineless, bright green, thin stems.		
<u>OPUNTIA monacantha</u> - eared fruit40	3.50
These are exceptionally fine plants. Bright green pads with four or more flat branches or "ears."		
<u>OPUNTIA schickendantzii</u> - 2½" to 3½" branched plants40	3.50
Narrow tapering joints, light yellow- green, short spines.		
<u>OPUNTIA vilis</u> - 2½" well branched plants40	3.50
Cylindrical trunk; branched like a small tree.		
<u>PEANUT CACTUS</u> - See <i>Chamaecereus silvestrii</i>		

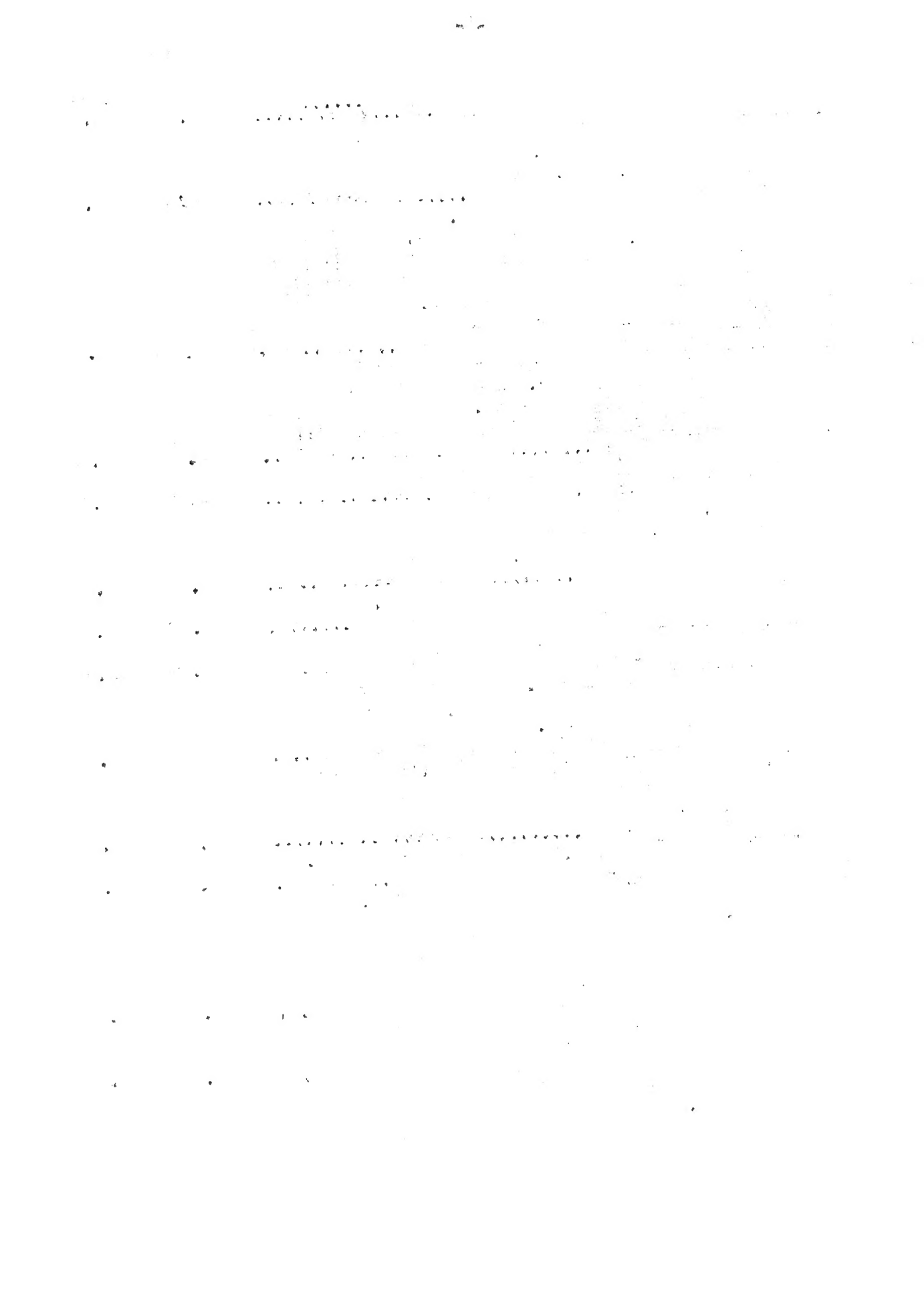
SUCCULENTS

NOTE: Reference numbers in parentheses refer to illustration in
"Succulents For The Amateur."

<u>AEONIUM haworthii</u> - 2½" to 3" rooted cuttings30	2.50
Large rosette type with red edged leaves. (Fig. 206)		
<u>AFRICAN LIVING ROCK</u> - See <i>Pleiospilos nelii</i>		
<u>AGAVE ferox</u> - 3" to 4" seedlings35	3.00
Long tapered blue gray leaves in loose rosettes.		
<u>AGAVE sisalana</u> - 2" to 3" plants35	3.00
<u>AGAVE sisalana</u> - 6" to 8" plants60	5.00
Beautifully formed rosettes of soft flexible tapered leaves.		
<u>ALOE africana</u> - 2½" seedlings40	3.50
<u>ALOE africana</u> - 4" seedlings60	5.00
Beautiful tree like plants with yellow teeth on the margin of light green leaves.		
<u>ALOE aristata</u> - 2" to 2½" plants90	7.50
Very thin tapering leaves of dark green, generously sprinkled with white dots. A compact rosette of delicate beauty. (Fig. 239)		



	Prices - and	
	No. of Plants	
	(10)	(100)
<u>ALOE brevifolia</u> - 2" rooted cuttings50	4.00
Small species with short, thick, gray leaves; grows easily, recommended for dish gardens. (Pl. 63).		
<u>ALOE humvir</u> - 2½" rooted cuttings50	4.00
Erect growth in rosette form. Leaves about ¼" across and almost round. Light green color. This plant is distinct because of the wiry, hard texture of it's cylindrical bright green leaves.		
<u>CORN COB CACTUS</u> - See Euphorbia submamillaris		
<u>CRASSULA albiflora</u> - 2½" rooted cuttings35	3.00
Dark green, oblong leaves deeply edged with intense dark red. One of the most colorful of all Succulents.		
<u>CRASSULA arborescens</u> - 4" to 5" rooted cuttings in prime condition35	3.00
<u>CRASSULA arborescens</u> - 6" to 7" heavily branched field grown75	6.00
Round, thick shiny green leaves edged with red. (Fig. 151) Samples sent on request.		
<u>CRASSULA orbiculata</u> - 2"40	3.50
Flat rosettes of bright green leaves.		
<u>CRASSULA perforata</u> - 2" to 3" rooted cuttings40	3.50
"Rosary Plant." (Fig. 5)		
<u>CRASSULA tetragona</u> - 3" to 4" rooted cuttings30	2.50
Grows into symmetrical, miniature branched tree with conical green leaves in four cornered arrangements.		
<u>ECHEVERIA derenbergii</u> - 1½" to 2" rooted cuttings60	5.00
Compact, silvery white with a small point of red on the tip of each leaf. (Fig. Pl. 43)		
<u>ECHEVERIA micrantha</u> - 2"40	3.50
Bright green leaves, edged with dark maroon.		
<u>ECHEVERIA multicaulis</u> - 2" rooted cuttings60	5.00
Leaves almost round, reddish, metallic. (Fig. 162)		
<u>ECHEVERIA perbella hybrid</u> - 2" to 3" rooted cuttings .	.35	3.00
Grows exceptionally well. Very firm, light green leaves.		
<u>ECHEVERIA pulv-oliver</u> - 2" to 2½" rooted cuttings35	3.00
Long, tapered, felted, flexible leaves tipped with red.		
<u>ECHEVERIA simulans</u> - 2" to 3" rooted cuttings40	3.50
Light yellow-green, thick leaves tinged with red.		



	Prices - and	
	No. of Plants	
	(10)	(100)
<u>EUPHORBIA hermentiana</u> - 4" to 5"60	5.00
<u>EUPHORBIA hermentiana</u> - 6" rooted cuttings75	6.00
<u>EUPHORBIA hermentiana</u> - 6" to 8" branched plants	1.25	10.00
Three-angled, columnar plant with marbled surface and ornamented with small rows of leaves on the angles.		
<u>EUPHORBIA sub-mammillaris</u> - 1½" to 2" rooted cuttings ..	.40	3.50
Called the "Corn Cob Cactus" because it looks like a small, green corn cob. Very popular.		
<u>FAUCARIA tigrina</u> - 1½" to 2" seedlings35	3.00
"Tiger's Jaw." Leaves marbled gray-green with white teeth.		
<u>FAUCARIA tuberculosa</u> - 1½" to 2" seedlings35	3.00
Wide brown leaves thickly covered with large tubercles, white dot in center, with teeth on ridges. (Fig. 93)		
<u>KALANCHOE pilosa</u> - 2" to 2½" plants75	6.00
(Syn. tomentosa) "Plush Plant." Attractive wide thickly felted leaves, scalloped tips marked with distinct brown spots. These unusual characteristics sell this plant on sight. (Fig. 185)		
<u>KALANCHOE somaliensis</u> - rooted cuttings35	3.00
Scalloped leaves, light-green shading to orange near the edges.		
<u>PACHYHYTUM compactum</u> - 1"35	3.00
Close-set, cylindrical, blue gray leaves with silvery white markings give the plant an angled effect. (Fig. 174)		
<u>PACHYVERIA orpetii</u> - 2" rooted cuttings40	3.50
Oblong, rounded, bluish leaves overlaid with white powder.		
<u>PLEIOSPILOS bolusii</u> - 1½" to 2"60	5.00
Imitates pieces of granite; always excites curiosity. (Fig. 25)		
<u>PLEIOSPILOS nelii</u> - 1" to 1½" seedlings60	5.00
"African Living Rock." Leaves nearly round, reddish brown in color.		
<u>PLEIOSPILOS simulans</u> - 1½" to 2"60	5.00
Similar to P. Bolusii, but the thick leaves are flat on top, triangular below.		
<u>PLUSH PLANT</u> - See Kalanchoe pilosa		
<u>PORTULACARIA afra</u> - 3" to 4" rooted cuttings30	2.50
<u>PORTULACARIA afra</u> - 6" to 8" rooted cuttings50	4.00
Small, shiny leaves on reddish stems, branching like a small tree. (Fig. 264)		
<u>PUYA chilensis</u> - 3" seedlings50	4.00
<u>PUYA chilensis</u> - 5" to 6" plants75	6.00
Striking plant of the pineapple family, leaves very thin, light green on upper side, silvery gray underneath.		

[The page contains extremely faint and illegible text, likely bleed-through from the reverse side of the document. The text is arranged in approximately 15 horizontal lines across the page, but the characters are too light to be transcribed accurately.]

Prices - and
No. of Plants
(10) (100)

ROSARY PLANT - See <i>Crassula perforata</i>		
<u>SEDUM adolphii</u> - 2½" rooted cuttings30	2.50
Colorful, waxy, yellow, thick, oblong leaves. (Fig. 51)		
<u>SEDUM guatemalense</u> - branched rooted cuttings25	2.00
Stems, densely covered with berry like leaves, shiny green tinged red. (Fig. 195-A)		
<u>SEDUM pachyphyllum</u> - well rooted cuttings25	2.00
Similar to <i>S. guatemalense</i> but leaves are cylindrical light gray tipped pink to red. (Fig. 195)		
<u>SEDUM winkleri</u> - 2" branched plants30	2.50
Small, light green rosette. Fig. 196		
<u>SEMPERVIVUM calcareum</u> - 2" rooted cuttings35	3.00
Elegant, small, rosette plant with numerous short broad, gray leaves sharply tipped with dull crimson. (Fig. 213)		
<u>TIGER JAW</u> - See <i>Faucaria tigrina</i>		

* * * * *

*
*
*
*

BOOKS EVERY DEALER SHOULD HAVE

* CACTI FOR THE AMATEUR - Paper \$1.00, Board \$1.50 - retail *

* SUCCULENTS FOR THE AMATEUR - Paper \$1.50, Cloth \$2.00 " *

* CACTI AND SUCCULENTS AND HOW TO GROW THEM - 25¢ *

* These books are profusely illustrated with photographic re-
* productions, also color plates, showing a large number of
* the plants we list. These illustrations will assist you in
* selecting stock and in interesting your customer. Copies
* for resale can be obtained at liberal dealers' discounts
* from the publisher,
*

* ABBEY PRESS, BOX 101, PASADENA, CALIFORNIA. *

* * * * *

ALBERT AROZENA NURSERY, 1518 EAST ROSECRANS AVE., COMPTON, CALIFORNIA.

Return Postage Guaranteed by:

ALBERT AROZENA NURSERY
1518 EAST ROSECRANS AVE.,
COMPTON CALIFORNIA.



LIBRARY,
U. S. DEPARTMENT OF AGRICULTURE,
WASHINGTON, 25
D. C.