

Historic, archived document

Do not assume content reflects current scientific knowledge, policies, or practices.



O
V
E
M
B
E
R

WHOLESALE GROWERS OF
CACTI & SUCCULENTS

ALBERT AROZENA NURSERY
1518 E. ROSECRANS AVE.
COMPTON CALIFORNIA

1
9
4
6

o o o o	NOTE: Because of the increased cost of production we are forced to in- crease the price of some items and Assortments. We know that you will understand that this slight increase is absolutely necessary if we are to continue to supply you with first class plants.	o o o o o o o
---------	---	---------------------

SALES CONDITIONS: Prices include packing but not transportation costs. Quantities quoted are minimum at these prices. This list is complete as to the stock available at present and supersedes and cancels all previous lists. Cash should accompany all orders unless goods are shipped C.O.D. or unless credit has already been established. 2% discount will be allowed for cash with orders. All material is offered subject to the prior sale of stock on hand.

ALL-IN-ONE ASSORTMENT

100 plants, unlabeled, fifty varieties, two of each kind \$5.00
This assortment continues to be our most popular assortment. Try it if you are seeking more variety. Fifty different varieties of both Cacti and Succulents in a well balanced collection.

CACTUS ASSORTMENT #1

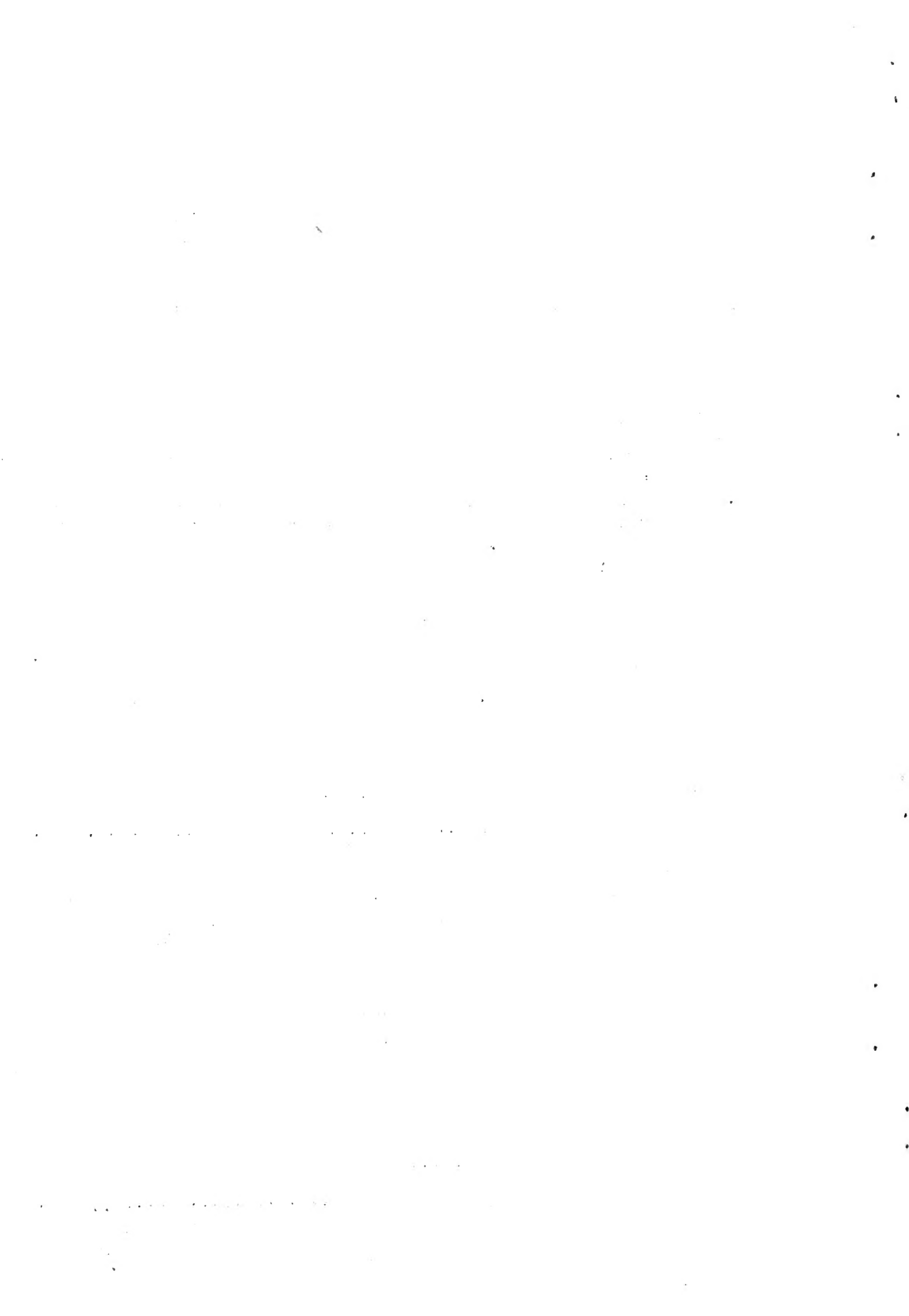
100 plants, ten varieties \$4.00
An economical well balanced collection of sturdy plant that will hold up under almost any conditions. A typical assortment would consist of Echinopsis hybrid, Harrisia eriophora, Monvillea diffusa, Nyctocereus serpentinus, Opuntia cylindrica, Opuntia microdasys, Opuntia elata var. oblongata, Opuntia schickendantzii, Opuntia monacantha fruit, Opuntia vilis.

CACTUS ASSORTMENT #2

100 plants, twenty-five varieties of Cacti only \$5.00
This selection will please you. Four plants of each kind giving a variation of size, form and color that mean quick sales.

COMBINATION ASSORTMENT

100 plants, twenty varieties, unlabeled \$3.50
An assortment giving wide range of colorful plants, combining a selection of five plant of each kind of ten varieties of Cacti and ten varieties of Succulents. Ideal for planting attractive dish gardens and novelty containers.



HAWORTHIA ASSORTMENT

100 unlabeled plants 1" to 2" \$7.50
Haworthias are most desirable and sell readily because of their striking appearance and their ability to stand up under adverse conditions. This assortment is made up of a variety of types, including some of the rarer species.

SUCCULENT ASSORTMENT

100 rooted plants, 10 varieties \$3.00
Includes Echeverias, Crassulas and Sedums in a colorful array.

GENERAL PRICE LIST

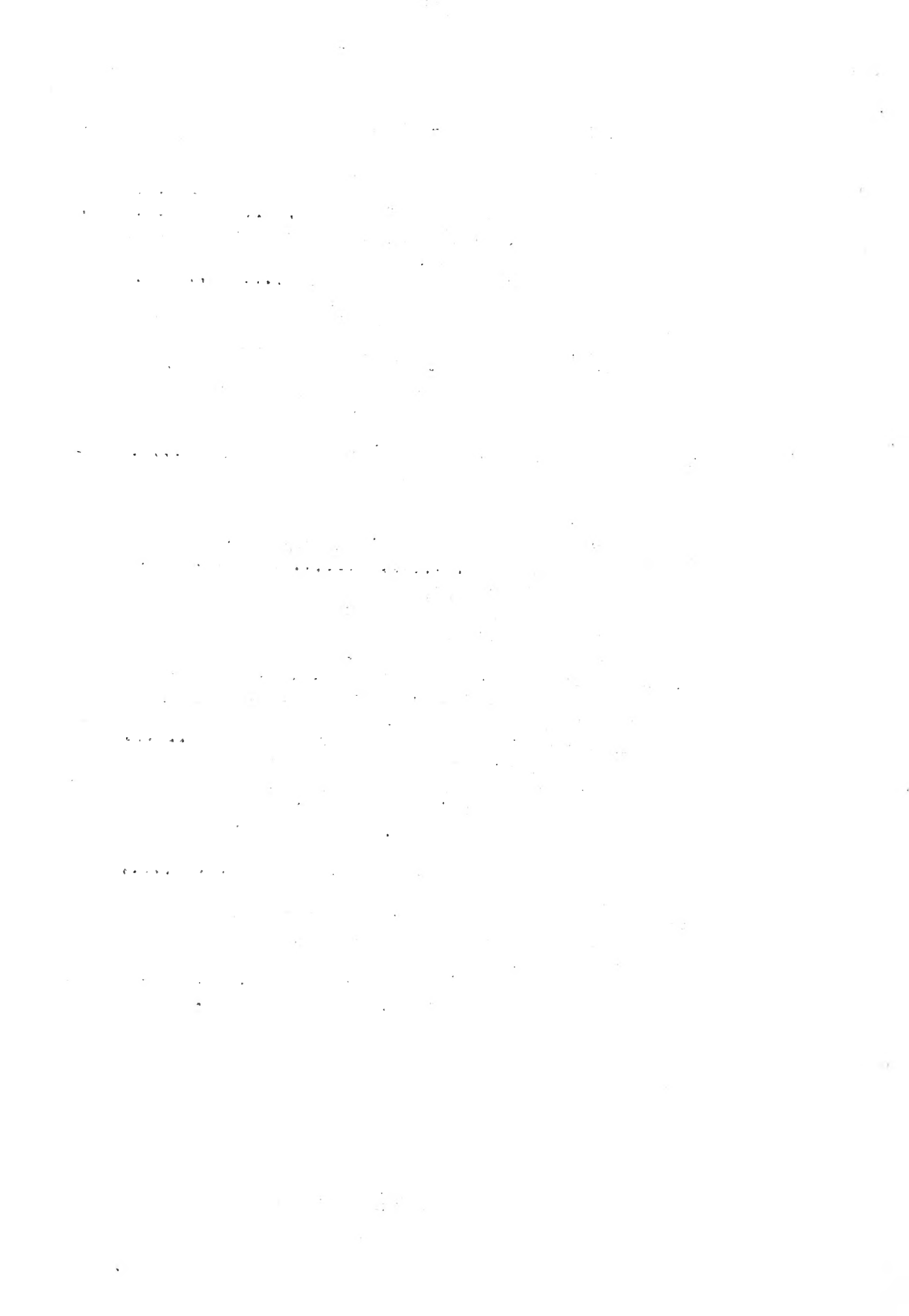
CACTI

NOTE: Reference numbers in parentheses refer to Illustrations in "CACTI FOR THE AMATEUR."

	<u>Prices & Number</u>	
	<u>Of Plants</u>	
	(10)	(100)
ANGELS WINGS - ANGORA BUNNY EARS - See Opuntia microdasys - White spined variety.		
ASTROPHYTUM myriostigma - 1" to 1½" seedlings	\$.90	\$ 7.50
"Bishop's Cap." Beautiful silvery-gray usually five ribbed, spineless. (Pl. 69)		
BISHOP'S CAP - See Astrophytum myriostigma		
CLEISTOCACTUS baumanii - 5" to 6" seedlings60	5.00
Columnar plants with attractive yellow spines.		
HARRISIA eriophora - 3" to 4" seedlings50	4.00
Sturdy columnar type.		
HARRISIA hybrid robusta - 2½" to 3½" seedlings40	3.50
Slender curved plants of unusually dark maroon color. Especially recommended for "Tails."		
MAMMILLARIA bocasana - 1" to 1½" seedlings60	5.00
Entire plant covered with fine silky white hair. Very popular.		
MAMMILLARIA compressa - 1" to 1½" seedlings75	6.00
Stiff, flattened, white spines. (Fig. Pg. 43)		
MAMMILLARIA nigra - 1" to 1½"75	6.00
Olive green plant body, dark spines on prominent tubercles.		
MONVILLEA diffusa - 3"40	3.50
MONVILLEA diffusa - 5" to 6"60	5.00
One of the best plants for "Tails" in novelty animal pots. Dark green with soft light spines.		
NOTOCACTUS mammulosus - 1" seedlings60	5.00
Very attractive plant with short stiff spines on dark red plant body.		

	Prices & Number	
	Of Plants	
	(10)	(100)
NYCTOCEREUS serpentinus - 5" to 6" rooted cuttings "Well known type of Night Blooming Cereus." Recommended for diah gardens. (Fig. 113)	\$.75	\$6.00
OPUNTIA cylindrica - 3" rooted cuttings40	3.50
OPUNTIA cylindrica - 5" to 6" plants60	5.00
Bright green, almost smooth, short widely spaced spines.		
OPUNTIA elata - 3" rooted cuttings50	4.00
Shiny, dark green, spineless.		
OPUNTIA elata var. oblongata - 3" to 4" rooted cuttings	.50	4.00
Smooth, dark green, oblong, spineless.		
OPUNTIA mamillata crest - 3" to 4" in diameter	1.25	----
Actual crests of this popular plant, Not just the ordinary semi-monstrose form.		
OPUNTIA microdasys - 2½" to 3" rooted cuttings50	4.00
Small, flat stems dotted with yellow clusters of small spinelets. Very popular. (Pl. 17)		
OPUNTIA microdasys - White spined variety - 2" rooted cuttings60	5.00
("Angora Bunny Ears, Angel's Wings") A new tiny variety distinct because of the clusters of pure white spines that are soft and harmless.		
OPUNTIA monacantha - eared fruit50	4.00
Bright green pods with three or more flat branches or "ears."		
OPUNTIA monacantha - 3" to 4" rooted cuttings40	3.50
Spineless, bright green, thin stems.		
OPUNTIA schickendantzii - 2½" to 3" rooted cuttings	.40	3.50
OPUNTIA schickendantzii - 4" to 6" rooted cuttings	.60	5.00
Narrow tapering joints, light yellow- green short spines.		
OPUNTIA schickendantzii - eared fruit40	3.50
Two or more "ears."		
OPUNTIA vilis - 2½" well branched rooted cuttings ..	.50	4.00
Cylindrical trunk; branches like a small tree.		
OPUNTIA vulgaris - 2½" rooted cuttings40	3.50
Small, flat dark green, very few spines.		

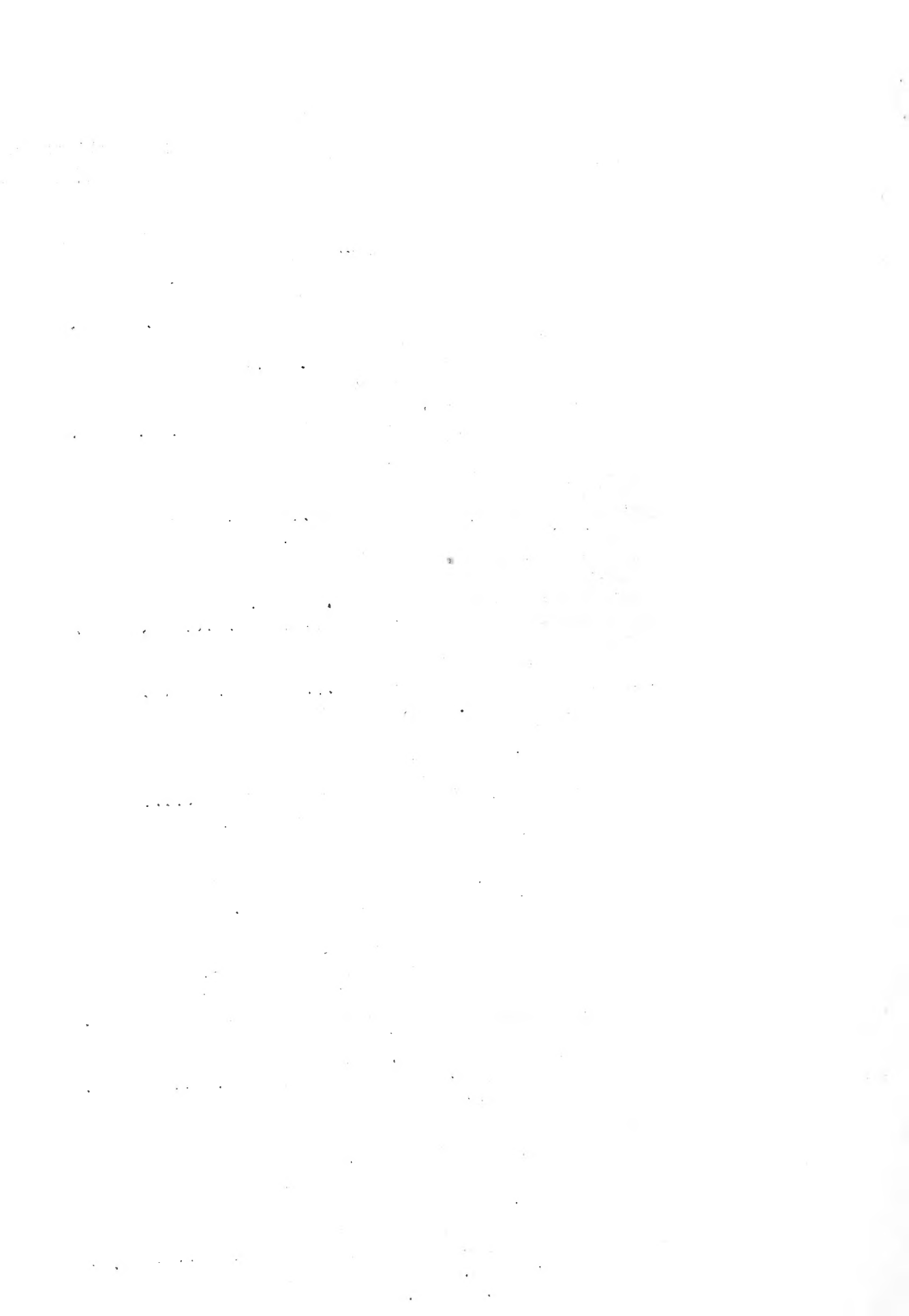
o o o o
o o
o



SUCCULENTS

NOTE: Reference numbers in parentheses refer to illustrations in "SUCCULENTS FOR THE AMATEUR."

	<u>Prices & Number</u>	
	<u>Of Plants</u>	
	(10)	(100)
AEONIUM tournefortii - branched rooted cuttings Small rosettes of gray-green leaves with small brown spots on the under side.	\$.35	\$3.00
AFRICAN LIVING ROCK - See Pleiospilos nelii		
AGAVE attenuata - 4" to 5" seedlings40	3.50
Soft green rosettes.		
AGAVE ferox - 4" to 5" plants40	3.50
Long tapered blue gray leaves in loose rosettes.		
ALOE africana - 2½" to 3½" seedlings50	4.00
Beautiful tree like plant with yellow teeth on the margin of light green leaves.		
ALOE aristata - 2" seedlings90	7.50
Very thin leaves of dark green, generously sprinkled with white dots, tapering to a compact rosette of delicate beauty. (Fig. 239)		
ALOE ferox - 2½" seedlings50	4.00
Dark green leaves lined with reddish brown teeth on the margins.		
ALOE striata - 2½" seedlings50	4.00
Handsome plant. Leaves grayish bordered with red, completely spineless. (Fig. 238)		
BURRO'S TAIL - See Sedum morganianum		
CHEIRIDOPSIS candidissima - 2" seedlings35	3.00
"Elephant Tusks." Beautiful species, small clumps of silvery gray leaves tipped with purple. (Fig. 86)		
CORN COB CACTUS - See Euphorbia sub-mammillaris		
CRASSULA albiflora - 2" to 2½" plants35	3.00
Dark green, oblong leaves deeply edged with intense dark red. One of the most colorful of all Succulents.		
CRASSULA arborescens - 4" to 5" branched rooted cuttings35	3.00
Round, thick, shiny green leaves edged with red. (Fig. 151)		
CRASSULA perforata - 3" rooted cuttings40	3.50
(Rosary Plant.) The thick leaves clasp the slender stems like the beads of a rosary.		
CRASSULA tetragona - 5" to 6" branched plants	.40	3.50
Grows into symmetrical, miniature branched tree with conical green leaves in four cornered arrangements.		
ECHIVERIA elegans - 2" rooted cuttings50	4.00
Very attractive, compact, silvery white rosette. (Fig. 159)		



	Prices & Number	
	(10)	(100)
ECHEVERIA perbella hybrid - 2½" rooted cuttings .. Grows exceptionally well. Very firm light green leaves.	\$.40	\$3.50
ECHEVERIA pulv-oliver - 2½" rooted cuttings35	3.00
Long, tapered, felted, flexible leaves tipped with red.		
ECHEVERIA set-oliver - 2" to 2½" rooted cuttings .	.35	3.00
Very attractive plant. Similar to E. setosa except the leaves are longer, thinner and tipped with red.		
ECHEVERIA simulans - 2½" to 3" rooted cuttings50	4.00
Light yellow-green, thick leaves tinged with red.		
ELEPHANT TUSKS - See Cheiridopsis candidissima		
ELKHORN - See Hereroa dyeri		
EUPHORBIA hermentiana - 4" to 5" rooted cuttings	.60	5.00
EUPHORBIA hermentiana - 6" to 7" plants75	6.00
EUPHORBIA hermentiana - 8" to 12" plants90	7.50
Three-angled, columnar plants with marbled surface and ornamented with small rows of leaves on the angles.		
EUPHORBIA sub-mammillaris - 2½" to 3" plants50	4.00
Very popular. Called the "Corn Cob Cactus," because it looks like a small, green corn cob.		
FAUCARIA tuberculosa - 2" seedlings35	3.00
Wide brown leaves thickly covered with large tubercles, white dot in center, with teeth on the ridges. (Fig. 93)		
GASTROLEA beguinii - 2" to 2½" plants75	6.00
Many white dots on both sides of dark green tapered leaves which form an attractive rosette.		
HEREROA dyeri - 1½" seedlings35	3.00
"Elkhorn." Small plant with curious club-like leaves forming a cluster similar in appearance to the antlers of an elk.		
KALANCHOE pilosa - 2½" plants75	6.00
(Plush Plant. Syn. Tomentosa) Attractive wide thickly felted leaves, scalloped tips marked with distinct brown spots. These unusual characteristics sell this plant on sight. (Fig. 185)		
PACHYVLARIA hybrid orpetii - 2½" to 3½" rooted cuttings.	.50	4.00
Oblong, rounded, bluish leaves overlaid with white powder.		
PLEIOSPILOS bolusii - 1½" to 2"60	5.00
Imitates pieces of granite; always excites curiosity. (Fig. 25)		

	Prices & Number	
	Of (10)	Plants (100)
PLEIOSPILOS nelii - 1" to 1½" seedlings	\$.60	\$5.00
"African Living Rock." Leaves nearly round, reddish brown in color.		
PLEIOSPILOS simulans - 1½" to 2"60	5.00
Similar to P. bolusii, but the thick leaves are flat on the top, triangular below.		
PLUSH PLANT - See Kalanchoe pilosa		
PORTULACARIA afra variegata - 2" plants60	5.00
Small, compact plant. Stems red; leaves round, waxy yellow edged with brick red. Grows easily and holds up well.		
PUYA chilensis - 6" to 7" plants60	5.00
Striking plant of the pineapple family, leaves very thin, light green on upper side, silvery gray underneath.		
ROSARY PLANT - See Crassula perforata		
SEDUM adolphii - rooted cuttings35	3.00
Colorful, waxy, yellow, thick oblong leaves. (Fig. 51)		
SEDUM guatemalense - rooted cuttings30	2.50
Stems, densely covered with berry-like leaves, shiny green tinged red. (Fig. 195-A)		
SEDUM morganianum - 2" to 3" rooted cuttings75	----
"Burro's Tail." Amber white, compact, round, oblongated leaves, much in demand.		
SEDUM pachyphyllum - well rooted cuttings30	2.50
Similar to S. guatemalense but leaves are cylindrical light gray tipped pink to red. (Fig. 195)		
SEDUM prealtum crest - 2½" rooted cuttings40	3.50
Unusual flattened stems of "Cockcomb" formation. Leaves small, light yellow-green. (Fig. 194)		
SEDUM treleasei - rooted cuttings35	3.00
A very attractive, chalky white plant forming small rosettes. (Fig. 195)		
SEDUM winkleri - branched rooted cuttings35	3.00
Small, light green rosette. (Fig. 196)		
SEMPERVIVUM calcareum - 1½" to 2" rooted cuttings	.35	3.00
Elegant, small, rosette plant with numerous short broad, gray leaves, sharply tipped with dull crimson. (Fig. 213)		
STOMATIUM fulleri - 1" to 1½" seedlings35	3.00
Round pebble-like, pale green leaves in close rosette. Something different. (Fig. 105)		

NOVEMBER - 1946 Price List

NOVEMBER 1946

ALBERT AROZENA NURSERY
1518 E. ROSECRANS AVE.
COMPTON CALIFORNIA

Wholesale Growers Of
Cacti and Succulents

Return Postage Guaranteed



LIBRARY,

U. S. DEPARTMENT OF AGRICULTURE,
WASHINGTON 25, D. C.