

Historic, archived document

Do not assume content reflects current scientific knowledge, policies, or practices.



WHOLESALE GROWERS OF CACTI AND SUCCULENTS

ALBERT AROZENA NURSERY
1518 EAST ROSECRANS AVENUE
COIPTON CALIFORNIA

SALES CONDITIONS: Prices include packing but not transportation costs. Quantities quoted are minimum at these prices. This list is complete as to the stock available at present and supersedes and cancels all previous lists. Cash should accompany all orders unless goods are shipped C.O.D. or unless credit has already been established. 2% discount will be allowed for cash with orders. All material is offered subject to the prior sale of stock on hand.

ALL-IN-ONE ASSORTMENT

100 plants, unlabeled, 50 varieties, 2 of each kind \$5.00
This assortment continues to be our most popular assortment. Try it if you are seeking more variety. Fifty different varieties of both Cacti & Succulents in a well balanced collection.

CACTUS ASSORTMENT #1

100 plants, 10 varieties \$4.00
An economical collection of sturdy plants that will hold up under almost any condition.

P
R
I
C
E

L
I
S
T

F
E
B
R
U
A
R
Y

CACTUS ASSORTMENT #2

100 plants, 20 varieties, unlabeled \$5.00
This selection will please you. There are five plants of each kind, giving a variation of size, form and color that means quick sales.

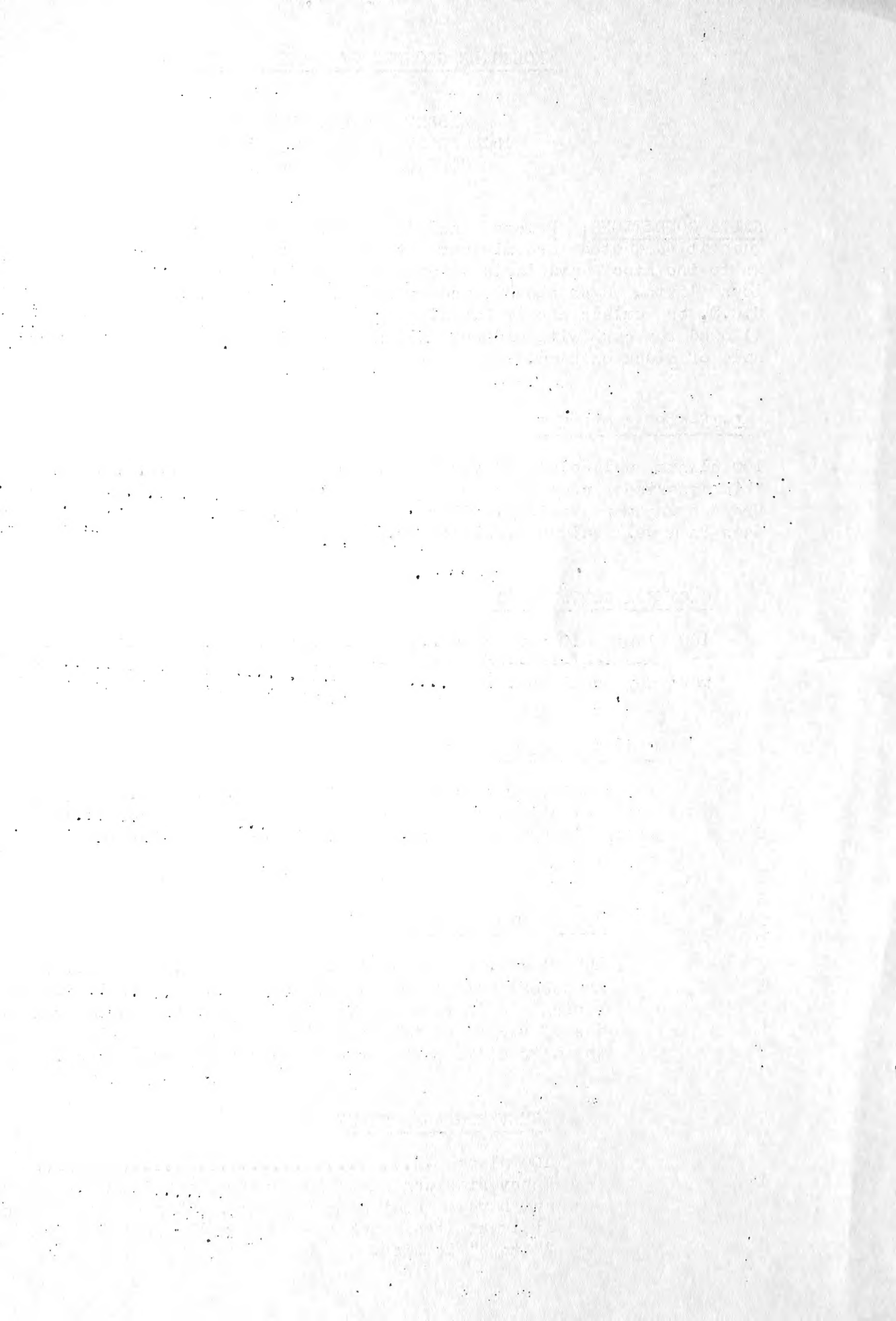
COMBINATION ASSORTMENT

100 plants, 20 varieties, unlabeled \$3.50
An assortment giving a wide range of colorful plants combining a selection of five plants of each kind of ten varieties of Cacti and ten varieties of Succulents. Ideal for planting attractive dish gardens and novelty containers.

ECHEVERIA ASSORTMENT

100 plants \$3.50
Echeverias are among the most colorful of all Succulents and have a great many fanciers. This collection contains at least ten varieties of well rooted plants from 2" to 3" in size.

1
9
4
8



100 unlabeled plant 1" to 2" \$7.50
 Haworthias are most desirable and sell readily because of their striking appearance and their ability to stand up well under adverse conditions. This assortment is made up of a variety of types, including some of the rarer species.

SUCCULENT ASSORTMENT

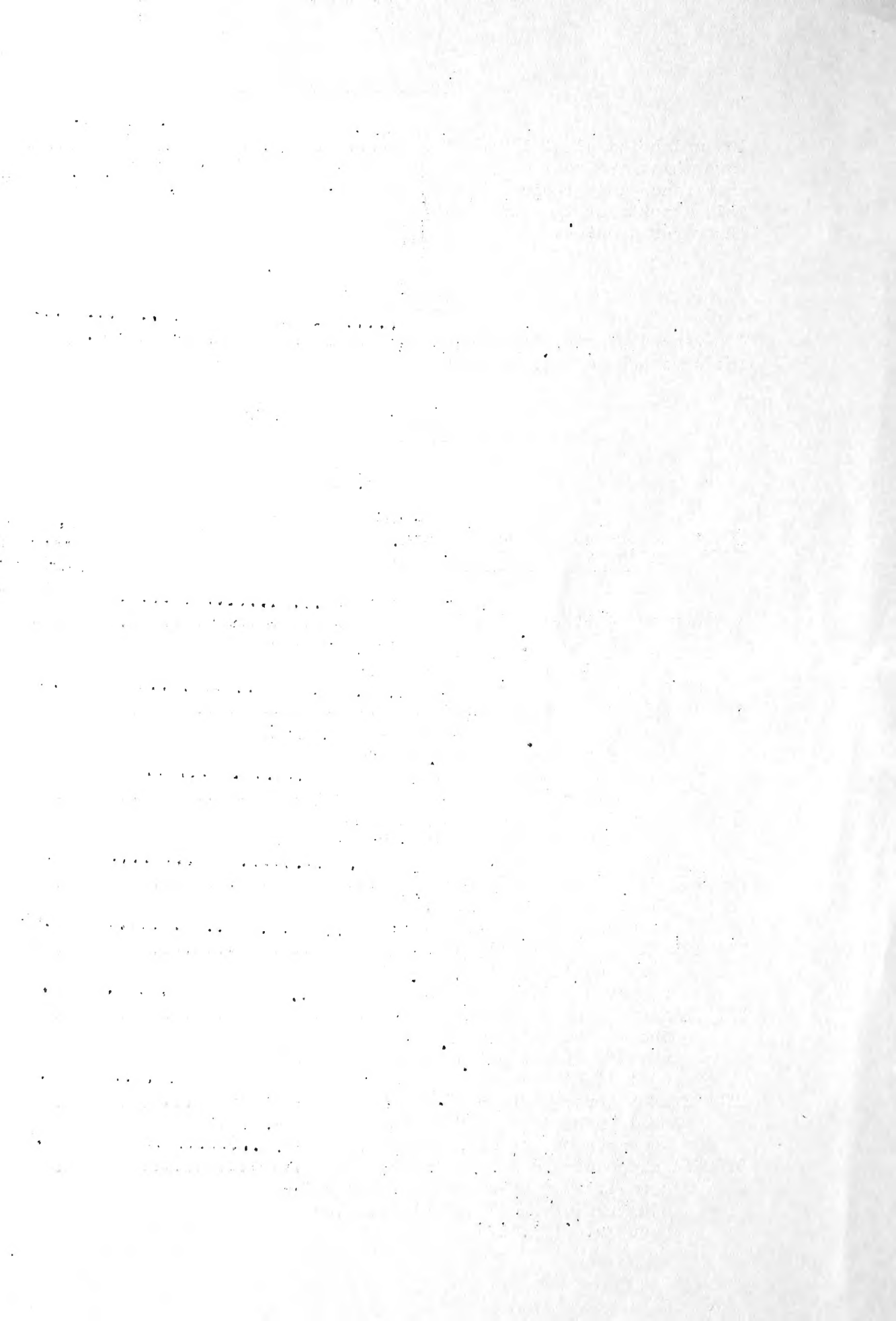
100 rooted plants, ten varieties \$3.00
 Includes Echeverias, Crassulas and Sedums in a colorful array.

GENERAL PRICE LIST

CACTI

NOTE: Reference numbers in parentheses refer to illustrations in "CACTI FOR THE AMATEUR."

	Prices & Number	
	Of Plants	
	(10)	(100)
ASTROPHYTUM myriostigma - 1" seedlings	\$.90	\$7.50
"Bishop's Cap." Beautiful silvery-gray usually five ribbed, spineless. (Pl. 69)		
BISHOP'S CAP - See Astrophytum myriostigma		
CEREUS hybrid - 2 1/2" seedlings50	4.00
One of the most popular plants for dish gardens. Drect dark green, truly cactoid in appearance.		
ESPOSTOA lanata - 1 1/2" to 2" seedlings90	7.50
Deautiful type of "OLD MAN CACTUS." Columnar plants densely covered with long, soft, pure white wool or hair.		
MAMMILLARIA nigra - 1 1/2" seedlings75	6.00
Olive green plant body, dark spines on prominent tubercles.		
MAMMILLARIA pringlei - 1" seedlings60	5.00
Very popular neat plant with recurved golden spines.		
MONVILLEA diffusa - 2 1/2" seedlings40	3.50
One of the best plants for "Tails" in novelty animal pots. Dark green with soft light spines.		
NYCTOCEREUS serpentinus - 3" to 4" rooted cuttings60	5.00
Well known type of "Night Blooming Cereus." Recommended for dish gardens. (Fig. 113)		
OPUNTIA microdasys - 2 1/2" rooted cuttings50	4.00
S mall, flat stems dotted with yellow clusters of small spinolets. Very popular. (Pl. 17)		

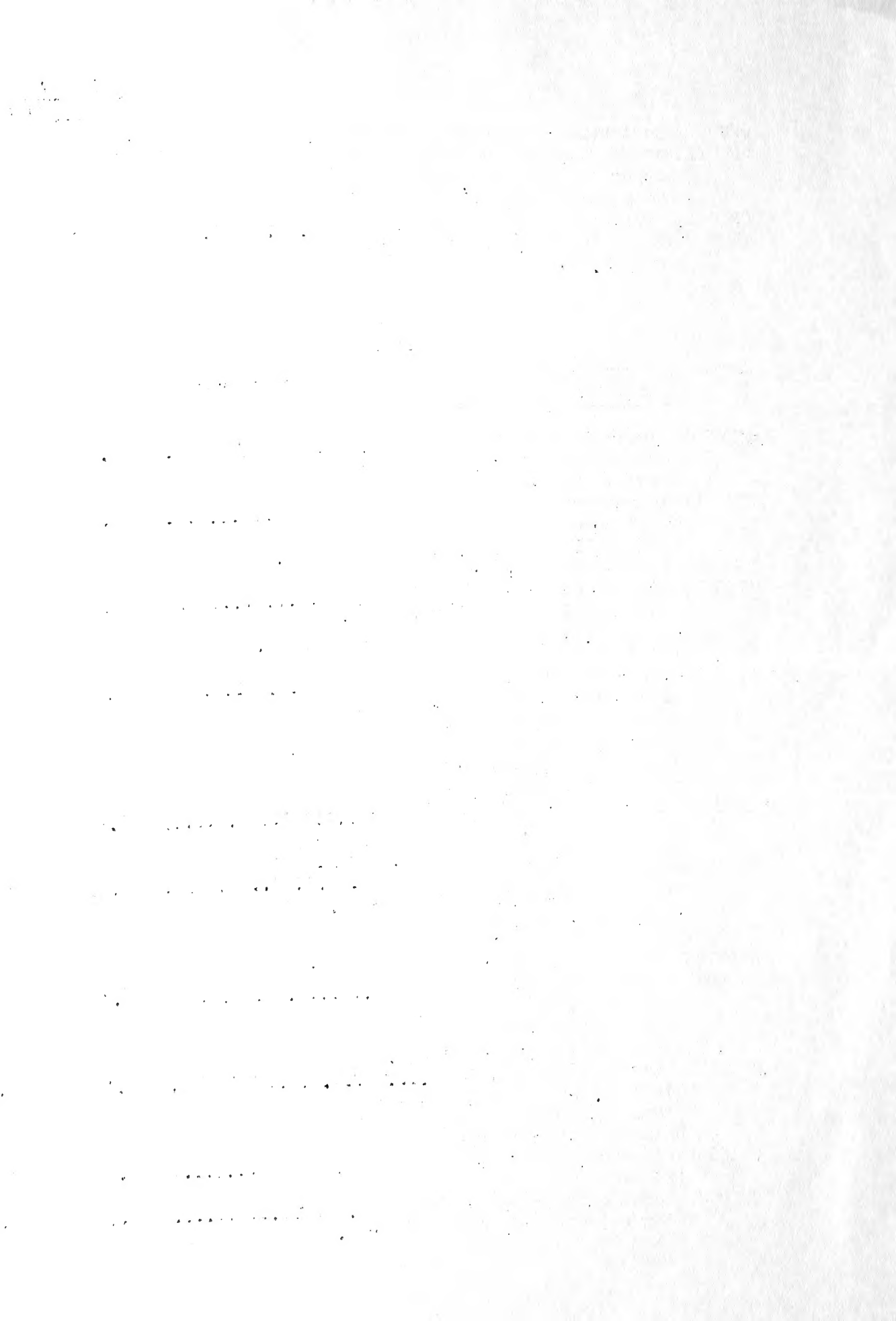


	Prices & Number	
	Of Plants	
	(10)	(100)
OPUNTIA schickendantzii - 3" to 4" rooted cuttings	\$.40	\$3.50
OPUNTIA schickendantzii - 5" to 7" branched rooted cuttings Narrow tapering joints, light yellow- green short spines.	.60	5.00
OPUNTIA vilis - 2 $\frac{1}{2}$ " to 3 $\frac{1}{2}$ " branched plants50	4.00
Cylindrical trunk, branches like a small tree.		

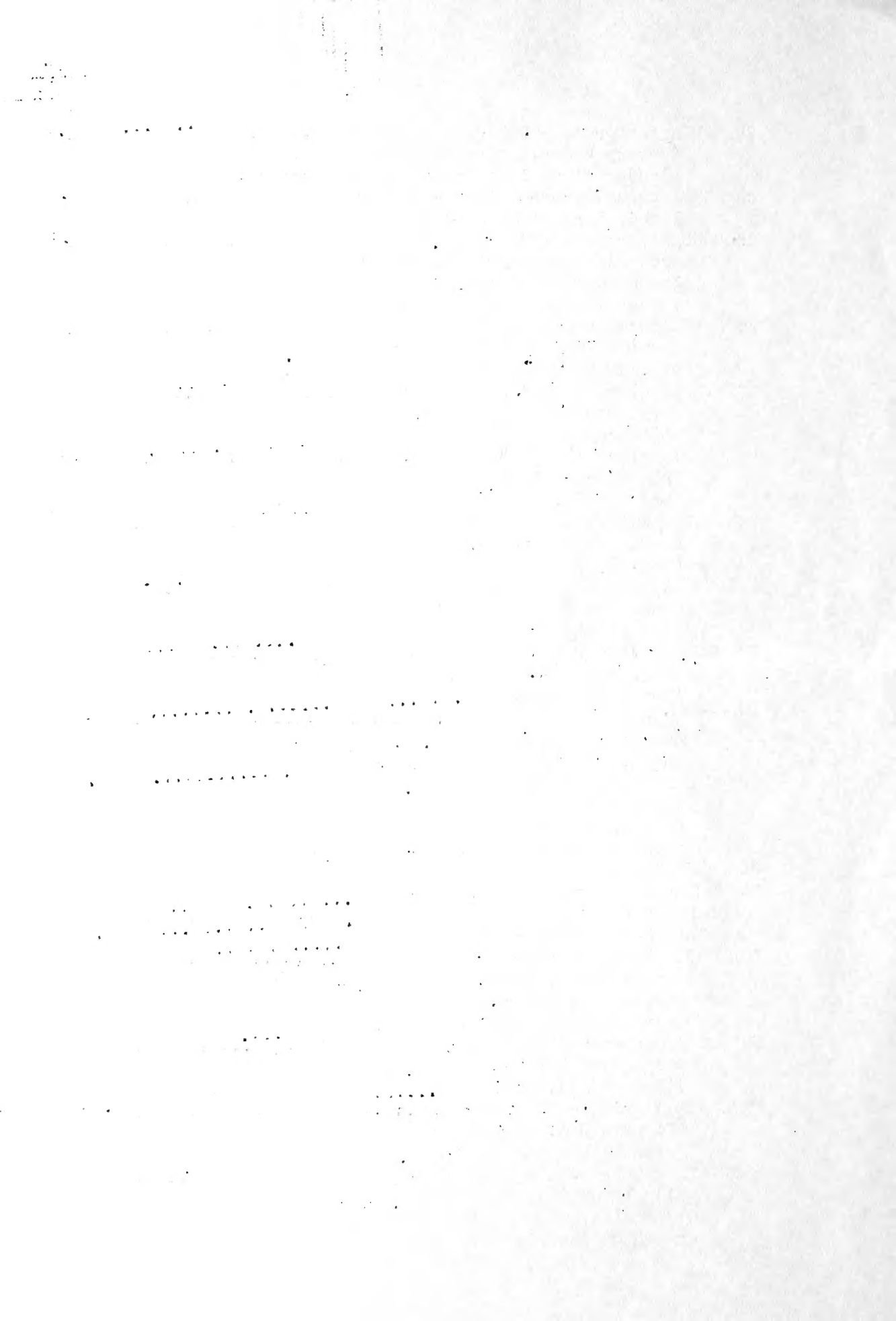
SUCCULENTS

NOTE: Reference numbers in parentheses refer to illustrations in
"SUCCULENTS FOR THE AMATEUR."

AEONIUM haworthii - 2" rooted cuttings35	3.00
Large rosette type with red edged leaves. (Fig. 206)		
AEONIUM tournefortii - branched rooted cuttings35	3.00
Small rosettes of gray-green leaves with small brown spots on the under side.		
AFRICAN LIVING ROCK - See Pleiospilos nelii		
ALOE brevifolia - 2" to 2 $\frac{1}{2}$ " rooted cuttings50	4.00
Small species with short, thick, gray leaves; grows easily, recommended for dish gardens. (Pl. 63)		
ALOE humvir - 2 $\frac{1}{2}$ " rooted cuttings50	4.00
Erect growth in rosette form. Leaves about $\frac{1}{4}$ " across and almost round. Light green color. This plant is distinct be- cause of the wiry, hard texture of it's cylindrical bright green leaves.		
ALOE striata - 2" to 2 $\frac{1}{2}$ " seedlings50	4.00
Handsome plant. Leaves grayish bordered with red, completely spineless. (Fig. 238)		
CHEIRIDOPSIS candidissima - 2" seedlings35	3.00
"Elephant Tusks." Beautiful species, small clumps of silvery gray leaves tipped with purple. (Fig. 86)		
CORN COB CACTUS - See Euphorbia sub-mammillaris		
CRASSULA albiflora - 2" rooted cuttings35	3.00
Dark green, oblong leaves deeply edged with intense dark red. One of the most colorful of all Succulents.		
CRASSULA imperialis - 2" branched40	3.50
Similar to C. lycopodioides except the stems are twice as thick and the plant branches more freely.		
CRASSULA lycopodioides - 2 $\frac{1}{2}$ " branched35	3.00
(Pl. 40)		
CRASSULA orbiculata - 2 $\frac{1}{2}$ " rooted cuttings40	3.50
Flat rosettes of bright green leaves.		



	Prices & Number	
	Of Plants	
	(10)	(100)
CRASSULA perforata - 2 $\frac{1}{2}$ " rooted cuttings (Rosary Plant.) The thick leaves clasp the slender stems like the beads of a rosary.	\$.40	\$3.50
CRASSULA pseudalycopodioides - 2 $\frac{1}{2}$ " branched plants Round, hard stems of dark olive green.	.35	3.00
CRASSULA tetragona - 3" to 4" branched plants Grows into symmetrical, miniature branched tree with conical green leaves in four cornered arrangement.	.35	3.00
ECHEVERIA bradburyana - 2" to 2 $\frac{1}{2}$ " rooted cuttings Rosette type with long tapered leaves, of silvery gray, flecked with maroon.	.50	4.00
ECHEVERIA elegans - 2" rooted cuttings Very attractive, compact, silvery white rosette. (Fig. 159)	.50	4.00
ECHEVERIA micrantha - 2" plants Bright green leaves, edged with dark maroon.	.50	4.00
ECHEVERIA multicaulis - 1 $\frac{1}{2}$ " to 2" plants Leaves almost round, reddish metallic. (Fig. 162)	.50	4.00
ECHEVERIA perbella hybrid - 2" to 2 $\frac{1}{2}$ " rooted cuttings Grows exceptionally well. Very firm light green leaves.	.50	4.00
ECHEVERIA pulv-oliver - 2 $\frac{1}{2}$ " rooted cuttings Long, tapered, felted, flexible leaves tipped with red.	.40	3.50
ECHEVERIA setosa - 2" plants Rosette of green leaves covered with short, shiny, white hairs. (Fig. 170)	.75	6.00
ECHEVERIA spruc-oliver - 2 $\frac{1}{2}$ " rooted cuttings Rosette type. Leaves, long, thin felted, turning bright red when grown in ample light.	.40	3.50
ELEPHANT TUSKS - See Cheiridopsis candidissima		
ELKHORN - See Hereroa dyeri		
EUPHORBIA hermentiana - 4" to 5" plants EUPHORBIA hermentiana - 6" to 8" plants EUPHORBIA hermentiana - 9" to 12" plants60 .75 .90	5.00 6.00 7.50
Three-angled, columnar plants with marbled surface and ornamented with small rows of leaves on the angles.		
EUPHORBIA sub-mammillaris - 2" rooted cuttings Called the "Corn Cob Cactus," because it looks like a small, green corn cob. Very popular.	.50	4.00
FAUCARIA tigrina - 2" seedlings "Tiger's Jaw." Leaves marbled gray-green with white tooth.	.35	3.00
FAUCARIA tuberculosa - 2" seedlings Wide brown leaves thickly covered with tubercles, white dot in center, white teeth on the ridges. (Fig. 93)	.35	3.00



	Prices & Number	
	Of	Plants
	(10)	(100)
GASTROLEA beguinii - 2" plants	\$.60	\$5.00
Many white dots on both sides of dark green tapered leaves which form an attractive rosette.		
HAWORTHIA fasciata - 1½" plants90	7.50
Probably the most striking of all Haworthias. Thin, tapering, dark green leaves with a series of heavy raised bands of white across the back of each leaf.		
HEREROA dyeri - 2" seedlings35	3.00
"Elkhorn." Small plant with curious club-like leaves forming a cluster similar in appearance to the antlers of an Elk.		
PLEIOSPILOS bolusii - 1½" to 2" plants60	5.00
Imitates pieces of granite; always excites curiosity. (Fig. 25)		
PLEIOSPILOS nelii - 1" to 1½" plants60	5.00
"African Living Rock." Leaves nearly round, reddish brown in color.		
PLEIOSPILOS simulans - 1½" to 2" plants60	5.00
Similar to P. bolusii, but the thick leaves are flat on the top, triangular below.		
PORTULACARIA afra variegata - 2½" rooted cuttings60	5.00
Small, shiny leaves on reddish stems, branching like a small tree. (Fig. 264)		
SEDUM adolphii - rooted cuttings35	3.00
Colorful, waxy, yellow, thick, oblong leaves. (Fig. 51)		
SEDUM guatemalense - rooted cuttings30	2.50
Stems densely covered with berry-like leaves, shiny green tinged red. (Fig. 195-A)		
SEDUM pachyphyllum - rooted cuttings30	2.50
Similar to S. guatemalense but leaves are cylindrical light gray tipped pink to red. (Fig. 195)		
SEDUM prealtum crest - 2" to 2½" rooted cuttings40	3.50
Unusual flattened stems of "Cockcomb" formation. Leaves small, light yellow green. (Fig. 194)		
SEDUM treleasei - rooted cuttings35	3.00
A very attractive, chalky white plant, forming small rosettes. (Fig. 195)		
STOMATIUM fulleri - 1½" to 2" seedlings35	3.00
Round pebble-like, pale green leaves in close rosettes. Something different.		
TIGER'S JAW - See Faucaria tigrina.		

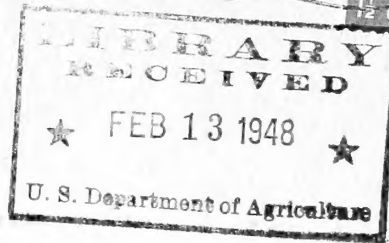
62,09

Return Postage Guaranteed by:

ALBERT AROZENA NURSERY
1518 EAST ROSECRANS AVE.,
COMPTON CALIFORNIA

Wholesale Growers of CACTI AND
SUCCULENTS

FEBRUARY - 1948 - PRICE LIST



LIBRARY
U. S. DEPARTMENT OF AGRICULTURE
WASHINGTON 25,
D. C.