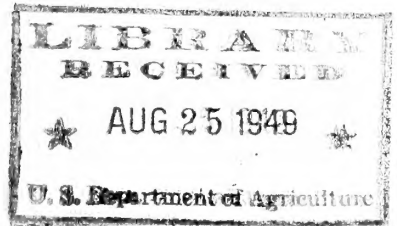


Historic, archived document

Do not assume content reflects current scientific knowledge, policies, or practices.





ALBERT AROZENA NURSERY
1518 EAST ROSECRANS AVENUE
COMPTON 2, CALIFORNIA

WHOLESALE GROWERS
OF
CACTI & SUCCULENTS

PRICE LIST
FOR
AUGUST - 1949

SALES CONDITIONS

Prices include packing but not transportation costs. Quantities quoted are minimum at these prices. This list supersedes and cancels all previous lists. Cash should accompany all orders unless credit has already been established. 2% discount will be allowed for cash with orders. All material is offered subject to the prior sale of stock on hand.

ALL-IN-ONE ASSORTMENT

100 plants, unlabeled, 50 varieties, two of each kind....\$6.00
This assortment continues to be our most popular assortment. Try it if you are seeking more variety. Fifty different varieties of both CACTI and SUCCULENTS in a well balanced collection.

CACTUS ASSORTMENT #1

100 plants, 10 varieties.....\$4.50
An economical collection of sturdy plants that will hold up well under almost any condition.

COMBINATION ASSORTMENT

100 plants, 20 varieties, unlabeled.....\$4.00
An assortment giving a wide range of colorful plants combining a selection of five plants of each kind of ten varieties of CACTI and ten varieties of SUCCULENTS. Ideal for planting attractive dish gardens and novelty containers.

SUCCULENT ASSORTMENT

100 rooted plants, 10 varieties..... \$3.50
Includes Echeverias, Grassulas, Sedums and Aloes in a colorful array.

Prices & Numbers
Of Plants
(10) (100)

GENERAL PRICE LIST

CACTI

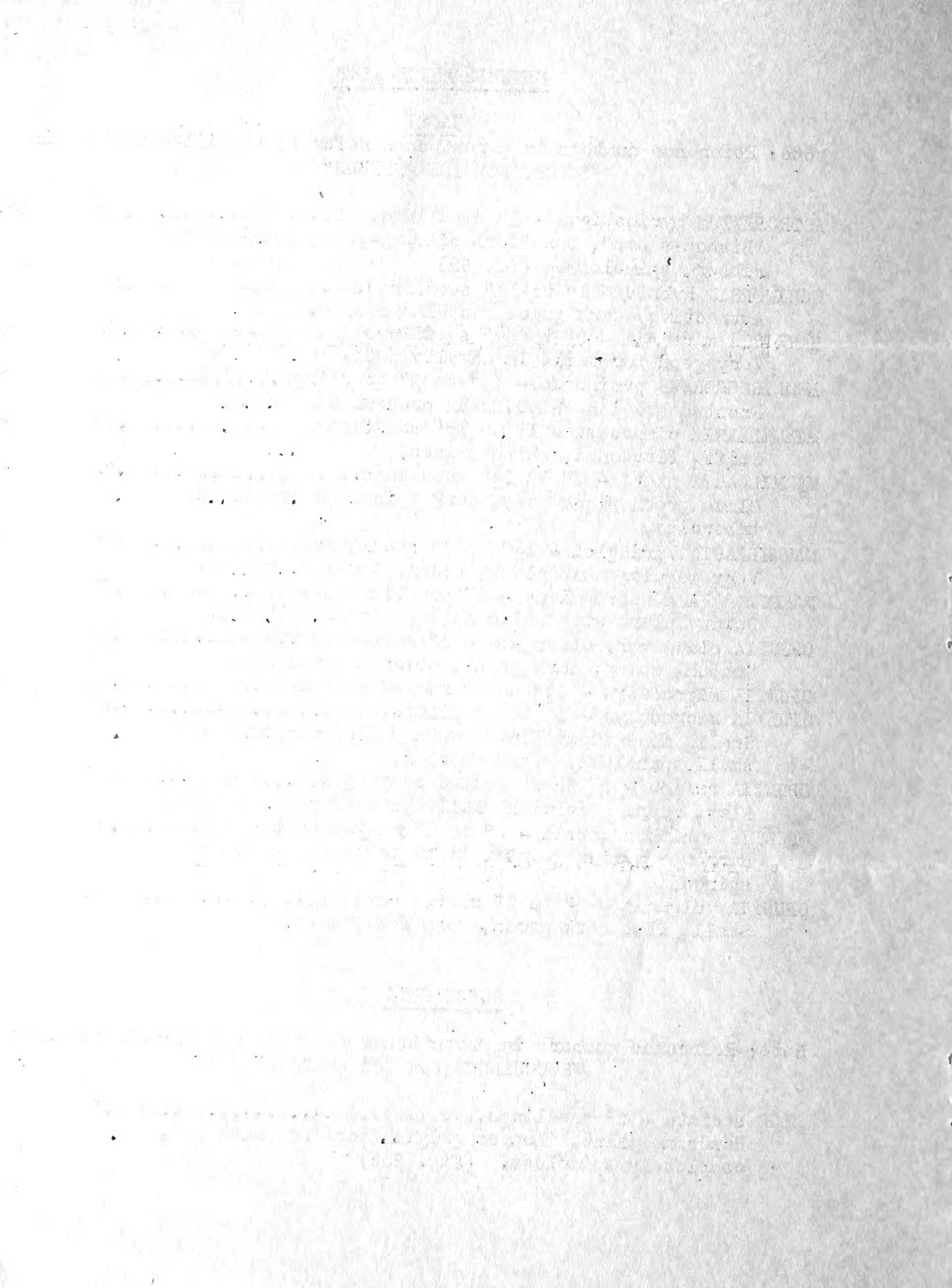
Note: Reference numbers in parentheses refer to the illustrations in
"CACTI FOR THE AMATEUR"

ASTROPHYTUM myriostigma - 1" seedlings.....	.90	\$7.50
"Bishop's Cap". Beautiful silvery-gray, usually five ribbed, spineless. (Pl. 69)		
ECHINOPSIS hybrid - 1" to 1½" seedlings.....	.55	4.50
Attractive, dark green globular plants.		
HARRISIA martinii - 3" to 3½" seedlings.....	.55	4.50
Very good for tails in novelty pots.		
LEMAIREOCEREUS prinosus - 1½" to 2" seedlings.....	.55	4.50
Frosted grayish-white, with pronounced angles.		
MAMMILLARIA compressa - 1" to 1½" seedlings.....	.75	----
Stiff, flattened, white spines.		
MAMMILLARIA nigra - 1" to 1½" seedlings.....	.75	----
Olive green plant body, dark spines on prominent tubercles.		
MAMMILLARIA Springlei - 1½" to 2" seedlings.....	.75	6.00
Very popular neat plant, recurved golden spines.		
MAMMILLARIA werdermaniana - 1" seedlings.....	.75	6.00
Dainty plant with white spines tipped with red.		
OPUNTIA elata var. oblongata - 3" rooted cuttings.....	.55	4.50
Smooth, shiny, dark green, oblong, spineless.		
OPUNTIA microdasys - 2½" to 3" rooted cuttings.....	.55	4.50
OPUNTIA microdasys - 4" to 5" plants.....	.65	5.50
Small, flat stems dotted with yellow clusters of small spinelets. Very popular.		
OPUNTIA rufida - 2" to 3" rooted cuttings.....	.55	4.50
Flat, round pads with small tufts of red glochids.		
OPUNTIA schickendantzii - 3" to 5" rooted cuttings.....	.55	4.50
Narrow tapering joints, light yellow-green short spines.		
OPUNTIA vulgaris - 2" to 3" rooted cuttings.....	.55	4.50
Small, flat dark green, very few spines.		

SUCCULENTS

Note: Reference numbers in parentheses refer to the illustrations in
"SUCCULENTS FOR THE AMATEUR"

ALOE striata - 2" seedlings.....	.55	\$4.50
Handsome plant. Leaves grayish bordered with red, completely spineless. (Fig. 238)		



	Prices & Numbers Of (10)	Plants (100)
CRASSULA albiflora - 2" plants.....	.40	\$3.50
Dark green, oblong leaves deeply edged with intense dark red. One of the most colorful of all Succulents.		
CRASSULA arborescens - 4" to 5" branched rooted cuttings.	.40	3.50
Round, thick, shiny leaves.		
CRASSULA imperialis - 2½" branched plants.....	.50	4.00
Similar to C. lycopodioides except the stems are twice as thick and the plant branches more freely.		
CRASSULA impressa - 2" plants in bud.....	.50	4.00
(Syn. Schmidtii, rubicunda) Leaves thin, flexible dark green tinged with crimson. Blooms are clusters of tiny bright red, long lasting flowers.		
CRASSULA hemispherica - 1½" seedlings.....	.90	----
Small, round, close stem, overlapping leaves forming a tight button-like rosette.		
CRASSULA lycopodioides - 3" branched plants.....	.40	3.50
Very thin bright green stems, branches freely.		
CRASSULA orbiculata - 1½" plants.....	.40	3.50
Flat rosettes of bright green leaves.		
CRASSULA pseudolycopodioides - 3" branched plants.....	.40	3.50
Round, hard thin stems of dark olive green.		
CRASSULA tetragona - 3" rooted cuttings.....	.35	3.00
Grows symmetrical, miniature branched tree with conical green leaves in four cornered arrangement.		
CHEIRDOPSIS candidissima - 1½" to 2" seedlings.....	.50	4.00
"Elephant Tusks." Beautiful species, small clumps of silvery gray leaves tipped with purple. (Fig.86)		
ECHEVERIA bradburyana - 2½" rooted cuttings.....	.55	4.50
Rosette type with long tapered leaves.		
FAUCARIA tuberculosa - 1½" to 2" seedlings.....	.40	3.50
Wide brown leaves thickly covered with large tubercles, white dot in center, white teeth on the ridges. (Fig. 93)		
GASTROLEA beguinii - 1½" to 2" plants.....	.65	5.50
Many white dots on both sides of dark green tapered leaves which form an attractive rosette.		
PLEIOSPILOS bolusii - 1" to 1½" plants.....	.60	5.00
Imitates pieces of granite; always excites curiosity. (Fig. 25)		
PLEIOSPILOS nolii - 1" to 1½" plants.....	.60	5.00
"AFRICAN LIVING ROCK". Leaves nearly round reddish brown color.		
PLEIOSPILOS simulans - 1½" plants.....	.60	5.00
Similar to P. bolusii, but thick leaves are flat on the top, triangular below.		

The first part of the document discusses the importance of maintaining accurate records of all transactions. It emphasizes that every entry should be supported by a valid receipt or invoice. This ensures transparency and allows for easy verification of the data.

In the second section, the author outlines the various methods used to collect and analyze the data. This includes both primary and secondary data collection techniques. The analysis focuses on identifying trends and patterns over time, which is crucial for making informed decisions.

The third part of the report details the challenges encountered during the data collection process. These include issues related to data quality, such as missing values and inconsistencies. The author provides strategies to address these challenges, such as data cleaning and validation procedures.

Finally, the document concludes with a summary of the findings and recommendations. It highlights the key insights gained from the analysis and suggests areas for future research. The author also provides a list of references used in the study.

	Prices & Numbers Of (10)	Plants (100)
PUYA chilensis - 3" to 4" seedlings.....	.75	\$6.00
Striking plant of the pineapple family. Leaves very thin, light green on upper side, silvery gray underneath.		
SEDUM adolphii hybrid40	3.50
Colorful, waxy, yellow, thick, oblong leaves.		
SEDUM linere var. small clumps.....	.40	3.50
Fine, green and white leaves; erect growth.		
SEDUM pachyphyllum - rooted cuttings.....	.35	3.00
Similar to S. guatemalense, but leaves are cylindrical light gray tipped pink to red.		
SEDUM trealeasi35	3.00
A very attractive, chalky white plant, forming small rosettes. (Fig. 195)		
SEDUM guatemalense - 2" plants.....	.35	3.00
Stems densely covered with berry-like leaves, shiny green tinged red. (Fig. 195-A)		
STOMATIUM fulleri - 1½" to 2" clumps.....	.40	3.50
Round, pebble-like, pale green leaves in close rosette. Something different.		

62.09

Return Postage Guranteed By:

ALBERT AROZENA NURSERY
1518 EAST ROSECRANS AVENUE
COMPTON 2, CALIFORNIA

WHOLESALE GROWERS OF CACTI
AND SUCCULENTS

Price List For - August - 1949

COMI
CAL

IF.
ca



Library
U. S. Dept. of Agriculture
Washington 25, D. C.