

## Historic, archived document

Do not assume content reflects current scientific knowledge, policies, or practices.



62.09

ALBERT AROZENA NURSERY  
1518 EAST ROSECRANS AVENUE  
COMPTON 2, CALIFORNIA

LIBRARY  
RECEIVED  
★ SEP 26 1952 ★  
U. S. Department of Agriculture

WHOLESALE GROWERS  
OF  
CACTI & SUCCULENTS

PRICE LIST  
FOR  
SEPTEMBER - 1952

SALES CONDITIONS

Prices include packing but not transportation costs. Quantities quoted are minimum at these prices. This list supersedes and cancels all previous lists. Cash should accompany all orders unless credit has already been established. All material is offered subject to the prior sale of stock on hand.

ALL-IN-ONE ASSORTMENT

100 plants, unlabeled, 50 varieties, two of each kind.....\$6.00  
This assortment continues to be our most popular assortment. Try it if you are seeking more variety. Fifty different varieties of both CACTI and SUCCULENTS in a well balanced collection.

CACTUS ASSORTMENT #1

100 plants, 10 varieties.....\$4.50  
An economical collection of sturdy plants that will hold up well under almost condition.

COMBINATION ASSORTMENT

100 plants, 20 varieties, unlabeled.....\$4.00  
An assortment giving a wide range of colorful plants combining a selection of five plants of each kind of ten varieties of CACTI and ten varieties of SUCCULENTS. Ideal for planting attractive dish gardens and novelty containers.

ECHEVERIA & SEMPERVIVUM ASSORTMENT

100 plants, 10 or more varieties.....\$4.00  
Echeverias and Sempervivums are among the most colorful of all succulents and have a great many fanciers. This collection contains at least 10 varieties of well rooted plants from 2" to 3" in size.

SUCCULENT ASSORTMENT

100 rooted plants, 10 varieties.....\$3.50  
Includes Echeverias, Crassulas, Sedums and Aloes in a colorful array.

The first part of the report deals with the general conditions of the country and the progress of the work during the year. It is followed by a detailed account of the various expeditions and the results obtained. The report concludes with a summary of the work done and a list of the names of the persons who have assisted in the work.

The second part of the report deals with the results of the various expeditions. It is divided into sections dealing with the different regions of the country. Each section contains a detailed account of the work done and the results obtained. The report concludes with a summary of the work done and a list of the names of the persons who have assisted in the work.

The third part of the report deals with the results of the various expeditions. It is divided into sections dealing with the different regions of the country. Each section contains a detailed account of the work done and the results obtained. The report concludes with a summary of the work done and a list of the names of the persons who have assisted in the work.

The fourth part of the report deals with the results of the various expeditions. It is divided into sections dealing with the different regions of the country. Each section contains a detailed account of the work done and the results obtained. The report concludes with a summary of the work done and a list of the names of the persons who have assisted in the work.

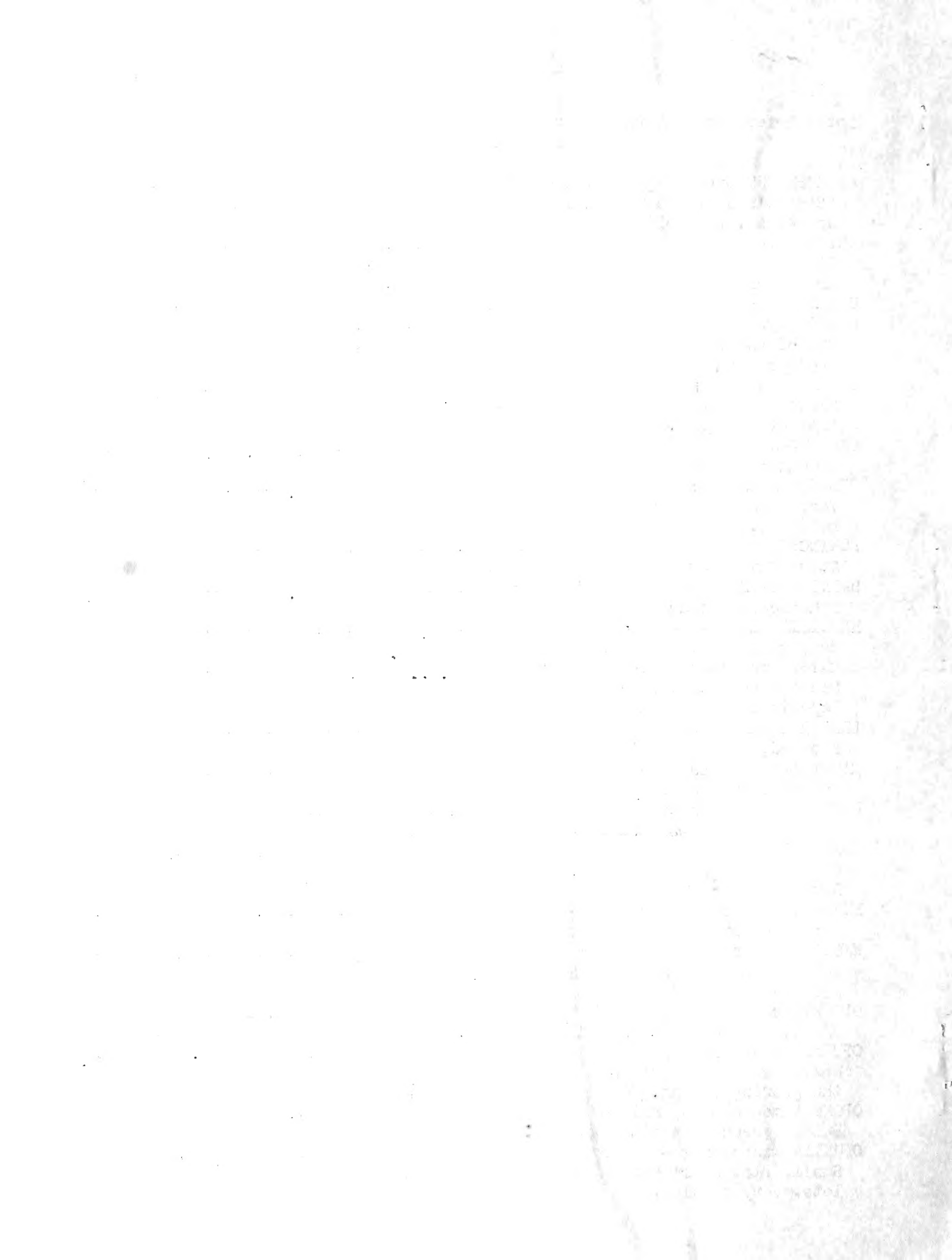
The fifth part of the report deals with the results of the various expeditions. It is divided into sections dealing with the different regions of the country. Each section contains a detailed account of the work done and the results obtained. The report concludes with a summary of the work done and a list of the names of the persons who have assisted in the work.

The sixth part of the report deals with the results of the various expeditions. It is divided into sections dealing with the different regions of the country. Each section contains a detailed account of the work done and the results obtained. The report concludes with a summary of the work done and a list of the names of the persons who have assisted in the work.

GENERAL PRICE LIST"CACTI"

Note: Reference numbers in parentheses refer to the illustrations in  
"CACTI FOR THE AMATEUR"

ASTROPHYTUM myriostigma - 1" to 1½" seedlings.....	.90	\$7.50
"Bishop's Cap." Beautiful silvery-gray, usually five ribbed, spineless. (Pl. 69)		
ASTROPHYTUM ornatum - 1" to 1½" seedlings.....	.90	7.50
Similar to Bishops Cap but with flexible recurved spines on ribs and numerous pearly white dots on plant body.		
CEREUS hybrid - 3" to 4" seedlings.....	.55	4.50
CEREUS hybrid - 5" to 6" seedlings.....	.75	6.00
One of the most popular plants for dish gardens. Erect dark green truly cactoid in appearance.		
CHAMAECEREUS silvestrii - 2" to 2½" clusters.....	.60	5.00
"Peanut Cactus". Small, round, silvery-green branches about the size of a peanut. (Pl. 38)		
CLEISTOCACTUS baumanii - 4" to 6" seedlings.....	.55	4.50
Columnar plants attractively spined. (Pl. 28)		
CLEISTOCACTUS strausii - 2½" to 3½" seedlings.....	.75	6.00
Very handsome plant, completely covered with creamy white bristles.		
ECHINOPSIS hybrid - 1" seedlings.....	.55	4.50
Attractive, dark green, globular plants.		
HAMATOCACTUS setispinus - 1" seedlings.....	.60	5.00
Spherical; attractive, yellow spines. (Pl. 54)		
HARRISIA martinii - 3" to 5" seedlings.....	.55	4.50
Very good for tails in novelty animal pots.		
HARRISIA robusta hybrid - 2½" seedlings.....	.55	4.50
Slender curved plants of unusually dark maroon color. Especially recommended for "Tails."		
LEMAIREOCEREUS pruinus - 1½" to 2" seedlings.....	.60	5.00
Frosted, grayish-white, with pronounced angles.		
MAMMILLARIA bocasana - 1" seedlings.....	.75	6.00
Entire plant covered with fine silky white hair. Very popular.		
MAMMILLARIA pringlei - 1½" seedlings.....	.75	6.00
Very popular neat plant, recurved golden spines.		
MONVILLEA diffusa - 4" to 5" seedlings.....	.55	4.50
One of the best plants for "Tails" in novelty animal pots. Dark green with soft light spines.		
MYRTILLOCACTUS geometrizzans - 2½" to 3" seedlings.....	.75	6.00
Beautiful light blue, columnar type.		
NYCTOCEREUS serpentinus - 4" to 6" rooted cuttings.....	.90	7.50
Well known type of "Night Blooming Cereus". fast and easy to grow. Recommended for dish gardens. (Pl. (Pg. 113)		
OPUNTIA basilaris - 2" to 3" rooted cuttings.....	.55	4.50
Small, smooth, purplish, flattened pads, almost spineless.		
OPUNTIA exaltata - 4" to 6" rooted cuttings.....	.75	6.00
Heavy columnar type; long round leaves from each areal during the growing season. Very unusual.		
OPUNTIA monacantha fruit - 2 or more "Ears" or branches.....	.55	4.50
Bright green pods with two or more flat branches or "Ears".		
OPUNTIA microdasys - 4" to 5" branched rooted cuttings.....	.55	4.50
Small, flat stems dotted with yellow clusters of small spinelets. Very popular.		



OPUNTIA vilis - 3" to 4" plants with small branches.....	.55	\$4.50
Cylindrical trunk; branches like a small tree.		
PEANUT CACTUS - See Chamaecereus silvestrii.		
TRICHOCECREUS spachianus - 2" to 2½" seedlings.....	.55	4.50
Columnar type; bright green, round, plump, plant with short yellowish spines. (Fig. 43)		

SUCCULENTS

Note: Reference numbers in parentheses refer to the illustrations in "SUCCULENTS FOR THE AMATEUR"

ALOE aristata - 2" seedlings.....	.90	\$7.50
Very thin leaves of dark green, generously sprinkled with white dots, tapering to a compact rosette of delicate beauty.		
ALOE striata - 2½" to 3" seedlings.....	.55	4.50
Handsome plant. Leaves grayish bordered with red; completely spineless. (Fig. 238)		
CHEIRDOPSIS candidissima - 2" to 2½" seedlings.....	.50	4.00
"Elephant Tusks." Beautiful species, small clump of silvery gray leaves tipped with purple.		
CRASSULA arborescens - 3" branched rooted cuttings.....	.40	3.50
Round, thick, shiny green leaves edged with red. (Fig. 151)		
CRASSULA perforata - 2" rooted cuttings.....	.50	4.00
(Rosary plant) The thick leaves clasp the slender stems like the beads of a rosary.		
CRASSULA tetragona - 3" rooted cuttings.....	.40	3.50
Grows symmetrical, miniature branched tree with conical green leaves in four cornered arrangements.		
ECHEVERIA bradburyiana - 2" to 2½" rooted cuttings.....	.55	4.50
Rosette type with long tapered leaves of silvery gray, flecked with maroon.		
ECHEVERIA elegans - 2" to 2½" plants.....	.55	4.50
Very attractive, compact, silvery white rosette.		
ECHEVERIA perbella hybrid - 2" to 2½" plants.....	.55	4.50
Grows exceptionally well. Very firm light green leaves.		
ECHEVERIA pulv-oliver - 2" rooted cuttings.....	.55	4.50
Long, tapered, felted flexible leaves tipped with red.		
ELEPHANT TUSKS - See Cheirdopsis candidissima.		
EUPHORBIA heptagona hybrid - 5" to 6" rooted cuttings.....	.90	7.50
Sturdy, club-like, columnar type. Grows exceptionally well and is very attractive.		
EUPHORBIA hermentiana - 6" to 8" rooted cuttings.....	.90	7.50
Three-angled, columnar plants with marbled surface and ornamented with small rows of leaves on the angles.		
FAUCARIA tuberculosa - 1½" seedlings.....	.50	4.00
Wide brown leaves thickly covered with large tubercles, white dot in center, white teeth on the ridges.		
GASTERIA hybrid - 2½" to 3" seedlings.....	.60	5.00
Dark green plants from selected fast-growing seed parents.		
GASTROLEA beguinii - 2" to 2½" plants.....	.75	6.00
Many white dots on both sides of dark green tapered leaves which form an attractive rosette.		
HEREROA dyeri - 1½" to 2" seedlings.....	.50	4.00
"Elkhorn." Small plant with curious club-like leaves forming a cluster similar in appearance to the antlers of an elk.		





	Prices & Numbers	
	Of	Plants
	(10)	(100)
PLEIOSPILOS bolusii - 1½" plants.....	.60	\$5.00
Imitates pieces of granite; always excites curiosity.		
PLEIOSPILOS nelii - 1½" plants.....	.60	5.00
"AFRICAN LIVING ROCK." Leaves nearly round, reddish brown color.		
PLEIOSPILOS simulans - 1½" plants.....	.60	5.00
Similar to P. bolusii but thick leaves are flat on the top, triangular below.		
PUYA chilensis - 3" to 5" seedlings.....	.75	6.00
Striking plant of the pineapple family. Leaves very thin, light green on the upper side, silvery gray underneath.		
SEDUM guatemalense - rooted cuttings.....	.35	3.00
Stems densely covered with berry-like leaves, shiny green tinged red. (Fig. 195-A)		
SEDUM linere variegata - small clumps .....	.40	3.50
Fine, green and white leaves; erect growth.		
SEDUM pachyphyllum - rooted cuttings.....	.35	3.00
Similar to S. guatemalense but leaves are cylindrical light gray tipped pink to red. (Fig. 195)		
SEDUM trealeasi - rooted cuttings.....	.40	3.50
A very attractive, chalky white plant forming small rosettes.		
SEMPERVIVUM arachnoidium - 1" plants surrounded by cluster of many small offsets.....	.60	5.00
"COBWEBS". Small compact rosettes with the crown thickly covered with webs of fine wool.		
STOMATIUM fulleri - 1½" clusters.....	.50	4.00
Round, pebble-like, pale green leaves in close rosettes. Something different.		

\*\*\*\*\*

FOLIAGE PLANTS FOR DISH GARDENS

BILLBERGIA nutans hybrid - 8" to 12" seedlings.....	.90	\$7.50
Very popular plants with thin graceful light green leaves.		

\*\*\*\*\*

Return Postage Guaranteed By:

SEC. 34.66 P. L. & R.

ALBERT AROZENA NURSERY  
1518 EAST ROSECRANS AVENUE  
COMPTON 2, CALIFORNIA

WHOLESALE GROWERS OF CACTI  
AND SUCCULENTS

Price List For SEPTEMBER - 1952

U.S. Dept. of Agriculture  
Library  
Washington 25, D. C.

