

# Historic, archived document

Do not assume content reflects current scientific knowledge, policies, or practices.



62.09 SB 115  
Z9A85  
R

ALBERT AROZENA NURSERY  
1518 EAST ROSECRANS AVENUE  
COMPTON 2, CALIFORNIA

Ca  
J. T. ...  
★ AUG 18 1955  
U. S. Department of Agriculture

WHOLESALE GROWERS  
OF  
CACTI & SUCCULENTS

PRICE LIST  
FOR  
AUGUST - 1955

SALES CONDITIONS

Prices include packing but not transportation costs. Quantities quoted are minimum at these prices. This list supersedes and cancels all previous lists. Cash should accompany all orders unless credit has already been established. All material is offered subject to the prior sale of stock on hand.

ALL IN ONE ASSORTMENT

100 plants, unlabeled, 50 varieties, two of each kind.....\$6.00  
This assortment continues to be our most popular assortment. Try it if you are seeking more variety. Fifty different varieties of both CACTI and SUCCULENTS in a well balanced collection.

CACTUS ASSORTMENT #1

100 plants, 10 varieties.....\$4.50  
An economical collection of sturdy plants that will hold up well under almost any condition.

COMBINATION ASSORTMENT

100 plants, 20 varieties.....\$4.00  
An assortment giving a wide range of colorful plants combining a selection of five plants of each kind of ten varieties of CACTI and ten varieties of SUCCULENTS. Ideal for planting attractive dish gardens and novelty containers.

SUCCULENT ASSORTMENT

100 rooted plants, 10 varieties.....\$3.50  
Includes Echeverias, Crassulas, Sedums and Aloes in a colorful array.

REC'D 7/19/55

JUL 12 '55

PROCUREMENT SEC  
SERIAL REC



GENERAL PRICE LIST"CACTI"

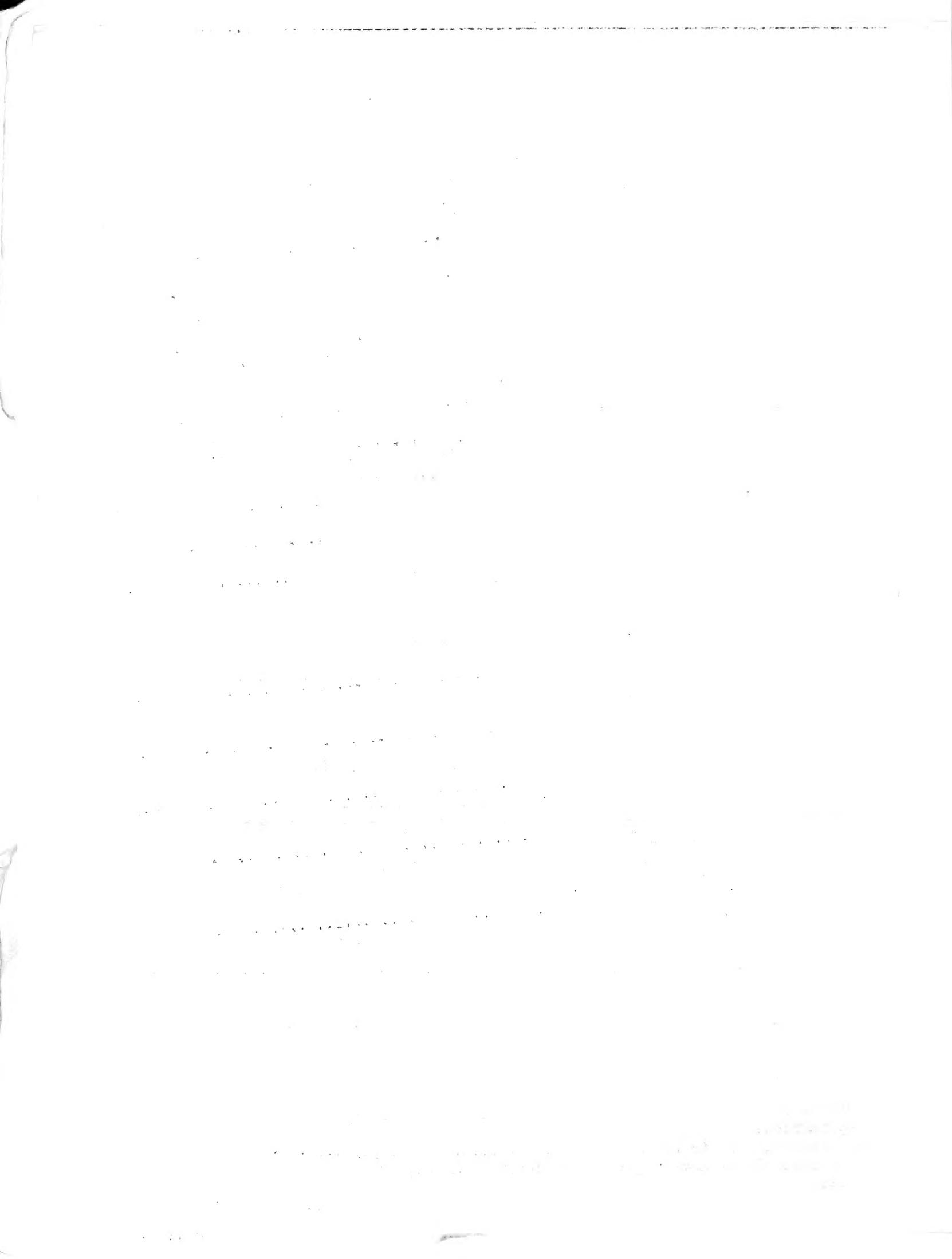
Note: Reference numbers in parentheses refer to the illustrations in  
"CACTI FOR THE AMATEUR"

ASTROPHITUM ornatum - 1" seedlings.....	.90	\$7.50
Similar to Bishop's Cap but with flexible recurved spines on ribs and numerous pearly white dots on plant body.		
CEREUS hybrid - 3" to 4" seedlings.....	.55	4.50
One of the best plants for dish gardens. Erect dark green truly cactoid in appearance.		
ECHINOPSIS hybrid - 1" to 1½" seedlings.....	.55	4.50
Attractive, dark green, globular plants.		
ESPOSTOA lanata - 2" seedlings.....	1.25	10.00
Beautiful type of "OLD MAN CACTUS." Columnar plants densely covered with long, soft, pure white wool or hair.		
GOLDEN BALL - See Notocactus leninghausii.		
HAMATOCACTUS setispinus - 1" seedlings .....	.60	5.00
Spherical; attractive, yellow spines. (Pl. 53)		
MAMMILLARIA bocasana - 1" seedlings.....	.75	6.00
Entire plant covered with fine silky white hair. Very popular.		
MAMMILLARIA pringlei - 1" to 1½" seedlings.....	.75	6.00
Very popular neat plant, recurved golden spines.		
MONVILLEA diffusa - 4" to 6" seedlings.....	.55	4.50
One of the best plants for "Tails" in novelty animal pots. Dark green with soft light spines.		
NOTOCACTUS leninghausii - 1½" seedlings.....	1.50	12.50
Spectacular plant very densely covered with soft golden spines. Truly a "GOLDEN BALL."		
OLD MAN CACTUS - See Espostoa lanata.		
OPUNTIA elata - 4" to 5" rooted cuttings.....	.55	4.50
Shiny, dark green, spineless.		
OPUNTIA microdasys - 2½" to 3½" plants.....	.55	4.50
Small flat stems dotted with yellow clusters of small spinelets. Very popular. (Pl. 17)		
OPUNTIA monacantha - 3" to 4" plants.....	.55	4.50
Spineless, bright green, thin stems.		
OPUNTIA rufida - 2½" to 3½" rooted cuttings.....	.55	4.50
Flat, round pads with small tufts of red glochids.		
OPUNTIA schickendantzii - 3" to 4" plants.....	.55	4.50
Narrow tapering joints, light yellow-green short spines.		

"SUCCULENTS"

Note: Reference numbers in parentheses refer to the illustrations in  
"SUCCULENTS FOR THE AMATEUR"

ADROMISCHUS cristatus - 2" plants.....	.90	\$7.50
Rosette type. Leaves light green almost round, very wavy or undulate at the tips. (Fig. 141)		
AEONIUM tournefortii - rooted cuttings.....	.40	3.50
Small rosette of gray-green leaves with small brown spots on the under side.		
ALOE aristata - 1½" to 2" seedlings.....	.90	7.50
Very thin leaves of dark green generously sprinkled with white dots, tapering to a compact rosette of delicate beauty.		
ALOE hum-vir - 2½" plants.....	.55	4.50
Erect growth in rosette form. Leaves about ¼" across and almost round. Light green color. This plant is distinct because of it's cylindrical light green leaves.		
ALOE striata - 2" to 2½" seedlings.....	.55	4.50
Handsome plant. Leaves grayish bordered with red; completely spineless.		



CHEIRDOPSIS candidissima - 1½" to 2" seedlings.....	.50	\$4.00
"ELEPHANT TUSKS." Beautiful species small clump of silvery-gray leaves, tipped with purple.		
CRASSULA tetragona - 3" to 4" rooted cuttings.....	.35	3.00
Grows symmetrical, miniature branched tree with conical green leaves in four cornered arrangement.		
CRASSULA argentea variegata - 3" to 4" plants.....	.75	6.00
(Syn. Variegated Crassula and Tri-color Jade) Very similar to C. arborescens in growth and habit. Leaves brightly marbled with light yellow, sometimes edged with red.		
CRASSULA imperialis - branched plants.....	.50	4.00
Similar to C. lycopodioides except the stems are twice as thick and the plant branches more freely.		
ECHEVERIA bradburyiana - 2" to 2½" plants.....	.55	4.50
Rosette type with long tapered leaves.		
ECHEVERIA elegans - 2½" to 3" plants.....	.55	4.50
Very attractive, compact, silvery-white rosette.		
ECHEVERIA perbella hybrid - 2" to 2½" rooted cuttings.....	.55	4.50
Grows exceptionally well. Very firm light green leaves.		
EUPHORBIA hermentiana - 4" to 6" plants.....	.90	7.50
Three-angled, columnar plants with marbled surface and ornamented with small rows of leaves on the angles.		
FAUCARIA hybrids assorted - 2" seedlings.....	.50	4.00
Unlabeled assortment to include several types of beautiful seedlings.		
HAWORTHIA cuspidata - 2" to 2½" plants.....	.60	5.00
Thick, fleshy, light green leaves in a compact rosette.		
HAWORTHIA fasciata - 1½" plants.....	.90	7.50
Probably the most striking of all Haworthias. Thin, tapering dark green leaves with a series of raised bands of white across the back of each leaf.		
HEPEROA dyeri - 1½" to 2" seedlings.....	.50	4.00
"ELMHORN." Small plant with curious club-like leaves forming a cluster similar in appearance to the antlers of an elk.		
KALIANCHOE somaliensis - 2" to 2½" plants.....	.40	3.50
Scalloped leaves, light green shading to orange near the edges.		
PLEIOSPILOS bolusii - 1½" plants.....	.60	5.00
Imitates pieces of granite; always excites curiosity.		
PUYA chilensis - 3" seedlings.....	.75	6.00
Striking plant of the pineapple family. Leaves very thin, light green on the upper side, silvery-gray underneath.		
SEDUM guatemalense - rooted cuttings.....	.35	3.00
Stems densely covered with berry-like leaves, shiny green tinged red.		
SEDUM pachyphyllum - rooted cuttings.....	.35	3.00
Similar to S. guatemalense but leaves are cylindrical light gray tipped pink to red.		
SEDUM prealtum crest - 2½" rooted cuttings.....	.50	4.00
Unusual flattened stems of "Cockcomb" formation. Leaves small light yellow-green. (Fig. 194)		
SEDUM trealeasi - rooted cuttings.....	.35	3.00
A very attractive, chalky white plant forming small rosettes.		
SEMPELVIVUM arachnoidium - 1½" clusters.....	.60	5.00
"COBWEBS." Small compact rosettes with the crown thickly covered with webs of fine wool.		
STOMATIUM fulleri - 1½" to 2" clusters.....	.50	4.00
Round, pebble-like, pale green leaves in close rosette. Something different.		

\*\*\*\*\*

Return Postage Guaranteed By:

SEC. 34.66 P. L. & R.

ALBERT AROZENA NURSERY  
1518 EAST ROSECRANS AVENUE  
COMPTON 2, CALIFORNIA

WHOLESALE GROWERS OF CACTI  
AND SUCCULENTS

PRICE LIST FOR AUGUST - 1955

U.S. Department of Agriculture  
Library  
Washington 25, D. C.