

Historic, archived document

Do not assume content reflects current scientific knowledge, policies, or practices.

62,09

WHOLESALE GROWERS OF CACTI AND SUCCULENTS

ALBERT AROZENA NURSERY
1518 EAST ROSECRANS AVE.,
COMPTON CALIFORNIA

NOV 21 1945
U. S. Department of Agriculture

NOVEMBER - 1945

PRICE LIST

DECEMBER - 1945

SALES CONDITIONS: Prices include packing but not transportation costs. Quantities quoted are minimum at these prices. This list is complete as to the stock available at present and supersedes and cancels all previous lists. Cash should accompany all orders unless goods are shipped C.O.D. or unless credit has already been established. 2% discount will be allowed for cash with orders. All material is offered subject to the prior sale of stock on hand.

SUCCULENT ASSORTMENT

100 rooted plants, 10 varieties - \$2.50
Includes Echeverias, Crassulas and Sedums in a colorful array.

ECHEVERIA ASSORTMENT

100 plants - \$3.00
Echeverias are among the most colorful of all Succulents and have many fanciers. This collection contains at least 10 unlabeled varieties of well rooted plants from 2" to 2½" in size.

CACTUS ASSORTMENT #1

100 plants, 10 varieties \$3.50
An economical well balanced collection of sturdy plants that will hold up under adverse conditions. A typical assortment would consist of Cereus hybrids, Echinopsis hybrids, Harrisia hybrid robusta, Selenicereus spinulosus Opuntia cylindrica, Opuntia monacantha eared fruits, Opuntia microdasys, Opuntia mamillata, Opuntia vilis and Chamaecereus silvestrii.

CACTUS ASSORTMENT #2

100 plants, 25 varieties \$5.00
We have had many requests for an assortment of this kind and know that this selection will please you. Four plants of each kind giving a variation of size, form and color that means quick sales.

COMBINATION ASSORTMENT

100 plants, 20 varieties, unlabeled \$3.00
 An assortment giving wide range of colorful plants, combining a selection of five plants of each kind of 10 varieties of Cacti and 10 varieties of Succulents. Ideal for planting attractive dish gardens and novelty boxes.

ALL-IN-ONE ASSORTMENT

100 unlabeled plants, 50 varieties, two of each kind \$5.00
 This assortment continues to be our most popular assortment. Try it if you are seeking more variety. 50 different varieties of both Cacti and Succulents in a well balanced collection.

GENERAL PRICE LIST

CACTI

NOTE: Reference numbers in parentheses refer to illustrations in "CACTI FOR THE AMATEUR."

	PRICES - AND	
	No. of Plants	
	<u>10</u>	<u>100</u>
<u>ASTROPHYTUM myriostigma</u> - 1" seedlings	\$.90	\$ 7.50
"Bishop's Cap." Beautiful silvery-gray usually five ribbed, spineless. (Pl. 69)		
<u>BISHOP'S CAP</u> - See <u>Astrophytum myriostigma</u>		
<u>BOXING GLOVE</u> - See <u>Opuntia mamillata</u>		
<u>CEREUS</u> hybrid - 2½" to 3½" seedlings40	3.50
Probably one of the most popular plants for dish gardens. Erect dark green, truly cactoid in appearance.		
<u>C. hybrid</u> - 4" to 5" seedlings60	5.00
<u>CHAMAECEREUS silvestrii</u> - 1½" rooted cuttings with small branches35	3.00
"Peanut Cactus." Small, round, silvery green branches about the size of a peanut. (Pl. 38)		
<u>CLISTOCACTUS baumanii</u> - 2½" seedlings40	3.50
Small, columnar plants with attractive yellow spines.		
<u>ECHINOPSIS hybrids</u> - 1" to 1½" seedlings40	3.50
Attractive, dark green, globular plants.		
<u>HARRISIA eriophora</u> - 2" seedlings35	3.00
Sturdy columnar type.		
<u>H. hybrid robusta</u> - 2" to 3" seedlings40	3.50
Slender curved plants of unusual dark maroon color. Especially recommended for tails.		
<u>H. justbertii</u> - 4" to 5" rooted cuttings60	----
Shiny dark green with only a few short stiff spines. These are tip cuttings from mature plants.		
<u>H. martinii</u> - 4" to 4" rooted cuttings60	5.00
(Syn. <u>Eriococcus martinii</u>) Dark green, long stiff spines.		

	Prices - and	
	No. of Plants	
	10	100
<u>MAMMILLARIA bocasana</u> - 1" to 1½" seedlings60	5.00
Entire plant covered with fine silky white hair, very popular plant.		
<u>M. compressa</u> - 1" to 1½" seedlings60	5.00
Stiff, flattened, white spines. (Fig. Pg. 43)		
<u>M. nigra</u> - 1" to 1½"60	5.00
Olive green plant body, dark spines on prominent tubercles. Grows easily, mature plant flower freely.		
<u>MONVILLEA diffusa</u> - 2½" to 3½" seedlings40	3.50
One of the best plants for "Tails" in novelty animal pots. Dark green with light soft spines.		
<u>M. diffusa</u> - 4" rooted cuttings60	5.00
Sturdy upright growth, dark green color. Similar to <i>Nyctocereus serpentinus</i> in growth habit.		
<u>MYRTILOCACTUS geometrizans</u> - 2½" seedlings60	5.00
Beautiful, light blue, columnar type, usually five ribbed; a clean, colorful plant.		
<u>NYCTOCEREUS serpentinus</u> - 3" to 4" rooted cuttings60	5.00
Well known type of "Night Blooming Cereus." Recommended for dish gardens. (Fig. 113)		
<u>N. serpentinus</u> - 5" to 7" rooted cuttings90	7.50
<u>OPUNTIA cylindrica</u> - 2½" to 3" rooted cuttings40	3.50
Bright green, almost smooth, short widely spaced spines.		
<u>O. elata</u> var. <u>oblongata</u> - 2½" rooted cuttings40	3.50
Smooth, shiny, dark green, oblong, spineless.		
<u>O. mamillata</u> - 2½" to 3" rooted cuttings40	3.50
"Boxing Glove." Dark, brown, monstrose, club-like stems.		
<u>O. microdasys</u> - 2½" to 3" rooted cuttings40	3.50
Small, flat stems dotted with yellow clusters of small spinelets. Very popular. (Pl. 17)		
<u>O. monacantha</u> - 2" to 3" rooted cuttings40	3.50
Spineless, bright green, thin stems.		
<u>O. monacantha</u> - eared fruit40	3.50
These are exceptionally fine plants. Bright green pads with four or more flat branches or "ears."		
<u>O. schickendantzii</u> - 2½" to 3½" branched plants40	3.50
Narrow tapering joints, light yellow-green, short spines.		
<u>O. verschaffeltii</u> - 2" to 3" rooted cuttings50	4.00
Smooth, round joints about the diameter of a pencil, bearing cylindrical leaves near the top of the stems.		
<u>O. vilis</u> - 2" to 2½" well branched plants40	3.50
Cylindrical trunk; branched like a small tree.		
<u>PEANUT CACTUS</u> - See <i>Chamaecereus silvestrii</i>		

- 1000 Microgaster - 1" to 1 1/2" ...
- 950 Microgaster - 1" to 1 1/2" ...
- 900 Microgaster - 1" to 1 1/2" ...
- 850 Microgaster - 1" to 1 1/2" ...
- 800 Microgaster - 1" to 1 1/2" ...
- 750 Microgaster - 1" to 1 1/2" ...
- 700 Microgaster - 1" to 1 1/2" ...
- 650 Microgaster - 1" to 1 1/2" ...
- 600 Microgaster - 1" to 1 1/2" ...
- 550 Microgaster - 1" to 1 1/2" ...
- 500 Microgaster - 1" to 1 1/2" ...
- 450 Microgaster - 1" to 1 1/2" ...
- 400 Microgaster - 1" to 1 1/2" ...
- 350 Microgaster - 1" to 1 1/2" ...
- 300 Microgaster - 1" to 1 1/2" ...
- 250 Microgaster - 1" to 1 1/2" ...
- 200 Microgaster - 1" to 1 1/2" ...
- 150 Microgaster - 1" to 1 1/2" ...
- 100 Microgaster - 1" to 1 1/2" ...

	Prices - and	
	<u>No. of Plants</u>	
	10	100
<u>SELLENICEREUS spinulosus</u> - 2½" branched seedlings50	4.00
Clusters of very thin light green stems forming an attractive clump.		
<u>THRICOCEREUS pasacana</u> - 1" seedlings40	3.50
This South American giant makes attractive seedlings which grow well under cultivation.		

SUCCULENTS

NOTE: Reference numbers in parentheses refer to illustrations in "SUCCULENTS FOR THE AMATEUR."

<u>AEONIUUM haworthii</u> - 2½" to 3" rooted cuttings30	2.50
Large rosette type with red edged leaves. (Fig. 206)		
<u>AFRICAN LIVING ROCK</u> - See Pleiospilos nolii		
<u>AGAVE sisalana</u> - 2" to 3" plants35	3.00
Beautifully formed rosettes of soft flexible tapered leaves.		
<u>A. sisalana</u> - 6" to 8" plants60	5.00
<u>ALOE africana</u> - 2½" seedlings40	3.50
Beautiful tree like plants with yellow teeth on the margin of light green leaves.		
<u>A. africana</u> - 4" seedlings60	5.00
<u>A. aristata</u> - 2" to 2½" plants90	7.50
Very thin leaves of dark green, generously sprinkled with white dots and tapering to a compact rosette of delicate beauty. (Fig. 239)		
<u>A. humvir</u> - 2½" rooted cuttings50	4.00
Erect growth in rosette form. Leaves about ¼" across and almost round. Light green color. This plant is distinct because of the wiry, hard texture of it's cylindrical bright green leaves.		
<u>CORN COB CACTUS</u> - See Euphorbia submamillaris		
<u>CRASSULA albiflora</u> - 2½" rooted cuttings35	3.00
Dark green, oblong leaves deeply edged with intense dark red. One of the most colorful of all Succulents.		
<u>C. arborescens</u> - 4" to 5" rooted cuttings in prime condition35	3.00
Round, thick shiny green leaves edged with red. (Fig. 151)		
<u>C. arborescens</u> - 6" to 7" heavily branched field grown75	6.00
Samples sent on request.		
<u>C. perforata</u> - 2" to 3" rooted cuttings40	3.50
"Rosary Plant." (Fig. 5)		
<u>C. tetragona</u> - 3" to 4" rooted cuttings30	2.50
Grows into symmetrical, miniature branched tree with conical green leaves in four cornered arrangements.		

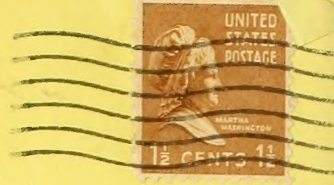
	Prices -	and No. of Plants.
<u>ECHIVERIA dorenborgii</u> - 1½" to 2" rooted cuttings60	100 5.00
Compact, silvery white with a small point of red on the tip of each leaf. (Fig. Pl. 43)		
<u>E. elegans</u> - 2" rooted cuttings40	3.50
Very attractive, compact, silvery white rosette. (Fig. 159)		
<u>E. micrantha</u> - 2"40	3.50
Bright green leaves, edged with dark maroon.		
<u>E. multicaulis</u> - 2" rooted cuttings60	5.00
Leaves almost round, roddish, metallic. (Fig. 162)		
<u>E. perbella hybrid</u> - 2" to 3" rooted cuttings35	3.00
Grows exceptionally well. Very firm, light green leaves.		
<u>E. pulv-oliver</u> - 2" to 2½" rooted cuttings35	3.00
Long, tapered, felted, flexible leaves tipped with red.		
<u>E. set-oliver</u> - 2½" rooted cuttings35	3.00
Very attractive plant. Similar to <u>E. setosa</u> except the leaves are longer, thinner and tipped with red.		
<u>E. simulans</u> - 2½" to 3" rooted cuttings40	3.50
Light yellow-green, thick leaves tinged with red.		
<u>EUPHORBIA hermentiana</u> - 4" to 5"60	5.00
Three-angled, columnar plant with marbled surface and ornamented with small rows of leaves on the angles.		
<u>E. hermentiana</u> - 6" rooted cuttings75	6.00
<u>E. hermentiana</u> - 6" to 8" branched plants	1.25	10.00
<u>E. pseudocactus</u> - 3" to 4" rooted cuttings	1.25	----
Stems angled, light green plainly marbled with yellow. (Fig. 219)		
<u>E. sub-mammillaris</u> - 2" rooted cuttings40	3.50
Called the "Corn Cob Cactus" because it looks like a small, green corn cob. Very popular.		
<u>FAUCARIA tigrina</u> - 1½" seedlings35	3.00
"Tiger's Jaw." Leaves marbled gray-green with white teeth.		
<u>F. tuberculosa</u> - 1½" seedlings35	3.00
Wide brown leaves thickly covered with large tubercles, white dot in center, white teeth on ridges. (Fig. 93)		
<u>FELT PLANT</u> - See <u>Kalanchoe beharensis</u>		
<u>KALANCHOE fottschenkoi</u> - rooted cuttings30	2.50
Purplish, scalloped leaves. (Fig. 187)		
<u>K. beharensis</u> (Cyn. <u>Kitchingia mandrakensis</u>) - 4" rooted cuttings75	6.00
The "Felt Plant." Large, scalloped, felt- like leaves, brown on upper side and silvery underneath. (Fig. 186)		

- 75. 1. *Polypodium* - 1" to 2" rooted cuttings
 Leaves silvery white with a small
 point of red on the tip of each leaf.
 (189, 190, 191)
- 76. 2. *Polypodium* - 1" rooted cuttings
 Very attractive, compact, silvery white
 foliage. (191, 192)
- 77. 3. *Polypodium* - 2" rooted cuttings
 Bright green leaves, edged with dark green.
 (192, 193)
- 78. 4. *Polypodium* - 2" rooted cuttings
 Leaves almost round, reddish, venose.
 (193, 194)
- 79. 5. *Polypodium* - 2" to 3" rooted cuttings
 Green exceptionally well, very large, light
 green leaves.
 (194, 195)
- 80. 6. *Polypodium* - 2" to 3" rooted cuttings
 Long, narrow, lobed, bluish leaves
 edged with red.
 (195, 196)
- 81. 7. *Polypodium* - 2" to 3" rooted cuttings
 Very attractive plant, bluish to red
 except the lower part, bluish and
 edged with red.
 (196, 197)
- 82. 8. *Polypodium* - 2" to 3" rooted cuttings
 Light yellow-green, which leaves tinged
 with red.
 (197, 198)
- 83. 9. *Polypodium* - 1" to 2" rooted cuttings
 Three-angled, narrow, thin, red
 margins and ornamented with small
 points on the angles.
 (198, 199)
- 84. 10. *Polypodium* - 2" to 3" rooted cuttings
 Very attractive plant, bluish
 (199, 200)
- 85. 11. *Polypodium* - 2" to 3" rooted cuttings
 Green edged, light green, slightly
 with yellow. (200, 201)
- 86. 12. *Polypodium* - 2" rooted cuttings
 Leaves like a wall, green with red
 margins.
 (201, 202)
- 87. 13. *Polypodium* - 1" rooted cuttings
 "1" to 2" long, leaves reddish green,
 with white teeth.
 (202, 203)
- 88. 14. *Polypodium* - 1" rooted cuttings
 The main leaves white, covered with
 a red, reddish, white, but in center, white
 part on the side. (203, 204)
- 89. 15. *Polypodium* - 1" rooted cuttings
 Red plant - see *Polypodium* below.
 (204, 205)
- 90. 16. *Polypodium* - 1" rooted cuttings
 Leaves reddish brown, (205, 206)
- 91. 17. *Polypodium* - 1" rooted cuttings
 The "1" to 2" long, leaves, reddish, like
 the leaves, brown on upper side and silvery
 underneath. (206, 207)

	Prices - and No. of Plants	
	$\frac{10}{}$	$\frac{100}{}$
<u>KALANCHOE pilosa</u> - 2" to 2 $\frac{1}{2}$ " plants \$.75	\$6.00
(Syn. tomentosa) "Plush Plant." Attractive wide thickly felted leaves, scalloped tips marked with distinct brown spots. These unusual characteristics sell this plant on sight. (Fig. 185)		
<u>PACHYPHYTUM compactum</u> - 1"35	3.00
Close-set, cylindrical, blue-gray leaves with silvery white markings give the plant an angled effect. (Fig. 174)		
<u>PACHYVERIA orpetii</u> - 2 $\frac{1}{2}$ " rooted cuttings40	3.50
Oblong, rounded, bluish leaves overlaid with white powder.		
<u>PLEIOSPILOS bolusii</u> - 1 $\frac{1}{2}$ " to 2"60	5.00
Imitates pieces of granite; always excites curiosity. (Fig. 25)		
<u>P. nelii</u> - 1" to 1 $\frac{1}{2}$ " seedlings60	5.00
"African Living Rock." Leaves nearly round, reddish brown in color.		
<u>P. simulans</u> - 1 $\frac{1}{2}$ " to 2"60	5.00
Similar to P. bolusii, but the thick leaves are flat on top, triangular below.		
<u>PLUSH PLANT</u> - See Kalanchoe pilosa		
<u>PORTULACARIA afra</u> - 3" to 4" rooted cuttings30	2.50
Small, shiny leaves on reddish stems, branching like a small tree. (Fig. 264)		
<u>P. afra</u> - 6" to 8" rooted cuttings50	4.00
<u>PUYA chilensis</u> - 3" seedlings50	4.00
Striking plant of the pineapple family, leaves very thin, light green on upper side, silvery gray underneath.		
<u>P. chilensis</u> - 5" to 6" plants75	6.00
<u>ROSARY PLANT</u> - See Crassula perforata		
<u>SEDUM adolphii</u> - 2 $\frac{1}{2}$ " rooted cuttings30	2.50
Colorful, waxy, yellow, thick, oblong leaves. (Fig. 51)		
<u>S. guatemalense</u> - rooted cuttings25	2.00
Stems densely covered with berry like leaves, shiny green tinged red. (Fig. 195-A)		
<u>S. pachyphyllum</u> - rooted cuttings25	2.00
Similar to S. guatemalense but leaves are cylindrical light gray tipped pink to red. (Fig. 195)		
<u>S. treleasei</u> - 2" to 3" rooted cuttings35	3.00
A very attractive, chalky white plant forming small rosettes. (Fig. 195)		
<u>S. winkleri</u> - 2" branched plants30	2.50
Small, light green rosette. (Fig. 196)		
<u>SEMPERVIVUM calcarum</u> - 2" rooted cuttings35	3.00
Elegant, small, rosette plant with numerous short broad, gray leaves sharply tipped with dull crimson. (Fig. 213)		
<u>TIGER JAW</u> - See Faucaria tigrina		

Return Postage Guaranteed By

ALBERT AROZEMA NURSERY
1518 EAST ROSECRANS AVE.,
COMPTON, CALIFORNIA.



Library
U. S. Department of Agriculture
Washington 25,
D. C.