

## Historic, archived document

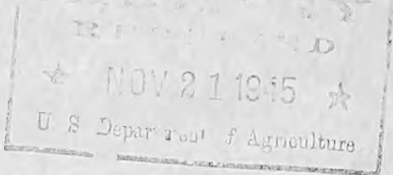
Do not assume content reflects current scientific knowledge, policies, or practices.



62,09

WHOLESALE GROWERS OF CACTI AND SUCCULENTS

ALBERT AROZENA NURSERY  
1518 EAST ROSECRANS AVE.,  
COMPTON CALIFORNIA



NOVEMBER - 1945

PRICE LIST

DECEMBER - 1945

SALES CONDITIONS: Prices include packing but not transportation costs. Quantities quoted are minimum at these prices. This list is complete as to the stock available at present and supersedes and cancels all previous lists. Cash should accompany all orders unless goods are shipped C.O.D. or unless credit has already been established. 2% discount will be allowed for cash with orders. All material is offered subject to the prior sale of stock on hand.

SUCCULENT ASSORTMENT

100 rooted plants, 10 varieties - \$2.50  
Includes Echeverias, Crassulas and Sedums in a colorful array.

ECHEVERIA ASSORTMENT

100 plants ..... - \$3.00  
Echeverias are among the most colorful of all Succulents and have many fanciers. This collection contains at least 10 unlabeled varieties of well rooted plants from 2" to 2 1/2" in size.

CACTUS ASSORTMENT #1

100 plants, 10 varieties ..... \$3.50  
An economical well balanced collection of sturdy plants that will hold up under adverse conditions. A typical assortment would consist of Cereus hybrids, Echinopsis hybrids, Harrisia hybrid robusta, Selenicereus spinulosus Opuntia cylindrica, Opuntia monacantha eared fruits, Opuntia microdasys, Opuntia mamillata, Opuntia vilis and Chamaecereus silvestrii.

CACTUS ASSORTMENT #2

100 plants, 25 varieties ..... \$5.00  
We have had many requests for an assortment of this kind and know that this selection will please you. Four plants of each kind giving a variation of size, form and color that means quick sales.

SECTION 1  
ARTICLE I  
SECTION 1

Section 1. The legislative power shall be vested in the Congress of the United States, which shall consist of a Senate and House of Representatives.

SECTION 2

Section 2. The House of Representatives shall be composed of Members chosen every second Year by the People of the several States, and the Electors in each State shall have the Qualifications requisite for Electors in that State.

SECTION 3

Section 3. The Senate of the United States shall be composed of two Senators from each State, chosen by the Legislature thereof, for six Years; and each Senator shall have the Qualifications requisite for Senators in that State.

SECTION 4

Section 4. The House of Representatives shall elect their Speaker and other Officers; and shall have the sole Power of Impeachment.

SECTION 5

Section 5. The Senate shall have the sole and exclusive Power of trying all Impeachments, when sitting on that Business, and when the Case of a Senator is under Consideration, he shall not be present.

COMBINATION ASSORTMENT

100 plants, 20 varieties, unlabeled \$3.00  
 An assortment giving wide range of colorful plants, combining a selection of five plants of each kind of 10 varieties of Cacti and 10 varieties of Succulents. Ideal for planting attractive dish gardens and novelty boxes.

ALL-IN-ONE ASSORTMENT

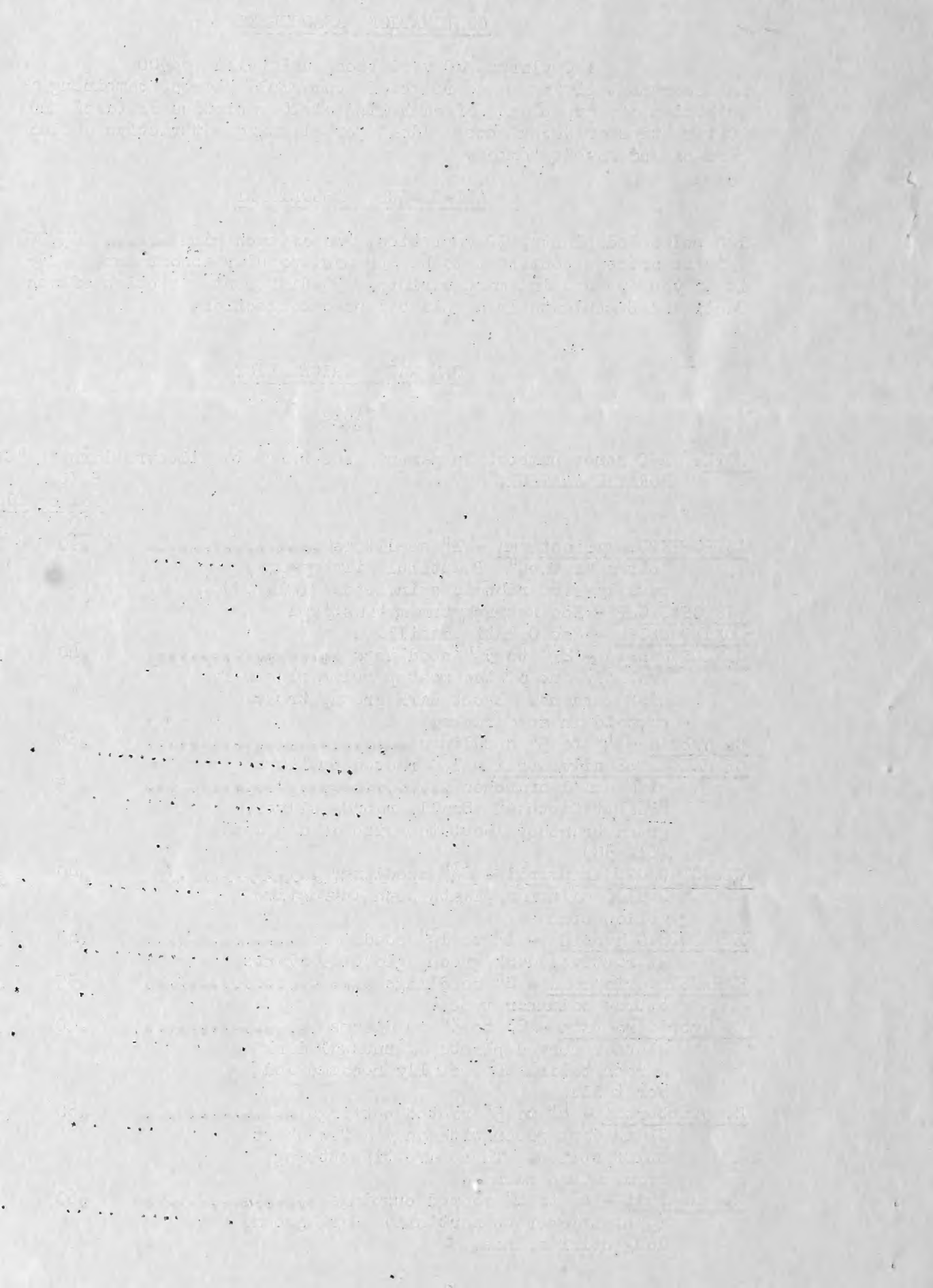
100 unlabeled plants, 50 varieties, two of each kind ..... \$5.00  
 This assortment continues to be our most popular assortment. Try it if you are seeking more variety. 50 different varieties of both Cacti and Succulents in a well balanced collection.

GENERAL PRICE LIST

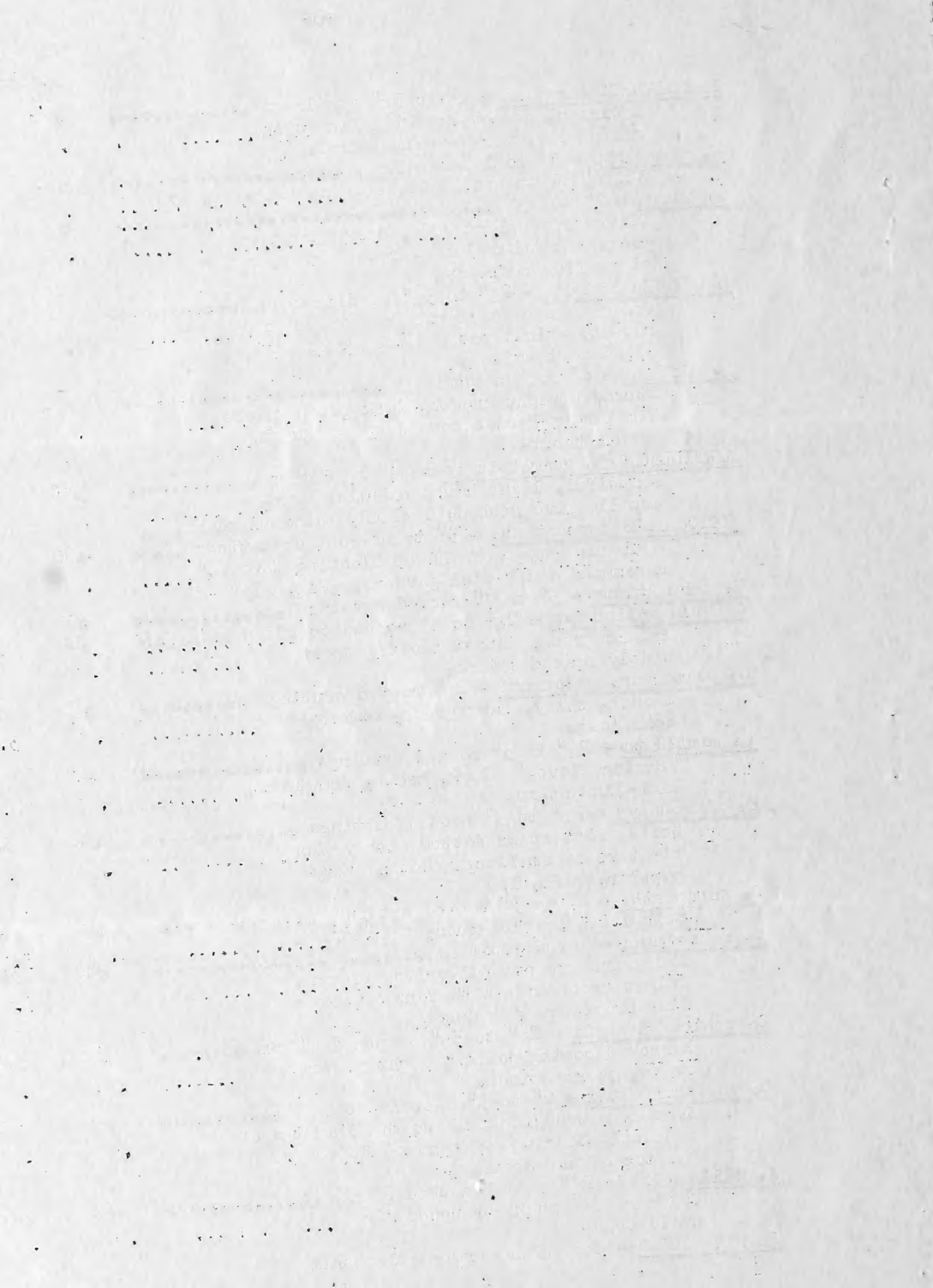
CACTI

NOTE: Reference numbers in parentheses refer to illustrations in "CACTI FOR THE AMATEUR."

	PRICES - AND	
	No. of Plants	
	<u>10</u>	<u>100</u>
<u>ASTROPHYTUM myriostigma</u> - 1" seedlings .....	\$ .90	\$ 7.50
"Bishop's Cap." Beautiful silvery-gray usually five ribbed, spineless. (Pl. 69)		
<u>BISHOP'S CAP</u> - See <u>Astrophytum myriostigma</u>		
<u>BOXING GLOVE</u> - See <u>Opuntia mamillata</u>		
<u>CEREUS hybrid</u> - 2 $\frac{1}{2}$ " to 3 $\frac{1}{2}$ " seedlings .....	.40	3.50
Probably one of the most popular plants for dish gardens. Erect dark green, truly cactoid in appearance.		
<u>C. hybrid</u> - 4" to 5" seedlings .....	.60	5.00
<u>CHAMAECEREUS silvestrii</u> - 1 $\frac{1}{2}$ " rooted cuttings with small branches .....	.35	3.00
"Peanut Cactus." Small, round, silvery green branches about the size of a peanut. (Pl. 38)		
<u>CLLISTOCACTUS baumanii</u> - 2 $\frac{1}{2}$ " seedlings .....	.40	3.50
Small, columnar plants with attractive yellow spines.		
<u>ECHINOPSIS hybrids</u> - 1" to 1 $\frac{1}{2}$ " seedlings .....	.40	3.50
Attractive, dark green, globular plants.		
<u>HARRISIA eriophora</u> - 2" seedlings .....	.35	3.00
Sturdy columnar type.		
<u>H. hybrid robusta</u> - 2" to 3" seedlings .....	.40	3.50
Slender curved plants of unusual dark maroon color. Especially recommended for tails.		
<u>H. justbertii</u> - 4" to 5" rooted cuttings .....	.60	----
Shiny dark green with only a few short stiff spines. These are tip cuttings from mature plants.		
<u>H. martinii</u> - 4" to 4" rooted cuttings .....	.60	5.00
(Syn. <u>Eriococcus martinii</u> ) Dark green, long stiff spines.		



	Prices - and	
	No. of Plants	
	10	100
<u>MAMMILLARIA bocasana</u> - 1" to 1 $\frac{1}{2}$ " seedlings .....	.60	5.00
Entire plant covered with fine silky white hair, very popular plant.		
<u>M. compressa</u> - 1" to 1 $\frac{1}{2}$ " seedlings .....	.60	5.00
Stiff, flattened, white spines. (Fig. Pg. 43)		
<u>M. nigra</u> - 1" to 1 $\frac{1}{2}$ " .....	.60	5.00
Olive green plant body, dark spines on prominent tubercles. Grows easily, mature plant flower freely.		
<u>MONVILLEA diffusa</u> - 2 $\frac{1}{2}$ " to 3 $\frac{1}{2}$ " seedlings .....	.40	3.50
One of the best plants for "Tails" in novelty animal pots. Dark green with light soft spines.		
<u>M. diffusa</u> - 4" rooted cuttings .....	.60	5.00
Sturdy upright growth, dark green color. Similar to <i>Nyctocereus serpentinus</i> in growth habit.		
<u>MYRTILOCACTUS geometrizans</u> - 2 $\frac{1}{2}$ " seedlings .....	.60	5.00
Beautiful, light blue, columnar type, usually five ribbed; a clean, colorful plant.		
<u>NYCTOCEREUS serpentinus</u> - 3" to 4" rooted cuttings .....	.60	5.00
Well known type of "Night Blooming Cereus." Recommended for dish gardens. (Fig. 113)		
<u>N. serpentinus</u> - 5" to 7" rooted cuttings .....	.90	7.50
<u>OPUNTIA cylindrica</u> - 2 $\frac{1}{2}$ " to 3" rooted cuttings .....	.40	3.50
Bright green, almost smooth, short widely spaced spines.		
<u>O. elata</u> var. <u>oblongata</u> - 2 $\frac{1}{2}$ " rooted cuttings .....	.40	3.50
Smooth, shiny, dark green, oblong, spineless.		
<u>O. mamillata</u> - 2 $\frac{1}{2}$ " to 3" rooted cuttings .....	.40	3.50
"Boxing Glove." Dark, brown, monstrose, club-like stems.		
<u>O. microdasys</u> - 2 $\frac{1}{2}$ " to 3" rooted cuttings .....	.40	3.50
Small, flat stems dotted with yellow clusters of small spinelets. Very popular. (Pl. 17)		
<u>O. monacantha</u> - 2" to 3" rooted cuttings .....	.40	3.50
Spineless, bright green, thin stems.		
<u>O. monacantha</u> - eared fruit .....	.40	3.50
These are exceptionally fine plants. Bright green pads with four or more flat branches or "ears."		
<u>O. schickendantzii</u> - 2 $\frac{1}{2}$ " to 3 $\frac{1}{2}$ " branched plants .....	.40	3.50
Narrow tapering joints, light yellow-green, short spines.		
<u>O. verschaffeltii</u> - 2" to 3" rooted cuttings .....	.50	4.00
Smooth, round joints about the diameter of a pencil, bearing cylindrical leaves near the top of the stems.		
<u>O. vilis</u> - 2" to 2 $\frac{1}{2}$ " well branched plants .....	.40	3.50
Cylindrical trunk; branched like a small tree.		
<u>PEANUT CACTUS</u> - See <i>Chamaecereus silvestrii</i>		





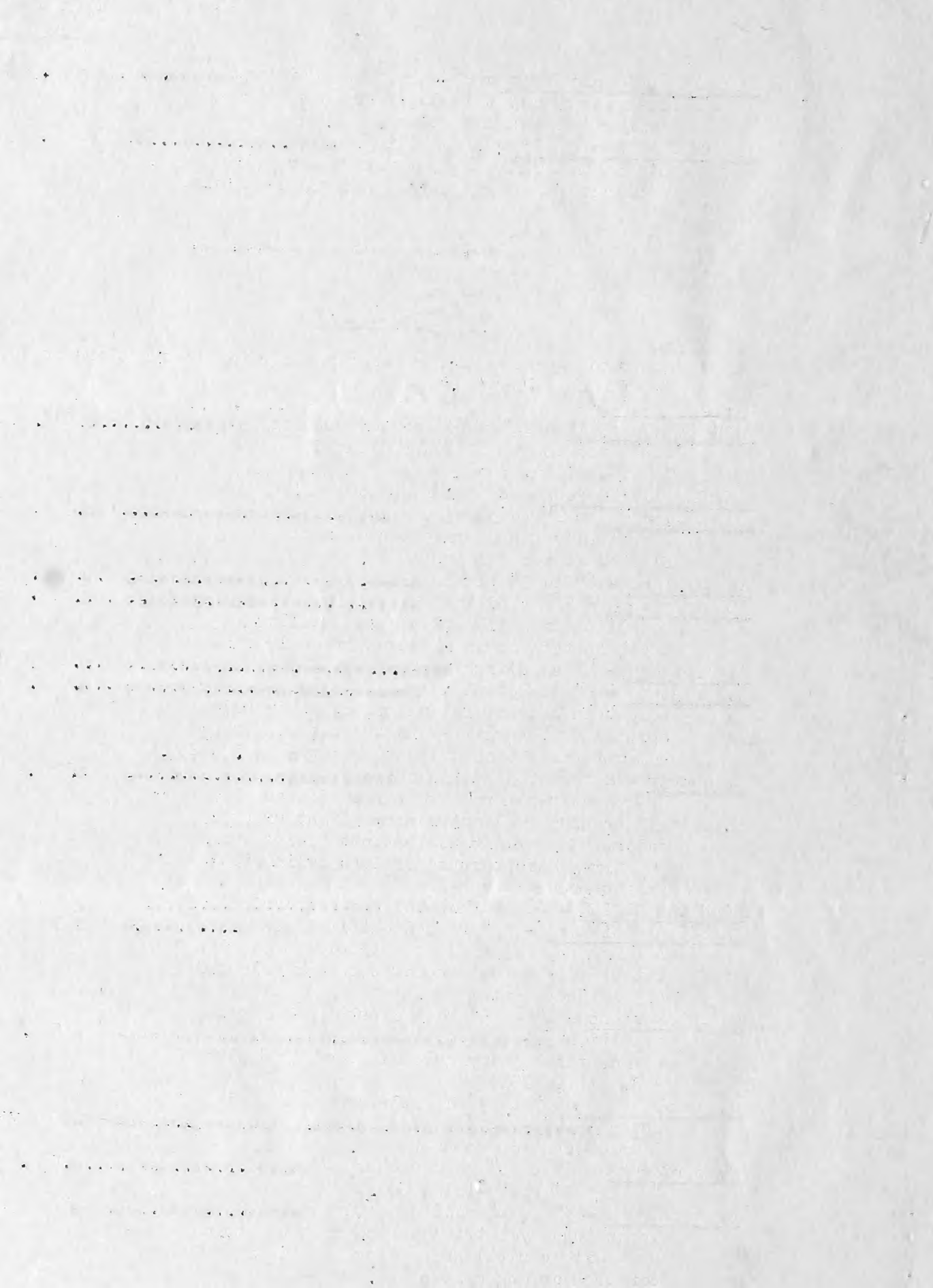
	Prices - and	
	<u>No. of Plants</u>	
	10	100
<u>SELLENICEREUS spinulosus</u> - 2½" branched seedlings .....	.50	4.00
Clusters of very thin light green stems forming an attractive clump.		
<u>THRICOCHREUS pasacana</u> - 1" seedlings .....	.40	3.50
This South American giant makes attractive seedlings which grow well under cultivation.		

\*\*\*\*\*

### SUCCULENTS

NOTE: Reference numbers in parentheses refer to illustrations in "SUCCULENTS FOR THE AMATEUR."

<u>AEONIUM haworthii</u> - 2½" to 3" rooted cuttings .....	.30	2.50
Large rosette type with red edged leaves. (Fig. 206)		
<u>AFRICAN LIVING ROCK</u> - See Pleiospilos nolii		
<u>AGAVE sisalana</u> - 2" to 3" plants .....	.35	3.00
Beautifully formed rosettes of soft flexible tapered leaves.		
<u>A. sisalana</u> - 6" to 8" plants .....	.60	5.00
<u>ALCE africana</u> - 2½" seedlings .....	.40	3.50
Beautiful tree like plants with yellow teeth on the margin of light green leaves.		
<u>A. africana</u> - 4" seedlings .....	.60	5.00
<u>A. aristata</u> - 2" to 2½" plants .....	.90	7.50
Very thin leaves of dark green, generously sprinkled with white dots and tapering to a compact rosette of delicate beauty. (Fig. 239)		
<u>A. humvir</u> - 2½" rooted cuttings .....	.50	4.00
Erect growth in rosette form. Leaves about ¼" across and almost round. Light green color. This plant is distinct because of the wiry, hard texture of it's cylindrical bright green leaves.		
<u>CORN COB CACTUS</u> - See Euphorbia submamillaris		
<u>CRASSULA albiflora</u> - 2½" rooted cuttings .....	.35	3.00
Dark green, oblong leaves deeply edged with intense dark red. One of the most colorful of all Succulents.		
<u>C. arborescens</u> - 4" to 5" rooted cuttings in prime condition .....	.35	3.00
Round, thick shiny green leaves edged with red. (Fig. 151)		
<u>C. arborescens</u> - 6" to 7" heavily branched field grown .....	.75	6.00
Samples sent on request.		
<u>C. perforata</u> - 2" to 3" rooted cuttings .....	.40	3.50
"Rosary Plant." (Fig. 5)		
<u>C. tetragona</u> - 3" to 4" rooted cuttings .....	.30	2.50
Grows into symmetrical, miniature branched tree with conical green leaves in four cornered arrangements.		



	Prices - and	
	No. of Plants.	
	10	100
<u>ECHIVERIA dorenborgii</u> - 1½" to 2" rooted cuttings .....	.60	5.00
Compact, silvery white with a small point of red on the tip of each leaf. (Fig. Pl. 43)		
<u>E. elegans</u> - 2" rooted cuttings .....	.40	3.50
Very attractive, compact, silvery white rosette. (Fig. 159)		
<u>E. micrantha</u> - 2" .....	.40	3.50
Bright green leaves, edged with dark maroon.		
<u>E. multicaulis</u> - 2" rooted cuttings .....	.60	5.00
Leaves almost round, reddish, metallic. (Fig. 162)		
<u>E. perbella hybrid</u> - 2" to 3" rooted cuttings .....	.35	3.00
Grows exceptionally well. Very firm, light green leaves.		
<u>E. pulv-oliver</u> - 2" to 2½" rooted cuttings .....	.35	3.00
Long, tapered, felted, flexible leaves tipped with red.		
<u>E. set-oliver</u> - 2½" rooted cuttings .....	.35	3.00
Very attractive plant. Similar to <i>E. setosa</i> except the leaves are longer, thinner and tipped with red.		
<u>E. simulans</u> - 2½" to 3" rooted cuttings .....	.40	3.50
Light yellow-green, thick leaves tinged with red.		
<u>EUPHORBIA hermentiana</u> - 4" to 5" .....	.60	5.00
Three-angled, columnar plant with marbled surface and ornamented with small rows of leaves on the angles.		
<u>E. hermentiana</u> - 6" rooted cuttings .....	.75	6.00
<u>E. hermentiana</u> - 6" to 8" branched plants .....	1.25	10.00
<u>E. pseudocactus</u> - 3" to 4" rooted cuttings .....	1.25	----
Stems angled, light green plainly marbled with yellow. (Fig. 219)		
<u>E. sub-mammillaris</u> - 2" rooted cuttings .....	.40	3.50
Called the "Corn Cob Cactus" because it looks like a small, green corn cob. Very popular.		
<u>FAUCARIA tigrina</u> - 1½" seedlings .....	.35	3.00
"Tiger's Jaw." Leaves marbled gray-green with white teeth.		
<u>F. tuberculosa</u> - 1½" seedlings .....	.35	3.00
Wide brown leaves thickly covered with large tubercles, white dot in center, white teeth on ridges. (Fig. 93)		
<u>FELT PLANT</u> - See <i>Kalanchoe beharensis</i>		
<u>KALANCHOE fottschenkoi</u> - rooted cuttings .....	.30	2.50
Purplish, scalloped leaves. (Fig. 187)		
<u>K. beharensis</u> ( <i>Cyn. Kitchingia mandrakensis</i> ) - 4" rooted cuttings .....	.75	6.00
The "Felt Plant." Large, scalloped, felt-like leaves, brown on upper side and silvery underneath. (Fig. 186)		

100  
101  
102  
103  
104  
105  
106  
107  
108  
109  
110  
111  
112  
113  
114  
115  
116  
117  
118  
119  
120  
121  
122  
123  
124  
125  
126  
127  
128  
129  
130  
131  
132  
133  
134  
135  
136  
137  
138  
139  
140  
141  
142  
143  
144  
145  
146  
147  
148  
149  
150  
151  
152  
153  
154  
155  
156  
157  
158  
159  
160  
161  
162  
163  
164  
165  
166  
167  
168  
169  
170  
171  
172  
173  
174  
175  
176  
177  
178  
179  
180  
181  
182  
183  
184  
185  
186  
187  
188  
189  
190  
191  
192  
193  
194  
195  
196  
197  
198  
199  
200

	Prices - and No. of Plants	
	$\frac{10}{.75}$	$\frac{100}{\$6.00}$
<u>KALANCHOE pilosa</u> - 2" to 2 $\frac{1}{2}$ " plants ..... \$	.75	\$6.00
(Syn. tomentosa) "Plush Plant." Attractive wide thickly felted leaves, scalloped tips marked with distinct brown spots. These unusual characteristics sell this plant on sight. (Fig. 185)		
<u>PACHYPHYTUM compactum</u> - 1" .....	.35	3.00
Close-set, cylindrical, blue-gray leaves with silvery white markings give the plant an angled effect. (Fig. 174)		
<u>PACHYVERIA orpetii</u> - 2 $\frac{1}{2}$ " rooted cuttings .....	.40	3.50
Oblong, rounded, bluish leaves overlaid with white powder.		
<u>PLEIOSPILOS bolusii</u> - 1 $\frac{1}{2}$ " to 2" .....	.60	5.00
Imitates pieces of granite; always excites curiosity. (Fig. 25)		
<u>P. nelii</u> - 1" to 1 $\frac{1}{2}$ " seedlings .....	.60	5.00
"African Living Rock." Leaves nearly round, reddish brown in color.		
<u>P. simulans</u> - 1 $\frac{1}{2}$ " to 2" .....	.60	5.00
Similar to P. bolusii, but the thick leaves are flat on top, triangular below.		
<u>PLUSH PLANT</u> - See Kalanchoe pilosa		
<u>PORTULACARIA afra</u> - 3" to 4" rooted cuttings .....	.30	2.50
Small, shiny leaves on reddish stems, branching like a small tree. (Fig. 264)		
<u>P. afra</u> - 6" to 8" rooted cuttings .....	.50	4.00
<u>PUYA chilensis</u> - 3" seedlings .....	.50	4.00
Striking plant of the pineapple family, leaves very thin, light green on upper side, silvery gray underneath.		
<u>P. chilensis</u> - 5" to 6" plants .....	.75	6.00
<u>ROSBARY PLANT</u> - See Crassula perforata		
<u>SEDUM adolphii</u> - 2 $\frac{1}{2}$ " rooted cuttings .....	.30	2.50
Colorful, waxy, yellow, thick, oblong leaves. (Fig. 51)		
<u>S. guatemalense</u> - rooted cuttings .....	.25	2.00
Stems densely covered with berry like leaves, shiny green tinged red. (Fig. 195-A)		
<u>S. pachyphyllum</u> - rooted cuttings .....	.25	2.00
Similar to S. guatemalense but leaves are cylindrical light gray tipped pink to red. (Fig. 195)		
<u>S. trecalensis</u> - 2" to 3" rooted cuttings .....	.35	3.00
A very attractive, chalky white plant forming small rosettes. (Fig. 195)		
<u>S. winkleri</u> - 2" branched plants .....	.30	2.50
Small, light green rosette. (Fig. 196)		
<u>SEMPERVIVUM calcarum</u> - 2" rooted cuttings .....	.35	3.00
Elegant, small, rosette plant with numerous short broad, gray leaves sharply tipped with dull crimson. (Fig. 213)		
<u>TIGER JAW</u> - See Faucaria tigrina		

Return Postage Guaranteed By

ALBERT AROZEMA NURSERY  
1518 EAST ROSECRANS AVE.,  
COMPTON, CALIFORNIA.



*Library*

*U. S. Department of Agriculture  
Washington 25,  
D. C.*